

BOOK 974

F.B. 974

BOOK

974

325.38
~~275~~
 26.75
 90.03

KEUFFEL & ESSER CO.

DRAWING MATERIALS

AND

SURVEYING INSTRUMENTS.

NEW YORK.

CHICAGO.

SAN FRANCISCO.

ST. LOUIS.

TABLES FOR EXCAVATIONS AND EMBANKMENTS.

DISTANCES FROM CENTER OF ROADWAY FOR CROSS-SECTIONING.

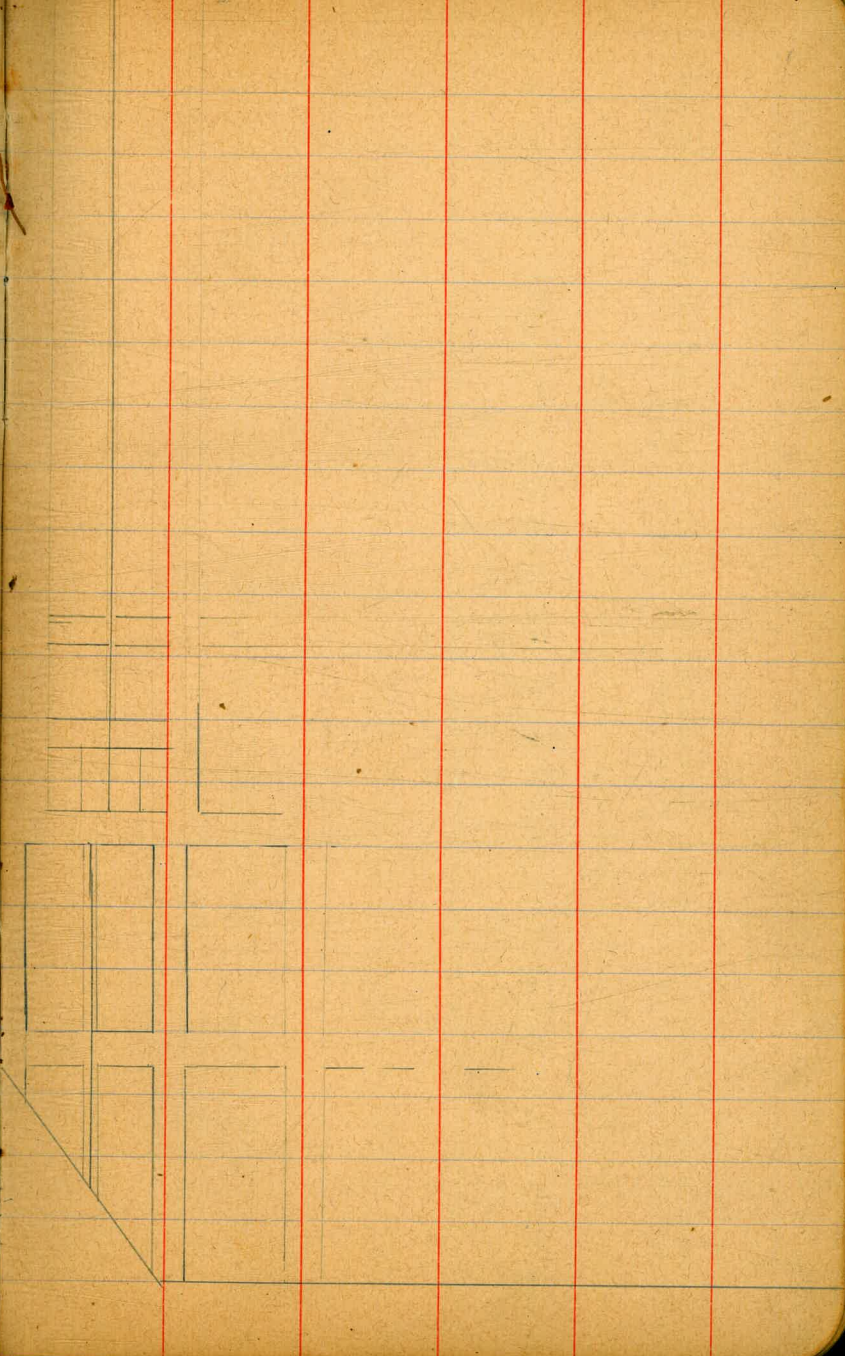
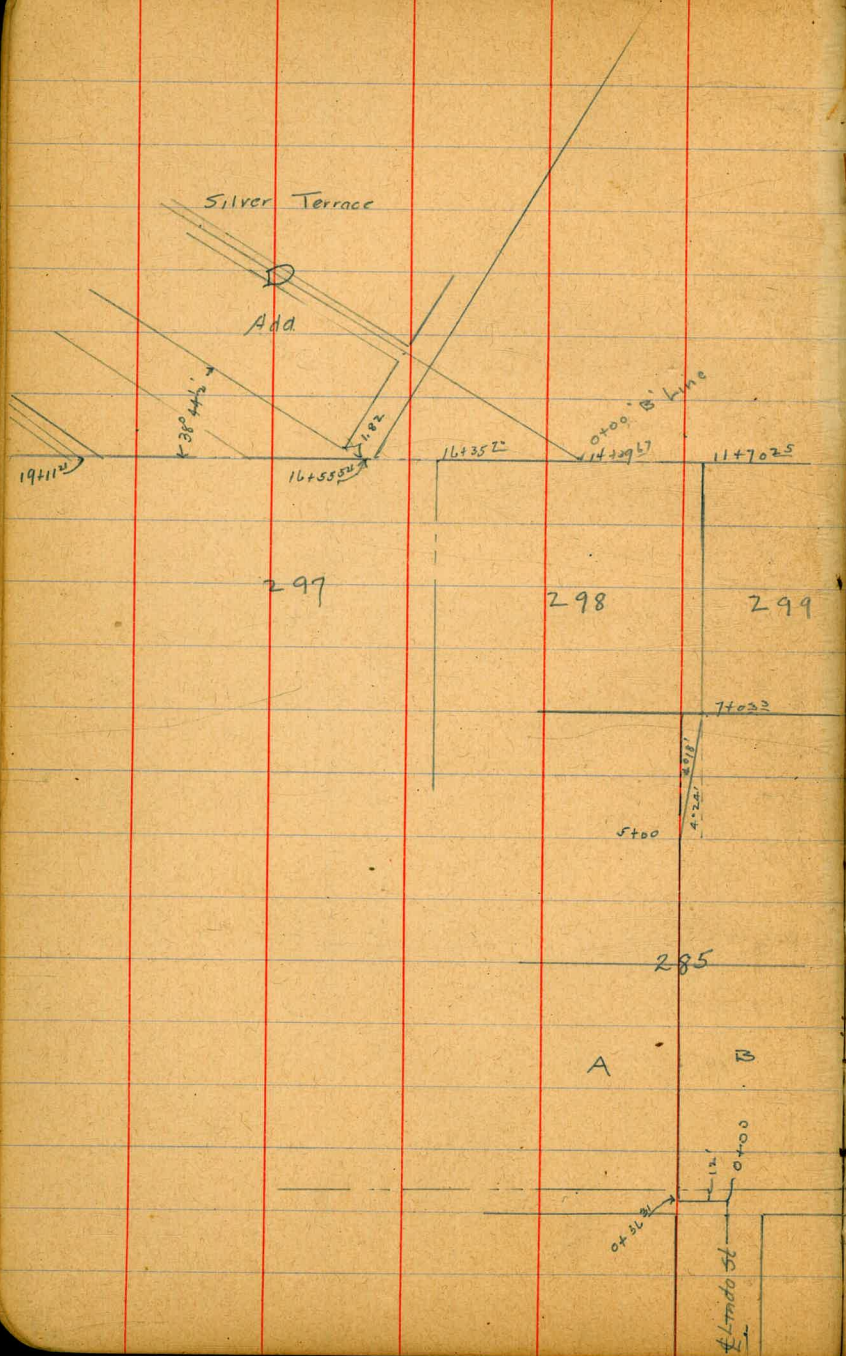
ROADWAY 18 FEET WIDE. SIDE SLOPES 1 TO 1.

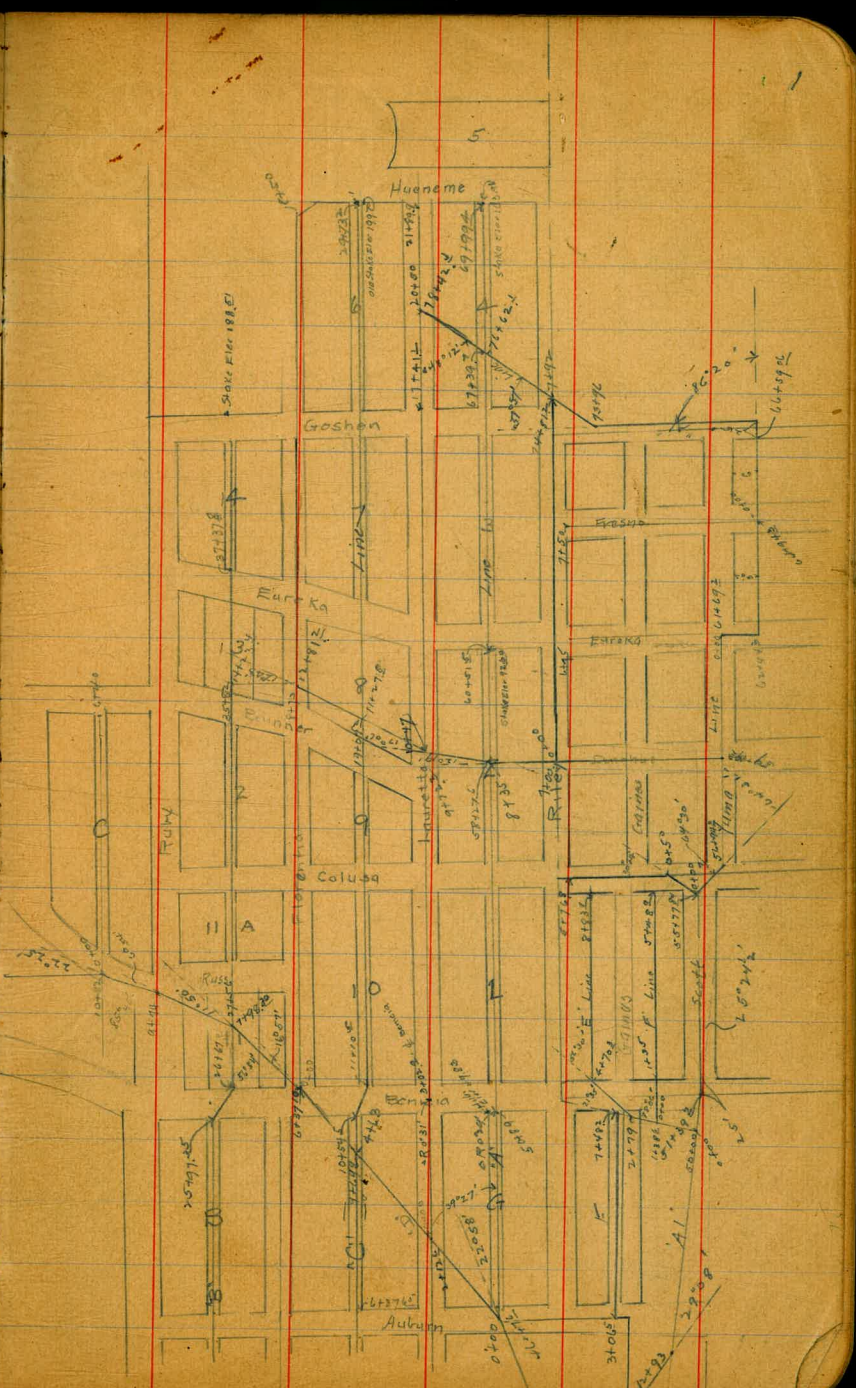
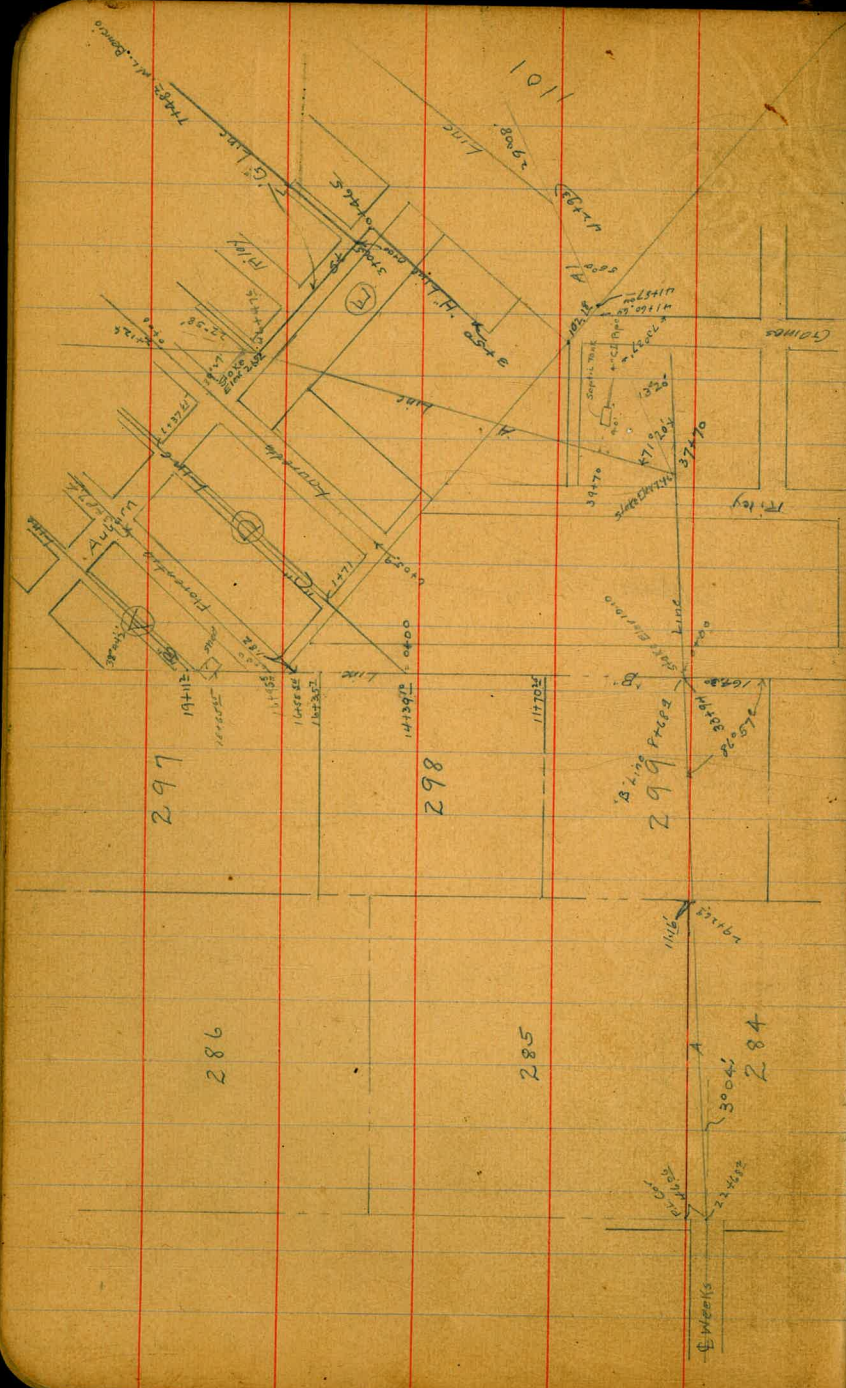
FOR SINGLE TRACK EXCAVATION

"Copyright, 1885, by Keuffel & Esser Co."

	0	.1	.2	.3	.4	.5	.6	.7	.8	.9	
0	9.0	9.1	9.2	9.3	9.4	9.5	9.6	9.7	9.8	9.9	0
1	10.0	10.1	10.2	10.3	10.4	10.5	10.6	10.7	10.8	10.9	1
2	11.0	11.1	11.2	11.3	11.4	11.5	11.6	11.7	11.8	11.9	2
3	12.0	12.1	12.2	12.3	12.4	12.5	12.6	12.7	12.8	12.9	3
4	13.0	13.1	13.2	13.3	13.4	13.5	13.6	13.7	13.8	13.9	4
5	14.0	14.1	14.2	14.3	14.4	14.5	14.6	14.7	14.8	14.9	5
6	15.0	15.1	15.2	15.3	15.4	15.5	15.6	15.7	15.8	15.9	6
7	16.0	16.1	16.2	16.3	16.4	16.5	16.6	16.7	16.8	16.9	7
8	17.0	17.1	17.2	17.3	17.4	17.5	17.6	17.7	17.8	17.9	8
9	18.0	18.1	18.2	18.3	18.4	18.5	18.6	18.7	18.8	18.9	9
10	19.0	19.1	19.2	19.3	19.4	19.5	19.6	19.7	19.8	19.9	10
11	20.0	20.1	20.2	20.3	20.4	20.5	20.6	20.7	20.8	20.9	11
12	21.0	21.1	21.2	21.3	21.4	21.5	21.6	21.7	21.8	21.9	12
13	22.0	22.1	22.2	22.3	22.4	22.5	22.6	22.7	22.8	22.9	13
14	23.0	23.1	23.2	23.3	23.4	23.5	23.6	23.7	23.8	23.9	14
15	24.0	24.1	24.2	24.3	24.4	24.5	24.6	24.7	24.8	24.9	15
16	25.0	25.1	25.2	25.3	25.4	25.5	25.6	25.7	25.8	25.9	16
17	26.0	26.1	26.2	26.3	26.4	26.5	26.6	26.7	26.8	26.9	17
18	27.0	27.1	27.2	27.3	27.4	27.5	27.6	27.7	27.8	27.9	18
19	28.0	28.1	28.2	28.3	28.4	28.5	28.6	28.7	28.8	28.9	19
20	29.0	29.1	29.2	29.3	29.4	29.5	29.6	29.7	29.8	29.9	20
21	30.0	30.1	30.2	30.3	30.4	30.5	30.6	30.7	30.8	30.9	21
22	31.0	31.1	31.2	31.3	31.4	31.5	31.6	31.7	31.8	31.9	22
23	32.0	32.1	32.2	32.3	32.4	32.5	32.6	32.7	32.8	32.9	23
24	33.0	33.1	33.2	33.3	33.4	33.5	33.6	33.7	33.8	33.9	24
25	34.0	34.1	34.2	34.3	34.4	34.5	34.6	34.7	34.8	34.9	25
26	35.0	35.1	35.2	35.3	35.4	35.5	35.6	35.7	35.8	35.9	26
27	36.0	36.1	36.2	36.3	36.4	36.5	36.6	36.7	36.8	36.9	27
28	37.0	37.1	37.2	37.3	37.4	37.5	37.6	37.7	37.8	37.9	28
29	38.0	38.1	38.2	38.3	38.4	38.5	38.6	38.7	38.8	38.9	29
30	39.0	39.1	39.2	39.3	39.4	39.5	39.6	39.7	39.8	39.9	30
31	40.0	40.1	40.2	40.3	40.4	40.5	40.6	40.7	40.8	40.9	31
32	41.0	41.1	41.2	41.3	41.4	41.5	41.6	41.7	41.8	41.9	32
33	42.0	42.1	42.2	42.3	42.4	42.5	42.6	42.7	42.8	42.9	33
34	43.0	43.1	43.2	43.3	43.4	43.5	43.6	43.7	43.8	43.9	34
35	44.0	44.1	44.2	44.3	44.4	44.5	44.6	44.7	44.8	44.9	35
36	45.0	45.1	45.2	45.3	45.4	45.5	45.6	45.7	45.8	45.9	36

Calculated by Julien A. Hall, M. Am. Soc. C. E.





Levels for Sewer from Weeks Ave & Cushman Via Isolation
 Hospital to Huename St. Silver Terrace. A Line Continued

	+	M1	-	Elev		Sta	+	-	Elev.	
	1.70	23.50		21.80	B.M. Cushman & LaJolla Blvd.		0.58	22.38	21.80	B.M. 3pk in Pole NW cor LaJolla Blvd & Cushman St.
T.P.	4.39	19.11	8.78	14.72		22+44	W.L. Cushman	2.9	19.5	
T.P.	4.79	19.24	4.66	14.45		+68	Pl.	3.9	18.5	
T.P.	4.65	23.02	0.87	18.37		23		4.0	18.4	
T.P.	2.32	13.11	12.23	10.79		+50		7.2	18.7	
			7.07	6.04	Mon SW Cor Chestnut & Taylor	24		5.2	17.2	
						+50		4.2	18.2	
						25		4.0	18.4	
						+17		4.4	8.0	
						+50		11.2	11.1	
						T.P.	1.95	11.25	13.08	9.30
						26		5.2	6.1	
						+50		6.0	5.3	
						27		7.1	4.2	
						+50		7.4	3.9	
						28		7.4	3.9	
						+50		7.2	4.1	
						29		6.8	4.5	
						+26.9		6.5	4.5	

Sta	+	1125 HI	-	Elev	
29	+50		64	4.9	
30			64	4.9	
	+50		60	5.3	
31			59	5.4	
	+50		48	6.5	
32			50	6.3	
T.P.	8.69	15.52	4.42	6.93	
	+50		7.7	7.8	
33			6.2	9.3	
	+50		5.5	10.0	
	+94		5.42	10.10	on stake
34			5.2	10.3	
	+50		5.0	10.5	
35			4.6	10.9	
	+50		5.2	10.3	
36			6.1	9.4	
	+50		6.6	8.9	
37			7.6	7.9	
	+50		7.7	8.3	

Sta	+	141 HI	-	Elev	
	+70		80	7.5	
T.P.	3.75	11.21	80.6	7.46	on stake
38			4.5	6.7	
	+50		5.6	5.6	
39			5.6	5.6	
	+50		5.6	5.6	
	+70		61	5.1	
			6.14	5.07	Top of C.I. pipe at entrance of Septic Tank. 40' E of line
			1.90	9.37	B.M. Floor of Hospital at W. door N.W. Cor. Bldg
	+50		6.3	4.9	
	+50		5.7	5.5	
41			5.2	6.0	
	+50		4.6	6.6	
42			4.2	7.0	
	+50		3.7	7.5	
43			3.0	8.7	
T.P.	12.52	22.76	0.97	10.24	
	+50		11.5	11.3	
44			10.3	12.5	

Sta	+	22.76	-	Elev
44+50		141	10.2	12.6
45			8.2	14.6
+50			5.4	17.4
46			3.5	19.3
+47.5			1.20	21.52 on Hub
T.P.	12.65	34.94	0.47	22.29
47			11.6	23.3
+50			8.4	26.5
48			3.3	27.6
T.P.	12.36	47.06	0.24	34.70
+50			11.2	35.9
49			5.4	41.7
+50			3.4	43.7
50			0.9	46.2
T.P.	11.76	57.95	0.87	46.19
+50			11.0	47.0
+89. W. St.			9.5	47.5
B.M. on Hub N.W. Cor. Alley			9.02	48.93
51			9.4	48.6

Sta	+	141	-	Elev
+50			7.7	50.3
52			6.3	51.7
+50			4.6	53.4
53			3.4	54.6
+50			2.9	55.1
54			2.3	55.7
+50			0.5	57.5
T.P.	12.95	69.96	0.92	57.03
55			10.8	59.2
+50			8.3	61.7
56			6.0	64.0
+50			3.1	66.9
57			0.5	69.5
T.P.	10.20	79.61	0.57	69.41
+50			7.9	71.7
+6.9			7.6	72.0
58			23.4	56.2
+17			4.96	50.0
+27.0			2.91	50.5

Sta	+	79.61 NI	-	Elev	
58427			29.6	50.0	
+50			22.2	57.2	
+69			12.2	67.4	
59			4.5	75.1	
T.P	12.79	91.46	0.94	78.67	
+50			9.3	82.2	
60			5.1	86.4	
T.P	12.61	103.30	0.77	90.69	
+51 ⁰⁰	WL St		10.70	92.60	on Stake
61			5.2	98.1	
T.P	12.94	116.02	0.22	103.08	
+50			12.0	104.0	
62			5.9	110.1	
+30			2.6	113.4	
135			3.8	112.2	
+50			2.8	113.2	
+65			1.3	114.7	
T.P	9.31	125.17	0.16	115.86	
+70			7.4	117.8	

Sta	+	4.1	-	Elev	
63			5.3	119.9	
+50			2.8	122.4	
64			1.9	123.3	
+50			2.8	122.4	
65			4.3	120.9	
+50 ²	E.L. Goshen		4.2	121.0	
T.P	14.02	125.02	4.17	121.00	Hut E.L. Goshen Crr Alley
66			3.4	121.6	
+50			6.5	118.5	
+70			9.4	115.6	
67			8.0	117.0	
+50			8.7	116.3	
+70			9.5	115.5	
T.P	• 12.98	137.78	0.22	124.80	
68			12.5	124.3	
+25			6.1	131.7	
T.P	12.66	150.18	0.26	137.52	
+50			10.7	139.5	
+75			4.9	145.3	

Sta	+	150.19 H.I.	-	Flor
T.P.	12.65	162.22	0.61	149.57
69			11.1	151.1
+25			6.8	155.4
+50			3.2	159.0
T.P.	12.94	174.75	0.41	161.81
+99 ^W	W. Line Huene		10.84	163.91 on Hub Chr Alley
T.P.	12.70	187.37	0.08	174.67
T.P.	12.91	199.91	0.37	187.00 old Hub S. L. Alley Block 6 W. Line Huene
B.M.			0.21	199.70
T.P.	0.98	188.57	12.32	187.59
T.P.	6.19	190.86	3.90	184.67 Hub on E. Line Coshon Chr Alley Alley Bk 4. Prod.
			2.38	188.51

Levels over "B" Line Silver Terrace Sewer Lines				
+	H.I.	-	Flor	
12.60	22.70		10.10	
8+CP 90 line station	✓	12.6	10.1	
9		11.4	11.3	
150		8.7	14.0	
10		4.8	17.9	
T.P.	12.33	34.89	0.14	22.56
+50		12.3	22.6	
11		8.1	26.8	
+50		5.5	29.4	
170 ²⁵	S.E. PL 298	5.19	29.70 on Mon	
12		4.8	30.1	
150		4.7	30.2	
13		4.5	30.4	
+50		4.5	30.4	
14		4.2	30.7	
+39 ¹⁰	0700 E. Line	4.16	30.75 on Stake	
+50		4.1	30.8	
15		3.4	31.5	
+50		3.0	31.9	

6
 { Davis
 24 { Hancock
 75 { Herrick
 Stake 33+du Alms
 8+62 B-line 1000

Sta	T	Ht.	-	Elev.
16		34.89	1.2	33.7
T.P.	12.90	46.72	1.12	33.77
+35.7 - NE PL 298			12.6	34.1
+50			12.5	34.2
+65 ⁰ - Int with skine Florentia			12.4	34.3
17			10.1	36.6
+50			8.9	38.0
18			5.8	40.9
+50			2.9	42.0
+65			1.8	44.9
T.R.	12.91	58.90	0.70	46.02
19			11.4	47.5
+11 ²			10.65	48.28 on stake
+50			8.4	50.5
20			5.4	53.5
+50			2.3	56.6
T.R.	12.92	71.82	0.03	58.90
21			11.0	60.8
+50			7.0	64.8

Sta	T	Ht.	-	Elev.
22			2.7	69.1
+50			0.5	71.3
T.P.	12.92	84.08	0.66	71.16
23			14.3	69.8
+50			10.6	73.5
24			6.2	77.7
+50			4.2	79.9
+70			2.8	81.3
+75			4.9	79.2
+90			2.8	81.3
25			1.7	82.4
+15			5.5	78.6
+30			0.1	84.0
T.P.	12.93	88.18	0.14	83.94
+50			3.2	85.0
25+97.35			0.66	87.52 on stake
26			1.0	87.2
+50			5.5	82.7
+67 ²			8.2	80.1

Sta	+	88.18	-	Elev
27			11.0	77.2
T.P.	13.07	89.50	13.75	76.43
+40			2.31	65.9
+50			2.45	65.0
+56 "D Line			2.49	64.6
+65			2.40	65.5
28			10.8	78.9
+50			0.7	88.8
T.P.	12.80	102.27	0.53	89.47
29			7.6	92.7
+50			3.7	98.6
30			0.5	101.8
+4			0.5	101.8
+7			1.8	100.5
120			1.4	100.9
+21			+0.8	103.1
+23			+0.8	103.1
+28			1.7	100.6
+44			1.0	101.3
+46			+0.2	102.5

Sta	+	B Line	-	Elev
+50			0.0	102.3
31			10.3	102.6
+50			1.9	100.4
T.P.	12.50	112.17	1.0	100.67
32			11.2	102.0
+30			9.1	104.1
+35			4.6	108.6
+50			3.0	110.2
+63			1.7	111.8
T.P.	12.69	124.47	1.39	111.78
+66			14.4	116.1
33			10.0	114.5
+32			1.8	122.7
T.P.	9.72	134.06	0.13	124.34
+50			8.6	125.5
34			3.0	131.1
+50			2.2	131.9
35			7.2	126.8
+25			12.9	121.2

Sta	+	13406 HI	-	Elev	
35	+50		18.6	115.5	
	+60		21.8	112.3	
	+78		35.0	99.1	
	+88		27.0	107.1	
36			21.9	112.1	
	+25		14.1	120.0	
	+50		7.9	126.2	
	+75		2.4	131.7	
T.P.	1273	146.31	0.48	133.58	
37			9.4	136.9	
	+37 ⁸	E.L. Eureka	2.17	144.14	on stake
	+50		0.3	146.00	
T.P.	1279	152.85	0.25	146.06	
	+75		9.0	149.9	
38			5.6	153.3	
	+50		0.2	158.5	
T.P.	1305	171.70	0.20	158.65	
39			8.3	163.4	
	+50		2.1	169.6	
T.P.	1289	183.37	1.22	170.48	

"B" Line 9

Sta	+	HI	-	Elev
40			5.2	178.2
	+33 ⁵	Goshoro N.L. (Huencore)	1.2	182.2
T.P.	770	190.42	0.65	182.72
B.M. Stake E.L. Goshoro on "B" Line Prod.			1.91	188.51 / 188.51

Levels over C Line Silver Terrace Sower Lines

Sta	+	H.I.	-	Elev.	Notes
	12.80	43.55		30.75	Hul stab 00
0+00	14739.00		12.9	30.7	B. Line
+50			12.2	31.4	
1			11.8	31.8	
+50			10.9	32.7	
+71			10.9	32.7	
2			10.4	33.2	
+50			9.2	34.4	
3			8.8	34.8	
+50			7.4	36.2	
4			6.4	37.2	
+50			4.5	39.1	
5			2.8	40.8	
+50			1.0	42.6	
T.P.	10.77	54.22	0.12	43.43	
6			10.4	43.8	
+37.65			11.2	43.0	
+50			11.2	43.0	
7			14.7	39.5	
+50			15.1	39.1	

C Line

Sta	+	H.I.	-	Elev.	Notes
		54.22			
8			13.9	40.3	
+50			12.1	42.1	
9			10.2	44.0	
+50			9.7	44.5	
10			7.0	47.2	
T.P.	12.94	67.05	0.11	54.11	
+50			11.2	55.9	
+54.5			10.01	57.0	on stake
+70			5.8	61.3	
11			3.7	63.4	
+105			3.6	63.5	
+20			3.2	63.9	
+25			5.0	62.1	
+38			5.0	62.1	
+41			2.4	64.7	
+50			2.3	64.8	
12			0.8	66.3	
T.P.	12.23	79.94	0.34	66.71	
T.25			13.7	65.2	

Sta	+	HI	-	Elev
		78.94		
+40			10.6	68.3
+50			10.1	68.8
+78			8.8	70.1
+83			11.3	67.6
+91			11.8	67.1
+92			7.9	71.0
12			7.6	71.3
+50			5.1	73.8
+52			12.8	66.1
+60			4.4	74.5
+68			4.1	74.8
+75			13.2	65.7
+80			12.8	66.1
+82			7.1	71.8
14			4.5	74.4
+4			2.0	76.9
T.P.	12.85	91.75	0.04	78.90
+50			12.6	79.2
15			10.1	81.7

Sta	+	HI	-	Elev
		C Lino		
		91.75		
+50			6.1	85.7
16			1.5	90.4
T.P.	12.84	103.98	0.61	91.14
+50			9.8	94.2
17			6.5	97.5
+50			2.8	101.2
18			2.5	101.5
+25			3.1	100.9
+50			5.2	98.8
+75			9.4	94.6
+85			12.1	91.9
19			21.3	82.7
+07%			27.9	76.1
+25			17.5	86.5
+50			11.0	93.0
+56			8.5	95.5
+75			5.0	99.0
20			0.7	103.3
T.P.	13.03	116.84	0.17	103.91

116.84

20 + 25 9.3 107.5

+ 50 25 118.3

T.P. 12.75 129.18 0.41 116.43

+ 75 10.9 118.3

21 6.3 122.9

+ 0.5 (W.L. Brunner) E.L. Eureka 5.47 123.71 on strike

+ 25 2.4 126.8

T.P. 13.02 142.04 0.16 129.02

+ 50 11.6 130.4

+ 75 7.3 134.7

22 4.7 137.3

T.P. 13.06 155.04 0.06 141.98

+ 50 13.2 141.8

23 9.7 145.3

+ 30 7.7 147.3

+ 33 8.1 146.4

+ 50 5.9 149.2

24 4.0 151.0

+ 50 1.4 153.6

C Line

12

Sta + H1 - Elev.

T.P. 130.5 167.51 0.58 154.46

25 10.6 156.9

+ 50 8.6 158.9

26 7.1 160.4

+ 50 3.9 163.6

T.P. 12.97 181.26 0.22 167.29

27 11.3 169.0

+ 50 5.6 174.7

T.P. 12.99 193.10 0.11 180.10

28 12.2 180.9

+ 50 8.4 184.7

29 2.7 190.4

T.P. 10.30 203.42 0.02 193.12

+ 50 5.3 198.1

+ 7.22 W.L. Huerfano 1.5 201.9

3.65 199.77 199.70

Levels over 'A1' Line Silver Terrace Sewers. ² Davis
¹⁵ Herrick.

A 1 Line 13

Sta	+	14	-	Elev					
	566	13.12		7.46 - Stake 3770	45		41		6.4
37770			57	7.4	150		54		7.1
38			65	6.6	46		48		7.7
+50			61	7.0	150		48		7.7
39			65	6.6	47		55		7.0
+50			67	6.9	150		56		6.9
40			70	8.8	48		51		7.4
+50			38	9.3	150		51		7.4
41			49	8.2	49		47		7.8
+60 F.L. Gaines			60	7.1	150		47		7.8
42	PL		61	7.0	50		44		8.1
43			53	7.8	T.P.	7.98	16.14	438	8.16 Hub Sta 50+00
+50			59	7.2	150		79		8.2
44			64	6.7	51		74		8.7
+50			64	6.7	89 ² Ch. Benoit		19		9.2
45			52	7.9	150		72		8.9
44			44	8.7	52		71		8.2
T.P.	3.52	12.54	410	9.02	150		50		7.5
+50			52	7.3	53		93		6.8

Sta	+	16.14	-	Elev
53			89	7.2
54			82	7.8
+50			81	8.0
+5			82	7.9
+50			79	8.2
+77 ² W.L. Colusa			79	8.2
T.P.	7.90	16.10	7.94	8.20 Hub W.L. Colusa
56			80	8.1
+50			70	8.8
+94 ³ = E.L. Colusa			75	8.6
57			75	8.6
+50			66	9.5
58			65	9.6
+50			65	9.6
59			63	9.8
+19 ² Ctr Donahue			62	9.9
+50			64	9.7
60			68	9.3
+50			71	9.0
61			72	8.9
BM			6.02	10.09

Hub. N.E. Cor
Donahue Belfin

Sta	+	A1 16.10	-	Elev
+50			61	10.0
169 ² Ctr Eureka			513	10.97 on Hub
62			64	9.7
+443			77	8.4
+50			76	8.5
63			76	8.5
T.P.	6.87	16.03	6.94	7.16
+50			77	8.3
64			86	7.4
+50			79	8.1
+94 ³ Ctr Fresno			574	10.27 on Stake
65			60	10.0
+50			57	10.3
66			57	10.3
+50			46	11.4
+59 ² W.L. Goshen			45	11.5
+842			413	11.9 on Stake
67			37	12.3
+50			25	13.5

Sta	+	16.03 141	-	Elev
T.P.	12.87	27.92	0.92	15.11
68			12.8	15.2
+50			10.2	17.7
69			6.6	21.4
+50			3.1	24.9
T.P.	12.90	40.72	0.26	27.82
70			11.5	29.2
+50			7.2	33.4
71			0.2	40.5
T.P.	12.77	53.45	0.04	40.28
+25			6.9	46.5
+50			+1.2	54.6
+75			1.4	52.0
72			3.5	49.9
+25			3.7	49.7
+46			4.7	48.7
+50			2.5	50.9
T.P.	12.10	66.32	0.23	53.22
+75			13.7	52.6

Sta	+	A 1 141 66.32	-	Line	Elev
73				4.9	61.4
+07				1.2	65.1
+25				5.6	60.7
+35				3.8	62.5
+50				4.1	62.2
T.P.	13.01	79.27	0.06		66.26
+75				9.4	69.9
+96				4.51	74.76 on Hub.
74				4.5	74.8
+25				3.2	76.1
T.P.	13.05	92.02	0.30		71.97
+50				13.0	79.0
+75				7.8	84.2
+81.2				7.36	84.66 on Hub.
75				5.2	86.8
+12				2.0	90.0
+25				0.6	91.4
T.P.	13.07	104.95	0.16		91.86
+50				8.0	97.0

Sta	+	$\frac{11405}{141}$	-	Elev
75	75		5.7	99.3
76			1.5	103.5
T.P.	1295	117.68	0.22	104.73
+ 25			9.3	108.4
+ 50			4.0	113.7
+ 62.4	Incl with 7" L 10		1.0	116.7
T.P.	1305	130.60	0.13	117.55
75			11.5	119.1
77			7.7	122.9
+ 25			1.8	128.8
T.P.	1301	143.53	0.08	130.52
130			9.1	134.4
+ 75			4.1	139.4
T.P.	1247	155.62	0.35	143.15
78			10.0	145.6
+ 25			3.6	152.0
T.P.	1065	165.55	0.72	154.90
+ 42.8	ctr Lauretta		8.7	156.8
4 B.M.	End of Line		1.78	163.77

Levels over Fresno St Line Silver Terrace Sewers

Sta	+	HT	-	Elev	Sewers
	13.03	23.32		10.29	State Air Fresno
0400 - 4194 ² A1 Line			13.0	10.3	
+10		✓	11.9	11.4	
+25			4.9	18.4	
T.P.	12.99	36.20	0.11	23.21	
+50			6.9	29.3	
+75			0.9	35.3	
T.P.	12.97	48.58	0.59	35.61	
1			9.4	39.2	
+25			7.0	41.6	
+50			5.9	42.7	
2			3.4	45.2	
+50			1.2	47.4	
T.P.	12.49	60.94	0.13	48.45	
3			11.6	49.3	
+50			8.5	52.4	
4			4.5	55.4	
+50			1.7	59.2	
T.P.	12.86	70.72	0.08	60.86	

Sta	+	HT	-	Elev
		73.72		
5			9.5	64.2
+50			2.6	71.1
T.P.	13.05	86.73	0.04	73.68
6			7.5	79.2
T.P.	12.99	99.50	0.22	86.51
+50			11.5	88.0
7			3.0	96.5
T.P.	7.90	107.23	0.17	99.33
+50 - S.L. Riley			2.4	104.8

Levels over Eureka St Line Sisker Terrace Sowers

18

Sta	Ht	HI	Elev	Sowers 2 (Doris P. Hartwick)					
	12.58	23.55		1097 Stake	133		59	55.8	
0000 411097 All Line		✓	12.6	11.0	150		31	58.6	
+50			9.2	14.4	T.P.	12.71	73.92	0.45	61.21
1			3.3	20.3	+75		11.5	62.4	
T.P.	1204	36.57	0.02	23.53	6		79	66.0	
+25			10.6	26.0	+75		44	69.5	
+50			5.6	31.0	+50		0.4	73.5	
+75			0.7	35.9	T.P.	8.50	81.76	0.46	73.46
T.P.	1279	48.91	0.45	36.12	+75 S.L. Riley		48	77.0	
✓			9.4	39.5					
+50			7.1	41.8					
3			5.4	43.5					
+50			3.9	45.0					
4			0.8	48.1					
T.P.	1205	61.66	0.30	48.61					
+50			11.4	50.3					
5			9.2	52.5					
+20			7.1	54.6					
+25			10.0	51.7					

Levels over Donohue St Line Silver Terrace Sewers

Sta	+	HI	-	Elev
	12.26	22.94		10.08. Hub NE Donohue Yuma
0+00	57.493 A Line	✓	1.30	9.9
100			11.6	11.3
1			9.0	13.9
150			6.7	16.2
2			5.5	17.4
250			4.9	18.0
3			2.7	20.2
350			0.5	22.4
T.P.	12.20	34.92	0.22	22.72
4			10.8	24.1
450			8.5	26.4
5			6.6	28.3
550			4.5	30.4
6			1.6	33.3
T.P.	11.48	46.04	0.36	34.56
650			9.2	36.8
750			4.7	41.3
7	Chr Riley		0.6	45.4
T.P.	13.01	58.40	0.65	45.39 on Hub Chr Riley

Sta	+	HI	-	Elev
		58.40		
7+25			13.7	44.7
750			7.0	49.4
775			11.7	46.7
8			10.3	48.1
125			9.0	49.4
135	Alley A line		7.9	50.5
150			7.0	51.4
175			5.5	52.9
9			5.2	53.3
225			4.1	54.3
300			1.8	56.6
T.P.	12.91	71.20	0.11	58.29
775	Chr Laurette		12.27	51.93 on Hub
793			10.2	61.0
10			12.3	58.9
811			7.0	64.2
819			1.6	69.6
825			0.9	70.3
828-3E			10.4	60.8
T.P.	12.72	83.83	0.09	71.11

Sta	+	83.83 HI	-	Elev
10150			10.1	73.7
+50			8.4	75.4
+75			7.3	76.5
11			15.2	78.6
+10			2.7	76.1
1278' C Line			2.7	76.1
+30			6.0	79.8
+50			0.5	83.4
T.P.	1302	96.81	0.04	83.79
+58			11.2	85.6
+62			13.2	83.5
+75			12.9	83.9
+90			17.3	79.5
12			11.6	85.2
+15			10.2	86.6
+25			8.5	88.3
+50			4.4	92.4
+75			0.7	96.1
+812' Ctr Florentia			0.2	96.6
T.P.	1226	105.84	0.23	96.58

Hub Ctr Florentia

70

Sta	+	107 10884	-	Elev
13			13.2	95.6
+25			9.7	99.1
+60			7.7	101.1
+50			8.1	100.7
+67			12.4	95.4
+95			6.7	102.1
14			7.8	101.0
+112			10.7	98.1
+234' B Line			6.8	102.66

on Hub

Levels over Riley St. Silver Terrace - Sewers

9 Dams
10 Holes

Level	12.85	58.24	45.39	146 ch. Drainage	+75	1.0	95.5		
at 100 Ctr. Drainage			12.9	48.3	T.P.	12.87	109.18	0.21	96.31
+25			7.8	50.4	↓			9.9	99.3
+50			2.9	55.3	+25			6.5	102.7
T.P.	12.90	70.83	0.31	57.93	+50			3.1	106.1
+75			12.2	58.6	+75			1.2	108.0
			9.1	61.7	5			0.7	108.5
+25			5.4	65.4	+25			0.7	108.5
+50			2.0	68.8	+50			6.1	108.1
T.P.	12.00	83.67	0.16	70.67	+75			1.9	107.3
+75			10.9	72.8	6			3.2	106.0
			8.0	75.7	+25			4.3	104.9
+25			5.6	78.1	+50			5.3	103.9
+50			2.5	81.2	+75			6.2	103.0
T.P.	12.98	96.52	0.13	83.54	7			8.0	101.2
+75			12.7	83.8	+25			11.3	97.9
			9.5	87.0	T.P.	107	98.00	12.25	96.93
+25			7.6	88.9	+50			3.4	94.6
+50			4.5	92.0	+75			9.4	88.6
					+92	Inl with Al Line		13.30	84.70 ✓ 84.66

Levels over D'Line Silver Terrace Square ⁹ of Dams ₁₀ ¹⁵ ₁₅ ¹⁵ ₁₅

Sta	M	-	Elev	
	12.76	34.28	21.52	Nut 0100
0100: 40476 A Line	✓		12.1	21.5
+50			11.3	23.0
1			P.P	25.5
+50			6.4	27.9
2			2.8	31.5
+12.5 Ctr Louetta			1.97	32.51 on Nut
T.P.	12.71	46.75	0.24	34.04
+50			11.8	35.0
3			9.8	37.0
+50			6.9	39.9
4			4.7	42.1
+50			1.9	44.9
+63.5 C Line			1.1	45.7
T.P.	12.91	59.04	0.02	46.72
5			12.0	47.6
+50			9.1	50.5
6			5.8	53.8
+37.5 Ctr. Marcia			37.3	55.91 on Nut

Sta	M	-	Elev	
+50			2.9	56.7
T.P.	12.65	71.90	0.39	59.25
7			12.6	59.3
+50			10.2	61.7
+98.2 B Line			7.23	64.67 on Nut
8+50			4.4	67.5
9			1.6	70.3
T.P.	12.06	84.12	0.84	71.06
+50			11.9	72.7
+74			11.02	73.1
10			9.2	74.9
+50			6.5	77.6
+82 Ctr Alley BICE			2.21	81.91
+95			3.5	80.6
+97			5.8	78.3
11			4.8	79.3
+105			2.0	82.1
T.P.	12.45	75.74	0.83	83.29
+25			12.0	83.7

D Line

Sta	+	Mt. 9574	-	Elev
114.35			8.7	87.0
150			8.3	87.4
+75			6.8	88.9
112 112-3'E			2.8	92.9
			5.8	89.9
T.P.	1269	108.32	0.11	95.63
+28			9.7	98.6
+50			8.5	99.8
+72			5.2	103.1
+75			6.8	101.5
+88			5.9	102.4
+90			4.2	104.1
T.P.	1296	121.26	0.02	108.30
13			11.1	110.2
+18			7.7	113.6
+25			6.7	114.6
+35			9.4	111.9
+45			5.6	115.7
+50			2.8	118.5

23

Sta	+	Mt	-	Elev
T.P.	1100	132.23	0.03	121.23
+60			14.5	117.7
+75			12.0	120.2
14			7.5	124.7
+18			4.6	127.6
+28			1.2	131.0
T.P.	1100	142.81	0.42	131.81
+35			13.0	129.8
+50			5.3	137.5

Levels over Alley Block C: Silver Terrace Sewers & Drain

Sta	+	141	-	Elev	to Terrace
	14.93	94.84		81.91	Motor...
0100		✓	12.9	81.9	
T.P.	1203	106.70	0.17	94.67	
+25			10.5	96.2	
T.P.	12.77	119.42	0.05	106.65	
+50			10.0	109.4	
+75			2.5	116.9	
T.P.	12.77	132.17	0.02	119.40	
1			8.2	124.0	
+25			2.4	129.8	
T.P.	12.18	144.17	0.18	131.99	
+50			9.7	134.5	
+75			6.9	137.3	
2			4.5	139.7	
T.P.	8.07	151.96	0.28	143.89	
+50			10.1	141.9	
3			9.5	142.5	
+50			9.4	142.6	
4			8.8	143.2	

24

Sta	+	141	-	Elev
		151.96		
+50			7.3	144.7
5			5.1	146.9
+50			5.2	147.6
6			3.3	148.7
+40 E. Bk. of Aprax			3.1	148.9

Levels over Florantia St. Silver Terrace Sewers

Sta	D Line to E. End	to E. End	to E. End	to E. End	to E. End	to E. End	to E. End	to E. End	to E. End		
	12.97	68.88		55.91	44.6	82.00	+29	93.99	71	84.9	
0+00	1432-D Line		13.0	55.9			3		83	85.7	
+25			12.2	56.7			+12		76	86.4	
+50			9.2	59.7			+20		90	85.0	
+75			2.1	66.8			+38		73	86.7	
T.P.	12.75	81.58	20.5	68.83			+50		71	86.9	
			0.8	72.8			+55		72	86.8	
+25			5.7	75.9			+62		17.2	76.8	
+50			4.3	77.3			+75		16.5	77.5	
+65			3.5	78.1			+86		28	84.2	
+67			4.8	76.8			4		6.3	87.7	
+84			4.2	77.4			+25		11	92.9	
+89			2.7	78.9			T.P.	12.97	106.84	0.12	93.87
2			1.6	80.0			+38		11.9	95.5	
T.P.	12.60	93.99	0.19	81.39			+40		83	98.5	
+25			13.4	80.6			+50		6.8	100.0	
+50			11.0	83.0			+75		39	102.9	
+84			7.3	84.7			5		64	106.4	
+86			12.5	81.5			T.P.	12.92	119.71	0.05	106.79

Sta	+	119.71 HI	-	Elev
5+50			9.1	110.6
+50			6.2	113.4
+75			2.9	116.8
6			0.8	118.9
T.P.	1.29	123.10	1.00	118.71
+50			0.1	123.0
7			0.0	123.1
+25			0.8	122.3
+50			3.0	120.1
+75			4.6	118.5
8			9.4	113.7
+25			13.1	110.0
+40			16.2	106.9
+50			18.6	104.5
+72: Dandura line			26.5	96.6
+87			37.0	86.1
9			27.1	95.3
+12			15.3	104.8
+25			13.3	109.8

Sta	+	123.10 HI	-	Elev	26
+50			7.1	115.5	
+75			2.3	120.8	
T.P.	13.05	136.05	0.10	123.0	
10			8.8	127.2	
+25			2.7	132.3	
T.P.	13.07	148.67	0.45	135.10	
+50			11.3	137.4	
+75			7.2	141.5	
11			3.7	145.0	
T.P.	13.03	160.99	0.71	147.96	
+25			13.7	147.3	
+50			11.5	149.5	
+75			9.1	151.9	
12			6.7	154.3	
+50			3.0	158.0	
T.P.	12.90	173.82	0.09	160.92	
13			10.1	163.7	
+50			6.5	168.2	
1653 W.L. Gresham			4.6	169.56	on H.W.

Sta	+	MI. 17382	-	Elev.
14			2.7	171.1
T.P.	12.99	185.76	1.05	172.77
+50			11.9	173.9
15			2.0	177.8
+50			1.0	184.0
T.P.	12.93	192.49	0.20	188.56
16			6.4	192.1
+50			0.4	198.1
T.P.	13.03	211.44	0.08	198.41
+50			6.7	204.7
+75			3.5	207.9
T.P.	13.07	224.31	0.20	211.24
17			12.0	212.3
+50			2.2	216.1
+50			6.8	217.5
18			4.0	220.3
T.P.	6.10	229.41	1.06	223.31
+50			4.0	225.4

Levels over Lauratta St. West of D-Line Silver Terrace Scurry

Sta	+	HT	-	Elev
	6.27	38.58		32.31
0+00.21x D-Line			6.0	32.3
	+50		8.0	30.3
1			9.0	29.3
	+50		8.2	30.4
2			6.1	30.2
	+50		4.2	34.4
3			2.7	35.9
	+50		3.5	35.1
4			4.1	34.5
	+50		5.1	33.5
5			5.6	33.0
	+50		6.3	32.3
6			6.9	31.7
1059 W End Lauratta			7.0	31.0

6 or 0?
chk.

Levels over Lauratta St East of D-Line Silver Terrace Scurry

Sta	+	HT	-	Elev
	12.06	45.37		32.31
0+00			13.1	32.3
	+50		10.9	34.5
	+80		10.0	35.4
			6.8	38.6
	+25		2.5	42.9
T.P.	12.06	58.16	0.04	45.03
	+50		16.8	46.4
	+75		9.2	49.0
2			7.3	50.9
	+7		6.4	51.8
	+15		7.9	50.2
	+22		5.4	52.8
	+50		4.1	54.1
3			2.8	55.4
	+50		1.4	56.8
	+54		2.5	55.7
	46		2.0	56.2
	47		0.4	57.8

Sta	+	HT	-	Elev
T.P.	1293	70.99	0.11	58.05
4			12.0	58.7
+50			9.7	61.3
5			8.0	63.0
+25			6.9	64.2
+26			11.3	59.7
+42			10.6	60.4
+43			6.7	64.3
+50			6.5	64.5
6			5.3	65.7
+50			4.3	66.7
7			3.6	67.4
+50			1.6	69.4
T.P.	1287	83.76	0.10	70.88
8			11.7	72.1
+50			8.9	74.9
9			5.7	78.1
+50			3.2	80.6
+96			2.0	81.8

Lauratta St 29

Sta	+	HT	-	Elev
10		82.75	3.0	80.8
+05			3.7	80.1
+14			7.6	76.2
+18			10.8	73.0
+27			19.0	64.3
+41			26.4	57.4
+47- Double Line			24.8	59.0
+50			24.5	59.3
+66			8.3	75.5
T.P.	1208	96.47	0.36	53.39
+83			12.3	84.2
11			11.3	85.2
+50			6.4	90.1
+75			2.9	93.6
T.P.	1293	107.19	0.21	96.26
12			12.0	97.2
+5			8.5	100.7
+50			5.2	104.0
+75			1.7	107.5

Sta	+	HI	-	Elev.
T.P.	1278	121.87	0.10	109.69
13			1.4	110.5
+25			7.9	114.0
+50			1.6	117.3
+75			0.9	121.1
T.P.	1290	134.51	0.26	121.61
14			10.8	123.7
+50			5.8	128.7
+80			3.3	131.2
15			4.9	129.6
+20			0.3	134.2
+25			3.1	131.4
+30			0.0	134.5
T.P.	1298	147.37	0.12	134.39
+50			11.6	135.8
16			9.3	138.1
+50			7.7	139.7
17			6.8	140.6
+50			5.9	141.7

Sta	+	HI	-	Elev.
		147.89		
18			5.8	141.6
+50			5.1	142.3
19			2.1	145.3
T.P.	1310	160.45	0.02	147.35
+50			11.4	149.1
20			7.5	153.0
+50 - End Line 21			3.5	157.0
T.P.	1293	172.91	0.47	169.98
21			9.5	163.4
+25			1.1	168.3
+50			1.7	171.2
T.P.	5.30	177.49	0.22	172.19
+75			3.5	174.0
+89.9 - E End Lauretta			1.6	175.9

Levels over Florentia St. B Line to W.L. Benicio
Silver Terrace Sumps

Sta	+	HI	-	Elev
	1270	43.48		30.75 Stake at 000' Line
	+0.0	10495.5 B line	7.5	36.0
	+50		6.3	37.2
1			4.4	39.1
	+50		2.8	40.7
2			1.0	42.5
T.P.	1308	56.29	0.27	43.21
	+50		11.6	44.7
3			8.7	47.6
	+50		5.6	50.7
	+874	W.L. Auburn	3.7	52.6
4			2.4	53.9
T.P.	1046	66.33	0.41	55.88
	+50		9.6	56.7
	+75		8.9	57.4
5			11.6	54.7
	+50		12.5	53.8
6			13.9	52.4
	+50		13.4	52.9

Sta	+	HI	-	Elev
7			7.5	58.8
	+11		6.4	59.9
	+12		9.9	56.4
	+20		9.8	56.4
	+30		3.4	62.9
	+42		2.6	63.7
	+53		6.1	60.2
	+64		0.7	65.6
8			0.4	65.9
	+545	W.L. Benicio	10.3	66.6

Levels over E Line Silver Terrace Sowers $\frac{10}{+}$ $\frac{15}{-}$ $\left\{ \begin{array}{l} \text{Davis} \\ \text{Harrick} \\ \text{Davis} \end{array} \right.$

Sta	+	Ht.	-	Elev.	
	12.75	20.91		8.16 B.M. Hub 50+00 Al.	
0+00-50+00 Al.			12.8	8.1	
+50			12.6	8.3	
1			10.2	10.7	
+38.5			9.32	11.58	on stake
+50			9.1	11.8	
+75			7.3	13.6	
2			5.7	15.2	
+25			3.9	17.0	
+50			3.2	17.7	
T.P.	13.08	32.07	1.90	19.01	
+79			13.0	19.1	
3			11.8	20.3	
+50			10.3	21.8	
4			8.2	23.9	
+35			5.9	26.2	
+50			3.4	28.7	
+70.3		E.L. Benicia	1.0	31.1	
5			3.5	28.6	

Sta	+	Ht.	-	Elev.
		14.1		
		32.09		
+25			2.4	29.7
+30			0.5	31.6
T.P.	13.02	44.77	0.32	31.75
+50			11.0	33.8
+75			7.7	37.1
6			3.7	41.1
+50			1.5	43.3
T.P.	6.53	51.20	0.10	44.67
7			5.7	45.5
+50			4.6	46.6
8			3.7	47.5
+50			2.3	48.9
+80.9		W.L. Colusa	1.8	49.4

Levels over F Line	Silver Terrace	Sewers	
Sta	Ht.	Elev.	
1293	24.51	11.58	11.58 - 11.56 + 11.356
0+00.1 + 31 ² F line		17.9	
+ 35	V	12.9	11.6
+ 50		10.9	13.6
+ 59		1.0	16.5
+ 75		5.1	19.1
1		2.7	21.8
T.P. 12.99	37.09	0.41	24.10
+ 25		12.1	25.0
+ 25 - E.L. Beniga		10.3	26.8
+ 50		8.3	28.8
+ 75		5.3	31.8
2		3.0	34.1
+ 50		2.3	34.8
3		1.5	35.6
+ 50		0.7	36.4
T.P. 3.59	40.03	0.65	36.44
4		3.5	36.5
+ 50		2.9	37.1
5		2.9	37.1
+ 48.1 W.L. Colusa		3.8	36.2

1² Davis
4¹ Herrick
11¹ Doris

Levels over Colusa St Line	St Line	Silver Terrace	Sensors	Dist H Dist
Sta	+	+	-	Elev
	13.04	21.24		8.20. Hub 55+77.4 A 1 Line
0+00	55+77.4 A Line		13.0	
+30		✓	10.3	10.9
+35			6.9	14.3
+60			2.5	17.7
T.P.	12.94	33.88	0.30	20.94
+75			10.2	23.7
1			4.4	29.5
+25			2.6	31.3
+50			0.4	33.5
T.P.	12.68	46.26	0.30	33.58
+81			8.2	38.1
2			7.7	39.1
+50			5.1	41.2
3			3.4	42.9
+50			1.4	44.9
T.P.	11.97	58.17	0.06	46.20
4			11.1	47.1
+50			8.0	50.2

Sta	+	141 58.17	-	Elev
5			5.1	53.1
+50			2.1	56.1
+76.5	S. Line Riley		1.0	57.2

Levels over "G" Line Silver Terrace Sewers

Sta	+	141	-	Elev
	12.87	34.39		21.52
0+00	✓		12.9	
+25			13.0	21.4
+50			6.3	28.1
+65			2.3	32.1
1			2.8	31.6
+50			4.9	29.5
✓			6.2	28.4
+50			9.2	25.2
3			8.4	26.0
+65			8.1	26.3
+50			6.0	28.4
4			4.8	29.6
+50			3.1	31.3
5			1.6	32.8
+50			2.0	32.4
6			7.0	25.4
+50			9.7	24.7
+65			8.7	25.7
7			4.2	30.2
+78.2			3.9	30.5

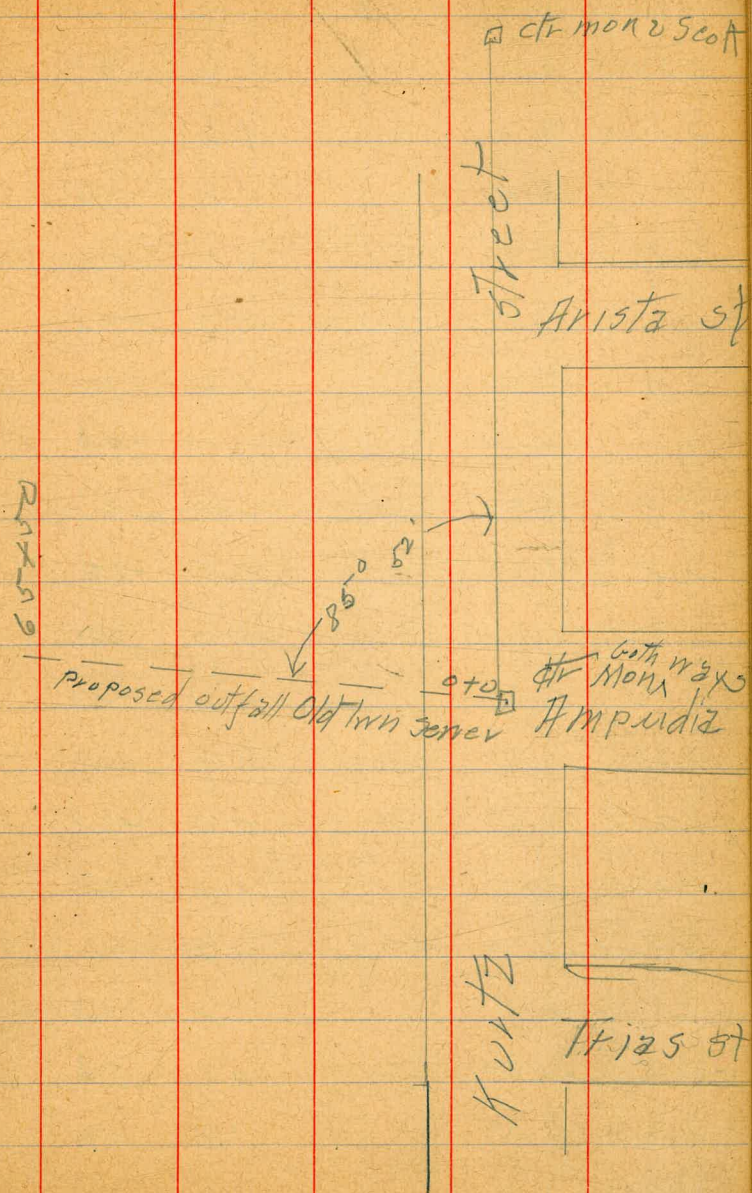
W.L. Benicia

Levels Over "H" Line Silver Terrace Sewers

Sta	+	141	-	Elev
		34.39		
0+00	34.65 "H"	✓	8.1	26.3
+46.5			6.3	28.1
1			6.5	27.9
+50			6.4	28.0
2			6.6	27.8
+50			7.6	26.8
3			7.9	26.5
+50			8.1	26.3

Proposed Outfall Oldtown sewer system

B.M.M. ϕ Trias & Kurtz	7.88	5.54	-2.34
oto = ϕ Kurtz & Ampudiz	4.4		1.1
+08	4.5		1.0
+14	6.6		-1.1
+43	8.3		-2.8
+50	7.6		-2.1
+57	6.6		-1.1
1	6.4		-0.9
+50	6.6		-1.1
+63	7.3		-1.8
+90	7.7		-2.2
2	7.4		-1.9
+35	7.1		-1.6
+40	6.1		-0.6
+50	6.0		-0.5
+65	5.6		-0.1
+79	8.2		-2.7
+90	8.1		-2.6
3	4.5		1.0
+05	3.9		1.6



5.54

3+25			6.9	-1.4
+43			8.2	-2.9
+50			6.1	-0.6
4			6.0	-0.5
+50			6.1	-0.6
5			5.9	-0.4
+50			6.5	-1.0
6			6.3	-0.8
T.P.	5.68	5.15	6.07	-0.53
+15			6.5	-1.3
+34			5.5	-0.3
+50			5.4	-0.2
+75			5.9	-0.7
7			5.5	-0.3
+50			5.7	-0.5
+90			5.2	0.0
8			5.5	-0.3
+24 = N. 1/2 Oil Pt Lom 3 RY			4.6	0.6
+50			5.0	0.2
+80			5.6	-0.5

5.15

37

+82			4.7	0.5
9			4.9	0.3
+10			5.0	0.2
+15			6.3	-1.2
+50			6.5	-1.3
10			6.5	-1.3
+50			6.9	-1.7
11			6.8	-1.6
+50			6.0	-0.8
12			6.3	-1.1
T.P.	5.27	4.22	6.20	-1.05
+18			5.8	-1.6
+25			5.2	-1.0
+50			5.1	-0.9
13			5.1	-0.9
+50			5.0	-0.8
+93			4.8	-0.6
14			6.7	-2.5
+13			5.5	-1.3
+20			8.3	-4.1

4.22

14+50		8.0	-3.8
+69		7.7	-3.5
+73		8.3	-4.1
+87		7.9	-3.9
+93		5.2	-1.0
15		4.8	-0.6
750		4.3	-0.1
16		4.4	-0.2
+50		4.5	-0.3
17		4.9	-0.7
+50		4.5	-0.3
T.P.	5.66	4.28	5.60 -1.38
+84		5.4	-1.1
+87		4.7	-0.4
18		4.5	-0.2
+25		5.5	-1.2
+50		4.4	-0.1
19		4.4	-0.1
750		4.5	-0.2
20		5.2	-0.9

428

38

20+50		4.8	-0.5
21		4.8	-0.5
+50		5.0	-0.7
22		4.9	-0.6
T.P.	9.28	8.56	5.00 -0.72
+50		9.5	-0.9
23		9.3	-0.7
+07		9.1	-0.5
+28		4.3	4.3
+50		4.3	4.3
24		4.5	4.1
+50		4.7	3.9
25		5.0	3.6
+50		5.4	3.2
26		5.5	3.1
+50		6.1	2.5
27		6.3	2.3
+50		6.5	2.1
T.P.	11.67	3.64	6.59 1.97
28		2.3	1.3

		364		
28+50			2.2	1.4
29			2.5	1.1
+50			2.6	1.0
30			2.8	0.8
+50			3.2	0.4
31			3.6	0.0
+50			4.5	-0.9
32			5.5	-1.9
+50			6.0	-2.4
33			6.2	-2.6
+50			6.3	-2.7
34			6.4	-2.8
+50			7.7	-4.1
35			6.5	-2.9
+50			5.5	-1.9
36			5.5	-1.9
T.P.	5.98	4.22	5.40	-1.76
+50			6.3	-2.1
37			6.6	-2.4
+19			6.4	-2.2

			4.22	
37+26			4.3	-0.1
+50			4.6	-0.4
38			5.2	-1.0
+50			5.0	-0.8
39			4.7	-0.5
+50			4.8	-0.6
40+0			4.5	-0.3
+50			4.8	-0.6
41			4.6	-0.4
+50			4.7	-0.5
42			4.9	-0.7
+50			4.9	-0.7
43			5.4	-1.2
+50			5.6	-1.4
44			6.0	-1.8
T.P.	6.16	5.05	5.33	-1.11
+50			6.5	-1.4
45			7.8	-2.7
+50			8.4	-3.3
46			8.4	-3.3

	5.05		8.4	-3.3
46+50			8.6	-3.5
47			8.2	-3.1
+50			8.0	-2.9
48			8.2	-3.1
+50			T.P.	0.55 -0.81 6.41 -1.36
49			4.4	-5.2
+50			4.9	-5.7
50			5.6	-6.4
+50			6.0	-6.8
51			6.2	-7.0
+50			6.5	-7.3
52			6.7	-7.5
+50			6.9	-7.7
53			7.4	-8.2
+50			7.6	-8.4
54			8.2	-9.0
+50			9.0	-9.8
55			9.3	-10.1
+25			9.8	-10.6
water elev at 1:25 P.M. Feb 29 th 1916			9.3	-10.1

					40
+50			9.7	-10.5	
56			9.3	-10.1	
T.P.	1.50	-6.16	6.85	-7.66	
+50			3.8	-10.0	
57			3.8	-10.0	
+50			4.1	-10.3	
58			3.6	-9.8	
+50			3.2	-9.4	
59			3.4	-9.6	
+50			3.7	-9.9	
60			4.1	-10.3	
+50			4.3	-10.5	
61			4.5	-10.7	
T.P.	2.24	-6.34	2.42	-8.58	
+50			3.9	-10.2	
62			4.1	-10.4	
+50			3.5	-9.8	
63			4.4	-10.7	
+50			4.5	-10.8	
64			4.8	-11.1	

64+30

-6.34

5.1

-11.4

+40

5.2

-11.5

+90

5.3

-11.6

65

5.6

-11.9

+20

6.1

-12.4

+40

7.1

-13.4

+50

7.1

-13.4

241

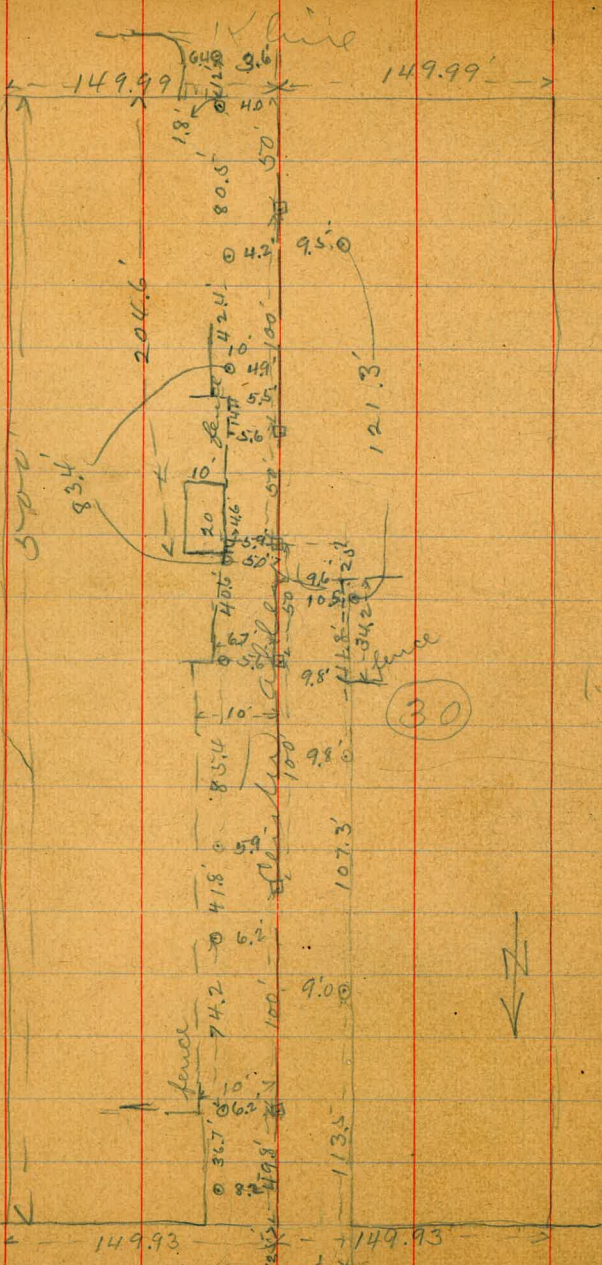
Childs 42
Evans
Shaw

June 19/16

Survey alley Block 30
Lafolla park
locating improvements
in alley.

Small

Tray

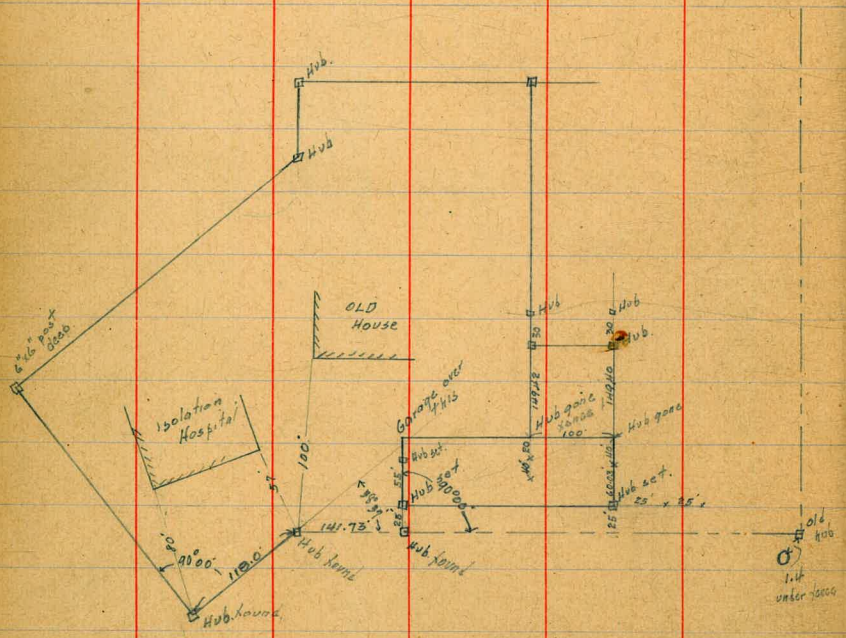


30



1/27/21

Isolation Hospital Survey



SEE PAGES 65 TO 72 THIS BOOK

10/16
 B. Moore
 Levels on Vermont
 Between Univ. + Cleveland.

(44)

B.M.	5.57	295.30	289.73	SW 1/4 Univ
		N.L. V.N.IV.		
E		4.8	290.5	
Ecb		4.78	290.52	on cement, cb
Wcb		6.13	289.17	on paving
W		6.32	288.90	✓ -
		No. on West	1/2 way	
W		6.3	289.0	
Wcb		5.9	289.4	
		No. on East	1/2 way	
E		5.0	290.3	
Ecb		5.3	290.0	
		S.L. Cleveland Arc		
E		5.3	290.0	
Ecb		5.5	289.8	
Wcb		6.4	288.9	
W		6.1	289.2	
West End Ref. SW cor Cleveland		6.6	288.7	
East " " SE " " "		5.35	288.95	on cement, cb

X sect. Atlantic from
cont. from Book 1013

HI
942

Center A Street

E. line	4.1	5.3
+10	4.3	5.1
+20	4.2	5.2
+30	5.1	4.3
+40	4.9	4.5
+50	4.8	4.6
+60	4.7	4.7
+70	4.9	4.5
+80	4.6	4.8
+90	4.7	4.7
+94	4.6	4.8
W. line	4.8	4.6

market to Cedar
last page.

(45)

no. 1/4

W. line	4.6	4.8
+6	4.5	4.9
+10	4.4	5.0
+20	4.7	4.7
+30	4.9	4.5
+40	5.1	4.3
+50	4.8	4.6
+60	4.8	4.6
+70	4.4	5.0
+80	4.2	5.2
+90	4.3	5.1
E. line	4.0	5.4

no. curb.

north line A street

E line	5.1	4.3	w. line	4.65	4.7
+10	4.9	4.5	+6	4.6	4.8
+20	4.8	4.6	+10	4.6	4.8
+30	5.2	4.2	+20	4.6	4.8
+40	4.9	4.5	+30	4.8	4.6
+50	4.5	4.9	+40	4.8	4.6
+60	4.9	4.5	+50	4.8	4.6
+70	4.9	4.5	+60	4.8	4.6
+80	4.9	4.5	+70	5.1	4.3
+90	4.8	4.6	+80	4.7	4.7
+94	4.9	4.5	+90	5.1	4.3
W. line	5.0	4.4	E line	5.6	3.8

50' no.

E line	5.3	4.1
+10	5.1	4.3
+20	5.0	4.4
+30	4.9	4.5
+40	4.4	5.0
+50	4.9	4.5
+60	4.9	4.5
+70	4.8	4.6
+80	4.7	4.7
+90	4.7	4.7
+94	4.7	4.7
W. line	4.6	4.8

100' no.

W. line	4.5	4.9
+6	4.5	4.9
+10	4.5	4.9
+20	4.6	4.8
+30	4.6	4.8
+40	4.6	4.8
+50	4.8	4.6
+60	4.8	4.6
+70	4.7	4.7
+80	4.8	4.6
+90	4.9	4.5
E line	5.3	4.1

150' 910.

E. line	6.0	3.4
+10	5.5	3.9
+20	5.0	4.4
+30	5.0	4.4
+40	5.0	4.4
+50	4.6	4.8
+60	4.6	4.8
+70	4.6	4.8
+80	4.6	4.8
+90	4.5	4.9
+94	4.5	4.9
W. line	4.5	4.9

200' 910.

W. line	4.3	5.1
+6	4.3	5.1
+10	4.3	5.1
+20	4.6	4.8
+30	4.6	4.8
+40	4.6	4.8
+50	4.3	5.1
+60	4.1	5.3
+70	4.6	4.8
+80	4.6	4.8
+90	5.5	3.9
E. line	5.6	3.8

200' no.

E. line	4.6	4.8
+10	5.3	4.1
+20	5.4	4.0
+30	4.9	4.5
+40	4.5	4.9
+50	4.5	4.9
+60	4.6	4.8
+70	4.6	4.8
+80	4.3	5.1
+90	4.4	5.0
+94	4.4	5.0
W. line	4.3	5.1

300' no. (20 line Ash)

W. line	4.4	5.0
+6	4.4	5.0
+10	4.4	5.0
+20	4.5	4.9
+30	4.4	5.0
+40	4.3	5.1
+50	4.7	4.7
+60	4.9	4.5
+70	5.0	4.4
+80	5.5	3.9
+90	5.5	3.9
E. line	5.8	3.6

No. curb.

E line	5.6	3.8
+10	5.6	3.8
+20	5.4	4.0
+30	5.3	4.1
+40	4.9	4.5
+50	4.6	4.8
+60	4.2	5.2
+70	4.2	5.2
+80	4.5	4.9
+90	4.5	4.9
+94	4.5	4.9
W. line	4.5	4.9

20 1/4

W. line	4.5	4.9
+6	4.5	4.9
+10	4.5	4.9
+20	4.6	4.8
+30	4.5	4.9
+40	4.5	4.9
+50	4.6	4.8
+60	4.8	4.6
+70	5.1	4.3
+80	5.1	4.3
+90	5.1	4.3
E. line	4.3	5.1

Center

Elise	4.6	4.8
+10	4.9	4.5
+20	5.2	4.2
+30	5.1	4.3
+40	4.8	4.6
+50	4.7	4.7
+60	4.6	4.8
+70	4.6	4.8
+80	4.5	4.9
+90	4.5	4.9
+94	4.5	4.9
White	4.6	4.8

no. 4

White	4.5	4.9
+6	4.5	4.9
+10	4.5	4.9
+20	4.5	4.9
+30	4.5	4.9
+40	4.7	4.7
+50	4.6	4.8
+60	5.0	4.4
+70	5.0	4.4
+80	5.2	4.2
+90	4.7	4.7
Elise	4.4	5.0

No. curb.

E line	5.2	4.2
+10	5.2	4.2
+20	5.2	4.2
+30	5.1	4.3
+40	4.9	4.5
+50	4.6	4.8
+60	4.6	4.8
+70	4.5	4.9
+80	4.5	4.9
+90	4.6	4.8
+94	4.6	4.8
W. line	4.6	4.8

North line Ash.

W. line	4.6	4.8
+6	4.6	4.8
+10	4.6	4.8
+20	4.6	4.8
+30	4.6	4.8
+40	4.7	4.7
+50	4.7	4.7
+60	4.5	4.9
+70	5.1	4.3
+80	5.2	4.2
+90	5.3	4.1
E line	5.3	4.1

5.10

9.42

50' no.

E line	5.5	3.9
+10	5.3	4.1
+20	5.1	4.3
+30	5.1	4.3
+40	4.6	4.8
+50	4.6	4.8
+60	4.6	4.8
+70	4.7	4.7
+80	4.7	4.7
+90	4.7	4.7
+94	4.6	4.8
Wilbur	4.6	4.8
JR	5.95	4.32

H.I.
10.27

5.10

10.27

50

100' no.

W. line	5.4	4.9
+6	5.5	4.8
+10	5.5	4.8
+20	5.6	4.7
+30	5.5	4.8
+40	5.6	4.7
+50	5.5	4.8
+60	5.2	5.1
+70	6.0	4.3
+80	5.9	4.4
+90	6.2	4.1
E line	6.1	4.2

750' no.

E line	6.3	4.0
+10	6.0	4.3
+20	6.2	4.1
+30	6.0	4.3
+40	5.6	4.7
+50	5.3	5.0
+60	5.5	4.8
+70	5.6	4.7
+80	5.6	4.7
+90	5.4	4.9
+94	5.4	4.9
W. line	5.3	5.0

200' no.

W. line	5.4	4.9
+68	5.4	4.9
+10	5.4	4.9
+20	5.4	4.9
+30	5.5	4.8
+40	5.2	5.1
+50	5.1	5.2
+60	5.2	5.1
+70	5.8	4.5
+80	5.8	4.5
+90	5.9	4.4
E line	6.0	4.3

250' no.

E line	6.2	4.1
+10	6.1	4.2
+20	6.0	4.3
+30	5.9	4.4
+40	5.5	4.8
+50	5.5	4.8
+60	5.4	4.9
+70	5.4	4.9
+80	5.4	4.9
+90	5.2	5.1
+94	5.1	5.2
w. line	5.2	5.1

300' no (No. line Beach)

w. line	5.40	4.9
+6	5.4	4.9
+10	5.5	4.8
+20	5.5	4.8
+30	5.6	4.7
+40	5.6	4.7
+50	5.6	4.7
+60	5.8	4.5
+70	5.7	4.6
+80	5.9	4.4
+90	5.8	4.5
E line	6.0	4.3

20. curb.

E. line	5.8	4.5
+10	5.8	4.5
+20	5.9	4.4
+30	5.9	4.4
+40	5.7	4.6
+50	5.9	4.4
+60	5.7	4.6
+70	5.7	4.6
+80	5.7	4.6
+90	5.5	4.8
+94	5.5	4.8
W. line	5.3	5.0

20 1/4

W. line	5.0	5.3
+6	5.5	4.8
+10	5.6	4.7
+20	5.6	4.7
+30	5.7	4.6
+40	5.4	4.9
+50	5.4	4.9
+60	5.5	4.8
+70	5.8	4.5
+80	5.8	4.5
+90	5.8	4.5
E. line	5.8	4.5

center

E line	5.7	4.6
+10	5.7	4.6
+20	5.7	4.6
+30	5.6	4.7
+40	5.5	4.8
+50	5.2	5.1
+60	5.3	5.0
+70	5.5	4.8
+80	5.5	4.8
+90	5.1	5.2
+94	4.6	5.7
W line	4.2	6.1

no. 4

W line	3.8	6.5
+6	3.7	6.6
+10	4.3	6.0
+30	5.3	5.0
+30	5.6	4.7
+40	5.4	4.9
+50	5.7	4.6
+60	5.5	4.8
+70	5.7	4.6
+80	5.6	4.7
+90	5.6	4.7
E line	5.6	4.7

no. curb-

Northline Beech

E line	5.3	5.0
+10	5.4	4.9
+20	5.6	4.7
+30	5.6	4.7
+40	5.4	4.9
+50	5.8	4.5
+60	5.6	4.7
+70	5.6	4.7
+80	4.9	5.4
+90	4.1	6.2
+94	3.8	6.5
White	3.9	6.4

W. line	4.98	5.3
+6	4.7	5.6
+10	4.6	5.7
+20	4.8	5.5
+30	5.5	4.8
+40	5.8	4.5
+50	5.9	4.4
+60	5.6	4.7
+70	5.5	4.8
+80	5.5	4.8
+90	5.4	4.9
E line	5.5	4.8

540' no.

E line	5.1	5.2
+10	5.5	4.8
+20	5.3	5.0
+30	5.7	4.6
+40	5.6	4.7
+50	5.7	4.6
+60	5.3	5.0
+70	5.5	4.8
+80	5.5	4.8
+90	5.1	5.2
+94	4.7	5.6
W line	4.7	5.6

100 no.

W line	5.1	5.2
+6	5.1	5.2
+10	5.1	5.2
+20	5.3	5.0
+30	5.4	4.9
+40	5.6	4.7
+50	5.7	4.6
+60	5.6	4.7
+70	5.7	4.6
+80	5.6	4.7
+90	5.3	5.0
E line	4.5	5.8

	150' no.		200' no.		
E line	4.3	6.0	W line	5.4	4.9
+10	5.2	5.1	+6	5.4	4.9
+20	5.6	4.7	+10	5.4	4.9
+30	5.6	4.7	+20	5.5	4.8
+40	5.6	4.7	+30	5.4	4.9
+50	6.0	4.3	+40	5.4	4.9
+60	5.6	4.7	+50	5.5	4.8
+70	5.5	4.8	+60	5.2	5.1
+80	5.4	4.9	+70	4.3	6.0
+90	5.3	5.0	+80	4.0	6.3
+94	5.3	5.0	+90	4.4	5.9
W line	5.3	5.0	E line	4.3	6.0

350' no.	
E. line	4.2 6.1
+10	5.2 5.1
+20	5.7 4.6
+30	5.9 4.4
+40	5.8 4.5
+50	6.2 4.1
+60	5.9 4.4
+70	5.8 4.5
+80	5.8 4.5
+90	5.6 4.7
+94	5.7 4.6
W. line	5.6 4.7

300' no. (20. line cedar)	
W. line	5.6 4.7
+6	5.7 4.6
+10	5.7 4.6
+20	5.8 4.5
+30	6.0 4.3
+40	6.1 4.2
+50	6.1 4.2
+60	6.0 4.3
+70	5.9 4.4
+88	5.9 4.4
+90	5.7 4.6
E. line	5.1 5.2

20 curb

E line	5.7	4.6
+10	5.9	4.4
+20	5.9	4.4
+30	5.9	4.4
+40	6.1	4.2
+50	6.1	4.2
+60	6.0	4.3
+70	5.9	4.4
+80	5.9	4.4
+90	5.8	4.5
+94	5.8	4.5
W. line	5.7	4.6

20 1/4

white	5.6	4.7
+6	5.6	4.7
+10	5.6	4.7
+20	5.8	4.5
+30	6.0	4.3
+40	6.1	4.2
+50	5.8	4.5
+60	5.9	4.4
+70	6.0	4.3
+80	5.9	4.4
+90	5.9	4.4
E line	5.6	4.7

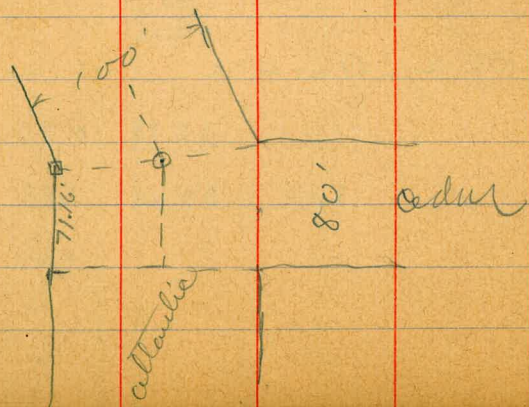
10,27

63

	Center			White			
E line		5.5	4.8			5.7	4.6
+10		5.7	4.6	+6		5.8	4.5
+20		5.9	4.4	+10		5.8	4.5
+30		6.0	4.3	+20		5.9	4.4
+40		5.9	4.4	+30		6.0	4.3
+50		5.9	4.4	+40		6.1	4.2
+60		6.0	4.3	+50		5.8	4.5
+70		6.0	4.3	+60		6.0	4.3
+80		5.9	4.4	+70		6.0	4.3
+90		5.8	4.5	+80		5.9	4.4
+94		5.7	4.6	+90		5.9	4.4
White		5.8	4.5	E line		5.7	4.6

		HI.		
J.P.	Top Hyd. SE. cor Cedar	12.32	20.53	7.04
				8.23
		13.10	32.86	0.79
		9.00	39.44	242
				30.44
				4.46
				34.98

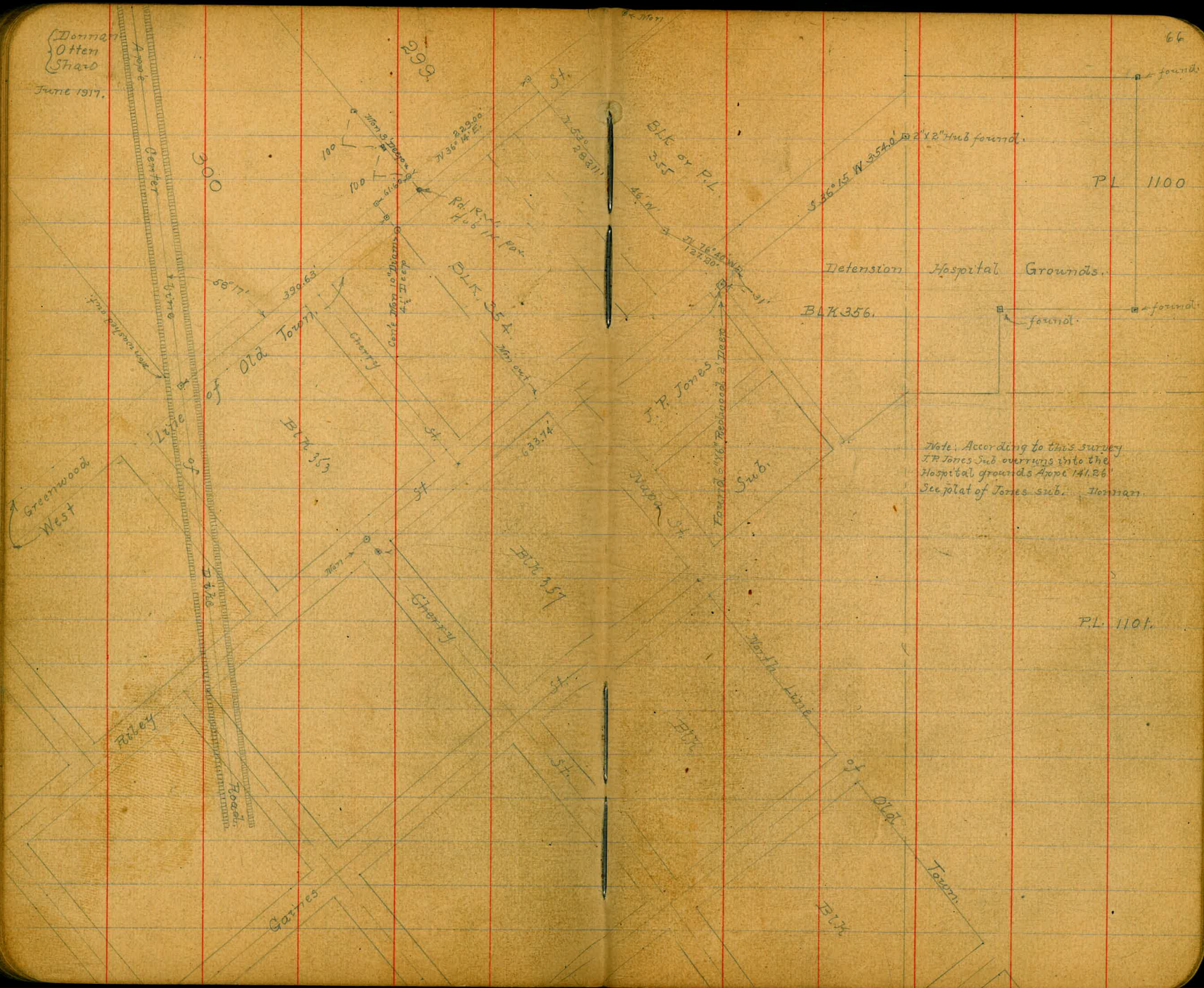
no curb			north line cedar		
E line	5.5	4.8	White	5.81	4.5
+10	5.8	4.5	+6	5.9	4.4
+20	5.7	4.6	+10	6.0	4.3
+30	6.1	4.2	+20	6.1	4.2
+40	6.0	4.3	+30	6.2	4.1
+50	5.8	4.5	+40	5.8	4.5
+60	6.1	4.2	+50	5.5	4.8
+70	6.2	4.1	+60	3.15	4.2
+80	6.0	4.3	+70	6.1	4.2
+90	5.9	4.4	+80	6.0	4.3
+94	5.7	4.6	+90	5.7	4.6
White	5.9	4.4	+94	5.6	4.7
			E line	5.7	4.6



West side of intersection at
cedar is 71.16 12.53' curbs
+ 11.52 quarters

Donna
Otten
Shard

June 1917.



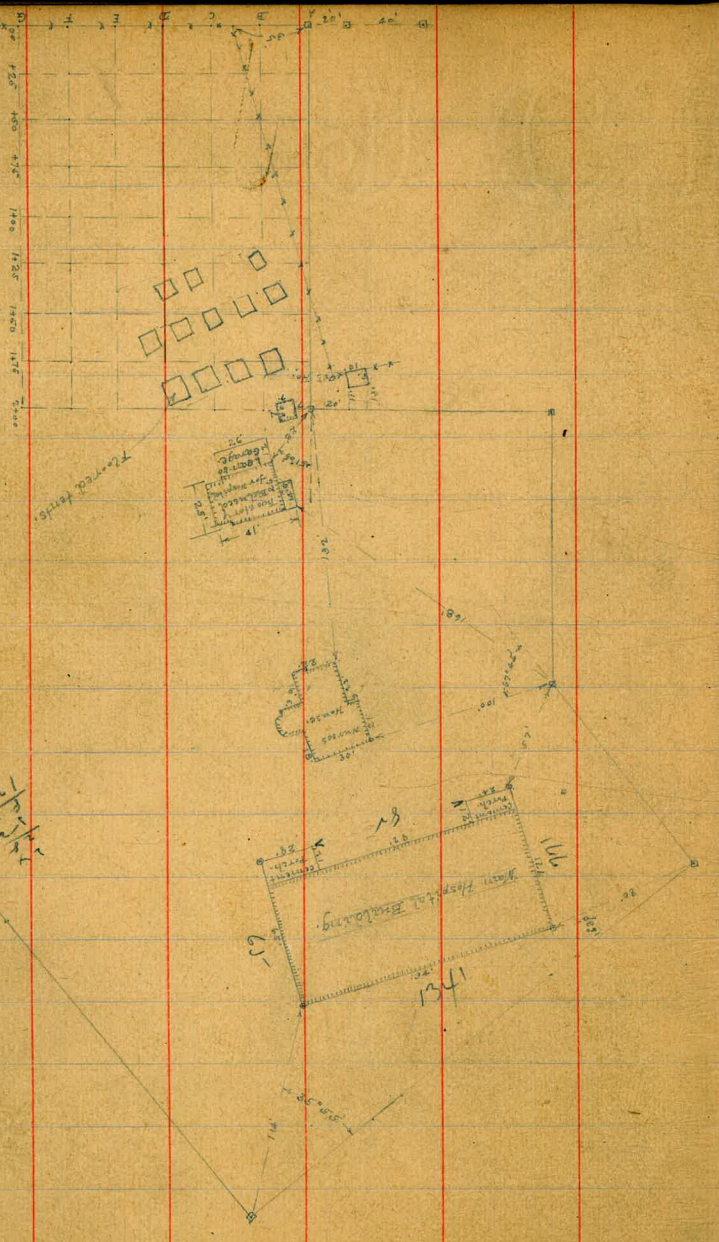
Note. According to this survey
 J.P. Jones Sub. overruns into the
 Hospital grounds April 14, 1861
 See plat of Jones sub. Homers.

P.L. 1101.

Survey & Section in Detention Hospital Grounds.

Harman
Chen
Shao

Top 28-1917.



See page 43

12.40

Section of a portion of the Detention Hospital Grounds.
See Page 68 this book. E.M. Men, S.E. Cor. P.L. 299 - 29.70 (Davis).

(Zemman
Offen.
Shard.
Sep 28, 1917

	+	π	-	
	1.15	30.85 ✓	5.69	29.70
Sec A.	5.78	30.94 ✓		25.16 ✓ T.P. Nail in ground.
00			3.2	27.7
+25			3.2	27.7
+50			3.6	27.3
+75			4.0	26.9
100			4.4	26.5
+25			4.6	26.3
+50			5.0	25.9
+75			5.2	25.7
2			5.4	25.5
Sec B.			5.1	25.8
2			5.1	25.8
+75			5.0	25.9
+50			5.5	25.4
1			5.4	25.5
+75			5.0	25.9
+50			5.0	25.9

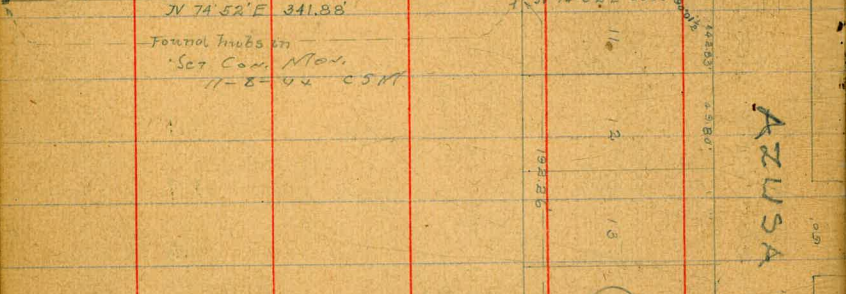
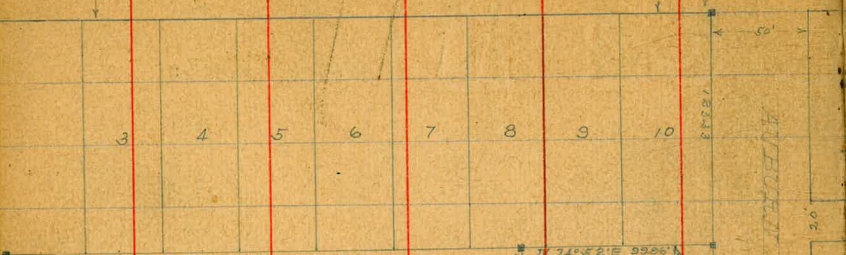
	+	π	-	
	+ 25	30.94	4.6	26.3
	00		3.5	27.4
	00		6.1	24.8
	+ 25		6.1	24.8
	+ 50		7.2	23.7
	+ 75		7.6	23.3
	1		7.8	23.1
	+ 25		6.9	24.0
	+ 50		6.4	24.5
	+ 75		5.6	25.3
	2		4.9	26.0
	II			
	2		7.4	23.5
	+ 75		8.3	22.6
	+ 50		8.8	22.1
	+ 25		10.4	20.5
	1		12.5	18.4
	+ 75		13.5	17.4
	+ 50		13.0	17.9
	+ 25		11.3	19.6
	00		10.2	20.7

70.

LAURETTA

ST

Found hubs in



DETENTION HOSPITAL GROUND

April 5, 1909
8:00 AM
8:00 PM

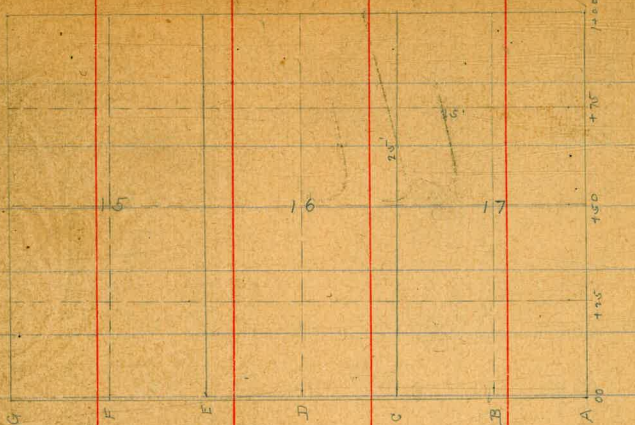


GAINES

ST

Survey of Lots 15-16-17 - Blk E - Silver Terrace Nov 5-1917

Therman
O'Hara
Shaw



Section of Lots 15-17 - Blk E - Silver Terrace Add - see plat.

Nov 5-1917
Therman
O'Hara
Shaw

Section	Lot	Area	Value
Sec A	5, 11	2.0	27.8
	30, 27	2.2	28.1
	25.16 TP Nail in ground - see page 70 this	2.0	28.3
		2.2	28.1
Sec B	1+00	2.4	27.9
	1+00	3.7	26.6
	4+00	3.4	26.8
	4+00	3.0	27.3
Sec C	4+00	3.1	27.2
	2+00	2.9	27.4
	2+00	2.8	27.2
	2+00	2.8	27.2

	+	π 30.27	-	
	+25		5.5	24.8
	+50		5.9	24.4
	+75		5.7	24.6
	1+00		4.9	25.4
Sec D				
	1+00		6.4	23.9
	+75		8.2	22.1
	+50		9.5	20.8
	+25		8.9	21.4
	00		9.1	21.2
Sec E				
	00		15.3	15.0
	+25		13.5	16.8
	+50		11.3	19.0
	+75		9.4	20.9
	1+00		7.2	23.1
Sec F.				
	1+00		6.1	24.2
	+75		8.6	21.7
	+50		11.7	18.6
	+25		14.2	16.1
	00		15.4	14.9
Sec G				
	00		11.3	19.0

	+	π 30.27	-	
	+25		7.8	20.5
	+50		8.3	22.0
	+75		6.4	23.9
	1+00		4.3	26.0
	H		5.11	25.16 = Initial T.P. 25.16.
	H		0.79	29.48 = B.M. - no tree here for S.E. of lot 17, B.K.E.

For Plat see page 67.

X-section of Helen St Greenwood to Riley - so wide - 10 curbs - 7 1/2 quarters.

B. 27. Mon. S.E. Cor. P.L. 299 - 29.70 (By Davis)

0.43

30.13

25.70

April 13-18
 (Summer
 of Helen
 St. Hard.)

H.I.
 1928

74

#	19.0	19.28	19.75	17.28	Having stairs		8.9	10.4
7xL 1'E of E. Curb of Greenwood (on fill)			5.1	14.1		S.L. +50	9.0	10.3
cb			5.2	14.1		S.L.	9.7	9.6
1/2			5.4	13.9		cb	9.4	9.9
c			5.4	13.9		1/2	9.2	10.1
1/2			5.4	13.9		c	9.5	10.4
cb			5.7	13.6		1/2	9.6	10.7
S.L.			5.8	13.5		cb	8.7	11.1
7E of E. Curb of Greenwood (for slope)			9.0	10.3		S.L. +50	8.1	11.2
cb			8.9	10.4		7xL	9.6	10.7
1/2			8.5	10.8		cb	9.3	10.0
c			8.4	10.9		1/2	9.6	9.7
1/2			8.5	10.8		c	8.8	10.5
cb			8.3	11.0		1/2	10.0	9.3
7xL			7.9	11.4		cb	10.5	8.8
7xL so - E.L. Greenwood			8.2	11.1		S.L. +50	10.8	8.5
cb			8.3	11.0		S.L.	10.3	9.0
1/2			8.5	10.8		cb	10.6	8.7
c			8.6	10.7		1/2	10.6	8.7
1/2			8.7	10.6		c	10.0	9.3
						1/2	10.0	9.3

cl		9.8	9.5
N.L		9.7	9.6
² N.L		9.9	9.4
cl		10.7	9.1
1/4		10.2	9.1
c		10.6	8.7
1/4		10.9	8.5
cl		10.5	8.8
S.L 150		10.4	8.9
S.L		10.6	8.7
cl		10.6	8.7
1/4		10.2	9.1
c		10.0	9.0
1/4		10.0	9.0
cl		10.4	8.9
N.L		11.0	8.3
#	4.75	13.50	8.75
= W.L. Riley. N.W. Cox Helen S. Riley.			
N.L		4.0	9.5
cl		4.0	9.5
1/4		4.0	9.5
c		4.3	9.4
1/4			

1/4		4.5	9.0
cl		4.4	9.1
S.L		4.7	8.8
W.C. Riley.			
S.L		4.7	8.8
cl		4.4	9.1
1/4		4.0	9.5
c		4.4	9.1
1/4		4.0	9.5
cl		4.0	9.5
N.L		3.9	9.6
W.C. Riley.			
N.L		3.9	9.6
cl		4.1	9.4
1/4		4.2	9.3
c		4.4	9.1
1/4		4.0	9.5
cl		4.4	9.1
S.L		4.8	8.7
S. Riley.			
S.L		4.8	8.7
cl		4.5	9.0
1/4		4.1	9.4
c		4.1	9.4

	+	-
	13.50	
1/4	4.2	9.3
cl	4.1	9.4
N.L. E 1/4 Riley	4.0	9.5
N.L.	3.9	9.6
cl	4.0	9.5
1/4	4.0	9.5
c	3.9	9.6
1/4	4.3	9.2
cl	4.5	9.0
S.L.	4.9	8.6
E.C. Riley		
S.L.	4.8	8.7
cl	4.9	8.6
1/4	4.3	9.2
c	4.3	9.2
1/4	4.0	9.5
cl	4.0	9.5
N.L.	4.2	9.3
N.L.		
E.L. Riley	4.1	9.4
cl	3.8	9.7
1/4	4.0	9.5
c	4.1	9.4

	+	-
	13.50	76
1/4	4.5	9.0
cl	4.7	8.8
S.L.	4.5	9.0
Xsection of Riley St. from N.L. of Helen St. to Hospital grounds. ✓		
50' wide - 10 curbs - 7 1/2 quarters.		
E.L.		
con N.L. Helen St.	4.1	9.4
cl	4.0	9.5
1/4	3.9	9.6
c	4.0	9.5
1/4	3.9	9.6
cl	4.0	9.5
W.L.	4.0	9.5
+61 LB		
W.L.	4.8	8.7
cl	4.7	8.8
1/4	5.1	8.4
c	4.7	8.8
1/4	4.6	8.9
cl	4.6	8.9
E.L.	4.8	8.7
Diagonal along line of Hospital Grounds		
W.L. = 61.8 to E.L. = 62.22		
E.L.	5.3	8.2
cl	5.0	8.5
1/4	4.8	8.7

13.50

c 5.0 8.5
 1/2 4.1 8.4
 cl. 4.8 8.7
 W.L 4.8 8.7
 # 10.67 19.42 2.75 8.75 *For 6 W. Cor. Min. 8 7/16*
 # 12.98 30.38 2.02 17.00 *Prising Stake*
 # 0.66 27.72 = 28.10 *Original P.M.*

Handwritten calculations:

$$\begin{array}{r} 229 \\ 616 \\ \hline 2906 \\ 2406 \end{array}$$

$$\begin{array}{r} 229 \\ 119 \\ \hline 110 \end{array}$$

$$\begin{array}{r} 498 \\ 433 \\ \hline 1094 \end{array}$$

DISTANCES FROM CENTER OF ROADWAY FOR CROSS-SECTIONING.
 ROADWAY 14 FEET WIDE. SIDE SLOPES 1 1/2 TO 1.
 FOR SINGLE TRACK EMBANKMENT.

	0	.1	.2	.3	.4	.5	.6	.7	.8	.9	
0	7.0	7.2	7.3	7.5	7.6	7.8	7.9	8.1	8.2	8.4	0
1	8.5	8.7	8.8	9.0	9.1	9.3	9.4	9.6	9.7	9.9	1
2	10.0	10.2	10.3	10.5	10.6	10.8	10.9	11.1	11.2	11.4	2
3	11.5	11.7	11.8	12.0	12.1	12.3	12.4	12.6	12.7	12.9	3
4	13.0	13.2	13.3	13.5	13.6	13.8	13.9	14.1	14.2	14.4	4
5	14.5	14.7	14.8	15.0	15.1	15.3	15.4	15.6	15.7	15.9	5
6	16.0	16.2	16.3	16.5	16.6	16.8	16.9	17.1	17.2	17.4	6
7	17.5	17.7	17.8	18.0	18.1	18.3	18.4	18.6	18.7	18.9	7
8	19.0	19.2	19.3	19.5	19.6	19.8	19.9	20.1	20.2	20.4	8
9	20.5	20.7	20.8	21.0	21.1	21.3	21.4	21.6	21.7	21.9	9
10	22.0	22.2	22.3	22.5	22.6	22.8	22.9	23.1	23.2	23.4	10
11	23.5	23.7	23.8	24.0	24.1	24.3	24.4	24.6	24.7	24.9	11
12	25.0	25.2	25.3	25.5	25.6	25.8	25.9	26.1	26.2	26.4	12
13	26.5	26.7	26.8	27.0	27.1	27.3	27.4	27.6	27.7	27.9	13
14	28.0	28.2	28.3	28.5	28.6	28.8	28.9	29.1	29.2	29.4	14
15	29.5	29.7	29.8	30.0	30.1	30.3	30.4	30.6	30.7	30.9	15
16	31.0	31.2	31.3	31.5	31.6	31.8	31.9	32.1	32.2	32.4	16
17	32.5	32.7	32.8	33.0	33.1	33.3	33.4	33.6	33.7	33.9	17
18	34.0	34.2	34.3	34.5	34.6	34.8	34.9	35.1	35.2	35.4	18
19	35.5	35.7	35.8	36.0	36.1	36.3	36.4	36.6	36.7	36.9	19
20	37.0	37.2	37.3	37.5	37.6	37.8	37.9	38.1	38.2	38.4	20
21	38.5	38.7	38.8	39.0	39.1	39.3	39.4	39.6	39.7	39.9	21
22	40.0	40.2	40.3	40.5	40.6	40.8	40.9	41.1	41.2	41.4	22
23	41.5	41.7	41.8	42.0	42.1	42.3	42.4	42.6	42.7	42.9	23
24	43.0	43.2	43.3	43.5	43.6	43.8	43.9	44.1	44.2	44.4	24
25	44.5	44.7	44.8	45.0	45.1	45.3	45.4	45.6	45.7	45.9	25
26	46.0	46.2	46.3	46.5	46.6	46.8	46.9	47.1	47.2	47.4	26
27	47.5	47.7	47.8	48.0	48.1	48.3	48.4	48.6	48.7	48.9	27
28	49.0	49.2	49.3	49.5	49.6	49.8	49.9	50.1	50.2	50.4	28
29	50.5	50.7	50.8	51.0	51.1	51.3	51.4	51.6	51.7	51.9	29
30	52.0	52.2	52.3	52.5	52.6	52.8	52.9	53.1	53.2	53.4	30
31	53.5	53.7	53.8	54.0	54.1	54.3	54.4	54.6	54.7	54.9	31
32	55.0	55.2	55.3	55.5	55.6	55.8	55.9	56.1	56.2	56.4	32
33	56.5	56.7	56.8	57.0	57.1	57.3	57.4	57.6	57.7	57.9	33
34	58.0	58.2	58.3	58.5	58.6	58.8	58.9	59.1	59.2	59.4	34
35	59.5	59.7	59.8	60.0	60.1	60.3	60.4	60.6	60.7	60.9	35
36	61.0	61.2	61.3	61.5	61.6	61.8	61.9	62.1	62.2	62.4	36

Calculated by Julien A. Hall, M. Am. Soc. C. E.

MADE IN GERMANY.