

Not Preliminary

Point Loma Sewers

**F.B. 975**

LEVEL BOOK

373

**F.B. 975**

# KEUFFEL & ESSER CO.

DRAWING MATERIALS  
AND  
SURVEYING INSTRUMENTS.

NEW YORK.

CHICAGO. SAN FRANCISCO. ST. LOUIS.

## TABLES FOR EXCAVATIONS AND EMBANKMENTS.

DISTANCES FROM CENTER OF ROADWAY FOR CROSS-SECTIONING.  
ROADWAY 18 FEET WIDE. SIDE SLOPES 1 TO 1.  
FOR SINGLE TRACK EXCAVATION.

"Copyright, 1895, by Keuffel & Esser Co."

	0	.1	.2	.3	.4	.5	.6	.7	.8	.9	
0	9.0	9.1	9.2	9.3	9.4	9.5	9.6	9.7	9.8	9.9	0
1	10.0	10.1	10.2	10.3	10.4	10.5	10.6	10.7	10.8	10.9	1
2	11.0	11.1	11.2	11.3	11.4	11.5	11.6	11.7	11.8	11.9	2
3	12.0	12.1	12.2	12.3	12.4	12.5	12.6	12.7	12.8	12.9	3
4	13.0	13.1	13.2	13.3	13.4	13.5	13.6	13.7	13.8	13.9	4
5	14.0	14.1	14.2	14.3	14.4	14.5	14.6	14.7	14.8	14.9	5
6	15.0	15.1	15.2	15.3	15.4	15.5	15.6	15.7	15.8	15.9	6
7	16.0	16.1	16.2	16.3	16.4	16.5	16.6	16.7	16.8	16.9	7
8	17.0	17.1	17.2	17.3	17.4	17.5	17.6	17.7	17.8	17.9	8
9	18.0	18.1	18.2	18.3	18.4	18.5	18.6	18.7	18.8	18.9	9
10	19.0	19.1	19.2	19.3	19.4	19.5	19.6	19.7	19.8	19.9	10
11	20.0	20.1	20.2	20.3	20.4	20.5	20.6	20.7	20.8	20.9	11
12	21.0	21.1	21.2	21.3	21.4	21.5	21.6	21.7	21.8	21.9	12
13	22.0	22.1	22.2	22.3	22.4	22.5	22.6	22.7	22.8	22.9	13
14	23.0	23.1	23.2	23.3	23.4	23.5	23.6	23.7	23.8	23.9	14
15	24.0	24.1	24.2	24.3	24.4	24.5	24.6	24.7	24.8	24.9	15
16	25.0	25.1	25.2	25.3	25.4	25.5	25.6	25.7	25.8	25.9	16
17	26.0	26.1	26.2	26.3	26.4	26.5	26.6	26.7	26.8	26.9	17
18	27.0	27.1	27.2	27.3	27.4	27.5	27.6	27.7	27.8	27.9	18
19	28.0	28.1	28.2	28.3	28.4	28.5	28.6	28.7	28.8	28.9	19
20	29.0	29.1	29.2	29.3	29.4	29.5	29.6	29.7	29.8	29.9	20
21	30.0	30.1	30.2	30.3	30.4	30.5	30.6	30.7	30.8	30.9	21
22	31.0	31.1	31.2	31.3	31.4	31.5	31.6	31.7	31.8	31.9	22
23	32.0	32.1	32.2	32.3	32.4	32.5	32.6	32.7	32.8	32.9	23
24	33.0	33.1	33.2	33.3	33.4	33.5	33.6	33.7	33.8	33.9	24
25	34.0	34.1	34.2	34.3	34.4	34.5	34.6	34.7	34.8	34.9	25
26	35.0	35.1	35.2	35.3	35.4	35.5	35.6	35.7	35.8	35.9	26
27	36.0	36.1	36.2	36.3	36.4	36.5	36.6	36.7	36.8	36.9	27
28	37.0	37.1	37.2	37.3	37.4	37.5	37.6	37.7	37.8	37.9	28
29	38.0	38.1	38.2	38.3	38.4	38.5	38.6	38.7	38.8	38.9	29
30	39.0	39.1	39.2	39.3	39.4	39.5	39.6	39.7	39.8	39.9	30
31	40.0	40.1	40.2	40.3	40.4	40.5	40.6	40.7	40.8	40.9	31
32	41.0	41.1	41.2	41.3	41.4	41.5	41.6	41.7	41.8	41.9	32
33	42.0	42.1	42.2	42.3	42.4	42.5	42.6	42.7	42.8	42.9	33
34	43.0	43.1	43.2	43.3	43.4	43.5	43.6	43.7	43.8	43.9	34
35	44.0	44.1	44.2	44.3	44.4	44.5	44.6	44.7	44.8	44.9	35
36	45.0	45.1	45.2	45.3	45.4	45.5	45.6	45.7	45.8	45.9	36

Calculated by Julien A. Hall, M. Am. Soc. C. E.

*Handwritten notes:*  
172.07  
7.32  
164.75

*Handwritten numbers:*  
312  
320  
320  
320  
127.2  
55  
1297

Levels for proposed sewer Canyon Line  
 of "M" Line from  $\frac{1}{4}$  of Rosecrans & Owens,  
 see blue print.

B.M., S.E. Mass of Rosecrans & Owens	48.07		
0+0 R 150° 55'	11.70	59.77	10.9
+25		11.1	
+31	✓	8.0	
+40		7.4	
+50		8.5	
+56		6.8	
+75		6.6	
0+87.9 +92		3.2	56.6
1+0		2.6	57.2
T.P., 12.49	71.80	0.46	59.31
+21		12.7	59.1
+27		12.4	59.4
+50		13.4	58.4
2		8.9	62.9
+25		5.4	65.4
+50		2.4	69.4
+70		4.1	67.7

Sheet 47

71.80

1

3+0			1.2	70.6
T.P., 12.01	83.64	0.17		71.63
+12		13.6		70.0
+25		8.9		74.7
+50		6.2		77.4
+64.9	R 38° 28'	5.0		78.6
4		1.7		81.9
T.P., 12.06	95.00	0.70		82.94
+45		11.1		83.9
+50		12.1		82.9
5		4.8		90.7
T.P., 12.52	107.03	0.49		94.51
+50		9.7		97.3
6		6.7		100.3
+12		4.8		102.2
+50		2.4		104.6
T.P., 12.77	119.37	0.43		106.60
+73.1	L 11° 04'	12.50		106.87
7		10.2		109.2
+15		8.8		110.6

		119.37		
7+18			7.2	112.2
+42			7.4	112.0
+47			4.3	115.1
+50			3.8	115.6
+70			1.8	117.6
T.P.	12.86	131.95	0.28	119.09
+82			15.0	117.0
8			13.2	118.8
+15			7.2	124.8
+23			7.6	124.4
+33			4.3	127.7
T.P.	12.79	144.52	0.22	131.73
+50			12.0	132.5
+69			10.7	133.8
+75			9.2	135.3
9+0			3.5	141.0
T.P.	12.28	156.63	0.17	144.35
+25			8.1	148.5
+40			5.9	150.7

		156.63		2
9+50			4.3	152.3
+56 <sup>6</sup>	R 19° 17'		4.1	152.5
+60			3.5	153.1
+67			4.6	152.0
+69			6.5	150.1
+77			5.7	150.9
+88			0.0	156.6
T.P.	12.75	169.23	0.15	156.48
10			11.5	157.7
114			13.0	156.2
+21			13.1	156.1
+23			10.7	158.5
+25			10.2	159.0
127			11.7	159.5
+35			10.6	158.6
+38			8.0	161.2
+47			4.0	165.2
+50			3.8	165.4
+64			1.9	167.3
+78			4.8	164.4
114				

11+0	169.23	2.2	167.0
T.P.	12.36	180.93	0.66
+30 <sup>9</sup> = $\phi$ Ditch	10.16	170.77	

Levels for proposed Sewer & Ditch 3  
 from Sta 11+30<sup>9</sup> M Line East for 75'

B.M.	10.60	181.37	170.77
0+0 = Sta 11+30 <sup>9</sup>			10.6
+03			11.7
+17			12.1
+25			8.2
T.P.	11.58	192.72	0.23
+50			11.5
+75			0.0

Sheet 46

Levels for Proposed <sup>sewer</sup> Ditch Trough  
 from sta 11+30<sup>9</sup> M Line west for 183

B.M.	10.16	180.93		170.77
0+0=sta 11+30 <sup>9</sup>		✓	10.16	170.8
+25			4.5	176.4
T.P.	12.23	193.05	0.11	180.82
+43			13.0	180.1
+50			10.8	182.3
+75			1.8	191.3
T.P.	12.73	205.69	0.09	192.96
140			2.3	203.4
T.P.	12.70	218.20	0.19	205.50
+25			7.1	211.1
+50			3.8	214.4
T.P.	8.92	226.82	0.30	217.90
+83			4.6	222.2

Sheet 46

Levels for proposed sewer  $\phi$  Perry 4  
 from sta 6+73<sup>1</sup> M Line East 115

B.M.	9.30	116.17		106.87
0+0=sta 6+73 <sup>1</sup> M Line		✓	9.30	106.9
+25			9.3	106.9
+39			7.5	108.7
+50			1.4	114.8
T.P.	12.46	128.29	0.34	115.83
+75			4.4	123.9
T.P.	12.30	140.22	0.37	127.92
+92			8.5	131.7
+97			4.8	135.4
1			4.2	136.0
+115			4.8	135.4

Sheet 47

Levels for sewer Owens st 1/2 South of N.L. from sta  
 56+46.5 "D" Line Page 36 Book 941 west for 459' to  
 intersection of "M" Line or sta 0+879 "M" Line Page 1  
 Abandon "M" Line from 0+0 to 0+879

Don't  
 Staw  
 Bunker

51.88

5

B.M.	11.93	28.63	16.70
0+0 = sta 56+46.5 "D" Line ✓		11.7	16.9
+40		9.0	19.6
+50		8.4	20.2
1		3.2	25.4
T.P.	11.79	40.14	28.35
+25		11.6	28.5
+50		9.6	30.5
+75		7.0	33.1
2		5.9	34.2
+25		3.4	36.7
+50		2.0	38.1
+63		1.2	38.9
T.P.	11.95	51.88	39.93
+70		11.0	40.9
+75		10.3	41.6
3		7.7	44.2
+25		5.6	46.3

Sheet 49

3+3.8

3.2 48.7

+48

2.8 49.1

+50

3.4 48.5

+75

2.6 49.3

+98

2.3 49.6

4

1.4 50.5

T.P.

8.73

58.90

1.71 50.17

+03

5.3 53.6

+25

3.9 55.0

+35

4.6 54.3

+50

5.0 53.9

+59 = "M" Line R 15° 55'

3.8 55.1

Levels for proposed sewer & Rodgers St  
 from sta 4+36<sup>2</sup> "D" Line book 941 page 41  
 west for 12.49'

B.M.	13.06	29.91	16.85
0+0 = Sta 4+36 <sup>2</sup> "D" Line			13.1
+21		✓	12.0
+25			11.2
+50			6.0
+69			2.0
+75			2.2
T.P.	12.89	42.63	0.17
+84			9.8
+94			7.0
1			3.3
T.P.	11.48	53.92	0.19
+10			8.3
+13			8.9
+38			7.8
+67			7.9
+68			1.3
T.P.	12.61	65.53	1.00
2			5.5
T.P.	12.29	77.52	0.30

Sheet 46

		77.52		
+25			10.0	67.5
+50			1.4	76.1
T.P.	12.54	89.97	0.09	77.43
+75			6.2	83.8
T.P.	12.46	102.22	0.21	89.76
3			10.3	91.9
+25			2.1	100.1
T.P.	12.43	114.42	0.23	101.99
+50			7.2	107.2
+75			1.2	113.3
T.P.	12.45	126.70	0.17	114.25
4			8.7	118.0
+25			2.8	123.9
T.P.	12.49	139.00	0.19	126.51
+50			7.6	131.4
+75			2.7	136.3
T.P.	9.93	148.75	0.18	138.82
5			8.3	140.5
+25			5.5	143.3
+50			4.3	144.5



		148.75			
6+0			2.6	146.2	
T.P.	12.40	159.56	1.59	147.16	
+50			7.5	152.1	
T.P.	12.17	171.56	0.17	159.39	
7			11.8	159.8	
+25			6.7	162.9	
+50			2.1	169.5	
T.P.	12.33	183.64	0.25	171.31	
+75			7.8	175.8	
T.P.	12.31	195.78	0.17	183.47	
8			12.1	183.7	
+25			5.2	190.6	
T.P.	12.41	207.76	0.43	195.35	
+50			9.8	198.0	
+75			4.6	203.2	
9			0.6	207.2	
T.P.	11.86	219.19	0.43	207.33	
+10			10.1	209.1	
+50			7.9	211.3	
10			7.2	212.0	

		219.19			
10+27	cut 7'			8.0	211.2
+40				6.6	212.6
+50				4.2	215.0
T.P.	12.44	231.12	0.51	218.68	
+75				9.5	221.6
+85				6.4	224.7
11	cut 10'			3.3	227.8
T.P.	12.18	243.08	0.22	230.90	
+25				12.7	230.4
+40				10.4	232.7
+50				9.0	234.1
+63	cut 12'			8.7	234.4
+75				6.4	236.7
+88				4.4	238.7
+96				3.9	239.2
12				5.1	238.0
+17	cut 7'			8.6	234.5
+33				2.5	240.6
+49	cut 6'			2.7	240.4

7

Levels of Perry St from Sta 6+73' M Line  
west for 458'

B.M.	12.05	118.92		106.87
0+0 = Sta 6+73'		12.05		106.9
+15		10.4		108.5
+25		5.6		113.3
T.P.	11.65	129.98	0.59	118.33
+50		3.3		126.7
T.P.	13.04	142.61	0.41	129.57
+60		8.6		134.0
+64		4.4		138.2
T.P.	12.88	155.29	0.20	142.41
+75		4.2		151.1
T.P.	12.44	167.40	0.33	154.96
+87		7.8		159.6
1		4.5		162.9
+25	cut 10'		+ 0.8	168.2
+43			+ 3.2	170.6
+44	cut 7'		2.9	164.5
+50			4.8	162.6
+75			3.3	164.1
2			3.4	164.0
+18			2.2	165.2
T.P.	12.62	179.68	0.34	169.06

Sheet 47

179.68

8

2+25		7.2		172.5
+32		5.5		174.2
+34		2.0		177.7
+50		3.0		176.7
T.P.	12.21	191.65	0.24	179.44
+65		11.9		179.8
+75		11.2		180.5
+95		11.2		180.5
3		10.6		181.1
+25		6.5		185.2
+50		5.2		186.5
T.P.	12.37	203.58	0.44	191.21
+75		8.7		194.9
4		2.2		201.4
T.P.	8.56	211.88	0.26	203.32
+75		5.4		206.5
+50		2.8		209.1
+58	cut 10'	2.6		209.3

Levels for corner Lot Line bet Nichols & Owens  
from sta 58147 D Line west for 10092' or  $\frac{1}{2}$  San Fernando

B.M.	8.24	25.47		16.65
0+0			6.48	19.01
+08			5.7	19.8
+50			3.1	22.4
T.P.	12.02	37.06	0.45	25.04
1			11.1	26.0
+50			7.6	29.5
+87			3.7	31.4
2			4.0	33.1
T.P.	12.37	49.26	0.19	36.37
+50			12.3	37.0
+75			9.5	39.8
+84			7.2	42.1
3			6.5	42.8
+50 & Proseclions			4.1	45.2
+74			4.4	44.9
+78			1.1	48.2
T.P.	12.28	61.04	0.50	48.76
4			10.3	50.7
+50			4.8	56.2
T.P.	12.37	73.20	0.21	60.83

Sheet 48

51 Dunkle  
105 Shaw  
116 Bunker

		73.20		
5+0			10.15	62.7
+50			5.2	68.0
T.P.	12.17	85.13	0.24	72.96
6			11.0	74.1
+50			5.8	79.3
+77			1.1	84.0
+99 <sup>5</sup> = $\frac{1}{2}$ Elizo cut 9'			0.0	85.1
T.P.	12.42	97.55	0.00	85.13
7+25			9.1	88.5
+50			6.8	90.8
8 cut 7'			2.4	95.2
T.P.	12.22	109.44	0.33	97.22
+50			9.9	99.5
9 cut 9'			5.3	104.1
+50			1.0	108.4
T.P.	11.93	121.16	0.21	109.23
+85			9.9	111.3
10.			4.5	116.7
T.P.	10.99	131.57	0.58	120.58
+24			5.8	125.8
+34			6.2	125.4
+36			6.8	124.8
+49 <sup>2</sup> = $\frac{1}{2}$ San Fernando cut 6'			5.60	126.0

9

Levels of San Fernando from Lot Line bet Nichols  
& Owens or Sta 10+49.2 (page 9) to & Owens

131.57

0+0	5.6	126.0
+50	4.1	127.5
1	2.6	129.0
+50	1.1	130.5
+95 = & Owens	0.5	131.1

217 120.73 130.01 118.56

& San Fernando 8.22 112.51

Sheet 48

Levels Lot Line bet McCall & Nichols from  
Sta 61+95.2 D Line west for 1027.2' or & San Fernando

10

B.M.	425	23.26	19.01
0+0	15.6	7.4	10.73
+04	12.78 nail	14.9	8.4
+25	6.6	16.7	
+33	4.4	18.9	
+50	2.6	20.7	
T.P.	12.02	34.70	0.68 22.58
1	10.2	24.5	
+12	10.3	24.4	
+21	9.0	25.7	
+50	6.6	28.1	
2	5.3	31.4	
+31	1.5	33.2	
T.P.	12.20	47.30	0.20 34.50
+50	11.8	35.5	
+60	10.9	36.4	
+80	7.9	39.4	
3	7.9	39.4	
+04	8.2	39.1	
+04	9.0	38.3	

Sheet 48

		47.30			
3+28			7.9	39.4	
+52			8.1	39.2	
+52			7.1	40.2	
+60			3.9	43.4	
4			1.1	46.2	
T.P.	11.91	58.71	0.50	46.80	
+50			8.8	49.9	
5			5.0	53.7	
+50			1.6	57.1	
T.P.	12.06	70.58	0.19	58.52	
6			9.8	60.8	
+50			5.0	65.6	
+79			3.4	67.2	
T.P.	12.21	82.52	0.27	70.31	
7			12.4	70.1	
+50			7.5	75.0	
+85			5.1	77.4	
8			1.3	81.2	
T.P.	12.67	94.85	0.34	82.18	
+50			5.6	89.3	

		94.85			
8+76			4.4	90.5	
9			1.8	93.1	
T.P.	12.49	107.10	0.24	94.61	
+50			8.5	98.6	
+80			5.0	102.1	
T.P.	7.69	114.63	0.16	106.94	
10			4.7	109.9	
+04			2.6	112.0	
+14			3.2	111.4	
427 <sup>2</sup> = $\frac{1}{2}$ San Fernando St			2.1	112.5	

11

Levels at Line bet Lawrence & McCall from  
Sta 65+75 <sup>8" D" Line</sup> west for 10+49' or @ San Fernando

B.M. 8.93 19.41 10.48

0+0 = Sta 65+75 <sup>8" D" Line</sup> 12.30 7.11

+0.7 10.3 9.1

+2.5 Wrong Sta. 7.0 12.4

+5.0 3.6 15.8

T.P. 12.71 31.86 0.26 19.15

1 12.9 19.0

+5.0 9.5 22.4

2 6.6 25.3

+5.0 3.4 28.5

3 0.0 31.8

T.P. 12.07 43.34 0.59 31.27

+1.8 9.7 33.6

+2.5 7.6 35.7

+2.5 8.4 34.9

+5.0 7.2 36.1

+7.5 7.3 36.0

+7.5 6.6 36.7

+7.8 5.8 37.5

4 4.0 39.3

Sheet 48

4150

T.P. 12.05

5

+5.0

6

T.P. 12.08

+5.0

7

T.P. 12.30

+5.0

8

+5.0

T.P. 12.98

9

+5.0

T.P. 7.48

10

+1.9

+2.3

+3.3

+3.5

+4.9

43.34

0.0

0.14

8.5

5.4

1.2

0.20

9.5

5.1

0.36

12.7

8.6

3.8

2.06

10.0

4.8

0.72

6.6

3.8

1.8

1.5

2.3

1.42

11.42

43.3

43.20

46.8

49.9

54.1

55.05

57.6

62.0

66.77

66.9

71.0

75.8

77.51

80.5

85.7

89.77

90.7

93.5

95.5

95.8

95.0

95.33

84.80

Cut 8' @ San Fernando

0.45 96.28

12

Levels Lot Line bet Kellogg & Lawrence from sta  
694022 "D" Line west for 10742.0 of San Fernando

B.M.	9.85	16.96	7.11
070		7.47	9.49
+15		6.0	11.0
+34		5.9	11.1
+40		5.0	12.0
+50		4.2	12.8
1		0.8	15.2
T.P.	12.20	28.81	0.35 16.61
+50		10.0	18.8
2		6.5	22.3
+50		2.7	26.1
T.P.	12.30	40.85	0.26 28.55
3		11.4	29.5
+45		8.7	32.2
+50		6.6	34.3
+50		7.3	33.6
+75		6.2	34.7
470		6.5	34.4
470		5.6	35.3
+07		5.4	35.5
+11		3.9	37.0
T.P.	12.07	52.57	0.35 40.50

Sheet 49

	4750	52.57	13.3	39.3
	5		9.4	43.2
	+50		6.3	46.3
	6		2.9	49.7
	T.P.	12.30	64.41	0.46 52.11
	+50		11.0	53.4
	7		7.6	56.8
	+50		4.2	60.2
	8		0.4	64.0
	T.P.	12.43	76.69	0.15 64.26
	+50		8.1	68.6
	9		3.5	73.2
	T.P.	11.80	87.94	0.55 76.14
	+50		10.4	77.5
	10		6.3	81.6
	+49		2.1	85.8
	+50		3.5	84.4
	+60		3.8	84.1
	+61		4.4	83.5
	+74 <sup>3</sup>	San Fernando	3.15	84.79

Levels Lot Line bet Jenkins & Kellog from Sta 72+52  
 "D" Line west 10742 or  $\Phi$  San Fernando

53.88

14

B.M.	10.10	19.59	9.99	5+50		5.8	48.1
0+0 = Sta 72+52 "D" Line			8.1	11.5	6	2.8	51.1
+40			6.6	13.0	T.P.	11.76	64.00
+41		✓	5.8	13.8	+50		10.1
+50			5.3	14.3	7		6.3
1			0.9	18.7	+33		4.6
					+38		3.3
T.P.	12.28	31.03	0.64	18.95	+50		3.3
+50			8.8	22.7	+78		2.2
					+88		5.8
2			6.1	24.9	T.P.	10.40	74.19
+50			2.6	28.4	8		16.3
T.P.	11.92	42.71	0.24	30.79	+22		14.4
3			11.1	31.6	+30		9.2
+50			8.3	34.4	+50		7.9
+50			9.1	33.6			
+75			7.9	34.8	9		4.7
+40			8.0	34.7	+06		4.7
+40			7.3	35.4	+15		5.7
+02			4.9	37.8	+50		1.3
+25			3.4	39.3	T.P.	12.45	86.15
T.P.	11.84	53.88	0.67	42.04	10		10.0
+75			10.3	43.6	+48		6.2
5			8.8	45.1	+50		4.6
					+60		5.2
					+74" $\Phi$ San Fernando		4.6

Sheet 49



Levels of Perry St from San Antonio west  
for 675'

B.M.	12.70	17.40		4.70
0+0 = San Antonio			12.70	4.7
+30			9.1	8.3
+43			6.2	11.2
+50			6.3	11.1
+59			5.8	11.6
+61			5.1	12.3
+75			2.5	14.9
T.P.	12.43	29.56	0.27	17.13
1			10.6	19.0
+25			6.1	23.5
+44			3.0	26.6
+50			3.7	25.9
+64			3.0	26.6
+75			0.0	29.6
T.P.	12.73	42.05	0.24	29.32
2			8.4	33.6
+25			4.6	37.4
T.P.	12.61	54.49	0.17	41.88
+50			12.3	42.2

Sheet 47

		54.49			8.0	46.5
2+75						
+95					4.8	49.7
3					2.2	52.3
T.P.	12.47	66.75			0.21	54.28
+10					8.1	58.9
+25					4.2	62.6
+50					3.0	63.8
+81					1.9	66.9
+90					2.3	64.5
4					1.7	65.1
T.P.	12.78	79.37			0.16	66.59
+02					6.2	73.2
+25					0.9	78.5
T.P.	12.39	91.59			0.17	79.20
+50					6.2	85.4
T.P.	12.40	103.78			0.21	91.38
+75					12.0	91.8
5					5.7	98.1
T.P.	12.95	115.93			0.30	103.48
+25					11.6	104.3

15

Levels of Dual Trough St from sta 7+89<sup>3</sup> "D" Line  
 (Book 941 page 41) west for 936.7'

16  
 5 FEB 1907

		115.93		
5+50			5.5	110.4
T.P.	12.52	128.14	0.31	115.62
+75			11.2	116.9
6			5.8	122.3
+75			0.6	127.5
T.P.	12.26	140.20	0.20	127.94
+50			6.9	133.3
+75	cut 8'		2.3	137.9
			4.8	135.1

B.M.	12.95	25.55		12.60
				12.95
0+0 = Sta 7+89 <sup>3</sup>				12.6
+19				5.3
				20.3
+40				3.6
				22.0
T.P.	12.67	37.98	0.24	25.31
+50				12.1
				25.9
+58				12.3
				25.7
+65				6.6
				31.4
T.P.	12.52	50.26	0.24	37.74
1				10.9
				39.4
+25				4.8
				45.5
+39				1.9
				48.4
T.P.	12.56	62.57	0.23	50.03
+50				2.2
				54.4
+60				2.5
				60.1
+75				2.3
				60.3
T.P.	12.00	74.07	0.52	62.07
2				12.7
				61.4
+21				11.9
				62.2
+40				12.2
				61.9

Sheet 46

		74.07		
2447			12.0	62.1
+49			5.6	68.5
T.P.	12.38	85.96	0.49	73.58
+75			11.7	74.3
3			0.8	85.2
T.P.	12.47	97.82	0.61	85.35
+25			4.3	93.5
+35			0.4	97.4
T.P.	12.66	110.23	0.25	97.57
+50			8.8	101.4
+75			2.7	107.5
T.P.	12.33	122.42	0.74	110.09
4			9.5	112.9
+25			3.4	119.0
T.P.	12.42	134.42	0.42	122.00
+50			8.4	126.0
+75			1.8	132.6
T.P.	12.40	146.62	0.20	139.22
5			8.6	138.0
+25			4.4	142.2
T.P.	12.34	158.80	0.16	146.46

		158.80		
5750			11.2	147.0
+57			10.3	148.5
+64			7.6	151.2
+75			5.5	153.3
6			1.5	157.3
T.P.	12.31	170.90	0.21	158.59
+25			10.0	160.9
+40			8.8	162.1
+50			9.4	161.5
7			2.5	168.4
T.P.	12.56	183.24	0.22	170.68
+25			4.4	171.8
+50			7.1	176.1
+75			2.6	180.6
T.P.	12.35	195.16	0.43	182.21
8			10.5	184.7
+25			6.2	189.0
+50			2.4	192.8
T.P.	10.92	205.80	0.28	194.88
+75			9.4	196.4
9			6.2	199.6
+367			3.5	202.3

Bill Bliss

Survey of

74.49 from  
140.08 to 18  
178.15

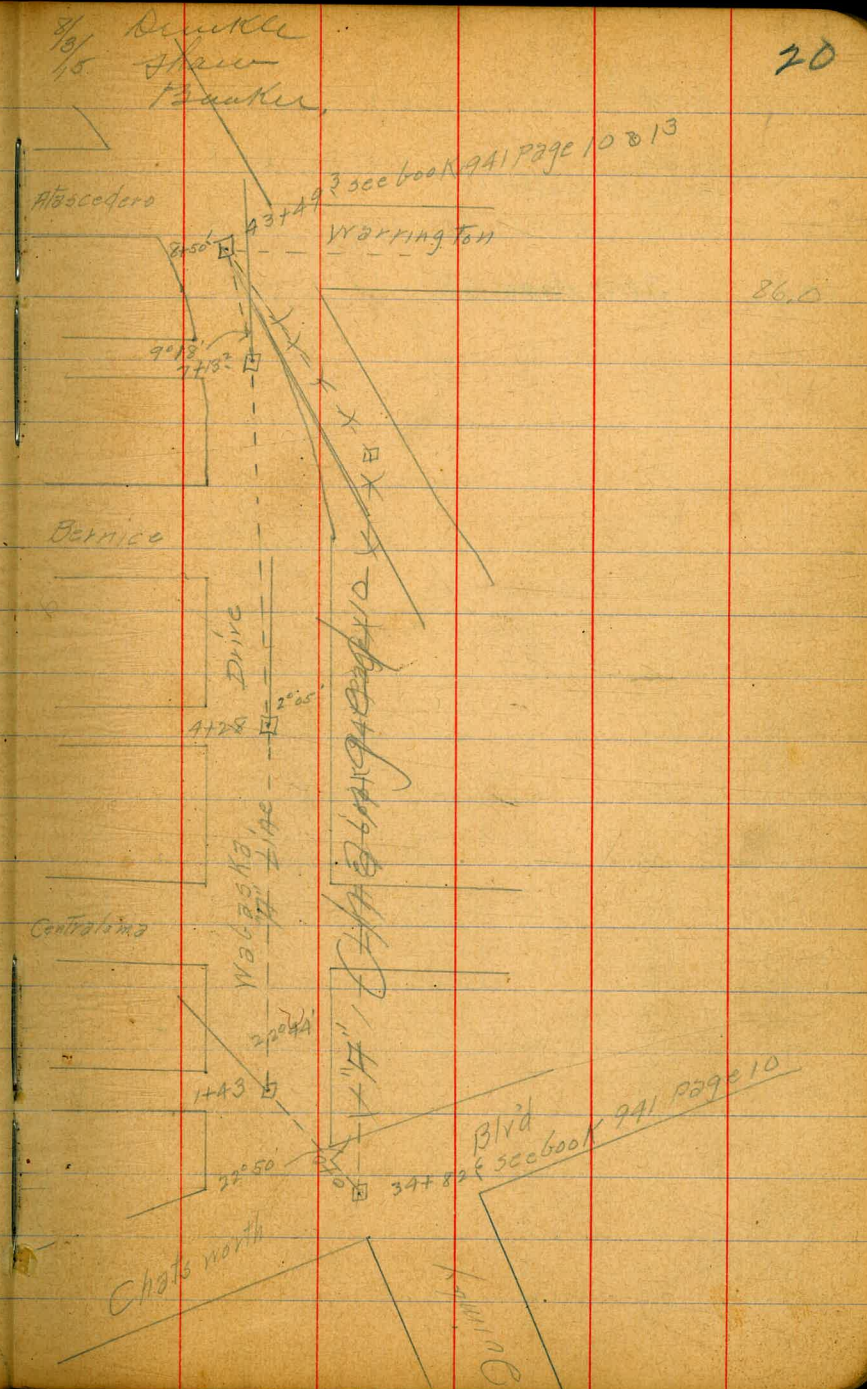
19

Levels for change in "A" line sketch opp page

13.01, N.E. Fly curb Terryson & Warrington		85.67	
B.M.	3.68	89.35	
0+0 = Chats north	L 22° 50'	12.2	77.2
34+82.5 old line = 34+61.72	New line POT		
+50	34+86.76	Δ 27° 27' 58"	11.6
1			77.8
			10.3
			79.1
(1+43 R 22° 44')	= 36+07.08	2.67	79.68
	Δ 27° 21' 58" RT.		
+50	36+14.08	7.6	79.8
2	36+64.08	8.9	80.5
+50	37+14.08	8.1	81.3
3	37+64.05	7.1	82.3
+50	38+14.08	6.8	82.6
4	38+64.08	6.4	83.0
	38+92.08 = Δ 2° 05' L		
+28	1 2° 05'	6.12	83.22
+50	39+14.08	5.8	83.6
5	39+64.08	5.3	84.1
+50	40+14.08	4.9	84.5
6	40+64.08	4.9	84.5
+50	41+14.08	5.0	84.4
7	41+64.08	4.5	84.9
	41+77.28 Δ 9° 18' L		
+13.2	L 9° 18'	4.51	84.89

Cont. from Book 941 pg 4

line change  
dist. computed



86.0

see book 941 page 10 & 13

Blvd  
see book 941 page 10

89.35

7+50 42+14<sup>08</sup>

4.1 85.2

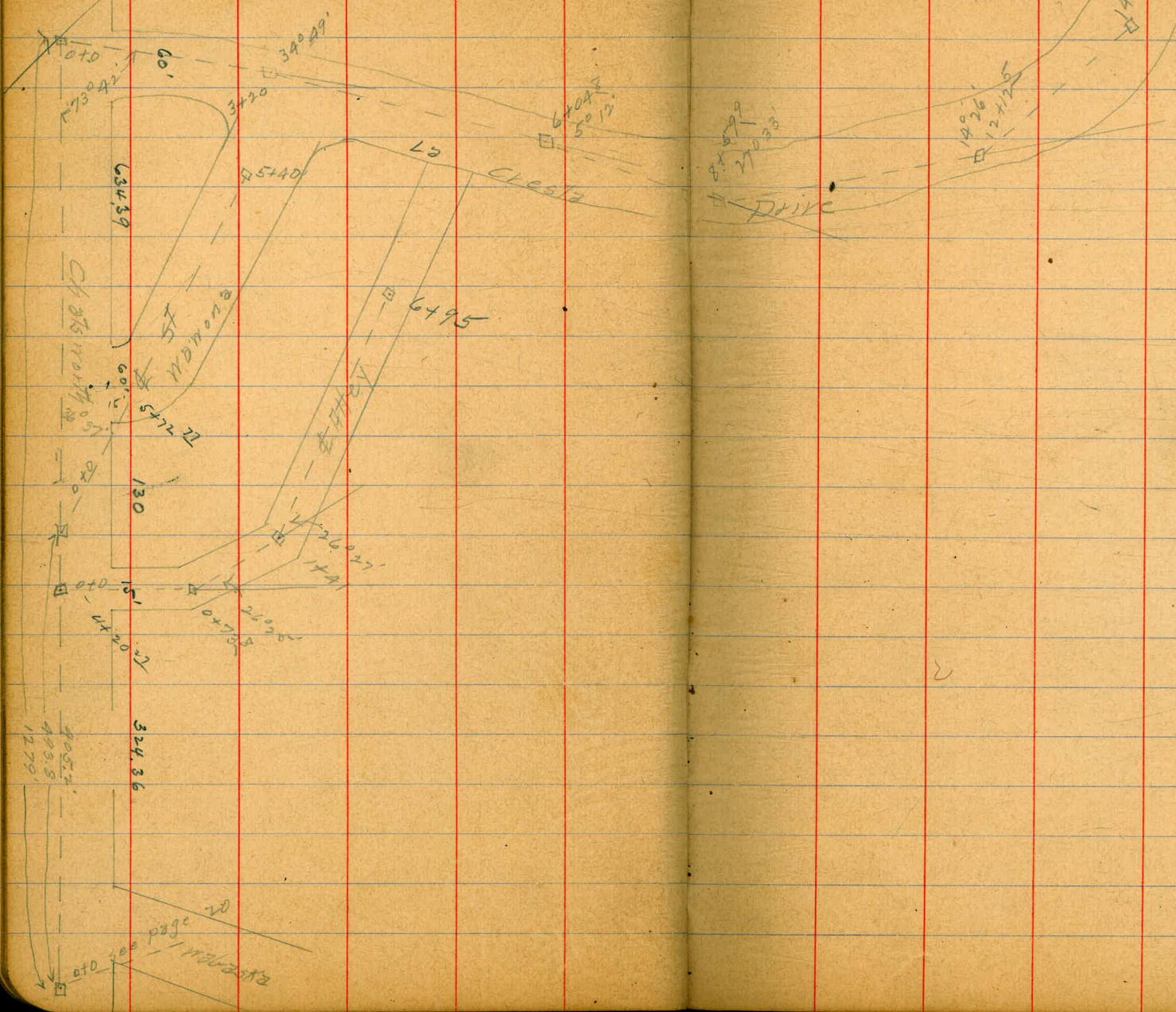
8 42+64<sup>08</sup>

3.5 85.9

43+14<sup>18</sup> Δ25°58'L

+50' = Tennyson & Warrington 3.4 86.0

Cont. See page 28



695  
 141  
 559  
 277

20



Levels for proposed sewer La Cresta Drive from  
 & Chatsworth in northerly direction for 1465.8  
 See sketch page 22

Sumner  
 Shaw  
 Bunker

23

B.M. N.E. McCook	Chatsworth	Huntington	133.23	
B.M.	0.21		133.44	
T.P.	9.46	129.91	12.99	120.45
+102 & Chatsworth			11.83	118.1
+124			12.4	119.5
+150			11.7	118.2
1			10.5	119.4
+150			9.3	120.6
2			7.0	122.9
+150			4.1	125.8
3			1.6	128.3
+120 R 34° 49'			10.2	128.89
7.45	136.34			
+150			6.2	130.1
4			5.2	131.1
+150			5.0	131.3
5			5.2	131.1
+150			4.7	131.6
6			4.8	131.5
+104 <sup>8</sup> R 5° 12'			4.9	131.4

Sheet 19

		136.34		
6+50			5.7	130.6
7			6.0	130.3
+50			6.3	130.0
8			6.2	130.1
+50			7.0	129.3
+59.9	L 27° 33'		7.4	128.9
9			5.8	130.5
T.P.	1116	141.45	6.05	130.29
+50			9.7	131.8
10			8.8	132.7
+50			7.9	133.6
11			7.0	134.5
+50			5.4	136.1
12			2.8	138.7
+12.5	L 14° 26'		2.2	139.3
T.P.	1304	154.18	0.31	141.14
+50			11.9	142.3
13			7.8	146.4
+50			4.7	149.5
14			2.0	152.2
T.P.	5.47	158.86	0.79	153.39
+50			2.3	156.6
+65.8			1.2	157.7

Levels for proposed sewer Wawona st from  
 @ Chatsworth in westerly direction for 540' 124

B.M.	1214	91.82		79.68
0+0			8.3	83.5
+43			7.9	83.9
+50			7.1	84.7
+73			6.2	85.6
+77			6.8	85.0
1			5.1	86.7
+50			1.8	90.0
T.P.	1164	103.21	0.25	91.57
2			9.8	93.4
+50			6.5	96.4
3			3.2	100.0
T.P.	12.48	115.08	0.61	102.60
+50			11.9	103.2
4			8.7	106.4
+50			5.6	109.5
5			2.1	113.0
T.P.	12.23	126.60	0.71	114.37
+40			10.7	115.9

Sheet 19

Levels for proposed sewer & Alley <sup>131.4</sup> bet Wagona Drive to Poe St from & Chats north west from <sup>69.5</sup> Dunkle B.M. Shaw Bunker			
B.M.		91.82	
0+0		10.27	81.55
+17		10.4	81.4
+25	✓	9.9	81.9
+33		10.0	81.8
+40		7.1	84.7
+50		6.6	85.2
+73 <sup>3</sup>	L 26° 25'	5.4	86.4
1		4.0	87.8
+41	L 26° 27'	1.9	89.9
+50	11.64	103.21	116
2		0.25	91.57
150		9.8	93.4
3		6.7	96.5
4		4.4	98.8
+50		3.2	100.0
5		1.4	101.8
T.P.	12.48	115.08	0.61
+50		10.6	104.5
5		6.9	108.2
+50		2.2	112.9
T.P.	12.35	126.72	0.71
6		7.8	118.9
+50		1.4	125.3
T.P.	2.37	134.73	0.36
+95		5.5	129.2

Sheet 19

Levels for proposed sewer & Alley bet Poe & 25 <sup>25</sup> Centraloma from & W3675' west for 835'			
B.M.	11.71	91.39	79.68
0+0			11.7
+11			13.8
+16			11.5
+50			11.9
1			12.0
+50			11.2
2			9.3
+50			4.9
3			0.6
T.P.	10.88	101.76	0.51
+50			8.6
4			6.9
+50			4.9
5			4.1
+50			1.9
T.P.	12.19	113.40	0.55
6			9.9
+50			4.7
T.P.	12.83	125.62	0.61
7			11.6
+50			7.2
8			2.2
T.P.	9.39	134.61	0.40
+35			7.5

Sheet 19

Levels for proposed sewer & Alley bet Central Ave  
& Bernice Drive from Nebraska Ave or sta 4+25  
"A" Line page 20 mist for 120

B.M.	11.95	95.17		83.22
0+0			11.9	83.3
+15			12.7	82.5
+16		✓	11.5	83.7
+25			11.0	84.2
+27			9.5	85.7
+50			8.8	86.4
1			8.3	86.9
+50			7.2	88.0
+70			7.2	88.0
2			5.2	90.0
+50			3.9	91.3
3			3.1	92.1
+50			1.2	94.0
T.P.	12.75	107.77	0.15	95.02
4			11.3	96.5
+50			8.2	99.6
5			5.3	102.5
+30			3.4	104.4
+50			3.2	104.6
T.P.	12.94	119.59	1.12	106.65
6			11.7	107.9
+50			7.4	112.2
7+0			3.5	116.1
T.P.	12.89	132.19	0.29	119.30
+50			11.5	120.7
8			7.8	124.4
+50			2.6	129.6
T.P.	10.95	141.86	1.28	130.91
9			7.8	134.1
+30			4.2	137.7

Sheet 20

Levels for proposed sewer & Alley bet Bernice & Escadero  
from Nebraska West for 1134

B.M.	11.24	96.08		84.34
0+0			11.2	84.9
+15			11.6	84.5
+17		✓	10.8	85.3
+28			10.4	85.7
+33			8.8	87.3
+50			7.8	88.3
1			6.7	89.4
+50			6.4	89.7
2			3.9	92.2
+50			1.2	94.9
3			1.6	94.5
T.P.	11.26	107.16	0.18	95.90
+50			10.0	97.2
4			8.1	99.1
+50			6.6	100.6
5			4.4	102.8
+50			0.4	106.8
T.P.	12.57	119.52	0.21	106.95
+28			10.9	108.6
+26			11.6	107.9
6			7.6	111.9

Sheet 20

119.52

6+50			5.2	114.3
7			3.0	116.5
T.P.	12.98	132.34	0.16	119.36
+50			11.6	120.7
8			6.7	125.6
T.P.	11.66	143.37	0.63	131.71
+50			10.7	132.7
+75			5.6	137.8
T.P.	11.32	154.63	0.56	142.31
9			11.5	143.1
+29	R 26° 00'	0	5.4	149.2
+50			3.3	151.3
+55			2.0	152.6
T.P.	11.40	165.41	0.62	154.01
10			8.8	156.6
+14'	R 26° 43'		6.9	158.5
+50			5.4	160.0
+66			5.8	159.6
11			2.6	162.8
T.P.	6.33	171.39	0.35	165.06
+34'			5.5	165.9

Levels for proposed sewer &amp; Alley bet Atascadero &amp; Alicia from Tennyson west for 900'

27

B.M. pique Tennyson & Wallington				85.67
B.M.			10.67	76.34
0+0				88.0
+16				87.9
+70				87.5
0+37 <sup>58</sup>	=	0+30	Δ 37	87.9
+50			0+42 <sup>32</sup>	93.5
1			0+92 <sup>32</sup>	95.5
T.P.	10.93	106.67	0.60	95.74
+50			1+42 <sup>32</sup>	97.1
2			1+92 <sup>32</sup>	98.4
+50			2+42 <sup>32</sup>	100.1
3			2+92 <sup>32</sup>	103.1
T.P.	12.71	119.01	0.37	106.30
+50			3+42 <sup>32</sup>	107.0
4			3+92 <sup>32</sup>	109.4
+50			4+42 <sup>32</sup>	112.8
5			4+92 <sup>32</sup>	117.9
T.P.	10.99	129.54	0.46	118.55
+50			5+42 <sup>32</sup>	120.9
			5+75 <sup>36</sup>	Δ 25° 50' 20" R
+83	R 26° 24'			123.3

Sheet 19

		129.54		
6+0	5+42 <sup>26</sup>		5.6	128.9
T.P.	11.74	140.90	0.38	129.16
+50	6+42 <sup>26</sup> 6+61 <sup>46</sup>	$\Delta 26^{\circ} 55' 40''$ Rt	11.4	129.5
+68 <sup>8</sup>	7+26 <sup>29</sup>		8.8	132.1
7	6+42 <sup>26</sup> 7+20 <sup>23</sup>	SPL Wells	4.7	136.2
+50	7+42 <sup>26</sup>		1.0	139.9
T.P.	11.70	152.19	0.41	140.49
+90	7+80 <sup>33</sup> 7+82 <sup>66</sup>	NPL Wells	9.3	142.9
8	7+92 <sup>68</sup>		7.6	144.6
+15	8+07 <sup>66</sup>		5.7	146.5
+50	8+42 <sup>66</sup>		4.5	147.7
9+0	End 8+92 <sup>66</sup>		3.0	149.2
	9+32 <sup>65</sup>	= End 10' wide lot line		

Levels for proposed sewer & Tennyson from 4  
Warrington to & Alley bet Alascadero & 11/2 28

B.M. P4 cont N.P. Tennyson & Warrington 85.67

Cont. from page 21

B.M. 5.91 91.58

0+00 = 43+14<sup>18</sup> New line  $\Delta 25^{\circ} 58' L$

0+0 = Warrington 5.3 86.3

+51 43+65<sup>18</sup> 5.2 86.4

1 44+14<sup>18</sup> 4.9 86.7

+50 44+64<sup>18</sup> 4.3 87.3

+89<sup>4</sup> 4 miles 45+03<sup>58</sup> P.O.T. 36 88.0

Manhole 45+26<sup>38</sup>  $\Delta 31^{\circ} 12' Rt$

New line computed along Right of Way from  
Sta 45+03<sup>58</sup> to Sta 48+51<sup>05</sup>  $\Delta 11^{\circ} 03' Rt$  = Bols Sta 9+04<sup>19</sup>

See Book 1116 page 16

Sheet 19

Levels for proposed Sewer beginning at Sta 6+70 "A" Line  
 (see book 941 Page 13) thence west ~~to~~ Lot line for 885'

B.M.	9.37	95.04	85.67	6+50	118.87	3.3	115.6	
0+0			85.0	7+0		2.2	116.7	
+04	√		85.7	T.P.	8.82	125.93	1.76	117.11
+05			87.4	7+50	cut 11'		8.0	117.9
+50			89.3	8			7.0	118.9
1			91.0	+50			4.7	121.2
+50			92.4	+85	cut 11'		2.5	123.4
+98 <sup>3</sup> = Wells st			93.2					
T.P.	12.79	106.02	93.23					
2			93.2					
+50			93.9					
3			95.9					
+50			96.1					
+65			97.3					
4			103.2					
T.P.	13.09	118.87	105.78					
+50			107.2					
5			109.7					
+50			111.9					
6			113.9					

Sheet 18

Levels for proposed sewer San Clemente st from sta 13492<sup>+</sup> H Line book 941 Page 13 south for 194' ± of San Clemente

B.M.	12.98	101.80	88.82
0+0		13.0	
+20		11.3	90.5
+50		4.4	97.4
T.P.	11.63	112.78	0.65
1		10.3	102.5
+50		6.2	106.6
+94		2.6	110.2

see book 1116 for revision -15.

Sheet 18

Levels for proposed sewer & Wells-st from sta 1498<sup>+</sup> page 29 to Alley BIK 37

B.M.	12.19	105.42	93.23
0+0		12.2	93.2
+50		8.7	96.7
1		5.4	100.0
+45		2.0	103.4
+50		0.8	104.6
T.P.	12.07	116.82	0.67
+52		11.7	105.1
+62		11.0	105.8
+64		9.1	107.7
+72		7.8	109.0
+83		9.1	107.7
+86		9.7	107.1
2		8.5	108.3
+50		5.6	111.2
3		2.5	114.3
+35 <sup>E</sup> = Alley BIK 37		0.39	116.93

Sheet 18



Levels for proposed sewer & Alley 31127 Rt Loma  
 Heights from & Wells west for 450'

B.M.	12.34	128.77	116.43
0+0 = & Wells St at Sta 3+35 <sup>5</sup> Page 30	12.34		
+50		9.8	119.0
1 cut 7'		7.9	120.9
+30		6.4	122.4
+50 cut 8'		3.9	124.9
+70		3.0	125.8
+79		0.6	128.2
T.P.	11.09	139.28	0.58 128.19
W		10.6	128.7
+50		7.5	131.8
3		4.2	135.1
+24		2.9	136.4
+30		7.5	131.8
+42		8.3	131.0
+50		7.4	131.9
+65		6.8	132.5
+70		1.6	137.7
T.P.	8.74	147.87	0.15 139.13
+78		7.7	140.2
4 cut 8'		4.9	143.0
+50 cut 8'			

Sheet 18

Levels for proposed sewer Arlington Drive 20' 31  
 south of north line from Sta 15+54<sup>2</sup> Chatsworth Blvd west  
 for 665' Note - 2 lines in Arlington Account of Center Parking

B.M.	N.E. 13+263 p/g	Chatsworth & Arlington	133.23
	12.03	145.26	
0+0 = 15+54 <sup>2</sup> Chatsworth		11.4	133.9
+20		11.3	134.0
+23		12.0	133.3
+30		11.2	134.1
+50		10.2	135.1
1		6.9	138.4
+50		1.9	143.4
T.P.	12.64	157.78	0.12 145.74
2		7.1	150.7
T.P.	12.51	170.22	0.07 157.71
+50		11.7	159.1
3		3.0	167.2
T.P.	12.57	182.34	0.45 169.77
+50		8.7	173.6
4		3.6	178.7
T.P.	12.53	194.79	0.08 182.26
+50		11.9	182.9
5		8.0	186.8
+50		3.8	191.0
T.P.	8.49	202.94	0.34 194.45
6		7.9	195.0
+50		3.7	199.2
+65		2.6	200.3

Sheet 20

Levels for proposed sewer  
of south line from sta 15+94.3  
for 12-50' Arlington Drive 20' north  
Chatsworth Blvd west

195.48

32

				545.0			4.2	191.3		
B.M.	13.06	146.29	133.23	6			0.3	195.2		
0+02 sta 15+94.3		Chatsworth	10.6	135.7	T.P.	12.46	207.74	0.20	195.28	
+20		✓	11.0	135.3	+50			9.0	198.7	
+23			12.0	134.3	7			5.0	202.7	
+27			10.8	135.5	+50			1.6	206.1	
+50		Sheet 20	9.8	136.5	T.P.	12.15	219.86	0.03	207.71	
1			6.6	139.7	8			10.2	209.7	
+50			1.6	144.7	+50			7.1	212.8	
T.P.	12.89		159.14	0.04	146.25	9			4.9	215.0
2				6.8	152.3	+50			3.7	216.2
T.P.	12.58	171.15	0.57	158.57	10			3.1	216.8	
+50			10.5	160.7	+50			2.7	217.2	
3			2.6	168.6	11			2.2	217.7	
T.P.	12.45	183.17	0.43	170.72	+50			1.6	218.3	
+50			8.1	175.1	12			1.1	218.8	
4			3.4	179.8	+50			0.6	219.3	
T.P.	12.63	195.48	0.32	182.85						
+50			11.7	183.8						
5			7.9	187.6						

Levels for proposed sewer & Ridge Road from sta 18+88.4 Chatsworth <sup>book 29, page 61</sup> Bird nest for 645'

B.M.	B.P. s.m. Ridge Road	Chatsworth	160.41
0+0	11.51	171.92	14.0 157.9
+50			12.3 159.6
1			7.8 164.1
+50			2.8 169.1
T.P.	11.96	183.65	0.23 171.69
2			10.3 173.4
150			7.4 176.3
3			5.5 178.2
+50			4.1 179.6
4			2.8 180.9
+50			1.0 182.7
T.P.	12.36	195.16	0.85 182.80
5			10.5 184.7
+50			7.8 187.4
6			4.9 190.3
+45			2.1 193.1

Sheet 20

Levels for proposed sewer & Wildwood from 33 & Chatsworth sta 22+135 west for 950'

B.M.	12.20	182.38	170.18
0+0			11.8 170.6
+50			11.0 171.4
1			8.4 174.0
+50			5.0 177.4
2			1.0 181.4
T.P.	12.36	194.37	0.37 182.09
+50			8.9 185.5
3			5.0 189.4
+50			1.0 193.4
T.P.	12.28	206.10	0.55 193.82
4			8.6 197.5
+50			4.3 201.8
5			0.1 206.0
T.P.	12.21	218.12	0.19 205.91
+50			8.4 209.7
+65			7.5 210.6
6			6.6 211.5
+50			5.4 212.7
7			3.5 214.6
+50			1.2 216.9
T.P.	12.43	230.01	0.54 217.58

Sheet 15

		230.01		
840			10.6	219.4
+50			6.7	223.3
9			2.2	227.8
T.P.	510	235.11	0.00	230.01
+50			4.3	230.8

			3.21	231.30
--	--	--	------	--------

Levels for proposed sewer & Tennyson st from & Warrington (see sta 8+50 on H Line page 20) East for 650.4 or 40' W of W.L. Chatsworth

B.M.	Grass ptg	N.E. Tennyson	Warrington	85.67
	7.62		93.29	
0+0	= & Warrington	7.3	86.0	
+50		6.9	86.4	
1		6.7	86.6	
+50		6.3	87.0	
2		5.9	87.3	
+50		5.3	88.0	
3		4.4	88.9	
+50		3.3	90.0	
4		2.3	91.0	
+50		1.2	92.1	
5		0.3	93.0	
T.P.	9.34	102.10	0.53	92.76
+50			8.4	93.7
6			7.5	94.6
+50 <sup>A</sup>			6.6	95.5

Sheet 25

Levels Tennyson st from & Chatsworth East for 1839' 35' or 25' W of Willow st

		102.10		
0+0	= & Chatsworth		5.8	96.3
+25			5.8	96.3
+50			5.1	97.0
1			4.3	97.8
+50			4.1	98.0
2			3.7	98.4
+50			3.1	99.0
3			2.7	99.4
+50			2.1	100.0
4			1.3	100.8
+50			0.1	102.0
T.P.	12.21	113.86	0.45	101.65
5			10.4	103.5
+50			9.6	104.3
+87			8.7	105.2
6			7.6	106.3
+33 <sup>5</sup>	= & Sterne		3.22	110.64
+50			0.8	113.1
T.P.	12.43	125.89	0.40	113.46

Sheet 25

3/7/16 Dunkle  
Shaw  
Bunker

		125.89		
7+0			5.7	120.2
T.P.	12.35	137.78	0.46	125.43
+50			10.6	127.2
8			3.5	134.3
T.P.	12.28	149.90	0.16	137.62
+50			8.8	141.1
sta. 8+91.8		2' E of W.L. Rowntree		
9			2.7	147.2
T.P.	12.07	161.80	0.17	149.73
+35			10.8	151.0
+50			9.8	152.0
+75			8.2	153.6
10			6.8	155.0
+50			4.6	157.2
11			3.0	158.8
+50			1.4	160.4
T.P.	10.74	171.93	0.61	161.19
12			10.2	161.7
+50			9.0	162.9
+99 <sup>1</sup>			8.50	163.43
			8.5	163.4

		171.93		
13+50			7.7	164.2
+64			6.1	165.8
+85			6.2	165.7
14			5.8	166.1
+50			3.4	168.5
15			1.5	170.4
+28 <sup>2</sup> $\phi$ Plum St			0.56	171.37
	12.08	183.45		
+50			10.6	172.9
+70			9.2	174.3
16			6.6	176.9
+30			4.3	179.2
+50			0.1	183.4
cut 11'				
T.P.	12.14	195.69	0.20	183.25
17			4.2	191.5
cut 15'				
T.P.	8.47	203.05	1.11	194.58
+30			8.3	194.8
+50			7.5	195.6
cut 15'				
18			6.0	197.1
+39=25' W of Willow			4.1	199.0

Levels North & South from Sta 12+99 <sup>Tennyson</sup> west of  
 P.L. see print.

B.M.	5.29	168.72	163.43
0+0 = 12+99 <sup>Tennyson</sup>		South for 155'	5.3
+14		5.6	163.1
+14		4.9	163.8
+24		4.6	164.1
+29		5.8	162.9
+50		6.5	162.2
+88		6.6	162.1
1		5.8	162.9
+17		6.0	162.7
+50		6.7	162.0
+55		7.0	161.7

North for 135'

0+0 = 12+99 <sup>Tennyson</sup>		5.3	163.4
+36		4.9	163.8
+36		4.2	164.5
+46		4.0	164.7
+50		4.8	163.9
+67		4.0	164.7
+75		3.3	165.4
+87		3.0	165.7
1		3.7	165.0
+95		2.3	166.4

Sheet 25

Levels & Quimby from & Chatsworth east for 275' 37

B.M. 6255 plg Chatsworth	10.54	S.D.F. Row	87.68	77.14
0+0 = & Chatsworth			6.4	81.3
+25			6.9	80.8
+50			5.4	82.3
1			1.8	85.9
T.P.	10.18	97.24	0.62	87.06
+50			7.6	89.6
~			4.4	92.8
+50			2.5	94.7
+75			2.0	95.2

Levels & Quimby from & Capistrano west for 244.5'

B.M.	9.46	89.86	80.40	
0+0 = & Capistrano		9.46	80.4	
+5		9.0	80.9	
+20		9.3	80.6	
+50		7.6	82.3	
1		3.8	86.1	
T.P.	8.26	97.79	0.33	89.53
+50		8.0	89.8	
~		5.0	92.8	
+14.5		3.2	94.6	

Sheet 27

Sheet 27

Levels of Capistrano from Sta 28+08 <sup>31"</sup> A Line			
North for 638.7' to of Alley Quimby & Sterne			
B.M.	2.49	79.63	77.14
T.P.	5.87	76.82	8.68
0+00 = Sta 27+65 <sup>31"</sup> B Mainline			70.95
0+0 = Sta 27+08 <sup>31"</sup> A Line = 0+43 <sup>95"</sup>		9.1	67.7
+50	0+93 <sup>95"</sup>		7.5
1	1+43 <sup>95"</sup>		6.2
<sup>2+182</sup>			
+18 = of Poc = 1+61 <sup>95"</sup>		5.96	70.86
+50	1+93 <sup>95"</sup>	5.6	71.2
2	2+43 <sup>95"</sup>	4.0	72.8
+50	2+93 <sup>95"</sup>	1.7	75.1
+93 <sup>95"</sup>	3+37 <sup>95"</sup> of Alley East		
+9A = of Alley bet Poc Quimby	9.37	85.96	0.23
3	2+43 <sup>95"</sup>	9.2	76.8
+50	3+93 <sup>95"</sup>	7.2	78.8
4	4+43 <sup>95"</sup>	5.9	80.1
+50	4+93 <sup>95"</sup>	4.9	81.1
+53 = of Quimby	4+96 <sup>95"</sup>	5.56	80.40
+55	4+98 <sup>95"</sup>	4.9	81.1
5	5+48 <sup>95"</sup>	2.9	83.1
T.P.	8.70	94.35	0.31
+50	5+93 <sup>95"</sup>	8.0	86.4
6	6+43 <sup>95"</sup>	4.7	89.7
+38 <sup>73"</sup> = of Alley	6+82 <sup>68"</sup>	2.18	92.17

Sheet 28

Levels of Alley bet Poc Quimby from of Capistrano east for 292.7' to int lot line 618 155 thence east on lot line to sta 10+24 <sup>4"</sup> or 25' west of Plum 38

B.M.	12.50	89.09	76.59
0+0 = of Capistrano		12.5	76.6
+23		13.7	75.4
+23		12.8	76.3
+36		12.4	76.7
+38		11.6	77.5
+50		10.8	78.3
1		11.1	78.0
+50		12.2	76.9
2		12.3	76.8
+50		12.3	76.8
+15		9.4	79.7
+39		8.7	80.4
+50		6.4	82.7
3		4.1	85.0
+27		3.4	85.7
+39		4.8	84.3
+50		5.6	83.5
4		6.3	82.8

Sheet 27



	89.09			
4+25		6.2	82.9	
+50		4.7	84.4	
+65		3.3	85.8	
5		3.5	85.6	
+33		4.5	84.6	
+50		6.5	82.6	
6		9.1	80.0	
+50 cut 3' O.K.		9.5	79.6	
+78		8.9	80.2	
7		6.2	82.9	
+50		2.4	86.7	
T.P.	12.60	100.68	101	88.08
8		12.2	88.5	
+27		9.9	90.8	
+50		8.6	92.1	
+69		6.9	93.8	
+73		5.4	95.3	
+92.7		4.8	95.9	
9		3.4	97.3	
T.P.	12.10	111.87	0.91	99.77

			111.87	
9+25			10.4	101.5
+50			4.4	107.5
T.P.	12.65	129.01	0.51	111.36
+75			7.9	116.1
T.P.	11.67	134.84	0.84	123.17
10			10.7	124.1
424 <sup>A</sup> = 25 W of Plum			2.2	132.6
Level from sta 19+76 <sup>A</sup> "H" Line North for 137.1' onto $\phi$ of Poc at <del>8</del> int of R.L.				
B.M.	9.70	56.60		46.90
0+0 = 19+76 <sup>A</sup> "H" Line			9.70	46.9
+50			6.9	49.7
+65			5.0	51.6
T.P.	11.51	67.18	0.93	55.67
+79			6.3	60.9
+83			5.0	62.2
1			4.8	62.4
+16			5.2	62.0
+16			5.9	61.3
+37 <sup>X</sup>			3.71	63.47

Sheet 28  
 see page 74  
 for relocation of  
 This Line

Levels of Poe St from Sta 1437<sup>1</sup> or P.L. West for 758'

	67.18		
0+0		3.7	63.5
+50		3.7	63.5
1	✓	3.3	63.9
+50		2.6	64.6
2		2.1	65.1
+50		1.6	65.6
3		1.0	66.2
T.P.	7.65	73.78	1.05
+50		7.3	66.15
4		6.8	67.0
+50		6.4	67.4
5		5.9	67.9
+50		5.3	68.5
6		5.0	68.8
+50		4.5	69.3
7		4.2	69.6
+50		3.8	70.0
+58		3.6	70.2

Sheet 28

Levels on Lot Line bet Olvphant & Poe from Sta 19+76<sup>4</sup> "A" Line East for 460' 40'

	B.M.	9.81	56.71	46.90
0+0	Sta 19+76 <sup>4</sup>	"A" Line	9.81	46.90
+50			10.2	46.5
+75			6.3	50.4
1			2.2	54.5
T.P.	11.44	67.27	0.88	55.83
+25			8.7	58.6
+50			1.5	65.8
T.P.	11.35	77.90	0.72	66.55
+56			10.8	67.1
+63			7.5	70.4
+75			2.9	75.0
T.P.	11.70	88.99	0.61	77.29
2			6.1	82.9
2+18 <sup>4</sup>	P.L. Plum. St		1.8	87.2
T.P.	10.84	98.93	0.90	88.09
+25			10.4	88.5
+50			6.1	92.8
+75			2.0	96.9
T.P.	10.90	109.00	0.83	98.10

Sheet 28

		109.00		
340			6.5	102.5
+25			0.5	108.5
T.P.	11.55	120.30	0.25	108.75
+50			6.0	114.3
T.P.	11.64	131.60	0.34	119.96
+75			10.5	121.1
A			3.3	128.3
T.P.	11.68	142.66	0.62	130.98
+25			7.9	134.8
+50			1.6	141.1
T.P.	12.43	154.86	0.23	142.43
+63			6.6	148.3

Levels of Poe St from 1437<sup>on</sup> page 41  
 39 East for 544 = 25' m of Plum

B.M	10.90	74.37		63.47
040			10.9	63.5
+17			8.0	66.4
+50			5.7	68.7
+61			4.2	70.2
T.P.	12.78	86.38	0.77	73.60
+75			12.0	74.4
+88			8.6	77.8
1			3.9	82.5
T.P.	12.56	98.67	0.27	86.11
+25			8.2	90.5
+35			4.8	93.9
+50			1.5	97.2
T.P.	12.96	111.05	0.58	98.09
+75			8.9	102.2
+85			6.5	104.6
+98 <sup>6</sup>	W.L. Plum		0.82	110.23
2	12.72	122.96		
			12.6	110.4
+25			6.5	116.5
T.P.	11.63	134.42	0.17	122.79
+50			10.3	124.1

Sheet 41

		134.42		
2+75			0.6	133.8
T.P.	12.66	146.81	0.27	134.15
3			4.2	142.6
T.P.	12.68	159.28	0.21	146.60
+25			9.3	159.0
+50			3.8	155.5
+61			0.9	158.4
T.P.	12.82	171.57	0.53	158.75
+75			10.2	161.4
4			5.2	166.4
+25			0.8	170.8
T.P.	11.94	183.33	0.18	171.39
+50			8.9	174.4
+75			5.8	177.5
5			3.0	180.3
T.P.	8.12	189.75	1.70	181.63
+25			7.1	182.7
+44			5.4	184.4

Levels of Quimby from  $\phi$  Capistrano East  
for 1416 see blue print for notes

B.M.	12.08	92.48		80.40
0+0 = $\phi$ Capistrano		12.08		80.4
102		11.4		81.1
+26		12.8		79.7
+31		11.6		80.9
+50		10.7		81.8
1		9.6		82.9
+50		8.2		84.3
2		6.2		86.3
+50		3.7		88.8
3		1.0		91.5
T.P.	12.60	104.51	0.57	91.91
+50		10.6		93.9
4		7.9		96.6
+50		5.7		98.8
5		4.1		100.4
+50		2.8		101.7
6		1.4		103.1
+50		0.4		104.1
T.P.	12.63	116.81	0.33	104.18

Sheet 27

		116.81			
7+0			11.9	104.9	
+31	P 15° 35'		11.1	105.7	
+50			10.8	106.0	
8			9.8	107.0	
+50			8.3	108.5	
+76 <sup>3</sup>	2' w. of P.L. D <sup>r</sup> = 4 of Quimby west 8		7.63	109.18	
9			9.4	112.4	
T.P.	12.35	128.87	0.29	116.52	
+13			9.2	119.7	
+25			5.9	123.0	
T.P.	12.57	141.02	0.42	128.45	
+50			10.9	130.1	
+55			9.6	131.4	
+68			5.2	135.8	
+75			3.3	137.7	
T.P.	12.55	153.36	0.21	140.81	
10			9.1	144.3	
+25			1.5	151.9	
T.P.	12.90	165.70	0.56	152.30	
+50			2.6	157.1	

				165.70	
10+71 <sup>3</sup>	= W.L. Plum			5.7	160.0
11				3.3	162.4
T.P.	11.61	176.77		0.54	165.16
+50				8.4	168.4
12				3.4	173.4
T.P.	7.91	184.06		0.62	176.15
+50				5.4	178.7
13	cut 8'			2.8	181.3
+11				2.0	182.1
+50				3.5	180.6
14	cut 10'			4.6	179.5
+16	= 25 w. of Willow			5.1	179.0

Levels in 61K 150 - 2' E of P.L. from  
 sta 8+76<sup>3</sup> & Quimby north to & Russel

B.M. 13.02 122.20 109.18

0+02 & Quimby		13.0	109.2
+29		12.2	110.0
+50		4.3	117.9
T.P.	12.85	134.29	0.76 121.44
+75		11.8	122.5
1		8.0	126.3
+25		4.1	130.2
+50		0.6	133.7
T.P.	11.28	145.16	0.41 133.88
+75		5.8	139.4
2		1.0	144.2
T.P.	11.80	156.60	0.36 144.80
+25		6.8	149.8
+50		0.7	155.9
T.P.	12.18	168.38	0.40 156.20
+69.9 = & Russel		8.8	159.6

Sheet 26

Levels & Russel st from sta 2+69.9 on  
 opposite Page - E for 168.20 or 25 W. of Plum 43

		168.38	
0+0 = st 2+69.9		8.8	159.6
+50		2.8	165.6
T.P.	10.16	177.97	0.57 167.81
1		8.4	169.6
+50		4.9	173.1
+68.2 = 25 W of Plum		4.9	173.1

Sheet 26

Levels of Sterne st from Tennyson  
East for 13+95<sup>5</sup>

B.M.	12.50	123.15		110.65
0+0 = sta	6+33 <sup>5</sup>	Page 35	12.5	110.7
+30		✓	9.7	113.5
+50			6.6	116.6
T.P.	13.06	135.57	0.64	122.51
1			12.0	123.6
+50			6.1	129.5
2			0.8	134.8
T.P.	13.09	148.33	0.33	135.24
+50			8.1	140.2
3			3.0	145.3
T.P.	11.87	160.00	0.20	148.13
+50			9.9	150.1
4			6.3	153.7
+50			4.2	155.8
5			2.8	157.2
+28			2.2	157.8
+50			1.6	158.4
6			0.9	159.1
T.P.	10.05	169.36	0.69	159.31

Sheet 26

169.36

6+50		9.4	160.0	44
7		8.5	160.9	
+28		7.8	161.6	
+50		5.6	163.8	
8		4.8	164.6	
+50		3.7	165.7	
9		5.8	163.6	
+50		6.8	162.6	
10		8.0	161.4	
+50		8.8	160.6	
+91		8.6	160.8	
11		8.2	161.2	
+06		7.7	161.7	
T.P.	11.16	172.50	8.02	161.34
+38		11.3	161.2	
+50 cut 5'		10.7	161.8	
12		10.0	162.5	
+18		10.0	162.5	
+30		9.3	163.2	
+50 cut 8'		7.4	165.1	

		172.50		
12+75	cut 7.0		7.0	165.5
+85			5.5	169.0
13			0.2	172.3
T.P.	12.94	185.34	0.10	172.40
+50			11.8	173.5
+70			11.6	173.7
7.72			11.0	174.3
14			7.1	178.2
+25			2.6	182.7
T.P.	10.73	195.02	1.05	184.29
+50			7.5	187.5
+95 <sup>5</sup>			3.7	191.3

Levels of Alley bet Dumbly & Sterne from  
 of Capistrano East for 485' 45

B.M.	12.26	104.43		92.17
040 = of Capistrano	12.26			92.17
+35			12.3	92.1
+47			9.4	95.0
+50			9.2	95.2
1			6.3	98.1
+25			3.1	101.3
+50			2.9	101.5
T.P.	12.93	116.21	1.15	103.28
2			11.9	104.3
+13			10.9	105.3
+25			8.1	108.1
+50			6.7	109.5
3			3.4	112.8
+50			0.8	115.4
T.P.	13.04	128.46	0.79	115.42
4			8.4	120.1
+50			5.7	122.8
+85			4.2	124.3

Sheet 27



Levels of Olyphant from sta 17+58<sup>65</sup> "H" Line East  
 for 375' or 42' W of Willow

B.M.	7.67	54.57		46.90
= 0+53 = new sta				
0+0 = sta 17+58 <sup>68</sup> "H" Line			12.06	42.51
+83 East 0+86			11.6	43.0
0+47 = 1+00 W lin Plm.				
+50	1+03		8.2	46.4
+75	1+28		4.9	49.7
1	1+53		0.9	53.7
T.P.	11.43	65.79	0.21	54.36
1+17 = 1+70 E lin Plm.				
+25	1+78		5.7	60.1
T.P.	12.65	78.02	0.42	65.37
+50	2+03		10.8	67.2
+58	2+11		8.8	69.2
+75	2+28		0.4	77.6
T.P.	12.39	89.97	0.44	77.58
2	2+53		3.5	86.5
T.P.	12.39	102.04	0.32	89.65
+25	2+78		9.2	92.8
+50	3+03		3.0	99.0
T.P.	12.56	114.39	0.21	101.83
+75	3+28		11.3	103.1
3	3+53		7.0	107.4

Sheet 29

114.39

3+25	3+78		0.9	113.5	46
T.P.	12.70	126.89	0.20	114.19	
+50	4+03		7.2	119.7	
+75 = 42' W of Willow	4+28		0.4	126.5	
3+77 = 40' W of Willow = 4+30 = 40' W of Willow End.					

Levels of Line bet. Oliphant & Newell from sta 15+40<sup>26</sup>  
 "A" Line East for 225'

B.M.	9.63	52.14		42.51
0+0 = Sta 15+40 <sup>26</sup> "A" Line			12.23	39.91
+27			12.6	39.5
+50			6.2	45.9
T.P.	12.85	64.65	0.39	51.80
+75			12.3	52.4
1			5.1	59.6
T.P.	12.29	76.55	0.39	64.26
+25			9.4	67.2
+50			3.4	73.2
T.P.	12.36	88.50	0.41	76.14
+75			10.1	78.4
2			5.6	82.9
+25			2.5	86.0

Sheet 29

Levels of Newell St from Sta 13+23<sup>24</sup> "A" Line west for  
 550' or 225' East of Clare

B.M.	8.62	48.53		39.91	47
0+0 = Sta 13+23 <sup>24</sup> "A" Line			10.05	38.4	
+20			12.3	36.2	
+21			13.8	34.7	
+29			13.8	34.7	
+20			11.4	37.1	
+22			6.3	42.2	
+50			6.0	42.5	
+22 = Newell Plume at P.V.			4.8	43.7	
0+72 <sup>29</sup> = 0+00			4.7	43.8	
1			1.3	47.2	
+07			0+34 <sup>31</sup>		
T.P.	12.08	60.39	0.22	48.31	
+25			7.8	52.6	
+34			5.3	55.1	
+36			4.0	56.4	
T.P.	12.49	72.58	0.30	60.09	
+50			12.1	60.5	
+75			6.2	66.4	
2			1.2	71.4	
T.P.	12.03	84.39	0.22	72.36	

Sheet 30

		84.39		
2+25	1+52 <sup>31</sup>		7.0	77.4
+50	1+77 <sup>31</sup>		2.7	81.7
T.P.	12.35	96.53	0.21	84.18
+75	2+02 <sup>31</sup>		10.5	86.0
3	cut 9'	2+27 <sup>31</sup>	7.2	89.3
+50	cut 8'	2+77 <sup>31</sup>	2.2	94.3
T.P.	11.92	108.13	0.32	96.21
4		3+27 <sup>31</sup>	8.8	99.3
+50	cut 7'	3+77 <sup>31</sup>	4.0	104.1
T.P.	5.28	112.81	0.60	107.53
5		4+27 <sup>31</sup>	4.1	108.7
		4+71 <sup>56</sup>	= 2725' E of E line of Clove	
+50	cut 6'	4+77 <sup>31</sup>	2.5	110.3
		4+99 <sup>31</sup>		
5+72 = East line of Clove				

Levels of Oliphant from Sta 17+58<sup>68"</sup> Line West  
for 700'

17+85<sup>16</sup> New

B.M.	12.10	54.61		47.51	48
	10+53				
0+0 = Sta (17+58 <sup>68"</sup> Line)			12.11	42.5	
+16	0+37		11.6	43.0	
+41	0+12		3.9	50.7	
	0+04				
+49 = Rail of Loma R.V.			2.5	52.1	
+50	0+03		2.9	51.7	
0+53 = Sta 00 New line					
+75	0+22		3.2	51.4	
T.P.	12.41	66.53	0.49	54.12	
+84	0+31		10.3	56.2	
1	0+47		6.9	59.6	
+25	0+72		2.4	64.1	
T.P.	12.05	78.34	0.24	66.29	
+50	1+97		8.6	69.7	
+75	1+22		4.9	73.4	
T.P.	12.54	90.65	0.23	78.11	
2	1+47		11.9	78.8	
+25	1+72		7.0	83.7	
+50	2+97		4.4	86.3	
	2+24				
+77 = Wagona			4.31	86.34	
+87	3+34		4.6	86.1	

sheet 29

	90.65			
3+0		3.4	87.3	
+30		1.7	89.0	
+50		2.5	88.2	
4		3.4	87.3	
+15 <sup>9</sup> = Alley bet Clave & Tustin		3.25	87.40	
+50		1.1	89.6	
T.P.	11.65	101.76	0.54	90.11
5		6.8	95.0	
+50		2.2	99.6	
T.P.	12.67	114.21	0.22	101.54
6		7.7	106.5	
+25		3.9	110.3	
T.P.	11.57	125.33	0.45	113.76
+50		10.7	114.6	
7		5.9	119.4	

Levels of Alley bet Tustin & Capistrano from  $\frac{1}{2}$  Elephant South for 470

B.M.	11.22	133.74		121.97	49
0+0 = Capistrano		11.77			
+18		9.5			
+50		8.3			
1		7.4			
+50		5.1			
+77		4.0			
2		1.1			
T.P.	11.62	150.03	0.33	133.41	
+50 cut 11'		7.0			
3		3.1			
T.P.	6.13	150.04	1.12	143.91	
+50		5.9			
+86		4.4			
A cut 3'		4.7			
+50		3.9			
+70		3.3			
5.45	142.63	12.86	137.18		
		10.72	131.91		

See Tustin & Capistrano

Levels of Alley bet Chave & Justin from  $\Phi$  Olyphant South for 475'

B.M.	12.85	100.25	87.40	
0+0 = $\Phi$ Olyphant		12.85	87.4	
+11		✓ 11.6	88.7	
+50		5.4	94.9	
1		0.7	99.6	
T.P.	12.28	112.05	0.48	99.77
+50		2.8	103.3	
2		4.5	107.6	
T.P.	12.25	123.90	0.40	111.65
+50		10.1	113.8	
3		5.7	118.2	
+50		1.0	122.9	
T.P.	11.78	135.44	0.24	123.66
+85		10.8	124.6	
+92		8.9	126.5	
4	cut 9	8.0	127.4	
+50	cut 7'	5.0	130.4	
+75		3.55	131.89	

Sheet 30

Levels of Justin from  $\Phi$  Olyphant South for 475'

B.M.	12.42	113.96	101.54	50
0+0 = $\Phi$ Olyphant		11.7	102.3	
+50		9.8	104.2	
+87		✓ 7.7	106.3	
1		6.1	107.9	
T.P.	12.24	125.99	0.21	113.75
+50		10.9	115.1	
2		4.2	121.8	
+25		2.9	123.1	
+27		2.0	124.0	
T.P.	12.04	137.78	0.25	125.74
+50		10.6	127.2	
+84		6.1	131.7	
3		5.3	132.5	
+26		5.1	132.7	
T.P.	12.39	149.93	0.24	137.54
+50		10.7	139.0	
+75		6.8	143.1	
4		4.7	145.2	
+25		2.3	147.6	
+50		6.9	149.0	
T.P.	5.71	154.91	0.73	149.20
+75		4.5	150.4	

Sheet 30

Levels of Wawano from  $\phi$  Olyphant cr sta 2477 Olyphant  
 st Line west for 620'

B.M.	1.71	88.05	86.34
0+0 = sta 2477 Olyphant	1.71	86.3	
+25	2.9	85.1	
+50	2.1	85.9	
1	6.2	81.8	
+37	14.0	74.0	
+50	11.7	76.3	
2	5.4	82.6	
+50	0.6	87.4	
T.P.	11.41	99.05	0.41 87.64
3	2.7	90.3	
+50	3.0	91.0	
4	5.0	94.0	
+23	4.7	94.3	
+50	2.6	96.4	
+71	3.0	96.0	
5	1.0	98.0	
T.P.	5.89	104.14	0.80 98.25
+22			6.0 98.1
+50			6.7 97.4
+77			6.1 98.0
6			9.0 95.1
+70			11.3 92.8

Sheet 29

Levels of Dickens st continued from sta 24444  
 Brook 965 Page 75

B.M.	7.31	172.05	164.74	51
24444 <sup>4</sup>	7.31	164.7		
+50	6.8	165.3		
+25	2.8	169.3		
+39 <sup>9</sup>	0.22	171.83		
+50	11.3	173.2		
26	6.7	177.8		
+50	2.0	182.5		
T.P.	12.21	196.40	0.30 184.19	
27	10.2	186.2		
+50	7.1	189.3		
28	2.8	193.6		
T.P.	9.16	205.05	0.51 195.89	
+50	9.4	195.7		
+79 <sup>3</sup>	8.4	196.7		
29	7.8	197.3		
+50	6.2	198.9		
30+0	4.7	200.4		
+50	2.9	202.2		
31+0	3.3	201.8		
T.P.	9.35	213.24	1.16 203.89	

Sheet 35

R 40° 47'  
12.66

L 12° 02'

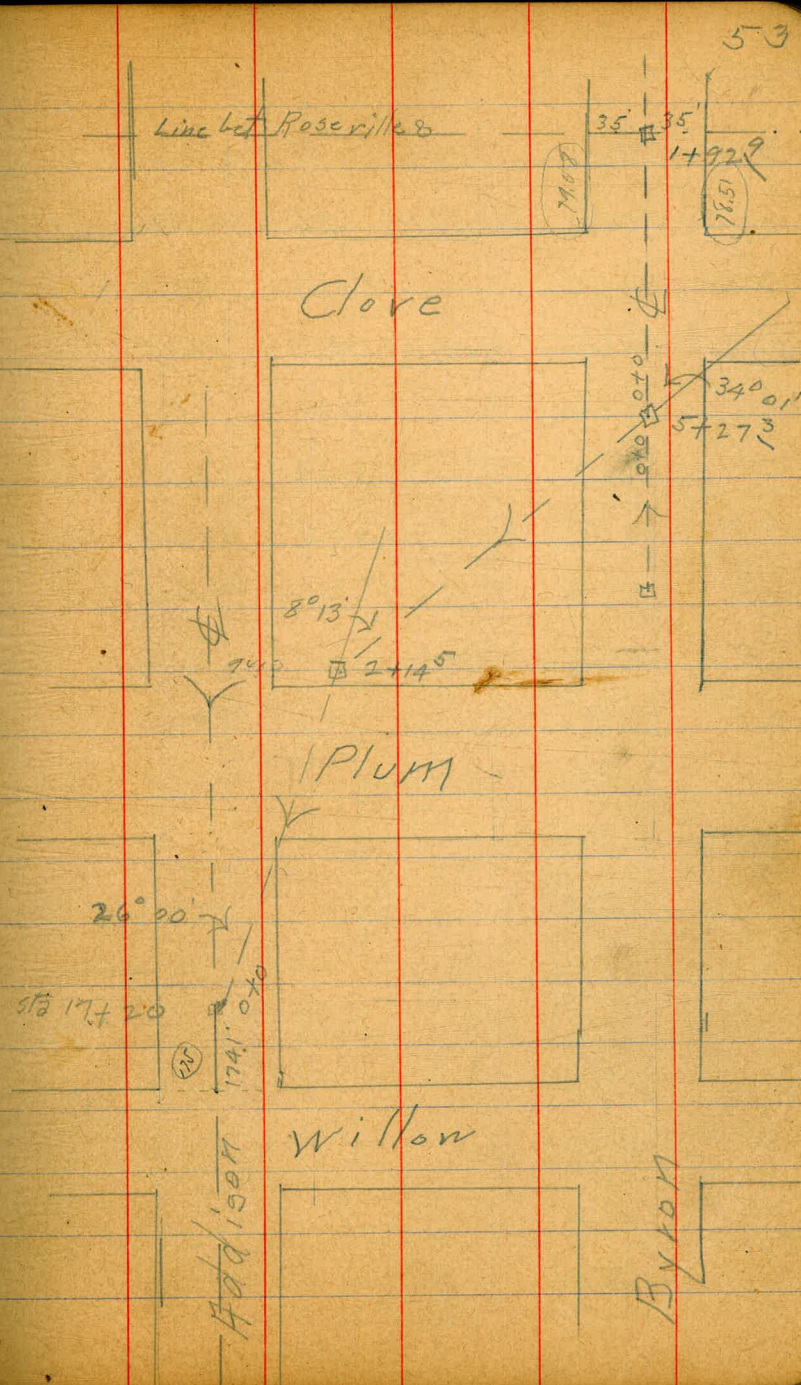
	213.24			
31+40		13.2	200.0	
+50		12.8	200.4	
32		7.8	205.4	
+50		6.6	206.6	
33		5.4	207.8	
+50		3.5	209.7	
+80 <sup>5</sup>	R 37° 05'	1.13	212.11	
	5.86 217.97			
34		6.2	211.8	
+50		7.5	210.5	
35		7.2	210.8	
+50		9.2	208.8	
36		9.7	208.3	
+50		9.9	208.1	
37		10.0	208.0	
+50		10.4	207.6	
38		10.3	207.7	
+50		10.7	207.3	
39		10.3	207.7	
+10 <sup>3</sup>	L 19° 03'	9.85	208.12	
	8.00 216.12			
+50		6.7	209.4	

	216.12			
40+00		6.9	209.2	52
+25		8.1	208.0	
+50		7.5	208.6	
41		5.8	210.3	
+50		5.6	210.5	
42		6.8	209.3	
+49 <sup>5</sup>		7.25	208.87	

Levels for proposed sewer from sta 17+20 <sup>Book 96 SP 79</sup>  
 Addison St Line to sta 5+27.3 Plum

B.M.	12.95	89.25		76.30
0+0 = Sta 17+20 Addison		12.95		76.3
+50		9.6		79.7
1		4.7		84.6
+1.0		3.2		86.1
+50		2.4		86.9
T.P.	12.14	99.22	2.17	87.08
2		8.8		90.4
+14.5	R 8° 13'	8.2		91.0
+50		6.7		92.5
3		4.1		95.1
T.P.	11.89	110.60	0.51	98.71
+50		10.4		100.2
+63		8.9		101.7
4		9.0		101.6
+50		5.7		104.9
5		3.3		107.3
T.P.	10.40	120.33	0.67	109.93
+27.3 = $\Phi$ Byron		9.07		111.26

Sheet 36





Levels of Byron from sta 5+27<sup>3</sup> page 53  
East for 130.8

B.M	9.07	120.33		111.26
0+0 = sta 5+27 <sup>3</sup> Canyon Line	9.07		111.26	
+12		11.6	108.7	
+25		8.5	111.8	
+50		1.8	118.5	
T.P.	11.18	131.07	0.44	119.89
+75		8.5	122.6	
1		4.4	126.7	
T.P.	6.91	137.49	0.49	130.58
+30 <sup>8</sup>		7.1	130.4	

Sheet 37

Levels Byron st from sta 5+27<sup>3</sup> page 54  
west for 2502.4

B.M	9.07	120.33		111.26
0+0 = sta 5+27 <sup>3</sup> Canyon line	9.07		111.26	
T.P.	11.68	131.57	0.44	119.89
+25			10.3	121.3
+50			2.7	128.9
T.P.	12.53	143.63	0.47	131.10
+75			8.4	135.2
1			2.3	141.3
T.P.	12.89	156.29	0.23	143.40
+75			10.1	146.2
+50			6.8	149.5
+75			3.8	152.5
+92 <sup>9</sup> = P.L.			2.3	154.0
2			1.7	154.6
T.P.	12.27	167.94	0.62	155.67
+50			9.6	158.3
3+02 <sup>3</sup> R 40° 36'			6.3	161.6
+50			4.1	163.8
4 cut 7'			1.4	166.5
T.P.	10.88	178.14	0.68	167.26

Sheet 37

		178.14		
+50			11.0	167.1
5			9.8	168.3
+50			8.5	169.6
6			6.6	171.5
+50			4.8	173.3
7			2.4	175.7
+25			1.5	176.6
T.P.	11.97	189.84	0.27	177.87
+50			11.2	178.6
8			9.4	180.4
+50			6.5	183.3
9			2.8	187.0
T.P.	12.05	201.34	0.55	189.29
+50			10.5	190.8
10	cut 7'		7.5	193.8
+50			5.2	196.1
11	cut 8		6.3	195.0
+23	L 26° 54'		5.9	195.4
+50			6.6	194.7
12			7.0	194.3

		201.34		
10	+35		6.2	195.1
+50	cut 8'		4.9	196.4
T.P.	12.15	212.35	1.14	200.20
13			11.1	201.3
+50			9.7	202.7
14			7.5	204.9
+06 <sup>8</sup>	R 28° 20'		7.3	205.1
+50			3.4	209.0
15	cut 8'		0.5	211.9
T.P.	7.05	218.99	0.41	211.94
+50			7.1	211.9
16			7.7	211.3
+10	R 23° 31'		7.9	211.1
+50			6.9	212.1
17			6.8	212.2
+50	cut 9'		5.2	213.8
18			7.0	212.0
+50	cut 7'		9.4	209.6
19			10.3	208.7
+50			9.9	209.1

	218.99			
20+0		8.6	210.4	
+50		6.1	212.9	
21		2.9	216.1	
T.P.	4.06	220.42	216.3	216.36
+50		3.5	216.9	
22		4.4	216.0	
+24	L 19° 40'	4.7	215.7	
+50		4.7	215.7	
23		5.8	214.6	
+50		5.9	214.5	
24		6.2	214.2	
+50		6.6	213.8	
+73		8.0	212.4	
25+0	4	7.3	213.1	

Levels from st from sta 13+61.4 C Line north 56  
 to Alley bet Talbot & Hill

B.M. sta 11972	C Line		95.70
12.73	107.93		
at sta 13+61.4	C Line	2.2	105.1
+14		2.2	105.7
+50		1.6	106.3
T.P.	11.41	117.76	1.58
1		9.5	108.3
+49	Alley	2.45	115.31

Sheet 38

Levels of Alley bet. Talbott & Hill from E Akron st  
west for 1075

		117.76		
0+0 = E Akron			2.45	115.3
+50			1.2	116.6
T.P.	12.53	129.49	0.80	116.96
1			10.6	118.9
+50		✓	6.5	123.0
+84			4.0	125.5
T.P.	12.36	141.59	0.26	129.23
2			11.9	129.7
+25			11.7	129.9
+50			12.2	129.4
3			10.3	131.3
+40			8.1	133.5
+50			6.9	134.7
+75			4.8	136.8
4			2.4	139.2
T.P.	12.45	153.44	0.60	140.99
+25			11.2	142.2
+50			8.6	144.8
5			3.0	150.4
T.P.	12.63	165.84	0.23	153.21

Sheet 38

		165.84		
5+50				9.5
6				2.9
T.P.	12.55	177.97	0.42	165.42
+50				9.8
7				3.7
T.P.	13.06	190.58	0.45	177.52
+50				9.7
8				4.8
+50				0.5
T.P.	12.63	202.91	0.30	190.28
9				4.7
T.P.	12.53	214.97	0.47	202.94
+25				12.1
+50				9.8
+75				1.3
T.P.	12.08	226.69	0.36	214.61
+55				9.4
10				9.0
+05				5.7
+17				4.4
+25				3.7
+29				1.2
T.P.	12.47	238.49	0.67	226.02
+30				9.2
+50				5.6
+75				2.67

of 107 Dunkle 5.7  
16 Shaw  
156.3 Bunker

Levels on Yell St 296' N. of S. Line from Sta 18+44.9  
 13" Line West for 996.2' or 50' E of E.L. Concord St  
 B.M.

	91.88			
0+0 = Sta 18+44.9 "B" Line	9.73	82.15		
+19	9.4	82.5		
+25	10.3	81.6		
+50	9.9	82.0		
+80	9.5	82.1		
1	7.0	84.9		
T.P.	12.38	103.90	0.36	91.52
+25	10.8	93.1		
+50	0.6	103.3		
T.P.	12.69	115.97	0.60	103.30
+65	8.3	107.7		
+75	7.5	108.5		
2	8.3	107.7		
+25	9.2	106.8		
+50	7.1	108.9		
+75	2.3	113.7		
T.P.	13.09	128.84	0.24	115.75
3	9.6	119.2		

Sheet 38

		128.84		58
3+25			2.2	126.6
T.P.	12.71	141.32	0.23	128.61
+50 cut 7'			7.7	133.6
+75			1.7	139.6
T.P.	12.80	153.94	0.18	141.14
4			7.2	146.7
+25 cut 7'			1.3	152.6
T.P.	12.37	166.03	0.28	153.66
+50			8.0	158.0
+75			3.9	162.1
T.P.	12.32	177.92	0.43	165.60
5			12.0	165.9
+25			9.2	168.7
+50			5.9	172.0
+75			0.6	177.3
T.P.	12.46	189.92	0.46	177.46
6			6.3	183.6
+25			1.7	188.2
T.P.	11.98	201.63	0.27	189.65
+50			9.7	191.9

		201.63		
6+75			6.6	195.0
7			2.5	199.1
T.P.	12.57	213.82	0.38	221.25
+25			11.8	203.0
+50			8.5	205.3
+75			4.1	209.7
8			0.4	213.4
T.P.	12.62	226.19	0.25	213.57
+25			8.7	217.5
+50			5.8	220.4
+75			2.3	223.9
T.P.	12.32	238.22	0.29	225.90
9			10.2	218.0
+25			7.3	230.9
+50			3.9	234.3
+75			1.2	237.0
+96 <sup>2</sup> = 50' E of E.L. Concord			0.28	237.94

Level of Akron St from sta 17+53.3 "B" Line south  
for 125.8' or 4381' N of N.L. Trumbull St

				92.19
0+0 = sta 17+53.3 "B" Line			11.87	80.32
+13			11.0	81.2
+20			12.2	80.0
+50			12.6	79.6
+59			12.2	80.0
+63			10.8	81.4
1			10.3	81.9
+13			9.6	82.6
+25 <sup>2</sup> = 600' next page = sta Villman St Line			7.43	84.76

Sheet 38

Levels Ullman st from sta 1+25 (AKron st 130' wide)  
 R 61°30'

		92.19		
0+0 = sta 1+25 AKron st.		7.43	84.76	
+11		6.2	86.0	
+25		2.6	89.6	
T.P.	11.49	103.27	0.41	91.78
+50		11.5	91.8	
+75		9.8	93.5	
1		9.2	94.1	
+25		6.1	97.2	
+50		2.7	100.6	
+52 <sup>9</sup> - N.E.S. Alley bet AKron & Bangov	12.34	113.31	2.30	100.97
+75		8.5	104.8	
2 cut 8'		1.5	111.8	
T.P.	12.57	125.59	0.29	113.02
+25		8.1	117.5	
+40	R 30°15'	5.2	120.4	
+50		5.6	120.0	
+75	cut 7'	2.5	123.1	
+80		2.3	123.3	
T.P.	12.18	137.42	0.35	125.24

Sheet 38

		137.42		
3+0		8.5	128.9	
+25		1.7	135.7	
T.P.	12.60	149.65	0.37	137.05
+50		6.6	143.1	
+75	cut 8'	1.1	148.6	
T.P.	12.52	161.74	0.43	149.22
+95	L 9°37'	7.2	154.5	
4		5.4	156.3	
T.P.	12.64	174.22	0.16	161.58
+15	cut 10'	11.0	163.2	
+50	cut 9'	5.6	168.6	
T.P.	12.65	186.38	0.49	173.73
+75		10.6	175.8	
+89		6.7	179.7	
5	cut 8'	4.8	181.6	
+25		2.8	183.6	
+50	cut 6'	1.5	184.9	
T.P.	12.60	198.73	0.25	186.13
+63		12.5	186.2	
+75		9.5	189.2	

60

	198.73		5.9	192.8
6+0				
+16			3.1	195.6
T.P.	12.35	210.76	0.32	198.41
+25 <sup>6</sup> = Bangor & Ullman			11.2	199.6
+33			8.7	202.1
+50			7.3	203.5
+75			5.1	205.7
7			4.3	206.5
+25			5.0	205.8
+50			4.5	206.3
+75			3.4	207.4
8			1.3	209.5
T.P.	12.51	222.93	0.34	210.42
+25			10.8	212.1
+50			9.6	215.3
+75			5.7	217.2
9			2.3	220.6
T.P.	12.53	235.19	0.27	222.66
+25			17.1	223.1
+50			8.7	226.5

	235.19			61
+75			6.5	228.7
10			4.5	230.7
+25			2.3	232.9
+50			1.3	233.9
T.P.	5.48	239.71	0.96	234.23
+75			5.3	234.4
11+05 <sup>3</sup> 50 Eaf E.L. Concord			5.18	234.53



Levels of Alley bet Akron & Bangor from sta 1452<sup>2</sup>  
 Ullman of Line (page 60) south for 229.9' or Alley bet  
 Ullman & Trumbull B.M. 100.97

	12.54	113.81		100.97
0+0 = Sta 1452 <sup>2</sup> Ullman of Line	12.94			100.97
+16			8.6	105.2
+25		✓	3.5	110.3
T.P.	12.61	126.14	0.28	113.53
+35			9.6	116.5
+50			1.3	124.8
T.P.	11.82	137.83	0.13	126.01
T.P.	12.86	150.52	0.17	137.66
+75			10.6	139.9
T.P.	12.92	163.17	0.27	150.25
1			11.9	151.3
+12			4.9	158.3
+25 cut 8'			1.5	161.7
T.P.	12.42	175.22	0.37	162.80
+50 cut 10'			9.3	165.9
2 cut 9'			6.5	168.7
+29 <sup>9</sup> = Alley bet Ullman & Trumbull	5.42			169.80

Sheet 39

Levels of Alley bet Ullman & Trumbull from E.M.S. Alley bet  
 Akron & Bangor west for 939' or 50' E of E.L. Concord 62  
 175.22

0+0 = Sta 2129 <sup>9</sup> opp page			5.42	169.80
T.P.	11.91	186.71	0.42	174.80
+50			✓ 11.3	175.4
1			7.2	179.5
+50			3.3	183.4
T.P.	12.69	199.09	0.31	186.40
2			12.3	186.8
+50			7.1	192.0
3			1.9	197.2
T.P.	12.18	210.73	0.52	198.57
+50			9.3	201.4
4			5.3	205.4
+50			1.9	208.8
T.P.	11.72	222.04	0.41	210.32
5			9.6	212.4
+50			7.3	214.7
6			4.7	217.3
+50			2.9	219.1
7			2.1	219.9
T.P.	12.12	233.94	0.24	221.82

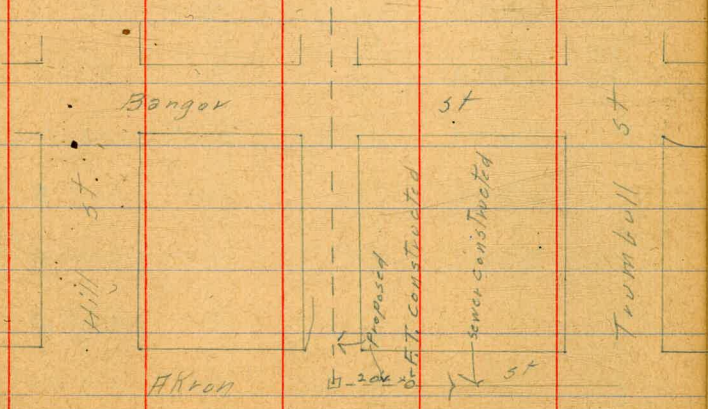
Sheet 39

		233.94		
7+50			10.6	223.3
+65			9.4	224.5
+85			5.9	228.0
8			4.9	229.0
+50			2.3	231.6
9			0.4	233.5
T.P.	5.22	238.80	0.36	233.58
+39 = 50 E. of E.L. Concord			4.7	234.1

Levels of Akron St from F.T. (Constructed) south  
for 20'  
B.M.

		169.80
	6.98	176.78
0+0 = F.T. TOP		16.0
0+20 = Alley bet Trumbull & Hill	15.1	161.7

Sheet 39



Lerels & Alley bet Trumbull & Hill from E  
 AKron st. West for 1050'

176.78

040 = \$ AKron			15.1	161.7
+05			15.0	161.8
+08			11.6	165.2
+50			6.4	170.4
+75	cut 7'		4.0	172.8
+1			1.9	174.9
+50	cut 6'		0.1	176.7
T.P.	12.23	188.83	0.18	176.60
2			8.2	180.6
+50			2.9	185.9
T.P.	12.17	200.69	0.31	188.52
3			9.4	191.3
+50			3.7	197.0
T.P.	11.93	212.23	0.39	200.30
4			10.9	201.3
+50			6.7	205.5
5			2.9	209.3
T.P.	12.32	224.20	0.35	211.88
+50			9.4	214.8

Sheet 39

224.20

64

640			6.1	218.1
+50			1.6	222.6
T.P.	12.38	236.24	0.34	223.86
7			10.5	225.7
+50			6.5	229.7
8			4.0	232.2
+50			1.9	234.3
T.P.	8.21	243.47	0.98	235.26
9			6.0	237.5
+50			3.6	239.9
+63			3.8	239.7
+70			4.2	239.3
+77			3.3	240.2
10			2.9	240.6
+40			3.3	240.2
+50			4.1	239.4
+80	cut 7'		5.8	237.7

Levels T&bet 5t from sta 19462<sup>3</sup> "C" Line (book 941 P 28)  
 West to E of Concord & P.L.

B.M. 1134 168.84 167.50

T.P. 0.88 156.77 12.95 155.89

+10 = Sta 19462<sup>3</sup> "C" Line 13.8 143.0

+50 ✓ 8.7 148.1

1 3.7 153.1

+25 1.2 155.6

T.P. 12.65 169.23 0.19 156.58

+50 10.3 156.9

2 4.9 164.3

T.P. 12.81 181.78 0.26 168.97

+50 10.9 170.9

3 4.5 177.3

T.P. 12.66 194.15 0.29 181.49

+50 12.4 181.8

4 4.5 189.7

T.P. 12.71 206.16 0.70 193.45

+50 11.0 195.2

+64 4.5 201.7

+75 0.2 206.0

T.P. 12.79 218.71 0.24 205.92

Sheet 39

218.71 143.0 65

570 5.2 213.5  
 +25 1.9 216.8  
 +50 1.4 217.3  
 T.P. 12.02 230.41 0.32 218.39  
 +65<sup>1</sup> - Int. P.L. & Concord 11.8 218.6

Levels & Concord from ST2 5465 (page 65)  
North for 1290

Dentle  
Shaw  
Bunker  
6/30/10

238.12

234.53

66

230.41

+80

11.4

226.7

040 = ST2 5465

11.8

218.6

6

10.2

227.9

+25

7.9

222.5

+50

7.8

230.3

+43

6.7

223.7

7

6.1

232.0

+50

5.0

225.4

+50

4.9

238.2

T.P.

11.89

242.08

0.22

230.19

8

6.0

232.1

+70

10.9

231.2

+50

6.6

231.5

+75

10.4

231.7

9

7.6

230.5

1

8.4

233.7

+50

8.7

229.4

+50

7.1

235.0

+65

9.1

229.0

2

6.7

235.4

10

8.3

229.8

+50

6.2

235.9

+97

8.2

229.9

3

6.7

235.4

+25

6.8

231.3

+50

5.9

236.2

T.P.

8.18

239.56

6.74

231.38

4

5.4

236.7

+50

8.2

231.4

+50

7.0

235.1

11

7.8

231.8

+85

12.3

229.8

+50

6.6

233.0

T.P.

7.93

238.12

11.89

230.19

12

4.9

234.7

5

8.9

229.2

+18

4.6

235.0

+50

10.5

227.6

+50

3.6

236.0

+90

1.6

238.0

Sheet 39

Levels of No 8 South Alley bet Chatsworth & Capistrano from E Alley  
 bet Peck & Warnera south for 980 or 30 N of N.L. McCauley St

B.M.	2118	79.32	77.14
+0		6.8	72.5
+25		6.2	73.1
+50		4.3	75.0
1		3.3	76.0
T.P.	13.03	90.31	1.54
+77		13.7	77.1
+38		9.2	81.6
+48		10.3	80.5
+50		10.0	80.8
+68		8.6	82.2
+87		9.0	81.8
+93		2.1	82.7
2		7.6	83.2
+19		8.9	81.9
+50		7.1	83.7
3		3.1	87.7
+35 = E Alley bet Warnera & Oliphant	11.43	101.25	0.99
+50		10.6	90.7
# 4		9.3	92.0
+50		7.2	94.1

Sheet 30

1/21 Dun #2  
 10 5/8 3/4  
 Bunker

101.25

67

+6.7	4.7	96.6
+7.8	4.4	96.9
+8.3	5.4	95.9
+202 = E Oliphant & Alley North	3.52	97.73
+32 = " " " " South	3.6	97.7
+50	4.1	97.2
+53	4.3	97.0
+63	2.9	98.4
+74	0.3	101.0
T.P.	12.70	113.75
6	10.5	103.3
+50	8.2	105.6
7	5.9	107.9
+50	4.0	109.8
8	2.3	111.5
+50	0.7	113.1
T.P.	12.08	125.20
9	9.2	116.0
+50	6.2	119.0
+90 = 20 N of McCauley	3.99	121.21
11.23	135.16	1.27
12.8	9.2	
1.98	133.18	

Levels of Olyphant st from the Alley bet Chatsworth & Capistrano or 25 ft 25 Page 67 East to the Capistrano

B.M.	11.31	109.09		97.73
0+0			11.31	97.7
+50			10.4	98.6
1		✓	9.3	99.7
+50			8.1	100.9
2			6.2	102.8
+50			3.9	105.1
+55 = the Alley bet Mendota & Capistrano			3.69	105.35
3			0.4	108.6
T.P.	11.49	120.35	0.18	108.86
+50			7.3	113.1
+78			5.3	115.1
+97 = the Capistrano			4.54	115.81

Sheet 29

Levels of Capistrano from the Olyphant south for 450 or 35 N of N.L. McCaulay 68

B.M.	12.54	128.35		115.81
0+0 = the Olyphant	12.54			115.8
+50			12.1	116.3
1		✓	11.5	116.9
+50			11.0	117.4
+75			10.7	117.7
2			10.1	118.3
+50			8.1	120.3
3			5.9	122.5
+50			3.6	124.8
4			1.3	127.1
T.P.	4.06	131.73	0.68	127.67
+50			2.5	129.2
+58			2.0	129.7
			9.89	121.89

Sheet 30

Levels of Alley bet Mendota & Capistrano from  
 of Olyphant south for 45° or 30° N of N.L. McCauley  
 B.M. 9.96 115.31 105.35

0+0 = of Olyphant			9.96	105.35
+20			10.6	104.7
+25			9.4	105.9
+50			8.4	106.9
1			6.0	109.3
+50			4.4	110.9
2	cut 6'	Sheet 30	3.2	112.1
+50			2.8	112.5
3			2.7	112.6
+50			1.6	113.7
T.P.	101.75 124.49		1.57	113.74
4			8.5	116.0
+24			7.2	117.3
+34			5.5	119.0
+40			3.5	121.0
+50			3.2	121.3
+58		2.63	121.86	

Levels of East & West Alley bet Olyphant & Wexiana  
 from of N.B.S. Alley bet Chats north & Capistrano East 69  
 for 33°

B.M.	11.98	101.30		89.82
0+0			11.98	89.8
+50			12.2	89.6
1			11.0	90.8
+29			6.9	94.9
+50			4.9	96.9
+75			2.0	99.8
T.P.	101.62	112.23	0.19	101.41
2			8.4	103.8
+25			4.8	107.1
+50			3.8	108.4
3			4.0	108.2
+13			5.1	107.1
+30	cut 8'		4.7	107.5

Sheet 30



Levels of Alley BIK & Pt. Loma Hghts from  
 of Waiwona south for 193' or 35' N. of N.L. Okphant

B.M.	13.02	111.16	98.14
0+0 = of Waiwona	2+27 <sup>18</sup>		13.02 98.1
+25	2+52 <sup>18</sup>		8.2 103.0
+38	2+65 <sup>15</sup>	✓	5.0 106.2
+50	2+77 <sup>11</sup>		3.7 107.5
+75	3+02 <sup>18</sup>		3.5 107.7
1	3+27 <sup>18</sup>		6.1 110.1
T.P.	10.05	120.78	0.43 110.73
+12	3+39 <sup>18</sup>		9.4 111.4
+25	3+52 <sup>18</sup>		6.8 114.0
+35	3+62 <sup>18</sup>		5.5 115.3
+50	3+77 <sup>18</sup>		6.4 114.4
+75	4+02 <sup>18</sup>		4.4 116.4
+93 =	4+20 <sup>18</sup>		3.0 117.8

Sheet 29

Levels of Poc St from of Capistrano west for 230' 70

B.M.	4.70	77.22	72.52
0+0 = of Capistrano		6.4	70.8
+50		6.3	70.9
1		6.2	71.0
+50		6.0	71.2
2		6.1	71.1
+30		6.2	71.0

Sheet 28

Levels for proposed sewer beginning at  $\frac{1}{4}$  Capistrano  
 & Sta 28+08.7 H Line (600x94) Thence south for 48.7' at  
 $\frac{1}{4}$  Alley bet Poc & Wagona Thence west into Alley to  
 $\frac{1}{4}$  N & South Alley bet Chats north & Capistrano

	77.22			
00 = Sta 27+65.13 Main				
0+0 = Sta 28+08.7 H Line	9.5	67.72		
+49.7 = $\frac{1}{4}$ Alley & Capistrano	9.1	68.1		
+70	9.3	67.9		
+74	8.5	68.7		
+79.7 = 0+30.51 $\Delta 10^{\circ} 28' 52''$ Pt.				
+80 0+30.81	8.1	69.1		
1 0+50.81	4.6	72.6		
+50 1+00.81	2.2	75.0		
2 1+50.81	1.4	75.8		
+50 2+00.81	1.5	75.7		
+75 2+25.81	0.1	77.1		
T.P. 6.34 83.18	0.38	76.54		
3 2+50.81	2.5	80.7		
+14 2+64.81	1.5	81.7		
+50 3+00.81	4.3	78.9		
4 3+50.81	2.0	75.2		
+25 3+75.81	9.9	73.3		
+47.2 = $\frac{1}{4}$ Alley 3+98.01	10.66	72.52		

Sheet 28

Level 2 E of W.L. Roseville from  $\frac{1}{4}$  Tennyson  
 north for 81.8' or to  $\frac{1}{4}$  Whittier

B.M. Sta 12+99.2				163.43
116	164.59			
T.P. 6.20	157.82	12.97		151.62
Sta. 8+91.2 Tennyson St.				
0+0 = $\frac{1}{4}$ Tennyson		12.3		145.5
+20		12.3		145.5
+70		11.5		146.3
+30		11.2		146.6
+33		9.5		148.3
+37		1.9		155.9
+50		1.0		156.8
T.P. 6.36	163.52	0.66		157.16
1		5.1		158.4
+50		6.7		156.8
+63		7.8		155.7
2		7.9		155.6
+50		8.7		154.8
+73		6.3		157.2
+78 $\frac{1}{4}$ W. J. St.		6.42		157.10
3		6.1		157.4
+50		5.0		158.5
4		4.0		159.5

Sheet 25

Plotted

	163.52		
4750		2.8	160.7
5		4.4	162.1
T.P.	10.87	0.45	163.07
+48 = $\Phi$ Voltaire		10.72	163.22
+50		10.7	163.2
6		8.7	165.2
+50		6.5	167.4
7		5.3	168.6
+50		3.8	170.1
8		4.0	172.9
+18 = $\Phi$ Whittier		0.88	173.06

Levels  $\Phi$  Whittier from 2' E of W.L. Roseville East f 19.2'

B.M.	12.81	185.87		173.06
040			12.5	173.1
150			8.8	177.1
1			5.7	180.2
+20			4.0	181.9
+40			4.4	181.5
+50			3.5	182.4
T.P.	4.17	188.93	1.11	184.76
+92			3.2	185.7
			4.8	

Sheet 23

Levels & Voltages from 2' E of W.L. Roseville  
East for 192

	12.95	176.17		163.22
0+0			12.95	163.2
+25			11.7	164.5
+50			9.1	167.1
1			5.0	171.2
+37			1.3	174.9
+50			0.8	175.4
T.P.	6.29	182.08	0.38	175.79
+92			2.6	179.5

Sheet 24

Levels & Voltages from 2' E of W.L. Roseville  
East 560'

	12.63	169.73		157.10
0+0			12.63	157.1
+22			12.9	156.8
+45			11.1	158.6
+50			11.1	158.6
+73			11.6	158.1
1			10.8	158.9
+50			9.4	160.3
2			7.0	162.7
+50			4.3	165.4
3			1.0	168.7
T.P.	12.06	180.98	0.81	168.92
+50			9.2	161.8
4			6.6	164.4
+95			3.0	168.0
T.P.	12.69	193.57	0.13	170.85
+50			11.1	172.4
+63			8.5	175.0
+75			7.5	176.0
5			5.3	178.2
+50			3.0	180.5
+60			2.5	181.0

Sheet 24

73

11/7/24

SEWER Levels from & of  
PoE St @ South Line of  
PT LOMA HEIGHTS TO  
& S.D.E.R.W.

74

Station	Offset	Level	Level	Notes
6	v. 78	66.25	63.47	stub 0100 page 41
6 PoE = 0+00	Problo line = Sta 0+00 see sketch Book 1116-17		63.4	
+20			61.3	
+40.5 = curb			62.0	
+53			62.1	
+56			61.2	
T.P.	v. 09	55.69	12.65	53.60
+73			4.3	51.4
1			7.2	48.5
+25			7.5	48.2
+30			11.5	44.2
+41			12.8	42.9
+45			12.8	42.9
+62			2.8	52.9
+67 = hub	hub Sta 8+16.17 book 1116-17		2.59	53.10 on hub

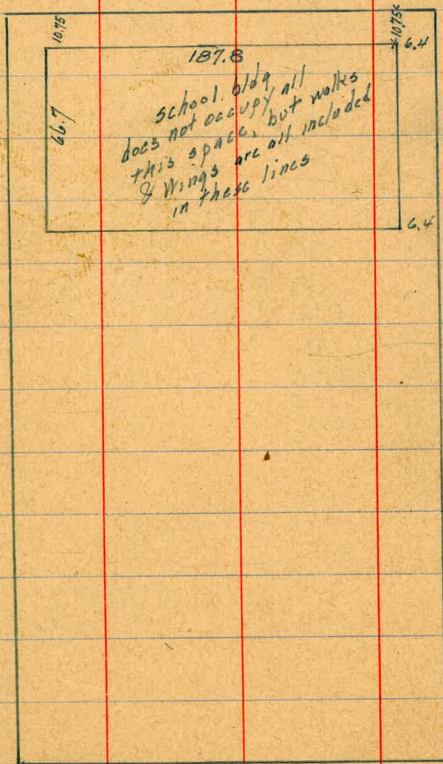
3/20/25

Gregory

Location of LOMA PORTAL  
SCHOOL BLDG

75

PLUM ST.



ALSCOTT ST.

BROWNING ST.

WILLOW ST.

ST.

Cast iron pipe on Scott St is necessary  
from 150' S. of S.L. of Ingelow to 17' S. of S.L.  
of FENELON ST.

Cast iron pipe on Hugo from W.L. Scott to  
S. Scott.

Cast iron pipe on Garrison from 78 W. of  
W.L. Scott to S. Scott

Cast iron pipe on FENELON from 14' W. of S.  
Scott to S. of Scott

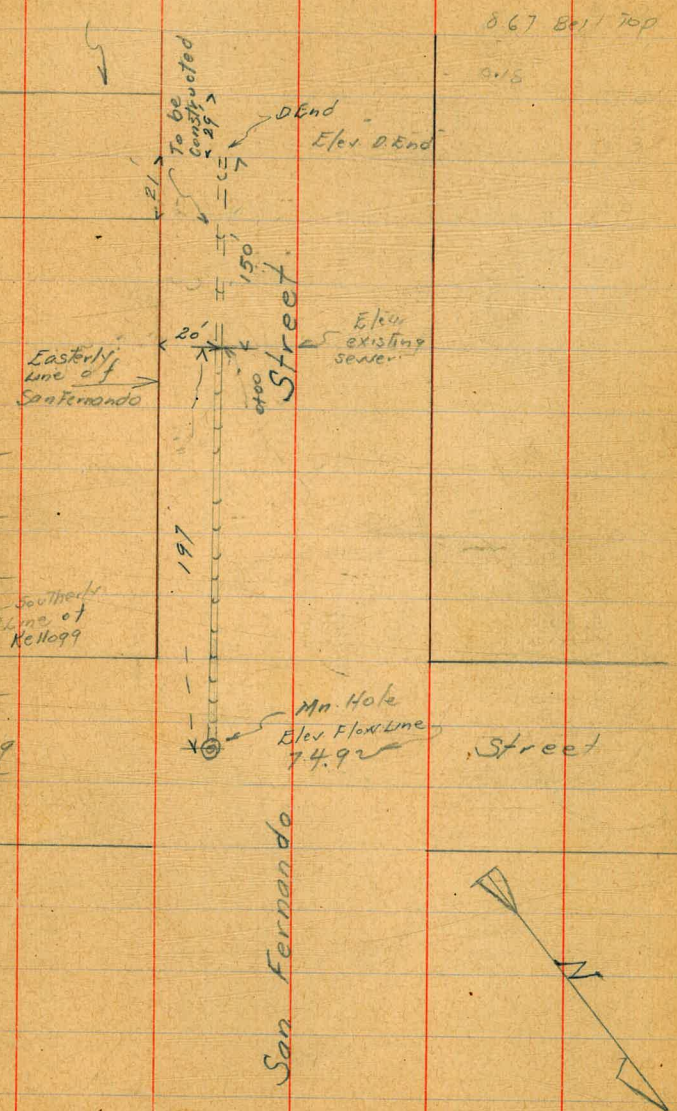
Bill Bliss  
 Johnny Jacobszon  
 Phil Brooks  
 July 16, 1929  
 Fair & Warm  
 Moderate S.W. Wind  
 Blowing  
 B.M.

Construction Notes - San Fernando  
 Street Sewer from end of existing  
 Sewer 150' South

Elev. N.E.B.P. Kellogg  
 & Rosecrans

	HT	Elev	Elev. floor line	
B.M.	12.88	46.48	33.60	
TP	12.87	59.03	0.32	46.16
TP	12.90	70.80	1.13	57.90
TP	13.04	83.23	0.61	70.19
check Floor Line Ex. Mn. H. Kellogg		8.31		74.92
TP.	4.65	85.74	2.14	81.09
Flow Line of Existing Sewer		9.35		76.41
0+00 Existing Sewer		4.07		81.67
5-30				76.41
#1	0.70%	3.86		81.88
#2		3.57		82.17
#3		3.18		82.56
#4		2.92		82.82
#5 D. End		2.70		83.04
Set B.M. Bolt on Top Ring of F.H. M. Kellogg		3.24		82.50

cut



8.67 Bell Top

0.15

Street

San Fernando

6.0	0.8		0.8
7.0			8.8
8.8	6.8		6.4
15.5	9.8		1092.3
6.0			625.6
9.5	9.0		466.7

$\frac{1133}{56}$   
 $\frac{530}{50}$   
 480

18 100.00

M.H. 101 100.9  
 29.6  
 71.3

cat creek

Angle

12.18  
 71.3  
 1289.3

12190  
 150.00  
 92.15  
 57.85  
 150.00

278  
 270  
 548  
 270  
 818

22.00  
 70.15  
 92.15

cell st

92.15  
 98.00  
 185.15  
 996.98

622.54  
 559.59  
 1182.13  
 98.00  
 1089.13  
 92.15  
 997

1019

1181.7

1180.5  
 163.0  
 1017.5  
 30  
 50  
 150  
 230

62.2  
 558.5  
 1180.5  
 243.0  
 937.5

150  
 93  
 243  
 925  
 930

622.3  
 559.4  
 1181.7  
 425  
 10  
 115

926.00  
 126  
 938.6  
 200

155  
 425  
 60  
 580  
 1140  
 50

150 155 1080  
 425 1140  
 60  
 540  
 1080

550  
 73  
 623

609.8  
 173.2  
 449.8

51.88  
 3.76  
 98.12  
 45.07  
 3.76  
 51.83  
 89.97

106.50  
 1027.5  
 1024.5

0.08 89.89 Top stake

126.89  
 104.19  
 115.87  
 220.42

0.00 126.89 = 0.30 below tip of post.

0.74 103.40

M Nichols

Eliso 6+99

10+49

10.2  
 129  
 107.5  
 996  
 126  
 1092  
 926  
 1700  
 565  
 3 1298  
 7497

210.2  
 5670.6  
 5320.3  
 6023.8  
 5670.6  
 3353.2  
 176.6

Eliso 6+776

Fernando 10+275

1019  
93

926 st 6.1

11 13.6

st 11.2

11 10.5 = 10+19

st 11.5 4/11/21

17+53 1/3 Line

11.53 72.81

T.P.

12.49 85.05

82.15  
 9.73  
 91.88

6198.8  
 176.8  
 6022.0  
 5646.6  
 58966  
 300  
 176.7  
 24.0  
 2007  
 61966

56466  
 200.7  
 58473  
 61978  
 3515  
 82.15  
 9.73  
 91.88  
 80.32  
 11.82  
 91.19

0.25  
 4.73  
 2.90

61.28  
 72.56  
 30.32  
 82.15



3744  
 585  
 3156  
 0.84  
 88.92  
 0.71  
 76.56  
 13.07  
 75.88  
 40.00  
 0.73  
 64.15  
 13.14  
 63.42  
 4.92  
 56.60  
 12.47  
 57.65  
 192.19  
 A line  
 9.70  
 46.90  
 37.61  
 154.86  
 68  
 195.00  
 154.18  
 178.82  
 11.76  
 3.00  
 12.68  
 166.86  
 192.0  
 0.28  
 182.58  
 190.58  
 7.55  
 4.30  
 37.72  
 166.58  
 17.87  
 193.03  
 75.22  
 75.56  
 179.45  
 282.03  
 193.03  
 505.22  
 187.50  
 179.63  
 154.1  
 30  
 630.6  
 178.82  
 146.86  
 153  
 475  
 12.68  
 158.86  
 0.68  
 146.18  
 773.02  
 T.P.  
 12.87  
 171.45  
 0.28  
 158.58  
 415.9  
 315.0  
 T.P.  
 11.76  
 182.58  
 0.63  
 170.82  
 320  
 Sta 14+85 POC  
 7.55  
 175.03  
 315  
 14+75  
 9.30  
 173.28  
 320  
 382  
 463.8  
 77.29  
 11.70  
 146.86  
 0.63  
 88.71  
 919  
 88.71  
 189.75  
 360  
 6.69  
 400  
 7+31 R 15° 35'  
 4.85  
 183.06  
 727  
 2+76 = 2' W of PL  
 173.12  
 4727  
 30  
 502.7  
 30  
 14+16  
 182.9  
 470.0  
 2560  
 6060  
 57.8  
 72.212

401  
 362/36.34  
 53.97  
 2.82  
 95.27, 34.6  
 70.86  
 0.3 P 7.2  
 128.8  
 1071.3  
 345  
 16.00  
 224.25  
 17163

**DISTANCES FROM CENTER OF ROADWAY FOR CROSS-SECTIONING.**  
 ROADWAY 14 FEET WIDE. SIDE SLOPES 1½ TO 1.  
 FOR SINGLE TRACK EMBANKMENT.

	0	.1	.2	.3	.4	.5	.6	.7	.8	.9	
0	7.0	7.2	7.3	7.5	7.6	7.8	7.9	8.1	8.2	8.4	0
1	8.5	8.7	8.8	9.0	9.1	9.3	9.4	9.6	9.7	9.9	1
2	10.0	10.2	10.3	10.5	10.6	10.8	10.9	11.1	11.2	11.4	2
3	11.5	11.7	11.8	12.0	12.1	12.3	12.4	12.6	12.7	12.9	3
4	13.0	13.2	13.3	13.5	13.6	13.8	13.9	14.1	14.2	14.4	4
5	14.5	14.7	14.8	15.0	15.1	15.3	15.4	15.6	15.7	15.9	5
6	16.0	16.2	16.3	16.5	16.6	16.8	16.9	17.1	17.2	17.4	6
7	17.5	17.7	17.8	18.0	18.1	18.3	18.4	18.6	18.7	18.9	7
8	19.0	19.2	19.3	19.5	19.6	19.8	19.9	20.1	20.2	20.4	8
9	20.5	20.7	20.8	21.0	21.1	21.3	21.4	21.6	21.7	21.9	9
10	22.0	22.2	22.3	22.5	22.6	22.8	22.9	23.1	23.2	23.4	10
11	23.5	23.7	23.8	24.0	24.1	24.3	24.4	24.6	24.7	24.9	11
12	25.0	25.2	25.3	25.5	25.6	25.8	25.9	26.1	26.2	26.4	12
13	26.5	26.7	26.8	27.0	27.1	27.3	27.4	27.6	27.7	27.9	13
14	28.0	28.2	28.3	28.5	28.6	28.8	28.9	29.1	29.2	29.4	14
15	29.5	29.7	29.8	30.0	30.1	30.3	30.4	30.6	30.7	30.9	15
16	31.0	31.2	31.3	31.5	31.6	31.8	31.9	32.1	32.2	32.4	16
17	32.5	32.7	32.8	33.0	33.1	33.3	33.4	33.6	33.7	33.9	17
18	34.0	34.2	34.3	34.5	34.6	34.8	34.9	35.1	35.2	35.4	18
19	35.5	35.7	35.8	36.0	36.1	36.3	36.4	36.6	36.7	36.9	19
20	37.0	37.2	37.3	37.5	37.6	37.8	37.9	38.1	38.2	38.4	20
21	38.5	38.7	38.8	39.0	39.1	39.3	39.4	39.6	39.7	39.9	21
22	40.0	40.2	40.3	40.5	40.6	40.8	40.9	41.1	41.2	41.4	22
23	41.5	41.7	41.8	42.0	42.1	42.3	42.4	42.6	42.7	42.9	23
24	43.0	43.2	43.3	43.5	43.6	43.8	43.9	44.1	44.2	44.4	24
25	44.5	44.7	44.8	45.0	45.1	45.3	45.4	45.6	45.7	45.9	25
26	46.0	46.2	46.3	46.5	46.6	46.8	46.9	47.1	47.2	47.4	26
27	47.5	47.7	47.8	48.0	48.1	48.3	48.4	48.6	48.7	48.9	27
28	49.0	49.2	49.3	49.5	49.6	49.8	49.9	50.1	50.2	50.4	28
29	50.5	50.7	50.8	51.0	51.1	51.3	51.4	51.6	51.7	51.9	29
30	52.0	52.2	52.3	52.5	52.6	52.8	52.9	53.1	53.2	53.4	30
31	53.5	53.7	53.8	54.0	54.1	54.3	54.4	54.6	54.7	54.9	31
32	55.0	55.2	55.3	55.5	55.6	55.8	55.9	56.1	56.2	56.4	32
33	56.5	56.7	56.8	57.0	57.1	57.3	57.4	57.6	57.7	57.9	33
34	58.0	58.2	58.3	58.5	58.6	58.8	58.9	59.1	59.2	59.4	34
35	59.5	59.7	59.8	60.0	60.1	60.3	60.4	60.6	60.7	60.9	35
36	61.0	61.2	61.3	61.5	61.6	61.8	61.9	62.1	62.2	62.4	36

Calculated by Julien A. Hall, M. Am. Soc. C. E.

MADE IN GERMANY.