

F.B. 977

LEVEL BOOK

373

IND

KEUFFEL & ESSER CO.

DRAWING MATERIALS

AND

SURVEYING INSTRUMENTS.

NEW YORK.

CHICAGO.

SAN FRANCISCO.

ST. LOUIS.

TABLES FOR EXCAVATIONS AND EMBANKMENTS.

DISTANCES FROM CENTER OF ROADWAY FOR CROSS-SECTIONING.

ROADWAY 18 FEET WIDE. SIDE SLOPES 1 TO 1.

FOR SINGLE TRACK EXCAVATION

"Copyright, 1885, by Keuffel & Esser Co."

	0	.1	.2	.3	.4	.5	.6	.7	.8	.9	
0	9.0	9.1	9.2	9.3	9.4	9.5	9.6	9.7	9.8	9.9	0
1	10.0	10.1	10.2	10.3	10.4	10.5	10.6	10.7	10.8	10.9	1
2	11.0	11.1	11.2	11.3	11.4	11.5	11.6	11.7	11.8	11.9	2
3	12.0	12.1	12.2	12.3	12.4	12.5	12.6	12.7	12.8	12.9	3
4	13.0	13.1	13.2	13.3	13.4	13.5	13.6	13.7	13.8	13.9	4
5	14.0	14.1	14.2	14.3	14.4	14.5	14.6	14.7	14.8	14.9	5
6	15.0	15.1	15.2	15.3	15.4	15.5	15.6	15.7	15.8	15.9	6
7	16.0	16.1	16.2	16.3	16.4	16.5	16.6	16.7	16.8	16.9	7
8	17.0	17.1	17.2	17.3	17.4	17.5	17.6	17.7	17.8	17.9	8
9	18.0	18.1	18.2	18.3	18.4	18.5	18.6	18.7	18.8	18.9	9
10	19.0	19.1	19.2	19.3	19.4	19.5	19.6	19.7	19.8	19.9	10
11	20.0	20.1	20.2	20.3	20.4	20.5	20.6	20.7	20.8	20.9	11
12	21.0	21.1	21.2	21.3	21.4	21.5	21.6	21.7	21.8	21.9	12
13	22.0	22.1	22.2	22.3	22.4	22.5	22.6	22.7	22.8	22.9	13
14	23.0	23.1	23.2	23.3	23.4	23.5	23.6	23.7	23.8	23.9	14
15	24.0	24.1	24.2	24.3	24.4	24.5	24.6	24.7	24.8	24.9	15
16	25.0	25.1	25.2	25.3	25.4	25.5	25.6	25.7	25.8	25.9	16
17	26.0	26.1	26.2	26.3	26.4	26.5	26.6	26.7	26.8	26.9	17
18	27.0	27.1	27.2	27.3	27.4	27.5	27.6	27.7	27.8	27.9	18
19	28.0	28.1	28.2	28.3	28.4	28.5	28.6	28.7	28.8	28.9	19
20	29.0	29.1	29.2	29.3	29.4	29.5	29.6	29.7	29.8	29.9	20
21	30.0	30.1	30.2	30.3	30.4	30.5	30.6	30.7	30.8	30.9	21
22	31.0	31.1	31.2	31.3	31.4	31.5	31.6	31.7	31.8	31.9	22
23	32.0	32.1	32.2	32.3	32.4	32.5	32.6	32.7	32.8	32.9	23
24	33.0	33.1	33.2	33.3	33.4	33.5	33.6	33.7	33.8	33.9	24
25	34.0	34.1	34.2	34.3	34.4	34.5	34.6	34.7	34.8	34.9	25
26	35.0	35.1	35.2	35.3	35.4	35.5	35.6	35.7	35.8	35.9	26
27	36.0	36.1	36.2	36.3	36.4	36.5	36.6	36.7	36.8	36.9	27
28	37.0	37.1	37.2	37.3	37.4	37.5	37.6	37.7	37.8	37.9	28
29	38.0	38.1	38.2	38.3	38.4	38.5	38.6	38.7	38.8	38.9	29
30	39.0	39.1	39.2	39.3	39.4	39.5	39.6	39.7	39.8	39.9	30
31	40.0	40.1	40.2	40.3	40.4	40.5	40.6	40.7	40.8	40.9	31
32	41.0	41.1	41.2	41.3	41.4	41.5	41.6	41.7	41.8	41.9	32
33	42.0	42.1	42.2	42.3	42.4	42.5	42.6	42.7	42.8	42.9	33
34	43.0	43.1	43.2	43.3	43.4	43.5	43.6	43.7	43.8	43.9	34
35	44.0	44.1	44.2	44.3	44.4	44.5	44.6	44.7	44.8	44.9	35
36	45.0	45.1	45.2	45.3	45.4	45.5	45.6	45.7	45.8	45.9	36

Calculated by Julien A. Hall, M. Am. Soc. C. E.

9. Cross section of Monroe St

Georgia to Texas St

3
15 } Davis
Normal

No. 345

349.5

2

2.49 249.50 347.01 B.M. S.E. Co. P. 1/2 H

E.L. Georgia

So	2.5	347.0
Cl	2.7	46.8
4	2.7	46.8
C	2.5	47.0
4	2.5	47.0
Cl	2.1	47.4
No	1.7	47.8
2.5' E		
No	2.8	46.7
Cl	2.5	47.0
4	2.1	47.1
C	2.6	46.9
4	2.8	46.7
Cl	1.8	47.7
So	2.2	47.3

So	2.2	547.3
Cl	2.6	46.9
4	3.6	45.9
C	3.1	46.4
4	3.3	46.2
Cl	3.0	46.5
No	3.2	46.3

75' E

No	3.9	45.6
Cl	4.1	45.4
4	3.9	45.6
C	3.8	45.7
4	4.0	45.5
Cl	2.1	46.4
So	2.5	47.0

100' E

So	4.2	45.3
Cl	4.7	44.8
+11	4.2	45.3

41
349.50

Monroe

100' E G.D.

Soil	5.0	344.5
C	4.7	448
1/2	5.3	442
Ch.	5.3	442
No.	5.9	436

125' E

No.	7.1	424
Ch.	7.0	425
1/2	7.0	425
C	6.5	430
1/4	6.6	429
1/2	5.8	43.7
Ch.	5.5	440
So	5.1	444

135' E

No.	7.4	421
1/2	8.2	412

137' E

No.	8.6	40.9
1/2	8.6	40.9

349.5

150' E

So	7.5	342.0
Ch.	8.0	415
1/2	8.3	412
1/4	9.0	40.2
C	9.2	40.3
1/2	9.0	40.2

Ch.	9.7	39.8
No.	9.6	39.9

175' E

No.	12.0	37.5
Ch.	12.7	26.8
1/2	12.5	37.0
C	12.3	37.2
1/4	12.4	37.1
1/2	11.6	37.9
Ch.	11.0	38.2
So.	11.1	38.4

T.P.	0.7	337.22	13.01	336.49
------	-----	--------	-------	--------

N.I.
337.22

monroe

200° E Gr.

S.	2.7	334.5 ✓
Cl.	2.7	345 ✓
4	3.0	342 ✓
C	3.0	342 ✓
4	3.1	341 ✓
25	2.5	347 ✓
Cl	2.8	344 ✓
No.	3.1	341 ✓

225° E

No.	5.4	318 ✓
Cl	4.5	327 ✓
49	4.6	326 ✓
4	6.2	310 ✓
C	6.9	313 ✓
4	6.0	312 ✓
Cl.	6.2	310 ✓
S.	6.1	311 ✓

337.2

4

250° E

S.	8.7	328.5 ✓
Cl	7.5	297 ✓
410	7.3	299 ✓
44	8.5	287 ✓
C	8.0	292 ✓
41	8.3	289 ✓
Cl	8.7	285 ✓
No.	8.4	288 ✓

275° E

No.	10.4	268 ✓
Cl	10.4	268 ✓
44	10.6	266 ✓
C	10.4	268 ✓
4	10.6	268 ✓
Cl	10.6	268 ✓
S.	10.9	268 ✓
T.P.	2.63	327.38
	12.47	324.95

527.38

Mound

300' E G.O.

So	2.6	324.8 ✓
cl.	2.2	257 ✓
+10	1.8	256 ✓
4	3.2	242 ✓
C	3.5	239 ✓
4	3.4	240 ✓
+6	2.1	253 ✓
cl.	2.2	254 ✓
No	2.2	252 ✓

310' E G.O. - W.L. Florida

No	2.5	249 ✓
cl.	2.6	248 ✓
+7	2.9	245 ✓
4	4.5	249 ✓
C	4.3	231 ✓
4	4.6	228 ✓
+4	3.4	240 ✓
cl.	3.2	242 ✓
So	3.5	229 ✓
T.P	7.04	320.24 / 320.25 by G.P. S.E.P.H.

5

E. Line Alalama

12.72	327.33	324.61 SE Ala. Pigt
So	10.5	326.8 ✓
cl.	10.5	26.8 ✓
4	10.4	26.9 ✓
C	10.2	27.1 26.7 ✓
4	10.8	26.5 ✓
cl.	10.7	26.6 ✓
No	10.6	26.7 ✓

25' E Ala

No	9.3	280 ✓
cl.	9.3	280 ✓
4	9.3	280 ✓
C	8.9	28.4 ✓
4	8.9	28.4 ✓
cl.	9.1	28.2 ✓
So	8.8	28.5 ✓

50' E

So	7.7	29.6 ✓
cl.	7.7	29.6 ✓

337.33

Morse

50' E Alabama

5.4	7.8	329.5
C	7.9	29.4
z	8.0	29.2
cl	8.2	29.1
N.	8.2	29.1

75' E

N.	6.8	30.5
cl	6.8	30.5
z	6.7	30.6
O	6.6	30.7
z	5.9	31.4
cl	6.5	30.8
S.	6.9	30.4

100' E

S.	5.9	31.4
cl	6.2	31.1
z	6.1	31.2
O	5.5	31.8
z	5.3	32.0

337.3

cl	5.5	33.8
N.	5.3	32.0
cl	3.9	33.4
cl	4.0	33.3

125' E

z	4.1	33.2
O	4.3	33.0
z	4.6	32.7
cl	5.4	32.3
S.	5.1	32.2

150' E

S.	2.8	34.5
cl	2.8	34.5
z	2.7	34.6
O	2.8	34.5
z	2.7	34.6
cl	2.7	34.6
N.	2.5	34.8

337.33

Monroe

175' E Alabama

N _o		15	335.8	
cl		18	35.5	
z		19	35.4	
C		2.2	35.1	
z		2.2	35.1	
cl		2.1	35.2	
S _o		2.3	35.0	
200' E				
S _o		1.3	36.0	
cl		1.2	36.1	
z		1.1	36.2	
o		0.9	36.4	
z		0.8	36.5	
cl		0.7	36.6	
N _o		0.9	36.4	
T.P	8.43	346.19	0.27	337.06
225' E				
N _o		79	337.6	
cl		79	37.6	

345.5

7

z		80	337.5
o		81	37.4
z		82	37.3
cl		84	37.1
S _o		83	37.2
250' E			
S _o		76	37.9
cl		75	38.0
z		73	38.2
o		73	38.2
z		70	38.5
cl		68	38.7
N _o		71	38.4
275' E			
N _o		63	39.2
cl		63	39.2
z		62	39.3
o		66	38.9
z		66	38.9
cl		63	39.2
S _o		68	38.7

345.49

Mouire

300' E A10. - W Line Miss.

345.5

8

So	6.3	39.7
W	6.0	39.5
W	6.1	39.4
C	5.7	39.8
W	5.8	39.7
W	5.8	39.7
No	5.7	39.7
W. Ch. Miss		
No	5.8	39.7
W	5.9	39.6
W	5.8	39.7
C	5.5	40.0
W	5.9	39.7
W	5.9	39.6
So	6.1	39.4
W. W		
So	5.5	40.0
W	5.6	39.9
W	5.6	39.9

C	5.6	340.1
W	5.5	340.0
W	5.6	339.9
No	5.8	39.7
Ch Miss		
No	5.7	39.8
W	5.5	40.0
W	5.5	40.0
C	5.5	40.0
W	5.6	40.1
W	5.3	40.2
So	5.1	40.4
E W		
So	5.1	40.4
W	5.2	40.3
W	5.4	40.3
C	5.6	39.9
W	5.6	39.9
W	5.7	39.8
No	5.8	39.7

345.49

Monroe

E. C. M. 55

N _o	51	340.4
W	52	40.1
Cl	58	39.7
W	57	39.8
C	57	39.8
W	54	40.1
Cl	52	40.3
S _o	53	40.2

E. Line M₅₀

S _o	56	39.9
Cl	52	39.9
W	58	39.7
C	52	39.9
W	52	39.9
Cl	57	39.6
N _o	59	39.6

25° E

N _o	69	38.6
Cl	63	39.2
W	61	39.4

345.5

99

C	58	339.7
W	58	39.6
Cl	56	39.9
S _o	53	39.2

60° E

S _o	57	39.8
Cl	56	39.9
W	60	39.5
C	62	39.3
W	62	39.3
Cl	67	38.8
N _o	70	38.5

75° E

N _o	71	38.4
Cl	68	38.7
W	67	38.8
C	66	38.9
W	62	39.3
Cl	60	39.5
S _o	62	39.3

345.49

Mound

100' E Miss

So	6.5	339.0
cl	6.7	38.8
1/2	7.1	38.4
0	7.1	38.4
1/2	7.3	38.2
cl	7.3	38.2
No	7.3	38.2

T.P.	5.90	344.41	6.98	338.51
------	------	--------	------	--------

125' E Miss

No	6.3	38.1
cl	6.5	37.9
1/2	6.5	37.9
0	6.4	38.0
1/2	6.2	38.2
cl	6.0	38.4
So	5.9	38.5

150' E

So	6.1	38.3
cl	5.9	38.5

344.4

100

1/2	6.1	338.3
0	6.2	38.2
1/2	6.2	38.2
cl	6.2	38.2
No	6.3	38.1

175' E

1/2	6.0	38.4
cl	6.1	38.3
1/2	6.2	38.2
0	6.3	38.1
1/2	6.4	38.0
cl	6.3	38.1
So	6.4	38.0

200' E

2	6.4	38.0
cl	6.3	38.1
1/2	6.2	38.2
0	6.3	38.1
1/2	6.3	38.1
cl	6.1	38.3
No	5.9	38.5

344.41

Monroe

225° E Miss

No	58	338.6
cl	60	38.4
W	59	38.5
C	59	38.5
W	59	38.5
cl	64	38.0
S	61	38.3
250° E		
S	56	38.8
cl	57	38.7
W	55	38.9
C	57	39.0
W	57	39.0
cl	55	38.9
No	55	38.9
275° E		
No	48	39.6
cl	51	39.3
W	52	39.2

344.4

111

C	54	339.0
W	54	39.0
cl	52	39.0
S	52	39.0
300° E - W Louisiana		
S	52	39.0
cl	52	39.2
to	6.5	37.9
W	6.2	38.2
cl	58	38.6
W	55	38.9
cl	{ 6.3 4.9	38.1 39.5
No	4.9	39.5
TP	6.05	343.70
	7.05	327.36
E Louisiana		
S	55	38.2
cl	{ 5.2 6.7	38.4 37.0
W	6.5	37.2
C	6.3	37.4
W	6.3	37.4
cl	{ 6.3 5.9	37.2 37.8
No	4.6	39.1

327.36

327.36

343.70

Winnipeg

25° E Lg.

No	4.1	38.6
4.0	4.2	38.5
Cl	5.4	38.3
1/4	5.7	38.0
C	5.7	38.0
1/2	5.8	37.9
Cl	5.8	37.9
S	5.4	38.3

50° E Lg.

So	5.1	38.6
Cl	4.9	38.8
1/4	5.5	38.2
C	5.7	38.0
1/2	5.6	38.1
Cl	4.8	38.9
No	4.2	39.4

75° E

No	5.7	40.0
Cl	4.5	39.2
1/4	5.2	38.5

343.7

182

C	5.6	38.1
1/4	5.7	38.0
Cl	5.6	38.1
So	5.1	38.6

100° E

S	4.6	39.1
Cl	5.7	38.0
1/4	5.7	38.0
C	5.4	38.3
1/2	5.3	38.4
Cl	5.4	38.3
No	4.8	38.9

120° E

No	5.3	38.4
Cl	5.7	38.0
1/4	5.6	38.1
C	5.7	39.0
1/2	5.7	38.0
Cl	5.7	38.0
1/4	5.6	38.1
So	4.7	39.0

34370

Minnosol

150° E Lg.

S ₀	57	337.8
cl	57	37.8
42	60	37.7
0	54	38.2
+6	65	39.2
42	40	39.7
cl	45	39.2
N ₀	42	39.3

175° E

N ₀	52	38.5
cl	56	38.2
42	56	38.1
d	58	37.9
42	58	37.9
+9	56	38.1
4	46	39.1
S	47	39.0

190° E

S ₀	48	38.9
cl	51	38.6

3437

135

200° E

S ₀	43	339.4
cl	40	39.7
+5	51	38.6
42	56	38.1
C	57	38.0
+5	54	38.3
42	42	39.5
cl	44	40.3
+5	44	39.3
N ₀	+5	39.2

210° E

S ₀	32	40.5
+7	27	41.0
cl	27	40.9
+5	45	39.2

225° E

N ₀	38	39.9
+10	47	39.0
cl	48	38.9
4	43	39.4
C	53	38.4
4	55	38.2
+9	57	38.6
cl	45	39.2
S ₀	39	37.8

34370

Monroe

235° E Lg

So 4.9 38.8

Cl 5.6 38.1

250° E Lg

So 4.0 39.7

+10 4.5 39.2

Cl 5.5 38.2

4 5.5 38.2

C 5.2 38.5

+10 4.8 38.9

4 4.1 39.6

Cl 2.6 41.1

No 3.2 40.5

263° E Lg

No 2.9 40.8

Cl 3.3 40.4

4 4.5 39.2

C 3.1 40.6

+10 4.1 39.6

4 4.6 39.5

16 5.2 38.5

Cl 4.4 39.3

So 3.9 39.8

3437

14/4

275° E Lg

So 2.8 340.9

18 4.0 39.7

Cl 4.3 39.4

4 4.6 39.1

C 4.3 39.4

4 4.0 39.7

Cl 3.1 40.6

No 2.9 40.8

300° E - W.L. Texas

No 4.2 39.5

Cl 3.8 39.9

4 4.8 38.9

C 4.6 39.1

4 4.9 38.8

Cl 4.9 38.8

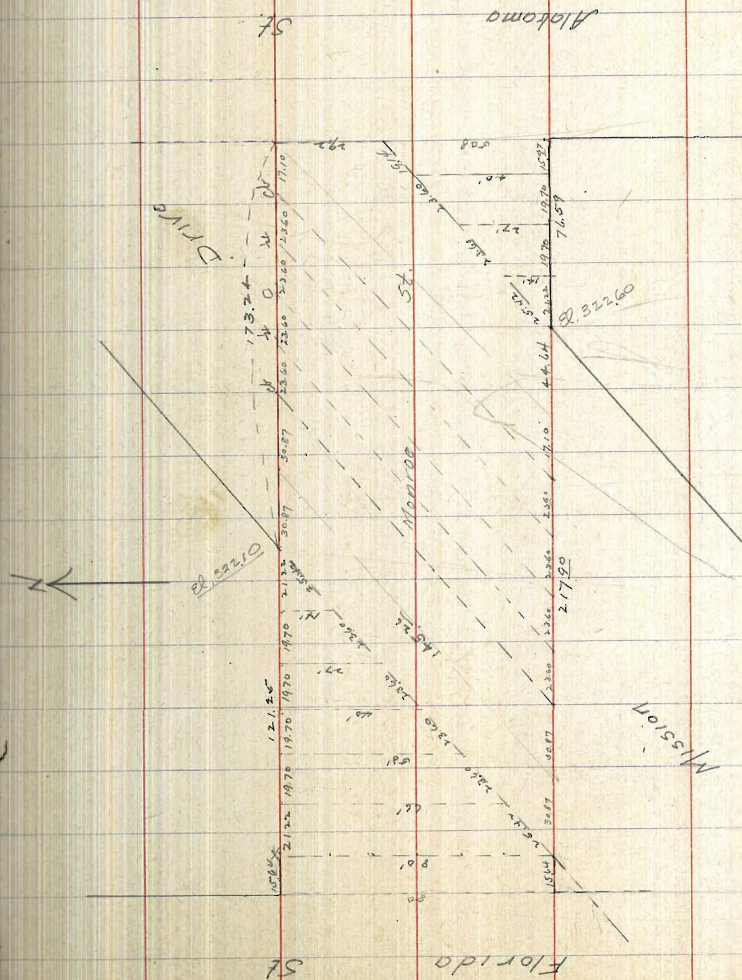
So 4.8 38.9

4.7 338.98 Base Tex Plog H.

Monroe

4.39 ~~325.74~~ 322.74
 E. Line Florida

So	4.6	320.1
Ch	5.0	19.7
u	4.4	20.3
C	4.1	20.6
u	4.0	20.7
19	4.7	20.0
Ch	3.7	21.0
No	3.6	21.1
4'E		
No	4.8	19.9
Ch	4.6	20.1
15.64 E		
No	5.3	19.4
Ch	5.3	19.4
u	5.1	19.6
C	5.2	19.5
u	5.3	19.4
u	5.2	19.5
So	0.5	19.7



324.74

~~325.24~~Monroe

36.26' E Fla.

S. of Monroe - N. Line Mission	6.0	318.7
44	6.4	18.3
C	6.5	18.2
44	6.5	18.2
Ch	6.1	18.6
15	6.1	18.6
No	5.2	19.5

52.52' E Fla

No	4.9	19.8
18	5.3	19.4
+11	6.6	18.1
Ch	6.6	18.1
12	6.6	18.1
16	7.4	17.3
44	7.3	17.4
C	7.2	17.4

70 1/2' Monroe N. L. Mission

76.28' E Fla

Chr Monroe - N. L. Mission	7.9	16.8
4	7.8	16.9
Ch	7.1	17.6
No	4.9	19.8

~~325.1~~

324.7

16

76.26' E Fla

No	7.2	317.5
Ch	7.1	17.6
No	7.1	17.6
Ch	7.5	17.2
No 1/2 Monroe - N. L. Mission	8.0	16.7

115.62' E Fla

No Ch Fla - No Line Mission	8.0	16.7
No	7.4	17.3

136.49' E Fla

1st of No. L. Monroe with No Line Mission

7.4 17.3

30.47' E of N. L. Line Mission (See sketch)

No	6.7	18.0
Ch	7.1	17.3
4	7.2	16.5
C	8.3	16.4
4	8.3	16.4
Ch	7.0	17.7
2	6.0	18.7

32479

~~32524~~Monroe

W. Co. Mission

So	6.6	318.1
cl.	8.4	16.3
4	8.4	16.3
C	8.1	16.6
4	8.1	16.6
cl.	7.6	17.1
N	5.1	18.9

W 4 Mission

No	7.9	19.8
cl.	6.5	18.2
4	7.9	16.8
C	7.7	17.0
4	8.0	16.7
cl.	8.1	16.6
So	8.1	16.6

C.L. Mission

So	8.1	16.6
cl.	8.0	16.7
4	7.8	16.9

32474

~~32524~~

17

C	7.5	317.2
4	6.7	18.0
cl.	5.5	19.2
No	4.1	20.6

E. Mission

No	3.4	21.3
cl.	4.7	20.0
4	6.0	18.7
C	7.1	17.6
4	8.1	16.6
cl.	8.1	16.6
So	8.5	16.2

E Co. Mission

So	8.2	16.1
cl.	8.1	16.6
4	7.4	17.3
C	5.9	18.8
4	4.7	20.0
cl.	3.3	21.4
N	2.0	22.7

32474

~~32574~~Monroe

E. Cl. Mission 47 Cr. - NW Cor. Alabama & Monroe

No	17	328.0
Cl	2.7	22.0
4	3.9	20.8
C	5.3	19.4
4	6.6	18.1
4	7.6	17.1
So	8.8	16.2

233rd E Fla. - S.E. Cor. Mission & Alabama

So	6.5	18.2
----	-----	------

21st E Mission

So	4.6	20.1
----	-----	------

Cl. Int. with S.L. Mission	5.1	19.6
----------------------------	-----	------

40th E Mission

20 th S.L. Mission	3.2	21.5
-------------------------------	-----	------

Cl	3.9	20.8
----	-----	------

So	4.2	20.4
----	-----	------

60th E Mission

So	3.1	20.8
----	-----	------

Cl	3.8	21.4
----	-----	------

32474

~~32574~~

18

4	2.9	321.8
---	-----	-------

Chr. Cl. Mission	2.8	321.9
------------------	-----	-------

76.59th E Mission - NW Ala.

No	1.7	230
----	-----	-----

Cl	1.9	228
----	-----	-----

4	2.0	227
---	-----	-----

4 + 2.20 Int. S.L. Mission - NW Ala.	2.0	227
--------------------------------------	-----	-----

C	2.1	226
---	-----	-----

4	2.5	222
---	-----	-----

Cl	2.5	222
----	-----	-----

So	2.5	222
----	-----	-----

1.9	324.62	324.61 - 324.60
-----	--------	-----------------

Bancroft St X Secs.
 NL Redwood to S L Upas - 50' wide 10' wks 7/29

West
 Otter
 Moore 1/4/10

BM Hub. NE Thorne & Bancroft 30749

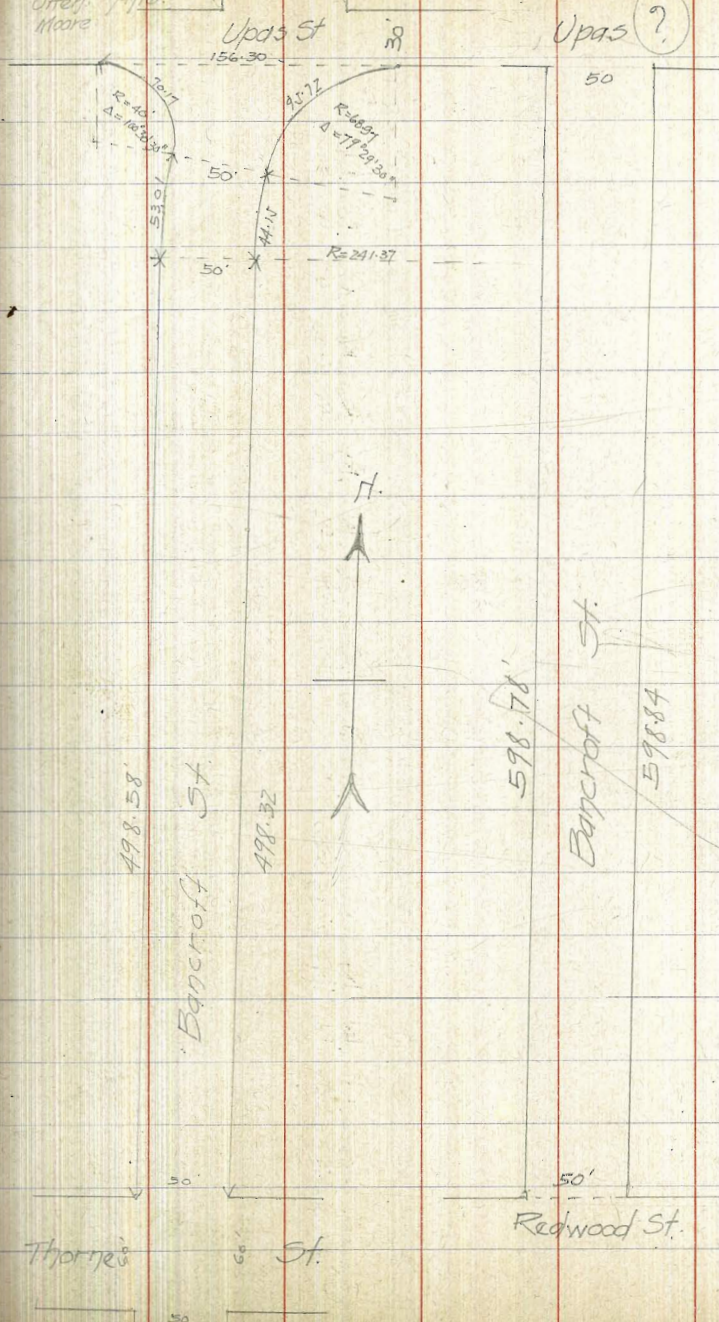
860 316.09

596.8' S. of Thorne - NL Redwood

WL Hub.	163	314.46 ^v
C	1.5	314.6
+1	2.1	314.0
1/4	1.9	314.2
E	1.3	314.8
1/4	1.6	314.5
+6	2.0	314.1
C	1.2	314.9
EL	1.2	314.9

550' S. of Thorne

EL	1.2	314.9
C	1.1	315.0
+1	2.3	313.8
1/4	1.8	314.3
E	1.5	314.6
1/4	2.0	314.1
+6	2.6	313.5
C	1.5	314.6
WL	1.7	314.4



Bancroft X Secs.

316.09

500' S. of Thorne.

WL	2.1	314.0
C	2.0	314.1
+1	3.0	313.1
1/4	2.3	313.8
£	1.6	314.5
1/4	2.0	314.1
+6	2.3	313.8
C	1.4	314.7
EL	1.2	314.9

450' S of Thorne.

EL	1.7	314.4
C	1.8	314.3
+1	2.7	313.4
1/4	2.5	313.6
£	2.2	313.9
1/4	2.9	313.2
+6	3.4	312.7
C	2.5	313.6
WL	2.8	313.3

Bancroft X Secs.

316.09

400' S. of Thorne.

WL	3.3	312.8
C	3.2	312.9
+1	4.2	311.9
1/4	3.6	312.5
£	3.0	313.1
1/4	3.4	312.7
+6	3.5	312.6
C	2.5	313.6
EL	2.4	313.7

350' S of Thorne.

EL	3.2	312.9
C	3.2	312.9
+1	4.3	311.8
1/4	4.1	312.0
£	3.8	312.3
1/4	4.4	311.7
+6	5.0	311.1
C	3.9	312.2
WL	4.0	312.1

20

Bangcroft X Sec's.

316.09

300' S. of Thorne

WL	4.8	311.3
C	4.7	311.4
+15	5.9	310.2
1/4	5.2	310.9
¢	4.5	311.6
1/4	4.9	311.2
+5 ⁵	5.4	310.7
C	4.1	312.0
EL.	4.0	312.1

250' S. of Thorne

EL.	5.0	311.1
C	5.4	310.7
+15	6.8	309.3
1/4	6.5	309.3
¢	5.9	310.2
1/4	6.6	309.5
+5 ⁵	7.2	308.7
C	5.8	310.3
WL.	5.6	310.5

Bangcroft X Sec's.

21

316.09

200' S. of Thorne

WL	7.0	309.1
C	7.2	308.9
+15	8.2	307.9
1/4	7.6	308.5
¢	6.9	309.2
1/4	7.3	308.8
+5 ⁵	7.8	308.3
C	6.8	309.3
EL.	6.7	309.4

150' S. of Thorne

EL.	7.4	308.7
C	7.6	308.5
+15	8.6	307.5
1/4	8.3	307.8
¢	8.1	308.0
1/4	8.6	307.5
+5 ⁵	9.2	306.9
C	8.3	307.8
WL.	8.4	307.7

Bangcroft x Secs.

316.09

100' S of Thorne.

WL	9.3	306.8
C	9.3	306.8
+15	9.9	306.2
1/4	9.4	306.7
±	8.7	307.4
1/4	9.0	307.1
+6	9.3	306.8
C	8.7	307.9
EL	8.0	308.1

50' S of Thorne.

EL	8.6	307.5
C	8.8	307.3
+15	9.8	306.3
1/4	9.6	306.5
±	9.4	306.7
1/4	10.0	306.1
+6	10.3	305.8
C	9.8	306.3
WL	9.9	306.2

Bangcroft x Secs.

316.09

5L Thorne 60' Wide.

WL	10.0	306.1
C	9.7	306.4
+1	10.4	305.7
1/4	10.3	305.8
±	9.8	306.3
1/4	10.0	306.1
+6	10.0	306.1
C	8.9	307.2
EL	8.7	307.4

Intersection taken on Thorne x Secs

T.P. Hub NE Cor Thorne. 8.60 307.49

11.50 318.79

NL Thorne.

EL	11.5	307.5
C	12.2	306.8
+1	13.0	306.0
1/4	13.0	306.0
±	12.9	306.1
1/4	13.3	305.7
+6	13.8	305.2

Bancroft X. Sec's.

318.99

(319.0)

C	12.9	306.1
WL	13.0	306.0
50' N of Thorne		
WL	12.3	306.7
C	12.3	306.7
+1	13.0	306.0
1/4	12.8	306.2
±	12.4	306.6
1/4	12.6	306.4
+6	12.7	306.3
C	12.1	306.9
EL	11.6	307.4
100' N of Thorne		
EL	11.1	307.9
C	11.4	307.6
+1	12.3	306.7
1/4	11.9	307.1
±	11.6	307.4
1/4	12.1	306.9
+6	12.3	306.7
C	11.5	307.5
WL	11.6	307.4

Bancroft X. Sec's.

319.0

318.99

23

150' N of Thorne

WL	10.1	308.9
C	10.3	308.7
+1 ³	11.6	307.4
1/4	10.9	308.1
±	10.4	308.6
1/4	10.9	308.1
+6	11.2	307.8
C	10.3	308.7
EL	10.2	308.8

200' N of Thorne

EL	9.1	309.9
C	9.1	309.9
+1 ³	10.1	308.9
1/4	9.5	309.5
±	8.8	310.2
1/4	9.2	309.8
+6	10.0	309.0
C	8.7	310.3
WL	8.5	310.5

Bancroft x Secs.

(319.0)

318.99

250' N. of Thorne

WL	6.2	312.8
C	6.4	312.6
+13	7.6	311.4
1/4	7.4	311.6
±	7.1	311.9
1/4	7.7	311.3
+6	8.6	310.4
C	7.5	311.5
EL.	7.5	311.5

300' N. of Thorne

EL.	5.4	313.6
C	5.2	313.8
+13	6.4	312.6
1/4	5.7	313.3
±	5.2	313.8
1/4	5.6	313.4
+55	6.2	312.8
C	4.6	314.4
WL	4.2	314.8

Bancroft x Secs.

(319.0)

318.99

350' N. of Thorne

WL	2.7	316.3
C	2.6	316.4
+13	4.1	314.9
1/4	3.7	315.3
±	3.2	315.8
1/4	3.8	315.2
+55	4.2	314.8
C	2.9	316.1
EL.	2.9	316.1

400' N. of Thorne

EL.	0.7	318.3
C	1.1	317.9
+13	2.2	316.8
1/4	1.6	317.4
±	1.2	317.8
1/4	1.7	317.3
+6	2.3	316.7
C	0.7	318.3
WL	0.7	318.3

24

Bangcroft x Sec's

T.P.	318.99	0.62	318.37
	7.87	<u>326.24</u>	
		450' N of Thorne	
WL		6.3	319.9
C		6.5	319.7
+13		7.7	318.5
1/4		7.1	319.1
£		6.6	319.6
1/4		7.0	319.2
+6		7.3	318.9
C		6.5	319.7
EL.		6.3	319.9
		498.57 N of WL - 498.32 N of EL - P.C. R 272.31 £.	
EL.		5.1	321.1
+9		5.1	321.1
C		5.9	320.3
1/4		5.6	320.6
£		5.2	321.0
1/4		5.8	320.4
+5.5		6.4	319.8
C		5.4	320.8
WL		5.1	321.1

Bangcroft x Sec's

25

326.2426.50' N of W - 22.08' E from last point = ~~same~~

WL	4.5	321.7
⁺⁷	4.6	321.6
⁺⁷	5.6	320.6
C	5.4	320.8
1/4	4.7	321.5
£	4.6	321.6
1/4	5.0	321.2
^{+6.5}	5.4	320.8
C	4.6	321.6
EL.	4.5	321.7

26.51' N of WL - 22.07' N of EL from last point = P.R.C. WL.
= P.C.C. EL.

see sketch.

EL	3.9	322.3
^{+8.5}	3.8	322.4
C	4.5	321.7
1/4	4.0	322.2
£	3.8	322.4
1/4	3.8	322.4
C	4.5	321.7
⁺²	4.7	321.5
⁺³	3.9	322.3
WL.	4.0	322.2

Bancroft X Sees

West
8th 1/4/6
Moore

26

32624

SL Opps = 70.17 on arc on WL with $R=40ft.$
 Bet PC on WL & PC on EL = 156.30 on SL Opps.
 Curbs & 1/4's are taken // & Radially to Curved
 property lines & $\frac{1}{2}$ at $\frac{1}{2}$ dist bet. Corners.
 See sketch.

WL. Hub.	2.80	323.44
+ 19	3.1	323.1
+ 20	3.6	322.6
+ 30 Curb	3.4	322.8
+ 41 ² 1/4	3.1	323.1
+ 60	3.0	323.2
+ 78 ¹⁵ $\frac{1}{4}$	3.1	323.1
+ 104 ² 1/4	3.7	322.5
+ 122 ² Curb.	4.0	322.2
+ 137	3.5	322.7
+ 156 ³ EL.	3.8	322.4

Up95 X Sec's.

West
after 1/5/16
Nore

27

Hub. SW. Up95 & Bancroft.

323.44

6.59 330.03

Hub SE 32 & Up95

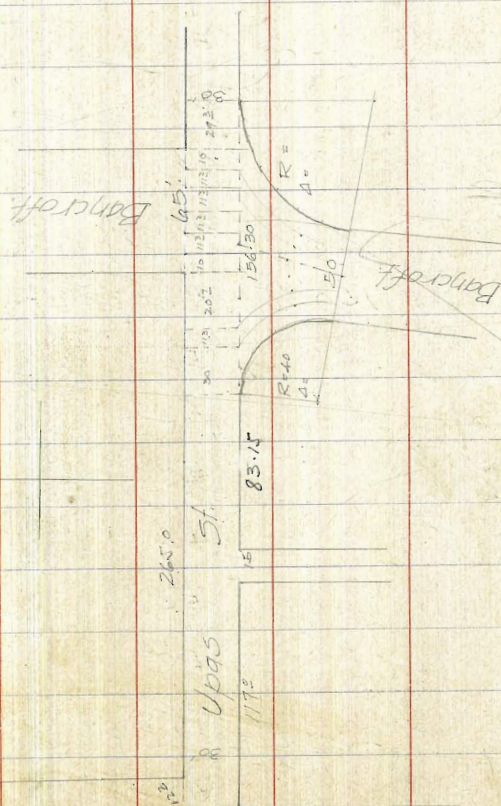
503

325.00

before
325.01

EL. 32 St produced N.

SL	50	325.0
+9	47	325.3
+10	51	324.9
+15 1/2	50	325.0
+27	50	325.0
NL	43	325.7
<p>1185 E (Sec Tie Pt. BK. E of 32nd) 1185 E = EL. 32 St along N</p>		
NL	43	325.7
+2	51	324.9
+15 1/2	48	325.2
+19	50	325.0
+21	44	325.6
+30 = SL	47	325.3
<p>50' East</p>		
SL	45	325.5
+9	44	325.6
+10	51	324.9



Upps x Secs

330.03

715- E	4.7	325.3
+28	4.8	325.2
+30= NL	4.0	326.0

100' East of 32 St

NL	4.5	325.5
+2	5.2	324.8
+15= E	5.0	325.0
+20	5.3	324.7
+21	4.6	325.4
+30= SL	4.7	325.3

150' East of 32 St

SL	5.2	324.8
+9	5.2	324.8
+11	5.9	324.1
+15= E	5.6	324.4
+27	5.5	324.5
+30= NL	5.0	325.0

200' East of 32 St

NL	6.3	323.7
+8	6.0	324.0
E	6.3	323.7

Upps x Secs

330.03

+19	6.7	323.3
+21	6.4	323.6
+30= SL	6.4	323.6

215.15 E = P.C. on SL for Bancroft going South

SL	6.6	323.4
+9	6.5	323.5
+10	7.0	323.0
+15= E	6.4	323.6
+28	6.9	323.1
+30= NL	6.5	323.5

20' East of P.C. SL on West.

SL	6.4	323.6
NL	6.8	323.7
+1	6.8	323.2
+15= E	6.2	323.8
+20	5.7	324.3
+28	6.3	323.7
+30 = NL	5.4	324.6

28

Upgs x Secs.

33003

30' E of PC. of SL, West side

Curb

NL	55	324.5
+2	63	323.7
+10	58	324.2
+15 = 6	61	323.9
+30 SL	65	323.5

41² E = W. 1/4 on South.

SL	61	323.9
+10	66	323.4
+15 6	60	324.0
+27	61	323.9
+30 = NL	54	324.6

60' E

NL	54	324.6
+3	66	323.4
+10	58	324.2
+15 6	61	323.9
+20	64	323.6
+30 = SL	61	323.9

Upgs x Secs.

33003

62' E = WL Bancroft on North

SL	61	323.9
+10	64	323.6
+15 6	61	323.9
+20	58	324.2
+27	68	323.2
+30 = NL	84	321.6

72' E = W. Curb on N.

NL	9.0	321.0
+6	7.0	323.0
+15 6	6.6	323.4
+20	7.0	323.0
+30 = SL	6.6	323.4

78⁵ E = ~~6~~ on South.

SL	6.6	323.4
+15 6	6.7	323.3
+24	6.9	323.1
NL	7.3	320.7

29

Upgs x Secs

330.0383³ E = W 1/4 of North

NL.	8.7	321.3
+8	7.2	322.8
+15 ϕ	6.7	323.3
SL.	6.8	323.2

94⁵ E = ϕ of North

SL.	7.1	322.9
+15 = ϕ	7.0	323.0
+22	7.0	323.0
+30 = NL.	8.8	321.2

104² E = E 1/4 of South

NL.	8.9	321.1
+7	7.0	323.0
+15 ϕ	7.0	323.0
SL.	7.6	322.4

105⁸ E = E 1/4 of North

SL.	7.6	322.4
+15	7.1	322.9
+23	7.2	322.8
+30 NL.	9.0	321.0

Upgs x Secs

330.03~~117~~
122' E = N Corb on NL.

NL.	9.4	320.6
+7.	7.2	322.8
+15 ϕ	7.3	322.7
+30 = SL	7.7	322.3

122' E

SL	7.8	322.7
+15 ϕ	7.6	322.4
+24	7.5	322.5
+30 = NL	9.6	320.4

127' E = EL Bancroft on NL.

NL.	See 983-10	9.0	321.0
+5		7.5	322.5
+15 ϕ		7.4	322.6
+25		7.8	322.2
+30 = SL		7.3	322.7

130' E.

SL	7.2	322.8
+7	7.7	322.3
+15 ϕ	7.5	322.5

30

Upas x Secs.

West
Key 1/5/16
Moore

31

33003

~~137' East~~
130'

+27 7.5 322.5

+30-NL 7.0 323.0

137' East.

NL 6.5 323.5

+3 7.6 322.4

+15 E 7.4 322.0

+22 7.8 322.2

+30 SL 7.4 322.6

156³ = PC on EL going South

SL 7.5 322.5

+7 7.3 322.7

+10 7.7 322.3

+15 E 7.5 322.5

+27 7.7 322.3

+30-NL 6.8 323.2

See book 983^{p10} for
+ returns of upas street limits
from [unclear] at city limits

33rd St. x Secs.
 NL Redwood to S.L. Upas
 50' Wide - 10' WKS 75' Quarters

BM Hub NE 33rd & Thorne 316.13

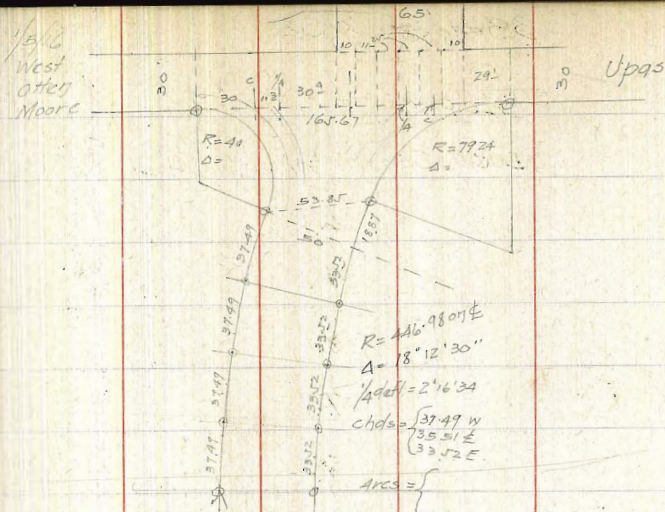
3.90 320.03

NL Redwood = 599.17 S. of S.L. Thorne on WL

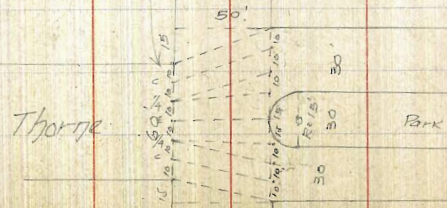
EL Hub.	8.06	311.97
+7	8.0	312.0
C	8.9	311.1
1/4	8.7	311.3
±	8.5	311.5
1/4	8.7	311.3
+6 ^s	8.9	311.1
C	8.4	311.6
WL	8.6	311.4

550's of Thorne on WL

WL	8.3	311.7
C	8.4	311.6
+1	8.8	311.2
1/4	8.6	311.4
±	8.1	311.9
1/4	8.2	311.8
C	8.4	311.6
FI	7.6	312.4
EL	7.7	312.3



398.71
 33rd St.



32093

500' S. of Thorne on WL

EL.	6.9	313.1
+9	7.2	312.8
C	8.1	311.9
1/4	7.7	312.3
⊕	7.5	312.5
1/4	8.0	312.0
+6.5	8.2	311.8
C	7.6	312.4
WL.	7.9	312.1

450' S. of Thorne on WL

WL.	7.2	312.8
C	7.1	312.9
+1	7.8	312.2
1/4	7.4	312.6
⊕	6.8	313.1
1/4	7.1	312.9
+6.5	7.5	312.5
⊕	6.5	313.5
EL.	6.4	313.6

33

32093

400' S. of Thorne on WL

EL.	6.2	313.8
+9	6.1	313.9
C	7.2	312.8
1/4	6.8	313.2
⊕	6.3	313.7
1/4	6.8	313.2
+6.5	7.2	312.8
C	6.5	313.5
WL.	6.8	313.2

350' S. of Thorne on WL

WL.	6.2	313.8
C	6.2	313.8
+1	7.0	313.0
1/4	6.5	313.5
⊕	6.0	314.0
1/4	6.4	313.6
+6.5	6.7	313.3
+1	5.6	314.4
EL.	5.6	314.4

33rd St X Secs.

32003

300' S. of Thorne on W.

EL.	52	314.8
C	51	314.9
+1	6.1	313.9
1/4	58	314.2
⊕	56	314.4
1/4	6.1	313.9
+6 ⁵	65	313.4
C	56	314.4
WL	56	314.4

250' S. of Thorne on W.

WL	55	314.5
C	55	314.5
+1	6.2	313.8
1/4	5.7	314.3
⊕	5.4	314.6
1/4	5.8	314.2
+6 ⁵	6.1	313.9
C	5.2	314.8
EL	5.1	314.9

33rd St X Secs

32003

200' S. of Thorne on W.

EL	4.9	315.1
C	5.0	315.0
+1	6.0	314.0
1/4	5.5	314.5
⊕	5.2	314.8
1/4	5.5	314.5
+6 ⁵	5.9	314.1
C	5.2	314.8
WL	5.2	314.8

450' S. of Thorne on W.

WL	5.4	314.6
C	5.3	314.7
+1	5.9	314.1
1/4	5.6	314.4
⊕	5.2	314.8
1/4	5.6	314.4
+6 ⁵	6.0	314.0
C	5.1	314.9
EL	5.0	315.0

34

33rd St. x Sec's

32003

100' S. of S.L. Thorne on W

EL.	4.9	315.1
C	4.9	315.1
+1	5.7	314.3
1/4	5.6	314.4
£	5.1	314.9
1/4	5.5	314.5
+6.5	5.9	314.1
C	5.1	314.9
WL	5.2	314.8

50' S. of S.L. Thorne on W

WL	5.3	314.7
C	5.3	314.7
+1	5.9	314.1
1/4	5.4	314.6
£	5.0	315.0
1/4	5.4	314.6
+6.5	5.9	314.1
C	4.9	315.1
EL	4.9	315.1

33rd St x Sec's

35

32003

15' S. of S.L. Thorne = S.L. on East.

EL	4.7	315.3
C	4.8	315.2
+1	5.5	314.5
1/4	5.3	314.7
£	5.0	315.0
1/4	5.3	314.7
+6.5	6.0	314.0
C	5.2	314.8
WL	5.1	314.9

S.L. Thorne both sides

WL	5.3	314.7
C	5.1	314.9
+1	5.9	314.1
1/4	5.3	314.7
£	5.0	315.0
1/4	5.2	314.8
+6.5	5.5	314.5
C	4.6	315.4
EL	4.7	315.3

33rd St x Secs.

32003S. Curb Thorne. See sketch B96A
P.62

EL	{ 46	315.4	£
	{ J.I. Gut.	314.9	1/4
C	{ 54 Gut.	314.6	C
	{ 48	315.2	
1/4	50	315.0	WL
£	52	314.8	
1/4	55	314.5	WL
C	{ 60 Gut	314.0	C
	{ 50	315.0	
WL	{ 53	314.7	1/4
	{ 63 Gut	313.7	

S 1/4 Thorne on W. & S. Roadway EL

WL	58	314.2	£
C	57	314.3	1/4
1/4	56	314.4	C
£	54	314.6	EL
1/4	51	314.9	
C	49	315.1	
EL	47	315.3	

S 1/4 on W. SL Park on EL

EL	50	315.0	£
C	50	315.0	1/4
1/4	51	314.9	C

33rd St x Secs.

32003

36

	53	314.7	
	54	314.6	
	56	314.4	
	58	314.2	
	£ Thorne both sides		
	51	314.9	
	49	315.1	
	48	315.2	
	47	315.3	

	46	315.4	
	46	315.4	
	{ 46 Gut.	315.4	
	{ 39 Top Parking	316.1	

N 1/4 on W. SL Park on East

	50	315.0	
	51	314.9	
	52	314.8	
	52	314.8	
	53	314.7	
	55	314.5	
	57	314.3	

320.03

N 1/4 on W. & N. Roadway on E.

WL.	5.7	314.3
C	5.7	314.3
1/4	5.6	314.4
±	5.4	314.6
1/4	5.1	314.9
C	4.8	315.2
EL.	4.5	315.5

N Curb. Thorne both sides

EL.	{ 4.8 Gut	315.2
	{ 4.0	316.0
C	{ 4.2	315.8
	{ 5.0 Gut	315.0
1/4	5.1	314.9
±	4.9	315.1
1/4	5.0	315.0
C	{ 5.9 Gut	314.1
	{ 5.0	315.0
WL.	{ 5.3 Gut	314.7
	{ 6.1 Gut	313.9

87

320.03

N.L. Thorne both sides

WL.	5.1	314.9
C	4.9	315.1
+1	5.8	314.2
1/4	5.0	315.0
±	4.7	315.3
1/4	4.9	315.1
+65	5.0	315.0
C	4.2	315.8

EL Hub TP.

3.90 316.13

1.45 323.58

N.L. Thorne on E. -15' N. of N.L. Thorne on WL

EL.	7.5	316.1
C	7.7	315.9
+1	8.4	315.2
1/4	8.3	315.3
±	8.1	315.5
1/4	8.5	315.1
+65	9.2	314.4
C	8.4	315.2
WL.	8.4	315.2

323.58

50' N. of N.L. Thorne on W.

WL	80	315.6
C	79	315.7
+1	89	314.7
1/4	87	315.4
±	77	315.9
1/4	80	315.6
+65	83	315.3
C	75	316.1
EL	75	316.1

100' N. of N.L. Thorne on West

EL	69	316.7
C	70	316.6
+1	80	315.6
1/4	75	316.1
±	71	316.5
1/4	75	316.1
+65	82	315.4
C	70	316.6
WL	71	316.5

323.58

150' N. of N.L. Thorne on W.

WL	65	317.1
C	66	317.0
+1	76	316.0
1/4	72	316.4
±	66	317.0
1/4	70	316.6
+65	72	316.4
C	62	317.4
EL	61	317.5

200' N. of N.L. Thorne on W.

EL	54	318.2
C	55	318.1
+1	65	317.1
1/4	64	317.2
±	60	317.6
1/4	67	316.9
+65	70	316.6
C	59	317.7
WL	59	317.7

373.58

250' N. of NL Thorne on WL.

WL	60	317.6
C	58	317.8
+1	67	316.9
1/4	64	317.2
±	58	317.8
1/4	62	317.4
+65	63	317.3
C	53	318.3
EL	52	318.4

300' N. of NL Thorne on W.

EL	50	318.6
C	53	318.3
+1	61	317.5
1/4	59	317.7
±	56	318.0
1/4	61	317.5
+65	66	317.0
⊙	56	318.0
WL	57	317.9

323.58

350' N. of NL Thorne on W.

WL	55	318.1
C	55	318.1
+1	63	317.3
1/4	60	317.6
±	53	318.3
1/4	56	318.0
+65	59	317.7
C	49	318.7
EL	49	318.7

398.51

~~300~~' N. of NL Thorne on W = PC.

EL	49	318.7
C	50	318.6
+1	60	317.6
1/4	56	318.0
±	51	318.5
1/4	57	317.9
+65	61	317.5
C	54	318.2
WL	52	318.4

R = 446.782
 Δ = 18° 12' 50"
 Sidel = 271' 31"
 Chd = 37.07W
 355.12
 33.02 E.

323.5835.51 N of last pt. on ϕ = $\frac{1}{4}$ arc.

WL	50	318.6
C	49	318.7
+1	57	317.9
$\frac{1}{4}$	51	318.5
ϕ	48	318.8
$\frac{1}{4}$	54	318.2
+6.5	54	318.2
C	47	318.9
EL	46	319.0

35.51 N on ϕ from last pt = $\frac{1}{2}$ arc.

EL	49	318.7
C	46	319.0
+1	53	318.3
$\frac{1}{4}$	52	318.4
ϕ	48	318.8
$\frac{1}{4}$	50	318.6
+6.5	54	318.2
C	48	318.8
WL	49	318.7

40

323.5835.51 N on ϕ from last pt = $\frac{3}{4}$ arc.

WL	47	318.9
C	45	319.1
+1	54	318.2
$\frac{1}{4}$	48	318.8
ϕ	48	318.8
$\frac{1}{4}$	51	318.5
+6.5	52	318.4
C	43	319.3
EL	47	318.9

35.51 N on ϕ = P.R.C. on WL. see sketch. P. 32

EL	43	319.3
C	44	319.2
+1	51	318.5
$\frac{1}{4}$	51	318.5
ϕ	46	319.0
$\frac{1}{4}$	48	318.8
+6.5	54	318.2
C	46	319.0
WL	48	318.8

33rd St x Sec 5.

323.58

Sec = 53.85 across.

Same P.R.C. on W.L. - 1887 N. on EL = P. Camp Curve E.L.

W.L.	4.9	318.8
C	4.7	318.9
+1	5.5	318.1
1/4	4.8	318.8
1/2	4.8	318.8
3/4	5.0	318.6
1 ft from curb - gutter	5.1	318.5
C	4.4	319.2
EL	4.5	319.1

5.2' Upas = 165.67 across = 75.79 on arc on W.L. R = 40'
 = 95.39 on " " EL R = 79.24'

W.L. Hbb.	3.68	319.90
+30 = curb	4.5	319.1
+31	5.1	318.5
+41 ³ = 1/4	5.0	318.6
+71 ³ = W.L. 33 St. going N.	4.6	319.0
+81 ³ = W.C. " " "	4.7	318.9
+82 ⁸⁴ = E going S.	4.7	318.9
+92 ³ = W 1/4 going N.	4.8	318.8
+104 ³ = E " "	5.0	318.6
+109 ⁴ = E 1/4 " S.	5.1	318.5

West
Open 1/5/16.
Moore

33rd St x Sec 5.

323.58

+115 ⁴ = E 1/4 going N.	5.3	318.3
+124 ⁵ = E curb going S.	5.4	318.2
+126 ² " " " N.	4.7	318.9
+136 ² = EL 33 rd going N.	4.7	318.9
+165.67 = EL P.C. on 5 L. Upas. Hbb.	5.14	318.44
T.P. = 7.7 328.52	0.83	322.75
B.M. 314. Upas & Bancroft	5.09	323.43 or 323.44

41

X Secs Felton St. 50' Wide
 N.L. Redwood to SL Upas
 10' WKS - 75' 1/4's.

Hub. SE Felton & Thorne

319.44

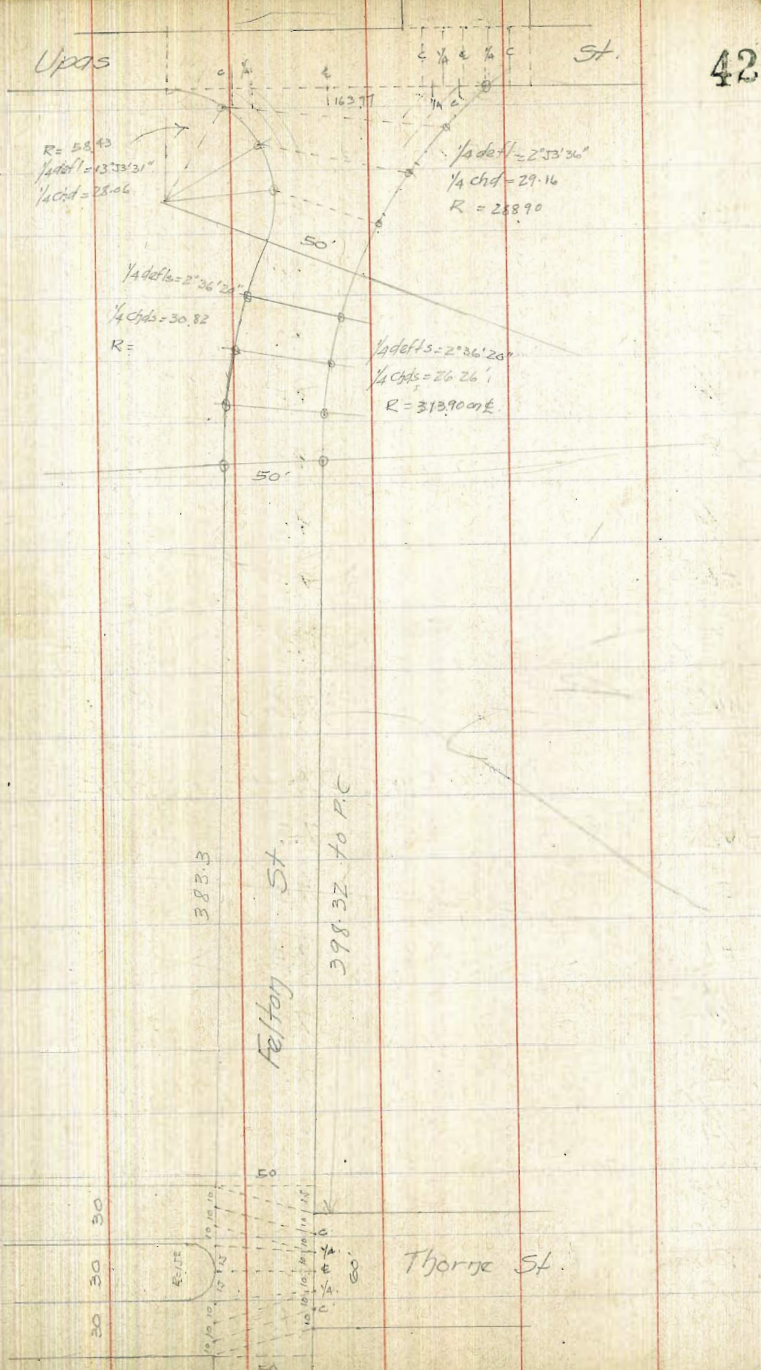
317 322.61

N.L. Redwood = 599.63 S. of S.L. Thorne on East

EL. Hub.	9.19	313.42
C	9.3	313.3
+1	100	312.6
1/4	9.8	312.8
E	9.4	313.2
1/4	100	312.6
+65	107	312.4
C	97	312.9
WL	9.8	312.8

550' S. of S.L. Thorne on E

WL	9.1	313.5
C	9.1	313.5
+1	9.8	312.8
1/4	9.3	313.3
E	8.6	314.0
1/4	9.0	313.6
+65	9.6	313.0
C	87	312.9
EL	87	313.9



Felton x Sec's

322.61

500'S. of S.L. Thorne on E.

EL.	79	314.7
C	80	314.6
+1	90	313.6
1/4	85	314.1
£	80	314.6
1/4	86	314.0
+6 ⁵	93	313.3
C	82	314.4
WL.	82	314.4

450'S. of S.L. Thorne on E.

WL	75	315.1
C	75	315.1
+1	85	314.1
1/4	79	314.7
£	73	315.3
1/4	77	314.9
+6 ⁵	84	314.2
C	73	315.3
EL.	74	315.2

Felton x Sec's

322.61

400'S. of S.L. Thorne on E.

EL	63	316.3
C	62	316.4
+1	75	315.1
1/4	67	315.9
£	63	316.3
1/4	69	316.7
+6 ⁵	77	314.9
C	67	315.9
WL.	67	315.9

350'S. of S.L. Thorne on E.

WL	60	316.0
C	58	316.8
+1	68	315.8
1/4	62	316.4
£	55	317.1
1/4	60	316.6
+6 ⁵	66	316.0
C	56	317.0
EL.	56	317.0

Felton x Sec's.

322-61

300' S. of S.L. Thorne on E.

EL	51	317.5
C	52	317.4
+1	61	316.5
1/4	54	317.2
ϕ	51	317.5
1/4	56	317.0
+65	63	316.3
C	54	317.2
WL	55	317.1

250' S. of S.L. Thorne on E.

WL	48	317.8
C	48	317.8
+1	58	316.8
1/4	52	317.4
ϕ	47	317.9
1/4	52	317.4
+65	58	316.8
C	48	317.8
EL	47	317.9

Felton x Sec's.

322-61

200' S. of S.L. Thorne on E.

EL	46	318.0
C	45	318.1
+1	53	317.3
1/4	48	317.8
ϕ	43	318.3
1/4	49	317.7
+65	53	317.3
C	46	318.0
WL	45	318.1

150' S. of S.L. Thorne on E.

WL	41	318.5
C	41	318.5
+1	51	317.5
1/4	44	318.2
ϕ	40	318.6
1/4	45	318.1
+65	51	317.5
C	42	318.4
EL	42	318.4

Felton x Secs.

322.61

100' S. of S.L. Thorne on E.

EL.	3.9	318.7
C	3.8	318.8
+1	4.7	317.9
1/4	4.1	318.5
⊕	3.6	319.0
1/4	4.1	318.5
+6 ⁵	4.7	317.9
C	3.8	318.8
WL.	3.8	318.8

50' S. of S.L. Thorne on E.

WL.	3.4	319.2
C	3.3	319.3
+1	4.2	318.4
1/4	3.8	318.8
⊕	3.3	319.3
1/4	3.7	318.9
+6 ⁵	4.4	318.2
C	3.5	319.1
EL.	3.5	319.1

Felton x Secs.

45

322.61

15' S. of S.L. Thorne on E = S.L. Thorne on WL.

EL.	3.4	319.2
C	3.2	319.4
+1	4.0	318.6
1/4	3.4	319.2
⊕	3.1	319.5
1/4	3.5	319.1
+6 ⁵	4.1	318.5
C	3.0	319.6
WL.	3.0	319.6

S.L. Thorne both sides.

WL.	3.0	319.6
C	2.9	319.7
+1	4.1	318.5
1/4	3.3	319.3
⊕	3.0	319.6
1/4	3.4	319.2
+6 ⁵	3.8	318.8
C	3.1	319.5
EL.	3.2	319.4

Felton x Sec's.

322.61

S. Curb Thorne - both sides.

EL.	{ 3.1	319.5
	{ 38 Gut.	318.8
C	3.0	319.0
+1	3.8	318.8
1/4	3.2	319.4
±	3.0	319.6
1/4	3.2	319.4
C	{ 3.7 Gut	318.9
	{ 3.0	319.6
WL.	{ 3.0	319.6
	{ 36 Gut.	319.0

S. 1/4 on EL - ± S. Roadway on W.

WL.	3.1	319.5
C	3.1	319.5
1/4	3.0	319.6
±	3.2	319.4
1/4	3.2	319.4
C	3.0	319.6
EL.	2.9	319.7

Felton x Sec's.

322.61

46

S. 1/4 on EL - S.L. Park on West.

EL.	2.9	319.7
C	2.9	319.7
1/4	3.0	319.6
±	2.9	319.7
1/4	3.0	319.6
C	3.2	319.4
WL.	3.3	319.3

± Thorne both sides.

WL.	2.4	320.2
+1	3.2	319.4
C	3.1	319.5
1/4	2.9	319.7
±	2.5	320.1
1/4	2.4	320.2
C	2.5	320.1
EL.	2.6	320.0

Felton x Secs

32261

N 1/4 of East - NL Park on West.

EL	30	319.6
C	29	319.7
1/4	28	319.8
£	28	319.8
1/4	29	319.7
C	31	319.5
WL	33	319.3

N 1/4 of East - £ N Roadway on West.

WL	28	319.8
C	30	319.6
1/4	31	319.5
£	31	319.5
1/4	31	319.5
C	30	319.6
EL	30	319.6

N. Corb Thorne both sides

EL	{ 36 Gut.	319.0
	{ 28	319.8
C	{ 26	320.0
	{ 34 Gut.	319.2
1/4	30	319.6

Felton x Secs

32261

47

£	28	319.8
1/4	29	319.7
C	{ 33 Gut.	319.3
	{ 26	320.0
WL	{ 26	320.0
	{ 33 Gut.	319.3

N.L. Thorne both sides

WL	26	320.0
C	26	320.0
+1	34	319.2
1/4	29	319.7
£	28	319.8
1/4	31	319.5
+65	34	319.2
C	26	320.0
EL	28	319.8

Same pt. on W. - 15' N of N.L. Thorne on E.

EL	29	319.7
C	28	319.8
+1	35	319.1
1/4	30	319.6
£	27	319.9

Feltog x Sec's.

322.61

1/4	3.1	319.5
+6.5	3.3	319.3
C	2.6	320.0
WL.	2.6	320.0

T.P. Hub. SE. Thorne & Feltog 3.17 319.44

7.13 326.57

50' N. of NL Thorne on E.

WL.	6.5	320.1
C	6.5	320.1
+1	7.2	319.4
1/4	6.9	319.7
£	6.5	320.1
1/4	6.8	319.8
+6.5	7.3	319.3
C	6.5	320.1
EL.	6.4	320.2

100' N. of NL Thorne on E.

EL	6.7	320.5
C	6.1	320.5
+1	7.0	319.2
1/4	6.5	320.1

Feltog x Sec's

326.57

£	6.2	320.4
1/4	6.4	320.2
+6.5	6.9	319.7
C	6.1	320.5
WL.	6.1	320.5

150' N. of NL Thorne on E.

WL	5.9	320.7
C	5.9	320.7
+1	6.7	319.9
1/4	6.1	320.5
£	5.7	320.9
1/4	6.0	320.6
+6.5	6.3	320.3
C	5.6	321.0
EL	5.7	320.9

200' N. of NL Thorne on E.

EL	5.7	320.9
C	5.5	321.1
+1	6.4	320.2
1/4	5.8	320.8
£	5.3	321.3
1/4	5.8	320.8
+6.5	6.3	320.3
C	5.4	321.2
WL	5.3	321.3

48

32657

250' N. of NL Thorne on E.

WL	52	321.4
C	52	321.9
+1	60	320.6
1/4	56	321.0
⊘	52	321.4
1/4	56	321.0
+6.5	61	320.5
C	53	321.3
EL	52	321.4

300' N. of NL Thorne on E.

EL	48	321.8
C	47	321.9
+1	56	321.0
1/4	51	321.5
⊘	48	321.8
1/4	53	321.3
+6.5	58	320.8
C	51	321.5
WL	51	321.5

49

32657

350' N. of NL Thorne on E.

WL	49	321.7
C	47	321.9
+1	57	320.9
1/4	50	321.6
⊘	46	322.0
1/4	48	321.8
+6.5	51	321.5
C	43	322.3
EL	44	322.2

1/42 off = 2' 56' 20"

wide = { 30' 82"

26' 26"

398.32' N. of NL Thorne on E = P.C.

EL. Hub.	446	322.11
C	43	322.3
+1	50	321.6
1/4	46	322.0
⊘	44	322.2
1/4	49	321.7
+6.5	53	321.3
C	46	322.0
WL. Hub.	479	321.78

Faltog x Secs.

326.0

322.11

3.86

325.91

$\frac{1}{4}$ Arc = $\left\{ \begin{array}{l} 30.82 \text{ Mon WL - chd lghs} \\ 2626 \text{ N" EL.} \end{array} \right.$

EL.	3.9	322.1
C	4.0	322.0
+1	4.1	321.3
$\frac{1}{4}$	4.2	321.8
$\frac{1}{4}$	3.9	322.1
$\frac{1}{4}$	4.2	321.8
+6.5	4.8	321.2
C	4.3	321.7
WL.	4.2	321.8
$\frac{1}{2}$ Arc = same dist from last pt		
WL	4.3	321.7
C	4.3	321.7
+1	4.8	321.2
$\frac{1}{4}$	4.5	321.5
$\frac{1}{4}$	4.2	321.8
$\frac{1}{4}$	4.5	321.5
+6.5	5.0	321.0
C	4.2	321.8
EL.	4.2	321.8

$\frac{3}{4}$ Arc = same dist from last pt

EL	4.7	321.3
C	4.6	321.4
+1	5.3	320.7
$\frac{1}{4}$	5.0	321.0
$\frac{1}{4}$	4.7	321.3
$\frac{1}{4}$	5.0	321.0
+6.5	5.4	320.6
C	4.7	321.3
WL	4.8	321.2

Faltog x Secs.

326.0

325.91

01 EL R = 288.90
P.R.C. of WL R = 58.43

Chk of EL = 2916 - $\frac{1}{4} \times 288.90$
Chk of WL = 2806 - $\frac{1}{4} \times 58.43$

50

WL	54	320.6
C	54	320.6
+1	63	319.7
$\frac{1}{4}$	57	320.3
$\frac{1}{4}$	55	320.5
$\frac{1}{4}$	58	320.2
+6.5	62	319.8
C	52	320.8
EL.	53	320.7

$\frac{1}{4}$ Arc's both sides = 58.20 across.

EL	64	319.6
+10	6.5	319.5
+11	7.1	318.9
$\frac{1}{4}$	7.1	318.9
$\frac{1}{4}$	6.6	319.4
$\frac{1}{4}$	6.6	319.4
+4.7 = C	6.8	319.2
+4.8 = C	6.3	319.7
+5.8 = WL	6.3	319.7

$\frac{1}{2}$ Arc both sides = 81.20 across.

+8.7 = WL	6.9	319.1
+7	6.8	319.2
+6.8	8.1	317.9
+5.5	7.7	318.3
+4.8 = C	7.6	318.4
+2.8	8.1	317.9
+1	8.7	317.3
+9	7.8	318.2
EL	7.8	318.2

Felton x Secs.

3200

32597

3/4 Arc both sides = 118° across

EL.	88	317.2
+ 2	88 93	317.2
+ 12	88	316.7
+ 14	97	317.2
59 = 4	8.2	316.3
+ 93	7.2	317.8
+ 95	8.1	317.9
+ 95	7.2	318.8
118 = W.L.	7.2	318.8

P.T. both sides = 163.7 across
= South 11th 4945 St

W.L.	6.9	319.1
+ 42	7.1	318.9
+ 45	8.3	317.7
+ 81.9 = 4	8.7	317.3
147	11.9	314.1
1450	11.0	315.0
163.7 = EL.	12.4	313.6
SE. 4945 & 33rd Hub.	7.48	318.49

OK
318.44

Redwood x Secs. N 1/2 - 30 wide -
 only part now open. Tax sections far full
 60' St - assuming 5-30' will be opened.
 EL. 32nd St. to City Limits.
 60' W - 10' Wks - 10' Quarters.

BM Hub. NE. 32 & Redwood 299.80

12.34 312.14

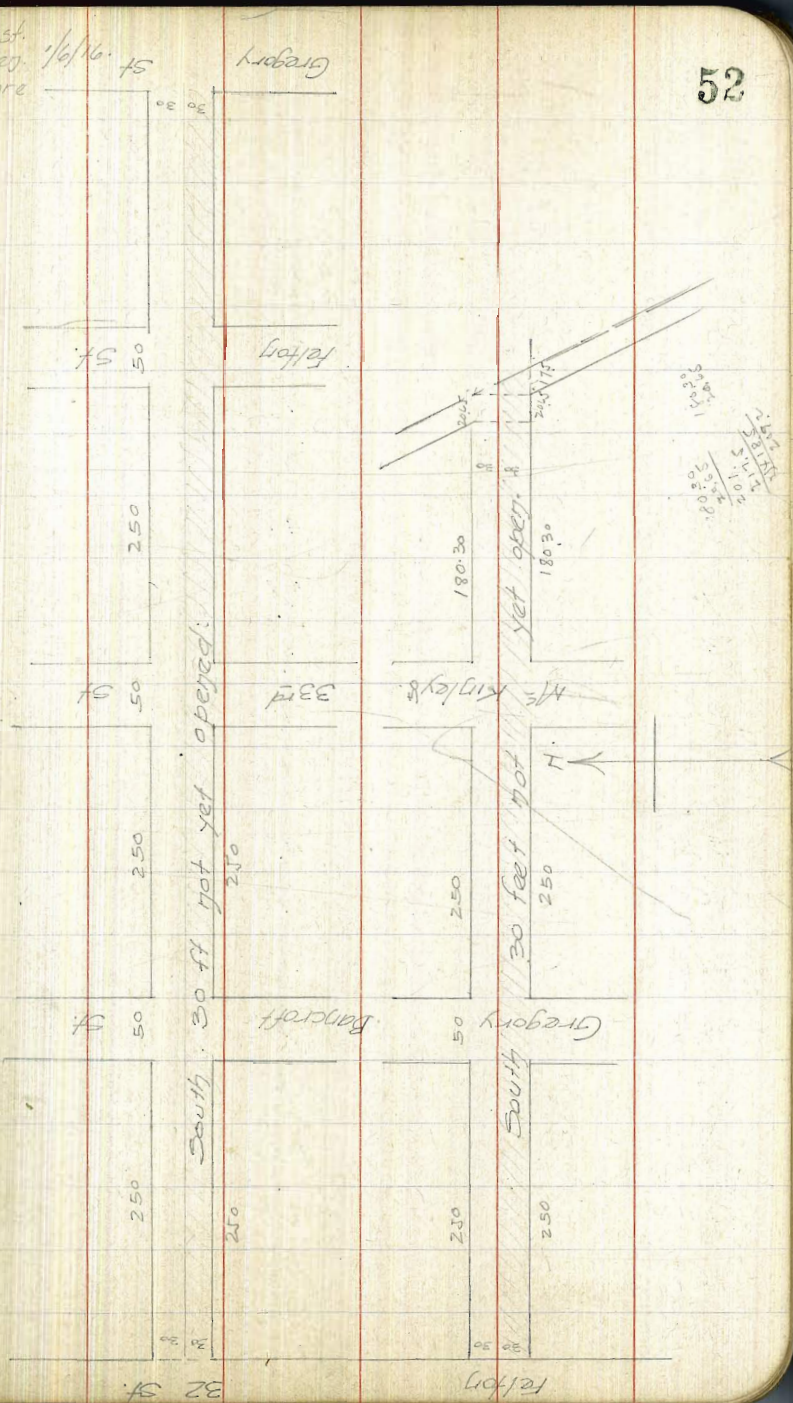
EL. 32nd St.

NL	12.3	299.8
C	11.8	300.3
+2	12.1	300.0
1/4	11.7	300.4
±	11.9	300.2
1/4	12.2	299.9
C	12.2	299.9
SL	12.4	299.7

50' East

SL	6.9	305.2
C	7.0	305.1
1/4	7.1	305.0
±	7.1	305.0
+1	8.1	304.0
1/4	7.5	304.6
+9	8.0	304.1
C	7.3	304.8
NL	7.3	304.8

West. 1/4/16. 45
 other Moore



Redwood x Sects.

312.14

100' East.

NL.	4.3	307.8
C	4.3	307.8
+1	5.6	306.5
1/4	4.3	307.8
+9	4.5	307.6
⊖	4.0	308.1
1/4	3.8	308.3
C	3.9	308.2
SL.	4.0	308.1

150' East.

SL.	0.9	311.2
C	1.0	311.1
1/4	1.1	311.0
⊖	1.3	310.8
+1	1.6	310.5
1/4	1.3	310.8
+9	2.1	310.0
C	1.5	310.6
NL.	1.1	310.4

Redwood x Sects.

53

312.14

8.95 311.19

9.18 320.37

200' East.

T.P.		
NL.	7.4	313.0
C	7.2	313.2
+1	8.0	312.4
1/4	7.1	313.3
⊖	7.9	312.5
+1	6.9	313.5
1/4	6.9	313.5
C	6.8	313.6
DL.	6.8	313.6

250' E = WL. Bancroft 50' W. 10' WKS - 7/15/96.

SL.	5.8	314.6
C	5.7	314.7
1/4	5.7	314.7
+9	5.9	314.5
⊖	6.3	314.1
1/4	5.8	314.6
+9	6.3	314.1
C	5.8	314.6
NL.	5.87	314.50

on Bancroft
314.46

32037

W Curb. Bancroft

NL	} 58 64 Gut	314.6
		314.0
C	} 63 " 58	314.1
		314.6
1/4	58	314.6
£	61	314.3
+1	57	314.7
1/4	55	314.9
C	56	314.8
SL	56	314.8

W 1/4 Bancroft

SL	55	314.9
C	54	315.0
1/4	55	314.9
+9	56	314.8
£	59	314.5
1/4	56	314.8
C	60	314.4
NL	60	314.4

32037

£ Bancroft

54

NL	56	314.8
C	56	314.8
1/4	55	314.9
£	59	314.5
+1	55	314.9
1/4	56	314.8
C	54	315.0
SL	55	314.9

E 1/4 Bancroft

SL	54	315.0
C	54	315.0
1/4	53	315.1
£	57	314.7
1/4	55	314.9
C	59	314.5
NL	59	314.5

Redwood x Secs

320.37

E. Curb Bancroft

NL	6.3 Cut.	314.1
		314.9
C	55	314.9
		314.4
1/4	56	314.8
1/2	58	314.6
+1	54	315.0
1/4	54	315.0
C	54	315.0
SL	54	315.0

EL Bancroft

SL	55	314.9
C	54	315.0
1/4	55	314.9
+9	53	315.1
1/2	58	314.6
1/4	55	314.9
+9	61	314.3
C	54	315.0
NL	54	315.0

Redwood x Secs

55

320.37

50' East

NL	51	315.3
C	50	315.4
+1	59	314.5
1/4	52	315.2
1/2	58	314.6
+1	51	315.3
1/4	52	315.2
C	53	315.1
SL	53	315.1

100' East

SL	56	314.6
C	56	314.8
1/4	55	314.9
1/2	53	315.1
+1	61	314.3
1/4	55	314.9
+9	61	314.3
C	54	315.0
NL	53	315.1

Redwood x Sec's.

32037

150' East.

NL.	6.6	313.8
c	6.4	314.0
+1	7.3	313.1
1/4	6.7	313.7
£	7.3	313.1
+1	6.5	313.9
1/4	6.6	313.8
c	6.5	313.9
SL.	6.6	313.8

200' East

SL	7.6	312.8
c	7.7	312.7
1/4	7.7	312.7
+9	8.0	312.4
£	8.7	311.7
1/4	8.2	312.2
+9	8.6	311.8
c	7.9	312.5
NL.	8.2	311.2

Redwood x Sec's.

32037250'E=NL 33rd 50' wide -10' wks -7th Q's.

56

NL	7.1	311.3
c	8.8	311.6
+1	9.3	311.1
1/4	9.1	311.3
£	9.2	311.2
+1	9.2	311.2
1/4	9.1	311.3
c	9.1	311.3
SL.	7.9	311.4

W. Curb 33rd St.

SL	9.1	311.3
c	9.1	311.3
1/4	9.2	311.2
£	9.5	310.9
1/4	9.4	311.0
c	9.3 Gut	311.1
	8.8	311.6
NL.	8.8	311.6
	9.3 Gut	311.1

Redwood x Secs.

320.37

N 1/4 33rd St.

NL	9.1	311.3
C	9.1	311.3
1/4	9.1	311.3
E	9.2	311.2
1/4	9.4	311.0
C	9.6	310.8
SL	9.5	310.9
E 33rd St.		
SL	9.7	310.7
C	9.6	310.8
1/4	9.5	310.9
+9		
E	9.2	311.2
1/4	9.0	311.4
C	8.9	311.5
NL	8.9	311.5

Redwood x Secs.

57

320.37

E 1/4 33rd St.

NL	9.0	311.4
C	9.0	311.4
1/4	9.1	311.3
E	9.2	311.2
+1		
1/4	9.6	310.8
C	9.4	311.0
SL	9.6	310.8
E Curb 33rd St		
SL	9.5	310.9
C	9.1	311.3
1/4	9.0	311.4
+9	9.0	311.4
E	9.5	310.9
1/4	9.4	311.0
C	9.4 Gut	311.0
	86	311.8
	84	312.0
NL	9.3 Gut	311.1

Redwood x Secs.

320.37

E.L. 33rd St

NL. Hub, T.P.	8.45	311.92	^{PK. 073311} 311.97
C	8.5	311.9	
+1	9.3	311.1	
1/4	8.9	311.5	
±	9.5	310.9	
+1	9.0	311.4	
1/4	8.9	311.5	
C	9.0	311.4	
SL	9.1	311.3	

7.35 319.27

50' East

SL	7.6	311.7
C	7.6	311.7
1/4	7.6	311.7
+9	7.5	311.8
±	8.1	311.2
1/4	7.4	311.9
+9	7.9	311.4
C	7.2	312.1
NL	7.1	312.2

Redwood x Secs.

58

319.27

100' East

NL	6.8	312.5
C	6.9	312.4
+1	7.7	311.6
1/4	7.3	312.0
±	7.7	311.6
+1	7.1	312.2
1/4	6.9	312.4
C	6.9	312.4
SL	6.7	312.6

150' East

SL	6.6	312.7
C	6.5	312.8
1/4	6.5	312.8
+9	6.5	312.8
±	7.2	312.1
1/4	6.8	312.5
+9	6.9	312.4
C	5.8	313.5
NL	5.9	313.4

Redwood x Secs.

319.27

200' East

NL	6.3	313.0
C	6.5	312.8
+1	7.2	312.1
1/4	6.7	312.6
±	7.1	312.2
+1	6.6	312.7
1/4	6.7	312.6
C	6.4	312.9
SL	6.4	312.9

250' E = WL Felton - 50' Wide - 10' WKS TEG's

SL	7.2	312.1
C	7.1	312.2
1/4	7.0	312.3
+9	6.9	312.4
±	7.2	312.1
1/4	6.7	312.6
+9	7.2	312.1
C	6.6	312.7
NL	6.5	312.8

Redwood x Secs.

59

319.27

W. Carb Felton

NL	6.3	313.0
	6.8 Gut.	312.5
	6.9 Gut.	312.4
	6.6	312.7
1/4	6.7	312.6
±	7.3	312.0
+1	6.9	312.4
1/4	6.9	312.4
C	7.0	312.3
SL	7.2	312.1

W. 1/4 Felton

SL	7.0	312.3
C	6.9	312.4
1/4	7.0	312.3
+9	6.9	312.4
±	7.2	312.1
1/4	6.7	312.6
C	6.8	312.5
NL	6.6	312.7

Redwood x Secs.

319.27

E Felton.

NL	6.1	313.2
C	6.5	312.8
1/4	6.6	312.7
£	7.1	312.2
+1	6.8	312.5
1/4	6.8	312.5
C	6.9	312.4
SL	6.9	312.4

E 1/4 Felton

SL	6.9	312.4
C	6.9	312.4
1/4	6.8	312.5
+9	6.8	312.5
£	7.2	312.1
1/4	6.6	312.7
C	6.8	312.5
NL	6.5	312.2

Redwood x Secs.

319.27

E Curb. Felton.

NL	{ 6.6 cut 6.0	312.7 313.3
C	{ 6.0 6.8 cut	313.3 312.5
1/4	6.5	312.8
£	7.1	312.2
+1	6.6	312.7
1/4	6.6	312.7
C	6.8	312.5
SL	6.9	312.4

E.L. Felton

SL	6.8	312.5
C	6.6	312.7
1/4	6.4	312.9
+9	6.4	312.9
£	7.1	312.2
1/4	6.5	312.8
+9	6.7	312.6
C	6.0	313.3
NL Hvb	5.88	313.39

60

00 Felton
313.42

Redwood x Sec's

31927

50' East

NL	55	313.8
C	54	313.9
+1	63	313.0
1/4	61	313.2
±	67	312.0
+1	60	313.3
1/4	60	313.3
C	60	313.3
SL	60	313.3

100' East

SL	62	313.1
C	61	313.2
1/4	60	313.3
+9	59	313.4
±	65	312.8
1/4	60	313.3
+9	64	312.9
C	55	313.8
NL	55	313.8

Redwood x Sec's

31927

150' East

NL	60	313.3
C	59	313.4
+1	67	312.6
1/4	63	313.0
±	68	312.5
+1	61	313.2
1/4	64	312.9
C	63	313.0
SL	63	313.0

200' East

SL	72	312.1
C	71	312.2
1/4	70	312.3
+9	69	312.4
±	76	311.7
1/4	69	312.4
+9	75	311.8
C	64	312.7
NL	64	312.9

61

319.27

250' E = W.L. Gregory - 50 Wide - 10 Wks - 7' 90.

NL.	7.1	312.2
C	7.2	312.1
+1	8.0	311.3
1/4	7.7	311.6
E	8.1	311.2
+1	7.6	311.7
1/4	7.7	311.6
C	7.8	311.5
SL.	7.9	311.4

W. Curb Gregory

SL.	8.2	311.1
C	8.0	311.3
1/4	7.9	311.4
+9	7.8	311.5
E	8.2	311.1
1/4	7.8	311.5
+9	8.1	311.2
C	7.3	312.0
NL.	7.6 ^{Got.}	311.7
	7.0	312.3

62

319.27

W 1/4 Gregory

NL.	7.3	312.0
C	7.8	311.5
1/4	7.9	311.4
E	8.3	311.0
+1	7.9	311.4
1/4	7.9	311.4
C	8.1	311.2
SL.	8.3	311.0

E Gregory

SL.	8.3	311.0
C	8.2	311.1
1/4	7.9	311.4
+9	7.9	311.4
E	8.3	311.0
1/4	7.9	311.4
+7	8.3	311.0
C	7.7	311.6
NL.	7.2	312.1

319.27

E 1/4 Gregory.

NL	75	311.8
C	77	311.6
+3	84	310.9
1/4	79	311.4
±	83	311.0
+1	79	311.4
1/4	79	311.4
C	82	311.1
SL	83	311.0

E Curb Gregory

SL	83	311.0
C	81	311.2
1/4	81	311.2
+1	80	311.3
±	84	310.9
1/4	81	311.2
+1	88	310.5
C	79	311.4
NL	74	311.9
	77	311.6

319.27

EL Gregory.

NL	77	311.6
C	78	311.5
+3	92	310.1
1/4	83	311.0
±	86	310.7
+1	80	311.3
1/4	83	311.0
C	83	311.0
SL	84	310.9

T.P. Top Post NE Cr.

570 313.57

092 314.49

50' East.

SL	53	309.2
C	53	309.2
1/4	54	309.1
±	52	309.3
1/4	48	309.7
+1	52	309.3
C	47	309.8
NL	53	309.2

Redwood

314.49

93' East

NL	5.5	309.0
C	5.4	309.1
1/4	5.2	309.3
⊕	6.0	308.5
+6	8.0	306.5
1/4	8.3	306.2
C	8.8	305.7
+5	11.1	303.4
SL	11.5	303.0
+13 for slopes	12.5	302.0

100' East

-25 for slope bot	13.1	301.4
SL	10.3	304.2
+	9.8	304.7
C	8.6	305.9
+4	7.4	307.1
1/4	7.9	306.6
+3	7.9	306.6
⊕	6.1	308.4

Redwood x Seds

314.49

64

1/4	5.3	309.2
C	5.5	309.0
NL	5.5	309.0

125' East

NL	4.8	309.7
C	5.2	309.3
+1	5.7	308.8
1/4	5.5	309.0
⊕	6.0	308.5
1/4	6.3	308.2
C	7.1	307.4
SL	7.5	307.0

150' East

SL	6.5	308.0
C	6.1	308.4
1/4	5.7	308.8
+8	5.4	309.1
C	6.3	308.2
1/4	5.5	309.0
+9	5.7	308.8
C	4.6	309.9
NL	4.4	310.1

314.49

200' East.

NL	4.8	309.7
C	5.0	309.5
+1	6.1	308.4
1/4	5.8	308.7
C	6.2	308.3
+1	5.7	308.8
1/4	5.5	309.0
C	6.1	308.4
SL	6.3	308.2
250' East = WL. McKinley		
50ft wide - 10' walks - 75 Q's		
SL	6.9	307.6
C	6.8	307.7
1/4	6.6	307.9
+9	6.5	308.0
Φ	6.8	307.7
1/4	6.5	308.0
+9	6.9	307.6
C	5.9	308.6
NL	5.8	308.7

65

314.49

W. Corb McKinley.

NL	{ 6.1	308.4
	{ 6.6 Gvt.	307.9
	{ 6.8 Gvt.	307.5
	{ 6.4	308.1
1/4	6.5	308.0
Φ	6.9	307.6
1/4	6.7	307.8
C	6.9	307.6
SL	7.1	307.4
W 1/4 McKinley.		
SL	7.3	307.2
C	7.0	307.5
1/4	6.9	307.6
Φ	6.8	307.7
+1	7.3	307.2
1/4	6.8	307.7
+5	7.3	307.2
C	6.8	307.7
NL	6.5	308.0

Redwood x Sees

314.49

E. M^s Kinley

NL	65	308.0
C	71	307.4
+5	76	306.9
1/4	70	307.5
E	73	307.2
+1	70	307.5
1/4	70	307.5
C	74	307.1
SL	75	307.0

E. 1/4 M^s Kinley

SL	77	306.8
C	76	306.9
1/4	73	307.2
+9	73	307.2
C	76	306.9
1/4	73	307.2
+7	79	306.6
C	74	307.1
NL	69	307.6

Redwood x Sees

66

314.49

E. Curb M^s Kinley

NL	{ 7.4 Gut.	307.1
	{ 6.7	307.8
C	{ 6.9	307.6
	{ 7.7 Gut.	306.8
+3	8.1	306.4
1/4	7.5	307.0
E	8.0	306.5
+2	7.6	306.9
1/4	7.6	306.9
C	7.7	306.8
SL	7.9	306.6

EL M^s Kinley

SL	8.4	306.1
C	7.9	306.6
1/4	7.8	306.7
+9	7.6	306.9
E	8.3	306.2
1/4	7.8	306.7
+9	8.4	306.1
C	7.2	307.3
NL	7.0	307.5
Top Post NE cor.	4.85	309.64

Redwood x Sec.

314.49

50' East.

NL	8.9	305.6
C	9.1	305.4
+1	10.1	304.4
1/4	9.5	305.0
£	10.1	304.4
+1	9.2	305.3
1/4	9.5	305.0
C	9.6	304.9
SL	9.7	304.8

100' East.

SL	11.7	302.8
C	11.5	303.0
1/4	11.5	303.0
£	11.6	302.9
1/4	11.7	302.8
+9	12.0	302.5
C	11.1	303.4
NL	11.1	303.4
TR	11.39	303.70

152

304.62

Redwood x Secs

304.62

150' East.

NL	5.2	299.4
C	5.2	299.4
+1	5.2	299.4
1/4	5.8	298.8
£	5.9	298.7
+1	5.2	299.4
1/4	5.0	299.6
C	5.1	299.5
SL	4.7	299.9

1803'E = WL Boundary St.

SL	9.3	295.3
C	9.2	295.4
1/4	9.5	295.1
£	9.8	294.8
+3	10.3	294.3
1/4	9.8	294.8
+9	11.1	293.5
C	10.1	294.5
NL Hub	10.39	294.23

67

REDWOOD

304.62

West
Otley 16/16
Moore

200.92 = Int with City Lts. of NL.

NL	135	291.1
C	129	291.7
1/4	122	292.4
£	122	292.4
1/4	124	292.2
C	123	292.3
SL	124	292.2

City Lts = 200.92 of NL & 218.4 of SL

SL	149	289.7
C	145	290.5
1/4	144	290.2
+8	140	290.6
£	133	291.3
1/4	127	291.9
C	129	291.7
NL	135	291.1

Gregory St x Secs.
 NL Redwood to S.L. Upas.
 50' Wide - 15' Wks. 75' GS

West
 Otter
 Moore

BM. NE Cor. top Post.

313.57

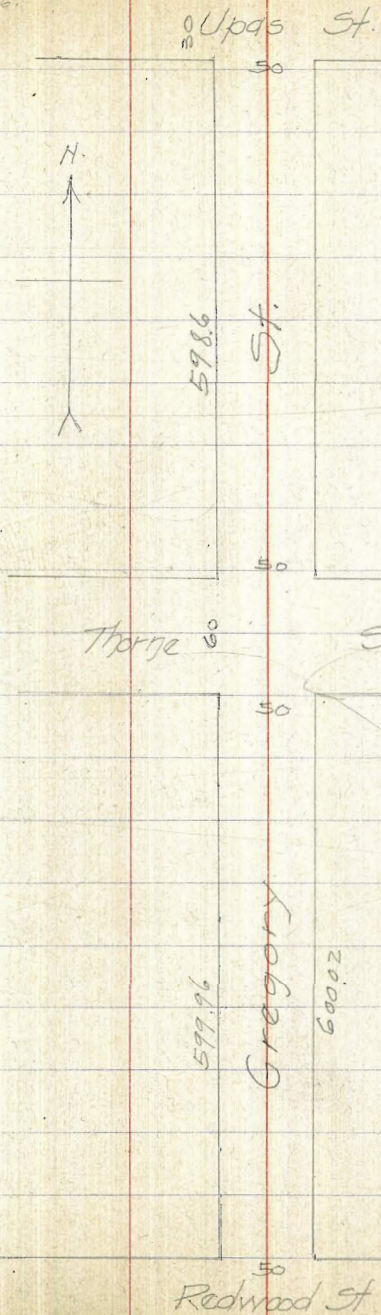
5.87 319.44

NL Redwood

EL	7.5	311.9
C	7.6	311.8
+2	8.0	311.4
1/4	7.7	311.7
±	7.4	312.0
1/4	7.5	311.9
+6.5	7.8	311.6
C	7.1	312.3
NL	7.3	312.1

50' North

WL	6.4	313.0
C	6.4	313.0
+1	7.2	312.2
1/4	6.8	312.6
±	6.4	313.0
1/4	7.0	312.4
+6	7.6	311.8
C	7.0	312.4
EL	7.1	312.3



Gregory x Secs

319.44

100' North.

EL	6.9	312.5
C	6.7	312.7
+1	7.4	312.0
1/4	6.7	312.7
1/2	6.3	313.1
3/4	6.5	312.9
+6 ⁵	6.8	312.6
C	6.0	313.4
WL	5.9	313.5

150' North.

WL	5.7	313.7
C	5.8	313.6
+1	6.5	312.9
1/4	6.2	313.2
1/2	6.1	313.3
3/4	6.6	312.8
+6 ⁵	7.3	312.1
C	6.5	312.9
EL	6.7	312.7

Gregory x Secs

319.44

200' North.

EL	6.4	313.0
C	6.3	313.1
+1	7.0	312.4
1/4	6.2	313.2
1/2	5.8	313.6
3/4	6.0	313.4
+6 ⁵	6.3	313.1
C	5.5	313.9
WL	5.3	314.1

250' North.

WL	5.0	314.4
C	5.2	314.2
+1	5.9	313.5
1/4	5.5	313.9
1/2	5.5	313.9
3/4	6.0	313.4
+6 ⁵	6.4	313.0
C	5.6	313.8
EL	5.8	313.6

70

Gregory x Sec's

319.44

300' North.

EL.	52	314.2
C	5.1	314.3
+1	5.8	313.0
1/4	5.3	314.1
⊘	5.0	314.4
1/4	5.1	314.3
+6 ⁵	5.5	313.9
C	4.7	314.7
WL	4.7	314.7

350' North.

WL	4.7	315.2
C	4.7	315.2
+1	4.8	314.6
1/4	4.5	314.9
⊘	4.5	314.9
1/4	4.8	314.6
+6 ⁵	5.1	314.3
C	4.6	314.8
EL.	4.6	314.8

Gregory x Sec's

319.44

400' North.

EL	4.1	315.3
C	4.1	315.3
+1	4.5	314.9
1/4	4.2	315.2
⊘	3.8	315.6
1/4	4.0	315.4
+6 ⁵	4.5	314.9
C	3.8	315.6
WL	3.8	315.6

450' North.

WL	3.0	316.4
C	3.2	316.2
+1	4.0	315.4
1/4	3.5	315.9
⊘	3.3	316.1
1/4	3.7	315.7
+6 ⁵	4.1	315.3
C	3.5	315.9
EL	3.5	315.9

71

Gregory x Secs.

319.44

500' North

EL.	33	316.1
C	32	316.2
+1	36	315.8
1/4	32	316.2
ϕ	29	316.5
1/4	31	316.3
+65	34	316.0
C	26	316.8
WL	25	316.9

550' North

WL	20	317.4
C	21	317.3
+1	30	316.4
1/4	25	316.9
ϕ	23	317.1
1/4	28	316.6
+65	32	316.2
C	28	316.6
EL	30	316.4

Gregory x Secs.

319.44

600' North - 3L Thorne

EL	27	316.7
C	24	317.0
+1	28	316.6
1/4	24	317.0
ϕ	20	317.4
1/4	21	317.3
+65	25	316.9
C	16	317.8
WL	17	317.7

BM. Hub. NE Cor. Thorne TR

226

317.18

on Thorne

317.20

333

320.51

NL Thorne

EL	33	317.2
C	31	317.4
+1	39	316.6
1/4	34	317.1
ϕ	28	317.7
1/4	30	317.5
+65	35	317.0
C	25	318.0
WL	24	318.1

72

Gregory x Sec's.

320.51

50' North.

WL	21	318.4
C	21	318.4
+1	33	317.2
1/4	27	317.8
±	24	318.1
1/4	29	317.6
+6 ⁵	34	317.1
C	25	318.0
EL	25	318.0

100' North.

EL	23	318.2
C	22	318.3
+1	31	317.4
1/4	28	317.7
±	25	318.0
1/4	27	317.8
+6 ⁵	30	317.5
C	19	318.6
WL	18	318.7

Gregory x Sec's.

320.51

150' North.

WL	20	318.5
C	20	318.5
+1	31	317.4
1/4	28	317.7
±	26	317.9
1/4	30	317.5
+6 ⁵	32	317.3
C	24	318.1
EL	27	317.8

200' North.

EL	35	317.0
C	34	317.1
+1	39	316.6
1/4	35	317.0
±	33	317.2
1/4	34	317.1
+6 ⁵	38	316.7
C	26	317.9
WL	25	318.0

Gregory x Secs.

320.51

250' North.

WL	3.2	317.3
C	3.6	316.9
+1	4.6	315.9
1/4	4.4	316.1
±	4.1	316.4
1/4	4.6	315.9
+6.5	5.1	315.4
C	4.3	316.2
EL	4.5	316.0

300' North.

EL	7.5	313.0
+1	6.5	314.0
C	6.1	314.4
+1	6.7	313.8
1/4	6.4	314.1
±	6.0	314.5
1/4	6.2	314.3
+6.5	6.6	313.9
C	8.0	314.5
+1.5	5.0	315.5
WL	4.8	315.7

Gregory x Secs

74

320.51

350' North.

WL	7.1	313.4
+8.5	7.5	313.0
C	8.2	312.3
+1	9.2	311.3
1/4	8.8	311.7
±	8.7	311.8
1/2	9.0	311.5
+6.5	9.7	310.8
C	9.1	311.4
+8	10.0	310.5
EL	10.8	309.7

400' North.

EL	15.3	305.2
+8	12.3	308.2
C	12.2	308.3
+2	12.9	307.6
1/4	12.4	308.1
±	12.0	308.5
1/4	11.8	308.7
C	12.2	308.3
+2	10.3	310.2
WL	9.9	310.6

Gregory x Secs

T.P. 320.51 1258 307.931.98 309.91

450' North.

WL. 32 306.7

+8 36 306.3

C 52 304.7

1/4 53 304.6

E 54 304.5

1/4 58 304.1

+6 61 303.2

C 61 303.8

EL. 10.9 299.0

+10 for slope 135 296.4

500' North.

-10 14.5 295.4

EL. bot. 16.4 293.5

C 102 299.7

+1 95 300.4

1/4 92 300.7

E 89 301.0

1/4 85 301.2

Gregory x Secs

309.91

75

C 85 301.4

+2 78 302.1

WL. 76 302.3

520' North

WL 94 300.5

C 95 300.4

1/4 95 300.4

E 96 300.3

1/4 99 300.0

C 104 299.5

EL 10.9 299.0

+10 94 300.5

550' North.

EL 7.5 302.4

C 8.1 301.8

+2 9.3 300.6

1/4 93 300.6

E 92 300.7

1/4 95 300.4

C 100 299.9

WL 100 299.9

to P. 77

The image shows an open notebook with two pages. The pages are cream-colored and feature horizontal ruling lines. The right page is numbered '76' in the top right corner. The notebook has a dark cover, and the pages are slightly aged. There are some faint, illegible markings on the pages, possibly from a previous page or bleed-through.

Gregory x Secs.

309.91

575' North

30991

77

WL	8.8	301.1
C	8.3	301.6
1/4	7.7	302.2
1/2	7.3	302.6
3/4	7.3	302.6
+6	7.0	302.9
C	6.3	303.6
+7	6.1	303.8
EL	4.6	305.3

TP			1.83	308.08
TP	11.89	319.97	2.23	317.74
	6.04	323.78		
Hub SE Upps & 33. P.C.			5.32	318.46

on 33rd
OE. 318.44

598.6 North = 5-L Upps.

EL	8.6	306.3
+1	4.1	305.8
C	4.6	305.3
+1	5.1	304.8
1/4	5.6	304.3
1/2	5.6	304.3
3/4	6.0	303.9
C	5.9	304.0
WL	6.0	303.9

DISTANCES FROM CENTER OF ROADWAY FOR CROSS-SECTIONING.

ROADWAY 14 FEET WIDE. SIDE SLOPES $1\frac{1}{2}$ TO 1.

FOR SINGLE TRACK EMBANKMENT.

	0	.1	.2	.3	.4	.5	.6	.7	.8	.9	
0	7.0	7.2	7.3	7.5	7.6	7.8	7.9	8.1	8.2	8.4	0
1	8.5	8.7	8.8	9.0	9.1	9.3	9.4	9.6	9.7	9.9	1
2	10.0	10.2	10.3	10.5	10.6	10.8	10.9	11.1	11.2	11.4	2
3	11.5	11.7	11.8	12.0	12.1	12.3	12.4	12.6	12.7	12.9	3
4	13.0	13.2	13.3	13.5	13.6	13.8	13.9	14.1	14.2	14.4	4
5	14.5	14.7	14.8	15.0	15.1	15.3	15.4	15.6	15.7	15.9	5
6	16.0	16.2	16.3	16.5	16.6	16.8	16.9	17.1	17.2	17.4	6
7	17.5	17.7	17.8	18.0	18.1	18.3	18.4	18.6	18.7	18.9	7
8	19.0	19.2	19.3	19.5	19.6	19.8	19.9	20.1	20.2	20.4	8
9	20.5	20.7	20.8	21.0	21.1	21.3	21.4	21.6	21.7	21.9	9
10	22.0	22.2	22.3	22.5	22.6	22.8	22.9	23.1	23.2	23.4	10
11	23.5	23.7	23.8	24.0	24.1	24.3	24.4	24.6	24.7	24.9	11
12	25.0	25.2	25.3	25.5	25.6	25.8	25.9	26.1	26.2	26.4	12
13	26.5	26.7	26.8	27.0	27.1	27.3	27.4	27.6	27.7	27.9	13
14	28.0	28.2	28.3	28.5	28.6	28.8	28.9	29.1	29.2	29.4	14
15	29.5	29.7	29.8	30.0	30.1	30.3	30.4	30.6	30.7	30.9	15
16	31.0	31.2	31.3	31.5	31.6	31.8	31.9	32.1	32.2	32.4	16
17	32.5	32.7	32.8	33.0	33.1	33.3	33.4	33.6	33.7	33.9	17
18	34.0	34.2	34.3	34.5	34.6	34.8	34.9	35.1	35.2	35.4	18
19	35.5	35.7	35.8	36.0	36.1	36.3	36.4	36.6	36.7	36.9	19
20	37.0	37.2	37.3	37.5	37.6	37.8	37.9	38.1	38.2	38.4	20
21	38.5	38.7	38.8	39.0	39.1	39.3	39.4	39.6	39.7	39.9	21
22	40.0	40.2	40.3	40.5	40.6	40.8	40.9	41.1	41.2	41.4	22
23	41.5	41.7	41.8	42.0	42.1	42.3	42.4	42.6	42.7	42.9	23
24	43.0	43.2	43.3	43.5	43.6	43.8	43.9	44.1	44.2	44.4	24
25	44.5	44.7	44.8	45.0	45.1	45.3	45.4	45.6	45.7	45.9	25
26	46.0	46.2	46.3	46.5	46.6	46.8	46.9	47.1	47.2	47.4	26
27	47.5	47.7	47.8	48.0	48.1	48.3	48.4	48.6	48.7	48.9	27
28	49.0	49.2	49.3	49.5	49.6	49.8	49.9	50.1	50.2	50.4	28
29	50.5	50.7	50.8	51.0	51.1	51.3	51.4	51.6	51.7	51.9	29
30	52.0	52.2	52.3	52.5	52.6	52.8	52.9	53.1	53.2	53.4	30
31	53.5	53.7	53.8	54.0	54.1	54.3	54.4	54.6	54.7	54.9	31
32	55.0	55.2	55.3	55.5	55.6	55.8	55.9	56.1	56.2	56.4	32
33	56.5	56.7	56.8	57.0	57.1	57.3	57.4	57.6	57.7	57.9	33
34	58.0	58.2	58.3	58.5	58.6	58.8	58.9	59.1	59.2	59.4	34
35	59.5	59.7	59.8	60.0	60.1	60.3	60.4	60.6	60.7	60.9	35
36	61.0	61.2	61.3	61.5	61.6	61.8	61.9	62.1	62.2	62.4	36

Calculated by Julien A. Hall, M. Am. Soc. C. E.

MADE IN GERMANY.