

980

F.B. 980

LEVIN BOOK

373

IND

# KEUFFEL & ESSER CO.

DRAWING MATERIALS

AND

SURVEYING INSTRUMENTS.

NEW YORK. 980

CHICAGO.

SAN FRANCISCO.

ST. LOUIS.

## TABLES FOR EXCAVATIONS AND EMBANKMENTS.

DISTANCES FROM CENTER OF ROADWAY FOR CROSS-SECTIONING.  
ROADWAY 18 FEET WIDE. SIDE SLOPES 1 TO 1.  
FOR SINGLE TRACK EXCAVATION

"Copyright, 1895, by Keuffel & Esser Co."

	0	.1	.2	.3	.4	.5	.6	.7	.8	.9	
0	9.0	9.1	9.2	9.3	9.4	9.5	9.6	9.7	9.8	9.9	0
1	10.0	10.1	10.2	10.3	10.4	10.5	10.6	10.7	10.8	10.9	1
2	11.0	11.1	11.2	11.3	11.4	11.5	11.6	11.7	11.8	11.9	2
3	12.0	12.1	12.2	12.3	12.4	12.5	12.6	12.7	12.8	12.9	3
4	13.0	13.1	13.2	13.3	13.4	13.5	13.6	13.7	13.8	13.9	4
5	14.0	14.1	14.2	14.3	14.4	14.5	14.6	14.7	14.8	14.9	5
6	15.0	15.1	15.2	15.3	15.4	15.5	15.6	15.7	15.8	15.9	6
7	16.0	16.1	16.2	16.3	16.4	16.5	16.6	16.7	16.8	16.9	7
8	17.0	17.1	17.2	17.3	17.4	17.5	17.6	17.7	17.8	17.9	8
9	18.0	18.1	18.2	18.3	18.4	18.5	18.6	18.7	18.8	18.9	9
10	19.0	19.1	19.2	19.3	19.4	19.5	19.6	19.7	19.8	19.9	10
11	20.0	20.1	20.2	20.3	20.4	20.5	20.6	20.7	20.8	20.9	11
12	21.0	21.1	21.2	21.3	21.4	21.5	21.6	21.7	21.8	21.9	12
13	22.0	22.1	22.2	22.3	22.4	22.5	22.6	22.7	22.8	22.9	13
14	23.0	23.1	23.2	23.3	23.4	23.5	23.6	23.7	23.8	23.9	14
15	24.0	24.1	24.2	24.3	24.4	24.5	24.6	24.7	24.8	24.9	15
16	25.0	25.1	25.2	25.3	25.4	25.5	25.6	25.7	25.8	25.9	16
17	26.0	26.1	26.2	26.3	26.4	26.5	26.6	26.7	26.8	26.9	17
18	27.0	27.1	27.2	27.3	27.4	27.5	27.6	27.7	27.8	27.9	18
19	28.0	28.1	28.2	28.3	28.4	28.5	28.6	28.7	28.8	28.9	19
20	29.0	29.1	29.2	29.3	29.4	29.5	29.6	29.7	29.8	29.9	20
21	30.0	30.1	30.2	30.3	30.4	30.5	30.6	30.7	30.8	30.9	21
22	31.0	31.1	31.2	31.3	31.4	31.5	31.6	31.7	31.8	31.9	22
23	32.0	32.1	32.2	32.3	32.4	32.5	32.6	32.7	32.8	32.9	23
24	33.0	33.1	33.2	33.3	33.4	33.5	33.6	33.7	33.8	33.9	24
25	34.0	34.1	34.2	34.3	34.4	34.5	34.6	34.7	34.8	34.9	25
26	35.0	35.1	35.2	35.3	35.4	35.5	35.6	35.7	35.8	35.9	26
27	36.0	36.1	36.2	36.3	36.4	36.5	36.6	36.7	36.8	36.9	27
28	37.0	37.1	37.2	37.3	37.4	37.5	37.6	37.7	37.8	37.9	28
29	38.0	38.1	38.2	38.3	38.4	38.5	38.6	38.7	38.8	38.9	29
30	39.0	39.1	39.2	39.3	39.4	39.5	39.6	39.7	39.8	39.9	30
31	40.0	40.1	40.2	40.3	40.4	40.5	40.6	40.7	40.8	40.9	31
32	41.0	41.1	41.2	41.3	41.4	41.5	41.6	41.7	41.8	41.9	32
33	42.0	42.1	42.2	42.3	42.4	42.5	42.6	42.7	42.8	42.9	33
34	43.0	43.1	43.2	43.3	43.4	43.5	43.6	43.7	43.8	43.9	34
35	44.0	44.1	44.2	44.3	44.4	44.5	44.6	44.7	44.8	44.9	35
36	45.0	45.1	45.2	45.3	45.4	45.5	45.6	45.7	45.8	45.9	36

Calculated by Julien A. Hall, M. Am. Soc. C. E.

187.88 BM Prospect College

103.97 Rhine + Grand

737.3 (1573) from west line  
High

124.25  
15.9  
140.05

23.8

103.4

25.4

8

20.0  
3.4  
22.0 81.2

125.2

44.0  
80.25

22' 0" in East  
20.06 1/4

22' 0" in west  
20.3 1/4

30.75 22.0

280  
124.05  
15.5.75  
272.0  
127.85  
355.60

7.75

341% in north  
367% in south

123.17 South  
121.36 north  
1.87

280  
272  
120  
672

122.23 center

67.85  
487.38  
555.23

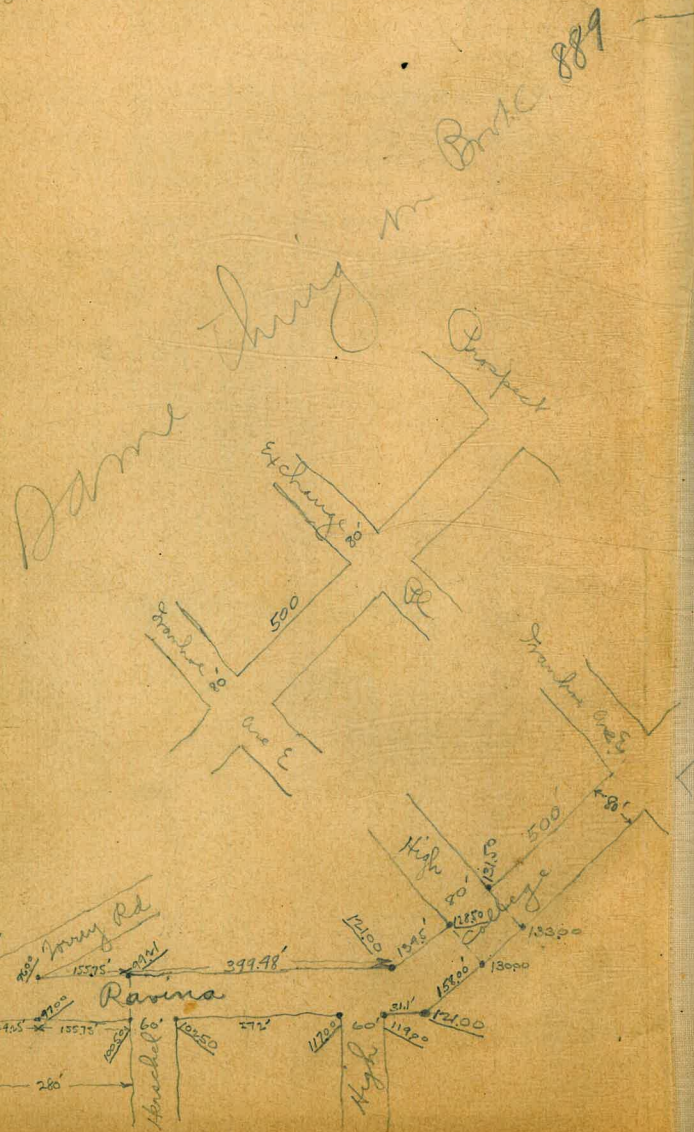
450  
280 3  
272  
120  
31.85  
703.35

91.35  
23.50  
67.85

555.23 124.25  
679.48  
23.50  
702.98

487.38  
124.25  
611.63

1557.5  
124.5  
140.0



1

X Sect. Ravina +  
College from East line  
Grand to South line  
Prospect.

Note

College street + Ravina are  
80' wide 14' sidewalks  
13' quarters

High street west of College  
Exchange East + prospect place  
are same as College.

High st. south of Ravina  
+ Herschel st. " " "

are 60' wide 10' walks  
10' quarters

Exchange place is an 80'  
street with 20' sidewalks  
+ 10' quarters.



RAVINA

1065 49

3

	H.I.						
J.P.	2.51	106.48	10397	B.M. Kline + Girard			
J.P.	9.93	106.46	9.95	96.53		W 1/4	
	East line	Girard		No line		9.6	96.9
No. line	106.5	11.1	95.4			10.3	96.2
		11.6	94.9			10.3	96.2
		12.0	94.5	C		11.2	95.3
C		11.5	95.0			11.4	95.1
		12.1	94.4			11.7	94.8
		12.0	94.5	No. line		11.4	95.1
No. line		11.2	95.3		Center		
	W. Cb. Torrey Road			No. line		11.4	95.1
No. line		11.4	95.1			11.4	95.1
		12.0	94.5			11.5	95.0
		11.8	94.7	C		10.5	96.0
C		11.8	94.7			9.9	96.6
		11.1	95.4			9.6	96.9
		10.5	96.0	No. line		9.4	97.1
No. line		10.1	96.4				

106549 RAVINA

E 1/4

no. line

9.2 97.3

A (no. line)  
+1'

9.3 97.2

9.4 97.1

c

9.8 96.7

c

11.2 95.3

11.1 95.4

no. line

11.0 95.5

B (no. line)

E 2/6

no. line

10.5 96.0

no. line

10.9 95.6

10.7 95.8

c

9.9 96.6

c

9.5 97.0

9.3 97.2

no. line

8.8 97.7

no. line

106549

4

12425

sect. AB (Eline Terry Road)

10.60 95.9

11.3 95.2

11.2 95.3

10.9 95.6

10.1 96.4

9.5 97.0

9.2 97.3

8.2 98.3

30.75' east sect. AB = 125' west  
Herschel.

8.7 97.8

9.0 97.5

8.9 97.6

9.3 97.2

10.4 96.1

10.9 95.6

11.1 95.4

RAVINA

106.5 H9

100' west Hirschel

no. line	10.7	95.8	no. line
	10.5	96.0	
	10.0	96.5	
C	9.4	97.1	C
	8.7	97.8	
	8.6	97.9	
no. line	8.1	98.4	no. line

75' west

no. line	7.8	98.7	no. line
	8.4	98.1	
	8.6	97.9	
C	9.1	97.4	C
	9.4	97.1	
	9.8	96.7	
no. line	11.1	95.4	no. line

106.5 H9

5

50' west

10.0	96.5
10.3	96.2
10.0	96.5
8.7	97.8
8.0	98.5
7.9	98.6
7.6	98.9

25' west

7.1	99.4
7.4	99.1
8.9	97.6
9.1	97.4
9.4	97.1
9.2	97.3
8.8	97.7

RAVINA

1064<sup>s</sup>6

west line Herschel

no. line	7.9	98.6	no. line
	7.2	99.3	
	6.8	99.7	
c	7.5	99.0	c
	8.0	98.5	
	8.2	98.3	
no. line	7.6	98.9	no. line
	w.cb.		
no. line	7.1	98.4	no. line
	7.1	98.4	
	7.1	98.4	
c	6.4	100.1	c
	6.0	100.5	
	6.2	100.3	
no. line	7.5	99.0	no. line

1065 H9

6

W 1/4

center

7.2	99.3
5.6	100.9
5.4	101.1
5.6	100.9
6.1	100.4
6.4	100.1
6.3	100.2
6.0	100.5
5.8	100.7
5.5	101.0
5.2	101.3
4.5	102.0
5.3	101.2
6.7	99.8



E 1/4

no. line	6.2	100.3
	5.1	101.4
	4.4	102.1
c	4.4	102.1
	4.9	101.6
	5.2	101.3
no. line	5.1	101.4
	4.3	102.2
	4.4	102.1
	3.7	102.8
c	3.2	103.3
	4.1	102.4
	5.1	101.4
no. line	5.6	100.9

E. cb.

East line Herschel

no. line	4.9	101.6
	4.6	101.9
	3.6	102.9
c	3.0	103.5
	3.3	103.2
	4.0	102.5
no. line	4.0	102.5
	3.2	103.3
	2.8	103.7
	2.2	104.3
c	2.4	104.1
	3.1	103.4
	3.7	102.8
no. line	3.7	102.8

250' west High

x

RAVINA

<sup>5</sup>  
106.46

225' west

no. line	2.0	104.5
	2.2	104.3
	1.9	104.6
C	1.8	104.7
	1.9	104.6
	2.6	103.9
no. line	2.8	103.7

200' west

no. line	0.0	106.5
	0.6	105.9
	0.8	105.7
C	0.9	105.6
	1.0	105.5
	0.8	105.7
no. line	0.8	105.7

118.8

8

J.P.  
13.11 H.I. 118.85 0.72 105.74

175' west

no. line	12.4	106.4
	12.6	106.2
	12.3	106.5
C	11.6	107.2
	10.7	108.1
	9.9	108.9
no. line	10.0	108.8

150' west

no. line	9.7	109.1
	9.9	108.9
	10.4	108.4
C	10.7	108.1
	11.2	107.6
	11.1	107.7
no. line	11.4	107.4

1188 RAVINA

st. here

135' W.

no. line

9.5 109.3

9.6 109.2

9.4 109.4

c

8.6 110.2

8.2 110.6

8.1 110.7

so. line

7.9 110.9

100' W.

so. line

6.4 112.4

6.5 112.3

6.7 112.1

c

7.1 111.7

8.2 110.6

8.5 110.3

no. line

8.8 110.0

1188

75' W

no. line

7.1 111.7

6.6 112.2

6.0 112.8

c

5.1 113.7

5.0 113.8

4.9 113.9

so. line

5.0 113.8

50' W.

so. line

3.6 115.2

3.4 115.4

3.5 115.3

c

3.3 115.5

4.1 114.7

4.6 114.2

no. line

5.3 113.5

RAVINA

118.85

25' W.

no. line

3.2 115.6

2.5 116.3

2.4 116.4

C

2.0 116.8

2.2 116.6

2.3 116.5

So. line

2.3 116.5

west line High on South

J.P.

12.44 <sup>HI</sup> 129.40

1.89 117.0

So. line

12.44 117.00

71.8 117.6

11.4 118.0

C

10.7 118.7

11.0 118.4

10.6 118.8

No. line

11.0 118.4

129.40

0

W. cl.

no. line

9.7 119.7

9.7 119.7

10.2 119.2

C

10.2 119.2

11.2 118.2

11.9 117.5

So. line

12.5 116.9

W 1/4

So. line

12.5 116.9

11.8 117.6

11.2 118.2

C

10.3 119.1

9.7 119.7

9.2 120.2

No. line

8.5 120.9

1294 RAVINA

Center

no. line	8.0	121.4
	8.5	120.9
	9.3	120.1
c	9.7	119.7
	11.1	118.5
	11.9	117.5
so. line	12.3	117.1
	E 1/4	
no. line	11.8	117.6
	11.7	117.7
	11.1	118.3
c	10.1	119.3
	9.3	120.1
	8.5	119.9
no. line	7.7	121.7

12940

11

E. E. b.

no. line	8.4	121.0
	8.9	120.5
	9.5	119.9
c	10.3	119.1
	11.1	118.3
	11.5	117.9
so. line	11.4	118.0
	East line High on South	
so. line	12.0	117.4
	11.7	117.7
	11.1	118.3
c	10.3	119.1
	9.7	119.7
	9.1	120.3
no. line	8.9	120.5

12940 RAVINA

7.85' east High on bank

no. line	8.76	120.7°	W. line
	9.0	120.4°	
	9.8	119.6°	
C	10.5	118.9°	C
	11.2	118.2°	
	11.8	117.6°	
S. line	12.5	116.9°	E. line

sect C. D.

S. line	12.11	117.3°	E. line
	11.4	118.0°	
	10.9	118.5°	
C	10.2	119.2°	C
	9.7	119.7°	
	8.9	120.5°	
no. line	8.76	120.7°	W. line

1294

12

134.5' south of High on bank

	8.76	120.7°
	8.8	120.6°
	9.3	120.1°
	10.0	119.4°
	10.2	119.2°
	10.0	119.4°
	9.7	119.7°

100' S.

	7.6	121.8°
	8.0	121.4°
	8.4	121.0°
	8.4	121.0°
	8.4	121.0°
	8.4	121.0°
	8.9	120.5°

COLLEGE  
129.4

75' 20.

White

8.1 1213

7.7 1217

7.5 1219

C

7.0 1224

7.1 1223

6.9 1225

E line

6.5 1229

50' 20.

E line

4.9 1245

5.4 1240

5.9 1235

C

6.4 1230

6.7 1227

6.5 1229

White

6.4 1230

129.4

13

25' 20.

White

6.2 123.2

5.6 123.8

4.8 124.6

C

4.4 125.0

4.5 124.9

4.2 125.2

E line

3.9 125.5

South line High on (west)

E line

2.5 126.9

2.6 126.8

3.1 126.3

C

3.4 126.0

4.0 125.4

4.5 124.9

White

4.6 124.8

X

## COLLEGE

129.40

20.06.

White	3.7	125.7
	3.3	126.1
	2.5	126.9
c	1.8	127.6
	1.4	128.0
	1.6	127.8
E line	1.6	127.8
	0.8	128.6
	0.8	128.6
	0.5	128.9
c	0.7	128.5
	1.5	127.9
	2.3	127.1
White	2.5	126.9

20.14

E line	0.8	128.6
	0.8	128.6
	0.5	128.9
c	0.7	128.5
	1.5	127.9
	2.3	127.1
White	2.5	126.9

140.6

14

S.P.

12.67 <sup>H.I.</sup> 140.65 14.2 128.48

center

W. line

c

E line

E line

c

White

20.14

12.6	128.0
12.5	128.1
11.9	128.7
11.1	129.5
11.0	129.6
10.8	129.8
11.0	129.6
9.8	130.8
9.5	131.1
9.8	130.8
10.6	130.0
11.0	129.6
11.5	129.1
11.8	128.8



## COLLEGE

140.6

no. 6.

White	10.7	129.9
	10.5	130.1
	10.2	130.4
C	9.1	131.5
	8.6	132.0
	8.5	132.1
E line	8.4	132.2
North line High w (west)		
E line	7.1	133.5
	7.4	133.2
	7.8	132.8
C	8.1	132.5
	8.7	131.9
	9.5	131.1
White	9.6	131.0

140.6

15

25' north

White	7.4	133.2
	7.5	133.1
	6.9	133.7
C	6.4	134.2
	5.0	135.6
	4.8	135.8
E line	5.0	135.6
50' no.		
E line	3.0	137.6
	3.4	137.2
	4.2	136.4
C	4.4	136.2
	5.7	134.9
	5.8	134.8
White	5.7	134.9

COLLEGE

140.65

75' no.

White	4.0	136.6
	3.5	137.1
	3.4	137.2
C	2.4	138.2
	1.7	138.9
	1.0	139.6
Elms	0.3	140.3
J.P.	0.18	140.5
	12.81	153.28
	100' no.	
Elms	10.3	143.0
	11.4	141.9
	11.8	141.5
C	12.5	140.8
	13.8	139.5
	14.5	138.8
White	15.5	137.8

153.3

16

125' no.

White	14.0	139.3
	13.1	140.2
	12.4	140.9
C	11.6	141.7
	10.6	142.7
	9.6	143.7
Elms	9.6	143.7
	150' no.	
Elms	7.1	146.2
	7.8	145.5
	8.8	144.5
C	9.7	143.6
	10.0	143.3
	11.5	142.8
	12.5	140.8
White		

COLLEGE153.3

175' no.

White	11.1	142.2
	10.2	143.1
	8.8	144.5
C	7.8	145.5
	7.4	145.9
	6.8	146.5
Blue	6.5	146.8

200' no.

Blue	4.8	148.5
	4.9	148.4
	4.8	148.5
C	6.3	147.0
	8.0	145.3
	8.5	144.8
White	9.1	144.2

153.3

17

225' no.

White	6.7	146.6
	6.6	146.7
	5.7	147.6
C	5.3	148.0
	5.2	148.1
	4.8	148.5
Blue	4.2	149.1

250' no.

Blue	3.4	149.9
	4.1	149.2
	4.4	148.9
C	4.4	148.9
	4.8	148.5
	4.9	148.4
White	5.1	148.2

COLLEGE  
3  
153.28

275' no.

White	4.4	148.9 <sup>✓</sup>
	3.7	149.6 <sup>✓</sup>
	2.9	150.4 <sup>✓</sup>
C	3.1	150.2 <sup>✓</sup>
	2.3	151.0 <sup>✓</sup>
	1.4	151.9 <sup>✓</sup>
Elms	1.7	151.6 <sup>✓</sup>
J.P.		
Elms	1.1	152.2 <sup>✓</sup>
	1.4	151.9 <sup>✓</sup>
	2.0	151.3 <sup>✓</sup>
C	2.2	151.1 <sup>✓</sup>
	2.4	150.9 <sup>✓</sup>
	2.3	151.0 <sup>✓</sup>
White	2.9	150.4 <sup>✓</sup>

300' no.

J.P.

White

C

Elms

Elms

C

White

164.1

H.I.

12.98 164.06

2:20 151.1<sup>✓</sup>

325' no.

13.0 151.1<sup>✓</sup>

12.7 151.4<sup>✓</sup>

12.6 151.5<sup>✓</sup>

11.3 152.8<sup>✓</sup>

11.0 153.1<sup>✓</sup>

11.0 153.1<sup>✓</sup>

10.5 153.6<sup>✓</sup>

350' no.

9.1 155.0<sup>✓</sup>

9.7 154.4<sup>✓</sup>

9.7 154.4<sup>✓</sup>

10.1 154.0<sup>✓</sup>

11.5 152.6<sup>✓</sup>

12.0 152.1<sup>✓</sup>

12.1 152.0<sup>✓</sup>

## COLLEGE

164.

375' no.

White	11.6	152.5
	11.1	153.0
	10.3	153.8
C	9.8	154.3
	9.3	154.8
	8.4	155.7
Elms	7.8	156.3

400' no.

Elms	6.1	158.0
	6.8	157.3
	7.3	156.8
C	8.6	155.5
	9.0	155.1
	9.2	154.9
White	10.4	153.7

164.1

18

425' no.

White	9.9	154.2
	9.2	154.9
	7.9	156.2
C	7.2	156.9
	6.9	157.2
	5.9	158.2
Elms	4.9	159.2

450' no.

Elms	3.3	160.8
	4.0	160.1
	5.3	158.8
C	6.7	157.4
	7.4	156.7
	8.6	155.5
White	8.5	155.6

164.06

475' no.

White	7.7	156.4	
	6.9	157.2	White
	6.2	157.9	
c	5.5	158.6	
	4.8	159.3	c
	3.7	160.4	
Elms	0.8	163.3	
500' no. (South line Grand Col. Exp.)			Elms
Elms	0.26	163.95	
	2.3	161.8	Elms
	3.2	160.9	
c	3.5	160.6	
	4.1	160.0	c
	5.8	158.3	
White	5.94	158.7	

173.6

19

9.83 <sup>H.I.</sup> 173.63 163.80

So. Cl.

	14.9	158.7	
	14.8	158.8	
	13.4	160.2	
	12.6	161.0	
	11.9	161.7	
	10.0	163.6	
	8.1	165.5	
			So. Cl.
	7.0	166.6	
	8.9	164.7	
	11.4	161.9	
	12.4	160.9	
	13.5	160.1	
	14.4	159.2	
	14.8	158.8	
			White

Center

White	14.4	159.2
	13.7	159.6
	12.6	161.0
C	11.5	162.1
	10.5	163.1
	8.8	164.8
Elms	6.7	166.9
	5.3	168.3
Elms	7.5	166.1
	10.2	163.4
C	11.2	162.4
	12.0	161.6
	12.6	161.0
White	13.7	159.9

no. 14

no. 16.

White	12.4	161.2
	11.2	162.4
	11.1	162.5
C	10.1	163.5
	9.5	164.1
	6.2	167.4
Elms	4.5	169.1
	4.5	169.1
Elms	6.5	167.1
	8.8	164.8
C	9.9	163.7
	10.0	163.6
	10.4	163.2
White	11.49	162.2

North line (granite side east)

COLLEGE  
173.6

25' no.

White

11.2 162.4

10.6 163.0

9.6 164.0

C

8.6 165.0

6.4 167.2

4.8 168.8

E line

3.4 170.2

50' no.

E line

4.0 169.6

5.2 168.4

6.2 167.4

C

6.9 166.7

7.6 166.0

9.2 164.4

White

9.7 163.9

173.6

21

75' no.

White

7.4 166.2

7.1 166.5

7.6 166.0

C

6.3 167.3

4.5 169.1

4.0 169.6

E line

3.3 170.3

100' no.

E line

1.2 172.4

3.4 170.2

4.2 169.4

C

5.1 168.5

6.1 167.5

6.4 167.2

White

6.7 166.9



## COLLEGE

173.63

125' no.

White	6.0	1676
	4.2	1694
	3.8	1695
C	3.5	1701
	2.9	1707
	1.9	1717
J.P.	0.24	173.4
Elvis	11.6	1741
	10.9	1748
	12.4	1733
	13.9	1718
C	14.0	1717
	13.9	1718
	14.4	1713
White	16.5	1692

185.7

22

175' no.

White	14.4	171.3
	13.0	172.7
	12.6	173.1
C	12.3	173.4
	11.7	174.0
	10.0	175.7
Elvis	9.2	176.5
	8.0	177.7
	9.2	176.5
	9.7	176.0
	10.8	174.9
C	11.5	174.2
	11.9	173.8
White	13.5	172.2

200' no.

COLLEGE  
185.7

240' no. (break)

White	10.6	175.1'
	10.2	175.5'
	9.0	176.7'
C	7.7	178.0'
	7.5	179.2'
	6.3	179.4'
Elms	5.4	180.3'

275' no.

Elms	3.3	182.4'
	4.2	181.5'
	5.2	180.5'
C	6.5	179.2'
	7.9	177.8'
	8.5	177.2'
White	9.4	176.3'

185.7

23

300' no.

white	7.3	178.4'
	7.3	178.4'
	6.5	179.2'
C	5.2	180.5'
	3.6	182.1'
	3.0	182.7'
Elms	1.5	184.2'

325' no.

Elms	0.1	185.6'
	1.7	184.0'
	2.6	183.1'
C	3.5	182.1'
	4.4	181.3'
	5.5	180.2'
white	5.9	179.8'

## COLLEGE

185.75

350' no.

White 4.5 181.2 ✓

3.9 181.8

3.2 182.5 ✓

C 1.8 183.9 ✓

1.2 184.5 ✓

0.5 185.2 ✓

J.P. 12.83 <sup>H.I.</sup> 198.13 0.45 185.30 ✓

Elio 11.0 187.2 ✓

375' no.

Elio 10.0 189.2 ✓

11.9 186.3 ✓

12.8 185.4 ✓

C 13.2 185.0 ✓

14.3 183.9 ✓

16.1 187.1 ✓

White 17.3 180.9 ✓

198.2

24

400' no.

White 16.2 182.0 ✓

15.4 182.8 ✓

14.6 183.6 ✓

C 13.5 184.7 ✓

12.8 185.4 ✓

10.5 187.7 ✓

9.0 189.2 ✓

425' no.

Elio 9.3 188.9 ✓

11.0 187.2 ✓

12.1 186.1 ✓

C 13.3 184.9 ✓

13.9 184.3 ✓

14.5 183.7 ✓

White 15.4 182.8 ✓

COLLEGE  
198.2

450' no.

White	17.0	181.2 <sup>v</sup>
	16.0	182.2 <sup>v</sup>
	15.0	183.2 <sup>v</sup>
C	13.4	184.8 <sup>v</sup>
	11.5	186.7 <sup>v</sup>
	10.7	187.5 <sup>v</sup>
E line	8.7	189.5 <sup>v</sup>

475' no.

E line +7'	8.1	190.1 <sup>v</sup>
	11.3	186.9 <sup>v</sup>
	12.5	185.7 <sup>v</sup>
	13.3	184.9 <sup>v</sup>
C	14.2	184.0 <sup>v</sup>
	15.1	183.1 <sup>v</sup>
	15.8	182.4 <sup>v</sup>
White	17.0	181.2 <sup>v</sup>

198.2

25

494' no.

E line	9.6	188.6 <sup>v</sup>
	12.0	186.2 <sup>v</sup>
	13.1	185.1 <sup>v</sup>
C	14.1	184.1 <sup>v</sup>
	14.7	183.5 <sup>v</sup>
	15.8	182.4 <sup>v</sup>
White	16.1	182.1 <sup>v</sup>

500' no. (to line Exchange place)

White	14.9	183.3 <sup>v</sup>
	15.5	182.7 <sup>v</sup>
	14.6	183.6 <sup>v</sup>
C	14.1	184.1 <sup>v</sup>
	13.1	185.1 <sup>v</sup>
	12.1	186.1 <sup>v</sup>
E line	10.0	188.2 <sup>v</sup>

So. Cb.

Elms	10.6	187.6
	11.9	186.3
	13.1	185.1
C	13.8	184.4
	14.1	184.1
	15.1	183.1
White	15.4	182.8
White	15.0	183.2
	13.9	184.3
	13.6	184.6
C	12.9	185.3
	12.3	185.9
	11.4	187.8
Elms	10.3	187.9

So. 1/4

White	15.0	183.2
	13.9	184.3
	13.6	184.6
C	12.9	185.3
	12.3	185.9
	11.4	187.8
Elms	10.3	187.9

Center

Elms	9.7	188.5
	10.8	187.4
	11.1	189.1
C	11.5	186.7
	12.0	186.2
	13.5	184.7
White	14.5	183.7
White	14.6	183.6
	13.4	184.8
	11.2	187.0
C	10.7	187.5
	10.5	187.7
	10.1	188.1
Elms	9.7	188.5

No. 1/4

710. C6.

E line	9.2	189.0
	9.5	188.7
	9.8	188.4
C	10.7	187.5
	11.7	186.5
	13.4	184.8
white	14.4	183.8

north line Exchange place

white	13.3	184.9
	13.0	185.2
	12.0	186.2
C	10.6	187.6
	9.6	188.6
	9.0	189.2
E line	8.4	189.8

2' no.

white	12.8	185.4
	12.8	185.4
	12.0	186.2
C	10.6	187.6
	9.4	188.8
	6.5	191.7
E line	5.4	192.8

25' no.

E line	5.5	192.7
	6.5	191.7
	8.1	190.1
	9.6	188.6
	10.9	187.3
	12.1	186.1
white	12.1	186.1

COLLEGE 1982

50' no.

White 10.9 187.3

10.7 187.5

9.2 189.0

C 8.6 189.6

6.0 192.2

5.8 192.4

E line 3.0 195.2

75' no.

E line +2' 2.9 195.3

4.2 194.0

5.5 192.7

6.6 191.6

C 7.9 190.3

8.6 189.6

8.7 189.5

White 9.7 188.5

1982

28

100' no.

White 8.0 190.2

7.4 190.8

6.5 191.7

C 6.1 192.1

5.4 192.7

4.3 193.9

E line 2.5 195.2

120' no. (break)

E line 1.4 196.8

3.4 194.8

4.4 193.8

C 5.1 193.1

5.9 192.3

6.9 191.3

White 7.4 190.8

COLLEGE 198.2

150' no.

White 7.6 190.6 ✓  
 6.8 191.4 ✓  
 5.7 192.5 ✓  
 C 5.4 192.8 ✓  
 4.4 193.8 ✓  
 3.1 195.1 ✓  
 Elms 0.5 197.7 ✓

175' no.

Elms  
 +4'  
 +6'  
 sb. 0.3 197.9 ✓  
 0.4 197.8 ✓  
 1.8 196.7 ✓  
 2.3 195.0 ✓  
 4.2 194.0 ✓  
 C 5.3 192.9 ✓  
 5.9 192.3 ✓  
 5.9 192.3 ✓  
 White 6.2 192.0 ✓

198.2

29

200' no.

White 8.2 190.0 ✓  
 7.0 191.2 ✓  
 5.8 192.4 ✓  
 C 5.3 192.9 ✓  
 3.6 194.6 ✓  
 1.8 196.4 ✓  
 0.8 197.4 ✓

225' no.

Elms 0.8 197.4 ✓  
 2.0 196.2 ✓  
 3.2 195.0 ✓  
 C 4.5 193.7 ✓  
 5.3 192.7 ✓  
 7.0 191.2 ✓  
 White 8.6 189.6 ✓



COLLEGE 1982

250' no.

White	9.0	188.2 <sup>v</sup>
	7.1	191.1 <sup>v</sup>
	5.8	192.4 <sup>v</sup>
C	5.0	193.2 <sup>v</sup>
	2.1	196.1 <sup>v</sup>
	1.4	196.8 <sup>v</sup>
Elmo	0.7	197.5 <sup>v</sup>

275' no.

Elmo	1.2	197.0 <sup>v</sup>
	2.6	195.6 <sup>v</sup>
	3.5	194.7 <sup>v</sup>
C	5.3	192.9 <sup>v</sup>
	6.6	191.6 <sup>v</sup>
	7.5	190.7 <sup>v</sup>
White	9.0	189.2 <sup>v</sup>

1982

30

300' no.

White	7.7	190.5 <sup>v</sup>
	7.4	190.8 <sup>v</sup>
	6.3	191.9 <sup>v</sup>
C	5.2	193.0 <sup>v</sup>
	3.3	197.9 <sup>v</sup>
	2.7	195.5 <sup>v</sup>
Elmo	1.5	196.7 <sup>v</sup>

320' no. (break)

Elmo	1.1	197.1 <sup>v</sup>
	2.8	195.4 <sup>v</sup>
	3.7	194.5 <sup>v</sup>
C	5.0	193.2 <sup>v</sup>
	6.9	191.3 <sup>v</sup>
	7.5	190.7 <sup>v</sup>
White	8.1	190.1 <sup>v</sup>

COLLEGE 198.4

350' no.

White 8.2 190.0

7.5 190.7

6.2 192.0

C 4.8 198.4

3.0 195.2

1.9 196.3

Blue 0.9 197.3

375' no.

Blue 0.7 197.5

2.3 195.9

3.0 195.2

C 4.1 194.1

5.4 192.8

7.0 191.2

White 8.0 190.2

198.3

31

400' no.

White 8.4 189.8

6.7 191.5

5.1 193.1

C 3.6 194.6

2.7 195.5

1.8 196.4

Blue -0.2 198.4

425' no.

Blue 0.1 198.1

1.2 197.0

1.5 196.7

C 2.5 195.7

3.9 194.3

6.5 191.7

White 7.6 190.6

450' no.

White	7.2	191.0
	6.2	192.0
	4.2	194.0
C	2.8	195.4
	2.5	195.7
	2.3	195.9
Elvis	0.2	198.0

475' no.

Elvis	0.6	197.6
	2.5	195.7
	3.3	194.9
C	3.7	194.5
	4.5	193.7
	6.8	191.4
White	7.6	190.6

500' no. (No line perfect play)

White	8.3	189.9
	6.9	191.3
	6.0	192.2
C	5.5	192.7
	4.2	194.0
	2.7	195.5
Elvis	2.35	195.9

1' no. of property

White	8.3	189.9
	6.9	191.3
	6.0	192.2
C	5.5	192.7
	4.7	193.5
	3.6	194.6
Elvis	3.1	195.1

So. cb.

Elms		3.7	194.5
		4.1	194.1
		5.2	193.0
C		6.1	192.1
		6.9	191.3
		7.6	190.6
White	Cement curb.	8.2	190.0
	1' no. of 40. curb.		
Elms		4.4	193.8
		5.7	193.1
		5.8	192.4
C		6.6	191.6
		7.1	191.1
		8.0	190.2
White		9.3	189.9

So 1/4

White		9.3	189.9
		8.2	190.0
		7.6	190.6
C		6.8	191.4
		5.9	192.3
		5.2	193.0
		4.5	193.7
Elms			
	Center		
Elms		4.0	194.2
		4.9	193.3
		5.4	192.8
C		6.5	191.7
		7.9	190.3
		8.9	189.3
White		9.6	188.6

COLLEGE 198.2

710.14

White

10.1 188.1

9.2 189.0

8.6 189.6

C

7.3 190.9

6.2 192.0

5.7 192.5

Elvis

4.8 193.4

710.06.

Elvis

5.6 192.6

5.9 192.5

6.7 191.5

C

8.3 189.9

9.1 189.1

9.6 188.6

White

10.1 188.1

198.13

24

North line prospect place

White

Cement and 10.2 188.0

9.9 188.3

9.4 188.8

C

8.7 189.5

7.5 190.7

6.8 191.4

Elvis

6.8 191.4

J.P.

10.30 187.83  
BMI. → 187.88

Cross Section of B St. E. line 29<sup>th</sup> to 169.5 W of 29<sup>th</sup>

12 Davis  
28 Hancock  
15 Herrick

199.12

35

179

199.12

197.33. 100 ft in So. Ch. 50' E 29<sup>th</sup>

1/2 S. edge bridge

{ 2.2  
1.4

196.9  
194.7

E. Line 29<sup>th</sup>

ch.

2.8

196.3

No

1.8

197.3

E. Ch. 29<sup>th</sup>

ch

1.7

197.4

No

2.0

197.1

1/2

2.0

197.1

ch

2.3

196.8

C

2.1

197.0

1/2

2.3

196.8

1/2

2.2

196.9

+2

3.8

195.3

ch

2.7

196.4

C

5.5

193.6

+5

3.3

195.8

1/2

4.5

194.6

5.

7.9

189.2

+6

3.1

196.0

+14

9.6

189.5

ch

3.0

196.1

+35

20.4

178.7

+7

3.9

195.2

+45

21.4

177.7

5.

8.1

191.0

8.5 W of E. line E. end bridge

+11

15.4

183.7

No

2.0

197.1

+30

19.3

179.8

ch

2.3

196.8

+45

22.0

177.1

1/2

2.3

196.8

+2: No. line bridge

{ 2.2

196.9

{ 3.7

195.4

C

{ 2.4

196.7

{ 5.4

193.7

199.12

B ST.

E 4 29<sup>th</sup> ST

No	2.5	196.6
cl	2.5	196.6
4	2.3	196.8
+2	{ 2.3 3.3 }	196.8 195.3
C	4.6	194.5
i	5.0	194.1
+6	2.8	195.3
cl	3.5	195.6
+8	4.9	194.2
50	7.7	191.4
+26	19.3	179.8
+45	22.4	176.7

ctr 29<sup>th</sup>

No	2.4	196.7
cl	2.6	196.5
4	2.1	197.0
+2	{ 2.4 5.3 }	196.7 193.3
C	7.0	192.1
4	7.2	191.9

199.1

36

+6	4.6	194.5
cl	4.3	194.8
50	5.2	193.9
No	2.3	196.8
cl	3.0	195.8
+10	3.2	195.9
4	5.7	193.4
C	7.1	192.0
4	6.6	192.5
+8	4.6	194.5
cl	4.6	194.5
50	5.3	193.8

W 4 29<sup>th</sup>

W 4

No	2.5	196.6
+7	3.2	195.9
d	5.7	193.9
+3	3.2	195.9
+8	3.3	195.8

199.12

B ST.

W. Cl 29<sup>th</sup>

No. 2	7.9	191.2
0	9.4	189.7
4	9.5	189.6
+8	5.0	194.1
Cl	4.8	194.3
5.0	5.5	193.6

W. line 29<sup>th</sup>

No.	3.0	196.1
+13	3.4	195.7
Cl	9.1	190.0
+4	3.9	195.2
+10	6.5	192.6
24	11.0	188.1
C	14.7	184.9
24	11.9	187.2
18	4.6	194.5
Cl	4.9	194.2
5.0	6.7	192.4
+30	2.3	194.8
+45	2.62	172.9

199.1

37

9' W 29<sup>th</sup>

5.4	17.3	181.8
7	4.7	194.4
Cl	5.0	194.1
25	5.5	193.6
5.0	13.4	185.7
+30	25.2	173.9
+55	31.2	167.9
20' No of No line	11.2	187.9

No.	11.0	188.1
+9	4.6	194.5
Cl	12.0	187.1
+8	10.5	188.6
24	18.9	185.2
C	17.6	181.5
+8	13.5	185.6
T.P.	0.26	186.42
	12.96	186.16

25' W 29<sup>th</sup>

30' No.	5.7	180.7
12 "	5.2	181.2
No	6.9	179.5
+4	6.0	180.4



186.4225° W 29<sup>th</sup>B ST.

No + 11	7.6	178.8		
ct	10.5	175.9		
+5	8.2	178.1		
z	9.3	177.1		
C	11.0	175.4		
z	10.7	175.7		
ct	8.1	177.6		
S.	11.0	175.4		
+4	9.5	176.9		
+28	17.2	169.1		
+40	21.0	165.4		
+55	22.0	164.4		
T.P.	191	<u>175.37</u>	1296	17346
		50° W 29 <sup>th</sup>		
40° No	0.8	174.6		
No	6.4	169.0		
ct	7.6	167.8		
z	7.5	167.9		
C	7.5	167.9		

175.450° W 29<sup>th</sup>

38

L	7.2	168.2
ct	8.7	166.7
30	10.8	164.6
60° S.	14.7	160.7
	75° W 29 <sup>th</sup>	
60° S.	12.4	163.0
16 "	13.4	162.0
50	12.8	162.6
ct	12.0	163.4
z	11.6	163.8
C	11.7	163.7
4	11.1	164.3
ct	10.2	165.2
No	10.6	164.8
50° No	8.9	166.5
	93° W 29 <sup>th</sup>	
50° No	9.1	166.3
No	11.0	164.4
ct	11.1	164.3

175.37

B 5T

100 W 29<sup>th</sup>

50 No	9.0	166.4
6.	10.8	164.6
No	10.2	165.2
ch	9.1	166.3
4	8.1	167.3
C	7.2	168.2
4	7.4	168.0
ch	8.8	166.6
5.	7.8	167.6
40's 0	5.6	169.8

125 W 29<sup>th</sup>

40's No	6.4	168.9
7' "	1.3	174.1
No	0.9	174.5
49	0.2	175.2
ch	2.2	173.2
T.P.	11.47	186.78
44	0.06	175.31
44	10.2	176.6
44	9.3	177.5

186.8

29

C	8.3	178.5
4	8.5	178.3
ch	8.9	177.9
5.	9.1	177.7
3560	11.6	175.2
T.P.	10.90	197.26
	0.42	186.36

150 W 29<sup>th</sup>

40's No	22.4 E	174.9
	18.9 W	178.4
20 "	16.9	180.4
No	8.0	189.3
48	6.3	192.0
ch	7.4	189.9
47	4.8	192.5
44	7.1	190.2
C	9.2	188.0
44	7.9	189.4
48	1.4	195.9
ch	1.3	196.0
48	1.7	195.6

1972.6

B ST.

100 W 29<sup>th</sup>

So	5.2	192.1
+20	14.0	183.3
+30	14.2	183.1

107 W 29<sup>th</sup>

No Cl.	1.9	195.4
+9	2.8	194.5
No	5.1	192.2
+1	7.3	190.0
+19	14.7	182.6
+20	17.2	180.1
+30	17.6	179.8

169.5 W 29<sup>th</sup> Wood bridge

No	1.7	195.6
+13	1.0	196.3
cl	2.2	195.1
+2	0.7	196.6
+9	1.4	195.9
1/4	3.4	193.9
C	4.2	193.1

197.3

40

Li	5.0	192.3
+5	14	195.9
cl	0.8	196.5
So	0.6	196.7

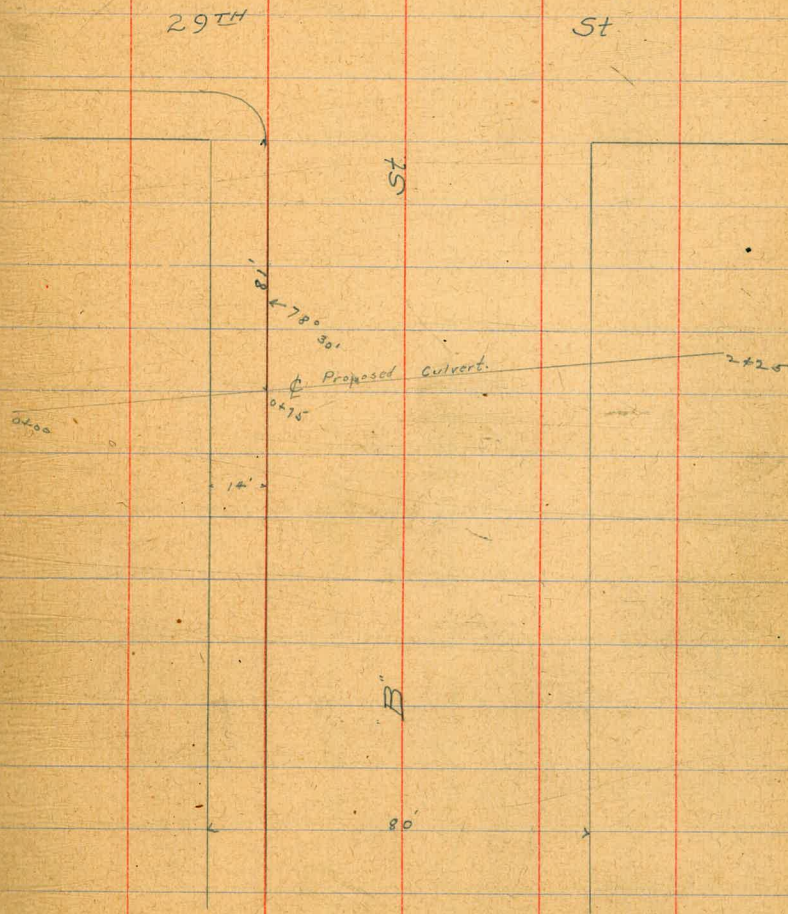
Levels over Proposed Culvert

Station	Level	Offset	Level
	4.36		164.16
			164.80
0+00		2.6	
+25		3.6	
+50		4.3	
+75		4.8	
1		5.4	
+25		5.8	
+50		4.9	
+75		5.9	
2		7.1	
+25		8.2	
+50		8.8	

Note - Locate ends of  
culverts by slope (plotting).  
Dredging has 20,000 cu ft to sell at 20¢

Location of Proposed Culvert across B St  
bet 28th & 29th Sts

14 (Date) 41  
28 Hancock  
15 Herrick



42

7/14/16  
Grand  
Roofs  
Miller

CROSS-SECTION OF  
PENNSYLVANIA AVE  
From W.L. Eagle Street  
To E.L. Goldsmith St.

Considered as a 60' st. with  
14' curbs + 13' 1/2  
NS Notes for a 60' st. also  
taken. Put down as pluses in  
with 80' notes.  
60' is the legal width.

spk. S.M. Eagle  
+ Pennyl.

2644

43

on B.M.	9.53	2644.3	254.90				
		W.L. Eagle St.		db		9.3	255.1
				+6	FL	9.6	254.8
				1/4		10.1	254.3
S		9.9	254.5	+3	db	10.1	254.3
+10	db	10.1	254.3	0	1/4	9.6	254.8
db		10.5	253.9	+10	+	9.7	254.7
+6	1/4	10.2	254.0	1/4		9.8	254.6
1/4		10.0	254.4	+7	1/4	10.0	254.4
+3	✓	9.9	254.5	db		10.7	253.7
0	1/4	9.9	254.5	+2		9.6	254.8
+10	db	10.2	254.2	+4		6.8	257.6
1/4		10.2	254.2	5		6.1	258.3
+7	FL	9.9	254.5				
						10' West.	
db		9.9	254.5	5		5.3	259.1
+4		9.5	254.9	+10	1/4	5.1	259.3
N		9.1	255.3	db		9.7	254.7
		2' West.		+6	1/4	9.4	255.0
N		7.1	257.3	1/4		9.0	255.4
+4		7.3	257.1	+3	+	8.9	255.5
+10		9.1	255.3	0	1/4	9.1	255.3

264.43

+10	cb	9.2	255.2 ✓
1/2		9.5	254.9 ✓
+7	HL	9.3	255.1 ✓
cb		9.0	255.4 ✓
+4		8.4	256.0 ✓
+9		5.4	259.0 ✓
N		5.2	259.2 ✓
35' WEST			
N		5.3	259.1 ✓
+7		5.3	259.1 ✓
+10		6.2	258.2 ✓
+12		7.6	256.8 ✓
cb		8.0	256.9 ✓
+6	HL	8.3	256.1 ✓
1/4		8.1	256.3 ✓
+3	cb	7.9	256.5 ✓
C	1/4	7.9	256.5 ✓
+10	E	7.9	256.5 ✓
1/4		8.2	256.2 ✓
+7	1/4	8.3	256.1 ✓

264.4

PENNSYLVANIA

44

cb		8.5	255.9 ✓
+4	cb	5.8	258.6 ✓
5	sc	5.4	259.0 ✓
50' WEST			
5		4.9	259.5 ✓
+10	cb	5.4	259.0 ✓
cb		8.2	256.2 ✓
+6	1/4	7.9	256.5 ✓
1/2		7.5	256.9 ✓
+3	E	7.4	257.0 ✓
C	1/4	7.5	256.9 ✓
+10	cb	7.4	257.0 ✓
1/2		7.6	256.8 ✓
+7	HL	7.7	256.7 ✓
cb		7.3	257.1 ✓
+4		4.8	259.6 ✓
N		5.2	259.2 ✓
75' WEST			
N		4.4	260.0 ✓
+10		4.4	260.0 ✓

cb	6.2	258.2 ✓
+6 HL	6.8	257.6 ✓
1/4	6.9	257.5 ✓
+3 cb	7.0	257.4 ✓
C 1/4	7.1	257.3 ✓
+10 E	7.1	257.3 ✓
1/4	7.1	257.3 ✓
+7 1/4	7.1	257.3 ✓
cb	7.2	257.2 ✓
+4 cb	6.1	258.3 ✓
+6	4.2	260.2 ✓
5 SL	3.8	260.6 ✓
	100' H	
5 SL	4.5	259.9 ✓
+8	4.5	259.9 ✓
+10 cb	6.1	258.3 ✓
cb	6.8	257.6 ✓
+6 1/4	6.6	257.8 ✓
1/4	6.7	257.7 ✓
+3 E	6.6	257.8 ✓

C 1/4	6.6	257.8 ✓
+10 cb	6.4	258.0 ✓
1/4	6.3	258.1 ✓
+7 HL	6.5	257.9 ✓
cb	4.4	260.0 ✓
44	4.1	260.3 ✓
N	4.2	260.2 ✓
	125 W	
N	4.3	260.1 ✓
+10	4.3	260.1 ✓
cb	4.3	260.1 ✓
+2	5.1	259.3 ✓
+6 HL	5.6	258.8 ✓
1/4	5.7	258.7 ✓
+3 cb	5.8	258.6 ✓
C 1/4	5.7	258.7 ✓
+10 E	6.1	258.3 ✓
1/4	6.2	258.2 ✓
+7 1/4	6.0	258.4 ✓
cb	6.0	258.4 ✓



264.43

+3		5.6	258.8 <sup>✓</sup>
+4	cb	4.6	259.8 <sup>✓</sup>
5.	sl	4.0	260.4 <sup>✓</sup>
	150' W.		
5	sl	4.0	260.4 <sup>✓</sup>
+10	cb	3.9	260.5 <sup>✓</sup>
+11		5.0	259.4 <sup>✓</sup>
cb		5.2	259.2 <sup>✓</sup>
+6	1/4	5.1	259.3 <sup>✓</sup>
1/4		5.1	259.0 <sup>✓</sup>
+3	ε	5.4	259.0 <sup>✓</sup>
c	1/4	5.6	258.8 <sup>✓</sup>
+10	cb	5.6	258.8 <sup>✓</sup>
1/4		5.3	259.1 <sup>✓</sup>
+7	πc	5.2	259.1 <sup>✓</sup>
+11		4.9	259.5 <sup>✓</sup>
cb		4.1	260.3 <sup>✓</sup>
+4		4.3	260.1 <sup>✓</sup>
N		4.3	260.1 <sup>✓</sup>

264A.

PENNSYLVANIA

46

175' W.

N

+10

cb

+2

+6 πc

1/4

+3 cb

c 1/4

+10 ε

1/4

+7 1/4

cb

+4 cb

+6

5 sl

+10 cb

cb

200' W.

36

38

44

48

47

48

48

49

48

47

47

45

44

36

37

39

41

45

260.8<sup>✓</sup>260.6<sup>✓</sup>260.0<sup>✓</sup>259.6<sup>✓</sup>259.7<sup>✓</sup>259.6<sup>✓</sup>259.6<sup>✓</sup>259.5<sup>✓</sup>259.6<sup>✓</sup>259.7<sup>✓</sup>259.7<sup>✓</sup>259.9<sup>✓</sup>260.0<sup>✓</sup>260.8<sup>✓</sup>260.7<sup>✓</sup>260.5<sup>✓</sup>260.3<sup>✓</sup>259.9<sup>✓</sup>

264.43

+6	1/4	46	259.8 <sup>✓</sup>
1/4		46	259.8 <sup>✓</sup>
+3	C	46	259.8 <sup>✓</sup>
C	1/4	47	259.7 <sup>✓</sup>
+10	d	46	259.8 <sup>✓</sup>
1/4		47	259.7 <sup>✓</sup>
+7	HL	49	259.5 <sup>✓</sup>
cb		44	260.0 <sup>✓</sup>
+4		43	260.1 <sup>✓</sup>
N		44	260.0 <sup>✓</sup>
225' W			
N		48	259.6 <sup>✓</sup>
+10		45	259.9 <sup>✓</sup>
cb		45	259.9 <sup>✓</sup>
+6	HL	45	259.9 <sup>✓</sup>
1/4		47	259.7 <sup>✓</sup>
+3	d	46	259.8 <sup>✓</sup>
C	1/4	43	260.1 <sup>✓</sup>
+10	e	40	260.4 <sup>✓</sup>
1/4		38	260.6 <sup>✓</sup>

264.4

PENNSYLVANIA

4

+7	1/4	38	260.6 <sup>✓</sup>
cb		38	260.6 <sup>✓</sup>
+4	cb	40	260.4 <sup>✓</sup>
5	sl	41	260.3 <sup>✓</sup>
250' W			
5	sl	41	260.3 <sup>✓</sup>
+10	d	43	260.1 <sup>✓</sup>
cb		44	260.0 <sup>✓</sup>
+6	1/4	44	260.0 <sup>✓</sup>
1/4		45	259.9 <sup>✓</sup>
+3	e	46	259.8 <sup>✓</sup>
C	1/4	46	259.8 <sup>✓</sup>
+10	d	47	259.7 <sup>✓</sup>
1/4		47	259.7 <sup>✓</sup>
+7	HL	49	259.5 <sup>✓</sup>
cb		49	259.5 <sup>✓</sup>
+4		51	259.3 <sup>✓</sup>
N		51	259.3 <sup>✓</sup>
275' W			
N		35	258.9 <sup>✓</sup>

264.43

+10		5.5	258.9 ✓
cb		5.3	259.1 ✓
+6 ML		5.3	259.1 ✓
1/4		5.2	259.2 ✓
+3 cb		5.0	259.4 ✓
C 1/4		4.9	259.5 ✓
+10 t		5.0	259.4 ✓
1/4		5.0	259.4 ✓
+7 1/4		5.1	259.3 ✓
cb		4.9	259.5 ✓
+4 d		4.9	259.5 ✓
S SL		4.5	259.1 ✓
N	285 W	5.4	259.0 ✓
	300 W		
S s		5.0	259.4 ✓
+10		5.6	258.8 ✓
+10.0 cb		5.8	258.9 ✓
cb		5.9	258.5 ✓
+6 1/4		5.9	258.5 ✓
1/4		5.6	258.8 ✓
+3 t		5.6	258.8 ✓

asmt  
= walk to  
house  
= dilapidated  
asmt walk  
to house

= 100 ft.

264A

PENNSYLVANIA

C 1/4		5.7	258.7 ✓	48
+10 cb		5.3	259.1 ✓	
1/4		5.1	259.3 ✓	
+7 ML		5.3	259.1 ✓	
cb		5.6	258.8 ✓	
+4		5.6	258.8 ✓	
N		5.5	258.9 ✓	
	315 W			
N		6.4	258.0 ✓	
+10		6.2	258.2 ✓	
cb		6.2	258.2 ✓	
+6 ML		6.3	258.1 ✓	
1/4		6.0	258.4 ✓	
+3 cb		6.1	258.3 ✓	
C 1/4		5.9	258.5 ✓	
+10 t		6.0	258.4 ✓	
1/4		6.2	258.2 ✓	
+7 t		6.4	258.0 ✓	
cb		6.1	258.3 ✓	
+4 cb		6.1	258.3 ✓	
S		6.2	258.2 ✓	

264.43

325' W

S		88	255.6 ✓	
+10 cb		88	255.6 ✓	
cb		8.5	255.9 ✓	
+6 1/4		9.8	254.6 ✓	
1/4		9.3	256.1 ✓	
+3 e		87	255.7 ✓	
C 1/4		7.1	257.3 ✓	
+10 cb		6.7	257.7 ✓	
1/4		6.8	257.6 ✓	
+7 HL		7.1	257.3 ✓	
cb		6.9	257.5 ✓	
+4		7.0	257.4 ✓	
N		7.4	257.0 ✓	
T.P.	3.61	259.10 ✓	8.94	255.49 ✓
-8		30	256.1 ✓	
-4		40	255.1 ✓	
N		44	259.7 ✓	
+10		3.9	255.2 ✓	
cb		3.8	255.3 ✓	
+6 HL		37	255.4 ✓	

335' W

259.1

PENNSYLVANIA

49

1/4		4.0	255.1 ✓
+3 cb		3.9	255.2 ✓
C 1/4		4.4	254.7 ✓
+10 e		6.6	252.5 ✓
1/4		7.4	251.7 ✓
+7 1/4		9.1	250.0 ✓
cb		9.5	249.6 ✓
+4 cb		9.5	249.6 ✓
S sl		8.2	250.9 ✓
+15		9.4	249.7 ✓
	3 1/2' W		
-15		12.6	246.5 ✓
S sl		11.7	247.4 ✓
+10 cb		13.6	245.5 ✓
N		14.4	244.7 ✓
+6 1/4		13.5	245.6 ✓
1/4		10.6	248.5 ✓
+3 e		9.9	249.2 ✓
C 1/4		8.1	251.0 ✓
+10 cb		7.3	251.8 ✓

259.10

1/4	7.1	252.0 ✓
+7 HL	6.8	252.3 ✓
cb	6.4	252.7 ✓
+4	6.2	252.9 ✓
N	6.3	252.8 ✓
+3	5.8	253.3 ✓
+8	3.7	255.4 ✓
	355' W	
-5	2.7	256.4 ✓
N	5.3	253.8 ✓
+10	8.6	250.5 ✓
cb	9.5	249.6 ✓
+6 HL	11.2	247.9 ✓
1/4	13.2	245.9 ✓
+3 cb	14.6	244.5 ✓
C 1/4	15.7	243.4 ✓
+10 d	19.0	240.1 ✓
1/4	19.8	239.3 ✓
+7 1/4	20.8	238.3 ✓
cb	21.4	237.7

259.1

PENNSYLVANIA

50

+4 cb	21.3	237.8 ✓
5 sl	20.0	239.1 ✓
+20	19.6	239.5 ✓
	362' W	
-20	24.0	235.1 ✓
5 sl	24.0	235.1 ✓
+5	23.9	235.2 ✓
+10 cb	24.9	234.2 ✓
cb	24.9	234.2 ✓
+6 1/4	23.6	235.5 ✓
1/4	22.1	237.0 ✓
+3 d	21.0	238.1 ✓
C 1/4	16.5	242.0 ✓
+10 cb	13.0	246.1 ✓
1/4	12.3	246.8 ✓
+7 HL	10.2	248.9 ✓
cb	8.9	250.2 ✓
+4	7.6	251.5 ✓
N	3.6	255.5 ✓

259.10

370 W

N	2.2	256.9 ✓
+10	5.4	253.7 ✓
cb	6.8	252.3 ✓
+6 NL	8.2	250.9 ✓
1/4	9.7	249.4 ✓
+3 cb	10.3	248.8 ✓
c 1/4	13.1	245.7 ✓
+10 E	17.6	241.5 ✓
1/4	18.3	240.8 ✓
+7 1/4	20.6	238.5 ✓
cb	23.1	236.0 ✓
+4 cb	24.6	234.5 ✓
S SL	28.0	231.1 ✓
+25	28.0	231.1 ✓

375 W

-25	30.3	228.8 ✓
-5 SL	28.0	231.1 ✓
+10 cb	23.1	235.7 ✓
cb	21.2	237.9 ✓

259.1

PENNSYLVANIA

5

+6 1/4

1/4

+3 E

c 1/4

+10 +

1/4

+7 NL

cb

+4

N

375 W

N

+10

cb

+6 NL

1/4

+3 cb

c 1/4

+10 E

1/4

19.0 240.1 ✓

16.3 242.8 ✓

15.2 243.9 ✓

11.9 247.2 ✓

9.0 250.1 ✓

8.4 250.7 ✓

7.0 252.1 ✓

5.0 254.1 ✓

3.9 255.2 ✓

1.9 257.2 ✓

1.9 257.2 ✓

3.0 256.1 ✓

3.4 255.7 ✓

4.2 254.9 ✓

5.2 253.9 ✓

6.1 253.0 ✓

9.3 249.8 ✓

12.2 246.9 ✓

13.5 245.6 ✓

259.10

+7 1/4	16.1	243.0 ✓
cb	18.5	240.6 ✓
+4 cb	20.4	238.7 ✓
S SL	24.4	239.7 ✓
+22	33.4	225.7 ✓
+35	31.8	227.3 ✓
+45	28.3	230.8 ✓
400' W		
-45	33.1	226.0 ✓
-35	37.3	221.8 ✓
S SL	22.2	236.9 ✓
+10 cb	17.7	241.4 ✓
cb	15.9	243.2 ✓
+6 1/2	13.8	245.3 ✓
1/4	11.2	247.9 ✓
+3 t	9.9	249.2 ✓
C 1/4	6.0	253.1 ✓
+5	4.0	255.1 ✓
+10 cb	3.7	255.4 ✓
1/4	3.5	255.6 ✓

259.1

PENNSYLVANIA

52

+7 1/4	33	2558 ✓
cb	31	2560 ✓
+4	2.9	256.2 ✓
N	1.8	257.3 ✓ = 1/4 W
410' W		
N	2.2	256.9 ✓ = 1/4 W
+10	31	256.0 ✓
cb	34	255.7 ✓
+6 1/2	36	255.5 ✓
1/4	37	255.4 ✓
+3 cb	38	255.3 ✓
+8	40	255.1 ✓
C 1/4	5.8	253.3 ✓
+10 t	9.6	249.5 ✓
1/4	11.1	248.0 ✓
+7 1/4	14.0	245.1 ✓
cb	15.7	243.4 ✓
+4 cb	18.1	241.0 ✓
S	22.4	236.7 ✓
+25	34.0	225.1 ✓

259.10

+38		39.0	220.1 <sup>✓</sup> = bottom draw
	425' W.		
-38		41.0	218.1 <sup>✓</sup> = bottom draw
-25		36.0	223.1 <sup>✓</sup>
5 sl		25.4	233.7 <sup>✓</sup>
+10 cb		21.2	237.9 <sup>✓</sup>
cb		18.9	240.2 <sup>✓</sup>
+6 1/4		16.9	242.2 <sup>✓</sup>
1/4		14.1	245.0 <sup>✓</sup>
+3 ±		12.2	246.9 <sup>✓</sup>
c 1/4		8.6	250.5 <sup>✓</sup>
+10 cb		4.4	254.7 <sup>✓</sup>
1/4		4.5	254.6 <sup>✓</sup>
+7 HL		4.3	254.8 <sup>✓</sup>
cb		4.1	255.0 <sup>✓</sup>
+4		3.9	255.2 <sup>✓</sup>
N		3.0	256.1 <sup>✓</sup> = lawn
	450' W		
N		4.4	254.7 <sup>✓</sup> = lawn
+1		5.0	254.1 <sup>✓</sup>

259.1

PENNSYLVANIA

53

+10		5.5	253.6 <sup>✓</sup>
cb		5.8	253.3 <sup>✓</sup>
+6 HL		6.2	252.9 <sup>✓</sup>
1/4		9.0	250.1 <sup>✓</sup>
+3 cb		10.0	249.1 <sup>✓</sup>
c 1/4		13.7	245.4 <sup>✓</sup>
+10 ±		17.7	241.4 <sup>✓</sup>
1/4		18.7	240.4 <sup>✓</sup>
+7 1/4		21.4	237.7 <sup>✓</sup>
cb		23.5	235.6 <sup>✓</sup>
+4 cb		26.0	233.1 <sup>✓</sup>
5 sl		30.6	228.5 <sup>✓</sup>
+28		41.0	218.1 <sup>✓</sup>
	465' W		
-25		42.0	217.1 <sup>✓</sup>
5		34.0	225.1 <sup>✓</sup>
+10		30.2	228.9 <sup>✓</sup>
cb		26.7	232.4 <sup>✓</sup>
+6 1/4		23.2	235.8 <sup>✓</sup>
1/4		21.0	238.1 <sup>✓</sup>



259.10

+3	c	19.9	239.24	
C	1/4	17.1	242.0	
+10	cb	14.0	245.1	
1/4		12.7	246.9	
+7	HL	10.6	248.5	
cb		9.0	250.1	
+4		7.6	251.5	
1/4		5.6	253.5	claw
No.		14.7	244.4	
+10		14.8	244.3	
cb		15.8	243.3	
+6	HL	17.0	242.1	15
1/4		19.0	240.1	20.2
+3	cb	20.0	239.1	21.5
C	1/4	22.4	236.7	20.6
+10	c	26.5	232.6	30.2
1/4		27.2	231.9	31.9
+7	1/4	29.3	229.8	
cb		31.8	227.3	

480' W = E.L. Gold Incht on North  
or Reynard Way

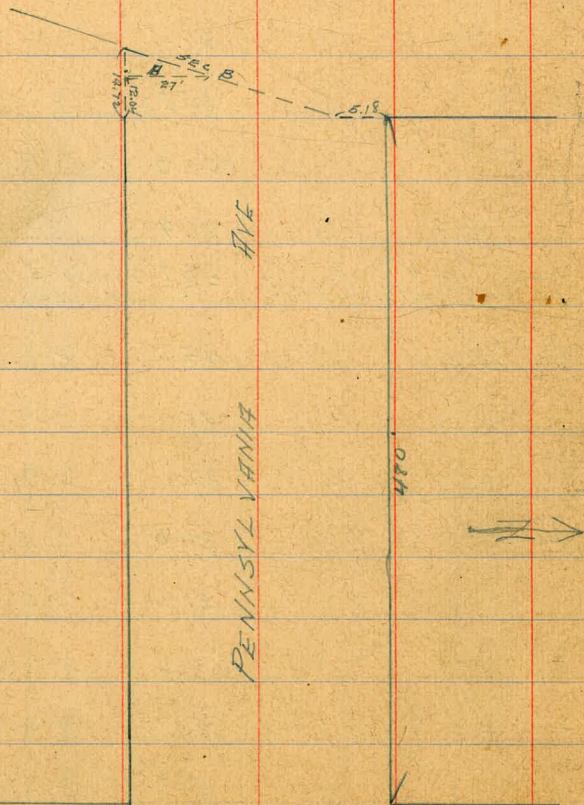
259.1 PENNSYLVANIA

54

+4	cb	33.7	225.4	
S	SL	37.6	221.5	
+10		39.8	219.3	
		492.06' W = SEC. A		
-10		41.2	217.9	
S	SL	39.3	219.8	
+10	cb	36.4	222.7	
cb		35.2	223.9	
+6	1/4	33.6	225.5	
1/4		31.9	227.2	
		SEC B 480' on No. } = E.L. Reynard Way 499.72 on So. } of Gold Incht St.		
S	SL	35.5	223.6	
+10	cb	35.0	224.1	
cb		34.6	224.5	
+6	1/4	34.0	225.1	
1/4		31.9	227.2	
+3	c	30.2	228.9	
C	1/4	25.6	233.5	
+10	cb	21.8	237.3	
1/4		20.4	238.7	

239.10

+7	HL		18.0	241.1	✓
ct			15.8	243.3	✓
+10			14.8	244.3	✓
N			14.7	244.4	✓
T.P.	9.52	265.01	3.61	255.19	✓
chken B.M.			8.02	256.99	✓ OK



EAGLE

ST.

PENNSYLVANIA

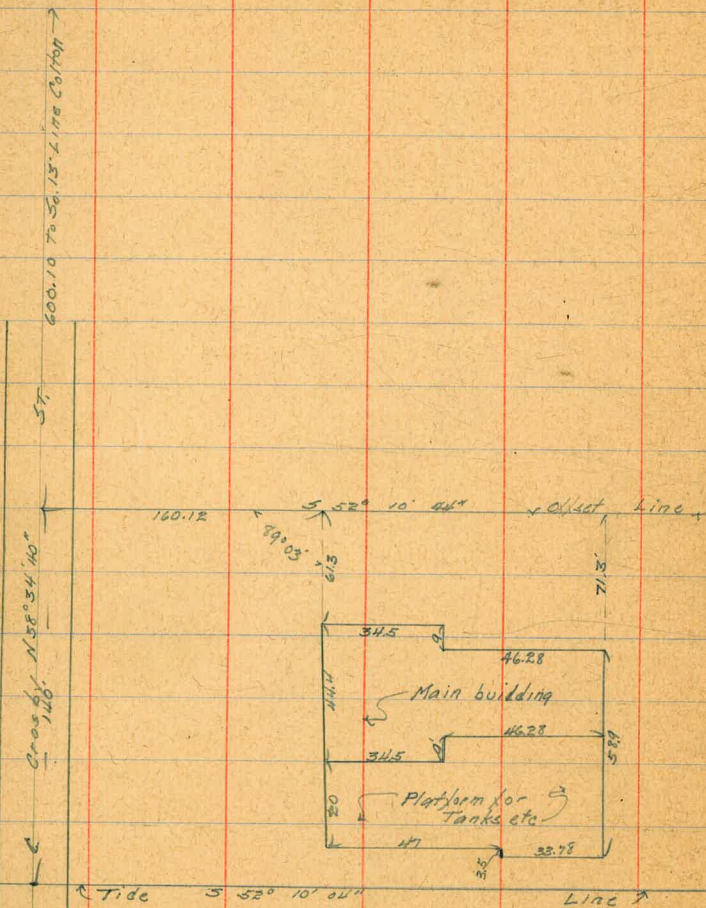
55

56

8/10/16  
Grapport  
moore  
Miller

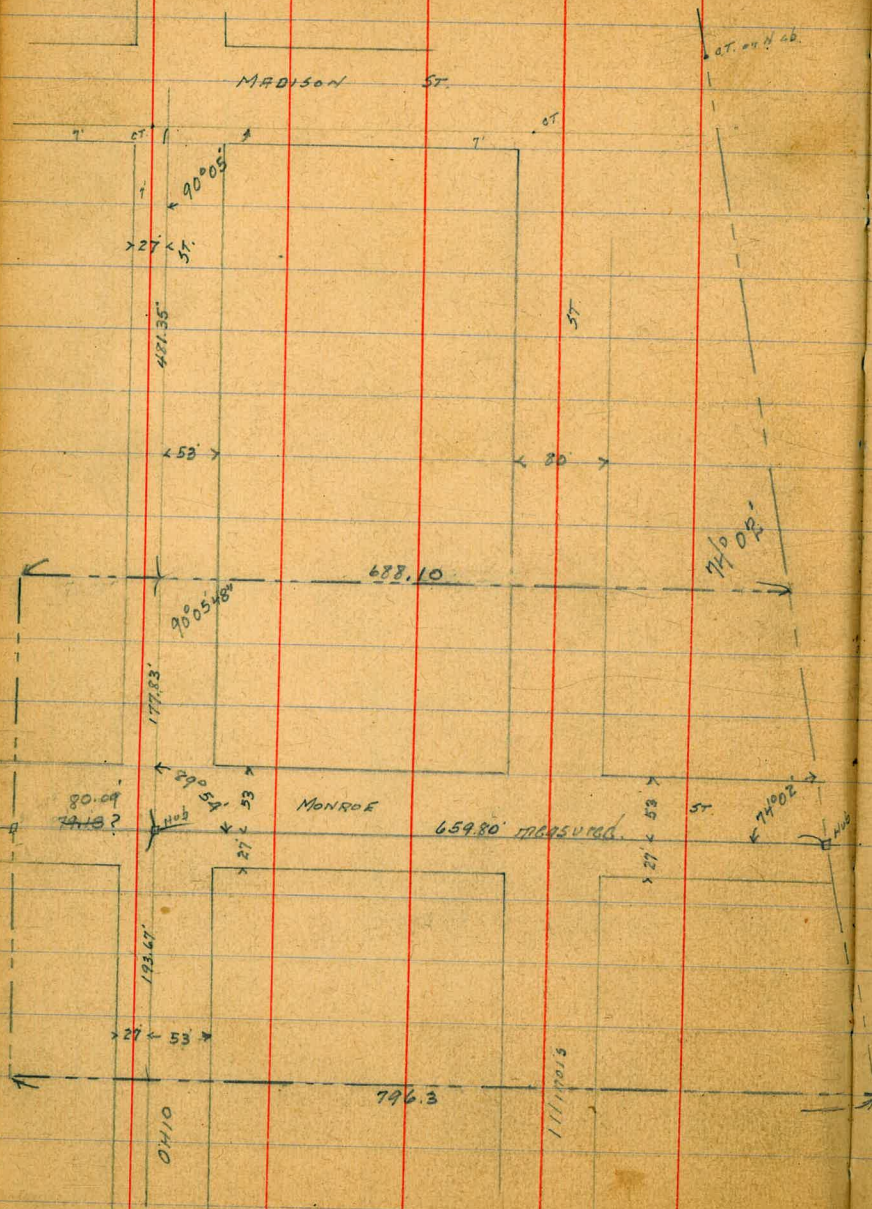
Location of Pioneer Reduction Plant  
on Bay Front East  
of Crosby St.

57



11/25/24

Gregory's Survey of Whitman Tract  
at Monroe & Ohio, Illinois



687.10  
 786.2  
 1184.4  
 742.2

52.49  
 80  
 140  
 20  
 140  
 80  
 113.20  
 62.41  
 8.10

Gregory  
Moore  
Miller

LEVELS ON ALBATROSS  
Bet. S.L. Robinson & N.L. Pennsylvania

Distances from E of Albatross, are to Cobblestone walls. Which Limit the  
graded portion of the street unless otherwise specified

B.M.	N. + D.	269.46	267.06	NE Albatross & Robinson	84 W of E	269.5	269.46	8.3	261.2
		S.L. Robinson				180' 50		8.5	261.0
Top of Cb.		2.94	266.52	on cement					
97 E of E		3.7	265.8		84 W of E		9.3	260.2	
E		4.0	265.5		E		9.0	260.5	
84 W of E		4.1	265.4		97 E of E		9.2	260.3	
Top of Cb.		3.18	266.78	on cement					
	50' 50					200' 50			
83 W of E		5.3	264.2		Top of Cb		10.75	259.71	on cement
E		5.1	264.4		97 E of E		9.9	259.6	
98 E of E		5.1	264.4		E		10.0	259.5	
	100' 50				84 W of E		10.2	259.3	
Top of Cb.		6.96	262.7	on cement	Top of Cb		11.01	258.45	on cement
96 E of E		6.6	262.9		95 W of E		11.2	258.3	
E		6.4	263.1		E		11.1	258.4	
84 W of E		6.4	263.1		96 E of E		11.0	258.5	
Top of Cb.		7.06	262.4	on cement					
	140' 50					240' 50			
84 W of E		7.8	261.7		95 E of E		12.4	257.1	
E		7.7	261.8		E		12.5	257.2	
97 E of E		7.7	261.8		85 W of E		12.8	256.7	
	160' 50								
97 E of E		8.1	261.4		T.B.	0.89	257.45	12.88	256.58

257.45

257.45

ALBATROSS  
324.7' So. = Center of Basins

60

	260' So			8.8 W of C	5.8	251.6	nest side of Basin
8.5 W of C		2.0	255.4	↓			= 2 x 2' curb
↓		1.8	255.6	↓	5.2	252.2	Basin outside measurements on both basins
9.7 E of C		1.7	255.7	9.7 E of C	5.5	252.0	East side of = 2 x 2' curb Basin
	2.80' So				340' So		
9.7 E of C		3.0	254.5	9.5 E of C	5.2	252.3	
↓		3.3	254.1	↓	5.3	252.1	
8.6 W of C		3.5	254.0	8.9 W of C	5.5	252.0	= top of wall 4' x 2' ground
					360' So		
Top of curb	300' So = S. End of Paving.		254.40 on cement	8.9 W of C	5.9	251.5	= - - -
8.6 W of C		4.0	253.4 = top of wall	↓	5.1	252.0	
↓		4.5	253.0 = ground	9.4 E of C	5.3	252.2	
↓		4.6	252.8		380' So		
9.5 E of C		4.3	253.1	9.2 E of C	5.3	252.2	
Top of curb		3.3	254.1 = top of wall 54.66 on cement	↓	5.4	252.0	
	320' So = S. end of Curbs E & W.			9.3 W of C	5.7	251.7	= - - -
9.5 E of C		5.0	252.4		400' So		
↓		5.1	252.3	9.1 W of C	5.1	252.3	
6.1 W of C		5.7	251.7 = break	↓	5.3	252.2	
9.0 W of C		5.2	252.2 = wall	9.2 E of C	5.2	252.2	= ground
					4.4	253.0	= top of wall

Vardago BK page 237

3/6.5' S of Basins 253.93  
W - - - = 253.78

257.45

420' 50

8.3 E of C	4.8	252.6
↳	5.0	252.4
9.1 W of C	4.9	252.5 = top of wall also ground.

440' 50

9.0 W of C	4.5	253.0 = top of wall
↳	4.8	252.6 = ground.
↳	4.8	252.6
9.0 E of C	4.4	253.0

460' 50

9.0 E of C	4.0	253.4
↳	4.1	253.3
9.0 W of C	4.1	253.0 = ground
↳	3.9	253.5 = top of wall

480' 50

8.8 W of C	3.7	253.5
↳	3.9	253.5
8.9 E of C	3.5	254.0

500' 50

9.0 E of C	3.4	254.0
↳	3.7	254.7 = top of wall

257.45

61

8.9 W of C	3.6	253.8
↳	3.7	253.7
8.9 W of C	3.9	254.4 = top of wall

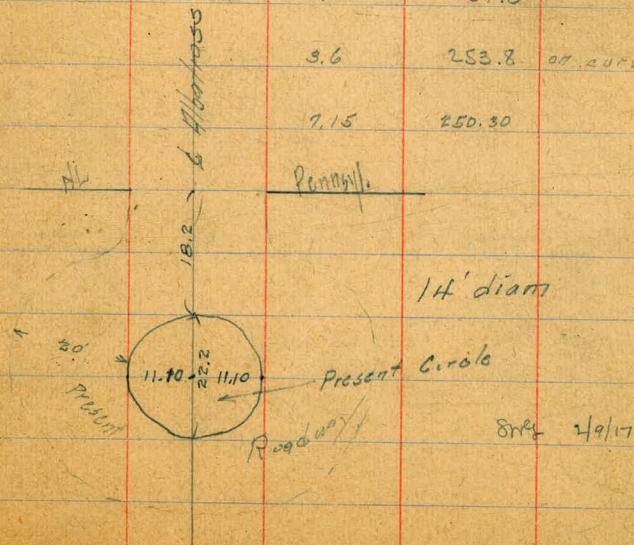
550' 50

9.2 W of C	3.6	253.8
↳	3.5	254.0
9.2 E of C	3.3	254.2

wall curves out on each side starting 8.5' N. of Pennsl.

600' 50 = N.L. PENNSYLVANIA.

13.6 E of C	3.3	254.0 on curve
9.5 W of C	3.5	254.0
↳	3.4	254.0
13.0 W of C	3.6	253.8 on curve
T.P.	7.15	250.30





9/5/16  
Gregory  
Miller

CROSS-SECTION OF  
1 DYLLWILD ST. or BRANT ST  
from S.L. Robinson Ave.  
To S.L. SLORNE AVE

30' WIDE  
5' MARKS  
5' 1/3

B.M. 1.13

268.19

267.06

NE. Robert  
Abatross

268.2

32

S.L. ROBINSON AVE.

				1/4	5.0	263.2
				C	5.2	263.0
E		43	263.9	1/4	5.3	262.9
cb		44	263.8	cb	5.1	263.1
1/4		45	263.7	W	5.4	262.8
C		48	263.4			
1/4		46	263.6	W	5.7	262.5
cb		47	263.5	cb	5.9	262.3
W		48	263.4	1/4	5.8	262.4
	25' 50"			C	5.6	262.6
W		5.1	263.1	1/4	5.6	262.6
cb		5.1	263.1	cb	5.4	262.8
1/4		5.0	263.2	E	5.2	263.0
C		49	263.3			
1/4		48	263.4	E	5.4	262.8
cb		47	263.5	cb	5.7	262.5
E		44	263.8	1/4	6.1	262.1
	50' 50"			C	5.9	262.3
E		48	263.4	1/4	6.3	261.9
cb		5.0	263.2	cb	6.3	261.9

75' 50"

90' 50"

= Door sill No.  
End of Garage

268.19

W		6.0	262.2	
	100' So.			
W		6.4	261.8	
cb		6.7	261.5	
1/2		6.6	261.6	
C		6.3	261.9	
1/4		6.2	262.0	
cb		6.0	262.2	
E		5.6	262.6	Door Sill = So. End Garage
	127.7' So.			
E		6.6	261.6	
cb		6.4	261.8	
1/2		6.6	261.6	
C		6.9	261.3	
1/4		7.2	261.0	
cb		7.3	260.9	
W		7.1	261.1	= No. side of walk to house End is on Prop. Line.
	150' So.			
W		7.8	260.4	on NW M.
cb		8.2	260.0	

268.19

63

1/4		7.8	260.4	
C		7.5	260.5	
1/4		7.4	260.8	
cb		7.3	260.9	
E		7.4	260.8	
	173.5' So.			
E		8.4	259.8	
cb		8.3	259.9	
1/2		8.4	259.8	
C		8.6	259.6	
1/4		8.8	259.4	
cb		8.9	259.3	
W		8.9	259.3	No. Side of = 6.5' walk to house. End of walk is 3' west of Prop. Line. Stop at house is 4.7' west of Prop. Line.
	180' So.			
W		9.0	259.2	So side of = 6.5' walk to house
	200' So.			
W		9.9	258.3	
cb		10.2	258.0	
1/4		10.1	258.1	
C		9.8	258.4	

268.19

1/4			9.4	258.8
cb			9.1	259.1
E			8.9	259.3
T.P.	1.63	259.10 <sup>m</sup>	10.72	257.47 <sup>v</sup>
215' 50" = N.L. SLOANE AVE 60' WIDE 10' WALKS				
E			0.3	258.8
cb			0.4	258.7
1/4			0.7	258.4
C			1.4	257.7
1/4			1.8	257.3
+4			2.1	257.0
cb			2.0	257.1
W			1.9	257.2
No. Curb				
W			3.4	255.7
cb			3.0	256.1
1/4			2.4	256.7
C			2.0	257.1
1/4			1.6	257.5
cb			1.2	257.9

10YLLWILD OR BRANT

259.1

64

E			1.0	258.1
No. QUARTER				
E			1.5	257.6
cb			1.5	257.6
1/4			2.0	257.1
C			2.8	256.3
1/4			3.1	256.0
cb			3.7	255.4
W			4.4	254.7
CENTER				
W			5.4	253.7
cb			4.7	254.4
1/4			4.3	254.8
C			3.9	255.2
1/4			3.0	256.1
cb			2.4	256.7
E			2.3	256.8
So. QUARTER				
E			3.2	255.9
cb			3.6	255.5

259.10

IDLLWILD

1/6	4.3	254.8
C	5.1	254.0
1/4	5.4	253.7
cb	5.7	253.4
W	6.4	252.7

So. CURB.

W	7.9	251.2
cb	7.4	251.7
1/4	7.0	252.1
C	6.6	252.5
1/4	5.9	253.2
cb	5.0	254.1
E	3.7	255.4

So. LINE SLOANE AVE

E	7.3	251.8
cb	7.0	252.1
1/4	8.2	250.9
C	8.7	250.4
1/4	10.0	249.1
cb	10.3	248.8

W.

11.2

247.9

65

14' So. of St. SLOANE

ON GROUND ELEV. OF HOUSE. 13.9 245.2

chk

8.81

250.29

8m

2/9/17

X sect. 33<sup>rd</sup> street at

H.5

B.M.

J.P.	4.26	301.88		297.62
J.P.	0.84	289.16	13.06	288.82
J.P.	0.14	276.18	13.12	276.04
J.P.	0.95	267.48	9.65	266.53

25' So. Kalunia

W. line

6.0 261.5

12.3 255.2

16.0 251.5

C

14.3 253.2

11.6 255.9

10.9 256.6

E. line

11.9 255.6

South line Kalunia

E. line

24.8 242.7

19.9 247.6

15.3 252.2

C

9.2 258.3

3.8 263.7

1.6 265.9

W. line

1.6 265.9

Kalunia 80' street 14' walks } builds

See Book 909

Feb 16/17

Edwards  
mood

(267.5)

South cb.

W. line

1.7 265.8

1.0 266.5

1.9 265.6

C

3.1 264.4

8.3 259.2

12.5 255.0

E. line

18.8 248.7

So. 1/4

E. line

13.3 254.2

+5'

6.8 260.7

4.3 263.2

3.0 264.5

C

2.6 264.9

2.0 265.5

1.3 266.2

W. line

2.4 265.1

J.P. So + W. 13' line 11.22 264.96

## 33rd Street at Kalmia

(267.5)

Center

White	2.5	265.0
	2.1	265.4
	3.0	264.5
C	3.2	264.3
+6'	2.5	265.0
	3.2	264.3
	7.0	260.5
Elvis	13.9	253.6

No. 14

Elvis	17.5	250.0
	10.3	257.2
+10	4.9	262.6
	4.1	263.4
C	3.3	264.2
	3.2	264.3
	2.8	264.7
White	3.0	264.5

(267.5)

67

No. 16

White	2.5	265.0
	3.7	263.8
	3.7	263.8
C	4.8	262.7
+6'	6.1	261.4
	10.0	257.5
	14.9	252.6
Elvis	20.9	246.6

North line Kalmia

Elvis	26.7	240.8
	20.1	247.4
	15.5	252.0
C	11.0	256.5
	7.3	260.2
	3.8	263.7
White	2.1	265.4

(267.5)

33rd ST.

68

4' no. Kalmia

Elm	30.0	237.5
	22.3	245.2
	16.8	250.7
C	12.9	254.6
	9.2	258.3
	4.6	262.9
White	2.5	265.0

20' no.

White	2.9	264.6
+5'	4.2	263.3
w.cb	8.2	259.3

28' no.

w.cb.	9.6	257.9
+7'	7.7	259.8
White	3.9	263.6

40' no.

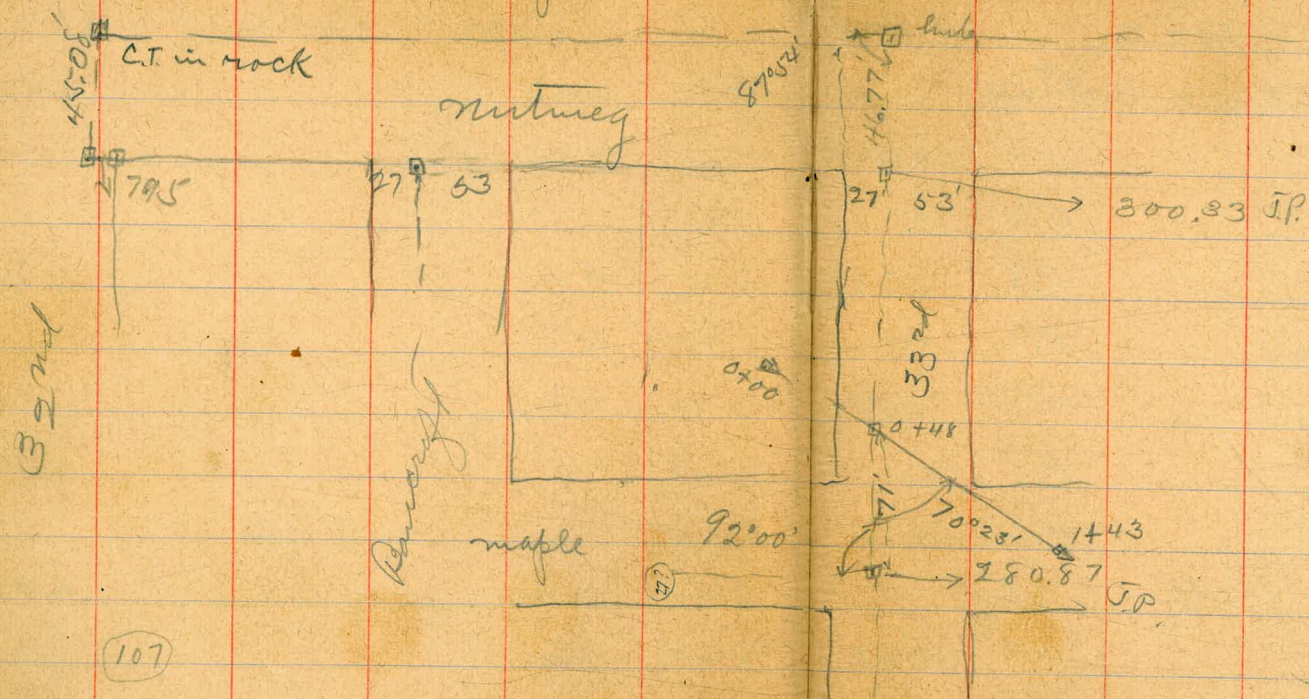
White	7.7	259.8
w.cb.	11.4	256.1

X sect. intersection at  
+ culverts at maple + Kalina

Nutmeg + 33<sup>rd</sup>  
on 33<sup>rd</sup> mar 9/17

1 builds  
2 runs  
more

69  
mm





33rd & nutmeg intersection

10' walk + 10' quarters from  
So. line nutmeg north.

70

J.P. 4.80 <sup>H.I.</sup> 305.13 300.33

305.1

South line nutmeg.

20' no.

E line 6.4 298.7

E line 6.3 298.8

5.6 299.5

5.8 299.3

5.3 299.8

5.4 299.7

C 5.0 300.1

C 5.0 300.1

4.80 300.3

4.8 300.3

4.7 300.4

4.5 300.6

W. line 4.5 300.6

W. line 4.4 300.7

10' no. (curb)

30' no.

W. line 4.4 300.7

W. line 4.3 300.8

4.5 300.6

4.6 300.5

4.7 300.4

4.9 300.2

C 5.0 300.1

C 5.1 300.0

5.3 299.8

5.5 299.6

5.8 299.3

5.9 299.2

E line 6.3 298.8

E line 6.2 298.9

305.1

40' no.

E line

6.6 298.5

6.1 299.0

5.7 299.4

C

5.2 299.9

5.0 300.1

4.7 300.4

W line

4.4 300.7

46.77 no. pueblo line

W line

4.5 300.6

4.7 300.4

5.1 300.0

C

5.4 299.7

5.8 299.3

6.2 298.9

E line

6.7 298.4

levels for culvert  
at maple + 33<sup>rd</sup>

71

J.P.

4.43 285.30

280.87

0+00

upper end culvert

11.1

274.2

+21

J.P.

0.60 272.91

12.2

273.1

+48

West 13' line 33<sup>rd</sup>

12.99

272.31

4.96

267.9

+78

4.0

268.9

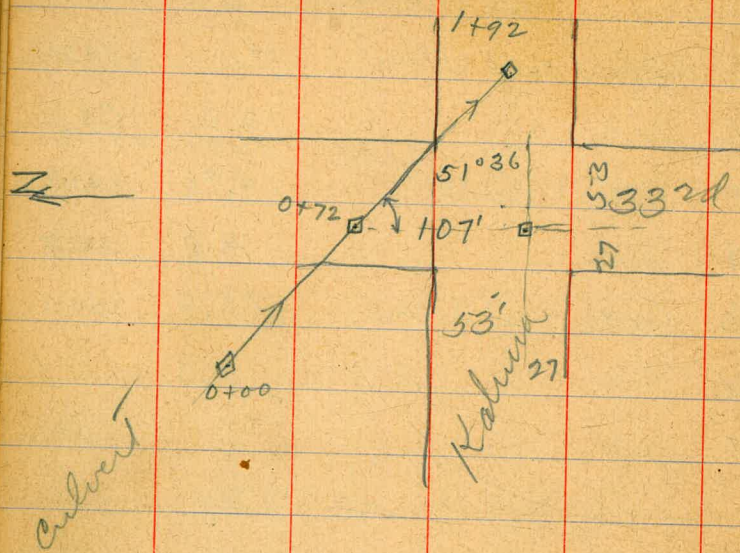
1+43

lower end culvert

13.8

259.1

~~288~~



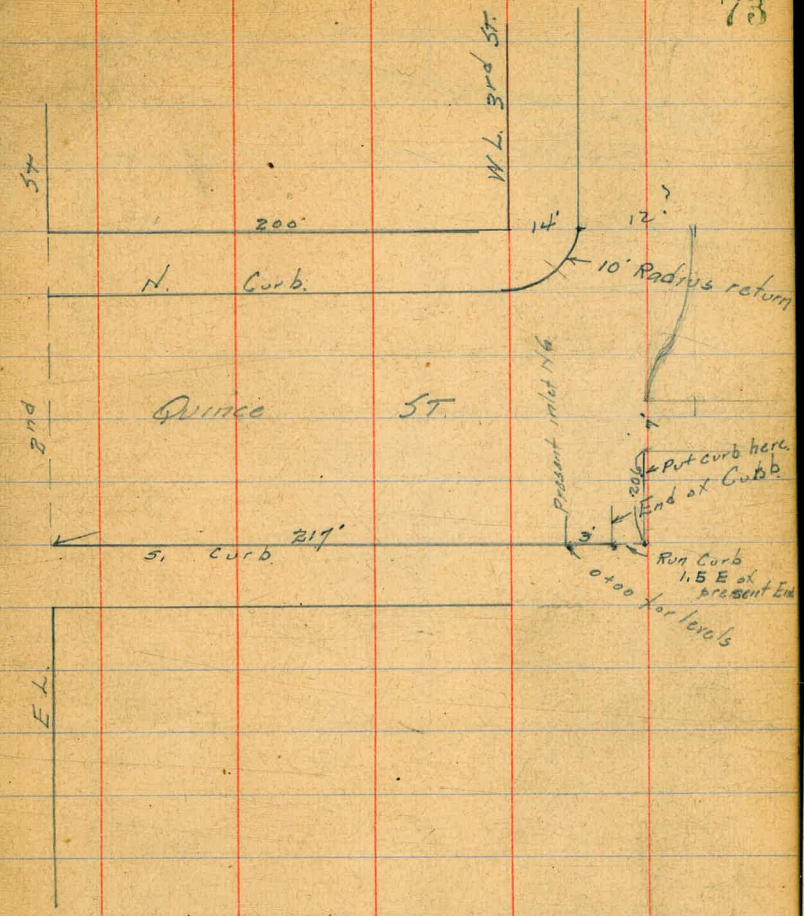
Levels for culvert } builds  
 at Kalua + 33rd } every  
 more  
 mar. 12/17

J.P.	1.34	H.I. 266.30	21	264.96
J.P.	0.33	H.I. 254.05	12.60	253.70
0+00	hub.		3.63	250.42
+42			7.1	247.0
+55			4.1	250.0
+72	hub. 13' line 33 <sup>rd</sup>		10.00	244.05
J.P.	1.68	H.I. 245.73		
+22			4.4	241.3
+62			10.7	235.0
+92	hub		11.97	233.76

11/27/23 Grap. Quince 2nd 3rd  
Improvements

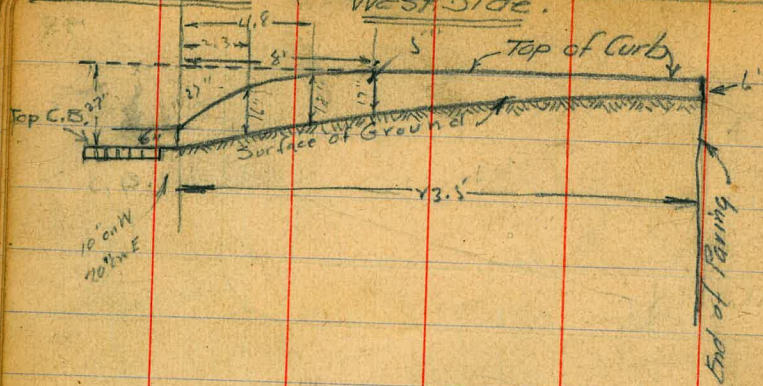
Levels 1' N. of S. Curb for pipe into  
2.82 265.85 263.03 Quince

0+00 = present	6.2	259.6
+1.0	5.6	160.2
+6.0	5.1	160.7
+11.0	7.3	158.5
+18.0	13.6	151.2



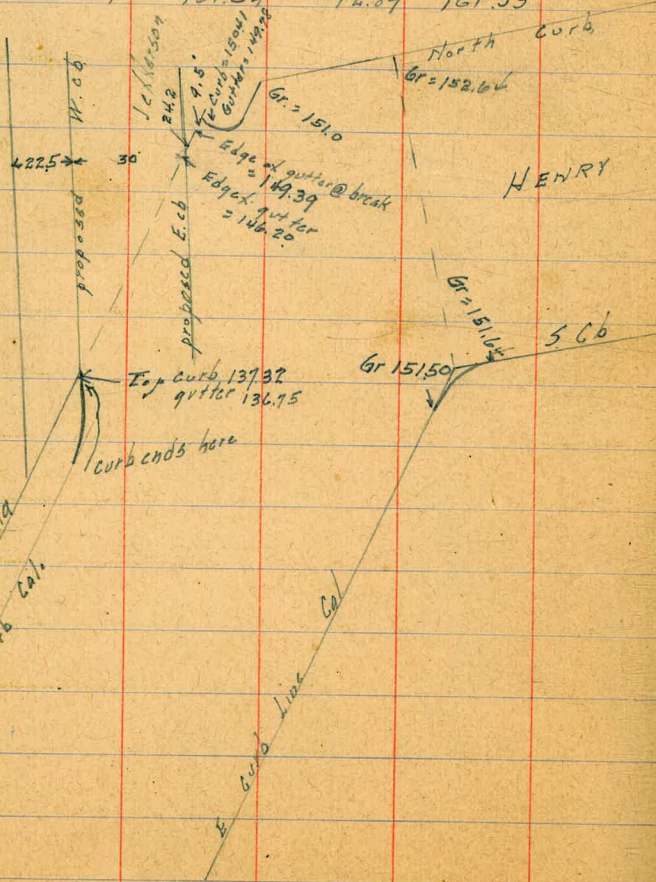
Albatross St.

West Side. End of pavement



Curb elevations  
California + Henry.

3.88	22278		218.90
0.44	21036	1286	209.92
0.99	19854	1281	197.55
0.08	18562	1300	185.54
0.66	17422	1206	173.56
0.21	161.54	12.89	161.33



1001  
151.53

971  
1759.1

75

161.54

8.90 152.64

10.57 50.97

11.13 150.41

1176 149.78

0.33 149.72 1215 149.39

3.52 146.20

1240 137.32

1297 3675

2500 Alley BIKITL6 Univ. Hls 11/6/24

Line from Polk bet Georgia & Florida

B.M.	0.52	335.49	334.97	SE. Polk + Georgia
T.P.	0.01	322.65	12.85	322.64
T.P.	-0.07	309.80	12.78	309.81
	00 = S. Line Polk.			
W			4.2	305.6 306.5
E			5.1	304.7
+8			6.0	303.8
E			7.0	302.8 302.5
+5			8.0	301.8
	50'S.			
-5			8.6	301.2
E			7.4	302.4
+4			5.3	304.5
C			5.0	304.8
W			4.3	305.5
	70'S			
W			4.4	305.4
E			5.4	304.4
+8			5.1	304.7
E			7.0	302.8
+5			8.2	301.6
	94'S	Garage on W cmt floor		
-5			9.4	300.4
E			7.4	302.4
+3			5.3	304.5
C			5.7	304.1
W			5.0	304.8
W+03			5.00	304.8 on mt. apron
W+53			4.88	304.9 on mt. floor 304.97

309.80  
150'S

W	5.8	304.0	20
+5	6.6	303.2	
+6	7.6	302.2	
E	7.6	302.2	
+3	7.9	301.9	
E	10.4	299.4	
+5	12.2	297.6	
	180'S.		
E-5	14.8	295.0	
E	12.6	297.2	
+4	12.0	297.8	
+6	11.1	298.7	
C	10.9	298.9	
+3	10.6	299.2	
+4	9.8	300.0	
W	7.8	302.0	
	200'S		
W	8.2	301.6	
+1	8.6	301.2	
+2	9.8	300.0	
+1	10.9	298.9	
C	11.3	298.5	
+3	11.4	298.4	
E	14.0	295.2	
+5	15.4	294.4	
	222'S		
-5	17.7	292.1	
E	16.0	293.8	
+5	13.4	296.4	
E	13.0	296.8	
+5	12.9	296.9	
W	11.7	298.1	
T.P.	0.45	297.26	
	227'S = N End Garage on W cmt floor		
-33			
W	0.38	296.88	on floor
C	0.62	296.64	" cmt floor
	0.8	296.5	
+9	1.2	296.1	

297.26		
	2275 (COM)	
E	4.3	293.0
+5	5.1	292.2
E-5	6.4	290.9
E	5.7	291.6
+1	2.6	294.7
C	1.9	295.4
W	0.87	296.39
+33	0.47	296.79
	265'S	
W	1.0	296.3
+1	2.0	295.3
C	3.7	293.6
+6	3.8	292.5
C	5.5	291.8
+5	7.1	
	298'S = Garage on W Dirt Floor 4' Back	
E-5	9.1	288.2
E	8.2	291.1
+1	6.7	290.6
C	5.5	291.8
W	4.3	293.0
	304'S	
W	4.5	292.8
C	6.0	291.3
+4	6.6	290.7
E	8.8	288.5
+5	9.5	287.8
	350'S	
E-5	11.4	285.5
E	11.3	286.0
C	9.8	286.5
+7	9.3	287.0
W	7.0	290.3

on apron  
" " Floor

297.26		
	400'S	
W	9.1	288.2
C	10.9	286.4
E	11.6	285.7
+5	12.0	285.3
	430'S	
E-5	12.8	284.5
C	12.4	284.9
C	11.1	286.2
+4	10.4	286.9
W	9.7	287.6
T.P.	4.26	290.29
	11.23	286.03
	462'S = Double Garage on E. Part Floor	
W	3.6	286.7
C	4.4	285.5
E	6.4	283.9
+3.3	6.7	283.6
	497'S	
E-5	8.0	282.3
E	7.3	283.0
C	6.3	284.0
+3	5.0	285.3
W	4.1	286.2
	520'S	
W	3.7	286.6
C	5.6	284.7

on floor



290.29

520's (con)

+2	5.9	284.4
+7	7.1	283.2
E	7.2	283.1
+5	8.0	282.3
-5	543.5 7.2	283.1
E	6.5	283.8
C	5.3	285.0
W	3.9	286.4

570's.

W	4.1	286.2
C	5.6	284.7
E	7.0	283.3
+5	7.5	282.8

585's

E-5	7.2	283.1
E	6.3	284.0
C	5.2	285.1
W	3.9	286.4

290.29

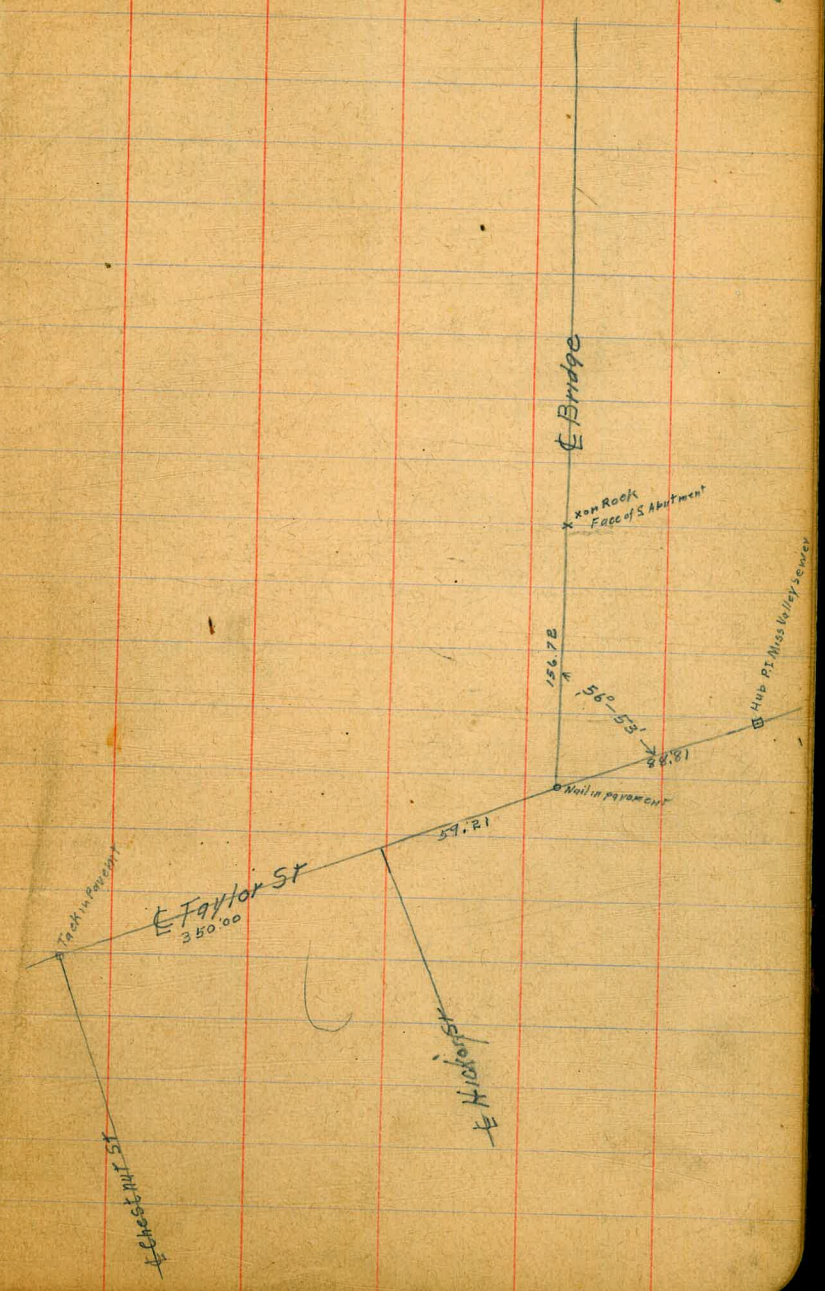
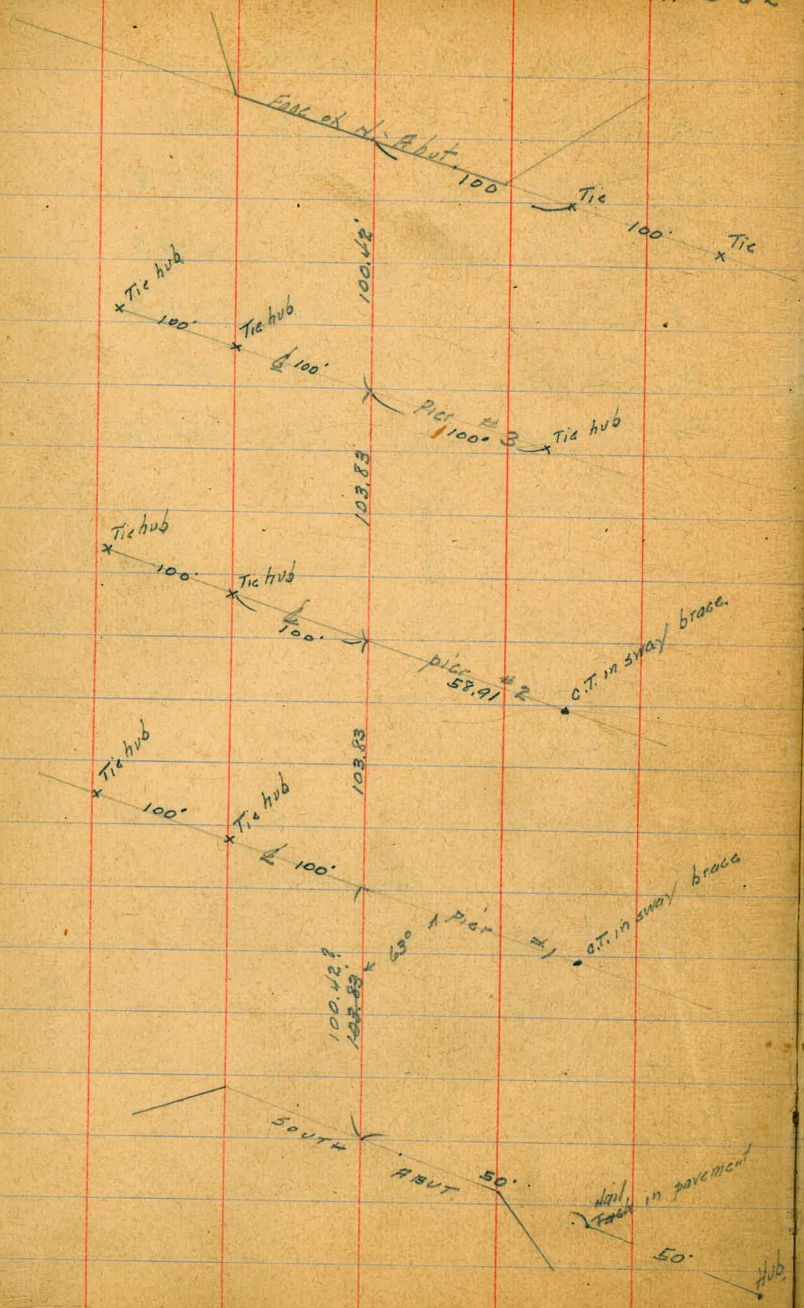
Alley BIKI76

U.I.T.  
13

600's = N. Line Limestone

W	4.3	286.0
+5	4.5	285.8
C	5.5	284.8
+3	5.9	284.4
E	7.0	283.3
+5	7.4	282.9

TIES ON OLD TOWN BRIDGE



295.30

11.1 12.2

8.72  
 3.24  
 11.96  
 0.45  
 11.51  
 9.33  
 20.84  
 12.38  
 8.46  
 2.00  
 10.88  
 4.88  
 6.00

264.96

19.3

266.89 HI

13.05

253.84 SP.

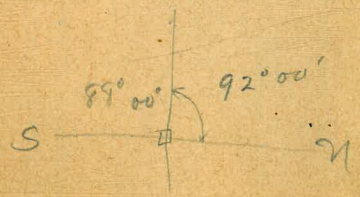
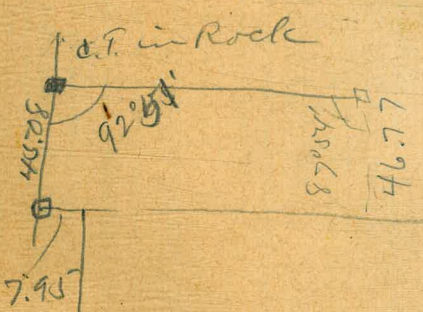
1.19

255.03 HI

21

234.0

SW	nutmeg	299.0	280.87
SE		299.0	443
			285.30 HI
NW	maple	285.0	
NE		284.0	12.2
			273.1
SW	Kalua	278.5	4.67
SE		277.5	28
NW	Kalua	265.0	37.36
NE		263.0	9.34
			130.76
SW		265.0	286.31
SE		263.0	273.1
			13.2
			6.6
			19.4
NE	Juni	271.0	12.99
NW		273.0	272.31 SP
			60
			272.91 HI
			10.5
			284
			262.4
			262.0
			21.6
			10.8
			32.4

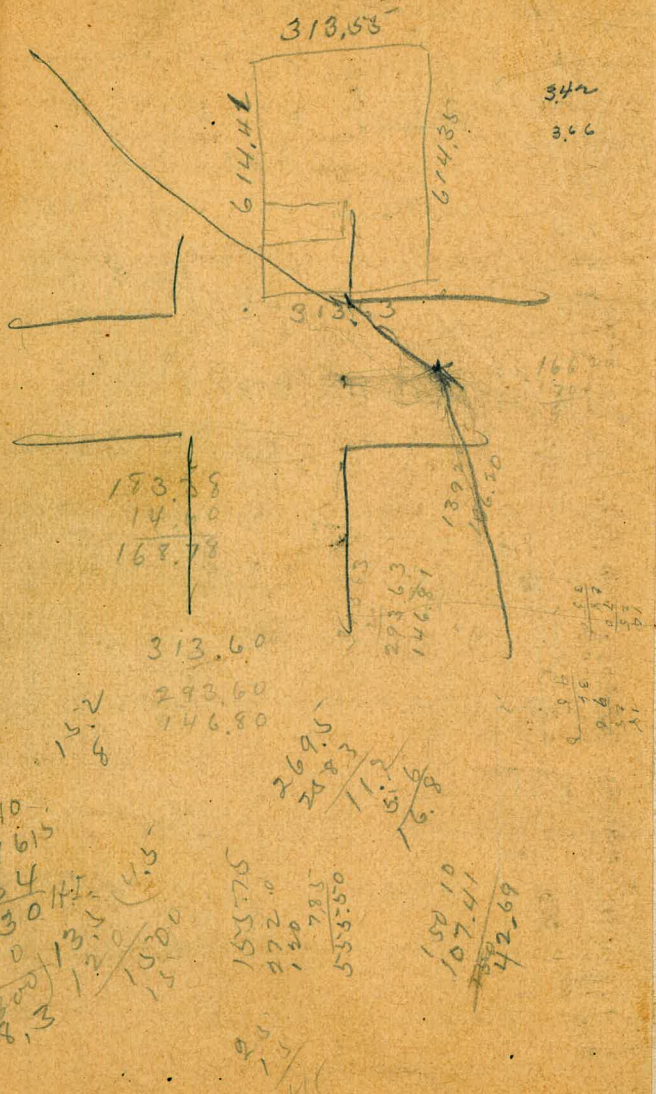


8338  
7.3  
76.08

156.72  
103.83  
103.83  
103.83  
100.42  
568.63

21890

488/21 409.21  
350 350  
58.21 59.21



12307  
361.2  
80.00

21.7

84.22  
72.1  
156.72

26706  
234  
269.40  
12.94  
256.46  
353  
269.79

406  
626 225.13  
500  
140  
72  
192

DISTANCES FROM CENTER OF ROADWAY FOR CROSS-SECTIONING.  
ROADWAY 14 FEET WIDE. SIDE SLOPES 1½ TO 1.  
FOR SINGLE TRACK EMBANKMENT.

	0	.1	.2	.3	.4	.5	.6	.7	.8	.9	
0	7.0	7.2	7.3	7.5	7.6	7.8	7.9	8.1	8.2	8.4	0
1	8.5	8.7	8.8	9.0	9.1	9.3	9.4	9.6	9.7	9.9	1
2	10.0	10.2	10.3	10.5	10.6	10.8	10.9	11.1	11.2	11.4	2
3	11.5	11.7	11.8	12.0	12.1	12.3	12.4	12.6	12.7	12.9	3
4	13.0	13.2	13.3	13.5	13.6	13.8	13.9	14.1	14.2	14.4	4
5	14.5	14.7	14.8	15.0	15.1	15.3	15.4	15.6	15.7	15.9	5
6	16.0	16.2	16.3	16.5	16.6	16.8	16.9	17.1	17.2	17.4	6
7	17.5	17.7	17.8	18.0	18.1	18.3	18.4	18.6	18.7	18.9	7
8	19.0	19.2	19.3	19.5	19.6	19.8	19.9	20.1	20.2	20.4	8
9	20.5	20.7	20.8	21.0	21.1	21.3	21.4	21.6	21.7	21.9	9
10	22.0	22.2	22.3	22.5	22.6	22.8	22.9	23.1	23.2	23.4	10
11	23.5	23.7	23.8	24.0	24.1	24.3	24.4	24.6	24.7	24.9	11
12	25.0	25.2	25.3	25.5	25.6	25.8	25.9	26.1	26.2	26.4	12
13	26.5	26.7	26.8	27.0	27.1	27.3	27.4	27.6	27.7	27.9	13
14	28.0	28.2	28.3	28.5	28.6	28.8	28.9	29.1	29.2	29.4	14
15	29.5	29.7	29.8	30.0	30.1	30.3	30.4	30.6	30.7	30.9	15
16	31.0	31.2	31.3	31.5	31.6	31.8	31.9	32.1	32.2	32.4	16
17	32.5	32.7	32.8	33.0	33.1	33.3	33.4	33.6	33.7	33.9	17
18	34.0	34.2	34.3	34.5	34.6	34.8	34.9	35.1	35.2	35.4	18
19	35.5	35.7	35.8	36.0	36.1	36.3	36.4	36.6	36.7	36.9	19
20	37.0	37.2	37.3	37.5	37.6	37.8	37.9	38.1	38.2	38.4	20
21	38.5	38.7	38.8	39.0	39.1	39.3	39.4	39.6	39.7	39.9	21
22	40.0	40.2	40.3	40.5	40.6	40.8	40.9	41.1	41.2	41.4	22
23	41.5	41.7	41.8	42.0	42.1	42.3	42.4	42.6	42.7	42.9	23
24	43.0	43.2	43.3	43.5	43.6	43.8	43.9	44.1	44.2	44.4	24
25	44.5	44.7	44.8	45.0	45.1	45.3	45.4	45.6	45.7	45.9	25
26	46.0	46.2	46.3	46.5	46.6	46.8	46.9	47.1	47.2	47.4	26
27	47.5	47.7	47.8	48.0	48.1	48.3	48.4	48.6	48.7	48.9	27
28	49.0	49.2	49.3	49.5	49.6	49.8	49.9	50.1	50.2	50.4	28
29	50.5	50.7	50.8	51.0	51.1	51.3	51.4	51.6	51.7	51.9	29
30	52.0	52.2	52.3	52.5	52.6	52.8	52.9	53.1	53.2	53.4	30
31	53.5	53.7	53.8	54.0	54.1	54.3	54.4	54.6	54.7	54.9	31
32	55.0	55.2	55.3	55.5	55.6	55.8	55.9	56.1	56.2	56.4	32
33	56.5	56.7	56.8	57.0	57.1	57.3	57.4	57.6	57.7	57.9	33
34	58.0	58.2	58.3	58.5	58.6	58.8	58.9	59.1	59.2	59.4	34
35	59.5	59.7	59.8	60.0	60.1	60.3	60.4	60.6	60.7	60.9	35
36	61.0	61.2	61.3	61.5	61.6	61.8	61.9	62.1	62.2	62.4	36

Calculated by Julien A. Hall, M. Am. Soc. C. E.

MADE IN GERMANY.