

982

South Chollas Valley Sewers

F.B. 982

LEVEL BOOK

373

IMD

KEUFFEL & ESSER CO.

DRAWING MATERIALS

AND

SURVEYING INSTRUMENTS.

NEW YORK.

CHICAGO.

SAN FRANCISCO.

ST. LOUIS.

TABLES FOR EXCAVATIONS AND EMBANKMENTS.

DISTANCES FROM CENTER OF ROADWAY FOR CROSS-SECTIONING.

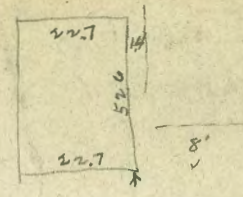
ROADWAY 18 FEET WIDE. SIDE SLOPES 1 TO 1.

FOR SINGLE TRACK EXCAVATION.

"Copyright, 1885, by Keuffel & Esser Co."

	0	.1	.2	.3	.4	.5	.6	.7	.8	.9	
0	9.0	9.1	9.2	9.3	9.4	9.5	9.6	9.7	9.8	9.9	0
1	10.0	10.1	10.2	10.3	10.4	10.5	10.6	10.7	10.8	10.9	1
2	11.0	11.1	11.2	11.3	11.4	11.5	11.6	11.7	11.8	11.9	2
3	12.0	12.1	12.2	12.3	12.4	12.5	12.6	12.7	12.8	12.9	3
4	13.0	13.1	13.2	13.3	13.4	13.5	13.6	13.7	13.8	13.9	4
5	14.0	14.1	14.2	14.3	14.4	14.5	14.6	14.7	14.8	14.9	5
6	15.0	15.1	15.2	15.3	15.4	15.5	15.6	15.7	15.8	15.9	6
7	16.0	16.1	16.2	16.3	16.4	16.5	16.6	16.7	16.8	16.9	7
8	17.0	17.1	17.2	17.3	17.4	17.5	17.6	17.7	17.8	17.9	8
9	18.0	18.1	18.2	18.3	18.4	18.5	18.6	18.7	18.8	18.9	9
10	19.0	19.1	19.2	19.3	19.4	19.5	19.6	19.7	19.8	19.9	10
11	20.0	20.1	20.2	20.3	20.4	20.5	20.6	20.7	20.8	20.9	11
12	21.0	21.1	21.2	21.3	21.4	21.5	21.6	21.7	21.8	21.9	12
13	22.0	22.1	22.2	22.3	22.4	22.5	22.6	22.7	22.8	22.9	13
14	23.0	23.1	23.2	23.3	23.4	23.5	23.6	23.7	23.8	23.9	14
15	24.0	24.1	24.2	24.3	24.4	24.5	24.6	24.7	24.8	24.9	15
16	25.0	25.1	25.2	25.3	25.4	25.5	25.6	25.7	25.8	25.9	16
17	26.0	26.1	26.2	26.3	26.4	26.5	26.6	26.7	26.8	26.9	17
18	27.0	27.1	27.2	27.3	27.4	27.5	27.6	27.7	27.8	27.9	18
19	28.0	28.1	28.2	28.3	28.4	28.5	28.6	28.7	28.8	28.9	19
20	29.0	29.1	29.2	29.3	29.4	29.5	29.6	29.7	29.8	29.9	20
21	30.0	30.1	30.2	30.3	30.4	30.5	30.6	30.7	30.8	30.9	21
22	31.0	31.1	31.2	31.3	31.4	31.5	31.6	31.7	31.8	31.9	22
23	32.0	32.1	32.2	32.3	32.4	32.5	32.6	32.7	32.8	32.9	23
24	33.0	33.1	33.2	33.3	33.4	33.5	33.6	33.7	33.8	33.9	24
25	34.0	34.1	34.2	34.3	34.4	34.5	34.6	34.7	34.8	34.9	25
26	35.0	35.1	35.2	35.3	35.4	35.5	35.6	35.7	35.8	35.9	26
27	36.0	36.1	36.2	36.3	36.4	36.5	36.6	36.7	36.8	36.9	27
28	37.0	37.1	37.2	37.3	37.4	37.5	37.6	37.7	37.8	37.9	28
29	38.0	38.1	38.2	38.3	38.4	38.5	38.6	38.7	38.8	38.9	29
30	39.0	39.1	39.2	39.3	39.4	39.5	39.6	39.7	39.8	39.9	30
31	40.0	40.1	40.2	40.3	40.4	40.5	40.6	40.7	40.8	40.9	31
32	41.0	41.1	41.2	41.3	41.4	41.5	41.6	41.7	41.8	41.9	32
33	42.0	42.1	42.2	42.3	42.4	42.5	42.6	42.7	42.8	42.9	33
34	43.0	43.1	43.2	43.3	43.4	43.5	43.6	43.7	43.8	43.9	34
35	44.0	44.1	44.2	44.3	44.4	44.5	44.6	44.7	44.8	44.9	35
36	45.0	45.1	45.2	45.3	45.4	45.5	45.6	45.7	45.8	45.9	36

Calculated by Julien A. Hall, M. Am. Soc. C. E.



MICROFILMED
DATE 12-19-1964

Levels for E Line see blue print - beginning at
 sta 13+90.5 "A" line look 971 page 1
 B.M. 9.44 10.16 0.72 ^{1/2 sample} _{1/5 same} _{Brook}

sta 13+90.5 "A" Line		13.0	-2.8
+37		10.8	-0.6
+50		4.8	5.4
+70		2.3	7.9
T.P.	4.87	13.24	11.9
1		5.0	8.8
+50		4.9	8.9
2		4.9	8.9
+09.7 = P.L.		5.0	8.8
+50		4.8	9.0
3		5.3	8.5
+50		4.8	9.0
4		6.1	7.7
+50		6.5	7.3
5		6.0	7.8
+50		5.7	8.1
6		5.3	8.5
+50		4.8	9.0
7		4.7	9.1
T.P.	5.08	14.49	4.43
			9.41

	14.49		
7.02		5.3	9.2
+0.8		6.0	8.5
+1.9		5.1	9.4
+3.4		5.9	8.6
+3.5		5.0	9.5
+5.0		5.0	9.5
8.40		4.9	9.6
+5.0		4.5	10.0
9		4.7	9.8
+5.0		5.3	9.7
10		5.3	9.7
+5.0		5.0	9.5
11		5.2	9.3
+5.0		4.9	9.6
12		4.4	10.1
+5.0		4.0	10.5
13		3.8	10.7
+4.6		4.2	10.3
15.0		4.8	9.7
T.P.	5.91	16.20	4.20
			10.29

	16.20		2
13+60		7.2	9.0
+78 = 4 Una 5T		6.5	9.7
+95		7.1	9.1
14		6.6	9.6
+50		5.9	10.3
15		5.3	10.9
+50		4.3	11.9
16		4.0	12.2
+50		4.0	12.2
17		4.5	11.7
+50		4.7	11.5
18		3.7	12.5
+25		3.1	13.1
+50		3.8	12.4
19		5.8	10.4
+50		7.4	8.8
20		8.1	8.1
+20		7.6	8.6
T.P.	7.56	16.17	7.59
			8.61
+50		7.9	8.3

20			
20+52		8.0	8.2
+53		7.3	8.9
21		7.4	8.8
+50		7.6	8.6
22		7.0	9.2
+50		6.9	9.3
23		6.3	9.9
+50		6.4	9.8
24		5.2	11.0
+50		5.0	11.2
25		4.9	11.3
+50		4.2	12.0
26		3.5	12.7
+50		3.2	13.0
+80		2.2	14.0
+82		3.0	13.2
+98' - 4' Woden St		2.67	13.50
27	2.22	2.2	13.5
+50		1.4	14.3

2810		2.0	13.7
+50		3.0	13.7
+86		7.8	7.9
+87 ⁵ = 5.101/5 D&S E. R.R.		7.9	7.8
+94		7.7	8.0
29		6.1	9.6
+15		3.8	11.9
+78		2.9	12.8
+50		2.9	12.8
30		5.5	10.2
+50		7.4	8.3
+79 ¹ = 4 Alley bet Main & Filbert		7.8	7.9
31		7.8	7.9
+50		7.0	8.7
32		6.0	7.7
+50		6.0	7.7
(35) +85		5.5	10.2
33		5.1	10.6
+50		3.1	12.6
34		2.2	13.5
+50		1.7	14.0
+60 = 4 Alley bet Main & Delbergia		1.74	13.98

	16.15		
34+25		2.6	13.6
+76		1.7	14.5
35		1.7	14.5
+26		2.3	13.9
+50		1.8	14.4
+90		3.5	12.9
36		5.2	11.0
+50		10.6	5.6
+62		11.9	4.3
37		12.8	3.4
+50		12.5	3.7
38		12.3	3.9
+50		11.9	4.3
39		11.6	4.6
+50		11.7	4.5
40		11.1	5.1
T.P.	8.54	13.82	10.27
+50		8.4	5.4
41		8.0	5.8
+20 = f Yama st		8.1	5.7

	13.82		4
41+50		7.8	6.0
42		8.0	5.8
+50		8.3	5.5
+90		7.8	6.0
43		6.8	7.0
+15		3.8	10.0
+25		3.9	9.9
+50		6.9	6.9
+63		7.7	6.1
44		7.9	5.9
+50		7.6	6.2
45		7.1	6.7
+20 = f Alley bet Dalbergia & Cotinus road		7.1	6.7
487		7.0	6.8
+38		6.3	7.5
+50		6.3	7.5
46		6.5	7.3
+50		5.8	8.0
+90 = f Alley bet Yama & Osborn		5.3	8.5
47		5.5	8.3

	13.82		
47+50	5.6	8.7	
48	5.7	8.1	
+50	5.2	8.6	
49	5.5	8.3	
+17 ² Cottonwood	5.4	8.4	
+50	5.1	8.7	
50+0	4.6	9.2	
+50	4.4	9.4	
T.P. 7.93	17.51	4.24	9.58
+77 ² Osborn	8.2	7.3	
51	7.9	9.6	
+50	7.4	10.1	
52+0	7.2	10.3	
+42 ³ 40 ⁴ lot Osborn & Earle	6.2	11.3	
+50	6.1	11.4	
53	5.8	11.7	
+50	5.7	11.8	
54	5.3	12.2	
+50	5.0	12.5	
55+0	4.7	12.8	

	17.51		5
55+27	4.7	12.8	
+30	2.0	9.5	
+38	8.6	8.9	
+42	8.6	8.9	
+50	6.2	11.3	
+62	5.8	11.7	
+72 ² Alley East of Earle St	5.0	12.5	
56	4.8	12.7	
+32	4.8	12.7	
+45	8.7	8.8	
+50	7.5	10.0	
+58	4.8	12.7	
57	3.7	13.8	
+50	3.0	14.5	
+58 ⁵ Int. 10 ⁴ St. N. Cottonwood East	2.71	14.20	
58	6.31	21.11	
58	6.7	14.4	
+50	6.3	14.8	
59	6.1	15.0	
+50	6.0	15.1	
60	5.4	15.7	
+29 ² - E Nordica St	4.75	16.36	

60+50	21.11	5.1	16.0
61		4.8	16.3
+50		4.8	16.3
62		4.7	16.4
+50		4.3	16.8
63		4.4	16.7
+50		4.2	16.9
64 cut 6'		4.8	16.3
+50		3.6	17.5
65		2.9	18.2
+50		2.6	18.5
+97 = ϕ 41 st st	7.02	2.30	18.81
66	25.83	7.0	18.8
+50		6.5	19.3
67		6.4	19.4
+50		6.2	19.6
68		5.9	19.9
+50		5.3	20.5
69		4.9	20.9
+50		4.9	20.9

70+0	25.83	4.9	20.9
+50		4.2	21.6
71		4.1	21.7
+50		3.9	21.9
72		3.6	22.2
+35		2.6	23.2
+42		4.2	21.6
+45		7.1	18.7
+50		7.2	18.6
+57 ⁸ = ϕ 42 nd st		6.5	19.3
106 S.W. 42 nd st to Harding	11.09	3.66	22.17
+90	33.26	13.8	19.5
73		12.8	20.5
+11		10.6	22.7
+50		10.5	22.8
74		8.8	24.5
+37 ⁵ = ϕ Alley = end of E Line		7.1	26.2
+50		6.4	
75		4.7	
+50		1.4	
T.P.	9.31	40.96	31.65
+87		6.6	
+50		8.6	
+60		9.4	
+60		10.0	
77		11.1	
+50		11.7	
78 = 55 th W of M.L. Highland		12.6	

Levels of North & South Alley BIK 3 from E 8th Alley
South for 115'

B.M.	6.94	38.99	32.05
010 = E 8th Alley	6.9		32.1
+50	8.3		30.7
1	9.6		29.4
+15	9.8		29.2

Sheet 12

Levels of Osborn St. from Cottonwood St. ^{50' 50" 79' E Line} South for 505' ⁷
at Alley bet Marine View & Dalbergia.

	11.78	21.09	9.31
000 = 50' 50" 79' E Line			11.2
+50			9.3
1			11.6
			9.5
1			11.2
			9.3
+50			12.1
			9.0
+50 = Alley			11.91
			9.18
1			11.7
			9.4
+41 cut 65' at that point culvert			10.5
			10.6
+50			10.0
			11.1
3			4.1
			17.0
T.P.	12.56	33.37	0.26
			20.83
+30 = E Marine View Ave			11.67
			21.7
+50			8.7
			25.7
4			4.7
			28.7
+50			3.1
			30.3
5			3.5
			29.9
+105 = Alley			3.50
			29.89

see page 60 for new notes

Sheet 12

7.30 top 18" pipe 512 = 491

Levels of Alley bet Marina View Hrs & Dalbergia from
 of Osborn East to of Easement 41K 14 Thence north in Easement
 to of East & West easement Thence E in of Easement 435 6+72

46.57

8

B.M.	9.10	38.99	29.89
0+0 = of Osborn		9.10	
+20		9.4	29.6
+25		8.7	30.3
+50		8.3	30.7
1		7.7	31.3
+50		7.2	31.8
+53 ⁶ = of N.S. Alley		6.94	32.05
2		6.5	32.5
+14		5.4	33.6
+50		4.7	34.3
+60		4.3	34.7
+72		3.2	35.8
3		2.5	36.5
+50		1.0	38.0
T.P.	8.27	46.57	0.69
4			7.3
+50			6.4
5			6.5
			40.1

Sheet 12

+15 ⁹ = of N.S. Easement	5.1	41.5
+50	5.4	41.2
+51 ⁵ = of E & W Easement	5.4	41.2
6	3.9	42.7
+12	3.1	43.5
+50	3.1	43.5
+72	3.0	43.6

Levels 40th St from Sta 574585 "E" Line South for 42.62
To $\frac{1}{2}$ of Marineview Arc East

B.M.	12.21	27.01	19.80
010 = $\frac{1}{2}$ of Cottonwood East 8.40 th St North	12.2		
+30		12.2	14.8
+32		15.2	11.8
+45		15.2	11.8
+48		12.8	14.2
+50		12.8	14.2
1.		12.6	14.4
+50		10.6	16.4
+76 = $\frac{1}{2}$ Easement B/K 13	2.86	18.15	
2		6.8	20.2
+41 = $\frac{1}{2}$ Alley B/K 12	2.78	24.23	
+50		1.7	25.3
T.P.	12.28	39.33	0.46
+75		11.1	28.2
3		8.1	31.2
+50		1.5	37.8
T.P.	9.32	48.41	0.24
4		7.1	41.3
+26 = $\frac{1}{2}$ Marineview East	6.05	42.36	

Sheet 12

Levels Marineview Arc from St +262 40th St West for 571.7
To $\frac{1}{2}$ Easement B/K 15

B.M.	6.05	48.41	42.36
010 = $\frac{1}{2}$ 426 th			6.1
+37			6.4
+50			5.6
1			4.9
+50			4.5
+77 = $\frac{1}{2}$ Easement B/K 15			4.4

Sheet 13

Levels $\frac{1}{2}$ Easement B/K 15 from $\frac{1}{2}$ Marineview South for 125

B.M.	42.41		
010 = $\frac{1}{2}$ Marineview		4.4	44.0
+25		5.6	42.8
+26		4.8	43.6
+40		4.6	43.8
+41		2.6	45.8
+50		2.6	45.8
1		3.3	45.1
+50		3.9	44.5
+85		4.4	44.0

Sheet 13

9.

Levels Marineview Ave from $\frac{1}{2}$ 40th St N or Sta 4126 = East

for 433.9' or $\frac{1}{2}$ Easement BIK 17

B.M.	12.93	55.29		42.36
0+0 = Sta 7+26 = 40 th St			12.9	
+50			10.0	45.3
1			6.3	49.0
R 25° 49'				
+43 ⁹ = $\frac{1}{2}$ Easement BIK 16		3.22		52.1
+50		2.6		52.7
T.P.	12.32	67.49	0.12	55.17
2			10.7	56.8
+50		7.2		60.3
3		4.6		62.9
+50		2.6		64.9
4		0.6		66.9
T.P.	12.07	78.94	0.62	66.87
+33 ⁹ = $\frac{1}{2}$ Easement BIK 17		11.3		67.6

Sheet 12

Levels $\frac{1}{2}$ Easement BIK 16 from Sta 1+43 Marineview

South for 245'

10

		55.29		
0+0		3.2		52.1
+19		3.4		51.7
+20		2.9		52.4
+50		2.9		52.4
1		3.5		51.8
+50		4.0		51.3
2		4.4		50.9
+45		4.7		50.6

Sheet 12

Levels $\frac{1}{2}$ Easement BIK 17 from $\frac{1}{2}$ Marineview south for 250'

		73.94		
0+0 = $\frac{1}{2}$ Marineview		11.3		67.6
+19		11.7		67.2
+20		15.1		67.8
+28		10.9		68.0
+34		9.2		69.7
+33		5.6		73.3
+50		4.7		74.2
1		4.5		74.4
+50		4.7		74.2
2		6.0		72.9
+50	cut 7.5'	7.3		71.6

Sheet 12

Levels & Easement BIK 13 from 40th St East for 415'

B.M.	10.69	28.79	18.15
at 0 of 40th St		10.6	
+11		10.8	18.0
+20		13.3	15.5
+50		13.5	15.3
+87		13.9	14.9
1		13.1	15.7
+24		12.6	16.7
+50		9.9	18.9
+72		8.6	20.2
2		9.1	24.7
T.P.	12.55	40.27	0.37 28.42
+25		9.5	31.5
+50		2.0	39.0
T.P.	12.73	53.22	0.48 40.49
+75		7.4	45.8
3		2.7	50.5
T.P.	6.01	58.69	0.54 52.68
+40		5.6	53.1
+50		5.8	52.9
4		9.6	49.1
+15		10.5	48.2

Sheet 18

Levels & Alley BIK 28, 12 from 4 Osborn East for 660'

B.M.	11.38	20.56	9.18
at 0 of Osborn		11.4	
+50		10.8	9.8
1		10.5	10.1
+27		10.4	10.2
+34		11.7	8.9
+42		13.9	6.7
+50		13.9	6.7
+65		13.4	7.2
+75		11.8	8.8
2		6.2	14.4
+05		5.4	15.2
+30		7.1	13.5
+50		6.1	14.5
3		3.3	17.3
+50		3.0	17.6
+64		3.3	17.3
+77		9.9	10.7
+95		4.5	16.1
4		4.4	16.2
+50		2.2	18.4
+60		1.4	19.2
T.P.	12.42	32.80	0.18 20.38

Sheet 18

		32.80		
+75			11.2	21.6
5			4.8	28.0
+06 ⁸ L	19° 14'		3.4	29.4
+32			1.6	31.2
T.P.	12.46	45.10	0.16	32.64
+50			10.4	34.7
+62			7.7	37.4
+75			6.0	39.1
6			2.1	43.0
T.P.	6.02	50.76	0.36	44.74
+21			3.2	47.6
+50			3.1	47.7
+60			3.9	46.9

Levels of Alley BIK 12 from ϕ 40th St west for 12

P.M.	10.79	35.02		24.23
0+0 = ϕ 40th St			10.8	
+17			12.4	22.6
+22			13.6	21.4
+34			14.3	20.7
+50			13.6	21.4
+75			10.4	24.6
1			4.5	30.5
T.P.	9.09	43.31	0.80	34.22
+25			6.0	37.3
+38.5			2.82	40.49

Sheet 12

Levels of Cotton wood st from sta 57+58 E Line East
for 545'

B.M. 2.61 23.41 14.20

Sta	1	2	3	4	5	6	7	8
0+0-57+58 ⁵		2.6						
+50		2.5	14.9					
1		2.1	15.3					
+50		7.8	15.6					
2		7.7	15.7					
+50		7.6	15.8					
3		7.3	16.1					
+10		7.3	16.1					
+20		11.5	11.9					
+30		2.5	14.9					
+50		7.7	15.7					
4		7.5	15.9					
+50		5.8	17.6					
5		3.5	19.9					
+45		1.6	21.8					

Sheet 18

Levels from the Nordic 2 at sta 72+57 E Line south in
the 425 st to the west Alley thence west in the Alley to sta 7+74 13

B.M. 7.12 29.29 22.17

Sta	1	2	3	4	5	6	7	8
0+0- Nordic 2 at 72+57 ¹⁰ st		10.0	19.3					
+05		9.6	19.7					
+10		6.4	22.9					
+50		6.9	22.4					
1		6.9	22.4					
+50		6.5	22.8					
+70 = the west Alley BIK 10		6.6	22.7					
2		6.7	22.6					
+50		7.1	22.2					
3		7.3	22.0					
+40 = the South Alley BIK 10		7.50	21.79					
+50		7.6	21.7					
4		7.4	21.9					
+25		5.2	24.1					
+50		1.4	27.9					
T.P.	9.79	37.92	1.11				28.18	
+75			5.9				32.0	
5			4.7				33.7	
+32			2.2				35.3	
+50			4.1				33.8	
6			7.8				30.1	
+50			2.5				29.4	
7			6.9				31.0	
+50			5.6				32.3	
+74			5.5				32.4	

Sheet 18

Levels of N 23.5 Alley BIK 10 from E & W Alley BIK 10 South for 340'

B.M.	11.80	33.59		21.79
0+0 = sta 3440' page 12			11.8	
+50			11.3	22.3
1			11.2	22.4
+50			10.2	23.4
+72			9.5	24.1
2			6.7	26.9
+50			0.6	33.0
T.P.	12.50	45.69	0.40	33.19
+61' = angle in Alley			11.0	34.7
3			9.6	41.1
T.P.	7.63	52.85	0.47	45.22
+40			2.1	50.8

Sheet 12

Levels of N 25 Alley BIK 11 from E Nordica for 410'

B.M.	5.99	28.16		22.17
0+0 = E Nordica			2.0	26.2
+50			4.8	23.4
+80			4.9	23.3
+73			6.2	24.0
+87			8.4	18.8
+90			9.5	18.7
+92			7.5	20.7
1			6.3	21.9
+12			5.2	23.0
+33			5.0	23.2
+50			6.7	21.5
+57			9.6	18.6
+62			8.5	19.7
+85			8.7	19.5
+93			10.7	17.5
+10			7.4	20.8
+07			4.9	23.3
+50			4.3	23.9
+72 = E Alley BIK 11			4.29	23.87
3			4.1	24.1
+50			3.5	24.7
+78 = angle 5.93	32.26	1.83		26.33
4			4.0	28.3
+10			2.7	29.6

Sheet 13

Levels of Edw Alley BIK 11 from $\frac{1}{2}$ N 8 S Alley or sta
2172 page 14 East for 348.4 of $\frac{1}{2}$ of 10' easement & 5 W of E.L.
of Alley

B.M.	6.01	29.88	23.87
0+0 = $\frac{1}{2}$ N 8 S Alley BIK 11		6.0	
+50		5.8	24.1
1		5.8	24.1
+50		5.5	24.4
2		5.3	24.6
+50		5.0	24.9
3		4.9	25.0
+48.4		4.5	25.4

Sheet 13

Levels $\frac{1}{2}$ west of $\frac{1}{2}$ Alley from sta 3147⁹ south for 130'

0+0		4.5	25.4
+50		3.8	26.1
1		3.2	26.7
+30		2.4	27.5

Sheet 13

Levels of Easement from sta 3148⁹ opp page north 15.
for 130' or $\frac{1}{2}$ Nordica

29.88			
0+0 = 3148 ⁹ Edw Alley		4.5	25.4
+50		4.2	25.7
1		4.8	25.1
+06		4.7	25.2
+20		7.1	22.8
+76		7.1	22.8
+33		3.8	26.1
+50		3.4	26.5
+90 = $\frac{1}{2}$ Nordica		0.8	29.1

Sheet 13

Levels of Nordica st from sta 1480 East for
89.8' or 55' west of Highland Ave

0+0		0.8	29.1
+50		0.9	29.0
+27 ⁹		1.5	28.4

Sheet 13

Levels of Alley between Hooks Add & Nordic Heights
 8 Bay Ocean View from Sta 46+90.2 E Line south
 feet 200

B.M.	4.93	13.43	8.50
0+0 = Sta 46+90.2		4.9	
+50		4.8	8.6
+67		5.7	7.7
+78		7.8	5.6
+89		4.6	8.8
1		5.0	8.4
+50		5.8	7.6
2		3.8	9.6

Sheet 13

Levels of Alley bet Hooks Add & Nordic Heights 8
 16 Bay Ocean View from & Cottonwood or Sta 49+17.2 Line
 to & Birch East

B.M.	9.39	17.79	8.40
0+0			9.4
+50			8.9
1			8.7
+50			8.3
2			7.0
+50			3.6
+62 = & Alley bet Cottonwood & Birch			3.09
3			1.1
T.P.	12.74	30.30	0.23
+50			11.3
4			8.9
+50			3.6
T.P.	4.68	33.42	1.56
+79.7 = & Birch East			2.37

Sheet 13

Levels of Alley bet Cottonwood & Birch from Sta 2+62

Page 16 rest for 120'

30.30

0+0

15.6

14.7

+50

15.1

15.7

+65

13.9

16.4

1

7.2

23.1

+20 out 6'

3.4

26.9

Sheet 13

Levels of Alley bet Osborne & Earle from Cottonwood North for 435'

17

P.M.

11.50

22.21

11.31

0+0 to Cottonwood

11.5

+13

12.2

10.6

+24

11.5

11.3

+50

12.2

10.6

1

11.8

11.0

+50

11.6

11.2

2

10.7

12.1

+38

9.5

13.3

+50

8.5

14.3

3

2.0

20.8

T.P.

12.95

35.71

0.05

22.76

+50

7.1

28.6

4

2.3

33.4

+25

0.86

34.85

Sheet 13

Levels of Birch St from E Alley ^{West} East of BIR & Bayocean
 View add or sta 4+79.7 page 16 East for 416'

B.M.	11.06	42.11	31.05
0+0		11.1	
+50		12.6	29.5
1		13.1	29.0
+32		11.9	30.2
+50		10.2	31.9
2		7.4	34.9
+50		5.5	36.6
3		5.0	37.1
+50		4.0	38.1
+66		3.5	38.6
4		1.0	41.1
+16		0.2	41.9

Sheet 13

Levels of Alley bet Earle & 40th St from E Cottonwood North for 495'

B.M.	8.24	20.75	12.51
0+0		8.2	
+24		8.4	12.4
+37		11.4	9.4
+48		10.9	9.9
+50		8.4	12.4
+56		7.2	13.6
1		7.1	13.7
+50		7.3	13.5
W		7.2	13.6
+50		6.4	14.4
3		4.3	16.5
+50		1.5	19.3
T.P.	10.66	31.17	20.51
+74	cut 6'	10.2	21.0
4	cut 6'	7.0	24.2
+25	ca	3.5	27.7

Sheet 13

Levels of Vestal from Φ Alley bet Birch & Heacia Thence
 north on Φ West to intersection of Vestal & Delta Thence East on
 Φ Delta for 2050 or 21' from M.L. 41st St

49.11

19

B.M.	1163	37.53	25.70	7+50		2.5	46.6
				+80 ⁵ = Φ 39 th St		2.16	46.95
0+0 = Φ Alley bet Birch & Heacia		10.5	27.0	8		1.7	47.4
+50		2.1	28.4	+50		0.8	48.3
1		8.6	28.9	T.P.	12.24	60.55	48.31
+50		8.3	29.2	9		11.0	49.6
+65' = Int of Vestal & Delta		8.1	29.4	+50		9.9	50.7
2		6.7	30.8	10		8.8	51.8
+50		3.3	34.2	+50		7.4	53.2
3		0.7	36.8	11		5.5	55.1
T.P.	1196	49.11	37.15	+50		3.3	57.3
+50		10.2	38.9	12		1.8	58.8
4		8.7	40.4	+50		0.3	60.3
+23' = Int of Φ E. 6 th & E. 11 th St		2.21	40.90	T.P.	10.59	70.76	60.17
+50		7.7	41.4	13		9.5	61.3
5		6.7	42.4	+50		8.4	62.4
+50		5.5	43.6	14		7.8	63.0
6		4.1	45.0	+50		7.1	63.7
+50		3.4	45.7	+71 = E.L. 40 th St		6.8	64.0
7		3.1	46.0	15		6.0	64.8

Sheet 13

	70.76			50.05
+50		5.3	65.3	
16		4.7	66.1	
+50		4.4	66.4	
17		3.4	67.4	
+50		1.7	69.1	
T.P.	9.78	80.06	0.48	70.28
18		9.1	71.0	
+50		8.4	71.7	
19		8.1	72.0	
+50		7.1	73.0	
20		6.3	73.8	
+50 = 21' from W.L. 41 st St		50.05	75.0	

Levels of 39th St from Φ Alley bet Delta & Gamma
 or 57th Brook 971 Page 20 Thence North on Φ 39th St.
 for 189.8 to Φ Gamma 20

B.M.	11.90	58.25	46.75
0+0 - Φ Alley		9.5	49.4
+50		9.1	49.8
1		8.8	50.1
+50		8.0	50.9
+88.8		7.0	51.9

Sheet 4

Levels of Gamma st from ϕ 39th st East
 for 613 or 17' from N.L. 40th st
 5885

0+0 = ϕ 39th st			7.0	51.9
+50			6.3	52.6
1			4.5	54.4
+50			2.8	56.1
2			1.1	57.8
T.P.	12.37	70.70	0.52	58.33
+50			10.6	60.1
3			7.6	63.1
+50			5.1	65.6
4			1.4	69.3
T.P.	12.41	82.74	0.37	70.33
+50			7.6	75.1
5	cut 13'		1.4	81.3
T.P.	6.69	88.97	0.46	82.28
+50			5.5	83.5
6			3.7	85.3
+13 = 17' cut 15'			3.3	85.7
				from N.L. 40th st

Sheet A

Levels from sta 4+231 Page 19 thence in E Easement
 BIK E Arlington Add to sta 4+657 on ϕ 39th st. thence 21
 south in ϕ of 39th to ϕ Epsilon or sta 5+482 thence in
 ϕ Epsilon to sta 28+10

B.M.	7.71	42.91		40.90
0+0 = sta 4+231			7.7	
+36			8.2	40.7
+35			7.6	41.3
+50			7.3	41.6
+62			7.2	41.7
+75			6.4	42.5
1			6.6	42.3
+50			7.2	41.7
2			7.8	41.1
+50			7.7	41.2
3			8.0	40.9
+50			6.2	42.7
4			5.3	43.6
+25			5.2	43.7
+50			5.1	43.8
+65 = ϕ 39th st			4.6	44.3
5			5.2	43.7
+48 = ϕ Epsilon			5.0	43.9

Sheet B

	48.91		
6+0		3.7	45.2
+50		2.8	46.1
7		1.8	47.1
+50		1.2	47.7
8		0.9	48.0
+10		0.9	48.0

Levels of 39th st from sta 4+65² page 21
 north for 2176

	48.91		
0+0 = sta 4+65 ²		4.6	44.3
+50		4.2	44.7
1		4.3	44.6
+50		3.8	45.1
2		3.4	45.5
+17 ⁶		3.2	45.7

Sheet 13

Levels of Alley bet Acacia & Birch from sta 20+15
 Book 971 Page 19 E to Int of Alley & 39th st + sta 22
 distance East in E to st to sta 3+02⁵ = E to st at this sta

B.M.	9.47	46.27	36.80
0+0 = sta 20+15			9.5
+50			8.3
+56 = Alley & 39th st			8.3
+72			8.2
+73			7.7
1			6.8
+50			5.5
+56			6.0
2			5.5
+50			4.8
3+02 ⁵			4.4

Sheet 4

Levels of 39th St from Sta 0+56 page 23 North for 283.7'

46.27

0+0 = Sta 0+56 page 22	8.3	38.0
+50	6.9	39.4
1	5.6	40.7
+50	4.5	41.8
2	3.3	43.0
+50	2.7	43.6
+83.7	2.8	43.5

Sheet A

28892

Levels of 42nd St from E Nordica St for Sta 72+57.2' Line North for 700.2' on Epsilon St 23

Epsilon & Delta

B.M. Hub. s.w. Nordica 28 42nd	7.46	29.63	22.17
0+0 = E Nordica			10.3 19.3
+09			7.6 22.0
+50			7.2 22.4
1			7.6 22.0
+50			7.0 22.6
+54.9 = E Alley			7.05 22.58
2			6.2 23.4
+50			4.3 25.3
3			2.5 27.1
+19.9 = E E13 St.			1.86 27.77
+50			1.9 27.7
+75			1.0 28.6
T.P.	44.87	41.34	0.16 29.47
4			10.3 31.0
+50			6.8 34.5
5			4.3 37.0
+106 = E Alley bet E13 St. Eps	10.91	49.06	3.19 38.15
+50			8.0 41.1

Sheet A

	49.06		
6+0		6.5	42.6
+50		5.5	43.6
7+00 ² = Epsilon		4.46	44.60
+25		5.5	
+50		4.8	
8		1.8	
T.P.	9.22	55.68	1.60
+32		6.4	47.6
+50		5.0	
+89 ² = Alley bet Epp. & Delta		1.90	
<hr/>			
Levels of 1/2 st from E 42 nd st west for 210			
B.M.	11.32	39.09	27.77
0+0 = E 42 nd st		11.3	
+35		12.3	26.8
+50		10.9	28.2
+75		8.7	30.4
1		5.7	33.4
-			
+20		3.2	35.9
+50		2.4	36.7
2		3.6	35.5
+10		5.3	33.8

Sheet 14

Levels of Alley bet Nordica & E 42 nd st from E 42 nd st East for 496.7'				24
B.M.	11.72	34.30	22.58	
0+0 = E 42 nd st		11.7		
+50		11.6	22.9	
1		10.0	24.3	
+50		7.5	26.8	
1		3.8	30.5	
+50		0.9	33.4	
T.P.	10.28	44.77	0.41	33.89
3		7.8	37.0	
+50		5.0	39.8	
4		4.1	40.9	
+50		3.4	41.4	
+56 ⁷ = angle in Alley		3.4	41.4	
+96 ⁷		2.5	42.3	

Sheet 14

Levels of Alley bet E²⁸ Epsilon from ϕ 42nd st
East
West for 487

B.M.	10.82	48.97	38.15
at 0 = ϕ 42 nd st.		10.8	
+20	✓	11.4	37.6
+29		15.1	33.9
+33		12.6	36.4
+50		11.4	37.6
+56		10.8	38.2
1		11.9	47.1
T.P.	3.73	51.81	0.89
+40		2.3	49.5
+50		3.2	48.6
2		10.8	41.0
T.P.	10.90	50.13	12.58
+50		12.7	37.4
+67 ^A = at 0 "F" Line		12.77	37.36
3		10.2	39.9
+25		6.5	43.6
+50		1.3	48.8
T.P.	11.88	60.93	11.08
+64		8.2	52.7
+75		6.7	54.2
4		4.4	56.5
+50		4.1	56.8
+53		4.3	56.6
+62		7.2	53.7
+87		6.1	54.8

Sheet 14

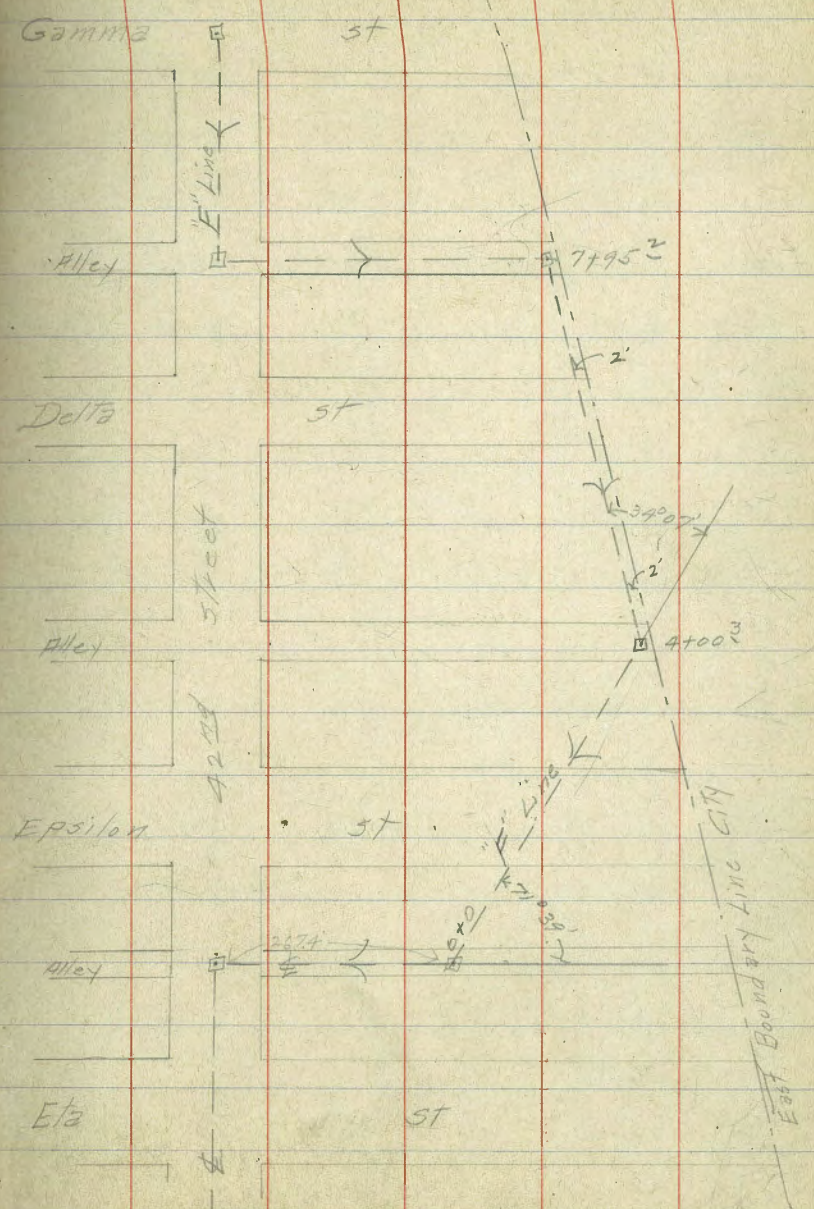
Levels for "F" Line see Page 26

25

B.M.	6.91	44.27	37.36
at 0		6.9	37.4
+50		6.4	37.9
1		6.1	38.2
+50		5.8	38.5
+80		5.8	38.5
2+00 ^A = ϕ Epsilon		5.14	39.13
+50		5.0	39.3
3		4.5	39.8
+50		3.8	40.5
4+00 ^B = ϕ Alley bet Eps. & Delta		2.77	41.50
+35		2.5	41.8
+50		2.0	42.3
T.P.	10.79	54.57	6.49
5		10.1	44.5
+50		10.0	44.6
+98 = ϕ Delta		8.74	45.83
6		8.7	45.9
+50		5.2	49.4
+69		2.9	51.7
+83		2.8	51.8
+84		1.6	53.0
+70		0.4	54.2
T.P.	12.81	67.02	0.36

Sheet 14

		67.02		
7+50			7.7	59.3
+95 ² = ϕ Alley bet Delta & Gamma		0.6		66.4
8			1.4	65.6
+09			1.3	65.7
+15			3.1	63.9
+50			5.8	61.2
+85			8.1	58.9
9			8.0	59.0
+50			8.0	59.0
10			7.4	59.6
+50			5.4	61.6
+81 ² = ϕ 42 nd St			5.0	62.0
11			3.9	63.1
T.P.	12.20	78.26	0.96	66.06
+50			10.5	67.8
12			4.7	73.6
T.P.	5.86	83.53	0.59	77.67
+50			4.4	79.1
+70 ⁸ = ϕ Gamma			1.63	21.90



Levels of Gamma from Φ 42nd East for 190'

B.M.	1.63	83.53	81.90
0+0 = Φ 42 nd st		1.6	81.9
+50		2.2	81.3
1		2.6	80.9
+50		3.0	80.5
+90		3.1	80.4

Sheet 14

Levels of Gamma from Φ 42nd st west for
or 20' E of E.L. 40th st

27

B.M.	1.63	83.53	81.90
0+0 = Φ 42 nd st		1.6	81.9
+50		4.8	78.7
1		6.4	77.1
+50		6.1	77.4
2		5.5	78.0

Sheet 14

+50		6.6	76.9
3		8.1	75.4
+10		8.5	75.0
+18		8.5	75.0
+50		7.7	75.8
4		8.8	74.7
+50		8.2	75.3
T.P.	6.56	82.06	8.03 75.50
5		6.5	75.6
+50		6.6	75.5
6		7.1	75.0
+50		7.7	74.4
7		7.7	74.4
+50		6.5	75.6
8		2.8	79.3
T.P.	10.39	92.38	0.07 81.99

	92.38		
8+50		10.4	82.0
9		9.2	83.2
+50	cut 10'	7.5	84.9
10		5.0	87.4
+50		3.2	89.2
11		3.7	88.7
+50	cut 10'	5.6	86.8
12		5.3	87.1
+50	cut 12'	4.4	88.0
+70 ⁷	= 20 from 40 th st	4.7	87.7

Levels & Delta from Sta 578 5798 F Line west for 958 78

020' E of 41st St
B.M. 11.39 57.22 45.83

040 = Sta 578

+50			11.4	45.8
+75			7.2	50.0
T.P.	12.00	69.13	0.09	57.13
1			11.4	57.7
+11			9.1	60.0
+23			9.1	60.0
+50			5.9	63.2
+74			2.3	66.8
2			7.0	68.1
T.P.	7.95	76.56	0.52	68.61
+10			2.8	67.8
+23			2.1	68.5
+42			3.7	67.9
+50			7.8	68.8
3			7.2	69.4
+50			6.6	70.0
4	cut 13		5.1	71.5
+50	cut 10'		5.6	71.0

Sheet 14

	76.56		
5+0		4.7	71.9
+12		4.3	72.3
+50		5.1	71.5
6 cut 8'		6.1	70.5
+50 cut 6'		5.9	70.7
+80		4.9	71.7
7		5.1	71.5
+50		5.8	70.8
8		6.1	70.5
+50		4.9	71.7
9		3.9	72.7
+50 cut 9'		0.5	76.1

Levels & Epsilon of from Sta 2100⁺ F' line E for 105' 29

B.M.	12.22	51.35	39.13
0+0 = Sta 2100 ⁺			12.2 39.2
+50			8.7 42.7
+75			2.2 49.2
T.P.	7.34	58.18	0.51 50.84
+88			5.2 53.0
+105			3.8 54.2

Sheet 14

Levels & Epsilon from Sta 2100⁺ West for 130'

B.M.	11.99	51.12	39.13
0+0 = Sta 2100 ⁺			12.0 39.1
+09			12.5 38.6
+50			2.8 41.3
+75			6.0 45.1
1			1.8 49.3
T.P.	5.74	56.14	0.72 50.40
+30			4.6 51.5

Sheet 14

Levels of Epsilon st from 42nd st East for 165'

B.M.	11.54	56.14	44.60
0+0 = 42 nd st		11.5	44.6
+23		13.6	42.5
+50		11.1	45.0
+90		7.8	48.3
1		6.6	49.5
+50		2.8	53.3
+65		2.7	53.4

Sheet 15

Levels of Epsilon from 42nd st west for 1270' or 20' E of 40th st

30

B.M.	11.54	56.14	44.60
0+0 = 42 nd st		11.5	44.6
+37		8.3	47.8
+50		6.1	50.0
+80		2.1	54.0
1		0.4	55.7
T.P.	6.39	62.36	0.17
+30		3.3	58.6
+50		3.0	59.4
2		1.5	60.9
+50		0.4	62.0
3		1.0	61.4
+50		2.6	59.8
4		4.9	57.5
+50		7.0	55.4
5		9.4	53.0
+23		11.3	51.1
+50		12.8	49.6
+65		13.5	48.9
6		12.9	49.5

Sheet 15

62,36

6+2.5	9.9	52.5
+50	6.1	56.3
7	6.3	56.1
+50	5.9	56.5
8	6.2	56.2
+50	6.7	55.7
9	7.1	55.3
+50	6.1	56.3
10	5.1	57.3
+50	5.5	56.9
11	5.1	57.3
+50	5.0	57.4
12	5.7	56.7
+50	7.0	55.4
+70	7.3	55.1

Levels $\$ 41^{\text{st}}$ from $\$ Nordica$ to $\$ Etz 5^{\text{th}}$ 31

B.M.	13.05	31.89	18.81	
0+0 = $\$ Nordica$		13.1	18.8	
+20		13.9	18.0	
+21		13.2	18.7	
+50		12.9	19.0	
+90		12.8	19.1	
1		15.0	16.9	
+05		13.8	13.1	
+10		15.5	16.4	
+15		15.5	16.4	
+20		13.8	18.1	
+50		12.8	19.1	
2		11.3	20.6	
+20		10.2	21.7	
+50		6.4	25.5	
+75		1.9	30.0	
T.P.	7.64	38.98	0.55	31.34
3		3.1	35.9	
+13		1.3	37.7	
+19 ⁹ = $\$ Etz 5^{\text{th}}$		1.42	37.56	

Sheet 15

Levels & Eta 5T from & 41st St East for 410'

B.M.	1.42	38.98		37.56
0+0 = & 41st			1.4	37.6
+50			7.6	31.4
1			11.3	27.7
T.P.	6.61	32.96	12.63	26.35
+50			8.0	25.0
+61			7.5	25.5
+70			8.6	24.4
+83			10.6	22.4
2			8.6	24.4
+50			9.6	23.4
3			10.3	22.7
+50			8.8	24.2
+80			7.8	25.2
4			5.6	27.4
+10			4.3	28.7

Sheet 15

Levels & Eta 5T from & 41st St West for 435'

32

B.M.	4.14	41.70		37.56
0+0 = & 41st			4.1	37.6
+73			3.7	38.0
+50			1.7	40.0
+75			2.9	38.8
1			6.7	35.0
+23			13.2	28.5
+33			12.6	29.1
+50			10.2	31.5
2			1.9	39.8
T.P.	10.14	50.66	1.18	40.52
+50			6.5	44.2
3 cut			6.2	44.5
+50			4.4	46.3
4			3.5	47.2
+35			3.6	47.1

Sheet 15

Levels 40th St from ϕ Nordica Northin ϕ 40th St
 To ϕ Birch Thence $\angle 23^\circ 38'$ To Int. of ϕ 40th St North 8
 Etā St East

B.M.	12.96	29.32	16.36
0+0 = ϕ Nordica		13.0	16.3
+50		10.0	19.3
1		6.7	22.6
+0.6 = ϕ Birch $\angle 23^\circ 38'$		6.81	22.51
+50		5.1	24.2
2		3.3	26.0
+50		0.9	28.4
T.P.	10.36	39.62	29.26
3		9.1	30.5
+39 = ϕ Etā East		7.3	32.3

Sheet 15

Levels ϕ Etā St from ϕ 40th St (North) East for
 135.4'

B.M.	39.62	-	33
0+0		7.3	32.3
+18		7.8	31.8
+26		9.0	30.6
+50		8.9	30.7
+75		7.4	32.2
1		5.0	34.6
+25		0.6	39.0
T.P.	10.03	49.08	0.57
+50		5.8	43.3
+85.4		2.6	46.5

Sheet 15

Levels of Birch st from E 40th st west for 349

B.M.	12.02	34.59	22.51
0+0 = E 40th st			12.1
729			22.5
+30			10.2
+50			24.4
1			9.0
+30			25.6
+44			2.1
+50			26.5
T.P.	10.48	44.49	0.58
2			29.9
+50			31.8
3			2.8
+49			34.1
			0.3
			34.3
			34.01
			8.2
			36.3
			6.6
			37.9
			4.2
			40.3
			2.1
			42.4

Sheet 15

Levels of Alley bet. Dalbergia & Cottonwood from E Yama st. west for 610 or 20' E of wooden

B.M.	9.13	15.90	6.72
0+0 = E Yama			9.2
+15			6.7
+16			9.6
+50			6.3
1			9.0
+50			6.9
2			9.3
+50			6.6
3			9.4
+50			6.5
+60			9.5
4			6.4
+50			9.3
5			6.1
+50			8.4
6			7.5
+50			6.7
7			9.2
+50			4.8
+80			11.1
8			3.7
+50			12.2
+82			3.7
9			12.2
+50			5.3
10			10.6
+50			7.0
11			8.9
+50			5.3
12			10.1
+50			2.9
13			13.0
+50			2.3
14			13.6
+50			2.1
15			13.8
+50			3.1
16			12.8
+50			2.7
17			13.2

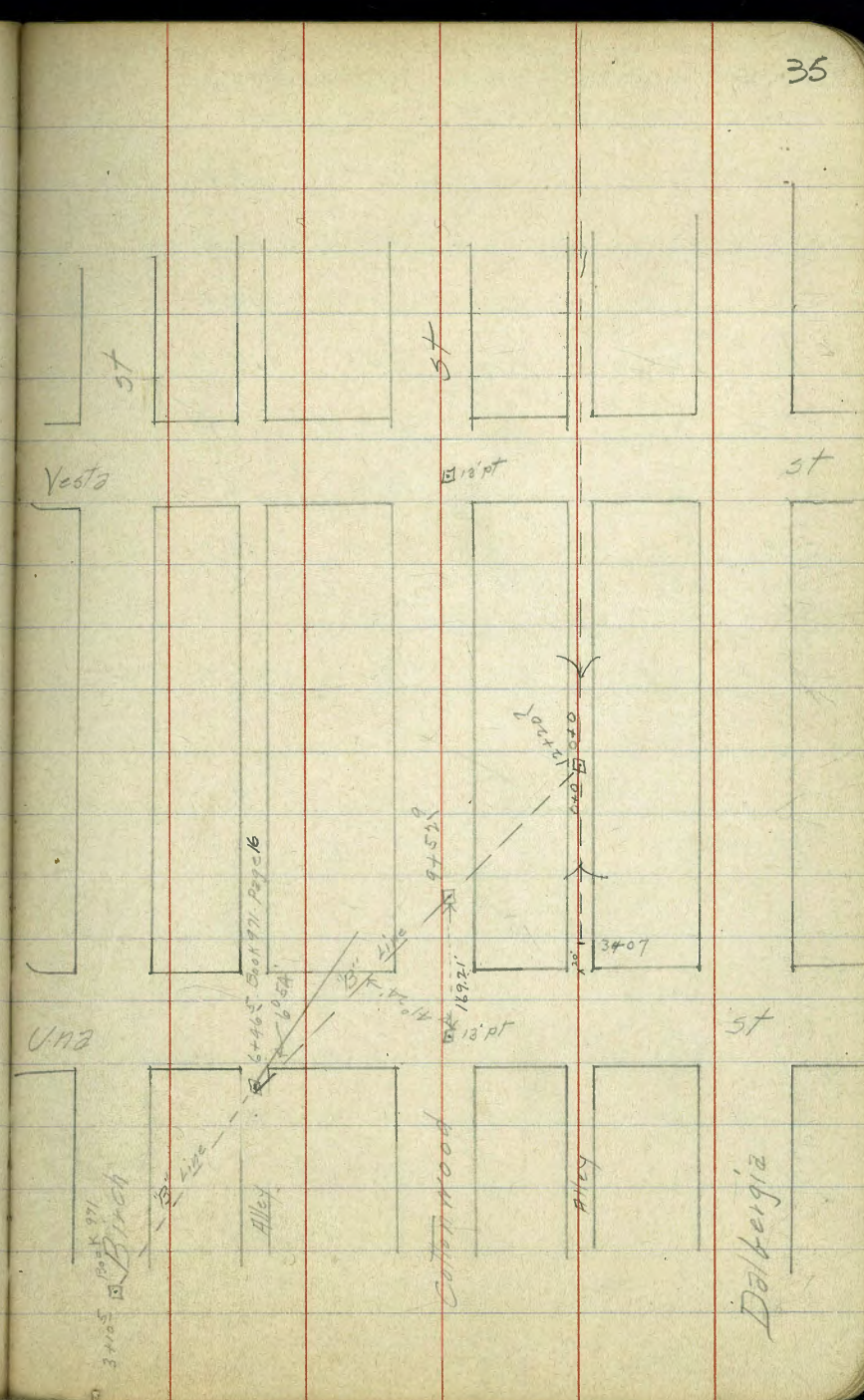
Sheet 15

Levels "B" line continued from Book 971 page 16

35

B.M.	9.64	12.79	2.85
6+46 ⁵ R 6054		9.6	2.9
+50		9.6	2.9
+90		9.3	3.2
7		8.4	4.1
+12		7.1	5.4
+50		7.1	5.4
+65		7.0	5.5
+75		7.6	4.9
8		7.5	5.0
+25		7.2	5.3
+35		6.5	6.0
+50		6.8	5.7
9		6.4	6.1
+06		5.3	7.2
+50		4.4	8.1
10		4.1	8.4
+50		3.2	9.3
+80		2.7	9.8
71		1.2	11.3
T.P.	11.57	22.88	11.31
+33		12.0	10.9
+50		11.5	11.4
12		9.3	13.6
+20 ⁷ = Alley bet Dalbergia & Cottonwood		8.55	14.33

Sheet 3



Levels of Alley bet Dalbergia & Cottonwood from sta
 12+20⁷ B line west for 307' or 20' E of Unk. st
 B.M. 2.55 22.88 14.33

Station	2.55	22.88	14.33
0+0 = 3/2 12+20 ⁷	2.5		14.4
+33	2.9		14.0
+50	2.5		14.4
1	2.2		15.7
+50	5.5		17.4
2	4.2		18.7
+50 cut 7'	3.2		19.7
3	2.3		20.6
+07	2.1		20.8

Sheet 15

Levels of Alley bet Dalbergia & Cottonwood from sta
 12+20⁷ B line East for 913.6' or 20' W. of wooden
 B.M. 2.55 22.88 14.33

36

Station	2.55	22.88	14.33
0+0			8.5 14.4
+50			8.7 14.2
1			7.7 15.2
+50			7.0 15.9
2			6.2 16.7
+50			5.6 17.3
+88			5.3 17.6
+89			5.8 17.1
3			5.5 17.4
+50			5.1 17.8
T.P.	5.25	23.21	4.92 17.96
4			5.5 17.7
+50			5.4 17.8
5			5.1 18.1
+50			4.9 18.3
6			4.7 18.5
+50			4.4 18.8
7			5.6 17.6
+50			5.8 17.4

Sheet 15

23.21

840	4.6	78.6
+50	3.8	19.4
9	3.7	19.5
+136	3.9	19.3

Levels of Alley bet Main & Dalbergiz from E. Wooden
post for 610 or 20 from E.L. Vesta

37

13.M.	6.40	20.38	13.98
0102 - E. Wooden		6.4	14.0
+15		6.6	13.8
+17		5.4	15.0
+30		5.5	14.9
+32		4.9	15.5
+50		5.0	15.4
1		5.0	15.4
+50		4.9	15.5
2		4.3	16.1
+50		4.2	16.2
3		5.3	15.1
+50		6.6	13.8
4		6.9	13.5
+50		7.1	13.3
+80		6.7	13.7
5		5.7	14.7
+25		5.0	15.4
+50		3.3	17.1
6		1.4	19.0
+10		1.0	19.4

Sheet 16

Levels of Alley bet Main & Dalbergia continued from
 Sta 12+65 Book 971 Page 14 East to Sta 14+30 or 20 n. of Vesta

B.M.	5.18	21.78	16.60
12+65		5.2	16.6
13		5.5	16.3
+01		6.1	15.7
+50		6.5	15.3
+73		5.6	16.2
14		6.8	15.0
+30		6.5	15.3
+50		4.6	17.2
+77		6.1	15.7
15		6.2	15.6
+50		5.8	16.0
16		5.9	15.9
+50		6.2	15.6
17		6.7	15.7
+50		5.1	16.7
18		4.4	17.4
+50		4.8	17.0
19		4.1	17.7
+80		2.9	18.9

Sheet 16

Levels of Alley bet Main & Elbert continued from
 Sta 12+65 Book 971 Page 13 East to Sta 14+30 or 20 n. of Vesta

B.M.	3.31	17.01	13.70
12+65		3.3	13.7
+59	✓	3.4	13.6
+90		4.1	12.9
13		4.6	12.4
+01		5.2	11.8
+39		4.7	12.3
+40		3.9	13.1
+50		3.7	13.3
+70		4.5	12.5
14		4.4	12.6
+10		5.5	11.5
+50		5.9	11.1
15		5.8	11.2
+50		5.7	11.3
16		6.2	10.8
+50		6.2	10.8
+85		5.3	11.7
17		5.8	11.2
+50		5.7	11.3
+65		4.8	12.1
18		5.3	11.7
+50		4.6	12.4
19		4.1	12.9
+30		3.1	13.9

Sheet 16

Levels of Alley bet main & Filbert from wooden
west for 612 or 20' E of Vestz

B.M.	11.66	19.58	7.92
0+0		11.7	7.9
+16		11.6	8.0
+18		10.6	9.0
+32		10.3	9.3
+34		9.7	9.9
+50		9.2	10.4
1		5.7	13.9
+50		2.7	16.9
+67		2.0	17.6
2		3.4	16.2
+27		4.2	15.4
+35		5.3	14.3
+50		5.7	13.9
3		5.6	14.0
+50		5.4	14.2
4		5.3	14.3
+50		4.0	15.6
5		3.6	16.0
+50		3.3	16.3
6		4.0	15.6
+10		4.10	15.5

Sheet 16

Levels of Una St. from Alley bet Filbert &
Gravella south to Alley south of Gravella

B.M.	1.54	11.24	9.70
0+0		1.5	9.7
+50		2.0	9.2
1		2.6	8.6
+50		3.2	8.0
2		3.8	7.4
+50		4.1	7.1
3		4.5	6.7
+50		4.6	6.6
+80 ^b		4.82	6.42

Sheet 16

39

Levels of Alley south of Gravelle from the
Una st west for 850'

B.M.	4122	11.24	6.42
0+0		4.8	6.4
+18		5.7	5.5
120		5.0	6.2
+31		5.7	5.5
+50		6.1	5.1
1		6.3	4.9
+50		6.4	4.8
2		6.3	4.9
+50		6.3	4.9
3		5.9	5.3
+39		5.3	5.9
+50		4.3	6.9
+62		3.3	7.9
4		2.7	8.5
+50		2.0	9.2
T.P.	10.32	19.77	9.45
5 cut 6'		8.1	11.7
+50		7.5	12.3

Sheet 16

19.77

40

6+0 cut 6'	7.0	12.8
+50	4.9	14.9
7	4.7	15.1
+50	4.4	15.4
8	3.4	16.4
+50	3.8	16.0

Levels of Alley south of Gravella from E Uno
East for 905'

B.M.	731	13.73	642
0+0		7.3	6.4
+18		7.9	5.8
+21		7.2	6.5
+31		7.5	6.2
+50		7.0	6.7
1		6.5	7.2
+50		5.4	8.3
+66		5.3	8.4
+75		6.2	7.5
2		6.4	7.3
+50		6.1	7.6
3		6.1	7.6
+50		5.9	7.8
+90		6.1	7.6
4		5.0	8.7
+12		4.7	9.0
+30		6.1	7.6
+50		6.3	7.4
+77		6.5	7.2

Sheet No

13.73

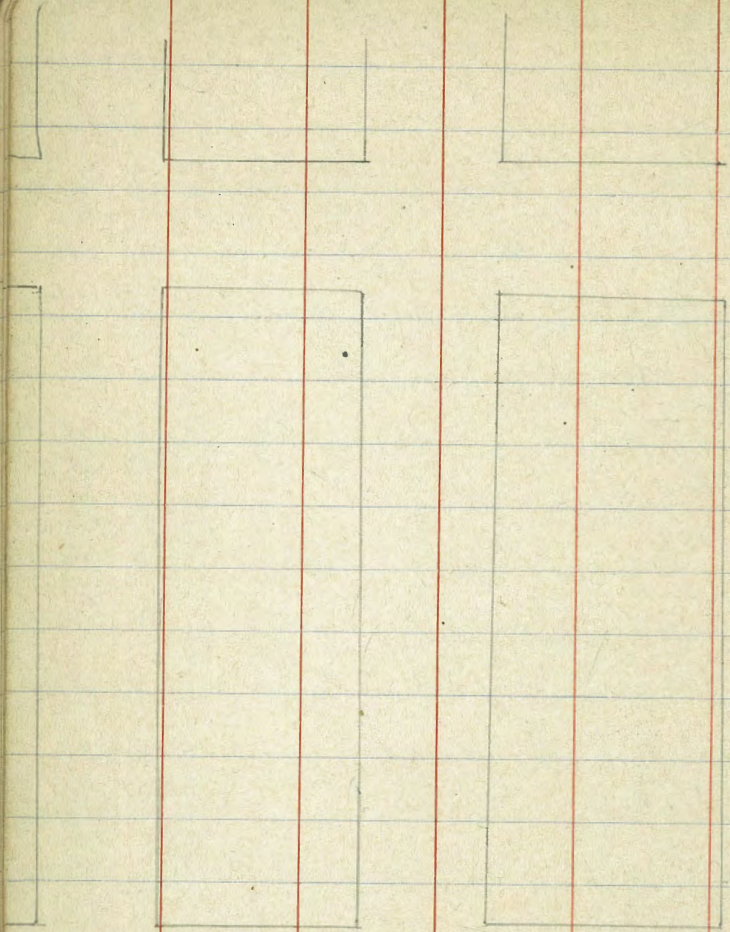
41

5+0		5.8	7.9
+10		6.1	7.6
+38		5.1	8.6
+50		6.0	7.7
6		5.7	8.0
+44		6.7	7.0
+50		6.4	7.3
+76		7.2	6.5
7		7.3	6.4
+50		7.8	5.9
8		6.5	7.2
+50		5.3	8.4
9		3.7	10.0
+05		3.5	10.2

Levels & Alley bet. Main & Dalbergia from & Yama
 st or sta 41+20 E" line East for 580'

B.M.	5.83	11.55	5.72	
0+0 = & Yama st		5.8	5.8	
+11		5.8	5.8	
+12		7.7	3.9	
+16		7.7	3.9	
+18		5.7	5.9	
+50		5.9	5.7	
1		6.3	5.3	
+50		6.6	5.0	
2		7.0	4.6	
+50		7.3	4.3	
3		7.5	4.1	
+23		6.6	5.0	
+50		3.9	7.7	
T.P.	12.38	23.65	0.28	11.27
4 cut 7'		11.2	12.5	
+50 cut 8'		6.7	17.0	
5 cut 8'		4.0	19.7	
T.P.	7.45	30.94	0.16	23.49
+50		7.1	23.8	
+80 cut 5'		4.6	26.3	

Sheet 13



Prelim Sewer line of Jackdaw St from opt. 40' S. of S. Line of Brooks 760 ft S. to N. Line of UPas

B.M.	5.58	252.17	246.59	spk switch Bracks	T.P.	0.67	194.93	1271	194.26
00=40'S. of Brooks			340	48.77	on stub	+55		9.9	850
+40			31	49.1		+85		10.2	84.7
1+00			4.4	47.8		T.P.	0.34	182.47	1280
+50			6.8	45.4		5+40		3.8	78.7
ctr of House 65' W of 1+80			7.40	42.8	on floor	+80		7.2	75.3
+70			7.9	44.3		T.P.	0.18	169.75	1285
2+00			11.1	41.1		6+30		1.9	167.9
+23			14.0	38.2		+65		7.2	62.5
T.P.	0.03	239.70	12.50	239.67		7		11.9	57.9
S. Line of House 56' W of 2+23			0.55	39.15	on floor	+60 ¹²	Δ 71' 12" 30" L	14.2	55.6
+60			7.6	37.1			0.32	165.15	492
T.P.	1.66	229.32	12.04	227.66		8		12.4	52.8
+85			5.5	23.8		+35		13.7	51.5
T.P. 3+00	0.03	219.15	10.17	219.15	on stub & Walnut	+80		13.2	52.0
+20			8.9	10.3		9+05		10.5	54.7
+45			12.9	206.3		+40		7.2	580
T.P.	0.68	206.97	14.89	206.29		+73		3.5	61.7
+80			3.7	203.3		+88		4.1	61.1
4+05			11.1	195.9		10		6.2	590
						+08.75 M.H. Δ		8.48	156.67
						T.P.		12.63	152.52

Platted
Sec 209 D
March 1924
H.R.B.

center Mark
40' S. of 7+00

on stub
on rock

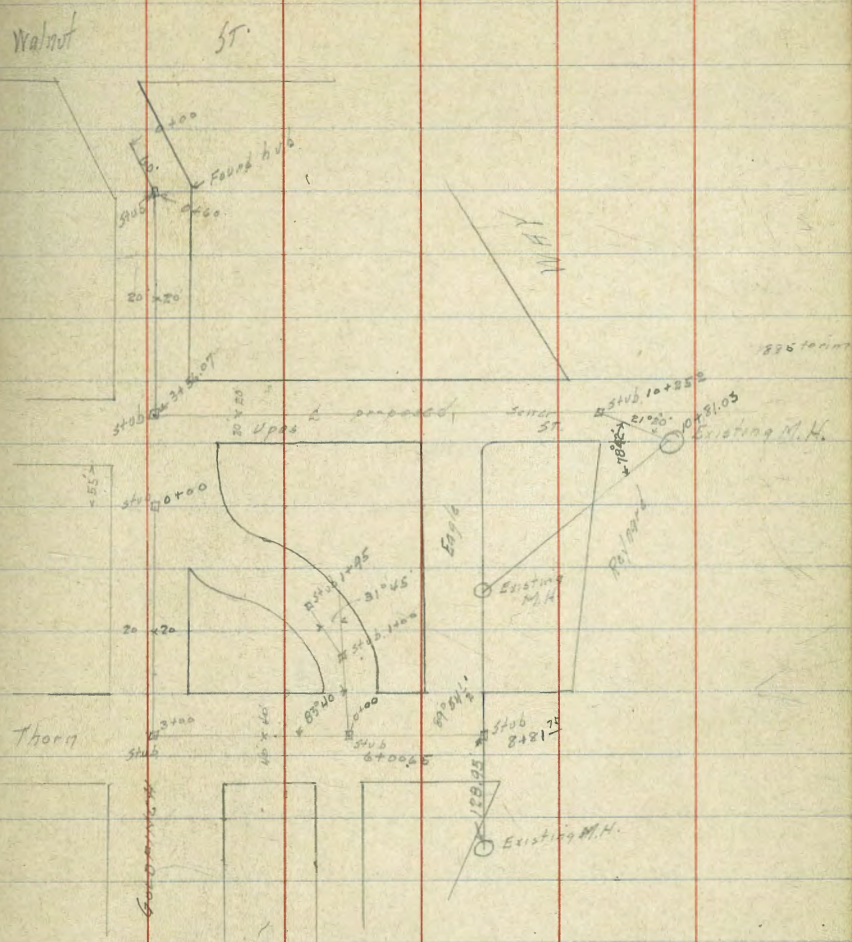
3/19/24 Gregory

Sewer Levels
 6" Goldfinch St
 from 356.07' North of Ups to 2 Ups
 thence E. on 2 Ups to Sewer in Refers Map

	0.99	217.58	246.59	5pt SW 1015 + Brakes
	2.92	212.40	8.10	239.48
0700			4.5	37.9
	+60 = $\Delta 33^\circ 43' R$		3.79	38.61 on stub
1			3.6	38.8
	+70		4.1	38.3
2			5.6	36.8
	+50		10.3	32.1
TP	0.21	229.75	12.86	229.54
3			4.5	27.3
	+56.07 $\Delta 90^\circ 00' L$		6.30	23.5 on stub
	+75		6.8	23.0
4			9.1	20.4
TP	0.24	217.00	14.99	216.76
	+50		3.1	13.9
5			9.3	20.77
TP	0.63	204.93	14.70	204.30
	+50		3.2	20.7
6			9.8	19.5.1

217.60

47



Plan 208 D
 Platted See Profile 209 P
 March 1924
 J.R.P.

		204.93			
+20			11.7	93.2	
+50			12.9	92.0	
T.P.	0.36	192.55	12.74	192.19	
7			6.2	86.4	
+50			12.1	80.5	
T.P.	0.11	180.02	12.64	179.91	
8			5.7	74.3	
+50			12.4	67.6	
T.P.	0.42	167.74	12.70	167.32	
9 P.O.T.			5.01	162.73	on stub
+10			6.6	61.1	
T.P.	0.10	155.34	12.50	155.24	
+25			2.1	53.2	
+40			6.9	48.4	
T.P.	1.09	144.05	12.38	142.96	
+65			5.6	38.5	
T.P.	0.02	131.71	12.36	131.69	
10			4.7	27.0	
+25	A	¹⁰³ 21°20' R 120.65	12.09	119.62	on stub
+27			3.0	117.7	

		170.65			48
+57.60	= Top of Curb		6.63	114.02	
+60	= bottom cement gutter		8.07	112.58	
+65	= edge		6.85	113.80	
+81.03	= Ctr Existing M.H.		6.63	114.02	Top of Rim
+81.03			15.48	105.17	= Flow Line
T.P.	5.55	113.58	12.62	108.03	
			10.29	103.29	on stub 210

Planted
see D-209
March 1924
JTB

3/19/24

Sewer Levels on
 2 Gold Birch St from apt
 55' S. of 3L. Upas St on West
 To Thorn thence E on Thorn to
 present sewer in Reynard Way Gage

	0.73	218.23		on stub
0+00 = 55' S. of 3L. Upas W. of Gold Birch			217.60	0+00
+50		4.7	136	
1		8.9	209.4	
T.P.	0.17	205.50	1300	20533
+50		0.6	204.9	
2		4.8	200.7	
+50		8.4	197.1	
+75		10.1	195.1	
3+00 Δ 90°00' L		9.87	195.63	on stub
+75		11.2	194.3	
T.P.	0.25	192.93	1282	192.65
+50		1.5	914	
4		7.2	857	
T.P.	0.11	184.56	848	184.45
+50		3.6	810	
5		8.3	763	
+50		12.8	718	
T.P.	0.44	172.65	1235	172.21
5+90 Δ of Fairfield rd closed (6+00.65) at Fairfield		3.56	169.09	on stub

49

+24		174.65	5.0	67.7
+25			6.3	66.4
+36			7.5	65.2
+38			5.8	66.9
+50			6.3	66.4
+60 P.O.T.			7.80	64.9
+70			10.2	62.5
T.P.	0.45	161.10	1200	160.65
+85			3.8	57.3
7			9.3	51.8
T.P.	0.06	149.21	11.95	149.15
+75			4.5	44.7
T.P.	0.25	136.61	12.85	136.36
+60			7.8	28.8
T.P.	1.54	125.05	1310	123.51
8			10.5	114.6
T.P.	0.20	113.58	11.67	113.38
+70			3.1	10.5
+65			9.0	104.6
+81. Junction with present sewer		10.29	103.29	on stub

Platted See Profile 210 D
 March 1924
 H.P.B.

2/19/24 Gregory Sewer Levels &
 Fairfield Pl. from & Thorn to
 5+90.65 - or
 (6+00.65 on page 49)
 195' N
 172.65 HS from page 49
 Fairfield =
 0+00

+20 3.56 169.09 ✓

+40 = PC 157.48 Radius Curve 4.9 67.8

+75 1.1 71.6

T.P. 1235 184.56 044 172.21 ✓

1 Δ 31°45' L 12.0 72.6

+20 9.5 75.1

+50 8.8 75.8 ✓

T.P. 8.48 192.93 011 184.45 ✓

1+90 = end of pipe on curve

+95 9.74 83.19 on stub

218.33 HS from page 49

3.04 208.30 13.07 205.26 ✓

0.52 196.36 12.46 195.84 ✓

12.52 183.84 ✓
 Note cord over C.D. E side from 1+90

Plotted See Profile 210D ✓
 March 1924 H.P.B.

Plan shows Sewer line on Curve

R = 157.48 Cord of 19.99 = 20' on Curve
 Δ = 54° 34' - 27" Defl for 19.99 = 3° - 38' - 18"
 T = 81.24
 L = 150'

3/21/24

Gregory Lower Levels & Spruce St
from Hawk E to Reynard Way

167.35

51

					+70		13.1	49.3	
6 Hawk	2.43	186.27		183.84	+80 - 6 Goldfinch		14.75	47.60	on Mon
= 0+00			1.2	85.1	3+05		15.7	46.7	
+20			2.2	84.1	+30		13.5	48.9	
+40			1.6	84.7	+50		10.8	51.6	
+50			7.6	78.7	+80		9.3	53.1	
T.P.	088	174.22	12.93	173.34	4+25		10.2	52.2	
+75			13.1	61.1	+65		13.4	49.0	
T.P.	041	162.35	12.28	161.94	T.P.	016	149.90	12.61	149.74
1+05			4.2	58.2	+80		2.4	47.5	
+07			10.1	52.3	+95		5.4	44.5	
+15 - bottom wash			15.0	47.4	5+10		2.6	40.3	
+20			8.3	54.1	T.P.	048	137.76	12.62	137.28
+29			10.8	51.6	+40.5 & Falcon B 15°05'R.		7.45	30.31	on stub
+32			15.2	47.2	+50		10.3	27.5	
+35			11.4	51.0	T.P. 1	059	126.42	11.93	125.83
+55			11.9	50.5	+75		10.4	16.0	
+80			14.2	48.2	T.P.	016	113.58	13.00	113.42
2			14.2	48.2	6		6.8	06.8	
+40			13.8	48.6	+75		13.0	100.6	

Plotted Profile
See 210-D
March 1924
MRB

Top Cb. over
C.B. NE
Throat Hawk

11358

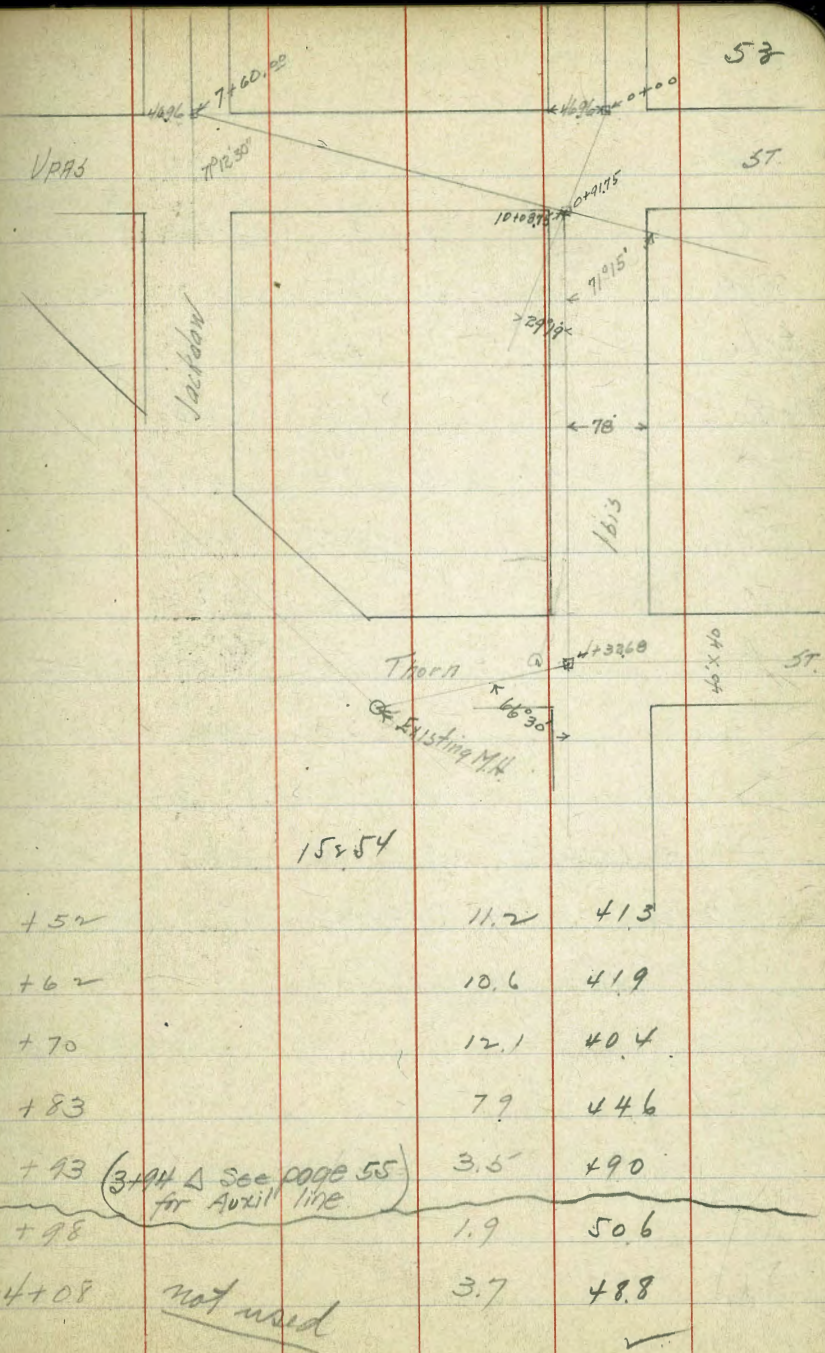
T.P.	0.09	101.10	1257	101.01	✓
+62			5.7	95.4	
+66			10.0	91.1	
+76 = Top of Cb			10.98	90.12	
+77.5 = bottom gutter			12.4	88.7	
+83			11.0	90.10	
7+06 ²⁰ = Existing M.H.			10.23	90.87	Top of Pipe ✓
7+06 ²⁰			14.91	86.19	M.H. Flow line

52

3/1/24

Sewer Levels 1613 St.
from N.L. Upas to M.H. Thorn
& Horton Ave.

	12.90	169.57	156.67	stubar 10+0875
T.P. N.L. Upas (= 7+60 L Profile) = 0.00 = 4+59.32 Page 57	10.27	177.82	2.02	167.55
+75			3.4	74.4
+50			10.9	66.9
+75			15.4	62.4
T.P. (= 8+51.82 Profile) + 9.175 = 3 L Upas Δ 49.99 L	20.2	169.57	10.27	167.55
0.02		152.54	152.52	T.P. on book page 46
1+13			2.2	50.3
+50			7.5	45.0
2	Platted		9.3	43.2
+08	See profile 2090		9.0	43.5
+27	March 1924		5.4	47.1
+53	7.3		6.9	45.6
+70			8.6	43.9
+83			11.1	41.4
3			11.0	41.5
+28			11.3	41.2



	15254	14544 ✓		
4+32.68 = 6 Thorn	025	14549 ✓	Δ 66° 30' P.	7.10 14544 ✓
+43			09	446
+49	<u>Not used</u>		2.6	429
+50		6.8	38.7	
+56		5.9	39.6	
+73		7.3	38.2	
T.P.	1.32	13549 ✓	1132	13417 ✓
+95			7.7	278
5+19			96	259
+33.38 - Existing M.H.			8.54	2695 Top Rim
+33.38			13.27	122.22 Floor line

Note Auxiliary line used from station 3+94 Δ 49° 31' 30" to mantle in Horton see page 55.

Ibis Street + Thorn.

(= 11+54 1/2 on Profile)	565 / 51.07	145.44	✓	See page 54 for 21
3+94 Δ	49° 31-30 R	219	4890	
4+00	11+60"	70	44.1	3.5 West = 9.5 lower.
+05	+65"	10.6	40.5	1.5 West 3.7 lower
+07	+67"	9.6	41.5	
+29	+89"	10.2	40.9	
+30	+90"	10.8	40.3	
+46	12+06"	11.4	39.7	
T.P.	006	138.59	12.56	138.53
+68	12+28"	9.9	28.7	
+81	12+41"	10.4	28.2	
+95	12+55"	12.5	26.1	
(= 12+75 1/2 Profile)				1267
5+15 50	NT Hole Top.	11.61	126.98	
Flowline	NT H.		127.00	

Platted See Profile 209 D
 March 1924
 H.P.B.

Sewer levels \pm of 1613 from
 \pm of Walnut S to M.H.

sw spike
 Brooks &
 1613 Sta

	1.20	247.79		240.59
\pm 1613 + Walnut road			3.8	
25 S			4.8	
40 S - 36 Walnut			4.0	
42			2.6	
1 -			4.6	
+ 35	N.G. see		6.0	
+ 65	next page		8.2	
2 -			11.7	
TP	0.17	235.67	12.29	235.50
2+50			8.0	
2+70			13.2	
TP	0.22	223.18	12.71	222.96
3 -			7.6	
TP	0.12	210.66	12.64	210.54
+ 50			4.7	
\pm Mon on Pl. 3+74.0			8.75	
4+00			14.2	
			12.21	

Sewer levels & 1615 from
& Walnut S. to M.H.

	253	249.1v	246.59	sw sp ko 1615 + Brooks
1615 + Walnut St. (3+00 Profile)			5.2	43.9
25' S			6.1	43.0
40' S			5.3	43.8
+42			4.0	45.1
1+00			5.9	43.2
+35			7.4	41.7
+65			10.0	39.1
2+00			13.4	35.7
TP	1.51	238.06	12.57	236.55
+40			9.3	28.8
TP	0.68	225.81	12.93	225.13
+30			7.1	18.7
3+00			11.5	14.3
TP	0.02	212.90	12.93	212.88
+35			5.3	07.6
+60			9.6	03.3
+77			12.2	200.7
T.P.	0.31	200.19	13.08	199.82

51

	20019	5.1	1.95.1
↓			
+22		11.8	188.4
TP	0.71	187.97	12.93
+35 (= 7+60 Profile)		49	183.1
+59.32 + 0+00 page 53		11.70	176.27

See page 53 for balance of
this str.

Platted

See Profile 209D

March 1924

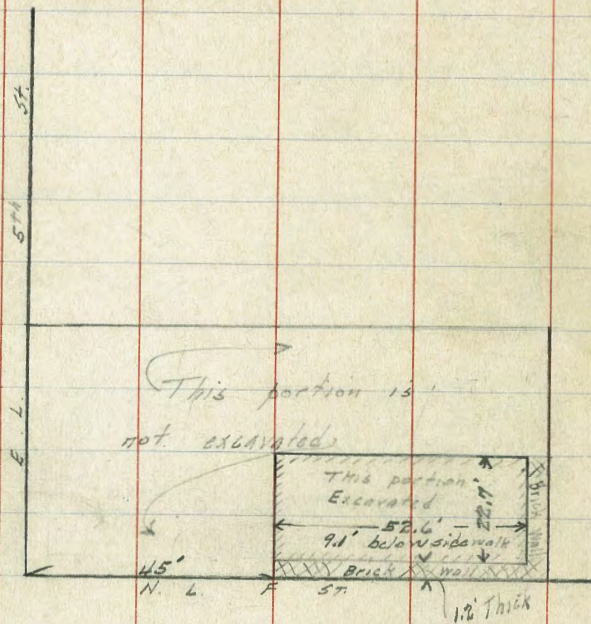
H.B.

11/25/24

Survey of Basement of Bldg
NE Cor 5th & F

58

5th



F

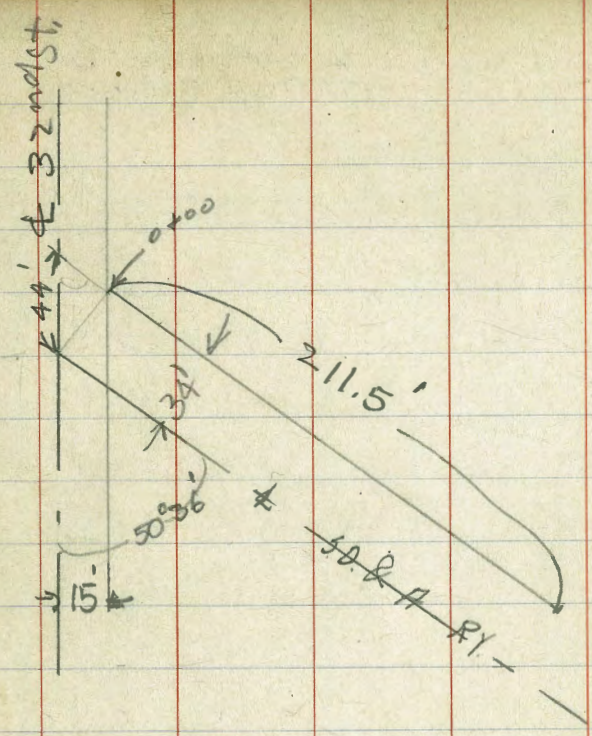
5th

5th

10/27/25
Phelps

Levels on ϕ Sewer Location
from 15' E of ϕ x 32nd St
To 226.5' \pm 5' E a line parallel to
& 34' N. x d of 50-ARY.

	5.47	10.12	4.65	st cap level at S. end
15' E of ϕ 32nd St 0+00			5.5	4.62
0+14			4.9	5.22
0+22			5.5	4.62
+32			9.2	0.92
+50			9.5	0.62
1			9.8	0.32
+50			10.6	-0.5
+83			10.1	0.0
+90			8.0	2.12
2			7.6	2.52
+115			8.0	2.12



Division + Main

B.M. 13.07

12/22/15 Sewer Levels
to Osborne St
from Cottonwood S.

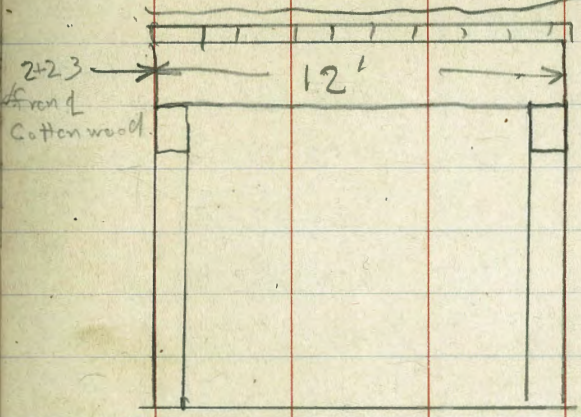
60

Main +
Yama Spike S.E
4.41

12.2 21.5
to Osborne + Cottonwood

Station	12.2	21.5	9.3	9.3	Ground @ Osborne & Cottonwood
+50	12.2		9.3	9.3	
1			11.9	9.6	
			12.0	9.5	
+50			12.1	9.4	
2			10.6	10.9	
+23			9.6	11.9	= back
+24			14.5	7.0	
+31			15.0	6.5	
+36			9.6	11.9	= back
+50			9.0	12.5	
+80			7.1	19.4	
3			4.6	16.9	
+25			0.7	20.8	
+30			0.0	21.5	

see page 7 for former notes



Levels for Wall.

Footings FIRST ST

S. of Pennsylvania

on approx natural ground B.M. NW

0.94 270.94 270.00 1st Penn.

100' S. of Pennsy. ~~ditto~~ 1st 9.6 261.34

110' ✓ ✓ ✓ ✓ WL 1st 12.3 258.6

120' ✓ ✓ ✓ ✓ ✓ ✓ 15.3 255.6

130' ✓ ✓ ✓ ✓ ✓ ✓ 18.4 252.3

160' ✓ ✓ ✓ ✓ ✓ ✓ 18.4 252.5

190' ✓ ✓ ✓ ✓ ✓ ✓ 23.1 247.8

T.P. 0.45 257.36 13.13

200' S. of Penn. 11.7 245.66

220' - - - 15.5 241.86

250' - - - 16.3 241.06

300' - - - 18.6 238.76

330' - - ✓ 16.3 241.06

370' - - - 15.1 242.26

380' - - - 12.4 244.96

400' - ✓ ✓ ✓ 8.4 248.96

126

10

Cross Section Schley St
From Intersection 26th St to S. Cotton

60' Wide
10' Cbs
10' 1/4
5/15/507

31.66

62

BM	355	31.66	28.11	11' 10" Hgt. Main x 26" S	31.7	28.5	31.7	28.5	✓
	Δ Taken	Diag	3.7	10.6 Cbs 10.6 1/4	CB	3.7	3.7	28.5	✓
"		3.0	28.7	✓	+8	4.3	27.4	27.4	✓
CB Top		3.22	28.42	✓	11	4.4	27.2	27.2	✓
Gutter		4.0	27.2	✓	2	4.1	27.6	27.6	✓
1/4		4.0	27.2	✓	+5	4.0	27.2	27.2	✓
2		3.6	28.2	✓	14	4.6	27.1	27.1	✓
1/4		3.9	27.8	✓	CB	4.1	27.3	27.3	✓
Gutter		4.1	27.3	✓	5	4.1	27.3	27.3	✓
CB Top		3.48	28.18	✓					
F		3.5	28.1	✓					
	0+0 on N 218501E					50.5			
E		4.7	27.0	✓	CB	4.7	27.0	27.0	✓
CB		4.0	27.7	✓	+6	4.5	27.4	27.4	✓
1/4		3.9	27.8	✓	11	3.4	28.3	28.3	✓
2		3.7	28.0	✓	+3	3.5	28.1	28.1	✓
1/4		4.1	27.6	✓	+6	4.4	27.3	27.3	✓
Gutter		4.4	27.3	✓	2	4.6	27.1	27.1	✓
CB Top		3.20	28.5	10.5-3000 Top curb 3.20	14	4.9	26.6	26.6	✓
"		3.0	28.7	✓	+6	4.7	27.0	27.0	✓
					+8	3.5	28.1	28.1	✓

Schley St.

31.66

312

CB	8.5	✓8.1 ✓
1.5	3.3	✓8.4 ✓
11	2.4	✓9.3 ✓
	70.5	
11	2.7	✓9.0 ✓
1.6	2.9	✓9.8 ✓
CB	3.6	✓9.1 ✓
1.2	3.8	✓9.9 ✓
1.3	5.0	✓6.7 ✓
1/4	5.0	✓6.7 ✓
B	4.8	✓6.9 ✓
1.4	4.6	✓7.1 ✓
1.6	3.5	✓9.1 ✓
1/4	3.6	✓8.1 ✓
1.5	3.5	✓8.2 ✓
CB	3.9	✓7.8 ✓
E	4.7	✓7.0 ✓
	83.45511.11611.0	
F	4.2	✓7.5 ✓
CB	4.4	✓7.3 ✓
1/4	4.3	✓7.4 ✓

31.66

312

1.4	4.2	✓7.5 ✓ 63
1.6	4.8	✓6.9 ✓
2	5.0	✓6.7 ✓
1/4	5.1	✓6.6 ✓
1.6	5.1	✓6.6 ✓
1.7	4.3	✓7.4 ✓
CB	4.0	✓7.7 ✓
11	4.0	✓7.7 ✓
	11CB	
11	4.7	✓7.0 ✓
CB	4.6	✓7.1 ✓
1.5	5.1	✓6.6 ✓
1/4	5.1	✓6.6 ✓
2	5.4	✓6.3 ✓
1.4	5.3	✓6.4 ✓
1.6	4.5	✓7.2 ✓
1/4	4.4	✓7.3 ✓
CB	4.9	✓7.8 ✓
F	5.5	✓6.1 ✓
	1/4	
E	5.6	✓6.1 ✓

Schley St.

31.66

31.7

CB	53	✓159	✓
1/4	52	✓156	✓
E	54	✓163	✓
1/4	50	✓167	✓
CB	50	✓167	✓
1/4	52	✓165	✓
St. Main			
1/4	50	✓167	✓
CB	50	✓167	✓
1/4	51	✓16.6	✓
E	51	✓16.6	✓
1/4	52	✓16.5	✓
CB	53	✓16.6	✓
E	55	✓16.2	✓
1/4			
E	58	✓159	✓
CB	55	✓16.2	✓
1/4	53	✓16.1	✓
E	53	✓16.4	✓
1/4	54	✓16.3	✓

31.66

31.7

64

CB	55	✓16.2	✓
1/4	55	✓16.2	✓
CB			
1/4	57	✓16.0	✓
CB	57	✓16.3	✓
1/4	55	✓16.2	✓
E	55	✓16.2	✓
1/4	58	✓15.9	✓
13	56	✓16.1	✓
CB	59	✓15.9	✓
E	58	✓15.9	✓
St. Main			
E	52	✓16.5	✓
CB	57	✓16.2	✓
1/4	53	✓16.4	✓
E	53	✓16.4	✓
1/4	54	✓16.3	✓
CB	54	✓16.3	✓
1/4	57	✓16.5	✓
50.5			
1/4	53	✓16.4	✓

Schley St.

31.66

317
58

CB		59	✓
75		63	✓
76		63	✓
E		61	✓
74		60	✓
75		63	✓
74		66	✓
CB		65	✓
F		60	✓

75's

F		60	✓
CB		61	✓
74		61	✓
E		61	✓
74		60	✓
75		60	✓
CB		60	✓
74		63	✓

100's

77		60	✓
78		64	✓

31.66

312
65

CB		65	✓
75		63	✓
74		64	✓
E		68	✓
71		67	✓
72		58	✓
74		50	✓
CB		53	✓
F		57	✓

77

155

2735

586

2580

1253

774

F		17	✓
CB		17	✓
74		19	✓
77		19	✓
E		28	✓
78		31	✓
74		30	✓
CB		31	✓
78		32	✓
77		23	✓

Sobley St.

27.35

150 114 91 010

27.4

14	39	✓35	✓
77	38	✓36	✓
19	45	✓49	✓
CB	45	✓49	✓
15	39	✓35	✓
14	39	✓35	✓
18	38	✓36	✓
8	28	✓46	✓
15	21	✓53	✓
14	21	✓53	✓
15	18	✓56	✓
CB	25	✓49	✓
F	26	✓48	✓

18.5

E	34	✓60	✓
CB	31	✓63	✓
14	27	✓69	✓
15	25	✓72	✓
8	33	✓61	✓
17	47	✓77	✓

27.35

27.4

44	42	✓46	✓66
CB	44	✓50	✓
14	45	✓49	✓
	26's		
11	44	✓50	✓
CB	48	✓46	✓
14	5.1	✓43	✓
15	47	✓47	✓
2	18	✓56	✓
14	0.6	✓68	✓
14	15	✓59	✓
CB	18	✓55	✓
F	31	✓43	✓
	34's		
F	77	192	✓
CB	76	198	✓
15	6.7	✓05	✓
14	58	✓16	✓
8	49	✓55	✓
14	53	✓41	✓
CB	57	✓43	✓

Sibley St.

27.35

27.4
49

M			✓1.5 ✓	
	41.5			
M		51	✓1.0 ✓	
CB		55	✓1.9 ✓	
1/4		51	✓1.0 ✓	
2		51	✓1.0 ✓	
7.5		63	✓1.1 ✓	53.5 S on F Toad Hill / S DAP Main line
2		64	✓1.0 ✓	55.5 - 21.77
1/4		63	✓1.1 ✓	57.5 S on F 50000.000
CB		63	✓1.1 ✓	56.2 - 21.73
F		63	✓1.1 ✓	63.5 S on F Main line 0.000
F	Top N Paul	596	✓1.49 ✓	544 21.91
	61.5			
F		59	✓1.6 ✓	
CB		59	✓1.6 ✓	
1/4		59	✓1.7 ✓	
2		58	✓1.6 ✓	
7.5		54	✓1.0 ✓	
1/4		55	✓1.9 ✓	
CB		51	✓1.0 ✓	
M		54	✓1.0 ✓	

27.35

61.5

27.4

67

M		58	✓1.4 ✓
CB		51	✓1.3 ✓
1/4		50	✓1.4 ✓
7.5		50	✓1.4 ✓
2		61	✓1.3 ✓
7.2		67	✓0.7 ✓
1/4		72	✓0.2 ✓
CB		72	✓0.4 ✓
F		72	✓0.4 ✓
	75.5		
F		49	✓1.5 ✓
CB		49	✓1.5 ✓
1/4		52	✓1.5 ✓
7.5		58	✓1.6 ✓
2		59	✓1.7 ✓
7.5		51	✓1.3 ✓
1/4		51	✓1.3 ✓
CB		51	✓1.3 ✓
M		56	✓1.8 ✓
	100.5		
M		57	✓1.7 ✓

Schley St.

2735

 $\frac{27}{59}$

+5	59	✓110	✓
CB	53	✓111	✓
1/4	53	✓111	✓
E	53	✓111	✓
1/4	52	✓111	✓
CB	53	✓111	✓
E	52	✓111	✓

150' S. N.L. Cotton

E	57	✓117	✓
CB	57	✓117	✓
1/4	58	✓116	✓
E	61	✓113	✓
1/4	61	✓113	✓
CB	62	✓112	✓
1/4	63	✓111	✓

N.C.B.

1/4	65	✓109	✓
CB	63	✓111	✓
1/4	62	✓112	✓
E	62	✓112	✓
1/4	61	✓113	✓

2735

 $\frac{47}{59}$

CB	59	✓115	✓68
E	61	✓113	✓
1/4			
E	62	✓112	✓
CB	63	✓111	✓
1/4	63	✓111	✓
E	62	✓112	✓
1/4	64	✓110	✓
CB	64	✓110	✓
1/4	64	✓108	✓
E			
1/4 Tapping	68	✓104	✓
CB	66	✓104	✓
1/4	68	✓106	✓
E	67	✓107	✓
1/4	67	✓107	✓
CB	68	✓106	✓
E	69	✓105	✓
1/4			
E	7.5	199	✓
CB	7.3	191	✓

Schley St.

2735

72-4

14

73

✓ 101 ✓

2

73

✓ 101 ✓

14

72

✓ 101 ✓

CB

69

✓ 105 ✓

14

Top Poring

708

✓ 101 ✓

14

14

Top Poring

760

✓ 198 ✓

CB

76

✓ 198 ✓

14

77

✓ 192 ✓

2

77

✓ 192 ✓

14

78

✓ 196 ✓

CB

76

✓ 198 ✓

F

78

✓ 196 ✓

SL Collors

F

77

✓ 197 ✓

CB

78

✓ 196 ✓

14

76

✓ 198 ✓

2

76

✓ 198 ✓

14

76

✓ 198 ✓

CB

74

✓ 100 ✓

14 Top Poring

713

✓ 101 ✓

2735

TP

517

2415

087

26.48

B.M.

406

28.09

NO. 14 2145

N. 30114

69

Cross Section Alley Fort Stockton High
 Between Fort Stockton Dr. And Hickory
 From H.L. Withersby to E.L. Harleasia

70

BM	10.28	26.34 ✓	25.06	sp. N 11 Hickory 14 Withersby	S	74	453.9
		0+0 - H.L. Withersby			S	87	52.6
S	Topwing	4.65	256.69		75	88	53.1
S		4.60	256.74		8	81	53.2
N		4.84	257.10		74	79	53.4
		25 11			N	76	53.7
N		4.7	56.6			125 11	
+2		4.7	56.6		N	86	54.7
+3		5.6	55.7		S	90	54.3
S		5.8	55.5		+8	89	54.4
S		6.0	55.3		S	94	51.9
		50 11				139.28 - E.L. Harleasia 2/11/17	
S		6.6	54.7		S	97	51.6
S		6.4	54.9		S	94	51.4
+7		6.4	54.9		N	86	54.7
N		5.9	55.6			149.28 - E.L. Harleasia 2/11/17	
		75 11			N	89	54.4
N		6.0	55.3		S	95	51.8
+5		6.6	54.7		S	102	51.1
S		7.1	54.2				

PLOTTED
 2/29/26

261.34

1598 N = H. L. N. 57104

S	10.1	50.9
Z	99	51.4
N	88	52.5

175 N

N	85	52.8
+5	96	51.7
Z	96	51.7
S	100	51.3

200 N

S	87	52.6
Z	80	53.3
+5	98	53.5
N	71	54.2

214 N

N	65	54.8
+4	67	54.6
+5	71	54.2
Z	73	54.0
S	81	53.2

261.34

250 N

S	72	55.1
Z	64	54.9
N	60	55.3

275 N

N	56	55.7
+6	60	55.3
Z	60	55.3
S	67	54.6

298.5 N = E. L. Hartensia

S Top Bridge	623	55.11
Z " "	628	55.06
N " "	580	55.54

71

Cross Section N4S Alley Fork Stockton Heights
 Between W. Hickory and Hortensia
 From S.W. E. W. Alley to N. Hickory
 2113.7

20' side

251.55

100' S

7~

90' S
 90' 100' Conc Floor
 12' 11" H L
 490 = 246.6

TP	0.06	251.55	98.5	251.49			48	246.7
			0.0 = S.W. E. W. Alley				54	46.1
E			0.1	251.4	15' S Garage 15' H H L Conc Floor		55	46.0
S			0.5	251.0	0.49 = 251.06		53	46.7
N			0.6	250.9				
		25' S			12' S Garage 15' E L Dirt Floor		61	45.4
N			1.7	249.8	0.5 = 251		61	45.4
1.5			1.9	50.1			56	45.9
S			1.4	50.1				
						125' S		
E			1.6	49.9	Fence 10' 10" H L		68	44.7
		50' S					75	44.0
E			2.9	48.6			77	43.8
S			2.9	48.6			74	44.1
N			3.0	48.5	12' S Garage 15' E L Dirt Floor		75	44.0
		75' S			3' 0			
			4.3	47.7			96	41.9
7.3			4.6	46.9			97	41.8
S			4.4	47.1			96	41.9
E			3.6	47.9	Fence 10' 10" H L		84	43.1
						144' S		

PLOTTED

105' S
 Garage Conc Floor
 10' H H L
 490 = 246.6

251.55
150'0" = N. Hickory

E	Top		10.02	✓41.53
L			10.2	✓41.3
M			10.5	✓41.0

TP	11.38	252.55	10.38	241.17	
BN			15.0	151.05	3P N. Hickory 251.05

74

70

76

77

78

79

A.C. Howard Tel No 354 J

owner & Resident for 9 Yrs

1.27		16.7	613
2.55	10.0	3.3	1.17
(43.7 ²)		13.4	8.8
	426.7		5.2
	39.0		14.0
	465.7		3.2
			10.8

Wooden valley N of Dalbergia 3.3

Yests " " " " 5.2

low place bet Una & Yests 8.8

92.38 620

6.56 60

85.84 580

1270

1402⁶ E Birch L 280 38'

41.9

2.85 = end 'B' line

$$38^{\circ} 19' = 113.4'$$

$$71^{\circ} 34'$$

250
72
328

275.00
90.7

365.7
43.0

322.7

329
162

167

19.58
22.88
0.24
22.64
23.21
10.1

13.1

105 26'
90 00

18 26'

180 00
108 26

71 34

6:35
7:10
7:45
8:20
8:55
9:30
10:05
10:40
11:15
11:40
12:15
12:50
1:35

6:35
7:10
7:45
8:20
8:55
9:30
10:05
10:40
11:15
11:40
12:15
12:50
1:35

42.41 42.55
58.69
13.3
45.4

26.25
19.375
25.70
40.70

249.65

42.11
7.30
34.81

37.53
10.53

27.0

47.6 150 11 47.9
0.9 A 4.9 45.0
R 48.5 +15 5.7 42.8

58.7
34.5 58.6
53.1
54.0

211
45

7.63
15

7.78

58.25
8.90

59.95

26.11
75.0

336.1
76.56

336
80

416

27.00 Elev 4 vests

7.7 17.2
46.27 7.8
2.55 10.0

(43.72)

16.7
3.3

13.4

204.50

600

630

613

1.17

426.7
39.0

465.7

8.8
5.7
14.0
3.2

10.8

Wooden valley N of Dalbergia 3.3

Vests " " " " 5.2

low place bet. main 2 vests 8.8

92.38
6.56

85.82

630
60

580
1270

1402⁶ E Birch L 230 38'

41.9

246,59

10.5
66.6
40.0
117.1
288.4
97.1
985.5

10.5
66.6
20.0
97.1
14.00
10.50
3.5

157
173
330
175
505
1700
1000
650

175
115
290
175
465
115
580
185
765
125
590

130.00
160.46
19.19
7.79
3/18
170.5
101.03
150.50
183.29
12.79
5.00
16.8
19.79
70.59
44.11
26.48
296
49.49
44.11
5.67
4375
4
175.00
45.49
41.67
41.66
90.00
124.99
70.59
45.49
45.49
116.08
180.00
116.08
180.00
45.49
63.12
120.00
146.48
175.00
39.79
214.79
166.00
164.81

246,59
252
49.12
290
175
465
580
185
765
125
590
70.59
37.47
160.46
2379.62
189.81
298
246
52
243.90
2482.75
130
90
180
10
190
380
30.00
49.00
170.00
24900
300
30.00
49.00
170.00
24900
300

16.40
42.00
13.00
40.00
39.94
10.50
191.84
10.50
32.62
120.00
354.36
27.81
382.17
32500
57.07
27.81
74.00
70.13
20.00
131.84
178.46
20.00
5.67
104.13
3979
125.00
124.99
42.37
30.00
412.65
20.00
108.84
11.20
140.09
450 99
72 41
118 10
N 72° 21'

180.00
118 10
21.50
97.5
3
127.5
40.0
187.5

50.0
115.0
667.0
56.14
25.04
93.74
313.0
44.60
48.06
11.41
51.42
5.72
55.75
0.96
0.90
42.5
3
127.5
43.0
6.0
176.5

DISTANCES FROM CENTER OF ROADWAY FOR CROSS-SECTIONING.
ROADWAY 14 FEET WIDE. SIDE SLOPES 1 1/2 TO 1.
FOR SINGLE TRACK EMBANKMENT.

	0	.1	.2	.3	.4	.5	.6	.7	.8	.9	
0	7.0	7.2	7.3	7.5	7.6	7.8	7.9	8.1	8.2	8.4	0
1	8.5	8.7	8.8	9.0	9.1	9.3	9.4	9.6	9.7	9.9	1
2	10.0	10.2	10.3	10.5	10.6	10.8	10.9	11.1	11.2	11.4	2
3	11.5	11.7	11.8	12.0	12.1	12.3	12.4	12.6	12.7	12.9	3
4	13.0	13.2	13.3	13.5	13.6	13.8	13.9	14.1	14.2	14.4	4
5	14.5	14.7	14.8	15.0	15.1	15.3	15.4	15.6	15.7	15.9	5
6	16.0	16.2	16.3	16.5	16.6	16.8	16.9	17.1	17.2	17.4	6
7	17.5	17.7	17.8	18.0	18.1	18.3	18.4	18.6	18.7	18.9	7
8	19.0	19.2	19.3	19.5	19.6	19.8	19.9	20.1	20.2	20.4	8
9	20.5	20.7	20.8	21.0	21.1	21.3	21.4	21.6	21.7	21.9	9
10	22.0	22.2	22.3	22.5	22.6	22.8	22.9	23.1	23.2	23.4	10
11	23.5	23.7	23.8	24.0	24.1	24.3	24.4	24.6	24.7	24.9	11
12	25.0	25.2	25.3	25.5	25.6	25.8	25.9	26.1	26.2	26.4	12
13	26.5	26.7	26.8	27.0	27.1	27.3	27.4	27.6	27.7	27.9	13
14	28.0	28.2	28.3	28.5	28.6	28.8	28.9	29.1	29.2	29.4	14
15	29.5	29.7	29.8	30.0	30.1	30.3	30.4	30.6	30.7	30.9	15
16	31.0	31.2	31.3	31.5	31.6	31.8	31.9	32.1	32.2	32.4	16
17	32.5	32.7	32.8	33.0	33.1	33.3	33.4	33.6	33.7	33.9	17
18	34.0	34.2	34.3	34.5	34.6	34.8	34.9	35.1	35.2	35.4	18
19	35.5	35.7	35.8	36.0	36.1	36.3	36.4	36.6	36.7	36.9	19
20	37.0	37.2	37.3	37.5	37.6	37.8	37.9	38.1	38.2	38.4	20
21	38.5	38.7	38.8	39.0	39.1	39.3	39.4	39.6	39.7	39.9	21
22	40.0	40.2	40.3	40.5	40.6	40.8	40.9	41.1	41.2	41.4	22
23	41.5	41.7	41.8	42.0	42.1	42.3	42.4	42.6	42.7	42.9	23
24	43.0	43.2	43.3	43.5	43.6	43.8	43.9	44.1	44.2	44.4	24
25	44.5	44.7	44.8	45.0	45.1	45.3	45.4	45.6	45.7	45.9	25
26	46.0	46.2	46.3	46.5	46.6	46.8	46.9	47.1	47.2	47.4	26
27	47.5	47.7	47.8	48.0	48.1	48.3	48.4	48.6	48.7	48.9	27
28	49.0	49.2	49.3	49.5	49.6	49.8	49.9	50.1	50.2	50.4	28
29	50.5	50.7	50.8	51.0	51.1	51.3	51.4	51.6	51.7	51.9	29
30	52.0	52.2	52.3	52.5	52.6	52.8	52.9	53.1	53.2	53.4	30
31	53.5	53.7	53.8	54.0	54.1	54.3	54.4	54.6	54.7	54.9	31
32	55.0	55.2	55.3	55.5	55.6	55.8	55.9	56.1	56.2	56.4	32
33	56.5	56.7	56.8	57.0	57.1	57.3	57.4	57.6	57.7	57.9	33
34	58.0	58.2	58.3	58.5	58.6	58.8	58.9	59.1	59.2	59.4	34
35	59.5	59.7	59.8	60.0	60.1	60.3	60.4	60.6	60.7	60.9	35
36	61.0	61.2	61.3	61.5	61.6	61.8	61.9	62.1	62.2	62.4	36

Calculated by Julien A. Hall, M. Am. Soc. C. E.

MADE IN GERMANY.