

983

F.B. 983

LEVEL BOOK

373

883

KEUFFEL & ESSER CO.

DRAWING MATERIALS
AND
SURVEYING INSTRUMENTS.

NEW YORK.

CHICAGO. SAN FRANCISCO. ST. LOUIS.

TABLES FOR EXCAVATIONS AND EMBANKMENTS.

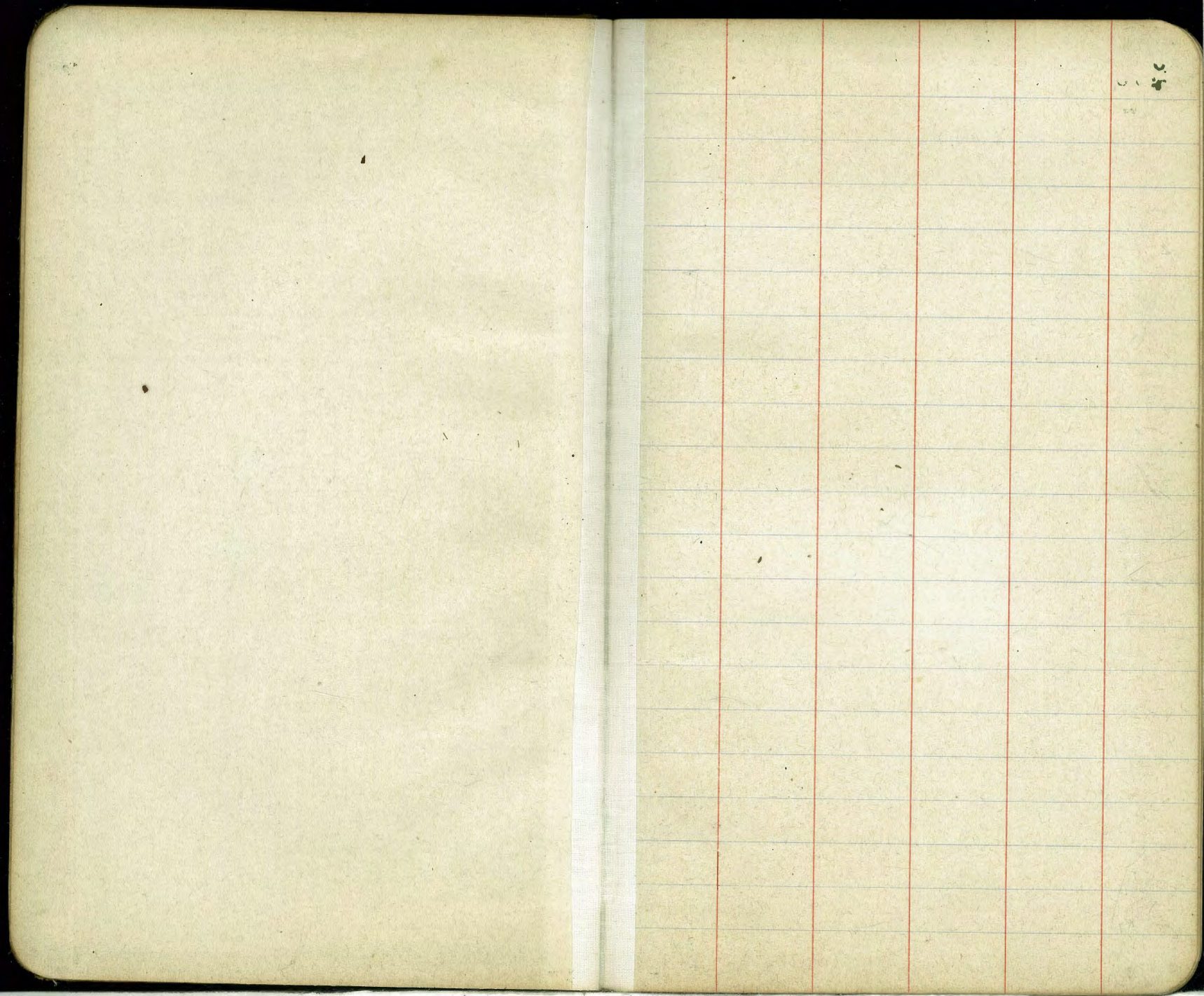
DISTANCES FROM CENTER OF ROADWAY FOR CROSS-SECTIONING.
ROADWAY 18 FEET WIDE. SIDE SLOPES 1 TO 1.
FOR SINGLE TRACK EXCAVATION.

"Copyright, 1885, by Keuffel & Esser Co."

	0	1	2	3	4	5	6	7	8	9	
0	9.0	9.1	9.2	9.3	9.4	9.5	9.6	9.7	9.8	9.9	0
1	10.0	10.1	10.2	10.3	10.4	10.5	10.6	10.7	10.8	10.9	1
2	11.0	11.1	11.2	11.3	11.4	11.5	11.6	11.7	11.8	11.9	2
3	12.0	12.1	12.2	12.3	12.4	12.5	12.6	12.7	12.8	12.9	3
4	13.0	13.1	13.2	13.3	13.4	13.5	13.6	13.7	13.8	13.9	4
5	14.0	14.1	14.2	14.3	14.4	14.5	14.6	14.7	14.8	14.9	5
6	15.0	15.1	15.2	15.3	15.4	15.5	15.6	15.7	15.8	15.9	6
7	16.0	16.1	16.2	16.3	16.4	16.5	16.6	16.7	16.8	16.9	7
8	17.0	17.1	17.2	17.3	17.4	17.5	17.6	17.7	17.8	17.9	8
9	18.0	18.1	18.2	18.3	18.4	18.5	18.6	18.7	18.8	18.9	9
10	19.0	19.1	19.2	19.3	19.4	19.5	19.6	19.7	19.8	19.9	10
11	20.0	20.1	20.2	20.3	20.4	20.5	20.6	20.7	20.8	20.9	11
12	21.0	21.1	21.2	21.3	21.4	21.5	21.6	21.7	21.8	21.9	12
13	22.0	22.1	22.2	22.3	22.4	22.5	22.6	22.7	22.8	22.9	13
14	23.0	23.1	23.2	23.3	23.4	23.5	23.6	23.7	23.8	23.9	14
15	24.0	24.1	24.2	24.3	24.4	24.5	24.6	24.7	24.8	24.9	15
16	25.0	25.1	25.2	25.3	25.4	25.5	25.6	25.7	25.8	25.9	16
17	26.0	26.1	26.2	26.3	26.4	26.5	26.6	26.7	26.8	26.9	17
18	27.0	27.1	27.2	27.3	27.4	27.5	27.6	27.7	27.8	27.9	18
19	28.0	28.1	28.2	28.3	28.4	28.5	28.6	28.7	28.8	28.9	19
20	29.0	29.1	29.2	29.3	29.4	29.5	29.6	29.7	29.8	29.9	20
21	30.0	30.1	30.2	30.3	30.4	30.5	30.6	30.7	30.8	30.9	21
22	31.0	31.1	31.2	31.3	31.4	31.5	31.6	31.7	31.8	31.9	22
23	32.0	32.1	32.2	32.3	32.4	32.5	32.6	32.7	32.8	32.9	23
24	33.0	33.1	33.2	33.3	33.4	33.5	33.6	33.7	33.8	33.9	24
25	34.0	34.1	34.2	34.3	34.4	34.5	34.6	34.7	34.8	34.9	25
26	35.0	35.1	35.2	35.3	35.4	35.5	35.6	35.7	35.8	35.9	26
27	36.0	36.1	36.2	36.3	36.4	36.5	36.6	36.7	36.8	36.9	27
28	37.0	37.1	37.2	37.3	37.4	37.5	37.6	37.7	37.8	37.9	28
29	38.0	38.1	38.2	38.3	38.4	38.5	38.6	38.7	38.8	38.9	29
30	39.0	39.1	39.2	39.3	39.4	39.5	39.6	39.7	39.8	39.9	30
31	40.0	40.1	40.2	40.3	40.4	40.5	40.6	40.7	40.8	40.9	31
32	41.0	41.1	41.2	41.3	41.4	41.5	41.6	41.7	41.8	41.9	32
33	42.0	42.1	42.2	42.3	42.4	42.5	42.6	42.7	42.8	42.9	33
34	43.0	43.1	43.2	43.3	43.4	43.5	43.6	43.7	43.8	43.9	34
35	44.0	44.1	44.2	44.3	44.4	44.5	44.6	44.7	44.8	44.9	35
36	45.0	45.1	45.2	45.3	45.4	45.5	45.6	45.7	45.8	45.9	36

Calculated by Julien A. Hall, M. Am. Soc. C. E.

Columa & oak Blvd. SW. north
property line mon. 77.595



Cut & Fills on Torrey Road from Sta 76 to Sta 144
 stakes set 20' from ctr of road. cut & fill given from Top hub

Sta	+	Mt.	-	Elev.	Grade	E	Sta	+	7+97 141	-	Elev.	Grade	±
	9.47	49.69		40.22	rem. Top Hyd. brace		83			8.0	67.0	64.0	13.0
75+95 76			11.2	38.5	40.0 0400	-4.5	+50			3.9	71.1	67.0	14.1
76+50			11.8	37.9	41.2	-3.3	84			1.3	73.7	070.0	43.7
77			8.3	41.4	42.4	-1.0	T.P.	12.26	87.82	0.01	74.96		
+50			7.5	42.2	43.6	-1.4	+50			11.1	76.7	71.8	44.9
78			4.7	45.0	44.8	+0.2	85			9.0	78.8	73.6	45.2
T.P.	12.22	61.99	0.52	49.17			+50			7.7	80.1	75.4	44.7
+50.33 PC			9.5	52.5	46.8	+6.5	86			3.0	84.8	77.2	47.6
79			10.6	51.4	47.2	+4.2	+50			0.2	87.6	79.0	48.6
+50			11.2	50.8	48.4	+2.4	T.P.	12.87	100.44	0.25	87.57		
80			11.2	50.8	49.6	+1.2	87			13.4	87.0	80.8	46.2
+0.62 E.C.			11.1	50.9	49.8	+1.1	+39.82 E.C.			1.3	86.1	82.2	43.9
+50			9.8	52.2	50.8	+1.4	88+134 PC			15.9	84.5	84.8	0.3
81			8.1	53.9	052.0	+1.9	+50			9.5	90.9	86.2	44.7
+50			6.5	55.5	55.0	+0.5	89			7.6	92.8	088.0	44.8
82			2.8	59.2	58.0	+1.2	+32.02 E.C.			3.4	97.0	90.2	46.8
+15.2 P.C.			1.7	60.0	59.0	+1.3	T.P.	13.09	113.41	0.12	100.32		
T.P.	13.06	74.97	0.08	61.91			+50			13.4	100.0	94.5	48.5
+50			12.5	62.5	46.0	+16	90			7.4	106.0	95.0	41.0

Sta		113.41 147	-	Elev	Grade	±	Sta		15023 41	-	Elev	Grade	±
90+50			37	109.7	98.5	+1.22	475			2.8	147.4	1204	+21.0
T.P.	12.7	128.52	0.06	113.35			T.P.	9.98	156.33	3.88	146.35		
91			11.2	114.3	102.0	+12.3	95			7.3	149.0	1281	20.9
+50			11.0	114.5	105.5	+9.0	+25			5.3	151.0	1799	+21.1
+87.12 P.C.			8.9	116.6	108.1	+8.5	+50			6.7	149.6	1316	+18.0
92			2.6	117.9	109.0	+8.9	+71.25 E.C.			7.2	149.1	1330	+16.1
+25			4.2	121.3	110.7	+10.6	+88.80 P.O.			5.6	150.7	1342	+16.5
B.M. on P.I.			9.62	115.84	115.85 B.M.		96			5.1	151.2	1350	+16.2
T.P.	12.81	137.99	0.24	125.18			T.P.	0.41	148.10	8.64	147.69		
+50			11.4	126.6	112.4	+14.2	+25			11.7	136.4	1352	+1.2
+75			8.1	129.9	114.7	+15.2	+50			11.2	136.9	1355	+1.4
93			5.2	132.8	115.9	+16.9	+75			11.3	136.8	1357	+1.1
+25			3.4	134.6	117.6	+17.0	97			1.3	147.8	1360	+1.8
+50			1.3	136.7	119.3	+17.4	+25			10.3	137.8	1362	+1.6
E.C. 461.38 = 192.80 P.C.			0.7	137.3	120.1	+17.2	+50			6.0	142.1	1365	+5.6
T.P.	12.99	150.23	0.75	137.14			T.P.	12.71	160.24	0.47	147.63		
94			11.0	139.2	121.3	+17.9	+69.80 P.C.			12.5	147.8	1367	+1.1
+25			8.8	141.4	123.0	+18.4	98			9.4	150.9	1370	+1.9
+50			5.6	144.6	124.7	+19.9	+25			8.6	151.7	1386	+1.3

370.53

0
0
0

Sta	+	160.34 HI	-	Elev	Grade	±	Sta	+	165.40 HI	-	Elev	Grade	±
98			8.1	152.2	140.2	+12.0	+75			5.0	180.4	174.6	+5.8
	+75		6.5	153.8	141.7	+12.1	+50			3.3	182.1	176.2	+5.9
99			4.9	155.4	142.3	+12.1	+75			0.6	184.8	177.7	+7.1
	+25		4.5	155.8	144.9	+10.9	T.P	12.85	198.19	0.06	185.34	184.75	+0.59
	+50		4.4	155.9	146.0	+9.9	105			11.0	187.2	179.3	+7.9
	+75		4.1	156.2	148.1	+8.1	+12.92 EC			9.3	188.9	180.1	+8.8
100			3.7	156.6	149.7	+6.9	+50			4.8	193.4	182.5	+10.9
	+25		2.6	156.7	151.3	+5.4	106			2.1	196.1	185.7	+10.4
ECT 515	+83.32		3.41	156.9	152.9	+4.0	T.P.	9.49	207.47	0.21	197.92		
101			2.4	157.9	154.0	+3.9	+50			8.3	199.2	188.8	+10.4
	T.P	12.68	172.63	0.39	159.95		+99.8 PC			6.5	201.0	192.0	+9.0
	+50		9.9	162.7	157.1	+5.6	107+25			6.9	200.6	192.7	+7.9
102			7.7	164.9	160.3	+4.6	+50			9.2	198.3	193.5	+4.8
	+50		4.2	168.4	163.5	+4.9	+75			14.2	193.2	194.2	-0.9
103			2.1	170.5	166.6	+3.9	+99.4 EC			4.4	203.1	195.0	+8.1
	T.P	12.83	185.40	0.06	172.87		108+52 PC			1.9	205.6	198.4	+7.2
	+50		10.6	174.8	169.8	+5.0	+75			6.0	206.5	199.9	+6.6
	+86.2 PC		7.8	177.6	172.1	+5.5	T.P	12.80	220.27	0.00	207.47		
104			7.1	178.3	173.0	+5.3	109			12.8	207.5	201.5	+6.0

867.67

172.63

100

12
5
15 } Davis
Hancock
Herrick
Elev

5

Sta		220.27		Elev	Grade	±	Sta		226.12		Elev	Grade	±
		141	-						141	-			
109+75			11.6	208.7	203.1	+5.6	114+75			5.9	240.2	236.4	+3.8
+50			10.4	209.9	204.7	+5.2	150			8.0	239.1	238.1	0.0
+242 EC			8.9	211.4	206.4	+5.0	+232 EC			3.2	241.9	240.4	+1.5
110			7.0	213.3	208.0	+5.3	T.P	12.70	258.79	0.00	246.09		
+50			7.7	212.6	211.2	+1.4	115+380 PC			8.7	250.1	244.1	+6.0
111			4.9	215.4	214.5	+0.9	116			4.1	254.7	248.3	+6.4
+50			0.0	220.8	217.7	+3.1	+602 EC			1.2	257.6	252.7	+4.9
T.P	13.00	233.25	0.02	220.25			117-20'E			2.7	256.1	255.2	+0.9
+738 PC			9.4	223.9	219.3	+4.6	117-20'W			7.6	251.2	255.2	-4.0
112			6.5	226.8	221.0	+5.8	+50			8.9	249.9	258.6	-8.7
+25			4.8	228.5	222.7	+5.8	118			7.4	251.4	262.0	-10.6
+50			3.4	229.9	224.4	+5.5	+168 EC			5.9	252.9	262.5	-9.6
		Cor Mt. 233.20	10.74	222.51	222.48	PT 4.6	+25			4.4	254.4	262.7	-8.3
+75			2.0	231.2	226.1	+5.1	T.R	12.95	271.68	0.06	258.73		
113			0.7	232.5	227.8	+4.7	+50			12.6	259.1	264.0	-4.9
T.P	12.99	246.12	0.09	233.13			+75			8.2	263.5	264.7	-1.2
+25			11.7	234.4	229.5	+4.9	119			4.4	267.3	265.0	+2.3
+44 EC			9.8	236.3	229.9	+6.4	T.P	12.09	284.64	0.13	271.55		
+99 EC			6.4	240.7	234.6	+6.1	+25			11.3	273.3	268.7	+4.6

Sta		284.64 104.1		Elev	Grade		Sta		309.28 14.1		Elev	Grade	
119+50			8.0	276.6	266.5	+10.1	126			2.8	306.5	300.8	+5.7
+68 ²⁵ EC			7.1	277.1	267.0	+10.0	T.P	1276	322.00	0.04	309.24		
120					0.269.0								
120+15 ²⁵ PC			6.8	277.8	268.8	+9.0	+50			11.0	311.0	304.0	+7.0
+50			5.1	279.5	270.5	+9.0	+78 ²⁵ PC			9.8	312.2	305.8	+6.4
121			3.0	281.6	273.0	+8.6	127			8.4	313.6	307.2	+6.4
145 ²⁵ EC			0.6	284.0	275.3	+8.7	+50			4.8	317.2	310.4	+6.8
T.P	1291	297.50	0.05	284.59			128			1.3	320.7	313.6	+7.1
122			9.9	287.6	278.0	+9.6	+78 ²⁵ EC			1.0	321.0	315.4	+5.6
+50			8.7	288.8	280.5	+8.3	+50			0.7	321.3	316.8	+4.5
123			7.1	290.4	282.0	+8.4	T.P	1287	334.78	0.09	321.91		
+50			6.7	290.8	285.5	+5.3	+99 ²⁵ PC			12.2	322.6	320.0	+2.6
124			1.6	295.9	288.0	+7.9	129 +50			9.5	325.3	322.3	+3.0
T.P	1284	309.28	1.06	296.44			+98 ²⁵ EC			5.6	329.2	324.7	+4.5
+50			10.6	298.7	291.5	+7.2	130+39 ²⁵ PC			1.6	333.2	326.5	+6.7
+71 ²⁵ PC			9.5	299.8	292.5	+7.3	+50			1.2	333.6	327.0	+6.6
125			8.4	300.9	294.4	+6.5	T.P	1289	347.22	0.25	334.53		
+25			7.8	301.5	296.0	+5.5	131			11.7	335.5	329.3	+6.2
+50			6.9	302.4	297.6	+4.8	+50			11.1	336.1	331.7	+4.4
+77 ²⁵ EC			5.4	303.9	299.3	+4.6	132			10.7	336.5	334.0	+2.5

Sta		347.22 141		Elev	Grade	±	Sta		371.23 141		Elev	Grade	
132+32.23 EC			9.8	337.4	335.1	+2.3	140			6.8	364.4	363.6	+0.8
133			7.5	339.7	338.7	+1.0	+50.25			6.3	364.9	363.9	+1.0
+50			5.6	341.6	341.0	+0.6				6.13	365.10✓	364.98	
+70.4° PC			3.9	343.3	341.9	+1.4	141			5.2	366.0	364.2	+1.8
134			2.5	344.7	343.3	+1.4	+50			5.7	365.5	364.5	+1.0
T.P	12.97	360.00	0.19	347.03			142			7.3	363.9	364.8	-0.9
+50			11.8	348.2	345.7	+2.5	+50			7.2	364.0	365.1	-1.1
135			8.7	351.3	348.0	+3.3	143			6.6	364.6	365.4	-0.8
+50			7.0	353.0	349.9	+3.1	+50			6.2	365.0	365.7	-0.7
136			6.3	353.7	351.7	+2.0	144			5.9	365.3	366.0	-0.7
+25° EC			5.6	354.4	353.1	+1.3							
+92° PC - 20' N			2.6	357.4	355.2	+2.2							
+92° PC 20' S			6.0	354.0	355.2	-1.2							
137+50			4.3	355.7	357.4	-1.7							
T.P	11.26	371.23	0.03	359.97									
138			12.5	358.7	359.2	-0.5							
+50			9.3	361.9	361.1	+0.8							
139			7.9	363.3	363.0	+0.3							
+50			7.3	363.9	363.3	+0.6							

Proposed Culvert from Catch Basin
flush with W. Curb of Oregon & Int. N. of S. Curb
produced of Copley Ave.

Hubs - offset 2ft 5. of 4 pipe.

12/1/15 West
of
Moore.

100

B.M. Curb S.E. Oregon & Copley.

390.00

3.25

393.25

Est. Pipe.

Curb

389.00

386.70

cuts.

0+00 = E. Proposed C.B. Int. E. of W. Curb Oregon

+15 = W.L. Oregon

2.9

390.4

+25

2.77

390.48

384.34

6.1

+50

3.30

389.95

382.68

7.3

+75

4.30

388.95

381.01

7.9

+100

7.68

385.57

379.34

6.2

+120 = Start Natural Wash
leading down to Est. Canyon.

15.2

378.1

378.00

0.1

Plan #1.

See Next Page.

Proposed line of Culvert = Int. N. of Curb produced.
10" Pipe large enough.

W.L. Oregon

W. Curb Oregon

S. Curb Copley

Proposed Plan to Ditch ^{W.} Curb line
 from S.L. Copley to N.L. Collier for drainage

12/1/15.
 West
 Otter
 Moore.

89

	Gr Rad.	Ground.	Curb Cuts	Gutter Cuts.	Curb Gr.
⁰⁺⁰⁰ S.L. Copley	4.45				389.98
+50	4.45	3.0	1.5	2.5	
1+00	4.45	3.8	0.7	1.7	
+50	4.45	4.65	-0.2	0.8	
2+00	4.45	4.20	0.25	1.3	
+50	4.45	3.95	0.5	1.5	
N.L. Collier	4.45	4.45	0.0	1.0	387.50

1.5 ft fall

Plan #2.

Cross-Sections Ups St. 30' Wide.
 EL Bancroft St to City Limits.

12/6/15
 West
 of
 Moore.

Note: Cross section notes
 for Ups between Bancroft and 32nd St.
 are in book 977-27

	500	326.00	
Curb NW Ups & Bancroft.			321.00
Curb NE Ups. 547		325.97	320.50

EL Bancroft St on NL.

NL.	326.0	3.5	322.5
±		3.6	322.4
SL.		3.4	322.6

29³ East - P.C for EL Bancroft on SL Ups

SL.		3.6	322.4
+7		3.5	322.5
+9		4.0	322.0
±		3.7	322.3
+13		3.6	322.4
NL.		3.0	323.0

50 East.

NL.		3.4	322.6
+1 ²		4.1	321.9
±		4.1	321.9
+5		4.0	322.0
+6		3.6	322.4
SL		3.8	322.2

Cross Sec's Upps.

376.00

100' East

SL.	4.8	321.2
+9.	4.7	321.3
+10	5.3	320.7
+15. £	4.9	321.1
+14	5.0	321.0
NL.	4.5	321.5

150' East.

NL.	5.6	320.4
+1	6.0	320.0
£	5.7	320.3
+4	6.2	319.8
+5	5.4	320.6
SL.	5.5	320.5

193.3 E = PC on NL 33rd SL Upps.

SL.	6.3	319.7
+9	6.2	319.8
+10	6.6	319.4
£	6.4	319.6
+13	6.6	319.4
NL.	5.9	320.1

11

376.00

265' E = NL 33rd St on NL Upps.

NL.	6.7	319.3
+2	7.3	318.7
£	7.2	318.8
SL.	7.2	318.8

32nd E of last pt = £ 33rd St on NL Upps.

SL.	7.6	318.4
£	7.6	318.4
NL.	7.8	318.2

32nd E of last pt = EL 33rd St on NL Upps.

NL.	8.2	317.8
£	7.9	318.1
+10	8.0	318.0
+12	7.2	318.8
SL.	7.2	318.8

29th E of EL 33rd St on NL = PC of EL 33rd St on South

SL.	7.7	318.3
+9	7.6	318.4
+10	8.2	317.8
£	8.1	317.9
NL.	8.3	317.7

UPAS

326.00

50' East of EL 33rd on NL

NL	8.2	317.8
±	8.1	317.9
+4	8.2	317.8
+6	7.7	318.3
SL	7.5	318.5

100' East

SL	7.3	318.7
+10	7.6	318.4
+11	8.5	317.5
±	8.5	317.5
+14	8.5	317.5
NL	8.2	317.8
TR	8.57	317.43

341 320.84

145th E = PC on SL Ups for NL Felton

NL	3.2	317.6
+1	3.8	317.0
±	3.3	317.5
+4	3.1	317.1
+6	2.2	318.6
SL	2.0	318.8

320.84

200' East

SL	3.5	317.3
±	3.9	316.9
NL	4.1	316.7

265' E = WL Felton on NL Ups

NL	6.2	314.6
±	6.0	314.8
SL	5.0	315.8

28' E of last pt.

SL	6.8	314.0
----	-----	-------

32nd E of WL Felton = ± Felton on NL Ups

SL	6.2	314.6
+3	6.5	314.3
+6	7.5	313.3
±	7.9	312.9
NL	8.7	312.1

43rd E of WL Felton on NL Ups =
PC on SL for E.L. Felton

NL	9.6	311.2
±	9.3	311.5
+4	9.0	311.8
+6	7.8	313.0
SL	7.4	313.4

UPAS

320.84

310.59

65' E of WL Felton on N-EL Felton

147' E of Felton on NL Upas = WL Gregory on S.

SL	9.8	311.0
+8	10.1	310.7
+10	11.2	309.6
±	11.4	309.4
+14	12.2	308.6
NL	11.7	309.1
T.P.	12.52	308.32

NL	4.3	306.3
+1	5.6	305.0
±	6.4	304.2
SL	6.8	303.8

197' E = EL Gregory on South

2.27 310.59

50' East

NL	8.5	302.1
+3	6.6	304.0
±	6.0	304.6
+4	5.8	304.8
+6	5.1	305.5
SL	4.8	305.8

100' East

SL	8.6	302.0
±	8.0	302.6
NL	8.0	302.6

SL	4.9	305.7
±	4.7	305.9
+14	4.2	306.4
NL	2.6	308.0

250' East

NL	1.9	308.7
+1	3.5	307.1
±	3.5	307.1
+5	3.5	307.1
+6	2.7	307.9
SL	3.1	307.5

306' E = PL on South line Upas

SL	15	309.1
+10	14	309.2
+11	18	308.8

Upas X Secs.

12/8/15

14

310.59

West.
Otter.
Moore.

£ 1.7 308.9

NL 1.2 309.4

318⁸? E = Boundary on NL

NL 0.3 310.3

£ 1.1 309.5

SL 1.6 309.0

Int. Boundary line with Upas on NL & SL.

= 318⁸ on NL - 3273 on SL.

SL 1.6 309.0

£ 0.8 309.8

NL 0.3 310.3

TP 0.9 310.40

T.P. 10.96 321.36 317 318.17

7.50 325.69

Cur'd NW. Upas & Bancroft. 4.70 320.99 321.00

Cross-sections of Saff Gorge, 5+
 St. McCall to Nerd St. 45-26' N of HL Gualtough.
 Tapering widths as shown on sketch.

BM NW Rosecrans & McCall Plug 38.135
 " NE " & Nichols 41.625
 " SE " " Owens 48.07
 " NE " " Perry 64.15
 " SE " " Gualtough 62.07

12/19/15
 West-
 Evans
 Moore

BM NW Rosecrans & McCall Plug 38.14

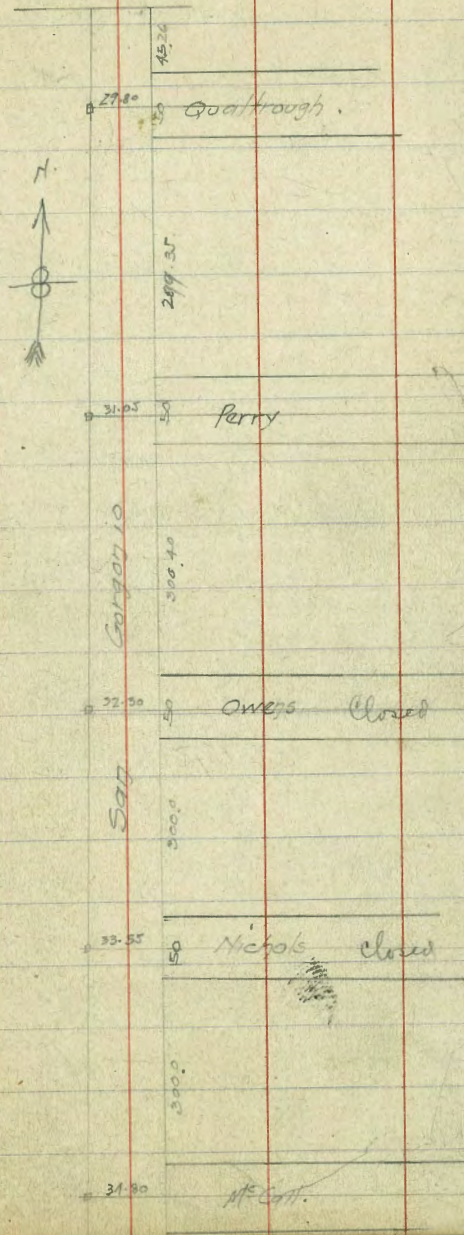
T.P.	11.34	49.48	0.95	48.53
T.P.	13.00	61.53	0.26	61.27
T.P.	12.61	73.88	0.39	73.49
T.P.	12.88	86.37	0.31	86.06
T.P.	12.66	98.72	0.23	98.49
T.P.	12.45	110.94	0.67	110.27
T.P.	12.96	123.23	0.65	122.58
T.P.	13.01	135.59	0.53	135.06
T.P.	12.44	147.50	1.14	146.36
	10.80	157.16		

BM Hub & McCall & WL Saff Gorge 6.37 150.79

724 724 158.00
 S.L. McCall St 50' wide

EL.	-	17.2	140.8
±		15.1	142.9
WL.		8.9	149.1
	3 Curb McCall		
WL.		8.1	143.9
±		11.3	146.7
EL.		15.8	142.2

38.63 at Jenkins



San Geronimo

158.03 N9

5 1/4 McCall

EL.	15.0	145.0
±	11.5	146.5
WL.	7.7	150.3

± McCall - 34.80 wide here

WL.	7.2	150.8
±	10.3	147.7
EL.	14.7	143.3

11 1/4 McCall

EL.	13.9	144.1
±	10.6	147.4
WL.	7.2	150.8

N Curb McCall

WL.	6.7	151.3
±	10.0	148.0
EL.	13.3	144.7

14 McCall

EL.	13.2	144.8
±	8.9	149.1
WL.	6.5	151.5

San Geronimo

158.03

25' N of McCall

WL.	4.6	153.4
±	8.2	149.8
EL.	11.4	146.6

31' N of McCall

EL.	15.3	142.7
±5	15.4	142.6
±6	11.7	146.3
±14	7.9	150.1

±	7.9	150.1
WL.	4.7	153.3

40' N.

WL.	5.4	152.6
±	8.9	149.1
25 E dw	10.8	147.2
29 E	15.1	142.9
EL.	10.3	147.7

San Geronimo

158.03

50' N of NL M^s Call

EL.	10.0	148.0
+3	9.2	148.8
+4	13.1	144.9
+8	12.5	145.5
+9	8.9	149.1
£	9.6	148.4
+21 from EL.	9.6	148.4
+22	11.1	146.9
+25	8.5	149.5
WL.	7.0	151.0

58' N of NL M^s Call

WL.	9.8	148.2
+4	10.1	147.9
+5	7.1	150.9
+£	7.2	150.8
+23	7.4	150.6
+24	9.3	148.7
+32 &	13.0	145.0
EL.	10.1	147.9

San Geronimo

158.03

75' N.

EL	9.3	148.7
+1	8.9	149.1
+2	6.4	151.6
+4	6.6	151.4
+5	11.7	146.3
+8	11.3	146.7
+9	5.7	152.3
£	5.6	152.4
WL.	3.6	154.4

100' N.

WL.	0.1	157.9
£	3.3	154.7
+25	5.1	152.6
+26	8.7	149.3
+30	9.7	148.3
+31	5.0	153.0
+32	5.3	152.7
+33	7.0	151.0
EL.	7.3	150.7

17

San Geronio

158.03 J48

125' N.

EL.	5.4	152.6
+11	4.8	153.2
+13	3.6	154.4
±	2.5	155.5
T.P.	0.89	157.14

12.24

169.38

109' N.

WL	10.7	158.7
±	14.4	155.0

113' N.

WL	12.6	156.8
±	14.4	155.6

118' N.

WL	10.6	158.8
±	14.2	155.2

125' N.

WL	10.3	159.1
----	------	-------

San Geronio

169.38

150' N of Mrs Coll.

WL	9.0	160.4
±	13.1	156.3
+30	14.5	154.9
EL	16.2	153.2

175' N.

EL	13.6	155.8
+5	11.6	157.8
+12	12.3	157.1
±	11.5	157.9
WL	5.7	163.7

184' N.

WL	5.6	153.8
±	10.0	159.4
+20	11.7	157.7
+21	10.2	159.2
+32	10.7	158.7
EL	12.8	156.6

18

San Geronimo

169.38 49

200' N.

EL.	11.4	158.0
+9	7.3	162.1
+13	9.6	159.8
+14	7.7	161.7
±	6.8	162.6
+29	2.5	166.9
WL.	-0.2	169.6
T.P.	0.34	169.04

12.75

181.79

225' N.

WL.	5.0	176.8
+14	14.2	167.6
±	15.3	166.5
+19	15.5	166.3
+20	16.9	164.9
+21	15.6	166.2
+27	14.5	167.3
EL.	19.5	162.3

San Geronimo

181.79 49

250' N.

19

EL.	10.2	171.6
+5	8.8	173.0
+8	11.8	170.0
+10	12.2	169.6
+14	7.0	174.8
±	6.0	175.8
WL.	1.6	180.2
T.P.	0.67	181.12

12.78

193.90

275' N of No 911.

WL.	8.9	185.0
±	12.1	181.8
+21	14.7	179.2
+25	20.4	173.5
+28	20.7	173.2
+30	15.7	178.2
EL.	17.3	176.6

San Geronio

193.90 Aug

300' N. of N^o 2 Call = S. L. Nichols (closed) 50' Wide

EL		14.3	179.6
+2		14.3	179.6
+9		19.8	174.1
+11		19.4	174.5
+15		14.3	179.6
⊖	17.1	13.3	180.6
+26	14	9.8	184.1
WL	18.3 17.1	7.8	186.1
		⊖ Nichols 33.55' wide here.	
WL		6.8	187.1
+11		9.4	184.5
+13		17.7	176.2
⊖		18.1	175.9
+26		19.6	174.3
EL		18.6	175.3
		NL Nichols 5'	
EL		19.0	174.9
⊖		18.9	175.0
+19		18.6	175.3

San Geronio

193.90

20

+23		7.3	186.6
WL		6.0	187.9
		25' N of Nichols	
WL		3.5	190.4
+12		5.6	188.3
+13		18.2	175.7
⊖		18.8	175.1
EL		18.6	175.2
		50' N. of Nichols	
EL		17.8	176.1
⊖		17.6	176.3
+21		5.3	188.6
WL		2.7	191.2
		75' N	
WL		1.0	192.9
+13		5.5	188.4
+15		17.0	176.9
⊖		17.1	176.8
EL		17.4	176.5

San Geronio

193.903¹⁹

90 N. of Nichols

EL.	17.2	176.7
±	17.2	176.7
+18	17.0	176.9

+ 20	5.5	188.4
WL.	1.6	192.3

100' N.

WL.	2.6	191.3
+ 7	4.7	189.2
+ 10	10.0	183.9
+ 11	11.7	182.2
+ 14	12.4	181.5
±	17.0	176.9
+183	17.1	176.8
EL.	17.1	176.8

112' N.

WL.	5.5	182.4
+11	7.9	186.0
+13	11.5	182.4

San Geronio

193.90

21

114	16.6	177.3
±	16.9	177.0
EL.	17.1	176.8

125' N.

EL.	16.5	177.4
±	16.2	177.7
+18	16.1	177.8
+22	11.4	182.5
WL	9.9	184.0

150' N. of Nichols

WL.	12.6	191.3
±	15.3	178.6
EL.	15.2	178.7
T.P.	11.76	182.14

564. 187.78

164' N. of Nichols

EL.	9.5	178.3
±	8.9	178.9
WL.	6.9	180.7

San Geronio

187.78 ~~28~~

175' N of Nichols.

WL.	7.3	180.5
±	9.4	178.4
+ 28	9.7	178.1
EL.	12.4	175.4
+ 16 for slope.	20.9	166.9
+ 24	20.6	167.2
+ 30	17.0	170.8

200' N of Nichols.

- 25	17.6	170.2
- 15	20.0	167.8
EL.	14.8	173.0
+ 9	10.2	177.6
±	9.9	177.9
WL.	7.4	180.4

225' N of Nichols

WL.	7.9	179.9
+ 5	9.4	178.4
±	10.1	177.7
+ 25	11.3	176.5

San Geronio.

187.78

22

EL.	14.9	172.9
+ 6	18.3	169.5
+ 15	15.5	172.3
	250' N.	
- 10	11.2	176.6
EL.	12.3	175.5
±	10.9	176.9
WL.	9.7	178.1

275' N of Nichols

WL.	6.6	181.2
±	7.2	180.6
EL.	6.8	181.0
	300' N of Nichols = Sl. Owens (closed) 50' wide.	
EL.	2.3	185.5
±	3.2	184.6
WL.	3.1	184.7

± Owens Sf = 32.30 ft wide here.

T.P. Hob WL & Owens.

12.97 200.67

0.08 187.70

San Geronio

200.67 ⁴⁹

± Owens. 32.30ft wide

WL.	13.0	187.7
±	12.5	188.2
EL.	12.1	188.6

NL Owens

EL.	9.3	191.4
±	9.9	190.8
WL.	10.4	190.3

25' N. of Owens

WL.	8.1	192.6
±	7.5	193.2
EL.	6.6	194.1

50' N. of Owens

EL.	3.6	197.1
±	3.5	197.2
WL.	3.9	196.8

75' N.

WL.	1.3	199.4
±	1.7	199.0
EL.	1.9	198.9
± ^{72.7}	3.5	196.2

San Geronio

200.67

100' N. of Owens.

EL.	3.3	197.4
+4	1.6	199.1
±	0.7	200.0
WL.	0.0	200.7
T.P.	0.24	200.43

11.63 212.06

125' N. of Owens.

WL.	10.4	201.7
±	11.2	200.9
+25	11.4	200.7
EL.	13.7	198.4
+10 slope	17.0	195.1

150' N

-13 slope	20.8	191.3
EL.	15.3	196.8
+11	10.5	201.6
±	9.8	202.3
+27	9.9	202.7
WL.	7.9	204.2

23

San Geronimo

217.06 J⁸

175' N. of Owens

WL.	8.1	204.0
±	9.2	202.9
EL.	14.8	197.3
+13 Slope	18.6	193.5
200' N.		
-13 Slope	16.6	195.5
EL.	11.0	201.1
±	8.3	203.8
+27	7.6	204.5
WL.	6.4	205.7
225' N.		
WL.	4.7	207.4
+5	6.0	206.1
±	6.4	205.7
EL.	9.6	202.5
+20 Slope	17.0	195.1
250' N.		
-13 Slope	14.7	197.4
EL.	10.0	202.1

San Geronimo

212.06

24

±	6.1	206.0
+19	5.4	206.7
WL.	4.7	207.4
275' N.		
WL.	4.8	207.3
+11	5.3	206.8
±	7.2	204.9
EL.	12.0	200.1
+12	12.0	200.1
300' N. = S.L. Perry 50' wide -10' wks. 7/27/45		
-10	10.5	201.6
EL.	10.1	202.0
+11	9.5	202.6
±	6.8	205.3
+18	6.0	206.1
WL.	4.7	207.4
J. Curb Perry		
WL.	4.8	207.3
+12	5.7	206.4
±	6.8	205.3
20	8.6	203.5
EL.	9.2	202.9

San Geronio

212.06 29

S 1/4 Perry

EL.	8.4	203.7
+10	7.9	204.2
±	6.6	205.5
WL.	4.8	207.3

± Perry 31.05 wide here.

WL.	4.7	207.4
±	6.4	205.7
+23	7.4	204.7
EL.	7.0	205.1

N 1/4 Perry

EL.	4.4	207.7
+8	6.3	205.8
±	6.1	206.0
+28	5.3	206.8
WL.	3.6	208.5

N Corb Perry

WL.	2.2	209.9
+6	5.6	206.5
±	6.0	206.1
+22	5.9	206.2
EL.	2.8	209.3

San Geronio

212.06

NL Perry

EL	2.6	209.5
+8	5.6	206.5
±	5.8	206.3
+25	5.4	206.7
+28	2.2	209.9
WL.	1.1	211.0

18# N of NL Perry

WL.	3.2	208.9
±	5.1	207.0
EL	2.8	209.3

25# N

EL	1.9	210.2
+10	3.4	208.7
+11	4.6	207.5
+14	4.7	207.4
±	3.8	208.3
WL.	2.2	209.9
T.P.	1.22	210.84

1247 223.01

25

San Geronio

223.01 N.B.

50' N of ^{Ferry} Gough

WL.	11.5	211.5
±	12.5	210.5
EL.	12.5	210.5

75' N.

EL.	10.9	212.1
±	9.7	213.3
WL.	9.2	213.8

100' N.

WL.	6.6	216.4
+2	5.8	217.2
±	7.5	215.5
EL.	8.2	214.8

125' N.

EL.	3.5	219.5
±	4.2	218.8
+26	3.8	219.2
WL.	2.5	220.5

TP.	0.27	222.74
-----	------	--------

12.30

235.04

San Geronio.

235.04

138' N of Ferry.

WL.	11.6	223.4
+8	14.0	221.0
±	14.4	220.6
EL.	13.2	221.8

150' N.

EL.	12.4	222.6
+12	12.2	222.8
±	10.8	224.2

+22	7.2	227.8
WL.	8.6	226.4

165' N.

WL.	5.0	230.0
±	5.7	229.3
+22	10.3 6.7	224.7 228.3
EL.	6.7	228.3

175' N.

EL.	6.3	228.7
±	4.5	230.5
WL.	3.6	231.4

26

San Geronio

235.04

200' Not Ferry

WL.	1.8	233.2
±	2.8	232.2
EL.	5.0	230.0

225' N.

EL.	3.8	231.2
±	1.7	233.3
WL.	1.0	234.0
T.P.	0.20	234.84

11.43

246.27

250' N

WL.	9.8	236.5
±	11.5	234.8
EL.	14.1	232.2

275' N

EL.	13.6	232.7
±	11.1	235.2
WL.	9.0	237.3

San Geronio.

246.27

300' N = S.L. Quatrough - 50' wide - 10ft wks - 7 1/2 ft

27

WL.	8.1	238.2
±	10.2	236.1
EL.	12.3	234.0

3 Curb Quatrough.

EL.	12.5	233.8
±	10.1	236.2
WL.	7.8	238.5

5/4 Quatrough

WL.	7.4	238.9
±	9.8	236.5
+27	12.0	234.3
EL.	15.5	230.8
+15 slope	21.5	224.8

± Quatrough

-15 slope	21.5	224.8
EL.	17.2	229.1
+7	10.8	235.5
±	9.4	236.9
WL.	6.9	239.4

San Geronio

246.27 ~~02~~

N 1/4 Qualtrough

WL.	6.3	240.0
±	8.6	237.7
+19	9.5	236.8
EL.	17.7	228.6
+15 slope	22.0	224.3

N. Carb Qualtrough.

-15 slope	23.5	222.8
EL	18.1	228.2
+10	9.7	236.6
±	8.3	238.0
WL.	5.9	240.4

NL Qualtrough.

WL.	5.7	240.6
+10	6.9	239.4
±	10.8	235.5
EL	17.8	228.5
+15 slope.	23.7	222.6

San Geronio

246.27

20' N of Qualtrough

-15	22.9	223.4
EL.	20.2	226.1
±	9.9	236.4
+19	7.3	239.0
WL.	4.3	242.0

30' N of Qualtrough

WL.	3.7	242.6
±	6.0	240.3
EL.	12.8	233.5
+3	12.7	233.6
+15 slope	23.0	223.3

38' N of Qualtrough.

-20 slope	24.0	222.3
-10	20.2	226.1
-3	8.3	238.0
EL.	6.8	239.5
±	4.2	242.1
WL.	3.2	243.1

28

San Geronimo

West
open
More
12/15/15

246.27

~~245.26~~ = End San Geronimo

WL.			2.8	243.5
±			3.9	242.4
EL.			5.7	240.6
+6			7.8	238.5
T.P.			12.86	233.41
T.P.	0.65	234.06	12.47	221.59
T.P.	0.23	221.82	12.47	209.35
T.P.	0.32	209.67	12.81	196.86
T.P.	0.18	197.04	12.50	184.54
T.P.	0.45	184.99	12.90	172.09
T.P.	0.01	172.10	12.96	159.14
T.P.	1.49	160.63	12.77	147.86
T.P.	0.50	148.36	12.93	135.53
T.P.	0.55	136.08	13.03	123.05
T.P.	0.22	123.27	12.92	110.35
T.P.	0.12	110.47	12.76	97.71
T.P.	0.25	97.96	13.00	84.96
T.P.	0.42	85.38	12.84	72.54
T.P.	5.10	77.54	12.14	65.50
	3.70	69.40	5.35	64.05

EM NE. ROBERTS & PERTY FLAG

64.15

2/9/16
Gregory
178066
Miller

CROSS SECTION OF
BRIDGE OPENING
ON 3RD ST
Bet Main + The Bay

7.65

31

BM.	1.68	40.27	38.59	5th 3rd + Main	cl + 4	4.2	3.5	
T.P.	0.74	27.99	13.02	27.25	+1	4.9	3.4	
T.P.	0.0	15.35	12.64	15.35	0+3	8.7	-1.0	
T.P.	4.0	7.65	11.70	3.65	cl	12.8	-5.1	
68.5' So. of Bay Ave = 00						50.6 So.		
E		4.7	3.0		E cl	17.2	-9.7	
C		4.7	3.0		E 1/4 + 5	14.7	-7.0	
W		4.4	3.3		W 1/4	11.2	-3.5	
40' So. of 00						cl	11.8	-4.1
W		10.1	-2.4			49.5 So. 66.0 So.		
10' E		4.2	3.5		W cl	17.2	-9.5	
C		4.5	3.2		1/4	20.2	-12.5	
1/4		4.8	2.9		E 1/4 + 5	20.2	-12.5	
+1		9.3	-1.6			66.0 So. 81.0 So.		
cl + 2		14.2	-6.5		E	21.5	-13.8	
E		14.5	-6.8		E cl + 5	20.7	-13.0	
43' So. of 00						96.0 So.		
W		11.5	-3.8		W 1/4	25.2	-17.5	
+7		10.4	-2.7		E cl	23.2	-15.5	

765
125' So.

15' E of W.L.	22.0	-14.3
35' v - - -	21.2	-13.5
45' v - - -	16.2	-8.5
E	11.1	-3.4

141' So.

E	6.6	1.1
15' W	8.5	-0.8
25' W	11.4	-3.7
40' W	13.8	-6.1
W ob	17.2	-9.5

150' So.

W	14.5	-6.8
6' E	11.3	-3.6
20' E	4.1	3.6
C	4.2	3.5
E	4.9	2.8

160' So.

E	3.8	3.9
C	4.1	3.6

32

+18	38	3.9
+26	8.7	-1.0
W	9.6	-1.9
Topok 14" cap on No. bent	6.08	1.57

Cross Sections - Torrey Road

13		11.53	42.37		30.84 Hydr. Station	9R		6.7
35	T.P.	5.97	47.61	0.70	41.62	C		6.2
42	B.M. Top Hydr. Post	54.76±50	7.52		40.09	9L		6.3
	T.P.	10.66	52.60	5.69	41.92		+7.5	
			76±50 - 76±53.32			9L		5.8
	9R			11.8		C		5.8
	C			11.3		9R		6.3
	9L			11.8			79±00	
			77±00			9R		5.8
	9L			11.3		C		5.2
	C			10.4		9L		5.3
	9R			10.6		Spr. Flood pole 62W 540 79±00	7.07	45.53
			77±50				+2.5	
	9R			9.3		9L		4.8
	C			9.3		C		4.8
	9L			9.8		9R		5.0
			78±00				+5	
	9L			8.2		9R		4.5
	C			7.8		C		4.2
	9R			7.9		9L		4.3

52.60

79.75

1	9L		3.8
3	C		3.5
4	9R		3.8

80+10.31 PC

	9R		3.1
	C		2.7
	9L		3.1

4.50

	9L		2.0
	C		1.7
	9R		2.1

T.P	12.50	64.77	0.33	52.27
-----	-------	-------	------	-------

81.00

	9R		12.4
	C		12.1
	9L		12.4

4.50

	9L		10.2
	C		10.0
	9R		10.3

82.100

	9R		7.3
	C		7.1
	9L		7.5

82+2.22 PC

	9L		6.0
	C		5.6
	9R		5.5

4.50

	9R		3.8
	C		3.9
	9L		4.5

1.75

	9L		2.6
	C		2.2
	9R		2.3

83.100

	9R		0.8
	C		0.7
	9L		1.0

6477

T.P

1111

75.76

0.17

6485

83425

9L

10.3

C

9.9

9R

10.0

8346621-FC

9R

7.6

C

7.7

9L

8.0

84400

9L

6.2

C

6.0

9R

5.8

9R

4.2

C

4.2

9L

4.7

B.M. Hyatt Sta 83

9.24

66521

64119

Alley Block 2 - Crittendens Addy.

BR. NW 58 Ups - Plug - 29491
 " " " Brooks " - 28532

West
 Otley
 Moore 3/29/16.

36

Alley 140' N of NL Ups 15' Wide.

Brookes.

BM. Plug NW. 5th & Ups. 284.91

9.62 294.53

TP Keel-Curb N. Alley. E side 6st. 5.92 288.61

6.17 294.78

E.L. 6st.

NL. 6.0 288.8

£ 6.0 288.8

SL. 5.9 288.9

25' East.

Ivy box

SL. 4.5 290.3

£ 5.1 289.7

NL. 4.9 289.9

50' East.

NL. 4.4 290.4

£ 4.5 290.3

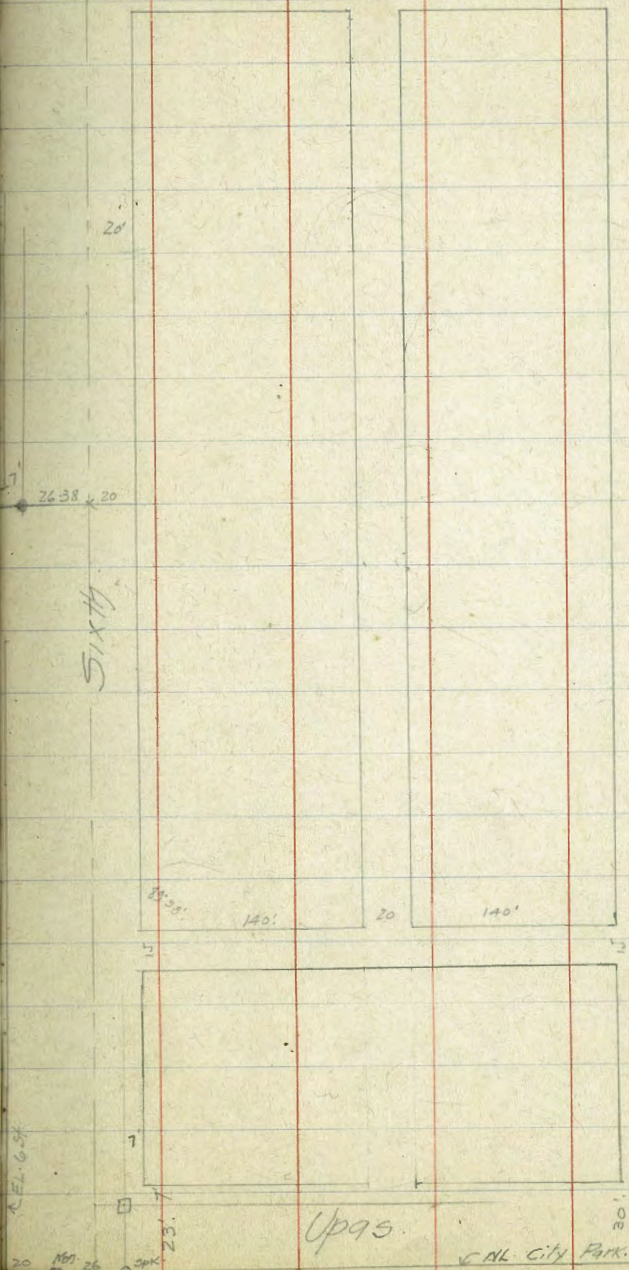
SL. 4.2 290.6

75' East.

SL. 4.2 290.6

£ 4.2 290.6

NL. 4.0 290.8



Alley 15' wide - 140' N of Upgs.

294.78

100' East

NL.	38	291.0
±	42	290.6
SL.	40	290.8

125' East

SL.	40	290.8
±	44	290.4
NL.	40	290.8

140' East - NL Alley going North.

NL	51	289.7
±	46	290.2
SL.	41	290.7

150' E - ± Alley

SL.	45	290.3
±	50	289.8
NL.	51	289.7

160' East - EL Alley

NL	54	289.4
±	56	289.2
SL.	49	289.9

Alley 140' N of Upgs.

294.78

175' East

SL.	65	288.3
±	70	287.8
NL	67	288.1

200' East

NL	84	286.4
±	86	286.2
SL.	82	286.6

225' East

SL	91	285.7
±	93	285.5
NL	94	285.4

250' East

NL.	104	284.4
±	105	284.3
SL	106	284.2

275' East

SL	115	283.3
±	114	283.4
NL	116	283.7

Alley 140' N of Ups

294.78

300' East - WL T St

NL	130	281.8
±	130	281.8
SL	12.9	281.9

In Block Z - Crittenden's Addn.
Alley Running North from above alley - between
6 St & 7 St - - 20ft wide.

NL 15ft Alley.

WL	5.1	289.7
±	5.1	289.7
EL	5.4	289.4

10' N = ± Garage

EL - Garage floor	4.8	290.0
-------------------	-----	-------

25' North.

WL	4.0	290.8
+1	4.6	290.2
±	5.2	289.6
+9.7 = Concrete ret wall.	5.1	289.7

20ft Alley. 17' B1 Z Crittendens.

38

294.78

50' N.

+0 ³ = Ret Wall	50	289.8
±	50	289.8
+9	4.4	290.4
WL	3.8	291.0

75' North.

WL	4.0	290.8
+1	4.5	290.3
±	5.4	289.4
+9 ⁶ Ret wall.	5.1	289.7

100' North.

+0 ⁵ " "	5.2	289.6
±	5.2	289.6
WL fence starts - running North	4.8	290.0

125' North.

WL fence	4.5	290.3
±	5.2	289.6
+9 ⁴ Ret wall.	5.2	289.6

Alley in Block 2 Crittenden's.

294.78

150' North.

+03	Ret wall.	51	289.7
±		49	289.9
WL.		47	290.1

175' North

WL.		46	290.2
±		50	289.8
E + 9 ³	Ret wall	48	290.0

200' North

+1	{ E of ret wall on E side.	48	290.0
±	{ start fence	49	289.9
+9 ⁵	fence.	45	290.3

225' North.

+06	fence West - 3L. Barn.	42	290.6
±		50	289.8
+9	± = Fence E side.	49	289.9
T.P.		46.9	290.09

4.35 294.44

237⁵ N = ± Barn in West

Floor level =		3.6	290.8
---------------	--	-----	-------

Alley in Block 2 Crittenden's.

39

294.44

250' North

EL.		42	290.2
±		44	290.0
+9 ³	= Hedge Barn.	42	290.2

275' North

WL.		40	290.4
+1	fence.	41	290.3
±		42	290.2
		42	290.2
		3.5	290.6
		3.8	290.6

{ EL = flush with 3L Garage.
Curb-entrance garage driveway.
+88 = WL Garage floor level.

291' North = NL Garage.

+88	East of EL Alley = floor.	3.8	290.6
-----	---------------------------	-----	-------

300' North. = end 20' Alley & start 15' Alley.

EL.		4.3	290.1
±		4.3	290.1
+7 ⁵	= Edge privet hedge.	4.2	290.2
+11 = WL		4.2	290.2

15' wide - 7⁵ each way from ±
from here North.

Alley 1/2 Black 2 Crittendens.

294.44

325' North.

WL.	4.3	290.1
+0 ² = fence.	4.4	290.0
+15 = ϕ .	4.5	289.9
EL.	4.4	290.0

350' North.

EL. Shrubs etc. Ht into Alley.	4.6	289.8
ϕ	4.9	289.5
+6 ² = fence.	4.5	289.9
+75 = WL.	4.4	290.0

375' North.

WL.	5.2	289.2
+1 ² = fence.	5.2	289.2
ϕ	5.7	288.7
EL. = 1st into shrubs (will remove)	5.2	289.2

400' North.

EL.	7.1	287.3
ϕ	7.0	287.4
WL.	6.7	287.7

Alley B/2 Crittendens

294.44

425' North.

WL.	8.3	286.1
ϕ	8.4	286.0
EL.	8.5	285.9

450' North.

EL.	9.5	284.9
ϕ	9.2	285.2
WL.	9.0	285.4

464' N = Tree on ϕ Alley = ϕ Garage on East.

15' W. of ϕ	9.3	285.1
ϕ	9.5	284.9
15' E of ϕ = Cem. front garage	9.5	284.9
20' E = WL Garage	9.5	284.9
T.P.	9.18	285.26
15' W	2.07	287.33

475' North.

15' E = Top Cem work front garage	2.5	284.8
ϕ	2.3	285.0
15' W of ϕ	2.6	284.7

484 N = End grading - top steps.

10' W of \pm	2.6	284.7
\pm top steps.	2.7	284.6
10' E of \pm .	3.2	284.1

 \pm Levels to furnish data for culvert

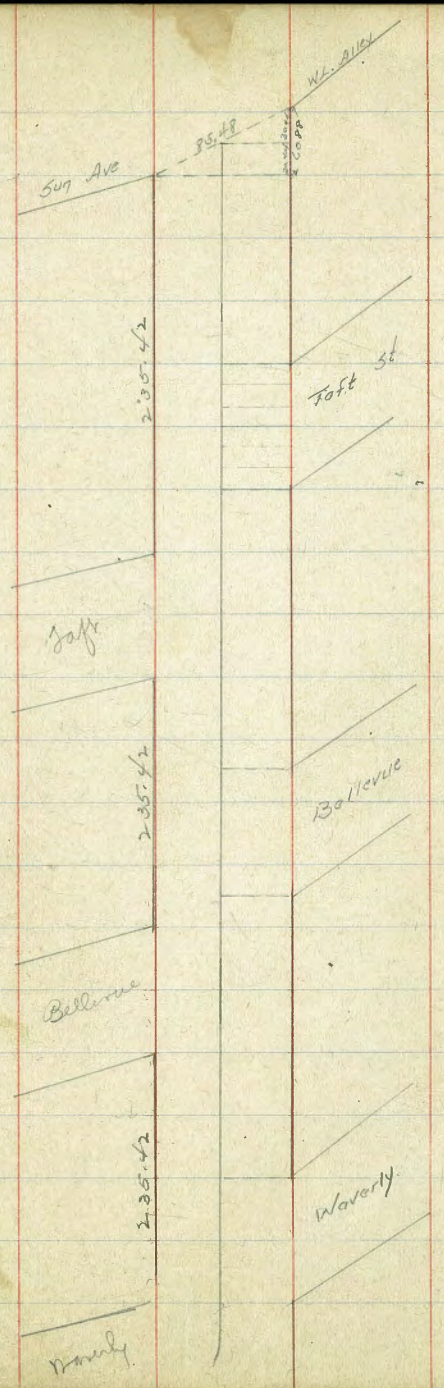
488' N = bot. steps.	5.2	282.1			
500' N.	5.7	281.6			
525' N.	11.7	275.6			
535' N = beyond shrubs - end culvert.	13.5	273.8			
T.R.	1.36	285.97			
T.P.	9.40	295.37	6.74	288.63	288.61
	5.92	294.55			
B.M. Plug NW-5 & Upprs	9.62	284.93	ok.	284.71	

West.
Ottew
Necre
3/29/16.

B.M. on Forward St. Bird Rock Add.

Mon. Sw. Oil Bldg

	5.00	82.69		77.69
T.P.	3.98	76.20	10.37	72.22
T.P.	11.59	85.67	2.12	74.08
B.M. Nail in Tel. pole S.E. Oil Bldg & Forward			9.24	76.43
T.P.	12.86	98.30	0.23	98.44
B.M. Nail in tel. pole S.E. Elrod Ave & Forward			3.67	94.63
T.P.	12.93	110.95	0.28	98.02
B.M. Nail in tel. pole S.E. Dodge & Forward			2.51	108.44
T.P.	13.07	123.92	0.10	110.85
T.P. B.M. Nail in tel. pole N.E. Buckner & Forward			1.5	123.77
	12.31	136.08		
T.P.	12.86	148.67	0.27	135.81
T.P.	12.49	161.03	0.13	148.54
B.M. Top Hydt. S.W. Toff & Forward			11.48	149.55



44

DAVIS

60' street
15' tracks

August 1916

161.0

45

Cross Section of No 2 Forward St

50' W. Sun

11.48	161.03	149.55	BATH HOUSE	d
	W.L. Sun			4
No	38	157.2		cl
cl	37	157.3		No
1/2	36	157.5		
c	32	157.8		
	W.L. Sun #2			
No	38	157.2		cl
cl	21	156.6		4
1/2	16	156.4		c
c	16	156.4		

75' W. Sun

	77	153.3	
	75	153.5	
	75	153.5	
	62	154.6	
	83	152.7	
	88	152.2	
	90	152.0	
	92	151.8	
	91	151.9	

100' W. Sun

	25' W. Sun			
No	5.1	155.9		c
cl	6.0	155.0		4
1/2	6.3	154.7		cl
c	6.2	154.8		4

	10.2	150.8	
	10.3	150.7	
	10.6	150.4	
	10.8	150.2	
	10.1	150.9	
	9.9	151.1	

FORWARD ST.

161.03

125 W 509

No		116	149.9
ct+10		120	149.0
+12		124	148.6
cl		123	148.7
4.		122	148.8
c		121	148.9
T.P	0.56	100.11	149.55

150 W 509

c		25	147.6
4		20	147.6
cl		30	147.1
+4		34	146.7
+5		26	147.5
No		20	147.8

175 W 509

No		41	146.0
cl		43	145.8
4		41	146.0
c		40	146.1

150.1

200 W 509

c		56	144.5
4		55	144.6
cl		59	144.2
No		56	144.5

205 1/2 W = E.L. Toft

No		73	142.8
cl		74	142.7
4		73	142.8
c		74	142.7

E.C.

c		79	142.2
4		79	142.2
cl		80	142.1
No		75	142.6

E.C.+1

No		86	141.5
cl		80	142.1

150.11
E.H. Taft St

FORWARD ST.

No	29	142.2
+13	89	141.2
cl	85	141.6
4	83	141.8
C	85	141.6

♀ Taft

C	88	141.3
4	86	141.5
+5	88	141.3
cl	96	140.5
+5	83	141.8
No	79	142.2

W.H. Taft

No	83	141.8
+13	93	140.8
cl	10.2	139.9
+2	93	140.8
4	104	139.7
C	95	140.6

150.1

W. Ch. Taft

47

C	10.0	140.1
+6	10.2	139.9
4	96	140.5
cl	10.2	139.9
+3	10.7	139.4
15	9.9	140.2
No	9.0	141.1

W.L. Taft

No	98	140.3
+14	10.2	139.9
cl	10.7	139.4
4	10.1	140.0
C	10.5	139.6

2.5 W Taft

C	11.0	139.1
4	10.9	139.2
cl	11.5	138.6
No	98	140.3

T.P 260 140.72 11.99 138.12

140.72

FORWARD ST

140.7

48

50' w/ Toff

No	12	139.5
+11	21	138.6
ct	28	137.9
4	22	138.5
C	23	138.4

75' w/ Toff

c	30	137.7
W	29	137.8
ct	38	136.9
+5	21	138.6
No	17	139.0

100' w/ Toff

No	24	138.3
+10	29	137.8
ct	41	136.6
4	30	137.3
C	32	137.5

125' w/ Toff

c	39	136.8
4	40	136.7
ct	48	135.9
+6	35	137.2
No	29	137.8

150' w/ Toff

No	34	137.3
+11	43	136.4
ct	52	135.5
4	44	136.3
C	45	136.2

175' w/ Toff

C	52	135.5
4	51	135.6
ct	60	134.7
+5	46	136.1
No	61	136.6

FORWARD ST.

14072
200 W Taft

No	49	135.8
711	50	135.1
Ch	68	133.9
4	59	134.8
C	59	134.8

235.42 W Taft - E. L. Bellevue

C	70	133.7
4	69	133.8
Ch	75	133.2
No	62	134.5

E. Ch

No	61	134.6
78	67	134.0
Ch	76	133.1
4	74	133.3
C	74	133.3

1407

E. L.

49

C	76	133.1
4	78	132.9
Ch	78	132.9
No	71	133.6

Ch Bellevue

No	67	134.0
Ch	79	132.8
4	82	132.5
C	80	132.7

W. L.

C	83	132.4
4	82	132.5
Ch	86	132.1
No	73	133.4

W. L. + 7

No	76	133.1
Ch	89	131.8

140.72 FORWARD ST.
W. Ch. Bellevue

No	7.0	133.7
+11	8.0	132.7
Ch	9.3	131.4
4	1.5	132.2
C	8.6	132.1

W.L. Bellevue

C	8.8	131.9
4	8.8	131.9
Ch	9.7	131.0
+6	8.2	132.5
No	7.4	133.3

25 W

No	8.3	132.4
+12	9.6	131.1
Ch	10.5	130.2
4	9.9	130.8
C	9.9	130.8

140.7

50 W

50

C	10.6	130.1
4	10.5	130.2
Ch	11.5	129.2
+5	10.3	130.4
No	9.0	131.7

75 W

No	10.0	130.7
+11	11.0	129.7
Ch	12.2	128.5
4	11.6	129.1
C	11.6	129.1

T.P. 152 129.54 127.0 128.02

100 W

C	15	128.0
4	13	128.2
Ch	2.0	127.5
+6	2.7	128.8
No	0.0	129.5

		129.5	FORWARD ST.
		125 W of Bellevue	
No		15	128.0
cl		32	126.3
H		26	126.9
c		27	126.8
		150 W	
c		39	125.6
H		37	125.8
cl		45	125.0
No		27	126.8
		175 W	
No		36	125.9
cl		55	124.0
H		50	124.5
c		52	124.3
		200 W	
c		62	123.3
H		61	123.4
cl		68	122.7
No		49	124.6

		129.5	50 W
		234' W of Bellevue	
No		62	123.3
H		72	122.3
cl		82	121.3
		235.5 W of E. L. Waverly	
No		82	121.3
cl		83	121.2
H		77	121.8
c		77	121.8
		E. Cl.	
c		83	121.2
H		81	121.4
cl		91	120.4
No		87	120.8
		E. Cl.	
No		95	120.0
cl		93	120.2
H		87	120.8
c		87	120.8

129.5

FORWARD ST.

129.5

51

Ctr W. or S. W.

C	9.2	120.3
H	9.1	120.4
Ch	9.6	119.9
No	9.6	119.9

W. H.

No	9.6	119.9
110	10.1	119.1
Ch	9.7	119.8
H	9.7	119.8
C	9.7	119.8

W. Ch

C	10.2	119.3
H	10.2	119.3
Ch	10.2	118.9
H	10.9	118.6
No	9.7	119.8

W. L.

No	9.3	120.2
H	9.6	119.9

Ch	11.3	118.2
H	10.7	118.8
C	10.8	118.7

25 W

C	12.0	117.5
H	12.2	117.3
Ch	12.2	116.3
H	11.8	118.2
No	11.1	118.4

T.P. 0.05 117.14 12.65 116.89

60 W

Ch	1.1	116.0
H	1.1	116.0
Ch	2.1	115.0
No	0.5	116.6

75 W

No	1.5	115.6
Ch	3.2	113.9
H	2.6	114.5
C	2.6	114.5

117.14

FORWARD ST.

100 W

C	38	113.3
H	39	113.2
Cl	42	112.8
H	39	113.2
No.	31	114.0

125 W

No	45	112.6
#11	48	112.3
Cl	61	111.0
H	49	112.2
C	50	112.1

150 W

C	65	110.6
H	65	110.6
Cl	71	110.0
H	66	110.5
No	59	111.2

117.1

175 W

52

No	75	109.6
H	79	109.2
Cl	85	108.6
H	77	109.4
C	78	109.3

3.43

111.87

875

108.59

108.42

184.29 W

C	3.0	108.9
H	3.0	108.9
Cl	38	108.1
H	3.0	108.9
No.	27	109.2

209.85

No	40	107.9
H	43	107.6
Cl	52	106.7
H	43	107.6
C	43	107.6

1113?

FORWARD ST

E.L. Beaumont

235.42?

C	43	107.6
H	47	107.2
Ch	57	106.2
No	53	106.6

Cross Section of $S_0 \frac{1}{2}$ of Forward Sun to Beaumont

53

1100 160.55 149.55

W.L. Sun Alley?

So	30	157.5
Ch	36	157.0
H	31	157.4
C	27	157.8

30.44 W of Alley

C	27	157.8
H	35	157.0
Ch	44	156.1
So	49	155.6

60.8 W = W of Sun on No

So	60	154.0
Ch	52	155.0
H	47	155.8
C	43	156.2

76 W

C	62	155.3
H	54	155.1
Ch	61	154.4
So	68	153.7

160.55

FORWARD ST.

100' W

50	77	152.8
+11	71	153.4
cl	77	152.8
4	68	153.7
C	60	154.2

100' W = E.L. Toff.

C	77	152.8
4	82	152.3
cl	86	152.0
+5	84	152.1
So	87	151.8

E cl

So	94	151.1
+12	92	151.3
+14	102	150.3
cl	93	151.2
4	88	151.7
C	86	152.1

160.5

54

E-L

C	90	151.5
4	95	151.0
cl	102	150.3
So	104	150.1

chr Toff.

S	10.6	150.0
+14	10.7	149.8
cl	13.0	147.5
+5	12.2	148.3
4	10.4	150.1
C	9.7	150.8

W/L

C	10.3	150.2
4	11.1	149.4
+1	13.4	147.1
+3	12.4	147.1
cl	11.1	149.4
S	11.5	149.0
TP	0.51	150.06
		11.00
		149.55

150.06FORWARD ST.150.1

55

W. ch.

Teff

S.	1.7	148.4
ch	1.5	148.6
+2	1.6	148.5
+3	3.0	147.1
+7	2.7	147.4
+4	1.1	149.0
C	0.5	149.5

W. Line Teff

C	1.6	148.5
ch	1.9	148.2
+2	3.5	146.3
+3	3.5	146.6
+4	2.4	147.7
ch.	2.7	147.4
S.	2.2	147.9

15 W

S.	39	146.2
+10	39	146.2
ch.	41	145.5

4

3.5

146.6

C

3.1

147.0

50 W

C

4.3

145.8

4

4.9

145.2

ch

5.8

144.3

+5

5.1

145.0

S.

5.3

144.8

75 W

S.

6.8

143.3

+11

6.5

143.6

ch

7.1

143.0

4

6.3

143.8

C

5.8

144.3

100 W

C

7.2

142.9

4

7.1

142.3

ch

8.6

141.5

S.

8.7

141.4

150.06175 W Toft.FORWARD ST.140.1200 W

56

So	10.0	140.1
cl	9.8	140.3
4	9.0	141.1
d	8.4	141.7

150 W

C	9.8	140.3
4	10.3	139.8
cl	11.0	139.1
So	11.1	139.0

175 W

So	12.1	138.0
+12	11.4	138.7
+13	12.1	138.0
cl	11.7	138.4
4	11.0	139.1
C	10.6	139.5
T.P	14.3	140.05
	11.40	138.66

C	1.5	138.6
4	1.8	138.3
+1	2.5	137.3
cl	3.0	137.1
So	3.0	137.1

200 W

So	3.6	136.5
+11	3.3	136.8
+12	3.8	136.3
cl	3.1	137.0
4	2.6	137.5
✓	2.1	138.0

217.4 = E.L. Bellrose

C	2.5	137.6
4	3.7	136.4
cl	4.9	135.2
+3	5.5	134.6
4	4.4	135.7
So	5.4	134.7

140.09

E. Cl. Bellarue

FORWARD ST.

So	52	134.9
tr	46	135.5
+13	57	134.4
ch	48	135.3
4	40	136.1
0	33	136.8

E 4

C	36	136.5
4	41	136.0
cl	50	135.1
So	57	134.4

ctr

So	52	134.9
+10	46	135.7
+13	54	134.7
ch	48	135.3
4	43	135.8
c	37	136.4

140.1

W 4

57

C	39	136.2
4	46	135.5
cl	50	135.1
tr	42	135.9
+6	52	134.9
So	59	134.2

W cl

So	61	134.0
cl	57	134.4
4	48	135.3
0	42	135.9

W.L. Bellarue

0	46	135.5
4	50	135.1
cl	59	134.2
+3	50	135.1
So	58	134.3

140.09

FORWARD ST.

25' West Bellevue

So	6.5	133.6
+11	58	134.3
Ch	6.5	133.6
L	58	134.3
C	52	134.9

50' W

C	6.1	134.0
L	6.4	133.7
Ch	7.9	132.2
25	20	133.1
So	7.9	132.2

75' W

So	9.1	131.0
+11	82	131.9
Ch	8.7	131.4
L	7.6	132.5
C	6.9	133.2

140.1

58

100' W

C	7.6	132.5
L	8.6	131.5
Ch	9.4	130.7
+11	8.9	131.2
So	7.8	130.3

125' W

So	10.3	129.8
+11	10.0	130.1
+13	10.6	129.5
Ch	10.0	130.1
L	9.1	131.0
C	8.5	131.6

150' W

C	9.3	130.8
L	10.0	130.1
Ch	11.4	128.7
+11	11.5	128.6
+13	11.0	129.1
So	11.4	128.7

TP	0.55	130.76	9.88	130.21
----	------	--------	------	--------

130.76FORWARD ST.130.8

59

175 W

S ₀	3.0	127.8
+9	2.5	128.3
Cl	3.0	127.8
H	1.6	129.2
C	0.7	130.1

200 W

C	1.6	129.2
H	2.3	128.5
Cl	1.0	126.8
+3	3.0	127.8
S ₀	3.0	127.2

225

S ₀	4.9	125.9
H	4.5	126.3
Cl	4.7	126.1
H	3.5	127.3
C	2.9	127.9

267.4 EL. Wards

C	5.0	125.8
H	5.7	125.1
Cl	7.0	123.8
+3	6.6	124.2
S ₀	7.1	123.7

E. Cl.

S ₀	7.8	123.0
Cl	7.7	123.1
H	6.5	124.3
C	0.6	125.2

E H

O	6.2	124.6
H	7.0	123.8
Cl	8.0	122.8
S ₀	8.3	122.5

Cl

S ₀	8.6	122.2
Cl	8.4	122.4
H	7.6	123.2
C	6.6	124.2

13076 FORWARD ST.
W of Waverly

C	71	123.7
4L	8.0	122.8
Ch	8.8	122.0
So	9.4	121.4

W. Ch

So	9.5	121.3
Ch	8.8	122.0
4L	7.7	123.1
C	7.5	123.3

W.L. Waverly

C	7.8	123.0
4L	8.5	122.3
Ch	9.8	121.0
H	9.1	121.7
So	10.1	120.7

25 W

So	10.6	120.2
Ch	10.8	120.0
4L	9.5	121.3
C	9.0	121.8

13076 60
50 W

C	10.1	120.7
4L	10.5	120.3
Ch	12.1	118.7
So	11.7	119.1

TP 0.37 119.64 1149 119.27

75 W

So	1.7	117.9
Ch	2.0	117.6
4L	0.7	118.9
C	0.4	119.2

100 W

C	1.7	117.9
4L	2.0	117.6
Ch	3.4	116.2
H	2.8	116.8
So	3.4	116.2

125 W

So	5.2	114.4
H	4.1	115.2
Ch	4.8	114.8
4L	3.5	116.1
C	2.9	116.7

119.64

FORWARD ST.

150 W

C	46	115.0
4	50	114.6
Ch	63	113.3
T3	57	113.9
S ₀	67	112.9

175 W

S ₀	79	111.7
T11	73	112.3
Ch	79	111.7
4	66	113.0
C	60	113.6

200 W

C	71	112.5
4	80	111.6
Ch	91	110.5
T3	84	111.2
S ₀	72	110.4

119.6

225 W

61

S ₀	10.3	109.3
T11	9.4	110.2
Ch	10.2	109.4
4	9.3	110.3
C	8.5	111.1

E.L. Beaumont 267.4

C	10.8	108.8
4	11.3	108.3
Ch	12.5	107.1
T3	11.6	108.0
S ₀	12.1	107.5

E.L. Beaumont

S ₀	12.1	107.5
4	13.0	106.6
4	12.5	107.1
C	12.2	107.4

T.P. 0.52 109.00 11.24 108.60 ✓ 108.44

1' W. of E.L.

No	34	105.6
Ch	36	105.4

109.00

FORWARD ST.

109.0

E Ct. Baumst

Jo	{20 27	107.0 106.2
cl	27	106.3
4	21	106.9
C	21	106.9
W	21	106.6
cl	41	104.9
+3	36	105.4
No	40	105.0
	E44	
No	41	104.9
cl	43	104.7
4	3.0	106.0
C	26	106.4
4	3.0	106.0
cl	3.3	105.7
S.	26	106.4
	ctr	
S.	30	106.0
cl	39	105.1
4	33	105.7

C	3.3	105.7
4	39	105.1
cl	46	104.4
No	45	104.5
	W44	
No	0.6	103.4
cl	5.3	103.7
4	45	104.5
C	3.9	105.1
4	40	105.0
cl	4.5	104.5
S.	3.8	105.2
	W44	
S.	4.5	104.5
cl	4.8	104.2
4	4.5	104.5
C	4.3	104.7
4	50	104.0
cl	5.2	103.4
No	{5.9 5.4	103.1 103.6

10900

FORWARD ST.

W.L. Beaumont #1

No	53	103.7
cl	58	103.2
4	54	103.6
C	50	104.0
4	53	103.7
cl.	55	103.5
So	50	104.0

3 W. F. W. L. #1

No	6.1	102.9
+10	6.2	102.8
+12	7.1	101.9
cl	6.4	102.6

21.6 W on Soline

So	6.2	102.8
+11	8.7	103.3
+12	6.5	102.5
cl.	6.4	102.6
4	5.3	103.7
C	5.0	104.0

1090

63

43.5 W on Soline - 0 + 00 on No

No	53	103.7
+10	5.6	103.4
+12	7.1	101.9
cl	6.4	102.6
4	6.3	102.7
C	6.2	102.8
4	7.2	101.8
cl	8.0	101.0
+3	8.2	100.8
#	6.9	102.1
So	7.3	101.7

0 + 00

So	8.3	100.7
+11	8.2	100.8
+12	9.3	99.7
cl	9.1	99.9
4	8.4	100.6
C	7.7	101.3
4	7.7	101.3

109.00

FORWARD ST.

50' W of Benchmark

No Cl	8.1	100.9
No	7.1	101.9
50' W		
No	8.3	100.7
+11	8.7	100.3
cl	9.3	99.7
4	8.9	100.1
C	8.9	100.1
4	9.4	99.6
cl	10.5	98.5
+3	10.6	98.4
4	9.5	99.5
S.	10.0	99.0

75' W

S.	11.2	97.8
+11	10.7	98.3
+12	11.7	97.3
cl	11.5	97.5
4	10.6	98.4

109.0

64

75' W

Q	9.8	99.2		
4	10.0	99.0		
cl	10.5	98.5		
No	9.1	99.9		
100' W				
No	10.7	98.3		
cl	11.2	97.8		
4	11.0	98.0		
C	11.0	98.0		
4	11.8	97.2		
cl	12.5	96.5		
S.	12.4	96.6		
TIP	136	98.82	11.24	97.46

125' W

S.	3.2	95.6
+9	3.0	95.8
+11	3.4	95.4
cl	3.2	95.6
4	2.6	96.2

98.92

FORWARD ST.

125 W of Beaumont

Φ	1.6	97.2
4L	1.9	96.9
0	1.8	97.0
No	2.4	97.4

150 W

No	2.2	96.6
0	2.9	95.9
4L	3.0	95.8
C	2.9	95.9
4	3.8	95.0
0	4.3	94.5
4L	3.7	95.1
So	4.3	94.5

184.23 = EL on 30

So	5.8	93.0
0	5.6	93.2
W	4.9	93.9
C	4.7	94.1
4	4.8	94.0

98.8

65

Ch	5.3	93.5
43	4.5	94.3
No	3.8	95.0

E L. Elect Ave (80' ST. 14' walks)

No	5.9	92.9
Ch	6.0	92.8
4L	5.5	93.3
C	5.1	93.7
4	5.3	93.5
Ch	5.7	93.1
So	5.8	93.3

E Ch Elect Ave

So	6.3	92.5
Ch	6.1	92.4
4L	6.0	92.8
E	6.0	92.8
W	6.0	92.8
0	5.8	93.0
No	6.1	92.7

98.82

FORWARD ST.

98.82

66

1' W of E Ch. Elected Ave

No	6.8	92.0
Ch	6.6	92.2
H	6.5	92.4
C	6.6	92.2
H	6.8	92.0
Ch	7.2	91.6
So	7.1	91.7

E of Elected Ave

So	8.6	90.2
Ch	9.5	89.3
H	8.9	89.9
C	9.3	89.5
H	8.0	90.8
Ch	8.2	90.6
No	9.4	89.4

2' E of E Rail

No	10.5	88.3
Ch	10.4	88.4
H	10.3	88.5

C	10.4	88.4
H	10.5	88.3
Ch	10.5	88.3
So	10.6	88.2
Top E Rail		
No	9.67	89.15
C	9.71	89.11
So	9.76	89.06

Top W. Rail

So	9.50	89.32
Ch	9.48	89.34
No	9.46	89.36

2' W of W Rail

So	10.2	88.6
Ch	10.3	88.5
H	10.3	88.5
C	10.2	88.6
H	10.3	88.5
Ch	10.3	88.5
No	10.3	88.5

99.22

FORWARD ST.

W 1/2 Elect Ave

No	113	87.5
Ch	113	87.5
4	109	87.9
C	10.8	88.0
4	11.0	87.8
Ch	11.5	87.3
So	11.4	87.9
G'W of W 1/2		
So	9.5	89.3
Ch	9.7	89.1
4	9.2	89.5
C	9.9	89.9
W	9.0	89.3
Ch	8.9	89.9
No	8.9	89.9
W Ch.		
No	9.1	89.7
Ch	9.1	89.7
4	9.2	89.6

98.8

67

C	9.1	89.9
Ch	9.2	89.6
W	9.6	89.2
So	10.3	88.5

W.L. Elect

So	10.7	88.1
Ch	10.5	88.3
Ch	10.3	88.5
C	10.2	88.6
4	9.8	89.0
Ch	9.9	88.9
No	10.3	88.5

W 1/2 "2" = 22.4' W on Soline - 0+00

No	10.3	88.5
Ch	10.3	88.5
4	10.5	88.3
C	10.9	87.9
Ch	11.1	87.7
Ch	11.3	87.5
So	11.6	87.2

9812

FORWARD ST.

75 W Elect. M (m.w.)

So			120	86.4
dr			120	86.8
4			118	87.0
c			120	86.8
4			120	86.8
4			118	87.0
No			118	87.0
T.P.	046	86.35	1293	85.89
		50 W		
No			82	86.2
cl			05	85.9
4			08	85.6
c			11	85.3
4			06	85.8
4			08	85.6
S.			11	85.3
		75' W		
So			25	83.9
4			25	83.9

8635

68

1/2			22	84.2
c			23	84.1
4			21	84.3
cl			18	84.6
No			15	84.9
		100 W		
No			28	83.6
cl			29	83.5
4			31	83.3
c			35	82.9
4			34	83.0
cl			37	82.7
So			39	82.5
		105 W		
S.			49	81.5
cl			49	81.5
4			43	82.1
c			43	82.1
4			42	82.0
cl			40	82.4
No			40	82.4

Pg. 35

FORWARD ST.

150 W Elect She

No	53	81.1
Ch	53	81.1
H	55	80.9
C	55	80.9
H	58	80.6
Ch	61	80.3
So	61	80.3

175 W

So	73	79.1
Ch	73	79.4
H	71	79.3
C	70	79.4
H	67	79.7
Ch	68	79.6
No	67	79.7

200 W

No	77	78.7
Ch	79	78.5
H	80	78.4

86.4

69

C	80	78.4
H	83	78.1
Ch	85	75.9
So	87	77.7

27.3 as figured
→ E.L. on South Side

So	98	76.6
Ch	93	77.1
H	94	77.0
C	92	77.2
H	91	77.3
Ch	90	77.4
No	88	77.6

E.L. Oil Pipe

No	99	76.5
H	99	76.5
H	99	76.5
C	100	76.4
H	99	76.5
Ch	97	76.7
So	98	76.6

86.35

FORWARD ST.

E Oil Blvd

walks 16 ft.

So	11.1	75.3
cl	10.9	75.5
44	10.7	75.7
o	11.1	75.3
4	11.1	75.3
ll	11.0	75.4
No	10.6	75.8

E 44

No	12.0	74.9
cl	12.1	74.3
44	12.1	74.3
o	12.1	74.3
4	12.2	74.2
cl	12.1	74.3
S	12.1	74.3

T.P. 255 77.10 11.77 74.58

Cor H. = 77.12 0.09 76.44 76.43

77.12

Oil Blvd

70

S	2.3	74.8
cl	2.2	74.9
4	2.2	74.9
o	2.1	75.0
4	2.1	75.0
cl	2.1	75.0
No	2.1	75.0

W 44

No	3.2	73.9
cl	3.3	73.8
4	3.3	73.8
o	3.3	73.8
4	3.4	73.7
cl	3.4	73.7
S	3.4	73.7

W cl

So	3.2	73.9
d	3.4	73.7
w	3.4	73.7
o	3.4	73.7

77.12

FORWARD ST.

W. Ch. Oil Blvd

N. 4	3.6	73.7
cl	3.4	73.7
No	3.4	73.2

W. L. Oil Blvd #1

No	4.0	73.1
cl	3.5	73.6
W	3.7	73.4
C	3.5	73.3
L	3.9	73.2
cl	3.9	73.2
S	3.8	73.3

18' W. on So. Side - or. co. on No

S.	4.1	72.7
cl	4.1	72.7
4	4.2	72.9
C	4.2	72.9
4	4.2	72.9
cl	4.3	72.8
N	4.0	73.1

77.12

W. Oil Blvd

71

No	5.1	72.0
cl	5.1	72.0
4	5.3	71.8
C	5.1	72.0
4	5.0	72.1
cl	5.2	71.9
S	5.2	71.9

50' W

2	5.9	71.2
cl	6.1	71.0
4	6.2	70.9
C	6.0	71.1
4	6.0	71.1
cl	6.0	71.1
N	6.0	71.1

75' W

No.	6.8	70.3
cl	6.8	70.3
4	6.8	70.3
C	6.8	70.3
4	6.8	70.3
cl	6.8	70.3
S	7.0	70.1

77.12

FORWARD ST.

100 W

So	77	69.4
Cl	79	69.2
W	76	69.5
C	79	69.2
W	7.8	69.3
Cl	7.8	69.3
No	7.5	69.6

125 W

No	8.3	68.8
Cl	8.4	68.7
W	8.4	68.7
C	8.3	68.8
W	8.5	68.6
Cl	8.5	68.6
S	8.5	68.6

150 W

S	91	68.0
Cl	93	67.8
W	93	67.8
C	91	68.0

77.12

100 W

W	91	68.0
Cl	91	68.0
No	89	68.2

175 W

No	95	67.6
Cl	97	67.9
W	98	67.3
C	99	67.2
W	99	67.2
Cl	100	67.1
S	100	67.1

210.45 on 50 = E.L. Beulah

S	110	66.1
Cl	111	66.0
W	111	66.0
C	111	66.0
W	109	66.2
Cl	105	66.6
No	101	67.0
T.P	120	67.9
		11.03
		66.09

6729

FORWARD ST.

224.5 on No. 5 side

E
H.L. Beulah

No	12	66.1
Ch	14	65.9
H	1.8	65.5
C	17	65.6
H	16	65.7
Ch	15	65.8
S _o	12	66.1

2 W of ^EH.L.

N.	23	65.0
Ch.	26	64.7

E. Ch. Beulah

S _o	16	65.7
Ch	21	65.2
H	24	64.9
C	28	64.5
H	31	64.2
Ch	33	64.0
N.	32	64.1

6729

E H

Beulah

73

No	25	63.8
Ch	20	63.3
H	42	63.1
C	20	63.3
H	25	63.8
Ch	27	64.6
S _o	18	65.5

Ch Beulah

S _o	14	65.9
Ch	33	64.0
H	49	62.4
C	54	61.9
H	51	62.2
Ch	47	62.6
No	38	63.5

W H

No	40	63.3
Ch	54	61.9
H	62	61.1
C	68	60.5
H	60	61.3
Ch	43	63.0
S _o	18	65.5

67.29

FORWARD ST.

67.29

74

	W. Ct. Beulah	
So	3.6	63.7
Ch	6.6	60.7
H	9.0	59.3
C	2.8	59.5
H	6.8	60.5
Ch	5.5	61.7
N	4.0	63.3

W.L. Beulah

No	3.5	63.8
Ch	5.5	61.8
H	7.0	60.3
C	8.4	59.9
H	9.3	58.0
Ch	8.6	58.7
So	5.2	62.1

W.L. H₂ 11.5 W on So line

So	6.4	60.9
Ch	9.7	57.6
H	9.4	57.7
a	8.7	58.6

H	7.1	60.2
Ch	5.7	61.6
No	3.5	63.8

25 W of Beulah

No	5.1	62.2
Ch	8.3	59.0
H	10.3	57.0
C	12.0	55.3
H	12.5	54.8
Ch	10.7	56.6
S	6.4	60.9

50 W.

So	9.7	57.6
Ch	13.1	54.2
H	15.5	51.8
C	13.7	53.6
H	11.3	56.0
Ch	8.8	58.5
N	5.4	61.9

67.29

FORWARD ST.

75 W of Dealok

No		P.3	59.0
ch		10.0	57.3
4		11.4	55.9
c		13.1	53.9
4		15.5	51.8
ch		18.3	49.0
So		14.3	53.0
T.P.	155	55.77	1307
		100W	54.22
So		76	48.2
+5		89	46.9
ch		67	49.1
4		50	50.8
c		36	52.2
4		22	53.6
ch		13	54.5
No		03	55.5

55.77

11.5 E W = E.L. Hotel

75

No		39	51.9
ch		52	50.6
4		60	49.8
c		66	49.2
4		74	48.4
ch		83	47.5
So		10.2	45.6
			E.Ch. Hotel
So		10.8	45.0
ch		96	46.2
4		93	46.5
c		87	47.1
4		85	47.3
ch		77	48.1
No		72	48.6

5577

FORWARD ST.

5577

76

EHL Hotel

No	89	46.9
cb	93	46.5
4	99	45.9
c	101	45.7
4	104	45.4
cb	104	45.4
S	111	44.7
	ctr	
S	112	44.6
cb	108	45.0
4	107	45.1
c	106	45.2
4	104	45.4
cb	100	45.8
No	93	46.5
	W 4	
No	94	46.4
cb	103	45.5
4	107	45.1
c	111	44.7

4	113	44.5
cb	115	44.3
50	118	44.0
	W.C.	
S	121	43.4
cb	118	44.0
4	117	44.1
c	116	44.2
4	114	44.4
cb	109	44.9
1.6	99	45.9
	W Line Hotel	
No	108	45.0
cb	118	44.0
4	120	43.3
c	128	43.0
4	129	42.9
cb	131	42.7
S	134	42.4

55.77

41

FORWARD ST.454

75 W

77

T.P 2.03 45.38 1292 42.85

Buy Nat. Int. Hotel & Forward 3.12 42.25
Calculated
25 W of Hotel

So 5.9 39.5

Cl 5.6 39.8

H 5.1 40.3

C 4.8 40.6

H 4.4 41.0

Cl 3.9 41.5

No 3.3 42.4

50 W

No 4.8 40.6

Cl 5.7 39.7

H 6.0 39.4

C 6.5 38.9

H 6.8 38.6

Cl 7.0 38.4

So 7.5 37.9

So 8.5 36.9

Cl 7.9 37.5

H 7.4 38.0

C 6.9 38.5

H 6.7 38.7

Cl 6.6 38.8

No 5.6 39.8

105 W = End at St on So side

No 6.9 38.5

Cl 7.7 37.7

H 8.2 37.2

C 8.7 36.7

H 8.9 36.5

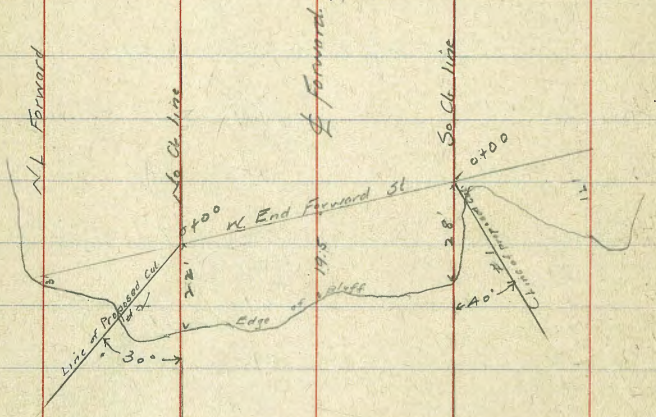
Cl 9.0 36.4

So 9.5 35.9

4538

105' Wood St - 145' Wood St - W. end of St.

So	9.5	35.9
Cb	9.4	36.0 36.4
1/4	9.1	36.3
Ctr	8.6	36.8
1/4	8.4	37.0
Cb	8.5	36.9
No	9.2	36.7



Levels for proposed Culverts at West end Forward St. span 23 17 78

+	ft	-	Elev.
0.32	42.57		W. 25 BM, N. 15 SW Culvert
T.P.	4.28	4.43	36.14
Levels over Culvert #1			
0+00		4.4	36.0
+10		4.9	35.5
+15.5		12.0	28.4
+18		14.4	26.0
+23		25.2	15.7
+24		33.5	6.9

Note: Make Ground at Sta 0+00 = grade for bottom of Cul. and let cul extend 6'

Levels over Culvert #2			
0+00		3.6	36.8
+15		4.6	35.9
+20		7.9	30.5
+28		20.4	20.0
+31		23.7	16.7
+37		27.7	12.7

Note: Make Ground at Sta 0+28 = grade for bottom of Cul. let cul extend 3'

Survey of Palm trees in
Ash to Beech 38376

Ash
10'
0100 47'
0122 0
0144 0
0166 0
0186 0
1107 0

1180 47'
1194 57'

Edgemont

Beech

43.00' 376 380'

13.24
306
1216
29364

376

East Side Edgemont between

Feb. 24/17
073
Belviders
Evans
moore

79

A

53' 27"

Ash

293.76'

Edgemont

31st street

624

1376

43' 17"

53' 27"

376

Beech

280'

63

27'

30'

43' 17"

Cedar

293.76'

53' 27"

