

987

F.B. 987

LEVEL BOOK

373

KEUFFEL & ESSER CO.

DRAWING MATERIALS
AND
SURVEYING INSTRUMENTS.

NEW YORK.

CHICAGO.

SAN FRANCISCO.

ST. LOUIS.

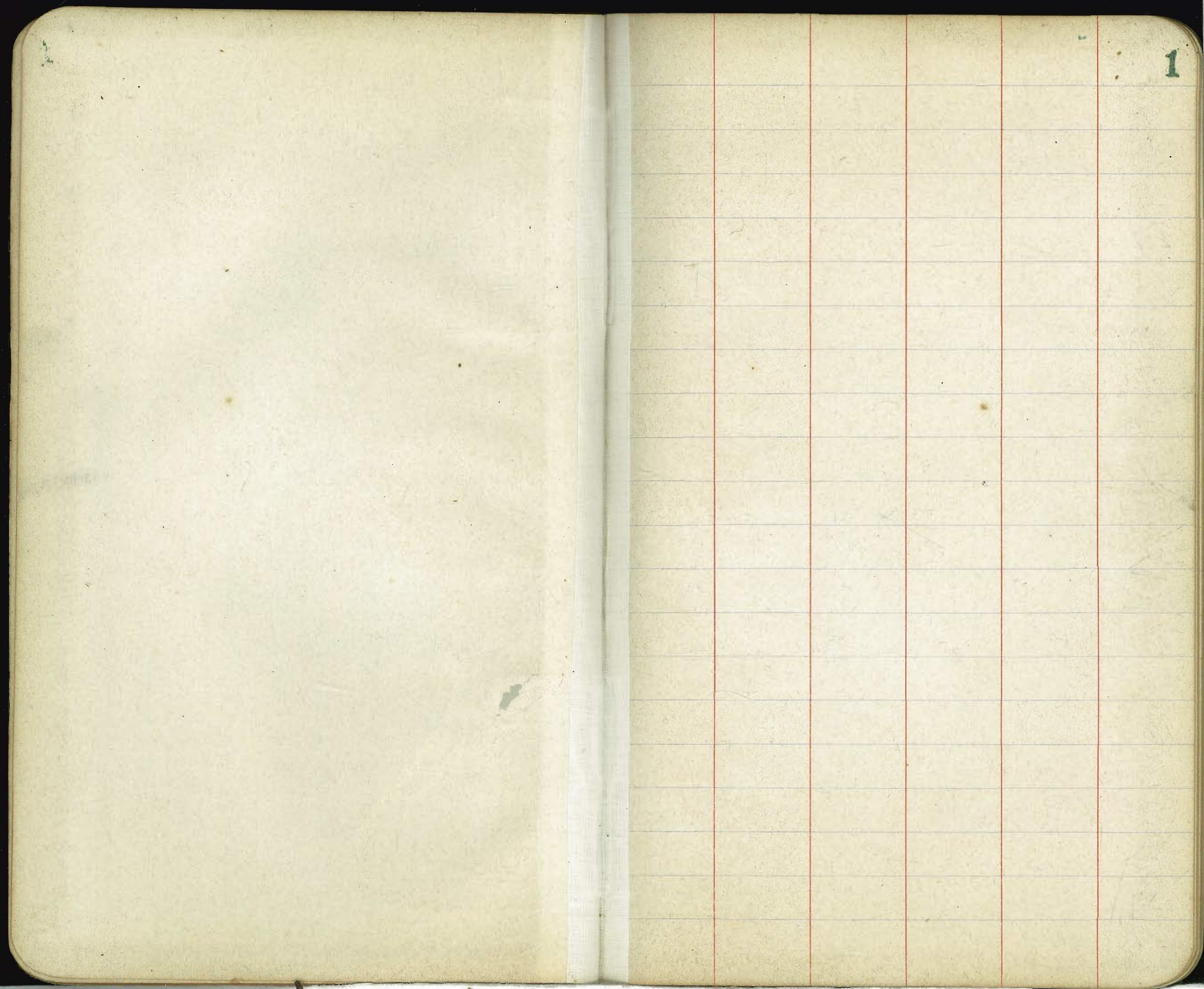
TABLES FOR EXCAVATIONS AND EMBANKMENTS.

DISTANCES FROM CENTER OF ROADWAY FOR CROSS-SECTIONING.
ROADWAY 18 FEET WIDE. SIDE SLOPES 1 TO 1.
FOR SINGLE TRACK EXCAVATION.

"Copyright, 1885, by Keuffel & Esser Co."

	0	.1	.2	.3	.4	.5	.6	.7	.8	.9	
0	9.0	9.1	9.2	9.3	9.4	9.5	9.6	9.7	9.8	9.9	0
1	10.0	10.1	10.2	10.3	10.4	10.5	10.6	10.7	10.8	10.9	1
2	11.0	11.1	11.2	11.3	11.4	11.5	11.6	11.7	11.8	11.9	2
3	12.0	12.1	12.2	12.3	12.4	12.5	12.6	12.7	12.8	12.9	3
4	13.0	13.1	13.2	13.3	13.4	13.5	13.6	13.7	13.8	13.9	4
5	14.0	14.1	14.2	14.3	14.4	14.5	14.6	14.7	14.8	14.9	5
6	15.0	15.1	15.2	15.3	15.4	15.5	15.6	15.7	15.8	15.9	6
7	16.0	16.1	16.2	16.3	16.4	16.5	16.6	16.7	16.8	16.9	7
8	17.0	17.1	17.2	17.3	17.4	17.5	17.6	17.7	17.8	17.9	8
9	18.0	18.1	18.2	18.3	18.4	18.5	18.6	18.7	18.8	18.9	9
10	19.0	19.1	19.2	19.3	19.4	19.5	19.6	19.7	19.8	19.9	10
11	20.0	20.1	20.2	20.3	20.4	20.5	20.6	20.7	20.8	20.9	11
12	21.0	21.1	21.2	21.3	21.4	21.5	21.6	21.7	21.8	21.9	12
13	22.0	22.1	22.2	22.3	22.4	22.5	22.6	22.7	22.8	22.9	13
14	23.0	23.1	23.2	23.3	23.4	23.5	23.6	23.7	23.8	23.9	14
15	24.0	24.1	24.2	24.3	24.4	24.5	24.6	24.7	24.8	24.9	15
16	25.0	25.1	25.2	25.3	25.4	25.5	25.6	25.7	25.8	25.9	16
17	26.0	26.1	26.2	26.3	26.4	26.5	26.6	26.7	26.8	26.9	17
18	27.0	27.1	27.2	27.3	27.4	27.5	27.6	27.7	27.8	27.9	18
19	28.0	28.1	28.2	28.3	28.4	28.5	28.6	28.7	28.8	28.9	19
20	29.0	29.1	29.2	29.3	29.4	29.5	29.6	29.7	29.8	29.9	20
21	30.0	30.1	30.2	30.3	30.4	30.5	30.6	30.7	30.8	30.9	21
22	31.0	31.1	31.2	31.3	31.4	31.5	31.6	31.7	31.8	31.9	22
23	32.0	32.1	32.2	32.3	32.4	32.5	32.6	32.7	32.8	32.9	23
24	33.0	33.1	33.2	33.3	33.4	33.5	33.6	33.7	33.8	33.9	24
25	34.0	34.1	34.2	34.3	34.4	34.5	34.6	34.7	34.8	34.9	25
26	35.0	35.1	35.2	35.3	35.4	35.5	35.6	35.7	35.8	35.9	26
27	36.0	36.1	36.2	36.3	36.4	36.5	36.6	36.7	36.8	36.9	27
28	37.0	37.1	37.2	37.3	37.4	37.5	37.6	37.7	37.8	37.9	28
29	38.0	38.1	38.2	38.3	38.4	38.5	38.6	38.7	38.8	38.9	29
30	39.0	39.1	39.2	39.3	39.4	39.5	39.6	39.7	39.8	39.9	30
31	40.0	40.1	40.2	40.3	40.4	40.5	40.6	40.7	40.8	40.9	31
32	41.0	41.1	41.2	41.3	41.4	41.5	41.6	41.7	41.8	41.9	32
33	42.0	42.1	42.2	42.3	42.4	42.5	42.6	42.7	42.8	42.9	33
34	43.0	43.1	43.2	43.3	43.4	43.5	43.6	43.7	43.8	43.9	34
35	44.0	44.1	44.2	44.3	44.4	44.5	44.6	44.7	44.8	44.9	35
36	45.0	45.1	45.2	45.3	45.4	45.5	45.6	45.7	45.8	45.9	36

Calculated by Julien A. Hall, M. Am. Soc. C. E.



Reynard Way X Secs.
 80' Wide - 10' Wks. - 13' 1/2"
 Contigued from Book 986 - P 78.

BM 13' N of Lot MN 117.59
 5.10 122.69
 North Line Opps on E = 27° N of NO on East

WL	9.0	113.7	✓
C	10.5	112.2	✓
1/4	10.8	111.9	✓
⊕	10.6	112.1	✓
1/4	10.5	112.2	✓
C	10.2	112.5	✓
EL	10.0	112.7	✓
+5	9.9	112.8	✓

Sec MN = 36° N of NO = 863' S of IL

EL	9.2	113.5	✓
C	9.3	113.4	115.7 23
C	9.5	113.2	✓
1/4	10.1	112.6	✓
⊕	10.0	112.7	✓
1/4	10.1	112.6	✓
C	10.2	112.5	✓
WL	9.0	113.7	✓

~~122.69~~
 122.69

2

850'S of IL

WL	7.3	115.4	✓
C	8.7	113.8	✓
1/4	9.3	113.4	✓
⊕	9.5	113.2	✓
1/4	9.8	112.9	✓
C	8.9	113.8	✓
EL	8.4	114.3	17 110.9 1.8
+4	8.0	114.7	✓

825'S

EL	7.0	115.7	✓
C	7.7	115.0	✓
1/4	8.7	114.0	✓
⊕	9.1	113.6	✓
1/4	7.7	115.0	✓
C	5.6	117.1	✓
WL	3.54	119.15	✓

8+13.09 = NL Opps on W.

WL	2.27	120.42	115.9 +.5
C	4.1	118.6	✓

12269

1/4		7.0	115.7	✓
+5		8.1	114.6	✓
⊖		9.1	113.6	✓
1/4		8.1	114.6	✓
C		6.7	116.0	✓
EL		6.18	116.51	11732.08

800's.

EL		5.05	117.64	✓
C		6.1	116.6	✓
1/4		7.6	115.1	✓
⊖		8.6	114.1	✓
+7		7.8	114.9	✓
1/4		5.6	117.1	✓
C		3.0	119.7	✓
WL		0.52	122.77	✓
T.P.		0.53	122.16	✓

9.70 131.86

775's.

WL		6.84	125.02	✓
C		10.1	121.2	✓

131.86

1/4		13.2	118.7	✓	3
⊖		16.6	115.3	✓	
+10		17.6	114.3	✓	
1/4		16.9	115.0	✓	
C		14.4	117.5	✓	
EL		12.80	119.36	✓	

750's of I.L.

EL		12.76	119.10	119.10	✓
+5		14.6	117.3	✓	
C		15.4	116.5	✓	
+10		16.7	115.2	✓	
1/4		16.0	115.9	✓	
⊖		15.2	116.7	✓	
1/4		12.1	119.8	✓	
C		8.6	123.3	✓	
WL		4.54	127.32	119.11	✓

736's.

WL		2.9	129.0	✓
C		6.6	125.3	✓
1/4		11.8	120.1	✓
⊖		14.2	117.7	✓

131.86

1/4	153	116.6
C	159	116.0
EL	14.1	117.8
+3	123	119.6

725's

# EL	124	119.5
C	152	116.7
1/4	153	116.6
£	139	118.0
1/16	124	119.5
1/4	112	120.7
C	4.8	127.1
WL	1.9	130.0

718's of IL

WL	1.0	130.9
C	4.8	127.1
+3	5.6	126.3
1/4	10.7	121.2
£	132	118.7
1/4	153	116.6
C	14.7	117.2
EL	11.9	120.0

131.86

700's of IL

EL	9.70	122.16
C	13.1	118.8
1/4	14.3	117.6
+10	14.2	117.7
£	13.0	118.9
1/4	10.5	121.4
C	5.2	126.7
WL	1.55	130.31

691's

WL	1.6	130.3
C	5.4	126.5
+11	9.5	122.4
1/4	10.2	121.7
£	13.0	118.9
+5	14.1	117.8
1/4	15.6	116.3
+11	14.3	117.6
C	13.2	118.7
EL	10.5	121.4

131.86

679's.

EL	9.3	122.6
+8	11.3	^{120.6} 130.6
C	11.7	^{120.2} 130.2
+9	14.1	117.8
1/4	14.3	117.6
⊕	14.0	117.9
+12	10.5	121.4
1/4	10.1	121.8
+4	9.7	122.2
+8	8.2	123.7
C	6.1	125.8
WL	2.2	129.7

675's.

WL	2.3	129.8
+3	3.3	128.6
+7	5.3	126.6
C	6.3	125.6
+8	8.6	123.3
+10	9.7	122.2
1/4	10.2	121.7

131.86

5

+10	12.9	119.0
⊕	13.7	118.2
1/4	14.4	117.5
+6	13.7	118.2
+10	11.9	120.0
C	11.2	120.7
EL	8.1	123.8

650's. of EL

EL	5.75	126.11
C	7.9	124.0
+13	11.0	120.9
1/4	12.3	119.6
⊕	13.6	118.3
+10	13.0	118.9
1/4	11.2	120.7
+10	9.4	122.5
C	7.3	124.6
WL	3.66	128.20

131.86

625' S.

0			
WL	6.1	125.8	✓
+2	8.3	123.6	✓
C	9.6	122.3	✓
+10	13.6	118.3	✓
1/4	12.9	119.0	✓
+10	12.4	119.5	✓
±	11.2	120.7	✓
+12	9.8	122.1	✓
+13	8.8	123.1	✓
1/4	8.2	123.7	✓
C	4.7	127.2	✓
EL	2.7	129.2	✓
	618' S. of I.L.		
EL	1.7	130.2	✓
C	4.4	127.5	✓
1/4	7.2	124.7	✓
+4	8.1	123.8	✓
+5	9.2	122.7	✓
±	10.2	121.7	✓
+10	12.5	119.4	✓

131.86

6

1/4	12.7	119.2	✓
+10	12.8	119.1	✓
C	10.0	121.9	✓
WL	8.4	123.5	✓
	600' S. of I.L.		
WL	8.9	122.96	✓
C	11.8	120.1	✓
1/4	12.6	119.3	✓
+4	12.9	119.0	✓
+12	8.8	123.1	✓
±	8.7	123.2	✓
+5	8.4	123.5	✓
+6	7.2	124.7	✓
1/4	4.9	127.0	✓
C	2.0	129.9	✓
EL	0.20	131.66	✓
T.P.	8.93	130.93	✓
	11.25	142.18	✓
	575' S.		
EL	7.9	134.3	✓
C	10.1	132.1	✓

142.18

1/4		134	128.8 ✓
+4		146	127.6 ✓
+8		165	125.7 ✓
+14		180	124.2 ✓
⊕		192	123.0 ✓
1/4		216	120.6 ✓
+2		218	120.4 ✓
+4		230	119.2 ✓
+5		218	120.4 ✓
C		205	121.7 ✓
WL		181	124.1 ✓
+2	550's	184	123.8 ✓
WL		191	123.1 ✓
+1		203	121.9 ✓
+5		214	120.8 ✓
+7		221	120.1 ✓
+9		208	121.4 ✓
C		208	121.4 ✓
1/4		191	123.1 ✓
⊕		168	125.4 ✓
+2		156	126.6 ✓

142.18

1/4		127	129.5 ✓	7
C		87	133.5 ✓	
EL		64	135.8 ✓	(125.8) 13.0
	530's			
EL		57	136.5 ✓	
C		80	134.2 ✓	
1/4		108	131.4 ✓	
⊕		150	127.2 ✓	
1/4		170	125.2 ✓	
C		196	122.6 ✓	
WL		217	120.5 ✓	
+10		186	123.6 ✓	
	500's			
- 77 toe		212	121.0 ✓	
- 6		212	121.0 ✓	
WL		1850	123.68 ✓	(126.07) 2.0
C		148	127.4 ✓	
1/4		126	129.6 ✓	
⊕		103	131.9 ✓	
1/4		79	134.3 ✓	
C		56	136.6 ✓	
EL		412	138.06 ✓	(130.0) 11.0

	142.18			
	492's			
EL		36	138.6	✓
C		50	137.2	✓
1/4		74	134.8	✓
£		92	133.0	✓
1/4		120	130.2	✓
+8		135	128.7	✓
+9		148	127.4	✓
C		150	127.2	✓
WL		174	124.8	✓
+8 ^o toe		21.1	121.1	✓
	482's			
-5 ^o toe		190	123.2	✓
WL		185	123.7	✓
+6		157	126.5	✓
C		157	126.5	✓
+4		153	126.9	✓
+5		139	128.3	✓
1/4		115	130.7	✓
£		85	133.7	✓
1/4		63	135.9	✓

	142.18			
				8
C		44	137.8	✓
EL		30	139.2	✓
	475's			
EL		26	139.6	✓
C		37	138.5	✓
1/4		60	136.2	✓
£		84	133.8	✓
1/4		121	130.1	✓
+7		140	128.2	✓
+11		160	126.2	✓
C		163	125.9	✓
WL		174	124.8	✓
+3 ^o toe		17.7	124.5	✓
	430's of J.L.			
WL		132	129.0	✓ 129.2 1.0
C		124	129.8	✓
+7		117	130.5	✓
1/4		123	129.9	✓
+12		118	130.4	✓
£		106	131.6	✓
+11		85	133.7	✓
1/4		68	135.4	✓

142.18

C	4.1	138.1
EL	26	139.58
	440's	
EL	5.6	136.6
C	7.1	135.1
1/4	8.9	133.3
£	11.0	131.2
1/4	10.2	132.0
C	11.5	130.7
WL	12.3	129.9
	425's	
WL	11.8	130.4
C	10.5	131.7
1/4	8.4	133.8
£	7.3	134.9
1/4	6.0	136.2
C	2.9	139.3
EL	2.0	140.2
	412's of I.L	
EL	-15	143.7
C	10	141.2

142.18

1/4	3.8	138.4
£	6.0	136.2
1/4	8.3	133.9
C	10.5	131.7
WL	12.1	130.1
	400's of I.L	
-7.7 to	17.9	124.3
-5	18.3	123.9
WL	14.80	127.4
C	12.9	129.3
1/4	9.6	132.6
£	5.7	136.5
1/4	2.3	139.9
TP	0.86	141.32
	11.37	152.69
C	10.1	142.6
EL	7.73	144.96
	395's	
EL	7.2	145.5
C	9.9	142.8
1/4	12.6	140.1
£	16.0	136.7

152.69

3 1/4

206 132.1 ✓

c

239 128.8 ✓

+4

247 128.0 ✓

WL

28.0 124.7 ✓

+52 toe

27.1 125.6 ✓

375's of I.L.

-5° toe

25.8 126.9 ✓

WL

28.0 124.7 ✓

c

24.5 128.2 ✓

1/4

206 132.1 ✓

E

15.0 137.7 ✓

1/4

11.0 141.7 ✓

c

7.2 145.5 ✓

EL

3.9 148.8 ✓

350's

EL

0.26 152.43 ✓

c

4.3 148.4 ✓

1/4

9.7 143.0 ✓

E

14.3 138.4 ✓

1/4

19.3 133.4 ✓

c

23.1 129.6 ✓

WL

24.1 128.6 ✓

+62 toe

26.2 126.5 ✓

152.69

325's

-8° toe

265 126.2 ✓

WL

248 127.9 ✓

+1

248 127.9 ✓

+2

238 128.9 ✓

+5

230 129.7 ✓

+7

220 130.7 ✓

c

21.0 131.7 ✓

+4

204 132.3 ✓

+5

19.5 133.2 ✓

1/4

16.8 135.9 ✓

E

13.3 139.4 ✓

1/4

9.5 143.2 ✓

c

4.6 148.1 ✓

EL

0.5 152.2 ✓

T.P. Keel Rack

0.71 151.98 ✓

560 157.58

317⁴³ S. of T1 = PC for rot. 52. Walnut on East

EL

6.1 151.5 ✓

c

9.7 147.7 ✓

1/4

14.2 143.4 ✓

157.58

1/4		18.3	139.3	
1/4		21.1	136.5	
C		24.7	132.9	
WL		30.0	127.6	132.01 11
+4		31.0	126.6	
+6		31.0	126.6	
+6 ²	toe	29.8	127.8	
	300' S. of IL			
-6 ⁸		29.4	128.2	
-2		30.5	127.1	
WL		29.9	127.7	
+3		29.0	128.6	
+4		29.0	130.6	
C		24.0	133.6	
1/4		20.8	136.8	
£		17.4	140.2	
1/4		14.6	143.0	
C		10.7	146.9	
EL		5.2	152.4	
	290.76' S. of IL - PC for return on WL for S.L. Walker			
EL		3.9	153.7	1007 00
C		10.0	147.6	
1/4		14.6	143.0	

157.58

£		17.3	140.3	11
1/4		20.4	137.2	
C		23.9	133.7	
+5		27.5	130.1	
WL		28.7	128.9	130.7 00
+5		30.2	127.4	
+7 ¹	toe	29.5	128.1	
	275' S. of IL			
-7 ¹	toe	28.6	129.0	
-5		29.9	127.7	
WL		27.9	129.7	
C		24.7	132.9	
+3		23.0	134.6	
1/4		20.5	137.1	
£		17.2	140.4	
1/4		14.2	143.4	
+11		10.4	147.2	
C		7.9	149.7	
EL		1.6	156.0	

157.58

250' S of IL

EL	2.35	155.23	✓
C	7.9	149.7	✓
+6	10.9	146.7	✓
1/4	13.8	143.8	✓
1/4	17.1	140.5	✓
1/4	20.8	136.8	✓
C	23.8	133.8	✓
WL	28.3	129.3	✓
+4	29.5	128.1	✓
+8° toe	27.4	130.2	✓

234.65' S of IL = NL Walnut on East

-7° toe	26.0	131.6	✓
-4	29.0	128.6	✓
WL	26.7	130.9	✓ 120.3 - 50
C	23.8	133.8	✓
1/4	20.4	137.2	✓
1/4	17.4	140.2	✓
1/4	14.1	143.5	✓
C	8.3	149.3	✓
EL	3.7	153.9	✓ 121.1 - 50

157.58

275' S of IL

12

EL	5.1	152.5	✓
C	9.6	148.0	✓
1/4	14.2	143.4 153.4	✓
1/4	17.6	140.0	✓
1/4	20.5	137.1	✓
C	23.4	134.2	✓
WL	27.9	129.7	✓
+3	28.9	128.7	✓
+7° toe	25.4	132.2	✓

217' S

-7° toe	25.2	132.4	✓
WL	28.1	129.5	✓
C	23.2	134.4	✓
1/4	19.9	137.7	✓
1/4	17.8	139.8	✓
1/4	14.9	142.7	✓
C	11.0	146.6	✓
EL	7.1	150.5	✓

157.58

210' N's of I.L. = EL taken on East

EL	88	148.8	✓
C	116	146.0	✓
1/4	152	142.4	✓
E	178	139.8	✓
1/4	198	137.8	✓
C	246	133.0	✓
+6	281	129.5	✓
WL	269	130.7	✓
+7 ² toe	250	132.6	✓

200' S. of I.L.

-7 ² toe	243	133.3	✓
WL	262	131.4	✓
+5	279	129.7	✓
C	247	132.9	✓
1/4	204	137.2	✓
E	183	139.3	✓
1/4	162	141.4	✓
C	138	143.8	✓
EL	118	145.8	✓

157.58

195' S. of I.L.

EL	133	144.3	
C	147	142.9	
1/4	165	141.1	
E	185	139.1	
1/4	201	137.5	
C	242	133.4	
+5	273	130.3	
WL	252	132.4	
+7 ² toe	237	133.9	

179.41' S. of I.L. PC for Return on N.L. Well on West

-2 ² toe	194	138.2	✓
WL	194	138.2	✓
C	193	138.3	
1/4	193	138.3	
E	161	141.5	
1/4	177	139.9	
C	173	140.3	
EL	172	140.4	

13

157.58

172'S of I.L

EL.	16.4	141.2
C	16.8	140.8
1/4	15.8	141.8
±	17.2	140.4
1/4	18.6	139.0
C	19.5	138.1
WL.	19.5	138.1
+3" toe.	19.5	138.1

167'S of I.L

- 3" toe	19.7	137.9
WL.	19.7	137.9
C	19.4	138.2
1/4	18.9	138.7
±	17.4	140.2
1/4	16.1	141.5
C	14.8	142.8
EL.	13.5	144.1

157.58

160'S of I.L

14

EL.	14.1	143.5
C	15.0	142.6
1/4	16.3	141.3
±	17.2	140.4
1/4	18.8	138.8
C	20.0	137.6
WL.	20.4	137.2
+6" toe.	21.4	136.2

150'S

- 8"	21.6	136.0
WL.	22.9	134.7
+3	24.8	132.8
+7	26.0	131.6
C	23.0	134.6
1/4	19.9	137.7
±	17.5	140.1
1/4	15.9	141.7
C	15.0	142.6
EL.	14.5	143.1

157.58

146'S of I.L.

EL	144	143.2
C	12.0	145.4
1/4	13.7	143.9
£	16.8	140.8
1/4 ⁺¹¹	17.6	140.0
1/4	19.0	138.6
C	22.9	134.7
+5	26.0	131.6
+8	26.0	131.6
WL	23.5	134.1
+9' toe.	21.9	135.7

143'S of I.L.

+9' toe.	21.9	135.7
WL	23.5	134.1
+2	26.0	131.6
+5	26.0	131.6
C	23.6	134.0
1/4	18.4	139.2
£	16.5	141.1
1/4	12.7	144.9
C	10.7	146.9
EL	9.8	147.8

157.58

125'S of I.L.

15

EL	4.3	153.3
C	5.4	152.2
1/4	8.6	149.0
£	12.8	144.8
+6	14.3	143.5
+7	16.1	141.5
1/4	16.1	141.5
C	21.9	135.7
+4	25.2	132.4
+6	25.2	132.4
WL	23.0	134.6
+10' toe.	21.4	136.2

104.57'S of I.L. = PC for Return for Factor on East.

- 12' toe.	21.5	136.2
WL	22.8	134.8
+2	24.7	132.9
+4	24.7	132.9
+7	21.3	136.3
C	20.4	137.2
+7	16.5	141.1
1/4	16.2	141.4

157.58

+2		13.6	144.0 ✓
£		9.0	148.6 ✓
1/4		4.0	153.6 ✓
T.P.		18.7	155.71 ✓
	11.65	167.36	
C		9.4	158.0 ✓
EL		7.25	160.11 ✓
		100' S. of I.L.	
EL		5.5	161.9 ✓
C		8.0	159.4 ✓
1/4		12.9	154.5 ✓
£		18.8	148.6 ✓
1/4		24.1	143.3 ✓
+1		26.0	141.4 ✓
+9		26.6	140.8 ✓
C		30.2	137.2 ✓
+7		34.7	132.7 ✓
WL		34.4	133.0 ✓
+1		32.6	134.8 ✓
+12 th	100	31.0	136.4 ✓

167.36

16

		95' S. of I.L.	
		-12 th	100
		31.0	136.4 ✓
		-5	32.0
			135.4 ✓
		WL	34.4
			133.0 ✓
		+1	32.5
			134.9 ✓
		C	29.6
			137.8 ✓
		+4	26.7
			140.7 ✓
		+13	26.0
			141.4 ✓
		1/4	24.3
			143.1 ✓
		£	18.1
			149.3 ✓
		1/4	11.4
			156.0 ✓
		C	6.7
			160.7 ✓
		EL	4.4
			163.0 ✓
		86' S. of I.L.	
		EL	1.8
			165.6 ✓
		C	4.5
			162.9 ✓
		1/4	9.8
			157.6 ✓
		£	16.9
			150.5 ✓
		1/4	22.7
			144.7 ✓
		+5	24.4
			143.0 ✓
		+6	26.2
			141.2 ✓
		C	27.1
			140.3 ✓

	167.36		
WL.		307	136.7 ✓
+5		34.0	133.4 ✓
+14 ² toe.		31.3	136.1 ✓
	81' South of IL.		
-14 ² toe		31.1	136.3 ✓
-10		33.8	133.6 ✓
WL.		306	136.8 ✓
C		26.7	140.7 ✓
+6		26.1	141.3 ✓
+9		23.8	143.6 ✓
1/4		21.7	145.7 ✓
⊕		16.0	151.4 ✓
1/4		9.0	158.4 ✓
C		3.3	164.1 ✓
EL.		0.7	166.7 ✓
	72' S. of IL		
EL		-2.3	169.7 ✓
C		1.1	166.3 ✓
1/4		6.7	160.7 ✓
⊕		14.2	153.2 ✓
1/4		21.0	146.4 ✓
+14		25.0	142.4 ✓

	167.36		
C		26.5	140.9 ✓
WL		27.4	140.0 ✓
+13		31.7	135.7 ✓
+18 ⁵ toe.		33.3	134.1 ✓
	55' S. of IL		
-14 ³ toe.		29.3	138.1 ✓
-10		27.9	139.5 ✓
WL		27.4	140.0 ✓
+1		25.3	142.1 ✓
C		23.0	144.4 ✓
1/4		17.2	150.2 ✓
⊕		11.0	156.4 ✓
1/4		3.0	164.4 ✓
T.P.		0.45	166.91 ✓
	130.6	179.97	
C		9.9	170.1 ✓
EL.		7.2	172.8 ✓
	53' S. of IL		
EL.		6.7	173.3 ✓
C		9.8	170.2 ✓
1/4		15.2	164.8 ✓

TP. 179.97 0.65 179.32 ✓

521 184.53

BM. Hub. - N.E. of Lpton E. of S.J. 1.28 183.25 ✓

Sec I J = 599.97 S. of P. Curve.

EL. 5.2 179.3 ✓

C 8.3 176.2 ✓

1/4 13.6 170.9 ✓

± 19.6 164.9 ✓

1/4 26.1 158.4 ✓

C 31.3 153.2 ✓

WL. 33.6 150.9 ✓

+ 3rd Ave. 34.0 150.5 ✓

575' S. of the PC.

WL 30.9 153.6 ✓

C 29.4 155.1 ✓

1/4 26.0 158.5 ✓

± 19.9 164.6 ✓

1/4 13.5 171.0 ✓

C 7.2 177.3 ✓

FL. 3.2 181.3 ✓

550' S. of PC

184.53

EL 4.6 179.9 ✓

C 9.4 175.1 ✓

1/4 15.1 169.4 ✓

± 21.7 162.8 ✓

1/4 25.4 159.1 ✓

C 28.0 156.5 ✓

WL. 29.4 155.1 ✓

525' S. of PC.

WL 28.4 156.0 ✓

C 27.1 157.4 ✓

1/4 25.0 159.5 ✓

± 21.6 162.9 ✓

1/4 17.0 167.5 ✓

C 10.9 173.6 ✓

EL. 7.3 177.2 ✓

518' S. of PC.

EL. 7.2 177.3 ✓

C 11.7 172.8 ✓

1/4 17.8 166.7 ✓

± 22.1 162.4 ✓

184.53

WS/A

24.7 159.8 ✓

C

27.2 157.3 ✓

WL

28.8 155.7 ✓

+4° toe

29.2 155.3 ✓

500' S. of P.C.

- 6I toe.

29.7 154.8 ✓

WL

29.0 ✓ 155.5 ✓

C

28.0 156.5 ✓

1/4

25.6 158.9 ✓

1/4

22.4 162.1 ✓

1/4

18.3 166.2 ✓

C

13.4 171.1 ✓

EL

8.8 ✓ 175.7 ✓

493' S. of P.C.

EL

10.9 173.6 ✓

T.P.

12.44 172.09 ✓

3.92

176.01

C

6.3 169.7 ✓

1/4

10.5 165.5 ✓

1/4

14.7 161.3 ✓

1/4

17.1 158.9 ✓

176.01

C

18.9 157.1 ✓

WL

19.8 156.2 ✓

+6° toe

20.8 155.2 ✓

475' S. of P.C.

-9° toe

21.6 154.4 ✓

WL

20.2 155.8 ✓

C

19.5 156.5 ✓

1/4

17.5 158.5 ✓

1/4

15.7 160.3 ✓

1/4⁷⁶

14.6 161.4 ✓

1/4

12.1 163.9 ✓

C

8.2 167.8 ✓

EL

5.7 170.3 ✓

458.98' S. of P.C. = 5L Brooks on East

EL

9.1 166.9 ✓

C

11.1 164.9 ✓

1/4

12.7 163.3 ✓

1/4

14.8 161.2 ✓

1/4

17.4 158.6 ✓

C

19.5 156.5 ✓

WL

20.8 155.2 ✓

+11° toe

22.0 154.0 ✓

176.01

450's of P.C

-14 ^L toe	23.1	152.9
WL	21.0	155.0
C	19.3	156.7
1/4	16.6	159.4
⊕	13.3	162.7
1/4	10.8	165.2
C	9.7	166.3
EL	9.0	167.0

444's of P.C

EL	7.8	168.2
C	7.9	168.1
1/4	9.0	167.0
⊕	11.7	164.3
+3	12.1	163.9
+7	14.0	162.0
1/4	15.9	160.1
C	19.0	157.0
WL	20.8	155.2
+14 ^L toe	23.1	152.9

176.01

429.93 = SL Brooks on W

-13 ^R toe	21.5	154.5
WL	18.7	157.3
C	16.7	159.3
1/4	13.6	162.4
⊕	9.7	166.3
1/4	5.3	170.7
C	2.8	173.2
EL	2.5	173.5

425's of P.C

EL	0.8	175.2
C	1.3	174.7
1/4	4.3	171.7
⊕	9.0	167.0
1/4	13.3	162.7
C	16.3	159.7
WL	18.3	157.7
+13 ^R toe	20.7	155.3

176.01

411' S. of the P.C.

-14 ¹ toe	20.8	155.2 ✓
WL	18.0	158.0 ✓
C	16.0	160.0 ✓
1/4	13.0	163.0 ✓
£	8.3	167.7 ✓
1/12	3.1	172.9 ✓
1/4	1.8	174.2 ✓
T.P.	0.25	175.76 ✓
10.90	186.66 ✓	
C	9.4	177.3 ✓
EL	7.9	178.8 ✓

405.83 S. of the P.C. = N.L. Brook, in E.

EL	6.8	179.9 ✓
C	8.7	178.0 ✓
1/4	12.2	174.5 ✓
£	18.8	167.9 ✓
1/4	23.5	163.2 ✓
C	26.9	159.7 ✓
WL	28.9	157.7 ✓
+8	30.5	156.2 ✓
+9	31.7	155.0 ✓
+17.2	31.7	155.0 ✓

~~176.01~~
186.66

400' S. of P.C.

22

-18 ¹ toe	32.9	153.8 ✓
-8	32.1	154.6 ✓
-7	30.6	156.1 ✓
WL	28.7	158.0 ✓
C	27.1	159.6 ✓
1/4	23.8	162.9 ✓
£	20.1	166.6 ✓
1/4	13.4	173.3 ✓
+8	10.2	176.5 ✓
C	8.7	178.0 ✓
EL	6.6	180.1 ✓

389' S. of P. Curve

EL	7.4	179.3 ✓
C	10.0	176.7 ✓
1/4	15.5	171.2 ✓
+5	17.5	169.2 ✓
£	20.5	166.2 ✓
1/4	24.1	162.6 ✓
C	27.7	159.0 ✓
WL	30.4	156.3 ✓
+6	31.6	155.1 ✓
+9	33.4	153.3 ✓
+17	33.7	153.0 ✓
+26	39.6	147.1 ✓

186.66

+27		42.6	144.1 ✓
+33 ¹ toe		42.6	144.1 ✓
	375'S. of P.C.		
-30	Vert bank up	40.8	145.9 ✓
-27		40.8	145.9 ✓
-20		33.4	153.3 ✓
-10		33.0	153.7 ✓
-9		30.6	156.1 ✓
-5		28.1	158.6 ✓
WL		27.1	159.6 ✓
C		25.0	161.7 ✓
1/4		23.0	163.7 ✓
£		20.0	166.7 ✓
1/4		16.8	169.9 ✓
C		12.9	173.8 ✓
EL		10.2	176.5 ✓

360'S. of P.C.

EL		11.4	175.3 ✓
C		13.6	173.1 ✓
1/4		16.2	170.5 ✓
£		18.5	168.2 ✓
1/4		20.6	166.1 ✓

186.66

23

C		22.7	164.0 ✓
WL		24.5	162.2 ✓
+7		27.6	159.1 ✓
+13		30.4	156.3 ✓
+14		33.2	153.5 ✓
+23 ¹ toe		33.5	153.2 ✓
	350'S. of P.C.		
-24 ¹ toe		33.2	153.4 ✓
-19		33.1	153.6 ✓
-18		31.0	155.7 ✓
-13		28.2	158.5 ✓
WL		23.0	163.7 ✓
C		21.1	165.6 ✓
+10		18.5	168.2 ✓
1/4		18.2	168.5 ✓
£		16.6	170.1 ✓
1/4		14.5	172.2 ✓
C		12.2	174.5 ✓
EL		10.4	176.3 ✓

15

18666

325'S.

EL.	7.1	179.6 [✓]
C	8.2	178.5 [✓]
1/4	9.1	177.6 [✓]
E	10.6	176.1 [✓]
1/4	12.9	173.8 [✓]
C	16.8	169.9 [✓]
WL	19.8	166.9 [✓]
+18' toe.	27.2	159.5 [✓]

300'South of the PC

-20' toe	27.0	159.7 [✓]
WL	20.1	166.6 [✓]
C	18.3	168.4 [✓]
1/4	12.0	174.7 [✓]
E	7.5	179.2 [✓]
+5	5.8	180.9 [✓]
1/4	4.3	182.4 [✓]
C	2.8	183.9 [✓]
EL.	2.5	184.2 [✓]

18666

288'S. of the PC

24

EL.	0.7	186.0 [✓]
C	1.9	184.8 [✓]
1/4	4.1	182.6 [✓]
E	9.0	177.6 [✓]
1/4	13.9	172.8 [✓]
C	19.0	167.7 [✓]
WL	22.1	164.6 [✓]
+13	25.8	160.9 [✓]
+22 ³ toe.	27.1	159.6 [✓]

275'S. of PC

-		
-		
-26 ⁵ toe	29.0	157.7 [✓]
WL	24.7	162.0 [✓]
C	21.2	165.5 [✓]
1/4	15.7	171.0 [✓]
+9	12.5	174.2 [✓]
E	11.0	175.7 [✓]
1/4	5.8	180.9 [✓]
C	1.7	185.0 [✓]

T.P.

186.66 456 182.10 ✓

620 188.30 ✓ /

275' S.

EL-

1.2 187.1 ✓

268' S. of the P.C.

E.L.

1.0 187.3 ✓

C

46 183.7 ✓

1/4

89 179.4 ✓

±

136 174.7 ✓

+8

160 172.3 ✓

1/4

190 169.3 ✓

C

240 164.3 ✓

WL

26.2 162.1 ✓

+16

29.6 158.7 ✓
+58.6

+20

315 156.8 ✓

+28² toe.

31.0 157.3 ✓

255' S. of P.C.

-

- 24² toe.

28.0 160.3 ✓

- 12

28.0 160.3 ✓

WL

29.6 ✓ 158.7 ✓

188.30

C

27.4 160.9 ✓

25

1/4

24.0 164.3 ✓

±

18.5 169.8 ✓

1/4

12.7 175.6 ✓

C

7.7 180.6 ✓

EL

4.3 ✓ 184.0 ✓

250' S. of the P.C.

EL

5.3 183.0 ✓

C

9.1 179.2 ✓

1/4

14.3 174.0 ✓

±

20.5 167.8 ✓

+12

24.6 163.7 ✓

1/4

26.6 161.7 ✓

+10

26.1 162.2 ✓

C

26.5 161.8 ✓

WL

26.9 161.4 ✓

+13

27.0 161.3 ✓

+24²

27.2 161.1 ✓

233' S. of P.C.

-

- 23² toe

25.5 162.8 ✓

WL

23.2 165.1 ✓

188.30

C	224	165.9 [✓]
1/4	225	165.8 [✓]
£ ⁺¹²	225	165.8 [✓]
	242	164.1 [✓]
+6	218	166.5 [✓]
1/4	196	168.7 [✓]
C	136	174.7 [✓]
EL	11.7	176.6 [✓]

225' S of PC

EL	134	174.9 [✓]
C	156	172.7 [✓]
1/4	203	168.0 [✓]
+3	234	164.9 [✓]
+8	214	166.9 [✓]
£	202	168.1 [✓]
1/4	203	168.0 [✓]
C	204	167.9 [✓]
WL	21.0	167.3 [✓]
+20 ⁸ toe	230	165.3 [✓]

200' S of P.C

-14 ² toe	167	171.6 [✓]
WL	14.5 [✓]	173.8 [✓]

198.30

C	13.1	175.2 [✓]	26
1/4	14.4	173.9 [✓]	
£	14.3	174.0 [✓]	
1/4	15.8	172.5 [✓]	
C	16.4	171.9 [✓]	
+5	17.1	171.2 [✓]	
EL	18.6 [✓]	169.7 [✓]	
+5	16.4	171.9 [✓]	
+13 ² toe	14.3	174.0 [✓]	

195' South of PC

-	16.0	172.3 [✓]	
-14 ⁸ toe	18.1	170.2 [✓]	
-6	15.7	172.6 [✓]	
EL	15.2	173.1 [✓]	
C	14.3	174.0 [✓]	
1/4	13.3	175.0 [✓]	
£	12.8	175.5 [✓]	
1/4	11.9	176.4 [✓]	
C	12.6	175.7 [✓]	
WL	13.2	175.1 [✓]	
+9 ² toe			

18830

T.P.		11.51	176.79
	12.70	<u>189.49</u>	
		175's of P.C.	
WL		6.7	182.8
C		5.1	184.4
1/4		5.8	183.7
⊕		8.0	181.5
1/4		9.5	180.0
C		9.8	179.7
EL		10.6	178.9
		165's of P.C.	
EL		7.1	182.4
C		7.0	182.5
1/4		6.0	183.5
⊕		4.2	185.3
T.P.		10.3	188.46
	12.21	<u>200.67</u>	
1/4		12.6	188.1
C		13.1	187.6
WL		14.7	186.0

20067

152-03'S = W.L. Goldfinch on West

W.L.		12.1	188.6
C		9.7	191.0
1/4		8.8	191.9
⊕		10.4	190.3
1/4		12.0	188.7
C		13.2	187.5
EL		13.8	186.9
		134's of P.C.	
EL		5.0	195.7
C		6.2	194.5
1/4		5.6	195.1
⊕		4.4	196.3
1/4		3.9	196.8
C		5.9	194.8
WL		9.2	191.5
		125's of P.C.	
WL		8.2	192.5
C		4.6	196.1
1/4		1.5	199.2
⊕		2.0	198.7

200.67

1/4	24	198.3	✓
C	25	198.2	✓
EL	22	198.5	✓
T.P.	0.97	199.70	✓

12.81 212.51

115' S of the P.C.

EL	120	200.5	✓
C	112	201.3	✓
1/4	10.3	202.2	✓
±	10.5	202.0	✓
1/4	11.0	201.5	✓
C	13.9	198.6	✓
WL	19.8	192.7	✓

100' S of P.C.

WL	21.0	191.5	✓
C	17.9	194.6	✓
1/4	11.6	200.9	✓
±	7.4	205.1	✓
1/4	6.7	205.8	✓
C	7.2	205.3	✓
EL	8.1	204.4	✓

212.51

87' S of the P.C.

EL	52	207.3	✓
C	4.1	208.4	✓
1/4	4.2	208.3	✓
±	6.0	206.5	✓
1/4	11.7	200.8	✓
+3	13.5	199.0	✓
C	18.8	193.7	✓
WL	21.8	190.7	✓

75' S of the P.C.

-3' toe	23.9	188.6	✓
WL	22.8	189.7	✓
C	20.2	192.3	✓
1/4	15.0	197.5	✓
±	8.0	204.5	✓
+8	5.4	207.1	✓
1/4	4.2	208.3	✓
C	3.8	208.7	✓
EL	3.9	208.6	✓

212.51

50' S. of P.C.

SEL.	53	207.2
C	70	205.5
1/4	100	202.5
⊖	14.5	198.0
1/4	175	195.0
C	204	192.1
WL	227	189.8
+5' toe.	236	188.9

38.95' S. of P.C. - S.L. Torrence on East

- 5' toe.	22.8	189.7
WL	216	190.9
C	196	192.9
1/4	168	195.7
⊖	146	197.9
1/4	114	201.1
C	8.2	204.3
EL	5.8	206.7

212.51

26.18' S. of the P.C. - S.L. Torrence on West 29

EL	53	207.2
C	75	205.0
1/4	101	202.4
⊖	132	199.3
1/4	157	196.8
C	183	194.2
WL	201	192.4
+4' toe.	210	191.5 192.5

Point Curve R on WL = 340' on EL = 260'

- 5' toe.	20.0	189.41
WL	19.2	192.5
C	17.2	193.3
1/4	14.0	198.5
⊖	10.0	202.5
1/4	6.2	206.3
C	3.6	208.9
EL	1.3	211.2
T.P.	1.78	210.73

1262 223.35

223.35

1/8 of Arc.

EL.	55	217.8
C	72	216.2
1/4	120	211.4
E	168	206.6
1/4	216	201.8
C	239	199.5
WL	250	198.4

2263 = 1/8 of Arc
on E

1/4 of Arc

WL	183	2051
C	187	204.7
1/4	174	206.0
E	131	210.3
1/4	74	216.0
C	1.3	222.1
T.P.	0.43	222.92

11.23 234.15

EL.	9.6	224.6
3/8 of Arc		
EL.	4.9	229.3
C	7.8	226.4

234.15

30

1/4	14.2	220.0
E	21.0	213.2
1/4	24.1	210.1
C	25.6	208.6
WL	25.9	208.3

1/2 Arc

WL	24.9	209.3
C	23.5	210.7
1/4	21.3	212.9
E	17.9	216.3
1/4	12.8	221.4
C	6.4	227.8
EL	2.0	232.2

5/8 Arc

EL	2.1	232.1
C	6.7	227.5
1/4	12.4	221.8
E	17.2	217.0
1/4	20.5	213.7
C	23.8	210.4
WL	26.0	208.2

234.15

 $\frac{3}{4}$ Arc.

- 13 ⁵ toe	34.6	199.6
WL	29.3	204.9
C	25.7	208.5
$\frac{1}{4}$	21.8	212.4
⊕	17.6	216.6
$\frac{1}{4}$	12.9	221.3
C	7.1	227.1
EL	2.3	231.9

 $\frac{7}{8}$ of Arc.

EL	4.4	229.8
C	8.8	225.4
$\frac{1}{4}$	15.0	219.2
⊕	19.0	215.2
$\frac{1}{4}$	24.1	210.1
C	29.0	205.2
WL	33.6	200.6
+ 20	42.5	191.7
+ 32 ² toe	46.2	188.0

234.15

Pt. Tarry = 231.43 S of Sec A.D.

31

- 46 ² toe	53.3	180.9
- 42	53.5	180.7
- 41	52.0	182.2
- 28	47.6	186.6
- 15	43.3	190.9
WL	39.2	195.0
C	35.8	198.4
$\frac{1}{4}$	30.1	204.1
⊕	25.6	208.6
$\frac{1}{4}$	19.3	214.9
C	14.3	219.9
EL	9.5	224.7

T.P. Hob. 10'E of Pt. Tarry

19.3 231.32

225'S of A.D.

EL	7.4	223.9
C	12.0	219.3
$\frac{1}{4}$	18.6	212.7
⊕	24.1	207.2
$\frac{1}{4}$	29.2	202.1
C	34.0	197.3
WL	37.2	194.1
+ 20	42.9	188.4
+ 40	50.0	181.3
+ 47 ² toe	50.3	181.0

231.32

215's of A.D.

-47 ¹ toe	49.7	181.5 ✓
-39.	49.6	181.7 ✓
WL.	38.6	192.7 ✓
C	36.0	195.3 ✓
1/4	31.4	199.9 ✓
⊕	26.5	204.8 ✓
1/4	19.4	211.9 ✓
C	12.7	218.6 ✓
EL.	8.2	223.1 ✓

200's of A.D.

EL	9.3	222.0 ✓
C	13.7	217.6 ✓
1/4	19.8	211.5 ✓
⊕	26.2	205.1 ✓
1/4	31.1	200.2 ✓
C	35.6	195.7 ✓
WL.	38.5	192.8 ✓
+35	48.1	182.6 ✓
+43	48.5	182.8 ✓
+46 ² toe	47.9	183.4 ✓

231.32

175's.

32

-44 ¹ toe	44.8	186.5 ✓
-38	46.3	185.0 ✓
-30	46.4	184.9 ✓
WL	35.3	196.0 ✓
C	32.2	199.1 ✓
1/4	27.9	203.4 ✓
⊕	23.8	207.5 ✓
1/4	17.9	213.4 ✓
C	12.8	218.5 ✓
EL.	8.4	222.9 ✓

150's.

EL.	10.8	220.5 ✓
TP	12.93	218.39 ✓
	0.92	<u>218.81</u>
C	0.7	218.1 ✓
1/4	5.2	213.6 ✓
⊕	8.8	210.0 ✓
1/4	12.7	206.1 ✓
C	15.6	203.2 ✓
WL	20.2	198.6 ✓
+13	25.4	193.4 ✓
+21	31.0	187.8 ✓
+44 ² toe	30.9	188.4 ✓

218.81

135' S. of A.D.

- 45 ³ toe	30.3	188.5
- 45	31.0	187.8
- 30	31.2	187.6
WL	20.5	198.3
C	18.1	200.7
1/4	14.6	204.2
1/4	11.6	207.2
1/4	7.5	211.3
C	2.7	216.1
EL	1.0	217.8

125' S. of A.D.

- 51 ³ toe	3.6	215.2
EL	4.2	214.6
C	7.3	211.5
1/4	11.3	207.5
1/4	14.0	204.8
1/4	17.7	201.1
C	20.6	198.2
WL	22.2	196.6
+ 30	29.1	189.7
+ 45 ³ toe	29.8	189.0

218.81

121' S. of A.D.

33

- 45 ³	29.2	189.6
- 25	28.4	190.4
WL	24.0	194.8
C	22.7	196.1
1/4	18.6	200.2
1/4	15.8	203.0
1/4	12.6	206.2
C	9.1	209.7
EL	6.3	212.5
+ 82	4.8	214.0

112' S. of A.D.

- 14 ³	8.5	210.3
EL	11.0	207.8
C	12.0	206.8
+ 9	14.6	204.2
1/4	17.0	201.8
1/4	19.0	199.8
1/4	20.6	198.2
C	22.7	196.1
WL	24.6	194.2
+ 23	27.8	191.0
+ 40	27.8	191.0
+ 43 ³ toe	27.1	191.7

218.81

100'S of A.D.

-41 ²	25.5	193.3
-35	27.1	191.7
-23	27.0	191.8
WL	22.2	196.6
C	21.1	197.7
1/4	19.3	199.5
⊕	18.2	200.6
1/4	16.6	202.2
C	15.8	203.0
EL	14.9	203.9
+13	11.6	207.2
+19 ³ toe	10.6	208.2

92'S of A.D.

-14 ⁵ toe	6.9	211.9
EL	9.6	209.2
C	10.9	207.9
1/4	12.5	206.3
⊕	14.4	204.4
1/4	16.0	202.8
C	17.5	201.3
WL	19.2	199.6
+12	21.1	197.7
+25	26.8	192.0
+35	26.7	191.9

218.81

34

+41 ³ toe	24.7	194.1
-43 ²	24.3	194.5
-38	26.1	192.7
-30	26.1	192.7
-10	17.7	201.1
WL	15.3	203.5
C	13.4	205.4
1/4	11.5	207.3
⊕	9.2	209.6
1/4	6.6	212.2
C	5.5	213.3
EL	4.2	214.6
+9 ² toe	1.8	217.0
T.P.	1.12	217.69

11.73

229.42

46.55'S = 5L. Penn. on W.

EL	5.2	224.2
C	7.4	222.0
1/4	9.5	219.9
⊕	12.8	216.6
1/4	16.0	213.4
C	18.6	210.8
WL ¹⁶	20.0	209.4
	21.6	207.8

229.42

+11	236	205.8
+30	333	196.1
+39	330	196.4
+41 ⁸ toe	320	197.4

25'S of A.D.

-41 ⁵ toe	303	199.1
-30	310	198.4
-26	276	201.8
-14	265	202.9
-13	225	206.9
WL	18.9	210.5
+4	166	212.8
C	146	214.8
1/4	113	218.1
E	83	221.1
1/4	48	224.6
T.P.	0.47	228.95

1229

241.24

C	120	229.2
EL	8.8	232.4

241.24

16'S of A.D.

35

EL	54	235.8
C	9.2	234.0
1/4	14.7	226.5
E	18.0	223.2
1/4	20.9	220.3
C	24.6	216.6
WL	28.6	212.6
E 2	32.1	209.1
+9	34.6	206.6
+10	39.1	202.1
+23	40.1	201.1
+25	38.0	203.2
+37 ⁸ toe	39.2	202.0

5.18' S = N.L. Penh. on W.

-33 ² toe	35.5	205.7
-4	35.5	205.7
-13	38.1	203.1
-6	39.5	201.7
-4	31.5	209.7
WL	28.0	213.2

108

241.24

C	233	~179
1/4	180	223.2
±	152	226.0
1/4	10.8	230.4
C	5.7	235.5
EL	1.1	240.1
Sec A.D. = 2 pt WL ST = 10.37 = 294.82 5 of 32 Sutter on W.A.		
EL	-0.3	241.5 ✓
C	4.1	237.1
1/4	9.7	231.5
±	13.7	227.5
1/4	16.9	224.3
C	220	219.2
WL ⁺	25.1	216.1 ✓
	270	214.2 ✓
+7	320	209.2 ✓
+8	380	203.2 ✓
+13	36.0	205.2 ✓
+332 toe	350	206.2 ✓

241.24

36

Sec AC thru 2 pts

-332 toe	350	206.2
-13	360	205.2
-8	380	203.2
-7	320	209.2
WL	270	214.2
C	22.1	219.1
1/4	16.3	224.9
±	12.3	228.9
1/4	6.7	234.5
C	15	239.7
T.P.	144	239.80
	12.27	<u>252.07</u>
EL	7.4	244.7
BM. Aug 14 E of 1st	2.13	249.94
T.P.	322	248.85
	12.75	261.60
BM. Plog. N.E. Sutter & Goldfinch	46.9	256.91 ^{OK} 256.99

Aug 10 E 2p AB

481 254.83

249.31
- 250.02

254.83

5.18 N. of Sec A.C. on East - same pt. on WL =
N.L. Perry. on EL. = 300' S. of S.L. Sutter. on E.

EL	8.8	246.0
C	13.3	241.5

Sec. A.B. = 294.82' S. of S.L. Sutter

C	12.2	242.6
EL	8.6'	246.2

275' S. of S.L. Sutter.

EL	4.2	250.6
C	8.7	246.1
1/4	15.3	239.5

250' S. of Sutter

1/4	15.8	239.0
C	9.4	245.4
EL	4.2	250.6

225' S. of Sutter

EL	4.5	250.3
C	9.7	245.1
1/4	16.2	238.6

254.83

212' S. of Sutter

37

1/4	12.9	241.9
C	6.5	248.3
EL	1.9	254.9

200' S. of Sutter.

EL	0.4	254.4
1/4	0.7	254.1
C	3.9	250.9
1/4	6.6	248.2
1/4	10.1	244.3
1/4	14.3	240.5

FP	12.23	242.60
----	-------	--------

057 243.17

1/4	7.9	235.3
C	12.4	230.8
WL	15.9	227.3

5.18 N. of Sec A.C. on East - same pt. on WL as AC. =
N.L. Perry. on EL. = 300' S. of S.L. Sutter. on East

East 1/4	7.9	236.3
1/4	13.7	229.5

Sec. A.B. = 294.82' S. of S.L. Sutter.

E 1/4	7.1	236.1
1/4	13.1	230.1

243.17

275' S. of S.L. Sutter.

E/4 3.7 239.5
 E 10.4 234.8

250' S. of S.L. Sutter.

E/4 4.2 239.0
 E 11.1 234.1

225' S. of S.L. Sutter.

E 9.2 234.0

W/4 14.0 229.2
 +4 14.2 229.0
 +6 18.0 225.0
 +8 14.8 228.4

212' S. of S.L. Sutter.

E 6.3 236.9

W/4 10.7 232.5

+3 13.7 229.5

+6 12.2 231.0

C 14.5 228.7

+7 17.0 226.2

T.P. 13.03 230.14

0.53 230.67

WL 9.3 221.4

230.67

518 ft of Sec A.C. of E₁₁ = N.L. Perry on East. ^{-Ept of WL}

W/4 5.7 225.0

W.C. 10.7 220.0

WL 16.5 214.2

Sec. A.B. = 294.82' S. of Sutter

WL 16.5 214.2

C 10.6 220.1

1/4 5.4 225.3

275' S. of S.L. Sutter.

W/4 4.3 226.4

W.C. 9.6 221.1

+9 14.9 216.8

250' S. of S.L. Sutter.

W Corb 14.0 216.7

W/4 5.3 225.4

225' S. of S.L. Sutter.

W Corb 4.1 226.0

W/4 5.5 225.2

WL 13.1 217.6

T.P. 12.60 218.07

0.87 218.74

218.94

Sec. 518' N. of A. Con East. = A. Con W. N.L. Ferry =
300' S. of S.L. Sutter on East.

WL.	4.7	214.2
+7	9.7	209.2
+8	15.7	203.2
+13	13.7	205.2
+33 ² fce.	12.7	206.2

Sec. A.B. = 294.82' S. of S.L. Sutter.

-33 ² fce.	12.7	206.2
-13	13.7	205.2
-8	15.7	203.2
-7	9.7	209.2
WL.	4.7	214.2

275' S. of S.L. Sutter.

WL.	5.1	213.8
+10	12.0	206.9
+25	11.7	207.2
+35 fce.	11.7	207.2

218.94

250' S. of S.L. Sutter.

39

WL.	6.3	212.6
+8	11.1	207.8
+12	10.0	208.9
+30	9.5	209.4
+35 fce.	9.4	209.5

225' S.

WL.	1.3	217.6
+12	9.3	209.6
+35 ¹ fce.	7.3	211.6

212' S. of S.L. Sutter.

+15	7.8	211.1
+35 ² fce.	6.3	212.6

200' S. of S.L. Sutter.

+15	6.4	212.6
+35 ³ fce.	5.4	213.5

175' S.

+25	4.1	214.8
+36 ³ fce.	3.6	215.3

02

218.94

163' S.

+30 1.7 v17.2

+35' loc. 1.7 v17.2

T.P. 242.60

5.26

247.86

175' S. of S.L. Sutter

WL. 14.1 v33.8

+3 12.2 v35.7

+6 8.0 v39.9

C 7.0 v40.9

+6 7.8 v40.1

+8 11.0 v36.9

+10 7.9 v40.0

+13 7.9 v40.0

1/4 5.7 v42.2

E 1.1 v46.8

247.86

163' S. of S.L. Sutter

40

WL. 6.7 v41.2

C 5.4 v42.5

+3 5.1 v42.8

+7 7.0 v40.7

+11 6.8 v41.1

+12 5.2 v42.7

1/4 4.5 v43.4

+4 4.5 v43.4

+5 2.6 v45.3

E 0.3 v47.6

150' S. of S.L. Sutter

WL. 5.5 v42.4

C 6.0 v41.9

1/4 6.0 v41.9

E 3.9 v44.0

+1 3.4 v44.5

125' S. of S.L. Sutter

WL. 4.7 v43.7

C 4.3 v43.6

1/4 4.6 v43.3

E 2.1 v45.8

247.86

100' S. of S.L. Sutter

WL	1.7 ^v	~46.2
C	1.9	~46.0
1/4	2.1	~45.8
£	0.1	~47.8
T.P.	1.44	246.42

1302

259.44

175' S. of S.L. Sutter

E 1/4	7.9	~51.5
C	5.3	~54.1
EL	4.1	~55.3

163' S. of S.L. Sutter

EL	4.0	~55.4
C	4.6	~54.8
1/4	5.7	~53.7

150' S. of Sutter

EL	3.6	~56.8
C	4.0	~55.4
1/4	5.1	~54.3
+7	5.6	~53.8

259.44

125' S. of Sutter

EL	2.9	~56.5
C	3.6	~55.8
1/4	4.6	~54.8
+9	5.3	~54.1
+12	7.8	~51.6

100' S. of Sutter

EL	2.7 ^v	~56.7
C	3.3	~56.1
1/4	4.2	~55.2
+10	5.3	~54.1
+12	7.2	~52.2

75' S. of Sutter

EL	2.1	~57.3
C	2.9	~56.5
1/4	3.5	~55.9
+11	4.5	~54.9
+13	9.7	~49.7
£	10.9	~48.5
1/4	12.4	~47.0
+10	12.3	~47.1
+12	11.5	~47.9
C	11.2	~48.2
WL	11.1	~48.3

41

259.44

58.3 S. of Sutter = point on W. curb.
where curb width goes from 10 to 14 ft

WL.	10.3	249.1
C + 10	10.5	248.9
C + 14	10.7	248.7
+ 1	11.5	247.9
$\frac{1}{4}$	11.2	248.2
£	10.0	249.4
+ 2	9.1	250.3
+ 4	4.2	255.2
$\frac{1}{4}$	3.3	256.1
C	2.6	256.8
EL.	2.0	257.4

50's of Sutter.

EL.	1.4	258.0
WL	8.72	250.7

48³ S = end existing 12" Cu hvt.

EL.	1.4	258.0
+ 14 = C	2.1	257.3
+ 25 = $\frac{1}{4}$	2.8	256.6
+ 31 = + 12	3.4	256.0
+ 38 = + 14	6.4	253.0
+ 40 = £	8.3	251.1

259.44

42

455 $\frac{1}{4}$	7.3	250.1
+ 66 Curb	8.8	250.6
WL.	8.6	250.8

25's of Sutter.

WL.	6.5	252.9
+ 14 = Curb.	7.0	252.4
+ 25 = $\frac{1}{4}$	6.9	252.5
+ 40 = £	6.6	252.8
+ 46 = + 6	3.3	256.1
+ 55 = $\frac{1}{4}$	3.2	256.2
+ 70 = C.	1.8	257.6
EL.	1.3	258.1

1's of Sutter.

EL.	1.6	257.8
C	2.0	257.4
+ 8	1.8	257.6
$\frac{1}{4}$	4.0	255.4
£	4.5	254.9
$\frac{1}{4}$	4.7	254.7
C	4.5	254.9
WL	4.2	255.2

259.44

S.L. Sutter.

43

EL.	38	255.6	
C.	39	255.5	
+8	38	255.6	
1/4	40	255.4	
4	45	254.9	
1/4	47	254.7	
C.	45	254.9	
WL	42	255.2	
BM. NE Goldfinch & Sutter.	247	256.97	256.99-10.

Lawrence

9540

W 1/4

NL	6.2	89.2
C	6.6	88.8
1/4	6.5	88.9
±	6.4	89.0
1/4	6.5	88.9
C	6.6	88.8
SL	7.1	88.3

± San Fernando

SL	6.9	88.5
C	6.8	88.6
1/4	6.7	88.7
±	6.7	88.7
1/4	6.5	88.9
C	6.5	88.9
NL	6.4	89.0

E 1/4

NL	{ 6.7	88.7
	{ 9.7	85.7
	{ 9.6	85.8
+9	{ 6.7	88.7
	{ 6.7	88.7
C	{ 9.4	86.0

Lawrence

9540

1/4

±

1/4

C

SL

SL

C

1/4

±

+3

+4

1/4

C

+2

NL

NL

+9

+10

C

7.0 88.4

7.2 88.2

7.2 88.2

7.2 88.2

7.5 87.9

E. Curb.

Gutter { 7.9	87.5
7.4	88.0

7.9 87.5

7.9 87.5

7.5 87.9

7.5 87.9

10.5 84.9

10.5 84.9

10.1 85.3

10.1 85.3

7.6 87.8

6.9 88.5

9.6 85.8

E.L. San Fernando

6.8 88.6

7.1 88.3

7.6 87.8

8.1 87.3

45

Lawrence.

9540

+2	9.8	85.6
1/4	10.5	84.9
+1	11.2	84.2
+5	11.2	84.2
£	8.4	87.0
1/4	8.3	87.1
c	8.3	87.1
+2	7.6	87.8
SL	7.3	88.1

Aft East.

SL	8.0	87.4
c	8.7	86.7
1/4	8.6	86.8
+5	8.7	86.7
£	11.0	84.4
1/4	10.6	84.8
+1	8.6	86.8
c	8.5	86.9
NL	8.3	87.1

Lawrence.

9540

46

25' East.

NL	10.0	85.4
c	10.3	85.1
1/4	10.3	85.1
£	10.2	85.2
+2	10.2	85.2
+3	11.8	83.6
1/4	11.6	83.8
+2	11.6	83.8
+3	10.2	85.2
c	10.2	85.2
SL	10.1	85.3

50' East.

SL	12.8	82.6
c	12.5	82.9
1/4	12.5	82.9
+1	{ 12.5	82.9
	{ 15.7	79.7
+4	{ 15.6	79.8
	{ 12.4	83.0
£	12.5	82.9
1/4	12.7	82.7

Lawrence.

9540

C	124	83.0
NL	115	83.9
T.P.	12.61	82.79

0.58

83.37

60' East.

NL	0.2	83.2
C	0.9	82.5
1/4	1.2	82.2
+4	1.1	82.3
+5	2.9	80.5
£	3.4	80.0
+5	4.6	78.7
1/4	1.2	82.2
C	1.3	82.1
SL	1.9	81.5

65' East.

SL	2.4	81.0
C	1.8	81.6
+1	4.8	78.6
1/4	4.9	78.5

Lawrence.

83.37

47

£	4.0	79.4
+2	2.0	81.4
1/4	1.9	81.5
C	1.2	82.2
NL	0.8	82.6

75' East.

NL	1.5	81.9
C	2.0	81.4
1/4	2.9	80.5
+4	2.8	80.6
+5	4.4	79.0
£	4.8	78.6
1/4	5.8	77.6
+4	5.4	78.0
+5	2.7	80.7
C	2.8	80.6
SL	2.9	80.5

90' East.

SL	3.8	79.6
C	3.5	79.9

Lawrence.

83.37

+4	35	79.9
1/4	60	77.4
+2	90	74.4
£	78	75.6
+3	57	77.7
+3 ⁵	36	79.8
1/4	36	79.8
C	31	80.3
NL	27	80.7

94' East.

NL	32	80.2
C	34	80.0
1/4	43	79.1
+2	95	73.9
£	113	72.1
1/4	90	74.4
+2	76	75.8
+3	37	79.7
C	37	79.7
SL	42	79.2

Lawrence.

83.37

48

100' East.

SL	46	78.8
C	44	79.0
+5	42	79.2
1/4	92	74.2
£	113	72.1
+5	116	71.8
1/4	45	78.9
C	39	79.5
NL	33	80.1

110' East.

NL	40	79.4
C	46	78.8
1/4	49	78.5
+4	124	71.0
£	124	71.0
+3	122	71.2
1/4	96	73.8
+3	85	74.9
+4	53	78.1
C	51	78.3
SL	56	77.8

Lawrence.

83.37

125' East.

SL	65	76.9
C	62	77.2
+A ⁵	62	77.2
1/4	11.2	72.2
£	132	70.2
1/4	126	70.8
+1	60	77.4
C	56	77.8
NL	51	78.3

137' East.

NL	61	77.3
C	68	76.6
1/4	70	76.4
+3	71	76.3
£	117	71.7
+2	137	69.7
1/4	137	69.7
+4	72	76.2
C	72	76.2
SL	74	76.0

Lawrence.

83.37

150' East.

SL	87	74.7
C	83	75.1
+3	83	75.1
+3 ³	120	71.4
1/4	125	70.9
£	140	69.4
+3	77	75.7
1/4	85	74.9
C	79	75.5
NL	72	76.2

161' East.

NL	84	75.0
C	92	74.2
+4	96	73.8
1/4	89	74.5
+2	153	68.1
£	153	68.1
+2	120	71.4
+3	94	74.0

49

46

Lawrence

83.37

1/4	9.1	74.3
C	9.2	74.2
SL	9.6	73.8

175' East.

SL	10.4	73.0
C	10.1	73.3
1/4	10.3	73.1
+1	15.3	68.1
E	16.0	67.4
+2	15.8	67.6
+4	10.4	73.0
1/4	10.1	73.3
C	10.8	72.6
NL	9.2	74.2

200' East.

NL	11.5	71.9
+8	12.3	71.1
C	13.3	70.1
+3	12.2	71.2
1/4	12.3	71.1

Lawrence

83.37

+1	12.7	70.7
+2	16.3	67.1
E	16.9	66.5
+4	16.9	66.5
+5	15.2	68.2
1/4	12.4	71.0
C	12.3	71.1
SL	12.3	71.1
T.P.	12.93	70.44

108

71.52

210' East.

SL	12	70.3
C	11	70.4
1/4	14	70.1
+1	4.4	67.1
+2	7.1	64.4
E	7.1	64.4
+4	4.5	67.0
+5	16	69.9
1/4	13	70.2

50

Lawrence

71.52

+A	12	70.3
C	21	69.4
+2	13	70.2
NL	02	71.3

225' East.

NL	16	69.9
+10	24	69.1
+11	34	68.1
C	24	69.1
+3	24	69.7
1/4	63	65.2
+2	80	63.5
±	80	63.5
+5	81	63.4
1/4	30	68.5
C	22	69.3
SL	23	69.2

246' East.

SL	41	67.4
C	43	67.2

Lawrence

71.52

51

1/4	42	67.3
+1	46	66.9
+2	89	62.6
±	87	62.8
1/4	85	63.0
+3	41	67.4
C	48	66.7
+5	40	67.5
NL	36	67.9

250' East.

NL	39	67.6
+9	44	67.1
+10	63	65.2
C	57	65.8
+1	44	67.1
1/4	42	67.3
±	51	66.4
1/4	49	66.6
C	42	67.3
SL	43	67.2

Lawrence.

7152

257' East.

SL	46	66.9
C	46	66.9
1/4	58	65.7
E	53	66.2
1/4	49	66.6
+5	49	66.6
C	68	64.7
+25	65	65.0
+4	50	66.5
NL	48	66.7

261' East.

NL	50	66.5
+8	53	66.2
+9	74	64.1
C	70	64.5
+1	54	66.1
1/4	53	66.2
E	54	66.1
+2	53	66.2
+4	96	61.9
1/4	97	61.8

Lawrence.

7152

52

+1	50	66.5
C	49	66.6
SL	50	66.5

275' East.

SL	60	65.5
C	58	65.7
+5	61	65.4
1/4	113	60.2
+2	115	60.0
+3	61	65.4
E	60	65.5
1/4	63	65.2
+3	63	65.2
+4	76	63.9
C	85	63.0
+2	79	63.6
+3	64	65.1
NL	60	65.5

Lawrence.

7152

282' East.

NL.	65	65.0
+10	69	64.6
+11	82	63.3
C.	87	62.8
+3	83	63.2
+4	68	64.7
1/4	67	64.8
£	66	64.9
+2	70	64.5
+3	99	61.6
1/4	117	59.8
+2	100	61.5
+3	68	64.7
C	65	65.0
SL.	66	64.9
290' East.		
SL.	74	64.1
C	72	64.3
+45	111	60.4

Lawrence.

7152

53

1/4	119	59.6
+2	120	59.5
+3	72	64.3
£	72	64.3
1/4	73	64.2
+5	74	64.1
C	90	62.5
+4	88	62.7
+5	76	63.9
NL.	76	63.9
300' East - W.L. Say Eljo - 50' wide - 10' Wks - 75' 93.		
NL.	84	63.1
+9	84	63.1
+10	98	61.7
C	93	62.2
+1	83	63.2
1/4	82	63.3
£	80	63.5
1/4	80	63.5
+1	116	59.9

Lawrence

7152

+5	130	68.5
C	80	63.5
SL	81	63.4

W. Curb

SL	92	62.3
C	88	62.7
+0 ⁺	123	59.2
+5	139	57.6

1/4 86 62.9

⊕ 87 62.8

1/4 90 62.5

C (94) 62.1
103 61.2

+2 104 61.1

+3 92 62.3

NL 94 62.1

W 1/4

NL 101 61.4

C 105 61.0

1/4 96 61.9

⊕ 93 62.2

Lawrence

7152

54

1/4 9.3 62.2

+2 9.3 62.2

+3 122 59.3

C 149 56.6

+2 130 58.5

+3 9.5 62.0

SL 96 61.9

⊕ San Elijo

SL 10.2 61.3

+10 10.1 61.4

+11 15.1 56.4

C 15.1 56.4

+2 130 58.5

+4 9.9 61.6

1/4 9.8 61.7

⊕ 10.1 61.4
Moj-BM 10.46 61.06

1/4 10.2 61.3

+3 10.4 61.1

+4 12.1 59.4

C 11.8 59.7

Lawrence.

71.52

+1		105	61.0
NL.		109	60.6
	E. 1/4.		
NL.		11.0	60.5
+11		109	60.6
C		122	59.3
+2		125	59.0
+A		11.0	60.5
1/4		106	60.9
£		104	61.1
1/4		103	61.2
+2		101	61.4
+4		156	55.9
C		13.8	57.7
+1		124	59.1
+6		119	59.6
+7		104	61.1
SL.		103	61.2
BM. Max & San Eliso		1046	61.06

1.33

62.39

Lawrence.

62.39

55

E. Curb.

SL.		1.7	60.7
+9		1.9	60.5
+10		3.5	58.9
C		{4.1	58.3
		{7.1	55.3
+2		7.0	55.4
+4		1.7	60.7
1/4		1.8	60.6
£		1.9	60.5
1/4		2.2	60.2
+2		2.2	60.2
+3		3.8	58.6
C		4.1	58.3
+2		3.6	58.9
+3		2.3	60.1
NL.		2.6	59.8
	EL. San Eliso		
NL.		3.1	59.3
+11		3.3	59.1
C		4.1	59.7

Lawrence

62.39

+3	45	57.9
+4	34	59.0
1/4	30	59.4
£	30	59.4
1/4	26	59.8
+4	24	60.0
+5	42	58.2
C	54	57.0
+1	76	54.8
+3	78	54.6
+4	22	60.2
SL	21	60.3

7' East.

SL	25	59.9
+7	27	59.7
+8	76	54.8
C	79	54.5
+3	75	54.9
+5	26	59.8
1/4	28	59.6

Lawrence

62.39

£	34	59.0
1/4	36	58.8
+4	40	58.4
+5	51	57.3
C	58	56.6
+2	48	57.6
+3	39	58.5
NL	38	58.6

15' East.

NL	41	58.3
+7	40	58.4
+8	55	56.9
C	61	56.3
+3	54	57.0
+4	44	58.0
1/4	42	58.2
£	37	58.7
+6	43	58.1
1/4	83	54.1

Lawrence

62.39

C	8.4	54.0
+1	3.4	59.0
SL	2.6	59.8

25' East

SL	3.4	59.0
+9	3.8	58.6
+11	9.4	53.0
C	9.5	52.9
1/4	8.7	53.7
+1	4.1	58.3
£	4.3	58.1
1/4	4.8	57.6
+1	6.7	55.7
C	7.0	55.4
+A	4.8	57.6
NL	4.6	57.8
T.P. x 500. stk	5.94	56.45

2.10 58.55

Lawrence

58.55

57

36' East

NL	1.5	57.1
+10	1.5	57.1
C	2.0	56.6
+1	3.5	55.1
+5	3.6	55.0
1/4	3.1	55.5
+1	1.6	57.0
£	1.5	57.1
+1	3.6	55.0
1/4	6.3	52.3
+2	6.3	52.3
C	0.9	57.4
SL	0.1	58.5

50' East

SL	1.5	57.1
£	2.0	56.6
+1	4.2	54.4
1/4	6.3	52.3
+4	7.1	51.5
+5	2.4	56.2

Lawrence.

58.55

£	24	56.2
+5	26	56.0
1/4	42	54.4
C	43	54.3
+1	40	54.6
+2	25	56.1
NL	22	56.4

60' East.

NL	30	55.6
+11	30	55.6
C	46	54.0
+2	33	55.3
+4	57	52.9
1/4	58	52.8
+1	32	55.4
£	31	55.5
+1	30	55.6
+2	71	51.5
1/4	74	51.2
+5	70	51.6
C	27	55.9

Lawrence.

58.55

58

5L	20	56.5
----	----	------

65' East.

5L	24	56.1
C	32	55.3
+4	33	55.2
+5	77	50.8
1/4	78	50.7
+3	76	51.0
+5	34	55.2
£	36	55.0
+4.5	33	55.3
1/4	58	52.8
+3	60	52.6
+4	35	55.1
C	46	54.0
+2	32	55.4
NL	29	55.6

75' East.

NL	36	54.9
+11	39	54.6
C	53	53.2

58

Lawrence.

58.55

+2	42	54.3
+3	60	52.5
1/4	69	51.6
+2	40	54.5
¢	41	54.4
+2	83	50.2
1/4	84	50.1
+2	83	50.2
+3	40	54.5
C	38	54.7
+10	38	54.7
SL	31	55.4
88' East		
SL	39	54.6
+2	44	54.1
C	47	53.8
+2	91	49.4
+5	90	49.5
1/4	60	52.5
+1	45	54.0

Lawrence.

58.55

59

¢	47	53.8
1/4	48	53.7
+1	79	50.6
+3	77	50.8
+4	52	53.3
C	61	52.4
+2	48	53.7
NL	45	54.0
100' East		
NL	54	53.1
+11	57	52.8
C	67	51.8
+2	61	52.4
+4	84	50.1
1/4	85	50.0
+1	57	52.8
+3	62	52.3
¢	57	52.8
+3	54	53.1
+4	95	49.0

Lawrence.

5855

1/4	98	48.7
C	95	49.0
+1	54	53.1
+10	52	53.3
SL	45	54.0
125' East.		
SL	62	52.3
+11	70	51.5
C	107	47.8
1/4	113	47.2
+3	112	47.3
+4	74	51.1
E	77	50.8
+5	78	50.7
1/4	99	48.6
+3	97	48.8
+4	79	50.6
C	88	49.7
+2	76	50.9
NL	76	51.0

Lawrence.

5855

60

150' East

NL	94	49.1
C	100	48.5
+2	100	48.5
+3	114	47.1
1/4	112	47.3
+1	97	48.8
E	95	49.0
+2	92	49.3
+3	125	46.0
1/4	127	45.8
+5	127	45.8
C	92	49.3
+12 ¹ - start fence	92	49.3

160' E.

SL - Edge shed - Eaves 5 m east. 10.1 48.4

175' East.

SL - E. edge Bldg Eaves 6 m east.	110	47.5
+02 - fence	110	47.5
C	111	47.4

Lawrence.

58.55

+1	14.2	44.3
1/4	14.3	44.2
+2	11.3	47.2
£	11.6	47.0
1/4	11.8	46.7
+2	13.1	45.4
C	12.0	46.5
NL	11.2	47.3
T.P.	12.79	45.76

0.59 46.35

200' East

NL	0.8	45.5
+3	1.2	45.1
C	1.4	45.0
+1	2.4	44.0
+4	3.3	43.0
1/4	1.4	45.0
£	1.1	45.2
+4	1.0	45.3
+5	3.3	43.0

Lawrence.

46.35

1/4	3.3	43.0
+5	3.3	43.0
C	1.0	45.3
+123 = fence	0.9	45.4
SL	0.9	45.4

205' East

SL	1.3	45.0
+03 = fence	1.3	45.0
C	1.4	45.0
+3	1.4	45.0
+4	3.6	42.7
1/4	3.6	42.7
+3	3.5	42.8
+4	1.3	45.0
£	1.5	44.8
1/4	1.7	44.6
+2	3.6	42.7
C	1.8	44.5
NL	1.3	45.0

61

Lawrence.

46.35

225' East.

NL.	2.7	43.6
C	3.7	42.6
+2	5.0	41.3
1/4	5.1	41.2
+1	3.5	42.8
£	3.2	43.1
+3	3.2	43.1
+4	4.7	41.6
1/4	4.7	41.6
+4	4.7	41.6
+5	3.1	43.2
C	2.8	43.5
SL - fence OK.	2.6	43.7

250' East

SL - fence OK.	4.4	44.0
C	4.7	41.6
1/4	4.9	41.4
+1	4.8	41.5
+2	6.1	40.2

Lawrence

46.35

62

£	6.1	40.2
+2	5.3	41.0
1/4	5.4	41.0
+2	6.9	39.4
C	5.3	41.0
NL.	4.7	41.6

275' East.

NL	6.6	39.7
C	7.1	39.2
+2	8.3	38.0
1/4	7.1	39.2
£	7.4	39.0
1/4	6.5	39.8
C	6.4	40.0
SL - fence OK.	6.0	40.3

291' East.

SL.	7.0	39.3
C	7.8	38.5
1/4	7.8	38.5

Lawrence.

46.35

£	7.9	38.4
1/4	7.9	38.4
C	10.2	36.1
+6	7.7	38.6
NL	8.0	38.3

298' East.

NL	8.9	37.4
+3	8.7	37.6
C	11.3	35.0
1/4	8.5	37.8
£	8.3	38.0
1/4	8.4	38.0
C	8.2	38.2
+10	7.8	38.5
SL	10.2	36.1

300' East = WL Rosecrans - 50' W - Graded.

SL	10.3	36.0
C	10.7	36.2
1/4	10.2	36.2

Lawrence.

46.35

£	9.9	36.4
1/4	10.1	36.2
C	10.4	36.0
NL	9.7	36.6
TR 10' N. NE. Curb Rosecrans.	11.24	35.11

0.43 35.54

E. J. Rosecrans.

NL	1.3	34.2
C	1.2	34.3
1/4	1.4	34.1
£	1.4	34.1
1/4	1.3	34.2
C	1.2	34.3
SL	0.9	34.6

6' East

SL	0.9	34.6
C	1.0	34.5
1/4	1.7	33.8
£	1.5	34.0
1/4	1.0	34.5

Lawrence

35.54

+3	20	33.5
+4	46	30.9
C	46	30.9
+7	{ 40 22	{ 31.5 33.3
NL	{ 34 20	{ 32.1 33.5
	10' East	
NL	23	33.2
+8 ⁵	22	33.3
+9	47	30.3
C	50	30.5
+1	48	30.7
+2	26	32.9
1/4	15	34.0
£	14	34.1
1/4	16	33.9
C	11	34.4
SL	09	34.6
	25' East	
SL	23	33.2
C	23	33.2

Lawrence

35.54

64

1/4	25	33.0
£	22	33.3
1/4	31	32.4
+5	42	31.3
C	59	29.6
+3	58	29.7
+4	36	31.9
NL	34	32.1
	50' East	
NL	56	29.9
+10	55	30.0
+11	74	28.1
C	75	28.0
+3	75	28.0
+4	53	30.2
1/4	49	30.6
£	53	30.2
1/4	52	30.3
C	46	30.9
SL	42	31.3

Lawrence

35.54

75' East.

SL.	63	29.2
C	66	28.9
1/4	72	28.3
±	75	28.0
1/4	80	27.5
C	92	26.3
+2	81	27.4
NL	80	27.5

100' East.

NL	97	26.3
+5	100	25.5
+11	96	25.9
C	106	24.9
1/4	94	26.1
±	94	26.1
1/4	91	26.4
C	89	26.6
SL	83	27.2

Lawrence.

35.54

125' East.

SL.	104	25.1
C	112	24.3
1/4	114	24.1
+1	128	22.7
±	126	22.9
1/4	123	23.2
C	118	23.7
NL	107	24.8
T.P.	1237	23.17

086

24.03

150' East.

NL	10	23.0
C	17	21.3
+1	29	21.1
1/4	32	20.8
±	28	21.2
+2	17	22.3
1/4	20	22.0
C	17	22.3

65

Lawrence

2403

+2.	10	23.0
+9.5 = Beg of fence.	12	22.8
SL.	12	22.8

158' East

WL. = on porch.	18	22.2
+0.8 = flush porch eaves.	18	22.2

167' East

W.L. on porch.	21	21.9
+1.2 = flush with porch.	21	21.9

174' East

WL. on steps.		
+1.3 = bot edge step.		

175' East

9 WL.	24	21.6
+2.5 = fence.	25	21.5
+10	27	21.3
C	36	20.4
1/4	38	20.2
£	36	20.4
1/4	43	19.7
C	36	20.4
NL.	27	21.3

Lawrence

2403

66

178' East

NL.	28	21.2
C	38	20.2
+1	6.7	17.3
1/4	6.8	17.2
+1	4.5	19.5
£	37	20.3
1/4	40	20.0
C	3.8	20.2
+4	2.6	21.4
+10 = fence.	2.5	21.5
SL.	2.5	21.5

195' East

SL.	40	20.0
+2.3 = fence.	39	20.1
+10	39	20.1
C	51	18.9
1/4	5.5	18.5
£	5.8	18.2
1/5	6.8	17.2
1/5	8.1	15.9

Lawrence

2403

+4	7.8	16.2
C	5.0	19.0
NL	3.8	20.2

200' East

NL	4.2	19.8
C	5.3	18.7
+5	5.6	18.4
1/4	8.3	15.7
+2	8.4	15.6
+3	6.2	17.8
±	5.9	18.1
1/4	5.8	18.2
C	5.4	18.6
+3	4.4	19.6
+10 ³ = fence	4.6	19.4
SL	4.6	19.4

205' East

SL	4.8	19.2
+2 = fence	4.8	19.2
+8	5.0	19.0

Lawrence

2403

67

C	6.0	18.0
1/4	6.3	17.7
±	6.2	17.8
+4	6.3	17.7
+5	8.7	15.3
1/4	8.7	15.3
C	9.0	15.0
+2	9.0	15.0
+3	5.5	18.5
NL	4.6	19.4

213' East

NL	5.2	18.8
+7	5.9	18.1
+8	9.4	14.6
C	9.4	14.6
+4	9.3	14.7
1/4	8.0	16.0
±	6.9	17.1
1/4	7.0	17.0

57

Lawrence.

24.03

C	6.4	17.6
+3	5.6	18.4
+1/3 = fence	5.6	18.4
SL	5.5	18.5

225 East.

SL	6.7	17.3
+1/3 = fence.	6.7	17.3
+10	6.9	17.1
C	7.5	16.5
1/4	7.7	16.3
£	8.0	16.0
+1	8.2	15.8
+5	10.3	13.7
1/4	10.2	13.8
C	10.0	14.0
+1	7.9	16.6
NL	6.8	17.2

231 East.

NL	7.0	17.0
----	-----	------

Lawrence.

24.03

68

C	7.9	16.1
1/4	8.3	15.7
+1	10.7	13.3
£	10.8	13.2
+1	8.4	16.6
1/4	8.3	15.7
C	7.9	16.1
+1/5 = W. side house	7.4	16.6
SL	7.4	16.6

250 East.

SL xxxx		
+0.6 N. Wall house	9.1	14.9
C	9.5	14.5
1/4	9.7	14.3
+1	9.9	14.1
+5	12.1	11.9
£	12.3	11.7
1/4	9.7	14.3
C	9.2	14.8
NL	8.7	15.3

Lawrence.

2403

275' East.

NL.	10.1	13.9
C	10.8	13.2
1/4	10.9	13.1
+A	11.1	12.9
£	13.2	10.8
1/4	12.4	11.6
+2	11.8	12.2
C	11.6	12.4
SL. House. O.K.	11.1	12.9
T.P.	12.11	11.92

a.16

12.08

300' East.

SL.	1.1	11.0
C	1.1	11.0
+1	4.1	8.0
+A	4.0	8.1
+5	0.9	11.2
1/4	0.6	11.5
£	0.2	11.9

Lawrence.

1208

69

1/4	0.2	11.9
C	0.5	11.6
NL.	0.5	11.6

302' East.

NL.	0.7	11.4
C	0.7	11.4
1/4	0.4	11.7
£	0.4	11.7
1/4	0.6	11.5
+2	0.9	11.2
+3	4.1	8.0
C	4.3	7.8
+5	3.9	8.2
+6	1.4	10.7
SL.	1.2	10.9

310' East.

SL.	1.3	10.8
+3	1.3	10.8
+7	4.7	7.4
C	4.8	7.3

Lawrence.

1208

+1	4.9	7.2
+2	1.0	11.1
1/4	0.8	11.3
£	0.8	11.3
+5	1.3	10.8
1/4	2.7	9.4
C.	2.9	9.2
+2	1.4	10.7
NL.	1.8	10.3

318' East.

NL.	2.9	9.2
+5	3.1	9.0
+6	1.7	10.4
C	1.5	10.6
1/4	1.8	10.3
£	1.6	10.5
+4	1.4	10.7
1/4	3.4	8.7
+3	5.0	7.1
C	5.3	6.8

Lawrence.

1208

+7	5.3	6.8
+9	1.3	10.8
SL	1.3	10.8

325' E. - W.L. San Antonio - 50' wide - 10' W.K.S. - 7 1/2' H.G.

SL	1.6	10.5
+2	1.8	10.3
+3	5.6	6.5
+11	5.7	6.4
C	3.1	9.0
+1	1.8	10.3
1/4	1.8	10.3
£	2.0	10.1
1/4	2.2	9.9
C	2.1	10.0
NL.	2.5	9.6

W. Curb.

NL.	3.3	8.8
C	2.8	9.3
1/4	3.0	9.1
£	2.6	9.5

70

Lawrence.

12-08

1/4	27	9A
+2	27	9A
+4	63	5.8
C	63	5.8
+7	56	6.5
+8 ⁵	25	9.6
SL	20	10.1

W 1/4

SL	30	9.1
+9	31	9.0
+10	60	6.1
C	66	5.5
+5	67	5.4
1/4	34	8.7
E	33	8.8
1/4	35	8.6
C	34	8.7
NL	37	8.4

Lawrence.

12-08

71

E San Antonio

NL	40	8.1
C	39	8.2
1/4	39	8.2
E	40	8.1
Mon. B.M.	486	7.22
+4	42	7.9
+5	72	4.9
1/4	71	5.0
C	69	5.2
+1	37	8.4
SL	41	8.0
E 1/4		
SL	48	7.3
C	45	7.6
+1	71	5.0
1/4	73	4.8
E	74	4.7
+2	43	7.8

51

Lawrence.

12.08

1/4	42	79
C	43	78
NL	47	74

E. Curb.

NL	51	70
C	48	73
1/4	48	73
E	50	71
+1	78	4.3
1/4	79	4.2
C	80	4.1
+1	80	4.1
+2	53	6.8
SL	53	6.6

E.L. San Antonio.

SL	59	6.2
+6	56	6.5
+7	86	3.5
C	87	3.4
+4	86	3.5

Lawrence.

12.08

72

1/4	57	6.4
E	57	6.4
1/4	57	6.4
C	57	6.4
NL	60	6.1

15' East

NL	74	4.7
C	71	5.0
1/4	69	5.2
+2	71	5.0
+3	95	2.6
E	96	2.5
1/4	97	2.4
C	91	3.0
+5	68	5.3
SL	65	5.6

25' East

SL	75	4.6
+11	86	3.5
C	101	2.0

Lawrence

12.08

1/4	103	01.8
±	98	1.3
+3.	88	3.3
1/4	88	3.3
C	90	3.1
NL	91	3.0

50' East.

NL	123	-0.2
C	120	0.1
1/4	117	0.4
±	116	0.5
1/4	110	1.1
C	108	1.3
SL	105	1.6

75' East.

SL	129	-0.8
C	129	-0.8
1/4	128	-0.7
±	130	-0.9

Lawrence

12.08

1/4	130	-0.9
C	130	-0.9
NL	134	-1.3

96' East.

NL	146	-2.5
C	146	-2.5
1/4	145	-2.4
±	136	-1.5
1/4	135	-1.4
C	136	-1.5
SL	145	-2.4
T.P.	892	3.16

7.96 6.12

B.M. Hub. NW. 500' Acker 10 & McCall. 1.73 4.39 4.38 ok.

West 3/16/16.
other.

73

Kellog Street Cross Sections.
 W.L. San Fernando to San Diego Bay.
 50' Wide - 12' Walks - 625' Quarters.

West
 of
 3/7/6.

74

BM. Noy & San Fernando & Lawrence 88.40.

2.55 90.95

T.P. Noy & S.F. & Kellog. 7.77 80.98

1.77 82.75

W.L. San Fernando - 50' W. - 10' Wks. - 7 1/2' / 43.

NL. 13 81.4

C 14 81.3

1/4 12 81.5

1/4 07 82.0

1/4 1.0 81.7

C 13 81.4

SL. 13 81.4

W. Curb

SL. 22 80.5

C 18 81.0

1/4 15 81.2

1/4 13 81.9

1/4 16 81.2

C 19 80.8

NL. 17 81.0

64 22 80.5

W. 1/4

NL. 20 80.7

C 21 80.6

1/4 18 81.0

1/4 15 81.3

1/4 17 81.0

C 21 80.6

SL. 23 80.4

E San Fernando

SL. 22 80.5

C 30 79.7

1/4 25 80.3

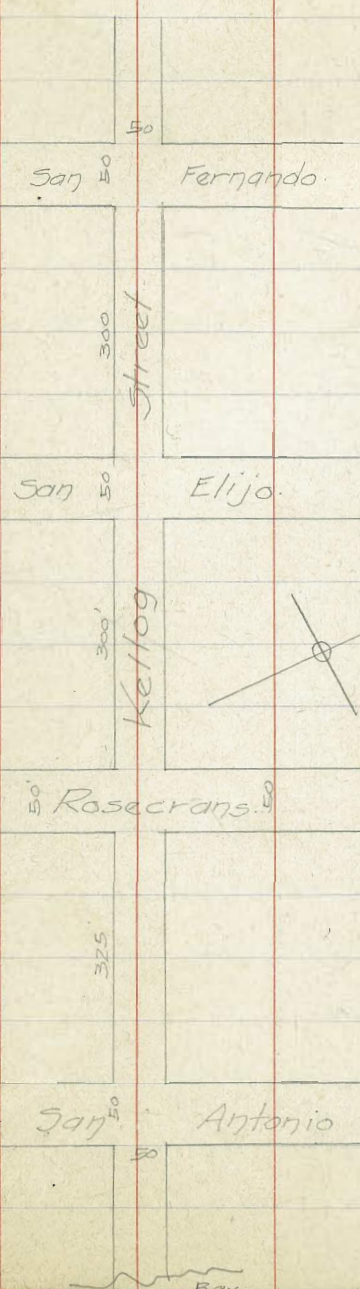
1/4 21 80.6

1/4 17 81.0

1/4 20 80.7

C 25 80.2

NL. 18 81.0



74

Kellog.

82.75

E/A.

NL.	2.3	80.4
C	2.8	80.0
+0.5	4.2	78.5
+J	4.1	78.6
1/4	2.3	80.4
E	1.9	80.8
+J	2.2	80.5
1/4	3.7	79.0
+4	3.7	79.0
C	2.5	80.2
SL.	2.4	80.3

E. Corb.

SL.	2.4	80.3
C	2.6	80.1
+1	4.0	78.7
+3	4.3	78.4
+4	2.9	79.8
1/4	2.6	80.1
E	2.4	80.3
1/4	2.5	80.2
+3	2.7	79.8
+4	4.2	78.5
C	4.6	78.1
+2	4.2	78.5
+3	2.8	80.0
NL.	2.5	80.2

E.L. San Fernando.

NL.	1.9	80.8
+9	2.3	80.4
+10	4.6	78.1
C	5.9	76.8
+3	4.6	78.1
+4	2.9	79.8
1/4	2.7	80.0
E	2.8	80.0
	4.6	78.1
	5.1	77.6
	3.0	79.7
+J	4.3	78.4
C	2.6	80.1
SL.	2.2	80.5

75

Kellog.

82.75

10' East.

SL.	2.8	80.0
C	3.4	79.3
1/4	3.2	79.5
E	3.1	79.6
1/4	3.2	79.5
+2	6.3	76.4
C	5.8	77.0
+1	3.3	79.4
NL.	2.5	80.2

25' East.

NL.	3.5	79.2
C	4.2	78.5
+1	6.6	76.1
+J	7.0	75.7
1/4	4.0	78.7
E	4.1	78.6
1/4	4.0	78.7
C	4.2	78.5
SL.	3.8	79.0

33' East.

SL.	4.2	78.5
C	4.8	78.0
1/4	4.5	78.2
E	4.5	78.2
1/4	4.5	78.2
+1	7.5	75.2
+4	7.6	75.1
C	4.7	78.0
NL.	4.0	78.7

50' East.

NL.	5.4	77.3
+6	5.5	77.2
+7	8.5	74.2
+10	9.1	73.6
C	5.5	77.2
1/4	5.5	77.2
E	5.6	77.1
1/4	5.6	77.1
C	5.6	77.1
SL.	5.1	77.6

Kellog.
82.75

75' East

SL.	7.0	75.7
C	7.3	75.4
1/4	7.1	75.6
E	7.2	75.5
1/4	7.0	75.7
+5	7.0	75.7
C	9.3	73.9
+5	10.8	72.0
+7	7.0	75.7
NL.	6.8	76.0

90' East

NL.	7.7	75.0
+4	7.5	75.2
+5	7.6	73.1
+8	11.3	71.9
C	7.8	73.0
+2	9.3	73.4
+3	8.1	74.6
1/4	8.0	74.7
E	8.3	74.4
1/4	8.1	74.6
C	8.3	74.4
SL.	7.9	74.8

95' East

SL.	8.3	74.4
C	8.7	74.0
1/4	8.6	74.1
E	8.8	74.0
1/4	8.5	74.2
+5	8.5	74.2
C	10.2	72.5
+8	11.9	70.8
+11.5	11.1	71.6
NL.	8.0	74.7

100' East

-2 top bank.	8.4	74.3
NL.	11.5	71.2
+3	12.0	70.7

Kellog.
82.75

76

C	10.8	72.0
+2	8.8	74.0
1/4	8.8	74.0
E	9.1	73.6
1/4	8.9	73.8
C	8.9	73.8
SL.	8.5	74.2

108' East

SL.	9.0	73.7
C	9.3	73.4
1/4	9.3	73.4
E	9.6	73.1
1/4	9.1	73.3
+5	9.3	73.4
C	11.0	71.7
+5	12.5	70.2
NL.	11.6	71.1
+1 top bank	8.8	74.0

111' East

NL.	9.0	73.7
+6 = top bank	9.1	73.6
+9	14.6	68.1
C	11.2	71.5
+1	9.4	73.3
1/4	9.5	73.2
E	9.6	73.1
1/4	9.4	73.3
C	9.4	73.3
SL.	9.2	73.5

125' East

SL.	10.2	72.5
C	10.7	72.0
1/4	10.4	72.3
E	10.4	72.3
1/4	10.5	72.2
+4	10.5	72.2
C	12.4	70.3
+2	16.3	66.4
+4	10.2	72.5
NL.	9.8	73.0

Kellog		82.75	
		136' East	
NL		10.7	72.0
+9		11.0	71.7
+11		17.0	63.7
C		13.0	69.7
+1		11.0	71.7
1/4		11.2	71.5
£		11.2	71.5
1/4		11.1	71.6
C		11.5	71.2
SL		10.9	71.8
T.P.		11.82	70.93

146		72.39	
		150' East	
SL		16	70.8
+8		20	70.4
C		34	69.0
+2		1.8	70.6
1/4		16	70.8
£		1.7	70.7
1/4		1.4	71.0
+2		9.9	62.5
C		9.8	62.6
+5		4.4	68.0
+8		1.4	71.3
NL		0.9	71.5

		165' East	
NL		23	70.1
+6		2.1	70.3
+8		8.5	63.9
C		10.6	61.8
+3		10.4	62.0
+5		2.6	69.8
1/4		2.7	69.7
£		2.6	69.8
1/4		2.4	70.0
C		2.5	69.9
+2		4.0	68.4
+4		2.1	70.3
SL		2.4	70.0

Kellog		72.39	
		175' East	
SL		27	69.7
+10		28	69.6
+11		51	67.3
C		30	69.4
1/4		31	69.3
£		33	69.1
1/4		32	69.2
+5		30	69.4
C		6.8	65.6
+3		11.1	61.3
+6		11.2	61.2
+7		7.9	64.5
+9		2.5	69.9
NL		28	69.6

		200' East	
NL		4.3	68.1
+5		4.0	68.4
+10		12.1	60.3
C		12.1	60.3
+2		11.9	60.5
+3		7.2	65.2
+4		4.9	67.5
1/4		4.9	67.5
£		5.2	67.2
1/4		4.8	67.6
C		4.7	67.7
+2		6.4	66.0
+4		4.4	68.0
SL		4.4	68.0

		211' East	
SL		50	67.4
+9		53	67.1
+11		7.2	65.2
C		5.6	66.8
1/4		5.6	66.8
£		6.0	66.4
1/4		5.8	66.6
+3		5.7	66.7
+5		12.3	60.1
C		12.6	59.8

Kellog
72.39

+2	126	59.8
+5	50	67.4
NL.	51	67.3
225' East		
NL.	59	66.5
+7	60	66.4
C	128	59.6
1/4	132	59.2
+2	6.8	65.6
E	6.9	65.5
1/4	6.5	65.9
C	6.4	66.0
+2	7.9	64.5
+4	61	66.3
SL.	59	66.5

TP. 1st. Mt. 500' E. 100' N. Kellog 2.29
6.23 66.33

250' East

SL.	16	64.7
+8	16	64.7
+9	3.1	63.2
C	27	63.6
+1	1.8	64.5
1/4	1.8	64.5
E	2.3	64.0
1/4	2.3	64.0
+2	22	64.1
+4	82	58.1
C	83	58.0
+6	82	58.1
+9	46	61.7
+10	16	64.7
NL	19	64.4

268' East

NL.	30	63.3
+7	31	63.2
+8	72	59.1
C	90	57.3
+5	9.0	57.3
1/4	5.1	60.6

West
Otter
3/7/16
St. Pat Bay

Kellog
66.33

78

+2	3.2	63.1
E	3.2	63.1
1/4	3.0	63.3
C	2.9	63.4
+1	4.6	61.7
+3	4.2	62.1
+4	2.6	63.7
SL.	2.4	63.9
275' East		
SL	2.9	63.4
+9	3.1	63.2
+10	5.0	61.3
E	3.3	63.0
1/4	3.4	62.9
E +4	3.8	62.5
E	7.1	59.2
+3	9.3	57.0
1/4	9.4	56.9
C	8.9	57.4
+2	8.1	58.2
+4	3.7	62.6
NL.	3.6	62.7
285' East		
NL.	4.0	62.3
+7	4.2	62.1
+10	9.8	56.5
C	9.8	56.5
1/4	9.8	56.5
+2	9.8	56.5
+3	5.6	60.7
E	4.6	61.7
1/4	4.1	62.2
C	4.0	62.3
+1	5.7	60.6
+3	5.5	60.8
+5	3.4	62.9
SL	3.5	62.8

Kellog.
66.33

294' East.

SL	43	62.0
+7	41	62.2
+8	58	60.5
C	61	60.2
+3	50	61.3
1/4	47	61.6
E	52	61.1
+2	73	59.0
+4	52	61.4
1/4	53	61.0
+1	53	61.0
+3	10.0	56.3
C	10.2	56.1
+5	10.3	56.0
+8	45	61.8
NL	47	61.6
300'E = NL San Elijo - 50'W - 10'WKS - 7 1/2' Sg.		
NL	53	61.0
+6	50	61.3
+8	10.2	56.1
C	10.8	55.5
+4	10.4	55.9
1/4	76	58.7
#4	82	58.1
E	57	60.6
1/4	52	61.1
C	52	61.1
+1	66	59.7
+3	67	59.6
+4	50	61.3
SL	46	61.7
W. Curb		
SL	54	60.9
+8	56	60.7
+9	73	59.0
C	58	60.5
1/4	59	60.4
E	61	60.2
+3	64	59.9

Kellog.
66.33

79

+4	86	57.7
1/4	92	57.1
+3	112	55.1
+5	109	55.9
C	86	57.7
+2	57	60.6
NL	57	60.6
W 1/4		
NL	63	60.0
C	64	59.9
+1	65	59.8
+3	104	55.9
1/4	116	54.7
+1	99	56.1
+4	67	59.6
E	65	59.8
1/4	63	60.0
C	69	59.9
+1	76	58.7
+4	76	58.7
+5	62	60.1
SL	60	60.3
E San Elijo		
SL	64	59.9
+8	63	60.0
+9	8.0	58.3
+11	7.7	58.6
C	68	59.5
1/4	66	59.7
E	71	59.2
+4	73	59.0
+5	119	54.9
1/4	119	54.9
+5	69	59.4
C	69	59.4
NL	72	59.1

Kellog.

66.33

E. 1/4.

NL.	7.3	59.0
+11	7.4	58.9
C	9.1	57.2
+1	7.5	58.8
+2	9.7	56.6
+4	12.2	54.1
1/4	12.4	53.9
+1	7.6	58.7
E	7.6	58.7
1/4	7.6	58.7
C	7.4	58.9
+2	7.4	58.9
+4	8.4	57.9
+6	7.0	59.3
SL.	6.9	59.4

E. Curb.

SL.	7.4	58.9
+6	7.7	58.6
+8	8.5	57.8
C	8.2	58.1
1/4	7.5	58.8
E	8.1	58.2
1/4	8.1	58.2
+1	10.1	56.2
+3	12.7	53.6
+5	12.6	53.7
C	9.3	57.0
+2	7.7	58.6
NL.	7.8	58.5

E.L. San Elijo.

NL.	8.2	58.1
+11	8.6	57.7
C	11.6	54.7
+2	13.0	53.3
+5	10.5	55.8
1/4	8.9	57.4
E	8.9	57.4
1/4	8.5	57.8
C	8.6	57.7
+5	9.5	56.9
+6	8.4	57.9

Kellog.

66.33

25' East.

80

SL.	9.9	56.4
+6	10.0	56.3
+8	11.0	55.3
+9	10.0	56.3
C	10.2	56.1
1/4	10.2	56.1
E	10.5	55.8
1/4	10.6	55.7
+1	14.5	51.8
C	14.5	51.8
+1	11.0	56.3
+3	10.2	56.1
NL.	9.4	56.9

50' East.

NL.	11.2	55.1
+9	11.9	54.4
+10	14.5	51.8
C	15.4	50.9
+2	15.4	50.9
+4	12.4	53.9
1/4	12.5	53.8
E	12.2	54.1
1/4	12.0	54.3
C	11.9	54.4
SL.	11.6	54.7
TP	13.03	53.30

0.45

53.75

15' East.

SL.	1.0	52.7
C	1.4	52.3
1/4	1.3	52.4
E	1.5	52.2
1/4	1.6	52.1
+2	1.6	52.1
+3	4.0	49.7
C	4.1	49.6
+3	3.6	50.1
+4	2.0	51.7
+6	1.2	52.5
NL.	0.7	53.0

Kellog.

53. II

100' East.

NL	23	51.4
+7	30	50.7
+8	51	48.6
C	50	48.7
+5	46	49.1
1/4	33	50.4
E	29	50.8
1/4	31	50.6
C	31	50.6
SL	26	51.1

125' East.

SL	40	49.7
C	46	49.1
1/4	48	49.0
E	47	49.0
1/4	53	48.4
+3	57	48.0
+5	63	47.4
C	54	48.3
NL	43	49.4

150' East.

NL	65	47.2
C	67	47.0
1/4	68	47.0
E	65	47.2
1/4	62	47.5
C	59	47.8
SL	56	48.1

167' East.

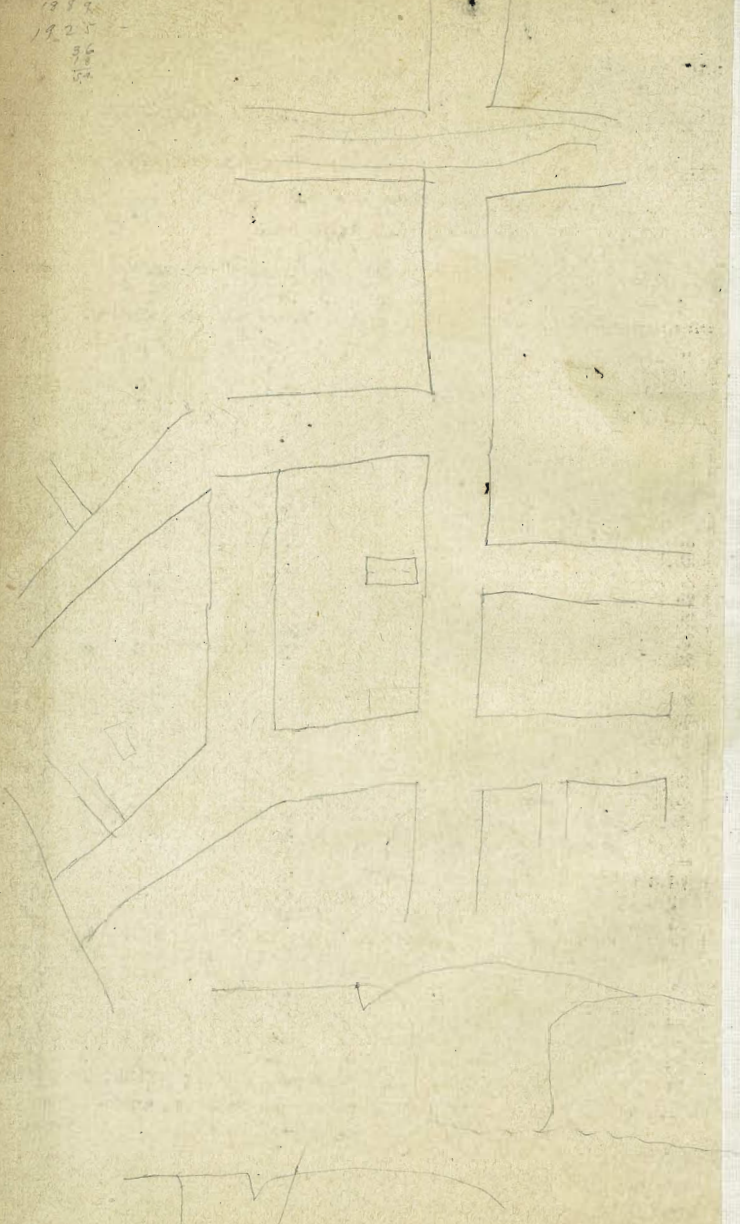
SL	67	47.0
C	72	46.5
1/4	76	46.1
E	75	46.2
1/4	79	45.8
C	79	45.8
NL	75	46.2

Continued in Book. 917

Page 62.

B.M. NE. Dutler & Gredfinch
Plug cut 256.99 ↓

2105
211
1987
1925
56
15
50



103.23 - Mog & Sgt Elijo & Owens.
76.70 - Hub - N. of Wash out near W. line - Sgt Elijo Nichols
65.09 - Nail pole - NE Cor. Sgt Elijo & N. of Gill
61.06 - B.M. Mog & Sgt Elijo & Lawrence

DISTANCES FROM CENTER OF ROADWAY FOR CROSS-SECTIONING.

ROADWAY 14 FEET WIDE. SIDE SLOPES 1 1/2 TO 1.

FOR SINGLE TRACK EMBANKMENT.

	0	.1	.2	.3	.4	.5	.6	.7	.8	.9	
0	7.0	7.2	7.3	7.5	7.6	7.8	7.9	8.1	8.2	8.4	0
1	8.5	8.7	8.8	9.0	9.1	9.3	9.4	9.6	9.7	9.9	1
2	10.0	10.2	10.3	10.5	10.6	10.8	10.9	11.1	11.2	11.4	2
3	11.5	11.7	11.8	12.0	12.1	12.3	12.4	12.6	12.7	12.9	3
4	13.0	13.2	13.3	13.5	13.6	13.8	13.9	14.1	14.2	14.4	4
5	14.5	14.7	14.8	15.0	15.1	15.3	15.4	15.6	15.7	15.9	5
6	16.0	16.2	16.3	16.5	16.6	16.8	16.9	17.1	17.2	17.4	6
7	17.5	17.7	17.8	18.0	18.1	18.3	18.4	18.6	18.7	18.9	7
8	19.0	19.2	19.3	19.5	19.6	19.8	19.9	20.1	20.2	20.4	8
9	20.5	20.7	20.8	21.0	21.1	21.3	21.4	21.6	21.7	21.9	9
10	22.0	22.2	22.3	22.5	22.6	22.8	22.9	23.1	23.2	23.4	10
11	23.5	23.7	23.8	24.0	24.1	24.3	24.4	24.6	24.7	24.9	11
12	25.0	25.2	25.3	25.5	25.6	25.8	25.9	26.1	26.2	26.4	12
13	26.5	26.7	26.8	27.0	27.1	27.3	27.4	27.6	27.7	27.9	13
14	28.0	28.2	28.3	28.5	28.6	28.8	28.9	29.1	29.2	29.4	14
15	29.5	29.7	29.8	30.0	30.1	30.3	30.4	30.6	30.7	30.9	15
16	31.0	31.2	31.3	31.5	31.6	31.8	31.9	32.1	32.2	32.4	16
17	32.5	32.7	32.8	33.0	33.1	33.3	33.4	33.6	33.7	33.9	17
18	34.0	34.2	34.3	34.5	34.6	34.8	34.9	35.1	35.2	35.4	18
19	35.5	35.7	35.8	36.0	36.1	36.3	36.4	36.6	36.7	36.9	19
20	37.0	37.2	37.3	37.5	37.6	37.8	37.9	38.1	38.2	38.4	20
21	38.5	38.7	38.8	39.0	39.1	39.3	39.4	39.6	39.7	39.9	21
22	40.0	40.2	40.3	40.5	40.6	40.8	40.9	41.1	41.2	41.4	22
23	41.5	41.7	41.8	42.0	42.1	42.3	42.4	42.6	42.7	42.9	23
24	43.0	43.2	43.3	43.5	43.6	43.8	43.9	44.1	44.2	44.4	24
25	44.5	44.7	44.8	45.0	45.1	45.3	45.4	45.6	45.7	45.9	25
26	46.0	46.2	46.3	46.5	46.6	46.8	46.9	47.1	47.2	47.4	26
27	47.5	47.7	47.8	48.0	48.1	48.3	48.4	48.6	48.7	48.9	27
28	49.0	49.2	49.3	49.5	49.6	49.8	49.9	50.1	50.2	50.4	28
29	50.5	50.7	50.8	51.0	51.1	51.3	51.4	51.6	51.7	51.9	29
30	52.0	52.2	52.3	52.5	52.6	52.8	52.9	53.1	53.2	53.4	30
31	53.5	53.7	53.8	54.0	54.1	54.3	54.4	54.6	54.7	54.9	31
32	55.0	55.2	55.3	55.5	55.6	55.8	55.9	56.1	56.2	56.4	32
33	56.5	56.7	56.8	57.0	57.1	57.3	57.4	57.6	57.7	57.9	33
34	58.0	58.2	58.3	58.5	58.6	58.8	58.9	59.1	59.2	59.4	34
35	59.5	59.7	59.8	60.0	60.1	60.3	60.4	60.6	60.7	60.9	35
36	61.0	61.2	61.3	61.5	61.6	61.8	61.9	62.1	62.2	62.4	36

Calculated by Julien A. Hall, M. Am. Soc. C. E.

MADE IN GERMANY.