

989

F.B. 989

FIELD BOOK

360

KEUFFEL & ESSER CO.

DRAWING MATERIALS
AND
SURVEYING INSTRUMENTS.
NEW YORK.

CHICAGO. ST. LOUIS. SAN FRANCISCO. MONTREAL.

TABLES FOR EXCAVATIONS AND EMBANKMENTS.

DISTANCES FROM CENTER OF ROADWAY FOR CROSS-SECTIONING.
ROADWAY 18 FEET WIDE. SIDE SLOPES 1 TO 1.
FOR SINGLE TRACK EXCAVATION.

"Copyright, 1895, by Keuffel & Esser Co."

	0	.1	.2	.3	.4	.5	.6	.7	.8	.9	
0	9.0	9.1	9.2	9.3	9.4	9.5	9.6	9.7	9.8	9.9	0
1	10.0	10.1	10.2	10.3	10.4	10.5	10.6	10.7	10.8	10.9	1
2	11.0	11.1	11.2	11.3	11.4	11.5	11.6	11.7	11.8	11.9	2
3	12.0	12.1	12.2	12.3	12.4	12.5	12.6	12.7	12.8	12.9	3
4	13.0	13.1	13.2	13.3	13.4	13.5	13.6	13.7	13.8	13.9	4
5	14.0	14.1	14.2	14.3	14.4	14.5	14.6	14.7	14.8	14.9	5
6	15.0	15.1	15.2	15.3	15.4	15.5	15.6	15.7	15.8	15.9	6
7	16.0	16.1	16.2	16.3	16.4	16.5	16.6	16.7	16.8	16.9	7
8	17.0	17.1	17.2	17.3	17.4	17.5	17.6	17.7	17.8	17.9	8
9	18.0	18.1	18.2	18.3	18.4	18.5	18.6	18.7	18.8	18.9	9
10	19.0	19.1	19.2	19.3	19.4	19.5	19.6	19.7	19.8	19.9	10
11	20.0	20.1	20.2	20.3	20.4	20.5	20.6	20.7	20.8	20.9	11
12	21.0	21.1	21.2	21.3	21.4	21.5	21.6	21.7	21.8	21.9	12
13	22.0	22.1	22.2	22.3	22.4	22.5	22.6	22.7	22.8	22.9	13
14	23.0	23.1	23.2	23.3	23.4	23.5	23.6	23.7	23.8	23.9	14
15	24.0	24.1	24.2	24.3	24.4	24.5	24.6	24.7	24.8	24.9	15
16	25.0	25.1	25.2	25.3	25.4	25.5	25.6	25.7	25.8	25.9	16
17	26.0	26.1	26.2	26.3	26.4	26.5	26.6	26.7	26.8	26.9	17
18	27.0	27.1	27.2	27.3	27.4	27.5	27.6	27.7	27.8	27.9	18
19	28.0	28.1	28.2	28.3	28.4	28.5	28.6	28.7	28.8	28.9	19
20	29.0	29.1	29.2	29.3	29.4	29.5	29.6	29.7	29.8	29.9	20
21	30.0	30.1	30.2	30.3	30.4	30.5	30.6	30.7	30.8	30.9	21
22	31.0	31.1	31.2	31.3	31.4	31.5	31.6	31.7	31.8	31.9	22
23	32.0	32.1	32.2	32.3	32.4	32.5	32.6	32.7	32.8	32.9	23
24	33.0	33.1	33.2	33.3	33.4	33.5	33.6	33.7	33.8	33.9	24
25	34.0	34.1	34.2	34.3	34.4	34.5	34.6	34.7	34.8	34.9	25
26	35.0	35.1	35.2	35.3	35.4	35.5	35.6	35.7	35.8	35.9	26
27	36.0	36.1	36.2	36.3	36.4	36.5	36.6	36.7	36.8	36.9	27
28	37.0	37.1	37.2	37.3	37.4	37.5	37.6	37.7	37.8	37.9	28
29	38.0	38.1	38.2	38.3	38.4	38.5	38.6	38.7	38.8	38.9	29
30	39.0	39.1	39.2	39.3	39.4	39.5	39.6	39.7	39.8	39.9	30
31	40.0	40.1	40.2	40.3	40.4	40.5	40.6	40.7	40.8	40.9	31
32	41.0	41.1	41.2	41.3	41.4	41.5	41.6	41.7	41.8	41.9	32
33	42.0	42.1	42.2	42.3	42.4	42.5	42.6	42.7	42.8	42.9	33
34	43.0	43.1	43.2	43.3	43.4	43.5	43.6	43.7	43.8	43.9	34
35	44.0	44.1	44.2	44.3	44.4	44.5	44.6	44.7	44.8	44.9	35
36	45.0	45.1	45.2	45.3	45.4	45.5	45.6	45.7	45.8	45.9	36

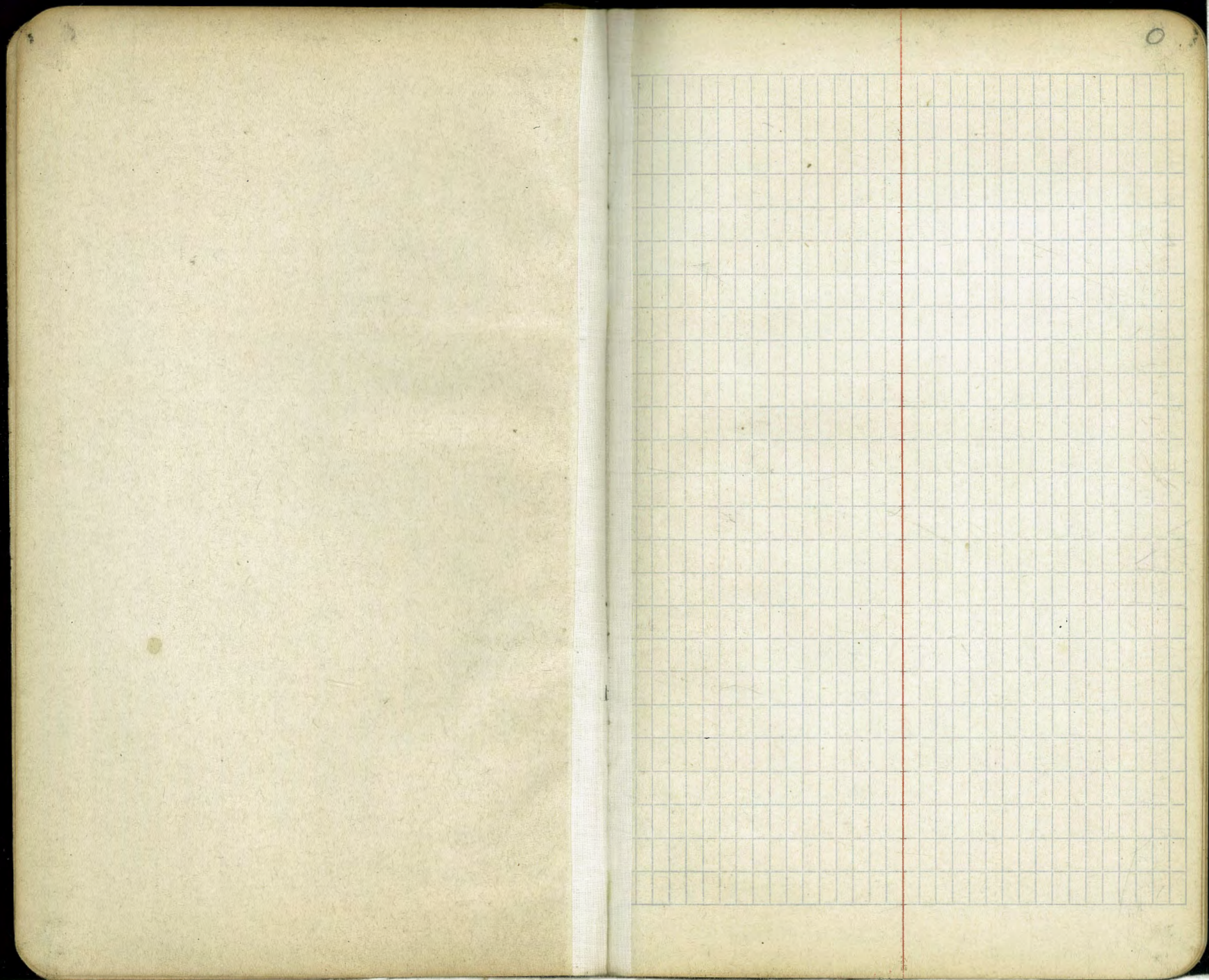
Calculated by Julien A. Hall, M. Am. Soc. C. E.

For Keith's Railroad Curve Tables see end of book.

Westbourne 3E
8/22
RETURN TO CITY ENGINEERS
CITY HALL, SAN DIEGO, CAL.
City Engineers Office
Civic Center
SAN DIEGO California
BE 9-7511



72 161
20.088
+ 2.887
70
+ 308.74
+ 2.887
72.889



Gregory CROSS SECTION OF
 30th St 60 wide
 19.425
 from S.L. M. St To Nk. Washman Ave.

30th St

BM	306	78.03	74.97	NY 30th 4 M
		S.L. M. St		
H		2.8	75.2 ✓	
on Cb		3.1	74.9 ✓	
gutter		3.6	74.4 ✓	
1/4		3.2	74.8 ✓	
c		2.9	75.1 ✓	
1/2		2.9	75.1 ✓	
gutter		3.1	74.9 ✓	
on cb		2.6	75.4 ✓	
E		2.4	75.6 ✓	
		15' 50		
E		2.2	75.8 ✓	
cb		2.6	75.4 ✓	
1/4		2.5	75.5 ✓	
c		2.5	75.5 ✓	
1/4		2.9	75.1 ✓	
gutter		3.6	74.4 ✓	
on cb		1.315	74.88 ✓	
W		2.9	75.1 ✓	
		50' 50		
W		3.1	74.9 ✓	
cb		3.3	74.7 ✓	
1/4		2.6	75.4 ✓	
c		2.8	75.2 ✓	

		77.03	
1/4		2.8	75.2 ✓
cb		2.9	75.1 ✓
E		2.4	75.6 ✓
		100' 50	
E		3.2	74.8 ✓
cb		3.4	74.6 ✓
1/4		3.3	74.7 ✓
c		3.2	74.8 ✓
1/4		3.2	74.8 ✓
cb		3.5	74.5 ✓
4.5		3.4	74.6 ✓
W		2.6	75.4 ✓
		150' 50	
W		3.2	74.8 ✓
4.5		3.8	74.2 ✓
cb		4.3	73.7 ✓
1/4		3.9	74.1 ✓
c		3.9	74.1 ✓
1/4		4.1	73.9 ✓
cb		4.1	73.9 ✓
E		4.2	73.8 ✓
		300' 50	
E		5.0	73.0 ✓
cb		4.8	73.2 ✓
1/4		4.4	73.6 ✓

C		4.7	73.3 ✓
1/4		4.9	73.1 ✓
cb		5.1	72.9 ✓
W		4.7	73.3 ✓
	250 So.		
W		5.5	72.5 ✓
cb		5.6	72.4 ✓
1/4		5.2	72.8 ✓
C		5.3	72.7 ✓
1/4		5.3	72.7 ✓
cb		5.5	72.5 ✓
E		5.0	72.5 ✓
	300 So. = 1/2 N St		100' wide, 16' curbs 17' / 4'
E		6.2	71.8 ✓
cb		6.0	72.0 ✓
1/4		5.7	72.3 ✓
C		5.3	72.7 ✓
1/4		5.7	72.3 ✓
cb		6.2	71.8 ✓
W		6.0	72.0 ✓
	No. Curb		
W		6.4	71.6 ✓
cb		5.9	72.1 ✓
1/4		5.5	72.5 ✓
C		5.4	72.6 ✓
1/4		5.3	72.7 ✓

cb		6.0	72.0 ✓
E		6.3	71.7 ✓
	No. QUARTER		
E		5.5	72.5 ✓
cb		5.6	72.5 ✓
1/4		5.1	72.9 ✓
C		4.9	73.1 ✓
1/4		5.0	73.0 ✓
cb		5.1	72.9 ✓
W		5.5	72.5 ✓
	No. QUARTER + $\left. \begin{array}{l} 2.8 \text{ on West} \\ 2.5 \text{ East} \end{array} \right\} = \text{No. 2' Line of R.R. track}$		
rail		4.57	
W		5.4	72.6 ✓
cb		4.8	73.2 ✓
1/4		4.7	73.3 ✓
C		4.8	73.2 ✓
1/4		4.9	73.1 ✓
cb		5.4	72.6 ✓
E		5.3	72.7 ✓
rail		4.74	
	So. QUARTER + $\left. \begin{array}{l} 7.0 \text{ on West} \\ 6.7 \text{ East} \end{array} \right\} = \text{So. 2' Line of Track.}$		
rail		5.15	
E		5.4	72.6 ✓
cb		5.2	72.8 ✓
1/4		5.2	72.8 ✓
C		5.1	72.9 ✓
1/4		5.2	72.8 ✓
cb		5.3	72.7 ✓

77.03

W rail		5.4 5.02	72.6
	So. CURB		
W		5.6	72.4
cb		5.5	72.5
1/4		5.4	72.6
C		5.4	72.6
1/4		5.5	72.5
cb		5.6	72.4
E		5.6	72.4
	So. LINE N ST		
E		6.1	71.9
cb		6.0	72.0
1/4		5.9	72.1
C		5.8	72.2
1/4		5.6	72.4
cb		5.8	72.2
W		6.0	72.0
T.P.	431	77.31 5.03	73.00
	50' 50		
W		5.0	72.3
cb		4.9	72.4
1/4		4.5	72.8
C		4.6	72.7
1/4		5.2	72.1
cb		5.6	71.7
E		5.6	71.7

30TH ST.

77.343

3

	80' 50		
E		5.0	72.3
cb		4.9	72.4
1/4		4.5	72.8
C		4.3	73.0
1/4		4.5	72.8
cb		4.7	72.6
W		5.0	72.3
	100' 50		
W		5.0	72.3
cb		4.7	72.6
1/4		4.4	72.9
C		4.7	72.6
1/4		4.9	72.4
cb		4.9	72.4
E		5.3	72.0
	170' 50		
E		5.5	71.8
W		5.3	72.0
1/4		4.9	72.4
C		4.4	72.9
1/4		4.5	73.0
cb		4.6	72.7
W		5.0	72.3

77.31

140' 50

W	4.8	72.5
cb	4.7	72.6
1/4	4.8	72.5
C	4.9	72.4
1/4	5.0	72.3
cb	4.6	72.7
F	4.8	72.5

145' 50

F	4.0	73.3
cb	4.2	73.1
1/4	4.8	72.5
C	4.9	72.4
1/4	4.9	72.4
cb	4.7	72.6
W	4.9	72.4

200' 50

W	4.9	72.4
cb	4.9	72.4
1/4	5.1	72.2
C	5.1	72.2
1/4	5.1	72.2
cb	4.7	72.6
F	4.2	73.1

3074 51

77.325

3 1/2

250' 50

F	4.2	73.1
cb	4.4	72.9
1/4	4.9	72.4
C	5.3	72.0
1/4	5.1	72.2
cb	4.9	72.4
W	4.7	72.6

277' 50

W	4.1	73.2
cb	4.7	72.6
1/4	5.8	71.5
1/4	5.9	71.4
C	5.9	71.4
1/4	5.9	71.4
cb	5.1	72.2
F	5.3	72.0

279.5' 50 = N.L. Webster Ave ^{50' wide}
_{15' marks}

F	5.4	71.9
cb	5.6	71.7
1/4	6.0	71.3
C	5.9	71.4
1/4	6.0	71.3
1/4	6.1	71.2
cb	5.7	71.6
W	5.9	71.4

7731

No. CURB

W	66	707
cb	64	709
1/4	61	712
C	63	710
1/2	62	711
cb	66	707
E	64	709

No. QUARTER.

E	64	709
cb	63	710
1/4	62	711
C	65	708
1/2	62	711
cb	62	711
W	65	708

CENTER

W	61	712
cb	61	712
1/4	60	713
C	60	713
1/2	60	713
cb	61	712
E	61	712

30TH ST.

7732

4

So. QUARTER.

E	66	707
cb	65	708
1/4	64	709
C	64	709
1/2	63	710
cb	64	709
W	62	711

So. CURB

W	66	707
cb	65	708
1/4	65	708
C	65	708
1/2	66	707
cb	69	704
E	68	705

So. LINE of Webster Ave

E	58	715
cb	60	713
1/4	62	711
C	61	712
1/2	63	710
cb	60	713
W	60	713

77.31

5' 50

W			4.2	73.1
cb			4.5	72.8
1/4			5.4	71.9
c			5.6	71.7
1/2			5.6	71.7
cb			5.2	72.1
E			5.0	72.3
T.P.	571	76.68	6.34	70.97

on curb
SE Master

50' 50

E			4.1	72.6
cb			4.1	72.6
1/4			3.8	72.9
c			3.5	73.2
1/2			3.3	73.4
cb			3.6	73.1
W			3.6	73.1

100' 50

W			3.1	73.6
cb			3.2	73.5
1/4			3.3	73.4
c			3.6	73.1
1/2			3.8	72.9
cb			3.8	72.9
E			4.0	72.7

30th St.

76.7 38

4 1/2

150' 50

E			3.9	72.8
cb			3.6	73.1
1/4			3.6	73.1
c			3.4	73.3
1/2			3.3	73.4
cb			2.9	72.8
W			2.9	72.8

73.8

73.8

175' 50

W			1.3	75.4
cb			2.0	74.7
1/4			3.1	73.6
c			3.5	73.2
1/2			3.6	73.1
cb			3.8	72.9
E			4.1	72.6

200' 50

E			4.7	72.0
cb			4.3	72.4
1/4			4.0	72.7
c			3.7	73.0
1/2			3.3	73.4
cb			2.8	73.9
W			2.5	74.2

76.68

230' So.

W	1.7	75.0'
cb	2.2	74.5'
1/4	2.8	73.9'
	3.6	73.1'
c	4.3	72.4'
1/2	4.4	72.3'
cb	5.0	71.7'
E	5.0	71.7'

250' So.

E	5.2	71.5'
cb	5.2	71.5'
1/4	4.8	71.9'
c	4.6	72.1'
1/2	3.5	73.2'
cb	3.1	73.6'
W	2.7	74.0'

275' So.

W	3.4	73.3'
cb	3.7	73.0'
1/4	3.9	72.8'
c	4.4	72.3'
1/2	4.9	71.8'
+5	5.4	71.3'
cb	4.9	71.8'
E	5.0	71.7'

30th St

767 N2

5

300' So. = N/L

CLAY AVE

80' wide
14' walks
13' 1/2

E	4.8	71.9'
cb	4.7	72.0'
+5	5.2	71.5'
1/4	4.9	71.8'
c	4.7	72.0'
1/2	4.3	72.4'
cb	4.4	72.3'
W	4.2	72.5'

No. CURB

W	4.6	72.1'
cb	4.7	72.0'
1/4	4.9	71.8'
c	5.1	71.6'
1/2	5.2	71.5'
cb	5.4	71.3'
E	5.2	71.5'

No. QUARTER

E	5.1	71.6'
cb	5.1	71.6'
1/4	5.0	71.7'
c	4.8	71.9'
1/2	4.6	72.1'
cb	4.5	72.2'
W	4.4	72.3'

7668

CENTER

W	40	72.7
cb	41	72.6
1/4	42	72.5
c	44	72.3
1/4	44	72.3
cb	46	72.1
E	50	71.7

So. QUARTER

E	50	71.7
cb	48	71.9
1/4	47	72.0
c	45	72.2
1/4	44	72.3
cb	43	72.4
W	43	72.4

So. CURB

W	40	72.7
cb	41	72.6
1/4	43	72.4
c	45	72.2
1/4	46	72.1
cb	46	72.1
E	49	71.8

30TH ST

76743

5 1/2

So. LINE CLAY AVE

E	34	73.3
cb	41	72.6
1/4	42	72.5
c	37	73.0
1/4	37	74.0
cb	30	73.8
W	28	73.9
T.P.	13.10	26.14
	364	73.04

1st SW
CLAY

25' 50"

W	10.4	75.7
cb	10.6	75.5
1/4	10.7	75.4
c	11.5	74.6
1/4	12.7	73.4
cb	12.4	73.2
E	12.5	73.6

50' 50"

E	12.5	73.6
cb	12.1	74.0
1/4	12.2	73.9
c	11.4	74.7
1/4	10.2	75.9
cb	9.5	76.6
W	9.2	76.9

86.14
75' 50

W	8.7	774 ✓
cb	9.2	769 ✓
1/4	10.0	761 ✓
c	10.6	755 ✓
1/4	11.3	748 ✓
cb	11.4	747 ✓
E	12.2	73.9 ✓

100' 50

E	10.9	752 ✓
cb	10.0	761 ✓
1/4	9.6	765 ✓
c	9.2	769 ✓
1/4	7.8	783 ✓
cb	6.2	799 ✓
W	4.5	79.6 ✓

125' 50

W	5.7	804 ✓
cb	6.1	800 ✓
1/4	7.0	791 ✓
c	7.5	786 ✓
1/4	8.0	781 ✓
cb	8.2	779 ✓
+5	9.9	762 ✓
E	10.3	758 ✓

30TH ST

86.149

6

150' 50

E	9.1	770 ✓
cb	8.1	780 ✓
1/4	7.3	788 ✓
c	7.1	790 ✓
1/4	6.2	799 ✓
cb	4.9	812 ✓ 792
W	3.9	82.2 ✓

175' 50

W	3.0	831 ✓
cb	4.0	821 ✓
1/4	5.0	811 ✓
c	6.1	800 ✓
1/4	6.3	79.8 ✓
cb	7.6	78.5 ✓
E	8.0	78.1 ✓

200' 50

E	6.4	79.7 ✓
+5	6.6	79.5 ✓
cb	5.7	804 ✓
1/4	4.5	81.6 ✓
c	4.5	81.6 ✓
1/4	3.4	83.7 ✓
cb	2.1	84.0 ✓
W	2.0	84.1 ✓

86.14

225' So

W	20	84.1 ✓
cb	21	84.0 ✓
+5	1.9	84.2 ✓
1/4	1.3	84.8 ✓
+5	1.8	84.3 ✓
C	26	83.5 ✓
1/4	27	83.4 ✓
+5	3.1	82.7 ✓
cb	4.1	81.7 ✓
E	5.5	80.6 ✓

250' So

E	4.9	81.2 ✓
cb	4.0	82.1 ✓
1/4	2.7	83.4 ✓
C	2.5	83.6 ✓
1/4	2.1	84.0 ✓
cb	2.1	84.0 ✓
W	1.9	84.2 ✓

275' So

W	1.7	84.4 ✓
cb	2.4	83.7 ✓
1/4	2.2	83.9 ✓
C	2.6	83.5 ✓
1/4	2.8	83.3 ✓
cb	4.0	82.1 ✓

30TH ST

86.1 29

7

E	47	81.4 ✓
300' So = N.L. FRANKLIN AVE		
E	39	83.2 ✓
cb	39	83.2 ✓
1/4	31	83.0 ✓
C	32	82.9 ✓
1/4	29	83.2 ✓
cb	2.8	83.3 ✓
W	2.9	83.8 ✓
No. CURB		
W	3.6	82.5 ✓
cb	3.7	82.4 ✓
1/4	3.7	82.4 ✓
C	4.2	81.9 ✓
1/4	4.4	81.7 ✓
cb	4.9	81.2 ✓
E	4.6	81.5 ✓
No. QUARTER		
E	48	81.3 ✓
cb	42	81.9 ✓
1/4	3.8	82.3 ✓
C	4.0	82.1 ✓
1/4	3.5	82.6 ✓
cb	3.2	82.9 ✓
W	3.0	83.1 ✓

86.14

CENTER.

W	2.6	83.5
cb	2.9	83.2
1/4	3.2	82.9
C	3.7	82.4
1/4	3.7	82.4
cb	4.1	82.0
E	4.5	81.6

So. QUARTER.

E	4.7	81.4
cb	4.4	81.7
1/4	4.0	82.1
C	3.8	82.3
1/4	3.4	82.7
cb	2.9	83.2
W	2.8	83.3

So CURB.

W	3.5	82.6
cb	3.6	82.5
1/4	3.9	82.2
C	4.2	81.9
1/4	4.3	81.8
cb	4.5	81.6
E	4.5	81.6

86.143

30TH ST.

8

So. LINE FRANKLIN AVE

E	4.0	82.1
cb	3.9	82.2
1/4	3.7	82.4
C	3.5	82.6
1/4	2.9	83.2
cb	2.4	83.7
W	2.1	84.0

4' So.

W	1.3	84.8
cb	1.8	84.3
1/4	2.6	83.5
C	3.2	82.9
1/4	3.4	82.7
cb	3.4	82.7
E	3.6	82.5

25' So.

E	3.0	83.1
4.5	2.9	82.2
cb	4.0	82.1
1/4	3.6	82.5
C	3.3	82.8
1/4	2.2	83.9
cb	1.4	84.7
W	1.0	85.1
T.P.	2.92	92.75
	1.31	84.83

92.75

50' 50

W	7.5	853 [✓]
cb	8.8	840 [✓]
1/4	9.7	831 [✓]
c	10.3	825 [✓]
1/2	10.2	826 [✓]
cb	10.7	821 [✓]
E	11.0	818 [✓]

75' 50

E	10.9	819 [✓]
cb	10.4	824 [✓]
1/4	10.0	828 [✓]
c	9.9	829 [✓]
1/2	9.5	833 [✓]
cb	9.2	836 [✓]
W	7.6	852 [✓]

100' 50

W	7.3	855 [✓]
cb	8.1	849 [✓]
1/4	8.5	843 [✓]
c	9.2	836 [✓]
1/2	9.3	835 [✓]
cb	9.8	830 [✓]
E	9.7	831 [✓]

30TH

ST.

92.809

9

125' 50

E	9.3	835 [✓]
cb	8.8	840 [✓]
1/4	8.3	845 [✓]
c	8.4	844 [✓]
1/2	7.4	854 [✓]
cb	6.7	861 [✓]
W	6.0	868 [✓]

150' 50

W	5.1	877 [✓]
cb	5.7	871 [✓]
1/4	6.8	860 [✓]
c	7.5	853 [✓]
1/2	7.6	852 [✓]
cb	8.1	847 [✓]
E	8.3	845 [✓]

175' 50

E	7.6	852 [✓]
cb	7.4	851 [✓]
1/4	7.2	856 [✓]
c	6.5	863 [✓]
1/2	6.0	868 [✓]
cb	5.5	873 [✓]
W	4.5	883 [✓]

92.75 03

200' 50

W	34	89.4
cb	41	88.7
1/4	49	88.0
C	57	87.1
1/4	61	86.7
cb	64	86.4
E	68	86.6

225' 50

E	57	87.1
cb	49	87.9
1/4	48	88.0
C	47	88.1
1/4	44	88.4
+5	33	89.5
cb	28	90.0
W	25	90.3

250' 50

W	1.6	91.2
cb	1.9	90.9
+3	2.9	89.9
1/4	3.5	89.3
C	3.6	89.2
1/4	3.6	89.2
cb	3.1	89.7
E	4.3	88.5

30TH ST

10

92.8000

275' 50

E	45	88.3
cb	39	88.9
1/4	39	88.9
C	38	89.0
1/4	35	89.3
+5	35	89.3
cb	25	90.3
W	10	91.8

301' 50 = N/L. WOOLMAN

W	23	90.5
cb	37	89.1
1/4	42	88.6
1/4	51	87.7
C	58	87.0
1/4	61	86.7
+5	56	87.2
cb	52	87.6
E	57	87.1
cb	1.76	90.99 = ²¹⁰⁰ 2100 E.M. NW 30th Woolman

Section of flooded section National Ave fill west of bridge bet
33rd & 34th st

B.M. SPR in 12x12 corr bridge

5.26 11.66

6.40

131' E of EL. 33rd st

South	3.7	8.0
cul	4.0	7.7
gutter	4.9	6.8
"	3.9	7.8
M	4.0	7.7
"	4.2	7.5
gutter	4.8	6.9
cul	4.0	7.7
N	3.7	8.0

137' E of 33rd

-15	11.7	2.0
N	10.5	1.2
cul	10.9	0.8
+8	10.1	1.6
"	8.1	3.6
+6	4.5	7.2
M	4.2	7.5
+4	4.7	7.0
"	9.2	2.5
+3	10.9	0.8
cul	11.3	0.4
+10	8.5	3.2
S	9.1	2.6
+15	10.0	1.7

11.66

2/5 Dunkle
1/6 Sham
Bunker

11

150' E of 33rd st

-15	10.8	0.9
S	10.6	1.1
cul	10.4	1.3
"	9.2	2.5
+10	4.7	7.0
M	4.6	7.1
+8	5.1	6.6
"	7.6	4.1
+7	10.1	1.6
cul	10.8	0.9
N	10.6	1.1
+15	10.4	1.3

170' E of 33rd

-15	10.8	0.9
N	10.6	1.1
cul	10.5	1.2
+9	10.0	1.7
"	7.8	3.9
+5	4.8	6.9
M	4.6	7.1
+3	4.8	6.9
"	10.4	1.5
cul	10.7	1.0
S	11.7	0.0
+15	12.0	-0.3

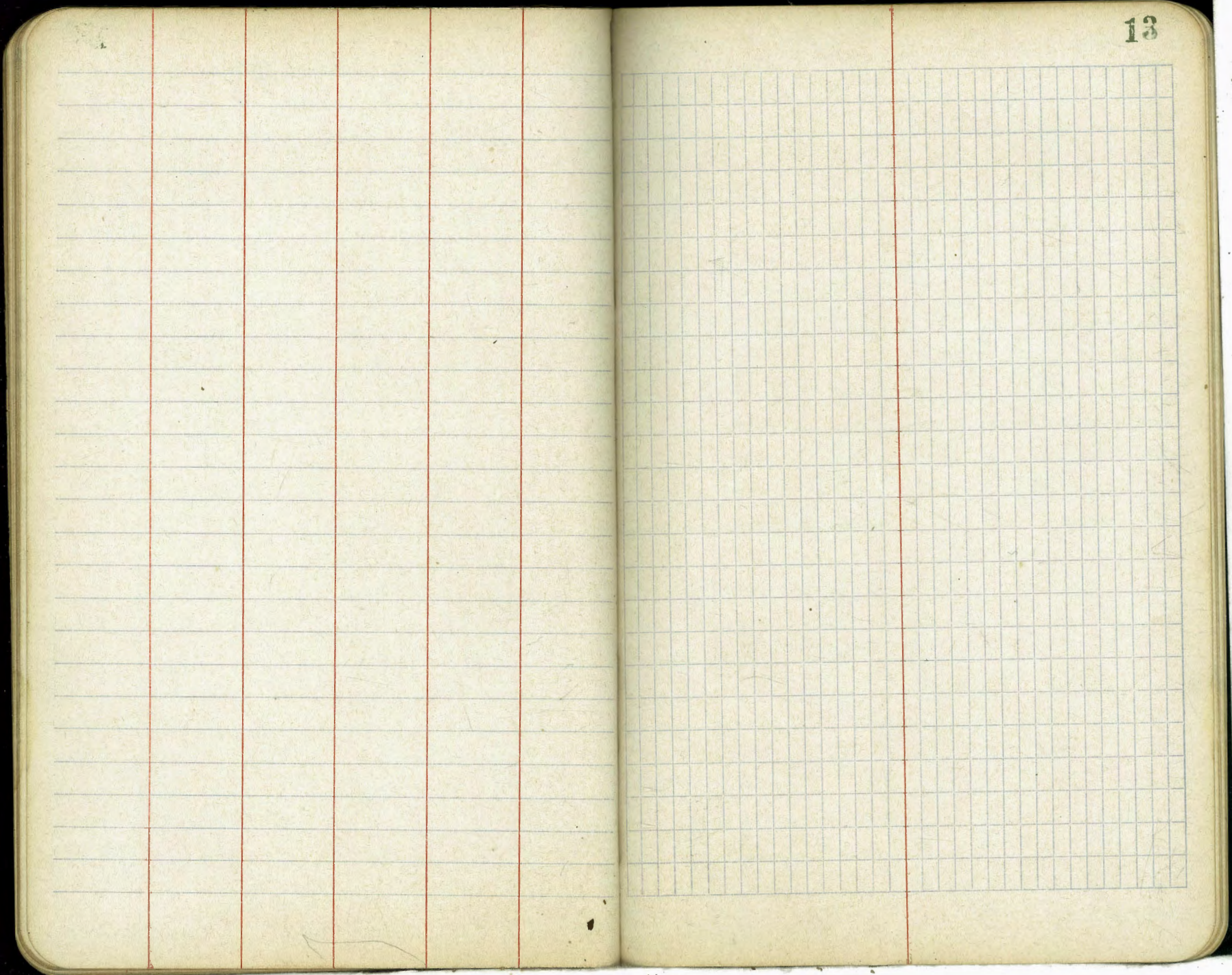
179' E of 33rd = West End of Bridge

-15	11.5	+0.2
5	12.1	-0.4
cul	12.3	-0.6
"4	10.3	+1.4
+10	4.5	7.2
M	4.3	7.4
+8	4.5	7.2
"4	7.1	4.6
+5	9.9	1.8
cul	10.0	1.7
N	10.0	1.7
+15		

179' E = west end bridge on Top

N	4.1	7.6
cul	4.3	7.4
gr	4.9	6.8
"4	4.5	7.2
M	4.3	7.4
"4	4.5	7.2
gr	5.0	6.7
cul	4.4	7.3
5	4.2	7.5

Note 60 yds will make fill at East end of Bridge



3/11/6
Gregor
Moore
Miller

Re Cross-section of 29th St sec Book 917
From Ash to S.L. 50. Park, for former notes
29th St is 80' wide 20' walks 10' / 4's

B.M.	042	204.43	204.01	SP NE 29th Ash
		S.L. Ash St.		
W		1.2	203.2	
cl		1.6	202.8	
+1		2.3	202.1	
+5		2.8	201.6	
1/4		2.3	202.1	
C		1.6	202.8	
		23' 50		
C		2.5	201.9	
W 1/4		3.1	201.3	
+5		3.9	200.5	
+8		5.1	199.3	
cl		2.3	202.1	
+10		2.1	202.3	
W		1.8	202.6	
		25' 50		
W		1.9	202.5	
+5		2.1	202.3	
cl		2.4	202.0	
+1		5.5	198.9	
+5		6.6	197.8	
+6		3.8	200.6	
1/4		3.3	201.1	
C		2.6	201.8	

204.2

29th St

14

27' 50

C		3.1	201.3
1/4		3.5	200.9
+5		4.1	200.3
cl		7.2	197.2
		6.8	197.6
		3.0	201.4
+10		2.6	201.8
W		2.5	201.9
		50' 50	
W		2.9	201.5
+17		3.2	201.2
cl		7.1	197.3
+7		8.2	196.2
		3.9	200.5
1/4		3.8	200.6
C		3.5	200.9
		60' 50	
C		3.9	200.5
W 1/4		4.3	200.1
		5.0	199.4
+6		8.3	196.1
cl		8.4	196.0
+5		8.8	195.5
+9		8.4	196.0
+11		5.6	198.8
		3.5	200.9
W		3.3	201.1
		74' 50	
W		3.8	200.6
+5		4.0	200.4
		6.1	198.3

204.43

+15	9.2	195.2
cb	9.6	194.8
+5	8.7	195.7
1/4	7.1	197.3
	4.5	199.9
C	4.4	200.0

85' 50

C	4.7	199.7
	4.6	199.8
+6	9.2	195.2
1/4	9.7	194.7
+5	10.7	193.7
cb	10.1	194.0
+10	8.3	196.1
	4.5	199.9
W	4.2	200.2

100' 50

W	4.7	199.7
	5.0	199.4
+15	9.0	195.4
cb	11.8	192.6
+8	11.8	192.6
1/4	10.3	194.1
+4	8.4	196.0
	5.2	199.2
C	5.2	199.2

115' 50

C	5.8	198.6
	5.7	198.7
+6	9.4	195.0
1/4	11.9	192.5
+5	13.3	191.1

204.4

204.5

15.

cb	11.9	192.5
	9.1	195.3
+5	6.5	198.5
W	5.6	198.8
	123' 50	
W	6.0	198.4
	6.2	198.2
+8		
+15	12.5	191.9
cb	13.4	191.0
+4	13.7	190.7
1/4	10.6	193.8
	7.2	196.5
+4	5.9	198.5
C	6.1	198.3
TP	258	198.81
	8.20	196.23

136' 50

C	0.9	197.9
1/4	1.6	197.8
	1.4	197.4
+4	7.3	191.5
cb	8.6	190.2
+5	8.6	190.2
+10	3.0	195.8
W	1.7	197.1

150' 50

W	1.3	197.5
+7	9.3	189.5
cb	9.1	189.7

19881

+2	8.1	1907
+7	1.8	1970
1/4	1.6	1972
C	1.3	1975

157' 50

C	1.6	1972
1/4	1.9	1969
+2	6.6	1922
cb	9.8	1890
+5	8.8	1906
+15	9.6	1892
W	1.2	1976

160' 50

-2	0.8	1950
W	7.4	1914
+5	9.4	1894
+15	7.9	1909
cb	9.9	1889
+9	7.0	1918
1/4	2.0	1968
C	1.7	1971

170' 50

C	2.5	1963
+5	2.4	1964
+6	7.0	1918

19881

3974 St.

1/4	8.9	189.9
+4	10.9	187.9
cb	10.6	188.2
+10	10.8	188.2
W	10.2	188.6
+3	7.9	190.9
+6	1.3	197.5

195' 50

W	2.9	195.9
+1	2.2	191.6
+7	11.7	187.1
cb	11.8	187.0
1/4	11.6	187.2
+1	3.0	195.8
C	2.8	196.0

200' 50

C	3.1	195.7
+7	3.1	195.7
1/4	5.9	192.9
	12.3	186.5
cb	12.3	186.5
+10	11.9	186.9
W	6.0	192.8
+6	2.5	196.3
-3	2.6	196.2
-2	7.0	191.8

		198.81		
W			82	190.6
+5			10.9	189.9
cb			132	185.6
1/4			132	185.6
+5			3.6	195.2
C			3.7	195.1
		240' 50		
C			4.9	193.9
+5			4.8	194.0
1/4			14.6	184.2
cb			13.9	184.9
+12			13.2	185.6
W			9.0	189.8
+4			4.5	192.3
		245' 50		
W			4.5	194.3
T.P.	9.53	195.76	12.58	186.23
+7			10.7	185.1
cb			11.4	184.4
+5			12.1	183.7
1/4			8.7	189.1
+4			1.6	194.2
C			1.7	194.1
		250' 50		
C			1.9	193.9
			1.8	194.0
+5			4.8	191.0

		19576	39745T	17
1/4			9.0	186.8
+5			11.3	184.5
cb			12.3	183.5
+10			11.7	184.1
W			5.9	189.9
+10			0.4	195.4
		265' 50		
W			1.5	194.3
+9			12.9	182.9
cb			11.7	184.1
+7			11.2	184.6
1/4			9.6	186.2
+6			4.5	191.3
			2.4	193.4
C			2.5	193.3
		274' 50		
C			2.4	193.4
+3			2.7	193.1
1/4			9.2	186.6
+5			12.3	183.5
cb			12.6	183.2
+5			13.4	182.4
+15			12.3	183.5
W			8.3	187.5
+10			4.8	191.0

195.76

883' So.

-10	2.0	193.8
W	19.4	183.4
+15	13.9	181.9
cb	13.0	180.8
+5	8.6	187.2
1/4	3.3	192.5
C	3.0	192.8

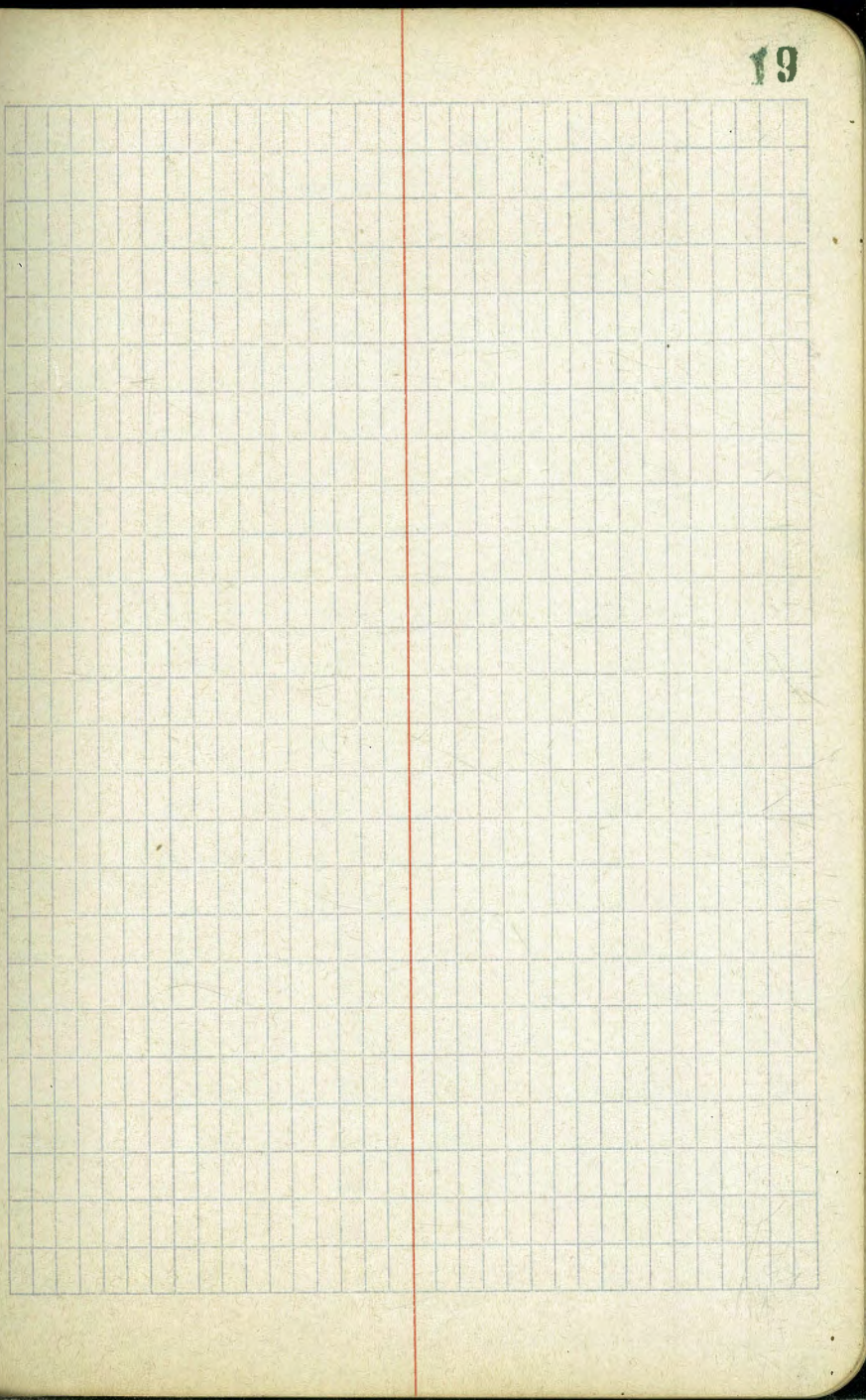
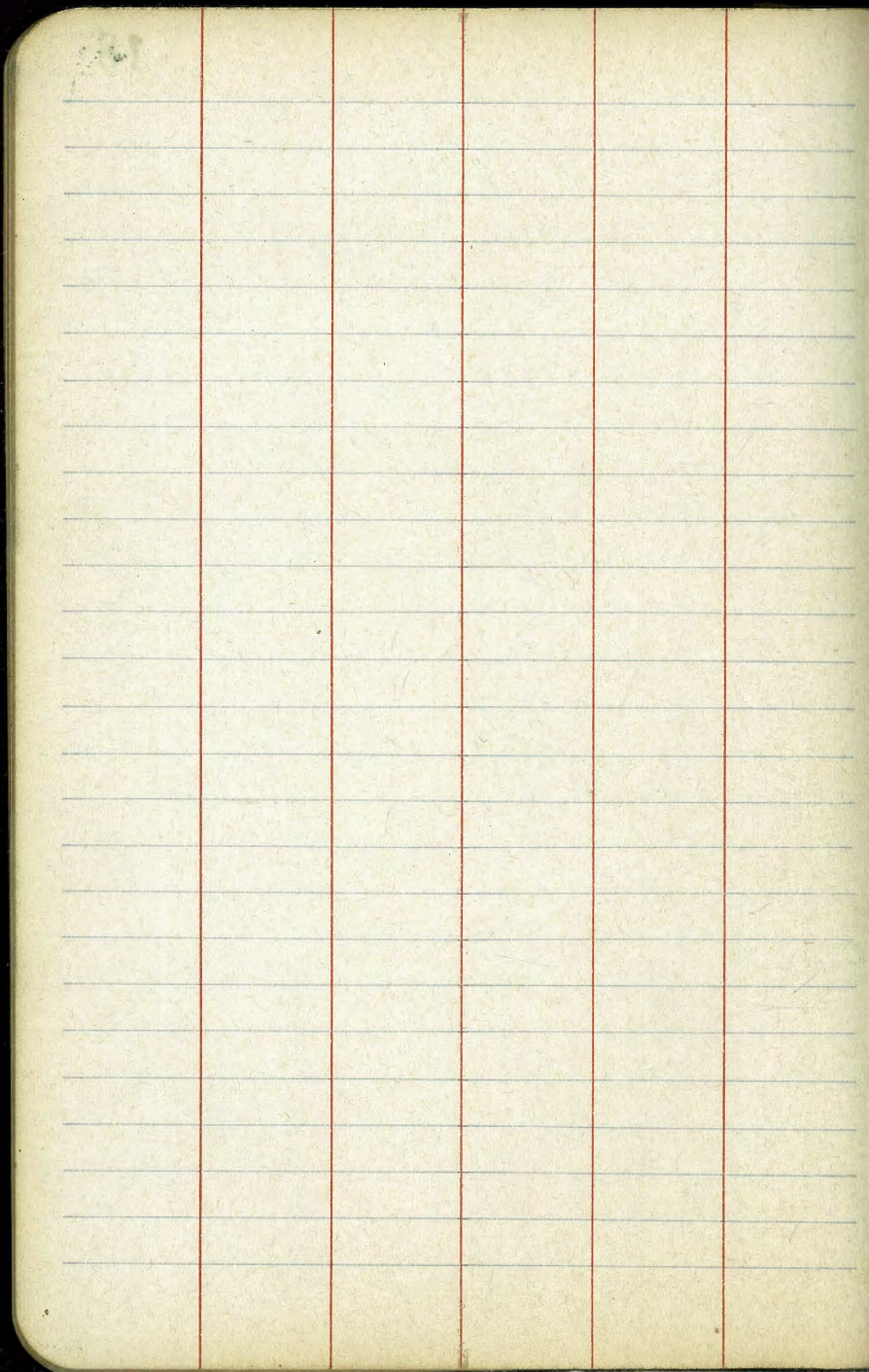
892' So.

C	3.2	192.5
+7	3.4	192.4
1/4	5.9	189.9
cb	12.4	183.4
+3	14.2	181.6
+10	13.3	182.5
W	12.7	183.1
+10	7.7	188.1
+15	4.2	191.6

301.6' So. = SL. of So. Part.

-20	5.5	190.3
-10	13.0	182.8
W	13.7	182.1
+15	14.4	181.4
cb	13.6	182.2
1/4	9.0	186.8
+7	3.9	191.9
C	4.4	191.4

39th St.



3/29/16
Gregor
Maard
Miller

CROSS-SECTION OF
H ST. 20' wide 14' walks 13' quarters
from W.L. of 30th ST
to E.L. of Granada St.

BM.	203	229.10	227.02	55 30th St H St. BP
		W.L. 30th ST.		
No.		8.6	220.5	
cb		8.9	220.3	
1/4		8.7	220.4	
c		8.1	221.0	
1/4		8.5	220.6	
cb		8.3	220.8	
So.		7.9	221.2	
		25' W.		
So.		8.3	220.8	
cb		8.7	220.4	
1/4		9.3	219.8	
c		9.4	219.7	
1/4		10.1	219.0	
cb		10.2	218.9	
No.		10.2	218.9	
		50' W.		
-10		11.3	214.8	
No.		13.1	216.0	
cb		13.1	216.0	
1/4		10.6	218.5	
c		10.2	218.9	
1/4		10.2	218.9	
cb		10.0	219.1	

H ST.

20

229.1

So.		9.3	219.8
		70' W.	
So.		10.3	218.8
cb		10.2	218.7
1/4		10.8	218.3
c		10.9	218.2
1/4		12.1	217.0
TIP	358 220.29	12.69	216.41
cb		5.4	214.9
No.		8.0	212.3
15' No.		10.4	209.9
		25' W.	
-20		17.2	203.1
-10		16.8	203.5
No.		11.9	208.4
+10		6.7	213.6
cb		6.4	213.9
1/4		4.2	216.1
c		2.8	217.5
1/4		2.6	217.7
cb		2.2	218.1
So.		2.1	218.2
		100' W.	
So.		3.1	217.2
cb		3.1	217.2

		220.29	
3.5			216.8
1/4			
C		4.1	216.2
1/4		5.9	214.9
cb		8.5	211.8
No.		13.1	207.2
+20		19.9	200.4
		125' W	
-15		21.9	198.4
-10		24.4	197.9
No.		19.8	200.5
cb		15.6	204.7
1/4		11.5	208.8
C		2.7	212.6
1/4		6.3	214.0
cb		5.7	214.6
So.		5.4	214.9
		140' W	
So.		7.1	213.2
cb		8.1	212.2
1/4		8.9	211.4
C		10.7	209.6
1/4		14.9	205.4
cb		20.3	200.0
+10		23.9	196.4
No.		24.6	195.7
+3		24.4	195.9
+15		18.7	201.6

		220.3	A 57	21
		155.14 West		
-10		17.0	203.8	
No		22.8	197.5	
+4		26.0	194.3	
+8		25.8	194.5	
cb		23.1	197.2	
1/4		18.6	201.7	
C		13.5	206.8	
1/4		11.1	209.2	
cb		10.2	210.1	
So.		9.4	210.9	
		125' W		
So.		11.5	208.8	
cb		13.1	207.2	
T.P.	035	207.57	13.07	207.22
1/4			2.4	205.2
C			6.5	201.1
1/4			10.0	197.6
+10			14.3	193.3
cb			14.4	193.2
+3			14.1	193.5
No.			8.9	198.7
+6			4.0	203.6
+12			3.0	204.6
		140' W		
-7			1.6	206.0
No.			4.7	202.9

207.57

db	18.3	195.3
+9	16.3	191.3
1/4	16.7	190.9
+5	16.3	191.3
C	13.9	193.7
1/4	9.6	198.0
+7	5.6	202.0
db	4.0	203.6
So	2.0	205.6
210' W.		
So	3.3	204.3
db	6.5	201.1
1/4	12.1	195.5
C	16.7	190.9
+2	17.3	190.3
+7	17.2	190.4
1/4	14.0	193.6
db	7.6	200.0
+7	3.9	203.7
No	2.9	204.7
240' W.		
No	3.5	204.1
db	5.1	202.2
+7	7.1	200.5
1/4	9.8	197.8
C	16.1	191.5

2056

A 57

22

+7	18.6	187.0
1/4	18.2	187.2
db	14.1	191.5
So	9.6	196.0
1/4	6.2	199.4
360' W.		
-15	8.0	197.6
So	11.8	193.8
db	16.9	188.7
+11	19.9	185.7
1/4	19.5	186.1
C	16.0	189.6
+10	12.9	192.7
1/4	10.5	195.1
+5	7.9	197.7
db	6.4	199.2
No	4.5	201.1
J.P.	2.64	204.41
380' W.		
No	2.0	202.4
db	4.3	200.1
1/4	6.2	198.2
C	12.9	191.5
+6	16.5	188.1
1/4	16.8	187.6

	204.41	" A ST.
+3	18.1	186.3
cb	16.4	188.0
S	12.6	191.8
+15	8.2	196.2
300' W		
-20	9.5	194.6
S	16.1	888.3
+9	19.3	185.1
cb	19.1	185.3
+6	19.0	185.4
1/4	14.9	189.5
C	9.6	194.8
+5	2.5	196.9
1/4	5.3	199.1
cb	4.1	200.3
N	2.5	201.9
325' W		
N	4.9	201.5
cb	4.7	199.7
1/4	6.6	197.8
+5	8.0	196.4
C	11.3	193.1
1/4	14.5	189.9
cb	19.8	184.6
+2	20.3	184.1
+12	20.5	183.9

	204.4049	" A ST.
S	12.7	184.7
+10	10.1	194.3
350' W		
-20	11.1	193.3
-5	20.4	184.0
S	21.3	183.1
+12	21.3	183.1
cb	20.3	184.1
1/4	14.5	189.9
C	9.7	194.7
1/4	6.6	197.8
cb	4.6	199.8
N	2.0	202.4
375' W		
N	1.6	202.8
cb	3.9	200.5
1/4	6.5	197.9
C	8.4	196.0
1/4	12.0	192.4
cb	17.3	187.1
+9	22.1	182.3
S	22.2	182.2
+7	21.7	182.7
+25	13.4	191.0

394.81 204.11 (60' WIDE) A ST
 W = E.L. of 29th ST TO THE SOUTH

-70		22.2	183.2
-10		21.9	179.5
S		20.9	183.5
+10		15.2	189.2
cb		12.4	190.0
1/4		11.2	193.2
C		8.6	195.8
1/4		5.9	198.5
cb		3.7	200.7
N		1.9	202.5
E. CURB			
N		2.1	202.3
cb		3.7	200.7
1/4		5.9	198.5
C		8.8	195.6
1/4		11.0	193.4
cb		14.2	190.2
S		7.2	197.2
T.P.	DO NOT FIGURE SLOPES ON THIS INTERSECTION IF YARDAGE ON 29 th ST IS CONSIDERED AT THE SAME TIME 10.29 20303	11.67	192.74
E. 1/4			
S		17.9	185.1
+7		14.4	188.6
cb		13.0	190.0
1/4		9.8	193.2
C		7.1	195.3

DO NOT FIGURE SLOPES ON THIS INTERSECTION IF YARDAGE ON 29th ST IS CONSIDERED AT THE SAME TIME 10.29 20303

2
 possibly wrong

203.0 24

1/4		4.6	198.4
cb		2.4	200.6
N		1.0	202.0
Center			
N		1.3	201.7
cb		2.7	200.3
1/4		5.0	198.0
C		8.3	194.7
1/4		10.5	192.5
cb		14.0	189.0
+9		16.9	186.1
S		19.8	183.2
W 1/4			
S		20.5	182.5
cb		15.2	187.8
B.M.		12.64	190.39 ^{13' 406} _{29th ST}
1/4		11.6	191.4
C		9.1	193.9
1/4		5.8	197.2
cb		3.7	199.3
N		2.0	201.0
W. CURB			
N		3.3	199.7
cb		4.8	198.2
1/4		7.4	195.6

C		10.7	192.3
1/4		12.8	190.2
cb		16.3	186.7
S		21.1	181.9
W.L. of the South 29 th St.			
S		21.6	181.4
cb		16.7	186.3
1/4		14.3	188.7
C		12.0	191.0
1/4		9.2	193.8
cb		6.5	196.5
N		4.7	198.3
26.67 on 16. 27.77 on 16. = E.L. of the North 20 th St 60' wide 10' curbs.			
N		10.5	192.5
cb		12.1	190.9
T.P.	1.21	191.80	190.59
1/4		3.0	188.3
C		4.7	187.1
1/4		5.1	186.7
cb		6.5	185.3
+1		8.2	183.6
S		9.8	182.0
+13		17.6	174.2
+25		17.9	173.9

E CURB

-25		18.9	172.9
-18		18.2	173.6
S		10.2	181.6
+1		8.7	183.1
cb		7.4	184.4
1/4	DO NOT FIGURE SLOPES ON THE NORTH ON THIS INTERSECTION	6.2	185.6
C		6.2	185.6
1/4		4.5	187.3
cb		2.9	188.9
N		1.2	190.6
E 1/4			
N		3.6	188.2
cb		5.0	186.8
1/4		5.8	186.0
C		7.8	184.0
+10		9.5	182.3
1/4		9.0	182.8
+2		8.6	183.3
cb		9.7	182.1
S		12.1	179.7
+20		15.9	175.9
+25		19.1	172.7
CENTER			
-30		18.9	172.9
-15		18.4	173.4

12

191.80

S		15.9	175.9
db		15.0	176.8
1/4		12.0	179.8
C		8.7	183.1
1/4		7.5	184.3
db		6.2	185.6
N		5.8	186.0
	11 1/4		
N		8.0	183.8
db		8.8	183.0
1/4		9.8	182.0
C		12.8	179.0
1/4		15.1	176.7
db		16.6	175.2
S		17.9	173.9
+30		18.7	173.1
	11 CURR.		
-30		19.3	172.5
S		18.8	173.0
db		17.6	174.2
1/4		17.4	174.4
C		15.9	175.9
1/4		13.5	178.3
db		11.6	180.2
N		9.8	182.0
T.P.	vds	121.92	12.33
			122.67

181.9

A ST.

26

W. LINE 29th ST on the north

N		3.9	178.0
db		5.8	176.1
1/4		6.5	175.4
C		7.0	174.9
1/4		7.2	174.7
db		7.1	174.8
S		8.0	173.9
+30		9.1	172.8
	20 WEST.		
-30		8.1	173.8
S		7.3	174.6
db		7.5	174.4
1/4		6.5	175.4
C		6.2	175.7
1/4		5.5	176.4
db		5.6	176.3
N		5.0	176.9
+25		3.2	178.7
	40 W		
-25		3.3	178.6
N		4.7	177.1
db		4.7	177.2
1/4		3.7	178.2
C		2.0	179.9
1/4		1.1	180.8

210.03

150' W

N	5.4	204.6
db	5.5	204.5
1/4	5.3	204.7
C	5.3	204.7
1/4	5.5	204.5
db	5.9	204.1
S	6.8	203.2

125' W

S	5.1	204.9
d	4.4	205.6
1/4	4.3	205.7
C	4.0	206.0
1/4	4.2	205.8
db	4.0	206.0
N	4.0	206.0

190' W

N	3.3	206.7
db	3.5	206.8
1/4	3.3	206.7
C	3.2	206.8
1/4	3.7	206.3
db	4.3	205.7
S	4.5	205.5

210.0

A 57

28

210' W

S	4.3	205.7
4.5	5.6	204.4
db	6.0	204.0
1/4	5.7	204.3
C	4.8	205.2
1/4	4.6	205.4
db	3.7	206.3
N	2.9	207.1

230' W = EL GRANADA

N	4.1	205.9
db	5.0	205.0
1/4	5.3	204.7
C	5.8	204.2
1/4	6.4	203.6
db	6.7	203.3
4.9	6.5	203.5
S	5.4	204.6
BM	4.49	205.54 = 20 + 4.49

NW Granada

205.54 = 20 + 4.49

3/23/6 Gregory
Moore
Miller

CROSS SECTION OF
29th St. 60' wide 10' walkst 1/2
from the N.L. of B ST
to S.L. of H

B.M.	H.W.	201.59	197.95	Elev of Corb S.L. B ST
		H.L. B ST		
E		2.2	197.4	
cb		4.6	197.0	
1/4		4.8	196.8	
C		4.8	196.8	
1/2		4.9	196.7	
cb		4.9	196.7	
W		5.8	195.8	
+7 = wall		8.3	193.3	= ground at bottom of wall
		25' No.		
-6		12.0	189.6	= bottom of wall
W		9.4	192.2	
cb		4.0	197.6	
1/4		4.9	196.7	
C		4.6	197.0	
1/2		4.5	197.1	
cb		4.2	197.4	
E		3.5	198.1	
		50' No.		
E		2.9	198.7	
cb		3.6	198.0	
1/4		4.2	197.4	
C		4.5	197.1	
1/2		4.8	196.8	

14' 29th St.
201.628

29

+7		5.1	196.5
cb		7.1	194.5
W		12.4	189.2
+6		14.0	187.6
		75' No.	
-15		16.5	185.1
W		13.0	188.6
cb		10.0	191.6
1/4		12	193.4
C		4.2	197.4
1/4		4.0	197.6
cb		3.3	198.3
E		2.3	199.3
		100' No.	
E		2.2	199.4
cb		3.2	198.4
1/2		3.8	197.8
C		4.2	197.4
25		4.8	196.8
1/4		4.9	196.7
cb		10.3	191.3
W		13.1	188.5
+15		16.9	184.7

201.59

125' No.

- 15	16.3	185.3
W	12.5	189.1
cb	10.0	191.6
+ 6	9.1	192.5
1/4	7.0	194.6
+ 5	4.2	197.4
C	3.6	198.0
1/4	3.1	198.2
cb	2.1	199.2
E	1.5	200.1

150' No.

E	1.8	199.8
cb	2.3	199.3
1/4	3.0	198.6
C	3.3	198.3
+ 5	3.9	197.7
1/4	6.8	194.8
cb	9.5	192.1
W	11.8	189.8
+ 15	16.0	185.6

175' No.

- 15	14.6	187.0
W	10.8	190.8
cb	8.5	193.1
1/4	5.7	195.9

201.643

2974 54

30

C	3.3	198.3
1/4	2.9	198.7
cb	2.0	199.6
E	0.6	201.0

200' No.

E	1.0	200.6
cb	2.4	199.2
1/4	3.0	198.6
C	3.9	197.7
1/4	5.4	196.2
cb	7.6	194.0
W	10.1	191.5
+ 15	14.1	187.5

225' No.

+ 15	15.1	186.5
W	11.1	190.5
cb	8.9	192.7
1/4	6.6	195.0
C	5.2	196.4
1/4	4.4	197.2
cb	3.9	197.7
E	3.1	198.5

30

201.59

250' No.

E		7.1	194.5
cb		7.6	194.0
1/4		8.4	193.2
C		9.7	191.9
1/4		12.3	189.3
T.P.	6.65	195.19	130.5
cb		7.5	187.7
W		9.2	186.0
+15		12.1	182.8

260' No.

-15		15.6	179.6
W		12.3	182.9
cb		10.8	184.4
1/4		9.2	186.0
C		7.4	187.8
1/4		6.8	188.4
cb		4.8	190.4
E		1.3	193.9

275' No.

-10		5.5	189.7
E		9.0	186.2
cb		12.8	182.4
T.P.	4.04	186.35	125.8
1/4		6.2	180.2
C		6.8	179.6
1/4		8.0	178.4

186.9

29th St.

31

cb		7.9	178.5
W		9.2	177.2
+20		11.2	175.2

275' No.

-20		11.7	174.7
W		10.9	175.5
cb		10.3	176.1
1/4		9.6	176.8
C		9.1	177.3
1/4		8.5	177.9
cb		8.2	178.2
E		4.8	181.6
+15		1.4	185.0

290' No.

E		6.1	180.3
cb		6.6	179.8
1/4		6.6	179.8
C		8.3	178.1
1/4		9.2	177.2
cb		10.6	175.8
W		11.0	175.4
+20		11.8	174.6

294' No.

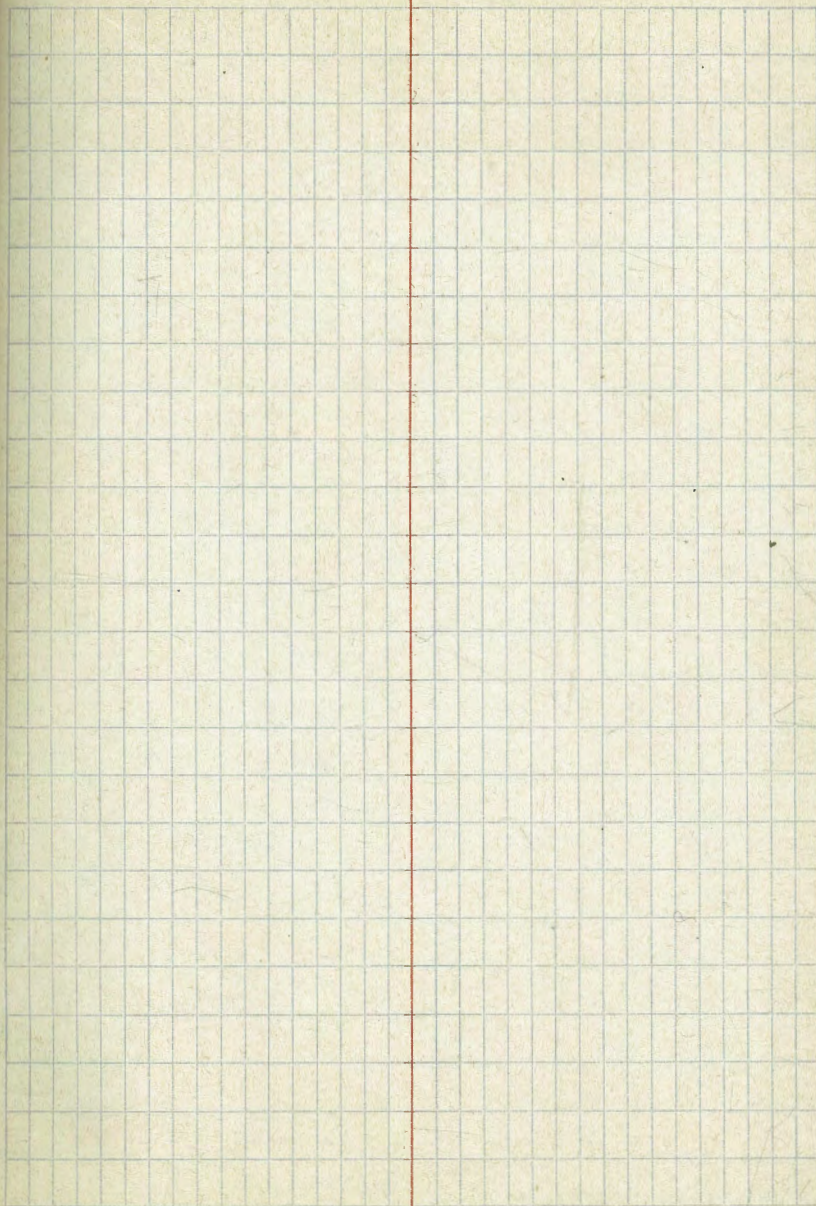
-20		9.3	177.1
-10		9.4	177.0

186.35

W			8.6	177.8
cb			8.5	177.9
1/4			7.4	179.0
C			6.2	180.2
1/4			5.0	181.4
cb			4.6	181.8
E			2.1	179.3
300' No. = 5L H 5T				
E			2.9	183.5
cb			0.2	186.2
1/4			1.3	185.1
C			3.1	183.3
1/2			3.7	182.7
cb			4.4	182.0
W			4.9	181.5
T.P.	6.35	191.73	0.97	185.38
chf			1.38	190.35 13' hub 2 1/2"

29TH ST.

32



Survey of Road from Lookyear's Gate E. Line Lot B. PL 1356
 to 3rd St Serranta

Sta	Ang	Bearing	Mag. Bearing
-----	-----	---------	--------------

22+88.7

65°

22+237

189°57'

535°15'W

E. Davis
 16 Hancock
 Herrick

1888.7

3+35 R43°55'

N65°10'W

139.50

1+96.50 123°11'

S81°0'W

1+86

86

1+50

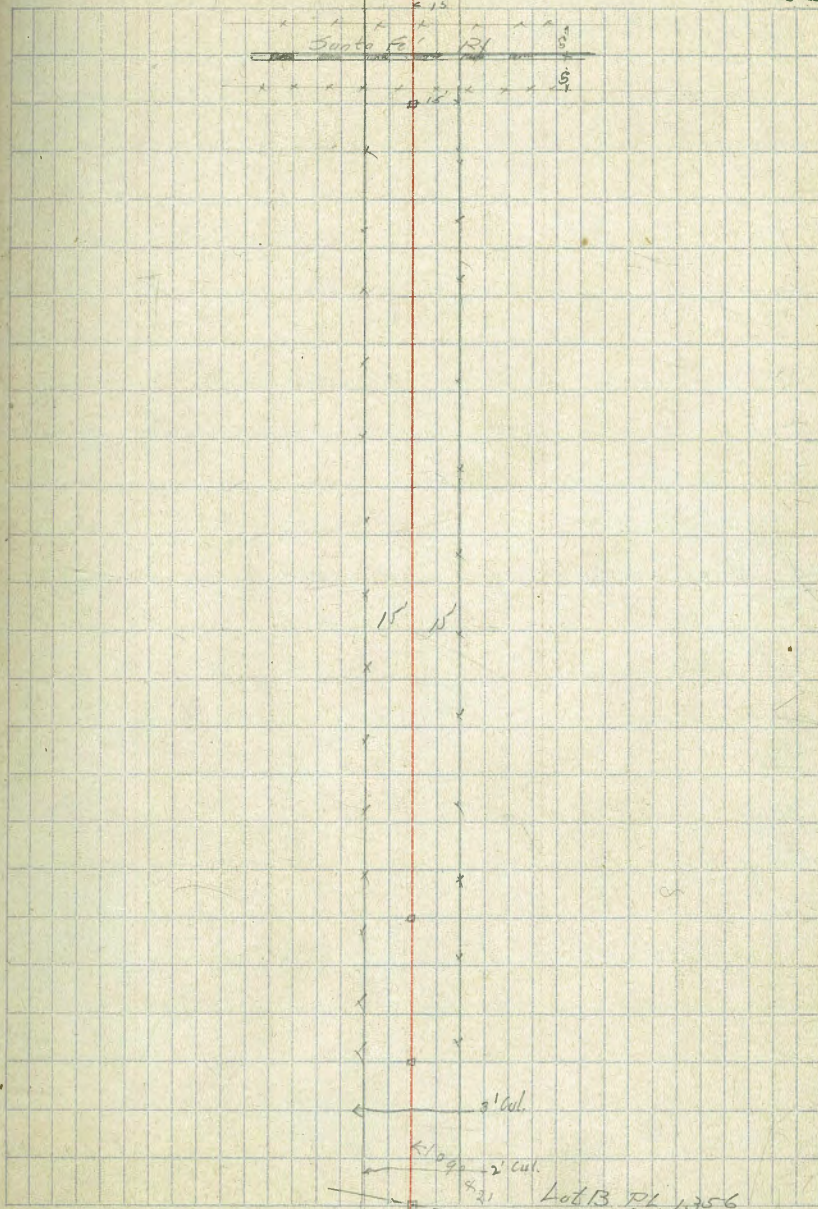
0+00

N75°50'W

Platted

Jan 8/25/16

33



Sta Ang Bearing Mag Bearing

4676
44
41+256

280.9

41+447

161.4

39+83.3 L 21° 01' N 52° 35' W

773.3

36 R 28° 07' N 31° 40' W

368

32+33

133

31

247

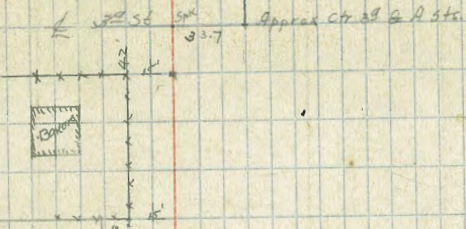
28+13 R 85° 0' N 59° 50' W

28

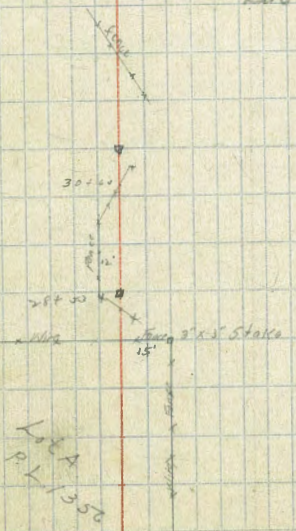
511.3

22+88.7

See F.B. 125/37



Set Aug 12th 2-19 P.M.
Inst. at 28+13 F. Sang St
Dit. 51° 11'
Cg. 68° 07'
Lat. 32° 54'



Sta	T	Mt	-	Elev
	6.73	32.22		25.49 City Datum 31.61 U.S.G.S.B.M.
T.P.	11.73	42.25	2.70	29.52
T.P.	6.75	47.48	1.52	40.93
44+17.6 - of A St			4.6	42.9
+50			4.0	43.5
44			3.9	43.6
+50			3.9	43.6
43			4.5	43.0
+50			4.8	42.7
42			5.3	42.2
+50			6.1	41.4
41			6.0	41.2
+50			6.1	41.4
40			6.1	41.4
T.P.	1.40	42.40	6.48	41.00
+50			1.2	41.2
+50			1.8	40.6
39			2.4	40.0
+50			3.3	39.1
38			3.7	38.7
+50			5.7	36.7
37			6.3	36.1
+50			6.6	35.8
36			7.0	35.4
T.P.	6.70	42.13	6.97	35.43

Platted 9/20 8/25/16.

35

Sta	T	Mt	-	Elev
at 5th St Santa Fe Crossing at Sorrento				
35+50		42.13	7.2	34.9
35			7.0	35.1
+50			6.5	35.6
34			6.0	36.1
+50			5.6	36.5
33			4.3	37.8
+50			5.3	36.8
32			3.6	38.5
+50			3.3	38.8
31			2.7	39.4
T.P.	7.89	47.33	2.89	39.44
+85			5.9	41.4
+50			7.3	40.0
+35			10.0	37.3
30			8.7	38.6
+50			7.6	39.7
29			6.8	40.5
+50			4.8	42.5
+13			4.3	43.0
28			5.7	41.6
+50			9.1	38.2
27			10.0	37.3
+50			11.1	37.2
26			9.5	37.8

Sta		Net		Elev.
25+50		47.33	88	38.5
+4v			89	38.4
+09			128	34.5
25			99	37.4
+50			91	38.2
T.P.	6.30	44.58	905	32.28
+07			70	37.6
24			82	36.4
+90			89	35.7
+80			72	37.3
+50			69	37.9
+10			82	36.3
23			61	38.5
+94			44	40.2
1217 - Q Santa Fe			43	40.3
Top rail			386	40.72
+82			48	39.8
+75			57	38.9
+50			49	39.7
+237			49	39.7
22			46	40.0
+50			39	40.7
21			30	41.6
+50			10	43.6
T.P.	12.59	57.01	0.16	44.42

Sta		Net		Elev.
20		57.91	120	45.0
+50			111	45.9
19			111	45.9
+50			97	47.3
18			49	52.1
+50			21	54.9
17			07	56.3
+50			13	55.7
16			25	54.5
+50			17	55.3
15			57	51.3
+50			21	49.9
14			41	52.9
T.P.	2.07	57.75	133	55.68
+50			19	55.9
13			52	52.6
+50			94	48.4
12			127	45.1
T.P.	8.64	53.80	12.59	45.16
+50			92	44.6
11			27	45.1
+50			84	45.4
10			23	45.5
+50			78	46.0
9			73	46.5

Sta	+	HT	-	EL. (ft)
8	+50	53.80	57	48.1
8			40	49.8
	+50		26	51.2
7			10	52.8
T.P.	708	50.61	027	53.53
	+50		61	54.5
6			50	55.6
	+50		44	56.2
5			49	55.7
	+50		54	55.2
4			52	55.4
	+50		56	55.0
	+35		56	55.0
3			48	55.8
	+50		20	57.6
2			24	58.2
T.P.	424	62.39	246	58.15
	+915		42	58.2
	+86		77	54.7
	+80		45	57.9
	+50		54	57.0
1			57	56.7
	+50		52	56.8
	+15		45	57.9
0400 on hole			602	56.37

11/2/16 Gregor's CROSS SECTION OF 80' wide rd walks
 1815 St from St. Hunter St
 to a pt 175' So. of Hunter

272A

IB15

39

BM	1.75	272.35	270.60	805 E 1815 Hunter
Curb & Sidewalk in on E. side from Hunter to 180 So. S.L. Hunter				
E ob.		1.78	270.57	on cement
1/2		2.1	270.0	
C		1.9	270.5	
1/4 + 2		1.4	271.0	
1/2		1.4	271.0	
ob.		0.5	271.9	
W		0.9	271.5	
25' So				
W		0.7	271.7	
ob.		1.6	270.8	
1/4		1.8	270.6	
+9		1.6	270.8	
C		2.1	270.0	
1/2		2.5	269.6	
ob.		2.30	270.05	on cement
50' So				
E ob.		2.23	269.52	
1/4		3.3	269.1	
C		2.7	269.7	
+6		1.9	270.5	
1/4		1.7	270.7	
ob.		1.7	270.7	
+9		1.9	270.5	

10		1.0	271.4	
W		1.0	271.4	
88' So				
W		1.7	270.7	
+3		1.5	270.6	
+4		2.5	269.9	
ob.		2.8	269.6	
1/4		2.1	270.0	
+10		2.9	269.5	
C		3.1	269.0	
+3		4.2	268.2	
1/4		4.4	268.0	
ob.		3.95	268.40	on cement
100' So				
E ob.		4.35	268.00	on cement
1/4		4.9	267.5	
C		4.4	268.0	
1/4		3.0	269.4	
ob.		2.7	269.7	
W		2.1	270.3	on lawn
125' So				
W		2.8	269.6	on lawn
ob.		3.5	268.9	
1/4		3.9	268.5	
+5		5.0	267.4	

272.35

C	5.6	266.8
1/4	6.1	266.3
cb	5.60	266.75 on cement

140' 50

Ecb	6.33	266.02 on cement
1/4	6.7	265.7
C	6.2	266.2
1/2	6.2	268.2
cb	3.6	268.8
W	3.2	269.2 on lawn

150' 50

W	4.0	268.9
cb	5.7	266.7
1/2	6.9	265.5
C	6.7	265.7
1/4	7.0	265.4
cb	6.45	265.40 on sidewalk

150' 50

E	7.3	265.1
cb	8.2	264.2
1/2	7.1	265.3
+10	6.9	266.1
C	7.2	265.2
+6	8.3	264.1
1/4	7.4	265.0
cb	6.1	266.3

272.4

IBIS

40

W	4.5	267.9
	175' 50	
W	6.9	265.5
cb	12.2	260.2
1/4	15.2	257.0
C	17.5	254.6
1/2	20.3	252.1
cb	22.3	250.1
E	22.3	250.1

7/2/20 Gregory

Sewer Construction
to Torrey Roadsee plans for
layingfrom DE 40' M. of M.L. Exchange to
562' West fence line 30' to connect
with present sewer

41

	0.28	166.13	165.85		
10' M. of M.L. Exchange to 100 DE					
0+62	3.56	162.57	156.0	+6.57	
1+12	5.36	160.97	154.80	+5.97	
1+62	6.26	169.87	153.83	+6.04	
2+12	7.50	157.63	152.87	+5.76	
2+62	8.64	157.19	151.90	+5.59	
3+00 = M.H.	9.70	156.43	150.93	+5.50	
3+12	10.44	155.69	150.2	+5.49	
3+62	10.70	155.43	150.0	+5.43	
4+12	11.60	154.53	149.0	+5.53	
4+62	36.2	152.19	148.0	+5.57	
5+12		6.07	152.97	147.0	+5.97
5+62		6.90	151.59	146.0	+5.89
+62 = Drop M.H. Δ		6.55	150.44	145.0	+5.64
5+92 = connect with present sewer			142.9	+7.74	

Gregory Levels on Arbor Drive
 to 11 grades from
 E.L. 4th St to 150' E
 of 5th St.

B.M.	6.28	29531	289.03	SE. T. 2. T. Arbor Drive
E.L. 4 th St				
So. Co.	6.28		289.03	on cement
No. -	6.30		289.01	- -
35' E of 4 th				
No.	5.54		289.77	on ground at steps to house which projects approx. 2 ft 1470 St.
50' E of 4 th				
No. 06	5.8		289.5	dirt curb
So. -	5.9		289.4	- -
100' E of 4 th				
So. -	5.7		289.6	
No. -	5.4		289.9	
150' E of 4 th				
No. -	5.2		290.1	on sidewalk
So. -	5.4		289.9	
200' E of 4 th = N.L. 5 th St.				
So. -	5.0		290.3	
No. -	4.8		290.5	
E.L. 5 th St				
No. -	5.6		289.7	
So. -	5.8		289.5	
50' E of 5 th St				
So. -	6.4		289.9	
No. -	6.5		289.8	

42

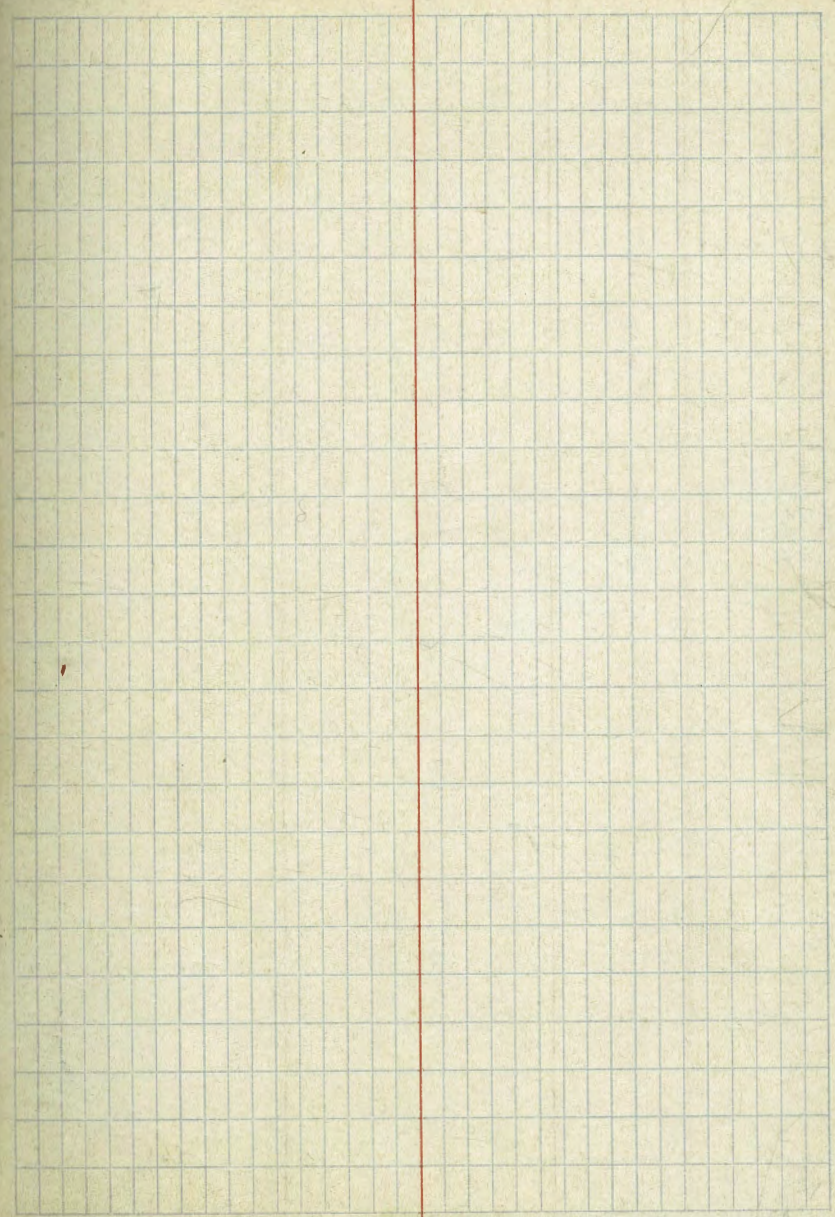
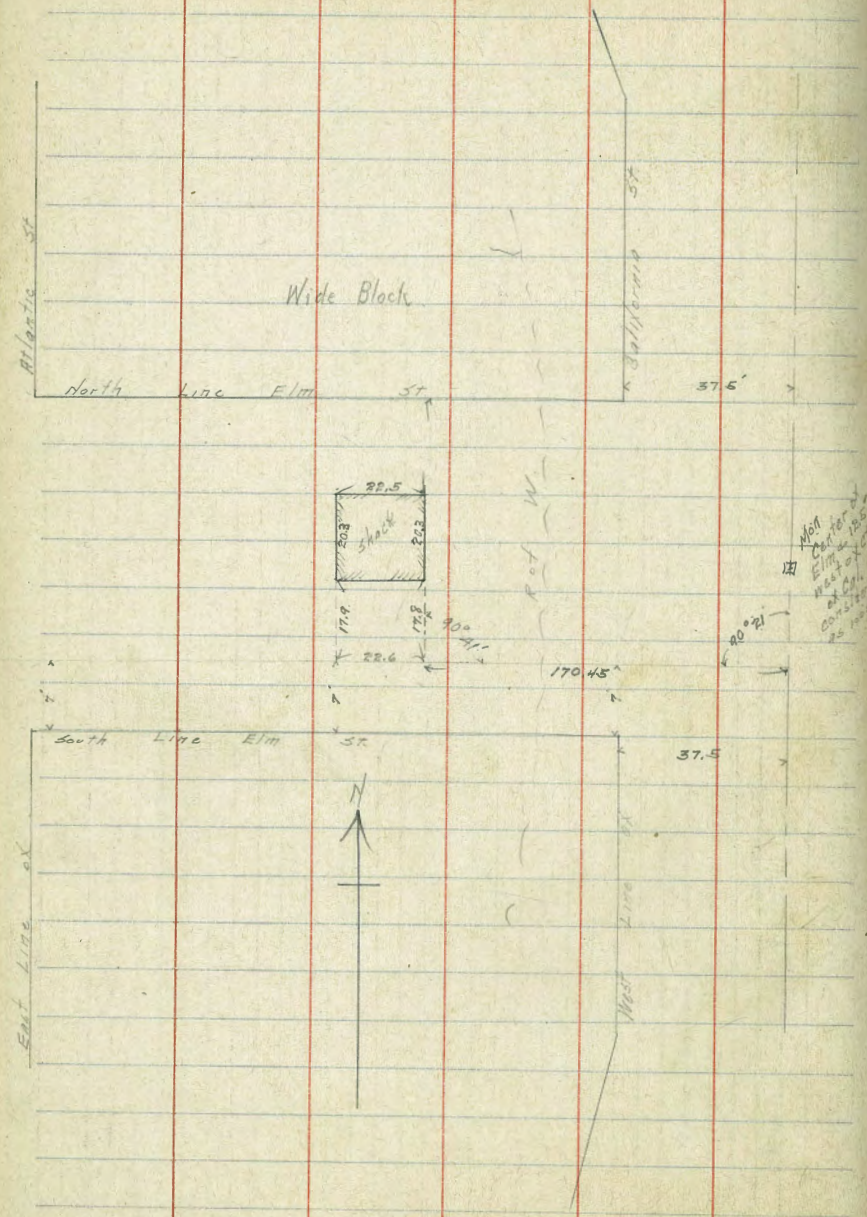
100' E of 5 th				
No curb	7.3		288.0	on dirt
-	7.54		289.77	on sidewalk stake
So. -	7.4		289.9	
150' E of 5 th				
So curb	8.0		287.3	on dirt
No. -	8.6		286.7	- -
145' E of 5 th				
No. -	8.33		286.98	on sidewalk stake

This page features horizontal blue ruling lines spaced evenly down the page. It is divided into five vertical columns by four vertical red lines. The columns are of varying widths, with the two inner columns being the narrowest and the two outer columns being the widest.

This page features a grid pattern of horizontal and vertical blue lines. A single vertical red line runs down the left side of the grid, creating a narrow margin. The grid covers the majority of the page area.

Wm. G. Moore
Miller

Survey to locate house in
Elm St.
bet. California & Atlantic Sts.



Cross-Section of 15th St. So. line M to No. line N. ^{N. G. Davis} ^{Harris} ²⁸ ^{O'Hara} ₁₇

427	12.73	P. 46 BR. Pigeon Nest N
So line M' St		
E	4.4	8.3
Ch	4.7	8.0
H	4.4	8.3
C	4.7	8.0
H	4.9	7.8
Ch	4.7	8.0
W	4.3	8.4
25' 50		
W	4.6	8.1
Ch	4.4	8.3
H	4.5	8.2
+8	4.5	8.2
C	3.6	9.1
H	5.3	7.4
Ch	{ 5.6 5.0	7.1 7.7
+2	4.1	8.3
+8	4.5	8.2
E	{ 7.1 8.2	5.6 4.5
5'E	8.2	4.5

50' 50" M'

5'E	8.8	3.9
E	{ 8.7 8.3	4.0 6.4
+7	5.1	7.6
Ch	5.5	7.2
H	5.1	7.6
C	4.3	8.4
+6	5.3	7.4
H	4.8	7.5
Ch	4.8	7.9
W	5.4	7.3
75' 50		
W	5.7	7.0
Ch	5.3	7.4
H	5.7	7.3
+9	5.7	7.0
C	4.9	7.8
H	5.6	7.1
Ch	5.6	7.1
+7	5.1	7.6
E	{ 6.7 5.7	6.0 3.9
+5	8.9	3.8

12.73

100' S. M.

S'E	59.0 50.0	3.7 6.5
E	59.0 56.0	3.7 6.7
+7	53	7.4
Ch	57	7.0
H	58	6.9
C	48	7.9
+6	57	7.0
H	54	7.3
Ch	51	7.6
W.	56	7.1

125' S. M.

W.	51	7.6
Ch	54	7.3
H	53	7.4
+7	57	7.0
C	46	8.1
+4	53	7.4
H	60	6.7
Ch	58	6.9
E	57	6.8

15th St

150' S. M.

47

E	59	6.8
Ch	61	6.6
H	60	6.7
C	55	7.2
H	56	7.1
Ch	55	7.2
W	53	7.4

175' S. M.

W	65	6.2
Ch	65	6.2
+7	60	6.7
H	61	6.6
C	61	6.6
H	63	6.4
Ch	63	6.4
E	61	6.6

200' S. M.

E	62	6.5
Ch	67	6.0
H	67	6.0
C	72	5.5
+10	71	5.6
H	65	6.2
Ch	67	6.0
W	70	5.7

12.73

225° 50 M

W	68	5.9
Ch	69	5.8
H	75	5.2
C	73	5.4
H	65	6.2
Ch	59	6.8
E	57	7.0

250° 50 M

E	67	6.0
Ch	66	6.1
H	62	6.5
C	62	6.5
H	65	6.2
Ch	73	5.4
W	72	5.5

275° 50 M

W	69	5.8
Ch	78	4.9
H	74	5.3
C	71	5.6
H	63	6.4
Ch	65	6.2
E	64	6.3

15th St.

300° 50 M = No line "N"

48

E	61	6.6
Ch	67	6.0
H	69	5.8
C	77	5.0
H	81	4.6
Ch	83	4.4
W	91	3.6

7/23

62901
Harris
Miller
Shaw

X section of
NAUTILUS ST
LA JOLLA BLVD TO Neptune PL

60' wide
10' cbs

	2.34	83.56	81.22	5th SE West Edge parking La Jolla Blvd
N			77.99	
C			5.57	on parking
S			5.83	77.7
			6.10	77.46
22'± W = 00? W.L. La Jolla Blvd.				
S		5.6	78.0	
cb		5.3	78.3	
+3		6.0	77.6	
1/4		5.9	77.7	
C		5.8	77.8	
1/4		5.8	77.8	
cb		6.1	77.5	
N		5.6	78.0	
350' W				
N		6.3	77.4	
cb		7.1	76.5	
1/4		6.8	76.8	
C		6.8	76.8	
1/4		6.8	76.8	
+8		6.9	76.7	
cb		6.3	77.3	
S		6.5	77.1	
70' W				
S		7.6	76.0	

Plotted by Tolman 7-6-33

cb	+9	74	76.2
cb		8.0	75.6
1/4		7.4	76.2
C		7.3	76.3
1/4		7.0	76.6
cb		6.8	76.8
N		6.7	76.9
100' W			
N		7.7	75.9
cb		7.8	75.8
1/4		7.9	75.7
C		8.1	75.5
1/4		8.3	75.3
cb		8.0	75.6
S		8.6	75.0
140' W			
S		9.5	74.1
cb		9.5	74.1
1/4		9.6	74.0
C		9.4	74.2
1/4		8.8	74.8
cb		8.8	74.8
N		9.1	74.5
170' W			
N		10.3	73.3

83.56

cb			10.4	73.2
1/4			10.3	73.3
c			10.1	73.0
1/4			10.5	73.1
cb			10.4	73.2
S			10.5	73.1
		200' W		
S			11.2	72.4
cb			11.2	72.4
1/4			11.4	72.2
c			10.9	72.7
1/4			11.1	72.5
cb			11.0	72.6
N			11.0	72.6
		250' W		
N			12.1	71.5
cb			12.1	71.5
1/4			12.2	71.4
c			12.1	71.5
1/4			12.5	71.1
cb			12.5	71.1
S			12.5	71.1
T.P	1.44	72.08	12.92	70.64
		300' W		
S			2.2	69.9
cb			2.1	70.0

Nautilus

50

1/4			2.5	69.0
c			2.0	70.1
1/4			2.1	70.0
cb			2.1	70.0
N			2.0	70.1
		350' W		
N			3.0	69.1
cb			3.2	68.9
1/4			3.3	68.8
c			3.3	68.8
1/4			3.6	68.5
cb			3.8	68.3
S			3.8	68.3
		400' W		
S			4.7	67.4
cb			4.5	67.6
1/4			4.1	68.0
c			4.0	68.1
1/4			4.1	68.0
cb			3.7	68.4
N			3.8	68.3
		420' W		
N			4.8	67.3
cb			4.9	67.7
1/4			5.0	67.1

7208

C	5.0	67.1
1/4	5.2	66.9
cb	5.3	66.8
S	5.3	66.8
460' W		
S	6.0	66.1
cb	5.9	66.2
1/4	5.9	66.2
C	5.7	66.4
1/4	5.7	66.4
cb	5.6	66.5
N	5.5	66.6
500' W		
N	6.4	65.7
cb	6.5	65.6
1/4	6.5	65.6
C	6.6	65.5
1/4	6.8	65.3
cb	6.5	65.6
S	6.7	65.4
540' W		
S	7.9	64.2
cb	7.9	64.2
1/4	7.8	64.3
C	7.5	64.6
1/4	7.4	64.7

Nautilus

51

cb	7.3	64.8
N	7.3	64.9
565' W		
N	7.8	64.3
cb	7.8	64.3
1/4	7.3	64.8
C	7.3	64.8
1/4	8.1	64.0
cb	8.2	63.9
S	8.4	63.7
600' W		
S	9.4	62.7
cb	9.3	62.8
1/4	9.4	62.7
C	9.0	63.1
1/4	8.8	63.3
cb	8.9	63.2
N	8.8	63.3
650' W		
N	9.9	62.2
cb	10.0	62.1
1/4	10.2	61.9
C	10.4	61.7
1/4	10.5	61.6
cb	10.5	61.6
S	10.3	61.8

81

72.08

700' W

S	12.1	60.0
cb	11.8	60.3
1/4	11.9	60.2
C	11.6	60.5
1/4	11.4	60.7
cb	11.1	61.0
N	11.0	61.1

735' W

N	12.4	59.7
cb	12.6	59.5
1/4	12.9	59.2
C	13.0	59.1
1/4	13.1	59.0
cb	13.1	59.0
S	13.1	59.6
T.P.	1.90	60.72
		13.26
		59.82

765' W

S	3.0	57.7
cb	3.0	57.7
1/4	3.0	57.7
C	2.9	57.8
1/4	2.7	58.0
cb	2.4	58.3
N	2.0	58.7

Nautilus

52

800' W

N	2.5	58.2
cb	2.8	57.9
1/4	3.2	57.5
C	3.3	57.4
1/4	3.6	57.1
cb	3.5	57.2
S	3.5	57.2

850' W

S	4.3	56.4
cb	4.1	56.6
1/4	3.8	56.9
C	3.4	57.3
1/4	3.5	57.2
cb	2.8	57.9
N	2.7	58.0

900' W

N	3.0	57.7
cb	3.0	57.7
1/4	3.7	57.0
C	3.8	56.9
1/4	4.3	56.4
cb	4.4	56.3
S	4.4	56.3

60.72

950' W

S	47	56.0
cb	46	56.1
1/4	43	56.4
C	44	56.2
1/4	44	56.3
cb	41	56.6
N	38	56.9

1000' W

N	50	55.7
cb	51	55.6
1/4	52	55.5
C	53	55.4
1/4	58	54.9
cb	59	54.8
S	58	54.9

1020' W

S	58	54.9
cb	59	54.8
1/4	58	54.9
C	56	55.1
1/4	56	56.1
cb	53	55.4
N	53	55.4

1050' W

N	64	54.3
---	----	------

Nauticos

53

cb	65	54.2
1/4	65	54.1
C	64	54.3
1/4	64	54.0
cb	68	53.9
S	69	53.8

1080' W

S	72	53.5
cb	72	53.5
1/4	73	53.4
C	72	53.5
1/4	73	53.4
cb	70	53.7
N	70	53.7

1100' W

N	87	52.0
cb	90	51.7
1/4	92	51.5
C	91	51.6
1/4	91	51.6
cb	92	51.5
S	91	51.6

chk. BM

60.72
11.05

67

Hub box
Ally's M.
of Nauticos

1133' W

S	12.9	47.8
---	------	------

cb			128	47.2
1/4			129	47.8
c			132	47.5
T.P.	0.26	43.03	12.95	47.77
1/4			1.2	46.8
cb			1.0	47.0
N			1.3	46.7
		1165' W		
N			5.4	42.6
cb			5.3	42.7
1/4			5.7	42.3
c			5.5	42.5
1/4			5.3	42.7
cb			5.1	42.9
S			4.8	43.2
		1200' W		
S			9.9	38.1
cb			9.8	38.2
1/4			9.9	38.1
c			10.2	37.8
1/4			10.1	37.9
cb			10.0	38.0
N			9.9	38.1
		1245' W = E.L. Neptune Place		
N			14.5	33.5
cb			14.2	33.8

1/4			14.1	33.9
c			14.0	34.0
1/4			14.0	34.0
cb			13.8	34.2
S			13.3	34.7
		25' W of E.L. Neptune		
S			16.1	31.9
cb			16.2	31.8
1/4			16.3	31.7
c			16.6	31.4
1/4			16.5	31.5
cb			16.6	31.4
N			16.4	31.6
		55' W of E.L. Neptune = Bluff		

11/26/23

Gregory

Section of Blaine Ave 25' 263
 from W.L. Centre St. 80' 57.
 To E.L. Cleveland Ave

	473	310.71	305.98	NE Univ 4 Blaine
				FL Centre
5	on cement	8.00	304.17 ✓	
+14	curb	8.20	302.5 ✓	
cb		8.1	302.6 ✓	
1/4		7.8	302.9 ✓	
c		7.8	302.9 ✓	
1/4		8.0	304.7 ✓	
cb		7.8	302.9 ✓	
N		7.1	303.6 ✓	
	3' W			
N		6.3	304.4 ✓	
+17		6.7	304.0 ✓	
cb		7.5	303.1 ✓	
1/4		7.4	303.3 ✓	
c		7.3	303.4 ✓	
1/4		7.8	304.9 ✓	
cb		8.0	304.7 ✓	
+5		7.4	303.3 ✓	
5		7.8	304.9 ✓	
	35' W			
5		7.0	303.7 ✓	
+1		7.5	303.1 ✓	
cb		7.4	303.1 ✓	
1/2		6.9	303.8 ✓	

55

				57
		305.95		
	BLAINE		AVE	
	330.49			
	16.7			
				Centre
			310.71	
c		6.7	304.0 ✓	
1/4		6.8	303.9 ✓	
cb		7.1	303.6 ✓	
+5		6.7	304.0 ✓	
N		6.3	304.4 ✓	
	60' W			
N		6.3	304.4 ✓	
+20		6.5	304.1 ✓	
cb		7.0	303.7 ✓	
1/4		6.5	304.1 ✓	
c		6.4	304.3 ✓	
1/4		6.4	304.3 ✓	
cb		7.0	303.7 ✓	
+1		6.2	304.5 ✓	

	310.71		
+23		6.9	303.8 ✓
S		6.0	304.7 ✓
	100' W		
S		5.8	304.9 ✓
+2		6.1	304.3 ✓
+24		6.1	304.6 ✓
cb		6.3	304.4 ✓
1/4		5.8	304.9 ✓
C		5.8	304.9 ✓
1/4		5.8	304.9 ✓
cb		6.1	304.6 ✓
N		6.1	304.6 ✓
	135' W		
N		5.6	305.1 ✓
cb		5.6	306.1 ✓
1/4		5.2	305.5 ✓
C		5.0	305.7 ✓
1/4		5.3	305.6 ✓
cb		5.5	305.2 ✓
+15		4.6	306.1 ✓
S		4.7	306.0 ✓
	175' W		
S		4.4	306.3 ✓
+24		4.5	306.2 ✓
cb		5.1	306.6 ✓
1/4		4.5	306.2 ✓

	310.21	BLAINE	58
C		44	306.3 ✓
1/4		44	306.0 ✓
cb		45	305.9 ✓
+3		5.1	305.6 ✓
+15		4.7	306.0 ✓
N		4.4	306.0 ✓
	200' W		
N		4.2	306.5 ✓
cb		4.6	306.1 ✓
1/4		4.3	306.2 ✓
C		4.2	306.5 ✓
1/4		4.4	306.3 ✓
cb		4.5	306.1 ✓
S		4.3	306.1 ✓
	250' W		
S		4.4	304.0 ✓
cb		4.4	306.3 ✓
1/4		4.4	306.3 ✓
C		4.1	306.6 ✓
1/4		4.1	306.6 ✓
cb		4.2	306.5 ✓
+10		3.6	307.1 ✓
+20		3.5	306.9 ✓
N		3.0	307.7 ✓

31071

295'W

N	40	306.7	✓
+17	42	306.5	✓
cb	50	305.7	✓
1/4	47	306.0	✓
C	48	305.9	✓
1/4	49	305.8	✓
cb	47	306.0	✓
+15	53	305.4	✓
S	51	305.6	✓

300 W = FL Normal St

S	55	305.4	✓
+14 = cement cb	577	304.94	✓
cb	53	305.4	✓
1/4	52	305.8	✓
C	52	305.5	✓
1/4	50	305.7	✓
cb	52	305.5	✓
+11 on cement cb	477	305.94	✓
N ✓ ✓ walk	43	306.4	✓

WL Normal St

N			
+14 on cement cb	477	305.94	✓
+15	52	305.8	✓
cb	59	304.8	✓
1/4	61	304.6	✓

BLAINE

57

31071

C	61	304.6	✓
1/4	61	304.6	✓
cb	61	304.6	✓
+11 on cement	573	304.98	✓
S	60	304.7	✓
		5'W	
S	62	304.5	✓
cb	66	304.1	✓
1/4	66	304.1	✓
C	65	304.1	✓
1/4	65	304.1	✓
cb	62	304.5	✓
N	50	305.7	✓
		40'W	
N	58	304.9	✓
cb	68	303.9	✓
1/4	68	303.9	✓
C	70	303.7	✓
1/4	72	303.5	✓
cb	71	303.6	✓
79	74	303.3	✓
+11	68	303.9	✓
S	66	304.1	✓
		60'W	
S	70	303.7	✓

31071

+14		7.1	303.6	✓
+15		7.6	303.1	✓
cb		7.1	303.6	✓
1/4		7.3	303.4	✓
c		7.1	303.6	✓
1/4		6.8	303.9	✓
cb		6.9	303.8	✓
+10		7.3	303.4	✓
+20		6.6	304.1	✓
N	= garage floor	5.41	305.30	✓
	80° W			
N		6.8	303.9	✓
+3		7.3	303.4	✓
cb		7.5	303.4	✓
1/4		7.5	303.4	✓
c		7.5	303.4	✓
1/4		7.6	303.1	✓
cb		7.4	303.3	✓
+10		7.7	303.0	✓
3		7.5	303.4	✓
	100° W			
3		8.2	304.5	✓
+15		8.2	304.5	✓
cb		7.7	303.0	✓
1/4		8.0	302.7	✓
c		8.0	302.7	✓

BLAINE 58

310.7

1/4		8.0	302.7	✓
cb		8.0	302.7	✓
+20		7.7	303.0	✓
N		7.0	303.7	✓
	185° W			
N		7.3	303.4	✓
+12		7.2	303.5	✓
+19		8.5	302.4	✓
cb		8.3	302.4	✓
1/4		8.2	302.5	✓
c		8.2	302.5	✓
1/4		8.5	302.4	✓
cb		8.7	302.0	✓
+10		8.8	301.9	✓
5		8.6	302.1	✓
	165° W			
5		8.8	301.9	✓
cb		8.8	301.9	✓
1/4		8.7	302.0	✓
c		8.7	302.0	✓
1/4		8.9	301.8	✓
cb		9.0	301.7	✓
+8		8.8	301.9	✓
+13		7.6	303.1	✓
N		7.4	303.3	✓

310.71

200' W

N	8.0	302.7	✓
+12	8.0	302.7	✓
+17	9.0	301.7	✓
cb	8.8	301.9	✓
1/4	8.8	301.9	✓
c	8.8	301.9	✓
1/2	9.0	301.7	✓
cb	9.0	301.7	✓
S	9.1	301.6	✓

250' W

S	97	301.0	✓
cb	92	301.5	✓
1/4	91	301.6	✓
c	89	301.8	✓
1/2	87	302.0	✓
cb	86	302.1	✓
+6	9.0	301.7	✓
+10	8.6	302.1	✓
N	8.6	302.1	✓

305.95' W = EL Cleveland on N

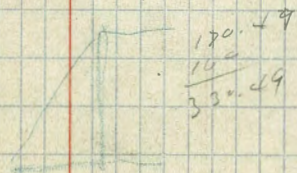
N	9.65	301.6	✓
+13	9.6	301.1	✓
+20	10.5	300.4	✓
cb	10.1	300.6	✓
1/4	9.6	301.1	✓

BLAINE

59

310.71

c	9.6	301.1	✓
1/2	9.9	300.8	✓
cb	9.6	301.1	✓
S	9.6	301.1	✓
305.95' W on N 330.49 - S = EL Cleveland Ave			
S	10.2	300.5	✓
+15	10.7	300.0	✓
cb	10.6	300.1	✓
1/4	10.5	300.4	✓
c	10.2	300.5	✓
1/2	10.1	300.6	✓
cb	10.3	300.2	✓
+10	10.6	300.1	✓
+16	9.9	300.8	✓
N	9.7	301.0	✓
chf curb NE Cleveland	9.23	300.88	✓



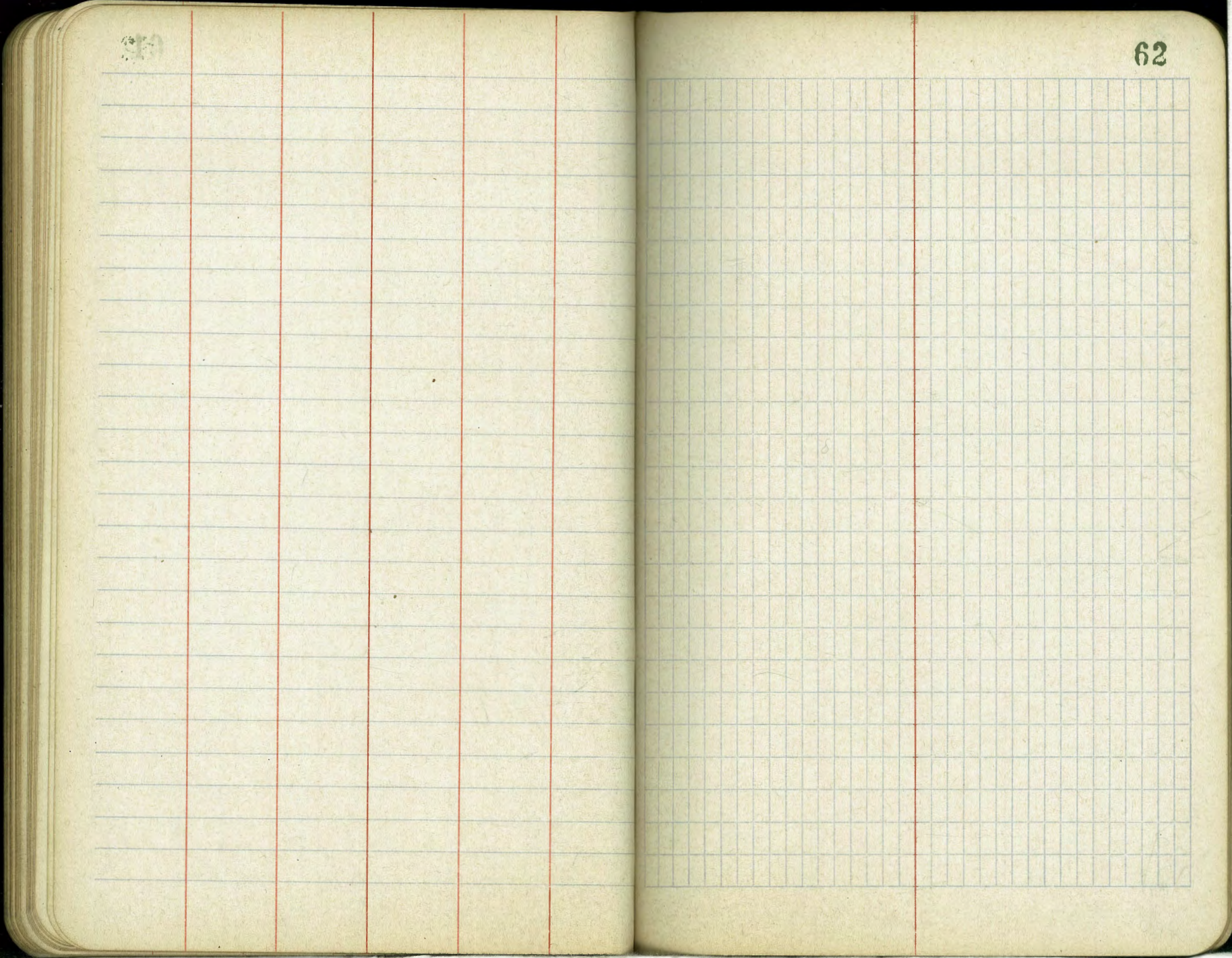
A ledger page with horizontal blue lines and four vertical red lines creating five columns. The columns are of varying widths, with the two inner columns being the narrowest. The page is otherwise blank.

A ledger page with horizontal blue lines, a vertical red line, and a grid of small squares. The grid covers most of the page, with a margin at the top and bottom. The page is otherwise blank.

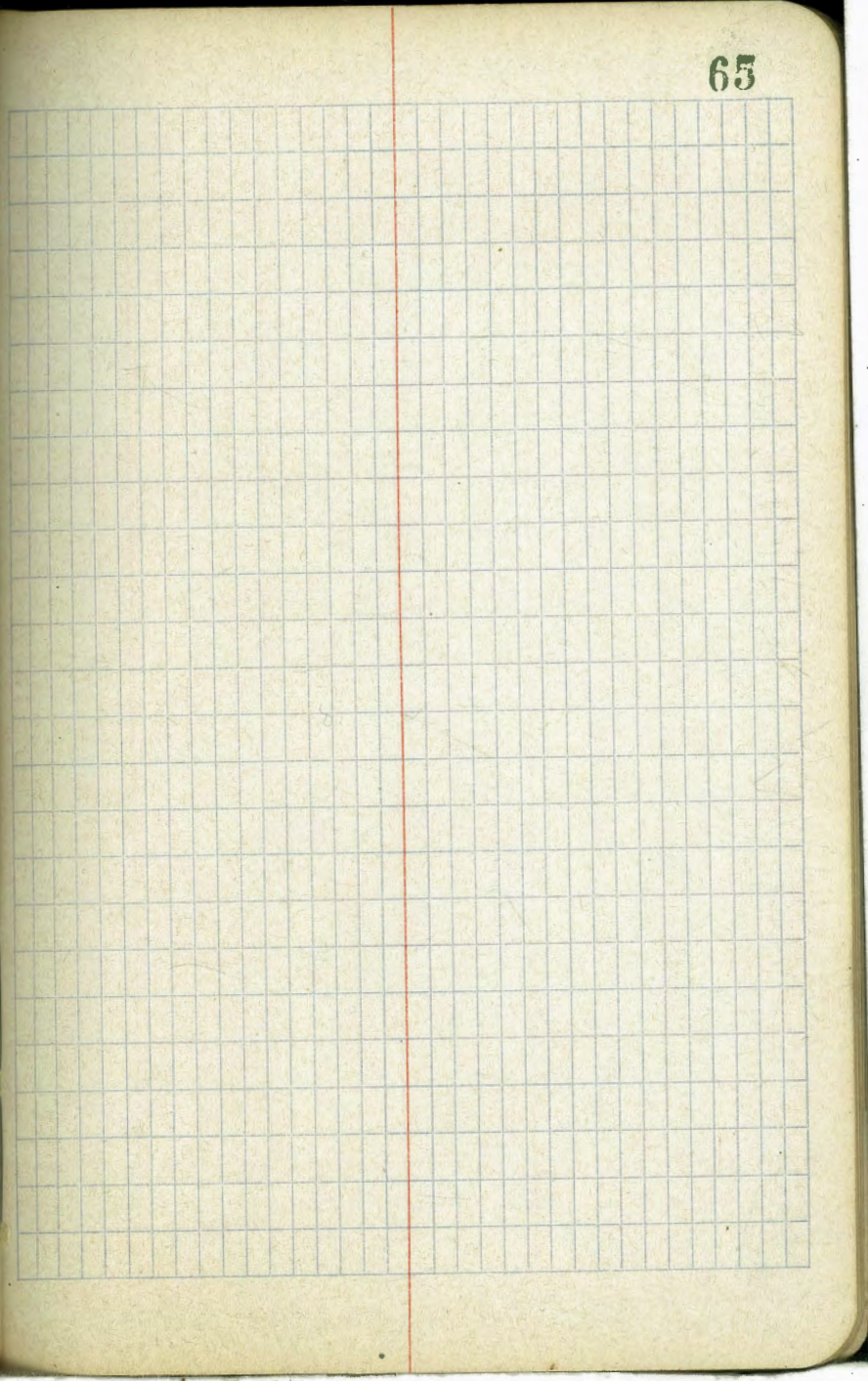
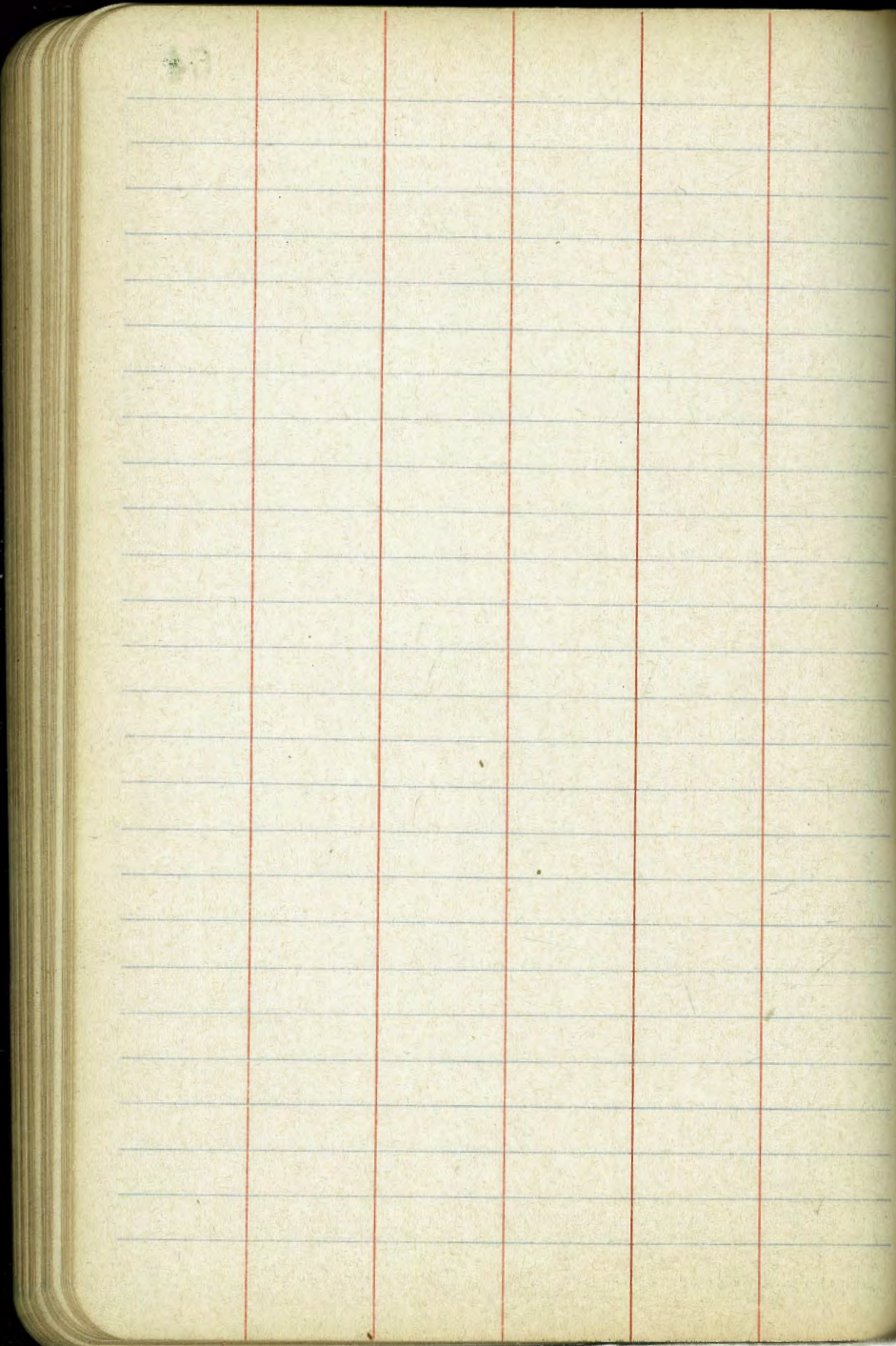
38

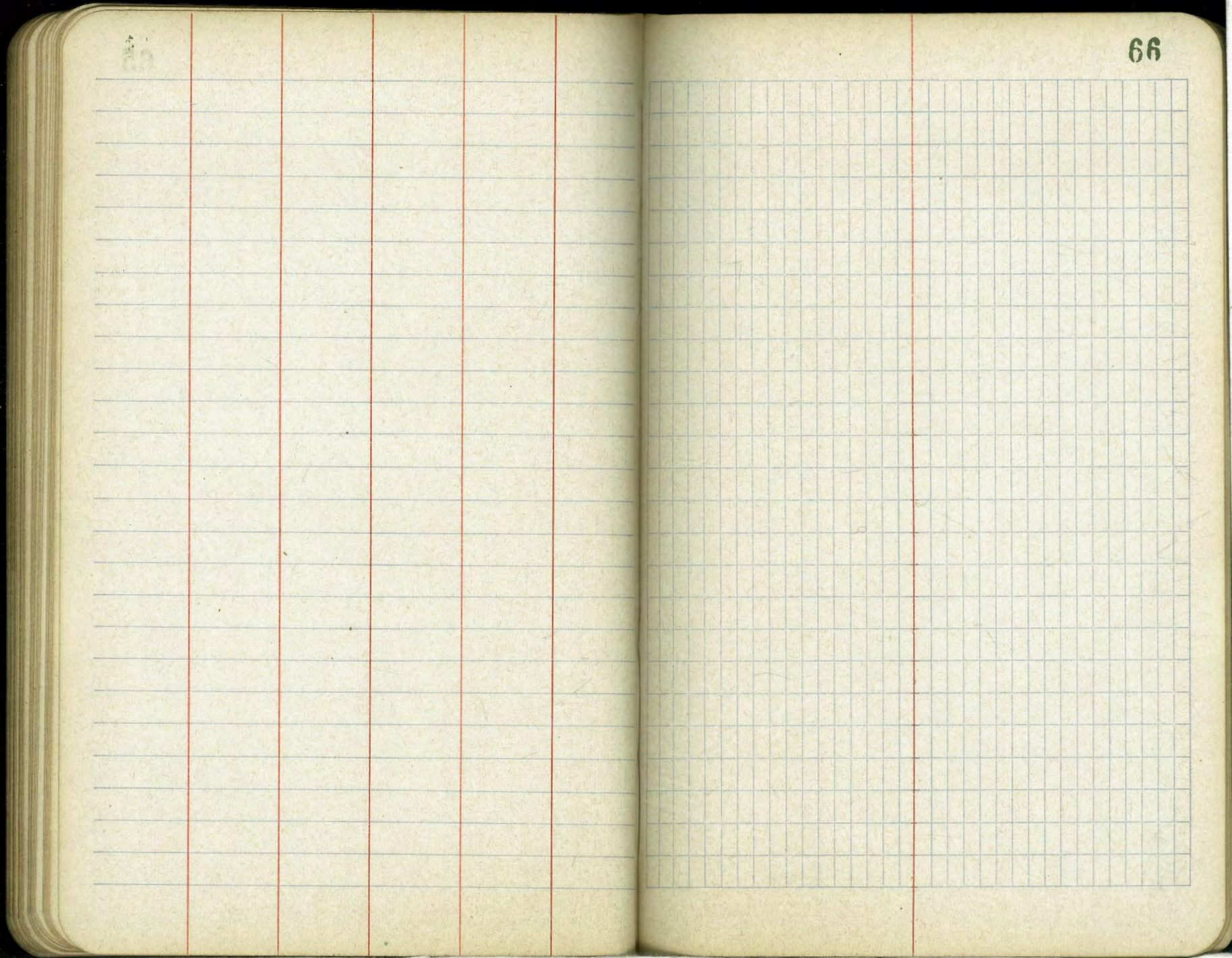
61

A grid of 20 columns and 20 rows on page 61. The grid is formed by light blue lines. A vertical red margin line is positioned on the left side of the grid, approximately one-fifth of the way across the page. The grid is otherwise empty.



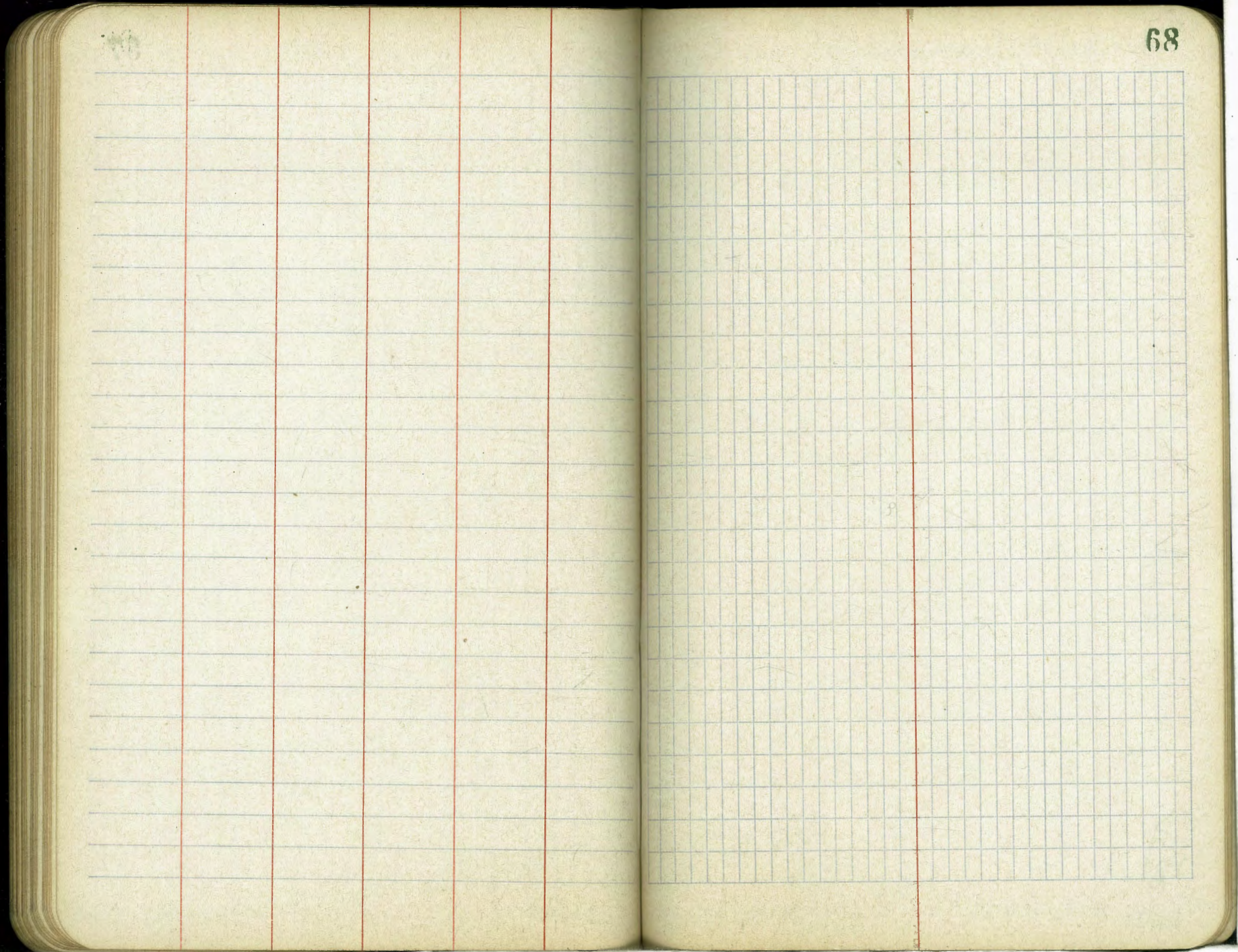
A grid of 20 columns and 20 rows on page 63 of a notebook. The grid is formed by light blue lines. A vertical red margin line is positioned on the left side of the grid, approximately one-fifth of the way across the page. The grid is empty.





A table with 5 columns and 20 rows. The columns are defined by vertical red lines. The first column is the widest, followed by three columns of equal width, and a final narrow column on the right. The rows are defined by horizontal blue lines.

A table with 1 column and 20 rows. The column is defined by a vertical red line on the left. The rows are defined by horizontal blue lines. The entire table area is filled with a fine grid of light blue lines.



A ledger page with horizontal blue lines and four vertical red lines creating five columns. The page is blank.

A ledger page with horizontal blue lines, a vertical red line, and a grid of small squares. The page is blank.

This page features horizontal blue ruling lines spaced evenly down the page. It is divided into four vertical columns by three red lines. The columns are of varying widths, with the two inner columns being the narrowest and the two outer columns being wider. The page is otherwise blank.

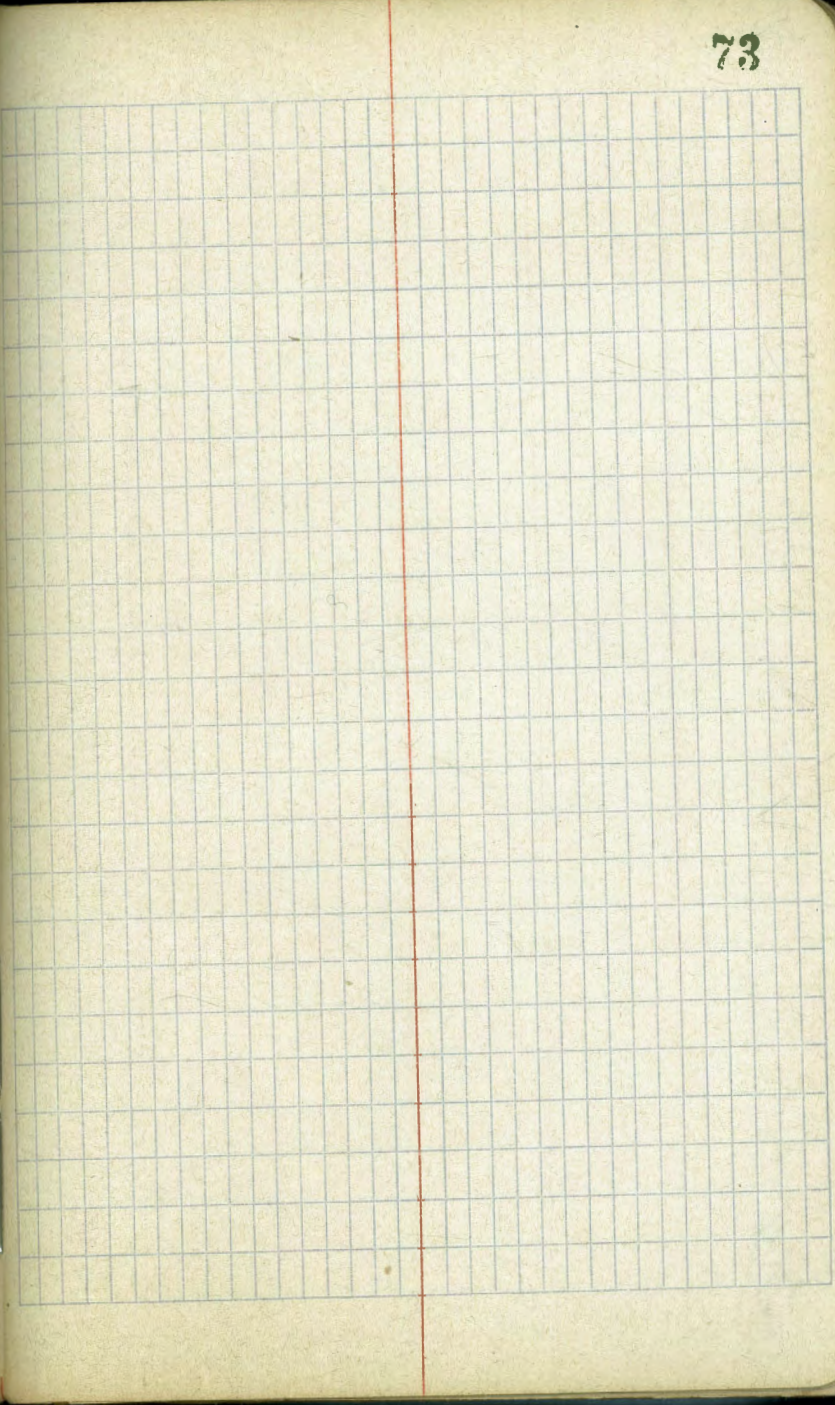
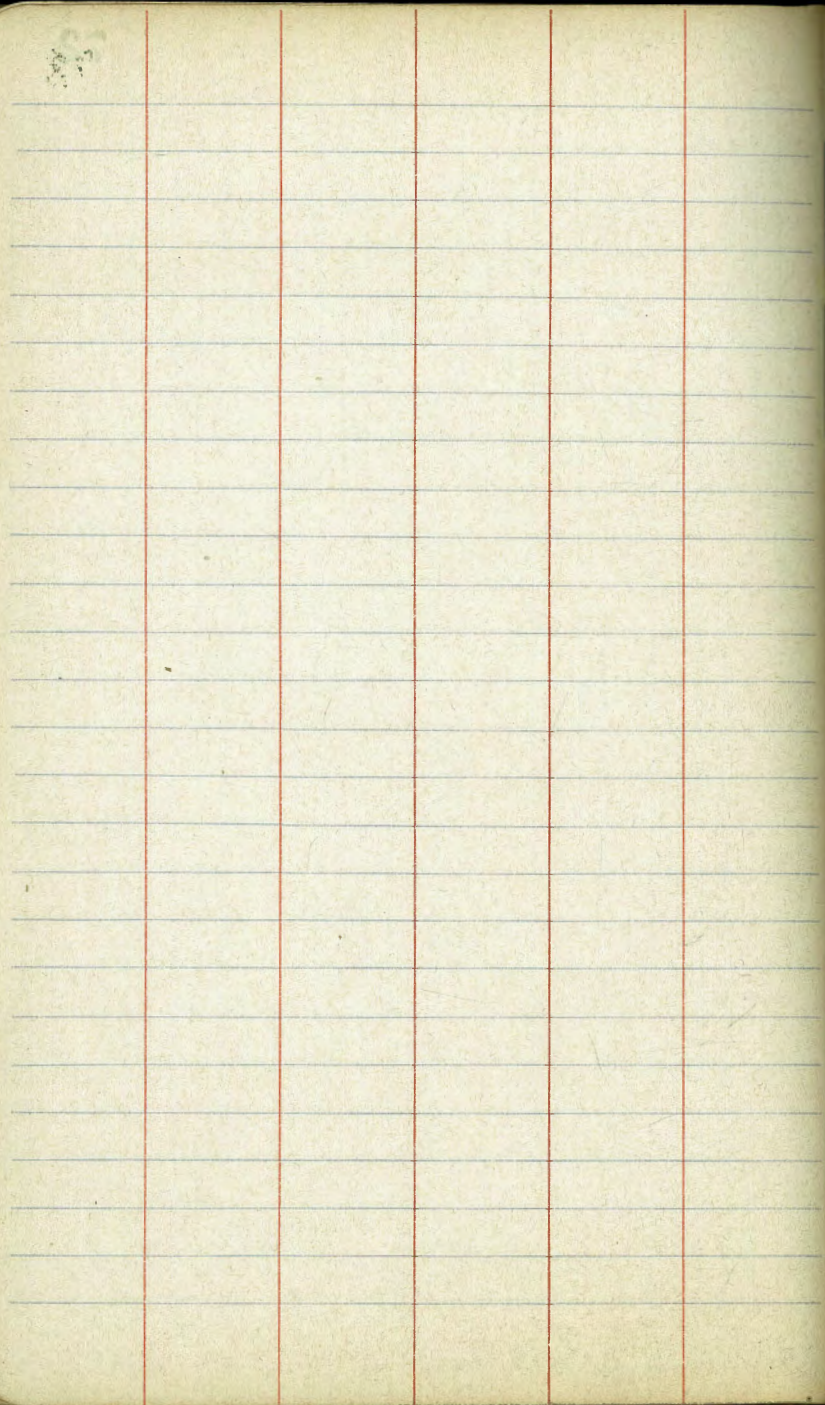
This page features a grid of small squares formed by horizontal and vertical blue lines. A single vertical red line runs down the page, creating a narrow left margin. The grid covers the majority of the page area, leaving a small margin at the bottom.

A ledger page with 5 vertical red lines and horizontal blue lines. The page is divided into 6 columns of varying widths. The columns are approximately 15%, 15%, 20%, 20%, 20%, and 10% of the page width from left to right. The page is otherwise blank.

A ledger page with a grid of blue lines and a vertical red line. The page is divided into 11 columns and 20 rows. The columns are approximately 10% wide each. The red line is positioned between the 5th and 6th columns from the left. The page is otherwise blank.

A ledger page with horizontal blue lines and four vertical red lines creating five columns. The columns are of varying widths, with the two inner columns being the narrowest. The page is otherwise blank.

A ledger page with horizontal blue lines, a vertical red line, and a grid of small squares. The grid covers most of the page, with a narrow margin on the left side. The page is otherwise blank.



A blank ledger page with horizontal blue lines and four vertical red margin lines. The page is otherwise empty.

A blank grid page with a vertical red margin line and a grid of blue lines. The page is otherwise empty.

This page is a blank ledger with horizontal blue lines and four vertical red lines. The red lines are positioned at approximately 10%, 20%, 30%, and 40% of the page width from the left edge, creating five columns of varying widths. The page is otherwise empty of any text or markings.

This page is a blank ledger with a grid of blue lines and one vertical red line. The grid consists of 20 columns and 25 rows. The red line is positioned at approximately 10% of the page width from the left edge, creating a narrow column on the left and a larger grid area on the right. The page is otherwise empty of any text or markings.

South North
 23 200 26 long
 5 21 7 high
 11.5 surface 8 7 surface 15 2 surface

most END
 1960
 43.87
 26.01

21 + 88
 Avg = 3418
 18.70
 3.35
 2 2405 - d

21 + 88
 2 + 82
 19.06
 1906
 335
 2 241

21 + 70.7
 2 + 82
 18 + 88.7
 3 + 35
 2 2520.7
 65
 2 147
 235
 2 + 91.57
 8.95

23
 25
 27
 50
 60
 74
 85
 100
 115
 123
 136
 150
 157
 160
 170
 195
 200
 220
 240
 245
 250
 260
 274
 283
 290

138.5
 796.5
 335
 19.57

0.193
 560
 300
 2800
 2700

0.1933
 62
 3866
 11598
 119846

0.1933
 35
 15464
 5799
 73454
 9665

262
 520
 524
 600

RETURN TO CITY ENGINEER'S OFFICE
 CITY HALL, 210, CAL.

8.46 NE 159M.

89 25 030
 89 57 290
 sec. 60.1

DISTANCES FROM CENTER OF ROADWAY FOR CROSS-SECTIONING.
 ROADWAY 14 FEET WIDE. SIDE SLOPES 1 1/2 TO 1.
 FOR SINGLE TRACK EMBANKMENT.

	0	.1	.2	.3	.4	.5	.6	.7	.8	.9	
0	7.0	7.2	7.3	7.5	7.6	7.8	7.9	8.1	8.2	8.4	0
1	8.5	8.7	8.8	9.0	9.1	9.3	9.4	9.6	9.7	9.9	1
2	10.0	10.2	10.3	10.5	10.6	10.8	10.9	11.1	11.2	11.4	2
3	11.5	11.7	11.8	12.0	12.1	12.3	12.4	12.6	12.7	12.9	3
4	13.0	13.2	13.3	13.5	13.6	13.8	13.9	14.1	14.2	14.4	4
5	14.5	14.7	14.8	15.0	15.1	15.3	15.4	15.6	15.7	15.9	5
6	16.0	16.2	16.3	16.5	16.6	16.8	16.9	17.1	17.2	17.4	6
7	17.5	17.7	17.8	18.0	18.1	18.3	18.4	18.6	18.7	18.9	7
8	19.0	19.2	19.3	19.5	19.6	19.8	19.9	20.1	20.2	20.4	8
9	20.5	20.7	20.8	21.0	21.1	21.3	21.4	21.6	21.7	21.9	9
10	22.0	22.2	22.3	22.5	22.6	22.8	22.9	23.1	23.2	23.4	10
11	23.5	23.7	23.8	24.0	24.1	24.3	24.4	24.6	24.7	24.9	11
12	25.0	25.2	25.3	25.5	25.6	25.8	25.9	26.1	26.2	26.4	12
13	26.5	26.7	26.8	27.0	27.1	27.3	27.4	27.6	27.7	27.9	13
14	28.0	28.2	28.3	28.5	28.6	28.8	28.9	29.1	29.2	29.4	14
15	29.5	29.7	29.8	30.0	30.1	30.3	30.4	30.6	30.7	30.9	15
16	31.0	31.2	31.3	31.5	31.6	31.8	31.9	32.1	32.2	32.4	16
17	32.5	32.7	32.8	33.0	33.1	33.3	33.4	33.6	33.7	33.9	17
18	34.0	34.2	34.3	34.5	34.6	34.8	34.9	35.1	35.2	35.4	18
19	35.5	35.7	35.8	36.0	36.1	36.3	36.4	36.6	36.7	36.9	19
20	37.0	37.2	37.3	37.5	37.6	37.8	37.9	38.1	38.2	38.4	20
21	38.5	38.7	38.8	39.0	39.1	39.3	39.4	39.6	39.7	39.9	21
22	40.0	40.2	40.3	40.5	40.6	40.8	40.9	41.1	41.2	41.4	22
23	41.5	41.7	41.8	42.0	42.1	42.3	42.4	42.6	42.7	42.9	23
24	43.0	43.2	43.3	43.5	43.6	43.8	43.9	44.1	44.2	44.4	24
25	44.5	44.7	44.8	45.0	45.1	45.3	45.4	45.6	45.7	45.9	25
26	46.0	46.2	46.3	46.5	46.6	46.8	46.9	47.1	47.2	47.4	26
27	47.5	47.7	47.8	48.0	48.1	48.3	48.4	48.6	48.7	48.9	27
28	49.0	49.2	49.3	49.5	49.6	49.8	49.9	50.1	50.2	50.4	28
29	50.5	50.7	50.8	51.0	51.1	51.3	51.4	51.6	51.7	51.9	29
30	52.0	52.2	52.3	52.5	52.6	52.8	52.9	53.1	53.2	53.4	30
31	53.5	53.7	53.8	54.0	54.1	54.3	54.4	54.6	54.7	54.9	31
32	55.0	55.2	55.3	55.5	55.6	55.8	55.9	56.1	56.2	56.4	32
33	56.5	56.7	56.8	57.0	57.1	57.3	57.4	57.6	57.7	57.9	33
34	58.0	58.2	58.3	58.5	58.6	58.8	58.9	59.1	59.2	59.4	34
35	59.5	59.7	59.8	60.0	60.1	60.3	60.4	60.6	60.7	60.9	35
36	61.0	61.2	61.3	61.5	61.6	61.8	61.9	62.1	62.2	62.4	36

Calculated by Julien A. Hall, M. Am. Soc. C. E.

MADE IN GERMANY.