

991

LEVEL BOOK

373

F.B. 991

# KEUFFEL & ESSER CO.

DRAWING MATERIALS

AND

SURVEYING INSTRUMENTS.

NEW YORK.

CHICAGO.

SAN FRANCISCO.

ST. LOUIS.

## TABLES FOR EXCAVATIONS AND EMBANKMENTS.

DISTANCES FROM CENTER OF ROADWAY FOR CROSS-SECTIONING.  
ROADWAY 18 FEET WIDE. SIDE SLOPES 1 TO 1.  
FOR SINGLE TRACK EXCAVATION.

"Copyright, 1895, by Keuffel & Esser Co."

	0	.1	.2	.3	.4	.5	.6	.7	.8	.9	
0	9.0	9.1	9.2	9.3	9.4	9.5	9.6	9.7	9.8	9.9	0
1	10.0	10.1	10.2	10.3	10.4	10.5	10.6	10.7	10.8	10.9	1
2	11.0	11.1	11.2	11.3	11.4	11.5	11.6	11.7	11.8	11.9	2
3	12.0	12.1	12.2	12.3	12.4	12.5	12.6	12.7	12.8	12.9	3
4	13.0	13.1	13.2	13.3	13.4	13.5	13.6	13.7	13.8	13.9	4
5	14.0	14.1	14.2	14.3	14.4	14.5	14.6	14.7	14.8	14.9	5
6	15.0	15.1	15.2	15.3	15.4	15.5	15.6	15.7	15.8	15.9	6
7	16.0	16.1	16.2	16.3	16.4	16.5	16.6	16.7	16.8	16.9	7
8	17.0	17.1	17.2	17.3	17.4	17.5	17.6	17.7	17.8	17.9	8
9	18.0	18.1	18.2	18.3	18.4	18.5	18.6	18.7	18.8	18.9	9
10	19.0	19.1	19.2	19.3	19.4	19.5	19.6	19.7	19.8	19.9	10
11	20.0	20.1	20.2	20.3	20.4	20.5	20.6	20.7	20.8	20.9	11
12	21.0	21.1	21.2	21.3	21.4	21.5	21.6	21.7	21.8	21.9	12
13	22.0	22.1	22.2	22.3	22.4	22.5	22.6	22.7	22.8	22.9	13
14	23.0	23.1	23.2	23.3	23.4	23.5	23.6	23.7	23.8	23.9	14
15	24.0	24.1	24.2	24.3	24.4	24.5	24.6	24.7	24.8	24.9	15
16	25.0	25.1	25.2	25.3	25.4	25.5	25.6	25.7	25.8	25.9	16
17	26.0	26.1	26.2	26.3	26.4	26.5	26.6	26.7	26.8	26.9	17
18	27.0	27.1	27.2	27.3	27.4	27.5	27.6	27.7	27.8	27.9	18
19	28.0	28.1	28.2	28.3	28.4	28.5	28.6	28.7	28.8	28.9	19
20	29.0	29.1	29.2	29.3	29.4	29.5	29.6	29.7	29.8	29.9	20
21	30.0	30.1	30.2	30.3	30.4	30.5	30.6	30.7	30.8	30.9	21
22	31.0	31.1	31.2	31.3	31.4	31.5	31.6	31.7	31.8	31.9	22
23	32.0	32.1	32.2	32.3	32.4	32.5	32.6	32.7	32.8	32.9	23
24	33.0	33.1	33.2	33.3	33.4	33.5	33.6	33.7	33.8	33.9	24
25	34.0	34.1	34.2	34.3	34.4	34.5	34.6	34.7	34.8	34.9	25
26	35.0	35.1	35.2	35.3	35.4	35.5	35.6	35.7	35.8	35.9	26
27	36.0	36.1	36.2	36.3	36.4	36.5	36.6	36.7	36.8	36.9	27
28	37.0	37.1	37.2	37.3	37.4	37.5	37.6	37.7	37.8	37.9	28
29	38.0	38.1	38.2	38.3	38.4	38.5	38.6	38.7	38.8	38.9	29
30	39.0	39.1	39.2	39.3	39.4	39.5	39.6	39.7	39.8	39.9	30
31	40.0	40.1	40.2	40.3	40.4	40.5	40.6	40.7	40.8	40.9	31
32	41.0	41.1	41.2	41.3	41.4	41.5	41.6	41.7	41.8	41.9	32
33	42.0	42.1	42.2	42.3	42.4	42.5	42.6	42.7	42.8	42.9	33
34	43.0	43.1	43.2	43.3	43.4	43.5	43.6	43.7	43.8	43.9	34
35	44.0	44.1	44.2	44.3	44.4	44.5	44.6	44.7	44.8	44.9	35
36	45.0	45.1	45.2	45.3	45.4	45.5	45.6	45.7	45.8	45.9	36

Calculated by Julien A. Hall, M. Am. Soc. C. E.

12 1/2 ft water - 2 and 1/2  
10 " " " 5

- 4.12 = July line = end of strata.

1

Owens Street Cross-Section  
 50' wide - 12<sup>5</sup> Walks - 6<sup>25</sup> / 4's.  
 W.L. San Fernando to Water line

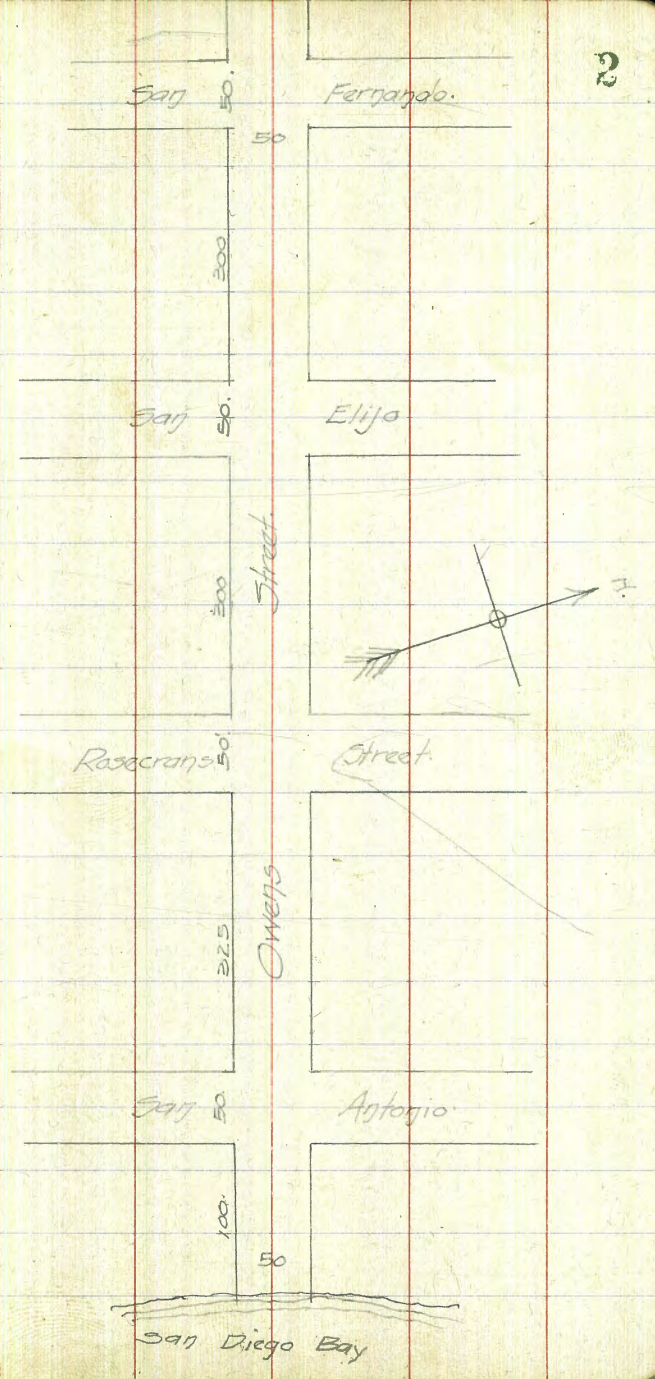
B.M. Plug	J.E. Rosecrans & Owens.	48.07	
T.P.	12.79	60.86	0.29 60.57
T.P.	12.94	73.51	0.65 72.86
T.P.	12.87	85.73	0.29 85.44
T.P.	12.15	98.19	0.70 97.49
	12.87	110.36	
B.M. Man	& both ways Owens & San Elijo	7.13	103.23
T.P.		8.70	110.16
T.P.	13.10	123.76	0.23 123.03
	10.04	133.07	

B.M. to Owens & San Fernando Hub. 2.10 130.97

W.L. San Fernando 50' W. 10' WKS - 7<sup>1</sup> / 4's.

3L		1.8	131.3
C		1.7	131.4
1/4		1.6	131.5
E		1.5	131.6
1/4		1.2	131.9
C		0.8	132.3
NL		0.3	132.8

3/16.  
 West  
 of  
 Moore



Owens.

133.07

W. Curb.

NL.	0.6	132.5
C	1.1	132.0
1/4	1.4	131.7
£	1.6	131.5
1/4	2.0	131.1
C	2.3	130.8
SL.	2.3	130.8

W. 1/4.

SL.	2.7	130.4
C	2.3	130.8
1/4	2.1	131.0
£	1.8	131.3
1/4	1.5	131.6
C	1.4	131.7
NL.	1.1	132.0

£ San Fernando.

NL	1.5	131.6
C	1.7	131.4
1/4	1.8	131.3

Owens

133.07

3

£	2.0	131.1
1/4	2.7	130.9
C	2.5	130.6
SL.	2.7	130.4

E. 1/4.

SL.	3.4	129.7
C	3.0	130.1
1/4	2.8	130.3
£	2.6	130.5
1/4	2.4	130.7
C	2.9	130.4
NL.	2.0	131.1

+6.5 E.

NL.	2.6	130.5
C	3.3	129.8
1/4	3.0	130.1
£	3.1	130.0
1/4	3.2	129.9
C	3.5	129.6
SL.	3.7	129.4

Owens.

133.07

E Curb.

SL.	31	130.0
C	38	129.3
1/4	33	129.8
£	34	129.7
1/4	33	129.8
C	34	129.7
NL.	21	131.0

E.L. San Fernando.

NL.	20	131.1
C	38	129.3
1/4	53	127.8
+3	61	127.0
+4	44	128.7
£	44	128.7
1/4	41	129.0
C	46	128.5
+4	32	129.9
SL.	30	130.1

Owens

133.07

25' East.

-10 for slope	144	118.7
SL.	122	120.9
C	8.0	125.1
1/4	7.8	125.3
£	7.7	125.4
1/4	9.0	124.1
+3	9.4	123.7
C	5.3	127.8
+5	3.0	130.1
NL.	2.4	130.7

50' East.

NL.	4.0	129.1
C	11.2	121.9
+4	13.0	120.1
1/4	15.9	117.2
+4	16.3	116.8
£	13.1	120.0
1/4	13.0	120.1
C	14.8	118.3
SL.	16.0	117.1
+15	16.1	117.0

4

Owens

133.07

75' East

-15	18.7	114.4	
SL	18.8	114.3	
C	18.6	114.5	
1/4	17.4	115.7	
£	17.6	115.5	
+4	17.5	115.6	
1/4	20.5	112.6	
+2	17.2	115.9	
C	16.1	117.0	
NL	8.8	124.3	
T.P.	12.46	120.61	

0.86

121.47

100' East

NL	4.5	117.0	
+7	8.3	113.2	
C	8.9	112.6	
1/4	9.0	112.5	
+2	10.2	111.3	
£	9.1	112.4	
1/4	9.2	112.3	

Owens

121.47

5

C. 9.4 112.1

SL. 9.6 111.9

+15 for slope 9.8 111.7

125' East

-15 for slope 12.9 108.6

SL. 12.2 109.3

C 11.2 110.3

1/4 11.0 110.5

£ 11.3 110.2

+3 11.8 109.7

1/4 11.0 110.5

C 10.6 110.9

NL 10.0 111.5

+10 for slope 8.8 112.7

150' East

-10 for slope 9.3 112.2

NL. 10.9 110.6

C 12.4 109.1

1/4 12.0 109.5

+2 12.0 109.5

+A 12.8 108.7

£ 12.3 109.2

Oweys.

121.47

1/4	122	109.3
C	124	109.1
SL	126	108.9
+15	14.7	106.8

175' East.

-15 for slope	16.4	105.1
-3 " "	14.2	107.3
SL	140	107.5
C	141	107.4
1/4	13.8	107.7
E	13.3	108.2
1/4	13.3	108.2
C	12.6	108.9
NL	10.9	110.6

200' East.

NL	8.7	112.8
C	10.9	110.6
1/4	12.0	109.5
E	13.8	107.7
1/4	14.3	107.2

Oweys

121.47

C	14.6	106.9
SL	15.5	106.0
-2	16.6	104.9
-1.5 for slope	17.8	103.7

225' East.

-15 for slope	19.6	101.9
-1 " "	17.0	104.5
SL	16.7	104.8
+5	14.5	107.0
C	14.4	107.1
1/4	14.0	107.5
+3	11.7	109.8
E	11.3	110.2
1/4	9.8	111.7
C	8.6	112.9
NL	6.1	115.4

232' East.

NL	5.3	116.2
C	7.8	113.7
1/4	9.3	112.2
E	10.8	110.7
+3	11.9	109.6
1/4	13.7	107.8

6



OWETS.

121.47

C	14.7	106.8
SL	16.9	104.6
-15 for slope	20.2	101.3

250' East.

-15 for slope	20.1	101.4
---------------	------	-------

SL	16.8	104.7
----	------	-------

+4	14.7	106.8
----	------	-------

+7	16.3	105.2
----	------	-------

C	14.8	106.7
---	------	-------

1/4	14.0	107.5
-----	------	-------

+3	12.1	109.4
----	------	-------

±	11.4	110.1
---	------	-------

1/4	10.2	111.3
-----	------	-------

C	9.0	112.5
---	-----	-------

NL	6.9	114.6
----	-----	-------

275' East.

NL	10.9	110.6
----	------	-------

C	11.8	109.7
---	------	-------

1/4	12.4	109.1
-----	------	-------

±	13.1	108.4
---	------	-------

OWETS

121.47

+3	13.5	108.0
----	------	-------

1/4	14.9	106.6
-----	------	-------

C	15.2	106.3
---	------	-------

+9	15.5	106.0
----	------	-------

SL	16.9	104.6
----	------	-------

-15 for slope	20.5	101.0
---------------	------	-------

300' East - WL Sag Elijo

50' Wide - 10' WKS - TS 1/42.1

T.P.	12.49	108.98
------	-------	--------

S	0.95	109.93
---	------	--------

-15 for slope	8.6	101.3
---------------	-----	-------

SL	6.2	103.7
----	-----	-------

C	4.6	105.3
---	-----	-------

1/4	4.4	105.5
-----	-----	-------

+4	4.1	105.8
----	-----	-------

±	3.3	106.6
---	-----	-------

1/4	3.1	106.8
-----	-----	-------

C	3.2	106.7
---	-----	-------

NL	4.4	105.5
----	-----	-------

+10	7.1	104.8
-----	-----	-------

7

Owens.

109.93

W. Curb. Sag. Elijo

-10 for slope.	12.1	97.8
NL	8.2	101.7
C	5.2	104.7
1/4	4.5	105.4
£	4.5	105.4
1/4	5.0	104.9
C	5.1	104.8
S.L.	6.3	103.6
	W. 1/4.	
S.L.	6.8	103.1
C	5.9	104.0
1/4	5.6	104.3
£	5.3	104.6
1/4	5.5	104.4
C	6.9	103.0
NL.	11.1	98.8
+20 for slope	17.2	92.7

Owens.

109.93

£ Sag. Elijo.

-20 for slope	21.5	88.4	
NL	13.8	96.1	
C	8.2	101.7	
1/4	6.5	103.4	
£	6.3	103.6	
BNL. Mon.	6.72	103.21	103.230k
1/4	6.1	103.8	
C	6.4	103.5	
S.L.	7.0	102.9	
+10.	8.7	101.0	
	E. 1/4.		
-10	9.0	100.9	
S.L.	7.6	101.3	
C	7.2	102.7	
1/4	7.2	102.7	
£	7.4	102.5	
1/4	8.2	101.7	
C	10.1	99.8	
NL.	16.6	93.3	
+20 for slope	25.0	84.9	

8

Owens.

109.93

E Curb

-20 for slope

270 829

NL 192 907

C 120 979

1/4 95 1004

E 90 1009

1/4 84 101.5

C 84 101.5

SL 86 101.3

EL San Elijo

SL 10.1 99.8

C 10.1 99.8

1/4 10.6 99.3

E 11.8 98.1

1/4 13.5 96.4

C 15.9 94.0

NL 216 88.3

+20 290 809

Owens.

109.93

T.P.

12.39 97.54

0.95 98.47

25' E. of San Elijo

-20 for slope 22.1 76.4

NL 194 79.1

C 15.8 82.7

1/4 13.5 85.0

E 10.9 87.6

1/4 8.5 90.0

C 6.2 92.3

SL 4.0 94.5

50' East

SL 10.8 87.7

C 12.6 85.9

T.P. 12.42 86.07

0.53 86.60

1/4 2.6 84.0

E 5.1 81.5

1/4 7.3 79.3

C 9.5 77.1

NL 10.7 75.9

+20 for slope 14.0 72.6

9

Owers.

86.60

75' East.

-20 for slope	17.0	69.6
NL	13.8	72.8
C	13.3	73.3
1/4	12.6	74.0
1/2	12.1	74.5
1/4	10.2	76.4
C	8.5	78.1
+4	6.8	79.8
SL	5.6	81.0

100' East.

SL	13.1	73.5
T.P.	12.84	73.76
0.05	<u>73.81</u>	
C	21	71.7
1/4	26	71.2
1/2	30	70.8
1/4	33	70.5
C	40	69.8
NL	60	67.8
+15 for slope	64	67.4

Owers

73.81

125' East.

-20 for slope.	12.1	61.7
-11 " "	9.3	64.5
NL	8.8	65.0
C	7.6	66.2
1/4	6.4	67.4
1/2	5.6	68.2
1/4	5.3	68.5
C	5.2	68.6
SL	4.7	69.1

150' East.

SL	7.3	66.5
C	7.3	66.5
1/4	7.0	66.8
1/2	7.3	66.5
1/4	7.6	66.2
C	9.5	64.3
NL	12.4	61.4
+17 <sup>net</sup> for slope	15.7	58.1

10

Oweys

73.81

175' East

- 11 bot.	176	56.2	NL
NL	144	59.4	+9
C	129	60.9	C
1/4	127	61.1	1/4
£	11.8	62.0	£
1/4	10.3	63.5	1/4
C	96	64.2	C
SL	94	64.4	SL

200' East

SL	123	61.5	SL
C	13.1	60.7	C
T.P.	1229	61.52	1/4
0.01	<u>61.53</u>		£
1/4	24	59.1	1/4
£	32	58.3	C
1/4	42	57.3	NL
C	45	57.0	
+6	49	56.6	
NL bot.	65	55.0	

Oweys

61.53

225' East

52	56.3
79	53.6
82	53.3
84	53.1
63	55.2
55	56.0
53	56.2
42	57.3

250' East

74	54.1
75	54.0
84	53.1
92	52.3
99	51.6
94	52.1
74	54.1

11

NL	6.5	55.0
+3	7.1	54.4
C	10.6	50.9
1/4	11.8	49.7
E	12.0	49.5
1/4	10.3	51.2
C	9.5	52.0
SL	9.7	51.8

SL	12.3	49.2
+5	13.0	48.8
C	13.0	48.5
1/4	12.8	48.7
E	11.5	50.0
1/4	10.0	51.5
C	9.2	52.3
NL	8.1	53.4

NL	12.1	49.4
C	12.4	49.1
1/4	12.7	48.8
E	12.9	48.6
1/4	12.8	48.7
C	13.0	48.5
SL	13.2	48.3
T.P.	12.47	49.06

Owers

5022

7' East

NL	15	48.7
C	20	48.2
1/4	24	47.8
E	30	47.2
1/4	35	46.7
C	38	46.4
+9	38	46.4
SL	30	47.2

12' East

SL	42	46.0
C	44	45.8
1/4	39	46.3
E	34	46.8
1/4	29	47.3
C	25	47.7
NL	15	48.7

25' East

NL	4.1	46.1
C	4.6	45.6
1/4	4.1	45.5

Owers

5022

E

1/4

C

SL

+10

-10

SL

1/4

E

1/4

C

NL

NL

+8

C

1/4

E

50 45.2

5.5 44.7

5.9 44.3

6.0 44.2

6.2 44.0

~~50' East~~

9.7 40.5

9.5 40.7

9.1 41.1

9.8 40.4

7.7 42.5

6.6 43.6

6.6 43.6

6.2 44.0

7.5' East

8.7 41.5

9.7 40.5

10.9 39.3

11.0 39.2

10.9 39.3

Owers.

5022

1/4	10.7	39.5
C	11.0	39.2
SL	10.6	39.6
85' East		
SL	11.0	39.2
C	11.3	38.9
1/4	11.4	38.8
£	11.3	38.9
1/4	11.2	39.0
C	11.3	38.9
NL	11.0	39.2
100' East		
NL	12.1	38.1
C	12.0	38.2
1/4	12.2	38.0
£	12.3	37.9
1/4	12.4	37.8
C	12.3	37.9
SL	11.6	38.6

Owers

5022

T.P.	12.56	37.66
0.88	38.54	
125' East		
SL	1.7	36.8
C	2.7	35.8
1/4	2.6	35.9
£	2.6	35.9
1/4	2.6	35.9
C	2.5	36.0
NL	1.8	36.7
150' East		
NL	4.2	34.3
C	4.3	34.2
1/4	4.4	34.1
£	4.3	34.2
1/4	4.3	34.2
C	4.6	33.9
SL	4.5	34.0

14



Owers

38.54

175' East.

SL.	62	32.3
C	59	32.6
1/4	63	32.2
E	61	32.4
1/4	60	32.5
C	63	32.2
NL.	55	33.0

200' East

NL.	8.1	30.4
C	8.3	30.2
1/4	8.4	30.1
E	8.6	29.9
1/4	8.5	30.0
C	7.8	30.7
SL.	7.9	30.6

225' East

SL.	9.9	28.6
C	9.8	28.7
1/4	10.6	27.9

Owers.

38.54

15

E	10.8	27.7
1/4	10.9	27.6
C	10.4	28.1
NL.	10.2	28.3

250' East.

NL.	12.8	25.7
C	12.8	25.7
1/4	12.9	25.6
E	13.1	25.4
1/4	12.9	25.6
C	12.2	26.3
SL.	12.4	26.1
T.P.	12.77	25.77

066

26.43

275' East.

SL	4.5	21.9
+5	4.1	22.3
C	2.7	23.7
1/4	3.3	23.1
E	3.4	23.0
1/4	3.5	22.9

Oweys

2643

C	32	23.2
NL	33	23.1
300' East.		
NL	59	20.5
C	59	20.5
1/4	56	20.8
£	58	20.6
1/4	57	20.7
C	56	20.8
SL	62	20.2

325' E. - W.L. Sag Antonio - 50' Wide - 10' High - 1/2 1/2

SL	71	17.3
C	84	18.0
1/4	78	18.6
£	75	18.9
1/4	75	18.9
C	74	19.0
NL	76	18.8

W. Corb

NL	85	17.9
----	----	------

Oweys.

2643

16

C	86	17.8
1/4	85	17.9
£	83	18.1
1/4	84	18.0
C	89	17.5
+2	100	16.4
SL	97	16.7

W. 1/4

SL	10.8	15.6
+ 10	10.9	15.5
C	9.5	16.9
1/4	9.1	17.3
£	9.2	17.2
1/4	8.9	17.5
C	9.0	17.4
NL	9.3	17.1

£ Sag Antonio

NL	96	16.8
C	96	16.8
1/4	93	17.1

Owers

26.13

£. BM Not.	9.74	16.69
1/4	10.0	16.4
C	10.0	16.4
+2	11.8	14.6
SL	11.5	14.9
T.P.	12.93	13.50

306

16.56

E 1/4

SL	3.3	13.3
+2	2.4	14.2
C	3.6	13.0
+5	1.0	15.6
1/4	1.0	15.6
£	0.7	15.9
1/4	0.9	15.7
C	1.0	15.6
NL	1.0	15.6

E. Corb.

NL	40	12.6
TA	46	12.0

Owers

16.56

C	4.8	11.8
1/4	4.8	11.8
E	4.1	12.5
1/4	4.0	12.6
H	4.9	11.7
C	4.9	11.7
+9	3.9	12.7
SL	5.2	11.4

E.L. Sag Antonio

SL	7.8	8.8
+8	5.9	10.7
C	6.2	10.4
1/4	6.9	9.7
+3	7.3	9.3
£	5.4	11.2
1/4	5.0	11.6
C	5.2	11.4
NL	5.2	11.4

17

OW075

16.56

20' E.

NL.	78	8.8
+9	93	7.9
+11	117	4.9
C	112	5.4
1/4	115	5.1
£	100	6.6
1/4	105	6.1
+2	115	5.1
C	160	0.6
+3	115	5.1
SL.	114	5.2
TP.	11.98	4.58

Z96

7.54

25' East.

SL	86	-1.1
C	81	-0.6
1/4	77	-0.2
+3	40	3.5
£	37	3.8

18

7.54

1/4

C

NL

NL

+8

+10

C

1/4

£

1/4

C

SL

SL

C

1/4

£

1/4

C

NL

2.3

2.7

4.0

5.1

6.8

9.1

9.3

10.2

10.6

10.8

11.3

12.0

12.9

12.4

12.0

12.0

11.7

11.2

10.4

5.2

4.8

3.5

2.4

0.7

-1.6

-1.8

-2.7

-3.1

-3.3

-3.8

-4.5

-5.4

-4.9

-4.5

-4.5

-4.2

-3.7

-2.9

50' East

67' East

West  
otter  
Moore 3/7/16

7.54

75' E.

NL 11.7 - 4.2

C 12.2 - 4.7

1/4 12.5 - 5.0

E 12.6 - 5.1

1/4 13.0 - 5.5

C 13.3 - 5.8

SL 14.0 - 6.5

100' E.

SL 15.2 - 7.7

C 14.7 - 7.2

1/4 14.5 - 7.0

E 14.3 - 6.8

1/4 14.2 - 6.7

C 14.0 - 6.5

NL 13.8 - 6.3

T.P. 14.0 7.4

12.41

19.55

B.M. Mon.

2.87

16.68 16.69 OK

OK

San Antonio St Cross Sections  
 S.L. Owens to N.L. Kellog Street  
 50ft wide - 10ft walks - 7ft 1/2 H.S.

West 3 3/4  
 Owen  
 Moore

P.M. E. Mag-Owens. (220) 16.69

5.28 21.91

S.L. Owens.

WL (220) 4.7 17.3

C 5.2 16.8

1/4 5.4 16.6

E 7.1 14.9

1/4 8.8 13.2

C 10.5 11.5

EL 13.1 8.9

7' South

EL 12.9 9.1

C 11.6 10.4

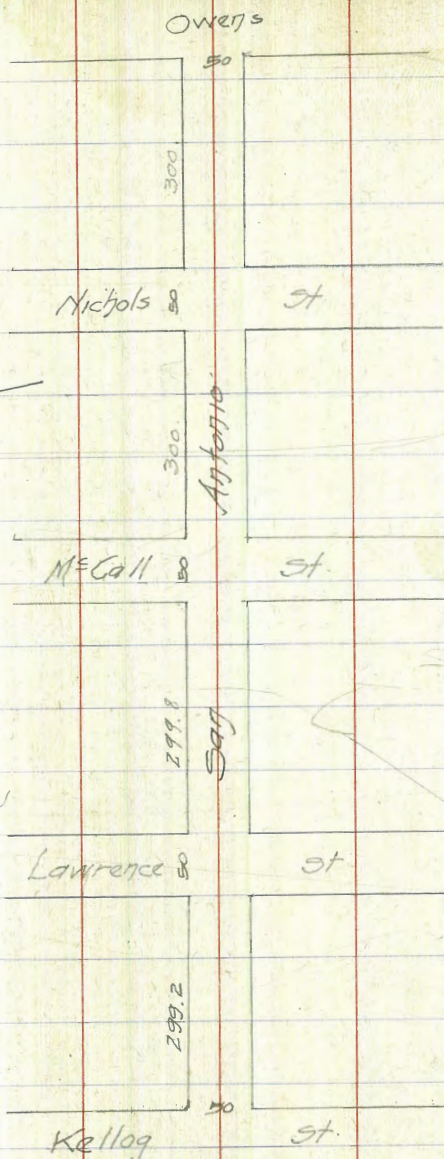
1/4 10.7 11.3

E 9.5 12.5

1/4 7.7 14.3

C 6.5 15.5

WL 5.1 16.9



San Antonio

22.0

21.97

16' South

WL.	5.6	16.4
C	7.6	14.4
1/4	9.3	12.7
£	10.8	11.2
1/4	12.6	9.4
C	15.5	6.5

25' South

EL.	12.4	9.6
+6	13.6	8.4
+8	16.6	5.4
C	16.8	5.2
1/4	15.0	7.0
£	12.9	9.1
1/4	11.2	10.8
C	9.0	13.0
WL.	6.2	15.8

33' South

WL	6.1	15.9
C	9.2	12.8

San Antonio

22.0

21.97

21

1/4	11.5	10.5
£	12.7	9.3
1/4	12.9	9.1
C	12.2	9.8
+5	9.8	12.2
EL.	9.2	12.8
+13 - Top Cliff.	13.0	9.0

50' South

-9 - Top of Cliff	9.4	12.6
EL.	7.5	14.5
C	6.3	15.7
1/4	5.8	16.2
£	5.2	16.8
1/4	5.0	17.0
C	5.2	16.8
WL.	4.7	17.3

75' South

WL.	2.9	19.1
C	3.8	18.2
1/4	4.2	17.8

San Antonio

22.0

21.97

±	44	17.6
1/4	5.1	16.9
C	5.7	16.3
EL. = Top Ver Cliff.	6.5	15.5

9.5' South

EL. Top Cliff.	5.8	16.2
C	5.2	16.8
1/4	4.7	17.3
±	4.1	17.9
1/4	3.6	18.4
C	3.1	18.9
WL.	2.4	19.6

100' South

WL.	2.3	19.7
C	3.1	18.9
1/4	3.6	18.4
±	4.2	17.8
1/4	4.6	17.4
C	5.1	16.9
+ 8 Top Cliff.	5.7	16.3
EL	10.0	12.0

San Antonio

22.0

21.97

22

117' South

5' E of E Corb. = Top Cliff	5.5	16.5
C	5.1	16.9
1/4	4.6	17.4
±	4.0	18.0
1/4	3.6	18.4
C	3.0	19.0
WL.	2.4	19.6

125' South

WL.	2.6	19.4
C	3.3	18.7
1/4	3.7	18.3
±	4.1	17.9
1/4	4.7	17.3
C	5.2	16.8
+ 5 - Top Cliff	5.5	16.5

150' South

5 <sup>s</sup> E of E 1/4	5.4	16.6
E 1/4	5.1	16.9
±	4.7	17.3



San Antonio

(220)

21.97

1/4	4.2	17.8
c	3.7	18.3
WL	3.1	18.9

175' South

WL	3.8	18.2
c	4.4	17.6

1/4	4.9	17.1
⊕	5.5	16.5

+3 - Top Cliff	5.5	16.5
----------------	-----	------

183' South

2' E. of ⊕ - Top Cliff	5.7	16.3
------------------------	-----	------

⊕	5.6	16.4
---	-----	------

1/4	5.1	16.9
-----	-----	------

c	4.7	17.3
---	-----	------

WL	4.0	18.0
----	-----	------

200' South

WL	4.6	17.4
----	-----	------

c	6.0	16.0
---	-----	------

+5	11.6	10.4
----	------	------

1/4	15.8	6.2
-----	------	-----

San Antonio

(220)

21.97

225' South

WL	5.2	16.8
+4	6.2	15.8
c	9.5	12.5

+5	13.6	8.4
----	------	-----

240' South

WL	6.2	15.8
----	-----	------

c	7.6	14.4
---	-----	------

+3	11.7	10.3
----	------	------

250' South

WL	5.2	14.8
	9.2	12.8

c	17.0	5.0
---	------	-----

271' South

WL	9.7	12.3
----	-----	------

c Top Cliff	11.3	10.7
-------------	------	------

275' South

WL	5.9	16.1
----	-----	------

c Top Cliff	7.2	14.8
-------------	-----	------

286' South

WL	15.6	6.4
----	------	-----

+6	16.9	5.1
----	------	-----

San Antonio

220

21.97

300' S. - NL. Nichols - 50' Wide.

WL.	16.0	6.0
-----	------	-----

T.P.	12.48	9.49
------	-------	------

1.46	10.95	
------	-------	--

16' S. of Owens

EL.	9.5	1.4
-----	-----	-----

+13 bot. Cliff.	12.9	-2.0
-----------------	------	------

T.P.	12.35	-1.40
------	-------	-------

2.27	0.87	
------	------	--

50' S. of Owens

16' E. of EL = bot Cliff.	3.0	-2.1
---------------------------	-----	------

75' S. of Owens

3' E. of EL = bot Cliff.	3.1	-2.2
--------------------------	-----	------

13 " " " for beach slope.	4.3	-3.4
---------------------------	-----	------

95' S. of Owens

2' E. of EL = bot Cliff.	3.6	-2.7
--------------------------	-----	------

12' " " "	4.9	-4.0
-----------	-----	------

San Antonio

087

100' S. of Owens

2' E. of EL = bot Cliff	3.6	-2.7
-------------------------	-----	------

12' " " "	4.8	-3.9
-----------	-----	------

117' S. of Owens

EL = bot Cliff	3.4	-2.5
----------------	-----	------

+15' East	6.0	-5.1
-----------	-----	------

125' S. of Owens

3' W. of EL = bot Cliff.	3.6	-2.7
--------------------------	-----	------

EL	4.1	-3.2
----	-----	------

+15' East	6.2	-5.3
-----------	-----	------

150' S. of Owens

2' W. of E. Corb. = bot Cliff.	2.8	-1.9
--------------------------------	-----	------

E. Corb	3.7	-2.8
---------	-----	------

EL	5.2	-4.3
----	-----	------

+15' East	7.0	-6.1
-----------	-----	------

175' S. of Owens

2' W. of E 1/4 = bot Cliff	1.2	-0.3
----------------------------	-----	------

E 1/4	3.8	-2.9
-------	-----	------

C	5.1	-4.2
---	-----	------

EL	6.1	-5.2
----	-----	------

+15' E	7.5	-6.6
--------	-----	------

24

087

183' South of Owens.

4' E of $\phi$ .	1.2	-0.3
5' " " "	3.8	-2.9
E $\frac{1}{4}$	4.2	-3.3
C.	5.3	-4.4
EL.	6.3	-5.4
+15' E.	7.7	-6.8

200' S. of Owens

1' E. of W $\frac{1}{4}$ .	2.6	-1.7
$\phi$	3.7	-2.8
E $\frac{1}{4}$	4.6	-3.7
C	5.7	-4.8
EL.	6.9	-6.0
+10' E	7.7	-6.8

225' South of Owens.

W $\frac{1}{4}$	2.8	-1.9
$\phi$	4.0	-3.1
$\frac{1}{4}$	5.2	-4.3
C	6.1	-5.2
EL	7.3	-6.4

087

240' S of Owens

5' E. of W. Curb.	2.8	-1.9
$\frac{1}{4}$	3.2	-2.3
$\phi$	4.3	-3.4
$\frac{1}{4}$	5.4	-4.5
C	6.3	-5.4
EL.	7.3	-6.4

250' S of Owens

2' E. of W. Curb. bot cliff.	2.8	-1.9
$\frac{1}{4}$	3.4	-2.5
$\phi$	4.6	-3.7
$\frac{1}{4}$	5.6	-4.7
C	6.6	-5.7
EL.	7.6	-6.7

271' S of Owens.

3' E. of W. Curb bot cliff.	2.8	-1.9
$\frac{1}{4}$	3.5	-2.6
$\phi$	4.7	-3.8
$\frac{1}{4}$	5.8	-4.9
C	6.9	-6.0
EL.	7.8	-6.9

San Antonio

087

275' South of Owens

1' E of W. Curb - bot Cliff.	28	-19
1/4	39	-30
⊕	51	-42
1/4	61	-52
C	71	-62
EL	78	-69

286' S of Owens

8' E of WL	20	-11
C	28	-19
1/4	40	-31
⊕	53	-44
1/4	63	-54
C	73	-64
EL	79	-70

300' S. = NL Nichols 50' Wide

+6' E of WL	30	-21
W. Curb.	32	-23
1/4	42	-33
⊕	52	-43

San Antonio

+087

26

1/4	63	-54
C	73	-64
EL	79	-70
T.P. Granite Mar.	272	-1.85

6.53

+4.68

5L Nichols (Int. taken on Nichols x Secs)

EL	11.8	-7.1
C	11.2	-6.5
1/4	10.6	-5.9
⊕	9.7	-5.0
1/4	8.7	-4.0
C	7.7	-3.0
WL	6.4	-1.7

25' South of Nichols

WL	6.8	-4.1
C	8.0	-3.3
1/4	9.0	-4.3
⊕	10.0	-5.3
1/4	10.7	-6.0
C	11.2	-6.5
EL	11.8	-7.1

San Antonio

(47)

468

50' S of Nichols

EL	11.7	-7.0
C	11.2	-6.5
1/4	10.7	-6.0
£	9.9	-5.2
1/4	9.2	-4.5
C	8.0	-3.3
WL	7.0	-2.3

75' South

WL	7.1	-2.4
C	7.9	-3.2
1/4	8.9	-4.2
£	9.6	-4.9
1/4	10.4	-5.7
C	11.0	-6.3
EL	11.6	-6.9

100' South

EL	11.4	-6.7
C	10.7	-6.0
1/4	10.0	-5.3

San Antonio

(47)

468

27

£	9.3	-4.6
1/4	8.3	-4.6
C	7.6	-2.9
WL	6.9	-2.2

125' South

WL	5.9	-1.2
C	7.2	-2.5
1/4	7.9	-3.2
£	9.0	-4.3
1/4	9.5	-4.8
C	10.2	-5.5
EL	11.0	-6.3

150' South

EL	10.3	-5.6
C	9.8	-5.1
1/4	9.3	-4.6
£	8.5	-3.8
1/4	7.7	-3.0
C	6.5	-1.8
WL	5.5	-0.8

San Antonio

(47)

468

175' South

WL	52	-0.5
C	60	-1.3
1/4	63	-1.6
E	73	-2.6
1/4	80	-3.3
C	86	-3.9
EL	96	-4.9

200' South

EL	82	-3.5
C	77	-3.0
1/4	69	-2.2
E	68	-2.1
1/4	65	-1.8
C	61	-1.4
WL	45	+0.2

225' South

WL	52	-0.5
C	52	-0.5
1/4	59	-1.2

San Antonio

(47)

468

28

E	60	-1.3
1/4	64	-1.7
C	63	-1.6
EL	7.1	-2.4

From 225'S. to SL McCall - fisherman are using street for fish drying racks.

250' South

EL	67	-1.7
C	55	-0.8
1/4	52	-0.5
E	53	-0.6
1/4	52	-0.5
C	49	-0.2
WL	4.8	-0.1

275' South

WL	38	-0.9
C	40	0.7
1/4	40	0.7
E	46	0.1
1/4	51	-0.4
C	54	-0.7
EL	55	-0.8

San Antonio

(47)

468

300' S - NL M<sup>c</sup>Call - 50' W - Jyt taken on M<sup>c</sup>Call

EL	54	-0.7
C	4.9	-0.2
1/4	4.7	0.0
£	4.2	0.5
1/4	4.0	0.7
C	3.7	1.0
WL	3.2	1.5

S.L. M<sup>c</sup>Call

WL	3.0	1.7
C	3.4	1.3
1/4	4.6	0.1
£	5.0	-0.3
1/4	5.3	-0.6
C	5.6	-0.9
EL	5.6	-0.9

25' South of M<sup>c</sup>Call

EL	5.7	-1.0
C	5.3	-0.6
1/4	5.0	-0.3

San Antonio

(47)

468

29

£	4.8	-0.1
1/4	4.6	0.1
C	4.4	0.3
WL	4.5	0.2

35' South

WL	4.4	0.3
C	4.7	0.0
1/4	5.0	-0.3
£	5.2	-0.5
1/4	5.4	-0.7
C	5.6	-0.9
EL	5.9	-1.2

50' South

EL	5.9	-1.2
C	5.8	-0.1
1/4	5.6	-0.9
£	5.4	-0.7
1/4	5.2	-0.5
C	4.9	-0.2
1/4	4.3	+0.4
WL	-0.2	4.9

W.L.

San Antonio

T.P.

468 293 1.75

11.59 13.34

75' South

W.L. 106 2.7

C 12.9 0.4

1/4 13.3 0.0

E 13.7 -0.4

1/4 13.8 -0.5

C 14.1 -0.8

EL 14.4 -1.1

90' South

EL 14.3 -1.0

C 13.9 -0.6

1/4 13.7 -0.4

E 13.3 0.0

1/4 12.9 0.4

C 12.2 1.1

W.L. 11.0 2.3

100' South

W.L. 9.8 3.5

C 12.4 0.9

San Antonio

30

13.34

1/4 130 0.3

E 133 0.0

1/4 134 -0.1

C 138 -0.5

EL 14.2 -0.9

125' South

EL 14.1 -0.8

C 13.7 -0.4

1/4 13.1 0.2

E 12.5 0.8

1/4 12.0 1.3

C 10.6 2.7

W.L. 8.5 4.8

150' South

W.L. 6.3 7.0

C 9.7 3.6

1/4 10.2 3.1

E 11.0 2.3

1/4 11.2 2.1

C 11.3 2.0

EL 11.8 1.5



San Antonio

1334

160' South

EL	11.6	1.7
C	10.8	2.5
1/4	10.5	2.8
ϕ	10.8	2.5
1/4	9.8	3.5
C	8.8	4.5
WL	5.9	7.4

175' South

WL	6.2	7.1
C	8.4	4.9
1/4	9.5	3.8
ϕ	9.8	3.5
1/4	9.8	3.5
C	10.4	2.9
EL	11.0	2.3

200' South

EL	10.3	3.0
C	9.6	3.7
1/4	9.7	3.6

San Antonio

1334

31

ϕ	9.2	4.1
1/4	8.7	4.6
C	8.2	5.1
WL	6.0	7.3

225' South

WL	6.4	6.9
C	7.2	6.1
1/4	7.4	5.9
ϕ	7.9	5.4

1/4	8.1	5.2
C	8.5	4.8
EL	8.8	4.5

250' South

EL	7.7	5.6
C	7.1	6.2
1/4	7.1	6.2
ϕ	6.7	6.6
1/4	6.2	7.1
C	6.0	7.3
WL	6.2	7.1

13.34

275' South.

WL	4.8	8.5
C	4.8	8.5
1/4	5.0	8.3
ϕ	5.6	7.7
1/4	6.1	7.2
C	6.3	7.0
EL	7.4	5.9

299.8 South - N.L. Lawrence

50' Wide Int taken on Lawrence x Secs.

EL	7.3	6.0
C	6.3	7.0
1/4	5.9	7.4
ϕ	5.3	8.0
1/4	5.0	8.3
C	4.6	8.7
WL	3.7	9.6
ϕ May. 21	6.4	7.20

S.L. Lawrence.

WL	3.0	10.3
C	3.2	10.1

13.34

1/4	4.3	9.0
ϕ	5.3	8.0
1/4	6.0	7.3
C	6.8	6.5
EL	7.1	6.2

25' S. of Lawrence

EL	7.4	8.9
C	7.2	6.1
1/4	6.5	6.8
ϕ	5.6	7.7
1/4	5.0	8.3
C	4.3	9.0
WL	3.1	10.2

50' South

WL	3.6	9.7
C	4.1	8.9
1/4	5.5	7.8
ϕ	6.0	7.3
1/4	6.6	6.7
C	7.2	6.1
EL	7.8	5.5

San Antonio

13:34

75' South

EL	7.5	5.8
C	7.0	6.3
1/4	6.3	7.0
Φ	5.5	7.8
1/4	4.8	8.5
C	4.1	9.2
WL	3.9	9.4

100' South

WL	3.4	9.9
C	3.9	9.4
1/4	4.4	8.9
Φ	5.3	8.0
1/4	5.8	7.5
C	6.3	7.0
EL	6.8	6.5

125' South

EL	6.0	7.3
C	5.5	7.8
1/4	4.7	8.6

San Antonio

13:34

Φ	3.9	9.4
1/4	3.5	9.8
C	3.3	10.0
WL	3.0	10.3
T.P.	2.39	10.95

5.67 16.62

150' South

WL	5.5	11.1
C	5.6	11.0
1/4	6.3	10.3
Φ	7.1	9.5
1/4	7.7	8.9
C	8.1	8.5
EL	8.9	7.7

175' South

EL	7.8	8.8
C	7.4	9.2
1/4	6.7	9.9
Φ	6.1	10.5
1/4	5.8	10.8
C	5.4	11.2
WL	5.2	11.4

33

San Antonio

16.62

200' South

WL	5.1	11.5
C	5.3	11.3
1/4	5.4	11.2
±	5.8	10.8
1/4	6.3	10.3
C	6.8	9.8
EL	7.4	9.2

225' South

EL	7.3	9.3
C	6.9	9.7
1/4	6.3	10.3
±	5.6	11.0
1/4	5.2	11.4
C	5.0	11.6
WL	4.9	11.7

250' South

WL	4.5	12.1
C	4.6	12.0
1/4	5.0	11.6

San Antonio

16.62

34

±	5.7	10.9
1/4	6.3	10.3
C	6.7	9.9
EL	6.7	9.9

275' South

EL	6.2	10.4
C	5.9	10.7
1/4	5.5	11.1
±	5.3	11.3
1/4	4.9	11.7
C	4.2	12.4
WL	3.9	12.7

290' South

WL	3.6	13.0
C	3.7	12.9
1/4	4.1	12.5
±	4.5	12.1
1/4	4.9	11.7
C	5.4	11.2
EL	5.1	10.9

Sag Antonio

16.62

29.4' South

EL.	5.7	10.9
+1	5.8	10.8
+3	8.5	8.1
C	10.5	6.1
1/4	9.1	7.5
±	{ 9.0-5 5.0 }	7.6 11.6
1/4	4.1	12.5
C	4.1	12.5
WL.	3.7	12.9

2993 = N. Kellog

WL.	3.7	12.9
C	4.4	12.2
1/4	4.7	11.9
±	4.5	12.1
+2	4.7	11.9
+3	{ 4.8 8.6 }	11.8 8.0
1/4	{ 9.1 5.5 }	7.5 11.1
C	10.6	6.0
EL.	11.2	5.4

West.  
Otter  
Moore

3/9/16

16.62

FP. Moj. 5.7' line Kellog &amp; Sag A. 463 11.99

35



Nichols.

12506

W 1/4 San Fernando

SL	50	120.1
C	44	120.7
1/4	39	121.2
£	38	121.3
1/4	36	121.5
C	35	121.6
NL	38	121.3

£ San Fernando

NL	35	121.6
C	39	121.2
1/4	40	121.1
£	41	121.0
1/4	42	120.9
C	42	120.9
SL	41	120.4

E 1/4

SL	54	119.7
C	48	120.3
1/4	53	119.8

Nichols.

12506

37

£	48	120.3
1/4	47	120.4
C	48	120.3
NL	40	121.1

E Curb

Gut	46	120.5
	41	121.0
	48	120.3
Gut	51	120.0
Gut	52	119.9
	48	120.3
	50	120.1
Gut	54	119.7
	52	119.9
Gut	57	119.4
Gut	57	119.4
	48	120.3
	53	119.8
Gut	58	119.3

E.L. San Fernando

SL	47	120.4
+6	39	121.2
C	52	119.9
+1	61	119.0
+4	60	119.1
1/4	44	120.7
£	42	120.9
	30	122.1
	26	122.5
1/4	41	121.0

\* Nichols.

12506

C	{ 40 21 }	121.1
		123.0
NL	{ 20 38 }	123.1
		121.3

A' East

NL	18	123.3
C	18	123.3
1/4	24	122.7
E	28	122.3
1/4	34	121.7
+2	64	118.7
+4	61	119.0
C	49	120.2
+2	41	121.0
SL	37	121.4

25' East

SL	62	118.9
C	52	119.9
+4	66	118.5
+5	78	117.3
1/4	67	118.4
+3	51	120.0
E	48	120.3

Nichols.

12506

1/4	43	120.8
C	39	121.2
+6	31	121.4
NL	43	120.8

50' East

NL	77	117.4
C	78	117.3
1/4	76	117.5
+4	74	117.7
E	82	116.9
+4	96	115.5
1/4	89	116.2
C	88	116.3
SL	103	114.8

60' East

SL	125	112.0
C	106	114.5
+3	79	115.2
1/4	103	114.8
+2	116	113.5
+4	99	115.2

38



Nichols

17506

£	9.9	115.2
¼	9.5	115.6
C	9.3	115.8
NL	8.7	116.4

68' East

NL	11.0	114.0
C	11.3	113.7
¼	11.7	113.3
£	11.7	113.3
+3	11.8	113.2
+5	13.0	112.0
¼	12.3	112.7
C	12.5	112.5
SL	14.8	110.2
TP	12.89	112.17

0.98

113.15

75' East

SL	45	108.6
C	26	110.5
¼	20	111.1

Nichols

113.15

+1	27	110.4
+2	1.9	111.2
£	1.6	111.5
¼	2.0	111.1
C	1.9	111.2
+6	1.8	111.3
NL	2.6	110.5

85' East

NL	9.1	104.0
C	6.5	106.6
¼	6.5	106.6
£	6.1	107.0
+5	5.8	107.3
¼	7.5	105.6
+2	6.8	106.3
C	7.0	106.1
SL	7.5	105.6
TP	13.03	100.12

1.00

101.12

Nichols

101.12

100' East.

SL.	25	98.6
C	23	98.8
+3	26	98.5
+4	53	95.8
1/4	55	95.6
+1	23	98.8
£	22	98.9
1/4	26	98.5
C	30	98.1
NL.	43	96.8
+15	56	95.5
-20	66	94.5
NL.	78	93.3
C	74	93.7
1/4	71	94.0
£	68	94.3
+3	70	94.1
+4	92	91.9
1/4	76	93.5
+2	66	94.5

110' East.

Nichols.

101.12

40

C	66	94.5
SL.	68	94.3
+10	67	94.2
125' East		
-15	123	88.8
SL.	118	89.3
C	114	89.7
+3	114	89.7
+5	11.8	89.3
1/4	11.2	89.9
£	11.2	89.9
1/4	11.0	90.1
C	10.5	90.6
NL.	9.2	91.9
+20	7.9	93.2
150' East		
-15	99	91.2
NL.	11.0	90.1
C	123	88.8
1/4	126	88.5
£	128	88.3
1/4	131	88.0

Nichols

101.12

+5	13.9	87.2
C	13.4	87.7
SL	14.3	86.8
+20	16.0	85.1
T.P.	12.53	88.59

0.88

89.47

175' East

-15	5.5	
SL	4.3	85.2
C	3.4	
1/4	3.2	
£	3.0	
1/4	2.4	
C	1.8	
NL	0.8	88.7
+10	-0.4	89.9

200' East

-10	1.7	
NL	2.1	87.4
C	3.1	

Nichols

89.47

1/4	38	
£	43	
1/4	48	
C	49	
SL	57	83.8
+10	65	

225' East

-10	76	
SL	69	82.6
C	62	
+4.5	59	
1/4	90	
+2	84	
+3	58	
£	55	
1/4	52	
C	4.8	
NL	38	85.7
+10	30	

41

Nichols

89.47

250' East.

NL.	5.3	84.2
C	6.3	
1/4	6.6	
±	6.9	
+4	7.2	
1/4	10.3	
+2	10.3	
+3	7.5	
C	7.6	
SL.	8.0	81.5

275' East.

SL.	10.0	79.5
C	9.5	
+5	9.3	
1/4	13.2	
+1	9.1	
±	8.8	
1/4	8.5	
C	8.2	
NL.	9.2	82.3

Nichols.

89.47

300' East - WL. 300' Elyo - 50' W. 10' WKS - 75ft 1/4s.

NL	9.7	79.8
C	10.2	
1/4	10.4	
±	10.9	78.6
+5	11.3	
1/4	14.0	
+1	13.8	
+2	11.4	
C	11.2	
SL.	12.0	77.5

W. Curb.

SL	12.9	76.6
C	12.2	
1/4	12.3	
+1	15.9	
+3	12.2	
±	12.0	
1/4	11.5	
C	11.2	
NL	10.6	78.9

42

Nichols

89.47

T.P.		12.75	76.72
	0.64		
	<u>77.36</u>		
B.M. Hub No of Wash out.		0.66	76.70
	W 1/4 San Elijo		
NL.		-0.9	78.3
c		-0.2	77.6
1/4		0.2	77.2
£		0.5	76.9
+5		0.7	76.7
1/4		2.3	75.1
+1		0.8	76.6
c		0.7	76.7
SL.		1.2	76.2
	£ San Elijo		
SL.		2.1	75.3
c		1.5	75.9
1/4		2.0	75.4
£		1.2	76.2
1/4		1.0	76.4
c		0.5	76.7
NL.		0.0	77.9

Nichols

77.36

E. 1/4 San Elijo

NL.		0.6	76.8
c		1.4	76.0
1/4		1.7	75.7
£		2.0	75.4
1/2		2.5	74.9
c		2.1	75.3
SL		2.6	74.8
	E. Curb.		
SL		3.6	73.8
c		3.1	74.3
1/4		2.8	74.6
£		2.6	74.8
1/4		2.4	75.0
c		2.0	75.4
NL.		1.4	76.0
	E.L. San Elijo		
NL		2.0	75.4
+3		2.5	74.9
+5		3.3	74.1
c		3.0	74.4

43

Nichols

77.36

1/4	3.1	74.3
E	3.3	74.1
+2	3.4	74.0
+3	5.6	71.8
+4	5.6	71.8
+45	3.5	73.9
1/4	3.3	74.1
C	3.7	73.7
SL	4.2	73.2

25' E of 507 Elijo

SL	6.3	71.1
C	5.7	71.7
1/4	5.7	71.7
+1	{ 5.5	71.9
	{ 7.0	70.4
E	6.8	70.6
+1	{ 6.8	70.6
	{ 5.6	71.8
1/4	5.2	72.2
C	4.9	72.5
+11' = fence.		
NL	4.1	73.3

Nichols

44

77.36  
50' East

NL	6.0	71.9
+0.7 = fence	6.0	71.4
C	6.5	70.9
1/4	7.0	70.4
E	7.3	70.1
1/4	7.5	69.9
C	7.6	69.8
SL	8.0	69.4

75' East

SL	10.0	67.4
C	9.6	67.8
+5	9.7	67.7
1/4	11.2	66.2
+1	9.6	67.8
E	9.5	67.9
1/4	9.2	68.2
C	8.7	68.7
+11' = fence		
NL	8.1	69.3

Nichols.

77.36

100' East.

NL	100	67.9
+0.8 - force		
C	11.0	66.4
1/4	11.6	65.8
£	11.7	65.7
+1	12.8	64.6
+3	13.0	64.4
+4	13.0	64.4
1/4	11.7	65.7
1/4	11.6	65.8
C	11.6	65.8
SL	12.2	65.2
T.P.	13.01	64.35

0.02

64.37

125' East

SL	1.5	62.9
C	1.0	63.4
1/4	1.0	63.4
+2	1.0	63.4
+4	1.0	61.5
£	0.9	63.5

Nichols.

64.37

1/4

C	0.7	63.7
+11.8 - force	0.4	64.0
NL	-0.8	65.2

150' East.

NL	2.2	62.2
+0.7 - force		
C	2.7	61.7
1/4	3.2	61.2
£	3.2	61.2
+4	3.3	61.1
+5	6.0	58.4
+6	6.0	58.4
1/4	3.6	60.8
C	3.4	61.0
SL	4.0	60.4

175' East

SL	6.5	57.9
C	6.2	58.2
1/4	6.2	58.2
+2	6.0	58.4
+3	7.8	56.6
+4	5.9	58.5

45

Nichols

64.37

£	5.9	58.5
1/4	5.9	58.5
C	5.4	59.0
+10	4.7	59.7
+118 = fence. NL	4.0	60.4
200' East.		
NL	7.2	57.2
+0.8 fence		
+2	7.8	56.6
C	8.1	56.3
1/4	8.5	55.9
£	8.6	55.8
1/4	8.5	55.9
C	8.5	55.9
SL	8.9	55.5

218' East.

SL	10.4	54.0
C	10.3	54.1
1/4	10.2	54.2
£	10.0	54.4
1/4	9.9	54.5

Nichols

64.37

C	9.7	54.7
+10	9.7	54.7
+115 = fence		
NL	9.1	55.3
225' East.		
NL	9.7	54.7
+1 = fence		
+2	10.4	54.0
C	10.5	53.9
1/4	10.7	53.7
+3	10.6 14.1	53.8 50.3
£	14.6	49.8
1/4	15.9	48.5
+2	15.4	49.0
+3	11.0	53.4
C	11.0	53.4
SL	11.4	53.0
T.P.	12.61	51.76

101

52.77

250' East.

SL	1.4	51.4
C	1.4	51.4

40



Nichols

52.77

		{ 9.3 6.7	51.5 46.1
+4			
1/4		6.8	46.0
£		6.7	46.1
+1		6.6	46.2
+2		1.8	51.0
1/4		1.7	51.1
C		1.2	51.6
+10		1.0	51.8
NL		0.4	52.4

295' East

NL		3.2	49.6
+2		3.6	49.2
C		4.0	48.8
1/4		4.2	48.6
£		4.2	48.6
+1		{ 4.3 8.2	48.5 44.6
1/4		8.1	44.7
+2		{ 8.1 3.9	44.7 48.9
C		4.0	48.8
SL		4.3	48.5

Nichols

52.77

276' East

SL		4.4	48.4
C		4.1	48.7
+4		{ 4.0 8.1	48.8 44.7
1/4		8.1	44.7
+5 <sup>2</sup>		{ 8.3 4.3	44.5 48.5
£		4.3	48.5
1/4		4.2	48.6
+2		{ 4.2 7.2	48.6 45.6
+4		7.1	45.7
C		4.0	48.8
NL		3.3	49.5

294' East

NL		5.1	47.7
C		6.0	46.8
+1		{ 6.2 8.8	46.6 44.0
+3 <sup>5</sup>		{ 9.5 6.0	43.3 46.8
1/4		5.8	47.0
+1		6.8	46.0
£		7.0	45.8

47

Nichols -

52.77

+2	88	44.0
1/4	86	44.2
+2	52	47.6
C	56	47.2
SL	57	47.1

298' East

SL	6.1	46.7
+1	8.9	43.9
+9	10.4	42.4
+10	7.0	45.8
C	6.4	46.4
+4	5.7	47.1
+5	9.0	43.8
1/4	9.3	43.5
£	8.5	44.3
1/4	{ 8.3	44.5
	{ 6.2	46.6
+2	{ 6.5	46.3
	{ 9.6	43.2
C	{ 9.6	43.2
	{ 6.5	46.3
NL	5.7	47.1

Nichols

52.77

48

300' East = W/L Rosecrans - 50' wide. Graded.

NL	9.9	42.9
C	9.8	43.0
1/4	9.7	43.1
£	9.8	43.0
1/4	10.1	42.7
C	10.3	42.5
SL	10.9	41.9
T.P. 5th Plug NE Rosecrans & Nic	11.20	41.57

OK  
41.63

269 44.32

EL. Rosecrans

SL	3.1	41.2
C	3.2	41.1
1/4	3.1	41.2
£	3.0	41.3
1/4	2.7	41.6
C	3.0	41.3
NL	2.4	41.9

Nichols

44.32

8' East.

NL.	31	41.2
C	22	42.1
1/4	23	42.0
E	27	41.6
1/4	28	41.5
C	24	41.9
SL.	23	42.0

17' East.

SL.	26	41.7
+8	33	41.0
C	16	42.7
1/4	09	43.4
E	15	42.8
1/4	23	42.0
C	24	41.9
+2	13	43.0
+7	10	43.3
NL.	21	42.2

Nichols.

44.32

25' East.

NL.	33	41.0
+2	22	42.1
C	18	42.5
1/4	24	41.9
E	31	41.2
1/4	31	41.2
C	43	40.0
+4	44	39.9
SL.	30	41.3

50' East.

SL	50	39.3
+3 fence	51	39.2
+6	63	38.0
C	63	38.0
1/4	65	37.8
E	66	37.7
1/4	63	38.0
C	56	38.7
NL.	69	37.4

49

Nichols

4432

75' East.

NL.	9.1	35.2
C	8.9	35.4
1/4	8.9	35.4
E	8.6	35.7
1/4	8.4	35.9
C	8.2	36.1
+6	8.3	36.0
+10 = fence - poor condition		
SL	7.5	36.8

100' East.

SL	9.6	34.7
+25 = Bum fence		
+6	10.3	34.0
C	10.4	33.9
1/4	10.2	34.1
E	10.4	33.9
1/4	10.5	33.8
C	10.6	33.7
NL	10.7	33.6

Nichols

50

4432

125' East.

NL.	12.4	31.9
C	12.4	31.9
1/4	12.5	31.8
E	12.5	31.8
1/4	12.3	32.0
C	12.3	32.0
SL	12.3	32.0
T.P.	12.33	31.99

106

32.05

150' East.

SL	17	30.3
C	25	29.5
1/4	20	30.0
E	21	29.9
1/4	24	29.6
C	23	29.7
NL	26	29.4

Nichols.

32.05

175' East

NL	50	27.0
C	52	26.8
1/4	51	26.9
£	4.8	27.2
1/4	4.6	27.4
C	4.6	27.4
SL	4.7	27.3

200' East.

SL	5.6	26.9
C	5.6	26.4
1/4	5.7	26.3
£	5.7	26.3
1/4	5.8	26.2
C	5.9	26.1
NL	5.9	26.1

225' East.

NL	7.6	24.4
C	8.2	23.8
1/4	8.3	23.7

Nichols.

32.05

£	8.1	23.9
1/4	8.1	23.9
C	8.1	23.9
SL	8.0	24.0

250' East.

SL	9.8	22.2
C	10.1	21.9
1/4	10.3	21.7
£	10.4	21.6
1/4	10.3	21.7
C	10.3	21.7
NL	10.7	21.8

275' East.

NL	12.3	19.7
C	11.9	20.1
1/4	12.0	20.0
£	12.2	19.8
1/4	12.1	19.9
C	11.9	20.1
SL	11.8	20.2

51

Nichols

32.05

T.P. 12.60 19.45

2.83

22.28

300' East.

SL. 3.6 18.7

C 3.9 18.4

1/4 3.9 18.4

1/4 3.9 18.4

1/4 4.0 18.3

C 4.7 17.6

NL 4.4 17.9

307' East.

NL 7.2 15.1

+3 8.2 14.1

+6 6.1 16.2

+6<sup>5</sup> 4.8 17.5

C 4.4 17.9

+2 5.3 17.0

1/4 5.2 17.1

1/4 4.5 17.8

1/4 4.4 17.9

Nichols

22.28

4.2 18.1

3.8 18.5

310' East

9.6 12.7

4.2 18.1

4.4 17.9

4.5 17.8

4.7 17.6

5.4 16.9

4.9 17.4

5.1 17.2

8.4 13.9

7.9 14.4

313' East

9.4 12.9

{ 5.6 14.7

{ 5.1 17.2

5.0 17.3

{ 5.1 17.2

{ 12.2 10.1

{ 11.9 10.4

{ 5.9 16.4

4.9 17.4

52

22.2811.04

1/4	4.7	17.6	+10	9.5	1.5
C	4.6	17.7	C	1.8	9.2
SL	4.4	17.9	1/4	1.8	9.2
	320' East.		+4	5.2	5.8
SL	15.5	6.8	±	7.4	3.6
C	16.8	5.5	+1	11.2	-0.2
1/4	14.2	8.1	T.P. Mag. BM.	12.90	-1.86
±	8.6	13.7	297	+1.11	
+1	12.3	10.0	1/4	1.6	-0.5
+4	12.2	10.1	C	2.3	-1.2
1/4	5.5	16.8	SL	2.9	-1.8
+3	5.6	16.7		5' East. of NL.	
C	11.3	11.0	SL	3.8	-2.7
+6	8.6	13.7	C	3.5	-2.4
NL	9.3	13.0	1/4	3.4	-2.3
T.P.	12.73	9.55	±	3.4	-2.3
149	<u>11.04</u>		1/4	3.2	-2.1
	325' E = NL San Antonio - 50' N. - 10' W. - 75' E. 1/4		C	3.0	-1.9
NL	4.5	6.5	NL	2.8	-1.7
+8	2.9	8.1			

Nichols

1.11

W. Curb.

NL.	3.5	-2.4
C	3.8	-2.7
1/4	3.8	-2.7
£	4.0	-2.9
1/4	4.0	-2.9
C	4.1	-3.0
SL.	4.2	-3.1
	W 1/4	
SL.	5.4	-4.3
C	5.1	-4.0
1/4	5.0	-3.9
£	4.9	-3.8
1/4	4.8	-3.7
C	4.7	-3.6
NL.	4.5	-3.4
	£ San Antonio	
NL	5.7	-4.6
C	5.7	-4.6
1/4	5.9	-4.8

Nichols

1.11

54

£	6.0	-4.9
1/4	6.2	-5.1
C	6.2	-5.1
SL.	6.3	-5.2
	E 1/4.	
SL.	7.2	-6.1
C	7.1	-6.0
1/4	7.0	-5.9
£	6.9	-5.8
1/4	6.9	-5.8
C	6.7	-5.6
NL.	6.6	-5.5
	E. Curb.	
NL	7.6	-6.5
C	7.6	-6.5
1/4	7.6	-6.5
£	7.6	-6.5
1/4	7.7	-6.6
C	7.7	-6.6
SL.	7.7	-6.6



Nichols.

1.11

E.L. Sag Antonio

West  
atop. 3/13/16.  
Moore

55

SL. 8.3 -7.2

C 8.3 -7.2

1/4 8.3 -7.2

1/2 8.3 -7.2

3/4 8.2 -7.1

C 8.2 -7.1

NL 8.2 -7.1

TP. 1.35 -0.24

6.92 6.68

B.M. Hub. NW. Sag Ant. & Mc Gill. 2.30 4.38

McCall St Cross Section  
 W.L. San Fernando to San Diego Bay.  
 30ft. wide - 125 ft. walks - 62 ft. Quarters

West  
 ofter.  
 Moore  
 3/13/16

56

BM. May. & Nichols & San Fernando. 120.71

T.P. 0.65 121.36 11.70 109.66

0.65 110.31

BM. May & McCall & San Fernando. 7.50 102.81

W.L. San Fernando.

NL 4.8 105.5

C 4.3 106.0

1/4 4.4 105.9

1/2 4.6 105.7

3/4 4.5 105.8

C 4.8 105.5

7/4 5.0 105.3

SL 5.8 104.5

W. Curb.

SL. { 6.2 104.1

Gut. { 7.6 102.7

C " { 7.1 103.2

" { 5.9 104.4

1/4 { 5.6 104.7

Gut. { 6.8 103.5

1/2 " { 6.6 103.7

3/4 { 5.4 104.9

1/4 { 5.5 104.8

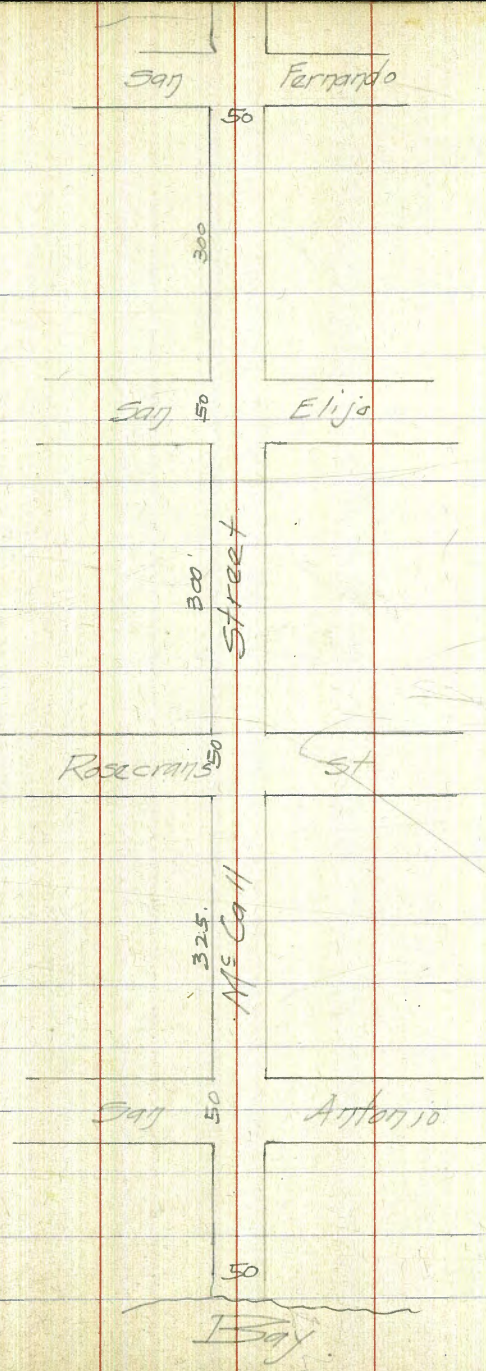
Gut. { 6.4 103.9

C " { 6.3 104.0

" { 5.4 104.9

NL. { 5.3 105.0

Gut. { 6.0 104.3



M<sup>e</sup> Call.110.31

W/4

NL.	59.	104.4
C	58	104.5
1/4	58	104.5
£	60.	104.3
1/4	62	104.1
C	65	103.8
SL.	68	103.5

£ Jan Fernando.

SL.	68	103.5
C	71	103.2
1/4	71	103.2
£	68	103.5
Mag. B.M.	7.50	102.81
1/4	65	103.8
C	63	104.0
NL.	60	104.3

E. 1/4

NL.	66	103.7
+7	63	104.0
+8	85	101.8

M<sup>e</sup> Call.110.31

C.	75	102.8
1/4	74	102.9
£	77	102.6
1/4	80	102.3
C	80	102.3
SL.	74	102.9

E. Curb.

SL.	80	102.3
+2	88	101.5
C	93	101.0
1/4	92	101.1
£	88	101.5
1/4	84	101.9
+5	85	101.8
C	97	100.6
+1	85	101.8
+9	88	101.5
NL	73	103.0

57

M<sup>c</sup>Call

11031

34 ft. E. of E Curb.

NL.	62	104.1
+5	9.5	100.8
C	9.2	101.1
+2	10.8	99.5
+4	9.2	101.1
1/4	9.0	101.3
±	9.4	100.9
1/4	9.7	100.6
C	9.8	100.5
+9	9.0	101.3
SL.	7.3	103.0

8 ft. E. of E Curb.

SL	7.8	102.5
+3	9.7	100.6
C	10.6	99.7
1/4	10.3	100.0
±	9.8	100.5
1/4	9.7	100.6
+2	11.6	98.7
C	11.0	99.3

M<sup>c</sup>Call

11031

58

+4	10.3	100.0
+8	6.6	103.7
NL.	6.2	104.1

E.L. San Fernando.

NL.	6.3	104.0
+5	7.0	103.3
+6	8.9	101.4
C	11.2	99.1
1/4	12.0	98.3
+1	10.1	100.2
±	10.2	100.1
1/4	10.5	99.8
C	10.9	99.4
SL.	10.3	100.0

11 ft. East of S.F.

SL.	11.8	98.5
+8	12.0	98.3
+9	12.8	97.5
C	12.2	98.1
1/4	11.8	98.5

Ms Call.

110.31

ϕ	11.7	98.6
+4	11.6	98.7
1/4	14.0	96.3
C	14.4	95.9
+5	10.5	99.8
NL	10.5	99.8
T.P.	12.72	97.59

0.02

97.61

25' East.

NL	-0.3	97.9
+5	0.0	97.6
+6	3.5	94.1
C	1.6	96.0
+A	5.9	91.7
1/4	5.8	91.8
+2	5.7	91.9
#3	0.4	97.2
ϕ	0.7	96.9
1/4	0.8	96.8

Ms Call.

97.61

59

C	1.4	96.2
SL	0.4	97.2
47' East.		
SL	3.8	93.8
C	4.0	93.6
1/4	3.8	93.8
ϕ	3.8	92.8

+4	3.0	94.6
+5	13.0	89.6
1/4	13.1	84.5
C	10.6	87.0
+7	{ 11.7	85.9
	{ 7.0	90.6
NL	1.8	95.8

50' East.

NL	13.3	84.3
C	13.1	84.5
1/4	13.2	84.4
+1	3.8	93.8
ϕ	4.2	93.4
1/4	4.4	93.2

M<sup>c</sup>Call.97.61

C	43	93.3
SL	42	93.4
55' East		
SL	45	93.1
+8	46	93.0
+10	57	91.9
C	50	92.6
1/4	50	92.6
±	48	92.8
1/4	47	92.9
+2	48	92.8
+4	140	83.6
C	14.1	83.5
+9	14.8	82.8
NL	14.1	83.5
60' East		
-7 = Ver bank.	83.6	94.0
NL	83.0	84.6
	14.4	83.2
+3	15.1	82.5
+5	11.4	86.2
C	11.3	86.3

M<sup>c</sup>Call.97.61

+3	53	92.3
1/4	54	92.2
±	55	92.1
1/4	57	91.9
C	58	91.8
+1	64	91.2
+2	57	91.9
SL	54	92.2
68' East		
SL	66	91.0
+8	66	91.0
+10	73	90.3
C	68	90.8
1/4	67	90.9
±	63	91.3
1/4	63	91.3
+3	64	91.2
C	10.7	86.9
+8	16.5	81.1
NL	16.4	81.2
+8 = Ver. cut	16.3	81.3
	14.0	93.6

M<sup>c</sup>Call.

97.61

75' East

-6 = Var. bank.

NL.

+4

+11

C

+4

1/4

£

1/4

C

+2

+4

SL.

80' East

SL.

C

1/4

£

1/4

4.4	93.2
12.1	85.5

15.2 82.4

16.9 80.7

16.7 80.9

15.2 82.4

7.1 90.5

7.1 90.5

7.1 90.5

7.3 90.3

7.5 90.1

8.0 89.6

7.4 90.2

7.6 90.0

8.3 89.3

8.0 89.6

7.8 89.8

7.6 90.0

7.7 89.9

M<sup>c</sup>Call.

97.61

+3

+4

C

+3

+7

NL

+1

NL

+5

C

+3

1/4

£

1/4

C

SL.

TP-4.6

1.06

7.7 89.9

17.1 80.5

17.5 80.1

17.6 80.0

17.2 80.4

13.9 83.7

6.7 90.9

85' East

6.2 91.4

16.7 80.9

17.9 79.7

17.4 80.2

8.3 89.3

8.4 89.2

8.4 89.2

8.7 88.9

9.2 88.4

9.3 88.18

89.24

61

M<sup>c</sup>Call.89.24

90' East.

SL.	1.1	88.1
C	0.8	88.4
1/4	0.6	88.6
±	0.8	88.4
1/4	0.4	88.8
+1	0.5	88.7
+15.	9.8	79.4
C	9.9	79.3
+3	9.8	79.4
NL.	6.6	82.6
+2: Nat. Ground.	-1.8	91.0

100' East.

-5 = Nat Ground.	-0.8	90.0
-3	7.4	81.8
NL.	8.6	80.6
+2	10.0	79.2
+9	10.2	79.0
C	8.0	81.2
+3	1.5	87.7
1/4	1.5	87.7

M<sup>c</sup>Call.89.24

62

±	1.7	87.5
1/4	1.8	87.4
C	2.1	87.1
SL.	2.2	87.0

110' East.

SL.	3.1	86.1
C	3.1	86.1
1/4	2.8	86.4
±	2.6	86.6
1/4	2.4	86.8
C	2.6	86.6
+1	11.1	78.1
NL.	11.1	78.1
+7	6.8	82.4
+10 Nat Ground.	0.0	89.2

125' East.

-15 Nat Ground.	1.3	87.9
-13	6.2	83.0
-2	12.0	77.2
NL.	12.1	77.1
+1	11.8	77.4
C	7.1	82.1



MS Call

8924

+3	3.9	85.3
1/4	3.9	85.3
±	4.0	85.2
1/4	4.1	85.1
C	4.4	84.8
SL	4.3	84.9

135' East.

SL	5.0	84.2
C	5.3	83.9
1/4	5.1	84.1
±	5.2	84.0
1/4	5.0	84.2
+1	9.4	79.8
C	9.0	80.2
+3	8.9	80.3
+6	12.7	76.5
NL	12.7	76.5
+15	6.6	82.6
+17 Nat Ground	2.0	87.2

MS Call

8924

145' East.

-7 Nat Ground	3.8	85.4
-5	11.3	77.9
NL	12.9	76.3
+8	13.6	75.6
+9	11.1	78.1
C	10.4	78.8
+5	8.5	80.7
1/4	5.5	83.7
±	5.8	83.4
1/4	5.8	83.4
C	5.9	83.3
SL	6.2	83.0

150' East

SL	6.4	82.8
C	6.5	82.7
1/4	6.4	82.8
±	6.4	82.8
1/4	6.1	83.1
+1	6.2	83.0
+3	9.3	79.9

63

MS Call

89.24

C		106	78.6
+3		140	75.2
+8		13.7	75.5
NL.		10.7	78.5
+4	Nat. Ground.	4.1	85.1
	157' East.		
-1	Nat Ground.	4.9	84.3
NL.		6.1	83.1
+3		12.5	76.7
+7		14.2	75.0
+11 <sup>5</sup>		14.5	74.7
C		12.8	76.4
+5		6.7	82.5
$\frac{1}{4}$		6.7	82.5
£		7.0	82.2
$\frac{1}{4}$		7.1	82.1
C		7.2	82.0
SL.		7.6	81.6

MS Call

89.24

64

	164' East.		
SL.		7.7	81.5
C		7.9	81.3
$\frac{1}{4}$		7.7	81.5
£		7.5	81.7
$\frac{1}{4}$		7.3	81.9
+3		7.4	81.8
+4		12.7	76.5
C		13.2	76.0
+1		15.1	74.1
+6		14.3	74.9
NL.		11.1	78.1
+0 <sup>1</sup>	Nat. Ground.	6.2	83.0
	168' East.		
NL = Nat Ground.		6.5	82.7
+0 <sup>5</sup>		6.6	82.6
+2		12.3	76.9
+5		14.4	74.8
C		15.2	74.0
+1		13.5	75.7

M<sup>c</sup>Call89.24

+4	130	76.2
+5	76	81.6
1/4	75	81.7
£	77	81.5
1/4	80	81.2
C	81	81.1
SL	80	81.2

175' East.

SL	87	80.5
C	86	80.6
1/4	86	80.6
£	82	81.0
1/4	83	80.9
+1	15.9	73.3
C	15.8	73.4
+6	14.7	74.5
+8 = Nat Ground.	75	81.7
NL	74	81.8

M<sup>c</sup>Call89.24

65

200' East.

NL	9.6	79.6
+6 Nat. Ground.	9.8	79.4
+8	15.7	73.5
+10	17.4	71.8
C	17.5	71.7
+4 <sup>s</sup>	17.3	71.9
+5 <sup>s</sup> top.	10.7	78.5
1/4	10.7	78.5
£	10.6	78.6
1/4	10.9	78.3
C	10.9	78.3
SL	10.8	78.4
T.P.	12.23	77.01

051 77.52

225' East.

SL	15	76.0
C	17	75.8
1/4	17	75.8
£	13	76.2

M<sup>e</sup> Coll.77.52

1/4		16	75.9
+3		18	75.7
+4		7.1	70.4
C		7.1	70.4
+3		6.8	70.7
+5		5.4	72.1
+7	Nat. Ground.	0.7	76.8
NL.		0.4	77.1
	250' East.		
NL.		3.2	74.3
+8	Nat. Ground.	3.3	74.2
+10		8.1	69.4
+11		8.7	68.8
C		8.7	68.8
+3		8.6	68.9
+5		4.3	73.2
1/4		4.2	73.3
⊕		4.1	73.4
1/4		4.7	72.8
C		4.6	72.9
SL		8.8	73.7

M<sup>e</sup> Coll.77.52

66

275' East.

SL		66	70.9
+3		70	70.5
C		72	70.3
1/4		72	70.3
⊕		66	70.9
1/4		68	70.7
+4		73	70.2
+5		106	66.9
C		102	67.3
+4		84	69.1
+5 top.		60	71.5
NL.		57	71.8
	300' East = WL Sag Eljo. 50' W - 10' Wks - 7/8 ft 1/2 in.		
NL.		82	69.3
+11		94	68.1
C		120	65.5
+3		122	65.3
+4		96	67.9
1/4		96	67.9

MS Call.

77.52

£	9.3	68.2
1/4	9.8	67.7
C	9.7	67.8
+4	10.6	66.9
+5	9.6	67.9
SL	9.7	67.8
W. Curb.		
SL	10.5	67.0
+8	10.5	67.0
+9	11.4	66.1
2	10.9	66.6
1/4	10.9	66.6
£	10.2	67.3
1/4	10.4	66.1
+3	11.0	66.5
+5	13.0	64.5
C	13.4	64.1
+2	13.3	64.2
+3	10.4	67.1
NL	9.7	67.8

MS Call.

77.52

67

W 1/4 Sag Elijo

NL	10.3	67.2
+1	12.6	64.9
C	14.0	63.5
+3	13.8	63.7
+4	12.4	65.1
1/4	12.0	65.5
£	11.6	65.9
1/4	11.7	65.8
C	11.6	65.9
+2	12.1	65.4
+5	12.0	65.5
+6	11.2	66.3
SL	11.5	66.0
£ Sag Elijo		
SL	12.1	65.4
+7	12.2	65.3
+8	12.8	64.7
C	12.4	65.1
1/4	12.4	65.1

M<sup>s</sup> Call.77.52

£		12.2	65.3
1/4		12.7	64.8
C		13.5	64.0
NL		12.2	65.3
T.P. Nail Pole N.E. Sag Elijo		12.43	65.09
	0.86	<u>65.95</u>	
		E 1/4 Sag Elijo.	
NL		0.9	65.0
+11		1.8	64.1
C		4.9	61.0
+5		5.0	60.9
1/4		1.5	64.4
£		1.2	64.7
1/4		1.5	64.4
C		1.5	64.4
SL		1.6	64.3
		E. Curb	
SL		2.1	63.8
C		2.4	63.5
1/4		2.1	63.3

M<sup>s</sup> Call.65.95

68

£		1.8	64.1
1/4		2.2	63.7
+1		4.7	61.2
C		7.0	58.9
+3		6.6	59.3
+5		1.5	64.4
NL		1.0	64.9
		8' E. of E Curb.	
NL		1.7	64.2
+10		1.7	64.2
+11		5.6	60.3
C		6.2	59.7
+3		7.9	58.0
+5		2.6	63.3
1/4		2.5	63.4
£		2.8	63.1
1/4		2.8	63.1
C		3.2	62.7
SL		2.8	63.1

M<sup>e</sup> Call.6595

E. L. Say Elijo St.

SL.	2.7	63.2
C	3.5	62.4
1/4	3.0	62.9
±	2.7	63.2
1/4	2.7	63.2
+2	7.8	58.1
C	7.6	58.3
+6	6.8	59.1
+8	2.3	63.6
NL.	1.8	64.1
	12' East.	
NL.	2.9	63.0
+1 fence.	2.9	63.0
+7	3.3	62.6
+8	5.6	60.3
+10	8.5	57.4
C	8.7	57.2
+2	8.6	57.3
+3	4.1	61.8

M<sup>e</sup> Call.6595

69

1/4	3.7	62.2
±	3.9	62.0
1/4	4.2	61.7
C	4.5	61.4
SL.	3.8	62.1
	25' East.	
SL.	5.0	60.9
+4	5.6	60.3
C	5.7	60.2
1/4	5.4	60.5
±	5.3	60.6
1/4	5.0	60.9
+3	5.4	60.5
+3 <sup>5</sup>	8.9	57.0
+5	9.3	56.6
C	7.6	58.3
+3	6.3	59.6
+5	4.4	61.5
+11 <sup>5</sup> = fence	4.0	61.9
NL.	3.9	62.0

ME C911.

6595

50' East.

NL.	62	59.7
+1 = fence.	64	59.5
C	69	59.0
+2	11.7	54.2
1/4	12.1	53.8
+1	7.4	58.5
±	7.5	58.4
1/4	7.5	58.4
C	7.6	58.3
+A	8.0	57.9
+6	7.5	58.4
SL.	7.2	58.7

75' East.

SL.	9.2	56.7
+7	10.2	55.7
C	9.7	56.2
1/4	9.9	56.0
±	10.1	55.8
1/4	9.7	56.2

ME C911.

6595

70

+3	10.0	55.9
+4	13.8	52.1
C	14.4	51.5
+3	14.0	51.9
+5	9.3	56.6
+12 = fence.	9.1	56.8
NL.	9.0	56.9

100' East.

NL.	11.1	54.8
+6 = fence.	11.3	54.6
+0	11.4	54.5
+1	16.0	49.9
C	16.0	49.9
+5	15.3	50.6
1/4	11.8	54.1
±	12.1	53.8
1/4	12.1	53.8
C	12.1	53.8
+5	12.3	53.6
+6	11.9	54.0
SL.	11.5	54.4



M<sup>s</sup> Call.65.95

T.P. 12.87 53.08

0.77 53.85

125' East.

SL. 1.8 52.0

+8 2.0 51.8

+9 2.4 51.4

C 2.1 51.7

1/4 2.0 51.8

E 2.0 51.8

1/4 1.8 52.0

+2 2.0 51.8

+3 5.0 48.8

C 5.0 48.8

+3 1.5 52.3

+12 = fence. 1.2 52.6

NL 1.0 52.8

150' East.

NL and fence. 3.0 50.8

+10 3.3 50.5

+11 7.3 46.5

M<sup>s</sup> Call.53.85

C. 7.4 46.4

+2 7.3 46.5

+3 4.1 49.7

1/4 4.0 49.8

E 4.1 49.7

1/4 4.1 49.7

C 4.1 49.7

SL. 4.2 49.6

175' East.

SL. 6.4 47.4

C 6.5 47.3

1/4 6.1 47.7

E 6.3 47.5

1/4 6.1 47.7

+4 6.3 47.5

+5 9.8 44.0

C 9.9 43.9

+1 9.4 44.4

+2 5.6 48.2

NL 5.7 48.1

71

N<sup>e</sup> Call.53.85

200' East.

NL.	76	46.2
+11	80	45.8
C	11.1	42.7
+2	11.1	42.7
+3	88	45.0
1/4	82	45.6
E	83	45.5
1/4	82	45.6
C	84	45.4
SL.	8.1	45.7

225' East.

SL.	9.9	43.9
C	101	43.7
1/4	101	43.7
E	100	43.8
1/4	100	43.8
+3	104	43.4
+4	126	41.2
C	125	41.3

N<sup>e</sup> Call.53.85

72

+1	100	43.8
+10	94	44.4
NL.	88	45.0

250' East.

NL.	106	43.2
+2	112	42.6
+10	113	42.5
+11	148	39.0
C	147	39.1
+2	145	39.3
+3	120	41.8
1/4	117	42.1
E	119	41.9
1/4	123	41.5
C	123	41.5
SL.	113	42.5
TF	1303	40.82

1.73 42.55

275' East.

SL	22	40.3
C	26	40.0

M<sup>c</sup> Call.42.55

1/4	27	39.8
±	28	39.7
1/4	26	40.0
+5	28	39.7
C	55	37.0
+4	48	37.7
+5	20	40.5
+10 <sup>5</sup>	1.8	40.7
NL	12	41.3
296' East.		
NL:	31	39.9
+8	33	39.2
+10 <sup>5</sup>	72	35.3
C	73	35.2
+1	72	35.3
+2	50	37.5
1/4	46	38.0
±	47	37.8
1/4	44	38.1
C	42	38.3
SL	39	38.6

M<sup>c</sup> Call.42.55

73

300' East - W.L. Rosecrans. 50' W. - Graded.

SL	52	37.3
C	48	37.7
1/4	47	37.8
±	48	37.7
1/4	51	37.4
+5	53	37.2
C	66	36.0
+4	73	35.2
+5	56	37.0
NL	Top curb 44	38.1
Bit Flag NW Gr	Nat Gr 50	37.5
	4.40	38.15
5' W. of EL. Rosecrans.		
-10	6.1	36.4
NL	Top 60	36.5
	160	26.5
C	6.1	36.4
1/4	6.4	36.1
±	6.4	36.1
1/4	6.5	36.0
C	6.6	36.0
SL	6.7	35.8

38.14 = OK

N<sup>e</sup> Call.42.55

EL. Rosecrans.

SL.	6.9	35.6
C	7.0	35.5
1/4	7.0	35.5
£	7.0	35.5
1/4	6.9	35.6
+5 <sup>z</sup>	6.9	35.6
C	15.7	26.8
NL.	15.7	26.8
+8	15.2	27.3
+9	8.0	34.5

2 ft East.

-9	5.9	36.6
-7.	13.9	28.6
NL.	15.4	27.1
C	15.7	26.8
1/4	{ 15.6 6.9	{ 27.0 35.6
£	7.1	35.4
1/4	7.0	35.5
C	7.0	35.5
SL	7.1	35.4

N<sup>e</sup> Call.42.55

4 ft East of Rosecrans.

SL.	7.1	35.4
C	7.4	35.1
1/4	7.3	35.2
£	7.2	35.3
1/4	7.1	35.4
+1	7.2	35.3
+2	16.2	26.3
C	16.1	26.4
+11	16.0	26.5
NL.	15.8	26.7
+2 Top	6.5	36.0

9 ft East.

NL.	8.1	34.4
+1	15.6	27.0
+5	16.7	25.8
C	16.7	25.8
+4	15.0	27.5
+5	{ 15.0 7.4	{ 27.5 35.1
1/4	7.4	35.1

-4

M<sup>c</sup>Coll.42.55

±	7.4	35.1
1/4	7.6	35.0
C	7.7	34.8
SL	7.5	35.0
25' East.		
SL	8.3	34.2
C	8.9	33.6
1/4	8.8	33.7
±	8.8	33.7
1/4	8.3	34.2
72	8.3	34.2
C	14.7	27.8
+3	15.2	27.3
+4	17.0	25.5
+11 <sup>5</sup>	16.5	26.0
NL	9.1	33.4
T.P.	10.14	32.41

2.18

34.59

50' East.

NL	12	33.4
----	----	------

M<sup>c</sup>Coll.34.59

+3	8.2	26.4
+5	12.0	22.6
+9	10.4	24.2
+11	8.0	26.6
C	2.7	31.9
1/4	2.3	32.3
±	2.6	32.0
1/4	2.8	31.8
C	3.0	31.6
SL	3.2	31.4
53' East.		
SL	3.4	31.2
C	3.2	31.4
1/4	3.1	31.5
±	2.8	31.8
1/4	2.6	32.0
C	3.2	31.4
+1	10.7	23.9
+3	12.3	22.3
+5	8.8	25.8
+8	5.6	29.0
	2.9	31.7

75

N<sup>o</sup> Call34.59

NL

$$\left. \begin{array}{l} 1.7 \\ 4.4 \end{array} \right\}$$

32.9

30.2

65' East.

-9 Top Bank.

3.1

31.5

-8

5.6

29.0

-4

7.8

26.8

NL.

10.4

24.2

+2

13.6

21.0

+4

8.3

26.3

+10

5.1

29.5

C

4.0

30.6

1/4

3.3

31.3

E

3.7

30.9

1/4

4.0

30.6

C

4.1

30.5

5f.

3.9

30.7

75' East

5L

4.5

30.1

C

4.9

29.7

1/4

4.6

30.0

E

4.3

30.3

1/4

4.2

30.4

C

4.7

29.9

+5

8.8

25.8

+7

14.1

20.5

+8

14.7

19.9

+9

11.6

23.0

NL

11.6

23.0

+3

10.3

24.3

+9

6.5

28.1

+11

Top Bank

3.6

31.0

N<sup>o</sup> Call34.59

86' East.

-9 Top Bank.

4.5

30.1

-7

7.9

26.7

NL.

9.7

24.9

+2

15.1

19.5

+4

15.2

19.4

+5

12.6

22.0

+8

8.9

25.7

+11

8.6

26.0

C

6.2

28.4

+2

4.8

29.8

1/4

4.9

29.7

E

5.0

29.6

1/4

5.4

29.2

C

5.5

29.1

5L

5.3

29.3

96' East.

5L

5.7

28.9

C

6.2

28.4

1/4

6.0

28.6

E

5.6

29.0

1/4

5.6

29.0

C

5.6

29.0

-2

9.5

25.1

+9

9.7

24.9

NL

15.7

18.9

+4

15.7

18.9

+5

13.3

21.3

-8

11.1

23.5

+10

= Top Bank.

5.1

29.5

100' East.

-13

" "

5.2

29.4

-12

8.7

25.9

-5

16.2

18.4

NL

11.4

23.2

70

N<sup>e</sup> Cg 1134.59

+4	88	25.8
c	92	25.4
+0.5	67	27.9
1/4	60	28.6
1/2	60	28.6
3/4	62	28.4
c	64	28.2
SL	62	28.4
115' East		
SL	72	27.4
c	72	27.4
1/4	72	27.4
1/2	69	27.7
3/4	70	27.6
+5	71	27.5
c	7.8	26.8
+2	80	26.6
+3	7.8	24.8
+10	9.7	24.9
NL	11.0	23.6
+8	17.4	17.2
+13	14.2	20.4
+17 Top Bank	60	28.6
125' East		
-20 " "	65	28.7
-15	17.8	16.8
-7	16.7	17.9
NL	13.2	21.4
+3	11.4	23.2
+10	10.1	24.5
c	8.1	26.5
1/4	7.5	27.1
1/2	7.5	27.1
3/4	7.7	26.9
c	8.0	26.6
SL	7.6	27.0
138' East		
SL	83	26.3
c	86	26.0

N<sup>e</sup> Cg 11.34.59

77

1/4	84	26.2
1/2	82	26.4
3/4	81	26.5
+2	82	26.4
+3	100	24.6
c	11.3	23.3
NL	12.5	22.1
+3	16.7	17.9
+9	16.7	17.9
+11	18.3	16.3
+16	18.4	16.2
+20 Top Bank	7.2	27.4
130' East		
-17 " "	7.5	27.1
-13	18.6	16.0
NL	18.1	16.5
+4	15.5	19.1
+6	14.0	20.6
c	13.5	21.1
+5	11.5	23.1
1/4	9.1	25.5
1/2	9.0	25.6
3/4	9.1	25.5
c	9.5	25.1
SL	9.4	25.1
165' East		
SL	10.5	24.1
c	10.6	24.0
1/4	10.1	24.5
1/2	9.7	24.9
+5	9.9	24.7
1/4	15.4	19.2
c	15.6	19.0
+3	19.2	15.4
NL	19.1	15.5
+2	19.0	15.6
+1 Top Bank	9.6	25.0
167' East		
NL	9.6	25.0
+2	19.0	15.6

34.59

+5	20.0	14.6
C	19.4	15.2
1/4	16.6	18.0
+2	10.3	24.3
E	10.1	24.5
1/4	10.2	24.4
C	10.9	23.7
SL	10.9	23.7

175' East.

SL	11.5	23.1
C	11.3	23.3
1/4	11.0	23.6
E	10.6	24.0
1/4	10.7	23.9
T.P.	11.40	23.19

107

24.26

+3	9.1	15.2
C	9.9	14.4
+6	11.5	13.1
+10 Top Bank	00	24.3
NL	00	24.3

187' East.

NL Top Bank	1.2	23.1
+1	5.9	18.4
+6	12.0	12.3
+9	12.1	12.2
+11	1.2	23.1
C	1.1	23.2
1/4	1.3	23.0
E	1.4	22.9
1/4	1.6	22.7
C	1.8	22.5
SL	2.0	22.3

190' East.

SL	2.2	22.1
+5	2.8	21.5
C	1.9	22.4
1/4	1.3	23.0
E	1.1	22.9

24.26

1/4	14	22.9
C	12	23.1
+1	13	23.0
+3	12.2	12.1
+7	11.8	12.5
NL	6.2	18.1
+15	7.6	16.7
+25 Top Bank	14	22.9

200' East.

-14 " "	16	22.7
-12	5.3	19.0
-3	7.0	17.3
NL	14.7	9.6
+5	14.2	10.1
+6	6.5	17.8
C	5.1	19.2
+1	20	22.3
1/4	22	22.1
E	2.7	21.6
1/4	2.2	22.1
C	2.3	22.0
SL	2.8	21.5

210' East.

SL	3.3	21.0
+5	3.8	20.5
C	3.1	21.2
1/4	2.7	21.6
+4	2.5	21.8
E	4.4	19.9
+3	5.5	18.8
1/4	5.0	19.3
+4	5.2	19.1
C	8.9	15.4
+5	11.2	13.1
+11 <sup>2</sup>	14.8	9.5
NL	7.5	16.8
+6	5.4	18.9
+10	7.1	17.2
+15 Top Bank	1.4	22.9



M<sup>c</sup>Call

24.26

225' East

-5 Top Bank.	30	21.3
-4	10.7	13.6
NL.	12.6	11.7
+5	17.4	6.9
+7	11.8	12.5
C	9.1	15.2
+3	8.4	15.9
1/4	5.7	18.6
+3	4.1	20.2
£	3.9	20.4
1/4	4.1	20.2
C	4.9	19.4
+4	5.2	19.1
SL.	4.5	19.8

235' East

SL.	5.4	18.9
+7	6.5	17.8
C	5.2	19.1
1/4	5.3	19.0
£	5.2	19.1
+2	5.0	19.3
+3	7.3	17.0
1/4	8.2	16.1
C	9.9	14.4
+9	18.9	5.4
NL.	12.0	12.3
+2 = Top Bank.	3.2	21.1

241' East

NL = " "	4.5	19.8
+3	17.7	6.6
+5	18.9	5.4
+7	17.5	6.8
C	12.1	12.2
1/4	9.7	14.6
+4	7.9	16.4
+5	5.3	19.0
£	5.6	18.7
1/4	5.9	18.4
C	6.1	18.2
+5	7.3	17.0
SL.	6.1	18.2

M<sup>c</sup>Call

24.26

250' East

SL.	76	16.7
+7	8.9	15.4
C	8.6	15.7
1/4	7.9	16.4
£	7.3	17.0
+4	6.8	17.5
+5	11.3	13.0
1/4	11.6	12.7
+4	12.1	12.2
C	15.7	8.6
+3	19.0	5.3
+6	19.5	4.8
+6.5 Top Bank.	5.9	18.4
NL.	5.7	18.6

265' East

NL.	9.1	15.2
+10 = top Bank	9.7	14.6
+11	19.4	4.9
C	20.4	3.9
+5	20.0	4.3
1/4	19.0	5.3
+3	12.5	11.8
£	11.3	13.0
1/4	11.0	13.3
+2	12.3	12.0
C	12.5	11.8
+8	11.7	12.4
+10	10.9	13.4
SL.	11.7	12.6
T.P.	12.70	11.56

242

13.98

275' East

SL.	32	8.8
+3 foxe	2.4	11.6
+7	3.7	10.3
+10	3.4	10.6
C	4.1	9.9
+2	3.0	11.0
1/4	2.8	11.2

79

M=Call

1398

(14.0)

+5	3.0	11.0
E	5.2	8.8
+4	11.1	2.9
+5	11.1	2.9
1/4	3.5	10.5
C	2.8	11.2
NL	1.5	12.5

300' East.

NL. Hub.	7.59	4.39	438 <sup>ac</sup>
C	102	3.8	
+2	103	3.7	
+3	121	1.9	
1/4	120	2.0	
+3	114	2.6	
+4	103	3.7	
E	104	3.6	
1/4	106	3.4	
C	91	4.9	
+3	74	6.6	
SL	71	6.9	

301' East.

SL	83	5.7
C	109	3.1
+3	110	3.0
+4	119	2.1
1/4	11.8	2.2
E	120	2.0
1/4	125	1.5
+4	123	1.7
C	109	3.1
NL	11.3	2.7

314' East.

NL	115	2.5
+11	110	3.0
C	120	2.0
+3	127	1.3
1/4	127	1.3
E	120	2.0
1/4	126	1.4
+4	122	1.8
+5	113	2.7

M=Call.

1398

140

114

2.6

80.

C	11.7	2.3
SL	11.7	2.3

325'E = W.L. San Antonio = 50'W - 10'WKS - 7 1/2' / as.

SL	12.3	1.7
+11	11.9	2.1
C	12.7	1.3
1/4	133	0.7
E	132	0.8
1/4	128	1.2
C	124	1.6
NL	125	1.5
T.P.	1246	1.52

265

4.17

W.Curb

NL	31	1.1
C	30	1.2
1/4	32	1.0
E	35	0.7
1/4	38	0.4
C	39	0.3
+8	36	0.6
+9	29	1.3
SL	29	1.3

W 1/4

SL	41	0.1
C	42	0.0
1/4	41	0.1
E	34	0.6
1/4	36	0.6
C	31	1.1
NL	35	0.7

E San Antonio

NL	35	0.7
C	36	0.6
1/4	38	0.4
E	39	0.3
1/4	39	0.3
C	43	-0.1
CSL	45	-0.3

McCall

4.17

E/4

SL	49	-0.7
C	42	0.0
1/4	41	0.1
E	42	0.0
1/4	40	0.2
C	40	0.2
NL	39	0.3

E Curb.

NL	43	-0.1
C	44	-0.2
1/4	44	-0.2
E	45	-0.3
1/4	44	-0.2
C	43	-0.1
SL	41	-0.9

EL San Antonio

SL	51	-0.9
C	43	-0.1
1/4	45	-0.3
E	48	-0.6
1/4	50	-0.8
C	49	-0.7
NL	49	-0.7

25' East

NL	60	-1.8
C	53	-1.1
1/4	55	-1.3
E	54	-1.2
1/4	54	-1.2
C	55	-1.3
SL	59	-1.7

50' East

SL	76	-3.4
C	73	-3.1
1/4	77	-3.5
E	75	-3.3
1/4	73	-3.1
C	71	-2.9
NL	72	-3.0

see next page →

4.17

81

70' East = Fresh Fish House SL

NL under fish house.

NL	78	-3.6
C	81	-3.9
1/4	83	-4.1
E	88	-4.6
1/4	85	-4.3
C	84	-4.2
SL	84	-4.2

DISTANCES FROM CENTER OF ROADWAY FOR CROSS-SECTIONING.

ROADWAY 14 FEET WIDE. SIDE SLOPES 1½ TO 1.

FOR SINGLE TRACK EMBANKMENT.

	0	.1	.2	.3	.4	.5	.6	.7	.8	.9	
0	7.0	7.2	7.3	7.5	7.6	7.8	7.9	8.1	8.2	8.4	0
1	8.5	8.7	8.8	9.0	9.1	9.3	9.4	9.6	9.7	9.9	1
2	10.0	10.2	10.3	10.5	10.6	10.8	10.9	11.1	11.2	11.4	2
3	11.5	11.7	11.8	12.0	12.1	12.3	12.4	12.6	12.7	12.9	3
4	13.0	13.2	13.3	13.5	13.6	13.8	13.9	14.1	14.2	14.4	4
5	14.5	14.7	14.8	15.0	15.1	15.3	15.4	15.6	15.7	15.9	5
6	16.0	16.2	16.3	16.5	16.6	16.8	16.9	17.1	17.2	17.4	6
7	17.5	17.7	17.8	18.0	18.1	18.3	18.4	18.6	18.7	18.9	7
8	19.0	19.2	19.3	19.5	19.6	19.8	19.9	20.1	20.2	20.4	8
9	20.5	20.7	20.8	21.0	21.1	21.3	21.4	21.6	21.7	21.9	9
10	22.0	22.2	22.3	22.5	22.6	22.8	22.9	23.1	23.2	23.4	10
11	23.5	23.7	23.8	24.0	24.1	24.3	24.4	24.6	24.7	24.9	11
12	25.0	25.2	25.3	25.5	25.6	25.8	25.9	26.1	26.2	26.4	12
13	26.5	26.7	26.8	27.0	27.1	27.3	27.4	27.6	27.7	27.9	13
14	28.0	28.2	28.3	28.5	28.6	28.8	28.9	29.1	29.2	29.4	14
15	29.5	29.7	29.8	30.0	30.1	30.3	30.4	30.6	30.7	30.9	15
16	31.0	31.2	31.3	31.5	31.6	31.8	31.9	32.1	32.2	32.4	16
17	32.5	32.7	32.8	33.0	33.1	33.3	33.4	33.6	33.7	33.9	17
18	34.0	34.2	34.3	34.5	34.6	34.8	34.9	35.1	35.2	35.4	18
19	35.5	35.7	35.8	36.0	36.1	36.3	36.4	36.6	36.7	36.9	19
20	37.0	37.2	37.3	37.5	37.6	37.8	37.9	38.1	38.2	38.4	20
21	38.5	38.7	38.8	39.0	39.1	39.3	39.4	39.6	39.7	39.9	21
22	40.0	40.2	40.3	40.5	40.6	40.8	40.9	41.1	41.2	41.4	22
23	41.5	41.7	41.8	42.0	42.1	42.3	42.4	42.6	42.7	42.9	23
24	43.0	43.2	43.3	43.5	43.6	43.8	43.9	44.1	44.2	44.4	24
25	44.5	44.7	44.8	45.0	45.1	45.3	45.4	45.6	45.7	45.9	25
26	46.0	46.2	46.3	46.5	46.6	46.8	46.9	47.1	47.2	47.4	26
27	47.5	47.7	47.8	48.0	48.1	48.3	48.4	48.6	48.7	48.9	27
28	49.0	49.2	49.3	49.5	49.6	49.8	49.9	50.1	50.2	50.4	28
29	50.5	50.7	50.8	51.0	51.1	51.3	51.4	51.6	51.7	51.9	29
30	52.0	52.2	52.3	52.5	52.6	52.8	52.9	53.1	53.2	53.4	30
31	53.5	53.7	53.8	54.0	54.1	54.3	54.4	54.6	54.7	54.9	31
32	55.0	55.2	55.3	55.5	55.6	55.8	55.9	56.1	56.2	56.4	32
33	56.5	56.7	56.8	57.0	57.1	57.3	57.4	57.6	57.7	57.9	33
34	58.0	58.2	58.3	58.5	58.6	58.8	58.9	59.1	59.2	59.4	34
35	59.5	59.7	59.8	60.0	60.1	60.3	60.4	60.6	60.7	60.9	35
36	61.0	61.2	61.3	61.5	61.6	61.8	61.9	62.1	62.2	62.4	36

Calculated by Julien A. Hall, M. Am. Soc. C. E.

MADE IN GERMANY.