

333

380

FIELD

F.B. 999

Cook's
Quality

38570833
308

251
269520
40-172

3057
3057

246 + 95.4
240 + 30.14
668.14

105 240
668
10024
1338

.13

MICROFILMED

DEC 18 1964

999

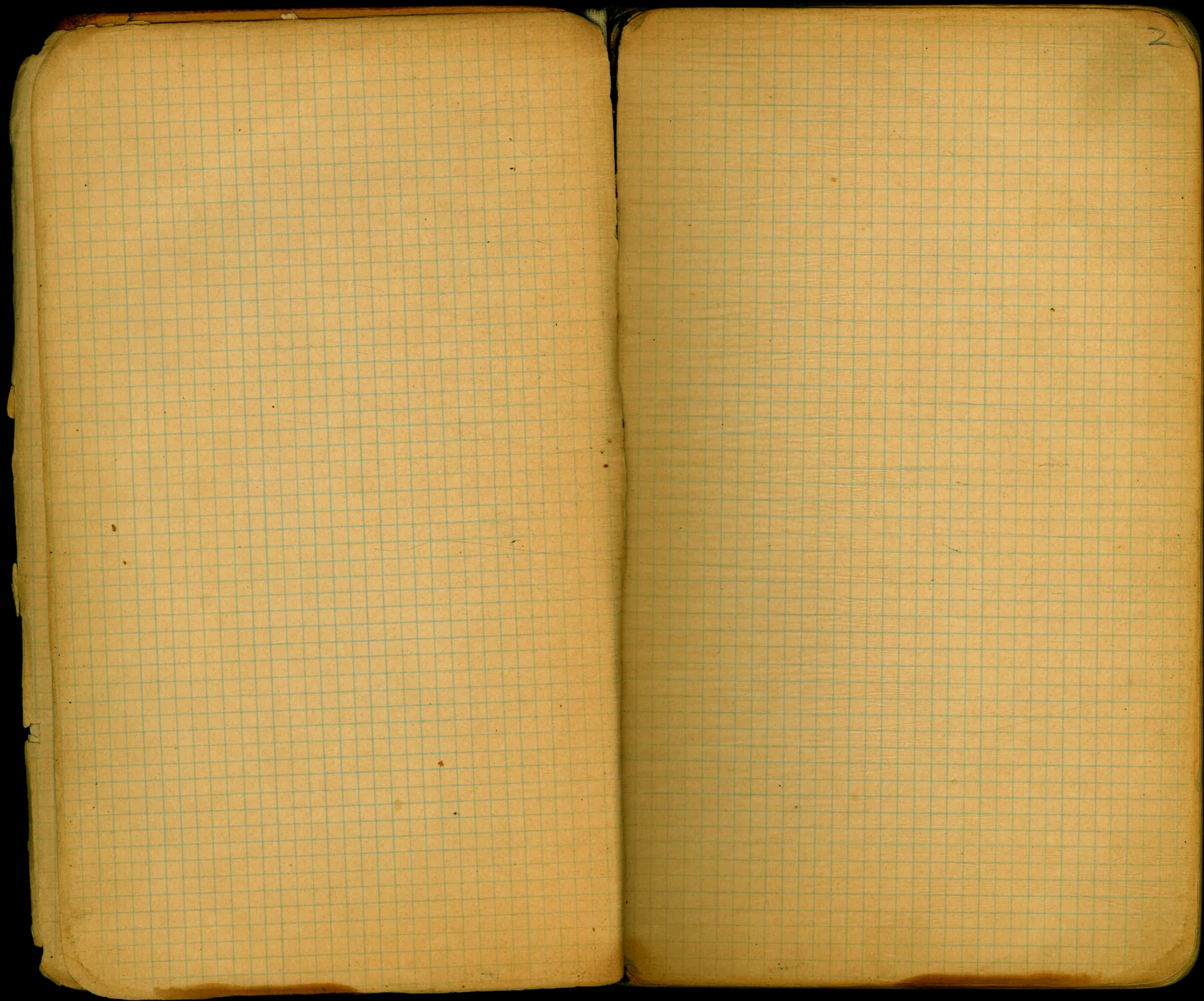
[Handwritten scribble]

9/21/14 Mon's set on Boundary at
N.H. 1109 and Cor 6 lot 33

X Mission Rancho

Sta 483+61⁶⁵ and moved 3905 W
" 473+95¹⁰





2

3

1865
1870

May 6th 1914 (Hatch) Rancharra. line to 4
1914 (Moore) determine East line
Hall Pueblo de San Diego
Sta 46+02⁹⁰ from angle near
Mon. Sorrento to
(offset 36.33 E for B line) Mission Valley

Sta 40+63⁵⁰ - Hub 6" x 6" Post
0.3

Sta 38+44⁶⁰ - Hub in Co Santa E Track

Sta 30+95⁵ - 6" Post



Barber line determined by Mass 0200 by Sta 42+02⁹⁰

Flag Sta 0+00 Mon. ▢ Angle pt near Sorrento

Flag Sta 98+00 ▢ Hub on line

Sta 92+77⁰⁰ ▢ Hub on line

Flag Sta 77+70 ▢ Hub on line (1000 visible from here)

1306
Sta 74+44⁵⁰ ▢ Hub on line
Mon 1193 1319

Sta 72+40 ▢ Hub on line

Flag Sta 62+00 ▢ Hub on line ^{Road} N of Miramonte

Sta 57+00 ▢ Hub on line

Sta 49+08²⁵ ▢ Hub on line

Sta 138+01¹⁰ ▢ Hub on line.

Sta 133+81²⁰ Mon. 20²⁷ ▢ Hub on line

Sta 129+55⁶⁰ ▢ Santa Fe Ry

Sta 124+00 ▢ Hub on line

Flag Sta 121+00 ▢ Hub on line

Flag Sta 117+55⁰⁰ ▢ Hub on line

Sta 112+00 ▢ Hub on line

1305 1304
Sta 102+01¹⁰ ▢ Hub 5²⁵ Mon.
1306
1305

Sta 103+61⁵⁰ 4x6 ▢ 10²⁸ ▢ Hub on line
1307

1244
Sta 213+69 ^{Perce Can} 31³⁰ Hub on line
1246

Rose Cañon

Sta 196+02 ²⁰ Hub on line

1246
Sta 186+67 ^{Hub on line} 25²⁰ Hub on line
1245

Sta 178+62 Hub on line

Flag

Sta 176+50 Hub on line

Sta 163+42⁷ Hub on line

1215
Sta 161+23 ^{Hub on line} 23²⁴ Hub on line
1216

Flag

Sta 154+00 Hub on line

6
Sta 263+00 Hub on line

1233
Sta 252+71 ^{Hub on line} 35²⁵ Hub on line
1245

Sta 248+00 Hub on line

Sta 239+00 Hub on line

Sta 228+51⁵ Hub on line

Sta 223+50 Hub on line

Sta 220+00 Hub on line

1245
Sta 217+61 ^{Hub on line} 32² Hub on line
1244

Sta 217+06 Hub on line

Sta 358+27⁵⁰ • Hub on line

Sta 345+00 • Hub on line

Sta 335+00 • Hub on line

Hub on
Tampa line

Sta 325+14²⁰ • 44.80 • Hub on line
1219

Sta 320+00 • Hub on line

Sta 312+11⁰ • 42.63 • Hub on line
1219
1232

Sta 307+00 • Hub on line

Sta 293+00 • Hub on line

Sta 283+13⁵⁰ • 38.76 • Hub on line
1232
1233

Sta 271+00 • Hub on line

Escondido Road

Sta 424+50 • Hub on line

Sta 420+67¹⁰ • Hub on line

Sta 408+77 • Hub on line

Hub on line Sta 393+34 • 30.8° • 2' x 2' in mound of rock

Sta 390+36 • Hub on line

Sta 384+90 • Hub on line N edge of ridge

Sta 380+00 • Hub on line

Sta 367+80 • Hub on line

Sta 361+00 • Hub on line Top of Ridge

Mon on South side Mission Valley
Angle pt. in City line

Sta 515+00 → Hub

Total length of Random line = 516+36²³
offset = 407.54

Sin 1729 = .31703

Cos 1729 = .94842

Sta 481+75 Hub Ratio = .00719252

31703 94842
4297 4297
53721 663814
233827 853578
23406 189684
26812 379368
36227781 407536074
513628

Sta 481+00 Hub → 350.22

Sta 480+00 Hub on line

Sta 478+00 Hub on line

Sta 459+00 Hub on line

Sta 451+47 Hub on line

Sta 450+49 4.100 ^{2nd New with later corrected} 869.50

Sta 449+50 Hub on line

Rock Pile ^{26.6150} _{40.45}

Sta 440+80 Hub on line

Instr at 408+77 Foresight 350+00

Time	Hor Angle	Vert Angle
3:00 PM	64°37'	Left 46°00'
3:01	64°47'	45°45'
3:02	64°39'	45°33'
3:02:30	64°32'	45°23'

4/21/17

100789212
312
1578004
784252
236778
246246.624

42.00
198.12
4.40
245.10

East line of City B. line

- ✓ (111+15) Sta 111+00 Hub
- Sta 103+50
- ✓ Flag Sta 96+60 Hub
- Sta 85+80 Hub
- ✓ Flag Sta 78+60 Hub
- Sta 72+50 Hub
- Flag Sta 62+75 Hub *off main road*
- ✓ Flag Sta 53+75 Hub
- Sta 48+50 Hub
- Sta 46+02⁷⁵ 3630 *Alon.*
- Sta 39+25 Hub
- Sta 28+00 *late Hub*
- ✓ Flag 0+00 *Alon*

- 199.45 Cal.
175.75 → To Alon
- ✓ Sta 252+71 Hub
 - Sta 249+50¹⁵ Hub
 - ✓ Sta 241+35¹⁰ Hub
 - ✓ Sta 234+50 Hub
 - ✓ Sta 218+25 Hub
 - Sta 218+06¹⁰ Hub
 - Rose Cañon
 - ✓ Sta 191+75 Hub
 - Sta 180+80 Hub
 - ✓ Sta 175+73⁵⁰ Hub
 - ✓ Sta 154+30 Hub
 - ✓ Sta 146+55 Hub
 - Sta 137+86⁶⁵ Hub
 - Sta 129+05 Hub *at N of Santa Fe*
 - ✓ Sta 117+55 Hub
- ✓ check as wide
close against
at 200

✓ Sta 367+00 Hub

✓ Sta 360+00 Hub

✓ Sta 352+70 Hub

Sta 345+00 Hub

✓ Sta 343+50 about

✓ Sta 334+70 Hub

Sta 330+00 Hub

✓ Sta 321+00 Hub

Sta 320+00 Hub

✓ Sta 310 about

Sta 306+00 Hub

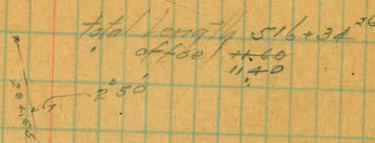
✓ Sta 297+00 Hub

✓ Sta 289+00 Hub

✓ Sta 277+00 Hub

✓ Sta 200+00 Hub

✓ Sta 260+00 Hub



Sta 514+00 Hub

✓ Sta 466+00 Hub

✓ Sta 446+00 Hub

466+20
14 E of Mark 110

✓ Sta 435 (about) Hub

✓ Sta 372+00 Hub near *Scandinavia*
Point

✓ Sta 410+00 Hub

Sta 404+00 Hub

✓ Sta 400+00 Hub

Sta 377+50 Hub

Kedge Heavy Case

✓ Sta 375+00 Hub

Sta 371+75

8057
1202
162.27 Mon
1215

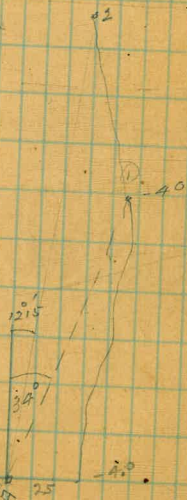
410 ^{North} ^{Front} ^{Hall} Survey Pl 253

B.M. Taylor Chestnut St 973	15.77		6044	
	317	16.79	215	13.62
	296	10.43	922	7.47
	279	6.43	699	3.64
B.M. Nails in North Front Hall			302	341
	350	299	652	-209
	461	280	530	-181
B.M. Nail in Cor Flat roof Shack East of Stoughton			472	-192
Hub w. cor. S. St. & S. Front St.	500	+239	541	-261
Easterly Cor 253			505	-266
A	466	1.01	604	-365
B	504	1.30	475	-374
C	485	0.87	528	-398
D	629	2.59	457	-376
B.M. chert			460	201
				-192

See next page

Globe

Alley



Fore-sight 90° R. from E Cor. Mission -

Inst at Station "A" Dist El

1 34°00R 230 -40

2 12°15R 510 -40

3 5°25L 505 -39

"B" 0°10L 917 -375

Inst at "B" Back-sight on "A"

1 16°33L 746 -38

2 19°00L 485 -36

3 39°20L 900 -35

"C" 26°20L 1110 -40

Inst at "C" Back-sight on "B"

1 6°25R 415 -34

"D" 16°45R 763 -37

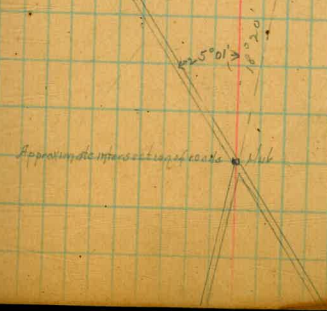
Inst at "D" Back-sight on "C"

W Cor 81°05L 371 -36

Survey of Linda Vista Road $\frac{5}{16}$ } ^{Davis}
 Hancock
 Harick

Sta	Ang	Bearing	Mag. Bearing
23			
22			
21			
20			
19			
18			
17			
16			
15			
14			
13			
12	± 56		
11			
10			
9			
8			
7			
6			
5			
4			
3			
2			
1			
0			

524° 51' W 59' 45" W



85+33

3 pipe

30

29

28

27

26

25

24

189+08.7

185+05

133+48.9

132+50

129

125+44.3

120+21

117

4423.3

1199

Wire fence
Granite Men

1202

45.13

Hub 44.26

Hub

1 pipe

1 pipe

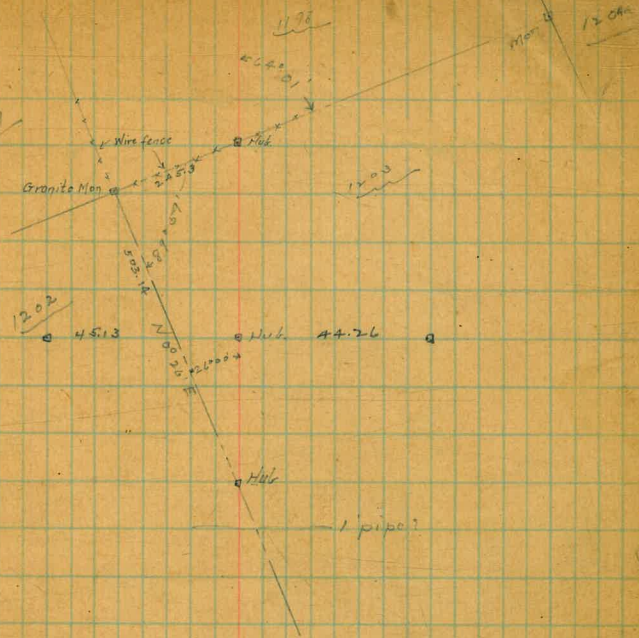
28.11

49.98

1 pipe

41.62

Hub 45.61



Sta Ang Bearing Mag. Bearing

159+60

155

46.46' from P.I. to P.I.

149+42.75

145+76.2 EC

143+56 PI x R 130' 539° 43' W 524° 30' W

142+80

141+33.6 PC

47.28'

→ 1 pipe

35.77 38.87

31.32 35.47

41.60 35.48

1/3
C.C. curve
Δ 13017'
T 222.41
R 191008
L 47.28
→ 1 pipe

42.80 47.60

Sta Ang Bearing Mag. Bearing

184+61

179+09.35

177+35

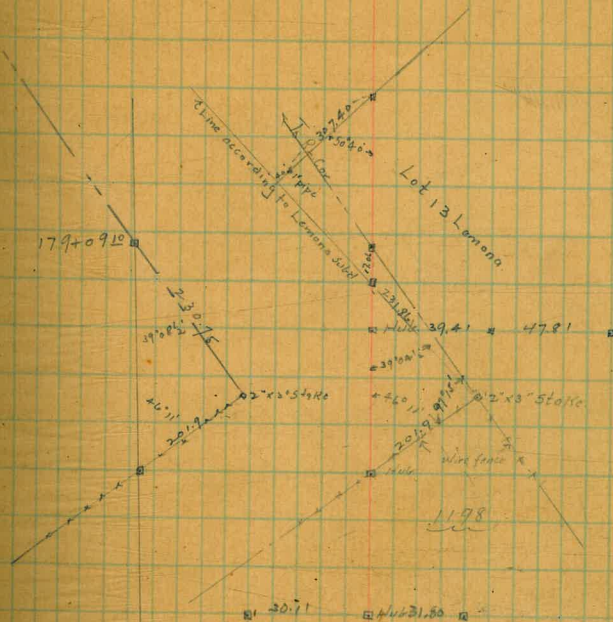
31904

175+90.3

172+12.8

165+32

163+00



3607

33.82

Sta Aug Bearing Mag. Bearing

204+92.00

204+87.50

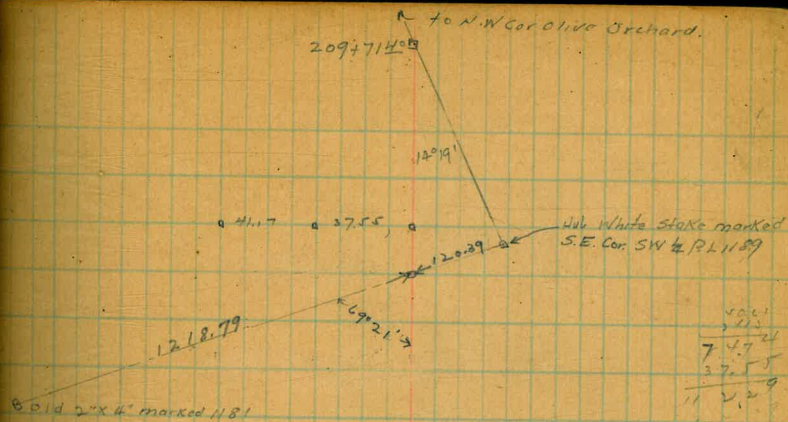
200

193+02.95 EC

190 P.I. $L 18^{\circ} 20'$ $S 21^{\circ} 23' W$ $S 6^{\circ} 20' W$

188+10

186+91.23 PC



Hubs 25.46 40.61 74.74

46.15.14 62.07

#12

3' Curve
$\Delta 18^{\circ} 20'$
T 308.23
R 1910.08
L 611.18

← 1 pipe

60.34 38.81 11.6

Sta Ang Bearing Mag Bearing

240+31⁵ EC X

236+13 PI R 44° 0' S 49° 23' W S 33° 50' W

231+29²⁷ PC

225+73⁶⁹

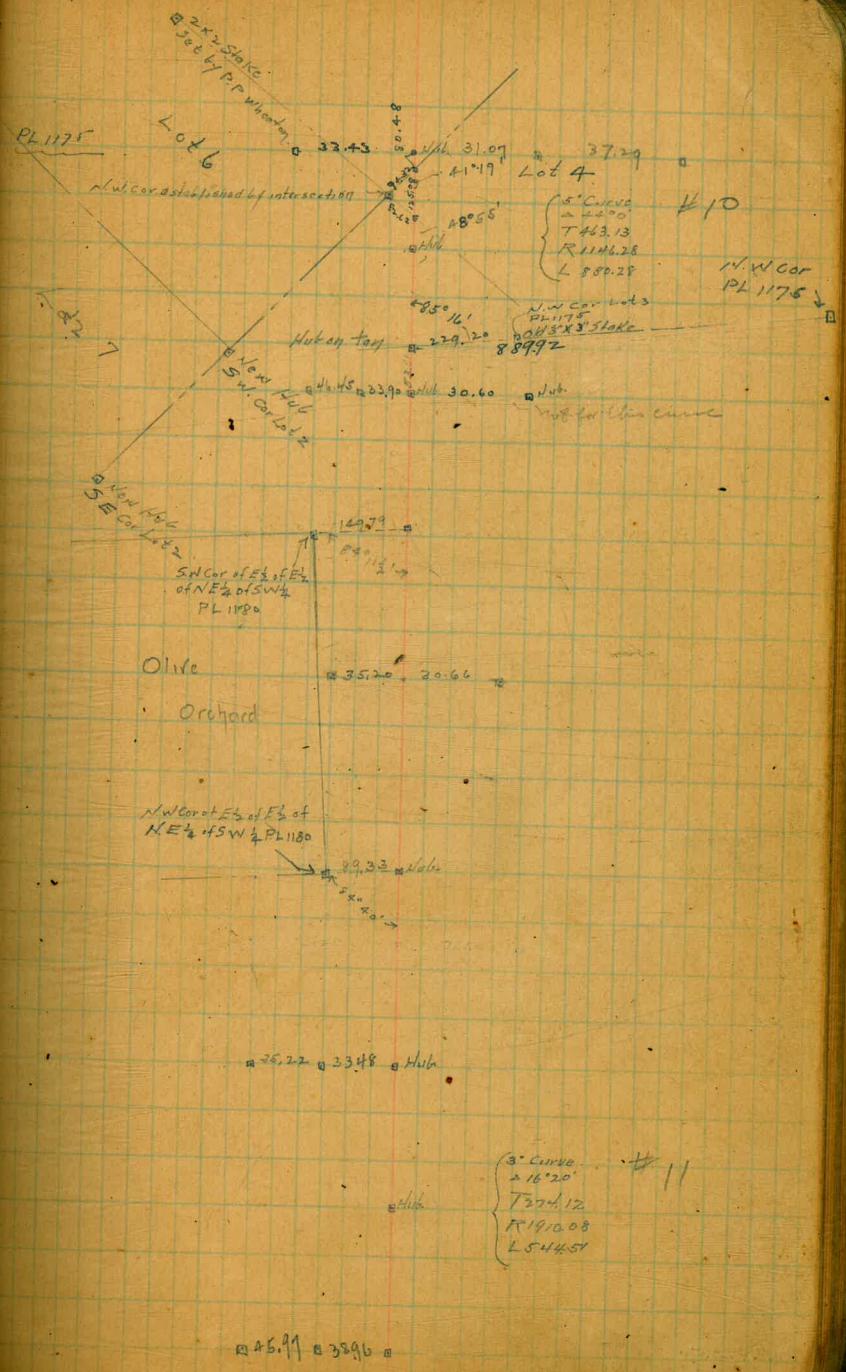
221+07

218+94⁷⁰

216+70³⁰ EC

214 PI L 16° 20' S 5° 03' W S 10° 0' E

211+25⁸⁸ PC



Sta Ang Bearing Mag Bearing

39.10
27.88
66.98

27.88
39.10
41.04
108.02
10

262+90.250 X

41.04 39.10 27.88 H46

260+05 PI R88°50' N42°09'W N57°50'W

H 9
{
Δ 88°50'
T 489.92
R 500
L 775.22

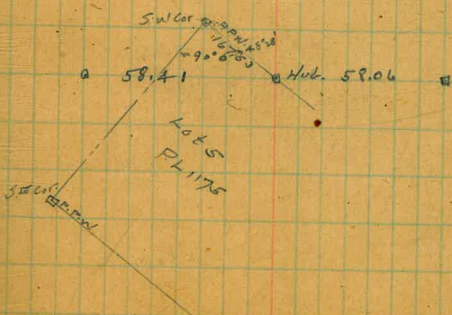
255+1508 H

39.19 37.61 46.00 H47 31.06

251

43.41 33.31 H46

246+9826 ✓



241750

6" pipe

Sta Ang Bearing Mag Bearing

282+99.4 EC

282 - P.I. L 39° 30' S 53° 50' W S 37° 50' W

280+92.9 PC

280+72.6

279+05.8 EC

278 - P.I. R 52° 30' N 86° 37' W S 77° 15' W

276+76.2 PC

275

271+33.9 EC

270+72.2 P.I. L 97° 0' S 40° 53' W S 24° 50' W

269+47.67 PC

269 47.67 33.79
 267 90.30 66.98
 6 57.37 100.77

278.85 Hub 35.55 29.43

Hub

A 39° 30'
 T 107.71
 R 300'
 L 206.82

6

27.41 Hub 29.12 32.62

Hub

30.68 27.82 Hub

Hub

Hub

A 52° 30'
 T 123.29
 R 250'
 L 229.07

7

34.29 Hub 21.95 42.135

35.17 46.69 Hub

Hub

A 97° 0'
 T 124.33
 R 110'
 L 186.23

8

Hub 33.79 40.50

Sta Ang Bearing Mag Bearing

300
299+13²

297+62¹ EC

296+90 PI L 28°08' S 55°05' W S 39°20' W

20=0

296+148³ RC

295+6+2² EC

294+55 PI R 18°0' S 58°3' W S 67°20' W

293+44¹ RC

292+26¹ EC

290 PI R 11°20' S 56°5' W S 49°35' W

287+71.77 RC

54.88 29.93 Hub

Fence

25.69 46.26.24

{ A 28°08' #3
T 75.17
R 300'
L 147.31

Hub

46.22.19 23.91 Hub

20.53 27.8
Hub 20.53 Hub 27.8

{ A 18°0' #4
T 110.87
R 700'
L 219.91

FB 46.26.24
42.24.23
S 1000

50 Approx 55.79 Hub

25.59 28.21 Hub 26.22 Hub
53.78

{ A 11°20' #5
T 228.23
R 2300'
L 454.95
E 11.29

FB 46.26.24
42.24.23
S 1000

30.35 Hub 40.63

Sta Ang Bearing Mag. Bearing

315+58.5
 314+19.8 EC
 314+15+22 L 38°38' 536°11'W 520°30'W
 314+19.7 PC

Note This curve put in after line ran thru. Stationing not changed.

312+50.26 40.00
 312+28.6 35.05
 75.09

311+43.6

308+95

308+68.5

307+28.9

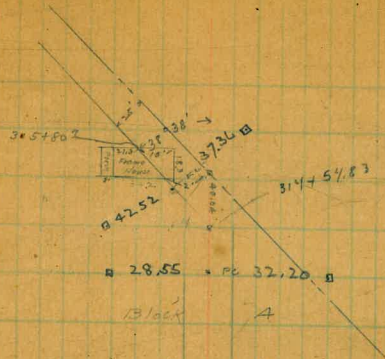
307+17.6

306+50

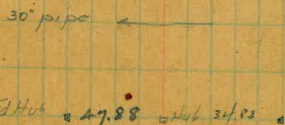
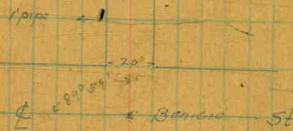
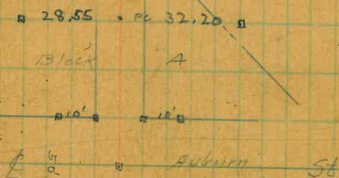
305+08.33 EC

304+06.25 EC R 19°44' 574°44'N 559°05'W

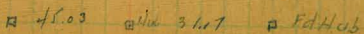
303+01.68 PC



2 38°38'
 T 3505 #1
 R 100'
 L 47.3



2 19°44'
 T 104.3
 R 600
 L 206.65



314
 305+08.33
 19.76
 08.33
 11.45

331 + 25.25

326 + 9.25

322 + 27

317 + 61.25

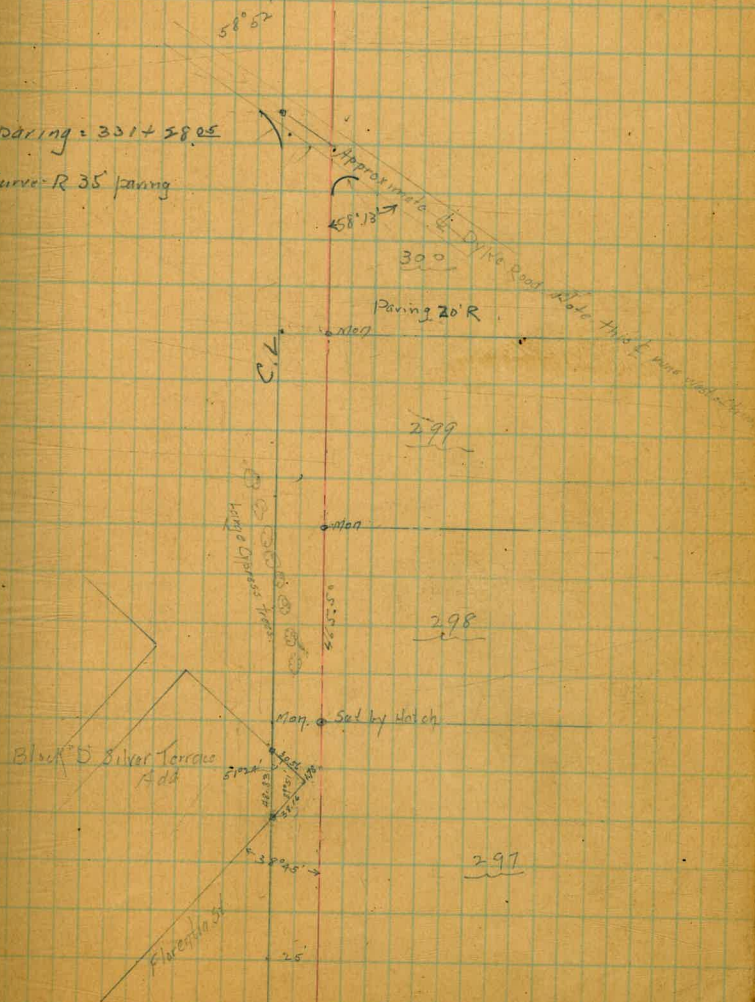
317 + 10.25

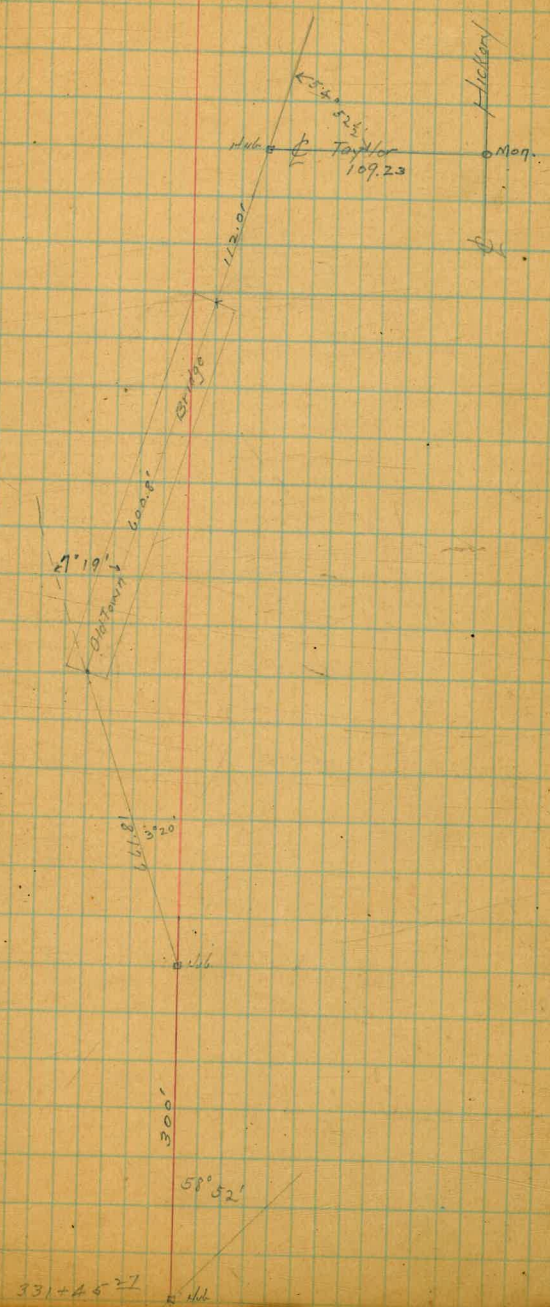
322 + 27
317 + 10.25
317 + 61.25
317 + 25.25

51.25

End paving = 331 + 25.25

E. Curve - R 35' paving





Hickory
Mon.

343.17 88 16135247
3-9456
3 18

340 708.8
24 5.888
6.90 25 392.1
50 75 197.6
75 15 62
100 125 285 270
125 150 35 352
150 1 742 352
175 2.28
200 228
225 4.5250
250 13.15 1333.2 15.91
275 2080 20
300 12345
325 10438 131
350 7319 717.7
375 18774
400 1519 1100
425 962 971 1574
450 142 1519 3260
475 122 25250
500 2 312
525 12.4 14.000 826
550 458 1450
575 15000
600 2649 2475
625 127 250
650 1610 5000
675 796
700 1378
725 22 96
750 22 9506
775 12727
800 163 1131368262 149 20000
825 81 48
850 4 93
875 20 192 1231 423
900 46
925 1071 2700 21.1 2
950 2750
975 1940 63
1000 1335
1025 5650
1050 5600
1075 1500
1100 4.75.4
1125 169
1150 642.2
1175
1200 159379

1495 3248 4.4
2000 17.5
2296
217000 38
186475
438 575
455 19403
455 1729.5
455 264.3 110592
455 4086
455 13240
455 4000
657 120 17070 5.83 7319 717.7
25126 600 1519 18774
6923 1520 1000 1100
52 962 971 1574
26 142 1519 3260
332 122 25250
18402 3778
1945 3798
2664 1779 453
2265 2265 6507 2277 2649 2475
2664 906 1300 127 250
133635 1369 27 1610 5000
52 53345
340 163 1131368262 149 20000
720 81 48
114 4 93
420 3.165 20 192 1231 423
516
1048
948 340
720 1071 2700 21.1 2
300 313 2750
326 163216 1940 63
1830 1947 1335
570 05.06 5650
510 503 5600
570 1578 65 4.75.4
570 169
570 642.2
570 159379