

GRADES

102

G 102

LEVEL BOOK

373

KEUFFEL & ESSER CO.

DRAWING MATERIALS

AND

SURVEYING INSTRUMENTS.

NEW YORK.

CHICAGO. ST. LOUIS. SAN FRANCISCO. MONTREAL.

Tables for Excavations and Embankments.

DISTANCES FROM CENTER OF ROADWAY FOR CROSS-SECTIONING.

ROADWAY 18 FEET WIDE. SIDE SLOPES 1 TO 1.

FOR SINGLE TRACK EXCAVATION.

"Copyright, 1895, by Keuffel & Esser Co."

	0	.1	.2	.3	.4	.5	.6	.7	.8	.9	
0	9.0	9.1	9.2	9.3	9.4	9.5	9.6	9.7	9.8	9.9	0
1	10.0	10.1	10.2	10.3	10.4	10.5	10.6	10.7	10.8	10.9	1
2	11.0	11.1	11.2	11.3	11.4	11.5	11.6	11.7	11.8	11.9	2
3	12.0	12.1	12.2	12.3	12.4	12.5	12.6	12.7	12.8	12.9	3
4	13.0	13.1	13.2	13.3	13.4	13.5	13.6	13.7	13.8	13.9	4
5	14.0	14.1	14.2	14.3	14.4	14.5	14.6	14.7	14.8	14.9	5
6	15.0	15.1	15.2	15.3	15.4	15.5	15.6	15.7	15.8	15.9	6
7	16.0	16.1	16.2	16.3	16.4	16.5	16.6	16.7	16.8	16.9	7
8	17.0	17.1	17.2	17.3	17.4	17.5	17.6	17.7	17.8	17.9	8
9	18.0	18.1	18.2	18.3	18.4	18.5	18.6	18.7	18.8	18.9	9
10	19.0	19.1	19.2	19.3	19.4	19.5	19.6	19.7	19.8	19.9	10
11	20.0	20.1	20.2	20.3	20.4	20.5	20.6	20.7	20.8	20.9	11
12	21.0	21.1	21.2	21.3	21.4	21.5	21.6	21.7	21.8	21.9	12
13	22.0	22.1	22.2	22.3	22.4	22.5	22.6	22.7	22.8	22.9	13
14	23.0	23.1	23.2	23.3	23.4	23.5	23.6	23.7	23.8	23.9	14
15	24.0	24.1	24.2	24.3	24.4	24.5	24.6	24.7	24.8	24.9	15
16	25.0	25.1	25.2	25.3	25.4	25.5	25.6	25.7	25.8	25.9	16
17	26.0	26.1	26.2	26.3	26.4	26.5	26.6	26.7	26.8	26.9	17
18	27.0	27.1	27.2	27.3	27.4	27.5	27.6	27.7	27.8	27.9	18
19	28.0	28.1	28.2	28.3	28.4	28.5	28.6	28.7	28.8	28.9	19
20	29.0	29.1	29.2	29.3	29.4	29.5	29.6	29.7	29.8	29.9	20
21	30.0	30.1	30.2	30.3	30.4	30.5	30.6	30.7	30.8	30.9	21
22	31.0	31.1	31.2	31.3	31.4	31.5	31.6	31.7	31.8	31.9	22
23	32.0	32.1	32.2	32.3	32.4	32.5	32.6	32.7	32.8	32.9	23
24	33.0	33.1	33.2	33.3	33.4	33.5	33.6	33.7	33.8	33.9	24
25	34.0	34.1	34.2	34.3	34.4	34.5	34.6	34.7	34.8	34.9	25
26	35.0	35.1	35.2	35.3	35.4	35.5	35.6	35.7	35.8	35.9	26
27	36.0	36.1	36.2	36.3	36.4	36.5	36.6	36.7	36.8	36.9	27
28	37.0	37.1	37.2	37.3	37.4	37.5	37.6	37.7	37.8	37.9	28
29	38.0	38.1	38.2	38.3	38.4	38.5	38.6	38.7	38.8	38.9	29
30	39.0	39.1	39.2	39.3	39.4	39.5	39.6	39.7	39.8	39.9	30
31	40.0	40.1	40.2	40.3	40.4	40.5	40.6	40.7	40.8	40.9	31
32	41.0	41.1	41.2	41.3	41.4	41.5	41.6	41.7	41.8	41.9	32
33	42.0	42.1	42.2	42.3	42.4	42.5	42.6	42.7	42.8	42.9	33
34	43.0	43.1	43.2	43.3	43.4	43.5	43.6	43.7	43.8	43.9	34
35	44.0	44.1	44.2	44.3	44.4	44.5	44.6	44.7	44.8	44.9	35
36	45.0	45.1	45.2	45.3	45.4	45.5	45.6	45.7	45.8	45.9	36

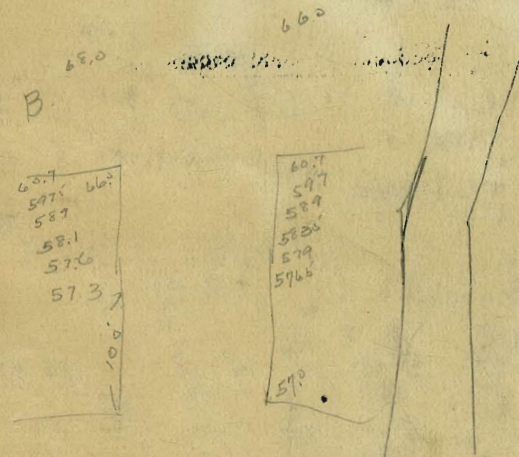
Calculated by Julien A. Hall, M. Am. Soc. C. E.

9102

ENGINEERING DEPARTMENT,
CITY OF SAN DIEGO,
CALIFORNIA.

MICROFILMED

APR 7 1965



60.7
59.6
58.7
58.1
57.6
57.3
10.0

60.7
59.7
58.9
58.6
57.9
57.6
5.9

60.7
58.7
57.6
57.3
10.0

60.7
58.7
57.6
57.3
10.0

60.7
58.7
57.6
57.3
10.0

Indexed
A

11/23/22

Gregory
Moore
Ellis
Shaw

Grades on Illinois St. Paving

373.54 BP. SE Meade + Ohio

MONROE

AVE

prop. grade 386.25

386.25 = prop grade

450 +0.1 384.98

385.25

400 +0.9 384.60

384.92 +2.0 nail

350 +0.2 384.22

384.58 +2.0 nail

300 +0.1 383.85

384.24 +0.5

250 +0.3 383.48

383.92 +0.5

200 +0.9 383.10

383.56 +1.0 nail

150 +1.1 382.73

383.26 +2.0 nail

100 +0.1 382.35

382.92 +2.0 nail

50 -0.2 381.98

382.56 +1.0 nail / grade

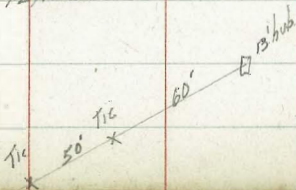
Prop grade 381.85

-0.2 381.6

382.25 = prop.
+1.0 nail

MEADE

AVE



	W	cb	1/4	2	1/4	cb	E
S.L. Landis	338.25	338.00	337.63	337.75	337.37	337.50	337.75
25'S	38.13	37.88	37.51	37.64	37.26	37.39	37.64
50'	38.00	37.75	37.39	37.52	37.15	37.29	37.54
75	37.88	37.63	37.27	37.41	37.04	37.18	37.43
100	37.75	37.50	37.15	37.30	36.93	37.08	37.33
125	37.63	37.38	37.03	37.19	36.81	36.98	37.23
150	37.50	37.25	36.91	37.08	36.71	36.87	37.12
175	37.37	37.13	36.79	36.97	36.60	36.77	37.02
200	37.25	37.00	36.67	36.85	36.49	36.66	36.91
225	37.13	36.88	36.55	36.74	36.39	36.56	36.81
250	37.00	36.75	36.43	36.62	36.28	36.46	36.71
275	36.88	36.63	36.31	36.51	36.17	36.35	36.60
300	36.75	36.50	36.19	36.39	36.06	36.25	36.50
325	36.63	36.38	36.07	36.28	35.95	36.14	36.39
350	36.50	36.25	35.95	36.17	35.84	36.04	36.29
375	36.38	36.13	35.83	36.05	35.73	35.93	36.18
400	36.25	36.00	35.71	35.94	35.62	35.83	36.08
425	36.13	35.88	35.59	35.82	35.51	35.73	35.98
450	36.00	35.75	35.47	35.70	35.40	35.62	35.88
475	35.88	35.63	35.35	35.58	35.30	35.52	35.77
500	35.75	35.50	35.23	35.46	35.19	35.42	35.67
525	35.63	35.38	35.11	35.34	35.08	35.31	35.56
550	35.50	35.25	34.99	35.23	34.97	35.21	35.46
575	35.38	35.13	34.87	35.11	34.86	35.10	35.35
600 ^{ft} Dwight	335.25	335.00	334.75	335.00	334.75	335.00	335.25
10' N Curb	35.00	35.00	34.67	34.92	34.67	35.00	35.00
10' N 1/4	34.62	33.88	34.59	34.84	34.59	33.88	34.62
10' 2	34.75	33.75	34.51	34.75	34.50	33.75	34.75
10' S 1/4	34.37	33.63	34.42	34.67	34.42	33.63	34.37
10' S Curb	34.50	34.50	34.33	34.58	34.33	34.50	34.50
10' S.L. Dwight	334.75	334.50	334.25	334.50	334.25	334.50	34.75

	W	cb	1/4	2	1/4	cb	E
S.L. Dwight	334.75	334.50	334.25	334.50	334.25	334.50	334.75.
25' S	34.01	34.36	34.11	34.36			
50'	34.46	34.21	33.96	34.21			
75	34.92	34.07	33.82	34.07			
100	34.17	33.92	33.67	33.92			
125	34.02	33.77	33.52	33.77			
150	33.88	33.63	33.38	33.63			
175	33.73	33.48	33.23	33.48			
200	33.59	33.34	33.09	33.34			
225	33.44	33.19	32.94	33.19			
250	33.29	33.04	32.79	33.04			
275	33.15	32.90	32.65	32.90			
300	33.00	32.75	32.50	32.75			
325	32.86	32.61	32.36	32.61			
350	32.71	32.46	32.21	32.46			
375	32.56	32.31	32.06	32.31			
400	32.42	32.17	31.92	32.17			
425	32.27	32.02	31.77	32.02			
450	32.13	31.88	31.63	31.88			
475	31.98	31.73	31.48	31.73			
500	31.83	31.58	31.33	31.58			
525	31.69	31.44	31.19	31.44			
550	31.54	31.29	31.04	31.29			
575	31.40	31.15	30.90	31.15			
^{N.L.} 600-Myrtle	31.25	331.00	30.75	31.00	30.75	331.00	31.25
N Curb	31.00	31.00	30.67	30.92	30.67	31.00	31.00
N 1/4	30.67	29.88	30.52	30.84	30.58	29.88	30.67
2	30.75	29.75	30.50	30.75	30.50	29.75	30.75
S 1/4	30.37	29.62	30.42	30.67	30.42	29.62	30.37
S Curb	30.50	30.50	30.33	30.58	30.33	30.50	30.50
S.L. Myrtle	30.75	330.50	30.25	30.50	30.25	330.50	30.75.

Same as other side

	W	cb	1/4	1/2	3/4	cb	E
S.L. Myrtle	30.75	30.50	30.25	30.50	30.25	30.50	30.75
25'S	30.25	30.00	29.76	30.03	29.79	30.07	30.32
50'S	29.75	29.50	29.27	29.55	29.32	29.60	30.85
75	29.25	29.00	28.78	29.07	28.85	29.14	29.39
100	28.75	28.50	28.29	28.59	28.38	28.68	28.93
125	28.25	28.00	27.80	28.11	27.91	28.22	28.47
150	27.75	27.50	27.31	27.63	27.44	27.76	28.01
175	27.25	27.00	26.82	27.15	26.97	27.30	27.55
200	26.75	26.50	26.33	26.67	26.50	26.84	27.09
225	26.25	26.00	25.84	26.19	26.03	26.38	26.63
250	25.75	25.50	25.35	25.71	25.56	25.92	26.17
275	25.25	25.00	24.86	25.23	25.09	25.46	25.71
= N.L. Upas							
300	24.75	24.50	24.37	24.75	24.62	25.00	25.25

11/23/22

Gregory
Moore
Ellis
Shaw

DWIGHT ST
GRADES

133

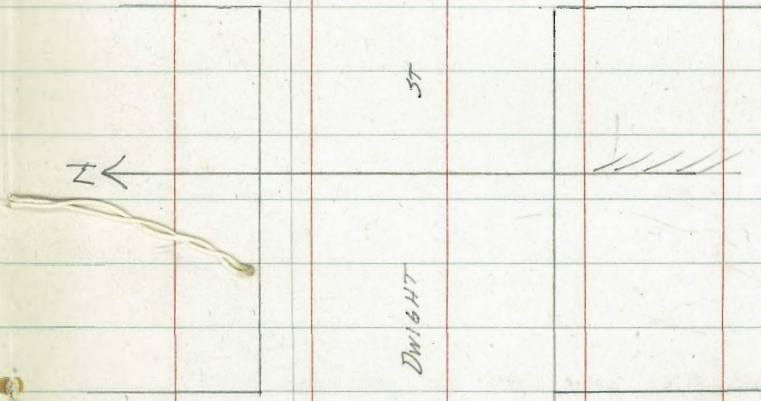
6

PAY

Tic 50 x 57 0.1/100

ST

W.L. Ray ST	33505	334.8	333.8	334.05
50	335.47			334.72
100	335.90			335.40
150	336.32			336.07
200 = EL. 30 th	336.75	336.5	336.5	336.75



337.95 BP NW 30th + Dwight

110
339.05

336.32	335.90	335.47	335.05
2.73	3.15	3.58	4.00
+0.2	0.0	-0.7	0.0

30th

ST

336.07	335.40	334.72	334.05
3.00	3.65	4.33	5.00
+0.2	-0.1	-0.2	-0.3

11/2/22

F 5th Paving Grades

18th

7883
5.05
5.38

7027
7026
7025

135
66
7

8000 7940 7966 8004 8012 8022 7962 7925 7997

7939
7945
7936
7910
7848
7816

7926
7926
7926
7926
7926
7926

19th

7883 7824 7838 7871 7881 7891 7838 7816 7823

7883
3.12
8.95

6701 6640 6667 6703 6715 6703 6667 6640 6703

6630
6626
6636
6620
6608
6549
6557
6530
6529
6512
6515 6511

6650 17th 6652

6593 6530 6558 6529 6527 6522 6512 6515 6511

6581
603
72.06

7180 7100 7027 7026 7053 7093 7110 7096 7058 7031 7001

7080
7051
7046
7040
7015
6975
6940
6900

7020
7019
7023
7012
6916
6946
6940

18th

6027 6044 6024 6044 6024

6998 6990 6953 6983 6990 6979 6945 6920 6919

16th

6987
7024

12/6/22 Gregory Moore Ellis Shaw

Paring Grades in Alley Block 2 Lynnhurst.

456
90

9

32121 BP NE 20 1/2 Thorn

32121	32122	32123	32124	32125	32126	32127	32128	32129	32130
325	325	325	325	325	325	325	325	325	325
524.46	524.46	524.46	524.46	524.46	524.46	524.46	524.46	524.46	524.46
520.53	520.53	520.53	520.53	520.53	520.53	520.53	520.53	520.53	520.53
570	570	570	570	570	570	570	570	570	570
326.93	326.93	326.93	326.93	326.93	326.93	326.93	326.93	326.93	326.93
167	167	167	167	167	167	167	167	167	167
324.71	324.71	324.71	324.71	324.71	324.71	324.71	324.71	324.71	324.71
500	500	500	500	500	500	500	500	500	500
2777	2777	2777	2777	2777	2777	2777	2777	2777	2777
W 32016	32030	32048	32055	32068	32081	32090	32099	32108	32117
432	416	408	578	565	557	549	542	535	528
+1.0	+1.0	+1.0	00	+1.0	+1.0	+1.0	+1.0	+1.0	+1.0
E 32005	32019	32035	32048	32061	32075	32089	32103	32117	32131
441	427	411	583	569	555	541	527	513	500
00	+1.0	0.0	+1.0	+1.0	+1.0	+1.0	+1.0	+1.0	+1.0
W 32110	32155	32217	32275	32333	32391	32450	32507	32565	32623
533	475	416	358	300	242	184	126	68	10
+1.0	+1.0	+1.0	+1.0	+1.0	+1.0	+1.0	+1.0	+1.0	+1.0
E 32110	32156	32213	32268	32324	32380	32436	32492	32548	32604
533	477	420	365	307	250	192	135	77	20
+1.0	00	+1.0	+1.0	+1.0	+1.0	+1.0	+1.0	+1.0	+1.0

599.7 N of St. Vras

32507

32493

550' N

32450

32436

500' N

32397

32380

450' N

32339

32326

400' N

32275

32268

350' N

32217

32213

300' N

32158

32156

250' N

32100

32100

200' N

32040

32039

150' N

32081

32078

100' N

32028

32024

66.7' N

32055

32046

100' N

32073

32035

66.7' N

32030

32019

33.3' N

32019

32000

N.L. Thorn

32005

31990

25th

St.

62.86

57.25
3.28
60.53

151.27
5.53
156.80

3) 53
17

156.81
60.9
162.98

156.81
42.6
161.07

57.66

527 5288 5290 5298 5299 5310 5304 5266 5240 5297 5278 523

5240 5210 5230 5220

5237 523 5223

5230 5186 23 52. 520 5210 5195

5199 518 5150

5146 5140 5130 5135

50
52.5
22
123
50
22
66
12

523 5129 5143 5122 5154 5193 5201 5189 5146 5116 5125 5120 512 512

5284 5275 5249 5283 5296 5287 5257 5235 5294

5297 5216 5224 5239

5235 5230 5685 524 5230 5240 5249 52 5695 5230

5686 5685 5620 5631

5681 5681 5615 5615 5624 5695 5688 5641 5610 5679 5631

156.81

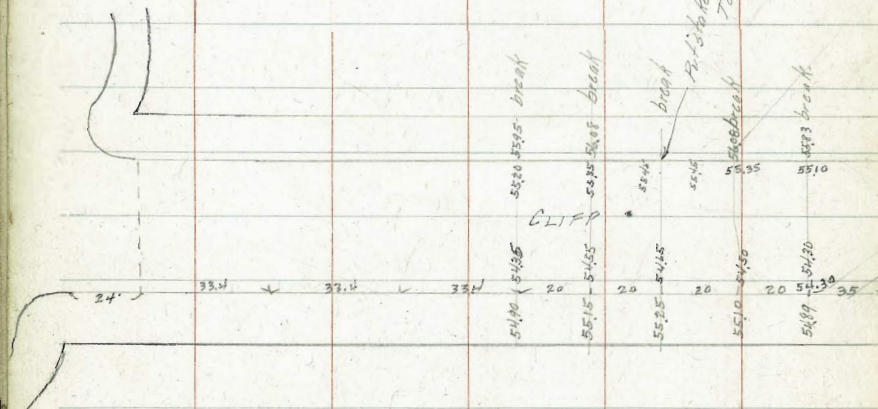
537.12

Grades on Witherby
S. of Sunset Blvd.

	X. Cb		E. Cb.	
E.C. S. of Sunset Blvd.	2625	+2.3	263.0	+1.1
75'		+1.8	263.6	+1.0
50'		+1.1	263.95	+1.0
75'		+0.6	263.76	+1.0
100		+0.3	263.05	+1.0
125		+0.2	261.81	+1.0
150		+0.3	260.06	+1.1
175		+0.6	257.78	+2.3
41.670 N. Juan		+3.1	251.0	+3.6

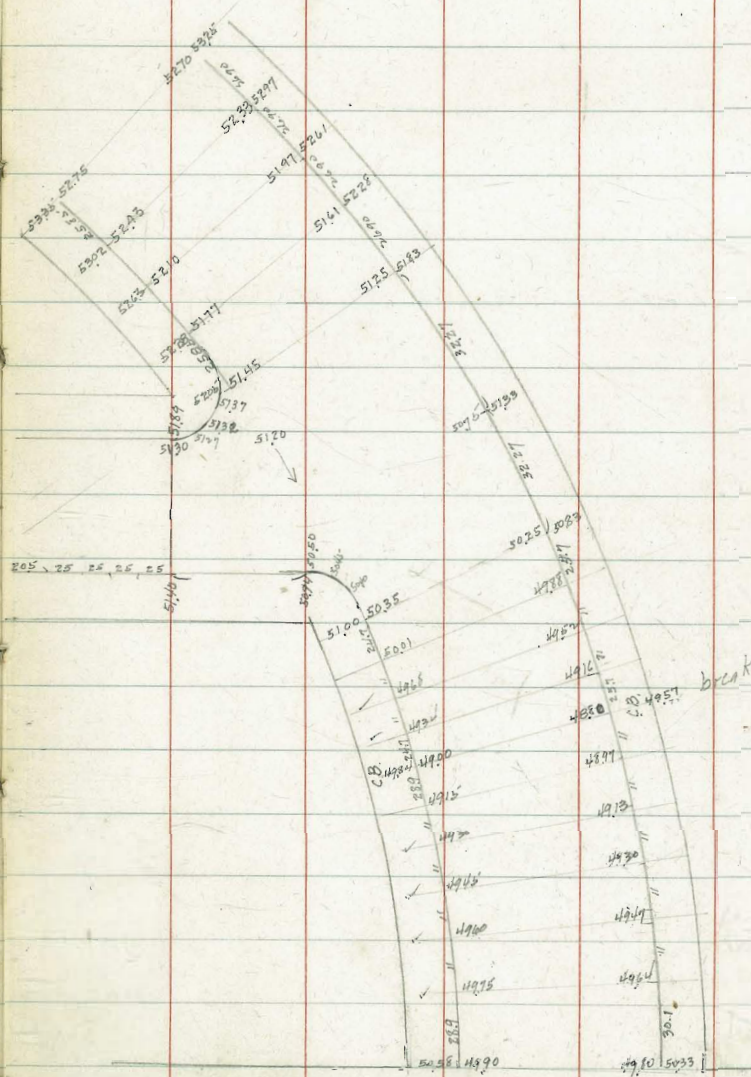
133
1.2

26102	2625	2630	2635	2636	2637	2631
732	5.87	5.2	4.87	5.06	5.77	7.00
268.32	5.87					
	2.3					
	26321	26335	26420	26401	26330	26206
	507	4.77	4.12	4.31	5.02	6.26
on wall						
	25956	25428	2585			
	8.76	11.0	1782			
on wall			1473			
	26021	25803	25122			
	80	1029	1707			
on wall			135			
			36			
	26102					
	8.04					
	269.06					
		26206	26181	26305	26376	26395
		4.00	7.25	6.01	5.30	5.11
						5.76
		263				
		6.06				



5604
150
5603

5713



500
5189

5453
5455
5457
5459
5461

5732

JUNIPER PAVING GRADES

3RD

ST

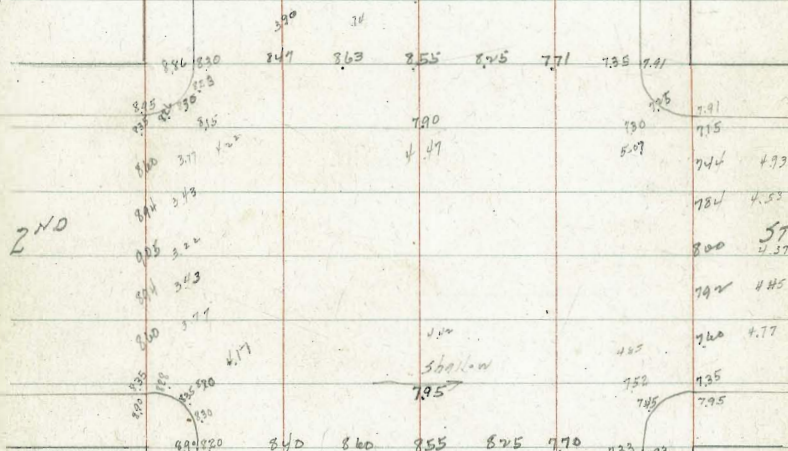
14

nail wood

4TH

ST

208.95
3.42
212.37



2ND

208.95
3.42
212.37

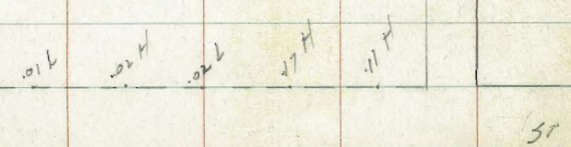
208.95
3.42
212.37

208.95
3.42
212.37

208.95
3.42
212.37

208.95
3.42
212.37

1ST

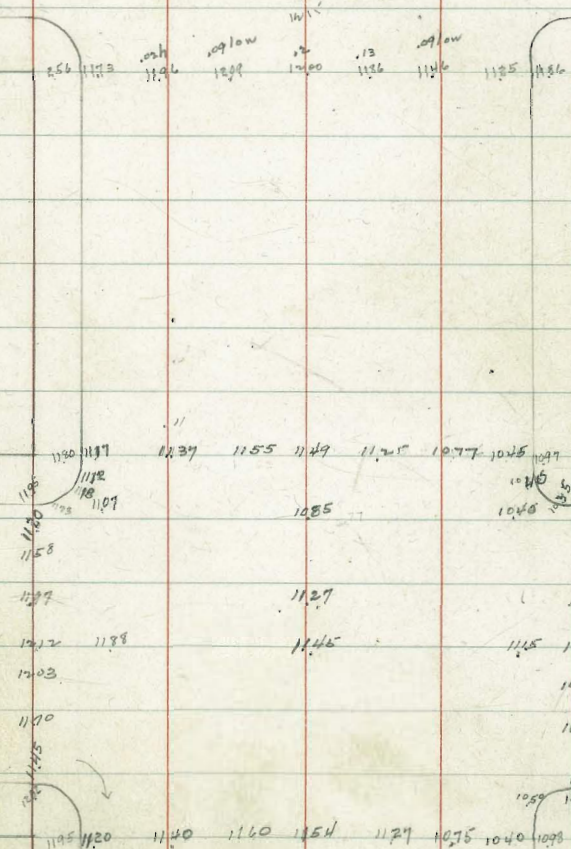


ST

~~139
489
76.9~~
1606

3RD

208.95
3.42
212.37



6TH

212
276

87
53
34

22139
188
23907

27140 3680 37020 37029 3732 3720 3666 3635 3695

27280 2729 2726 2717 2715 2715 2715 2715 2715 2726 2722

5TH

57

27280 2729 2726 2717 2715 2715 2715 2715 2726 2722

27280 2729 2726 2717 2715 2715 2715 2715 2726 2722

710
2529

259 259 259 259 259 259 259 259 259 259 259

4TH

57

GRADES ON
LINCOLN AVE
Florida to Texas
H. Co

BP. NW A19 28504
 120 300 8 17 140 300 107.140 210 220 200 07097
 28436
 27368
 27397
 28504
 1000
 28506
 28504
 1000
 28506
 28504
 28787
 28694
 28504
 650
 28504

EL. Florida 263.0 +0.25 262.0

50' E -0'2" 26655 +1.28 26539 -0'5"

100' E -0'5" 27010 +0.95 26877 -0'3" +1.16

150' E +2'3" 27364 +1.05 27216 +1'7" +0.62

210' +4'0" 27791 +2.0 27622 +2'0"

260' +3'8" 28146 +0.97 27961 +1'6"

310' E WL A19 285.0 x 0.10 +0.58 283.0

EL. H/a 286.0 -3'1/4" 00 284.0

50' E +5'5" 28707 +3'1/4 -3'1/4 28507 +1'5"

100' +5'8" 28814 +6'1/2 +11'3/4 28014 +2'0"

140' +5'0" 2890 -2'1/2 +2'5/8 287.0 +8'1/4 +2'0"

200' +4'2" 28987 -6'1/2 +10'5/8 286.69 +1'1/4 +2'6"

250' +3'3" 28094 -7'3/8 -6'1/2 28564 -0'10"

300' = W.L. Miss. 286.0 -4'5/8 +7'1/2 285.0

28436
 27368
 27397
 28504
 1000
 28506
 28504
 28787
 28694
 28504
 650
 28504
 28707 28514 2890 28787 28694
 8.00 4.92 4.06 7.2 8.1
 3.20 1.27 1.01 3.07 4.54
 +5.4 5.67 5.10 +4.15 4.57
 28507 28614 2870 28626 28567
 1000 8.92 8.06 8.81 7.44
 861 69 606 1000 1030
 +1.34 2 4.20 -2.49 0.86

10214
 5
 1070

0.87
 25
 0.935
 3746
 467

2920

12.1
 25
 625
 250
 312.6

75
 742

4.12

677
 0
 3386

10 11
15 77

N.L

S.L

To Woodman
←

13'hub

X 40' X 50' X

-2.3
600' E = 11.2315'

47.25 +11

550' -1.0 49.75

50.75 +7.3

500' -1.5 53.75

54.75 +7.4

450' +0.3 56.75

57.75 +5.4

400' E +1.0 60.25

61.25 +4.2

350' E +0.8 62.75

63.75 +3.4

300' E +0.9 65.25

66.25 +2.5

250' E +1.2 67.75

68.75 +1.5

200' E +0.7 70.25

71.25 -0.1

150' E 0.0 71.25

74.00 -0.6

100' E +0.4 74.25

74.75 +0.4

50' E +0.2 73.25

73.50 -0.2

EL 30th -0.1 74.25

74.25 +0.4

76.76	74.25	73.25	72.25	71.25	70.25	68.75	65.25	62.75	60.25
0.50	3.00	4.00	5.00	6.00	7.00	7.5	12.00	14.5	2.9
77.26	3.1	3.8	4.6	6.0	6.8	8.3	11.1	13.7	3.9
77.26	-1.1	1.0	1.0	1.0	1.0	1.0	1.0	1.0	1.0
65.00	74.25	73.50	72.75	72.00	71.25	68.75	66.25	63.75	61.25
12.50	3.00	3.75	4.5	5.25	6.0	6.5	11.00	13.5	1.60
52.50	2.40	3.7	4.1	5.4	6.1	7.0	8.1	10.1	11.5
58.51	1.04	-0.2	1.0	-0.6	-0.1	1.1	1.5	1.5	4.2
40									

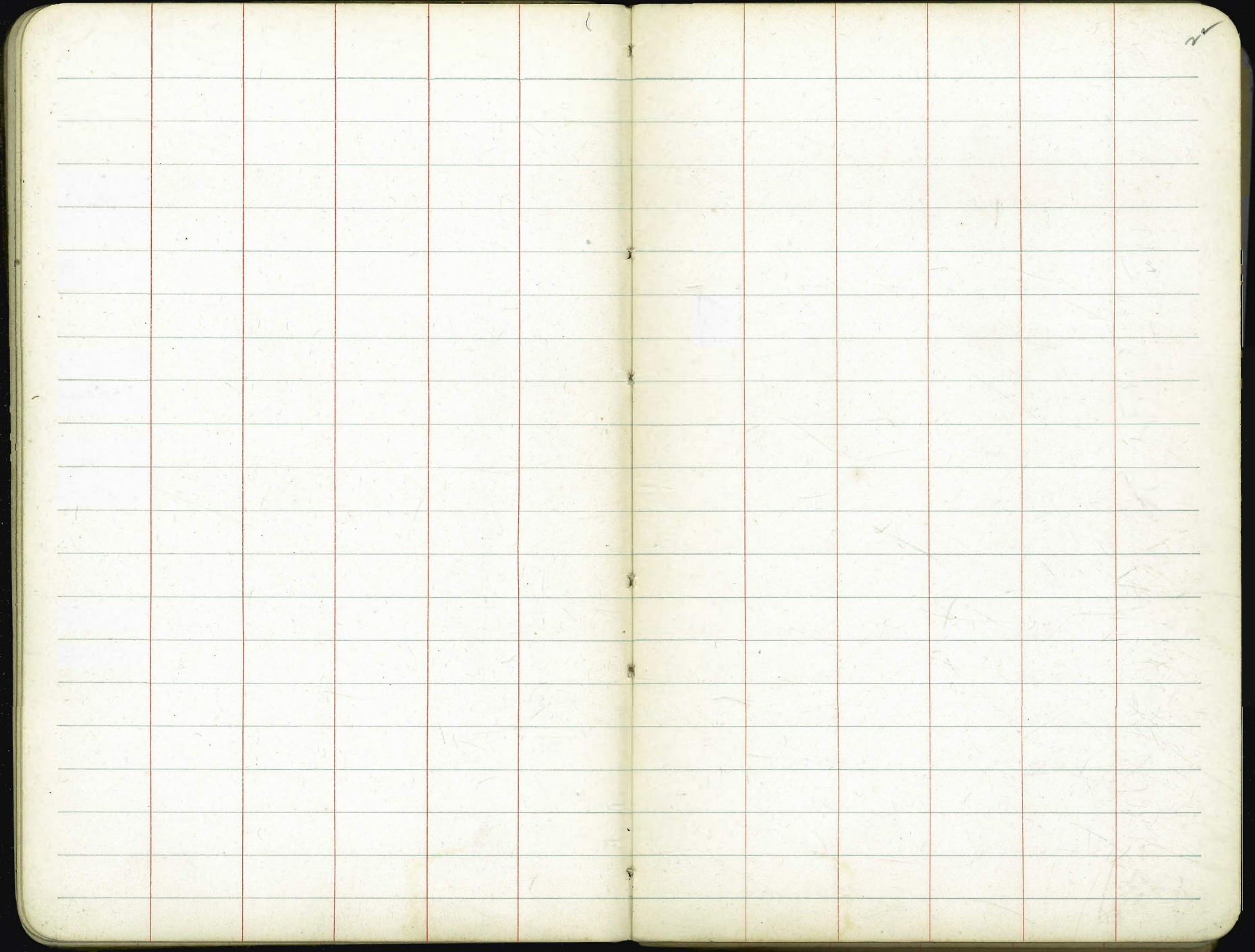
56.75	53.75	49.75	46.25
8.4	11.9	10.9	12.36
2.3	15.4	-2.0	14.7
57.75	54.25	50.75	47.25
7.4	10.9	7.80	11.36
2.2	3.5	0.6	1.0
15.4	17.4	19.3	21.4

76.76	74	73.0	72	71	70	68.50	66	64.50	62	60.50
1.9	0.75	0.90	1.0	1.1	1.2	1.35	1.5	1.65	1.8	1.95
76.75	74	73.0	72	71	70	68.50	66	64.50	62	60.50
11.95	1.0	1.20	1.40	1.6	1.8	2.0	2.2	2.4	2.6	2.8
65.17	74	73.0	72	71	70	68.50	66	64.50	62	60.50
54.75	53	49.50	46							
54	1.41	50.50	47							
		59.5	47							

HOWARD AVE
GRADES

	33602	33359	33092	32712	32358	
	7.54	10.47	12.5	14.0	14.4	
	6.4	10.1	10.8	10.4	10.0	
S	33709	33392	33134	32754	32442	
	7.57	10.5	13.07	14.4	14.5	
	7.1	10.3	10.7	10.4	10.5	
N	31226	30722	30475	29825	29484	
	12.5	11.1	10.1	13.5	13.5	
	10.5	10.3	11.3	10.8	10.0	
S	30833	30826	30575	29925	29421	
	10.5	10.5	10.6	10.1	13.4	
	10.5	10.5	10.6	10.1	13.4	
310	W. Flor.	290.75				289.75
450' E	+60	294.84	-0.30			-0.68 294.04 +2.6
300' E	+33	298.25	+0.59			+0.82 299.25 +1.2
150' E	+15	302.75	-0.36			+0.05 303.75 +0.6
100' E	+03	307.25	+0.36			-0.20 308.25 -0.4
50' E	-29	314.95	10.13			-0.08 313.95 -1.0
E.L. Ga.		318.65				319.65
300' E-WL Ga.		320.25	+0.80			321.25 -
250' E	00	323.58	10.95			-0.08 324.42 +4.7
200' E	-04	326.92	+0.07			+0.19 327.59 +4.5
140' E	+08	330.92	0.18			+0.80 331.39 +2.2
100' E	+01	335.59	-0.13			+0.46 333.92 +0.2
50' E	+19	336.92	+0.30			+0.93 337.09 -2.5
E.L. Park Blvd.		340.25				340.25

	295.29	293.09	291.80	290.59	289.77	
	5.84	5.43	5.0	4.6	4.2	
	7.1	7.2	7.2	7.3	7.2	
N	290.15	285.56	280.81	276.36	271.77	
	5.84	5.43	5.0	4.6	4.2	
	7.1	7.2	7.2	7.3	7.2	
S	287.22	282.22	278.17	274.70	271.22	
	7.0	6.76	6.5	6.3	6.0	
	7.0	7.26	7.2	7.3	7.2	
0.2	291.25	287.22	283.22	279.22	275.22	
	7.1	6.76	6.5	6.3	6.0	
	7.1	7.26	7.2	7.3	7.2	
300' E-WL. Miss		317.25	-0.40			-0.15 316.25
250' E	+10	313.25	-0.07			298.50 10.03 300.53 312.08 +2.6
200' E	+17	309.25	-0.13			307.91 +2.0
160' E	+14	306.05	-0.20			304.58 +1.3
100' E	+01	301.25	-0.20			299.58 +1.8
50' E	-03	299.25	0.0			295.41 +1.7
E.L. Ala.		293.25	-0.72			+0.65 291.25
310' E-WL Fla.		292.25				290.25
250' E	-08	291.77				289.75 -0.2
200' E	-23	291.36				289.20 -2.9
150' E	-32	290.96				289.47 -3.0
100' E	-25	290.56				289.23 -0.4
50' E	-13	290.15				288.99 0.0
E.L. Flor		289.75				288.75



Blank
6 + 3
Watts
BOOKER

Grades in Alley
Blks 3 + 13
4 + 5
Nutt's + Brook's
Robn to Penn

450	28818	28796
425	28813	28791
400	28808	28786
375	28804	28782
350	28799	28777
330	28795	28773
300	28761	28740
275	28733	28712
250	28705	28685
225	28677	28657
200	28649	28630
175	28621	28602
150	28593	28575
125	28565	28547
100	28537	28520
75	28509	28492
50	28481	28465
25	28453	28437
N. Penn	28425	28410

60
832

422
862

444
844

422
846

418
810

111

23

28789 1/2 5 1/2 Robn

W	28841	28837	28834	28827	28823	28815	28813	28808
	446	444	444	454	463	465	473	478
	+1.0	+1.0	+1.5	+1.0	+1.2	+1.0	+1.0	+1.0
E	28819	28815	28810	28802	28801	28796	28791	28786
	441	441	446	481	485	490	498	500
	+1.0	+1.0	+1.0	+1.0	+1.0	+1.0	+1.0	+1.0
W	28804	28799	28794	28786	28783	28780	28777	28749
	482	487	476	510	513	516	524	522
	+1.0	+1.0	+0.6	+1.0	+1.0	+1.0	+1.0	+1.0
E	28782	28777	28773	28740	28712	28685	28657	28630
	508	509	508	531	559	566	574	571
	+1.0	+1.0	+1.0	+1.0	+1.0	+1.0	+1.0	+1.0
W	28621	28593	28565	28537	28509	28481	28453	
	450	478	506	534	562	589	615	
	+1.0	+1.0	+1.0	+1.0	+1.0	+1.0	+1.0	
E	28602	28575	28547	28520	28492	28465	28437	
	444	476	504	531	559	583	607	
	+1.0	+1.0	+1.0	+1.0	+1.0	+1.0	+1.0	
600						28823		
575						28819		
550						28815		
525						28810		
500						28805		
475						28801		

7/3/23

GRADES ON
KITE ST.

256.09 Ealt in h/c SE Brooks

74

Station	W.L.	E.L.	Diff	Notes	160	W	251.54	249.13	246.72	244.25	243.75	242.47	241.17	239.88
5 L Marine View	256.25	255.75			259.69 12.67 247.02	250.98	248.76	248.75	248.24	244.96	241.6	240.48	239.34	
54 300 W					1.30	6.94	9.44	0.5	8.1	8.5	4.4	3.8	2.8	7.0
53 S. on R	254.0	253.25			246.32	2.7	14.5	6.3	6.0	2.8	2.1	2.0	2.0	
103 S	202	250.75	-27			202.88	201.29	236.41	235.24					
133 S	21.0	248.25	-51			7.9	4.0	9.8	11.1					
203 S	21.0	245.75	-58			5.0	2.4	1.4	1.6					
254.33 on W	24.3					238.20	237.06	236.35	235.25					
253 S on E - 11.4 Walnut	244.25	243.25	-60			8.1	10.8	10.2	11.1					
3 L Walnut	208	242.75	-53			256.09	248	250	245.5			241.2	7.5	
50 S	21.5	241.62	-31			0.68	8.77	6.27	11.27					
100 S	22.6	240.48	-26			11.27	243	9.1	8.10					
150 S	22.8	239.88	-20			245.50	242.5	244	243.5					
200	22.1	238.20	-11			6.60	243.6	240.92	239.62	238.24	237.05			
250	20.6	237.06	-07			252.10	242.5	241.5	240.7	239.62	238.24	237.05		
281.28 - P.C. - 0.6	236.28	236.38	-01				242.5	241.5	240.7	239.62	238.24	237.05		
328.95 on W	21.5	235.25	-06				242.5	241.5	240.7	239.62	238.24	237.05		
329.40 on E	21.5	235.25	-06				242.5	241.5	240.7	239.62	238.24	237.05		

30th

7/6/43

PAVING GRADES
REDWOOD ST

3F

1784
1771

1790
1775

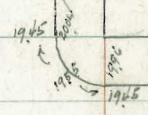
60' 1.5'

BP 31995
25

200' 15"

155' 12"

20.18 1985



BP 30806

20.0

29+4

120' 11"

115' 12"

20.14 1985



BP 31122

DALE

ST

31995
31824

126' 9"

115' 12"

17.84 1985



32006

358

GRAND



AVE

16.80 16.87

1187 16.25

16.58 16.60

16.45 16.53

29th ST

31696
315
31494

BP 31696

VPAS

NW-BP
329.50

2792
54.22
2846.22

ST

302.1
30.90

23.49
+ 2.29
25.78

23.49
+ 2.29
25.78

4.57

27

BP 323.49

22.41 22.0

22.45
2/50

22.95 22.49

22.95 22.95

23.52

THORN

ST

21.40

21.45

21.94 21.40

22.31

22.45

23.02

22.25 22.95

4.4 4.76

3/2/23 Gregory

GRADES ON
MCKEE ST
from Kettner Blvd to
California

26

6053 5th N. Clayton + Cal.

	N. P.L.	S.P.L.	
210° E			
180° E	84.82 84.70 84.17 +1.3	88.26 -0.7	
150° E	80.39 80.05 79.60 +1.2	83.82 -1.7	
100° E	72.01 72.77 71.97 -1.4	72.01 -0.9	
50° E	65.63 65.50 64.35 -1.6	63.45, 64.63	0.0 nail
20° E	59.77	58.80	
10° E	58.63	57.68	
E.L. Cal	58.26	57.35	

6053	65.63	73.01	80.39	84.82	84.70
605	0.95	573	1022	585	742
655	2.8	81	15	54	13
836	-1.8	24	10.3	2.6	1.1
622	64.63	72.01	79.39	83.82	88.26
125	1.95	76	-0.7	6.8	2.2
787		-0.7	-1.1	8.5	3.1
0.0				8.5	3.1
787				8.5	3.1
113				8.5	3.1
90.67				8.5	3.1
60.53	65.50	72.77	80.05	84.40	88.75
3.27	8.75	1.48	6.6	2.2	4.4
63.80	11.5	3.20	5.9	1.1	3.4
0.52	-2.8	-2.2	10.7	11.1	10.6
63.28					
10.47					
74.25					
6.54					
73.66	64.63	72.01	79.39	83.82	88.25
12.95	7.62	2.2	7.2	2.8	5.00
86.61	0.0	3.1	8.9	11.4	5.0
1.31		-0.9	-1.7	-1.6	-0.8
65.30					
7.89					
93.17					

NL 64.07

S	57.68	58.80	63.45
	6.79	5.87	1.3
	5.99	3.87	0.4
	+1.00	2.0	+1.00

N	59.63	59.77
	6.04	4.90
	5.04	
	+1.0	

See 2015
 31
 12/27/49

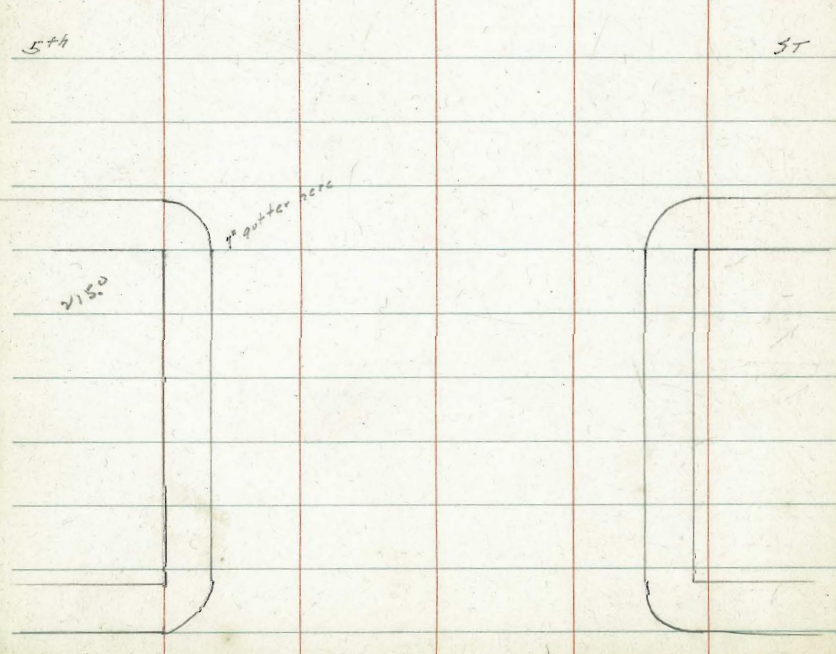
IVY ST PAVING

ST

6+4										
	11.100	11.200	11.300	11.400	11.500	12.000	12.100	12.200	12.300	12.400
	0.112	0.112	0.112	0.112	0.112	0.112	0.112	0.112	0.112	0.112
2.29	2.29	2.29	2.29	2.29	2.29	2.29	2.29	2.29	2.29	2.29
2.29	2.29	2.29	2.29	2.29	2.29	2.29	2.29	2.29	2.29	2.29
2.29	2.29	2.29	2.29	2.29	2.29	2.29	2.29	2.29	2.29	2.29
2.29	2.29	2.29	2.29	2.29	2.29	2.29	2.29	2.29	2.29	2.29
2.29	2.29	2.29	2.29	2.29	2.29	2.29	2.29	2.29	2.29	2.29
2.29	2.29	2.29	2.29	2.29	2.29	2.29	2.29	2.29	2.29	2.29
2.29	2.29	2.29	2.29	2.29	2.29	2.29	2.29	2.29	2.29	2.29

ST

223.75	215	1935	200
	99		
	1122		



ST

M

223.75	215	1935	200
	99		
	1122		

4+4

12.5
7.0
6.0

1.2
1.0
1.0

20649
131
20680
1599
19581
866
19447
85.5
5.92
91.42
85.8
.62

19169
2.78
190
4.47
13890
8.57
18825
6.22
15720
6.57
1875
6.97
51
89.37
187.48
4.13
191.61
26.17
2.5
26.69
7.3
86.71
7.1

59
46
25
505
115

ST

71.27

73
68
807
472
1730
330
850
5.9
8595
5.7
826
4.6
876
3.6
8810
3.3
8800
5.18
1.73
1.00
1.00
1.20

19169 9109 11.47 9127 90.95 9089
191 194- 89.5 89.4 89.2 89.3 89.6 89.8 89.9 89.5
18890 8820 8838 8824 8820 8782 8726 8697 8754
18825 8726 8750 8766 8778 8723 8703 8611 8666
18790 8730 8731 8732 8733 8734 8735 8736 8737
18748 8690 8688 8687 8686 8685 8684 8683 8682
87.39 88.07 88.66 88.99 89.25
85.50 85.95 85.95 85.95 85.95 85.95 85.95 85.95 85.95

87.39

85.95

88.07

86.96

3rd

88.66

87.86 ST

88.99

88.10

89.25

88.24

89.25
89.25
89.25
89.25
89.25
89.25
89.25
89.25
89.25
89.25

88.20
88.20
88.20
88.20
88.20
88.20
88.20
88.20
88.20
88.20

11.1

9007 1950 8971 8901 8990 8958 8589 8960 8924
 9005 9245 9255 9262 9252 9221 9171 9180 9137
 9300 9285 9450 9464 9455 9424 9372 9338 9371
 9428 9565 9581 9599 959 9561 9509 9475 9531
 9100 9445 9644 9479 9670 9644 9589 9556 9618
 9740 9675 9691 9707 97 9671 9622 9585 9644

9595 9530 9537 9541 9530 9507 9469
 9591 9520 9549 9554 9550 9525 9445 9444
 9592 9520 9492 9485

9572
 9571
 96 9583 9550
 9577
 9550

9535 9520
 9544 9520 9535 9544 9535 9520 9507 9450 9500
 9544 9520 9535 9544 9535 9520 9507 9450 9500

BM 14596

19596
 292
 19994

19596
 361
 19964

19596
 211
 19886

9545
 313

9587 9550 9523 9479
 299 306 333 377

9622 9671 97 9691
 752 130 165

19596
 276
 19870

15

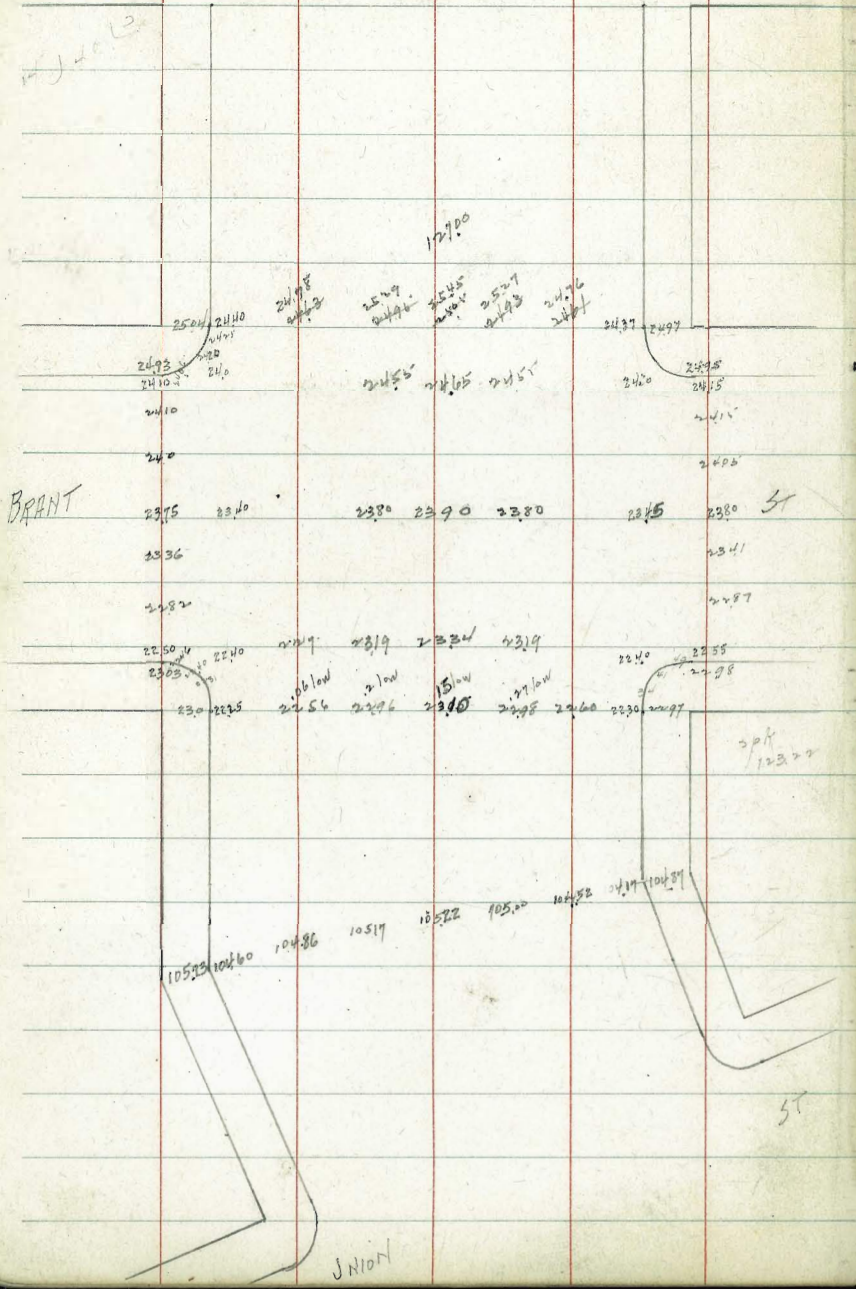
32

FRONT

ALBATROSS

4.4.13

478
324



BRANT

JN107

12322

12322
510
12832

2461
371
301
70

2493
539
232
106

2505
327
246
176

2495
337
227
110

2463
369
287
82

33

12322
510
12832

2461
371
301
70

2493
539
232
106

2505
327
246
176

2495
337
227
110

2463
369
287
82

2240
59

2287
545

2341
149

2380
152

2405
167

2415
177

2240
59

2287
545

2341
149

2380
152

2405
167

2415
177

2476
356

12022
152
12174

2460
96

2496
146

2520
184

2545
198

2570
212

10417
220
10113

10450
261

10500
291

10570
340

10600
380

10650
430

10700
480

2460
96

2496
146

2520
184

2545
198

2570
212

2595
226

2620
240

17 38 1/2

9823	9824	9825	9826	9827	9828	9829	9830	9831	9832	9833	9834	9835	9836	9837	9838	9839	9840	9841	9842	9843	9844	9845	9846	9847	9848	9849	9850	9851	9852	9853	9854	9855	9856	9857	9858	9859	9860	9861	9862	9863	9864	9865	9866	9867	9868	9869	9870	9871	9872	9873	9874	9875	9876	9877	9878	9879	9880	9881	9882	9883	9884	9885	9886	9887	9888	9889	9890	9891	9892	9893	9894	9895	9896	9897	9898	9899	9900
9823	9824	9825	9826	9827	9828	9829	9830	9831	9832	9833	9834	9835	9836	9837	9838	9839	9840	9841	9842	9843	9844	9845	9846	9847	9848	9849	9850	9851	9852	9853	9854	9855	9856	9857	9858	9859	9860	9861	9862	9863	9864	9865	9866	9867	9868	9869	9870	9871	9872	9873	9874	9875	9876	9877	9878	9879	9880	9881	9882	9883	9884	9885	9886	9887	9888	9889	9890	9891	9892	9893	9894	9895	9896	9897	9898	9899	9900

UNION

ST

BP
97.83

STATE

ST

97.83
5.91
103.74

97.83
5.91
103.59

97.47
5.97
102.53

99.24
2.20
106.28

20 12.18
1.50
13.68

45.5
5.27

286
0.00
519

29.20
1.50
30.70
34

9947	9923	9962	9924	9853	9854	9814	9804	9816	9762
4.12	2.6	3.9	4.18	4.76	5.14	5.00	4.67	4.99	5.43
9890	9913	9822	9905	9871	9802	9840	9816	9762	
4.64	4.4	4.52	4.74	4.45	4.67	4.99	5.43	5.97	
9722	9815	9837	9820	9810	9760	9832	9821	9801	
5.39	5.44	5.2	5.29	5.49	5.97	5.35	5.31	5.54	
9700	9690	9640	9755	978	9726				
6.03	6.4	7.19	6.04	5.8	5.73				
9731	9754	9750	9721	9647					
6.8	6.05	6.09	6.35	6.47					

66
66

123
73
63

6293
566
6859

4589
7
5279

6493
472
6787

205
200
5

35

COLUMBIA

6491 6425 6442 6475 6458 6461 6430 6474 6496
 6495 6420 6405 6405 6496 6475

6420
6405
6417

6380 6380 6380 6380

6355
6280
6277

6346 6355 6349 6355 6280 6280 6292

6294 6285 6262 6289 6290 6266 6296 6296 6296

6294 6285 6262 6289 6290 6266 6296 6296 6296

6294 6285 6262 6289 6290 6266 6296 6296 6296

6294 6285 6262 6289 6290 6266 6296 6296 6296

6294 6285 6262 6289 6290 6266 6296 6296 6296

6294 6285 6262 6289 6290 6266 6296 6296 6296

6294 6285 6262 6289 6290 6266 6296 6296 6296

ST.

BP 6293

1960
66

4814 4834

5.3

4826 4826
4806 4852 4824 4809

4723 4850

4719 4851
-36 -48
4

4730 4744 4684 4707
.3 .25
4

2/19/23

GRADES ON
NUTMEG ST
from NL 29th to 127' west

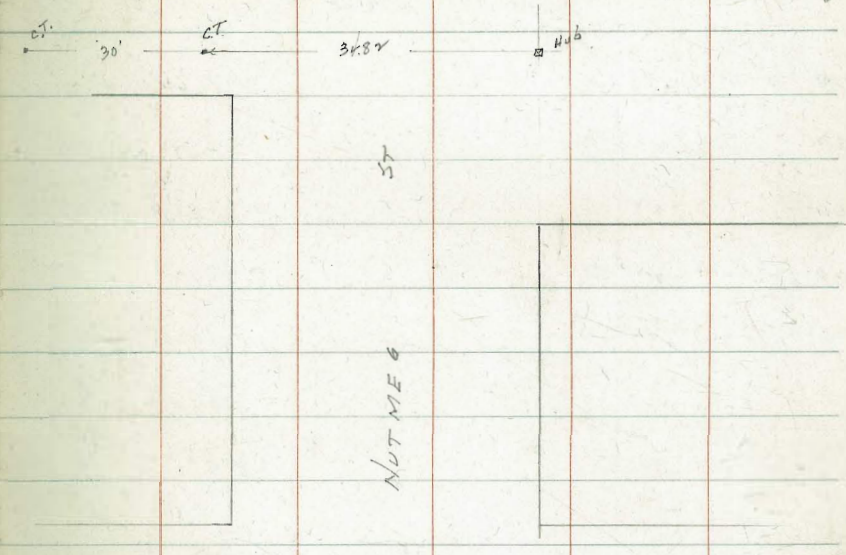
stakes set
3' out.

29th

ST

36

Dir	Dist	Grade	ST
NL 29th	1.8	290.25	2.6
50 W	1.4	289.2	-1.3
brick 75 3.2	2.8	289.5	3.6
100 W	1.9	288.59	+0.3
127 W	10.4	284.33	8.7
			11.9
			283.40
			-4.2



GRANADA

AVE

291.13	289.75 1.3	289.25 3.9	284.75 6.3	283.40 7.7
		289.2	285.57 5.5	284.33 6.8

2/20/23 Gregory. GRADES ON
5TH ST
North of Arbor Drive

WL	EL
300' ✓ -1.5 288.25	288.25 0.0
250' ✓ -2.3 288.67	288.50 +0.7
44.53 200' ✓ -0.6 288.71	288.53
200' ✓ -0.6 289.08	288.75 +1.1
150' ✓ -0.5 289.50	289.0 +1.2
100' ✓ -0.1 289.92	289.26 +1.0
50' ✓ -0.6 290.33	289.50 +0.5
N.L. Arbor -0.2 290.75	289.75 +0.4

287.90 287.90

37

83
45
41.5
33.2
31.36

1/5
22.4

55'
Tie hub

289.03 CT S.E. 4th + Arbor Drive

16.01
295.04

290.16 43 47 50	290.27 47 53 56	289.92 51 56.1 56	289.50 55 58 58	289.08 60 62 58	288.67 64 67 67	288.26 68 70 75
289.75 53 57 +0.4	289.50 55 50 +0.5	289.26 52 45 +1.0	289.0 50 48 +1.2	288.75 48 52 +1.1	288.50 45 53 +0.7	288.26 48 48 0.0

287.03
5.63
274.66

290.56 41	89.21 54.1	89 56.6	88.6 59.1	88.50 61.6	88.28 63.8	88.21 64.22	87.90 65.0	87.90 65.9 66.7 67.6
90.05 4.58 4.4	89.67 4.64	89.65 4.5	88.8 5.83	88.6 6.20	88.60 6.26 6.20	88.60 6.34 6.31 6.33	88.60 6.39 6.31 6.33	87.6 6.46

Isthmus Tennis Courts.
Grades etc.

BM assumed at 100.00 on curb over catch Basin

Wall on Indian Village
38

100
797
107.97

100.00
820
108.2

1025 1026 1027
5.7 5.6 5.4

1028 1029 1030
5.9 5.8 5.7

1031 1032 1033
6.0 6.1 6.2

1034 1035 1036
6.2 6.3 6.4

100.00
698
106.98

100
107.92

430
108.63

440
108.53

45
109.4

45
109.38

49
109.3

46
109.3

47
109.2

49
109.0

51
108.8

102
108.4

102
108.4

102.35
108.5

102.32
108.5

102.25
108.5

36.8

37.6

38.2

38.8

39.4

Ground 104.0
Grade 102.25

60
102.94

Ground 108.2
Grade 107.35

Ground 99.3
Grade 101.75

Ground 105.1
Grade 102.75

Ground 103.9
Grade 102.62

Ground 102.2
Grade 102.50

Ground 105.1
Grade 103.50

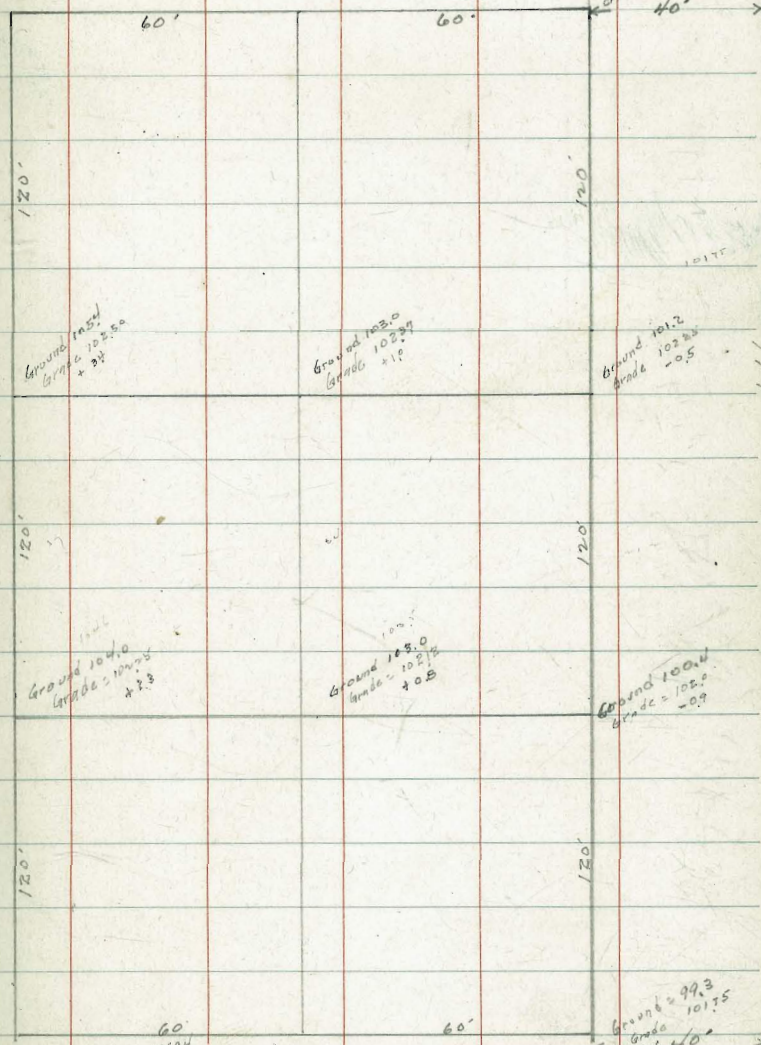
Ground 103.0
Grade 102.19

Ground 101.2
Grade 102.05

Ground 104.0
Grade 102.3

Ground 103.0
Grade 102.05

Ground 100.4
Grade 102.09



UNIV.

7/28/23

SIXTH ST PAVING

AVE

55 12 00 12 00 12 00 12 00

39

285.51
470
289.91

213.81
487
288.74

8245 8394

8307 8358

BP 285.51

8558 8420
8549 1754
8500

8590 8449
8582 8448
8583

ROBIN

AVE

850 8478
8558
8558 8425

8588 8530
8578 8448
8408 8448

ROBIN

AVE.

40

276'

5TH

8616
8585
8620, 8558
8618

8686
212
8898

EVANS
PL.

600'

8585
8621
8627, 8573

476'

6TH

PENN.

AVE

BP
28686

87.06 86.80
88.86
84.50

87.00 87.58
87.0
87.49

28686
87.27
27 853

28686
87.25
29 851

PENN

AVE

8596
508
91.2

8568
538

8550
860

8514
599

8630
86.88
86.50
87.02 86.85

8401

8727

8714

87.00 87.00
87.00 87.54
86.90 87.51

8465
678
71.3

8570
591

8581
562

8475
665

8490

8481
662

8540
563

8549
572

8445
800
91.7

8727
570

8514 84.75
8506
84.75
8550

8533

8522

8581

8529 86.21

8478

ANDERSON
PL.

8490

8522

8560

8549

8481

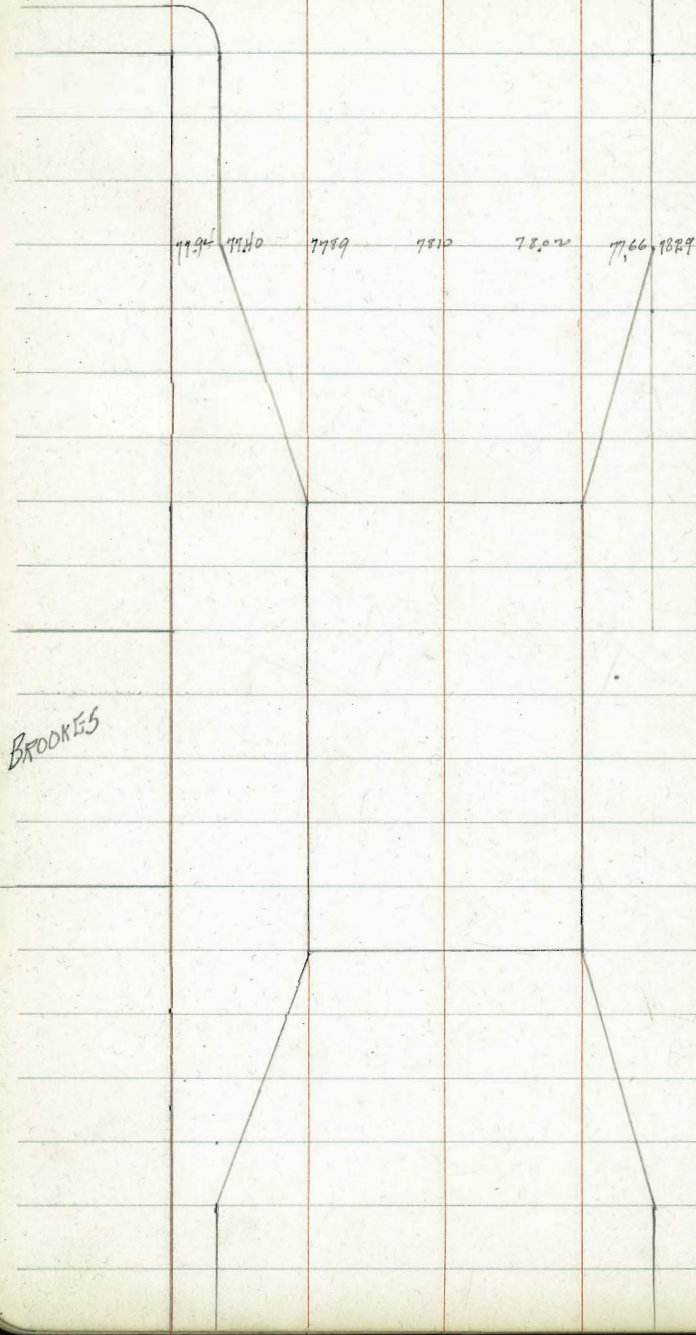
84.50
8500
8500
8503 84.50

8514

8550

8558

8535 84.82



8491

666

677

$$\begin{array}{r} 7766 \\ 643 \\ \hline 8409 \end{array}$$

$$\begin{array}{r} 7784 \\ 620 \\ \hline 8404 \end{array}$$

$$\begin{array}{r} 7800 \\ 599 \\ \hline 8399 \end{array}$$

$$\begin{array}{r} 7800 \\ 601 \\ \hline 8401 \end{array}$$

BROOKES

AVE

8907
198
291.00

255
752

8600
469
9069

8901
366

8908
359

8667
448
9108

86
308

515

527

528

8575
535

8722
7

7690
618

613

8574
880
9454

8553
61

8592
564

8601
563

8536
637

8505
619

8577
655

8637 8435
8529 8541 8526 85 8500
8525 8490

IVY
LANE

8556
8575 8624 8621
8401

8575 8653
8650 8600 8667 8707 8707 8700 8770

6TH

VP45

		33rd St		66	
3L Palm	305.75	305.50		306.0	306.95
50		304.15			304.42
100 S		302.55			302.62
150 S		300.96			300.82
200 S		299.36			299.02
250 S		297.77			297.22
300 S		296.17			295.42
360 S		294.25			293.21
400 S		294.08			293.08
450 S		292.87			292.87
500 S		292.66			292.66
550 S	293.15				292.45 -3.4
598 S: NLHd map	293.25				292.25 -0.3

305.02	E 292.21	292.45	292.41	292.9	293.1	293.25
736	10.8	5.2	4.9	4.7	4.5	4.3
295.6	11.1	5.6	4.9	4.7	4.5	4.3
196	-0.3	-5.4	-6.5	-8.8	-7.1	-5.4
297.62	W 292.21	292.45	292.41	292.9	293.1	293.25
296.36	11.1	4.2	3.7	3.7	3.5	3.3
108.7	-0.3	-5.4	-6.5	-8.8	-7.1	-5.4
307.23	11.1	4.2	3.7	3.7	3.5	3.3
		+2.2	-1.5	-3.3	-2.2	-0.1
	64	126	91	71	40	22
	291.2	294.6	297	300.1	303.2	306.5
	11.1	11.1	11.1	11.1	11.1	11.1
	-1.4	-1.4	-1.4	-1.4	-1.4	-1.4
	00	75	59	46	33	24
	297.6	299.1	301.3	302.6	302.9	304.5
	11.1	11.1	11.1	11.1	11.1	11.1
	1.4	1.4	1.4	1.4	1.4	1.4
			+1.4	+2.5	+0.5	+0.1

FT Stockton Paring

Hawk

ST

6901 68.55 6840 6880 6859 6879 6861

7054 6990 7033 7050 7038 700 7059

7055 7000 7050 7000

7027 7026

7060 7062

7077 7080 ST

7074 7075

7053 7058

7035 7040

7097 7050 7089 710 7090 7055 7102

7102 7105

7102 7105

7102 7105

7102 7105

7102 7105

7102 7105

7102 7105

7102 7105

7102 7105

7102 7105

7102 7105

7102 7105

7102 7105

7102 7105

7102 7105

7102 7105

7102 7105

7102 7105

7102 7105

7102 7105

7102 7105

7102 7105

7102 7105

7102 7105

7102 7105

IBIS

BP 7110

Jackdaw

7110 7030

7100 6988 7130 7140

7052 7000 7017 7028 7005 6955 700

7052 7000 7017 7028 7005 6955 700

7052 7000 7017 7028 7005 6955 700

7052 7000 7017 7028 7005 6955 700

7052 7000 7017 7028 7005 6955 700

7052 7000 7017 7028 7005 6955 700

7052 7000 7017 7028 7005 6955 700

7052 7000 7017 7028 7005 6955 700

7052 7000 7017 7028 7005 6955 700

7052 7000 7017 7028 7005 6955 700

7052 7000 7017 7028 7005 6955 700

Soul

0.60 1.0 4.00 5.31

5.22 4.1 2.87 46

27057 57 27626

27102 480 27587

710 342 7147

77 270

590 628 687

628 619

586 561

27057 57 27626

27102 480 27587

700 450 705

437 7016

6720 67

7028 7018 7009

7046

7000

7054

7016

7007

7020

6747

6747

6755

BP 7052

Jackdaw

Ft Stockton.

31.8
70

47

27295
500
27838

27298
599
27896

27304
589
27893

27307
479
27786

7298
570
7868

BP 27298

7296 7230

7273

7290

7278

7240 7245

27300
569
27871

7128
713
7241

7299

7250

7246

7297

7291

7315

7240 7245
7245 7250
7250 7255

7301

7300
331
7631

7128
713
7241

7237

Inquills

7300

7290

7285

7317

7340

7350

7301

7325 ST

7341

7305

7310

7304

7306

7307

7308

7309

7310

7311

7312

7313

7314

7315

7316

7317

7318

7319

7320

7321

7322

7323

7324

7325

7326

7327

7328

7329

7330

7331

7332

7333

7334

7335

7336

7337

7338

7339

7340

7341

7342

7343

7344

7345

7346

7347

7348

7349

7350

7338

7400

7384

7350 7401

7368

7386

7406

7456

7468

7489

7501

7500

7500

7500

7500

7500

7500

7500

7500

7500

7500

7500

7500

7500

7500

7500

7500

7500

7500

7500

7500

7500

7500

7500

7500

7500

7500

7500

7500

7500

7500

7500

7500

7500

BP
27300

Lark

7160

7161

7162

7163

7164

7165

7166

7167

7168

7169

7170

7171

7172

7173

7174

7175

7176

7177

7178

7188

7203

7188

7145 7201

7160

7180

7206

7206

7206

7206

7206

7206

7206

7206

7206

7206

7206

7206

7206

7205

7207 ST

7211

7180

7180

7180

7180

7180

7180

7180

7180

7180

7180

7180

7180

7180

7180

7180

7180

7180

7180

7180

7180

C. P. W. W. D.

$$\begin{array}{r} 26605 \\ 49 \\ \hline 27097 \\ 26605 \\ 51 \\ \hline 27115 \end{array}$$

$$\begin{array}{r} 20605 \\ 320 \\ \hline 20925 \end{array}$$

$$\begin{array}{r} 247 \\ 26294 \\ \hline 16113 \end{array}$$

$$\begin{array}{r} 828 \\ 16113 \end{array}$$

$$\begin{array}{r} 722 \\ 26217 \\ \hline 1581 \end{array}$$

$$\begin{array}{r} 1581 \\ 1374 \end{array}$$

$$\begin{array}{r} 6173 \\ 768 \\ \hline 6941 \end{array}$$

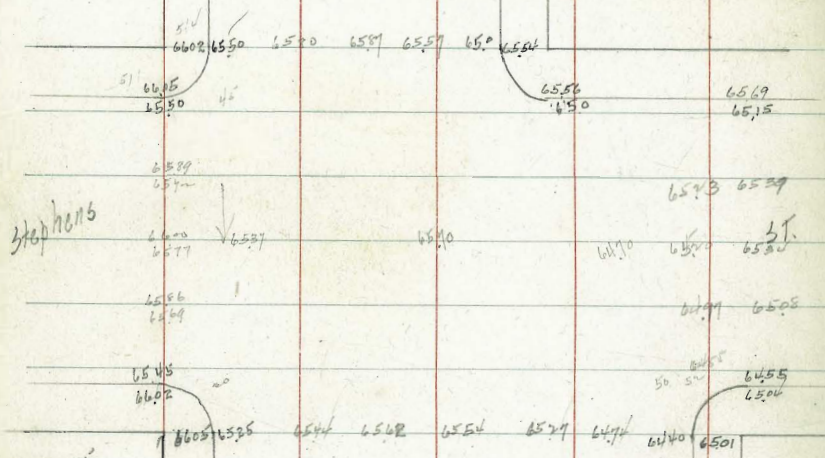
$$\begin{array}{r} 6173 \\ 768 \\ \hline 6941 \end{array}$$

$$\begin{array}{r} 6173 \\ 768 \\ \hline 6941 \end{array}$$

$$\begin{array}{r} 6173 \\ 768 \\ \hline 6941 \end{array}$$

$$\begin{array}{r} 6173 \\ 768 \\ \hline 6941 \end{array}$$

$$\begin{array}{r} 6605 \\ 267 \\ \hline 6872 \end{array}$$



Stephens

26606

6448	6460	6450	6418	6364	6379	6376
6432	6442	6430	6394	6340		
6416	6426	6410	6372	6318		
6400	6406	6390	6350	6300		
6384	6385	6370	6325	6270		
6368	6370	6350	6306	6240		
6352	6352					

61/2

Lewis

50

75103
499
70202

307
905

407
793

5752
480

5780
612

5800
78

57952
423
29430

7139

7145

7157

57

7047.70

7046.

7117

7127

7125 7201

70

6992

7035

7180

7140

Stockton

6950

6998 6940

7013

7020

7078

7079 7150

JACKSON

5952 5922

yellow
HLS

5930

5940

5995 5960

Washington

5915

5935

5985

5925

5.45
2.60
2.85

MONTECITO

276.51
24.47
279.92

1335
295
763

10 963 926 890

3)110
37

5

6687+6690 6688 6720 6710

67.5 67.3
67.0 67.09
67.53

7820
519
7847

6724
431
72.19

454
67.5

LARK

6742 6770 6768

67.50 67.85 ST.

7390
543
79.13

6796 6790 6792 6818

67.69 67.70 67.89
67.86

7399
557
79.47

7355
533
78.83

WAY

7390 7390 74 7384

7386 7385 7388

7392

74

7407

7385 740

7385

7386 7380

7383

7377

7395 7360

7415

7382 740 ST.

7399

7435

7303

RANDOLPH

7390 7390 7392

7386 7380

7439 7455 7439

7380 7379 7380
7380 7380

MONTECITO

DRIVE

DRIVE

Arbor

PALMETTO

Drive

57

BP 27801

27901
203
281.29

7535
553
7088

7586
502

7645
463

7619
469

7626
462

7650
438

7633
455

7619
469

7644

7692
475

7713

2777
7540
78.67

2777

263

2780

520
7577
7535

581
7598
7550

7593

7626

7619

7595

410
7626

7648
7585

7584

7633

Montecito

760

7635

7650

7584

7636

7535
5375
5376

545
7595
7535

7586

7625

7619

7590

760
4590
7648
481

7630

7617

7619

684

LEWIS

57

PRYMOSE

WAY

HUNTER

ARBOR

ARBOR

DR

27801
487
~~28388~~

7531
576
~~8051~~

7785
444
~~8229~~

7837
397

7838
381
~~7825~~
397

500

520 5

440

360

8423
8000
~~6747~~

364
35

7846 7785 7834 7840 7825
7845 780

7790 7850
7850 7790

7841

7836

7873

7874 DR

7877

7861

7860

7846 7845 7844
7844 7844

7842 7835

7879

7802

7852

7840

7801

7860
7858

89 249.01

6441 6379 6440 6470 6471 6473 265.0

2650
2.85
268.05

ARBOR

PLUMOSA WAY.

Rando/ph

ST

472

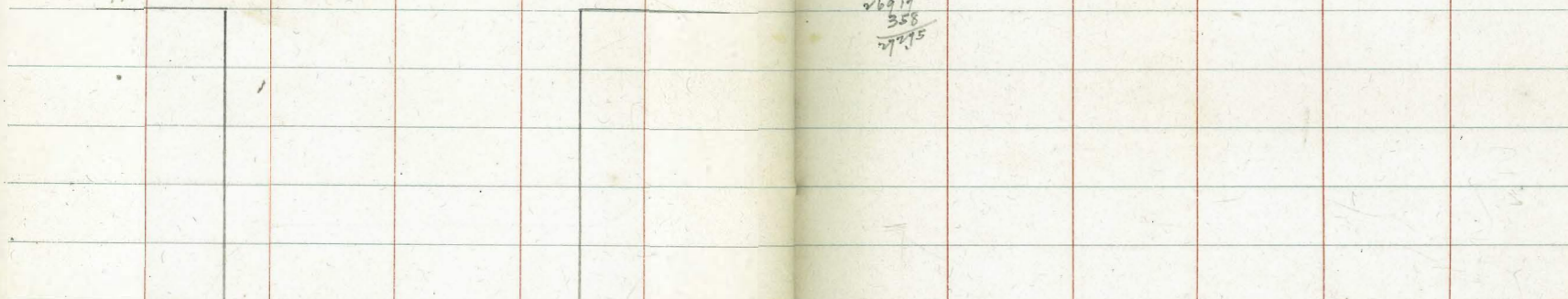
358

337

363

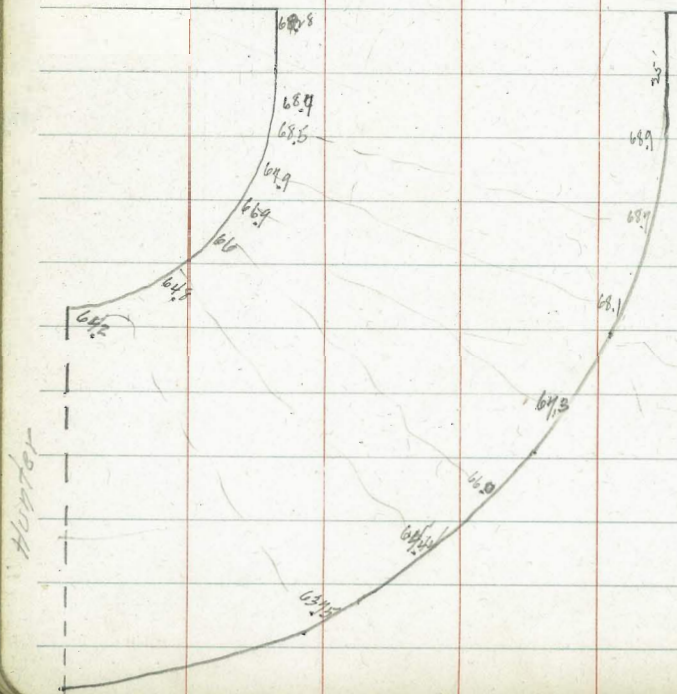
659
380

26917
358
27275



Palmetto

Way



FORT STOCKTON and
AMPUDIA

264.0

264.5

PINE

ST.

+1.3

+2.9

+1.4

-1.0

-1.1

-0.4

+0.6

264.0

262.70

261.50

260.25

259

257.75

256.5

256.0

264.5

263.33

262.17

261.0

259.83

258.67

257.5

257.0

267.06
1.21
268.27
10.50
278.77
10.33
289.10

264.5
3.75
37.5
268.25
6.1
274.35
13.84
288.19

265.5
2.00
267.5
2.7
264.8
11.74

267.5
1.7
269.25
9.26
278.51
12.50
291.01
10.75

260.0
8.0
268.0
2.6
270.6
12.50
283.1
7.7

260.0
8.4
268.4
9.2
277.6
12.50
290.1
7.7

57.0

59.1

60.0

62.2

63.3

64.5

65.0

65.5

65.9

66.1

66.5

66.5

STOCKTON
FORT

57.5

59.9

61.3

62.7

63.8

64.9

65.5

66.0

66.4

66.6

67.0

TRIAS

21.9 256.0

257.0

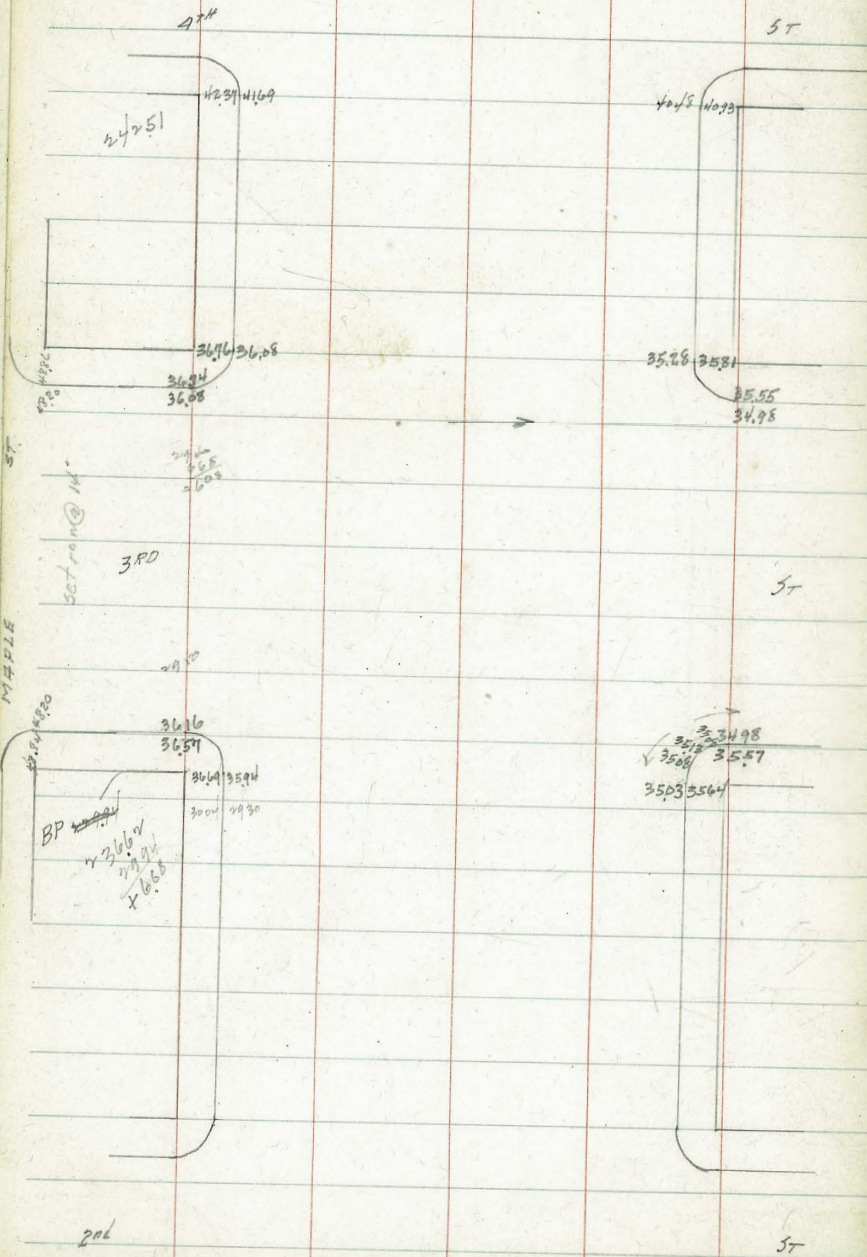
66.5

67.0

4246 4263

LAUREL ST. PAVING

4144 4180



33.93

2499
135
251.69

2.85
2.5
3.26

24251
307
24558

321 389 465
169 092

36.67
477
4139

482
654

470
3689

370 412
156

523
36.16
6.65
29.48

521
3594
6.65
29.29

291 412
4265 4246
2

2896
605
564

510 400

2859
665
2527
6.49

ST

44993
5104
23559

271 426

588 5131

5046 5096

35.28 35.81
35.55
34.98
3503 3564

4160 516
51.00 50.43

619 502

4940 4991

5.49

ST

4989 4920

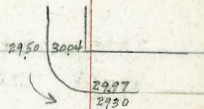
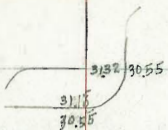
679 659
4860 49.0

56

2nd

ST

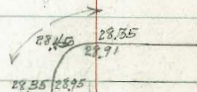
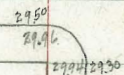
LAUREL ST



2ND



ST



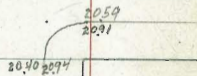
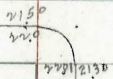
BP 22924



1ST



ST



BP 2224

259
3132

22924
549
233.93

22924
527
235.21

222
602
2802

510
227

548
207

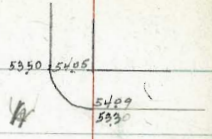
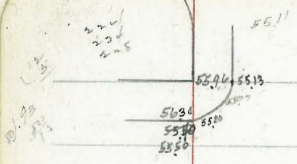
222
320
221.20

2390
386
27.16

LAUREL ST PAVING

14413
1409
158.20

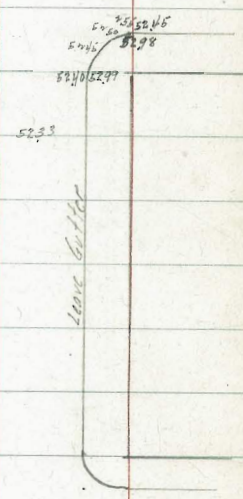
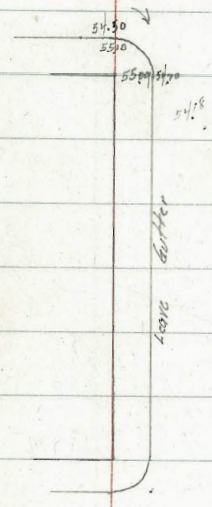
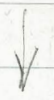
58



BRANT



12156 1/2 ST



CURLEW

57

LAUREL ST PAVING

34

CURLEN

4234
4235
4236
4237

11159
11774
12258

4730
5620
597

144.13
775
15788

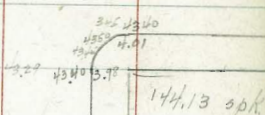
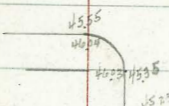
790
598



57



HORTON



132.05

179.22

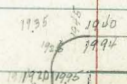
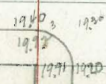
2730
2745
255

HILMIR

UNION



57



KALMIA ST PAVING

2582
2577

24.77

2504
2485
2435

BRANT

ST

3370
3345

3400
1930

2190
2180

2194
2120

2105

3250
3200

3240
2020

1940
1990

1982

1920

CURLEW

ST

2045
210

210
2020

1840
1850

1840
1830

1940

1900

413
21
1993

1993

11.59
12.00
783.59
0.93
23.66
18.26
725.72

21.20
480
2600

0.10
1990

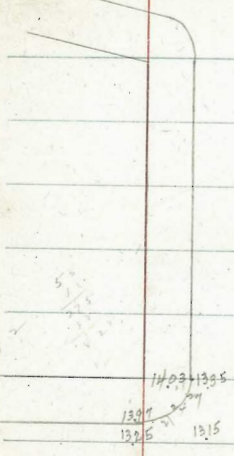
20010
1324
3379
111
3568
3193

404
3389
253
3460

368
3430
301
3492

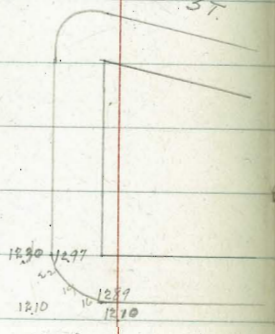
328
3465
272
3521

CURLEW



111.59
566
117.24

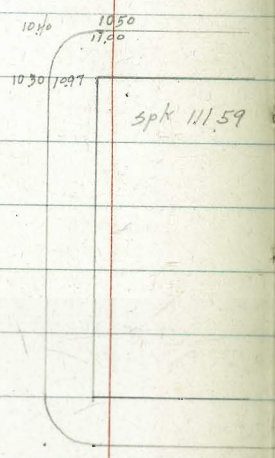
ST.



UNION



ST.



spk 111.59

STATE

ST.

KALMIA ST PAVING.

B.P. 8792

8739 8735
8726 8710
8724

8735 8800
8710 8725
8721

$$\begin{array}{r}
 4687 \\
 + 858 \\
 \hline
 5545 \\
 - 5016 \\
 \hline
 529 \\
 + 1244 \\
 \hline
 1773 \\
 - 813 \\
 \hline
 960 \\
 + 1276 \\
 \hline
 2236 \\
 - 8024 \\
 \hline
 -5788 \\
 + 8013 \\
 \hline
 2225 \\
 - 1254 \\
 \hline
 971
 \end{array}$$

8792

$$\begin{array}{r}
 75 \\
 \times 12 \\
 \hline
 150 \\
 + 750 \\
 \hline
 900
 \end{array}$$

STATE

ST

8550 8545
8601 8530
8600

8550. 8557
8578 8530
8535

6426 6435
6500 6480
6430

6440 6501
6415 6473
6425

COLUMBIA

ST

6240 6235
6273 6220
6290

6235 6245
6271 6291
6225 6215

B.P. 6301

$$\begin{array}{r}
 4335 \\
 + 4335 \\
 \hline
 8670
 \end{array}$$

INDIA

ST

1146 4332

3/22/73

Gregory

GRAVES IN ALLEY
BLOCK 6 CLEVELAND HEIGHTS

63

5L Robinson		267.86		267.09	
W 80 18 S	+1.0	266.79		266.98	+1.0
90 S 20 W	+1.0				
100 S		265.71		265.86	+1.0
112 S	+1.0				
E 80 150	+0.0	264.64		264.74	+0.54
400	+1.0	263.57		263.62	+0.44
250 S	+1.0	262.5		262.5	0.0
300 S	+1.0	261.67		261.67	+0.77
350 S	-0.33	260.83		260.83	+1.0
400 S	0.0	260.0		260	+1.0
442 S - 0.05		259.3		259.3	+0.16

267.06	6699	26571	26464	26357	2625	26167
506	593	701	3.29	7.54	5.11	6.24
27272						
732	6902	6586	26474	26362	2625	26167
26538	5.70	6.86	3.17	7.39	8.41	3.33
253						
26791	26083	260	259.3			
597	4.7	500	5.7			
26194						
3.06						
26550						

3/23/23

GRADES ON SEB LANE
30' wide, 5' cbs
property line to be 1' above curb

N. Prop.	S. Prop.	
W.L. La Jolla Blvd. 19.6	69.4	
50' W on N 46' W on S 105 67.35	67.47	+0.3
100' " " 96' " " 109 65.10	65.38	+0.3
150' " " 146' " " 120 62.85	63.28	+0.5
200' " " ~ EL Olivetas on N 120 60.6		
EL Olivetas on S	60.6	+0.9
WL " " N 103 60.1		
WL " " S	60.1	-0.1
50' W. of Olivetas on N 36' W on S 103 57.88	58.47	-0.1
115' " " " 101' " " 103 55.00	55.53	-0.3
120' " " " 166' " " 103 52.59	52.59	+0.4
EL Monte Vista on N 106 52.1		
" " " " S	50.6	+0.4
WL " " N 109 51.1		
WL " " S	50.1	+0.9

7186 Mont H to San Lane

558
94.44
60.22
17.77
11.97

67.47	65.38	63.28	60.6	60.1
50	67.6	91.6	11.84	12.34
47	63	86.6	10.9	12.01
67.8	65.1	80.85	60.6	60.1
46	73	95.9	11.84	12.34
48	66	85.9	9.82	13.2
55.47	55.53	52.6	50.6	50.1
35.6	67	7.3	11.84	11.9
57.88	55.0	50.1	51.1	
41	60.7	48.7	10.9	
35	66.3	42.7		

64

3/29/23

Gregory

GRADES IN ALLEY
BLK 225 UNIV. HIGHTS

111

5

	N		S	
W.L. Richmond	294.99		294.92	
50 W	+1.0	294.46	294.42	+1.0
100 W	+1.0	294.14	294.11	+1.0
150 W	+1.0	293.82	293.81	+1.0
200 W	+1.0	293.5	293.5	+0.17
260.5 250 W	+1.0	292.92	292.92	+1.0
300 W	+1.0	292.35	292.35	+1.0
350 W	+1.0	291.77	291.77	+1.0
400 W	+1.0	291.2	291.2	+1.0
450 W	+1.0	290.93	290.93	+1.0
500 W	0.0	290.66	290.66	+1.0
550 W	cont	290.4	290.4	+0.39
El. Vermont	288.79		288.72	

287.98	290.4	290.66	290.93	291.2	291.77	292.35	292.92
6.06	3.64	3.38	3.11	2.84	2.71	2.13	4.56
274.04	3.23	2.38	2.11	1.84	4.71	4.10	
2.03	0.39	1.0	1.0	1.0	1.0		
272.01							
5.27	3.64	3.38					
277.48	3.10	3.38					
3.97	10.24	3.38					
293.51		0.0					
5.00							
299.11							
	293.5	293.5	293.5	294.11	294.16		
	3.98	5.61	5.30	5.00	4.69	5.1	
		3.17			3.72		
			293.9	294.16	294.16	294.16	
			5.9	6.4	4.65		

GRADES IN ALLEY
BLOCK 215 Univ. Hgts.

480.5 -Wt. Vermont.		285.32		285.18	
420	+1.0	284.76		284.69	+1.0
360	+1.0	284.2		284.2	+0.26
300	+1.0	284.0		284.0	+1.0
250	+1.0	283.6		283.6	+1.0
200	+0.91	283.2		283.2	+0.33
150	+2.0	282.71		282.67	+0.18
100	+1.0	282.23		282.15	+1.0
50	+0.84	281.74		281.63	0.0
EL. 10 th		281.25		281.11	

285.98					
328					
289.26					
5.52					
282.73					
4.22					
288.65					
N					
284.76					
4.50					
3.50					
5					
284.69					
4.57					
5.57					
1.0					
282.22					
6.42					
282.15					
6.50					
8.50					
1.0					
284.2					
5.06					
4.06					
284.2					
5.06					
4.06					
284.2					
5.06					
4.06					
284.2					
6.42					
281.74					
6.7					
281.62					
7.02					

A

18th ST PAYING ST

6708 6750 6772 6801 6811 6802 6775 6750 6811

6808 6795 6733 6719 6730 6740 6726 6720

B 6690 6649 6593 6560 6550 6550 6520 6510 ST

6607 6540 6564 6546 6607 6546 6564 6540 6607

6072 6005 6005 6000 6000 6059 6022 6001 6025
5966 5910 5921 5960 5969 5957 5926 5908 5941
5935 5896 5849 5884 5892 5889 5947 5925 5900
5876 5949 5995 5818 5828 5822 5785 5774 5841
5760 5697 5726 5786 5753 5780 5753 5731 5798
5735 5670 5703 5747 5770 5767 5739 5715 5760

5611 5555 5617 5617 5617 5617 5617 5629 5619

C

ST

68.14 B.P.

63.57 65.58 66.08 66.37 68.14
61.08 61.21 60.60 8.74 68.89
0.00 0.00 0.00 0.00 0.00
0.00 0.00 0.00 0.00 0.00

66.85 65.60 5.01 70.61

84.90 6.21 91.86

7053 7095 7013 7041 7050 7041 7016 7041 7056

8533 8590 8526 8613 8602 8584 8540 8510 8510

8526 8515 8582 8506 8591 8540 8531

H

8507 8506 8513 8540 8556 8540 8513 8510 8510

B

ST

6TH

ST

BP
255.48

5TH

ST

BP 257.41

4TH

ST

BP 253.46

2.95 2.90 2.85 2.80 2.75 2.70 2.65 2.60 2.55 2.50 2.45 2.40

253.46
254.5

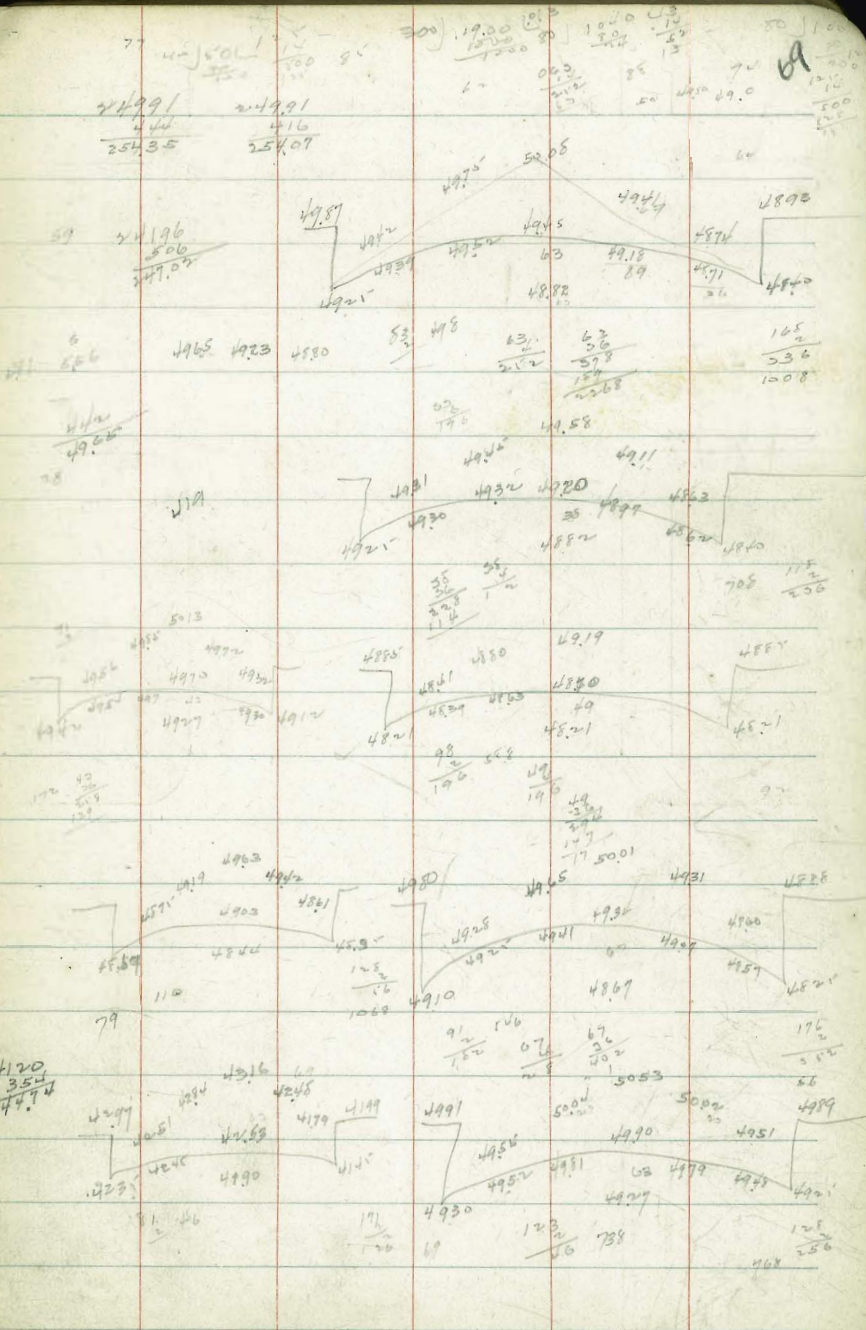
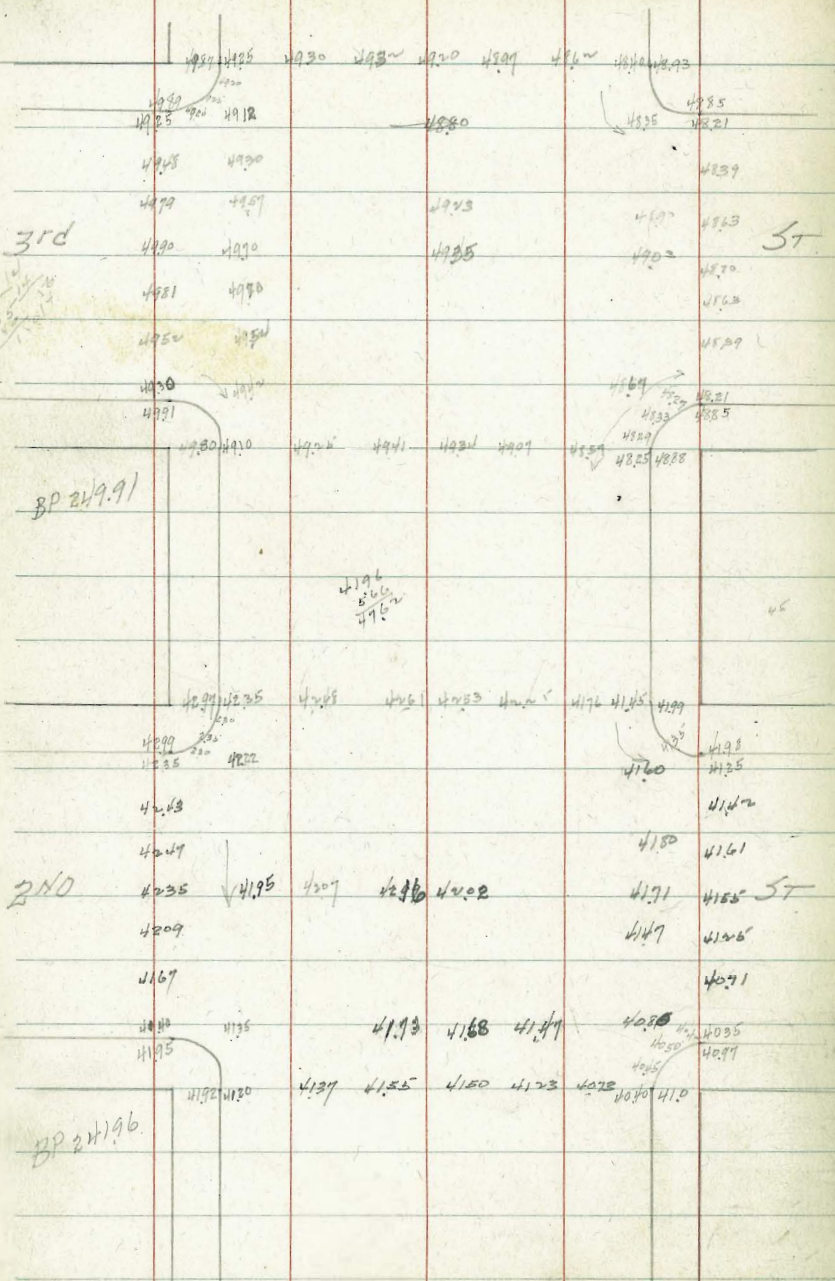


BP

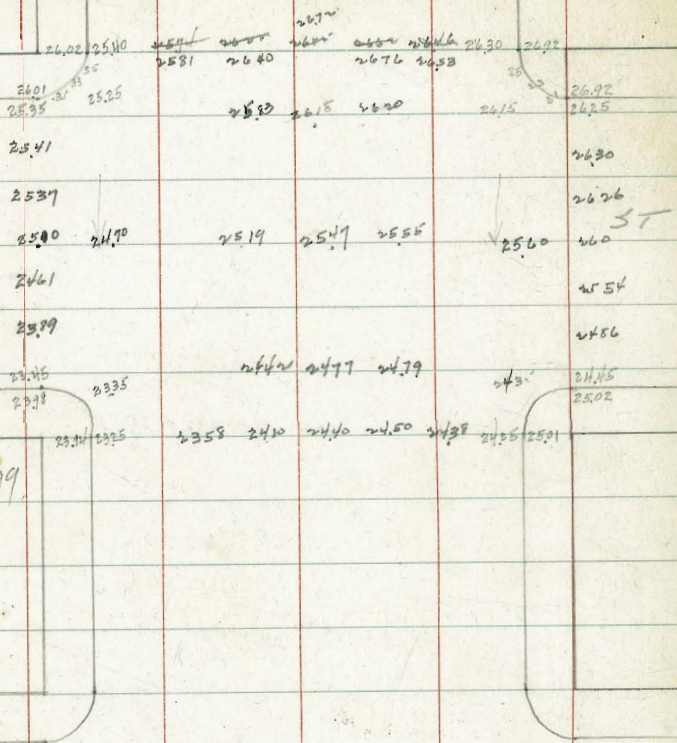
ST

253
257

MAPLE ST



MAPLE ST

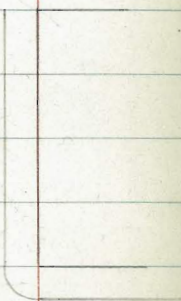


~~27389~~
~~594~~
~~21993~~
 26.90
~~400~~
 30.30
 24.21
~~324~~
 27.50

FRONT

ST

6

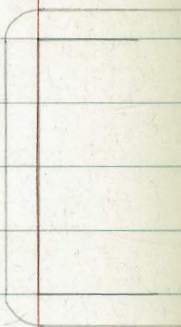
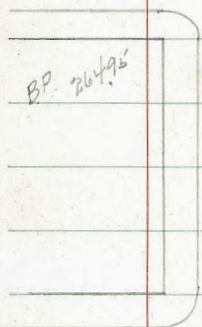


5TH

ST

5

BP 26495



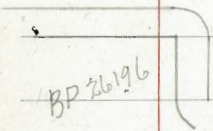
4

4TH

ST

3

BP 26496



NUTMEG ST PAVING

5.20
2.22
2.51

190
47
7
3.7

74

5644 5660 5666 5672 5678 5585 5674
5638 5633 5632 5639 5586
5644 5635 5622 5628 5634 5585 5595 ST
5612 5574 5573 5568 5576 5538 5538
5550 5545 5495 5490
5607 5610 5651 5649 5636 5603 5653 5620 5620

BP 25604
5607 5610 5651 5649 5636 5603 5653 5620 5620
4701 4625 4625 4625 4625 4691 4691
4625 4625 4625 4625 4625 4554 4554
4649 4636 4590 4625 4595 4595 4595 4550 4550
4611 4549 4549 4549 4549 4516 4516
4520 4530 4569 4560 4531 4497 4450 4450
4520 4530 4534 4534 4534 4534 4497 4497

2ND
4611 4549 4520 4530 4534 4534 4534 4534 4497 4497
BP 24594
4520 4530 4534 4534 4534 4534 4497 4497
Top of gutter is grass

25604
533
26137
24594
522
25119
5620
776
4376
787
587
454
646
5241
5720
652
6072
4640
185
4725

47
6
2.2
47
63
1.1
5.5
2.1

Grades Alley Blk 3 Brookas

W

E

125
140
126
192

27991 NW 5th Brookas $\frac{4.25}{1.66}$ $\frac{2.11}{.91}$
 $\frac{615}{28606}$
 $\frac{253.53}{7.03}$ F $\frac{28248}{3.58}$ $\frac{28305}{3.01}$ $\frac{8362}{2.74}$ $\frac{8419}{6.37}$ $\frac{8475}{5.81}$ $\frac{8617}{2.12}$
 $\frac{290.56}{1.91}$ $\frac{28230}{3.76}$ $\frac{28292}{3.12}$ $\frac{8355}{2.48}$ $\frac{8422}{6.34}$ $\frac{8485}{5.91}$ $\frac{8618}{4.38}$
 $\frac{502}{29367}$ $\frac{26}{3.44}$
 $\frac{581}{28786}$
 $\frac{200}{28986}$

73

$\frac{8760}{3.06}$ $\frac{8776}{2.80}$ $\frac{8808}{2.48}$ $\frac{8808}{5.29}$ $\frac{8841}{5.26}$ $\frac{8860}{5.07}$ $\frac{8875}{5.07}$
 $\frac{8830}{1.50}$

394

8572

600' N	+1.0	281.66	281.91	+2.0
550' N	+1.0	282.90	282.48	+1.0
500' N	+1.0	282.13	283.05	+1.0
450' N	+1.0	283.58	283.62	+1.0
400' N	+1.0	284.20	284.19	-0.70
350' N	+1.0	284.85	284.75	-1.05
295' N	+1.0	286.19	286.12	-0.80
240' N	+1.0	287.50	287.50	-0.20
200' N	+1.0	287.96	287.96	+1.0
150' N	+1.0	288.08	288.08	+1.0
100' N	+1.0	288.41	288.41	+1.0
70' N	+1.0	288.60	288.60	-0.70
25' N	+1.0	288.75 30	288.75 30	

170
 $\frac{1100}{10200}$
 $\frac{1064}{2560}$
 $\frac{142}{142}$

N. Walnut

4/19/23

GRANDES IN ALLEY
BLK 5 CLEVELAND HEIGHTS

SL. Robin	W	E	
50' S 00	271.0	271.0	-0.32
100' S +1.0	269.8	269.8	+1.0
150' S +1.0	268.6	268.6	+2.0
	+0.3	269.1	+1.5
200' S +1.0	269.1	268.9	+2.0
	+1.37	268.3	+1.37
250' S +1.36	267.35	268.17	+2.0
	-0.39	268.8	+1.37
300' S +1.66	266.70	267.55	+2.0
	-1.54	268.3	+1.25
350' S +1.0	266.70	266.92	+2.0
	267.1	267.8	+1.12
400' S +1.0	265.77	266.3	+2.0
	+0.87	267.3	+0.97
450' S +1.0	264.85	265.67	+2.0
	+1.35	266.8	+1.35
500' S +1.0	264.00	265.05	+1.0
	+0.82	265.7	+0.82
550' S -1.18	263.6	264.6	0.0
	-1.18	263.8	+0.3
600' S -0.52	262.34	263.5	0.0
		263.32	0.0

31
272.2
277.8
28.8
26.73271.0
473
2698
593
268.8
6.93
26817
7.56
2755
818
2692
4.64
263
5.26
2667
5.89

24

1573
74
888
3.28
71.56
9.5
63.01
300
65.016505
6.51
64.22
7.34
638
97627.35
429
555
0.36
2672
484
550
0.86924
6232
265
133
6236
2.66
318
0.52164
32

3/27/23

Gregory CROSS SECTION OF
ALLEY BLOCK 9
Brookings
bet 3rd & 4th Pennsylv. Brookes

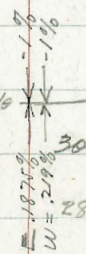
15' wide

95

					E	282.75		4.5	283.0		
	2.12	287.48		285.36			108' 5"				
		S. L. Pennsylvania			E	282.70		4.55	282.9	wood floor	
E	Grade Top of finish pass 283.03		4.45	283.03	placement curb	C	282.37		4.7	282.8	
C	282.75		4.5	282.98		W	282.53		4.6	282.9	
W	282.97		4.51	282.97	on cement curb	+3			4.5	283.0	dirt floor
		44.5' 5"				Sta 1405 = Break in grade Sta 1405 East = 282.60 " " West = 282.4				156' 5"	
- 1/2			4.74	282.8	= cement garage floor	W	282.24		4.95	282.5	= cement floor
W	282.79		4.7	282.8		C	282.09		5.0	282.5	
C	282.59		4.7	282.8		E	282.44		5.2	282.3	
E	282.89		4.7	282.8						186' 5"	
+ 0.1			4.3	283.2	= wood floor	E	282.14		5.50	282.0	edge apron
		157' 5"				C	281.79		5.7	281.8	
E	282.86		4.74	282.7	= cement apron	W	281.94		5.7	281.8	
C	282.55		4.6	282.9						218' 5"	
W	282.74		4.7	282.8		- 4.5			5.7	281.8	= garage/dirt
+ 4			4.74	282.7	= cement floor	W	281.62		5.7	281.8	
		92' 5"				C	281.47		6.0	281.5	
W	282.60		4.90	282.6	= edge apron	E	281.82		6.0	281.5	
C	282.43		4.6	282.9		+ 2.6			6.0	281.5	= garage (dirt)

finish grade 259' 5"

-5		6.1	281.1	= garage (dirt)	410' 5"		
E	281.41	6.4	281.1		E	280.96	4.3 281.2
C	281.06	6.2	281.3		C	280.59	4.7 280.8
W	281.21	6.5	281.0		W	280.72	5.08 280.4
+4.5		6.48	281.0	= garage (cement)			
<p>2+80 = Break in grade 2+80.0 E = 281.20 2+80.0 W = 281.00</p>					<p>curb is 1' wide on Top, curb is on W. side 4' 59" 5" = N. end of cement curb projects 1' in alley</p>		
C	390	5.88	281.60	Man hole	W	280.61	5.0 280.5
	300' 5"				C	280.49	4.8 280.7
	308' 5"				E	280.86	4.37 281.1 edge apron
W	280.94	4.00	281.5	garage 4' W edge apron			4.73.6 = 5 end of above curb elev. = 281.10
C	280.80	4.2	281.3				4.85' 5"
E	281.15	4.3	281.2	board floor garage 3.5 E	W	280.55	4.77 280.7 edge apron
	342' 5"						5.35' 5"
E	281.08	4.50	281.0	garage 3.6 E edge apron	E	280.72	4.5 281.0
	362' 5"				C	280.33	4.6 280.9
E	281.05	4.40	281.1	garage 7' E edge apron	W	280.44	4.8 280.7
C	280.69	4.6	280.9				5.85' 5"
W	280.82	4.66	280.8	cement floor	W	280.33	4.5 281.0
	387' 5"				C	280.23	4.7 280.8
					E	280.63	4.3 281.2
W	280.77	4.95	280.5	garage 6' W edge apron	E	280.60	4.60 280.9 on cement
C	280.64	4.7	280.8		C	280.20	4.9 280.6
E	281.00	4.23	281.3	cement floor	W	280.30	4.85 280.6 ✓ ✓



2/19/23

Gregory
Miller
2111WCROSS SECTION OF
NUTMEG ST from 31.80' width
from WL of 29th ST To 32.15' ✓
To 127' West

				24' S		3.9	
	1.17	291.13	289.96	29' S		4.2	
		WL 29th		3		2.5	288.6
N			1.1		65' W		
8' S			2.3	3		5.5	288.6
16' S			2.7	8' N		4.7	
24' S			2.7	16' ✓		4.4	
3			2.7	24' ✓		3.9	
		8' W		N		3.0	288.1
3			1.8		100' W		
8' N			3.1	N		4.6	286.5
16' N			2.9	8' S		5.9	
24' N			2.4	16' -		6.5	
30' ✓			1.8	24' ✓		7.2	
N			1.3	3		8.0	288.1
		45' W			127' W		
N			1.7	3		10.8	280.3
1' S			2.5	8' N		9.5	
8' ✓			3.2	16' ✓		8.3	
16' ✓			3.3	24' ✓		7.2	
				N		7.0	284.1

2

29113

135' W

N

7.2

2839

8.5

8.2

16' ✓

9.1

24' ✓

10.7

5

11.3

2998

8

ENGINEERING DEPARTMENT,
 CITY OF SAN DIEGO,
 CALIFORNIA.

307
 290
 166

307.00 100 210) 16.50 (07857
 593 1470
 286 1800 392850
 30307 110 1200
 299.14 200 10100
 29521 250 1000

10 10 10 10 10
 10 10 10 10 10
 940 960 970 980 990

95
 8
 760
 145
 1160
 508
 558
 100
 784

79

Gregory Final on Jupiter St

52
1000
80

517
5175
518
3) 16538
5178
209
75834
10356
105134

4th to 5th 10,511.34

203

5th to 6th 9,080.88

518

3rd to 4th 10,391.08

175.6

517
518
1056
518
14048
1756
5780
909608
98088

Int 3rd OK 5701.8

2nd to 3rd 10,392.25

Int 2nd 15' 21/2 56,86.8

700.6 5th to 6th

517
518

1st to 2nd 10,406.62

Int 2006
518
16448
16406
1008808
39108

Total 62,170.77

2009

518
517
517
518
51.78

5178

36246
10356
1009

518
29.71
219.60
255

10890
345
16440
11070
219.10

2009

517
518
518
518

1000
517
16000
10000
10000
10000
10000

110.7
153
592
323.4
219.10
41.3
263.9
219.10
41.3
323.4

01012
110
1012
1012
1.11320

327 63.27

597
2
622

6173
7.68

01012
57
5000
7108
5060
1002140

100220

10761

511 430 6 511
238 1.000
757
480
470
40

360 1300
1580
2000
1260
400

30 40
40

10022
48
336
168
2016

0241
60
2160

30 40
40

108

102528

1291
727
570

03198

360 1271
1080
1200
1300
1000
220
250

652
629
231

72
275
4.8

360 1150
1080
760
360
3400
3240
1600

02528
60
211680

03198
60
191700
1591

1762

652
71
6434
63.24
55
62.9

779 231.00
223.2
780
538
2220

100828
110
8280
828
91080

805
109
7482
828
90220
828
60
49680

01012

323 327
323
400
323
770

506
535

459
409

459
409

459
409

