

171
grades

E111

EASTS

FIELD BOOK

No. 385 F

Posted 2/15/26

Our Leather Bound Engineers Note Books are carried in the following rulings:

- No. 380 LEVEL BOOK. Left and Right Hand Page the same as Left Hand Page of this Book.
- No. 382 FIELD BOOK. Left Hand Page as in this Book, Right Hand Page 4 x 4 to the inch, Center Line Red.
- No. 384 MINING TRANSIT BOOK. Left Hand Page as in this Book, Right Hand Page 8x8 to the inch, Center Line Red.
- No. 385 FIELD BOOK. Left Hand Page as in this Book, Right Hand Page 8 vertical and 4 horizontal lines to the inch, Center Line Red.

We also carry the Note Books listed above, bound in extra strong Fabri-Hide (otherwise the same quality of book), which can be furnished at a somewhat lower price.

In ordering Fabri-Hide covered books, add the letter "F" to catalog number.

THE FREDERICK POST CO.

ENGINEERING and DRAFTING SUPPLIES

IRVING PARK STATION

CHICAGO, ILL.

92 FIFTH ST.
PORTLAND, ORE.

79 NEW MONTGOMERY ST.
SAN FRANCISCO, CAL.

AGENTS FOR

"BERGER" TRANSITS and LEVELS

"GURLEY" SURVEYING and HYDRAULIC INSTRUMENTS

"CHICAGO" STEEL TAPES, etc.

MICROFILMED

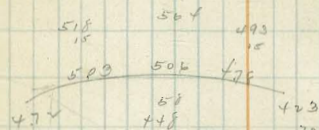
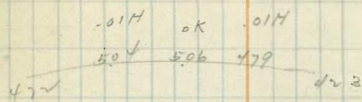
APR 7 1965

EVANS PLACE
PAVING

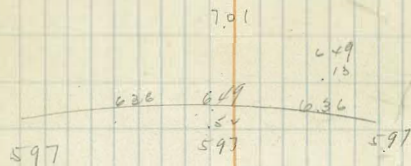
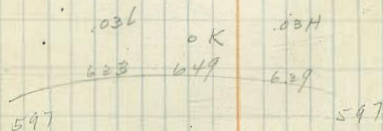
7/2/25

Moore
Walker
Preston
Mel

909 EL 5+H



WL 6+H



2/2/25

Moore

Alley Paving BIK 4. 15' wide.
Hartley's North Park
Herman to 32nd

	N		S	
El Herman	352.55		352.43	
50' E	352.12	+0.32	352.01	+1.0
100' E	351.70	+0.05	351.59	+1.0
125.5	351.49	+0.57	351.36	+0.30
140.5	351.37	-0.02	351.23	+0.18
170	351.12	-0.12	350.98	+1.0
200	350.87	-0.12	350.74	+0.22
233	350.58	-0.37	350.47	+0.02
266 = W 32 nd	350.30	-0.09	350.20	-0.19

UNIV + 10W19

NW B.P.

356.50

0.21

356.71

	N		S	
	52.12		51.70	
	4.59		5.01	
	4.25		4.66	
	+0.32		+0.05	
	51.49		51.87	
	5.22		5.34	
	4.65		5.36	
	+0.57		-0.04	
	51.12		51.12	
	5.59		5.59	
	5.73		5.73	
	-0.14		-0.14	
	52.01		51.59	
	4.70		5.12	
	3.70		5.35	
	+1.0		5.05	
	4.12		5.30	
	+1.0		+0.18	
	50.98		50.98	
	4.73		4.73	
	4.73		4.73	
	+1.0		+1.0	
	50.87		50.58	
	50.20		50.20	
	352.55		352.55	
	6.13		6.41	
	6.50		6.50	
	-0.37		-0.09	
	50.74		50.47	
	50.20		50.20	
	352.43		352.43	
	6.44		6.51	
	6.20		6.70	
	+0.04		-0.19	

2/26/45
Moore

ALLEY PAVING BIK 14
LINCOLN PARK 20' Wide

	S		N	
00 = E 24th	51.58	0.0	51.92	✓
40' E	51.78	-0.28	52.09	+0.08
80'	51.99	+0.05	52.26	-0.52
120'	52.19	+1.0	52.43	-0.46
160' B	52.40	+1.0	52.60	+1.0
210'	52.95	+1.0	53.10	+1.0
260'	53.50	+1.0	53.60	+1.0
310'	54.05	+1.0	54.10	+1.0
360' B	54.60	+1.0	54.60	+1.0
407.5	55.25	+1.0		+1.0
455	55.90	+1.0		+1.0
502.5	56.55	0.0		+1.0
550 B	57.20	-0.03	57.20	+1.0
600' E = W 25th	56.33	✓	56.40	✓

INF. + 25th
5894 N 837
291
61.85
797
4388
329
5717

S	51.58	51.78	51.99	52.19	52.40	52.95	53.50
	5.59	5.39	5.18	4.98	4.77	4.22	8.35
		5.27	5.13	3.98	3.77	3.22	7.25
5' stub	0.0	-0.08	+0.05	+1.0	+1.0	+1.0	+1.0
5' back							

N	51.92	52.09	52.26	52.43	52.60	53.10	53.60
	5.25	5.08	4.91	4.74	4.57	4.07	8.25
		5.00	4.43	5.20	3.57	3.07	7.25
		+0.02	-0.52	-0.46	+1.0	+1.0	+1.0

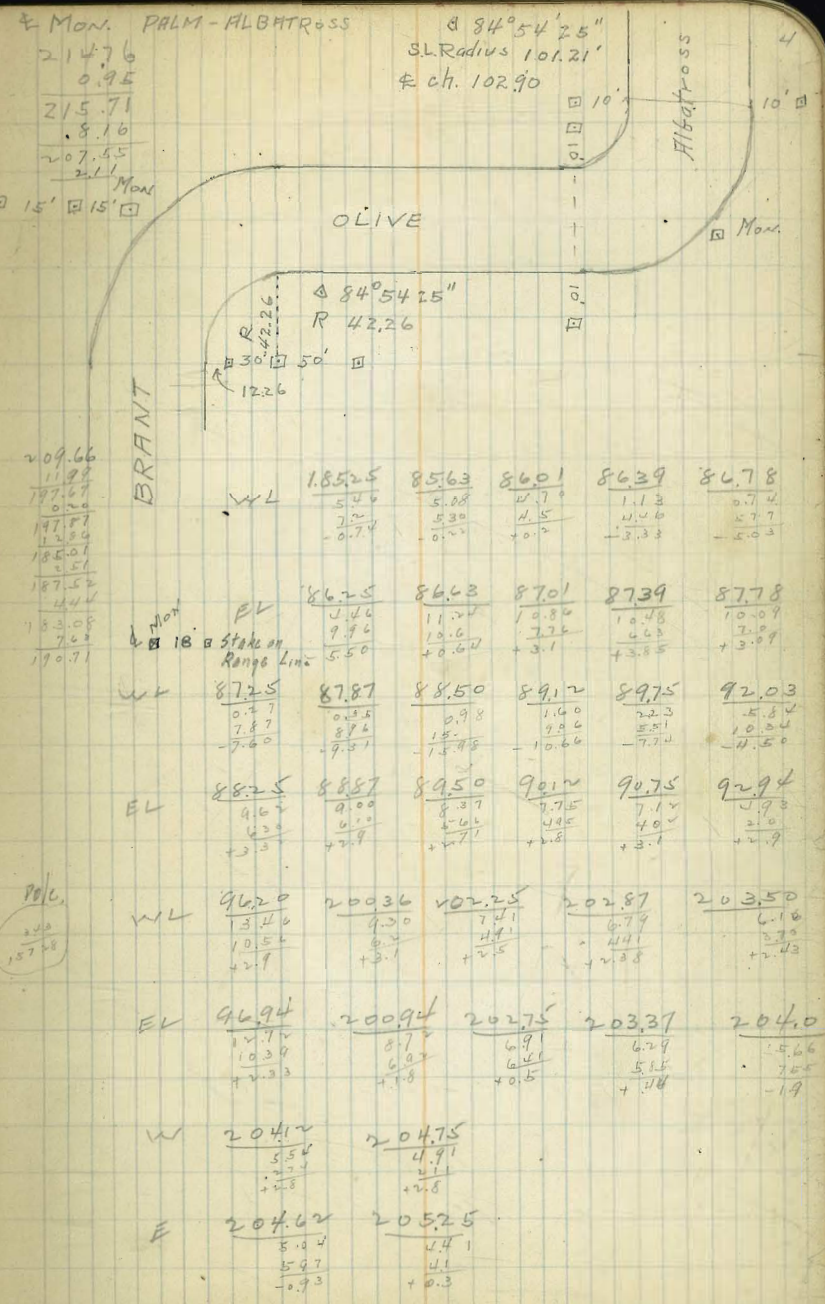
S	54.05	54.60	55.25	55.90	56.55	57.20	58.33
	7.80	7.25	6.60	5.95	5.30	4.65	5.53
	6.80	6.25	5.60	4.95	5.30	4.65	
	+1.0	+1.0	+1.0	+1.0	0.0	-0.03	

N	54.10	54.60	55.25	55.90	56.55	57.20	58.33
	7.75	7.25	6.60	5.95	5.30	4.65	5.45
	6.75	6.25	5.60	4.95	4.30	3.65	
	+1.0	+1.0	+1.00	+1.00	+1.0	+1.0	✓

Grades on
BRANT - OLIVE & ALBATROSS 3/6/25

	WL		E.L.	
NL Nutmeg	185.25	-0.7	186.25	-5.5
49.75' N = PC.			186.48	
50 N	185.63	-0.2	186.63	+0.7
100	186.01	+0.2	187.01	+3.1
150	186.39	-3.4	187.39	+3.9
200	186.78	-5.0	187.78	+3.1
260 = PC	187.25	-7.6	188.25	+3.3
	187.87	-9.3	188.87	+2.9
4 parts	188.50	-16.0	189.50	+2.7
	189.12	-10.7	190.12	+2.8
322.63 = PC	189.75	-7.7	190.75	+3.1
350	192.03	-4.5	192.94	+2.9
400	196.20	+2.9	196.94	+2.3
450	200.36	+3.1	200.94	+1.8
472.49 = PC	202.25	+2.5	202.75	+0.5
1	202.87	+2.2	203.37	+0.5
4 Parts	203.50	+2.2	204.0	-1.9
2	204.12	+2.8	204.62	-0.9
322.47 = PC	204.75	+2.8	205.25	+0.3

Brant St Nutmeg to Olive St
Olive St Brant St to Albatross St



L.P. DELANO TRACT

ALLEY GRADES
KAIMIA PLACE

	NL		SL	
Wt 29th	286.80	0.0	286.80	0.0
7	287.43	+0.67	287.32	0.0
14	287.66	-0.36	287.49	-0.37
21	287.49	-0.22	287.30	-0.43
28	286.92	+0.1	286.76	-0.20
50	284.5	+0.78	284.5	+1.0
65	284.2	+0.20	283.90	-0.47
97.65	280.45	+0.20	280.20	+1.0
130.25 = PC.	276.70	+0.58	276.50	-0.46
EC.	276.0	+0.61	275.90	-0.86
WL □		+1.0	273.90	-1.96

84.40									
7.63									
92.03	NL	8680	8743	8766	8749	8692	84.50		
7.63		5.23	4.60	4.37	4.54	5.11	3.81		
84.40			3.73	4.73	4.74	5.00	3.03		
82.91				-0.36	-0.22	4.11	+0.78		
88.31			+0.87						
11.92									
77.25	SL	8680	8732	8749	8730	8676	84.50		
171		5.23	4.71	4.54	4.73	5.27	7.53		
78.99				4.91	5.16	5.47	6.53		
				-0.37	-0.43	-0.20	4.10		
	NL	84.2	80.45	76.70		276.0			
		4.11	78.6	11.61		2.99	274.0		
		3.91	7.66	11.03		2.38	4.99		
		+2.0	+0.20	4.58		+0.61	3.99		
	SL	8390	80.20	76.50		75.40	+1.0		
		4.41	8.11	11.81		3.09	273.0		
		4.88	7.11	12.27		3.75	5.09		
		-0.47	+1.0	-0.46		-0.86	7.05		
							-1.96		

A St Paving

145.42 SW. 22 mb + B

148.51
309
148.51
007
148.44
205
160.49
160.48
698
167.46

6.5
23
29.5

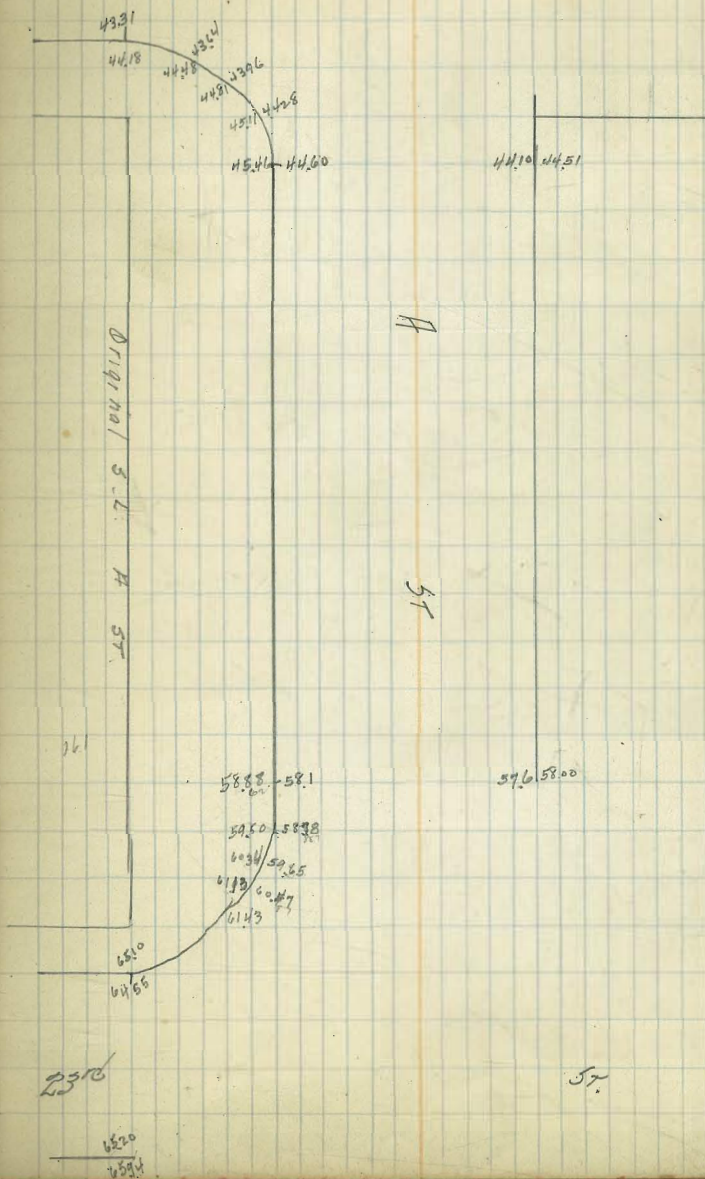
29.5	3.33	0.113
29.5	29.5	6.0
380		
29.5		565
85.0		678
		7345
31260		
87		

78
72
66

1.24
2.94

22 1/2

57



Moore
Preston
Walton
2/19

ALLEY PAVING BIK I NUTTS

	WL		EL	
SL UNIV	283.12		283.35	
50 S B	282.20	-0.09	282.40	+0.70
100 S	282.20	+0.36	282.20	+1.0
150	281.80	+0.48	282.0	+1.0
7208 71.50 200	281.60	+1.0	281.80	+1.0
71.8 250 B	281.40	+0.13	281.60	+0.41
72.2 300	281.30	+0.14	281.50	+0.47
72.1 350 B	281.20	+2.0	281.40	+0.83
72.2 383	280.59	+1.0	280.80	+2.0
72.8 416 paving	280.24		280.40	
	279.92		280.24	
41.50 72.06				

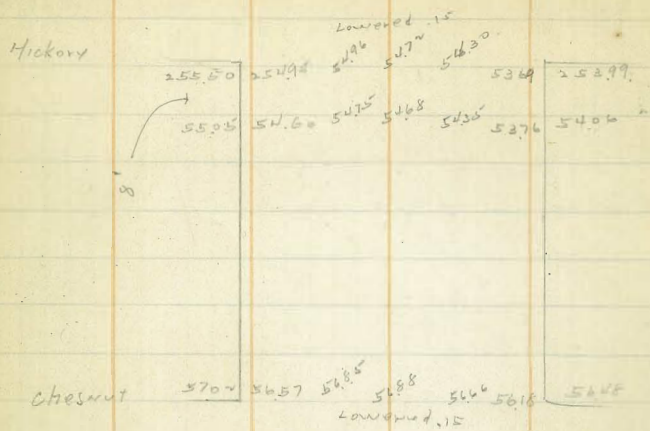
63.55
72.06
11.87
72.06

274.85
10.92
285.77
4.03
281.74
5.09
286.83
4.95
281.88
5.77
287.60

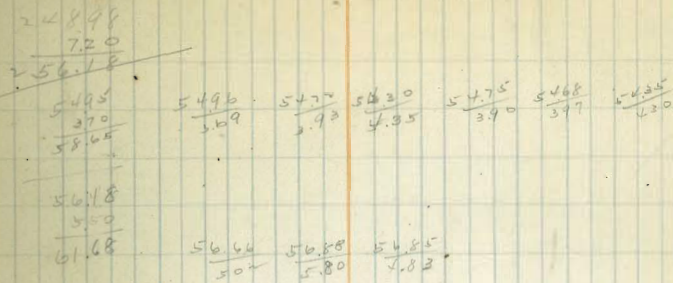
W	8.312	82.20	82.50	81.80	81.60	81.40
	4.48	5.40	5.60	5.80	6.00	5.73
		5.49	5.24	5.30	5.00	5.30
		0.09	+0.36	+0.48	+1.0	+0.13
E	20.38	82.40	82.20	82.0	81.80	81.60
	4.22	5.20	5.40	5.60	5.80	5.23
		4.50	4.40	4.60	4.30	4.80
		+0.70	+1.00	+1.0	+1.0	+0.41
W	81.30	81.20	80.59			
	5.53	5.63	5.18			
	5.39	5.43	4.18			
	+0.14	+2.0	+1.0			
E	81.50	81.40	80.50			
	5.23	5.43	6.01			
	4.86	4.60	4.01			
	+0.47	+0.33	+2.0			

PAVING
E UNIV
4.38
283.22

Pairing of Hartwood
Hickory to chestnut



Hickory - Hartwood



Moore

ALLEY PAVING BIK 1 FRARY HTS.

	WL		EL	
SLUPAC PAVING	326.36		326.25	
20 S	327.20	+1.34	327.10	+1.45
40 B	327.70	+0.78	327.60	+0.56
60 B	327.80	+0.31	327.80	+0.13
110	327.45	+0.34	327.55	+1.10
160 B	327.10	+0.20	327.30	+0.20
204	326.46	+0.02	326.68	-0.07
248	325.82	-0.08	326.06	-0.02
292	325.18	+0.43	325.42	+0.18
336	324.54	-0.07	324.82	+1.0
380 B	323.90	+0.23	324.20	+1.0
420	323.65	+0.38	323.95	+0.19
460 B	323.40	+0.19	323.70	+1.0
500	322.95	+0.07	323.25	+1.0
540 B	322.50	+0.05	322.80	+0.39
570	219.5	+0.19	22.12	+0.66
600 PAVING	321.46 21.29		321.50 21.43	

325.57 Upper Kansas

325.57 5.40 322.97 6.01 321.91 1.50 320.41 7.46 322.95 4.28 327.23 600 320.93	W	26.35 7.57	27.20 6.72 5.34 +1.34	27.70 6.22 5.44 +0.78	27.80 6.12 5.81 +0.31	27.45 6.47 6.13 +0.34	27.10 3.31 3.11 +0.20	26.46 3.95 3.93 +0.02
320.90 600 320.93	E	26.25 7.67	27.10 6.82 5.27 +1.45	27.60 6.32 5.76 +0.56	27.80 6.12 5.99 +0.73	27.55 6.37 5.37 +1.0	27.30 3.11 2.91 +0.20	26.65 3.73 3.50 +0.07
320.90 600 320.93	W	25.82 4.59 4.27 4.80 -0.08	25.18 5.23 5.91 +2.43	24.54 5.87 5.91 -0.07	23.90 6.51 5.28 +0.23	23.65 6.76 6.35 +0.38	23.40 7.01 6.82 +0.19	
	E	26.06 4.35 4.37 -0.02	25.40 4.77 4.79 +0.18	24.82 5.59 4.57 +1.0	24.20 6.21 5.21 +1.0	23.95 6.26 6.27 +0.19	23.70 6.71 5.71 +1.0	
	W	22.95 4.26 4.21 +0.57	22.50 4.73 4.68 +0.06		21.95 5.23 5.09 +0.14	21.46	21.29	
	E	23.35 3.98 2.95 +1.10	22.50 4.43 4.04 +0.39		22.22 5.11 4.46 +0.65	21.54	21.43	

Moore
2/9/25

ALLEY PAVING BIK 206 UNIK HGTS.

	W/L		E/L	
SL Limestone	361.30	chisel cut	361.30	chisel cut
30'S	361.35	+1.93	361.50	+0.72
60 S B	361.60	+1.16	361.70	+0.20
100	361.27	+0.35	361.40	+0.26
140	360.95	+0.19	361.10	+0.15
180	360.62	+0.46	360.80	+0.90
220 B	360.30	+0.16	360.50	+0.65
260	359.60	+0.31	359.80	-0.31
300	358.90	-0.76	359.10	-0.14
340	358.20	-0.62	358.40	+0.20
380	357.50	+1.0	357.70	+0.07
420 B	356.80	+0.36	357.0	+0.21
460	356.41	-0.05	356.61	+0.14
500	356.02	-0.18	356.21	+1.0
540	355.64	+0.36	355.81	+1.0
580	355.26	+1.0	355.41	+0.15
600 S: NL UNIK	355.06	✓	355.21	✓

SUM OF UNIK + 3044

355.01									
5.57									
360.58									
2.71									
356.87	W 361.30	61.45	341.20	61.27	60.95	60.62			
4.95	3.48	5.33	5.18	5.51	5.83	3.70			
365.82	✓	3.40	4.02	5.16	5.62	2.74			
2.31		+1.93	+1.16	4.35	+0.19	+0.46			
361.51									
5.27	E ✓	61.50	61.70	61.40	61.10	60.80			
366.78		5.58	5.08	5.38	5.68	3.02			
		4.66	4.88	5.12	5.53	2.12			
		+0.72	+0.20	+0.26	+0.15	+0.90			
	W	60.30	59.60	58.90	58.20	57.50	56.80		
		3.52	1.22	4.92	5.62	6.32	7.02		
		3.36	3.91	5.68	6.22	5.32	6.66		
		+0.16	+0.31	-0.72	-0.62	+1.0	+0.36		
	E	40.50	57.80	59.10	58.40	57.70	57.00		
		3.32	4.02	4.72	5.42	6.12	6.82		
		2.67	4.23	4.86	5.32	6.05	6.48		
		+0.62	-0.31	-0.14	+0.20	+0.07	+0.34		
	W	56.41	56.02	55.62	55.26				
		7.41	7.80	4.94	5.32				
		7.46	7.98	4.55	4.32				
		-0.05	-0.18	+0.36	+1.0				
	E	56.61	56.21	55.81	55.41				
		7.21	7.61	4.74	5.17				
		7.07	6.61	3.77	4.22				
		+0.14	+1.0	+1.0	+0.85				

TV

6/14/25

ALLEY PAVING

15' wide

Robinson + 1st
NW 3rd

13

Moore BIK 1 BROOK BIK 8 NUTTS

W

E

St. Robinson	279.53	r	280.16	✓
55 S	280.46	+1.0	280.78	+0.18
110 S BREAK	281.40	+0.10	281.40	+1.0
152.33	280.27	+0.11	280.27	+1.0
196.67	279.13	+1.0	279.13	+0.42
240.0 BREAK	278.0	+0.06	278.0	+1.0
290.	277.67	-0.48	277.70	-0.22
340	277.33	-0.13	277.40	+1.0
390	277.0	+1.0	277.10	+0.42
440	276.67	+0.17	276.80	+1.39
490	276.33	+1.0	276.50	+1.0
540 BREAK	276.0	+0.31	276.20	+1.0
570	275.38	+0.61	275.62	+2.0
600 = NW PENN.	274.76	✓	275.03	✓

274.85

10.11

264.76

4.00

280.73

4.99

285.42

9.27

276.65

4.82

280.97

5.92

275.03

6.12

281.16

7.81

279.35

279.34

W

279.53

80.46

81.40

80.27

79.13

78.0

4.50

4.52

5.65

6.79

7.92

3.50

4.42

5.54

5.79

7.86

+1.0

+0.10

+0.11

+1.0

+0.06

E

280.16

80.78

4.52

5.65

6.79

7.92

5.14

3.52

4.65

6.37

6.92

4.94

+1.0

+1.0

+0.42

+1.0

+0.18

Check BM Penn + 30

W

77.67

77.33

77.0

76.67

76.33

76.0

75.33

8.25

8.59

8.92

4.30

4.64

4.97

5.59

8.73

8.72

7.92

4.13

3.64

4.66

4.98

-0.48

-0.13

+1.0

+0.17

+1.0

+0.31

+0.61

E

77.70

77.40

77.10

76.80

76.50

76.20

75.62

8.22

8.52

8.52

4.19

4.47

4.77

5.35

8.42

7.52

8.40

3.78

3.47

3.77

3.35

-0.22

+1.0

+0.42

+1.39

+1.0

+1.0

+2.0

W 274.76

NW 3rd

PENN + 30

279.34

E 275.03

GRADES IN
CLIFF GARDEN TRACT.

VOGT PL. 5' walk on S. only.

	N. Line	S. Cb.
EL Maryland	345.0	
25' E = EC.	344.70	345.20
37.15' E = EC.	344.25	344.79
74.30' - - - - - End on N.	343.80	344.37
106.69' - - - - - S		344.00

352.26 from page 15

453	4489	4447	4410
7.0	7.37	7.8	8.2
6.6	6.8	6.5	6.5
+0.4	+0.6	+1.3	+1.7

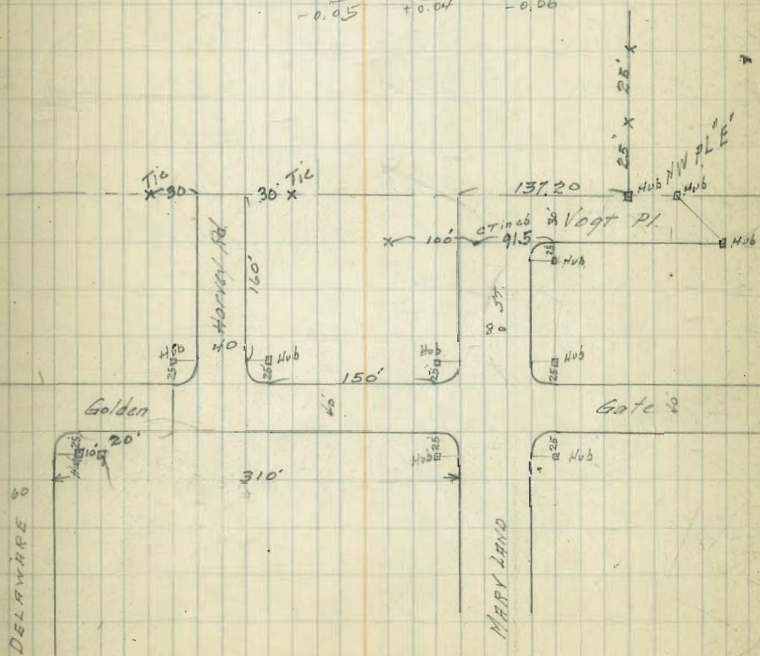
345.0	344.40	43.90
73	79	84
93	107	124
-2.0	28	-4.0

346.70
508
351.81

S abt	245.20	44.79	44.37	244.0
	6.51	7.02	7.24	7.81
	2.23	7.35	7.83	7.51
	-0.17	-0.33	-0.39	+0.30

PC Maryland
old eg

450.8	452.1	452.4	452.7
6.53	6.60	6.57	6.54
	6.65	6.53	6.60
	-0.05	+0.04	-0.06



GOLDEN GATE AVE
5' Cbs on both sides

350.54

16

W.L. Cleveland.

N. Cb	5. Cb
348.0	348.23
347.77	348.0
347.54	347.77
347.30	347.54
347.07	347.31
346.83	347.06
346.60	346.85

25' W of W.L. Maryland
= EC.

346.27	346.52	- 9 24059
--------	--------	-----------

50' W

345.87	346.12
--------	--------

100'

345.47	345.72
--------	--------

150' = PC into Harvey

345.07	345.32
--------	--------

G. Harvey

344.96	
--------	--

EC. W. of Harvey
of Delaware

344.35	344.60
	344.45

EL Delaware

344.0

N	4410	4445	4517	4557	4597	4637
	6.5	6.1	5.4	5.0	4.6	4.2
	6.9	5.4	3.4	4.0	3.0	2.7
	-0.4	+0.7	+2.0	+1.0	+1.6	+1.5
S	4455	4477	4506	454	457	462
	6.0	5.8	5.5	5.1	4.7	4.3
	4.5	5.8	4.2	4.0	3.4	3.9
	+1.5	+0.3	+1.3	+1.1	+1.9	+0.7

346.73 SE G.G. Maryland
553
35222

N	346.73	4693	4717	4740	4764	4787	481
	5.6	5.3	5.1	4.9	4.6	4.4	4.2
	3.4	3.6	3.5	3.4	3.2	3.1	3.0
	+2.2	+1.9	+1.6	+0.8	+0.7	+0.2	-0.6
S	4695	4718	4741	4764			
	5.3	5.1	4.9	4.8			
	3.5	3.3	3.2	3.4			
	+1.8	+1.8	+0.6	+1.2			

346.73
673
35346

N	348.0	4777	4754	4730	4707	4683	4655	4625	4595	4567	4540
	5.4	5.09	5.9	6.16	6.37	6.03	6.91	6.55	6.58	7.11	6.67
	6.19	6.9	6.04	6.23	6.54	6.57	7.06	6.22	6.47	6.07	
	-0.73	-0.50	-0.12	-0.07	-0.15	+0.11	-0.15				

PC RETURNS
G.G. MARYLAND old ch

S	4820	4820	4777	4754	4726	4708	4680	4650	4620	4590	4560
	5.43	5.42	5.67	5.9	6.15	6.35	6.26	6.91	6.91	6.76	6.71
				6.30	6.35	6.35	6.48	6.91	6.91	6.55	6.51
				-0.08	-0.20	-0.17	-0.17	-0.21	+0.36	+0.11	

H1
35181

N	463	46.87	45.47	45.00	44.35	34.0
	5.42	5.44	6.34	6.74	7.06	7.81
	5.86	6.34	6.94	7.25	7.92	8.20
	-0.44	-0.40	-0.60	-0.51	-0.29	-0.29
S	46.59	46.2	45.70	45.20	44.96	44.60
	5.20	5.69	6.09	6.49	6.85	7.21
	5.54	5.86	6.37	6.90	7.30	7.64
	-0.32	-0.17	-0.28	-0.41	-0.45	-0.43

N.E. RETURN
G.G. + HARVEY

44.99	44.91	44.85
6.87	6.96	6.98
6.91	6.95	6.17
-0.09	+0.63	+0.81
44.4	44.46	44.35
7.10	7.20	7.33
7.19	6.51	7.1
+0.01	+0.69	+0.19
		44.35
		7.46
		7.25
		-0.29

450	4476	3
44.1	43.5	
46.8	46.36	46.4
5.3	5.25	5.37
5.35	5.30	5.17
+0.20	+0.17	+0.25
46.3	5.17	5.06
5.96	5.96	-0.44
SW RETURN old ch	46.82	46.71
4.98	5.04	5.10
	4.4	4.84
	+0.10	+0.20
	4.66	5.16
	5.09	5.29
	+0.47	

HARVEY ROAD. 40' ST.
5' Curbs

WCB

ECb.

185' N = End.

343.50

343.85

343.80

344.15

344.10

344.45

25' N = P.C. 100

344.41

344.76

N.L. Golden Gate

350.54

76

W	$\frac{44.51}{6.0}$	$\frac{44.20}{6.3}$	$\frac{43.90}{6.6}$	$\frac{43.60}{6.9}$
	$\frac{8.6}{+0.4}$	$\frac{8.3}{+0.7}$	$\frac{5.8}{+0.8}$	$\frac{6.0}{+0.9}$

	$\frac{44.86}{5.7}$	$\frac{44.55}{6.0}$	$\frac{44.24}{5.3}$	$\frac{43.95}{6.6}$
	$\frac{4.8}{+0.9}$	$\frac{5.0}{+1.0}$	$\frac{3.9}{+1.4}$	$\frac{6.0}{+0.6}$

351.81

WCB	$\frac{43.50}{8.31}$	$\frac{43.80}{8.01}$	$\frac{44.10}{7.71}$	$\frac{44.41}{7.41}$
	$\frac{8.3}{-0.22}$	$\frac{8.12}{-0.11}$	$\frac{7.79}{-0.08}$	$\frac{7.93}{-0.53}$
ECb	$\frac{43.85}{7.96}$	$\frac{44.15}{7.66}$	$\frac{44.45}{7.36}$	$\frac{44.76}{7.05}$
	$\frac{6.22}{-0.26}$	$\frac{7.85}{-0.19}$	$\frac{7.32}{+0.04}$	$\frac{7.00}{+0.05}$

Delaware 57 Grades.

E. Co.

35054 HQ

17

<u>345.29</u>	<u>4509</u>	<u>449</u>	<u>44.7</u>	<u>443</u>
5.25	5.45	5.2	5.3	6.2
<u>54</u>	<u>53</u>	<u>52</u>	<u>62</u>	<u>62</u>
-0.2	-0.4	00	-0.4	00

35181

<u>4504</u>	<u>4484</u>	<u>4464</u>	<u>4444</u>	<u>4425 = FC</u>
6.77	6.97	7.17	7.37	
<u>734</u>	<u>829</u>	<u>829</u>	<u>851</u>	
-0.57	-1.32	-1.12	-1.14	-1.23

175' N = PC.

344.35

	PC					
Return	<u>44.41</u>	<u>44.34</u>	<u>44.27</u>	<u>44.30</u>	<u>44.25 = FC</u>	
C. & Delaware	<u>7.40</u>	<u>7.47</u>	<u>7.54</u>	<u>7.51</u>	<u>7.46</u>	
	<u>200</u>	<u>222</u>	<u>229</u>	<u>254</u>	<u>249</u>	
	-0.20	+0.25	+0.25	-1.01	-1.23	

150' N

344.44

100' N

344.64

50' N

344.84

N.L. Madison

345.04

Grades on W.L. Witherby
Hickory to Chesnut.

	W.L.
SL Hickory	251.25
56.4 S.B	252.90
101.4 / B	254.10
151.05	253.88
200.70	252.67
250.35	253.46
300 S. W. Chesnut	253.25

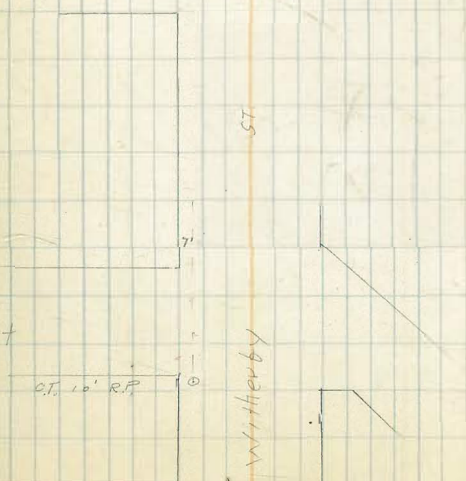
W.L. Hickory to Witherby

251.06
6.91
-57.07

51.25	52.90	54.10	53.88	53.67	53.46	53.25
5.87	4.17	2.97	3.19	3.40	3.6	3.8
6.4	5.57	4.83	3.80	4.1	5.2	4.9
-0.6	-1.4	-1.56	-0.61	-0.7	-1.8	-1.1

Hickory

Chesnut



Grades on Fine St
Trias to Plvista

Moore
Preston
Walker

	SL	NL
WT of Trias to top		270.25
50' W	✓	270.0
100' W = B	✓	269.75
150' ✓	✓	269.0
200' ✓ = B	✓	268.25
250' ✓	✓	266.50
300' = EL Flmpulio	✓	264.75
WEL ✓ 0+00		264.25
4810 W		263.50
462' ✓		260.75
144.32 ✓		259.0
192.43 ✓ = B		257.25
246.21 ✓		251.25
300' ✓ = EL Plvista		245.25

NO 52 Ft. Stockton + Trias

19

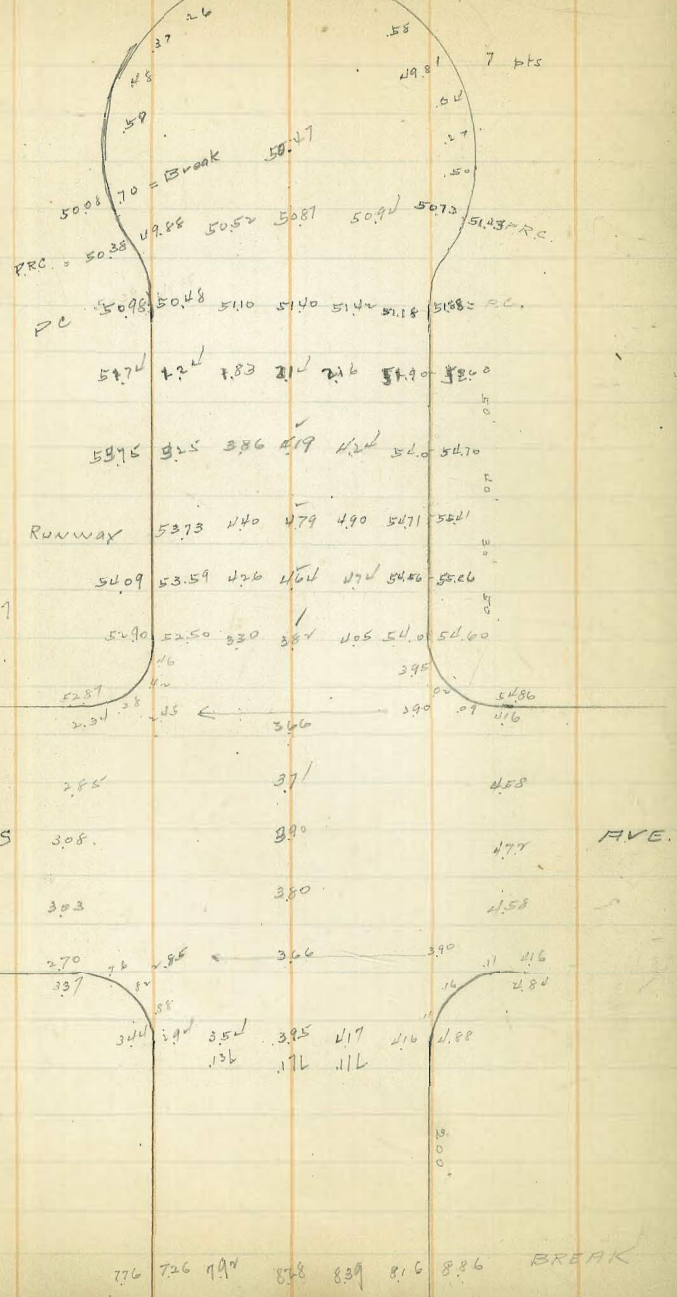
	SL	5.55	5.5	6.55	7.30	9.05	264.25
267.06							
8.49							
✓ 275.55							0.6
12.46							
✓ 263.09	SL	270.0	5.55	5.5	6.55	7.30	264.25
0.25		5.55	5.5	6.5	7.30	9.05	264.25
✓ 263.34			+0.25	+0.2	+0.55	+0.7	17.05
12.77							
✓ 250.57							
0.22							
✓ 250.89	NL	270.25	270.0	269.75	269.0	268.25	266.50
7.97		5.30	5.55	5.80	6.55	7.30	7.05
✓ 240.92		11.7	11.7	11.7	11.7	11.7	10.80
0.44		10.60	10.55	10.7	10.95	10.6	11.1
CH 440.92							
P. Mod. Ft. Stockton							
Trias							
✓ 264.0		264.0	260.75	59.0	57.25	51.25	252.5
11.55		13.05	11.59	11.34	6.09	12.1	11.64
✓		16.5	17	2.5	3.0	6.0	2.7
		+0.55	+0.8	+1.50	+2.27	+6.1	+3.0
26							
✓ 246							
11.89							

FRONT ST

4979 Flowline

PAVING

21



HS
25997

ALLEY PAVING
BIK 12 LINCOLN PARK

SL	NE	S		N	
EL 24th	✓	70.30	-	70.92	✓
50'E	50	69.81	+0.18	69.61	+0.03
100	100	B 68.30	+1.31	68.30	+1.31
151.25	150	67.95	+0.06		+0.07
202.5	200	67.60	+1.12		-0.06
253.75	250	67.25	-0.21		+0.26
305.0	300	B 66.90	-0.70	66.90	-0.39
350	346.66	67.93	+1.19	68.00	+0.62
395	393.33	68.97	+1.08	69.10	+1.07
440	440	B 70.0	0.0	70.20	+0.13
483.33	✓	70.40	+1.0	70.63	+0.21
526.67	✓	70.80	+1.0	71.07	+0.68
570	B	71.20	+0.38	71.50	-0.04
600 = 211.25th		70.78	✓	71.13	✓

Lowered grade 100 EAST 0.50 TO FIT G. Floor 155'E
 ✓ ✓ 300 ✓ IN NL
 ✓ ✓ 305 ✓ ✓ SL

NO E + 24th

62.89
 12.71
75.60
 7.05
 67.95
 4.07
72.77
 3.80
 68.93
 7.05
75.98

S 70.30 69.31 68.30 68.03 67.75 67.47
 5.39 6.29 7.30 4.74 5.02 5.30
 6.1 6.0 4.74 4.02 5.73
 +0.15 +1.3 0.0 +1.0 -0.23

N 70.92 69.61 7.30 68.03 5.02 5.30
 5.68 5.94 6.0 7.57 5.2 5.46
 5.96 4.30 7.20 5.2 -0.20 5.46
 +0.03 +0.34

S 67.20 68.13 69.07 70.00 70.40 70.80
 5.57 2.64 3.70 5.98 5.58 5.18
 4.57 3.04 2.70 4.58 4.58 4.18
 -1.0 +1.0 +1.0 0.0 +1.0 1.0

N 5.57 68.20 69.20 70.20 70.63 71.07
 6.15 4.57 3.57 5.78 5.25 4.91
 -0.58 -0.09 2.57 5.05 5.14 4.23
 +0.48 +1.0 +0.13 +0.21 +0.68

S 71.20 70.78 5.26
 4.78 4.82 5.00
 -0.00

N 71.50 71.13 4.85
 4.48 4.10
 4.10 +0.38

62.89
 12.71
75.60
 7.05
 67.95
 4.07
72.77
 3.80
 68.93
 7.05
75.98

S 64.31 68.30 67.95 67.60 67.25 66.90 67.93 67.97
 6.27 7.08 4.98 5.33 5.69 6.03 5.02 7.12
 5.15 5.44 5.22 4.29 5.89 6.75 5.01 6.08
 +0.15 +1.02 +1.06 +1.14 -0.21 -0.70 +1.79 +1.08

N 69.61 70.0 69.37 69.37 +0.37 5.25 5.68 4.03 4.83 7.23
 5.97 5.97 5.29 5.06 +0.34 6.28 4.31 5.46
 +0.03 6.73 2.06 +0.34 -0.30 +0.62 +1.07

S 70.0 70.40 70.80 71.20
 6.3

N 70.20 70.63 71.07 71.50
 5.93

MOON
 PLASTON 5/19/25
 WATER KOT 11125 2V

5/20/25

ALLEY PAVING BIK28 TERALTA
 ELCAJON - ORANGE - SISSON - CENTRAL

6/6/25
 MOORE

	W		E	
NL ORANGE			64.0	
47.1 N B	65.0	+0.32	65.0	+0.35
73.5 N	65.13	+0.94	65.13	+0.38
100 N B	65.26	+1.27	65.26	+0.27

NW Orange & Sisson

364.64	W	64.0	65.0	65.13	65.26
5.07		6.52	5.82	5.69	5.56
370.09			5.50	4.75	4.29
			+0.32	+0.94	+1.27

ELCAJON + CENTRAL

364.66	E	64.0	54.7	54.9	55.6
7.07		6.52	5.27	5.31	5.29
371.73			+0.35	+0.38	+0.27
5.74					

365.99	W	64.3			
4.83					
370.82		304.19			

E	65.3				
	304.29				

6/13/25
Moore

ALLEY PAVING 20' wide
BIK 6 BREED & CHASE 4" DIP

	S		N	
E.L. 24th	164.30	✓	164.99	✓
40' E BREAK	167.90	-0.55	168.20	+0.60
75' ✓	169.37	0.0	169.67	+1.14
110' ✓	170.85	+1.0	171.15	+0.73
145' ✓	172.32	-0.35	172.62	+0.84
180' ✓ BREAK	173.80	-0.68	174.10	+0.15
225' ✓	176.20	0.0	176.50	+1.40
270' ✓ BREAK	178.60	+1.0	178.90	+2.0
320' ✓	179.60	+1.0	179.90	+0.10
370' ✓	180.60	+1.0	180.90	+1.0
420' ✓	181.60	0.0	181.90	+1.0
470' ✓	182.60	+2.0	182.90	+0.20
520' ✓ BREAK	183.60	+2.0	183.90	+2.0
540' ✓	183.90	+0.80	184.20	+2.0
560' ✓	183.80	+0.70	184.0	+1.47
580' ✓	183.30	+1.23	183.50	+2.04
600' ✓ = WL 25th	181.96	✓	182.11	✓

NW 25th
F 425th

180.40 9.10 189.50 8.13 181.27 3.55 184.92 8.92 176.00 5.99 181.99 12.55 171.94 3.29 175.23	S	64.30 10.93 ✓	67.90 7.33 7.88 -0.55	69.37 5.86 5.86 0.0	70.85 4.38 3.38 +1.0	72.32 ✓ 3.26 -0.35	73.80 8.19 8.87 -0.68	620 579 579 0.0	660 632 532 +1.0
181.99 12.55 171.94 3.29 175.23	N	64.99 10.24 ✓	68.20 7.03 6.43 +0.60	69.67 5.56 4.44 +1.12	71.15 4.08 3.35 +0.73	72.62 2.61 1.77 +0.84	74.10 7.89 7.74 -0.15	650 549 499 +1.40	690 632 402 +1.0
	S	79.60 5.32 4.32 +1.0	80.60 4.32 3.32 +1.0	81.60 3.32 3.32 0.0	82.60 6.90 4.90 +2.0	83.60 5.90 3.90 +2.0	83.90 5.60 4.80 +0.8	8350 570 500 +0.70	
	N	79.90 5.02 4.02 +0.10	80.90 4.02 3.02 +1.0	81.90 3.02 2.02 +1.0	82.90 6.60 4.60 +2.0	83.90 5.60 3.60 +2.0	84.20 5.30 3.30 +2.0	84.0 5.80 4.03 +1.47	
	S	83.30 6.20 4.97 +1.23		81.96 7.54 ✓					
	N	83.50 6.00 3.96 +2.04		82.11 7.39 ✓					

ALLEY PAVING

Between INDIANA + Georgia + Robinson + Cypress
BIK 250 21H

	W/L 307.29 paving	EL 307.29 paving
SL Rob. 690.0		
6+50	307.64	307.80
6+00	308.08	308.18
5+50	308.51	308.56
5+00	308.95	308.94
4+50	309.38	309.32
4+00	309.81	309.90
3+50	310.25	310.09
3+10 Break.	310.60	310.40
2+70	310.37	310.12
2+30 Break.	310.15	309.85
1+80	309.83	309.53
1+30	309.52	309.22
+80	309.21	308.91
+30 Break.	308.90	308.60
0+00 = N.L. Cypress	305.63	304.61

S.W. Rob. + Geo.
D.P.

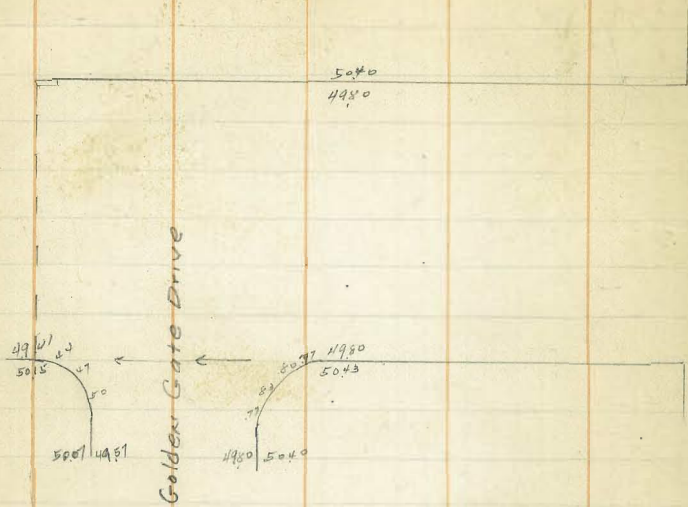
515
739

26

311.99	0.45	312.44	1.00	311.44	4.05	315.49	4.77	310.70	1.87	312.57
W	7.29	7.76	8.25	8.94	9.53	10.12	10.60			
	5.15	4.68	4.09	3.50	2.91	2.32	1.84			
		3.21	2.48	3.14	3.16	1.74	1.09			
		+1.47	+1.61	+0.36	-0.25	+0.51	+0.75			
E	7.29	7.90	8.41	8.93	9.45	9.99	10.40			
	4.95	4.54	4.03	3.51	2.99	2.47	1.94			
		2.40	3.56	5.47	2.60	5.65	2.04			
		+2.12	+0.47	-2.16	+0.35	-3.18	0.00			
W	10.37	10.15	9.83	9.52	9.21	8.90				
	2.97	5.32	5.60	5.95	6.20					
	1.02	4.66	4.84							
	+1.05	+0.66	+0.80							
E	10.12	9.65	9.53	9.22	8.91	8.60				
	5.35	5.62	5.94		6.56					
	6.05	4.63	5.24							
	-0.70	-0.01	+0.70							

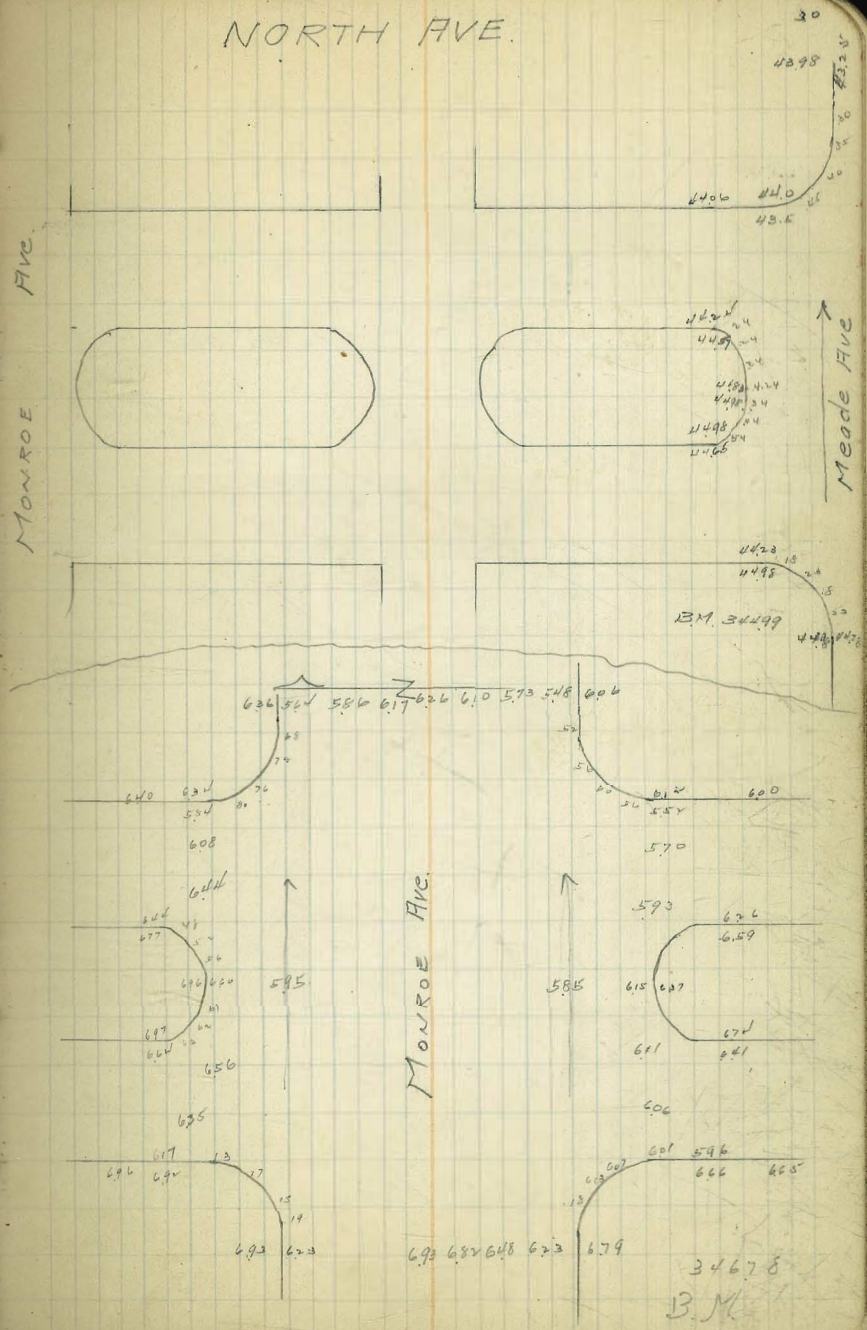
W	31015	31037	31060	31025	30981	30938	30995
	5.37	5.10	4.87	5.22	5.66	6.09	5.65
	4.35	4.85	4.66	4.04	4.11	4.77	4.70
	+0.97	+0.25	+0.21	+1.18	+1.55	+1.32	+0.97
E	30985	31012	31040	31009	30970	30932	30924
	5.62	5.34	5.07	5.38	5.77	6.15	5.63
	4.62	4.22	5.63	6.05	5.06	3.25	3.21
	+1.00	+0.11	-0.56	-0.67	+0.91	2.52	+0.98
W	30851	30808	30764				
	4.06	4.49	4.93				
	3.21	2.60	3.32				
	+0.81	+1.89	+1.61				
E	30856	30818	30780				
	4.01	4.39	4.77				
	5.80	3.67	6.54				
	-1.79	+0.72	+2.25				

CAMPUS AVE.



NORTH AVE.

MONROE AVE.



30

4420
4410
4485

4420
4410
4485

Meade Ave

B.M. 34499

636 561 586 617 626 610 573 548 604

640 634 624 614 604 594 584 574 564 554 544 534 524 514 504 494 484 474 464 454 444 434 424 414 404 394 384 374 364 354 344 334 324 314 304 294 284 274 264 254 244 234 224 214 204 194 184 174 164 154 144 134 124 114 104 94 84 74 64 54 44 34 24 14 4 6 12 18 24 30 36 42 48 54 60 66 72 78 84 90 96 102 108 114 120 126 132 138 144 150 156 162 168 174 180 186 192 198 204 210 216 222 228 234 240 246 252 258 264 270 276 282 288 294 300 306 312 318 324 330 336 342 348 354 360 366 372 378 384 390 396 402 408 414 420 426 432 438 444 450 456 462 468 474 480 486 492 498 504 510 516 522 528 534 540 546 552 558 564 570 576 582 588 594 600 606 612 618 624 630 636 642 648 654 660 666 672 678 684 690 696 702 708 714 720 726 732 738 744 750 756 762 768 774 780 786 792 798 804 810 816 822 828 834 840 846 852 858 864 870 876 882 888 894 900 906 912 918 924 930 936 942 948 954 960 966 972 978 984 990 996 1000

MONROE AVE.

↑

↑

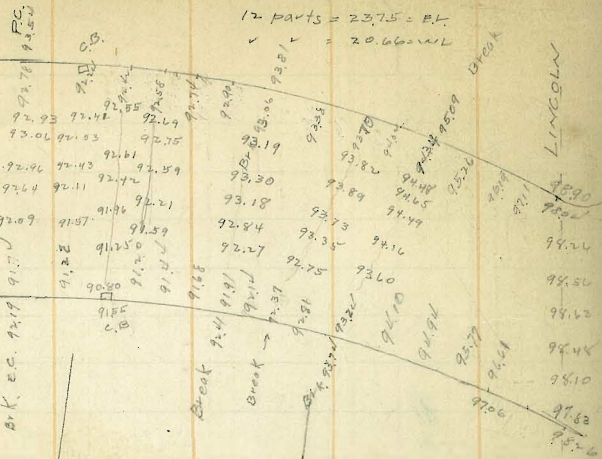
593 626 659 674 681 611 606 601 596 666 668

694 684 648 623 679

34678
B.M.

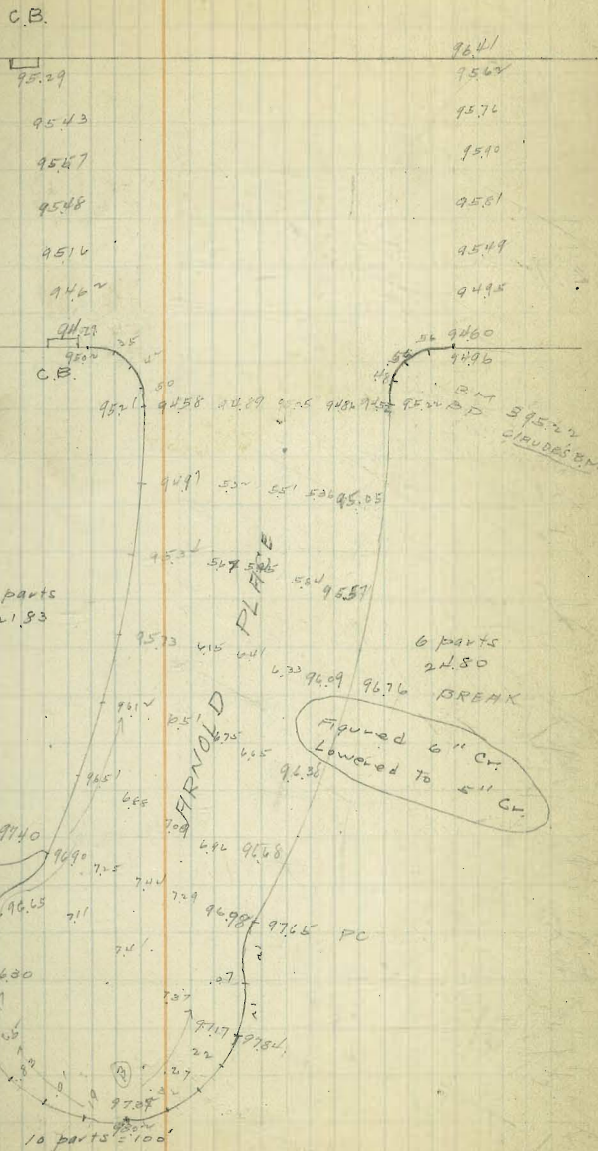
MARYLAND AVE

TYLER



97.43	96.73	97.01	96.67	96.05	96.26	96.46	95.70
96.92							96.83
97.00							95.89
96.95							95.72
96.69							95.54
96.20							94.73
95.81							94.31
96.97							94.84
Break							

MARYLAND AVE



95.29	96.41
95.43	95.62
95.67	95.70
95.88	95.81
95.96	95.49
94.62	94.95
94.78	94.60
94.90	94.96
95.21	94.58
95.29	94.58
95.37	94.58
95.45	94.58
95.53	94.58
95.61	94.58
95.69	94.58
95.77	94.58
95.85	94.58
95.93	94.58
96.01	94.58
96.09	94.58
96.17	94.58
96.25	94.58
96.33	94.58
96.41	94.58
96.49	94.58
96.57	94.58
96.65	94.58
96.73	94.58
96.81	94.58
96.89	94.58
96.97	94.58
97.05	94.58
97.13	94.58
97.21	94.58
97.29	94.58
97.37	94.58
97.45	94.58
97.53	94.58
97.61	94.58
97.69	94.58
97.77	94.58
97.85	94.58
97.93	94.58
98.01	94.58
98.09	94.58
98.17	94.58
98.25	94.58
98.33	94.58
98.41	94.58
98.49	94.58
98.57	94.58
98.65	94.58
98.73	94.58
98.81	94.58
98.89	94.58
98.97	94.58
99.05	94.58
99.13	94.58
99.21	94.58
99.29	94.58
99.37	94.58
99.45	94.58
99.53	94.58
99.61	94.58
99.69	94.58
99.77	94.58
99.85	94.58
99.93	94.58
100.01	94.58

4th ST. PAVING

LEWIS

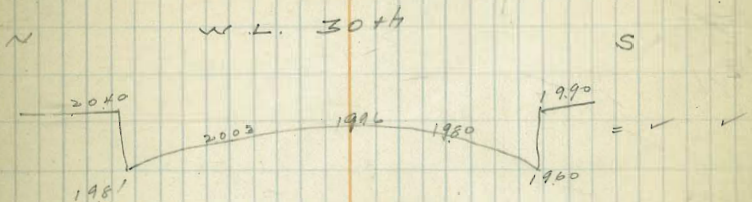
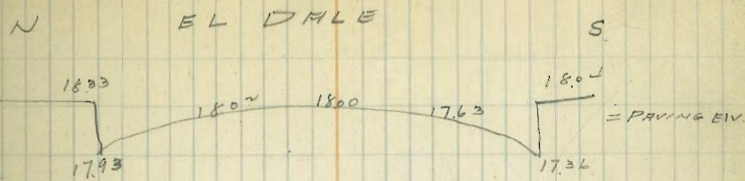
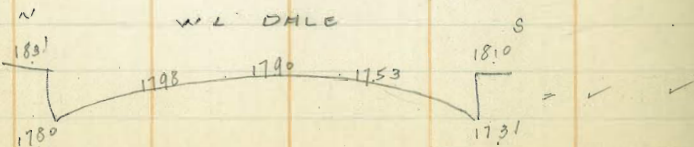
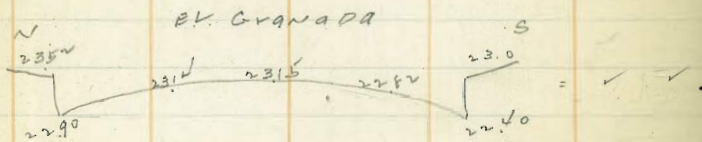
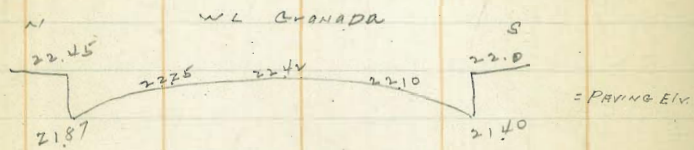
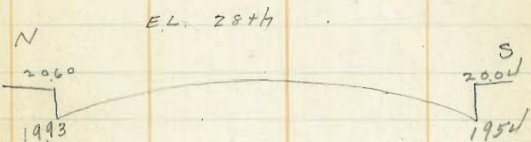
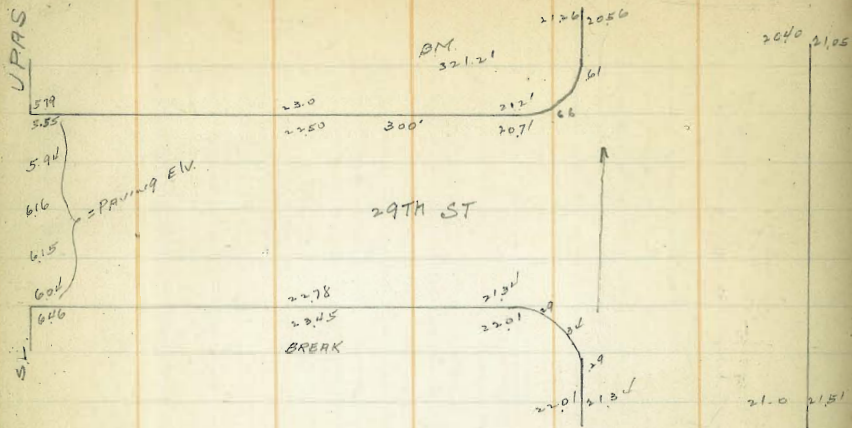
ST

89.01
56
75.63

	82.02	82.43	235	209	170	81.6	81.66	
25	83.87	82.7	377	290	250	81.88	82.33 = PC.	
							0.35 R	
50	84.72	82.12	399	371	329	82.70	83.20	
75		84.79	467	436	396	83.22	RUNWAY .06 L	
100	86.07	85.47	535	505	463	84.02	84.52	
125		86.19	606	572	528	84.66		
150	87.51	86.91	674	640	598	85.20	85.80	
175		87.44	721	695	649	85.87		
200	88.55	87.98	767	751	705	86.4	86.94	
225		88.46	817	800	750	86.94		
250	89.54	88.92	865	849	804	87.44	87.94	
275		89.23	894	878	834	87.74		
300	90.12	89.52	924	908	864	88.05	88.55	
		89.70	951	931	889	88.32		
	90.48	89.88	979	954	912	88.60	89.10	
		90.03	998	976	937	88.84		
400	90.79	90.19	90.17	898	860	89.08	89.58	
		90.20	90.20	896	870	89.19		
	90.72	90.20	90.1	895	881	89.21	89.81	
		90.10	90.20	893	883	89.50		BRNK
500	90.56	89.98	90.1	894	866	89.35	89.85	
		89.74	897	896	873	89.24		
	90.09	89.49	898	891	860	89.13	89.63	
		89.18	951	956	926	88.99		
600	89.48	88.88	925	926	912	88.85	89.25	
620		88.70	898	899	890	88.48		
640	88.97	88.52	885	886	879	88.5	88.97	

WASHINGTON

THORN ST PAVING

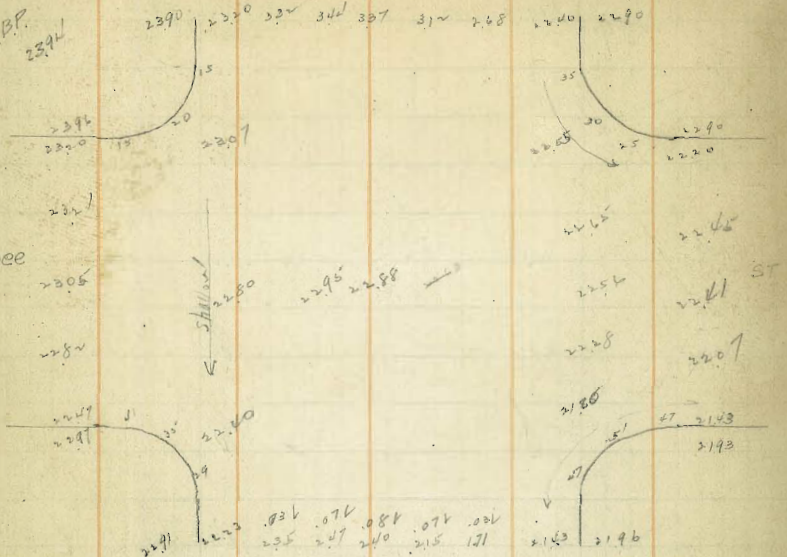


Moore
5/29/25

NATIONAL AVE PAVING

72 Cr.

NEBP
2394

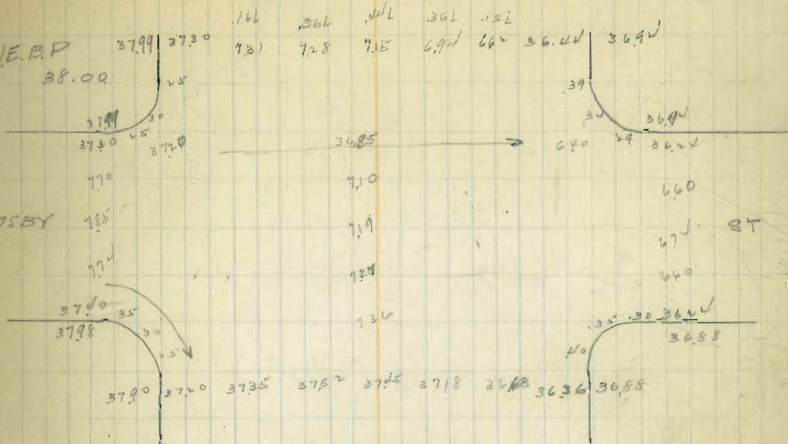


Sigsbee

Bandsley

BREAK

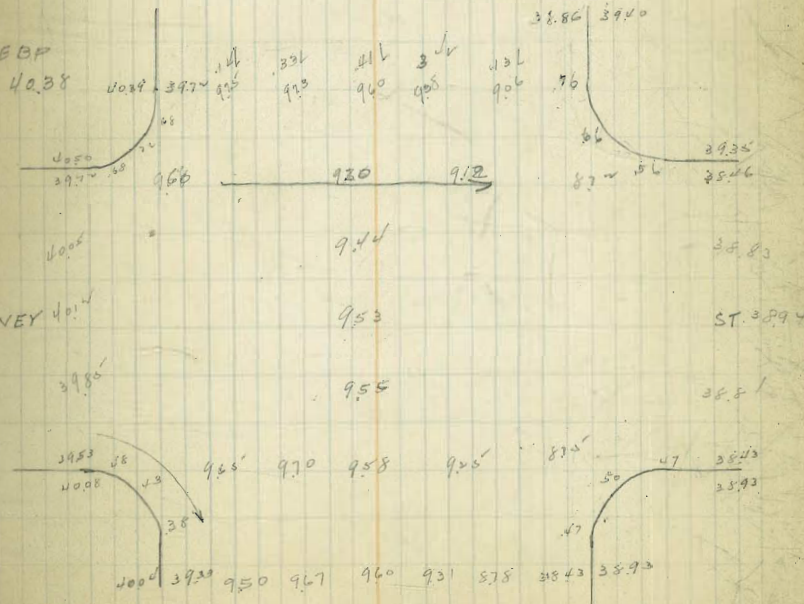
NEBP
38.00



CROSBY

DEWEY

NEBP
40.38



6/17/25 Gregor Sewer Construction
 to Montecita + d Arbor Dr.
 544 From 165' West d Arbor to 205' West Montecita

165' West Arbor on Montecita	270.94	265.00		
= 0+00	6.40	264.54	261.2	+ 3.34
+ 54.5	7.40	263.54	260.94	+ 2.60
1+09.0	7.18	263.76	260.67	+ 3.09
1+63.5 M.H. d Arbor	5.97	264.97	260.4	+ 4.57
2+14.75	6.36	264.58	260.05	+ 4.53
2+66.00	6.10	264.84	259.70	+ 5.14
3+17.25	5.60	265.34	259.31	+ 5.99
3+68.50 M.H. Δ 95' L	4.35	266.59	259.0	+ 7.59
3+78.50 End.	7.70	264.24	258.95	7.29 under curb

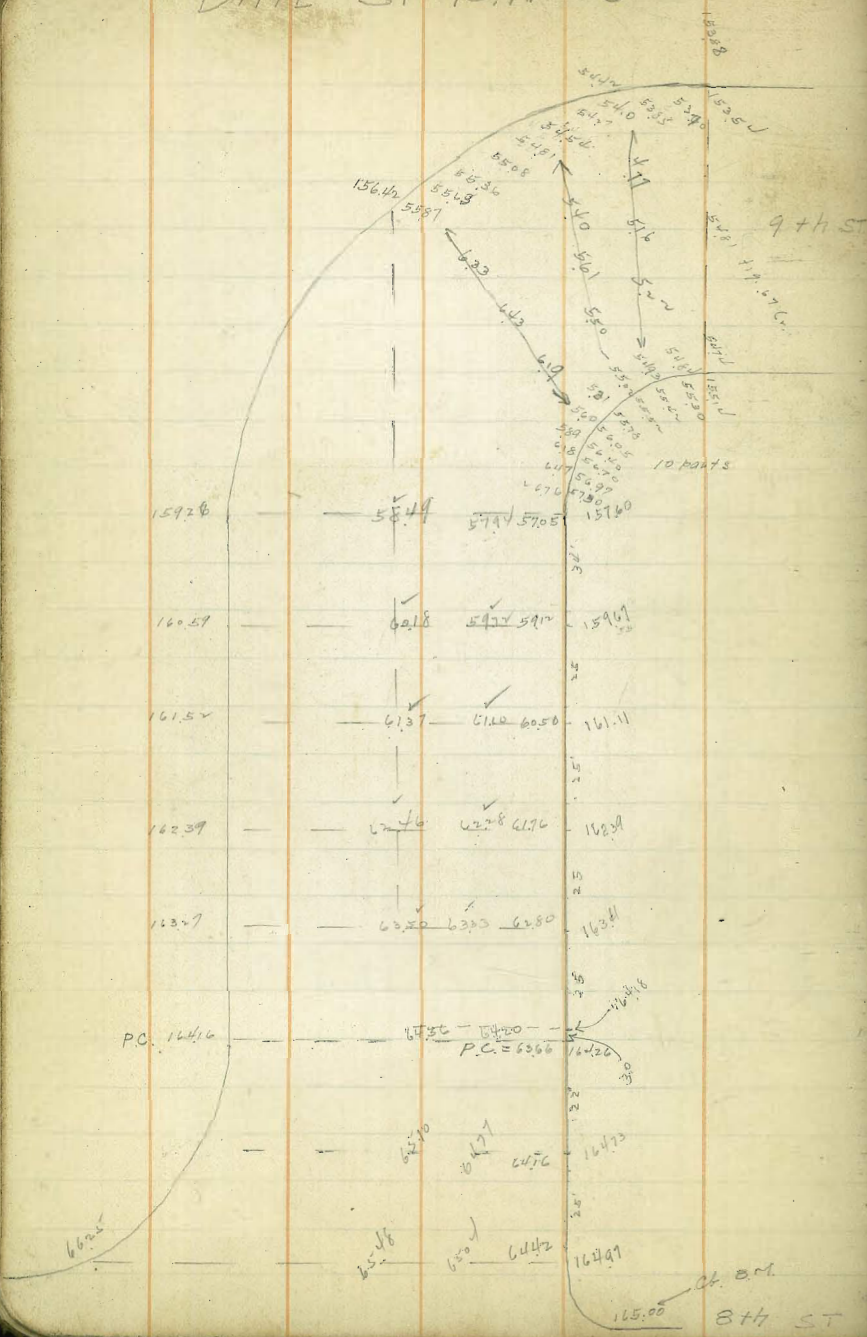
2/5/25

Gregor

41

DATE ST PAVING

SEE PAGE 49 FOR BALANCE



STATE ST. GRADING

NUTMEG TO PALM

Wcb Sta.	W.L.	E.L.
NL Nutmeg	132.25	132.25
10 W	132.51 BK	132.56
20 W	133.24 B	133.23
30 W	134.15 B	134.16
40 W	135.55 B	135.59
97.86	144.32	145.10
155.73 = PC.	153.10	154.62
168.59	155.06	153.38 BK
181.6 N = PRC.	157.01	
194.32	158.97	
207.19 = E.C.	160.93	161.03 BK
242.86	166.34	
278.53	171.75 BREAK	172.25
317.53	175.75	321.99
356.53 = Slope.	179.75 BK	365.46
E ✓	181.50	182.50
NL ✓	183.25 B	184.25
	183.90	184.90
	184.55 B	185.55
	184.55	185.48
	183.85	184.86
	182.55	183.63
	180.45	181.52
	177.60	179.40
	174.05	176.40

see next page for these grades

60'
50'
40'
30'
20'
10'

65'

143.56 Columbia + Olive
0.25
144.51
10.50
133.97 P.R. number 2nd step
0.88
134.85
11.13
143.72
1.37
145.09

130.97
2.60
137.57
130.93
5.57
6.02
0.25
132.18
5.34
5.47
-0.08
133.97
6.42
139.39
0.00
139.39
13.45
151.67
0.72
150.95
12.41
162.36
0.05
162.31
11.77
174.09
2.43
173.66
12.73
186.39
0.16
186.23

189.54
12.58
176.96
0.21
177.17
10.63
166.64
1.88
168.52

Culvert Notes
132.0 Top of = NL Nut. 132.18 = 7' N End of
2.85
4.50
-1.65

128.50 128.0 117.0 = Flowline
6.35 6.85 8.09
3.80 4.61 7.56
+1.55 +2.21 +0.53

W 132.24 132.51 138.22 134.15 135.55 144.32 152.10
7.14 6.89 6.17 5.24 3.84 7.35 1.40
2.11 3.99 2.1 1.6 0.9 4.7 +0.7
+4.1 +3.6 +2.7 -2.4 -2.1

E 132.24 13 132.23 135.59 145.10 154.62
1.14 1.3 6.16 3.80 3.9 3.0
1.25 1.30 1.73 1.73 5.7 2.6
-3.7 -9.1 -18.6 -14.1 -9.5

W 155.06 157.01 158.97 160.93 166.34 171.75 175.75
7.3 5.3 3.4 1.4 4.7 2.3 1.0
2.7 5.1 3.3 0.9 6.8 3.1 1.0
-0.4 +0.2 +1.1 +1.5 +1.9 +0.2 +1.4

E 160.9 166.59 172.25 176.50
1.4 7.5 1.8 9.9
4.7 6.4 2.1 7.1
-1.7 +2.1 +0.7 +1.8

W 179.75 181.50 183.25
6.6 4.9 4.8
7.0 4.8
-0.4 +0.1
+0.6 +1.1

E 180.75 182.50 184.25
5.6 3.9 2.1
5.5 4.8
+0.1 +1.0
+1.1 +2.8

Wcb 179.50 175.50 171.50 166.09 160.68
10.04 1.77 5.77 11.18 7.84
9.08 1.74 6.82 11.12 7.77
+0.06 +0.03 -1.05 +0.06 +0.07

Ecb 180.50 176.25 172.00 166.51 161.03
9.04 10.2 5.7 10.76 7.49
5.88 0.87 5.49 10.63 6.35
+0.16 +0.15 -0.22 +0.13 +1.1

Change Here

STATE ST GRADING
SHEET 1611 L

W/L	EL	
179.75	180.75'	
183.25	184.25	
183.90	184.90	Hub
184.55	185.55	
184.55	185.48	
183.85	184.86	
182.55	183.63	
180.45	181.82	
177.60	179.40	
174.05	176.40	
166.25	169.25	

169.30	W	166.0	163.25	160.25
		33°	6.05	8.55
	E	169.0	164.25	159.75
			4.05	9.55

186.23				
32.1				
182.44				
12.77				
172.67				
2.32				
176.97	W	183.25	183.90	184.55
12.36		6.2	7.5	8.7
164.13		7.9	8.2	9.2
6.88		-1.7	-1.0	-1.3
164.21		-0.7	-1.0	-0.5
12.77				
154.24	E	184.25	185.55	186.25
0.26		5.2	4.5	3.9
151.50		5.2	4.5	3.9
12.84		-1.7	-1.0	-1.3
138.66		+3.9	+4.3	+4.3
5.89				
144.55				
2.00				
12.54				
113.56				

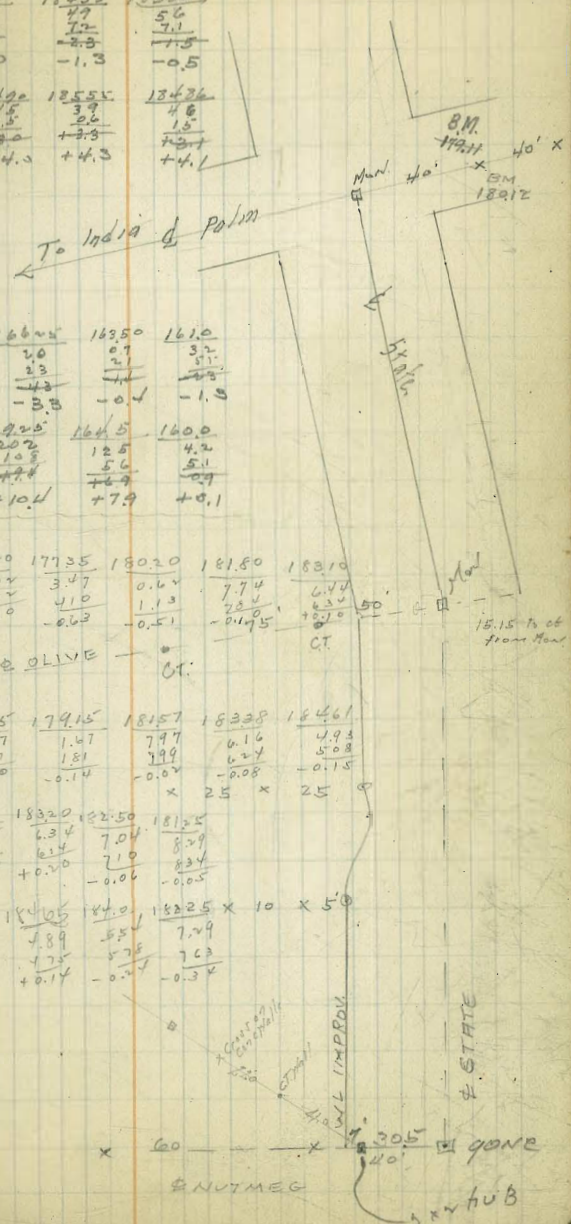
180.45	174.05	166.25	169.25	161.0
7.0	2.7	2.0	2.1	3.2
1.50	7.6	2.3	4.1	2.3
-3.0	-3.6	-3.3	-0.4	-1.3
-2.0				
181.24	176.40	169.25	164.5	160.0
7.6	13.0	20.2	12.5	4.2
3.1	7.8	10.5	5.6	5.1
4.2	2.5	4.4	16.4	0.7
+5.2	+6.2	+10.4	+7.9	+0.1

166.0	169.90	173.80	177.35	180.20	181.50	183.10
14.82	10.92	7.02	3.47	0.62	7.74	6.44
15.72	11.46	7.02	4.10	1.13	22.0	23.0
-0.90	-0.54	-0.60	-0.63	-0.51	-0.145	+0.10

169.0	172.57	176.15	179.15	181.57	183.38	184.61
14.2	8.25	4.7	1.47	7.97	6.16	4.93
11.77	5.45	5.7	1.81	7.99	6.24	5.08
-2.15	-0.43	-0.50	-0.14	-0.02	-0.08	-0.13

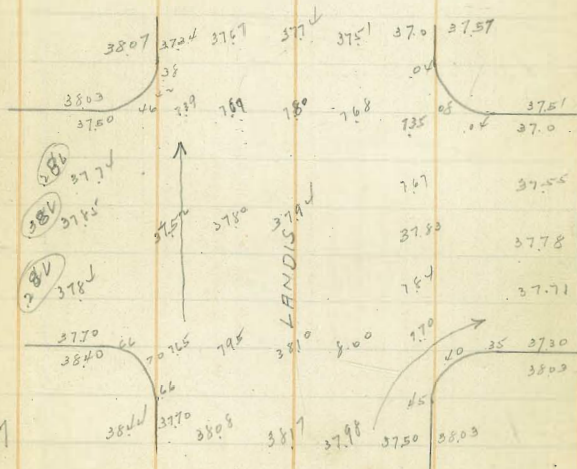
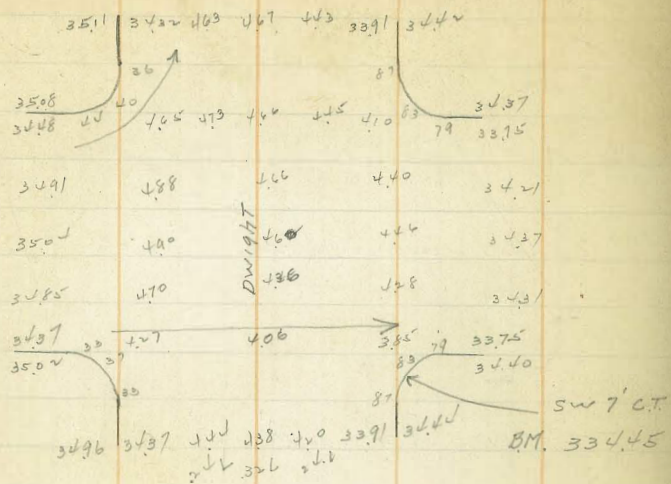
183.80	183.90	183.20	182.50	181.25
5.76	5.67	6.34	7.04	8.29
5.1	5.66	6.14	7.0	8.34
+0.30	+0.04	+0.20	-0.06	-0.05

187.3	185.30	184.65	184.0	182.25
4.31	6.24	4.89	5.5	7.29
4.79	4.22	4.75	5.75	7.03
-0.48	+0.02	+0.14	-0.24	-0.32

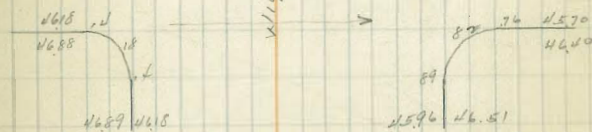


470
46

32nd ST. PAVING



32nd ST. PAVING



SW 7' C.T. B.M. 334.45

SW 7' C.T. B.M. 338.47

6th ST. PAVING

60.80
60.50

LAWN

59.60
59.50

60.8v

60.75

60.5v

60.15

60.0

60.0

60.0

60.0

60.0

60.0

60.0

60.0

60.0

60.0

60.0

60.0

60.0

60.0

60.0

60.0

60.0

60.0

60.0

60.0

60.0

60.0

60.0

60.0

60.0

60.0

60.0

60.0

60.0

60.0

60.0

60.0

60.0

60.0

60.0

60.0

60.0

60.0

60.0

60.0

60.0

60.0

60.0

60.0

60.0

60.0

60.0

60.0

NUTMEG

60.21
60.14
59.91
59.75 59.50

59.60
59.53
59.30
59.43
59.60

59.25 59.88

used 267.70
267.40

LAWN

266.30 used
266.0

7.53

7.41

7.18

6.83

6.753

6.75

6.75

6.75

6.75

6.75

6.75

6.75

6.75

6.75

6.75

6.75

6.75

6.75

6.75

6.75

6.75

6.75

6.75

6.75

6.75

6.75

6.75

OLIVE

66.60
66.60
66.50

66.60
66.60
66.50

66.25 66.25
267.04

267.04
B.M.

74.50

LAWN

83.40

77.30
77.10
76.90
76.70
76.50
76.30
76.10
75.90
75.70
75.50
75.30
75.10
74.90
74.70
74.50
74.30
74.10
73.90
73.70
73.50
73.30
73.10
72.90
72.70
72.50
72.30
72.10
71.90
71.70
71.50
71.30
71.10
70.90
70.70
70.50
70.30
70.10
69.90
69.70
69.50
69.30
69.10
68.90
68.70
68.50
68.30
68.10
67.90
67.70
67.50
67.30
67.10
66.90
66.70
66.50
66.30
66.10
65.90
65.70
65.50
65.30
65.10
64.90
64.70
64.50
64.30
64.10
63.90
63.70
63.50
63.30
63.10
62.90
62.70
62.50
62.30
62.10
61.90
61.70
61.50
61.30
61.10
60.90
60.70
60.50
60.30
60.10
59.90
59.70
59.50
59.30
59.10
58.90
58.70
58.50
58.30
58.10
57.90
57.70
57.50
57.30
57.10
56.90
56.70
56.50
56.30
56.10
55.90
55.70
55.50
55.30
55.10
54.90
54.70
54.50
54.30
54.10
53.90
53.70
53.50
53.30
53.10
52.90
52.70
52.50
52.30
52.10
51.90
51.70
51.50
51.30
51.10
50.90
50.70
50.50
50.30
50.10
49.90
49.70
49.50
49.30
49.10
48.90
48.70
48.50
48.30
48.10
47.90
47.70
47.50
47.30
47.10
46.90
46.70
46.50
46.30
46.10
45.90
45.70
45.50
45.30
45.10
44.90
44.70
44.50
44.30
44.10
43.90
43.70
43.50
43.30
43.10
42.90
42.70
42.50
42.30
42.10
41.90
41.70
41.50
41.30
41.10
40.90
40.70
40.50
40.30
40.10
39.90
39.70
39.50
39.30
39.10
38.90
38.70
38.50
38.30
38.10
37.90
37.70
37.50
37.30
37.10
36.90
36.70
36.50
36.30
36.10
35.90
35.70
35.50
35.30
35.10
34.90
34.70
34.50
34.30
34.10
33.90
33.70
33.50
33.30
33.10
32.90
32.70
32.50
32.30
32.10
31.90
31.70
31.50
31.30
31.10
30.90
30.70
30.50
30.30
30.10
29.90
29.70
29.50
29.30
29.10
28.90
28.70
28.50
28.30
28.10
27.90
27.70
27.50
27.30
27.10
26.90
26.70
26.50
26.30
26.10
25.90
25.70
25.50
25.30
25.10
24.90
24.70
24.50
24.30
24.10
23.90
23.70
23.50
23.30
23.10
22.90
22.70
22.50
22.30
22.10
21.90
21.70
21.50
21.30
21.10
20.90
20.70
20.50
20.30
20.10
19.90
19.70
19.50
19.30
19.10
18.90
18.70
18.50
18.30
18.10
17.90
17.70
17.50
17.30
17.10
16.90
16.70
16.50
16.30
16.10
15.90
15.70
15.50
15.30
15.10
14.90
14.70
14.50
14.30
14.10
13.90
13.70
13.50
13.30
13.10
12.90
12.70
12.50
12.30
12.10
11.90
11.70
11.50
11.30
11.10
10.90
10.70
10.50
10.30
10.10
9.90
9.70
9.50
9.30
9.10
8.90
8.70
8.50
8.30
8.10
7.90
7.70
7.50
7.30
7.10
6.90
6.70
6.50
6.30
6.10
5.90
5.70
5.50
5.30
5.10
4.90
4.70
4.50
4.30
4.10
3.90
3.70
3.50
3.30
3.10
2.90
2.70
2.50
2.30
2.10
1.90
1.70
1.50
1.30
1.10
0.90
0.70
0.50
0.30
0.10

75.08

74.88

74.68

74.48

74.28

74.08

73.88

73.68

73.48

73.28

73.08

72.88

72.68

72.48

72.28

72.08

71.88

71.68

71.48

71.28

71.08

70.88

70.68

70.48

70.28

70.08

69.88

69.68

PELM

73.48

73.97

73.92

73.92

73.92

73.92

73.92

73.92

73.92

73.92

73.92

73.92

73.92

73.92

73.92

73.92

73.92

73.92

73.92

73.92

73.92

73.92

73.92

73.92

73.92

73.92

73.92

73.92

73.92

73.92

73.92

73.92

used 81.10
LAWN

280.10
LAWN

80.88

80.78

80.51

80.24

80.78

80.49

80.04

80.04

80.04

80.04

80.04

80.04

80.04

80.04

80.04

80.04

80.04

JINGIE

79.90

79.80

79.53

79.33

79.13

79.13

79.13

79.13

79.13

79.13

79.13

79.13

79.13

79.13

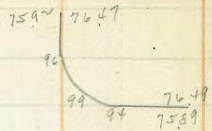
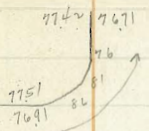
79.13

79.13

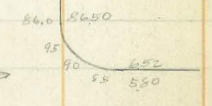
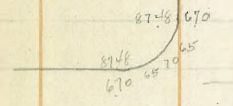
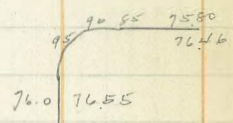
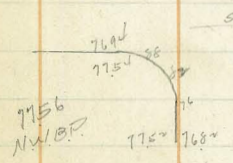
79.13

IRVING AVE PAVING

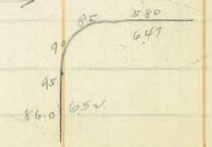
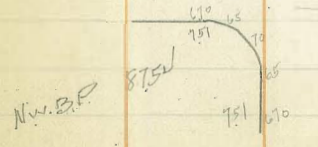
W L 28+4



SICARD

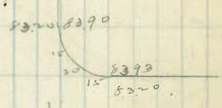
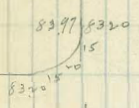


SAMPSON



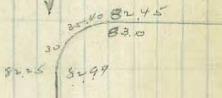
BREAK	87.50	88.44	87.7	87.0	88.0	88.0
BREAK	88.07					NIT.

BREAK	87.0	87.0	86.30	86.30	87.0	87.0
-------	------	------	-------	-------	------	------



EVANS

ST



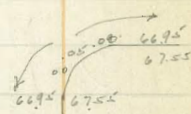
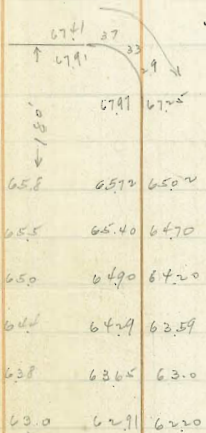
74.4	74.30	74.68		74.30	
73.4	73.33	74.8		73.33	
72.5	72.45	71.30		72.45	
20' BREAKS	71.8	71.76	71.10	LEVEL	71.74
	71.4	71.0	70.50	ACROSS	71.13
	70.7	70.43	70.0		70.77
	70.4	70.38	69.70		70.45
	70.2	70.20	69.80		70.16

IRVING AVE PAVING



DEWEY

67.92
N.W. C.P.



65.8	65.72	65.02
65.5	65.40	64.70
65.0	64.90	64.20
64.4	64.29	63.59
63.8	63.65	63.0
63.0	62.91	62.20
59.4	59.22	58.62
58.8	58.44	57.74
57.8	57.70	57.0
57.4	57.27	56.60
56.9	56.88	56.18
56.6	56.52	55.82

64.81	65.28
64.61	65.18
64.15	64.72
63.59	64.29
63.0	63.62
62.20	62.88
59.2	59.21
77.4	58.40
57.0	57.68
66.0	57.30
61.8	56.82
59.2	56.22

ST.

54.5

EL. CROSBY

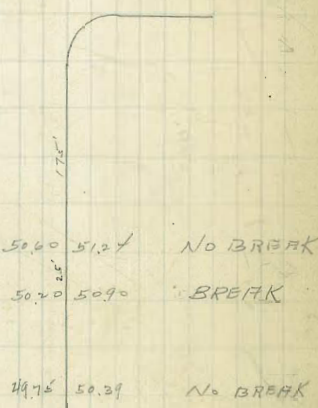
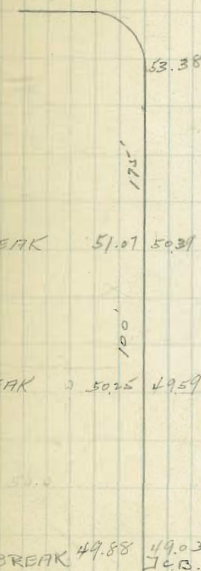
54.5

S.E.P.P.
54.52 55

CROSBY

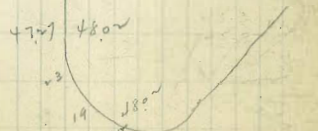
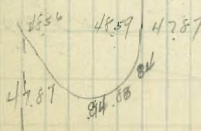
PAVED

ST.



BREAK	51.07	50.39
BREAK	50.25	49.59
No BREAK	49.88	49.03

50.60	51.27	No BREAK
50.20	50.90	BREAK
49.76	50.39	No BREAK



WIGHTMAN GRADES

Louisiana to ALABAMA

7/24/25
Moore

	S CB	N CB
WL Louisiana	289.0	290.0
54' W	287.0	287.9
108' W	285.0	285.8
162' W	283.0	283.7
216' W	281.0	281.60
270' W EL MISS	279.0	279.5
WL MISS	278.0	278.5
50' W BK	277.0	277.25
75' W BK	276.28	276.33
100' W BK	274.72	274.87
125' W BK	272.62	272.73
150' W BK	270.04	270.03
208.8' W	262.77	263.02
267.6' W EL ALA	255.50	256.0

25991 50 WIGHTMAN + LAI

25991									
0.58									58
290.49	ok	290.00	88.15	86.05	83.95	81.55	79.50	ok	
12.22			2.34	4.4	6.54	8.64	10.99		
278.27			0.84	2.4	4.1	5.7			
0.99			+1.5	+2.0	+2.4	+3.4			
279.26			ok	ok					
12.22									
266.54	SL	89.00	87.0	85.0	83.25	81.25	79.0	ok	
12.22			1.4	5.44	7.24	9.24	11.49		
267.50					5.72	6.4			
12.22									
255.51	SE ALA								
	WIGHTMAN								

ok	78.5	77.50	76.58	75.12	72.98	70.28	63.27	ok
SL	11.99	10.99	13.91	2.14	6.48	8.98	16.10	
		2.5	1.9	2.4	6.30	7.88	17.3	
		+2.0	+2.0	+1.7	+2.05	+1.78	+3.7	
	78.0	77.25	76.53	74.97	72.87	70.29	63.02	ok
	12.49	13.24	13.96	4.1	6.4	7.0	16.2	
		1.22	1.82	2.1	4.4	7.2	11.8	
		+2.0	+2.0	+2.0	+2.0	+1.8	+2.0	

ALLEY PAVING
 BK 207 UNIV. HQTS

7/24/25
 1900 v

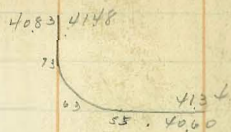
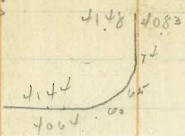
	WV	EV
HL UNIV.	355.63	355.54
10' n' (B)	356.50	356.30
90 ✓	357.00	356.80
140 ✓	357.50	357.30
190 ✓	358.0	357.80
240 ✓ (B)	358.50	358.30
290 ✓	358.73	358.63
340 ✓	358.91	358.97
390 ✓ (B)	359.20	359.30
✓ 32 ✓	359.69	359.80
✓ 44 ✓	360.19	360.30
516 ✓	360.68	360.81
558 ✓	361.18	361.34
600 ✓ LL wood	361.68	361.82

355.01
 570
 360.73
 4.00
 356.73
 5.00
 361.75
 2.75
 359.00
 5.43
 364.42

	WV	EV	WV	EV	WV	EV	WV	EV
	567.63	564.50	57.0	57.50	58.0	58.40	58.73	
	5.10	4.23	4.75	4.25	4.63	3.25	3.00	
		3.23	3.75	3.25	4.18	3.03	3.00	
		+1.0	+1.0	+1.0	-0.18	+0.22	+1.0	
	555.4	563.0	568.0	573.0	578.0	583.0	586.3	
	5.18	4.43	4.95	4.45	3.95	3.45	3.10	
		3.48	4.85	3.45	2.95	3.63	2.10	
		+1.0	+0.10	+1.0	+1.0	-0.18	+1.0	
	5897	5920	5968	6019	6068	6118	6168	
	5.46	5.23	4.70	4.24	3.75	3.25	2.75	
	4.26	5.48	5.28	4.28	3.75	3.01		
	+1.0	-0.24	-0.54	-0.04	+1.0	+0.24		
	5897	5930	5980	6030	6081	6132	6182	
	5.46	5.13	4.63	4.13	3.62	3.11	2.61	
	4.46	5.20	4.43	4.91	3.72	2.98		
	+1.0	-0.13	-0.80	-0.78	-0.10	+0.13		

I ST PAVING

N.B.P. 41.45

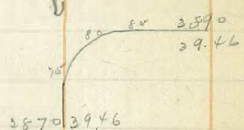
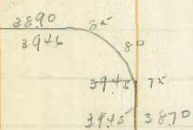


17+6

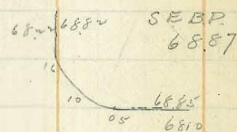
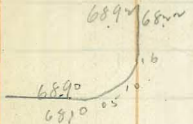
ST

21+27

ST



68.35 (QUARRY CONC.)



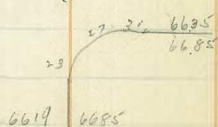
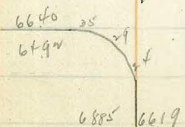
S.E.P.P. 68.87

19+4

ST

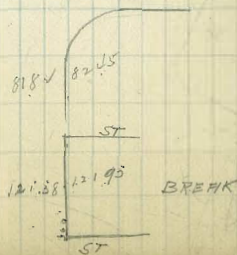
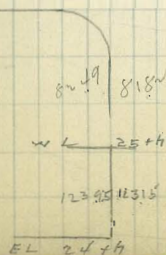
20+7

ST



24+1

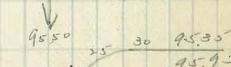
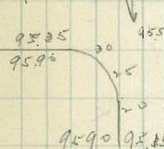
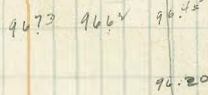
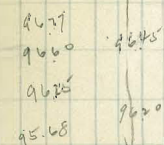
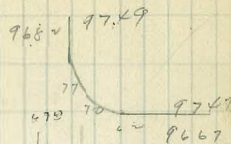
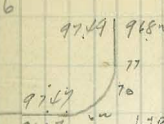
NO 1150



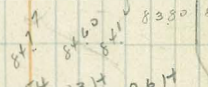
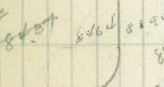
I ST PAVING

41

N.B.P. 97.46



N.B.P. 90.42



ALLEY PAVING
BIK & KIMBALL'S

8/7/25
Moore

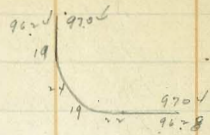
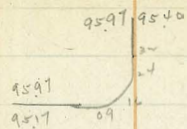
	SL	NL
EV 24th	118.99	120.00
30' E	119.47	120.11
60' S (B)	119.95	120.20
100	121.28	121.53
140	122.61	122.86
180 (B)	123.95	124.20
220	126.98	127.23
260	130.01	130.26
300 (B)	133.05	133.30
350	135.80	136.05
400 B	138.55	138.80
440	139.90	140.15
480	141.25	141.50
520 (B)	142.60	142.85
540	143.27	143.52
560	143.49	144.12
580	143.02	144.68
600 = EV 24th	142.90	144.52

± lower than S header

11150 NEAR
24th + 1st

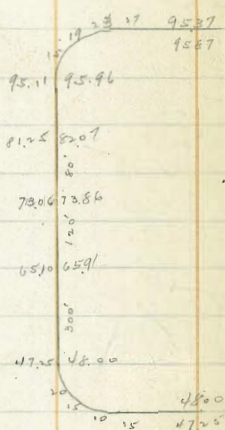
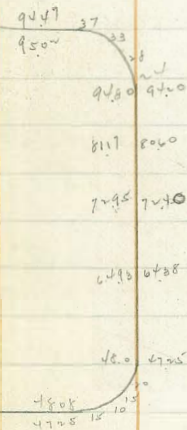
1222									
12275									
802									
12373	S	1899	1937	1995	2128	2261	2395	2698	3001
1169		476	228	380	247	114	1127	842	521
13544		496	338	380	247	014		742	421
137			+1.0	+1.0	0.0	+1.0	-0.37	+1.0	+1.0
13405									
1080	N	2002	4996	2020	2153	2286	2420	2723	3022
14185		373	379	355	222	684	1122	819	516
162		403	295	302	209	030	540	732	416
14323		-30	+0.84	+0.53	+0.13	+0.59	+2.82	+0.85	+1.0
526									
14859									
	S	3205	3580	3855	3990	4125	4260	4327	4329
		237	905	630	495	368	599	532	510
		137	805	530	495	368	599	532	503
		+1.0	+1.0	+1.0	0.0	0.0	0.0	-0.04	+0.07
	N	3330	3605	3850	4015	4150	4252	4352	4422
		212	880	605	470	335	200	507	427
		112	780	505	322	235	000	429	218
		+1.0	+1.0	+1.0	+1.28	+1.0	+2.0	+0.78	+0.29
	S	4302	4290						
		557	569						
		467	500						
		+0.90	-0.22						
	N	4468	4452						
		391	401						
		159	437						
		+2.32	-1.50						

SANTAMONICA PAVING



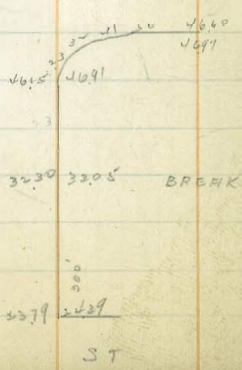
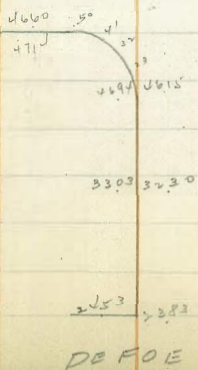
FROUDE

ST



EBERS

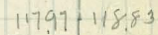
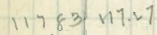
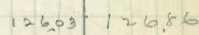
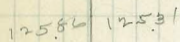
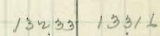
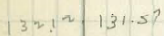
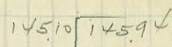
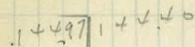
ST



DE FOE

ST

GUIZOT ST



FROUDE ST

BROOKLYN SCHOOL PAVING
HAZARD PAVING CO.

SEPP 30th + A

227.00
8.70
235.70

22292 ct

22737 ct

22220

2770 paving

FERN ST

22102
22105

2780 25
2783 25
2784 25
2785 25
2786 25
2787 25
2788 25
2789 25
2790 25
2791 25
2792 25
2793 25
2794 25
2795 25
2796 25
2797 25
2798 25
2799 25
2800 25

22701

30th ST.

2735 2660

22660

2680 2665 2652

A
ST

ASH ST

2233 2165 2227 2226

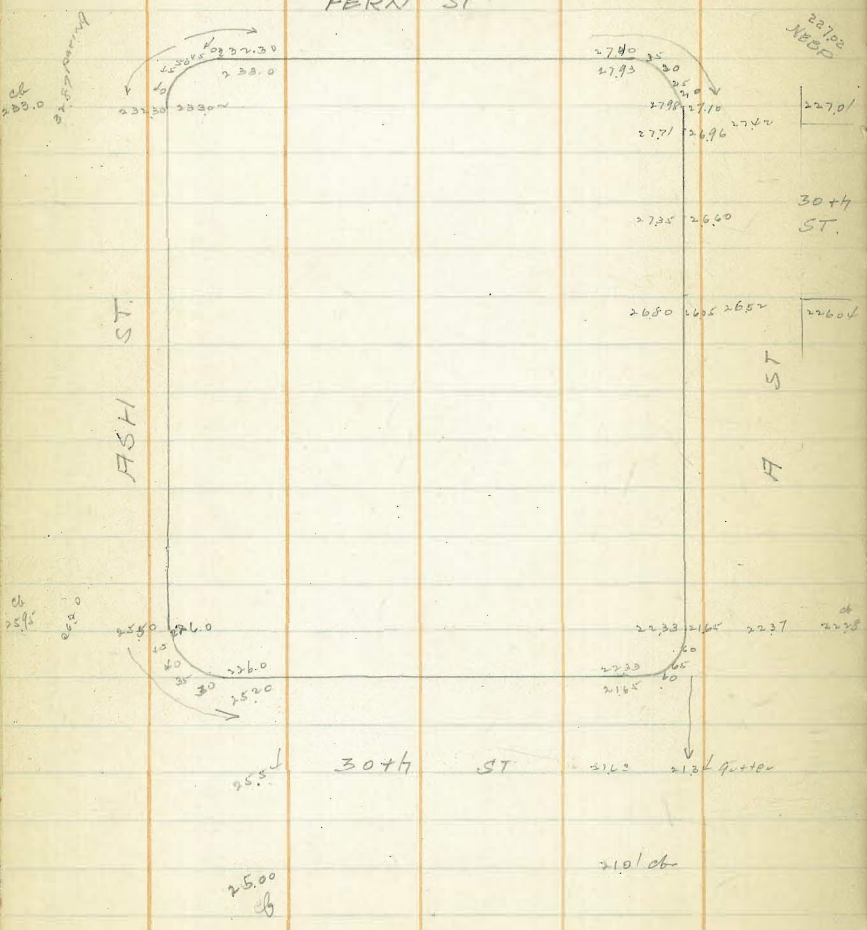
2220 2165
2165 2165

30th ST

2162 2124 quarter

2101 ct

25.00
6



GRANT SCHOOL
PAVING

HAZARD PAVING CO

ST

W L F + Choates

162.83

LARK

WASHINGTON

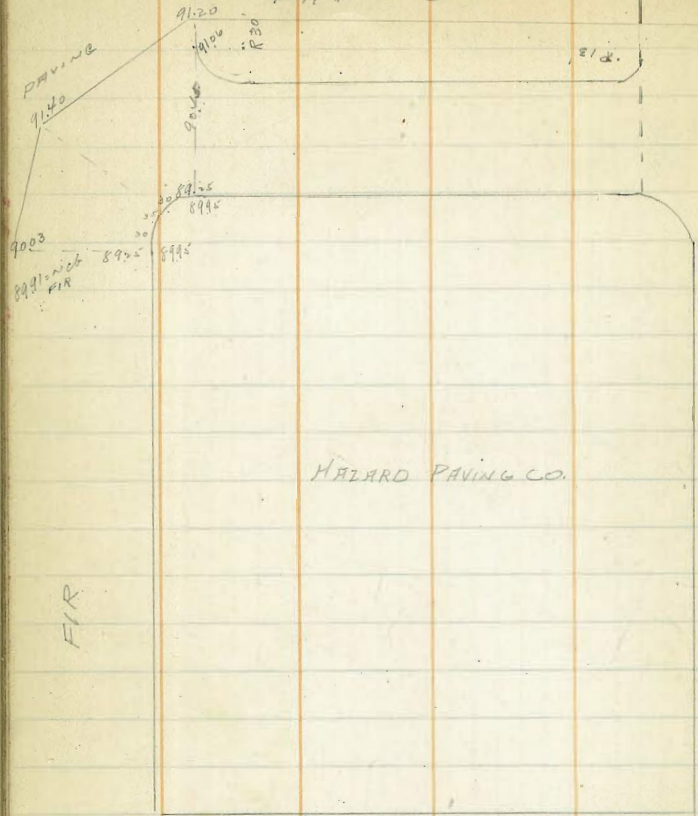
ST

SEBP
2699
579
276.73

WASH + LARK

00	50	100	150	182.83
270.50	271.18	271.88	272.55	273.0
6.23	5.55	4.85	4.18	3.73
5.93	5.22	4.96	4.33	3.13
+0.30	+0.13	-0.11	-0.15	-0.40
6.23				
6.61	= 2 L WASH			
-0.38				

WASHINGTON SCHOOL
PAVING



NWBP
 94.00 FIR + ALBATROSS
 1.08
 95.08

758.4 NWBP
 . EIM + UNION

LAUREL ST GRADES

	N.L
W. L. Kettner	33.25
40' W	29.14
60' W	27.08
100' W	22.97
150' W	17.83
175' W = EL Cal.	15.25

S.L
32.25

32.97 SE Laurel Kettner BP.

1.21
34.18
7.13
27.05
2.51 N
27.56

33.25
0.93
0.53
4.04

29.14
4.11
1.58

27.08
0.48

22.97
4.59
9.19
0.00

17.83
9.73
9.73
0.00

15.25
12.31
11.31
41.00

12.60
1.07
13.07
14.49

28.8542 60' Line 50' N 100 200 300
23.7 22.8 21.5 21.0

ALLEY PAVING
 BK 3 HARTLEY'S N. PARK
 15' wide

	N	S
wL Herman = 0+00	353.17	353.02
+50 W	353.55	353.41
100	353.93	353.80
145 EV Alley to south	354.11	354.0
140 W 1 1'	354.22	354.14
165	354.41	354.31
215	354.79	354.70
265 = EL 31st	355.20	355.10

12/16/45
 Moore

7.0

356.50 NW 3/4 UNIV + 100 W 9

354.71	355.20 = NL	554	NL	} wL Herman
4.82		353.17		
354.69	4.61 = SL			
5.78		5.69	SL	
360.47	355.10	353.04		

N	353.55	353.95	354.11	354.24	354.41	354.79
	5.14	7.78	6.36	6.25	6.06	5.68
	4.82	4.65	5.89	5.58	4.94	4.47
	+0.34	40.13	+0.47	+0.67	+1.02	+1.21
S	353.41	353.80	354.0	354.12	354.31	354.70
	5.30	4.91	6.47	6.35	6.16	5.77
	4.78	4.78	5.21	5.31	5.09	4.33
	+0.55	40.13	+1.16	+1.04	+1.07	+1.24
N	355.29					
	5.27					

8/1/65
Moore

SEWER CONSTRUCTION NATIONAL AVE betw 36th + 38th

0+00 = DE. N. 28th + Natl.	+496	33.20
40 S = MH	+522	33.0
70 E	+435	32.82
100 E	+423	32.65
150 OFFSET 4' S + W	+503	32.36
200	+576	32.05
250	+650	31.79
299.87 = M.H.	+692	31.50
350	+632	31.88
400	+705	32.26
450	+811	32.62
497 = Drop MH	+933	33.0
497 = Drop ✓	+533	37.0
550	+519	38.32
600	+544	39.57
650	+562	40.82
700	+557	42.07
750	+556	43.32
800	+589	44.57
857 = M.H.	+630	46.0
900	+539	48.40
950	+525	51.9
1000	+562	53.98
1050	+568	56.77
1082 = DE	+613	58.56

36th + Natl
SEBP

36.98	33.20	33.0	32.82	32.65	32.36	32.08	31.79
6.56	10.34	10.54	10.72	10.89	11.18	11.46	11.75
43.54	535	532	6.37	6.6	6.15	5.70	5.25
0.93	+4.96	+5.22	+4.35	+4.23	+5.03	+5.76	+6.50
53.79	31.50	31.0 = DE SL	31.88	32.26	32.62	33.0	
11.75	12.04	12.54	11.66	11.48	10.90	10.52	
65.54	5.12	5.56	5.32	4.23	2.79	1.21	
0.85	+6.92	+6.98	+6.34	+7.05	+8.11	+9.33	
64.69	33.20 = DE SL	37.0	38.32	39.57	40.82	42.07	
1.74	10.34	6.54	5.22	4.58	3.33	1.08	
77.43	0.53	1.21	0.03	4.12	7.71	6.51	
0.91	+9.81	+5.33	+5.19	+5.44	+5.62	+5.57	
76.52	43.32	44.57	46.0 = MH	48.40	51.9	53.98	56.77
	10.83	9.58	8.15	5.75	4.35	1.56	5.77
	5.27	3.69	1.85	0.36	9.10	5.92	3.29
	+5.56	+5.89	+6.30	+5.39	+5.25	+5.64	+5.68
	58.56						
	6.98						
	0.85						
	+6.13						

+6.98
76.58 SEBP
38th + Natl

31.0 = SL
DE

+9.81
N
DE

37th + Natl
SWBP
46.89

LOCATION of CULVERT on GREGORY ST.

S. of UPAS ST.

205 308.28

306.23

0+00 = END of EXISTING CULVERT FLOWLINE
N. of N. UPAS ST.

5.60 299.68

0+17 5.30

0+46 5.60

0+65 7.2

1+11 = INLET on W side Gregory ST 7.97

1+23 2.9

1+67.6 = 4.2

1+82.46 = C.B. at E. Ch on Gregory 4.0

1+97 4.0

2+24 = OUTLET 15.37 292.91

3032.0
5.08
257
+0.51

302.20
6.08
377
+2.36

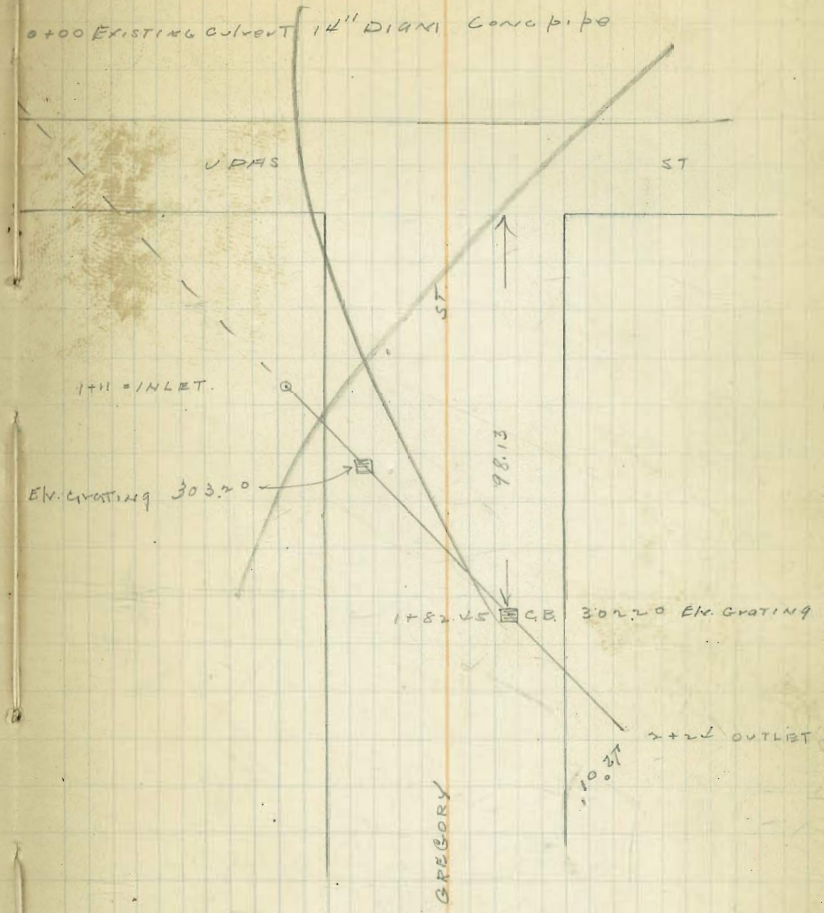
299.0
92.8
742
+1.86

296.0

292.91
15.87
0.0

1.1000
8 1/2 in 1.25

74



SEWER CONSTRUCTION
PRINGLE + GUY

Moore
7/21/22

DE = 0+00 192.30
50' S 191.93
100' ✓ 191.56
150' S = NL PRINGLE 191.19
176' S = # ✓ MH. 191.0
200' S = SL ✓ DE 191.30

E. M.H. & Pringle = 0+00 178.0
125' W. of # Guy 184.50
62.5' 0
175' E = # M.H. Pringle Guy 191.0

178.0 E.M.H. EIV.
+ 5.97
+ 9.90
193.87
0.14
193.73
9.72
203.45

191.30	191.0	191.19	191.56	191.93	192.30
<u>12.15</u>	<u>12.45</u>	<u>12.26</u>	<u>11.89</u>	<u>11.54</u>	<u>11.15</u>
<u>520</u>	<u>575</u>	<u>506</u>	<u>505</u>	<u>510</u>	<u>531</u>
+ 695	+ 670	+ 7.00	+ 684	+ 642	+ 5.84

184.50
9.37
3.24
+ 6.13
191.0

W/L

GREGORY ST GRADES

THORN TO UPAS

W.L.

E.L.

NL THORN	318.25		317.75
45 N	317.96		317.47
90	317.68		317.18
135	317.40		316.90
180 BREAK	317.12		316.62
200	316.92		316.42
220	316.59		316.07
240 U	316.12		315.57
260	315.50		314.93
280	314.72		314.13
300 BREAK	313.84		313.17
345	311.65		310.85
390	309.46		308.54
435	307.28		306.22
480 BREAK	305.09		303.91
500	304.24		303.12
520 U	304.02	303.14	302.91
540	304.15		303.21
560 BREAK	304.70		304.05
595.6 = 50 UPAS	306.25		306.25

-4.86

-3.91

-5.15

-5.56

314.20
 323.30
 12.49
 310.81
 1.12
 311.93

W/L	18.25	17.96	17.68	17.40	17.17	16.92	16.59
	5.0	5.34	5.7	5.7	6.2	6.4	6.8
		4.0	4.4	4.1	4.0	4.0	4.0
		+2.7	+1.3	+1.5	+2.2	+2.2	+2.8

E/L	17.75	17.47	17.18	16.90	16.62	16.42	16.07
	5.6	5.9	6.2	6.4	6.7	6.9	7.3
	5.0	5.3	5.0	5.5	6.4	6.7	6.3
	-0.6	+0.6	+1.2	+0.9	+0.8	+0.7	+1.0

W/L	16.12	15.50	14.74	13.52	11.65	10.94	07.28
	7.2	7.8	8.6	9.5	11.7	13.9	16.1
	4.5	5.1	5.8	5.9	7.7	10.2	12.8
	+2.7	+2.7	+2.8	+3.6	+4.0	+3.9	+3.3

E/L	15.57	14.93	14.3	13.7	10.85	10.85	06.22
	7.8	8.4	9.2	10.2	11.1	11.1	12.8
	7.9	9.0	10.1	11.0	12.7	13.4	14.8
	-0.7	-0.6	-0.9	-0.8	-1.6	-0.2	+0.9

W/L	05.09	04.3	04.02	04.15	04.70	06.25
	6.9	7.2	7.9	7.5	7.2	5.7
	7.2	8.8	11.3	11.5	11.3	8.6
	-0.3	-1.2	-3.4	-3.7	-4.1	-2.9

E/L	03.91	03.12	02.91	03.21	04.05	06.25
	8.8	9.0	9.0	8.7	7.9	5.7
	17.4	18.1	18.1	18.0	7.8	6.0
	-8.6	-4.1	-4.1	-7.3	+0.1	-0.3

318.05
 322.25
 341.48
 12.85
 308.45
 19.5
 310.40

306.25

305.3

W	218.0	17.71	17.43	17.15	16.87	16.67	16.37	15.87	15.25
	3.28	3.57	3.86	4.13	4.41	4.61	4.94	5.41	6.03
	3.02	3.47	3.73	4.33	4.15	4.90	5.02	5.45	6.20
	-0.14	+0.15	+0.1	-0.20	+0.26	-0.29	-0.08	-0.04	-0.23
E	17.50	17.22	16.93	16.65	16.37	16.17	15.82	15.32	14.68
	4.06	4.35	4.63	4.91	5.11	5.26	5.96	5.96	6.60
	3.38	4.15	4.60	4.75	4.94	5.41	5.90	5.90	6.40
	+0.31	+0.20	+0.03	+0.16	+0.11	+0.05	+0.06	+0.20	
W	14.49	13.59	11.40	09.21	07.03	04.84	04.09	03.77	03.70
	6.79	7.69	9.88	14.07	13.31	5.86	6.31	6.63	6.50
	7.13	7.46	9.73	12.09	12.03	5.84	6.21	6.47	6.29
	-0.34	+0.23	+0.15	+0.07	+0.14	-0.28	-0.21	-0.04	+0.01
E	13.88	12.92	10.60	08.29	05.97	03.66	02.87	02.66	02.96
	7.46	8.36	10.20	12.94	14.43	6.74	7.53	7.74	7.46
	7.25	8.06	10.66	12.83	14.77	5.24	5.88	6.84	6.66
	+0.14	+0.30	+0.02	+0.16	-0.24	+1.10	+1.65	+0.70	+0.15
E	03.80	306.0	430	04.45	306.0	440	440	440	440
	6.60	4.40	3.37	5.95	4.40	4.40	4.40	4.40	4.40
	4.14	4.07	3.87	5.74	4.17	4.17	4.17	4.17	4.17
	+0.11	+0.33	+0.0	+0.16	+0.23	-0.04			

Sewer Construction MILLER
E COLTON ST

0+00	430	1699 ^{M1.}	554	1269	-0.18	+12.87
+50			554	1145	-0.05	+11.50
1-			424	1265	+0.06	+12.53
+50			264	1435	+0.21	+14.14
2			239	1310	0.25	+13.25
+50			470	1229	0.22	+11.81
3			532	1166	0.61	+11.05
+357K = M.H. = 0+0			554	1145	0.71	+10.74
+50			534	1115	0.84	+10.31
1			699	1010	0.97	+9.03
+50			810	899	1.12	+7.89
2			891	808	1.24	+6.84
+50			952	743	1.37	+6.06
3			1026	673	1.50	+5.23
+30 = M.H. E COLTON DISTRICT					1.58	
IPC-hub			1123	566		

SEWER CONSTRUCTION

VILLA TERRACE & DWIGHT TO 385 S.

Station	1070	302.70	292.00	Flow Line M.H.	
0+00 = MH & DWIGHT	5		292.0		
48.15	532	9738	292.37	+ 5.01	
96.24	500	9770	292.75	+ 4.95	
144.36	489	9781	293.12	+ 4.69	
192.48	457	9813	293.50	+ 4.63	
240.60	440	9830	293.87	+ 4.43	
288.72	407	9863	294.25	+ 4.38	
336.84	370	9880	294.62	+ 4.18	
385.0 = M.H.	357	9913	295.0	+ 4.13	

BM Flowline MH & DWIGHT

6/16/25 Moore 78

292.00
10.30
302.30

$\frac{92.37}{9.92}$
 $\frac{92.75}{9.55}$
 $\frac{93.12}{9.18}$
 $\frac{93.50}{8.80}$
 $\frac{93.87}{8.43}$
 $\frac{94.25}{8.05}$

$\frac{94.62}{7.68}$
 $\frac{295.0}{7.30}$

6/14/25
Moore

SEWER CONSTRUCTION ON
BEARDSLEY ST. COLTON South to EX. M.H.

5' E of BEARDSLEY		
00 = M.H. & COLTON	- 0.18	+ 12.87
50 S	- 0.31	+ 12.86
100 ✓	- 0.44	+ 10.89
150 ✓	- 0.57	+ 9.54
200.9 = M.H.	- 0.71	+ 8.43
LATERAL to EL Beardsley & ALLEY EX. Sewer	+ 0.60	
250	- 0.84	+ 7.22
300	- 0.97 ✓	+ 6.69
350	- 1.10	+ 6.35
400	- 1.24	+ 5.97
450	- 1.37	+ 5.24
500	- 1.50	+ 5.42
550 = PO	- 1.63	+ 5.03
565 = MIDDLE of CURVE	- 1.67	+ 5.17
580 = EX. M.H.	- 1.71	✓

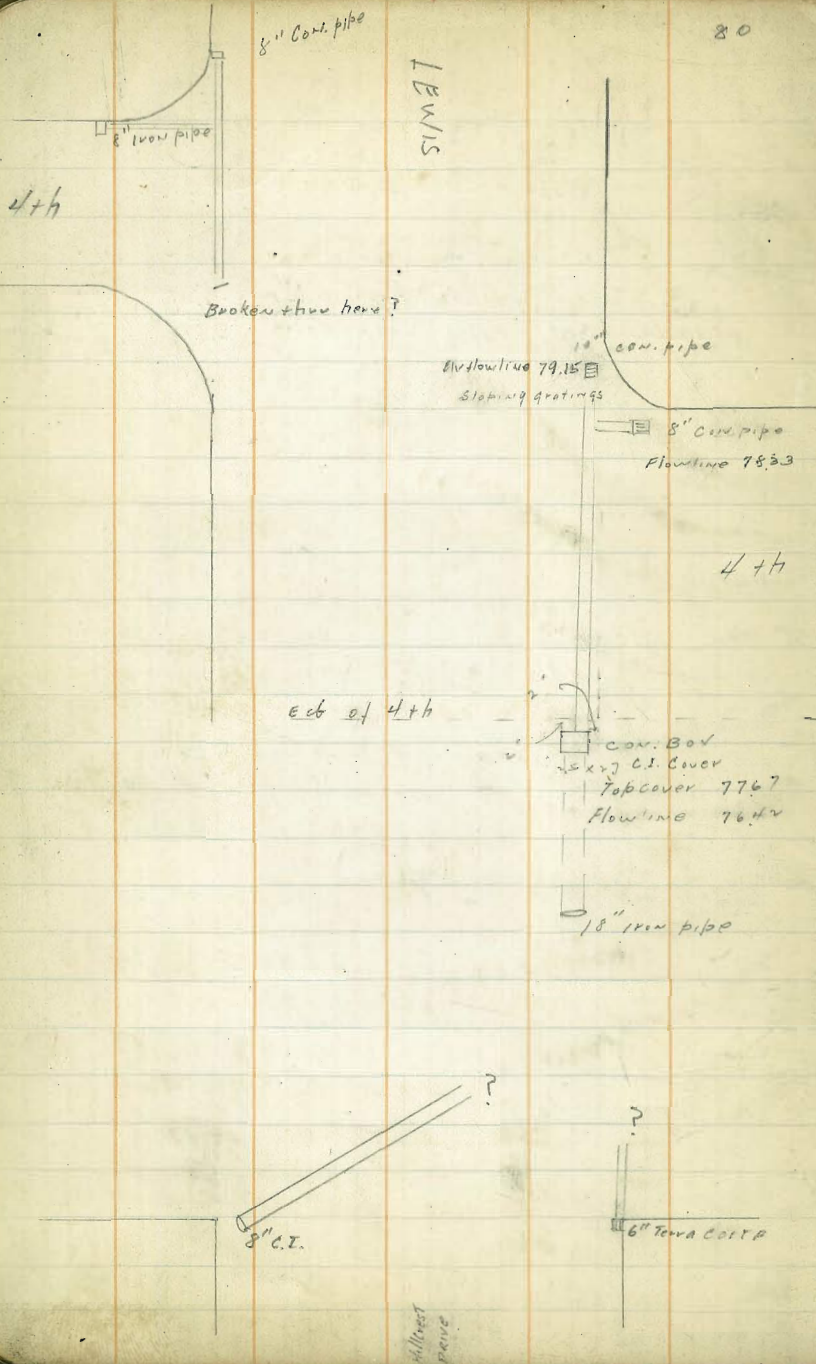
NW 5P
Newton & Beardsley

6.35
7.21
13.77

79

27.89							
0.56							
28.45							
10.13							
18.32							
0.65	18.97	18.97	18.97	18.97	18.97	18.97	9.02
18.97	- 0.18	- 0.31	19.41	19.54	19.68	19.81	9.97
12.59	17.15	17.28	17.52	17.76	18.00	18.24	9.99
6.35	1.28	1.28	1.28	1.28	1.28	1.28	5.20
2.64	+ 1.87	+ 1.26	+ 10.89	+ 9.54	+ 8.73	+ 7.22	+ 6.69
9.02							
	9.02	9.02	9.02	9.02	9.02	9.02	9.02
	1.10	1.37	1.50	1.63	1.67	1.71	
	10.12	10.26	10.39	10.52	10.65	10.73	
	3.77	4.29	5.05	5.10	5.42	5.52	10.73
	+ 6.35	+ 5.97	+ 5.03	+ 5.24	+ 5.03	+ 5.17	0.0

LEWIS



DIRECTIONS FOR USE OF TABLES

TABLE No. 1.

Distance of slope stake from side or shoulder stake for any width roadway, slope 1 to 1. If ground is nearly level, the cut or fill at side stake is located by the double entry method in

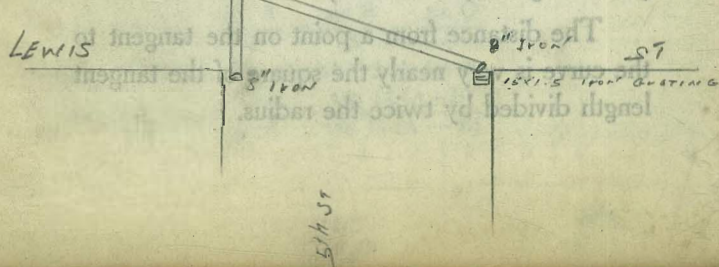
IMPROVED TABLES

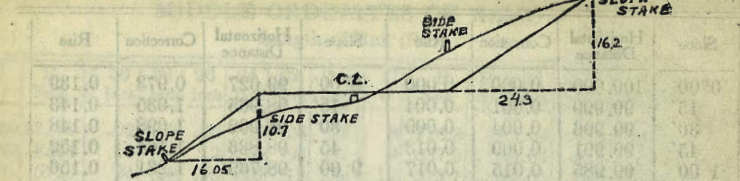
AND

INFORMATION

TABLE No. 2.

To find Tangent or External for curve of any other degree, divide by degree of curve and add connection found in column of connection. Degree of curve with a given L may be found by dividing tangent (or external), opposite by given tangent (or external).





DISTANCES FROM SIDE STAKES FOR CROSS-SECTIONING.

SLOPE 1 1/2 TO 1. ROADWAY OF ANY WIDTH.

	0	.1	.2	.3	.4	.5	.6	.7	.8	.9	
0	0 00	0 15	0 30	0 45	0 60	0 75	0 90	1 05	1 20	1 35	0
1	1 50	1 65	1 80	1 95	2 10	2 25	2 40	2 55	2 70	2 85	1
2	3 00	3 15	3 30	3 45	3 60	3 75	3 90	4 05	4 20	4 35	2
3	4 50	4 65	4 80	4 95	5 10	5 25	5 40	5 55	5 70	5 85	3
4	6 00	6 15	6 30	6 45	6 60	6 75	6 90	7 05	7 20	7 35	4
5	7 50	7 65	7 80	7 95	8 10	8 25	8 40	8 55	8 70	8 85	5
6	9 00	9 15	9 30	9 45	9 60	9 75	9 90	10 05	10 20	10 35	6
7	10 50	10 65	10 80	10 95	11 10	11 25	11 40	11 55	11 70	11 85	7
8	12 00	12 15	12 30	12 45	12 60	12 75	12 90	13 05	13 20	13 35	8
9	13 50	13 65	13 80	13 95	14 10	14 25	14 40	14 55	14 70	14 85	9
10	15 00	15 15	15 30	15 45	15 60	15 75	15 90	16 05	16 20	16 35	10
11	16 50	16 65	16 80	16 95	17 10	17 25	17 40	17 55	17 70	17 85	11
12	18 00	18 15	18 30	18 45	18 60	18 75	18 90	19 05	19 20	19 35	12
13	19 50	19 65	19 80	19 95	20 10	20 25	20 40	20 55	20 70	20 85	13
14	21 00	21 15	21 30	21 45	21 60	21 75	21 90	22 05	22 20	22 35	14
15	22 50	22 65	22 80	22 95	23 10	23 25	23 40	23 55	23 70	23 85	15
16	24 00	24 15	24 30	24 45	24 60	24 75	24 90	25 05	25 20	25 35	16
17	25 50	25 65	25 80	25 95	26 10	26 25	26 40	26 55	26 70	26 85	17
18	27 00	27 15	27 30	27 45	27 60	27 75	27 90	28 05	28 20	28 35	18
19	28 50	28 65	28 80	28 95	29 10	29 25	29 40	29 55	29 70	29 85	19
20	30 00	30 15	30 30	30 45	30 60	30 75	30 90	31 05	31 20	31 35	20
21	31 50	31 65	31 80	31 95	32 10	32 25	32 40	32 55	32 70	32 85	21
22	33 00	33 15	33 30	33 45	33 60	33 75	33 90	34 05	34 20	34 35	22
23	34 50	34 65	34 80	34 95	35 10	35 25	35 40	35 55	35 70	35 85	23
24	36 00	36 15	36 30	36 45	36 60	36 75	36 90	37 05	37 20	37 35	24
25	37 50	37 65	37 80	37 95	38 10	38 25	38 40	38 55	38 70	38 85	25
26	39 00	39 15	39 30	39 45	39 60	39 75	39 90	40 05	40 20	40 35	26
27	40 50	40 65	40 80	40 95	41 10	41 25	41 40	41 55	41 70	41 85	27
28	42 00	42 15	42 30	42 45	42 60	42 75	42 90	43 05	43 20	43 35	28
29	43 50	43 65	43 80	43 95	44 10	44 25	44 40	44 55	44 70	44 85	29
30	45 00	45 15	45 30	45 45	45 60	45 75	45 90	46 05	46 20	46 35	30
31	46 50	46 65	46 80	46 95	47 10	47 25	47 40	47 55	47 70	47 85	31
32	48 00	48 15	48 30	48 45	48 60	48 75	48 90	49 05	49 20	49 35	32
33	49 50	49 65	49 80	49 95	50 10	50 25	50 40	50 55	50 70	50 85	33
34	51 00	51 15	51 30	51 45	51 60	51 75	51 90	52 05	52 20	52 35	34
35	52 50	52 65	52 80	52 95	53 10	53 25	53 40	53 55	53 70	53 85	35
36	54 00	54 15	54 30	54 45	54 60	54 75	54 90	55 05	55 20	55 35	36
37	55 50	55 65	55 80	55 95	56 10	56 25	56 40	56 55	56 70	56 85	37
38	57 00	57 15	57 30	57 45	57 60	57 75	57 90	58 05	58 20	58 35	38
39	58 50	58 65	58 80	58 95	59 10	59 25	59 40	59 55	59 70	59 85	39
40	60 00	60 15	60 30	60 45	60 60	60 75	60 90	61 05	61 20	61 35	40
41	61 50	61 65	61 80	61 95	62 10	62 25	62 40	62 55	62 70	62 85	41
42	63 00	63 15	63 30	63 45	63 60	63 75	63 90	64 05	64 20	64 35	42
43	64 50	64 65	64 80	64 95	65 10	65 25	65 40	65 55	65 70	65 85	43
44	66 00	66 15	66 30	66 45	66 60	66 75	66 90	67 05	67 20	67 35	44
45	67 50	67 65	67 80	67 95	68 10	68 25	68 40	68 55	68 70	68 85	45
46	69 00	69 15	69 30	69 45	69 60	69 75	69 90	70 05	70 20	70 35	46
47	70 50	70 65	70 80	70 95	71 10	71 25	71 40	71 55	71 70	71 85	47
48	72 00	72 15	72 30	72 45	72 60	72 75	72 90	73 05	73 20	73 35	48
49	73 50	73 65	73 80	73 95	74 10	74 25	74 40	74 55	74 70	74 85	49
50	75 00	75 15	75 30	75 45	75 60	75 75	75 90	76 05	76 20	76 35	50

Computed by L. Leland Locke.

$$\begin{array}{r} 102 \overline{) 4400} \quad 04 \ 37 \\ \underline{408} \\ 320 \\ \underline{304} \\ 160 \\ \underline{155} \\ 50 \\ \underline{530} \\ 215 \\ \underline{315} \end{array}$$

61.2
60.7
5
1.6
1.1

13'

557
391
1.66

4349
4412
63

44.68
4302
1.66

2093 E Mon Ft Stock + 171.54

93.8
4.33
137.1
93.8
4.33
98.13

47.8
18

781.6
732.6
49.0
5.5

11.5
11.5
11.5
50.5
11.1
147.5

EL Cleveland at Morrow

514 106 096 051 061 061 507
480 514 529 519 484
464

130
33.33

604

508

492

490 523 534 473 490

3040.2
82

484

460
50
150
15

117
118
34

Newport

EBERS NW Mon 446.2

Froule NE 108.98

Guizot NBB 164.52

538
4.33
10.71

1897
4.65
10.32

50.4
12
4.90

101.60
60
101.20

515
74
502

2 NUT + olive x 20 x 60 x

PC

EC x 25 x 25 x

olive WL 50 8 75 0 07

IRVING + Crosby SE 54.52

Dewey NW 67.92

EVANS N 82.93

316.2
1317
3.450

175 1.5000
1445
700

007
50
3700

17950
17500
400

18050
17200
850
425

17150
16068
1082
571
166.09

17200
16103
1097
508
166.51

282
210
2.92
25
5.17
5.52
-0.37