

G 115

DIETZGEN  
TRADE MARK

ENGINEERS

FIELD BOOK

No. 404



# EUGENE DIETZGEN CO.

DRAWING MATERIALS, MATHEMATICAL and  
SURVEYING INSTRUMENTS

Chicago New York San Francisco New Orleans Pittsburg Toronto

Distances from Center of Roadway for Cross-Sectioning  
Roadway 16 feet wide. Side Slopes 1 on 1.  
For Single Track Embankment.

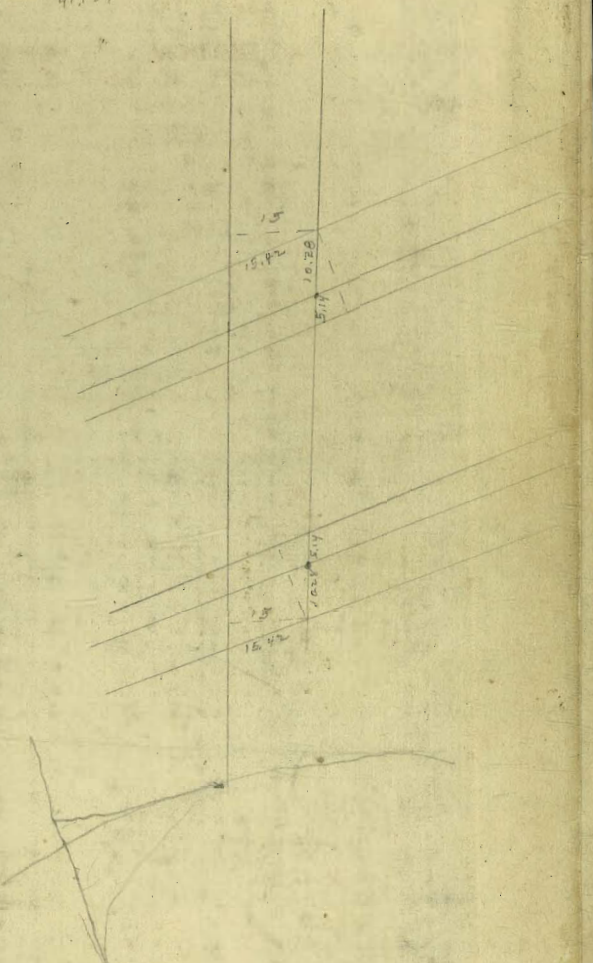
H	0	.1	.2	.3	.4	.5	.6	.7	.8	.9	H
0	8.0	8.1	8.2	8.3	8.4	8.5	8.6	8.7	8.8	8.9	0
1	9.0	9.1	9.2	9.3	9.4	9.5	9.6	9.7	9.8	9.9	1
2	10.0	10.1	10.2	10.3	10.4	10.5	10.6	10.7	10.8	10.9	2
3	11.0	11.1	11.2	11.3	11.4	11.5	11.6	11.7	11.8	11.9	3
4	12.0	12.1	12.2	12.3	12.4	12.5	12.6	12.7	12.8	12.9	4
5	13.0	13.1	13.2	13.3	13.4	13.5	13.6	13.7	13.8	13.9	5
6	14.0	14.1	14.2	14.3	14.4	14.5	14.6	14.7	14.8	14.9	6
7	15.0	15.1	15.2	15.3	15.4	15.5	15.6	15.7	15.8	15.9	7
8	16.0	16.1	16.2	16.3	16.4	16.5	16.6	16.7	16.8	16.9	8
9	17.0	17.1	17.2	17.3	17.4	17.5	17.6	17.7	17.8	17.9	9
10	18.0	18.1	18.2	18.3	18.4	18.5	18.6	18.7	18.8	18.9	10
11	19.0	19.1	19.2	19.3	19.4	19.5	19.6	19.7	19.8	19.9	11
12	20.0	20.1	20.2	20.3	20.4	20.5	20.6	20.7	20.8	20.9	12
13	21.0	21.1	21.2	21.3	21.4	21.5	21.6	21.7	21.8	21.9	13
14	22.0	22.1	22.2	22.3	22.4	22.5	22.6	22.7	22.8	22.9	14
15	23.0	23.1	23.2	23.3	23.4	23.5	23.6	23.7	23.8	23.9	15
16	24.0	24.1	24.2	24.3	24.4	24.5	24.6	24.7	24.8	24.9	16
17	25.0	25.1	25.2	25.3	25.4	25.5	25.6	25.7	25.8	25.9	17
18	26.0	26.1	26.2	26.3	26.4	26.5	26.6	26.7	26.8	26.9	18
19	27.0	27.1	27.2	27.3	27.4	27.5	27.6	27.7	27.8	27.9	19
20	28.0	28.1	28.2	28.3	28.4	28.5	28.6	28.7	28.8	28.9	20
21	29.0	29.1	29.2	29.3	29.4	29.5	29.6	29.7	29.8	29.9	21
22	30.0	30.1	30.2	30.3	30.4	30.5	30.6	30.7	30.8	30.9	22
23	31.0	31.1	31.2	31.3	31.4	31.5	31.6	31.7	31.8	31.9	23
24	32.0	32.1	32.2	32.3	32.4	32.5	32.6	32.7	32.8	32.9	24
25	33.0	33.1	33.2	33.3	33.4	33.5	33.6	33.7	33.8	33.9	25
26	34.0	34.1	34.2	34.3	34.4	34.5	34.6	34.7	34.8	34.9	26
27	35.0	35.1	35.2	35.3	35.4	35.5	35.6	35.7	35.8	35.9	27
28	36.0	36.1	36.2	36.3	36.4	36.5	36.6	36.7	36.8	36.9	28
29	37.0	37.1	37.2	37.3	37.4	37.5	37.6	37.7	37.8	37.9	29
30	38.0	38.1	38.2	38.3	38.4	38.5	38.6	38.7	38.8	38.9	30
31	39.0	39.1	39.2	39.3	39.4	39.5	39.6	39.7	39.8	39.9	31
32	40.0	40.1	40.2	40.3	40.4	40.5	40.6	40.7	40.8	40.9	32
33	41.0	41.1	41.2	41.3	41.4	41.5	41.6	41.7	41.8	41.9	33
34	42.0	42.1	42.2	42.3	42.4	42.5	42.6	42.7	42.8	42.9	34
35	43.0	43.1	43.2	43.3	43.4	43.5	43.6	43.7	43.8	43.9	35
36	44.0	44.1	44.2	44.3	44.4	44.5	44.6	44.7	44.8	44.9	36
37	45.0	45.1	45.2	45.3	45.4	45.5	45.6	45.7	45.8	45.9	37
38	46.0	46.1	46.2	46.3	46.4	46.5	46.6	46.7	46.8	46.9	38
39	47.0	47.1	47.2	47.3	47.4	47.5	47.6	47.7	47.8	47.9	39
40	48.0	48.1	48.2	48.3	48.4	48.5	48.6	48.7	48.8	48.9	40

Example—If point is 22.6 ft. above grade, how far should it be from center line to be a slope stake point? Ans. from Table 30.6. For same slopes but other widths of roadbed, correct above figures by one-half difference in width of roadbed; thus in example above, for 20 ft. roadbed distance will be  $30.6 + (20 - 16) \div 2$  or 2 ft. added to  $30.6 = 32.6$ . For slopes of 1 on  $1\frac{1}{2}$  see inside of back cover.

Copyright, 1914, by Eugene Dietzgen Co.

115

61.70  
10223  
13  
51415  
12443  
154245  
10.283  
41137  
61.70



MICROFILMED

APR 7 1965



La Jolla Blvd  
Curb Stakes

	W. cl	E. cl
Head of Bird Rock	75.85 end → 76.15	
32.55 on W + 23.5 on E = 00	76.30	76.30
+50		
+100		
+50		
+200		
+50		
+300		
+50		
B 400	80.00	80.10
B 450	80.10	80.20
B 500	80.00	80.10
5+350 N E 5+500 NW N 41° W		
5+70 " E Bird Rock Ave	79.80	79.70
S. Line Bird Rock Ave 0+30 S on W 0+29 S on E	79.10	78.80
+100	79.45	
+50	77.80	
B 200	76.50	76.75
+50	76.35	76.57
+300	76.20	76.39
+50	76.05	76.21
+200	75.90	76.04
+50	75.75	76.87
5+00	75.60	75.70

Indexed  
C.S.K.

83.75								
4.23								
79.52	E	76.30	76.77	77.25	77.72	78.20	78.67	79.15
3.00		7.45	4.98	6.50	6.03	5.55	5.08	4.60
82.52		7.32	4.90	6.41	6.05	5.70	5.28	4.80
5.91		+0.13	+0.03	-0.09	-0.02	-0.15	-0.20	-0.20
76.61	W	76.30	76.75	77.22	77.68	78.14	78.61	79.08
3.44		7.45	7.00	6.53	6.07	5.61	5.14	4.77
80.05		7.57	7.48	7.75	7.41	5.87	5.70	5.45
8.15		-0.12	-0.18	-0.22	-0.34	-0.26	-0.56	-0.68
74.90								
3.72	E	77.62	80.10	80.10	80.10	79.90	79.70	
77.62		4.13	3.45	3.55	3.65	3.85	4.05	
76.81		4.57	4.18	3.89	3.70	4.05	4.23	
79.80		-0.44	-0.53	-0.34	-0.65	-0.20	-0.18	
79.80	W	79.54	80.00	80.15	80.00		79.80	
		4.21	3.75	3.65	3.75		3.75	
		3.11	4.82	4.22	4.05		4.25	
		-0.80	-1.09	-0.57	-0.30		-0.30	
N.E. Cor	79.70	79.65	79.70	79.75	79.80	79.85		
		2.87	2.82	2.77	2.72	2.67		
		3.07	3.02	3.02	2.87	2.61		
		-0.20	-0.20	-0.25	-0.15	-0.06		
S.E. Cor	79.80	79.84	79.87			79.05	79.14	
		3.44	3.55			3.47	3.38	
		3.61	3.58			3.51	3.18	
		-0.83	-0.03			-0.03	-0.30	
W.N.E.T	79.80	79.70	79.60	79.60	79.50	79.40		
		2.82	2.92	3.02	3.02	3.12		
		2.14	3.82	3.67	3.67	3.26		
		-0.32	-0.50	-0.65	-0.65	-0.14		
SW Cor	79.10	79.20	79.25	79.10	78.90	78.65	78.40	
		3.42	3.32	3.27	3.42	3.62	3.87	
		3.99	3.69	3.70	3.74	3.98	4.13	
		-0.48	-0.37	-0.43	-0.32	-0.36	-0.26	
E	78.80	78.45	77.89	77.32	76.75			
		3.72	4.07	4.43	5.20	5.77		
		3.74	4.27	4.77	5.36	5.79		
		-0.02	-0.20	-0.14	-0.16	-0.06		
W	79.10	78.45	77.80	77.15	76.50			
		3.42	4.07	4.72	5.24	6.02		
		3.72	4.47	5.09	5.71	6.22		
		-0.48	-0.40	-0.36	-0.39	-0.20		
E	76.75	76.57	76.39	76.21	76.04	75.87	75.70	
		2.58	2.76	2.94	3.12	3.29	3.46	
		2.60	2.72	2.86	3.05	3.50	3.58	
		-0.02	-0.04	-0.32	-0.23	-0.21	-0.08	
W	76.50	76.35	76.20	76.05	75.90	75.75	75.60	
		2.98	3.13	3.28	3.43	3.58	3.73	
		3.14	3.65	3.73	4.13	4.35	4.44	
		-0.18	-0.52	-0.65	-0.80	-0.77	-0.75	



on w	Wed	Thu	Fri
5+80=8'00F			
N. Line Alley	75.45	75.60	5+30
5+72=8'50F			5+60=8'00F
S. Line Alley	75.39	75.51	N. Line Alley
		75.44	5+82=8'80F
			S. Line Alley
6+00	75.30	75.38	6+00
+25	75.22	75.30	+25
+44	75.16	75.22	+50
N. Forward			+68.5
+63	7 - 1.05 75.10	75.14	N. Line Forward
		75.10	5.20+87.0
W	75.00	74.90	
S. Line Forward			
+25	74.83	74.73	
+50	74.66	74.55	
+75	74.47	74.37	
1+00	74.30	74.20	
+25	74.13	74.03	
+50	73.95	73.84	
+75	73.77	73.66	
2+00	73.60	73.49	
+25	73.42	73.30	
+50	73.24	73.13	
+75	73.06	72.96	
3+00	72.89	72.78	
+25	72.72	72.60	
+50	72.54	72.43	
+75	72.37	72.25	
4+00	72.19	72.07	

	75.40	75.51	75.44	75.32	75.30	75.27	75.16	75.10
79.33	3.73	3.82	3.87	3.95	4.03	4.11	4.17	4.23
5.10	2.68	4.01	3.97	2.98	4.13	4.26	4.40	4.40
78.43	4.005	-0.19	-0.68	-0.02	-0.10	-0.16	-0.23	-0.17
76.86								
W	75.45	75.38	75.30	75.22	75.16	75.10		
	3.88	3.95	4.03	4.11	4.17	4.23		
	4.45	4.72	4.74	4.79	5.03	5.26		
	-0.77	-0.77	-0.71	-0.68	-0.86	-1.03		
N.E. Pt	75.10	75.05	75.05	75.40	75.95	76.50		
	4.24	4.24	3.93	3.38	2.83	2.83		
	4.68	4.46	4.26	4.06	2.73			
	-0.95	-0.18	-0.33	-0.68	-1.10			
N.W. Pt	75.10	74.80	74.30	73.90	73.35			
	4.23	4.53	5.03	5.55	5.98			
	5.26	5.29	5.67	5.92	6.18			
	-1.03	-0.76	-0.64	-0.29	-0.20			
S.E.	74.90	75.00	75.35	75.80	76.30			
	4.43	4.33	3.98	3.53	3.03			
	4.90	4.76	4.24	3.53	3.03			
	-0.47	-0.43	-0.26	0.0	0.0			
S.W.	75.00	75.00	74.76	74.52	74.24	73.80		
	4.33	4.23	4.57	4.81	5.05	5.32		
	5.27	5.33	5.55	5.72	5.65	6.05		
	-0.94	-1.00	-0.98	-0.91	-0.60	-0.52		
76.86								
4.93								
71.93								
E	74.90	74.73	74.55	74.27	74.20	74.03	73.84	
	1.96	2.13	2.31	2.49	2.66	2.83	3.02	
	2.43	2.57	2.86	2.59	2.66	2.81	3.04	
	-0.47	-0.44	-0.25	0.10	0.0	10.02	10.02	
W	75.00	74.83	74.65	74.47	74.30	74.13	73.95	
	1.86	2.03	2.21	2.39	2.56	2.73	2.91	
	2.88	2.88	2.71	2.68	2.82	2.98	3.16	
	-0.82	-0.50	-0.29	-0.24	-0.24	-0.25	-0.25	
E	73.66	73.49	73.30	73.13	72.96	72.78	72.60	
	3.20	3.37	3.56	3.73	3.90	4.08	4.26	
	3.23	3.43	3.54	3.73	3.77	4.03	4.22	
	-0.03	-0.06	+0.02	0.0	0.13	0.05	0.02	
W	73.77	73.60	73.42	73.24	73.06	72.89	72.72	
	3.09	3.26	3.44	3.62	3.80	3.97	4.14	
	3.23	3.46	3.50	3.79	4.29	4.57	4.76	
	-0.14	-0.20	-0.06	-0.17	-0.47	-0.62	-0.62	
E	72.43	72.25	72.07					
	4.43	4.61	4.79					
	4.54	4.66	4.92					
	-0.11	0.0	0.14					
W	72.54	72.37	72.19					
	4.32	4.49	4.67					
	5.02	5.32	5.18					
	-0.71	-0.83	-0.51					



4+25	72.02	71.90	
+50	71.85	71.72	
+75	71.67	71.54	
5+00	71.50	71.36	
+20	71.35	71.18	+25
N line Midway +40	71.20	71.00	+50

not E.C. 3 line  
Midway  
+50  
1+00  
+50  
2400  
2+55 on S  
2+45 on N = White Electric

Midway  
S ch N. cl

Culvert at Midway & La Jolla

Top cl. at cl. inlet	70.90	
Flowline	67.40	
+12	67.04	
+32	66.42	
+72 Hand Flowline	65.20	
W end Top cl	68.78	
	3	
	65.28	

71.93  
~~3.52~~  
75.45

E	71.90	71.72	71.54	71.36	71.18	71.00
	3.55	3.73	3.91	4.09	4.27	4.45
	3.64	4.04	4.03	4.15	4.39	4.48
	-0.09	-0.31	-0.12	-0.06	-0.12	-0.04
W	72.02	71.85	71.67	71.50	71.35	71.20
	3.43	3.60	3.78	3.95	4.10	4.25
	3.70	3.99	4.17	4.36	4.55	4.53
	-0.27	-0.34	-0.41	-0.41	-0.45	-0.28
N.W. Ret.	70.20	70.80	70.10	69.40	68.75	68.75
	4.63	5.35	6.05	6.75	6.75	6.75
	4.20	5.37	4.02	5.00	5.00	5.00
	-0.25	-0.02	2.03	-1.25	-1.25	-1.25
S.W. Ret	71.00	70.80	70.40	69.82	69.23	68.28
	4.45	4.65	5.05	5.63	6.22	7.47
	4.77	4.81	5.05	5.16	5.40	5.17
	-0.32	-0.26	0.0	0.47	0.82	0.0
N.E. Ret	71.00	70.95	70.90	70.95	71.00	
	4.50	4.55	4.55	4.50	4.45	
	4.40	4.45	4.38	4.20	4.20	
	+0.10	+0.10	+0.12	+0.25		
S.E. Ret	71.70	71.95	72.0	72.45	72.70	
	10.93	10.68	10.45	10.18	9.18	
	11.28	11.52	11.45	11.45	12.40	
	-0.70	-0.82	-1.02	-0.22		

82.88

N	72.20	74.88	76.96	79.04	81.12	83.00
	10.04	8.50	8.92	8.44	7.74	7.02
	10.20	8.24	8.10	7.87	7.01	6.66
	-0.22	-0.24	-0.18	-0.23	-0.25	-0.78
S	72.70	77.52	76.35	78.17	80.00	82.29
	8.36	6.53	4.71	2.88	2.88	0.59
	8.53	6.78	5.11	2.78	2.78	0.70
	-0.17	-0.25	-0.40	-0.13	-0.11	
	68.28					
	71.12					
	75.40					
	65.20	66.42	67.04	67.40		
	10.20	8.98	8.36			
	7.12	4.65	4.59			
	+3.08	4.33	+3.80			



La Jolla Blvd		
	Wed	Wed
S. Midway	71.00	
+17.55		
74.55	71.20	
00-67.55A		71.70
+50	72.30	72.30
+50		
+50		
+50		
3400		
+50		
4400 - N Line		
Collma on W	76.30	76.30
+50		
+50		
5 Line Collma		
on W # 55	77.80	
		+60 = N Line
		Collma on E
78.5		
97.0		76.00
141.0		
		#1 S.
185.0	73.50	73.00
		# 2 S. send

		50	100	200	
	E	71.70	72.30	72.87	73.44
		72.30	72.87	73.44	74.02
		72.87	73.44	74.02	74.57
		73.44	74.02	74.57	75.15
		74.02	74.57	75.15	75.73
		74.57	75.15	75.73	76.31
		75.15	75.73	76.31	76.89
		75.73	76.31	76.89	77.47
		76.31	76.89	77.47	78.05
		76.89	77.47	78.05	78.63
		77.47	78.05	78.63	79.21
		78.05	78.63	79.21	79.79
		78.63	79.21	79.79	80.37
		79.21	79.79	80.37	80.95
		79.79	80.37	80.95	81.53
		80.37	80.95	81.53	82.11
		80.95	81.53	82.11	82.69
		81.53	82.11	82.69	83.27
		82.11	82.69	83.27	83.85
		82.69	83.27	83.85	84.43
		83.27	83.85	84.43	85.01
		83.85	84.43	85.01	85.59
		84.43	85.01	85.59	86.17
		85.01	85.59	86.17	86.75
		85.59	86.17	86.75	87.33
		86.17	86.75	87.33	87.91
		86.75	87.33	87.91	88.49
		87.33	87.91	88.49	89.07
		87.91	88.49	89.07	89.65
		88.49	89.07	89.65	90.23
		89.07	89.65	90.23	90.81
		89.65	90.23	90.81	91.39
		90.23	90.81	91.39	91.97
		90.81	91.39	91.97	92.55
		91.39	91.97	92.55	93.13
		91.97	92.55	93.13	93.71
		92.55	93.13	93.71	94.29
		93.13	93.71	94.29	94.87
		93.71	94.29	94.87	95.45
		94.29	94.87	95.45	96.03
		94.87	95.45	96.03	96.61
		95.45	96.03	96.61	97.19
		96.03	96.61	97.19	97.77
		96.61	97.19	97.77	98.35
		97.19	97.77	98.35	98.93
		97.77	98.35	98.93	99.51
		98.35	98.93	99.51	100.09
		98.93	99.51	100.09	100.67
		99.51	100.09	100.67	101.25
		100.09	100.67	101.25	101.83
		100.67	101.25	101.83	102.41
		101.25	101.83	102.41	102.99
		101.83	102.41	102.99	103.57
		102.41	102.99	103.57	104.15
		102.99	103.57	104.15	104.73
		103.57	104.15	104.73	105.31
		104.15	104.73	105.31	105.89
		104.73	105.31	105.89	106.47
		105.31	105.89	106.47	107.05
		105.89	106.47	107.05	107.63
		106.47	107.05	107.63	108.21
		107.05	107.63	108.21	108.79
		107.63	108.21	108.79	109.37
		108.21	108.79	109.37	109.95
		108.79	109.37	109.95	110.53
		109.37	109.95	110.53	111.11
		109.95	110.53	111.11	111.69
		110.53	111.11	111.69	112.27
		111.11	111.69	112.27	112.85
		111.69	112.27	112.85	113.43
		112.27	112.85	113.43	114.01
		112.85	113.43	114.01	114.59
		113.43	114.01	114.59	115.17
		114.01	114.59	115.17	115.75
		114.59	115.17	115.75	116.33
		115.17	115.75	116.33	116.91
		115.75	116.33	116.91	117.49
		116.33	116.91	117.49	118.07
		116.91	117.49	118.07	118.65
		117.49	118.07	118.65	119.23
		118.07	118.65	119.23	119.81
		118.65	119.23	119.81	120.39
		119.23	119.81	120.39	120.97
		119.81	120.39	120.97	121.55
		120.39	120.97	121.55	122.13
		120.97	121.55	122.13	122.71
		121.55	122.13	122.71	123.29
		122.13	122.71	123.29	123.87
		122.71	123.29	123.87	124.45
		123.29	123.87	124.45	125.03
		123.87	124.45	125.03	125.61
		124.45	125.03	125.61	126.19
		125.03	125.61	126.19	126.77
		125.61	126.19	126.77	127.35
		126.19	126.77	127.35	127.93
		126.77	127.35	127.93	128.51
		127.35	127.93	128.51	129.09
		127.93	128.51	129.09	129.67
		128.51	129.09	129.67	130.25
		129.09	129.67	130.25	130.83
		129.67	130.25	130.83	131.41
		130.25	130.83	131.41	131.99
		130.83	131.41	131.99	132.57
		131.41	131.99	132.57	133.15
		131.99	132.57	133.15	133.73
		132.57	133.15	133.73	134.31
		133.15	133.73	134.31	134.89
		133.73	134.31	134.89	135.47
		134.31	134.89	135.47	136.05
		134.89	135.47	136.05	136.63
		135.47	136.05	136.63	137.21
		136.05	136.63	137.21	137.79
		136.63	137.21	137.79	138.37
		137.21	137.79	138.37	138.95
		137.79	138.37	138.95	139.53
		138.37	138.95	139.53	140.11
		138.95	139.53	140.11	140.69
		139.53	140.11	140.69	141.27
		140.11	140.69	141.27	141.85
		140.69	141.27	141.85	142.43
		141.27	141.85	142.43	143.01
		141.85	142.43	143.01	143.59
		142.43	143.01	143.59	144.17
		143.01	143.59	144.17	144.75
		143.59	144.17	144.75	145.33
		144.17	144.75	145.33	145.91
		144.75	145.33	145.91	146.49
		145.33	145.91	146.49	147.07
		145.91	146.49	147.07	147.65
		146.49	147.07	147.65	148.23
		147.07	147.65	148.23	148.81
		147.65	148.23	148.81	149.39
		148.23	148.81	149.39	150.00
		148.81	149.39	150.00	
		149.39	150.00		
		150.00			



Sewer Construction  
 14 Alley bet El Cajon & Howard  
 W Line 30 to W Line Kansas

8/11/44

S.E. El Cajon  
 & Ohio

BM	6.53	369.63	363.10	
T.P.	6.88	373.05	346	366.17
T.P.	5.25	373.75	4.55	368.50
00=W Line 30			13.83	359.92 359.92
+25			6.27	367.48 360.07
+50			5.90	367.85 360.22
+75			5.80	367.95 360.37
+100			5.12	368.63 360.52
+125			5.25	368.50 360.67
+50			5.29	368.46 360.82
+75			5.52	368.23 360.97
+100			5.52	368.23 361.12
+25			5.26	368.49 361.27
+50			5.02	368.73 361.42
+75			4.93	368.82 361.57
+100			5.12	368.63 361.72
+25			4.98	368.77 361.87
+50			4.74	369.01 362.02
3+80=W Line Kansas			4.69	369.06 362.20

Indexed  
 C.S.K.

5

Flow line present Pipe

+7.41 ✓
+7.63 ✓
+7.58 ✓
+8.11 ✓
+7.83 ✓
+7.64 ✓
+7.26 ✓
+7.17 ✓
+7.27 ✓
+7.31 ✓
+7.25 ✓
+6.91 ✓
+6.90 ✓
+6.79 ✓
+6.86 ✓



Lewis, 5<sup>th</sup>, 6<sup>th</sup> + Hillcrest Drive

11/13/25  
m.c.

Indexed  
C.S.K.

11.26

6

Sewers, Grading + Paving

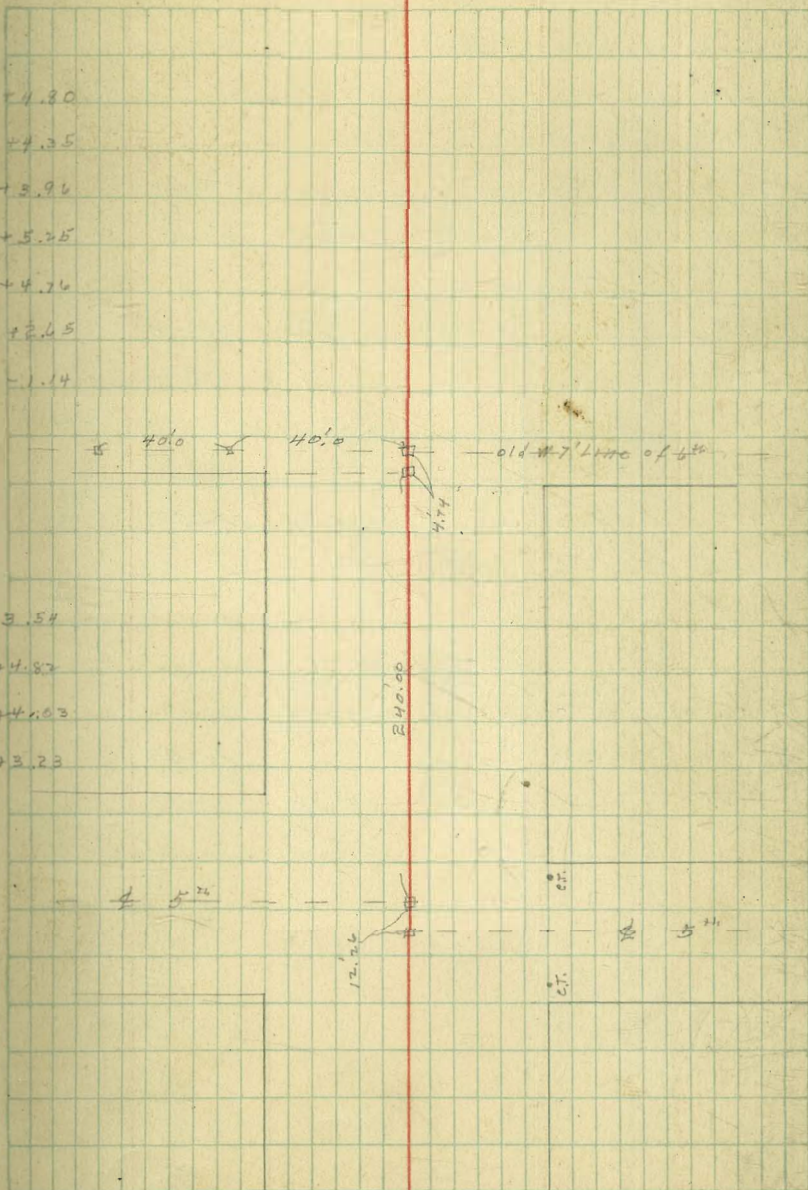
5<sup>th</sup> St Sewer  
289.30

00-MH 11				(278.77)	
Hillcrest Drive	10.58	278.72		278.72	
+50	5.63	283.67		278.87	+1.30
+100	5.93	283.37		279.02	+4.35
+50	6.17	383.13		279.17	+3.96
+400	4.73	384.57		279.32	+5.25
+50	5.07	384.23		279.47	+4.76
3400	7.03	282.27		279.62	+2.65
at 300 DE 110				(279.70)	
N of Lewis St	10.73	278.57		279.71	-1.14

6<sup>th</sup> St Sewer

289.94

00-MH 21					
Hillcrest Drive	5.55	284.39	280.25		+3.54
+50	4.02	285.92	281.10		+4.82
+100	4.54	285.38	281.35		+4.03
N of Lewis	5.04	284.86	281.63		+3.23





		Lewis St Grading			
		S d.	N d.	N. line	
E line of H <sup>th</sup> ch S.	S line	281.5			
86.24.0 = E line of 4 <sup>th</sup> ch N.	279.75	279.50	279.00	279.25	
+50	280.62				
1+10	281.67				
+50	282.37			282.25	
1+97.76 = N. line of 5 <sup>th</sup> ch S.					
2+00 = N. line of 5 <sup>th</sup> ch N.	283.25	283.00	283.00	282.25	
South E line of 5 <sup>th</sup>	283.75	283.50	283.50	283.75	North E line of 5 <sup>th</sup>
+50	84.07			284.10	+50
1+00	84.39			284.45	1+00
+50	84.71			284.80	+50
2+00	85.03		285.00	285.25	2+15
2+35 = W line of 6 <sup>th</sup>	286.25	285.00			

		5 <sup>th</sup> St Grading			
		E d.	w d.	w line	
N line of Lewis	E line	83.75	283.50	283.00	83.25
+50	282.90				82.60
1+18	281.75	281.50	281.50	281.75	

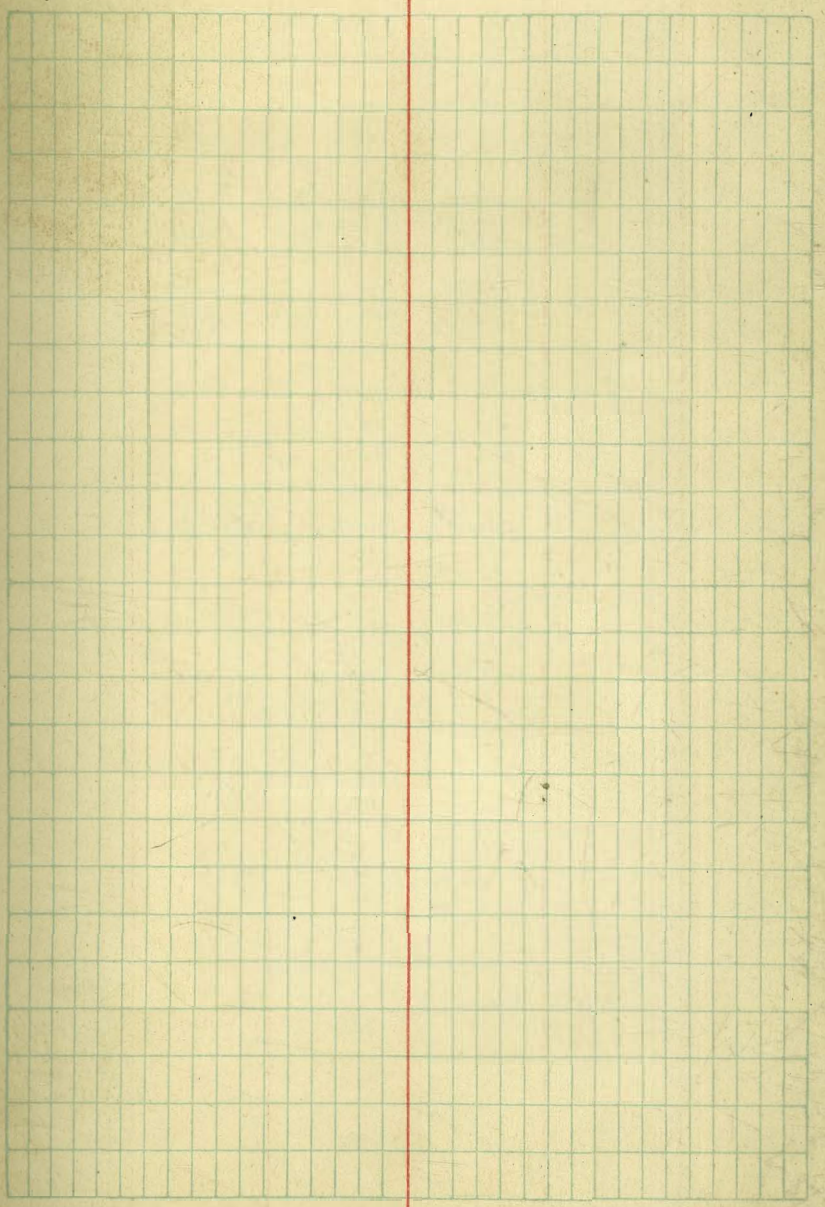
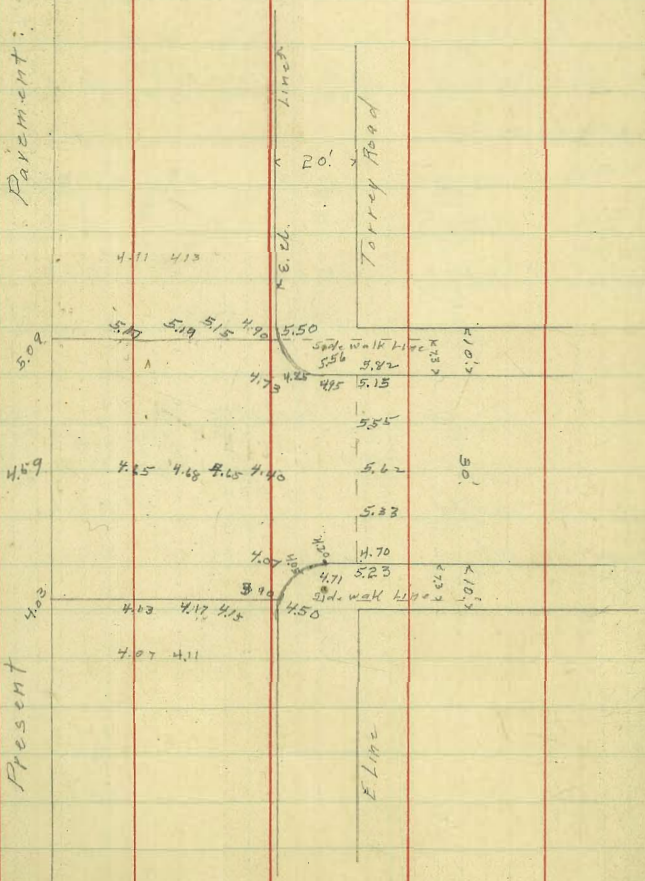
		289.30		4.35			
		289.30	6.35	282.95	18P SW Lewis 5 <sup>th</sup>		
289.30	289.30	281.50	279.75	280.62	281.67	282.37	283.00
284.77	7.2	9.6	8.7	7.6	6.9	6.30	
5.13	8.2	8.6	7.7	5.6	5.0	6.35	
289.94	2.4	0.0	+1.0	+2.0	+1.9	2.05	
	N	279.25				282.25	283.25
		12.0				7.0	6.0
		10.1				6.4	5.6
		-0.1				10.6	10.4
	S	283.50	84.07	84.39	84.71	85.03	85.25
		3.8	3.2	4.9	4.6	4.3	4.7
		5.93	3.2	3.8	4.6	3.8	4.8
		0.37	+2.0	+1.7	+1.0	4.0	-0.1
	N	83.75	84.10	84.45	84.80	85.25	
		5.6	5.2	4.9	4.3	4.7	
		4.1	4.2	3.5	3.5	3.1	
		7.5	+1.0	+1.4	+1.0	-0.4	
282.95	Lewis 5 <sup>th</sup>						
289.70	W	82.60	81.75	83.50	85.00		
		6.7	7.6	4.6	3.0		
		4.4	9.1				
		+0.30	1.8	83.00			
82.95	E	82.90	81.75	83.00			
5.15		6.4	7.6				
88.10		5.1	15.6	4.60	5.60	81.50	6.60
		+1.3	-8.0				
		83.95	84.60	85.00	5.10	4.37	
		4.2	3.6	4.70	6.68	4.66	
		4.1	3.9	5.35	11.90	3.1	
		+0.1	+0.6	10.00	5.86	3.75	
		84.00		5.02	15		
		5.70		4.17	6.00		
				.85			
287.97	287.50	288.00					
3.44	4.41	5.91					
281.91		7.5					
		7.10					
		4.41					



9.99 H.I. assumed

Pavement:

Present





Juniper St Paving  
Atlantic to Harbor

11/1/25

00 = W. Line Atlantic	N Line	S. Line
+50	0.75	8.75
	7.75	7.75
100 = E. Line Belt	6.75	6.75
1+50 = E	6.15	6.45
	Drop 0.3	6.15
200 = W. Line Belt	6.15	6.15
+50	5.80	5.80
300	5.45	5.45
+50	5.10	5.10
400	4.75	4.75
4+25 = E. Line Harbor	4.58	4.58
4+66	4.29	4.29
5+07 = Br. End Paving	4.00	4.00
6+00 Grade PT	3.85	3.85

30.97 B.M. N.E. Kettner & Juniper 29.02 N.W.

Indexed  
C.S.K.

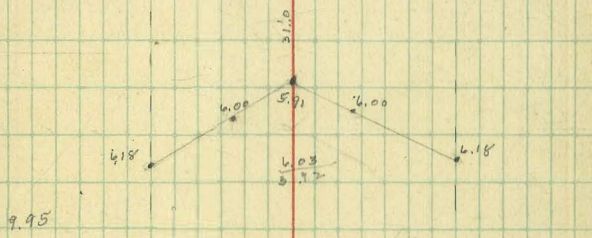
9

8.17	N	8.75	7.75	6.75	6.15	5.80	5.45	5.10
31.14		5.63	4.00	5.00	5.60	5.60	5.95	6.65
17.64		6.06	3.30	4.52	6.16	4.89	4.36	4.44
8.50		-0.47	10.60	10.48	-0.54	+0.71	+1.59	+2.21
6.51								
17.01	S	5.62	6.62	5.00	5.60	5.60	5.95	6.30
9.97		6.25	6.21	4.37	4.59	4.77	3.98	4.58
10.04		-0.63	+0.41	10.63	+1.01	+0.83	+1.97	+2.07
4.33								
4.31								
6.27								
8.16								
3.59								
11.75								

N	4.75	4.58	4.29	4.00
	7.00	7.17	7.46	7.75
	4.50	4.45	6.31	6.75
	+2.50	+2.72	+1.13	+1.00

S	7.00	7.17	7.46	7.75
	4.65	6.63	6.24	5.05
	+2.35	+0.54	+1.12	+2.70

700	3.72	3.58	3.72	4.00
4.79	4.01	3.87	4.01	4.79
4.58	4.20	4.16	4.20	4.58
6.85	5.87	5.73	5.87	6.85



6.75	6.47	6.33	6.47	6.75
	3.48	3.62		
7.75	7.47	7.23	7.47	7.75
	2.48	2.22		
8.95	8.47	8.23	8.47	8.95
	1.48	1.22		
8.55				8.55
9.00				9.00
9.27				9.27
9.27				9.27
9.35				9.35
10.00				10.00

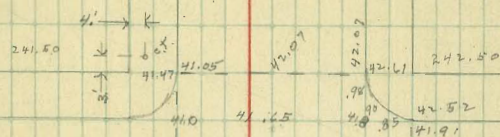


Couts + Guy Intersection  
Pavina

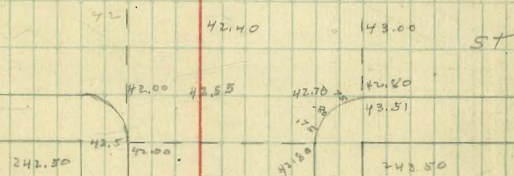
11/17/25  
mllh

Indexed  
C.S.K.

10



Couts





Bancroft St Grading

1/21/05

Woolman North

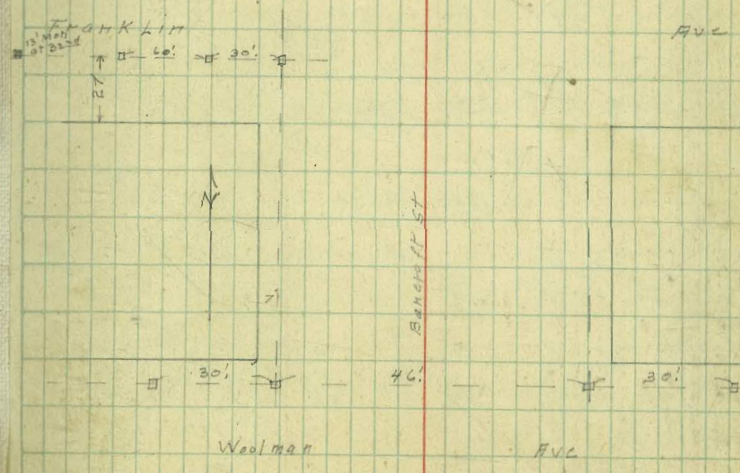
	Ed	W.C	W.Linc
00 = N. Line Woolman	32.25	32.00	34.00
+50	35.75		37.75
1+00	39.25		41.25
+50	42.75		44.75
BYK 2+00	46.25	46.00	48.00
+50	51.75		53.75
3+00 = S. Line Franklin	57.25	57.00	59.00
		56.00	58.00
00 = N. Line Franklin	59.25	59.00	61.00
+50	64.75		66.75
F.V.C. 1+00	70.25	70.00	72.00
+20		71.99	73.99
+40	73.81	73.86	75.56
+60		74.71	76.71
+80	75.69	75.44	77.44
2+00		75.74	77.74
+20	75.89	75.64	77.89
+40		75.11	77.11
+60	74.41	74.16	76.16
+80		72.79	74.79
3+00 = S. Line Clay	71.25	71.00	73.00
N. Line Woolman			
+50	32.25	32.00	34.00
+50	35.38		37.38
1+00	38.50		40.50
+50	41.62		43.62
2+00	44.75		46.75
BYK 2+40	47.25	47.00	49.00
S. Line Franklin			
3+00	56.25	56.00	58.00

Indexed  
C.S.K.

11

36.23 B.M. Top Hydr SW Woodman - Bancroft

	BYK						
10.73							
42.96							
0.27	W 34.25	37.75	41.25	44.75	48.25	53.75	59.25
46.69	12.7	9.2	5.7	2.2	1.15	0.10	0.5
13.02	11.5	8.1	5.5	1.8	10.9	6.1	10.5
59.76	+1.2	+1.1	+0.2	+0.4	+0.6	-0.1	+1.0
0.47							
59.29	Top of Post Said Bancroft						
12.68	E 14.7	11.2	7.7	4.2	46.25	8.0	2.5
77.97	13.7	10.8	6.7	5.2	0.7	10.0	10.4
0.18					2.5		
71.77	71.0	+0.4	+1.0	-1.0	-1.8	-2.0	-7.9
11.04							
82.83	W 61.25	66.75	72.25	75.81	77.69	77.89	76.41
	21.6	16.1	10.6	7.0	5.1	4.4	6.4
	9.7	6.9	4.8	3.2	2.3	1.4	1.2
	+11.9	+9.2	+6.3	+3.8	12.8	+3.5	+5.2
							0.10 High
	E 59.25	64.75	70.25	9.0	7.1	6.9	8.4
	12.72	7.2	1.7				7.25
	14.4	9.6	2.2	8.5	6.6	4.7	4.5
	-1.7	-2.4	-0.5	+0.5	+0.5	+2.2	+3.9
							+3.8
36.23	W 37.38	40.50	43.62	46.75	49.25		58.25
12.72	11.6	8.4	5.3	2.2	8.1		
48.45	10.1	7.4	3.8	0.1	5.0		
0.49	1.5	+1.0	+1.5	+2.1	+3.1		
48.46							
8.05							
57.31	E 13.6				47.25		56.25
	12.8	10.4	7.3	4.2	1.7		1.1
		8.0	7.2	4.5	1.7		8.0
	+6.8	+1.8	+0.1	-0.3	0.0		-4.9





Bancroft Grading

	E line	E. cl	W. cl	W line
00= N. Line Clay	68.25	68.00	70.00	70.25
+40	65.75			67.75
BK +80	63.25	63.00	65.00	65.25
+100	62.81			64.41
+50	61.47			63.67
+200	60.53			62.53
+50	59.39			61.39
200= S. Line Webster	58.25	58.00	60.00	60.25

	E line	E. cl	W. cl	W line
00= N. Line Webster	60.25	60.00	62.00	62.25
+65	62.00			64.00
BK +30	63.75	63.50	65.50	65.75
+54.60 MW	63.38	63.13	65.13	65.38

$$\begin{array}{r} 7.50 \\ 4.2 \\ \hline 3.3 \end{array}$$

$$\begin{array}{r} 59.20 \\ 7.9 \\ 9.1 \\ \hline 71.25 \end{array}$$

$$\begin{array}{r} 58.25 \\ 8.4 \\ 6.4 \\ +2.0 \\ \hline 74.49 \end{array}$$

$$\begin{array}{r} 49.25 \\ 5.08 \\ 2.00 \\ 3.1 \\ \hline 57.33 \end{array}$$

$$\begin{array}{r} 71.25 \\ 7.5 \\ \hline 78.75 \end{array}$$

$$\begin{array}{r} 74.49 \\ 4.3 \\ 0.5 \\ \hline 79.29 \end{array}$$

$$\begin{array}{r} 6.14 \\ 5.14 \\ \hline 1.00 \end{array}$$

71.00	E	68.00	63.00	58.00	60.00	63.50
2.42		5.42	10.42	7.35	6.35	1.85
73.42						
10.35						
63.07	N	70.00	65.00	60.00	62.00	65.50
21.28		3.42	8.42	5.35	3.35	
65.35						

	W	E	W	E	W	E	W	E
82.70	70.00	67.75	65.25	64.41	63.67	62.53	61.39	60.00
12.70	3.9	6.4	6.8	8.0	4.7	10.3	11.66	
70.00	12.70	18.3	3.8	1.0	2.8	4.0	7.4	11.47
1.50	0.13	14.2	2.6	5.8	5.2	5.7	2.9	0.19
71.60								
7.30								
64.30	E	65.25	5.9	8.4	8.4	10.0	6.53	58.25
5.76		3.4	15.7	16.7	14.8	14.6	6.9	11.0
72.00		20.4	3.8	-2.3	-6.0	-4.6	-4.7	-4.0
64.27	W	62.00	64.00	65.75	65.38	62.00	61.67	
1.87		9.66	7.7	5.9	4.6	4.24	4.6	
66.27		7.40	2.6	3.9	7.0	3.98	3.1	
		0.56	15.7	2.0	14.9	0.26	4.8	
	E	60.25	62.00	63.75	63.78			
		6.0	4.2	2.8	2.9			
		7.7	7.9	7.7	7.7			
		-1.7	-3.7	-5.2	-4.8			
36.23						WRET	WRET	
7.36	W	34.00	37.12	40.25	42.56	43.00	44.25	44.19
43.59		9.39	6.47	3.34	1.03	0.99	10.08	10.14
43.00								
54.33	E	11.59	4.47	5.34	3.03			12.14
0.18								
54.15								
2.48	W	46.50	49.00	58.00	58.50	60.50	61.00	
46.63		7.83	5.33	8.63	8.13	6.13	5.63	
0.13								
66.50								
12.25	E	9.83	7.33	10.63		9.13		76.3
78.75								
	W	66.50	72.00	73.99	75.34	75.79	76.96	76.81
		6.13	6.75	4.76	3.41	2.96	1.89	1.94
								77.44
								77.31
76.14	E	2.13	70.00	71.99	73.56			74.71
3.61			9.77	7.78	6.21			5.06
79.77								4.33
	W	77.74	77.64	77.11	76.16	74.79	73.10	
		1.01	1.11	1.44	2.59	3.96	5.45	
	E	75.74	75.64	75.11	74.16	72.79	71.00	
		7.03	4.13	4.46	5.01	6.98	8.77	



Redwood Paving

Indexed  
CSIK

4<sup>th</sup>

5<sup>th</sup>

70.83 71.26 71.29 71.22 70.76  
26

5<sup>th</sup>

72.44 72.32 72.47 72.13 72.24  
1.00

5<sup>th</sup>

5<sup>th</sup>

79.28 79.76 79.91 79.20 79.70 79.09 79.15  
1.07

Redwood

82.86 82.86 82.86 82.86 82.86 82.86 82.86  
107 107 107 107 107 107 107  
83 83 83 83 83 83 83

6<sup>th</sup>

5<sup>th</sup>

Indexed  
CSIK

Spruce Paving

13

4<sup>th</sup>

5<sup>th</sup>

72.00 72.27 72.44 72.19 72.70 72.29 72.11  
0.7

78.52 78.76 78.08 79.18 79.06 78.70 78.44  
0.7

5<sup>th</sup>

5<sup>th</sup>

80.94 81.47 81.65 81.49 81.97  
0.7

84.37 84.90 85.08 84.97 84.49  
0.7

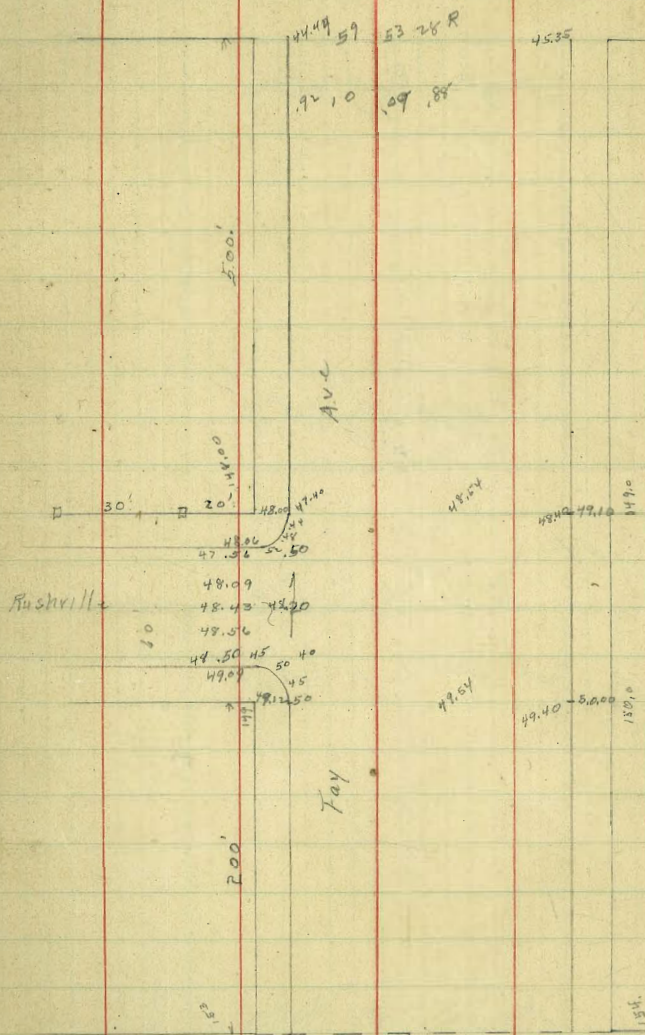
6<sup>th</sup>

5<sup>th</sup>



Fay St Paving

145.00      146.00



Indexed  
c.s.k.

144.14									
3.75									
151.75	W	45.00	45.00	45.30	45.60	45.90	46.20	46.50	46.80
1.75		1.90	1.90	1.60	1.30	1.00	0.70	0.40	0.10
150.00		6.64	6.76	6.15	6.30	5.93	5.75	5.30	4.90
6.25		+0.22	+0.14	+0.45	-0.02	+0.27	-0.05	+0.10	+0.02
153.40									
8.45	E	46.00	46.30	46.60	46.90	47.20	47.50	47.80	
5.90		5.90	5.60	5.30	5.00	4.70	4.40	4.10	
5.50		5.78	5.23	5.17	4.90	4.68	4.37	4.03	
4.90		+0.12	+0.37	+0.18	+0.10	+0.15	+0.03	+0.15	
	W	47.10	47.40	47.70	48.00	48.30	48.60	48.90	
		4.10	4.50	4.20	3.90	3.90	3.90	3.90	
		4.67	4.54	4.08	3.77	3.84	3.84	3.84	
		+0.13	-0.04	+0.17	+0.13	+0.06	+0.04	+0.29	
	E	48.10	48.40	48.70	49.00	49.30	49.60	49.90	
		3.90	3.50	3.20	2.90	2.90	2.90	2.90	
		3.93	3.27	3.91	2.78	2.78	2.78	2.78	
		-0.13	+0.23	+0.29	+0.12				
	W	51.00	52.00	53.00	54.00	55.00	56.00	57.00	
		5.10	4.40	3.40	3.40	3.40	3.40	3.40	
		5.15	4.42	3.84	3.84	3.84	3.84	3.84	
		+0.25	-0.02	-0.44					
	E	52.00	53.00	54.00	55.00	56.00	57.00	58.00	
		4.40	3.40	2.40	2.40	2.40	2.40	2.40	
		4.25	3.12	3.20	3.20	3.20	3.20	3.20	
		+0.05	+0.28	-0.80					

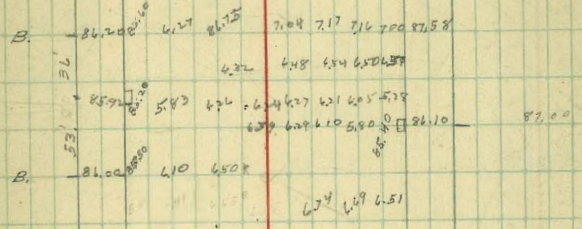
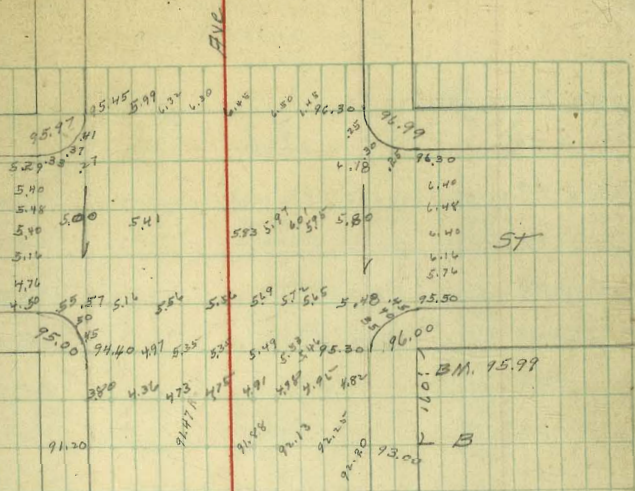






KLINE

ST



PEARL

ST

FAY



Alley BIK 208 Univ Hts  
 Grades Univ to Lindon  
 Brk Ohio + Illinois

1/30/26

	E. line	W. line
00 - N. line Univ	57.17	57.04
+45	57.68	57.32
Brk +90	58.2	58.00
+120	58.45	58.24
+150	58.70	58.54
+195	59.08	58.98
+45	59.46	59.44
3+00	59.93	59.95
+50	60.36	60.41
+100	60.79	60.87
+150	61.22	61.33
+200	61.65	61.79
+250	62.08	62.25
6400 S. line Lindon	62.50	62.70

Indexed  
 cr. BIK.

4.37 4.50  
 57.17 57.06

17

357.98 N.W. Univ. + Illinois

	Paying	Brk
361.56	4.50	58.00
4.23	57.04	58.28
361.54	4.02	58.56
2.18	3.85	58.98
359.36	+0.17	59.08
6.00	4.37	59.45
365.36	57.17	59.70
	3.86	59.98
	3.30	60.24
	+0.56	60.54
	59.44	60.87
	5.92	61.33
	2.70	61.79
	0.10	62.25
	+2.00	62.70
	4.41	63.10
	+1.00	63.50
	59.46	63.90
	5.90	64.30
	5.87	64.70
	+0.03	65.10
	62.25	65.50
	3.11	65.90
	2.63	66.30
	+0.48	66.70
	62.18	67.10
	2.23	67.50
	2.23	67.90
	+1.00	68.30



Eagle Penn Torrence & Alley BIKs 463  
 Paving 4 456 C.C. Seaman's Sub

Alley BIK 4.63

	N. line	S. line	
00-Width Eagle	255.42	255.46	255.25 cl
BK 440	57.40	57.20	
BK 480	258.50	258.30	House rd 0.5 for drainage
1+20			
1+60			
2+00			
2+40			
2+80			
3+20			
3+60			
BK 4+00	260.50	260.30	
W. end 4+40	259.00	259.00	

B.M. S.W. Penn & Eagle

INDEX

18

	BRK	BRK						
254.90	N	235.40	57.40	58.50	58.75	59.00	59.25	59.50
7.89			5.39	4.79	4.04	3.79	5.35	5.68
262.79			3.29	2.79	3.04	1.79	3.53	2.40
2.42			42.00	41.50	41.00	42.00	42.00	42.49
259.87						44.58		
4.71	S	55.20	57.20	58.30	3.55	8.80	9.05	59.30
264.58		7.59	5.59	4.49	4.26	5.78	5.53	5.24
			4.37	4.27	2.85	4.78	4.53	4.21
			40.70	40.22	41.41	40.90	41.00	41.07
	N	59.75	60.00	60.25		60.50		59.00
			4.83	4.58	4.32	4.08		5.54
			4.30	3.58	4.03	4.76		5.53
			40.53	41.00	40.20	-0.18		00
	S	59.55	59.80	60.05		60.30		59.00
			4.03	4.78	4.53	4.24		5.54
			5.24	5.71	4.40	4.24		4.54
			-0.25	-0.93	-0.27	.00		11.00



Alley BIK 456  
C.C. Seamans Add

	N. Line	S. Line
00= W. line Eagle 254.79		255.05
B +40	257.27	257.52
B +60	258.35	258.58
B +80	259.09	259.30
B +100	259.47	259.67
B +120	259.50	259.70
+165	259.16	259.36
+210	258.82	259.02
+255	258.47	258.69
B +300	258.15	258.35
B +20	257.86	258.06
B +40	257.20	257.50
+90	255.55	255.75
W. end 4+90	253.80	254.00

indexed

254.90 3M S.W. Eagle Penn

	N	B	B	B	B	B	B
264.22	54.70	57.27	58.35	59.09	59.47	59.50	59.16
5.54	9.52	6.95	5.87	5.13	4.75	4.72	3.04
258.66		5.06	4.80	4.94	4.80	4.80	4.40
4.24		+1.89	+1.07	+0.15	-0.05	-0.04	+0.66
262.92	54.90	57.52	58.58	59.30	59.67	59.70	59.36
	9.52	6.70	5.64	4.92	4.55	4.52	4.86
		2.50	4.34	4.61	4.43	4.62	4.58
		+3.20	+1.30	+0.31	+0.12	-0.10	+0.33
	N 58.82	58.49	58.15	57.86	57.30	55.55	53.80
	5.40	5.73	4.77	5.04	5.62	7.37	9.12
	5.21	3.73	3.77	4.06	5.88	8.53	11.77
	10.39	+2.00		+1.00	-0.26	-1.16	-2.65
	S 59.02	58.69	58.35	58.06	57.50	55.75	54.00
	5.20	5.53	4.57	4.86	5.42	7.17	8.92
	4.84	5.44	4.72	5.26	5.62	6.65	8.10
	+0.36	+0.05	-0.15	-0.40	-0.20	+0.48	+0.82
		58.69					
		4.23					
		4.17					
		10.06					



Tarred + +  
 E Line Eagle 163.55

	S. line	S. cl	N. cl
00 = E. Line Eagle	256.75	256.5	$\frac{5.07}{256.05}$ ✓
+50	257.25	257.00	$\frac{4.87}{256.55}$ ✓
	256.50	256.25	$\frac{5.31}{55.81}$ ✓
	255.85	255.60	$\frac{5.82}{55.30}$ ✓
	5.75		
	55.37		

BMSW P. Line Eagle

254.90					
6.22					
261.12	S	256.75	257.25	256.50	255.85
		4.87	3.87	4.62	5.3
		4.0	4.4	4.4	4.7
		10.4	-0.5	+0.2	0.6















Pearl St Paving  
La Jolla Blvd Paved

32.74

77.44 78.70  
77.47 78.90

77.80 77.90

77.94

Cuvier

ST

80.30 81.00  
81.00 80.30

85.80 87.44  
88.90 87.46

ST

89.24 89.45

88.45 88.97  
89.00 89.45

Draper

ST

90.25 90.95  
91.00 90.25

89.25 89.92  
89.45 90.00

Pearl

101.00 101.03  
102.00 101.45

99.44 99.50  
99.50 99.90

Ends

ST

102.00 102.40

99.55 100.44  
100.50 100.50

Indexed  
C.S.K.

24

Fay ST Paved

113.60 113.80  
113.80 113.53  
114.00 113.50  
113.50 113.50

111.70 111.70  
111.70 111.70  
111.70 111.70  
111.70 110.57

Gipard ST

114.30 115.05  
115.05 114.30

111.70 111.70  
111.70 111.70  
111.70 111.70

FAY ST  
[Pearl]







BM 6583 SW Lament & Garnet.

Index  
c.s.k.

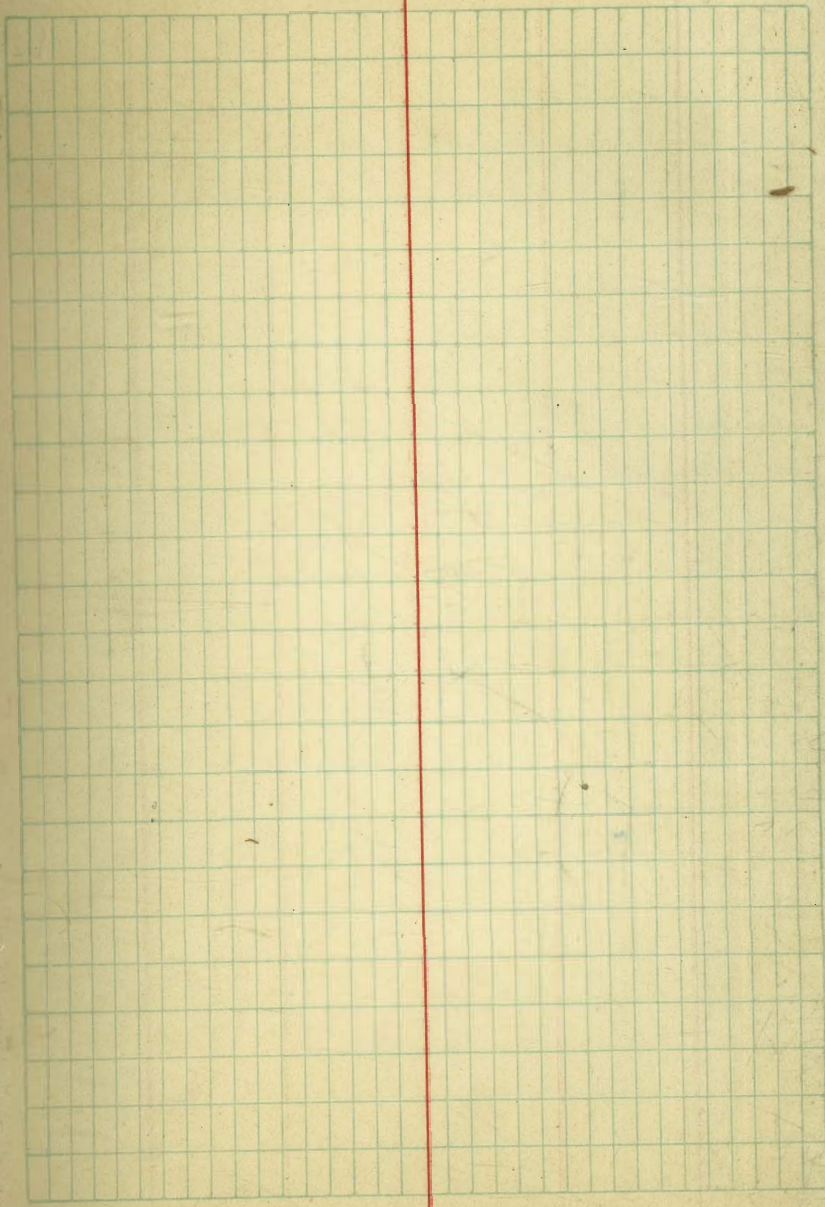
5.99  
71.82  
5.52 SE, Morrel  
66.30 64.50  
2.45 54.05  
68.75  
64.30 B.P.N.W. Morrel & Garnet 58.80 Pav 5.11 Pav 4 S.W. S  
0.91 5.21 7.20 7.46 5.71 61.75 11.50  
67.41 62.00 59.95 59.73 61.50 5.46 5.71  
5.19 N.E.  
62.02 B.P.N.W. Hayes & Garnet 46.43  
3.73  
42.70

27.75 62.02 62.30 62.57 62.85 63.12 63.40 63.67 63.95  
5.46 5.19 4.91 4.64 4.36 4.09 4.48 4.21 3.93  
63.12 64.22 64.50  
4.76 3.56 3.28  
67.88

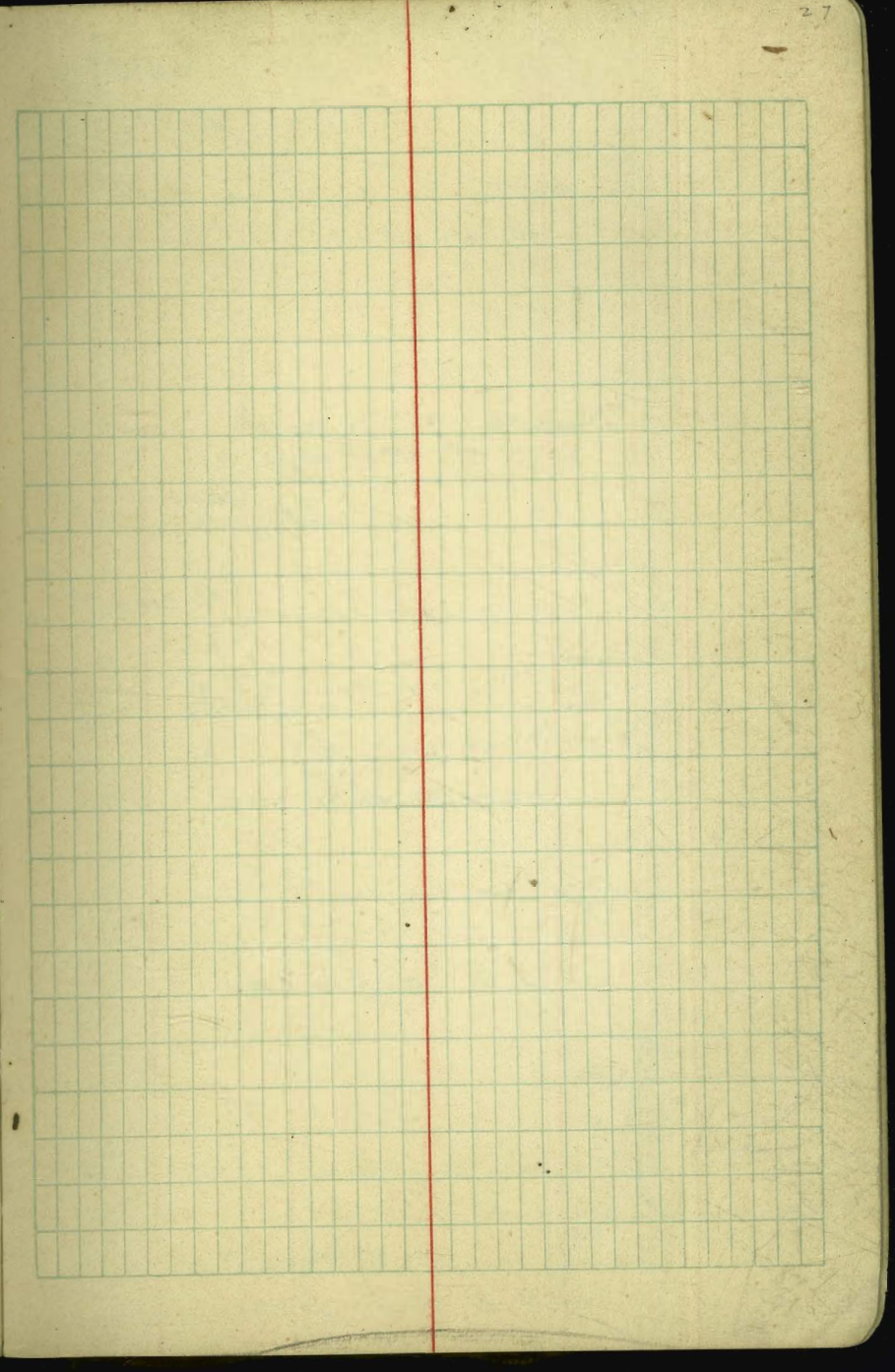
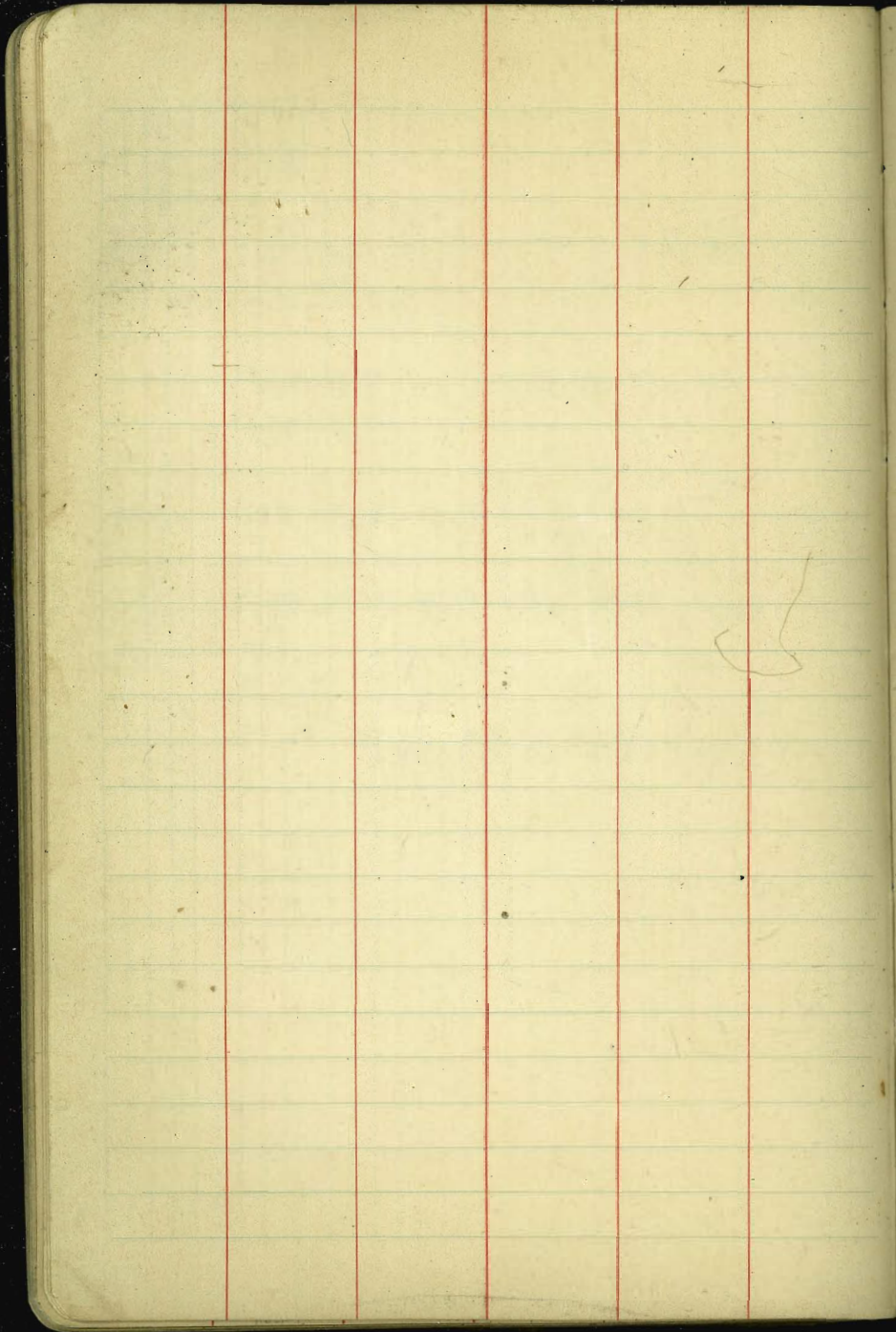
42.02 40 40 40 40 B. 56.47  
60.28 60.00 58.57 57.13 55.69 54.25 52.59  
62.30 2.30 3.13 5.17 6.61 8.05 9.76  
10.93  
51.37  
1.98

53.38 50.92 49.25 47.59 45.92 44.25 43.75  
9.10 2.43 4.10 5.76 7.43 9.10 2.68  
44.75  
2.18 40.43  
41.43 1.33  
45.10 B.P.N.W. Garnet & Olney

40.50 39.95 38.90 37.85 36.80 35.75  
6.48 7.53 8.58 9.63 10.68









Ivanhoe, Cave & Wall Ravine

Prospect ST

1.37 4.96 5.20 5.09 4.63

Ave

7.77 7.25 7.90 8.20 8.15 7.75 8.44

7.94  
8.49 8.90  
7.90 8.00 8.42

909  
936 Cave St

923

B 544 8.00 8.41 8.86

7.93 8.60 8.91 8.84 8.50 9.07 B

Ivanhoe

8.07 7.67 8.44 8.93 9.04 8.80 9.48

5.63  
5.97  
6.05  
6.63  
6.64  
6.12  
8.84 8.10 8.30 8.50 8.70 8.90 9.10 9.30 9.50 9.70 9.90 10.10 10.30 10.50 10.70 10.90 11.10 11.30 11.50 11.70 11.90

WALL ST

9.70 9.64 9.30 10.00 B

9.50 9.00 9.12 10.10 10.15 9.80 10.58

Herschel St. Fared

Indexed  
c.s.K.

28

Wall

ST

9.50 9.00 9.13 10.10 10.13 9.80 10.58

112.03 11.50 12.46 12.07 12.34 113.21 B 114.05

117.62  
B 118.05 - 117.50 118.66 119.44 119.79 119.75 120.50

19.96 20.16 20.96 21.36 21.26 22.62

21.45  
22.14 IRVING PLACE

22.88

22.98

23.25 - 23.61

23.98

23.12 - 23.54

21.74 22.83 23.57 23.81 23.70

76

106

123.06 128.56

2422 175.09

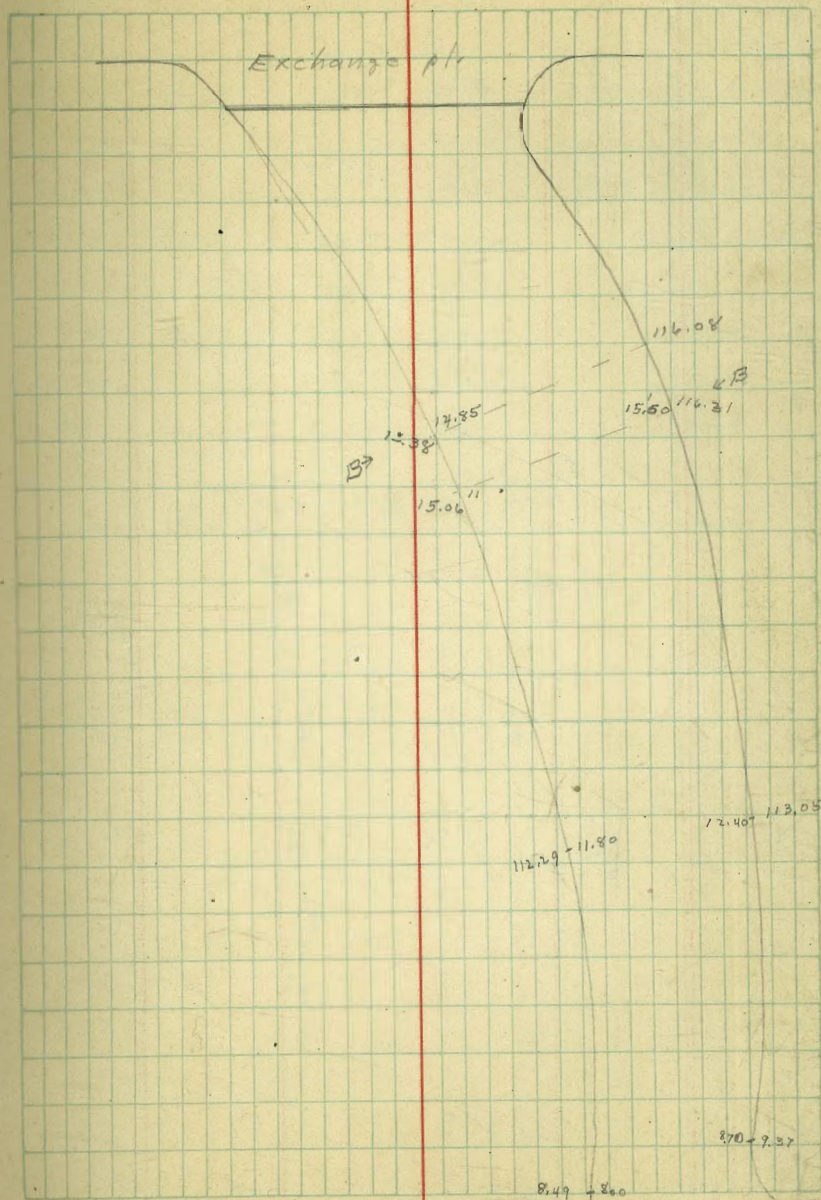
Silverado St



Case St Paving

indexed  
C. S. K.

29



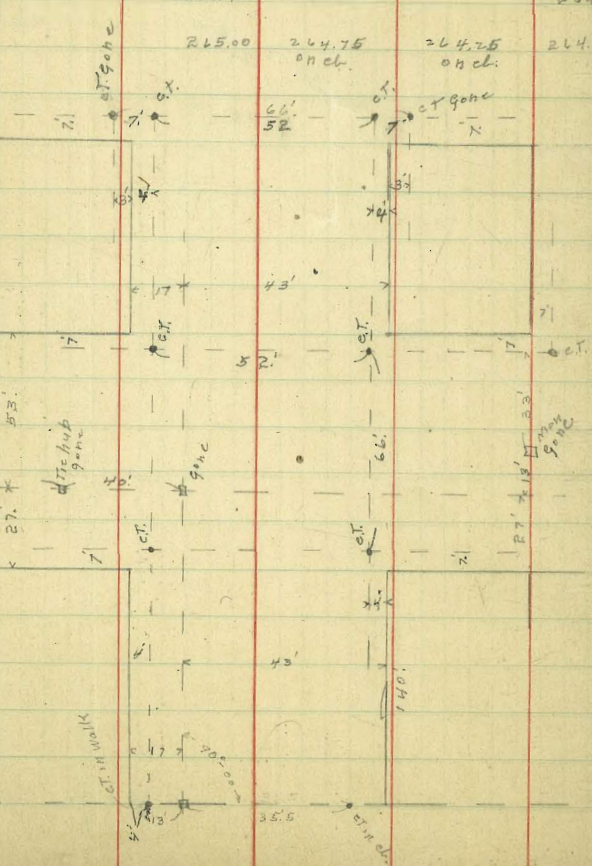
IVANHOE



Hite St Grading  
Sutter St South

12/18/24  
walk

	W. line	W. cl	E. cl	E. line
00 = S. Line Sutter	269.25	268.81 269.00 ← walk	266.35	266.60
+57.5	269.53			266.67
B. 1418 N. Line Hillery = 00	267.82	267.67	266.50	266.75
+33.33	267.46			266.59
+26.67	267.10			266.42
1460 = N. Line Park Ave	266.75	266.5	265.00	266.25
00 = S " " "	266.25	266.00	265.50	265.75
+46.67	265.84			265.34
+93.33	265.42			264.92
1440.00	265.00	264.75 on ch.	264.25 on ch.	264.50



Indexed  
C.S.K.

266.55 B.M. Top wall N.W. Torrence & Kite

	W	E	W	E
	68.53	67.82	67.46	67.10
	3.8	4.5	4.7	5.2
	30.1	2.8	3.6	3.5
	+1.7	+1.7	+1.3	+1.7
				+2.1
	66.47	66.75	66.59	66.42
	5.7	5.6	5.7	5.9
	6.9	7.9	6.0	6.4
	-1.2	-2.3	-0.3	-0.3
				0.0
	66.25	65.84	65.42	
	6.1	6.5	6.9	
	3.0	3.1	4.3	
	+3.1	+3.4	+2.6	
	65.75	65.34	64.92	
	6.6	7.0	7.4	
	4.3	4.4	5.4	
	+2.3	+2.6	+2.0	



Sutter St Grading  
Pringle to 150' E

	S line	S. cl	¢	N. cl
00 = E line Pringle	265.35	265.10	265.6	266.0
+50	259.98		259.9	260.0
+100	254.62		254.2	254.0
+50	249.25	249.00	248.5	248.00

Neale St Grading  
Pringle to 150' E

	S. cl	¢	N. cl	N. line
00 = E line Pringle	252.14	253.0	254.03	254.15
B + 50	251.5	252.5	253.5	253.75
+100	247.75	248.5		249.50
+50	244.0	244.5	245.00	245.25

Neale St Grading  
Pringle to 150' E

	S. cl	¢	N. cl	N. line
00 = E line Pringle	252.14	253.0	254.03	254.25
+50		248.94		250.08
+100		244.87		245.91
B + 120	242.5	243.25	244.0	244.25
+150		235.42		236.42

Indexed  
C.S.K.

			254.25	248.25
265.07			2.1	8.1
272				13.2
26779	2.69			15.2
265.10				5.1
256.34				
249.98	S	265.35	259.98	254.62
11.10			7.8	13.2
261.00			3.4	7.9
11.10			+4.2	+5.3
249.90	¢	265.6	259.9	254.2
0.69			7.9	13.6
250.59			6.1	11.0
			+7.8	+2.6
				-3.8

8.86 6.07  
252.14 257.03

N	253.75	249.50	245.25
	7.2	11.5	
¢	252.50	248.50	244.50
	8.5	12.5	

254.03	N	250.08	245.91	244.25	236.42
1.75		5.7	9.9	11.5	19.4
255.78		2.0	5.9	7.3	12.2
		+3.7	+4.0	+4.2	+7.2
	¢	248.94	244.87	243.25	235.42
		6.8	10.9	12.5	20.4
		6.1	10.6	12.6	17.8
		+0.7	+0.3	-0.1	+2.6



Cedar St Paving

28<sup>th</sup>

ST

218.97 178.45 19.28 18.95 219.52

12.64 13.39 13.74 13.83 13.84

BM. 212.99  
1.67  
220.66

Granada Paved AVE

10.85 12.88 11.98 12.04 11.74

12.21 12.93 13.83 13.34 13.11

29<sup>th</sup> Paved ST

12.74 13.66 14.03 14.06 13.77

15.94 15.89 16.05 15.87 15.94 16.00

16.13 16.52 16.59 16.36 17.09 17.10 16.60 17.08 17.23 17.93 16.50

Dale

ST

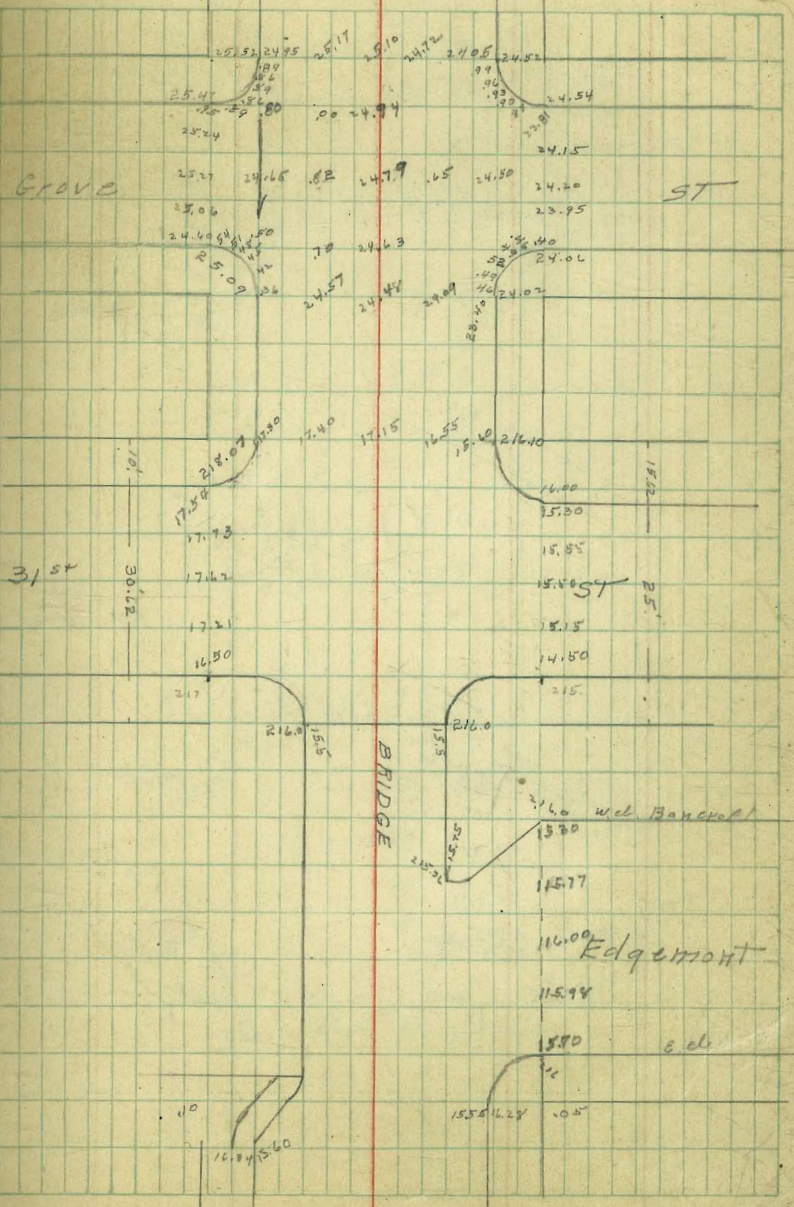
BM. 217.09

30<sup>th</sup> Paved ST

Fern Paved ST

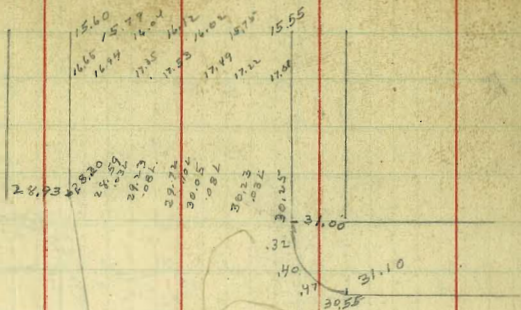
24.20 24.71 24.83 24.65 24.19

Indexed  
C.S.K.

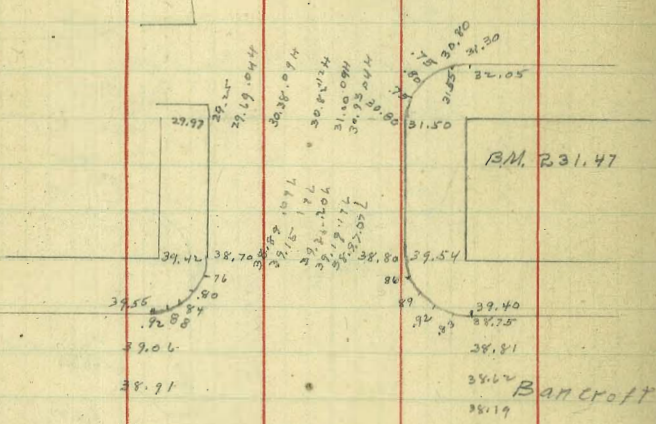




Cedar ST Paving

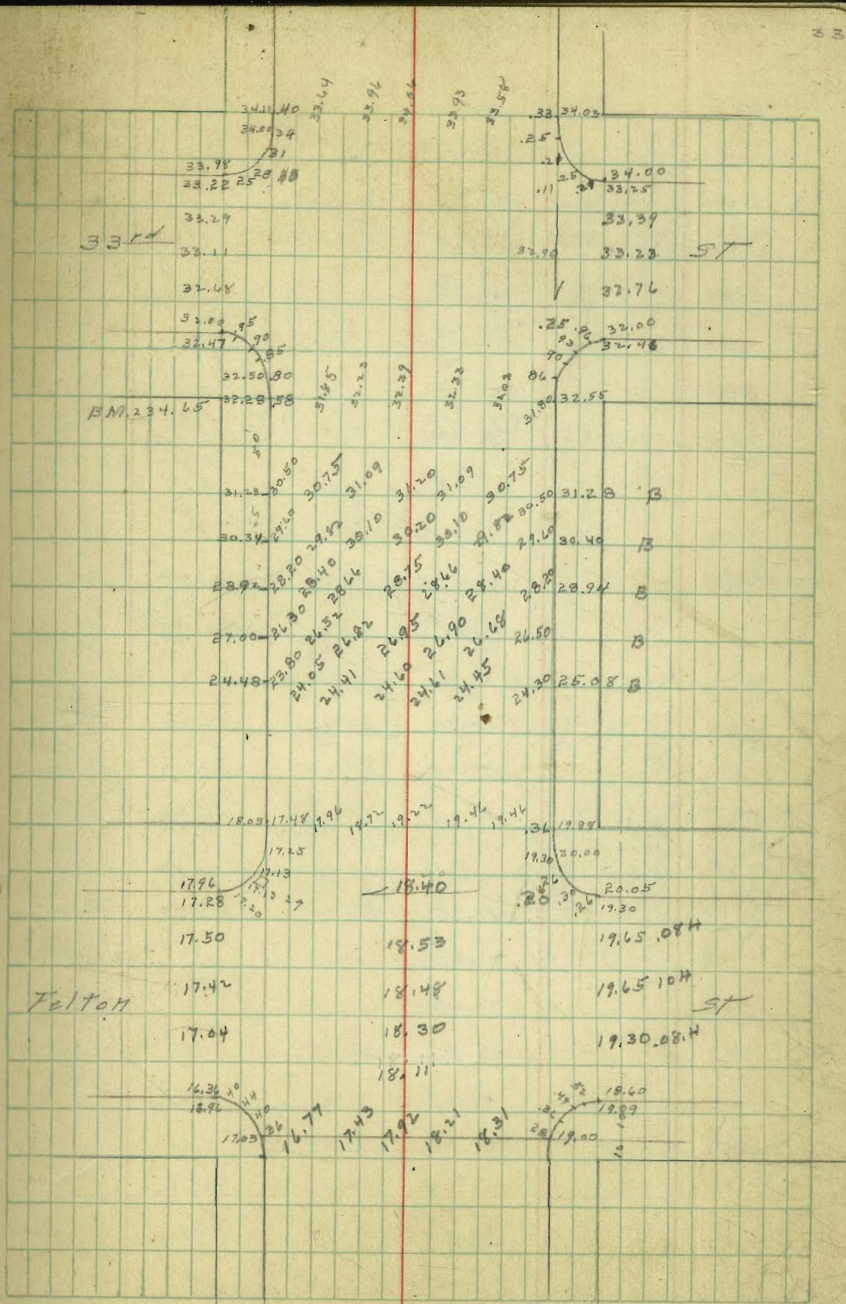
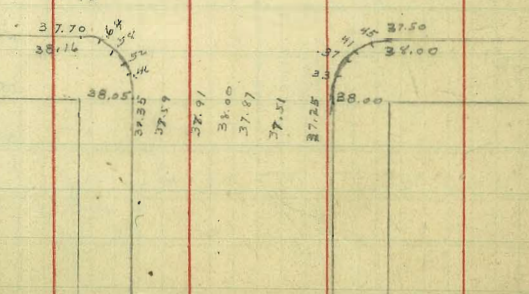


32<sup>nd</sup> ST



B.M. 231.47

Bancroft



33<sup>rd</sup> ST

32<sup>nd</sup> ST

Felton



	S. line	S. d.	N. d.	N. line
000 E. line 36 <sup>th</sup>	49.85	49.00	50.00	50.25
+50	49.43			50.43
1000	49.62			50.62
+50	49.80			50.80
2000	49.99			50.99
+50	50.17			51.17
3000	50.36			51.36
+50	50.54			51.54
4000	50.73			51.73
+50	50.91			51.91
BxK 5000	51.10	50.85	51.85	52.10
" 400	51.35	51.10	52.10	52.35
" 400	51.96	51.71	52.71	52.96
" 400	52.93	52.68	53.68	53.93
" 400	54.25	54.00	55.00	55.25
000 W. line 37 <sup>th</sup>	55.75	55.50	56.50	56.75
000 E. line 37 <sup>th</sup>	57.25	57.00	58.00	58.25
+50	61.34			62.11
1000	65.44			65.94
BxK 1400	68.71	68.46	68.82	69.07
" 400	70.25	70.00	70.24	70.53
" 400	71.61	71.36	71.58	71.83
" 2000	72.78	72.53	72.70	72.95
" 400	73.80	73.55	73.67	73.92
" 400	74.61	74.36	74.46	74.71

	N. 50.2	50.4	50.6	50.8	51.0	51.2	51.4	51.5
	6.0	5.8	5.6	5.4	5.2	5.0	4.8	4.7
	5.5	2.6	2.6	3.1	3.7	5.1	7.2	4.0
	+0.5	+3.2	+3.0	2.3	+1.5	-0.1	+1.6	+4.7
	7.0	6.8	6.6	6.4	6.2	6.0	5.8	5.7
	8.0	3.8	5.6	5.4	5.2	6.0	7.8	8.4
	-1.0	+3.0	+1.0	+1.0	+1.0	0.0	+2.0	+1.3
	60.17	51.7	51.9	52.10	53.0	53.9	60.2	60.2
	7.18	8.5	8.3	8.1	7.2	6.3	5.6.7	5.6.7
	52.97	4.6	7.0	8.1	6.2	6.3	3.5	3.5
	3.22	+3.9	+1.3	0.0	+1.0	-0.4	5.7	5.7
	56.21	9.5	9.3	9.1	8.2	7.3	4.5	4.5
	11.76	10.7	14.5	9.1	12.5	10.0	7.3	7.3
	44.25	-1.2	-5.2	0.0	-4.3	-2.7	-2.8	-2.8
	0.28	60.2	62.1	64.0	67.1	71.8	73.9	73.9
	43.00	2.0	10.4	6.5	5.4	13.5	11.4	11.4
	1.99	2.3	11.4	8.3	5.3	12.9	10.1	10.1
	37.01=36.98	-0.3	-1.0	1.8	-1.9	+0.6	+1.3	+1.3
	2.11=24.14	57.2	61.3	65.4	68.7	71.6	73.8	73.8
	1.5.8	7.7	7.7	3.8	73.7	11.5	11.5	11.5
	12.4	9.3	4.5	0.6	10.7	9.3	9.3	9.3
	55.50	+2.7	+1.9	+2.6	+3.2	+3.0	+2.2	+2.2
	2.5	50.00	51.85	52.10	52.71	53.64	55.00	56.50
	57.02	4.73	6.7	5.3	5.31	4.34	3.02	1.32
	0.94	49.00	50.85	51.10	51.71	52.68	54.00	55.50
	37.08	5.73	7.17	6.72	6.31	5.34	4.02	2.32
	58.02	14.0	12.82	10.24	7.58	72.70	73.67	74.46
	6.29	10.51	12.44	10.98	9.68	8.52	7.59	6.80
	51.93	57.00	68.46	70.00	71.36	72.53	73.55	74.36
	2.80	1.02	0.05	3.73	2.41	1.24	7.71	6.90
	54.73	5.32	7.7	7.7	7.7	7.7	7.7	7.7
	57.04	73.77						
	12.43							
	68.51							
	0.06							
	68.45							
	5.32							
	72.53							
	3.73							
	81.26							

49.4  
5.3  
2.3  
+3.0 C.A.K.



Logan Ave Grading

	S. Line	S. C	N. C	N. Line
Brk +60	75.24	74.99	75.09	75.34
" +80	75.70	75.45	75.55	75.80
E.C. " 3+00	75.96	75.71	75.85	76.10
" +500	76.41			76.64
" +800	76.86			77.17
Brk 4+60	77.39	77.14	77.57	77.82
" +80	77.68	77.43	77.91	78.16
" 5+00	78.21	77.96	78.49	78.74
" +20	78.96	78.71	79.32	79.57
" +40	79.95	79.70	80.40	80.65
4+00=W Line 38 <sup>th</sup>	83.25	83.00	84.00	84.25
6+2 Line 38 <sup>th</sup>	84.25	84.00	85.00	85.25
Brk +20	85.25	85.00	86.00	86.25
" +40	86.18	85.93	86.93	87.18
" +60	86.94	86.69	87.69	87.94
" +80	87.64	87.39	88.39	88.64
" 1+00	88.02	87.77	88.77	89.02
" +20	88.32	88.07	89.07	89.32
" +40	88.47	88.22	89.22	89.47
2+00	88.70			89.70
+50	88.89			89.89
3+00	89.08			90.08
+80	89.28			90.28
4+00	89.47			90.47
+50	89.66			90.66
5+00	89.86			90.86
+50	90.05			91.05
6+00=W Line 39 <sup>th</sup>	90.25	90.00	91.00	91.25

76.58 Nat 38<sup>th</sup> S.S.R.P.

	N	75.3	76.1	76.6	77.2	77.8	78.7	80.6	84.2
80.40		10.10	9.2	8.7	8.1	7.5	6.6	4.7	1.1
85.28		8.4	7.4	6.6	6.4	7.2	5.5	3.7	0.3
		+1.6	2.1	2.1	+1.7	+0.3	+1.1	+1.0	+0.8
	S	75.2	76.0	76.4	76.9	77.4	78.2	80.0	83.2
		10.1	9.3	8.4	8.4	7.9	7.1	5.5	2.1
		8.7	7.2	6.1	5.3	4.3	3.5	2.7	1.1
		+1.4	+0.1	-0.2	+0.1	-0.4	-0.4	-0.4	-2.0
90.43-13 MCH 39 <sup>th</sup> Logan									
95.72	N	85.2	87.2	88.6	89.3	89.5	89.7	89.9	90.1
		10.7	8.7	7.3	6.6	6.4	6.2	6.0	5.8
		7.5	5.9	4.9	3.9	4.0	3.8	3.7	4.5
		+3.2	+2.8	+2.4	+2.7	+2.4	+2.4	+2.3	+1.3
	S	84.2	86.2	87.6	88.3	88.5	88.7	88.9	89.1
		11.7	9.7	8.3	7.6	7.4	7.2	7.0	6.8
		11.7	9.6	8.2	7.3	6.8	6.1	6.0	6.2
	CHK	0.0		-0.4	+0.3	+0.6	+1.1	+1.0	+0.6
	N	90.3	90.5	90.7	90.9	91.0	91.2	91.4	91.6
		5.6	5.4	5.2	5.3	4.9	4.7	4.5	4.3
		4.5	5.0	3.3	2.5	3.5	3.8	3.7	4.5
		+1.1	+0.3	+1.9	+2.5	+1.4	+0.1		
	S	89.3	89.5	89.7	89.9	90.0	90.2	90.4	90.6
		6.6	6.4	6.2	6.0	5.9	5.7	5.5	5.3
		7.2	7.6	7.0	6.1	5.5	4.6	4.1	3.6
		-0.6	-1.2	-0.8	-0.1	+0.4	+1.1		
81.26									
0.87	N	75.09	75.55	75.85	77.57	77.91	78.49	79.37	80.40
80.39		6.17	5.71	5.41	3.69	3.25	2.77	1.94	0.86
5.03									
85.42	S	74.99	75.45	75.71	77.14	77.43	77.96	78.71	79.70
		6.4	5.81	5.55	4.12	3.83	3.30	2.55	1.56
	N	84.00	85.00						
		1.42	1.02						
	S	83.00	84.00						
		2.42							
76.58									
13.15	S	84.00	85.00	85.93	86.69	87.39	87.77	88.07	
89.73									
0.51									
89.22									
5.15									
94.37									
	S	88.22	90.00						
		1.51							























Woden St Grades - Main to Accacia

	E. Line	E. ch.	W. ch.	W. Line
000 N. Line				
Main St	10.25	10.00	10.50	10.75
+50	10.50			11.2
+100	10.7			11.6
+50	11.0			12.0
2+00	11.2			12.4
+50	11.5			12.8
3000 S. Line				
Dalkergin 000 N. Line	11.75	11.50	13.00	13.25
Dalkergin	12.25	12.00	13.50	13.75
+50	13.5			14.9
+100	14.9			16.1
+50	16.2			17.2
2+00	17.5			18.4
+50	18.9			19.6
3000 S. Line				
Cottonwood	20.25	20.00	20.50	20.75

Indexed  
c.s.K.

	E.	W.	E.	W.	E.	W.	E.	W.
12.07								
6.44								
18.51								
0.36								
17.15								
10.94								
28.99								
14.51								
3.91								
14.60								
10.2	10.5	10.7	11.0	11.2	11.5	11.7		
8.3	8.0	7.8	7.5	7.3	7.0	6.8		
7.0	3.8	3.5	4.0	4.9	6.6	6.9		
+1.3	+0.7	+4.3	+3.5	+2.4	+0.4			
10.7	11.2	11.6	12.0	12.4	12.8	13.2		
7.8	7.3	6.9	6.5	6.1	5.7	5.3		
6.5	4.3	2.0	3.6	3.6	3.5	3.0		
+1.3	+3.0	+1.7	+2.9	+2.5	+2.2	+2.3		
12.2	13.5	14.8	16.2	17.5	18.9	20.2		
6.3	5.0	3.6	2.3	1.0	10.0	8.7		
6.4	6.0	6.2	5.8	2.6	12.7	10.0		
+0.1	-1.0	-2.8	-3.5	-1.6	-2.7	-1.3		
13.7	14.9	16.1	17.2	18.4	19.6	20.7		
4.8	3.6	2.4	1.7	10.5	9.3	8.2		
2.9	1.0	1.0	11.1	10.2	8.6	7.7		
+2.8	+2.6	1.4	+0.6	+0.3	+0.7	+0.5		







Newton Ave Grades  
S. ab. N. ab.

5+00	✓	72.3			71.4
8+20	✓	73.43	73.18	72.29	72.54
B+40			73.90	73.26	
B+60	✓	74.50	74.25	73.95	74.20
B+80			74.40	74.36	
600' W LINE 38" S	✓	74.75	74.50	74.50	74.75
005 LINE 38" S	✓	74.75	74.50	74.50	74.75
B+20			74.34	74.46	
V +40	✓	74.45	74.20	74.34	74.59
+60			73.95	74.15	
+80	✓	73.86	73.61	73.88	74.13
1+00			73.21	73.53	
+20	✓	72.97	72.72	73.10	73.35
+40			72.17	72.59	
+60	✓	71.78	71.53	72.00	72.25
+80			70.82	71.33	
2+00	✓	70.29	70.04	70.59	70.84
+20			69.18	69.76	
+40	✓	68.51	68.26	68.86	69.11
+60			67.25	67.88	
+80	✓	66.42	66.17	66.83	67.08
3+00			64.98	65.74	
+20	✓	64.17	63.92	64.77	65.02
+40		63.60	63.34	64.05	
B+60	✓	62.87	62.62	63.58	63.83

77.77 E. 20	N	71.4	72.5	74.2	74.7	X	74.7	74.6	74.1
75.47 E. 20		6.4	5.3	3.6	5.1		3.1	3.2	5.7
77.85 E. 20		4.8	4.1	2.8	2.6		2.1	1.3	0.2
77.85 E. 20		4.6	4.2	3.8	3.5		3.0	2.3	1.5
77.85 E. 20	S	72.3	73.4	74.5	74.7	X	74.7	74.4	73.9
77.85 E. 20		5.5	4.4	3.3	3.1		2.4	3.4	3.9
77.85 E. 20		4.2	3.5	2.7	2.3		1.6	2.4	2.4
77.85 E. 20		4.3	3.6	2.8	2.4		1.7	2.5	2.5
77.85 E. 20	N	73.3	72.2	70.8	69.1		67.1	65.0	63.8
77.85 E. 20		4.5	3.6	2.7	2.7		1.7	0.2	1.4
77.85 E. 20		4.0	3.3	2.4	2.4		1.5	1.0	4.3
77.85 E. 20		4.5	3.8	2.8	2.3		1.6	1.1	2.9
77.85 E. 20	S	73.0	71.8	70.3	68.5		66.4	64.2	62.9
77.85 E. 20		4.8	4.0	3.5	3.3		2.4	1.0	2.3
77.85 E. 20		4.8	4.1	3.6	3.0		2.3	1.1	1.8
77.85 E. 20		0.0	-1.1	-0.1	-0.3		-0.9	-3.1	-7.5
74.50 E. 20									
77.50 E. 20	N	74.50	74.46	74.34	74.15	73.88	73.53	73.10	72.59
77.50 E. 20		3.00	3.04	3.16	3.35	3.62	3.97	4.40	4.91
77.50 E. 20								73.00	73.00
77.50 E. 20	S	74.50	74.39	74.20	73.95	73.61	73.21	72.72	72.17
77.50 E. 20		3.00	3.11	3.30	3.55	3.89	4.29	4.78	5.33
77.50 E. 20	N	72.00	71.33	70.59	69.76	68.86	67.88	66.83	65.74
77.50 E. 20		5.50	6.17	6.91	7.74	8.64	9.62	10.67	11.76
77.50 E. 20									2.65
77.50 E. 20	S	71.53	70.82	70.04	69.18	68.26	67.25	66.17	64.98
77.50 E. 20		5.97	6.68	7.46	8.32	9.24	10.25	11.33	12.52
77.50 E. 20	N	64.77	64.05	63.58	63.37	63.40		65.00	
77.50 E. 20		3.62	4.34	4.81	5.02	4.99		3.39	
77.50 E. 20	S	63.92	63.14	62.62	62.38	62.40		64.00	
77.50 E. 20		4.47	5.25	5.77	6.01	5.99		4.39	
77.50 E. 20		4.97	5.75			6.49			
77.50 E. 20		-0.50	-0.50			-0.50			
77.50 E. 20	N	47.9	4.89	4.59					
77.50 E. 20	S	47.9	5.19	5.59					

2/24



Newton Ave Grades

	S. d	N. d	
+80	62.63	62.35	63.37
B +100	62.65	62.40	63.40
+50	63.05		64.05
5+00	63.45		64.45
+450	63.85		64.85
6+00=White 39 <sup>th</sup>	64.25	64.00	65.00
		65.00	65.25

Indexed  
C.S.K.

Boston Ave Grades, 37th to 38th

	S. d	N. d	
at road line			
37 <sup>th</sup> ST	34.75	34.50	36.00
+50	35.82		36.84
B +100	36.89	36.64	37.78
B +20	37.46	37.21	38.28
B +40	38.32	38.07	39.10
B +60	39.48	39.23	40.10
B +80	40.94	40.69	41.69
2+36.67	45.47		46.46
2+2333	50.00		50.98
3+50	54.53		55.50
4+06.67	59.06		60.22
4+63.33	63.59		64.54
85+20	68.12	67.87	68.81
8 +40	69.58	69.33	70.24
8 +60	70.84	70.59	71.33
8 +80	71.90	71.65	72.04
6+00=W			72.33
Line 38 <sup>th</sup>	72.75	72.50	72.50

65.17	4+00	63.6	64.0	64.4	64.8	65.2
11.52	N	9.3	8.9	8.5	8.1	7.7
63.65		7.5	6.0	4.9	3.1	3.3
7.25		11.8	12.9	16.6	22.0	24.4
76.90						
0.67						
72.83	S	62.6	63.0	63.4	63.8	64.2
77.18		2.6	9.9	9.5	9.1	8.7
80.01		11.4	10.9	6.8	8.4	10.7
		-8.8	-1.0	+2.7	+0.7	-2.0
74.7						
5.3						
43						
11.0	chk					

Boston

73.61				41.8		50.3	
0.41	N	36.2	37.1	38.0	39.3	41.9	44.5
74.02		5.6	4.7	3.8	2.5	1.4	0.8
2.59		3.6	2.8	2.3	1.1	0.7	0.4
61.43		+2.0	+1.9	+1.0	+1.4	-0.3	-1.0
0.70							
62.13	S	34.7	35.8	36.9	38.3	40.9	45.5
11.68		7.1	6.0	4.9	3.5	2.4	1.8
49.45		6.8	6.9	7.8	8.1	10.4	12.1
0.92		+0.3	+0.2	-0.9	-2.9	-4.6	-11.0
50.17							
17.42	N	40.0	44.5	49.1	54.5	60.0	66.5
57.25		14.0	9.5	4.9	2.5	1.3	0.6
1.92		12.7	6.0	3.7	1.8	0.6	0.3
41.77		+2.6	+3.5	+1.5	+0.7	+0.7	chk
1.24							
40.73	S	59.0	63.5	68.1	72.8	77.7	
17.75		3.1	10.5	5.9	3.2		
53.48		3.3	11.3	5.2	1.5		
		-0.2	-0.8	+0.7	+1.7		

Cut/vert #3

N	3+85	63.6 Prop	82.4 in short
		57.5 Flowline	21.0 on S
		6.0	10.0 in N
		3.0	117.4
		9.0 cut	113.2
S	3+80	62.6 Prop	3.5 short
		49.6 flowline	
		13.0	
		6.5	
		19.5 cut	
		49.6	57.6
		15.6	7.6
		15.6	6.9
		00 on S	+0.7 on N



Indexed C.S.K.	Uhr St Grading E. cl.      W cl.		Main to Acacia
4 Line			
00-Main St	14.25	14.00	13.50
+50	14.92		14.58
+100	15.59		15.71
+150	16.25		16.25
200	16.92		17.08
+50	17.59		17.91
2400 = 5 Line Dalbergia	18.25	18.00	18.50
00-N Main Dalbergia	19.25	19.00	19.50
+50	19.50		20.16
+100	19.75		20.57
B +40	19.95	19.70	20.55
B +60	19.97	19.69	20.59
B +80	19.72	19.47	20.40
B 200	19.28	19.03	19.99
B +20	18.62	18.37	19.35
B +40	17.74	17.49	18.49
B +60	16.65	16.40	17.40
3400 = 5 Line Cotton Wood	14.25	14.00	15.00
		12.50	13.50

16.89 8.07 24.96 7.95		24.96 5.70 19.26 Paving 0.7 Below cl.		40' Wide Uner Dalbergia				45
W	13.7	14.6	15.4	16.2	17.1	17.9	18.7	13.7
	5.0	4.1	5.4	4.6	3.7	2.9	4.2	11.7
	4.2	5.3	5.1	4.5	4.4	3.9	6.2	11.7
	+0.8	+0.8	+0.3	+0.1	-0.7	-1.0	0.0	
E	14.2	14.9	15.6	16.2	16.9	17.6	18.2	
	4.5	5.9	5.2	4.6	3.9	3.2	6.7	
	4.6	6.3	5.6	5.4	4.4	3.8	6.9	
	-0.1	-0.1	-0.4	-0.8	-0.6	-0.6	-0.2	
W	19.7	20.2	20.6	20.8	20.6	19.6	17.6	15.2
	5.2	4.7	4.3	4.1	4.3	5.3	4.3	9.7
	4.8	4.7	3.8	2.9	2.4	3.3	4.4	6.0
	+0.3	0.0	+0.5	+1.2	+1.9	+2.0	+2.9	+3.3
E	19.2	19.5	19.7	19.9	19.7	18.6	16.6	14.2
	5.7	5.4	5.2	5.0	5.2	6.3	8.3	10.7
	5.4	4.9	4.4	4.1	4.2	4.6	6.9	11.0
	+0.3	+0.6	+0.8	+0.9	+1.0	+1.7	+1.4	-0.3
22.11								
W	19.87	20.25		20.55	20.57	20.40	19.99	
	2.24	1.86		1.56	1.52	1.71	2.12	
1900 E	19.25	19.50		19.70	19.69	19.47	19.03	
	3.11	2.86	2.61	2.41	2.42	2.64	3.09	
		1.86						
W	19.35	18.49		17.40	15.00			
	2.76	3.62		4.71	7.11			
E	18.37	17.49		16.40	14.00			
	3.24	4.22		5.21	8.11			





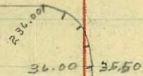






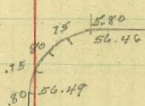
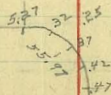
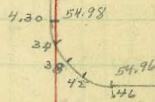
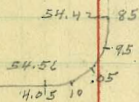
ST

Front



ST

THORN

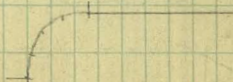
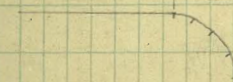
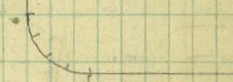
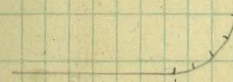


ST



ST

UPAS





Indexed  
C.S.K.

9th St

paving  
53.47  
53.88  
54.18

84  
61  
1842 5378  
40'  
3.27  
B 53.30 52.80  
2.34  
B 21  
1.87

DATA

4.35  
3.90  
3.45  
.99  
.52

55.42 55.93  
54.96  
507 55.47  
25. R.

4.05 5.20  
54.85 5.20

3.12

3.70

3.24

2.77

51.47 51.40

54.2

51.45 51.75?

25'

50.80

52.00  
32.30  
25'  
51.15  
52.00  
5.00  
52.00  
51.45  
51.60  
51.0

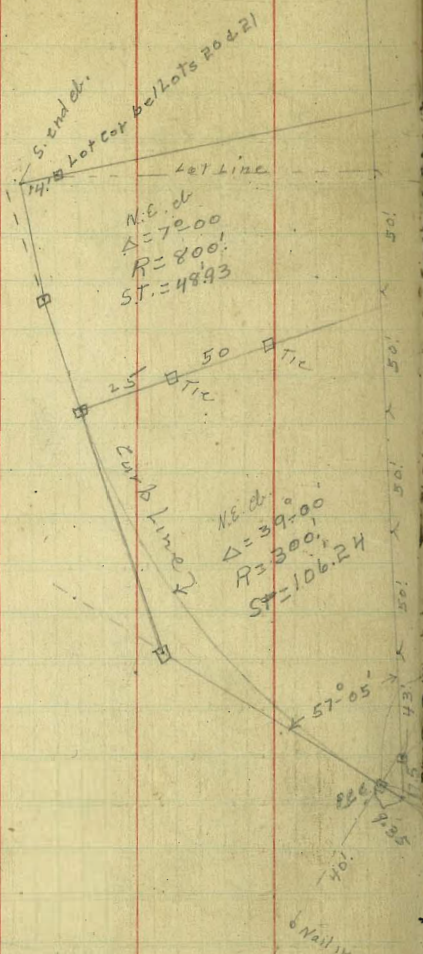
5 Points

147.71  
256  
158.47  
49.10  
169.31

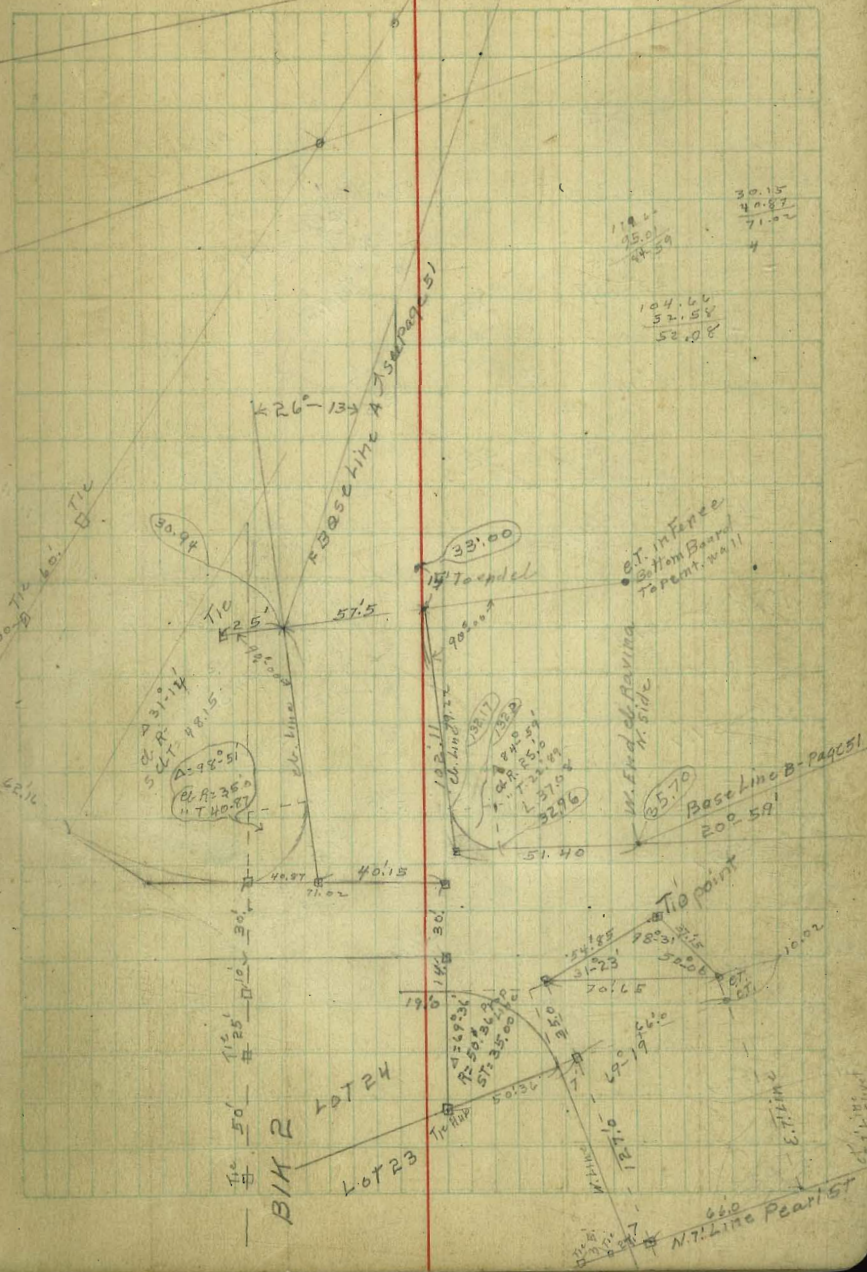
4.83 4.17 2.49 3.14 3.35 2.84  
57.44 54.24 55.47 55.17 54.76 55.47

5.07	4.65	4.56	3.75	3.27	2.80	2.34	1.87	1.40
3.24	3.66	3.76	4.50	5.04	5.51	5.97	6.44	6.91
50.95	50.50	41.10	7.21	51.6	54.00	2.05	2.30	6.01
7.36	7.81	7.21	7.7	6.71	6.31	6.26	6.01	
2.05	1.65	1.45		3.24	4.17	3.24	2.77	
6.20	6.66	6.86		4.81	4.79	5.07	5.54	
2.52	2.89	3.45	3.70	4.12	4.35			
3.74	5.32	4.86	4.41	4.19	3.96			





58.53  
52.05  
110.31  
48.15  
62.16



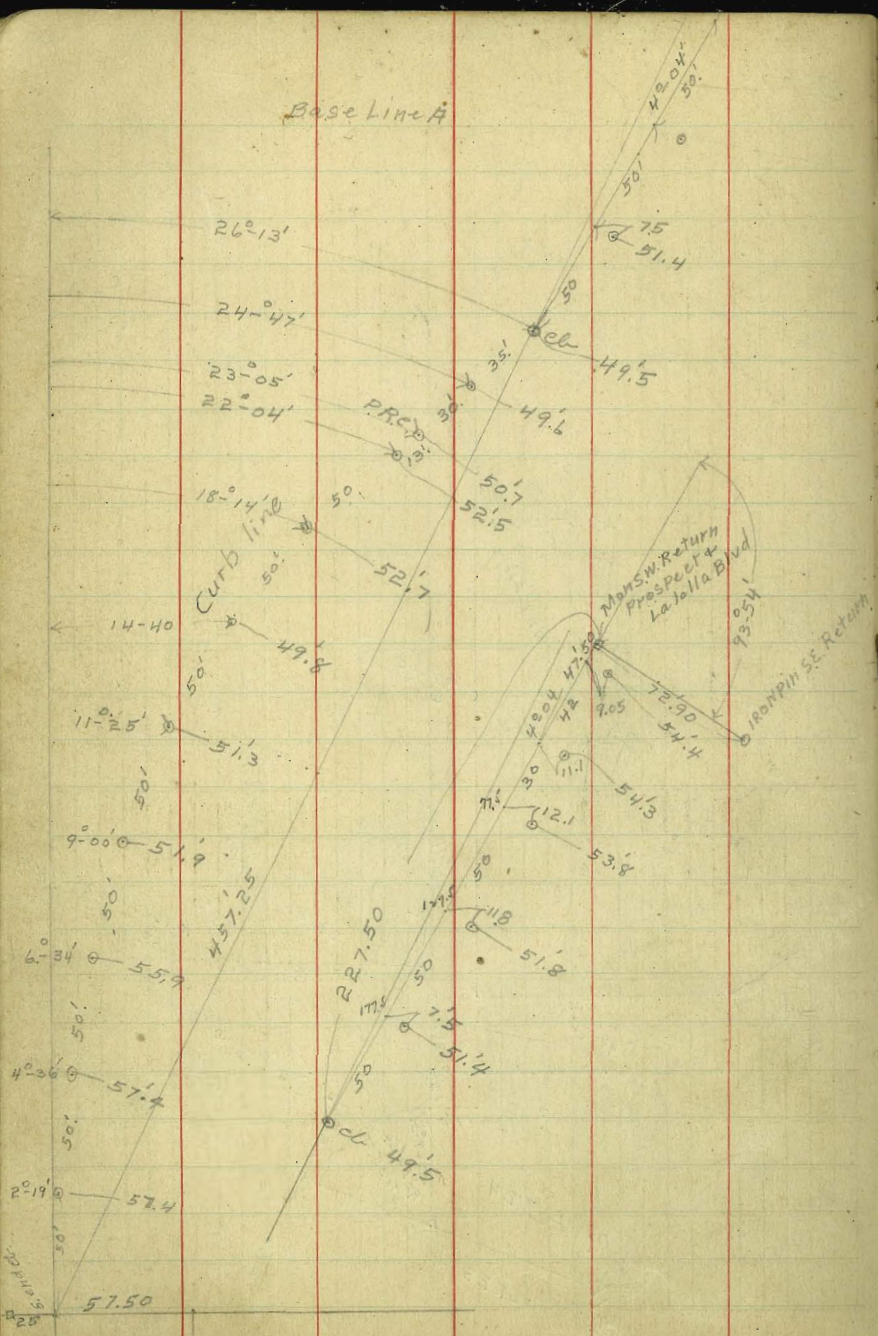
30.15  
40.87  
71.02  
  
104.66  
32.58  
52.08

35.70  
Base Line B - Page 51  
202.59

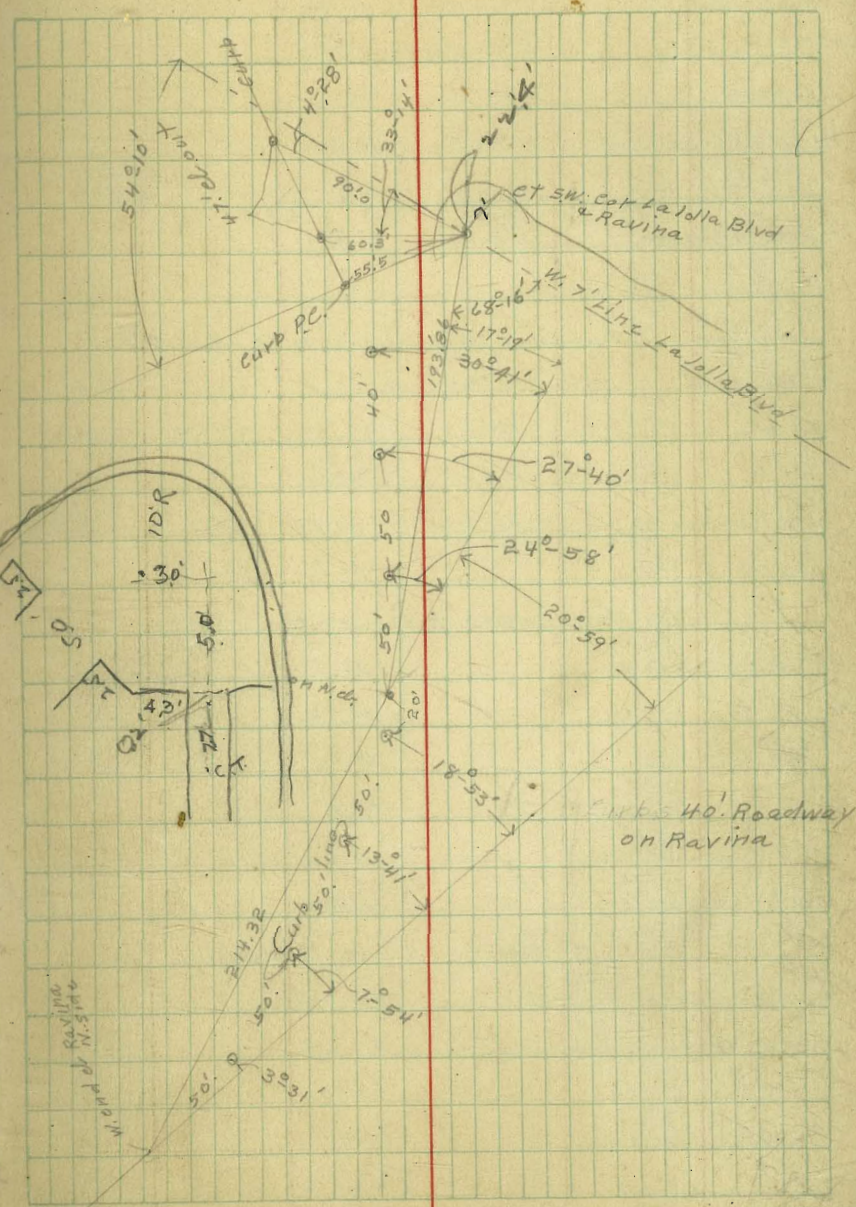
660  
N.7. Line Pearl St



Base Line A



Base Line B





74 - S. side of R<sup>th</sup> HARRISON

W line 24 <sup>th</sup>	47.75	47.50
60 E = S line 24 <sup>th</sup>	48.25	48.00
71.20 E	48.76	48.51
111.35 = W line Harrison	49.05	48.80
		49.31
E line Harrison	50.12	49.87

side walk Grades W. side 24<sup>th</sup> N. of N. 5<sup>th</sup>

00 N line N.	49.00	
50 N	49.83	
100 N	50.66	Prop
138 N = H line	51.29	51.57
162 N = "		51.91 + 1.30

ch grades SW line Harrison

60 = N line Crosby	52.52
50 N	51.79
100 N	51.05
150 N	50.31
253 N = S line N	48.80

ch grades E line Harrison

60 = N line Crosby	52.00
150 N	51.28
100 N	50.56
147.4 N = S line N	49.87

48.98 SE Wazh  
564  
54.62

Indexed  
C.A.K.

S. line N. 5<sup>th</sup>

5	47.75	48.25	48.76	49.05	50.12
	6.9	6.4	5.9	5.6	4.5
	11.6	6.3	3.6	3.7	7.8
	-4.7	2.1	+2.3	1.9	-3.3

W side HARRISON

2.10					
52.52	51.79	51.05	50.31	50.31	
	2.83	3.57	4.31	2.98	

E. side HARRISON

2.62					
52.00	51.28	50.56			
	3.34	4.06			
49.98					
4.31					
53.29	47.50	48.00	48.40	48.80	48.85
	5.79	5.29	4.89	4.49	4.44
	49.87	49.96	50.06	50.15	50.25
	3.42	3.33	3.23	3.14	3.04

43 N.B. 52  
8' 21" x 18" D.S. in line

211.7  
55.95  
5.0



Sewer Construction  
Vista Del Mar Ave

3/13/26  
mull

Indexed  
C.S.K.

53

Main #1  
From  $\Phi$  Belvedere South

00 = existing		57.23	flow line	
M.H. $\Phi$ Belvedere		15.74	41.49 =	41.50
+48.75		9.42	47.81	42.00
+97.50		8.60	48.63	42.50
+46.25		7.65	49.58	43.00
DEI +95		7.00	50.23	43.50

Main #2

From Surfmen Place South

00 = Existing		47.17	flow line	
M.H. in Surfmen Place		13.64	33.53	33.50
+47.5		7.61	39.56	34.75
+95.0		5.41	41.76	36.00
+42.5		2.34	44.83	37.25
DE 1+90.0		0.43	46.74	38.50

77.01 SE West Bourne + La Jolla Blvd

	0.51		
	79.32		
	12.90		
	66.42		
	11.69		
+5.81	60.11	64.11	
	13.03	8.54	
+6.13	55.08	59.57	set B.M. B.P. S.W. Belvedere + Monte Vista Ave
	2.15		
+6.55	57.23	9.20	set B.M. B.P. S.E. Belvedere + Vista Del Mar Ave
	9.20		
+6.73	48.03		
	57.23		
	10.49		
	46.74		
	0.43		
	47.17		











Belvedere Culvert outlet.

13M	0.45	28.75	28.30	12.0%
oo=Wedge	C.B. #5	0.75	28.00	24.15
+50		2.25	26.50	18.15
+100		6.45	22.30	12.15
T.P. outlet		1.80	18.20	12.35
+50			16.40	6.15
+65			13.85	4.35

28.00 of clay  
 $\frac{3.53}{24.47}$

Culverts #1 & #2

C.B. #1 H.I. 38.6 C.B. #2

Flow line 24.7 Plan

Flow line 26.1 Plan

" " 25.0 changed to Miss. Water Pipe  
 $\frac{13.6}{8.6}$   
 + 5.0 to F.L.

24.4 change  
 $\frac{14.2}{8.8}$   
 + 5.4 to F.L.

outlet  
 - 1.7 to F.L.

Culverts #3 & #4

H.I. 32.80

C.B. #3  
 $\frac{24.9}{7.9}$   
 $\frac{4.2}{3.7}$

C.B. #4  
 $\frac{23.5}{19.3}$   
 $\frac{3.5}{5.8}$

C.B. #5  
 $\frac{19.7}{15.1}$   
 $\frac{4.8}{8.3}$

4230  
 $\frac{57.5}{}$

470

6230

56

+ 3.85		24.15		28.00	7.4	10.8	
+ 8.35				$\frac{4.8}{32.80}$	$\frac{25.4}{23.0}$	$\frac{22.0}{}$	
+ 10.15							4.44
+ 10.25	$\frac{48.03}{54.49}$	$\frac{53.0}{1.7}$	$\frac{52.00}{2.60}$				3.94
48.03	51.50	50.50					
$\frac{6.63}{54.66}$	$\frac{8.14}{}$	$\frac{4.76}{}$					
48.03	47.00	46.00	39.00	38.00	37.60	36.88	39.30
$\frac{0.45}{48.68}$	$\frac{1.68}{51.68}$	$\frac{2.28}{51.78}$	$\frac{7.68}{}$	$\frac{10.68}{}$	$\frac{11.68}{}$	$\frac{11.80}{}$	$\frac{9.38}{}$
36.88							
$\frac{0.87}{37.45}$	50	30.00	30.04	30.09	30.13	30.18	30.22
$\frac{1.72}{38.73}$		$\frac{7.45}{}$	$\frac{7.41}{}$	$\frac{7.36}{}$	$\frac{7.31}{}$	$\frac{7.27}{}$	$\frac{7.23}{}$
37.6							
32.49	SE	30.31	30.36	30.40			
		$\frac{7.14}{}$	$\frac{7.09}{}$	$\frac{7.05}{6.55}$			
				40.50			
	NW	29.00	29.07	29.13	29.20	29.26	29.33
		$\frac{8.45}{}$	$\frac{8.38}{}$	$\frac{8.32}{}$	$\frac{8.25}{}$	$\frac{8.19}{}$	$\frac{8.12}{}$
		29.17	29.53	29.60	29.67	29.73	29.80
		$\frac{7.98}{}$	$\frac{7.92}{}$	$\frac{7.85}{}$	$\frac{7.78}{}$	$\frac{7.72}{7.22}$	$\frac{7.65}{6.15}$
						40.50	41.50
		29.00	28.00	27.00	28.00		
		$\frac{3.49}{}$	$\frac{4.49}{}$	$\frac{5.49}{}$	$\frac{7.49}{}$		
		29.20	28.20				
		$\frac{3.29}{}$	$\frac{4.29}{}$				











Water Grades Kettner Blvd

S. line Pierce

H.7  
64.2

1100 S

63.2

2100 S

62.1

3100 S - N. line  
Winder

61.0

S. line Winder

61.0

1100 S

57.2

2100 S

53.3

3100 S - N. line

Chalmers

49.5

Indexed  
c. S. K.

59

65.12 S.E. Kettner + Pierce

N. Winder skin  
line

N. Chalmers

3.80							
68.92	63.2	62.1	61.0	61.0	57.2	53.3	49.5
64.70	5.7	6.8	7.9	7.9	5.7	9.6	15.4
62.22	4.5	4.4	6.2	7.2	3.7	7.4	11.0
61.72	+1.2	+2.4	+1.7	+0.7	+2.0	+2.0	+2.4
62.94							

Hyd S.E. Kettner + Pierce

65.00

3.84 Present cl

3.92

65.08

4.22

0.30

Hyd S.E. Kettner Winder

6.68 Rod

62.24 elev. Tab

61.50

+0.74 to cl

Hyd N.E. Kettner + Chalmers

11.20 Rod

51.74 stub



End Bent Pipe Pier

404'

42'

lengths out

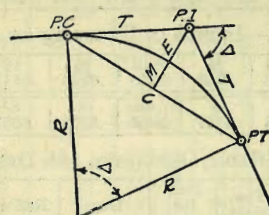
End Pipe

393'

747K

# DIETZGEN'S RAILROAD CURVE AND REDUCTION TABLES

Copyright, 1914, by Eugene Dietzgen Co., New York City



### CURVE FORMULAS

Radius= $R = \frac{50}{\sin \frac{D}{2}}$  (1) Degree of Curve= $D$  and  $\sin \frac{D}{2} = \frac{50}{R}$  (2)

Tangent= $T = R \tan \frac{\Delta}{2}$  (3) Length of Curve= $L = 100 \frac{\Delta}{D}$  (4)

Middle ordinate= $M = R(1 - \cos \frac{\Delta}{2})$  (5)  $= R \text{vers} \frac{\Delta}{2}$  (6)

External= $E = T \tan \frac{\Delta}{4}$  (7)  $= R \div \cos \frac{\Delta}{2} - R$  (8)  $= R \text{exsec} \frac{\Delta}{2}$  (9)

Long Chord= $C = 2 R \sin \frac{\Delta}{2}$  (10)  $\Delta =$  Central Angle

### EXPLANATION AND USE OF TABLES

Stations.—Given P. I.—Sta. 161+60.35 to find Sta. of P. C. and P. T.  $\Delta = 62^\circ 10'$   $D = 8^\circ 20'$ . From Table IV for  $1^\circ$  curve  $T = 3454.1$  and  $\div 8\frac{1}{2} = 414.49$  ft. From Table V correction = .36 or  $T = 414.85$  ft. P. C.—Sta. P. I.— $T = 157 + 45.50$ . Also from (4)  $L = 746.00$  and P. T.—Sta. P. C. +  $L = 164 + 91.50$ .

Offsets.—Tangent offsets vary (approximately) directly with  $D$  and with square of the distance. Thus tangent offset for Sta. 158 on above curve is 2.16 ft. found as follows. From Table III tangent offset for 100 ft. = 7.27 ft. Distance = 158—Sta. P. C. = 54.50, hence offset =  $7.27 (54.50 \div 100)^2 = 2.16$  ft. Also square of any distance divided by twice the radius equals (approximately) the distance from tangent to curve. Thus  $(54.50)^2 \div (2 \times 688.26) = 2.16$  ft.

Deflections.—Deflection angle =  $\frac{1}{2} D$  for 100 ft.,  $\frac{1}{4} D$  for 50 ft., etc. For  $e$  ft. = (in minutes)  $.3 \times C \times D^\circ$  or = defl. for 1 ft. from Table III  $\times C$ . For Sta. 158 of above curve =  $.3 \times 54.5 \times 8\frac{1}{2} = 136.2'$  or  $2^\circ 16.2'$ , or =  $2.50 \times 54.5 = 136.2'$  from Table III. For Sta. 159 deflection angle =  $2^\circ 16.2' + 8^\circ 20' \div 2 = 6^\circ 26.2'$ , etc.

Externals.—May be found in similar manner to tangents. Thus  $E$  for curve above is 91.37. For from Table IV for  $1^\circ$  curve  $E = 960.6$  for  $8^\circ 20' = 960.6 \div 8\frac{1}{2} = 91.27$  and from Table V correction = .10 or  $E = 91.37$  ft. Or suppose  $\Delta = 32^\circ$  and  $E$  is measured and found to be 42 ft. What is  $D$ ? From Table IV  $E = 230.9$  and  $\div 42 = 5.5$  or  $D = 5^\circ 30'$ .



57.5  
25  
82.50



500.20  
44.8  
44.8  
1598  
60

40  
40  
70  
105  
112  
123  
128  
132  
144  
150  
200  
206

129.43  
12.03  
141.48  
27.49  
49.60  
67.10  
71.50

45  
36.94  
8.02

80  
17  
100  
79  
100

299.92  
22  
277.92  
138.96

24.60  
16.50  
5.04  
33.6  
20.34  
1.13

305.64  
7  
298.68  
22  
276.68  
138.34  
22  
138.34  
199.68

298.56  
22  
276.56  
138.28

17.8  
22.38  
30  
42  
57  
67  
77  
86.88  
92.13  
97.77



DISTANCES FROM CENTER OF ROADWAY FOR  
CROSS-SECTIONING.

Roadway 16 feet wide. Side Slopes 1 on 1½.  
For Single Track Embankment.

314  
27  
341

H	0	.1	.2	.3	.4	.5	.6	.7	.8	.9	H
0	8.0	8.2	8.3	8.5	8.6	8.8	8.9	9.1	9.2	9.4	0
1	9.5	9.7	9.8	10.0	10.1	10.3	10.4	10.6	10.7	10.9	1
2	11.0	11.2	11.3	11.5	11.6	11.8	11.9	12.1	12.2	12.4	2
3	12.5	12.7	12.8	13.0	13.1	13.3	13.4	13.6	13.7	13.9	3
4	14.0	14.2	14.3	14.5	14.6	14.8	14.9	15.1	15.2	15.4	4
5	15.5	15.7	15.8	16.0	16.1	16.3	16.4	16.6	16.7	16.9	5
6	17.0	17.2	17.3	17.5	17.6	17.8	17.9	18.1	18.2	18.4	6
7	18.5	18.7	18.8	19.0	19.1	19.3	19.4	19.6	19.7	19.9	7
8	20.0	20.2	20.3	20.5	20.6	20.8	20.9	21.1	21.2	21.4	8
9	21.5	21.7	21.8	22.0	22.1	22.3	22.4	22.6	22.7	22.9	9
10	23.0	23.2	23.3	23.5	23.6	23.8	23.9	24.1	24.2	24.4	10
11	24.5	24.7	24.8	25.0	25.1	25.3	25.4	25.6	25.7	25.9	11
12	26.0	26.2	26.3	26.5	26.6	26.8	26.9	27.1	27.2	27.4	12
13	27.5	27.7	27.8	28.0	28.1	28.3	28.4	28.6	28.7	28.9	13
14	29.0	29.2	29.3	29.5	29.6	29.8	29.9	30.1	30.2	30.4	14
15	30.5	30.7	30.8	31.0	31.1	31.3	31.4	31.6	31.7	31.9	15
16	32.0	32.2	32.3	32.5	32.6	32.8	32.9	33.1	33.2	33.4	16
17	33.5	33.7	33.8	34.0	34.1	34.3	34.4	34.6	34.7	34.9	17
18	35.0	35.2	35.3	35.5	35.6	35.8	35.9	36.1	36.2	36.4	18
19	36.5	36.7	36.8	37.0	37.1	37.3	37.4	37.6	37.7	37.9	19
20	38.0	38.2	38.3	38.5	38.6	38.8	38.9	39.1	39.2	39.4	20
21	39.5	39.7	39.8	40.0	40.1	40.3	40.4	40.6	40.7	40.9	21
22	41.0	41.2	41.3	41.5	41.6	41.8	41.9	42.1	42.2	42.4	22
23	42.5	42.7	42.8	43.0	43.1	43.3	43.4	43.6	43.7	43.9	23
24	44.0	44.2	44.3	44.5	44.6	44.8	44.9	45.1	45.2	45.4	24
25	45.5	45.7	45.8	46.0	46.1	46.3	46.4	46.6	46.7	46.9	25
26	47.0	47.2	47.3	47.5	47.6	47.8	47.9	48.1	48.2	48.4	26
27	48.5	48.7	48.8	49.0	49.1	49.3	49.4	49.6	49.7	49.9	27
28	50.0	50.2	50.3	50.5	50.6	50.8	50.9	51.1	51.2	51.4	28
29	51.5	51.7	51.8	52.0	52.1	52.3	52.4	52.6	52.7	52.9	29
30	53.0	53.2	53.3	53.5	53.6	53.8	53.9	54.1	54.2	54.4	30
31	54.5	54.7	54.8	55.0	55.1	55.3	55.4	55.6	55.7	55.9	31
32	56.0	56.2	56.3	56.5	56.6	56.8	56.9	57.1	57.2	57.4	32
33	57.5	57.7	57.8	58.0	58.1	58.3	58.4	58.6	58.7	58.9	33
34	59.0	59.2	59.3	59.5	59.6	59.8	59.9	60.1	60.2	60.4	34
35	60.5	60.7	60.8	61.0	61.1	61.3	61.4	61.6	61.7	61.9	35
36	62.0	62.2	62.3	62.5	62.6	62.8	62.9	63.1	63.2	63.4	36
37	63.5	63.7	63.8	64.0	64.1	64.3	64.4	64.6	64.7	64.9	37
38	65.0	65.2	65.3	65.5	65.6	65.8	65.9	66.1	66.2	66.4	38
39	66.5	66.7	66.8	67.0	67.1	67.3	67.4	67.6	67.7	67.9	39
40	68.0	68.2	68.3	68.5	68.6	68.8	68.9	69.1	69.2	69.4	40

Example—If point is 22.6 ft. above grade, how far should it be from center line to be a slope stake point? Ans. from Table 41.9. For same slopes but other widths of roadbed correct figures by one-half difference in width of roadbed; thus in example above for 20 ft. roadbed distance will be 41.9 + (20 - 16) + 2 or 2 ft. added to 41.9 = 43.9. For slopes of 1 on 1 see inside of front cover.