

G 120

DASTS

FIELD BOOK

No. 385

Bet Popular & Pepper
Violet & Azalia Park

47 10
50 39

29 9 N
137 67
35
131 07

Our Leather Bound Engineers Note Books are carried in the following rulings:

- No. 380 LEVEL BOOK. Left and Right Hand Page the same as Left Hand Page of this Book.
- No. 382 FIELD BOOK. Left Hand Page as in this Book, Right Hand Page 4 x 4 to the inch, Center Line Red.
- No. 384 MINING TRANSIT BOOK. Left Hand Page as in this Book, Right Hand Page 8x8 to the inch, Center Line Red.
- No. 385 FIELD BOOK. Left Hand Page as in this Book, Right Hand Page 8 vertical and 4 horizontal lines to the inch, Center Line Red.

We also carry the Note Books listed above, bound in extra strong Fabri-Hide (otherwise the same quality of book), which can be furnished at a somewhat lower price.

In ordering Fabri-Hide covered books, add the letter "F" to catalog number.

THE FREDERICK POST CO.
ENGINEERING and DRAFTING SUPPLIES

IRVING PARK STATION

CHICAGO, ILL.
MICROFILMED

APR 8 1965

Invited 8/19/29
H.H.

Survey Construction Merigold - 11, 11, 11
Between Eagle Point & Existing Survey

8-4-26
S. 1000
G. 1000
N. 1000

Beards States off. 1000

Lexington Park

34+1279 = MH 70	129.37	128.77 +5.33	201.15	Conc. Mass 300x100 0.92x1.15
33+6279	30.04	19.20 +2.28	224.60	
33+1279	30.71	29.53 +2.28	221.00	
32+6279	31.38	28.66 +2.32	209.90	
32+1279	32.05	30.24 +2.32	196.10	
31+80.00 = MH 67	132.55	127.20 +5.35	182.00	
31+50	40.25	37.70 +2.55	178.50	
31+20 Break	108.00	105.50 +2.50	160.00	
30+20	54.07	52.00 +2.07	140.00	
30+20	60.14	58.00 +2.14	130.00	
29+80 = MH 68	165.00	162.00 +3.00	120.00	
29+20 Break	175.00	172.00 +3.00	110.00	
29+80 Break	193.00	190.00 +3.00	100.00	
28+40	203.25	200.00 +3.25	90.00	
28+00 Break	13.50	13.00 +0.50	80.00	
27+50	15.41	15.00 +0.41	70.00	
27+00	17.32	17.00 +0.32	60.00	
26+93.32 = Drop MH 66	228.00	225.00 +3.00	50.00	
26+33.32	19.21	19.00 +0.21	40.00	
25+83.32	20.47	20.00 +0.47	30.00	
25+63.00 Conc. Pier	20.98	20.00 +0.98	20.00	
25+51	21.28	21.00 +0.28	10.00	
25+39	21.05	21.00 +0.05	10.00	
25+27 Rail Bolt	21.89	21.50 +0.39	10.00	
25+15	22.19	22.00 +0.19	10.00	

25+03 Rail Bolt	Footings	209.5	20.49	14.90 +2.79	120.00 +2.00	23.90 +2.00
24+91 Conc. Pier		215.0	22.79	9.27 +2.81	110.00 +2.79	24.50 +2.00
24+79 "		221.0	23.10	3.47 +1.40	100.00 +2.70	25.00 +2.00
24+29			24.36	16.30 +2.20		26.00 +2.00
23+79			25.62			27.00 +2.00
23+64.33 = Drop MH 65		226.00	23.04	14.40 +2.00	90.00 +2.00	28.00 +2.00
23+14.33		32.39		8.80 +2.11		29.00 +2.00
23+14.33		32.74		16.00 +2.00		30.00 +2.00
22+14.33		33.09		16.50 +2.39		31.00 +2.00
21+64.33		33.44		16.00 +2.00		32.00 +2.00
21+35.33 = Drop MH 64		233.14	23.00	15.00 +10.00	80.00 +10.00	33.00 +2.00
20+85.48		33.99		15.60 +1.10		34.00 +2.00
20+25.04 = MH 64 Drop 20'		234.34		15.00 +10.00	70.00 +10.00	35.00 +2.00
19+85.04		34.69		16.00 +2.00		36.00 +2.00
19+14.04 = MH 63 Drop 11'		235.00	23.00	14.60 +2.00	60.00 +2.00	37.00 +2.00
18+91.04		40.58		8.00 +2.00		38.00 +2.00
18+41.04		42.08		7.50 +2.00		39.00 +2.00
17+93.52 = MH 62		242.80		14.00 +2.00	50.00 +2.00	40.00 +2.00

Sever Construction Alley 8/24/36
Lexington Park

8-11-36

0+35 = Dead End 35	243.68	12.20 2.55 +4.87	258.43 M 11.01 247.02 11.63 258.50
+85	45.33	13.20 2.55 +6.15	
1+35	44.98	13.20 2.55 +6.15	
+85	44.63	13.20 2.55 +6.15	
2+35	44.28	13.20 2.55 +6.15	
+85	43.93	13.20 2.55 +6.15	
2+04.07 = MH 62	43.80		

Sycamore Drive

0+0 = DE 26	236.30	12.25 2.55 +4.87	MAR 15 M
+50	36.10	12.25 2.55 +4.87	
1+0	35.90	12.25 2.55 +4.87	
+50	35.70	12.25 2.55 +4.87	
2+0	35.50	12.25 2.55 +4.87	
+50	35.30	12.25 2.55 +4.87	
3+0	35.10	12.25 2.55 +4.87	
238.93 = DMH 63	33.500	12.25 2.55 +4.87	

Sever Construction 39th St.
Between Poplar Dr - W. Hill

8-11-36
3

0+0 = D.F. 27	245.00	12.14 2.55 +4.78	233.66
+50	44.50	13.14 2.55 +4.78	246.50
1+0	44.00	13.14 2.55 +4.78	245.10
+50	43.50	13.14 2.55 +4.78	242.60
2+0	43.00	13.14 2.55 +4.78	239.60
+50	42.50	13.14 2.55 +4.78	237.10
3+10 = DMH 67	242.00	15.64 2.55 +4.78	228.07
+50	37.55	9.71 2.55 +4.78	34.22
4+0	35.19	14.03 2.55 +4.78	20.71
+50	32.53	14.56 2.55 +4.78	13.20
+60	232.00	15.97 2.55 +4.78	213.70
5+10	30.79	21.64 2.55 +4.78	27.46
+60	29.58	21.64 2.55 +4.78	26.83
6+10	28.39	21.64 2.55 +4.78	26.20
7+5.11 = D.M.H. 66	238.00		

Talia Street

0+0 = D.F. 24	217.67	14.82 2.55 +4.61	200.30
+16.71	17.50	18.31 2.55 +4.61	12.24
+16.71	17.00	17.57 2.55 +4.61	12.37
1+16.71 = MH 59	216.50	18.04 10.36 +7.68	199.10

Spine Construction Talpa St. Through 84x39
Between Sycamore & Walnut

2+54.91 = DMH 4	227.00	227.14	241.19
7+3.71	241.71	15.41	257.12
2+0.0	242.00	14.13	257.12
7.50	42.50	9.32	16.22
1.70	44.00	13.12	16.22
7.50	44.50	14.13	16.22
0+0	245.00	16.12	17.38
5+55.15	45.74	17.17	17.38
5+55.15	45.39	17.17	17.38
2+55.15	45.80	17.17	17.38
2+55.15	45.76	17.17	17.38
2+55.15	46.20	17.17	17.38
2+55.15	46.14	17.17	17.38
0+57.56 = MH 50	46.50	17.17	17.38
2+08.56	46.85	17.17	17.38
2+58.56	47.20	17.17	17.38
2+08.56	47.55	17.17	17.38
1+58.56	47.90	17.17	17.38
1+58.56	48.25	17.17	17.38
1+58.56	48.60	17.17	17.38
0+0 = MH 59 & 68.48	49.00	17.17	17.38
14+16.26	49.34	17.17	17.38
13+16.26	49.69	17.17	17.38
13+16.26	50.04	17.17	17.38
12+05.22 DMH 59 & 66.74	250.43	250.00	257.12
11+5.52	50.77	17.17	17.38

Note: Through This was left at MH 59 OK at MH 60.

Violates And Sycamore Drive
Between Poplar & Talpa

11+05.28	251.11	28.34	278.65
10+55.28	51.44	12.32	277.35
10+05.28	51.78	12.32	276.03
9+98.82 = DMH 55	351.83	12.32	264.71
9+48.82	360.50	12.32	252.39
9+35.58 = MH 54 & 60.36	261.00	12.32	240.68
8+35.58	61.89	12.32	228.36
8+35.58	61.79	12.32	216.04
7+25.58	62.18	12.32	203.72
7+35.58	62.58	12.32	191.40
6+24.15 = MH 53 & 42.90	263.00	12.32	179.08
6+34.15	63.30	12.32	166.76
5+24.15	63.79	12.32	154.44
5+34.15	64.18	12.32	142.12
4+23.54 = DMH 52 & 32.21	264.50	12.32	129.80
4+43.54	74.64	12.32	117.48
3+23.54	73.29	12.32	105.16
2+23.28 = MH 51	273.94	12.32	92.84
2+23.28	74.58	12.32	80.52
2+23.28	75.23	12.32	68.20
1+23.28	75.87	12.32	55.88
1+23.28	76.52	12.32	43.56
0+23.28	77.16	12.32	31.24
0+23.28	77.81	12.32	18.92
0+22.09 = MH 50	278.00	12.32	6.60
0+0 = DE 30	278.36	12.32	4.28

278.65
277.35
276.03
264.71
252.39
240.68
228.36
216.04
203.72
191.40
179.08
166.76
154.44
142.12
129.80
117.48
105.16
92.84
80.52
68.20
55.88
43.56
31.24
18.92
6.60
4.28

Senior Construction Alley Block 11
Lexington Park

9-15-21

10758.88 - MH 50	278.00	81.06 38.33 13.73 25.97	282.11 7.25 291.06
10708.88	78.33	13.10 13.10 26.20	
9458.88	78.67	18.06 16.90 +6.90	
9408.88	79.00		4.23 +6.77
8451.88	79.34	11.58 +6.75	
8400 - MH 72	279.50		14.33 +6.83
7450	79.83	13.88 +7.33	
740	80.17		13.56 +7.02
6450	80.50	12.82 +6.17	
640	80.84		10.06 +5.73
5476.9 DE 18	281.00		

Alley Block 12

3444.22 - MH 51	273.94	85.36 24.82 13.58 +6.47	270.31 9.05 289.36
2494.22	74.82	14.65 +6.21	
2144.22	75.71	11.77 6.69 +6.08	
1794.22	76.59		10.88 2.83 +6.06
1444.22	77.48		13.00 2.83 +6.87
0494.22	78.36		9.16 2.69 +6.69
0444.22	79.25		8.37 3.45 +4.92
040 DE 31	280.00		

Sycamore Drive And Tuberosa St

9-15-21 5

5473.9 - DMH 52	214.50	84.91 24.93 19.23 +18.7	272.19 7.27 289.46
5423.9	64.88	14.25 16.35 +19.7	289.46
4473.9	65.16		18.97 6.96 +13.15
4423.9	65.94		18.49 6.15 +13.34
3473.9	66.42		18.24 +13.33
3423.9	66.90		17.53 +13.21
2473.9	67.38		17.85 +12.87
2423.9	67.86		16.84 +11.25
1499.08 - MH 49	268.09		84.65 16.22 6.22 +9.45
1449.08	68.57		15.56 +10.77
0449.08	69.05		15.04 +7.34
0449.08	69.53		14.66 +6.98
040 DE 19 Industrial	270.00		

Alley Block 27

3459.51 - DMH 57	256.00	74.25 16.05 26.08	245.70 4.32 250.02
3409.51	58.88		13.47 +6.31
2459.51	60.56		6.38 +5.71
2428 = DE	262.00		3.25 3.25 +6.50

Sever Construction Taberose St. and Poplar St.

Lexington Park

5111.69 = NH 49		268.09	84.44	284.61/11
4+61.69		687.6	15.75	282.13
4+11.69	11.65	694.4	11.55	282.45
3+61.69	11.65	701.1	14.50	289.15
3+45.17 = NH 48	1.5° 13'	270.34	11.67	289.15
2+95.17		71.01	13.60	
2+45.17		71.69	10.20	
1+95.17	1.85	72.36	13.25	
1+45.17	1.85	73.04	14.35	
0+95.17		73.71	17.52	
0+45.17		74.39	18.25	
0+0 = DMH 47	A 25° 19'	275.00	15.58	14.58
0+0		278.00	10.87	17.84
+50	1.25	78.50	13.05	
1+0	1.00	79.00	17.67	
+50		79.50	14.58	
+72.55 = NH 46	A 25° 19'	279.73	10.85	9.25/11
2+22.55		80.18	10.65	28.07
+72.55		80.63	16.73	28.61
3+22.55	0.50	81.08	12.02	
+72.55		81.54	15.01	
4+22.55 = D.L. 17		282.00	10.66	

Violet St

9.12.11
5.50.07
3.11.11
1.11.11
6

3110.98 = DMH 52		214.50	272.0	27.70
2+60.98		64.50	22.25	27.02
2+10.98		65.10	17.50	27.02
1+60.98		65.40	15.60	27.02
1+10.98		65.70	17.30	27.02
0+60.98		66.00	13.05	27.02
0+10.98		66.30	11.20	27.02
0+0 = D.E. 21		266.36	11.65	27.02

Senior Construction Shamrock St
 Loc
 Lexington Park

9-4-22

7

				2717.541
				912
				268.61
				268.58
				264.97
				255.20
				3.11
				1.07
				2.11
				1.15
				255.11
040 - D.F. 22		254.00		
+33.28	2572	58.86	10.53	
			+3.90	
+66.56 - MH 51	Δ29130	253.73	10.66	
			+5.97	
1 + 11.56		53.53	15.82	
			+5.52	
+11.56		53.26	10.2	
			+6.54	
2 + 11.56		53.12	11.37	
			53.12	
			1.25	
			+8.37	
+66.56		52.92	18.93	
			+9.29	
3 + 0.0 - MH 76		252.79	19.06	
			5.22	
			+10.69	
+50		52.59	19.16	
			7.41	
			+11.7	
4 + 0		52.39	19.36	
			6.21	
			+13.65	
+50		52.19	19.56	
			4.73	
			+13.82	
5 + 0		51.99	19.76	
			4.82	
			+14.94	
+40.81 - D.M.H 55		251.83	260.50	

Sewer Construction Alley Block 34 Poplar St.
 And Public Rights of Way to Non-Hole Near Estrella Park
 Lexington Park 8-17-26

8
 8-17-26
 J. J. Jones
 Northham
 Pa. Co.

0+	20+09.3	-Excising MH	146.05	1573 7.95 +778	151.21 1617.55 1573	100 Estrella Park
+3	19+54.3		48.47	1331 6.23 +1577	1617.55 1573	
+6	19+09.3		50.89	10.89 3.26 +1779	170.61 170.61	
+7	18+54.3		43.31	8.17 0.83 +767	165.25 170.61	
+16	18+05.1	MH 27 ABC 49	155.89	1497 8.22 +1777	170.61 170.61	
+17	17+55.1		58.41	12.50 5.41 +759	170.61 170.61	
+16	17+02.45	MH 26 APP 19	160.66	9.85 2.96 +759	170.61 170.61	
+3+0	16+52.45		63.08	14.86 1.61 +759	170.61 170.61	
+5	16+02.45		65.50	14.86 +759	170.61 170.61	
+4+0	15+52.45		67.92	8.82 14.77	170.61 170.61	
+7.5	15+20.71	-MH 34 28' 15"	168.87	8.82 14.77	170.61 170.61	
5+0	14+80.71		71.29	15.71 10.80 +557	170.61 170.61	
+4	14+30.71		72.81	15.71 +557	170.61 170.61	
	13+80.71	cut	76.23		170.61 170.61	
	13+75.08	-MH 33 43' 04"	176.50	12.86 +557	170.61 170.61	
	13+25.08		79.63	12.86 +557	170.61 170.61	
	12+75.08		82.76	12.86 +557	170.61 170.61	
	12+25.08		85.89	12.86 +557	170.61 170.61	
	11+75.08		89.02	12.86 +557	170.61 170.61	
	11+43.46	-MH 32 Δ 47' 36"	191.00	7.83 15.03 +778	170.61 170.61	
	10+93.46		92.01	7.83 15.03 +778	170.61 170.61	
	10+43.46		95.02	7.83 15.03 +778	170.61 170.61	
	9+93.46		97.03	7.83 15.03 +778	170.61 170.61	
	9+43.46		99.04	7.83 15.03 +778	170.61 170.61	
	8+93.46		201.05	7.83 15.03 +778	170.61 170.61	

8+69.88	-MH 31 Δ 53' 21"	202.00	15.52 9.69 +6.83	217.51 217.51	
8+34.94		204.97	12.55 2.92 +9.63	217.51 217.51	
8+00	BF Pak	207.95	3.57 +2.33	217.51 217.51	
7+50		15.72	11.17 1.52 +1.32	217.51 217.51	
7+00	-Drop MH 30	223.50	14.86 3.59 +11.27	217.51 217.51	
6+50		26.82	11.54 1.79 +9.75	217.51 217.51	
6+00		28.44	2.62 +11.32	217.51 217.51	
5+50		30.46	1.82 1.69 +11.77	217.51 217.51	
5+00		32.28	11.46 12.44 +47.02	217.51 217.51	
4+80	= MH 29	233.00	15.84 2.26 +11.72	217.51 217.51	
4+40		41.50	5.68 2.90 +2.62	217.51 217.51	
4+00	-BF Pak	250.00	14.69 8.97 +3.72	217.51 217.51	
3+54.98	-MH 28	266.56	8.26 6.73 +11.57	217.51 217.51	
3+02.98		67.33	8.26 6.73 +11.57	217.51 217.51	
2+54.98		68.10	14.08 15.23 +8.77	217.51 217.51	
2+04.98		68.87	Out	217.51 217.51	
1+97	-DF 412	269.00	13.15 16.13 +8.05	217.51 217.51	

John Construction Alley Block 34
 From 14th Cor. Lot 10 to B Alley
 Lexington Park

040	D.F. N° 13	275.00	268 +2.82	270 270 +7.03	275.00
750		72.48			
140		69.91	11.82 +5.73		
+16	Conc Piers	69.15	Footings 12.33 +2.72	15.17 12.97	
+28	"	68.55	6.00	13.63 12.15	22.63 15.20
+40	"	67.95	11.00	14.23 12.75	16.23 15.70
+65	M.H. 28	266.56			

Stub West Line Lot 22 Block 33

040 - D.E. 28	282.00	52.15 22.15 22.73 +5.24
0799 - M.H. 71	230.00	

93.26
 51.00
 91.00
 135.26

Alley Block 33. Between Poplars and Poplar Drive.

040 - D.E. 29	252.00	53.71 11.21 +5.77	217.53 217.53 217.53
+20 Break	240.00	12.25 2.25 +9.79	228.25 228.25 228.25
+40.45 Conc Cap	238.26	52.15 38.25 +6.02	202.22 202.22 202.22
178986 Conc Plug	230.76	2.25 3.25 +9.12	225.26 225.26 225.26
178980 - M.H. 71 A 12°35'	230.00	12.25 +9.79	217.75 217.75 217.75
178981	26.35	14.16 1.01 +8.08	12.28 12.28 12.28
24388	22.70	22.20 +0.50	22.70 22.70 22.70
24888	19.05	9.86 1.23 +8.73	10.82 10.82 10.82
31388	15.40	14.11 -1.11	15.40 15.40 15.40
318523 - M.H. 72 A 16°40'	212.00	2.25 4.15 +5.53	209.75 209.75 209.75
413523	209.33	12.65 +9.67	199.68 199.68 199.68
418523	206.67	15.21 15.21 +4.77	191.46 191.46 191.46
511595 - M.H. 73 A 17°25'	205.00	15.21 15.21 +5.52	189.78 189.78 189.78
574119	3.50	11.00 11.00 +6.61	17.87 17.87 17.87
610643 - M.H. 31	202.00		202.00 202.00 202.00

Sewer Construction

Manzanito Drive across Block 35

From S.W. Cor Lot 22 & 23

To S.W. 1/4 Poplar St.

Lexington Park

10-13-21

10

0+0 = DE #10	284.00	37 279.25 18.01 12.22 +6.52	55 Manzanito +1000 ft
+50	83.64	14.37 6.33 +9.04	288.52 29.22 288.01
+100	83.28	15.09 15.14 +9.95	12.33 6.13 +7.00
+150	82.92	15.09 15.14 +9.95	15.25 15.42 +9.95
+200	82.56	15.26 6.31 +9.57	15.26 6.31 +9.57
+249.91 = MH 17 Δ 51°20'	282.20	14.31 18.82 +7.78	14.31 18.82 +7.78
+299.91	out	16.68 7.35 +9.33	9.04 8.97 18.04
+349.29 = MH 18 Δ 50°00'	281.70	9.01 14.23 +7.97	9.01 14.23 +7.97
+399.29	81.33	9.82 2.15 +7.73	9.82 2.15 +7.73
+449.29	80.97	16.11 5.61 +7.85	16.11 5.61 +7.85
+499.29	80.61	16.76 6.61 +7.61	16.76 6.61 +7.61
+549.29	80.25	16.76 6.61 +7.61	16.76 6.61 +7.61
+599.51 = MH 19 Δ 57°13.33 = Violat	280.00	16.11 5.61 +7.85	16.11 5.61 +7.85
+649.29	79.66	16.11 5.61 +7.85	16.11 5.61 +7.85
+699.29 = MH 20 Δ 59°35'	279.33	16.11 5.61 +7.85	16.11 5.61 +7.85
+749.29	79.39	16.11 5.61 +7.85	16.11 5.61 +7.85
+799.29	78.70	16.11 5.61 +7.85	16.11 5.61 +7.85
+849.29	78.06	16.11 5.61 +7.85	16.11 5.61 +7.85
+899.29	77.43	16.11 5.61 +7.85	16.11 5.61 +7.85
+949.29 = MH 21 Δ 71°45'	277.00	16.11 5.61 +7.85	16.11 5.61 +7.85
+999.29	77.70	16.11 5.61 +7.85	16.11 5.61 +7.85
+1049.29	77.10	16.11 5.61 +7.85	16.11 5.61 +7.85
+1099.29	76.40	16.11 5.61 +7.85	16.11 5.61 +7.85
+1149.29	75.70	16.11 5.61 +7.85	16.11 5.61 +7.85
+1199.29 = MH 22	269.00	16.11 5.61 +7.85	16.11 5.61 +7.85
+1249.29	67.41	16.11 5.61 +7.85	16.11 5.61 +7.85

11704.38	15.93	84.2 16.2 +6.8	165.25 13.22 178.47
+152.38	out	13.25 13.25 +5.05	178.47 13.13 191.60
+181 = MH 23 Δ 16°30' ?	264.00	13.55 17.54	191.60 13.13 204.73
+212.1	60.70	13.55 17.54	204.73 13.13 217.86
+233.1	57.37	13.55 17.54	217.86 13.13 230.99
+261.1	54.04	13.55 17.54	230.99 13.13 244.12
+288.1	50.71	13.55 17.54	244.12 13.13 257.25
+315.1	47.38	13.55 17.54	257.25 13.13 270.38
+342.1 = MH 24	244.00	13.55 17.54	270.38 13.13 283.51
+369.1	39.50	13.55 17.54	283.51 13.13 296.64
+396.1	235.00	13.55 17.54	296.64 13.13 309.77
+423.1	223.62	13.55 17.54	309.77 13.13 322.90
+450.1	211.23	13.55 17.54	322.90 13.13 336.03
+477.1	198.84	13.55 17.54	336.03 13.13 349.16
+504.1 = MH 25	192.00	13.55 17.54	349.16 13.13 362.29
+531.1	188.00	13.55 17.54	362.29 13.13 375.42
+558.1	74.33	13.55 17.54	375.42 13.13 388.55
+585.1 = MH 26	160.66	13.55 17.54	388.55 13.13 401.68

Sewer Construction Poppy Place

9-23-21

11

28572 H1

070 - DE 11	271.45	85.23 37.23 18.23 76.88	14.23 29.23
+50	70.95		
140	70.45	15.23 40.21	
+50	69.95		14.23 29.23
270	69.45	15.23 22.23	
+4200 - M.H. 22	269.00		

Some Construction Violat St. L. Alleys Blocks 9-8-6

Lexington Park

To cross St

From Manzanita Drive to Alley Blocks 8+9

12

0+0 = MH 19	280.00	280.00	280.00	280.00
+50	80.32	17.68 +67.7	8M 289.10	CF Admission + 1.00 288.10
+70	80.65	17.86 +62.79	8M 289.10	CF Admission + 1.00 288.10
+50	80.97	17.94 +63.03	8M 289.10	CF Admission + 1.00 288.10
2+0	81.30	18.24 +63.06	8M 289.10	CF Admission + 1.00 288.10
745.82 = MH 16	281.60	18.24 +63.06	8M 289.10	CF Admission + 1.00 288.10
0+0	81.92	18.24 +63.06	8M 289.10	CF Admission + 1.00 288.10
+50	82.25	18.24 +63.06	8M 289.10	CF Admission + 1.00 288.10
+70	82.57	18.24 +63.06	8M 289.10	CF Admission + 1.00 288.10
+50	82.90	18.24 +63.06	8M 289.10	CF Admission + 1.00 288.10
2+0	83.22	18.24 +63.06	8M 289.10	CF Admission + 1.00 288.10
+50	83.55	18.24 +63.06	8M 289.10	CF Admission + 1.00 288.10
+75 - DMH 15	283.71	285.00	13.01 285.00 +67.7	13.01 285.00 +67.7
3+25	84.03	13.98 2.31 +11.67	14.65 2.97	
+75	84.36	13.98 2.31 +11.67	14.65 2.97	
4+25	84.68	13.98 2.31 +11.67	14.65 2.97	
+75	85.01	13.98 2.31 +11.67	14.65 2.97	
5+25	85.33	13.98 2.31 +11.67	14.65 2.97	
+75	85.65	13.98 2.31 +11.67	14.65 2.97	
6+25	85.98	13.98 2.31 +11.67	14.65 2.97	
+50 = MH 18	286.15	286.15	286.15	
+70	86.65	9.33 2.31 +7.02	8.87 2.31 +6.56	
+50	87.15	9.33 2.31 +7.02	8.87 2.31 +6.56	
8+0	87.65	9.33 2.31 +7.02	8.87 2.31 +6.56	
+50 - DE 7	288.15	288.15	288.15	

0+0 = DE 7	287.00	287.00	287.00
+50	86.41	17.68 +68.73	86.41
+70	85.81	17.68 +68.13	85.81
+50	85.22	17.68 +67.54	85.22
746.78 = MH 15	285.60	285.60	285.60

Sawyer Construction
Manzanita Drive + Snow Drop St.

Lexington Park

10-22-26

13

0-30 = DE "8	290.50	881 871 +10	291.21 1.66 292.87
0+20	90.21	810 820 +10	
+20	89.91	815 825	
1+20	89.61	820 830 +10	
+20	89.31	825 835	
2+20	89.01	830 840 +10	
+20	88.71	835 845	
+93.5 = MH 1A	288.56	845 855	
3+22.82	88.90	out	
3+50.28 = MH 1B	288.23	10.88 +47.9	
4+100.28	87.93	12.38 +57	
+50.28	87.63	10.48 +57	
5+100.28	87.33	10.88 +57.30	
+50.28	87.03	12.38 +57	
6+100.28	86.73	11.58 +57.6	
+50.28	86.43	10.88 +57.35	
+96.84 = MH 1C	286.15		

Senior Construction Oak St & Alley Block 6
 Third Public Right of Way Block 38 Lexington Park

Manzanita Drive Dublin to Oak St.

11-14

9+0 = D.F. 6.	289.00	9.8 26 284.22 4.58
+1.50	87.64	8.88 18.20
10+0	86.27	13.35 10.22 21 10.00
+1.50	84.77	16.94 10.87
11+0	83.54	12.00 10.07
+1.50	82.10	14.34 15.22
+7.75 = D.D.M.H. 7	281.50	13.45 31.6 18.55 277.00 +277+52.7 +6.77
12+17.5	76.15	18.54 +7.22
+1.60 Break	275.30	9.66 7.53 5.35 +3.95
+90.65	68.15	22.61 Explosion 14.7 Lexington Marlborough
13+21.3 = M.H. 8	261.00	8.36 7.72 214.53 15.63 15.63 15.63
+68.63	54.25	15.63 14.25 13.09
14+11.57 = M.H. 9	248.50	19.26 23.22 15.7 20.67 22.38 11.50
+151.89	12.71	17.55 17.07
+77.81	36.92	19.64 24.55 18.93 11.35 25.82
15+23.73 = M.H. 10	231.13	8.73 12.00 12.00 4.17
+10.91	24.62	31.85 21.02 13.34 24.85 11.20
15+98.1 = M.H. 11	218.11	15.25 14.37
16+48.1	16.61	14.55 17.92 29.66
16+98.1	15.11	18.15 18.07 17.78
17+17.5 = Existing M.H. Lexington Ave	214.53	

0+0 = D.F. 5	275.00	10.66 +5.79
+1.50	74.70	10.76 5.70 +5.00
1+0	74.40	10.66 5.65 +5.43
+1.50	74.10	11.36 5.20 +6.50
2+0	73.80	11.66 4.63 +7.8
+1.50 Break	72.50	9.66 10.76 10.76 +5.11
+89.66 = M.H. 8	261.00	
2+50	3.7	3.66 28.577
2+10	3.7	28.61 on slab 2.000
1+1.50	4.2	80.5
1+0	5.0	80.8
0+2.50	5.6	79.7
0+0	5.2	80.1

0+0 - DE #1	308.00	800 +5.15	294.47	000/45 MH5	11+25.69	86.38	14.35 +8.05	294.77	07.54 MH7
+50	306.88	9.12 +4.97	306.79	9.33 306.79	+50.69 - MH5	286.00	8.88 +8.70	294.77	
1+0	305.77	12.20 +2.09	302.07	12.20 302.07	12+00.69	285.47	9.16 +9.78		
+50	304.66	11.35 +4.97	307.55	11.35 307.55	+50.69	84.94	9.84 +7.50		
2+0	303.55	14.45 +4.97	307.12	14.45 307.12	12+00.69	84.41	10.42 +6.33		
+50	302.44	6.18 +5.17	318.59	6.18 318.59	+50.69	83.88	16.99 +7.20		
7+0 - MH #1	302.00	6.63 +5.76	305.45	6.63 305.45	14+00.69	83.35	14.53 +4.57		
3+0.409	301.25	out			+30 - MH6	292.00	16.60 +6.89		
+38.19 - MH 2	300.50	8.13 +6.00			+80	82.47	16.46 +2.01		
+88.194	299.12	2.51 +2.71			15+30	81.94	12.94 +6.22		
4+38.19	297.73	12.88 +6.89			+80	81.41	3.47 +6.29		
+88.19	296.35	out			16+30	80.88	14.08 +6.75		
5+00.69 - MH 3	296.00	16.63 +7.67			+80	80.35	14.53 +6.70		
+50.69	295.23	7.52 +6.53			17+13.19 - 0.0/MH 9	281.50	280.00	179.00	
6+00.69	294.46	8.34 +6.73			200/4				
+50.69	293.69	9.16 +6.97							
7+00.69	292.92	9.88 +6.97							
+50.69	292.15	13.55 +6.87							
8+00.69	291.38	14.26 +6.92							
+25.69 - MH 4	291.00	14.80 +6.90							
+25.69	290.23	14.57 +6.94							
9+25.69	289.46	13.32 +7.06							
+25.69	288.69	14.16 +6.93							
10+25.69	287.92	14.88 +7.50							
+25.69	287.15	14.65 +7.75							

Lexington Park

0 + 0 - D.E. *2	297.50	11.43 6.03 +4.93	308.63 H1
+50	97.20	11.43 6.03 +5.20	
1 + 0	96.89	16.25 +5.57	
+50	96.58	12.05 6.10 +5.95	
2 + 0	96.27	12.36 6.24 +6.53	
+1025 - MH 3 2 Hrs 91m	296.00		

Alley Block 3

0 + 0 - D.E. *3	291.89	18.86 +5.09	302.50 H1
+50		16.56 +5.30	
1 + 0		16.81 +6.60	
+225 - MH 4 4 Hrs 51m	291.00		

Alley Block 4

0 + 0 - D.E. *4	282.95	16.22 +5.57	294.47 0.75 H1 4.25 MH 5
+50		11.22 5.68 +6.63	298.22
1 + 0		16.27 +5.27	
+50		12.33 6.22 +6.36	
2 + 07.5 - MH *5	286.00	12.24	

Senior Construction, Oak St. Peplar St. Across 8th 15
 Had Pepper Drive

Lexington Park

0+0	DOWN #7	277.00	280.00	281.5	292.3
+50		77.43		16.58 +7.28	
+100		77.87		16.06 7.05 +7.07	
+150		78.30		15.13 7.53 +7.33	
+225	MH 43 A	278.50		15.22 7.78	118.26
+225		78.85		15.40 8.11 +6.89	286.28 0.01 MH 43
+225		79.39		15.83 7.63	291.53
+225		79.55		14.85 7.53	
+225		79.90		14.13 7.22 +6.98	
+00.65	MH 42 A	280.10		14.43 7.22 +7.22	
+50.65		80.45		14.01 6.66 +7.52	
+00.65		80.80		13.23 6.52 +7.17	
+50.65		81.15		13.38 6.27 +6.91	
+225	MH 40 A	281.31		13.22 6.84 +6.37	
+03.25		81.57	out		
+33.25	MH 75	281.73		12.80 6.26 +7.57	
+83.25		82.08		12.15 6.29 +6.79	
+233.25		82.43		12.10 6.27 +6.87	
+83.25		82.78	out	11.75	
+90.78	MH 41	282.83		11.70 6.65 +7.03	
+40.78		84.45		10.08 6.52	
+88.21	DE 15	286.00		8.53 6.77 +6.72	

Pepper Drive Between Columbine + Hollywood Park 17

0+0	MH 41 Mast	282.83	11.70	294.57
+50		83.13	16.48 +5.73	
+100		83.43	11.18 7.28 +3.85	
+200	DE #32	282.55	10.88 8.45 +2.77	

Lexington Park.

0+0 = D.F. 14	894.56	11.73 7.07 +4.68	11.73 7.07 +4.68
+50	94.01		
1+0	93.46 out		
+11.27 Fageluz Δ 43° 50'	93.33	13.41 8.29 +5.12	13.41 8.29 +5.12
-040908		13.49 8.13 +5.36	13.49 8.13 +5.36
0+349 = MH 35	92.05	13.84 8.25 +5.59	13.84 8.25 +5.59
1.85	92.50		
1+35	91.95	13.79 8.50 +5.29	13.79 8.50 +5.29
+85	91.40	19.35 11.75 +7.60	19.35 11.75 +7.60
2+0 = MH 36	891.24	19.51 8.76 +10.75	19.51 8.76 +10.75
+50	90.69	11.06 8.92 +2.14	11.06 8.92 +2.14
3+0	90.14	14.61 4.21 +10.40	14.61 4.21 +10.40
+50	89.59	13.16 8.33 +4.83	13.16 8.33 +4.83
4+0343 = MH 37 = 2 Quince	889.00	14.10 4.72 +9.38	14.10 4.72 +9.38
+50.41	88.43	11.85 4.21 +7.64	11.85 4.21 +7.64
5+0343	87.83	13.46 6.68 +6.78	13.46 6.68 +6.78
+50.41	87.22	13.07 8.07 +5.00	13.07 8.07 +5.00
6+0341	86.61	7.82 1.25 +6.57	7.82 1.25 +6.57
6+50 = MH 39	86.00	8.53 1.08 +7.45	8.53 1.08 +7.45
6+9017	85.09	9.44 2.86 +6.58	9.44 2.86 +6.58
7+4017	82.97	13.56 8.38 +5.18	13.56 8.38 +5.18
7+90.17	82.85	14.68 4.32 +10.36	14.68 4.32 +10.36
8+4017 = MH 75	81.73		

0+0 = MH 37 Columbian Quince	889.00		
+50	89.30	12.45 5.50 +6.95	12.45 5.50 +6.95
1+0	89.60	12.15 4.50 +7.65	12.15 4.50 +7.65
+52.05 = MH 38 = 2 Alloys	887.91	11.84 8.25 +3.59	11.84 8.25 +3.59
2+02.05	90.21	11.54 4.24 +7.30	11.54 4.24 +7.30
+52.05	90.51	11.24 4.25 +6.99	11.24 4.25 +6.99
3+02.05	90.81	10.94 5.20 +5.74	10.94 5.20 +5.74
+52.05	91.11	10.64 5.20 +5.44	10.64 5.20 +5.44
4+02.05	91.41	10.34 5.20 +5.14	10.34 5.20 +5.14
+52.05	91.71	10.04 5.20 +4.84	10.04 5.20 +4.84
4+97.05 = D.F. 37	852.40	8.25 5.30 +2.95	8.25 5.30 +2.95

Sever Co. structure - Poplar - Spandrop - Pepper Drive 11-26

0 + 0 = MH 43	278.50	15.08 6.89 +8.19	293.22 5.14 288.07 4.03
+150	78.85		14.72 14.68 292.70
1 + 0	79.21		+8.14
+150	79.56	14.37 5.87 +9.00	
2 + 0	79.92		14.08 +8.93
+150	80.28	13.66 4.24 +8.76	
3 + 0	80.64		13.30 5.13 +8.17
+150 = MH 44 Δ	281.00	12.93 +9.77	
4 + 0	81.30		11.10 4.05 17.05
+150	81.60	11.68 4.02 +7.08	
5 + 0	81.90		10.89 4.99 +6.68
+150	82.20	10.50 4.28 +5.02	
6 + 0	82.50		10.30 +4.86
+150	82.80	9.00 5.52 +4.36	
+83.2 = MH 45 Δ	283.00		8.20 6.22 +4.04
7 + 83.2	83.30	9.40 4.69 +4.73	
+83.2	83.60		8.10 6.51 +5.55
8 + 83.2	83.90	8.00 4.63 +5.78	
+83.2	84.20		8.50 5.21 +5.29
9 + 83.2 = DL 16	284.50	8.20 5.20 +2.70	

350 0.9

300 0.6

250 0.8

Sexual Construction
 In J Teratohypts. And Part 109 of Normal Hypts

18+81.5	- First of MH & Madusa	353.6	28.45 28.30 114.73	372.35 372.34 372.34	0.5160 114.73
18+81.5		53.80	28.33 115.23	372.44 372.44	
17+81.5		54.00	19.88 4.07 15.81	368.84 368.84	
17+81.5		54.20	19.88 4.07 15.81	374.08	
16+99.8	- MH N° 8 Δ 16° 27'	354.33	19.55 4.53 15.53	364 364	
16+99.8	Δ 16° 54' Madusa	54.53	19.55 4.53 15.53	364	
15+99.8		54.73	19.35 4.53 14.81	364	
15+99.8		54.93	19.15 4.53 14.81	364	
14+93.8	- DMH N° 7 Δ 16° 54'	355.15	18.99 4.53 14.81	370 370	110.6
14+93.8		55.35	18.99 4.53 14.81	370	
13+93.8		55.55	18.99 4.53 14.81	370	
13+93.8		55.75	18.99 4.53 14.81	370	
12+93.8		55.95	18.99 4.53 14.81	370	
12+91.8	- MH N° 6 Δ 20° 21'	356.14	16.28 4.53 11.85	368	
11+91.8		56.36	16.28 4.53 11.85	368	
11+91.8		56.56	16.28 4.53 11.85	368	
10+91.8		56.76	16.28 4.53 11.85	368	
10+38.8	DMH N° 5 Δ 28° 17'	356.97	15.47 3.87 11.85	368	16.77
9+88.8		57.17	15.47 3.87 11.85	368	
9+38.8		57.37	15.47 3.87 11.85	368	
8+88.8		57.57	15.47 3.87 11.85	368	
8+99.5	MH N° 4 Δ 27° 50'	357.73	8.35 2.02 11.85	368	
7+99.5	Δ 38° 51'	57.93	8.35 2.02 11.85	368	
7+99.5		58.13	8.35 2.02 11.85	368	
6+99.5		58.33	8.35 2.02 11.85	368	

6+99.5		58.73	8.35 2.02 11.85	368	
5+99.7	- MH N° 3	358.98	13.27 6.51 18.77	368	13.27
5+99.7		59.23	13.27 6.51 18.77	368	
4+99.7		59.48	13.27 6.51 18.77	368	
4+372	- MH N° 2 Δ	359.79	12.46 3.69 13.77	368	12.46
3+872	Δ 38° 14' 54"	60.04	12.46 3.69 13.77	368	
3+372		60.29	12.46 3.69 13.77	368	
2+872		60.54	12.46 3.69 13.77	368	
2+400	- MH N° 1	360.78	9.35 8.87 15.31	368	16.73
1+90		63.13	9.35 8.87 15.31	368	
1+40		65.46	9.35 8.87 15.31	368	
0+90		67.80	9.35 8.87 15.31	368	
0+40		70.13	9.35 8.87 15.31	368	
0+0	= DF	372.00	6.98 1.63 15.35	368	15.35

181-20
 20
 20
 20

SEWER CONSTRUCTION FILEY BLOCK 7 TERRA

0+0	D.M.H. No. 52 Madison	362.30	356.97	369.07 6.26 375.33
+150'S		62.80	12.52 +7.05	
1+0		13.30	13.03 +7.38	
+50		63.80	11.53 +7.09	
2+0		64.30	10.03 +7.45	
+150		64.80	10.53 +8.37	
+70	D.F.	365.00	18.33 +8.57	

SEWER CONSTRUCTION FILEY BLOCK 46

Horizontal Hph's

0+0	M.H. No. 38 38th	358.98	362.05 8.97 371.03
+15		59.43	16.59 +2.76 +17.83
+90	D.F.	367.88	16.12 +8.88 +25.00

SEWER CONSTRUCTION 3916 ST.
N of Madison Ave.

0+0	M.H. No. 6 2 39th Madison	356.16	362.01 2.33 369.39
+150'S		56.51	12.83 2.23 +9.70
1+0		56.96	12.81 3.24 +9.57
+50		57.21	12.13 3.83 +8.30
2+0		57.56	12.25 4.24 +8.01
+150		57.91	11.43 4.24 +7.19
3+0		58.21	11.08 4.50 +6.58
+50		58.61	10.27 4.51 +5.76
+75	D.F.	358.79	10.55 5.25 +5.27

SEWER Construction Alley Block S
Toronto Hgts

010 - drop MH N°7	361.43	355.15	318.71 823 877.08
+50.5	61.78	15.80 5.02 +7.22	14.85 +8.14
1+0	62.13	14.10 1.08	14.85 +8.14
+50	62.48	17.22	14.85 +8.14
2+0	62.83	13.82 2.80	14.85 +8.14
+55 - MH N°8	363.21	357.57	318.71 823 877.08
3+0.5	63.56	13.62 1.62	14.85 +8.14
+55	63.91	15.12	14.85 +8.14
4+0.5	64.26	12.82 1.62	14.85 +8.14
+55	64.61	12.82 1.62	14.85 +8.14
5+10 - DE	365.00	358.2	318.71 823 877.08

SEWER Construction 401454
N. of Madison Ave

010 - MH N°8 of Madison + 401454	354.33	378.43 375.53	318.71 823 877.08
+56.11	54.68	71.53 54.61 17.85 +15.28	17.85 +15.28
1+0	55.03	17.15 0.32	17.85 +15.28
+50	55.38	16.80 2.22	17.85 +15.28
2+0	55.73	16.45 2.22	17.85 +15.28
+50	56.08	16.10 2.22	17.85 +15.28
3+0	56.43	15.75 2.22	17.85 +15.28
730 - DE	356.64	375.53	318.71 823 877.08

Paving Alley Block 25 University Heights
 Madison L. Adams Behrman Park Blvd & North

	M	F
H.L. Madison Ave	351.86	351.77
50N	52.03	52.00
100N	52.60	52.23
150N	52.37	52.46
200N	52.55	52.19
250N	52.76	52.92
300N	52.89	52.45
330N	353.00	353.30
380N	52.95	54.11
430N	52.90	54.95
467N	355.60	355.54

	M	F
H.L. Madison Ave	351.86	351.77
50N	52.03	52.00
100N	52.60	52.23
150N	52.37	52.46
200N	52.55	52.19
250N	52.76	52.92
300N	52.89	52.45
330N	353.00	353.30
380N	52.95	54.11
430N	52.90	54.95
467N	355.60	355.54

514
 Madison
 2100
 355.53
 4.01
 355.52
 5.15
 350.37
 2.15
 355.52
 4.08
 351.44
 5.02
 351.59
 HERR
 HERR
 18th Blvd
 558.58

514
 Madison
 2100
 355.53
 4.01
 355.52
 5.15
 350.37
 2.15
 355.52
 4.08
 351.44
 5.02
 351.59
 HERR
 HERR
 18th Blvd
 558.58

Paving Alley Block 27 University Heights
 Madison to Adams between Cleveland & Campus

	H	F
NL Madison	351.21	351.68
30' H	51.98	51.19
60' H - Break	251.70	351.90
110'	51.10	51.53
160' H	51.09	51.25
200' H	50.85	51.03
240' H - Break	350.60	350.80
280' H - S. Golden Gate	273.99.20	
291.57' H - S. "	1100F	347.30

	H	F
N	351.21	351.68
30' H	51.98	51.19
60' H - Break	251.70	351.90
110'	51.10	51.53
160' H	51.09	51.25
200' H	50.85	51.03
240' H - Break	350.60	350.80
280' H - S. Golden Gate	273.99.20	
291.57' H - S. "	1100F	347.30

	H	F
N	351.21	351.68
30' H	51.98	51.19
60' H - Break	251.70	351.90
110'	51.10	51.53
160' H	51.09	51.25
200' H	50.85	51.03
240' H - Break	350.60	350.80
280' H - S. Golden Gate	273.99.20	
291.57' H - S. "	1100F	347.30

	H	F
N	351.21	351.68
30' H	51.98	51.19
60' H - Break	251.70	351.90
110'	51.10	51.53
160' H	51.09	51.25
200' H	50.85	51.03
240' H - Break	350.60	350.80
280' H - S. Golden Gate	273.99.20	
291.57' H - S. "	1100F	347.30

Server Construction 30th St
 Between Market and K St.

Time	Notes	Value	Subtotal	SW
0:40	DF	124.30	5.34 5.32 124.32	118.23 13.00 126.23
1:50		129.82	9.13 5.47 14.60	126.63 12.26 138.89
2:10		125.34	12.20 7.39 14.37	
2:50		120.86		5.07 9.26 14.33
3:10		116.38	10.45 13.61 14.37	
4:00	Bk	111.00		15.03 13.28 28.31
3:100	N.H. 2.30 Island	110.00	16.03 11.70 27.73	SW 113.53 1.13 114.66
4:50		104.58	10.31 3.22 7.09	114.66 12.01 126.67
5:10		99.16	10.00 13.34 12.76	126.67 10.95 137.62
5:50		93.79		8.86 2.86 11.72
5:10		88.32	14.23 13.83 15.68	
7:40	D.M. Eisdor	84.00		18.55 17.05 35.60

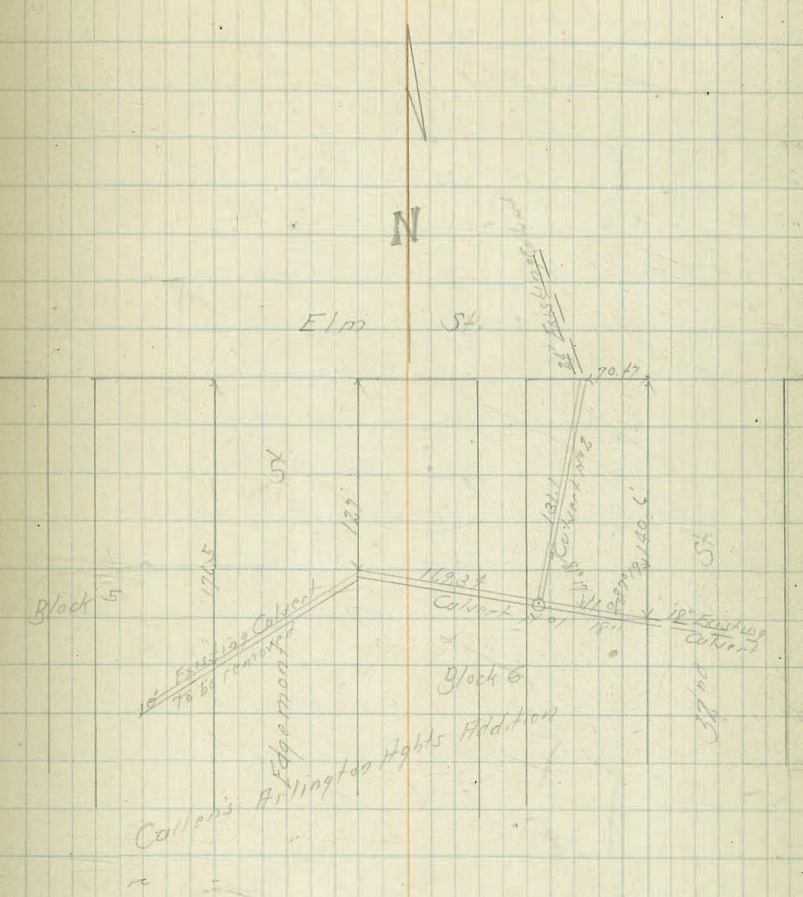
Concrete Pipe Culvert

B'ks. 5 + 6 Callens Arlington Hgts Add.

10-27-26

Culvert No. 1	18" Conc Pipe	BM	226.53	Elm + General
0 + 0 = F.L. Edgemoor	191.40	1506	111.87	1.92
150 E	192.50	10.28	111.87	215.27
1 + 0	193.60	8.63	111.87	216.5
1934 Bkt	194.00	9.18	111.87	217.51
1934 Junction No. 2	197.00	9.27	111.87	218.51
2 + 24.34	100.24	8.28	111.87	219.39
799.34 = Existing 18" Culvert	202.50	13.46	111.87	199.19
		11.80	111.87	208.28
		10.30	111.87	194.85
		1.92	111.87	103.14
		1.92	111.87	103.14
		1.92	111.87	103.14

Culvert No. 2	18" Conc Pipe	BM	226.53	Elm + General
0 + 0 = Junction No. 1 + 2	197.00	1444	111.87	1.92
50 N	201.77	1265	111.87	215.27
100 N	206.54	9.67	111.87	216.5
131.1 N = Existing 24" Culvert	209.50	6.71	111.87	217.51



Grades Ingraham St. East Line
Diamond to Grand

10.20.27
27

	F.L.		
S.L. Diamond	83.25	4.3 9.7 10.4	4.3 9.7 10.7
54'S	81.85	5.2 7.0	
108'S	80.45	2.7 10.7	
162'S	79.05	1.1 10.9	
216'S	77.65	5.5 11.7	
270'S - H.L. Emerald	76.25	6.9 11.2	
S.L. Emerald	75.25	7.8 10.8	
54'S	73.85	8.3 10.0	
108'S	72.45	10.2 10.8	
162'S	71.05	9.2 10.4	
216'S	69.65	3.4 10.6	
270'S - H.L. Felspar	68.25	6.0 11.1	
S.L. Felspar	67.25	5.1 10.7	
54'S	66.45	6.6 10.3	
108'S	65.65	7.4 10.5	
162'S	64.85	8.2 10.7	
216'S	64.05	9.0 10.1	
270'S - H.L. Garnet	63.25		
S.L. Garnet	62.25	5.6 10.2	
54'S	61.45	6.5 11.2	
108'S	61.13	6.0 11.9	
162'S	61.32	6.6 12.0	

	F.L.		
216'S	61.03	6.0 10.8	
270'S - H.L. Hornblend	60.71	7.2 10.3	
S.L. Hornblend	60.35	7.6 10.3	
54'S	59.45		
108'S	58.65	9.0 10.6	
162'S	57.85		
216'S	57.05	10.8 10.7	
270'S - H.L. Granite	56.25		

3MSSE
12.27
6.78
6.82
7.25
7.30
7.35
7.40
7.45
7.50
7.55
7.60
7.65
7.70
7.75
7.80
7.85
7.90
7.95
8.00
8.05
8.10
8.15
8.20
8.25
8.30
8.35
8.40
8.45
8.50
8.55
8.60
8.65
8.70
8.75
8.80
8.85
8.90
8.95
9.00
9.05
9.10
9.15
9.20
9.25
9.30
9.35
9.40
9.45
9.50
9.55
9.60
9.65
9.70
9.75
9.80
9.85
9.90
9.95
10.00
10.05
10.10
10.15
10.20
10.25
10.30
10.35
10.40
10.45
10.50
10.55
10.60
10.65
10.70
10.75
10.80
10.85
10.90
10.95
11.00
11.05
11.10
11.15
11.20
11.25
11.30
11.35
11.40
11.45
11.50
11.55
11.60
11.65
11.70
11.75
11.80
11.85
11.90
11.95
12.00

Paving Alleys 190 + 191 University Heights
 Between Normal + Centre From University to Lincoln Ave.

11-4-46
 28

Distance	Direction	Start	End	Notes	Start	End	Notes
5 L. Lincoln	E	319.12	318.38		22.88 319.12	17.30 15.15	13.00 12.55
20 S 0 Bkt		317.30	17.30		37.2 4.58 4.37	7.79 6.67 4.06	9.88 8.88 7.77
60 S		15.15	15.15				+1.20
100 S 0 Bkt		313.00	313.00		22.88 318.38	17.30 15.15	13.00 12.48
150 S		12.55	12.48		7.50 4.0	7.73 7.23 6.0	9.88 9.01 7.77
200 S		12.10	11.95				+6.78
250 S		11.65	11.43				
300 S 0 Bkt		311.20	310.90	SM Joint Herbald 302.49	8.40 7.64 7.81 0.00	7.61 8.13 7.13 7.5	6.82 8.27 7.37 7.74
350 S		309.80	309.80				5.25
400 S 0 Bkt		308.40	308.70				5.65
450 S		7.61	7.84				5.90
500 S		6.86	6.98				-0.05
550 S		6.03	6.12				
600 S N.L. Blaine Av. 305.25		305.25	305.25				
610 Paving		305.00	305.00		304.75	306.00	304.45
S.L. Blaine		304.75	304.75		4.58 Paving	4.86	4.45
10 S 0 Bkt		306.00	306.30				3.87
60 S 0 Bkt on N		306.45	306.50				3.52
105 S		306.98	306.93				3.26
150 S E.V.C.		307.33	307.31				3.11
160 S		307.22	307.28				3.11
170 S		306.76	306.91				3.87
180 S		305.92	306.24				3.26
190 S E.V.C.		304.71	305.28				3.11
N.L. University Ave		303.60	303.50				3.11

Porter Alley 157 University Heights
Between Iowa & Illinois From Polk to Howard

	N	E	S.M. 31647 Polk Illinois
N.L. Polk	36160	36120	36770 6.09 36716
50' N	6146	6128	36535 1.05 36830 1.60 36878
100' N	6132	6095	36878 33.272 36850 4.227 36835 4.80
150' N	6118	6083	36835 4.11 36575
200' N	6104	6070	36575 4.11
250' N	6090	6058	36104 S.M. 31648 Howard Illinois 36101
300' N	6075	6045	
350' N	6061	6033	
400' N	6047	6020	
450' N	6033	6008	
500' N	6019	5995	
550' N	6005	5983	
600' N - S.L. Howard	35990	35970	

	N	E	S.M. 31647 Polk Illinois
N.L. Polk	6918	6108	6095
50' N	6128	6083	6070
100' N	6146	6058	6045
150' N	6160	6033	6020
200' N	6174	6008	5995
250' N	6188	5983	5970
300' N	6202	5958	5943
350' N	6216	5933	5927
400' N	6230	5908	5911
450' N	6244	5883	5895
500' N	6258	5858	5879
550' N	6272	5833	5863
600' N	6286	5808	5847

Paving Alley Block 5 Mariposa Street
Between Terrace & Paterbourg West Side

WEST SIDE
Terrace
West Side

11-5-21
30
Mar 21 11

	S	N
42.5 ft	261.95	262.15
40 ft	64.72	64.82
80 ft - Bk	267.50	267.50
130 ft - Bk	269.50	269.50
165	70.30	70.30
200 - Bk	271.10	271.10
240 - Bk	271.90	271.40
260 "	271.30	271.30
280 "	271.00	271.00
320	69.93	70.00
360	68.86	69.00
400	267.80	268.00

N	262.15	64.82	67.50	69.50	70.30	71.10	71.40	71.90	71.00
	271.77	69.5	72.7	74.7	75.7	76.5	77.5	78.5	79.5
	270.64	68.6	72.05	74.05	75.05	75.85	76.85	77.85	78.85
	270.09	68.1	71.5	73.5	74.5	75.3	76.3	77.3	78.3
	271.77	+0.87	+0.00	+0.18	+0.27	+0.18	+0.10	+0.00	+0.00
S	261.95	64.72	67.50	69.50	70.30	71.10	71.40	71.30	71.30
	271.77	70.5	73.7	75.7	76.5	77.5	78.5	79.5	80.5
	270.64	69.6	72.95	74.95	75.95	76.75	77.75	78.75	79.75
	270.09	69.1	72.45	74.45	75.45	76.25	77.25	78.25	79.25
	271.77	+0.87	+0.18	+0.00	+0.27	+0.18	+0.07	+0.15	0.0
N	70.00	69.00	68.00						
	69.5	68.5	67.5						
	69.1	68.1	67.1						
	+0.27	+0.13	+0.16						
S	69.93	68.86	67.80						
	69.6	68.5	67.5						
	69.2	68.1	67.1						
	+0.20	+0.00	-0.27						

Paving Alley Block 96 Div. Hgts.
Between Maryland + Cleveland
From Van Buren to Meade

	M	F	
H.L. Van Buren	317.15	319.85	BM 33401 Meade Maryland
20' H Grk on M	322.70	321.15	
60' H Grk.	325.00	325.30	
110' H	328.77	328.97	
160' H	329.65	329.11	
200' H Grk	328.70	329.00	
250'	29.13	29.43	
300	29.57	29.87	
350	30.00	30.30	
400	30.44	31.14	
430' H Grk	330.70	331.70	
480	338.5	34.85	
530 Grk	337.00	337.30	
565	37.61	38.45	
600 - S.L. Meade Ave	338.72	339.08	Top Cb

F	319.85	321.15	25.34	26.66	27.91	29.00	29.67	29.87
M	317.65	318.00	25.00	26.30	27.45	28.20	29.19	29.57
F	30.30	30.74	31.00	31.15	31.30	31.10	31.01	
M	30.00	30.44	31.70	32.85	33.00	32.61	32.22	

Paving Alley Block 81 Dist. Hgts.
Between Maryland & Cleveland
From Meade to Monroe
H

		F	
H.L. Meade	339.82	340.18	BY 331.00 Meade
10'H - Brk.	343.70	344.00	343.70 Maryland
70'H	41.01	41.25	343.70
100'H	344.32	344.50	343.70
150'H	44.83	44.92	343.70
200'H - Brk.	45.35	45.35	343.70
250'H	45.52	45.52	343.70
300'H	45.70	45.70	343.70
350'H	45.87	45.87	343.70
400'H	46.05	46.05	343.70
450'H	46.22	46.22	343.70
500'H - Brk.	346.40	346.40	343.70
550'H	45.82	45.82	343.70
600'H = 5' to Monroe	345.30	345.60	343.70

Note Block 0.7 Spent at Meade Locals 2.11/16, 199.15
" 0.2 " of Monroe

11-17-21
32

F	340.48	44.00	44.25	44.50	44.77	45.35	45.52
		5.00	4.75	4.50	4.25	3.75	3.50
		3.00	2.75	2.50	2.25	1.75	1.50
		12.00	11.75	11.50	11.25	10.75	10.50
H	339.82	44.70	44.01	44.32	44.83	45.35	45.52
	45.5	5.00	4.75	4.50	4.25	3.75	3.50
	45.10	4.25	4.00	3.75	3.50	3.00	2.75
	45.10	4.25	4.00	3.75	3.50	3.00	2.75
E	45.70	45.87	46.05	46.22	46.40	46.57	46.75
	4.70	4.87	5.05	5.22	5.40	5.57	5.75
	4.70	4.87	5.05	5.22	5.40	5.57	5.75
	4.70	4.87	5.05	5.22	5.40	5.57	5.75
H	45.70	45.87	46.05	46.22	46.40	46.57	46.75
	4.70	4.87	5.05	5.22	5.40	5.57	5.75
	4.70	4.87	5.05	5.22	5.40	5.57	5.75
	4.70	4.87	5.05	5.22	5.40	5.57	5.75

Bring Alley Block Fort Stockton Heights
 Between Hortensia & Mitberby From Hickory 150'

	N	E	SM	NY
				251.96 Hickory 0.76 Mitberby
N. L. Hickory -	241.30	241.50		251.88 10.20
40' N = 9th	245.80	246.00		247.60 12.20 253.82
80' N	47.76	47.96		
120' N	49.73	49.93		
150' N - S. L. E. N. W. 11th	251.20	251.40		

	E				
	241.20	46.00	47.91	19.93	51.40
	10.67	7.88	5.86	3.88	2.42
	15.30	6.86	4.86	3.88	1.42
	10.33	47.00	47.00	0.00	47.00
N	241.00	45.00	47.76	19.93	51.20
	10.83	8.02	6.06	4.09	2.42
	10.31	7.02	6.06	4.09	2.42
	10.31	47.00	47.00	0.00	47.00

Paving Alley Block 2 H.M. Higgins Addition
Between A & B St. From 25th to 27th

	S	N
N 25 th St	78.7	199.38
50 th	99.35	99.15
100 th - Bk	199.80	199.80
155	201.40	201.40
210 - Bk	203.00	203.00
245	203.30	203.30
280 - EVC	203.60	203.60
300	203.50	203.50
320 - EVC	202.70	202.70
360	200.35	200.35
400 - Bk	198.00	198.00
450	93.23	93.15
500 - End Paving	88.46	88.29
FL 24	178.92	178.58

	N 199.10	99.45	99.80	201.40	203.00	203.30	203.60
	7.89	4.14	5.79	2.19	2.93	4.13	4.33
		4.90	3.31	2.80	3.87	2.71	4.25
		-0.76	7.08	-0.01	+1.02	7.18	7.08
S 198.00	99.25	99.80	201.40	203.00	203.30	203.60	
	4.69	4.24	3.79	1.53	2.03	2.13	
		4.24	4.95	6.68	4.08	4.63	
		0.0	4.06	-0.15	2.08	2.00	
N 203.50	202.70	200.35	198.00	193.15	188.79		
	4.13	3.59	5.84	10.79	5.15		
	6.87	6.96	8.35	10.89	6.6		
	7.06	-0.79	-2.83	-3.41	40.42		
S 203.50	202.70	200.35	198.00	193.23	188.46		
	4.13	3.59	5.84	10.79	5.28		
	6.83	6.93	7.83	8.82	7.00		
	7.00	7.00	7.00	7.00	7.00		

34
11.10.21
34

5.295
5.14

Pring Alley Block 78 University Heights
Between Park Blvd. & North Montross Meade

East West Alley

	N	S	877 344.88	North
EL North	344.84	344.76	344.88	North
50'E	44.54	44.46	344.88	
100'E	44.24	44.16	344.88	
140'E - N.L.N. St. 1/2	344.00	43.82	344.88	
160'E - E.L. "	343.89	43.80	344.88	
200'E	43.65	43.13	344.88	
250'E	43.35	43.42	344.88	
300'E - N.L. Park Blv.	343.05	43.20	344.88	

N.W.S. Alley

	N	E
N.L.E.W. Alley	344.00	343.89
50'N	44.21	44.10
100'N	44.42	44.31
150'N	44.63	44.52
200'N	44.84	44.74
250'N	45.05	44.95
300'N	45.26	45.16
350'N	45.47	45.37
400'N	45.68	45.59
450'N - S.L. Montross St.	345.89	345.81

35
11-10-24

N	44.24	44.54	44.74	44.00	43.89	43.15	43.35	43.05
	4.73	5.03	5.33	5.57	5.18	5.07	6.93	7.23
	4.90	4.97	5.27	5.80	4.25	6.28	6.71	7.15
		+0.06	-0.11	+0.37	+1.73	+0.09	+0.28	
S	44.21	44.41	44.16	43.97	43.70	43.63	43.42	43.20
	4.81	5.11	5.41	5.15	5.77	6.73	7.03	7.23
	4.71	4.51	4.88	4.25	3.97	5.90	7.03	7.33
		+0.01	+0.53	-1.60	+2.00	+0.95	+1.00	7.09
E	43.89	44.10	44.31	44.52	44.74	44.95	45.16	45.37
	6.8	2.95	2.71	4.53	4.53	4.31	4.10	3.89
	5.67	4.90	3.54	3.54	3.54	4.86	4.10	3.89
		+0.57	+0.65	+1.00	+1.00	-0.55	0.0	0.0
N	44.00	44.21	44.42	44.63	44.84	45.05	45.26	45.47
	6.07	4.82	4.13	4.43	4.43	4.21	4.00	3.79
	5.91	4.60	4.26	3.88	4.26	4.26	4.03	3.65
	+0.16	+0.67	+0.37	+1.00	+1.00	-0.29	-0.33	-0.76
E	45.59	45.81						
	3.67	3.45						
	2.47	3.58						
	+1.00							
N	45.18	45.89						
	3.58	3.37						
	3.72	3.05						
	-2.18							

Rising Alley Block 79 University Heights
Between North + Meade + Monroe

East + West Alley

W.L. North	W	S	W.L. North
345.73	345.67	345.67	345.67
50' N	46.18	46.25	46.25
100' N	46.64	46.84	46.84
140' N = E.L. N. S. Alley	347.00	47.31	47.31
160' N = W.L. ...	347.20	47.54	47.54
200' N	47.28	48.01	48.01
250' N	48.51	48.59	48.59
300' N = E.L. Campus	349.25	349.18	349.18

N	S	N	S
45.23	46.18	46.64	47.00
47.20	47.78	48.51	49.25
45.67	46.25	46.84	47.31
47.54	48.01	48.59	49.18

North + South Alley

N.L.E. + W.Riley	W	S	N.L.E. + W.Riley
347.20	347.00	347.00	347.00
50' N	47.35	47.15	47.15
100' N	47.50	47.80	47.80
150' N	47.65	47.45	47.45
200' N	47.79	47.60	47.60
250' N	47.94	47.75	47.75
300' N	48.07	48.90	48.90
350' N	48.24	48.05	48.05
400' N	48.39	48.20	48.20
450' N = S.L. Monroe	348.54	348.26	348.26

E	N	E	N
47.00	47.15	47.30	47.45
47.60	47.75	47.90	48.05
47.20	47.35	47.50	47.65
48.20	48.36	48.54	48.71

Paving Alley Block 48 City Heights
 Between Danby St & 43rd From University to Nightman

37
 11-2-26
 37

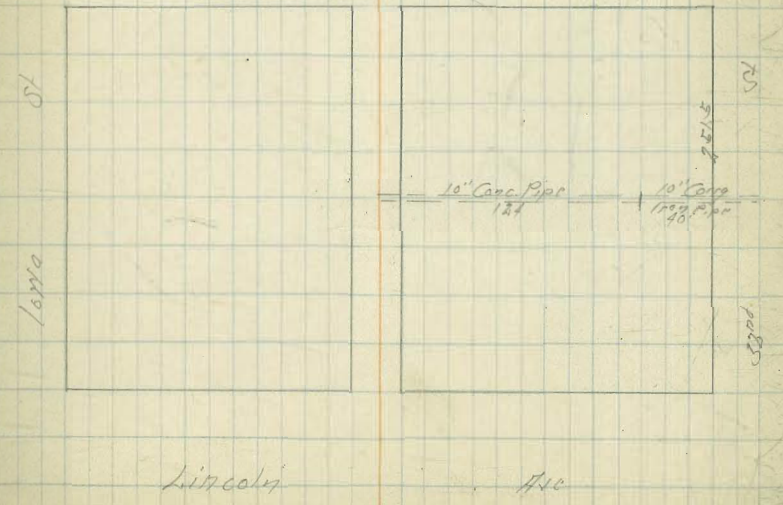
	N	E											
N. Nightman	357.30	357.20	BM 357.11	E	357.20	54.20	55.16	56.00	56.10	57.20	58.40	57.10	
50'	54.92	54.80	357.32		54.2	55.1	56.0	56.10	57.20	58.40	57.10		
100'	55.54	55.20	357.35		54.2	55.1	56.0	56.10	57.20	58.40	57.10		
150'	56.16	56.00	357.37	N	357.20	54.92	55.54	56.16	56.28	57.40	57.57	57.24	
200'	56.78	56.60	363.07		54.2	55.1	56.0	56.10	57.20	58.40	57.10		
250'	57.40	57.20			54.2	55.1	56.0	56.10	57.20	58.40	57.10		
300'	57.57	57.40		E	57.20	58.00	58.20	58.40	58.10				
350'	57.94	57.60			57.2	58.0	58.2	58.4	58.1				
400'	57.91	57.20			57.2	58.0	58.2	58.4	58.1				
450'	58.08	58.00			57.2	58.0	58.2	58.4	58.1				
500'	58.24	58.20		N	57.91	58.07	58.26	58.43	58.10				
550'	58.42	58.40			57.2	58.0	58.2	58.4	58.1				
600'	58.60	358.60			57.2	58.0	58.2	58.4	58.1				

Paving Alley Block 161 University Heights
Between 10th + 32nd St From Lincoln to Polk

	N	E	SEBP 31362.92 Lincoln 3.00 + 11110.00									
12' Lincoln	357.25	355.75	3155.6	E	355.60	51.40	55.11	51.05	54.22	52.13	52.97	52.30
40' N - Bek on East	56.72	356.40	356.88 3.92 360.80		70.92	5.21	7.65	5.76	5.29	2.50	3.06	3.73
100' N	55.92	55.61	357.73 8.81 366.54			5.62	6.94	6.94	8.19	8.75	5.11	5.2
150' N	55.85	54.65	367.60 11.06 378.66			7.82	8.15	7.68	8.27	7.84	8.05	7.84
200' N	54.59	54.29	380.00 22.34 402.34	N	356.50	51.72	55.00	55.55	51.58	52.0	52.26	52.10
250	53.92	53.62	402.34 22.66 425.00		7.42	3.19	4.20	4.91	5.12	2.20	2.77	3.43
300	53.26	52.92	425.00 22.66 447.66			3.20	3.82	5.08	6.12	6.20	3.25	3.12
345.5 - Catch Basin		52	447.66 22.66 470.32			7.27	11.00	-0.24	-0.70	-0.62	-0.65	7.31
350' N - Break	352.60	352.30	470.32 22.66 492.98									
405	52.80	52.55	492.98 22.66 515.64									
460 - Break	353.00	352.80	515.64 22.66 538.30									
500	52.75	52.51	538.30 22.66 560.96									
5550	51.68	51.44	560.96 22.66 583.62									
600 - S.L. Polk	355.62	355.31	583.62 22.66 606.28									

Culvert No 1 And No 2 12' of 10" Conc 40x10" Corr. Iron Pipe 543

0+0 - 2' Alley	350.60		
10' E - 14' Alley	50.52	50.52	50.00
67' E	50.07	50.07	50.00
124' E - End 10" Conc 10" Corrlcon	49.62	49.62	46.80
164' E - X Curblure 32nd St	349.30	349.30	349.30



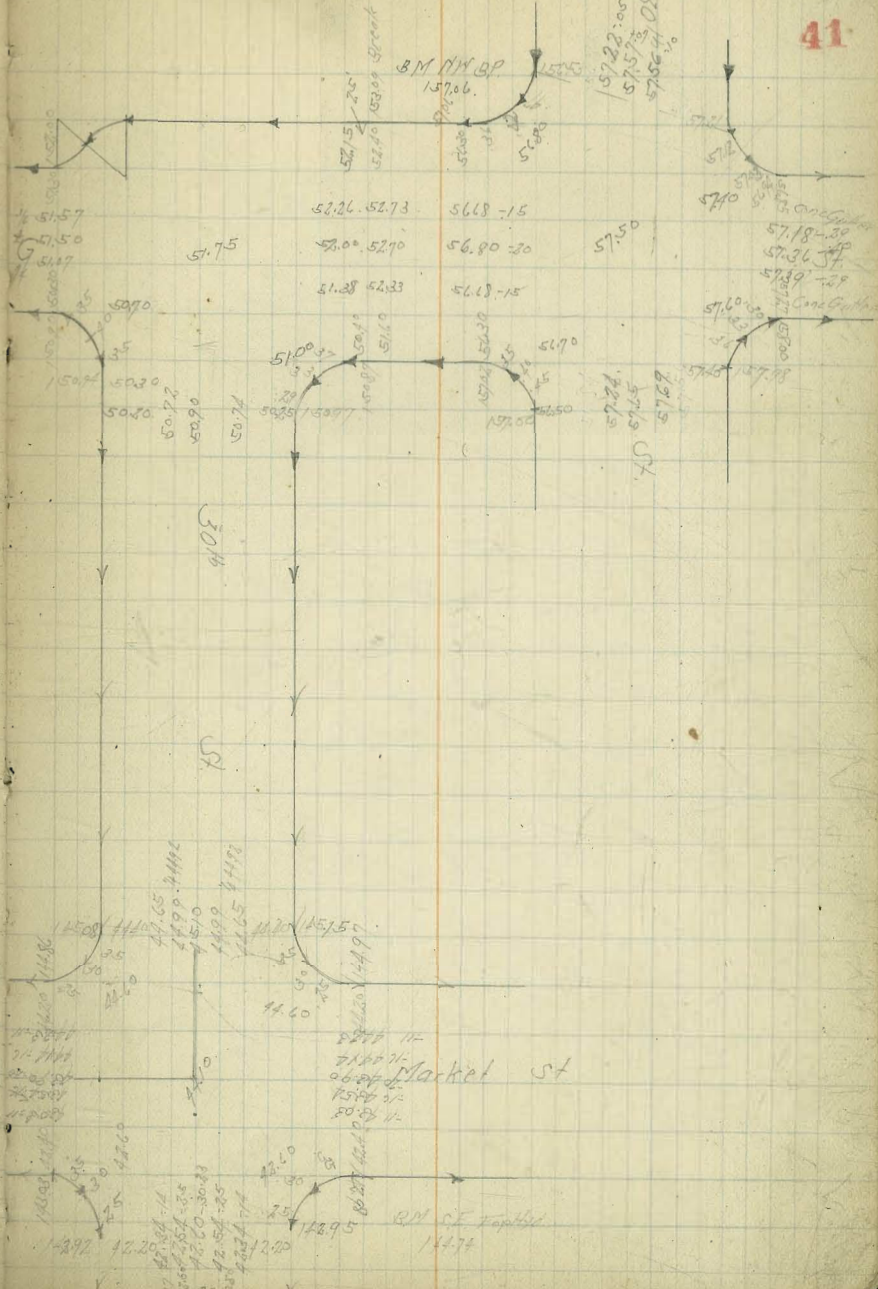
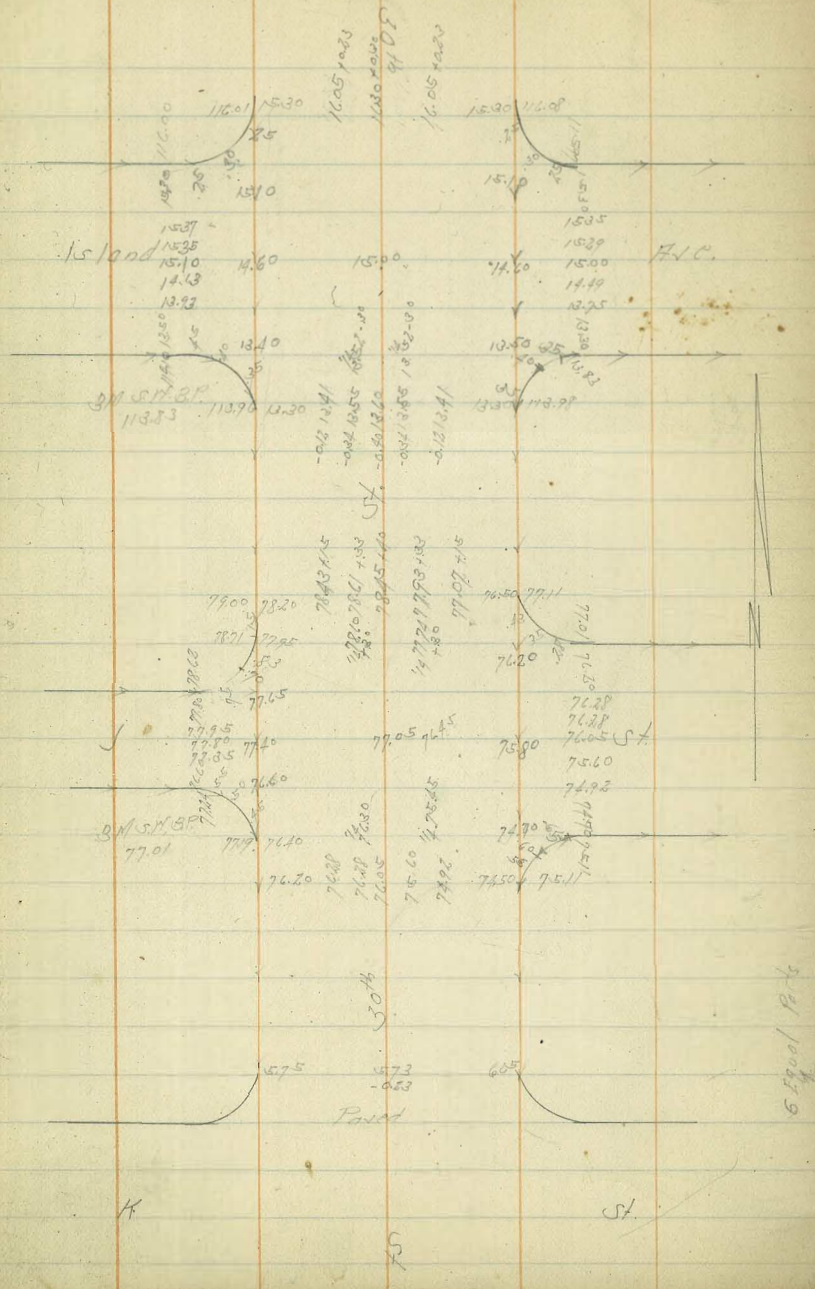
Lincoln Polk

Paving Alley Block 162 University Heights
Between 1st & 11th Illinois From Lincoln to Polk

11-16
40

	N	F	SE 362.98 Lincoln Illinois		E							
11 L Lincoln	362.78	362.72	362.98		E 362.78	63.99	63.27	63.54	63.82	64.09	64.36	64.64
50'H	63.08	62.99	363.77 7.08		4.90	4.63	4.35	4.08	3.81	3.54	3.27	3.00
100'H	63.39	63.27	370.50 66.84		7.80	7.53	7.25	6.98	6.71	6.44	6.17	5.90
150'H	63.69	63.54	377.23 66.84		10.70	10.43	10.15	9.88	9.61	9.34	9.07	8.80
200'H	64.00	63.82	383.96 66.84	SE Polk Illinois 366.99	13.60	13.33	13.05	12.78	12.51	12.24	11.97	11.70
250'H	64.30	64.09			16.50	16.23	15.95	15.68	15.41	15.14	14.87	14.60
300'H	64.61	64.36			19.40	19.13	18.85	18.58	18.31	18.04	17.77	17.50
350'H	64.91	64.64			22.30	22.03	21.75	21.48	21.21	20.94	20.67	20.40
380'H - Break	365.10	364.80			25.20	24.93	24.65	24.38	24.11	23.84	23.57	23.30
420'H	65.00	64.70			28.10	27.83	27.55	27.28	27.01	26.74	26.47	26.20
460'H	64.90	64.60			31.00	30.73	30.45	30.18	29.91	29.64	29.37	29.10
500'H	64.80	64.50			33.90	33.63	33.35	33.08	32.81	32.54	32.27	32.00
540'H - Break	364.70	364.40			36.80	36.53	36.25	35.98	35.71	35.44	35.17	34.90
580'H - Break	363.70	363.70			39.70	39.43	39.15	38.88	38.61	38.34	38.07	37.80
600'H - S.L. Polk	362.78	362.21			42.60	42.33	42.05	41.78	41.51	41.24	40.97	40.70

Paving '30th St. And 9th



Set of Construction Alloys Blocks I & F Montecello
Between Alameda & 5th St.

43
11-17-26
S. J. ...
Montecello

off set SSE

0+0 = Existing MH N° 2 Montec	375.18	12.38 4.53 77.83	on pipe MH 21.48 482.45 210.07	off Mon. 12.57 12.57 +7.75
+50	75.98	12.09 7.75 77.12	388.15 383.53 389.06	12.57 +7.75
1+0	76.28	11.28 5.28 76.70	389.06 386.07 393.37	12.57 +7.75
+50	76.58	4.48 4.00 76.43	393.37 390.35 395.83	12.57 +7.75
2+0	76.88	11.18 5.00 76.18	395.83 392.81 398.29	12.57 +7.75
+50	77.18	10.58 3.78 76.80	398.29 395.27 400.75	12.57 +7.75
3+0	77.48	10.25 2.95 77.32	400.75 397.73 403.21	12.57 +7.75
+50 = MH N° 3	377.81	9.05 2.17 77.78	403.21 400.19 405.67	12.57 +7.75
4+0.5	78.11	9.05 2.17 77.78	405.67 402.65 408.13	12.57 +7.75
+55	78.41	9.35 1.37 77.91	408.13 405.11 410.59	12.57 +7.75
5+0.5	78.71	9.35 1.37 77.91	410.59 407.57 413.05	12.57 +7.75
+55	79.01	14.03 11.97 77.59	413.05 410.03 415.49	12.57 +7.75
6+0.5	79.31	13.49 4.24 77.76	415.49 412.47 417.93	12.57 +7.75
+55	79.61	13.80 4.17 76.63	417.93 414.91 420.37	12.57 +7.75
7+10 = MH N° 2 & Modisco	379.94	13.80 4.17 76.63	420.37 417.35 422.81	12.57 +7.75
+60	80.24	13.80 4.17 76.63	422.81 419.79 425.25	12.57 +7.75
8+10	80.54	13.80 4.17 76.63	425.25 422.23 427.69	12.57 +7.75
+60	80.84	13.80 4.17 76.63	427.69 424.67 430.13	12.57 +7.75
9+10	81.14	13.80 4.17 76.63	430.13 427.11 432.57	12.57 +7.75
+60	81.44	13.80 4.17 76.63	432.57 429.55 435.01	12.57 +7.75
10+10	81.74	13.80 4.17 76.63	435.01 431.99 437.45	12.57 +7.75
+65 = MH N° 1	382.07	13.80 4.17 76.63	437.45 434.43 440.89	12.57 +7.75
11+1.5	82.37	13.80 4.17 76.63	440.89 437.87 443.33	12.57 +7.75
+65	82.67	13.80 4.17 76.63	443.33 440.31 445.77	12.57 +7.75
12+1.5	82.97	13.80 4.17 76.63	445.77 442.75 448.21	12.57 +7.75

12+1.5	388.27	13.80 4.17 76.63	448.21 445.19 450.65	12.57 +7.75
12+1.5	83.57	13.80 4.17 76.63	450.65 447.63 453.09	12.57 +7.75
+50 = Dead End	382.78	13.80 4.17 76.63	453.09 450.07 455.53	12.57 +7.75

3.55' 0.67'
3.55' 70'
3.55' 70'
2.25' 70'

Sawyer Construction Alloy Blocks A.D.G. - J. Montecello
Between 4th St + Nimona Ave

0+0 = M.H. N° 19	359.04	9.68 2.32 +67.8	377.05 77.67 +49.51
ASO	60.54	8.12 +7.00	368.53 379.13
1+0	62.04	12.28 1.84 +8.77	379.13 379.94
+50	63.54	16.70 1.50 +19.7	379.94 381.00
2+0	65.04	13.28 3.50 +19.7	381.00 384.50
+50	66.54	12.00 2.27 +9.62	384.50 394.12
+80 = M.H. N° 18	3624.4	13.00 1.66 +10.73	394.12 404.85
3+30	67.74	11.70 0.72 +11.05	404.85 415.87
+80	68.04	14.66 2.92 +11.54	415.87 427.41
4+30	68.34	14.06 3.50 +11.80	427.41 439.21
+80	68.64	13.88 1.02 +10.67	439.21 450.18
5+30	68.94	13.28 5.22 +17.26	450.18 467.44
+60 = M.H. N° 17	3691.2	13.28 5.22 +17.26	467.44 484.70
6+10	69.42	12.38 5.22 +17.26	484.70 501.96
+60	69.72	12.38 5.22 +17.26	501.96 519.22
7+10	70.02	12.38 5.22 +17.26	519.22 536.48
+60	70.32	12.38 5.22 +17.26	536.48 553.74
8+10	70.62	12.38 5.22 +17.26	553.74 571.00
+39.5 = M.H. N° 16 of Moncoe	370.77	11.65 6.84 +15.93	571.00 586.93
+87.5	71.09	11.35 6.84 +15.93	586.93 602.86
9+39.5	71.39	11.05 6.84 +15.93	602.86 618.79
+87.5	71.69	10.75 6.84 +15.93	618.79 634.72
10+39.5	71.99	10.45 6.84 +15.93	634.72 650.65
+87.5	72.29	10.15 6.84 +15.93	650.65 666.58
11+39.5	72.59 out		666.58

11+54.5 = M.H. N° 15	372.18	10.06 6.23 +16.29	666.58 682.87
12+04.5	72.98	10.30 8.07 +18.37	682.87 701.24
+54.5	73.28	12.00 8.22 +13.68	701.24 714.92
13+04.5	73.58	11.28 1.28 +12.56	714.92 727.48
+54.5	73.88	11.40 1.51 +10.99	727.48 738.47
14+04.5	74.18		738.47
+54.5	74.48 out		738.47
+69.5 = M.H. N° 14	374.57	10.80 1.89 +12.69	738.47 751.16
15+19.5	75.12	10.25 2.20 +12.45	751.16 763.61
+69.5	75.47	9.70 2.62 +12.32	763.61 775.93
16+19.5	76.22	9.15 3.07 +12.22	775.93 788.15
+69.5	76.77	8.60 3.50 +12.10	788.15 800.25
17+19.5	77.32		800.25
+69.5	77.87 out		800.25
18+19.5 = M.H. N° 13	378.03	10.30 6.23 +16.53	800.25 816.78
18+34.5	78.58	10.20 6.33 +16.53	816.78 833.31
+84.5	79.13	10.10 6.43 +16.53	833.31 849.84
19+34.5	79.68	10.00 6.53 +16.53	849.84 866.37
+84.5	80.23	9.90 6.63 +16.53	866.37 882.90
20+34.5	80.78		882.90
+84.5	81.33 out		882.90
+99.5 = M.H. N° 12	381.50	9.70 3.50 +13.20	882.90 896.10
21+49.5	81.90	9.60 3.60 +13.20	896.10 909.30
+99.5	82.30	9.50 3.70 +13.20	909.30 922.50
22+49.5	82.70		922.50

22+99.5		383.10	13.67 6.90 +6.84	391.77 81/2 rd 3.57 393.13 5.46 398.59
23+99.5		83.50	13.82 6.90 +6.87	398.59 393.20 375.33 Nail Folio
+99.5		83.90 out		
24+14.5 = M.H. N° 11		384.02	12.20 5.15 +6.55	
+64.5		84.42	12.30 5.26 +6.67	
25+14.5		84.82	16.90 5.27 +6.63	
+64.5		85.22	16.50 +6.37	
26+14.5	2/5	85.62	11.10 4.35 +6.75	
+64.5	0.8%	86.02	10.70 2.88 +6.62	
27+14.5		86.42 out		
+29.5 = M.H. N° 10		386.54	13.18 13.24 +6.36	
+79.5		86.94	16.50 2.88 +6.37	
28+29.5		87.34	14.00 4.00 +6.99	
+79.5	2.5%	87.74	10.20 4.63 +6.61	
29+29.5		88.14	12.38 4.00 +6.79	
+79.5 = Dead End		388.54	2.00 6.88 +6.11	

11.70 - 11.22

Senior Construction Alley Block "C" Belmont
Between Estrella + 49th St.

11-29-21

300771

S.F.B.P

010 = M.H. N° 23	346.72	14.24	357.05
+12 = 3' N.E. EIC Corp	47.15	16.77	373.82
+58 = 3' N. Edge of Parkway	47.30	13.23	387.05
+95 = M.H. N° 22	347.67	16.72	403.77
1145	48.17	13.23	417.00
+95	48.67	13.23	430.23
2745	49.17	13.23	443.46
3100 = M.H. N° 21	349.72	11.12	454.58
+50	51.72	11.12	465.70
+10	53.72	11.12	476.82
+50	55.72	11.12	487.94
510	57.72	11.12	499.06
+50	59.72	11.12	510.18
6105 = Drop M.H. 20	361.92	13.59	523.77
+55	65.50	16.67	540.44
7105	66.00	12.22	552.66
+55	66.50	12.22	564.88
8105	67.00	12.22	577.10
+25 = D.F.	369.20	13.02	590.22

Senior Construction Alley Block "B" Belmont
And Block 47 Tract N° 1368
Between Estrella + 48th St.

46

010 = D.F. 135' S & Trojan Ave	341.08		
+50 N	40.68		
+10	40.28		
+35 = Existing M.H. 27 Trojan Ave	340.00		
+85	45.50		
2735	41.00		
+85	41.50		
3735	45.00		
+54 = M.H. 29	342.19		
+104	42.69		
+54	43.19		
5104	43.69		
+54	44.19		
773 = M.H. 28	344.38		
+123	44.88		
+68 = M.H. 27 - 3' S N.E. EIC Corp	345.33		
7118	45.53		
+68	45.73		
8118	45.93		
+73 = M.H. 26	346.15		
9423	46.35		
+73	46.55		
10423	46.75		
+73	46.95		
11423	47.15		

See page 49

Alley Block B + 17 Cont.

11+73 = MH 25	347.35
12+23	47.55
173	47.75
13+23	179.5
173	48.15
14+23	48.25
173 = Plug End Pipe	348.55

300'
0.1%

Sexer Construction E. Alley Between Estrada & 49th St.
Block 46 Track No 1368 Block 35 Fairmount
N+S of Trojan Ave

47
150.76
47

0+0 = MH Existing	347.00
+50N	44.25
170 N	44.50
+50	44.75
270	45.00
+50	45.25
370	45.50
130 = D.F.	345.65

12.16
12.07
11.89
11.87
11.63
11.62
11.61
10.89
10.87
10.66
10.64
10.44
10.53
10.96

on Stub
M.H. 22
352.79
8.25
351.54
7.07
349.57
8.49
341.08
16.11
16.93
16.89
15.31
10.66
2.60
8.16
3.27
4.87
8.96
2.32
10.75
2.76
3.26
4.86
2.51
2.47
8.11
7.83

070 = MH Existing	345.00
+50 S	44.00
170	44.10
+50	44.00
270	44.80
+50	45.00
+80	45.12

8.36
2.87
8.16
3.27
4.87
8.96
2.32
10.75
2.76
3.26
4.86
2.51
2.47
8.11
7.83

Senior Construction & Alloy Between 49th & Winona
 N+S of Trojan Ave
 Block 45 Tract N° 1368

12.3.36

Block 36 Fairmount

070 - Existing M.H. Blk 45	354.00	812 517 +295	3220.71 120.51 362.16 0.23 361.89 11.76 373.65 2.22 371.43 7.50 378.93
+50 N	54.40	778 466 +312	
1+0	54.80	738 618 +120	
+50 - Dead End	355.20	6.00 5.71 +1.29	

Block 36 Fairmount

070 - Existing M.H. of Trojan Ave	352.00	1718 427	
+50 N	52.50	262 2.72 +259	
1+0	53.00	20.58 11.51 +9.07	
+50	54.50	10.00 13.90 +3.90	
2+0	54.00	19.58 8.96 +10.62	
750	59.50	19.06 4.38 +14.68	
+80 - Dead End	354.90	19.69 11.81 +7.88	

Senior Construction & Alloy Between Winona + 50th St
 N+S of Trojan Ave
 Blocks 44 Tract N° 1368 + Block 37 Fairmount

48
12.3.36
48

070 - Existing M.H. 257 N+S Trojan	363.00	19.84 15.75 +4.09	10.03 378.45 +1.87
+50 S	63.50	2.51 5.43 +2.92	368.78 4.86 373.64
1+0 S	64.00	9.04 6.25 +2.79	
+50	64.50	18.25 13.88 +4.37	
3+0	65.00	13.45 17.80 +4.35	
+67 - M.H. N° 30 of Trojan Ave	365.57	12.88 +7.17	
3+07	66.07	17.38 3.81 +13.57	
+57	66.57	14.88 1.70 +13.18	
4+07	67.07	11.38 4.70 +6.68	
+57	67.57	10.88 1.06 +9.82	
+92 - DE	367.92	10.53 4.31 +6.22	

Sewer Construction & Alley Between Estrella and 48th St.
 North & South of Trojan Hill
 Block 8 Belmont 47 Tract 1218 - 34 Fairmount

12.6.26
 49

0+0	- Dead End 135 5th Trojan	341.08	19.07 19.07	352.36 352.36	11+73 = MH 25	347.35	15.40 8.81 +9.56
+35		40.80	19.39 +0.37	372.75 351.70	12+23	47.53	15.29 5.43 +10.07
+85	135	40.40	18.99 -0.37	362.71	773	47.73	15.92 8.81 +11.17
1+35	- Existing M.H. of Trojan	340.00	16.77 +1.33	379.48	13+23	47.93	14.82 1.45 +11.21
+85		40.50	19.10 19.10	398.58	773	49.13	14.82 2.89 +11.20
2+35		41.00	19.10 19.10	417.68	14+23	49.33	14.82 2.89 +11.20
+85		41.50	19.10 19.10	436.78	773 - End of Pipe Plug	49.53	14.82 2.89 +11.20
3+85		42.00	19.10 19.10	455.88			
+54	= MH 29	342.19	14.27 8.29 -5.98	470.16			
4+04		42.19	13.97 7.16 -6.81	484.07			
+54		43.19	13.97 7.16 -6.81	497.98			
5+04		43.69	13.97 7.16 -6.81	511.89			
+54		44.19	13.97 7.16 -6.81	525.80			
+73	= MH 28 - 35th El Cajon	344.38	12.51 7.51 -5.00	538.31			
6+23		44.88	12.08 5.74 -6.34	550.33			
+68	= MH 27 - 35th El Cajon	345.33	11.53 5.53 -6.00	561.86			
7+18		45.53	11.53 5.53 -6.00	573.39			
+68		45.73	11.53 5.53 -6.00	584.92			
8+18		45.93	11.53 5.53 -6.00	596.45			
+73	= MH 26	346.15	11.33 7.63 -6.30	607.98			
9+23		46.35	11.33 7.63 -6.30	619.51			
+73		46.55	11.33 7.63 -6.30	631.04			
10+23		46.75	11.33 7.63 -6.30	642.57			
+73		46.95	11.33 7.63 -6.30	654.10			
11+23		47.15	11.33 7.63 -6.30	665.63			

North Side El Cajon Between 48th & Estrella

0+0	= DE - 80 East MH 27	348.52	8.56 2.56 -6.00	357.08
+40	80	46.73	8.56 2.56 -6.00	365.64
+80	= MH 27	345.33	8.56 2.56 -6.00	374.20
+80	80	46.53	8.56 2.56 -6.00	382.76
+100	= DE - 80 East MH 27	347.73	8.75 6.75 -2.00	391.48

Sewer Construction North Side El Copeo
Between Estrella and Winosa

Sewer Construction South Side El Copeo
Between 49th St & Winosa

50
13.1.21

50

323,894/

0+0 = Dead End	366.01	5.67 19.21
+50	11.54	12.35 4.77 11.77
+100	357.04	1.85 8.03 13.7
+150	572.9	11.10 10.12 16.22
+200	555.1	18.35 12.24 25.73
+250	537.95	7.51 9.21 22.97
+300	520.1	2.22 5.06 17.37
+350	502.29	11.08 6.32 15.27
+400	485.1	1.53 2.51 14.22
+425 = N.H. 19	347.67	12.70
+465	48.07	1.22 2.0 15.20
5+05 = Dead End	323.47	1.90 1.22 11.8

0+0 = Dead End	359.47	2.66 8.25 8.81
+50	579.97	11.16 7.02 30.27
+100	561.47	14.65 7.05 37.38
+150	543.97	14.11 11.5 36.28
+200	526.47	15.14 15.54 20.31 7.26 357.48
+257.5 = N.H. 21 & 49th St	351.75	9.11 6.57 12.04
+307.5	507.5	11.3 11.3
+357.5	487.5	1.56 1.72 11.28
+407.5	472.5	11.2 11.2
+425 = N.H. 22	344.71	14.65 12.25 15.25
+475	463.7	15.25 15.25
+525	440.2	15.11 11.77
+575	425.67	12.70 15.0
+625	413.2	11.16 11.16
+675	403.7	12.51 12.51
+725	396.2	12.15 12.15
+775 = N.H. 25	346.25	15.77
+825	44.83	12.65 12.65
+875 = D.E.	315.25	12.71 12.71

Street Construction of Webster Ave
Between 35th + 33rd St.

0-5		12.50	10.51	
0+0	Existing Street of 33rd St + Webster Produced 38 ft from 33rd	14.00	17.07	20.57
+50.5		12.62	12.30	17.05
1+0		12.42	12.26	17.05
+50		12.87	12.05	18.51
2+0	300' 0.25 DMH	12.62	12.20	19.00
+50		13.00	12.16	19.31
3+0	M.H.	12.82	12.05	19.50
+50		13.12	12.05	20.34
4+0		12.64	12.05	20.34
+50		12.25	12.05	20.34
+75	Conc. Piers	12.25	12.05	20.34
+87	" "	12.87	12.05	20.34
+99	" "	12.46	12.05	20.34
5+11	" "	12.50	12.05	20.34
+23	300' 0.25 DMH	12.67	12.05	20.34
+35	" "	12.87	12.05	20.34
+47	" "	12.99	12.05	20.34
6+0	DMH	13.71	12.05	20.34
+46.53	8107 9.9%	13.02	12.05	20.34
+81.07	DMH & Holbert Pl	12.74	12.05	20.34
7+31.07		12.87	12.05	20.34
+81.07		12.72	12.05	20.34
8+31.07		13.50	12.05	20.34
+81.07		13.22	12.05	20.34
9+31.07		13.84	12.05	20.34
+81.07		13.27	12.05	20.34
		14.00	12.05	20.34
		13.50	12.05	20.34
		17.00	12.05	20.34
		27.00	12.05	20.34
		25.00	12.05	20.34
		28.00	12.05	20.34
		31.70	12.05	20.34
		35.40	12.05	20.34
		39.10	12.05	20.34
		42.80	12.05	20.34
		46.50	12.05	20.34
		50.20	12.05	20.34

10+05.47	M.H. & Alley Francis	52.00	17.85
+55.47		54.85	18.24
11+05.47		57.90	18.88
+58.87	M.H. 35th St. Point E	61.00	19.10
5th St. between Durant & Webster			
0+0	M.H. & Webster	61.00	19.70
+56.71		61.01	19.78
1+0		61.63	19.82
+59	M.H. & Durant	62.00	19.80

52
11-19-21

Sept Construction Durant St.
Between 35th & 36th St.

0+0	MH 35th St. 40' x 40'	62.00		81.10 Hl. 81.50
+50 E		64.85	16.25 2.30 +9.73	80.35
1+0		67.71	13.30 2.83 +8.96	80.35
+50		70.56	10.56 3.75 +9.40	80.35
2+0		73.42	2.86 7.31	80.35
+50		76.27	15.90 7.88 +9.97	80.35
+80	MH 2 Pardee St	78.00	1.73 +8.51	80.35
3+30		81.50	3.50 2.25 +7.50	80.35
+80		85.00	1.50 9.00 +8.00	80.35
4+30		88.50	1.50 +7.50	80.35
+80	Break	92.00	1.50 1.50 +3.00	80.35
5+15		93.00	10.50 2.50 +11.00	80.35
150	OT	94.00	1.00 3.00 +2.00	80.35

Sept Construction 2 Pardee St.

0+0	MH 2 Pardee & Durant	78.00		92.00 Hl
+50 N		78.44	13.62 5.62 +5.00	92.00 Hl
1+0		78.88	13.18 2.70 +5.78	92.00 Hl
+50		79.32	13.24 2.15 +5.09	92.00 Hl
2+0		79.76	18.34 +5.70	92.00 Hl
+75	OT	80.00	1.24 2.00 +0.76	92.00 Hl

Center Construction & Wolbert Place + Alley Stock H Turnbull's
Between Francis St + 34th St.

11-26-26

0+0 = D.M.H. & Wolbert Ave	25.00	28.00	34.73 2.73 42.35	on 5th St N.H. & Wolbert + 34th St
+50'S	25.38	17.97 +11.75	1.57 +16.53	
1+0	25.76	17.26 +13.77	1.57 +16.53	
+50	26.14	16.45 +12.77	1.57 +16.53	
2+0	26.52	15.65 +11.77	1.57 +16.53	
+50	26.90	14.87 +10.77	1.57 +16.53	
3+0	27.28	14.07 +9.77	1.57 +16.53	
+50 = M.H.	27.70	13.27 +8.77	1.57 +16.53	
4+0	28.08	12.47 +7.77	1.57 +16.53	
+50	28.46	11.67 +6.77	1.57 +16.53	
5+0	28.84	10.87 +5.77	1.57 +16.53	
+50	29.22	10.07 +4.77	1.57 +16.53	
6+0	29.60	9.27 +3.77	1.57 +16.53	
+55 = D.F.	30.00	8.47 +2.77	1.57 +16.53	

Center Construction & Alley Between 35th + Francis St.
Wolbert And Woolman Ave.
Block 5 Stratford Park + E + F Turnbull's Sub

54

0+0 = M.H. & Wolbert	52.00	10.24 8.24 19.74 6.45
+50'S	52.25	16.81 +6.80
1+0	52.70	16.46 +6.65 +7.87
+50	53.05	16.11 +6.50 +7.96
2+0	53.40	15.76 +6.35 +7.80
+50	53.60	15.56 +6.15 +7.38
3+0	53.95	15.21 +6.00 +7.16
+50 = M.H.	54.30	14.86 +5.85 +7.00
4+0	54.65	14.51 +5.70 +6.84
+50	55.00	14.16 +5.55 +6.68
5+0	55.20	13.81 +5.40 +6.52
+50	55.55	13.46 +5.25 +6.36
6+0	55.90	13.11 +5.10 +6.20
+50	56.25	12.76 +4.95 +6.04
7+0	56.60	12.41 +4.80 +5.88
7+15 = M.H. & Franklin	57.00	12.06 +4.65 +5.72
+65	57.33	11.71 +4.50 +5.56
8+15	57.66	11.36 +4.35 +5.40
+65	58.00	11.01 +4.20 +5.24
9+15	58.33	10.66 +4.05 +5.08
+65	58.66	10.31 +3.90 +4.92
10+15	59.00	9.96 +3.75 +4.76
+65	59.33	9.61 +3.60 +4.60
+90 = D.F.	59.50	9.26 +3.45 +4.44

Sever Construction Franklin Ave.
Between Alleys ExH of 35th St.

11-26-26

0+0 = MH & Alley Webster	57.50	66.32	07 54 25
+50 E	57.96	17.94	MH
+10	58.43	17.30	77.92 & 11/11/1 Frank
+50	58.89	17.06	
+10	59.36	17.92	
+50	59.82	17.68	
+10	60.29	17.03	
+20 = D.M.H. & Alley Franklin	60.50	17.63	99.6
	68.00	17.03	4.32
		13.02	+5.57

Sever Construction & Alley Between Pardee + 35th St.
Webster to Modman

55

0+0 = D.E. SSA Webster	73.00	13.50	
+50 S	73.69	13.00	
+10	74.38	12.50	
+50	75.07	12.00	
+10	75.77	11.50	
+50	76.46	11.00	
+10	77.15	10.50	
+25 = MH	77.00	15.50	
+75	70.50	15.27	
4+25	70.05	14.77	
+75	69.59	14.27	
5+25	69.10	13.77	
+75	68.63	13.27	
6+25	68.15	12.77	
+90 = D.M.H. & Franklin	68.00	15.50	
	60.50	15.27	
+90	60.78	14.77	
7+40	61.07	14.27	
+90	61.35	13.77	
8+60	61.64	13.27	
9+100 = MH & Alley Modman	62.00	15.50	

Server Construction & Alley Between Woolman + Franklin Ave's
From 35th to 36th St.

12-10-26

0+0 = DE F.E. 35th St	65.00	12.17 2.05 +10.42	71.00 73.27 75.27	on 35th St MH
+72.5	63.50	13.02 12.8 +10.02	71.47 73.47 75.49	
+85 = MH & N+S Alley	62.00		75.82 79.22 85.01	
+92.5	62.25	15.33 15.30 +7.18		
+85	62.50		14.97 15.16 +1.15	
2+13.5	62.75	14.73 15.58 +9.58		
+85	63.00		16.42 16.11 +1.11	
3+13.5	63.25	14.22 15.24 +10.24		
+80 = MH - S Alley Between 35th + 36th	63.50		13.97 14.66 +6.55	
4+22.5	65.00	12.17 1.87 +7.60		
+65 = DE MH 36th St	66.50		14.97 14.8 +7.31	

Server Construction & Alley Between 36th + Pardon St.
From Woolman to Webster

12-11-26
56

0+0 = M.H. & Alley N Woolman	62.50			85.44 111.31
+50 N	65.13	19.31 18.28 +1.03		83.57 12.86 96.43
+40	66.77			18.88 18.23 +0.65
+50	68.40	16.62 18.16 +1.54		74.88 77.29 102.69
+60	70.04			15.89 +8.79
+60 = MH & Franklin Ave	72.00	13.04 12.24 +0.80		81.92 96.7
3+10	73.87			11.7 14.3 +2.6
+60	75.75	8.38 8.26 +0.09		7.42 1.62 +5.75
4+10	77.62			16.73 12.14 +4.59
+60	79.50			14.86 14.8 +0.06
5+10	81.37			16.88 16.28 +0.60
+60	83.25			12.63 12.37 +0.26
+80 = MH	84.00			11.14 12.1 +0.96
6+30	85.09			10.05 12.22 +2.17
+80	86.18			8.6 10.27 +1.67
7+30	87.27			7.87 9.25 +1.38
+80	88.36			6.78 8.38 +1.60
8+30	89.45			14.09 13.02 +1.07
+80	90.54			14.63 14.10 +0.53
9+0 = DE	91.00			

Sewer Construction to Allen between Francis to 13th
From Woolman to Franklin

12-2-21

Station	Description	Station	Value	Notes
0+0	= M.H. to Woolman	21.00		20.57 M.H. to Sect
+50		29.33	17.42 21.05	20.15 19.77 19.39 18.52
1+0		32.66		14.16 14.00 14.13
+50		36.00	19.82 19.95	14.16 14.00 14.13
2+0	= M.H.	39.33		19.82 19.95
+50		42.65	15.18 15.46 10.29	19.82 19.95
3+0	= Break	46.00		17.31 17.31 17.00
+50		49.50	11.84 11.84 18.93	17.31 17.31 17.00
4+0	= D.E. S.S. Franklin	47.00		11.34 11.34 11.34

Sewer Construction 34th St. 14.5' H. E.L.

Franklin to 170.2 S Woolman to Existing Sewer

57

12-2-21

Station	Description	Station	Value	Notes
0+0	= D.E. 35' H. to Woolman	13.42		5.89 5.89 11.75
+50		13.22	2.98 2.97	BM 22.33 2.98 2.97
1+0		19.01		2.98 2.98 13.24
+50		12.81	2.50 2.50 13.59	2.98 2.98 13.24
2+0	S.50' 0.1405	12.60		2.71 2.71 13.52
+50		12.46	2.91 2.91 15.23	2.71 2.71 13.52
3+0		12.20		13.24 13.24 17.51
+50	= D.M.H. to Woolman	12.00		
4+0		11.69		13.24 13.24 17.51
+50	120.2 0.623 0.623	11.38		13.24 13.24 17.51
5+0		11.07		13.24 13.24 17.51
120.2	= M.H. to Existing Sewer	10.94		13.24 13.24 17.51

Sewer Construction Myrtle Ave + Alley Block 89
Gty Heights

11-29-26

Sewer Construction Bellingham Ave.

11-29-26
58

0+0	- DE	10 S S L Onigbt St	317.00	1252 +587	34327.55
+50.5			1434	147 817 +621	358.89 347.03
+70			11.68	1714 +643	316.47 314.40
+750			09.01	738 +641	307.13 313.46
+20	300		06.35	1005 +626	313.99 290.64
+50			03.69	1427 +627	298.01 282.95
3+0	- MH		306.00	1540 +645	285.33 1272
+50			300.50	1580 +627	273.25 273.51
+70			300.00	1640 +620	260.84 260.86
+50	- MH	x 90 S Myrtle Ave	299.50	1620 +623	261.90 252.20
+50			97.52	1806 +621	248.66
+50			95.19	1487 +621	248.66
6+0			93.46		out
+10.79	- MH	2 S Myrtle Ave + Bellingham Ave	293.00	1786 +627	
+60.79			82.05	85.34 1428 +627	1586 +623
+70.79			71.10	1428 +627	
+76.79			60.75		1636 +625
+87.10.79			49.20	24.33 +628	
+30.05	- Drop MH		245.00	1632 +627	2189 +612
+80.05			35.15	1356 +625	
9+21.8	- Existing Sewer Construct MH		231.50		1816 +625

0+0	- MH	Myrtle + Bellingham	293.00	1706	310.36 MH
+50 SE			93.50	1586 +629	
+10			94.00	1636 +628	
+50			94.50	1586 +628	
+20	300		95.00	1526 +670	
+50			95.50	1486 +658	
3+0	- DE		296.00	1436 +658	

Grades Pacific Ave
Lament to Sexton

N.L. Lament on S	34.25		35.25	GM 35.02
25' N = PC on N	34.75	15.00	35.71	35.71
50' N	35.40		36.19	36.19
100' N	36.55	36.60	37.13	37.13
150' N	37.70		38.07	38.07
200' N	38.85	38.68	39.01	39.01
238.9' N = E.L. Segovia	39.75		39.75	39.75

N # 3501	36.19	37.13	38.07	39.01	39.75
	3.8	3.3	1.1	0.5	11.6
	3.2	3.3	2.3	1.0	11.7
	-0.3	-0.4	-0.9	-0.5	-0.1
S 34.25	35.40	36.55	37.70	38.85	39.75
	5.2	1.9	1.7	0.6	0.3
	5.2	6.6	6.0	6.5	1.4
	-1.4	-1.8	-2.1	-1.9	-1.7

N.L. Segovia	40.75	40.50	40.75	
50' N	41.79		42.15	
100' N	42.84	41.51	43.55	
150' N	43.88		44.95	
160.82' = PC Kendall on N	44.10	15.00	45.27	
200' N	44.93		45.27	
215' N = E.L. Kendall on S	45.25		45.25	

N 40.75	42.15	43.55	44.95	45.27
	2.40	1.40	1.40	0.32
	1.40	1.40	0.4	0.32
	-1.3	-1.8	0.1	0.3
S 40.75	42.29	43.81	44.93	45.25
	1.54	1.52	0.04	0.32
	1.54	1.52	1.57	1.57
	-1.2	-1.2	-1.2	-1.2

N.L. Kendall on S	45.25	45.65	46.54	
50' N	46.87		47.63	
100' N	48.50	48.15	48.72	
150' N	50.12		49.82	
200' N	51.75	51.08	50.92	
215' N = E.L. Sbasta	52.25		52.25	
N.L. Sbasta	52.25	51.50	51.25	
50' N	53.86		50.25	
100' N	49.46		49.25	
150' N	48.07		48.25	
160' = PC on N	46.67		48.06	
200' N	46.35	10.50	48.06	
215' = E.L. on S	46.50		48.06	

N 46.54	47.63	48.73	49.82	50.92	51.25
	1.09	1.10	1.13	1.10	1.8
	1.10	1.10	1.10	1.10	1.8
	-1.1	-1.0	-1.0	-0.2	-0.2
S 45.25	46.87	48.50	50.12	51.75	52.25
	1.62	1.63	1.62	1.63	0.5
	1.62	1.63	1.62	1.62	1.6
	-1.1	-1.1	-1.1	-1.0	-0.9
N 51.25	50.25	49.75	48.25	48.06	
	1.0	0.5	1.5	1.3	1.3
	1.0	1.3	1.3	1.3	1.3
	-1.0	-1.3	-1.3	-1.0	-1.0
S 52.25	53.86	49.46	48.07	46.67	46.25
	1.61	1.61	1.61	1.61	1.61
	1.61	1.61	1.61	1.61	1.61
	-1.0	-1.0	-1.0	-1.0	-1.0

Grades Sewell St
Reed to Pacific

	E		N												
S.L. Reed	58.75 57.75 58.25		57.75 58.25	55.25 H 55.50	E	57.75	57.41	57.13	56.51	62.60	55.80	55.77	54.65	54.56	54.15
25'S - P.C. 07 E	58.26 57.47 57.90 57.87		out	48.47 57.72 55.85		5.3	5.1	6.2	6.8	15	15	0.6	2.1	3.3	8.5
50'S	57.97 57.13 57.51		57.38 56.96	55.94 6.75		1.8	1.6	1.8	1.8	1.8	1.8	1.8	out	2.3	out
100'S	57.18 56.51 56.87 56.10	0.17 S	56.50 56.17	3.75 59.55	H	57.25		56.81	56.17	55.88	54.55	53.80		53.25	3.5
150'S	56.39 55.89	56.15	55.13 55.38			4.9		5.2	6.5	1.6	2.2	3.3		4.1	10.6
200'S	55.61 0 55.27 55.45 54.93		54.75 54.59			1.1		1.2	1.2	1.2	1.2	1.2		1.2	1.2
250'	54.87 54.65 54.75 54.10		53.88 53.80			1.1		1.2	1.2	1.2	1.2	1.2		1.2	1.2
260'S - P.C. 00 E	54.66 54.56 54.11		out			1.1		1.2	1.2	1.2	1.2	1.2		1.2	1.2
285'S - H.L. above corner 54.25			53.75												
S.L. Oliver	53.25		52.25		E	53.25	52.72	52.18	51.13	50.06	49.00	48.02			
25'S	52.22	52.02	out			8.5	4.1	4.1	5.7	6.7	7.8	7.3			
50'S	52.19		51.19			out	10.2	1.0	10.2	10.1	10.1	10.5			
100'S	51.13	50.87	50.13		H	52.25		51.18	50.13	49.07	48.00				
150'S	50.06		49.07			4.5		5.6	6.7	7.7	8.8				
200'S	49.00	48.25	48.00			5.2		6.2	7.1	8.3	9.5				
244'S - P.C. 00 E	48.03	47.55	out			10.7		11.6	12.4	13.6	14.7				
250'S			46.93												
300'S			45.86		H	51.83	45.86	45.86	45.86	45.86	45.86	45.86			
329.85 - H.L. Pacific Ave			45.25			7.9	9.8	10.6	10.6	10.6	10.6	10.6			

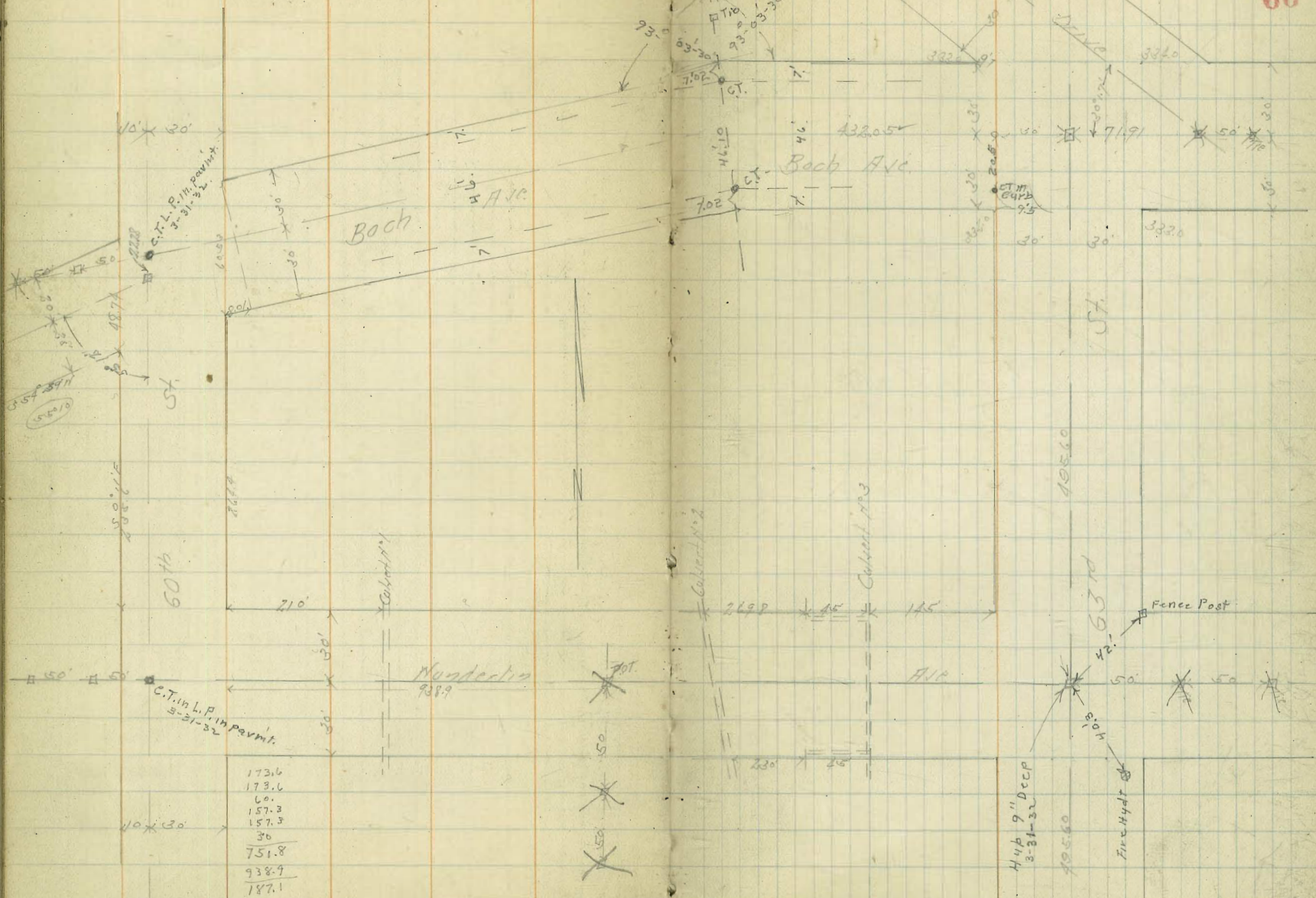
Grades Reed Ave.
Lamoont to Serrell

	S	N																		
N.L. Lamoont St.	41.25	40.75	BM 4294	SF Top	N	40.75	41.55	42.35	43.15	43.95	44.75	45.55	46.35	47.15	47.95	48.75	49.55	50.35	51.15	51.95
25' N - F.C. on S	41.52	out	4297	Lamoont		7.0	6.2	5.4	4.6	3.8	3.0	2.2	1.4	0.6	-0.2	-1.0	-1.8	-2.6	-3.4	-4.2
50' N	41.78	41.55	4298			10.9	9.7	8.5	7.3	6.1	4.9	3.7	2.5	1.3	0.1	-0.7	-1.5	-2.3	-3.1	-3.9
100' N	42.32	42.35	4299		S	41.25	47.77	48.57	49.37	50.17	50.97	51.77	52.57	53.37	54.17	54.97	55.77	56.57	57.37	58.17
150' N	42.85	43.15	4300			10.9	10.5	10.1	9.7	9.3	8.9	8.5	8.1	7.7	7.3	6.9	6.5	6.1	5.7	5.3
200' N	43.39	43.95	4301			10.9	10.3	9.7	9.1	8.5	7.9	7.3	6.7	6.1	5.5	4.9	4.3	3.7	3.1	2.5
250' N	43.92	44.75	4302		N	47.97	49.33	50.69	52.05	53.41	54.77	56.13	57.49	58.85	60.21	61.57	62.93	64.29	65.65	67.01
280' N - Break	44.25	45.25	4303			6.8	6.5	6.2	5.9	5.6	5.3	5.0	4.7	4.4	4.1	3.8	3.5	3.2	2.9	2.6
330' N	45.6	46.6	4304			12.2	11.7	11.2	10.7	10.2	9.7	9.2	8.7	8.2	7.7	7.2	6.7	6.2	5.7	5.2
380' N	46.97	47.97	4305		S	46.97	48.33	49.69	51.05	52.41	53.77	55.13	56.49	57.85	59.21	60.57	61.93	63.29	64.65	66.01
430' N	48.33	49.33	4306			12.2	11.6	11.0	10.4	9.8	9.2	8.6	8.0	7.4	6.8	6.2	5.6	5.0	4.4	3.8
475' N - P.C. on S	49.55	50.55	4307			12.2	11.5	10.8	10.1	9.4	8.7	8.0	7.3	6.6	5.9	5.2	4.5	3.8	3.1	2.4
500' N - F.L. Kendall	50.25	51.25	4308			12.2	11.4	10.6	9.8	9.0	8.2	7.4	6.6	5.8	5.0	4.2	3.4	2.6	1.8	1.0
N.L. Kendall	51.25	52.25	4309		N	51.25	52.17	53.17	54.17	55.17	56.17	57.17	58.17	59.17	60.17	61.17	62.17	63.17	64.17	65.17
25' N - F.C. on S	51.25	51.25	4310			out	0.0	0.0	0.0	0.0	0.0	0.0	0.0	0.0	0.0	0.0	0.0	0.0	0.0	0.0
50' N	51.78	52.90	4311			5.0	4.8	4.6	4.4	4.2	4.0	3.8	3.6	3.4	3.2	3.0	2.8	2.6	2.4	2.2
100' N	52.12	53.58	4312		S	51.25	51.72	52.19	52.66	53.13	53.60	54.07	54.54	55.01	55.48	55.95	56.42	56.89	57.36	57.83
150' N	52.55	54.20	4313			out	5.5	5.1	4.7	4.3	3.9	3.5	3.1	2.7	2.3	1.9	1.5	1.1	0.7	0.3
200' N	53.00	54.90	4314			10.9	10.3	9.7	9.1	8.5	7.9	7.3	6.7	6.1	5.5	4.9	4.3	3.7	3.1	2.5
250' N	53.53	55.50	4315		N	52.25	53.20	54.15	55.10	56.05	57.00	57.95	58.90	59.85	60.80	61.75	62.70	63.65	64.60	65.55
300' N	54.06	56.15	4316			11.0	10.4	9.8	9.2	8.6	8.0	7.4	6.8	6.2	5.6	5.0	4.4	3.8	3.2	2.6
320' N - Break	54.25	56.0	4317			11.0	10.3	9.6	8.9	8.2	7.5	6.8	6.1	5.4	4.7	4.0	3.3	2.6	1.9	1.2
370' N	54.78	57.47	4318		S	57.15	57.70	58.25	58.80	59.35	59.90	60.45	61.00	61.55	62.10	62.65	63.20	63.75	64.30	64.85
420' N	55.31	58.08	4319			11.1	10.5	9.9	9.3	8.7	8.1	7.5	6.9	6.3	5.7	5.1	4.5	3.9	3.3	2.7
475' N - P.C. on S	55.84	58.15	4320			11.1	10.4	9.7	9.0	8.3	7.6	6.9	6.2	5.5	4.8	4.1	3.4	2.7	2.0	1.3
500' N - F.L. Kendall	56.37	58.75	4321			11.1	10.3	9.5	8.7	7.9	7.1	6.3	5.5	4.7	3.9	3.1	2.3	1.5	0.7	0.0

Tide 6th St. Wunderlin-Boch Ave

Indexed
C.S.K.

Encanto Hgts.



Grades Warden in file
60th St to 63rd St

Excentric Right

	N	S
EL 60th St	275.25	274.25
50' E P&C	269.97	268.97
90' E	266.10	265.10
130' E	263.41	262.41
170' E	261.79	260.79
210' E = Drain	261.25	260.25
250	261.40	260.40
290	262.60	261.60
330	264.98	263.98
370	268.55	267.55
390 EVC	270.78	269.78
445	277.32	276.32
500 EVC	283.87	282.87
540 EVC	287.30	286.30
585	289.66	288.66
630	292.02	291.02
675	294.38	293.38
720 = Bk	296.75	295.75
770	298.16	297.16
820	299.57	298.57
855	300.56	299.56
890 = VC	301.55	300.55
930	301.88	300.88
970	300.62	299.62
1010 = VC	299.77	298.77

	N	S	N	S	N	S	N	S	N	S
	75.25	69.87	66.10	62.41	61.79	61.75	61.40	62.60	64.98	64.98
	26	10.9	19.2	26	32	47.9	26	2.2	13.2	13.2
	3.3	7.2	12.2	5.9	8.2	6.9	5.1	2.9	8.2	8.2
	71.3	72.7	42.5	70.9	71.0	71.5	70.9	72.7	74.7	74.7
	74.25	68.87	65.10	62.41	60.90	60.25	60.40	61.60	63.98	63.98
	56	11.9	22	26	5.25	5.8	5.6	4.4	2.9	2.9
	8.5	10.3	22	8.6	7.25	12.9	11.2	9.0	6.7	6.7
	78.5	70.3	70.7	71.0	71.5	71.7	72.2	72.8	74.7	74.7
	68.55	70.98	77.32	82.87	87.30	88.66	92.07	94.38	96.75	96.75
	10.1	7.2	12.8	6.2	13.2	11.5	10.2	6.8	7.2	7.2
	7.5	6.1	8.2	6.7	10.2	8.5	6.8	4.2	4.2	4.2
	73.7	71.3	74.1	73.5	73.0	73.0	73.0	73.0	73.0	73.0
	67.55	69.87	70.32	82.87	86.30	88.66	91.02	93.38	95.75	95.75
	11.5	8.2	11.9	7.1	13.0	11.2	10.2	7.2	5.4	5.4
	11.9	10.7	12.2	8.3	10.2	8.5	11.2	9.2	6.7	6.7
	8.4	7.3	8.2	7.7	7.9	7.1	7.5	7.0	7.0	7.0
	98.16	99.57	300.56	301.55	301.88	300.62	299.77	299.77	299.77	299.77
	8.0	8.2	5.2	6.7	6.2	6.2	6.2	7.0	7.0	7.0
	42.8	42.5	42.2	41.9	41.2	40.5	40.5	43.0	43.0	43.0
	97.16	98.57	99.56	300.55	300.88	299.62	299.77	299.77	299.77	299.77
	7.0	8.6	6.2	2.5	7.2	8.2	11.5	11.5	11.5	11.5
	4.7	3.0	4.2	0.9	4.2	6.2	6.2	4.6	4.6	4.6

1722-24
515.00
615.50
1131.50
67

308.31
922
817.39
an Indian Map
of 1878, Woodrow
549+39

Wunderlin Rio. Cont.

	N	S	302.31
1065 E	292.75	291.75	12.84
1120 E - VC	287.73	286.73	295.17
1160	289.66	288.66	295.91
1200	292.73	291.73	283.10
1240 - VC	281.94	280.94	283.95
1290	281.72	280.72	287.14
1320	281.48	280.48	286.25
1385	281.26	280.26	297.25
1430 - PVC	281.04	280.04	305.74
1470	281.73	280.73	2.56
1510	284.17	283.17	303.18
1550 - VC	288.36	288.06	S.E. Top of Wunderlin + 63rd
1600	294.60	294.86	
1621.3 - H.L. 63rd St.	297.75	297.75	

N	92.75	87.73	84.66	82.73	81.91	81.72	81.49	81.21	81.04
	15.6	5.8	2.8	2.7	5.1	5.7	5.0	6.2	6.2
	11.5	3.2	7.0	5.5	5.0	5.2	5.7	6.5	6.5
	+ 4.1	- 1.2	- 4.2	- 0.8	- 0.5	- 0.3	+ 0.1	+ 0.4	+ 0.2
S	91.75	86.73	83.66	81.73	80.91	80.72	80.48	80.21	80.04
	16.6	5.2	5.8	5.7	6.4	6.7	6.9	7.0	7.2
	12.9	8.5	6.5	13.3	11.0	11.6	11.8	11.0	13.5
	+ 4.6	+ 0.7	- 2.7	- 7.2	- 4.1	- 4.9	- 4.2	- 4.7	- 6.1
N	81.73	84.17	88.36	94.60	97.25				
	5.7	3.2	- 2.8	- 7.2	2.4				
	2.3	4.1	6.9	8.0	7.1				
	- 0.6	- 7.6	- 6.9	- 8.0	7.0				
S	80.81	80.48	88.06	94.86	97.75				
	6.6	1.2	- 0.6	7.0	5.0				
	14.3	11.2	8.2	8.4	8.8				
	- 9.7	- 7.4	- 6.2	- 2.1	- 0.8				

Wanderlin 710 Colverts

Colvert N^o 1 11" D.S. Concrete Pipe

040 = 2' H. H. 2 of Wanderlin	2594	$\frac{4\frac{1}{2}}{10.3}$	2669 H. 1.
+38	2557		
+76	2520	$\frac{140}{130}$ $\frac{110}{110}$	

Colvert N^o 2 12" D.S. Conc. Pipe 287 11 H. 1.

040 = 2' H. H. 1	280.40	$\frac{28}{10.7}$	
+48	276.85		
+96	273.30	$\frac{141}{12.6}$ $\frac{117}{117}$	

Colvert N^o 3 30" D.S. Conc. Pipe 287 11 H. 1.

070	27800	$\frac{94}{18.7}$	
+30	27590		
+60	27380	$\frac{136}{12.6}$ $\frac{117}{117}$	

Grades Bach Ave
From 6th St to 63rd St

29114
11.9
SN 279.67 N T. Hub
Bacht 60th St.

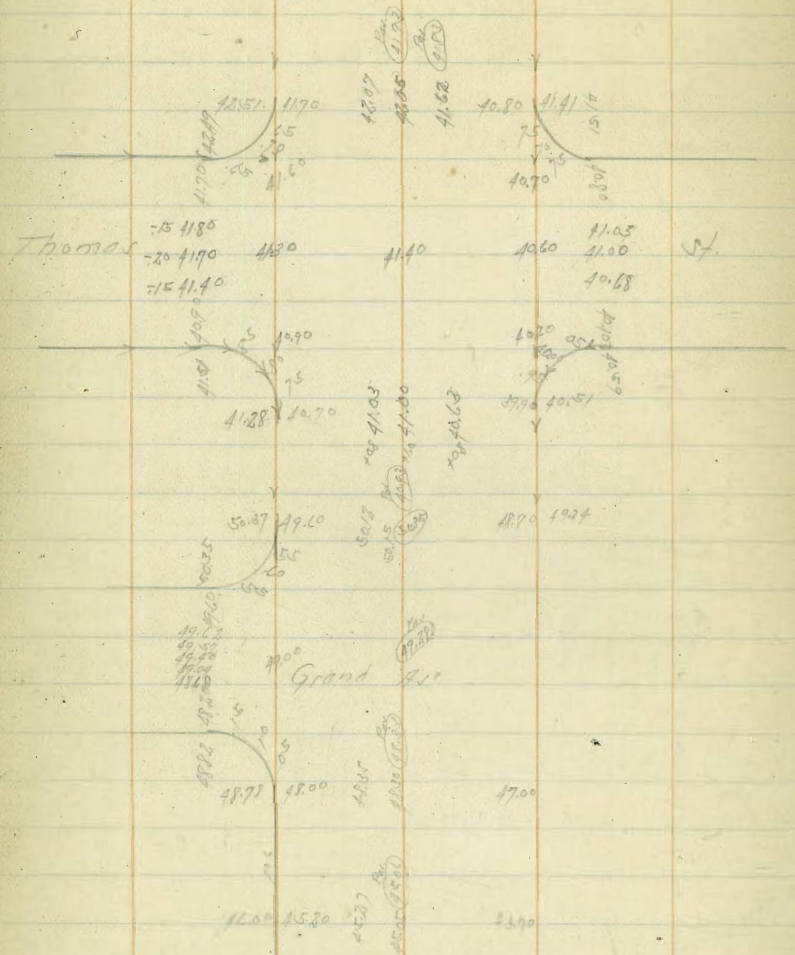
12.28.21

70

	N	S	29114 H. 95 Feet
F.L. 60th St on S		282.25	286.67 293.62 0.22 298.92 11.71 304.60 0.22 304.23 12.27 316.50
80' E - F.L. 60th St on N	281.25	Out	298.92 316.50
50' E	281.98	283.00	304.60 0.22 304.23 12.27 316.50
100' E	282.85	283.74	316.50 316.50
150' E	283.72	284.49	316.50 328.77
200' E	284.59	285.23	
250' E	285.41	285.98	
300' E	286.33	286.72	
350' E	287.20	287.47	
400' E	288.07	288.21	
408.0' E - P.V.C.	288.21	288.35	
418' E	289.34	289.39	
488' E	291.38	291.31	
528' E - P.V.C.	294.33	294.10	
578' E	298.56	298.13	
628' E	302.79	302.17	
688' E - P.V.C.	307.82	307.02	
728' E	310.74	309.80	
768' E - P.V.C.	312.67	311.67	
818' E	314.43	313.43	
868' E	316.19	315.19	
918' E	317.95	316.95	
968' E	319.71	318.71	
1018' E	321.47	320.47	
1068' E	323.23	322.23	

N	281.25	81.98	82.85	83.72	84.59	85.46	86.33	87.20	88.07
	9.8	10.1	8.3	7.2	6.6	5.7	4.8	4.0	5.1
	10.3	7.8	7.5	6.7	5.7	4.8	4.0	4.0	7.3
	-0.4	-1.1	-0.9	-0.1	-0.1	0.0	0.0	0.0	-3.2
S	282.25	83.00	83.74	84.49	85.23	85.98	86.72	87.47	88.21
	8.9	8.1	7.4	6.9	6.0	5.2	4.4	5.7	5.0
	8.2	7.8	7.7	8.2	10.6	8.8	7.6	6.8	8.3
	+3.2	+3.2	-0.3	-2.2	-4.7	-3.7	-2.0	-1.1	-0.7
N	88.61	89.34	91.38	94.33	98.54	302.79	307.87	10.76	
	5.0	3.9	10.3	10.2	6.1	1.8	8.8	8.8	
	7.1	5.1	15.7	12.2	7.0	2.5	8.7	8.5	
	-3.6	-1.2	-2.4	-2.2	-0.9	-1.0	+0.4	+1.3	
S	88.35	89.39	94.31	94.10	98.73	303.17	307.02	09.80	
	4.9	3.8	10.3	10.5	6.5	2.5	9.7	6.9	
	8.8	7.6	15.7	12.2	5.2	0.5	7.8	7.2	
	+1.1	+2.4	+2.2	+3.2	+1.3	+1.6	+1.8	+2.2	
N	12.67	14.43	16.19	17.95	19.71	21.47	23.23		
	2.0	1.7	1.0	1.3	0.4	1.4	5.9		
	0.4	0.0	0.5	1.0	0.9	0.9	4.4		
	+3.4	+4.8	+5.7	+5.5	+1.5	+3.2	+1.8		
S	11.67	13.43	15.19	16.95	18.71	20.47	22.23		
	5.0	3.3	13.9	10.2	10.4	8.6	6.9		
	2.7	0.7	13.9	11.6	11.8	11.5	10.9		
	+2.3	+2.6	+2.2	+0.6	+1.1	+2.9	+4.0		

Paving Lorraine

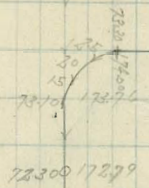
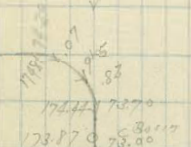
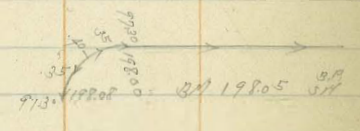
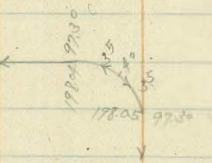
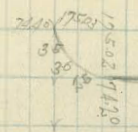
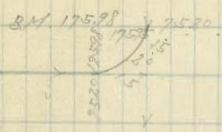
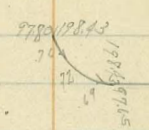


27th

27th

28th

28th



- 2295 @ 72.30
- 2281 @ 71.90
- 2189 @ 71.20
- 213 71.45 @ 70.90.7
- 22 71.31 @ 70.80
- 213 71.49 @ 70.90.4
- 218 71.95 @ 71.30
- 2228 @ 72.00
- 2105 @ 72.20

- 72.30 @ 72.03.
- 72.10 @ 71.92 211
- 71.10 @ 71.86
- 70.70 @ 71.71
- 70.60 @ 71.71
- 70.50 @ 71.50 212
- 71.30 @ 71.97 218
- 72.20 @ 72.95 227
- 72.30 @ 74.08.

- 176.39 @ 75.60
- 172.87 @ 75.00
- 171.50 @ 73.70
- 176.39 @ 75.60
- 172.87 @ 75.00
- 171.50 @ 73.70
- 176.39 @ 75.60
- 172.87 @ 75.00
- 171.50 @ 73.70
- 175.80 @ 75.00
- 172.40 @ 96.00
- 179.60 @ 97.80
- 179.57 @ 98.80
- 180.36 @ 99.15
- 180.90 @ 200.00
- 181.13 @ 200.25
- 181.15 @ 200.49
- 180.97 @ 200.15

- 72300 @ 72.99
- 72200 @ 72.36
- 7400 @ 75.41
- 72200 @ 72.96
- 8200 @ 82.10
- 81200 @ 82.15
- 84300 @ 84.91
- 85800 @ 84.98
- 87000 @ 87.56
- 88000 @ 88.68
- 89200 @ 89.45
- 90300 @ 89.91
- 91400 @ 90.18
- 92500 @ 90.11
- 92800 @ 89.98

19411 Paving

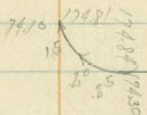
19422

26th

26th

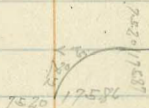
BM 197.00

17587 7510



2916 St.

1768 7710



18685 8610

8520 17586

18888 8910

8620 17586

19188 9110

9020 17586

19488 9200

9120 17586

19787 9250

9170 17586

19976 19200

9200 17586

19850 9100

9020 17586

8980

8810

18191 8630

8520 17586

38th

37

30th St.

Pass



8th 19496

19403 9230

9230 19403

19205 9220

9220 19205

19198 9220

9220 19198

760 19781 9205

9205 17621 9205

765 9639 9560

9560 7486 955

1756 17551 7480

7480 17205 748

750 17482 7480

7480 17228 748

745 17482 7410

7410 17227 745

7510

7410

39th St.

Sewer Construction

Pacific Pines

Pacific Beach

Alley North of Pacific Ave

40' W - W.L. Lamont	31.65	9.91 8.67 +6.84	21,35.03 10.57 2.07 +6.51	S.E. Hill Pacific Lamont
M.H. N° 2 - G. Lamont	30.97			
40' E - E.L. Lamont	30.69	10.87 3.27 +7.76		

Alley North of Olive

40' W of M.H. - W.L. Lamont	34.43	10.35 8.83 +9.02	21,42.86 10.75 3.67 +7.78	S.E. Hill Reed Lamont
M.H. N° 1 - G. Lamont	34.03			
40' E of M.H. - E.L. Lamont	33.00	11.78 8.87 +7.97		

Alley North of Olive

40' W of M.H. - W.L. Kendall	43.17	9.99 8.97 +6.79	21,51.88 11.8 5.35 6.25 +6.07	M.H. P Reed Kendall
M.H. N° 3 - G. "	42.41		19.66 4.63 +6.09	
40' E of M.H. - E.L. "	41.68	11.39 4.41 +6.98		

Alley North of Pacific Ave

40' W of M.H. - W.L. Kendall	41.23	8.40 8.37 +5.76	19.89 15.77	
M.H. N° 4 - G. "	40.83			
40' E of M.H. - E.L. "	40.15	12.68 9.28 +6.70		

Grades E St.
East of W St.

Grade	Value	Value	Value
E 131° St.	178.25	178.25	187.63 191.02 12.02
50' E	172.60	172.50	178.18 182.17 12.84
100' E	166.95	166.75	168.83 172.96 179.79
120' E - End of St.	164.70		172.91 161.89
130' E - " "		162.30	155.5 170.83

11
S. 19
S. 19
S. 19

Grade	Value	Value	Value	Value
N	178.25	172.60	166.95	164.70
S	172.00	172.50	166.75	163.30

DIRECTIONS FOR USE OF TABLES

TABLE No. 1.

Distance of slope stake from side or shoulder
stake for any width roadway, slope 1 1/2 to 1
If ground is nearly level, the cut or fill at side
stake is located by the double entry method in
left column and top row. The number in both

from side stake to slope stake. If ground is not

**IMPROVED TABLES
AND
INFORMATION**

TABLE No. 2.

To find Tangent and External for curve of
any other degree divide by degree of curve and
add correction found in column of corrections.

Degree of curve with a given T may be found
by dividing tangent (or external), opposite T by
given tangent (or external).

The distance from a point on the tangent to
the curve is very nearly the square of the tangent
length divided by twice the radius.

