

128

GRADUATES

G128

FIELD BOOK

No. 385 F

Our Leather Bound Engineers Note Books are carried in the following rulings:

- No. 380 LEVEL BOOK. Left and Right Hand Page the same as Left Hand Page of this Book.
- No. 382 FIELD BOOK. Left Hand Page as in this Book, Right Hand Page 4 x 4 to the inch, Center Line Red.
- No. 384 MINING TRANSIT BOOK. Left Hand Page as in this Book, Right Hand Page 8x8 to the inch, Center Line Red.
- No. 385 FIELD BOOK. Left Hand Page as in this Book, Right Hand Page 8 vertical and 4 horizontal lines to the inch, Center Line Red.

We also carry the Note Books listed above, bound in extra strong Fabri-Hide (otherwise the same quality of book), which can be furnished at a somewhat lower price.

In ordering Fabri-Hide covered books, add the letter "F" to catalog number.

THE FREDERICK POST CO.
ENGINEERING and DRAFTING SUPPLIES

IRVING PARK STATION

CHICAGO, ILL.
MICROFILMED

APR 8 1965

Penn. + Dyllwld	page	
First St paving Brooks to Park	"	✓
Cable St " Ocean Beach	"	3
Alley paving Dixie Reed + Swayne	"	5
	"	6

~~Journal~~
~~1/16/24~~

Pent. & Idyllwild
parking

Noone
4/10/21

234.50 266 270
23.95 2610 2650

24.80
24.80

Pent

$\begin{matrix} 24.80 \\ 23.95 \\ \hline 48.75 \end{matrix}$
 $\begin{matrix} 266 \\ 2610 \\ \hline 2876 \end{matrix}$
 $\begin{matrix} 270 \\ 2650 \\ \hline 5320 \end{matrix}$

4.56	4.56	4.09	1.05	4.19
0	11.66	4.03	4.12	4.74
0	4.07	4.04	4.05	4.07
0	3.65	3.06	8.88	3.49
0	30.62	35.20	4.91	35.20

10/11/21

233.70 xwbp
 41.6 Pent of 116
 $\begin{matrix} 233.70 \\ 41.6 \\ \hline 275.30 \end{matrix}$
 13.16
 $\begin{matrix} 275.30 \\ 13.16 \\ \hline 288.46 \end{matrix}$
 23.2
 $\begin{matrix} 288.46 \\ 23.2 \\ \hline 311.66 \end{matrix}$

24.80
 23.95
 24.80

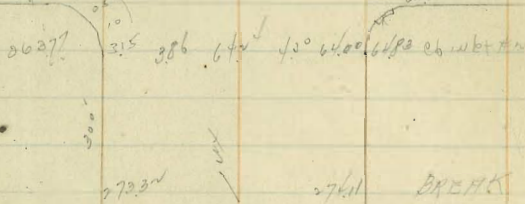
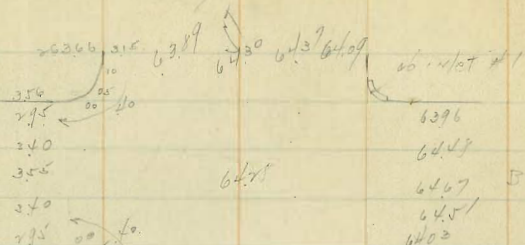
area to having

24.80
 23.95
 24.80

with 116 bottom

First to Brooks
Paving

Moore
Hills



W LINE

Walnut

26295
260
2664

Curvert # 1 + 2

Howline Culv. # 1 inlet
" " # 1 Junction
" outlet # 1 Culvert

26' 0	15.80	41.80
259.50	1.71	43.51
255.0	11.51	32.00

Curvert # 3

Outlet bottom box = Howline
+ 14.5 BREAK
+ 68

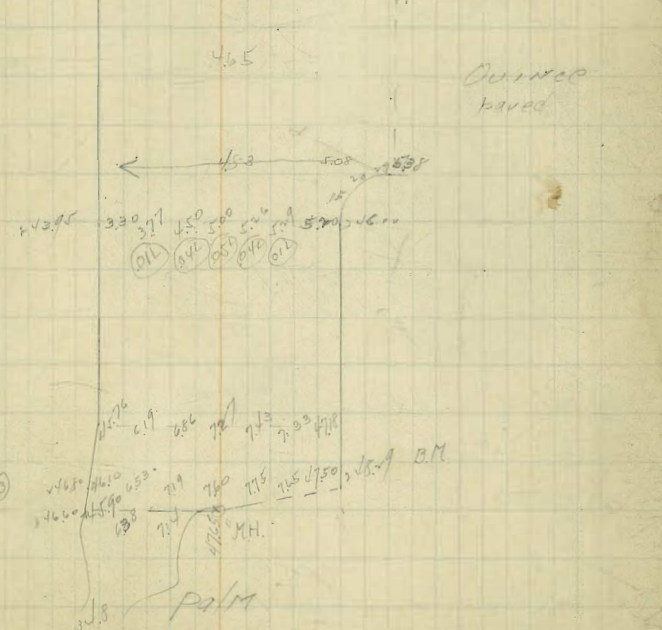
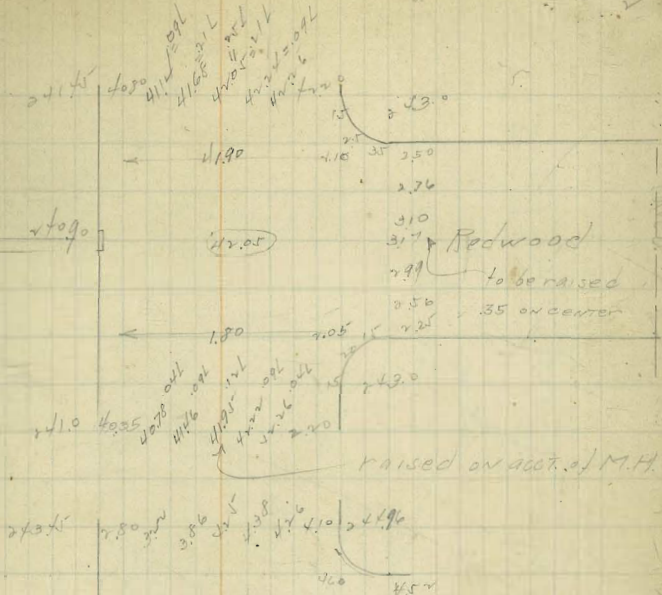
26495
15.80
23373
2225
204.77
14.74
211.03
6.97
204.06

238.10	2.37	240.47
236.50	4.49	241.00
215.50	3.73	219.23
6.97		
5.18		

26090
5.18

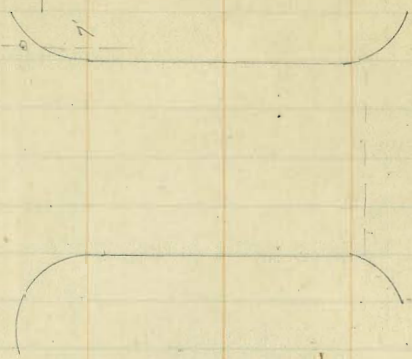
First ST Paving

Curvert # 3



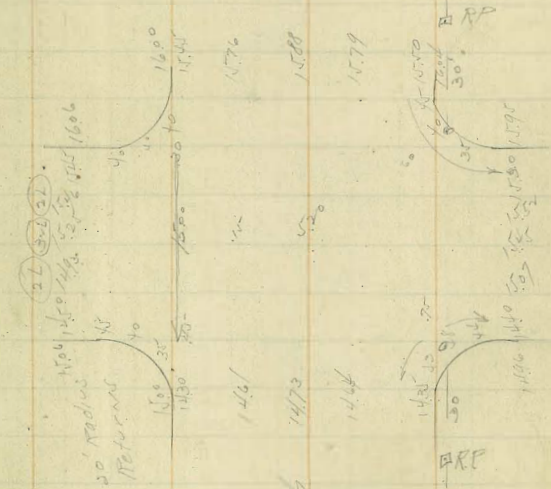
Cable ST PAVING

10-4 TORUS
 17
 16.00
 15.76
 15.50
 15.29



VALTARA

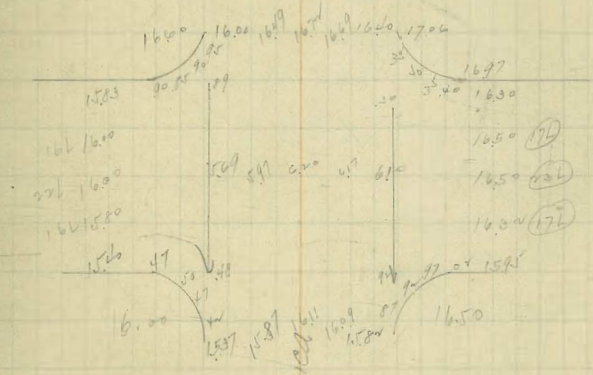
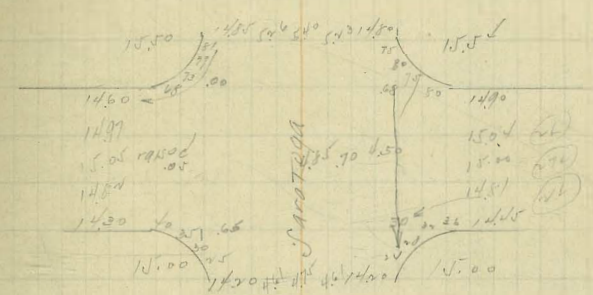
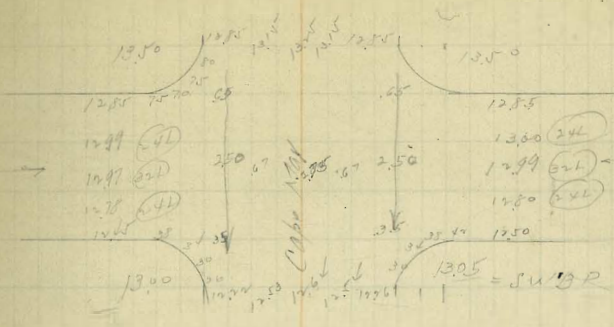
Cable



LONG BEACH

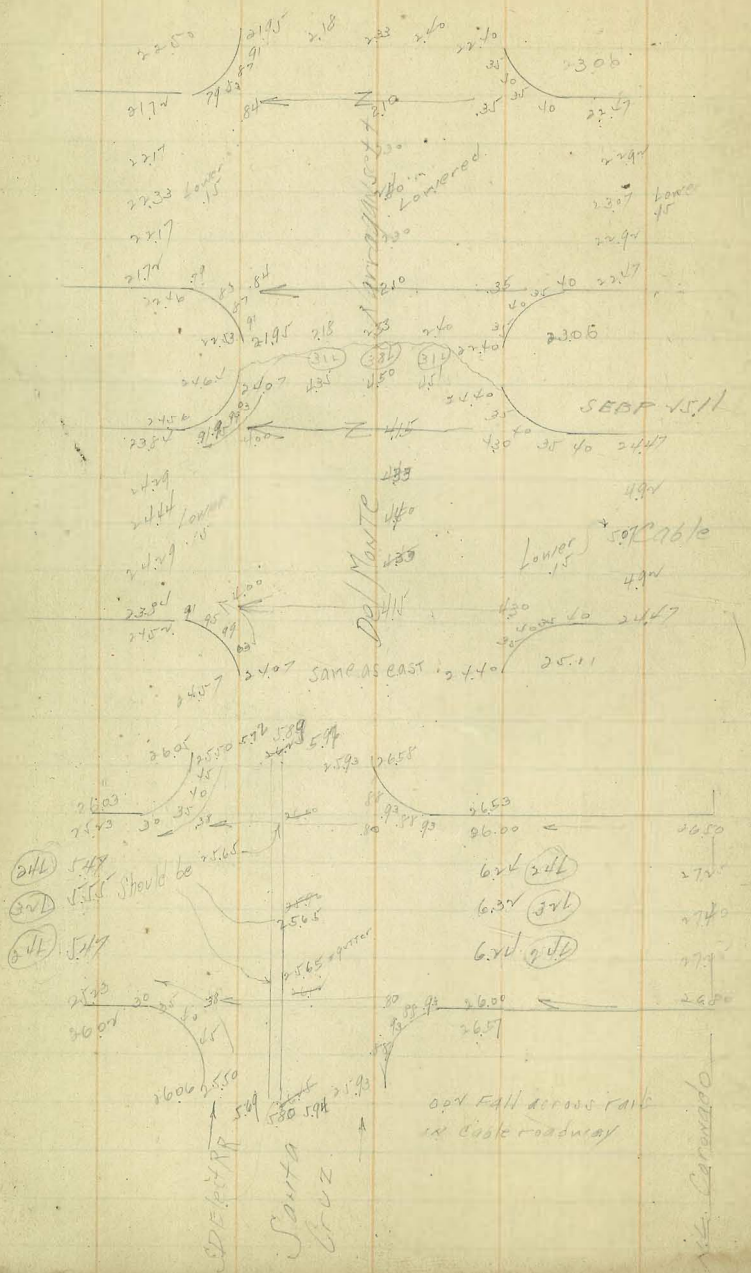


Cable ST PAVING

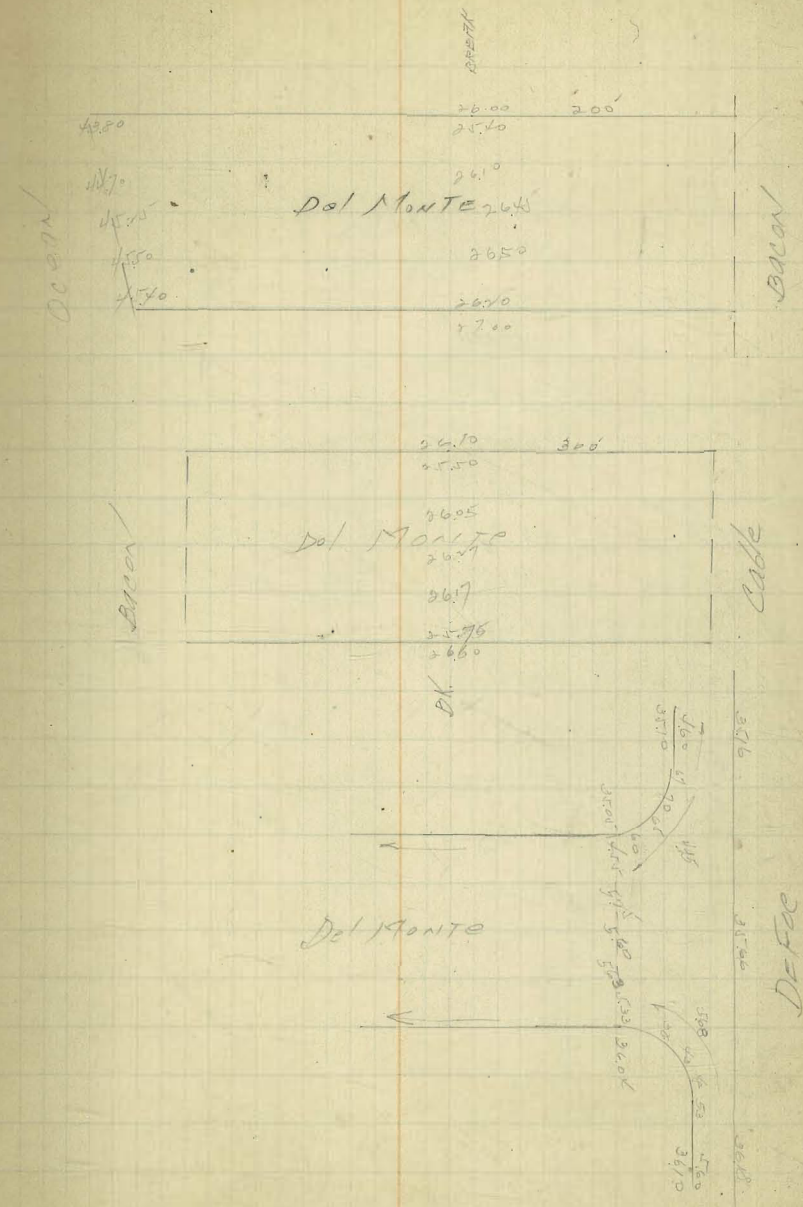


SANTA MONICA

Cable & T Paving



Del Monte Paving



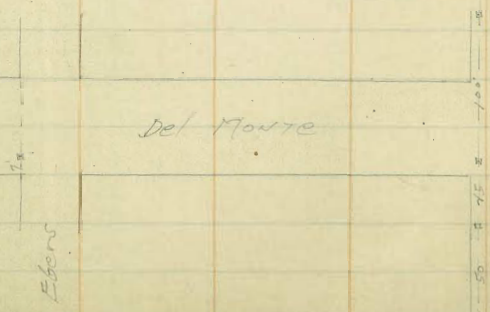
10000
131 ALLEY PAVING 20' wide
BIK 110 Reed + Swayne

EL 312.00	77.30	77.20
45 E	77.47	77.35
90	77.65	77.50
135	77.84	77.65
180 = BREAK	78.00	77.80
220	78.77	78.57
260	79.53	79.33
300 = BREAK	80.30	80.10
335	80.55	80.35
370	80.80	80.60
405	81.05	80.85
440 = BREAK	81.30	81.10
476.67	81.87	81.73
513.33	82.43	82.37
550 = BREAK	83.00	83.00
600 = W/L around	82.51	82.33

78.45	X + 0.1					
77.20	77.35	77.50	77.65	77.80	78.57	
4.23	4.23	4.28	4.13	4.28	3.51	
4.51	4.51	4.90	4.58	4.10	2.51	
4.51	4.51	4.62	4.25	4.15	4.10	
83.68	77.30	77.47	77.65	77.80	78.77	
7.20	4.28	4.31	4.13	3.96	4.21	
80.98	4.28	4.96	5.03	4.29	4.58	
4.51	4.28	4.65	4.70	4.08	4.03	
85.51	79.30	80.10	80.35	80.60	80.55	81.10
3.80	4.35	3.58	5.19	4.94	4.69	4.24
81.74	4.90	3.83	3.14	4.28	4.54	3.24
8.55	4.51	4.33	4.20	4.06	4.77	4.10
87.29	79.53	80.20	80.55	80.80	81.05	81.30
	4.15	3.35	4.99	4.74	4.49	4.24
	3.15	3.22	4.74	4.64	4.64	4.21
	4.10	4.10	4.07	4.07	4.15	4.03
	81.70	82.37	83.00	83.23		
	5.56	4.94	4.44	4.90		
	4.56	4.76	3.93			
	4.70	4.76	4.36			
	81.87	82.43	83.00	83.23		
	5.71	4.76	4.24	4.78		
	5.77	3.76	3.29			
	4.15	4.10	4.10			

Del Monte Ave Grading
 + Paving - 30' betwch dno' of raterms

Moore	N 26	5.00	
EL Ebers = 00	71.00	72.00	71.5 = P.
+ 50 E	75.20	76.70	
1	80.41	81.41	
+ 50	85.11	86.11	
2	89.82	90.82	
+ 50	94.52	95.52	
3	99.23	100.23	
+ 40 = DRENK	103.00	104.00	
4	109.34	109.88	
+ 50	114.63	114.78	
5	119.94	119.68	
+ 50	125.21	125.19	128.7 = P.
6 = W.L. Froude	130.50	129.50	

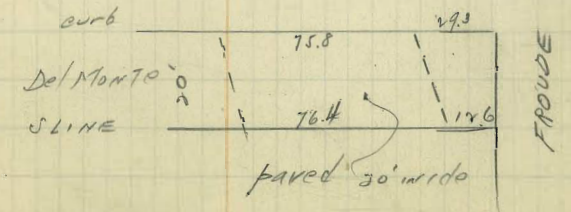
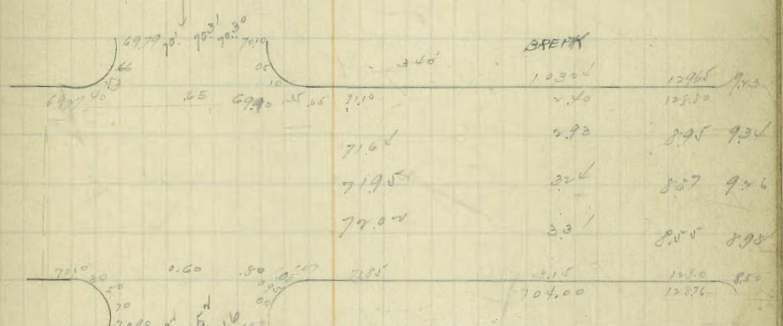


37.05 sec of Del Monte + Dofue

SW cor " + Ebers } = 70.47
 Water Dept lead plug
 copper
 track

75.00	75.9	80.0	85.3	90.1	94.7	99.5	103.7
4.0	4.9	5.0	5.1	5.2	5.3	5.4	5.5
0.9	0.7	0.5	0.4	0.3	0.2	0.1	0.1
100.01	100.7	100.9	101.4	101.8	102.2	102.6	103.0
76.70	76.9	81.6	86.3	91.1	95.7	100.5	104.1
5.6	5.9	5.9	5.9	5.9	5.9	5.9	5.9
0.4	0.3	0.2	0.2	0.1	0.1	0.1	0.1
100.01	100.7	100.9	101.4	101.8	102.2	102.6	103.0
109.6	114.9	120.2	125.4	130.7			
3.0	3.1	3.2	3.3	3.4			
10.2	10.2	10.2	10.2	10.2			
10.2	10.2	10.2	10.2	10.2			
110.1	115.0	119.9	124.8	129.7			
4.7	5.3	5.8	6.3	6.8			
0.0	0.1	0.2	0.3	0.4			
100.0	100.1	100.2	100.3	100.4			

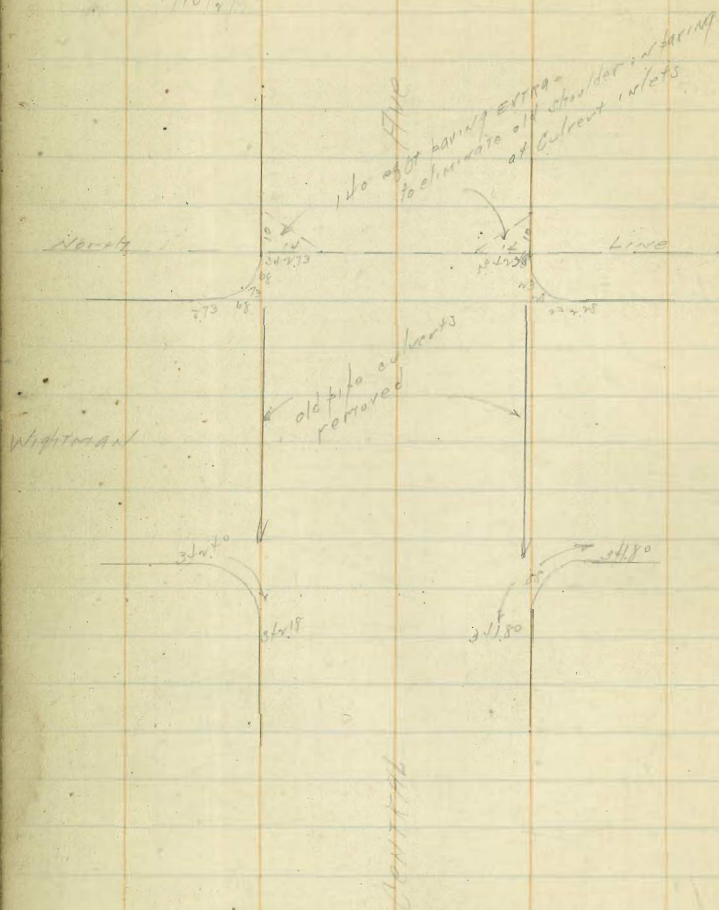
1873 = MANUAL Del Monte + Froude



Central & Wightman
EXTRA BAYING.

Moore

2/10/97



34356 NWBP WIGHTMAN + CENTRAL
345
347.01

11/10/19
Moore

Vpas + Villa Terrace
East to alley

Ben Fierol
Private Contract

31850 T

5

29959 T

street

15.

27300
29125

31250
31225

145

to
Raised for Va

29450

31225

Pearthing Drive

Villa Terrace

Wip

291

Alley Paving 30' wide
 BIR 49 CITY HATS

	W	E
St. 100	357.31	357.26
355	357.03	357.10
70.	356.75	356.73
105	356.48	356.36
140 = BREAK	356.20	356.00
184	356.03	355.83
224	355.86	355.66
266	355.69	355.41
308	355.52	355.22
350	355.35	355.15
392	355.18	354.93
434	355.01	354.81
476	354.84	354.62
518	354.67	354.47
560 = BREAK	354.50	354.30
600 = NIGHTMAN	353.82	353.77

35461 NIGHTMAN + VAN DYKE
 453
 3574
 357
 350.7
 412
 3595
 3571
 3577
 361.51

	W	E							
	5731	5703	5675	5647	5620	5603	5586		
	450	478	506	533	561	577	594		
		460	495	520	547	574	601		
		452	487	514	541	568	595		
		445	480	507	534	561	588		
		438	473	500	527	554	581		
		431	466	494	521	548	575		
		424	459	487	514	541	568		
		417	452	480	507	534	561		
		410	445	473	500	527	554		
		403	438	466	494	521	548		
		396	431	459	487	514	541		
		389	424	452	480	507	534		
		382	417	445	473	500	527		
		375	410	438	466	494	521		
		368	403	431	459	487	514		
		361	396	424	452	480	507		
		354	389	417	445	473	500		
		347	382	410	438	466	494		
		340	375	403	431	459	487		
		333	368	396	424	452	480		
		326	361	389	417	445	473		
		319	354	382	410	438	466		
		312	347	375	403	431	459		
		305	340	368	396	424	452		
		298	333	361	389	417	445		
		291	326	354	382	410	438		
		284	319	347	403	431	459		
		277	312	340	396	424	452		
		270	305	333	389	417	445		
		263	298	326	382	410	438		
		256	291	319	375	403	431		
		249	284	312	368	396	424		
		242	277	305	361	389	417		
		235	270	298	354	382	410		
		228	263	291	347	375	403		
		221	256	284	340	368	396		
		214	249	277	333	361	389		
		207	242	270	326	354	382		
		200	235	263	319	347	375		
		193	228	256	312	340	368		
		186	221	249	305	333	361		
		179	214	242	298	326	354		
		172	207	235	291	319	347		
		165	200	228	284	312	340		
		158	193	221	277	305	333		
		151	186	214	270	298	326		
		144	179	207	263	291	319		
		137	172	200	256	284	312		
		130	165	193	249	277	305		
		123	158	186	242	270	298		
		116	151	179	235	263	291		
		109	144	172	228	256	284		
		102	137	165	221	249	277		
		95	130	158	214	242	270		
		88	123	151	207	235	263		
		81	116	144	200	228	256		
		74	109	137	193	221	249		
		67	102	130	186	214	242		
		60	95	123	179	207	235		
		53	88	116	172	200	228		
		46	81	109	165	193	221		
		39	74	102	158	186	214		
		32	67	95	151	179	207		
		25	60	88	144	172	200		
		18	53	81	137	165	193		
		11	46	74	130	158	186		
		4	39	67	123	151	179		

WATER MAIN IN S E of Alley
Alleys 190 + 186 City Mats

11/1/47
Moore

Ex. Main Nightman = 00	WRIGHTMAN SWIFT NWBP	337.14 13.00 350.14	341.95	
0+30 RVC		337.89 12.53 1.12	344.16	52. 84 109
+50		339.02 14.47	343.37	70 123
+70		346.05 0.28 346.13 113.6	343.96	65 104 125
+90		347.11 0.00	343.98	134
+100 EVC		347.23	343.41	70 121 141
+60			341.25	101 112
+110			339.10	121 125
+160 BREAK			326.93	107 110
3			332.96	110 115
+50			330.25	115 120
J			326.54	143 151
+35			323.94	110 111
+70 Break			321.33	110 110
5+30			315.80	106 110 110
+90 BREAK			310.33	161 163
6+30 = ALL Laid S. BREAK			305.78	111 111
+80			304.79	110 110
7+30 = BREAK			303.80	101 101
+80			304.11	101 101
8+36.0			304.41	110 110
+90 = Break			304.74	110 110
9+10 = "			305.05	110 110
+30 = "			305.97	110 110
+70			307.50	110 110
10+10 = "			309.00	110 110

10+30	309.00	314.23
10+50	309.69	315.85
10+70	309.47	315.85
10+90 = BREAK	305.70	6.0 3.9
11+50 = "	305.20	10.0 6.0 16.0
12+10 = 4" CI Plug	297.70	17.8 13.7 4.1

31st St Grading Redwood to Thorn

Web	E66		
2.70	318.50	319.50 ✓	
50	316.50 ✓	317.50 ✓	
100	315.50 ✓	315.50 ✓	
150	313.40 ✓	314.40 ✓	
200	312.30 ✓	313.30 ✓	
250	311.20 ✓	312.20 ✓	
300	310.10 ✓	311.10 ✓	
350 - BREAK	307.00 ✓	310.00 ✓	
400		308.00 ✓	
450		306.00 ✓	
475	304.50	305.00 ✓	
		304.75	
		6.25	

Culvert #1

curb inlet flowline = 307.2

307.2

" outlet " = 285.0

285.0

$\frac{411}{1.50} = 274$
16.21

Culvert #2

inlet flowline

305.20

outlet "

299.2

$\frac{811}{2.50} = 324.4$
 $\frac{1211}{2} = 605.5$

THORN 4 31st ST

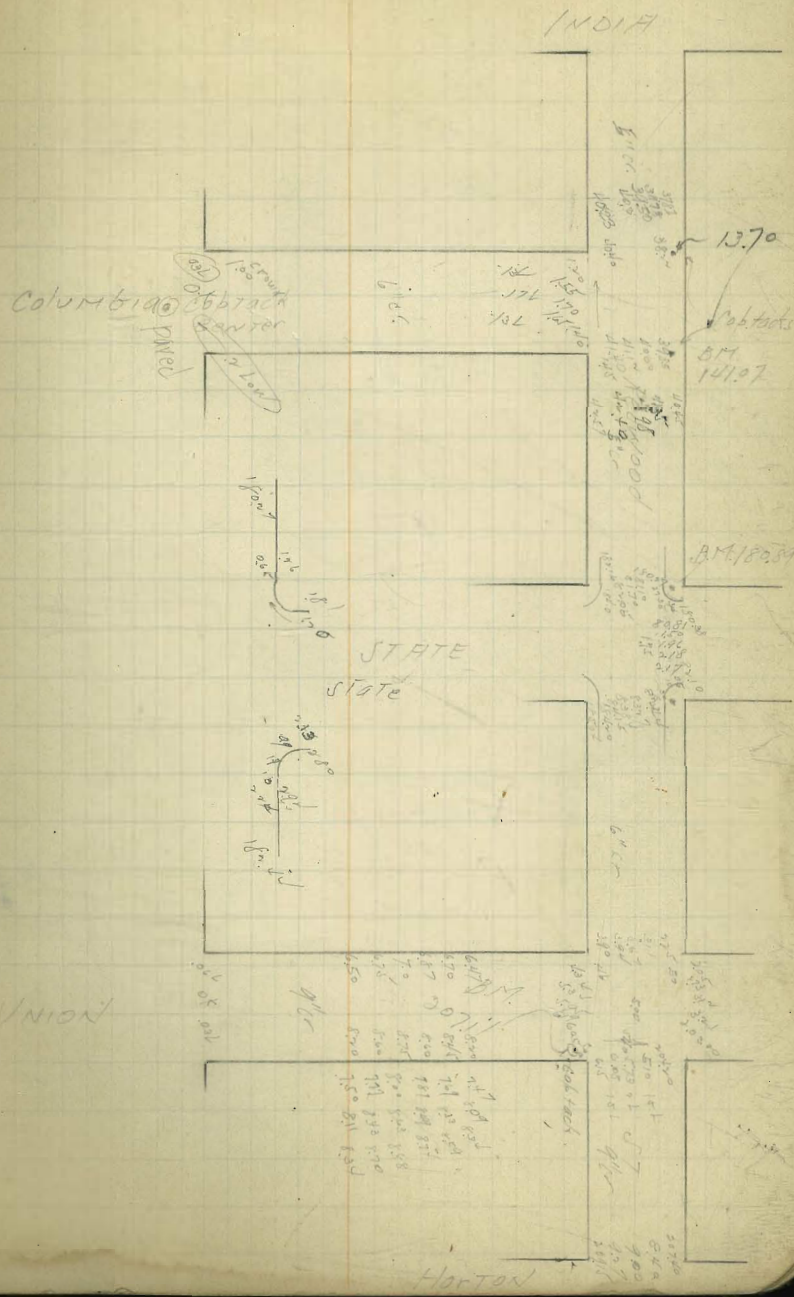
	318.25	16.75	14.25	13.50	12.75	11.50	10.25	8.75
	316.75	2.75	5.75	6.75	7.75	8.75	11.75	16.75
	314.25	2.75	5.75	6.75	7.75	8.75	11.75	16.75
	312.75	2.75	5.75	6.75	7.75	8.75	11.75	16.75
	311.25	2.75	5.75	6.75	7.75	8.75	11.75	16.75
	310.75	2.75	5.75	6.75	7.75	8.75	11.75	16.75
	310.25	2.75	5.75	6.75	7.75	8.75	11.75	16.75
	310.75	2.75	5.75	6.75	7.75	8.75	11.75	16.75
	311.25	2.75	5.75	6.75	7.75	8.75	11.75	16.75
	311.75	2.75	5.75	6.75	7.75	8.75	11.75	16.75
	312.25	2.75	5.75	6.75	7.75	8.75	11.75	16.75
	312.75	2.75	5.75	6.75	7.75	8.75	11.75	16.75
	313.25	2.75	5.75	6.75	7.75	8.75	11.75	16.75
	313.75	2.75	5.75	6.75	7.75	8.75	11.75	16.75
	314.25	2.75	5.75	6.75	7.75	8.75	11.75	16.75
	314.75	2.75	5.75	6.75	7.75	8.75	11.75	16.75
	315.25	2.75	5.75	6.75	7.75	8.75	11.75	16.75
	315.75	2.75	5.75	6.75	7.75	8.75	11.75	16.75
	316.25	2.75	5.75	6.75	7.75	8.75	11.75	16.75
	316.75	2.75	5.75	6.75	7.75	8.75	11.75	16.75
	317.25	2.75	5.75	6.75	7.75	8.75	11.75	16.75
	317.75	2.75	5.75	6.75	7.75	8.75	11.75	16.75
	318.25	2.75	5.75	6.75	7.75	8.75	11.75	16.75

Redwood ST
 PAVING Sewer Construction
 & Redwood 1899.16

EL. STATE ST = 00	1899.6	180.70	180.70
0+40 = Break	189.67	183.00	183.00
0+89.27	189.67	187.25	187.25
1+38.75	189.67	191.50	191.50
1+88.12	190.70	195.75	195.75
2+37.5 = part of Union	191.11	200.0	200.0
2+85.67		200.75	200.75
3+33.75		201.50	201.50
3+81.87		202.25	202.25
4+30 = D.E.		203.00	203.00

Jewer Construction & Columbia 1510.6 T

0+00 = Existing M.H. & Redwood		136.00	136.00
0+45.0		136.35	136.35
1+1		136.70	136.70
4+30		137.05	137.05
4+50		137.40	137.40
4+50		137.75	137.75
3 = DE		138.10	138.10



1/17/30
 Stake T Alley Bk 244 U.H.
 from E.L. Higgins Add. 1+10 East
 Private Grade
 No Contract

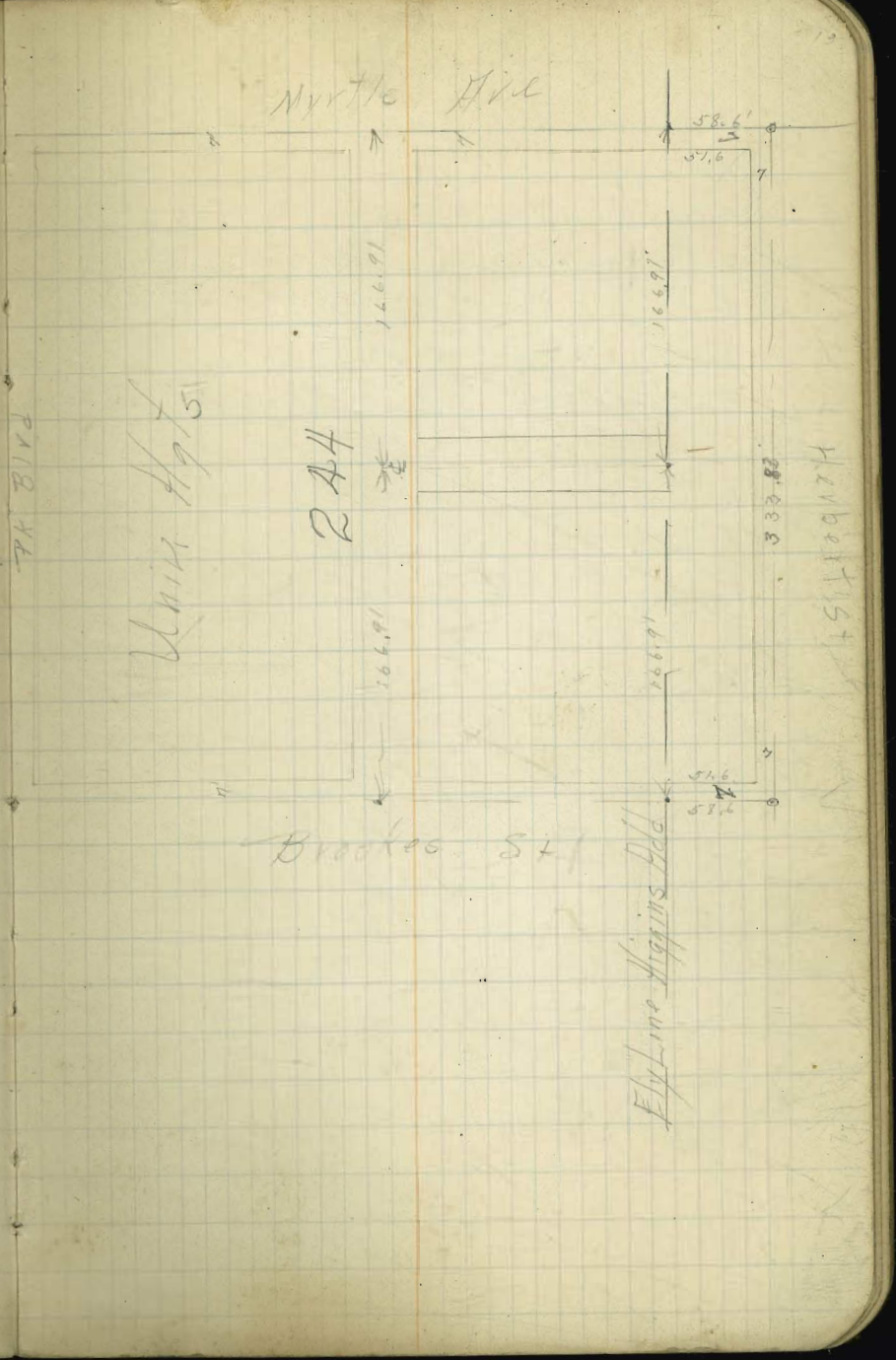
0+00 = E.L. Higgins Add. S.	279.0	12.10 279.0 +2.19	279.0	12.10 279.0 +6.76
0+40 = Bk	279.7	2.29 279.7 -0.25	279.7	11.41 279.7 -1.60
0+60 = Bk	280.6	10.50 280.6 grade	280.6	10.50 280.6 -1.75
0+80 = Bk	282.8	8.30 282.8 -5.00	282.8	8.30 282.8 -2.44
1+10 = Bk	286.7	1.40 286.7 +2.82	286.7	1.40 286.7 -3.18

Colvert #1 50' E of E.L. Higgins Add.

N.E. support	277.3	13.80 277.3 -2.25
S.E. support	275.3	4.25 275.3 -4.28

B.M. S.E. B.P. Brooke's & Herbert

289.13
9.42
297.57
6.49
291.08
0.02
291.10
11.88
279.22
272.49
281.99
1.91
280.08
7.40
289.48
0.23
289.25
5.33
294.58
5.45
289.13 B.M.



34/27 Sewer CONSTRUCTION

Maine Milkstir Terrace

75 Solid Cypress - 0.0 = D.E.	248.50
0+54/60	246.25
5	244.0
3	241.95
10	239.50
15	237.25
3+25 @ - DRECK - MH #1	235.00
3+76.7	234.23
4	233.67
3	233.0
5	231.52
3	221.67
6+35 MH #1 + Manhole	231.00
785	214.75
7+35 = DRECK	199.50
7+80	196.93
8+25 = EX. MH. & Florida	195.36

250.00
248.50
246.25
244.00
241.95
239.50
237.25
235.00
234.23
233.67
233.00
231.52
231.00
214.75
199.50
196.93
195.36

250.00	46.50	46.25	44.00	41.75	39.50	37.25
248.50	16.83	18.08	15.33	17.58	2.41	8.66
246.25	3.27	6.50	4.03	11.20	1.42	3.82
244.00	25.86	16.25	16.10	15.88	11.47	14.84
241.95	46.91					
239.50	13.85	34.23	33.67	33.09	32.33	31.67
237.25	132.06	11.91	12.58	12.74	12.91	12.94
235.00	0.18	5.74	7.26	7.82	10.58	10.13
234.23	132.48	15.77	15.36	14.74	10.81	10.17
233.67	13.83					
233.00	11.41	31.00	14.71	12.50	11.43	10.87
231.52	2.50	15.91	12.41	10.76	10.53	10.10
231.00	11.99	8.46	12.29	10.49	10.05	
214.75	11.91	7.25	12.57	10.27	10.25	
199.50	11.08					
196.93	0.05					
195.36	11.96					

National Fire Paving

ST 4107 CT

W/L 41ST JT	34.20		34.60
35' E of W/L 41ST	32.80	= A	33.31
E L 41ST = 00	31.80		32.40
0+20 BREAK	30.90		31.50
0+40 "	30.20		30.80
0+60 "	29.70		30.30
0+80 "	29.40		30.00
1+77.5	28.90		29.30
1+74.90	28.40		28.60
4 W/L + CITYLINE	27.90		27.90

27.90
27.11 z Bridge

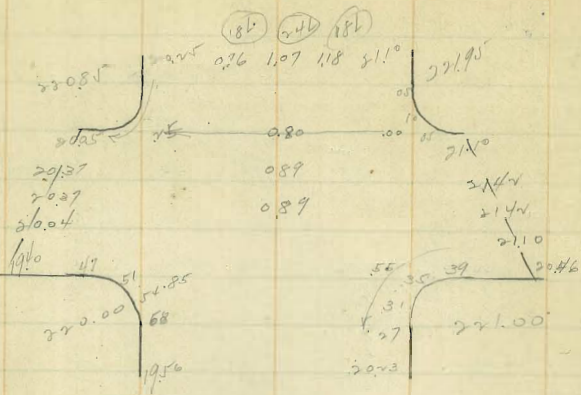
NATH 4204
Tot Hyd Sulfur

65.10						
40.50						
14.95						
2.10						
12.55						
10.10						
2.00						
40.80						
5.00						
17.70						
38.75						
23.00						
4.84						
5.00						
0.92						
31.80						
6.35						
7.14						
0.77						
30.90						
7.45						
8.15						
0.89						
30.20						
7.75						
8.95						
1.50						
29.70						
6.15						
8.75						
10.39						
1.64						
31.50						
5.75						
6.65						
7.30						
30.80						
7.85						
10.25						
2.67						
30.30						
8.15						
11.51						
3.06						
28.90						
9.75						
10.97						
1.71						
28.20						
8.85						
11.15						
4.80						
28.40						
9.55						
10.55						

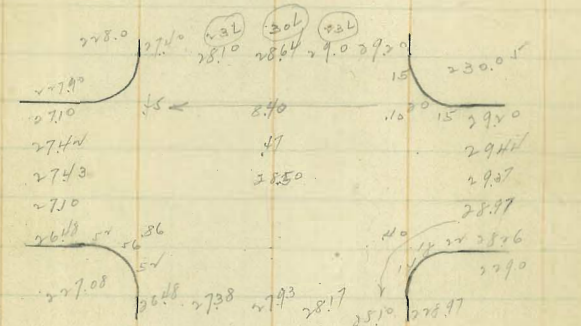
29th ST PAVING

⊙ BREAK ON WEST CURB

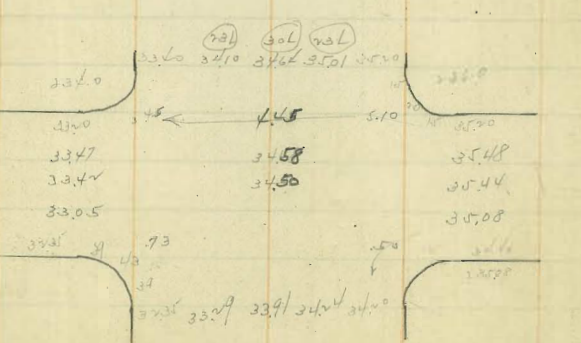
DATE



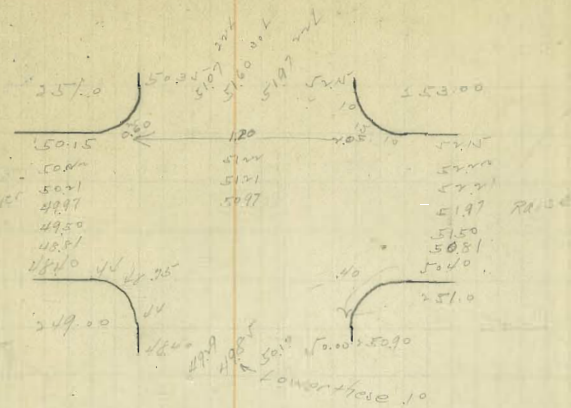
EIM



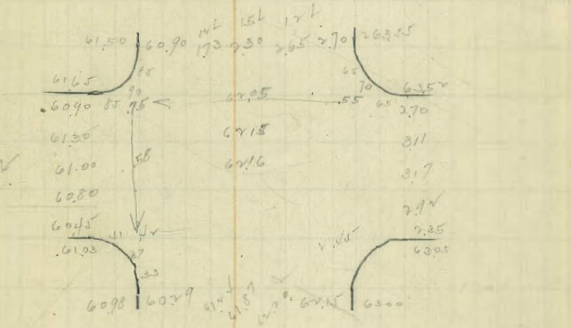
FTR



GRAPE

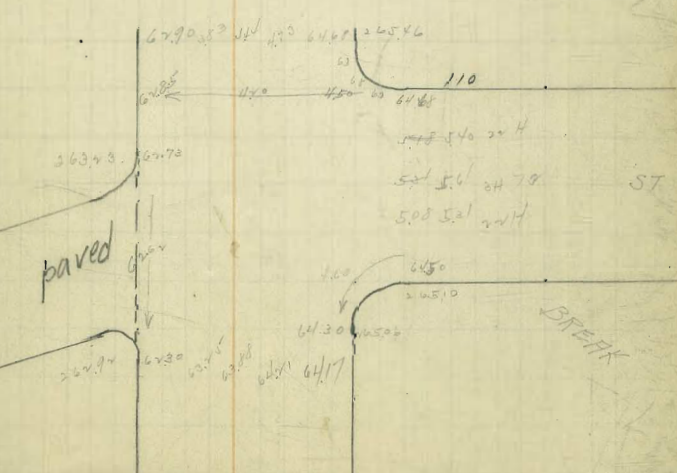


HAWTHORN



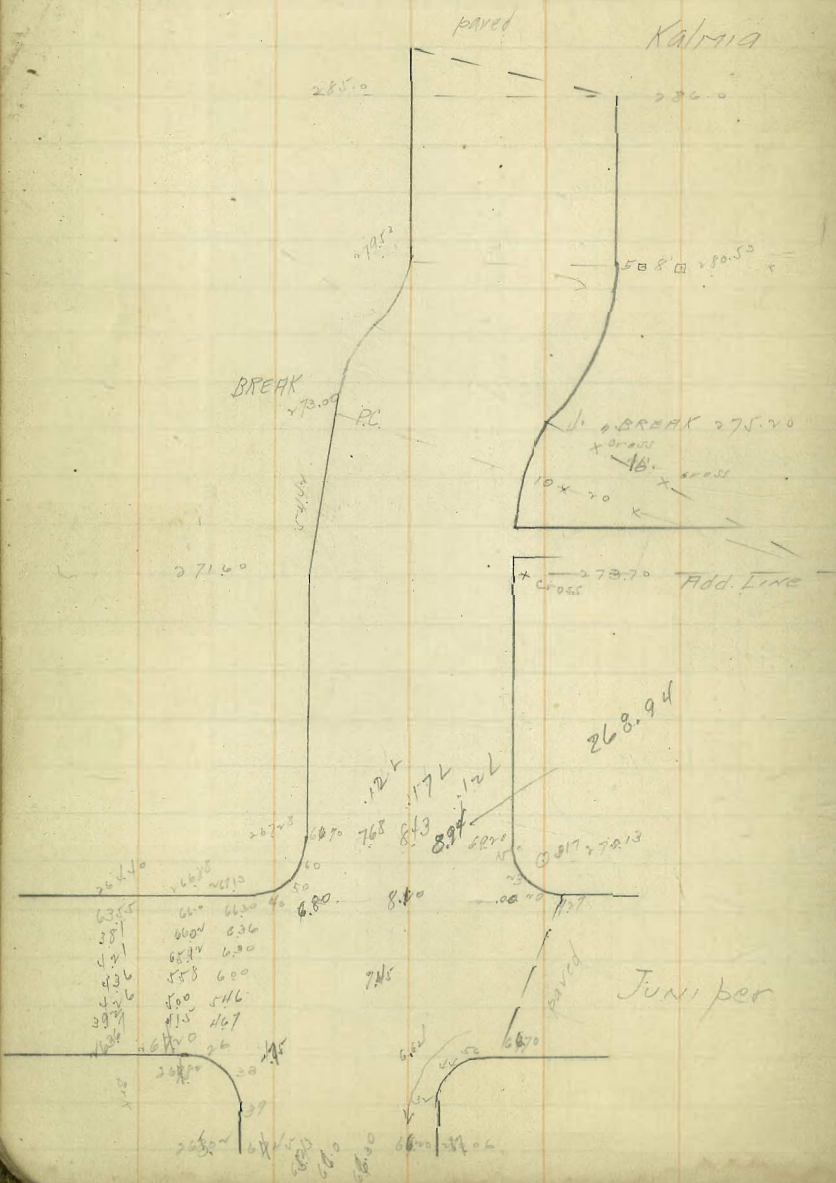
paved

IVY



BREAK

29th ST PAVING



27012
1326
27339
27339
27339
27339
27339

curb grades

E	R	RC	PRC	Nealley
286.0	285.53	278.66	275.20	271.60
286.0	285.53	278.66	275.20	271.60

273.0	275.20	279.53	280.53
1.27	8.19	2.86	4.86
286.0	285.53	278.66	275.20
1.27	8.19	2.86	4.86

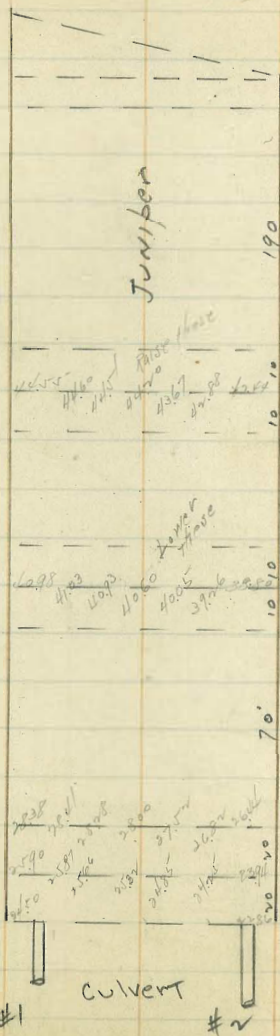
EL 29th EXISTING paving at Juniper

9.28	9.14	8.73	8.10	7.74
9.32	9.00	8.64	8.04	7.78 = paving
9.20	8.90	8.50	7.86	6.98
1.24	1.14	1.14	1.84	3.04

29th + Juniper
PAVING

29 + 4

ST



27.13	265.0	264.75	259.32	253.89	248.46
27.14	5.57	5.82	11.25	5.39	10.83
27.15	1.51	1.54			
27.16					
27.17					
27.18					
27.19					
27.20					
27.21					
27.22					
27.23					
27.24					
27.25					
27.26					
27.27					
27.28					
27.29					
27.30					
27.31					
27.32					
27.33					
27.34					
27.35					
27.36					
27.37					
27.38					
27.39					
27.40					
27.41					
27.42					
27.43					
27.44					
27.45					
27.46					
27.47					
27.48					
27.49					
27.50					

Sec	240.37	239.70	238.40	233.40
	6.85	5.55	8.85	1.25
Sec	227.20	224.50	224.00 = wall	226.00
	7.81	10.45	11.81	10.01
Curb	235.60	229.20	226.80	226.00
		5.88	2.88	2.00
				11.01
				5.00
curb inlet #1			flowline inlet 219.00	
			" " outlet 215.50	
				12.61
				13.01
				0.4
" " #2			inlet 218.17	
			" " outlet 215.00	
				11.4

ALLOY PAVING 15' wide
 BIK 2 UNIVERSITY PLACE

	S	N
WL Harbert = 00	295.36	295.48
+20 BREAK	296.93	297.09
+40 "	298.02	298.21
+60 "	298.14	298.34
+10 "	297.23	297.43
+60 "	296.33	296.53
+10 "	295.42	295.62
+60 BREAK	294.52	294.72
+80 "	293.91	294.11
3+100 "	292.86	293.0
+20 "	291.88	291.98
3+25 END CONTRACT	290.65	290.85
2+80	294.16	294.364
+05	293.68	293.88
3+10	292.68	292.88
3+25	291.46	291.66
	289.97	289.97

2405 WEST Robinson + Harbert

Harris + Jones 19
 CONTRACTORS

307.47 777.54 777.07	S	95.36 7.13	96.93 5.56 3.77 +1.77	98.02 4.17 3.27 +0.55	98.14 4.25 2.27 +1.0	97.23 4.39 2.48 -0.04	96.33 3.29 3.25 -0.02
274.05 730 307.35 921 294.14 -23 77.77	N	95.42 4.40 4.32 -0.12	97.09 5.20 3.25 +0.62	98.21 4.78 3.75 +0.53	98.34 5.15 4.19 +0.30	97.43 4.52 3.57 +0.67	96.53 3.09 3.09 -0.01
	S	95.42 4.40 4.32 -0.12	97.09 5.20 3.25 +0.62	98.21 4.78 3.75 +0.53	98.34 5.15 4.19 +0.30	97.43 4.52 3.57 +0.67	96.53 3.09 3.09 -0.01
	N	95.62 5.00 3.20 +0.20	97.22 5.20 3.20 0	98.41 5.51 3.30 +0.18	98.0 6.62 5.25 +1.14	97.38 5.74 4.03 +1.21	96.85 5.77 7.42 +1.35
	N	92.88 6.94 5.5 21.30	91.38 6.37 5.15 4.84	93.0 5.0 3.0 2.77			
	S	92.6 7.1 8.1 1.04	91.8 6.19 7.7 1.12	92.50 4.97 4.2 1.50			
274.05 730 307.35 921 294.14 -23 77.77	N	94.36 3.50 2.38 -0.58	93.88 3.78 3.05 +0.25	92.88 3.78 4.68 +0.16	91.66 6.00 4.25 +0.66	89.97 7.75 6.25 +1.50	
	S	94.16 3.50 4.78 1.28	93.68 3.78 5.44 -1.51	92.68 3.78 6.35 -1.37	91.46 6.00 5.08 -1.85	89.77 7.75 6.05 -1.70	

463
 463.14 = Garage
 1.19 = " bottom garage door
 293.48

ALLEY Paving 7' wide
HAWTHORNE Terrace

Grade lowered see profile

EL 32' = 0400	281.75	281.75
Δ N Break	281.50	281.50
3' 15"	280.33	280.33
	279.16	279.16
Δ BREAK	278.0	278.0
	277.18	277.20
3' 15"	276.35	276.40
P.C. 3' 15"	275.53	275.60
N.	275.46	275.50
BREAK	275.40	275.40
N.	275.10	275.10
EC.	274.80	274.80
20' S EC = BREAK	273.40	273.40
45' S EC = N.C. = 15' 15"	271.07	271.21
S	✓	✓
El 32' md	280.10	280.10
0+20	280.8	280.8
0+40	281.4	281.4
0+60	281.7	N.L. STA. 281.7
Δ 0+5 0+7335	281.5	0+8305 281.5

27696
672
28368

Break 43' md
SW 02

S	282.0	281.75	281.50	280.33	279.16	278.0	277.18	276.35
	1.06	1.23	1.16	1.13	1.14	1.14	1.14	1.14
	1.04	1.52	2.36	3.21	4.07	4.93	5.79	6.64
	+2.06	+0.76	+0.78	+0.54	+0.85	+0.79	+0.65	+0.57
N	1.68	1.93	2.18	2.43	2.68	2.93	3.18	3.43
	1.50	1.34	1.18	1.02	0.86	0.70	0.54	0.38
	-0.18	+0.59	-0.71	-0.90	-1.09	-1.28	-1.47	-1.66

S	275.53	275.46	275.40	275.10	274.80	274.0	273.40
	8.15	8.22	8.28	8.35	8.42	8.49	8.56
	8.04	8.07	8.14	8.18	8.25	8.32	8.39
	+0.13	+0.15	+0.16	+0.17	+0.18	+0.19	+0.20
N	275.60	275.40	275.40	275.10	274.80	274.0	273.40
	8.08	8.13	8.24	8.35	8.46	8.57	8.68
	8.96	9.23	9.50	9.77	10.04	10.31	10.58
	-0.88	-1.10	-0.94	-0.78	-0.62	-0.46	-0.30

27696
672
28368

✓	280.10	280.30	281.40	281.70	281.50
	6.29	5.59	4.99	4.69	4.89
	4.25	4.37	4.96	4.75	4.55
	2.04	1.22	1.03	0.94	0.89
S	6.29	5.59	4.99	4.69	4.89
	4.25	4.46	4.50	4.53	4.54
	+1.95	+1.14	+0.99	+0.16	+0.17

Grape ST Grading

	Sub	Net
EL 32nd = 00	277.50	279.10
0+50	275.64	277.07
1+00	273.75	275.05
1+50	271.87	273.04
1+84 = Blank	270.00	
2+00 = 420000	270.00	271.00
4+70 = 550000	269.92	270.44
3+25		
3+80 = BREAK	270.80	271.33
4+00	270.85	271.20
4+20	270.20	270.00
4+40	269.40	266.00
4+80	266.00	

18' radius
to pit curb in

253.05

21

SL	2250	75.9	24.0	72.10	70.80	70.00	70.50	71.10
	6.18	7.8	3.9	7.8	14.7	15.5	12.1	11.0
		5.3	4.0	12.8	10.5	12.7	11.0	11.0
		4.5	4.0	12.8	10.5	12.7	11.0	11.0
NL	2230	22.30	75.3	73.3	70.70	71.60	71.40	70.0
	3.6	6.4	2.8	12.4	12.4	12.0	12.3	11.5
	3.1	3.3	2.1	12.4	12.4	12.0	12.3	11.5
	4.3	2.9	2.1	12.4	12.5	12.6	12.4	11.4
SL	7040	67.60	21.1	70.4	69.6	66.2	64.7	63.7
	13.8	14.8	2.2	4.9	3.3	7.1	8.6	7.0
	10.8	11.5	0.2	1.3	0.2	2.0	2.0	0.0
	4.3	4.6	+1.5	+1.2	+2.1	+6.7	+7.1	-0.7
NL	20680	24.20	40.1					
	10.9	10.0	1.0					
	10.4	10.0	1.0					

MC Con 33' Grape

269.6	267.4	263.2	262.0 = 50' curb	270.20	268.0
2.6	1.0	1.0		2.0	2.0
8.5	6.7	9.5	9.5	10.5	10.5
11.1	7.3	10.5	10.5	11.0	11.0
266.0	65.77	65.75	65.73	266.35	264.70 = 1/2 curb
5.9	1.0	1.0	6.04	5.0	5.0
64.8	63.2	63.0	63.0	63.0	63.0
11.1	11.1	11.1	11.1	11.1	11.1
264.0	262.30	262.15	263.0	lowered .20 for 1/2 c.	
7.9	8.7	8.8	8.7		

Bancroft Grading Griffiths

± STA	W CB	E CB
51 Grape = E.C. = 00	269.0	269.0
+50	266.30	266.18
1 -	263.61	263.36
+50	260.94	260.54
+95 = P.C. BREAK	258.50	258.0
0° 58' 43" 0	257.47	257.17
1° 57' 26" 0 ^{40' 46"}	256.83	256.33
2° 56' 09" 0 = BREAK	256.0	255.5
3° 54' 57" 0 ^{1/2 = 146"}	255.0	254.67
4° 53' 36" 0	254.0	253.83
5° 51' 22" 0 = P.C. Break	253.0	253.0
1° 36' 12" 0 ^{75"}	250.07	250.4
2° 12' 25" 0 ^{106"} BREAK	247.15	247.29
4° 02' 23" 0 ^{15"} Break	245.18	244.91
5° 51' 22" 0 = E.C. BREAK ^{STA 23+71.22 = 0.00}	243.0	243.04
0+20 BREAK	241.69	241.70
0+40 BREAK	240.86	240.86
0+77.5	239.80	239.80
1+15 BREAK	238.73	238.73
+25 "	238.05	238.05
+55 "	237.16	237.16
+75 "	236.03	236.03
+95 "	234.69	234.69
+57.5	231.60	231.60
+80 = N.I.E.M.	228.50	228.50

CUTS to curb grade

21

W 69.0	66.30	63.61	60.94	58.5	57.67	56.83
E 69.0	66.18	63.36	60.54	58.0	57.17	56.33
W 56.0	55.0	54.0	53.0	50.07	47.15	45.15
E 55.5	54.67	53.83	53.0	50.14	47.29	44.91
W 43.0	41.69	40.86	39.80	38.73	38.05	37.16
E 43.04	41.70	40.86	39.80	38.73	38.05	37.16
W 36.03	34.69	31.60	28.50			
E 36.03	34.69	31.60	28.50			

Bancroft Grading

ESTN	WCB	ECB
Old SL Grate	269.0	269.0
0+50	266.67	266.55
1	264.33	264.10
+50	261.0	261.66
L+95 = P.C.	259.90	259.46
✓ +10	259.20	258.73
+25 = BREAK	258.50	258.0
3 parts 3° 17' 19"	257.33	256.9
1938 4° 35' 00"	256.17	255.83
P.R.C. 5° 51' 00"	255.0	254.75
0° 59' 59" @ 15 ch	254.0	253.87
1° 59' 58" = BREAK	253.0	253.00
3° 17' 19" 3 parts	250.73	250.60
4° 35' @ 19.3'	248.46	248.20
5° 35' 00" = EC = 00	246.20	245.80
0+10 BREAK	245.18	244.91
0+30	243.0	243.0
0+50	241.70	241.70
0+70	240.86	240.86
1+07.5	239.80	239.80
1+45 BREAK	238.73	238.73
+65	238.05	238.15
+85	237.16	237.16
✓ +105	236.03	236.03
+225	234.69	234.69

changed here
see profile

27696
27697
27698
27699
27700
27701
27702
27703
27704
27705
27706
27707
27708
27709
27710

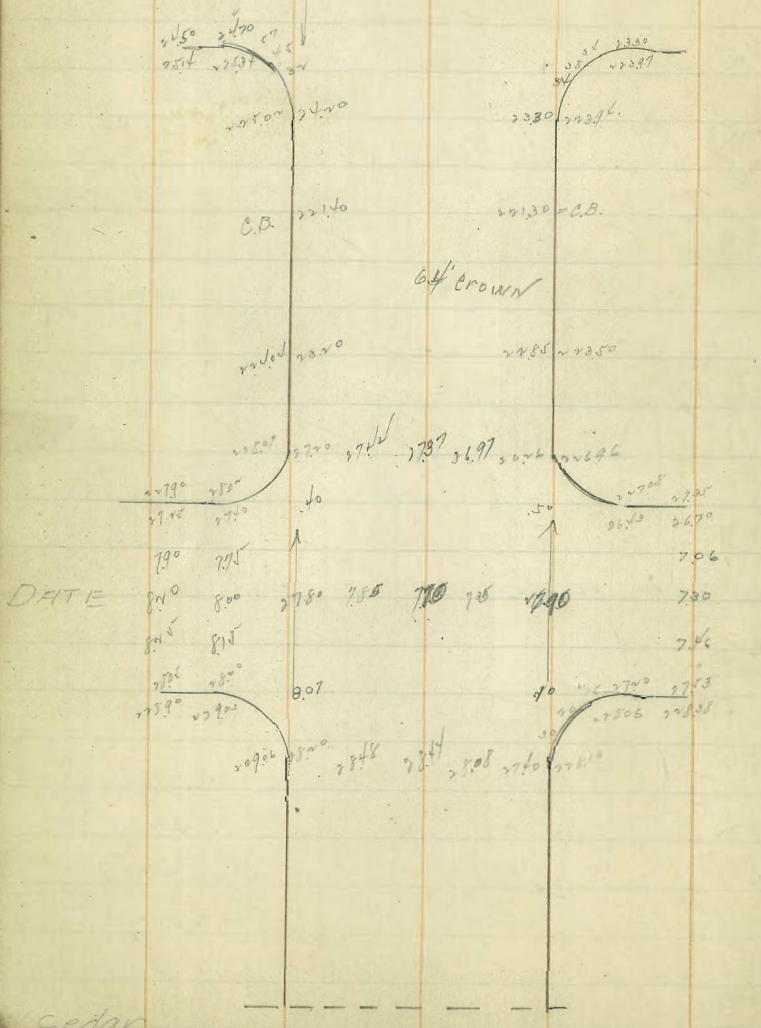
25767 - RP NW Riv + Bank

Wcb	69.0	66.7	64.3	62.0	59.9	59.2	58.5	57.3	56.2
Feb	19.5	16.5	14.1	11.7	9.5	8.7	8.0	6.8	5.8
Wcb	45.0	44.0	53.0	50.7	48.5	46.2	45.2	43.0	41.0
Feb	15.5	12.5	10.1	7.7	5.5	4.7	4.0	2.8	1.8
Wcb	30.5	31.5	42.9	43.0	43.0	41.5	39.2	36.2	34.5
Feb	15.0	19.0	19.1	14.5	12.5	11.0	10.0	8.0	7.5
Wcb	15.5	16.5	17.4	18.3	19.2	20.1	21.0	22.0	23.0
Feb	1.0	1.0	1.0	1.0	1.0	1.0	1.0	1.0	1.0
Wcb	40.5	39.8	32.7	28.0	27.2	26.0	24.7	23.6	22.5
Feb	15.5	12.5	10.1	7.7	5.5	4.7	4.0	2.8	1.8
Wcb	25.0	27.3	22.6	20.3	21.7	20.0	18.7	17.6	16.5
Feb	10.5	9.8	12.5	12.6	14.5	13.0	11.7	10.6	9.5
Wcb	14.5	14.0	10.0	10.0	10.0	10.0	10.0	10.0	10.0
Feb	0.0	0.0	0.0	0.0	0.0	0.0	0.0	0.0	0.0
Wcb	24.0	24.0	23.0	23.0	23.0	23.0	23.0	23.0	23.0
Feb	0.0	0.0	0.0	0.0	0.0	0.0	0.0	0.0	0.0

Wcb	231.60	ECB
2+67.5	231.60	231.60
3+10 = NLEM	228.50	228.50

Bancroft Paving

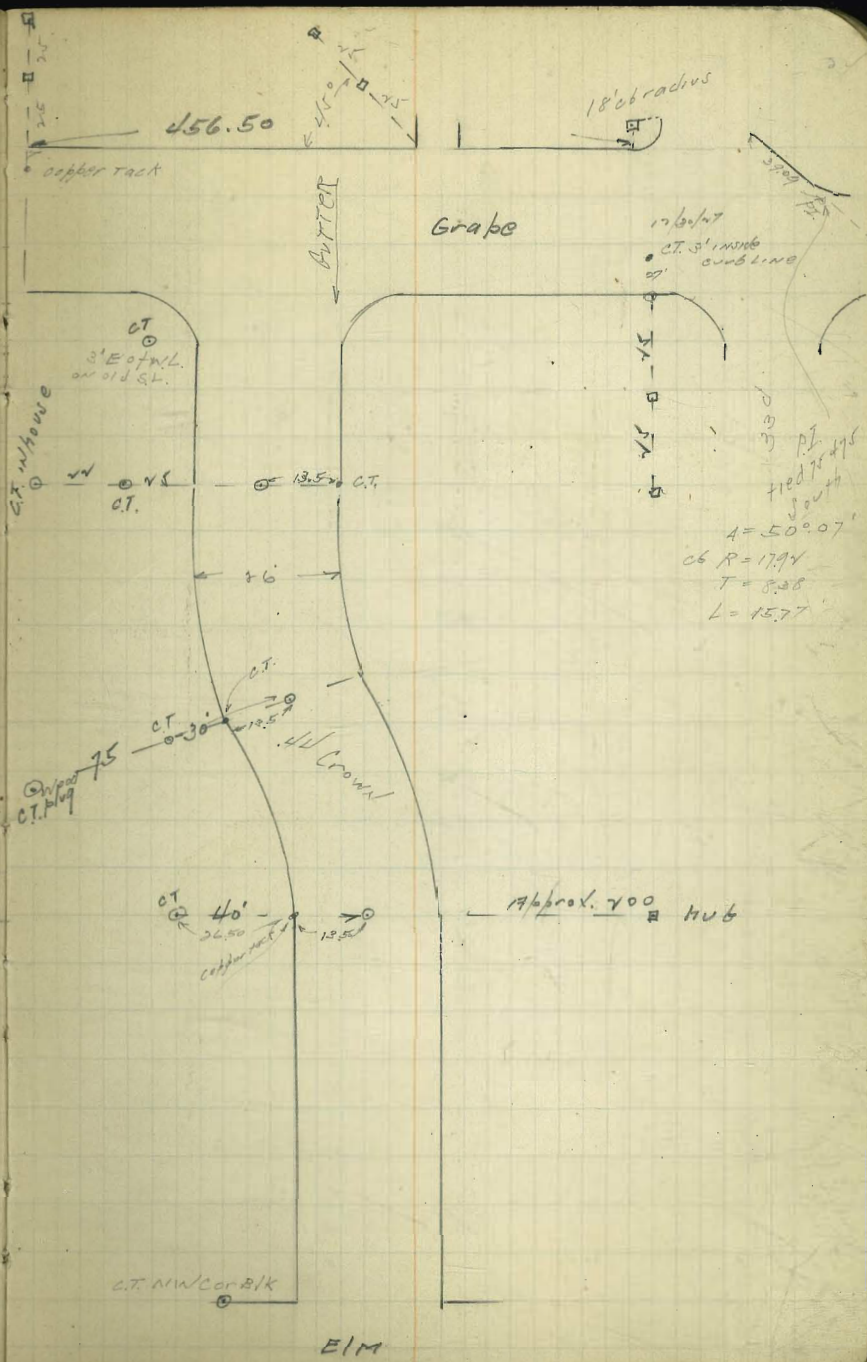
ELM



DATE

79°	79°	79°	79°	79°	79°	79°	79°
81°	81°	81°	81°	81°	81°	81°	81°
81°	81°	81°	81°	81°	81°	81°	81°
81°	81°	81°	81°	81°	81°	81°	81°
81°	81°	81°	81°	81°	81°	81°	81°

cedar



Graps

C.T. House

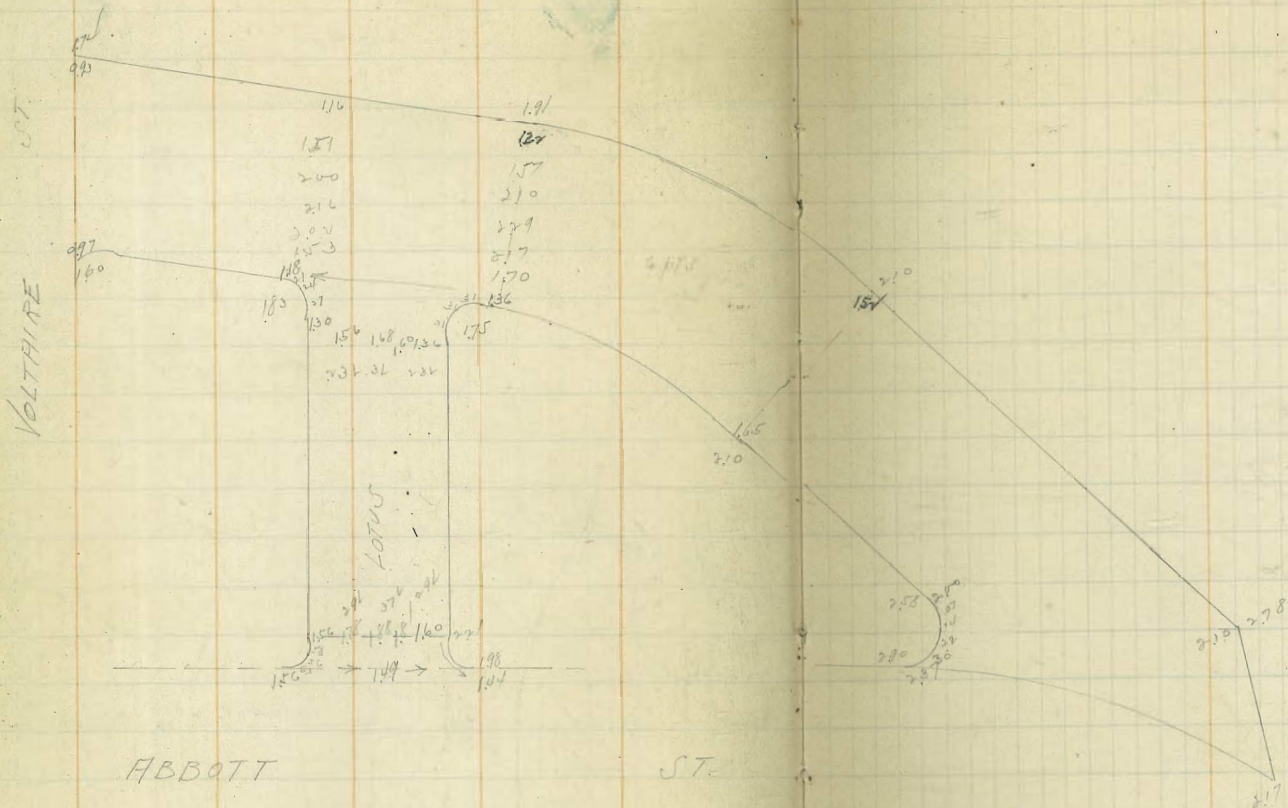
C.T. 13.5

CT 3' inside curb line
 tied to
 $A = 50^{\circ} 07'$
 $CB R = 1794$
 $T = 8.28$
 $L = 15.77$

C.T. NW corner

ELM

West Pt. Loma Blvd + Lotus
Paving



11/137

Curlew Paving

Culvert #1

inlet	Handline	136.5	2.87 2.09 +0.78	130 9.77 +5.30
outlet	"	131.6		
prop grade northern end of wall				
"	"	122.95	6.67 10.22 3.74	
"	"	121.47	8.14 5.21 -0.28	
"	"	119.25	11.53 11.53	

Sewer Curlew

DE=00		148.0	8.64 3.46 +5.18	
+40		146.50	10.14 4.89 +5.25	
+80		145.0	11.64 5.30 +6.34	
+120		143.50	6.77 3.59 +3.18	
+160	M.H.#1	142.0	8.97 3.70 +5.27	
3+176.90	5 = M.H.#2	140.60	9.67 4.82 +4.85	142.14 0.58 141.76 0.57 141.29 0.59 140.80 6.96 136.64
4+177.0	3 EX. M.H.	139.90	11.07 5.50 +5.57	
5+176.90	5 = M.H.#3	139.20	11.97 6.21 +5.76	
6+176.90		138.50	12.47 6.05 +6.42	
7+176.90		137.80	13.17 7.66 +5.51	
8+176.90		137.10	13.87 8.41 +5.46	
9+176.90		136.40	14.57 9.07 +5.50	
10+176.90		135.70	15.27 9.81 +5.46	
11+176.90		135.00	16.00 10.54 +5.46	

Curlew Sewer

N.G.

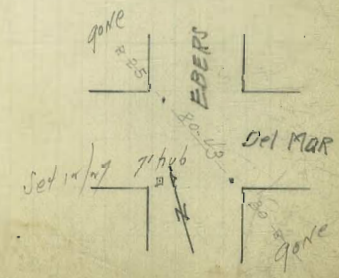
PLAN MEASUREMENT	134.70	7.94 3.19 +4.75	
	133.40	8.74 3.14 +5.60	
	132.60	9.54 3.94 +5.60	114.66 9.22 124.20 0.67 124.53 1.30 125.83 0.84 131.91 12.23 145.14
	131.80	10.34 4.74 +5.60	
	131.0	11.14 5.55 +5.59	
	129.24	12.90 6.57 +6.33	
	127.48	14.66 8.61 +6.05	
	125.72	16.42 10.53 +5.89	
	123.96	18.18 12.42 +5.76	
	122.20	20.00 14.28 +5.72	
	119.87	21.86 16.14 +5.72	
	117.53	23.70 18.00 +5.70	
	115.20	25.54 19.86 +5.68	
	112.87	27.38 21.72 +5.66	
	109.06	29.22 23.58 +5.64	
	106.0	31.06 25.44 +5.62	

Del Mar Grading

	5.06	N.06
EL Defoe = 00	36.00	36.50
+50	37.14	37.75
	38.25	39.00
+50	39.37	40.25
✓ = BREAK	40.50 ✓	41.50 ✓
+20 "	41.10	42.10
+40 "	42.0 ✓	43.00 ✓
+60 "	43.10	44.20
✓ +80 BREAK	44.50 ✓	45.70 ✓
3 +33.3	48.67	49.97
+86.67	54.83	54.23
+40 BREAK	57.00	58.50 ✓
+90.3	64.67	66.17
5 +46.67	72.33	73.83
6 +00 = WLEBENS	80.00	81.50
00 EL "	83.00	84.50
0 +56.67	91.0	92.5
1 +13.33	99.0	100.5
+70	107.0	108.5
2 +26.67	115.0	116.5
+83.33	123.0	124.5
3 +40 = BREAK	131.0	132.50
+92	136.60	138.1
4 +44	142.2	143.7
+96	147.8	149.30

119.75 C.T.R. Top Cor Conc 27.4 on road show plate

37.7	37.0	40.25	41.50	43.00	45.70	50.00	54.2
10.3	7.0	5.3	6.5	5.0	14.6	10.3	6.1
10.3	6.0	6.6	5.3	5.0	14.6	10.3	6.1
0.0	1.0	1.0	1.0	1.0	1.0	1.0	1.0
11.9	11.9	11.9	11.9	11.9	11.9	11.9	11.9
37.1	38.2	39.4	40.5	42.0	44.5	48.7	52.8
10.9	7.8	6.6	7.6	6.0	14.5	11.6	7.5
12.4	11.4	10.6	8.8	6.3	13.2	13.2	10.1
1.5	1.8	1.7	1.0	0.8	0.5	0.1	0.7
58.5	60.2	73.2	81.5	84.50	92.5	100.5	108.5
12.1	5.0	6.3	10.9	9.9	14.4	10.4	11.0
10.8	6.0	6.3	10.9	9.9	14.4	10.4	11.0
10.3	17.0	11.4	17.0	16.6	15.0	15.4	15.3
57.0	64.7	72.3	81.0	83.0	91.0	99.0	107.0
5.0	6.9	0.9	2.0	11.0	3.4	7.9	12.9
5.8	10.3	4.3	8.0	10.8	2.8	7.6	10.0
5.3	5.3	5.0	6.6	10.6	10.6	10.4	0.7
124.5	127.5	138.1	143.7	149.3			
7.9	11.6	7.8	13.2	21.0			
2.6	5.6	1.0	5.7	11.3			
122.9	141.0	143.2	143.2	147.8			
7.9	10.1	4.5	7.9	10.1			
147.9	150.0	150.0	150.0	155.0			
21.0	17.0	17.0	17.0	17.0			



Del Mar Gradient

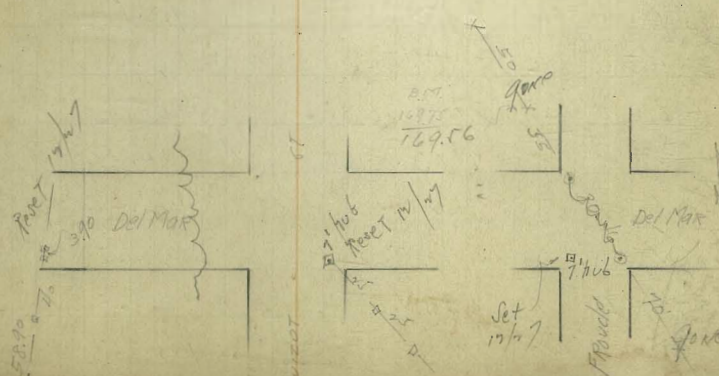
5448	153.4	154.9
600=WLFroude	159.00	160.50
0700=EL	162.00	163.50
0750	164.67	166.17
1	167.33	168.83
+50	170.0	171.5
✓	172.67	174.17
+50	175.33	176.83
3	178.0 = BREAK	179.5
+57.03	181.9 3+5/35	183.55 = Pacific Lane
✓	185.5	187.0
+50	189.35	190.75
✓	193.0	194.5
+50	196.75	198.25
6 = WLGuisot	200.50	202.0
0700=EL	203.00	204.50
0750	209.53 ✓	210.72 ✓
1	216.06 ✓	216.94 ✓
+50	222.59 ✓	223.16 ✓
✓	229.12 ✓	229.38 ✓
+50	235.65 ✓	235.60 ✓
+885Y=NL	240.60 ✓	240.40 ✓
	244.18 ✓	
+40=BREAK	247.40 ✓	246.52
+5798=SL	248.9 ✓	248.22 ✓

1497
176.5
176.19
176.12
168.61
170.50
171.59
172.49
172.39
172.87

31

16.0	16.5	16.8	17.0	17.5	18.0	18.5	19.0	19.5	20.0
17.0	17.5	18.0	18.5	19.0	19.5	20.0	20.5	21.0	21.5
18.0	18.5	19.0	19.5	20.0	20.5	21.0	21.5	22.0	22.5
19.0	19.5	20.0	20.5	21.0	21.5	22.0	22.5	23.0	23.5
20.0	20.5	21.0	21.5	22.0	22.5	23.0	23.5	24.0	24.5

SW Del Mar - ...



Orchard ST Grades

	5.06	Nob
EL Defoe	30.0	31.0
0+50	30.75	31.75
1 -BREAK	31.50	32.50
+50	32.75	33.75
2 -BREAK	34.0	35.0
+50	36.75	37.75
3 -BREAK	39.5	40.5
+60	44.6	45.75
4 +20	49.75	51.0
+80	54.87	56.25
5 +40 BREAK	60.0	61.5
600=WLEbens	67.0	68.5
00=EL "	68.5	70.0
0+56	73.0	74.70
1+12	77.90	79.40
+68	82.60	84.10
2+24	87.30	88.80
3+80=BREAK	92.0	93.5
3+44	99.0	100.50
4+08	106.0	107.50
+72	113.0	114.50
5+36	120.0	121.50
600=WLFroude	127.0	128.5
00 EL "	129.0	130.5
0+70	135.0	136.25

Elevation NWSP
Defoe

N	31.7	32.5	33.7	35.0	37.7	40.5	45.7	51.0	56.4
	7.9	7.1	5.9	4.6	14.6	14.8	6.6	12.8	7.6
	37.8	6.7	7.0	4.6	14.1	9.8	5.2	11.3	5.8
	74.0	10.7	11.1	0.0	10.5	14.0	11.2	17.5	11.1
S	30.7	31.5	32.7	34.0	36.7	39.5	44.6	49.7	54.9
	8.1	8.1	6.9	5.6	2.9	14.8	4.9	5.6	8.9
	18.0	7.8	8.3	6.2	2.7	14.1	6.8	1.5	8.9
	10.0	10.2	7.9	0.6	10.4	11.7	11.1	11.1	8.7
N	61.5	62.5	70.0	74.7	79.2	84.1	88.8	93.5	100.5
	14.5	7.5	6.0	12.6	7.9	15.3	10.6	5.9	10.7
	10.0	7.1	1.7	7.8	4.3	11.7	7.0	3.7	11.7
	22.5	10.0	1.3	10.1	10.6	13.6	13.0	12.0	11.7
S	60.0	67.0	68.1	73.0	77.1	82.6	87.3	92.0	99.0
	3.8	9.0	7.5	4.1	4.9	4.7	4.0	8.0	11.0
	3.0	1.9	8.8	13.0	8.1	11.7	2.3	10.9	11.0
	10.5	1.7	1.3	5.7	11.2	0.7	2.3	1.5	11.7
N	107.5	110.5	116.5	120.5	125.5	130.5	135.5	140.5	145.5
	16.1	1.1	1.3	1.3	17.4	1.2	1.2	1.7	1.7
	13.8	2.2	1.9	1.9	12.5	1.2	1.2	1.2	1.2
	17.3	1.7	1.7	1.7	10.7	1.2	1.2	1.2	1.2
S	106.5	110.0	120.0	127.0	129.0	129.0	135.0	140.5	145.5
	4.7	10.6	3.6	1.2	16.6	16.6	10.6	10.6	10.6
	10.0	10.0	6.0	10.0	10.0	21.2	15.8	15.8	15.8
	10.0	10.0	10.0	10.0	10.0	10.0	10.0	10.0	10.0



ORCHARD ST Grades

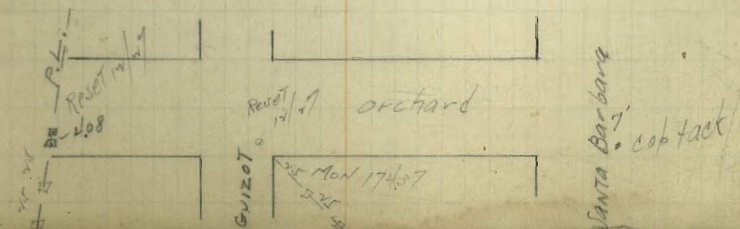
5.00	141.0	142.0
1+40 = BREAK	143.80	144.80
+92	146.60	147.60
+96	149.40	150.40
3+48	152.20	153.20
4+00 = BREAK	155.0	156.0
+50	159.75	160.75
5	163.50	164.50
+50	167.75	168.75
6.00 = WL Guizot	172.0	173.0
00 = BL	174.0	175.0
0+54.0	182.0	183.07
1+08.56	190.0	191.14
+62.84	198.0	199.21
2+77.12	206.0	207.28
+71.40	214.0	215.35
3+25.68	222.0	223.43
3+30 = BREAK	230.0	231.5
4+35	235.0	236.62
+90	240.0	241.75
5+45	245.0	246.87
6.00 = WL Santa Barbara	250.0	252.0

33

Direct NE 1/2 No. 40
Orchard + Grade

145.20	147.0	148.8	147.6	150.4	153.2	156.0	160.2	164.5
146.00	3.6	11.7	20.6	17.8	14.0	14.2	8.0	3.3
146.40	3.1	11.3	20.2	17.8	14.0	14.2	8.0	3.3
146.80	+2.5	+0.2	+17.5	+16.0	+6.0	+0.6	+0.9	+1.3
147.20	141.0	143.8	146.6	149.4	152.2	155.0	159.2	163.5
148.00	4.6	7.6	17.0	18.8	16.0	13.2	9.0	4.7
148.40	3.3	13.0	13.2	10.8	19.5	17.8	12.4	4.2
148.80	+1.3	-0.3	+8.1	+6.0	-3.5	-4.6	-0.4	+2.3
149.20	148.7	152.0	155.0	158.1	161.1	164.2	167.3	170.3
149.60	0.5	7.3	5.3	9.8	1.8	6.4	11.3	15.6
150.00	0.3	5.0	1.4	8.2	0.9	4.4	8.0	12.2
150.40	-1.8	-0.7	+2.1	+1.2	+0.7	+2.0	+3.0	+4.2
150.80	167.7	172.0	174.0	178.0	180.0	185.0	186.0	191.0
151.20	14.6	8.3	6.3	10.7	11.9	7.6	0.1	4.0
151.60	7.3	9.5	5.3	12.4	17	11.2	6.1	10.1
152.00	+5.3	+1.2	0.0	+7.5	-1.0	-3.6	-6.5	-5.2
152.40	23.4	31.5	36.6	41.7	46.9	52.0		
152.80	7.5	14.2	14.1	14.1	5.9	3.3		
153.20	1.5	3.4	10.6	6.8	3.3	3.3		
153.60	+6.0	+0.8	+8.6	+7.3	+5.1	0.0		
154.00	22.0	30.0	35.0	40.0	45.0	50.0		
154.40	8.9	13.7	6.7	3.7	10.8	5.8		
154.80	2.0	14.5	10.3	8.7	11.3	6.4		
155.20	3.1	2.0	13.6	3.0	-0.5	-0.6		

557.3 = BM Orchard +
0.34 corner Santa Barbara



Pascadero ST Grades

	8.86	11.06	
EL De/oo	27.0	28.0	
0+50	27.27	28.27	
1	27.55	28.55	
+50	27.82	28.82	5764
2	BREAK	29.10	5792
+20	28.20	29.20	5820
+40	28.40	29.40	5848
+60	28.80	29.80	5876
+80	29.50	30.50	5904
3	30.40	31.40	5932
+20	31.50	32.50	5960
+40 BREAK	32.80	33.80	5988
+96	36.84	37.84	6016
4+74	40.88	41.88	6044
+96	44.92	45.92	6072
5+78	48.96	49.96	6100
6 = WLEbens	53.0	54.0	6128
oo = EL	52.5	55.5	6156
0+50	57.83	58.83	6184
1	61.17	62.17	6212
+50	64.50	65.50	6240
2	67.83	68.83	6268
+50	71.17	72.17	6296
3	74.50	75.50	6324
+50	77.83	78.83	6352
4	81.17	82.17	6380

Pascadero De/oo

8.86	11.06	13.26	15.46	17.66	19.86	22.06	24.26	26.46	28.66	30.86	33.06	35.26	37.46
27.0	27.3	27.6	27.9	28.1	28.4	28.7	28.9	29.1	29.4	29.6	29.8	30.0	30.2
27.27	27.5	27.8	28.1	28.3	28.6	28.8	29.1	29.3	29.6	29.8	30.1	30.3	30.5
27.55	27.8	28.1	28.4	28.6	28.9	29.1	29.4	29.6	29.9	30.1	30.4	30.6	30.8
27.82	28.1	28.4	28.7	28.9	29.2	29.4	29.7	29.9	30.2	30.4	30.7	30.9	31.1
28.20	28.5	28.8	29.1	29.3	29.6	29.8	30.1	30.3	30.6	30.8	31.1	31.3	31.5
28.40	28.7	29.0	29.3	29.5	29.8	30.0	30.3	30.5	30.8	31.0	31.3	31.5	31.7
28.80	29.1	29.4	29.7	29.9	30.2	30.4	30.7	30.9	31.2	31.4	31.7	31.9	32.1
29.50	29.8	30.1	30.4	30.6	30.9	31.1	31.4	31.6	31.9	32.1	32.4	32.6	32.8
30.40	30.7	31.0	31.3	31.5	31.8	32.0	32.3	32.5	32.8	33.0	33.3	33.5	33.7
31.50	31.8	32.1	32.4	32.6	32.9	33.1	33.4	33.6	33.9	34.1	34.4	34.6	34.8
32.80	33.1	33.4	33.7	33.9	34.2	34.4	34.7	34.9	35.2	35.4	35.7	35.9	36.1
36.84	37.1	37.4	37.7	37.9	38.2	38.4	38.7	38.9	39.2	39.4	39.7	39.9	40.1
40.88	41.1	41.4	41.7	41.9	42.2	42.4	42.7	42.9	43.2	43.4	43.7	43.9	44.1
44.92	45.2	45.5	45.8	46.0	46.3	46.5	46.8	47.0	47.3	47.5	47.8	48.0	48.2
48.96	49.2	49.5	49.8	50.0	50.3	50.5	50.8	51.0	51.3	51.5	51.8	52.0	52.2
53.0	53.3	53.6	53.9	54.1	54.4	54.6	54.9	55.1	55.4	55.6	55.9	56.1	56.3
52.5	52.8	53.1	53.4	53.6	53.9	54.1	54.4	54.6	54.9	55.1	55.4	55.6	55.8
57.83	58.1	58.4	58.7	58.9	59.2	59.4	59.7	59.9	60.2	60.4	60.7	60.9	61.1
61.17	61.4	61.7	62.0	62.2	62.5	62.7	63.0	63.2	63.5	63.7	64.0	64.2	64.4
64.50	64.8	65.1	65.4	65.6	65.9	66.1	66.4	66.6	66.9	67.1	67.4	67.6	67.8
67.83	68.1	68.4	68.7	68.9	69.2	69.4	69.7	69.9	70.2	70.4	70.7	70.9	71.1
71.17	71.4	71.7	72.0	72.2	72.5	72.7	73.0	73.2	73.5	73.7	74.0	74.2	74.4
74.50	74.8	75.1	75.4	75.6	75.9	76.1	76.4	76.6	76.9	77.1	77.4	77.6	77.8
77.83	78.1	78.4	78.7	78.9	79.2	79.4	79.7	79.9	80.2	80.4	80.7	80.9	81.1
81.17	81.4	81.7	82.0	82.2	82.5	82.7	83.0	83.2	83.5	83.7	84.0	84.2	84.4

Pascadero Grades

	506	N 06
4+50	84.50	85.50
5	87.83	88.83
+50	91.17	92.17
6 = WILFROUDE	94.50	95.50
00 = EL "	96.0	97.0
0+50	100.83	101.83
1	105.67	106.67
+50	110.50	111.50
2	115.33	116.33
+50	120.17	121.17
3	125.00	126.0
+50	129.83	130.83
4	134.67	135.67
+50	139.50	140.50
5	144.33	145.33
+50	149.17	150.17
6 = WILGUISSET	154.0	155.0
00 = EL "	156.0	157.0

93.50
 92.40 - B17 Lead + nail in sidewalk
 13.34 CW Pascadero + Froude
 103.21

S	84.5	87.8	91.17	94.5	96.0	96.0	100.8	105.7
	9.0	5.7	2.3	2.9	7.4	9.1	4.6	11.6
	10.9	7.3	1.5	2.9	6.8	8.8	4.8	13.0
	-1.9	-1.6	+0.5	-1.0	+7.6	2.6	-0.2	-0.2
N	85.5	88.8	92.17	95.5	97.0	97.0	101.8	106.7
	1.0	3.7	11.2	7.9	6.0	12.0	16.2	11.0
	5.6	2.7	9.6	7.9	0.0	3.4	10.8	7.0
	+2.9	+2.0	+1.6	0.0	+6.0	+6.0	+5.6	+2.4
S	110.5	115.3	120.7	125.0	129.8	134.7	139.5	144.3
	7.0	2.0	7.9	5.2	0.5	5.0	2.5	11.0
	10.8	2.0	6.5	9.6	3.1	8.8	2.3	10.0
	2.0	6.0	-14.8	-4.3	-2.2	-1.4	+1.4	2.5
N	111.5	116.3	121.4	126.0	130.8	135.7	140.5	145.3
	6.0	2.0	9.5	4.3	0.5	7.3	5.3	2.1
	10.8	2.0	12.0	9.5	0.3	2.8	6.0	1.1
	2.0	-0.8	-3.3	5.0	-0.8	4.3	+8.9	+7.7
S	154.0	154.0	156.0					
	6.0	1.0	10.0					
	9.1	3.6	10.0					
	-2.0	-2.8	2.0					
N	155.0	155.0	157.0					
	1.0	1.0	2.0					
	2.0	1.0	2.0					
	-1.0	2.0	2.0					

Pascadero Grades

506 N 66

EL Guizot	156.0	157.0
0 + 50	161.67	162.67
1	167.33	168.33
+ 50	173.00	174.00
2	178.67	179.67
+ 50	184.33	185.33
3	190.00	191.00
+ 50	195.67	196.67
4	201.33	202.33
+ 50	207.00	208.00
5	212.67	213.67
+ 50	218.33	219.33
6 = Hill Santa Barbara	224.0	225.0

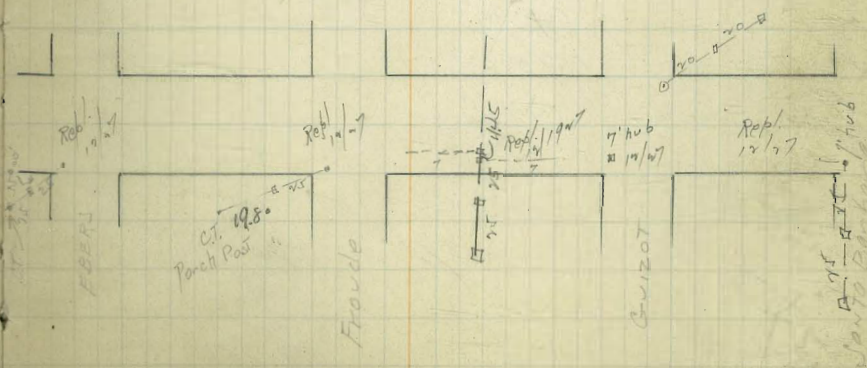
16841 X 230.08 NUTTEN Pascadero Santa Barbara

36

NETTON Pascadero + Guizot

177.42 T								
16847 S	161.7	67.3	173.0	78.7	84.3	90.0	95.7	201.3
	6.7	1.4	1.6	2.7	5.4	14.9	7.1	15.6
	11.3	2.6	3.2	2.7	0.9	3.5	1.0	2.6
	2.0	6.5	8.3	2.1	17.5	11.4	11.1	19.2
	11.8							
17069 N	162.2	168.3	174.0	18.7	25.3	31.0	36.7	207.3
	1.7	6.1	5.8	1.7	6.4	1.7	5.7	2.6
	4.6	7.5	7.3	1.0	1.6	5.3	11.4	4.1
	17.1	14.6	14.3	6.3	8.7	6.0	17.9	20.0
19052								
12.00								
204.96								
0.90								
204.06	S	207.0	213.7	218.3	224.0			
17.90	Nail	7.7	7.5	10.0	4.3			
212.96		4.0	1.0	9.3	4.3			
0.45		2.9	1.0	0.7	2.1			
16.11								
13.15								
202.81	N	208.0	213.7	218.3	225.0			
202.71		5.7	74.6	4.0	5.3			
202.71		5.7	11.1	1.0	5.3			
202.71		5.7	1.0	1.0	2.6			
3.86								
202.71								
202.71								

Pascadero R.P.s



GUIZOT GRADES

	Wc6	E c6
NL W. P. Loma	120.0	121.0
0+56.68	122.8	123.8
	125.6	126.6
	128.4	129.4
	131.2	132.2
SL Bermuda 2+83.4	134.0	135.0
NL "	135.0	136.0
0+50	138.17	139.17
1	141.33	142.33
+50	144.50	145.50
✓	147.67	148.67
+50	150.83	151.83
3 = SL Pasadero	154.0	155.0
NL "	156.0	157.0
0+46.67	159.33	160.33
0+93.33	162.67	163.67
1+40 = BREAK	166.0	167.0
1+93.33	168.0	169.0
2+46.67	170.0	171.0
3 = SL Orchard	172.0	173.0
NL "	174.0	175.0
0+50	178.41	179.41
1	182.83	183.83
+50	187.25	188.25
✓	191.67	192.67
+50	196.09	197.09

185.17
 0.56
 169.02
 12.97
 156.08
 0.32
 156.36
 13.04
 143.34
 0.82
 144.16
 42.86
 131.30
 1.07
 132.37
 12.16
 120.15

120.15 NW. Caprock P. Loma 4 Guizot

37

Wc6	120.0	122.8	125.6	128.4	131.2	134.0	135.0	136.0	137.0
	17.3	9.5	6.7	3.9	1.0	10.1	9.7	6.0	2.0
		11.8	8.3	4.4	13.3	10.3	8.2	6.0	4.0
		0.3	1.5	3.3	0.3				4.0
E c6	121.0	123.5	126.6	129.4	132.2	135.0	136.0	137.0	138.0
	11.3	10.2	11.6	14.8	14.0	10.0	8.2	17.2	6.0
		13.4	10.8	7.8	13.3	10.3	8.2	6.0	4.0
		17.0	16.8	17.0	18.7			11.2	
N 1/2 c3	44.5	47.7	50.8	54.0	57.0	60.0	63.0	66.0	69.0
	0.3	3.7	5.6	15.0	15.0	15.0	15.0	15.0	15.0
	10.6	10.0	2.5	15.7	15.7	15.7	15.7	15.7	15.7
	7.5	10.9	1.5	1.1	0.9	0.9	0.9	0.9	0.9
E 1/2 c3	45.5	48.7	51.8	55.0	58.0	61.0	64.0	67.0	70.0
	12.1	10.9	4.6	14.0	14.0	14.0	14.0	14.0	14.0
	7.3	10.2	4.3	10.8	10.8	10.8	10.8	10.8	10.8
	16.8	22.7	1.7	20.3	23.2	23.2	23.2	23.2	23.2

177.44
 1.82
 175.62
 10.06
 185.68
 0.36
 186.04
 12.30
 173.74
 10.27
 163.47

W	156.0	159.3	62.7	166.0	168.0	170.0	172.0	174.0	178.4
	11.9	18.1	14.7	11.9	9.2	7.9	5.9	3.4	1.0
	20.1	15.1	11.3	7.7	3.8	9.1	6.6	3.4	1.0
	41.3	15.0	22.4	15.7	0.0	1.7	1.9	2.0	2.4
E	157.0	60.3	13.7	62.0	69.0	71.0	73.0	175.0	79.4
	20.4	17.1	13.7	10.4	8.4	6.2	4.5	13.7	9.3
	8.1	13.5	10.4	5.9	1.1	1.9	3.5	9.8	2.9
	41.3	13.6	13.3	17.3	17.1	11.0	10.7	12.1	12.4
W	82.8	87.2	91.7	96.1					
	1.9	1.5	5.0	4.1					
	7.4	2.7	3.0	11.7					
	3.4	3.7	6.0	5.7					
E	83.8	88.2	92.7	97.1					
	16.9	14.5	5.0	5.6					
	11.5	10.0	6.2	8.2					
	15.0	14.4	17.7	16.0					

Coronado ST Grading

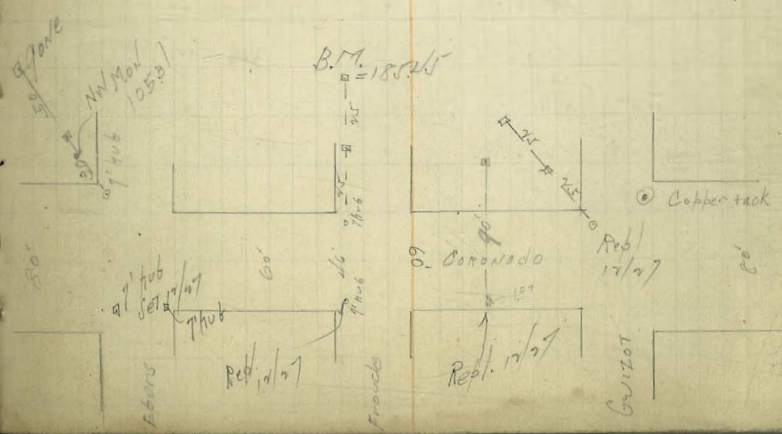
	S cb	N cb
EL DeFoe=00	50.0	51.0
+50	54.58	55.5
1	59.16	60.0
+50	63.75	64.5
2	68.33	69.0
+50	72.91	73.5
3	77.50	78.0
+50	82.08	82.5
4	86.66	87.0
+50	91.25	91.5
5	95.83	96.0
+50	100.41	100.5
6 = WLEBENS	105.0	105.0
00 = EL EBENS	106.9	See profile 106.0
0+50	111.46	111.8
1+00	116.92	116.57
1+50	122.38	121.85
2+00	127.84	127.14
2+60 = BREAK	133.30	132.43
3+00 = BREAK	137.50	136.50
3+45	145.07	144.37
3+90	153.25	152.25
4+35	161.14	160.12
4+80 = BREAK	169.0	168.0

next page

1154
1157
1168
1159
98.71
0.15
7436
1300
81.26
0.88
11.22
70.44
0.31
70.56
11.26
58.90
0.70
59.60

179.57

S	50.0	54.6	59.2	63.7	68.3	72.9	77.5	82.1	86.7
	7.6	16.0	11.4	6.9	13.7	7.3	4.7	14.3	7.7
		11.8	8.5	3.2	9.8	7.4	4.4	14.3	11.0
		21.1	19.9	13.2	14.1	21.7	10.3	24.0	3.3
N	51.0	55.5	60.0	64.5	69.0	73.5	78.0	82.5	87.0
	7.6	15.1	22.2	17.7	12.4	20.9	16.4	11.9	14.5
		7.5	12.8	6.3	12.4	8.1	3.6	11.7	12.0
		17.6	29.9	21.2	24.8	14.5	14.8	10.7	27.6
S	91.2	95.8	100.4	105.0	109.6	114.2	118.8	123.4	128.0
	3.8	11.0	8.4	1.9	11.2	5.9	12.5	2.0	1.2
	9.0	10.8	8.0	1.0	11.0	1.2	12.5	2.6	0.9
	12.8	21.8	16.4	2.9	16.4	6.5	20.0	4.6	2.3
N	91.5	96.0	100.5	105.0	109.5	114.0	118.5	123.0	127.5
	15.3	12.1	2.1	1.9	11.4	5.1	8.8	3.6	2.1
	9.1	2.6	2.1	3.4	5.4	5.0	1.1	4.5	3.6
	24.2	23.2	4.2	6.0	16.8	11.1	12.9	7.7	7.8
S	33.3	37.5	41.4	45.2	49.1	53.0	56.9	60.8	64.7
	8.8	4.6	7.3	13.4	5.9	16.9	10.4	6.3	
	4.5	2.6	2.6	14.0	1.8	13.7			
	13.3	7.2	9.9	27.4	16.0				
N	32.4	36.5	40.4	44.2	48.1	52.0	55.9	59.8	63.7
	9.7	4.6	10.3	14.7	6.9	17.0	11.0	7.6	2.3
	9.7	2.6	7.0	10.6	3.4	12.6			
	19.4	7.2	17.3	25.3	10.3	29.6	17.6		



Coronado Grading

177.01
166.84
17.63
179.87
0.43
178.97

	S ab	Neb
5+00 BREAK	172.1	171.1 v
+20 "	174.71	173.72
+40 "	176.91	175.8 v
+60 "	178.51	177.3 v
+80 "	179.81	178.4 v
6 = WL Froude	180.5	179.0
00 = EL Froude	182.0	180.5
0+45	184.50 v	183.1 v
0+90	187.00 v	185.75 v
1+35	189.50 v	188.37 v
1+80 - BREAK	192.0 v	191.0 v
+32.5	196.75 v	195.75 v
+48.5	201.5 v	200.5 v
3+37.5	206.25 v	205.25 v
3+90.0	211.0 v	210.0 v
4+42.5	215.75 v	214.75 v
4+95.0	220.50 v	219.50 v
5+47.5	225.25 v	224.25 v
6+00 = WL Guizot	230.0	229.0
EL Guizot	232.0	230.7

S	72.1 7.2 3.0 -4.2	74.7 16.5 11.3 -5.2	76.9 14.3 9.1 -5.2	78.8 19.7 11.6 -8.1	79.8 11.2 8.7 -2.5	80.5 18.7 7.9 -10.8	82.0 9.7 6.8 -2.9	84.5 6.7 6.3 -0.4	87.0 2.7 8.5 -5.8
N	71.1 4.1 14.0 -17.1	73.7 9.7 11.5 -18.2	75.8 9.1 1.9 -17.7	77.3 10.3 5.0 -15.3	78.4 11.2 7.5 -17.7	79.0 0.1 2.0 -8.5	80.5 1.0 5.3 -6.3	83.1 3.4 6.6 -3.2	85.7 2.4 12.0 -8.6
S	89.5 1.7 4.7 -3.0	92.0 4.0 4.7 -0.7	96.7 4.7 -5.5	201.5 2.7 1.8 -0.9	206.2 4.7 -10.6	211.0 2.9 2.7 -0.2	215.7 18.1 10.0 -7.1	220.5 5.3 6.8 -1.5	
N	88.4 2.5 7.7 -5.2	91.0 12.9 4.2 -10.9	95.7 4.7 0.0	200.5 13.8 6.7 -6.5	205.2 8.7 4.5 -4.2	210.0 1.5 1.5 -0.2	214.7 11.1 3.2 -7.8	219.5 6.3 1.5 -4.8	
S	25.4 0.6 0.9 -0.3	200.0 3.4 2.4 -0.9	232.0 1.7 3.3 -1.6						
N	24.4 9.7 2.5 -6.8	229.0 4.9 4.0 -0.9	230.7 3.7						
S	180.4	180.4 4.1	229.4						
N	178.7 8.1	181.0 2.3	228.7						

FROUDE ST Grades

103.41
101
90.80
80.66
77.86
76.61
75.85
75.17
74.04

	W CB	E CB
N.L. PTLoma Ave	66.0	67.0
+50	68.33	69.33
1	70.67	71.67
+50	73.0	74.0
W	75.33	76.33
+50	77.67	78.67
3 = SL Bermuda	80.0	81.0
00 = NL "	81.0	82.0
+50	83.25	84.25
1	85.50	86.50
+50	87.75	88.75
2	90.0	91.0
+50	92.25	93.25
3 = SL Pascadero	94.5	95.5
00 = NL "	96.0	97.0
+50	100.06	101.06
1	104.12	105.12
+50	108.18	109.18
1+60 = BREAK	109.0	110.0
2	114.14	115.14
+50	120.56	121.56
3 = SL Orchard	127.0	128.0

Grade changed in this block

about page

W	66.0 14.0 r	68.33 11.7 11.8 10.7	70.7 4.3 8.0 +0.3	73.0 7.0 7.6 -0.6	75.3 5.7 5.7 -1.0	77.7 13.2 12.6 -0.6	80.0 11.5 11.5	81.0 11.5 11.5	83.25 5.3 2.1 -0.8
E	67.0 13.0 r	69.33 10.7 12.0 11.7	71.7 5.3 5.1 +0.2	74.0 6.0 5.1 +0.6	76.3 3.7 3.9 +1.5	78.7 10.8 10.9 +1.9	81.0 10.8 10.8	82.0 9.5 9.5	84.25 7.3 6.4 +0.5
W	85.5 6.0 7.9 -1.9	87.7 3.8 5.4 +1.6	90.0 13.7 13.8 -0.4	92.25 11.4 11.3 -0.1	94.5 8.9 9.9 -1.0	96.0 7.8 7.9 -0.1	101.25 4.6 4.7 -0.1	106.3 11.4 13.0 -1.6	111.5 6.0 10.4 -4.4
E	86.5 5.0 3.3 +1.7	88.7 4.8 1.3 +1.5	91.0 12.4 9.5 +0.7	93.25 10.4 6.7 +3.5	95.5 7.9 8.5 +0.6	97.0 6.9 2.6 +4.3	102.25 5.4 10.7 +5.3	107.3 10.7 8.8 +1.9	112.5 5.0 5.6 -0.6
W	116.7 6.3 5.3 -1.9	121.8 4.3 4.5 -0.2	127.0 5.8 10.7 -4.9						
E	117.7 2.4 1.2 +1.2	122.8 7.0 5.9 +1.1	128.0 1.5 6.4 -4.9						
W	96.0 7.1 10.0 -2.9	100.1 4.1 4.1 +0.8	104.1 13.0 13.0 +0.4	108.2 4.3 10.4 -6.1	109.0 8.5 9.0 -0.5	114.1 5.1 5.7 -0.6	120.6 5.6 14.0 -8.4	127.0 6.4 5.0 -1.4	
E	97.0 7.4 3.3 +4.1	101.5 5.9 2.9 +3.9	105.4 12.4 8.7 +3.7	109.2 5.3 5.4 +0.9	110.0 7.5 10.7 +3.2	115.1 5.1 1.8 +3.3	121.6 2.6 8.9 -6.3	128.0 6.4 5.0 -1.4	

Froude ST Grades

	W c6	E c6
NL Orchard	129.5	130.5
0+50	136.75	137.75
1 = BREAK	144.0	145.0
+40 "	146.8	147.8
+40 "	149.0	150.0
+60 "	150.8	151.8
1+80 "	152.7 A.P.	153.7
2+40	155.6	156.6
3 = SL Del Mar	159.0	160.0
00 = NL " "	162.5	163.5
0+40	167.9	168.9
0+80	173.3	174.3
1+20 = BREAK	178.7	179.7
+40 "	181.0	182.0
+60 "	182.4	183.4
+80 "	183.4	184.4
2+00 "	183.4	184.4
+55	184.1	183.1
3+10 = SL Coronado	181.0	182.0
NL "	179.0	180.0

141.57									
141.06									
139.90									
138.75									
137.50									
136.26									
135.18									
134.64 W	29.5	36.7	52.0	46.8	49.0	50.8	52.4	55.6	59.0
134.07	15.1	17.2	17.9	7.1	8.9	3.1	12.4	✓	7.6
133.43	6.5	11.6	6.5	4.4	2.8	2.1	12.4		17.3
132.97	15.3	15.6	13.4	12.7	11.1	11.0	0.0		3.7
132.37									
131.0 E	30.5	37.7	45.0	47.8	50.0	51.8	53.2	56.6	60.0
129.77	11.4	3.7	17.9	18.8	10.6	14.8	12.4		2.6
129.21	5.4	3.1	6.2	13.0	11.0	9.4	8.0		1.2
128.01	12.5	10.3	12.7	15.8	15.6	15.2	11.4		4.8
127.59									
127.07 W	62.5	67.9	73.3	78.7	81.0	82.4	83.2	83.2	84.1
126.43	16.7	17.5	6.1	17.3	9.0	7.6	12.9	12.9	12.0
125.83	11.5	7.7	3.1	10.6	8.6	7.5	11.8	9.6	7.9
125.45 = Hub	10.5	12.3	13.0	10.7	10.4	10.1	11.0	13.3	16.7
125.07									
124.40 E	63.5	68.9	74.3	78.7	82.0	83.4	84.2	84.2	85.1
123.97	15.7	10.5	15.7	15.3	8.0	12.7	11.9	17.7	13.0
123.40	2.6	7.0	7.0	3.3	1.1	5.2	6.1	2.6	3.7
122.97	11.3	11.0	15.7	17.0	16.9	17.5	17.8	19.3	10.3
122.59									
122.07 W	181.0	179.0							
121.59	15.1	9.1							
121.07	13.0	16.1							
120.59	7.7	8.7							
120.17 E	182.0	180.0							
119.69	10.1	8.4							
119.21	9.9	14.8							
118.73	14.2	6.4							

EBERS ST. GRADES

	Wcb	Ecb.
NL PTLoma	35.0	36.0
0+50	36.33	37.33
1	37.67	38.67
+50	39.00	40.0
2	40.33	41.33
+50	41.67	42.67
3 SL Bermuda	43.0	44.0
NL "	44.0	45.0
0+50	45.5	46.5
1	47.0	48.0
+50	48.5	49.5
2	50.0	51.0
+50	51.5	52.5
3 SL Peccadero	53.0	54.0
NL "	54.5	55.5
0+40	55.67	56.67
0+80	56.75	57.75
1+20	57.87	58.87
1+60 = BREHK	59.0	60.0
2+30	63.0	64.0
3 = SL Orchard	67.0	68.0

next page

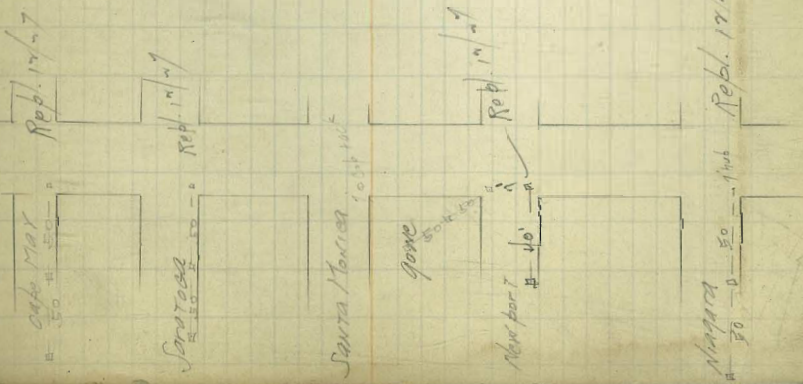
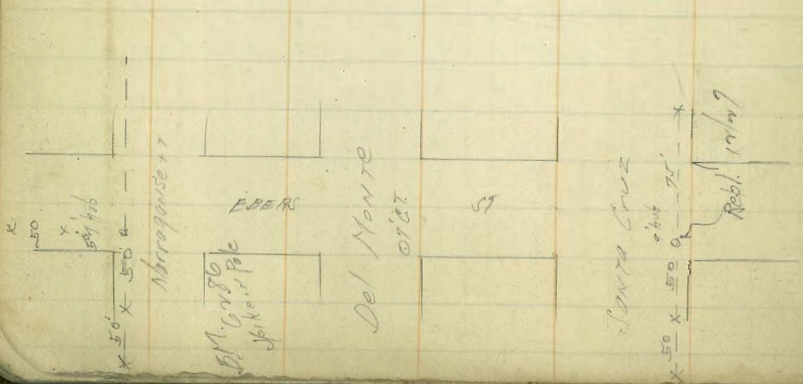
57.64 = Cassiniana Fibers
 241
 60.00
 12.58
 17.45
 1.18
 48.65

W	35.0 13.9 1	36.3 12.4 14.0 50	37.7 11.0 10.6 18.1	39.0 9.7 10.1 10.7	40.3 8.5 8.0 -0.5	41.7 7.0 7.6 5.6	43.0 5.7	44.0 4.7	45.5 3.7 3.8 -0.1
E	36.0 12.7 12.58 1.18 48.65 49.80	37.3 11.4 8.3 +3.1	38.7 10.0 6.7 +3.3	40.0 8.7 7.2 +1.3	41.3 7.0 5.7 17.7	42.7 6.0 5.0 17.7	44.0 4.7	45.0 3.7	46.5 2.7 12.5 12.5 -0.1
W	47.0 13.0 15.0 -2.0	48.5 11.5 13.5 -2.3	50.0 10.0 10.6 -0.6	51.5 8.5 7.0 +2.6	53.0 7.0 7.0 0.0	54.5 5.5 3.6 -2.1	55.6 4.8 14.8 -2.1	56.75 3.7 14.1 -2.4	
E	48.0 14.0 9.7 +2.3	49.5 10.5 8.0 +2.3	51.0 9.0 6.1 +2.9	52.5 7.5 2.8 +3.7	54.0 6.0 2.8 +3.5	55.5 5.0 2.3 +2.0	56.6 4.0 10.1 +2.3	57.75 3.0 8.7 +2.0	
W	57.9 10.5 10.6 -2.1	59.0 9.0 9.5 -0.1	63.0 5.7 5.9 -0.5	67.0 4.4 3.3 -1.7					
E	58.9 9.5 7.0 +2.3	60.9 8.0 5.1 +2.3	64.0 4.0 1.5 +2.9	68.0 3.0 11.3 +2.7					

EBERS ST GRADES

	Wob	Eob
NL Orchard	69.0	70.0
+50	75.91	71.91
1	74.83	73.83
+50	74.74	75.74
2W	76.66	77.66
+50.	78.58	79.58
33 = SL Del Mar	80.50	81.50
00 = NL " "	83.0	84.0
+50	86.67	87.67
1	90.33	91.33
+50	94.00	95.0
2W	97.67	98.67
+50	101.33	102.33
3 = SL Coronado	105.0	106.0
3 + 10.0 N EARS		106.0

7230
0.54
77.16
77.13
77.59
1.23
90.06
12.45 W 69.0 70.3 72.8 74.7 76.6 78.4 80.50 83.0
10.57 10.3 8.4 6.5 4.6 2.7 1.7 1.2 2.3
10.57 10.5 9.2 7.1 5.1 3.2 2.2 1.7 2.5
10.57 10.7 9.6 7.6 5.6 3.7 2.7 2.1 2.6
10.57 10.8 9.7 7.7 5.7 3.8 2.8 2.2 2.7
10.57 11.0 9.9 7.9 5.9 4.0 3.0 2.3 2.9
10.57 11.2 10.1 8.1 6.1 4.2 3.2 2.5 3.1
10.57 11.4 10.3 8.3 6.3 4.4 3.4 2.7 3.3
10.57 11.6 10.5 8.5 6.5 4.6 3.6 2.9 3.5
10.57 11.8 10.7 8.7 6.7 4.8 3.8 3.1 3.7
10.57 12.0 10.9 8.9 6.9 5.0 4.0 3.3 3.9
10.57 12.2 11.1 9.1 7.1 5.2 4.2 3.5 4.1
10.57 12.4 11.3 9.3 7.3 5.4 4.4 3.7 4.3
10.57 12.6 11.5 9.5 7.5 5.6 4.6 3.9 4.5
10.57 12.8 11.7 9.7 7.7 5.8 4.8 4.1 4.7
10.57 13.0 11.9 9.9 7.9 6.0 5.0 4.3 4.9



EBERS ST GRADES

Station	WCB	ECB
W.L. Coronado	105.0	106.0
0+40	104.13	105.13
0+80	103.25	104.25
1+20	102.37	103.37
1+60 = BREAK	101.50	102.50 = NL valley
2 x 30	97.75	98.75
3 = SL Santacruz	94.5	95.0
00 = NL	92.5	93.5
0+4667	89.6	90.6
0+93.33	86.7	87.7
1+40 = BREAK	83.8	84.8
1+93.33	79.7	80.52
1+4667	75.6	76.26
3 = SL Del Monte	71.50	72.00
0+00 = NL	70.40	71.00
+50	68.81	69.5
1	67.26	68.0
+50	65.70	66.5
2	64.13	65.0
+50	62.56	63.5
3 = SL Narragansett	61.0	62.0
00 = NL	60.0	61.0
0+50	58.67	59.67
1	57.33	58.33
+50	56.0	57.0

115

105.3 = NL front Coronado + Ebers

62.86 spike sum poles

Murapo used + EBERS

	W	101.13	103.2	102.4	101.50	97.7	94.0
	105.0	8.7	7.1	7.9	7.8	13.6	7.9
	8.7	8.7	8.8	9.4	10.2	13.1	8.5
	12.80	6.0	6.9	7.7	8.2	10.5	7.6
	87.05	0.0	-0.7	-0.5	-0.2	0.0	-0.2
	102.3	E 106.0	106.0	105.1	104.2	103.4	102.5
	87.75	8.7	5.3	6.4	7.1	7.9	8.5
	104.56	4.8	2.2	3.9	3.3	2.3	12.6
	78.74	12.7	13.1	17.0	17.2	17.0	13.6
	76.76	2.0	2.1	3.0	3.5	3.5	2.5
	78.88						
	13.16						
	67.7	W 92.5	89.6	86.7	83.8	79.7	75.6
	67.7	7.4	10.3	13.2	3.5	7.6	11.7
	70.19	2.6	11.8	14.4	3.0	4.7	2.5
	72.33	2.1	1.2	1.0	4.5	4.7	3.7
	62.86 spike						
	71.54	E 93.5	90.6	87.7	84.8	80.52	76.26
		6.8	9.3	12.2	15.1	6.8	11.1
		2.8	7.7	10.8	7.5	1.5	6.0
		11.0	17.6	27.8	23.3	15.3	15.1
	W 67.2	65.7	64.1	62.5	61.0	60.0	59.7
	11.9	10.2	6.1	7.7	9.2	10.4	14.2
	14.2	13.2	6.1	7.5	5.6	10.4	15.4
	40.3	20.0	0.0	40.7	40.6	-0.2	11.2
	E 68.0	66.5	65.0	63.5	62.0	61.0	59.7
	10.4	12.1	13.9	6.7	8.2	9.2	11.8
	5.5	8.3	7.5	2.5	5.1	4.0	3.9
	15.3	11.1	14.1	17.1	17.7	15.7	17.7
	W 56.0						
	15.5						
	14.5						
	41.0						
	E 57.0						
	15.5						
	12.1						
	11.5						

EBERS ST GRADES

	wcb	EC6	71.54 12.58 58.96 -1.13 57.83
v	54.67	55.67	63.77 10.47 53.30 10.47 42.83
+50	53.02	54.33	10.24 42.90 1.35 41.55 3.20 38.35
3 = SL Niagara	52.0	53.0	45.81 6.16 7.27 49.58 0.66 50.24
00 = NL "	51.0	52.0	
+50	49.83	50.83	
1	48.67	49.67	
+50	47.50	48.50	
w	46.33	47.33	
+50	45.17	46.17	
3 = SL Newport	44.0	45.0	
00 = NL "	44.0	45.0	
+50	44.5	45.50	
1	45.0	46.0	
+50	45.5	46.5	
w	46.0	47.0	
+50	46.5	47.5	
3 = SL Santa Monica	47.0	48.0	
00 = NL " "	47.0	48.0	
0+50	46.5	47.5	
1	46.0	47.0	
+50	45.5	46.5	
v	45.0	46.0	
+50	44.5	45.5	
3 = SL Saratoga	44.0	45.0	
00 = NL "	43.0	44.0	

Newport + Ebers NW Max 44.67
Santa Monica + " SW + tack

46

w	52.7	53.3	52.0	51.0	49.8	48.7	47.5	46.3	
	9.1	12.5	11.8	12.5	12.4	8.5	4.7	8.9	
	9.9	12.4	13.3	15.3	5.6	8.3	10.4	11.8	
	-0.8	-1.9	-1.5	-2.5	-3.4	-1.8	-5.7	-7.9	
E	55.7	54.3	53.0	52.0	50.8	49.7	48.5	47.3	
	15.8	17.7	17.3	17.5	13.0	10.1	7.3	13.7	
	6.6	0.0	11.4	14.5	8.1	10.5	14.5	16.7	
	+11.2	+8.2	+7.1	+5.0	+2.9	+3.6	+7.8	+1.0	
w	45.2	44.0	44.0	44.5	45.0	45.5	46.0	46.5	47.0
	7.0	6.7	6.2	7.7	7.2	6.7	7.4	8.9	7.4
	2.6	8.0	7.7	6.6	5.8	5.0	5.5	7.6	✓
	-2.6	10.2	10.8	+1.1	+1.4	+1.7	+1.2	+1.3	
E	46.2	45.0	45.0	45.5	46.0	46.5	47.0	47.5	48.0
	18.8	16.4	16.4	17.1	17.4	16.4	17.0	17.9	18.0
	10.7	8.5	8.1	8.0	8.4	8.4	8.4	7.9	✓
	-10.1	+3.9	+3.3	+3.9	+4.6	+4.6	+5.0	+4.9	
w	47.0	46.5	46.0	45.5	45.0	44.5	44.0	43.0	
	8.3	8.9	9.4	9.9	10.2	10.9	11.4	11.4	
	5.6	6.3	6.3	7.5	8.3	9.5	10.3	10.8	
	+0.3	+1.1	+1.1	+1.4	+1.1	+1.0	+1.1	+1.1	
E	48.0	47.5	47.0	46.5	46.0	45.5	45.0	44.0	
	7.4	7.9	8.4	8.9	9.4	9.9	10.4	11.4	
	✓	5.6	5.3	5.7	5.9	6.2	7.2	8.0	
		+2.3	+3.1	+3.7	+3.5	3.2	4.2	4.2	

EBERS ST. GRADES

18.01
 35.15
 5.76
 40.91
 5.70
 35.21
 3.05
 38.26

	Wcb	ECb
0+50	41.0	43.0
1	41.0	42.0
+50	40.0	41.0
✓	39.0	40.0
+50	38.0	39.0
3 = SL Cape May	37.0	38.0
00 = NL " "	36.0	37.0
+50	35.75	36.75
1	35.50	36.50
+50	35.25	36.25
✓	35.0	36.0
+50	34.75	35.75
3 = SL Brighton	34.5	35.5
00 = NL " "	34.5	35.5
0+53.75	34.0	34.87
1+07.5	33.5	34.25
1+61.75	33.0	33.62
2+15 = SL Long Branch	32.5	33.0
NL " "	32.0	32.5

W	42.0 6.2 5.6 +0.6	41.0 7.2 7.0 +0.2	40.0 7.2 6.4 +0.8	39.0 7.2 10.0 -0.8	38.0 10.2 10.6 -0.4	37.0 11.2 11.2 -0.2	36.0 12.2 13.1 -0.9	35.5 15.1 15.5 -0.4	35.5 15.5 16.5 -1.0	35.0 15.6 16.5 -0.9
E	43.0 5.2 3.3 +1.9	42.0 6.2 2.8 +3.4	41.0 7.2 5.6 +1.6	40.0 7.2 7.2 +0.0	39.0 7.2 6.4 +0.8	38.0 10.2 10.2 -0.2	37.0 11.2 10.9 +0.3	36.5 11.7 10.6 +1.1	36.5 11.7 10.8 +0.9	36.0 12.2 11.3 +0.9
W	35.0 5.9 6.0 -0.1	34.5 6.1 4.5 +0.6	34.5 6.4 -	34.5 6.4 -	34.0 6.2 6.5 +0.3	33.5 7.2 6.9 +0.3	33.0 7.9 7.6 +0.3	32.5 8.7 8.5 +0.2	32.0 9.5 9.3 +0.2	32.0 10.3 10.3 0.0
E	36.0 12.2 10.0 +2.2	35.0 14.2 10.0 +4.2	35.5 14.2 -	35.5 14.2 -	34.9 6.0 4.8 +1.2	34.2 6.2 5.5 +0.7	33.6 7.2 3.0 +4.2	33.0 8.2 4.4 +3.8	32.5 9.2 4.4 +4.8	32.5 10.2 4.4 +5.8

EBERS ST

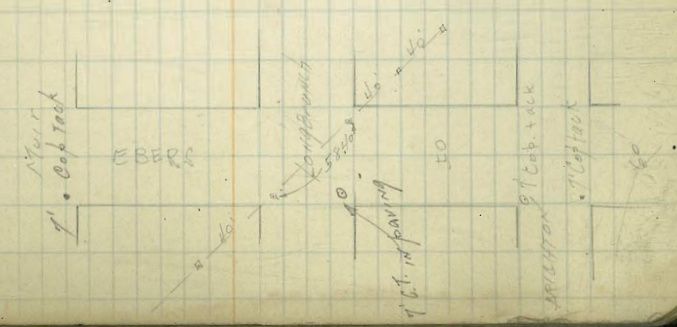
3826
5.86
3420
400
3626
5.80
3176
470
3590

	W/CB	ECB
00 = NL Long Branch	32.0	32.5
0 + 53.75	31.75	32.25
1 + 07.5	31.50	32.0
1 + 61.25	31.75	31.75
2 + 15 = SL MUIR	31.0	31.5
00 = NL "	31.0	31.5
0 + 53.75	30.75	31.25
1 + 07.5	30.50	31.0
1 + 61.25	30.75	30.75
2 + 15 = SL VOLTAIRE	30.0	30.5

	W	31.7	31.5	31.3	31.0	31.0	30.7	30.5	30.2	30.0
	32.9	4.8	5.0	5.3	5.5	5.5	5.8	6.0	5.7	5.9
	1.5	4.7	4.6	5.0	✓	✓	5.7	4.9	4.7	✓
	1.2	3.1	3.4	3.3	✓	✓	2.1	2.3	1.9	1.54

	E	32.2	32.0	31.7	31.5	31.2	31.0	30.7	30.5
	32.4	4.3	4.5	4.7	5.0	5.3	5.5	5.8	6.0
	1.5	3.0	3.5	3.8	✓	✓	5.1	5.0	4.8
	1.0	1.3	1.0	1.0	✓	✓	1.4	1.0	1.2

Voltaire



5/6/47
Moore
Walbrook
Elcot
Osbert

ALLEY PAVING 28' to parking
BK 64 Park Villas 15' wide

	W	E
54 Lands = 00	339.60	339.70
0 + 20 BREAK	342.64	342.57
0 + 40 "	343.43	343.43
0 + 80 "	343.30	343.30
1 + 20	342.60	342.53
+ 60	341.90	341.77
2 + 00 BREAK	341.20	341.02
+ 40.5	340.15	339.97
+ 85	339.10	338.95
3 + 27.5	338.05	337.94
+ 70	337.0	336.90
4 + 12.5	335.95	335.87
+ 55	334.90	334.85
+ 97.5	333.85	333.84
5 + 40 = BREAK	332.80	332.80
+ 70	331.40	331.60
6 = NB DWIGHT	330.06	330.40

3-11-48 NEBP Lands + 28' + 4'

321							
545.17							
4.30							
339.70							
5.26							
347.10							
11.5							
358.57	W	39.60	42.64	43.43	43.30	42.60	41.90
3.20		8.00	5.35	4.59	4.74	3.88	4.53
346.73			4.00	4.54	3.74	3.44	5.23
6.20			4.23	3.00	4.10	4.34	3.83
340.83							4.10
4.15							
344.97	E	39.70	42.57	43.43	43.30	42.59	41.77
5.45		8.30	5.45	4.59	4.74	4.47	4.66
338.73			4.25	3.51	3.70	3.16	4.04
4.10			40.50	4.10	4.10	40.33	40.64
342.91							
7.15	W	40.15	39.10	38.05	37.0	35.95	34.90
335.76		6.40	5.08	4.80	5.71	6.96	7.88
4.05		5.40	4.94	4.56	5.04	6.80	3.88
331.78		10.74	10.16	10.30	10.04	10.16	10.10
6.20							
323.20	E	39.97	38.85	37.94	36.9	35.87	34.85
3.85		6.40	5.33	6.26	6.01	7.04	6.93
337.40		5.40	5.07	4.50	5.88	6.70	3.73
		11.0	10.16	10.80	10.16	10.80	11.0
	W	32.80	31.40	30.0			
		4.20	5.00	7.40			
		4.40	4.80	3.10			
		0.80	1.0				
	E	32.80	31.60	30.4			
		4.00	5.60	6.80			
		4.20	4.60	6.70			
		7.0	7.0	6.10			

5/6/57
Moore

Alley PAVING
BIK 203 UNIV HRS. = 20' wide

Oregon to Idaho

338.85

NEPTON UNIV + Oregon

50

	W	E
N.L. UNIV Ave	343.70	344.00
0+45	344.07 ^{343.70 + 0.37}	344.76 ^{344.00 + 0.76}
0+90	344.45 ^{344.07 + 0.38}	344.51 ^{344.00 + 0.51}
1+35	344.80 ^{344.45 + 0.35}	344.75 ^{344.00 + 0.75}
1+80 = BREAK	345.20	345.00
2+20 = BREAK	345.70	345.90
+67.5	347.11	347.31
3+15	348.52	348.74
+67.5	349.93	350.13
4+10	351.35	351.55
+57.5	352.76	352.96
5+05	354.17	354.37
+57.5	355.58	355.78
6+00 = 5th Lincoln	357.0	357.20

	W	E	W	E	W	E	W	E
	43.70	44.07	44.45	44.82	45.20	45.70	47.11	
	468	481	493	506	518	531	544	
	2.04	3.57	4.11	4.65	5.19	5.73	6.27	
	44.07	44.76	44.51	44.75	45.0	45.90	47.31	
	426	412	387	370	355	339	322	
	3.35	3.87	4.39	4.91	5.43	5.95	6.47	
	10.77	10.02	9.27	8.52	7.77	7.02	6.27	
	48.52	49.93	51.35	52.76	54.17	55.58	57.0	
	683	722	760	797	836	875	914	
	583	640	697	754	811	868	925	
	71.0	71.0	71.0	71.0	71.0	71.0	71.0	
	48.72	50.13	51.55	52.96	54.37	55.78	57.20	
	8.63	9.24	9.85	10.46	11.07	11.68	12.29	
	6.40	5.17	3.94	2.71	1.48	0.25		
	70.23	70.02	69.81	69.60	69.39	69.18	68.97	

Alley PAVING
 BIK 213 UNIV. Hgts 80' wide

	S	N
W. Vermont	288.35	288.57
0+40	288.32 = paving	288.36 = paving
	287.50	287.60
0+80	286.70	286.90
1+20	285.87	286.04
1+60	285.06	285.24
2+00	284.24	284.46
2+40	283.42	283.65
2+80 = BREAK	282.60	282.87
3+30 = BREAK	280.80	280.70
3+80	280.07	279.95
4+30	279.34	279.20
4+80 = EL 10+4	278.62	278.46

287.98 SWBP Essex + Vermont

287.98									
288.01									
288.60									
288.91									
289.41									
289.84	S	88.34	87.50	86.70	85.87	85.06	84.26	83.44	82.61
290.27		4.69	3.32	4.12	4.97	5.78	6.60	7.41	8.22
290.84			3.02	3.14	4.07	4.79	5.60	6.41	7.22
291.41			40.27	4.0	10.30	11.0	11.0	11.0	11.0
291.98									
292.55	N	88.36	87.60	86.80	86.01	85.22	84.44	83.65	82.85
293.12		4.65	3.22	4.02	4.83	5.62	6.40	7.19	7.98
293.69			1.87	3.02	3.83	4.62	5.41	6.20	6.99
294.26			11.37	11.0	11.0	11.0	11.0	11.0	11.0
294.83	S	87.60	86.80	86.07	85.31	84.54	83.77	83.00	82.23
295.40		3.91	3.11	3.11	3.17	3.17	3.17	3.17	3.17
295.97		2.91	4.71	5.02	5.33	5.64	5.95	6.26	6.57
296.54		11.0	11.0	11.75	11.6	11.6	11.6	11.6	11.6
297.11	N	87.87	87.07	86.25	85.40	84.56	83.71	82.86	82.01
297.68		3.64	3.91	4.22	4.53	4.84	5.15	5.46	5.77
298.25		3.28	3.54	3.85	4.16	4.47	4.78	5.09	5.40
298.82		10.36	10.07	11.30	11.0	11.0	11.0	11.0	11.0

Set these below
 TURNING
 on these side

Mission Beach Sea Wall

South Section

San Fernando Place to Balboa Court

EL. OCEAN FRONT WALK = LINE of OFFSETS

778 SHEET
Piling = ELV. 1.00

on Curve
St. San Fernando Place = 0+00

0+11.1

0+14.2 *Slope = 0.004*
Tieout EAST

20+66.3 = EL.

1+16.3

+66.3

2+16.3

+66.3

3+16.3

+66.3

4+16.3

+66.3

5+16.3

+66.3

6+16.3

+66.3

7+16.3

+66.3

8+16.3

+66.3

9+16.3

+66.3

10+16.3

+66.3

11+16.3

778
398
+3.80

778
201
+3.77

778
398
+3.80

778
201
+3.77

778
398
+3.80

778
201
+3.77

778
398
+3.80

778
201
+3.77

778
398
+3.80

778
201
+3.77

778
398
+3.80

778
201
+3.77

778
398
+3.80

778
201
+3.77

778
398
+3.80

778
201
+3.77

823
441
+3.78

823
441
+3.80

823
441
+3.80

823
441
+3.84

823
441
+3.74

823
441
+3.79

823
441
+3.81

818
436
+3.84

818
436
+3.86

818
436
+3.85

818
436
+3.85

823 = St. San Gabriel
4.51 = 6 steps
+3.74

0.83 DER RM

1.95

5.78

2.01

5.77

4.46

1.73

6.24

4.97

1.31

7.18

4.70

5.26

7.267

9.43

5.03

7.10

= DPBM NE Cor.

SAN Gabriel

OCEAN FRONT DRIVE

ELV 4.50

= Grade of

Bulkhead

Moore

Walcock

Asborel

5/14/29

offset 2'-5" to

West edge of sheet piling

30.1 to wedge " "

on stairway

stairway 7.6' over all

1.00

8.46

4.97

+3.671

2.16

1.65

-0.17

Mission Beach Sea Wall

South Section

E.L. Ocean Front Walk = line of offsets

11 + 65.9 = RC.

0° 07' 40"

0° 11' 40"

0° 22' 00"

0° 29' 40"

0° 36' 40"

0° 44' 00"

0° 51' 20"

0° 58' 40"

1° 06' 00"

1° 13' 40" = E.C. = STA 1

+ 4.50

15 + 03 & Cabistrano = steps

+ 50

16

+ 50

17

+ 50

18

+ 50

+ 80.9 & Balboa COURT

So. end of work

EV. Stoop-piling

1.00

8.18
4.18
4.00
13.78

7.98
4.00
13.78

7.98
4.00
13.78

7.98
4.00
13.78

7.98
4.00
13.78

7.98
4.00
13.78

7.98
4.00
13.78

7.98
4.00
13.78

7.98
4.00
13.78

7.98
4.00
13.78

7.98
4.00
13.78

7.98
4.00
13.78

7.98
4.00
13.78

7.98
4.00
13.78

7.98
4.00
13.78

7.98
4.00
13.78

7.98
4.00
13.78

7.98
4.00
13.78

7.98
4.00
13.78

7.98
4.00
13.78

7.98
4.00
13.78

7.98
4.00
13.78

9.18 = π

4.18

4.00

13.78

8.98

4.98

4.00

8.98

4.98

4.00

8.98

4.98

4.00

8.98

4.98

4.00

8.98

4.98

4.00

8.98

4.98

4.00

8.98

4.98

4.00

8.98

4.98

4.00

8.98

4.98

4.00

8.98

4.98

4.00

8.98

4.98

4.00

8.98

4.98

4.00

8.98

4.98

4.00

8.98

4.98

4.00

8.98

4.98

4.00

8.98

4.98

4.00

8.98

4.98

4.00

8.98

4.98

4.00

8.98

4.98

4.00

8.98 = TPCobtrak & Cabistrano

+ Ocean Walk

- 0.08 check to BM

- 0.10 SDFRR

hub

Tied east 40' + 85' cross in cement

Start from South end curve

1.03

0° 5' 18"

0° 14' 36"

0° 18' 54"

0° 25' 12"

0° 31' 30"

0° 37' 48"

Tie east 80' cross in cement +

cross in west curb 0° 50' 00" of Mission Blvd

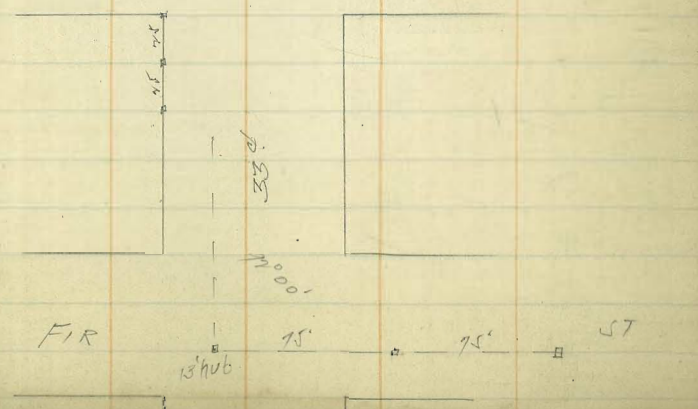
0° 56' 40"

1° 02' 58"

33^d ST Grading
 GRAPE TO FIR 10'-Roadway
 PRIVATE CONTRACT

H.G. Fenton

	Web	Feb	276.96
old sl Grap	266.7	265.5	50.19
0+40	268.15	266.05	12.35 = F.H.
+60	268.39	266.30	1.67 Grap
+80	268.33	266.45	11.25 23d
1+00	267.96	265.95	1.67 33d
+20	267.20	265.36	1.67
+40	266.23	264.39	0.67
+60	264.96	262.19	160.19
+80	263.39	261.70	
N	261.52	259.72	
+20	259.35	257.86	
+40	256.88	255.55	
+70	252.96	251.78	
3=NL FIR	249.0	248.0	
4 "	246.5	245.5	
SL "	240.0	243.0	



Graps 4 33^d
 SWBP

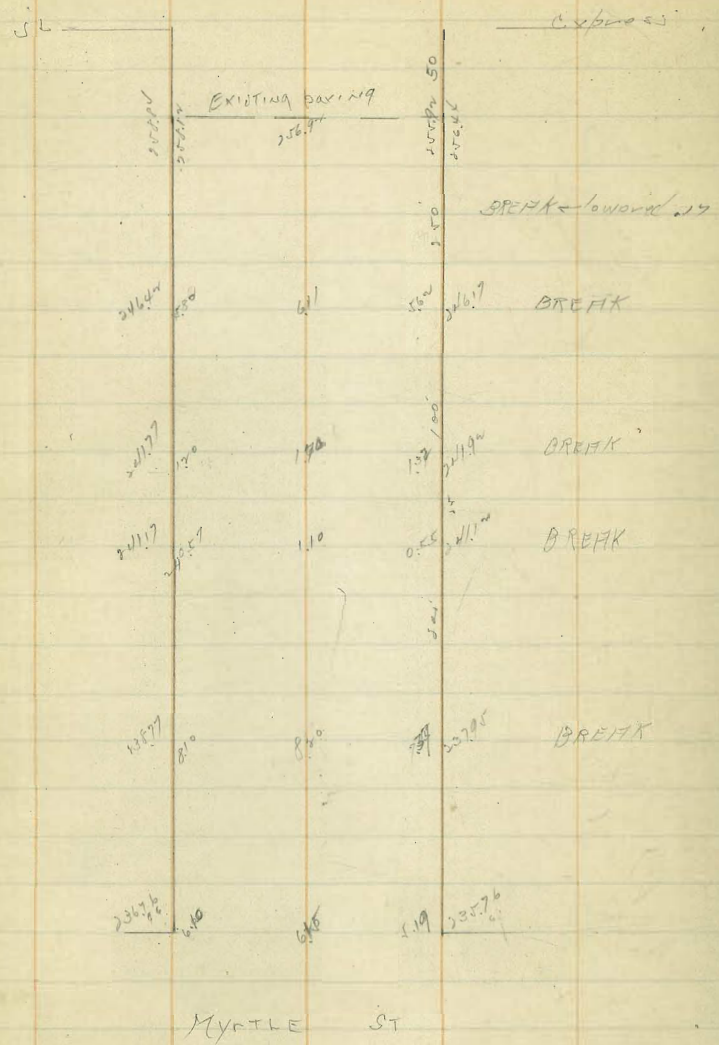
114

276.96	276.96	276.96	276.96	276.96	276.96	276.96	276.96	276.96	276.96	276.96	276.96
318	318	318	318	318	318	318	318	318	318	318	318
276.19	276.19	276.19	276.19	276.19	276.19	276.19	276.19	276.19	276.19	276.19	276.19
1.67	1.67	1.67	1.67	1.67	1.67	1.67	1.67	1.67	1.67	1.67	1.67
11.25	11.25	11.25	11.25	11.25	11.25	11.25	11.25	11.25	11.25	11.25	11.25
1.67	1.67	1.67	1.67	1.67	1.67	1.67	1.67	1.67	1.67	1.67	1.67
11.25	11.25	11.25	11.25	11.25	11.25	11.25	11.25	11.25	11.25	11.25	11.25
1.67	1.67	1.67	1.67	1.67	1.67	1.67	1.67	1.67	1.67	1.67	1.67
11.25	11.25	11.25	11.25	11.25	11.25	11.25	11.25	11.25	11.25	11.25	11.25
1.67	1.67	1.67	1.67	1.67	1.67	1.67	1.67	1.67	1.67	1.67	1.67
11.25	11.25	11.25	11.25	11.25	11.25	11.25	11.25	11.25	11.25	11.25	11.25
1.67	1.67	1.67	1.67	1.67	1.67	1.67	1.67	1.67	1.67	1.67	1.67
11.25	11.25	11.25	11.25	11.25	11.25	11.25	11.25	11.25	11.25	11.25	11.25
1.67	1.67	1.67	1.67	1.67	1.67	1.67	1.67	1.67	1.67	1.67	1.67
11.25	11.25	11.25	11.25	11.25	11.25	11.25	11.25	11.25	11.25	11.25	11.25
1.67	1.67	1.67	1.67	1.67	1.67	1.67	1.67	1.67	1.67	1.67	1.67
11.25	11.25	11.25	11.25	11.25	11.25	11.25	11.25	11.25	11.25	11.25	11.25
1.67	1.67	1.67	1.67	1.67	1.67	1.67	1.67	1.67	1.67	1.67	1.67
11.25	11.25	11.25	11.25	11.25	11.25	11.25	11.25	11.25	11.25	11.25	11.25
1.67	1.67	1.67	1.67	1.67	1.67	1.67	1.67	1.67	1.67	1.67	1.67
11.25	11.25	11.25	11.25	11.25	11.25	11.25	11.25	11.25	11.25	11.25	11.25
1.67	1.67	1.67	1.67	1.67	1.67	1.67	1.67	1.67	1.67	1.67	1.67
11.25	11.25	11.25	11.25	11.25	11.25	11.25	11.25	11.25	11.25	11.25	11.25
1.67	1.67	1.67	1.67	1.67	1.67	1.67	1.67	1.67	1.67	1.67	1.67
11.25	11.25	11.25	11.25	11.25	11.25	11.25	11.25	11.25	11.25	11.25	11.25
1.67	1.67	1.67	1.67	1.67	1.67	1.67	1.67	1.67	1.67	1.67	1.67
11.25	11.25	11.25	11.25	11.25	11.25	11.25	11.25	11.25	11.25	11.25	11.25
1.67	1.67	1.67	1.67	1.67	1.67	1.67	1.67	1.67	1.67	1.67	1.67
11.25	11.25	11.25	11.25	11.25	11.25	11.25	11.25	11.25	11.25	11.25	11.25

10
10
30

1/11/19

W. 4th Terrace Bradenck Private Contract



Cypress

NW Cypress & Georgia

384.00
 0.34
 384.74
 12.70
 372.04
 0.25
 371.79
 13.15
 358.64
 1.10
 357.54
 13.64
 343.90
 0.60
 343.30

TOMPKINS ST
Grading

	scb	N 26
100 W of WL Francis	53.0	53.5
50' W " "	50.77	51.27
W L " P.C. Curb	48.55	49.05
E. L. Francis P.C. Curb	48.55	49.05
50' E	50.77	51.27
100 E = BREAK	53.0	53.5
150 E	57.45	57.95
200 = WL 35th = P.C. Curb	61.9	62.4
00 = EL 35th = P.C. Curb	63.5 ₇₅	64.0
0 + 50	64.25	64.75
1	65.00	65.50
+ 50	65.75	66.25
2 = WL Francis - P.C. Curb	66.5	67.0
00 = EL " " " "	66.5	67.0
0 + 50	66.77	67.27
1	67.05	67.55
+ 50	67.32	67.82
4 W of 36th P.C. Curb	67.6	68.1
00 E " " " "	67.7	68.2
0 + 7.65	68.6	69.1
0 + 79.30 = Pueblo line	69.5	70.0
0 + 84.70		

PLAN N.G.

57.97 X
57.39 X
57.27
57.15
57.03
56.91
56.79 = nail
56.67
56.55
56.43

57.97 X
57.85
57.73
57.61
57.49
57.37
57.25
57.13
57.01
56.89
56.77
56.65
56.53
56.41
56.29
56.17
56.05
55.93
55.81
55.69
55.57
55.45
55.33
55.21
55.09
54.97
54.85
54.73
54.61
54.49
54.37
54.25
54.13
54.01
53.89
53.77
53.65
53.53
53.41
53.29
53.17
53.05
52.93
52.81
52.69
52.57
52.45
52.33
52.21
52.09
51.97
51.85
51.73
51.61
51.49
51.37
51.25
51.13
51.01
50.89
50.77
50.65
50.53
50.41
50.29
50.17
50.05
49.93
49.81
49.69
49.57
49.45
49.33
49.21
49.09
48.97
48.85
48.73
48.61
48.49
48.37
48.25
48.13
48.01
47.89
47.77
47.65
47.53
47.41
47.29
47.17
47.05
46.93
46.81
46.69
46.57
46.45
46.33
46.21
46.09
45.97
45.85
45.73
45.61
45.49
45.37
45.25
45.13
45.01
44.89
44.77
44.65
44.53
44.41
44.29
44.17
44.05
43.93
43.81
43.69
43.57
43.45
43.33
43.21
43.09
42.97
42.85
42.73
42.61
42.49
42.37
42.25
42.13
42.01
41.89
41.77
41.65
41.53
41.41
41.29
41.17
41.05
40.93
40.81
40.69
40.57
40.45
40.33
40.21
40.09
39.97
39.85
39.73
39.61
39.49
39.37
39.25
39.13
39.01
38.89
38.77
38.65
38.53
38.41
38.29
38.17
38.05
37.93
37.81
37.69
37.57
37.45
37.33
37.21
37.09
36.97
36.85
36.73
36.61
36.49
36.37
36.25
36.13
36.01
35.89
35.77
35.65
35.53
35.41
35.29
35.17
35.05
34.93
34.81
34.69
34.57
34.45
34.33
34.21
34.09
33.97
33.85
33.73
33.61
33.49
33.37
33.25
33.13
33.01
32.89
32.77
32.65
32.53
32.41
32.29
32.17
32.05
31.93
31.81
31.69
31.57
31.45
31.33
31.21
31.09
30.97
30.85
30.73
30.61
30.49
30.37
30.25
30.13
30.01
29.89
29.77
29.65
29.53
29.41
29.29
29.17
29.05
28.93
28.81
28.69
28.57
28.45
28.33
28.21
28.09
27.97
27.85
27.73
27.61
27.49
27.37
27.25
27.13
27.01
26.89
26.77
26.65
26.53
26.41
26.29
26.17
26.05
25.93
25.81
25.69
25.57
25.45
25.33
25.21
25.09
24.97
24.85
24.73
24.61
24.49
24.37
24.25
24.13
24.01
23.89
23.77
23.65
23.53
23.41
23.29
23.17
23.05
22.93
22.81
22.69
22.57
22.45
22.33
22.21
22.09
21.97
21.85
21.73
21.61
21.49
21.37
21.25
21.13
21.01
20.89
20.77
20.65
20.53
20.41
20.29
20.17
20.05
19.93
19.81
19.69
19.57
19.45
19.33
19.21
19.09
18.97
18.85
18.73
18.61
18.49
18.37
18.25
18.13
18.01
17.89
17.77
17.65
17.53
17.41
17.29
17.17
17.05
16.93
16.81
16.69
16.57
16.45
16.33
16.21
16.09
15.97
15.85
15.73
15.61
15.49
15.37
15.25
15.13
15.01
14.89
14.77
14.65
14.53
14.41
14.29
14.17
14.05
13.93
13.81
13.69
13.57
13.45
13.33
13.21
13.09
12.97
12.85
12.73
12.61
12.49
12.37
12.25
12.13
12.01
11.89
11.77
11.65
11.53
11.41
11.29
11.17
11.05
10.93
10.81
10.69
10.57
10.45
10.33
10.21
10.09
9.97
9.85
9.73
9.61
9.49
9.37
9.25
9.13
9.01
8.89
8.77
8.65
8.53
8.41
8.29
8.17
8.05
7.93
7.81
7.69
7.57
7.45
7.33
7.21
7.09
6.97
6.85
6.73
6.61
6.49
6.37
6.25
6.13
6.01
5.89
5.77
5.65
5.53
5.41
5.29
5.17
5.05
4.93
4.81
4.69
4.57
4.45
4.33
4.21
4.09
3.97
3.85
3.73
3.61
3.49
3.37
3.25
3.13
3.01
2.89
2.77
2.65
2.53
2.41
2.29
2.17
2.05
1.93
1.81
1.69
1.57
1.45
1.33
1.21
1.09
0.97
0.85
0.73
0.61
0.49
0.37
0.25
0.13
0.01

57.97 X
57.85
57.73
57.61
57.49
57.37
57.25
57.13
57.01
56.89
56.77
56.65
56.53
56.41
56.29
56.17
56.05
55.93
55.81
55.69
55.57
55.45
55.33
55.21
55.09
54.97
54.85
54.73
54.61
54.49
54.37
54.25
54.13
54.01
53.89
53.77
53.65
53.53
53.41
53.29
53.17
53.05
52.93
52.81
52.69
52.57
52.45
52.33
52.21
52.09
51.97
51.85
51.73
51.61
51.49
51.37
51.25
51.13
51.01
50.89
50.77
50.65
50.53
50.41
50.29
50.17
50.05
49.93
49.81
49.69
49.57
49.45
49.33
49.21
49.09
48.97
48.85
48.73
48.61
48.49
48.37
48.25
48.13
48.01
47.89
47.77
47.65
47.53
47.41
47.29
47.17
47.05
46.93
46.81
46.69
46.57
46.45
46.33
46.21
46.09
45.97
45.85
45.73
45.61
45.49
45.37
45.25
45.13
45.01
44.89
44.77
44.65
44.53
44.41
44.29
44.17
44.05
43.93
43.81
43.69
43.57
43.45
43.33
43.21
43.09
42.97
42.85
42.73
42.61
42.49
42.37
42.25
42.13
42.01
41.89
41.77
41.65
41.53
41.41
41.29
41.17
41.05
40.93
40.81
40.69
40.57
40.45
40.33
40.21
40.09
39.97
39.85
39.73
39.61
39.49
39.37
39.25
39.13
39.01
38.89
38.77
38.65
38.53
38.41
38.29
38.17
38.05
37.93
37.81
37.69
37.57
37.45
37.33
37.21
37.09
36.97
36.85
36.73
36.61
36.49
36.37
36.25
36.13
36.01
35.89
35.77
35.65
35.53
35.41
35.29
35.17
35.05
34.93
34.81
34.69
34.57
34.45
34.33
34.21
34.09
33.97
33.85
33.73
33.61
33.49
33.37
33.25
33.13
33.01
32.89
32.77
32.65
32.53
32.41
32.29
32.17
32.05
31.93
31.81
31.69
31.57
31.45
31.33
31.21
31.09
30.97
30.85
30.73
30.61
30.49
30.37
30.25
30.13
30.01
29.89
29.77
29.65
29.53
29.41
29.29
29.17
29.05
28.93
28.81
28.69
28.57
28.45
28.33
28.21
28.09
27.97
27.85
27.73
27.61
27.49
27.37
27.25
27.13
27.01
26.89
26.77
26.65
26.53
26.41
26.29
26.17
26.05
25.93
25.81
25.69
25.57
25.45
25.33
25.21
25.09
24.97
24.85
24.73
24.61
24.49
24.37
24.25
24.13
24.01
23.89
23.77
23.65
23.53
23.41
23.29
23.17
23.05
22.93
22.81
22.69
22.57
22.45
22.33
22.21
22.09
21.97
21.85
21.73
21.61
21.49
21.37
21.25
21.13
21.01
20.89
20.77
20.65
20.53
20.41
20.29
20.17
20.05
19.93
19.81
19.69
19.57
19.45
19.33
19.21
19.09
18.97
18.85
18.73
18.61
18.49
18.37
18.25
18.13
18.01
17.89
17.77
17.65
17.53
17.41
17.29
17.17
17.05
16.93
16.81
16.69
16.57
16.45
16.33
16.21
16.09
15.97
15.85
15.73
15.61
15.49
15.37
15.25
15.13
15.01
14.89
14.77
14.65
14.53
14.41
14.29
14.17
14.05
13.93
13.81
13.69
13.57
13.45
13.33
13.21
13.09
12.97
12.85
12.73
12.61
12.49
12.37
12.25
12.13
12.01
11.89
11.77
11.65
11.53
11.41
11.29
11.17
11.05
10.93
10.81
10.69
10.57
10.45
10.33
10.21
10.09
9.97
9.85
9.73
9.61
9.49
9.37
9.25
9.13
9.01
8.89
8.77
8.65
8.53
8.41
8.29
8.17
8.05
7.93
7.81
7.69
7.57
7.45
7.33
7.21
7.09
6.97
6.85
6.73
6.61
6.49
6.37
6.25
6.13
6.01
5.89
5.77
5.65
5.53
5.41
5.29
5.17
5.05
4.93
4.81
4.69
4.57
4.45
4.33
4.21
4.09
3.97
3.85
3.73
3.61
3.49
3.37
3.25
3.13
3.01
2.89
2.77
2.65
2.53
2.41
2.29
2.17
2.05
1.93
1.81
1.69
1.57
1.45
1.33
1.21
1.09
0.97
0.85
0.73
0.61
0.49
0.37
0.25
0.13
0.01

FRANCIS ST
Grading

	wcb	E 06
NL Homestead Union	80.5	81.0
0+44.45	80.9	80.5
0+84.50 = BREAK	79.5	80.0
1+44.50 = NL L = PC curb	74.6	75.1
00 = SL L = PC curb	73.0	73.5
0+60	67.0	67.5
1+20 = BREAK	61.0	61.5
1+80	57.2	57.53
7+40	53.4	53.56
3 = NL Tompkins = PC curb	49.6	49.6
00 = SL " = PC curb	48.0	48.0
0+50	42.94	42.94
1 = BREAK	37.85	37.85
1+20 "	37.75	37.75
1+81 " = PC curb	34.2	34.7
1+33.5		31.14
1+86.0 = NL Imperial		29.5

29.5 = Imperial
creek

49.7
38
37.05
1.95
38.55
6.82
41.77

Hub BM Int Bank
SECOR L + FRANCIS
79.78

31.89
3.27
37.60
11.50
46.14

32.2	32.2	37.8	42.9	48.0	49.6
7.7	7.7	8.3	3.2	7.9	8.9
11.3	11.3	12.7	6.2	6.1	12.9
-8.0	-8.0	-2.3	-5.8	-6.1	-7.9
29.5	31.1	32.7	37.8	42.9	48.0
5.4	3.8	7.4	6.4	3.2	10.5
7.5	8.8	9.0	11.4	9.8	8.0
-7.4	-8.0	-6.8	-5.1	-7.9	-10.7
53.4	57.2	61.0	67.0	73.0	74.6
1.1	7.0	3.3	8.2	7.6	9.1
2.5	6.2	2.3	7.5	7.5	4.5
-2.4	10.8	-2.2	-7.2	-8.4	4.2
53.56	57.53	61.5	67.5	73.5	75.1
4.0	6.8	10.9	7.0	10.5	10.1
2.9	2.8	8.3	3.1	8.7	9.4
5	-7.0	10.2	7.8	4.7	3.3
11.9	10.3	11.9	15.0	12.5	12.75
18.1	12.6	10.9	8.09	10.24	10.34
-6.2	-2.3	10.8	8.00	11.69	11.69
49.6	49.6	49.6	49.6	49.6	49.6
18.0	18.0	18.0	18.0	18.0	18.0
0.54	0.51	0.51	0.51	0.51	0.51
0.51	0.51	0.51	0.51	0.51	0.51
-0.42	10.04	1.76	1.76	1.76	1.76
48.99	48.99	48.99	48.99	48.99	48.99
11.04	11.04	11.04	11.04	11.04	11.04
37.75	37.75	37.75	37.75	37.75	37.75
37.44	37.44	37.44	37.44	37.44	37.44
wcb	32.20	31.67	31.14	30.61	30.08 = end curb
	6.77	7.50	7.84	5.20	
wcb	32.20	31.67	31.14	30.61	30.08
	7.88	8.31	8.94	6.47	7.00
E	29.54	31.14	32.70	37.75	
	7.54	8.96	7.38	4.24	

35th ST Grading

	Wcb	Ecb
SL Tompkins = PC curb	61.9	67.4
NL " PC curb	63.5	64.0
+50	64.75	65.25
1	66.00	66.50
+50	67.25	67.75
4 = BREAK	68.5	69.0
+50	73.5	74.0
3 = SL L ST. Pc. curb	78.5	79.0
00 NL L ST Pc. curb	80.1	80.6
04 48.07	85.4	85.9
0 + 96.1	90.7	91.4
1 + 44.4 = NL Homestead W	96.0	96.5

62.94
 41.0
 74.1
 71.76
 130.1
 84.77
 84.77
 120.0
 97.39
 1.56
 95.83
 63.3
 101.80
 1.94
 99.94
 Non-45
 " 45
 Homestead

	Wcb	Ecb	Wcb	Ecb	Wcb	Ecb	Wcb	Ecb	Wcb	Ecb
Wcb	61.9	68.5	64.7	66.0	67.2	68.5	73.5	78.5	80.1	
	10.2	8.6	7.4	6.1	4.9	3.6	11.5	6.5	2.9	
	11.7	10.5	14.2	13.2	15.0	8.8	11.5	7.3	0.7	
	21.5	17.7	14.8	6.1	10.1	5.4	0.7	0.8	10.7	
Ecb	67.4	64.0	65.2	66.5	67.7	69.0	74.0	79.0	80.6	
	7.7	8.1	6.4	7.6	4.4	3.1	11.0	6.0	16.8	
	9.0	5.4	3.7	3.1	7.6	5.7	10.9	8.0	10.0	
	10.5	27.7	4.4	12.5	3.4	2.6	11.0	11.1	26.1	
Wcb	85.4	90.7	96.0							
	12.0	6.7	1.5							
	7.8	6.1	0.5							
	13.2	10.2	1.1							
Ecb	85.9	91.2	96.5							
	17.5	6.4	0.3							
	6.4	3.7	2.8							
	25.0	10.5	11.5							

Pardee S.T.

	WCB	ECB
S. Tompkins PC curb	65.95	65.95
NL " PC curb	67.55	67.55
0+50	72.54	72.77
1 = BREAK	77.54	78.04
750 = BREAK	81.0	81.5
7 = BREAK	83.0	83.5
+50	84.0	84.5
3 = SL LST PC curb	85.0	85.5
00 NL ST PC curb	86.6	87.1
0+47.93	86.9	87.4
0+95.86	87.4	87.7
1+43.8 = NL Hamstead	87.5	88.0

7978
 620
 86.98
 376
 87.62
 12.92
 95.54
 13.04
 82.50
 8.71
 83.21
 12.62
 70.54
 5.67
 76.21

WCB	66.0	67.5	72.5	77.5	81.0	83.0	84.0	85.0	86.6
	10.4	15.7	10.7	5.7	4.4	12.5	11.5	10.5	5.9
	11.6	12.3	10.6	6.4	2.8	12.0	9.7	12.7	12.9
	-1.4	+3.0	+0.1	-0.7	-0.2	+0.5	+1.8	-2.2	-0.0
ECB	66.0	67.5	72.5	77.5	81.5	83.5	84.5	85.5	87.1
	10.4	15.7	10.7	5.7	14.0	12.0	11.0	10.0	5.4
	12.0	11.1	10.5	5.1	11.3	13.0	9.7	10.2	5.2
	-6.4	+6.6	+0.8	+2.1	+0.3	+1.3	-0.7	-0.7	2.2
W	86.9	87.2	87.5						
	8.6	7.3	8.0						
	14.0	9.8	6.0						
	-5.4	-1.5	+2.0						
E	87.4	87.7	88.0						
	8.1	7.8	7.5						
	1.6	2.7	1.2						
	+6.5	+5.1	+6.3						

36th ST Grading

	Wcb \downarrow 15.60% To RR.	Ecb \downarrow 14.83% To RR.
SL Trench side = PG Curb	64.94	64.54
NL " = PG Curb	69.58	69.09
0+50	72.47	71.97
1	75.36	74.86
+50	78.45	77.75
✓	81.14	80.64
+50	84.03	83.53
3 = SL LST PG Curb	86.94	86.44
oo NL LST PG Curb	88.80	88.30
0+48.33	90.40	89.70
0+96.67	91.60	91.10
1+45 = Pueblo line	93.0	92.50

	Wcb 65.56°	Ecb 65.76°	W	E
end curb New SL	69.66	69.1	86.0	83.5
	77.5	77.0	86.9	86.4
	78.4	77.9	88.8	88.3
	78.7	77.7	90.7	89.7
	81.1	80.6	91.6	91.1
	81.1	80.6	93.0	92.5
	7.3	7.8	13.0	11.6
	4.4	4.9	11.6	10.9
	7.5	7.0	8.7	8.0
	10.5	10.1	15.3	14.3
	11.1	10.6	14.7	13.7
	10.3	9.8	11.3	10.3
	10.3	9.8	11.3	10.3

L ST Grading

S 06		N 06
WL Francis PC Curb	73.0	73.5
EL " PC Curb	74.6	75.1
0+50	75.58	76.07
1	76.55	77.05
+50	77.52	78.02
N WL 35th PC Curb	78.5	79.0
00 EL " PC Curb	80.1	80.6
0+50	81.32	81.82
1	82.55	83.05
+50	83.77	84.27
N WL Pandoe PC Curb	85.00	85.5
00 EL " PC Curb	86.6	87.1
0+50	86.95	87.33
1	87.30	87.55
+50	87.65	87.77
N WL 30th PC Curb	88.0	88.0
EL " PC Curb	87.5	87.5

T.P. 107 RP Hub SW Con
L & Pandoe 83.45

79.78									
85.34									
76.00	Sub	73.0	74.6	75.6	76.5	77.5	78.5	80.1	81.3
75.00		10.6	13.7	11.7	6.7	5.7	4.7	8.7	7.5
80.00		7.8	2.5	8.5	13.0	2.5	5.6	8.8	6.8
76.5		8.7	16.2	19.2	6.3	1.8	0.9	0.1	10.7
78.81									
78.81	Sub	73.5	75.1	76.1	77.0	78.0	79.0	80.6	81.7
75.00		10.5	12.2	11.2	6.2	5.2	4.2	8.2	7.1
83.45		14.8	3.9	5.8	7.9	10.8	4.0	8.4	0.2
		-4.2	19.3	16.2	-7.7	+0.8	+5.6	+5.8	+6.9
									+6.8
	S	82.5	83.8	84.0	86.6	86.9	87.3	87.6	88.0
		6.3	5.0	3.8	8.9	8.6	8.4	7.9	7.5
		13.3	10.8	6.0	10.3	9.8	7.8	6.2	4.7
		-7.0	-5.8	-2.2	-1.8	-0.8	+0.8	+1.5	+4.8
									-3.0
	N	82.8	83.9	84.0	87.1	87.3	87.5	87.8	88.0
		6.0	4.9	3.8	8.4	8.2	8.0	7.7	7.5
		1.5	2.2	1.2	6.9	5.9	4.8	3.5	12.0
		+1.3	-0.4	-1.1	11.0	10.0	10.2	10.1	15.3
			-1.6	-1.9					-6.6
	S	88.0	89.18						
		4.9	87.52						
		7.9							
	N	85.0	85.0	85.0	88.1	88.1	88.1	88.1	88.1
		15.0	15.0	15.0	7.57	7.57	7.57	7.57	7.57
		9.9	9.9	9.9	4.00	4.00	4.00	4.00	4.00
		15.9	15.9	15.9	80.6	80.6	80.6	80.6	80.6
					7.07	7.07	7.07	7.07	7.07
					4.5	4.5	4.5	4.5	4.5
					11.34	11.34	11.34	11.34	11.34
					-3.32	-3.32	-3.32	-3.32	-3.32

Culvert #6 FRANCIS
+
Tomkins

INlet = 200 NW Con = flowline	45.00	13.5 13.0 +0.5	
0 + 41.4	41.34	4.77 4.71 +0.06	
0 + 38.8 = A Culvert #6	37.70	8.42 8.14 +3.30	
1	36.70	8.94 6.67 +3.27	
+50	31.80	14.34 7.86 +6.48	
N + 60	27.40	18.72 10.30 +8.42	
+50	23.00	11.87 11.80 +0.07	
+78	20.50	14.57 13.17 +1.40	
		Drops 0.50	
		20.0 = flowline at 36" pipe	

Culvert #7 = 18" pipe

INlet = 200 = flowline	56.0	5.75 6.44 +1.69	
0 + 68	51.5	7.0 6.6 +0.5	
Outlet 1 + 36 = "	47.6	11.5 10.5 +1.0	

Culvert #5 double 36" SS Conc pipe

INtake	21.10	13.77 12.77 +1.0	13.77 11.32 +2.45
--------	-------	------------------------	-------------------------

Culvert #4 24" pipe

INlet = NW L ST	73.5	11.24 8.04 +3.20	9.74 9.01 +0.73
curb intake # 7	72.0		
" " 4.8	70.5		11.25 1.00 +10.25
OUTlet SW LOT	69.0	12.24 13.20 +1.96	

15 E & W Cul.	76.24	27.04
from & West of C6	75.9	3.89
	76.94	77.54
	7.99	3.39
	5.71	7.12
	1.71	-1.73

29.7
5.80
34.87

26.14	+
4.77	
4.71	
8.83	
34.87	
6.25	+

L ST

Culvert #3

inlet. S.W. L.S.T	77.6	11.7 11.4 -0.3	13.5 10.3 -3.2
Curb inlet #5	75.3	12.8 12.6 -0.2	17.4 17.0 -0.4
" " #6	74.0		
outlet = S.L. L.S.T	71.6		

88.51 x

10.35
32.75
5.24
37.71
12.26
5.97
1.27
57.30
6.09
57.39

Culvert #1

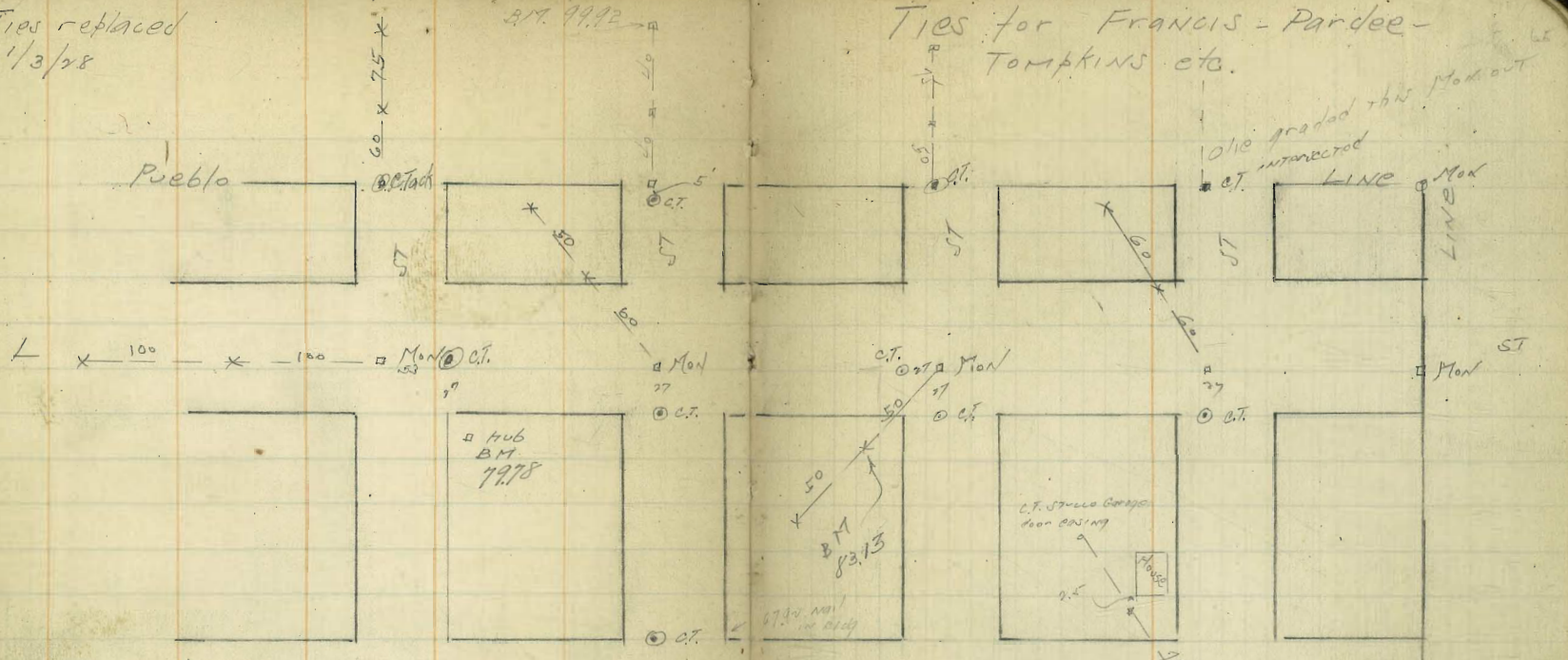
inlet	53.0	54.39	46.4	11.0 10.5 +0.5
sub inlet #1	11.78	3.18	44.2	13.2 10.8 +2.4
" " #2	57.5	57.95	42.2	13.2 12.4 +0.8
outlet	31.9	0.64	40.0	12.4 15.5 +3.1

Culvert #2

inlet	14.1	14.81	60.4	11.4 11.0 +0.4
Curb #3	67.0	67.5	59.0	13.1 10.6 +2.5
" " #4	4.8	3.6	57.8	14.3 12.1 +2.2
outlet	68.0	68.5	56.4	15.9 15.0 +0.9

Ties replaced
1/3/28

317. 99.12

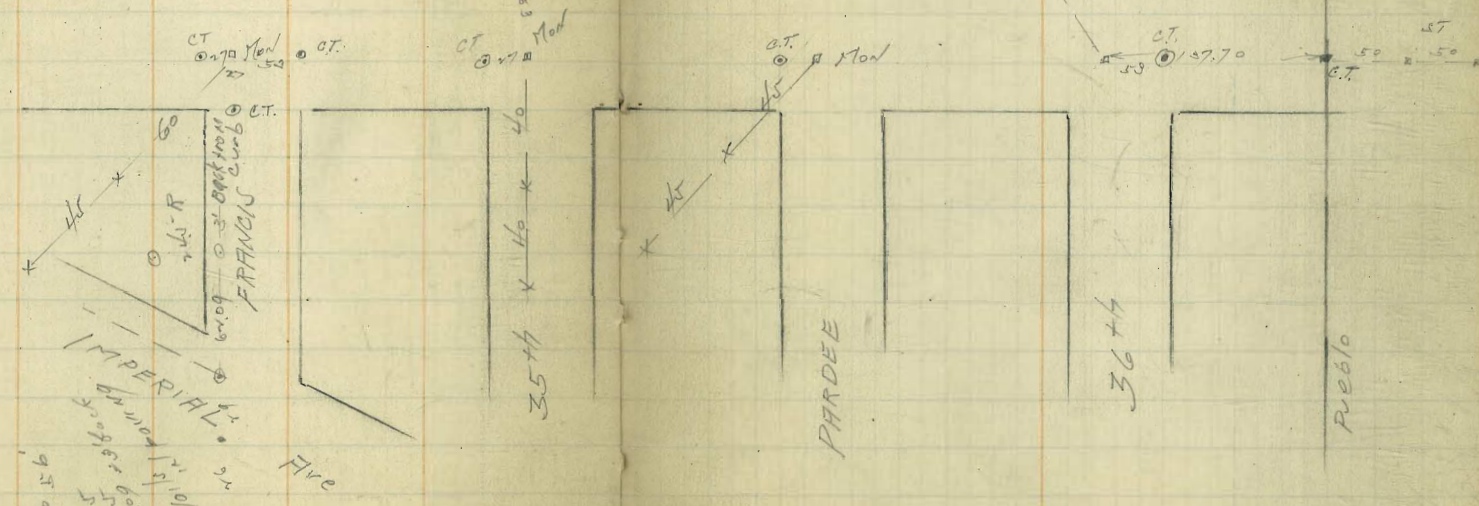


Ties for Francis - Pardee - Tompkins etc.

1010 graded this Mon out
intersected

TOMPKINS

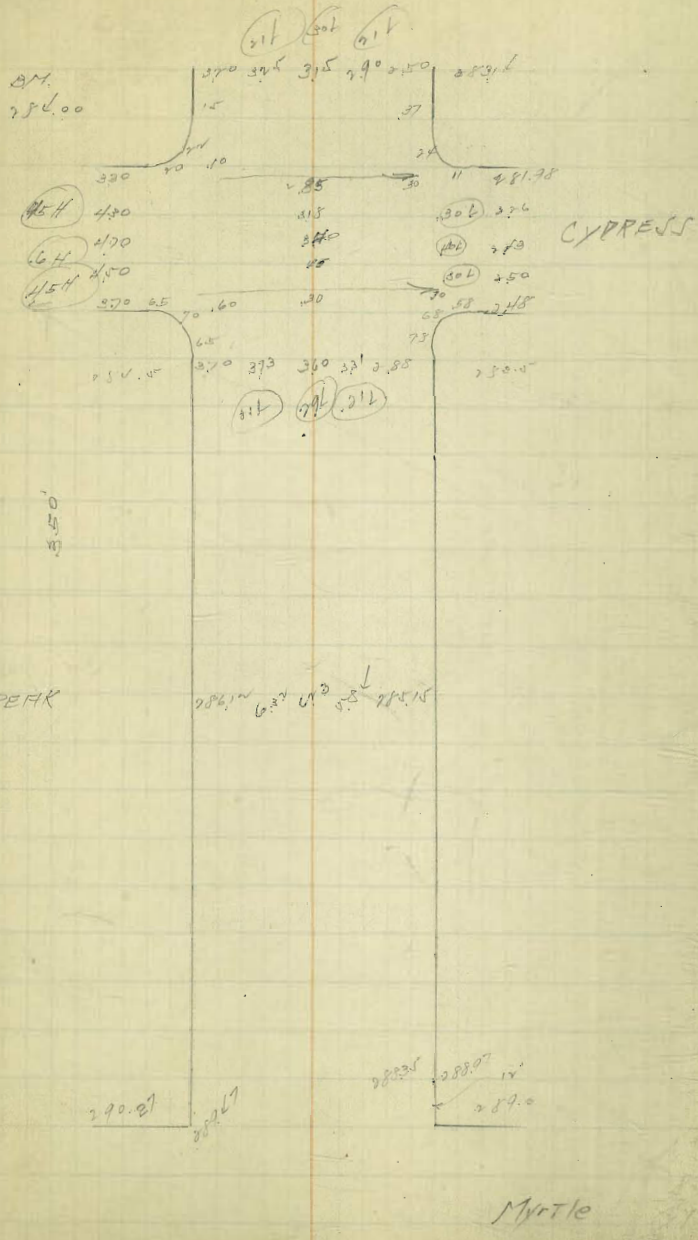
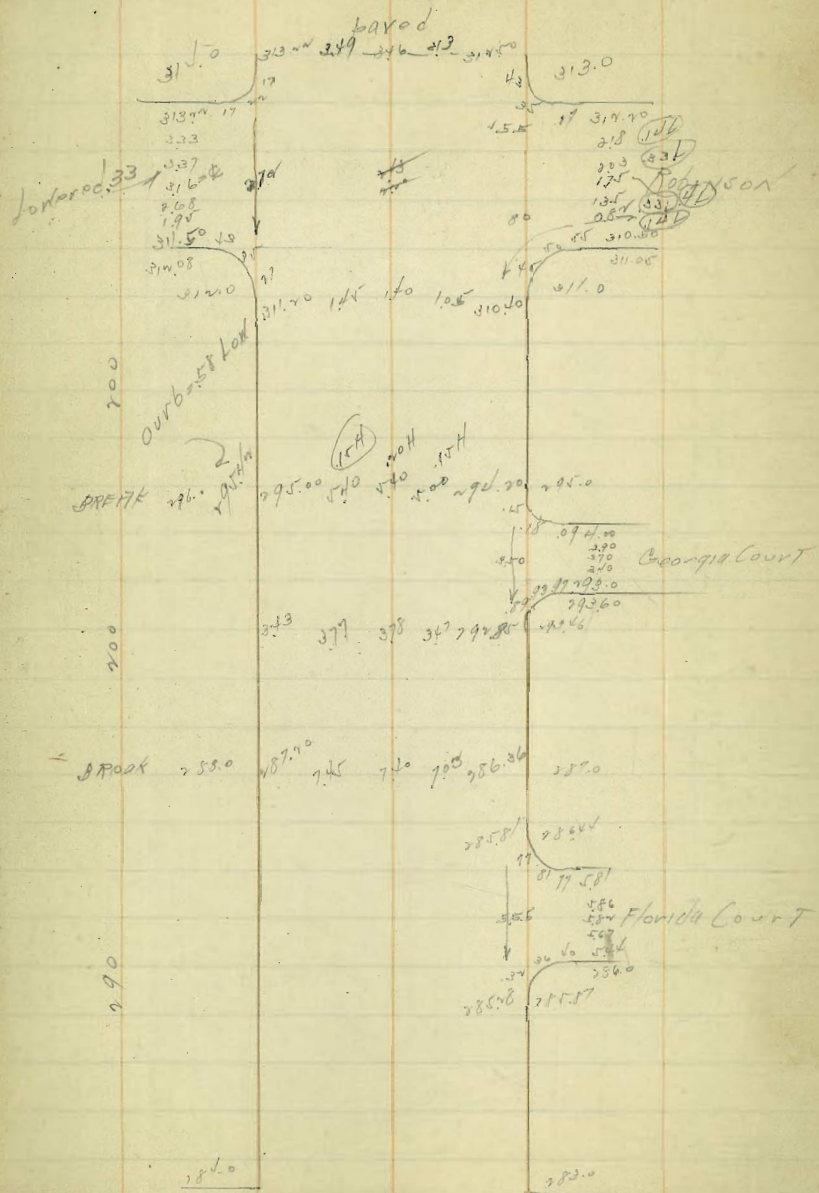
73005 18" of curb
36 37 39 - 1/4"
Lehand = 29.17



IMPERIAL Fire
Francis curb
Imperial Fire

6/7/77

Georgia ST. PAVING

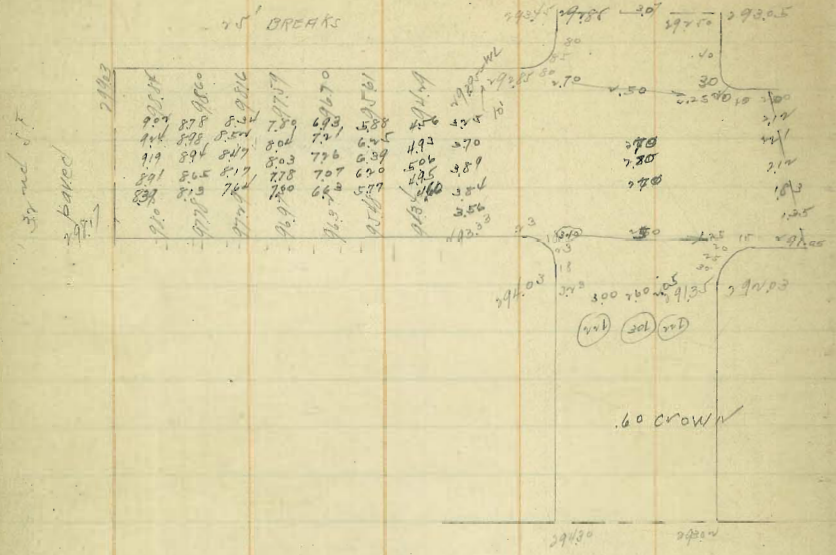


CYPRESS

Mirtle

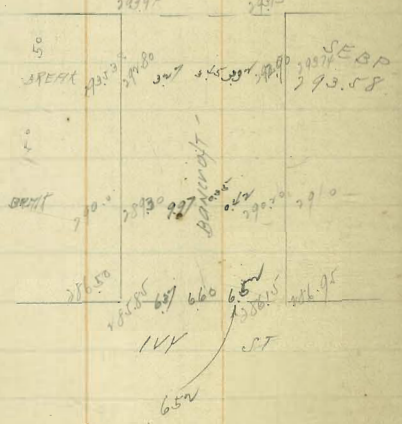
Bancroft & Kalmia Paving

St Juniper + Bancroft
 213.58
 32.80



Kalmia ST

Juniper ST
 paved



W. H. WILSON
CORP.
Dwight St Grading
Louisiana to Arizona

280.44
11.72
292.16
2.16

	SC6	NC6	
EL LOUISIANA = 00	250.45	250.95	292.00
+50	281.96	282.33	2.21
1	283.47	283.72	295.21
+50	285.0	285.11	
1 = BREAK	286.50	286.50	
+35	287.95	288.20	
+70 WL TEXAS	289.40	289.90	
EL TEXAS = 00	290.34	290.90	
+50	288.56	288.93	
1	286.78	286.96	
+50 = BREAK	285.0	285.0	
+95	283.72	284.0	
+133	282.44	283.0	
+174.5 = WL ARIZONA	281.16	282.0	

SE DWIGHT & LOUISIANA
68

SU	10.0	8.4	85.2	86.7	87.4	89.16
	1.72	2.6	7.9	8.5	8.0	2.70
	4.0	8.0	7.5	8.1	11.3	✓
		1.0	-0.5	20.1	-0.3	
W	82.6	84.0	85.8	86.7	88.4	89.90
	7.9	8.4	6.9	8.0	8.5	2.56
	4.7	7.9	7.3	8.7	8.3	✓
		20.3	-0.4	-0.2	2.3	
				-0.2	0.0	
S	88.8	87.0	85.2	84.0	82.7	81.16
	6.4	8.4	10.0	11.2	12.4	12.00
	3.0	3.4	9.1	11.0	12.8	✓
	15.4	11.0	10.1	0.0	10.1	
W	82.2	87.2	85.2	84.0	83.2	82.0
	6.0	8.0	10.0	11.0	12.0	13.7
	3.0	7.0	7.0	10.8	11.4	
	13.2	7.0	7.0	10.7	10.6	
	256.50	280.0				
	67.3	1.43				

Mission Beach Sea Walk Moore
North Section

Elev. sheet piling
1.00

68 + 47.6 = NL Pac. Ave = North end work

69 + 46.35 = " " "

67 + 45.10 = " " "

66 + 41.0 = 4 steps

66 + 40.85

65 + 46.70 = Ann walk = 18.58 wide

64 + 46.70 = NL alley = E.C.

63 + 44.14 = 54' alley =

defl = 0° 05' 00"
chords = 26.1

defl = 0° 06' 20"
ch = 34.40

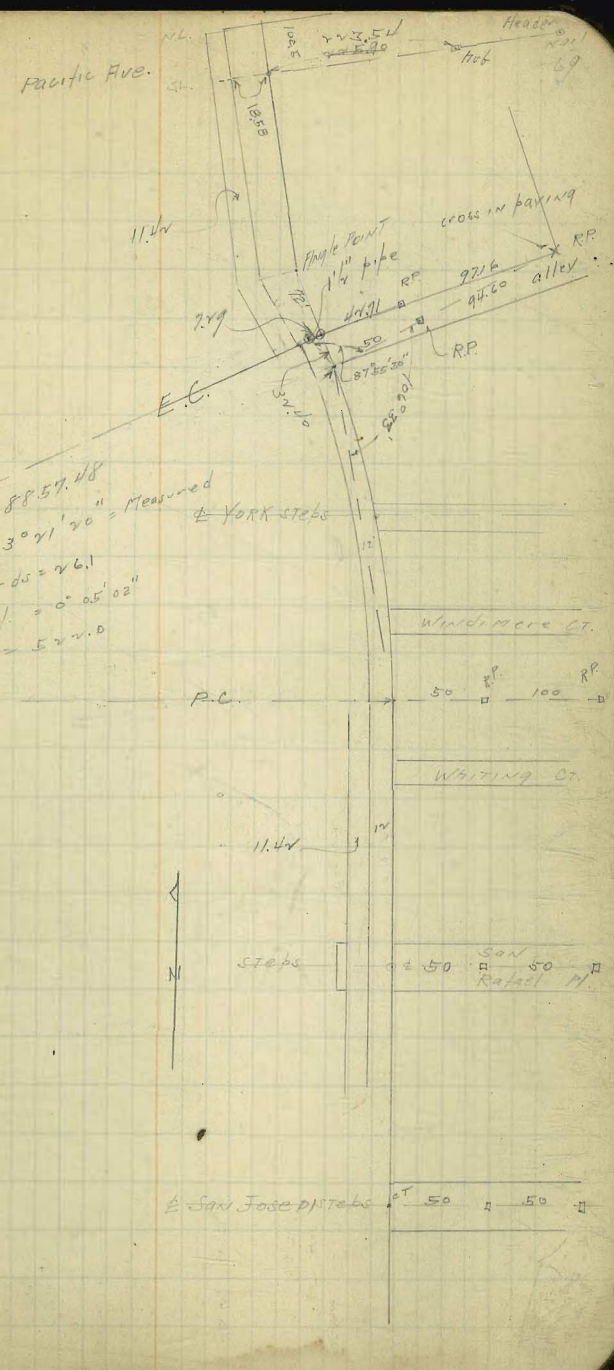
TRANSIT
at P.C.

6 + 436.5
Esteps York Court

- 7
- 8
- 9
- 10
- 11
- 12
- 13
- 14
- 15
- 16
- 17

8.37	8.37
7.94	8.37
+13.85	7.94
	7.94
	+0.87
	8.37
6.72	8.37
+1.65	6.72
	6.72
	+2.74
	8.37
6.40	8.37
+1.97	6.40
	6.40
	+1.60
	8.37
5.05	8.37
+3.32	5.05
	5.05
	+1.96
	8.37
7.76	8.37
+0.61	7.76
	7.76
	+0.67
	8.37
5.04	8.37
+0.35	5.04
	5.04
	+0.24
	8.37
7.41	8.37
+0.96	7.41
	7.41
	+1.17
	8.37
7.24	8.37
+0.92	7.24
	7.24
	+0.32
	8.37
7.26	8.37
+0.81	7.26
	7.26
	+1.17
	8.37
7.17	8.37
+1.20	7.17
	7.17
	+0.65
	8.37
6.80	8.37
+1.57	6.80
	6.80
	+1.00
	8.37
7.20	8.37
+1.17	7.20
	7.20
	+1.20
	8.37
6.80	8.37
+1.57	6.80
	6.80
	+1.00
	8.37
7.15	8.37
+1.22	7.15
	7.15
	+1.22

Ext North side
4.66
4.51
7.37



Figured
A = 3° 1' 36"
R = 8857.48
A = 3° 1' 20" = Measured
chords = 26.1
defl. = 0° 05' 02"
L = 522.0

N

E San Jose pntals

Mission Beach Sea Wall
North Section

7.37 T

Elev. out off

18	1.00	8.37	7.42	10.80
19		8.37	7.46	10.91
59 + no. 10 @ = P.C.		8.37	7.40	10.77
59	4.00 3.50 +1.08	4.60	4.50	+0.82
+50	4.60 3.80 +1.18	4.60	4.57	+2.35
58	4.60 4.50 +0.10	4.60	0.60	+7.07
+50	4.60 3.00 +1.55	4.60	2.00	+2.60
57	4.50 4.30 +0.20	4.50	2.77	+7.27
+50	4.50 4.30 +0.20	4.50	2.77	+7.27
56	4.50 4.30 +0.20	4.50	2.77	+7.27
+50	4.50 4.30 +0.20	4.50	2.77	+7.27
55	4.50 4.30 +0.20	4.50	2.77	+7.27
54	4.50 4.30 +0.20	4.50	2.77	+7.27
53	4.50 4.30 +0.20	4.50	2.77	+7.27
+50	4.50 4.30 +0.20	4.50	2.77	+7.27
52	4.50 4.30 +0.20	4.50	2.77	+7.27
+50	4.50 4.30 +0.20	4.50	2.77	+7.27
51	4.50 4.30 +0.20	4.50	2.77	+7.27
+50	4.50 4.30 +0.20	4.50	2.77	+7.27
50	4.50 4.30 +0.20	4.50	2.77	+7.27
+50	4.50 4.30 +0.20	4.50	2.77	+7.27
49	4.50 4.30 +0.20	4.50	2.77	+7.27
+50	4.50 4.30 +0.20	4.50	2.77	+7.27

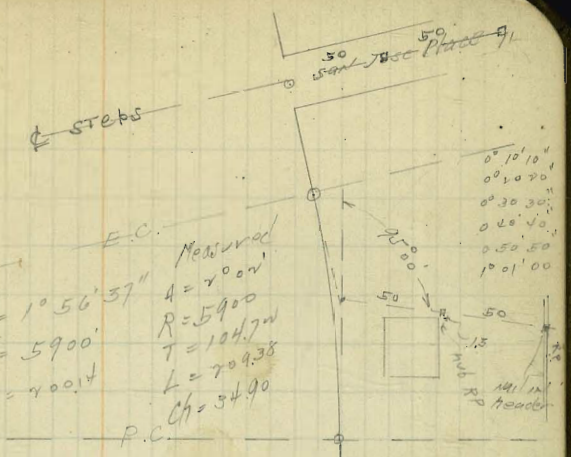
STRAND WAY B.M.'S

San Gabriel Pl	NE Cor BP	4.70
Ventura Pl	Lead + cap rock inside	4.60
Lead plug rock	Jersey Court " " " " " "	6.72
San Louis Obispo Pl	Spike in pole	5.88
El Carmel Pl	" " " "	5.29
San Juan Pl	" " " "	5.83
Santa Clara Pl	" " " "	7.55
SAN JOSE Pl	NE Cor wall in house	7.78
San Rafael Pl	" " " " " "	7.84
York Court	Water tap house South side of road	5.30
North alley	Mission Beach Spike in pole	1.86

Mission Beach Sea Wall

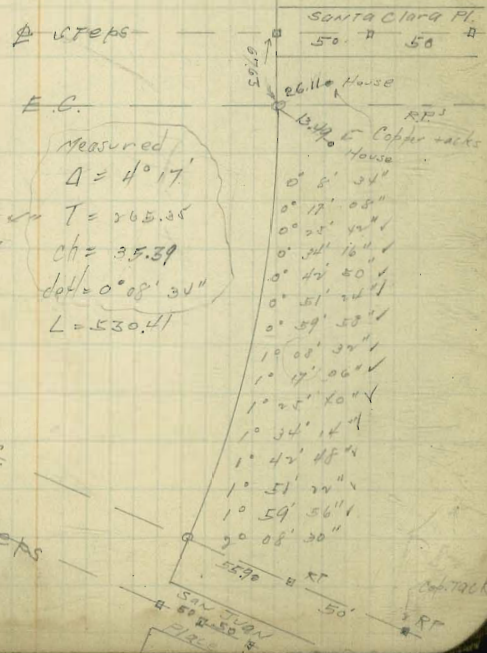
1.00 = Elev. out of

48		616 630 -0.64	616 566 +0.50	
+50			616 628 +0.08	778 184 9.60 0.58 5.06 2.10 716
47		616 628 -0.08		
+50			860 848 +0.12	
46	Left out			
+79.30	E steps San Jose Place			
+50	Left out			
45		860 808 -0.52	860 808 -0.52	
44	19.0 20.0 = E.C. Y	2.75 = X 4.73 -1.98 = X	860 808 -0.52	7.55 Elev
0	✓		448 460 -0.12	4.35 10.90 7.97
ch = 34.9°	✓		448 340 +1.08	3.74 2.91 5.94
0	✓		448 441 +0.07	
0	✓		448 440 +0.08	
4	+11.03 @ = P.C. ✓		448 438 +0.10	
41	+50 ✓		448 440 +0.08	
41	✓		448 440 +0.08	
+50	gone		448 440 +0.08	
40	✓		448 440 +0.08	
+50	✓		448 440 +0.08	
39	✓		448 440 +0.08	
+50	✓		448 440 +0.08	
37+79	= E Santa Clara 5 steps		448 440 +0.08	
37+11.37	= E.C.		448 440 +0.08	
0			448 440 +0.08	
0			448 440 +0.08	



Map = $\Delta = 1^{\circ} 56' 37''$
 $R = 5900$
 $L = 400.4$

Measured
 $\Delta = 1^{\circ} 00'$
 $R = 5900$
 $T = 104.72$
 $L = 709.38$
 $Ch = 34.90$



Map = $\Delta = 4^{\circ} 23' 24''$
 $R = 7095.07$
 $L = 543.62$

Measured
 $\Delta = 4^{\circ} 17'$
 $T = 265.35$
 $Ch = 35.39$
 $del = 0^{\circ} 08' 30''$
 $L = 530.41$

0° 10' 10"	
0° 10' 20"	
0° 30' 30"	
0° 20' 40"	
0° 50' 50"	
1° 01' 00"	
0° 5' 34"	
0° 17' 08"	
0° 25' 44"	
0° 34' 16"	
0° 42' 20"	
0° 51' 24"	
0° 59' 58"	
1° 08' 30"	
1° 17' 06"	
1° 25' 40"	
1° 34' 14"	
1° 42' 48"	
1° 51' 22"	
1° 59' 56"	
2° 08' 30"	

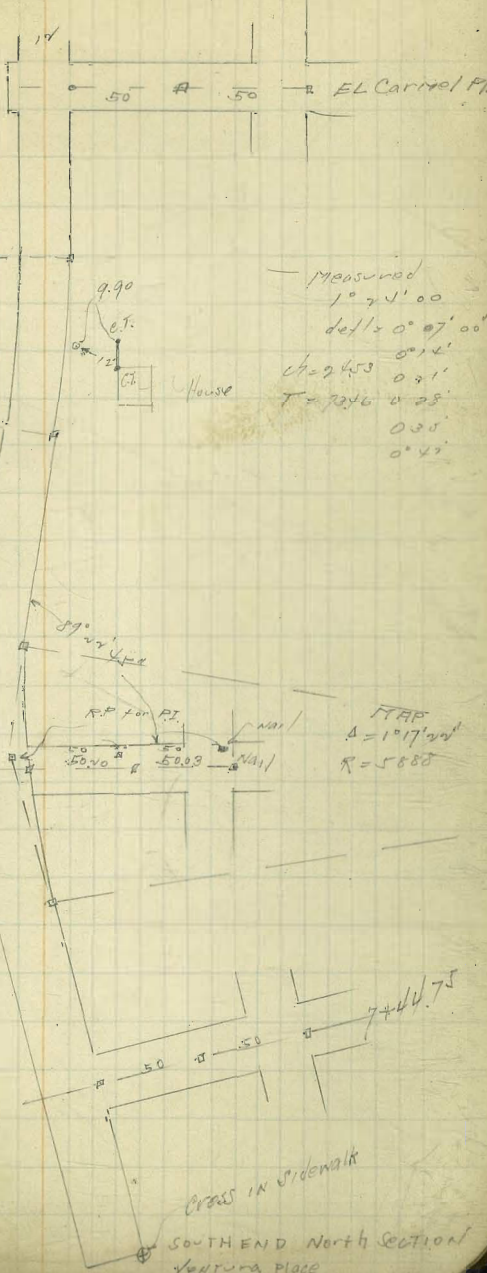
Mission Beach Sea Wall

70

4	4.94 10.43	+0.43
5	4.94 10.87	+0.57
6	4.94 11.28	+0.76
7	4.94 11.60	+1.00
8	4.94 12.00	+1.00
9	5.14 12.13	+0.93
10	5.14 12.01	+0.87
11	5.14 12.01	-0.13
12	5.14 12.07	-0.08
13	5.14 12.07	10.04
14	5.14 12.07	-0.01
15	5.14 12.07	10.00
31 + 80.96 = P.C.	5.14 12.07	-0.16
31 + 00	5.14 12.07	+0.17
30 + 40.14 @ San Juan Steps	5.14 12.07	-0.19
29 + 50	5.14 12.07	+0.17
29	3.84 10.09	+0.12
+50	3.84 10.09	+0.21
28	3.84 10.09	+0.21
+50	3.84 10.09	-0.14
27	3.84 10.09	+0.43
+50	3.84 10.09	+0.47
26	3.84 10.09	+0.79
+50	3.84 10.09	+0.64
25	3.84 10.09	+0.81
+50	3.84 10.09	+0.87
24	3.84 10.09	+0.60
+50	3.84 10.09	+0.80

STEPS
 EL Carmel Pt.
 EC
 $\Delta = 1^{\circ}23'29''$
 $R = 601.7$
 $T = 73.46$
 PC
 $L = 146.90$

Measured
 $\Delta = 1^{\circ}14'30''$
 $R = 5888$
 $T = 6378$
 $CP = 25.85$
 $L = 127.60$
 Steps Santa Barbara Pt.



Mission Beach Sea Wall

North Section

24	746 701 +0.39	+0.21	840 x 3.17 5.77 = 5.77
+50	710 694 +0.26	0.88 x +0.25	+0.91
23	710 694 +0.26	+0.24	Here North Side 203 from cut error in level
22 + 6.29 = ϕ El. Canal steps	710 694 +0.26	+0.24	+0.26
21 + 99.7 = E.C.	5.60 5.32 +0.28		5.77 = 0 M El Canal Place
20 = 54.8 ϕ = P.C.	5.60 5.32 +0.28		5.77 = 0 M El Canal Place
19	5.60 5.32 +0.28		5.77 = 0 M El Canal Place
+50	5.60 5.32 +0.28		5.77 = 0 M El Canal Place
18	5.60 5.32 +0.28		5.77 = 0 M El Canal Place
+50	5.60 5.32 +0.28		5.77 = 0 M El Canal Place
17	5.60 5.32 +0.28		5.77 = 0 M El Canal Place
+50	5.60 5.32 +0.28		5.77 = 0 M El Canal Place
16	5.60 5.32 +0.28		5.77 = 0 M El Canal Place
15 + 73.0 = E.C.	5.60 5.32 +0.28		5.77 = 0 M El Canal Place
14 + 45.6 ϕ = P.C.	5.60 5.32 +0.28		5.77 = 0 M El Canal Place

del = 0° 07' 00" ϕ
 chord = 21.53 ϕ
 ϕ
 ϕ
 ϕ

91.5
 199
 +21.16
 = 170.56
 = ϕ San Louis Obispo

91.5
 50.0
 +2.07
 = 143.57
~~143.57~~
 143.57
 +2.11
 = 145.68

Mission Beach Sea Wall

1.00 = E.V. CUT OFF

588 = 8M

San Louis Obispo Pl.

74

Lead by Jersey Court

12 + 00

58V
8.93
-0.31

6.74 = 8M
2.90
9.64 + X
8.39
1.33
5.79
7.12
4.76
1.36
1.37
6.73

573
4.80
+0.93

573
4.33
+7.40

+ 50

+ 50

13

51V
8.41
+0.37

573
4.15
+1.58

+ 50

+ 50

12

56V
7.90
+0.92

573
3.02
+2.71

+ 50

0 + 00 = Cross in sidewalk

573
1.88
+3.85

673 road plus
8.15 Ventura Pl.
4.58 = 4.60
0.02 error

11

56V
8.39
+0.33

+ 50

56V
8.01
+0.67

61V
3.63
+7.27

10

61V
3.05
+0.77

+ 50

61V
3.27
+2.85

9

61V
5.28
+0.27

+ 50

61V
4.73
+0.79

8

61V
4.04
+0.78

+ 50

61V
3.25
+1.89

7 + 44.25 = ϕ Santa Barbara Pl = STEPS

61V
5.07
+1.05

7

61V
2.25
+0.87

+ 50

61V
4.76
+1.86

6

+ 50 channel cut sidewalk

573
1.93
+3.80

573
4.05
+1.38

5

+ 50

573
4.12
+1.61

573
4.00
+1.73

4

+ 50

573
3.76
+1.57

573
2.32
+3.41

3

+ 50

573
1.90
+3.83

7/29/65
Moore

Alley Paving 15' wide. 3 dip
BIK 34 Teralto B. Cornell

	W	E
1. EL CAYON = 00	377.06	376.94
0 + 54 = BREAK	376.0	376.0
1	375.80	
2	375.60	
3	375.40	
4	375.20	
5	375.0	
6	374.80	
7	374.60	
8	374.40	
9	374.20	
10	374.0	
6 + 14	11 = NL Orange 373.80	373.80

50.90 11 TIMES

377.94 SW 3P EL CAYON 4 36 77

	PAVING	BRK					
377.94							
381.50							
376.06							
377.02	77.06	376.0	74.80	74.60	74.40	74.20	74.00
374.42		3.50	5.70	5.90	6.10	6.30	6.50
4.39		4.50	6.20	6.52	6.80	7.07	7.37
378.81 = X		-7.00	-0.36	-0.62	+0.30	+0.44	+0.60
31.8							
375.63 E	376.94	376.00	74.80	74.60	74.40	74.20	74.00
		3.50	5.70	5.90	6.10	6.30	6.50
		8.94	6.24	6.70	6.32	6.04	5.72
		-0.44	-0.74	-0.80	-0.28	+0.26	+0.24

	W						
W	74.80	74.60	74.40	74.20	74.0	73.80	= NL Orange
	6.22	6.42	6.62	6.82	7.01	7.21	
	4.94	3.42	4.65	5.17	3.11	4.69	
	+1.28	+3.00	+1.97	+1.71	+1.70	+0.32	
E	74.80	74.60	74.40	74.20	74.00	73.80	" "
	6.22	6.42	6.62	6.82	7.01	7.21	
	2.22	3.34	3.43	3.82	3.48	4.83	
		+1.08	+1.19	+3.00	+3.33	+0.18	

8/19/67
Moore
Walsh
Johnson
Isbell

ALLEY PAVING
BIT 17 UNITS 14975. WATSON + SUTTON

	W	E
NL Madison = 00	374.40	374.80
+20 BREAK	375.20	375.70
+40 "	375.80	376.40
+60 "	376.0	376.80
1	376.27	376.95
+40	376.55	377.10
+80	376.82	377.25
2 +20 BREAK	377.10	377.40
+60	377.43	377.77
3	377.77	378.15
+40	378.10	378.52
+80	378.43	378.90
4 +20	378.77	379.27
+60 BREAK <small>on West only</small>	379.10	379.65
5 +10	379.65	380.13
+60 BREAK	380.20	380.60
+80 "	380.10	380.40
6 = SL Adams	376.76	379.90
		+90 379.0
	± 6100 SL	377.36 Adams
SL Adams = paving	376.80	
-10	378.40	
-20	379.50	
-30	379.90	
-40 = 5+60	380.0	

378.99 SECP Mad. + Hart. 76

378.99	0.82																		
377.81	6.51																		
376.30	1.50																		
374.10	1.23																		
377.74 W	4.26	75.70	75.80	76.0	76.27	76.55	76.82	77.10	77.43	77.77									
532.48	5.41	4.67	6.30	6.10	5.83	5.55	5.28	5.00	4.67	4.34									
60 AUTS		4.89	5.30	6.49	6.17	4.85	4.08	4.00	4.20	5.17									
380.14		+0.57	+1.0	-0.37	-0.37	+1.0	+1.0	+1.0	+0.27	+0.57									
493 E	74.80	75.70	76.40	76.80	76.95	77.0	77.25	77.60	77.97	78.10									
350.07	3.01	4.11	5.70	5.30	5.45	5.00	4.73	4.08	5.71	4.33									
	3.1	5.30	4.30	4.85	4.1	5.28	5.95	4.71	4.56	4.77									
		+0.90	+0.20	+1.0	+0.00	+1.0	+0.25	+0.13	+1.0	+0.77									
W 78.10	78.43	78.77	79.10	79.65	80.0														
5.38	5.05	4.71	4.38	5.24	4.87														
4.95	4.81	4.17	4.20	4.49	4.87														
+0.63	+0.02	+0.54	+0.18	+0.43	+1.0														
E 78.54	78.90	79.27	79.65	80.13	80.60														
4.86	4.58	4.21	3.83	4.44	4.77														
3.91	3.58	3.26	3.37	4.04	4.10														
+1.05	+1.0	+0.78	+0.36	+0.50	+0.37														
M 80.10	76.74 = paving																		
4.97	5.41																		
4.93																			
+0.02																			
E 80.40	79.90	79.50	79.36 = paving																
4.67	5.17	6.07	7.71																
4.27	4.25	4.61																	
+0.40	+0.84	+1.46																	
E 80.0	79.90	79.50	78.40	76.80 = paving															
5.07	5.17	5.57	6.67																
4.10	4.2	4.35	4.61																
+0.97	+0.9	+1.02	+2.06																

NOTE - Where fall across alley is more than 0.3 put ± 0.2 below low side

8/18/11
Moore
Walbrook
Osborn
Isabel

ALLEY PAVING
BLK 3 Blairs Highland

	WL	EL
NL Palm	312.96	313.16
+50	312.51	313.72
1	314.07	314.28
+50	314.62	314.84
2	315.18	315.40
+50	315.73	315.96
3	316.29	316.52
+50	316.84	317.08
4	317.40	317.64
+50	317.95	318.20
5	318.51	318.76
+50	319.07	319.32
+78.75 = BREAK	319.40	319.70
+98.75 = SL Redwood	319.0	319.10

312.96
7.00
320.96
4.82
325.78
4.52
330.30
4.54
334.84
4.56
339.40
4.58
343.98
4.60
348.58
4.62
353.20
4.64
357.84
4.66
362.50
4.68
367.18
4.70
371.88
4.72
376.60
4.74
381.34
4.76
386.10
4.78
390.88
4.80
395.68
4.82
400.50
4.84
405.34
4.86
410.20
4.88
415.08
4.90
419.98
4.92
424.90
4.94
429.84
4.96
434.80
4.98
439.72
5.00
444.68
5.02
449.58
5.04
454.50
5.06
459.44
5.08
464.40
5.10
469.30
5.12
474.22
5.14
479.16
5.16
484.12
5.18
489.00
5.20
493.90
5.22
498.82
5.24
503.76
5.26
508.62
5.28
513.50
5.30
518.38
5.32
523.28
5.34
528.20
5.36
533.14
5.38
538.02
5.40
542.92
5.42
547.84
5.44
552.78
5.46
557.74
5.48
562.72
5.50
567.72
5.52
572.74
5.54
577.78
5.56
582.84
5.58
587.92
5.60
593.02
5.62
598.14
5.64
603.28
5.66
608.44
5.68
613.62
5.70
618.92
5.72
624.24
5.74
629.88
5.76
635.48
5.78
641.10
5.80
646.34
5.82
651.60
5.84
657.08
5.86
662.58
5.88
668.10
5.90
673.64
5.92
679.22
5.94
684.82
5.96
690.44
5.98
696.10
6.00
701.80
6.02
707.52
6.04
713.28
6.06
719.06
6.08
724.86
6.10
730.68
6.12
736.52
6.14
742.38
6.16
748.26
6.18
754.16
6.20
760.08
6.22
766.02
6.24
772.00
6.26
778.00
6.28
784.02
6.30
790.06
6.32
796.12
6.34
802.20
6.36
808.30
6.38
814.42
6.40
820.56
6.42
826.72
6.44
832.90
6.46
839.10
6.48
845.32
6.50
851.76
6.52
858.32
6.54
864.90
6.56
871.50
6.58
878.22
6.60
885.00
6.62
891.60
6.64
898.22
6.66
904.86
6.68
911.62
6.70
918.40
6.72
925.20
6.74
932.02
6.76
938.86
6.78
945.72
6.80
952.60
6.82
959.50
6.84
966.42
6.86
973.36
6.88
980.32
6.90
987.20
6.92
994.10
6.94
1001.00
6.96
1007.92
6.98
1014.86
7.00
1021.72
7.02
1028.60
7.04
1035.50
7.06
1042.42
7.08
1049.36
7.10
1056.32
7.12
1063.30
7.14
1070.30
7.16
1077.32
7.18
1084.36
7.20
1091.42
7.22
1098.50
7.24
1105.60
7.26
1112.72
7.28
1119.86
7.30
1127.02
7.32
1134.20
7.34
1141.40
7.36
1148.62
7.38
1155.86
7.40
1163.12
7.42
1170.40
7.44
1177.70
7.46
1185.02
7.48
1192.36
7.50
1200.72
7.52
1208.00
7.54
1215.30
7.56
1222.62
7.58
1230.00
7.60
1237.40
7.62
1244.82
7.64
1252.26
7.66
1259.72
7.68
1267.20
7.70
1274.70
7.72
1282.22
7.74
1289.76
7.76
1297.32
7.78
1304.90
7.80
1312.50
7.82
1320.12
7.84
1327.76
7.86
1335.42
7.88
1343.10
7.90
1350.80
7.92
1358.52
7.94
1366.26
7.96
1374.02
7.98
1381.80
8.00
1389.60
8.02
1397.42
8.04
1405.26
8.06
1413.12
8.08
1421.00
8.10
1428.90
8.12
1436.82
8.14
1444.76
8.16
1452.72
8.18
1460.70
8.20
1468.66
8.22
1476.64
8.24
1484.64
8.26
1492.66
8.28
1500.70
8.30
1508.76
8.32
1516.84
8.34
1524.94
8.36
1533.06
8.38
1541.20
8.40
1549.36
8.42
1557.54
8.44
1565.74
8.46
1573.96
8.48
1582.20
8.50
1590.46
8.52
1598.74
8.54
1607.04
8.56
1615.36
8.58
1623.70
8.60
1632.06
8.62
1640.44
8.64
1648.84
8.66
1657.26
8.68
1665.70
8.70
1674.16
8.72
1682.64
8.74
1691.14
8.76
1699.66
8.78
1708.20
8.80
1716.76
8.82
1725.34
8.84
1733.94
8.86
1742.56
8.88
1751.20
8.90
1759.86
8.92
1768.54
8.94
1777.24
8.96
1785.96
8.98
1794.70
9.00
1803.46
9.02
1812.24
9.04
1821.04
9.06
1829.86
9.08
1838.70
9.10
1847.56
9.12
1856.44
9.14
1865.34
9.16
1874.26
9.18
1883.20
9.20
1892.16
9.22
1901.14
9.24
1910.14
9.26
1919.16
9.28
1928.20
9.30
1937.26
9.32
1946.34
9.34
1955.44
9.36
1964.56
9.38
1973.70
9.40
1982.86
9.42
1992.04
9.44
2001.24
9.46
2010.46
9.48
2019.70
9.50
2028.96
9.52
2038.24
9.54
2047.54
9.56
2056.86
9.58
2066.20
9.60
2075.56
9.62
2084.94
9.64
2094.34
9.66
2103.76
9.68
2113.20
9.70
2122.56
9.72
2131.94
9.74
2141.34
9.76
2150.76
9.78
2160.20
9.80
2169.66
9.82
2179.14
9.84
2188.64
9.86
2198.16
9.88
2207.70
9.90
2217.26
9.92
2226.84
9.94
2236.44
9.96
2246.06
9.98
2255.70
10.00

SWBP Redwood + Granada

W	12.96	13.51	14.07	14.62	15.18	15.73	16.29	16.84
	6.10	5.55	4.99	4.42	3.85	3.28	2.71	2.14
		5.30	4.54	3.87	3.18	2.53	1.87	1.20
		10.75	10.17	9.57	8.90	8.23	7.57	6.90
E	13.16	13.74	14.28	14.84	15.40	15.96	16.52	17.08
	5.90	5.32	4.74	4.17	3.60	3.02	2.45	1.88
		4.10	3.20	2.30	1.40	0.50	-0.40	-1.30
		10.94	9.90	8.84	7.70	6.50	5.20	3.90
W	17.00	17.95	18.51	19.07	19.64	20.20	20.77	21.34
	6.26	5.71	5.15	4.59	4.02	3.45	2.88	2.31
	5.06	4.27	3.48	2.69	1.90	1.11	0.32	-0.47
	7.0	6.00	5.10	4.20	3.30	2.40	1.50	0.60
E	17.64	18.20	18.77	19.35	19.92	20.50	21.08	21.66
	6.00	5.26	4.52	3.78	3.04	2.30	1.56	0.82
	6.04	5.29	4.54	3.79	3.04	2.29	1.54	0.79
	0.0	10.17	10.19	10.26	10.30	10.30	10.30	10.30

5/1/09

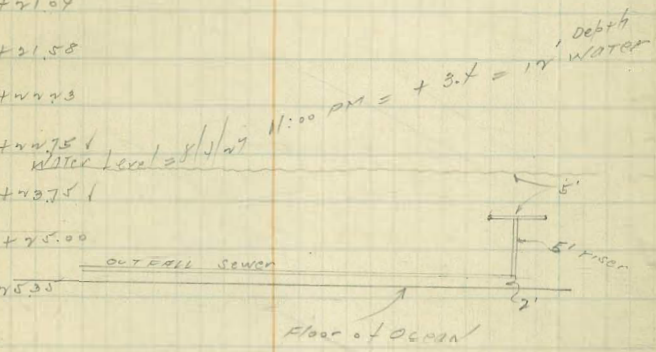
Mission Beach Sewer Outfall

at Capitran's Place
576 10.35 = π

105 contract #
Capitran's

Wedge Septic Tank = 0 + 00

2+39 = hole in pipe at shore edge	19.34	-0.95	Grade		
3+81 = end of brook line	19.96	-9.62	-9.62	-9.62	+17.30
0+37 = cuts from top of caps to flowline	2.08	8.56	-10.28	-10.19	+18.45
0+73	1.51	8.53	-10.24	-10.75	+19.58
0+98	1.55	8.90	-11.24	-11.13	+20.03
1+45	1.20	9.14	-12.26	-11.90	+21.04
1+96	1.40	8.92	-13.12	-12.64	+21.58
2+25	1.51	8.83	-14.00	-13.40	+22.23
2+93	1.73	8.61	-14.86	-14.14	+22.75
3+11	1.57	8.87	-15.72	-14.88	+23.51
3+91	0.99	9.35	-16.60	-15.65	+25.00
4+11 =	0.99	9.35	-17.00	-16.00	+25.35
4+15 = Floor of ocean	28.34	-18.00			



10" Sewer Construction
6th ST
BETW A + B STS

7/6/17
Moore
1234 B

	Flowline	61.64
		3.60
El. Sewer MH on B ST = 00	Plan = 37.00	61.04
+46.0	✓	10.96
+94		72.00
+138		24.35
+84		67.65
+30.0 = MH. to be constructed		-17.00
		50.65
		-0.07
		50.58 = 7

CUT IN GRADE 4' E of 4' of sewer

El. MH = 00	37.98	61.36
0 + 20	37.55	2.90
+40	37.63	62.26
+60	37.81	7.89
+80	37.98	61.37
+100	38.16	10.71
+120	38.33	72.08
+140	38.51	
+160	38.69	
+180	38.86	
+200	39.04	
+220	39.22	
+240	39.36	

~~5443~~ ~~WMA~~ ~~6th + B ST~~

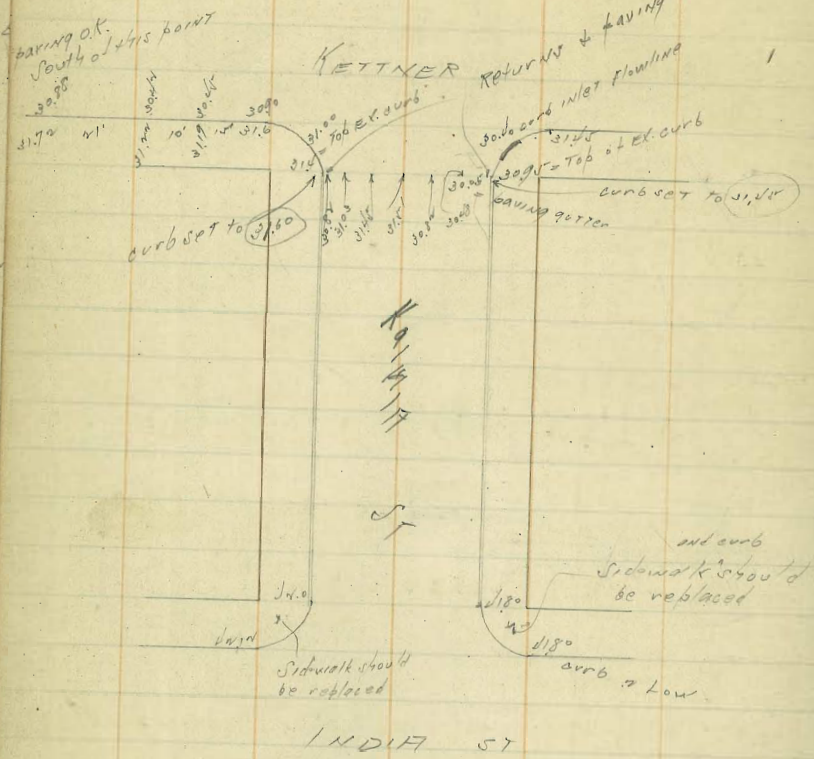
61.06 SE
3.28
62.64 2144B 77

00	256	292	1438	1224	2430
2736	516	920	720	415	130
3748	5928	6278	6276	6735	7061
✓	3770	3311	3853	3321	3936
	+2178	+2717	+26.23	+28.91	+31.25

10.55
40.00 = Flowline sewer at WL 6th ST.
- 39.34
0.64 = fall to MH to be constructed

3745	37.63	37.81	37.98	38.16	38.33	38.51	38.69
26.81	26.63	26.45	26.28	33.21	33.75	33.37	33.39
6.11	5.11	3.86	2.72	9.30	8.25	7.16	5.74
+40.70	+41.54	+42.37	+43.26	+44.07	+44.50	+44.71	+44.65
38.86	39.04	39.22	39.36				
33.22	33.04	32.86	32.72				
4.16	3.23	3.01	1.07				
+48.76	+49.51	+50.35	+51.65				

6.87
 77.11
 12.57
 36.34
 1.02
 37.41



DIRECTIONS FOR USE OF TABLES

TABLE No. 1

Distance of slope stake from side or shoulder
 stake for any width roadway slope 12 to 1.
 If ground is nearly level, the cut or fill at side
 stake is located by the double entry method in
 last column and top row. The number in body
 of table is the distance from side stake to
 road center line. If ground is not

IMPROVED TABLES
 AND
 INFORMATION

To find Tangent and External for curve of
 any other degree divide by degree of curve and
 add correction found in column of correction.
 Degree of curve with a given L may be found
 by dividing tangent (or external) opposite L by
 given tangent (or external).
 The distance from a point on the tangent to
 the curve is very nearly the square of the tangent
 length divided by twice the radius.

Old Road

75
37.77
112.77

753
413
360

10.76
404
674

1006
418
588

743
410
529

1228
473
755

240
471
591
374
799
451
950
470
490
960
475
485
468
253
291
664
494
1156
500
626
450
1076
527
549
457
1006
513
773
250
443
217
726
228
251
371
583
459
101
465
547
62
1240
788
458
46
1268
478
244
101

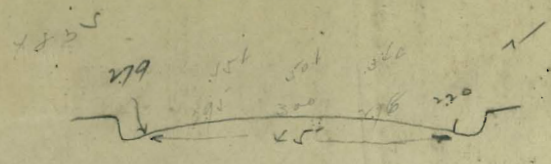
1073
470
603
489
1072
601
791
370
867
486
375
483
858
374
486
262
748
655
0.93
389
462
002
775 = 16. Pacific
5000 to city BM

1092
510
282

858
378
4.30

1393 / N/E Froude

EL Indian Redwood



328

334 350 310 220
277 120 250
90 137.77 28
20.55

22.1 = 0.6
S do / = 1.00000
R = 5.012.0

435.70
787.45
105

137.70
53
84.70

