



Books on Masonry, Plaster, Sewer

981

~~595~~

969

409

405

445

962

1003

old form tie pl.

Completely  
INDEXED  
W.K.  
JAN 17 1949

Our Leather Bound Engineers Note Books are carried in the following rulings:

- No. 380 LEVEL BOOK. Left and Right Hand Page the same as Left Hand Page of this Book.
- No. 382 FIELD BOOK. Left Hand Page as in this Book, Right Hand Page 4 x 4 to the inch, Center Line Red.
- No. 384 MINING TRANSIT BOOK. Left Hand Page as in this Book, Right Hand Page 8x8 to the inch, Center Line Red.
- No. 385 FIELD BOOK. Left Hand Page as in this Book, Right Hand Page 8 vertical and 4 horizontal lines to the inch, Center Line Red.

We also carry the Note Books listed above, bound in extra strong Fabri-Hide (otherwise the same quality of book), which can be furnished at a somewhat lower price.

In ordering Fabri-Hide covered books, add the letter "F" to catalog number.

**THE FREDERICK POST CO.**  
ENGINEERING and DRAFTING SUPPLIES  
IRVING PARK STATION  
CHICAGO, ILL.

MICROFILMED

APR 8 1965

SEWER CONST. BOOK

0

INDEX.

PAGES

PUBLIC Pl. of WYAY Bet. Buchanan + Proctor Pl.	- 24
" " " " " NEW JERSEY + ARNOLD Pl.	- 25
" " " " " East " " Bet. Buchanan + Maryland	- 26-27
Alley West of New Jersey Bet. Monroe + Meade	27
NEW JERSEY South of Proctor Pl.	27

Additional Grades Old Town  
Sewer Construction Book 137

## INDEX

	PAGE
old Town 16" line along A.T. & S.F. Ry. Taylor St. Miss. Valley	2
Sewer Const. Block 541 Old San Diego	35
Hortensia Sewer. Bet. Barnett & Whitman	35-36
HANCOCK " Bet. Hortensia & Witherby	37
WITHERBY " " Moore & Congress	37-38
CONGRESS " " Witherby & Courts	38
JEFFERSON " " " "	38
Block 226 Middletown " "	39
L. H. Jobb's Ave Sewer Bet. Witherby & Bandini	39
HANCOCK St. Sewer " " & Emory	32-34
KURTZ St " " & Seward	41-43
" " " " Seward & Bean	43-45
Courts St. Sewer " Hancock & Kurtz	45
Clayton " " " " " "	43
Emory " " Kurtz & Atlantic	44
BANDINI " " " " " "	44
Noell St. " " Moore & Hancock	46
WEST ATLANTIC St. Sewer Bet. Harshy & Bean	46
TRIAS St. Sewer Bet. Trunk Line & Whitman	46-48
AMPUDIA " " Hancock & " "	49-50
MOORE St. " " Trias & Conde	51
ARISTA " " Moore & San Diego Ave	52-57
JEFFERSON " " Ampudia & Conde	53
CONDE " " Trunk Line & JUAN	54-55
SAN DIEGO Ave Sewer Bet. Wiska & Twiggs	56

## INDEX

HARNEY St. Sewer Bet. Moore & Juan	58-59
CONGRESS Bet. Twiggs & Smith & Conde	59-60
MASON St. & Jefferson Sts.	61
MASON " Bet. Jefferson & San Diego Ave	64
SAN DIEGO Ave Bet. Twiggs & Mason	64
WALLACE St. " Trunk Line & San Diego Ave	65
SAN DIEGO " Wallace & Mason	65
SMITH St. " Trunk Line & Jefferson	60
MASON " " Juan & Calhoun	61
TWIGGS " " Jefferson & Presidio Dr.	62-63
CALHOUN " Taylor & Twiggs	66
JUAN " Rosecrans & " "	68-69
SUNSET Blvd " " " "	70-71
WALLACE " Juan & Sunset	72
Whitman " Wallace & Rosecrans	73
CHESNUT " Rosecrans & Jackson	74
ROSECRANS " Whitman & Govt. Dyke	75
ARISTA Bet. Juan & Whitman	57
" " cherry & H. Shickton	40
PINE " Ansta & Conde	40
ARISTA AND CANYON LINE	77-78
Trunk Line. Restake - MH #232 to - #70	20
San Diego Ave Restake #294-E	28
(Mon. holes - 96-97-98-99 etc.)	
Canyon Line - to rite - of MH #95	21
INDEX. Cont. on Page 0	

Water  
Replenish  
dry  
shel

Old TOWN Sewer Trunk Line  
in Public Part of WAY  
Bet. TAYLOR & W Atlantic Sts.  
16" line

Exist. Sewer E Side W Atlantic	T			Elev. Grade	
= 0+00 5-17.35	3.60	6.85	-3.25	-3.24	-0.01 loss
0+17.35		6.41	-2.81	-3.20	+0.39
1+17.35		6.21	-2.61	-3.17	+0.56
1+42.05		5.38	-1.78	-3.13	+1.35
1+89.4		3.72	-0.12	-3.09	+2.97
2+36.75 = 2 MH #5 (5-44.11) TP 10.21	10.61	3.20	0.40	-3.06	+3.46
2+81.66		3.20	-0.40	-3.03	+2.37
3+26.57		11.27	-0.66	-3.03	+2.37
3+71.48		9.16	1.45	-2.99	+4.44
4+16.39		8.34	2.27	-2.96	+5.23
4+61.3 = 2 MH #6 (7-27.14)		5.40	5.21	-2.92	+8.13
5+08.44		8.46	2.15	-2.89	+5.04
+55.58		11.88	-1.27	-2.86	+1.59
6+02.72		11.29	-0.68	-2.82	+2.14
6+49.86		9.04	1.57	-2.78	+4.65
6+97		2.94	7.67	-2.74	+10.41
7+44.14		2.45	8.14	-2.70	+10.86
7+91.3 = 2 MH #7 (45.5-8) TP 9.06 18.71 Double Drop 17.11		0.96	9.65	-2.66	+12.31
8+36.8		0.96	9.65	-2.62	+17.83
+22.3		3.47	15.21	+1.00	+14.21
7+27.8		2.98	15.73	-2.58	+12.31
+73.3		2.58	16.13	-2.55	+18.68
10+18.8		2.50	16.21	-2.51	+18.72
10+64.0		3.76	14.95	-2.48	+7.43
11+09.8		6.58	12.13	-2.44	+14.57
		8.01	10.70	-2.41	+13.11
		8.05	10.66	-2.37	+12.03
					+13.03 Reset

by the Lamp Pole  
871 400 E. Wood St on North

2

2778  
035+  
2800-T  
12.82  
1519-TP  
083+  
102  
175-  
427-TP  
378+  
805  
207-  
207-TP  
567  
360-T  
320-  
640-TP  
1021+  
1061-T  
096  
965-TP  
906+  
1871-T

on slab 7+10.14

INDEXED  
WIC  
JAN 14 1949

old Town Sewer Const. Trunk line

16" Trunk line cont.

11+55.3 = 2.01118 = 1/2 Proprietor	1871 2276.5	675	15.51	-2.33	+17.94 +17.84
(4578-6)		310	15.61	+5.00	+10.61 10.51 ← This one Reset
12+01.03 TP 175	12.01	845	10.26	-2.29	-12.55
+46.81		845	10.26		
+92.59		716	4.85	-2.26	+7.11
13+38.97		10.06	1.95	-2.22	+4.17
13+84.15		1131	0.70	-2.18	+2.88
14+29.93		1230	-0.29	-2.15	+1.86
+75.71		12.63	-0.62	-2.11	+1.49
15+21.55 = 1.11119 = 1/2 H. H. H.	12.34	1238	-0.33	-2.07	+1.74
(4591) B 573 5.36		1238	-0.37	-2.03	+1.66
15+67.46		621	-0.85	-1.99	+1.14
16+13.37		567	-0.31	-1.96	+1.65
16+59.3		534	0.02	-1.92	+1.94
17+05.2		529	0.07	-1.88	+1.95
17+51.1		4.70	0.66	-1.85	+2.51
17+97		472	0.64	-1.81	+2.45
18+42.9		4.08	1.28	-1.77	+3.05
18+88.81 = 1.11110 = 1/2 Lander st		462	0.74	-1.74	+2.48
(4580) B		526	0.10	-1.70	+1.80
19+34.6		5.03	0.33	-1.67	+2.00
19+80.4		4.88	0.48	-1.63	+2.11
20+26.2		515	0.21	-1.60	+1.81
+72 TP 575 596		515	0.21		
21+17.8		574	0.22	-1.56	+1.78
+63.6		565	0.31	-1.52	+1.83
22+09.4		5.77	0.19	-1.49	+1.68
+55.24 = 1.11111 = 1/2 Harnes st.		5.26	0.70	-1.45	+2.15

1871 = T  
845 =  
1026 = TP

Sub no 1681  
175 =  
1201 = T  
1238 =  
-0.37 = TP  
573 =

Sub 20+72  
536 = T  
515 =

575 = T.P.  
596 = T

596 = T  
433 =

163 = T.P.  
538 =

(Note this one checked back to Kurtz trial)

701 = T

451 =

850 = TP

468 =

518 = T

585 =

-0.67 = TP

422 =

375 = T

608 =

233 = 1/2 Mon

-2.34 = 1/2 Mon

0.01 = Error

chk on 814 of Mon Kurtz Trial =

Above 814 S.W. Harnes + Moore Nails = 163

Walker  
 22-11-24 old Town Sewer Cont. Trunk line  
 16" line

22+02.58 on Page 2  
 = 8' MH #11  
 = 0+00  
 (9-60.8)

9.27				-1.45	
+40.83	7.59	1.68	-1.42	+3.10	
+81.66	7.46	1.81	-1.38	+3.19	
1+22.5	7.18	2.09	-1.35	+3.44	
+63.3	8.05	1.22	-1.31	+2.53	
2+04.15	8.66	0.61	-1.28	+1.89	
+45	7.56	1.71	-1.25	+2.96	
+85.7	7.51	1.76	-1.21	+2.97	
3+26.6	7.97	1.30	-1.18	+2.48	
+67.45 = 8' TRIGGS ST. (6-35.63) = 0+00 = 8' MH #12	7.75	1.52	-1.15	+2.67	
0+35.63	7.30	1.970	-1.125	+3.69	
+71.26	6.94	2.33	-1.10	+3.43	
1+06.9	6.40	2.87	-1.07	+3.94	
+42.5	5.30	3.97	-1.04	+5.01	
+78.15 T.P. 15.56	10.98	4.58	-1.01	+5.59	
+13.8 = 8' MASON School East. 7) 3986) = 8' MH #13 = 0+00	8.49	7.07	-0.98	+8.05	
0+39.86 = 39.93 def = 0.25' 30"	1.37	14.19	-0.95	+15.14	
+77.74 T.P. 25.64	6.25	19.39	-0.91	+20.30	
1+19.61	5.31	20.33	-0.88	+21.21	
+59.48	5.16	20.48	-0.85	+21.33	
+79.35	4.84	20.80	-0.82	+21.62	
2+39.22	5.13	20.51	-0.79	+21.30	
-79.9	6.10	19.54	-0.75	+20.29	
3+18.96	7.71	17.93	-0.72	+18.65	
3+58.72 = 0+00 = 8' M.H. #14 in Jefferson St.	9.88	15.76	-0.69	+16.45	

1'16'30"  
 1'47'10"  
 2'07'30"  
 2'09'00"  
 2'58'30"  
 3'21'00"  
 3'45'30"

Note this much reset

See Page 76 for data set  
 in between 1/2 way there brooks

cut stub at 20' MH #11 Horney Moore

0.70  
 8.57+  
 9.27-T  
 5.30-  
 3.97-T.P.  
 11.59+  
 15.56-T  
 0.27-  
 15.79-T.P.  
 10.35+  
 25.64-T  
 12.10-  
 13.54-T.P.  
 0.89+  
 14.93-T

Old Town Survey Cont. (MH # 14)  
 1/16" to MH 15 } (14" base bet 15-23)

(6-3554) TP	1443				
0+3554		1042	4.01	-0.67	+4.68
+71.08		1332	1.11	-0.64	+1.75
1+06.62 TP	4.89	476	0.13	-0.61	+0.74
+42.16		610	-1.21	-0.58	-0.63
+77.7		559	-0.70	-0.55	-0.15
2+13.22 = 1/2 Smith St (8-3285) - 1/2 MH # 15 = 0+00		527	-0.38	-0.52	+0.14
0+32.85		552	-0.63	-0.48	-0.15
+65.70		599	-1.10	-0.44	-0.66
+98.55		598	-1.09	-0.40	-0.69
1+31.40		575	-0.86	-0.36	-0.50
+64.25		572	-0.83	-0.32	-0.51
+97.10		550	-0.61	-0.28	-0.33
2+29.95		524	-0.35	-0.24	-0.11
2+62.79 = 1/2 Wallace St. Reduced (9-3361) - 1/2 MH # 16 = 0+00		429	0.60	-0.20	+0.80
0+33.61		322	1.67	-0.16	+1.83
+67.22 TP	4.70	461	0.09	-0.12	+0.21
1+00.83		540	-0.70	-0.08	-0.62
+34.44		564	-0.94	-0.04	-0.90
+68.05		584	-1.14	-0.00	-1.14
2+01.66		581	-1.11	+0.04	-1.15
+35.27		580	-1.10	+0.08	-1.18
2+68.9 (in block 409)		571	-1.01	+0.12	-1.13
3+02.5 = 1/2 MH # 17 = 0+00 (9-3361)		495	-0.25	+0.16	-0.41
0+33.61		475	-0.05	0.20	-0.25
+67.22		394	0.76	0.24	+0.52

H.J. from Page 4 = 1443  
 1332  
 111 = TP  
 378 +  
 489 = T  
 322 -  
 1.67 = TP  
 303 +  
 470 = T



old TOWN Sewer Cont. Trunk line  
14" line

1+00.83	4.70	3.86	+0.84	0.28	+0.56
+39.44		3.33	1.37	0.32	+1.05
+68.05		3.28	1.42	0.36	+1.06
2+01.66		3.08	1.62	0.40	+1.22
+35.27 T.P.	9.49	7.63	1.86	0.44	+1.42
+68.9		8.34	1.15	0.48	+0.67
3+02.54 = 25' South of Taylor st (+854) 6 = 2 MN #18 = 0+00 T.P. 9.34		8.06	1.43	0.52	+0.91
0+48.54		4.71	4.63	0.58	+4.05
+97.1		6.37	2.97	0.64	+2.33
1+45.6		6.35	2.99	0.70	+2.29
+74.2		6.81	2.53	0.76	+1.77
2+42.7		5.90	3.44	0.82	+2.62
-19.26 = 2 Calhoun on East = 0+00 = 2 MN #19		5.64	3.70	0.87	+2.83
0+50		5.57	3.77	0.93	+2.84
1+00		5.50	3.84	0.99	+2.85
+50		5.40	3.94	1.05	+2.89
2+00 T.P.	10.00	6.33	3.67	1.11	+2.56
+50		5.80	4.20	1.17	+3.03
3+00 = 2 Juan St = 0+00 = 2 MN #20		5.22	4.78	1.23	+3.55 Location cut stub changed
0+50		5.28	4.72	1.29	+3.43
1+00		5.20	4.80	1.35	+3.45
+50		4.92	5.08	1.41	+3.67
2+00		4.68	5.32	1.47	+3.85
+50		4.70	5.30	1.53	+3.77
3+00 = 2 Serrano St +50 = 0+00 = 2 MN #21		4.51	5.49	1.59	+3.90
		3.50	4.50	1.65	+2.85

Cont. on 7

H.I. From Page 5 = 470.

308 -  
1.62 = T.P.  
7.87 +  
7.19 - T  
6.55  
= 2.94 = Nail  
  
9.49 = T  
5.81 -  
3.68 = T.P.  
3.05 +  
7.33 - T  
3.01  
6.32  
6.28 = B.M.  
6.04 = Error  
= 2.33 = T  
5.50 -  
3.65 = T.P.  
2.46 +  
6.29 = T  
6.03 -  
5.66 = T.P.  
3.63 +  
7.27 - T  
3.58 -  
5.71 = T.P.  
3.42 +  
7.13 = T  
3.17 -  
5.76 = T.P.  
3.62 +  
7.58 = T  
7.84 -  
1.74 = T.P.  
5.21 +  
6.95 = T  
5.32  
= 1.63 = B.M.  
1.63  
0.00 = Error.  
  
2.94  
6.40 +  
9.34 = T  
3.40 -  
2.94 = T.P.  
6.06  
12.00 = T  
5

Taylor & San Diego Ave  
Left B.M. Nail in the Lamp Pole

B.M. S.E. Top Hydr. Taylor & Jun St

Note check back to B.M. Harney & Moore

{ San Jacinto Ave B.M. check  
Ret. No Place + Serrano }

SY.  
obt. on B.M. Harney & Moore St

B.M. the Lamp Pole Taylor & San Diego

See next page

old Town Sewer Cont. 14" trunk 6100

	Profile 1 - Plan 7				
0 + 450	10.00	4.23	5.77	1.71	
1 + 00 = 0 + 100 = 6" MH # 284 = 1/2 Sun. Ave. (5-51) T.P.	11.56	4.06	5.74	1.77	
0 + 51		5.95	5.61	1.83	
1 + 02		5.56	6.00	1.89	
+ 53		5.11	6.45	1.95	
2 + 04		5.16	6.40	2.01	
+ 55 = 0 + 100 = 6" MH # 22		5.99	5.57	2.08	
(7-49.3') 0 + 49.3		5.14	6.42	2.15	
+ 98.6		5.12	6.44	2.22	
1 + 47.9		4.83	6.73	2.30	
+ 97.2		4.74	6.82	2.37	
2 + 46.5		4.52	7.04	2.44	
2 + 95.7		4.26	7.30	2.51	
3 + 45 = 0 + 100 = 8" MH # 23 = End 14" Line		3.20	8.36	2.59	
0 + 50		2.85	8.71	3.40	
1 + 00	T.P. 21.34	11.96	9.38	4.21	
+ 50		10.51	10.83	5.03	
2 + 00		9.83	11.51	5.84	
+ 50		8.85	12.49	6.65	
3 + 00		7.65	13.69	7.47	
+ 50 = 0 + 100 = 6" MH # 24	33.17	8.16	14.50	8.29	
0 + 42.84		0.55	32.62	8.53	
+ 85.68	T.P. 28.01	9.68	18.33	8.78	
1 + 28.52		10.69	17.32	9.02	
+ 71.35 = 6" MH # 25 = Sta. 143 + 34.9	13.05	14.96	9.27		

Cont. on Page 8

+4.06
+4.17
+3.78
+4.11
+4.30
+4.39
+3.49 + 4.51
+4.27
+4.22
+4.43
+4.46
+4.60
+4.79
+5.77 = Think Line
+5.31
+5.17
+5.80
+5.67
+5.84
+6.22
+6.72 + 5.72 New location
+74.07
+9.55
+8.30
+5.19

H.I. from Page 6 = 10.00 = π  
 4.06 = π  
 5.94 = T.P.  
 5.62 = π  
 11.56 = π  
 4.85 = π  
 8.71 = T.P.  
 12.63  
 21.34  
 12.9  
 20.05  
 28.14 = B.M.  
 20.9 = Error.

New Location in Side Walk  
 ch. on B.M. B.P. East end Old Town Bridge

20.14 = About Sta  
 13.05  
 33.17 = π  
 13.05  
 70.14 = T.P.  
 78.74  
 38.1 = π

2516-1  
 797  
 1809-ckk on Hub 6 M.H. 8

# Mission Valley Sewer 12" Line

From old town <sup>New</sup> Bridge to Mission Grade.  
 This line ~~backed~~ <sup>backed</sup> in Hence  $\Delta$  turned  $\Delta$  etc.  
 in Reverse order to angles as given in  
 Profile Maps Profile # 4 thru 6

Station	Profile	Repetition	9.27
143+39.7 = 2 MH #25 (4-38.1)	28.01	9.93	18.08
142+76.2		10.68	17.33
142+57.5		12.55	15.46
142+18.8		2.40	13.36
141+80 = MH #26 (4-51.5)	2.576	5.33	20.43
141+28.25		4.54	21.22
140+76.45		5.93	19.83
140+24.7		5.99	19.77
139+73.0 = MH #27 (3-47)		6.97	18.79
139+26		7.49	18.27
138+79		4.41	21.35
138+32		4.33	21.43
137+85		2.82	22.74
137+38		6.06	23.07
136+91	29.13	6.38	22.75
136+44		6.57	22.56
135+97 = MH #28 (4-51.5)	38.91	10.2	37.89
135+45.5		17.52	13.67
134+94.0	31.19	6.11	25.08
134+42.5		7.71	23.48
133+91.0 = MH #29 (1-45)		14.06	21.79
133+43 = MH #30 (3-36.87)	35.85	8.44	27.41
133+06.2		0.85	35.00
132+69.5			

cont page 9

## INDEXED

WK  
 JAN 14 1949

+8.57
+7.62
+5.53
+13.21
+9.99
+10.58
+8.80
+8.44
+7.19
+6.40
+9.21
+9.02
+10.26
+10.12
+9.53
+9.08
+14.12
-0.39
+10.73
+8.85+7.83
+5.86
+6.87
+11.29
+12.28
+18.69
+19.66

Note this H.I. used up Canyon Line Page 77 → 31.19 = T  
 For ck out see labels up Canyon " 77 387  
 left 8M. on RE Hub M.H. #30 → 22.32 = 8M.

Change of grade  
 def. MH #29 to #30

H.I. From Page 7 = 28.01

12.55 -
15.46 = TP
10.30 +
25.76 = X
2.82 -
22.91 = TP
6.19 +
29.13 = X
138 -
27.75 = TP
11.6 +
38.71 =
11.6
27.75 = TP
341 +
31.19 = T
387
22.32 = 8M.
8.53 +
35.85 = T
12.24
24.61 = TP

# Mission Valley Line

Station	Cont.	13.86	21.99	16.51	+5.48
132+32.7 = Δ 76°59' R (4-40.67) MH 31 TR	35.85	13.86	21.99	15.55	+6.44
131+9.2	37.24	8.55	28.69	16.72	+11.97
131+51.4		1.80	35.44	15.78	-7.12
131+10.7	46.44	9.94	36.50	16.94	+18.50
130+70 = Δ 16°18' R (3-31) MH 32 TR		8.35	38.09	14.01	+7.43
130+31	16.29	6.48	7.81	17.15	+19.35
129+9.2		5.42	10.87	14.24	+2.76
129+53 = Δ 2°20' Lt (2-50) TR		3.55	12.74	17.37	+20.72
129+03	26.67	12.98	13.74	16.48	-12.61
128+53 = MH 33 TR 2-48.5 = Δ 17°05' R	39.05	9.40	29.65	17.57	-7.76
128+04.5		7.48	79.57	16.70	-6.89
127+56 = MH 388 (3-43.67) = Δ 18°18' Lt		7.14	31.91	17.77	-6.90
127+12.33		6.95	32.10	16.92	-6.05
126+68.66		4.63	34.42	17.98	-5.24
126+25 = MH 34 3-46.67 = Δ 24.25° Lt		8.30	30.75	17.15	-4.41
125+78.33		6.48	32.57	18.24	-4.50
125+31.66		7.65	31.40	17.43	-3.69
124+85 = Δ 5°16' Lt (4-45) TR	43.59	11.40	37.19	18.50	+11.15
124+40				17.72	+4.93
123+9.5		11.61	31.98	18.75	+10.82
123+50		9.43	34.16	18.50	+14.57
123+05 = MH 35 4-38.75 = Δ 17°50' R		9.77	33.82	19.01	+12.90
122+66.25		7.54	36.05	18.27	+13.64
122+27.50		7.29	36.30	19.24	+12.86
121+88.75		7.95	35.64	18.52	+13.60
121+50 = MH 389 = Δ 16°06' Lt	9.80	33.79	31.72	19.47	+14.95
				18.77	+15.65
				19.70	+11.05
				19.02	+11.73
				19.94	+12.63
				19.29	+13.28
				20.18	+11.22
				19.56	+11.84
				20.43	+11.43
				19.32	+12.04
				20.67	+11.52
				20.07	+12.12
				20.91	+11.07
				20.33	+11.65
				21.15	+13.01
				20.58	+12.58
				21.38	+12.41
				20.84	+12.98
				21.58	+14.47
				21.06	+14.99
				21.78	+14.52
				21.28	+15.02
				21.98	+13.66
				21.50	+14.14
				22.19	+11.60
				21.72	+12.07

Cont P-10

Change Grade to 168 MW for MH 31 and 32

HI from Page 8 = 35.85

1124 -
24.61 = TP
12.63 +
87.74 - T
1.80 -
35.44 - TP
11.00 T
46.44 - T
11.00 -
35.44
1.80 -
87.74 = T
12.63 -
24.61 = TP
0.83 +
25.94 - T
1.80 -
14.90 = TP
1.39 +
16.29 = T
2.02 -
11.27 = TP
12.00 -
26.67 = T
0.31 -
26.33 = TP
19.72 +
39.05 = T
7.17 -
31.86 = TP
2.73 +
62.59 = T

# Mission Valley Line Cont.

678

10

(3-50)				22.45	+11.50	
121+00	43.59	9.64	33.95	22.00	+44.95	offsets
				22.71	+15.16	10' RT
120+50		5.72	37.87	22.29	+15.58	
= $\Delta 20'19''$ RT				22.97	+8.57	
120+00 = MH#36		12.05	31.54	22.58	+8.96	
(4-51.5')				23.24	+10.73	
119+48.5	48.36	14.39	33.97	22.87	+44.10	
				23.51	+11.42	
118+97.0		13.43	34.93	23.11	+44.77	
				23.78	+15.43	
118+45.5		9.15	39.21	23.45	+15.76	
= $\Delta 8'05.7''$ RT				24.05	+12.01	
117+94.0 = MH#37		12.30	36.06	23.75	+12.31	
(5-48.8')				24.30	+13.86	
117+45.2		10.20	38.16	24.03	+14.43	
				24.56	+12.55	
116+96.4		11.25	37.11	24.31	+12.80	
				24.81	+12.26	
116+47.6		11.29	37.07	24.59	+12.48	
				25.07	9.76	
115+98.8		13.53	34.83	24.87	+9.96	
= $\Delta 0'23''$ LT				25.32	+15.63	
115+50 = MH#38		7.41	40.95	25.15	+15.80	
(3-50)				25.58	10.04	
115+00	47.67	12.05	35.62	25.43	+10.21	
				25.84	12.77	
114+50		9.06	38.61	25.71	+12.90	
= $\Delta 13'47.6''$ LT				26.11	+16.68	
114+00 = MH#39		4.88	42.79	26.00	+14.79	
(3-48)				26.36	+13.68	
113+52		7.63	40.04	26.27	+13.77	
				26.61	+12.05	
113+04		9.01	38.66	26.54	+12.12	
= $\Delta 12'43.9''$ PL				26.87	+14.19	
112+56 = MH#39 (note $\Delta$ turned)		6.61	41.06	26.82	+14.24	
(3-39.33')				27.08	+15.93	
112+16.67	51.54	8.53	43.01	27.04	+15.97	
				27.29	+16.59	
111+77.33		7.66	43.88	27.26	+16.62	
= $\Delta 47.16'36''$						
111+38 = MH#391		8.40	43.14	27.49	+15.65	
(3-44.33')						
110+93.67	41.79	4.42	37.37	27.75	+9.62	
110+49.33		4.30	37.49	28.00	+9.49	
= $\Delta 30'35''$ RT						
110+05.0 = MH#40		5.48	36.31	28.25	+8.06	
(3-45')						
109+60		4.21	37.58	28.51	+9.07	
109+15		5.18	36.61	28.76	+7.85	

HT from Page 9 = 43.59  
 772 -  
 35.87 - TP  
 12.49 +  
 48.36 - X  
 48.26 = X  
 741 -  
 40.95 - TP  
 672 +  
 47.67 - X  
 661 -  
 41.06 - TP  
 10.85 +  
 51.54 - X  
 12.77 -  
 38.77 - TP  
 302 +  
 41.79 - X

Change of Grade  
 Between MH#391 and MH#29

Prelim Book 1109  
 Page 57  
 11.09  
 37.27 - Marker  
 37.20 - Nick DONANS  
 6.07

Cont D-11

MISSION VALLEY Sewer Cont.  
12" Line

108+70 = $\Delta 27^{\circ}33'$ Lt. (A-42.15) = MH #41	41.79	3.95	37.84	29.02	+8.82
108+27.85		5.02	36.77	29.26	+7.51
107+85.7		4.73	37.06	29.50	+7.56
107+43.35		4.53	37.26	29.74	+7.52
107+11.40 = $\Delta 12^{\circ}49'$ Rt. (C-33.53) = MH #42		4.56	37.23	29.98	+7.25
106+67.85 T.P.	42.20	5.36	36.84	30.17	+6.67 ✓
106+34.3 = $\Delta 15^{\circ}48'$ Lt. + P. (3-4577) = MH #392	42.32	2.70	39.62	30.36	+9.26
105+88.53		3.04	39.28	30.62	+8.66
105+42.76		2.36	39.96	30.88	+9.08
104+97 = $\Delta 17^{\circ}52'$ Ft. 7D (6-42.83) = MH #43	43.92	4.11	39.31	31.15	+8.16
104+54.17		3.40	40.02	31.39	+8.63
104+11.34		2.86	40.56	31.64	+8.92
103+68.51		2.11	41.31	31.88	+9.43
103+25.68		2.11	41.31	32.12	+9.19
102+82.85		1.21	42.21	32.37	+9.84
102+40 = $\Delta 1^{\circ}32'$ Rt. (5-44) = DMH #44		1.09	42.33	32.61 12"	+9.72
101+96		1.03	42.39	36.50-8"	+5.83
101+52		1.49	41.93	32.86	+9.53
101+08 T.P.	48.62	6.30	42.2	33.11	+8.82 ✓
100+64		6.77	41.85	33.36	+8.96
100+20 = P.O.T. Lt. (5-44) = MH #45		6.81	41.81	33.61	+8.74
99+76		6.25	42.37	33.87	17.91
99+32		5.74	42.88	34.12	+8.25
98+88		6.20	42.42	34.37	+8.51
98+44		6.57	42.05	34.62	+7.80
98+00 = $\Delta 42^{\circ}53'$ Ft. = MH #46		6.94	41.68	34.87	+7.18
				35.12	+6.56 ✓

Cont. P-12

H.I. from Page 10 = 41.79

517  
~~366~~ = TP  
 558  
 4220 = T  
 508  
 37.12 = TP  
 530 +  
 42.32 = T  
 638  
 35.94 = TP  
 748 +  
 4342 = T  
 149  
 41.93 = TP  
 669 +  
 48.62 = T  
 760  
 41.02 = B.M.  
 752 +  
 48.54 = T

Book 1107 - Page 57  
 ch. on Mt. Dennis Sub. 106+34.3

42.32  
 3846 = Walker  
 3838 = Demaris  
 008 = difference

Left B.M. in Elec Pole 3rd Pole East  
 of Allens Dairy Rd. on South line  
 Mission Valley Road

Profile  
 Sheet 15

6-13-28  
Walker  
Stake  
100  
= Marking

Mission Valley Sewer Cont.

(5-50)	48.54				
97+50		6.18	42.36	35.40	+6.96
97+00		5.40	43.14	35.69	+7.45
96+50		4.90	43.64	35.98	+7.66
96+00		4.77	43.77	36.26	+7.51
95+50 = $\Delta 37^{\circ}08' R$ (3-40')		5.34	43.20	36.55	+6.65
95+10		3.29	45.25	36.78	+8.47
94+70 = $\Delta 41^{\circ}17' L$		5.26	43.28	37.01	+6.27
94+30 = MH #48 (5-41)		4.55	43.99	37.23	+6.76
93+89		4.70	43.84	37.46	+6.38 ✓
93+48 = $\Delta 36^{\circ}45' L$		3.99	44.55	37.70	+6.85
93+07 = MH #49 (2-50')		3.62	44.92	37.93	+6.99
92+57 = $\Delta 24^{\circ}34' L$		4.00	44.54	38.21	+6.33
92+07 = MH #50 (6-43.66)		3.21	45.33	38.50	+6.83
91+63.95		1.45	47.09	38.75	+8.34 ✓
91+19.7 TP	53.27	1.67	51.60	39.00	+12.60
90+76.10		2.93	50.34	39.25	+11.09
90+32.4		4.69	48.58	39.50	+9.08
89+88.75		6.71	46.56	39.75	+6.81
89+45 = $\Delta 40^{\circ}41' L$ (4-43.75)		7.69	45.58	39.99	+5.59
89+01.25		6.14	47.13	40.24	+6.89
88+57.50		4.74	48.53	40.49	+8.04
88+13.75 TP	57.04	8.85	48.19	40.74	+7.45
87+70 = $\Delta 47^{\circ}59' R$ (5-49.8')		10.88	46.16	40.99	+5.17
87+20.2		9.98	47.06	41.27	+5.79
86+70.4		9.01	48.03	41.56	+6.47

H.I. from Page 11 → 48.54  
 12.5  
 on cut slab Sta 91+63.95 → 47.07 = TP  
 6.18  
 53.27  
 833  
 24.94 = ch. on 2 NUB 89+45 (Page 56)  
 44.88 = Nick Donais  
 o.p.b. = difference  
 53.27 = r  
 39.2  
 49.35 = TP  
 7.69  
 57.04 = r

Cont. on 13

Mission Valley line cont

86+20.6	57.04	886	48.18	41.84	+6.34
85+70.8 = $\Delta 103^{\circ}28'17''$		9.25	47.79	42.12	+5.65
85+21.0 = MH#50 (4-42')		10.94	46.10	42.41	+3.69
84+79		8.35	48.69	42.65	+6.04
84+37		7.11	49.93	42.89	+7.04
83+95 = $\Delta 73^{\circ}31'17''$		7.62	49.42	43.13	+6.29
83+53 = MH#54 (6-44.11')		7.68	49.36	43.37	+5.99
83+08.83		3.40	53.64	43.62	+10.02
82+64.66 T.P.		0.74	56.80	43.87	+12.43
82+20.49	58.86	1.52	57.34	44.12	+13.22
81+76.32		3.91	54.95	44.37	+10.58
81+32.15 = $\Delta 62^{\circ}29'17''$		4.86	54.00	44.62	+9.38
80+88 = MH#55 (5-43.1')		8.44	50.42	44.88	+5.54
80+44.6		9.02	49.84	45.13	+4.71
80+01.2		3.66	55.20	45.38	+9.82
79+57.8		6.27	52.59	45.63	+6.96
79+14.4 = $\Delta 87^{\circ}58'44''$		6.42	52.44	45.88	+6.56
78+71 = MH#56 (4-41.5')		8.13	50.73	46.12	+4.61
78+29.5		6.30	52.56	46.35	+6.21
77+88		6.19	52.67	46.59	+6.08
77+46.5 = $\Delta 46^{\circ}35'14''$		6.18	52.68	46.82	+5.86
77+05 = MH#57 (3-46.33')		5.27	53.59	47.06	+6.53
76+58.67		6.76	52.10	47.33	+4.77
76+12.33 = $\Delta 46^{\circ}37'44''$		5.75	53.11	47.59	+5.52
75+66 = MH#58 (2-47.57')		5.36	53.50	47.85	+5.65
75+18.5		6.12	52.74	48.12	+4.62

H.I. from Page 12

57.04  
074 -  
56.30 = TP  
2.56 +  
58.86 = T

Box 119-55  
c64.00 & 114.80 + 55  
58.86  
9.89  
46.97  
+ 8.83 = Danans  
0.04 = difference



74+71 = $\Delta 37^{\circ}39' R_L$ (5-426')	5886	549	53.37	48.40	+4.77
74+28.4 T.P.		4.43	54.43	48.64	+5.79 ✓
73+85.8	659X	10.38	55.56	48.88	+6.68
73+43.2		9.09	56.85	49.18	+7.72
73+00.6		9.88	56.06	49.37	+6.69
72+5B = $\Delta 60^{\circ}05' R_L$ (3-51')		13.78	52.16	49.61	+2.55
72+07		7.96	57.78	49.90	+8.08
71+56		6.46	59.48	50.19	+9.29
71+05 = $\Delta 88^{\circ}01' L_T$ (3-3833)		10.41	55.53	50.48	+5.05
70+66.47		11.46	54.48	50.70	+3.78
70+28.33		8.71	57.23	50.92	+6.31
69+90 = $\Delta 17^{\circ}29' R_L$ (6-50.83)		6.86	59.08	51.14	+7.94
69+39.17		5.73	60.15	51.35	+8.80
68+88.34		5.60	60.34	51.55	+8.79
68+37.5		7.62	58.32	51.76	+6.56
67+86.7		6.57	59.37	51.96	+7.41
67+35.83		8.49	57.45	52.16	+5.39 ✓
66+85 = $\Delta 14^{\circ}18' R_L$ (6-50.67')	69.90	10.31	59.59	52.36	+7.23
66+34.23		8.77	61.13	52.56	+8.57
65+83.66		8.93	60.97	52.76	+8.71
65+33.0		8.54	61.36	52.96	+8.40
64+82.33		7.65	62.25	53.16	+9.09
64+31.66		7.79	62.11	53.37	+8.74
63+81 = $\Delta 6^{\circ}41' L_T$ (2-299')		6.85	63.05	53.58	+9.47
63+51. = Interceptor 6" base		6.82	63.08	53.70	+9.38
63+21.2 = MH #64		5.64	64.26	53.82	+10.44

chk 2 Nos 71405 each 1109 P110  
 65.94  
 11.48  
 54.46 = Walter  
 54.39 = Donnan's  
 0.07 = difference

H.I. from P.18 = 5886  
 448 -  
 5443 = T.P.  
 1151 +  
 6594 = T  
 849 -  
 57.45 = T.P.  
 12.25 +  
 6970 = T

## Mission Valley Line

15

	$\pi$				
(6-4681) 62+72.33	69.90	4.48	65.42	54.01	+11.41
62+27.46		4.26	65.64	54.20	+11.44
61+80.6		6.65	63.25	54.39	+8.86
61+133.7 T.P.	75.31	10.56	64.75	54.58	+10.17
60+86.8 - $\Delta 08^{\circ}43' R$		10.63	64.68	54.77	+9.91
60+40 = MH#65 (3-41')		10.73	64.58	54.95	+9.63
59+99		9.62	65.69	55.11	+10.58
59+58		7.63	67.68	55.28	+12.40
59+17		7.73	67.58	55.44	+12.14
58+76 - $\Delta 13^{\circ}20' R$		8.31	67.00	55.61	+11.39
58+35 = MH#66 (4-43.25)		8.75	66.56	55.77	+10.79
57+91.25		5.64	69.67	55.94	+13.73
57+48.50 T.P.	77.07	5.46	71.61	56.12	+15.49
57+05.25 - $\Delta 54^{\circ}33' R$		6.29	70.78	56.29	+14.49
56+62.00 = MH#67 (3-42.64)		13.44	63.63	56.47	+7.16
56+20 T.P.	72.32	5.22	67.10	56.64	+10.46
55+78 - $\Delta 2.5'$ change in direction		7.48	64.84	56.80	+8.04
55+36 = MH#68 (3-44.97) T.P.		5.71	66.61	56.97	+9.64
54+10.77 change in direction	81.53	9.32	72.21	57.15	+15.06
54+77 - $\Delta 11^{\circ}21' R$		4.47	77.06	57.33	+19.73
53+34 = Elevation 58+79.4 (2-37.35)		2.40	79.13	57.52	+17.61
58+42.05 - $\Delta 20^{\circ}0' L$		5.54	75.99	57.70	+18.29
58+04.1 = MH#231 (5-43.94)		12.76	68.77	57.88	+10.89
57+60.76 T.P.	74.82	7.08	67.74	58.08	+9.66
57+16.82		6.48	68.34	58.25	+10.09
56+72.88		5.93	68.89	58.43	+10.46

Cont on 16

M <sub>2</sub> from P-12 =	69.90
	6.65
	63.25 = T.P.
	12.06
	73.31 = T
	3.62
	69.67 = T.P.
	7.80
	77.07 = T
	9.33
	67.74 = T.P.
	4.58
	72.32 = T
	2.80
	69.52 = T.P.
	12.01
	81.53 = T
	12.76
	68.77 = T.P.
	6.05
	74.82 = T

on cross in concrete in Bull Pen

Mission Valley <sup>12"</sup> TRUNK LINE

56+28.94 = Δ 87°23' Lt	74.82	7.41	67.41	58.60	+ 8.81
55+85 = MH# 250 2-30'		8.85	65.77	58.76	+ 7.21
55+55 = Δ 87°45' Lt		12.98	61.84	58.88	+ 2.96
55+25 = MH# 232 (4825) 9		10.74	64.08	59.00	+ 5.08
54+76.75		7.87	66.95	59.27	+ 7.68
54+26.5		5.65	69.17	59.54	+ 9.63
53+80.25 = Δ 13°38' Rt		3.90	70.92	59.81	+ 11.11
53+32 = MH# 70 T.P. 2-38.5	83.33	8.07	75.26	60.08	+ 15.18
52+93.5		4.49	78.84	60.29	+ 18.55
52+50 = Δ 3°22' Lt (3-51.66')		3.44	79.89	60.51	+ 19.38
52+03.39		5.50	77.83	60.80	+ 17.03
55+51.66 = Δ 7°07' Rt		8.74	74.59	61.09	+ 13.50
51+00 = MH# 393 (3-49.67')		9.25	74.08	61.38	+ 12.70
50+50.33		6.82	76.51	61.66	+ 14.85 ✓
50+00.67 T.P. = Δ 71°02' Rt	80.45	3.67	76.78	61.94	+ 14.84
49+51 = MH# 71 (6-44.33')		10.85	69.60	62.21	+ 7.39
49+06.67		8.10	72.35	62.46	+ 9.89
48+62.39		9.34	71.11	62.71	+ 8.40
48+18		9.04	71.41	62.96	+ 8.45
47+73.67		8.26	72.19	63.21	+ 8.98
47+29.33 = Δ 3°47' Rt		10.41	70.01	63.46	+ 6.55 ✓
46+85 = MH# 72 (7-47.2')		8.47	71.98	63.70	+ 8.28
46+37.8 T.P.	79.36	6.96	72.40	63.96	+ 8.44
45+90.6		6.30	73.06	64.23	+ 8.83
45+43.4		5.97	73.39	64.49	+ 8.90
44+96.2		7.94	71.42	64.76	+ 6.66

H.S. from P-15 - 74.82  
 673 -  
 on 2 Hub MH# 70 = 6507 - T.P.  
 74.82 - 16.11 =  
 2.35 -  
 Gate  
 left 8 m. on Nail top 6" 1/2" Post opp MH# 210 T.P. T. 2 m.  
 72.47 - 16.11 =  
 10.86 +  
 83.33 -  
 6.82 -  
 76.51 = T.P.  
 374 +  
 80.45 -  
 8.47 -  
 71.98 = T.P.  
 7.38 +  
 THIS HT USED ON 17 79.36 = T

Mission Valley Line Cont.

44+49	79.36	5.41	73.95	65.02	+8.93
44+01.8		5.55	73.81	65.28	+8.53
43+54.6 = Δ 7°06' R.L. (4-479) = MH #73		3.90	75.46	65.55	+9.91 - W +7.00 - E
43+06.7		2.16	77.20	66.75	+10.45
42+58.8	84.91	7.01	77.90	67.04	+10.86
42+10.9 = Δ 49°07' R.L.		6.95	77.96	67.33	+10.63
41+63 = MH #74 (2-44.8)		10.29	74.62	67.61	+7.01
41+18.2		5.98	78.93	67.88	+11.05
40+73.4 = Δ 20°05' R.L. (4-38.35) = MH #394		8.38	76.53	68.15	+8.38
40+35.05 TP	80.09	4.48	75.61	68.38	+7.23
39+96.70		7.27	72.82	68.61	+4.71
39+58.35 = Δ 46°59' L.L.		12.63	67.46	68.84	-1.38
39+20 = MH #75 (2-46.8)		2.13	73.96	69.07	+4.89
38+73.2		0.30	79.79	69.35	+10.44
38+26.4 = Δ 51°48' L.L. (2-28.2) = MH #76		4.12	75.97	69.63	+6.34
37+98.2 = Δ 75°32' L.L.		11.44	68.65	69.80	-1.15
37+70 = MH #77 2-50 TP		3.53	76.56	69.97	+6.59
37+20	91.59	5.47	86.12	70.27	+15.85
36+70 = Δ 3°01' R.L. 2-40		6.01	85.58	70.57	+15.01
36+30 = Δ 16°44' R.L.		2.27	89.32	70.81	+18.51
35+90 = MH #395 (2-45)		7.28	84.31	71.05	+13.26
35+145 = Δ 74°18' R.L. (1-47.86) = MH #78		3.82	87.77	71.32	+16.45
35+100		11.51	80.08	71.59	+8.49
34+52.14		7.73	83.84	71.88	+11.98
34+04.78 TP	95.85	10.05	85.80	72.17	+13.63
33+56.42		7.49	86.36	72.46	+13.90

H.I. from Page 16 = 79.36 - π  
 2.16 -  
 77.20 = TP  
 7.71 +  
 84.91 = π  
 6.83 -  
 78.08 = TP  
 2.01 +  
 80.09 = π  
 0.26 -  
 79.83 = TP  
 4.76 +  
 91.59 = π  
 7.73 -  
 83.86 = TP  
 4.99 +  
 95.85 = π

June 28-28  
 Walkers = 72.49 = chg. on Danans L. 1146  
 72.53 = Danans Sept. 1924  
 0.04 = Difference

this H.I. used on P-18 → 95.85 = π

Rappling  
Sta  
Bridges  
7-13-28

Mission Valley Line Cont.

33+08.56	95.85	9.04	86.81	72.74	+14.07	
32+60.7		9.69	86.16	73.02	+13.14	
32+12.82		11.85	84.00	73.31	+10.69	
31+65 = MH#79 (5-45')		13.06	82.79	73.60	+9.19	
31+22		12.58	83.27	73.86	+9.41	
30+77		11.22	84.63	74.12	+16.51	
30+36		10.81	85.04	74.38	+10.66	
29+93		11.78	84.07	74.64	+9.43	
29-150 = L.MH#80 (6-45')		11.89	83.96	74.89	+9.07	
29+05		10.48	85.37	75.16	+11.021 ✓	
28+60 T.P.	96.17	11.74	84.43	75.43	+9.00	
28+15		14.09	82.08	75.70	+6.38	
27+70		2.25	93.92	75.97	+17.95	
27+25		3.42	92.75	76.24	+16.51	
26+80 = P.O.T. MH#81 (3-46.67')		3.10	93.07	76.51	+16.56	
26+33.33		1.80	94.37	76.79	+17.58	
25+86.66		3.42	92.75	77.07	+15.68	
25+10 = Δ 10°36' Rt MH#39 49.33	95.58 T	4.63	90.95	77.35	+13.60	
24+95.67		12.53	94.81	77.62	+17.19	
24+51.33	T.P.	107.34	7.99	99.35	77.88	+2.147
24+07.00 MH#82 46.7' T.P.		11.41	95.93	78.15	+117.78	
23+60.30		2.63	104.71	78.43	+26.28	
23+13.60	116.01	8.65	107.36	78.71	+28.65	
22+66.90		7.14	108.87	78.99	+29.88	
22+20.20 T.P.		10.77	105.24	79.27	+25.97	
21+73.50 MH#83	109.20 T.P.	172.97	10.14	99.06	79.55	+19.51

H.I. from page 17 → 95.85  
10.48  
85.37 = T.P.  
10.804  
96.17 = T  
12.85 =  
83.32 = T.P.  
96.17  
7.82 =  
88.35 = Val  
88.38 = Gregory  
0.03 = Difference

TR. on L. MH#396

Book 1109.17  
cht. on Pot. Hub Gregorys 27+90

cht-stab-sta 25+86.66 = 92.75  
2.83  
95.58  
10.48  
85.10 = T  
12.83  
97.93 = T  
0.82  
97.11 = T  
10.21  
107.34 = T  
2.63  
T.P. on Sta 20+50 = 104.71 = T  
11.30  
116.10 = T  
10.787  
T.P. on Sta 22+20 = 105.24 = T  
7.73  
112.97 = T  
11.30  
T.P. on Rock = 101.59 = T  
109.20 = T

## Plans-1-Pr. 4

19

	T (Trans.)	Rod				
49.70③						
21+23.80	T.P.	109.20	12.06	97.14	99.85	+ 17.29
20+74.10	T.P.	105.36	12.20	93.16	80.14	+ 13.02
20+24.20			12.22	93.14	80.44	+ 12.70
19+72.10		102.59	9.16	93.43	80.74	+ 12.69
	Δ 13°45' Rt.					Marked
19+25.00 MH# 84		102.42	5.17	97.25	81.04	+ 16.21
50③						
18+75			7.88	94.54	81.34	+ 13.22
425						
	T.P.		9.30	93.12	81.64	+ 11.48
17+75 M.H.# 397	Δ 17°40' Rt.	99.34	12.59	86.75	81.94	+ 4.81
48.33③						
7+26.67	T.P.		0.97	98.37	92.23	+ 16.14
6+78.34		104.23	4.70	99.53	92.52	+ 17.01
	Δ 10°36' Rt.					
4+30.00 MH# 85			8.92	95.31	82.81	+ 12.50
48.75③						
5+81.25			3.85	100.38	83.10	+ 17.28
5						
5+42.50			3.92	101.24	83.39	+ 16.85
8						on-stub
4+43.75	T.P.		10.63	093.60	83.69	+ 09.91
3						+ 9.09
4+45.00		104.56	11.49	93.07	83.98	+ 09.89
8						
3+47.25			4.95	99.61	84.27	+ 15.34
3						
3+47.50			5.63	98.93	84.56	+ 14.37
8						
12+28.75	T.P.		12.67			+ 7.03
4			12.81	91.89	84.86	
	Δ 10°59' 30" Rt.					
2+40.00 MH# 86		103.96	12.01	91.95	85.15	+ 6.80
45③						
11+95			2.40	101.56	85.42	+ 16.14
11+50	T.P.		6.16	97.80	85.69	+ 12.11
11+05		105.39	9.62	95.77	85.96	+ 9.81
10+60			7.78	97.61	86.23	+ 11.38
	Δ 9°42' Rt.					
10+15 MH# 87			2.02	103.37	86.50	+ 16.87

(trans) 109.20 = T

-12.52

T.P. on mail 96.68 = E1

8.68

105.38 = T

-12.22

T.P. on sta. 20+493.14 = E1

9.45

102.59 = T

12.88

Ruplinger = 89.71

Gregory 89.76

.05 = Diff.

old  
19+25 & CK on M.H. Hub

89.71  
+ 12.71  
102.42 T  
9.30  
93.12  
+ 6.22  
99.34 T  
+ 1.92  
97.37  
+ 6.36  
104.23 T  
10.63  
93.60  
10.76  
104.56 T  
12.67  
91.89  
12.07  
103.96 T  
6.16  
97.80  
7.59  
105.39 T

MH# 87 = 99.53  
Greg . 96.66

Replogle  
Stacy  
Brans  
7-11-28

Restaking Trunk-Line  
MH #232-10570

Plans #3

MH#232	T7453					
55+25		8.62		65.91	59.00	+ 6.91
48250						
54+76.25		9.56		64.97	59.27	+ 5.70
+285		8.94		65.59	59.54	+ 6.05
53+80.25		8.05		66.48	59.81	+ 6.67
+32.0	MH#70					
<hr/>						
7+69.85	T.P.	105.39	3.56	101.83	86.77	+ 15.06
+24.70		104.89	1.45	103.44	87.04	+ 16.40
8+79.55			2.23	102.66	87.31	+ 15.35
8+34.40	E offset	<del>101.89</del> 103.05	12.75	89.14	87.58	+ 1.56
7+89.25	W offset		10.34	92.71	87.86	+ 4.85
7+44.10	East offset A2701RT		7.89	95.16	88.13	+ 7.03
6+99.00	MH#88	101.89	4.46	97.43	88.40	+ 9.03
6+48.25		T.P.	2.59	99.30	88.70	+ 10.60
5+97.50		<del>106.86</del> 68	4.74	102.12	89.00	+ 12.94
5+46.75			5.17	101.51 <del>101.69</del>	89.30	+ 12.21
4+96.00	MH#89	107.05	9.46	97.59	89.61	+ 7.98
4+52.50			11.75	95.30	89.87	+ 5.43
4+09.00	MH#90	T.P.	12.47	94.58	90.14	+ 4.44
3+54.00	MH#91	103.29	8.72	94.57	90.47	+ 4.10
3+03.8			3.56	99.73	90.77	+ 8.96
2+53.6			1.93	101.36	91.07	+ 10.29
2+03.4			3.65	99.54	91.37	+ 8.17

10189  
8917

MH#70-stub	75.26
+ 5.27	
80.53	
- 12.28	
68.25	
+ 6.28	
74.53	
7.10	
67.43	

Stub-56+28.7  
E1=67.41

(Trans)	86.50
T.P.	
105.39	
- 9.6	
104.43	
+ 4.6	
104.89	
- 12.83	
92.06	
10.92	
103.00	
12.3	
102.82	
4.23	
107.05	
- 12.47	
94.58	
8.71	
103.27	

MH#88-83.95  
Gregory 93.96

Stub 7+44.0

on stub

on-MH#89

95.16
6.73
101.89
2.59
99.30
7.38
106.68
9.08
97.60

Replinger  
Shed  
Brooks  
7-18-28

BUCHANAN ST SEWER

INDEXED  
WK  
JAN 14 1949

	T.P.	(Trans)				
1+53.2		103.29	2.11	101.18	91.67	+9.51
1+03.53	M.H.#92	112.42	11.47	100.95	91.97	+8.98
0+50.50	M.H.#398	T.P.	9.24	103.18	92.29	+10.89
0+00.48.5	M.H.#93	107.17	6.14	101.03	92.59	+8.44
1+85		108.39	6.39	102.00	93.53	+8.47
1+97.0			5.21	103.18	94.47	+8.71
1+45.5			5.55	102.84	95.42	+7.42
1+94.0	M.H.#94	T.P.	9.47	98.92	96.36	+2.56
2+40.75		119.35	11.09	108.26	97.27	+10.99
2+97.50			9.63	109.72	98.18	+11.54
3+43.4.25			12.38	106.97	99.09	+7.88
3.81.00	M.H.#95		12.90	106.45	100.00	+6.45
(1-20-28) Canyon Line @ - tarite of M.H.#95						
Plan 1 - Pr 20 (Man holes 96-97-98-99 etc.)						
0+00	M.H.#95			100.00		+6.45
1+49.01		T.P.	10.65	108.70	102.75	+5.95
1+98.02		121.43	5.65	115.78	105.50	+10.28
1+47.03			7.80	113.63	108.75	+5.38
1+96.04	M.H.#96	T.P.	4.50	116.93	111.00	+5.93
2+46.47		122.97	8.07	121.90	114.00	+7.90
2+96.90			3.08	126.89	117.00	+9.89
3+47.34	M.H.#97		4.47	123.50	120.00	+5.50
3+99.00	M.H.#97	T.P.	7.18	128.37	123.33	+5.04
4+50.67		146.14	5.57	136.06	126.46	+9.16
5+02.33	BRK	152.34	3.74	142.40		+12.29

(Trans)
103.29
2.11
101.18
11.24
112.42
9.24
103.18
3.99
107.17
96.35
12.04
108.39
0.43
107.74
11.61
119.35
10.65
108.70
12.72
121.43
9.50
116.93
13.04
129.97
1.58
128.39
13.00
141.39
0.42
140.95
11.39
152.34

Elev. cut ship M.H.#97 = 125.50  
10.04  
135.54  
0.70  
134.76  
11.38  
146.14

Line reset  
Oct 1948



BUCHANAN ST. JEWEL

36.5 <sup>②</sup>	106.14					
5+38.84	(Trans) 4.25 152.34	12.64	141.89	141.70	131.00	
5+75.34		0.14	146.00	146.00	132.00	
6+11.84	M.H.#98 104.10 RT	6.78 3.27	145.56	142.87	133.00	
6+59.72	TP 146.14	9.42	142.92	142.92	138.00	
7+07.60	TP	0.92	145.82	145.82	140.60	
7+55.48		10.20	146.35	146.35	143.20	
8+03.36		6.86	151.69	151.69	145.80	
8+51.24	M.H.#99 104.15 RT	5.04	153.51	153.51	148.40	
8+98.52	TP	1.47	157.08	157.08	151.00	
9+45.80		7.91	161.80	161.80	153.57	
9+93.08		8.32	161.39	161.39	156.14	
10+40.36		4.87	164.84	164.84	158.71	
10+87.64		3.49	166.22	166.22	161.28	
11+34.92	TP	0.90	168.81	168.81	163.85	
11+82.24	M.H.#100 11.80 RT	9.34	171.69	171.69	166.42	
12+31.36		6.59	174.44	174.44	169.00	
+80.47	TP	3.15	177.88	177.88	171.00	
13+29.59		11.64	180.07	180.07	173.00	
13+78.71		7.32	184.39	184.39	175.00	
14+27.82		5.97	185.74	185.74	177.00	
14+76.94	M.H.#101 51.15 RT	1.77	189.74	189.74	179.00	
15+28.09	TP	2.43	189.28	189.28	181.00	
15+79.24		14.50	187.76	187.76	183.75	
16+30.39		8.67	193.59	193.59	186.50	
16+81.54	M.H.#102 19.00 RT, TP	6.96	195.70	195.70	189.25	
		4.49	201.17	201.17	193.00	

104.15 RT  
104.15 RT  
104.15 RT

10.89						
+10.70						
+14.00						
+13.56						
+9.92						
+4.32+4.87						
+5.22						
+5.15						
+5.89						
+5.11						
+6.08						
+8.23						
+5.25						
+6.13						
+4.94						
+4.96						
+5.27						
+5.44						
+6.88						
+7.07						
+9.39						
+8.74						
+10.74						
+8.28						
+4.01						
+1.09						
+6.45						
+9.17						
+8.17						

2 MH #98  
173.04  
Old El. 142.95

TP stub  
10 RMH #98

(Trans)  
152.34  
9.42  
142.72

146.14  
0.92  
145.82 = TP  
12.73 +  
158.55 = T  
0.75 -  
157.80 = TP  
11.91 +  
169.71 = T  
0.90  
168.81 = TP  
12.22 +  
181.03 = T  
1.00 -  
180.03 = TP  
11.68 +  
191.71 = T  
0.28  
191.43 = TP  
10.83 +  
202.26 = T  
2.75 -  
197.57 = TP  
6.15 +  
205.66 = T

on slab 10187.4

191.71 = T  
2.18 =  
189.53 = chg. on sta 23+74.9 = Aerial Photo  
189.57 = by Dunkle & Co 962 = A  
0.04 = diff.

BUCHANAN ST. SEWER

(8-427)

17+31.3	205.66	2.73	204.93	196.12	+ 8.81
+ 81.1	217.08	11.60	205.48	199.25	+ 6.23
18+30.8		9.81	207.27	202.37	+ 4.90
+ 80.6		4.06	213.02	205.50	+ 7.52
19+30.4	228.13	11.24	216.89	208.62	+ 8.27
+ 80.2		9.50	218.63	211.75	+ 6.88
20+29.9		4.96	223.17	214.87	+ 8.30
+ 79.74		2.62	225.51	218.00	+ 7.51
(7-48.23)					
21+28	240.99	12.07	228.92	221.14	+ 7.78
+ 76.2		10.56	230.43	224.28	+ 6.15
22+24.4		3.69	237.30	227.42	+ 9.88
+ 72.7		3.35	237.64	230.56	+ 7.08
23+20.9	253.83	10.12	243.71	233.70	+ 10.01
+ 69.12		9.50	244.33	236.85	+ 7.48
24+17.34		4.56	249.27	240.00	+ 9.27
(2-32.5)					
24+19.8	266.71	9.94	256.77	247.00	+ 9.77
+ 82.34 = B.P.		2.12	265.9	254.00	+ 10.59
(2-35)					
25+17.34	278.96	7.02	271.74	263.33	+ 8.61
+ 52.24 = P.C.					
25+17.34	291.50	7.36	284.14	272.67	+ 11.47
25+72.34 = B.P.	302.52	10.21	292.51	276.82	+ 16.49
+ 92.24 = E.V.C.		10.06	292.46	278.63	+ 13.83
(1-427)					
26+35.04 = M.H. 105		9.43	293.09	280.00	+ 13.09

=  $\Delta 12009' H$   
 = M.H. 103

=  $\Delta 55010' H$   
 = M.H. 102

H.I. from P-22

205.66	- 1.14	204.52 = T.P.
	12.56 +	217.08 = T
	0.23 -	216.85 = T
	11.28 +	228.13 = T
	0.04 -	228.09 = T.P.
	12.90 +	240.99 = T
	0.20 -	240.79 = T.P.
	13.04 +	253.83 = T
	0.40 -	253.43 = T.P.
	13.28 +	266.71 = T
	0.51 -	266.20 = T.P.
	12.76 +	278.96 = T
	0.02 + 104	278.98 = T.P.
	12.52 +	291.50 = T
	1.51 -	289.89 = T.P.
	12.63 +	302.52 = T
	3.09 -	302.43 = T.P.
	12.68 +	315.11
	5.02 -	312.09
	312.02 = B.P.	
	0.07 = Error.	

Levels brot. from old town bridge  
 ckt. on SE. B.P. Tyler & Cleveland

Walker  
Kippinger  
Stark  
Brookings  
8-9-28

SEWER CONST  
PUBLIC RD. of NEBY  
Bet. Buchanan + Procter Place  
Profile 21 - Plan 2

MH # 101 = 0+00	200.34	11.06	189.28	181.00	+ 8.28	
+30 = PVC		15.32	185.02	181.60	+ 3.42	
+50 = Bk		8.64	191.70	184.45	+ 7.25	
+70 = EXC 2-40		2.26	198.08	192.80	+ 5.28	
1+10	224.67	0.10	224.57	214.40	+ 10.17	
1+50 = Bk 1-50	249.45	3.41	346.04	236.00	+ 10.04	
2+00 = P.V.C (4-20')	274.40	1.98	272.42	263.50	+ 8.92	
2+20 = Bk	286.69	4.39	282.30	273.28	+ 9.02	
+40 = P.V.C	298.83	9.59	289.24	280.65	+ 8.59	
+60 = Bk		0.30	298.53	284.86	+ 13.67	
+80 = EXC	304.00	5.71	298.29	286.80	+ 11.49	
1-46.1 3+26.10 = Exist. Sewer - 1 Andar Place	5.69		299.31	288.60	+ 10.71	

offsets Elev cut slab station 14+27.82 R.9.622 = 189.74  
10' NW on 1st line back

10.60+  
200.34 = T  
0.36 -  
199.98 = TP  
1213 +  
212.11 = T  
0.25 -  
211.86 = TP  
1281 +  
224.67 = T  
0.10 -  
224.57  
1285 +  
237.42 = T  
0.09 +  
237.33 = TP  
1212 +  
249.45 = T  
0.32 -  
249.13 = TP  
1273 +  
261.86 = T  
0.06 -  
261.80 = TP  
1260 +  
274.40 = T  
0.23 -  
274.17 = TP  
1232 +  
286.69 = T  
0.31 -  
286.38 = TP  
1245 +  
298.83 = T  
0.30 -  
298.53 = TP  
5.47 +  
304.00 = T  
3.78 -  
300.22 = TP  
1209 +  
312.31 = T  
2.19 -  
310.12 = BM  
310.00  
0.12 = Error

chk on BM. N.E. 7' back Near sewer's Meade.

SEWER IN PUBLIC RD. of N.Y.  
 S.E. NEW JERSEY ST + ARNOLD PLACE

Profile  
 8-9-28

Profile 20 - Plan 1

4+114.102					-8.17	offsets
+0+00 (8-41.07)	211.60	10.43	201.17	192.00	+9.17	10' South
0+46.07		8.27	203.33	196.50	+6.83	10' W
+92.14		1.15	210.45	200.00	+10.45	10' W
1+38.21	222.74	10.15	212.59	203.50	+9.09	10' W
+84.28		9.98	212.76	207.00	+5.76	10' W
2+30.35		5.79	216.95	210.50	+6.45	10' W
+76.42		4.84	217.93	214.00	+3.93	10' W
3+22.5	233.56	10.05	223.51	217.50	+6.01	10' W
+68.6 = M4#107 (2-41.2')		7.16	226.40	220.00	+6.40	10' W
4+09.8		4.53	229.03	225.00	+5.28	10' South
+51 = Bk.	244.57	12.40	232.17	227.50	+7.67	10' N
+92.2		5.00	239.57	231.25	+8.32	10' S
5+33.4 = M4#106 (2-47.6')		3.57	241.00	233.00	+8.00	
5+81	257.12	5.71	251.41	238.50	+6.00	10' N.E.
6+28.6 = Bk. (3-39.3')	268.95	10.06	258.89	244.00	+12.91	
6+67.9	280.61	11.96	268.65	245.00	+14.89	
7+07.3		1.54	279.07	253.67	+14.98	
+46.6 = D.F. North side Arnold place	291.28		279.07	263.34	+15.73	
	254		288.74	263.66	+5.74	

INDEXED  
 WK  
 JAN 14 1949

Exec. M4 cut stub on Page 22 = 201.17

1043 +  
 211.60 = T  
 8.66 -  
 210.94 = TP  
 11.80 +  
 227.74 = T  
 0.34 -  
 222.40 = TP  
 11.60 +  
 233.60 = T  
 1.02 -  
 232.58 = TP  
 12.03 +  
 244.57 = T  
 0.21 -  
 244.36 = TP  
 12.76 +  
 257.12 = T  
 0.27 -  
 256.85 = TP  
 12.10 +  
 268.95 = T  
 0.42 -  
 268.53 = TP  
 12.87 +  
 280.61 = T  
 1.54 -  
 279.07 = TP  
 12.21 +  
 291.28 = T  
 2.54 -  
 288.74 = TP  
 12.20 +  
 200.94  
 5.58  
 295.36  
 175.22 = BM.  
 0.14 = diff.

chk. on SW. B.P. Arnold Pl. + Maryland

Walker  
Rippling  
Shed  
Book # 28

SEWER IN PUBLIC RT. of WAY  
EAST of NEW JERSEY  
Bet. Buchanan & Maryland St.  
Profile 20 - Plan 1

6 MH #107 Aug 76						
=0+00	239.41			220.00		
5-44.99'						
0+45		4.65	234.76	225.00	+19.76	
+90	251.70	10.91	240.79	230.00	+10.79	
1+35		4.89	246.81	235.00	+11.81	
+80		6.43	245.27	240.00	+5.27	
2+24.95 = MH #108	264.30	11.08	253.22	245.00	+8.22	
(8-51.1')						
2+75.1'		6.45	257.85	250.01	+7.84	
3+26.1	276.97	10.15	266.82	255.03	+11.79	
3+77.3 = P.V.C		0.70	276.27	260.04	+16.23	
(2-20.1)	289.25					
3+97.3 = B.K. = Δ 54° 27' 26"		13.32	275.93	264.28	+11.65	
4+17.3 = E.V.C		5.43	283.82	273.10	+10.72	
(4-8.86')						
4+26.1 = DE		1.01	288.24	281.00	+7.24	

5/6 in. cut stub MH 107 Page 25 = 226.40

13.01 +
239.41 = T
0.43 -
238.98 = TP
12.72 +
251.70 = T
0.48 -
251.22 = TP
13.08 +
264.30 = T
0.46 -
263.84 = TP
13.13 +
276.97 = T
0.70 -
276.27 = TP
12.98 +
289.25 = T
1.55 -
287.70
287.14
0.3 = diff.

chk. on both with nail in top see -  
Sketch in Book 762 - 78 = 78 Section 7

SEWER IN PUBLIC RT. of WAY

Bet. Buchanan & Meade Ave

MH #98 Page 22						
=0+00	148.28			133.00		
+35 = P.V.C		9.43	139.53	134.40	+5.15	
+50 = B.K.		7.78	141.20	135.81	+5.39	
+65 = P.V.C		5.07	143.91	138.87	+5.04	
+80 = B.K.		0.36	148.62	143.84	+4.78	
+95 = E.V.C	161.60	5.28	156.32	151.00	+5.32	
(4-45')						
1+40	186.25	4.03	182.22	175.75	+6.47	
+85	222.43	11.72	210.71	200.50	+10.21	
2+30	234.26	0.01	234.25	225.25	+9.00	
+75 = B.K.	270.35	12.08	258.27	250.00	+8.27	
(2-30)						
3+05	282.34	7.56	274.78	265.46	+9.32	

offset cut stub MH #98 on Page 22 = 142.87

10' South	222.43 =	6.11 +
	0.14 -	148.98 = T
10'E	222.29 = TP	0.36 -
	11.94 +	148.62 = TP
10'E	234.26 = T	12.98 +
	0.01 -	161.60 = T
10'E	234.25 = TP	0.78 -
	11.63 +	160.82 = TP
10'E	245.88 = T	13.05 +
	0.02 -	173.87 = T
10'W	245.86 = TP	0.00 -
	12.47 +	173.87 = TP
10'W	258.28 = T	12.38 +
	0.13 -	186.25 = T
10'E	258.15 = TP	0.29 -
	12.20 +	185.96 = TP
10'W	270.35 = T	11.30 +
	0.61 -	197.26 = T
10'W	269.74 = TP	0.00 -
	12.60 -	197.26 = TP
10'W	287.34 = T	12.78 +
		209.98 = T
		0.00 -
		209.98 = TP
		12.45 +
		223.43 = T

transferred to Page 26

Cont. on P-27

3+35 = Exist. sewer 1-51	294.58	6.04	288.54	280.92	+ 7.62
3+86 = Exist. " 1-46.5	301.09	5.06	296.03	284.70	+ 11.33
4+32.5 = Exist. "		5.61	295.48	285.92	+ 9.56

HI. from Page 26

282.34
0.66-
281.68 = TP
12.90+
294.58
1.61-
292.97 = TP
8.12+
301.09 = T
3.51-
297.58 = TP
12.57+
308.15 = T
1.63-
306.52
306.47 = Elev. stak.
0.05 = Error.

chk. on cut stake 0+00 = 16' N Exist. MH. on opposite Page.

Water  
Rupture  
Sinker  
8' 28

### Alley West of New Jersey

Bet. Monroe & Meade

#### Profile 20 - Plan 2

16' N Exist. MH. in Arch

= 0+00 = Exist. Sewer 6-47.33	310.15	3.68	306.47	301.96	+ 4.51
0+47.33		1.68	308.47	304.63	+ 3.84
+94.66	322.42	10.76	311.66	307.30	+ 4.36
1+42		8.16	314.26	309.97	+ 4.29
+89.33		6.20	316.22	312.65	+ 3.57
2+36.66		2.68	319.74	315.32	+ 4.42
+84 = MH #112	334.23	10.90	323.33	318.00	+ 5.33
4-44.25		8.57	325.66	320.00	+ 5.66
3+28.25		6.50	327.73	322.00	+ 5.73
+72.5		5.11	329.12	324.00	+ 5.12
4+16.75		4.00	330.23	326.00	+ 4.23
+61 = DE					

BM. NE 7' back Meade + New Jersey

310.00 = BM
0.15+
310.15 = T
0.16-
309.99 = TP
12.43+
322.42 = T
0.27-
322.15 = TP
12.08+
334.23 = T
2.09-
332.14 = TP
9.81+
341.95 = T
4.96-
336.99
337.06 = BM
0.07 = Error.

Station SE. BM. 7' back Monroe + New Jersey

Water  
Rupture  
Sinker  
8' 28

### NEW JERSEY South of Proctor Pl.

#### Profile 20 - Plan

45' South Exist. MH in Proctor Pl.

= 0+00 = Exist. Sewer	312.19	6.12	306.07	294.77	+ 11.30
+40.33		8.02	304.17	295.01	+ 9.16
+80.66		10.13	302.06	295.25	+ 6.81
1+21 = DE.		12.40	199.79	295.50	+ 4.29

BM. NE 7' back Meade + New Jersey

310.00 = BM
2.19+
312.19 = T

San Diego Ave - Restake  
MH#274+E

R. P. Plunk  
Brooks  
Shed 19-28  
D.E. 50' W. Mason

Profile - 7 Plans - 7

GRd

offset - st. b. otog 20.59  
D.E. + 0.37  
20.96

0+00	20.96	0.37	20.59	14.51	+	6.08
+48		1.43	19.53	13.61	+	5.92
+96		2.22	18.74	12.71	+	6.03
1+44		3.07	17.89	11.81	+	6.08
+92		3.87	17.09	10.92	+	6.17
2+40 30' @		4.77	16.19	10.02	+	6.17
+70		5.32	15.64	9.46	+	6.18
3+00 M.H#273 47.30		5.90	15.06	8.90	+	6.16
+47.30		6.84	14.12	8.05	+	6.07
3+94.60		7.69	13.27	7.20	+	6.07
4+41.90		8.38	12.58	6.35	+	6.23
4+89.20 M.H#274				5.50		

**INDEXED**  
WIK  
**JAN 14 1949**

Walker  
Ringside  
Chow  
Shoo 6-7-28

CANYON LINE RE-STAKED  
Bet MH # 248 - MH 244 Page 77

MH # 248				33.00	
4+255	53.97	11.77	42.20	38.00	+2.20 = 419 = Page 77
+77.5		7.50	46.47	43.00	+3.47
5+29.5 = Bk		2.53	51.44	48.00	+3.44
+74.5	66.66	5.60	61.06	54.50	+6.56
6+19.5 MH # 247	79.73	12.29	67.44	61.00	+6.44
+62		8.65	61.08	67.00	+4.08
7+04.5		2.80	76.93	73.00	+3.93
+74.10 = Bk	92.31	8.63	83.68	79.00	+4.68
+97		3.87	88.44	80.00	+8.44
8+47 MH # 246		3.74	88.57	81.00	+7.57
+87.15	104.97	11.91	193.06	85.00	+8.06
9+27.2 = Bk		7.26	97.71	89.00	+8.71
+77.2 = Bk	117.15	8.09	109.06	99.00 100.00	+10.06
10+32.3		5.78	111.37	102.00 102.50	+9.37
+87.10 MH # 245		1.11	116.04	105.00	+11.04
11+28.9	129.81	5.71	124.10	109.28	+14.82
+70.8		3.05	126.76	113.56	+13.20
12+12.6		1.61	128.20	117.84	+10.36
12+154.5 = MH 244	132.96	2.99	129.97	122.12	+7.85 = 7.91 Page 79

Exec. Cut Stub MH # 248 - Page 77 = 4192

INDEXED  
WK  
JAN 14 1949

12.05+  
53.97 = K  
0.87-  
53.50 = TP  
13.16+  
66.66 = TP  
0.23-  
66.43 = TP  
13.30+  
77.73 = K  
0.67-  
79.06 = TP  
13.25+  
72.31 = K  
0.00-  
72.31 = TP  
12.66+  
104.97 = K  
0.10-  
104.87 = TP  
12.98+  
117.15 = K  
0.24-  
116.91 = TP  
12.90+  
119.81 = K  
2.20-  
127.61 = TP  
5.35-  
132.96



ARISTA COURT Sewer  
Bet. Arista Dr + Canyon Line

SEE ALSO PAGE 77

30

MH# 221 Page 78

Profile 13 - Plan 6

B.M. Con. Man. L. H. Stockton + Arista 240.93

= 0+00 (2-47.37')	244.20	10.05	234.15	229.10	+ 5.05
0+47.37		6.34	237.86	230.32	+ 7.54
+ 94.74 = MH# 240-A.L. 5302 1/2 (3-42.27')		8.92	235.28	231.54	+ 3.74
1+36.01		6.56	237.64	232.41	+ 5.23
+ 78.9		4.61	239.59	233.27	+ 6.32
2+20.95 = L.M.H. # 239 (1-31')		3.30	240.90	234.13	+ 6.77
2+51.85 = Exist. Sewer		4.07	240.13	235.00	+ 5.13

327 +  
240.93 - K

INDEXED  
W.I.K  
JAN 14 1949

SEWER IN PUBLIC RT. + WAY

Bet. Canyon Line + Grade

MH# 244 Page 78

Profile 13 - Plan 6

Elev. cut dub 121.84.5 = Bck. Page 68

= 0+00 (2-44.8')	142.34		122.12	For cut see Page 78	
0+44.8		9.62	132.72	127.56	+ 5.16
+ 89.6 = MH# 113 - R.V.C. 1-20 T.P.	155.08	3.11	139.23	133.00	+ 6.23
1+09.6 = Bck. 1-20 T.P.	167.29	3.64	151.44	142.90	+ 8.54
1+29.6 = Bck = EX.C. (2-37.5')	179.01	7.29	160.00	150.60	+ 9.40
1+67.10 T.P.	181.70	6.20	172.81	162.05	+ 10.76
2+04.6 = Exist. Sewer 8 1/2 15.0		2.04	179.66	173.50	+ 6.16

131.28  
16.06  
142.34  
0.26  
142.08 = T.P.  
13.00 +  
155.08  
0.50  
154.54 = T.P.  
12.75 +  
167.29 -  
0.90 -  
166.39 = T.P.  
12.62 +  
179.01 -  
0.47  
178.52  
178.44 = B.M.  
0.08

chk on Con. Man. L. Grade + History

178.44  
3.26  
181.70



HANCOCK St. Sewer Const.  
 Bet. Witherby & Emory sts.  
 Profile 3 Plan 9-10

06. East of Witherby

= 0+00

17-51.43

0+51.43

1+02.86

+54.29

2+05.7

+57.15

3+08.6

= 0+00 = 1/2 cut of st.

+60 = 1/2 DMH #339

0+47.5

+95

1+42.5

+90

2+37.5

+85

3+32.5

3+80 = 1/2 Bankline

= 0+00 = 1/2 MH #338

0+47.5

+95

1+42.5

+90

2+37.5

+85

3+32.5

3+80 = 1/2 right

= 0+00 = 1/2 MH #337

+47.5

INDEXED  
 WK  
 JAN 14 1949

27.73 = 8.11 on floor

0.35 + Near Witherby

28.08 = T 7.00

12.89 6.50

15.19 = TP 6.00

188 5.50

1707 = T 5.00

595 4.50

1112 = TP 4.00

766 + 2085 = T 3.50

109 - 5.00

1971 = TP 4.00

587 + 2538 = T 3.50

158 - 5.00

2400 = TP 5.95

512 + 2912 = T 6.90

7.85

8.80

9.75

10.70

11.65

12.60

π 1888 13.09 + 5.99

6.70 19.77 13.58 + 5.69

5.67 19.91 14.07 + 5.02

4.55 21.03 14.54 + 6.89

3.80 21.78 15.02 + 6.76

2.87 22.71 15.53 + 7.18

1.68 23.90 16.02 + 7.88

1.58 24.00 16.50 + 7.5

5.73 23.89 16.74

Alignment changed 1-12-18  
 See other page

Yoko  
 1-12-20

Change in Line & Grade Hancock  
 Bet Witherby & Bankline

32

06. East of Witherby

= 0+00

17-15.27

0+45.47

0+90.92

+36.4

1+81.9

2+27.35

2+72.8

3+18.3

3+63.76 = 1/2 MH #339 = 0+00

0+45.52

+77.04

1+45.56 = Δ R 8 1/2°

(2-27.5)

1+83.06

2+20.56 = Δ R 10°

(4-10.3)

2+60.86

3+01.16

3+41.46

+81.76 = 1/2 MH #338 = 1/2 Bankline

5.89 Resat

+7.15

π

1707 6.36 10.71 7.00 +3.71

6.60 10.47 6.56 +3.91

6.47 10.60 6.12 +4.48

6.50 10.57 5.68 +4.89

6.08 10.99 5.25 +5.74

6.00 11.07 4.81 +6.26

5.95 11.12 4.38 +6.74

7.65 11.15 3.94 +7.21

7.60 11.20 3.50 +7.70

5.00 5.00 +6.20

8.20 12.60 6.12 +6.48

7.49 13.31 7.25 +6.06

6.10 14.70 8.38 +6.37

5.35 15.45 8.88 +6.57

4.38 16.42 9.38 +7.04

3.39 17.41 10.18 +7.23

6.22 19.36 10.99 +8.37

6.68 18.90 11.80 +7.10

6.36 19.22 12.60 +6.62

Line changed 4-23-28  
 Bet Bankline & Gault St.  
 See page 31

Ⓢ Elev. NAILS for old cut

HANCOCK St. Server Cont.

0+95	T 29.12	522	2390	16.97	+693
1+42.5		513	2399	17.18	+681
+90		494	2418	17.41	+677
2+37.5		473	2439	17.65	+674
+85		443	2469	17.88	+681
3+32.5		4.47	2465	18.17	+648
Section #4 Box = 855 Jodillo St (217) 782 620 + 100 = 8 MH #336		4.46	2466	18.41	+625
0+47.5		4.38	2474	18.64	+612
+95		4.23	2489	18.86	+603
1+42.5 T.P.	T 31.11	6.01	2510	19.10	+600
1+90		5.46	2565	19.34	+631
2+37.5		5.36	2575	19.58	+617
+85		5.21	2590	19.81	+609
3+32.5		5.09	2602	20.04	+597
3+80 = 8 Noell St = 0+00 = MH #335		4.99	2612	20.30	+587
+47.5		4.96	2615	20.54	+561
+95		5.01	2610	20.78	+532
1+42.5		4.76	2635	21.02	+533
+90		4.53	2658	21.25	+533
2+37.5		4.35	2676	21.49	+527
+85		4.00	2711	21.73	+538
3+32.5 T.P.	32.51	5.12	2739	21.97	+542
3+80 = 8 Southherland St = 0+00 = 8 MH #334		4.82	2769	22.20	+509
+47.5		4.77	2774	22.45	+529
+95		4.74	2777	22.69	+508
1+42.5		4.13	2778	22.93	+4.85

2912-T  
423  
2489 = T.P.  
622+  
3111-T  
400-  
2711 = T.P.  
540+  
3251-T

HANCOCK st cont.

32.51

1+90	4.31	28.20	23.16
2+37.5	3.92	28.59	23.40
+85	3.90	28.61-	23.64
3+32.5	3.59	28.92	23.87
3+80 =0+00 = $\frac{1}{2}$ MH # 333	3.46	29.05	24.10
+47.5		24.96	
+95		25.82	
1+42.5		26.68	
+90		27.54	
2+37.5		28.40	
+85		29.26	
3+32.5		30.13	
3+80 =0+00 = $\frac{1}{2}$ MH # 332		31.00	
+50		31.67	
1+00		32.34	
+50		33.00	
2+00		33.67	
+50		34.34	
3+00 = D.E. West of Emory St.		35.00	

See other Page

this much in

S.E. Spk. Clayton + Hancock  
chk. on B.M. Page 43

B.M. used

+5.04							
+5.19							
+4.97							
+5.05							
+4.95						24.10	
7.4851	TP	39.33					
0+48.51			9.82	29.51	25.00	+4.51	
+97.06			8.99	30.34	25.90	+4.44	
1+45.6			7.66	31.67	26.80	+4.87	
+94.12			6.24	33.09	27.70	+5.39	
2+42.65			5.01	34.32	28.60	+5.72	
+91.18			3.73	35.60	29.49	+6.11	
3+39.71 = Exist. Sewer in Horatio			2.37	36.96	30.38	+6.58	
					31.00		

32.51

270

29.81

29.79 = B.M.

007 = Error

29.79

9.54 +

39.33 = T

2-6-78  
Walker  
Rupl. 1991  
Chas  
Shea

Sewer Const.

THRU. 814 541 old San Diego thence East  
to Hancock thence South to Barnett  
thence East on W. Hatherby  
14.18

DBL. DMH #17  
Page 2  
= 0+00

7+01.18 Repen  
Elev. 7. Penstuck  
965  
453+  
1418-T.

**INDEXED**  
WK  
**JAN 14 1949**

150	7.80	6.38	143	+495
1+00	6.42	7.76	186	+5.90
150	6.62	7.56	229	+5.27
2+00	6.01	8.17	272	+5.45
150	5.40	8.78	315	+5.63
3+00	4.92	9.76	358	+5.68
150.08 = 2 Horsensia West of Hancock = 1 MH #324	4.40	9.78	400	+5.78

2-6-78  
Walker

Horsensia st. Sewer Const.

bet. Barnett + Whitman st.

Above MH #324  
= 0+00

Doore, HI.  
14.18

+47.9	2.66	11.52	4.25	+7.27
+95.83 = 2 Hancock st. (4-46.52) = 1 MH #323	10.22	15.08	4.50	+10.58
1+42.35	9.97	15.33	6.62	+8.71
+88.87	10.14	15.16	8.74	+6.42
2+35.4	10.66	14.64	10.87	+3.77
+81.93 = Break (4-40.88)	8.52	16.78	13.00	+3.78
3+22.8	5.47	19.83	14.75	+5.08
3+67.7	3.29	22.01	16.50	+5.51
4+04.5	1.00	24.30	18.25	+6.05
+45.43 = 2 N. H. #322 (3-38.83)	8.33	7.91	20.00	+9.41
4+84.26	8.00	29.74	23.33	+6.41
5+23.09	4.48	33.86	26.66	+6.60
5+61.93 = Bk.	1.40	36.34	30.00	+6.94

Change in grade

**INDEXED**  
WK  
**JAN 14 1949**

14.18  
644  
1374 = TP  
1156+  
2530-T  
002-  
2528 = TP  
1246+  
3774 = \*  
003 -  
3771 = TP

Cont. on Page 36

4.5-28  
 Mike  
 Ruppel  
 S. J. Jones

Hortensia st. Sewer Cont.  
 From Page 35

(4-45)		50.08				
6-06.92			6.37	43.71	36.25	+7.46
6-51.92			0.31	49.77	42.50	+7.27
+96.92	T.P.	62.15	7.72	54.43	48.75	+5.68
7-41.92 = Bk.	T.P.	73.74	8.92	64.82	55.00	+9.82
(1-57.9)						
799.82 = M.H. #321 = 0+00			8.51	65.23	59.00	+6.23
0-43.9 = NYC			5.60	68.14	62.92	+5.72
7.58 = Bk.			1.27	72.47	69.08	+3.39
(1-14.1)	T.P.	98.38	12.17	86.21	86.90	+9.31
721 = NYC	T.P.					
(2-37.5)						
1407.6	T.P.	110.76	1.91	96.47	90.45	+6.02
1447.1 = Bk.			9.15	101.61	94.00	+7.61
(3-45.87)						
1497.97	T.P.	121.74	3.59	107.17	98.83	+8.34
2138.84			9.50	112.24	103.66	+8.58
2484.70 = D.F.			5.92	115.82	108.50	+7.32

{ Note: Hortensia Cont. in Book 187-7 }  
 Bet. Canyon Line + Juan St.

on stub sta. 615192

on West side of Harbor St.  
 Nail in Pole 2nd Blk North Capitol Blvd

3771 = T.P. R-25  
 1237 +  
 5028 = T  
 0.31 -  
 4977 = T.P.  
 1238 +  
 6215 = T  
 0.10 -  
 6205 = T.P.  
 1169 +  
 7374 = T  
 0.33 -  
 7341 = T.P.  
 1238  
 8577 = T  
 0.25 -  
 8558 = T.P.  
 1280 +  
 9838 = T  
 0.02 + not a fixture  
 9840 = T.P.  
 1236 +  
 11076 = T  
 0.66 -  
 11010 = T.P.  
 11.64 +  
 12174 = T  
 1.18 -  
 12056 = T.P.  
 924 +  
 129.80  
 1201 -  
 117.79 = T.P.

4-6-28  
Walker  
Kupling  
Sho

HANCOCK and BARNETT Sewer Const.  
Bet. Hordensia + Witherby

MH # 323 Page 35

21.63

= 0+00  
(3-491)

**INDEXED**  
WK  
**JAN 14 1949**

0+49.1	8.62	13.01	4.81	4.50	+8.20
+98.2	9.84	11.79	5.12		+6.67
1+47.3	10.61	11.02	5.43		+5.59
1+59.4 2 MH # 330 (U-368)	10.16	11.47	5.50		+5.97
(+96.2 (5-50.3)	9.10	12.53	7.41		+5.12
2+46.2	7.28	14.35	9.32		+5.03
2+96.2	5.35	16.28	11.24		+5.04
3+46.2	3.86	17.77	13.15		+4.62
3+96.2 TP 3194	12.60	19.34	15.07		+4.27
-2 Moore st.	10.20	21.74	16.50		+5.24
4+46.2 - 2 MH # 329 1-498	9.08	22.86	17.57		+5.29
4+91.0 Exist. Sewer in Moore st					

Change in Grade Use these Grades

MH Page 35  
Elev. cut stub # 323 Hancock st. to 1508

6.55 +  
21.63 - x  
2.01 -  
17.62 - T.P.  
12.32 +  
31.94 - x  
41.6  
27.78 - chk.  
27.73 - 814.  
0.05 = Error

{ East of Witherby Page 2 }  
{ chk. on BM Moore }

4-6-28  
Walker  
Kupling  
Sho

Witherby St. Sewer  
Bet. Moore + Congress (bet. 16-12)

Above MH # 329  
= 0+00

3194 = Above H.F.

+40	8.23	23.71	19.75	16.50	+3.96
+80 = Break (3-46.7)	2.17	29.77	23.00		+6.77
1+26.67 T.P.	44.20	8.40	35.30	30.00	+5.30 +5.80
+73.34	1.97	41.73	37.00		+4.73 +5.23
TP	55.85				
2+20 = Break	56.35	6.31	47.54	44.00	+5.54 +6.04
2+41.5 TR	67.58				
2+61.5	68.08	7.22	58.36	54.00	+4.36 +4.86
3+03.1 = MH # 328 1-369	79.63	10.69	68.44	64.00	+4.44 +4.94
3+40.0 = PVC - BK	79.13				
3+60 = BK	10.15	68.98	64.65		+4.33 +4.83
	9.14	69.97	66.50		+3.49 +3.99

Cont. on 38

**INDEXED**  
WK  
**JAN 14 1949**

3194  
0.39 -  
3155 - TP  
12.65 +  
44.20 - x  
0.49 -  
43.71 - TP  
12.64 +  
58.35 - x  
0.20 -  
56.5 - TP  
11.93 +  
68.8 - x  
0.79 -  
67.35 - TP  
12.28 +  
79.63 - x  
0.15 -  
79.48 - TP  
12.33 +  
91.81 - x

3194  
0.39 -  
310.5 = TP ?  
12.65 +  
43.71 - x ?  
0.49 -  
43.21 = TP ?  
12.64 +  
58.35 - x  
0.20 -  
55.65 - TP ?  
11.93 +  
67.58 - x ?  
0.73 -  
66.85 - TP ?  
12.28 +  
79.13 - x ?  
0.15 -  
78.98 - TP ?  
12.33 +  
91.31 - x



Witherby St. Sewer Cont.  
from Page 37

	T.P.	71.31					
3+80 = E.V.C.		91.81	12.46	78.85	71.35	+7.50+8.00	
2-31				88.72			
4+11			3.09	88.22	81.18	+7.04+5.94	
+42 = 1/2 MH #327	T.P.	103.81	6.42	97.39	91.00	+5.89+6.39	
(3-463)	T.P.	115.13		108.62			
4+88.3	T.P.	115.63	7.01	108.12	103.33	+4.79+5.99	
	T.P.	128.08					
5+34.6			6.31	121.77	115.66	+6.11	
+80.3 = 1/2 Jefferson T.P.	T.P.	140.41					
2-54.7	T.P.	152.74	8.70	131.71	128.00	+3.71	Re. ref. New Location
6+35.6	T.P.	165.26	6.49	146.25	138.50	+7.75	
+90.3 = Brk			9.24	156.02	149.00	+7.02	
(2-50.)							
7+40.3			5.16	160.10	150.50	+9.60	
+90.3 = 1/2 Congress St.			7.91	157.35	152.00	+5.35	

Congress St. Sewer

More MH #325

		165.26	7.91	157.35	152.00	+5.35
+45	T.P.	170.69	10.09	160.60	155.00	+5.60
+90			5.33	165.36	158.00	+7.36
1+35			2.24	168.45	161.00	+7.45
+80 = DE	T.P.	174.93	4.03	170.90	164.00	+6.90

Jefferson St. Sewer

More MH #326

		140.41	8.70	131.71	128.00	+3.71
+40.29 = Exist. Sewer			4.69	135.72	129.06	+6.66

+6.66 = Chas. Moore's cut.

INDEXED

WK  
JAN 14 1949

INDEXED

WK  
JAN 14 1949

91.81 = X	91.31 = X
048 -	048 -
913.3 = T.P.	708.3 = T.P.
1248 +	1248
103.81 = X	103.31 = X
029 -	029 -
103.52 = T.P.	108.02 = T.P.
12.11 +	12.11 +
115.63 = X	115.13 = X
032 -	032 -
115.31 = T.P.	114.81 = T.P.
12.77 +	12.77 +
128.08 = X	125.8
023 -	128.08
127.85 = T.P.	10.32
12.56 +	117.76
140.41 = X	117.79
0.35 -	0.03 = 5101
140.06 = T.P.	
12.68 +	
152.74 = X	
022 -	
152.52 = T.P.	
12.70 +	
165.26 = X	165.26 = T
045	7.37
164.81 = T.P.	157.89
9.38 +	157.97 = Elev
174.17 = X	0.08
1.71	
172.48	
172.59 = Elev. Stub	
0.11 = Elev	
157.35	
13.34	
170.69 = X	
0.19	
170.50 = T.P.	
4.931	
174.93 = 1	

Page 36 on old Witherby  
Page 37 on old Slab Book 1003 - Page 60 = 0+13  
on Slab 2629 Book 1003 - 60

Sewer in Blk. 226 Middletown  
 Bet. Witherby & Couls sts  
 (Profile 12 Pkn 9)

M.H. # 337 Page 38 = 0 + 0.0	109.24		91.00	+ 6.39	
+ 45.4		9.60	99.64	92.92	+ 6.72
- 90.8		6.45	102.79	94.84	+ 7.95
1+36.1		5.10	104.14	96.76	+ 7.38
+ 81.5		3.61	105.63	98.68	+ 6.95
2+26.9	TP	8.01	107.90	100.59	+ 7.31
+ 72.3 = DE	115.91	5.10	110.81	102.50	+ 8.31

**INDEXED**

WK  
**JAN 14 1949**

La Jolla Ave Sewers

Bet. Witherby & Bandini sts.

M.H. # 338 Page 37 = 0 + 0.0 (8-45.72) 0 + 45.9	81.89		64.00		
+ 91.8		11.97	69.92	65.13	+ 4.79
1+87.8		10.78	71.11	66.25	+ 4.86
1+83.7		9.22	72.67	67.38	+ 5.29
2+29.6		7.61	74.28	68.50	+ 5.78
+ 75.5		6.03	75.86	69.63	+ 6.23
3+21.4		4.40	77.49	70.75	+ 6.74
3+67.34 = Couls (4-50) M.H. # 331		2.69	79.20	71.88	+ 7.32
4+17.3		1.71	80.18	73.00	+ 7.18
- 67.3 TP	89.87	0.75	81.14	74.37	+ 6.77
5+77.3		7.43	82.44	75.75	+ 6.69
+ 67.34 = DE		6.10	83.77	77.12	+ 6.65
		4.71	85.16	78.50	+ 6.66

**INDEXED**

WK  
**JAN 14 1949**

Page 38  
 {Elev. cut slab M.H. 327} = 97.39  
 11.85 +  
 109.24  
 5.38 -  
 108.86 = TP  
 12.05 +  
 115.91 = T

Elev. Cut Slab M.H. # 338 Page 37

68.94  
 12.95 +  
 81.87 = T  
 0.08 -  
 81.81 = TP  
 8.06 +  
 89.87 = T

WALKER  
RUBLINGER  
Shaw  
Shea

4-28

Sewer Const. in Public Pt. of Way.

Bet. Cherry St and Pine sts.

And ARISTA to AMPUDIA ST.

40

Exist. MH in Ampudia st bet. Cherry & Pine (2-4375)	Profile 13 Pine St 255.01		5' Elev. Flow Line	Flow Line -1.8 High
0 +43.75 (offset 7' North) T.P.	249.59	7.15	247.86	245.00 +2.86
+87.5 (offset 7' South)		2.59	247.00	244.00 +3.00
1 +31.25 (first 2' South)		3.85	245.74	243.00 +2.74
1 +71.8 = A.L. 4625127010' (offset)				
1 +75 = 2' MH #234 (7' South)		4.25	245.34	242.00 +3.34
(3-3473) slight change in alignment				
2 +06.53 (3-3847) (7' North)		1.46	248.13	241.76 +6.37
+41.26 T.P. (offset 7' North)	260.40	7.80	252.60	241.53 +11.07
+41.26 = A.L. 462512720' (offset)				
2 +77.5 = 2' MH #237 (7' South)		3.22	257.18	241.29 +15.89
(2-3457) T.P.	264.04			
3 +15.00 (offset 10' North)		3.21	260.83	241.05 +19.78
3 +15.00 (offset 10' North)		2.07	261.97	240.82 +11.15
3 +15.00 (offset 10' North)		10.18	253.86	240.60 +13.26 248.86 251.00 +5.00 offset North
{ D.F. 30' North } stations from 3+86.5 T.P.		8.78	255.26	250.00 +5.26
(4-437) 4 +29.5	252.77	2.22	260.55	240.32 +19.23
4 +72.5		4.61	248.16	240.05 +8.11
5 +15.5		6.78	245.99	239.77 +6.22 239.50 +6.03
5 +58.5 = 2' DMH #236		7.24	245.53	236.00 +9.53

M.V. B.P. Pine & Ampudia	
263.92	
2.05 +	
265.97 - T	
11.29 -	
253.68 = T.P.	
1.33 +	
255.01 - T	
8.02 -	
242.99 = T.P.	
2.68 +	
249.57 - T	
1.46 -	
248.13 = T.P.	
12.27 +	
260.40 - T	
3.22 -	
257.18 + T.P.	
6.86 +	
264.04 - T	
13.04 -	
251.00 = T.P.	
1.77 +	
252.77 = T	

PINE STREET SEWER CONST.

2' DMH #236			239.50	+6.02
= 0 +00	252.78	7.26	245.52	236.00 +9.52
+45		10.18	242.60	236.50 +6.10
+90		11.54	241.24	237.00 +4.24
1 +35		12.02	240.76	237.50 +3.26
+80 = Break		7.60	243.18	238.00 +5.18
2 -33.5		5.02	247.76	241.00 +6.76
2 +13.5		1.72	251.06	244.00 +7.06

H.I. From Page 73 → 252.78  
6.84  
Left. B.M. on T. Hook N.W. of Cor. Pine & Arista = 245.94

Walter  
R. ...

KURTZ St. Sewer  
Bet. Witherby & Sutherland sts

HI from Page 45

DE. East of Witherby = 0+00 (4-4875)	7.59	3.86	3.73	1.94	+ 1.79	
+4875		4.43	3.16	1.77	+ 1.39	
+97.5		4.59	3.00	1.41	+ 1.39	
1+46.25		4.42	3.17	1.44	+ 1.73	
1+95 - 2 MH #359		4.67	2.92	1.28	+ 1.64	
(0-10)		4.72	2.87	1.11	+ 1.76	
2+45		5.01	2.58	0.94	+ 1.64	
-95		4.87	2.77	0.77	+ 1.95	
3+45		5.05	2.54	0.60	+ 1.94	
+95 = 2 coverts of = 0+00 - MH #340	777	5.07	2.52	0.49	+ 2.03	
(0-47.67)		5.22	2.37	0.37	+ 2.00	
+47.67		5.42	2.17	0.26	+ 1.91	
+95.34		5.38	2.21	0.14	+ 2.07	
1+43		5.51	2.08	0.03	+ 2.05	
+90.68		5.50	2.09	-0.08	+ 2.17	
2+38.35		4.96	2.63	-0.19	+ 2.82	
+86.02		4.74	2.85	-0.30	+ 3.15	
3+337.0		6.22	2.92	0.17	+ 2.81	+ 2.75
+81.37 = 200 = 2 MH #341 = 0+00 Page 44 (0-47.41) TP	7.14	5.60	3.54	0.65	+ 3.07	+ 2.89
0+47.41		4.61	4.53	1.12	+ 3.60	+ 3.41
+94.82		3.27	5.87	1.60	+ 4.53	+ 4.27
1+42.23		2.05	7.09	2.07	+ 5.33	+ 5.02
+89.65		1.06	8.08	2.55	+ 5.91	+ 5.53
2+37.06		6.06	10.00	3.02	+ 7.41	+ 6.98
+84.5	TP 0 16.06	3.04	13.02	3.50	+ 10.02	+ 9.52
3+31.9						
+87.32 = 2 MH #342						
- 0+00						

INDEXED  
WK  
JAN 14 1949

7.59  
4.74 -  
2.85 = TP  
6.22 +  
9.14 = T  
0.11  
9.03 = TP  
7.03 +  
16.06 = T

		Rad.	Ground.	Grade	Cut.
MH # 342 - 8' height = 0+00 (8-47.88)	16.06	<del>5.34</del>	10.71	3.50	+9.57 +7.22
0+47.88 T.P. +95.76	18.14	5.34	10.71	3.81	+6.91
1+43.64		7.49	10.65	4.12	+6.53
+91.52		7.44	10.70	4.43	+6.27
2+39.40	✓	8.13	10.01	4.75	+5.76
2+87.28	✓	8.29	9.85	5.06	+4.79
3+35.16	✓	7.64	10.50	5.37	+5.13
3+82.96 - 2' stud 1/16 = 0+00	✓	7.38	10.76	5.69	+5.07
0+47.59	✓	6.03	12.11	6.01	+6.10
+95.18	✓	5.98	17.16	6.37	+5.84
1+42.77	✓	5.27	17.87	6.63	+6.74
+90.36	✓	4.79	13.35	6.95	+6.40
2+37.95 T.P. +85.54	20.65 ✓	4.30	13.84	7.26	+6.58
3+33.13	✓	5.04	13.10	7.57	+5.53
+80.7 - 2' MH # 44 = 0+00	✓	6.77	13.88	7.89	+5.99
0+50	✓	5.92	14.73	8.21	+6.57
1+00	✓	4.52	16.13	8.52	+7.61
+750	✓	5.53	15.12	8.85	+6.77
2+00	✓	4.95	15.70	9.18	+6.57
+50	✓	4.83	15.82	9.51	+6.31
3+00 = DE. N. of Sutherland	✓	4.63	16.07	9.84	+6.18
	✓	4.44	16.71	10.17	+6.24
	✓	3.56	17.09	10.50	+6.59

Cont. on P. 43

Page 43  
chk. on cut stub DE 0+00

Stub =

16.06 = T.  
5.34 -  
10.72 = T.P.  
7.42 +  
18.14 = T.  
5.04  
13.10 = T.P.  
7.55 +  
20.65 = T.  
7.65  
13.00 = T.P.  
13.07  
0.07 = Error

Yakky  
2/1/28

KURTZ St cont.  
Bet. Harasthy & Bear St.  
Line 17 25042 N.W.

DE 40' E. E.L. Subst. cont.  
= 0+00

**INDEXED**  
WK  
**JAN 14 1949**

22.25	9.23	13.02	11.00	+2.02	
+50	9.94	12.31	10.66	+1.65	
1+00	10.61	11.64	10.33	+1.31	
+50	10.32	11.93	10.00	+1.93	
2+00	10.46	11.79	9.66	+2.13	
+50	3.26	18.79	9.33	+7.66	
3+00 = Clayton	6.35	20.73	9.00	+11.73	
= 0+00	87.08	6.35	14.50	+6.23	
0+48.57	27.08	6.34	20.74	14.86	+5.88
0+97.14	6.80	20.28	15.22	+5.26	
1+45.7	5.65	21.43	15.58	+5.85	
+94.3	5.48	21.60	15.94	+5.66	
2+42.85	5.31	21.77	16.30	+5.47	
+91.42	4.90	22.18	16.65	+5.53	
3+40 = 1/2 Harasthy = DE	5.04	22.04	17.00	+5.04	

Kurtz St Cont. on Page 45

Clayton St. Sewer  
Bet. Kurtz & Atlantic

1 Above DMH #345	87.08	6.35	20.73	14.50	+6.23
= 0+00	15.01	7.40	19.68	8.00	+11.73
+51.14	1.69	13.32	7.00	+11.68	
1+02.28	1.25	13.76	6.01	+6.32	
+53.42	3.34	11.67	5.02	+7.75	
2+04.56	4.58	10.43	4.03	+6.65	
+55.7	6.40	8.61	3.04	+6.40	
3+06.84	5.58	2.05	+5.51		
3+58 = Exist. Sewer N.W. Atlantic	1.363	1.38	1.32	+3.53	
1-375 = Flow Line Exist. MH				+0.06 = High	

**INDEXED**  
WK  
**JAN 14 1949**

Elev. cut stub MH #345 = 20.73  
1.52 +  
22.25 = T

Elev. MH cut stub = 20.73  
6.50  
27.23 = T

6.48	20.75	14.86	+5.89
6.94	20.29	15.22	+5.07
6.09	21.14	15.58	+5.56
5.77	21.46	15.94	+5.52
5.33	21.90	16.30	+5.60
5.42	21.81	16.65	+5.16
5.18	22.05	17.00	+5.05

in walk to cut + dog hospital  
B.M. B.P. Clayton & Moore

Spt. 38.71 =  
87.2  
Left B.M. S.E. Clayton & Harasthy 27.79 = B.M.

49.71  
1.52 +  
51.23 = T  
13.07  
38.69 = T.P.  
0.02  
38.71  
12.62  
26.07 = T.P.  
0.79 +  
27.08 = T  
12.35  
14.70 = T.P.  
0.31 +  
15.01 = T  
6.53  
8.48 = T.P.

Note this T.P. used on Page 46.

This line levels chks. flow line MH in & Atlantic - Clayton  
of 006

1-11-20

EMORY St. Sewer Const.  
Bet. Atlantic & Kurtz St.

2 MH #347 = 5' South intersection Kurtz & Emory					
= 0+00	31.65	9.60	2005	18.30	
+41.87 (7-46.87)		8.31	2034	16.45	
+88.74		10.74	2091	14.60	
+135.61		11.89	2036	12.75	
+82.48	TP 19.74	3.68	1606	10.90	
2+29.35		4.31	1543	9.05	
+76.22		5.04	1470	7.20	
3+23.09		6.76	1298	5.35	
3+70 = 2 Atlantic & 2 MH #348		10.27	9.47	3.50	

INDEXED  
WK  
JAN 14 1949

BANDINI St. Sewer Const.

2 MH #341 Page 51					
= 0+00 (7-46.21)		9.14 = HI from Page 41 7.39		-0.30	
+48.21		5.70	1.69	-0.49	
+96.42		7.43	7.71	-0.68	
1+44.63		6.19	1.20	-0.87	
-92.84		7.86	1.78	-1.06	
2+21.05		6.94	0.47	-1.25	
+89.26		8.67	0.47	-1.45	
3+37.5 = N Atlantic = exist. Sewer		8.69	0.45	-1.64	
2 Exist MH		9.57	-0.43	-1.79	
		8.95	0.19		
		7.94	1.20		
		10.81	-1.67		

INDEXED  
WK  
JAN 14 1949

H.F. from Page 45 = 31.65 = X  
12.81 -  
18.84 = T.P.  
8.70 +  
174 = T

+3.75  
+6.89  
+6.31  
7.61  
-5.16  
+6.38  
+7.50  
+7.63

+5.97 chk. in MH cut stub Elev 9.45  
8.21  
8.02

+2.18  
+7.10  
1.88  
+1.96  
+1.31 ✓  
+1.51  
-0.82  
+1.64  
+2.84  
70.17 = High.

Yanley  
2-11-28

KURTZ St. Const.  
Bet. Horasthy & Bean St.

C

Page 43 on Kurtz St.  
Elev cut stub on DS. W. Horasthy

DE. 20' E. F. A. Horasthy = 0+00	32.14	3.77	28.37	23.00	+5.37
+50		3.25	28.89	22.30	+6.59
1+00		3.43	28.71	21.60	+7.11
+50		4.24	27.90	20.90	+7.00
2+00		6.20	25.94	20.20	+5.74
+50		6.75	25.39	19.50	+5.89
3+00 = <sup>REMOVED</sup> MH #347		10.09	22.05	18.80	3.25
= 0+00		10.09	22.05	18.30 =	0+00 3.75
0+47.7 TP	31.65	4.87	26.78	18.76	+8.02
+94.54		5.74	25.91	19.22	+6.69
1+41.8		5.20	26.45	19.68	+6.77
+89.08		4.82	27.33	20.15	7.18
2+36.35		4.01	27.64	20.61	+7.03
+83.62		4.03	27.62	21.07	+6.55
3+30.9		5.02	26.63	21.53	+5.10
3+78.18 = <sup>1/2</sup> Bean dist. from tie pt. to obs. = <sup>1/2</sup> MH #346		4.21	27.44	22.00	+5.44

Note this H.S. was used on P. 44  
for chk out see Levels on P. 44

22.04 stub  
10.10 +  
32.14 -  
10.09 -  
22.05 = TP  
7.60 +  
31.65 = T

COURTS STREET Sewer Const.

Bet. Hancock + Kurtz

MH # 339 Page 37

Elev. cut stub MH #339 Page 37 = 11.20

= 0+00	13.46			3.50	
+45.83		3.73	9.73	3.02	+6.71
+91.66		5.35	8.11	2.55	+5.56
1+37.5		5.95	7.51	2.07	+5.44
+83.82		4.13	7.33	1.60	+7.73
2+29.15		10.20	3.26	1.12	+7.14
+75 = <sup>1/2</sup> MH #340 Page 41		10.92	2.54	0.65	+1.89
				0.60	+1.94

INDEXED  
WK  
JAN 14 1949

this H.S. used on P. 41 = 7.59 = T

11.20  
2.26 +  
13.46 = T  
10.92  
2.54 -  
5.08 +  
7.59 = T



Walker  
Poplar  
Shaw  
4-11-28

West ATLANTIC St. Sewer Const.  
Bet. Harathy & Bean St.

Profile	Plan 10				
Exist. Sewer Bl. Atlantic = 0+00 (7-4857)	15.82	1342	2.40	2.41	-0.01 = Exist. MH & Atlantic & Harathy
0+48.57		579	10.03	2.53	+7.50
+97.14		5.35	10.47	2.67	+7.80
1+45.7		4.90	10.92	2.81	+8.11
+94.3		4.70	11.12	2.95	+8.17
2+42.8		5.03	10.79	3.09	+7.70
+91.4		5.77	10.05	3.23	+6.82
3+40 = 2 MH #348 =		6.27	9.55	3.37	+6.15
0+48.33 TP 1511		6.37	9.45	3.50	+5.95
+96.66		5.58	9.53	3.75	+5.78
1+45		6.09	9.02	4.00	+5.02
+93.33		6.56	8.55	4.25	+4.30
2+41.66		6.53	8.58	4.50	+4.08
+90 = DE. 50' x 11 1/2' Bean St		6.73	8.38	4.75	+3.63
		7.01	8.10	5.00	+3.10

Atlantic & Harathy  
1582  
535  
1047 = Elev.  
Elev. TP on Page 43 = 848  
794 +  
1582 - T  
607 -  
945 = TP  
566 +  
1511 - T

INDEXED  
WK  
JAN 14 1949

NOEL St. Sewer Const.  
Bet. Moore & Hancock St.

Elev. cut stub MH #335 Page 93 = 26.12  
1172 +  
3784 - T  
331 -  
3447 = TP  
1081 +  
4528 - T

2 MH # 335 & Hancock = 0+00 (5-475)	37.84		20.30		
0+47.5		10.31	27.53	22.84	+5.69
+95		8.06	29.78	25.38	+6.40
1+42.5 TP	45.28	6.18	31.66	27.92	+6.72
+90		7.79	37.51	30.46	+11.05
2+37.5 = Exist Sewer S.W. Moore St.		2.84	47.44	33.00	+14.4
chk. on MH 10 Moore St.				34.27	
				34.19	
				0.06	

INDEXED  
WK  
JAN 14 1949

TRINIDAD St. Sewer Const.  
bet. Trunk line & Whitman  
Profile 11 Plan 9

dbl DMH #7 & trunk line = 0700	27.34			8.00	
+4136		762	1972	13.00	+6.72
+82.73 = 1/2 MH 310 (1-4993) = 0+00 = 1/2 Manock		320	24.14	18.00	+6.14
0+49.93 TP	32.97	567	2730	18.43	+8.87
+99.86		361	2936	18.86	+10.50
1+49.8		420	2877	19.29	+9.48
+99.72		439	2858	19.72	+8.86
2+49.65		517	2780	20.15	+7.65
+99.6		784	2513	20.58	+4.55
3+49.5 = 1/2 MH #309 = 0+00 (7-4993) TP	39.67	626	2671	21.00	+5.71
0+49.93		1130	2837	23.57	+4.80
+99.86		887	3080	26.14	+4.66
1+49.8		637	3320	28.71	+4.59
+99.8		383	3584	31.28	+4.56
2+49.65		0.90	3877	33.85	+4.92
+99.6 TP	50.43	864	4179	36.42	+5.37
3+49.44 = 1/2 MH #308 (7-4993) = 0+00 = 1/2 Jefferson		6.06	4437	39.00	+5.37
0+49.93 TP	63.14	318	4725	41.86	+5.39
+99.86 TP		1232	5082	44.12	+6.10
1+49.8		1019	5295	47.68	+5.37
+99.8		920	5394	50.44	+3.50
2+49.65		408	5906	53.30	+5.76
3+49.6 TP = 1/2 Congress St.	70.07	0.90	6244	56.15	+6.29
0+49.5 = 1/2 MH #307 = 0+00		330	6677	59.00	+7.77
0+31 TP	79.42	10.73	6869	62.50	+6.49.79

INDEXED

WK  
JAN 14 1949

46  
dupl. coll.

Elev. cut stub MH #7 Page 2 = 15.21

12.18 +  
2734 = T  
0.52 -  
2682 = TP  
615 +  
3297 = T  
626 -  
2671 = TP  
1296 +  
3967 = T  
0.90 -  
3877 = TP  
1166 +  
5043 = T  
0.18 -  
5025 = TP  
1289 +  
6314 = T  
0.70 -  
6244 = TP  
763 +  
7007 = T

on cut stub MH #309 = 26.71 = TP

on stub 2+49.65 = 38.77 = TP

on tick. 5025 = TP

Elev. Cut. Stub MH #307 = 66.67

Note: Above Stub is Elev. 66.77  
Making all cuts bet MH #307 and Exist. MH in 2 Juan  
St 0.10 deeper

TRIAS ST. Sewer Const.

Cont.  
(Profile 11) (Plan 8)

0+62 = Bk (4-50)		7942	6.03	73.39	66.00		
1+12	T.P.	91.85	8.76	83.09	78.25		
+CV	T.P.	104.52	10.16	94.36	90.50		
2+12	T.P.	117.10	10.57	106.53	102.75		
+CV = Bk (2-50.31)	T.P.	130.00	10.58	119.42	115.00		
3+12			0.05	129.95	125.00		
4+62 = San Diego Ave (1-39.37)		143.05	0.96	144.09	135.00		
0+39.37	T.P.	165.99	12.03	153.96	148.00		
+79.87 = Bk (2-30.31)	T.P.		0.86	165.13	161.00		
1+09.68		178.41	3.03	175.38	172.65		
+39.98 = PV (1-39.37)	T.P.	191.47	1.36	190.11	184.31		
+59.98 = Bk	T.P.	204.00	7.07	196.93	190.82		
1+79.98 = EXC (1-40)	T.P.		2.28	201.72	195.00		
2+20 = DE		211.17	2.74	208.43	201.00		
	TRIAS ST. CONT.						
DE. 2475' South of 8 <sup>th</sup> Town St = 0+00 (3-46.67)		211.17	1.86	209.31	200.00		
0+46.7			6.37	204.80	195.66		
+93.3			11.67	199.50	191.33		
1+40 = Bk (3-35.83)	T.P.	199.35	7.75	191.60	187.00		
1+75.80			9.85	189.50	185.83		
2+11.7			10.35	189.00	184.67		
+47.5 = 8 <sup>th</sup> Town St = Exist. MH			15.98	183.37	183.50		
	TRIAS ST. CONT.						
End of Exist. Sewer 125' N of 8 <sup>th</sup> Town St = 0+00 (2-39)		178.74	1.75	176.99	172.70		
0+39			11.34	167.40	161.35		

709  
+739  
494  
+484  
396  
+386  
386  
+378  
452  
+442  
505  
+495  
719  
+709  
606  
+596  
423  
+413  
253  
+273  
590  
+580  
671  
682  
+672  
753  
+743

San Diego Ave  
left 84 on E. tie hub. 25'  
West off 8 on W. TRIAS St.

153.02 = T  
12.02  
140.98  
198.31 = TP  
1.04  
149.35 = T

03 low  
Please locate 42 low.

N.T. from Page 48

Ch. on cut & sub DE 4+42.5 Page 50

7942  
0.24  
7918 = TP  
12.67 +  
91.85 = T  
0.30  
91.55 = TP  
12.97 +  
104.52 = T  
0.26  
104.26 = TP  
12.84 +  
117.10 = T  
0.07  
117.03 = TP  
12.97 +  
130.00 = T  
0.05  
129.95 = TP  
13.10 +  
143.05 = T  
0.96  
142.09 = TP  
10.93 +  
153.02 = T  
0.27  
152.75 = TP  
13.24 +  
165.99 = T  
0.19  
165.80 = TP  
12.61 +  
178.41 = T  
0.11  
178.30 = TP  
12.17 +  
191.47 = T  
0.30  
191.17 = TP  
12.83 +  
204.00 = T  
0.16  
203.84 = TP  
7.31 +  
211.17 = T  
12.86  
198.31 = TP  
178.74 = T  
0.70  
178.44 = TP  
12.76  
191.47 = T  
7.33  
183.89  
183.78 = Sub  
0.11

## TRIAS St. Cont.

Note Levels Backed up from Sta. 1110 to 0100.

0+78 = Bk.	166.46	11.85	154.61	150.00	+ 4.61
+98 = Bk.	153.92	12.37	141.60	137.50	+ 4.10
1+10.30 = DM. South of Sunset			137.00 = N		
(2-38.85)			140.00 = X-1E		
0+38.85	166.46	8.10	158.36	154.50	+ 3.86
	178.74				
+77 = D.E. on South line Sunset Blvd.	5.29	173.45	169.00		+ 4.45

HT. from Book 137 - Page 3

153.92

0.97 -  
 153.83 = TP  
 12.63 +  
 166.46 = T  
 0.28 -  
 166.18 = TP  
 12.56 +  
 178.74 = T

for these cuts see Book 137-3

## AMPUDIA ST. Cont. From P-50

all offsets 10' ±

1+75.5 = D.M. #256 = 0100	126.69	2.74	123.95	116.00 = N	+ 7.95
0+55	149.44	1.77	147.67	140.50	+ 7.17
1+10.01 = M.H. #270	174.09	2.49	171.60	165.00	+ 6.60
(1-27')					
17.57 = PXC	198.00	8.88	189.12	180.40	+ 8.72
(2-20')					
+77 = Bk.	2.42	195.58	183.91		+ 11.67
+97 = EYC	210.53	11.65	198.88	187.23	+ 11.65
3-50					
2+47	4.47	206.06	187.82		+ 18.24
+97	6.70	203.83	188.41		+ 15.42
3+47 = Exist. Sewer	6.38	204.15	189.00		+ 15.15 + 9.21 = New location

offset 10' NE  
= new location

HT. from Page 50

126.69  
 2.74 -  
 123.95 = TP  
 12.98 +  
 136.87 = T  
 0.27 -  
 136.62 = TP  
 12.82 +  
 149.44 = T  
 0.90 -  
 149.04 = TP  
 12.82 +  
 161.86 = T  
 0.28 -  
 161.61 = TP  
 12.28 +  
 174.09 = T  
 0.28 -  
 173.81 = TP  
 12.44 +  
 186.25 = T  
 0.67 -  
 185.58 = TP  
 12.42 +  
 198.00 = T  
 11.65 -  
 197.79 = TP  
 12.59 +  
 210.53 = T  
 0.78 -  
 209.75 = Bk.  
 209.79 = Bk.  
 0.04 = Error.

Note: this

209.79 = Bk. PAGE 57

0.49  
 213.28  
 12.74  
 210.54 = TP  
 0.89 +  
 210.43 = T

chk. on B.M. Run up from Driggs + Trunk line  
by San Joaquin tracks see Page 57

AMPUDIA ST. SEWER Const  
Bet. Hancock st. & Whitman sts.

(Profile 10) (Plan 8-9)

Elev Grade

DMH # 8 on 16" Trunk Line

Range 3 0+00 = 8 DMH

(2-46.47)

0+46.47 TP

+92.95 = Bk

(47.31) 5

1+40.76

+88.6

2+36.4

+84.2

- 8 Moore St

3+32 = 0+00 = 8 DMH # 305

(7-49.93)

0+49.93

+99.86 TP

1+49.8

+99.8

2+49.65

+99.6

- 8 Jefferson St

3+49.44 = 0+00 = MH # 304

(7-46.89)

0+46.89

+92.78

1+39.17

+85.56 TP

2+31.95

+78.34

- 8 Congress St. Apparently

3+24.75 = 8 DMH # 303 = 0+00

(5-45.35)

0+45.35

+90.7

1+36.1

Cont. on 50

INDEXED  
WK  
JAN 14 1949

22.26	6.75	15.51	-2.33	+17.84 = Trunk line
31.56	6.48	25.08	5.00	+10.51 = N
5.48	26.08	21.00		+12.08
5.22	26.34	21.60		+5.08
4.97	26.59	22.20		+4.74
4.42	27.14	22.80		+4.39
4.11	27.45	23.40		+4.34
3.29	28.27	24.00		+4.05
2.56	29.00	24.50		+4.27
37.87	8.24	29.63	25.00	+4.50
7.51	30.36	25.50		+4.63
6.67	31.20	26.00		+4.86
5.71	32.16	26.50		+5.20
4.86	33.01	27.00		+5.66
4.26	33.61	27.50		+6.01
3.41	34.46	29.00		+6.11
2.26	35.61	30.50		+5.46
0.97	36.90	32.00		+5.11
9.70	38.05	33.50		+4.90
8.54	39.21	35.00		+4.55
7.22	40.53	36.50		+4.21
5.51	42.24	38.00		+4.03
4.51	43.24	38.70		+4.24
3.97	43.78	39.40		+4.54
3.76	44.59	40.10		+4.38
				+4.49

Trunk line  
Elev. cut stub on sta. 10+128

12/3  
1013 +  
22.26 - T  
0.44 -  
21.82 - TP  
9.74 +  
31.56 - T  
2.56 -  
29.00 - TP  
8.87 +  
37.87 - T  
0.97 -  
36.90 - TP  
10.85 -  
47.75 - T

Ampudia st.  
Cont.

1+81.4	4775	2.85	44.90	40.80	+4.10
2+26.77 = 1/2 M.H. #302 (2-40)		1.16	46.59	41.50	+5.09
2+66.77 TP	58.71	7.07	51.64	47.75	+3.89
3+06.77 = Brk. (2-40.81)		1.70	57.01	54.00	+3.01
3+47.1 TP	70.49				
+87.4 = 1/2 San Diego Ave (2-49.68) TP #302		2.84	67.65	65.50	+2.15
0+49.68 TP	102.39	1.66	107.73	95.50	+12.23
+99.37 = Brk. (2-35.1)	129.00	8.78	120.02	114.00	+6.02
1+34.36 TP	141.72	4.86	136.86	129.00	+7.86
+69.36 = Brk. (1-50)	154.02	2.85	151.17	144.00	+7.17
2+19.36 = Brk. (2-50)	178.41	12.27	166.14	159.00	+7.14
2+67.36 TP		3.68	174.73	165.50	+9.23
3+19.36 = Brk. (3-41.04)	189.99	10.23	179.76	172.00	+7.76
3+60.4		8.42	181.57	174.00	+7.57
4+01.44 = 40' South St. Juan st. DE = D.E.		7.09	182.90	176.00	+6.90
742.5 = D.E. 6-1-28		6.21	183.78	178.00	+5.78

H.I. from P49 = 4775

116
46.59 - T.R
12.12 +
58.71 - T
0.19 -
58.52 = T.R
11.97 +
70.49 - T
0.12 -
70.37 = T.R
12.65 +
83.02 - T

Elev. cut stub station 3+87.4

77.12
12.91 +
92.03 - T
0.54 -
71.49 = T.P.
12.90 +
14.37 = T
0.56
108.3 = T.P.
12.20 +
147.5 = T
0.52 +
118.21 = T.P.
12.79 +
177.00 = T
0.48 -
182.52 = T.P.
19.20 +
141.72 +
0.67 -
111.05 = T.P.
12.97 +
149.07 = T
0.80 -
153.22 = T.P.
12.92 +
166.14 = T
0.81 -
145.73 = T.P.
12.63 +
178.11 = T
0.64 -
177.77 = T.P.
12.21 +
157.77 = T
0.58 -

Ampudia Cont. North of Juan

DE 40' N.H. Juan = 0+00	191.11	4.76	186.35	181.00	+5.35
0+17.5 = P.V.C.		6.49	184.62	178.64	+5.98
+37.5 = Brk. TP	178.97	10.13	180.98	175.03	+5.95
+57.5 = P.C.V.C. compounding TP		3.67	175.30	169.50	+5.80
+77.5 = Brk. TP		11.46	167.51	167.45	+0.06
+97.5 = P.V.C. 1-10	154.90	0.61	154.29	150.32	+3.97
1+07.5 = Brk. 1-42 TP		6.01	148.89	144.00	+4.89
1+49.5 = P.V.C. 2-13 TP	138.62	9.85	128.77	121.50	+7.27
1+62.5 = Brk.	126.69	11.74	114.95	115.63	-0.68

Elev. D.E. cut stub 4+02.5 = 183.78

167.73 +
12.87 -
154.86 = T.P.
0.04 +
154.90 = T
0.01 -
148.89 = T.P.
0.72 +
147.81 = T
12.61 -
137.15 = T.P.
1.47 -
138.62 = T

26.5 H.S. used on Page 48. For chk out see that page.

183.78
7.33 +
191.11 = T
12.93 -
178.18 = T
0.77 +
178.97 = T
12.55 -
166.42 = T.P.
1.34 -
167.73 = T

chk. on Floor Lease Exht. M.H. & Juan Page 47

145.41 = chk.
183.50 = flow
0.09 = Error.

Cont. on Page 48

4-30-28  
Walker  
Shaw  
Rep

MOORE STREET SEWER Contd  
Bet. Trias + Conde sts.

{Profile 10 - Plan 8}

DE. bet. Trias + Ampudia = 0+00 (4-4625)	33.17	348	27.67	26.00	+3.69
0+46.25		377	27.40	25.50	+3.90
+92.5		421	28.96	25.00	+3.96
1+38.75		497	28.20	24.50	+3.70
1+85 = 2 M.H. #305			24.00		

INDEXED  
WK  
JAN 14 1949

DE. bet. Ampudia + Conde = 0+00 (4-4375)	33.17	583	27.34	23.00	+4.34
0+43.75		565	27.52	22.62	+4.90
+87.5 TP	28.66	117	27.49	22.24	+5.25
1+81.25		067	27.99	21.87	+6.12
1+75 = 2 M.H. #200 (3-3883)		111	27.55	21.50	+6.05
2+13.33		153	27.13	19.66	+7.47
+51.66		416	24.50	17.83	+6.67
2+90.00 = 0 bk. (2-425)		782	20.84	16.00	+4.84
3+32.5 TP	15.85	1037	18.29	11.50	+6.79
3+75 = 2 DMH #303 (3-50')		287	12.98	1.00	+5.98 = E +11.98 = W
4+25 TP	7.04	1179	4.06	0.53	+3.53
+75		519	1.85	-0.02	+1.87
5+25 = 2 M.H. #297		511	1.93	-0.42	+1.35

Elev cut stub Sta 2+84.2 Page 49 = 2745

572 +  
83.17 = T  
591 -  
1776 = TP  
180 +  
7866 = X  
1.01  
= 2765 - BM.  
28.66 = T  
1303 -  
15.63 = TP  
022 +  
1585 = T  
1271 -  
3.14 = TP  
3.90  
7.04 = T  
631  
073  
074 = stub  
001 = Elev.

20 Penny Nail (old)  
Left 2 M. IN SW Elec. Pk  
Moore + FRISTH

chk. on cut stub M.H. #20 = Conde = Trunk line

ARISTA St Server Const  
Bet. Moore St. and San Diego Ave  
" Whitman Sts

Profile 14 - Plan 8

DE North of Moore = 0+00. (546.89)		30.00	10.53	19.47	11.34	+8.13
0+46.89 TP		25.41	10.60	1.481	10.88	+3.93
+93.78			11.72	13.67	10.41	+3.78
1+40.67			11.48	13.93	9.94	+3.99
+87.56			9.94	15.47	9.47	+6.00
2+43.44 = of Jefferson St (7-49.37) = 2 DMH # 299 = 0+00		4.37	71.04	17.00 = N	9.00 = K	+12.04 = N+S +4.04 = N
0+49.96		0.91	24.50	17.50		-17.00
+99.94 TP	31.72	6.15	25.57	18.00		+7.57
1+49.9		5.64	26.08	18.50		+7.58
+99.88		5.43	26.99	19.00		+7.29
2+49.85		5.28	26.44	19.50		+6.94
+99.82		5.68	26.04	20.00		+6.04
3+49.75 = of Congress (3-36.91) = 0+00 = 2.111 298		5.67	26.05	20.50		+5.55
0+36.94		6.35	25.37	21.00		+4.37
+73.88		5.01	26.71	21.50		+5.21
1+10.81 = Brk (3-46.47)		5.12	26.60	22.00		+4.60
1+57.49		2.63	29.09	24.33		+4.76
2+04.15 TP	39.13	5.20	33.93	26.66		+7.27
2+50.81 = DE. Approx. White Lilla Brk 407		35.06	29.00			+6.06
2.111 # 294 Page 56	Arista Const (Profile 14) 5-5-28					545 stake Reset
= 0+00	56.21	12.94	43.27	38.00		+5.27
3-42.6 TP	56.30					
0+42.66		12.38	43.92	40.88		+3.64
+85.33		6.89	49.41	43.76		+5.65
1+28 = PXC		4.04	52.26	46.65		+5.61
+48 = Brk		0.65	55.65	49.58		+6.07

INDEXED  
WK  
JAN 14 1949

Cont on 57

Page 51

NW B.M. Moore & ARISTA = 27.65

2.35
31.00 - T
12.97 -
17.03 - TP
8.98 +
25.41 = T
4.26 -
21.15

Left 2 marks SE. Pole  
Jefferson & ARISTA

25.41 = T
0.91
24.50 = TP
7.27 +
31.72 = T
2.28 -
29.44 = TP
9.69 +
39.13 = T
3.97 -

Left B.M. SE Pole 2 MARKS

Lopilla Blvd. Arista

Note. This B.M. chkd. from trunk line  
up grade to San Diego Ave

35.16 = B.M.
39.13 = Arista
1.38 -
37.75 = TP
8.35 +
46.10 = T
3.89
12.21
42.34 = Elev. Sub
0.03 = Error

(cert stub)  
chk. on M.H. Sub 303 Page 49

this H.I. from Page 56

= 56.21
0.70 -
55.51 = TP
0.79
56.30 = T
0.65 -
55.65 = TP

See page 57 for chk



JEFFERSON St. Sewer Const.

Bel. Ampudia + Trias st

Profile 10. Plan 8

M.H. # 304 on Page 49

= 0400	4.051		27.50		cut on Page 49
+1625					
0+26.25		5.24	3527	29.37	+5.90
+92.50		3.85	3666	31.24	+5.42
1+38.75		2.58	3793	33.12	+4.81
1+85 = DE. West of Trias		1.82	3869	35.00	+3.69

Elev. cut stub 0+46.89 Page 49

= 34.46  
+ 6.05  
40.51 = T

INDEXED  
WK  
JAN 14 1949

JEFFERSON Sewer Const.

Bel. ARNETH + CONDE

M.H. # 299			17.00		+5.02
= 0400	Jefferson + ARNETH 2.311	1.09	22.02	9.00	13.02
(3-41.67)					
+41.67		2.19	2092	7.11	+13.81
+83.84		6.61	1650	5.23	+11.27
1+25 = 2 M.H. # 300		13.35	9.76	3.35	+6.41
5-45					
1+70 T.P.	10.23	3.57	6.66	3.08	+3.58
2+15		3.70	6.53	2.81	+3.72
+60		3.15	7.08	2.54	+4.54
T.P.	20.95				
3+05		9.77	11.18	2.27	+8.91
= Conde st				2.00 = 54 N	E + 1405
3+50 = D.M.H. # 296 = 0+00		4.90	11.05	12.00 - W	+4.95
(5-47) T.P.	29.86	7.97	21.89	13.20	+8.69
0+47					
+94		6.06	23.80	14.40	+9.40
1+41		5.78	24.08	15.60	+8.48
+88		5.15	24.71	16.80	+7.91
2+35 = DE. East of Harney st		4.71	25.15	18.00	+7.15
Jefferson Bel. Harney + TWIGGS profile					
0+00 = M.H. # 287 = 0 HARNEY		4.77	25.09	18.00	+7.09
(5-50)					
+50		5.27	24.59	18.30	+6.29
1+00		5.72	24.14	18.60	+5.54
+50		6.02	23.84	18.90	+4.74
2+00		5.94	23.92	19.20	+4.72
2+50 = DE 75' E.F.L. TWIGGS		6.48	23.38	19.50	+3.88

S.E. Jefferson + Arneth  
B.M. IN Bldg Page 52

21.15  
19.61  
23.11 = T  
13.35 -  
9.76 = T.D.  
6.47 +  
10.23 = T  
0.66 -  
7.57 = T.P.  
11.38 +  
20.95 = T  
0.37 -  
20.58 = T.P.  
7.28 +  
29.86 = T  
8.70 -

Left B.M. 2 nails NW Conde + Jefferson 2.111 = B.M.

For chik. see Page 54 have 1 from Trint Line

5-3-28

CONDE ST. SEWER Const.  
Bet. Trunk line + Java St.

54

MH # 10 Page 3

Profile 6 - Plan 10

Trunk line  
Elev. cut stub MH # 10 Page 3

= 0+00  
(3-3717)

8.59 7.84 0.75 -1.74 = Trunk.  
-1.00

+2.49 stake (Mord)  
+1.75 hence different cut from Page 3

= 0.74

0+37.17

7.76 0.83 -0.75

+1.53

7.81 = TP

+74.34

7.04 1.55 -0.50

+2.05

11.86 +

= d. Moore St

1+11.53 = d. MH # 297 = 0+00

6.59 2.00 -0.25

+2.25 stake word hence different cut

19.67 = T

(7-4983)

0+49.93

6.79 1.80 0.07

+1.73

2.00 -

+99.86

**INDEXED**

6.50 2.09 0.39

+1.70

chk. on B.M. N.Y. File Jefferson + Conde

17.67

1+49.8

WK

5.58 3.01 0.71

+2.30

4.29 +

+99.8

**JAN 14 1949**

0.78 7.81 1.03

+6.78

21.96 = T

TP

19.67

2+49.65

7.32 12.35 1.35

+11.00

0.84

+99.6

4.64 15.03 1.67

13.36

21.11 - B.M.

= d. Jefferson

3+49.44 = d. MH # 296 = 0+00

3.62 16.05 2.00

+14.05

0.01

(7-4997)

0+49.97

2.00 17.67 2.86

+14.81

21.96 = T Above

+99.74

TP

21.96

9.22 12.74 3.71

+9.03

8.27 -

1+49.9

12.52 7.44 4.57

+4.87

13.69 = TP

+99.9

11.98 9.78 5.42

+7.456

11.29 +

2+49.8

8.27 13.69 6.28

+7.41

24.98 +

+99.8

TP

24.98

7.90 17.08 7.14

+9.94

0.82

= d. Compress St.

3+49.72 = d. MH # 295 = 0+00

6.16 18.82 11.50

+10.82 = South  
+7.32 = North

24.16 = TP

(8-4887)

0+48.87

4.73 20.25 13.19

+7.06

12.52 +

+77.74

2.95 22.03 14.88

+7.15

36.68 = T

1+46.61

0.82 24.16 16.57

+7.59

+95.48

TP

36.68

11.47 25.21 18.26

+6.95

2+44.35

10.00 26.68 19.95

+6.73

+93.22

9.02 27.66 21.64

+6.02

3+42.09

4.98 31.70 23.31

+8.39

Cont on 55

Conde st. Cont.  
 $\pi$   
 36.68 from 54

3+90.96 (4-2372) T.P. 0+43.72	= 8' South N.L. San Diego Ave = MN# 293 = 0400 36.70	5.23	3145	25.00	+6.45
487.44		3.93	2277	27.50	+5.27
17.31 T.P.	48.04	1.76	3494	30.00	+4.94
+7488 = MN# 292 (2-40) T.P. 2+14.88		7.69	4035	32.50	+7.85
		4.57	4347	35.00	+8.47
754.88 = Bk 2184 T.P.	60.20	6.91	5329	47.00	+6.29
3+14.88 = Bk 1-00 T.P.	71.65	5.93	6572	59.00	+6.72
3+64.88 = P.Y.C. 1-20 T.P.	84.14	7.28	7686	71.00	+5.86
3+84.88 = Bk	96.62	8.50	8812	83.00	+5.12
4+104.88 = Exc. (1-217)	108.17	1.50	10667	101.00	+5.67
4+13.00 = D.E. 40' South side of	119.45	5.56	11389	106.65	+7.24
		1.90	11755	109.43	+8.12
		2.88	11657	110.00	+6.57

Conde + San Diego  
 Left. B.M. SW. P.R. spk. in Pic

chk. on cut stub sta 2+04.15 Page 57  
 = E.V.

36.68
570 -
<u>3098 = B.M.</u>
36.68
2.75
33.93
33.93
000 = Error
3098 = Above B.M.
572 +
36.70 = $\pi$
058 -
3612 = T.P.
1192 +
4804 = $\pi$
009 -
4795 = T.P.
1225 +
6020 = $\pi$
047 -
5773 = T.P.
1192 +
7165 = $\pi$
017 -
7146 = T.P.
1268 +
8414 = $\pi$
042 -
8372 = T.P.
1290 +
7662 = $\pi$
053 -
7609 = T.P.
1208 +
10817 = $\pi$
040 -
10777 = T.P.
1168 +
11945 = $\pi$
1020
10925 =
10938 = B.M.
013 = Error

SW side Jaun + Conde  
 chk. on B.M. cluster of nails

Note this B.M. Has Receipt from  
 from Mission Hills Hence Error of  
 0.13 use 109.25

See Page 57 for chk.

SAN DIEGO AVE. Sewer Const.

Bet. Arista & Harney sts  
8' South From N.Y. Line San Diego Ave  
Profile 6 - Plan 8

8 MH # 293 = 0+00	36.70	5.24	31.46	25.00	+ 6.46
+ 50		3.70	33.00	26.86	+ 6.14
1+00		1.78	34.92	28.72	+ 6.20
+ 50 T.P.	45.18				
+ 50		7.34	37.84	30.58	+ 7.26
2+00		4.97	40.21	32.44	+ 7.77
+ 50		4.42	40.76	34.30	+ 6.46
3+00		2.55	42.53	36.15	+ 6.38
+ 50 = 2 MH # 274		12.94	43.27	38.00	+ 5.27

INDEXED

WK

JAN 14 1949

T.P. Arista 8' S N.Y. Line 5621

San Diego West Bet. Cordes & Harney Profile 6

Above MH # 293 = 0+00	36.70	5.24	31.46	25.00	+ 6.46
+ 45		5.51	31.19	25.67	+ 5.52
+ 90		5.14	31.56	26.33	+ 5.23
1+35 = DE End of Harney		4.66	32.04	27.00	+ 5.04

SAN DIEGO AVE

Bet. Harney & Triggs Profile 6

8 M.H. # 290 Page 58 = 0+00	35.63	4.70	30.93	25.00	+ 5.93
+ 40		4.97	30.66	25.33	+ 5.40
+ 80		5.04	30.59	25.67	+ 5.33
1+20 = DE. this line extended		5.10	30.53	26.00	+ 5.09
1-50				25.74	+ 4.97
1+70	35.70			26.00	+ 4.79
1-55		5.31	30.59	26.41	+ 4.55
2+25 = DE		4.65	31.25	26.37	+ 4.18
				26.87	4.88
					+ 4.38

INDEXED

WK

JAN 14 1949

Page 56 B.M. SW cph Cordes + San Diego Ave = 30.98

572+  
36.70 = T  
552.  
36.18 = T.P.  
7.00 +  
45.18 = T  
10.02

Page 57  
Chk. on B.M. SW Capella Blvd + Arista =

35.16  
35.16 = BM  
200 = Error

45.18 = T Above  
175 -  
43.43 = TR  
12.18 +  
56.21 = T

Note: this H.I. used on Page 52  
For chk out see Levels up Arista  
to Town thence to Town & Harney

Page 58  
B.M. BR Harney + San Diego Ave

30.60  
5.33 +  
35.63 = T

30.60  
5.30  
35.90

5-5-28  
 1/2" x 1/2" x 1/2" - 1/2" x 1/2" x 1/2"  
 1/2" x 1/2" x 1/2" - 1/2" x 1/2" x 1/2"  
 1/2" x 1/2" x 1/2" - 1/2" x 1/2" x 1/2"

Arista St. Sewer Cont.  
 from P 52

7P	68.53				
1+68 = EVC		5.98	62.55	55.68	+ 6.87
1-40 TP	80.03				
2+08 = Bk		3.27	76.76	71.00	+ 5.76
1-40 TP					
2+48 = Bk	102.99	9.78	74.21	83.00	+ 6.21
(-45) TP	115.96				
2+73 TP		2.46	113.50	106.41	+ 7.09
3+38 = PVC	140.26	7.32	132.94	124.82	+ 8.12
+58 = Bk		1.78	138.48	131.31	+ 7.17
+78 = EVC	145.05	3.06	141.99	134.45	+ 7.54
(-35)					
4+13 = DE 40' S.S. Launch		0.81	144.24	137.00	+ 7.24

T.P. from 52

55.65 = T.P.
12.88 +
68.53 = T
0.87 -
67.66 = T.P.
12.37 +
80.03 = T
0.48 -
17.55 = T.P.
12.70 +
72.25
2.50 -
71.75 = T.P.
12.24 +
103.99 = T
6.55 -
103.44 = T.P.
12.51 +
115.96 = T
0.29 -

ARISTA ST. Cont. Bet Juan Whitman

MH# 257 Page 2 Book 132					
= 0+00			94.00		
+25 = PVC	119.54	3.53	116.01	109.00	+ 7.01
+45 = Bk	131.58	4.77	126.81	119.90	+ 6.91
+65 = EVC	143.44	9.03	134.41	128.60	+ 5.81
+95 = Bk		1.24	142.20	140.00	+ 2.20
(-43.9)	167.38	9.96	157.42	151.00	+ 6.42
1+38.7	180.14				
+82.8 - MH# 271 = 0+00		11.80	168.34	162.00	+ 6.34
2-36.10		2.54	177.60	167.50	+ 10.10
0+36.10					
+72.2 = Bk	192.51	11.17	181.34	173.00	+ 8.34
(-30.2)		5.78	186.73	181.00	+ 5.73
1+02.2					
+32.2 = Bk	205.21	12.18	193.03	189.00	+ 4.03
1+75 = Exist. Sewer	217.62	5.94	211.68	207.59	+ 4.09

M.H. from Book 137 Page 3 =

119.54  
 0.69  
 118.71 = TP  
 12.02 +  
 131.58  
 0.40  
 131.18 = TP  
 12.26 +  
 0.27 -  
 143.44 = T  
 12.24 -  
 142.20 = TP  
 12.39 +  
 154.59 = T  
 0.16 -  
 154.95 = TP  
 22.93 +  
 167.38 = T  
 5.10 -  
 167.28 = TP  
 12.86 +  
 180.14 = T  
 0.10 -  
 180.04 = TP  
 12.47 +  
 192.51 = T  
 2.14 -  
 192.34 = TP  
 12.31 +  
 205.21 = T

205.21  
 0.50 -  
 70.71 = TP  
 12.91 +  
 77.62 = T  
 1.51 -  
 216.04 = T  
 7.83  
 217.62 = Above H.L.  
 7.83

Left BM. Sec. Pole on S.W. 76.719 = BM. 5  
 1/2" x 1/2" x 1/2" south of  
 Whitman St.  
 Note: Levels up impudic arches.  
 4618 BM. by cad See Page 48

Page 55  
 Chk. on B.M. S.V. 3 nails Conde & Juan

115.57 = TP
12.02 +
127.61 = T
0.27 -
127.34 = TP
12.92 +
140.76 = T
0.55 -
137.1 = TP
5.34 +
145.05 = T
12.91 -
132.11 = TP
4.21
137.53
13.01
119.57 = TP
11.75 +
121.21 = T
11.99 -
137.28
107.25 = BM.
0.03 = Error

INDEXED  
 WK  
 JAN 14 1949

HARNEY ST. SEWER Const

Between Moore + Jaun sts

Profile 6 - Plan 8

B.M. Harney + Moore Page 3 = 163

1/2 MH # 11 on Page 3 - trunk line

= 0+00	13.50	12.80	0.70	-14.5	-14.0	+ 2.15	+ 2.10 = North
+ 42.31 = Bk.		11.51	1.99	0.00		+ 1.99	
(6-40) + 82.31		2.07	11.43	3.67		+ 7.76	
1+22.31 T.P.	25.51	7.46	18.05	7.34		+ 10.71	
+ 62.31 = 1/2 MH # 288		3.75	22.26	11.00		+ 11.26	
(4-47.12) 2+09.43 T.P.	30.07	7.00	23.07	12.75		+ 10.32	
+ 56.55		6.16	23.91	14.50		+ 9.41	
3+03.7		5.37	24.70	16.25		+ 8.45	
+ 50.81 = 1/2 MH # 287		4.97	25.10	18.00		+ 7.10	

For chk. See levels below

1187.  
 1350 - x  
 829 -  
 1021 = T.P.  
 1230 +  
 2551 - x  
 270 -  
 2781 = T.P.  
 726 +  
 3007 = T.P.

Harney St cont

100' N.W. 1/4 = DE.							
= 0+00	30.07	4.74	25.33	19.50		+ 15.83	
5-45		4.87	25.20	18.80		+ 6.40	
0+45		5.11	24.96	18.10		+ 6.86	
+ 90		5.96	24.11	17.40		+ 6.71	
1+35		7.72	22.35	16.70		+ 5.65	
+ 80		7.50	22.57	16.00		+ 6.57	
2+25 = 1/2 Congress		4.48	23.19	17.28		+ 5.91	
(7-48.42) T.P.	27.67	3.53	24.14	18.57		+ 5.57	
0+48.42		2.36	25.31	19.85		+ 5.46	
+ 96.84		1.02	26.65	21.14		+ 5.51	
1+45.26		9.55	28.24	22.42		+ 6.82	
+ 93.7		7.77	30.07	23.71		+ 6.31	
2+42.1 T.P.	37.79	6.85	30.94	25.00		+ 5.94	
+ 90.52		5.19	32.60	27.33		+ 5.27	
3+38.9 = 1/2 North St. San Diego		2.94	34.85	29.66		+ 5.19	
(6-50.48) 0+50.48							
1+00.96							

Cont. on 59

INDEXED  
WIK  
JAN 17 1949

S.W. B.R. Harney + San Diego Ave

30.07 = Above H.T.  
 7.50 -  
 22.57 = T.P.  
 510 +  
 27.67 = x  
 1.02 -  
 26.65 = T.P.  
 11.14 +  
 37.79 = x  
 7.19  
 30.60 = B.M.  
 37.79 = T Above  
 0.62 -  
 37.17 = T.P.  
 30.60 - Above B.M.  
 6.52 +  
 37.12 = T  
 6.10  
 30.78  
 30.88 = B.M.  
 0.00 = Error

Chk. on B.M. S.W. Spk. Condo + San Diego P. 51 - 30.88 = B.M.

Harney St. cont.

	37.79				
1+51.44		0.62	37.17	32.00	+5.17
2+01.92 T.P.	50.16	10.52	39.64	34.33	+5.31
+52.40		7.84	47.82	36.66	+5.66
3+02.87 = L.M.H. # 289		5.27	44.87	39.00	+5.89
(4-40.78)		2.05	48.11	42.26	+5.85
3+43.65		11.55	51.35	45.52	+5.83
+84.43 T.P.	62.90	8.16	54.74	48.78	+5.96
4+25.21		3.77	59.13	52.05	+7.08
4+66.00 = D.F. 40' S. 56. Jawn st. ✓					

CONGRESS ST. Sewer  
Bet. Triggs + Conde Sts.

	Profile 6 - Plov 8				
1/2 D.M.H. # 295 - L. Conde			8.00		+10.83
= 0+100	27.67	8.84	18.83	11.50	+7.33
+50		9.12	18.55	12.14	+6.41
1+00		8.73	18.94	12.79	+6.15
+50		8.21	19.46	13.43	+6.03
2+00		7.45	20.22	14.08	+6.14
+50		6.72	20.95	14.72	+6.23
3+00		6.18	21.49	15.36	+6.13
+50 = L. Harney		5.10	22.57	16.00	+6.57
(9-45')		5.51	22.16	16.50	+5.66
0+145		5.71	21.96	17.00	+4.96
+90		5.79	21.88	17.50	+4.38
1+35 = D.F.					

INDEXED  
JAN 17 1949

Note: Congress St. Bet. Triggs + Smith St. D.F. Page 60

H.I. from 58 = 37.79 = 1

0.62 -
37.17
12.99 +
50.16 = 1
0.10 -
50.06 = T.P.
12.84 +
62.90 = 1
2.58
60.32 = T.P.
87.6 +
69.08 = 1
4.06

B.M. S.W. 4 Nails in Pole  
Harney + Jawn

65.07 = B.M.
2.43 +
67.45 = 1
12.23
54.52 = T.P.
0.06 +
54.58 = 1
12.61
47.97 = T.P.
0.74 +
47.71 = 1
12.98 -
30.63
30.60 = B.M.
0.03 = 11.00

Station S.W. 22 Harney + San Diego on Page 58

H.I. From Page 58 = 27.67

CONGRESS ST. Sewer Const.  
Bet. Triggs + Smith sts.

	Profile 7 - Plan 7	Elev. Grade			
8 M.H. # 265					
= 0+00	2660	4.72	21.88	16.00	+5.88
+50		5.36	21.24	15.50	+5.74
1+00		5.95	20.65	15.00	+5.65
+50		6.39	20.21	14.50	+5.71
2+00		6.72	19.88	14.00	+5.88
+50		7.04	19.56	13.50	+6.06
3+00	TP 23.79	4.83	18.96	13.00	+5.96
+50	8 Maryn st. = 8 M.H. # 266	5.38	18.41	12.50	+5.91
0+50		6.03	17.76	12.00	+5.76
1+00		6.44	17.35	11.50	+5.85
+50		6.91	16.88	11.00	+5.88
2+00		7.54	16.25	10.50	+5.75
+50		8.19	15.60	10.00	+5.60
3+00		8.81	14.98	9.50	+5.48
+50	TP = 8 M.H. # 267 Smith St. 15.71	1.99	13.72	9.00	+4.72

INDEXED  
WK  
JAN 17 1949

H.I. From Page 62 = 2660  
 704  
 19.56 = T.P.  
 4.23 +  
 23.79 = +  
 8.81 -  
 14.98 = T.P.  
 0.13 +  
 15.71 = +  
 For ckt. out see Levels below

SMITH ST SEWER Const.  
Bet. Congress + Trunk Line

	Profile 7 - Plan 7				
Above M.H. # 267					
= 0+00	15.71 = Above	1.99	13.72	9.00	+4.72
+43.06		6.66	9.05	5.00	+4.05
+86.13 = M.H. # 268		11.90	3.81	1.00	+2.81
(3-50) 12 T.P.	5.66	3.97	1.74	0.51	+1.73
+86.13		5.16	-0.10	0.00	-0.10
2+36.13 = M.H. # 15 Page 5		6.01	-0.35	-0.52	-0.17

15.71 = Above Hgt.  
 11.90 -  
 3.81 = TR  
 1.83 +  
 5.66 = +  
 6.01  
 0.35  
 -0.38 = cut stub  
 0.03 = FITTER  
 Page 5  
 ckt. on cut stub M.H. # 15

Note FOOT on Page 5, leave at this FOOT



MASON ST & JEFFERSON ST.  
 Bet. Trunk Line & Jefferson  
 66' E on Jefferson St.

± D.M.H. #13 on Page 4  
 = 0+00

19.27

- 0.95 = Trunk  
 3.20

+41.5	6.61	12.66	6.59	+6.07
+83	4.17	15.10	10.18	+4.92
1+245 T.P.	6.63	19.87	13.79	+6.08
20.50	4.89	21.61	17.00	+4.61
1+61.5 <sup>50</sup> = M.H. #286	5.21	21.29	18.00	+3.29
1+945	3.65	22.85	19.00	+3.85
2+145 <sup>50</sup> = D.E.				

Elev. cut stub M.H. #13 Page 4 = 7.07

INDEXED  
 WK  
 JAN 17 1949

12.20  
 19.27  
 1.31 -  
 17.88 = T.P.  
 8.62 +  
 26.50 = X  
 2.11  
 19.39  
 19.39 = Elev. Stub  
 0.00 = Error.

chk. on stub. 0+79.74 Page 4 → 19.39

MASON ST.  
 Bet. Juan & Calhoun

± M.H. #276  
 = 0+00

Profile 6 - Plan 7

27.80	5.09	22.71	17.50	+5.21
+45	4.66	23.14	18.12	+5.02
+90	3.66	24.14	18.75	+5.29
1+35	2.79	25.01	19.38	+5.63
+80 = D.E.	2.00	25.80	20.00	+5.80

Elev. cut stub M.H. #276 Page 66 = 22.71  
 5.09  
 27.80

Above Restaked

0+00	27.87	5.29	22.58	17.50	+5.08
+45	4.77	23.10	18.12	+4.98	
+90	3.86	24.01	18.75	+5.26	
1+35	2.98	24.89	19.38	+5.51	
1+80 = D.E.	2.18	25.69	20.00	+5.69	

Elev. cut stub. 0+49.67 Page 61

21.23  
 6.64  
 27.87 = X

INDEXED  
 WK  
 JAN 17 1949

5-828

TWIGGS ST. Sewer Const.  
 Det. Jefferson + Sunset Blvd + Arroyo Dr.  
 Draft No. 7 - Plan 7

DE. North of Jefferson

= 0400 (6-41)	26.60	2.93	23.67	18.00	+ 5.67
+ 175		3.11	23.49	17.66	+ 5.83
+ 95		3.13	23.47	17.33	+ 6.14
1+42.5		3.42	23.18	17.00	+ 6.18
+ 90		3.65	22.95	16.66	+ 6.29
2+37.5		3.88	22.72	16.33	+ 6.39
+ 85 = 1/2 Comp. St (7-50)		4.72	21.88	16.00	+ 5.88
0+50		4.37	22.23	17.14	+ 5.09
1+00		3.21	23.39	18.28	+ 5.11
+ 50		1.78	24.82	19.44	+ 5.38
2+00		0.10	26.50	20.58	+ 5.92
+ 50 TP	38.40	10.37	28.03	21.72	+ 6.31
3+00		9.26	29.14	22.86	+ 6.28
+ 49.8 = 1/2 MH # 264 = 0+00 (5-46.2)		9.42	28.98	24.00	+ 4.98
0+46.4		6.83	31.57	25.20	+ 6.37
+ 92.8		4.40	34.00	26.40	+ 7.60
1+39.2		3.19	35.21	27.60	+ 7.61
+ 85.6		1.71	36.69	28.80	+ 7.89
2+32 = 1/2 MH # 263 = 0+00 (6-44.5) TP		2.60	35.80	30.00	+ 5.80
0+44.55	51.03	10.34	40.69	32.75	+ 7.94
+ 89.10		8.08	42.95	35.50	+ 7.45
1+33.65		5.25	45.78	38.25	+ 7.53
1+78.2 = 1/2 MH # 262 (5-46.2) TP		2.22	48.81	41.00	+ 7.81
2+24.4	54.08	2.82	51.26	41.40	+ 9.86
+ 70.6		5.71	48.37	41.80	+ 6.57

INDEXED

WIK  
 JAN 17 1949

Cont. on 63

62

Elev. cut stub 1+35-25 on page 59 = 21.88

Left 8 nails = 8 N. S.M. Comp. + TWIGGS = 23.76

on Rock.

3 nails in Elec Pole  
 S.M. & N. J. 16.17 + TWIGGS

4.72 +  
 26.60 - T  
 334  
 26.60 = T Above  
 0.10 -  
 26.50 = TP  
 11.90 +  
 38.40 = T  
 0.28 -  
 38.12 = T.P.  
 12.91 +  
 51.03 = T  
 0.10 -  
 50.93 = TP  
 315 +  
 54.08 = T  
 553  
 48.5 = 8 N  
 54.08 - T

5-328  
Hall/Kay  
Rep. Survey  
Mud

TWIGGS St. Cont From 62

5408

3716.8		5.23	48.85	42.20	+6.65
+63.0		5.61	48.47	42.60	+5.87
4409.7 = CANYON Line = MH #261 = 0+00		6.01	48.07	43.00	+5.07
0+285 = PVC		4.50	49.58	44.76	+4.82
+48.5 = Bk		1.80	52.28	47.06	+5.22
+68.5 = EXC (2-20) TP	66.00	10.65	55.35	51.50	+3.85
1+08.5 TP	77.13	7.97	70.06	62.50	+7.56
+48.5 = PVC	89.66	11.97	77.67	73.50	+4.19
+68.5 = Bk		8.10	81.56	77.95	+3.61
1+88.5 EXC 1-40		3.91	85.75	80.33	+5.42
2+285 = 1/2 MH #110 = 0+00		2.66	87.00	83.00	+4.00
0+225 TP	101.80	7.41	94.39	88.94	+5.45
0+48 TP		2.01	99.79	94.40	+5.39
+96 TP	113.40	4.31	109.09	105.80	+3.29
1+44 TP	125.60	5.85	119.75	117.20	+2.55
1+92 TP	138.11	7.57	130.54	128.60	+1.94
2+140 = Exist. Sewer	144.53	3.04	141.49	140.00	+1.49

Change 111 grade Bot MH #110 + Exist. Sewer  
See Notes below

2+285 = 1/2 MH #110 = 0+00	99.52	12.52	87.00	83.00	+4.00
0+40 TP	111.59	1.72	97.80	89.75	+8.05
+80 Bk		10.99	100.60	96.50	+4.10
1+20 TP	123.98	10.09	113.89	106.87	+7.02
+60 TP	134.67	12.24	122.43	117.25	+5.18
2+00 TP	147.23	3.20	131.47	127.62	+3.85
+40 = Exist. Sewer		5.53	141.70	138.00	+3.70

Elev. cut stub MH #110

Left. BM. on Redwood tie hub 50' W of  
TWIGGS + Sunset on N.L. Sunset

145.68 = TP below  
11.22  
156.90 = T  
3.31  
153.59 = chh on TP on Rock  
Page 80  
153.57 = TP  
0.07 = Error  
Rock 981

123.85 = TP below  
10.82  
134.67 = T  
0.01  
134.66 = TP  
1.257  
147.23 = T  
1.55  
145.68 = TP

5408 = T
0.19
5389 = TP
12.11 +
6600 = T
0.65 -
6335 = TP
11.78 +
7713 = T
0.20 -
7693 = TP
12.73 +
8966 = T
0.70 -
8876 = TP
12.81 +
101.80 = T
0.27 -
101.53 = TP
11.87 +
113.40 = T
0.23 -
113.17 = TP
12.48 +
125.60 = T
2.7 -
125.33 = TP
12.78 +
138.11 = T
1.76 -
136.95 = TP
8.18
144.53

87.00
12.52
99.52
12.31
87.21 = BM.
99.52 = T Above
0.50 -
99.02 = TP
12.57 +
111.59 = T
0.11 -
111.42 = TP
12.86 +
133.98 = T
0.13 -
133.85 = TP

MASON St. Sewer Const.

Bet. Jefferson<sup>st</sup> & San Diego Ave

Profile 7 Plan 7

DE North of Jefferson St

= 0+00 (6-4583)	23.79	1.96	21.83	15.00	+6.83
0+45.83		2.84	20.95	14.60	+6.35
+91.7		2.96	20.83	14.20	+6.63
1+37.5		3.60	20.19	13.78	+6.41
+83.3		3.93	19.86	13.36	+6.50
2+29.1		4.23	19.56	12.92	+6.64
2+75 = 0+100 = Congress St. MH# 266		5.38	18.41	12.50	+5.91
0+50		4.63	19.16	13.00	+6.16
1+00		4.80	18.99	13.50	+5.49
+50		5.34	18.45	14.00	+4.45
2+00		4.86	18.93	14.50	+4.43
+50		4.10	19.69	15.00	+4.69
3+00		2.74	21.05	15.50	+5.55
+50 = 25' N. of San Diego Ave MH# 272		1.59	22.20	16.00	+6.20

H.I. From Page 60  
cut, plug  
T.P. on stub MH 272 = 23.79  
1.59  
= 27.70

INDEXED  
WIK  
JAN 17 1949

offset 10' NE

SAN DIEGO AVE.

Bet. Mason & 4 point 235 Easterly

Profile 7 - Plan 7

Above MH # 272

= 0+00	27.73	1.59	22.20	16.00	+6.20
+47		4.28	23.45	17.00	+6.15
+94		3.30	24.43	18.00	+6.43
1+41		2.29	25.44	19.00	+6.44
+88		1.34	26.39	20.00	+6.39
2+35 = DE.		0.41	27.37	21.00	+6.32

INDEXED  
WIK  
JAN 17 1949

Above  
22.20 - T.P.  
5.53  
27.73



CALHOUN St. Sewer Const.  
Bet. TAYLOR & TWIGGS

DE. 40' W. W. L. TWIGGS

Profile 6 - Plan 7

Elev. cut of sub. MH # 263 Page 62 = 3580

= 0+00	37.29	2.49	34.80	28.00	+6.80
+50		3.87	33.42	26.69	+6.73
1+00		5.35	31.94	25.38	+6.56
+50 - MH # 381		6.47	30.82	24.07	+6.75
2+00		7.51	29.78	22.74	+7.04
+50		8.90	28.39	21.43	+6.96
3+00		11.00	26.29	20.12	+6.17
+50		12.80	24.49	18.81	+5.68
4+00 = 1/2 Mason St. P. 2543 (7-49.67) MH # 276 = 0+00		2.72	22.71	17.50	+5.21
0+49.67		4.20	21.23	15.88	+5.35
+99.34		5.86	19.57	14.27	+5.30
1+49		7.21	18.22	12.66	+5.56
1+98.7		8.75	16.68	11.05	+5.63
2+48.35		9.99	15.44	9.44	+6.00
2+98		10.91	14.52	7.83	+6.69
3+47.7 = 1/2 MH # 277 = 0+00 (6-49.16)		11.50	13.93	6.22	+7.71
0+49.16		12.26	13.17	5.82	+7.35
+98.34 T.P.	15.15	2.58	12.57	5.43	+7.14
1+47.5		4.08	11.07	5.04	+6.03
+96.7		5.17	9.98	4.64	+5.34
2+45.8		5.88	9.27	4.25	+5.02
+95 = 1/2 MH # 278 (6-49.16) = 0+00		6.76	8.39	3.86	+4.53
0+49.16		8.40	6.75	3.46	+3.29
+98.34		9.62	5.53	3.07	+2.46
1+47.5		10.45	4.70	2.68	+2.02

INDEXED  
W K  
JAN 17 1949

3580  
147 = +  
37.29 = +  
12.80 -  
24.49 = T.P.  
0.94 +  
25.43 = T  
12.26 -  
13.17 = T.P.  
1.98 +  
15.15 = T

Cont on 67

CALHOUN St. Cont From 66

1+96.7	15.15	11.15	4.00	2.28	+1.72
2+45.8		11.30	4.85	1.89	+2.96
+95 = 25' E of Taylor				1.50	-17.23
+95 = 1/2 MH #19 on Trunkline		11.42	3.73	0.87	+2.86

chk. B.M. S.E. top Hydt. Juan's Taylor

Note this B.M. chkd. 0.85 High from levels  
that were run up from trunk line on  
Page 6.

67

1515 = T.P. 1/4  
1142  
373 = TP  
5457  
9.18 = I  
281  
6.37  
6.28 = B.M.  
0.87 = Error.

-6.37  
6.37 1001  
0.85 = Error.

JUAN ST.

bet Rosecrans + Triggs St.

Profile 5 - Plan 7	Red	Grey	W	Cut
8 MH #365 - Rosecrans = 0+00	10.43	6.05	4.38	2.90
+50		5.76	4.67	2.75
1+00		5.38	5.05	2.60
+50		6.57	3.86	2.45
2+00 = 2 MH #379		6.47	3.96	2.30
+50		6.73	3.70	2.15
3+00		6.43	4.00	2.00
+50		6.18	4.75	1.85
- 25'E of Taylor				1.70 = W
8+100 = 0+00 = 1 MH #20 on trunk line		5.83	4.60	1.23 = E
8-46.88		5.70	4.73	1.70
0+46.9		5.05	5.38	2.17
+93.7		4.66	5.77	2.64
1+40.6		4.15	6.28	3.11
+87.5		3.48	6.95	3.58
2+34.4		2.51	7.92	4.05
+81.2		1.94	8.49	4.52
3+28.1		0.45	9.98	5.00
+75 = DE 75' West Wallace on South		6.73	13.64	8.00
8 MH #280 - 8 Wallace on North	20.37	6.45	13.92	9.50
= 0+00 TP		4.77	15.60	11.00
(8-45.3)		3.23	17.14	12.50
0+45.3		1.42	18.95	14.00
+90.6		12.03	20.60	15.50
1+35.9		10.47	22.16	17.00
+81.2		8.85	23.78	18.50
2+26.55 TP	32.63			
+71.9				
3+17.2				

(= 2+00)  
Elev. cut slope on Taylor 40.5' E Juan = 42.0 = Elev. Stud.  
6.23 +  
10.43 = T  
0.45 =  
9.98 = TP  
10.39 +  
10.31 = T  
5.88 =  
14.49  
20.37 = Above H.T.  
0.09  
20.28 = TP  
12.35 +  
32.63 = T

Juan + Wallace  
cut. 2m N.E. Cor. Plan. With 8P.

Cont. on 69



JUAN St. Cont. From 68

		32.63			
3+62.5 = 1/2 Mason on North (5-50) = MH# 279 = 0100		6.66	25.77	20.00	+5.97
0+50		4.84	27.79	22.31	+5.48
1+00		2.76	29.87	24.62	+5.25
+50		0.58	32.05	26.93	+5.12
2+00	T.P. 4485	10.59	34.26	29.24	+5.02
+50 = 1/2 MH# 380 (4-40)		8.37	36.48	31.57	+4.91
+90		6.32	38.53	33.43	+5.10
3+30		4.27	40.58	35.29	+5.29
+70		2.39	42.46	37.15	+5.31
4+10 = DE. 40' x NW. Triggs St.		0.16	44.69	39.00	+5.69

32.63
0.58 -
32.05 = T.P.
12.80 +
44.85 = T
0.16
44.69
7.77
52.46
3.91
48.51 = *
48.55 = 0.04
0.04 = Error

chk. on BM Triggs station

SUNSET BLVD

Bet. Rosecrans + Twigg's sts.  
Profile 5 - Plan 7

Elev. cut. sub MH #21 on Page 6 = 4.50

1/2 MH #364 = 0+00 - Rosecrans st.	10.08	4.98	5.10	3.20	+ 1.90
+50		5.14	4.94	3.05	+ 1.89
1+00		5.02	5.06	2.90	+ 2.16
+50		4.93	5.15	2.75	+ 2.40
2+00 = 1/2 MH #378		4.88	5.20	2.60	+ 2.60
+50		5.13	4.95	2.45	+ 2.30
3+00		5.05	5.03	2.30	+ 2.73
+50		4.58	5.50	2.15	+ 3.35
4+00 = 1/2 MH #21 on trunk line		5.58	4.50	2.00 <sup>on</sup>	Wk + 2.50
				1.65 = trunk	+ 2.85

INDEXED  
WK  
JAN 17 1949

5.58  
10.08 = T  
4.95 =  
533 = TP  
4.89 =  
1022 = T  
4.53 =  
5.67  
7.11 +  
1278 = T  
3.12  
9.66  
9.65 = Elev. sub.  
0.01 = Error.

chk. on MH #282 cut sub Page 72

Sunset Bet. Taylor + Wallace

1/2 MH #284 = 0+00 (6-47.08) 0+47.1'		4.13	5.95	1.77 = trunk	+ 4.18
				2.30	3.65
+94.2	TP	4.54	5.54	2.48	+ 3.06
	10.22	4.85	5.37	2.66	+ 2.71
1+41.2		5.13	5.09	2.84	+ 2.25
+88.3		5.49	4.73	3.02	+ 1.71
2+33.4		5.12	5.10	3.19	+ 1.91
+82.5 = 1/2 MH #283 = 0+00 (6-46.67) 0+46.67		4.80	5.42	3.36	+ 2.06
		5.01	5.21	3.53	+ 1.68
+93.3		4.91	5.31	3.70	+ 1.61
1+40		4.55	5.67	3.88	+ 1.79
+86.7	TP	6.71	6.07	4.05	+ 2.02
2+33.3	12.78	5.91	6.87	4.23	+ 2.64
+80 = 1/2 MH #282		3.12	9.66	4.40	+ 5.26

Sunset Bet. Wallace + Twigg's

H.I. from Page 72 = 15.28

MH #281 0+00	15.28	5.50	9.78	5.00	+ 4.78
-----------------	-------	------	------	------	--------

cont. on 71

SUNSET Blvd. Cont.  
From Page 70

1528

0+46.67			470	10.58	5.67	+4.91
+93.3	T.P.	2300	12.02	10.98	6.34	+4.64
1+40			11.25	11.75	7.00	+4.75
+86.7			10.21	12.79	7.67	+5.12
2+33.3			9.11	13.89	8.33	+5.56
+80 = Brk.			7.44	15.56	9.00	+6.56
(2-4125)			3.29	19.71	13.50	+6.21
3+21.25			6.22	28.14	18.00	+10.14
+62.5 = 0+00 = 6 MH #285			2.37	31.99	24.60	+7.39
(5-435)			9.45	37.39	31.20	+6.19
0+43.5	T.P.	46.84	11.35	47.79	37.80	+9.99
+87.0			6.16	52.98	44.40	+8.58
1+30.5	T.P.	59.14	12.48	59.29	51.00	+8.29
+74.0			7.11	64.66	57.25	+7.41
2+17.5 = 6 MH #114 - 0+100	T.P.	71.77	1.96	69.81	63.50	+6.31
(4-4812)			8.16	75.74	69.75	+5.99
0+48.5			1.53	82.37	76.00	+6.37
+96.2						
1+44.4	T.P.	83.90				
+92.5 = DE. 40' into Sunset						

1/2 P. Mason st. 3436

H.I. From 72 From 70 → 1528

470 -
1058 = T.P.
1242 +
12.00 = T
0.75 -
22.05
12.31 +
34.36 = T
0.37 -
33.99 = T.P.
12.81 +
46.84 = T
0.13 -
46.71 = T.P.
12.93 +
59.14 = T
0.26 -
58.88 = T.P.
12.89 +
71.77 = T
0.06 -
71.71 = T.P.
12.19 +
83.90 = T
1.53 -
82.37 = T.P.
8.70 +
91.07 = T
3.88
87.17
87.21 = B.N.
0.02 = Error.

on N.W. Sunset  
cct. on 814 Redwood Tie bud 52' W of Wiggs Bq. 613

WALLACE ST.  
Bet. Juan & Sunset Blvd.

Profile 5 - Plan 7

1/2 MH #280

= 0+00

15.28

8.00

+50

2.71

12.57

7.57

+5.00

1+00

**INDEXED**

3.43

12.85

7.14

+5.71

+50

WIK

3.99

11.29

6.71

+4.58

2+00

**JAN 17 1949**

4.80

10.48

6.29

+4.19

+50

5.36

9.92

5.86

+4.06

3+00

4.68

10.60

5.48

+5.17

1/2 MH #281 offset W

+50 = 1/2 Sunset Blvd. on E

5.50

9.78

5.00

+4.78

4+00

5.22

10.06

4.70

+5.36

1/2 MH #282 offset =

+50 = 1/2 Sunset Blvd. on West.

5.63

9.65

4.40

+5.25

Elev cut stub MH #280 Page 68 = 1364

1.68 +  
Note, for ckt. see Levels on Sunset Blvd. 15.28 = X  
East of Wallace

WHITMAN ST

Bet. Wallace St. and a point 185' W of Rosecrans St.

Profile 3 - Plan 7

Elev. Cut stub MH# 22 Page 7

O.E. West of Rosecrans St.  
= 0+00

11.08

4.77 6.31 4.16

+7.15 +205 New Location

5.51

5.57

11.08 - T

5.57 -

5.57 - TP

7.17 +

12.68 - T

0.71 -

11.77 - TP

9.07 +

21.04 - T

11.43

9.61

9.65 = stub

0.04

+46.25

5.62 6.06 4.02

+7.04

+92.5

4.59 6.47 3.88

+7.61

1+38.75

= d Rosecrans St.

4.66 6.42 3.74

+7.68

+85 MH# 363 = 0+00

4.88 6.20 3.60

+7.60 +249 location changed

0+50

INDEXED

4.50 6.58 3.45

+3.13

1+00

WK

4.82 6.26 3.30

+2.96

{chk. on cut stub MH# 282 Page 72

+50

JAN 17 1949

4.99 6.09 3.15

+2.74

2+00 = 1/2 MH# 377

5.22 5.86 3.00

+2.86

+50

4.75 6.33 2.85

+3.48

3+00

4.61 6.47 2.70

+3.77

+50

= 25% d Taylor St.

5.14 5.94 2.55

+3.39

4419 - New Location

4+00 = 1/2 MH# 22 = 0+00

5.57 5.51 2.40

+3.11 - 6" line for cut on trunk here see Page 7

(6-4583)

12.68

0+45.83 TP

7.40 5.28 2.56

+7.72

+91.7

7.93 4.75 2.73

+7.02

1+37.5

7.29 5.39 2.90

+7.49

+83.3

7.11 5.57 3.07

+7.50

2+29.1

6.60 6.08 3.23

+7.85

+75 = 1/2 MH# 368 = 0+00

7.03 5.65 3.89

+7.26

(6-475)

0+47.5

7.03 5.65 3.55

+7.10

+95

6.80 5.88 3.70

+7.18

1+42.5

6.06 6.62 3.85

+7.77

+90 = 1/2 MH# 367

3.67 9.01 4.00

+5.01

(2-475) TP

21.04

2+37.5

7.66 13.38 7.50

+5.88

2+85 = 1/2 MH# 366

2.52 18.52 11.00

+7.52

CHESNUT ST.  
bet. Rosecrans & Jackson Sts.

Profile E-Plan 7

1/2 MH# 362 = 0+00 = Rosecrans	12.33	565	668	3.69	+2.99 + 2.26 Ruset
+50		5.51	682	3.53	+3.29
1+00		5.11	722	3.37	+3.85
+50		5.33	700	3.21	+3.79 + 3.56 Ruset
2+00 = 1/2 MH# 376		5.74	659	3.05	+3.54
+50		5.47	686	2.88	+3.98
3+00		5.40	693	2.72	+4.21
+50		5.19	714	2.56	+4.58
4+00 = 1/2 MH# 23 = 0+00 (6-4839) = 25' E of Taylor for 16.84		8.48	836	2.40	+5.96
0+48.33		8.95	789	2.92	+4.97
+96.66		8.70	814	3.44	+4.70
1+45		8.27	857	3.96	+4.61
+93.33		7.42	942	4.48	+4.94
2+41.66		6.13	1071	5.00	+5.71
+90 = 1/2 MH# 361		4.56	1228	5.53	+6.75
2-35		1.28	1556	9.76	+5.80
3+20 T.P.	2337				
3+60 = D.E.		1.98	2139	14.00	+7.39

cut on cut slab 2+95.7 Page 7

74

12.33 = T
519
714
9.70
16.84
0.73 -
16.11 = T.P.
7.26 +
23.37 = T
11.85 -
11.52 = T.P.
1.56 +
13.08 = T
577
731
730 = cut slab
0.07 = Error

ROSECRANS ST.  
Bet. Whitman + Guit. DYKE

Profile 5 - Plan 7

2 MH # 363					
= 0+00 = Whitman	17.33		3.60		12.60
+45	5.43	6.90	3.78		+3.17
+90	5.39	6.94	3.96		+2.98
1+35	5.02	7.31	4.14		+3.17
+80	5.50	6.83	4.32		+2.51
2+25 = DE. South of Chesnut st.	5.36	6.97	4.50		+1.47

INDEXED

JAN 17 1949

Rosecrans Cuts Bet Chesnut + Hickory

2 MH # 362					
= 0+00 = Chesnut st.	5.65	6.68	3.69		+2.99
(6-43.33)					
0+43.33	4.58	7.75	3.86		+3.89
+86.66	4.74	7.59	4.03		+3.56
1+30	4.67	7.66	4.20		+3.46
+73.33	4.57	7.76	4.38		+3.38
2+16.66	5.08	7.25	4.55		+2.70
+60 = DE. South of Hickory	4.73	7.60	4.73		+1.97

Elev. cut stub MH # 363 Page 73 = 6.20

6.131

Note this HZ. used on Page 74 → 17.33 = +  
For chk. out see levels on 74

16" Line on Page 4  
 Bet MH<sup>#</sup> 13 + 14 Reset

L MH<sup>#</sup> 13  
 = 0+00

2518

①			-0.98	
②			-0.95	
③			-0.94	
④			-0.92	
⑤	5.20	19.98	-0.91	+20.89
⑥	4.85	20.33	-0.89	+21.22
⑦	5.08	20.10	-0.87	+20.97
⑧	4.70	20.48	-0.86	+21.34
⑨	4.50	20.68	-0.84	+21.52
⑩	4.39	20.79	-0.83	+21.62
⑪	4.67	20.51	-0.81	+21.32
⑫	4.30	20.50	-0.80	+21.30
⑬	4.45	20.35	-0.78	+21.13
⑭	5.14	19.56	-0.76	+20.32
⑮	5.95	18.85	-0.75	+19.60
⑯	6.87	17.93	-0.73	+18.66
⑰	8.24	16.56	-0.71	+17.27
⑱ = L MH <sup>#</sup> 14	9.03	15.77	-0.69	+16.46 = 16.45 use this

Elev cut stub 07797K Page 4 =  
 1939  
 579  
 2518 = T  
 4.67 -  
 2051 = TP  
 4.29 +  
 2480 = T



Walker  
Prop. 1/19/78  
Short  
Book Key  
572-78

ARISTA ST. & CANYON Line  
Bet. cherry st. & Intersection of Mission  
Valley Canyon line at MH#29

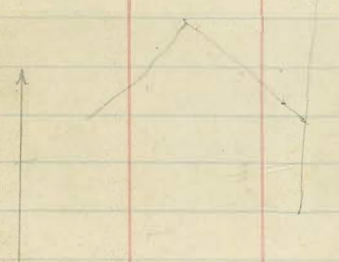
SEE ALSO PAGE 30

Profile 13 - Plan 6

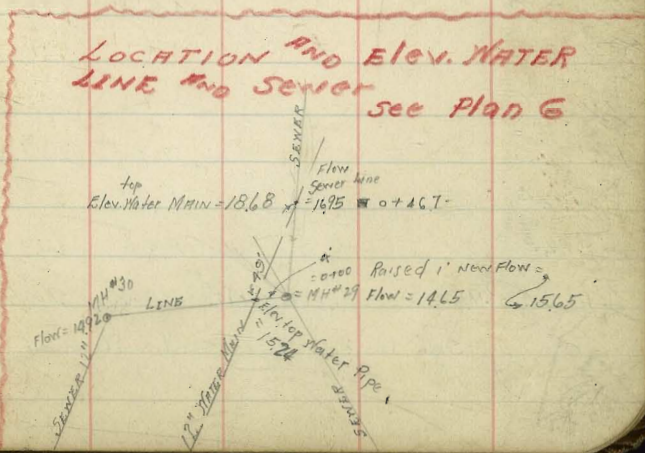
8 MH# 29 on Mission Valley line				15.65	+7.83
= 0400	3119	7.71	7348	14.65	+8.83
(0-41.7)				16.30	+7.84
0+46.7		7.05	7414	16.95	+7.19
+93.4				18.97	+7.73
1+40.10		4.54	7665	19.24	+7.41
+86.8					
2+33.5 T.P.	41.27	4.11	7708	21.54	+5.54
+80.2		2.18	7701	23.83	+5.18
3+26.9		10.88	3039	26.13	+4.26
+73.5 = MH# 248	51.97	5.33	3594	28.42	+7.52
(0-52')					
4+25.5		1.03	4024	30.71	+9.53
+77.5		10.05	4192	33.00	+8.92
5+29.5 Bk.	64.50	9.78	4219	38.00	+4.19
(0-45')					
5+74.5		5.17	4680	43.00	+3.80
6+19.5 = MH# 247	76.94	13.00	5150	48.00	+3.50
(0-42.53')					
6+62		3.45	61.05	54.50	+6.55
7+04.5	89.65	9.46	6748	61.00	+6.48
+47.1 = Bk.					
(0-50')		5.84	7110	67.00	+4.10
7+97	102.39	6.00	76.94	73.00	+3.94
8+47 = MH# 246					
(2-40.7)		5.76	83.89	79.00	+4.89
8+87.15		6.33	89.32	80.00	+9.32
9+21.7 = Bk.	114.88	11.68	90.71	81.00	+9.71
(1-50)					
9+77.2 = Bk.		7.57	94.82	85.00	+9.82
(2-54.93')					
10+32.13	126.34	1.88	100.51	89.00	+11.51
10+87.1 = MH# 245					
(4-41.36')		5.78	109.10	100.00	+9.10
11+28.9		3.81	111.07	102.50	+8.57
		10.27	116.07	105.00	+11.07
		0.73	125.61	109.28	+16.33

H.T. from Page 8

3119
218 -
29.01 = TD
12.26 +
41.27 = T
1.03 -
40.24 = TP
1173 +
51.77 = T
0.20 -
51.77 = TP
1273 +
64.50 = T
0.60 -
63.90 = TP
13.04
76.94
0.00 -
76.94 = TP
1271 +
89.65 = T
2.33 -
87.32 = TP
13.07 +
102.39 = T
1.18 -
101.91 = TP
12.97 +
114.88 = T
1.25 -
113.63 = TP
12.71 +
126.34 = T



Reset



Cont. on 78

CANYON Line Cont from 77

11+70.8	138.58	11.32	127.26	113.56	+13.70
12+12.6 T.P.		10.33	128.25	117.84	+10.41
= $\Delta$ 84°11'		8.55	130.03	122.12	+7.91
+54.5 = MH #244 (1-30)		7.30	131.28	123.50	+7.78
12+84.5 = Bk. (1-52.3) = $\Delta$ 33°0' T.P.	151.23	10.59	140.64	135.00	+5.64
13+86.8 = MH #243 (2-34.5)		2.55	148.68	140.00	+8.68
13+71.32 T.P.	163.45	10.63	152.82	145.00	+7.82
14+05.8 = $\Delta$ 1°26'30" Lt. (1-54.18)		3.26	160.19	153.00	+7.19
14+6.0 (1-57.23) = $\Delta$ R 40°57'30"		6.58	169.34	161.44	+7.90
15+14.18 = MH #242 (1-42.8) T.P.	175.72	6.55	180.44	167.49	+12.95
15+57.1 = Bk = RVC 1-10	186.99	11.14	175.85	169.87	+5.98
15+67.0 = Bk (1-10)		6.31	180.68	174.00	+6.68
15+77.0 = Bk = RVC (1-45) T.P.		12.75	211.65	206.50	+5.15
16+22.1 = Bk (1-35)	224.40	2.57	221.88	217.00	+4.88
16+37.1 = Bk (1-50) T.P.	236.55	6.06	230.49	226.00	+4.49
17+07.1 = Bk (1-36.65)(1-31.65) = Next location 244.20		10.05	234.15	229.10	+5.05
17+43.75 = MH #241 (1-39.35) = $\Delta$ 90° Lt.		2.82	241.38	233.50	+8.38
17+83.10 = MH #238 (7-49.6)		4.65	239.55	233.43	+6.12
18+32.96		4.17	240.03	233.86	+6.17
+82.8		6.56	237.64	234.29	+3.35
17+32.7		7.01	237.19	234.72	+2.47
+82.5		4.36	239.84	235.15	+4.69
20+32.4 T.P.	252.78	8.98	243.80	235.57	+8.23
+82.3				236.00	+9.57
21+32.10 = D MH #236 = Sta. 5458.5 Page 40		7.26	245.52	239.50	+6.07

See Page 40 For Continuation of this Line

126.34 = $\pi$ 0.01
126.33 = T.P. 12.25
138.08 = $\pi$ 0.41
138.14 = T.P.
13.09 +
57.23
0.10
151.13 = T.P.
12.32 +
163.45 = $\pi$ 0.50
on Rock in Canyon 162.95 = T.P.
12.37 +
175.72 = $\pi$ 0.27
175.5 = T.P.
11.34 +
186.99 = $\pi$ 0.24
186.75 = T.P.
12.36 +
177.11 = $\pi$ 0.38
Bow of Canyon 178.73 = T.P. on Rock
12.75 +
211.8 = $\pi$ 0.18
211.30 = T.P.
13.10 +
224.40 = $\pi$ 0.25
224.15 = T.P.
12.40 +
236.50 = $\pi$ 1.16
235.39 = T.P.
9.02 +
244.41
3.89
241.07
240.73 = B.M.
0.07 = Error
240.93
3.27
244.20
4.36
239.84 = T.P.
12.94 +
257.18 = $\pi$ 6.84
245.94

chk. on Geo. New. Fl. Station & B.M. Sta.

STAKES Reset old Town Sewer  
charge to H.H. Peterson Contr.

DATE	LOCATION	STAKE	200 =
JUNE 20 <sup>th</sup>	MH # 22 on Trunk line	1	2.00 = 2.00
" "	" " " " "	1	2.00 = 2.00
" "	1st stake East MH # 24	1	2.00 = 2.00
" 6 <sup>th</sup>	MH SAN DIEGO + Ansta	1	2.00 = 2.00
" 7 <sup>th</sup>	CANYON line Bet Ansta + Trunk line	10	2.00 = 20.00
" 14 <sup>th</sup>	Chesnut St. Near Petersons	2	2.00 = 4.00

7-18-20 ERUP Break shed

Restaking Bet MH # 274 + DE-North

D.E. 52' W. Mason

0 + 0.0	21.32	Red	El	Grd	cut	at 96 shiner dd line
		0.71	20.59	14.50		17.89
+ 4.8		1.77	19.53	13.60		3.41
+ 9.6		2.56	18.74	12.70		21.30
1 + 4.4		3.41	17.89	11.80		
1 + 9.2		4.20	17.10	10.90		
2 + 4.0 MH # 273		5.10	16.20	10.00		
2 + 8.77		5.86	15.44	9.25		
3 + 23.54		6.73	14.57	8.49		
3 + 65.3 A 100' 8" L		7.42	13.88	7.74		
4 + 16.83		7.99	13.31	6.99		
4 + 48.36		8.72	12.58	6.25		
7 + 89.9 MH # 274		12.27		5.50		
RESET MH # 92						8 200

14234  
211  
14023

0029  
40  
0116.0

DIRECTIONS FOR USE OF TABLES

7422  
888  
6574

TABLE No. 1

Distance of slope stake from side or shoulder stake for any width roadway, slope 1/2 to 1. If ground is nearly level, the cut or fill at side stake is located by the double entry method in left column and top row. The number in body

from side stake to slope stake. If ground is not level, the side stake and slope stake, for a given amount of cut or fill. Add this amount to cut or fill and find in table. Set up rod at this point and line of sight should cut target. necessary.

TABLE No. 2  
To find Tangent and External for curve of any other degree, divide by degree of curve and add correction found in column of corrections. Degree of curve with a given I may be found by dividing tangent (or external), opposite I by given tangent (or external).  
The distance from a point on the tangent to the curve is very nearly the square of the tangent length divided by twice the radius.

# DIRECTIONS FOR USE OF TABLES

TABLE No. 1.

Distance of slope stake from side or shoulder stake for any width roadway, slope  $1\frac{1}{2}$  to 1. If ground is nearly level, the cut or fill at side stake is located by the double entry method in left column and top row. The number in body of table in same row and column gives distance from side stake to slope stake. If ground is not level estimate the difference in elevation between the side stake and slope stake, lower target by this amount if cut, elevate if fill. Add this amount to cut or fill and find distance in table. Set up rod at this point, and line of sight should cut target. If it does not make the slight adjustment necessary.

TABLE No. 9.

To find Tangent and External for curve of any other degree, divide by degree of curve and add correction found in column of corrections.

Degree of curve with a given I may be found by dividing tangent, (or external), opposite I by given tangent, (or external).

The distance from a point on the tangent to the curve is very nearly the square of the tangent length divided by twice the radius.

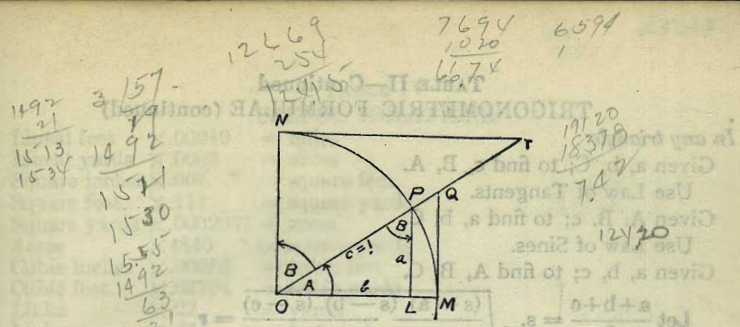


TABLE II  
TRIGONOMETRIC FORMULÆ.

$$\angle A = \angle MOP \quad \angle B = \angle PON = \angle OPL$$

$$R = OB = c = 1$$

$$\sin A = \frac{a}{c} = \frac{a}{1} = a = \cos B = LP$$

$$\cos A = \frac{b}{c} = \frac{b}{1} = b = \sin B = OL$$

$$\tan A = \frac{a}{b} = \frac{MQ}{OM} = \frac{MQ}{1} = MQ = \cot B = MQ$$

$$\cot A = \frac{NT}{ON} = \frac{NT}{1} = NT = \tan B = NT$$

$$\sec A = \frac{OQ}{OM} = \frac{OQ}{1} = OQ = \csc B = OQ$$

$$\csc A = \frac{OT}{ON} = \frac{OT}{1} = OT = \sec B = OT$$

$$\text{vers } A = \frac{LM}{OP} = LM = \text{covers } B \#$$

$$\text{covers } A = \frac{OP - LP}{OP} = OP - LP = \text{vers } B$$

$$\text{exsec } A = PQ = \text{coexsec } B$$

$$\text{coexsec } A = PT = \text{exsec } B$$

$$\sin \frac{1}{2} A = \sqrt{\frac{1 - \cos A}{2}} \quad \cos \frac{1}{2} A = \sqrt{\frac{1 + \cos A}{2}}$$

$$\sin 2A = 2 \sin A \cos A \quad \cos 2A = \cos^2 A - \sin^2 A$$

$$\text{Law of Sines} \quad \frac{\sin A}{a} = \frac{\sin B}{b} = \frac{\sin C}{c}$$

$$\text{Law of Cosines} \quad c^2 = a^2 + b^2 - 2ab \cos C$$

$$\text{Law of Tangents} \quad \frac{a+b}{a-b} = \frac{\tan \frac{1}{2}(A+B)}{\tan \frac{1}{2}(A-B)}$$

0.000	0.000	0.000	0.000	0.000	0.000	0.000	0.000	0.000	0.000
0.001	0.002	0.003	0.004	0.005	0.006	0.007	0.008	0.009	0.010
0.011	0.012	0.013	0.014	0.015	0.016	0.017	0.018	0.019	0.020
0.021	0.022	0.023	0.024	0.025	0.026	0.027	0.028	0.029	0.030
0.031	0.032	0.033	0.034	0.035	0.036	0.037	0.038	0.039	0.040
0.041	0.042	0.043	0.044	0.045	0.046	0.047	0.048	0.049	0.050
0.051	0.052	0.053	0.054	0.055	0.056	0.057	0.058	0.059	0.060
0.061	0.062	0.063	0.064	0.065	0.066	0.067	0.068	0.069	0.070
0.071	0.072	0.073	0.074	0.075	0.076	0.077	0.078	0.079	0.080
0.081	0.082	0.083	0.084	0.085	0.086	0.087	0.088	0.089	0.090
0.091	0.092	0.093	0.094	0.095	0.096	0.097	0.098	0.099	0.100

TABLE II—Continued  
TRIGONOMETRIC FORMULAE (continued)

In any triangle:

Given a, b, C; to find c, B, A.

Use Law of Tangents.

Given A, B, c; to find a, b, C.

Use Law of Sines.

Given a, b, c; to find A, B, C.

$$\text{Let } \frac{a+b+c}{2} = s, \sqrt{\frac{(s-a)(s-b)(s-c)}{s}} = r$$

$$\cos \frac{1}{2} A = \sqrt{\frac{s(s-a)}{bc}}$$

$$\tan \frac{1}{2} A = \frac{r}{s-a}$$

$$\tan \frac{1}{2} B = \frac{r}{s-b}$$

$$\tan \frac{1}{2} C = \frac{r}{s-c}$$

Area of a triangle:

$$\text{Area} = \frac{1}{2} ab \sin C$$

$$\text{Area} = \sqrt{s(s-a)(s-b)(s-c)}$$

PRISMOIDAL FORMULA.

$$\text{Vol.} = \frac{h}{6} (B+b+4M)$$

h = altitude; b B = bases; M = midsection

TABLE III  
INCHES AND FRACTIONS OF AN INCH IN DECIMALS OF A FOOT

	0	1	2	3	4	5	6	7	8	9	10	11
$\frac{1}{16}$	.0052	.0885	.1719	.2552	.3385	.4219	.5052	.5885	.6719	.7552	.8385	.9219
$\frac{1}{8}$	.0104	.0938	.1771	.2604	.3438	.4271	.5104	.5938	.6771	.7604	.8438	.9271
$\frac{3}{16}$	.0156	.0990	.1823	.2656	.3490	.4323	.5156	.5990	.6823	.7656	.8490	.9323
$\frac{1}{4}$	.0208	.1042	.1875	.2708	.3542	.4375	.5208	.6042	.6875	.7708	.8542	.9375
$\frac{5}{16}$	.0260	.1094	.1927	.2760	.3594	.4427	.5260	.6094	.6927	.7760	.8594	.9427
$\frac{3}{8}$	.0313	.1146	.1979	.2813	.3646	.4479	.5313	.6146	.6979	.7813	.8646	.9479
$\frac{7}{16}$	.0365	.1198	.2031	.2865	.3698	.4531	.5365	.6198	.7031	.7865	.8698	.9531
$\frac{1}{2}$	.0417	.1250	.2083	.2917	.3750	.4583	.5417	.6250	.7083	.7917	.8750	.9583
$\frac{9}{16}$	.0469	.1302	.2135	.2969	.3803	.4635	.5469	.6302	.7135	.7969	.8802	.9635
$\frac{5}{8}$	.0521	.1354	.2188	.3021	.3854	.4688	.5521	.6354	.7188	.8021	.8854	.9688
$\frac{11}{16}$	.0573	.1406	.2240	.3073	.3906	.4740	.5573	.6406	.7240	.8073	.8906	.9740
$\frac{3}{4}$	.0625	.1458	.2292	.3125	.3958	.4792	.5625	.6458	.7292	.8125	.8958	.9792
$\frac{13}{16}$	.0677	.1510	.2344	.3177	.4010	.4844	.5677	.6510	.7344	.8177	.9010	.9844
$\frac{7}{8}$	.0729	.1563	.2396	.3229	.4063	.4896	.5729	.6563	.7396	.8229	.9063	.9896
$\frac{15}{16}$	.0781	.1615	.2448	.3281	.4115	.4948	.5781	.6615	.7448	.8281	.9115	.9948
1	.0833	.1667	.2500	.3333	.4167	.5000	.5833	.6667	.7500	.8333	.9167	1.0000
	0	1	2	3	4	5	6	7	8	9	10	11

TABLE IV  
USEFUL RELATIONS.

Lineal feet  $\times .00019$  = miles  
 Lineal yards  $\times .0006$  = miles  
 Square inches  $\times .007$  = square feet  
 Square feet  $\times .111$  = square yards  
 Square yards  $\times .0002067$  = acres  
 Acres  $\times 4840$  = square yards  
 Cubic inches  $\times .00058$  = cubic feet  
 Cubic feet  $\times .03704$  = cubic yards  
 Links  $\times .22$  = yards  
 Links  $\times .66$  = feet  
 Feet  $\times 1.5$  = links

$360^\circ = 21600' = 1296000''$   
 Radius = arc of  $57.2957790^\circ$   
 Arc of  $1^\circ$  (radius = 1) = .017453292  
 Arc of  $1'$  (radius = 1) = .000290888  
 Arc of  $1''$  (radius = 1) = .000004848

$$\pi = 3.141592654$$

$$\sqrt{\frac{1}{4}} = 0.564190$$

$$\frac{\pi}{4} = 0.785398163$$

$$\sqrt[3]{\frac{6}{\pi}} = 1.240700982$$

$$\frac{\pi}{6} = 0.523598776$$

$$\pi^2 = 9.869604401$$

$$\sqrt{\frac{4}{\pi}} = 1.128379167$$

$$\frac{1}{\pi^2} = 0.101321184$$

$$\frac{\pi}{6} = 0.523598776$$

$$\sqrt{\pi} = 1.772453851$$

$$\frac{4\pi}{3} = 4.188790205$$

$$\frac{1}{\pi} = 0.3183099$$

Curvature of Earth's surface = about 0.7 feet in 1 mile

Curvature in feet =  $0.667$  (Dist. in miles)<sup>2</sup>

Difference between arc and chord length, 0.05 feet in  $11\frac{1}{2}$  miles

$$\text{Probable error of a single observation} = 0.6754 \sqrt{\frac{Mv^2}{n-1}}$$

Error in chaining of 0.01 feet in 100 feet:

Due to—

1. Length of tape error of 0.01 feet
2. Alignment. One end 1.4 feet out of line
3. Sag of tape at centre of 0.61 feet.
4. Temperature difference of  $15^\circ$
5. Difference of pull of 15 lbs.

STADIA REDUCTION FORMULAE.

Horizontal Distance =  $R - R \sin^2 a + C \cos a$

Vertical Distance =  $R \frac{1}{2} \sin 2a + C \sin a$

$R = \text{Reading} \times \frac{\text{distance from Object glass to cross hairs}}{\text{distance between cross hairs}}$

C = distance from Object glass to cross hairs + distance from Object glass to center of instrument.

a = angle of elevation for mid Reading

157° 450°

13858  
94  
179.2

0083  
5  
0715

TABLE X.  
MIDDLE ORDINATES OF RAILS  
Length of Rail (feet)

C	R	30	28	26	24	22	20	C	R	30	28	26	24	22	20
o /	Feet	Inch	Inch	Inch	Inch	Inch	Inch	o	Feet	Inch	Inch	Inch	Inch	Inch	Inch
0-20	17189	.08	.07	.06	.05	.04	.03	8	716.8	1.88	1.64	1.42	1.20	1.01	.84
0-40	8594	.16	.14	.12	.10	.08	.07	9	637.3	2.12	1.84	1.60	1.35	1.14	.94
1-0	5730	.24	.20	.18	.15	.13	.10	10	573.7	2.36	2.05	1.78	1.50	1.27	1.04
1-20	4297	.31	.27	.23	.20	.17	.13	11	521.7	2.59	2.26	1.95	1.65	1.39	1.15
1-40	3438	.39	.34	.29	.25	.21	.17	12	478.3	3.83	2.47	2.15	1.81	1.54	1.26
2-0	2865	.47	.41	.35	.30	.25	.20	13	441.7	3.05	2.66	2.30	1.96	1.66	1.36
2-20	2456	.55	.48	.41	.35	.29	.23	14	410.3	3.30	2.87	2.48	2.10	1.78	1.46
2-40	2149	.63	.55	.47	.40	.33	.27	15	383.1	3.54	3.08	2.68	2.26	1.91	1.57
3-0	1910	.71	.62	.53	.45	.38	.31	16	359.3	3.76	3.28	2.83	2.40	2.04	1.67
3-20	1719	.78	.68	.59	.50	.42	.35	17	338.3	4.00	3.48	3.02	2.57	2.16	1.78
3-40	1563	.86	.75	.65	.55	.46	.38	18	319.6	4.21	3.67	3.18	2.70	2.28	1.87
4-0	1433	.94	.82	.71	.60	.50	.42	19	302.9	4.45	3.89	3.36	2.86	2.41	1.98
4-20	1323	1.02	.89	.77	.65	.55	.45	20	287.9	4.70	4.09	3.55	3.00	2.54	2.09
4-40	1228	1.10	.96	.83	.70	.59	.48	22	262.0	5.16	4.44	3.84	3.30	2.80	2.29
5	1146	1.18	1.03	.89	.75	.63	.52	24	240.5	5.64	4.92	4.20	3.59	3.04	2.50
6	955.3	1.41	1.23	1.06	.90	.76	.62	26	222.3	6.07	5.29	4.58	3.88	3.29	2.70
7	819.0	1.65	1.44	1.24	1.05	.89	.73								

TABLE XI.  
SHORT RADIUS CURVES

Radius Feet	Chord Feet	Central Angle	Deflection Angle	Deflection for 1 Foot
35	10	16-26	8-13	49.3
45	10	12-46	6-23	38.3
50	15	17-16	8-38	34.5
60	15	14-22	7-11	28.8
75	15	11-30	5-45	23.0
100	20	11-30	5-45	17.3
120	20	9-34	4-47	14.3
150	20	7-39	3-49	11.5
190	25	7-32	3-46	9.15
200	25	7-10	3-35	8.6
225	25	6-25	3-12	7.7
240	25	5-58	2-59	7.2
250	25	5-44	2-52	6.9
275	25	5-12	2-36	6.2
288	50	9-58	4-59	6.0
300	50	9-32	4-46	5.7
350	50	8-12	4-06	4.9
376	50	7-40	3-50	4.6
400	50	7-10	3-35	4.3
410	50	7-00	3-30	4.2

To find length of curve divide angle from P. C. to P. T. by central angle of chord, and multiply by length of chord.

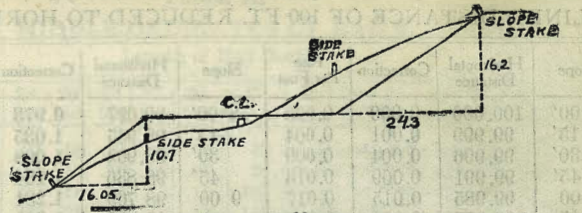
TABLE XII.  
INCLINED DISTANCE OF 100 FT. REDUCED TO HORIZONTAL

Slope	Horizontal Distance	Correction	Rise Per Foot	Slope	Horizontal Distance	Correction	Rise Per Foot
0°00'	100.000	0.000	0.000	8°00'	99.027	0.973	0.139
15'	99.999	0.001	0.004	15'	98.965	1.035	0.143
30'	99.996	0.004	0.009	30'	98.902	1.098	0.148
45'	99.991	0.009	0.013	45'	98.836	1.164	0.152
1 00	99.985	0.015	0.017	9 00	98.769	1.231	0.156
15	99.976	0.024	0.022	15	98.700	1.300	0.161
30	99.966	0.034	0.026	30	98.629	1.371	0.165
45	99.953	0.047	0.031	45	98.556	1.444	0.169
2 00	99.939	0.061	0.035	10 00	98.481	1.519	0.174
15	99.923	0.077	0.039	15	98.404	1.596	0.178
30	99.905	0.095	0.044	30	98.325	1.675	0.182
45	99.885	0.115	0.048	45	98.245	1.755	0.187
3 00	99.863	0.137	0.052	11 00	98.163	1.837	0.191
15	99.839	0.161	0.057	15	98.079	1.921	0.195
30	99.813	0.187	0.061	30	97.992	2.008	0.199
45	99.786	0.214	0.065	45	97.905	2.095	0.204
4 00	99.756	0.244	0.070	12 00	97.815	2.185	0.208
15	99.725	0.275	0.074	15	97.723	2.277	0.212
30	99.692	0.308	0.078	30	97.630	2.370	0.216
45	99.657	0.343	0.083	45	97.534	2.466	0.221
5 00	99.619	0.381	0.087	13 00	97.437	2.563	0.225
15	99.580	0.420	0.092	15	97.338	2.662	0.229
30	99.540	0.460	0.096	30	97.237	2.763	0.233
45	99.497	0.503	0.100	45	97.134	2.866	0.238
6 00	99.452	0.548	0.105	14 00	97.030	2.970	0.242
15	99.406	0.594	0.109	15	96.923	3.077	0.246
30	99.357	0.643	0.113	30	96.815	3.185	0.250
45	99.307	0.693	0.118	45	96.705	3.295	0.255
7 00	99.255	0.745	0.122	15 00	96.593	3.407	0.259
15	99.200	0.800	0.126	15	96.479	3.521	0.263
30	99.144	0.856	0.131	30	96.363	3.637	0.267
45	99.087	0.913	0.135	45	96.246	3.754	0.271

TABLE XIII.  
MINUTES IN DECIMALS OF A DEGREE.

0 30"	.00833	10' 30"	.17500	20' 30"	.34167	30' 10"	.50833	40' 30"	.67500	50' 10"	.84167
1 00	.01667	11 00	.18333	21 00	.35000	31 00	.51667	41 00	.68333	51 00	.85000
30	.02500	30	.19167	30	.35833	30	.52500	30	.69167	30	.85833
2 00	.03333	12 00	.20000	22 00	.36667	32 00	.53333	42 00	.70000	52 00	.86667
30	.04167	30	.20833	30	.37500	30	.54167	30	.70833	30	.87500
3 00	.05000	13 00	.21667	23 00	.38333	33 00	.55000	43 00	.71667	53 00	.88333
30	.05833	30	.22500	30	.39167	30	.55833	30	.72500	30	.89167
4 00	.06667	14 00	.23333	24 00	.40000	34 00	.56667	44 00	.73333	54 00	.90000
30	.07500	30	.24167	30	.40833	30	.57500	30	.74167	30	.90833
5 00	.08333	15 00	.25000	25 00	.41667	35 00	.58333	45 00	.75000	55 00	.91667
30	.09167	30	.25833	30	.42500	30	.59167	30	.75833	30	.92500
6 00	.10000	16 00	.26667	26 00	.43333	36 00	.60000	46 00	.76667	56 00	.93333
30	.10833	30	.27500	30	.44167	30	.60833	30	.77500	30	.94167
7 00	.11667	17 00	.28333	27 00	.45000	37 00	.61667	47 00	.78333	57 00	.95000
30	.12500	30	.29167	30	.45833	30	.62500	30	.79167	30	.95833
8 00	.13333	18 00	.30000	28 00	.46667	38 00	.63333	48 00	.80000	58 00	.96667
30	.14167	30	.30833	30	.47500	30	.64167	30	.80833	30	.97500
9 00	.15000	19 00	.31667	29 00	.48333	39 00	.65000	49 00	.81667	59 00	.98333
30	.15833	30	.32500	30	.49167	30	.65833	30	.82500	30	.99167
10 00	.16667	20 00	.33333	30 00	.50000	40 00	.66667	50 00	.83333	60 00	1.00000

Shag Sick Leave 5-15-28  
 Shaw 5-15-28



DISTANCES FROM SIDE STAKES FOR CROSS-SECTIONING.

SLOPE 1 1/2 TO 1. ROADWAY OF ANY WIDTH.

	0	.1	.2	.3	.4	.5	.6	.7	.8	.9	
0	0 00	0 15	0 30	0 45	0 60	0 75	0 90	1 05	1 20	1 35	0
1	1 50	1 65	1 80	1 95	2 10	2 25	2 40	2 55	2 70	2 85	1
2	3 00	3 15	3 30	3 45	3 60	3 75	3 90	4 05	4 20	4 35	2
3	4 50	4 65	4 80	4 95	5 10	5 25	5 40	5 55	5 70	5 85	3
4	6 00	6 15	6 30	6 45	6 60	6 75	6 90	7 05	7 20	7 35	4
5	7 50	7 65	7 80	7 95	8 10	8 25	8 40	8 55	8 70	8 85	5
6	9 00	9 15	9 30	9 45	9 60	9 75	9 90	10 05	10 20	10 35	6
7	10 50	10 65	10 80	10 95	11 10	11 25	11 40	11 55	11 70	11 85	7
8	12 00	12 15	12 30	12 45	12 60	12 75	12 90	13 05	13 20	13 35	8
9	13 50	13 65	13 80	13 95	14 10	14 25	14 40	14 55	14 70	14 85	9
10	15 00	15 15	15 30	15 45	15 60	15 75	15 90	16 05	16 20	16 35	10
11	16 50	16 65	16 80	16 95	17 10	17 25	17 40	17 55	17 70	17 85	11
12	18 00	18 15	18 30	18 45	18 60	18 75	18 90	19 05	19 20	19 35	12
13	19 50	19 65	19 80	19 95	20 10	20 25	20 40	20 55	20 70	20 85	13
14	21 00	21 15	21 30	21 45	21 60	21 75	21 90	22 05	22 20	22 35	14
15	22 50	22 65	22 80	22 95	23 10	23 25	23 40	23 55	23 70	23 85	15
16	24 00	24 15	24 30	24 45	24 60	24 75	24 90	25 05	25 20	25 35	16
17	25 50	25 65	25 80	25 95	26 10	26 25	26 40	26 55	26 70	26 85	17
18	27 00	27 15	27 30	27 45	27 60	27 75	27 90	28 05	28 20	28 35	18
19	28 50	28 65	28 80	28 95	29 10	29 25	29 40	29 55	29 70	29 85	19
20	30 00	30 15	30 30	30 45	30 60	30 75	30 90	31 05	31 20	31 35	20
21	31 50	31 65	31 80	31 95	32 10	32 25	32 40	32 55	32 70	32 85	21
22	33 00	33 15	33 30	33 45	33 60	33 75	33 90	34 05	34 20	34 35	22
23	34 50	34 65	34 80	34 95	35 10	35 25	35 40	35 55	35 70	35 85	23
24	36 00	36 15	36 30	36 45	36 60	36 75	36 90	37 05	37 20	37 35	24
25	37 50	37 65	37 80	37 95	38 10	38 25	38 40	38 55	38 70	38 85	25
26	39 00	39 15	39 30	39 45	39 60	39 75	39 90	40 05	40 20	40 35	26
27	40 50	40 65	40 80	40 95	41 10	41 25	41 40	41 55	41 70	41 85	27
28	42 00	42 15	42 30	42 45	42 60	42 75	42 90	43 05	43 20	43 35	28
29	43 50	43 65	43 80	43 95	44 10	44 25	44 40	44 55	44 70	44 85	29
30	45 00	45 15	45 30	45 45	45 60	45 75	45 90	46 05	46 20	46 35	30
31	46 50	46 65	46 80	46 95	47 10	47 25	47 40	47 55	47 70	47 85	31
32	48 00	48 15	48 30	48 45	48 60	48 75	48 90	49 05	49 20	49 35	32
33	49 50	49 65	49 80	49 95	50 10	50 25	50 40	50 55	50 70	50 85	33
34	51 00	51 15	51 30	51 45	51 60	51 75	51 90	52 05	52 20	52 35	34
35	52 50	52 65	52 80	52 95	53 10	53 25	53 40	53 55	53 70	53 85	35
36	54 00	54 15	54 30	54 45	54 60	54 75	54 90	55 05	55 20	55 35	36
37	55 50	55 65	55 80	55 95	56 10	56 25	56 40	56 55	56 70	56 85	37
38	57 00	57 15	57 30	57 45	57 60	57 75	57 90	58 05	58 20	58 35	38
39	58 50	58 65	58 80	58 95	59 10	59 25	59 40	59 55	59 70	59 85	39
40	60 00	60 15	60 30	60 45	60 60	60 75	60 90	61 05	61 20	61 35	40
41	61 50	61 65	61 80	61 95	62 10	62 25	62 40	62 55	62 70	62 85	41
42	63 00	63 15	63 30	63 45	63 60	63 75	63 90	64 05	64 20	64 35	42
43	64 50	64 65	64 80	64 95	65 10	65 25	65 40	65 55	65 70	65 85	43
44	66 00	66 15	66 30	66 45	66 60	66 75	66 90	67 05	67 20	67 35	44
45	67 50	67 65	67 80	67 95	68 10	68 25	68 40	68 55	68 70	68 85	45
46	69 00	69 15	69 30	69 45	69 60	69 75	69 90	70 05	70 20	70 35	46
47	70 50	70 65	70 80	70 95	71 10	71 25	71 40	71 55	71 70	71 85	47
48	72 00	72 15	72 30	72 45	72 60	72 75	72 90	73 05	73 20	73 35	48
49	73 50	73 65	73 80	73 95	74 10	74 25	74 40	74 55	74 70	74 85	49
50	75 00	75 15	75 30	75 45	75 60	75 75	75 90	76 05	76 20	76 35	50

Computed by L. Leland Locke.

MH #254  
 MH #253  
 MH #274

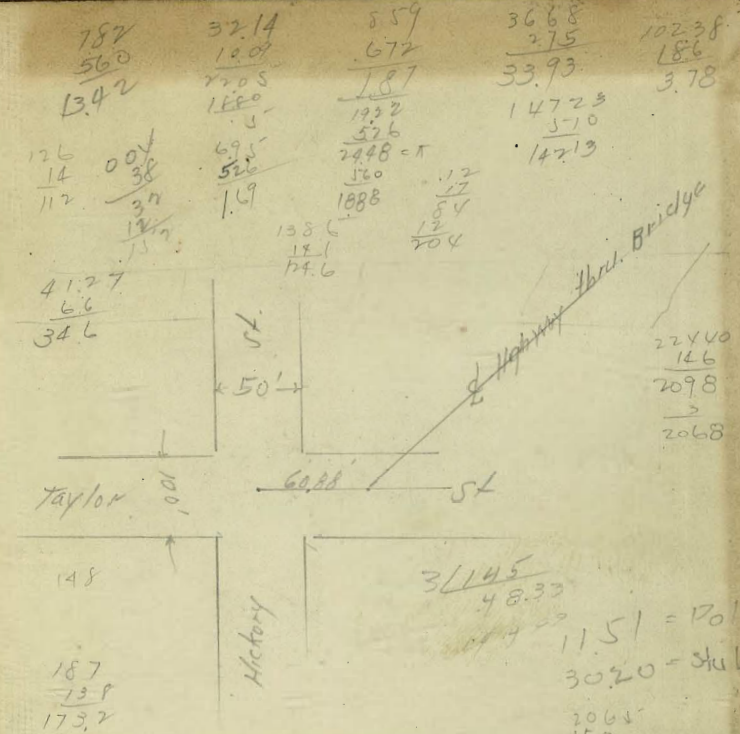
12.75  
 9.19

46.75  
 2  
 93.50  
 261.933  
 94.37  
 1.20  
 95.57  
 92.70  
 2.83  
 95.58

95.16  
 6.73  
 101.89  
 92.71  
 9.19  
 101.90

106.68  
 9.08  
 97.60

478  
 48.75  
 490.00  
 0194  
 1358  
 7178  
 591  
 6.23  
 9502  
 4151  
 120  
 105  
 228  
 200  
 3/133  
 44.33  
 13343  
 9800  
 3543  
 145067  
 1818.11  
 7139  
 10.21  
 5110  
 21.27  
 3651.3  
 124.2  
 499.9  
 3.39  
 396  
 9.04  
 338  
 5.65  
 346  
 420  
 446  
 +026  
 9696  
 4828  
 11945  
 107  
 180.14  
 136  
 106.5  
 446.2  
 159.1  
 286.8  
 45.15  
 316.05  
 125.3  
 41.77  
 219.70  
 8100  
 1727  
 4394.922  
 219.70  
 1727  
 5243  
 25  
 76215  
 10X86  
 131075  
 14589  
 25  
 183.49  
 179.3  
 362.79  
 5208.3  
 997  
 1964  
 2562  
 4526  
 236.2  
 6.4  
 25175  
 7  
 312.25  
 323.54  
 41.77  
 363.31  
 4153  
 40683  
 4153  
 448.36  
 41.53  
 489.89



148  
 187  
 138  
 173.2  
 3/145  
 48.33  
 11.51 = Pole  
 3020 = stub  
 3068  
 169  
 7526 45  
 +5127  
 80.53  
 12.28  
 68.25  
 +6.28  
 74.53  
 -7.10 on stub  
 67.43  
 102.59  
 123.88  
 89.71  
 264.52  
 10.38  
 254.14 = Elm stub  
 25418  
 4886  
 532  
 1354