



Frederick P

189.97

Our Leather Bound Engineers Note Books are carried in the following rulings:

No. 380 LEVEL BOOK. Left and Right Hand Page the same as Left Hand Page of this Book.

No. 382 FIELD BOOK. Left Hand Page as in this Book, Right Hand Page 4 x 4 to the inch, Center Line Red.

No. 384 MINING TRANSIT BOOK. Left Hand Page as in this Book, Right Hand Page 8x8 to the inch, Center Line Red.

No. 385 FIELD BOOK. Left Hand Page as in this Book, Right Hand Page 8 vertical and 4 horizontal lines to the inch, Center Line Red.

We also carry the Note Books listed above, bound in extra strong Fabri-Hide (otherwise the same quality of book), which can be furnished at a somewhat lower price.

In ordering Fabri-Hide covered books, add the letter "F" to catalog number.

**THE FREDERICK POST CO.**  
*ENGINEERING and DRAFTING SUPPLIES*  
IRVING PARK STATION  
CHICAGO, ILL.  
**MICROFILMED**

APR 8 1965

11.5  
11.0  
10.5  
10.0

B

0

1

Howard Ave Paving

S. line S. cl N. cl N. line

00 = E. Idaho	73.04	73.00
+50	73.2	73.2
100	73.30	73.3
+50	73.5	73.5
200	73.6	73.6
+50	73.80	73.8

300 = W. Utah

73.92	74.05
-------	-------

00 = E. line Kansas

69.94	70.03
-------	-------

+50

100

+50

200

+50

300 = W. 30<sup>th</sup>

67.34	67.38
-------	-------

378.01

699

379.10

5.18

373.92

2.02

375.94

5.91

370.03

3.43

373.46

373.46

5

69.94

69.94

N

59.91

70.03

ent'd

6.06

73.04

N

6.10

73.00

S

6.00

69.94

N

59.91

70.03

73.2

5.9

4.7

71.2

5.9

4.3

71.6

73.3

5.8

5.2

70.8

5.8

4.9

70.9

73.5

5.6

6.0

70.4

5.6

5.2

70.4

73.6

5.5

5.5

71.0

5.5

4.2

71.9

73.8

5.3

5.2

70.1

5.3

7.8

70.5

ent'd

5.18

73.92

ent'd

5.05

74.05

ent'd

6.12

67.34

ent'd

6.08

67.38

Sewer Construction

B.M. Top Hydt	12.94	188.85		175.91	s.w. Titus & Henry
	12.70	201.16	200.39	188.46	
	8.22	209.13	0.25	200.91	
20 DE 40 S. of Henry			4.70	204.43	197.20
+40			5.76	203.37	194.00
+80			7.85	201.28	190.80
+120			10.23	198.90	187.60
T.P.	0.50	196.63	13.00	196.13	
+160			1.45	195.18	184.40
+200			6.44	190.19	181.20
T.P.	0.33	184.38	12.58	184.05	
2+40 BPK			3.00	181.38	178.00
2+60 BPK Main Clark			10.77	173.61	156.00
T.P.	0.56	172.23	12.71	171.67	
2+85 M.H.			7.31	164.92	153.50
T.P.	0.37	159.82	12.78	157.45	
3+10 BPK S. line			2.04	157.74	151.00
T.P.	0.12	147.29	12.65	147.17	
3+70 BPK			8.97	138.32	131.80
T.P.	0.31	134.72	12.88	134.41	
4+13 23			7.84	126.84	120.36
T.P.	0.40	122.15	12.97	121.75	
4+56 67			8.38	113.77	108.92
T.P.	0.12	109.79	12.83	109.62	
5+00 BPK			6.44	103.30	97.48
5+55 Existing M.H.			17.50	92.24 = 92.00	
			9.34	100.40 Top M.H.	
			8.16		
			17.50		

209.13  
E. el 267  
206.46  
W. el 4.02  
205.11

Water Grades

209.13

S. line

205.0

204.43	203.4	+3.8
203.7	201.8	+4.3
201.3	200.0	+4.0
198.9	197.0	+4.6
195.2	193.2	+4.7
190.2	188.6	+4.3
181.4	184.0	0.0
	181.3	

Continued page 8

Alley BIK Mission Hills 7-25-24

BM 266.94 N.E. Ft Steaton + Sierra Vista

	S. line	N. line
00 = E. line St James	275.40	275.40
+ 40 B	76.30	76.20
+ 60 B	76.60	76.30
+ 80 B	76.40	76.00
1 + 35 M line N+S Alley	75.30	BIK N. 74.80
1 + 50 S. line N+S Alley	75.00	" " 74.60
2 + 00 BIK low pt	274.00	274.00
+ 40	74.40	74.40
2 + 80 BIK	274.80	79.80
3 + 00 B	75.30	75.30
+ 20 B	76.40	76.40
+ 40 B	78.80	78.80
+ 60 B	80.40	80.40
+ 80 B	80.80	80.80
4 + 00 B	79.80	79.80
4 + 20 B	78.70	78.70
4 + 80 PC on N B	75.90	75.60
5 + 00 A 90° on S	75.50	
N. end Curve W	75.00	75.00 E
A E + W	73.00	73.00
Ft. Steaton	72.60	72.60

10.54  
277.48  
2.66  
274.82  
6.42  
281.24  
6.84  
274.40  
4.94  
279.34  
0.29  
279.09  
5.28  
284.37  
7.53  
276.84  
3.53  
280.37

N 5.56  
75.68

S 5.83  
75.41

N 3.  
74.00

S 7.24  
5.51  
+1.73

N 80.40  
3.97  
2.97  
+1.00

S 3.97  
2.97  
+1.00

N+W 75.00  
5.37  
4.92  
+0.44

S+E 75.00  
5.37  
4.95  
+0.42

B	B	B	W+N	E+N
76.20	76.30	76.00	74.80	74.60
5.04	4.94	5.24	6.44	6.64
+0.80	4.57	4.90	6.42	6.70
	+0.37	+0.44	Paymt	Paymt

S	B	B	B	B	B
76.30	74.60	76.40	75.30	75.00	75.00
4.94	4.64	4.84	5.94	6.24	6.24
3.94	4.24	4.64	5.44	5.72	5.72
+1.00	+0.58	+0.70	+0.30	+0.52	+0.52

N	B	B	B	B	B
74.40	74.80	75.30	76.40	78.80	78.80
6.84	4.58	4.08	2.98	5.57	5.57
7.24	4.54	4.08	4.98	4.57	4.57
0.0	0.0	0.0	+1.00	+1.00	+1.00

S	B	B	B	B	B
74.40	4.58	4.08	2.98	4.57	4.57
4.98	5.01	4.08	1.98	4.57	4.57
3.98	5.01	4.08	1.98	4.57	4.57
+1.00	-0.43	0.0	+1.00	+1.00	+1.00

N	B	B	B	PC N	B
80.80	79.80	78.70	75.60	75.60	75.60
3.57	4.57	5.67	4.77	4.77	4.77
2.97	3.57	4.67	4.63	4.63	4.63
+1.00	-0.04	+1.00	+0.14	+0.14	+0.14

S	B	B	B	B	B
3.97	4.57	5.67	75.90	75.90	75.90
2.97	3.57	4.67	4.47	4.47	4.47
+1.00	0.0	+1.00	+1.00	+1.00	+1.00

N+W	A	PC
75.00	73.00	72.60
5.37	4.37	7.77
4.92	5.37	7.77
+0.44	+2.00	Paymt

S+E	B	B
75.00	73.00	72.20
5.37	4.37	8.17
4.95	5.37	8.18
+0.42	+1.50	Paymt

90° L  
75.50  
4.47  
4.44  
+0.03  
Raised to 40  
To fit drive

Alley BIK II Mission Hills

Drain

5

00 = 1/2 Alley C.B.	271.10
+ 35 25	70.75
04 70.50	70.40
54	
14 24 50	69.86
54	
14 78 50 End Pipe	67.37
0	
14 98 50 d line	269.12

266.94 BK	2015
10.32	50
27 7.26	124.5
4.56	178.5
27 2.70	
5.08	
27 7.78	8.14
4.25	269.12
27 3.53	
4.80	
27 4.33	
4.21	
27 4.12	
7.12	
281.24	

69.32	69.86	70.40	70.75	71.10
7.94	7.92	7.38	7.88	7.23
5.26	4.48	4.63	4.98	4.21
+2.68	+3.44	+2.75	+2.60	+3.02

Q

Alley Brk 10 Kimb alls Add 7-25-28

B.M. N.E. 24<sup>th</sup> + 1 STS

6

	S. Line	N. Line
00 = E. Line 24 <sup>th</sup> ST.	105.00	105.44
+20 Brk	106.80	107.10
+40 Brk	107.70	108.00
+80	8.50	8.80
1+20	9.30	9.60
1+60 Brk	110.10	110.40
2+15	12.30	12.60
2+70 Brk	114.50	114.80
2+90 Brk	115.10	115.40
3+10 Brk	115.30	115.60
3+57 <sup>5</sup>	15.72	16.02
4+05	16.15	16.45
4+52 <sup>5</sup>	16.57	16.87
5+00 Brk	117.00	117.30
+30	17.30	
	16.78	Br Kon N
+80 Br Kons	116.40	117.17
6+00 = W. Line 25 <sup>th</sup> ST	115.30	117.00

111.50  
3.00  
114.50  
6.72  
107.78  
5.01  
112.79  
0.31  
112.48  
7.23  
119.71  
3.61  
116.10  
5.42  
121.52

	B	S	8	8	8
N. 7.35	107.10	8.00	8.80	9.60	10.40
105.44	5.69	4.79	3.99	3.19	2.39
	3.69	3.79	4.06	2.53	1.39
	+2.00	+1.00	-0.07	+0.66	+1.00
S 7.79	106.80	7.70	8.50	9.30	10.10
105.00	5.99	5.09	4.29	3.49	2.69
	4.99	4.09	3.29	2.49	1.69
	+1.00	+1.00	+1.00	+1.00	0.0
N	12.60	14.80	15.40	15.60	16.45
	7.17	4.91	4.31	4.11	3.69
	6.43	3.91	3.31	2.11	3.03
	+0.68	+1.00	+1.00	+2.00	+0.66
S	12.30	14.50	15.10	15.30	16.15
	7.41	5.21	4.61	4.41	5.80
	6.41	4.21	2.61	4.15	4.80
	+1.00	+1.00	+2.00	+0.26	+1.00
N	16.87	17.30	17.60	17.17	17.00
	4.65	4.22	3.92	4.35	4.52
	3.65	2.22	3.41	2.70	
	+1.00	+2.00	+0.51	+1.65	
S	16.57	17.00	16.78	16.40	15.30
	4.95	4.52	4.74	5.17	6.22
	3.95	3.52		4.97	
	+1.00	+1.00		+0.15	
			17.30		
			4.22		
			4.32		
			0.0		
			Top of	16.90 = 15.80	
				4.62	
				4.97	
				-0.35	



Alley BIK 71 Park Villas

	W. Line	E. Line
00 = S. Line Myrtle	322.40	322.70
+ 20 B	22.60	22.90
+ 40 B	22.50	22.80
+ 60 B	22.40	22.70
+ 80 B	22.10	22.40
1 + 20 B	21.50	21.80
+ 40 B	21.10	21.40
1 + 60 B 48.85	20.60	20.90
2 + 08.85	18.85	19.17
2 + 57.70	17.10	17.43
3 to L. 35	15.35	15.69
3 + 55 <sup>40</sup> W. Lin + 4 pas.	313.58	313.95

332.51 B.M. N.E. Myrtle + R8<sup>th</sup>

1.50  
334.01  
7.07  
326.94  
1.41  
328.35  
11.62  
316.73  
4.04  
320.71

	W. Line	E. Line	B	B	B
	22.70	22.55	22.40	22.10	21.50
W. 6.07	22.60	22.50	5.95	6.25	6.85
322.28	5.65	5.80	6.40	6.80	7.10
	5.39	6.10	4.95	6.00	6.25
	+0.26	-0.30	+1.00	-0.55	-0.25
	23.00	22.85	22.70	22.40	21.90
C 5.44	22.90	22.80	5.65	5.95	6.55
322.91	5.35	5.50	4.70	4.45	5.35
	4.62	4.39	4.70	4.45	5.35
	+0.73	+1.11	+0.95	+1.52	+1.20
	20.60	18.85	17.10	15.35	13.58
W 21.10	7.25	9.50	11.25	5.42	7.17
	7.75	8.21	11.62	5.33	7.15
	-0.50	-0.46	0.00	-0.37	+0.07
	20.90	19.17	17.43	15.69	13.95
E 21.40	6.95	9.14	8.34	5.08	6.82
	6.32	7.06	7.34	3.08	6.81
	+0.63	+2.00	+1.52	+2.00	+2.00

6.30  
0.95  
5.35

6.77 7.45  
5.00 1.77  
1.77 5.68

2.74  
4.92  
2.66

Linwood Paviment

	W ch	E. ch
S. Line Henry	205.00	204.50
+55	202.75	204.10
1+70 P.V.C.	200.50	201.70
+30	199.60	200.70
+50	198.20	199.20
+70	196.30	197.30
1+90 E.V.C.	194.30	195.30 OK
2+36.4 P.C. 10'R	189.00 188.45	190.00 189.45
	183.00	184.00
2+80	<del>184.00</del>	<del>185.00</del>

Culvert

00-Intake Top curb	185.30
" " Flow Line	180.00
+30' = BxK	157.00
+65	153.50
1+00 outlet	150.00

S.E. Henry & Linwood.

8

	W ch	E. ch	PVC	E.V.C.	W ch	E. ch	PVC	E.V.C.
206.51	205.00	202.7	200.5	97.6	98.2	96.3		
3.09	4.60	6.9	7.1	X	11.4	X		
207.60		8.4	9.5	X	12.8	X		
13.09		-1.5	-0.4		-1.4			
196.51	206.50	204.1	201.7	200.7	99.2	97.3		
0.70	3.10	5.5	7.9	X	10.4	X		
197.21		0.2	5.9		8.4			
12.64		+5.3	+2.0		+2.0			
184.57	E.V.C.			206.51				
0.60	94.3	89.0	84.0	0.80				
185.17	15.3	8.2	1.2	206.81				
12.76	16.7	8.4	3.6	12.23				
172.41	-1.4	-0.2	(2.4)	194.58				
0.46			-1.4	1.07				
172.87	E	95.3	90.0	85.0	195.65			
12.87		14.3	7.2	0.2				
12.87		10.7	6.1	6.3				
159.95		+3.6	1.1	(6.1)				
0.73				-5.1				
160.71	PVC	202.70	200.50	99.60	94.20	96.30	94.30	89.00
0.73		4.11	6.51	7.21	8.61	10.51	12.51	6.65
159.98		3.80	5.42	7.43	8.94	10.65	12.23	5.57
12.37		+0.31	10.89	-0.22	-0.33	-0.15	+0.25	+1.08
172.35								+1.50
0.93	E	204.10	201.70	200.70	99.20	97.30	95.30	70.00
171.42		2.71	5.11	6.11	7.61	9.51	11.51	5.65
12.57		2.33	5.25	6.21	8.27	9.21	11.53	4.43
183.67		+0.38	0.74	-0.61	-0.66	40.30	-0.02	+1.22
0.24								55
183.35								+1.77
12.60								
195.95								
0.52								
195.43								
12.13								
207.56								
1.05								
206.51								

Culvert

Top ch.	F.L.	BxK		
185.30	180.00	157.00	153.50	150.00
20.12	5.17	28.17	27.27	15.00
-1.82	1.82	10.60	10.46	8.80
-1.94	+3.35	+17.57	+8.91	+1.77
54				
-1.80				
85.30				
84.45				
85				

Paving Alley Blk 3. Mission Hills

S. line

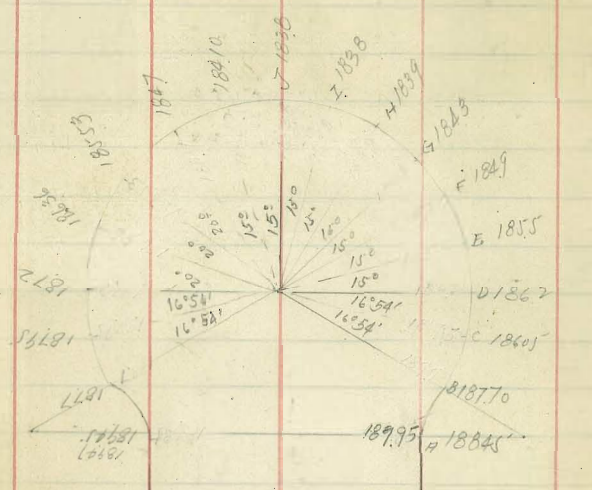
N. line

80± E. line Trias	268.70	268.80
+ 47.31	68.25	68.32
+ 94.62	67.80	67.85
+ 41.93	67.25	67.37
1+89.23 Brk	266.90	266.90
2+39.23	66.57	66.46
2+84.23	66.13	66.03
3+39.23	65.75	65.60
3+89.23	65.36	65.16
4+39.23	64.98	64.73
4+89.23 Brk	264.60	264.30
5+29.23	64.00	63.70
5+69.23	263.40	263.10
5+89.23	263.00	262.70
+ 09.23	262.40	262.10
6+29.23	261.60	261.30
6+39.23 N only		260.40
6+49.23 W. line Wetherby	260.60	259.40

267.06 P.M. N.E. T + Station + Trias

273.07	5.17	267.90	N	68.80	68.32	67.85	67.37	66.90	66.46	66.03	65.60	65.16
270.84	4.25	270.84		4.25	4.25	4.25	4.25	4.25	4.25	4.25	4.25	4.25
267.37	3.04	267.37		3.04	3.04	3.04	3.04	3.04	3.04	3.04	3.04	3.04
270.43	3.22	270.43	S	64.70	64.25	63.80	63.35	62.90	62.46	62.03	61.60	61.16
266.56	4.30	266.56		4.30	4.30	4.30	4.30	4.30	4.30	4.30	4.30	4.30
265.86	4.16	265.86		4.16	4.16	4.16	4.16	4.16	4.16	4.16	4.16	4.16
265.86	4.03	265.86		4.03	4.03	4.03	4.03	4.03	4.03	4.03	4.03	4.03
263.17	3.62	263.17		3.62	3.62	3.62	3.62	3.62	3.62	3.62	3.62	3.62
262.79	4.91	262.79	S	64.98	64.60	64.00	63.40	63.00	62.40	61.80	61.20	60.60
263.17	5.83	263.17		5.83	5.83	5.83	5.83	5.83	5.83	5.83	5.83	5.83
269.00		269.00		269.00	269.00	269.00	269.00	269.00	269.00	269.00	269.00	269.00

Walker  
Ruplinger  
Stn. #1  
Northwind  
9-12-28



19233	19183	19083	19133
19516	19466	19360	19450
19530		1957	19630
19728	19648	1976	19840
19920	19870	1987	19947
2007	2018	2000	2005
2017	2012	20272	20152
20424	20304	20456	20517
20646	20575		

HENRY

LINWOOD

20575

20651 = BY Henry & Linwood  
 19828  
 1281  
 19656 = T  
 181  
 18975 = TP on slope  
 218  
 19193 = T

PRC	1877	18645	1862	1855	1849	1843	1839
W.L.	348	423	528	573	643	703	763
	337	381	355	691	887	902	822
	+ 2.17	+0.97	-1.93	-3.18	-2.44	-1.99	-0.59

W.L. 1838 1828  
 8.13 8.13  
 8.30 8.13  
 -0.17 P.C.

PRC	1887	18795	1872	18636	18553	1847	18410
E.L.	448	373	378	473	557	640	723
	207	207	203	278	445	579	630
	1091	+1.16	+1.95	+1.75	+1.12	+0.67	+1.93

Some Stake to From of

ST

Alleys BIK E+9  
Estudillo & Capronis

9-20-28

E+W Alley

E. Line 8<sup>th</sup> St.

S. Line

N. Line

+40

+80

1+20 W. Neg. Line

1+40 E

1+70

2+00 B

2+30

2+60 W. Line 9<sup>th</sup> St.

N. Line E+W Alley

+45

+90

1+35

1+80

2+25 BIK

2+65

3+05 PVC

3+25

3+45

3+65

3+85 EVE

4+25 S. Line Washington

283.80

83.92

84.04

84.16

84.22

84.31

284.40

284.20

284.00

284.00

284.00

84.14

84.28

84.42

84.56

284.70

85.30

285.90

286.10

286.10

285.90

285.40

284.50

283.60

83.70

83.80

283.90

284.00

284.10

284.20

284.10

284.00

283.90

283.90

84.12

84.34

84.36

84.78

285.00

85.60

286.20

286.40

286.30

286.10

285.60

284.50

284.38 BM. N.W. 8<sup>th</sup> + Univ Ave

7.55  
288.93  
4.34  
284.55  
4.93  
289.48

E + W

N.	83.60	83.70	83.80	83.90	84.00	84.10	84.20
	5.33	5.22	5.13			5.38	5.28
		4.53	4.42			4.72	4.52
		+0.70	+0.71			+0.92	+0.76

S	83.80	83.92	84.04	84.16	84.22	84.31	84.40
	5.13	5.01	4.89	4.77	5.26	5.17	5.08
		4.63	3.89	3.77	4.26	4.17	4.08
		+0.38	+1.00	+1.00	+1.00	+1.90	+1.00

284.55

5.08

289.63

4.40

285.23

5.13

290.36

4.63

285.73

4.50

290.53

5.96

284.57

4.70

289.27

N	84.10	84.00
	5.38	5.48
	4.71	5.48 O.K
	+0.67	

S	84.20	84.00
	5.26	5.48
	4.28	5.36
	+1.00	0.12 High

N + S

W	83.70	84.12	84.24	84.56	84.78	85.00	85.60	86.20
	5.73	5.51	5.29	5.07	4.85	5.36	4.76	4.16
	5.16	4.32	4.29	4.97	3.85	5.30	3.76	4.16
	+0.57	+1.19	+1.00	+0.10	+1.00	+0.00	+1.00	0.0

E	84.00	84.44	84.28	84.42	84.56	84.70	85.30	85.70
	5.63	5.49	5.35	5.21	5.07	4.93	5.06	4.86
	4.33	4.58	3.35	4.70	4.07	3.93	4.43	3.46
	+1.30	+0.91	+2.00	+0.51	+1.09	+1.00	+0.63	+1.00

W	86.40	86.30	86.10	85.60	84.50
	3.96	4.06	4.26	4.93	6.03
	3.96	3.06	3.26	3.93	5.12
	0.0	+1.00	+1.00	+1.00	+0.91

E	86.10	86.10	85.90	85.40	84.50
	4.26	4.26	4.46	4.96	6.03
	4.26	4.30	4.48	5.16	5.85
	+0.0	-0.04	-0.02	-0.20	+0.18

Culvert # 8<sup>th</sup> St

00 = el. inlet	275.5	BM 284.41	C.B. 275.5	74.0	72.5	71.0
		2.56	11.47	12.97	14.47	15.67
		286.97	6.04	1.74	3.62	3.57
			+5.46	+11.23	+16.85	+24.6

0+48.33 74.0

0+96.67 72.5

1+45. outlet 71.0

Wilshire Drive  
Paving, Sewers etc.  
Sewer Cons.  
392.31

10-21-28

to NW 1/4 line of 35th St.

106  
New 0+54

1+08 M.H. #  
47.17

1+57 17

2+06 33  
New

2+55 50  
New

3+04 47  
New

3+53 83  
New

4+03 M.H. #  
53 R.

4+56 T.P. 11.06 390.44

5+09

5+62

6+15

6+68 D.E.

7.65 384.66 371.98 +12.68

5.22 387.08 72.36 +14.72

4.40 387.91 372.74 +15.17

4.48 387.33 73.08 +14.25

5.71 386.60 73.47 +13.18

6.66 385.65 73.76 +11.89

7.62 384.69 74.10 +10.59

8.93 383.38 74.45 +8.93

11.30 381.01 374.80 +6.21

12.89 379.42 76.12 +3.30

8.51 381.97 77.45 +4.52

5.13 385.35 78.77 +6.58

3.40 387.08 80.10 +6.98

2.78 387.70 381.42 +6.28

Floor garage

10.71 379.77 1

E  
7.26  
7.80  
6.63  
7.16  
5.92  
5.42  
P.C. 5.18  
5.68  
4.63  
5.20  
4.34  
4.90  
4.14  
4.70  
4.04  
4.65  
4.08  
4.60  
4.18  
4.70  
4.28  
4.80  
4.41  
4.90  
4.54  
5.05  
E.C. 4.68  
5.20

W  
6.67  
7.17  
6.24  
6.74  
5.70  
6.20  
5.16  
5.68  
5.20  
4.41  
4.90  
4.21  
4.70  
4.18  
4.65  
4.12  
4.60  
4.25  
4.70  
4.36  
4.80  
4.44  
4.90  
4.56  
5.05  
4.68  
5.20

395.42 B.M. B.P. 51035  
2.82 + Mt. View Drive  
398.25  
7.67  
390.57  
2.41  
392.98  
7.40  
385.58 B.M. B.P. M.W. 25th St  
6.73 + Wilshire Drive  
392.81  
12.89  
379.42  
7.87  
387.29

6.67  
385.64

P.C. 8.64  
9.18  
4.08  
4.66  
4.57  
5.17  
5.07  
5.67  
5.60  
6.18  
6.15  
6.69  
E.C. 6.70  
7.20

8.64  
9.18  
4.12  
4.66  
4.60  
5.17  
5.10  
5.67  
5.63  
6.18  
6.15  
6.69  
6.55  
7.20

Dove & Penn Ave Paving  
#  
Culvert 1.

90° S. Edge ch inlet L

0+45.6

+91.2

1+36.8

1+82.4 A 10° 34' R

2+37.4

2+92.4 & cleanout # 26-48 L.

3+39.67

3+85.73

4+32.40

Flowline

Top Curb

172.5

179.00

171.50

170.50

169.50

168.50

167.30

166.10

165.06

164.03

163.00

Parvnt.  
171.70

Curb Inlet #2  
E. End chrb Inlet  
70.00  
5.91 (S'S)  
2.28  
-1.37  
5.91 (S'S)  
7.25  
-1.38

E.C.B. inlet  
67.80  
6.11 (S'S)  
8.09  
-1.98

W. End C.B. inlet  
69.60 (S.W)  
6.31  
8.00  
-1.69  
6.31 (S'S)  
8.19  
-1.88

199.25 BM.  
11.26  
2.00.51  
12.72  
187.79  
0.36  
188.15  
12.65  
175.50  
0.41  
175.91

199.25 BM. Top Hyd + S.E. Penna Cut lew.  
0.90 3.28 R 3.10 S.E. Ret 6.34 SW. Ret  
2.00.15 196.95 197.05 193.51  
12.22  
187.73 Top cl par at cleanout  
188.02 179.00 179.00 71.70  
13.00 2.49 2.49 4.49  
175.02 2.75 0.31 5.54  
0.17 -0.26 +2.18 -1.05  
175.19 5.54  
169.65 172.50 171.50 70.50 69.50 68.50  
11.84 8.99 9.99 10.99 11.99 12.99  
181.49 +6.97 +5.98 +5.83 +5.70 +4.39 +7.52  
66.10 65.06 64.03 outlet  
9.09 10.13 11.16 12.19  
5.54 6.62 8.51 9.80  
+3.55 +3.51 +E.65 +R.37

π 185.85

New Intake

20' W. of d.

150.50  
5.35  
5.45  
-0.10

20' E. of d.

180.50  
5.35  
5.25  
+0.10

S.K. & N. In. Apron

71.4  
4.1  
8.8  
-4.7

174.50  
11.35  
7.73  
+3.62

33-38  
27  
34-05

15.4  
3.0  
1.1  
1.1  
1.1  
1.1  
1.1  
1.1

2.4  
1.5  
1.0  
0.02  
1.2  
1.2

200.20  
51.85  
25.25  
50.52  
1.88  
1.88  
1.00

40.60  
160.  
51.85  
252.45  
250.52  
1.93

51.00  
18.00  
1.00

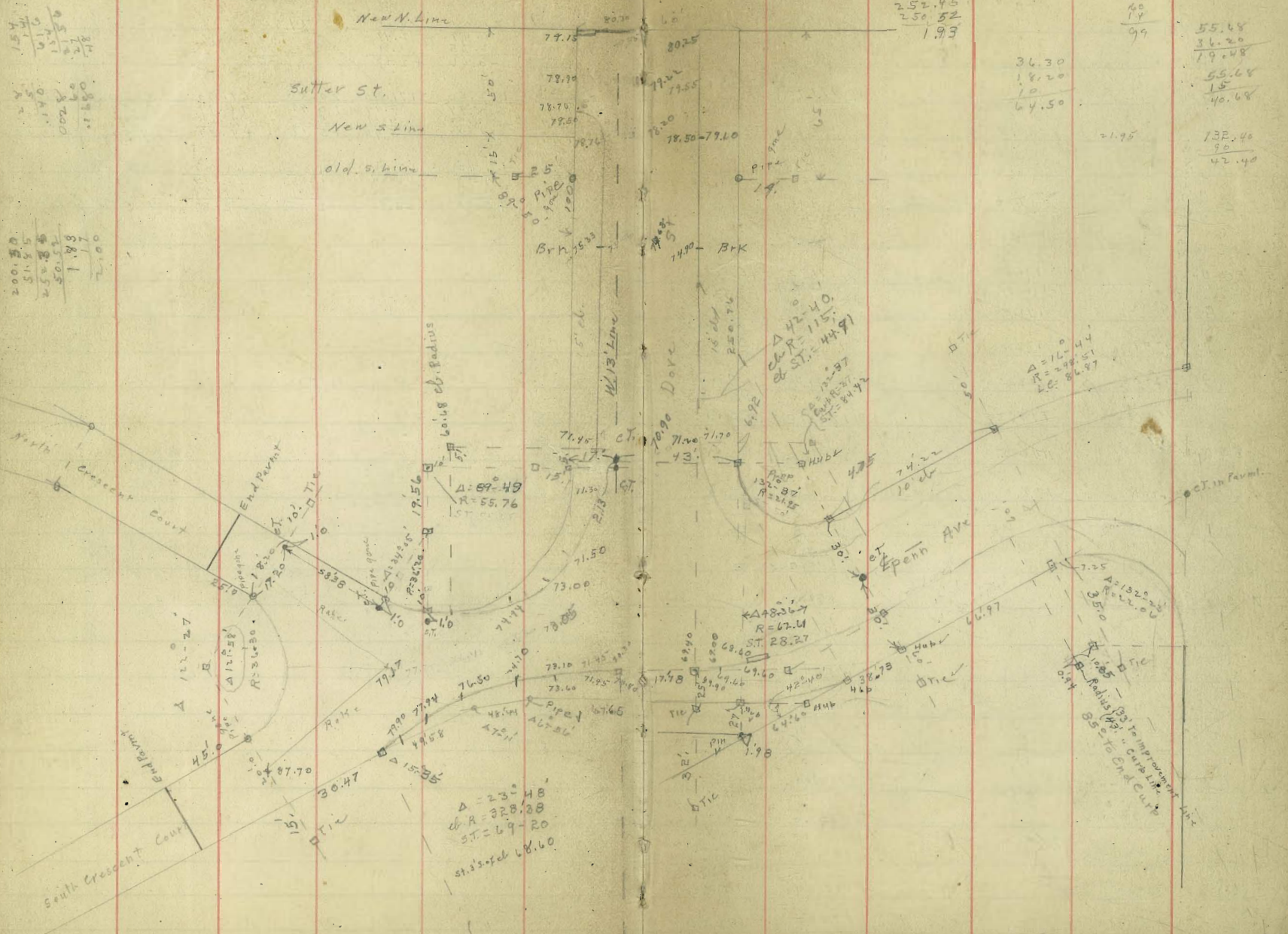
25  
14  
99

36.30  
18.20  
64.50

55.68  
36.20  
19.48  
55.68  
15  
40.68

138.40  
32  
42.40

14





Dove St Grades

175.60  
177.9  
200.6  
186.88

47.9  
71.5  
15.4  
14.4  
15  
Curve into Penn N

West  
# 20 1/2 - 5 - 53.4  
# 30 2 1/2 - 11 - 1  
# 40 2 1/2 - 11 - 1  
# 50 2 1/2 - 11 - 1  
East  
# 25 2 1/2 - 5 - 57.8

N. Line Sutter 179.00  
S. Line Sutter { W.R. + 178.00  
                  { S.R. + 177.70  
                  { 176.5  
                  { 195.3  
                  { 174.0  
                  { 172.7  
                  { 171.50  
RC. Brk 14-12  
33-09  
Brk 52-05  
71-01  
E.C. curb 88-58  
P.C. Brk 36-20 R.  
E.C. " " " R  
N. Crescent Court  
P.C. on S  
W. End Pavmt  
Brk Δ 15-47  
Brk 31-34  
" 43-27  
" 59-14  
" 75-01  
" 90-48  
" 106-35  
P.C. into S. Crescent Court  
W. W. = End Pavmt

E. cl  
179.0  
177.70  
176.50  
175.30  
174.10  
172.90  
171.70  
171.30  
171.30  
171.50  
172.50  
175.10  
177.50  
179.50  
181.40  
188.00  
191.20  
186.50  
185.40  
184.90  
184.60  
184.80  
185.60  
186.80  
188.00  
193.30  
P.C. Brk  
Toward Crescent  
Brk  
Brk  
Δ 66-20  
Brk  
Δ 99-30  
Δ 132-40  
E.C. Brk  
N. Crescent Court  
S. Line  
P.C. on W  
S. Crescent Court  
N. Line  
P.C. on W

E	79.0 7.9 0.3 +7.6	77.7 9.2 3.2 +6.0	76.5 10.4 6.9 +3.5	75.3 11.6 10.5 +1.1	74.10 12.9 13.6 -0.8	72.9 14.0 13.8 +0.2	71.5 15.4 14.4 -2.2	71.7 3.9 6.1 -2.2	71.3 4.3 6.6 -2.3	71.5 4.1 6.9 -2.8	72.5 3.1 4.6 -3.5
W	79.0 7.9 8.4 -0.5 +0.9	78.0 8.9 8.0 +1.7	77.7 9.2 6.6 +3.8	76.5 10.4 7.3 +4.3	75.3 11.6 7.3 +1.4	74.10 12.9 11.5 -1.4	72.9 14.2 15.6 +1.0	71.5 16.4 15.4 +1.0	71.3 16.6 14.4 +2.2	72.0 15.9 11.2 +4.7	
W Dove N Penn	73.5 14.4 7.2 +7.2	75.5 12.4 5.0 +7.4	EC 77.5 10.4 4.3 +6.1	PC End cut 78.5 9.4 3.6 +5.8	EC 81.4 6.5 2.1 +4.4	82.0 12.6 9.4 +3.2	91.2 9.4 7.0 +2.4	86.5 14.1 10.8 +2.2	88.0 12.6 8.7 +1.8	91.2 9.4 6.7 +2.7	

Grade Change N. End Dove St  
W. cl  
N. Line Sutter 180.50  
S " " +0.50  
1+00  
1+50 = Brk  
3+12 = P.C. on W

E	+7.6 Raised 2.0 +5.6	+6.0 Raise 1.4 +4.6	-0.5 Raise 1.5 -2.0	W. End Pavmt +0.9 +1.2 +0.1	E. Rat +1.2 +1.1 +0.1
E	81.00 7.0 1.4 +5.6	79.1 8.9 4.3 +4.6	77.3 10.7 7.8 +2.9	75.4 12.6 11.2 +1.4	
W	80.50 7.5 3.6 -2.1	79.5 8.5 9.1 -0.6	78.8 9.2 9.1 +0.1	77.1 10.9 7.6 +3.3	75.3 12.7 8.1 +4.6

Penn. Av.

S. cl

N. cl

P.C. on N. line Coupt 188.00

0729.38 P.C. Brk 184.20

Def Δ 4-17-50" chd 49.20 Brk 178.50 End Curb.

Def Δ 8-39-30 " 49.91 Brk 174.00

Def Δ 10-27 " 20.55 Brk 172.00

Def Δ 1-54 P.C. " 16.60 No Brk 170.75

Def Δ 3-40 Brk 170.50

Def Δ 7-38 P.C. No Brk 169.85

Def Δ 23-40 Δ 1-24 chd 5.00 Brk 169.40

Def Δ 3-40 Def Δ 6-23 chd 19.98 169.40

Def Δ 63-40 Def Δ 11-22 " " 170.00

Def Δ 3-40 Def Δ 16-21 " " 171.80

Def Δ 3-40 Def Δ 21-20 " " 174.00

1708.15

1723.40 Brk 176.70

1728.15

1743.40 Brk 180.00

1759.43 P.C. on S. Brk 182.70

Δ 26-11 187.15

Δ 52-22 Brk 191.60

Δ 68-41 Brk 193.20

N. line. Curlew Present Curb 193.80

P.C. on N

Def Δ 2-26 chd 1939

Def Δ 7-18 chd 17.70

187.40  
190.90  
193.60  
195.70  
196.96

175.10 P.C. on N  
178.70 Brk

49.60

2  
1  
15

199.25	3 M.	Top Hydt	30.	Curlew #	Fenn	44.03	12.45
0.16						11.57	16
177.41						18.91	
12.65						5.06	
186.76							
186.77							
12.93							
174.04							
1.86							
175.10							
0.14							
174.96							
12.92							
187.88							
0.32							
187.56							
13.00							
200.56							
13.00							
187.56							
0.32							
187.88							
12.92							
174.96							
11.92							
186.88							
188.00							
0.02							
188.02							
13.02							
175.00							
1.07							
176.07							
0.40							
69.85							
10.27							
180.52							
11.0							
179.42							
1.94							
178.26							
1.59							
190.77							
9.62							
200.39							
187.40							
190.90							
193.60							
195.70							
196.96							

cmr. cl.	187.0	87.0	PC	80.0	76.7	74.0	71.8
S 178.80	92.2	91.6	87.1	82.7	80.0	76.7	74.0
5.61	6.2	+4.6	+0.1	4.3	7.0	11.3	1.6
5.61	11.2	1.6	3.4	4.7	7.5	2.8	5.3
0.K	-5.0	-6.2	-2.5	-0.4	-0.5	-1.5	-3.7
178.80	69.5	69.6	70.5	72.0	75.6	74.0	73.3
5.61	6.1	6.0	5.1	3.6	1.6	9.4	3.7
9.4	8.9	6.2	4.2	2.7	0.5	6.6	11.7
-3.5	-2.8	-0.2	+0.9	+0.7	+1.1	+2.8	+1.7
187.88							
0.32							
187.56							
13.00							
200.56							
13.00							
187.56							
0.32							
187.88							
12.92							
174.96							
11.92							
186.88							
188.00							
0.02							
188.02							
13.02							
175.00							
1.07							
176.07							
0.40							
69.85							
10.27							
180.52							
11.0							
179.42							
1.94							
178.26							
1.59							
190.77							
9.62							
200.39							
187.40							
190.90							
193.60							
195.70							
196.96							

0.5  
1.3  
69.60  
6.47  
69.60  
6.47  
6.52  
8.36  
6.47  
7.89

Penn. Ave & Dove  
Water Grades

00 = N. line Cuyler	199.72				
+32 45° Bend T.P. 0.50	187.25	11.6 12.97	188.1 186.75	90.0	(-1.9) - 2.0
+70 Brk T.P. 0.53	174.95	4.5 12.83	182.7 174.42	80.0	+2.7
+111 Brk		1.4	73.6	73.6	0.0
+132.5 Brk		5.2	69.8	71.0	-1.2
+154.5 45° Bend T.P. 0.50		7.3	67.7	68.6	(-0.9) - 0.2
+170		8.4	66.6	67.8	(-1.2) + 0.6
+195 to Fire Plug		7.4	67.6	66.5	+1.1
+215 in Dove st		5.5	69.5	66.5	+3.0
+235 90° Bend (28)		4.8	70.2	66.6	+3.6
Brk T.P. 12.78	186.89	7.9 0.84	73.1 174.11	69.0 R.ck	+4.1
(21)		11.9	75.2	71.0	+4.2
Brk		11.7	75.2	71.0	+4.2
Y to N. Crescent Court		6.8	80.1	75.5	+4.6
T.P. 10.80	196.25	2.4 1.44	84.5 87.7	81.5 85.3	+3.0 +2.5
W. End Pipe S.C.C. Valve		3.1	93.2	90.6	+2.6
N.C.C.					
86.89					
Y to N.C.C.		6.8	80.1	75.5	+4.6
Brk		2.6	80.3	78.00	+2.3
96.25					
Opp P.C.		9.1	87.2	85.3	+1.9
End Pipe N.C.C. Valve		6.0	90.3	88.5	+1.8

199.25  
0.124  
199.49  
12.52  
186.97  
0.38  
187.35  
12.62  
174.72  
0.64  
175.26

199.25  
0.47  
199.72

17

6.8  
73.5

online Bat P.C. 3 on N + S.

74.95

Fire Plug

st grade

69.6

72.0

70.0

69.55

5.40

6.93

-1.53

175.91

69.55

6.36

8.06

-1.70

Fire Plug

82.7

87.4

170.8

82.8

80.0

70.7

76.4

2.8

73.6

74.0

73.8

71.0

71.8

75.5

2.8

78.7

96.2

2.7

93.5

70.0

69.8

2.4

67.8

67.8

84

2.7

85.3

69.5

3.0

66.5

84.2

2.7

61.5

69.6

3.0

66.6

156

2.7

85.3

93.5

2.7

90.6

84

2.7

85.3

6.8

168.4

67.8

6

82.0

167.8

66.5

60.8

Dove St Water Grades.

10' E. of  $\phi$

83.88

W. Line Dove End Pipe	5.8	78.1	175.0	+ 3.1
40' E. = 90° Bend $\phi$ N4S Pipe	3.6	80.3	175.0	+ 5.3
1+06 52	7.0	76.9	73.5	+ 3.4
1+58	9.2	74.7	72.2	+ 2.5
2+10	3.6	72.8	71.0	+ 1.8
2+62 52	5.0	71.4	69.8	+ 1.6
3+14 P.C. on E. side into Penn	7.2	69.2	68.6	+ 0.6
3+42 Valve	7.8	68.6	67.6	+ 1.0
3+71 T. to E. in Penn	5.5	69.5	66.5	+ 3.0
3+91 90° Bend W. in Penn	4.8	70.2	66.6	+ 3.6

T.P. 174.11  
2.24  
76.37  
3.60  
72.77  
11.16  
83.88

74.10  
9.8

6.9  
69.5

3.5

74.10  
73.8  
2.8  
71.0

76.3  
2.5  
73.8

177.8  
2.4  
175.0

72.9  
2.5  
70.4

71.4  
2.5  
68.9

10' W. of  $\phi$

Alignment change Dove St Water Grades

T.P.	9.0	79.2	70.2	
W. Line Dove End Pipe	1.1	78.1	175.0	+ 3.1
90° Bend $\phi$ N4S Pipe	1.2	78.0	175.0	+ 3.0
1+06 52	2.8	76.4	73.5	+ 2.9
1+58 52	4.4	74.8	72.2	+ 2.6
2+10 52	5.9	73.3	71.0	+ 2.3
2+62 52	7.3	71.9	69.8	+ 2.1
3+14 P.C. into Penn. on E	8.9	70.3	68.6	+ 1.7
3+42 Valve	9.0	70.2	67.6	+ 2.6
3+71 T. to E. in Penn	6.8	72.4	66.5	+ 5.9
3+91 90° Bend W. in Penn	6.8	72.4	66.2	+ 4.2

199.25  
 0.46  
 199.71  
 12.91  
 186.80  
 0.64  
 187.44  
 12.65  
 174.79  
 0.27  
 175.06  
 3.86  
 171.20  
 1.11  
 172.91  
 184.11  
 12.91  
 171.20  
 8.39  
 179.59  
 0.61  
 178.98  
 12.71  
 171.69  
 4.19  
 187.50  
 1.81  
 199.31

171.70  
 3.36  
 3.86  
 -0.50

80.50  
 3.61

79.50 78.50  
 4.61 5.31

81.00  
 3.11  
 1.11  
 +2.00

79.14  
 4.97  
 5.47  
 -0.50

77.27 75.40  
 6.84 8.71  
 7.34 7.21  
 -0.50 -0.50

80.50  
 3.61  
 3.86  
 -1.50

79.50 78.50  
 4.61 5.31  
 6.11 6.31  
 -1.50 -1.00

77.01 75.33  
 7.03 8.78  
 8.03 8.78  
 0.0

71.50  
 7.03 8.78  
 9.09  
 -1.00

71.30 72.00  
 8.59 7.59  
 8.79 7.59  
 -0.50 0.0

73.50  
 4.09  
 4.59  
 -0.50

75.50 77.50  
 4.09 2.09  
 4.09  
 6.0

78.50 78.00  
 1.09 1.89  
 0.59 0.39  
 +0.50 +1.00

79.70 71.40  
 1.09 1.89  
 11.79 10.29  
 11.29 10.29  
 0.0

74.00 91.20  
 3.69 8.11  
 4.19 6.61  
 -0.50 -0.50  
 0.0 0.0  
 Paymt Paymt

W. side

Prospect

Court

71.20  
 8.11  
 7.11  
 1.00  
 +1.50  
 Paymt

82.00  
 11.31  
 11.31  
 0.0  
 +0.50  
 Paymt

84.50  
 12.81  
 12.31  
 +0.50  
 71.00  
 Pay

85.40  
 6.49  
 5.79  
 70.50  
 +1.00  
 Paymt

84.90  
 6.79  
 6.29  
 +0.50  
 +1.00  
 Paymt

84.00  
 7.09  
 6.59  
 +0.50  
 +1.50  
 Paymt

84.80  
 6.89  
 5.89  
 +1.00  
 +1.50  
 Paymt

85.60  
 6.09  
 5.59  
 +0.50  
 +1.00  
 Paymt

86.80  
 4.89  
 4.89  
 0.0  
 +0.50  
 Paymt

88.00  
 3.69  
 3.69  
 0.0  
 +0.50  
 Paymt

73.30  
 6.01  
 5.01  
 +1.00  
 +1.50  
 Paymt

75.30  
 6.21  
 6.21  
 0.0  
 +0.50  
 Paymt

78.00  
 3.69  
 3.69  
 0.0  
 +0.50  
 Paymt

180.52  
 1.10  
 179.42  
 12.94  
 172.36  
 1.59

171.70  
 8.82  
 9.32  
 -0.50

71.30 71.50  
 9.52 7.02  
 9.86 7.46  
 -0.64 -0.46

72.50 73.50  
 8.02 6.72  
 8.87 7.40  
 -0.85 -0.78

75.10 78.20  
 8.42 2.32  
 5.60 2.62  
 -0.18 -0.30

87.40 90.90  
 4.76 1.44  
 5.23 2.46  
 -0.27 0.0

190.77  
 9.62  
 200.39  
 99.25  
 1.14

93.60  
 6.79  
 8.24  
 -1.42

95.70 96.96  
 4.69 3.43  
 4.53

6.8  
 6.4  
 7.0

6.8  
 6.4  
 7.0

6.8  
 6.4  
 7.0

6.8  
 6.4  
 7.0

6.8  
 6.4  
 7.0

6.8  
 6.4  
 7.0

6.8  
 6.4  
 7.0

4.40  
 6.0  
 4.9  
 1.1

7.77  
 3.97

8.11  
 5.8  
 2.3

7.00  
 1.0  
 2.6

8.2  
 6.1  
 2.1

19

37  
 2.3  
 0.4

6.4  
 4.1

3.7  
 0.2  
 3.2

Pringle Keating Sublet Grading 9-25-28

Water Grades

00: Eline Portola P.C.		6.4		254.8	
		3.8	57.3	54.1	+3.2 ✓
		4.1	57.0	53.4	+3.6 ✓
		4.3	56.8	52.7	+4.1 ✓
4 E.C. Brk		4.8	56.3	252.00	+4.3 ✓
		5.0	56.1	251.33	+4.8 ✓
		6.2	54.9	250.67	+4.2 ✓
Δ 90° 6' + 10 Keating Brk		13.6	47.5	250.00	-2.5 ✓
1 T.P.	4.46	7.67	253.40	49.1	+4.3
2		6.3	51.6	48.2	+3.4
3		7.4	50.4	47.3	+3.1
Δ 400 Brk		8.1	49.8	246.4	+3.4
+40 Brk		8.9	49.0	46.7	+2.3
+40 Brk		7.6	50.2	48.0	+2.2
1100		5.4	52.4	49.0	+3.4
1436		1.2	56.7	51.5	+5.2
15) 1.0 T.P.	5.00	0.44	257.42		
Δ in sublet ST Brk		4.2	258.2	52.6	+5.6
0+22		3.8	258.6	53.3	+5.3
0+44		2.8	59.6	54.1	+5.5
0+64		2.3	60.1	54.6	+5.5
1+21	25	2.1	60.3	56.0	+4.3
1+44	85	2.0	60.4	56.2	+4.2
End Pipe	85	7.0	55.4	56.4	-1.0

260.18 B.M. BP. top wall N.E. Pringle + Portola  
 6.87  
 261.07

Fire Huct.

59.42  
 3.00  
 5.31  
 -2.31

20  
 6.12  
 21.12

260.18  
 1.30  
 T.P. 261.48  
 11.27  
 250.21  
 4.57  
 254.78

53.4  
 8.1  
 9.4  
 -1.3

53.23  
 8.25

Fire Huct

9.54  
 -1.29

53.4  
 52.3  
 7 11.1  
 .1

10.61  
 8.99  
 14.60

49.30  
 20  
 48.40  
 2.24  
 48.64

53.40  
 17  
 53.23

15.3  
 1.4  
 16.7  
 8.4  
 25.1

Curb Inlet + Head wall

Top of W  
 249.30  
 5.48  
 6.38  
 -0.90

Fl. at c.b.  
 244.00  
 10.78  
 6.38  
 +4.40

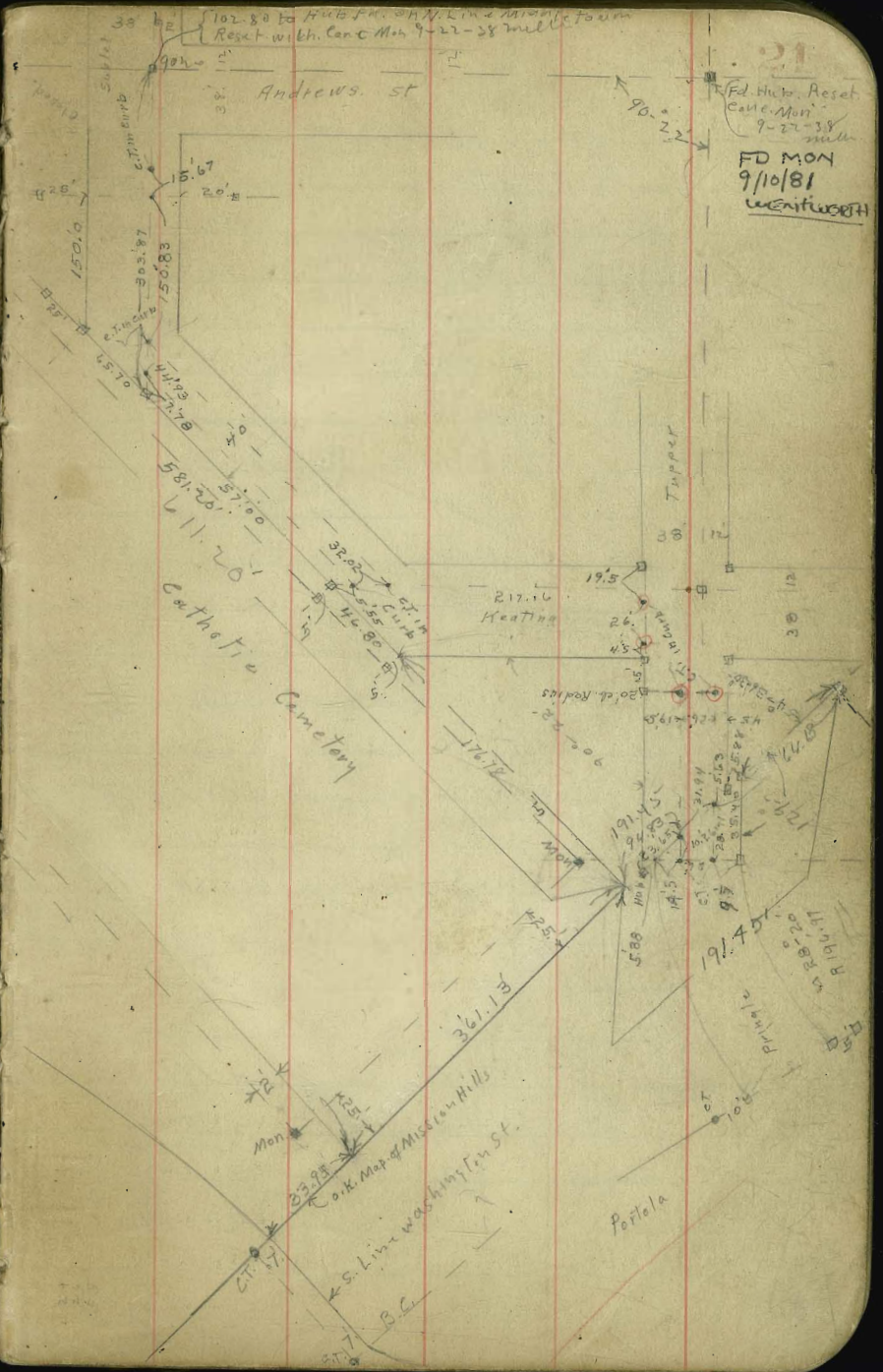
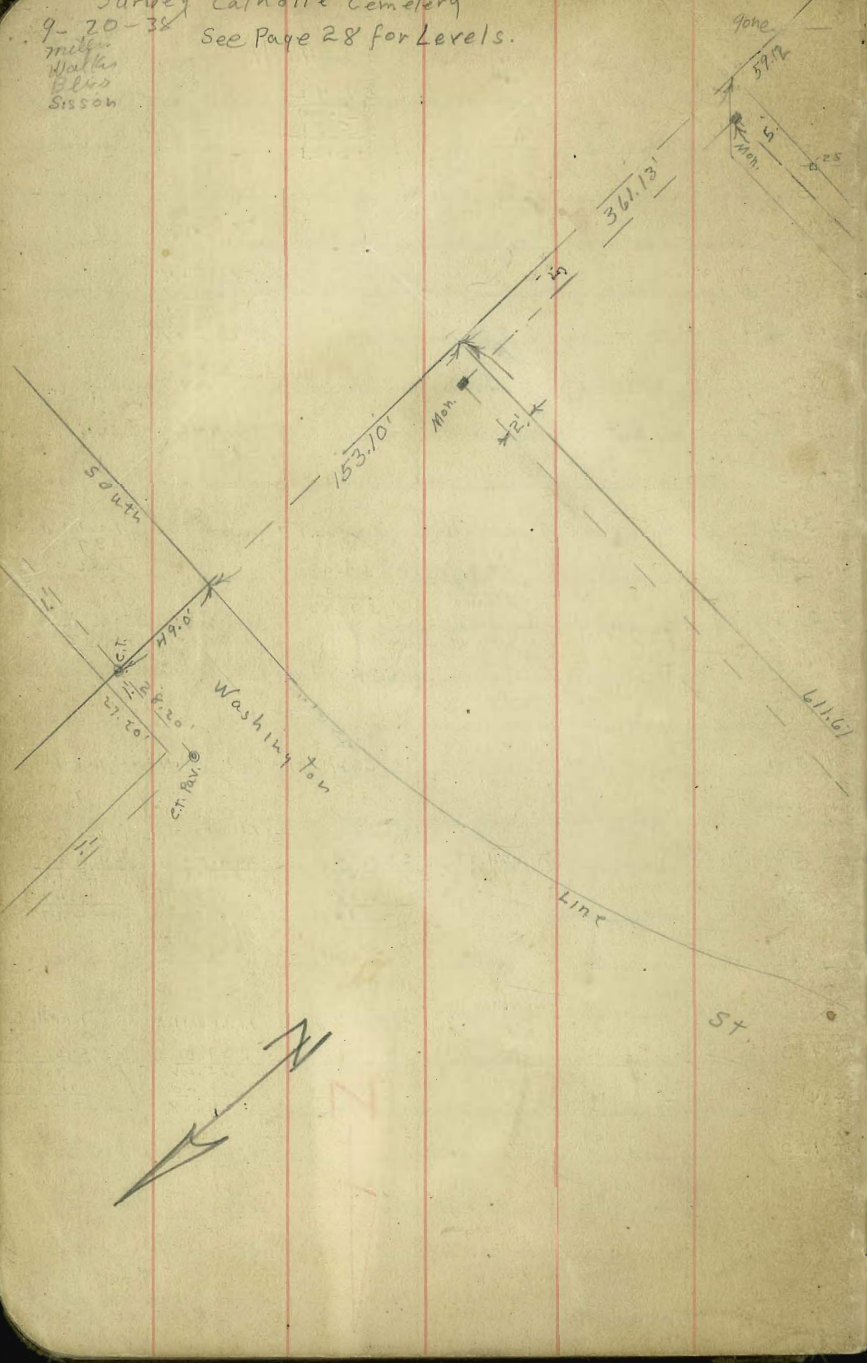
Top of E  
 249.30  
 5.48  
 9.47  
 -4.17

Top Wall W  
 246.50  
 8.28  
 11.00  
 -2.72

Fl. at outlet  
 239.50  
 15.28  
 11.00  
 +4.28

Top Wall E  
 246.50  
 9.28  
 14.60  
 -6.32

Survey Catholic Cemetery  
 9-20-38 See Page 28 for Levels.  
 Miller  
 Walker  
 Ellis  
 Sisson



	Pringle Keating	Sublet	
E. Line Portola	S. d	N. d	
1	57.47	58.44	
2	57.0	57.7	
3	56.4	57.1	
4 = C.C.	55.9	56.5	
+32	55.40	255.90 X	
P.C. into Keating	54.75		
1	253.40	253.70 X	
2	53.2		
3	52.9		
3 E. with Keating	52.6		7.7 2.4 5.3
1	252.30	252.80 X	
2	51.5	52.0	53.9 6.5 1.5 +5.0
3 Brk	X 249.40	250.20 X	260.18 1.03 261.21 7.21 253.90 6.54 260.44
+869 P.C.	X 249.50	250.00 X	54.0 8.4 1.9 +6.5
E.C.	X 249.30	249.80 X	252.90 3.91 257.81
+10 Brk	249.30	249.80	52.60 5.01
+30 "	249.60	250.20	
+50 "	X 250.10	250.60 X	
+70 "	251.00	251.50	
+90	X 252.00	252.50 X	
+26 Brk	254.30	254.80	
+35 Z P.C.	X 255.00	255.20 X	
B.C.	X 255.50	256.00 X	

260.18 PM Top wall		7.9 x 9 6	2.77 59.44		
261.61 8.44	262.67 6.33 59.20 2.66 261.54 8.23 264.77	N. d. 3.17 58.44	57.7 3.9 4.5 5.1 56.5 55.9 55.9 52.9 57.7 7.7 1.6 1.4 3.2 1.1 4.4 2.7 +2.3 3.1 +1.9 +4.6 +1.3 +5.0	cc	pc
S. d. 4.14 57.47	57.0 56.4 55.9	57.0 56.4 55.9	57.7 4.6 5.2 4.1 4.2 4.4 7.6 5.7 7.5 4.0.5 +1.0 +1.3 +0.6 +1.2	54.7 53.4 53.2 8.4 52.9 8.2 12.2 12.2 -3.7 -3.5	
N. 2.6 52.8 8.8 4.1 0.7 4.7 +5.0 2.6	52.0 7.2 8.1 1.0 0.7 +6.5	51.1 50.2 50.0 49.9 49.8 50.6 52.5 52.9 52.9 6.7 1.5 +5.2	50.2 9.0 9.2 7.3 9.4 9.2 7.3 2.8 3.5 5.6 7.9 7.9 +6.4 +5.8 +3.8 +0.7 +5.2	pc	cc
S. 52.6 6.6 11.0 -7.4	52.2 6.9 11.7 -4.8	51.5 7.7 8.6 14.3 -6.6	49.7 8.6 9.5 9.7 15.8 15.5 -6.3 5.8	49.3 50.1 52.0 -5.4	50.1 9.1 7.2 -9.4
N. 55.2 9.6 2.2 +7.4	55.6 9.2 1.0 +8.2	56.0 8.8 0.8 +8.0			
S. 55.0 4.2 1.5 +1.7	55.5 3.7 2.8 +1.2	55.5 3.7 2.8 +1.2		Portola	
N. 55.90 5.31	54.90 6.31	53.90 7.31	53.34 6.90	53.17 6.77 +0.50	55.75 5.46 7.0 62.0.
S. 55.40 5.81	54.75 6.46	53.40 7.81	53.21 4.60	53.83 4.78	52.85 4.96 5.15 5.33 52.48 5.20
N. Brk 50.20 10.24	PC 50.00 10.44	Brk 49.95 10.49	PC 49.90 10.54	Brk 49.85 10.59	Brk 49.80 10.64 50.10 10.34 50.60 9.84
S. 49.70 10.24	49.50 10.24	49.20 10.24	49.20 11.14	49.20 11.24	49.60 10.84 50.10 10.34
N. Brk 51.50 8.74	Brk 51.50 7.74	Brk 54.80 5.64	PC 55.20 5.24	Brk 55.60 4.84	Brk 56.00 4.44 57.50 2.94 58.00 2.44
S. 51.00 9.44	52.00 8.44	54.30 5.64	55.00 4.94	55.50 4.44	56.20 4.24 57.00 2.94 57.50 2.0.50



	S. d	N. cl
E. C	255.50	256.00
+17 BHK	X 256.20	256.70 X
+37 "	X 257.00	257.50 X
+57 "	X 257.50	258.00 X
578		
5dR 1+143 BHK P.C.S.	X 258.90	259.40 X
PAC	259.00	
12	259.15	
P.C.C. BHK	259.30	
	259.42	
	259.55	
	259.67	
	259.80	P.C. on 16

264.77

	P.C.S						
N.	56.7	57.5	58.0	59.4			
	8.1	7.3	6.8	5.4			
	1.1	1.1	1.4	2.6			
	+7.0	+6.2	+5.4	+2.8			
S	56.2	57.0	57.5	58.9			
	8.6	7.8	7.3	5.9			
	7.9	8.2	8.0	5.7			
	+0.7	-0.4	-0.7	+0.2			
TURN	PAC						
	59.0	59.1	59.3	59.4	59.5	59.7	59.8
	5.8	5.7	5.5	5.4	5.3	5.1	5.0
	5.7	7.5	7.7	7.8	10.9	6.3	2.6
	50.1	-7.8	-2.2	-2.4	-5.6	-1.2	+2.4

240.44

59.00  
-2.44

	59.70		59.40		opp 2.8	
N	1.74	1.04	0.64	0.74	0.74	0.84
	1.24	0.54	0.14	0.24	0.24	0.34
	+0.50	+0.50	+0.50	+0.50	+0.50	+0.50
	PAC	PAC				
	58.20	58.90	59.00	59.15	59.30	
	2.24	1.54	1.44	1.29	1.14	
	1.04	0.94				
	+0.50	+0.50				

CURVE

	59.70	59.60	59.50	59.40
	0.74	0.84	0.94	1.04
	0.24	0.34	0.44	0.54
	+0.50	+0.50	+0.50	+0.50

Anthony Drive

Curbing + Paying

E. cl

W. cl

00- N. Line Division

41.34

40.52

0736.5

0773

0787

1+28.75

1+70.50-3.11m

44.11

44.14

1-3-79

41

X 46.39

walklow 430  
 $\frac{5.45}{40.85}$   
 42.20  
 $\frac{4.39}{3.75}$

4.17 Walklow  
 $\frac{3.11}{41.00}$

42.46 Alley Ret.

W 40.52 41.30 42.08 42.38 43.26 44.14  
 $\frac{5.87}{5.19}$   $\frac{5.09}{4.31}$   $\frac{4.31}{4.50}$   $\frac{4.01}{4.24}$   $\frac{3.15}{3.23}$   $\frac{2.25}{2.25}$   
 ✓ ✓ ✓ ✓ ✓ ✓  
 walklow walklow walklow walklow

E 41.34 41.93 42.52 42.75 43.43 44.11  
 $\frac{5.05}{4.46}$   $\frac{3.47}{3.64}$   $\frac{2.96}{2.96}$   $\frac{2.28}{2.28}$   
 ✓ ✓ ✓ ✓ ✓ ✓

273  
 $\frac{36.5}{}$

83.5  
 $\frac{41.75}{}$



Sutter St Pavement  
Pringle to 178' South.

	W. elev	E. elev
S. Line Pringle	265.05	265.89
+37.5		260.69
N. End		
+75 present el. on E.		255.48
1+40 S. End Present el. on W.	246.26	
1+50 S. End Present el. on E.		245.05
		241.80
1+75 Face of E. W. elev	241.57	<u>241.57</u>
1+78 S. end Berth		
1+80 Grade Point	240.90	240.90

Culvert  
253.98

00 = elev. inlet Top elev. E. End	11.84	242.14	241.70	+0.44
00 = curb inlet Top elev. W. End	11.67	242.31	241.57	+0.74
" " " Floor Line	11.67	242.31	239.57	+2.74
T.P. 0.36	242.67	11.67	242.31	228.00
0+25 south-outlet stub	9.72	222.95	<u>228.50</u>	+4.95
" " ground	14.3	228.4		

265.07 B.M. NW. Washington + Pringle

1.42

266.49

12.93

253.56

0.42

253.98

11.67

242.31

0.36

242.67

W.

65.05

1.44

46.26

7.72

41.57

E.

65.90

0.39

55.48

11.01

45.05

8.93

8.63

0.3 High

41.57

1.1

11.7

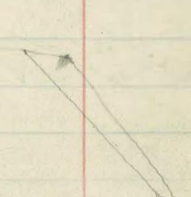
10.6

26

	N. Line	E. Line
802 S. Line Penn Ave	284.0	283.40
0+05 Brk E only		283.80
0+46.67	84.67	84.34
0+93.33	85.33	84.97
1+40 Brk P.K.C.	286.0	285.6
1+60 "	286.1	285.8
1+80 "	285.8	285.5
2+00 "	285.3	285.0
2+20 "	284.4	284.2
2+40 " E.V.C.	283.4	283.2
2+80	82.05	81.8
3+20 Brk	280.7	280.4
3+60	79.85	79.6
4+00 Brk	279.0	278.8
4+50	76.50	76.37
5+00	74.00	73.95
5+25 End. Improvement	72.75	72.75
5+40 Brk	273.0	272.0
	culvert N. Line	E. Line
Top ch inlet	73.45	73.45
ch inlet F.L.		70
		270.00
outlet		265.00

286.86 B.M. N.W. C<sup>th</sup> + Penn Ave.

290.28	W	84.00	84.67	85.33	86.00	86.10	85.80	85.30	84.40
3.10		6.28	6.06	5.90	4.73	4.05	4.93	5.95	3.74
285.18			2.85	3.77	3.73	3.63	3.93	4.09	2.18
5.55			+3.21	+1.63	+1.00	+1.00		+1.34	+1.00
290.73									
5.78									
284.95	E	83.40	83.90	84.34	84.97	85.60	85.80	85.50	84.40
2.63		6.88	6.39	5.76	5.13	4.93	5.23	2.88	3.38
287.58			6.31	5.67	5.48	4.13	4.23	2.88	2.88
8.05			+0.17	+0.77	+0.28	+1.00	0.0	0.0	+1.00
279.53									
0.73									
282.76	W	83.40	82.05	80.70	79.85	79.00	76.50	74.00	72.75
6.19		3.18	5.53	6.88	2.91	3.74	3.58	2.00	7.25
276.57			7.53	6.48	1.65	3.07	2.06	5.18	7.13
3.43			+1.00	+0.43	+1.26	+0.74	+1.84	+0.87	+0.12
280.00									
8.24	E	83.20	81.80	80.40	79.60	78.90	76.37	73.95	72.0
271.72		4.18	5.78	7.18	5.76	3.94	3.65	6.05	3.65
1.70			4.78	6.18	3.34	3.96	4.54	5.85	6.95
273.42			+1.00	+1.00	-0.18	0.0	-0.93	+0.10	+0.30
0.62									
272.80									
11.57									
284.37									
0.60									
283.77									
0.45									
291.22									
4.35									
286.87 = 246.86									
286.86									
1.29									
288.15									
3.01									
285.14									
2.33									
287.47									
11.42									
276.05									
2.89									
278.94									
286.86									
1.29									
288.15									
3.01									
285.14									
2.33									
287.47									
11.42									
276.05									
2.89									
278.94									
Header check 3-12-29									
84.00	W	84.00	86.00	86.10	85.80	85.30	84.40	83.40	82.05
4.15		1.47	1.37	1.67	2.17	3.07	4.67	5.42	6.74
0.6K		1.65	1.49	1.74	2.17	3.07	4.67	5.42	6.74
		0.184	0.114	0.074	0.4K	0.4K	0.4K	0.4K	0.4K
83.80	E	83.80	85.60	85.80	85.50	85.00	84.20	83.20	81.80
4.35		2.55	1.67	1.97	2.47	3.27	4.27	5.67	7.07
4.83		2.65	1.66	1.94	2.48	3.27	4.27	5.67	7.07
0.082		0.054	0.014	0.4K	0.4K	0.4K	0.4K	0.4K	0.4K
79.85	W	79.85	79.00	76.50	74.00	72.75	73.45		
7.62		8.43	2.44	4.94	6.74	5.49	5.34		
7.61		8.48	2.34	4.93	6.66	5.34	5.34		
0.4K		0.4K	0.014	0.4K	0.024	0.164			
79.60	E	79.60	78.80	76.37	73.75	72.75	73.45		
7.87		8.67	2.57	4.97	6.17	5.49			
7.78		8.75	2.56	5.00	6.18	5.38			
0.094		0.084	0.15	0.4K	0.04	0.164			
80.00	W	80.00	73.45						
6.45		7.13							
7.13		-0.68							
80.00	E	80.00							
6.45									
6.15									
-0.50									
54.9									
4.8									
6.17									



72.45  
6.79  
6.38  
0.114

73.42  
265.00  
8.42  
8.42  
0.0

9-23-38

## Levels for wall of Catholic Cemetery

Sec Page 21

B.M.	7.60	277.54	269.94	s.e. Washington + Lark. St.
N.E. Cor 0+00		2.6	269.9	
0+05	Nail 10' S. of N.	7.5	270.0	
0+50 W	" " " "	6.4	271.1	
0+50 W	N. Line	6.3	271.2	
1+00 W	N "	5.5	272.0	
1+00	Nail 10' S. of N	4.8	272.7	
1+50	" " " "	4.2	273.3	
1+50	N. Line	5.0	272.5	
2+00	N. "	4.9	272.6	
2+00	Nail 10' S. of N.	3.9	273.6	
2+50	" " " "	4.3	273.2	
2+50	N. Line	4.5	272.7	
3+00	" "	5.5	272.0	
3+00	Nail 10' S. of N	4.9	272.6	
T.P.	6.15	278.23	272.08	
3+50	Nail 10' S. of N	6.3	271.9	
3+50	N. Line	6.8	271.4	
4+00	" "	7.3	270.9	
4+00	Nail 10' S. of N.	6.6	271.6	
4+50	" " " "	6.6	271.6	
4+50	N. Line	7.4	270.8	
5+00	N. "	8.4	269.8	
5+00	Nail 10' S. of N	6.5	271.8	
5+50	" " " "	6.9	271.3	
5+50	N. Line	9.3	268.9	
5+86 <sup>67</sup>	N. Line 25' E. of W. Line	9.6	268.6	
5+86 <sup>67</sup>	10' S. of N. " " " "	8.5	269.7	

## MISSION HILLS.

278.23

5+86<sup>67</sup> N. Line 25' E. of W. Line 20+00

9.6	268.6	28
5.2	273.0	
2.6	275.6	
2.1	276.1	
3.8	274.4	
6.2	272.0	
8.2	270.0	
8.7	269.5	
T.P.	2.74	272.23
0+00 = 25' E. of W. Line		
0+40	ground Brk	2.1
0+40	" " S. Line	3.6
0+52	Nail 5' N. of S. Line	3.1
0+52	S. Line	3.6
0+92	Nail 5' N. of S	7.7
0+92	S. Line	8.4
1+27	" "	12.7
1+27	Nail 5' N. of S.	12.2
T.P.	3.33	263.02
1+52	Nail 5' N. of S	7.4
1+52	S. Line to W	7.6
1+52	S. " to E street angle	12.9
2+02	Nail 5' N. of S	11.6
2+05	S. Line st. Elev	12.9
2+52	Nail 5' N. of S.	7.7
2+52	S. Line st. Elev	11.0
2+87	Nail 5' N. of S.	2.2
2+87	S. Line st. Elev	8.9
T.P.	7.76	268.99
		269.49
1.79	261.23	
3+23	S. Line to W st. Elev.	13.8
3+23	S. " " E - ground	6.2
3+52	Nail 5' N. of S	4.2
3+52	S. Line	4.7
4+02	Nail 5' N. of S.	7.6
4+02	S. Line	3.8
4+49	Nail 5' N. of S.	3.7
4+49	S. Line	4.4
4+99	Nail 5' N. of S.	6.9
4+99	S. Line	7.1
5+19	Nail 5' N. of S.	8.9
5+19	S. Line	9.3
5+50	Nail 5' N. of S.	13.5
5+50	S. Line	13.5
T.P.	1.21	257.42
		257.91
12.78	256.21	
5+60	S. Line	5.4
5+68	S. "	9.8
247.6		

Con Page 28.

	E. Line	W Line		
00 = A. Line Cal			00 = A. Line Cal	
0 + 10 B + K	145.5	144.5	0 + 10 = Brk	
0 + 62	155.9	135.3	0 + 64	
1 + 14 B + K R.C.	166.3	166.1	1 + 14 R.C. Brk	
1 + 34 S. Line = Waller	170.0	168.5	1 + 38 = S. Waller	

173.0				
1.1				
174.1				
12.2				
161.9	E	45.5	55.7	66.3
0.8		17.2	18.2	79.0
162.7		10.2	8.9	7.8
13.1		77.2	49.3	47.1
149.6				4.1
2.9				+1.0
152.5				+5.1
11.6	W	44.5	55.3	66.1
140.9		18.2	18.8	8.0
5.1		13.1	11.0	2.9
		5.1	71.8	5.9
				75.0

Catholic Cemetery Confrom Page 26

	257.42			
	257.91			
5 + 81 Nail	{ 5' W. of E. Line 5' N. of S. " }	15.4	242.0	
5 + 84	{ E. " } = S.E. Cor S. " }	18.9	238.5	N.W. side Eucalyptus
0 + 00 =	S. Line		238.5	
0 + 15	E. Line	17.3	240.1	
0 + 35		13.6	243.8	
0 + 50	Nail 5' W. of E	8.6	248.8	
0 + 50	E. Line	11.2	246.2	
1 + 00	Nail 5' W. of E	3.5	243.9	
1 + 06	E. Line	5.1	242.3	
1 + 28	" "	0.6	257.4	
TP	12.51	0.60	256.87	
1 + 50	Nail 5' W. of E	10.5	258.8	
1 + 50	E. Line	10.6	258.7	
1 + 75	" "	9.0	260.3	
2 + 00	Nail 5' W. of E. Line	6.8	262.5	
2 + 00	E. Line	6.6	262.7	

Trees are 1.5 E. of E. Line

	266.82	269.53	
2 + 09	S. End. school wing	1.6	E. of E. Line
2 + 30	E. Line	5.1	264.2
2 + 50	Nail 5' W. of E	3.6	265.7
2 + 50	E. Line	4.0	265.3
2 + 61.3	N. End. school Wing	2.3	E. of E. Line
3 + 00	Nail 5' W. of E	1.5	267.8
3 + 00	E. Line	1.9	267.4
F.R	5.11	274.78	0.15
			269.18
			267.67

Trees 1.5 E. of E. Line





Cypress Court S/O Slakes

0+00		
P.C. 22.08 R. W. Side Cypress Court 2133.5 E. of E. Line Vermont	283.00	cl.
+15'		
P.I. Inside S. 67 Walk & S. Line Cypress Ave	83.28	Prop
+21.4		
P.I. S. 67 Curb Line & S. Line	83.32	cl.
+29.40		
+37.4		
+45.4		
+56.6		
+67.8	284.00	"
+83.5	84.20	"
+99.2	284.40	"
+119.2	284.50	"
+139.2	284.60	"
+159.2	284.50	"
+179.2	284.30	"
+199.2	284.00	"
+210.7	83.95	"
+222.2	283.9	"
+230.2	83.94	"
+238.2	83.99	"
+246.2	84.03	"
P.I. S. 67 Curb & S. Line Cypress Ave	84.11	Prop
+252.6		
P.I. Inside Walk & S. Line Cypress Ave	84.16	cl.
+267.6		
P.C. 22.08 R. W. Side Cypress Court 230.7 E. of E. Line Vermont	284.16	cl.

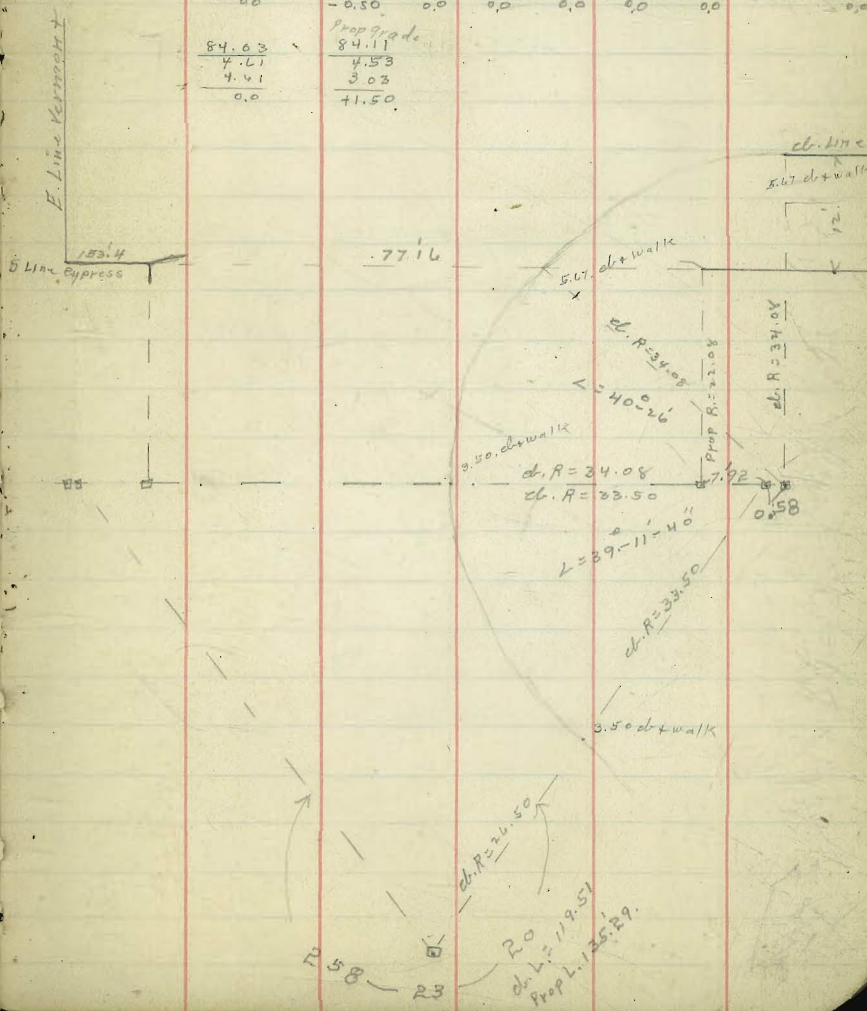
284.96 N.E. Vermont & Penn. Ave.

2.86  
288.42  
7.30  
281.02  
7.62  
288.64

281.00  
7.64

31

Prop grade	83.32	83.44	83.66	83.67	83.83	84.00	84.20	84.40
	5.32	5.20	5.09	4.97	4.81	4.64	4.44	4.24
	4.82	4.70	4.57	4.47	4.31	4.14	4.04	3.84
	+1.00	+0.50	+0.50	+0.50	0.00	0.00	0.00	0.00
	84.50	84.60	84.50	84.30	84.00	83.95	83.94	83.99
	4.14	4.04	4.14	4.34	4.64	4.69	4.70	4.65
	4.14	4.54	4.14	4.34	4.64	4.69	4.74	4.65
	0.0	-0.50	0.0	0.0	0.0	0.0	0.0	0.0
Prop grade	84.03	84.11	84.53	84.53	84.53	84.53	84.53	84.53
	4.61	4.61	3.03	3.03	3.03	3.03	3.03	3.03
	0.0	0.0	0.0	0.0	0.0	0.0	0.0	0.0



Arenas Rushville Fern Glen and Alley

Arenas - Draper to Alley

	S. cl.	N. cl.
00: E. Line Draper	110.50	110.50
+45	12.75	12.66
+90	15.00	14.83
+135	17.25	17.00
+180	19.50	19.16
+225	21.75	21.33
+270 = W. Line Alley	129.00	123.50

Fern Glen - Draper to Alley

	S. cl.	N. cl.
00: E. Line Draper	101.00	101.00
+45	4.42	4.50
+90	7.84	8.00
+135	11.26	11.50
+180	14.68	15.00
+225	18.10	18.50
+270 = W. Line Alley	121.50	122.00

106.34 B.M. s.w. Draper Center.

10.51  
176.57  
0.37  
116.20  
12.04  
128.24

Arenas

	S	N
	10.50 12.7 15.0 17.2 19.5 21.7 24.0	10.50 12.7 14.8 17.0 19.2 21.3 23.5
	6.09 3.9 1.6 11.1 8.8 6.6 4.3	6.09 3.9 13.5 11.3 9.1 7.0 4.8
	0.0 40.3 40.3 40.3 40.7 40.8 40.2	6.09 3.0 12.6 10.3 8.8 6.5 4.8
		40.9 40.9 41.0 40.3 40.5 0.0

116.59

3.10

111.49 B.M. s.w. Top Hndt

Draper & Arenas

32

Fern Glen

	S	N
	128.24 120.31 115.97 0.48 116.45	110 11.4 7.8 11.3 14.7 18.1 21.50
	15.48 8.0 5.0 2.1 10.9 10.8 11.5	15.48 12.0 8.7 5.1 13.6 10.2 6.8
	0.48 4.0 43.7 43.0 42.7 -0.6 4.7	15.4 8.0 5.0 2.1 10.9 10.8 11.5
		4.0 43.7 43.0 42.7 -0.6 4.7
	11.0 4.5 8.0 11.5 15.0 18.5 22.0	11.0 4.5 8.0 11.5 15.0 18.5 22.0
	15.45 12.0 8.5 5.0 13.8 9.8 6.3	15.45 12.0 8.5 5.0 13.8 9.8 6.3
	15.5 7.4 4.5 13.0 10.0 6.9	15.5 7.4 4.5 13.0 10.0 6.9
	42.0 41.1 40.5 40.3 -0.2 -0.6	42.0 41.1 40.5 40.3 -0.2 -0.6



Rushville (C.M.)

S. cl.

N. cl.

000 E. Line Alley	123.50	124.50
+48.33	25.33	26.33
+96.67	27.17	28.17
145 W. Line Ends	129.00	130.00
000 E. Line Ends	130.70	131.50
0750	32.94	33.54
1400	35.24	35.58
1440 B	137.10	137.20
1460 B	138.20	138.20
1780 B	139.60	139.40
2+20	42.73	42.20
2+60	45.86	45.13
3+00 W. Line Fay	149.00	148.00

Rushville (C.M.)

3

127.52	23.00								
0.27	4.52								
127.25	2.66								
11.98	21.80								
139.23									
0.62									
138.61									
13.11									
151.72									
S 123.50	25.3	27.2	29.0	30.7	32.0	33.3	35.1		
7.02	2.0	12.0	10.2	8.5	6.2	3.9	2.1		
139.23	0.3	10.8	7.7	6.3	4.1	4.6	4.5		
0.62	+1.36	+1.7	+1.2	+2.2	+2.1	-0.7	-2.4		
138.61									
13.11									
151.72									
N 124.50	26.3	28.2	30.0	31.5	33.5	35.6	37.2		
14.7	12.9	11.0	9.2	7.7	5.7	3.6	2.0		
12.6	10.4	8.3	7.5	7.9	1.3	1.9	3.2		
2.1	+2.5	+2.7	+1.7	-0.2	+4.4	+1.7	-1.2		
S 38.2	39.6	42.7	45.9	49.0					
1.0	12.1	9.0	5.8	2.7					
3.8	13.1	10.1	3.7	2.6					
-2.8	-7.0	-1.1	+2.1	cl					
N 38.2	39.4	42.3	45.1	48.0					
1.0	12.3	9.4	6.6	3.7					
2.7	10.4	7.8	5.5	3.7					
-1.7	+1.9	+1.4	+1.1	cl					

BM. B.P.	Storm Drain	1.			N.E. Glenwood & India	
00: Curbinlet #7	2.03	79.37	76.34	72.0	72.0	+4.62
0+23.0 Δ			76.25	71.10	71.10	+5.15
0+73.0			74.53	69.23	69.23	+5.30
1+23.0			72.87	67.37	67.37	+5.50
1+55.0 Δ			71.91	66.17	66.17	+5.74
1+73.0 Cleareout A			71.80	65.50	65.50	+6.30
2+23.0 Cleareout A	0.63	66.05	8.07	70.30	63.50	+6.80
2+71.0 outlet Flowline			12.95	65.42	65.42	
2+71.0 Top Headwall			14.05	52.00	45.00	+7.00

	47.5	18.5
	10.5	9
	19.5	
	60.0	
	19.5	
	40.5	

add for Union Walnut

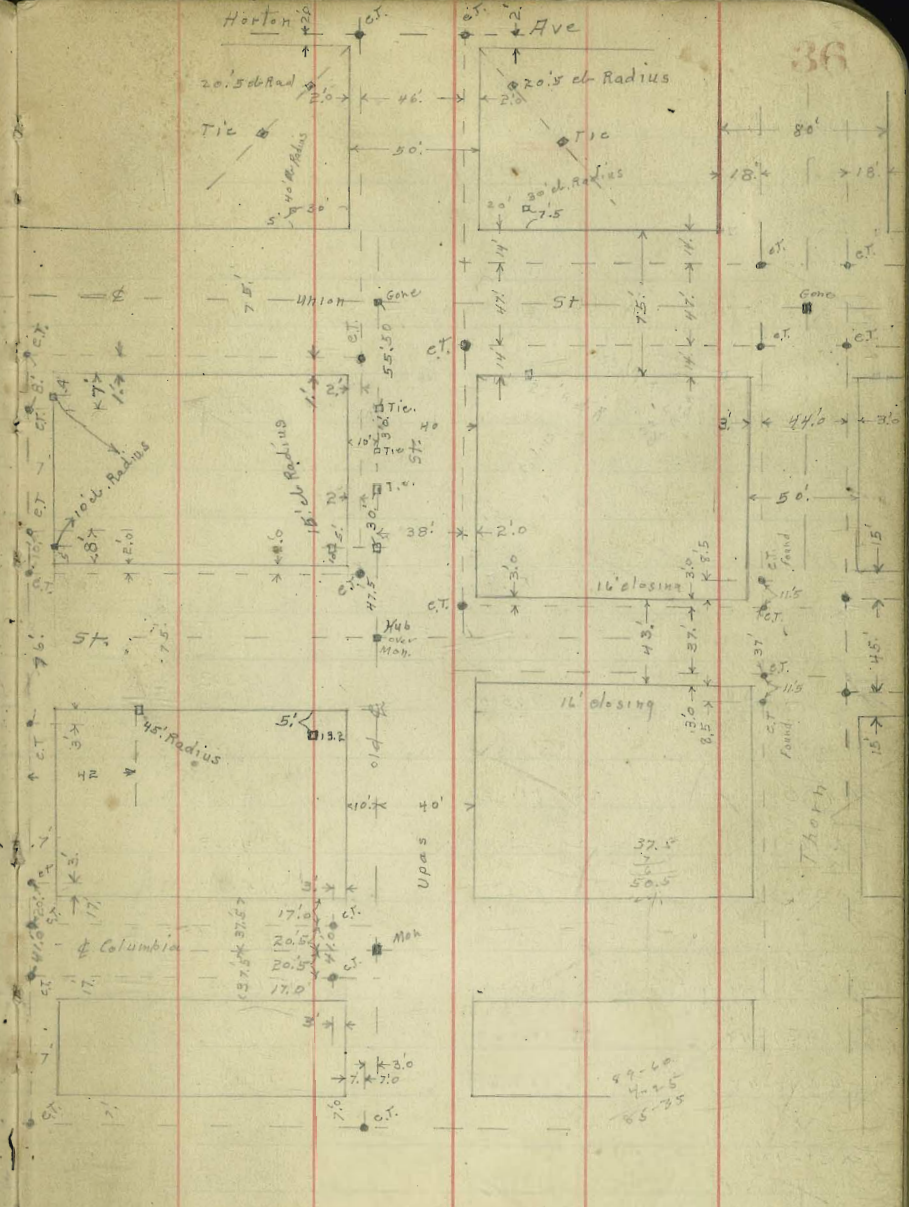
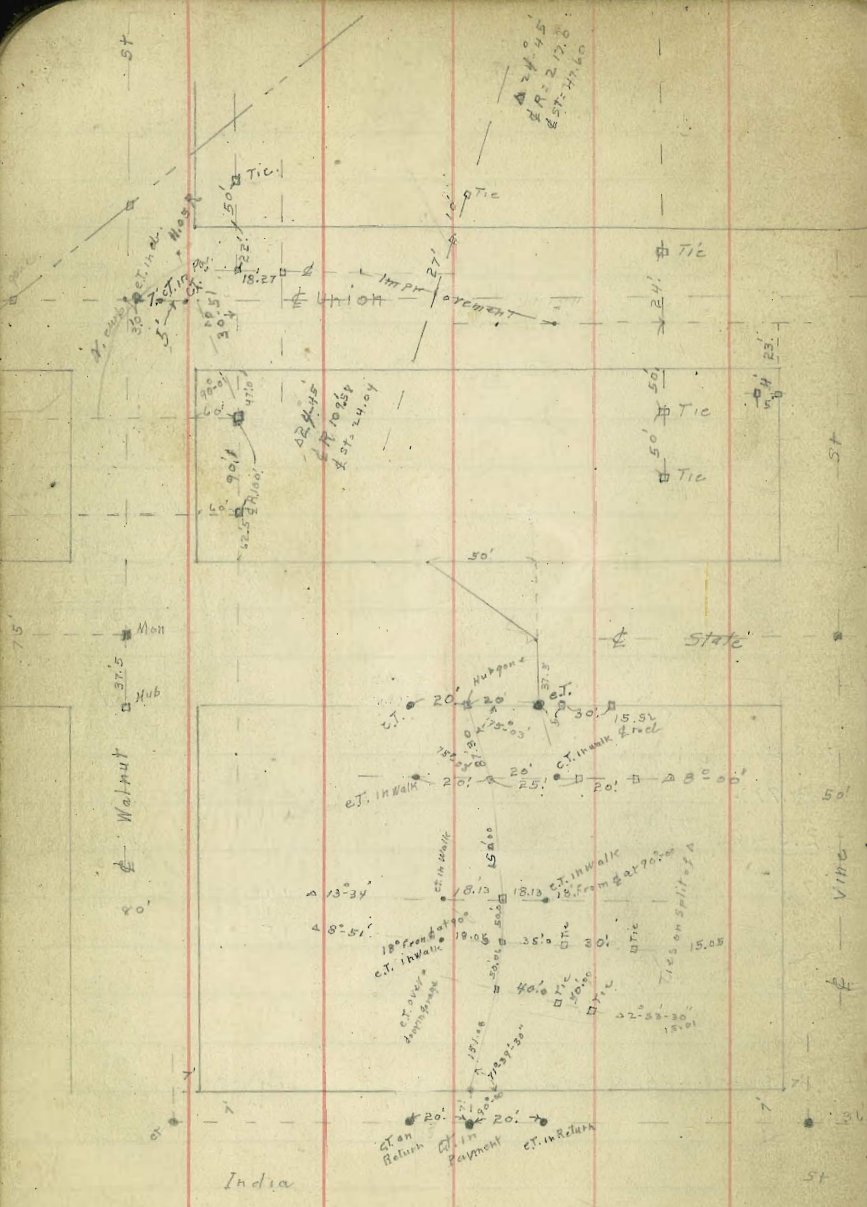
BM 135.29
12.25
147.54
2.42
145.12
8.73
153.84

Culvert #7

00: Inlet Flowline	153.84	6.13	147.71	145.00	+2.71
00: Top of inlet	152.82	6.13	147.71	148.50	-0.79
		5.66	147.16	148.50	-1.34
		7.60	146.18	148.50	-2.32
		1.64	151.14	143.20	+7.94
4+27.0 outlet Flowline		3.00	150.78	143.20	+7.58
		1.68	151.14	143.20	+7.94
Top of C. line Union N. Spillway		3.06	150.78	144.00	+6.78
		11.12	141.70	144.00	-2.30
" " R.C. S. Spillway		11.84	142.00	143.50	-1.50 Top of
		10.30	142.52	143.50	-0.98 OK
" " E.C. on 11.05 Radius P.T.		11.32	142.50	143.50	+3.27
" " C. line Union N. Spillway		6.55	146.07	143.00	+4.07
		4.84	149.00	143.00	+6.00 Top of

East Tie OK	
W. Tie	-1.34
	+7.94
	+7.14
	-8.00
	+0.70 to paving grade
	+4.07
	+6.80 to Paving grade

271
89
3.60
9.5
147.3
147.8
1.1
153.24
2.15
151.12
143.50
9.4
142.52
10.30
152.82
43.20
10.04
5.11
5.66
07.16



Glenwood, Front, Walnut, Union Grades

	Glenwood s-d	N. cl
E. line India	77.90	76.60
+20	77.90	
2 <sup>nd</sup> A	80.75	80.6
3 <sup>rd</sup> A	82.30	81.80
4 <sup>th</sup> A	91.90	91.40
W. Line State	101.0	100.01 chd.
	(101.30)	(100.80)
P.C. on N. 35° R. on W. ch.		(101.50)
P.C. ... S	102.30	
1		
2		
3		
4		
5 E.C. Et W	105.00	104.00
+45.7.	8.45	(8.45)
+91.4 P.C. E L W	111.90	112.90
1 A 10-17	113.00	114.33
2 A 20-34	114.10	115.77
A 30-51		
3 Brk S. line Walnut on W. ch	115.20	117.20
1 A 39-48	116.30	118.30
2 A 48-45	117.40	119.40
A 57-42		
3 Brk E. line Front on N. ch	118.50	120.50
1 A 68-38	120.03	121.70
2 A 79-14	121.56	122.90
A 90-00		
3 E.C.	123.10	124.18

12.4  
11.74  
1.64  
10.70  
111.00

8.4  
14.2  
13.5  
12.7

76.18 BM N.E. of Glenwood  
9.70  
85.88  
0.40  
85.48  
12.87  
97.35  
0.155  
97.50  
12.91  
110.71  
0.224  
109.77  
12.85  
122.62  
0.01  
122.61  
12.44  
135.07

5-101.0  
7.7  
2.1  
+7.6

E.C. P.C. B B E.C.  
N.W. State 104.0  
6.7  
8.7  
-2.0

5-8. State 105.0  
77.4  
10.6  
+7.0

N. E. India  
76.18  
8.06  
84.24

E. India 20'0  
77.80  
6.44

126.98  
13.05  
113.93  
0.98  
114.91  
12.77  
102.14  
3.32  
105.46

5.2 8.45  
6.44  
7.46  
-1.00

N. E. of Glenwood  
1<sup>st</sup> A  
76.60  
79.70  
2<sup>nd</sup> A  
5.26  
80.62  
= 80.60  
3<sup>rd</sup> A  
4.04  
81.84 ch  
= 81.80  
4<sup>th</sup> A  
6.95  
91.40 ch  
= 91.40  
2<sup>nd</sup> A  
80.75  
+0.1  
80.85  
3<sup>rd</sup> A  
3.60  
82.28  
= 82.30  
4<sup>th</sup> A  
6.4  
4.4  
12.0  
Achimans  
2.9  
2.9  
77.0  
8.9  
2.9  
80

102.30  
102.7  
17.9  
2.5  
+17.4

8.4 71.9  
7.4 10.7  
+0.7 10.1  
+7.0 10.6  
S/C 10.1

79.70  
4.58  
84.28

80.00  
4.24  
84.24

8.10  
6.81  
7.81  
-1.00

8.45  
6.44  
7.46  
-1.00

91.90  
13.56  
1.16  
12.40

17.2 20.5  
17.7 14.6  
2.4 5.1  
+15.2 +9.5

13.2 18.5  
7.4 4.1  
5.2 2.4  
+12.2 +1.7

80.00 80.74  
4.24 3.50  
84.24 84.24

103.61  
1.85  
105.46

103.61  
3.16  
1.85  
+0.50

P.C.  
5.00  
9.91  
4.46  
10.75  
10.77  
11.03  
+0.50 +0.50

24.1  
17.0  
8.7  
+2.3

23.1  
12.0  
11.2  
+0.8

81.80  
3.14  
84.94

82.50  
1.94  
84.44

100.96  
4.50  
105.46

3.38  
11.53  
11.03  
+0.50 +0.50

14.5  
8.5  
6.8  
+1.9

4.1  
3.1

3.1  
0.6  
2.5

124.98  
18.5  
8.5  
1.7

99.63  
8.3

102.30  
12.61





	N. cl	E. cl
E. 2	170.60	171.10
+ 50	77.3	78.0
1+00 N. Line Vine	184.0	185.00
00 S. Line Vine	185.50	186.50
+ 53 75	88.0	88.9
1+ 07 50	90.5	91.2
1+ 61 75	93.0	93.6
2+ 15 Brk	195.50	196.00
50		
2+ 65	99.8	200.5
3+ 15 Brk R.C. on E	204.20	205.00
10		
20		
30 N. Line Upas	206.50	211.00
S. Line Upas	206.00	211.00
+ 10 E	207.00	209.50
+ 12 E = 1/2 E.W	207.60	209.20
+ 20 R.C. E		209.20
+ 25 W Brk	209.2	
+ 50	209.29	210.40
1+ 00 PVC	211.56	212.56
+ 20	212.21	213.21
+ 40	212.55	213.55
+ 60	212.55	213.55
+ 80	212.34	213.34
+ 00 PVC	211.60	212.60

	White	S. Vine	B.
E	78.0 20.7 8.3 +12.4	86.5 12.2 2.0 10.2	88.9 9.8 0.2 +8.6
W	77.3 8.5 6.4 +1.7	84.0 1.8 0.4 +1.4	88.0 10.7 8.2 +0.7
E	200.5 11.1 4.0 +7.1	5.0 8.8 +6.6	8.8 11.2 3.2 +8.0
W	99.8 13.8 3.0 -2.1	4.2 7.4 5.1 10.4	6.5 6.0 5.6 4.2
E	12.6 7.8 3.2 +6.6	13.2 7.2 1.4 +5.4	13.5 6.9 2.0 +4.9
W	11.6 8.8 7.8 +1.0	12.2 8.2 5.9 +2.3	12.5 7.9 5.5 +2.4
W	57.40 10.75 68.15 1.95 66.20 12.83	59.60 8.58 78.55 9.55 71.00 -11.00	61.80 6.25 7.35 4.65 -0.50
E	36.35 11.90 24.45 5.6 5.10 -0.50	37.20 10.25 8.05 5.55 6.15 -0.50	62.30 4.15 7.35 4.65 -0.50
W	84.50 5.6 5.10 -0.50	84.75 5.38 5.85 -0.50	84.20 5.78 6.15 -0.50
W	85.50 4.0 1.15 112.28	88.00 2.10 11.27 10.87 70.50	93.10 8.87 8.37 70.50
E	86.50 3.60 4.10 -0.50	88.87 1.23 1.23 11.82	91.25 10.62 8.25 70.50
W	6.50 5.75 4.78 2.10	7.00 5.28 4.68 7.00	7.60 4.62 7.60
E	11.75 0.85 1.03 -0.50	10.25 2.03 3.03 -0.50	9.20 2.79 2.48 -0.50

208.38  
208.80

5.1

78.05

77.30

78.05

141.88

6.00

5.78

7.12

7.78

5.32

3.08

Union

E.V.C.	W. d.	211.60	E. d.	212.60	220.43
+50		9.6		10.3	
1+00 N. Line Thorn on E P.C.		207.60		208.00 P.C.	
1+15 " " " " W		207.00		208.00 E	
5 " " " " W		205.00		206.50 W	
S. line Thorn		204.50		206.00	

9.20  
6.90  
11.60  
4.55  
10.60  
209.93  
10.60

9.20  
6.90  
11.60  
4.55  
10.60

Upas Grades  
Union to Horton

E. Line Union	S. d.	211.00	N. d.	211.00	
+5 P.C. N				211.50	
+7.5 P.C. S		211.75			
+50		216.00		216.00	
1+00 Bk		221.00		221.00	
4+75		223.00		223.20	
1+89 <sup>50</sup> P.C. N+S.		225.00		225.50	
2+00 W. Line Horton		225.50		226.00	

217.20  
9.10  
226.30  
1.30  
225.00  
4.80  
229.80

11.25  
10.14  
21.39  
0.84  
20.51  
5.95  
26.46

381 150	2.9 0.5 17.7	40		
N. Thorn	E. Ret	E. Ret	S. Thorn	
E 10.3	8.0	7.5	6.0	6.0
10.1	12.4	12.9	17.4	14.4
6.5	8.6	7.2	11.7	12.1
+3.6	+3.8	+3.7	+2.7	+2.3
	W. Ret	W. Ret		
W 9.6	7.6	15.1	4.5	
10.8	12.8	10.5	15.9	
7.4	10.5		14.2	
+3.4	+2.3		+1.7	
4110 s/c stakes				
11.5	+50	P.V.		
7.60	9.29	11.56	12.21	12.55
7.90	6.21	3.94	3.29	2.95
✓	✓	✓	3.79	3.45
			-0.50	-0.50
11.60	+50	P.V.		
4.55	9.20	10.46	13.21	13.55
16.15	7.20	5.49	2.94	2.60
	✓	✓	✓	3.10
			-0.50	-0.50
4110 s/c stakes				
W 6.78	ch. in W	ch. in S	5.60	4.55
8.72	10.12	11.60	11.00	11.00
7.72	203.34	203.90	10.50	10.95
11.00	✓	✓	8.50	8.45
			7.00	7.50
E 8.00	E. line Thorn	Ch Ret		S. Line Thorn
7.50	8.00	7.00	6.53	6.00
8.00	7.50	8.97	8.44	7.50
-0.50	✓	7.50	8.47	7.50
		+1.00	10.50	11.50
				12.00
RC		RC		
W 205.0	8.8	11.5	16.0	21.0
21.3	17.5	14.8	10.3	5.3
17.7	12.1	9.6	3.8	+0.2
+6.6	+5.4	+5.2	+6.5	+5.5
				+3.8
S RC	9.6	11.7	16.0	21.0
20.92	17.1	14.6	10.3	5.3
17.1	9.1	6.4	3.0	2.7
18.0	17.6	18.2	17.3	12.6
				+0.7
Upas s/c stakes				
11.25	16.00	21.00	23.00	25.50
10.14	7.60	0.39	3.46	1.46
21.39	12.14	5.89	1.47	3.56
0.84	-0.50	-0.50	-1.50	1.66
20.51				4.06
5.95				-0.50
26.46				
N 11.50	16.00	21.00	23.20	25.50
9.87	5.39	0.39	3.26	1.46
10.33	5.39	0.82	3.36	1.16
-0.50		-0.50		

21.00  
5.46  
2.1

25.5  
4.3  
0.9  
+3.4

25.0  
1.6  
0.3

26.0  
3.8  
3.7  
0.14

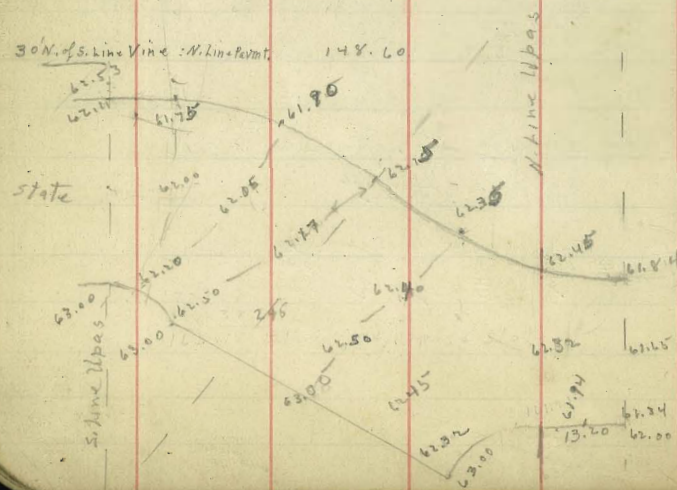
25.5  
26.0

25.0  
26.0

State St Grades  
Upas to Vine  
e. ch

Line	Upas	e. ch	W. edg. Pavment
S. line Upas	163.00		162.50
R.R.C. on W.			162.80
N. line Upas	163.00		163.00
+45 = P.C. on E	162.66		
+133 = P.C. " W		162.11	
+70 = BTK	158.30		158.30
+90 = BTK	157.20		157.20
+110 = BTK	156.30		156.30
+160	154.53		154.60
+210	152.77		152.90
+260	151.00		151.20
+310 P.C. on W	149.24		149.50
+370			148.50
+445 = S. Line Vine	148.00		146.90
			144.80
			142.50

W. End 45' Radius Curve on W



B.M. 159.21 + Man Upas + State.

Year	N. Upas	P.C.E	B	B	B	B	PC
54 year	163.00	62.7	58.3	57.2	56.3	54.5	52.8
E. 63.00		9.1	9.4	13.8	14.9	15.8	17.0
0.06		6.3	6.7	11.1	11.4	11.7	11.0
159.20		+2.8	+2.8	+2.7	+3.5	+4.1	+4.6
11.87							
147.33							
0.16							
147.49							
0.16							
147.33							
11.87							
159.20							
5.22							
153.98							
0.3							
5.26							
159.24							
9.39							
149.85							
0.29							
150.14							
4.92							
B.M. 145.22							

Year	N. Upas	P.C.E	B	B	B	B	PC
54 year	163.00	62.7	58.3	57.2	56.3	54.5	52.8
E. 63.00		9.1	9.4	13.8	14.9	15.8	17.0
0.06		6.3	6.7	11.1	11.4	11.7	11.0
159.20		+2.8	+2.8	+2.7	+3.5	+4.1	+4.6
11.87							
147.33							
0.16							
147.49							
0.16							
147.33							
11.87							
159.20							
5.22							
153.98							
0.3							
5.26							
159.24							
9.39							
149.85							
0.29							
150.14							
4.92							
B.M. 145.22							

Upas St. Water Grades  
Horton to State.

	N	¢	S	
W. line Horton.	226.0	225.4	225.5	
P.C.	225.5	225.0	225.0	
	223.2	222.8	223.0	
B.K.	221.0	220.7	221.0	
	216.0	215.8	216.0	
P.C. Diagonal	211.5	211.3	211.75	7.5¢ of Horton
S. ch. Union				
W. line Mich	206.0	205.8	206.0	
+ 50		195.1		
+ 200		184.4		
+ 50		173.7		
+ 200 S. line State	163.0	163.0	163.5	
"T." state to N	163.0	162.3	162.5	

206  
65  
5.2

175.3	167.8	63.0	73.7	84.4	95.1	05.8	11.3	15.8	20.7	22.8
0.0	13.0	12.3	13.7	15.5	4.8	6.7	13.4	8.9	4.0	5.8
175.3	12.0	5.9	8.2	11.4	3.0	8.9	10.3	5.7	4.0	5.4
12.1	+ 1.0	+ 6.9	+ 5.5	+ 4.1	+ 1.8	- 2.2	+ 3.1	+ 3.2		+ 0.4
187.4										
0.04										
197.36										
12.24										
199.90	25.0									
12.6	3.6									
212.5	6.6									
0.4										
212.1										
12.6										
224.7										
0.1										
224.6										
4.0										
228.6										

chk ch  
25.5  
3.1  
3.1

23.2  
5.4  
4.0  
23.3

Sewer Cons. Glenwood State Union etc

State ST

168.01

Existing M.H.					
5. Line Upas	10.61	157.40	156.00		
52.97 K - M.H. 7					
X. Line Upas - 0.00	5.17	162.84	151.80	+ 11.04	
0+35 = S. End C.I. Pipe 7	7.88	160.13	150.35	+ 9.78	
11 = N. End C.I. Pipe 1	11.61	156.40	147.70	+ 8.70	
1+65 S. End C.I. Pipe 2	1.79	154.83	145.05	+ 9.78	
2+10			143.23		
2+55 N. End C.I. Pipe 2	5.09	151.53	141.39	+ 10.14	
3+12.5	7.32	149.30	139.05	+ 10.25	
25' N. of S. Line		146.55	136.70 - S.	+ 9.85	+ 9.85.5
3+70 D.M. H. in Vine St	10.07	145.85	135.70 N+E	+ 10.15	+ 10.85. N+E.
4+00 BrK	6.15	127.85	124.00	+ 11.75	+ 3.85
4+45.7	5.30	128.70	112.85	+ 22.00	+ 15.85
4+91.4 BrK	7.83	126.17	96.101.70 BrK	+ 24.47	OK
5+37.1 = 5+36. Map M.H. 4	6.54	103.45	96.70	+ 6.75	
	change				
0+00 = 3+70 M.H. 6	130.63				
0+44 BrK	7.83	122.80	122.80	Flow line	6' to E
0+82	1.43	129.20	120.90	+ 8.30	
1+20 BrK	4.17	126.44	119.00	+ 7.44	6' to W
1+39 BrK	10.23	120.40	100.00	+ 20.40	103.87 + 3.87
T.P.	0.10	105.30	12.89	105.20	
1+66 = M.H. 4	2.50	102.80	96.70	+ 6.10	
1+39 BrK	1.43	103.87			

changed

change

148.21  
11.40  
56.62  
0.62  
156.00  
12.01  
168.01  
4.93  
163.08

10.87  
146.85  
145.22  
12.78  
158.00  
1.25  
146.75  
2.31  
149.06

43

B.M. S.W. Front + VINE

5.51  
3.05  
2.56

390  
225  
31.45

145.22  
1.25  
146.40  
12.69  
133.71  
0.29  
134.00  
13.00  
51.80  
50.35  
121.00  
120.44  
121.44  
12.66  
108.78  
1.21  
109.99

102.7  
18.7  
1.2  
+ 17.4

59.2  
10.8  
7.3  
+ 3.5

Sewer Cons Glenwood State Walnut

+ Union

105.30

000 = M.H. 5			12.30	93.00	87.40	+ 5.60
0 + 52			7.16	98.14	92.05	+ 6.09
1 + 52 = M.H. 4			2.50	102.80	96.70	+ 6.10
T.P.	13.93	118.23	0.10	105.20		
0 + 47			13.62	104.61	100.23	+ 4.38
0 + 94			9.63	108.60	103.76	+ 4.84
1 + 41 M.H. 3			4.97	113.26	107.30	+ 5.96
0 + 53			1.07	117.16	111.80	+ 5.36
T.P.	13.03	131.19	0.07	118.16		
1 + 06 M.H. 2			10.14	121.05	115.30	+ 5.75
+ 50			6.11	125.08	119.55	+ 5.53
1 + 00			1.74	129.45	123.80	+ 5.65
T.P.	12.25	143.32	0.12	131.07		
+ 50			8.09	135.23	128.05	+ 7.18
2 + 00 = M.H. 1			5.61	137.71	132.30	+ 5.41
0 + 45 = Existing M.H.					137.00	

Union St

143.32

00 = M.H. 1			5.61	137.71	132.30	+ 5.41
+ 50 T.P.	12.32	155.21	0.43	142.89	137.65	+ 5.24
1 + 00 B.V.K.			7.08	148.13	143.00	+ 5.13
+ 50 T.P.	12.60	167.63	0.18	155.03	149.50	+ 5.53
2 + 00 = D.E.			5.31	162.32	156.00	+ 6.32
T.P.	12.92	180.23	0.32	167.31		
T.P.	8.10	188.04	0.25	179.98		

13.18

55

13.73

87.68

101.41

8.41

93.00

87.20

+ 5.30

112.97

3.44

97.97

92.20

+ 5.97

10.20

102.77

96.70

+ 6.07

8.43

104.54

100.23

+ 4.31

115.49

4.43

108.64

103.76

+ 4.78

2.20

113.26

107.30

+ 5.96

D.E. 35 N. of M.H. 3

117.17

110.80

+ 6.37

+ 5.86

+ 5.75

+ 5.53

+ 5.65

+ 7.18

+ 5.41

1.29  
12.78  
13.62

101.41

111.2

109.29

12.62

117.97

0.42

112.55

2.94

115.47

6.95

108.54

Sewer Cons. Vine St State to Union  
 & Union St Vine South

	152.75		6.20	146.55	{ 136.70 S. 135.70 E+N		9.85 S.			
00 = D.M.H. 6	168.89		11.98	151.91	43.85		10.85 E+N			
0+40 25							+8.06			
0+81 50			4.43	159.46	52.09		+7.46			
1+22 25	176.01		9.71	166.30	60.15		+6.15			
1+63 Brk. 40	188.08		2.01	174.00	168.30		+5.70			
2+03			12.90	181.01	70.70		+10.31			
			(6.81) 90	(181.27)			+10.57			
2+43 = M.H. 8:00	9.74	193.91	3.91	184.17	173.10		+11.07	9.77	184.14	Grade DE.
0+46 25			8.07	185.84	75.60		+10.24			
0+92 30			5.26	188.05	78.10		+9.95			
1+38 25			3.78	190.13	80.60		+9.53			
1+85			1.75	192.16	83.10		+9.06			
2+31 25 T.P.	12.49	206.18	0.42	193.49	85.60		+8.73			
2+77 50			11.85	194.33	88.10		+9.38			
3+23 35			8.70	197.48	90.60		+11.75			
			3.83	202.35	193.10N		+12.18			
3+70 D.M.H. 9 T.P.	10.40	215.68	0.90	205.28	195.80S		+9.48			
0+40			0.90	205.24	97.60		+8.78			
0+80			7.30	206.38	99.40		+8.55			
1+20			7.73	207.95	201.20		+8.89			
1+60 = D.E.			5.59	210.09	203.00		+7.00			
00 = D.E.			3.68	212.00	204.50		+5.95			
150			5.23	210.45	202.00		+6.83			
1+00			6.85	208.83	199.50		+7.30			
1+50 = M.H. # 10. & Union + Thorn			8.28	207.40	197.00		+9.96			
37.5 SW. = W. Line = Union			8.72	206.96	194.55		+10.32			
			10.81	204.87						

146.22  
 188.08  
 12.55  
 175.53  
 8.48  
 176.01  
 12.64  
 162.37  
 0.52  
 163.89  
 11.78  
 151.91  
 0.84  
 152.75  
 7.83  
 145.22  
 206.0  
 0.2  
 2.4  
 2.2  
 206.5

Five Plugs  
Walnut & Union

FR.C	143.5	
0+11.4 F.H.	144.55	Tied out 6' E.
0+63 = C.C.	149.20	

Union & Vine

S. line Vine	186.50	
0+10 F.H.	186.94	Tied out 2' E.
2+15	196.00	

Glenwood

145.22  
11.35  
156.57  
0.10  
156.47  
2.26  
158.73  
0.77  
162.16  
13.00  
175.16  
0.22  
180.88  
8.11  
188.99  
7.11  
181.88

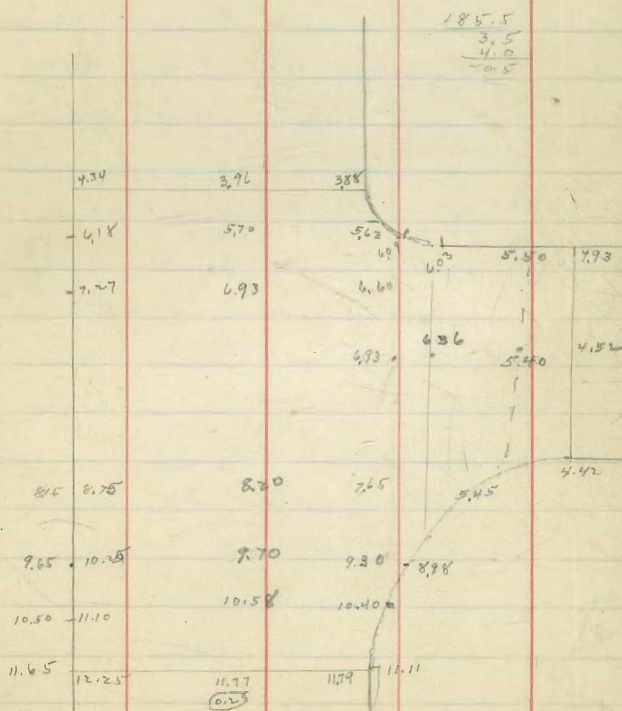
145.22  
10.42  
155.64

144.55  
11.09  
11.89  
0.80  
to cl grade

186.94  
2.05  
0.40  
171.65  
to cl grade

51.42  
44.55  
6.87  
7.00  
-0.73

FR Top wall S. Side  
Vine West of Steps  
W. of Union



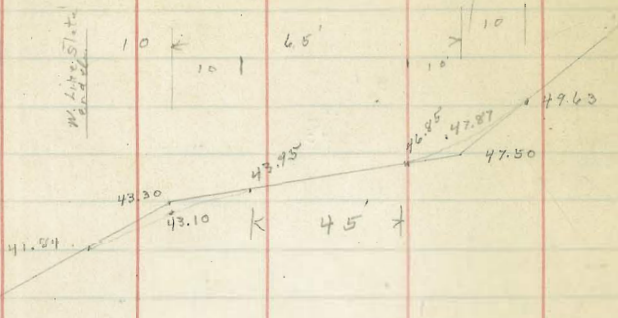


12.26  
10.40  
1.46  
9.34

S/c stakes No. 14 Vine at State

152.64

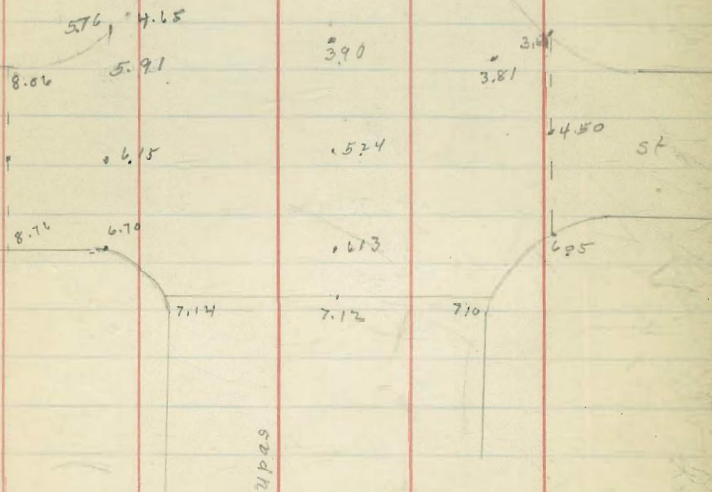
10.40 9.34  
141.84 143.30



41.84	43.10	43.95	46.85	47.87	47.63
10.80	9.54	8.69	5.79	4.77	3.01
52.00	✓	✓	41.00	✓	✓

46.86	41.74
46.5	41.4

Union



Express Ave  
S/e stakes

4.16  
5.64  
9.80  
4.90

E. Ver

Endct

P.C. South

282.15  
4.01  
286.16  
1.10  
285.06  
3.73  
288.79

82.00  
4.16  
82.00  
4.10  
4.16  
4.90  
5.40  
-6.50

81.00 81.14 81.28  
5.16 5.22 5.28  
5.11 .054  
C.B.  
80.50  
5.61  
5.64

83.72  
2.44  
2.44  
-0.50

82.86 83.02  
5.50 5.54  
5.50

N

B 8  
84.75 85.06  
7.41 7.10  
1.81  
-0.50

B B  
85.22 85.24  
0.94 3.55  
3.55

B B  
85.12 84.98  
3.67 3.86  
4.17  
-0.50

S

end mark

83.18 83.24  
2.74 2.84  
2.74

P.C.  
84.22 84.24  
1.94 4.55  
1.94

84.12 83.98  
4.27 4.81  
4.27

N

83.89 83.75 82.83  
4.90 5.24 8.76  
4.90

S

83.21 83.10 82.83  
5.58 5.62 5.91  
40.80  
40.80

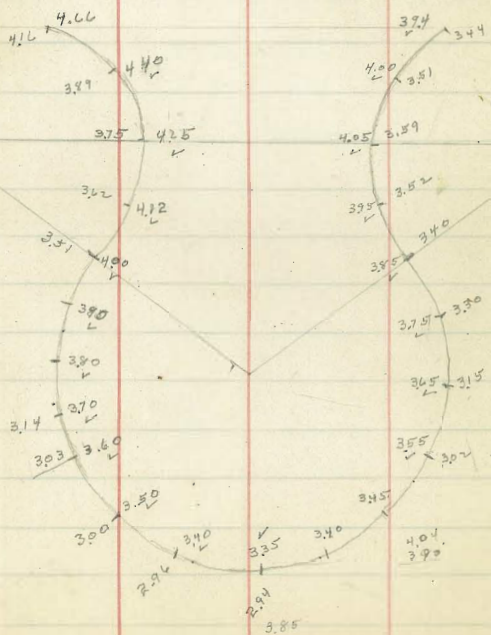
282.15  
5.36  
287.51

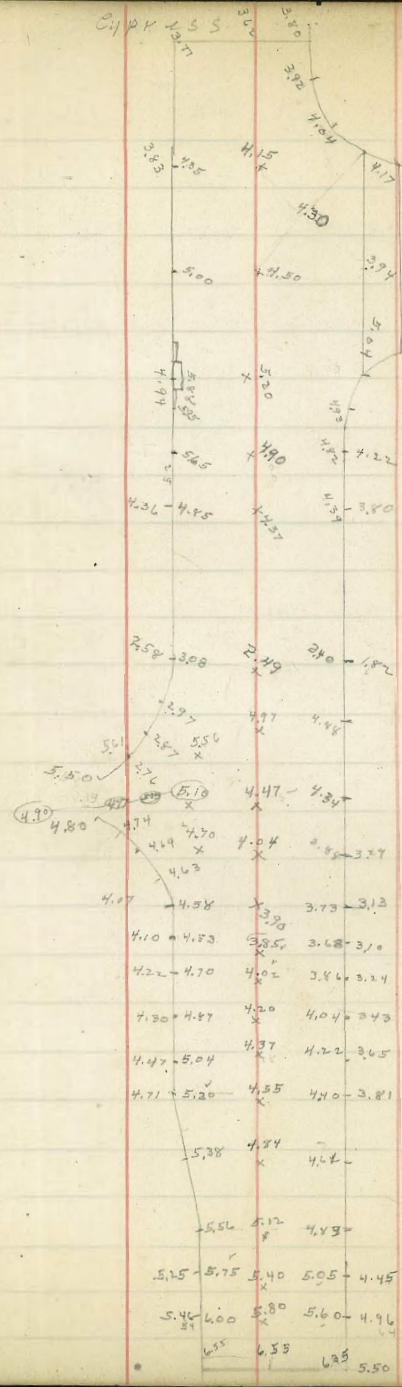
41.66  
1.4

83.34  
52.86  
31.48  
1.16  
83.02  
83.18  
83.34

4.55  
3.89  
8.44  
4.22

83.24  
3.70  
83.45







Marine View Drive

51

	S. d.	N. d.	
00 = E. line Anthony	44.20	44.50	00
+55	43.89	43.84	+55
1+10	43.77	43.16	1+10
1+65	43.55	42.48	1+65
2+28	43.30	41.82	2+20 d-83
2+26 P.C. Ret	43.28		

46.81 B.M. N.E. Division +40

3.44  
50.25  
4.16  
46.09  
3.01  
47.00

N	44.5	43.8	42.1	42.7	41.7E	9.9 9.0 +0.9
	5.7	6.4	7.1	7.8	8.48	98 23 7.5
	4.2	4.3	5.3	6.3	8.33	
	+1.5	+1.9	+1.8	+1.5	.04H	
S	44.20					
	5.40					
	5.41					
	0.01H					

6.25  
4.75  
1.5

6.9  
4.6  
+2.2

s/e slakes

25 4-28

46.72  
6.15  
42.57  
3.30  
45.87  
11.38  
34.49  
1.39  
35.88

N	41.52	42.48	43.16	43.84	44.50	Anthony 44.60 7.12
	6.00	6.24	5.56	4.88	4.22	
		5.24		4.38	3.72	
		+1.00		+0.50	+0.50	

S	43.30	43.55	42.77	43.99	44.20	
	5.42	5.17	4.95	4.73	4.50	
		change	change	change		
		5.25	5.03	4.812		

changed on account of old walk LOW.

N	44.50	44.05	43.45	43.10	43.35	42.90
	4.22	4.67	5.27	5.02	5.37	2.97
	3.72	4.17				
	+0.50	+0.50				

S	44.57	43.67	43.19	43.18	43.09	42.57
	5.58	5.04	5.53	5.58	5.63	6.15

N	42.40	41.60	40.30	38.30	36.10	32.50
	3.47	4.27	5.57	7.57	9.37	

S	42.00	41.20	40.00	38.20	36.00	32.75
	3.87	4.67	5.87	7.57	9.87	13.12

N	29.00	25.50	22.00	21.30		
---	-------	-------	-------	-------	--	--

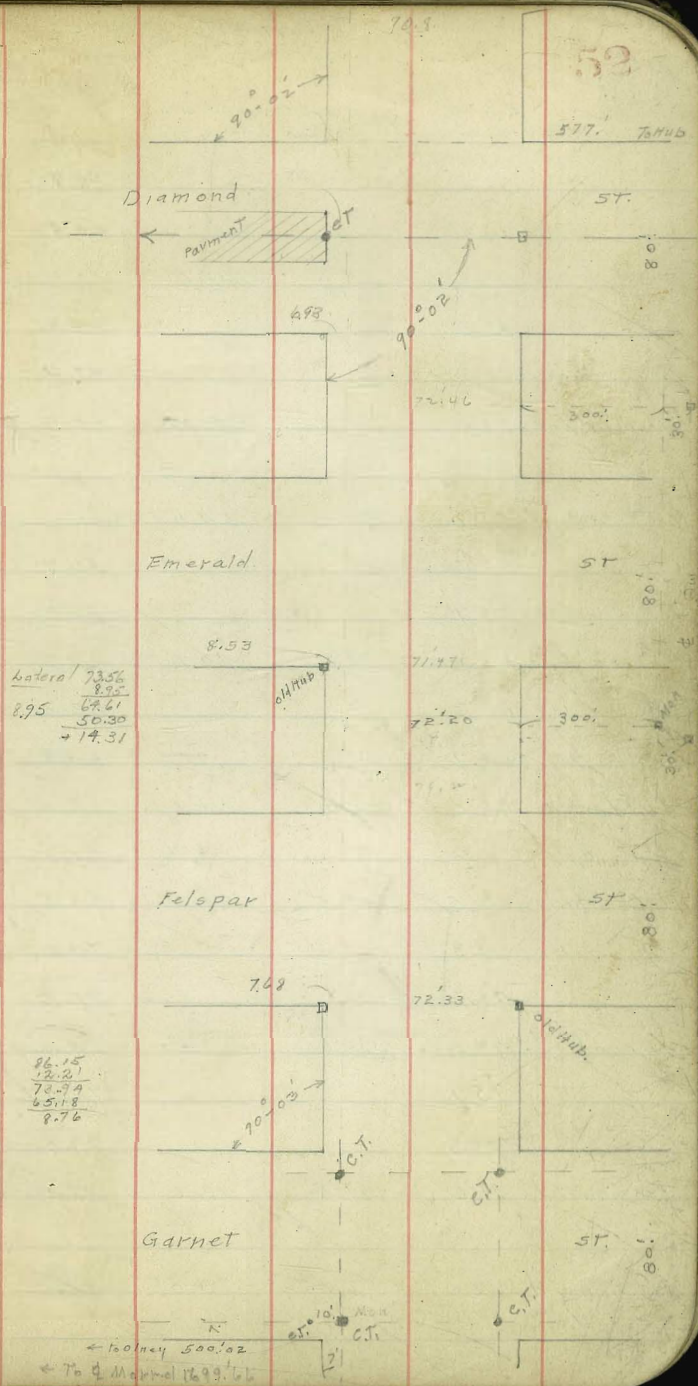
S	29.50	26.25	23.00	22.50		
---	-------	-------	-------	-------	--	--

13.4  
11.4  
12.0

34.49	N	42.3	41.5	40.20	38.30	36.20	33.20	32.77	29.56	26.13
8.86		1.04	1.85	3.04	5.04	7.15	9.54	10.30	5.43	8.26
43.35			1.30		3.45	3.0	2.0		4.43	7.35
8.86					4.05				1.00	11.50
34.49	S	42.00	41.20	40.00	38.40	36.40	34.80	33.39	30.14	26.73
0.50		1.35	2.15	3.35	4.95	6.75	9.15	9.96	4.83	8.04
34.99										
23.70	N	22.70	21.70		22.70	21.70				
11.85		12.29	13.29		12.05	13.05				
34.75		10.29	11.29		10.29	11.29				
0.26		42.00	41.00		42.00	41.00				
34.49	S	23.70	23.10				36.40			
7.16		11.29	11.89				24.52			
41.65			10.84							
			+1.00							
	S				38.40	36.65	34.52	33.75	30.50	27.25
					3.25	5.00	0.23	1.00	4.25	7.50
					1.85		2.13			
	S	24.00	23.40		36.52					
		10.75	11.35		5.13					
			10.85							
			+0.50							

Pendleton St  
Grading Paving Sewers etc.  
Diamond to Garnet.

BM. 10 Tie c.T.	12.70	48.79	Sewers	36.09	sw Garnet if Pendleton
000 Connection N. Line Garnet:			12.74	36.05	30.64 +5.41
+44.24			10.43	38.36	32.44 +5.92
+89.88			8.30	40.49	34.24 +6.25 36.04 Sewer +6.52
1+34.82 M.H. 6			6.23	42.56	37.00 N +5.56N
43.71			2.81	45.98	39.51 +6.47
1+78.54			10.48	50.73	44.53 +6.20
2+22.25	+12.95	61.21	T.P. 0.53	48.26	42.02 +6.24
2+65.96			7.13	54.08	47.05 +7.03
3+09.26 M.H. 5 & Felspar			3.69	57.52	47.79 +9.73
43.71			T.P. 0.28	60.93	48.53 +12.40
3+53.27			10.24	63.32	49.22 -14.05 50.02 S -14.71 S
6+97.08	+12.63	73.56	8.83	64.73	55.45 N +9.28 N
4+40.22			7.78	65.78	56.63 +9.15
4+84.22 D.M. H. 4			7.11	66.45	57.81 +8.64
43.71			5.95	67.61	58.99 +8.62
5+28.20			5.19	68.37	60.17 +8.20
5+71.21			4.48	69.08	61.35 +7.73
6+15.62			2.78	70.78	62.53 +8.25
6+59.32 M.H. 3 & Emerald.			13.05	73.10	63.71 -9.39 64.90 -9.82 S
43.71			11.43	74.72	69.50 N +5.22 N
7+08.03			9.46	76.69	71.26 +5.43
7+41.24			7.68	78.47	73.02 +5.45
7+70.45			4.78	81.37	74.78 +6.59
8+34.15 D.M. H. 2			2.39	83.76	76.53 +7.23
47.46					76.90
8+81.61					
9+29.07					
9+76.83					
10+23.25 M.H. 1					



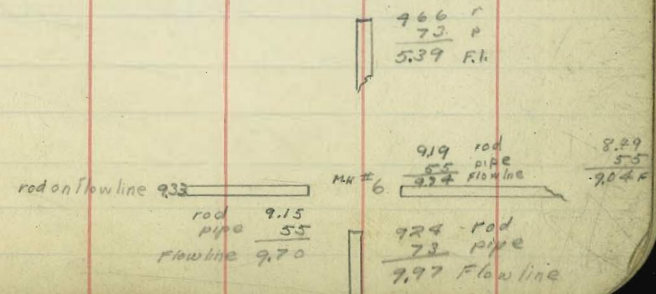
Pendleton St. Grades  
Garnet to Diamond

	E. line	E. curb	W. curb	W. line
N. line Garnet	36.7	36.0	37.2	37.2
1 38.6	E. range			38.8
2 40.6				40.4
3 = Brk	42.5	43.0	42.0	42.0
1 45.3				44.8
2 48.2				47.7
3 = 3/4 Feldspar	51.0	51.0	50.5	50.5
N. line Feldspar	55.0	55.0	54.0	54.0
1 57.3				56.7
2 59.7				59.3
3 = Break	62.0	62.0	62.0	62.0
1 63.3				63.3
2 64.7				64.7
3 = Sh. Emerald	66.0	66.0	66.0	66.0
N. line Emerald	67.5	67.5	68.5	68.5
1 69.3				70.3
2 71.2				72.2
3 = Break	73.0	73.0	74.0	74.0
1 75.7				76.7
2 78.3				79.3
3 = Sh. Diamond	81.0	81.0	82.0	82.0
N. line Diamond	82.0	82.0	83.0	83.0

B.M. 5' mark  
S.M. Garnet to Pendleton

	W.	E.	B	Shine
36.09	37.2	38.8	40.4	42.0
4.25	8.1	6.5	4.9	3.3
7.5.31	6.8	6.5	5.3	1.6
-0.04	0.0	-0.4	+1.7	+2.7
4.5.30	36.7	38.6	40.6	42.5
12.66	8.6	6.7	4.7	15.5
57.96	5.2	2.8	0.6	12.1
-0.28	3.9	+1.1	+3.4	+2.2
57.75	N. line			+1.3
12.67	54.0	56.7	59.3	62.0
70.42	16.4	13.7	11.1	8.4
-1.41	12.5	10.1	8.2	6.9
69.01	+3.9	+3.6	+2.9	+1.3
16.42	N. line			+1.3
81.43	55.0	57.3	59.7	62.0
-3.63	15.4	13.1	10.7	8.4
77.80	12.5	10.0	7.9	6.1
-10.81	+2.9	+3.1	+2.8	+2.3
88.61	N. line			+2.9
12.40	68.5	70.3	72.2	74.0
76.21	12.9	11.1	9.2	7.4
61.11	11.1	9.6	7.6	5.3
77.32	+1.8	+1.3	-1.6	+2.2
-12.52	N. line			+1.2
64.50	67.5	69.3	71.2	73.0
+0.30	13.9	12.1	10.2	8.4
64.80	13.2	12.0	9.7	7.4
12.51	+0.7	+0.1	+0.5	+1.0
52.29	W.			-0.3
+0.75	83.0			-0.5
53.02	5.6			
12.65	3.2			
40.37	+2.8			
12.80	N. line			
43.27	82.0			
6.19	6.6			
36.03	+6.1			
	+0.5			

check on Sewer ends  
 7.14 r. 4.55 r.  
 55 p. 3.55 r. MH #4 not in  
 4.09 r. 3.00 r.



2.81  
3.50  
3.25  
3.21  
3.40  
3.54  
2.81

Diamond

Emerald

Feldspar

5.0  
1.6  
+3.4  
  
1.0  
2.1  
+3.9  
  
3.0  
1.9  
+1.9

36.09  
11.43  
47.52  
2.19  
47.33  
12.67  
60.00  
8.30  
59.70  
11.75  
71.45  
10.74  
60.71  
1.72  
69.73  
12.40  
82.53

6.18  
EM. 76.37 Made Pol  
N. Fend. + Hilly S. =  
Diamond

81.50  
4.31  
85.81

	A. Grand	3-40.67	S. Hill	W. Hill	W. Hill	N. Hill	4447	47.74	
W	37.20	38.55	39.80	41.25	41.55	42.20	42.20	44.77	
	10.22	8.77	7.62	6.27	5.97	5.31	5.31	2.55	
	5.01	10.25	8.94			2.82	4.82	2.05	
	5.01					+2.50	+0.50	+0.50	
	5.01								
E	34.70	38.33	39.76	S. Hill	E. Hill	W. Hill	N. Hill	45.47	
	10.82	7.19	7.56	41.50	41.70	42.70	42.70	48.24	
	10.74		7.06	5.94	5.62	4.81	4.81	2.05	
	0.88		+0.50	5.44	4.42	3.82	3.82	1.71	
				+0.50	+1.00	+1.00	+1.00		
W	57.38	51.00	51.50	S. Hill	W. Hill	W. Hill	N. Hill	53.25	
	50.50	51.00	51.50	51.85	52.00	53.00	53.55	53.55	
	7.50	7.00	8.50	8.15	8.00	7.00	7.75	6.44	
						6.00	6.25	5.05	
						+1.00	+0.50	+0.50	
E	5.51	51.50	52.00	S. Hill	E. Hill	W. Hill	N. Hill	54.10	
	51.00	51.50	52.00	52.40	52.50	53.50	53.70	54.55	
	9.00	8.50	8.00	7.60	7.50	6.50	6.80	5.70	
						5.30	5.40	5.40	
						-0.50	+0.50	+0.50	
W	N. Hill	54.00	56.60	59.20	S. Hill	W. Hill	W. Hill	N. Hill	63.75
	54.00	56.60	59.20	61.50	62.00	62.75	62.75	63.75	
	6.00	5.40	0.80	7.15	7.25	8.70	8.70	7.70	
	5.50	5.40	0.30			8.20	8.20	6.25	
	+0.50	+1.00	+0.50			+0.50	+0.50		
E	N. Hill	55.00	57.25	59.50	S. Hill	E. Hill	W. Hill	N. Hill	63.75
	55.00	57.25	59.50	61.83	62.20	62.75	62.75	63.75	
	5.00	2.72	1.89	9.62	9.35	8.70	8.62	7.70	
		7.22	11.34	9.12	8.25	8.20	8.20	7.20	
		+1.00	+0.50	+0.50	+1.00	+2.50	+0.50	+0.50	
W	S. Emerald	66.00	66.25	66.45	W. Hill	W. Hill	W. Hill	N. Hill	67.20
	66.00	66.25	66.45	66.60	66.70	67.75	67.75	67.20	
	5.45	5.20	5.00	4.85	4.75	3.75	3.75	3.55	
	4.45	4.70	4.50	4.35	4.25	3.25	3.25	3.25	
	+1.00	+0.50	+0.50	+0.50	+0.50	+0.50	+0.50		
E	S. Emerald	66.00	66.10	66.10	S. Hill	E. Hill	W. Hill	N. Hill	67.20
	66.00	66.10	66.10	66.10	66.20	66.50	66.70	66.90	
	5.40	5.35	5.25	4.35	4.40	4.75	4.75	4.55	
	5.95			4.25	4.45	4.25	4.25	4.25	
	-0.50			+0.50	+1.50	+0.50	+0.50		
W	N. Emerald	70.22	71.94	73.66	S. Hill	W. Hill	W. Hill	N. Hill	73.85
	68.50	70.22	71.94	73.66	74.00	75.06	75.06	73.85	
	2.98	1.23	10.59	8.87	8.53	7.77	7.50	5.18	
		4.73		7.62	8.02	4.71	7.00	2.95	
		-0.50		+1.00	+0.50	+1.00	+0.50		
E	N. Emerald	69.22	70.94	72.66	S. Hill	E. Hill	W. Hill	N. Hill	73.85
	67.50	69.22	70.94	72.66	73.00	74.06	74.06	72.35	
	3.95	2.29	11.59	9.87	9.73	8.97	8.50	6.18	
				9.02	9.02	7.92	7.92	3.85	
				+0.50	+0.50	+0.50	+0.50		
W	S. Dia	82.40	82.70	82.90	W. Hill	W. Hill	W. Hill	N. Hill	83.00
	82.00	82.40	82.70	82.90	83.00	83.00	83.00	83.00	
	2.58	3.41	3.11	2.91	2.81	2.81	2.91	2.81	
	1.03	3.71	3.61	3.91	3.81	3.31	3.31	3.31	
	-0.50	-0.50	-0.50	-1.00	-1.00	+0.50			
E	S. Dia	81.40	81.60	81.70	S. Hill	E. Hill	W. Hill	N. Hill	81.90
	81.00	81.40	81.60	81.70	81.70	81.70	81.70	81.80	
	1.82	1.73	0.93	0.93	0.83	4.11	4.01	3.81	
		4.41	4.21	4.11		3.61	3.61	3.41	
						+0.50	+0.50	+0.50	
W	N. Dia	83.00			E	N. Dia			
	83.00				82.00				
	2.81				3.81				
					3.31				
					+0.50				



A 11-cy BIK. 95 Mannasse + Schiller

00 = E. Line Crasby	26.05	25.80	26.00	26.34
+20 B		26.30	26.50	
+40 B		26.75	26.95	
+60 B		27.05	27.25	
+80 B		27.30	27.50	
+100 B		27.50	27.70	
+40		27.62	27.82	
+80		27.74	27.94	
2+20		27.85	28.05	
+60		27.97	28.17	
3+00		28.09	28.29	
3+40 B		28.20	28.40	
3+60 B		28.20	28.40	
4+00		28.10	28.30	
+40		28.00	28.20	
+80		27.90	28.10	
5+20		27.80	28.00	
5+60		27.70	27.90	
6+00 = W. line Dewey	27.68	27.60	27.80	28.03

27.45

B.M. 28.93 SW. Corby + Newton

B.M. 31.95 NW. Dewey + Newton

0.77									
32.74									
7.74									
28.00	S	26.05	25.80	26.30	26.75	27.05	27.30	27.50	27.50
4.83			6.65	6.75	5.70	6.11	5.86	5.66	5.66
32.83			5.65	2.15	1.70	2.11	2.86	2.86	2.86
4.83			+1.00	+4.00	+4.00	+4.00	+3.50	+3.50	+2.80
28.00			4.64						
4.64			32.164	N	26.34	26.00	26.50	26.95	27.25
4.64			6.82		6.45	5.95	5.50	5.31	5.16
4.64			6.77		6.05	1.95	0.50	3.50	2.30
4.64			5.16		0.05 H	+0.40	+4.00	+5.00	+2.86
33.16			5.22						
27.94	S	27.61	27.74	27.85	27.97	28.09	28.20	28.30	28.40
4.11		5.54	5.42	5.31	5.19	5.07	4.94	4.82	4.68
32.45		4.11	5.03	5.65	4.14	4.76	4.55	4.48	4.34
		+1.43	+0.37	-0.37	+1.00	+0.31	+0.07	0.0	+0.07
		27.82	27.94	28.05	28.17	28.29	28.40	28.50	28.60
	N	5.24	5.22	5.11	4.97	4.87	4.78	4.68	4.58
		4.60	4.78	4.74	4.14	3.87	3.64	4.28	3.48
		+0.74	+1.04	+0.37	+0.85	+1.00	+0.59	0.0	+0.16
		27.90	27.80	27.70	27.60				
	S	4.78	5.03	5.13	5.23				
		3.78	4.03	4.13					
		+1.00	+1.00	+1.00					
		28.10	28.00	27.90	27.80				
	N	4.58	4.68	4.73	5.03				
		4.78	4.68	3.98					
		-0.17	0.00	+1.00					

B.M. 33.95 NW. Dewey + Newton

B.M. 24.96 N.W. Dewey + Main

25.80	26.30	26.75	27.05	27.30	27.50
6.65	6.75	5.70	6.11	5.86	5.66
5.65	2.15	1.70	2.11	2.86	2.86
+1.00	+4.00	+4.00	+4.00	+3.50	+3.50
26.00	26.50	26.95	27.25	27.50	27.70
6.45	5.95	5.50	5.31	5.16	5.16
6.05	1.95	0.50	3.50	2.30	2.30
+0.40	+4.00	+5.00	+2.86		
27.61	27.74	27.85	27.97	28.09	28.20
5.54	5.42	5.31	5.19	5.07	4.94
4.11	5.03	5.65	4.14	4.76	4.55
+1.43	+0.37	-0.37	+1.00	+0.31	+0.07
27.82	27.94	28.05	28.17	28.29	28.40
5.24	5.22	5.11	4.97	4.87	4.78
4.60	4.78	4.74	4.14	3.87	3.64
+0.74	+1.04	+0.37	+0.85	+1.00	+0.59
27.90	27.80	27.70	27.60		
4.78	5.03	5.13	5.23		
3.78	4.03	4.13			
+1.00	+1.00	+1.00			
28.10	28.00	27.90	27.80		
4.58	4.68	4.73	5.03		
4.78	4.68	3.98			
-0.17	0.00	+1.00			

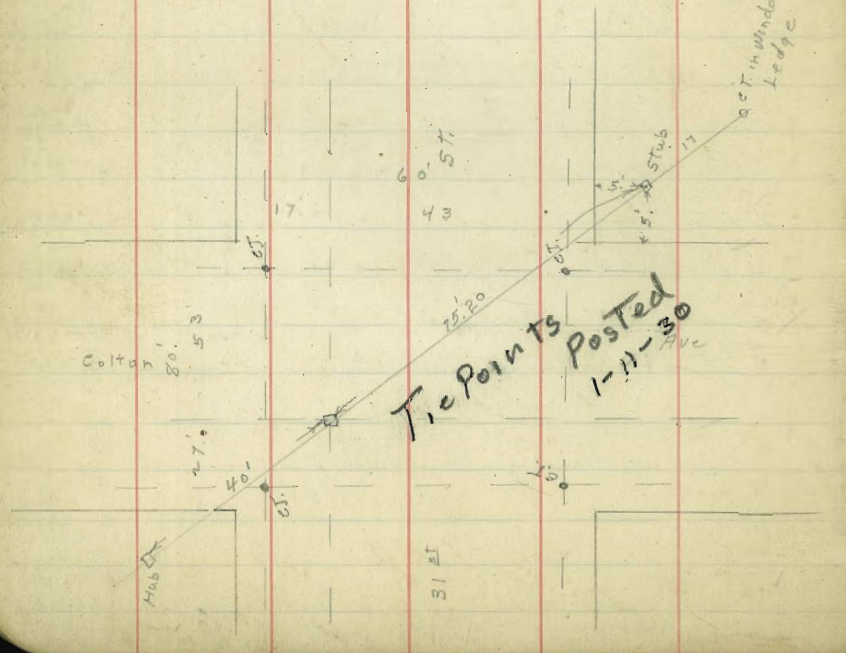
5.31  
27.50 = 28.03  
MH

32.74  
4.77  
28.00  
5.15  
33.15

5.02  
28.13  
28.10 B  
28.11/100

7.10  
26.05 Bal  
4.75  
4.0

	31st	ST. 74	
skinc Main	43.51	44.00	
+50	41.84	42.54	
+100	40.17	40.67	
+50	38.50	39.00	
+200	36.84	37.37	
+50	35.17	35.67	
3000 N. Line Cotton	33.00	33.50	East 33.5
000 S. Line Cotton	32.00	32.00	East 32.5
+50	29.00	28.96	
+100	26.00	25.72	
+140 End	22.40	21.95	
+1780 G.T.T.	21.30	20.70	



	45.0	BM NW 31st							56
	46.35								
	42.89								
	33.46								
	1.23								
	35.23								
	1.23								
	33.46								
	5.76								
	39.72								
	340								

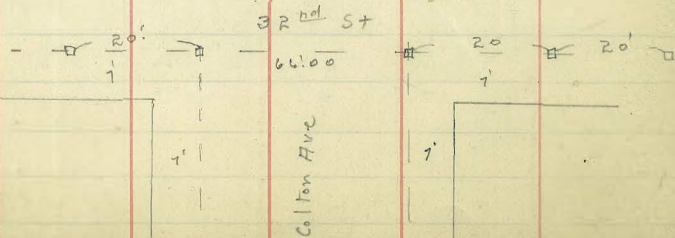
	45.05	43.51	41.84	40.17	38.51	36.84	35.17	33.50	32.00	29.00	26.00	22.40	21.30
	0.70	2.24	3.71	5.58	7.92	10.26	12.60	14.94	17.28	19.62	21.96	24.30	26.64
	45.175	43.27	41.37	39.47	37.57	35.67	33.77	31.87	29.97	28.07	26.17	24.27	22.37
	12.125	10.17	8.27	6.37	4.47	2.57	0.67	-1.23	-3.33	-5.43	-7.53	-9.63	-11.73
	33.50	31.55	29.60	27.65	25.70	23.75	21.80	19.85	17.90	15.95	14.00	12.05	10.10
	1.35	1.75	2.15	2.55	2.95	3.35	3.75	4.15	4.55	4.95	5.35	5.75	6.15
	34.85	32.90	30.95	29.00	27.05	25.10	23.15	21.20	19.25	17.30	15.35	13.40	11.45
	12.82	10.87	8.92	6.97	5.02	3.07	1.12	-0.83	-2.88	-4.93	-6.98	-9.03	-11.08
	22.63	20.68	18.73	16.78	14.83	12.88	10.93	8.98	7.03	5.08	3.13	1.18	-0.77
	1.09	1.49	1.89	2.29	2.69	3.09	3.49	3.89	4.29	4.69	5.09	5.49	5.89
	23.11	21.16	19.21	17.26	15.31	13.36	11.41	9.46	7.51	5.56	3.61	1.66	-0.29

Colton T + -

Sch

N. cl

163 W of 31	28.50	29.40
160 W of 31 = End	28.60	29.50
1+40 B	29.30	30.20
1+20 B	29.70	30.70
60 W	30.85	31.85
000 N. Line 31 <sup>st</sup> St.	32.00	33.0
000 S. Line 31 <sup>st</sup> St South	32.50	33.50
156	33.36	34.36
1412	34.22	35.22
1+68	35.08	36.08
2+24	35.94	36.94
2+80 B	36.4	37.8
3+00 B	37.1	38.1
3+20 B	37.2	38.2
3+40 B	37.2	38.2
3+60 B	37.1	38.1
4+10	36.6	37.6
4+60	36.1	37.1
5+10	35.6	36.6
5+30 on N side of line		
5+28.5 on S side of line	35.50	36.50



38.72  
 1.56  
37.16  
 5.80  
 4.2  
42.96  
 8.5  
 5.71  
37.45  
 3.52  
42.77  
 7.47  
35.30  
 6.80  
42.16  
 3.85  
38.81

9.40

3.14

3.92

45.05

48.79

3.92

45.07

3.14

48.71

9.40

38.81

33.50

37.4

37.28

35.94

6.09

42.03

8.00

34.03

1.97

48.100

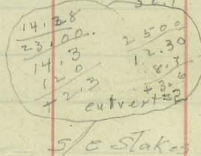
40.95

8M 45.05

	29.5	30.2	30.7	31.8	33.0 [31 <sup>st</sup> St]	33.5	34.4	35.2
	7.2	8.5	8.0	6.9	5.7	5.2	4.3	5.8
	9.3	8.7	5.2	4.6	2.5	1.8	1.9	3.4
	-0.1	+3.3	+2.8	+2.3	+3.2	+3.5	+2.9	+4.4
S	29.6	29.3	29.7	30.8	31.0	32.5	33.4	34.2
	10.1	9.4	9.0	7.9	6.7	6.2	5.9	5.8
	9.2	8.9	9.2	7.4	5.9	5.4	4.7	9.0
	+0.2	70.5	-0.2	+0.5	+0.8	+0.8	+0.6	-0.2
N	36.1	36.9	37.8					
	6.9	6.1	5.2					
	3.9	4.3	2.6					
	+3.0	+1.8	+2.6					
	9.40							
S	35.1	35.9	36.8					
	7.9	7.1	6.2					
	8.0	7.0	5.9					
	-0.1	+0.1	+0.3					
	3.14							
S	35.1	35.9	36.8					
	7.9	7.1	6.2					
	8.0	7.0	5.9					
	-0.1	+0.1	+0.3					
N	36.6	36.5						
	6.2	5.7						
	3.92	2.5						
	+3.7	+1.2						
S	35.6	35.5						
	7.2	7.3						
	7.6	7.7						
	-0.4	-0.4						
	33.50							
	37.4							
	37.28							
N	39.50	30.00	30.70	31.47	32.24	33.00	33.50	34.86
	7.78	7.08	6.85	6.81	6.04	4.22	8.78	2.92
		6.58	+0.50					
S	28.60	29.30	29.70	30.47	31.24	32.00	32.50	33.36
	8.68	7.94	7.58	6.81	6.04	5.28	4.78	2.92
N	35.22	36.04	36.94	37.80	38.10	38.20	38.10	37.60
	2.04	1.20	0.84	4.33	3.93	3.23	3.93	4.13
S	34.22	35.04	35.94	36.80	37.10	37.20	37.10	36.60
	3.04	2.20	1.34	5.23	4.73	4.83	4.93	5.23
	2.56							
	+0.50							
N	37.10	36.60	36.50					
	4.93	5.43	5.83					
	4.43		6.03					
	+0.50							
S	36.10	35.60	35.50					
	5.93	6.43	6.83					

8M 5.57 N. S. W. 32 4/4 M. M. 57  
 5.57

43.0

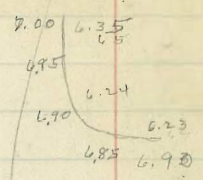
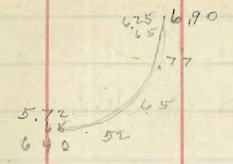


S/O Stakes

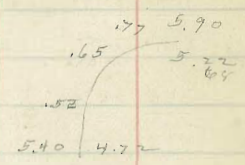
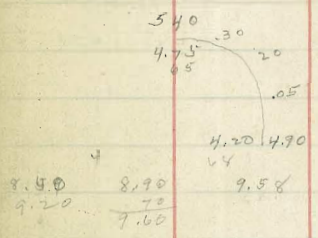
	35.7		34.0	9.0	9.0
	4.4		7.2		
	1.6		4.6		
				2.4	34.00
				1.33	3.27
					37.27
					8.0
					29.50
					38.0
					37.30
					19.2
					7.41
					5.28
					4.4
					4.6

5.41  
1.09  
6.50

6.00 6.70 7.30  
6.70



3.65



2.56  
7.0  
8.26

8.06  
8.76  
8.73  
8.34  
9.4.3

5.14

4.75	4.65	4.66	4.74	5.07
5.42	5.25	5.25	5.40	5.70

3.74	3.64	3.64	3.72	4.03
6.8	6.8	4.25	6.8	6.7
4.43	4.35	4.28	4.40	4.70

Sewer Grades  
 & Dodson St. Market South.

2-16-29

00 = D.E. HOS. of s. line Market	134.07	1.20	132.87	127.03	+5.84
+50.		1.82	32.25	26.28	+5.97
1+00		1.67	32.40	25.53	+6.87
+50		1.84	32.23	24.78	+7.45
2+00		3.27	30.80	24.03	+6.77
+50		4.97	29.10	23.28	+5.82
3+00 = M.H. & Island Ave		5.50	28.57	122.53	+6.04
3+58.5 T.P. 1.94 connection with	127.12	8.89	25.18	119.19	+5.99
4+17.0 Exposed Sewer.		9.09	18.03	115.86	+2.17

B.M. 113.83 s. of 30<sup>th</sup> & Island.  
 11.81  
 124.64  
 9.42  
 125.22  
 8.85  
 134.07  
 8.89  
 125.18  
 1.94  
 127.12

92 s. of & Island = End. Sewer.

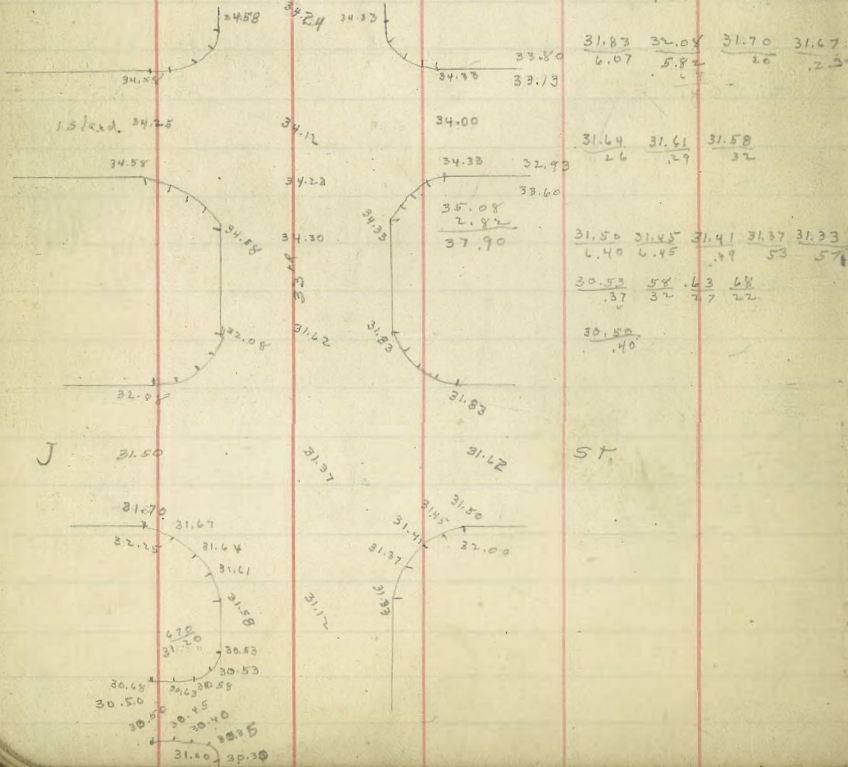


33<sup>rd</sup> St Grades

	W. elev	W gutter	E	E gutter	E elev
000 S. Line JST	32.25	31.58	31.12	31.33	31.00
+62.5	31.62				31.56
1+25 = W " Lane M. L. Lane	31.20	30.53	30.15		31.11
1+55 = S. Line Lane M. L. Lane	31.00	30.33	29.95		30.90
2+07 52.5	30.75				30.52
2+60 = S. End.	30.50	29.83	29.32	29.47	30.14

cb. cula 33<sup>rd</sup> st

	W	B	B	B	N
35.08	38.56	27.97	27.20	26.53	26.13
5.89	2.41	3.19	3.77	4.44	4.84
40.97	2.39			5.14	4.78
				5.54	4.71
35.08	38.94	28.17	27.40	26.63	26.13
4.28	2.03	2.80	3.57	4.34	4.84
39.36	2.00			5.14	5.03
				5.54	4.71



Water Grades

38.40

28.5

28.2

27.9

27.5

27.1

26.7

38.93

7.41

31.52

5.04

36.56

Fire Hault

33<sup>rd</sup> + J. ST.

31.95

4.61

4.15

0.46

BM 33.18

400

4.50 E. Tie 33<sup>rd</sup> St

35.08

1.52

36.60

6.10

30.50

4.42

34.92

Water Grades

28.5

28.2

27.9

27.5

27.1

26.7

38.40

28.5

28.2

27.9

27.5

27.1

26.7

38.93

7.41

31.52

5.04

36.56

44 - stakes.

W.	31.2	31.7	31.2	31.0	30.7	30.5
	6.7	7.2	7.7	5.6	5.9	6.1
	6.3	6.5	7.3	5.2	5.5	6.8
	+0.4	+0.7	+0.4	+0.4	+0.4	-0.7

E.	32.0	31.6	31.1	30.9	30.5	30.1
	6.9	7.3	5.5	5.7	6.1	6.5
	6.3	7.0	4.8	5.3	5.6	6.0
	+0.6	+0.3	+0.7	+0.4	+0.5	+0.5

s/e stakes

	W. Ret	50	100	P.C.	E. Prop	3.814	3.814
E	32.00	32.00	31.64	31.28	31.12	31.01	30.86
	4.10	4.60	4.96	5.22	5.38	5.59	4.86
	70.50	3.96	71.00	4.88	4.88	3.81	3.56
					40.50	31.01	40.50
E	30.50	30.14		31.01	31.12		
	4.42	4.79		4.98	4.85		
				35.99	55.98		
					31.15		
					4.85		

	W. Ret	50	100	P.C.	W. Ret	W. Ret	P.C.
W	32.25	32.25	31.83	31.41	31.24	31.20	31.00
	4.35	4.35	4.77	5.19	5.36	5.40	5.60
				5.61			5.24
				-0.50			
W	30.73	30.50					
	5.87	6.10					

W.  
27.5  
10.9  
7.3  
+3.6

27.5  
9.1  
5.8  
24.0  
4.8

4.8  
4.3

3.814  
3.814  
31.01  
30.86  
3.81  
3.56  
31.01  
3.91  
40.50

Island Ave Grades

	S. cb	S. gutter	4	N. gutter	N. Line	Water grade
00=390' N. of 83.455	43.60	42.93	42.60	42.93	43.60	39.8
010 Brk	42.80	42.13	41.80	42.13	42.80	
0130 Brk	42.00	41.33	41.00	41.00	42.00	38.2
0180	40.88				40.88	37.2
1130	39.75				39.75	36.1
1180	38.62				38.62	35.0
2+30 Brk	37.50	36.83	36.50	36.83	37.50	33.9
2+70	36.93				36.93	33.4
3+10	36.37				36.37	32.8
3+50	35.81				35.81	32.2
3+90 - N. Line 33.2	35.25	34.58	34.25	34.58	35.25	31.6
		34.23	34.12	34.12		31.5
00= E. Line 33.2	35.00	34.33	34.00	34.33	35.00	31.2
+50	34.54				34.60	30.8
1+00	34.07				34.20	30.4
1+50 End.	33.60	32.93	32.70	33.13	33.80	30.0

S/C stakes

35.08 8.88 43.96	S	35.25 8.71	35.81 8.15	36.37 7.59	36.93 7.03	37.58 6.46	38.62 5.34	39.75 4.21	40.88 3.08	42.00 1.96	42.90 1.16	43.60 0.36	End B B -1.00
35.08 4.24 39.32	S	35.00 4.32	34.54 4.78	34.07 5.25	33.60 5.72	33.60 4.74							
35.08 3.24 38.34	N	35.25 3.09	35.81 8.47	36.37 7.93	36.93 7.37	37.50 6.80	38.62 5.18	39.75 4.55	40.88 3.42	42.00 2.30	42.80 1.50	43.60 0.70	
35.08 3.22 44.30	N	35.00 3.34	34.60 3.74	34.20 4.14	33.80 4.04	33.80 4.04							

BM 35.08 8.30 32.33 4 Island

	39.8	38.3	37.2	36.1	35.0	33.9	33.4	32.8
	3.6 0.6 +3.0	5.1 0.7 +4.4	6.2 1.9 +4.3	7.3 1.2 +5.4	8.4 4.2 +4.2	9.5 4.7 +4.8	10.6 5.4 +4.6	11.7 6.1 +4.5
	32.2	31.6	31.2	30.8	30.4	30.0		
	11.2 2.8 +4.4	11.8 8.1 +3.7	12.2 5.1 +4.1	12.6 8.8 +3.8	13.0 7.0 +4.0	13.4 8.6 +3.8		
	40.68 1.60 39.08 2.53 48.61							
	S	43.6 5.0 5.9 -0.9	42.8 5.8 5.9 -0.1	42.0 6.6 6.5 +0.1	40.9 7.7 7.4 +0.3	39.7 8.8 8.8 +0.1	38.6 10.0 9.4 +0.6	37.5 11.7 11.2 +0.5
	N	43.6 5.0 5.1 -0.1	42.8 5.8 5.2 +0.6	42.0 6.6 5.0 +1.6	40.9 7.7 4.7 +3.0	39.7 8.8 8.1 +0.8	38.6 10.6 9.2 +0.8	37.5 11.7 11.4 +0.3
	S	36.9 3.8 2.7 +0.1	36.4 4.3 3.9 +0.4	35.8 4.9 4.3 +0.6	35.2 5.5 4.8 +0.7	35.0 5.7 5.7 0.0	34.5 6.2 6.2 -0.5	34.1 6.6 7.8 -0.7
	N	36.9 3.8 3.5 +0.6	36.4 4.3 3.5 +0.8	35.8 4.9 4.1 +0.8	35.2 5.5 4.5 +1.0	35.0 5.7 5.4 +1.3	34.6 6.0 6.5 +0.1	33.8 6.8 6.8 +0.2
	S	35.27 8.0 7.4 +0.6	35.8 7.6 6.2 +0.9	36.4 7.0 6.1 +0.9	37.5 6.5 5.6 +0.9	38.6 6.0 5.2 +0.8	39.7 4.9 4.1 +0.8	40.8 3.8 3.0 +0.8
	S	40.9 2.6 1.5 +1.1	42.0 1.5 1.0 +0.5					
	N						37.5 6.0 4.7 +1.3	38.6 4.9 4.2 +0.7
	N	40.9 2.6 1.7 +1.4						
	N	34.6 3.7 3.5 +0.2	34.7 4.1 4.0 +0.1					
	S	34.5 3.8 2.6 +0.2						

Water Laterals

35.08 8.37 43.45	S	35.27 8.0 7.4 +0.6	35.8 7.6 6.2 +0.9	36.4 7.0 6.1 +0.9	37.5 6.5 5.6 +0.8	38.6 6.0 5.2 +0.8	39.7 4.9 4.1 +0.8	40.8 3.8 3.0 +0.8
35.08 4.24 39.32	S	35.00 4.32	34.54 4.78	34.07 5.25	33.60 5.72	33.60 4.74		
35.08 3.24 38.34	N	35.25 3.09	35.81 8.47	36.37 7.93	36.93 7.37	37.50 6.80	38.62 5.18	39.75 4.55
35.08 3.22 44.30	N	35.00 3.34	34.60 3.74	34.20 4.14	33.80 4.04	33.80 4.04		



25  
17  
8  
7  
17

d. cuts

39.36 N 37.50 36.83  
1.36 1.86 2.53  
38.00  
6.98  
44.98

S 37.50 24.83

S d 42.00 41.80 43.60  
2.96 2.18 1.88

gutter 41.33 42.13 42.93  
3.63 2.85 2.05

35.08 Men.  
4.10  
39.18  
3.85  
B.M. 35.33 B.P. N.W. 33rd L Island.

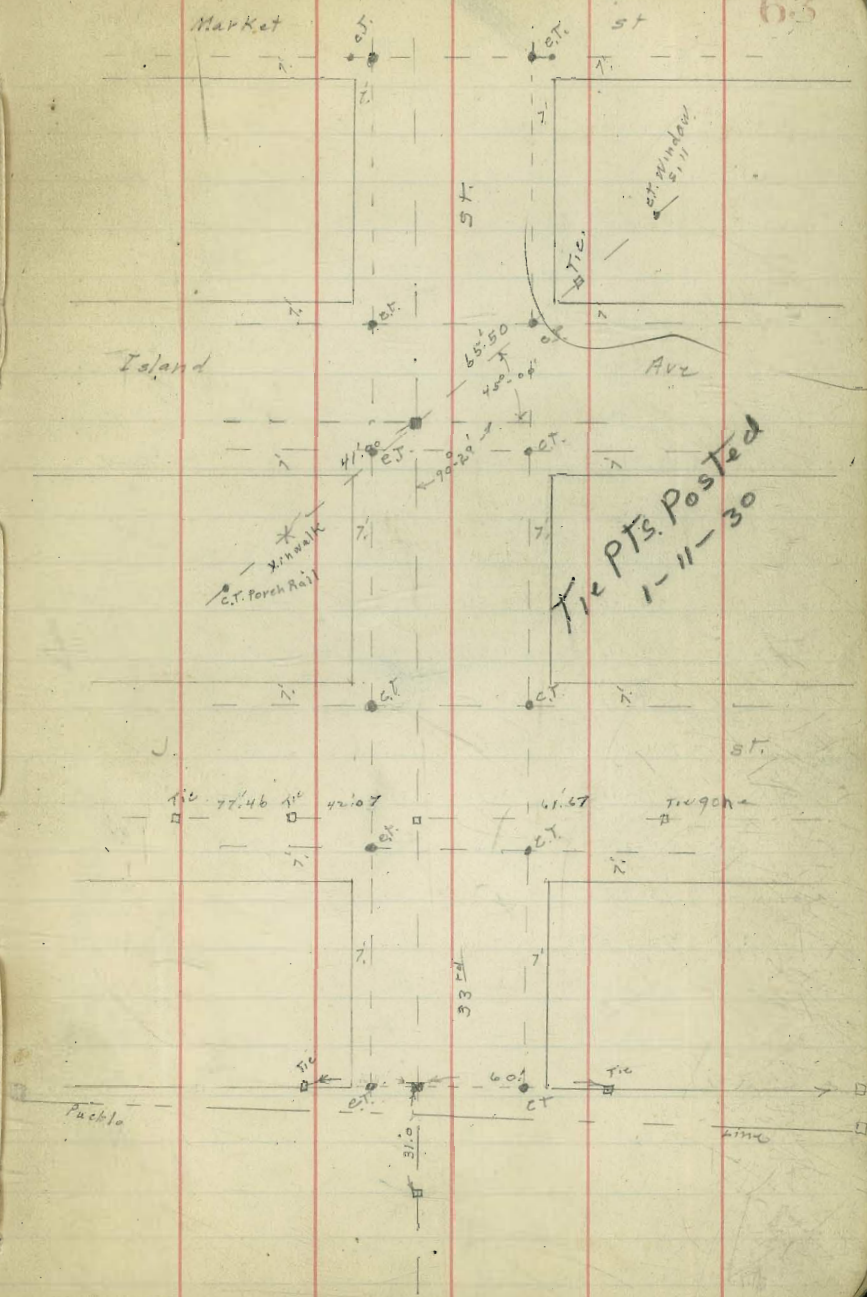
42.07  
17.  
25.07  
27.07  
7  
34.07  
42.  
76.07  
7  
83.07  
2.  
103.74  
85.07  
18.67

42.07  
41.67  
103.74  
43  
18.67  
9  
27.67

N 43.60 41.80 42.00 3.47 4.03  
1.87 2.18 2.96

42.93 42.03 41.20 4.47 4.70  
2.05 2.85 3.70

35.08 Men  
6.20  
41.28  
40.58  
B.M. 40.70 B.P. S.E. 33rd  
& Market.



Cypress Ave Grades  
Vermont East.

1-20-29

	s. cb.	s. gutter	±	N. Cullet	N. cb.
W. W. of w. line Vermont			81.90		82.0
W. Line Vermont	282.00	81.50		81.5	82.0
± Vermont			81.25		
S. line Vermont	280.50	79.50	80.25	80.5	81.0
0+20			80.93		
0+26				81.0	81.5
0+45	81.24				81.85
0+95	82.05				82.79
1+15	82.86				83.72
1+53.4	283.0	282.4			
2+00 B	83.75	83.25	84.08	84.25	84.75
2+20 B	84.06	83.56	84.36	83.56	85.06
2+30 B	84.16	84.66			
2+39.16	84.20				
2+40 B	84.22	83.72	84.55	84.72	85.22
2+60 B	84.24	83.74	84.57	84.74	85.24
2+80 B	84.12	83.62	84.45	84.62	85.12
3+00 V	83.98				
3+40 A	83.70		83.93		84.55
4+10 A	83.21		83.25		83.89
4+25	83.10				83.75
4+50	82.93	82.50		83.0	83.50
4+55		82.40	82.91		
4+65 End	82.83				change
4+75	82.76	81.76	82.26	82.76	83.26
4+78.67 End Berms					83.35 ±2.83

284.96 B.M. N.E. Vermont + Penn. Ave

2872.15 B.M. N. W. Vermont + Cypress.

	N. End	S. End	±	±	±	±	±
3.12							
288.08							
5.93							
282.15 B.M.							
81.02							
270.17							
286.10							
282.15							
270.15							
7.77							
282.15							
81.02							
81.00							
81.17							
82.00							
81.50							
81.4							
82.00							
81.1							
82.00							
82.00							
82.00							
82.00							
82.00							
82.00							
82.00							

284.19  
1.54  
285.73

82.15  
3.24  
85.43

80.50  
4.93  
6.07

81.00  
81.17  
82.00  
81.50  
81.4  
82.00  
81.1  
82.00  
82.00  
82.00

82.00  
82.00  
82.00  
82.00  
82.00  
82.00  
82.00  
82.00  
82.00  
82.00  
82.00  
82.00  
82.00

82.00  
82.00  
82.00  
82.00  
82.00  
82.00  
82.00  
82.00  
82.00  
82.00  
82.00  
82.00  
82.00

82.00  
82.00  
82.00  
82.00  
82.00  
82.00  
82.00  
82.00  
82.00  
82.00  
82.00  
82.00  
82.00

	N.	E.	S.
White State	23.10	22.70	22.90
+ 10. W	22.97	22.65	22.9
+ 55	22.38	22.07	22.20
+ 100	21.80	21.50	21.7
+ 147.5			
+ 195			
+ 200	19.90	19.58	19.60

21.75	Point	710	455	1100
5.34	S	22.90	22.90	22.30
27.09		4.19	4.19	4.79
				5.37

N	Point	22.97	22.38	21.70
		2.99	4.12	4.71
				5.37

E	22.75	22.65	22.07	21.80
	4.34	4.44	5.02	5.67

490	5.80
22.17	21.29
78.025	
510	5.11
21.97	21.94
21.38	
	4.31
	22.78

Sewer Extension in Madison Ave

From D.E. 100' E of M.H. & New Hampshire

East  
NE Madison  
& Massachusetts

Stub  
Raised  
Grade

B.M.	0.00	333.03	333.03	π 333.03		8.93	324.10	316.10	+ 8.00
00 = D.E. 100' E of N.H. Hampshire			324.10	312.50	+ 11.60 ckk				
0 + 40 E		6.90	326.13			6.90	326.03	319.10	+ 7.03
0 + 80 E		5.05	327.98	322.00		5.05	327.98	322.10	+ 5.88
14 Alley 20' S. of Mad.		7.7	325.3						
Sewer at rear of House		8.2	324.8						

Marlton Drive Grades

Culvert  
34.16  
 5.65  
 28.50

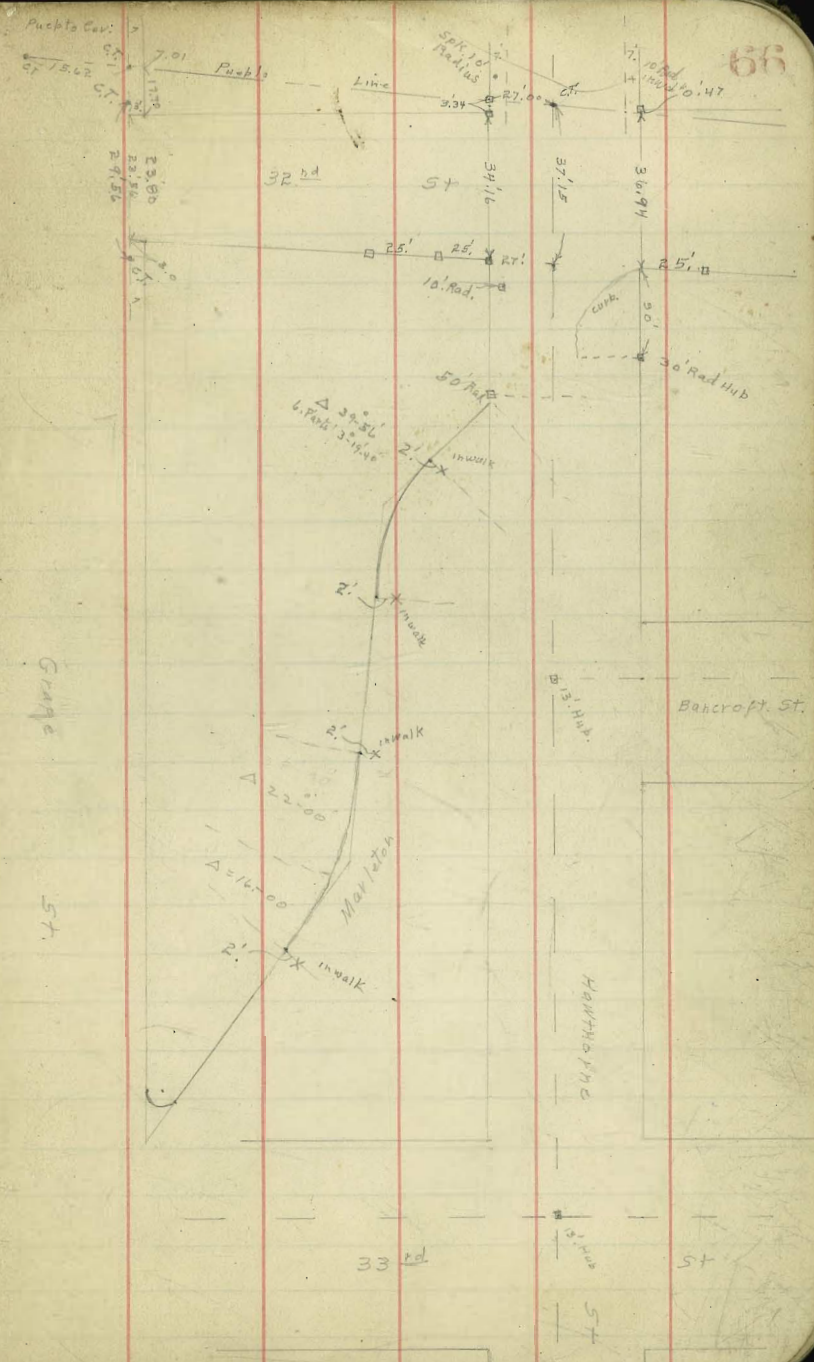
59.8  
5.6  
 54.2  
0.9  
 55.1  
12.8  
 42.3  
0.4  
 43.1

9.6  
33.5

55 out. } Toe Slope  
 60 from Curb }

14.  
29.0  
30.8  
15.4  
 46.2

59.8  
17.1  
26.0  
33.4  
16.9  
 50.7



Marlton Drive Grades

E. cl

282.0 NW cor

X 281.50 N line Hawth P.C.

281.15

X 240.30 4 parts

278.90

X 277.20 E.C. 30' E of 32'

34  
5  
28.4

X 270.90 P.C. into Marlton

270.10 B

X 269.40

X 268.70 E.C.

X 267.45

X 266.20 B.R. 5' line Hawthorn

X 264.95

X 263.70 P.E.

62.25

X 62.80

62.35

X 61.90

61.45

X 61.00 P.C.

282.00 old B.M. N.W. 32' and Hawthorn  
 282.49  
 282.08 New B.M. N.W. 32' Hawthorn 20' W. of 32'

81.0  
1.5

67

282.49  
12.92  
269.57  
0.56  
270.13  
9.79  
260.34

P.C.	E.C.	P.C.	E.C.	B	P.C.
81.0	80.3	77.2	70.9	69.4	68.7
7.0	2.2	5.3	11.6	10.7	1.4
4.7	4.2	5.7	10.4	1.8	3.0
-3.7	-2.0	-0.4	11.2	-1.1	-1.6
				-1.9	-1.4
					-0.4
					0.0

282.06  
0.62  
282.68  
13.08  
269.60  
0.05  
269.65

E.C.	B	P.C.	E.C.	B	P.C.
62.8	61.9	61.0	62.8	61.9	61.0
7.8	8.2	9.1	7.8	8.2	9.1
7.2	8.0	9.8	7.2	8.0	9.8
+0.1	+0.2	-0.7	+0.1	+0.2	-0.7

270.90  
0.36  
271.26  
10.55  
271.89  
2.02  
273.91

E.C.	B	P.C.	E.C.	B	P.C.
68.70	62.45	62.80	68.70	62.45	62.80
5.95	6.40	6.85	5.95	6.40	6.85
6.45	7.40	7.35	6.45	7.40	7.35
-0.55	-1.00	-0.50	-0.55	-1.00	-0.50

282.08  
0.36  
282.44  
10.55  
271.89  
2.02  
273.91

E.C.	B	P.C.	E.C.	B	P.C.
61.00	82.26	81.17	61.00	82.26	81.17
8.65	0.18	0.30	8.65	0.18	0.30
	82.26	81.17		82.26	81.17
		0.44			0.44
		3.79			3.79
		+0.50			+0.50

270.90  
0.36  
271.26  
10.55  
271.89  
2.02  
273.91

E.C.	B	P.C.	E.C.	B	P.C.
81.00	81.50	81.15	81.00	81.50	81.15
0.92	81.50	0.94	0.92	81.50	0.94
81.52	0.94	0.44	81.52	0.94	0.44
	+0.50			+0.50	

270.90  
0.36  
271.26  
10.55  
271.89  
2.02  
273.91

E.C.	B	P.C.	E.C.	B	P.C.
70.10	68.70	69.16	70.10	68.70	69.16
68.70	69.16	4.1	68.70	69.16	4.1
21.40	4.8	69.62	21.40	4.8	69.62
4.8	69.62	8.12	4.8	69.62	8.12
69.62	8.12	7.010	69.62	8.12	7.010

270.90  
0.36  
271.26  
10.55  
271.89  
2.02  
273.91

E.C.	B	P.C.	E.C.	B	P.C.
80.60	80.90	81.15	80.60	80.90	81.15
80.60	80.90	81.15	80.60	80.90	81.15
79.90	80.20	80.30	79.90	80.20	80.30
79.90	80.20	80.30	79.90	80.20	80.30
78.70	78.90	78.90	78.70	78.90	78.90
78.70	78.90	78.90	78.70	78.90	78.90
77.20	77.20	77.20	77.20	77.20	77.20

270.90  
0.36  
271.26  
10.55  
271.89  
2.02  
273.91

E.C.	B	P.C.	E.C.	B	P.C.
77.20	80.20	77.20	77.20	80.20	77.20
77.20	80.20	77.20	77.20	80.20	77.20
78.70	78.90	78.90	78.70	78.90	78.90
78.70	78.90	78.90	78.70	78.90	78.90
77.20	77.20	77.20	77.20	77.20	77.20

70.10  
68.70  
69.16  
4.1  
69.62  
8.12  
7.010  
81.15  
78.90  
79.90  
79.90

E. d.  
 261.00 E.C.  
 60.50 } 62.20  
 X 260.00 P.C.  
 X 159.80 } 222.00  
 X 259.40 B } 24.00  
 X 59.80 } Δ 16.00  
 X 260.00 E.C.  
 X 61.10 } 43.6 } 86.0  
 X 262.20 B } 43.0  
 62.80 } 33.0 } 116.0  
 264.00 } 62.0

270.13  
 9.79  
 260.34  
 4.76  
 265.10  
 0.64  
 264.46  
 7.28  
 271.74

189.	P.C.	#	E.C.
61.00	60.00	59.80	60.00
9.1	5.1	5.5	5.1
9.8	9.6	10.3	8.9
0.7	-4.5	-5.6	-4.7
			-5.0
			-3.8

PC.	N. d. d.	S. d. d.
60.4	59.85	59.75
4.15	4.80	4.80
64.55	10.30	60.00
	-1.99	9.25
		10.14
		0.24

B	Δ d.	N.G.
62.20	62.80	63.40
5.40	4.80	64.00
5.90		3.60
-0.50		3.63
		0.03

61.10 62.20 62.8 64.20  
 4.0 2.9 2.3 7.59  
 8.1 10.0 7.9  
 -4.1 -7.1 -5.5

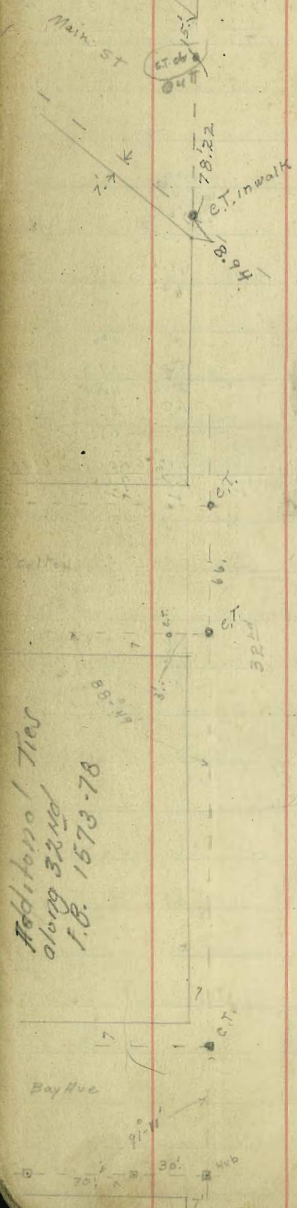
64.00  
 62.80  
 21.20  
 .60  
 63.40  
 64.00

10.71  
 58.94  
 59.85

60.0  
 4.15  
 64.55  
 4.5  
 4.5  
 9.05

59.85 59.75 59.8  
 4.70 4.80 4.80  
 5.60 5.04 5.6  
 -0.70 -0.24 10.50

59.60 59.80 60.00 61.10  
 10.05 9.25 9.25 6.00



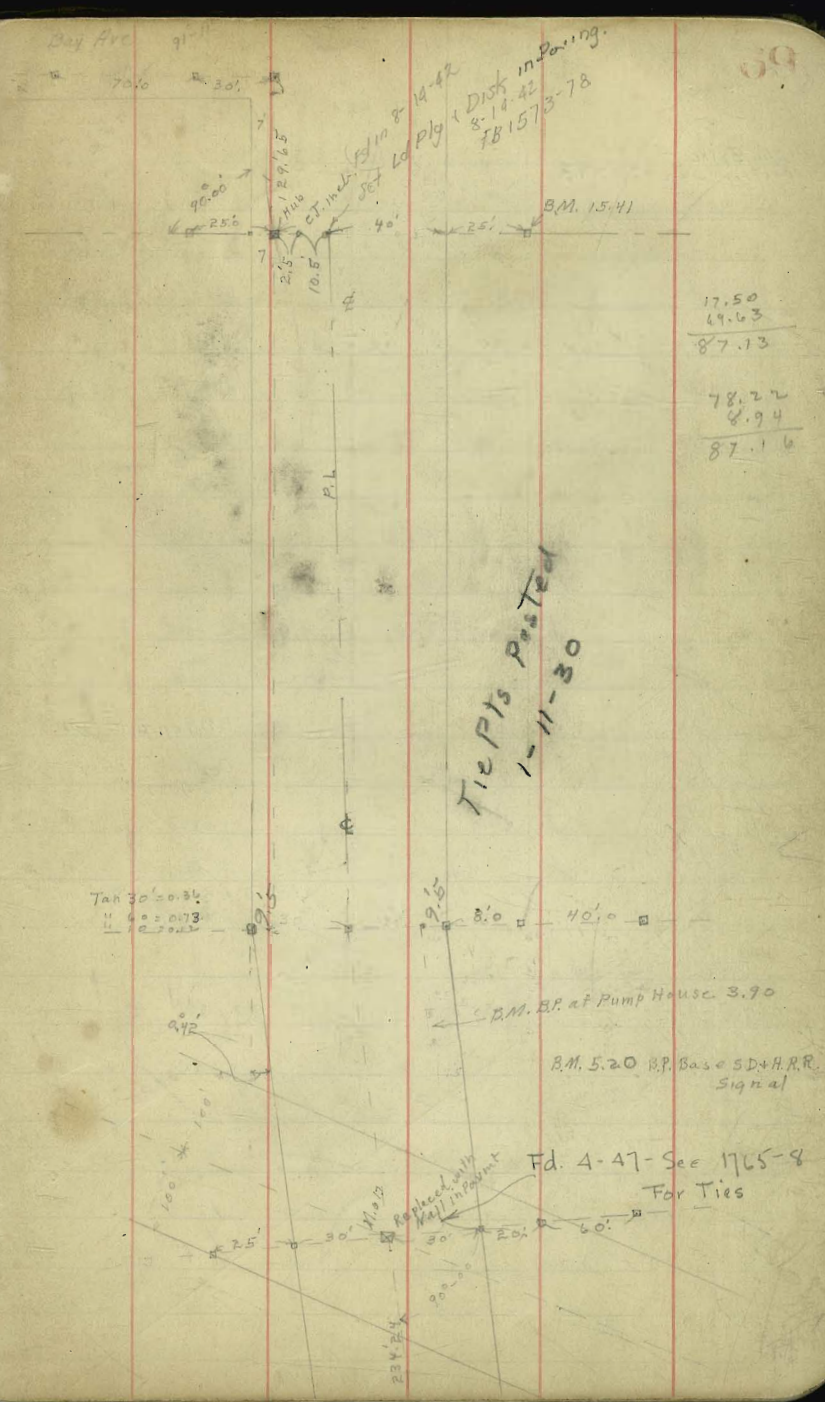
25.82  
 12.76  
 3.83  
 16.57  
 12.76  
 3.83  
 16.57

Tie Pts. Posted  
1-11-30

89.60  
 101.21  
 308.29  
 1128.30  
 1208  
 1111-30  
 121-30

140  
 110  
 110  
 110  
 110  
 110

Fibert St  
 84.31  
 102.20  
 17.89  
 12.77  
 4.94  
 5.11

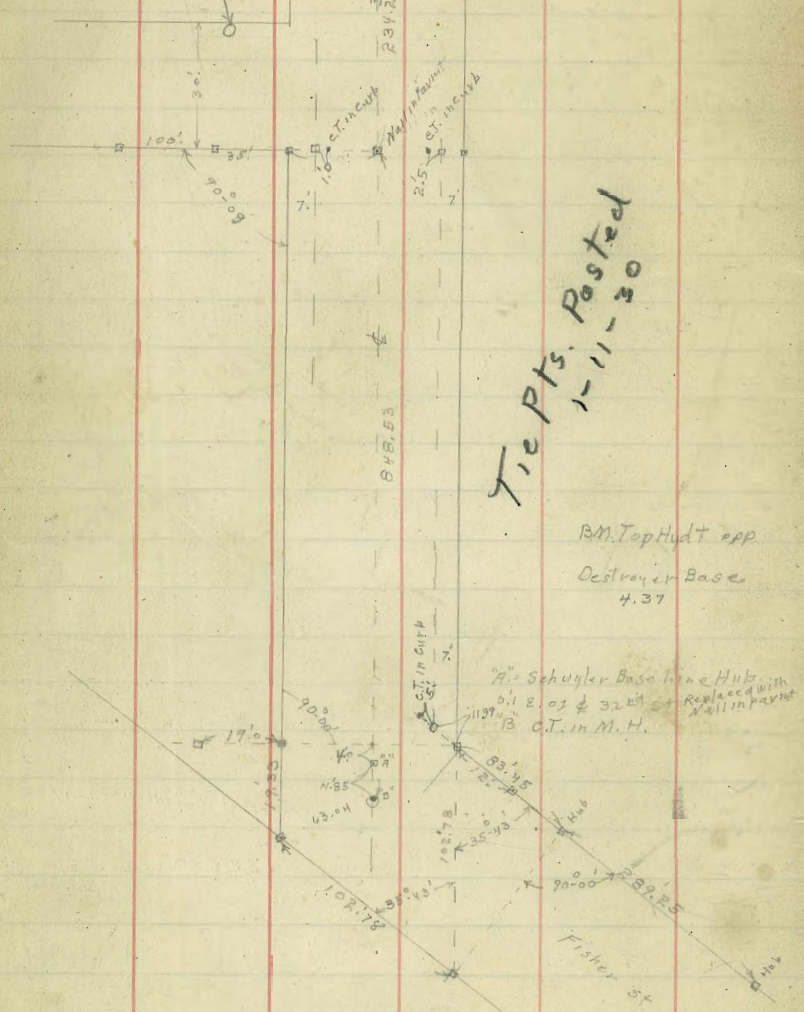


17.50  
 49.63  
 87.13  
 78.22  
 8.94  
 87.16

Tie Pts. Posted  
1-11-30

Fd. 4-47-See 1765-8 For Ties

BM. Spike Pole NW  
 Bay Front + 32.00 7.98



Tie Pts. Posted  
 1-11-30

BM. Top Hudt opp  
 Destroyer Base  
 4.37

A. Schuyler Base line Hub with  
 0.1 E. of & 32.00' replaced with  
 Vall in part  
 B. C.T. in M.H.

Fisher St.

83.45  
 12  
 71.45  
 90  
 85.43  
 125

38.59  
 3.84  
 42.43  
 13.12  
 29.31  
 1.15  
 30.46

39.95  
 1.05  
 41.00

43.11  
 39.95  
 3.16  
 43.20  
 39.95  
 3.35  
 43.20

M. Topd.  
 39.95  
 2.48

28.5

28  
 40

43.11  
 39.95  
 3.16  
 43.20  
 39.95  
 3.35  
 43.20

Culvert  
 2  
 115  
 75

2.48  
 39.95  
 26.70  
 + 13.25

39.95  
 39.95  
 27.25  
 + 12.55

26.78  
 27.25  
 12.75  
 27.25  
 → 27.80

03  
 2.00  
 2.04  
 28  
 .03  
 0.80  
 40  
 .02  
 02  
 120

38.50  
 4.31  
 27.20  
 31.20  
 12.10  
 27.20  
 26.80  
 15.91  
 11.91  
 4.00  
 26.80  
 30.80  
 12.50

3.64  
 38.80  
 75.50  
 + 13.30

39.80  
 24.90  
 + 12.90

26.78  
 27.25  
 12.75  
 27.25  
 → 27.80

13.4  
 27.6

27.20  
 26.80  
 27.50  
 15.91  
 16.31  
 15.01  
 11.91  
 12.31  
 12.01  
 4.00  
 44.00  
 26.80  
 30.80  
 12.50

8.4  
 2.5  
 6.6  
 7.1

21.4  
 21.2  
 25.5  
 26.80  
 28.8  
 31.0  
 24.90  
 + 7.8  
 27.40

14  
 27

70



6-22-29 3R<sup>nd</sup> St Grading, Paving Etc,

12" water Main pipe

	w. cb.		e. cb.	
e. line Main	E138.3		E137.42	
+ 21.12 PC	E138.1	37.20	E137.35	+ 8.34 PC
		4.2		
		38.0		
		9.4		
		5.2		
		4.2		
		32.1		
		10.2		
		6.0		
		4.2		
		35.4		
		31.2		
N. line Cotton	E136.5		E135.5	
	5.84			
54 S. N. line cotton		24.30 11.2		
		4.2		
		30.1		
		12.2		
S. Line Cotton	E134.75		E133.75	
		11.3		
		12.4		
		14.5		

BN 38.59 Mon  
3.76  
42.35

Sewer laterals

#	8.09				
(18)		1.7	+ 6.4	- 4.4	+ 10.8
(19)		3.1	5.0	- 4.8	+ 9.8
(20)		4.09	4.00	- 5.2	+ 9.2
(21)		3.29	4.8	- 5.1	+ 9.9
(22)		3.0	5.1	- 4.7	+ 9.8
(23)		3.0	5.1	- 4.5	+ 9.6

6" Sewer at 32<sup>nd</sup> & Fisher

8.09

At Existing M.H.	6.09	+ 2.00	- 6.93	+ 8.93
+ 57.4 = e. line 32 <sup>nd</sup> St	6.15	+ 1.94	- 6.68	+ 8.62

Sewer laterals

#	B.M. 5.20	9.10	3.90		
(17)		7.4	- 1.7	- 3.6	+ 5.3
(12)		7.0	2.1	- 3.3	+ 5.4
(13)		6.4	2.7	- 3.2	+ 5.9
(14)		6.4	2.7	- 2.8	+ 5.8
(11)		5.26	3.84	- 2.8	+ 6.6

B.M.	3.90	slot #11	sewer lat #14
	3.9	- 2.8	- 2.8
	7.8	10.6	10.6
		3.7	6.7
		+ 6.9	43.9



W.C.

E.C.

00=BK	15.00	14.50
+479	13.00	12.60
+958	11.00	10.70
+432 P.V.C.	9.00	8.80
1 B	8.10	7.90
2 X	7.30	7.10
3 "	6.45	6.40
4 X	5.90	5.80
5 "	5.40	5.30
6 X	5.00	5.00
7 "	4.70	4.70
00-8 C.P.C.	4.50	4.50
+40	4.33	4.33
4.17	4.17	4.17
+20 B	4.00	4.00
+80	3.75	3.75
+40 N.W. Bridge	3.50	3.50

8-25

Electric P.L.S. of 13th

B.M. 15.41	W	15.0	13.0	11.0	7.0	7.3	5.9	5.0	4.5	4.2
0.71		1.8	3.1	5.1	7.1	8.8	10.2	11.1	4.5	4.8
16.12		6.7	3.8	6.0	7.4	9.5	11.2	11.9	5.1	5.0
11.48		16.4	0.7	0.9	0.3	0.7	1.0	0.8	0.6	0.2
4.64	E	14.5	12.6	10.7	8.8	7.1	5.8	5.0	4.5	4.2
4.40		1.6	3.5	5.4	7.3	9.0	10.3	11.1	4.5	4.8
9.04		1.3	3.6	5.4	6.5	9.6	10.3	10.4	5.0	4.9
5.14		10.4	0.1	0.0	10.8	0.6	0.0	0.7	0.8	0.1
3.90	W	4.0	3.7	3.5					5.0	
		5.0	5.3						1.0	
		5.3	5.7						3.4	
		-0.3	-0.4						15.41	
									5.81	
	E	4.0	3.7	3.5						
		5.0	5.3							
		5.1	6.2							
		-0.1	-1.0							
B.M. 3.90										
4.49										
8.39	W	4.00	4.17	4.33	4.50	4.70	5.00	5.40	5.70	6.45
3.84		4.39	6.19	6.03	5.86	5.86	5.36	4.96	4.46	3.91
4.55						5.16				
5.81						10.50				
10.86	E	4.00	4.17	4.33	4.50	4.70	5.00	5.30	5.80	6.30
1.36		6.36	4.39	6.19	6.03	5.86	5.36	5.06	4.56	4.06
9.00										
12.22										
21.22										
	W	7.30	8.10	9.00	11.00	13.00	15.00	16.83	18.67	20.50
		3.06	2.26	1.36	10.22	8.22	6.22	4.39	2.55	0.72
						7.72				
						10.50				
20.50	J	7.10	7.90	9.80	10.70	12.60	14.50	16.17	17.84	19.50
8.70		3.26	2.46	1.56	10.52	8.52	6.72	5.05	3.39	1.70
29.20						8.12		4.55		2.20
						10.50		10.50		11.50
	W	20.65	21.00	21.30						
		8.55		7.90						
						6.40				
						9.70				
						10.10				
	E	21.15	17.83	16.17	14.50					
		8.05	5.70	7.36	9.03					

s/c stakes

P.V.C.

B.K.

B.K.

W.R.T

4901 - 10-49

	W. cl		E. cl
000 S. End. Bridge	3.50		3.50
+33.41 A D-VLL	3.58		3.58
1	3.69		3.69
2	3.80		3.80
3	3.94		3.94
4	4.02		4.02
5	4.14		4.14
6	4.25		4.25
7	4.36		4.36
8	4.47		4.47
9	4.58		4.58
10 B.K. Quarter W. = 0.00	4.69	opposite	4.69
+50 N. Line S.P. H. A. N. W. on W. side	4.80	opposite	4.80
+07.88	4.90		5.00
1133.75	5.00		5.10
3+19.65	(6.34)		5.20
46.6	(6.34)		6.36
2+46.25	(6.34)		6.47
3+08.45 S. Line ATSF ST. H. & W	(6.10)		6.56
3+58.62	(5.87)		6.30
4+08.33 N. Line Bay Front	5.63	opposite	5.93
4+38.2			
S. Line Bay Front	4.14 4.31		5.71

3.90 AM  
4.50  
8.10  
5.00  
3.40  
7.19  
10.59

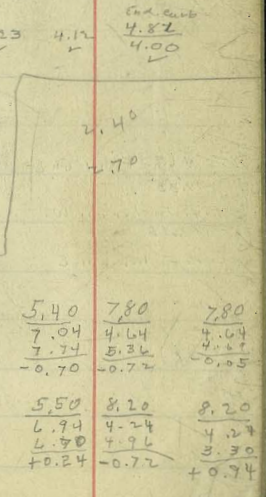
	W	3.5	3.6	3.7	3.8	3.9	4.0	4.1	4.2	4.4
		4.8	4.7	4.6	4.5	4.4	4.3	4.2	4.2	4.2
		5.7	5.2	5.4	4.6	4.2	4.3	4.4	4.4	4.2
		0.9	-0.5	-0.8	-0.1	+0.2	0.0	-0.2	-0.2	-1.2
	C	3.5	3.6	3.7	3.8	3.9	4.0	4.1	4.2	4.4
		4.8	4.7	4.6	4.5	4.4	4.3	4.2	4.2	4.0
		4.5	4.5	4.9	5.0	3.9	4.9	4.0	4.0	7.7
		10.3	10.2	-0.2	-0.15	+0.5	-0.6	-3.8	-3.7	
	W	4.5	4.6	4.7	4.8	4.90	5.00	5.04	6.34	6.1
		3.9	3.8	3.7	3.7	5.8	5.89	7.25	4.25	4.5
		5.7	4.8	5.0	6.5	5.64	5.97	3.58	2.88	2.1
		-1.8	-1.0	-1.3	-0.7	0.00	-0.30	+0.75	+1.67	+2.4
	E	4.5	4.6	4.7	4.8	5.0	5.10	5.20	6.56	6.56
		3.9	3.8	3.7	3.7	5.8	5.49	5.39	4.03	4.03
		7.1	7.2	7.8	7.5	9.6	6.02	4.83	3.10	1.44
		-3.2	-3.4	-5.1	-3.7	-4.0	-0.53	+0.5	+0.93	+2.57
	W	5.9	5.6	5.5	6.56		5.11	5.10		
		3.6	4.6	5.1	5.88					
		+1.1	+0.4		3.30					
	E	6.3	5.9	5.7						
		4.3	4.7	4.7						
		3.1	3.0	3.7						
		+1.2	+1.7	+1.2						
+50 B.K. Quarter W. = 0.00	E 4.02	4.14	4.15	4.26	4.47	4.58	4.69	4.80	4.90	
+50 N. Line S.P. H. A. N. W. on W. side	4.29	4.27	4.56	4.45	4.34	4.23	4.12	4.01	3.91	
+07.88								3.51	3.41	
1133.75								+0.50	+0.50	
3+19.65	W 4.02	4.67	4.56	4.45	4.34	4.23	4.12	4.00	4.00	
46.6	4.79									
2+46.25	5.63									
3+08.45 S. Line ATSF ST. H. & W	5.20									
3+58.62	5.48									
4+08.33 N. Line Bay Front	5.51									
4+38.2	5.01									
S. Line Bay Front	+0.50									
	E 5.75	5.93	7.00	8.00	8.42					
	5.20	5.06	3.99		8.57					
	Rail ATSF	Rail ATSF	Rail ATSF							
	W 4.40	5.10	5.06	7.24	5.10					
	8.04									
	E 3.80	3.2	5.50	5.3	7.02					
	8.04		8.94		5.42					

5.39  
5.20

71

3.90  
4.91  
8.81  
3.61  
5.20  
3.01  
7.98  
10.99  
5.20  
7.24  
12.44

5.20  
5.39  
5.88  
6.50  
5.30  
5.29  
4.85  
4.44



7.80  
7.80  
4.64  
4.64  
4.64  
3.30  
8.20  
8.20  
4.24  
4.24  
4.24  
3.30  
4.76  
4.76

4(111.4)  
27.85  
55.70  
83.55

4.37  
3.55  
7.72  
4.37 BM.  
3.65  
8.02  
2.59  
5.43  
4.15  
9.58

2.57  
4.34  
6.74

7.98  
2.15  
10.13

Stine Bay Front St

+5825

1+16 St B.

# 1

# 2

# 3

# 4

# 5

# 6

# 7

# 8

# 9

# 10

# 11

# 12

# 13

# 14

15 N. Line Fisher on E

19.33

S Line Fisher on W.

102.78

S Line Fisher on E

5.48  
5.19  
4.90  
4.73  
4.54  
4.38  
4.21  
4.03  
3.86  
3.69  
3.52  
3.35  
3.18  
3.00  
2.82  
2.64  
2.47  
2.30  
2.10

5.71  
5.30  
4.90  
4.73  
4.56  
4.38  
4.21  
4.03  
3.86  
3.69  
3.52  
3.35  
3.18  
3.00  
2.82  
2.64  
2.47  
2.30  
2.10  
2.40

7.92  
4.84  
BM 3.0 & B.11 Head N. gate dis. Base

75

W	5.5	5.2	4.9	4.7	4.6	4.4	4.2	4.0	3.9
	4.7	4.4	4.2	4.2	4.0	3.8	3.7	4.0	4.1
	3.8	3.8	4.0	4.3	4.4	4.7	3.2	2.6	2.1
	+0.3	+0.6	+0.7	+0.6	+0.6	+0.5	+0.6	+1.4	+2.0
E	5.7	5.3	4.9	4.7	4.6	4.4	4.2	4.0	3.9
	4.3	4.3	4.2	4.2	4.0	3.8	3.8	4.0	4.1
	3.9	2.7	2.3	3.0	3.1	3.2	2.4	2.4	2.5
	+1.2	+2.2	2.4	+1.9	+1.9	+1.6	+1.2	+1.4	+1.6
W	3.7	3.5	3.3	3.2	3.0	2.8	2.6	2.5	2.3
	4.3	4.3	4.7	4.8	5.0	5.2	5.4	5.5	5.7
	1.5	1.4	1.3	1.0	1.4	3.5	3.1	2.1	2.2
	+2.8	+3.1	+3.4	+3.8	+3.6	+1.7	+2.3	-0.6	-0.5
E	3.7	3.5	3.3	3.2	3.0	2.8	2.6	2.5	2.3
	4.3	4.3	4.7	4.8	5.0	5.2	5.4	5.5	5.7
	2.9	2.4	1.7	2.4	2.7	3.1	3.1	2.8	2.8
	+1.4	+2.1	+3.0	+2.4	+2.3	+1.9	+2.3	+1.7	+2.9
W	2.1				2.10		1.40		
	5.9				5.82		2.2		
	6.2				6.60				
	-0.3				+1.52				
E		2.1				0.75 LW.			
		5.9							
		4.4							
		-0.7							
								1.54	
								4.00	
W	2.10	2.15	2.30						
	4.84	4.79	4.64						
	5.34	5.29	5.14						
	-0.50	-0.50	-0.50						
			N.E.						
E		2.30			2.10		2.10		
		4.64			4.84		4.84		
		3.14							
		+1.50							
E	3.71	5.30	4.90						
	4.92	4.83	5.23						
		4.23	4.23						
		40.50	1.00						
W	5.48	5.19	4.90						
	4.68	4.74	5.23						

15-47.75

716.2

S/C stakes

Rail

R

## Sewer Construction

BM. Man	5.01	43.60	38.59	sw. 32 + Main		
00 = D.E.S. of Boston		3.12	40.48	30.50	+9.98	
+38.33		3.95	39.65	30.00	+9.65	
+76.67		3.58	40.02	29.50	+10.52	
17.15 M.H. 7 d Alley RIK 36		3.67	39.93	29.00 N-S+W	+10.93	
14.66 87		4.30	39.30	27.50	+11.80	
24.18 45 D.M.H. 2		4.34	39.24	26.00 N	+13.24 N	
26.00 77		4.53	39.07	27.00 E.	16.24 E	
34.02 89		4.70	38.90	26.00 S	+13.24 S	
34.45 D.E. N. of Main		5.10	38.50	27.00	+11.00	
Flag C. Line 3200		6.75	38.90	20.80	+18.10	
OMP, D.M.H. 2						
	Ally BIK 36					
	45.65					
00 = M.H. 1 & 32				29.00		
#1		4.94	40.71	30.50	+10.21	
#2		7.85	37.80	32.00	+5.80	
#3		8.85	36.80	33.50	+3.30	
#4	T.P. 8.42	51.10	3.37	42.24	35.00	+7.24
#5		5.21	45.89	36.50	+9.39	
#6 = D.E. W. of 2nd St.		2.95	48.15	38.00	+10.15	
#7	Sewer Laterals	5.6	40.1	31.4	+8.7	
#8	45.65	5.8	39.9	30.7	+9.2	
#9		6.3	39.4	30.1	+9.3	
#10		6.3	39.4	28.9	+10.5	
#11		4.5	41.2	31.4	+9.8	
#12		4.4	41.3	30.5	+10.8	
#13		5.7	40.0	27.4	+12.6	
#14		5.9	39.8	28.4	+11.4	

Sewer Construction

#	H.W.	42.83		38.57			
D.M.H. R=00			3.59	39.24	23.00	+16.24	
+382° E. Line 32.00 ft			3.93	38.90	20.80	+18.10	
+8292					18.24		
1+27 <sup>54</sup>	TP 0.86	30.53	13.16	29.67	15.68		8.19
1+72 <sup>16</sup>	T.P. 2.134	20.54	12.29	18.24			
2+16 <sup>78</sup>			3.81	16.77	13.12	+3.65	
2+16 <sup>78</sup>			5.91	14.67	10.56	+4.11	
A 2+61 <sup>42</sup>	M.H. #3-0100		7.01	13.57	8.90	+5.57	
0+52.14			8.46	12.12	6.75	+5.37	
1+07 <sup>88</sup>			6.36	14.22	5.50	+8.72	
1+61 <sup>82</sup>			9.91	10.67	4.25	+6.42	
2+15 <sup>76</sup>			10.20	10.38	3.00	+7.38	
2+69 <sup>20</sup>			3.08	17.50	1.75	+15.75	
Δ 3+23 <sup>14</sup>	M.H. #4	2.20	19.03	3.75	16.83	+0.50	
0+54.22			4.30	14.73	-0.67	+15.40	
1+08 <sup>74</sup>			6.79	12.24	-1.83	+14.07	
1+63 <sup>11</sup>	M.H. #5 as connection with 24" Sewer		12.61	6.42	-3.0	+9.42	

B.M. 3.90

4.07

7.97

2.67

5.30

7.09

0.88

7.17

0.80

3.8

1.18

3.90

4.14

8.04

2.67

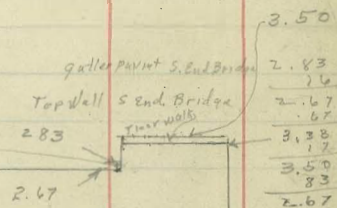
5.37

4.54

.83

S. Bulk Head.

Top curb S end Bridge



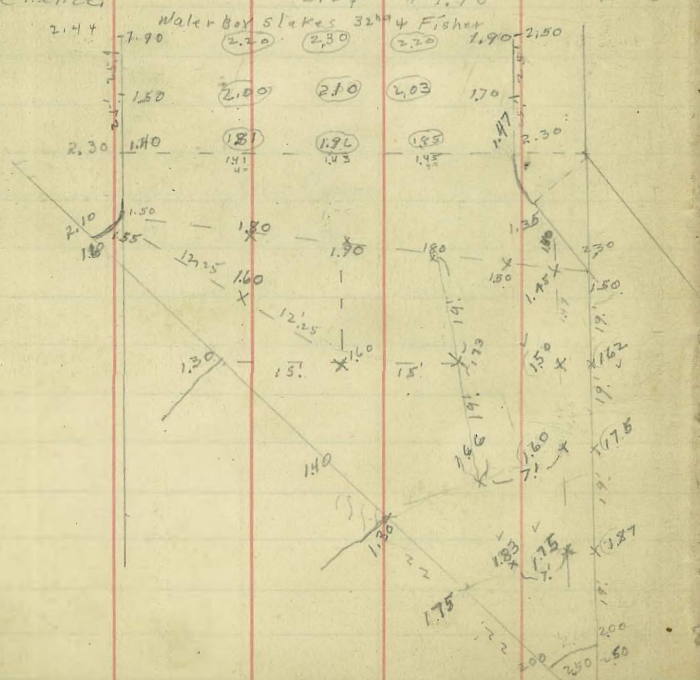
3.50

4.54

Culvert at S. Ep 4 32<sup>nd</sup> Base

AM. 386	4.94	3.08	M. side detour
Topwater Pipe at M.H.	7.71	-0.77	
Bottom "		-1.60	
Top el. N.E. 32 <sup>nd</sup> Fisher	8.64	2.30	
Gutter "		1.30	
Top el. S.W. "	4.84	2.10	
Top el. at el. H. let. W. side 32 <sup>nd</sup>	4.64	2.30	
Gutter "		1.30	
Pavmt. inside Base	5.77	1.20	

6.82			
F.L. inlet W. Cor 32 <sup>nd</sup> + Fisher Spoo	1.05	5.77	-3.60
X 6.94			
F.L. " R. W. side line 32 <sup>nd</sup> St: 0+50	4.64	2.30	-4.00
0+82 Base Fence	5.27	+1.70	-4.20



3.08	2.38	2.10	1.88	1.58	1.50	1.30	1.70	
4.78	4.97	5.19	5.68	5.73	5.78	5.78	5.58	
7.28								
	4.64		4.78					
	2.44		2.50					
	3.08	1.50	2.30	1.70	1.90	1.30	2.50	
	3.39	4.97	4.17	4.77	7.57	5.17	3.97	
	6.47		4.15				4.47	
	4.77						-0.50	
	1.70							

7.19	7.27
-0.72	0.80
	4.60
	1.87

4.126	2.03
-------	------

3.08	3.08	4.52	5.42
3.39	3.74	1.50	1.46
6.47	6.82	4.58	
4.77	2.30		
1.70			

181	196	185
448	433	444

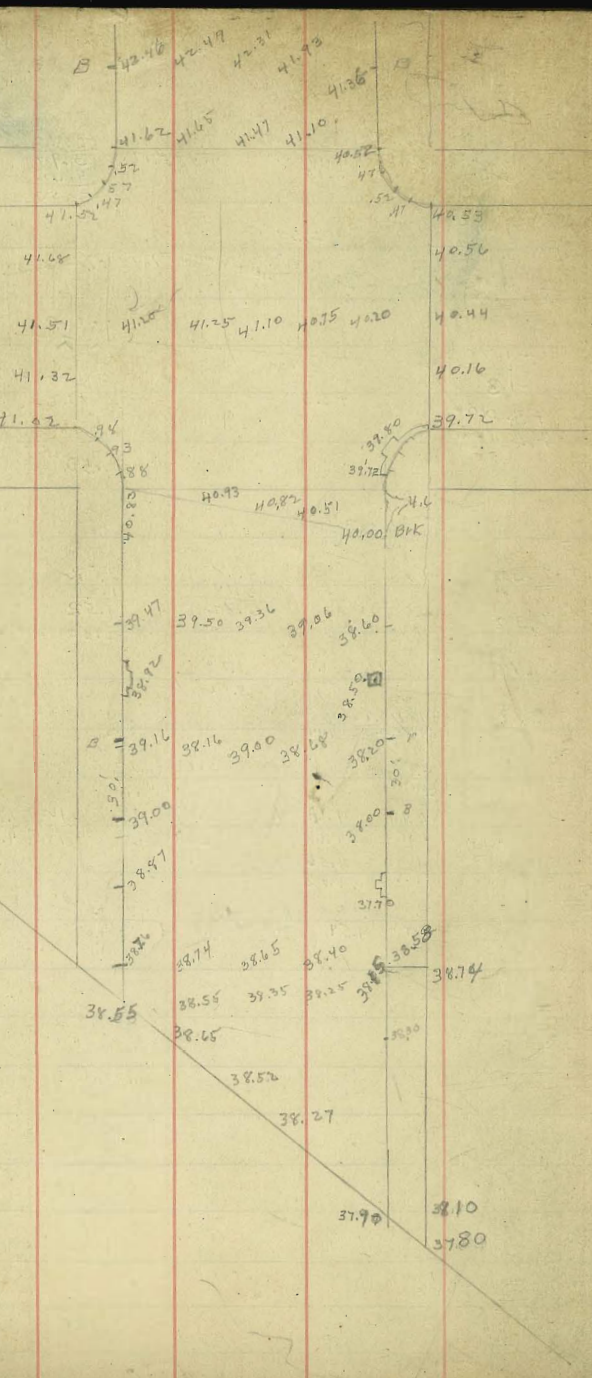
200	190	170	175	165	175	190	200	4.99
4.46	4.61	4.77	4.87	1.75	1.75	1.75	4.37	4.29
1.83	1.68	1.52	2.00	1.90	1.75	4.54	4.37	1.30
4.42	4.56	4.70	1.59					
1.87	1.75	1.59						
1.83	1.75	1.87	1.60	1.66	1.73			
4.46	4.54	4.42	4.64	4.63	4.56			

78



Boston

Main



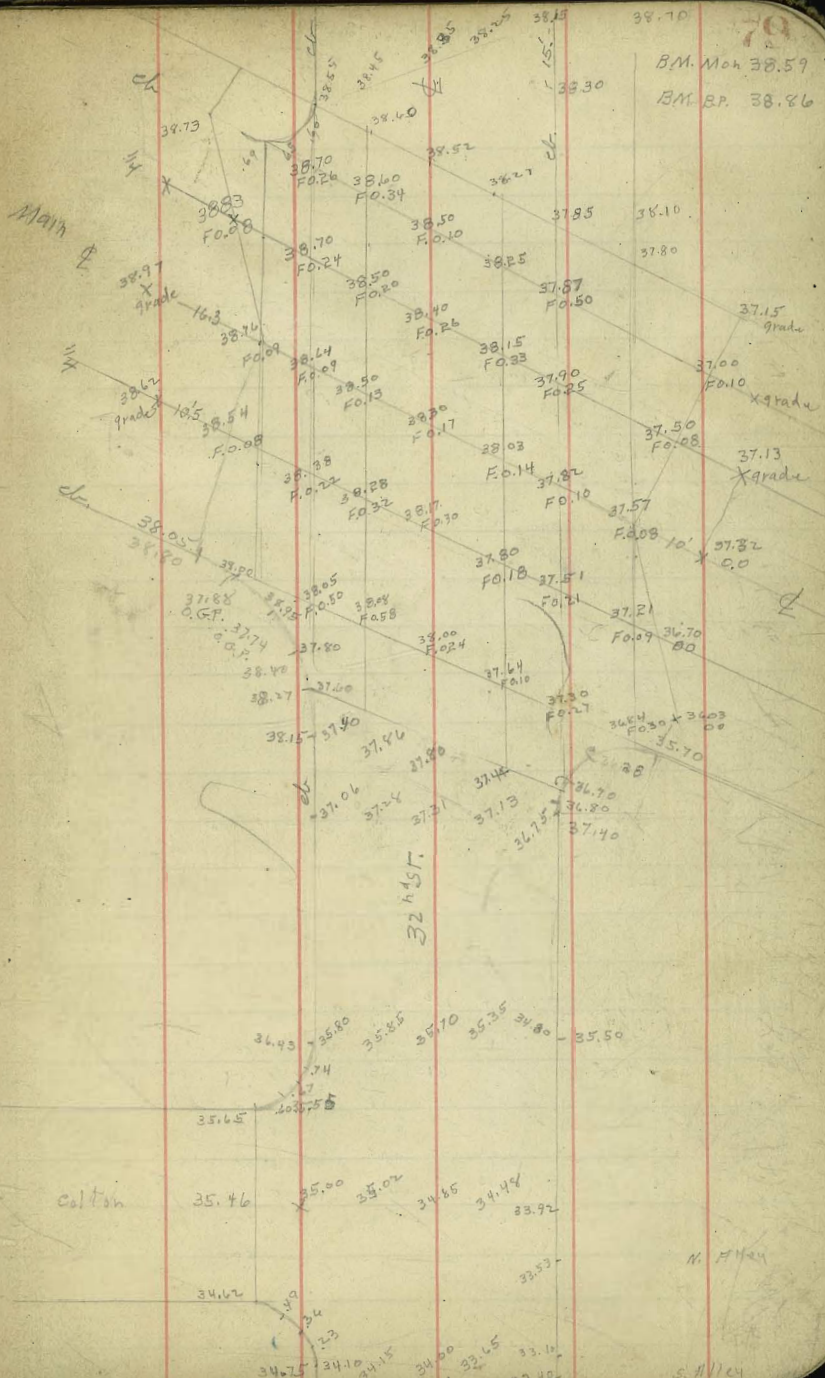
B.M. Mon 38.59

B.M. Br. 38.86

Main

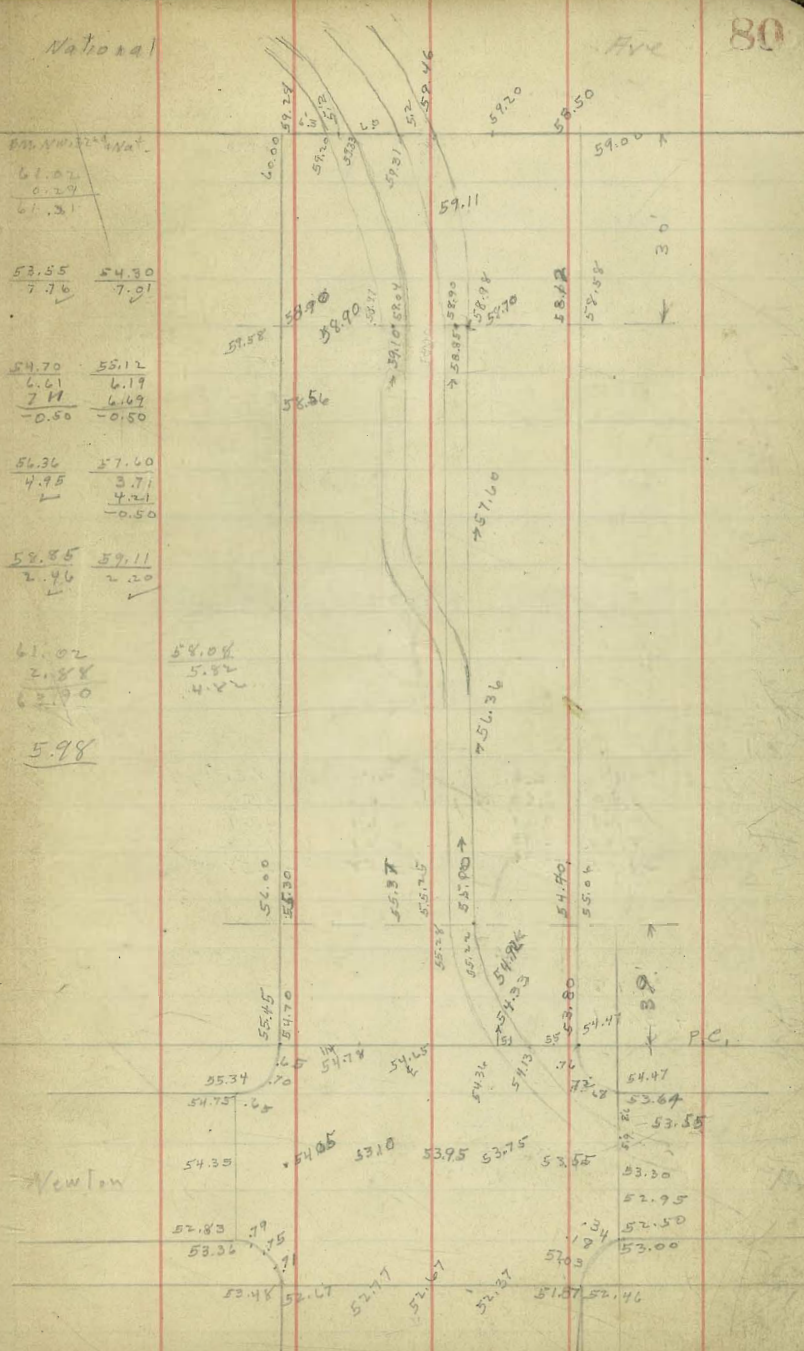
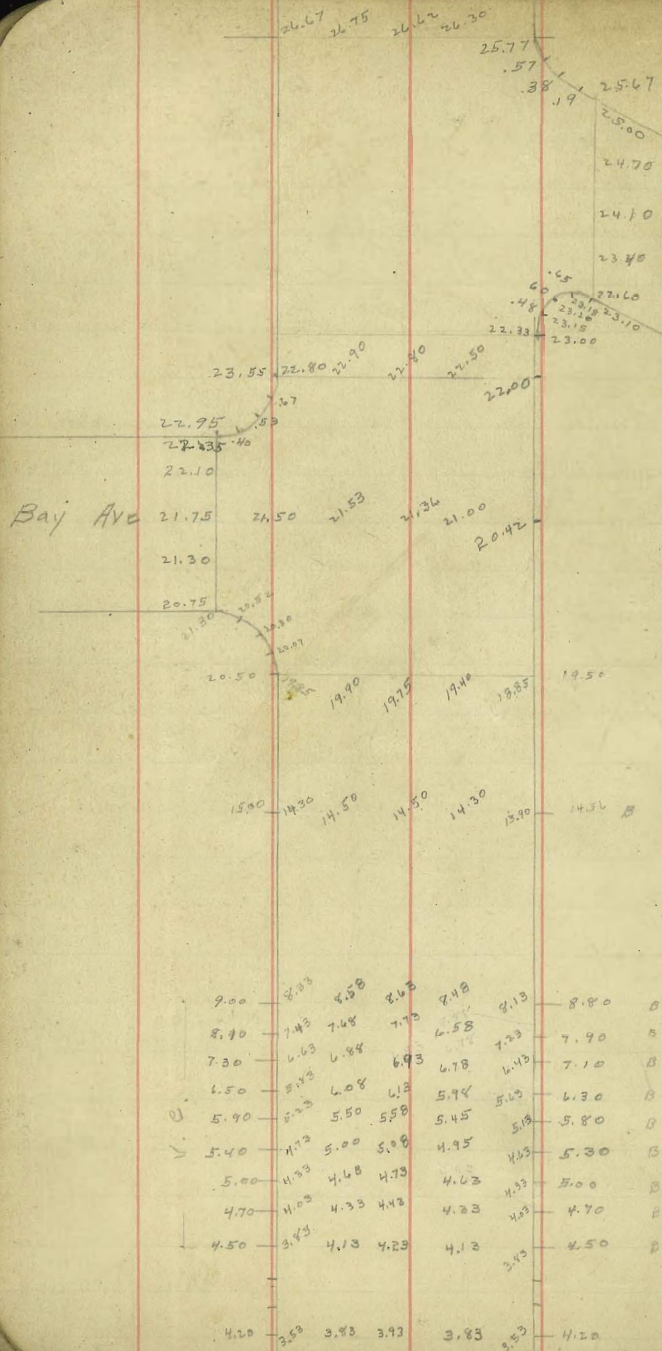
32nd St.

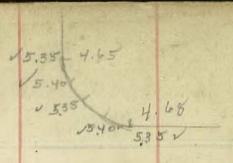
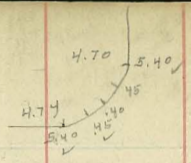
Colton



N. 11/124

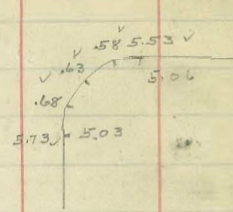
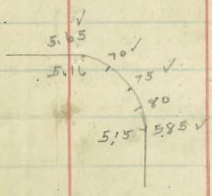
S. 11/124





Meads

st



33 1/2

5.47  
6.15  
.68  
7.90

5.85  
6.54  
.56

3.90  
4.24  
8.19

5.60  
6.30  
5.37  
6.08

S.W.	S.E.	N.W.	N.E.
3.50	3.50	3.50	3.50
4.69	4.69	4.69	4.69
8.74	3.75	8.27	11.24
-4.05	+0.96	-3.58	-6.58

4.78  
+ 3.41

DIRECTIONS FOR USE OF TABLES

TABLE No. 1.

Distance of slope stake from side or shoulder stake for any width roadway, slope 1/2 to 1. If ground is nearly level, the cut or fill at side stake is located by the double entry method in left column and top row. The number in body

of table in same row and column gives distance from side stake to slope stake. If ground is not

level, the side stake and slope stake, lower target by this amount if cut, elevate if fill. Add this amount to cut or fill and find distance in table. Set up rod at this point and line of sight should cut target.

necessarily.

**IMPROVED TABLES AND INFORMATION**

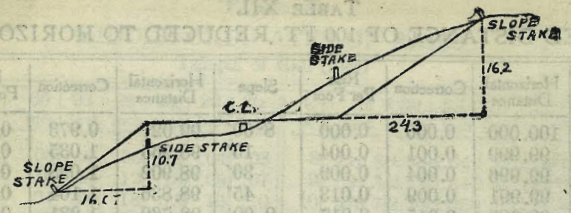
TABLE No. 2.

To find Tangent and External for curve of any other degree, divide by degree of curve and add correction found in column of corrections.

Degree of curve with a given T may be found by dividing tangent, (or external), opposite T by given tangent, (or external).

The distance from a point on the tangent to the curve is very nearly the square of the tangent length divided by twice the radius.

INCLINED PLANE OF ROAD REDUCED TO HORIZONTAL



DISTANCES FROM SIDE STAKES FOR CROSS-SECTIONING.

SLOPE 1 1/2 TO 1. ROADWAY OF ANY WIDTH.

	0	.1	.2	.3	.4	.5	.6	.7	.8	.9	
0	0.00	0.15	0.30	0.45	0.60	0.75	0.90	1.05	1.20	1.35	0
1	1.50	1.65	1.80	1.95	2.10	2.25	2.40	2.55	2.70	2.85	1
2	3.00	3.15	3.30	3.45	3.60	3.75	3.90	4.05	4.20	4.35	2
3	4.50	4.65	4.80	4.95	5.10	5.25	5.40	5.55	5.70	5.85	3
4	6.00	6.15	6.30	6.45	6.60	6.75	6.90	7.05	7.20	7.35	4
5	7.50	7.65	7.80	7.95	8.10	8.25	8.40	8.55	8.70	8.85	5
6	9.00	9.15	9.30	9.45	9.60	9.75	9.90	10.05	10.20	10.35	6
7	10.50	10.65	10.80	10.95	11.10	11.25	11.40	11.55	11.70	11.85	7
8	12.00	12.15	12.30	12.45	12.60	12.75	12.90	13.05	13.20	13.35	8
9	13.50	13.65	13.80	13.95	14.10	14.25	14.40	14.55	14.70	14.85	9
10	15.00	15.15	15.30	15.45	15.60	15.75	15.90	16.05	16.20	16.35	10
11	16.50	16.65	16.80	16.95	17.10	17.25	17.40	17.55	17.70	17.85	11
12	18.00	18.15	18.30	18.45	18.60	18.75	18.90	19.05	19.20	19.35	12
13	19.50	19.65	19.80	19.95	20.10	20.25	20.40	20.55	20.70	20.85	13
14	21.00	21.15	21.30	21.45	21.60	21.75	21.90	22.05	22.20	22.35	14
15	22.50	22.65	22.80	22.95	23.10	23.25	23.40	23.55	23.70	23.85	15
16	24.00	24.15	24.30	24.45	24.60	24.75	24.90	25.05	25.20	25.35	16
17	25.50	25.65	25.80	25.95	26.10	26.25	26.40	26.55	26.70	26.85	17
18	27.00	27.15	27.30	27.45	27.60	27.75	27.90	28.05	28.20	28.35	18
19	28.50	28.65	28.80	28.95	29.10	29.25	29.40	29.55	29.70	29.85	19
20	30.00	30.15	30.30	30.45	30.60	30.75	30.90	31.05	31.20	31.35	20
21	31.50	31.65	31.80	31.95	32.10	32.25	32.40	32.55	32.70	32.85	21
22	33.00	33.15	33.30	33.45	33.60	33.75	33.90	34.05	34.20	34.35	22
23	34.50	34.65	34.80	34.95	35.10	35.25	35.40	35.55	35.70	35.85	23
24	36.00	36.15	36.30	36.45	36.60	36.75	36.90	37.05	37.20	37.35	24
25	37.50	37.65	37.80	37.95	38.10	38.25	38.40	38.55	38.70	38.85	25
26	39.00	39.15	39.30	39.45	39.60	39.75	39.90	40.05	40.20	40.35	26
27	40.50	40.65	40.80	40.95	41.10	41.25	41.40	41.55	41.70	41.85	27
28	42.00	42.15	42.30	42.45	42.60	42.75	42.90	43.05	43.20	43.35	28
29	43.50	43.65	43.80	43.95	44.10	44.25	44.40	44.55	44.70	44.85	29
30	45.00	45.15	45.30	45.45	45.60	45.75	45.90	46.05	46.20	46.35	30
31	46.50	46.65	46.80	46.95	47.10	47.25	47.40	47.55	47.70	47.85	31
32	48.00	48.15	48.30	48.45	48.60	48.75	48.90	49.05	49.20	49.35	32
33	49.50	49.65	49.80	49.95	50.10	50.25	50.40	50.55	50.70	50.85	33
34	51.00	51.15	51.30	51.45	51.60	51.75	51.90	52.05	52.20	52.35	34
35	52.50	52.65	52.80	52.95	53.10	53.25	53.40	53.55	53.70	53.85	35
36	54.00	54.15	54.30	54.45	54.60	54.75	54.90	55.05	55.20	55.35	36
37	55.50	55.65	55.80	55.95	56.10	56.25	56.40	56.55	56.70	56.85	37
38	57.00	57.15	57.30	57.45	57.60	57.75	57.90	58.05	58.20	58.35	38
39	58.50	58.65	58.80	58.95	59.10	59.25	59.40	59.55	59.70	59.85	39
40	60.00	60.15	60.30	60.45	60.60	60.75	60.90	61.05	61.20	61.35	40
41	61.50	61.65	61.80	61.95	62.10	62.25	62.40	62.55	62.70	62.85	41
42	63.00	63.15	63.30	63.45	63.60	63.75	63.90	64.05	64.20	64.35	42
43	64.50	64.65	64.80	64.95	65.10	65.25	65.40	65.55	65.70	65.85	43
44	66.00	66.15	66.30	66.45	66.60	66.75	66.90	67.05	67.20	67.35	44
45	67.50	67.65	67.80	67.95	68.10	68.25	68.40	68.55	68.70	68.85	45
46	69.00	69.15	69.30	69.45	69.60	69.75	69.90	70.05	70.20	70.35	46
47	70.50	70.65	70.80	70.95	71.10	71.25	71.40	71.55	71.70	71.85	47
48	72.00	72.15	72.30	72.45	72.60	72.75	72.90	73.05	73.20	73.35	48
49	73.50	73.65	73.80	73.95	74.10	74.25	74.40	74.55	74.70	74.85	49
50	75.00	75.15	75.30	75.45	75.60	75.75	75.90	76.05	76.20	76.35	50

Computed by L. Leland Locke.

S.P. + A.A. ...  
 5.20  
 4.45  
 10.05

3.08 Bolt. Dis. Base  
 4.75  
 4.74  
 8.22

5.86  
 4.19  
 3.63  
 7.82  
 5.69

2.13 B.M. BP. S.W. 3rd + Fisher at Disroyer base

38.3  
 225.4  
 263.7

486.75  
 323.64  
 163.11

64  
67  
4.97

3) 40  
8  
30  
1.33

1944  
174  
15552  
13608  
94  
346032  
15.11  
17.88  
102.50  
32.99  
19.21

121.17  
1.33

89.60  
51.31  
38.29

678  
13

F 0.5  
F 0.50

N 89°-43 E  
N 0-27 W  
90-10  
89-50

6.15  
7.45  
1.50

1786  
17.88  
61.21  
3  
90109  
1572025.52  
12.76  
15.76  
2.98  
76.99  
5112  
102.10

7.0000  
6.2628  
73760  
70452  
38080  
8.94  
1.28  
5.12

3.43  
7828 / 30000  
23484  
65160  
62624  
25536

12.76 12.76  
3.93 8.12  
16.59 17.88

679.5  
13.25  
33

13.78  
7922  
1276  
92.88

611.67  
30.  
581.67



525 35  
45 2.75  
314.68  
157.34  
1824  
110  
140  
43



121.17  
59.8  
59.5  
119.3  
29.65

3190  
46.67  
46.68  
93.88  
162.52  
150.  
12.50

37.07  
13  
24.07

810220  
1.277  
7  
8.939

35  
11  
44

36  
10  
46

210.22  
5.11

320

105 44  
420  
88.5  
17.5  
71.0  
17.5  
53.5

44 = X  
105 87

17  
20.5  
3.75

60.585  
60.585  
121.170

58  
4  
25.2  
88  
33  
53

