

GRADE

146

PASTS

FIELD BOOK

No. 385

4.67

Our Leather Bound Engineers Note Books are carried in the following rulings:

- No. 380 LEVEL BOOK. Left and Right Hand Page the same as Left Hand Page of this Book.
- No. 382 FIELD BOOK. Left Hand Page as in this Book, Right Hand Page 4 x 4 to the inch, Center Line Red.
- No. 384 MINING TRANSIT BOOK. Left Hand Page as in this Book, Right Hand Page 8x8 to the inch, Center Line Red.
- No. 385 FIELD BOOK. Left Hand Page as in this Book, Right Hand Page 8 vertical and 4 horizontal lines to the inch, Center Line Red.

We also carry the Note Books listed above, bound in extra strong Fabri-Hide (otherwise the same quality of book), which can be furnished at a somewhat lower price.

In ordering Fabri-Hide covered books, add the letter "F" to catalog number.

THE FREDERICK POST CO.
ENGINEERING and DRAFTING SUPPLIES
IRVING PARK STATION
CHICAGO, ILL.

MICROFILMED

APR 8 1965

Sewer Construction
 & Zola St. Rosecrans to Chalaworth

BM	10.03	28.04		18.01 SW	Rosecrans Xenophon		
T.P.	11.19	36.66	2.57	25.47			
8.21 M & Rosecrans Outlet			13.07	23.59	18.05	+5.54	
23' E of Wline Rosecrans 002 M.H.			11.19	25.47	19.01	+6.46	
+50.2			3.92	32.74	26.00	+6.74	
T.P.	12.26	49.61	(0.01)	(36.65)			
1101.2			9.12	40.49	33.00	+7.49	
1152.1			1.29	48.32	46.00	+8.32	
T.P.	12.28	62.35	(0.24)	(49.37)			
1102.2			7.94	54.41	47.00	+7.41	
2253.5	T.P.	13.07	75.04	(0.38)	(61.97)	54.00	+7.97
3+02.3			3.33	71.71	61.00	+10.71	
M.H. & Locust	T.P.	13.21	87.90	(0.35)	(74.68)		
3+55.2			6.41	71.49	68.00	+13.49	
T.P.	12.28	100.48	(0.40)	(87.50)			
3+75.1 BK			12.30	88.18	70.00	+18.18	
(46.33)							
4+43.3			5.29	95.19	79.86	+15.33	
T.P.	12.20	113.35	(0.63)	(100.45)			
4+91.2			11.32	102.03	89.72	+12.31	
M.H.			5.60	107.75	99.58	+8.17	
5+40.2			(0.14)	(113.71)			
T.P.	13.04	126.25	12.70	113.55	104.76	+8.79	
6+01.2			7.09	119.16	108.94	+10.22	
6+63.2			1.99	124.26	115.12	+9.14	
M.H. & Evergreen			(0.55)	(125.90)			
7+25.0	T.P.	13.05	138.95	9.70	129.25	119.81	+9.44
61.47			6.08	132.87	124.50	+8.37	
7+86.7			2.91	136.14	129.18	+6.96	
8+48.4			(0.19)	(138.76)			
M.H.	T.P.	5.93	144.69	5.59	139.10	129.61	+9.49
9+10.0			3.88	140.81	130.04	+10.77	
9+71.2			11.66	136.82	130.47	+6.35	
10+33.4	T.P.	7.67	148.48				
M.H. & Willow							
10+95.0							

138.95
 11.45
 127.50 SW BK GP
 Zola & Evergreen

	148.48				
MH & Willow				130.47	+6.35
10+25.0 (46.25)					
11+41.25	8.60	139.88	120.80		+9.08
11+27.50	5.41	143.07	131.12		+11.95
12+33.25	3.74	144.70	131.45		+13.25
12+80 M.H.	4.19	144.29	131.77		+12.52
13+26.25	5.55	142.93	132.16		+10.83
13+72.50	7.47	141.61	132.42		+8.59
14+18.25	7.93	140.55	132.75		+7.80
MH & P14M					
14+65.0	8.55	139.93	133.06		+6.87
15+11.25 T.P. 13.10	155.26	6.32	142.16	133.85	+8.31
15+57.50	10.30	144.96	134.44		+10.32
16+03.75	10.74	144.52	135.43		+9.09
16+50 M.H.	11.31	143.95	136.21		+7.74
16+96.25	13.71	141.55	137.00		+4.55
17+42.50	11.98	143.28	137.78		+5.50
17+88.25	7.50	147.76	138.56		+9.20
M.H. & Clov. L					
18+25.0 (47.50)	5.87	149.37	139.35		+10.04
18+82.50	6.14	149.12	141.01		+8.11
19+30.25	4.06	151.20	142.47		+8.53
19+77.50	2.33	152.93	144.23		+8.60
20+25.00 M.H. T.P. 207	143.66	0.67	154.59	146.00	+8.59
20+72.50	7.74	155.92	147.66		+8.26
21+20.25	6.46	151.20	149.33		+7.88
21+67.50	5.30	158.36	150.99		+7.37
22+15.00 DE,	2.18	161.48	152.65		+8.83

$$\frac{12.58}{11.16} \\ 13.71$$

Sewer Construction
 Alcot St. Rose crans to Chatsworth

PR

Page 5
 37.82

20' E of Whine- = 00			8.49	29.33	23.06	+6.27
Rose crans = M.H.			(0.24)	(37.58)		
T.R. 13.61	50.59		12.41	37.94	26.80	+11.18
0+57.5						
1+15.0			9.44	41.15	30.54	+10.61
1+72.5			11.76	38.83	34.28	+4.55
M.H.						
2+36.0			4.94	45.65	38.01	+7.64
TP 12.76	62.93		(6.42)	(50.17)		
2+87.5			12.04	50.89	44.28	+6.61
3+45.0			5.95	56.98	50.55	+6.43
4+02.5			1.82	61.11	56.82	+4.29
RT. Math Line & High Line T.P. 12.41	75.52		(6.02)	(62.91)		
4+10.0 M.H.			5.66	69.86	63.08	+6.78
TP 13.22	88.58		(0.76)	(75.36)		
5+13			7.61	80.97	63.45	+17.52
5+66			5.10	83.44	63.82	+19.66
TP 4.17	92.55		(8.22)	(88.36)		
6+19			2.53	90.02	64.19	+25.83
6+72			7.24	85.31	64.56	+20.75
Evergreen T.P. 0.04	79.33		(13.20)	(79.29)		
7+25 M.H.			2.91	76.42	64.94	+11.48
7+81.25			5.37	73.94	65.33	+8.63
8+37.50			7.40	71.93	65.72	+6.21
8+93.75			9.78	70.15	64.11	+4.04
TP 11.92	91.11		(6.14)	(79.19)		
9+50 M.H.			15.04	76.07	66.81	+9.56
9+98.33			8.50	82.61	78.35	+4.26
TP 12.74	103.20		(0.23)	(90.86)		
10+46.67			7.70	95.90	90.19	+5.71
Willow T.P. 12.71	114.89		(1.43)	(102.18)		
10+95 M.H.			2.61	112.28	102.04	+10.24

Alcot St High Line

4+60	69.86	63.08	+6.78
5+13	80.97	67.69	+13.28
5+66	83.48	72.30	+11.18
6+19	90.02	76.91	+13.11
DE 6+50	30089.55	79.61	+9.94

♀ Willow 10+95 M.H. 61.67	114.89	2.61	112.28	102.04	+10.24
11+56 67		5.76 (6.23)	109.13 (112.67)	106.54 B.P. N.W. Willow & Alcot	+2.59
12+14 33	T.P. 12.96 125.60	8.40	117.20	111.04	+6.16
12+40.00		1.90 (6.14)	123.70 (125.40)	115.54	+8.16
13+41 67	T.P. 13.29 138.75	8.60	130.13	120.04	+10.09
14+03 33		3.54	135.21	124.54	+10.67
♀ Plum 14+45.00 M.H. 61.67	T.P. 13.30 152.05	6.00 13.05	138.75 139.00	129.05	+9.95
15+26 67		11.28	140.77	131.45	+9.32
15+88 33		9.78	142.27	133.85	+8.42
16+50		5.67	146.38	136.26	+10.12
17+11 67		4.29	147.76	138.67	+9.09
17+73 33		2.65	149.40	141.07	+8.33
♀ clove 18+35.00 M.H. 50	T.P. 12.32 162.63	2.44 (6.74)	149.61 (150.31)	143.48	+6.13
18+85		12.94	149.69	145.43	+4.26
19+35		12.52	150.11	147.38	+2.73
19+85		10.48	152.15	149.23	+2.92
20+35		5.75	156.88	151.28	+5.60
20+85 DE		2.42	160.21	153.23	+6.98
		6.68	155.95		

8.26

Sewer Construction
 Rosecrans St & Zoloto & Curtis
 on a line 20' C of W Line Rosecrans

W 33, 5th, Rose & Curtis

5

5

			Page 1			
002MH						
♀ Zola	12.35	37.82	25.47	19.01	+6.46	
0+45		11.18	26.64	19.64	+6.96	
0+90		10.92	26.90	20.35	+6.55	
1+35		10.14	27.68	21.02	+6.66	
1+80		9.36	28.46	21.70	+6.76	
2+25		8.55	29.27	22.38	+6.89	
♀ Hicot R+70MH 45		8.49	29.33	23.06	+6.27	
3+15		6.65	31.17	24.05	+7.12	
3+60		5.74	32.08	25.04	+7.04	
4+05		4.82	33.00	26.03	+6.97	
4+50		3.96	33.86	27.02	+6.84	
4+95 T.P	11.71	46.55	2.98	34.84	28.01	+6.83
♀ Browning 5+40 M.H 45		11.28	35.27	29.00	+6.27	
5+85		9.55	37.00	29.79	+7.01	
6+30		8.62	37.93	30.78	+6.95	
6+75		7.65	38.90	31.97	+6.93	
7+20		6.12	40.43	32.96	+7.47	
7+65		5.36	41.19	33.95	+7.24	
♀ Curtis 8+10 M.H.		4.95	41.60	34.94	+6.66	

Sewer Construction

♀ Browning, Rosecrans To D.E.W. of Willow
45.94

Rosecrans 00=MH				29.00	+6.27
0+50.2		5.77	40.17	34.07	+6.10
1+01.4	58.39	12.65	45.74	39.14	+6.60
1+52.4		7.74	50.65	44.21	+6.74
2+02.4		1.19	57.20	49.29	+7.92
2+53.5	71.12	8.91	62.21	54.35	+7.96
3+04.3		2.10	69.02	59.42	+9.60
♀ Lowest 3+55 M.H.	83.75	9.10	74.65	64.50	+10.15
3+95 Brk 5		5.24	78.51	66.50	+12.01
4+50	96.64	13.27	83.41	72.99	+10.42
5+05		7.60	89.68	79.44	+9.60
5+60		1.80	94.88	85.97	+8.91
6+15	109.57	7.57	102.00	92.46	+9.54
6+70		1.79	107.78	98.95	+8.83
♀ Evergreen 7+25 M.H.	122.21	11.65	110.56	105.44	+5.12
52.95 7+79		9.85	112.36	108.03	+4.33
8+30.4		6.49	115.72	110.62	+5.10
8+83.4		1.93	120.28	113.21	+7.07
9+36.5	125.24	9.66	125.58	115.40	+9.78
9+98.2		5.22	130.02	118.39	+11.63
10+42.4		4.64	130.60	120.98	+9.62
♀ Willow 10+95 M.H.		5.79	129.45	123.57	+5.88

C

6

135.24
13.24
172.00
0.21
112.21
12.79
107.22
0.25
109.57
12.97
96.60
0.08
96.88
13.27
83.41
0.34
83.75
12.45
70.90
0.22
71.12
13.07
58.05
0.34
58.39
12.65
45.74
0.20
45.94

Browning St

W. Willow	135.24			
10+95 ^c MH		5.79	129.45	123.57
11+49		3.57	131.67	124.65
11+93		2.74	132.50	125.73
12+42		1.82	133.42	126.81
12+91		1.13	134.11	127.89
13+40 DE		0.27	134.97	128.96

Sewer Construction

W. to D.E. from existing M.H. in Plum St

18 Plum St	W. to D.E.			
01+00 = 8x MH	147.76		130.30	130.30
07+47.5		17.46		
07+95		9.18	138.58	132.32
1+42.5		5.86	141.90	134.36
1+90.0 MH	760.16	2.30	145.46	136.39
2+37.5		11.31	148.85	138.42
2+85		7.74	152.42	140.53
3+32.5		4.34	155.82	142.64
3+80 MH		3.02	157.14	144.74
4+30		1.71	158.45	146.45
4+80		5.41	154.75	147.20
5+30		5.89	154.27	147.55
5+80		7.71	152.45	147.90
6+30 D.E.		7.16	153.00	148.25
		6.42	153.74	148.60

29.35
136.46
78.12
2.05
7.64
7.78
17.46

148.86 58 Outfit
11.30 d Chatsworth
160.16
12.63
147.53
0.23
147.76
2.77
134.97
0.27
135.24

Sewer Construction

4 Curtis from Rosecrans to DE
West of Evergreen

4

Station	Notes	Station	Station	Station	Station	Station	Station
10+							
11+	14 Rosecrans 00 = MH	12		34.94			+6.66
11+		12.66	56.99	44.33			
11+	04502			12.10	44.89	38.49	+6.40
12+	11012			8.36	48.63	42.04	+6.59
12+	11522			4.60	52.39	45.59	+6.80
13:	2+522 T.P.	13.01	69.55	0.45	56.54	49.14	+7.40
	2+522 E			9.16	60.39	52.69	+7.70
	3104 E			5.15	64.40	56.24	+8.16
	4 Locust 3+55 MH			3.25	66.30	59.79	+6.51
	52.9					2.7	
14P	4+072	T.P. 12.95	82.21	1.20	68.35	63.49	+4.86
040	4+602			(0.29)	(69.26)		
07	5+132			9.83	72.38	67.19	+5.19
07	5+132			5.40	76.81	70.89	+5.92
07	5+662			0.78	81.43	74.59	+6.84
		T.P. 13.19	94.90	(0.50)	(81.70)		
1+	6+192			9.23	85.67	78.29	+7.38
1+	6+722			4.56	90.40	81.99	+8.41
2+	4 Evergreen 7+25 MH			2.34	92.56	85.69	+6.87
	49					31.43	
2+	7+74			0.61	94.29	89.12	+5.17
3+2	8+23	T.P. 13.04	107.94	(0.80)	(94.90)		
40	9+72			10.26	97.58	92.55	+5.03
3+	9+72			5.98	101.96	95.98	+5.98
4+	9+21			1.78	105.96	99.41	+6.55
		T.P. 8.90	116.80	(6.04)	(107.90)		
4+	9+70 D.E.			6.77	110.03	102.84	+7.19
5+							
5+							
6+							

Sidewalk Grades
S.W. Cor 65th + Imperial

00 - White 65 th	212.	221.20	221.5
+50' W		221.40	221.7
100' W		221.60	221.9

212.80 sPK Pole N.E. A KIM + 65th ST
 12.91
 225.71

Paving 6 line 65 th	cl. 8 lines 65 th
5.16	4.91
220.55	221.20

Paving White 65 th	Paving 50' W	Paving 100' W
5.11	4.91	4.61
220.60	220.80	221.10
cl	cl	cl
221.20	221.40	221.60

PROP. LINE

221.5	221.7	221.9
4.2	4.0	3.8
9.1	0.9	0.0
1.1	4.3	4.8

Coast Blvd Paving

Culvert #1
25.30

00 = N end inlet	4.80	20.50	20.00
+45 = Δ on N.E. ch	3.65	21.65	16.8
			17.00
+60 junction with Culvert #4	3.44	21.86	15.90
			12.75
+24 B.R.K. junction Culvert #2	6.94	19.36	12.00
+97	8.62	16.68	10.50
+70 W. end outlet	1.60	9.30	9.00

Culvert #4 36' long

15.90 cul #4

00 = connection with Culvert #5.5 + 27.43		21.86	17.0
ch inlet #2	4.25	23.32	18.0
curb	4.25	23.32	32.00

Culvert #3 100' long

ch inlet #2			18.0
+50	38.26		
ch inlet #7	0.16	38.10 ^{ch}	32.90
ch			38.0

Culvert #2 18' long

12.00 cul #2

Junction with Culvert #1		18.36	12.75
8.92	30.78	21.86	
ch inlet #3	1.68	29.10	14.75
		29.10	29.00

R. For Plat showing tie outs G. Book 115, P 50¹⁰

10

+0.50	49.29	W. E. Pearle Chintas
+4.85	1.91	
+4.86 cul #4	51.20	
+5.96	13.14	
+5.41 cul #2	38.86	
+6.36	0.12	
	39.24	
	13.08	
+6.18	25.18	
	0.12	
+0.30	25.30	

38.42 B.M. BP S.E. Coast Blvd's chintas

12.42
18.96

+5.41	12.75
+14.35 Bottom Box	
+0.10 Top ch	

Culverts

#7

27.13

S. ch

N. ch

Bottom Box

outlet

$$\begin{array}{r} 1.43 \\ \hline 25.70 \end{array}$$

$$\begin{array}{r} 25.1 \\ \hline 0 \end{array}$$

$$\begin{array}{r} 17.0 \\ \hline 10.1 \end{array}$$

$$\begin{array}{r} 15.0 \\ \hline 12.1 \end{array}$$

$$\begin{array}{r} 1.4 \\ + 8.7 \end{array}$$

Culvert #7

Top ch

Bottom Box

18.7

22.62

$$\begin{array}{r} 13.0 \\ \hline 9.6 \end{array}$$

$$\begin{array}{r} 14.0 \\ \hline 8.6 \end{array}$$

3.6

+5.0

11

Coast Blvd Pearl de Paving

Sewer Construction in Pearl St

00-84. MM in Milling W of La Lolla Blvd	11.73	61.02	10.22	79.29 50.88	50.8	
+55' E	5.05	64.35	1.72	56.88	52.65	+4.23
1+10' E=DE	1		2.45	59.30	54.87	+4.43
				61.90	57.00	+4.90

Sewer Construction on Olivitas from MM Coast Blvd S.

00-84 MM Coast Blvd South Olivitas	4.01	42.43	17.14	38.42 25.29	25.00	
+37.5			9.14	33.29	26.40	+6.79
+75.0 DE			7.63	34.80	29.50	+5.30
			4.57	37.86	32.50	+5.36

Prospect St Sewer Construction

00-84 MM Coast Blvd South Olivitas	12.43		17.14	25.29	25.00	
str 5' Pipe			9.36	33.07	26.00	+7.07 ✓
+26			11.20	31.23	26.52	+4.71 ✓
+36			11.43			

84' 12" Pipe 2' Hopper and End
12' str 5' Pipe
2' Asson End Firs

str 4' Pipe						
+48						
+60						
+72						
+84						
+96						
str 4' Pipe						
1+06			11.23	31.00	28.10	+2.90 ✓
1+46			8.90	33.53	28.90	+4.63 ✓
1+86			8.91	33.52	29.70	+3.82 ✓
2+26 DE			7.55	34.88	30.50	+4.33 ✓

28.40	28.57	28.27	28.95
6.20	6.01	5.83	5.65
π 34.60	OK		
6.30			
0.10 L			

12

34.42 B.M. B.P. 52. Coast Blvd Olivitas 12

12

						7.30
						7.24
						17.14
						42.43
						17.07
						29.36
						0.21
						29.57
						7.30
						22.25
						3.52
						25.77

38.42
0.55
38.97

32.0 32.20 32.9 44
6.97 6.77 6.07

38.97	28.40	28.59	28.77	28.95	29.14	29.32
10.42	10.57	10.38	10.20	10.02	9.73	9.65
28.57					16.23	
1.01					0.50	
29.58						
29.51	29.70	30.32				
9.46	9.27	8.65				

PC
E 7.18
22.40 23.10 24.00 24.88 25.76 26.64
6.48 5.58 4.70 3.82 2.94

PC
W 7.11
22.47 23.10 24.00 24.88 25.76 26.64
6.44 5.58 4.70 3.82 2.94

E 27.52 28.40
2.06 1.18

W 27.52 28.40
2.06

49.29
 4.57
 53.86
 11.26
 42.60
 1.71
 44.31
 14.31
 33.00
 5.25
 38.05

SW

with
olive

49.50 49.36 49.22 49.07 48.93 48.78 48.64
 4.31 4.50 4.65 4.79 4.93 5.08 5.22
 4.31 4.50 4.65 4.79 4.93 5.08 5.22
 4.31 4.50 4.65 4.79 4.93 5.08 5.22

CHAIN
PART

SW

10L

P.C.

52.5

52.5

P.C.

148.0K

48.21 47.20 42.60 38.00 37.25 36.50
 5.65 6.64 11.24 4.31 7.06 7.81

SW

35.75
8.54

grade point

25.00
9.31

34.50 34.00 33.50 33.00 32.00
 9.81 10.31 10.81 11.31 11.81
 9.81 10.31 10.81 11.31 11.81
 70.50 70.50 71.00 71.00 71.00

E.C.

BYK

30.70
7.35

P.C.

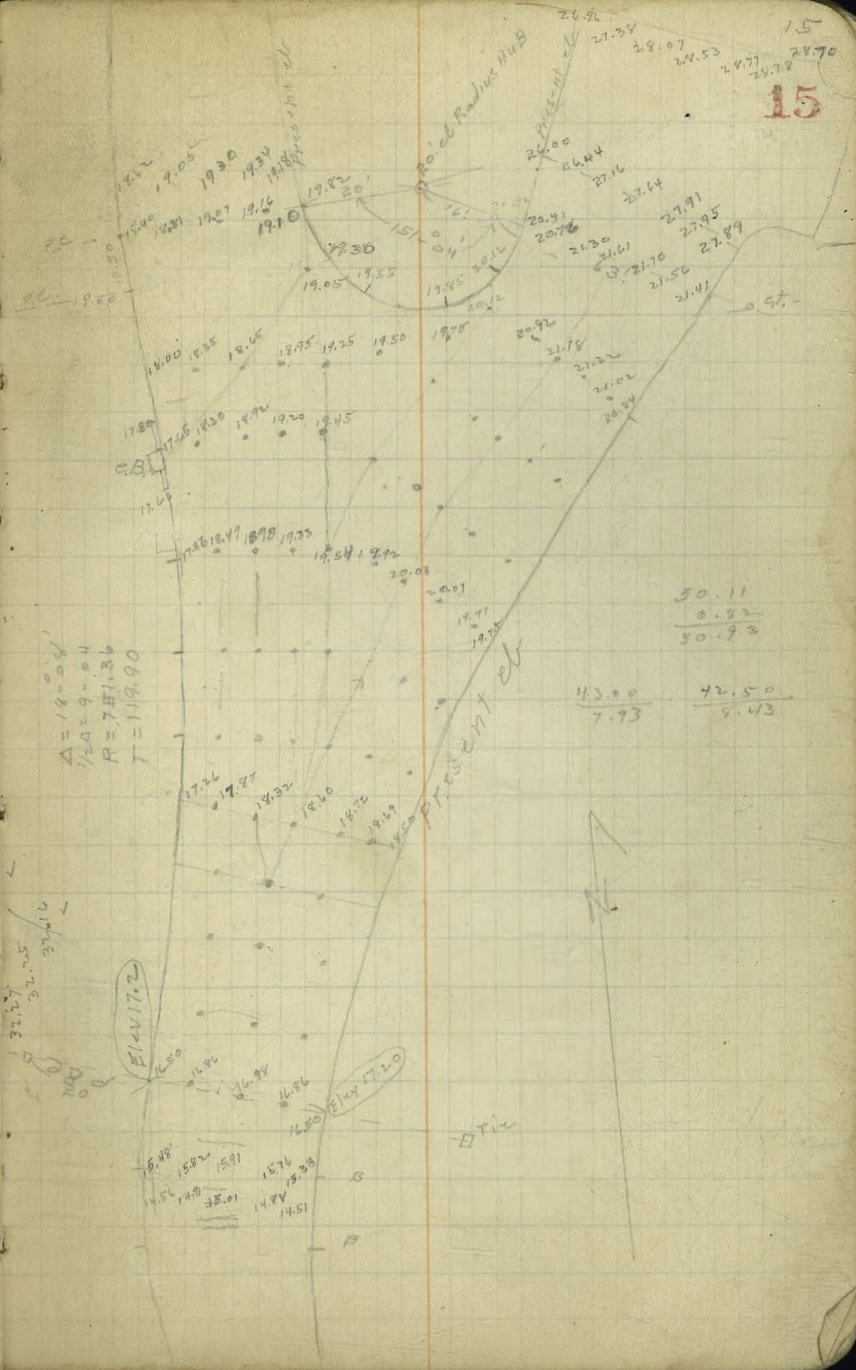
28.40

9.15

0.50

17.00
 5.54 5.74 5.90
 16

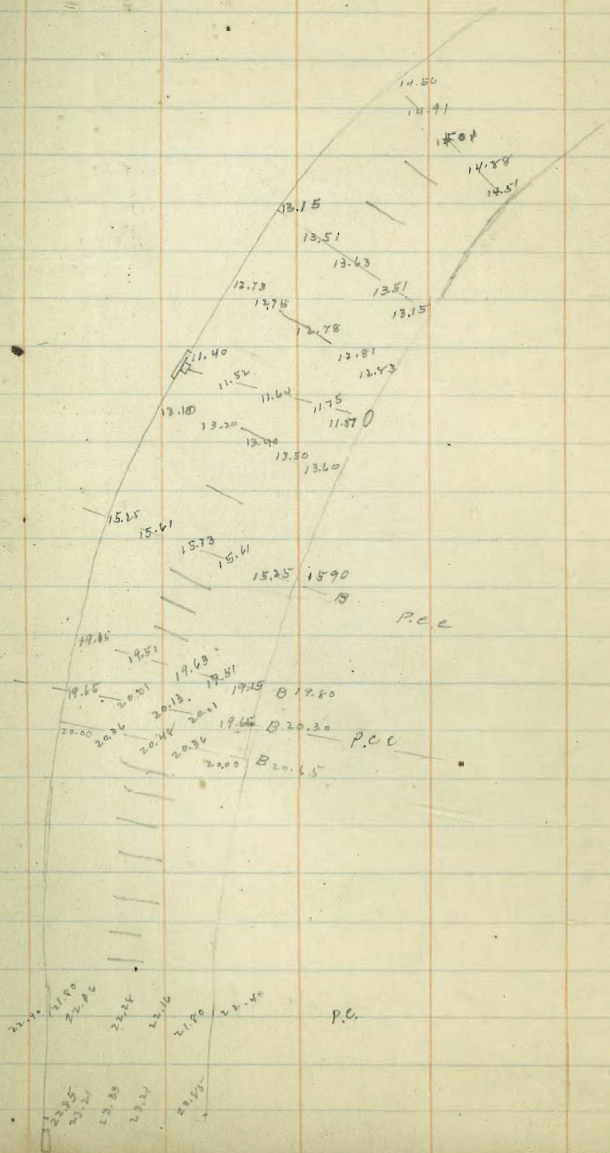
6.40
-6.50



15

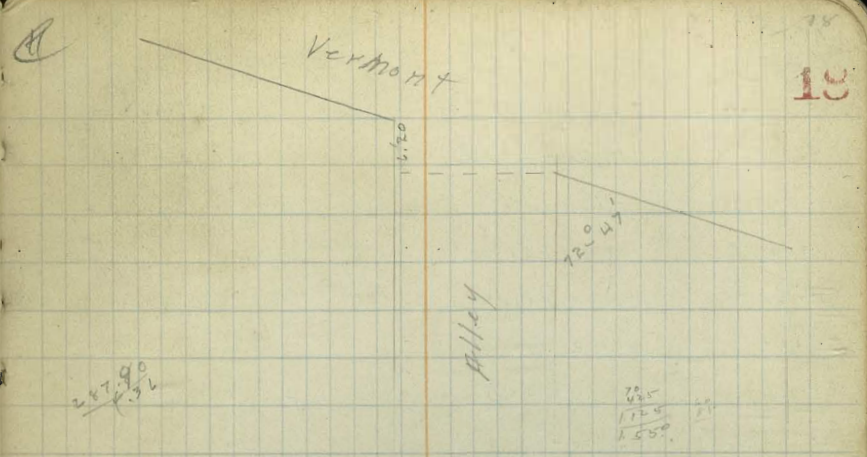
50.11
 0.82
 50.93

43.00
 7.93
 72.50
 9.43



Grades Alley BIK 187 U.H

	N. Line	S. Line
00 = W. line Vermont Not opposite	288.80	288.70
10 ³ + 60 = E. End wall on N	287.90	287.85
1120 N + S = B + K 2-42.5	287.00	287.00
1 + 62.5		
2 + 05 = W. End wall on N	86.86	86.86
7-49 #1	86.55	86.55
#2		86.25
#3		85.95
#4		85.65
#5		85.35
#6	285.05	285.05
#7	284.75	284.75
E Line 10 th St	284.60	284.50



289.73 B.M. Univ + Vermont

	N. 288.80	3.51	188.50
Profile	3.46	188.75	
288.47			
292.26			
280.66			
291.30			
570			
8560			
4.15			
4.15			
6.00			
4.85			
4.40			
85.25			
5.00			
12.23			
-7.23			

282.02 B.M. SW Univ + 10th

	188.50	88.14	87.74
3.76			
3.21			
+0.75			
4.17			
4.72			
-0.96			
188.50			
3.76			
3.63			
+0.07			
86.25			
85.95			
5.05			
4.61			
+0.44			
5.35			
5.35			
0.0			
5.65			
5.52			
+0.13			
5.75			
4.88			
+0.13			

N	85.05	84.75	84.60	88.25
	4.80	5.10	5.25	5.10
	4.74	5.04	5.75	6.23
	+0.04	+0.06		
S	4.80	84.75	84.50	
	4.45	5.10	5.35	
	70.55	1.35	5.80	
		+3.75		

Zola St Favingham

	S.W.	S.E.	N.E.	N.W.
S. side Zola	163.7	163.43	162.25	162.5
W. side Zola	160.4	160.12	160.12	160.4
2148		58.48	58.37	
2196		56.84	56.62	
1744		55.20	54.85	
1492		53.56	53.08	
2440		51.92	51.31	
2188		50.24	49.54	
3136		48.64	47.77	
W. side Zola	147.8	147.00	146.00	146.3
E. side Zola	146.8	146.00	145.00	145.3
+50	45.4	45.1	44.1	44.4
1400	44.5	44.2	43.2	43.5
+50	43.5	43.2	42.2	42.5
2400	42.6	42.3	41.3	41.6
+50	41.7	41.4	40.4	40.7
W. side Plum	140.8	140.50	139.50	139.8
E. side Plum	139.8	139.50	138.50	138.8
+50	39.5	39.2	38.5	38.5
1400	39.3	39.0	38.3	38.3
+50	39.0	38.7	38.0	38.0
2400	38.8	38.5	37.8	37.8
+50	38.5	38.2	37.5	37.5
W. side Willow	138.3	138.00	137.00	137.3

50.50 Alcock Chatsworth

34.75
27.75
20

	ROCKS	PC. NW					
1679							
1732							
53.81	S 163.4	62.8	61.2	60.1	58.5	56.8	55.2
0.3	3.4	4.5	5.1	6.7	8.3	10.0	11.6
0.44		3.5	3.1	4.7	5.0	6.9	8.8
		+1.0	+2.5	+3.0	+3.3	+3.1	+2.8
141.78	N 4.78			60.1	58.4	56.6	54.8
140.70				6.7	8.4	10.2	12.0
				4.5	6.6	8.8	10.2
				+2.2	+1.8	+2.4	+1.8
	S 52.6	51.9	50.3	48.6	47.0	46.0	45.1
	13.7	14.9	3.9	5.6	7.2	8.2	9.1
	10.3	11.4	0.9	2.3	2.9	3.7	4.5
	+2.4	+3.5	+3.0	+2.3	+4.3	+2.5	+2.4
	N 53.1	51.2	49.5	47.6	46.0	45.0	44.1
	13.3	2.9	4.7	6.4	8.2	9.2	10.1
	13.3	2.8	3.3	6.6	8.6	10.5	12.4
	+0.4	+0.1	+1.4	-0.2	-0.6	-1.3	-2.3
	S 44.2	43.2	42.3	41.4	40.5	39.5	39.2
	10.10	11.0	11.9	12.8	13.7	14.4	15.1
	6.2	5.3	5.8	6.4	7.9	9.4	10.7
	+3.8	+5.7	+6.1	+6.4	+5.8	+4.3	3.4
	N 43.2	42.2	41.3	40.4	39.5	38.5	38.2
	5.7	6.7	7.6	8.5	9.4	10.4	10.7
	14.0	12.8	11.8	11.3	13.1	15.0	15.6
	-4.3	-6.1	-4.2	-2.8	-3.7	-4.6	-4.5
	S 39.0	38.7	38.5	38.2	38.0	37.5	37.2
	9.9	10.7	10.8	10.8	10.86	10.66	10.5
	2.7	1.2	1.2	1.2	1.2	1.2	1.2
	+7.2	+8.9	+9.1	+8.3			
159.30	N 38.0	37.7	37.5	37.2	37.0	36.5	36.2
5.15	10.7	11.2	11.4	11.7	11.96	12.14	12.4
164.51	13.7	11.4	9.5	9.4	11.24	11.87	12.5
	-2.8	-0.2	+1.9	+2.3	11.24	11.87	12.5
	PC NW	NW					
161.58	N 100.12	107.4	112.6	113.7	116.8	120.0	124.7
2.73	4.39	4.08	3.77	3.45	3.14	2.83	2.50
764.51				1.95	2.14	2.33	2.50
43.25				41.50	41.00	40.50	40.00
757.26							
1.44							
152.70	S 110.12	111.19	112.27	113.70	116.13	118.56	121.71
30.3	4.39	3.82	3.24	1.87	1.38	1.20	1.20
142.38	3.49	4.69	3.40	3.17	2.74	2.34	2.00
2.03	+0.81						
144.31	PC NW	NW					
	110.71	111.45	112.00	113.00	114.54	116.77	119.00
	5.79	5.25	4.70	4.70	4.16	3.70	3.20
		S.W.					
		47.26	47.43	47.00	47.00	45.54	45.77
		4.24	5.27	5.70	5.70	7.16	8.23
		4.24	4.70	4.70	4.70	4.70	4.70
		0.00	0.50	1.00	1.50	2.00	2.50
		129.26	129.73	129.50	129.80	128.37	128.44
		4.35	4.59	4.91	5.01	5.27	5.27
		4.25	5.04	5.81	7.12	8.53	9.81
		-0.50	-0.50	-1.00	-1.50	-2.00	-2.50
		140.76	140.73	140.50	140.50	139.37	139.44
		3.35	3.58	3.81	3.81	4.74	4.81
			2.88	1.01	1.41	1.41	1.41
				2.30	2.40	2.40	2.40

Zeta

	S. 400	S. 4	N. 6	N. 400
E. Pine Willow	37.3	137.3	137.00	136.00
+40	36.8	137.1		136.735
+80	36.3	136.8		135.835
			135.53	134.53
1720 P.N.C.	135.8	136.6	(36.30)	(135.30)
			185.16	134.16
			(36.25)	(135.05)
			138.52	133.52
+40	34.8	135.8	(35.40)	(134.40)
			102.63	132.63
+40			(33.57)	(133.57)
			132.48	131.48
2400	32.8	133.7	(32.30)	(132.30)
			138.07	130.07
+20			(31.87)	(130.87)
			129.40	128.40
+40 P.N.C.	29.6	130.3	(30.00)	(129.00)
				123.00
3400 White Evergreen	124.3	124.00		123.3
Wd		22.5	122.50	121.50
E. d		21.5	121.50	120.50
3000 E. Pine		121.3	121.00	120.3
+50		115.8		114.8
1400		110.3		109.3
1450 B.K.		104.8	104.50	103.8
2400		97.8		96.2
+50		89.5		88.5
3400 White Locust		81.8	81.50	80.50
W. d		78.50	78.50	77.50
E. d		77.50	77.50	76.50
E. Pine		75.3	75.00	74.00
36.77 BM N	4.70	37.00	4.62	37.12
41.73	37.10	4.66	37.04	4.58
41.70			19.	
	38.00	38.04	38.04	38.72
		3.66	3.62	3.58

12.64 SW. N.W. Alder + Willow		12.75 SW. B.K. Zeta + Evergreen	
12.62	12.62	143.94	130.77
12.58	12.58	7.17	130.77
12.54	12.54		
12.50	12.50		
12.46	12.46		
12.42	12.42		
12.38	12.38		
12.34	12.34		
12.30	12.30		
12.26	12.26		
12.22	12.22		
12.18	12.18		
12.14	12.14		
12.10	12.10		
12.06	12.06		
12.02	12.02		
11.98	11.98		
11.94	11.94		
11.90	11.90		
11.86	11.86		
11.82	11.82		
11.78	11.78		
11.74	11.74		
11.70	11.70		
11.66	11.66		
11.62	11.62		
11.58	11.58		
11.54	11.54		
11.50	11.50		
11.46	11.46		
11.42	11.42		
11.38	11.38		
11.34	11.34		
11.30	11.30		
11.26	11.26		
11.22	11.22		
11.18	11.18		
11.14	11.14		
11.10	11.10		
11.06	11.06		
11.02	11.02		
10.98	10.98		
10.94	10.94		
10.90	10.90		
10.86	10.86		
10.82	10.82		
10.78	10.78		
10.74	10.74		
10.70	10.70		
10.66	10.66		
10.62	10.62		
10.58	10.58		
10.54	10.54		
10.50	10.50		
10.46	10.46		
10.42	10.42		
10.38	10.38		
10.34	10.34		
10.30	10.30		
10.26	10.26		
10.22	10.22		
10.18	10.18		
10.14	10.14		
10.10	10.10		
10.06	10.06		
10.02	10.02		
9.98	9.98		
9.94	9.94		
9.90	9.90		
9.86	9.86		
9.82	9.82		
9.78	9.78		
9.74	9.74		
9.70	9.70		
9.66	9.66		
9.62	9.62		
9.58	9.58		
9.54	9.54		
9.50	9.50		
9.46	9.46		
9.42	9.42		
9.38	9.38		
9.34	9.34		
9.30	9.30		
9.26	9.26		
9.22	9.22		
9.18	9.18		
9.14	9.14		
9.10	9.10		
9.06	9.06		
9.02	9.02		
8.98	8.98		
8.94	8.94		
8.90	8.90		
8.86	8.86		
8.82	8.82		
8.78	8.78		
8.74	8.74		
8.70	8.70		
8.66	8.66		
8.62	8.62		
8.58	8.58		
8.54	8.54		
8.50	8.50		
8.46	8.46		
8.42	8.42		
8.38	8.38		
8.34	8.34		
8.30	8.30		
8.26	8.26		
8.22	8.22		
8.18	8.18		
8.14	8.14		
8.10	8.10		
8.06	8.06		
8.02	8.02		
7.98	7.98		
7.94	7.94		
7.90	7.90		
7.86	7.86		
7.82	7.82		
7.78	7.78		
7.74	7.74		
7.70	7.70		
7.66	7.66		
7.62	7.62		
7.58	7.58		
7.54	7.54		
7.50	7.50		
7.46	7.46		
7.42	7.42		
7.38	7.38		
7.34	7.34		
7.30	7.30		
7.26	7.26		
7.22	7.22		
7.18	7.18		
7.14	7.14		
7.10	7.10		
7.06	7.06		
7.02	7.02		
6.98	6.98		
6.94	6.94		
6.90	6.90		
6.86	6.86		
6.82	6.82		
6.78	6.78		
6.74	6.74		
6.70	6.70		
6.66	6.66		
6.62	6.62		
6.58	6.58		
6.54	6.54		
6.50	6.50		
6.46	6.46		
6.42	6.42		
6.38	6.38		
6.34	6.34		
6.30	6.30		
6.26	6.26		
6.22	6.22		
6.18	6.18		
6.14	6.14		
6.10	6.10		
6.06	6.06		
6.02	6.02		
5.98	5.98		
5.94	5.94		
5.90	5.90		
5.86	5.86		
5.82	5.82		
5.78	5.78		
5.74	5.74		
5.70	5.70		
5.66	5.66		
5.62	5.62		
5.58	5.58		
5.54	5.54		
5.50	5.50		
5.46	5.46		
5.42	5.42		
5.38	5.38		
5.34	5.34		
5.30	5.30		
5.26	5.26		
5.22	5.22		
5.18	5.18		
5.14	5.14		
5.10	5.10		
5.06	5.06		
5.02	5.02		
4.98	4.98		
4.94	4.94		
4.90	4.90		
4.86	4.86		
4.82	4.82		
4.78	4.78		
4.74	4.74		
4.70	4.70		
4.66	4.66		
4.62	4.62		
4.58	4.58		
4.54	4.54		
4.50	4.50		
4.46	4.46		
4.42	4.42		
4.38	4.38		
4.34	4.34		
4.30	4.30		
4.26	4.26		
4.22	4.22		
4.18	4.18		
4.14	4.14		
4.10	4.10		
4.06	4.06		
4.02	4.02		
3.98	3.98		
3.94	3.94		
3.90	3.90		
3.86	3.86		
3.82	3.82		
3.78	3.78		
3.74	3.74		
3.70	3.70		
3.66	3.66		
3.62	3.62		
3.58	3.58		
3.54	3.54		
3.50	3.50		
3.46	3.46		
3.42	3.42		
3.38	3.38		
3.34	3.34		
3.30	3.30		
3.26	3.26		
3.22	3.22		
3.18	3.18		
3.14	3.14		
3.10	3.10		
3.06	3.06		
3.02	3.02		
2.98	2.98		
2.94	2.94		
2.90	2.90		
2.86	2.86		
2.82	2.82		
2.78	2.78		
2.74	2.74		
2.70	2.70		
2.66	2.66		
2.62	2.62		
2.58	2.58		
2.54	2.54		
2.50	2.50		
2.46	2.46		
2.42	2.42		
2.38	2.38		
2.34	2.34		
2.30	2.30		
2.26	2.26		
2.22	2.22		
2.18	2.18		
2.14	2.14		
2.10	2.10		
2.06	2.06		
2.02	2.02		
1.98	1.98		
1.94	1.94		
1.90	1.90		
1.86	1.86		
1.82	1.82		
1.78	1.78		
1.74	1.74		
1.70</			

Zala
 S.W. S. E. N. E. N.W.

6.21m + dust	75.3	75.00	74.00	74.3
+50	67.7	66.8	66.0	66.3
100	59.0	58.7	58.0	58.3
+50	50.8	50.5	50.0	50.2
200	42.6	42.3	42.0	42.3
+50	34.5	34.2	34.0	34.3
300 = W. L. M. Res + craps	26.3	26.00	26.00	26.3

78.40	80.50	82.41	84.33
5.00	6.47	4.56	2.64
31.51	31.97	5.06	
26.87		-0.50	
79.40	81.50	83.41	85.33
7.57	3.47	3.56	.64
5.97	5.44	4.00	
45.00	OP	-0.50	

33.5
 25.79 9.50
 26.39

18.01

74.64									
13.08	S	75.0	66.4	58.7	50.5	42.3	34.2	26.0	
63.56		1.6	9.8	4.9	13.11	8.6	4.2	12.4	
0.06		0.7	10.7	6.9	17.9	5.4	0.8	11.5	
63.62		10.9	-0.9	-2.0	-1.8	+0.2	+3.4	+0.9	
12.72									
50.90	N	74.0	66.0	58.0	50.0	42.0	34.0	26.0	
0.00		2.4	10.6	5.6	13.6	8.9	4.4	12.4	
50.95		3.0	10.4	2.6	17.4	5.9	1.6	10.1	
13.05		-0.4	+0.2	+3.0	+2.2	+2.0	+2.8	+3.3	
37.90									
0.53									
38.43									

129.16	S	21.50	21.00	19.65	18.25	12.75	7.25	2.0	
12.85		7.60	8.10	9.47	10.85	3.91	7.41	10.450	
116.25		6.60				3.41		10.450	
0.41	N	21.00				20.50		12.43	
116.66									
12.00									
104.24	N	20.50	20.00	18.63	17.25	11.75	6.25	10.50	
8.40		8.30	9.10	10.47	11.85	4.91	10.41	11.323	
104.44						4.41		11.323	
12.66						10.50		11.91	

71.74									
0.24									
72.22	S	100.64	92.98	85.33	83.41	81.50	79.40		
12.65		4.00	11.66	6.89	8.81	10.72	12.82		
79.57	N				7.84	9.31	10.82		
0.19					1.00	-0.50	2.00		
79.67									

	S	71.00	72.00						
		4.77	3.79						
		75.79							

	N	99.64	91.98	84.33	82.41	80.50	78.40		
		5.00	12.66	7.49	9.81	11.72	13.82		
							9.22		
							+5.00		

18.01									
11.12									
29.14	S	30.00	28.00	26.70	26.10	35.75			
2.43		5.89	7.89	9.19	9.77	9.94			
26.71		7.50	5.39	5.69	3.22				
9.18			+2.00	+3.50	20.50				
25.89									

	N	30.00	28.00	26.70	26.10	26.20			
		5.89	7.89	9.19	9.89	9.69			
		4.89	6.37	6.19	8.32	8.67			
			1.50	+3.00	1.50	71.00			
						+1.90			
						+1.20			
		30.66	1.16	0.96	3.31	3.41	4.31		
		29.50	27.70	27.70	27.70	27.70	27.70		
		25.00	26.70	25.00	25.00	26.20	26.30		
		+11.50	+3.00	1.65	1.65	+1.00	3.5		

25.60 25.90 26.35
 5.06 4.68
 4.06
 11.00

12.4
 7.5
 4.9
 22

outlet	inlet	old CR
24.40	F.L. E. End	25.00
3.90	8.53	1.90
30.30	1.50	47.00
	10.03	25.00
	20.27	
	24.40	

S/C Plum

24
21

	N.W	E.C	S.W	N.E
143.06	139.96	139.73	139.50	139.30
	3.10	5.33	3.56	3.76
				3.26
				-1.50

S.W	140.96	140.73	140.50	140.50
	2.10	2.33	2.56	2.40
				2.16
				142.06

	N.W	E.C	S.W	N.E
	138.37	138.44	138.50	138.30
	4.69	4.62	4.36	4.76
		5.13	4.26	5.26
		-0.50	-1.50	-2.50

S.E	139.37	139.44	139.50	139.70
	3.69	3.62	3.36	3.36
			2.16	2.86
			11.50	10.50

S/C Grove

	N.W	R.C	N.W
	46.91	46.45	46.00
			45.50

S.W	47.84	47.43	47.00
			5.16
			47.00

N.E	44.54	44.77	45.00
			45.00

S.E	45.54	45.77	46.00
			46.00

Indexed
CSKBanner St Sewer
From Existing D.E. Ho's of S. Line Beech St
To D.E. Ho's of S. Line Cedar

RM B.P.	9.92	241.39			231.47		NE Cedar + 32 nd
T.P.	0.14	239.16	2.37	239.02			
00: BE Ho's of S. Line Cedar			0.84	238.32	234.00		+ 4.32
+ 52			4.14	35.02	229.00		+ 6.02
1+04			9.50	29.66	224.00		+ 5.66
T.P.	0.34	226.26	13.24	25.92			
1+56			2.01	24.25	219.00		+ 5.25
2+08			7.48	18.78	214.00		+ 4.78
N. Line Beech 2+60 Break 40	T.P. 2.48	217.04	12.08	214.18	209.00		+ 5.18
3+00 M.H. & Beech			4.03	13.03	207.00		+ 6.03
3+40			4.86	12.80	205.20		+ 7.00
3+80 Existing D.E.			7.18	207.88	203.41		+ 6.47

25

Indexed
C.S.K.

Sami Gorgonio Grades
Mc Call to Lawrence

26

	W d	E d
000 Shinn McCall	144.97	145.00
450	144.40	143.83
1400	143.00	142.65
1450	141.50	141.50
2400	139.40	139.30
2450	138.00	138.00
3400 N Line Lawrence	136.00	136.00

W	144.97	144.4	143.0	141.5	139.9	138.0	136.0
		1.6	3.0	4.5	6.2	8.0	10.0
			3.0	4.5	5.6	6.9	7.7
			0.0	0.0	+0.6	+1.1	+2.3
E	145.0	143.9	142.7	141.5	139.9	138.0	136.0
	1.05	2.2	3.3	4.5	6.2	8.0	10.0
W	140.05	2.5	3.6	4.6	5.6	6.1	7.7
		-0.3	-0.3	-0.1	+0.6	+1.7	+2.3

Alley N. of Bdw.

60.91 page 27

Sw. 007 M.H. #35 T.P. 13.25	71.64	2.52	58.39	51.50	+6.89
+40		12.64	59.00	53.12	+6.72
+80		12.76	58.88	54.75	+4.13
+120		12.10	59.54	56.37	+3.17
1+60 Brk T.P. 12.82	84.32	9.88 0.14	61.76 71.50	58.00	+3.76
2+00 T.P. 13.23	97.03	9.84 0.52	74.48 83.80	69.50	+4.98
2+40 Brk (5)		9.25	87.78	81.00	+6.78
2+90		7.70	89.33	84.90	+4.43
3+40 MH (20) T.P. 12.92	109.64	3.63 0.31	93.40 96.72	88.80	+4.60
3+80		12.46	97.18	90.70	+6.48
4+20		9.35	100.29	92.60	+7.69
4+60		8.46	101.18	94.50	+6.68
5+00		7.36	102.28	96.40	+5.88
5+40		2.88	106.76	98.30	+8.46
5+80		0.45	109.19	100.20	+8.99
6+20		1.43	108.21	102.10	+6.11
6+60 MH #34 T.P. 8.30 48.75	117.23	0.71	108.93	104.00	+4.93
7+00 25		4.86	112.37	104.75	+7.62
7+50 50		4.48	112.75	105.50	+7.25
8+00 25		3.91	113.32	106.25	+7.07
8+50 100		3.72	113.51	107.00	+6.51
9+00 75		3.22	114.01	107.75	+6.26
9+50 50		3.00	114.23	108.50	+5.73
10+00 25		2.05	115.18	109.25	+5.93
10+50 = D.E		4.20	113.03	110.00	+3.03

117.23

12.97

104.26

1.56

105.82

6.54

99.28 = 99.28

28

Indexed
c.s.k.

Paving Grades
Blue Bird Lane
Alleys BIKS H3-4H La Jolla Park

S.E. line

N.W. line

00=N.E. Line Ivanhoe East

157.50

157.20

+55

159.57

159.30

1+10

161.65

161.40

1+65

163.72

163.50

2+20 BIK

165.80

165.60

2+60

166.90

166.65

3+00

168.00

167.70

3+40

169.10

168.75

3+80

170.20

169.80

4+20

171.30

170.85

4+60 Break

172.40

171.90

5+00 SW Line Exchange

173.90

172.50

00=N.E. Line Exchange

174.23

173.74

+30

175.00

174.55

+60 BIK

175.80

175.40

1+10

176.60

176.25

1+60 BIK

177.40

177.10

2+00

177.65

176.75

2+40

176.70

176.80

2+80

176.35

176.05

2+20 BIK

176.00

175.70

3+50

175.65

175.35

3+80 BIK

175.30

175.00

4+10

174.65

174.30

4+40 BIK

174.00

173.60

4+70

5+00 SW Line Prospect

173.08

170.45

152.03 S.E. Torrey Road Ivanhoe

7.43

161.46

161.33

11.80

172.63

1.86

170.77

6.40

177.17

6.86

176.31

180.66

3.91

176.64

3.71

180.35

5.49

174.86

4.67

179.53

S.E.

57.50

59.57

61.15

63.72

65.80

66.90

68.00

69.10

N.W.

57.20

59.30

61.40

63.50

65.60

66.65

67.70

68.75

S.E.

70.20

71.30

72.40

77.17

77.17

75.00

75.80

74.60

N.W.

69.80

70.85

71.90

77.17

77.17

74.55

75.40

76.25

S.E.

77.40

77.05

76.70

76.35

76.00

75.65

75.30

74.65

N.W.

77.10

76.75

76.40

76.05

75.70

75.35

75.00

74.30

S.E.

74.00

73.50

6.53

N.W.

73.60

72.00

9.10

SW

2.45

+1.00

NW

0.01

4 1/20

21

176.31

7.15

185.96

195.01

0.95

77.17

3.33

73.84

17.45

5.23

3.09

12.14

Indexed
cc.s.k.

++ Grades Arenas St
La Jolla Blvd to Draper St.

	S. line	S. dr	N. dr	N. line
0035 Line La Jolla Blvd	69.3	69.00	68.50	68.8
105 Ec.				
+50	73.3			73.0
1100 Brk	77.3	77.00	77.00	77.3
+50	79.7			79.5
2+00 Brk	82.0	81.75	81.50	81.7
5-52				
+52	83.9			83.7
3+04	85.4			85.7
3+56	87.7			87.7
4+08	89.4			89.7
4+60 Brk	91.5	91.25	91.50	91.7
5-50.5				
5+10.5	95.1			95.3
5+41	98.7			98.9
6+11.5	102.4			102.5
6+62	106.0			106.1
7+12.7 N. line Draper	109.7	109.50	109.50	109.7

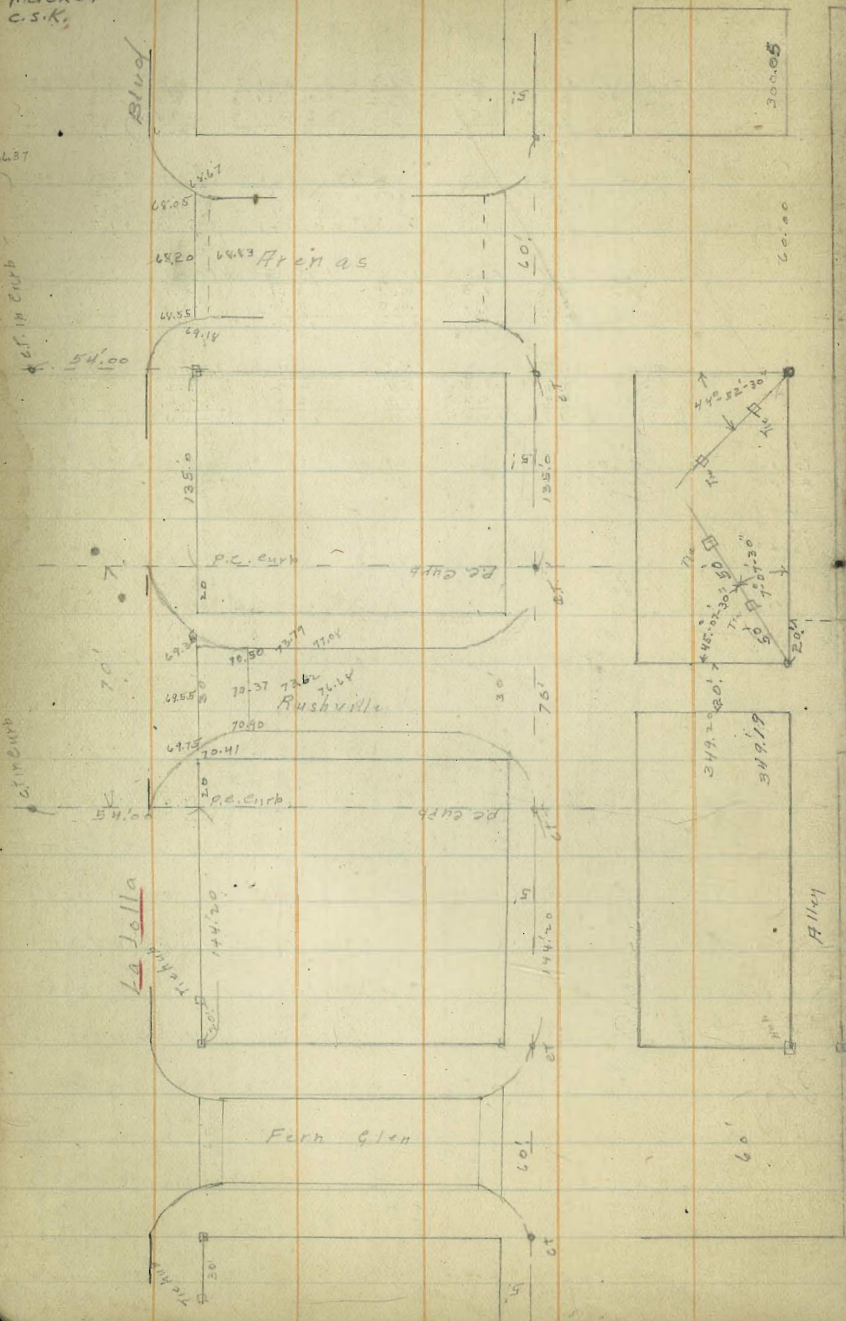
67.74 B.M. N.W. La Jolla Blvd + Arenas

32
32

	80.5	B	B	93.0
12.72				
80.46				
0.44				
79.98				
73.02	N	Paving 12.40	68.8	73.0
73.00		68.46	11.7	7.5
1.50			11.5	5.8
91.50			+0.2	+1.7
13.07			+0.1	+0.4
104.47				
0.40	S	12.06	69.3	73.3
104.17		68.40	11.2	7.2
6.04			10.1	5.9
110.25			+1.1	+1.3
10.12				
100.13				
0.18	N	89.7	91.7	95.3
100.21		8.3	1.3	9.3
		3.8	2.3	8.9
		-0.5	-1.0	+0.4
				+1.2
	S	89.6	91.5	95.1
		3.4	13.1	9.5
		2.0	11.4	8.7
		41.4	+1.7	+0.8
67.74		0.104	Brk	Brk
12.11	N	68.60	27.00	81.50
80.85		12.45	3.85	91.50
0.71		00	4.85	11.77
80.14			-1.00	
13.13				
93.27	S	0.104	Brk	Brk
		69.10	27.00	81.75
		11.75	3.85	91.25
		00	00	17.00
				2.02

Indexed
c.s.K.

Center



Ties For Fern Glen, Rushville + Arenas
For Grades See Pages 30-31-32

67.74 7.07 <u>74.83</u>	7.46 6.37	6.16 6.07	5.86 5.77	5.07 4.76			
68.05 64.55 <u>736.60</u> 64.30	1.96 2.10 <u>4.06</u> 2.03		6.55 5.48 6.59 6.55 6.78 68.05	4.25 4.0	212.10	5.86 5.48 5.27 5.07 5.86	
67.74 11.30 <u>77.04</u>	1.96 77.08		6.44 6.37 6.05		71.21		70.00
8.63 10.41 <u>19.04</u> 69.75	10.37 8.67	10.50 8.54	69.75 9.30 5.18 6.7	6.50 6.34	70.80	70.80 70.80 70.80 70.80 70.80 70.80	69.35
6.36 6.96 5.93 6.53			5.76 7.0			6.53 6.96 <u>13.50</u> 6.76	2.95 2.85 5.20
			3.78 3.78 3.78 3.78			3.40 2.85 3.7	2.60
			2.70 3.26			140 60 <u>149.2</u>	
69.75 6.33 <u>74.78</u>	69.55 5.43	69.35 5.65	10.60 4.38 2.01				2.37

indexed
c.s.k.

Clove St Private Grading 11-15-26

Curtis to 100 S.

	W line	W. cl.	E. ce	E. line
00-5. line - Curtis	135.25	135.00	134.00	134.25
0 + 5.0	138.25			137.25
1 + 00 Brk	141.25	141.00	140.00	140.25
0 0	136.2	136.0	135.0	135.2
+ 50	138.2	138.0	137.0	137.2
1 + 00 Brk	140.2	140.0	139.0	139.2

148.80 B.M. S.6 Chalsworth & Curtis

1.68			
150.54			
17.6			
137.92	W 135.2	138.2	141.2
6.13		8.8	
144.05			

9.88
9.41
2.7
9.74
134.81

E 134.2	137.2	140.2
9.8		

W 136.2	138.2	141.2	
7.8	5.3	2.8	
6.1	4.7	2.4	2.4
+1.7	+0.6	+0.4	141.6

E 135.2	137.2	140.2	
8.8	6.3	3.8	
6.3	6.1	5.0	5.0
+0.5	-0.2	-1.2	139.0

W 136.2	138.2	140.2
7.8	5.8	3.8
6.1	4.7	2.4
+1.7	+1.1	+1.4

E 135.2	137.2	139.2
8.8	6.8	4.8
6.3	6.1	5.0
+0.5	+0.7	-0.2

Indexed
C.S.K.

	E. line	S. d	W. d	W. line
30-N. line Palomar	23.2	23.00	22.70	
+53.85	22.8			
1407.70	22.5			
1461 ⁵⁵	21.9			
2415 ⁴¹ S. line Rosemont	21.5	21.30	21.00	21.2
20-N. line Rosemont	21.2	21.00	20.70	21.0
+53.85	20.9			
1407 ²⁰	20.6			
1461 ⁸⁵	20.3			
215 ⁴¹ S. line Kalmus	20.0	19.80	19.75	
20-N. line Kalmus	20.0	19.80	19.75	
+57.5	19.7			
1415 BTK	19.50	19.25	19.00	
1465	19.8			
215 ⁴¹ S. line Grayville	20.2	20.00 20.80	19.75	
20-N. line Grayville	21.0	(20.40)	20.15	
150	20.6			
1400	20.2			
1463 P.C. MW 9.50			19.7	
1472 ⁵ S. line P.D.S. ONE	19.7	19.50	19.25	19.5
P.C. N of P.D.S	19.6	19.40	19.00	19.2
+41 ¹⁷	19.1			18.7
+82 ³⁵ P.C. N. end paving	18.7	18.50	18.00	18.2

24.00

8.50

17.50

0.78

20.28

0.56

19.70

23.2	22.8	22.5	21.9	21.5	21.2	20.9	20.6	20.3	19.80
4.4	5.2	5.7	6.1	6.5	6.8	7.1	7.4	7.7	8.0
3.38	4.1	4.7	5.0	5.5	6.0	6.4	6.8	7.2	7.6
23.04	4.4	4.8	4.9	4.1	3.0	2.8	2.7	2.6	2.5

19.7	19.5	19.8	20.2	20.6	20.2	19.7
5.2	5.4	5.6	5.3	5.5	5.7	5.8
3.24	3.6	3.7	3.8	4.1	4.3	4.5
0.14	0.2	0.3	0.5	0.6	0.7	0.8

23.04

2.29

20.79

2.26

24.05

19.7

4.3

3.2

1.1

19.7

4.3

4.7

4.4

27.96

0.37

28.33

8.12

20.00

8.33

20.75

20.40

7.75

30.42

0.17

30.61

21.30

7.31

21.00

7.61

38

d

d

d

d

d

d

d

d

d

d

d

d

d

d

d

d

d

d

d

d

d

d

d

d

d

d

d

d

d

d

d

d

d

d

d

d

d

d

d

d

d

d

d

d

d

d

d

d

d

d

d

d

d

d

d

d

d

d

d

d

d

d

d

d

d

d

d

d

d

d

d

Neptune Culverts

Culvert #6

W. end - 20' W of W line 8.4

40' E - BYK 12.0

78' E - E. End 18' E. of R. line 13.6

2796 BM SE RD. S. 4 V. DM.

24.66				
24.57				
12.77	4.17	13.6	12.0	8.4
15.80	17.00	4.6	6.2	
2.37		4.3	2.2	9.8
18.17		+0.3	+4.0	

20' x 11'	s. end	22' W	Wall #2	66' N	N. end wall
	16.62	16.54	16.34	16.24	16.24
	3.65	3.74	3.74	4.04	4.04
	+1.26	-1.18	14.24	6.79	6.79
			10.80	-2.75	-2.75

23.04				
12.77				
10.31				
5.94				
16.23				
	s. end wall	55' N	Wall #1	N. end wall
	15.50	15.26	15.02	15.02
	0.75	1.00	1.23	1.23
	-2.00	10.18	5.94	5.94
	-6.25	-9.18	-4.71	-4.71

Neptune Spillway

27.96	19.40	Top curb	6.00 Bottom at A	6.00 Bottom end
0.52	1.19		3.59	
28.48	0.69		7.13	
10.17	+0.50	N	18.33 Top Wall at A	13.26
18.31			3.26	9.83
2.28			1.74	3.43
20.59			1.52	
		S	3.26	13.26
			2.28	5.93
			+0.98	+3.93
5	14.59			
105	6.00			
155				

Culvert #7

25.44				
1.85				
27.29				
26.2				
19.27				
1.28				
20.56				
	Top cl. Elev			
	N. end	S. end opening	outlet	
	19.20	19.75	17.56	10.0
	0.66	0.81	9.00	10.56
	1.29	1.47	9.26	11.85
	-0.60	-0.68		+1.00

Culvert #2

20.56				
1.37				
17.19				
4.43				
25.43				
	Top cl. Elev			
	N. end	S. end	outlet	
	17.00	19.00	12.55	7.00
	1.56	1.80	7.15	13.56
	2.28	2.37	7.37	13.66
	-0.72	20.81		-0.10

Culvert #3

21.5				
4.1				
17.1				
43.0				
	Top cl. Elev			
	N. end	S. end	outlet	
	19.60	19.40	11.56	9.70
	0.96	0.96	7.00	10.26
	1.17	1.87	11.56	10.26
	-0.21	-8.41	12.16	10.26
			-0.50	

Culvert #4

23.04				
12.77				
10.31				
5.94				
16.23				
	Top curb Elev			
	N. end	S. end	outlet	
	20.80	20.90	12.4	11.5
	4.83	4.73	15.78	13.1
	4.35	3.16	11.90	
	7.25	1.57	-0.2	

Culvert #5

22.70				
2.90				
4.86				
11.43				
	Top cl. Elev			
	N. end	S. end	outlet	
	22.70	22.70	10.5	
	2.90	2.73	7.51	
	4.86	1.93	16.2	
	-1.43	11.00	-1.2	

Indexed
C.S.K.

Playa Del Sur Grades

0

	S. cl	N. cl		
E. Line Neptuna	19.7	19.50	20.00	20.2
P.F. on N			21.30	21.5
W. S. of shore - P.C.	23.8	23.10	22.60	22.4
N. Line V.P.M.	25.8	25.60		
E. Line W.D.M.	28.0	28.00		
1st P.C.	29.8	29.60	29.10	29.3

	PC	PT	P.C.	W.K.P.M.
	24.05 1.17 4.4 2.8 8.08 30.96 2.97 27.99	N 19.6 20.2 20.8 21.5	22.1 20.8 21.5 22.8	25.8 25.2 5.6 +0.4
		S 19.7 4.3 3.2 11.1		23.3 25.4 2.7 5.2 1.2 6.2 -0.5 11.0

Vista Del Mar

	W. cl	E. cl		
000 S. Line Kalmat	27.7	27.4	28.4	
+ 53.85	28.4			
+ 07.20	29.2			
+ 61.55	30.0			
+ 15.40 N. Line Rosemont	30.7	30.50	32.40	
000 S. Line Rosemont	31.00	30.70	33.20	33.40
+ 53.85	31.6			
+ 07.2	32.2			
+ 61.55	32.8			35.2
+ 15.40 N. Line Palomar	33.40	33.20	35.60	35.80
N. Line Rosemont 50° E of Neptuna		25.8		
S. Line		26.2		

	N.W. Rosemont	S.W. Rosemont	N.W. Palomar	W.W. Palomar
	30.80 6.05	32.80 3.75	30.60 5.75	33.20 1.48 29.6 44.4
	35.60 0.95 0.45 40.50	35.50 1.05	33.20 3.35 3.75 40.50	33.20 3.35 4.35 -1.00
	30.42 5.52 36.01	37.44 28.4 29.2 30.0 30.7	31.0 31.6 32.2 32.8	25.8 26.2
	34.00 1.22 39.60	7.6 9.0 11.0	6.0 6.8 7.8 -1.0	8.0 4.4 2.8 3.2 10.6 9.8 10.4 7.6
	35.2 4.4 20.5 41.9	50.4 25.82 4.39	100.4 26.20 4.06	146.3 25.91 4.30 25.22
	27.96 2.28 30.24	25.44 4.80	28.82 7.42	26.20 4.04

Indexed
c.s.K.Alley BIK 5 La Jolla Strand
Grades

	S	N
00- E. Line V.D.M.T	28.39	28.20
+60 Brk	35.50	35.50
1+00	39.25	39.16
1+40 Brk	43.03	42.83
1+80 Brk	46.75	45.98
2+20 Brk 7-52.3	48.27	48.07
2+72 ³	50.33	50.15
3+24 ⁵	52.39	52.22
3+76 ²	54.45	54.30
4+29 ²	56.51	56.37
4+81 ⁵	58.58	58.45
5+33 ⁸	60.64	60.52
5+86° White N+S. Alley	62.70	62.60
5+96 E " N+S. "	62.90	62.78
	N+S. Alley	
	N	E
00- S Line N+S. Alley	62.70	62.90
+45		
+90 S Line Grayilla		

69.46 NW Grayilla + La Jolla Blvd

	B	B	B	B
31.0				
70.96				
12.77	N 28.20	35.50	39.16	42.83
58.19		11.53	7.87	4.20
0.44		6.29	7.18	4.27
59.03			-0.09	-0.07
13.02			+0.69	+0.29
46.01	S 28.39	35.50	39.25	43.03
1.02				46.15
47.03		11.53	7.78	4.00
12.86		6.10	7.18	0.88
34.17		11.72	7.18	2.11
0.32			-0.19	+0.58
34.49	N 50.15	52.22	54.30	56.37
		6.41	4.73	2.62
		7.11	4.90	3.21
			-0.30	-0.55
			-0.17	-0.26
	S 50.33	52.39	54.45	56.51
		6.64	4.58	2.52
		7.82	4.54	1.81
		+0.78	+0.24	+0.71
				+0.43
	N 62.60	62.78		
		8.30		
		8.96		
		-0.60		
				34.49
				61.77
				28.02
	S 62.70	62.90	62.90	
		8.26	4.60	
		8.13	4.14	
		+0.13	0.46	
62.83				
4.67				
67.50				
	E 62.90	64.14	5.24	PAVINA
		6.82	5.68	65.38
		5.90	5.59	5.31
		+0.46	+0.92	+0.27
	N 62.70	63.94	5.66	PAVINA
		8.26	45.28	65.18
		8.13	7.29	5.78
		+0.13	-0.27	5.35
				+0.43

11

Indexed
c.s.K.

Grades Alley BIK & La Jolla Strand

	S	N
00-8 Line V.R.M.	29.40	29.30
+60 BvK	40.00	39.70
1+00	44.90	44.60
1+40 BvK	49.40	49.50
2+00 BvK	54.40	54.50
2+46 67	56.13	55.93
2+92 ³³	57.47	57.37
3+40 BvK	58.80	58.80
3+89	60.77	60.73
4+38	62.74	62.66
4+86	64.71	64.59
5+34	66.68	66.52
5+83	68.65	68.45
6+32	70.62	70.38
7+80 N.H. La Jolla Blvd	72.60	72.30
	72.70	72.30

69.96 PM. N.H. La Jolla Blvd & Gravel

42

	B	B	B	B	B
69.96	39.70	44.60	49.50	54.50	59.93
75.64	7.33	2.43	9.60	4.60	5.17
13.19	7.44	2.18	9.60	5.02	3.17
62.45	-0.11	+0.35	0.0	-0.42	0.0
2.65					
65.10	29.40	40.60	44.90	49.80	54.80
7.31	7.03	2.13	9.30	4.30	2.97
57.77	6.75	0.94	8.44	3.85	0.97
11.81	+0.28	+1.19	+0.86	+0.45	+2.00
59.10	60.73	62.66	64.59	66.52	68.45
42.60	4.37	12.98	11.05	9.16	7.49
6.05	4.74	13.50	10.78	9.01	6.39
12.74	(0.3)	-0.52	+0.07	+0.11	+0.80
46.16	-0.45				+0.37
0.87	60.77	62.74	64.71	66.68	68.65
47.02	4.33	12.70	10.93	8.96	6.99
11.58	4.33	12.78	10.74	8.69	5.80
35.45	0.0	+0.17	+0.15	+0.27	+1.10
0.60					
36.05					
	30.42	32.90	32.80		
	9.60	6.87	7.12	7.22	
	40.02	33.15			
	0.41				
	39.22				12.34
	12.75				3.06
	52.36				1.16
	0.71	51.67	11.75	60.70	13.50
	57.65	41.89	61.81	2.86	3.06
	11.91			.55	2.71
	63.56				1.16
					3.47
					60.15
	65.86	70.34	60.73		
	6.65	5.13	4.60		
	75.51	47.6	5.05		
		37	-1.75		
	60.77				
	4.56				
	65.33				
		68.65			
		6.86			
		5.76			
		1.10			

Sewer Construction Neptune Place
5' W of E. cl. from Settling Tank South

BM	0.74	24.72		27.96	S.P.V.M. + P.D.S.
Connection with Settling Tank 5-51.1	00 T.P. 4.64	24.01	9.35	19.37	15.00
+51.1			5.28	18.73	15.25
+02.2			5.30	18.71	15.51
+53 ³			5.17	18.84	15.77
2+04 ⁴			5.20	18.81	16.03
2+55 ⁵ M.H. #1 6-50	Kolmar		4.67	19.34	16.24
3+05 ⁵		24.77	5.10	18.91	16.53
3+58 ⁵			8.14	16.68	16.78
4+05 ⁵			5.56	19.21	17.03
4+55 ⁵			5.13	19.64	17.28
5+05 ⁵			4.73	20.04	17.53
5+55 ⁵ M.H. #2 3-50.7			3.61	21.16	17.78
6+06 ⁶			4.15	20.62	18.05
6+56 ⁶			3.43	21.34	18.32
7+07 ⁶ DE			2.65	22.12	18.58

+4.37					
+3.48	18.91				
+3.20	5.41				5.60
+3.07	<u>24.32</u>				
+2.78		5.51		18.81	CHK
+3.06	out	5.51		18.81	16.28 + 2.53
+2.38		5.41		18.98	CHK
+2.07	Run over	5.60		18.72	16.78 + 1.94
+2.18					
+2.36					
+2.51					
+3.38					
+2.57					
+3.02					
+3.54					

$$\begin{array}{r} 20.42 \\ 0.75 \\ \hline 31.17 \\ 11.90 \\ \hline 19.27 \\ 5.50 \\ \hline 24.77 \end{array}$$

$$\begin{array}{r} 18.54 \\ 18.78 \\ \hline 37.32 \\ 24 \\ \hline 13.11 \end{array}$$

2078
11/25
11/27

indexed
C.S.K.

Regrade Gravilla La Jolla East

003 Elina La Jolla

502

1400 = P.H. 9

1210 = E. Alley

1460

2410 = W. Elce

83.80	2.88	84.70	84.36	84.02	83.68	83.34	83.00
4.23	85.20	3.33	3.67	4.01	4.35	4.69	5.03
88.03							

83.80	83.40	84.10	83.90	83.50
3.82	4.22	3.52	3.72	4.53
87.62				

B.M.L. 86
10.60
79.44

S.E. Ret

8.10

S 71.36

N.W. of NonGrade

N 8.13	70.50	71.77	73.05	73.30	74.57	3.60
71.23	70.7	72.0	73.2	73.5	74.8	75.86
	8.4	7.5	6.2	6.0	4.7	76.0
	8.2	7.7	6.4	6.2	4.7	3.5
	+0.3	-0.1	-0.2	-0.2	-0.1	4.3
						-0.8

15

Electric

3.60
75.86

Spec S. Gravilla Neptune to Vista Del Mar
W.V.P.M. 4. East E. Neptune

27.96	4.32	22.64	20.20	20.0
1.71	25.35	7.00	9.47	
29.67				
				8.83
				20.84

74 - Electric Ed. 91.8

83.80	76.10	72.55	78.90	80.25	81.60	81.93	82.7	82.60	82.93	83.27	83.60
4.10	11.7	10.4	10.0	7.7	6.3	6.0	5.6	5.3	5.0	4.6	4.2
87.90		8.6	7.6	6.3	6.8	4.4	4.4	3.9	2.6	2.9	2.8
		41.8	41.4	41.4	40.3	41.2	41.2	41.3	42.4	41.7	40.8

150 - S. Vista Del Mar to Vista Del Mar
 W 84.10 84.8 84.0 83.3
 3.8 3.1 3.9 4.0
 1.7 1.8 2.9 4.0
 42.1 41.3 41.0 40.2
 37
 85.2
 2.0

Rosemont

83.80	80.40	80.6	81.3	82.1	82.9	83.6
6.60			7.1	8.3	7.5	6.8
90.40			7.4	6.8	5.0	6.0
			42.7	42.3	42.5	40.4

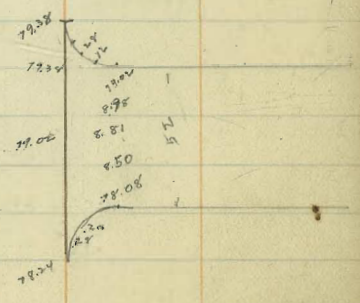
S 80.40	80.6	81.5	82.4	83.2	84.1
		8.9	8.0	7.2	6.3
		6.7	6.2	3.6	4.2
		42.2	41.8	43.6	42.1

77.38	71.45 <u>70.25</u> 1.20	6.63 <u>75.75</u> 1.12	0.88 <u>76.50</u> 0.72	1.04 <u>76.34</u> 0.16	2.55 <u>55</u> 2.30	4.84 <u>4.20</u> 0.64
	4.61 <u>4.44</u> 0.17	5.55 <u>5.43</u> 0.12			34 <u>70</u> 36	4.24 <u>4.80</u> 0.56
	4.35 <u>4.22</u> 0.13	5.81				

75.10 <u>5.13</u> 80.23	76.00 <u>4.23</u> 80.23					
75.10 <u>7.94</u> 80.04	4.29 <u>75.75</u> 80.04	4.20 <u>75.84</u> 80.04	76.35 <u>3.70</u> 78.05	2.60 <u>76.44</u> 78.05		
75.10 <u>7.45</u> 84.15	81.40 <u>3.55</u> 80.05	3.19 <u>81.74</u> 80.05				

83.40 <u>5.04</u> 88.84	5.43 <u>83.40</u> 80.04	5.24 <u>83.60</u> 80.04	5.14 <u>83.66</u> 80.04	5.18 <u>83.66</u> 80.04	3.60 <u>3.24</u> 0.36	
-------------------------------	-------------------------------	-------------------------------	-------------------------------	-------------------------------	-----------------------------	--

88.10 <u>4.62</u> 88.42	4.27 <u>75</u> 80	5.0 <u>80</u> 85	4.5 <u>77</u> 81.5	3.7 <u>84.70</u> 81.5	3.77 <u>44</u> 47.7	4.1 <u>70</u> 74	5.4 <u>72</u> 77	5.47 <u>83.02</u> 77.55
	4.87 <u>3.52</u> 1.35	4.90 <u>5.2</u> 0.3						



Indexed

C.S.K.

Improvement of Bird Rock
ARRISNE Place

W. Line Chelson	W. Line C. Grades	E. Line C. Grades	W. Line Chelson
+36.2	65.00	65.50	+36.2
+78.4 P.C.	56.90	55.83	+73.8 P.C.
8-15.1 Deflection	9.96	11.03	4-18.64
0+88.5	55.24	53.37	+92.84
1+03.6	53.58	50.92	+110.64
1+18.7	51.91	48.46	+129.32
1+33.8	50.21	46.01	+147.95 P.V.C.
1+48.9	48.59	43.55	+167.95
1+64.0	46.92	41.60	+187.95
1+79.4	45.27	39.67	+207.95
1+94.1 P.V.C.	43.61	38.66	+227.95
6-20	41.95	37.86	+247.95
2+14.4	39.89	37.47	+267.95 P.V.C.
2+34.4	38.55	37.30	+286.95
2+54.4	37.69	37.14	+305.81
2+74.4	36.82	36.96	+324.73 P.C.
3+14.4 P.V.C.	36.48	36.50	+344.53
4-18.37	36.32	36.50	W. Line Bird Rock
3+22.4	36.16	36.50	P.V.C.
3+50.84	36.10		
3+69.21	35.86		
3+87.58	35.50		
1-40.27	35.10		
4+27.86	35.50		
S. Line B.R. Ave		36.50	S. Line B.R. Ave.

W. Line Chelson	W. Line C. Grades	E. Line C. Grades	W. Line Chelson
72.73	65.00	65.50	72.73
1.38	65.00	65.50	1.38
74.31	65.00	65.50	74.31
12.91	65.00	65.50	12.91
41.40	65.00	65.50	41.40
7.00	65.00	65.50	7.00
68.40	65.00	65.50	68.40
13.13	65.00	65.50	13.13
55.27	65.00	65.50	55.27
12.94	65.00	65.50	12.94
28.21	65.00	65.50	28.21
12.94	65.00	65.50	12.94
55.27	65.00	65.50	55.27
0.28	65.00	65.50	0.28
2.55	65.00	65.50	2.55
43.00	65.00	65.50	43.00
2.53	65.00	65.50	2.53
44.53	65.00	65.50	44.53
65.00	65.00	65.50	65.00
1.36	65.00	65.50	1.36
0.50	65.00	65.50	0.50
46.86	65.00	65.50	46.86
7.94	65.00	65.50	7.94
56.92	65.00	65.50	56.92
0.05	65.00	65.50	0.05
56.90	65.00	65.50	56.90
13.23	65.00	65.50	13.23
43.64	65.00	65.50	43.64
0.10	65.00	65.50	0.10
45.74	65.00	65.50	45.74
34.10	36.50	37.50	34.10
6.01	4.61	2.61	6.01
40.11			40.11

ABBLONE PLACE

W. Line	E. Line	W. Line	E. Line
36.50	36.50		
35.80	36.80		
36.17	10.06		
36.49	37.17		
36.84	37.47		
37.02	37.88		
37.55	38.27		
38.31	38.59		
38.64	39.52		
39.24	41.24		
40.02	43.40		
41.06	46.00		
44.06	48.43		
46.06	51.67		
46.49	54.50		
49.92	57.33		
51.92	60.17		
53.35	63.00		
54.77	67.25		
58.78	71.50		
58.64			
61.07			
63.50			
66.00			
64.50			
71.00			

W. Line	E. Line	W. Line	E. Line
35.5	36.0		
9.0	9.5		
9.6	9.0		
-0.6	-0.5		
36.5	36.8		
7.0	7.7		
6.7	6.2		
7.1	6.0		
7.3	7.2		
53.8	58.6		
10.2	14.0		
5.9	8.7		
4.3	7.3		
36.50	12.51		
46.80	46.86		
46.47	12.73		
59.22	1.49		
57.33	17.57		
69.85			

W. Line	E. Line	W. Line	E. Line
34.8	34.1		
5.9	3.1		
6.1	4.0		
3.0	-3.6		
37.1	37.8		
38.3	38.3		
41.2	41.2		
46.0	46.0		
51.7	51.7		
66.0	66.0		
68.5	68.5		
71.0	71.0		
6.3	5.9		
45.2	45.2		
67.2	67.2		
10.3	10.3		
8.4	8.4		
44.9	44.9		
38.76	38.76		
24.39	24.39		
3.37	3.37		
3.37	3.37		
7.74	7.74		
3-37	3-37		
180	180		
37	37		
1217	1217		
.91	.91		

Bird Rock Ave.

19.04
5.26
24.30

	S.d	N.d		
E Line LaJolla Blvd	79.05	79.80		
S.3-417	5.25	7.3		
1	80.03	80.53		
2				
3				
B.R.K. 3	82.00	82.00		
4-50	2.30	2.30		
1	84.12	84.12		
W Line Electric	86.25	86.25	87.00	87.00
E Line Electric	88.50	88.50	88.00	88.00
1	90.70	90.50		
2	92.90	92.50		
3	95.10	94.50		
4	97.30	96.50		
N. Line Beaufort	99.50	98.50		
E Line Beaufort	101.50	100.50		
5-471				
1	104.7	103.7		
2	107.9	106.9		
3	111.1	110.1		
4	114.3	113.3		
S.W. Line Waverly	117.50	116.50		
E Line Waverly	119.50	118.50		
5-471				
1	122.2	121.3		
2	124.9	124.1		
3	127.6	126.9		
4	130.3	129.7		
S.W. Bellevue	133.00	132.50		
E. Bellevue	136.00	135.00		

79.06 SW LaJolla & B.R.K. Ave

12.24
91.30
2.05
99.25
12.19
101.44

54.00
12.25
79.05

81.0
11.3
10.7
11.6
-0.3

88.0
3.3
2.8
+0.5

89.0
3.3
+1.3

99.0
3.3
125.57
0.41

112.00
0.33
113.33

117.50
8.5
8.3
+0.2

135.81
3.67
139.48

117.50
4.78
122.28

99.61
5.26
104.87

79.06
13.16
92.22

134.00
3.94
137.94

35.00
2.94
38.00
1.94

N 1147
77.53
80.5
10.8
11.2
-0.2

80.0
11.3
10.7
11.6
-0.3

88.5
2.8
+0.5

89.5
3.3
+1.3

99.5
3.3
125.57
0.41

112.00
0.33
113.33

117.50
8.5
8.3
+0.2

135.81
3.67
139.48

117.50
4.78
122.28

99.61
5.26
104.87

79.06
13.16
92.22

134.00
3.94
137.94

35.00
2.94
38.00
1.94

B.R.K.
82.0
9.5
10.1
9.4
-0.1

81.0
10.3
10.7
11.6
-0.4

82.5
8.9
9.3
10.3
-0.5

84.5
6.7
6.3
7.3
+0.6

87.5
4.7
4.3
5.3
+0.5

90.5
10.9
11.3
12.3
+0.8

92.5
8.9
9.3
10.3
+0.8

94.5
6.7
6.3
7.3
+0.5

96.5
4.7
4.3
5.3
+0.5

98.5
2.9
2.1
3.1
+0.9

101.5
10.9
11.3
12.3
+0.8

104.5
8.9
9.3
10.3
+0.5

107.5
6.7
6.3
7.3
+0.5

110.5
4.7
4.3
5.3
+0.5

113.5
2.9
2.1
3.1
+0.9

81.0
87.0
4.3
6.9
-2.6

81.0
10.3
10.7
11.6
-0.4

82.5
8.9
9.3
10.3
-0.5

84.5
6.7
6.3
7.3
+0.6

87.5
4.7
4.3
5.3
+0.5

90.5
10.9
11.3
12.3
+0.8

92.5
8.9
9.3
10.3
+0.8

94.5
6.7
6.3
7.3
+0.5

96.5
4.7
4.3
5.3
+0.5

98.5
2.9
2.1
3.1
+0.9

101.5
10.9
11.3
12.3
+0.8

104.5
8.9
9.3
10.3
+0.5

107.5
6.7
6.3
7.3
+0.5

110.5
4.7
4.3
5.3
+0.5

113.5
2.9
2.1
3.1
+0.9

DOLPHIN Place

N. ch. Grades E. ch. Grades

5+36 ²² E.C.	28.50	29.28	
2-37.21			
5+47 ²⁵	28.00 X	28.89 X	
N. Line BR. H.V.			
6+11 ²⁹	27.50 X	28.40 X	
S. Line BR. H.V.			
2-30.90	27.50 X	28.50 X	
+40 ²²	27.95 X	28.82 X	
8+1 ³⁴ P.C. Deflection	28.40 X	29.14 X	Deflection
8-18:50	5.42	4.68	
1+00 ²⁴	3-22'-30"	28.60 X	29.31 X
		5.22	4.51
1+18 ²³	6-45	28.80 X	29.48 X
		5.02	4.34
1+37 ²³	10-07'-30"	29.00 X	29.65 X
		4.82	4.17
1+55 ²³	13-30'	29.20 X	29.82 X
		4.62	4.00
1+74 ²²	14-52'-30"	29.40 X	30.00 X
		4.42	3.82
1+92 ²²	20-15'	29.60 X	30.41 X
		4.22	3.66
2+11 ²¹	23-37'-30"	29.80 X	30.93 X
		4.02	3.46
2+29 ²¹	27-00'	30.00 X	31.16 X
2-35.50		3.82	3.26
2+45 ²¹		30.50 X	31.40 X
		3.62	3.06
3+00 ²¹ P.C.		31.00 X	31.65 X
1-29.80		2.82	2.27
3+29 ²¹ R.V.C.	1-52'	31.42 X	31.85 X
1-20		2.60	2.05
3+49 ²¹	3-07'	31.68 X	32.05 X
2-14.01		2.44	1.87
3+67 ²¹	4-15'	31.92 X	32.12 X
1-12.01		1.90	1.35
3+79 ²¹ E.C.	5-00'	32.08 X	32.63 X
1-6		1.74	1.19
3+85 ²¹		32.16 X	33.53 X
2-20		1.66	1.11
4+05 ²¹		32.84 X	34.73 X
		1.64	1.09
4+25 ²¹		33.71 X	36.24 X
		1.60	1.05
4+45 ²¹		34.84 X	38.07 X
1-10		1.54	1.00
4+55 ²¹ P.C.		35.50 X	40.22 X
1-10		1.48	0.94

4+53 ²¹ E.C.	
2-37.27	
5+20 ²¹	
N. Line BR. H.V.	
5+58 ²⁴	
S. Line BR. H.V.	
2-41.14	
4+1.14	
P.C. +82.20	
5+22.05	
1+04 ³³	
1+26 ³³	
1+48 ³⁴	
1+70 ³⁰	
1+92 ³⁵ E.C.	
2-35.5	
2+24 ⁰⁵	
2+63 ³⁵ P.C.	
2-17.61	
2+81 ¹⁶	
2+98 ³⁸ P.V.C.	
7-201	
3+18 ³⁵	
2-15.82	
3+34 ⁴⁰	
3+50 ⁴¹ E.C.	
1-6.07	
3+56 ⁴⁸ P.V.C.	
7-120	
3+76 ⁴⁸	
3+96 ⁴⁸	
4+16 ⁴⁵	
4+26 ⁴¹ P.C.	
4+36 ⁴⁵	
3-20	
4+56 ⁴⁵	
4+76 ⁴⁵	
4+96 ⁴⁵ E.V.C.	

33.37
2.36
31.01
13.20
44.21

W	28.0	27.5	27.5	28.0	28.4	28.6	29.2	29.6
	5.7	5.4	5.7	5.4	5.0	4.6	4.2	3.8
	5.1	4.8	5.1	5.0	4.6	5.0	5.0	4.3
	+0.8	+1.0	+0.7	+0.4	+0.4	-0.4	-0.8	-0.5
E	28.9	28.5	28.5	28.8	29.1	29.3	29.6	
	4.5	4.9	4.7	4.6	4.3	4.1	3.9	
	3.7	3.1	3.6	3.5	3.5	3.2	3.2	
	0.8	1.4	+1.3	+1.1	+0.6	+0.9	+0.6	
W	30.0	30.5	31.0	31.4	31.7	32.1	33.7	35.5
	3.4	2.9	2.4	2.0	1.5	1.2	1.0	0.7
	4.0	3.5	3.1	2.7	13.0	12.5	11.5	10.5
	-0.6	-0.0	-0.7	-0.7	-6.5	-0.4	-1.0	-2.3
E	30.0	30.5	31.0	31.4	31.7	32.1	33.5	35.5
	3.4	2.9	13.2	12.8	12.5	12.1	10.7	8.7
	2.9	2.4	12.7	12.1	11.6	11.2	10.0	8.3
	+0.5	+0.5	+0.5	+0.7	+0.4	+0.9	+0.7	+0.4

32.08
12.65
44.70

Grades Forward

3-22-29
59

FL Account	704.00	105.50	111.491 81 Ford
50 F	106.98	108.58	116.67
100 F	109.95	111.67	121.14
150 F	112.93	114.75	125.78
200 F	115.90	117.84	130.43
235 4.5	118.00		135.08
250 F		120.92	139.73
267 F		122.00	144.38
FL Nevada	120.00	124.50	148.93
50 F	122.12	125.91	153.58
100 F	124.24	127.63	158.23
150 F	126.38	129.30	162.88
200 F	128.50	131.31	167.53
235 4.5	130.00		172.18
250 F		133.33	176.83
267 F		134.00	181.48
650 6.0	134.00	134.00	186.13
	135.00	132.00	190.78
	5.63	0.80	195.43

N	104.00	106.98	109.95	112.93	115.90	118.00
S	105.50	108.58	111.67	114.75	117.84	120.92
N	120.00	122.12	124.24	126.38	128.50	130.00
S	122.50	125.46	128.43	131.39	134.36	137.33
	126.13	129.10	132.07	135.04	138.01	140.98
	112.14	115.11	118.08	121.05	124.02	126.99
	120.15	123.10	126.05	129.00	131.95	134.90
	123.50	126.45	129.40	132.35	135.30	138.25

Beaumont

	W. ch	E. ch
2	105.63	106.63
3	105.50	106.50
4 Eve	105.30	106.30
4-45.9 W	4-49.6 E	
1	104.72	105.72
2	104.15	105.15
3	103.57	104.57
	57	
W. line Forward	103.00	104.00

11.58

	W.	PVE				
	105.6	105.3	104.7	104.1	103.6	103.0
	4.0	6.3	6.7	7.5	8.0	8.6
	6.6	7.0	6.8	7.4	7.9	8.8
	-0.6	-0.7	+0.1	+0.1	+0.1	-0.2
E	106.6	106.3	105.7	105.1	104.6	104.0
	5.0	5.3	5.9	6.5	7.0	7.6
	1.6	2.6	2.7	3.1	4.2	5.0
	+3.4	+2.7	+3.7	+3.4	+2.8	+2.6

93	18.8
34	12.6
128	56

111.6
3.9
107.7

9.1
5.7
4.0
2.4

61

Indexed
C.S.K.

Waverly Ave

117.30 B.M. SW T. x Waverly-B.R. Ave

62

N. 1/4 Ph. 1782
W. L-40

w.d. e.d.
109.00 X 110.00
8.40 7.50

117.00
0.40
117.40

4.48
121.78
8.01
113.77
8.05
121.82

W. 9.0	9.3	9.5	9.8	10.1	10.3	PVC	10.6	11.0
12.8	12.5	12.3	12.0	11.7	11.5		11.2	10.8
13.3	12.3	11.1	11.1	10.8	10.5		10.2	9.9
-0.5	+0.2	+1.2	+0.9	+0.9	+1.0		+1.0	+0.7

E 10.0	10.3	10.5	10.8	11.1	11.3	11.6	12.0
11.8	11.5	11.3	11.0	10.7	10.5	10.2	9.8
8.3	6.2	5.4	4.8	4.5	5.0	5.3	6.9
+3.5	+5.3	+5.9	+6.2	+6.2	+5.5	+4.9	+2.9

W 11.5	CVC 12.2	13.0	13.8	14.6	15.4	16.2	17.0
10.3	9.6	8.8	8.0	7.2	6.4	5.6	5.0
9.3	9.4	8.3	7.1	7.4	7.0	6.2	9.8
+1.0	+0.2	+0.5	+0.1	-0.2	-0.6	-0.6	-0.8

E 12.5	13.2	14.0	14.8	15.6	16.4	17.2	18.0
9.3	9.6	7.8	7.0	6.2	5.4	4.6	8.0
7.1	6.8	6.1	5.1	4.3	3.2	2.4	5.9
+3.1	+1.8	+1.7	+1.9	+1.9	+2.2	+2.2	+2.1

W 18.0	18.9	19.8	20.7	21.6	22.5	PVC	23.4
8.0	9.9	9.0	8.1	7.2	6.3	5.4	5.4
8.3	9.6	8.5	7.2	6.5	6.1	5.3	5.3
-0.3	+0.3	+0.5	+0.9	+0.7	+0.2	+0.1	+0.1

E 17.0	19.9	20.8	21.7	22.6	23.5	24.4	
14.1	7.0	13.3	12.6	11.7	10.8	9.9	9.0
10.2	3.4	9.3	7.6	6.2	5.6	4.9	4.7
+2.6	+4.2	+5.0	+5.5	+5.2	+5.0	+4.3	

112.6	4.6	23.70	6.0
107.0		4.00	
5.6			
4.8			
-0.5			

118.00	23.40	23.70	23.92	24.04	24.05	23.95
10.00	4.64	4.34	4.12	4.00	3.89	4.07
128.00		3.34	0.12	3.00	2.99	2.92
5.37						
122.61						
5.22						
128.04						

E 24.40			
5.64			

23.75	22.00	19.00
4.29	6.04	9.04
3.09	5.04	

R 40' W
225' E

109.27 X 110.27
7.19 7.19
109.53 X 110.53
6.80 6.80
109.80 X 110.80
6.60 6.60
110.07 X 111.07
6.33 6.33
110.33 X 111.33
6.07 6.07

112.20
3.34
115.54
12.90
102.64
2.58
105.22

PVC 6-20

110.60 X 111.60
4.94 5.88
110.75 X 111.75
4.79 5.25

5.80
0.1
24.9

1
2
3
4
5

110.96 X 111.96
4.58 5.44
111.20 X 112.20
4.34 5.20
111.48 X 112.48
4.06 4.92
111.83 X 112.83
3.71 4.57

5.13
30

EVC W
L-40 W
6-42.5 E

112.20 X 113.20
5.20 4.20
113.00 X 114.00

R 40' W
255' E

113.80 X 114.80
114.60 X 115.60
115.40 X 116.40
116.20 X 117.20

WY line B.R. Ave

117.00 X 118.00

S 11
L-50 W
6-47.5

118.00 X 119.00

300' W
225' E

118.90 X 119.90
119.80 X 120.80
120.70 X 121.70
121.60 X 122.60
122.50 X 123.50

P.V.C.

123.40 X 124.40

Waverly

1-20	W26	
1	123.70	124.70
2	123.92 X	124.92
3	124.04	125.04
4	124.05 X	125.05
5	123.95	124.95
6	123.75 X	124.75
7	123.16 X	124.16
8	122.58 X	123.58
9	122.00 X	123.00
10	121.00 X	122.00
11	120.00 X	121.00
12	119.00 X	120.00

W26

3-46.67

140

BRK

W3-46.27

E,3-46.27

1

BRK

2

BRK

123.84

2

N. Line Forward

5140
26

	W	PVC	BRK
128.76			
3.68			
125.11	123.9	24.0	23.7
88.31	4.9	4.8	5.1
133.42	4.9	5.4	5.5
7.80	0.0	-0.6	-0.4
125.62			
4.00			
129.62	124.9	25.0	24.7
	8.5	8.4	8.7
	4.2	4.8	5.0
	+4.3	+3.6	+3.7

23.2	22.6	22.0	21.0	20.0	19.0
6.2	6.2	6.8	8.6	9.6	10.6
5.6	6.2	5.7	8.5	9.4	10.0
+0.1	0.0	+1.1	+0.1	+0.2	+0.6
24.2	23.6	23.0	22.0	21.0	20.0
9.2	9.8	10.4	11.4	12.6	13.6
5.5	5.5	6.4	7.8	8.8	9.0
+3.7	+4.3	+4.0	+3.6	+3.8	3.6

Indexed
C.S.K.I.

Bellevue Ave 53.27

7.67
5.88

change
add E.C.

N. Line PL 1782
45' son E
60' son W PVC
8-20

W. cl. E. cl.

146.50 X 147.50

+ 19 W

148.86 X 149.48

+ 24.4 E

149.56 150.22

149.88 X 150.66

149.95 150.82

149.80 X 150.70

149.34 150.28

148.60 X 149.58

147.70 148.60

146.30 X 147.30

142.74 X 143.74

139.19 X 140.19

137.85 138.85

136.68 X 137.68

135.66 136.66

134.82 X 135.82

134.15 135.15

133.62 X 134.64

133.28 134.30

133.10 X 134.13

132.90 X 133.92

132.70 X 133.71

132.50 X 133.50

2 PVC
8-20

8 E.V.C.
W-3-40 E3-45

120' W 135' E

3 N. Line B.R. Ave

32.60
12.59
45.19
0.77
44.42
8.45
53.27

7.5
3.8
2.6

143.74
9.53

135.81
6.07
141.88
0.61
141.27
13.00

151.24
2.55
151.64
8.94
160.58
12.25

147.82
0.33
148.05
1.25
146.80

147.36
3.24
149.82 X 149.65
3.45
147.63
5.64

147.36 149.41

147.20 X 148.20

147.36 149.41

147.20 X 148.20

147.36 149.41

147.20 X 148.20

147.36 149.41

147.20 X 148.20

147.36 149.41

147.20 X 148.20

147.36 149.41

147.20 X 148.20

147.36 149.41

147.20 X 148.20

147.36 149.41

147.20 X 148.20

147.36 149.41

147.20 X 148.20

147.36 149.41

147.20 X 148.20

147.36 149.41

147.20 X 148.20

147.36 149.41

147.20 X 148.20

147.36 149.41

147.20 X 148.20

147.36 149.41

147.20 X 148.20

147.36 149.41

147.20 X 148.20

147.36 149.41

147.20 X 148.20

147.36 149.41

147.20 X 148.20

147.36 149.41

147.20 X 148.20

147.36 149.41

SV. TIC. B.R. Ave + Bellevue N

136
4.8
17.6

41.9

64

141.88
0.61
141.27
13.00

151.24
2.55
151.64
8.94
160.58
12.25

147.82
0.33
148.05
1.25
146.80

147.36
3.24
149.82 X 149.65
3.45
147.63
5.64

147.36 149.41

147.20 X 148.20

147.36 149.41

147.20 X 148.20

147.36 149.41

147.20 X 148.20

147.36 149.41

147.20 X 148.20

147.36 149.41

147.20 X 148.20

147.36 149.41

147.20 X 148.20

147.36 149.41

147.20 X 148.20

147.36 149.41

147.20 X 148.20

147.36 149.41

147.20 X 148.20

147.36 149.41

147.20 X 148.20

147.36 149.41

147.20 X 148.20

147.36 149.41

147.20 X 148.20

147.36 149.41

147.20 X 148.20

147.36 149.41

147.20 X 148.20

147.36 149.41

147.20 X 148.20

147.36 149.41

147.20 X 148.20

147.36 149.41

147.20 X 148.20

147.36 149.41

147.20 X 148.20

46.7
46.9
49.9
49.8
48.6
46.3
42.7
39.2

47.5
49.5
49.5
49.5
47.3
43.7
40.2

47.5
49.5
49.5
49.5
47.3
43.7
40.2

47.5
49.5
49.5
49.5
47.3
43.7
40.2

47.5
49.5
49.5
49.5
47.3
43.7
40.2

47.5
49.5
49.5
49.5
47.3
43.7
40.2

47.5
49.5
49.5
49.5
47.3
43.7
40.2

47.5
49.5
49.5
49.5
47.3
43.7
40.2

47.5
49.5
49.5
49.5
47.3
43.7
40.2

47.5
49.5
49.5
49.5
47.3
43.7
40.2

47.5
49.5
49.5
49.5
47.3
43.7
40.2

47.5
49.5
49.5
49.5
47.3
43.7
40.2

47.5
49.5
49.5
49.5
47.3
43.7
40.2

47.5
49.5
49.5
49.5
47.3
43.7
40.2

47.5
49.5
49.5
49.5
47.3
43.7
40.2

47.5
49.5
49.5
49.5
47.3
43.7
40.2

47.5
49.5
49.5
49.5
47.3
43.7
40.2

47.5
49.5
49.5
49.5
47.3
43.7
40.2

47.5
49.5
49.5
49.5
47.3
43.7
40.2

47.5
49.5
49.5
49.5
47.3
43.7
40.2

47.5
49.5
49.5
49.5
47.3
43.7
40.2

47.5
49.5
49.5
49.5
47.3
43.7
40.2

47.5
49.5
49.5
49.5
47.3
43.7
40.2

47.5
49.5
49.5
49.5
47.3
43.7
40.2

47.5
49.5
49.5
49.5
47.3
43.7
40.2

47.5
49.5
49.5
49.5
47.3
43.7
40.2

47.5
49.5
49.5
49.5
47.3
43.7
40.2

47.5
49.5
49.5
49.5
47.3
43.7
40.2

47.5
49.5
49.5
49.5
47.3
43.7
40.2

47.5
49.5
49.5
49.5
47.3
43.7
40.2

47.5
49.5
49.5
49.5
47.3
43.7
40.2

47.5
49.5
49.5
49.5
47.3
43.7
40.2

47.5
49.5
49.5
49.5
47.3
43.7
40.2

47.5
49.5
49.5
49.5
47.3
43.7
40.2

47.5
49.5
49.5
49.5
47.3
43.7
40.2

47.5
49.5
49.5
49.5
47.3
43.7
40.2

47.5
49.5
49.5
49.5
47.3
43.7
40.2

47.5
49.5
49.5
49.5
47.3
43.7
40.2

47.5
49.5
49.5
49.5
47.3
43.7
40.2

47.5
49.5
49.5
49.5
47.3
43.7
40.2

49.8
48.6
46.3
42.7
39.2

49.8
48.6
46.3
42.7
39.2

49.8
48.6
46.3
42.7
39.2

49.8
48.6
46.3
42.7
39.2

49.8
48.6
46.3
42.7
39.2

49.8
48.6
46.3
42.7
39.2

49.8
48.6
46.3
42.7
39.2

49.8
48.6
46.3
42.7
39.2

49.8
48.6
46.3
42.7
39.2

49.8
48.6
46.3
42.7
39.2

49.8
48.6
46.3
42.7
39.2

49.8
48.6
46.3
42.7
39.2

49.8
48.6
46.3
42.7
39.2

49.8
48.6
46.3
42.7
39.2

49.8
48.6
46.3
42.7
39.2

49.8
48.6
46.3
42.7
39.2

49.8
48.6
46.3
42.7
39.2

49.8
48.6
46.3
42.7
39.2

49.8
48.6
46.3
42.7
39.2

49.8
48.6
46.3
42.7
39.2

49.8
48.6
46.3
42.7
39.2

49.8
48.6
46.3
42.7
39.2

49.8
48.6
46.3
42.7
39.2

49.8
48.6
46.3
42.7
39.2

49.8
48.6
46.3
42.7
39.2

49.8
48.6
46.3
42.7
39.2

49.8
48.6
46.3
42.7
39.2

49.8
48.6
46.3
42.7
39.2

49.8
48.6
46.3
42.7
39.2

49.8
48.6
46.3
42.7
39.2

49.8
48.6
46.3
42.7
39.2

49.8
48.6
46.3
42.7
39.2

49.8
48.6
46.3
42.7
39.2

49.8
48.6
46.3
42.7
39.2

49.8
48.6
46.3
42.7
39.2

49.8
48.6
46.3
42.7
39.2

49.8
48.6
46.3
42.7
39.2

49.8
48.6
46.3
42.7
39.2

49.8
48.6
46.3
42.7
39.2

49.8
48.6
46.3
42.7
39.2

46.3
42.7
39.2

46.3
42.7
39.2

46.3
42.7
39.2

46.3
42.7
39.2

46.3
42.7
39.2

46.3
42.7
39.2

46.3
42.7
39.2

46.3
42.7
39.2

46.3
42.7
39.2

46.3
42.7
39.2

46.3
42.7
39.2

46.3
42.7
39.2

46.3
42.7
39.2

46.3
42.7
39.2

46.3
42.7
39.2

46.3
42.7
39.2

46.3
42.7
39.2

46.3
42.7
39.2

46.3
42.7
39.2

Indexed
C.S.K.

Colima Grades

	S. cl	N. cl
00 = E Line La Jolla Blvd 3-57.3 1 119	77.20	78.00
177.80 2 3 B.K. 2-50	78.60	79.20
100 4 2 = W. Line Electric	81.25	81.50
00 = E Line Electric 5-53.5	82.50	82.75
1	84.30	84.40
2	86.10	86.05
3	87.90	87.70
4	89.30	89.35
5 = W. Line Beaumont	91.50	91.00
00 = E Line Beaumont 5-53.5	93.00	93.00
1	95.50	95.30
2	98.00	97.60
3	100.50	99.90
4	103.00	102.20
5 = W. Line Waverly	105.50	104.50
00 = E Line Waverly 5-53.5	107.00	106.50
1	109.80	109.8
2	112.60	111.1
3	115.40	113.4
4	118.20	115.7
5 = W. Line Bellevue	121.00	118.00

71.88 AM Colima + La Jolla Blvd

7.35
3.20
18

66

	cl in	78.40	78.80	79.20	80.3	81.50
	6.18	5.8	5.4	5.0	3.9	2.7
	78.00	5.9	5.9	5.3	4.4	3.5
		10.8	-0.5	-0.3	-0.5	-0.8
	7.00	77.7	78.1	78.60	79.9	81.25
	77.20	6.5	6.1	5.6	4.3	5.0
		7.7	7.2	6.7	5.2	4.2
		11.2	-1.1	-0.5	-0.9	-1.2
	77.94					
	10.44					
	89.47					
	0.62					
	89.84					
	3.2					
	97.44					
	1.30					
	96.04					
	7.60					
	103.74					
	1.61					
	102.13					
	6.67					
	108.80					
	5.34					
	105.20					
	18.72					
	116.17					
	3.82					
	113.15					
	9.41					
	122.76					
	1.10					
	121.66					
	12.44					
	134.14					
	77.94					
	7.56					
	85.54					
	2.84					
	88.38					
	6.74					
	78.60					
	6.74					
	85.34					
	2.84					
	88.18					
	6.74					
	94.92					
	5.44					
	100.36					
	1.10					
	101.46					
	12.44					
	113.90					
	9.41					
	122.76					
	1.10					
	121.66					
	12.44					
	134.14					
	77.94					
	7.56					
	85.54					
	2.84					
	88.38					
	6.74					
	94.92					
	5.44					
	100.36					
	1.10					
	101.46					
	12.44					
	113.90					
	9.41					
	122.76					
	1.10					
	121.66					
	12.44					
	134.14					
	77.94					
	7.56					
	85.54					
	2.84					
	88.38					
	6.74					
	94.92					
	5.44					
	100.36					
	1.10					
	101.46					
	12.44					
	113.90					
	9.41					
	122.76					
	1.10					
	121.66					
	12.44					
	134.14					

Indexed
e.s.k.

Electric Ave Grades
N. Line P.L. 1782 to Forward

500 page 80 for
colvert

	Net	E.d.
00 N. Line Pl. 1782	86.00	87.00
+50	6.08	7.08
100	6.16	7.16
1+50	6.25	7.25
200	6.33	7.33
+50	6.41	7.41
300	6.50	7.50
+50	6.58	7.58
400	6.66	7.66
+50	6.75	7.75
500	6.83	7.83
+50	6.91	7.91
400 N. Line Bird Rock	87.00	88.00
000 S. Line B.R. Ave	87.00	88.00
0+50	87.07	88.07
100	87.14	88.14
+50	87.22	88.22
200	87.29	88.29
+50	87.36	88.36
300	87.44	88.44
+50	87.51	88.51
400	87.58	88.58
+50	87.66	88.66
500	87.73	88.73
N. Line 15' Alley 5+50 ³⁰ S. Line B.R. City by Sea	87.81	88.81

75.84 B.M. N. Line La Jolla Blvd S. Line La Jolla Hermosa

68

	W	6.1	6.2	6.2	6.3	6.4	6.5	6.6	6.7
	2.7	2.6	2.5	2.3	2.4	2.3	2.2	2.1	2.0
	5.2	5.0	4.7	4.6	4.2	3.6	2.6	2.1	2.3
	-2.5	-2.4	-2.2	-2.1	-1.8	-1.3	-0.4	0.0	-0.3
	7.0	7.1	7.2	7.2	7.3	7.4	7.5	7.6	7.7
	1.7	1.6	1.5	1.5	1.4	1.3	3.2	3.6	3.5
	2.3	2.2	2.4	2.4	1.8	0.8	2.7	2.6	3.0
	-0.6	-0.6	-1.3	-0.9	-0.4	+0.5	+1.0	+1.0	+0.5
	6.7	6.8	6.9	87.0	87.0	87.0	7.1	7.1	7.1
	2.0	4.4	4.5	4.2	5.0	4.2	4.0	4.0	9.0
	3.0	5.2	6.1	5.0	5.4	6.4	11.0	11.3	11.3
	-1.0	-0.8	-1.8	-0.8	-1.4	-2.2	-2.0	-2.3	-2.3
	7.7	7.4	7.9	88.0	88.0	81	81	81	81
	3.5	3.4	3.3	3.2	3.2	3.2	3.0	3.0	3.0
	3.3	3.6	3.2	2.7	2.0	2.0	4.0	5.0	5.0
	+0.2	-0.2	+0.1	+0.5	+1.2	+2.0	+2.0	+2.0	+2.0
	7.2	7.3	7.4	7.4	7.5	7.6	7.7	7.7	7.4
	8.7	8.8	8.7	8.7	8.6	8.5	8.4	8.4	8.3
	11.1	10.2	10.7	11.0	11.0	10.5	10.6	10.6	10.5
	-2.2	-1.4	-2.0	-2.3	-2.4	-2.0	-2.2	-2.2	-2.2
	8.2	8.3	8.4	8.7	8.5	8.6	8.7	8.7	8.8
	7.8	7.8	7.7	7.7	7.6	7.5	7.4	7.4	7.3
	4.9	4.8	4.4	4.9	5.2	4.9	4.8	4.8	5.0
	+3.0	+3.0	+3.2	+2.8	+2.4	+2.6	+2.6	+2.6	+2.3

75.84	87.0	87.03
12.83	1.7	1.64
88.67	2.3	2.74
	.6	-1.10

75.84			
12.71			
88.55			
0.02			
88.47			
2.92	36.00	36.40	37.00
91.39	5.39	4.99	4.39
3.48			
87.91			
4.43			
92.34			

86.25	86.25	87.00
6.09	6.09	5.34
7.37		
1.50		
87.00		
8.34		
6.34		
-1.00		
87.00		
5.34		
86.95		
5.37		
88.00		
4.34		
4.34		
-0.50		
88.50		
3.84		
88.50		
3.84		

Electric Ave Grades Con

15' S. of above Section
N. Line Bird Rock Add

= S. Line 15' Alley

56.55

113' = N. Line Forward

w. ch

e. ch

87.83

87.91

88.00

88.83

88.91

89.00

87.50

5.28

87.50

5.42

74.95

13.01

87.96

0.51

87.45

5.47

92.92

87.81

5.11

5.60

97.32

88.00

3.78

88.40

89.00

3.78

3.78

89.50

3.28

89.50

3.28

5.14

87.78

5.22

87.70

88.00

4.78

92.78

97.03

W

87.8

9.2

11.1

-1.7

88.8

8.2

4.5

+3.7

87.9

9.1

7.1

0.0

88.9

8.1

3.8

+4.3

88.0

9.0

9.0

0.0

89.0

8.0

3.5

+4.5

Forward

87.50

7.5

9.0

40.5 chK

89.50

7.5

2.5

+4.0

Indexed
C.S.K.

San Antonio McCall to Reservation Line

	W. line	W. cb	e. cb	E. line
005 S. Line McCall	4.7	4.50	3.50	3.7
150	5.2			4.2
100	5.7			4.7
150	6.2			5.2
200	6.7			5.7
250	7.2			6.2
300 N. Line Laurence	7.7	7.50	6.50	6.7
005 S. Line Laurence	8.2	8.00	7.00	7.2
150	8.6			7.6
100	9.0			8.0
150	9.4			8.4
200	9.9			8.9
250	10.3			9.3
300 N. Line Kellogg	10.7	10.50	9.50	9.7
005 S. Line Kellogg	11.2	11.00	10.00	10.2
150	11.3			10.5
100	11.6			10.8
100 (Reservation) 100 (Station W)	12.2	12.00	11.00	11.2

4.60 BM S.W. San Antonio & McCall

W	W. cb	E. cb	E. line	W	W. cb	E. cb	E. line	W	W. cb	E. cb	E. line
2.55				4.60				4.60			
3.15				4.50				4.50			
3.50				4.35				4.35			
4.35				4.12				4.12			
5.09				3.90				3.90			
5.79				3.75				3.75			
6.45				3.60				3.60			
7.12				3.45				3.45			
7.79				3.30				3.30			
8.45				3.15				3.15			
9.12				3.00				3.00			
9.79				2.85				2.85			
10.45				2.70				2.70			
11.12				2.55				2.55			
11.79				2.40				2.40			
12.45				2.25				2.25			
13.12				2.10				2.10			
13.79				1.95				1.95			
14.45				1.80				1.80			
15.12				1.65				1.65			
15.79				1.50				1.50			
16.45				1.35				1.35			
17.12				1.20				1.20			
17.79				1.05				1.05			
18.45				0.90				0.90			
19.12				0.75				0.75			
19.79				0.60				0.60			
20.45				0.45				0.45			
21.12				0.30				0.30			
21.79				0.15				0.15			
22.45				0.00				0.00			

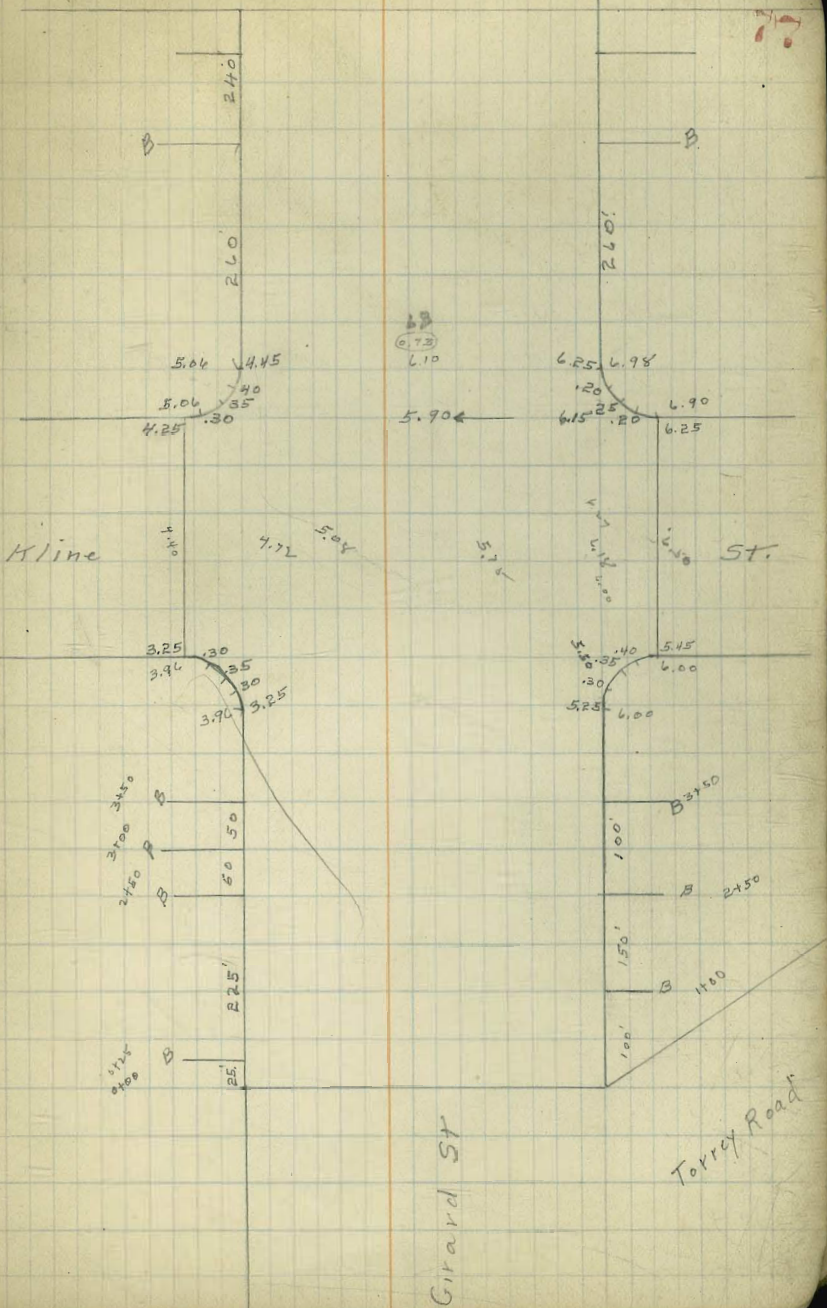
indexed
C.S.K.I

6-14-27

Girard St Paving
Silverado to Torrey Road

Silverado

ST.



Indexed
C.S.M.

Laurel + Columbia ReGrade

63.01 PM S.W. Kalmia + Columbia

Sewer Laterals

# 15 W	# 14 W	# 13 E	# 12 E	# 11 W
56.40	52.50	43.00	41.40	42.00
9.16	13.44	10.41	4.04	5.84
7.74	10.37	9.41	6.76	5.80
2.42	13.09	11.20	-0.66	+0.04
# 10 W	# 9 E	# 8 E	# 7 W	# 6 W
43.00	43.00	50.00	50.00	57.00
4.84	4.84	10.40	10.40	15.95
2.40	3.20	9.73	7.43	8.01
16.44	11.54	10.87	13.13	17.94
# 5 E	# 4 E	# 3 W	# 2 E	# 1 E Change
57.00	64.00	72.00	72.00	82.00
3.40	8.95	13.19	13.19	12.91
6.24	8.15	3.00	8.53	9.55
-2.88	+0.80	+10.19	+4.66	+3.36

Grade SW Columbia
& Laurel

51.00
+ 3.16
6.15
- 9.34

Grade N.W. Columbia
& Laurel

51.50
9.10

Connection with
36" Culvert

24.20
23.64
5.27
+ 18.37

Grade SE Columbia
& Laurel

51.00
+ 3.16
6.41
- 9.57

cl W
3.01
62.95
63.00
OK

cl E
0.74
65.02
65.00
OK

cl W
21.91
12.00

E
21.41
92.50

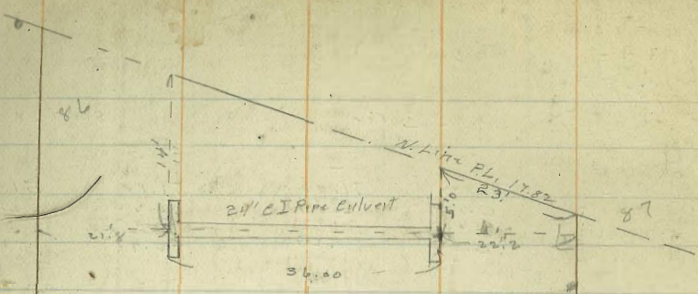
63.01
1.63
64.64
12.64
51.95
1.62
53.57

51.50
2.07
51.00
2.57

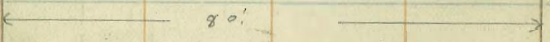
SE Cor

SW Cor

S	E	S	W
51.50	51.00	51.00	51.00
2.12	2.62	2.62	2.62
53.62	51.62	2.97	3.10
	-3.00	-0.20	-0.48
51.25	4.24		
2.37	3.24		
-11.00			



	T 88.64		
176' X 4' 24" Pipe Culvert	1.05	87.63	paved crossing 1st inlet 1.05
W. end 24" Pipe Culvert outlet	6.14	82.54	flow line
E. " " " " Inlet	5.72	82.96	" "
Top Rail W. line PL 1782	2.04	86.60	Grade = 81.50



Electric Ave

500000 70556
473892 7.00
41080

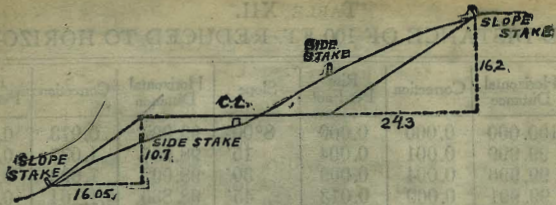
87
38

DIRECTIONS FOR USE OF TABLES

Distance of slope stake from side or shoulder stake for any width roadway, slope 1% to 10% If ground is nearly level, the cut or fill side stake is located by the double entry method in left column and top row. The number in body of table in same row and column gives distance from side stake to slope stake. If ground is not level, add this amount if cut, elevate if fill. Add this amount to cut or fill and find in table. Set up rod at this point and line of sight should cut target.

IMPROVED TABLES
AND
INFORMATION

To find Tangent and External for curve of any other degree, divide by degree of curve and add correction found in column of corrections. Degree of curve with a given T may be found by dividing tangent (or external), opposite T by given tangent (or external). The distance from a point on the tangent to the curve is very nearly the square of the tangent length divided by twice the radius.



DISTANCES FROM SIDE STAKES FOR CROSS-SECTIONING.

SLOPE 1 1/4 TO 1. ROADWAY OF ANY WIDTH.

	0	.1	.2	.3	.4	.5	.6	.7	.8	.9	
0	0 00	0 15	0 30	0 45	0 60	0 75	0 90	1 05	1 20	1 35	0
1	1 50	1 65	1 80	1 95	2 10	2 25	2 40	2 55	2 70	2 85	1
2	3 00	3 15	3 30	3 45	3 60	3 75	3 90	4 05	4 20	4 35	2
3	4 50	4 65	4 80	4 95	5 10	5 25	5 40	5 55	5 70	5 85	3
4	6 00	6 15	6 30	6 45	6 60	6 75	6 90	7 05	7 20	7 35	4
5	7 50	7 65	7 80	7 95	8 10	8 25	8 40	8 55	8 70	8 85	5
6	9 00	9 15	9 30	9 45	9 60	9 75	9 90	10 05	10 20	10 35	6
7	10 50	10 65	10 80	10 95	11 10	11 25	11 40	11 55	11 70	11 85	7
8	12 00	12 15	12 30	12 45	12 60	12 75	12 90	13 05	13 20	13 35	8
9	13 50	13 65	13 80	13 95	14 10	14 25	14 40	14 55	14 70	14 85	9
10	15 00	15 15	15 30	15 45	15 60	15 75	15 90	16 05	16 20	16 35	10
11	16 50	16 65	16 80	16 95	17 10	17 25	17 40	17 55	17 70	17 85	11
12	18 00	18 15	18 30	18 45	18 60	18 75	18 90	19 05	19 20	19 35	12
13	19 50	19 65	19 80	19 95	20 10	20 25	20 40	20 55	20 70	20 85	13
14	21 00	21 15	21 30	21 45	21 60	21 75	21 90	22 05	22 20	22 35	14
15	22 50	22 65	22 80	22 95	23 10	23 25	23 40	23 55	23 70	23 85	15
16	24 00	24 15	24 30	24 45	24 60	24 75	24 90	25 05	25 20	25 35	16
17	25 50	25 65	25 80	25 95	26 10	26 25	26 40	26 55	26 70	26 85	17
18	27 00	27 15	27 30	27 45	27 60	27 75	27 90	28 05	28 20	28 35	18
19	28 50	28 65	28 80	28 95	29 10	29 25	29 40	29 55	29 70	29 85	19
20	30 00	30 15	30 30	30 45	30 60	30 75	30 90	31 05	31 20	31 35	20
21	31 50	31 65	31 80	31 95	32 10	32 25	32 40	32 55	32 70	32 85	21
22	33 00	33 15	33 30	33 45	33 60	33 75	33 90	34 05	34 20	34 35	22
23	34 50	34 65	34 80	34 95	35 10	35 25	35 40	35 55	35 70	35 85	23
24	36 00	36 15	36 30	36 45	36 60	36 75	36 90	37 05	37 20	37 35	24
25	37 50	37 65	37 80	37 95	38 10	38 25	38 40	38 55	38 70	38 85	25
26	39 00	39 15	39 30	39 45	39 60	39 75	39 90	40 05	40 20	40 35	26
27	40 50	40 65	40 80	40 95	41 10	41 25	41 40	41 55	41 70	41 85	27
28	42 00	42 15	42 30	42 45	42 60	42 75	42 90	43 05	43 20	43 35	28
29	43 50	43 65	43 80	43 95	44 10	44 25	44 40	44 55	44 70	44 85	29
30	45 00	45 15	45 30	45 45	45 60	45 75	45 90	46 05	46 20	46 35	30
31	46 50	46 65	46 80	46 95	47 10	47 25	47 40	47 55	47 70	47 85	31
32	48 00	48 15	48 30	48 45	48 60	48 75	48 90	49 05	49 20	49 35	32
33	49 50	49 65	49 80	49 95	50 10	50 25	50 40	50 55	50 70	50 85	33
34	51 00	51 15	51 30	51 45	51 60	51 75	51 90	52 05	52 20	52 35	34
35	52 50	52 65	52 80	52 95	53 10	53 25	53 40	53 55	53 70	53 85	35
36	54 00	54 15	54 30	54 45	54 60	54 75	54 90	55 05	55 20	55 35	36
37	55 50	55 65	55 80	55 95	56 10	56 25	56 40	56 55	56 70	56 85	37
38	57 00	57 15	57 30	57 45	57 60	57 75	57 90	58 05	58 20	58 35	38
39	58 50	58 65	58 80	58 95	59 10	59 25	59 40	59 55	59 70	59 85	39
40	60 00	60 15	60 30	60 45	60 60	60 75	60 90	61 05	61 20	61 35	40
41	61 50	61 65	61 80	61 95	62 10	62 25	62 40	62 55	62 70	62 85	41
42	63 00	63 15	63 30	63 45	63 60	63 75	63 90	64 05	64 20	64 35	42
43	64 50	64 65	64 80	64 95	65 10	65 25	65 40	65 55	65 70	65 85	43
44	66 00	66 15	66 30	66 45	66 60	66 75	66 90	67 05	67 20	67 35	44
45	67 50	67 65	67 80	67 95	68 10	68 25	68 40	68 55	68 70	68 85	45
46	69 00	69 15	69 30	69 45	69 60	69 75	69 90	70 05	70 20	70 35	46
47	70 50	70 65	70 80	70 95	71 10	71 25	71 40	71 55	71 70	71 85	47
48	72 00	72 15	72 30	72 45	72 60	72 75	72 90	73 05	73 20	73 35	48
49	73 50	73 65	73 80	73 95	74 10	74 25	74 40	74 55	74 70	74 85	49
50	75 00	75 15	75 30	75 45	75 60	75 75	75 90	76 05	76 20	76 35	50

Computed by L. Leland Locke.

6670
111
281.96
271.80
3172
37.3

6270
43

220
124
146
73
12
14

326.82
33672
337.24
36.94
337772
38693

16284
2.3
16071
12
17.93

7.04
348
10.50
3.54

1.92
1.76
12.16
15.48

