

Grade

152

PASTS

LEVEL BOOK

1896

Our Leather Bound Engineers Note Books are carried in the following rulings:

- No. 380 LEVEL BOOK. Left and Right Hand Page the same as Left Hand Page of this Book.
- No. 382 FIELD BOOK. Left Hand Page as in this Book, Right Hand Page 4 x 4 to the inch, Center Line Red.
- No. 384 MINING TRANSIT BOOK. Left Hand Page as in this Book, Right Hand Page 8x8 to the inch, Center Line Red.
- No. 385 FIELD BOOK. Left Hand Page as in this Book, Right Hand Page 8 vertical and 4 horizontal lines to the inch, Center Line Red.

We also carry the Note Books listed above, bound in extra strong Fabri-Hide (otherwise the same quality of book), which can be furnished at a somewhat lower price.

In ordering Fabri-Hide covered books, add the letter "F" to catalog number.

THE FREDERICK POST CO.
ENGINEERING and DRAFTING SUPPLIES
IRVING PARK STATION
CHICAGO, ILL.

MICROFILMED

APR 8 1965

28th St. Paving National to Colton D
Iowa St Paving El Cajon to Mendocino

This book
Indexed on
Page 28

Insured
12/20/14
HPL

11/15/28
Moore

28th ST. PAVING National to Colton

8" curb face 6" Crown

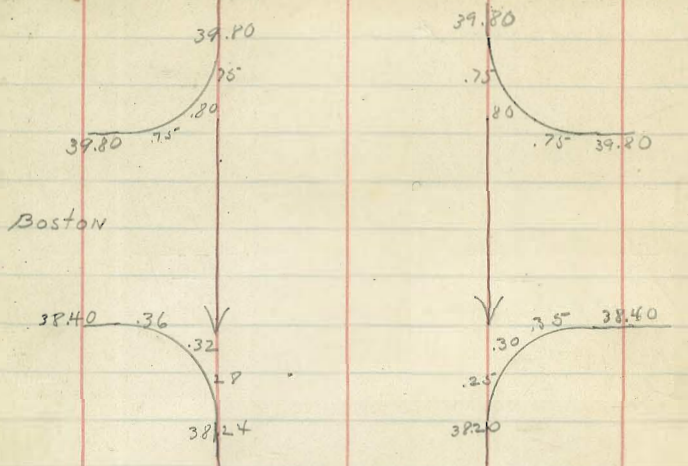
National - Paved

Newton - Paved

Break

Break

28th



Alley

35' 0" 8.25'

Boston

25' Brk

Brk.

Brk.

25'

Main

Main

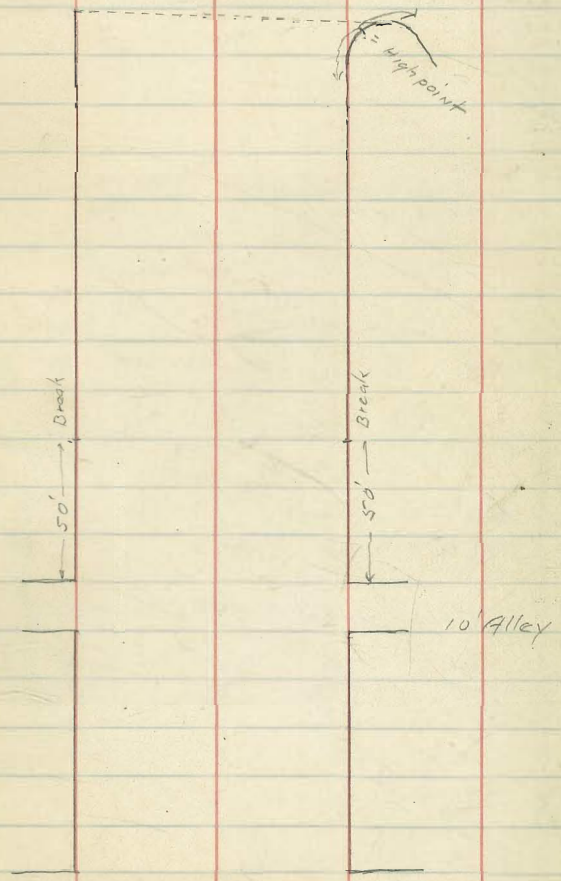
25' ③

Colton

11/17/28 IOWE st. Paving
Moore

EL Cajon to Maude
8' curbside
6' Crown

Maude st.

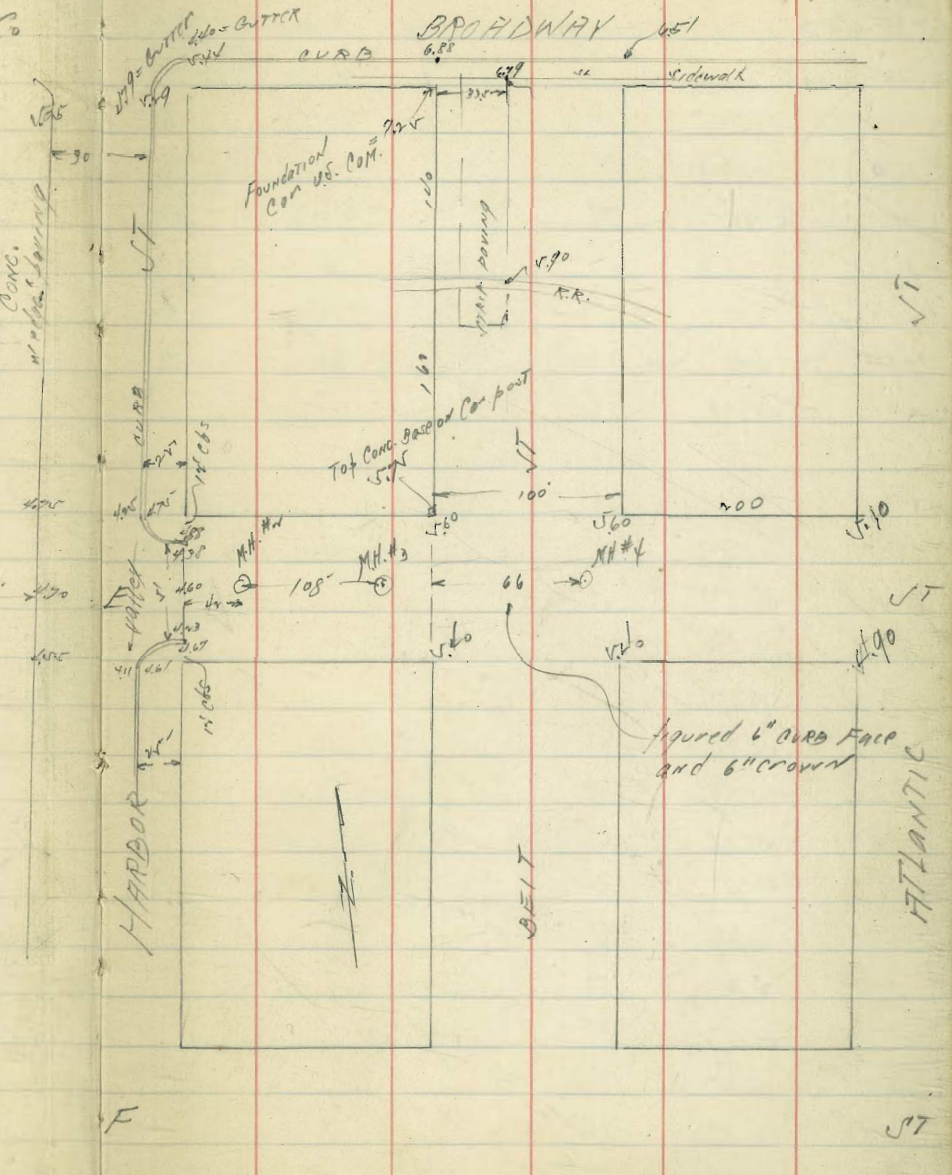


Elv. for Conduit MH RINGS
 @ EAST ATLANTIC to Harbor

SE F & KEISER for S.D. Gas & Elec. Co
 11/23/28
 10000

71.6
 1x.61
 7.01
 5.11
 4.94
 9.25
 4.22
 5.33 - TP ONLY
 5.16
 10.47
 1.47
 8.94
 2.39
 11.31
 6.04
 5.24 TD 16' cb. of Broadway
 5.15 cover cb. of Harbor
 10.47
 5.74
 5.74
 5.37
 10.12
 4.98
 5.34 TP ONLY
 4.77
 10.11 X

S.D. Gas & Elec. Co
 #1
 F 0.10
 above old MH



	MH#1	MH#2	MH#3	MH#4
el. =	4.60	4.90	4.35	4.55
	5.51	5.16	4.76	4.86
	5.01	4.01	4.71	4.83
	-0.10	+0.35	+0.05	+0.23
	F 1 1/4"	C 4 1/4"	C 1"	C 3"

62nd & El Cajon Ave 11/23/68 Moore
Correction of Drainage.

OURD CUTS 3" above grade
cuts

415.58
4.39
469.77

Station	Cuts	Grade
1 + 30	46.75	
+ 40	5.57	.62
+ 50	5.56	.81
+ 60	5.54	.79
+ 70	5.53	.78
+ 80	5.52	.77 ✓
+ 90	5.51	.76
2	5.49	.74
+ 10	5.48	.73
+ 20	5.47	.72
+ 30	5.46	.71
+ 40	5.44	.69
+ 50	5.43	.68
+ 60	5.42	.67
+ 70	5.41	.66
+ 80	5.39	.64
+ 90	5.38	.63
3	5.37	.62
+ 10	5.36	.61
+ 20	5.34	.59
+ 30	5.33	.58
+ 40	5.32	.57
+ 50	5.31	.56
+ 60	5.29	.54
+ 67	5.28	.53

19 } = RUNWAY
20 }

beginning CUT

CUTS

3

①	5.57	5.0
②	5.56	5.0
③	5.55	5.0
④	5.54	5.0
⑤	5.53	5.0
⑥	5.52	5.0
⑦	5.51	5.0
⑧	5.49	5.0

cuts drained to grade

5.19 end valley 5.19 ✓ CUT RC.

BOLINAS ST WATER JOB N/26/18
 Balboa Const. Co. Moore

	NWBP	Voltaire Freude
NL Voltaire 200	80.30	14.47
0 + 17.4	81.4	12.86
1 + 14	80.50	12.47
	79.0	69.33
	77.5	0.65
	76.0	65.68
	74.6	12.58
	73.1	81.26
	71.6	80.25
7 = SL Greed	70.20	81.01
50' = 4" x 6" Tee	69.8	80.30
WL Bolinas = 9" EX. Macn	69.5	79.31
EL Bolinas 4" plug	70.1	78.45

129' column
 Voltaire Bolinas

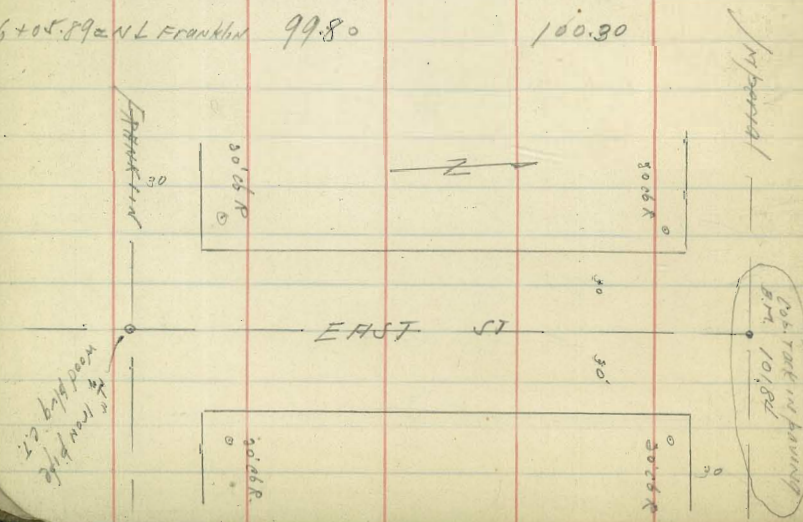
8931 17.23 76.88 2.03 78.91	Osmond Colquhoun Pearce	Inst. Hood Rear
	82.3 71.0 2.9 +2.1	81.4 71.8 4.8 +2.1
	73.1 5.9 3.0 +2.8	71.6 4.3 4.4 +2.7
	70.5 29.0 27.5 26.0 24.6	70.2 69.8 69.5 69.1 68.7 68.3

11/27/88
JM0000

EAST ST GRADING
IMPERIAL TO FRANKLIN

O. Nelson
CONTR.

	WCB	break	ECB	101.84 6.29 108.13
SL Imperial = 00	101.90		102.40	
0+10 = PC CURB	101.90	"	102.50	PC CURB
0+20 ^{offset to BRK ON EAST}	101.97	"	102.50	
0+70	102.30		102.80	
1+20	102.62		103.17	
+70	102.97		103.50	
2+20	103.31		103.83	
+70	103.66		104.17	
3+20 = P.V.C.	104.00		104.50	
+60	104.10		104.60	
✓	103.90		104.40	
+40	103.40		103.90	
+80 = E.V.C.	102.70		103.20	
✓+37.92	101.36		101.86	
✓+95.89 = PC CURB	100.03		100.53	
6+05.89 = NL Franklin	99.80		100.30	



11644 Woodman + 49th
116.88
7.98
108.90
8.91
117.71
12.00
104.86
5.70
108.56
6.20
101.84
8.20
110.16

101.84 - C.T. Imperial + East St

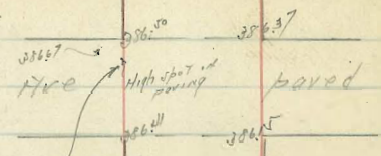
	W	E	W	E	W	E
101.9	101.9	102.0	102.3	102.5	104.0	104.1
8.5	8.5	8.0	6.9	6.0	6.0	6.1
8.6	8.0	2.8	7.1	7.7	7.7	7.6
-0.1	+0.2	+0.2	-0.2	-0.4	+1.2	+1.5
102.4	102.5	102.5	103.8	104.4	104.5	104.6
7.5	7.7	7.7	6.4	6.0	5.7	5.6
8.5	8.0	2.8	6.6	6.0	6.0	5.8
-1.0	-0.4	-0.2	+1.6	+1.5	+1.4	+1.6
102.3	103.7	104.0	103.8	104.4	104.5	104.6
6.9	6.4	6.0	6.4	6.0	5.7	5.6
7.1	6.2	5.0	6.6	6.0	6.0	5.8
-0.2	+0.2	+1.2	+1.6	+1.5	+1.4	+1.6
102.7	101.5	100.0	103.4	101.8	100.5	100.9
7.5	6.9	10.0	7.0	6.1	9.7	9.9
8.5	8.0	2.8	6.6	6.0	6.0	5.8
-1.0	-0.4	-0.2	+1.6	+1.5	+1.4	+1.6

Sedge paving

W	E	
101.9	102.3	3320
7.7	6.8	1249
102.5	102.63	

Charlotte Paving
Co. Daley
Moore
12/4/28

MONROE



High spot in paving
in middle of RETURN
same on NEW CO.
37th & Mad.

BREAK 386.44

386.51

386.50

386.50

Meade

Hwy

excepted

386.20

386.20

Break on East Only
377.96

377.46

376.12
Bring

375.37

El Cajon

AVE

Madison Ave paved

6

382.60

382.60

382.75

382.20

382.10

382.12

BREAK

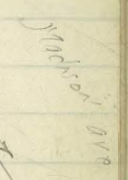
382.65

382.77

BREAK

MONROE

711.0

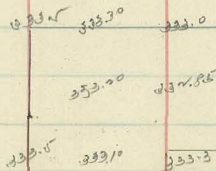


Moore Alley Paving Bit 131 U.H. Richardson
 in/4/38 30' wide 3 dip on E Cont.

	W	E
NL Howard = 00	330.0	329.58
0+05 BREAK	330.10	329.70
0+10.5	331.05	330.70
1+00 BREAK	332.0	331.70
1+10 BREAK	333.30	333.0
1+75 = NL alley to east	333.50	333.30
1+95 = NL " "	333.50	333.0

Alley to east

	S.L.	N.L.
EL alley to South = 00	333.30	333.0
0+150	327.15	327.15
1+00 BREAK	321.0	321.30
1+20 BREAK	319.80	320.0
1+40 = NL Georgia	319.30	319.30



Howard

819.75 NW of Howard + Georgia

343.94	W	330.0	30.10	31.05	32.0	33.30	33.50	33.50
344.21			7.97	7.05	6.07	5.77	5.89	5.89
0.06			2.87	4.88	4.05	3.91	1.92	1.92
343.94	at cut 2.0		2.10	4.22	4.12	4.06	4.07	4.10
343.94								
343.07	E	329.58	1.970	30.70	31.70	33.0	33.30	33.0
		3.39	7.37	7.37	6.37	5.87	5.87	
	at	0.20	8.87	10.27	7.23	4.87	4.87	
			-0.30		-0.86	2.2	2.2	
	S	333.30	2.715	31.0	19.50	19.30		
		3.09	9.22	3.31	4.17	3.07		
		3.39	9.90	2.3	4.17	5.00		
		-0.30	-0.66	4.10	+0.34	1.21		
	N	333.0	2.715	31.30	20.0	19.30		
		3.39	9.22	3.01	2.31	1.01		
		2.69	2.67	0.16	1.01	5.00		
		40.70	41.47	40.85	-0.20	0.14		

333.50 = E of alley
 3.19

333.30 = E of alley on NL of east alley
 3.09
 2.09
 41.0 = nail on pole

12/1/48

ALLEY PAVING 30' wide
BIK & V6 U.H.

Moore

Corral - Center

	✓	N
EL South Alley = 00	300.10	300.10
0+10 STRK	301.30	301.20
0+20 "	301.50	301.60
0+30 (400)	302.08	301.88
0+40 (400)	302.37	302.17
0+59	302.66	302.46

	✓		NORTH
00 EL Alley	300.10	300.10	
+10 STRK	301.30	301.20	
+20 "	301.50	301.70	
+30 "	302.40	302.20	
+66.33 "	302.55	302.55	
1+14.67	302.81	302.88	
1+59	303.20	303.20	

12/8/48
Moore
grade raised
to meet IMPRMTS

12/1/48

NW 3P

Moore & Inc

307.21	S 300.10	301.30	301.80	302.08	302.37	302.66
	7.21	6.01	5.51	5.23	4.94	4.64
	2.27	6.01	5.51	4.75	4.96	4.81
	-1.06	0.0 nail	0.0 nail	+0.78	+0.58	-0.66
	N 300.10	301.20	301.60	301.88	302.17	302.46
	7.21	6.11	5.71	5.43	5.14	4.85
	2.27	4.69	5.61	4.49	4.55	4.24
	.01	4.02	+0.10	+0.94	+0.49	+0.21

306.63 T

✓ 300.10	01.30	01.80	02.40	02.55	02.88	03.20
6.53	5.33	4.83	4.23	4.08	3.75	3.43
0.0	0.0	0.0	0.0	0.07	0.68	0.63
				+0.01	+0.67	-1.00
N 300.10	01.20	01.70	02.20	02.45	02.85	03.20
6.53	4.43	4.93	4.43	4.08	4.75	3.43
0.0	4.04	4.93	4.43	4.81	3.58	3.06
	4.04	0.0	0.0	+0.07	-0.12	-0.22

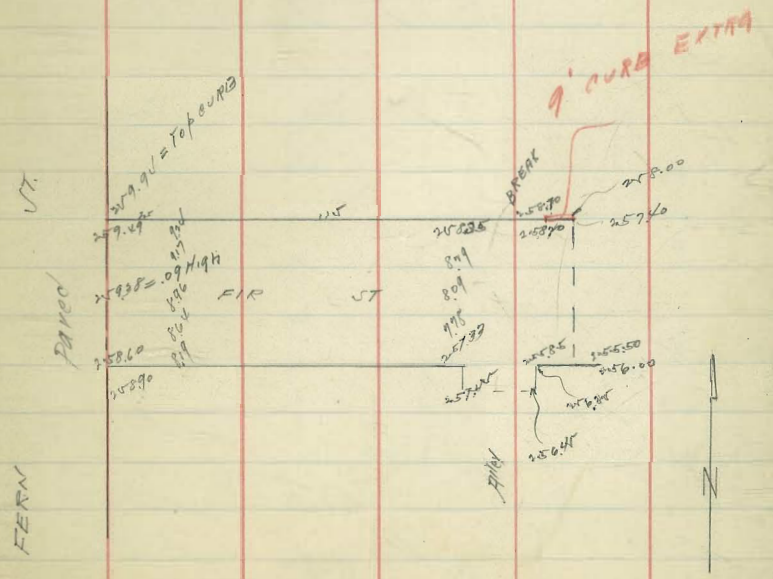
10/2/48
Moire
FIR ST PAVING
125' east of Form UT
3" CROWN
6" db face.
Guthrie Co.

	W 4110x	W 4110x	E 4110x	RET.
J	259.0 ✓ 106	258.45 ✓ 119	257.90 ✓ 169	257.93 ✓ 166
			257.65 ✓ 191	257.65 ✓ 184
				257.60 ✓ 199

	RET.	
✓	258.00 ✓ 106	258.65 ✓ 119

275.04
3.86
278.88
7.67
286.55
2.24
288.79
2.66
291.45
2.65
294.10

259.94
3.57
263.51



int. h. s.
Mooke

MONROE AVE PAVING HITHADENA to 52nd ST

Daily COR.

S ab

N CB

EL HITHADENA 00

382.30

382.30

382.52

382.74

0.10%

382.96

383.18

5 W/L 57th

383.40

383.40

EL "

383.60

383.60

383.82

0.10%

384.04

384.12

00.18%

384.26

384.38

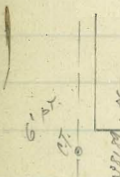
384.48

384.64

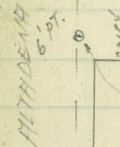
5 W/L 57th

384.70

384.90



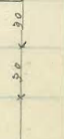
MONROE



CT. BM.
382.26

6' CT.

6' CT. 3' W of PL



6" CURB FACE
4" Crown



386.82

SWAP EL GAYON + 51st

382.96

7.23

384.73

4.11

388.84

6.58

382.26

388.84

22.3
6.40
+1.7

82.5
6.8
+1.9

82.7
6.1
+1.9

82.9
5.9
+1.5

83.2
5.6
+2.0

83.4
5.4
+1.4

83.6
5.2
+1.6

65.4
4.9
+1.2

63
5.0
+0.9

61
5.0
+0.1

59
5.8
+0.4

56
5.4
+0.6

54
4.8
+0.3

83.8
5.0
+2.6

84.0
4.8
+2.7

84.2
4.6
+2.5

84.4
4.4
+2.1

84.6
4.2
+2.1

83.8
4.0
+0.7

84.1
4.7
+1.4

84.4
4.2
+1.7

84.6
4.2
+2.0

84.9
3.9
+1.3

SL

NL

380.6

8.2
4.6
+3.6

380.6

8.2
5.1
+3.1

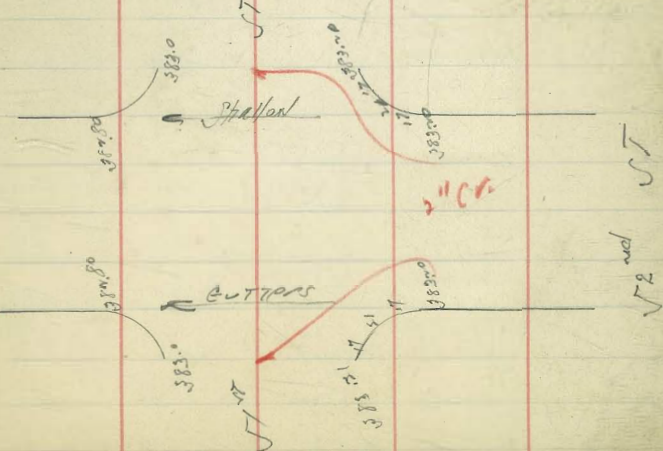
= MOIR

83.84
4.60
4.60
+1.0

84.86
4.38
4.38

84.86
3.78 = AC.

32.44



12.11.18
Bissell
Measure

DRAIN in alley west of UTAH ST
Monroe to Meade BRK 67 U.H.

changed 12/12/18

00 = S.L. Monroe FL Curculat	365.84	365.84	
+50	365.79	365.84	+4/10
1.	365.74	365.85	+3.50
+50	365.69	365.85	+3.49
2	365.64	365.85	+3.81
+50	365.59	365.86	+4.19
3	365.54	365.86	+4.93
+50	365.49	365.87	+5.17
4	365.44	365.87	+5.35
+50	365.39	365.87	+5.57
5	365.34	365.88	+5.97
+50	365.29	365.88	+6.40
6 = NL Meade	365.24	365.88	+6.00
+10 = Cleanout A 90° LT	365.22	365.88	+5.31
+65	365.18	365.89	+4.60
7+18	365.14	365.89	+3.37
7+71 = grating Meade + UTAH	365.9	365.90	+2.42

no fix falls to Monroe

365.90
365.80

See P 77 This book
For Finished Grades
on Catch Basins
& Cleanout Boxes
NB. Torn out of book
by Bissell

370.61
2.31
374.94
3.70
371.24
6.05
377.27

SE 7' C.T. Monroe + UTAH
365.84
370.8
370.40 = 0.114
366.67 = E1
11.34
363.17
Sewer MH
on Meade W of UTAH
Sewer MH
MONROE W of UTAH

11

65.79	65.74	65.89	65.64	65.49	65.44	65.49
9.13	9.18	9.23	9.28	9.33	9.38	9.43
4.98	5.07	5.16	5.26	5.36	5.45	5.55
+4.14	+3.61	+3.65	+4.02	+4.46	+4.89	+5.34
65.44	65.39	65.34	65.29	65.24	65.24	65.24
9.45	11.58	11.92	11.98	12.03	12.03	12.03
3.70	5.83	5.82	4.89	5.37	6.05	6.05
+5.78	+6.00	+6.51	+6.99	+6.66	+5.97	+5.97
65.18	65.14	65.10	65.09	65.09	65.09	65.09
12.09	12.13	12.17	12.17	12.17	12.17	12.17
6.76	8.01	8.91	8.91	8.91	8.91	8.91
+5.32	+4.12	+3.26	+3.26	+3.26	+3.26	+3.26

100' S of MONROE = low spot in alley

65.86	65.85	65.85	65.85	65.86	65.86	65.87	65.87
9.08	9.07	9.07	9.07	9.06	9.06	9.05	9.05
4.88	5.27	5.58	5.86	4.87	4.13	3.88	3.70
+4.10	+3.50	+3.49	+3.81	+4.19	+4.93	+5.17	+5.34
65.87	65.88	65.88	65.88	65.88	65.89	65.89	65.90
11.40	11.39	11.39	11.39	11.39	11.38	11.38	11.37
5.83	5.44	4.89	5.37	6.05	6.76	8.01	8.91
+5.57	+5.97	+6.40	+6.04	+5.31	+4.62	+3.97	+2.46

367.76 = E1
bowling
in gutter

70' 06' return

Coast Blvd South FAVING
Watson - Sutton

STORM DRAIN #1

CURB Inlet #1=00

0+50

1

+50

2 = Cleanout #1

+50

3

+50

+79.6 = OUTLET

STORM DRAIN #2

CB Inlet #1 Curb #1

00 = beginning S.D. #2 = APT.

0. (3 TIMES)

1+67 = CB Inlet #2

2+17

2+67 = Cleanout #2

3+18

3+69 = EX CB Inlet #3

4+35 = angle pt.

4+75 = CB Inlet #4

F.L.

27.00

24.75

22.50

20.26

18.02

15.79

13.55

11.32

10.00

38.0

36.80

35.70

34.40

33.20

32.40

31.40

30.30

29.20

27.90

27.0

23.26
12.49
30.77
16.7
24.46

16.26
4.24
+11.54
18.57
5.14
+10.40

20.76
10.29
+10.27
20.00
10.49
+10.51

16.65
4.24
+10.06
18.89
8.23
+10.36

5.11
8.23
+10.36
14.44
+8.00

48.30 = ERM.
0.30
48.60
10.07
38.53
4.27
42.80

11.8
3.9
+8.9
12.9
5.2
+7.7

10.2
7.3
+6.9
15.2
2.0
+6.4

16.4
9.6
+6.6
17.2
10.0
+7.0

18.3
10.0
+7.3
19.6
1.3
+8.1

20.5
10.0
+10.0
21.6
10.0
+11.6

33.4 = ELV of bottom of oil scrubber

STORM DRAIN #2

CB Inlet #5=00

0+38.5 = APT

(2) 39.25

1+05 = APT

1+43.5 = CB Inlet #4

F.L.

32.0

30.70

29.50

28.30

27.02 = 1/152

12.8
4.1
+8.7

14.1
4.2
+9.9

15.3
5.1
+10.2

16.5
10.6
+10.9

1/152 = 76.06
4.3
4.4
0.10 High

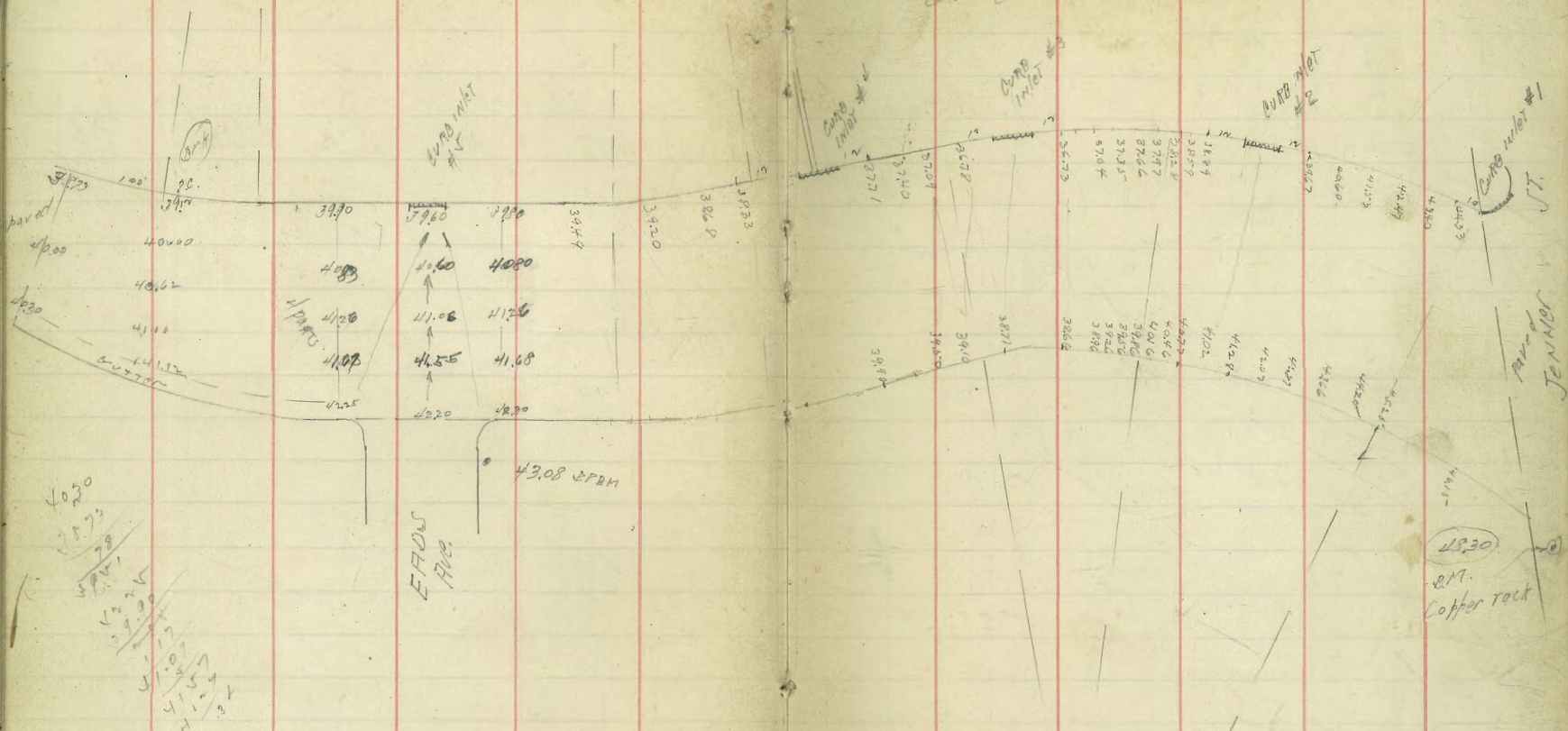
0

Coast Blvd South

8" CURB FACE
6" CROWN

groves @ 66' dia

13



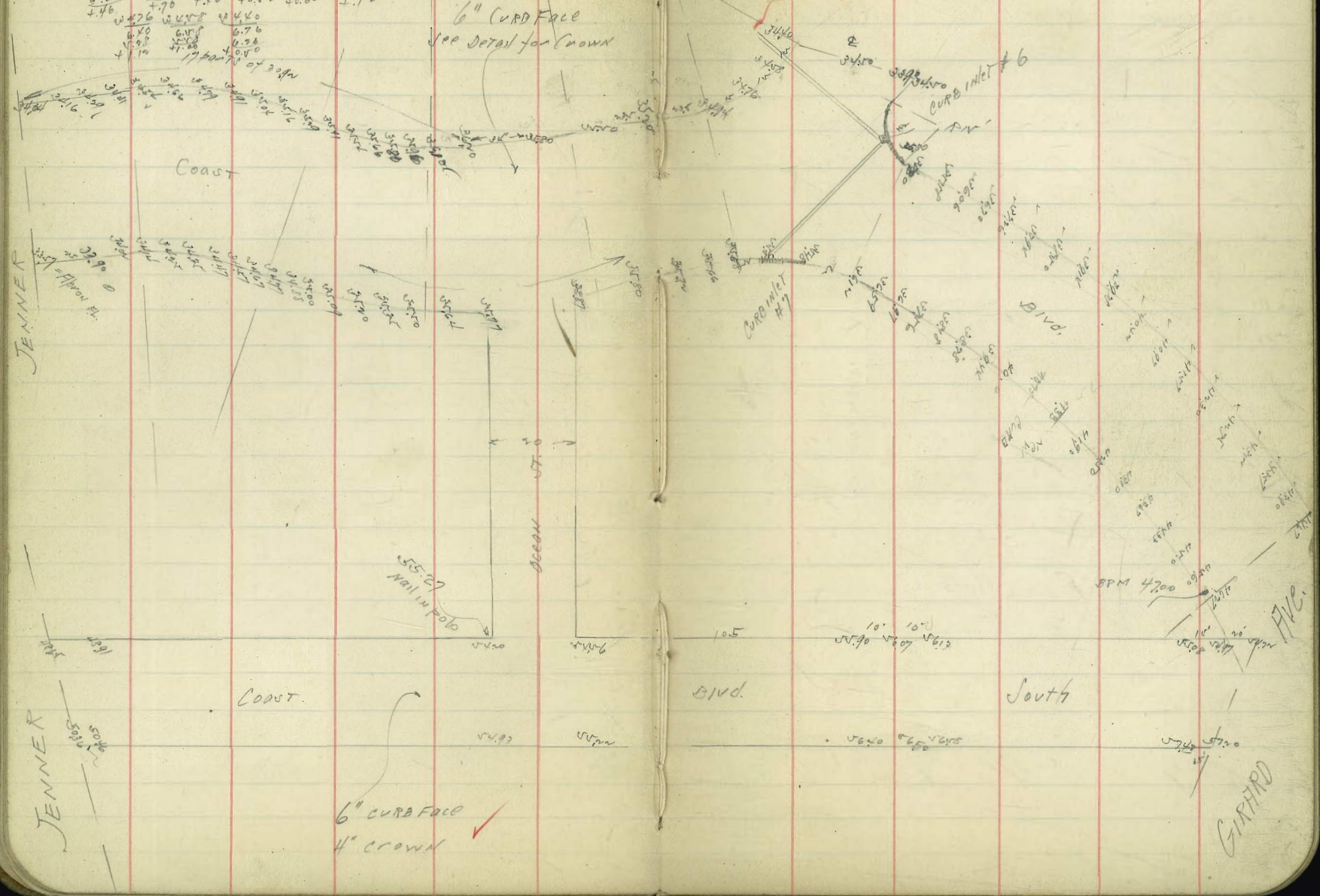
40.20
 40.23
 40.27
 40.31
 40.35
 40.39
 40.43
 40.47
 40.51
 40.55
 40.59
 40.63
 40.67
 40.71
 40.75
 40.79
 40.83
 40.87
 40.91
 40.95
 40.99
 41.03
 41.07
 41.11
 41.15
 41.19
 41.23
 41.27
 41.31
 41.35
 41.39
 41.43
 41.47
 41.51
 41.55
 41.59
 41.63
 41.67
 41.71
 41.75
 41.79
 41.83
 41.87
 41.91
 41.95
 41.99
 42.03
 42.07
 42.11
 42.15
 42.19
 42.23
 42.27
 42.30

49.40	24.70	41.16							
4.00	20.00	1.00	3.00	2.00	1.00	2.00	1.00	1.00	1.00
3.70	2.00	4.00	1.50	1.00	1.00	1.00	1.00	1.00	1.00
4.00	4.00	4.00	4.00	4.00	4.00	4.00	4.00	4.00	4.00
4.16	0.00	0.00	0.00	0.00	0.00	0.00	0.00	0.00	0.00

6" CURB FACE
See Detail for Crown

Cont Blvd. and
" " " " " " South
40.59

Wilson
Suttons
CONTR. 14



6" CURB FACE ✓
4" CROWN

GIRARD

Ocean St 20' wide Watson

SUTTON

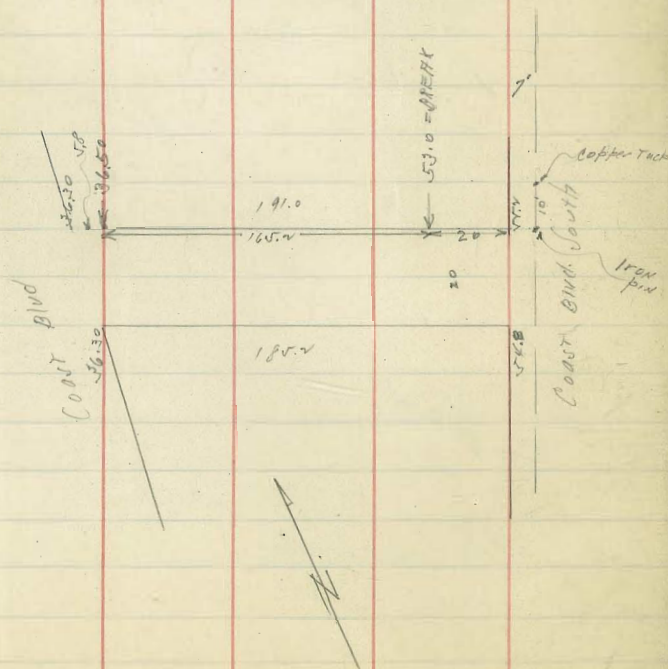
	S	N
WL Coast Blvd South = 00	52.80	52.00
0 + 20 = BREAK	54.80	53.00
0 + 75.06	47.30	47.50
1 + 30.13	41.80	44.00
1 + 75.14	36.30	36.50
1 + 91		36.30

WTM
407
49.24
10.31
49.03
0.22
47.67
0.01
47.66
0.08
47.14
0.37
47.17

S ✓ 52.80	52.80	47.30	41.80	36.30	
X ✓	6.34	0.37	4.87	11.37	
	6.16	0.30	4.81	✓ +	
	+0.18	+0.07	+1.06		
X ✓ 53.10	53.00	47.50	44.00	36.50	36.30
X ✓	6.14	0.17	4.67	11.17	11.37
	6.60	0.01	4.69	8.58	✓ +
	-0.46	+0.16	+0.98	+1.57	

CULVERT #5 40.59T

#7 cb inlet Box FL.	28.10	
	12.09	
	4.04	
	+5.00	
#6 " " outlet	27.90	
	12.69	
	5.00	
	+7.09	
	25.00	
	15.39	
	11.67	
	+2.7	outlet #6

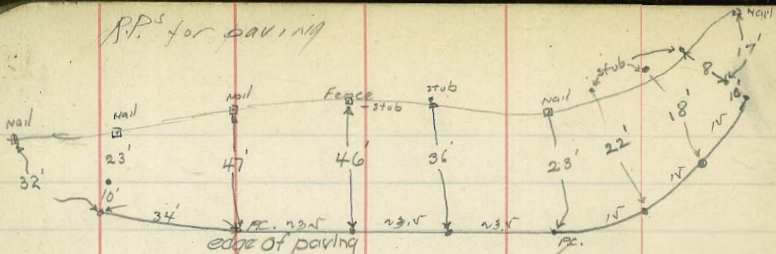


Sewer Main on Ocean St.

DMH #1 = DROP	30.60	19.99 4.20 +15.49
" " upper FL.	27.0	13.79 4.70 +8.89
0 + 47.67	31.33	9.66 6.36 +6.30
0 + 95.33	35.67	12.09 2.15 +7.14
1 + 43 = D.E.	40.0	9.96 3.00 +6.90

40.59 T
2.26
27.83
14.13
47.76

R.P.'s for paving



Coast Blvd at Ocean St

1/2/37
Moore
Maple St Paving
RT 28th ST.
Middle
60' wide graded
Salsoda Paving Co.

Job	N ob	N ob
-40' - Wedge paving	262.0	
EL. 28th on North = 00	261.50	262.150
0+60 = P.V.C.	258.20	259.20
0+80	256.80	257.80
1	255.10 ✓	256.10 ✓
+20	252.90	253.90
+40 = E.V.C.	250.40	251.40
1 + 7360 = END JOB	246.40	246.70

Water Line

EL. 28th	P.V.C.	255.30	250.10	E.V.C.	246.7
258.7	258.4		13.9	7.1	11.3
7.3	7.5		12.0	4.3	6.3
8.0	2.6		11.0	2.3	2.7
-0.7	-0.1		11.9	+2.2	+2.7

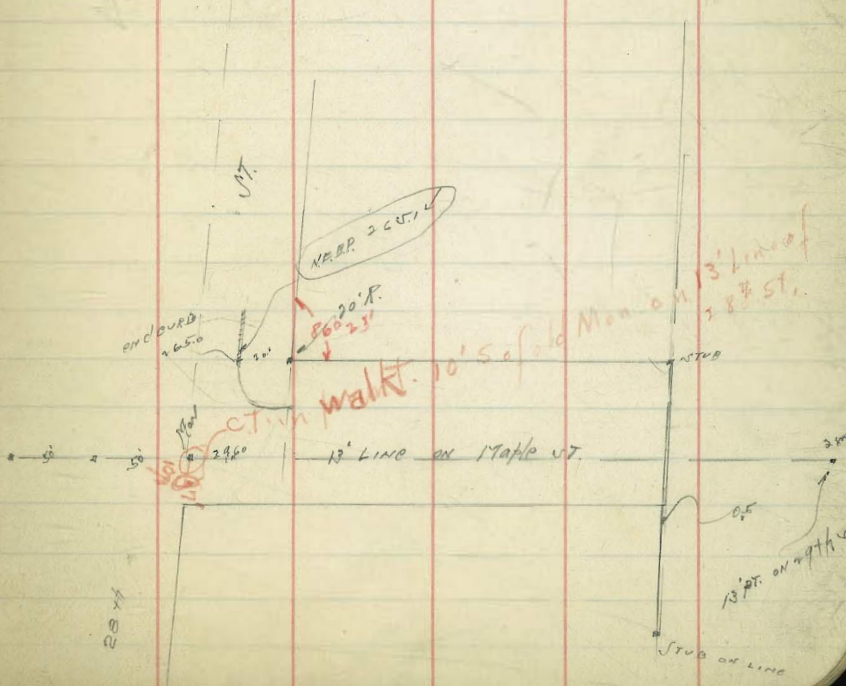
20160 = Topob (FH)
4.57
6.31
-10.88

~~265.14
-0.75
264.39 X
10.88
253.51
11.9
241.61~~

265.14 = 527 Maple + 28th

Station	Topob	Wend C.B. inlet	FL BOX	FL OUTLET
265.14				
0.88				
266.02				
12.94				
253.08				
1.75				
254.83				
11.94				
242.89				
11.04				
253.93				
1.77				
255.70				
0.40				
256.10 ✓				
1.76				
257.86				
1.75				
259.61				
1.75				
261.36				

265.14
0.75
264.39 X
10.88
253.51
11.9
241.61



1/3/21 Texas ST paving 8" CB Face. Base = Concrete
 Moore at Madison 6" crown

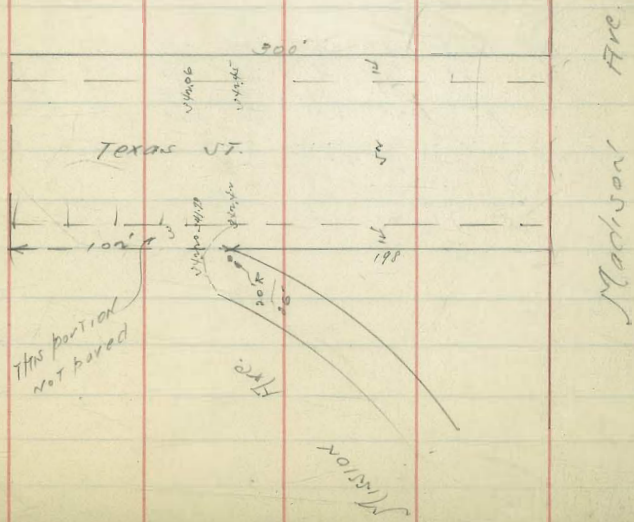
	WCB	EL STA.	ECB	
00 = NL Madison	345.0	0+00	346.0	
1+98 = EL. Mission ^{on water}	343.0	1+98	343.0	
2+20 = BRK.	342.60	2+25	342.60 = end of cb	
2+40 "	342.00	2+40	342.20 ✓	
2+60 "	341.10	2+60	341.20 ✓	
2+80 "	339.60	2+80	339.60 ✓	
3+00 end of Job.	337.60	3+00	337.60 ✓	

~~426~~
~~33~~
~~1.7~~

346.03
 2.08
 348.11

SEPP Mad. + Tex

NL 342.4	342.0	341.1	339.6	337.6
E 342.60	342.20	341.20	339.6	337.6
5.7'	6.1'	7.1'	8.7'	10.7'
5.6'				
0.1' diff				
W gutter	41.73	41.33	40.53	39.79
	6.58	6.98	7.78	9.38
				11.38
NL TOOS	42.00	41.70	40.80	39.40
	6.11	6.61	7.51	8.91
				11.11



Shirley Ann Place

	W CB	E CB
✓ NL Monroevias	344.17	344.29
√		
√		
✓ = BREPK	341.10	341.20
√		
3		
√		
√		
√		
√		
√		
√		
g = NL MONROE	338.87	339.03

349.90 T Water Line

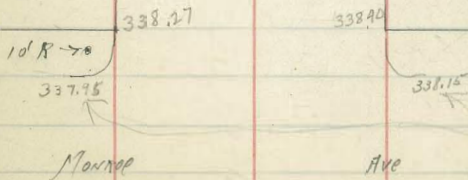
4 mod.

41.5	40.7	39.9	39.0	38.4	38.1	37.5	37.5	37.3
√	2.6	3.4	4.1	4.4	5.1	5.4	4.8	6.0
	0.5	0.9	1.8	2.5	2.0	2.9	3.3	3.6
	+ 2.4	+ 2.5	+ 2.3	+ 2.2	+ 2.8	+ 2.6	+ 2.5	+ 2.4
37.0	36.7	36.5	36.2	= NL MONROE				
6.3	6.0	6.0	7.1					
5.8	4.0	4.3	4.8					
+ 2.5	+ 2.6	+ 2.5	+ 2.3					

337.34
345.50

SEBR Monroe Louisiana

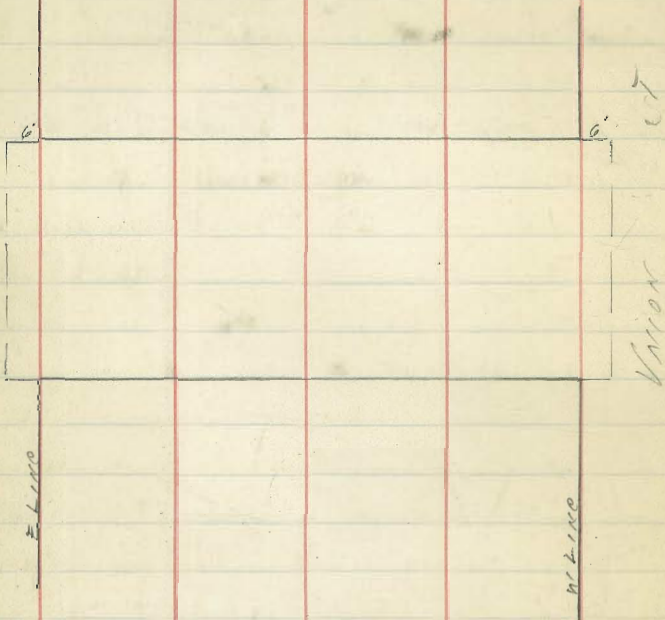
	Monroe	Ave
337.36 S.E. Louisiana	344.38	343.60
6.30		
344.65		
3.74		
340.71		
8.12		
348.83		
2.84	340.60	340.70
340.99		
346.03 S.E. Louisiana		
- .94		



1/10/40
Moore

Laurel St paving
STATE to Union
Bost, Conn.

STATE ST



87.94 SEBP Kalmia & STATE

0.62
5 P.M.Y
11.19
77.35
4.44
81.90

NE RETURN

TOT	77.01	78.9
4.06	4.61	5.21
4.06		3.71
.10 H		0.10 Low

} STATE

NE RETURN

74.64	75.30	76.35
7.06	6.60	7.45
2.02		5.63
.06 H		0.08 H

120.16
2.48
123.64

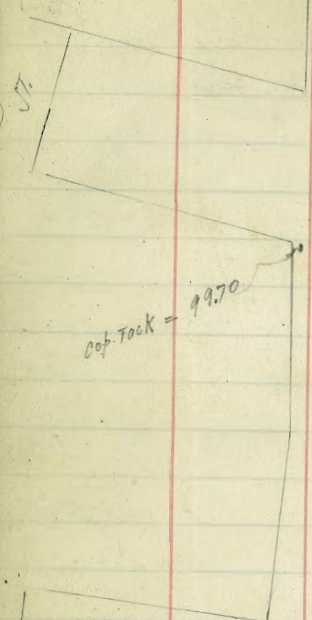
NW

115.01	119.70	120.16
4.99	3.94	
4.02		
0.10 H		

} UNION

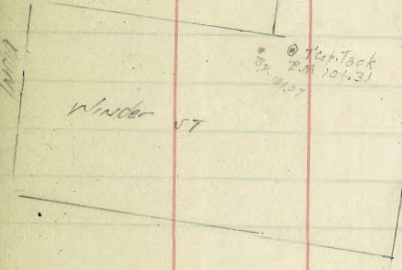
SW

118.71	119.71	120.16
4.93	3.93	
4.02		
0.10 H		



Andrews

B.M.
124.05



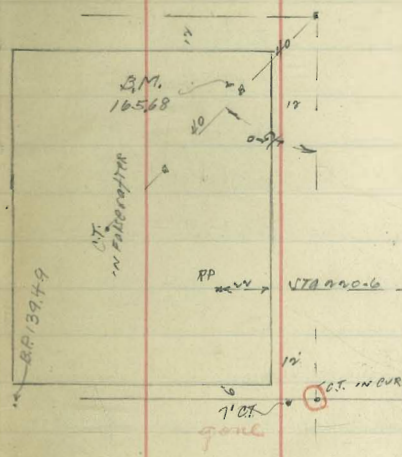
© Tack
Z.M. 10/31

Wainburn

1 x 6
1/2 in 1925

FREMONT

Linnood



B.M.
165.68

R.P. 13949

RP

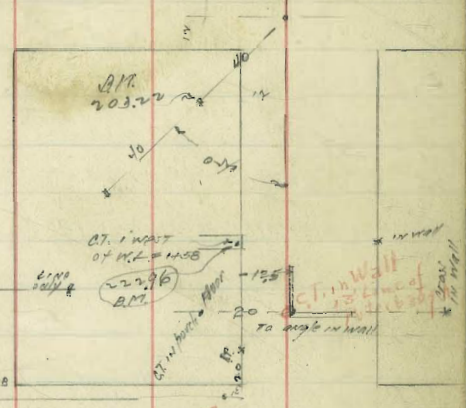
174 and 6

1' OF
gone

Wainburn
1 x 6
1/2 in 1925
Back of
Foster
1925

Guy

ST.



B.M.
203.20

B.M.
22.96

0.7' in west
of M.L. 1155

0.7' in front
of

10' 0"

10' 0"

10' 0"

10' 0"

10' 0"

10' 0"

10' 0"

10' 0"

10' 0"

10' 0"

10' 0"

10' 0"

10' 0"

10' 0"

10' 0"

10' 0"

10' 0"

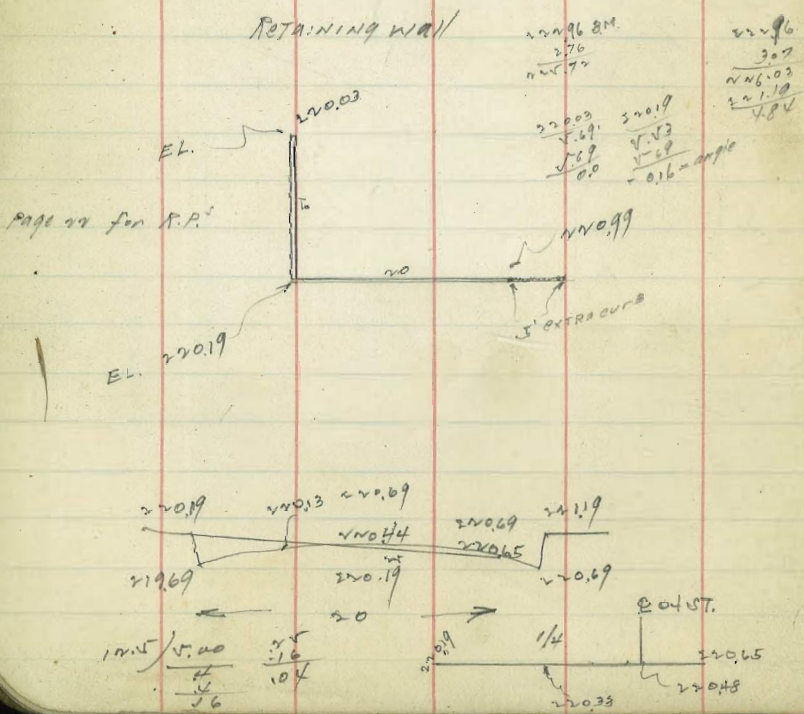
10' 0"

Potterbaugh

223

Puterbaugh ST

	WCS	EL
NK Andrews 200	200.0	201.0
0 + 40	206.40	207.40
0 + 80 = PVC	212.80	213.80
1	215.70	216.70
+ 20	217.50	218.50
+ 40	218.80	219.80
1 + 60 = EVC	219.50	220.50
2 + 18 = Wall	220.19	221.19



	W	W	W	W	W	W	W
209.74	200.0	206.4	212.8	215.7	217.5	218.8	219.5
0.00	9.7	3.3	9.7	6.8	4.0	3.7	14.1
209.74	21	1.1	2.5	6.1	2.6	2.3	11.8
12.75	21	1.1	2.5	6.1	2.6	2.3	11.8
222.49	+3.6	+2.2	+0.4	+0.5	+0.8	+1.0	+3.5
0.00							
222.49							
12.15							
234.64							
11.68							
222.96 = C.T.							
222.96	201.0	207.4	213.8	216.7	218.5	219.8	220.5
222.96	8.7	10.7	10.8	17.9	16.1	14.8	14.1
231.80	29	15.1	15.5	35.3	3.3	2.8	11.8
0.36	+4.8	+11.7	+1.5	+12.2	+12.8	+14.0	+14.0
231.44							
12.07							
243.51	W 200.19						
0.00							
243.51							
13.00							
256.51							
11.8 UNIT							
268.31 = BOLT E	221.19						
12.67	10.6						
280.98							
283.65							
1.01							
284.66							
0.00							
284.66							
7.00							
291.66							
298.66							
0.09							

222.96	220.03	220.19	220.69	221.19
270	7.11	7.2	6.4	6.6
222.96				
3.07				
226.03				
221.19				
4.80				

GUY ST.

	W cb	E cb
JL Andrews = 00	164.75	165.25
0 + 30 = PVC	168.30	169.30
0 + 50	170.30	171.30
0 + 70	171.80	172.80
0 + 90	174.70	173.70
1 + 10 = EVC	173.20	174.20
+ 67.5	173.58	174.58
2 + 25 = end grading	173.96	174.96

Winter Lane

165.58	61.75	65.3	67.3	48.8	69.7	70.2	70.5
160.00	14.33	10.68	8.68	7.28	6.38	5.89	5.5
176.08	11.42	20.2	8.80	4.12	8.04	2.67	3.3
11.26	2.87	2.76	42.87	2.18	13.34	43.27	43.2
184.12							
3.57	21	45.0					
187.69	5.1	11.1					
	2.5	5.2					
	22.6	48.0					

165.68
16.05
177.53
6.21
177.32
10.77
188.09

100.N 1/2 x 1/2

24

W	164.7 ^{all}	68.3	70.3	71.8	72.7	73.4	75.6	174.0
	12.8	9.2	7.2	5.7	4.3	4.3	3.9	3.5
	11.8	8.0	6.8	5.8	5.1	4.0	4.2	3.8
	7.0	7.2	4.8	0.2	0.3	10.3	0.5	0.4
E	165.7	69.3	71.3	72.8	73.7	74.4	74.6	175.0
	12.1	8.2	16.8	15.3	14.4	13.9	13.5	13.1
	16.0	0.0	18.0	8.6	2.4	2.4	7.0	10.1
	1.3	+ 8.2	46.6	+ 6.7	47.0	+ 6.7	+ 11.5	43.0
	19.5							

Wellborn ⁵/₁₀₀ Ice

	S 06	N 06
EL Linwood 00	140.50 ✓	139.50
0 + 55	141.10 ✓	
1 + 10 = PVC	141.70 ✓	141.19
1 + 30	142.31 ✓	141.81
1 + 50 = EVC	143.56 ✓	143.04
2 + 00 = WL Guy St.	147.46 ✓	146.96
00 = EL Guy St.	151.40 ✓	150.90
0 + 50	155.80	155.30
1	160.20	159.70
+ 50	164.60	164.10
2 = WL Purenbaugh	169.0	168.50

CURB IN

$$\begin{array}{r} 137.49 \\ 12.11 \\ \hline 151.98 \\ 0.45 \\ \hline 151.33 \\ 12.55 \\ \hline 123.99 \\ 163.10 \\ \hline 191.85 \\ 1.95 \\ \hline 170.40 \end{array}$$
 101.07
 8.47
 109.54



7006 base

Linwood & Andrews

$$\begin{array}{r} 124.05 \\ 11.27 \\ \hline 735.32 \\ 0.30 \\ \hline 735.02 \\ 19.20 \\ \hline 144.22 \\ -0.11 \\ \hline 144.11 \\ +12.47 \\ \hline 156.58 \\ -0.02 \\ \hline 156.56 \\ +13.01 \\ \hline 169.57 \\ -0.08 \\ \hline 169.49 \\ -13.04 \\ \hline 182.53 \end{array}$$

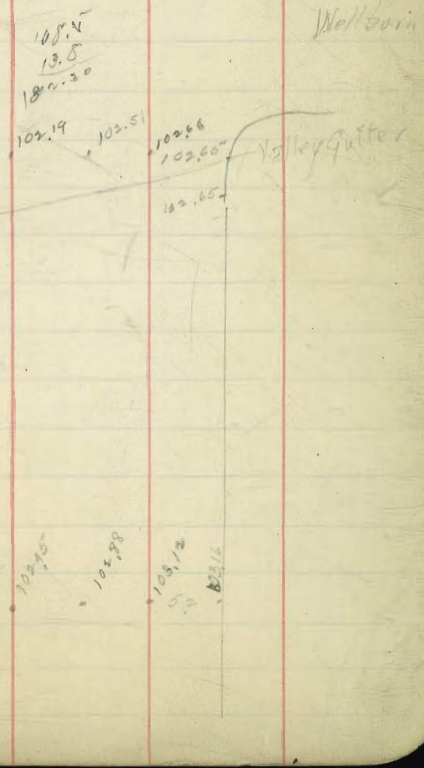
$$\begin{array}{r} 101.07 \\ 5.43 \\ \hline 106.50 \end{array}$$

Winder

55

	PVC	EVC	WL	EL
S	140.50 3.72 4.22 108	41.0 15.5 7.7	41.7 14.9 4.0 10.9	42.3 14.3 3.8 10.3
N	139.50 4.72 7.75	41.9 3.03 2.93	41.81	42.04 46.96 50.9 5.9 4.9 +0.9
S	155.8 13.8 11.8 72.0	60.0 9.4 7.4 0.0	64.6 5.0 5.0 0.0	169.0 13.8 10.6 72.9
N	55.3 1.3 1.9 -0.6	59.7 5.9 6.4 +3.5	64.1 5.5 1.7 +3.8	168.5 74.0 0.2 +13.8

COLUMBIA



Wellborn

Valley gutter

Water line on Puterbaugh

	FL.
0+00 = NL Wellborn = 0+00 = Gate	165.7
0+04 = 6" CI Cross	165.7
0+34 = BREAK = NL Wellborn	165.7
0+60 = " = 20 1/2° Bend	190.0
0+89.5	201.70
1+1.9 = Face of crosswalk	213.5
1+19 = BREAK = Bend	217.5
1+74 = E.V.C.	216.5
1+94 (B)	215.8
2+14 "	214.5
2+34 "	212.7
2+44 = PVC	209.8
2+94	203.4
3+44 = SL Andrews	197.0

39.85%

Water line on Guy St

	FL.
NL Wellborn = 00	146.0
0+30 = BREAK	148.0
0+47 = "	150.0
0+70 = "	165.0
0+75 = " = 4 1/2° Bend	171.0

166.4	Sub. 24
11.57	
155.01	
4.0	0.01
4.0	155.01
23.0	132.01
4.0	128.01
2.7	125.31
14.7	
16.0	
13.9	

27

See page 24 - set 3' below w curb grade

Index

28

28 th St Paving Nat. to Colton	P. 0
Iowa St " El Cajon to Trade	P. 1
E 5 th Drain Atlantic to Harbor	P. 2
62nd & El Cajon Correction of Drainage	P. 3
Bolinas St Waterline	4
East St Grading Imperial to Franklin	5
Cherokee Paving Madison to El Cajon	6
Alley 131 U.H.	7
" 246 U.H.	8
First Prmt. Fern - East 124'	9
Monroe Ave prmt Altadena to 52nd	10
Alley 67 U.H. Storm Drain	11
Coast Blvd & Coast Blvd South Prmt	12
Maple St Prmt 28 th East	17
Texas St " Madison North	18
Shirley Ann Place Paving	19
Laurel St Paving State - Union	20
Guy Andrews Peterbaugh Prmt	21
33rd St Prmt Juniper to Hawthorne	29
Polk St Waterline Georgia to Oregon	34
Mississippi St Paving Adams to Polk	36
Alleys 4 & 5 Crittenden	42-3
Kingsley St Prmt Chatsworth Rosecrans	44
Evergreen St " Alcott to Freeman	47
Locust St " " Lytton	51

Lewis St Prmt Hawk to Goldfinch	P. 60
Florida St Prmt Adams to Univ	61
65 th St " Hickory to Imperial	72
Alley 3 Mission Hills	72
Locust St Grades Alcott to Lola	73
3rd St N of Broadway Reset Gutter	74
Broadway 5 th to 6 th S. Side	
6 th Broadway to E Levels for Lion Clothing Bldg	75
Return Grades Beech & Edgemont	78
Walnut & Union Sewer Line	79
Alley prmt - 188 M & S. & S. L. ST	80
Jobs 76-77 Turned by Bissell	

Sewer Construction
33d lvr to Juniper

Juniper + 33d
Tot Wall SW. GP

278.17
3.81
281.98

	F.L.
NL Juniper	258.40
2 " MH #1 = 0400	259.0
+50	259.5
1	260.0
+50	260.5
2	261.0
+50	261.5
3 = D.E.	262.0

Cutvert #1

T.P. 262.60
0.93
263.53

S. End	N. End	F.L. Box	F.L. Outlet
63.53	63.53	63.53	63.53
258.0	258.40	258.5	247.1
5.53	4.54	13.03	16.43
10.85	6.93	10.85	11.12
-5.32	-3.39	7.18	75.31

5820	590	495	300.0	260.5	260.8	261.5	262.0
23.73	20.93	21.93	21.93	21.93	20.93	20.93	19.93
8.06	8.74	8.22	8.32	8.11	7.68	7.06	6.15
+14.67	+17.19	+13.66	+13.54	+13.32	+13.25	+13.37	+13.78

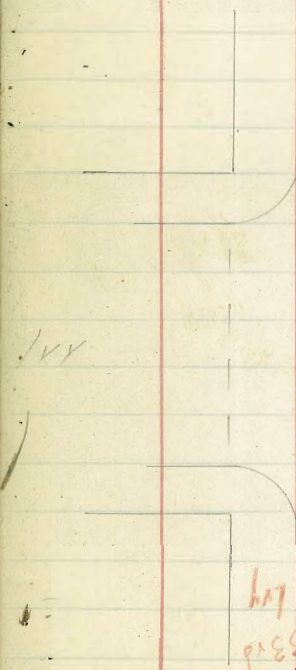
Juniper

33^d ST R.P.^s

ST

Moore
F. bed
P. trace
Calphorn

30



33^d

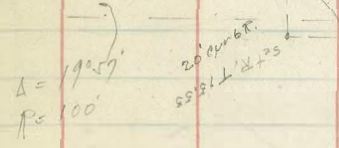
ST
Climwalk

33^d
Climwalk
is back of prop on lny

ST

of Climwalk 7/11/12
Highway drive

Highway drive



Climwalk

33^d
100' R
271.8
0.812
0.812
0.812
0.812

30

Climwalk

7/11/12
Climwalk

15

270 27 Grades

278.12
- 3.87
274.25
+ 8.43
271.81 F.H.
- 0.64
272.15

W.C.B.	273.50	E.C.B.	271.50
273.9		1.9	
274.8		2.3	
1.7		2.7	
5.1		3.1	
5.5		3.5	
5.9		3.9	

276.20	274.30
276.50	274.50

276.0	274.0
274.5	272.7
273.0	271.25
270.38	269.75
265.8	267.75
265.5	265.5
258.0	258.25

278.13 B.M.
- 3.65
281.77
- 3.15
278.62 B.M. N.W. 1/4 Sec 11
275.92
- 12.36
272.16
- 1.21
273.72
- 21.38
262.34
- 10.32
262.71
- 0.11
262.60
- 11.88
274.18
- 0.82
273.59
- 7.65
281.24
- 2.63
278.62 N.W. 1/4

W.C.B.	276.0	4.5	3.0	0.4	9.3		
	8.5	10.0	11.2	14.1	18.2		
	2.5	2.4	8.3	14.0	14.1		
	+7.0	+7.6	+5.9	+4.1	+4.1		
E.C.B.	74.	3.2	2.7	2.1	1.3	69.75	7.8
	-0.2	1.6	1.1	1.7	2.5	4.0	5.3
	3.0	1.9	1.9	2.2	2.5	3.8	6.0
	-0.2	-1.2	-1.9	-1.5	8.1	4.2	7.12
W.C.B.	9.0	6.7	2.9	6.9	5.8	2.5	5.8.3
	1.8	5.1	5.9	6.9	3.0	11.3	4.1
	3.5	6.2	5.7	6.0	6.7	12.4	13.5
	+7.3	-1.1	+1.2	+7.9	+1.3	-1.1	-3.9
E.C.B.	66.18	5.5	2.5	58.3			
	7.6	8.3	11.5	4.4			
	2.2	8.2	11.8	5.8			
	7.3	7.1	4.3	-1.4			

278.62
8.09
286.71

274.71
276.0
10.71
3.2
274.0

286.7
278.6
8.2
3.7
+4.8

274.7
272.5
12.2
4.6
7.6

(8.75)

= 272. ONE

(8.75)

= EFF. ON E.

33rd St Grades

Sec. 16 face To Highview
3" 506 face NW

W. Cb.

EC6

5.1. Try =	0+00	276.0	274.0
	0+40	274.8	273.2
	0+60	274.2	272.7
	0+80	278.6	272.1
	1+00	273.0	271.25

P.C. on East	1+30		269.75
3° 29' 38"	1.		269.72
1° 59' 16"	2.	ch. 8.10	269.08
7° 28' 53"	3.		268.74
9° 58' 36"	4.		268.4
P.R. on East			267.92
			267.43
			266.94
E.C. on E.			266.45

1+35	Ret. for Highview P.C. on W.	270.4	
2+05	S. Ret. Highview		
2+50		262.5	262.5
2+97	P.C. on E		258.51
3+00		258.25	258.25

33rd St. Water Grades

SL Juniper		269.50	
40.5		269.20	
80.5		269.30	
120.5		269.70	
160.5		270.20	
200.5		270.50	
240.5		270.00	
280.5		271.40	
320.5		271.00	
360.5		272.20	
400.5		271.00	
440.5		270.50	
480.5		270.20	
520.5		270.20	
560.5		269.70	
600.5		269.70	
640.5		269.25	
680.5		266.50	
720.5		266.75	
760.5		266.50	
800.5		266.50	
840.5		266.50	
880.5		266.50	
920.5		266.50	
960.5		266.50	
1000.5		266.50	

33rd St. grades

Juniper to Hawthorne

	W. prop.	E. prop.
5.4 Juniper = 0+00	276.0	270.
1	6.2	0.0
2	6.8	.8
3	7.2	1.2
4	7.6	1.6
5	8.0	2.0
6	8.4	.4
7	8.8	.8
3+00 = N.L. Jry.	279.0	273.0
S.L. Jry = 3+80	278.5	272.5
4+30	276.25	271.88
4+80	274.0	271.25
5+15 = P.C.	271.05	
5+30.33 = N.L. High View Dr.	269.78	267.75
5+70.33 S.L. High View Dr.	269.1	
Propt 10 E.	268.75	
" +25 E = P.C. Ret.	268.0	
2	267.0	
3		
5+85.33 = E.C. Ret.	265.4	
5+90 = Bridge		265.5
6+30.33	262.6	262.5
6+70.33 = N.L. Hawthorne	258.1	258.25
6+83.33 = End Job.	258.2	258.3

81377X

33

W.L.	76	6.9	6.8	7.0	7.6	8.0	8.4	8.8	79.0
	4.8	5.9	5.0	4.0	7.2	8.8	5.7	3.0	5.5
		5.2							2.2
			-1						+3.3
									81.77
E.L.	70.	8.4	8.8	12	1.6	2.0	2.4	2.8	73.0
	11.8	11.7	11.0	10.4	10.2	9.8	9.7	9.8	8.8
									5.8
									1.0
									2.0
									-1.7

384.52X

W.L.	78.5	76.8	74	71.05	69.78	69.1	68.25	68	67.
	6.0	8.2	10.0	13.5	14.8	1.7	3.0	5.8	4.8
	2.5	3.1	8.3	10.1	11.1	3.5	6.2	5.7	6.0
	+4.5	+5.8	+3.2	+3.7	+3.5	+7.2	-1.2	+1.7	+1.8
W.L.	65.9	62.6	60.7	62.71	58.2				
	7.9	11.2	4.6	4.0					
	6.7	12.4	13.8	14.3					
	+1.3	-1.2	+8.9	-9.8					

845
~~780~~
 6.5
 2.2
 +3.8
 845
 78
 6.5
 1.5
 +510

Water Line Polk St.
Georgia to Oregon

Water Dept.

	T	Flow Line	Grades	Rods	Cuts
0+00 = E.L. Georgia	337.53	332	5.53 - 2.88	2.65	
1 - 50		222.64	14.9 - 11.7	43.7	
2	325.13	312.92	12.2 - 10.8	41.4	
3	313.47	303.19	10.3 - 8.9	41.4	
4	301.97	293.46	8.5 - 6.8	41.7	
5	290.95	283.73	7.2 - 4.7	42.5	
6 3+10 = W.L. Florida	281.7	274	7.7 - 4.1	43.6	
0+00 = E.L. Florida		273	8.7 - 6.0	42.7	
0+50		273.9	8.3 - 7.2	-0.9 (2.1)	
1+00 = R.V.C.		273.8	7.7 - 5.6	42.3	
1+30		274.1	7.6 - 4.6	43.0	
1+40	Chgd.	274.8	6.9 - 3.1	43.8	
1+60		275.9	5.7 - 1.8	44.0	
1+80 = E.V.C.		277.2	4.5 - 0.2	44.3	
2+45	291.96	281.85	10.1 - 5.7	44.2	
3+10 = W.L. Alabama		286.5	5.4 - 2.6	42.8	
0+00 = E.L. Alabama	300.48	287.5	13.0 - 10.0	43.0	
0+50		291.25	9.3 - 2.9	46.5	
1+00 = Brk		295	5.5 - 0.7	49.8	
1+50	312.35	297.5	14.9 - 10.1	44.7	
2+00		300	11.3 - 7.4	43.4	
2+50		302.5	9.8 - 6.2	43.6	
3+00 = W.L. Mississippi		305	7.3 - 4.1	43.2	
0+00 = E.L. "	316.12	307	9.1 - 5.7	43.2	
0+50 = Brk		306.5	9.6 - 4.8	44.8	

	T	Flow Line	Grade	Rods	Cuts
1+00	316.12	305.25	10.9 - 4.5	46.4	
1+60 = Brk.	310.28	304	6.3 - 1.8	45.0	
2+30		301.25	9.0 - 5.7	43.1	
3+00 = W.L. Louisiana		298.5	11.8 - 8.9	42.9	
0+00 = E.L. "		298.5	11.2 - 8.8	43.0	
1	314.31	302	12.3 - 9.3	43.0	
2 (53'30")		305.5	8.8 - 5.3	43.5	
3 1+60 Brk		309	5.3 - 2.3	43.0	
2+30	325.37	314.5	10.7 - 8.5	42.4	
3+00 = W.L. Texas		320	5.1 - 2.4	43.0	
0+00 = E.L. Texas	333.00	322	11. - 8.0	43.0	
50		323.5	10.5 - 6.8	43.7	
1+00		323	10. - 6.2	43.8	
+50		328.5	9.5 - 5.3	44.2	
2+00		324	9.0 - 4.8	44.2	
+50		324.5	8.5 - 4.8	43.7	
3+00 = W.L. Arizona		325	8.0 - 5.1	42.9	
0+00 = E.L. "		327	6.0 - 3.2	42.8	
+50		327.5	5.5 - 2.8	42.7	
1+00 = Brk	343.54	328	15.5 - 12.4	43.1	
+50		329.5	14.0 - 11.3	42.7	(2.8)
2+00 = Brk		331	12.5 - 9.1	43.1	
+50		335	8.5 - 5.9	42.6 (2.8)	
3+10 = W.L. Hamilton		339	7.5 - 1.9	42.6 (2.8)	
0+00 = E.L. Hamilton	355.34	340.5	14.8 - 11.8	43.0	
0+10 Brk (old Propline)		341.5	13.8 - 10.8	43.0	

Water Line Polk Ave.

Station	Flowline	Grade	Rods	Cut
0+70 = P.V.C.	355.34	348.4	6.9 1.8 + 5.1	
0+90	367.14	350.6	16.5 11.9 + 4.6	
1+10		352.3	14.8 - 10.7 + 4.1	
1+30		353.6	13.5 - 9.6 + 3.9	
1+50 = E.V.C. @ Mill Lake	354.6	354.6	12.5 - 9.0 + 3.5	
1+68.3	356.4	356.4	10.4 - 6.7 + 3.7	
2+	358.87	358.87	8.3 - 5.0 + 3.3	
3+10 = W.L. Oregon	361.	361.	6.1 - 3.1 + 3.0	

366.03 S.E.R. Polk Oregon

1.12

367.14

11.97

355.17

0.17

355.34

12.03

343.31

373.34

12.47

331.07

331.07

329.97

2.89

328.37

12.81

312.76

1.03

311.31

11.12

303.19

7.07

310.28

1.30

308.98

7.19

316.17

2.21

307.71

2.44

313.30

12.50

300.80

0.89

300.49

10.37

290.07

337.77 S.E.R. Polk Oregon

2.56

337.53

12.07

327.77

0.69

325.13

13.08

312.08

1.39

313.77

12.49

302.88

0.84

301.77

13.00

288.77

1.52

290.50

12.78

278.17

3.53

281.70

0.17

281.53

10.43

271.76

1.24

270.17

290.17 = E.W. 1st. N. 1st. St.

5/29/29
 1929
 1929
 Calphoon

Mississippi St. Adams to Park, Dennis Const. Co.

Sewer Construction Alley S. of E. Cajon

3100
 E. Line Miss. = Plug end. 315.08
 0340
 M.H. #1 - 4 Miss. 214.05
 1705 = Connection to Existing Sewer
 25' W. of W.L. Miss. 810.00

B.M. N.E. B.P. E/Cajon 9 Alabama

306.57	324.10	324.10	324.10	306.50
8.64	315.08	314.05	310.00	310.
518121	7.02	10.05	17.10	15.60
313.48	2.26	1.22	5.52	6.86
10.02	21.76	23.22	18.38	18.69
305.76				
313.21				
312.22				
324.10				

Mississippi Adams to Madison
Paving Staked 7/31

Miss. Paving Madison to Monroe Staked 8/2

37

4050
51.32
8.83

3509 349.50

351.13

357.37 352.22

359.10 338.27

339.34 340.0

3461 345.33 4.06

346.83

346.33 347.2

5 pts 347 336.13

336.59

336.88

336.94

337.01

337.08

337.15

337.22

337.29

337.36

337.43

337.50

337.57

337.64

337.71

337.78

337.85

337.92

337.99

338.06

338.13

338.20

338.27

338.34

338.41

338.48

338.55

338.62

338.69

338.76

338.83

338.90

338.97

339.04

339.11

339.18

339.25

339.32

339.39

339.46

339.53

337.54

337.44

337.34

337.24

337.14

337.04

336.94

336.84

336.74

336.64

336.54

336.44

336.34

336.24

336.14

336.04

335.94

335.84

335.74

335.64

335.54

335.44

335.34

335.24

335.14

335.04

334.94

334.84

334.74

334.64

3370 338.51

339.15

339.8 340.0

336.5 338.76

336.91

336.47 337.0

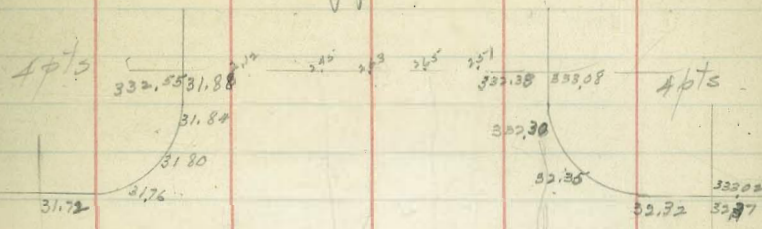
Staked
8/5

Mississippi Paring Monroe to Meade

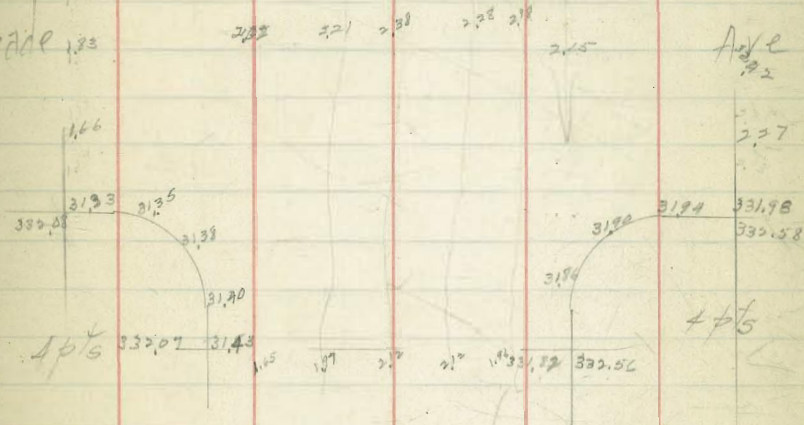
D.M. SE. Monroe Louisiana

677.00
177

307.85 336.6 335.89 334.71 336.38 337.0



Meade



Mississippi

332.5 331.78 332.98 332.38 333.0

57

38

4
N

4
N

Mississippi Paving Meade To El Cajon

332.0 331.43 332.02 331.52 332.5

Staked
5/10/29
Floor
Tessie
Remmen

330.7 329.73 330.01 309.5 330.73 329.8 330.73 331.4

329.87 329.2 329.5 329.8 330.5 329.6 329.6 330.4 331.07

100'

Staked
8/12/29
Floor
Tessie
Remmen

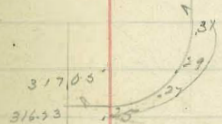
321.6 321.06 322.31 324.1 323.4

Mississippi Paving El Cajon To Howard

39

320.6 320.12 321.44 321.45 322.2

317. 316.33 317.11 317.83 317.5 318.1 318.33 319.14

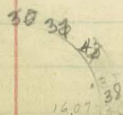


16.21

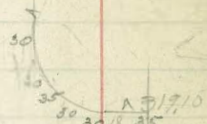
316.93

15.71

315.93



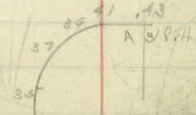
316.0 315.82 317.11 316.83 317.1 317.33 318.0



16.20

319.17
Howard
St.

15.87



Mississippi Paving
Howard To Polk

316.0 315.33 316.83 317.33 318.0

780'

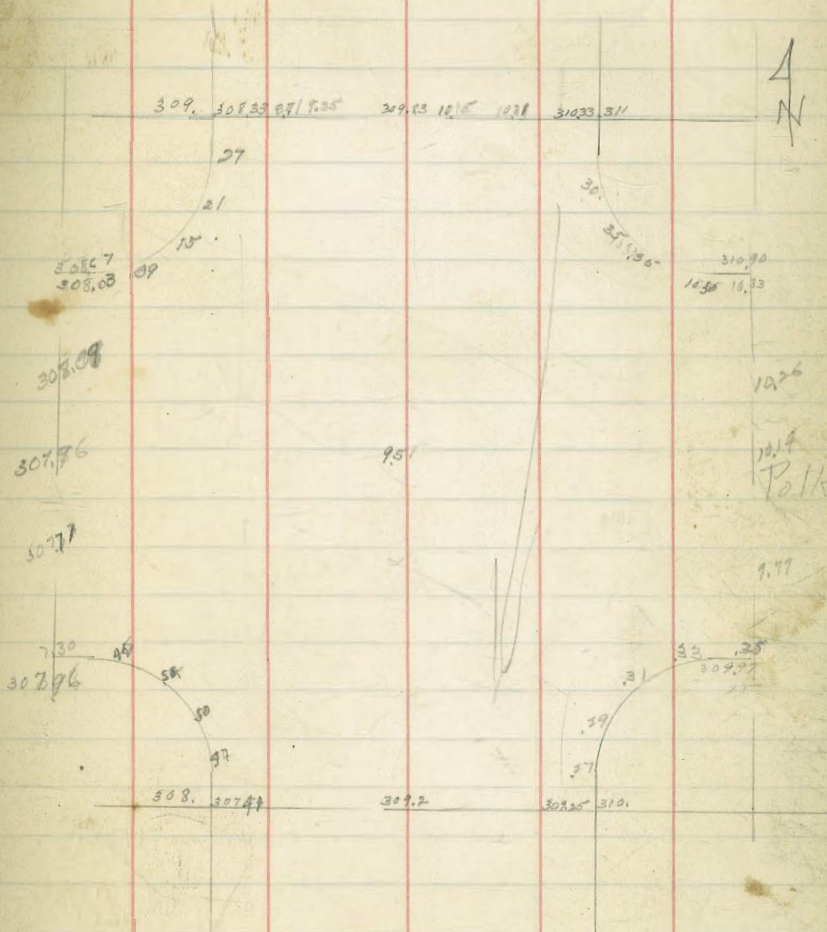
250'

311. 310.20 309.63 311.4 311.8 311.4 312.33 313.0

309.0 308.33 309.83 310.33 311.00

Mississippi & Polk Intersection

41



Flood
Tadrow
Calywood
6/17/49

Paving Alley Bk 5 Crittendens Add. 20' wide
University to Robinson - between 6th & 7th Sts.

R.M. W.B.P.
W. 1/2 E 5th Ave

	N. Side	E	E Side	
			289.94 4.12	
0+00 = S. University	289.15		279.06 9.60	
0+53.3	288.18		281.71 0.17	
1+08.6 = R.K.C.	282.1		287.20 1.27 285.96 3.97 287.55	
1 (3-205)	281.7		281.80 1.53	
2	281.5		271.33 2.83	
3. 1+84.6 = E.K.C.	281.4		281.80 4.32 286.14 1.66	
1.	281.25		281.49 4.22	
2.	281.11		281.71 5.55 280.36	
3. (7-405)	280.97			
4.	280.82			
5.	280.69			
6.	280.59			
7. 4+64.6 = N.L. Robinson	280.4	280.2	280.4	
1+77.1 = N.C.	280.35	280.14	279.85	

W.S.

Chiseled

Mail.

89.00	77.35	77.00	87.55	73.50	81.50	61.00	61.00	80.12	80.68
87.15	83.13	82.1	87.7	83.75	81.25	81.11	80.87	80.82	80.68
74.40	72.20	51.25	56.00	58.00	49.75	50.3	51.7	51.2	51.2
3.79	3.32	3.48	4.88	4.60	2.49	2.64	3.88	4.82	5.13
-0.04	1.00	-2.17	1.12	1.55	4.10	4.37	4.17	4.50	4.20
				4.10	4.38	4.10	4.37	4.50	4.20

E.S.

87.60	78.00	74.00	83.00	83.00	84.14	81.14	81.4	80.82	80.68
87.10	83.10	82.10	87.7	83.75	81.25	81.11	80.87	80.82	80.68
3.50	3.25	4.00	5.60	4.88	4.88	5.03	5.17	5.32	5.53
3.43	3.25	4.12	5.81	4.88	4.18	5.00	4.96	5.28	5.73
-1.05	1.00	4.74	4.42	4.50	4.75	-1.14	4.07	4.12	4.04
				4.50	4.75	-1.14	4.07	4.12	4.04

W.S.

1.21	1.21	Ch.
80.54	80.7	80.35 Change
5.27		5.88
5.90	5.81	5.88
+.87	+.83	+.26

E.S.

80.54	80.7	80.35
5.27	5.81	6.34
4.92	5.81	6.31
+1.76	+4.40	+1.50

6.20	1.20	1.39	2.49	1.29	2.41	81.11	80.97	80.82	80.68
84.15	83.13	82.1	87.7	83.75	81.25	81.11	80.97	80.82	80.68
2.14	3.16	4.19	4.67	4.77	4.11				
		3.46	3.96	4.21	4.11				
		2.2	.68	1.00	.75				
			1.07	1.47					
			1.14						

W.	E.
280.4	280.4
3.35	4.09
287.10	284.49
3.63	30
289.77	288.79

280.4	
280.4	
360.8	
280.7	
279.85	
1.35	

4
85
1.35

Handwritten notes in the top left corner, including "1/11/22" and other illegible scribbles.

Paving Alley Bk A Crittenden Add. 20' Wide
 Robinson to Pennsylvania between 6th & 7th Sts.

	W. Side	E. Side
0-12.5 = S. 6. Robinson St. 280.22		280.67
0+00 = S. 1. Robinson St. 280.4		280.2
1. 280.51		280.31
2. 280.64		280.42
3. 280.73		280.53
4. 280.84		280.64
5. 280.95		280.75
6. 281.06		280.86
7. 281.17		280.97
8. 281.29		281.09
9. 3+80 = Bk 281.2		281.2
1+30 281.42		281.75
1+80 282.15		282.30
5+30 282.97		282.85
5+80 = Bk 283.5		283.4
6+50 = N. Pennsylvania 284.		283.4

Culvert #1 = 100 S. of St. Robinson 20' of 6" C.I.B. Cul. Pipe

W.L.	E.L.
281.95	281.95
277.9	277.0
5.75	5.95
5.45	5.88
+ .30	+ .07

grades Reversed on profile?

W.S.	E.S.
280.37	280.51
280.45	280.55
280.55	280.65
280.65	280.75
280.75	280.85
280.85	280.95
280.95	281.05
281.05	281.15
281.15	281.25
281.25	281.35
281.35	281.45
281.45	281.55
281.55	281.65
281.65	281.75
281.75	281.85
281.85	281.95
281.95	282.05
282.05	282.15
282.15	282.25
282.25	282.35
282.35	282.45
282.45	282.55
282.55	282.65
282.65	282.75
282.75	282.85
282.85	282.95
282.95	283.05
283.05	283.15
283.15	283.25
283.25	283.35
283.35	283.45
283.45	283.55
283.55	283.65
283.65	283.75
283.75	283.85
283.85	283.95
283.95	284.05

on P.L.W.

281.09

281.09

281.09

281.09

281.09

281.09

281.09

281.09

281.09

281.09

281.09

281.09

281.09

281.09

281.09

281.09

281.09

281.09

281.09

281.09

281.09

281.09

281.09

281.09

281.09

281.09

281.09

281.09

281.09

281.09

281.09

4/18/29
 Flood
 Prince
 Calverton
 EL. Chatsworth:

Paving Kingsley St
 Chatsworth to Rosencrans,
 30 crown

Penn. S. Coll.

S. Cb. S. Gutter N. Gutter N. Cb.

0 + 00	70.1	69.0	67.68	68.50
0 + 10		69.05	67.80	
0 + 34.8 = N.				
0 + 34.10 = S.	69.30	68.85	67.80	68.30
0 + 63.75 N.				
0 + 60.72 S.				
0 + 70.7 N.			(69.8)	
0 + 87.3 S.	67.70	67.05	66.6	67.10
1 + 15.7 N.				
1 + 12.3 S.				
1 + 40.7 N.				
1 + 37.3 S.				
1 + 65.7 N.				
1 + 62.3 S.				
1 + 90.7 N.				
1 + 87.3 S.				
2 + 15.7 N.				
2 + 12.3 S.	63.9	63.5	63.4	63.8
2 + 30.7 N.				
2 + 10.7 N. Paving	63.5		63.10	
2 + 37.3 S.	63.7	63.26	62.67	63.36

Freight St

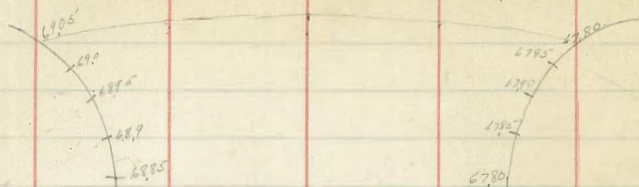
EL. Freight St				
0 + 00	61.22	61.26	61.07	61.72
0 + 10		61.30	61.05	
0 + 25	61.3	60.9	60.7	61.20
		59.9		

10.265

S. Cb. S. Gutter N. Gutter N. Cb.

10. 2 + 75	53.9	53.5	53.6	54.10
1. 3 + 00	53.27	52.9	53.2	53.5
Koovst. St 70' wide				
2. Koovst 0 + 00	52.36	51.9	51.9	52.21
1. 0 + 25	51.9	51.4	51.3	51.9
0 + 61.5				
0 + 98		49.1		
1 + 28				
1 + 58				
1 + 88		47.1		
2. 28.33				
3. 2 + 73	46.0	45.5	44.6	45.0
3. 700	46.65	44.8	43.9	44.66

Kingsley, Chalsworth to Evergreen.



635

634

6317

6300

6282

634

6328

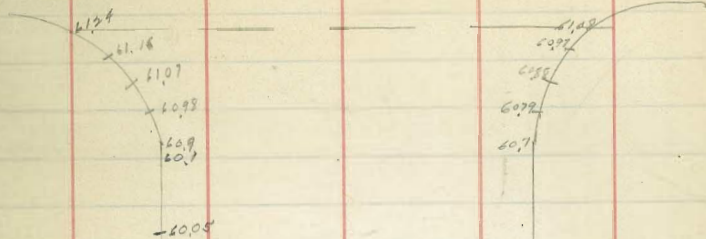
6318

6304

6287

Kingsley, Evergreen to Locust

45



6005

5345

5332

5318

5304

5290

5275

5260

5385

5372

5358

5344

5330

5316

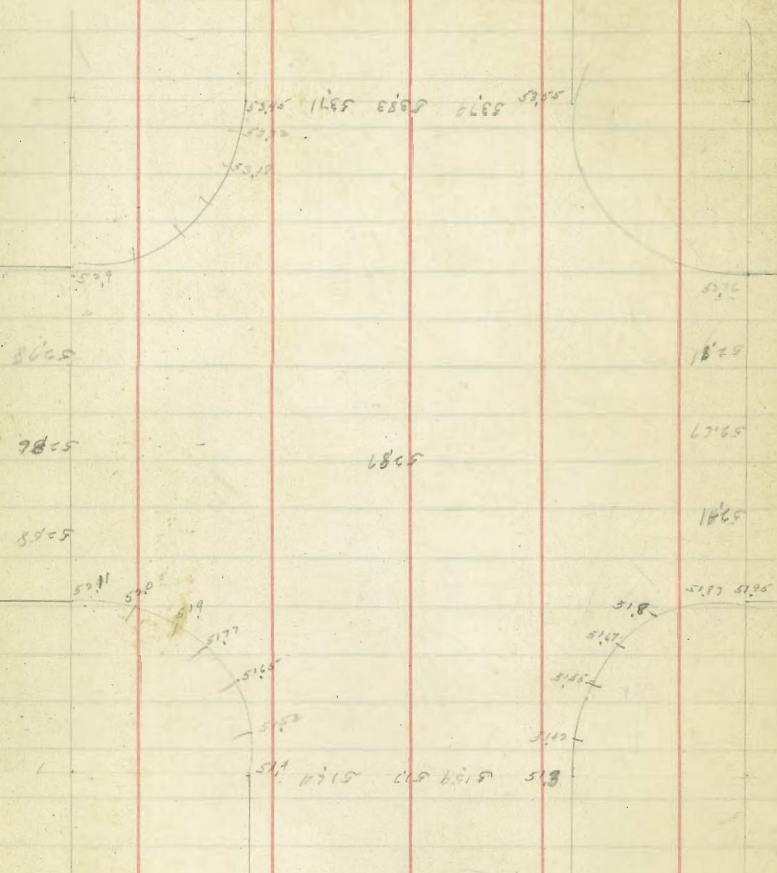
5302

5274

Intersection of Kingstoy & Loarst

Kingstoy - Loarst to Rosen crans

46



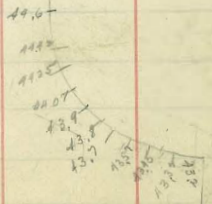
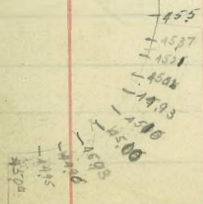
570
6.1

22.99
7.30

19.1

17.1

17.0
1.2



7/21/92
 7204
 11/16/92
 11/16/92
 11/16/92
 11/16/92

Evergreen St
 Culvert at Alcott VT

S. N. B. P.
 Browning

FL.

- 1N167=00 63.0
 0+15V.V 60.5
 1+10.X=A=149 58.0
 1+60.X 55.7
 2+10.X 53.4
 +60.L 51.2
 3+10.X 48.9
 +60.4 46.6
 3+487V=OUTLET 45.4

177.91
 8.00
 170.91
 15.56
 119.85
 2.13
 118.99
 19.10
 103.99
 2.13
 104.81
 17.23
 93.69
 1.50
 95.19
 12.39
 82.75
 2.29
 85.67
 12.62
 73.87
 6.99
 80.067
 12.55
 67.51
 3.51
 70.727
 12.54
 58.18
 3.26
 61.24

I							
50.06	50.06	50.06	50.06	70.72	11.34	11.34	
68.0	68.0	68.0	68.0	40.2	42.6	45.4	
170.6	170.6	170.6	170.6	21.83	18.24	15.84	
11.39	15.15	18.11	21.36	2.02	3.14	2.98	
45.07	46.45	43.70	41.19	41.95	41.32	44.87	
80.40	71.44	71.45	70.47	70.07	59.44	58.34	
40.0	40.0	40.0	40.0	49.7	44.5	45.4	
14.42	10.79	12.41	14.37	21.19	17.49	12.84	
13.93	13.93	13.93	13.93	6.43	8.23	6.34	
4.5	4.5	4.5	4.5	74.7	6.7	6.5	

58.0
 23.85
 61.79
 10.87
 72.76
 0.32
 72.74
 23.01
 55.15
 1.34
 56.81
 12.87
 94.78
 0.75
 76.30
 11.79
 108.09
 0.46
 107.22
 4.78
 112.57
 13.25
 27.67
 3.13
 107.74
 6.36
 95.44
 95.44
 Curtice Evergreen

Alcott St
 33 cr.

88.57		
88.2	88.7	89.0
88.6	89.0	89.0
88.7		
88.9	89.2	89.7
89.5	89.5	89.9
90.0		
90.7	90.2	90.2
91.2		
91.5	91.5	91.7
92.5	92.5	93.0
93.5	93.5	94.0
94.5	94.5	95.0
97.1	97.1	96.6

3 Back hole
 6.55
 11.51
 17.04
 23.24

BV
 BK
 BTR

107.5	106.1	108.6
107.5	106.88	
107.9	107.3	
107.6	107.4	

Browning St

Evergreen St

	E 06	W 06
10' S of N.L. Abbott	88.57	89.01
N.L. Abbott = 00	88.50	89.0
0 + 25 = curb PC	89.20	90.1
0 + 30 = P.C.	89.50	90.30
0 + 50	90.70	91.30
0 + 70	92.20	93.0
0 + 90	94.50	95.0
1 + 10 E.V.C.	97.10	97.30
1 + 4 V.V.	101.60	101.75
1 + 7 V = curb P.C.	106.10	106.20
2 + 00 = SL Browning	107.60	108.60 = E.C. 06.
0 + 00 = N.L. Browning	107.4	108.60
0 + 25 = P.C.	106.54	106.50
0 + 75	102.14	102.26
1 + 25	97.88	98.03
1 + 75 = P.C.	93.5	93.8
2 + 00 = SL Curtis St.	92.1	93.0

E.	72.46 88.57 -14.11 2 -23.1	72.46 89.2 -16.74 5.73 -22.5	72.46 89.5 -17.04 4.04 -21.1	86.15 90.7 5.55 7.58 -13.1	86.78 92.0 5.45 11.85 -7.0	86.78 94.3 7.52 12.08 -7.3	108.08 97.1 -10.98 12.89 -11.6	108.08 101.6 6.48 7.95 -1.47
W.	72.46 89.21 -16.75 6.01 -23.3	85.15 90.1 -4.95 1.34 -6.3	86.78 90.3 4.08 11.09 -7.61	86.78 91.3 4.52 4.96 -7.5	86.78 93.0 6.28 3.84 -2.9	108.08 95.0 -13.08 8.14 -4.7	108.08 97.3 -10.78 5.64 -5.1	108.08 101.75 6.33 1.83 -4.4
E.	108.62 106.1 2.52 1.5 -2.71	108.62 107.6 1.02 1.02 11.237	108.62 107.6 1.02 1.02 11.237	108.62 107.6 1.02 1.02 11.237	108.62 107.6 1.02 1.02 11.237	108.62 107.6 1.02 1.02 11.237	108.62 107.6 1.02 1.02 11.237	108.62 107.6 1.02 1.02 11.237
W.	108.62 106.1 2.52 1.5 -2.71	108.62 107.6 1.02 1.02 11.237	108.62 107.6 1.02 1.02 11.237	108.62 107.6 1.02 1.02 11.237	108.62 107.6 1.02 1.02 11.237	108.62 107.6 1.02 1.02 11.237	108.62 107.6 1.02 1.02 11.237	108.62 107.6 1.02 1.02 11.237
E.	101.75 90.1 11.64 1.55 -1.09							
W.	101.75 93.0 8.74 1.89 -1.05							

Evergreen ST

Browning
33 cr.

107.2 107.8
107.6 107.1
107.4 107.1
107.3 106.8

105.5 104.8

108.1 108.6

107.4 107.9

106.7 107.2

106.1 106.5

Brk
Brk

93.5 93.5

92.7

91.8

90.6

89.1 91.5

93.3 93.8

93.0 93.5

92.5 93.2

92.9 93.6

Brk 4
Brk

Curtis

49

CURTIS
33 cr.

90.7 90.4

10

89.7 89.4

10

89.2 88.8 89.7 89.8 89.5 89.3

Brk

91.2 91.7

89.7 91.4

Brk

15

75

82.5 81.8 81.3 81.7 82.5 81.4

77.2 76.7 76.7 76.8 76.2 77.4 78.1

76.35

75.69

75.5 74.8

77.8 77.7

76.8 77.2

74 77.0

Brk
Brk

Dumas

76.9
76.3

Locust ST Grades

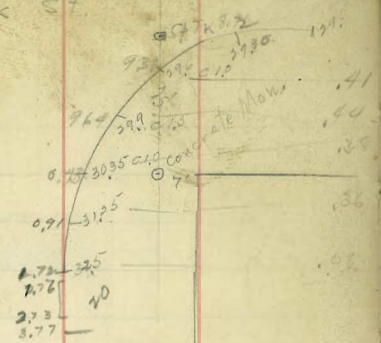
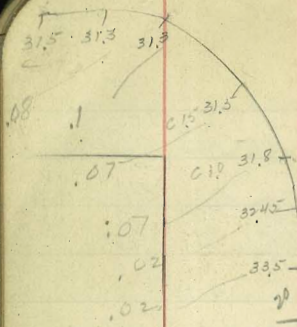
B.M. SWBR.
Curtis Locust

51

	WCB	FCB
NL Dumas = 00		52.5
0 + 10		8.98
0 + 25 = PC cb		78.31
0 + 75		7.80
1 + 25		70.51
1 + 75 = PC cb		13.08
1 + 95		83.59
2 + 00 = NL Curtis		13.95
00 = SWB "	67.1	70.88
0 + 10 ON EAST		71.72
0 + 25 = PC cb	67.74 ✓	12.29
+ 75	69.03 ✓	59.73
1 + 25	70.34 ✓	1.32
1 + 75 = PC cb	71.60 ✓	60.75
+ 90	74.0	71.38
+ 95	74.7	49.37
2 = NL Browning	72.6	2.30
		51.74

	E	W	E			
	53.6	57.0	60.3	63.7		
	17.5	14.1	10.8	7.4		
	13.2	9.8	7.2	4.8		
	+4.3	+4.6	+3.8	+3.6		
	67.7	69.0	70.3	71.6	72.6	
	10.6	9.3	8.0	12.0	10.99	
	6.0	5.2	3.8	4.8	10.28	
	+4.6	+4.1	+3.8	+7.2	+ .01	
	66.1	66.6	68.2	69.9	71.5	72.0
	12.2	11.7	10.1	8.4	6.8	11.6
	8.9	8.8	9.7	8.8	7.8	13.0
	+3.3	+2.9	+1.4	-1.4	-1.0	-1.4
						71.9
						71.5
						11.9
						22.89
						12.8
						13.11
						-1.1
						-1.02

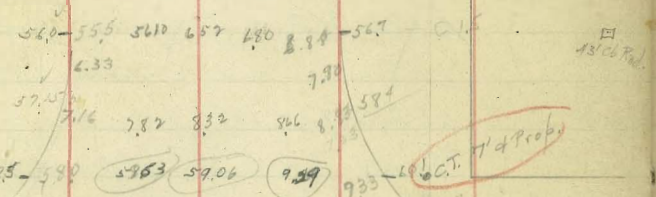
Rosencrans St.
133 Cr.



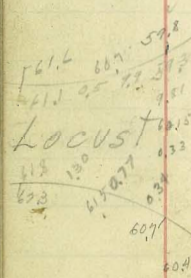
60.55
60.73
59.76
39

Alcott St.

1306 Rad.



Locust



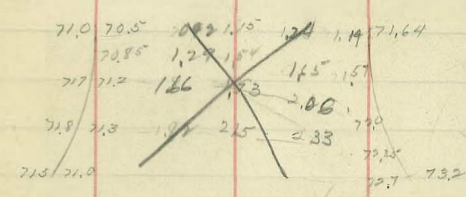
St.

Locust 133 Cr.
Alcott St.

1306 Rad.

61.6 61.1 153 1.78 1.98 61.8 62.3

1306 Rad.



1306 Rad.

Browning

1306 Rad.

Rad 5

St.

Browning

Locust

33 Cr

CT 14 X 10 0

71.5 71.0 71.25 71.9 72.1 72.6
 71.9 71.4 71.25 71.9 71.7 72.2
 72.0 71.5 71.74 71.86 71.74 71.5 72.0
 71.5 71.0 72.6 1.36 1.30 71.7 71.6

66.6 66.1 65.1 65.5 2.8 67.7 67.77
 15.15
 66.8 66.65 6.7 6.56 6.74 6.81 67.36
 66.8 66.3 68.6 67.10

CT 14 X 10 0

Curtis

Locust St Parking
33 Cr

Curtis

54

65.0 64.74 65.8 66.4
 64.3 64.1 64.7
 64.0 64.0
 63.8 63.6 3.7 1.66 63.87 64.87

53.6 53.1 3.55 4.1 54.1 54.6
 53.75
 53.9 53.4
 53.6 53.0 53.2 53.9

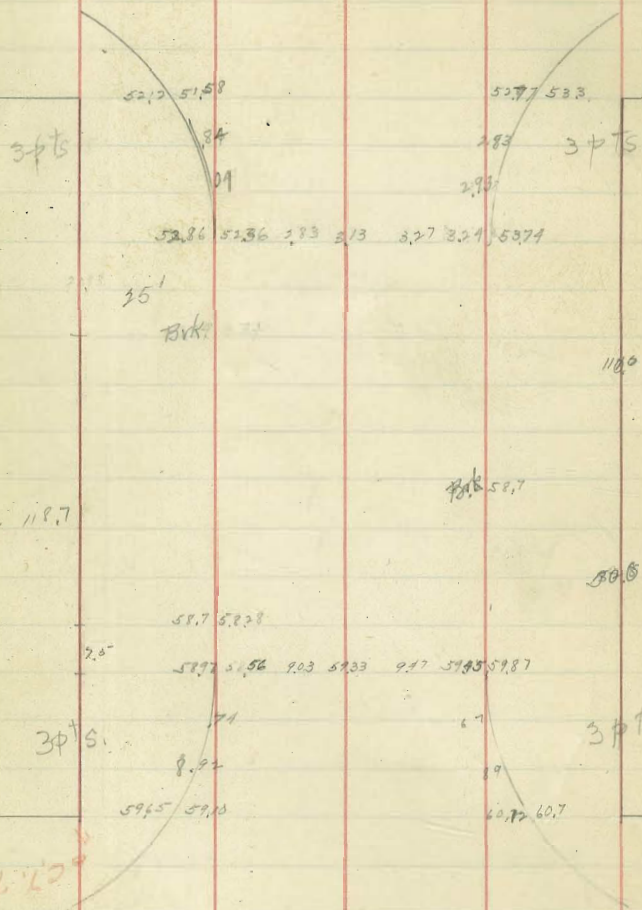
CT 14 X 10 0

Dumas

B.M. 53.72

Locust St Paving
.33 Cr.

Dumas



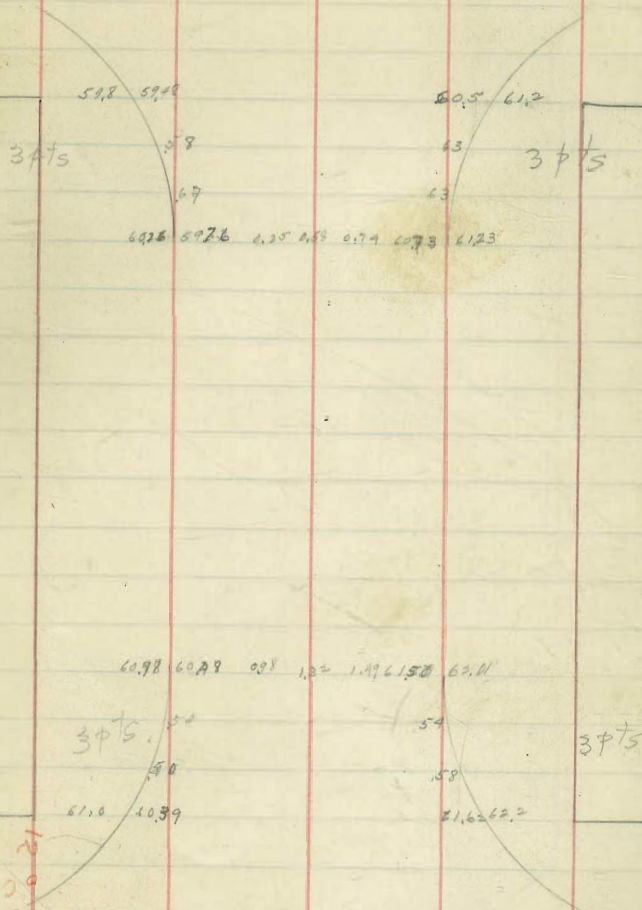
Elliot

⊙ B.M. 61.63

Locust St Paving
.33 Cr.

Elliot

55



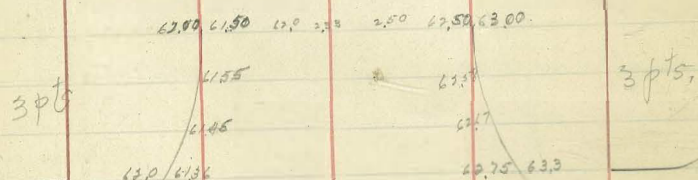
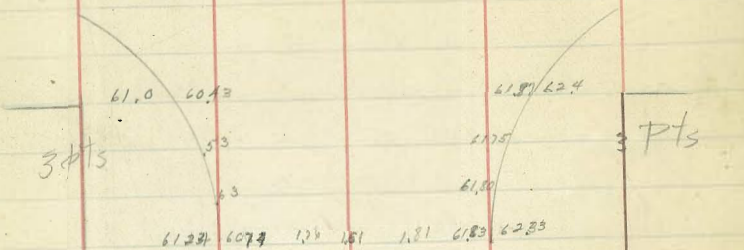
Handwritten note in red ink: "Hand X 21 1/2 ft 1/2 in 1/2 1/2 1/2"

Freeman

⊙ B.M. 62.77

Locust St Paving
33 Cr.

Freeman



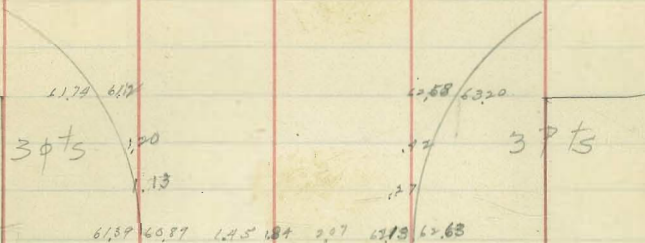
Goldsmith

○ B.M. 6410

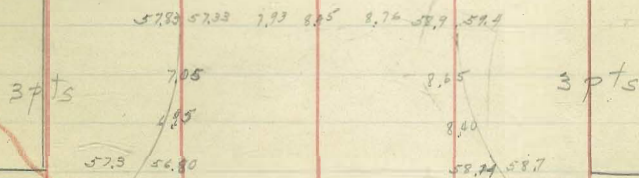
Locust St Paving
33 Cr.

56

Goldsmith



Water Pocket & Hersh
Gutter line on Homer needs fill



Homer

○ B.M. 5968

Locust St Fare
33 cr.

Homer

590 5886 5931 607
 3 pts 50 975 3 pts
 99 999
 5987 5927 999 013 027 6029 6074

6672 492 327 550 594 1879 6622
 4 pts 39 614 4 pts
 664 69 597 637 649 655 6727
 664 63 669 686 704 717 6767
 6638 667 699 719 737 753 763
 6650 624 710 672 675 725 751 769 783
 6694 685 717 735 756 768 779
 IBSEN
 6614 671 715 739 751 758 620

6696 731 740
 662 685 698 705 170

Locust St Paving
33 cr.

57

Ibsen

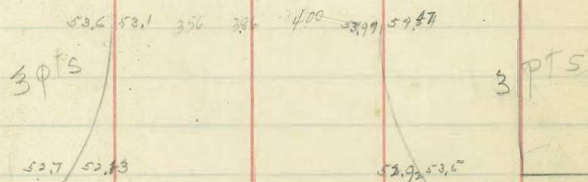
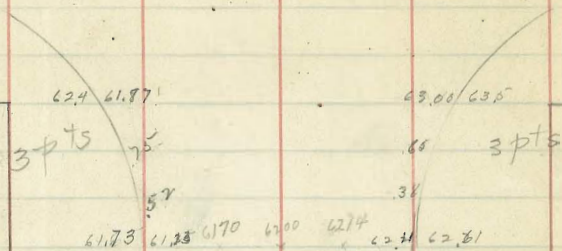
6624 6616 675 680
 6631 677
 669 6698 678
 4 pts 667
 6671 667 668 6696 6705 670 675
 4 pts

6387 6331 6379 640 670 6404 6454
 3 pts 610 630
 637 6485 6388 6430
 3 pts

James

Locust St Paving
33 Cr.

James

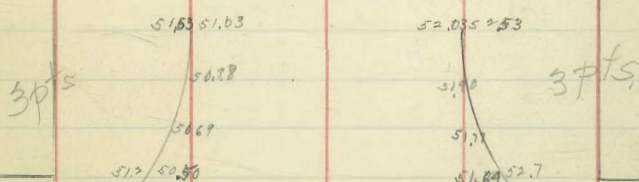
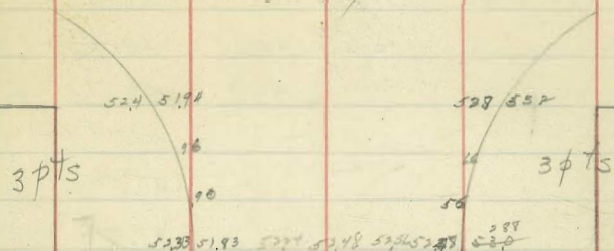


Kingsley

Locust St Paving
33 Cr.

58

Kingsley



Lytton

55.25 B.M.
Top Hyd.

Storm Drain in Alcott St.

(Ref to P. 10)

0-20 = Connection to Culvert Shown on above ref.		
0+00 = Clean Out Flow Line	44.8	15.75 7.98 22.25
Top Cleanout	61.4	2.65 2.25 10.40
0+44.04	43.27	17.47 11.25 44.23
0+88.08	41.74	14.04 3.72
1+32.12	40.22	11.59 2.21 76.80
1+72.00 = 4	38.84	12.92 5.40 18.52
2+11.96	37.45	14.31 10.34 73.15
2+51.92	36.07	15.69 2.12 17.59
2+90.42 = 4	34.74	7.27 3.27 18.70
3+20.4 = Connection to box	33.7	8.31 2.54 73.72
3+45.4 = W. End opening	32.6	10.41 5.16 14.25
3+55.4 = E. End opening	31.6	10.11 4.52 4.69

2/25/29
 11000
 Pease
 Co. 1000

Lewis St. Paving Pease Corp.

0+00 = Elm Hawk S.Cb. N.Cb.
 268.0 267.0

1+00 = Bk 268.5 267.5

3+00 = White Goldfinch 266.0 265.0

B. NEWB.
 Lewis Hawk
 267.97
 2.07
 272.04
 2.01
 266.03
 1.56
 269.69

Goldfinch.
Paved

Hawk paved

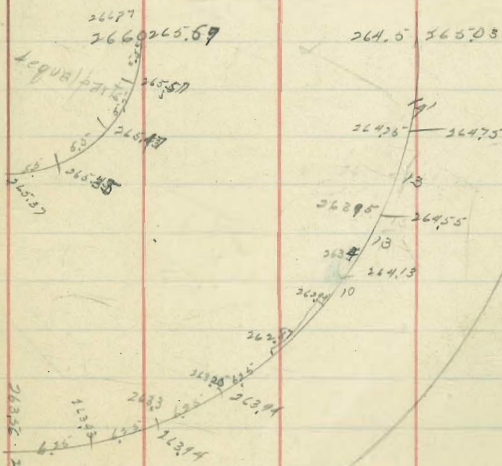
60

268.0 267.97 267.5 267.42

100

268.0 267.97 267.42 267.52

100



Storm Drain, Florida St

Culvert #1

7/26/29
Flood
Damage
Collected

Stations

Station	Flow line	Height
0+00 = Connection to send C. Basin #1	1975	287.08
		0.76
		297.84
		12.83
		275.01
		3.17
		279.18
		12.00
0+53.42	250.8	265.31
		3.73
1+06.84	249.6	267.91
		13.04
+65.80	249.08	254.67
		0.28
2+24.76	246.98	254.93
		10.14
+83.72	245.64	247.77 on
		Headwall of Existing Culvert 20' W of outlet
		275.01
		0.21
		275.22
		12.83
		262.39
		0.53
		262.72
		11.31
3+12.68 = p.c. Def	244.32	251.41
		6.29
		259.40
		0.71
		257.49
		5.12
		262.79
		3.05
		260.74
		10.01
		270.75
		7.24
		2.01
		289.52
		7.23
		7.91
		5.00
		278.22
		8.00
		270.22
		1.13
		269.09
		8.26
		277.35
		7.24
		8.43
		7.64
		7.79

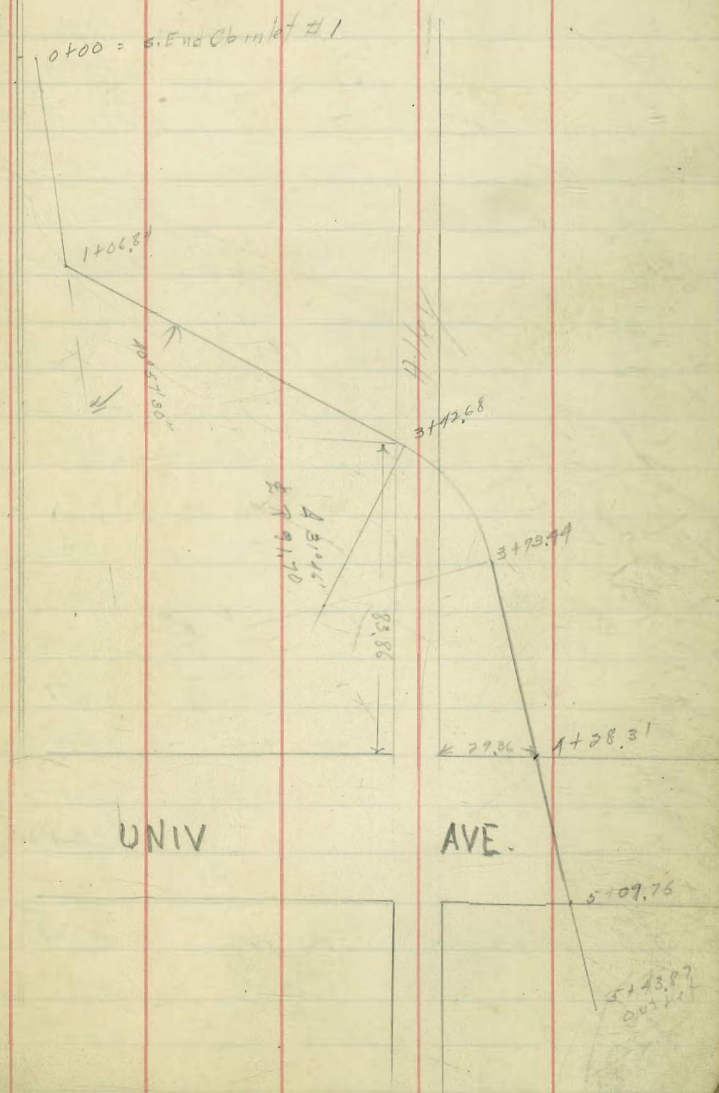
275.22
2.41
272.61

245.05
61

Culvert #1 6" drain for Cb Outlet #1

0+00 = S. End Cb Outlet #1	289.52
+	89.35
+	89.18
+	89.0
1+91 outlet on Howard St	88.83

300.65
1.84
302.49
6.29
295.55
1.71
297.26
8.43
305.69



Florida St Culvert # 3.

SW 1/4
El Cajon
Fl 10108
300.65

300.65 - SW 1/4
4.55 El Cajon + Fl 2
305.20

62

Station	Description	Flowline
0+00	= S. End Cb Inlet # 3	291.5
+36	= N. End Inlet # 4	293.75
1+21	= Brk under Water Main	292.0
+67.7		291.54
2+13.4		291.09
2+59.6		290.63
3+05.8		290.18
3+52.0	= N. End Cb Outlet # 1	289.72

Top of Cb Ret NE El Cajon 300.65 C.15
E 300.60

Top of Cb S. End Cb # 3 301.13

Florida St. Sewer

0+00	= Connection to Flush Tank	289.0
1		287.35
2	(1-17.75) N. End	285.70
3		284.05
4	1+91 = M.H. # 1	282.4
5		281.96
6		281.58
7	7+18.555 South End	280.05
8		280.60
9		280.44
10		279.88
11	5+731 = Connection to East M.H.	279.03
12	1+91 = 0+00	282.1
13	3-13385 W. End	286.0
14		281.58
15	1+30 = Connection to existing Sewer	293.16

Cb. inlet # 1 East Side Fla. N of Univ. ^{200 ft from}		
Cb. S. End	265.82	5.56
Flowline S. End	265.82	12.82
Cb N. End	260.30	5.79
Flowline N. End.	265.82	11.82
	254.	5.20
		+6.36

Cb inlet # 2 W. Side Fla opp # 1		
Cb S. End	265.82	5.7
Flowline S. end	265.82	11.82
Cb N. End	260.30	5.20
Flowline N. End	265.82	6.87
		5.52
		11.82
		5.20
		+5.82

Florida Paving

Crown A

Adams

S.W.B.P.
Adams
Florida
340.10
0.72
340.82

340 339.40

335.1 337.0

331.0 330.29

329.3000

Madison

Crown A

Madison

63

S.E.B.P.
329.09
3.33
332.42
7.77
324.65
1.33
325.74
3.79
329.02

330.0 327.2

329.290

500'

3280 25.24

25.58
4.37

25.23
4.02

24.87
2.88

2482 25.0

322.0 21.43

207.21.0

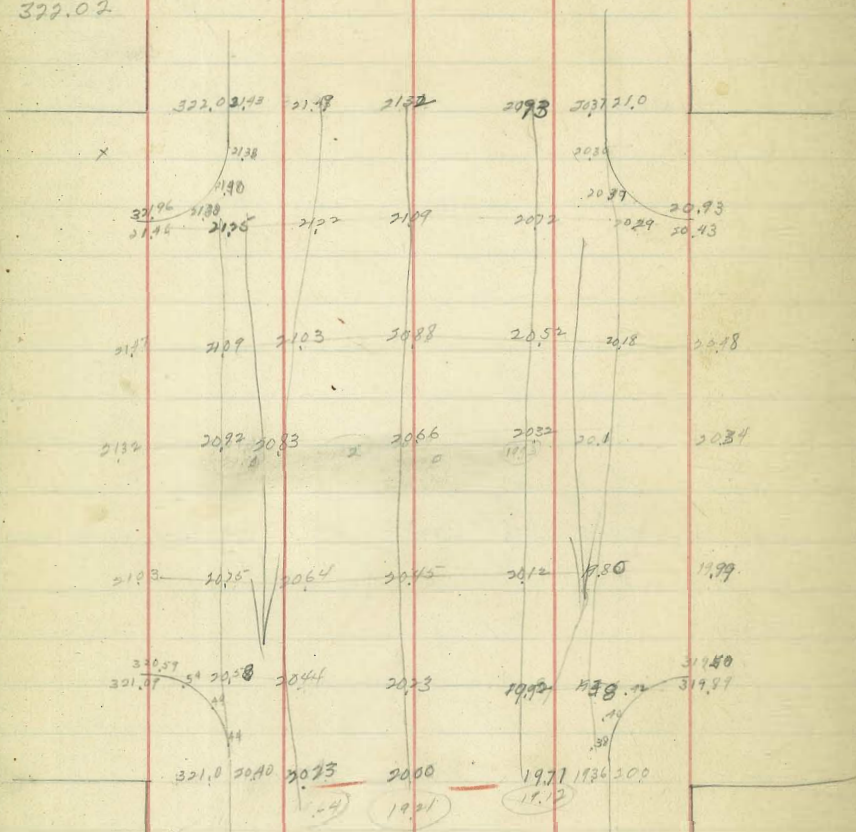
Monroe

A
N

A
N

Florida St Paving
 Monroe Intersection

N.W. Tack
 377.02

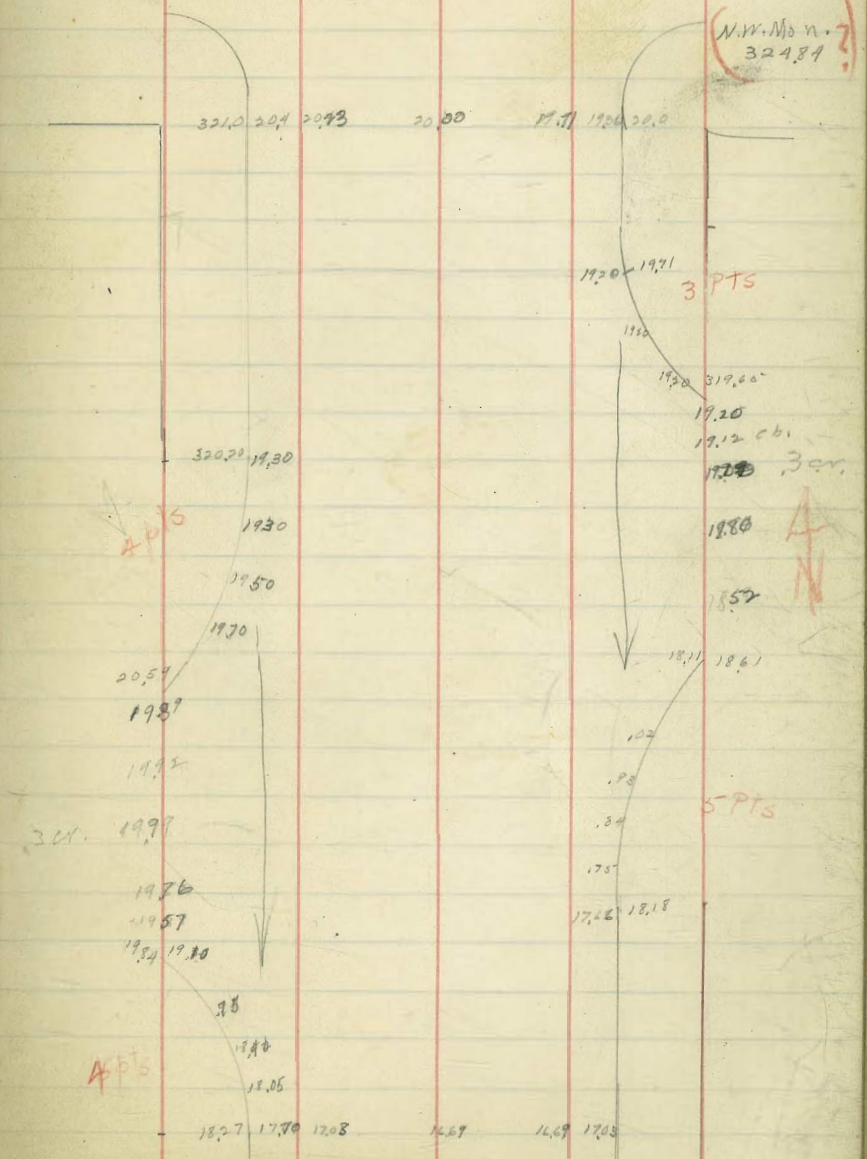


A
N

dip. 67

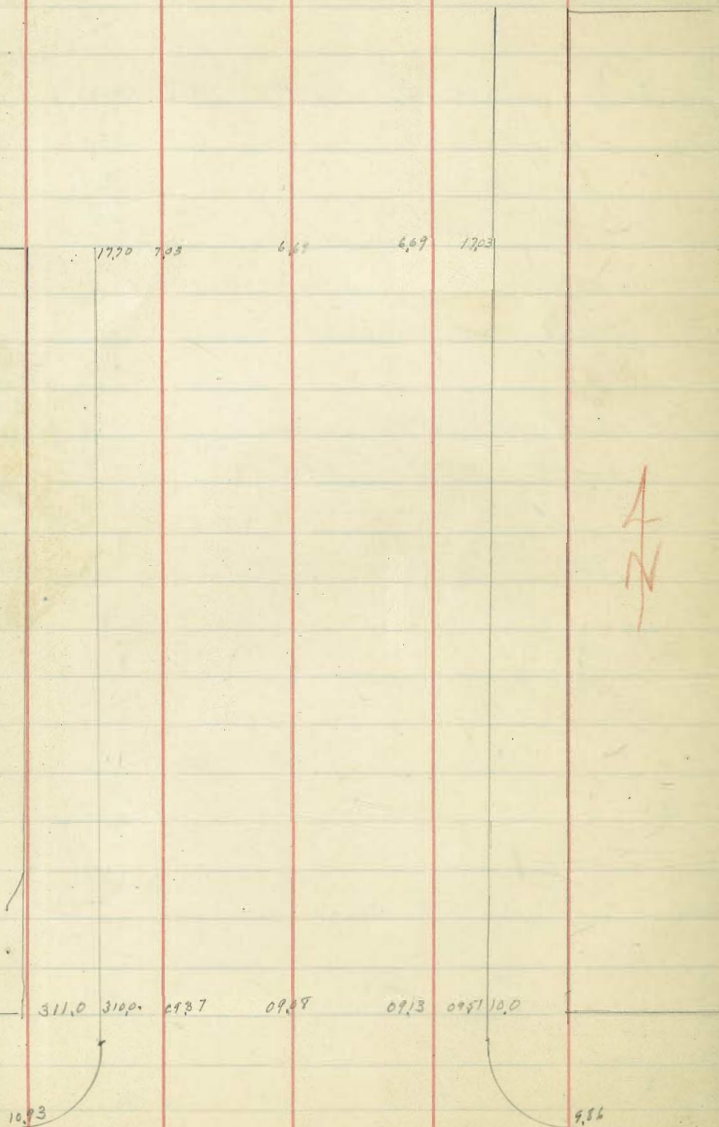
Mission Ave Intersection 64

N.W. Mo n.
324.84



A
N

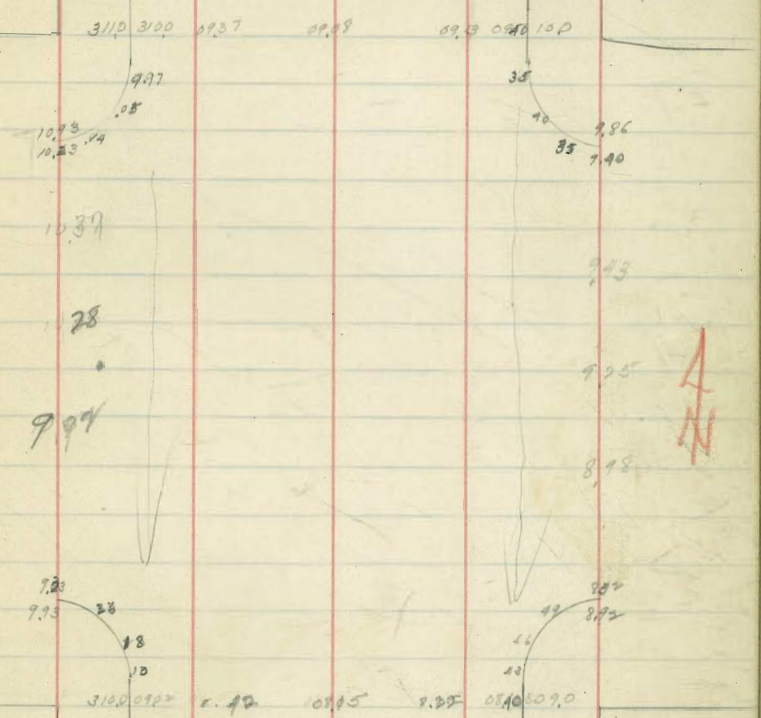
Florida St Paving Dip .67
 Mission Ave to Meade



Meade

dip .67
 Meade Intersection

65
 N.E. tack
 309.94



Florida St. Paving *dip. 67*
 Meade to El Cajon

NE Track
 309.74

310.0 0253 842 815 822 0145 090

Rodent Mout
 304
 N print
 254
 @ 304
 S print
 1.84

57 dip

10'

10'

303.50 0171 0151 0157
 0250 0170 0153 0087 0007
 0210 0170 0150 0107 0050
 0210 0170 0150 0087 0050
 0210 0170 0150 0087 0050

El Cajon

Cr. 5

El Cajon to Howard

66
 SW.B.P.
 300.65

300.65 299.74 299.74 299.74 299.74 299.74
 299.74 299.74 299.74 299.74 299.74

299.74 299.74 299.74 299.74 299.74

20' Alley

dip. 67

1.72
 3.22
 7.94
 3.17

294.72 2327 7307 2088 2021
 292.22 2221 9124 20 20

292.22 2221

292.22 2221

Howard

Florida St Paving Dip 67

Howard St. Intersection NWB.P.
290.59

905	2160	875	856	859	875	890
-85	60					
98	73					
91.5	29	819	814	846	870	890
88						
91	553	824	829	84		
899	836	808	813	845		
877	82	791	797	825		
	803					
853	855	803	770	775	795	804
853						804
56						
875	547	878	872	755	870	880

8830
 986
 1869
 1934

AN

Dip 67

Howard to Polk

67

299.5 327 790 288.5

AN

278.0 7205 435 601 609 640 377.0

Polk

Florida St Paving *dp 67*
 Polk Intersection S.H. Top Hydt

B.M.

278.05	628	601	604	640	277.0
7.11					
77.07				38	
77.37	6.55	6.14	5.83	5.86	6.15
					376.96
7.5	6.5	5.97	3.66	5.69	5.78
					6.27
7.33	6.3	5.77	5.78	5.52	5.8
					6.10
7.0	6.1	5.62	5.31	5.35	5.63
					5.84
76.40	5.8	5.44	5.13	5.19	5.42
77.09	7.62				5.95
					576.99
					7.0
					38
277.0	276.90	5.35	4.95	4.99	5.05

4
N

Dip. 67

Polk to Lincoln

68

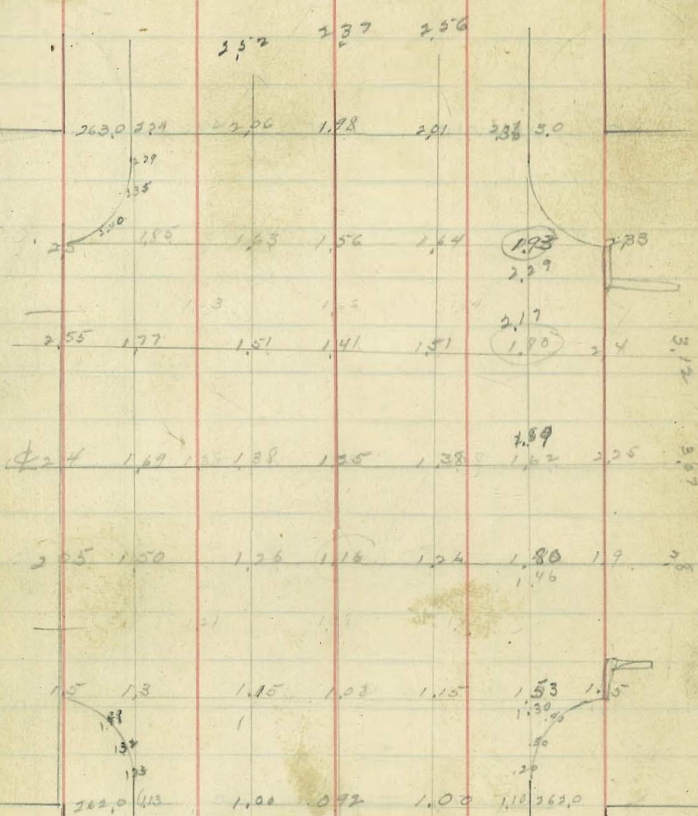
277.0 5.30 5.25 4.95 4.99 5.05 7.40

2.80 2.24 2.06 1.78 2.01 2.13 2.630

Lincoln

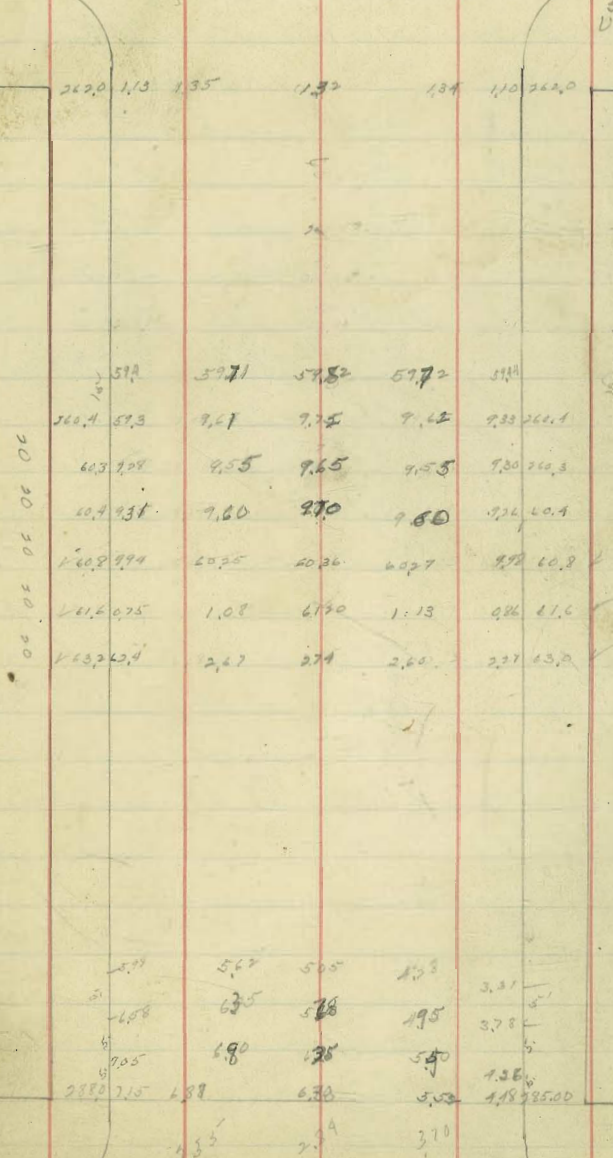
4
N

Florida St Perming dip to
Lincoln Intersection *Cr. &*



19th of November

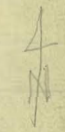
Cr. &
Lincoln to University ¹⁸⁰



SW B.P.
University of
Florida
287.08
3.97

270.55
12.48
278.07
1.09
279.16
12.45
266.71
1.45
268.16
6.17
261.99

SW 7/4
Lincoln
287.08
2.19
239.12



University
PAVED

8/1/29

Moore
Flood
Traverse
Columbian
Kearney

65th St. Paving Hill to Imperial

	W. Edge	E. Edge
0400 = S. Hill St	220.6 216.5	216.4
+ 25	217.0	
+ 35	217.2	
+ 45	217.3	217.3
+ 55	217.3	217.4
+ 65	217.7	217.5
+ 75	217.9	217.8
+ 92	219.2	218.8
+ 101	219.9	219.7
+ 1162	220.4	220.4
+ 1322	220.7	220.6

220.6
- 0.62

221.22
- 0.91

217.31

1.30
105
0.80

220.6
- 4.14

224.74
- 4.20

219.54

8/15/29

Flood
Traverse
Kearney

Paving Hill 3 Mission Hills

Riches
Contr.

	31.	N.A.	Riches Contr.
0400 = F.A. Sierra Vista	276.96	277.0	277.0
0740 = H.V.C.	279.4	279.5	279.5
+ 50	279.9	280.1	280.1
+ 60	280.2	280.4	280.4
+ 70	280.4	280.6	280.6
+ 80	280.45	280.65	280.65
+ 90	280.4	280.6	280.6
1400 = F.V.C.	280.1	280.3	280.3
04	278.7	278.9	278.9
21	277.3	277.5	277.5
31270 = B.K.	275.9	276.1	276.1
+ 30 = B.K.	275.0	275.5	275.5
+ 65 = B.K. on S.	274.0	275.10	275.10
+ 75.6 = N.A. Hermosa Way	272.5	274.5	274.5
		273.8	273.8

S.W. B.P. Alameda Pl. Y. Sierra Vista.

277.49
- 5.53

283.02
- 2.87

290.89
- 4.13

294.00
- 5.88

298.62
- 3.25

281.87
- 10.01

271.86
- 7.81

279.48
- 8.19

270.99
- 2.19

273.18
- 1.01 Error

N.W. Alameda + Hermosa Way

Locust St Barrow (for Locust & Alcott St)
 Alcott to Zola Bur. Nide Cont.

	F.Cb.		W.Cb.	
0700 = 52. Alcott	62.0	18.2 12.5 +2.7	63.0	24.5 7.7 12.3
0730 = P.K.C.?	66.8	13.4 71.7	67.8	19.7 7.2 +14.9
+50	67.6	10.4 72.4	70.6	16.9 3.2 +13.6
+70	72.0	15.3 72.9	73.0	14.5 2.3 +12.2
+90	73.9	13.6 72.6	74.9	12.6 1.4 +11.4
+110	75.2	12.3 71.2	76.1	11.4 0.4 +11.0
+130	76.0	11.5 71.5	76.8	10.7 7.6 +9.6
+50 = F.K.C.	76.5	11.0 72.2	77.2	10.3 2.2 +8.0
+75 = K.C. Ret	76.7	10.8 71.9	77.3	10.2 3.1 +7.1
+90	76.8	10.7 71.5	77.4	10.1 2.5 +7.6
+95	76.65	10.9 71.4	77.7	9.9 2.4 +7.2
2+00 = N.H. Zola	76.0		78.54	

Gutter Line E. Side of 3rd St
300' N. of Broadway

3245 S.W.R. 3rd St
842
29.907

17.90
6.19
11.71

17.90
6.39
11.51

17.90
6.19
11.71

17.90
5.72
12.18

28708 S.W.R.
347
292.55

Section of
Florida University Intersection

74

0+00 = N.L. University

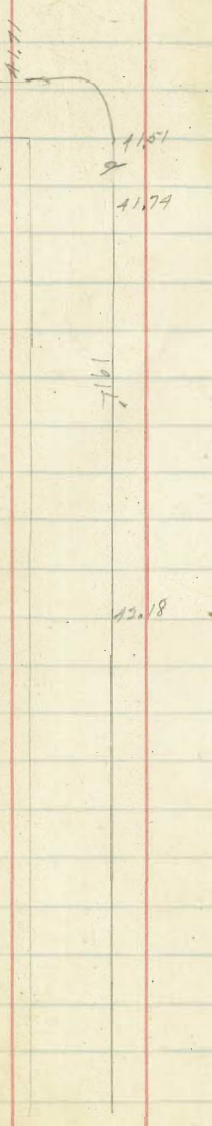
ECb.	5.63	284.92
E.gut	6.04	284.51
1/4	4.90	285.65
E	4.07	286.48
1/4	3.57	288.98
W.gut.	3.34	287.21
W.Cb.	2.63	287.92

W.Cb line of University

TOP Cb W.L. Florida	2.60	287.95
	3.62	286.93
W.Cb.	3.82	286.73
1/4	4.06	286.49
E	4.40	286.15
1/4	5.09	285.96
E.Cb.	6.00	284.55
E.L.	6.44	284.11
TOP Cb	5.64	284.91

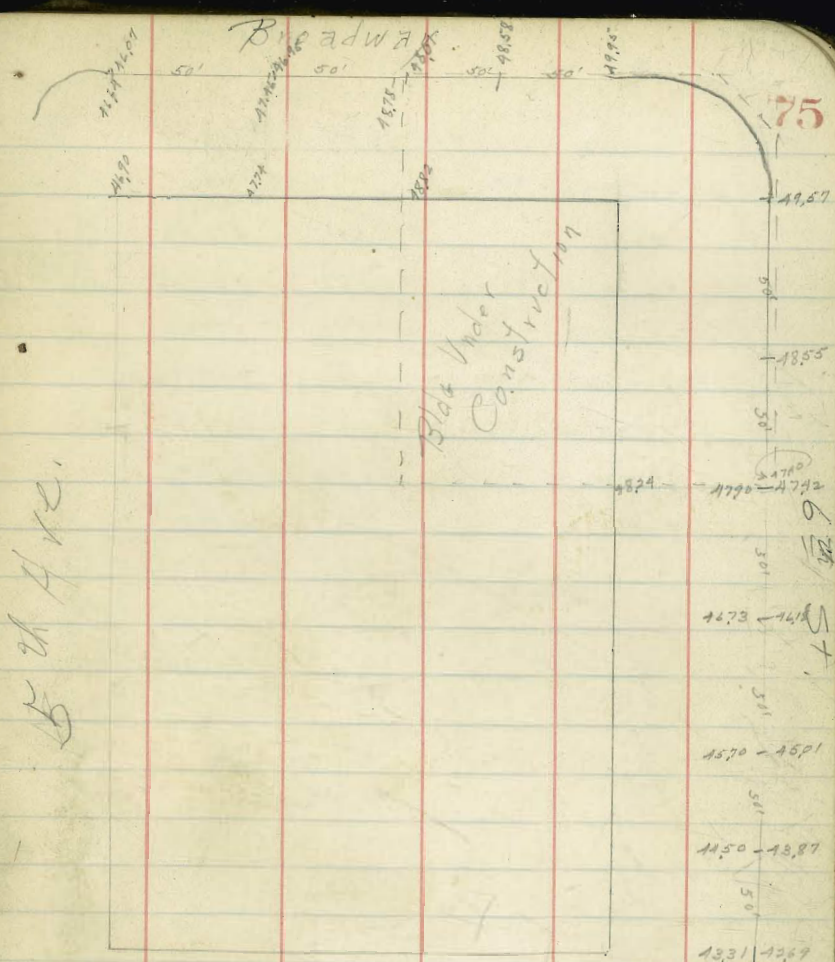
N. Rail of T.R. 225 = Cb + 09

E.L.	6.18	283.37
ECb	5.62	284.93
1/4	5.11	285.44
E	4.67	285.88
1/4	4.28	286.27
W.Cb.	3.86	286.19
W.L.	3.40	287.15



Levels for Check S. side Broadway
Between 5th & 6th & W Side 6th Between
Broadway & Ests.

B.M. N.E.	B.P. 8.93	52.37	13.11	6th Est	
0+00	W.L. E.St.	Top Cb.	9.06	43.31	
		Gutter	9.68	42.69	
+50		Top Cb.	7.87	41.50	
		Gutter	8.50	43.87	
1+00		Top Cb.	6.67	45.70	
		Gutter	7.36	45.01	
1+50		Top Cb.	5.64	46.73	
		Gutter	6.19	46.18	
2+00		Top Cb.	4.47	47.90	
S. of		Gutter	4.95	47.42	
Constructing		Property	4.13	48.24	
T.P.	3.39	53.37	1.19	51.18	
Check on Hydt	Given by Lieby	redation	0.18	53.39 = 53.1	collip.
2+00		paring inside Const. line	6.17	47.40	Sidewalk gone
2+50		" " " "	5.02	48.55	" "
T.P.	5.40	51.93	4.04	49.53	
3+00	St. Bury	Permt inside Const. line	5.36	49.57	Cb. gone
W.L. 6th Est.	"	" " " "	4.98	49.95	" "
T.P.	3.72	53.76	4.89	50.04	
W.L. 6th +50		prmt inside Const. line	5.18	48.58	Cb. gone
W.L. 6th +100		" " " "	5.75	48.01	" "
on prop. line	"	" " " "	4.94	48.82	
T.P.	3.95	55.13	1.58	51.18	
1+00		Cb. outside Const. line	6.54	48.19	



Levels for Cheat on 6th 9th Broadway.
Cont.

	55.13		
T.P.	9.02	52.57	6.58
1750 W of Mt. 6th			
Top Cb.		5.11	47.46
Gutter		5.62	46.95
Prop. line		4.83	47.74
Check to Nail in Swalk 100' E of S		1.60	17.97 = 17.99 - 0.02 diff.
E. Line, 5 th Ave Top Cb.		5.73	46.64
Gutter		6.50	46.07
Prop. line		5.67	46.90

NEBP Book 15, 3.07

Grades for CURB
Beech + Edgemont

For Councilman
Moire

18

1905
4.91
13.48
1.98
1.90
1.31
1.01

by Mount
Flood
Calculated
Prove
3/2/09

1905 18.75 1914 40.10 31.10 3.91

N.G.

22.10 23.0 23.95 24.63 25.27
4.91 4.01 3.06 2.33 1.64

ground
elev.

25.37 = P.C. #1 24.03 #2 23.6 #3 22.1 #4 21.2 #5 20.1 #6 19.4

#7 #8 #9 #10 = E.C.

18.6 18.5 18.0 19.1 = 2.00 = 2.30

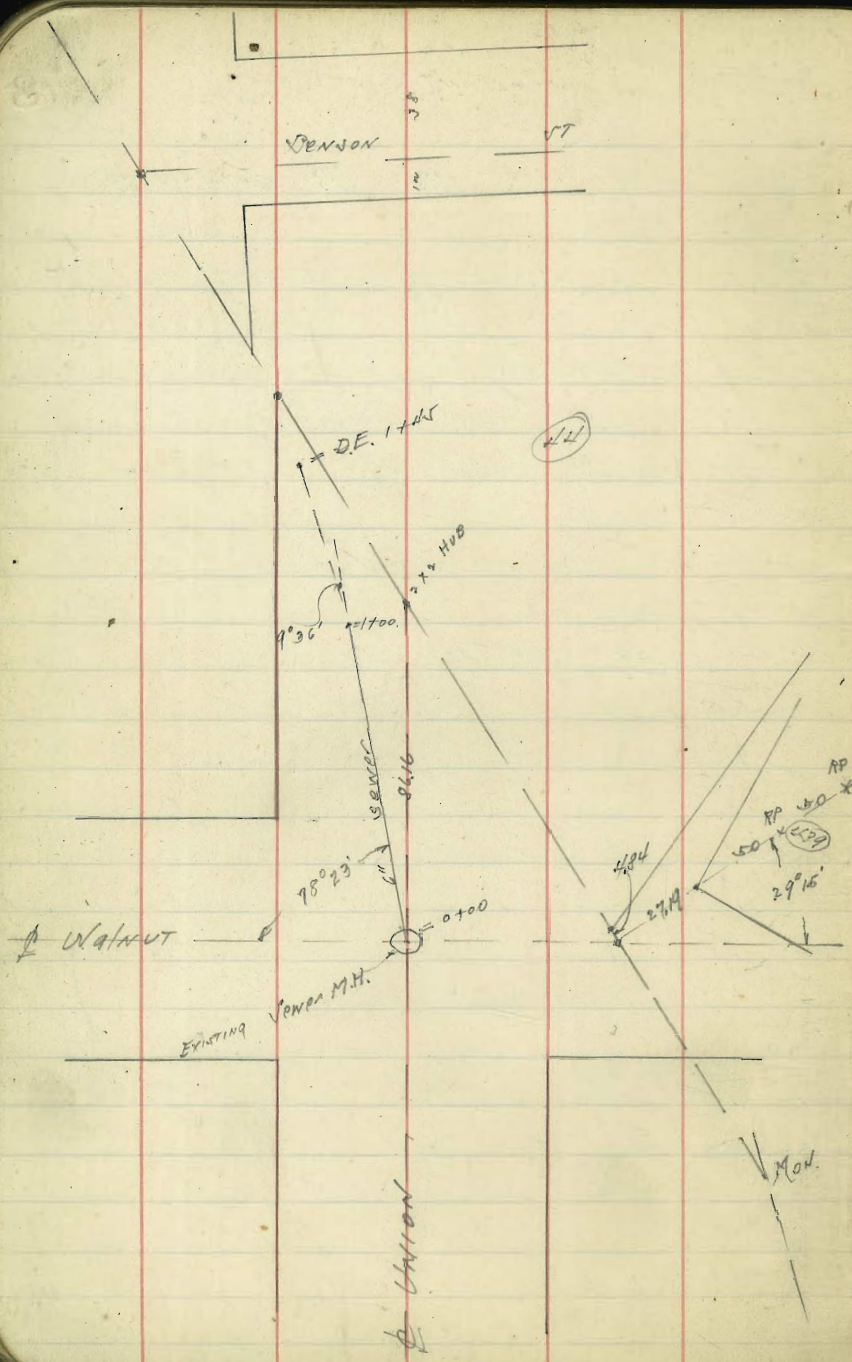
CURB

Grades

25.37 24.63 23.90 23.25 22.48 21.00 19.15 18.00
3.2 4.25 5.55 6.8 7.85 8.4

#8 #9

18.45 18.70 19.5
8.55 8.3 7.5



6" Sewer Line
Laid by Harper

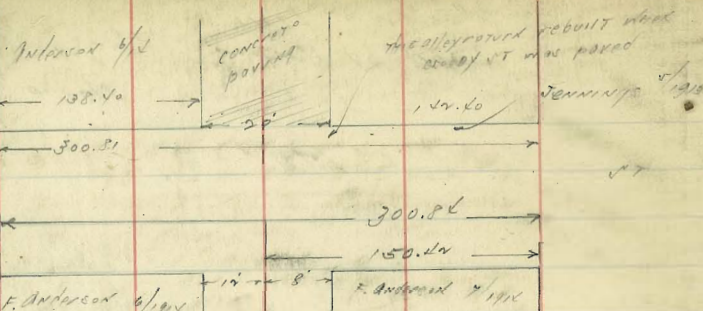
1/25/19
Moore

79

Harper made grade

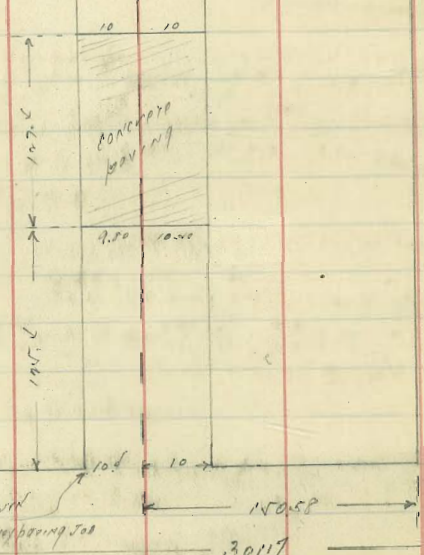
2.07
2.17
2.52

CROSBY

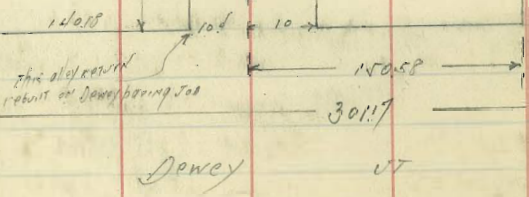


alley bet. 188 N & S
 " " " S. L. 47

Stinson



Julian Ave



Dewey

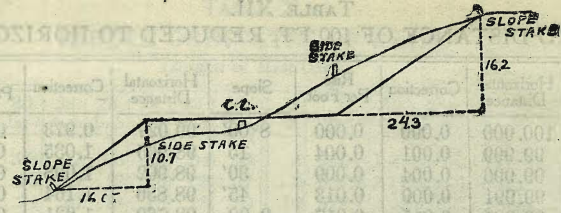
DIRECTIONS FOR USE OF TABLES

Distance of slope stake from side or shoulder
 stake for any width roadway, slope 1:1 to 1:
 If ground is nearly level, the cut or fill at side
 stake is located by the double entry method in
 left column and top row. The number in body

IMPROVED TABLES AND INFORMATION

TABLE No. 2
 To find Tangent and External for curve of
 any other degree, divide by degree of curve and
 add correction found in column of corrections.
 Degree of curve with a given L may be found
 by dividing tangent (or external), opposite L by
 given tangent (or external).
 The distance from a point on the tangent to
 the curve is very nearly the square of the tangent
 length divided by twice the radius.

TABLE XI
INCLINE OF PL. REDUCED TO HORIZONTAL



DISTANCES FROM SIDE STAKES FOR CROSS-SECTIONING.

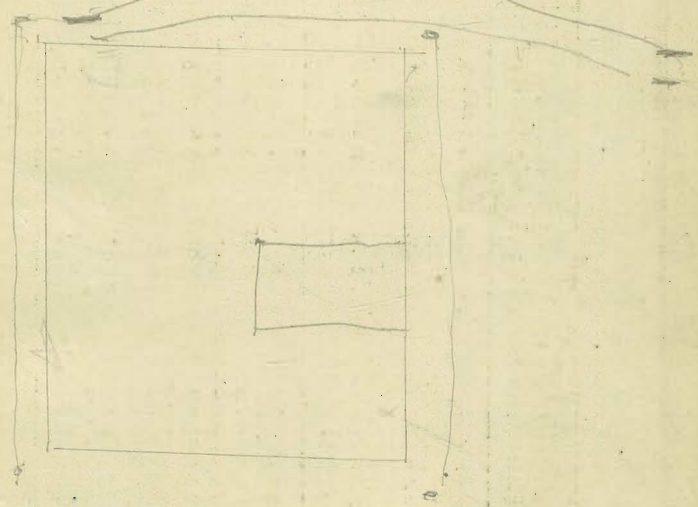
SLOPE 1 1/2 TO 1. ROADWAY OF ANY WIDTH.

	0	.1	.2	.3	.4	.5	.6	.7	.8	.9	
0	0 00	0 15	0 30	0 45	0 60	0 75	0 90	1 05	1 20	1 35	0
1	1 50	1 65	1 80	1 95	2 10	2 25	2 40	2 55	2 70	2 85	1
2	3 00	3 15	3 30	3 45	3 60	3 75	3 90	4 05	4 20	4 35	2
3	4 50	4 65	4 80	4 95	5 10	5 25	5 40	5 55	5 70	5 85	3
4	6 00	6 15	6 30	6 45	6 60	6 75	6 90	7 05	7 20	7 35	4
5	7 50	7 65	7 80	7 95	8 10	8 25	8 40	8 55	8 70	8 85	5
6	9 00	9 15	9 30	9 45	9 60	9 75	9 90	10 05	10 20	10 35	6
7	10 50	10 65	10 80	10 95	11 10	11 25	11 40	11 55	11 70	11 85	7
8	12 00	12 15	12 30	12 45	12 60	12 75	12 90	13 05	13 20	13 35	8
9	13 50	13 65	13 80	13 95	14 10	14 25	14 40	14 55	14 70	14 85	9
10	15 00	15 15	15 30	15 45	15 60	15 75	15 90	16 05	16 20	16 35	10
11	16 50	16 65	16 80	16 95	17 10	17 25	17 40	17 55	17 70	17 85	11
12	18 00	18 15	18 30	18 45	18 60	18 75	18 90	19 05	19 20	19 35	12
13	19 50	19 65	19 80	19 95	20 10	20 25	20 40	20 55	20 70	20 85	13
14	21 00	21 15	21 30	21 45	21 60	21 75	21 90	22 05	22 20	22 35	14
15	22 50	22 65	22 80	22 95	23 10	23 25	23 40	23 55	23 70	23 85	15
16	24 00	24 15	24 30	24 45	24 60	24 75	24 90	25 05	25 20	25 35	16
17	25 50	25 65	25 80	25 95	26 10	26 25	26 40	26 55	26 70	26 85	17
18	27 00	27 15	27 30	27 45	27 60	27 75	27 90	28 05	28 20	28 35	18
19	28 50	28 65	28 80	28 95	29 10	29 25	29 40	29 55	29 70	29 85	19
20	30 00	30 15	30 30	30 45	30 60	30 75	30 90	31 05	31 20	31 35	20
21	31 50	31 65	31 80	31 95	32 10	32 25	32 40	32 55	32 70	32 85	21
22	33 00	33 15	33 30	33 45	33 60	33 75	33 90	34 05	34 20	34 35	22
23	34 50	34 65	34 80	34 95	35 10	35 25	35 40	35 55	35 70	35 85	23
24	36 00	36 15	36 30	36 45	36 60	36 75	36 90	37 05	37 20	37 35	24
25	37 50	37 65	37 80	37 95	38 10	38 25	38 40	38 55	38 70	38 85	25
26	39 00	39 15	39 30	39 45	39 60	39 75	39 90	40 05	40 20	40 35	26
27	40 50	40 65	40 80	40 95	41 10	41 25	41 40	41 55	41 70	41 85	27
28	42 00	42 15	42 30	42 45	42 60	42 75	42 90	43 05	43 20	43 35	28
29	43 50	43 65	43 80	43 95	44 10	44 25	44 40	44 55	44 70	44 85	29
30	45 00	45 15	45 30	45 45	45 60	45 75	45 90	46 05	46 20	46 35	30
31	46 50	46 65	46 80	46 95	47 10	47 25	47 40	47 55	47 70	47 85	31
32	48 00	48 15	48 30	48 45	48 60	48 75	48 90	49 05	49 20	49 35	32
33	49 50	49 65	49 80	49 95	50 10	50 25	50 40	50 55	50 70	50 85	33
34	51 00	51 15	51 30	51 45	51 60	51 75	51 90	52 05	52 20	52 35	34
35	52 50	52 65	52 80	52 95	53 10	53 25	53 40	53 55	53 70	53 85	35
36	54 00	54 15	54 30	54 45	54 60	54 75	54 90	55 05	55 20	55 35	36
37	55 50	55 65	55 80	55 95	56 10	56 25	56 40	56 55	56 70	56 85	37
38	57 00	57 15	57 30	57 45	57 60	57 75	57 90	58 05	58 20	58 35	38
39	58 50	58 65	58 80	58 95	59 10	59 25	59 40	59 55	59 70	59 85	39
40	60 00	60 15	60 30	60 45	60 60	60 75	60 90	61 05	61 20	61 35	40
41	61 50	61 65	61 80	61 95	62 10	62 25	62 40	62 55	62 70	62 85	41
42	63 00	63 15	63 30	63 45	63 60	63 75	63 90	64 05	64 20	64 35	42
43	64 50	64 65	64 80	64 95	65 10	65 25	65 40	65 55	65 70	65 85	43
44	66 00	66 15	66 30	66 45	66 60	66 75	66 90	67 05	67 20	67 35	44
45	67 50	67 65	67 80	67 95	68 10	68 25	68 40	68 55	68 70	68 85	45
46	69 00	69 15	69 30	69 45	69 60	69 75	69 90	70 05	70 20	70 35	46
47	70 50	70 65	70 80	70 95	71 10	71 25	71 40	71 55	71 70	71 85	47
48	72 00	72 15	72 30	72 45	72 60	72 75	72 90	73 05	73 20	73 35	48
49	73 50	73 65	73 80	73 95	74 10	74 25	74 40	74 55	74 70	74 85	49
50	75 00	75 15	75 30	75 45	75 60	75 75	75 90	76 05	76 20	76 35	50

Computed by L. Leland Locke.

283.1
219
284.15
214
285.29
21
284.27
4.29
281.00
1.5
1.30

5



187

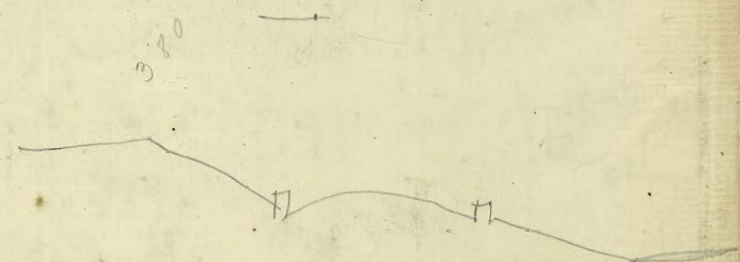
V.M.W. = N.W.S.P. Court Rd
 12.27
 26.40
 3.90
 4.49 Nail Swails Court Rd South
 + Ocean St
 0.36
 57.85 733 SECOR CT. Court Rd South
 + Jenner
 12.84 4.52
 40.01 = Nail T.P. in pole 38.50
 1.30
 41.31
 0.35 = 1
 35.66

270.6
 300.6

PCH30
 P.RCH45
 E.C. = 1798
 3.80
 5.78

43
 16
 3.40
 4.30
 5.10
 P.C.E.

380
 464
 5.44



0.17
 160 / 3.00
 1.60
 14.00

258 25
 1429
 14 / 20000
 1429
 50
 36
 10
 28
 120

6048
 4.42
 64.70

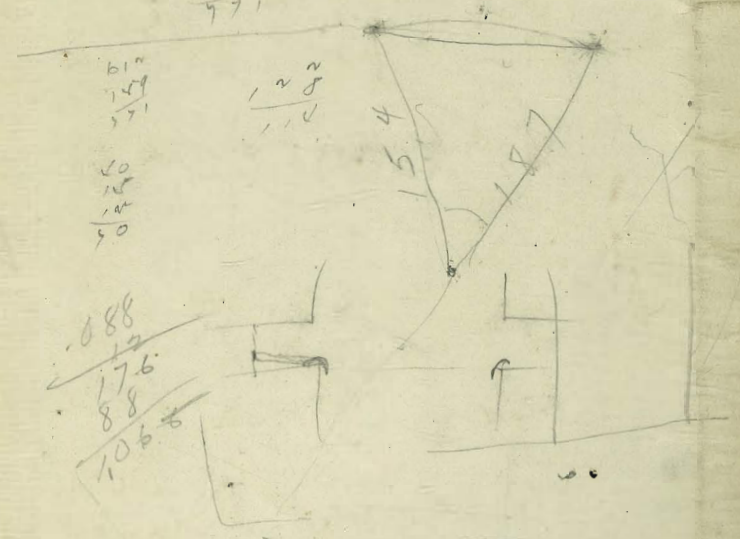
61.50
 5.24
 60.48
 65.72

01428
 3
 01287 6050
 422
 65.72

300
 .80
 150.33
 40.
 110
 683.33
 109 MID.



5.85
 95
 680
 124
 159
 53
 610
 665
 53
 718
 771
 367.77
 365.10
 2.67



088
 176
 88
 106.8

