

G-156

BASTY

FIELD BOOK

No. 385

10 + 12 19  
4927  
10-6146

Indexed R

Our Leather Bound Engineers Note Books are carried in the following rulings:

- No. 380 LEVEL BOOK. Left and Right Hand Page the same as Left Hand Page of this Book.
- No. 382 FIELD BOOK. Left Hand Page as in this Book, Right Hand Page 4 x 4 to the inch, Center Line Red.
- No. 384 MINING TRANSIT BOOK. Left Hand Page as in this Book, Right Hand Page 8x8 to the inch, Center Line Red.
- No. 385 FIELD BOOK. Left Hand Page as in this Book, Right Hand Page 8 vertical and 4 horizontal lines to the inch, Center Line Red.

We also carry the Note Books listed above, bound in extra strong Fabri-Hide (otherwise the same quality of book), which can be furnished at a somewhat lower price.

In ordering Fabri-Hide covered books, add the letter "F" to catalog number.

**THE FREDERICK POST CO.**  
*ENGINEERING and DRAFTING SUPPLIES*  
IRVING PARK STATION  
CHICAGO, ILL.

MICROFILMED

APR 9 1965



01

June 1922



35th St East of Hillsboro Drive

Culvert #1

2' 52" of 18" Corq Iron Pipe

	Topco	Flow 2.01	14.41	8138.054	N/A
010 - Curb to culvert #1	387.20	374.20	13.00	388.67	3.07
+13 - A		371.60	177.4	378.25	
3-0-033		370.17	162.0	378.93	
+1033		368.67	147.4	376.69	
		367.15	132.9	376.66	
+83.66		353.74	118.2	371.33	
		352.13	103.7	364.45	
+119.0 - A 54° 50' R		344.80	89.5	351.38	
5-27		343.60	74.1	351.95	
+41		336.15	58.4	351.90	
		334.50	42.9	338.75	
+73 - Btk		327.50	27.0	337.00	
		325.50	10.7	337.00	
+86 - A		319.05	13.50	337.00	
1-27		317.37	0.63	337.00	
+113 - Btk		301.50	16.8	337.00	
1-25		300.50	1.00	337.00	
+135 - End		292.00	8.3	337.00	
			25.11	217.77	
			18.50	18.77	
			16.71	204.67	











Estrella Ave. Posim  
El Cajon North

32321

5

36425.6455

4455.36507

100

4455.3667

55

36409.6360

4290.36443

175

36174.6070

4217.36186

115

200

5730.35781

100

35541.5495

5518.35510

5

50

35457.5410

54100.35457

5

5

35283.5330

53210.35276

15750

35050

B.M. 35151 N.M.  
4.P.

El Cajon Ave

Imperial Air Base  
361451 to 361451

91.75 99.85

91.75 99.85

91.75 99.85

91.75 99.85

91.75 99.85

91.75 99.85

91.75 99.85

91.75 99.85

91.75 99.85

91.75 99.85

91.75 99.85

91.75 99.85

91.75 99.85

91.75 99.85

91.75 99.85

91.75 99.85

91.75 99.85

91.75 99.85

91.75 99.85

91.75 99.85

91.75 99.85

91.75 99.85

91.75 99.85

91.75 99.85

91.75 99.85

91.75 99.85

91.75 99.85

91.75 99.85

91.75 99.85

371451

311 97.92 35 40

91.75

South 1/2 section

91.75

99.85

91.75 97.40

91.75 97.65

91.75 97.90

91.75 98.15

91.75 98.40

91.75 98.65

91.75 98.90

91.75 99.15

91.75 99.40

91.75 99.65

91.75 99.90

91.75 100.15

91.75 100.40

91.75 100.65

311 95.44 32 70 40

361451

12 line

391451

6

1.5 30  
S 10 W  
1/4 section  
North 1/2  
Aborn

11750 11807

11750 11807

11750 11807

11750 11807

11750 11807

11750 11807

11750 11807

11750 11807

11750 11807

11750 11807

11750 11807

11750 11807

11750 11807

11750 11807

11750 11807

11750 11807

11750 11807

11750 11807

11750 11807

11750 11807

11750 11807

11750 11807

11750 11807

11750 11807

11750 11807

11750 11807

11750 11807

11750 11807

11750 11807

11750 11807

11750 11807

11750 11807

11750 11807

11750 11807

11750 11807

11750 11807

11750 11807

311 97.23 34 70

91.09 95.90 97.00

91.09 95.90 97.00

91.09 95.90 97.00

91.09 95.90 97.00

91.09 95.90 97.00

91.09 95.90 97.00

91.09 95.90 97.00

91.09 95.90 97.00

91.09 95.90 97.00

91.09 95.90 97.00

91.09 95.90 97.00

91.09 95.90 97.00

91.09 95.90 97.00

91.09 95.90 97.00

91.09 95.90 97.00

91.09 95.90 97.00

91.09 95.90 97.00

91.09 95.90 97.00

91.09 95.90 97.00

91.09 95.90 97.00

91.09 95.90 97.00

91.09 95.90 97.00

91.09 95.90 97.00

91.09 95.90 97.00

91.09 95.90 97.00

91.09 95.90 97.00

91.09 95.90 97.00

91.09 95.90 97.00

381451

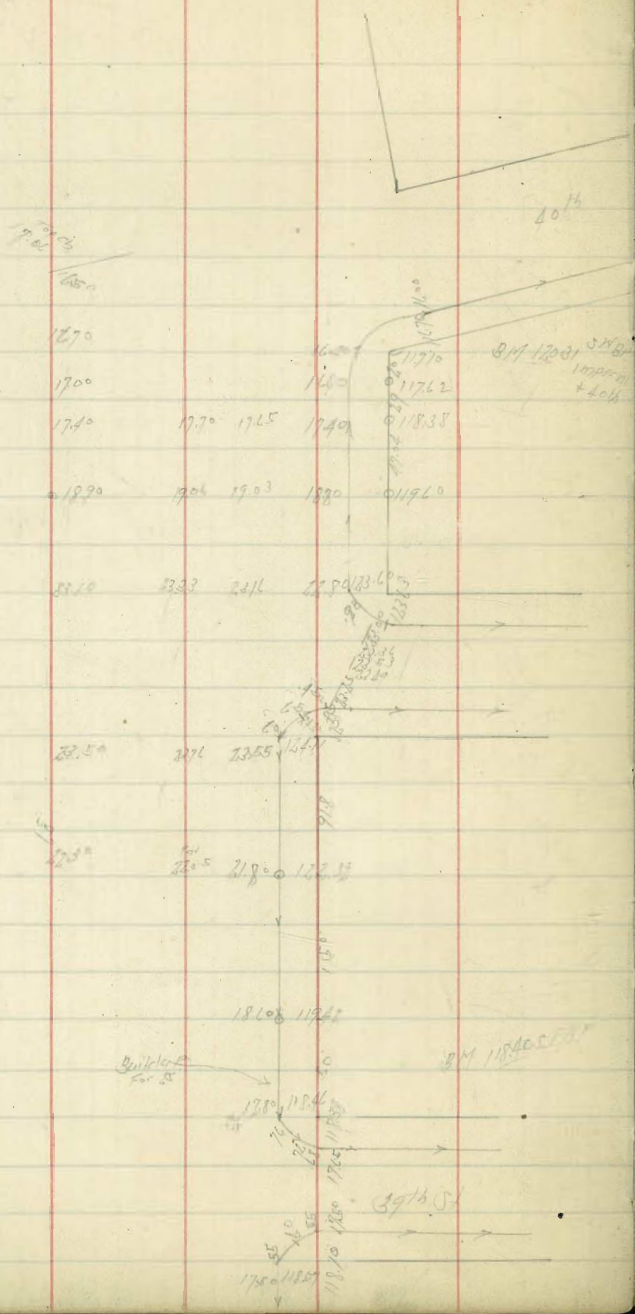
91.09 95.90 97.00

91.95 92.00

391451



Imperial Ave Pavine  
30th to 40th



7

5/

1137  
1200



W. H. May Block 80  
 2nd Kimballs St  
 Section 14K 10/24/86

Top Hall	S	#
110.80	110.80	878686
110.80	110.60	
110.80	109.90	
109.35	107.84	
106.30	105.78	
105.80	105.00	
103.90	103.30	
102.51	101.70	
100.20	100.00	
99.50	98.80	
96.30	96.10	
90.00	90.00	
87.90	87.80	
87.30	87.20	
87.10	87.00	
86.90	86.80	
86.77	86.70	
86.60	86.90	

8

112.50	112.00	111.10	109.80	108.10	106.00	105.50	104.20
109.00	110.60	109.00	107.80	106.50	105.20	104.00	103.30
108.80	110.40	107.80	106.80	105.50	104.20	103.00	102.30
108.20	108.40	107.20	106.00	104.80	103.50	102.30	101.60
107.60	107.80	106.60	105.40	104.20	103.00	101.80	101.10
107.00	107.00	106.00	104.80	103.60	102.40	101.20	100.50
106.40	106.40	105.40	104.20	103.00	101.80	100.60	99.90
105.80	105.80	104.80	103.60	102.40	101.20	100.00	99.30
105.20	105.20	104.20	103.00	101.80	100.60	99.40	98.70
104.60	104.60	103.60	102.40	101.20	100.00	98.80	98.10
104.00	104.00	103.00	101.80	100.60	99.40	98.20	97.50
103.40	103.40	102.40	101.20	100.00	98.80	97.60	96.90
102.80	102.80	101.80	100.60	99.40	98.20	97.00	96.30
102.20	102.20	101.20	100.00	98.80	97.60	96.40	95.70
101.60	101.60	100.60	99.40	98.20	97.00	95.80	95.10
101.00	101.00	100.00	98.80	97.60	96.40	95.20	94.50
100.40	100.40	99.40	98.20	97.00	95.80	94.60	93.90
99.80	99.80	98.80	97.60	96.40	95.20	94.00	93.30
99.20	99.20	98.20	97.00	95.80	94.60	93.40	92.70
98.60	98.60	97.60	96.40	95.20	94.00	92.80	92.10
98.00	98.00	97.00	95.80	94.60	93.40	92.20	91.50
97.40	97.40	96.40	95.20	94.00	92.80	91.60	90.90
96.80	96.80	95.80	94.60	93.40	92.20	91.00	90.30
96.20	96.20	95.20	94.00	92.80	91.60	90.40	89.70
95.60	95.60	94.60	93.40	92.20	91.00	89.80	89.10
95.00	95.00	94.00	92.80	91.60	90.40	89.20	88.50
94.40	94.40	93.40	92.20	91.00	89.80	88.60	87.90
93.80	93.80	92.80	91.60	90.40	89.20	88.00	87.30
93.20	93.20	92.20	91.00	89.80	88.60	87.40	86.70
92.60	92.60	91.60	90.40	89.20	88.00	86.80	86.10
92.00	92.00	91.00	89.80	88.60	87.40	86.20	85.50
91.40	91.40	90.40	89.20	88.00	86.80	85.60	84.90
90.80	90.80	89.80	88.60	87.40	86.20	85.00	84.30
90.20	90.20	89.20	88.00	86.80	85.60	84.40	83.70
89.60	89.60	88.60	87.40	86.20	85.00	83.80	83.10
89.00	89.00	88.00	86.80	85.60	84.40	83.20	82.50
88.40	88.40	87.40	86.20	85.00	83.80	82.60	81.90
87.80	87.80	86.80	85.60	84.40	83.20	82.00	81.30
87.20	87.20	86.20	85.00	83.80	82.60	81.40	80.70
86.60	86.60	85.60	84.40	83.20	82.00	80.80	80.10
86.00	86.00	85.00	83.80	82.60	81.40	80.20	79.50
85.40	85.40	84.40	83.20	82.00	80.80	79.60	78.90
84.80	84.80	83.80	82.60	81.40	80.20	79.00	78.30
84.20	84.20	83.20	82.00	80.80	79.60	78.40	77.70
83.60	83.60	82.60	81.40	80.20	79.00	77.80	77.10
83.00	83.00	82.00	80.80	79.60	78.40	77.20	76.50
82.40	82.40	81.40	80.20	79.00	77.80	76.60	75.90
81.80	81.80	80.80	79.60	78.40	77.20	76.00	75.30
81.20	81.20	80.20	79.00	77.80	76.60	75.40	74.70
80.60	80.60	79.60	78.40	77.20	76.00	74.80	74.10
80.00	80.00	79.00	77.80	76.60	75.40	74.20	73.50
79.40	79.40	78.40	77.20	76.00	74.80	73.60	72.90
78.80	78.80	77.80	76.60	75.40	74.20	73.00	72.30
78.20	78.20	77.20	76.00	74.80	73.60	72.40	71.70
77.60	77.60	76.60	75.40	74.20	73.00	71.80	71.10
77.00	77.00	76.00	74.80	73.60	72.40	71.20	70.50
76.40	76.40	75.40	74.20	73.00	71.80	70.60	69.90
75.80	75.80	74.80	73.60	72.40	71.20	70.00	69.30
75.20	75.20	74.20	73.00	71.80	70.60	69.40	68.70
74.60	74.60	73.60	72.40	71.20	70.00	68.80	68.10
74.00	74.00	73.00	71.80	70.60	69.40	68.20	67.50
73.40	73.40	72.40	71.20	70.00	68.80	67.60	66.90
72.80	72.80	71.80	70.60	69.40	68.20	67.00	66.30
72.20	72.20	71.20	70.00	68.80	67.60	66.40	65.70
71.60	71.60	70.60	69.40	68.20	67.00	65.80	65.10
71.00	71.00	70.00	68.80	67.60	66.40	65.20	64.50
70.40	70.40	69.40	68.20	67.00	65.80	64.60	63.90
69.80	69.80	68.80	67.60	66.40	65.20	64.00	63.30
69.20	69.20	68.20	67.00	65.80	64.60	63.40	62.70
68.60	68.60	67.60	66.40	65.20	64.00	62.80	62.10
68.00	68.00	67.00	65.80	64.60	63.40	62.20	61.50
67.40	67.40	66.40	65.20	64.00	62.80	61.60	60.90
66.80	66.80	65.80	64.60	63.40	62.20	61.00	60.30
66.20	66.20	65.20	64.00	62.80	61.60	60.40	59.70
65.60	65.60	64.60	63.40	62.20	61.00	59.80	59.10
65.00	65.00	64.00	62.80	61.60	60.40	59.20	58.50
64.40	64.40	63.40	62.20	61.00	59.80	58.60	57.90
63.80	63.80	62.80	61.60	60.40	59.20	58.00	57.30
63.20	63.20	62.20	61.00	59.80	58.60	57.40	56.70
62.60	62.60	61.60	60.40	59.20	58.00	56.80	56.10
62.00	62.00	61.00	59.80	58.60	57.40	56.20	55.50
61.40	61.40	60.40	59.20	58.00	56.80	55.60	54.90
60.80	60.80	59.80	58.60	57.40	56.20	55.00	54.30
60.20	60.20	59.20	58.00	56.80	55.60	54.40	53.70
59.60	59.60	58.60	57.40	56.20	55.00	53.80	53.10
59.00	59.00	58.00	56.80	55.60	54.40	53.20	52.50
58.40	58.40	57.40	56.20	55.00	53.80	52.60	51.90
57.80	57.80	56.80	55.60	54.40	53.20	52.00	51.30
57.20	57.20	56.20	55.00	53.80	52.60	51.40	50.70
56.60	56.60	55.60	54.40	53.20	52.00	50.80	50.10
56.00	56.00	55.00	53.80	52.60	51.40	50.20	49.50
55.40	55.40	54.40	53.20	52.00	50.80	49.60	48.90
54.80	54.80	53.80	52.60	51.40	50.20	49.00	48.30
54.20	54.20	53.20	52.00	50.80	49.60	48.40	47.70
53.60	53.60	52.60	51.40	50.20	49.00	47.80	47.10
53.00	53.00	52.00	50.80	49.60	48.40	47.20	46.50
52.40	52.40	51.40	50.20	49.00	47.80	46.60	45.90
51.80	51.80	50.80	49.60	48.40	47.20	46.00	45.30
51.20	51.20	50.20	49.00	47.80	46.60	45.40	44.70
50.60	50.60	49.60	48.40	47.20	46.00	44.80	44.10
50.00	50.00	49.00	47.80	46.60	45.40	44.20	43.50
49.40	49.40	48.40	47.20	46.00	44.80	43.60	42.90
48.80	48.80	47.80	46.60	45.40	44.20	43.00	42.30
48.20	48.20	47.20	46.00	44.80	43.60	42.40	41.70
47.60	47.60	46.60	45.40	44.20	43.00	41.80	41.10
47.00	47.00	46.00	44.80	43.60	42.40	41.20	40.50
46.40	46.40	45.40	44.20	43.00	41.80	40.60	39.90
45.80	45.80	44.80	43.60	42.40	41.20	40.00	39.30
45.20	45.20	44.20	43.00	41.80	40.60	39.40	38.70
44.60	44.60	43.60	42.40	41.20	40.00	38.80	38.10
44.00	44.00	43.00	41.80	40.60	39.40	38.20	37.50
43.40	43.40	42.40	41.20	40.00	38.80	37.60	36.90
42.80	42.80	41.80	40.60	39.40	38.20	37.00	36.30
42.20	42.20	41.20	40.00	38.80	37.60	36.40	35.70
41.60	41.60	40.60	39.40	38.20	37.00	35.80	35.10
41.00	41.00	40.00	38.80	37.60	36.40	35.20	34.50
40.40	40.40	39.40	38.20	37.00	35.80	34.60	33.90
39.80	39.80	38.80	37.60	36.40	35.20	34.00	33.30
39.20	39.20	38.20	37.00	35.80	34.60	33.40	32.70
38.60	38.60	37.60	36.40	35.20	34.00	32.80	32.10
38.00	38						





Gravel Alley Block 188 Sandymound Twp. Co. Hold  
 Crosby to Derry Gal. Salina & Keokuk

10

	N	S											
1.6 Crosby	51.40	51.10	51.50	51.90	N	51.40	51.80	52.20	52.60	53.00	53.45	53.90	54.30
50 F	51.70	51.63	51.87	52.20		51.70	52.10	52.50	52.90	53.30	53.75	54.15	54.55
100 F	52.20	52.15	52.40	52.70		52.20	52.60	53.00	53.40	53.80	54.25	54.65	55.05
150 F	52.60	52.49	52.74	53.00		52.60	53.00	53.40	53.80	54.20	54.65	55.05	55.45
200 F - 80'	53.00	52.80	53.05	53.30	S	53.00	53.40	53.80	54.20	54.60	55.05	55.45	55.85
250 F	53.45	53.27	53.52	53.75		53.45	53.85	54.25	54.65	55.05	55.50	55.90	56.30
300 F	53.90	53.73	53.98	54.20		53.90	54.30	54.70	55.10	55.50	55.95	56.35	56.75
350 F - N End Parcel	54.35	54.20	54.45	54.65		54.35	54.75	55.15	55.55	55.95	56.40	56.80	57.20
400 F	54.80	54.66	54.91	55.10		54.80	55.20	55.60	56.00	56.40	56.85	57.25	57.65
475 F - E End Parcel	55.27	55.21	55.46	55.65		55.27	55.67	56.07	56.47	56.87	57.32	57.72	58.12
500 F - 80'	55.70	55.60	55.85	56.05		55.70	56.10	56.50	56.90	57.30	57.75	58.15	58.55
550 F	56.10	56.00	56.25	56.45		56.10	56.50	56.90	57.30	57.70	58.15	58.55	58.95
600 F - N. E. Parcel	56.50	56.40	56.65	56.85		56.50	56.90	57.30	57.70	58.10	58.55	58.95	59.35





Paper Constructing

88<sup>th</sup> + Hawthorn St. to Connect  
with Existing Sewer in Balboa Park

3-30-21  
San-

Each side of Balboa Park Facing Sewer	17500	21000	18516	18516
4948.00	17132	1581	17132	17132
5816.00	16764	785	16764	16764
1122.00	16396	1500	16396	16396
126.00	16088	1625	16088	16088
245.00	15668	245	15668	15668
252.00	15391	1351	15391	15391
346.48	15016	1351	15016	15016
328.51	14740	1351	14740	14740
135.11	14513	1351	14513	14513
472.71	14041	1351	14041	14041
509.80 - Existing Manhole	14150	1351	14150	14150



Grading 1945

Grading to El Cajon Rd

	H	L	BM 342.15
14. Orange	332.00	331.30	500
15.5H	332.25	331.75	332.75
16.5H - P.C.	332.50	332.60	332.75
10.5H	332.40	333.30	332.75
14.5H	332.30	332.80	332.75
17.5H	332.80	332.15	332.75

I	21.3	21.25	21.20	21.10	21.00	20.90
21	21	21	21	21	21	21
21	21	21	21	21	21	21
21	21	21	21	21	21	21

H	21.25	21.20	21.10	21.00	20.90
21	21	21	21	21	21
21	21	21	21	21	21
21	21	21	21	21	21

	BM SWBP
B.K.	358.29
B.K.	351.30
B.K.	350.70
B.K.	350.50

Collect #1

12/29

13

55' of 18" Grading

	BM 342.15	BM 342.15
51.10 of 18" Grading	332.80	332.80
35.1H	332.80	332.80
339.13	332.80	332.80
338.23	332.80	332.80

Scale: 1/4" = 10'

H	19.5H	19.5H
19.5H	315.30	315.30
19.5H	314.70	314.70
19.5H	314.10	314.10

	BM SWBP	BM SWBP	BM SWBP	BM SWBP	BM SWBP
B.K.	358.42	358.43	358.43	358.43	358.43
B.K.	353.29	351.30	350.70	350.50	350.20
B.K.	5.14	7.13	7.73	7.93	8.13
B.K.	2.30	4.60	5.38	5.50	5.70
B.K.	12.84	+ 2.53	+ 2.37	+ 2.54	





Collect N° 1

104' of 24" Conc. Pipe

N End Inlet	102.00	4.41	2.27	37	217.83
51' E - 2' Paving	199.75	4.71			224.46
104' E Outlet	197.40	11.70			205.70
	155.40				178.70
					15.00
					201.55
					202.64
					203.35
					174.36
					206.41
					205.03
					205.03
					215.06
					215.06
					213.77
					6.96
					202.76
					1.19
					211.57

Collect N° 2

80' of 24" Conc. Pipe

N End Inlet	157.00	5.65		8M	172.50
33' E - 2' Paving		6.21			178.71
43' E	157.00	0.09			178.80
86' E - E End Culvert	149.00	1.15			160.95
		4.37			165.32
		1.36			166.68
					152.00
					153.36
					154.51
					155.66
					156.81
					157.96
					159.11
					160.26
					161.41
					162.56
					163.71
					164.86
					166.01
					167.16
					168.31
					169.46
					170.61
					171.76
					172.91
					174.06
					175.21
					176.36
					177.51
					178.66
					179.81
					180.96
					182.11
					183.26
					184.41
					185.56
					186.71
					187.86
					189.01
					190.16
					191.31
					192.46
					193.61
					194.76
					195.91
					197.06
					198.21
					199.36
					200.51
					201.66
					202.81
					203.96
					205.11
					206.26
					207.41
					208.56
					209.71
					210.86
					212.01
					213.16
					214.31
					215.46
					216.61
					217.76
					218.91
					220.06
					221.21
					222.36
					223.51
					224.66
					225.81
					226.96
					228.11
					229.26
					230.41
					231.56
					232.71
					233.86
					235.01
					236.16
					237.31
					238.46
					239.61
					240.76
					241.91
					243.06
					244.21
					245.36
					246.51
					247.66
					248.81
					249.96
					251.11
					252.26
					253.41
					254.56
					255.71
					256.86
					258.01
					259.16
					260.31
					261.46
					262.61
					263.76
					264.91
					266.06
					267.21
					268.36
					269.51
					270.66
					271.81
					272.96
					274.11
					275.26
					276.41
					277.56
					278.71
					279.86
					281.01
					282.16
					283.31
					284.46
					285.61
					286.76
					287.91
					289.06
					290.21
					291.36
					292.51
					293.66
					294.81
					295.96
					297.11
					298.26
					299.41
					300.56
					301.71
					302.86
					304.01
					305.16
					306.31
					307.46
					308.61
					309.76
					310.91
					312.06
					313.21
					314.36
					315.51
					316.66
					317.81
					318.96
					320.11
					321.26
					322.41
					323.56
					324.71
					325.86
					327.01
					328.16
					329.31
					330.46
					331.61
					332.76
					333.91
					335.06
					336.21
					337.36
					338.51
					339.66
					340.81
					341.96
					343.11
					344.26
					345.41
					346.56
					347.71
					348.86
					350.01
					351.16
					352.31
					353.46
					354.61
					355.76
					356.91
					358.06
					359.21
					360.36
					361.51
					362.66
					363.81
					364.96
					366.11
					367.26
					368.41
					369.56
					370.71
					371.86
					373.01
					374.16
					375.31
					376.46
					377.61
					378.76
					379.91
					381.06
					382.21
					383.36
					384.51
					385.66
					386.81
					387.96
					389.11
					390.26
					391.41
					392.56
					393.71
					394.86
					396.01
					397.16
					398.31
					399.46
					400.61
					401.76
					402.91
					404.06
					405.21
					406.36
					407.51
					408.66
					409.81
					410.96
					412.11
					413.26
					414.41
					415.56
					416.71
					417.86
					419.01
					420.16
					421.31
					422.46
					423.61
					424.76
					425.91
					427.06
					428.21
					429.36
					430.51
					431.66

Imperial Hill Grades  
31<sup>th</sup> + 37<sup>th</sup> St

	S	87 9544	S.T. 1000
FL 31 <sup>th</sup> St	93.0	101.77	386.00
45 E	9530	97.75	
80 E	9680	103.58	
120 E - Exc	9740		
170 E	9750		
220 E	9760		
270 E - W. South 4/4	9770		
FL South 4/4	9850		
45 E	9842		
90 E	9863		
135 E	9885		
180 E	9906		
225 E	9928		
270 E - W. 37 <sup>th</sup> St	9950		

S	9860	9830	9820	9790	9750	9710	9670
	70	76	51	75	71	63	71
	7.9	70.7	-0.7	70.2	12.8	70.6	32.0000
S	9860	9846	9863	9885	9901	9928	9950
	52	52	52	45	43	41	41
Starch	70.2	70.5	70.2	70.1	71.7	70.1	70.6







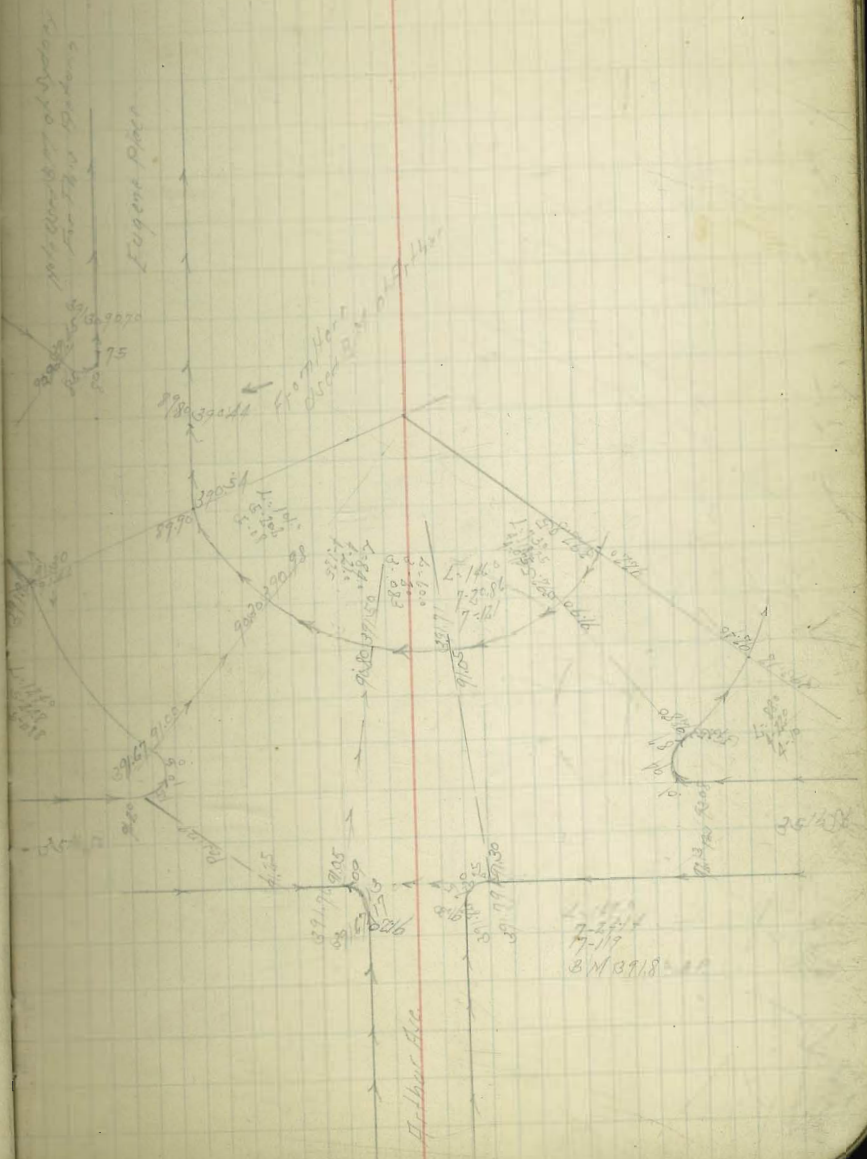
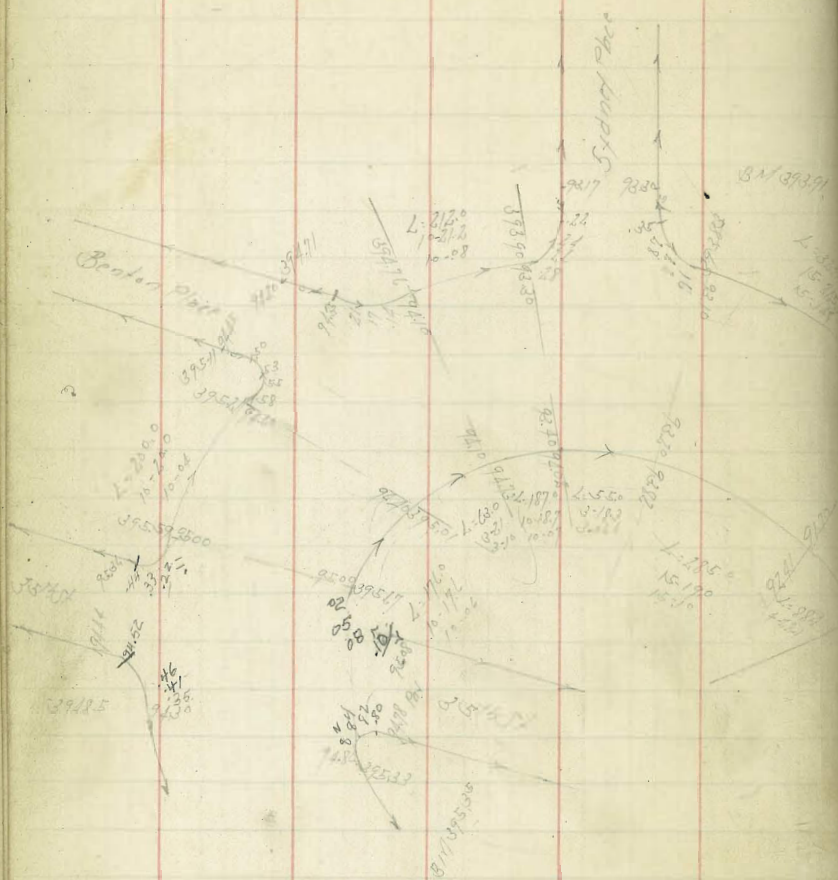






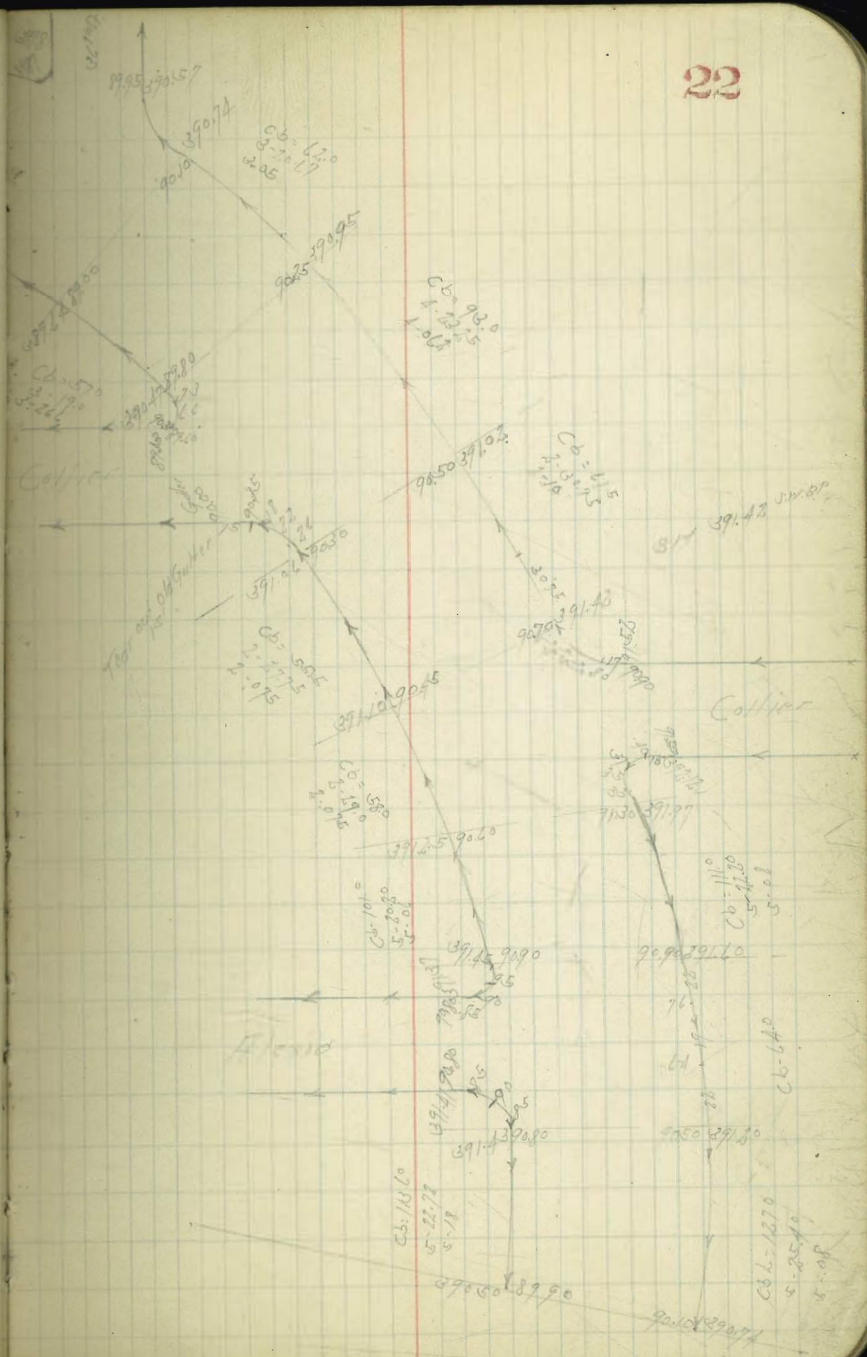
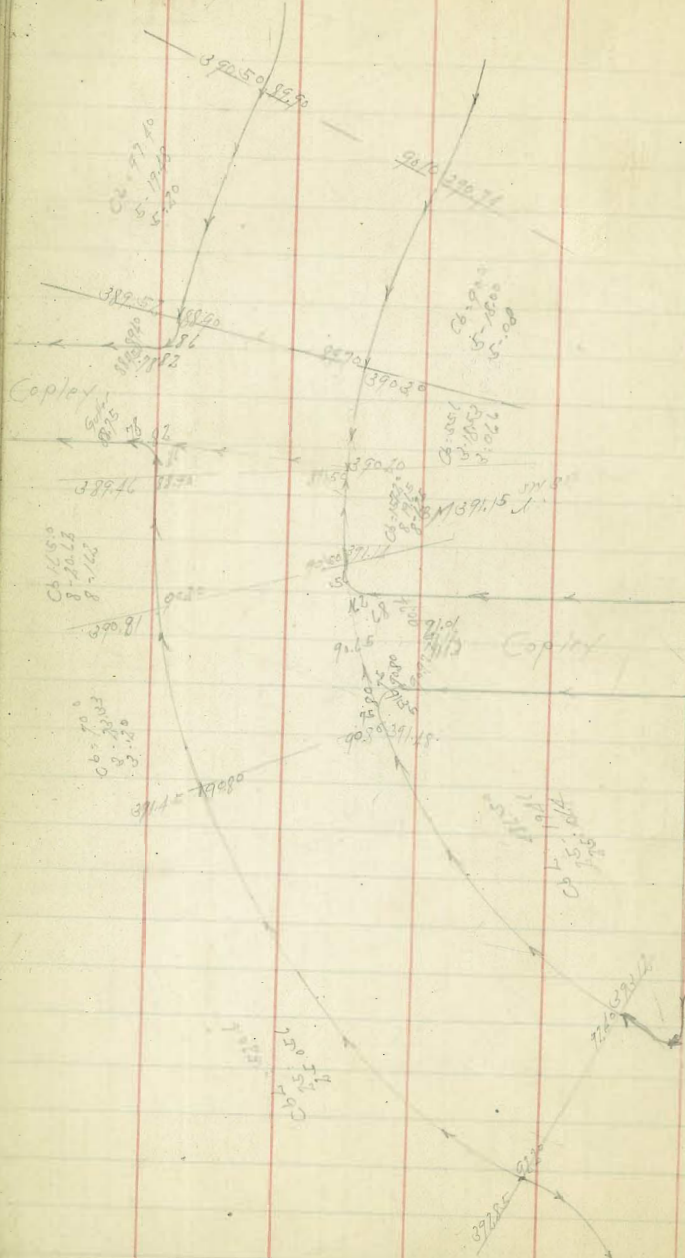


Mountain View Dam  
Reservoir





Mountain View Drive  
Paving













Sartre Grader

Hard Road - 39th St - Edison Park - 39th St

MH N° 1	36026	866	877	886	895	904	913	922	931	940	949	958	967	976	985	994	1003	1012	1021	1030	1039	1048	1057	1066	1075	1084	1093	1102	1111	1120	1129	1138	1147	1156	1165	1174	1183	1192	1201	1210	1219	1228	1237	1246	1255	1264	1273	1282	1291	1300	1309	1318	1327	1336	1345	1354	1363	1372	1381	1390	1399	1408	1417	1426	1435	1444	1453	1462	1471	1480	1489	1498	1507	1516	1525	1534	1543	1552	1561	1570	1579	1588	1597	1606	1615	1624	1633	1642	1651	1660	1669	1678	1687	1696	1705	1714	1723	1732	1741	1750	1759	1768	1777	1786	1795	1804	1813	1822	1831	1840	1849	1858	1867	1876	1885	1894	1903	1912	1921	1930	1939	1948	1957	1966	1975	1984	1993	2002	2011	2020	2029	2038	2047	2056	2065	2074	2083	2092	2101	2110	2119	2128	2137	2146	2155	2164	2173	2182	2191	2200	2209	2218	2227	2236	2245	2254	2263	2272	2281	2290	2299	2308	2317	2326	2335	2344	2353	2362	2371	2380	2389	2398	2407	2416	2425	2434	2443	2452	2461	2470	2479	2488	2497	2506	2515	2524	2533	2542	2551	2560	2569	2578	2587	2596	2605	2614	2623	2632	2641	2650	2659	2668	2677	2686	2695	2704	2713	2722	2731	2740	2749	2758	2767	2776	2785	2794	2803	2812	2821	2830	2839	2848	2857	2866	2875	2884	2893	2902	2911	2920	2929	2938	2947	2956	2965	2974	2983	2992	3001	3010	3019	3028	3037	3046	3055	3064	3073	3082	3091	3100	3109	3118	3127	3136	3145	3154	3163	3172	3181	3190	3199	3208	3217	3226	3235	3244	3253	3262	3271	3280	3289	3298	3307	3316	3325	3334	3343	3352	3361	3370	3379	3388	3397	3406	3415	3424	3433	3442	3451	3460	3469	3478	3487	3496	3505	3514	3523	3532	3541	3550	3559	3568	3577	3586	3595	3604	3613	3622	3631	3640	3649	3658	3667	3676	3685	3694	3703	3712	3721	3730	3739	3748	3757	3766	3775	3784	3793	3802	3811	3820	3829	3838	3847	3856	3865	3874	3883	3892	3901	3910	3919	3928	3937	3946	3955	3964	3973	3982	3991	4000	4009	4018	4027	4036	4045	4054	4063	4072	4081	4090	4099	4108	4117	4126	4135	4144	4153	4162	4171	4180	4189	4198	4207	4216	4225	4234	4243	4252	4261	4270	4279	4288	4297	4306	4315	4324	4333	4342	4351	4360	4369	4378	4387	4396	4405	4414	4423	4432	4441	4450	4459	4468	4477	4486	4495	4504	4513	4522	4531	4540	4549	4558	4567	4576	4585	4594	4603	4612	4621	4630	4639	4648	4657	4666	4675	4684	4693	4702	4711	4720	4729	4738	4747	4756	4765	4774	4783	4792	4801	4810	4819	4828	4837	4846	4855	4864	4873	4882	4891	4900	4909	4918	4927	4936	4945	4954	4963	4972	4981	4990	5000
---------	-------	-----	-----	-----	-----	-----	-----	-----	-----	-----	-----	-----	-----	-----	-----	-----	------	------	------	------	------	------	------	------	------	------	------	------	------	------	------	------	------	------	------	------	------	------	------	------	------	------	------	------	------	------	------	------	------	------	------	------	------	------	------	------	------	------	------	------	------	------	------	------	------	------	------	------	------	------	------	------	------	------	------	------	------	------	------	------	------	------	------	------	------	------	------	------	------	------	------	------	------	------	------	------	------	------	------	------	------	------	------	------	------	------	------	------	------	------	------	------	------	------	------	------	------	------	------	------	------	------	------	------	------	------	------	------	------	------	------	------	------	------	------	------	------	------	------	------	------	------	------	------	------	------	------	------	------	------	------	------	------	------	------	------	------	------	------	------	------	------	------	------	------	------	------	------	------	------	------	------	------	------	------	------	------	------	------	------	------	------	------	------	------	------	------	------	------	------	------	------	------	------	------	------	------	------	------	------	------	------	------	------	------	------	------	------	------	------	------	------	------	------	------	------	------	------	------	------	------	------	------	------	------	------	------	------	------	------	------	------	------	------	------	------	------	------	------	------	------	------	------	------	------	------	------	------	------	------	------	------	------	------	------	------	------	------	------	------	------	------	------	------	------	------	------	------	------	------	------	------	------	------	------	------	------	------	------	------	------	------	------	------	------	------	------	------	------	------	------	------	------	------	------	------	------	------	------	------	------	------	------	------	------	------	------	------	------	------	------	------	------	------	------	------	------	------	------	------	------	------	------	------	------	------	------	------	------	------	------	------	------	------	------	------	------	------	------	------	------	------	------	------	------	------	------	------	------	------	------	------	------	------	------	------	------	------	------	------	------	------	------	------	------	------	------	------	------	------	------	------	------	------	------	------	------	------	------	------	------	------	------	------	------	------	------	------	------	------	------	------	------	------	------	------	------	------	------	------	------	------	------	------	------	------	------	------	------	------	------	------	------	------	------	------	------	------	------	------	------	------	------	------	------	------	------	------	------	------	------	------	------	------	------	------	------	------	------	------	------	------	------	------	------	------	------	------	------	------	------	------	------	------	------	------	------	------	------	------	------

1165.31 = MH N° 7	36500	1953	1976	1999	2022	2045	2068	2091	2114	2137	2160	2183	2206	2229	2252	2275	2298	2321	2344	2367	2390	2413	2436	2459	2482	2505	2528	2551	2574	2597	2620	2643	2666	2689	2712	2735	2758	2781	2804	2827	2850	2873	2896	2919	2942	2965	2988	3011	3034	3057	3080	3103	3126	3149	3172	3195	3218	3241	3264	3287	3310	3333	3356	3379	3402	3425	3448	3471	3494	3517	3540	3563	3586	3609	3632	3655	3678	3701	3724	3747	3770	3793	3816	3839	3862	3885	3908	3931	3954	3977	4000	4023	4046	4069	4092	4115	4138	4161	4184	4207	4230	4253	4276	4299	4322	4345	4368	4391	4414	4437	4460	4483	4506	4529	4552	4575	4598	4621	4644	4667	4690	4713	4736	4759	4782	4805	4828	4851	4874	4897	4920	4943	4966	4989	5012	5035	5058	5081	5104	5127	5150	5173	5196	5219	5242	5265	5288	5311	5334	5357	5380	5403	5426	5449	5472	5495	5518	5541	5564	5587	5610	5633	5656	5679	5702	5725	5748	5771	5794	5817	5840	5863	5886	5909	5932	5955	5978	6001	6024	6047	6070	6093	6116	6139	6162	6185	6208	6231	6254	6277	6300	6323	6346	6369	6392	6415	6438	6461	6484	6507	6530	6553	6576	6599	6622	6645	6668	6691	6714	6737	6760	6783	6806	6829	6852	6875	6898	6921	6944	6967	6990	7013	7036	7059	7082	7105	7128	7151	7174	7197	7220	7243	7266	7289	7312	7335	7358	7381	7404	7427	7450	7473	7496	7519	7542	7565	7588	7611	7634	7657	7680	7703	7726	7749	7772	7795	7818	7841	7864	7887	7910	7933	7956	7979	8002	8025	8048	8071	8094	8117	8140	8163	8186	8209	8232	8255	8278	8301	8324	8347	8370	8393	8416	8439	8462	8485	8508	8531	8554	8577	8600	8623	8646	8669	8692	8715	8738	8761	8784	8807	8830	8853	8876	8899	8922	8945	8968	8991	9014	9037	9060	9083	9106	9129	9152	9175	9198	9221	9244	9267	9290	9313	9336	9359	9382	9405	9428	9451	9474	9497	9520	9543	9566	9589	9612	9635	9658	9681	9704	9727	9750	9773	9796	9819	9842	9865	9888	9911	9934	9957	9980	10003
-------------------	-------	------	------	------	------	------	------	------	------	------	------	------	------	------	------	------	------	------	------	------	------	------	------	------	------	------	------	------	------	------	------	------	------	------	------	------	------	------	------	------	------	------	------	------	------	------	------	------	------	------	------	------	------	------	------	------	------	------	------	------	------	------	------	------	------	------	------	------	------	------	------	------	------	------	------	------	------	------	------	------	------	------	------	------	------	------	------	------	------	------	------	------	------	------	------	------	------	------	------	------	------	------	------	------	------	------	------	------	------	------	------	------	------	------	------	------	------	------	------	------	------	------	------	------	------	------	------	------	------	------	------	------	------	------	------	------	------	------	------	------	------	------	------	------	------	------	------	------	------	------	------	------	------	------	------	------	------	------	------	------	------	------	------	------	------	------	------	------	------	------	------	------	------	------	------	------	------	------	------	------	------	------	------	------	------	------	------	------	------	------	------	------	------	------	------	------	------	------	------	------	------	------	------	------	------	------	------	------	------	------	------	------	------	------	------	------	------	------	------	------	------	------	------	------	------	------	------	------	------	------	------	------	------	------	------	------	------	------	------	------	------	------	------	------	------	------	------	------	------	------	------	------	------	------	------	------	------	------	------	------	------	------	------	------	------	------	------	------	------	------	------	------	------	------	------	------	------	------	------	------	------	------	------	------	------	------	------	------	------	------	------	------	------	------	------	------	------	------	------	------	------	------	------	------	------	------	------	------	------	------	------	------	------	------	------	------	------	------	------	------	------	------	------	------	------	------	------	------	------	------	------	------	------	------	------	------	------	------	------	------	------	------	------	------	------	------	------	------	------	------	------	-------

Sartre Grader Alley Black 45th Street

MH N° 7 of 39th St	36501	1953	1976	1999	2022	2045	2068	2091	2114	2137	2160	2183	2206	2229	2252	2275	2298	2321	2344	2367	2390	2413	2436	2459	2482	2505	2528	2551	2574	2597	2620	2643	2666	2689	2712	2735	2758	2781	2804	2827	2850	2873	2896	2919	2942	2965	2988	3011	3034	3057	3080	3103	3126	3149	3172	3195	3218	3241	3264	3287	3310	3333	3356	3379	3402	3425	3448	3471	3494	3517	3540	3563	3586	3609	3632	3655	3678	3701	3724	3747	3770	3793	3816	3839	3862	3885	3908	3931	3954	3977	4000	4023	4046	4069	4092	4115	4138	4161	4184	4207	4230	4253	4276	4299	4322	4345	4368	4391	4414	4437	4460	4483	4506	4529	4552	4575	4598	4621	4644	4667	4690	4713	4736	4759	4782	4805	4828	4851	4874	4897	4920	4943	4966	4989	5012	5035	5058	5081	5104	5127	5150	5173	5196	5219	5242	5265	5288	5311	5334	5357	5380	5403	5426	5449	5472	5495	5518	5541	5564	5587	5610	5633	5656	5679	5702	5725	5748	5771	5794	5817	5840	5863	5886	5909	5932	5955	5978	6001	6024	6047	6070	6093	6116	6139	6162	6185	6208	6231	6254	6277	6300	6323	6346	6369	6392	6415	6438	6461	6484	6507	6530	6553	6576	6599	6622	6645	6668	6691	6714	6737	6760	6783	6806	6829	6852	6875	6898	6921	6944	6967	6990	7013	7036	7059	7082	7105	7128	7151	7174	7197	7220	7243	7266	7289	7312	7335	7358	7381	7404	7427	7450	7473	7496	7519	7542	7565	7588	7611	7634	7657	7680	7703	7726	7749	7772	7795	7818	7841	7864	7887	7910	7933	7956	7979	8002	8025	8048	8071	8094	8117	8140	8163	8186	8209	8232	8255	8278	8301	8324	8347	8370	8393	8416	8439	8462	8485	8508	8531	8554	8577	8600	8623	8646	8669	8692	8715	8738	8761	8784	8807	8830	8853	8876	8899	8922	8945	8968	8991	9014	9037	9060	9083	9106	9129	9152	9175	9198	9221	9244	9267	9290	9313	9336	9359	9382	9405	9428	9451	9474	9497	9520	9543	9566	9589	9612	9635	9658	9681	9704	9727	9750	9773	9796	9819	9842	9865	9888	9911	9934	9957	9980	10003
--------------------	-------	------	------	------	------	------	------	------	------	------	------	------	------	------	------	------	------	------	------	------	------	------	------	------	------	------	------	------	------	------	------	------	------	------	------	------	------	------	------	------	------	------	------	------	------	------	------	------	------	------	------	------	------	------	------	------	------	------	------	------	------	------	------	------	------	------	------	------	------	------	------	------	------	------	------	------	------	------	------	------	------	------	------	------	------	------	------	------	------	------	------	------	------	------	------	------	------	------	------	------	------	------	------	------	------	------	------	------	------	------	------	------	------	------	------	------	------	------	------	------	------	------	------	------	------	------	------	------	------	------	------	------	------	------	------	------	------	------	------	------	------	------	------	------	------	------	------	------	------	------	------	------	------	------	------	------	------	------	------	------	------	------	------	------	------	------	------	------	------	------	------	------	------	------	------	------	------	------	------	------	------	------	------	------	------	------	------	------	------	------	------	------	------	------	------	------	------	------	------	------	------	------	------	------	------	------	------	------	------	------	------	------	------	------	------	------	------	------	------	------	------	------	------	------	------	------	------	------	------	------	------	------	------	------	------	------	------	------	------	------	------	------	------	------	------	------	------	------	------	------	------	------	------	------	------	------	------	------	------	------	------	------	------	------	------	------	------	------	------	------	------	------	------	------	------	------	------	------	------	------	------	------	------	------	------	------	------	------	------	------	------	------	------	------	------	------	------	------	------	------	------	------	------	------	------	------	------	------	------	------	------	------	------	------	------	------	------	------	------	------	------	------	------	------	------	------	------	------	------	------	------	------	------	------	------	------	------	------	------	------	------	------	------	------	------	------	------	------	------	------	------	-------



Senior Grader

Mountain View Drive + Alley Block 44  
 Normal Heights

M.H. #1	32241	13.57	STOP
5-451			
45.4.25	32235	13.18	STOP
90.8	323.24	12.79	STOP
136.2	323.12	12.41	STOP
181.6	324.07	12.04	STOP
227.0 - M.H. # 8 - A 30' W	324.10	11.67	STOP
273.47	325.41	11.30	STOP
319.21	326.43	11.00	STOP
366.4	327.25	10.62	STOP
412.87	328.26	10.25	STOP
459.33	329.48	9.88	STOP
505.80 - M.H. # 9	330.50	9.51	STOP
552.8	331.29	9.14	STOP
595.20	332.22	8.77	STOP
640.00	332.67	8.40	STOP
685.80 - D.F.	333.46	8.03	STOP

Senior Grader

Mountain View Drive And  
 East West Alley Block 21 Normal Heights

M.H. # 2	324.40	7.63	STOP
7-47206			
19.29	324.86	7.26	STOP
58.57	325.24	6.89	STOP
117.86	325.66	6.52	STOP
197.14	326.08	6.15	STOP
274.43	326.50	5.78	STOP
295.71	326.91	5.41	STOP
315.00 - M.H. # 10	327.33	5.04	STOP
391.62	327.91	4.67	STOP
418.31	328.60	4.30	STOP
499.81	329.23	3.93	STOP
551.18	329.87	3.56	STOP
623.10 - M.H. # 11	330.50	3.19	STOP
650.57	331.24	2.82	STOP
690.01	331.77	2.45	STOP
715.51	332.91	2.08	STOP
793.02 D.F.	333.05	1.71	STOP

Sewer Grades  
 Mountain View Drive  
 West of M.H. #4

M.H. #4	362.86	1530 1527	483.877	S.F. MINN 1257 877 1000
290 W	364.18		377.5	
913 W	365.91	1116 1107	377.7	
147.5 W	367.63		377.0	
196.2 W	369.35	540 537		
215.8 W	371.08			
295.00 - DE	372.80	530 527 524		

Benton Place Sewer Grades

Feeling M.H. to Mountain	389.60	1015 1012		
50 W	389.90			
100 W	391.20	511 507		
150 W	392.50			
200 W	393.80	506 503		
250 W	395.10			
295.00 - DE	396.40	511 507		





Mountains of the  
State of Colorado

Left	Right
N° 18 38635 <sup>1278</sup> <sub>767</sub>	N° 24 38640 <sup>1278</sup> <sub>767</sub> 39170 <sup>1278</sup> <sub>767</sub>
	N° 24 38645 <sup>1278</sup> <sub>767</sub> 37569 <sup>1278</sup> <sub>767</sub>
N° 27 38585 <sup>1278</sup> <sub>767</sub>	N° 25 38590 <sup>1278</sup> <sub>767</sub> 37578 <sup>1278</sup> <sub>767</sub>
	N° 26 38540 <sup>1278</sup> <sub>767</sub>
	N° 27 38745 <sup>1278</sup> <sub>767</sub>
	N° 28 38760 <sup>1278</sup> <sub>767</sub>
	N° 29 38720 <sup>1278</sup> <sub>767</sub>
	N° 30 38740 <sup>1278</sup> <sub>767</sub>
	N° 31 38760 <sup>1278</sup> <sub>767</sub>
	N° 32 38740 <sup>1278</sup> <sub>767</sub>
	N° 33 38760 <sup>1278</sup> <sub>767</sub>
N° 40 38860 <sup>1278</sup> <sub>767</sub>	N° 37 38770 <sup>1278</sup> <sub>767</sub>
	N° 38 38790 <sup>1278</sup> <sub>767</sub>

Left	Right
N° 39 38950 <sup>1278</sup> <sub>767</sub>	N° 41 39010 <sup>1278</sup> <sub>767</sub>
	N° 42 39070 <sup>1278</sup> <sub>767</sub>
	N° 43 39150 <sup>1278</sup> <sub>767</sub>
	N° 44 39100 <sup>1278</sup> <sub>767</sub>
	N° 45 39170 <sup>1278</sup> <sub>767</sub>
	N° 46 39200 <sup>1278</sup> <sub>767</sub>
	N° 47 39200 <sup>1278</sup> <sub>767</sub>
	N° 48 39250 <sup>1278</sup> <sub>767</sub>
	N° 49 39229 <sup>1278</sup> <sub>767</sub>
	N° 50 39210 <sup>1278</sup> <sub>767</sub>
	N° 51 39200 <sup>1278</sup> <sub>767</sub>
	N° 52 39240 <sup>1278</sup> <sub>767</sub>
	N° 53 39240 <sup>1278</sup> <sub>767</sub>
	N° 54 39255 <sup>1278</sup> <sub>767</sub>

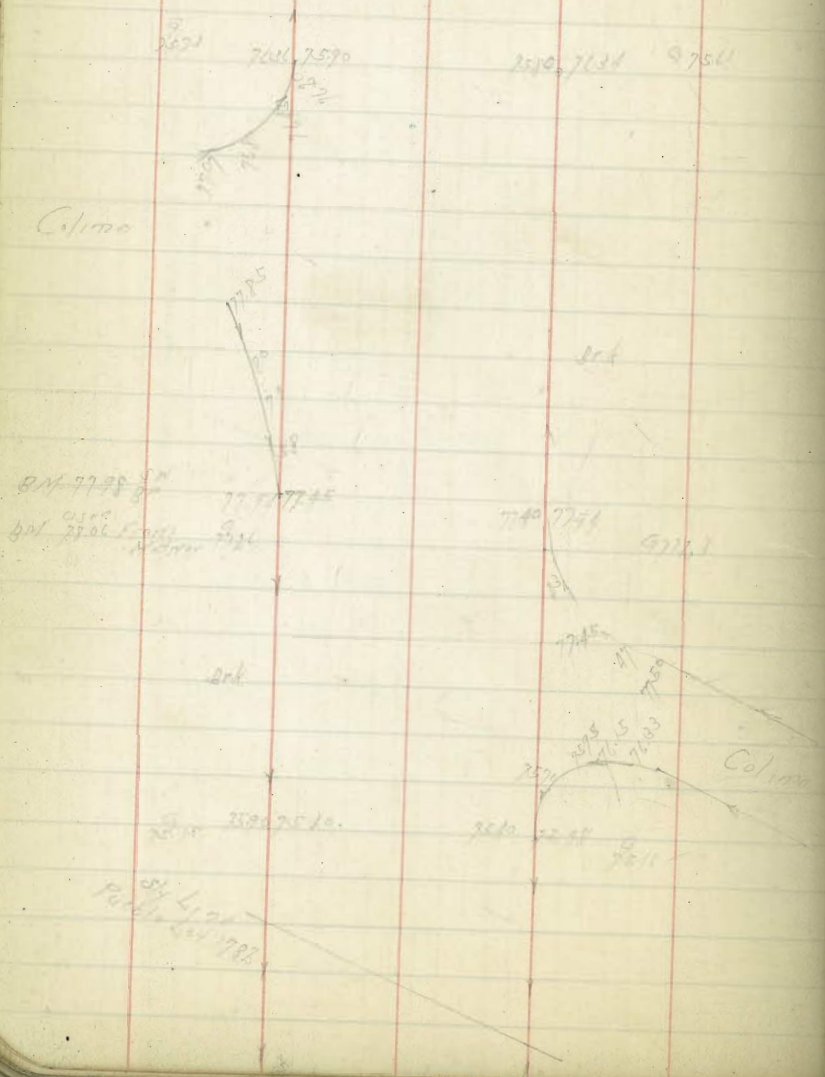




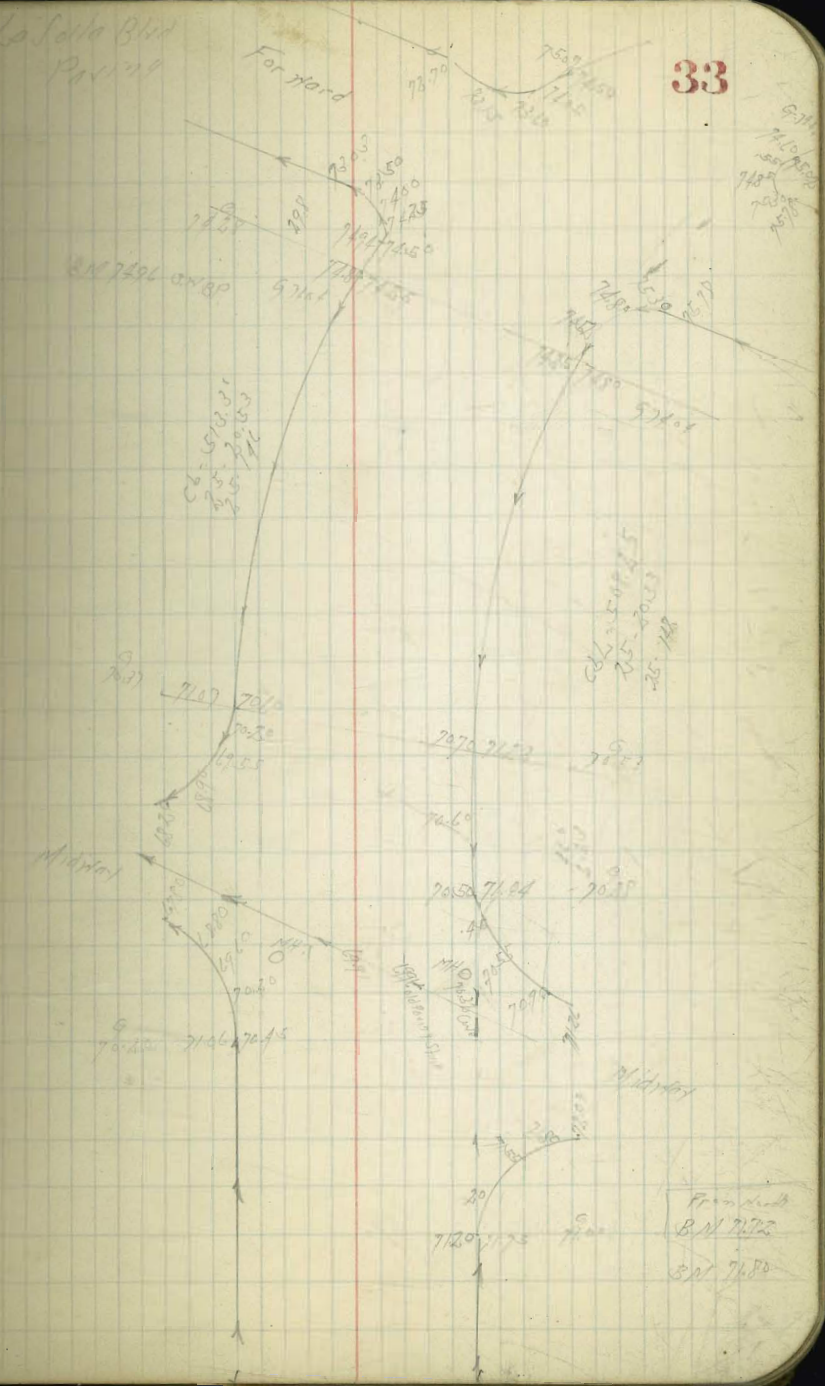




Los Jales Blvd  
via Passing

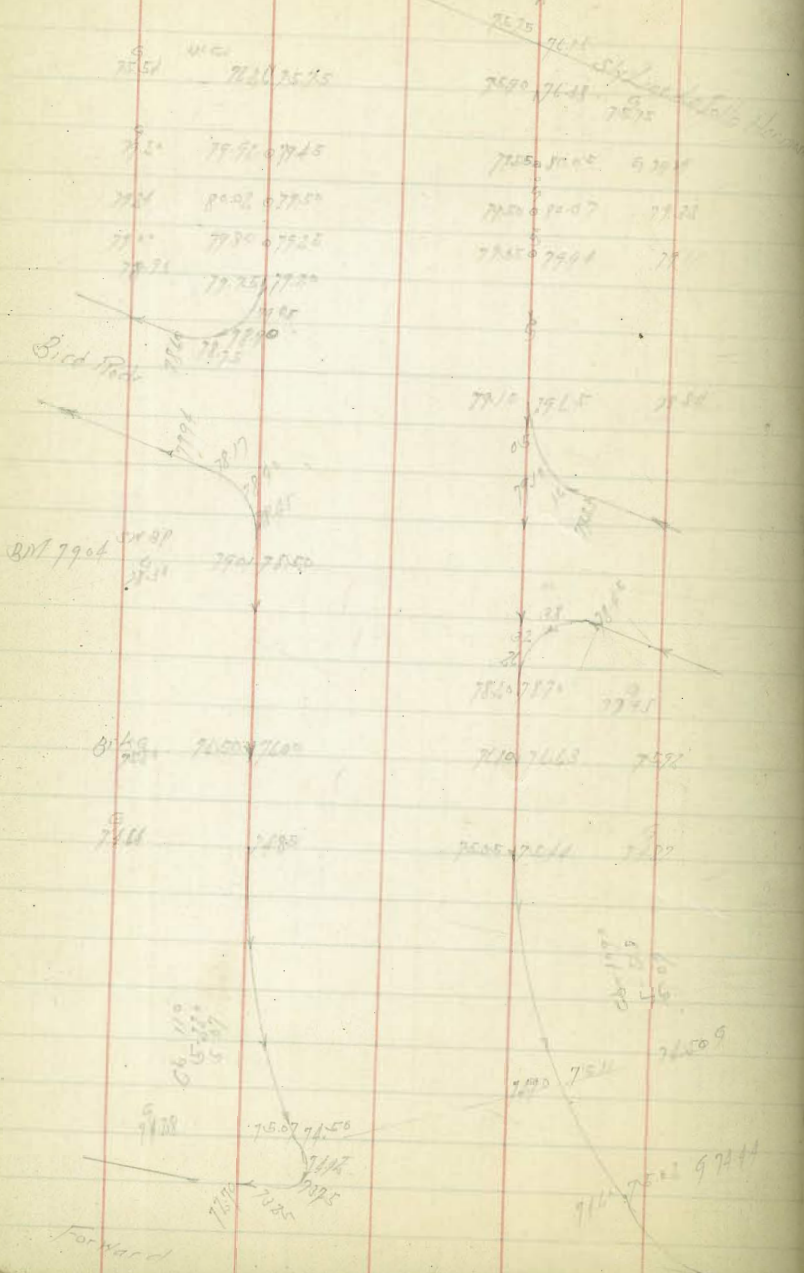


Los Jales Blvd  
Passing

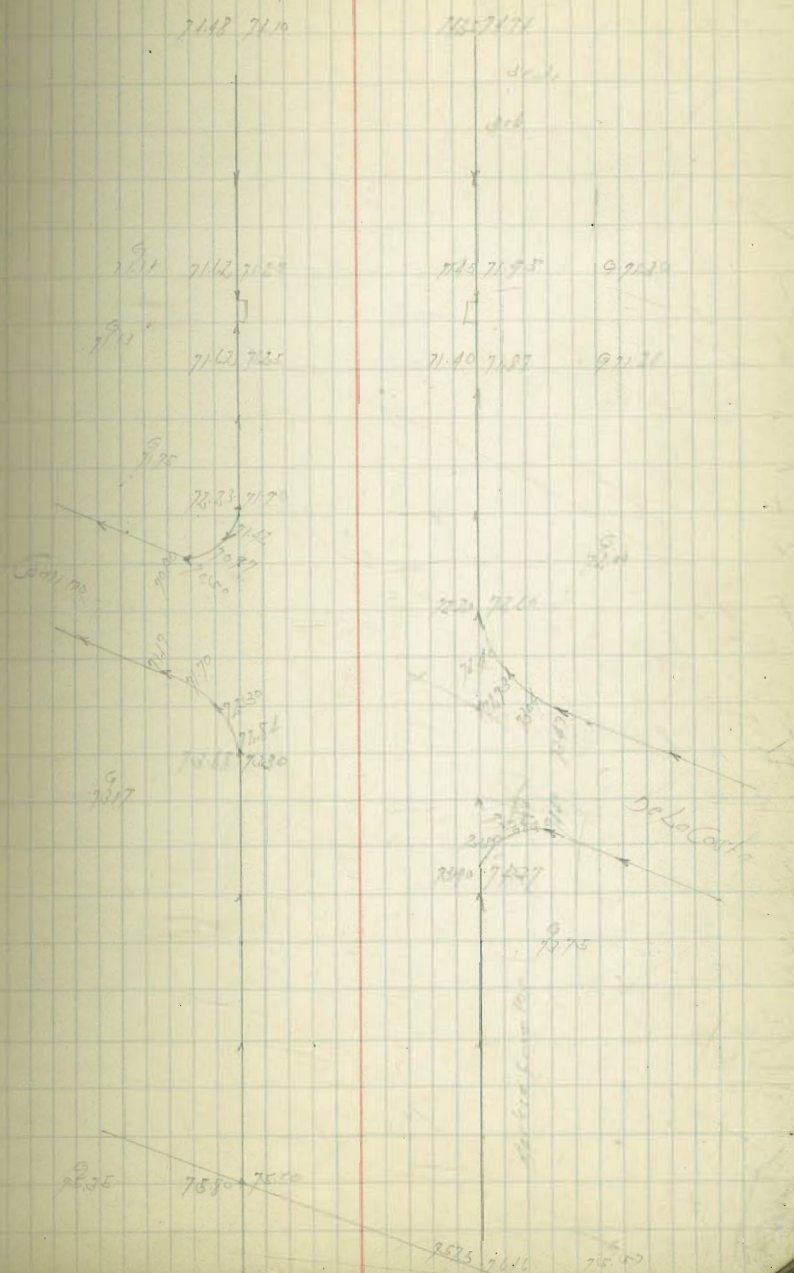


31/1954  
7550 7550  
7550 7550

La Jolla Blvd  
Paving



La Jolla Blvd  
Paving







La Sella Blvd

6-28-49

Culverts & Storm Drains

Culvert No. 8 No. 9 Storm Drain No. 1  
 Flow Line 70.00 70.00 154  
 Curb Inlet No. 10 - E. Col. Inlet  
 La Sella Blvd 64.80 77.1 72.8 111.00

101.00 - Curb Inlet No. 11 - W. Col. Inlet  
 La Sella Blvd 62.00 77.1 71.6 121.00

11.55 W 60.50 77.1 70.00 75.80  
 70.00

8.55 W - Curb Inlet No. 12  
 S. 133 59.00 77.1 70.00 75.80  
 70.00

12.32 W 55.95 77.1 70.00 75.80

84.11 W 52.90 77.1 70.00 75.80

127 W - A 49.85 77.1 70.00 75.80  
 2-33-75

160.75 W 47.40 77.1 70.00 75.80

194.50 W - End 45.00 77.1 70.00 75.80

Curb - Inlet #1

N. END

67.70 + 14.78 = 75.52  
 NW. 82 Atoms 70.70 Ex. 70.76 70.76

S. END

70.80

75.52  
 70.50  
 4.72



IX Sta. defl. N.G. ... E. Sta. L.G.

0.19 = tangent offset

1071819	7890	9+8517.0m	7920
9+6646.3	78.40v	9+7359.3	79.80v
9+12.14	7'19.25	8+566.5	80.47v
8+61.38	80.87v	8+37.2	81.13v
8+16.12	81.60v	7+58.9	81.80v
7+58.96	82.31v	7+28.91	82.47v
7+08.10	83.02v	6+39.69	83.13v
6+58.44	83.73v	6+40.45	83.80v
6+08.78	84.44v	5+49.21	84.47v
5+59.12	85.15v	5+09.97	85.14v
5+09.46	85.86v	4+70.73	85.81v
4+59.80	86.57v	4+31.49	86.48v
4+10.14	87.28v	3+92.25	87.15v
3+60.48	87.99v	3+53.01	87.82v
3+10.82	88.70v	3+13.77	88.49v
2+61.16	89.41v	2+74.53	89.16v
2+11.50	90.12v	2+35.29	89.83v
1+61.84	90.83v	1+96.05	90.50v
1+12.18	91.54v	1+56.81	91.17v
0+62.52	92.25v	1+17.57	91.84v
0+12.86	92.96v	0+78.33	92.51v
0+63.20	93.67v	0+39.09	93.18v
0+13.54	94.38v	0+0.85	93.85v
0+63.88	95.09v	0+41.61	94.52v
0+14.22	95.80v	0+0.37	95.19v
0+64.56	96.51v	0+42.13	95.86v
0+14.90	97.22v	0+0.89	96.53v
0+65.24	97.93v	0+43.59	97.20v
0+15.58	98.64v	0+0.45	97.87v
0+66.58	99.35v	0+44.01	98.54v
0+16.22	100.06v	0+0.01	99.21v
0+67.94	100.77v	0+44.47	99.88v
0+16.86	101.48v	0+0.57	100.55v
0+68.28	102.19v	0+45.93	101.22v
0+17.50	102.90v	0+0.67	101.89v
0+69.62	103.61v	0+46.39	102.56v
0+18.14	104.32v	0+0.77	103.23v
0+70.94	105.03v	0+47.85	103.90v
0+18.78	105.74v	0+0.87	104.57v
0+71.30	106.45v	0+48.31	105.24v
0+19.42	107.16v	0+0.97	105.91v
0+72.66	107.87v	0+49.77	106.58v
0+19.86	108.58v	0+0.07	107.25v
0+73.00	109.29v	0+50.23	107.92v
0+20.30	110.00v	0+0.17	108.59v
0+74.34	110.71v	0+51.69	109.26v
0+20.94	111.42v	0+0.27	109.93v
0+75.68	112.13v	0+53.15	110.60v
0+21.58	112.84v	0+0.37	111.27v
0+76.02	113.55v	0+54.61	111.94v
0+22.22	114.26v	0+0.47	112.61v
0+77.36	114.97v	0+56.07	113.28v
0+22.86	115.68v	0+0.57	113.95v
0+78.70	116.39v	0+57.53	114.62v
0+23.50	117.10v	0+0.67	115.29v
0+79.04	117.81v	0+58.99	115.96v
0+24.14	118.52v	0+0.77	116.63v
0+80.38	119.23v	0+60.45	117.30v
0+24.78	119.94v	0+0.87	117.97v
0+81.72	120.65v	0+61.91	118.64v
0+25.42	121.36v	0+0.97	119.31v
0+82.06	122.07v	0+63.37	120.00v
0+26.06	122.78v	0+0.07	120.67v
0+83.40	123.49v	0+64.83	121.34v
0+26.70	124.20v	0+0.17	122.01v
0+84.74	124.91v	0+66.29	122.68v
0+27.34	125.62v	0+0.27	123.35v
0+85.08	126.33v	0+67.75	124.02v
0+27.98	127.04v	0+0.37	124.69v
0+86.42	127.75v	0+69.21	125.36v
0+28.62	128.46v	0+0.47	126.03v
0+87.76	129.17v	0+70.67	126.70v
0+29.26	129.88v	0+0.57	127.37v
0+89.10	130.59v	0+72.13	128.04v
0+29.90	131.30v	0+0.67	128.71v
0+90.44	132.01v	0+73.59	129.38v
0+30.54	132.72v	0+0.77	130.05v
0+91.78	133.43v	0+75.05	130.72v
0+31.18	134.14v	0+0.87	131.39v
0+93.12	134.85v	0+76.51	132.06v
0+31.82	135.56v	0+0.97	132.73v
0+94.46	136.27v	0+77.97	133.40v
0+32.46	136.98v	0+0.07	134.07v
0+95.80	137.69v	0+79.43	134.74v
0+33.10	138.40v	0+0.17	135.41v
0+97.14	139.11v	0+80.89	136.08v
0+33.74	139.82v	0+0.27	136.75v
0+98.48	140.53v	0+82.35	137.42v
0+34.38	141.24v	0+0.37	138.09v
0+99.82	141.95v	0+83.81	138.76v
0+35.02	142.66v	0+0.47	139.43v
0+101.16	143.37v	0+85.27	140.10v
0+35.66	144.08v	0+0.57	140.77v
0+102.50	144.79v	0+86.73	141.44v
0+36.30	145.50v	0+0.67	142.11v
0+103.84	146.21v	0+88.19	142.78v
0+36.94	146.92v	0+0.77	143.45v
0+105.18	147.63v	0+89.65	144.12v
0+37.58	148.34v	0+0.87	144.79v
0+106.52	149.05v	0+91.11	145.46v
0+38.22	149.76v	0+0.97	146.13v
0+107.86	150.47v	0+92.57	146.80v
0+38.86	151.18v	0+0.07	147.47v
0+109.20	151.89v	0+94.03	148.14v
0+39.50	152.60v	0+0.17	148.81v
0+110.54	153.31v	0+95.49	149.48v
0+40.14	154.02v	0+0.27	150.15v
0+111.88	154.73v	0+96.95	150.82v
0+40.78	155.44v	0+0.37	151.49v
0+113.22	156.15v	0+98.41	152.16v
0+41.42	156.86v	0+0.47	152.83v
0+114.56	157.57v	0+99.87	153.50v
0+42.06	158.28v	0+0.57	154.17v
0+115.90	158.99v	0+101.33	154.84v
0+42.70	159.70v	0+0.67	155.51v
0+117.24	160.41v	0+102.79	156.18v
0+43.34	161.12v	0+0.77	156.85v
0+118.58	161.83v	0+104.25	157.52v
0+43.98	162.54v	0+0.87	158.19v
0+119.92	163.25v	0+105.71	158.86v
0+44.62	163.96v	0+0.97	159.53v
0+121.26	164.67v	0+107.17	160.20v
0+45.26	165.38v	0+0.07	160.87v
0+122.60	166.09v	0+108.63	161.54v
0+45.90	166.80v	0+0.17	162.21v
0+123.94	167.51v	0+110.09	162.88v
0+46.54	168.22v	0+0.27	163.55v
0+125.28	168.93v	0+111.55	164.22v
0+47.18	169.64v	0+0.37	164.89v
0+126.62	170.35v	0+113.01	165.56v
0+47.82	171.06v	0+0.47	166.23v
0+127.96	171.77v	0+114.47	166.90v
0+48.46	172.48v	0+0.57	167.57v
0+129.30	173.19v	0+115.93	168.24v
0+49.10	173.90v	0+0.67	168.91v
0+130.64	174.61v	0+117.39	169.58v
0+49.74	175.32v	0+0.77	170.25v
0+131.98	176.03v	0+118.85	170.92v
0+50.38	176.74v	0+0.87	171.59v
0+133.32	177.45v	0+120.31	172.26v
0+51.02	178.16v	0+0.97	172.93v
0+134.66	178.87v	0+121.77	173.60v
0+51.66	179.58v	0+0.07	174.27v
0+136.00	180.29v	0+123.23	174.94v
0+52.30	181.00v	0+0.17	175.61v
0+137.34	181.71v	0+124.69	176.28v
0+52.94	182.42v	0+0.27	176.95v
0+138.68	183.13v	0+126.15	177.62v
0+53.58	183.84v	0+0.37	178.29v
0+140.02	184.55v	0+127.61	178.96v
0+54.22	185.26v	0+0.47	179.63v
0+141.36	185.97v	0+129.07	180.30v
0+54.86	186.68v	0+0.57	180.97v
0+142.70	187.39v	0+130.53	181.64v
0+55.50	188.10v	0+0.67	182.31v
0+144.04	188.81v	0+131.99	183.00v
0+56.14	189.52v	0+0.77	183.67v
0+145.38	190.23v	0+133.45	184.34v
0+56.78	190.94v	0+0.87	185.01v
0+146.72	191.65v	0+134.91	185.68v
0+57.42	192.36v	0+0.97	186.35v
0+148.06	193.07v	0+136.37	187.02v
0+58.06	193.78v	0+0.07	187.69v
0+149.40	194.49v	0+137.83	188.36v
0+58.70	195.20v	0+0.17	189.03v
0+150.74	195.91v	0+139.29	189.70v
0+59.34	196.62v	0+0.27	190.37v
0+152.08	197.33v	0+140.75	191.04v
0+59.98	198.04v	0+0.37	191.71v
0+153.42	198.75v	0+142.21	192.40v
0+60.62	199.46v	0+0.47	193.07v
0+154.76	200.17v	0+143.67	193.74v
0+61.26	200.88v	0+0.57	194.41v
0+156.10	201.59v	0+145.13	195.08v
0+61.90	202.30v	0+0.67	195.75v
0+157.44	203.01v	0+146.59	196.42v
0+62.54	203.72v	0+0.77	197.09v
0+158.78	204.43v	0+148.05	197.16v
0+63.18	205.14v	0+0.87	197.83v
0+160.12	205.85v	0+149.51	198.50v
0+63.82	206.56v	0+0.97	199.17v
0+161.46	207.27v	0+150.97	199.84v
0+64.46	207.98v	0+0.07	200.51v
0+162.80	208.69v	0+152.43	201.18v
0+65.10	209.40v	0+0.17	201.85v
0+164.14	210.11v	0+153.89	202.52v
0+65.74	210.82v	0+0.27	203.19v
0+165.48	211.53v	0+155.35	203.86v
0+66.38	212.24v	0+0.37	204.53v
0+166.82	212.95v	0+156.81	205.20v
0+67.02	213.66v	0+0.47	205.87v
0+168.16	214.37v	0+158.27	205.94v
0+67.66	215.08v	0+0.57	206.61v
0+169.50	215.79v	0+159.73	207.28v
0+68.30	216.50v	0+0.67	207.95v
0+170.84	217.21v	0+161.19	208.62v
0+68.94	217.92v	0+0.77	209.29v
0+172.18	218.63v	0+162.65	209.96v
0+69.58	219.34v	0+0.87	210.63v
0+173.52	220.05v	0+164.11	211.30v
0+70.22	220.76v	0+0.97	211.97v
0+174.86	221.47v	0+165.57	212.64v
0+70.86	222.18v	0+0.07	213.31v
0+176.20	222.89v	0+167.03	213.98v
0+71.50	223.60v	0+0.17	214.65v
0+177.54	224.31v	0+168.49	215.32v
0+72.14	225.02v	0+0.27	215.99v
0+178.88	225.73v	0+169.95	216.66v
0+72.78	226.44v	0+0.37	217.33v
0+180.22	227.15v	0+171.41	217.40v
0+73.42	227.86v	0+0.47	218.07v
0+181.56	228.57v	0+172.87	218.74v
0+74.06	229.28v	0+0.57	219.41v
0+182.90	230.00v	0+174.33	220.08v
0+74.70	230.71v	0+0.67	220.75v
0+184.24	231.42v	0+175.79	221.42v
0+75.34	232.13v	0+0.77	222.09v
0+185.58	232.84v	0+177.25	222.76v
0+75.98	233.55v	0+0.87	223.43v
0+186.92	234.26v	0+178.71	224.10v
0+76.62	234.97v	0+0.97	224.77v
0+188.26	235.68v	0+180.17	225.44v
0+77.26	236.39v	0+0.07	226.11v
0+189.60	237.10v	0+181.63	226.78v
0+77.90	237.81v	0+0.17	227.45v
0+190.94	238.52v	0+183.09	228.12v
0+78.54	239.23v	0+0.27	228.79v
0+192.28	240.00v	0+184.55	229.46v
0+79.18	240.71v	0+0.37	230.13v
0+193.62	241.42v	0+186.01	230.80v
0+79.82	242.13v	0+0.47	231.47v
0+194.96	24		







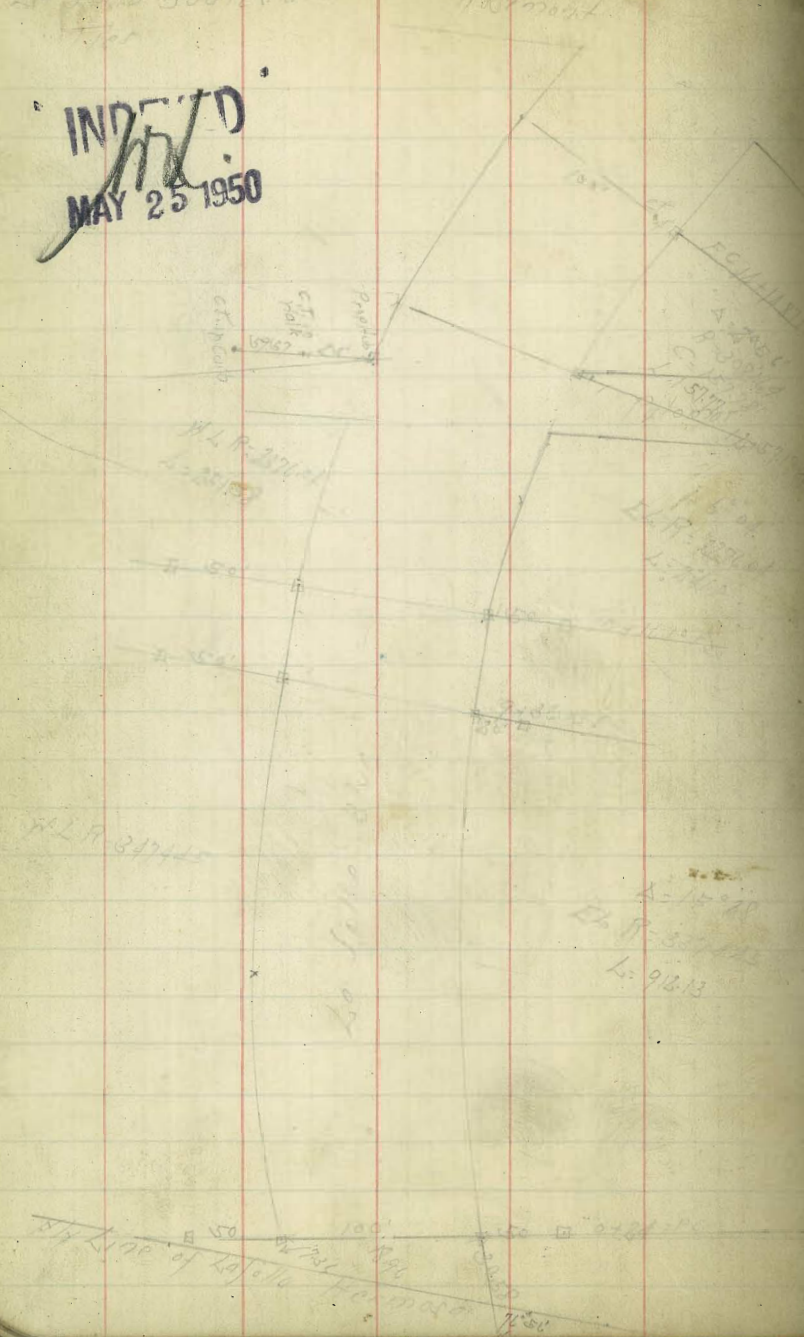




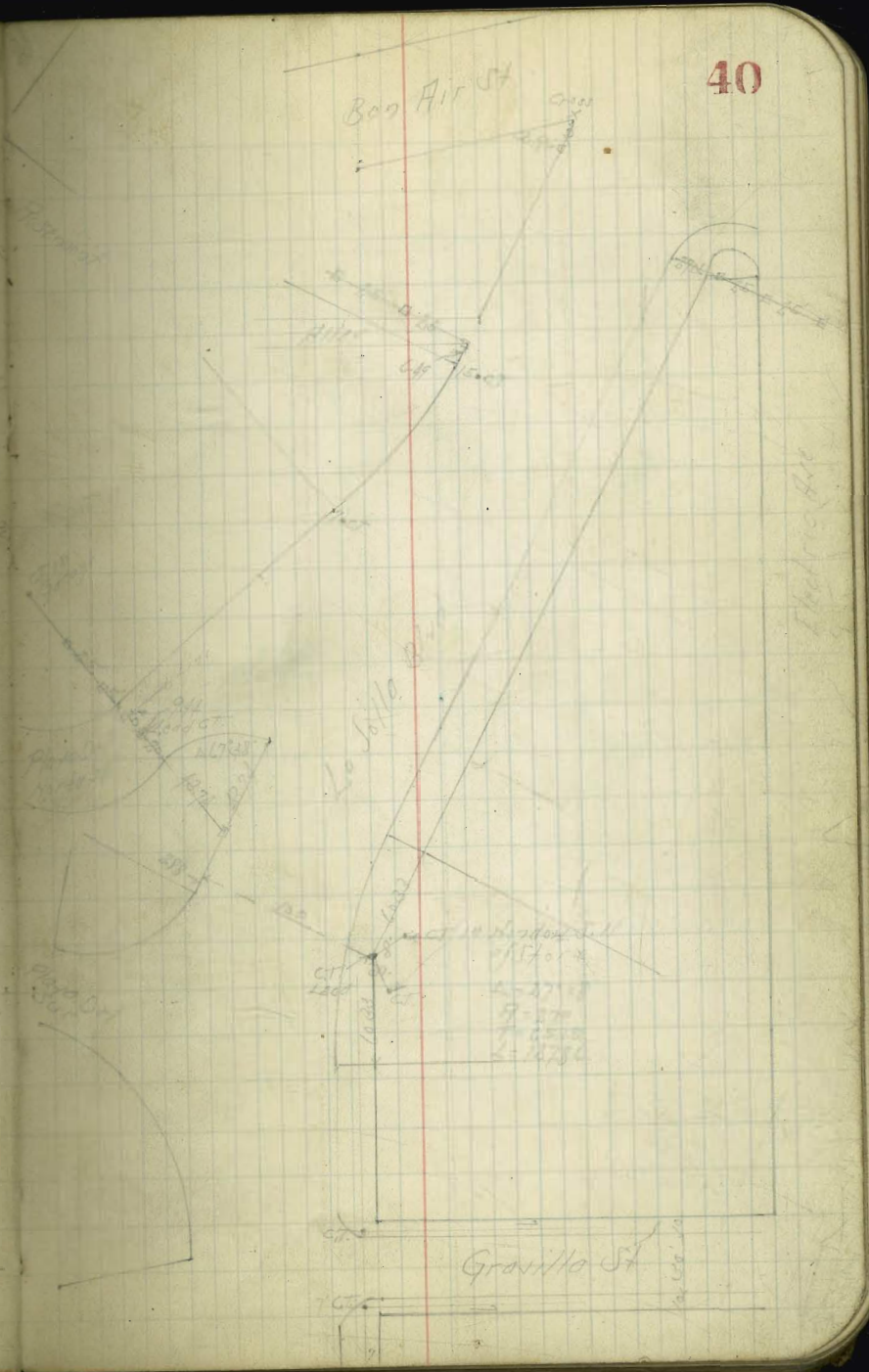
La Jolla Boulevard

Reservoir

INDEXED  
MAY 25 1950



Boo Air St

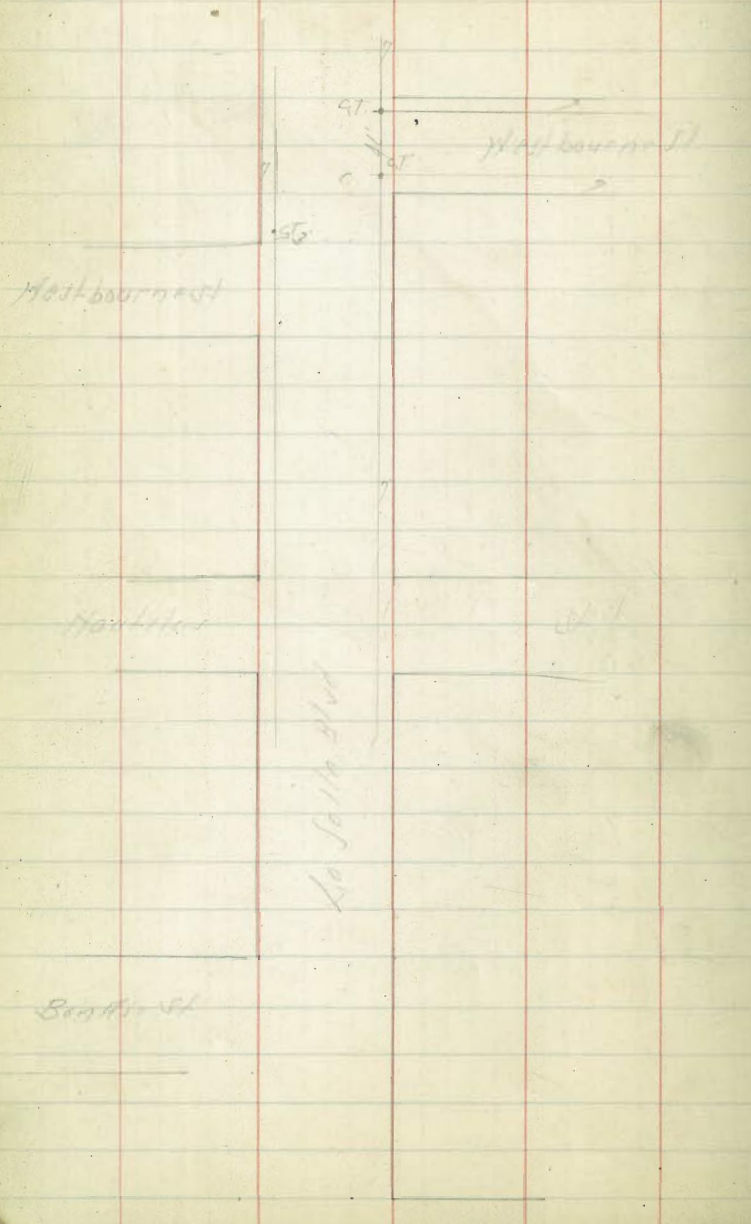


Graville St



La Salle Blvd

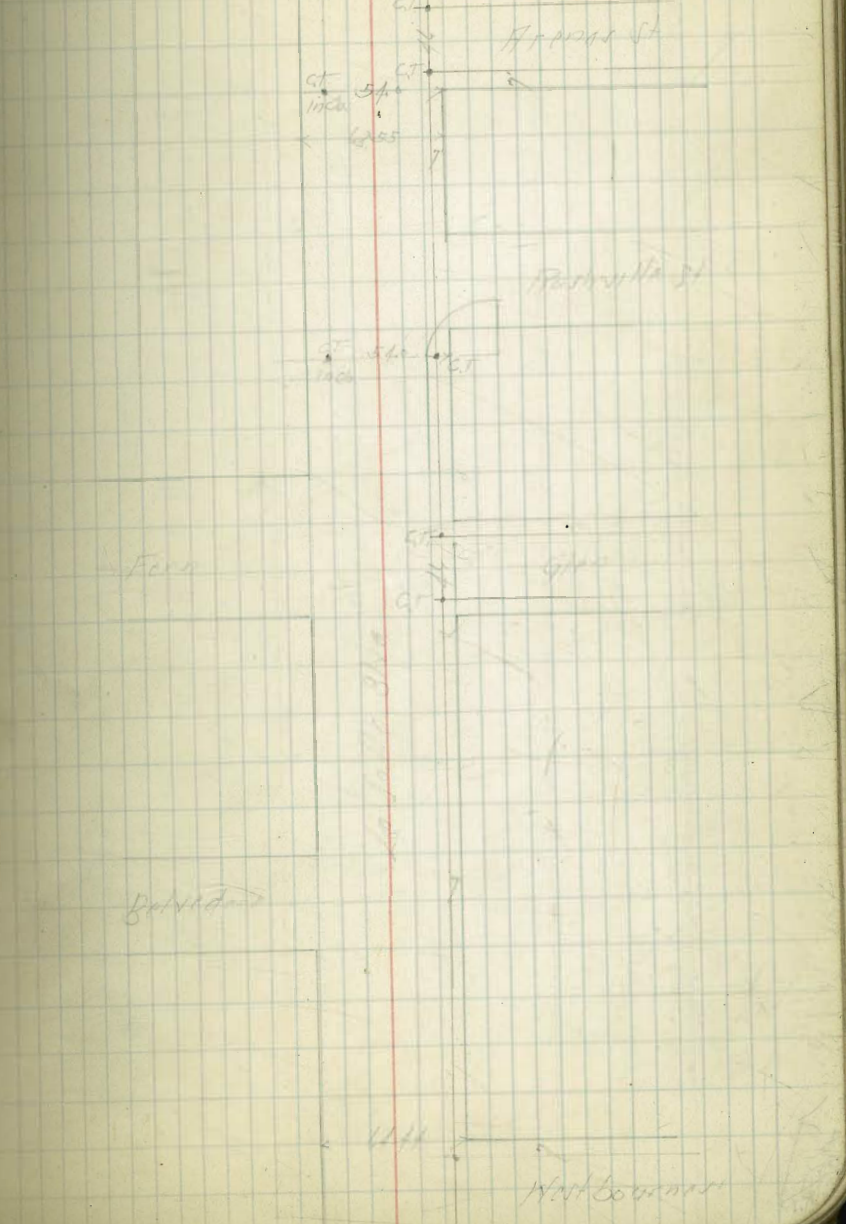
Tues



La Salle Blvd

Tues

41







La Jolla Blvd  
Station Drain No 1

7-13-59

	Flow Level		
0.75	37.00	14.57	BM 1277
1.379.22	37.25	12.34	12.34
17.590.5	41.50	12.38	12.38
18.38.5	43.87	12.40	12.40
18.9.18.1	44.34	12.93	12.93
19.500.0 = Br. net	48.6	12.93	12.93
23.3.31.2	49.59	12.93	12.93
27.1.78.1	50.57	12.93	12.93
310.08.5 = (Junction #1)	51.57	12.93	12.93
3.52.35	52.36	12.93	12.93
4.06.66	54.07	12.93	12.93
4.54.89	55.32	12.93	12.93
5.03.16	56.51	12.93	12.93
55.1.45 = A. H. block of block	57.80	12.93	12.93

Extension

0+0 Clean out No 5	41.50	12.93	12.93
39.67' H	39.02	12.93	12.93
79.33' H	36.54	12.93	12.93
119.0' H = Δ 39° 45' H	34.06	12.93	12.93
144.0' H = End	32.50	12.93	12.93
173.0' H Extension	30.70	12.93	12.93

La Jolla Blvd  
Water Grades

43 8-22-59

	Topch		
St. Gardner	69.6	65.00	BM 6774
100.5		64.70	64.70
300.5		64.40	64.40
300.5 - H.L. Arroyo	65.0	64.10	64.10
St. Arroyo	69.0	64.60	64.60
800.5		65.80	65.80
100.5 - H.L. Reservoir	70.20	65.80	65.80
St. Rushville	70.40	66.00	66.00
800.5		66.55	66.55
100.5 - H.L. Reservoir	71.50	67.10	67.10
St. Fern Glen	72.00	67.60	67.60



Lafolla Blvd  
Storm Drains N<sup>o</sup> 2-3-4

7-26-29  
5:55am

B.M. 7.01  
- 6.31  
85.32 H.I.

44

Reds 7.17  
5.81  
8.98  
7.92  
8.74

+ 7.15  
+ 9.95  
+ 8.21  
+ 8.71  
+ 16.13

Stakes  
Reset

Lafolla Blvd Water Grade  
At Box Pit & Elevation

top of  
881 76.01  
882 76.32  
883 76.33

Box Pit  
Electric Box

884 76.66  
885 76.66

Storm Drain	Clear Cut	Elev. Lat	Notes
71.00	1175	8179.0	SE
69.56	1175	8275	
68.13	1175	8275	
66.69	1175	8275	
65.25	1175	8275	
63.81	1175	8275	
62.38	1175	8275	
60.94	1175	8275	
59.50	1175	8275	
57.77	1175	8275	
60.05	1175	8275	
60.32	1175	8275	
60.60	1175	8275	
60.87	1175	8275	
61.15	1175	8275	
61.42	1175	8275	
61.70	1175	8275	
61.99	1175	8275	
62.28	1175	8275	
62.57	1175	8275	
62.86	1175	8275	
63.15	1175	8275	
63.44	1175	8275	
63.72	1175	8275	
63.80	1175	8275	

762.85 N = Open Cut #3  
812.85 = 89  
862.85  
912.85  
962.85  
1012.85  
1062.85  
1112.85 = A 5' Grade  
1125.05 = Corral Cut #7



	M	F
333 40-56 Facobius		72.0
285.78		71.87
291.45		72.74
192.57		74.21
142.85		75.48
95.21		76.55
47.63		77.22
7-17-33		78.10
W. Westbourne on Fall		

Bin 790  
11/15/38  
D183

F	72.00	72.87	72.74	74.11	75.48	76.55	77.22	78.10
	89	91	86	79	85	82	79	82
	2.0	2.0	2.5	4.3	3.5	3.7	3.7	

275.00 - St. Westbourne 97.14		
235.55	78.87	
192.00	78.83	
74.925	78.70	
106.5	78.57	
63.25	78.43	
20.4 = 8.4	78.20	
W. Westbourne	77.92	

Bin 754  
11/15/38  
D183

M	77.80	78.30	78.43	78.57	78.70	78.83	78.87	78.90
	80	86	85	84	82	83	83	82
	2.0	2.0	2.5	2.6	2.6	2.3	2.3	2.3

375.00 - St. Hautitus	77.10
430.00	76.88
185.00	76.56
140.00	76.14
95.00	75.72
5.150	
60.00 - 3.0	75.40
5.00	75.07
W. Ben. Hill	

M	75.20	75.78	76.14	76.56	76.98	77.10
	86	88	88	88	84	84
	2.3	2.3	2.3	2.3	2.0	2.0

East

3607 S.L. Grades	19.60	
2507	19.65	
2007	19.70	
1507	19.75	
1007	19.80	
507	19.85	
H.L. Arroyo	19.90	48191
		1212
		377
		116
1107 S.L. Arroyo	19.95	7303
1157	19.97	7324
707	19.67	7324
257 E.C.	70.01	
H.L. Rubenille	70.20	
1127 S.L. Rubenille	70.40	
1167 P.C.	70.52	
7167	70.85	
1187 S.L. 1507	71.17	
H.L. Ferry Station	71.50	

E	19.50	19.15	19.70	19.25	19.10	19.15	19.40
	51	53	57	50	48	47	48
	47	42.0	43	42	41	41	42.00

I	70.20	70.00	69.67	69.33	69.00
	17	18	13	16	18
		2.6	3.5	3.7	2.8

I	71.50	71.17	70.85	70.52	70.20
	18	18	16	16	15
	40	39	37	37	



La Jolla Blrb-Grades

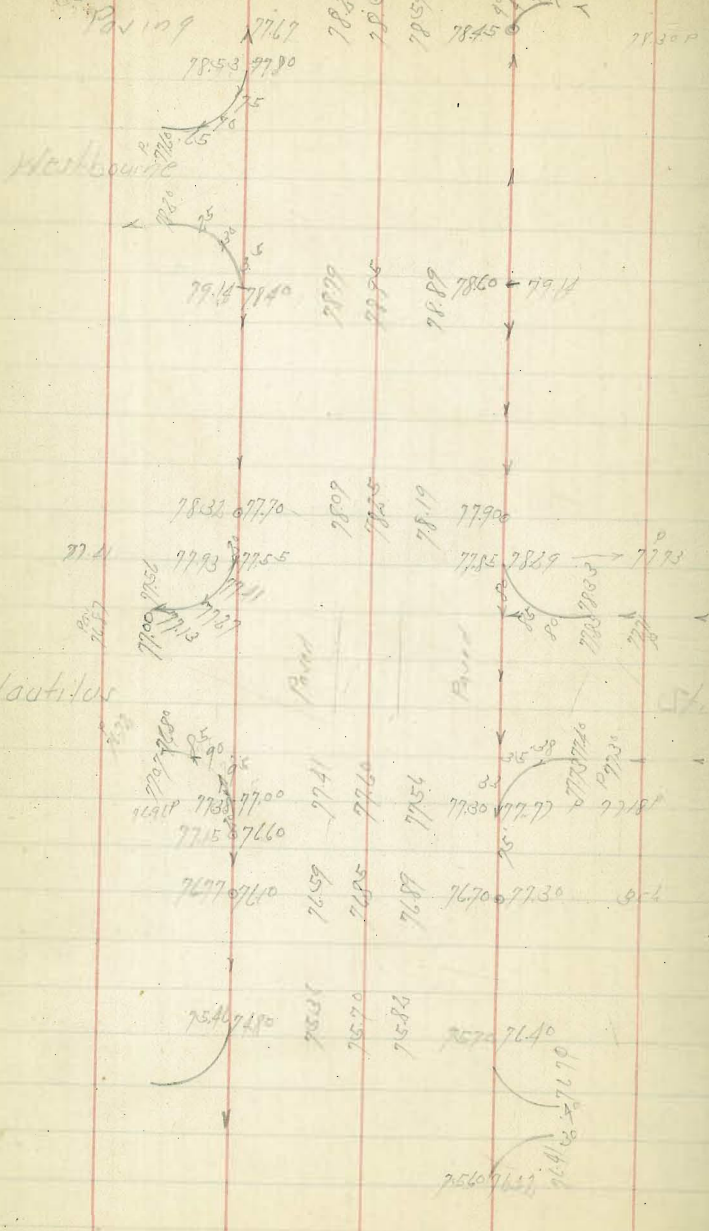
Intersection - Pavina + La Jolla Blvd.	Jolla Blvd. Grade - ob.	B.M. N.E. B.P. Road 1/4 mile	
0-40 <sup>00</sup> E.P. Ob.	58.69	65.06	
0+00 <sup>00</sup> Profile Point	58.00	+ 1.42	9.48
0+20 <sup>00</sup> BRK	58.80	76.148	7.63
0+50 <sup>00</sup>	58.59		7.89
0+80 <sup>00</sup> Elev	58.39		

Note: Walk id. 2 below top of curb at 0+00 + 0+20 + 0+40 look at 0-20<sup>00</sup>

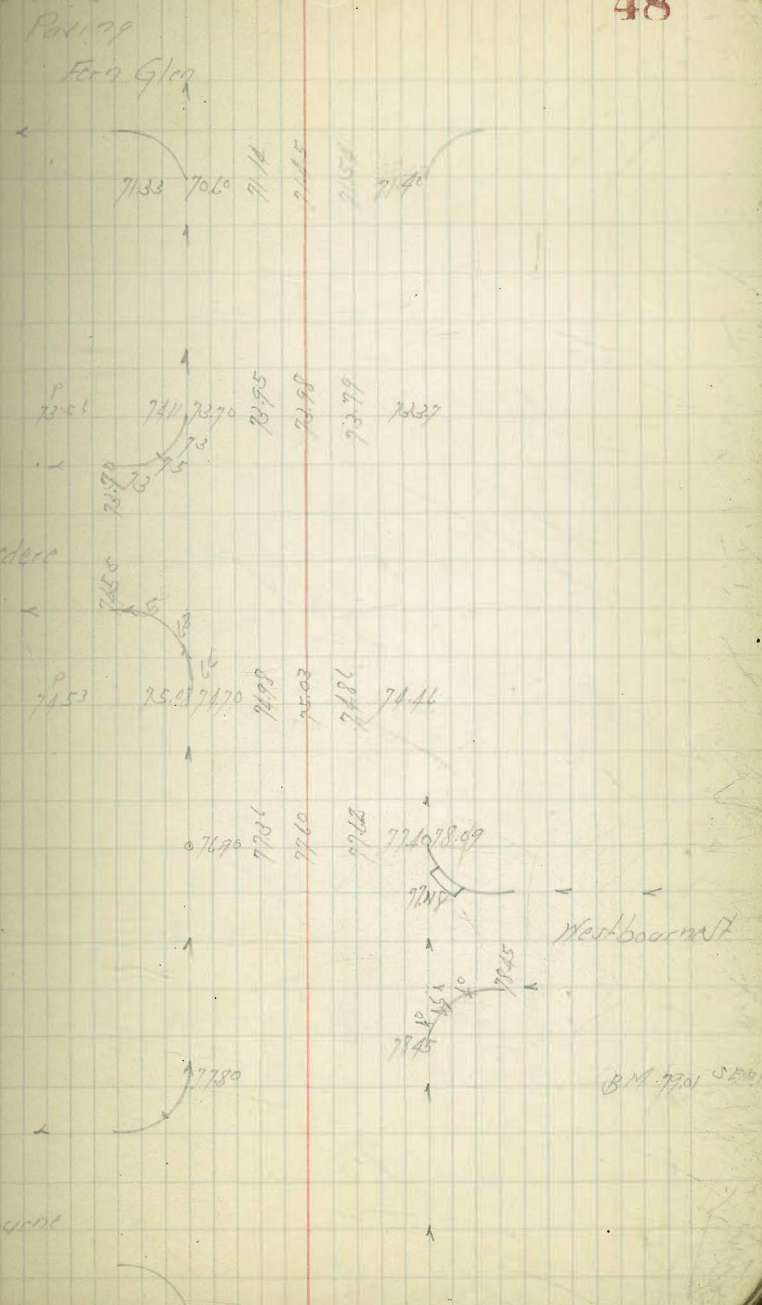
New Curb in Block between Marine + Pearl

0+00 P.C. on South	GRASSES	B.M. N.E. B.P. Road 1/4 mile	La Jolla
+09 <sup>22</sup> 1-19-15	70.66	70.73	65.06
+18 <sup>42</sup> 2-37-30		70.79	10.10
+27 <sup>06</sup> 3-57-45		70.86	75.16
+36 <sup>58</sup> 5-17-00		70.93	
+46 <sup>10</sup> BRK 6-36-15		71.00	
+55 <sup>32</sup> 7-55-30		70.82	
+64 <sup>54</sup> 9-14-45		70.64	
+73 <sup>76</sup> 10-34-00		70.47	
+82 <sup>38</sup> 11-53-15		70.29	
+92 <sup>23</sup> E.C. on North		70.11	

La Solla Blvd



La Solla Blvd





La Salle Blvd  
Parking

6952 6949 6942 6937

6925 6925

6967 6973 6971 6977

6980 7001

6980 7001

6980 7001

6980 7001

6980 7001

6980 7001

6980 7001

6980 7001

6980 7001

6980 7001

6980 7001

6980 7001

6980 7001

6980 7001

6980 7001

6980 7001

6980 7001

6980 7001

6980 7001

6980 7001

6980 7001

6980 7001

6980 7001

6980 7001

6980 7001

6980 7001

6980 7001

6980 7001

6980 7001

6980 7001

6980 7001

6980 7001

6980 7001

6980 7001

6980 7001

Arenas

La Salle Blvd  
Parking

49

Gentle

6974 6984 6992 6997

6980 6979

6984 6976 6989 6954

6957 6964

Barbara  
Place

6980 6970

6980 6970

6980 6970

6980 6970

6980 6970

6980 6970

6980 6970

6980 6970

6980 6970

6980 6970

6980 6970

6980 6970

6980 6970

6980 6970

6980 6970

6980 6970

6980 6970

6980 6970

6980 6970

6980 6970

6980 6970

6980 6970

6980 6970

6980 6970

6980 6970

6980 6970

6980 6970

6980 6970

6980 6970

6980 6970

6980 6970

6980 6970

6980 6970

6980 6970

BW 6994 HRP

6977 6970 6971 6970

6971 6970

Arenas St

6980 6970

6980 6970

6980 6970

6980 6970

6980 6970

6980 6970

6980 6970

6980 6970

6980 6970

6980 6970

6980 6970

6980 6970

6980 6970

6980 6970

6980 6970

6980 6970

6980 6970

6980 6970

6980 6970

6980 6970

6980 6970

6980 6970

6980 6970

6980 6970

6980 6970

6980 6970

6980 6970

6980 6970

6980 6970

6980 6970

6980 6970

6980 6970

6980 6970

6980 6970

6980 6970

Arenas St

6952 6949 6942 6937

6925 6925

6967 6973 6971 6977

6980 7001

6980 7001

6980 7001

6980 7001

6980 7001

6980 7001

6980 7001

Ford Stage II

7072 7088

7047 7042

7032 7025

7015 7014

7072 7088

7047 7042

7032 7025

7015 7014

7072 7088

7047 7042

7032 7025

7015 7014

7072 7088

7047 7042

7032 7025

7015 7014

7072 7088

7047 7042

7032 7025

7015 7014

7072 7088

7047 7042

7032 7025

7015 7014

7072 7088

7047 7042

7032 7025

7015 7014

7072 7088

7047 7042

7032 7025

7015 7014

7072 7088

7047 7042

7032 7025

7015 7014

7072 7088

7047 7042

7032 7025

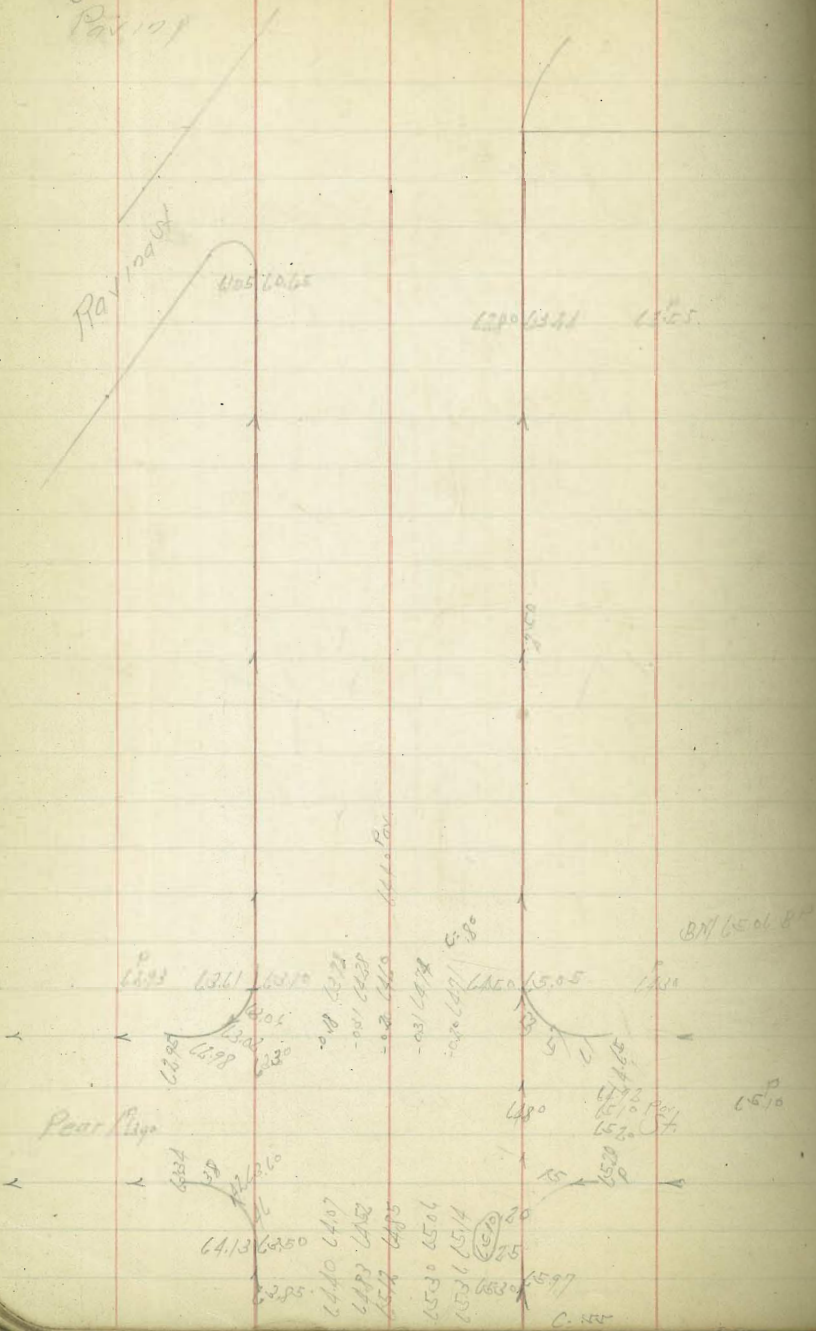
7015 7014

Ford Glen

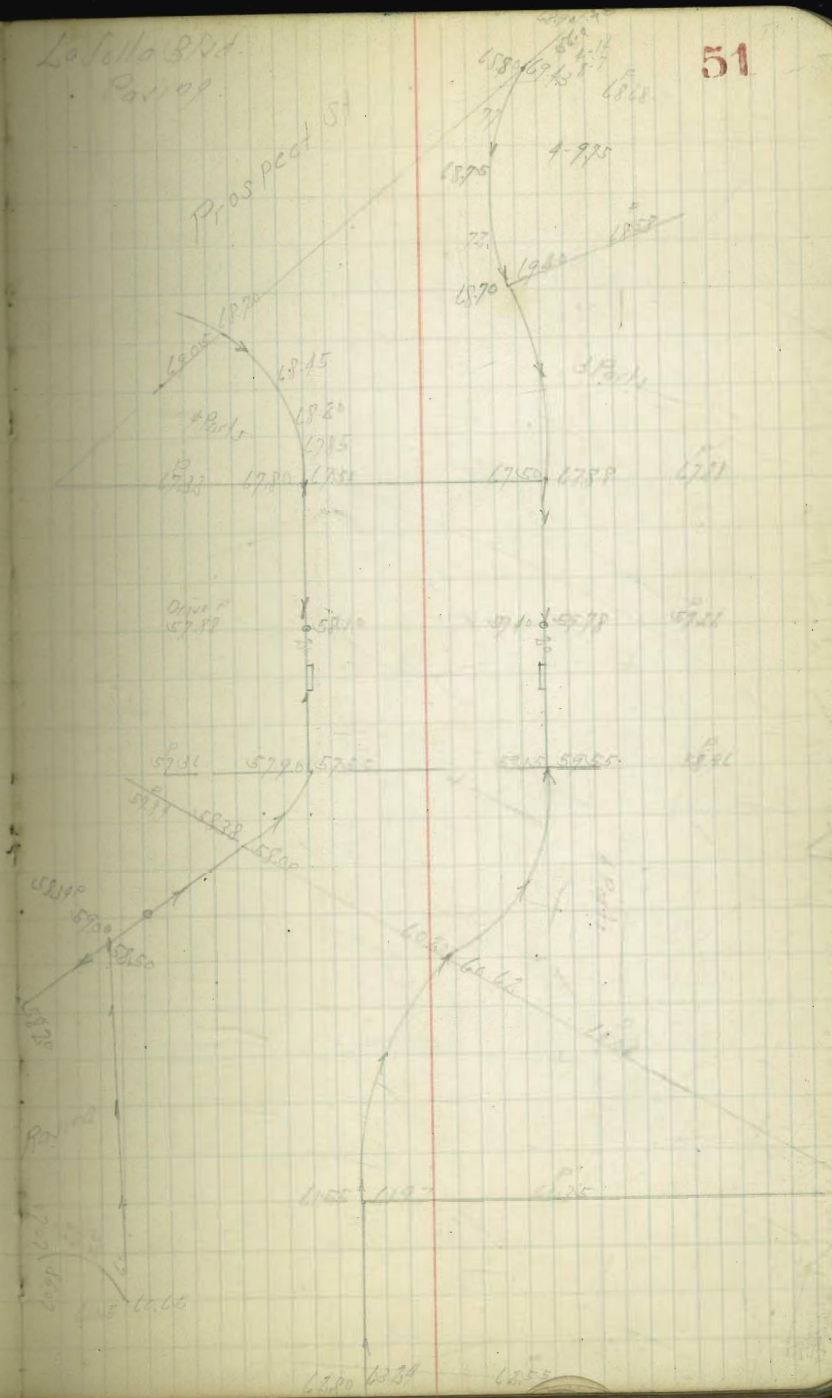




La Jolla Blvd.  
Pav. 191



La Jolla Blvd.  
Pav. 191



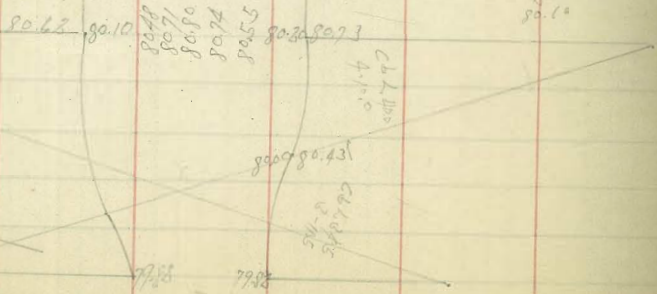
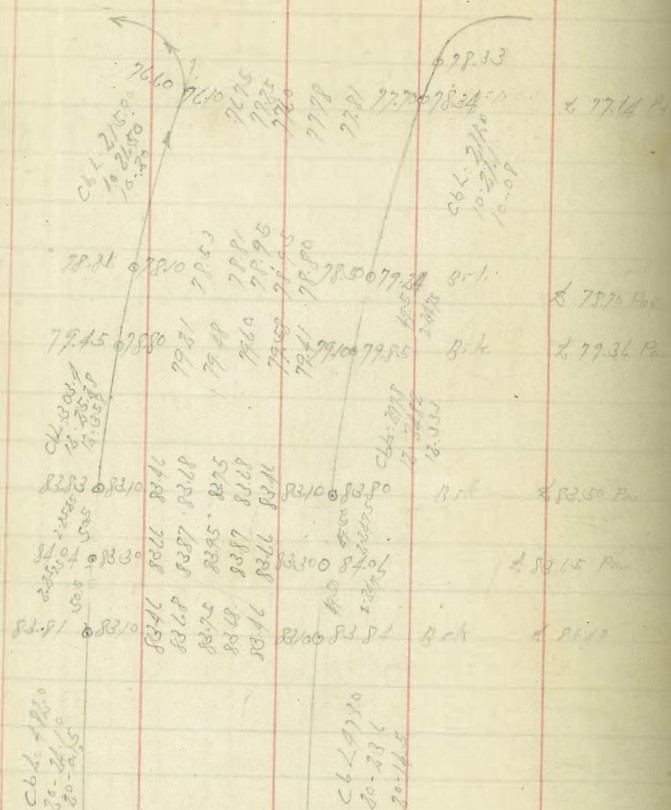


La Jolla Blvd

Palomares

Palomares

H.C.



NY Line

BM 7952

of La Jolla Blvd

La Jolla Blvd

Palomares

52

Rosemead

Palomares

Palomares

Palomares

Palomares

Palomares

Palomares

Palomares

Palomares

Palomares

Palomares

Palomares

Palomares

Palomares

Palomares

Palomares

Palomares

Palomares

Palomares

Palomares

Palomares

Palomares

Palomares

Palomares

Palomares

Palomares

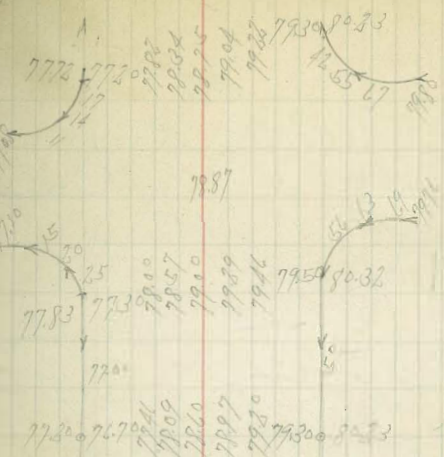
Palomares

Palomares

Palomares

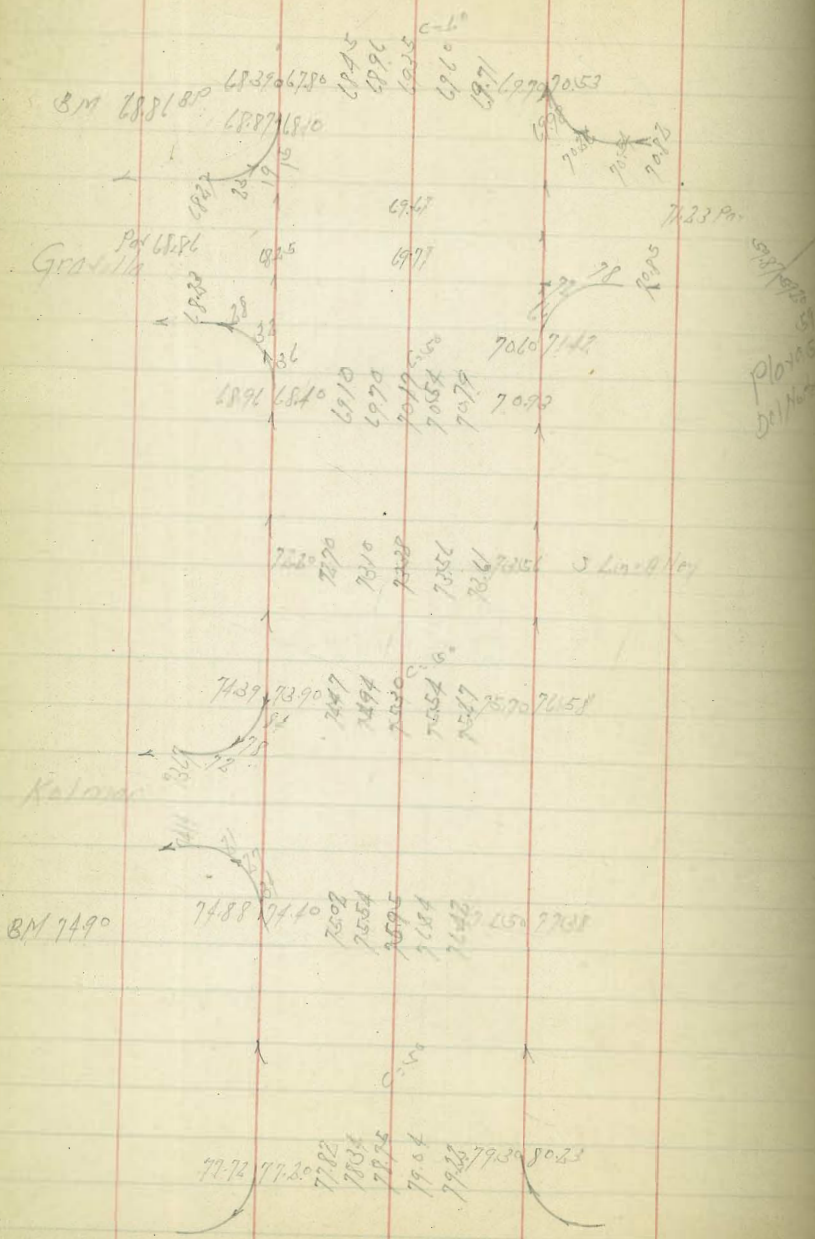
Palomares

Palomares





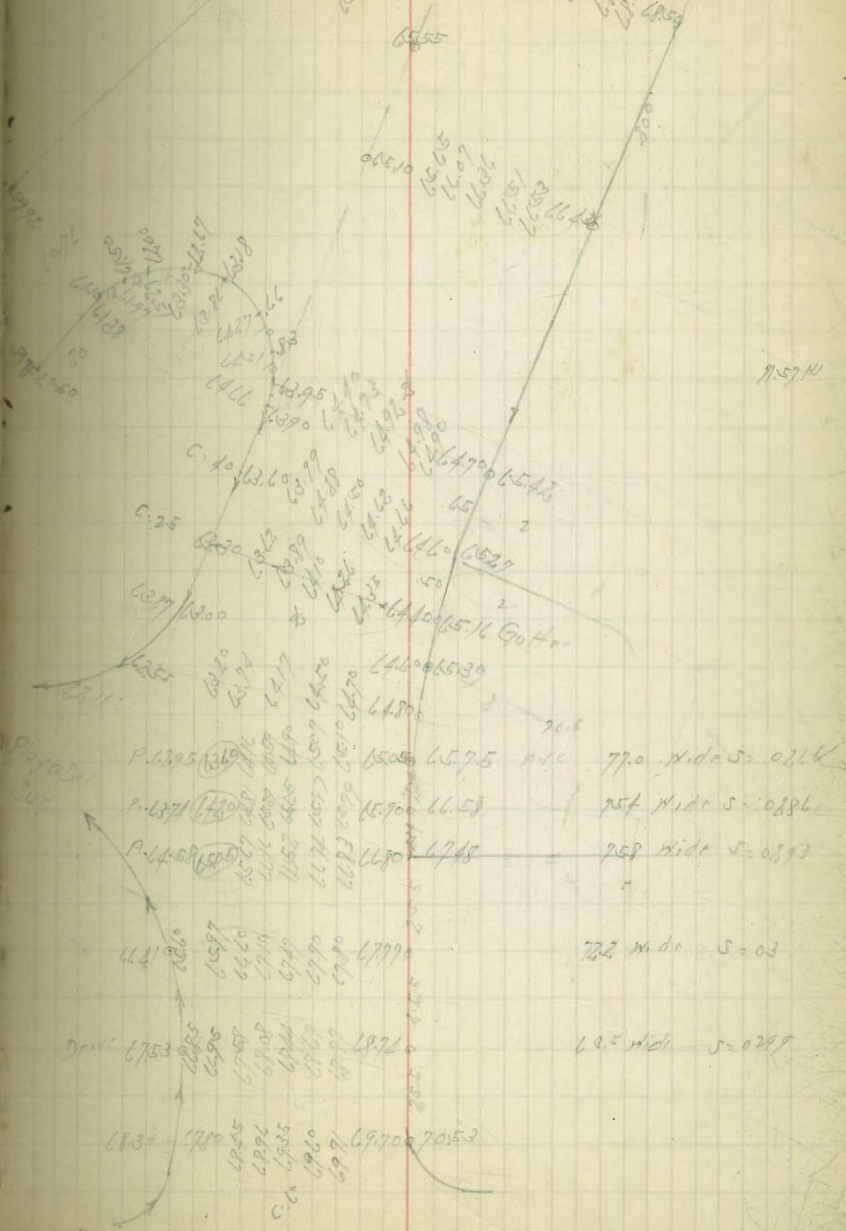
La Soño Blvd  
Paving



BM 7490

Roscom

La Soño Blvd  
Paving



53

Granilla











C5

Curb Inlet N°1 And Culverts N°1- N°3

BM	0.58	199.87		199.59	NE BP C & Edge
TP	0.04	187.01	12.90	186.97	
TP	0.62	177.92	9.71	177.30	TOP

616.7 Top of 30" RC Pipe = N End of Inlet		176.52		176 86 -78	
622.25 x		176.51		138	

627.75 Top of Inlet		176.65		127 73 -57	
---------------------	--	--------	--	------------------	--

TP	0.63	165.80	12.75	165.17	
----	------	--------	-------	--------	--

Culvert N°2		32' of 30"			
S End of Existing Culvert 30" Pipe		156.60			
318.5' of Existing Culvert - S End of N°1		148.90		148 158 -70	

9-7-21  
518.00  
247.00  
271.00  
57

Culvert N°1

TP	3.05	190.35		177.30	Top
TP	0.73	169.14	11.94	167.21	

N End of Existing 30" Pipe		10.07		159.07	
----------------------------	--	-------	--	--------	--

278.1' of Existing Pipe = N End of Culvert N°1		159.81		9.38 89.0 +89.7	
---	--	--------	--	-----------------------	--

C & Sides Laterals		JK of 30" RC Pipe			
BM	131	200.93		199.59	

Lateral N°1		190.39		128 138 -70	
-------------	--	--------	--	-------------------	--

Lateral N°2		185.53		154 165 -71	
-------------	--	--------	--	-------------------	--

Lateral N°3		192.43		75 87 -72	
-------------	--	--------	--	-----------------	--

12<sup>th</sup> + Russ Blv

Branch Mark For Part Time School

7-2-38  
S.W.

BM	9.51	114.98		105.47	H.W. BP H + 12/20
TP	8.03	120.40	261	112.37	
BM			533	115.08	P.M. H.W. BP S.E. Co. Part Time School
TP	3.70	115.07	8.03	112.37	
BM			9.10	105.47	H.W. BP H + 12/20





490' N St College	102.00	102.00	115.00
180' N - Bld	101.10	102.10	115.00
135' N	102.49	103.49	115.00
384' N	103.88	104.88	115.00
336' N	105.27	106.27	115.00
288' N	106.66	107.66	115.00
240' N	108.05	109.05	115.00
192' N	109.44	110.44	115.00
144' N	110.83	111.83	115.00
96' N	112.22	113.22	115.00
48' N	113.61	114.61	115.00
St. Pearl	115.00	116.00	115.00
400' N - St. Pearl	116.00	117.00	115.00
345' N	116.30	117.30	115.00
290' N - F.V.C.	116.60	117.60	115.00
250' N	117.10	118.10	115.00
210' N	118.10	119.00	115.00
170' N	119.70	120.50	115.00
130' N - R.V.C.	121.90	122.40	115.00
86.67' N	124.60	124.76	115.00
43.33' N	127.00	127.12	115.00
St. Line Center Hdd to La Salle Park	130.00	129.50	115.00

109.08	105.06	113.61	112.22	110.83	109.44	108.05	106.66	105.27
SE Top Hdd Collegest Herschel		113.61	112.22	110.83	109.44	108.05	106.66	105.27
113.61	112.22	110.83	109.44	108.05	106.66	105.27	104.88	103.49
116.00	114.61	112.22	110.83	109.44	108.05	106.66	105.27	104.88
116.00	114.61	112.22	110.83	109.44	108.05	106.66	105.27	104.88
103.88	102.49	101.10	101.00					
104.88	103.49	102.10	102.00					
130.00	127.30	124.70	123.10	119.70	118.10	117.10	116.10	115.00
119.50	120.50	122.40	122.40	120.50	119.00	118.10	117.10	116.00



Herschel Ave

@ West St

240 - 1st St	11820	1256	11960
3111	11610	1276	11710
6211 - 8th	11400	1286	1257
113511	11321	1296	13171
16511 - Clearcut	11212	1306	
20211	11179	1316	
21711	11116	1326	
23311 - St Paul - Furling Cohort	11050	1336	

Herschel Ave

Seneca - Lakewood

61 9-11-29

11240	1207	11720	Grade over 13213
11330	1217		
11500	1227		
11960	1237		
13000	1247		



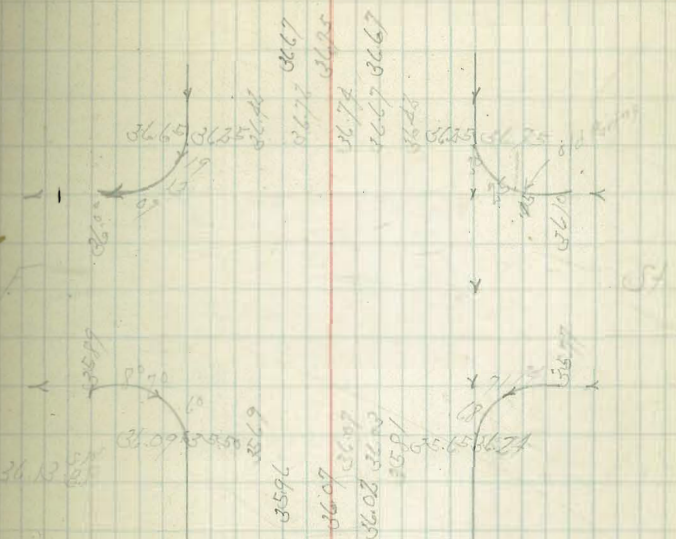
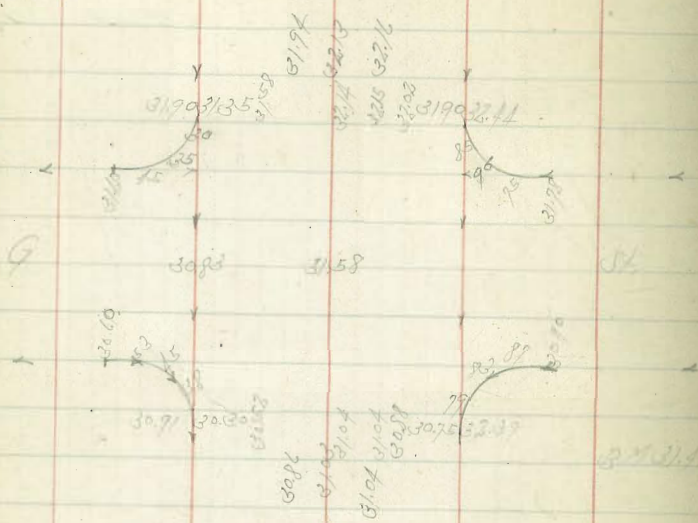








Sixth St. Pavilion  
8th to 2nd St



Market

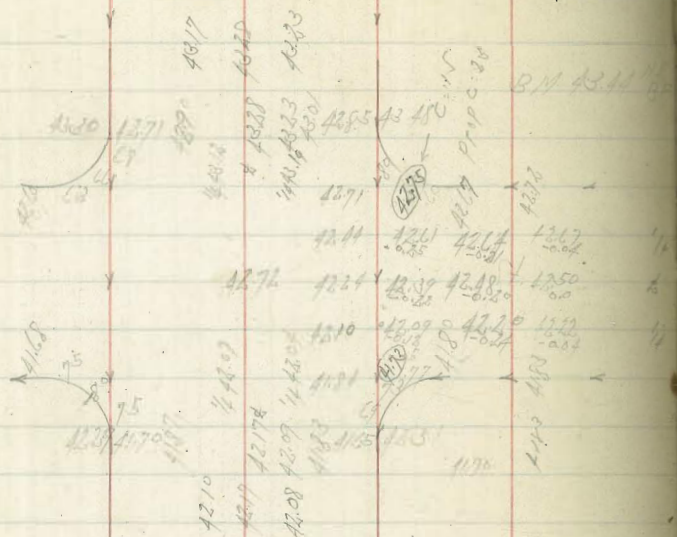
S

G

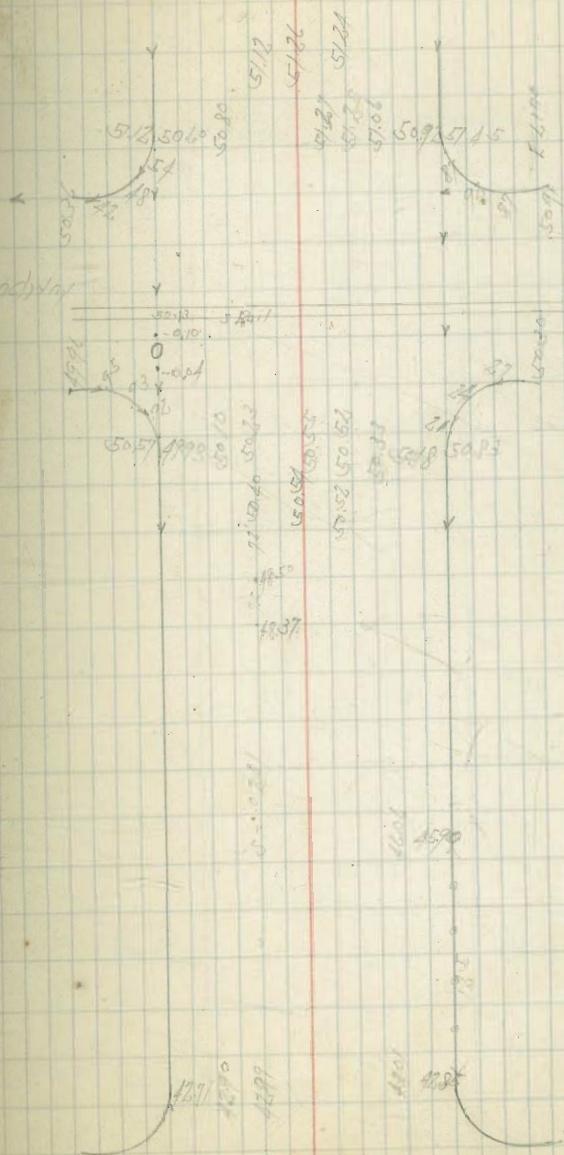
S



South St. Paul  
88 to 86



66













Senior Grades

Alley Black 216 San Diego Land & Tract Co.

South Chollas Add. Map 579

Plots to 22nd between Wain & Filbert

Location	Area	Value	Value	Value
East of 1st St	2500	6.25	15.62	39.06
57 W. East of 1st St	2.84	13.71	34.57	85.43
80 W - 1st	2.09	12.71	31.77	79.43
130 W	2.31	11.43	28.57	71.43
150 W	2.71	10.71	26.77	66.93
210 W	1.11	17.29	43.23	108.07
250 W	1.51	14.29	35.73	89.43
320 W - D.F.	19.71	14.29	35.73	89.43

10-31-21  
 Block 57 City Heights  
 University of Washington, Bot. Garden, Wilson + 36 + 37

10-31-21  
 70

11h. Highlines	34750	34750	34750
50h	34995	34990	35119
100h - 9h	35140	35120	35325
130h	35120	35160	35847
160h - 9h	35220	35220	35521
190h	35291	35275	36354
230h	35360	35350	35965
260h	35430	35425	36454
300h - 9h	35500	35500	36948
350h	35625	35625	37437
400h - 9h	35750	35750	37926
450h	35790	35790	38415
500h - 9h	35820	35820	38904
550h	35853	35851	39393
600h	35886	35890	39882
650h	35919	35912	40371
700h - 5h. University	35952	35944	40860

F	34740	19.00	61.20	51.60	52.00	52.75	53.50	54.25	55.00
	570	439	799	752	719	687	654	622	589
	625	482	870	824	792	760	728	696	664
	+0.64	+0.36	+0.29	+0.34	+1.00	-0.21	+0.75	-0.16	+0.31
N	34750	19.05	61.10	51.80	52.20	53.00	53.75	54.50	55.25
	575	444	804	757	724	692	660	628	596
	630	487	875	829	797	765	733	701	669
	+0.67	+0.77	-0.16	+0.77	+0.67	+0.75	+0.87	-0.36	+0.31
F	56.25	57.50	57.90	58.20	58.51	58.82	59.12	59.44	
	707	531	794	711	656	620	589	561	
	828	670	929	822	757	702	653	609	
	-0.36	+0.37	-0.35	-0.77	+0.67	+0.34	-0.73		
N	56.25	57.50	57.90	58.20	58.57	58.80	59.19	59.57	
	709	534	796	714	659	623	593	567	
	830	672	931	824	759	704	655	611	
	-0.71	-0.32	-0.72	+1.00	+0.84	-0.75	-0.19		



Howard Ave Parking  
Park Blvd

Florida

SM 290.59 448.00

cut 188.86

298.13

97.45

307.11

66.45

11.60

317.45

Georgia

SM 319.85 448.00

19.47

22.15

200

35.95

339.57 324

Park Blvd.

8890

9845

7.50 308.42

17.65

318.42

GA

70.22 321.00

20.90

35.95

39.27 339.81

Mississippi

1638

892.00 9238

Alabama

892.00 9127

8910

8900

Florida

1750

1520

91.00

9053 391.00

8935 796.00

8810

8805

GA

11-9-29  
S. C. 71  
M. C. 100  
M. C. 100  
Remmen SM 320/151  
7911

Texas

316.00 1490

1508 1440

1414

Dr. 140 1450

1541 1474

1676 1541

NL 140 1854 1784

30.38

Louisiana

30.40

1842

Mississippi

1490  
1485 1598

1463 1537

1455 1514

1474 1546

1574 1588

1594 1664

1770 1839

2944

30.38

1750

Oregon

7338  
3745 1490

6276

59.65

Hawaii

332.00 331.31

Arizona

330.00 332

3382 312.00

Texas

7322

6905 6975

441

5872

317.00 332.45  
3095 331.50

3382 339.50

312.10

1700 318.01

BM 33151 SE 1/4

BM 33151 SE 1/4

BM 33151 SE 1/4

BM 31804 SE



Grades Calhoun St.

Wallace St to Taylor St

S

N

W.L. Wallace from S	12.00	
68.61 W - F.L. Wallace from N	11.88	12.00
118.61 W - W.L. Wallace from N	11.04	11.00
148.61	10.20	10.48
218.61	9.34	9.35
268.61	8.53	8.53
318.61	7.69	7.71
368.61	6.85	6.88
418.61	6.02	6.06
468.61	5.18	5.21
518.61	4.34	4.33
568.61 - F.L. Taylor	3.90	4.00
	31.8	41.0

4.00  
11.88  
15.84  
8.04  
7.41  
1.99  
9.7

Taylor St  
Calhoun St  
Taylor St

13.00	11.88	11.04	10.20	9.34	8.53	7.69	6.85
	8.53	7.69	6.85	6.02	5.18	4.34	3.90
	7.69	6.85	6.02	5.18	4.34	3.90	
	6.85	6.02	5.18	4.34	3.90		
	6.02	5.18	4.34	3.90			
	5.18	4.34	3.90				
	4.34	3.90					
	3.90						

117.59  
73  
3.000

Alley Block 53 City Heights  
University to Highline  
Between Central 4<sup>th</sup> St  
West East

74 11-25-27

S.L. University -	35284	35281	345592	F	5281	5319	5290	5441	5111	5104	5043	4980
30'S Brk	35291	35300	35750		269	115	135	157	359	450	520	574
40'S - Brk	35275	35290	35700		271	325	405	397	378	430	477	577
5'S 52 013			480			570	1070	7100	7077	7030	7077	7005
92'S	35216	35218	35730	H	5224	5290	5295	5216	5146	5121	5083	4960
144'S	35149	35111	35745		272	235	150	570	546	739	580	702
196'S	35086	35104	35711		110	830	850	110	585	280	630	597
			612			770	770	7100	-107	-0.99	70.87	70.77
218'S	35021	35041	34960	F	1910	1910	1970	1990	1960	1710	1110	1510
300'S - Brk	34960	34980	35398		612	450	470	500	263	320	390	523
340'S	34940	34960	35103		112	287	300	400	420	310	190	570
380'S - PVC	34920	34940	35103		-0.12	-0.87	-0.23	11.00	-3.20	-0.81	10.00	+0.58
400'S	34900	34920	35103	H	1940	1920	1900	1970	1920	1740	1590	1500
420'S	34870	34890	35103		258	170	190	500	570	363	510	603
440'S	34850	34870	35103		240	-510	340	510	570	420	510	603
460'S - PVC	34830	34850	35103		-0.78	-0.41	-0.47	-0.57	0.00	-0.61	-0.61	-0.45
480'S	34810	34830	35103									
500'S - PVC	34790	34810	35103	F	1160	1000	3920					
520'S	34770	34790	35103		2.23	13.63	11.83					
540'S - PVC	34750	34770	35103		7.12	13.63	11.83					
560'S	34730	34750	35103		11.05	11.05	11.05					
580'S	34710	34730	35103	H	1160	1100	3930	367	00	100	100	
600'S - H.L. Highline	34690	34710	35103		8.10	10.00	11.70	357.50				
	34670	34690	35103		10.21	10.00	11.70					
	34650	34670	35103		-0.87							



Florida St Water Grades  
Cypress Ave to Upas St.

208.55  
2.55  
81236.00 = 57700  
Cypress  
Florida

Old S.L. Cypress	221.50	208.55 +3.95	81236.00
64 S	226.34	1221 +3.51	50800 Cypress Florida
128 S	221.18	117 +3.55	
192 S	216.02	1133 +3.17	
256 S	210.86	558 +3.23	
320 S = Brk	205.70	1066 +3.87	
376 S	204.10	1226 +3.77	
430 S	203.50	1384 +3.70	
470 S	200.90	1546 +3.92	
530 S	199.30	608 +3.60	
570 S	197.70	768 +3.63	
620 S	196.10	928 +3.7	
670 S = Brk	194.50	1088 +3.62	
721-67 S	193.94	1248 +3.78	
773-34 S	193.38	1409 +3.73	
825-01 S	192.82	1571 +3.55	
876-68 S	192.26	1732 +3.50	
928-35 S	191.70	1894 +3.90	
980-02 S	191.14	2056 +3.74	
1031-69 S	190.58	2218 +3.78	
1083-36 S = Brk	190.00	2380 +3.70	
1118-36 S	187.60		

Water Grades  
Florida Upas

75  
12-17-27

E.L. of Florida	187.60	14.01 +6.97	-0.18 For Pay 8466 H.
20 W of E.L.	187.60	14.06 +6.74	
60 W of E.L. = N.L. of Florida	190.50	11.16 +5.15	-2.70 For Pay

Florida + Myrtle Water

N.L. Florida	194.73	6.93 +3.80	
BM	1.03	285.62	284.00 N.W.B.P. Cypress + Georgia
TP	0.61	272.70	12.94 276.09
BM	0.09	261.54	11.25 261.45 S.W.B.P. Cypress + Myrtle 261.53
TP	0.08	248.70	12.92 248.62
TP	0.35	236.62	12.43 236.57
BM			0.62 236.00 S.W.B.P. Cypress + Florida
TP	0.0	223.78	12.84 223.78
TP	0.53	211.62	12.69 211.09
TP	0.43	201.81	12.23 198.29
BM			4.52 197.99 S.W.B.P. Myrtle Florida



Sewer Laterals  
Florida St

No	Prop	1970	1973
No 9	193.20	193.20	191.73
No 8	192.70	192.70	192.39
No 7	194.60	194.60	193.46
No 6	195.10	195.10	194.08
No 5	195.60	195.60	194.74
No 4	197.10	197.10	196.54
No 3	200.30	200.30	198.94
No 2	202.37	202.37	201.97
No 1	203.12	203.12	202.73

Florida St. Myrtle to Upas  
Lateral on top of Existing  
Sewer Main to Florida

76

BM	3.65	201.66	199.01
67.5' S of old S.L. of Myrtle St			194.78
160' S of old S.L. Myrtle St	8.07		193.59
336' S of old S.L. Myrtle St	9.10		192.56
Change of Sewer Myrtle to Florida			
BM 10.02	208.03		198.01
Existing pipe to Florida & Myrtle			195.87
30' S of Myrtle St			196.10
59' S			198.10
88' S			202.10

Florida

Myrtle

6" Top Pipe 19606

194.30 = FL

197.87 = FL at 6" line

198.1 = Top 6" sewer

800

1923  
1924  
1925  
1926  
1927  
1928  
1929  
1930  
1931  
1932  
1933  
1934  
1935  
1936  
1937  
1938  
1939  
1940  
1941  
1942  
1943  
1944  
1945  
1946  
1947  
1948  
1949  
1950  
1951  
1952  
1953  
1954  
1955  
1956  
1957  
1958  
1959  
1960  
1961  
1962  
1963  
1964  
1965  
1966  
1967  
1968  
1969  
1970  
1971  
1972  
1973  
1974  
1975  
1976  
1977  
1978  
1979  
1980  
1981  
1982  
1983  
1984  
1985  
1986  
1987  
1988  
1989  
1990  
1991  
1992  
1993  
1994  
1995  
1996  
1997  
1998  
1999  
2000

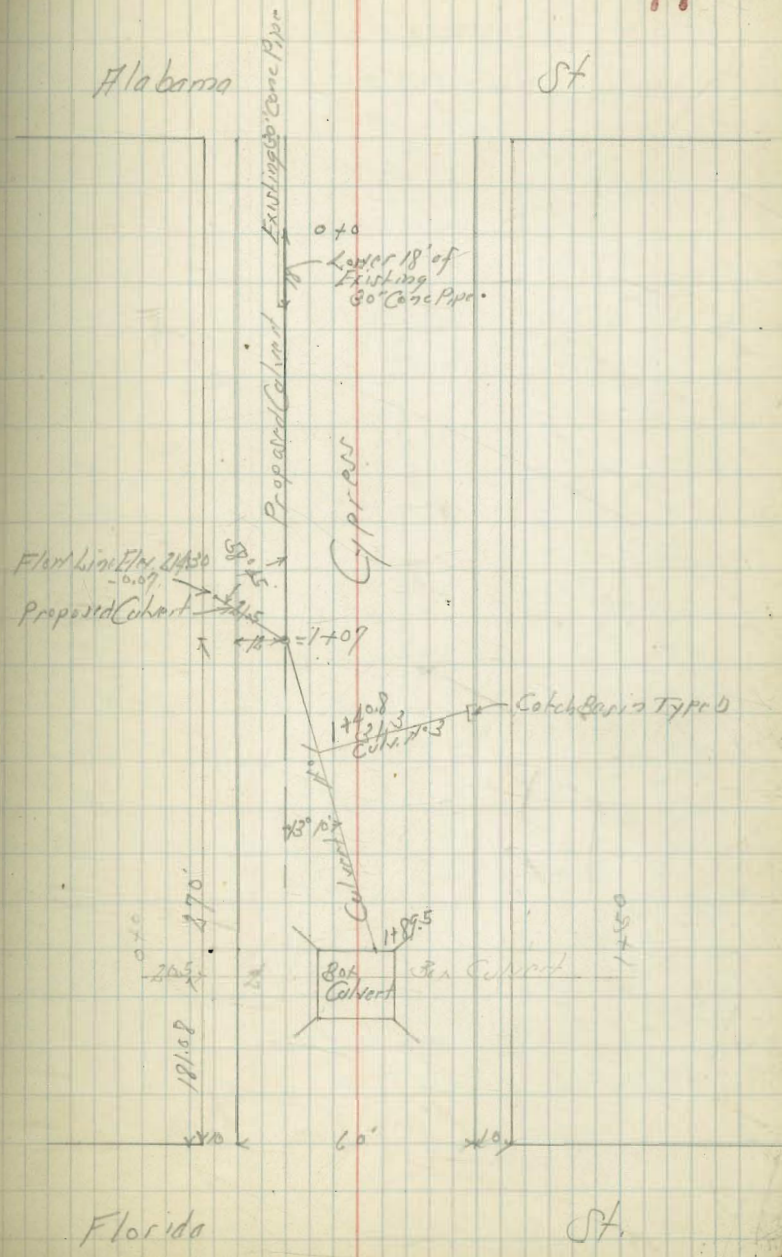


Cypress St.  
Proposed Culvert

		222.50			Grade
1+89.5 = Box Culvert			8.2		214.06 <sup>7.5</sup> <sub>1.5</sub>
1+79			7.2		
1+46			7.9		
1+40.8 = Junction with 42			8.7		214.17 <sup>7.4</sup> <sub>1.3</sub>
1+07 Δ			8.4		214.25 <sup>7.0</sup> <sub>1.5</sub>
1+0			5.0		
0+60			1.0		215.76 <sup>18.0</sup> <sub>1.5</sub>
TP 12.04	233.78		0.76	231.74	216.70 <sup>1.5</sup> <sub>1.5</sub>
0+50			11.2		
0+40			10.0		219.00 <sup>1.7</sup> <sub>1.3</sub>
0+30			8.7		
0+20			7.4		
0+10 = Flank Line			4.8		
0+0			2.50	231.28	231.28
-10 = 3/4 higher 0+0					
TP 0.37	221.31	12.84		220.94	
TP 12.68	233.87	0.12		221.19	
TP 7.62	241.47	0.07		233.80	
		5.47		236.00	

SMBP  
Cypress St. Road  
236.00

12-19-29  
77



Florida

ST



Cross Section of Channel  
North & South of Box Culvert in  
Cypress St. Bet Florida & Alabama Sec Page 77  
22474 St. Ford

0+0 - 20.5 ft of Old H.L. of Cypress St

16 E of L	73
8 E	71
L	93
8 W of L	93
10 W	88

100.5 - Old H.L. of Cypress

10 W of L	53
7 W	96
L	98
4 E of L	15
10 E	69

120.5

10 E of L	75
12 E	71
4 E	97
L	102
4 W of L	100
1 W	74
10 W	51

150.5 - H.L. of Box Culvert

10 W of L	70
8 W	87
L	104
10 E of L	96

22474

78

715 - S.L. of Box Culvert

10 E of L	10.6
L	92
10 W of L	87

100.5 - Old H.L. Cypress

10 E of L	95
1 W	96
L	101
10 E of L	98

121.5

10 E of L	110
4 E	100
L	100
10 W of L	94

150.5

10 W of L	10.5
L	109
6 E of L - Bottom of Gulch	12.3
10 E	12.3





DIRECTIONS FOR USE OF TABLES

TABLE No. 1.

Distance of slope stake from side or shoulder  
stake for any width roadway, slope 1 1/2 to 1.  
If ground is nearly level, the cut or fill at side  
stake is located by the double entry method in  
left column and top row. The number in body

from side stake to slope stake. If ground is not  
nearly level, the distance from side stake to  
the side stake and slope stake lower target by this  
amount if cut, always if fill. Add this amount  
to cut or fill and add distance in table. Set up  
rod at this point, and line of sight should cut  
target.

**IMPROVED TABLES  
AND  
INFORMATION**

TABLE No. 2.

To find Tangent and External for curve of  
any other degree, divide by degree of curve and  
add correction found in column of corrections.  
Degree of curve with a given  $L$  may be found  
by dividing tangent (or external), opposite  $L$  by  
given tangent (or external).  
The distance from a point on the tangent to  
the curve is very nearly the square of the tangent  
length divided by twice the radius.



49.76

3

---

149.28

36.60

---

20

205.88

30.30

---

236.24

251.58

236.24

---

15.34

2276.04

2376.04