

GRADE
168
Pt Loma Sewer

LEVEL BOOK

No. 380

Our Leather Bound Engineers Note Books are carried in the following rulings:

- No. 380 LEVEL BOOK. Left and Right Hand Page the same as Left Hand Page of this Book.
- No. 382 FIELD BOOK. Left Hand Page as in this Book, Right Hand Page 4 x 4 to the inch, Center Line Red.
- No. 384 MINING TRANSIT BOOK. Left Hand Page as in this Book, Right Hand Page 8x8 to the inch, Center Line Red.
- No. 385 FIELD BOOK. Left Hand Page as in this Book, Right Hand Page 8 vertical and 4 horizontal lines to the inch, Center Line Red.

We also carry the Note Books listed above, bound in extra strong Fabri-Hide (otherwise the same quality of book), which can be furnished at a somewhat lower price.

In ordering Fabri-Hide covered books, add the letter "F" to catalog number.

THE FREDERICK POST CO.
ENGINEERING and DRAFTING SUPPLIES

IRVING PARK STATION

CHICAGO, ILL.

MICROFILMED

APR 9 1965

Index to page 26 11/25/29 MGS

Index.

P

1

Pt Loma Sewer	Alley NE of Coronado	1
"	" " Del Mar	4
"	" " Orchard	6
"	" Santa Cruz	8
"	" Coronado	9
"	" Del Mar	11
"	" Orchard	12
"	" Catalina	15
"	" Alley W of Catalina	17
"	" Renaud	21
"	" Alley W of Renaud	22
"	" Harragansett	25

01

INDEXED

2

Sexer Alley N.E. of Coronado
Ave from the W line of Catalina
West to Santa Barbara Street

11.76 179.32 167.56 -

Existing Sewer
W Line
0+00 Catalina Ave

11.10 168.22 163.36 4.86 -

1-25

M.H.
#1 #314

6.76 172.56 164.98 7.58 -

4-45

#1 11.86 190.67 0.51 178.81 171.07 7.80 -

#2 6.86 183.81 177.04 6.77 -

#3 12.51 202.36 0.82 189.85 183.07 6.78 -

M.H.
#4 315 5.18 197.18 189.10 8.08 -

3-50

#1 1.92 200.44 193.70 6.74 -

TP 12.45 214.49 0.32 202.04

#2 9.29 205.20 198.30 6.90 -

M.H.
#3 #316 4.33 210.16 202.90 7.26 -

5-47.50

#1 13.00 226.55 0.94 213.55 205.70 7.85 -

#2 9.62 216.93 208.50 8.43 -

#3 6.34 220.21 211.30 8.91 -

#4 4.13 222.42 214.10 8.32 -

167.56
11.76
179.32
10.51
178.81
11.86
190.67
0.51
199.85
11.51
202.36
0.82
202.04
12.45
214.49
0.94
213.55
13.00
226.55

HI.
226.55

256.63

1.58

255.05

8.60

263.65

4.98

1

3

#5 M.H. Venice 332 223.23 216.91 6.32 -

7-47th

#1 878 234.89 0.44 226.11 218.70 7.41 -

#2 690 227.99 220.49 7.50 -

#3 548 229.41 222.20 7.13 -

#4 500 229.89 224.07 5.82 -

#5 332 231.57 225.86 5.71 -

#6 211 232.78 227.65 5.13 -

#7 M.H. #318 1219 246.66 0.42 234.47 229.45 5.02 -

7-47th

#1 987 236.79 231.24 5.55 -

#2 675 239.91 233.03 6.88 -

#3 424 242.42 234.82 7.60 -

#4 235 244.31 236.61 7.70 -

#5 1144 252.63 1.47 245.19 238.40 6.79 -

#6 734 249.29 240.19 9.10 -

#7 M.H. #319 Santa Barbara 9.93 246.70 241.99 4.71 -

548

#1 7.61 249.02 242.57 6.45 -

#2 424 252.39 243.14 9.25 -

#3 383 252.80 243.72 9.08 -

#4 4.60 252.03 244.29 7.74 -

#5 D. End 6.75 249.88 244.87 5.01 -

Sewer Alley North East of Del Mar Ave

INDEXED

SWBP	4.00	191.53	187.53	17005 MH 173.32	Profile Grade Actual Elev. Flank 2.99	187.53	SWBP 1201 West Co. 1000
0100		14.20	177.33	174.34		0.47	42
3-38 ²³						188.00	
#1		7.71	183.82	177.41	6.41	11.43	
#2	11.86	201.72	1.67	189.86	180.48	176.57	48
#3 #320		8.86	192.86	183.55	9.31	4.56	45
5-48						157.43	
#1		5.59	196.13	188.5	7.88	11.10	Flow Main
#2		2.55	199.17	192.95	6.22	170.28	
#3	12.22	223.43	0.57	201.4	197.65	181.42	
#4		5.56	207.87	202.36	5.51	7.09	
#5 321		4.65	214.60	207.07	6.93	174.34	
5-47 ⁵⁰						173.52	
#1		7.91	217.74	210.07	7.67	183.55	1733.4
#2		4.85	220.80	213.67	7.73	174.34	340
#3	12.28	237.36	0.57	225.08	216.07	319.21	176.74
#4		10.59	226.77	219.07	7.10	3.07	340
#5 322 & source		9.62	227.74	222.03	5.71	180.14	340
7-47 ¹⁴						183.56	
#1		7.00	230.36	222.74	7.62	174.34	176.34
#2		5.29	232.07	223.44	8.63	3.07	307
#3		4.42	232.94	224.15	8.79	177.41	179.41
#4		4.18	232.18	224.86	8.32	3.07	307
#5		4.24	233.12	225.56	7.56	180.48	180.48

HZ
23736

5

#6			3.95	233.41	226.27	7.14
M.H.						
#7	323		4.21	233.15	226.98	6.17
7-47 th						
#1			3.88	233.48	228.35	5.13
#2	12.99	247.24	3.11	234.25	229.72	4.53
#3			11.81	235.43	231.09	4.34
#4			9.70	237.54	232.46	5.08
#5			7.57	239.67	233.83	5.84
#6			5.34	241.90	235.19	6.71
M.H.						
#7	324		4.77	242.47	236.55	5.92
5-48						
#1	13.20	259.48	0.96	246.28	238.47	7.81
#2			9.68	249.80	240.39	9.41
#3			5.36	254.12	242.31	11.81
#4			2.65	256.83	244.23	12.60
#5	D End		0.80	258.68	246.15	12.53

Senior Alley North East of
Orchard Ave from Catalina Blvd North West
to Santa Barbara Ave.

INDEXED

6

	10.94	198.52		187.53		
EXISTING SEWER 06 line of Catalina			5.25	193.27	186.56	
1-5233						
#1			5.04	193.48	186.98	
2-3833						
#1			4.79	193.73	187.29	
M.H. #2 #325			5.54	192.98	187.60	
5-48						
#1			3.35	195.17	189.90	
#2	11.37	209.79	0.16	198.42	192.20	
#3			8.98	200.81	194.50	
#4			6.93	202.86	196.81	
M.H. #5 #326			4.18	205.61	199.12	
5-4750						
#1			1.82	207.77	201.95	
TP	12.80	222.09	0.50	209.29		
#2			10.54	211.55	204.78	
#3			6.55	215.54	207.61	
#4			3.38	218.71	210.44	
M.H. #5 #327 6-492			2.34	219.75	213.13	

Note Profile Grades and Pipe on Ground
did not check. Line was pulled out back
6.71 - took and laid straight to M.H. #325
6.47 -

21
28
50

6.50 -

7.42 -

6.44 -

6.40 -

5.38 -

5.27 -

6.22 -

6.31 -

6.05 -

6.49

6.02 -

6.77 -

7.93

8.27

6.62 -

H.I.
2229

TP	13.21	234.52	0.78	221.31		
#1			1.56	222.96	215.78	7.18 -
#2			8.60	225.92	218.43	7.49 -
#3			6.72	227.80	221.08	6.72 -
#4			4.79	229.73	223.74	5.99 -
#5			2.63	231.89	226.40	5.49 -
TP	12.15	246.19	0.48	234.04		
M.H. #6 #328			11.44	234.55	229.06	5.49 -
6-40 ¹¹						
#1			9.04	237.15	231.71	5.44 -
#2			5.84	240.35	234.36	5.99 -
#3			2.18	244.01	237.01	7.00 -
TP	13.15	259.02	0.32	245.87		
#4			12.08	246.94	239.66	7.28 -
#5			10.94	248.08	242.32	5.76 -
#6 D End			7.83	251.19	244.99	6.20 -
40 to check out						
check out			8.67	250.35		

	Sewer	Santa Cruz Ave			
	from Cato line Blvd of Redondo Street	S.E. to a Point	437.3 E		
8M SW 1/4	+	H.I.	-	Elv	
6.25	173.81			167.56	
0700	Existing Sewer to line of line END		9.80	164.01	159.77
5-49 ^{1/2}					
#1			6.17	167.64	163.02
#			2.53	171.28	166.27
TP	12.44	185.95	0.30	173.51	
#3			10.92	175.03	169.52
#4	into 3 sh.		7.33	178.62	172.76
#5	M.H. 307	to Redondo	4.17	181.78	176.00
		Δ 14° 51' 00" R.			
4-54 ^{1/2} TP	12.09	197.79	0.25	185.70	
#1			10.50	187.29	180.75
#2			7.70	190.09	185.50
#3			2.43	195.36	190.25
TP	12.69	210.12	0.36	197.43	
#4	M.H. 308	Δ 14° 51' 00" L	9.63	200.49	195.00
4-55					
#1			5.39	204.73	199.25
#2	12.69	221.82	0.99	209.13	203.50
#3			8.64	213.18	207.75
#4 D. End			4.45	217.37	212.00
FX Wing Sewer	Sewer	Redondo Street			
	H.I.		4.12	181.83	177.01
	185.95				

INDEXED

8

TP.

22/8 ~ HT
382-
218.00 TP
4.46
222.46
703

check M.H.
#322

215.43 =
215.38 = ops
error

Sever Coronado Street from
the E line of Catalina S. East to D End

					Coronado + Catalina	
B.M. SWBP	7.57	180.51		172.94		
EXISTING		180.54				
0400 2 line Cabbina St		180.54	9.52	170.99	166.41	4.580
3-39.16						
#1			7.30	173.21	167.28	5.93-
#2 530/long			4.68	175.83	168.11	7.72 ✓
D.M.H.					169.00	9.80 ✓
#3 329. 2 line			1.71	178.80	170.50	8.30 ✓
4-41 TP	13.18	193.48	0.21	180.30		
#1			10.99	182.49	174.02	8.47-
#2			7.39	186.09	177.55	8.54-
#3			3.98	189.50	181.07	8.43 ✓
M.H.						
#4 #330			2.09	191.39	184.60	6.79 ✓
6-50						
#1 158 at 5 line	9.42	202.05	0:85	192.63	186.70	5.93-
#2			7.99	194.06	188.50	5.26-
#3			5:78	196.27	190.90	5.37-
#4			1.73	200.32	193.00	7.32-
TP	11.06	212.44	0.67	201.38		
#5			8.43	204.01	195.10	8.91-
M.H #331						
#6			5.75	206.69	197.20	9.49-
6-50				200.00		6.69 ✓

INDEX

169.00 3 117.50
166.41 500
259 9 50
2 1170
hr 250/250
2450
1400
1225
1750

HI
212.44

10

#1			2.69	209.75	-201.15	8.60-
#2	8.94	220.00	1.38	211.06	-202.30	8.76-
#3			7.51	212.49	-203.45	9.04-
#4			6.16	213.84	-204.60	9.24-
#5			5.28	214.72	-205.75	8.97-
#6	M.H 332		4.62	215.38	-206.90	8.48-
6-50						
#1			3.79	216.21	-207.25	8.96-
#2			2.55	217.45	-207.60	9.85-
#3	3.15	221.57	1.58	218.42	-207.95	10.47-
#4			2.63	218.94	-208.30	10.64-
#5			3.93	217.64	-208.65	8.99-
#6 D.End.			6.63	214.94	-209.00	5.94-
Check out DE DelMarSt Service			7.95	213.62	=213.65	

Sewer Del Mar - South East from
Catalina Blvd to Chatsworth Blvd

BMSWBP	657	194.10	187.53	Del Mar Catalina	
EXISTING Sewer					
0700 Easterly line of Catalina		9.78	184.32	178.23	6.09
6-52 ⁵⁰					
#1		9.77	184.33	178.87	5.46
#2		9.58	184.52	179.51	5.01
#3		9.43	184.67	180.15	4.52
#4		8.82	185.28	180.79	4.49
#5		7.75	186.35	181.43	4.92
#6 M.H. #333		6.13	187.97	182.07	5.90
6-55					
#1		2.96	191.14	186.03	5.11
TP	11.80	205.66	0.24	193.86	
#2		10.99	194.67	189.99	4.68
#3		6.44	199.22	193.95	5.27
#4		1.65	204.01	197.91	6.10
TP	13.02	217.84	0.84	204.82	
#5		9.94	207.90	201.87	6.03
#6 M.H. #334		7.12	210.72	205.83	4.89
6-49 ¹⁷					
#1		5.59	212.25	206.32	5.93
#2		4.51	213.33	206.81	6.52
#3		3.94	213.90	207.30	6.60
#4		3.65	214.19	207.79	6.40
#5		3.63	214.21	208.28	5.93
#6 D End	10.10	223.75	4.19	213.45	208.78

INDEXED

187.53.

925
196.78
8.68
188.10
186.80
1.30

158.10

187.60

0.50

156.80

Check D End
Orchard
Wotchar's Work

11

223.75

12.08

211.677P

3.87+

215.54

51.9

210.35

210.35 NO ERROR

213.65 DE

4.93

218.58

#5 218.58

#4 218.58

43.8

214.20

#3 218.58

#1 218.58

4.60

213.90

#2 218.58

5.26

213.32

6.30

212.25

30.52

5.70

214.77

M.H. #334

40.5

210.72

201.83

#5 214.77

7.16

194.67

190.52

M.H. #333

157.97

410

186.23

190.52

#4 190.52

526

185.26

184.47

190.52

#1 190.52

600

184.32

187.53

#5 190.52

6.15

184.34

215.58

6.00

212.28

2.49+

214.77

18.10

201.677P

0.16

201.83

16.53

159.25

1.07

190.52

190.52

32.8

187.53

Sewer Orchard Ave South East from
Catalina Blvd to Chatsworth Blvd.

INDEXED

12

BMSWB	392	200 42	196.50	Orchard Catalina		
Existing Sewer. Easterly side of Catalina Blvd.						
0+00		4 88	195.54	186.26	9.28 -	
5-46.78						
#1		4 73	195.69	186.59	9.10 -	
#2		4 88	195.54	186.92	8.62 -	
#3		4 93	195.49	187.25	8.24 -	
#4		4 67	195.75	187.58	8.17 -	
#5 M.H. #325		4 86	195.56	187.90	7.66 -	
4-50						
#1		5 14	195.28	189.30	5.98 -	
#2	10.34	208.34	2 42	198.00	190.70	7.30 -
#3			7 99	200.35	192.10	8.25 -
M.H. #4 #336			5 73	202.61	193.50	9.11 -
4-50						
#1			4 63	203.71	194.90	8.81 -
#2	7 83	213.38	2 79	205.55	196.30	9.25 -
#3			6 42	206.96	197.70	9.26 -
#4 D. End			3 03	210.35	199.10	11.25 -

18790
18624

Sewer Orchard Ave. N.W.
 from N.W. line of Catalina Blvd N.W. to Venice
 Street then S.W. along Venice Street to Alley S.W. of Orchard
 Ave. then along said Alley 590' N.W. to D. End.

INDEXED

38
 217
 13

SW 89	7.68	204.18	196.50	Orchard Catalina	
Existing Sewer N.W. line of Catalina Blvd					
0-00			7.86	196.32	189.52
6-46 ⁵					6.80
#1			6.98	197.20	190.31
#2			6.13	198.05	191.10
#3			5.40	198.78	191.89
#4			4.57	199.61	192.68
#5			3.77	200.41	193.47
M.H. # #6 337			2.50	201.68	194.25
6-53 ³³					
#1	11.93	215.78	0.33	203.85	197.05
#2			9.37	206.41	199.86
#3			6.79	208.99	202.66
#4			3.89	211.89	205.47
#5	12.23	226.95	1.06	214.72	208.27
M.H. # #6 #338	Δ 90° 00' 00" L & Venice		9.26	217.69	210.80
4-47 ⁵⁰					
#1			10.26	216.69	211.25
#2			10.46	216.49	211.70
#3			10.65	216.30	212.15
M.H. # #4 #339	Δ 90° 00' 00" R & Alley S of Orchard		10.56	216.39	212.60
4-50					

HZ
226.95

14

#1			6.88	220.07	215.20	4.87-
#2			5.36	221.59	217.80	3.79-
#3			2.95	224.00	220.40	3.60-
TP	13.01	239.54	0.42	226.53	-	
#4 ^{M.H.} 340			12.61	226.93	223.00	3.93-
4-50						
#1			8.30	231.24	226.25	4.99-
#2			4.27	235.27	229.50	5.77-
#3	12.78	251.62	0.70	238.84	232.75	6.09-
#4 ^{M.H.} 341			9.25	242.37	236.00	6.37-
4-47.50						
#1			5.49	246.13	236.33	9.80-
#2			3.39	248.23	236.66	11.57-
#3			6.62	245.00	236.99	8.01-
#4 D.End			10.37	241.25	237.33	3.92-
TP	7.38	257.03	1.97	249.65	-	
Check ^{BM} 5589 Orchard + Santa Barbara			6.94	250.09	256.08	
				- 0.01 error		

Sewer Catalina Blvd from
 existing Sewer Pointoma Ave + Catalina SW
 to 2 End (Prof. h. 10) Main Interceptor

INDEXED

138
 5
 600
 3) 273.40
 5465
 273.40
 15
 connector

B.M. 4.46 229.63 225.17 S.W. Top Hydrant Catalina Blvd + Pointoma Ave

EXISTING Sewer
 4 line by same Ave
 0+00 10.89 218.74 212.00 6.74

1-31⁸⁰ 4.5 16° 03' 00"
 M.H. #1 #44 3" off 1/4 line Paloma Ave 2" off line Catalina
 9.00 220.63 214.00 6.63

5-54⁶⁸
 #1 7.87 222.26 215.38 6.88
 #2 5.52 224.11 216.76 7.35
 #3 3.51 226.12 218.14 7.98

#4 1.79 227.84 219.52 8.32
 #5 873 237.93 0.43 229.20 220.90 8.30

6-50
 #1 7.50 230.43 221.75 8.68

#2 6.44 231.49 222.60 8.89
 #3 5.61 232.32 223.45 8.87
 #4 5.21 232.72 224.30 8.42
 #5 4.72 233.21 225.15 8.06

M.H. #6 #46 2/4 Paloma Ave
 4.16 233.77 226.00 7.77

6-55
 #1 3.45 234.78 227.15 7.33
 #2 2.53 235.40 228.31 7.09
 #3 1.63 236.30 229.46 6.84

H.I.
23793

16

#4	11.12	248.58	0.47	237.46	230.62	6.84-
#5			9.97	238.61	231.77	6.84-
#6	M.H.# 47		8.63	239.95	232.93	7.02-
6-55						
#1			7.13	241.45	234.25	7.20-
#2			5.53	243.05	235.57	7.48-
#3			3.95	244.63	236.89	7.74-
#4			2.28	246.30	238.21	8.09-
#5	10.09	258.08	0.59	247.99	239.53	8.46-
#6	M.H. #48		8.79	249.29	240.85	8.44-

continued on page 24

Connect existing Sewer
w/ Line Col. 10/14

M.H.# 44		229.63				
1-20 ⁹⁰					214.00	
#1 connect			8.22	221.41	215.28	6.13-

Bill Bliss Notes
 In Duesmit X
 J. Jacobsen Rd
 H. Soper Rd
 Oct 26/1929

Sewer Alley West of Catalina
 Blvd From Point Loma Ave South to
 Alley South East of Toronto Drive

INDEXED

S.B.N.W.89

17

				At Loma Ave	At Catalina	
B.M. S.W. Taply	18 69	237.86		225.17		
EXISTING Sewer						
0700	Skene P. Loma Ave	6.00		231.86	226.10	5.76-
5-58 ¹²						
#1			1.12	236.74	228.28	8.46-
7P	1165	249.23	0.28	237.58		
#2			10.34	238.89	230.46	8.43-
#3			8.23	241.00	232.64	8.36-
#4			6.28	242.95	234.82	8.13-
M.H. #5 343			4.82	244.41	237.00	7.41-
5-57 ²²						
#1	set 8.00		3.84	245.39	237.72	7.67-
#2			3.23	246.00	238.45	7.55-
#3			2.10	247.13	239.17	7.96-
#4			1.71	247.52	239.90	7.62-
connect existing sewer						
#5	N. 10.0 Loma Ave		2.12	247.11	240.62	6.49-
1-30 # of existing Sewer						
M.H. #1 344	8.10 P. Loma 12.42	259.55	2.10	247.13	241.00	6.13-
6-55						
#1			7.81	251.74	242.43	9.31-
#2			6.84	252.71	243.86	8.85-
#3			5.22	254.33	245.29	9.04-
#4			3.74	255.81	246.72	9.09-
#5			2.67	256.88	248.15	8.73-
M.H.* #6 345			1.79	257.76	249.58	8.18-
6-55 #1	11.76	270.80	0.51	259.04	250.98	8.06-
#2			10.35	260.45	252.39	8.06-

H.I.
270.80

18

#3			8.80	262.00	258.79	8.21-
#4			7.77	263.03	255.19	7.84-
#5			5.52	265.28	256.60	8.68-
#6	M.H. #346 E. Varona		5.42	265.38	258.00	7.38-
#1	Connect existing Sewer X on WALK S. Line Penod 07/62		4.73	266.07	258.21	7.86-
5-46						
#1	7.69	278.03	0.46	270.34	258.52	11.82-
#2			7.46	270.57	258.83	11.74-
#3			6.95	271.08	259.14	11.94-
#4			5.92	272.11	259.45	12.66-
#5	connect existing Sewer N. Line Penod 08		6.97	271.06	259.75	11.31-
60' of existing Sewer						
S. Line Penod 00						
existing Sewer						
			6.57	271.46	260.17	11.29-
6-37.07						
#1			5.76	272.27	260.44	11.83-
#2			5.00	273.03	260.71	12.32-
#3			4.66	273.43	260.97	12.46-
#4			4.36	273.67	261.24	12.43-
#5			4.64	273.39	261.51	11.88-
Flast 5' 2" hood						
#6	DMH #348		5.00	273.03	267.00 261.81	6.03 11.22-
1-31.64						
#1	8.84	281.22	5.65	272.88	262.03	10.35-
3-36.00						
#1			9.72	271.56	262.30	9.20-

0.6846
0.7120

H.I.
281.22

37
3680
-10

19

#2 10.93 270.29 262.56 7.73

#3 11.97 269.25 262.82 6.43

1-39 connect existing

#5 M.H. Mine Santa Barbara 12.30 268.92 263.10 5.82

5 Line Santa Barbara

Connect EXISTING
X-on WORK

8.24 272.98 266.30 6.68

3-43³³

#1 7.54 273.68 267.67 6.01

6.18 275.04 269.05 5.99

DMH# Δ 90°-00'00"

#3 351 4.06 277.16 270.94 6.22

1-38⁵⁰

MH Δ 22°-14'00"

#1 #352 2.17 279.05 272.37 6.68

#51²⁵ TP 13.00 293.30 092 280.30

#1 10.24 283.06 274.28 8.78

#2 6.24 287.06 276.19 10.87

#3 2.47 290.83 278.10 12.73

DMH¹⁰ 3.84 296.33 0.86 292.44 → 280.00 14.35

#4 353 1.78 294.55 287.00 7.55

Going North 5 Grade Going North → 280.00

5-34

#1 3.79 292.54 280.24 12.30

#2 5.21 291.12 280.48 10.64

#3 6.65 289.68 280.72 8.96

#4 8.12 288.21 280.96 7.25

#5 D. End 9.24 287.09 281.19 5.90

Going South 3-50 Grade → 287.00

HZ
29633

#1	3.31	299.36	028	296.05	288.00	8.05 -
#2			206	296.27	289.00	7.27 -
#3 D End			126	298.10	290.00	8.10 -

Server Alley Block F. Rivna Villas

6	M.H. 348=00	10.08	283.11	273.03	267.00	6.03 -	
3	6-55						
#1			7.69	275.42	269.01	6.41 -	
#2			4.98	278.13	271.02	7.11 -	
#3	T.P.	7.75	290.07	246 0.79	280.65 282.32	273.03	7.62 -
#4			7.04	283.03	275.04	7.99 -	
#5			5.17	284.90	277.05	7.85 -	
#6 D End			2.63	287.44	279.05	8.39 -	

#	SE Top		9.06	281.01		
---	--------	--	------	--------	--	--

HZ 29936
 13.01 -
 286357A
 0.261
 28661
 13.14
 273.97
 0.54
 2737
 13.06
 260.66
 260.68
 Santa Barbara
 + Colbyline

Sewer Renoud Ave from the E
of La Palma Ave 590's to 650

INDEXED

21

BM	Tie out 4.6 M.H. #344	12.43	259.56	247.13	E. La Palma Ave	
000	EXISTING MV E. La Palma Ave	11.43	269.98	1.01	258.55	251.48 7.07
6-49 II						
#1				10.28	259.70	253.15 6.55
#2				8.75	261.23	254.82 6.41
#3				7.97	262.01	256.49 5.52
#4				5.86	264.12	258.16 5.96
#5				4.59	265.39	259.83 5.56
#6	M.H.# 357			3.02	266.96	261.51 5.45
6-49 II						
#1				1.34	268.64	263.18 5.46
#2	T.P	12.41	281.91	0.48	269.50	
				11.69	270.22	264.85 5.37
#3				10.06	271.85	266.52 5.33
#4				8.62	273.29	268.19 5.10
#5				7.01	274.90	269.86 5.04
#6	D.Ford			5.56	276.35	271.54 4.81
Check BM.				0.87		

B. H. Bliss 4-123
 Joe Die-nit 7
 J. Jacobszoon Red
 H. Saper Red

Sewer Alley West of Renaud St
 from Point Home Ave to Varona St.

3M. Tie out for General tap to EXisting Sewer - 52" dia Along side of West Side of 17 TP. Connect EXisting Sewer to line Point Home Blvd	13-10	247.96		231.86	
0+00	12.95	257.43	0.48	244.48	
4-57 ^{TP}	9.68	266.49	0.62	256.81-	
#1			7.36	259.13-	249.61 9.52-
#2			5.56	260.93-	251.67 9.26-
#3			4.81	241.68	253.73 7.95-
#4 M. 4358			4.40	262.09	255.80 6.29-
5-52					
#1			3.22	263.27	256.32 6.95-
#2	11.29	276.79	0.99	265.50	256.84 8.66-
#3			8.19	268.60	257.36 11.24-
#4			5.33	271.46	257.88 13.58-
MH #5 4354			4.55	272.24	258.46 13.84-
4-57 ⁵⁰					
#1			5.08	271.71	258.97 12.74-
#2			6.23	270.56	259.55 11.01-

H.I.
276.79

23

#3 6.98 269.81 260.12 9.69-

connect existing
#4. Sewer N. line to Palms Ave 10.82 265.97 260.70 5.27-

1-30 of existing Sewer
#1 M.H.
#360 & La. Palms Ave 10.78 266.01 261.00 5.01-

6-51 62
#1 8.74 281.83 3.70 273.09 262.86 10.23-

#2 8.13 273.70 264.70 8.98-

#3 7.31 274.52 266.58 7.94-

#4 6.32 275.51 268.44 7.07-

#5 5.38 276.47 270.30 6.17-

M.H.
#6 #361 4.27 277.56 272.16 5.40-

5-56
#1 2.66 279.17 273.84 5.33-

#2 10.48 291.45 9.86 280.97 275.52 5.45-

#3 8.14 283.31 277.20 6.11-

#4 5.48 285.97 278.88 7.09-

#5 D. End 2.55 288.90 280.56 8.34-

Check B.M. S.F. Top of . Remous + Varona 10.40 281.05
= 281.01
0.04 error

Catalina Sewer cont/ from page 16

42.
258.00

INDEXED

24

M.H 48:00			8.79	249.29	240.85	8.44-
7-50						
#1			7.58	250.50	242.00	8.50-
#2			6.50	252.08	243.15	8.93-
#3			5.31	252.77	244.20	8.47-
#4			4.31	253.77	245.45	8.32-
#5			3.25	254.83	246.60	8.23-
#6			2.56	255.52	247.75	7.77-
#7 ^{M.H} 49			1.72	256.36	248.90	7.46-
7-50						
#1	7.58	264.72	0.94	257.14	249.35	7.79-
#2			6.83	257.89	249.80	8.09-
#3			6.14	258.58	250.25	8.33-
#4			5.68	259.04	250.70	8.34-
#5			5.56	259.16	251.15	8.01-
#6			5.65	259.07	251.60	7.47-
#7 D End			5.97	258.75	252.05	6.70-
Check BM NW 2P			4.06	260.66		
			=	260.68		

NWB R
San To Barbara
Catalina

Sewer Narragansett^{street} from Existing
 Sewer Wline of Catalina West to D. End
 5614 set North of it.

INDEXED

25

BM	12.76	170.28		157.52	NEBP Narragansett Catalina	
Existing Sewer Wline of Catalina Blvd 0+00			12.90	157.38	151.10	6.28-
2-46						
#1			9.00	161.28	155.00	6.28-
M. H. 15th #2 301			4.11	166.17	159.00	7.17-
4-52.50						
#1	12.60	182.41	0.47	169.81	162.21	7.60-
#2			8.81	173.60	165.48	8.12-
#3			6.46	175.95	168.75	7.20-
M. H. #4 #302			3.33	179.08	172.02	7.06-
4-46 87 TP	13.24	195.37	0.28	182.13		
#1			11.24	184.13	177.92	6.21-
#2			5.16	190.21	183.83	6.38-
TP	11.51	206.61	0.27	195.10		
#3			10.36	196.25	189.73	6.52-
#4 D End			6.14	200.47	195.64	4.83-
SN BP Check BM Narragansett			1.40	205.21	=205.21	

INDEXED
MAY 8 1908

Topography Lot 14 Block 56
Pt Loma Heights

BMSWB 9-47 197.00 187.53 Del Mar
Catalina

INDEXED

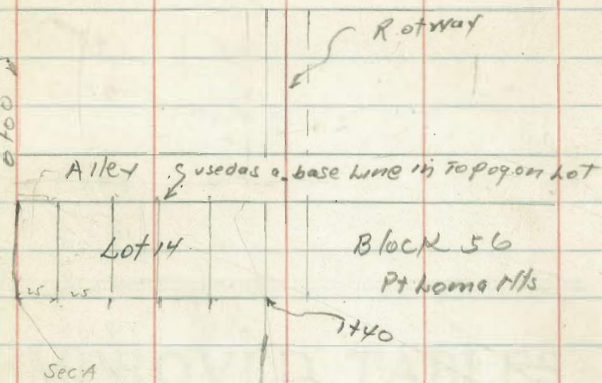
WK

DEC 28 1948

	Sec A	0+00
0+00	5.2	191.8
+20	4.7	192.3
+30	3.9	193.1
+40	2.6	194.4
+50	2.2	
	Sec B 0+45	
-50	2.7	194.3
-40	3.5	193.5
-30	4.4	192.6
-20	5.4	191.6
-10	5.9	191.1
0+00	6.4	190.6
	Sec C 0+40	
00	6.3	190.7
+10	5.7	191.3
+20	5.3	191.7
+30	5.1	191.9
+40	4.3	192.7
+50	3.5	193.5
	Sec D 0+75	
-50	3.3	193.7
-40	4.0	193.0

Del Mar Street

Del Mar



HI
197.00

-30	4.8	192.2
-20	5.6	191.4
-10	6.3	190.7
00	6.3	190.7
	11.00 Sec E	
+00	5.8	191.2
+10	5.8	191.2
+20	5.2	191.8
+30	4.4	192.6
+40	3.7	193.3
+50	2.8	194.2
	Sec F 11.20	
-50	1.4	195.6
-40	2.2	194.8
-30	3.4	193.6
-20	4.0	193.0
-10	4.7	192.3
+00	4.8	192.2
	Sec G 11.40	
+00	4.2	192.8
+10	4.2	192.8
+20	3.4	193.6
+30	2.4	194.6
+40	1.2	195.8
+50		

DIRECTIONS FOR USE OF TABLES

TABLE No. 1

Distance of slope stake from side or shoulder
 stake for any width roadway, slope 1 1/2 to 1.
 If ground is nearly level, the cut or fill at side
 stake is located by the double entry method in
 left column and top row. The number in both

IMPROVED TABLES

AND

INFORMATION

To find Tangent and External for curve of
 any other degree, divide by degree of curve and
 add correction found in column of correction.
 Degree of curve with a given L may be found
 by dividing tangent (or external), opposite L by
 given tangent (or external).
 The distance from a point on the tangent to
 the curve is very nearly the square of the tangent
 length divided by twice the radius.

Charles M. Boren

R. 6870

$$\begin{array}{r}
 BM - 0.75 \\
 \underline{1.89} \\
 + 1.14 \\
 \underline{1.09} \\
 0.05 -
 \end{array}$$

$$\begin{array}{r}
 + 1.14 \\
 - 3.50 \\
 \hline
 4.64
 \end{array}$$

$$\begin{array}{r}
 + 1.14 \\
 11.73 \\
 \hline
 - 10.59
 \end{array}$$

$$\begin{array}{r}
 276.00 \\
 273.24 \\
 \hline
 2.76
 \end{array}$$

$$\begin{array}{r}
 270.30 \\
 266.58 \\
 \hline
 3.72 \\
 270.30 \\
 \hline
 4.02
 \end{array}$$

$$\begin{array}{r}
 272.16 \\
 262.89 \\
 \hline
 67930 \\
 155 \\
 \hline
 930
 \end{array}$$

$$\begin{array}{r}
 272.16 \\
 491.00 \\
 \hline
 411.16 \\
 186 \\
 \hline
 1172
 \end{array}$$

$$\begin{array}{r}
 266.58 \\
 186 \\
 \hline
 268.44
 \end{array}$$