

GRADE  
169

WAS

FIELD BOOK

No. 335



1209  
BM 8317 JWB.P. Silver & Fede  
Indexed  
x 0

Our Leather Bound Engineers Note Books are carried in the following rulings:

- No. 380 LEVEL BOOK. Left and Right Hand Page the same as Left Hand Page of this Book.
- No. 382 FIELD BOOK. Left Hand Page as in this Book, Right Hand Page 4 x 4 to the inch, Center Line Red.
- No. 384 MINING TRANSIT BOOK. Left Hand Page as in this Book, Right Hand Page 8x8 to the inch, Center Line Red.
- No. 385 FIELD BOOK. Left Hand Page as in this Book, Right Hand Page 8 vertical and 4 horizontal lines to the inch, Center Line Red.

We also carry the Note Books listed above, bound in extra strong Fabri-Hide (otherwise the same quality of book), which can be furnished at a somewhat lower price.

In ordering Fabri-Hide covered books, add the letter "F" to catalog number.

**THE FREDERICK POST CO.**  
*ENGINEERING and DRAFTING SUPPLIES*  
IRVING PARK STATION  
CHICAGO, ILL.

MICROFILMED

APR 9 1965

Ties Included.







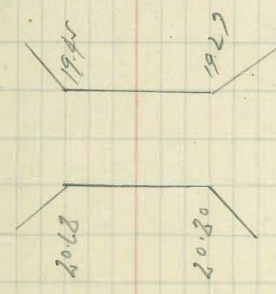
Gypsum St. Grades  
Florida to Alabama

12-19-29  
Gandy  
Wep 194  
Hartman  
Reman

2

	H	S
Elite Florida St	234.60	234.85
10' L - FC. CB Pal	233.70	233.70
40' F	230.60	230.45
70' L - FVC	227.50	227.20
90' F	225.65	225.20
110' L - FVC	224.20	223.70
150' L - FVC OK	221.75	221.25
157.17' F - Gandy to Bay	221.30	220.81
176.17' F - H. Colver	220.36	219.56
190' F - F.L.	219.25	219.55
205' F - Gandy to Bay	218.31	218.48
210' F - Brk. ok	218.00	218.20
230' F	218.90	218.20
250' F - Colver	218.60	218.20
254' F - Colver	218.70	217.20
270' F	219.05	218.55
279' L - Colver	219.25	219.55
290' F	217.10	218.20
310' F	218.00	218.50
330' F - End of Imp	220.50	221.00

Grade	FC	FC	FC	FC	FC	FC	FC
33.70	30.60	27.50	25.15	24.20	21.75	21.36	Gandy
30.60	27.50	25.15	24.20	21.75	21.36		
27.50	25.15	24.20	21.75	21.36			
25.15	24.20	21.75	21.36				
24.20	21.75	21.36					
21.75	21.36						
21.36							
18.90	18.40	18.35	18.55	19.50	20.20	21.20	
18.40	18.35	18.55	19.50	20.20	21.20		
18.35	18.55	19.50	20.20	21.20			
18.55	19.50	20.20	21.20				
19.50	20.20	21.20					
20.20	21.20						
21.20							
19.25	18.40	18.35	18.55	19.50	20.20	20.70	
18.40	18.35	18.55	19.50	20.20	20.70		
18.35	18.55	19.50	20.20	20.70			
18.55	19.50	20.20	20.70				
19.50	20.20	20.70					
20.20	20.70						
20.70							



Cypress St

Colvert No. 1	98 80" Pipe Conc. Pipe		
Fast End	217.05	217.20	10.85
18.79 ft = Junction	214.18	214.28	10.51
27.53 ft Box Colvert No. 1	214.06	214.16	10.68
East End	217.05	212.40	8.85
50.5 ft	212.15	212.15	8.30
100.5 ft	211.90	211.90	8.35

Colvert No. 3	31.5" 18" Conc. Pipe		
Catch Basin No. 1	215.20	218.30	9.16
36 ft = Junction with No. 1	214.80	214.80	8.72

Box Colvert No. 1			
N End Box Colvert Flankline	214.10	214.10	11.72
S End	214.00	214.00	15.50

Colvert No. 2	R=80 Δ=39°00'		
0+0 = Existing 12" Conc. Pipe	221.50	221.50	19.21
18.15 ft	221.00	221.00	18.54
36.30 ft	220.50	220.50	17.87
54.45 ft	220.00	220.00	17.20

Proposed Culvert

	212.50	212.50	212.50	3
1+87.5 = Junction of Box No. 1	8.5	212.50	212.50	22.5
1+79	7.2			
1+46	7.9			
1+108 = Junction of 12" Conc. Pipe	8.71			214.17
1+07 = Junction with	8.4	214.10	214.10	22.6
1+70	5.0	212.50	212.50	22.6
7.75	2.5	220.0		
TP 12.04	233.78	0.71	211.74	16 215.70
+50	11.2	222.6	216.70	19.28
+40	10.0	223.8	Pvc 219.00	14.78
+30	8.7	225.0		12.11
+20	7.4	226.5		
+10	4.8	229.1		
0+0	2.50	231.28	231.28	
-10	13.0	Flankline		
TP 0.57	221.81	17.81	210.96	
TP 12.62	222.87	5.12	211.19	
TP 76.7	241.50	0.07	233.80	
BM	15.47	221.00		23.00



Florida St Point  
Robinson to Upas

Myrtle

199.02 9830 917  
9205 9122 9840 9990  
9925 9941 9989  
9925 9991 9830  
1980 9974 969 922 919 974 19797  
BM 19799 81 19778 9690 9690 19776

Upas

19538 9450 9454 9394 9484  
9480 9270 9215 9205 9220 9320 9340  
9417 9495 9502  
9410 9487

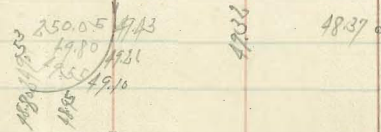
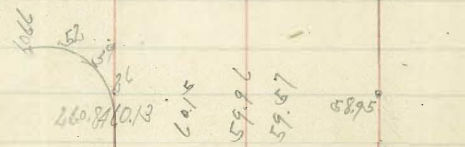
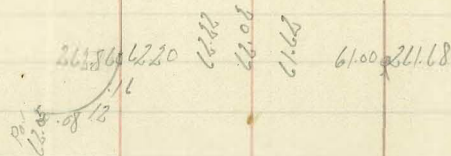
23976 3920

BM 23690 3133 3360 3620  
311 3620 3590  
BM 2360 3513 3415 3386 3323 3353  
3105 3953 30853 892 80913  
724  
30590 578 498  
30052 9925 9950  
19925 19925 9830 9805 9840 19960

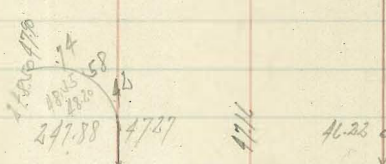
Myrtle

Florida St. Parvint  
Robinson to Upor

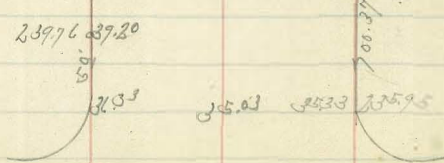
Georgia Ct



Florida Ct.

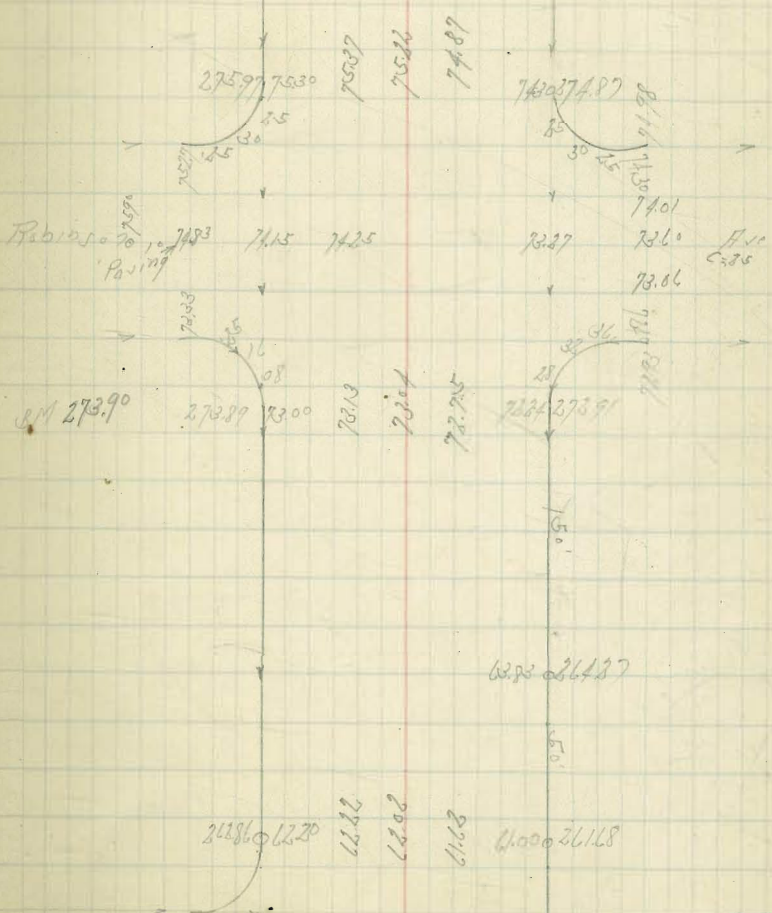


Dip Section Star 14



Cypress

Robinson to Parvint



Georgia Ct



Florida St. Levels  
H. Robinson Florida

12-23-39

Cypress St. Levels  
For No. 1 Culvert

12-27-39

6

H. Robinson Florida

219.97

12.01  
13.37  
+6.37

273.90  
13.37  
+6.37

405 - MH No. 1

219.40

13.37  
+6.37

273.90  
13.37  
+6.37

305 E of MH No. 1  
E.L. Florida

217.69

12.31  
+6.37

273.90  
12.31  
+6.37

273.90  
587  
279.77

221.25

0+0 - N.E. End Culvert 7.4

+30 6.9

+50 7.6

+80 8.0

+85 8.3

+100 - End 7.8

Culvert No. 1 100ft 2-18" Cone 221.25 H.

0+0 - East End 213.80

279' E of E.L. Florida

50 ft 213.68

100 ft - Wing Fall of  
Box Culvert 213.56

7.45  
+6.37  
7.57  
5.27  
+1.9  
7.69  
7.45  
+0.45

Catch Basin 254' E of E.L. Florida on N.C.B.  
of Cypress

254' E of E.L. Cypress Top C.B. 216.62

4.63  
+6.37  
+0.45

Florida St.

Sixth Landmarks

West Side

East Side

1-29-80

No 10 204.00

No 1 203.10

No 11 204.00

No 2 204.00

No 12 200.60

No 14 199.22

No 15 198.76

No 16 197.78

No 17 196.84

No 18 192.76

No 19 192.12

No 20 191.13

SM 204.00  
204.00

270  
270

204.00

SM 197.99  
197.99

197.99  
197.99

200.30

197.10

195.60

195.10

194.10

193.70

193.50

Florida St. Section Chicago

2-4-30

Myrtle to Upas

7

200 N of L Myrtle

150 N "

100 N "

50 N of L Myrtle

E of Myrtle

50 S

100 S

150 S

200 S

250 S

300 S

350 S

385 S

198.93

197.67

196.46

195.23

194.00

193.81

192.52

191.98

191.01

190.30

189.56

188.82

188.20

SM 197.99

197.99

197.99

197.99

197.99

197.99

197.99

197.99

197.99

197.99

197.99

197.99

Easting  
1989.2

1989.2

Easting  
1883.0

SM 197.99

SM 197.99

SM 197.99

SM 197.99

SM 197.99

SM 197.99

SM 197.99

SM 197.99

SM 197.99

SM 197.99

SM 197.99



Cypress Ave  
Water Graders  
Florida to Alabama

2-10-30

Florida + Upas

3-1-30

8

Curtain Hall No 1

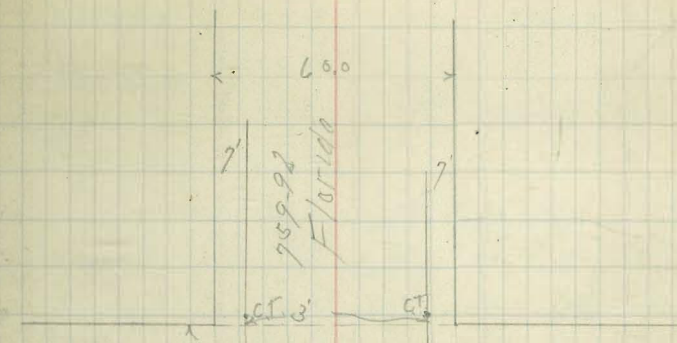
East Line of Florida		21436.00
10' E of FL Florida	230.50	21191.50
50' E	226.65	20964.85
90' E - Oak	222.00	20742.85
150' E - Oak	218.20	20524.65
190' E - Oak	217.35	20307.30
250' E - Oak	214.00	20093.30
293' E	215.00	19878.30
336' E - Oak - 1/2 in	218.10	19660.20
372' 75" E - Bit 1/4 in	239.50	19420.70
397' 75" E - FL Florida		19181.20

N. Ch of Upas FL Florida	193.30	19181.20
3' S	193.10	18988.10
10.5' S	192.15	18795.95
18.0' S	192.44	18603.51
25.5' S	192.55	18410.96
37' S	192.70	18218.26
43' S - FL Upas	192.90	18025.36

Curtain Hall No 2

FL Florida	192.90	
10' E	193.15	18832.20
20' E	193.25	18638.95
30' E	193.50	18445.45
40' E	193.60	18251.85
50' E	193.50	18058.35
53' E - East Curb Return of Florida	193.40	17864.95

Florida St Ties  
Cypress to Upar





28th St. Grades  
Ocean View to Irving Ave

12-28-29  
Susan  
McLaughlin  
Hartford  
Remain  
**10** 10-30

	F											
5 L Ocean View	90.00	BM 91.05	NE 80	F	90.00	89.32	88.65	88.91	87.75	87.19	86.62	86.06
50 S	89.32	1.61	NE 80		2.66	3.24	4.01	4.25	4.91	5.47	6.04	6.60
100 S = N.L. Hampton Ch.	88.65	92.66			2.63	3.78	4.45	4.79	5.35	5.91	6.48	7.04
125 S = S.L.	88.31	8.83										
166.45	87.75	86.53										
207.82	87.19	87.57										
249.25	86.62		BM 91.05		85.50	85.16	84.56	83.63	82.75	81.88	81.00	80.13
290.65	86.06		2.05		7.16	7.53	8.16	8.94	7.83	8.69	9.67	10.65
332.55 = N.L. Palm Ct	85.50		92.10		6.66	7.00						
357 S = S.L.	85.16		8.16		40.50	40.50						
404.71 = Bck	84.50		84.76		7.60	7.94	8.60	9.17	8.23	8.10	8.98	9.85
454.71	83.63		84.02									
504.71	82.75		84.98									
554.71	81.88											
604.71	81.00											
654.71	80.13											
704.71	79.25											
754.71	78.38											
804.71	77.50											
854.71	76.63											
888.31 = End Cby Walk	76.03											

S. 01751

F

F

End Cby Walk



Mc Clintock St

Tile Drain E/Cajon Ant. to Monroe Ave

1-8-30  
5000  
11

	W	E	BM 37350
27 1/2' E/Cajon	37010 <sup>755</sup> <sub>10.5</sub> ✓	36980 <sup>755</sup> <sub>10.5</sub> ✓	37765
47.5' N	36973 <sup>755</sup> <sub>10.5</sub> ✓	36953 <sup>811</sup> <sub>10.5</sub> ✓	59856 5/4/1000
95' N	36936 <sup>829</sup> <sub>10.5</sub> ✓	36926 <sup>829</sup> <sub>10.5</sub> ✓	37200
142.5' d. Brk	36900 <sup>865</sup> <sub>10.5</sub> ✓	36900 <sup>865</sup> <sub>10.5</sub> ✓	37680
146.0 - Existing Sewer	37080 <sup>885</sup> <sub>10.5</sub> ✓	37040 <sup>885</sup> <sub>10.5</sub> ✓	
197' N <sup>9.5</sup> <sub>10.3</sub>	37111 <sup>854</sup> <sub>10.3</sub> ✓	37091 <sup>854</sup> <sub>10.3</sub> ✓	
248' N	37142 <sup>822</sup> <sub>10.3</sub> ✓	37122 <sup>822</sup> <sub>10.3</sub> ✓	
299' N	37173 <sup>841</sup> <sub>10.3</sub> ✓	37153 <sup>841</sup> <sub>10.3</sub> ✓	
350' N	37204 <sup>854</sup> <sub>10.3</sub> ✓	37184 <sup>854</sup> <sub>10.3</sub> ✓	
401' N	37235 <sup>833</sup> <sub>10.3</sub> ✓	37215 <sup>833</sup> <sub>10.3</sub> ✓	
452' N	37266 <sup>842</sup> <sub>10.3</sub> ✓	37246 <sup>842</sup> <sub>10.3</sub> ✓	
503' N	37297 <sup>795</sup> <sub>10.3</sub> ✓	37277 <sup>795</sup> <sub>10.3</sub> ✓	
554' N	37328 <sup>771</sup> <sub>10.3</sub> ✓	37308 <sup>771</sup> <sub>10.3</sub> ✓	
605' N - 5/4/1000	37360 <sup>692</sup> <sub>10.3</sub> ✓	37340 <sup>692</sup> <sub>10.3</sub> ✓	
211 1/2' N/Head	37410 <sup>642</sup> <sub>10.3</sub> ✓	37350 <sup>642</sup> <sub>10.3</sub> ✓	
50' N - Dickson	37420 <sup>819</sup> <sub>10.3</sub> ✓	37380 <sup>819</sup> <sub>10.3</sub> ✓	
104.86' N <sup>10.5</sup> <sub>10.5</sub>	37448 <sup>809</sup> <sub>10.5</sub> ✓	37410 <sup>809</sup> <sub>10.5</sub> ✓	
159.7' N	37476 <sup>811</sup> <sub>10.5</sub> ✓	37440 <sup>811</sup> <sub>10.5</sub> ✓	
214.5' N	37504 <sup>787</sup> <sub>10.5</sub> ✓	37470 <sup>787</sup> <sub>10.5</sub> ✓	
269.42' N	37532 <sup>755</sup> <sub>10.5</sub> ✓	37500 <sup>755</sup> <sub>10.5</sub> ✓	
324.28' N	37560 <sup>727</sup> <sub>10.5</sub> ✓	37530 <sup>727</sup> <sub>10.5</sub> ✓	
379.14' N	37588 <sup>699</sup> <sub>10.5</sub> ✓	37560 <sup>699</sup> <sub>10.5</sub> ✓	
433.99' N	37616 <sup>671</sup> <sub>10.5</sub> ✓	37590 <sup>671</sup> <sub>10.5</sub> ✓	
488.85' N	37644 <sup>644</sup> <sub>10.5</sub> ✓	37620 <sup>644</sup> <sub>10.5</sub> ✓	

Restaked 4-10-30

BM 37350  
37400  
37450  
37500  
37550  
37600  
37650  
37700  
37750  
37800  
37850  
37900  
37950  
38000  
38050  
38100  
38150  
38200  
38250  
38300  
38350  
38400  
38450  
38500  
38550  
38600  
38650  
38700  
38750  
38800  
38850  
38900  
38950  
39000  
39050  
39100  
39150  
39200  
39250  
39300  
39350  
39400  
39450  
39500  
39550  
39600  
39650  
39700  
39750  
39800  
39850  
39900  
39950  
40000



Mc Clintock St. Passing  
El Cajon Ave to Monroe Ave

4-24-30

12

Meade

Ave

Monroe

Ave

7630

7576

38000 7953

7925

7590

500

7290

7205

7260

37746 7695

50

7730

7259

7230 7270

7680

7270

7600

El Cajon Ave

Meade

Ave





13th St

St. Line of Harbor

BM 598 <sup>NE</sup>  
E 1/4 1/4

Commercial

BM 702

National Ave

Newton Ave

14

16th St

182 1/17

400

344 2300

205

220 8 143

200 100

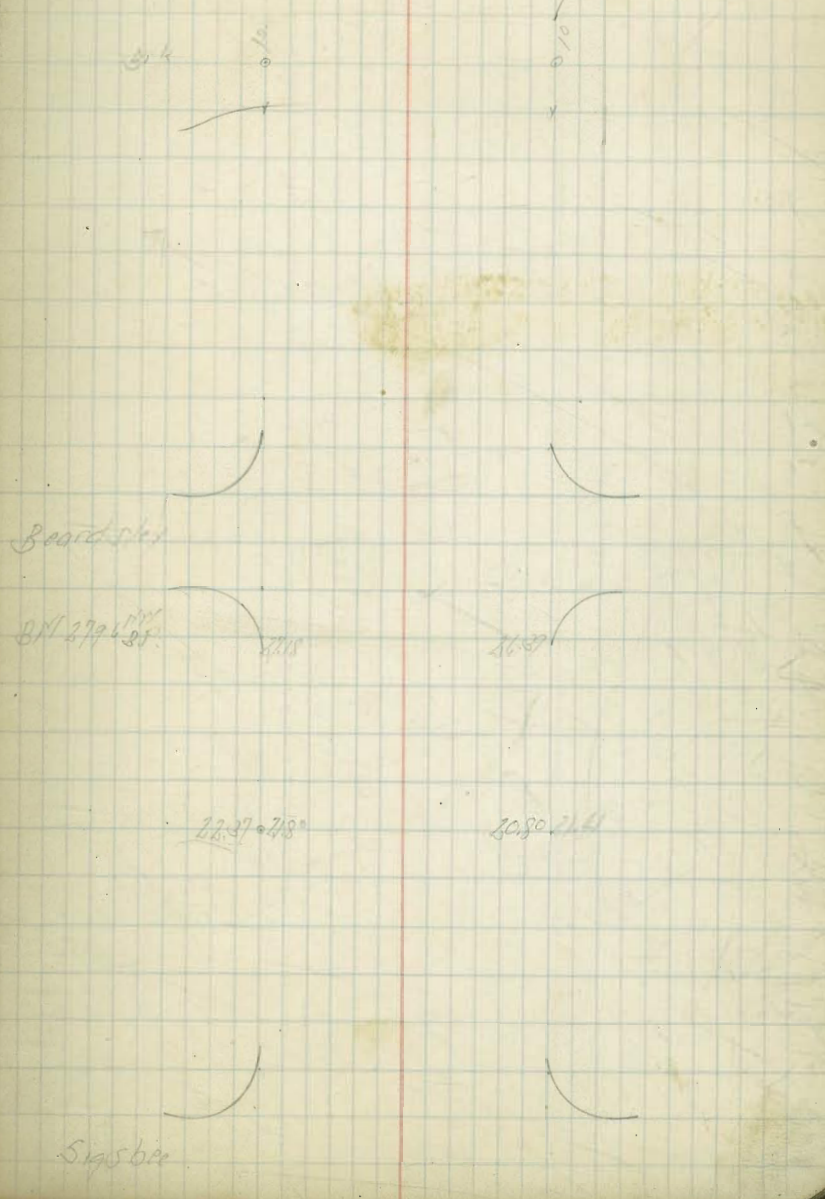
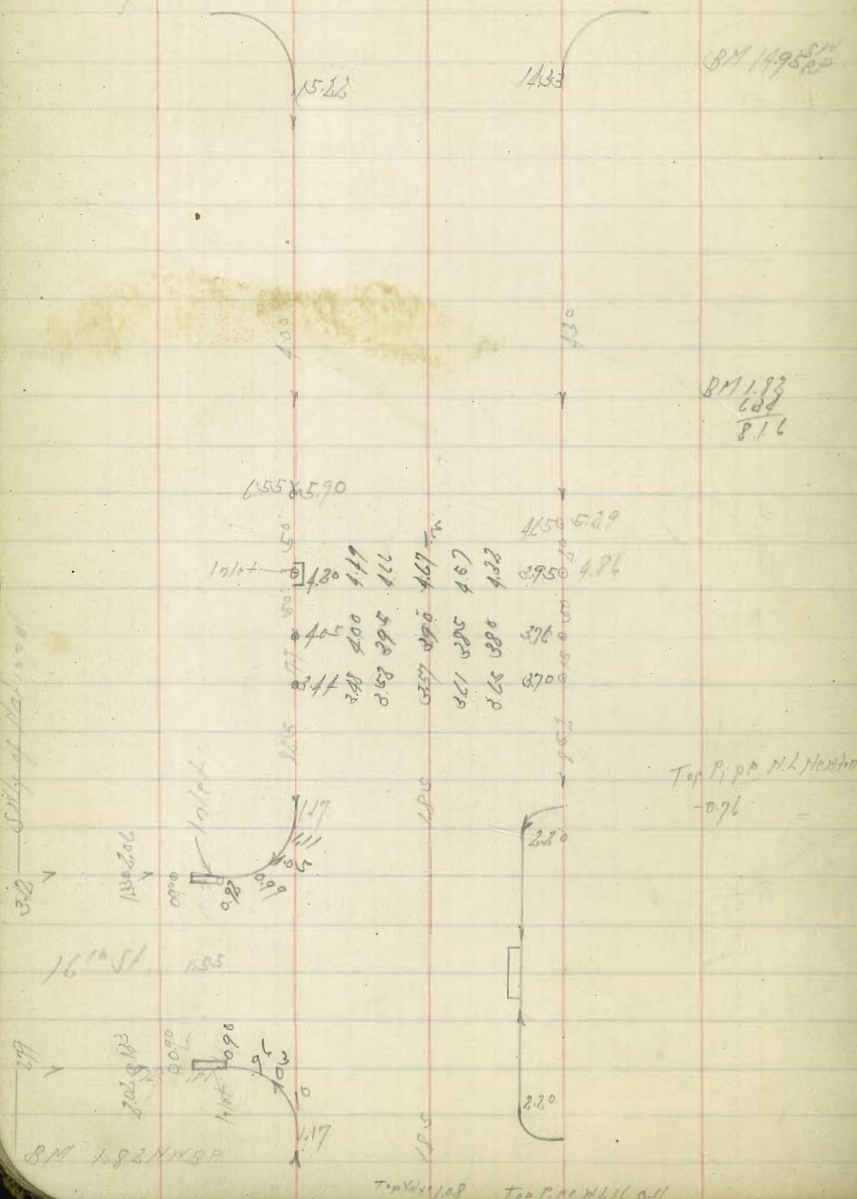
230

St. Line of Harbor

12/20/07

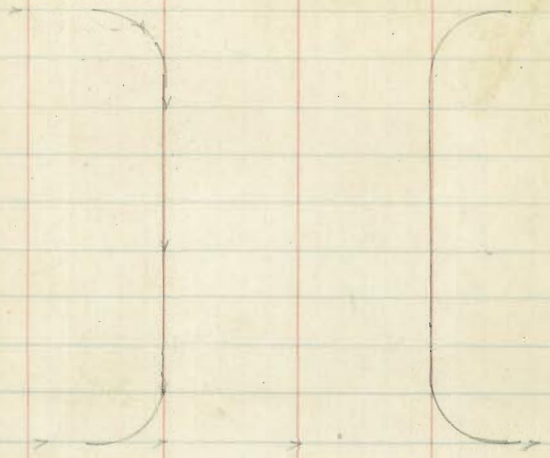
Sigsbee

Crosby

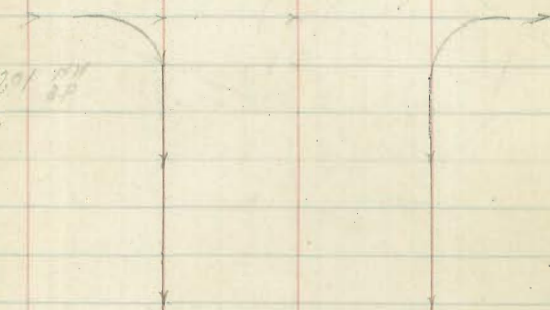




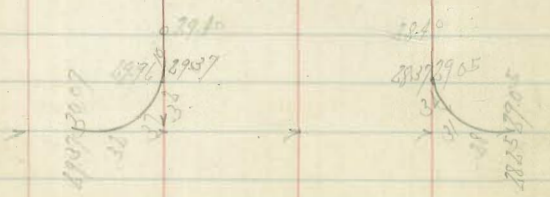
Evans



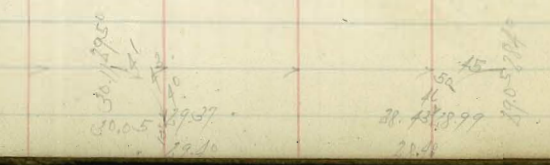
Denny



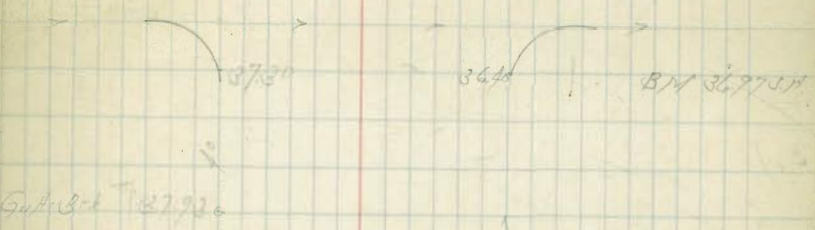
311 3201 711 25



Crosby



Sampson



Guthrie 127926



Evans



Hexton Ave.

17

36  
36 14 57

34 34

35 55  
35 52  
35 43  
35 32  
35 23  
35 14

34 34

34 34

50' gutter Brk

34 34

34 34

Sicard

35 55  
35 52  
35 43  
35 32  
35 23  
35 14

34 34

34 34

34 34

34 34

36 22

Sampson



Newton Ave Grades

Newton 416

11.3.7

	3.	
1+00.7 = Brk	3.7	4.7 +0.3
0+75.2 = Brk	3.7	4.7 -0.1
1+12.6	2.9	4.7 +1.0
0+00 = 14.18 <sup>th</sup> St	2.2	4.7 +1.9

N

1.82  
4.42  
5.44  
5.84  
6.10  
7.04  
7.10  
7.15  
7.55  
7.87  
5.98  
2.28  
8.26

Top of Newton = 18.5

0+00 = 14.12 <sup>th</sup> St	2.2	4.7 +0.1
0+50	1.4	4.7 +0.8
1+00	2.6	4.7 +1.0
+50	2.9	4.7 +0.4
2+00	3.1	4.7 +0.4
+50	3.3	4.7 +0.4
3+00	3.5	4.7 +0.4
+50	3.8	4.7 +0.4
4+00 Brk	4.0	4.7 +0.6
+50	3.7	4.7 +0.0
5+00	3.4	4.7 +0.5
+50	3.1	4.7 +0.0
6+00 = Brk.	2.8	4.7 +0.1
+60 = CB.	3.0	4.7 +0.4
7+09.91	3.15	4.7 +0.0
7+5982 = L	3.3	4.7 +0.0

Grating 1.9  
Curb: 3.0

S. Side 1.8  
Track 2.9

2.0  
2.9  
5.85  
4.67  
+1.4  
4.65  
4.6  
7.00  
4.32  
4.34  
2.08

Newton Ave  
Water Grades 10th to 13th

11 1/2 ft	-1.30	847 1387	846 1387	11 1/2 ft 0.97 15.6 12.58 2.42 3.76 13.03 7.03 11.68
50 ft	-0.97			
100 ft	-0.74	803 1382		
150 ft	-0.51		280 1380	
200 ft	-0.32	757 1377		
250 ft	-0.05		280 1377	
300 ft	+0.18	711 1367		
350 ft	+0.41		688 1368	
400 ft	+0.63	666 1365		
450 ft	+0.83		636	
500 ft	+0.03	766 1357		
550 ft	-0.17		726 1354	
600 ft - Bk	-0.57	726 1351		
660 ft - Bk	-0.80		809 1351	
764 ft - P.I	0.00	764 1351		

Newton Ave #1 10 1/2 ft

First 12 ft Cross	-1.10	827 1350	
12 ft	-0.37		814 1346
21 ft	0.0	777 1343	
36 ft	0.0	764 1343	
76 ft - 36 ft of #1 10 1/2 ft	-1.0	877 1343	

13 1/2 ft  
Water Grades  
Commercial to Newton

2-3-30  
19

30 ft of SL Commercial	+0.80	625 1343	
SL	+0.80		683 1343
117 ft	+0.88	725 1343	
89 ft - Bk	-0.25		788 1343
139 ft - 5 1/2 ft Portons	+0.40	723 1343	

Ship  
500  
711

11 1/2 ft #1 Newton

First 12 ft Cross	-1.10	827 1340	
48 ft	-2.50		837 1340
60 ft	-2.50	1347 1340	
120 ft 7 1/2 ft of #1 Newton	-1.0		877 1340



13th St. Sewer

M.H. N<sup>o</sup> 1/2 13th & Commercial St. -1.73

10.25  
18.67  
+4.97

598 N.E. 1st  
259 Commercial  
8.52 1935

40 ft of M.H. = H.L. of Commercial -1.00

952  
507  
+4.47

Next to Air

Sewer

20

Plug End = 1/2 of pipe  
of 12" diameter

5/ 13.25  
2.50  
+7.72 on ch

BM 14.95  
3.93  
18.78  
5/4  
3.93  
155.800

51' S = Existing M.H.

Newton Ave

Culvert No 3 No 4 And Storm Drain No 1

5-28-30  
Over  
100 ft  
to 100 ft

	Flow Line	Top Ch	
East End Culvert No 3 - Cb/lat No 4	-1.60	1.84	6.31 out 1.80 1.33 1.55 1.57
East Cb. line of 16' 5"	+3.77		
40' W of End Culvert No 4 - Cb/lat No 4	-2.00	1.80	6.31 out 2.26 7.85
Wcb of 16' 5"	+3.87		
30.5'	-2.10	10.25 out	
60.5' = Storm Drain Cleanout No 1	-2.20		10.25 +4.57
Sub. Culvert No 4 No 1			
14-42.54			
47.54' W of Cleanout No 1	-2.37		10.52 +4.37
95.08' W	-2.55		10.70 6.62 +4.84
142.62' W	-2.72		10.87 2.20 +4.67
190.16' W	-2.90		11.05 6.27 +4.78
237.70' W	-3.07		11.22 5.74
285.24' W	-3.25		11.40 5.59 +5.81
332.78' W	-3.42		11.57 5.33 +5.87
380.32' W	-3.60		11.75 5.07 +6.18
427.86' W	-3.77		11.92 4.85 +6.25
475.40' W	-3.95		12.10 4.72 +6.33
522.94' W	-4.12		12.25 4.52 +6.41
570.48' W	-4.30		12.45 4.36 +6.51
618.02' W	-4.47		12.62 4.20 +6.61
665.57' W - Existing Storm Drain	-4.65		12.80

21

Culvert No 1	Culvert No 2	Flow Line	Top Ch	
No End Culvert No 1 - Cb/lat No 1		0.0	5.30	2.85 out
52.5' - So. End No 1 - Cb/lat No 2		-0.60	1.90	3.25 3.30 out
50' W of 1st lat No 2 - A		-0.99		9.11 4.33 +4.81
100.25' W		-1.38		9.53 1.52 +4.77
150.50' W - L.L. 16' 5" - A		-1.77		9.93 6.17 +4.77
180.9' W - 1st lat No 3		-2.00		10.15 1.51 +4.20
201.4' W - Clean out No 1		-2.20		10.35



13155+

5-31-38

22

Culvert N° 6

	Flood Line	Top of	BM 598	H.F. Comm. elev
Catch Basin N° 1 - Wcb of 13'3"	990 729	-2.00	152 79°	131
15' E	1213 16.37	-2.43		
53' E = Curb inlet N° 7	1120 46.18	-3.50	2.58	533 26.026

Catch Basin N° 2 Standard type D

Stakes 5' S + 5' N + 5' W

BM 598  
152  
79°

	Flood Line	Top of Basin	BM 598
2 - 5' N of 5' by 10' markers	916 13.5 737	2.50	529 5.27 70.02

Catch Basin N° 3

Stakes 5' S + 5' N + 5' W

7-22 1940  
Grading

	Flood Line	Top of Basin	BM 598
2	1038 53.5 +5.03	-1.50	198 68.5 58.3 +1.63

Curb inlet N° 6

	Flood Line	Top of	BM 598
2 of inlet	998 684 +3.17	-1.10	2.00 688 684

13<sup>th</sup> 5<sup>th</sup> Grades

	W		E	
0+00 = S.L. Newton	3.4	4.15 4.10 4.00 4.18 4.2 4.00	2.9	4.65 4.62 -0.0
+38.18	3.4	4.15 4.10 4.00		
+47.91 = Horton's Line	3.4	4.15 4.10 4.00	2.9	4.65 4.62 -0.0
+77.91 = V.Gutter W.	3.47	4.15 4.10 4.00 4.18 4.2 4.00	3.1	5.21 5.24 5.24 5.24 5.24 5.24
1-44.75	3.54	4.15 4.10 4.00 4.18 4.2 4.00	3.5	4.76 4.76 4.76 4.76 4.76 4.76
1+87.31 = S.L. Comm.	3.6	4.15 4.10 4.00 4.18 4.2 4.00	3.6	5.21 5.24 5.24 5.24 5.24 5.24
+80 = N.L. "	3.6	4.15 4.10 4.00 4.18 4.2 4.00	3.6	5.21 5.24 5.24 5.24 5.24 5.24
2-58.4	3.54	4.15 4.10 4.00 4.18 4.2 4.00	3.5	4.76 4.76 4.76 4.76 4.76 4.76
3-58.4	3.38	4.15 4.10 4.00 4.18 4.2 4.00	3.1	4.76 4.76 4.76 4.76 4.76 4.76
1+60.7 = S.L. National on EBT	3.02	4.15 4.10 4.00 4.18 4.2 4.00	3.77	4.76 4.76 4.76 4.76 4.76 4.76
1+73.06 = C.B. on W.	3.98	4.15 4.10 4.00 4.18 4.2 4.00		
1+86.56 = Ex. Improvement	2.89	4.15 4.10 4.00 4.18 4.2 4.00		

3.00  
5.00  
8.35  
3.27  
6.07  
  
8.35  
5.20  
3.15  
4.15  
7.90

5.98 B.M. 412  
1.50  
7.48

	W.		E.	
0+00 = S.L. Newton	3.4	4.15 4.10 4.00 4.18 4.2 4.00	2.9	4.65 4.62 -0.0
+38.18	3.4	4.15 4.10 4.00		
+47.91 = Horton's Add	3.4	4.15 4.10 4.00	2.9	4.65 4.62 -0.0
+77.91 = V.G. on W.	3.0	4.15 4.10 4.00 4.18 4.2 4.00	3.1	5.21 5.24 5.24 5.24 5.24 5.24
2-44.75	3.4	4.15 4.10 4.00 4.18 4.2 4.00	3.4	4.76 4.76 4.76 4.76 4.76 4.76
1+87.31 = S.L. Com.	3.8	4.15 4.10 4.00 4.18 4.2 4.00	3.8	5.21 5.24 5.24 5.24 5.24 5.24
+80 = N.L. Com.	3.8	4.15 4.10 4.00 4.18 4.2 4.00	3.8	5.21 5.24 5.24 5.24 5.24 5.24
3-58.4	3.54	4.15 4.10 4.00 4.18 4.2 4.00	3.5	4.76 4.76 4.76 4.76 4.76 4.76
1+60.7 prof on E.	3.02	4.15 4.10 4.00 4.18 4.2 4.00	3.77	4.76 4.76 4.76 4.76 4.76 4.76
1+73.06 C.B. on W.	3.98	4.15 4.10 4.00 4.18 4.2 4.00		
1+86.56 = Ex. Improvement	2.89	4.15 4.10 4.00 4.18 4.2 4.00		

5.98  
1.11  
7.09  
2.00  
4.99  
  
7.09  
2.00  
4.99





32nd St. Grades  
Grape to Hartborn

217-30  
25

	Number	F Topc6	BM 27691 89 64 85 28578
N.L. Grape	27830	27890	
50 ft	27876	27935	
100 ft	27923	27960	
150 ft = 2 All-ways	27970	27995	27696
196 ft = 2 All-ways	28017	28038	2833
200 ft	28017	28030	28529
250 ft	28064	28065	
290 ft = Bk on ft	28101	out	
300 ft = S.L. Hartborn	28115	28100	

Topc6 Grades								
F	27890	7785	7760	7995	8030	8065	8100	
	788	673	63	69	56	53	475	
		+25	+7	+39	+34	+33	486	
		+22	+19	+21	+22	+16		

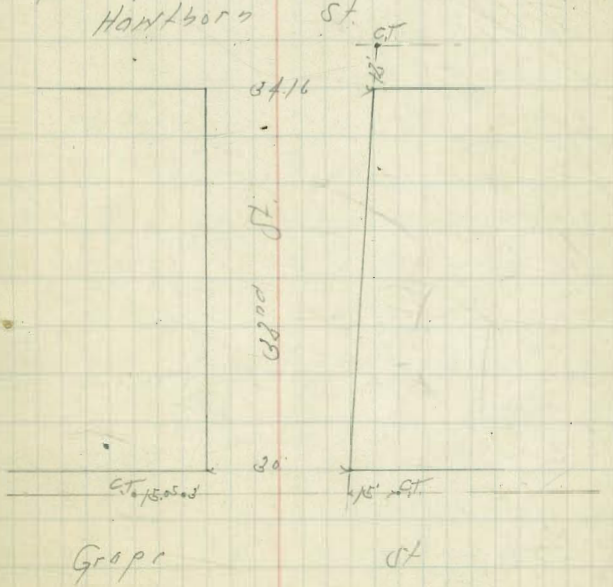
  

Gutter Grades								
N	7830	7876	7923	7970	8017	8064	8101	28115
	712	73	67	65	59	53	49	477
		+37	+2	+2	+18	+13	+12	478
		+25	+2.5	+1.6				317.00

Curt Stairs								
F	7890	7925	7960	7995	8020	8036	8065	8093
	630	614	569	535	509	493	474	451
	537	526	522	523	516	503	486	489
	+1.02	+0.56	+0.37	+0.31	+0.17	+0.10	+0.28	+0.85

Ⓟ





N. 4<sup>th</sup> map St  
Grades  
From Alley West of 39<sup>th</sup> St to Dale St

2-19-39  
J. Blinn  
North  
25<sup>th</sup> St  
26

Fast Line of Dale			298.91	
30' H = PC. N. 5 <sup>th</sup> Road			299.74	
11' L. 1 <sup>st</sup> Date	268.89		298.96	
10' H. 4 <sup>th</sup> Date	277.59	270.00	299.72	
12.33' H	276.76	277.00	299.96	
84.66' H. 1 <sup>st</sup> Date	283.85	282.11	299.98	
100' H. 1 <sup>st</sup> Date	288.29		298.03	
127.04' H. E. L. Alley	290.53	291.25	299.01	
143.0' H. H. L.	291.98	292.06	299.23	
184.33' H	293.85	291.21		
227.66' H	295.92	296.31		
270.00' H = E. L. 29 <sup>th</sup> St	298.00	298.50		
1/2 29 <sup>th</sup>	292.43			
H. Line 29 <sup>th</sup> St	298.03	298.50		
30' H	297.00	297.05		
60' H - Brk	296.00	296.30		
80' H - Brk	295.10	295.30		
100' H - Brk	294.00	294.00		
117.15' H = PC. 2 <sup>nd</sup>	292.82	292.47	PC. 0.7H	
121.5' H	292.50	292.50		
132.0' H = PC. 2 <sup>nd</sup>	292.05			
143.0' H = H. L. 1 <sup>st</sup>		291.00		
144.67' H = H. L. End of 1 <sup>st</sup>		290.74		
PC. of N. 5 <sup>th</sup> Road	292.05			
Pack 1	291.79			
" 2	291.53			
" 3	291.27			
" 4 = PC. S. End of 29 <sup>th</sup> St				

H	270.00		77.08	84.16	91.25	92.01
	9.01		10	18	0.7	7.8
	9.05		0.8	0.8	0.8	0.8
	0.04		7.4	6.5	7.7	7.1
S	269.89	76.27	76.71	83.85	88.20	90.53
	8.1	7.7	8.3	10.9	3.7	5.0
	1.4	1.5	1.2	2.2	7.6	13.8
	-1.2	-1.1	-1.1	-1.9	-3.5	-3.6
H	94.21	96.24	90.50			
	5.5	3.6	6.2			
	7.9	7.5	7.6			
S	93.85	95.91	91.00			
	5.7	3.9	6.7			
	8.0	3.6	7.9			
H	98.50	97.15	96.20	95.70	94.00	92.50
	6.8	3.1	3.5	2.5	5.7	7.8
	7.7	7.2	7.3	7.4	7.9	11.0
S	298.03	97.06	91.09	95.10	91.11	91.50
	0.1	0.7	0.7	7.6	5.7	7.6
	0.1	0.1	0.1	0.1	0.1	0.1
	19.79	91.53	91.27			
	16.2	8.3	8.4			
	3.5	11.2	11.0			
	2.0	8.0	3.2			
	2.0	8.0	2.8			
			17			

292.76  
17571 F.T. 11/11/39  
311871 H. L. West of Dale St

Hulmeys St

Collect N° 1	Flushing	
East End of Culvert	289.00	1032 815 717
15 ft. N End Culvert	288.60	1074 1485 -106

Curb Inlet N° 1		
Standard Type F		
S End of Inlet etc	291.00	848 715 -137
" " " " " "	291.00	831 571 -260

Collect N° 2	Flushing	
West End of Culvert Inlet	261.70	
37 ft. S End Culvert	255.70	974 1032 -58

Curb Inlet N° 2	15 Standard Type F	
N End of Inlet etc	218.95	817 557 -260
S Inlet & Drain N° 2	218.95	817 557 -260
S End of Inlet	218.95	817 557 -260

Hulmeys Dale  
Grate

2.21.30

27

Slipgr Inlet in Inter-section		
West End Dale S. Inter-section	219.88	815 717 -98
PC 15 RCB	219.10	815 717 -98
S End of Inlet N° 2	218.95	75 1032 -98
S Inlet N° 2	218.95	75 1032 -98
FC 15 RCB - N End Inlet	218.95	75 1032 -98
S. Inlet near B. Drain	219.00	815 717 -98

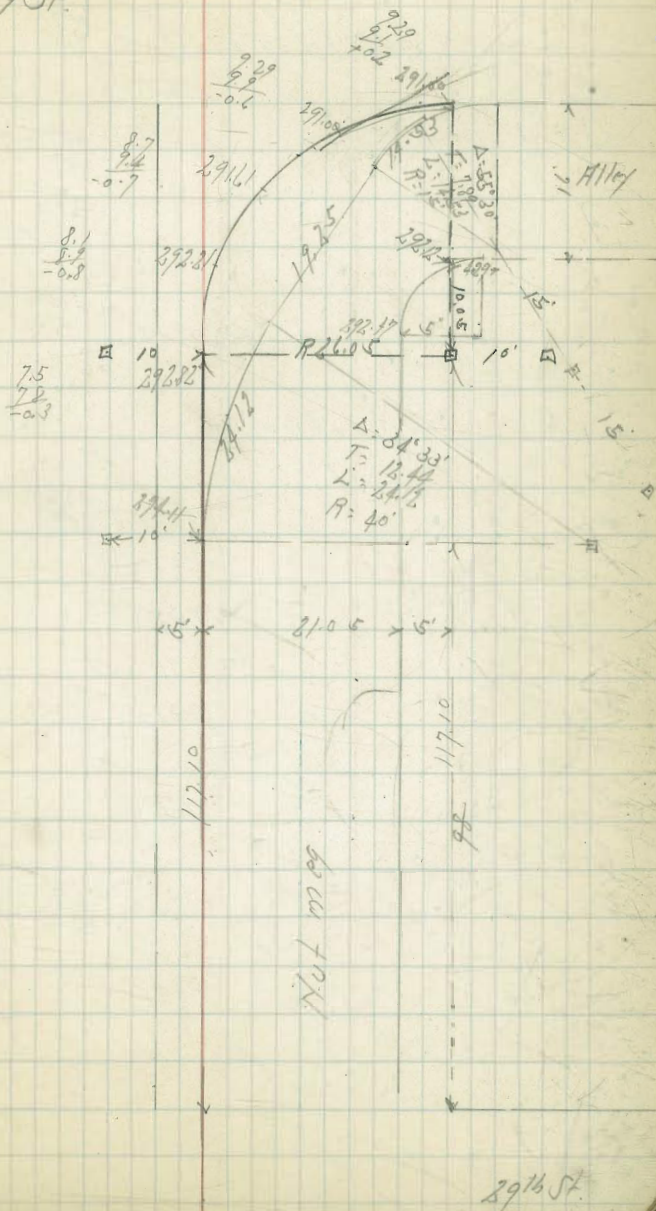


Proposed Change of Curb  
Between 29th + Alley West

2-2-38

Nutmeg St.

BM 29896  
L 33  
30829



Hutney St  
Sellers

3-19-30

29

Existing M.H. & Alley E of 29 <sup>th</sup> St	284.00	16.81 7.26 +7.77	3M 299.91 11.00 11.00 300.81 12.95 287.86 2.16 290.02 2.60 277.42 2.69 274.73 27.81 276.54
47.25 H	284.33	14.46 +8.32	METRO Hwy Harvey 2.00 271.75
94.5 H - DE	284.66	14.15 8.20 +10.55	

Seven Laterals

N° 1	285.20	15.61 7.50 +8.11	
N° 2	284.90	15.96 10.66 +5.79	
N° 3	283.20	18.61 30.25 +13.77	
N° 4	274.70	3.41 2.50 +1.76	
N° 5	266.20	11.61 9.30 +2.41	
N° 6	257.60	20.21 16.25 +3.96	



29th St

97.50

78.00

291.78 91.88  
290.53 90.03  
288.29 87.79

91.85 92.31  
91.85 90.46

299.96 BM  
1252  
300.25  
92.8  
293.0  
93.33  
292.5 BM

295.32 95.33

297.06 97.36  
298.20 97.70  
298.40 97.90  
298.43 97.93  
298.40 97.90  
298.30 97.80  
298.00 97.60

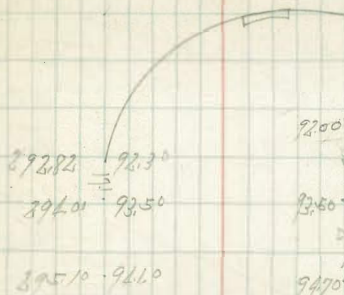
297.25 BM  
273.05

271.27 90.70  
268.89 89.10  
197 PE 88.20

69.50 270.00  
92.0

Solard

B.M. 271.75 Top of



Hilf

B.M. 298.91 87

29th St

98.00 98.50

Flly Block I - Terolto Hts Sub 11 1/2  
 From Monroe to Madison  
 Between 3876 St & 3976 St

2-2-35  
 J.C. BIRD  
 No. 1131  
 Osborn

	W	E
12.11.11 - 8th	374.25	374.09
5.11 - 8th	374.10	374.20
10.11 - 8th	374.30	374.10
5.5.11	373.07	372.87
16.11 - 8th	371.85	371.65
12.11 - 8th	371.40	371.20
14.11 - 8th	371.15	370.95
19.11	370.97	370.57
24.11 - 8th	370.40	370.20
26.11.11 - S.L. Medicines	370.00	out
36.11.11 - S.L. Medicines		369.80

E 374.09	74.20	74.10	73.87	71.65	71.20	70.85	70.57	70.20	69.80
3.91	3.80	3.90	5.13	6.05	5.25	5.50	5.88	6.05	6.65
3.72	1.26	4.14	5.07	2.22	5.28	5.66	5.88	6.05	6.07
	-0.46	-0.84	+0.09	+0.33	+0.07	-0.16	+0.05	+0.57	+0.60
W 374.05	72.40	74.30	73.07	71.85	71.40	71.15	70.77	70.40	70.00
3.65	3.40	3.70	4.93	6.15	5.95	5.30	5.68	6.05	6.45
	3.44	3.68	4.53	5.85	4.62	4.72	5.07	5.45	5.97
	+0.76	+0.02	+0.41	+0.35	+0.43	+0.38	+0.39	+0.90	+0.77

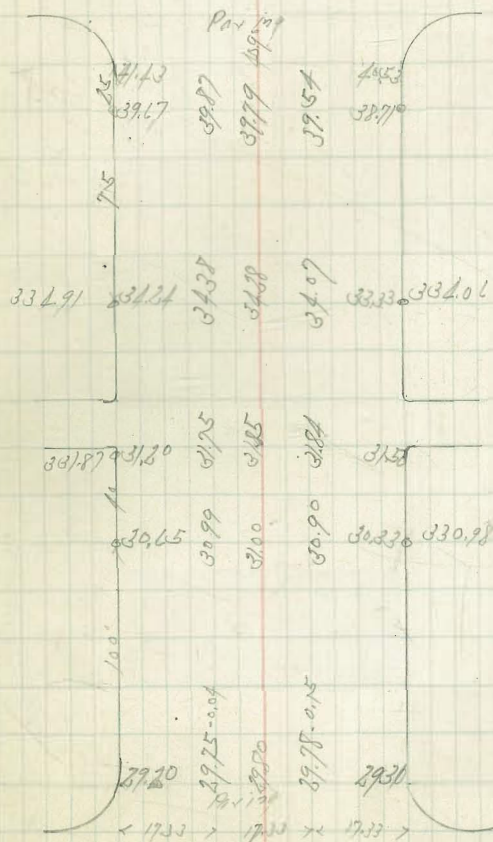


Polk Ave. Passing  
Arizona to Hamilton

3-28-30  
Jison  
Se. 21st St  
North  
Osborn

Hamilton

St.



31422995 St

Arizona

St.

St.

Landis St. Paving  
Mar/boroughs to 42<sup>nd</sup> St.

33

42<sup>nd</sup>

St.

Paving

34185

34189

34241

34201

Paving

Mar/boroughs

St.

BM 34308 N.Y.C.P.  
Landis + Mar/boroughs



Oak-Crest Drive

Grade

University Ave to EC North of

F.L. Stat

H.L. Stat

BM 330.15

opp Univ

P.C. 338.90

P.C. 338.30

333.54

24.15' S of PC 337.30

15.85' S of PC 337.00

331.98

48.30' S 335.40

31.70' S 335.40

341.34

72.45 333.25

47.55 333.50

328.42

96.60 331.10

63.40 331.40

330.00

120.75 328.95

79.25 329.25

317.41

144.90 326.80

95.10 327.10

317.69

175.68 - P.C. 323.60

115.29 opp P.C. 322.60

195.68 320.20

135.29 322.40

215.68 316.40

155.29 321.10

235.68 312.60

175.29 320.40

255.68 309.60

195.29 320.30

275.68 307.40 - Exch

215.29 320.80

295.68

235.29 321.80

315.49 - Univ. Ave

255.29 323.10

275.29 324.50

295.29 325.80

322.06 - Univ. Ave

3-30-30  
Dissol  
S. Ellis  
Northway

34

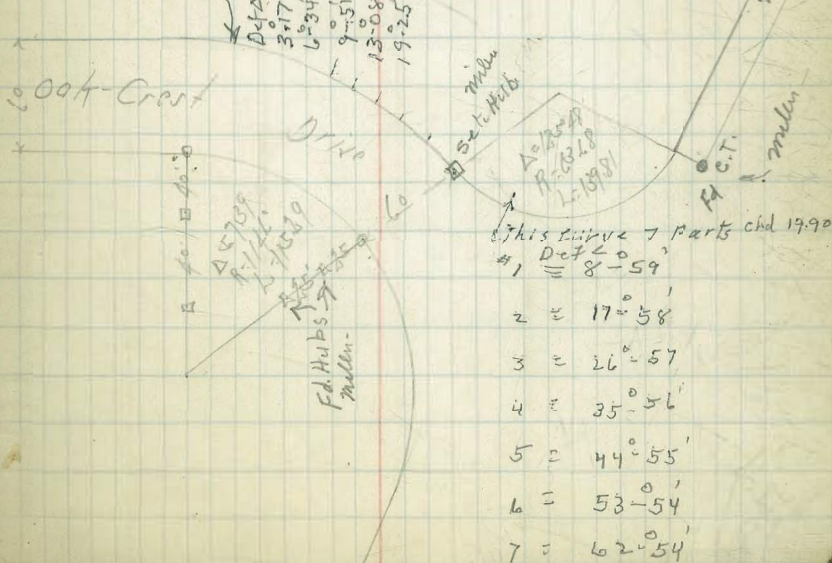
E	38.90	37.20	35.40	33.25	31.10	28.95	26.80	23.60
	1.5	1.8	1.9	1.6	1.2	1.2	1.5	1.5
	+1.1	+1.0	+1.6	+1.6	+0.6	+0.4	+0.6	+0.1

W	38.20	37.00	35.40	33.50	31.40	29.25	27.10	24.60
	1.5	1.8	1.9	1.6	1.2	1.2	1.5	1.5
	+2.4		+3.6		+6.1		+8.4	+9.9

E	20.10	16.40	12.10	9.60	7.60
	1.5	1.3	1.2	1.2	1.0
	+1.1	+1.4	+1.2	+1.1	+0.5

W	22.60	21.10	20.40	20.30	20.80	21.00	22.10	24.50	25.80
	1.9	2.2	2.2	2.2	2.5	2.5	2.4	2.8	2.8
	+10.9	+11.7	+11.8	+11.8	+11.4	+10.7	+8.8	+7.2	

5 stakes on this curve



Landis St. Parity  
Charlotte to 36<sup>th</sup> St.

4-8-30

35

Finish Station  
5-23-30

Charlotte Ave

3831	Parity	3776
2180	2180	2180

BM 3525  
477  
477

335.06	Parity	334.95
35.13	35.27	35.04
35.25	35.25	35.25

36<sup>th</sup> St.

BM 33535 H.K.P.  
London 317<sup>th</sup>



Atlantic St. Grades  
Broadway to B St.

N.L.	
N.L. Broadway	3.86
36.33'H	3.94
72.66'H	4.02
109.0'H = Break	4.10
151.50'H	4.06
194.0'H	4.02
236.5'H	3.99
279.0'H	3.95
321.5'H	3.91
364.0'H	3.87
406.5'H	3.84
449.0'H = Break	3.80
499.0'H	4.10
549.0'H	4.40
599.0'H	4.70
649.0'H = Break	5.00

S.F. 8.0  
BM 10.50 Broadway  
3.85  
11.38  
7.18  
4.86  
6.05  
10.25

H.W. B.P.  
Set BM 4.20 Broadway  
Atlantic

417.30  
36

Br										
H	3.86	3.94	4.02	4.10	4.06	4.02	3.99	3.95	3.91	3.87
	6.39	6.31	6.25	6.15	6.19	6.13	6.11	6.09	6.04	6.00
	6.30	6.07	6.04	-0.43	-0.59	-0.25	-0.48	-0.43	-0.90	-0.95

Br					
H	3.84	3.90	4.10	4.40	4.70
	6.41	6.15	6.15	5.85	5.55
	5.56	5.21	5.11	5.23	5.00
	+0.87	+1.21	+0.91	+0.23	+0.25

Market St  
Track Centers  
3rd to 4th St

E. 6th of 3rd St	12.78
E. 2. 3rd St	12.88
5 E of East King = Brk	13.90
45 E	
95 E	
145 E Set	15.52
195 E = Brk	16.44
200 E = W L H S	16.52

11.67 SWBP  
703 Market  
1870

11.67 SWBP  
631 Market  
1798

Market St Sensors

4-19-30

37

Market At Columbia

Tied 5' Eff of Mail in Pines

N.L. Market St	-1.50	13.94 +6.89	
58 S of N.L. = M.H. N° 1 Drop	-4.79		1133 BM 507 SWBP 6.79 Market 1152 Columbia
100 S . . . . . = S.L. Market	-8.55	12.83 +11.89	11027
			1409 +9.97

Market At Kettner

Tied 5' E Hills Gate

N.L. Market of Kettner = M.H. N° 6	-4.50	11.84 +6.58	BM 1455 SWBP 5.79 Market 7.34 Kettner
---------------------------------------	-------	----------------	---

Market At California

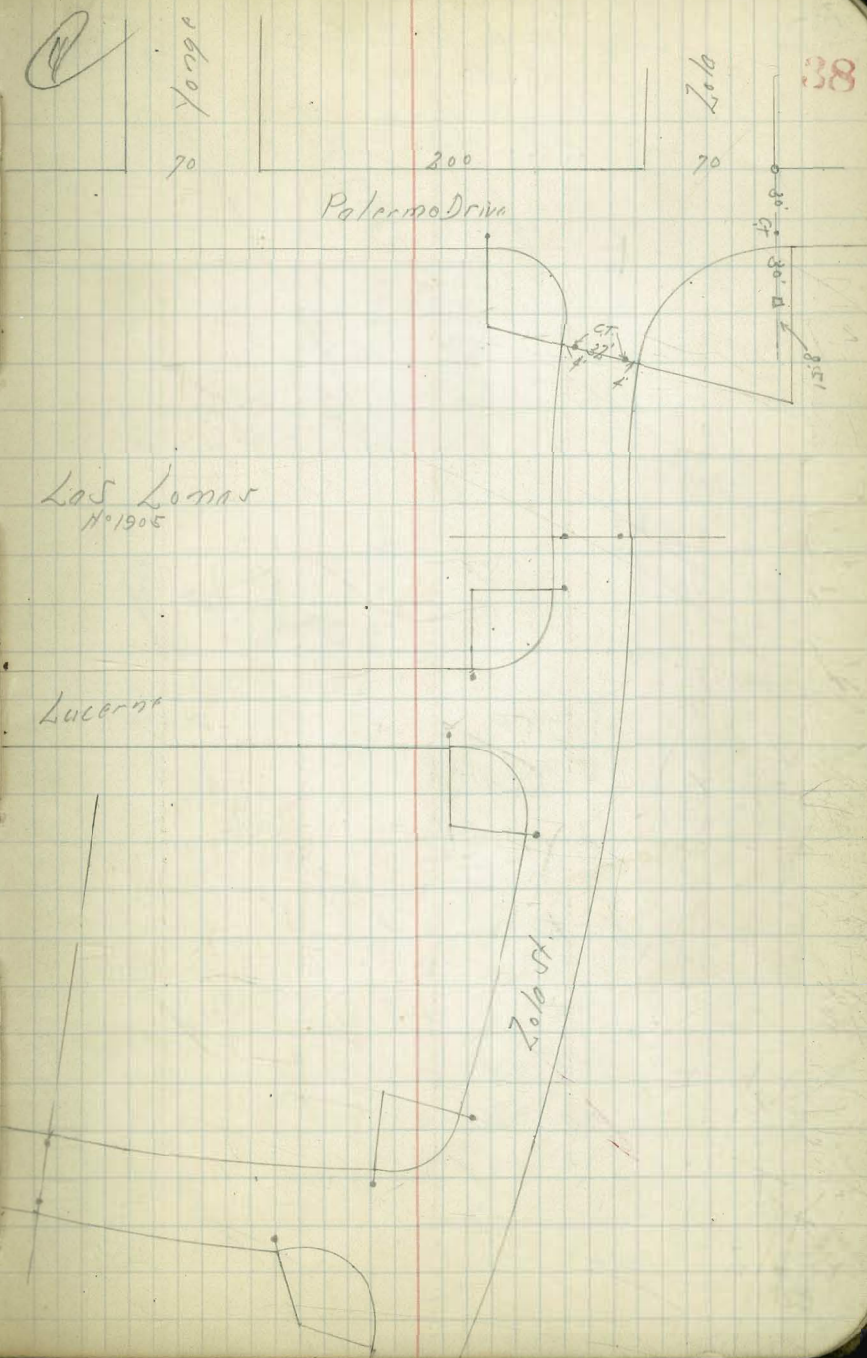
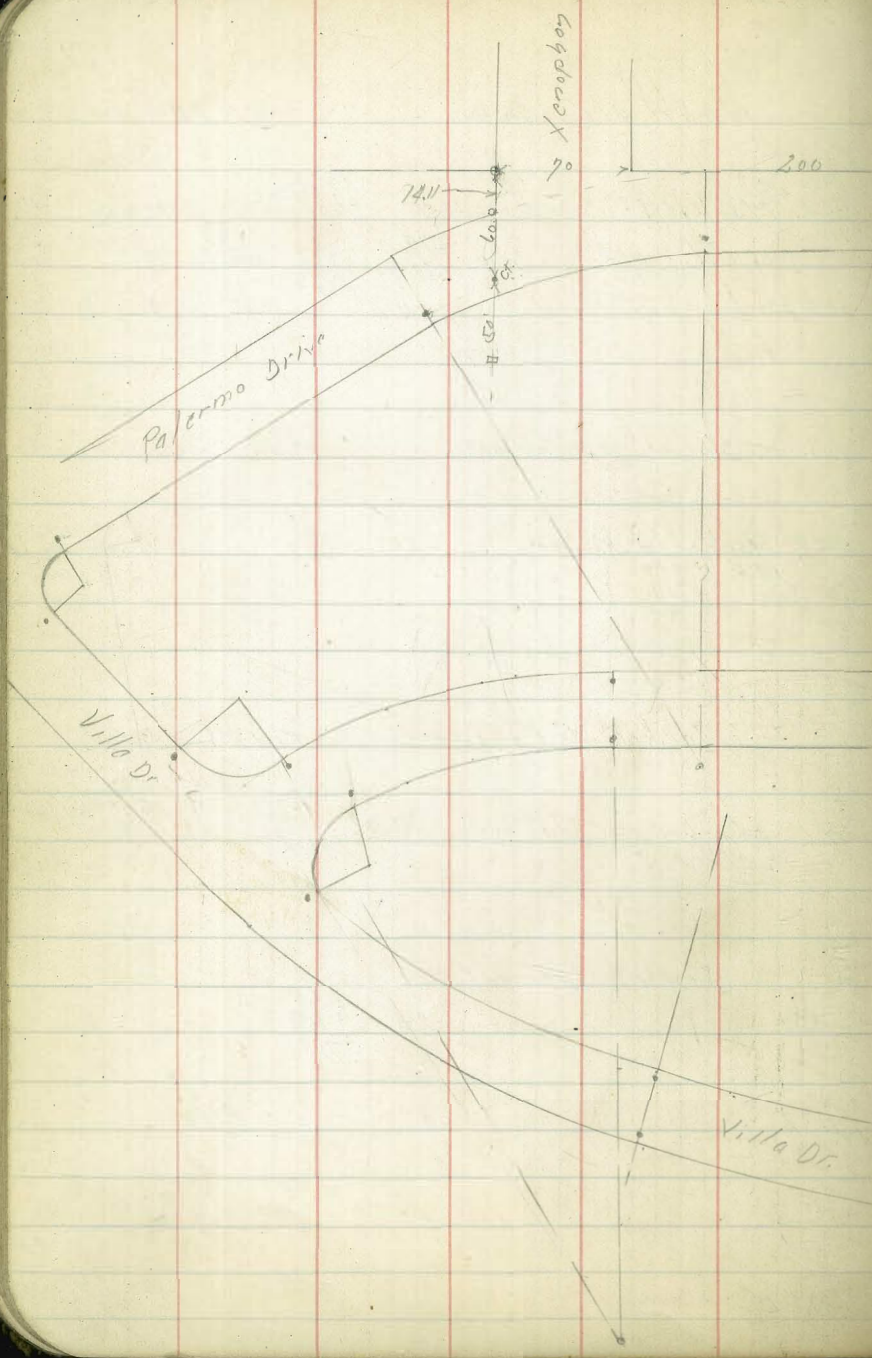
Tied 5' E Hills Gate

N.L. Market of California = M.H. N° 3	-5.36	11.27 +6.50	BM 0.91 SWBP 5.65 Market 6.41 California
--	-------	----------------	--

Sensors Laterals

N° 1	-2.4	8.21 +4.79	
N° 2	-4.80		1151 6.53 +5.89
N° 3	-1.0		1154 6.96 +5.62
N° 4	1.20	10.34 +6.80	





Q

Yonge  
70

Zola  
70

38

Las Lunas  
Nº 1905

Lucerne

Zola St.

Villa Dr.

Palermo Drive

Palermo Drive

Xenophon  
90

14.11

200

200

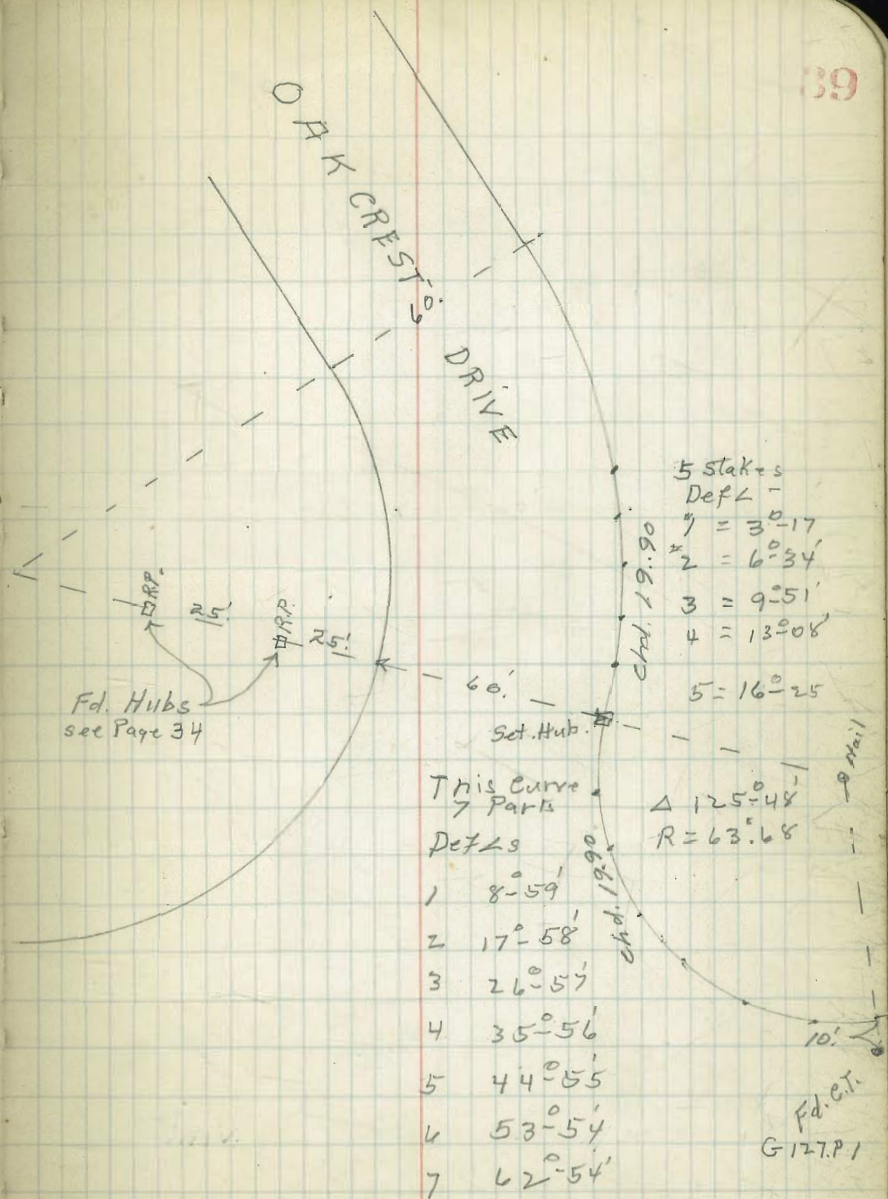
90°  
90°  
90°  
90°

indexed  
c.s.N.

Property Line stakes 3/11/36  
Lots 18 & 19 BIK E.  
Oak Park

Walker  
Walker  
Bliss

39

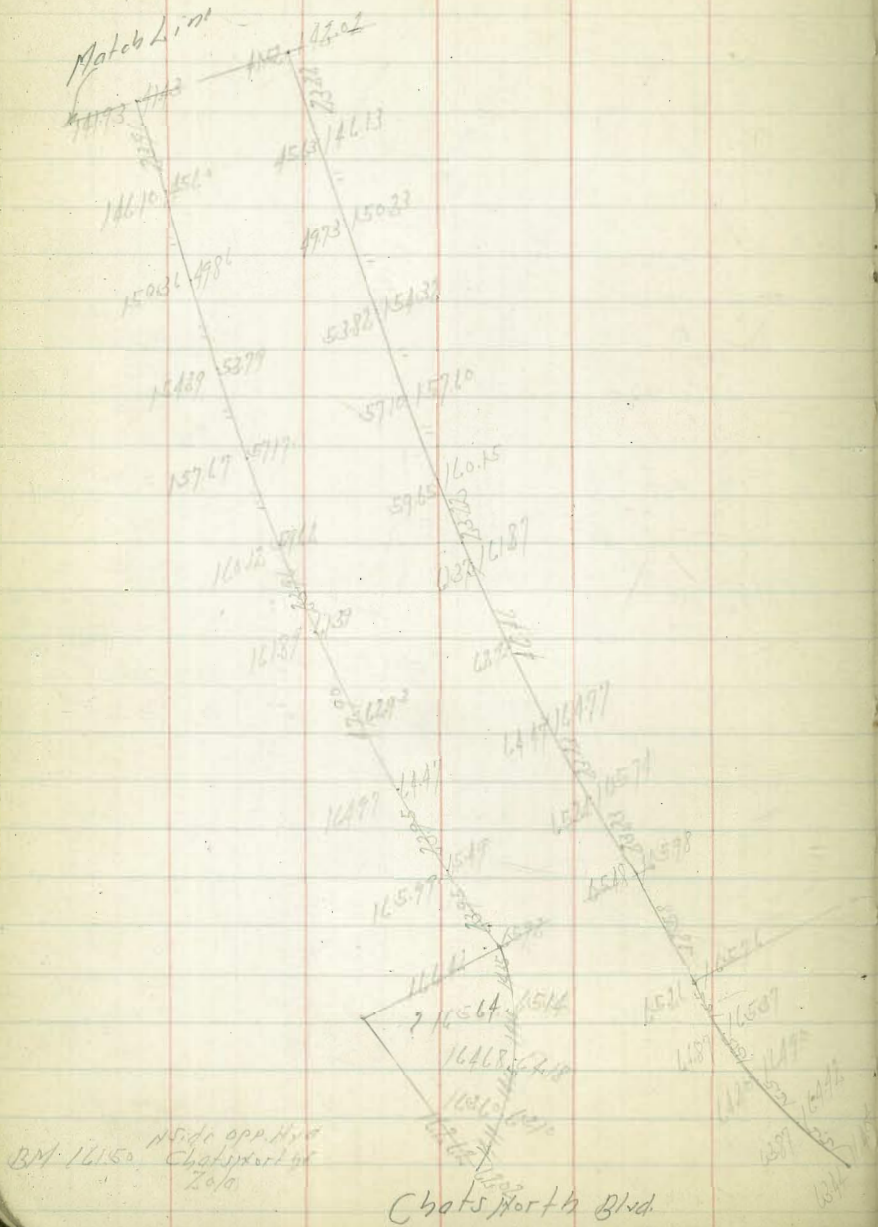


Univ

Ave

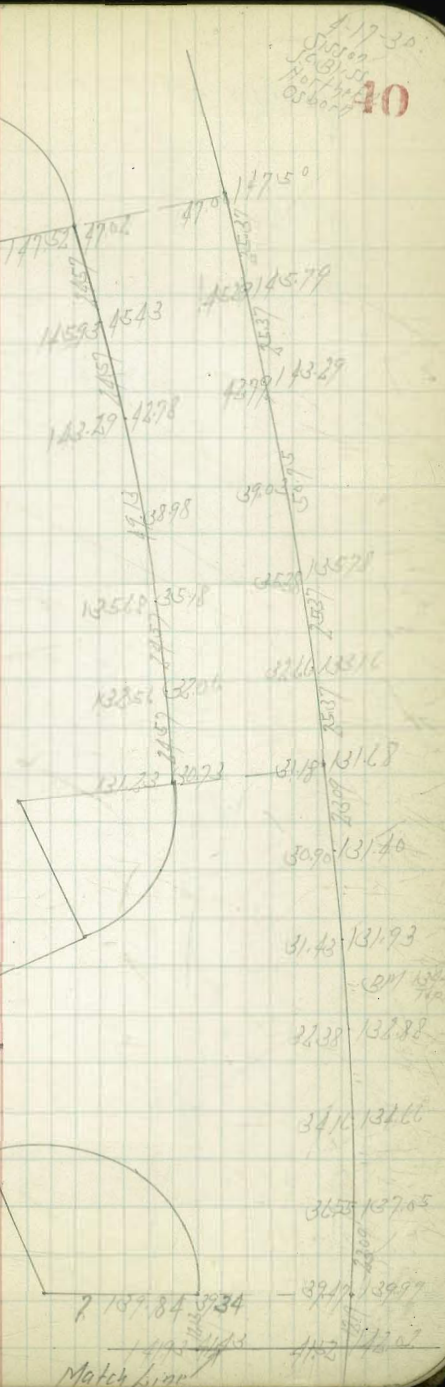


Zolo St. Paving  
 Chatsworth to Palermo



Lucinda Dr

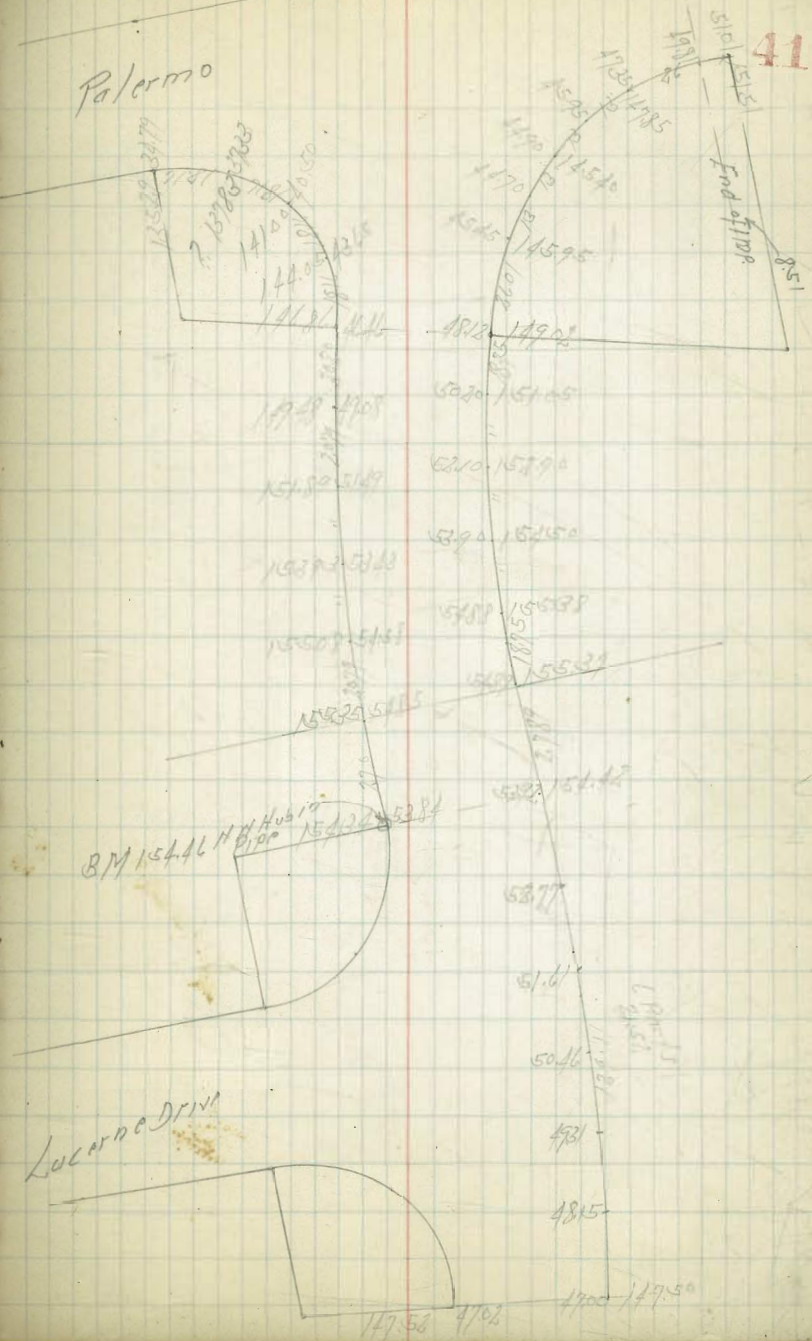
Villa Drive



Z. LaSt. Pav 199  
Chatsworth to Palermo

BM 1434 Top of Hill

Palermo



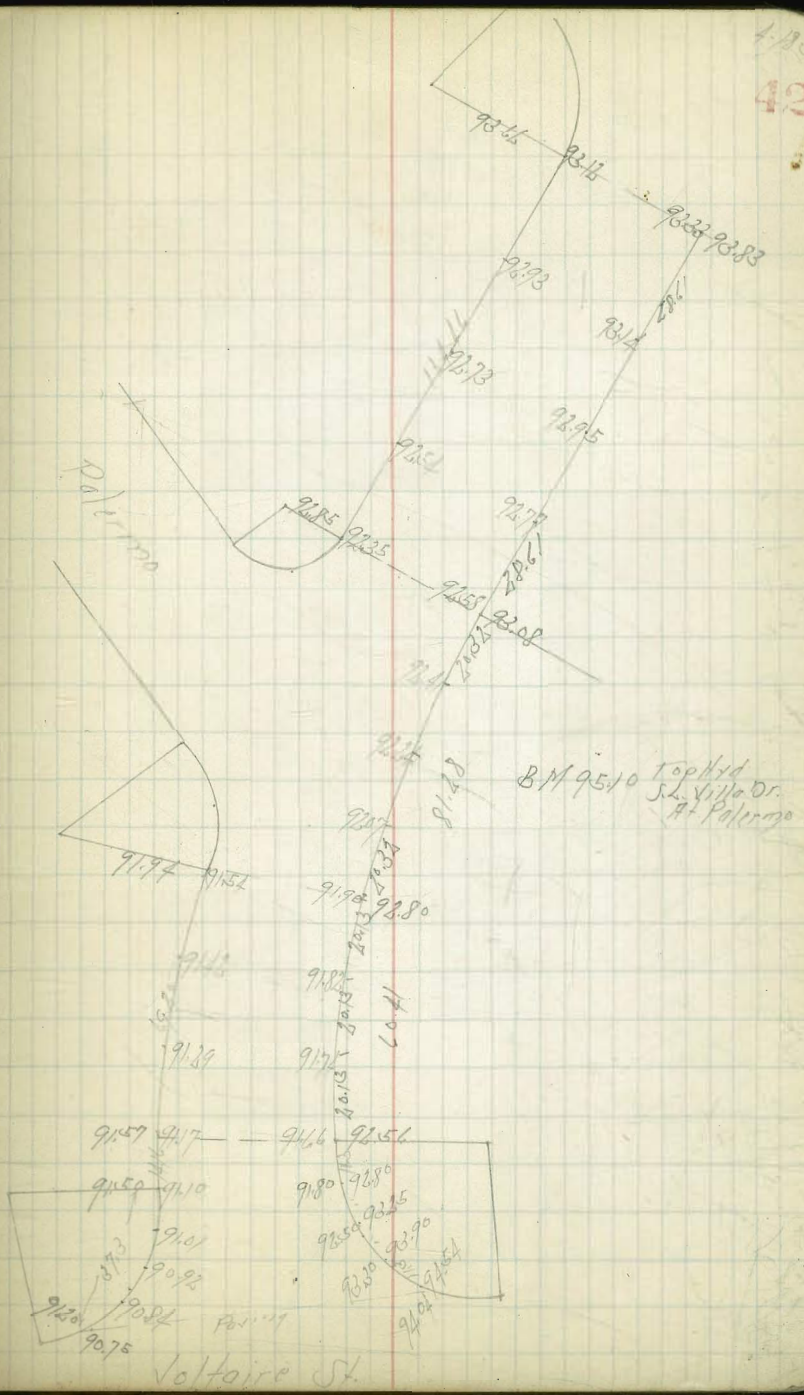
Lucerne Drive



Villa Drive Parings  
 Voltaire to Zola

4.1.50  
 42

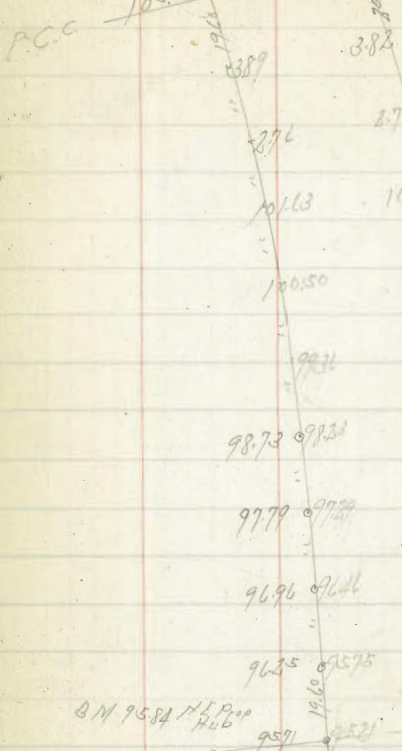
3.17 95.10  
 4.33  
 5.07  
 5.60  
 6.15  
 6.73  
 7.33  
 7.95  
 8.60  
 9.27  
 9.95  
 10.65  
 11.35  
 12.07  
 12.81  
 13.57  
 14.34  
 15.11  
 BM 134.47  
 Top Hyd  
 Zola + Villa Dr  
 104.45



Villa Drive Poring  
Voltaire to Zola

P.C.C. 1055.3 503

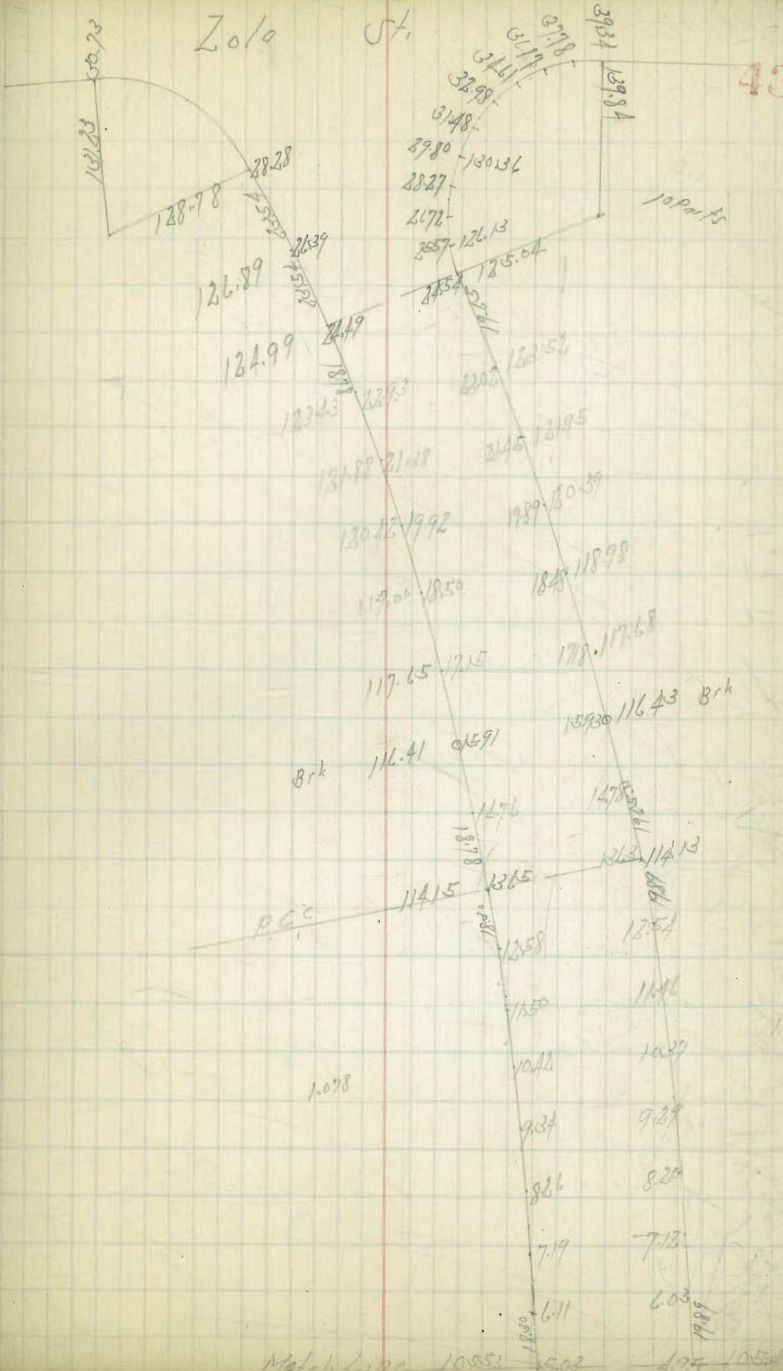
495 1054.5



Lucero



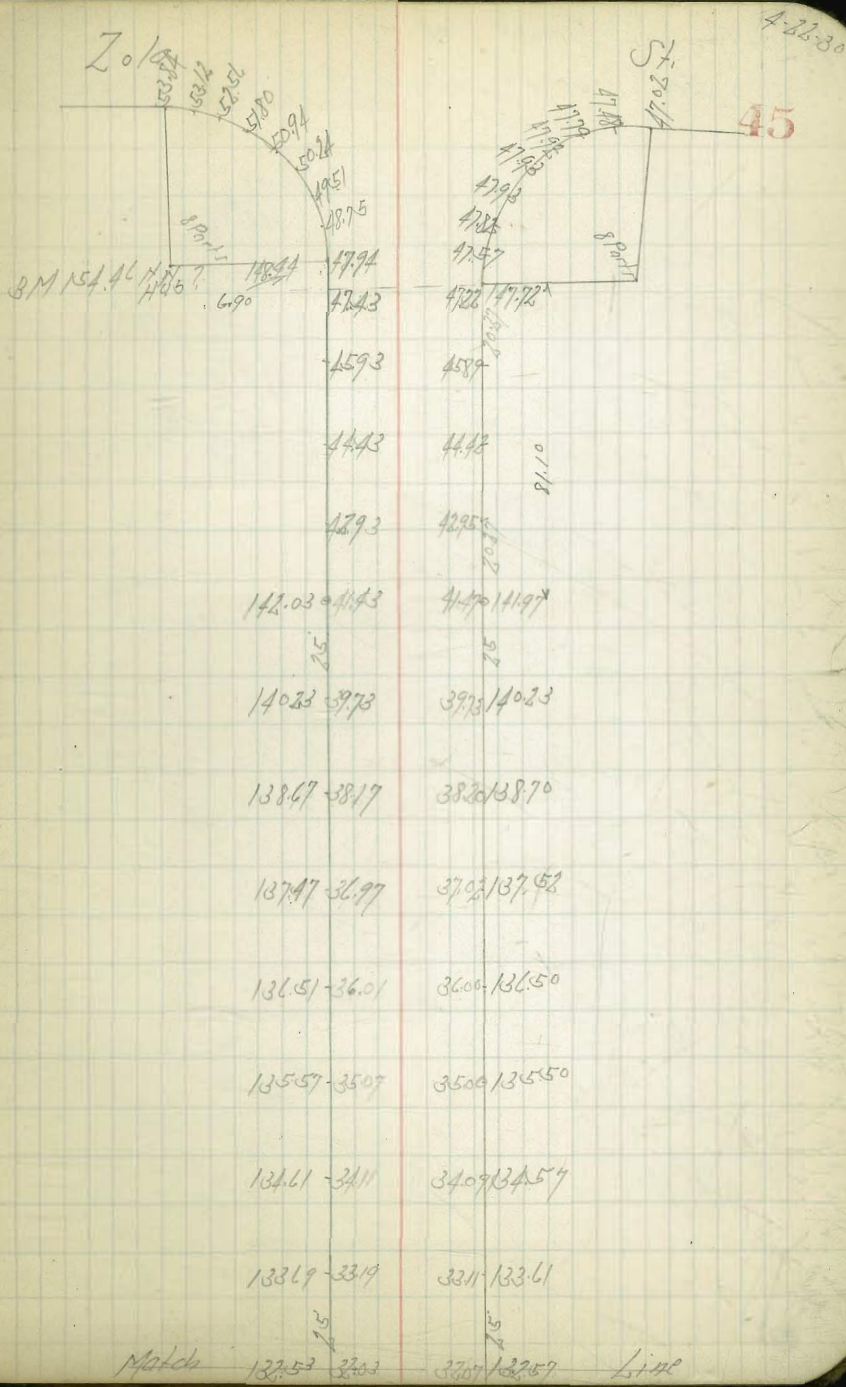
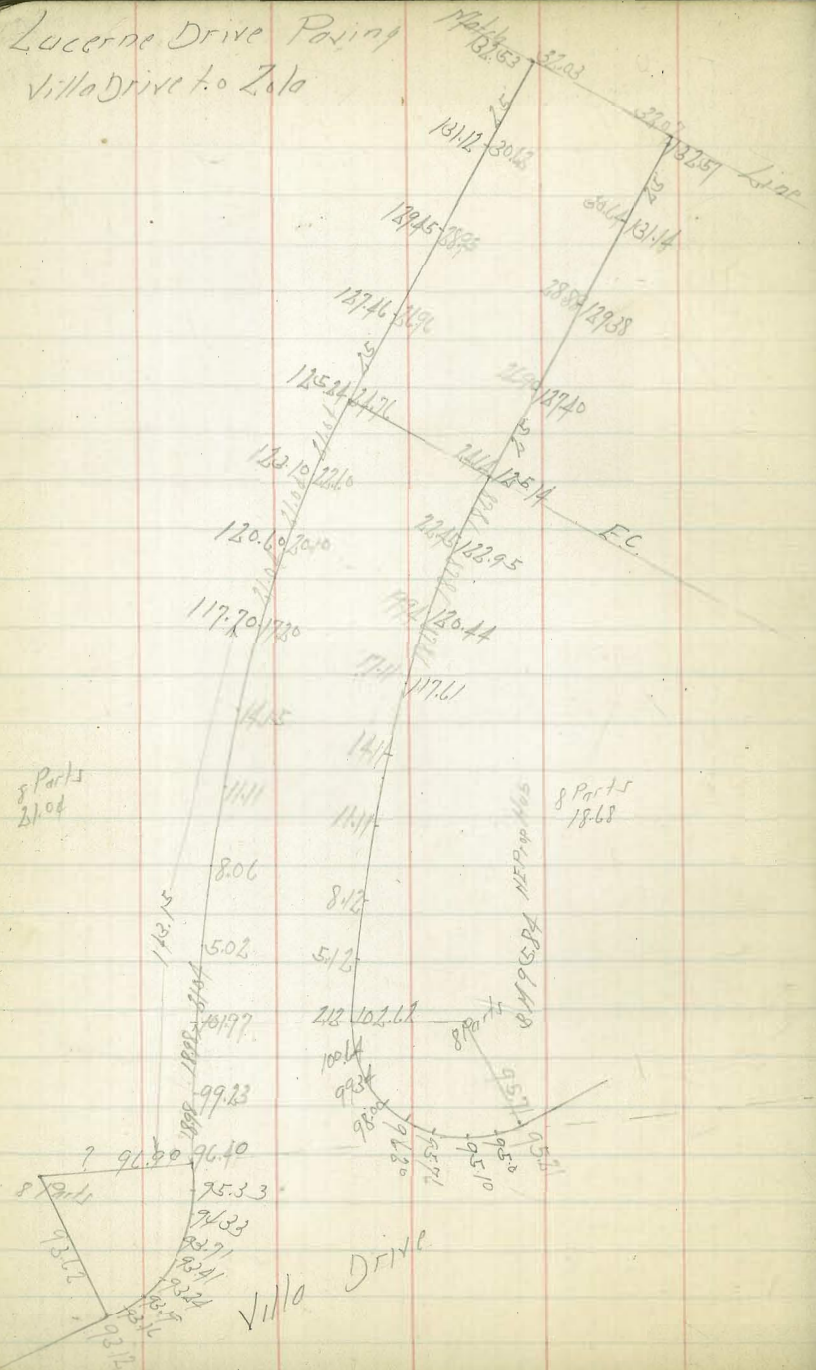
Zola St.







Lucerne Drive Paving  
Villa Drive to Zola



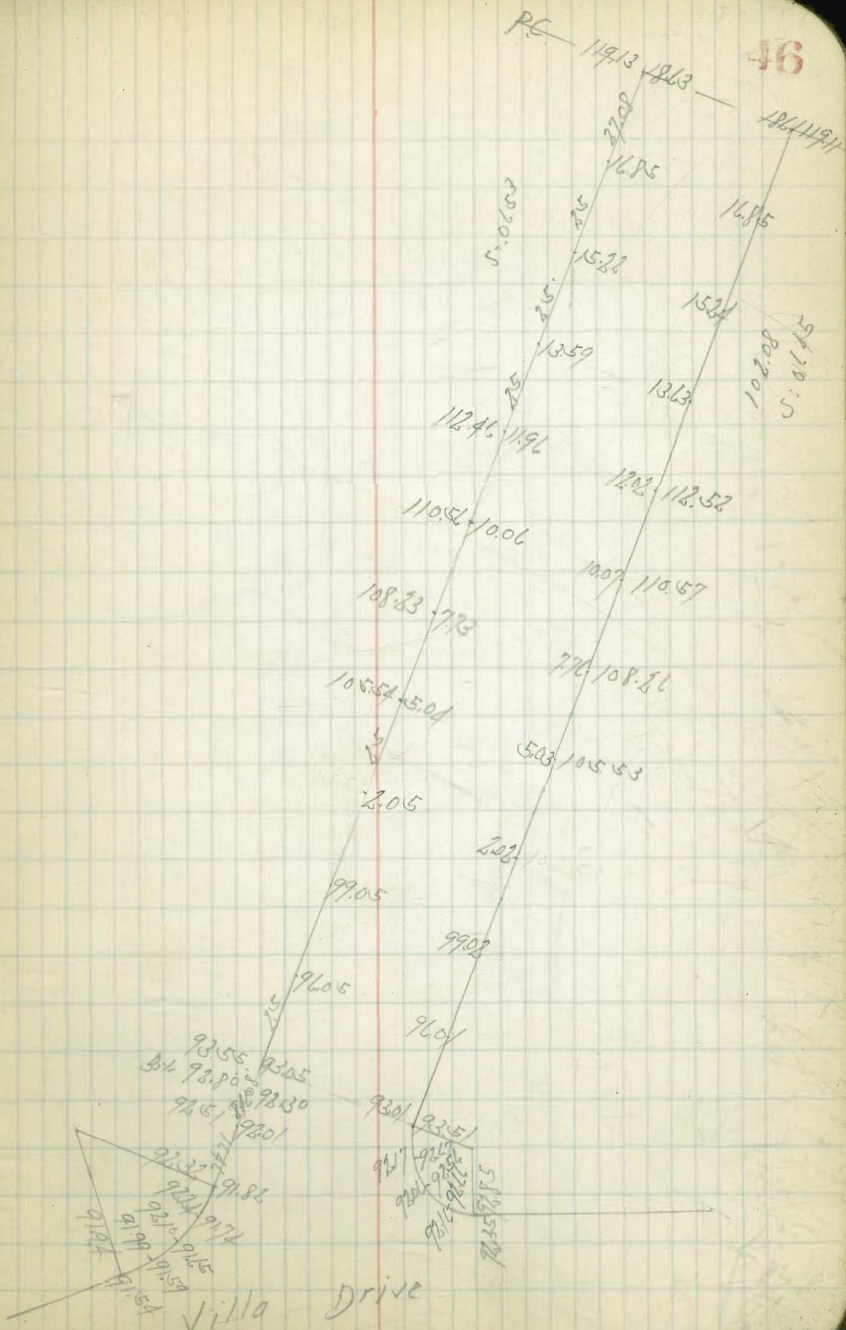
433.30  
45

Match 132.53 32.03 32.03 132.53 Line



Palermo Drive Pairs  
Villa Drive to Zolo

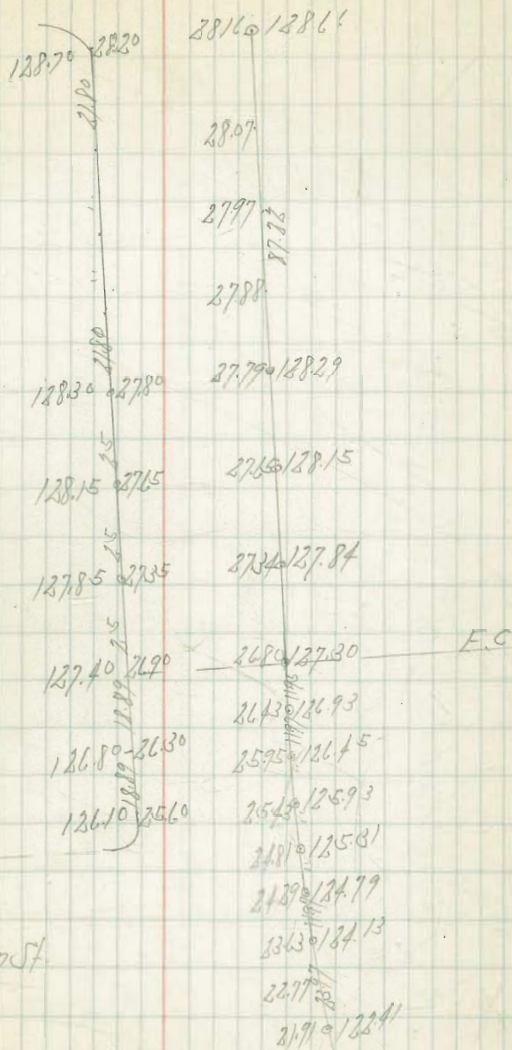
871.95 Top Hill  
 184.49 Villa Dr.  
 186.79 Ft. Palermo  
 104.40  
 12.79  
 17.18  
 16.18  
 117.02  
 16.25  
 129.29  
 103.33  
 108.96  
 9.50  
 137.46



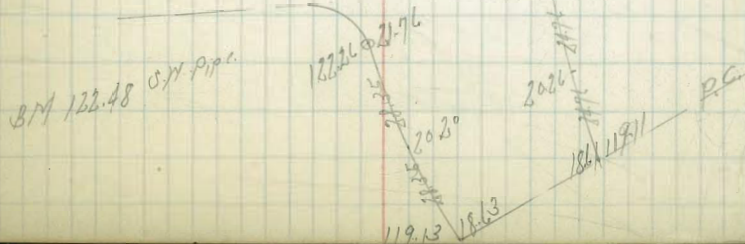
Palermo Drive Paving

Yong St.

47



Xenophon St.





Palermo Drive Paving

Zola St.

150.60 150.10

143.00 142.50

137.50 137.00

135.20 134.80

133.65 133.15

132.20 131.80

131.10 130.60

130.10 129.60

129.20 128.80

Yonge St.

3179 135.29

3376 133.66

3179 132.29

3057 131.07

2956 130.06

2890 129.50

2849 128.99

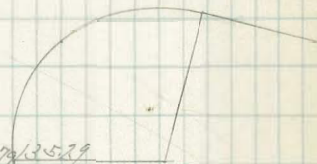
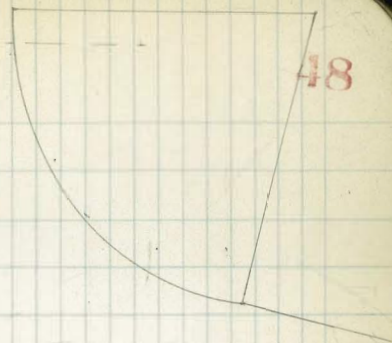
2821 128.81

2823 1/2

2816 128.16

48

Zola St.









Atlantic St. Grades  
From Palmeto North to line

4-18-30  
J. W. Brown  
S. C. B. Co.  
No. 1  
0567

	West L.	East L.
N.L. Palmeto St.	13.60	14.00 14.60
28.25' H: P.C.	13.37	out 14.36
50' H	13.10	13.53 14.08
100' H	12.60	13.27
150' H	12.10	13.60 13.05
200' H	11.60	13.14 12.53
250' H	11.10	12.87
300' H: S.L. Quince	10.60	12.50
N.L. Quince	10.20	10.80
50' H	10.00	10.55
100' H	9.80	10.30 .25
150' H	20 9.60	10.05
200' H	9.40	9.80
250' H	9.20	9.55
300' H: S.L. Redwood	9.00	9.30
N.L. Redwood	8.80	9.10
50' H	8.65	8.95
100' H	15 8.50	8.80 .15
150' H	8.35	8.65
200' H	8.20	8.50
250' H	8.05	8.35
300' H: S.L. Spruce	7.90	8.20

	pc	gut							
F	14.88	14.81	13.53	13.07	12.60	12.14	11.67	11.21	
	14.60		14.08	13.54	13.05	12.53	12.02	11.50	
	2.1		3.1	-0.1	-0.1	0.1	0.2	1.1	
	3.4		3.7	-0.2	-0.2	0.2	0.2	1.5	
	-6.8		-0.7	-0.3	-0.1	-0.2	-0.2	-0.1	
	-0.3		-0.2	-0.3	-0.1	-0.1	-0.2	10.8	

H	13.60	13.37	13.10	12.60	12.10	11.60	11.10	10.60	
	3.6	3	4.1	2.1	5.1	5.6	5.9	6.5	
	3.1		3.7	4.2	4.7	5.4	5.9	6.5	
	+0.2		70.4	70.7	70.4	70.8	70.2	70.7	

F	10.80	10.55	10.30	10.05	9.80	9.55	9.30
	2.1	2.4	2.6	2.9	3.1	3.4	3.6
	1.9	2.2	2.8	2.7	3.6	4.4	4.6
	+0.2	0.0	-0.2	70.2	-0.5	-1.0	-1.5

H	10.20	10.00	9.80	9.60	9.40	9.20	9.00
	7.0	2.9	3.1	3.3	3.5	3.7	3.9
	7.2	3.0	3.2	4.0	4.5	4.7	4.9
	-0.2	-0.1	-0.1	-0.7	-1.0	-1.0	-1.0

F	9.10	8.95	8.80	8.65	8.50	8.35	8.20
	3.8	4.0	4.1	4.3	4.4	4.6	4.7
	4.1	4.9	5.3	5.7	4.9	5.1	4.8
	-0.8	-0.9	-1.3	-0.8	-0.5	-0.5	-0.1

H	8.80	8.65	8.50	8.35	8.20	8.05	7.90
	4.1	4.3	4.4	4.6	4.7	4.9	5.0
	5.1	5.3	5.3	5.5	5.0	5.5	5.3
	-1.0	-1.0	-0.9	-0.9	-0.3	-0.6	-0.3



Atlantic St. Grades

	West	East	
N.L. Spruce	7.90	8.20	BM 893
50'H	8.05	8.35	13.37
100'H	8.20	8.50	13.34
150'H	8.35	8.65	13.30
200'H	8.50	8.80	13.26
250'H	8.65	8.95	13.20
300'H - S.L. Sassafras	8.80	9.10	BM 226
N.L. Sassafras	8.80	9.10	
50'H	8.65	8.95	
100'H	8.50	8.80	
150'H	8.35	8.65	
200'H	8.20	8.50	
250'H	8.05	8.35	
300'H - S.L. Thoro	7.90	8.20	

	8.20	8.35	8.50	8.65	8.80	8.95	9.10
F	4.7	4.6	4.8	4.7	4.5	4.4	4.2
	-0.1	-0.3	-0.2	-0.5	-0.3	-0.4	-0.7
H	5.0	4.9	4.7	5.0	4.9	4.7	4.5
	-0.4	-0.4	-0.4	-0.4	-0.8	-0.9	-0.7
F	4.2	4.4	4.5	4.7	4.8	4.9	5.1
	-0.6	-0.6	-0.7	-0.5	-0.1	0.1	0.7
H	4.5	4.7	4.8	5.0	5.1	5.3	5.4
	-0.4	-0.7	-0.5	-0.6	-0.4	-0.1	0.5

3.01 M.H. Tide  
Mon  
V. 22  
22.59  
9.31  
13.49

52

22.31  
9.31  
BM 1433

BM 5.70  
11.70  
16.80  
33.5  
BM 13.45  
Mon 2  
Brent  
Atlantic  
Mon 27 M.H.  
Tide  
So. of Pine  
8.49



Atlantic Grader

4-21-30

53

West Sta	M Grader	East Sta	E Grader
N.L. Thoro	7.90	N.L. Thoro	8.20
49.45 N-PC	8.05	49.45 N-PC	8.35
97.98 N	8.30	99.45 N	8.50
146.51 N	8.35	149.45 N	8.65
195.03 N	8.50	199.45 N	8.80
243.56 N	8.65	249.45 N	8.95
292.09 N	8.80	299.45 N	9.10
340.22 N	8.96	349.45 N	9.24
389.15 N	9.09	399.45 N	9.39
437.67 N	9.24	449.45 N	9.54
486.20 N	9.39	499.45 N	9.69
534.73 N	9.54	549.45 N	9.84
583.26 N	9.69	599.45 N	9.99
596.45 N	9.73	618.07-OL Ximp	10.03
673.07 N	9.96	692.07-NL Ximp	10.26
683.29 N	10.00	702.63 N-Bl	10.30
731.82 N	9.86	752.63 N	10.16
780.35 N p.c.	9.71	802.63 N	10.01

M.H.A.M.  
N.J.P.C.  
8.01  
13.94

F 8.20	8.35	8.50	8.65	8.80	8.95	9.10	9.24	9.39	9.54
57	56	54	53	51	50	48	47	45	42
-0.1	-0.3	-0.1	-0.1	-0.5	-0.6	-0.4	-0.4	-0.3	-0.4
N 7.90	8.05	8.20	8.35	8.50	8.65	8.80	8.94	9.09	9.24
60	59	57	56	54	53	51	50	48	47
57	56	54	53	51	50	48	47	45	42
+0.3	+0.3	+0.1	0.0	-0.2	0.0	-0.2	-0.3	-0.6	-0.5
L 9.69	9.84	9.99	10.03	10.26	10.30	10.16	10.01		
43	41	40	38	37	36	34	33	31	29
42	41	40	38	37	36	34	33	31	29
-0.5	-0.5	-0.6	-0.2	-0.8	-0.9	-0.6	-0.6		
N 9.39	9.54	9.69	9.84	9.96	10.00	9.86	9.71		
46	45	43	42	40	39	37	36		
50	50	48	47	45	44	42	41	39	38
-0.4	-0.6	-0.7	-1.0	-0.8	-0.7	-0.8	-1.1		

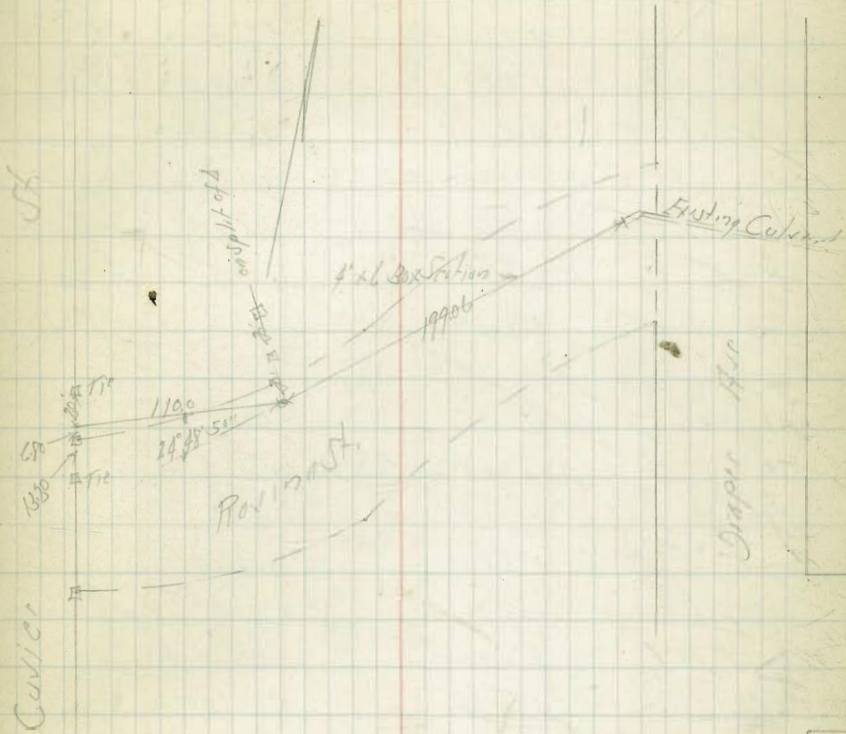


Rowin St. Storm Drain  
Draper Ave. to Currier St.

	1125	13.14 1073	B.M. 76.49 453 Kimm Covier
West End of Existing Culvert W. of Draper	59.50		81.61
33.18 W	58.49	14.45 +9.84	73.60 68.73
66.35 W	57.48	15.65 +8.53	73.14
99.53 W	56.47		14.67 +6.5
132.70 W	55.46	12.88 +8.47	18.19 17.41
165.88 W	54.45		
199.06 W = Δ 24° 48' 50" W	53.44	12.70 +8.22	20.81 19.79
235.73 W	52.33		
272.39 W	51.22	11.94 +8.04	23.04 16.69 16.3
309.06 W. E. of Currier St.	50.10		
5' W. of W. End of Culvert = Cleanout Top	68.00	5.44 +6.62	

4-23-30  
Sisson  
J. G. Wiers  
Northland  
05687

54





High in Black B" Wallace Heights  
From Dale to Granada  
Betula Spruce And Thorn

	S	N	BM 320.54
1/2 Dale	312.27	312.30	325.08
30 H	314.43	314.35	325.53
60 H - PVC	316.60	316.40	326.00
80 H	317.70	317.50	326.04
100 H - PVC	318.30	318.20	326.94
130 H	318.90	318.80	327.76
160 H - PVC	319.30	319.40	328.76
180 H	319.70	319.90	329.61
200 H - PVC	320.35	320.55	329.77
230 H	321.47	321.67	330.1
260 H - PVC	322.60	322.80	
280 H	323.20	323.40	
300 H	323.70	323.90	
320 H - PVC	324.00	324.20	
360 H	324.45	324.65	
400 H - PVC	324.90	325.10	
420	325.10	325.30	
440	325.10	325.30	
460	325.00	325.20	
480	324.85	325.0	
500	324.60	324.75	
520 H - PVC	324.20	324.30	
560 H	323.22	323.24	
600 H - F.L. Granada	322.24	322.18	

	H	S	N	S	H	S	N	S	H	S	N
1/2 Dale	312.30	17.35	16.40	17.50	18.20	18.80	19.40	19.90	20.55	21.67	
30 H	314.35	6.05	4.00	2.90	5.52	4.92	10.63	10.10	9.41	9.15	8.99
60 H - PVC	316.60	8.10	7.56	4.35	3.00	4.52	2.97	10.63	9.41	9.15	8.99
80 H	317.70	-0.51	-0.35	-0.10	4.00	4.50	4.07	4.69	4.31	4.34	
100 H - PVC	318.30										
130 H	318.90										
160 H - PVC	319.30										
180 H	319.70										
200 H - PVC	320.35										
230 H	321.47										
260 H - PVC	322.60										
280 H	323.20										
300 H	323.70										
320 H - PVC	324.00										
360 H	324.45										
400 H - PVC	324.90										
420	325.10										
440	325.10										
460	325.00										
480	324.85										
500	324.60										
520 H - PVC	324.20										
560 H	323.22										
600 H - F.L. Granada	322.24										

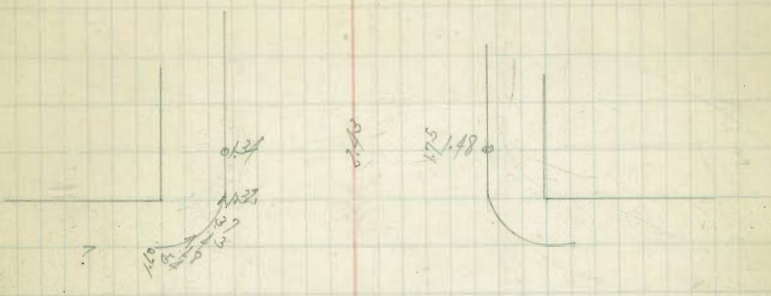
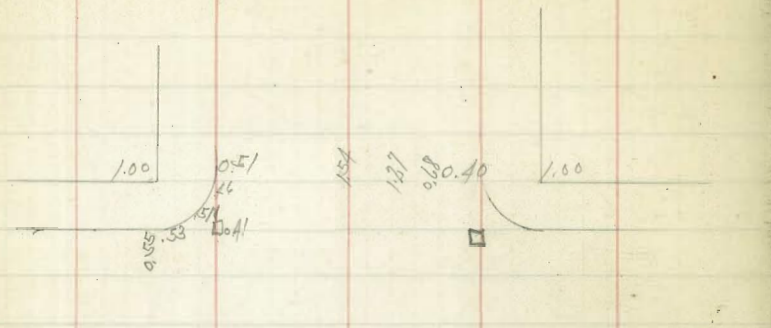
4.25.30  
Sisson  
C. B. Sisson  
North  
Shaw





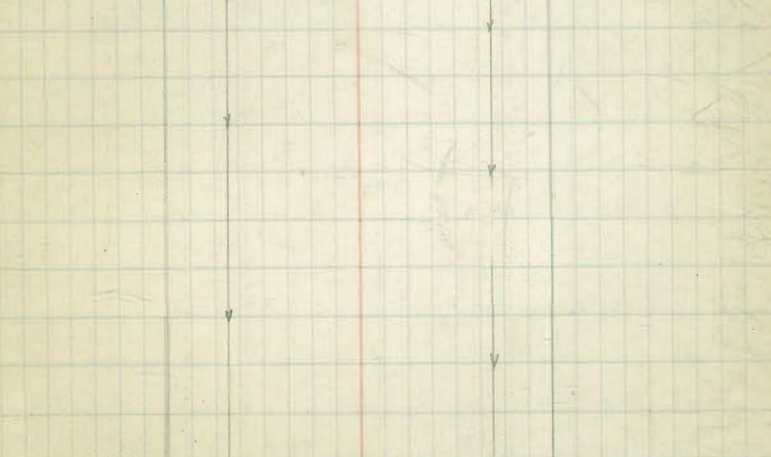
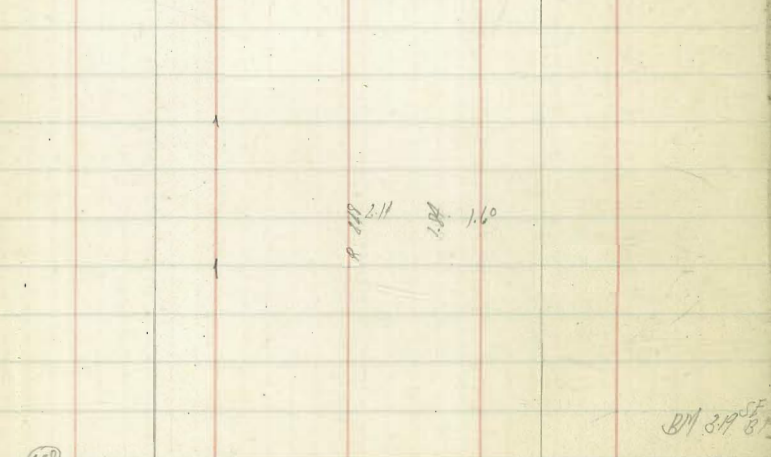
Market St. Paving  
 Atlantic St. to  
 20.

Mar 2:30  
 Sisco?  
 J.C. Bl...  
 North...  
 Osborn?  
 Shaw



California St.

Kettner Blvd.

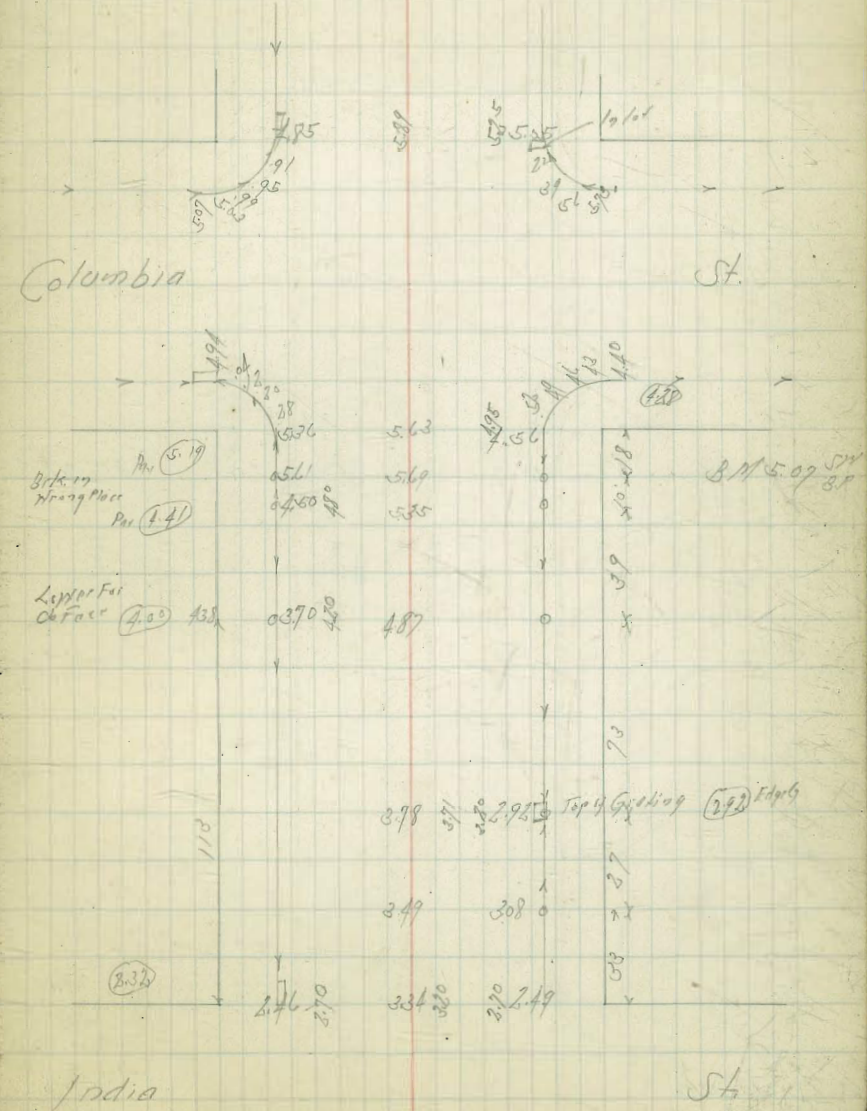
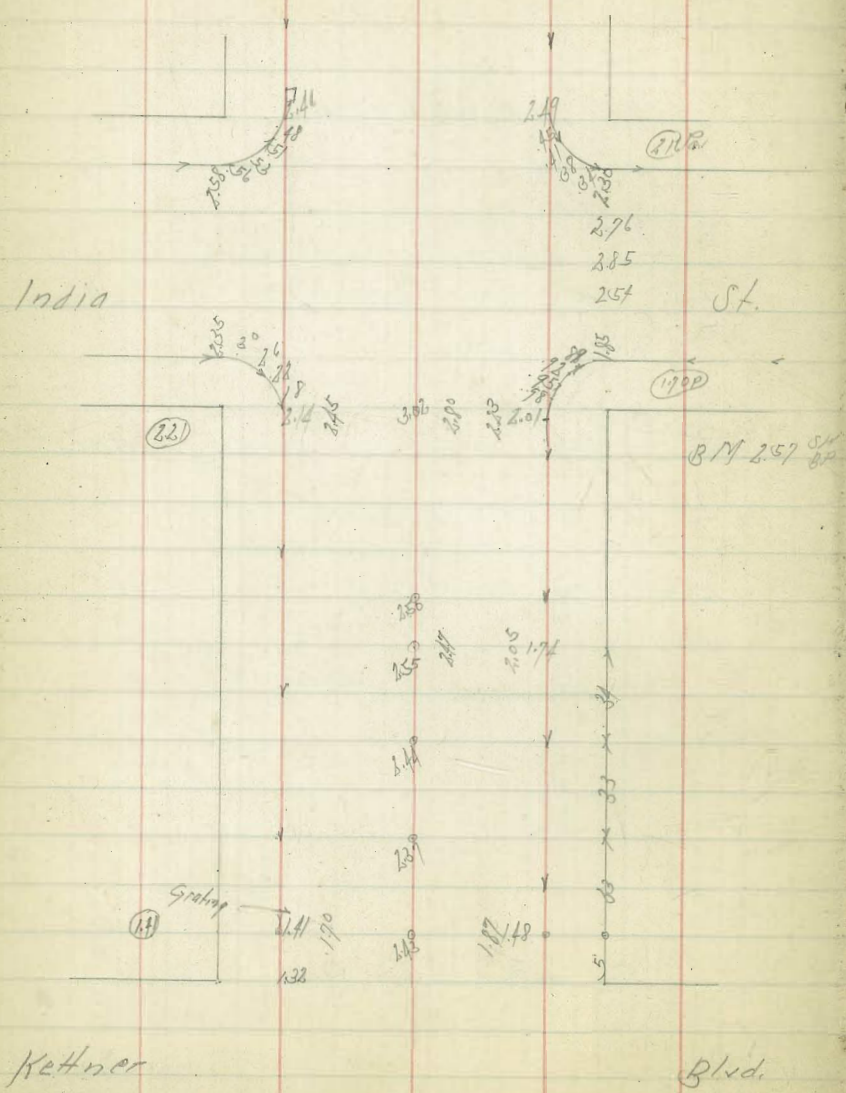


Atlantic St.

California St.











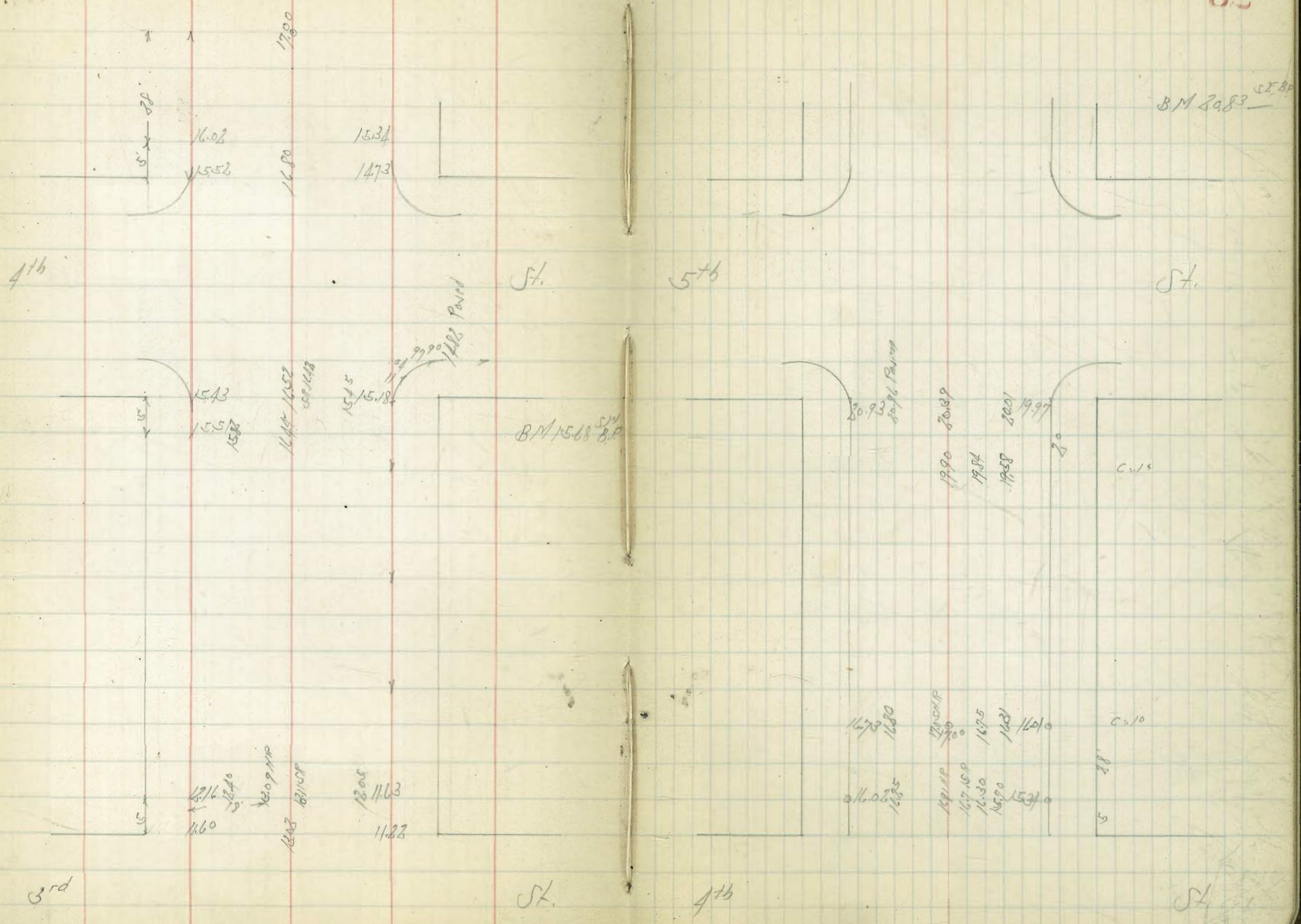


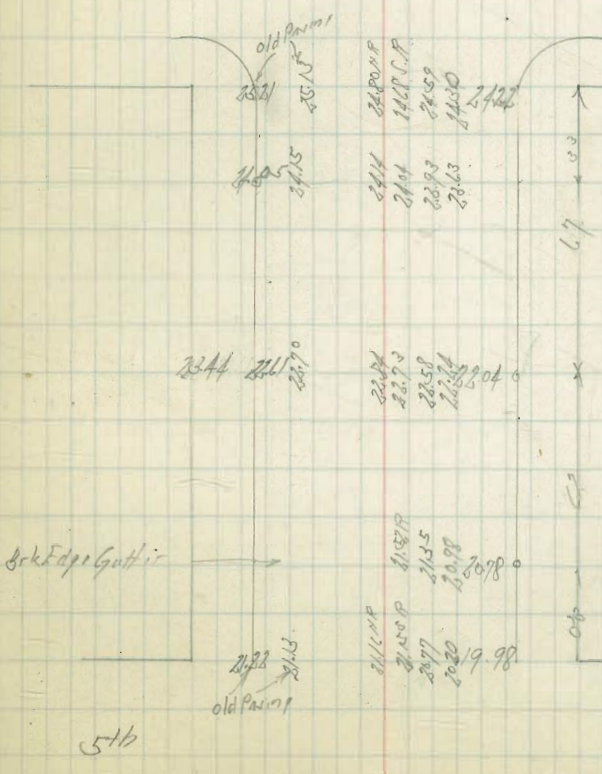
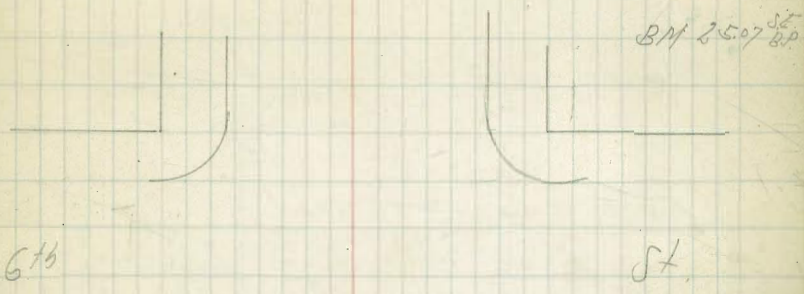






Market St. Paving





G16

St







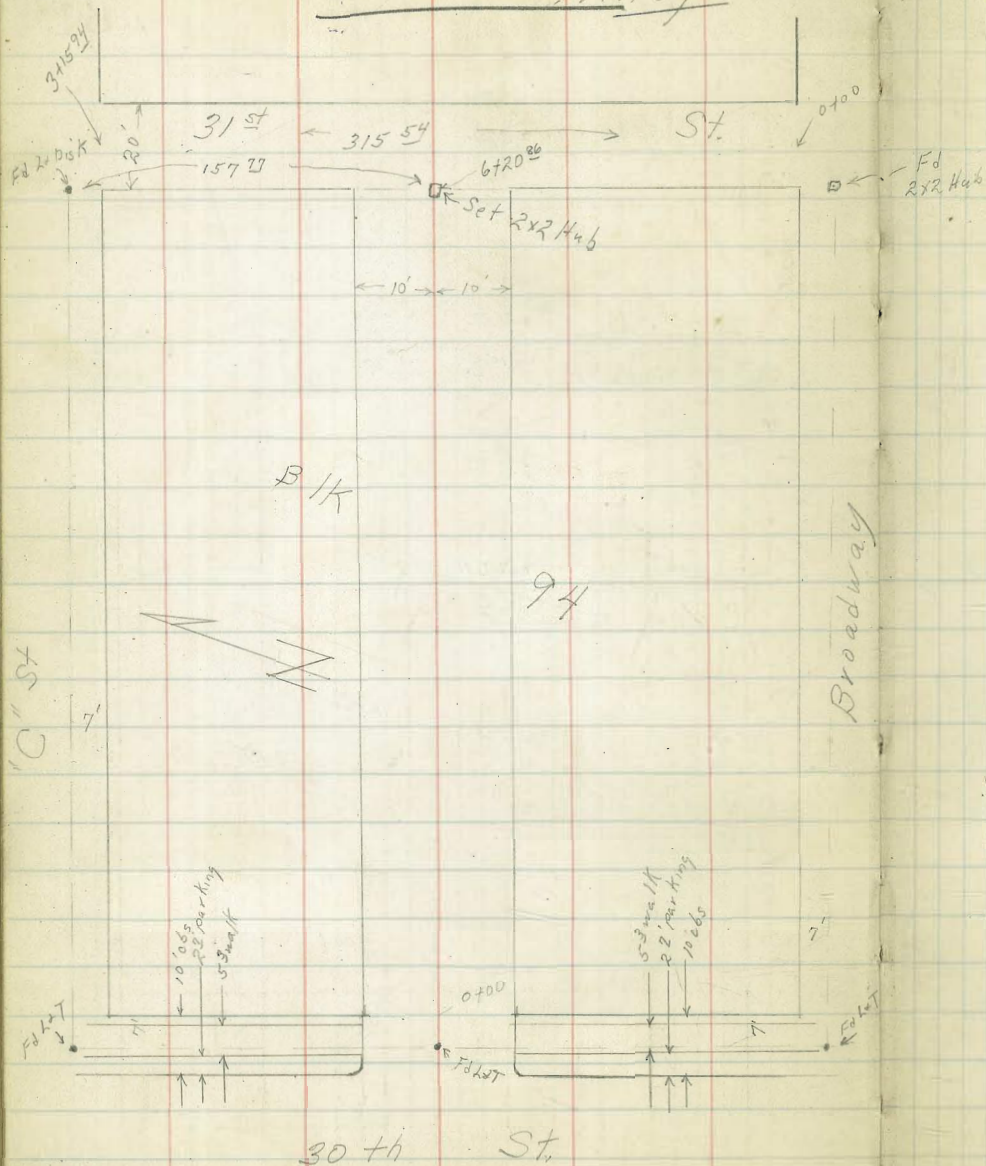
D. Smith  
J. Huffman  
J. Bishop

# Cross Sec. Alley BIK 94 E.W. Morse

wo# 25020  
12-17-51

65

INDEXED  
Luo  
JAN 14 1952





X Sec Alley (T) B.K. 94 E.W. Morse

2<sup>nd</sup> North

RT: 504 + 4

0+75

1998	1993	1989	1989	1992
95	102	104	104	104
20	10		10	15

TP, 9<sup>20</sup> 209<sup>28</sup> 042 199<sup>48</sup>

T 209<sup>28</sup>

0+74 9<sup>6</sup> RT & Dead man

0+63 11<sup>2</sup> RT & 3' con walk

19768  
2<sup>22</sup>  
11<sup>2</sup>  
walk

0+57 8<sup>2</sup> RT End hedge

Reduced & Plotted  
1-24-52  
H. Mills

1958	1963	1967	1966	1965
42	36	38	33	34
20	10		10	15

0+50

0+27 10<sup>4</sup> RT End 12" stucco wall

1950  
42  
104  
footing

0+26 8<sup>2</sup> RT Begin Northerly of 3' wide hedge 3<sup>5</sup> high

10<sup>3</sup> RT Begin 12" Stucco wall

0+00 Fly Prop 30<sup>th</sup> edge con parking

19466	19449	19417	19423	19438	1944
524	541	573	581	552	55
93	92		103	103	103
25	24		24	26	footing

0-10 Fly cb 30<sup>th</sup>

19431	19267	19440	19218	19401	19358	19429	19239	19410
559	623	580	622	630	632	561	651	580
36	35	10	10		10	10	35	35
25	24	26	24		24	24	24	25

BM

4<sup>82</sup> 19920

195<sup>08</sup>

S EBP 30<sup>th</sup>  
Broadway

T 19920



2+01 8° RT E 10" Power Pole # PA 3040

2+00 105 Lt End Lath Fence <sup>2041<sup>1/2</sup></sup> 3 car garage dirt floor

1+70 10° Lt Begin Lath Fence

1+61 10° Lt E Double garage dirt floor

1+50

1+25

1+05 11<sup>3</sup> RT E single garage con floor + apron

1+00

0+99 9° RT E 12" Power Pole # A 3020

0+90 10° RT E single garage con floor + apron

Lt. North

E

Rt. South

67

2046	2047	2041	2038	2033
47	46	53	55	60
105	10		10	20
Floor				
2046				
47				
102				
Floor				
2048	2047	2044	2042	2043
45	46	49	52	50
15			10	10
2040	2040	2040	2039	2040
53	53	53	54	53
20	10		10	10
			20323	20332
			635	526
			112	145
			apron	Floor
2026	2025	2018	2024	
62	68	75	69	
20	10		10	
			20018	20014
			90	94
			101	132
			apron	Floor

20928



Lt = North

E

Rt = South

68

TP<sub>2</sub> 004 196<sup>68</sup> 1264 196<sup>64</sup>3780 10<sup>5</sup> Lt E 24" Pepper tree

3775

3750

3744 8° Rt NE cor single garage

3728 7° Rt NW cor single garage dirt floor  
opens westerly

3701 8° Rt E 10" Power Pole #P3060

3700

2795 10<sup>5</sup> Lt E single garage dirt floor  
not used

2750

2732 10<sup>2</sup> Lt End 3 car garage dirt floor

2010	2004	1993	1985	1976
83	89	100	105	112
15	10		10	15
2035	2033	2029	2031	2028
58	60	64	62	65
10	10		10	15

2057	2055	2051	2049	2043
36	35	42	44	50
15	10		10	20
2056				
32				
10				
Floor				
2060	2057	2048	2043	2039
33	36	45	50	54
15	10		10	20

2050				
43				
10				
Floor				
20920				



TP<sub>3</sub> 092 184<sup>29</sup> 13<sup>3</sup> 183<sup>37</sup>

4787 clothes poles cross Alley

4775

4767 6<sup>2</sup> Lt & 12" Power Pole # JPA 3070

4765 10<sup>2</sup> Lt & 10' guy pole

4765 clothes poles cross Alley

4760 11<sup>5</sup> Lt Begin con foundation for 6' Fence

4750

4741 12<sup>0</sup> Lt & 3' con walk

4725

4711 9<sup>5</sup> Lt & single garage con floor + apron

4700

Lt = North

♀

Rt = South

69

1870	1847	1844	1847	1837	1792
92	11 <sup>8</sup>	123	12 <sup>0</sup>	13 <sup>0</sup>	22 <sup>5</sup>
15	10		7	10	31

18738	1853			
73 <sup>0</sup>	8 <sup>5</sup>			
115	115			
for wall	Costing			
	1926	1911	1896	1884
	6 <sup>1</sup>	5 <sup>6</sup>	7 <sup>4</sup>	8 <sup>3</sup>
	10		10	20

19213				
455 <sup>5</sup>				
12 <sup>0</sup>				
	1944	1941	1935	1925
	2 <sup>3</sup>	2 <sup>6</sup>	3 <sup>2</sup>	3 <sup>2</sup>
	10		10	20

19696	19656			
10 <sup>28</sup>	0 <sup>12</sup>			
112	9 <sup>5</sup>			
Floor	apron			
1977	1972	1967	1966	1952
11 <sup>0</sup>	10 <sup>5</sup>	0 <sup>0</sup>	0 <sup>4</sup>	1 <sup>5</sup>
15	10		10	20

T 19668



6703 E SMH

5790 E creek ditch

5780

5774 5° RT E dead man

5756 5° RT E 12" Power Pole # JPA 3094

TPJ 0° 161<sup>55</sup> 120 161<sup>25</sup>

5750

TPH 0° 173<sup>35</sup> 112 172<sup>58</sup>

5725 109 Lt End con foundation wall for 6' Fence

4796

Lt North

E

Rt South

70

1462	1458	14563	1456	1452
154	158	1592	160	164
20	10	11m	10	20

1397	1443	1413	1413	1411
219	213	203	203	205
20	10	10	10	20

1426	1442	1446	1457	1452
190	174	170	159	164
20	10	10	10	20

1618	1615	1612	1636	1642
116	119	133	98	92
15	10	10	10	20
16158				

17190	1741	1723	1721	1714	1731	1728
1234	143	143	152	129	112	115
109	102	10		5	10	20
Top wall	Roofing					
17335						

1841	1827	1823	1823	1810	1737
02	06	10	10	43	104
15	10		4	10	23

18429

BM starting

0<sup>27</sup>195<sup>07</sup>✓  
195<sup>08</sup>TP<sub>10</sub>11<sup>52</sup>195<sup>34</sup>0<sup>15</sup>183<sup>82</sup>TP<sub>9</sub>12<sup>52</sup>183<sup>97</sup>0<sup>18</sup>171<sup>45</sup>TP<sub>8</sub>1<sup>18</sup>170<sup>45</sup>TP<sub>7</sub>12<sup>69</sup>171<sup>63</sup>2<sup>61</sup>158<sup>94</sup>TP<sub>6</sub>13<sup>20</sup>148<sup>35</sup>Top Iron fence post  
0420 10' LT  
on 3<sup>rd</sup> line6+20<sup>86</sup> Wly 31<sup>st</sup> St after closing15<sup>44</sup>7<sup>2</sup>

10

15<sup>42<sup>5</sup></sup>7<sup>30</sup>

hub

16/55

15<sup>41</sup>7<sup>5</sup>

10



X Sec. 31st St 20' wide

1760<sup>77</sup> Nly Alley

1740<sup>77</sup> Sly Alley

1710

0785 10<sup>2</sup> RT E Power Pole No<sup>4</sup>

0780

TP 10<sup>22</sup> 167<sup>52</sup> 0<sup>20</sup> 156<sup>60</sup>

0750

0720

0700 North Prop Broadway

0-14

TP 9<sup>15</sup> 157<sup>50</sup> 148<sup>35</sup>

Lt = West E RT = East

72

13<sup>2</sup> 8<sup>5</sup> 4<sup>1</sup> 10<sup>5</sup>  
10 10 20

13<sup>7</sup> 8<sup>8</sup> 4<sup>6</sup> 0<sup>0</sup>  
10 10 20

17<sup>2</sup> 16<sup>0</sup> 13<sup>2</sup> 8<sup>2</sup> 4<sup>1</sup> 0<sup>3</sup>  
20 14 10 10 20

20<sup>4</sup> 15<sup>5</sup> 11<sup>8</sup> 7<sup>6</sup> 3<sup>7</sup> 0<sup>3</sup>  
28 20 10 10 20

167<sup>52</sup>

9<sup>6</sup> 7<sup>7</sup> 3<sup>5</sup> 10<sup>8</sup> 14<sup>8</sup> 17<sup>8</sup>  
22 20 10 10 20

12<sup>3</sup> 8<sup>5</sup> 4<sup>2</sup> 0<sup>2</sup> 12<sup>4</sup>  
20 10 10 20

16<sup>2</sup> 15<sup>4</sup> 12<sup>2</sup> 8<sup>2</sup> 3<sup>2</sup>  
20 10 10 20

20<sup>2</sup> 18<sup>3</sup> 15<sup>4</sup> 10<sup>4</sup> 5<sup>4</sup>  
20 10 10 20

157<sup>50</sup>

BM T<sup>1</sup><sub>8</sub> page 71

960

170<sup>45</sup>

✓ 170<sup>45</sup>

3+15<sup>54</sup> South C6 "C" ST

3+01<sup>54</sup> South Prop "C" ST.

TP" 132<sup>5</sup> 180<sup>05</sup> 622 166<sup>80</sup>

2+70

2+59 10°4 E 30" outlet con pipe drain

2+48 10' Lt E 7' wide apron con.

2+00

Lt = West E Rt = East

73

364	432	355	455	421	347	324	324	220	212
30	30	10	10	94t	05	10	10	30	30
06	54t	06	94t			54t	06	94t	05

4 <sup>5</sup>	3 <sup>5</sup>	3 <sup>4</sup>
10		10

180<sup>05</sup>

12 <sup>6</sup>	12 <sup>0</sup>	11 <sup>0</sup>	8 <sup>6</sup>	5 <sup>2</sup>
20	10		10	20

18<sup>30</sup>  
10  
10  
Apron

17 <sup>5</sup>	18 <sup>20</sup>	19 <sup>82</sup>	18 <sup>06</sup>	15 <sup>2</sup>	12 <sup>0</sup>
20	13 <sup>5</sup>	10	6 <sup>5</sup>		10
		10			
		Apron			

18 <sup>8</sup>	15 <sup>8</sup>	11 <sup>2</sup>	6 <sup>5</sup>	2 <sup>0</sup>
18	10		10	20

1 167<sup>52</sup>



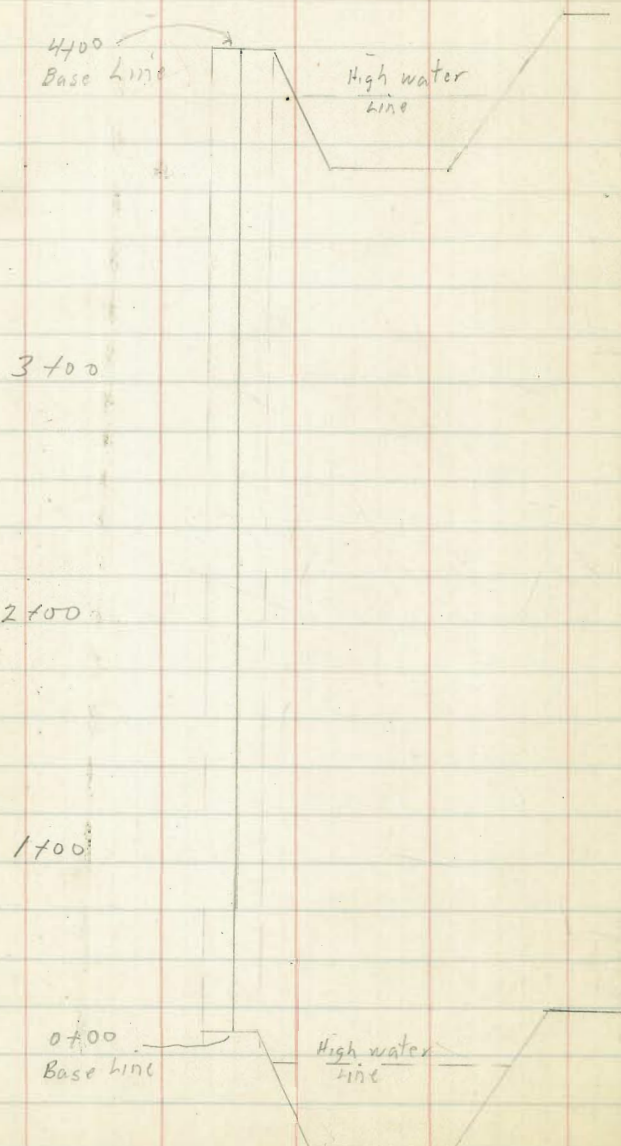
Cottonwood Channel

74

TP <sub>3</sub>	2.58	11.06	2.50	8.48	Nail in Pole #3570
TP <sub>2</sub>	4.13	10.98	5.14	6.85	
TP <sub>1</sub>	4.14	11.99	-8.04	7.85	
B.M.	4.83	15.89	11.06		SEBP A1PA9 384 came in 1082 FB2159-16

D. Smith

12-31-51

Cottonwood Channel  
S. CHOLLASBase Line  
↓

RT or West side

INDEXED  
Law

75

JAN 14 1952

68	104	108	105	66	10	103
↑	10	23	35	44	55	water surface
				H.W.		

H.W. over bank

58	58	64	105	105	103	64	10
	3	5	14	27	40	45	60
		H.W.				H.W.	

52	52	62	106	104	103	62	04
	3	5	14	27	40	48	60
		H.W.				H.W.	

42	42	60	102	102	101	60	12
	3	6	15	28	40	48	56
		H.W.				H.W.	

48	42	52	103	103	102	52	02	93
	5	10	18	30	40	50	60	water surface
		H.W.				H.W.		

T 11.06





77





Storm Drain  
Atlantic St  
Cuts to Bandini

2.5M of S.W.L. of Atlantic

0+0 = Existing M.H. Cuts	-2.87	18.34 +4.86	10.22 3.37	BM 2.37	5.77 2.28	SE of Bandini 7.5.2
41 SE = S.E.L. Cuts		18.34 +4.85	10.22 5.17			
94 SE			10.22 5.17			
144 SE			10.22 5.17			
194 SE			10.22 5.17			
244 SE			10.22 5.17			
294 SE			10.22 5.17			
345.3 SE = 1 M.H. Bandini = A			10.22 5.17			
379.8 S		18.34 +4.4	10.22			
414.3 S = Existing Carb. lat. # Bandini	-2.87		10.22			10.25 on Plot List

Cuts on Edge of Walk

7.13  
8.87  
10.00

BM 4.87  
3.46  
7.13

May 16, 1900  
Jesse  
79

0+0 Existing M.H.  
Cuts E.N. Franklin - 3.54

0+11

Atlantic St

3+1.53

Bandini

4+1.37

Vallet



DIRECTIONS FOR USE OF TABLES

TABLE No. 1.

Distance of slope stake from side or shoulder stake for any width roadway, slope 1 1/2 to 1. If ground is nearly level, the cut or fill at side stake is located by the double entry method in left column and top row. The number in body

from side stake to slope stake. If ground is not

**IMPROVED TABLES  
AND  
INFORMATION**

TABLE No. 2.

To find tangent and lateral for curve of any other degree, divide by degree of curve and add correction found in column of corrections. Degree of curve with a given L may be found by dividing tangent (or external), opposite L by given tangent (or external). The distance from a point on the tangent to the curve is very nearly the square of the tangent length divided by twice the radius.

182  
24  
866  
543  
322

87  
37  
50  
47