

GRADE 171

DASTS

---

FIELD BOOK

No. 385

---

Our Leather Bound Engineers Note Books are carried in the following rulings:

- No. 380 LEVEL BOOK. Left and Right Hand Page the same as Left Hand Page of this Book.
- No. 382 FIELD BOOK. Left Hand Page as in this Book, Right Hand Page 4 x 4 to the inch, Center Line Red.
- No. 384 MINING TRANSIT BOOK. Left Hand Page as in this Book, Right Hand Page 8x8 to the inch, Center Line Red.
- No. 385 FIELD BOOK. Left Hand Page as in this Book, Right Hand Page 8 vertical and 4 horizontal lines to the inch, Center Line Red.

We also carry the Note Books listed above, bound in extra strong Fabri-Hide (otherwise the same quality of book), which can be furnished at a somewhat lower price.

In ordering Fabri-Hide covered books, add the letter "F" to catalog number.

**THE FREDERICK POST CO.**  
*ENGINEERING and DRAFTING SUPPLIES*  
IRVING PARK STATION  
CHICAGO, ILL.

MICROFILMED

APR 9 1965







11/31/30  
 Flood  
 marks  
 on  
 pole

Stakes Drain Ditch - Encanto  
 City limits to approx 660 ft

City Limits

Sta	S side	Area sq ft	N side
0+00 = City Limits	8.4 +3.2 ✓ 263.5	48.2	8.4 +3.7 ✓ 48.2
+50	9.0 +3.6 ✓ 262.9	48.9	9.0 +3.7 ✓ 48.9
1+00	9.7 +3.9 ✓ 262.2	45.6	9.7 +3.0 ✓ 45.6
+50	10.3 +3.0 ✓ 261.6	41.5	10.3 +2.3 ✓ 41.5
3+00	10.9 +2.8 ✓ 261.0	40.7	10.9 +2.4 ✓ 40.7
+50	11.6 +3.5 ✓ 260.3	49.0	11.6 +3.5 ✓ 49.0
3+00	12.2 +3.7 ✓ 259.7	52.2	12.2 +2.7 ✓ 52.2
+50	12.8 +3.4 ✓ 259.1	53.9	12.8 +3.4 ✓ 53.9
4+00	13.4 +3.9 ✓ 258.5	59.7	13.4 +3.2 ✓ 59.7
+50	14.1 +3.6 ✓ 257.8	67.3	14.1 +2.8 ✓ 67.3
5+00	14.7 +4.0 ✓ 257.2	69.2	14.7 +2.6 ✓ 69.2
+50	7.6 +3.7 ✓ 256.6	61.5	7.6 +4.0 ✓ 61.5
6+00	8.3 +3.3 ✓ 255.9	45.6	8.3 +3.5 ✓ 45.6
+50	9.0 +3.9 ✓ 255.3	49.6	9.0 +3.4 ✓ 49.6
7+00	9.5 +3.6 ✓ 254.7	63.0	9.5 +3.5 ✓ 63.0
+50	10.2 +4.1 ✓ 254.0	59.8	10.2 +3.4 ✓ 59.8
8+00	10.8 +4.1 ✓ 253.4	59.8	10.8 +3.4 ✓ 59.8
+50	11.4 +3.6 ✓ 252.8	53.1	11.4 +3.0 ✓ 53.1
9+00	12.0 +4.4 ✓ 252.2	49.7	12.0 +3.4 ✓ 49.7
+50	12.7 +3.5 ✓ 251.5	47.2	12.7 +3.5 ✓ 47.2
10+00	13.3 +3.0 ✓ 250.9	40.7	13.3 +2.2 ✓ 40.7
+50	13.9 +3.9 ✓ 250.3	34.1	13.9 +3.9 ✓ 34.1
11+00	14.5 +3.5 ✓ 249.6	56.8	14.5 +3.7 ✓ 56.8
+50 = 8th	15.1 +3.9 ✓ 249.0	48.9	15.1 +3.4 ✓ 48.9

B.M. N.W. RR Spike in Pole 69th & Akins Sts.

2

Elevations

0+00 this book = 7+00 stake line

11+50 " " = 18+50 = 0+00 " "

19+50 " " = 8+00 " "

\$ cut

Sta	263.5	262.9	262.2	261.6	261.0	260.3
259.7	259.1	258.5	257.8	257.2	256.6	255.7
12.2	12.8	13.4	14.1	14.7	15.3	15.9
3.2	3.0	3.8	4.4	5.1	5.7	6.0
255.3	254.7	254.0	253.4	252.8	252.2	251.5
8.9	9.5	10.2	10.8	11.4	12.0	12.7
3.0	2.3	2.7	3.7	3.6	3.4	3.2
250.9	250.3	249.6	249.0			
13.3	13.7	14.4	15.0			
2.9	2.6	3.2	3.7			

INDEXED  
 WK  
 DEC 23 1948



cut

Sta	SSide	Grade	NSide	
12+00	9.5 6.2 +3.3	248.5	8.5 +3.9	53.0
+50	10.0 7.8 +2.2	248.0	10.0 +4.2	41.4
13+00	10.5 7.0 +3.5	247.5	10.5 +4.9	44.3
+50	11.0 7.0 +4.0	247.0	11.0 +5.1	55.4
14+00	11.0 7.9 +3.1	246.5	11.5 +5.6	123.0
+50	12.0 7.9 +4.1	246.0	12.0 +10.5	157.3
15+00	13.1 8.1 +5.0	245.5	13.1 +11.0	175.0
+30	13.6 8.3 +5.3	245.0	13.6 +10.8	163.3
16+00	14.1 10.5 +3.6	244.5	14.1 +12.3	201.4
+50	14.6 10.5 +4.1	244.0	14.6 +12.4	207.0
17+00	15.1 11.3 +3.8	243.5	15.1 +12.6	213.3
+50	15.6 11.3 +4.3	243.0	15.6 +12.2	207.4
18+00	16.1 11.3 +4.8	242.5	16.1 +12.0	203.4
+50	16.6 11.3 +5.3	242.0	16.6 +12.7	159.0
19+00	17.1 11.3 +5.8	241.5	17.1 +12.9	132.0
+50:8k	17.6 11.3 +6.3	241.0	17.6 +12.9	136.9
20+00	18.1 11.3 +6.8	240.0	18.1 +13.0	137.0
+50	18.6 11.3 +7.3	239.0	18.6 +13.1	127.9
21+00	19.1 11.3 +7.8	238.0	19.1 +13.0	105.7
+50	19.6 11.3 +8.3	237.0	19.6 +13.0	97.4
22+00	20.1 11.3 +8.8	236.0	20.1 +13.0	104.5
+50	20.6 11.3 +9.3	235.0	20.6 +13.1	111.6
23+00	21.1 11.3 +9.8	234.0	21.1 +13.1	89.6
+50	21.6 11.3 +10.3	233.0	21.6 +13.2	86.6
24+00	22.1 11.3 +10.8	232.0	22.1 +13.3	85.9

558.00 TO ... from 72

248.5	248.0	247.5	247.0	246.5	246.0	245.5	245.0
7.0	10.0	10.5	11.0	11.5	12.0	12.5	13.0
3.32	3.0	3.24	3.46	3.68	3.90	4.12	4.34

40.0	40.0	40.0	39.0	38.0	37.0	36.0	35.0	34.0
13.1	13.6	14.1	14.6	15.1	15.6	16.1	16.6	17.1
10.32	10.32	11.24	11.72	12.24	12.72	13.24	13.72	14.24

38.0	32.0
15.0	10.2
4.57	0.7

236.41	14.8	13.8	12.8	11.8	10.8	9.8	8.8
6.78	5.3	5.5	5.7	5.9	6.1	6.3	6.5
236.12	8.2	8.2	8.2	8.2	8.2	8.2	8.2
18.57	15.9	14.9	13.9	12.9	11.9	10.9	9.9
246.51	5.1	5.2	5.3	5.4	5.5	5.6	5.7
10.28	7.8	7.8	7.8	7.8	7.8	7.8	7.8
245.53	13.4	12.9	12.4	11.9	11.4	10.9	10.4
9.40	8.0	8.0	8.0	8.0	8.0	8.0	8.0
254.93	13.4	12.4	11.4	10.4	9.4	8.4	7.4
4.61	4.2	4.2	4.2	4.2	4.2	4.2	4.2
260.82	13.4	12.4	11.4	10.4	9.4	8.4	7.4
262.49	13.4	12.4	11.4	10.4	9.4	8.4	7.4
13.17	13.4	12.4	11.4	10.4	9.4	8.4	7.4



T covered over from P. 8

£ cut 4

S. Side	£	N. Side	
24+50	231.0	80.6	154.0
25+00	230.0	73.4	149.2
+50	229.0	70.8	136.7
26+00	228.0	65.9	120.2
+50	227.0	54.3	90.5
27+00	226.0	36.2	79.3
+50	225.0	43.1	71.2
28+00	224.0	48.1	106.2
+50	223.0	58.1	114.5
29+00	222.0	56.4	119.1
+50	221.0	62.7	112.3
30+75	220.5	50.0	
30+00	220.0		

28898	32.0	30.0	29.0	28.0	27.0	26.0	25.0
22924	8	9.0	10.0	11.0	10.0	8.0	7.0
22926	3.3 ✓	4.7 ✓	4.5 ✓	4.2 ✓	3.6 ✓	2.7 ✓	2.7 ✓
22928							
22930							
22932							
22934							
22936							
22938							
22940							
22942							
22944							
22946							
22948							
22950							
22952							
22954							
22956							
22958							
22960							
22962							
22964							
22966							
22968							
22970							
22972							
22974							
22976							
22978							
22980							
22982							
22984							
22986							
22988							
22990							
22992							
22994							
22996							
22998							

9593.2  
cu. yds



Blood  
 Pease  
 Kainer  
 1/24/20

Encanto Ditch City Line to Bridge  
 under R.R. 700' East 12' ditch

	N.L.	\$ Grade	S.L.		\$ Cuts			
7+00 = City Line	13.6 10.4 15.7	263.5	13.6 10.4 15.2	277.15	263.5	264.1	264.7	265.3
6+50	13.0 9.4 12.6 12.4	264.1	13.0 9.4 12.6 12.4		13.6 10.4 3.1	13.0 9.4 3.7	13.6 9.4 3.4	13.6 9.4 3.3
6+00	7.6 11.9 7.2	264.7	7.6 11.9 7.2					
5+50	11.2 6.6	265.3	11.2 6.6		265.9	266.5	267.1	267.7
5+00	10.6 5.6 10.0	265.9	10.6 5.6 10.0		14.2 11.2 3.0	10.6 5.6 5.0	10.6 5.6 5.0	10.6 5.6 5.0
4+50	5.6 10.0	266.5	5.6 10.0					
4+00	5.6 10.0	267.1	5.6 10.0		267.3	268.1	269.0	270.1
3+50	8.2 11.5 8.8	267.7	8.2 11.5 8.8		8.8 5.2 3.6	8.2 5.2 3.0	8.2 5.2 3.0	8.2 5.2 3.0
3+00	8.2 11.5 8.8	268.3	8.2 11.5 8.8					
2+50	7.6 11.7	268.9	7.6 11.7		270.7	271.3	271.9	
2+00	7.6 11.7	269.5	7.6 11.7		4.4 1.0 3.4	7.6 11.7 4.1	7.6 11.7 4.1	7.6 11.7 4.1
1+50	7.6 11.7	270.1	7.6 11.7					
1+00	5.2 11.2	270.7	5.2 11.2					
0+50	5.2 11.2	271.3	5.2 11.2					
0+00 = Creek Bed	5.2 11.2	271.9	5.2 11.2					

INDYAN  
JUL 22 1881



Fl 110  
Perice  
5/27/30

Cypress Ave  
Indiana to Florida

B.G. Canall

Water Grades

INDEXED

WK  
DEC 23 1948

0+00 = W.L. Indiana St. Connect		
+50 = 6x4 Cross Connect		
+80 = E.L. Indiana St.	299.3	10.0 6.8 +3.2
1+30	299.3	8.0 5.1 +3.0
+80 = Brk.	301.3	6.0 8.0 +2.0
2+05 = "	301.8	7.6 4.3 +3.0
2+30 = "	301.7	8.3 5.0 +3.3
2+55 = "	299.4	10.1 13.0
2+80 = "	296.4	4.7 2.0 +2.7
3+35	288.7	12.4 3.2 +9.1
3+90 = W.L. Georgia Connect.	281.0	5.6 +3.0
0+00 = E.L. " "	279.6	10.5 7.4 3.1
"	272.7	5.6 2.6 +3.0
2. 1+67.5	265.8	12.5 7.3 +5.2
3. 1+40 = W.L. Wilshire Terrace	258.9	8.8 6.2 +3.0
1+70 = 6x4 Cross South	254.5	13.2 9.4 +3.8
2+20	247.1	9.1 6.2 +3.0
2+70	239.8	7.0 4.0 +3.0
3+30 = E.L. Florida Connect.	232.4	14.37 10.83 3.54
20 S. of 6x4 Cross Sta 1+70 = 8x1 Cypress		
5 L. # 1-30' W of Alley on S.	299.0	8.29 1.04 +7.25
5 L. # 2-80' W of Florida on N.	242.0	5.77 1.17 +4.53

3.11 50  
264

7

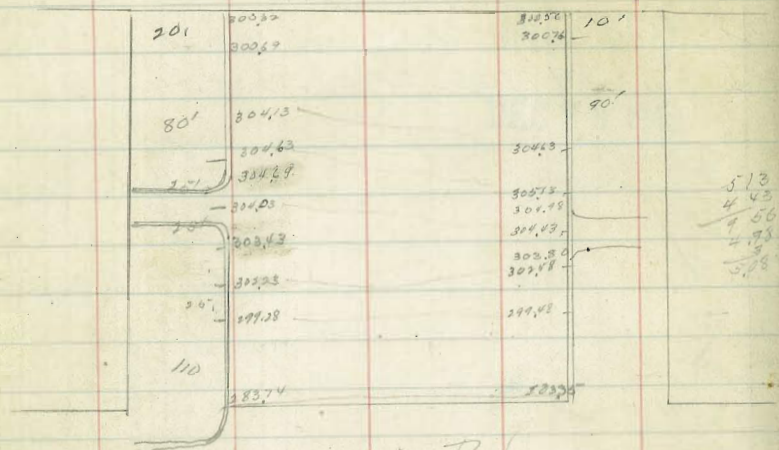
Cypress + Georgia N.W. B.P. 284.00  
Cypress + Fla Blvd S.E. Hyd 300.84  
Cypress + Florida S.W. B.P. 236.00

336.00
10.74
246.77
0.67
346.10
10.13
256.33
1.11
255.12
12.56
267.68
0.91
266.77
11.57
278.34
0.85
277.67
12.40
290.07
6.05
284.02
0.85
280.09
0.22
289.87
11.29
301.16
0.26
301.10
8.87
308.47
5.27
303.20
3.87
307.27

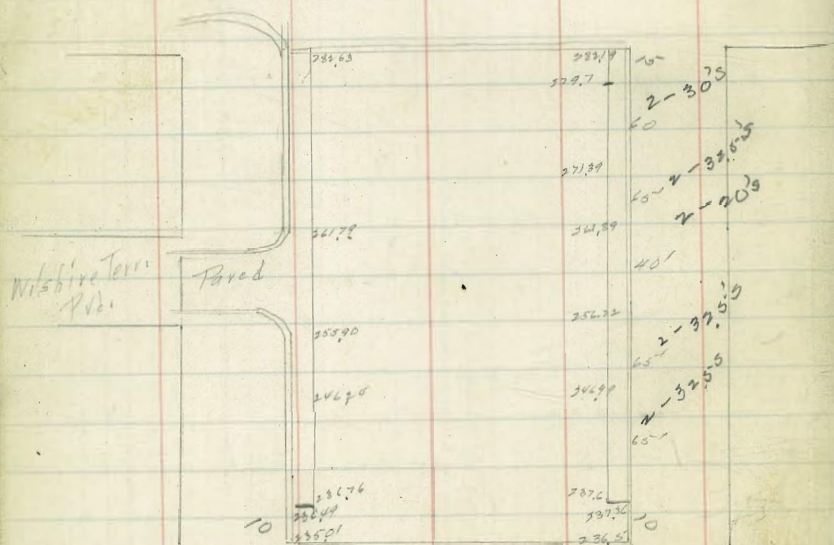
284.00  
11.77  
295.77



Indiana Prd.



Georgia Prd.



Florida Prd.

304.15  
304.23  
304.58

8

304.63	304.13	299.28	
304.03	304.04	304.03	
66	16.28	605.34	
304.33	304.17	301.63	
12	56	10.8	
304.43			
304.23	304.03		
304.03	304.63		
67.6	66		
303.43	4		



Flood  
 Damage  
 6/30/30

Polk Paving Florida to  
 Louisiana  
 Griffith

INDEXED  
 WK  
 DEC 23 1948

Water Services Figure/Grades & Cuts

Location	Figure	Grades	Cuts
120' E of Flann S.	277.1	281.93 4.83 5.61 -0.80	311.22 12.22 300.22 1.83 1.12
110 W of Alab. on S.	281.75	298.54 10.09 8.93 F.P.I.	307.12 17.02 290.09 1.25
110 E of " " "	209.5	302.12 2.12 2.50 +0.70	211.84 11.81 280.03 1.90
80 E of " " N	297.1	302.12 5.02 5.02 +1.73	281.93
110 W of Mississ S.	303.05	313.01 9.96 9.68 -1.13	
110 W. " " " M.	303.5	313.01 9.57 9.02 -2.50	
100 E of " " S.	308.64	313.01 4.87 2.50 -2.8	
115 E of " " N	307.82	313.01 3.19 5.06 +2.1	

Restake  
 Water Main East of Alabama

0+00 - E. Alabama	287.0	8.0 3.2 4.8
+30	289.4	6.9 4.9 11.2
+60 - B.K.	291.8	3.7 2.3 2.4
+80	293.4	2.1 1.7 3.8
+100	294.8	
+20	295.9	
+40	296.9	

Sum of  
 290.16  
 5.37  
 295.53

7/29/30  
Flood  
P. 2000  
2000

Palk Ave Grades

	N.		S.	
0+00 = E.L. Florida Resin	276.93	7.20 20.00	275.93	8.19 8.19 21.00
+10 = Bck	277.0	7.1 8.0 -1.4	276.0	8.1 8.2 20.6
+55	277.35	2.2 -2.4	276.4	7.7 7.2 20.6
+100 = P.V.C.	277.7	1.4 8.2 -2.9	276.8	7.3 8.7 11.2
+20	278.0	8.3 -2.2	277.1	7.3 -0.3
+40	278.5	5.6 7.1 -1.5	277.8	6.3 5.7 20.6
+60	279.3	4.8 -0.8	278.9	5.2 20.3
+80 E.V.C.	280.4	5.3 -0.8	280.2	3.9 20.2
1	283.3	} curb in	283.5	8.9 8.3
2 43.33	286.1		286.7	8.4 8.0
3 3+10 = W.L. Alabama	289.0		289.0	7.3 2.00 20.11111

0+00 = E.L. Alabama	290.0	12.53 12.53 -1.01	291.0	11.53 11.53 -0.01
+60 = P.V.C.	295.4	7.13 2.0 +2.8 3.2	295.8	6.4 5.0 7.19
+80	297.1	3.2 +2.8 3.9	297.31	5.2 3.9 7.19
+100	298.6	1.4 +1.1 2.6	298.66	3.9 3.9 7.19
+20	299.9	2.6 7.3	299.81	2.7 2.2 7.19
+40 = E.V.C.	301.0	1.5 2.5 7.19	300.8	1.7 1.3 7.19
1	303.0	10.6 9.0	2.6	10.5 8.6 7.19
2 40 <sup>5</sup>	305.0	8.1 7.1 7.19	4.4	8.7 6.9 7.19
3	307.0	6.4 7.19	6.2	6.7 6.2 7.19
4 3+00 = W.L. Miss.	309.0	4.08 4.24 -0.26	308.0	5.08 5.08

B.M. S.W. 7' CT.  
Alabama

N.E.  
S.W. 7' CT  
Mississippi  
311.12

S.W. 8' P. Miss  
309.91

10

290.16  
22.0  
277.36  
10.47  
281.89  
22.0  
292.13

290.16 B.M.  
12.37  
302.53  
0.03  
302.40  
10.03  
313.08



	N.		S.	
0-100 = E.A. Miss.	311.0	$\frac{2.28}{2.103}$	310.0	$\frac{2.08}{2.103}$
+ 50 Bki.	311.0	$\frac{2.1}{2.103}$	310.0	$\frac{2.1}{2.103}$
14-05	310.0	$\frac{3.1}{2.103}$	308.5	$\frac{4.6}{2.103}$
14-60 Bki.	309.0	$\frac{4.1}{2.103}$	307.0	$\frac{6.7}{2.103}$
1	306.7	$\frac{6.7}{2.103}$	305.2	$\frac{7.9}{2.103}$
2 46-75	304.3	$\frac{8.9}{2.103}$	303.3	$\frac{9.8}{2.103}$
3 3+00 = W.L. Louisiana	302.0	$\frac{11.58}{2.103}$	301.5	$\frac{11.58}{2.103}$

Florida Paved

10'	275.75	5.02	6.33	276.93
20'	276.0	5.52	6.83	277.0
30'	276.5		7.33	277.5
40'	277.0	6.10	7.83	278.0
50'	277.5	6.40	8.33	278.5
60'	278.0	7.10	8.83	279.0
70'	278.5	7.50	9.33	279.5
80'	279.0	7.80	9.83	280.0
90'	279.5	8.10	10.33	280.5
100'	280.0	8.50	10.83	281.0

Alabama Paved

Alabama Paved

11

20'	291.0	292.3	9.3	290.0
30'	295.0	5.13	9.73	295.4
40'	297.81	297.64	10.43	297.1
50'	298.79	298.11	11.23	298.6
60'	299.99	299.2	12.23	299.9
70'	300.95	300.7	13.03	300.15
80'	301.7	1.23	13.83	301.15
90'	302.15	302.7	14.53	302.1
100'	302.5	303.7	15.23	303.1

INDEXED

WK

DEC 23 1948

Mississippi Paved

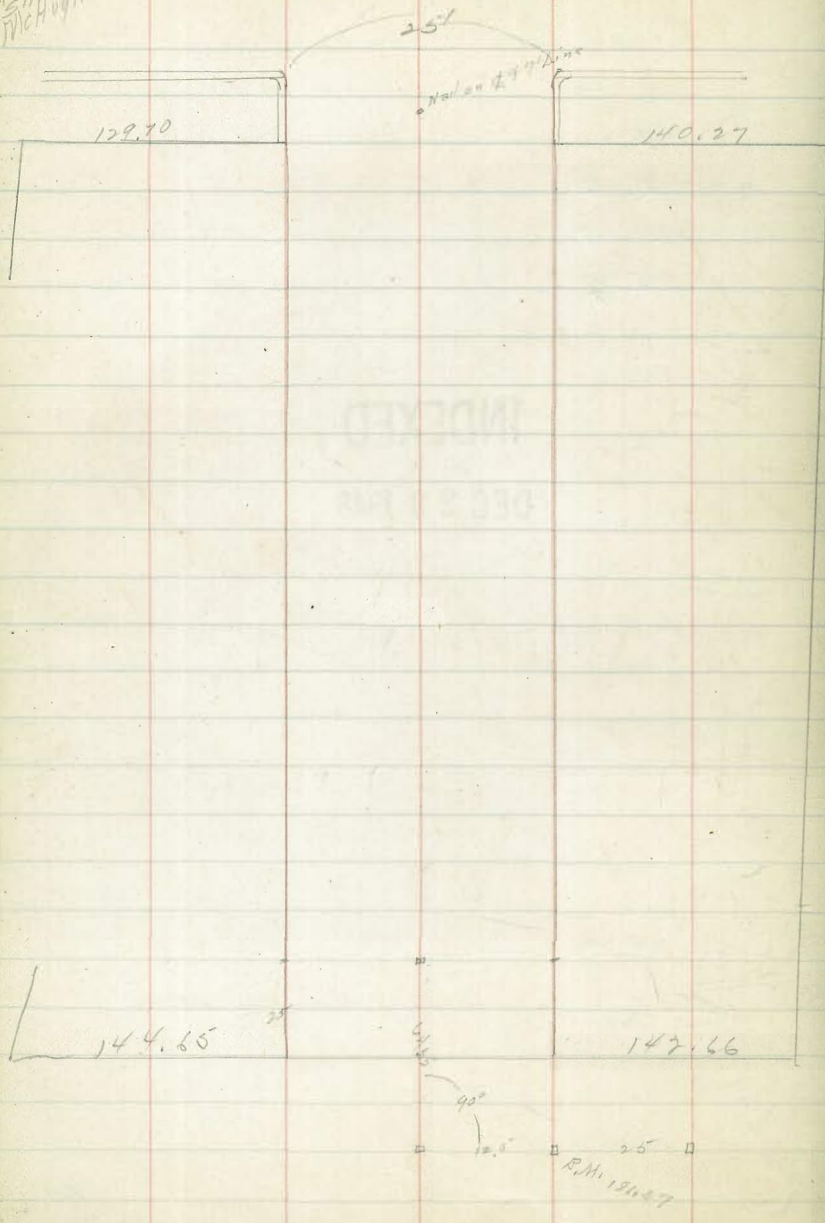
30'	310.0	7.87	310.0	211.0
40'	310.0	9.33	310.0	321.0
50'	309.75	8.77	310.0	431.0
60'	309.5	8.27	310.0	541.0
70'	309.25	7.77	310.0	651.0
80'	309.0	7.27	310.0	761.0
90'	308.75	6.77	310.0	871.0
100'	308.5	6.27	310.0	981.0

Louisiana Paved

Flood  
George  
McAugh.

# Edgemont Place

Carroll



INDEXED  
DEC 2 1907

INDEXED  
DEC 2 1907



## Edgemont Place Grades

	W.		E.	
0+00 = St. C St -				
	196.10	$\frac{4.4}{5.3}$	194.75	$\frac{5.8}{-0.1}$
0+10	196.1	$\frac{4.2}{2.0}$	195.3	$\frac{5.2}{+0.7}$
+20	195.9	$\frac{4.6}{2.7}$	195.45	$\frac{5.1}{+0.4}$
+30	195.6	$\frac{4.7}{2.7}$	195.3	$\frac{5.2}{+0.2}$
+40	195.2	$\frac{5.33}{5.33}$	195.0	$\frac{5.5}{-0.1}$
1	193.28	$\frac{3.2}{2.7}$	193.08	$\frac{4.0}{+0.1}$
2	191.36	$\frac{3.2}{2.7}$	191.16	$\frac{3.2}{+0.2}$
3	189.44	$\frac{4.1}{2.7}$	189.24	$\frac{4.5}{+0.2}$
4	187.52	$\frac{3.0}{1.8}$	187.32	$\frac{3.6}{+0.2}$
5	185.6	$\frac{5.3}{1.2}$	185.4	$\frac{5.3}{+1.2}$
2+76.8	184.37	$\frac{5.0}{5.0}$	184.17	$\frac{5.0}{-0.7}$

+25 = Broadway

INDEXED  
WK  
DEC 27 1948

## N.E.B.P.C. Edgemont

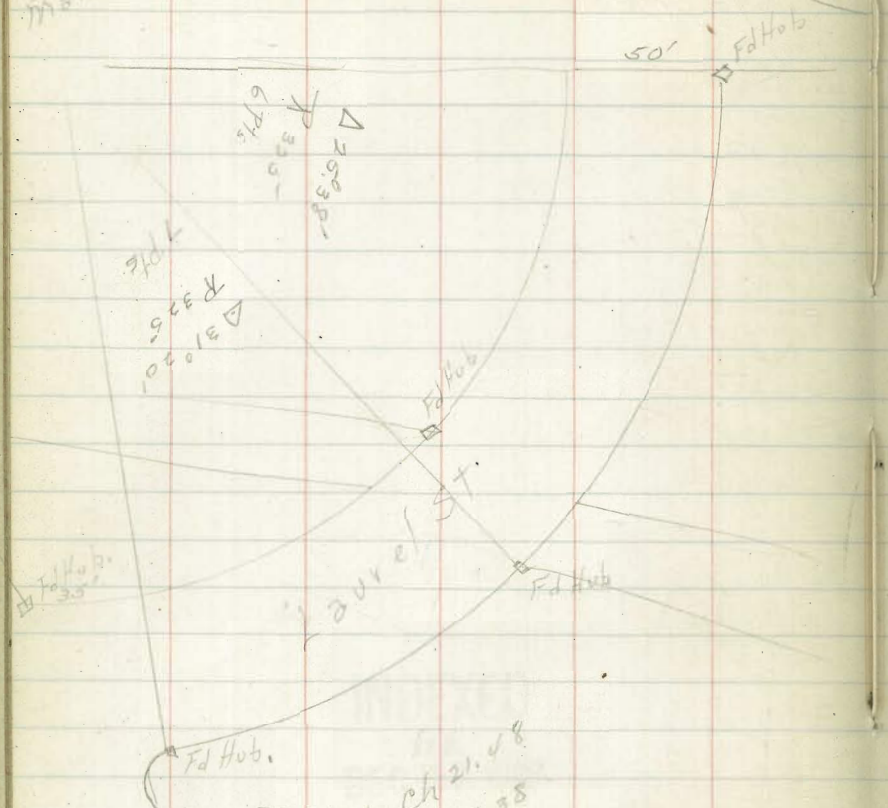
199.59
0.94
200.53
4.56
195.97
1.94
190.191
2.34
187.85
0.25
190.91
0.23
190.68
17.66
203.34
3.74
197.60 = 197.59

INDEXED  
DEC 27 1948

Flood  
Barre  
Rouney  
M. Hoon

Stake Borrow Pit on Laurel  
Fairmount

Bunker



- 2-14-17
- 4-28-34
- 6-42-51
- 8-57-28
- 11-11-25
- 13-25-48
- 15-40
- 17-48-10
- 19-56-40
- 21-64-30
- 23-72-100
- 25-80-100
- 27-88-100
- 29-96-100
- 31-104-100
- 33-112-100
- 35-120-100
- 37-128-100
- 39-136-100
- 41-144-100
- 43-152-100
- 45-160-100
- 47-168-100
- 49-176-100
- 51-184-100
- 53-192-100
- 55-200-100
- 57-208-100
- 59-216-100
- 61-224-100
- 63-232-100
- 65-240-100
- 67-248-100
- 69-256-100
- 71-264-100
- 73-272-100
- 75-280-100
- 77-288-100
- 79-296-100
- 81-304-100
- 83-312-100
- 85-320-100
- 87-328-100
- 89-336-100
- 91-344-100
- 93-352-100
- 95-360-100
- 97-368-100
- 99-376-100
- 101-384-100
- 103-392-100
- 105-400-100

N.L. Ch 21.48  
 3L. 25.38  
 N.L. Ch. 3050  
 3L. Ch 2430

**INDEXED**  
 WK  
 DEC 27 1948



Filed  
Project  
K. S. W. /  
5/1/30

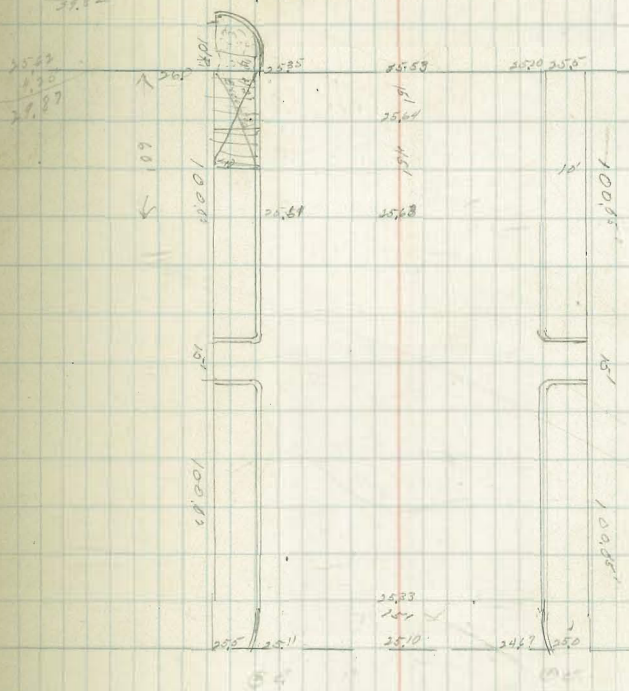
# Sunset Cliffs Blvd Part

**INDEXED**  
WK  
DEC 27 1948

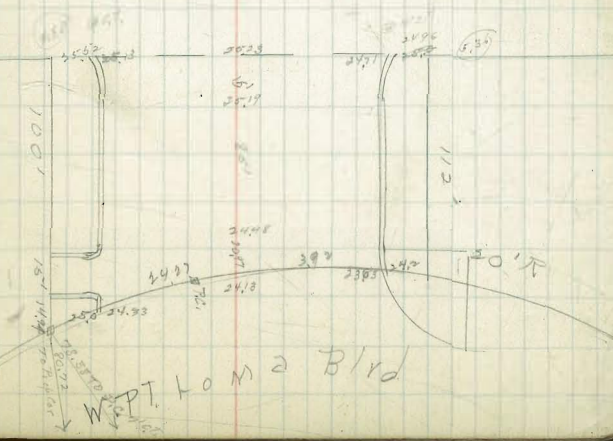
Griffith

40' Rd  
10' C&G  
3MSW 27'  
25.82  
11.10  
30.92  
10.00  
10.00  
25.82

## Voltaire Paved



## Lot vs St Paved



WPT LOMA Blvd

























































































































































































77







DIRECTIONS FOR USE OF TABLES

TABLE No. 1.

Distance of slope stake from side or shoulder stake for any width roadway, slope 1 1/2 to 1. If ground is nearly level, the cut or fill at side stake is located by the double entry method in left column and top row. The number in body

from side stake to slope stake. If ground is not level, the slope stake is lower (higher) by the amount of cut (fill). Add this amount to cut or fill and find distance in table. Set up rod at this point and line of sight should cut target.

**IMPROVED TABLES**  
AND  
**INFORMATION**

necessary.

TABLE No. 2.

To find Tangent and External for curve of any other degree, divide by degree of curve and add connection found in column of connections.

Degree of curve with a given  $L$  may be found by dividing tangent (or external), opposite  $L$  by given tangent (or external).

The distance from a point on the tangent to the curve is very nearly the square of the tangent length divided by twice the radius.



120  
 2  
 150  
 277  
 120  
 20  
 516 523 530  
 570 580 590

73  
73  
 140  
20  
 166  
 120  
 190

62.66  
 120  
190  
 372.66  
 73  
299.66  
 20  
279.66  
 139.83  
3  
 136.83

316.28  
 309.28  
10  
 399.28  
 149.64  
 159.64  
 156.64

299.28  
20  
 279.28  
 139.64  
3  
 136.64  
10  
 146.64  
26