

GRADE  
174

POSTS

---

LEVEL BOOK

No. 330

---

Book indexed complete, 3-19-35.

Our Leather Bound Engineers Note Books are carried in the following rulings:

- No. 380 LEVEL BOOK. Left and Right Hand Page the same as Left Hand Page of this Book.
- No. 382 FIELD BOOK. Left Hand Page as in this Book, Right Hand Page 4 x 4 to the inch, Center Line Red.
- No. 384 MINING TRANSIT BOOK. Left Hand Page as in this Book, Right Hand Page 8x8 to the inch, Center Line Red.
- No. 385 FIELD BOOK. Left Hand Page as in this Book, Right Hand Page 8 vertical and 4 horizontal lines to the inch, Center Line Red.

We also carry the Note Books listed above, bound in extra strong Fabri-Hide (otherwise the same quality of book), which can be furnished at a somewhat lower price.

In ordering Fabri-Hide covered books, add the letter "F" to catalog number.

**THE FREDERICK POST CO.**  
*ENGINEERING and DRAFTING SUPPLIES*  
IRVING PARK STATION  
CHICAGO, ILL.

MICROFILMED

APR 9 1965

Page

Index

- ✓1 Anna Ave. Grades
- ✓5 Bear Drive "
- ✓6 46th St. Water Grades
- ✓7 " " Sewer Laterals
- ✓8 Norwood St.
- ✓11 Alley-Bk. 154, Univ. Hts.
- ✓12 Orange Ave., Paving
- ✓15 9th St. Ties
- ✓16 " " Grades
- ✓18 " " Sewer Laterals
- ✓21 Tourmaline St. Grades
- ✓22 " 4 Everts, Sewer
- ✓23 Alley bet. E I Cajon, Orange, Copeland-Vanduyke
- ✓24 Ponder House Canyon, Grades
- ✓30 C St. - India to Kettner, Grades.
- ✓31 41st St. Paving
- ✓32 Alley, Bk. 36, Terra 19-H&I
- ✓33 " " 10, City Hts. - Water
- ✓34 Bk. 70, Crown Pt. - Sewer
- ✓35 Alley bet. E & F - Grades
- ✓36 " Bk. 10 City Hts. Annex #1, Pave.
- ✓37 " " 195, Pacific Beach, Grades
- ✓38 Torrey Pines Road - Ties
- ✓41 " " " Water
- ✓50 Alley - Bk. 2, Hartley's N. Park
- ✓51 Chalcedony St. - Water

- ✓ 52 Haines St. - Water
- ✓ 53 Torrey Pines Road - Grades
- ✓ 57 Alleys - Blks. 41-42-43, Normal Hts. - Water
- ✓ 58 Torrey Pines Road - Ret. Wall
- ✓ 59 Alley - Blk. 7, Normal Hts - Pavé
- ✓ 60 State St. - Grades
- ✓ 61 Sassafras St. Grades
- ✓ 62 Westbourne St. - Water Chute - Swk.
- ✓ 63 Torrey Pines Road - Grades
- ✓ 64 G St. - 9th & 10th - Ties
- ✓ 65 Alleys - Blks. 23 & 24, Normal Hts - Water
- ✓ 66 Silver Gate Ave. - Water
- ✓ 70 Charles St. - "
- ✓ 71 Bangor St. - "
- ✓ 72 Sunset Road - Grades
- ✓ 73 Atlantic St. - Sewer Lat.
- ✓ 74 " " - Water
- ✓ 76 State St. - Grades
- ✓ 77 Atlantic & Rosecrans - Water
- ✓ 79 Girard & Torrey Pines Rd. - M.H.
- ✓ 80 Alcott St. - Grades





Survey of Sherman  
Anna & Allan  
to Merchants Bldg.

Allen St.

Allen St.

Mon

P.C.  
R.C. 8349 & R.  
44017

P.L. 282

P.L. 302

CT. 11717 & 6

Mon

50' 25"

70'

Mon. Not Found

P.L. 283

P.L. 301

Banks St. 50

121.5

90°

Grant St. 50

Mon.

Mon.

P.L. 284





16th St. Water Grades

El Cajon Ave to Norwood St.

Indexed  
C.S.K.

Aug. 11. 30  
Survey

S. L. Norwood St	347.50	8.05 5.1 +3.9	353.12	Spr. BP Marple Chamney
500	347.65	7.90 +3.0	355.21	
1000	347.80	7.75 +3.9	350.34	
1500	347.95	7.60 +3.6	355.55	
2000	348.10	7.45 +3.7	352.36	
2500	348.25	7.30 +3.8	358.16	
3000 - 3rd	348.40	7.15 +3.7	355.40	
3500	348.65	7.00 +3.7	359.10	
4000	348.97	6.85 +3.0	352.01	Spr. BP FC 3500
4500	349.25	6.70 +3.0	353.01	
5000	349.53	6.55 +3.0	353.01	
5500	349.81	6.40 +3.0	353.01	
6000 - 8th	350.10	6.26 +3.1	353.01	
6400	350.47	6.11 +3.1	353.01	
6800	350.83	5.96 +3.1	353.01	
7200 - 9th	351.20	5.81 +3.1	353.01	
76181	351.97	5.66 +3.1	353.01	
80365	351.54	5.51 +3.1	353.01	
84545	351.70	5.36 +3.1	353.01	

170 Wood St. Water Grades

355.31  
2.87  
343.50  
37.0  
Spr. BP  
Marple  
Chamney

20 ft of E. L. 11th St	347.50	7.55 +3.8		
N. L. 11th St.	346.90	7.40 +3.8		
50 ft. - 3rd	346.60	7.25 +3.8		
100 ft. - Ave	346.60	7.10 +3.7		
150 ft	347.00	6.95 +3.7		
200 ft. - E. S.	347.70	6.80 +3.5		
260 ft	348.45	6.65 +3.5		
380 ft. - E. L. Chamney	349.30	6.50 +3.5		
310 ft. - S	349.50	6.35 +3.7		
340 ft. - N. L.	349.80	6.20 +3.6		
386.23	350.43	6.05 +3.6		
432.46	351.07	5.90 +3.7		
478.68 - N. End Imp.	351.70	5.75 +3.8		

46th St Sewer Laterals Indexed  
C.S.K.

HL	East Side	BM 35311
N°1	34790	846 338 15.08
N°2	34880	756 746 15.1
N°3	34890	946 232 15.18
N°6	34690	865 238 15.17
N°5	34710	1126 523 15.53
N°7	34660	805 275 15.5
N°8	34630	985 120 15.00

Harwood

N°14	34710	735 53 12.0
N°9	34730	765 10.23
N°11	34780	943 126 12.27
N°12	34820	903 637 12.6
N°13	34890	833 315 15.0

46th St Sewer

8-1-30  
7

M.H. N°1	34300	1536 330 711.95
30 E of M.H. 41158	34321	1515 325 111.30

Harwood St. Sewer

Exit of M.H. of Channing	34720	18.93 14.91 1.00 M.H. 1110
42-18 N	34750	972 462 15.1
84-31 N	34780	913 162
126-54 N	34810	913 1594
168-72 N	34840	883 173 17.10
Exit of M.H. of 11th St	34586	859 13 14.97
30 E of M.H. 41144	34607	838 148 16.70

117 1/2 N. 5th  
Norwood St

Indexed  
C.S.R.

Sept 12 30

Conduit No 1

78' of 18" Conc Pipe

Flank L. in

Curb Inlet No 1

345.80 7.87

30.5 ft

345.22

8.45

61 ft - 2 25' 00"

344.63

9.67

7.75

73 ft - End of

344.40

7.35

9.27

311 368.37 511.80  
336  
352.67

Curb Inlet No 1

Top Ch

E End of Inlet =  
116.5 ft of 2 25' 00"

349.56 4.17

W End of Inlet =  
121.0 ft of 2 25' 00"

349.56 4.17

Moore  
1-18-39.

Align for Prop. Drain  
on Lot 5 Blk E Villa Tr. La Jolla Pk.

NEBP	9.52	105.84		96.32	Torrey Rd. Viking Way
T.P.	13.08	118.85	0.07	105.77	
T.P.	12.55	131.13	0.27	118.58	
T.P.	12.84	143.89	0.08	131.05	
T.P.	12.64	156.49	0.04	143.85	
T.P.	12.62	168.94	0.17	156.32	
T.P.	12.90	181.74	0.10	168.84	
T.P.	11.34	194.96	0.12	181.62	
Set B.M.B.P.			2.51	190.45	SW of Whitfield Soledad
T.P.	11.69	191.68	12.97	179.99	

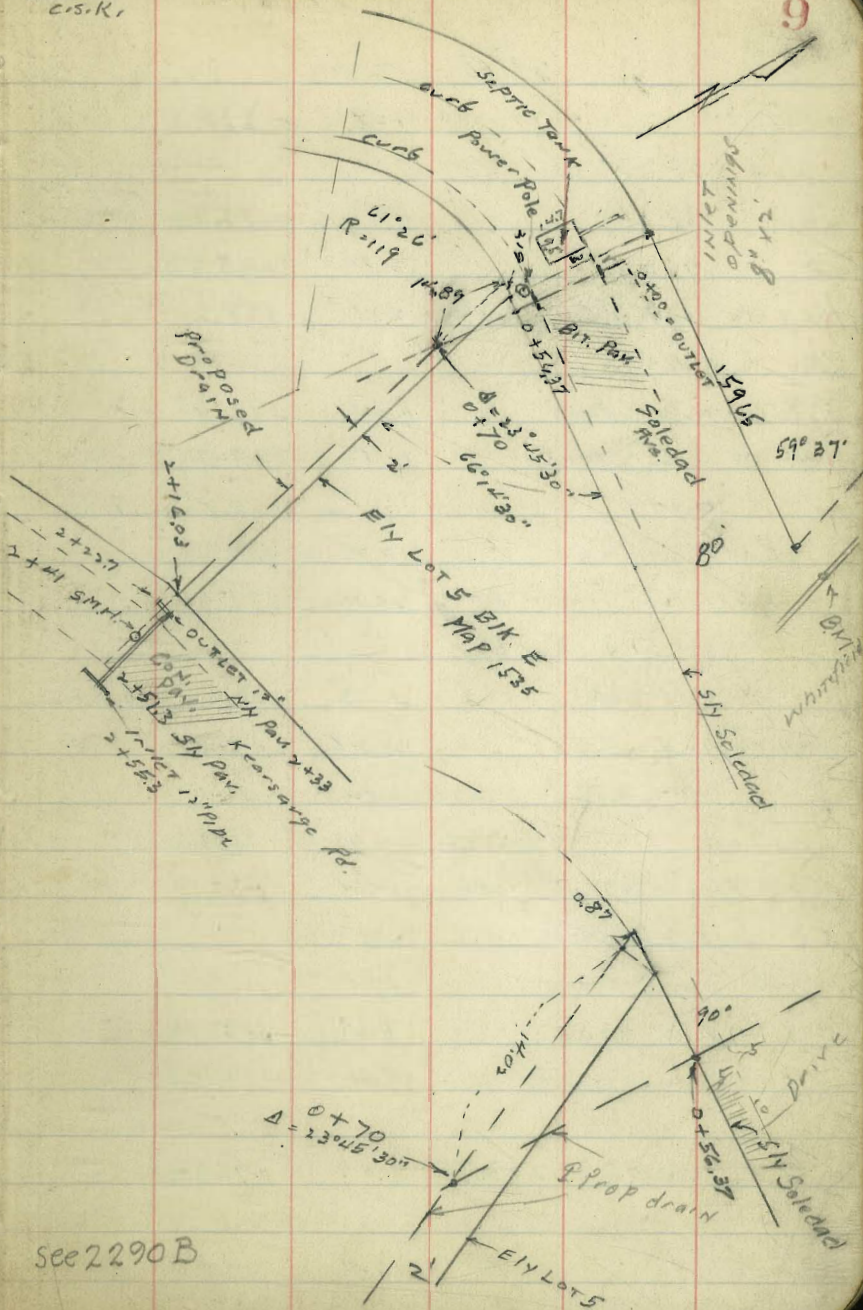
0+00 Prop. outlet of Prop 18" drain

±		25.4	166.3
2 L		21.7	170.0
5 R		25.4	166.3
7 R		21.4	170.3

0+16

± WASTE		22.4	169.3
± F.L. EX. 18" Con. drain		18.5	173.2
4 R		22.8	168.9
6 R		18.8	177.9
4 L		23.3	168.4
6 L		13.3	178.4

indexed  
C.S.K.



see 2290 B

	191.68					203.95		
0+17		12.8	178.9		1+41			
0+26.5 H cb					E	7.7	196.3	
TOP cb.		11.82	179.86	EX 8" x 2" OPENING	5' L NW Cor Resid.	8.2	195.8	
947		12.80	178.88		1+50			
6.3 Rt W + N. Cor tank		12.35	179.33		E	6.4	197.6	
0+41.3					1+75			
E drain on Pav		12.00	179.68		E	1.5	202.5	
6.3 Rt S. Cor. tank		11.42	179.76		5.2 LT. AGAINST RESID.	0.7	203.3	
0+40								
Pav.		12.00	179.68		T.P.	12.56	216.07	0.44
F.L. of 6" Sewer EAST	FROM	20.30	171.38					
0+51.3 S cb								
TOP cb		11.63	180.05	8" x 2"	1+92			
947		12.48	179.00	8" x 2" inlet	E Prop drain	7.6	208.5	
0+56.37 S.L. Soledad					2' LT ground	7.5	208.6	foot Ret. wall
TOP 8" Hd wall CONC		11.61	180.07		" TOP wall + Porch	3.74	212.33	
F.L. INLET 18" Pipe		14.68	177.00		2+16.03 N 2 Kearsarge			
0+60					E	2.0	214.1	
E Prop. drain		10.5	181.2		2.2 LT Ret. wall on ground	2.0	214.1	
0+70 & STUB		8.59	183.09					
1+00		4.0	187.7		T.P.	9.86	224.08	1.85
					2+22.7 = OUTLET EX 12" CON. PIPE DRAIN			
					E ground	8.3	215.8	
T.P.	12.65	203.95	0.38	191.30	TOP HD WALL	7.44	215.64	
					1+47 F.L. 12" PIPE OUTLET	10.03	214.05	
1+20		12.0	194.0					

CONTD. P 78



Orange Ave Paving  
41<sup>st</sup> St to 43<sup>rd</sup> St.

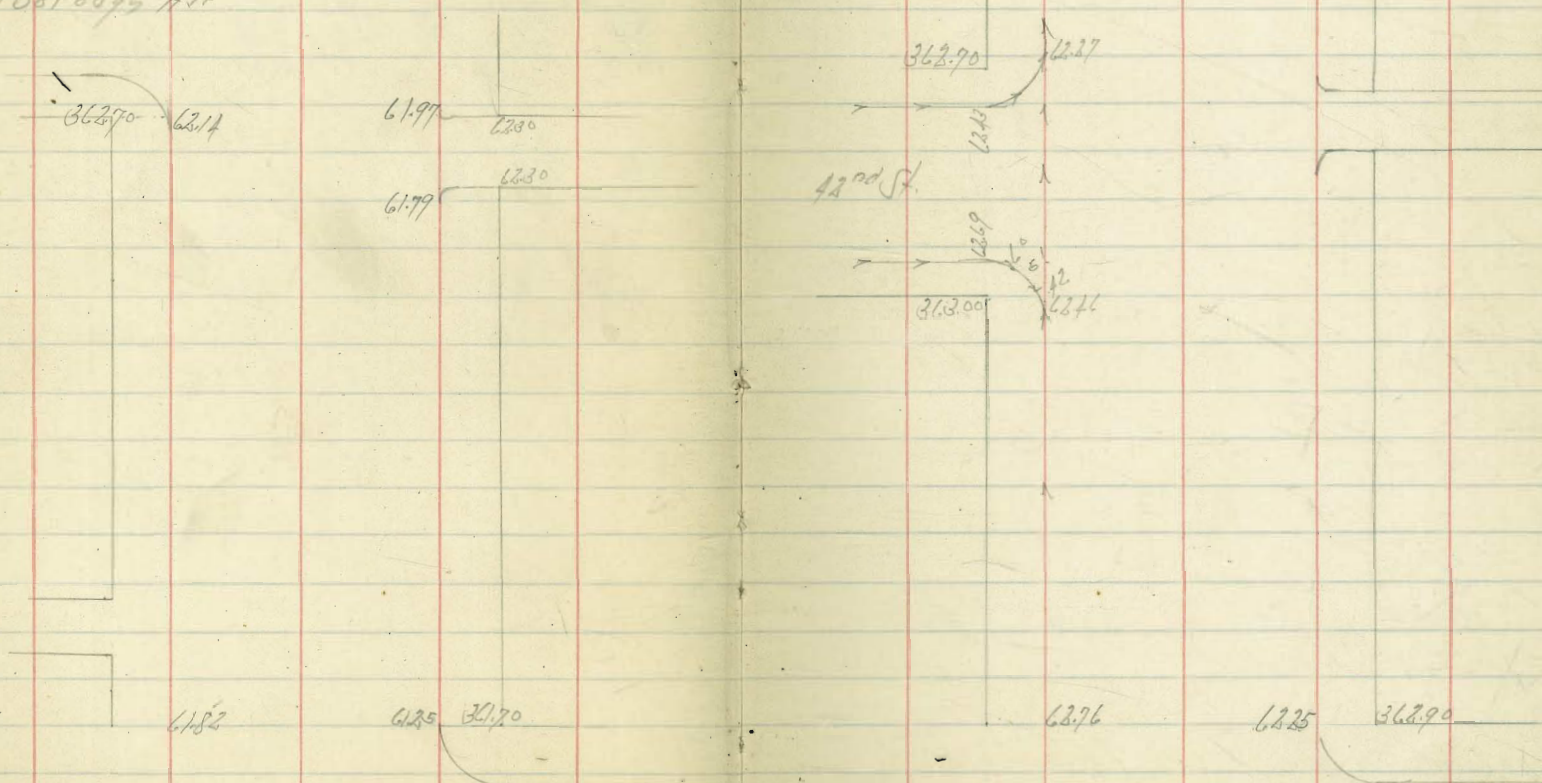
Indexed  
C.S.K.

Sept. 3-1930  
Sissos  
McHugh  
Forberg  
Flood

42<sup>nd</sup> St

12

Marlborough Ave



317 362.81 11<sup>th</sup> 3P  
11<sup>th</sup> St Orange

41<sup>st</sup>

St.

Marlborough Ave

Orange Ave Parking

13

43rd St

Van Dyke Ave

87 3609 <sup>11</sup>/<sub>8</sub> 36100 6039

43rd St

5977 36050

6076

6075 36120

Alley

Alley

Alley

36150

6108

6120

Alley

Copeland Ave

36150

6090

6049

Van Dyke Ave

64

3







Ninth St. Grades  
From Robinson to Tent

Indexed  
C.S.K.

HL Sta	W	EL Sta	F										
				SM 282.02									
				282.67									
				283.09									
				282.68									
				270.35									
759.03 - HL 10th St	275.75	588.09 - HL 10th St	276.10	276.80	F	276.10	75.00	70.97	66.94	62.91	58.87	56.41	54.01
741.82 - Opp P.C. of F	274.50	578.09 - P.C.	275.00	257.75			7.5	-0.42	5.6	7.6	11.7	14.1	16.5
702.33	270.60	538.60	270.97	256.26			6.6	-2.68	5.2	7.6	11.7	14.1	16.5
662.84	266.69	499.11	266.94	258.21			10.9	-3.00	3.0	4.8	10.0	10.1	19.3
623.35	262.78	459.62	262.91	245.37									
583.86 - FC	258.87	420.13 - FC	258.87	246.44									
554.18	256.50	396.66	256.44	244.00									
524.51 - A or W	254.11	373.20 - A	254.01	242.44									
494.83	252.23	349.73	252.18	241.00									
465.16 - P.C.	250.35	326.87 - P.C.	250.35	240.00									
426.55	248.60	292.75	248.60	238.75									
387.95 - A or W	246.87	259.23 - A	246.87	237.50									
349.34	245.90	225.71	245.90	236.25									
210.74 - Cb P.C.	244.92	192.19 - Cb	244.92	235.00									
172.79 <sup>17.95</sup>	243.94	154.24	243.94	233.75									
134.84	242.96	116.39	242.96	232.50									
96.89 <sup>37.95</sup>	241.98	78.34	241.98	231.25									
58.94 <sup>31.4</sup> - FC or F	241.00	40.39 - FC	241.00	230.00									
25.1 <sup>10.11</sup> = A	240.10			228.75									
HL Robinson	240.30	HL Robman	240.10	227.50									

246.44  
27.75  
238.69 = 2 Hobs / L Robinson  
238.68

SM 282.02  
Cont. 10th St

on the  
part of  
HL Robinson

FC

A

P.C.

A

P.C.

W

F

W

Culvert N° 1

54' of 24" Concr. Pipe

Existing Culvert	271.41
18"	271.0
21" H. of Existing = Δ	271.12
54' H. - Cb. Outlet	270.57

258.87 = Elev. Ch. Stake on rd

12.224  
 271.09  
 0.59  
 270.50  
 2.54  
 280.34 = x

272.60	271.21	271.12	270.57
2.34	✓	2.22	2.71
		2.54	2.54
		15.60	12.22

Curb Outlet N° 1

Curtain Wall N° 1

11.92m	1/2	2	1/2	= E. top 11.61
232.55	238.26	238.70	238.74	239.10
5.54	6.13	6.33	6.35	5.99

244.00 = B.M. on tie Mt. Robinson  
 1.99  
 245.99 = x

	North	Main	East L.	Prop	
N° 1	265.0 12.19 2.13 +1.06	264.0			
N° 2	266.0 5.84 3.57 +2.30	260.2			BM 244.00 10.18 256.18 5.84 251.60 12.84 266.84 260.32 266.52 10.99 277.49
N° 3	255.0 11.84 7.87 +8.96	254.3			
N° 4	250.0 16.88 18.26 +7.64	249.4			
N° 5	242.9 11.38 6.84 +8.27	242.4			
N° 6	241.6 12.58 7.21 +4.90	241.16			None
N° 7	238.5 15.18 7.21 +9.73	238.0	N° 9	240.0 12.18 7.66 +6.52	239.3
N° 8	234.7 19.28 16.91 +8.5	234.2 10.93 16.92 +9.56	N° 10	238.0 14.16 7.63	237.3
			N° 11	236.7 18.45 18.73	236.0





Tourmaline St Grader  
 Everts to Fanuel

Indexed  
 C.S.K.

Oct 5, 34  
 21  
 Survey  
 of  
 Tourmaline  
 Property  
 No. 4

	N	S
FL Everts	141.30	140.90
50' E	143.19	141.08 = Fire Hyd
100' E	145.08	142.75
150' E	146.98	144.61
200' E	148.87	146.46
250' E	150.76	148.32
300' E	152.65	150.17
350' E	154.55	152.03
400' E	156.44	153.88
430' E	157.57	155.74
460' E	158.70	156.86
480' E	159.30	158.00
500' E = N.L. Fanuel	159.50	158.40
		158.50

N 141.00	43.19	45.08	46.98	48.87	50.76	52.65	54.55
16.2	8.3	6.7	4.5	3.1	1.6	0.9	0.5
8.3	1.4	2.7	3.2	4.3	5.2	6.1	7.5
71.9	71.9	71.7	71.3	70.9	70.9	70.1	-0.3

S 140.80	43.75	44.61	46.41	48.32	50.17	52.03	53.88
19.6	8.7	6.9	5.0	3.2	1.9	1.0	0.6
8.7	0.2	1.3	2.6	3.9	5.0	6.0	7.9
70.9	70.5	70.6	70.4	70.3	-0.1	-0.3	-0.9

N 56.44	57.57	58.70	59.80	59.50
5.5	1.5	3.3	3.7	3.55
5.3	1.0	3.2	3.1	
70.3	70.5	-0.5	70.3	

S 55.74	56.86	58.00	58.40	58.50
6.3	5.3	4.0	3.6	3.55
7.0	7.7	5.8	3.7	
70.7	70.8	70.8	-0.1	

Fire Hyd 141.08 Top Cb  
 10.62  
 2.67  
 7.37

Water Grader Same Stationing as Property

137.60	39.45	41.30	43.16	45.02	46.87	48.73
13.00	7.05	10.20	8.34	6.48	4.62	2.76
8.95	7.07	5.76	3.92	2.52	1.53	0.97
74.94	74.87	74.84	74.72	73.95	73.54	73.56
50.58	52.44	53.51	54.70	55.10	55.20	
11.42	9.61	8.77	7.35	6.95	6.85	out
8.66	6.73	3.97	3.08	2.85		
73.19	73.98	74.52	75.7	74.09		



Tourmaline St + Quartz St  
Semi

Oct 21-30  
Sisson 161.99  
Molyb 34.25  
Food  
Part bar 758.54  
Pierce 19.57  
12.52  
+7.05 on rim

Exist 120 MH	131.53	19.32	
37.18 H	131.78	12.20	BM 161.38
74.37 H	132.03	17.05	SE Top Tourmaline + Quartz
111.55 H	132.28	17.82	0.21
148.75 H: Drop MH 7.5	132.53	17.38	161.99 H
200.65 F	132.99	18.81	13.98
252.55	133.95	17.93	14.00
304.46	140.92	18.57	12.09
356.36	142.89	16.03	15.10 H
408.27	144.86	16.07	14.12
460.17 = A	146.83	12.15	8.20
413.92 = D.F.	146.97	2.25	15.92

31.82 H of 460.17 A =  
Existing 4" C.I. Pipe 149.84 BM 161.38 SE Top

Oct 30-30

181.53	31.78	32.03	32.28	32.53	35.00	36.98	38.95
17.85	17.10	17.35	17.10	16.85	14.38	12.60	10.43
	16.65	16.10	16.09	8.58	8.32	8.63	6.55
	17.85	17.33	18.01	18.27	15.80	13.87	14.68

10.92	42.89	44.86	46.83	46.97
8.11	6.49	11.58	11.61	11.47
2.38	2.37	12.14	10.52	10.34
+4.09	+4.28	+4.14	+4.09	+4.13

Alloy Block 23 ReSub of R/hs K+L Teralto  
 El Cajon + Orange Copelandt Van Dyke

Indexed  
 C.S.K.

Sept 3-3-23  
 11547  
 No. 11547  
 No. 11547  
 No. 11547

	EL	YL									
5.4 El Cajon	363.40	363.20		F	363.40	63.62	63.85	64.07	64.30	64.40	64.65
11.75 S of EL	363.62	363.47	363.56		5.51	5.28	5.06	4.82	4.61	4.51	4.41
83.50 S	363.85	363.75	368.91			4.54	4.32	4.15	4.05	4.09	4.05
125.25 S	364.07	364.02		Y	363.20	63.47	63.75	64.02	64.30	64.40	64.65
167 S - Pyc	364.30	364.30			5.71	5.44	5.16	4.89	4.61	4.51	4.41
187 S	364.40	364.40			5.71	5.44	5.16	4.89	4.61	4.51	4.41
207 S - S/2 of 100	364.45	364.45				+3.50	+0.68	+0.60	+0.30	0.00	-0.36

Grades Powder House Canyon Road Indexed  
 Pershing Drive to Florida St.  
 C.S.K.

For Alignment + Ties  
 Sta # 1355 P99.78

Feb. 18, 1914  
 24  
 Has been

Station	Grade	Stakes Offset 20.5 of 2
69+0	86.47	
+7.5		
+5.0	86.70	
+2.5	86.85	
68+0	87.01	on Paring
+7.5	87.21	$\frac{18}{70.5}$
+5.0	87.42	$\frac{16}{70.5}$
+2.5	87.67	$\frac{14}{70.5}$
67+0	87.93	$\frac{12}{71.3}$
+7.5	88.23	$\frac{10}{71.7}$
+5.0	88.53	$\frac{8.5}{70.8}$
+2.5	88.88	$\frac{7.1}{71.0}$
66+0	89.23	$\frac{5.8}{70.1}$

Station	Grade	Grade
65+50	90.03	$\frac{2.8}{70.8}$
65+0 P.V.C.	90.92	$\frac{13.4}{71.5}$
+5.0	91.86	$\frac{11.7}{70.8}$
64+0	92.80	$\frac{10.7}{71.7}$
+5.0	93.74	$\frac{9.5}{72.3}$
63+0	94.68	$\frac{8.3}{71.7}$
+5.0	95.62	$\frac{7.2}{71.5}$
62+0	96.56	$\frac{6.2}{71.6}$
+5.0	97.50	$\frac{5.2}{72.0}$
61+0	98.44	$\frac{4.2}{72.2}$
+5.0	99.38	$\frac{3.2}{72.7}$
60+0	100.32	$\frac{2.2}{72.8}$
+5.0	101.26	$\frac{1.2}{73.2}$

0.02 this  
 87.8728 65+24.09  
 87.9077 63+5.5  
 87.972 61+6.7  
 88.00  
 88.02  
 88.05  
 88.08  
 88.11  
 88.14  
 88.17  
 88.20  
 88.23  
 88.26  
 88.29  
 88.32  
 88.35  
 88.38  
 88.41  
 88.44  
 88.47  
 88.50  
 88.53  
 88.56  
 88.59  
 88.62  
 88.65  
 88.68  
 88.71  
 88.74  
 88.77  
 88.80  
 88.83  
 88.86  
 88.89  
 88.92  
 88.95  
 88.98  
 89.01  
 89.04  
 89.07  
 89.10  
 89.13  
 89.16  
 89.19  
 89.22  
 89.25  
 89.28  
 89.31  
 89.34  
 89.37  
 89.40  
 89.43  
 89.46  
 89.49  
 89.52  
 89.55  
 89.58  
 89.61  
 89.64  
 89.67  
 89.70  
 89.73  
 89.76  
 89.79  
 89.82  
 89.85  
 89.88  
 89.91  
 89.94  
 89.97  
 90.00  
 90.03  
 90.06  
 90.09  
 90.12  
 90.15  
 90.18  
 90.21  
 90.24  
 90.27  
 90.30  
 90.33  
 90.36  
 90.39  
 90.42  
 90.45  
 90.48  
 90.51  
 90.54  
 90.57  
 90.60  
 90.63  
 90.66  
 90.69  
 90.72  
 90.75  
 90.78  
 90.81  
 90.84  
 90.87  
 90.90  
 90.93  
 90.96  
 90.99  
 91.02  
 91.05  
 91.08  
 91.11  
 91.14  
 91.17  
 91.20  
 91.23  
 91.26  
 91.29  
 91.32  
 91.35  
 91.38  
 91.41  
 91.44  
 91.47  
 91.50  
 91.53  
 91.56  
 91.59  
 91.62  
 91.65  
 91.68  
 91.71  
 91.74  
 91.77  
 91.80  
 91.83  
 91.86  
 91.89  
 91.92  
 91.95  
 91.98  
 92.01  
 92.04  
 92.07  
 92.10  
 92.13  
 92.16  
 92.19  
 92.22  
 92.25  
 92.28  
 92.31  
 92.34  
 92.37  
 92.40  
 92.43  
 92.46  
 92.49  
 92.52  
 92.55  
 92.58  
 92.61  
 92.64  
 92.67  
 92.70  
 92.73  
 92.76  
 92.79  
 92.82  
 92.85  
 92.88  
 92.91  
 92.94  
 92.97  
 93.00  
 93.03  
 93.06  
 93.09  
 93.12  
 93.15  
 93.18  
 93.21  
 93.24  
 93.27  
 93.30  
 93.33  
 93.36  
 93.39  
 93.42  
 93.45  
 93.48  
 93.51  
 93.54  
 93.57  
 93.60  
 93.63  
 93.66  
 93.69  
 93.72  
 93.75  
 93.78  
 93.81  
 93.84  
 93.87  
 93.90  
 93.93  
 93.96  
 93.99  
 94.02  
 94.05  
 94.08  
 94.11  
 94.14  
 94.17  
 94.20  
 94.23  
 94.26  
 94.29  
 94.32  
 94.35  
 94.38  
 94.41  
 94.44  
 94.47  
 94.50  
 94.53  
 94.56  
 94.59  
 94.62  
 94.65  
 94.68  
 94.71  
 94.74  
 94.77  
 94.80  
 94.83  
 94.86  
 94.89  
 94.92  
 94.95  
 94.98  
 95.01  
 95.04  
 95.07  
 95.10  
 95.13  
 95.16  
 95.19  
 95.22  
 95.25  
 95.28  
 95.31  
 95.34  
 95.37  
 95.40  
 95.43  
 95.46  
 95.49  
 95.52  
 95.55  
 95.58  
 95.61  
 95.64  
 95.67  
 95.70  
 95.73  
 95.76  
 95.79  
 95.82  
 95.85  
 95.88  
 95.91  
 95.94  
 95.97  
 96.00  
 96.03  
 96.06  
 96.09  
 96.12  
 96.15  
 96.18  
 96.21  
 96.24  
 96.27  
 96.30  
 96.33  
 96.36  
 96.39  
 96.42  
 96.45  
 96.48  
 96.51  
 96.54  
 96.57  
 96.60  
 96.63  
 96.66  
 96.69  
 96.72  
 96.75  
 96.78  
 96.81  
 96.84  
 96.87  
 96.90  
 96.93  
 96.96  
 96.99  
 97.02  
 97.05  
 97.08  
 97.11  
 97.14  
 97.17  
 97.20  
 97.23  
 97.26  
 97.29  
 97.32  
 97.35  
 97.38  
 97.41  
 97.44  
 97.47  
 97.50  
 97.53  
 97.56  
 97.59  
 97.62  
 97.65  
 97.68  
 97.71  
 97.74  
 97.77  
 97.80  
 97.83  
 97.86  
 97.89  
 97.92  
 97.95  
 97.98  
 98.01  
 98.04  
 98.07  
 98.10  
 98.13  
 98.16  
 98.19  
 98.22  
 98.25  
 98.28  
 98.31  
 98.34  
 98.37  
 98.40  
 98.43  
 98.46  
 98.49  
 98.52  
 98.55  
 98.58  
 98.61  
 98.64  
 98.67  
 98.70  
 98.73  
 98.76  
 98.79  
 98.82  
 98.85  
 98.88  
 98.91  
 98.94  
 98.97  
 99.00  
 99.03  
 99.06  
 99.09  
 99.12  
 99.15  
 99.18  
 99.21  
 99.24  
 99.27  
 99.30  
 99.33  
 99.36  
 99.39  
 99.42  
 99.45  
 99.48  
 99.51  
 99.54  
 99.57  
 99.60  
 99.63  
 99.66  
 99.69  
 99.72  
 99.75  
 99.78  
 99.81  
 99.84  
 99.87  
 99.90  
 99.93  
 99.96  
 99.99  
 100.02  
 100.05  
 100.08  
 100.11  
 100.14  
 100.17  
 100.20  
 100.23  
 100.26  
 100.29  
 100.32  
 100.35  
 100.38  
 100.41  
 100.44  
 100.47  
 100.50  
 100.53  
 100.56  
 100.59  
 100.62  
 100.65  
 100.68  
 100.71  
 100.74  
 100.77  
 100.80  
 100.83  
 100.86  
 100.89  
 100.92  
 100.95  
 100.98  
 101.01  
 101.04  
 101.07  
 101.10  
 101.13  
 101.16  
 101.19  
 101.22  
 101.25  
 101.28  
 101.31  
 101.34  
 101.37  
 101.40  
 101.43  
 101.46  
 101.49  
 101.52  
 101.55  
 101.58  
 101.61  
 101.64  
 101.67  
 101.70  
 101.73  
 101.76  
 101.79  
 101.82  
 101.85  
 101.88  
 101.91  
 101.94  
 101.97  
 102.00  
 102.03  
 102.06  
 102.09  
 102.12  
 102.15  
 102.18  
 102.21  
 102.24  
 102.27  
 102.30  
 102.33  
 102.36  
 102.39  
 102.42  
 102.45  
 102.48  
 102.51  
 102.54  
 102.57  
 102.60  
 102.63  
 102.66  
 102.69  
 102.72  
 102.75  
 102.78  
 102.81  
 102.84  
 102.87  
 102.90  
 102.93  
 102.96  
 102.99  
 103.02  
 103.05  
 103.08  
 103.11  
 103.14  
 103.17  
 103.20  
 103.23  
 103.26  
 103.29  
 103.32  
 103.35  
 103.38  
 103.41  
 103.44  
 103.47  
 103.50  
 103.53  
 103.56  
 103.59  
 103.62  
 103.65  
 103.68  
 103.71  
 103.74  
 103.77  
 103.80  
 103.83  
 103.86  
 103.89  
 103.92  
 103.95  
 103.98  
 104.01  
 104.04  
 104.07  
 104.10  
 104.13  
 104.16  
 104.19  
 104.22  
 104.25  
 104.28  
 104.31  
 104.34  
 104.37  
 104.40  
 104.43  
 104.46  
 104.49  
 104.52  
 104.55  
 104.58  
 104.61  
 104.64  
 104.67  
 104.70  
 104.73  
 104.76  
 104.79  
 104.82  
 104.85  
 104.88  
 104.91  
 104.94  
 104.97  
 105.00  
 105.03  
 105.06  
 105.09  
 105.12  
 105.15  
 105.18  
 105.21  
 105.24  
 105.27  
 105.30  
 105.33  
 105.36  
 105.39  
 105.42  
 105.45  
 105.48  
 105.51  
 105.54  
 105.57  
 105.60  
 105.63  
 105.66  
 105.69  
 105.72  
 105.75  
 105.78  
 105.81  
 105.84  
 105.87  
 105.90  
 105.93  
 105.96  
 105.99  
 106.02  
 106.05  
 106.08  
 106.11  
 106.14  
 106.17  
 106.20  
 106.23  
 106.26  
 106.29  
 106.32  
 106.35  
 106.38  
 106.41  
 106.44  
 106.47  
 106.50  
 106.53  
 106.56  
 106.59  
 106.62  
 106.65  
 106.68  
 106.71  
 106.74  
 106.77  
 106.80  
 106.83  
 106.86  
 106.89  
 106.92  
 106.95  
 106.98  
 107.01  
 107.04  
 107.07  
 107.10  
 107.13  
 107.16  
 107.19  
 107.22  
 107.25  
 107.28  
 107.31  
 107.34  
 107.37  
 107.40  
 107.43  
 107.46  
 107.49  
 107.52  
 107.55  
 107.58  
 107.61  
 107.64  
 107.67  
 107.70  
 107.73  
 107.76  
 107.79  
 107.82  
 107.85  
 107.88  
 107.91  
 107.94  
 107.97  
 108.00  
 108.03  
 108.06  
 108.09  
 108.12  
 108.15  
 108.18  
 108.21  
 108.24  
 108.27  
 108.30  
 108.33  
 108.36  
 108.39  
 108.42  
 108.45  
 108.48  
 108.51  
 108.54  
 108.57  
 108.60  
 108.63  
 108.66  
 108.69  
 108.72  
 108.75  
 108.78  
 108.81  
 108.84  
 108.87  
 108.90  
 108.93  
 108.96  
 108.99  
 109.02  
 109.05  
 109.08  
 109.11  
 109.14  
 109.17  
 109.20  
 109.23  
 109.26  
 109.29  
 109.32  
 109.35  
 109.38  
 109.41  
 109.44  
 109.47  
 109.50  
 109.53  
 109.56  
 109.59  
 109.62  
 109.65  
 109.68  
 109.71  
 109.74  
 109.77  
 109.80  
 109.83  
 109.86  
 109.89  
 109.92  
 109.95  
 109.98  
 110.01  
 110.04  
 110.07  
 110.10  
 110.13  
 110.16  
 110.19  
 110.22  
 110.25  
 110.28  
 110.31  
 110.34  
 110.37  
 110.40  
 110.43  
 110.46  
 110.49  
 110.52  
 110.55  
 110.58  
 110.61  
 110.64  
 110.67  
 110.70  
 110.73  
 110.76  
 110.79  
 110.82  
 110.85  
 110.88  
 110.91  
 110.94  
 110.97  
 111.00  
 111.03  
 111.06  
 111.09  
 111.12  
 111.15  
 111.18  
 111.21  
 111.24  
 111.27  
 111.30  
 111.33  
 111.36  
 111.39  
 111.42  
 111.45  
 111.48  
 111.51  
 111.54  
 111.57  
 111.60  
 111.63  
 111.66  
 111.69  
 111.72  
 111.75  
 111.78  
 111.81  
 111.84  
 111.87  
 111.90  
 111.93  
 111.96  
 111.99  
 112.02  
 112.05  
 112.08  
 112.11  
 112.14  
 112.17  
 112.20  
 112.23  
 112.26  
 112.29  
 112.32  
 112.35  
 112.38  
 112.41  
 112.44  
 112.47  
 112.50  
 112.53  
 112.56  
 112.59  
 112.62  
 112.65  
 112.68  
 112.71  
 112.74  
 112.77  
 112.80  
 112.83  
 112.86  
 112.89  
 112.92  
 112.95  
 112.98  
 113.01  
 113.04  
 113.07  
 113.10  
 113.13  
 113.16  
 113.19  
 113.22  
 113.25  
 113.28  
 113.31  
 113.34  
 113.37  
 113.40  
 113.43  
 113.46  
 113.49  
 113.52  
 113.55  
 113.58  
 113.61  
 113.64  
 113.67  
 113.70  
 113.73  
 113.76  
 113.79  
 113.82  
 113.85  
 113.88  
 113.91  
 113.94  
 113.97  
 114.00  
 114.03  
 114.06  
 114.09  
 114.12  
 114.15  
 114.18  
 114.21  
 114.24  
 114.27  
 114.30  
 114.33  
 114.36  
 114.39  
 114.42  
 114.45  
 114.48  
 114.51  
 114.54  
 114.57  
 114.60  
 114.63  
 114.66  
 114.69  
 114.72  
 114.75  
 114.78  
 114.81  
 114.84  
 114.87  
 114.90  
 114.93  
 114.96  
 114.99  
 115.02  
 115.05  
 115.08  
 115.11  
 115.14  
 115.17  
 115.20  
 115.23  
 115.26  
 115.29  
 115.32  
 115.35  
 115.38  
 115.41  
 115.44  
 115.47  
 115.50  
 115.53  
 115.56  
 115.59  
 115.62  
 115.65  
 115.68  
 115.71  
 115.74  
 115.77  
 115.80  
 115.83  
 115.86  
 115.89  
 115.92  
 115.95  
 115.98  
 116.01  
 116.04  
 116.07  
 116.10  
 116.13  
 116.16  
 116.19  
 116.22  
 116.25  
 116.28  
 116.31  
 116.34  
 116.37  
 116.40  
 116.43  
 116.46  
 116.49  
 116.52  
 116.55  
 116.58  
 116.61  
 116.64  
 116.67  
 116.70  
 116.73  
 116.76  
 116.79  
 116.82  
 116.85  
 116.88  
 116.91  
 116.94  
 116.97  
 117.00  
 117.03  
 117.06  
 117.09  
 117.12  
 117.15  
 117.18  
 117.21  
 117.24  
 117.27  
 117.30  
 117.33  
 117.36  
 117.39  
 117.42  
 117.45  
 117.48  
 117.51  
 117.54  
 117.57  
 117.60  
 117.63  
 117.66  
 117.69  
 117.72  
 117.75  
 117.78  
 117.81  
 117.84  
 117.87  
 117.90  
 117.93  
 117.96  
 117.99  
 118.02  
 118.05  
 118.08  
 118.11  
 118.14  
 118.17  
 118.20  
 118.23  
 118.26  
 118.29  
 118.32  
 118.35  
 118.38  
 118.41  
 118.44

Feb 20-31  
 Start 54.0 **25**

59+0	102.20	$\begin{matrix} 15.9 \\ 17.6 \\ +1.9 \end{matrix}$		52+7585 F.C.	113.93	$\begin{matrix} 15.3 \\ 12.7 \\ +2.6 \end{matrix}$	
+50	103.14	$\begin{matrix} 15.0 \\ 12.3 \\ +2.7 \end{matrix}$		+50	114.42	$\begin{matrix} 14.8 \\ 6.5 \\ +8.3 \end{matrix}$	116.11 A&E Ford
58+0	104.08	$\begin{matrix} 16.0 \\ 10.8 \\ +3.2 \end{matrix}$		+25	114.89	$\begin{matrix} 14.2 \\ 6.5 \\ +1.98 \end{matrix}$	110.58 128.3 123.4 134 119.07 120.13 139.07 136.83 138.37 137.07 137.441
+50	105.02	$\begin{matrix} 13.1 \\ 13.0 \\ +4.1 \end{matrix}$	$\begin{matrix} 118.11 \\ 132.2 \\ 105.88 \\ 0.76 \\ 146 \\ 57.150 \\ 103.7 \end{matrix}$	52+0	115.36	$\begin{matrix} 13.8 \\ 1.4 \\ +1.27 \end{matrix}$	
57+0	105.96	$\begin{matrix} 12.1 \\ 9.8 \\ +2.3 \end{matrix}$		+75	115.83	$\begin{matrix} 21.6 \\ 8.7 \\ +1.29 \end{matrix}$	
+50	106.90	$\begin{matrix} 11.5 \\ 13.9 \\ +2.6 \end{matrix}$		+50	116.30	$\begin{matrix} 21.1 \\ 8.8 \\ +1.23 \end{matrix}$	
56+0	107.84	$\begin{matrix} 15.5 \\ 12.8 \\ +3.1 \end{matrix}$		26.12 +24.01 P.C.	116.76 116.79	$\begin{matrix} 20.6 \\ 17.6 \\ +7.4 \end{matrix}$	
+50	108.78	$\begin{matrix} 14.6 \\ 10.9 \\ +3.7 \end{matrix}$		51+0 F.V.C.	117.24	$\begin{matrix} 10.7 \\ 13.9 \\ +7.2 \end{matrix}$	16.8 16.1
55+0	109.72	$\begin{matrix} 13.7 \\ 13.3 \end{matrix}$		+50	118.16	$\begin{matrix} 10.3 \\ 17.5 \\ +7.2 \end{matrix}$	
+50	110.66	$\begin{matrix} 12.7 \\ 12.3 \\ +2.4 \end{matrix}$		50+0	118.92	$\begin{matrix} 18.5 \\ 15.5 \\ +3.0 \end{matrix}$	14.8 14.7 12.7
54+0	111.60	$\begin{matrix} 16.8 \\ 14.7 \end{matrix}$		+50	119.86	$\begin{matrix} 17.6 \\ 12.3 \\ +5.3 \end{matrix}$	13.8 9.1 +7.7
+50	112.54	$\begin{matrix} 12.9 \\ 12.4 \\ +3.7 \end{matrix}$		49+0	120.65	$\begin{matrix} 18.0 \\ 12.6 \\ +5.4 \end{matrix}$	13.9 13.8 +7.2
53+0	113.48	$\begin{matrix} 15.7 \\ 15.0 \\ +0.7 \end{matrix}$		48+50	121.40	$\begin{matrix} 16.9 \\ 12.5 \\ +4.4 \end{matrix}$	13.3 13.2 +4.7

Line Change March 13-31

Feb. 20-31  
Start 537.0

48+0	2 Grad 122.10	<del>15.7</del> +18.5	<del>11.6</del> +13.7		41+50	129.94	<del>8.8</del> +14.2	<del>8.9</del> +17.7	
+50	122.77	<del>15.4</del> +18.3	<del>10.6</del> +12.3	Line Change March 13-31	41+0	130.53	<del>8.8</del> +9.6	<del>8.3</del> +9.7	137.4581/10 134.99 134.787 135.887 130.78 138.747 138.64 137.387
47+0 = P.V.C.	123.38	<del>18.4</del> +18.5	<del>15.3</del> +12.6	SM 129.85 129.72	+50	131.13	<del>8.4</del> +13.0	<del>7.7</del> +17	137.4581/10 134.99 134.787 135.887 130.78 138.747 138.64 137.387
+50	123.98	<del>18.8</del> +18.0	<del>9.7</del> +12.2	132.677 130.13 8.72 138.827 138.827 138.827	40+0	131.72	<del>8.8</del> +12.0	<del>7.1</del> +11.5	137.4581/10 134.99 134.787 135.887 130.78 138.747 138.64 137.387
46+0	124.57	<del>12.4</del> +18.5	<del>9.6</del> +12.8	137.81 137.81 146.4	+50	132.32	<del>8.6</del> +10.6	<del>6.5</del> +10.6	137.4581/10 134.99 134.787 135.887 130.78 138.747 138.64 137.387
+50	125.17	<del>16.6</del> +12.1	<del>8.5</del> +12.7		39+0	132.92	<del>6.8</del> +11.2	<del>5.8</del> +11.4	
45+0	125.76	<del>14.3</del> +11.3	<del>7.8</del> +11.7		+50	133.51	<del>6.2</del> +11.7	<del>5.3</del> +11.9	
+50	126.36	<del>18.4</del> +11.9	<del>7.3</del> +12.2	139.74 139.74 SM 129.85 SM 130.21	38+0 - E.V.C.	134.12	<del>12.1</del> +10.0	<del>12.3</del> +10.2	146.18 SM 136.72 137.10
44+0	126.95	<del>8.7</del> +18.5	<del>11.9</del> +12.5		+50	134.74	<del>18.4</del> +10.3	<del>11.7</del> +12.5	
+50	127.55	<del>9.1</del> +12.1	<del>11.3</del> +13.1		37+0	135.41	<del>18.6</del> +12.2	<del>11.6</del> +12.5	
43+0	128.15	<del>8.4</del> +18.8	<del>19.2</del> +13.3		+50	136.13	<del>18.8</del> +11.3	<del>13.3</del> +11.8	
+50	128.74	<del>14.9</del> +18.3	<del>18.6</del> +13.8		36+0	136.90	<del>9.3</del> +11.0	<del>9.1</del> +10.3	
43+0	129.34	<del>18.1</del> +18.3	<del>9.5</del> +12.6		+50	137.72	<del>8.5</del> +12.7	<del>8.7</del> +13.1	

35+0	-	138.60	$\frac{11.6}{-2.7}$	$\frac{7.0}{-3.0}$	146.41 T Bl Face	28+50	149.97	$\frac{18.0}{+11.8}$	$\frac{16.5}{+13.8}$	
+50		139.52	$\frac{6.9}{-2.9}$	$\frac{6.3}{-2.4}$	147.87 157.02 153.50 152.90 152.29 151.54 149.95 148.54 147.00	28+0 = PVC	150.50	$\frac{16.0}{+11.7}$	$\frac{10.9}{+5.3}$	146.18 T Bl Face 147.99 148.25 150.04 T 150.52 152.53 152.53 159.74 T
34+0	= PVC	140.50	$\frac{5.7}{-2.7}$	$\frac{6.0}{-1.7}$	161.54 T 160.95 158.54 T 157.00	+50	151.00	$\frac{15.5}{+11.3}$	$\frac{15.5}{+13.7}$	on slope 3.20 T 3.00 T
+50		141.50	$\frac{4.7}{-3.4}$	$\frac{5.0}{-2.9}$	161.54 T 160.95 158.54 T 157.00	27+0	151.50	$\frac{15.5}{+11.3}$	$\frac{17.0}{+11.2}$	
33+0		142.50	$\frac{4.7}{-2.5}$	$\frac{4.0}{-1.6}$	173.92 T Face	+50	152.00	$\frac{15.5}{+11.3}$	$\frac{16.5}{+11.6}$	on slope 3.20 T 3.00 T
+50		143.50	$\frac{2.7}{-3.0}$	$\frac{11.5}{+0.6}$		26+0	152.50	$\frac{15.5}{+11.3}$	$\frac{16.9}{+11.8}$	
32+0	= PVC	144.50	$\frac{10.5}{+0.1}$	$\frac{18.4}{+1.7}$		+50	153.00	$\frac{14.5}{+11.3}$	$\frac{15.5}{+11.6}$	on slope 3.20 T 3.00 T
+50		145.47	$\frac{9.6}{+3.0}$	$\frac{9.2}{+3.7}$	167.55 160.76	25+0 BM	153.50	$\frac{14.5}{+11.3}$	$\frac{18.0}{+11.8}$	on slope 3.20 T 3.00 T
31+0		146.38	$\frac{8.7}{+5.6}$	$\frac{8.3}{+6.1}$		+50	154.00	$\frac{14.5}{+11.3}$	$\frac{14.5}{+11.9}$	
+50		147.22	$\frac{13.8}{+1.7}$	$\frac{10.3}{+8.6}$	159.76 157.03 155.71 154.75	24+0	154.50	$\frac{13.8}{+11.3}$	$\frac{14.0}{+11.7}$	
30+0		148.00	$\frac{11.0}{+1.7}$	$\frac{18.5}{+11.0}$		+50	155.00	$\frac{13.8}{+11.3}$	$\frac{13.5}{+11.5}$	
+50		148.72	$\frac{20.8}{+12.3}$	$\frac{17.8}{+14.7}$		23+0	155.50	$\frac{13.8}{+11.3}$	$\frac{18.1}{+15.8}$	
29+0		149.38	$\frac{18.4}{+1.3}$	$\frac{17.1}{+15.8}$		+50	156.00	$\frac{13.8}{+11.3}$	$\frac{17.8}{+16.5}$	

Water Ppt

17+33.19.17 Hairs  
Hairs 51.

28  
3M 16540  
H/16+55

22+0 -XVC -0156.50 <sup>148</sup>146 <sup>172</sup>170  
<sup>146</sup>146 <sup>172</sup>170  
+50 157.03 <sup>148</sup>146 <sup>172</sup>170  
157.00 <sup>148</sup>146 <sup>172</sup>170  
21+0 157.62 <sup>148</sup>146 <sup>172</sup>170  
157.50 <sup>148</sup>146 <sup>172</sup>170  
+50 158.81 <sup>148</sup>146 <sup>172</sup>170  
158.00 <sup>148</sup>146 <sup>172</sup>170  
20+0 159.00 <sup>148</sup>146 <sup>172</sup>170  
158.50 <sup>148</sup>146 <sup>172</sup>170  
+50 159.80 <sup>148</sup>146 <sup>172</sup>170  
159.04 <sup>148</sup>146 <sup>172</sup>170  
19+0 160.65 <sup>148</sup>146 <sup>172</sup>170  
159.65 <sup>148</sup>146 <sup>172</sup>170  
+6671-20 161.37 <sup>148</sup>146 <sup>172</sup>170  
160.11 <sup>148</sup>146 <sup>172</sup>170  
+50 161.58 <sup>148</sup>146 <sup>172</sup>170  
160.34 <sup>148</sup>146 <sup>172</sup>170  
+25 out 162.07 <sup>148</sup>146 <sup>172</sup>170  
160.72 <sup>148</sup>146 <sup>172</sup>170  
18+0 -XVC 162.57 <sup>148</sup>146 <sup>172</sup>170  
161.70 <sup>148</sup>146 <sup>172</sup>170  
+75 out 163.08 <sup>148</sup>146 <sup>172</sup>170  
161.52 <sup>148</sup>146 <sup>172</sup>170  
+50 163.59 <sup>148</sup>146 <sup>172</sup>170  
161.95 <sup>148</sup>146 <sup>172</sup>170

17+33.19.17 Hairs out  
17+33.19.17 Hairs out  
+25  
17+0  
+75  
+50  
+25  
+1494 P.C.L. out  
16+0  
+50  
15+0  
+50  
14+0  
+50  
+50  
13+0  
+50  
12+0  
+50

163.92 11.8  
162.26 10.0 -X  
164.10 9.7  
164.11 9.7  
163.86 9.7  
165.11 9.7  
165.62 9.7  
163.86 9.7  
166.13 9.7  
166.64 9.7  
164.92 9.7  
167.66 8.1  
166.02 8.1  
168.68 13.9  
167.13 13.9  
169.70 5.9  
168.23 5.9  
170.71 4.8  
169.34 4.8  
171.73 3.7  
170.71 3.7  
172.75 2.6  
171.54 2.6  
173.77 1.5  
172.65 1.5  
174.79 0.3  
173.75 0.3  
175.80 8.9  
174.86 8.9

11.8  
10.0 -X  
9.7  
9.7  
9.7  
9.7  
9.7  
9.7  
9.7  
9.7  
8.1  
8.1  
13.9  
13.9  
5.9  
5.9  
4.8  
4.8  
3.7  
3.7  
2.6  
2.6  
1.5  
1.5  
0.3  
0.3  
8.9  
8.9

117557 815  
162.45  
162.93  
171.377  
162.36  
169.74  
173.62  
170.72  
8364 Nard

11+0 176.82 7.3  
175.91  $\frac{11.6}{3.3} - 4.2$

+50 177.84 6.6  
177.01  $\frac{11.1}{11.1} + 0.3$

10+0 178.86 5.5  
178.19  $\frac{4.1}{2.8} + 2.1$

+50 179.88 13.8  
179.29  $\frac{11.6}{7.8} + 1.7$

9+0 180.88 12.8  
180.38  $\frac{12.0}{10.8} + 2.3$

+50 181.91 11.7  
181.48  $\frac{8.6}{2.3} + 2.5$

8+0 -A.V.C. 182.93 10.6  
182.58  $\frac{7.5}{2.5} + 4.1$

+50 183.92 9.5  
183.66  $\frac{8.2}{1.3} + 6.0$

7+0 184.89 8.5  
184.69  $\frac{3.9}{1.6} + 4.4$

+50 185.81 11.9  
185.68  $\frac{11.6}{10.8} + 0.2$

6+0 186.70 16.0  
186.60  $\frac{7.4}{10.8} + 3.7$

+50 187.55 10.1  
187.56  $\frac{9.6}{10.5}$

5+0 188.36 9.4  
188.33  $\frac{11.7}{-1.9}$

4+50 189.12 8.5  
189.11  $\frac{12.5}{-4.0}$

4+0 -P.V.C. 189.85 7.7  
 $\frac{11.8}{-4.1}$

+50 190.56 7.0  
 $\frac{6.3}{2.7}$

3+0 191.28 6.3  
 $\frac{4.1}{12.3}$

+50 191.99 5.1  
 $\frac{3.7}{2.5}$

2+0 192.72 4.9  
 $\frac{1.6}{3.3}$

+50 193.41 4.7  
 $\frac{0.2}{4.0}$

1+0 194.14 10.8  
 $\frac{2.8}{13.9}$

+50 194.70 10.2  
 $\frac{6.5}{13.7}$

+40 194.70

+20 194.50

0+0 194.04 10.87  
11.03 on Paving

183.14 T.B.P.  
180.56  
192.69 T  
192.59  
184.60  
191.59 T  
190.18  
197.39  
197.52  
204.91 T  
206.97  
BM 197.94  
S.W.B.P.  
M.Y.H.L.  
197.99

190.88  
190.38

193.19 T  
1.06  
BM 197.57 = 35% P.V.C.  
1.50

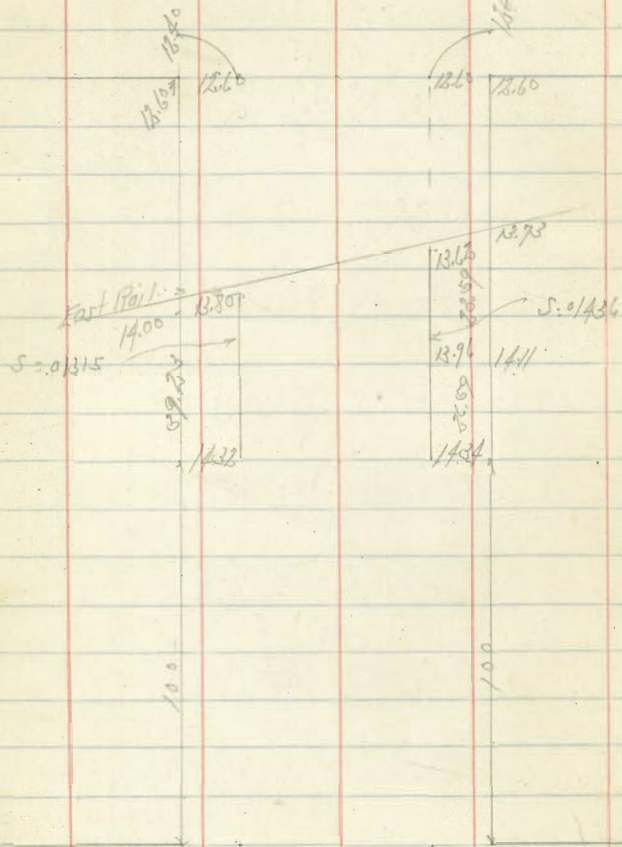
192.72



C St. Grader  
India to Kettner

Indexed  
C.S.K.

Kettner Blvd.



India SA

June 15-31  
Moore  
Sloan  
Northrup  
30  
NEBP  
16.90 India to  
183  
187.31

NCb 14.34	13.94	13.62	13.60	12.40
4.34	4.77	5.40	6.13	6.33
4.37 c bold	5.37	6.59	6.55	7.03
	-0.60	-0.59	-0.42	-0.70
H Prop	14.11	13.73	12.60	
	2.22	5.00	6.13	
	5.07	5.73	6.52	
	-0.45	-0.73	-0.39	

S cb 14.37	13.81	12.60	12.40
6.41	4.97	6.13	6.33
4.44 old cb	5.19	6.52	7.03
	-0.57	-0.39	-0.72
S Prop	14.00	12.60	
	4.73	6.13	
	5.45	6.52	
	-0.72	-0.44	

41<sup>st</sup> St Parking

Indexed  
C.S.K.

El Cajon Ave to 310.67

Meade Hill

65.53 65.65 65.35

5/11  
30

1/11

2.0/18

14.10 14.58 214.35

El Cajon Ave

3/11 4.51 368.93

367.42

June 27/31

31

SMBP  
El Cajon Ave

Alley Block 36 Teratta - Rev. Bks NY 1.  
 From Orange Ave to El Cajon  
 Between 35th & Wilson  
 W

Block	Value	Value
607 N. S. El Cajon	380.79	380.14
587 N	380.25	380.15
567 N	379.80	379.65
547 N	379.40	379.25
527 N	379.20	379.00
507 N - P. 16	379.00	378.90
467 N	378.89	378.78
427 N	378.77	378.67
387 N	378.66	378.55
347 N	378.55	378.43
307 N	378.44	378.32
267 N	378.32	378.20
227 N	378.21	378.08
187 N	378.10	377.97
147 N	377.99	377.85
107 N	377.87	377.73
67 N - B. 10	377.76	377.62
27 N - B. 4	377.65	377.50
N. Orange Ave	377.40	377.20

77-31  
 Near  
 El Cajon  
 Harbor

Block	Value	Value	Value	Value	Value	Value	Value	Value
F	80.14	80.15	79.75	79.25	79.00	78.90	78.78	78.67
	4.54	5.63	5.53	5.93	6.18	6.16	6.28	6.39
	4.59	4.01	+0.36	+0.79	+1.00	+0.07	+0.87	+0.50
W	80.99	80.25	79.80	79.40	79.20	79.00	78.89	78.77
	4.39	4.93	5.21	5.28	5.99	4.06	4.17	4.40
	4.10	4.78	5.27	5.29	5.33	4.33	4.41	4.83
		4.00	+0.77	+0.79	+0.65	-0.76	-0.24	-0.24
F	78.55	78.43	78.32	78.20	78.08	77.97	77.85	77.73
	4.51	4.35	4.46	4.58	4.28	4.51	4.93	5.54
	+0.50	2.52	-0.02	+0.03	+0.22	+0.57	+0.67	+0.94
W	78.66	78.55	78.44	78.32	78.21	78.10	77.99	77.87
	4.40	4.51	4.30	4.41	4.57	4.68	4.79	5.34
	4.09	5.11	4.25	4.64	4.37	4.62	4.66	5.42
		-0.60	-0.14	-0.18	+0.25	+0.37	+0.73	4.03
F	77.50	77.40						
	5.73	6.03						
	4.82	5.13						
	+0.70							
W	77.65	77.40						
	5.58	5.89						
	4.24	5.79						
	+0.74							

Water Grades  
 Hill Block to City Heights  
 from Laddis to Dwight Between Fairmount + 44145

Indexed  
 c.s.k.

Station	Grade	Indexed	Remarks
S.L. Laddis	347.40	+3.62	Standard Fairmount
25 S	347.03	+3.34	
50 S	346.66	+3.07	
78 S	346.25	+2.77	
100 S	345.92	+2.43	
150 S	345.19	+2.06	
168 S	344.93	+1.93	
200 S - Bk	344.45	+1.85	
212 S	344.34	+1.76	
256 S	343.98	+1.57	
260 S	343.89	+1.53	
300 S	343.51	+1.38	
361 S	342.94	+1.27	
400 S	342.53	+1.27	
453 S	342.02	+1.27	
489 S	341.74	+1.27	
520 S	341.45	+1.27	
540 S	341.18	+1.27	
560 S	340.80	+1.27	
580 S	340.35	+1.27	
600 S	339.80	+1.27	
N.L. Dwight	670	342.19	342.70

33  
 7-10-01  
 Moore  
 Faxon  
 Northern

Sewer Grades  
Blk 21 Crown Pt.

Indexed  
C.S.K.

M.H. #56 = 00	16.4
0 + 25	16.53
0 + 45	16.90
0 + 50	17.27
0 + 75	17.70
1 + 00	18.14
1 + 25	18.58
1 + 60 = M.H. #47 = 00	19.25
0 + 25	19.68
0 + 50	20.12

16.40  
17.85  
17.75

16.90	17.27	17.70	18.14	18.58
12.35	11.93	11.55	11.11	10.67
↓	↓	↓	↓	↓
19.25	19.68	20.12		
10.00	9.57	9.13		
↓	↓	↓		

Set F.L. Grades

7/28/21

Moore

Northoin

Plan = 159.2 #56 to #57  
Gough = 161.9

7/28/31 Alley Grading berm Blks B, E & F  
 Moore S: 120' + N & S alley, South La Jolla  
 Northern

	W	E
NL Nautikas = 00	48.58	49.38
0 + 20	48.90	49.30
0 + 40	49.10	49.38
0 + 60	49.10	49.30
0 + 80	49.05	49.70
1	48.94	49.10
+05 = PC 30' R	48.91	49.08
+40	48.83	49.02

PRIVATE CONTRACT

7/28/31

Moore

Northern

Indexed  
 C.S.K.  
 Top of ONE.

49.98  
 5.61  
 57.99

W	48.58	48.90	49.10	49.10	49.05	48.94	48.83
	6.41	6.09	5.89	5.89	5.91	6.05	6.16
		-0.15	0.00	0.00	-0.1	-0.65	-1.1
E	49.38	49.30	49.38	49.30	49.20	49.10	49.02
	5.61	5.69	5.61	5.69	5.79	5.89	5.91
		0.08	0.11	0.08	0.11	0.10	0.11
		+3.14	+2.5	+3.16	+2.22	+2.62	+3.1

35  
 48.91 = PC  
 6.08  
 6.75  
 -0.7

49.08 = PC  
 5.91  
 6.10  
 +2.41







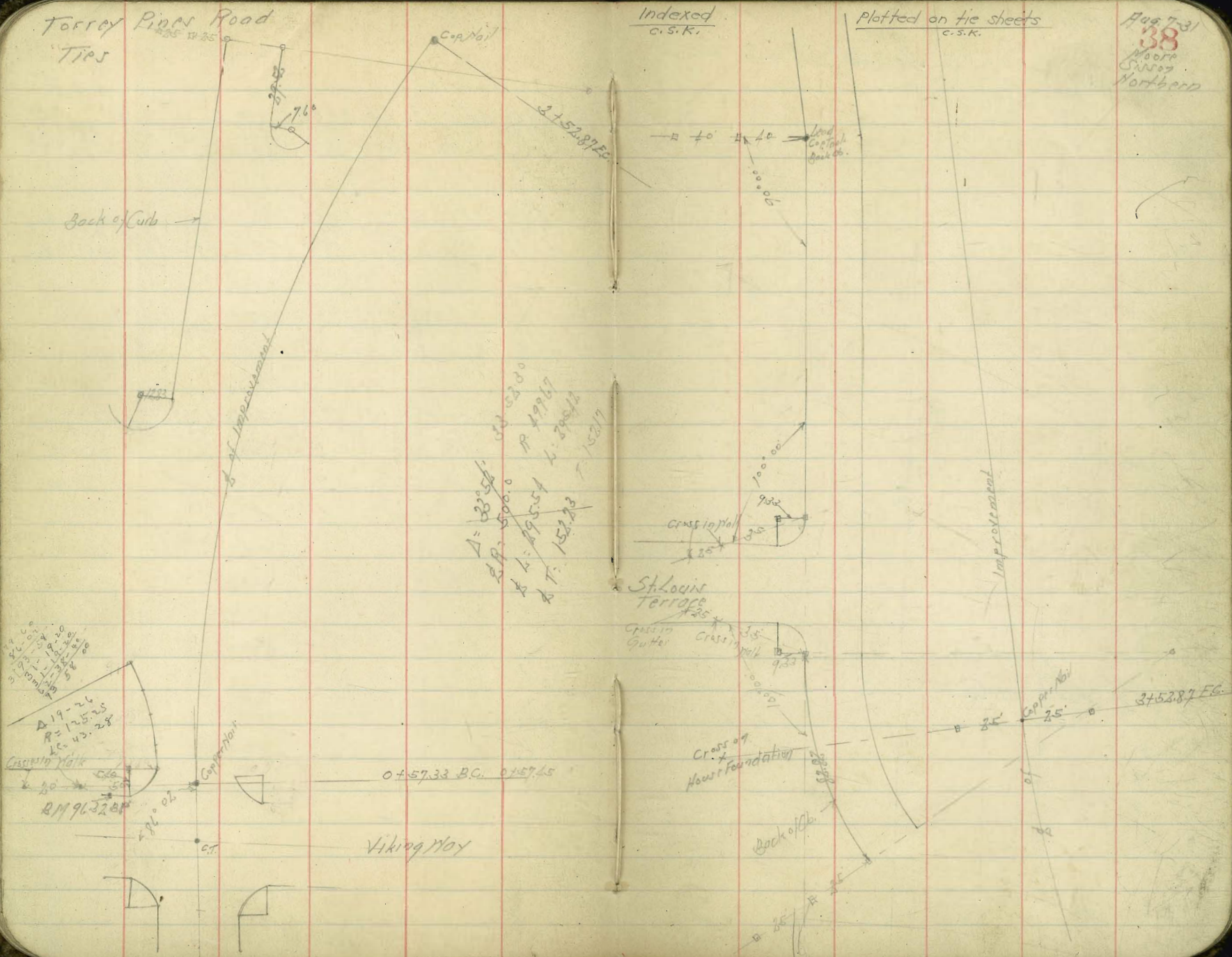
Torrey Pines Road

TIPS

Indexed  
C.S.K.

Plotted on tie sheets  
C.S.K.

Aug 7-31  
38  
Moore  
Singer  
Northern



Torrey Pines Road  
Ties

BM 8562 40' — Cop Nail 25' — 29' — 915459 BC

Impr. Nail

4 25' — 25' — 2067

of  
2

1276587 BC

Lead CT 25' — 15' —  
Lor  
only

35' — Cop Nail 35' — BM 9863 1174352 EC

Impr. Nail

A: 1486  
B.R: 7500  
B.L: 18893  
B.T: 9497

BM 8562 40' — Cop Nail 25' — 29' — 915459 BC

Torrey Pines Road

15+77.82 EC

$\Delta = 25^\circ - 25'$   
 $R = 703.23$   
 $L = 211.95'$   
 $T = 25' \times 4 = 100'$   
 $L = 152.94$

$\Delta = 25^\circ 33'$   
 $R.P. = 700.0$   
 $L = 811.95$   
 $R.T. = 158.61$

12+65.87 BC

25' 24.60 29.98

Impracticable

Iron Pipe Stake

25' 15'

P.C. La Jolla Canyon

40

Hub R 48.0  
20.0  
11' 9'  
Hub  
30.9  
R=20  
 $\Delta=80$   
25'

$\Delta = 84.71$   
 $L = 262.76$

A 12-31 Hub

70.91

80.47

B.M. 5469

81.91

c.t. walk

33'

screw in Pavmt

25'

Corner Point

25'

17+10.21 PC  
76 North

calle de la Plata

Mon 23

15+77.82 EC

25' 25'



Torry Pines Road  
Water Grader

Line And Grade Change West of Station 15+77.82

Aug. 11, 31

42

0+0 = 1597.82 EC	63.00		68.60	10+50	87.22	91.67
0+57.1	64.65	14.4	10.41	11+16.70 Valve on 100 pipe	87.40	91.67
1+02.20 BC PI	66.30	8.1	79.01 T			
1+42.75	67.34	12.7	70.17			
1+82.30	68.38	15.7	78.54			
2+22.85	69.42	11.3	77.00			
2+76.40	70.46	15.3	89.84 T			
3+04.97 = EC	71.50	10.6	84.28			
3+52.20	72.80	15.1	88.08			
4+02.20	74.20	9.6	96.64 T			
4+60.78 BC Lt	75.80	14.8				
5+19.54	76.72	8.5				
5+30.10	77.64	14.7				
5+64.71	78.56	7.5				
5+99.42	79.48	15.6				
6+34.10 EC = 91.54 59 BC 2 imp	80.40	14.4				
7+0	82.05	14.0				
7+150	83.30	17.6				
8+01.34 BC PI	84.60	14.0				
8+40.90	85.20	14.0				
8+80.46	85.80	14.0				
9+20.02	86.40	14.0				
9+59.52 EC	87.00	14.0				
10+0	87.10	14.0				

10+50	87.22	91.67
11+16.70 Valve on 100 pipe	87.40	91.67
	92.67	4.1
	11.17	2.03
	76.77	7.21
Valve Box Torrey Rd.		
4+68	92.40	92.44
	4.39	4.10
4+79	92.36	92.40
	4.43	4.14
4+77		

Valve Box	Torry Rd.	S. Edge Pavmt.	W. S. of 4'	4
4+68	92.40	92.44	92.68	92.74
	4.39		4.10	
4+79	92.36	92.40	92.65	92.70
	4.43		4.14	

Torrey Pipes Road Grades

2-26-23  
1560  
1177.50  
382.50  
647.5

96.32  
8.39  
104.71

Water Grades	Torrey Rd For Lowering Pipe
1100 +50	2400 +40
97.75	97.25 96.78 95.43 94.50
7.0	6.7 2.9 9.3 10.2
5.9	5.0 5.2 6.4 8.1
+1.1	+1.9 +2.7 +2.9 +2.1
	+1.3 +0.6

3452.87 EC  
92.97  
11.7  
11.5  
99.00  
5.1

43

Station	Grade	Notes	Station	Grade	Notes
N.L. Viking Way	97.50	98.80	9828	98.50	104.81
0+5745-BC		98.23	9775		104.53
1+0	2'-26.23"	99.00	9785		111.03
					99.53
					100.42
+50	5'-8.23"	99.10	9678		12.96
					87.46
					8.49
					75.95
2+0	8'-10.23"	98.13	9543		
+70	10'-27.59"	97.03	9450		
+80	12'-45.35"	95.98	9375		
3+20	15'-03.11"	94.92	9322		
3+5287-FC 16-56.15		94.10	9297		
3+80		92.50	9285		
4+0287-FC 16-56.15			9274		
4+20		92.90	9267		
4+60		92.50	9248		
5+00		92.30	9230		

Station	Grade	Notes	Station	Grade	Notes
M 9750	98.80	99.80	9970	98.13	97.03
	7.31	6.01	5.01	5.11	2.3
	7.14	7.14	6.53	5.10	3.4
	+0.17	-1.13	-1.53	0.26	+1.7
F 9805	97.28	97.75	9678	95.43	94.50
	6.16	7.53	7.0	15.1	16.5
	5.19	6.19	5.27	17.3	17.3
	+0.97	-1.37	-1.95	+1.06	+1.4
			21.9	23.3	23.7

M 935	93.50	92.90	9250	92.30
	11.2	3.0	3.1	3.6
	11.2	13.7	11.2	16.1
	-0.7	0.6	1.2	12.5
		2.9	3.0	38.8
		36.1	33.0	
F 9285	92.85	92.67	9218	92.30
	2.1	2.2	2.3	2.5
	2.1	0.1	1.8	2.4
	+1.0	+2.1	+0.5	+0.1

40  
52.87  
27.13

Torrey Point Road

85.62  
7.20  
94.82

	Edg. of Paving	F
5+50	9210	9210
6+0	9190	9190
+50 PVC	9170	9170
+90	9140	9140
7+20.54 opp BC	9112	9112
+70	9015	9015
8+10 PVC	8920	8920
+54.59	88.05	87.83
+74.59 = opp Δ Paving	87.61	87.25
9+04.59	87.00	86.25
+66.6 = Voke 00E		
+54.59 = BC	86.10	84.60
10+04.59	85.11	83.05
+49.05	8390	81.70
+61.93 = A 07 E Prop		80.88
+93.52	82.55	80.55

M	9210	9190	9170	9140	9112	9015	8920
	3.8	2.6	2.2	4.4	out	-1.6	-0.7
	1.1	1.7	1.7	2.1		0.7	2.2
	10.3	1.7	1.9	2.7		-2.3	-2.9
	35.5	31.6	37.4	34.1			
F	9210	9190	9170	9140	9112	9015	8920
	2.7	2.9	3.1	3.4	3.7	4.7	5.6
	3.2	3.1	2.9	3.2	3.5	4.4	6.2
	-0.5	-0.2	+0.2	+0.2	+0.2	+0.3	-0.6
							27.8
							7.0
							6.1
							10.9

M	8205	87.18	87.00	86.10	85.11	8390	82.55
	9.5	0.7	1.5	2.1	3.1	4.1	6.0
	3.7	2.7	1.9	2.9	2.5	5.4	2.1
	-3.4	-1.8	-0.4	-0.9	-1.1	-1.1	-1.1
F	8783	87.25	86.25	84.60	83.05	81.70	80.88
	8.1	8.7	11.2	11.2	30.9	22.2	23.0
	7.3	7.9	11.2	11.2	28.0	22.0	23.0
	40.2	42.9	45.3	45.3	78.0	79.0	79.0
		81.2	81.6	81.6	81.6	81.6	81.6
		4.7	4.7	4.7	4.7	4.7	4.7
		+3.9	+3.9	+3.9	+3.9	+3.9	+3.9

12.24

	N		F	
11+42.52-EG. 7°13'00"	80.80		79.53 <sup>c</sup>	
+84.30	79.23		78.83	10392T 1129 92.63 95.75 98.07 82.17 80.49 83.11 70.55 72.21
12+25.08	77.66		78.13	1140 15773
12+65.87-BC	76.10		77.42	
13+15.87 2°02'47"	74.33		76.43	
+65.87 4°05'24"	72.80		75.20	8751T 1319 75.15 70.91 76.36 13.77 63.29 60.73 62.33 95.68
14+03.19 5°47'11"	71.74		74.14	NEEP Coll. D. 14916 5410
+40.51 7°08'08"	70.68		73.08	
+77.82 8°40'26"	69.63		72.03	
15+02.82				
15+27.82 10°43'12"	68.25		70.40	
+52.82				
+77.82-EG. 12°46'00"	67.00		68.55	
16+27 82 50				
16+77 82 50				

14	80.80	79.23	77.66	76.10	74.33	72.80	71.74
	7.7	9.3	11.4	10.5	7.9	3.5	2.5
	2.8	9.4	12.7	19.6	26.0	17.5	12.1
	-0.11	-0.1	-16.1	-19.1	-18.1	-16.0	-16.1
			14.2	49.1	47.6	41.9	35.2
E	70.53	78.83	78.13	77.42	76.43	75.20	74.14
	7.2	4.3	5.0	5.7	6.7	8.0	9.8
	9.6	20.1	5.5	2.3	7.6	9.0	9.8
	+6.6	-20.1	-0.5	-0.5	-0.9	-1.0	-0.8
	22.3	25.0					
N	70.68	69.63	68.25	67.00			
	5.6	6.6	8.0	9.3			
	11.4	7.7	7.6	9.2			
	-15.8	-1.1	+0.8	+0.1			
	38.7	25.0					
E	73.08	72.03	70.40	68.55			
	10.6	11.1	12.3	14.6			
	20.6	11.3	12.8	15.3			
	-0.5	-0.3	-0.1	-0.6			



Torrey Rd.			La Jolla Shore Dr		
S.	±	N	S	±	N
17+27 <sup>82</sup> 22.14					
17+90.00 35					
18+25 25					
18+50 60.81					
19+1681 P.C. X 18.14	57.27	57.17		57.17	56.67
19+29.00 21.03	56.60	56.50		56.50	56.00
19+50.02 X 25.12	55.85	55.75		55.75	55.25
19+75.15 19+98.32 End pay on N	54.90	54.80		54.80	54.30
20+00.39 X 25.44	53.90	53.80		53.72	53.35
20+25.83 25.67	52.95	52.85	52.40	52.68	52.25
20+51.50 X 25.98	52.04	51.94	51.55	51.70	51.20
20+77.44 26.34	51.35	51.25	50.92	50.85	50.35
21+03.82 X 26.76	50.84	50.78	50.50	50.50	50.05
21+30.58 27.25	50.65	50.60	50.30	49.80	49.30
21+57.83 X 27.87	50.65	50.65	50.30	48.95	48.45
21+85.72 26.82	50.75	50.80	50.45	48.18	48.06
22+12.54 End X	50.70	50.71	50.71		

Torrey Pine Road to St. Louis Terrace  
Grades

W Top of Curb F

West Curb Line Sta

West Curb Line Sta	N End	E End
SW End		
Curb BC 185 Rad	99.60	98.60
2475N	98.90	
4475N	98.30	
6475N	97.30	
8475N	95.50	
10475N = opp BC 022	93.90	93.30
13427N = BC	88.20	88.60
15483	85.50	85.90
17539	82.80	82.20
19595	80.30	80.70
21651 = PRC = S.L. St. Louis Ter.	78.40	77.00
24151	out	77.80
26651 = N2 St. Louis Ter	77.30	76.20
29651	78.60	79.05
32651 - 8th	79.90	80.20
36851	81.90	82.43
41060 - A	83.90	84.63
45778	86.31	86.96
50496	88.73	89.20
55050 = opp BC East	90.50	91.00
58444	90.50	91.57
61444	89.70	

	N End	N End							
W	98.60	99.60	98.90	98.20	97.30	95.50			
	1.8	0.8	1.5	2.5	3.3	4.8			
		-0.1	0.2	-0.4	-1.2	-1.5			
F									
W	93.90	88.20	85.50	82.80	80.30	78.40	77.00	77.30	
	1.5	2.2	1.9	2.9	7.4	9.3	10.7	10.7	
	8.3	11.3	13.9	15.5	6.9	8.8	8.9	10.5	
	-0.7	+1.0	+1.7	+1.4	+0.5	+0.5		-0.1	
F	96.04	93.30	88.60	85.90	83.20	80.70	78.90	77.80	
	2.4	7.1	11.8	1.8	1.5	7.0	8.8	8.9	
	2.9	4.4	12.1	6.2	5.5	7.3	8.9	8.9	
	-0.5	+2.2	-0.3	+1.8	-1.0	-0.3	+0.9	+1.0	+1.2
W	78.60	79.90	81.90	83.90	86.31	88.73	90.50	90.50	89.70
	9.1	7.8	5.8	3.8	1.7	5.3	3.5	3.5	1.3
	8.0	7.7	5.8	3.5	2.6	7.5	8.7	4.5	5.2
	7.0	4.1	-0.1	-0.5	-3.3	2.2	1.5	+2.2	-0.9
F	79.05	80.30	82.43	84.63	86.96	89.20	91.00	91.57	
	8.7	7.7	5.3	3.1	3.2	4.8	3.0	2.5	
	10.3	10.8	10.3	8.3	7.6	7.3	7.6	7.6	





Alley Block 2 Hartley's North Park  
From Grid to 319 S. University to Nightman  
Paving Grades

Indexed  
C.S.K.

North 50  
North  
5512  
North

East + West Alley	N	S
F L Grid Ave	354.84	354.72
10' E	355.25	355.05
48' E	355.50	355.30
86' E	355.74	355.55
125.23 E - N.L. N.W. Alley	355.99	355.80
140.23 E - F.L. "	356.08	355.90
180.23 E	356.34	356.15
220.23 E - P.V.C.	356.60	356.40
227.73 E	356.67	356.47
235.23 E	356.60	356.40
250.23 E	356.35	356.15
265.53 E - N.L. S.W.	355.70	355.65

N 54.84	55.25	55.50	55.74	55.99	56.08	56.34	56.60	56.67
205	1.02	1.15	1.21	1.24	1.25	1.31	1.38	1.43
	+5.47	+6.71	+8.21	+9.80	+11.60	+13.73	+16.14	+16.67

S 54.72	55.05	55.30	55.55	55.81	55.90	56.15	56.40	56.47
217	1.84	1.30	1.05	1.13	1.19	1.29	1.34	1.37
	+6.66	+7.00	+7.10	+6.56	+7.04	+7.67	+8.27	+8.13

N 56.60	56.35	55.70
5.01	5.39	5.91
+2.80	+3.29	+3.91

Grade Change  
Station

S 56.40	56.15	55.65
5.11	5.49	5.99
5.05	5.14	5.24
+0.19	+0.35	+0.03 on Par.

same

North + South Alley	E	W
South Line East + West Alley	355.90	355.80
40' S	355.30	355.10
80' S	355.75	355.00
120' S	354.35	354.60
160' S - P.V.C.	354.00	354.20
180' S	353.45	353.45
200' S - N.L. Nightman	351.72	351.72

E 55.90	55.25	54.75	54.25	53.60	53.45	53.72
6.11	5.47	5.05	5.16	5.42	5.30	5.02
5.72	4.81	4.31	4.31	4.65	4.98	4.82
-0.04	+1.00	+1.27	+1.27	+0.20	+0.32	+0.03 on Par.

W 55.80	55.40	55.00	54.60	54.20	53.45	53.78
5.13	5.52	5.93	6.15	6.55	5.30	6.07
+0.56	+0.26	+0.45	+0.04	+0.66	+1.00	+0.50 on Par.

See Lateral

351.50  
10.14  
+5.56

60' S of S-L-E + W Alley

355.25 Ground Elev.

3' E of E6	5.10	5466
23' E " "	4.85	5491
42' E " "	4.75	5501

07 F.L. Drain  
From Hill



Haines St Water Grades  
Chalcedony to Beryl

Indexed  
C.S.K.

Oct 3, 52

N.L. Chalcedony	89.67	BM 117.10	89.67	91.67	93.67	95.67	97.67	99.67	100.01
54' N	91.67	3.03	12.0	16.7	14.7	12.7	10.7	8.7	8.4
108' N	93.67	120.28	7.6	13.7	10.8	9.0	7.2	5.6	2.9
162' N	95.67	133.8	+4.4	4.0	7.9	+3.7	+3.3	+3.1	+3.5
216' N	97.67	108.04							
270' N - S.L. Low	99.67	0.37							
30' N	100.67	108.21	100.67	103.76	105.65	108.14	110.63	113.12	
80' N - H.L. Low	100.67	126.7	7.7	5.2	14.8	12.3	2.8		7.3
54' N of H.L.	103.16	95.74	3.0	1.2	11.2	9.4	6.7		
108' N	105.65	101.63	+4.7	+4.1	+3.6	+3.0	+2.1		
162' N	108.14	13.18							
216' N	110.63	89.25							
270' N - S.L. Beryl	113.12	54.94							
		11.54							
		82.40							
		88.44							
		88.84							
		8.57							
		BM 85.39							
		NE Mo. Diggins Program 85.28							

Torrey Pigeon Wood  
Flour Grades

	NY	Z	SF
22+12.54	50.79	50.81	50.70
21+85.72	50.65	50.80	50.75
21+62.54-AP.82	50.36	50.67	50.67
21+57.83	50.30	50.65	50.65
21+30.58	50.30	50.60	50.65
21+03.82	50.50	50.78	50.88
20+77.48	50.92	51.25	51.35
20+57.50	51.55	51.96	52.04
20+35.83	52.40	52.85	52.95
20+00.89	52.35	52.80	52.90
19+70.15	54.30	54.90	54.90
19+50.02	55.25	55.75	55.85
19+29.0	55.90 56.50	56.50	56.60
19+10.81-85.4	56.29	57.17	57.27
19+00	56.93 59.03	57.53	57.60
18+75	57.25	58.35	58.31
18+50	58.22	59.15	59.10
18+25	59.22	59.96	59.90
17+90	60.80	61.70	60.80
17+58.91	61.90	62.70	62.85
17+37.82	62.80	63.70	62.95
17+02.82	63.59	62.95	63.62
16+77.82	64.30	64.73	64.50
16+52.82	65.05	65.55	65.47

21 51.19  
60.75

	NY	Z	SF										
NY	50.79	50.65	50.36	50.30	50.29	50.50	50.92	51.55	52.40				
Z	50.81	50.80	50.67	50.65	50.60	50.78	51.25	51.96	52.85				
SF	50.70	50.75	50.67	50.65	50.65	50.88	51.35	52.04	52.95				
	10.03	9.98	10.26	10.01	10.02	9.85	9.31	9.69	9.78				
	0.89												
NY	52.35	54.30	55.25	55.91	56.57	56.93	57.25	58.11	58.35				
Z	52.80	54.90	55.75	56.01	56.23	56.63	57.05	57.71	58.22				
SF	52.90	54.90	55.75	56.10	56.32	56.66	57.08	57.74	58.25				
	1.83	2.16	3.80	2.88	2.98	2.91	2.11	2.41	2.47				
	5.01	4.37	3.95	3.09	3.01	2.81	2.81	2.81	2.81				
	-0.18	-0.21	-0.15	-0.09	-0.20								
Z	52.80	54.80	55.75	56.50	57.17	57.51	58.05	59.15	59.91				
SF	52.90	54.90	55.75	56.60	57.27	57.61	58.15	59.25	59.91				
	1.80	2.10	2.75	2.10	2.10	2.10	2.10	2.10	2.10				
NY	60.80	61.80	62.80	62.59	64.30	65.05							
Z	61.90	62.70	63.70	63.97	64.73	65.55							
SF	61.10	62.10	63.10	62.97	64.73	65.55							
	1.80	2.10	2.80	2.07	2.36	2.66							
	2.10	2.50	2.80	2.15	2.31	2.66							
	10.30	10.20	10.10	10.18	10.12	10.11							
SF	60.80	61.85	62.90	63.64	64.50	65.40							
	7.19	6.14	5.09	7.35	3.47	2.53							



	NH	A	SF
16 + 8782	6572	6637	6649
15 + 7782-50	6700	6868	6855
15 + 5282	1-01-06 6760	6881	6950
15 + 3782	2-02-12 6825	6972	7040
15 + 0282	2-23-18 6882	7012	7122
14 + 7782	1-01-26 6963	7083	7202
14 + 4982	5-12-11 7012	7162	7282
14 + 3182	6-21-10 7121	7241	7361
13 + 9382	7-22-11 7201	7321	7441
13 + 6582	8-31-00 7282	7400	7520
13 + 4082	9-29-01 7351	7479	7589
12 + 1582	10-23-12 7432	7532	7642
12 + 9082	11-11-18 7520	7607	7791
12 + 6582	12-11-20 7610	7696	7782
12 + 3509	7767	7789	7818
11 + 8431	7924	7903	7882
11 + 4352	8080	8015	7952
11 + 1852	8175	8085	8000
10 + 9352	1-51-36 8255	8155	8055
10 + 7128	2-15-43 8328	8218	8108
10 + 4905	3-31-40 8390	8290	8170
10 + 2682	4-27-27 8452	8342	8232
10 + 0459	5-19-24 8511	8402	8305
9 + 9959	6-15-12 8560	8474	8380
9 + 5459	807-13-00 8610	8540	8460

	NH	A	SF
6572	6700	6760	6825
6868	6855	6950	7040
6881	6950	7040	7122
6972	7040	7122	7202
7012	7122	7202	7282
7083	7202	7282	7361
7162	7282	7361	7441
7241	7361	7441	7520
7321	7441	7520	7607
7400	7520	7607	7696
7479	7607	7696	7782
7589	7696	7782	7879
7520	7642	7739	7832
7607	7739	7832	7924
7696	7832	7924	8015
7782	7924	8015	8108
7879	8015	8108	8200
7818	8108	8200	8290
7903	8200	8290	8380
7952	8290	8380	8474
8000	8380	8474	8570
8055	8474	8570	8670
8108	8570	8670	8770
8170	8670	8770	8870
8232	8770	8870	8970
8305	8870	8970	9070
8380	8970	9070	9170
8460	9070	9170	9270

	NW	E	SE
9 + 64.59	87.00		86.25 BM 8513 87.0
8 + 79.59	87.50		87.10 92321
8 + 54.59	88.05		87.33
8 + 39.59	88.40		88.30
8 + 24.59	88.97		88.74
8 + 10.00	89.20		89.00
7 + 90	89.70		89.70
7 + 70	90.15		90.15
7 + 50	90.55		90.55
7 + 30	90.95		90.95
7 + 10	91.20		91.20
6 + 90	91.40		91.40
6 + 70	91.57		91.57
6 + 50	91.70		91.70
6 + 00	91.90		91.90
5 + 50	92.10		92.10
5 + 00	92.30		92.30
4 + 80	92.39		92.40
4 + 60	92.50		92.48
4 + 20	92.90		92.67
4 + 00	93.20		92.76
3 + 80	93.50		92.85
2 + 60	93.94		92.94

NW	SE	SW	NE	SE	SW	NE	SE	SW	NE
87.00	87.50	88.05	88.40	88.77	89.20	89.70	90.15	90.55	90.95
7.32	0.82	0.87	0.72	0.55	0.52	0.42	0.49	0.37	0.37

SE	SW	NE	SE	SW	NE	SE	SW	NE	
86.25	87.10	87.81	88.30	88.77	89.20	89.70	90.15	90.55	90.95
8.07	0.82	0.87	0.02	0.55	0.52	0.42	0.49	0.37	0.37

NW	SE	SW	NE	SE	SW	NE	SE	SW	NE
91.20	91.40	91.57	91.70	91.90	92.10	92.30	92.39	92.50	92.90
3.12	2.92	2.75	2.62	2.42	2.33	2.02	1.93	1.84	1.72

SE	SW	NE	SE	SW	NE	SE	SW	NE	
91.20	91.40	91.57	91.70	91.90	92.10	92.30	92.39	92.50	92.90
3.12	2.92	2.75	2.62	2.42	2.33	2.02	1.93	1.84	1.65

NW	SE	SW	NE
93.20	93.50	93.94	93.94
9.61	9.81	8.87	
9.61			

E	SE	SW	NE
92	96.00	97	

SE	SW	NE
93.76	93.85	93.94
10.05	9.91	9.87
10.05		

	NW		SF
3+52.87-FC	94.10	93.54	92.97
3+40.0	0-41-16 94.40		93.05
3+20.0	1-53-04 94.92		92.22
3+00	3-01-52 95.45		92.45
2+80	4-10-40 95.99		92.75
2+60	5-19-28 96.50		94.10
2+40	6-28-16 97.03		94.50
2+20	7-37-04 97.55		94.95
2+00	8-45-52 98.08		95.43
1+75	10-11-50 98.70		96.10
1+50	11-22-52 99.10		96.78
1+25	12-23-52 99.30		97.50
1+00	14-29-52 99.40		97.85
0+75.0	15-55-52 99.65		97.90
0+59.45-80	16-56-45 99.88		92.75

NW	94.10	94.40	94.92	95.45	95.99	96.50	97.03	97.55
	871	821	789	736	683	631	579	526
		268	202	150	107	64	21	-21
				8.02	7.49	6.97	6.44	5.92

2

SF	92.97	93.05	93.21	93.45	93.75	94.10	94.50	94.95
	784	776	759	736	706	677	648	619
						2.71	2.81	2.81
						+1.60	+1.50	+1.40

4+

NW	96.13	96.70	97.10	97.50	98.00	98.65	99.28
	418	477	437	427	447	482	525
	534	518	500				

2

SF	96.43	96.10	96.78	97.50	97.85	97.90	97.75
	738	737	710	597	513	527	577
	807	898	833	613	606	575	547
	+831	+839	+756	+615	-0.44	+1.82	out

Water Grades Alley

Blocks 41-42-43 Normal Heights  
From Cherokee to 35th St South of Adams

Dec 31st  
1901  
1902  
1903

Indexed  
C.S.K.

Block	Period	Start	End	Notes
41 Cherokee	1901	82.00	82.00	113.91
53 W		82.90	82.90	113.91
106 W		82.40	82.40	113.91
159 W		82.90	82.90	113.91
212 W		84.40	84.40	113.91
254 W - E. 35th St	1902	84.90	84.90	113.91
42 35th St	1901	85.30	85.30	113.91
53 W		85.10	85.10	113.91
106 W		86.00	86.00	113.91
159 W		86.44	86.44	113.91
212 W		86.80	86.80	113.91
254 W - E. 35th St	1902	87.30	87.30	113.91
42 35th St	1902	87.10	87.10	113.91
53 W		87.85	87.85	113.91
106 W		88.10	88.10	113.91
159 W		88.35	88.35	113.91
212 W		88.60	88.60	113.91
254 W - E. 35th St	1902	88.80	88.80	113.91

Retaining Wall  
Torrey Pines Road  
Foot of Boulevard Place

Indexed  
C.S.K.

	Dell. From	Pering	Top Wall	
West End of Wall	1° 44' 48"	8316	86.04	232 199 -2.67
5' E of End	1° 56' 34"			
10' E	2° 08' 20"			
15' E	2° 20' 06"			
20' E	2° 31' 52"			
25' E	2° 43' 38"			
30' E	2° 55' 24"			
35' E	3° 07' 10"			
40' E	3° 18' 56"			
45' E	3° 30' 42"			
50' E	3° 42' 28"			
55' E	3° 54' 14"	8130	9528	-1.92 169 -2.67
60' E - opp A	4° 06' 00"			
65' E	4° 17' 46"	8106	9494	-1.58 199 -2.67
70' E	4° 29' 32"			
75' E	4° 41' 18"			
80' E	4° 53' 04"			
85' E	5° 04' 50"			
90' E	5° 16' 36"			
95' E	5° 28' 22"			
100' E - End Wall	5° 40' 08"	8035	8323	5.13 780 -2.67

1-5-32  
Moore  
58

4933 ✓  
G 174-40

T.P. She  
# 2179  
is Wrong  
See FB 1564  
3

4933 V  

---

G 174-40

T.P. Sheet  
# 2179

is Wrong

See FB 1564  
3

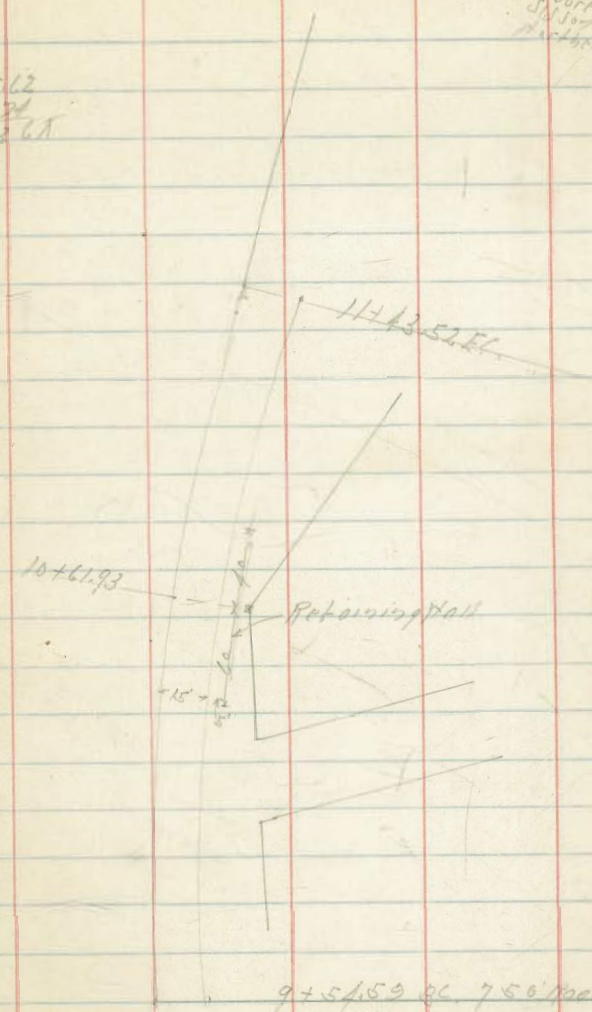
Retaining Wall  
Torrey Pine Road  
Foot of Boulevard Place

Indexed  
c.s.K.

	Dell. From	Paving	Top Wall	
West End of Wall	80 1° 44' 48"	8311	86.04	832 829 -3.67
5' E of End	1° 56' 34"			
10' E	2° 08' 20"			
15' E	Chord 738.80 5.05 2° 20' 06"			
20' E	2° 31' 52"			
25' E	2° 43' 38"			
30' E	2° 55' 24"			
35' E	3° 07' 10"			
40' E	3° 18' 56"			
45' E	3° 30' 42"			
50' E	3° 42' 28"			
55' E	3° 54' 14"	8140	9528	-1.92 -2.62 -3.67
60' E - opp A	4° 06' 00"			
65' E	4° 17' 46"	8106	9494	-1.50 -2.29 -3.57
70' E	4° 29' 32"			
75' E	4° 41' 18"			
80' E	4° 53' 04"			
85' E	5° 04' 50"			
90' E	5° 16' 36"			
95' E	5° 28' 22"			
100' E - End Wall	5° 40' 08"	8035	8323	5.13 7.80 -3.67

1-5-32  
Moore  
5/1/37  
Machern  
58

BM 8562  
234  
88.3 21



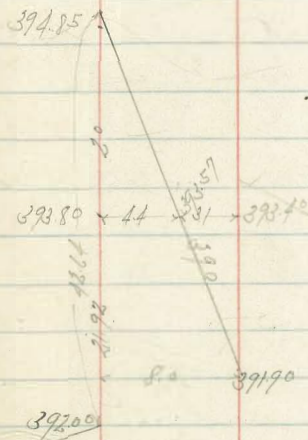
Pairing Alley Between Stock 7 Normal Heights  
And Evans Place

	S.L.	H Edge Strip
H.L. Mountain View	392.00	391.90
21.92 W	393.80 $\begin{matrix} +3.28 \\ +2.48 \\ +0.80 \end{matrix}$	393.57 $\begin{matrix} +3.51 \\ +2.76 \\ +0.76 \end{matrix}$
12.64 W	394.85 $\begin{matrix} +3.33 \\ +3.22 \\ +1.21 \end{matrix}$	

Indexed  
c.s.k.

1-9-22  
Mount  
59

392.00  
393.00  
397.08T







Sassafras Grades  
E.L. State to 100 East

Indexed  
C.S.K.

1-19-32  
61

	H.L. Walk	Z
100' E = Ford Layout	174.60	173.88
80' E	174.90	174.28
60' E	174.50	173.98
40' E	173.40	173.03
20' E	171.60	171.38
E.L. State	169.50	169.72

CF&F  
18727  
18729  
18731  
18733  
18735  
18737  
18739  
18741  
18743  
18745  
18747  
18749  
18751  
18753  
18755  
18757  
18759  
18761  
18763  
18765  
18767  
18769  
18771  
18773  
18775  
18777  
18779  
18781  
18783  
18785  
18787  
18789  
18791  
18793  
18795  
18797  
18799

	Stakes 5' H. 1/2" x 1/2" x 1/2" Walk	5' E. of 20' E
H	174.60 174.90 174.50 173.40 171.60 169.50	174.50 174.28 173.98 173.03 171.38 169.72
	174 171 165 156 147 138	174 171 165 156 147 138
	47 25 38 47 58 69	47 25 38 47 58 69
	+9.7 +11.6 +11.7 +10.9 +9.6	
b	173.88 174.28 173.98 173.03 171.38 169.72	173.88 174.28 173.98 173.03 171.38 169.72
	152 168 159 160 177 193	152 168 159 160 177 193
	11.8 9.8 7.7 8.5 9.9	11.8 9.8 7.7 8.5 9.9

166.32  
11.24  
177.56

	E.L. State	20' E	60' E	80' E	100' E	120' E
cb	169.50	71.60	73.45	73.25	74.50	74.00
	8.06	5.96	4.16	3.41	3.01	2.14
	80.70					

b	69.72	71.38	73.03	73.50	73.98	74.28
	78.4	6.18	7.53	8.06		
	787.00					

cb & Paving  
2-2-32

Water Chute And Side Walk  
Westbourne St. Bet. Draper And Fay Ave  
& Grades

Indexed  
c.s.k.

1-20-32  
Moore  
Sullivan  
part 62

	Flank Line	Station	75.0 ft
0+0 = 199' E of E.L. Draper	113.71		
0+35 12-17-28	115.49	1128 +0.69	
0+82.08	117.84	943 8.28 +1.27	
1+39.16	120.20	707 4.96 +1.37	
1+76.25	122.55	471 3.72 +1.56	
2+23.33	124.91	1304 11.09 +2.25	
2+70.41	127.26	1158 4.22 +2.78	
3+17.50	129.61	835 6.65 +3.59	
3+64.58	131.97	688 2.26 +3.78	
4+11.66	134.32	453 1.84 +2.74	
4+58.75	136.68	1373 13.03 +2.70	
5+05.83	139.03	1638 9.37 +3.07	
5+52.91	141.38	903 2.29 +0.99	
6+00 = 1	143.74	667 9.02 +0.37	
6+33.20 = 1/2 E of S.E. Existing Drain Under S.O. Elec RR.	145.04	587 5.06	

SE End C6  
BM 114.39 199' E of E.L. Draper  
12.88  
127.27  
126.55  
126.73  
126.13  
138.85  
0.12  
138.71  
137.76  
150.41

1-20-32  
 Hoop  
 1919  
 Northern  
 62

Water Chute And Side Walk  
 Westbourne St. Bld. Draper And For Ave  
 2 Grades

Indexed  
 c.s.k.

	Flank Loc	Station 7/20. 1/2
0+0 = 199' E of E.L. Draper	113.71	
0+35 13-17-00	115.49	1108 +0.69
0+82.08	117.84	943 823 +1.21
1+39.16	120.20	707 626 +1.37
1+96.25	122.55	472 512 +1.55
2+23.33	124.91	1394 1166 +2.25
2+70.41	127.26	1159 +2.78
3+17.50	129.61	824 665 +2.29
3+64.58	131.97	688 498 +2.75
4+11.66	134.32	153 128 +2.27
4+58.75	136.68	1373 1303 +2.70
5+05.83	139.03	1138 937 +2.01
5+52.91	141.38	903 802 +2.99
6+00 = 1	143.74	667 702 -0.37
6+33.20 = 1/2 E of S.C. Existing Drain Under S.O. Elev. RR.	145.04	587 545

BM 11439  
 12.82  
 127.27  
 126.56  
 126.73  
 127.13  
 138.57  
 0.14  
 138.71  
 11.70  
 150.41

S.E. End C6  
 199' E of E.L. Draper

Tortly Pine Road on South  
Sloping of Cuts From Princess St to 900' Road

63  
2-3-02  
Moart.

H. Co. Princess St

100 ft

140 ft

150 ft

200 ft

250 ft

300 ft

350 ft

368 ft - El. Elizabeth

418 ft - H. L.

500 ft

550 ft

600 ft

Tie Points G St. 719th + 10th St.

64

indexed  
c. s. k.

plotted on Tie sheet  
c. s. k.

650 ft

700 ft

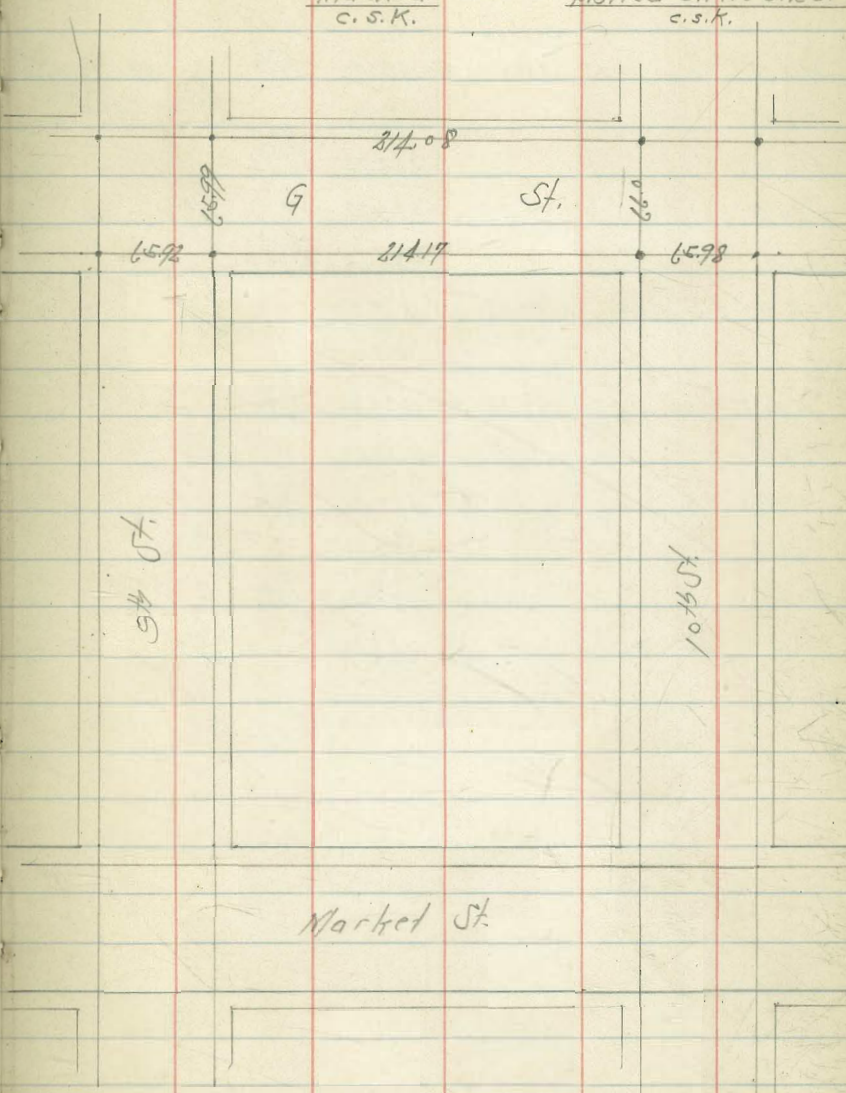
750 ft

800 ft

850 ft

900 ft

120  
730



Market St.

Water Grades Allen  
 Blocks 22 + 24 Horizontal Heights  
 From 36<sup>th</sup> St to 35<sup>th</sup> St North of Adams

3-8-32  
 Moore  
 Sisson  
 Worthington

Indexed  
 C. S. K.

65

Point	Top	Bottom	Diff	Notes
W.L. 36 <sup>th</sup> St	389.00	385.20	+3.80	SM 390.07
53 W		385.56	+3.44	
106 W		385.92	+3.92	
159 W		386.38	+4.38	
212 W		386.64	+4.64	
265 W = T.L. Wilson	390.62	387.00	+3.62	
W.L. Wilson	390.85	387.20	+3.65	
53 W		387.40	+3.85	
106 W		387.60	+4.05	
159 W		387.80	+4.25	
212 W		388.00	+4.45	
265 W = E.L. 35 <sup>th</sup> St	391.80	388.20	+3.60	

Water Grades Silver Gate Ave  
 Jennings St to U.S. Reservation

Indexed  
 C.S.K.

Pairing Grade Bottom Ditch

17.5 ft of S.L. Jennings Tec	269.90	269.90	12.1	
S.L. Jennings	273.62	270.90	12.7	
53.5		272.50	10.8	
106.5		274.10	13.6	
159.5		275.70	16.4	
212.5		277.32	19.2	
265.5 = 15' N of H.L. Charles	281.57	278.90	22.7	
315.5 = Cross		280.02	25.5	
365.5 = 15' S of H.L. Charles	283.37	280.70	28.3	
50.5		282.78	31.1	
100.5		283.87	33.9	
150.5		285.15	36.7	
200.5		287.04	39.6	
250.5 = 15' N of H.L. Charles		288.62	42.4	
265.5 = H.L. Charles	291.78	289.10	45.2	
345.5 = Cross		289.66	48.0	
S.L. Charles	292.60	289.90	50.8	
511.5		290.90	53.6	
103.34.5		291.90	56.4	
154.95.5 P.V.C.		292.90	59.2	
194.95.5		293.10	62.0	
211.95.5		293.45	64.8	
234.95.5		292.50	67.6	
249.85 = opp. H.L.	296.70	293.30	70.4	
274.85.5		293.00	73.2	
299.40 = H.L. Dudley		292.80	76.0	

BM 292.70 BP 106 of S.L. Charles  
 293.24  
 293.56  
 288.88  
 282.37  
 283.27  
 287.77 BP 101 of S.L. Charles  
 287.77

Hyd. Grade Station

BM 297.70 BP 105 of S.L. Charles  
 301.55

127-32  
 Moore  
 66  
 66  
 66



N.L. Dudley 1st	292.80	2.2	
135		2.2	
85 S = Cross	292.10	2.3	
130 S.L. Dudley 1st		12.9	5.5
15 S = 15 S of S.L. Dudley 1st	291.50	2.9	2.7
1-114		9.0	
474 S	290.77	2.0	
468 S	290.42	2.3	
94 S	290.03	2.7	
142 S	289.30	2.1	1.9
189 S	288.57	1.6	1.5
237 S	287.83	1.8	1.8
284 S = N.L. Warner	287.10	1.2	1.3
35 S Tee 1st	286.70	1.3	1.3
70 S = 20 S of S.L. Opp'd	286.38	1.4	1.3
1-180 S		1.2	1.2
51.6 S = 51.6 S	286.17	1.2	1.2
103 S	285.93	1.2	1.2
154 S	285.70	1.2	1.2
206 S	285.47	1.3	1.2
258 S	285.23	1.3	1.2
309 S = Tee 1st	285.00	1.2	1.2
1-171		1.2	1.2
319 S = Tee 1st	285.30	1.2	1.2
5-64 front Tee 1st		1.2	1.2
54 S	287.48	1.1	1.1
108 S	289.96	1.1	1.1
163 S	292.44	1.1	1.1
216 S	294.92	1.1	1.1
270 S	297.40	1.2	1.2
1-57		1.2	1.2
327 S = N.L. Pio Pico St.	300.00	1.2	1.2
35 S = Tee	301.40	1.2	1.2

301.551

B.M. 293.60 S.P. 84.15 S of S.L. Dudley  
E.C. of Silver Gate

B.M. 292.70 S.P. 84.15 S of S.L. Dudley  
E.C. of Silver Gate

B.M. 293.60 S.P. 84.15 S of S.L. Dudley  
E.C. of Silver Gate

299.74  
10.16  
289.58  
298.55  
297.39  
296.56  
296.83  
302.37  
303.02  
306.38 S.P. 84.15 S of S.L. Dudley  
E.C. of Silver Gate

502.5' L. Pipe	302.00	74 67 63		
546.25	305.20	14.6 14.4	Fire Hyd	
1092.55	308.40	13.9 13.7	306.62	
163.875	311.60	13.5 13.3	13.33	
218.505	314.80	12.9 12.7	12.7	
273.185 - Rye	318.00	11.6 11.4	11.4	
313.125	320.20	10.8 10.6	10.6	
353.187	322.00	9.3 9.1	9.1	
393.185	322.60	8.5 8.3	8.3	
433.185	325.00	7.5 7.3	7.3	
473.185 - Eye	325.80	6.5 6.3	6.3	
526.935	326.90	5.5 5.3	5.3	
580.245	322.00	4.3 4.1	4.1	
634.455	329.10	3.3 3.1	3.1	
688.365	330.20	2.3 2.1	2.1	
742.175	331.20	1.3 1.1	1.1	
795.985	332.40	0.8 0.6	0.6	
849.795	333.50	0.4 0.2	0.2	
903.635 - NL McColl	334.60	0.5 0.3	0.3	
10' S - Top Fall	335.22	0.5 0.3	0.3	
10' S - S.L. McColl's Gate	335.60	0.5 0.3	0.3	Fire Hyd
15' Top of S.L. - opp. Gate				339.18 338 337.8 +0.1 P.

TP 306.32  
18.05  
319.35  
310.25  
318.70  
312.90  
331.00  
30.10  
330.90  
11.24  
312.11

S.L. McCall	335.60	6.5 +8.2
16-021 5214 0.425	336.02	6.1 +8.5
1042'S	336.45	5.7 +8.0
1563'S	336.87	5.3 +8.2
2084'S	337.30	4.8 +8.3
210.5'S	337.72	4.1 +8.6
3121'S	338.15	4.9 +8.1
3647'S	338.57	4.6 +8.4
4168'S	339.00	4.8 +8.7
4689'S	339.42	4.6 +8.9
5210'S	339.85	4.5 +8.8
5731'S	340.27	4.3 +8.7
6252'S	340.70	4.5 +8.3
6773'S	341.12	4.2 +8.0
7294'S	341.55	4.5 +8.8
7815'S	341.97	4.1 +8.0
8336'S = PVC. 3.4°	342.40	6.8 +8.9
8776'S	342.80	6.3 +8.9
9176'S	343.40	6.6 +8.9
9576'S = PVC 5.5-1.1°	344.30	10.6 +8.0
10131'S	345.60	12.1 +8.8
10672'S	346.90	11.8 +8.0
112212'S	348.20	10.5 +8.7
117696'S	349.20	9.5 +8.0
123180'S = TCC	350.20	7.9 +8.0

342.11  
340.69  
341.75  
341.21  
359.01  
347.30  
341.36  
358.62  
811 358.32  
 S. End Silver Gate  
 + 105. Post. Lim.  
 258.42

Water Grads Charles St  
Silver Gate to Catalina

Indexed  
C.S.K.

Mts Silver Gate	290.60	12.1 10.2 +3.9
6.0 H 10.00	294.40	10.3 8.0 +2.3
10.0 H	296.20	5.4 +2.1
14.0 H	298.20	6.5 3.7 +2.8
18.0 H	298.90	5.8 2.9 +2.9
22.0	298.80	5.9 3.1 +2.8
26.0	298.00	6.7 4.1 +2.6
30.0 H	296.70	8.5 5.5 +3.0
34.0 H	295.10	9.6 7.0 +2.6
38.0 H	293.30	11.4 8.8 +2.6
42.0 H	291.20	13.5 10.5 +3.0
46.0 H	288.80	15.0 12.0 +3.0
49.0 H 1.20	287.50	14.1 11.0 +3.1
52.8 H 8.421	284.51	19.3 15.1 +4.2
57.6 H 10.75	281.12	16.0 12.7 +3.3
62.5 H 10.55	277.91	16.0 12.6 +3.4
67.3 H 10.1	274.25	14.6 11.2 +3.4
72.0 H 11.00	271.56	14.0 10.8 +3.2
77.0 H 10.1	268.37	14.0 10.8 +3.2
81.8 H 10.1	265.18	14.1 10.5 +3.6
86.7 H 10.1	262.00	17.3 13.2 +4.1

70

B.P. Charles  
+ Silver Gate

3M	292.70
	12.05
	304.75
	12.05
	291.80
	291.80
	291.80
	279.03
	279.32



Grades Sunset Road (Hortons 1051)  
 Juan St to San Juan Road.

Indexed  
 C.S.K.

West Curb Grade

5 L Juan St		221.05	
3 S - Cb.R.C.		220.99	1.19
5 S Brk		220.95	1.33
10 S "		220.50	1.18
15 S "		219.80	2.38
20 S Brk		219.00	3.18
40 S		212.65	9.53
100 S Brk		206.30	3.37
120 "		203.20	6.49
140 "		200.60	9.07
160 "		198.40	11.27
180 "		196.80	3.49
200	4.49	195.80	4.89
		195.40	
208.28 - Cb.R.C.	4.79	195.50	4.25
		195.03	
219.71	5° 28' 10" 4.94	195.35	5.44
		194.85	
231.14	10° 57' 20" 4.84	195.45	5.14
		195.45	
242.57 - Franch 16° 26' - Top Fishtrap Ck		195.88	4.41

Dec 7 1932  
 Moore  
 S. 1915  
 Northern

72

BM 220.09  
 220.09  
 222.18  
 12.78  
 209.40  
 6.27  
 209.67  
 11.27  
 198.40  
 1.89  
 200.29

S. 1915  
 Sunset

Atlantic St Sexer Laterals  
Broadway to Harashty

indexed  
c.s.k.

2-2-33  
Moore  
S. D. 10  
73  
Harashty  
Bot Emory + Bean

100' N of N.L. Elm  
6" Sexer Lateral Lot 7+8 Bot. Elm + Grape

130' S of 2 Emory 09 E  
4" Sexer Lateral 10' N of S.L. Lot 3 Bot Emory + Bean

±	8.60 +2.87	0.57	BM 6.53 2.68 7.21	±	1.86 +1.77
25 E	8.16 +2.07	1.07	7.21	20 E	9.71 +2.25
50 E = E.L. Atlantic	9.14 +2.16	1.57		37.5 E	9.34 +1.92

±				±	1.86 +1.77
20 E				20 E	9.71 +2.25
37.5 E				37.5 E	9.34 +1.92

360' N of N.L. Elm  
4" Sexer Lateral 10' N of S.L. Lot 2 Bot. Elm + Grape

190' S of 2 Emory  
6" Sexer Lateral 3+4 Bot Emory + Bean

±		1.04	8.16 +3.75	±	2.80 +2.08
25 E		1.54	7.67 +3.23	20 E	2.80 +2.08
50 E = E.L. Atlantic	Notes: Poles by Farman	2.84 +2.04	7.18 +3.93	37.5 E	2.80 +2.08

±				±	2.80 +2.08
20 E				20 E	2.80 +2.08
37.5 E				37.5 E	2.80 +2.08

151' N of N.L. Emory 09 W  
6" Sexer Lateral Lot 9+10 Bot. Emory + Harashty

390' S of 2 Emory  
6" Sexer Lateral Lot 5+6 Bot. Emory + Bean

±	3.27	11.00 +6.1	10.68 +6.02	±	9.37 +2.89
20 N	3.67			20 E	8.87 +2.57
37.5 N = N.L. Atlantic	4.02	10.25 +1.73		37.5 E	8.52 +2.57

±				±	9.37 +2.89
20 E				20 E	8.87 +2.57
37.5 E				37.5 E	8.52 +2.57

50' N of N.L. Emory 09 E  
6" Sexer Lateral Lot 5+6 Bot. Emory + Harashty

±	3.55	10.72 +6.16	10.32 +5.51		
20 E	3.95				
37.5 E = E.L. Atlantic	4.30	9.97 +5.97			

H.F.B.P.  
BM 10.39  
Harashty  
Atlantic  
11.27

90' S of 2 Emory 09 W  
6" Sexer Lateral Lot 11+12 Bot. Emory + Bean

±	3.96	12.31 +5.19	9.91 +4.31		
20 N	4.36				
37.5 N	4.71	9.56 +4.4			

## Atlantic St Water Services

3-2-33

74

- |   |   |
|---|---|
| #1 ✓ 2" Water Service 150 S of S. L. Ash 02 East ✓    | #14 ✓ 2" Water Service 150 N of N. L. Redwood 07 East |
| #2 ✓ 2" Water Service 100 N of N. L. Ash " " ✓        | " 15 ✓ 2" " " 150 N of N. L. Spruce " "               |
| #3 ✓ 2" Water Service 200 N of N. L. Ash " " ✓        | " 16 ✓ 2" " " 125 N of B. L. N. Thorn " "             |
| #4 ✓ 2" Water Service 350 N of N. L. Elm " " ✓        | " 17 ✓ 2" " " 420 N of B. L. N. Thorn " "             |
| #5 ✓ 2" Water Service 100 S of S. L. Hawthorn " " ✓   | " 18 ✓ 3/4" " " 15 N of N. L. Bean " "                |
| #6 ✓ 2" Water Service 150 N of N. L. " " " "          | " 19 ✓ 3/4" " " 65 N " " " "                          |
| " 7 ✓ 2" Water Service 150 N of N. L. Juniper " " " " | " 20 ✓ 3/4" " " 115 N " " " "                         |
| " 8 ✓ 2" Water Service 240 N of N. L. " " " "         | " 21 ✓ 3/4" " " 165 N " " " "                         |
| " 9 ✓ 2" Water Service 530 N of N. L. " " " "         | " 22 ✓ 3/4" " " 215 N " " " "                         |
| " 10 ✓ 2" Water Service 150 N of N. L. Laurel " " " " | " 23 ✓ 3/4" " " 115 N N. L. F. morey 07 N.            |
| " 11 ✓ 2" Water Service 150 N of N. L. Maple " " " "  |   |
| " 12 ✓ 2" Water Service 150 N of N. L. Palm " " " "   | left out  |
| " 13 ✓ 2" Water Service 150 N of N. L. Quince " " " " | " " P. 3/6/33   |



6" Sider 350' H of H.L. Vine

6" Sider 450' H of H.L. Vine

6" Sider 550' H of H.L. Vine

10" H of H.L. Sider

100' H of H.L. "

200' H of H.L. "

300' H of H.L. " - S.L. Kalmia

380' H of H.L. " " H.L. "

100' H of H.L. Kalmia



Water Grades  
Atlantic + Rosecrans

Indexed  
c.s.k.

4-8-30  
Moore

4.90 873

3.83

Station 11  
48+00

36 S of Atlantic

Bellam Ditch  
Grade

8.73

0.0

4.77

+4.96

4 Atlantic + Rosecrans

0.0

8.23

3.77

+4.96

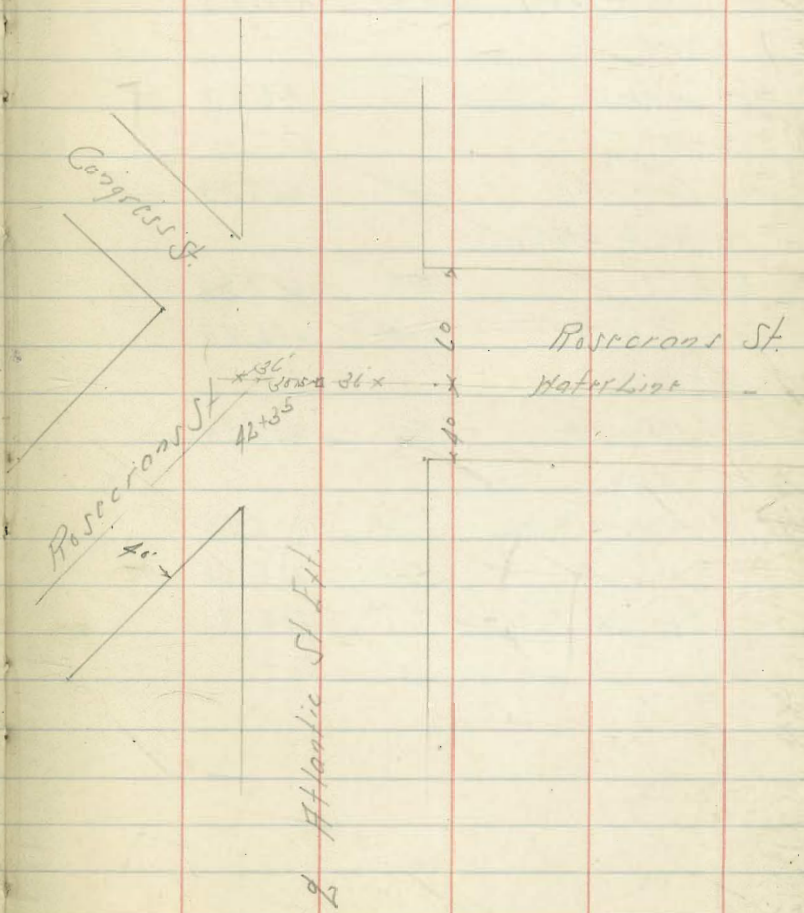
36 S of Atlantic

0.0

8.23

4.43

+4.2



Prop. 18" drain  
thru E Villa Tr. L.I. PK

224.08 from p 10

78

2+25			
E ground	5.9	218.2	
2.2 LT Top Ret wall + step	5.49	218.59	
2+32			
dirt embank	4.9	219.2	
2+33			
N edge Conc. Pav.	5.35	218.73	
2+41 E S.M.H.			
RIM	5.8	218.90	
F.L. S.M.H.	12.84	211.24	
2+51.3			
S edge Conc. Pav.	5.14	218.94	
2+55.3			
Top 8" Hd. Wall + Pav.	5.13	218.95	
2.2 LT E 12" Pipe inlet	5.13	218.95	E of Top Hd wall
" " F.L. 12" Pipe Cem.	7.17	216.91	

Senses Levels  
 Man Hole Girard And Torrey Pines Road

3-8-32  
 Moore  
 Assoc  
 79  
 Hartman

indexed  
 c.s.k.

BM	0.35	115.40		115.05	J.E.P. Pawl + Girard
TP	0.79	103.21	12.88	102.52	
Man Hole on Rim			9.51	93.80	
" " Flow Line			15.22	88.09	
TP	7.12	108.60	1.83	101.48	
BM			4.69	103.91	J.M.B.P. Kline + Girard 103.97

Indexed  
C.S.R.

Alcott St. clove to Plum.  
chk. Private Grading

11-10-31  
Miller  
Walker  
Bliss  
nd  
Prop.

Prop	sub	gutter	gutter	d	gutter	nd	Prop
0+0.5 line clove	146.25	145.65	146.71		147.00	147.45	
0+12.5	145.85	145.15	146.16		146.20	146.65	
0+25 EC	145.60	145.40	144.65	145.66	145.65	146.40	146.65
0+50							
0+75							
1+00							
1+25							
1+50							
1+75							
2+00							
2+25							
2+50							
2+75 P.C.	136.80	136.60	135.85	136.86	136.85	137.60	137.80
2+87.5							
3+00							

Property line + Below grade 0.2 to 0.65 ft

gutter not trimmed

Roadway Fair

gutter not trimmed

Prop line + Below grade

No M+3 Gutter on E. cl. Line

W. end New 24" Ent. Pipe Culvert in Alcott St

15.116' W. of W. Line Evergreen

2" 14 18

80

DIRECTIONS FOR USE OF TABLES

Distance of slope stake from side or shoulder  
stake for any width roadway slope 1% to 1.  
If ground is nearly level, the cut or fill of the  
stake is located by the double entry method in  
left column and top row. The number in both

IMPROVED TABLES  
AND  
INFORMATION

To find Tangent and External for curve of  
any other degree, divide by degree of curve and  
add correction found in column of correction.  
Distance of curve with a given P may be found  
by dividing tangent (or external) multiplied by  
given tangent (or external) by the sine of the angle.  
The distance from a point on the tangent to  
the curve is very nearly the square of the tangent  
length divided by twice the radius.

.0466

7

.3262