

G-180

LEVIN BOOK

373 A

# KEUFFEL & ESSER CO.

DRAWING MATERIALS

AND

SURVEYING INSTRUMENTS.

NEW YORK.

CHICAGO. ST. LOUIS. SAN FRANCISCO. MONTREAL.

## Tables for Excavations and Embankments.

DISTANCES FROM CENTER OF ROADWAY FOR CROSS-SECTIONING.

ROADWAY 18 FEET WIDE. SIDE SLOPES 1 TO 1.

FOR SINGLE TRACK EXCAVATION.

" Copyright, 1895, by Keuffel & Esser Co."

	0	.1	.2	.3	.4	.5	.6	.7	.8	.9	
0	9.0	9.1	9.2	9.3	9.4	9.5	9.6	9.7	9.8	9.9	0
1	10.0	10.1	10.2	10.3	10.4	10.5	10.6	10.7	10.8	10.9	1
2	11.0	11.1	11.2	11.3	11.4	11.5	11.6	11.7	11.8	11.9	2
3	12.0	12.1	12.2	12.3	12.4	12.5	12.6	12.7	12.8	12.9	3
4	13.0	13.1	13.2	13.3	13.4	13.5	13.6	13.7	13.8	13.9	4
5	14.0	14.1	14.2	14.3	14.4	14.5	14.6	14.7	14.8	14.9	5
6	15.0	15.1	15.2	15.3	15.4	15.5	15.6	15.7	15.8	15.9	6
7	16.0	16.1	16.2	16.3	16.4	16.5	16.6	16.7	16.8	16.9	7
8	17.0	17.1	17.2	17.3	17.4	17.5	17.6	17.7	17.8	17.9	8
9	18.0	18.1	18.2	18.3	18.4	18.5	18.6	18.7	18.8	18.9	9
10	19.0	19.1	19.2	19.3	19.4	19.5	19.6	19.7	19.8	19.9	10
11	20.0	20.1	20.2	20.3	20.4	20.5	20.6	20.7	20.8	20.9	11
12	21.0	21.1	21.2	21.3	21.4	21.5	21.6	21.7	21.8	21.9	12
13	22.0	22.1	22.2	22.3	22.4	22.5	22.6	22.7	22.8	22.9	13
14	23.0	23.1	23.2	23.3	23.4	23.5	23.6	23.7	23.8	23.9	14
15	24.0	24.1	24.2	24.3	24.4	24.5	24.6	24.7	24.8	24.9	15
16	25.0	25.1	25.2	25.3	25.4	25.5	25.6	25.7	25.8	25.9	16
17	26.0	26.1	26.2	26.3	26.4	26.5	26.6	26.7	26.8	26.9	17
18	27.0	27.1	27.2	27.3	27.4	27.5	27.6	27.7	27.8	27.9	18
19	28.0	28.1	28.2	28.3	28.4	28.5	28.6	28.7	28.8	28.9	19
20	29.0	29.1	29.2	29.3	29.4	29.5	29.6	29.7	29.8	29.9	20
21	30.0	30.1	30.2	30.3	30.4	30.5	30.6	30.7	30.8	30.9	21
22	31.0	31.1	31.2	31.3	31.4	31.5	31.6	31.7	31.8	31.9	22
23	32.0	32.1	32.2	32.3	32.4	32.5	32.6	32.7	32.8	32.9	23
24	33.0	33.1	33.2	33.3	33.4	33.5	33.6	33.7	33.8	33.9	24
25	34.0	34.1	34.2	34.3	34.4	34.5	34.6	34.7	34.8	34.9	25
26	35.0	35.1	35.2	35.3	35.4	35.5	35.6	35.7	35.8	35.9	26
27	36.0	36.1	36.2	36.3	36.4	36.5	36.6	36.7	36.8	36.9	27
28	37.0	37.1	37.2	37.3	37.4	37.5	37.6	37.7	37.8	37.9	28
29	38.0	38.1	38.2	38.3	38.4	38.5	38.6	38.7	38.8	38.9	29
30	39.0	39.1	39.2	39.3	39.4	39.5	39.6	39.7	39.8	39.9	30
31	40.0	40.1	40.2	40.3	40.4	40.5	40.6	40.7	40.8	40.9	31
32	41.0	41.1	41.2	41.3	41.4	41.5	41.6	41.7	41.8	41.9	32
33	42.0	42.1	42.2	42.3	42.4	42.5	42.6	42.7	42.8	42.9	33
34	43.0	43.1	43.2	43.3	43.4	43.5	43.6	43.7	43.8	43.9	34
35	44.0	44.1	44.2	44.3	44.4	44.5	44.6	44.7	44.8	44.9	35
36	45.0	45.1	45.2	45.3	45.4	45.5	45.6	45.7	45.8	45.9	36

Calculated by Julien A. Hall, M. Am. Soc. C. E.

INDEXED  
*Completely*

MICROFILMED

APR 12 1965

Completed

INDEX

PAGE

Sewer Construction N. of Adams	"A" Line	1-3
" " " " "	"F" "	4
" " " " "	"E" "	5
" " " " "	"C" "	6-7

1100 ft  
S. 13.51  
170' 20.30

Sewer CONST. "A" Line  
N. of Adams

FL = 0.54%

F. Line Gr. 1148.11

8			334.06		C 7.40
7	+60	M.H. #41	334.27	339.0	C 7.74
7			334.58		C 13.75
	+50		334.84		C 10.93
6			335.10		C 8.16
	+50		335.36		C 6.86
5	+140	M.H. #42	335.59	345.0	C 12.27
5			335.60	OUT	
	+50		335.86		C 12.14
4			336.12		C 10.10
3	+83.42	M.H. #43	336.20	341.0	C 7.68
	+50		336.37		C 10.71
3			336.63		C 9.79
2	+43.78	M.H. #44	336.92	340.5	C 11.50
2			337.14		C 9.46
	+50		337.40		C 8.02
1	+98.40	M.H. #45	337.67	345.8	C 7.87
0	+100	Make Con. To Ev. Sewer	337.92		

Indexed  
C.S.K.

352.67	X. P.
4.69	
347.98	
7.84	
355.82	
8.86	
346.96	TP nat fence post
4.13	
350.79	
4.62	
346.17	
9.28	
355.45	
5.12	
350.33	
8.20	
342.13	
3.70	
345.83	= SWB 3956 + C. 1010 Br
	346.14
334.27	
7.72	
341.99	= El. cut stub M.H. #41
9.19	
351.18	
10.12	
341.06	
9.70	
350.75	
3.92	
346.83	= B11 34683 top station
	12.27 of 140

343.48

	"F" Line	F.L.	M.H. #	grade		
	+50	330.17			C 9.2	342.67 from 72
15		330.43			C 6.88	240.08 10.66 350.74
	+50	330.69			C 10.54	342.93 7.91 247.84 12.84 239.90 V. 1.5
14		330.95			C 12.92	345.03 0.40
13 + 50		331.21			C 10.93	344.68 = BM 9 + 42.35 M.H. #40 9.04 327.67
13 + 28.26		331.31	337.0		C 9.48	
13 + 35 = EB. M.H. #38		331.49		109° 01' 30" LT	C 19.07	
13		331.75			C 17.6	
	+50	332.01			C 9.05	
12		332.27			C 9.4	
	+50	332.53				
11		332.79				
	+50	332.96	338.0			
10 + 47.46	M.H. #39	333.00		43° 33' R.		
10 + 06.35	END 8" CL. PIPE	333.06				
+ 94.35	Pier #2	333.14		FOOTING 325.0	F 3.44 C 6.66	
+ 82.35	Pier #1	333.18		" 328.0	C 2.23	
+ 70.35	dep. 8" CL. PIPE	333.33	342.0		C 11.30	
9 + 42.35	M.H. #40	333.54		108° 33' R.	TO Tie line to M.H. #39 & X CUT IN SLYCE of Collier St. To South	
9		333.80			C 11.18	
8 + 50					C 6.87	

"A" Line.

F.L. M.H. Rem  
grade

250' E of cb. end, Sly. Copley.

3

36328  
 $\begin{array}{r} 1.61 \\ 364.89 \\ .2.79 \\ 352.10 \\ .78 \\ 354.88 \\ 1.59 \\ 340.29 \\ 1.27 \\ 342.16 \end{array}$

BM. 5" I.P. pi 1245

Pump House

19 + 24.84 = E Copley

19 + 21.84 = Pump House. End "A" Line 328.25

19 328.36

+50 328.62

18 328.88

17 + 84 M.H. #36 85°47' RT 328.96 335.5

+50 329.13

17 329.39

16 + 54.84 M.H. #37 23°53' RT 329.63 334.5

16 329.91

96328

0.31

96359

10.46

C 23.86 343.13 = E.I. state NW of Pump House

C 24.34

C 25.24

C 5.22

C 10.18

C 11.34

C 7.74

C 8.38

C 7.36

"F" Line

F.L.

CUTS

Indexed  
C.S.K.

4

352.84  
2.96  
351.88  
12.45  
364.33  
2.70  
361.63  
7.94  
369.57

2 + N.8V = D.E.

362.50

C 3.81

2

360.14

C 4.78

+50

352.58

C 7.53

1

345.04

C 7.90

0 + 50 = D.K.

337.50

C 4.40

00 = M.H. # 40

333.33

C 11.30

"E" Line  
Collier Ave.

Grades

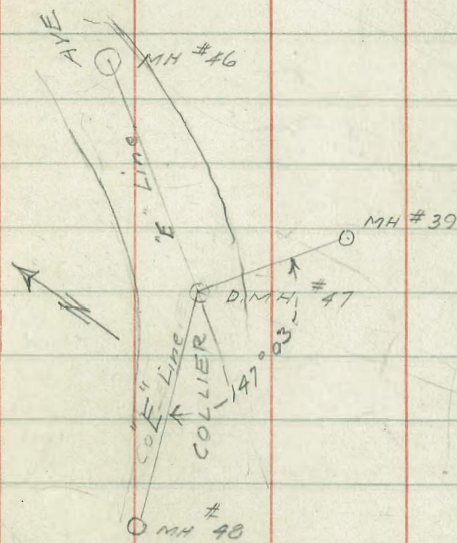
CUTS

7+24.30 = DE.	384.50	C 492
7	383.82	C 505
6 +50	382.42	C 514
5 + 99.30 = Brk	381.00	C 472
+50	377.79	C 558
5	374.55	C 571
+50	371.31	C 556
4 + 14.30 = M.H. #48 2 1/2' RT	369.00	C 552
4	368.17	C 543
+50	365.08	C 522
3	362.04	C 503
+50	359.0	C 528
2	355.96	C 510
+50	352.91	C 582
1 + 18.46 = DM.H. #17 5 1/2' RT	351.00	C 742
Drop =	346.82	C 11.60
0 + 59.23 /	347.64	C 12.33
0 + 00 = M.H. #46 = Ex. Line	348.50	C 12.90

Indexed  
C.S.R.

5

344.03	B.M. 10' Stub 9+42.35
10.70	
355.33	
1.53	
353.80	
11.73	
365.53	
8.13	
365.40	
13.00	
378.40	
0.28	
378.12	
12.25	
390.37	



0 + 63.08 = DM.H. #17	346.82	C 11.60
0 + 31.54	339.90	C 1832
M.H. #39	332.98	C 497
0 + 00		



"C" Line  
Copley Ave

Gravity Sewer to Tank

Indexed  
C.S.K.

36328 2" Pipe B.M.  
368.59 HI.  
367.88  
380.80  
380.38  
390.01 HI.

6

			11" High Pressure C.I.	Cont. 6' offset Right
4 +66 = D.E.	381.0	C 603	4+69	382.17 C 4.86
+50	380.62	C 605	4+53	381.79 C 4.88
↓ 2.33%	379.45	C 5.87	4+03	380.58 C 4.74
+50	378.28	C 5.94	3+53	379.38 C 4.84
3	377.12	C 5.98	3+03	378.18 C 4.92
2 +50	375.95	C 6.19	2+53	376.98 C 5.16
2 +09 D.M.H. #50	375.0	C 6.14		
	365.0	C 6.14		
1 +74 M.H. #49	358.0	C 6.44		
+50	356.62	C 6.44		
1 5.74%	353.74	C 6.53		
+50	350.87	C 7.30		
0+00 = TANK = 3' W. of TANK	348.0	C 4.58		

Copley Ave

6" C.I. Pressure line from TANK

368.59 = H.I.

390.01 H.I.

7

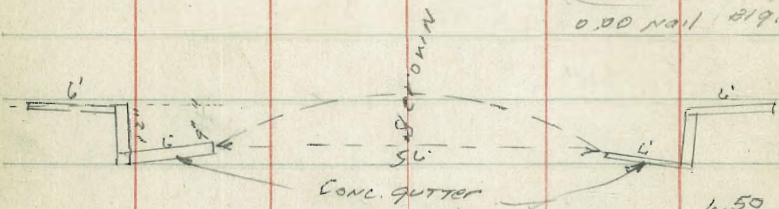
6 + 07.60	EX. (H. Mt. View Dr.	385.50	C 413
+50		384.11	C 403
5		382.91	C 471
+50		381.71	C 471
4		380.51	C 482
+50		379.31	C 497
3		378.11	C 492
+50		376.91	C 530
2 + 12	= Lift Vert. = Break	376.0	C 4.88
2 + 12	= Break = Bend at 17th + 50	365.0	C 15.83
1 + 91	= Break = Bend	360.0	C 5.75
+50		357.64	C 2.50
1		354.76	C 5.41
+50		351.88	C 6.36
0 + 00	= TANK	349.0	C 3.88

Const. of  
Ocean Beach Police Sta.

4-16-27

NEBP 3.17 9.07

6.50 Newport  
Abbott



5.00 El. of  
Finish floor

4.67 rod  
4.67 Harry 600  
0.00 nail 219.

	W/ly Abbott +100	Curb grade +46.5	+90
CUT	4.10	3.80	3.50
3.20	6.10	6.20	3.07
	5.05		
	40.45		
CUT	4.50	4.00	3.50
3.60	5.70	2.37	3.07

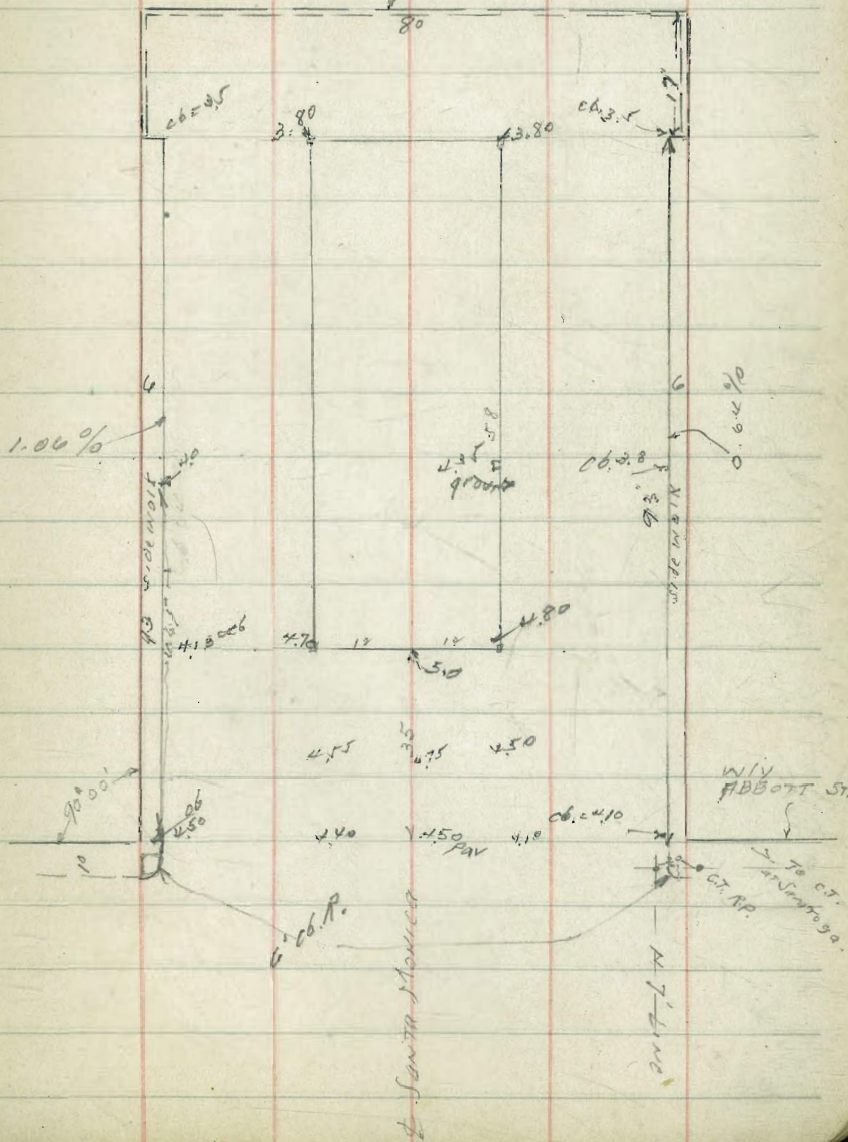
3.30 = Top Bulkhead

3.27

Indexed  
C.S.K.

8

Wood, sheet pile Bulkhead



Sassafras & Calif.  
Curb inlets & CULV. CONST. 6/26/07

10' N cb inlet curb grades

W END	E END	FL. BOX
27.25	27.95	22.0
11.31	10.41	10.50
10.80	10.17	10.24
+ 0.47	+ 0.44	+ 5.72

10' S cb inlet curb grade

W END	E END	FL. BOX
27.90	28.04	22.80
10.40	9.92	10.26
9.11	7.55	19.11
+ 1.35	+ 4.37	+ 7.15

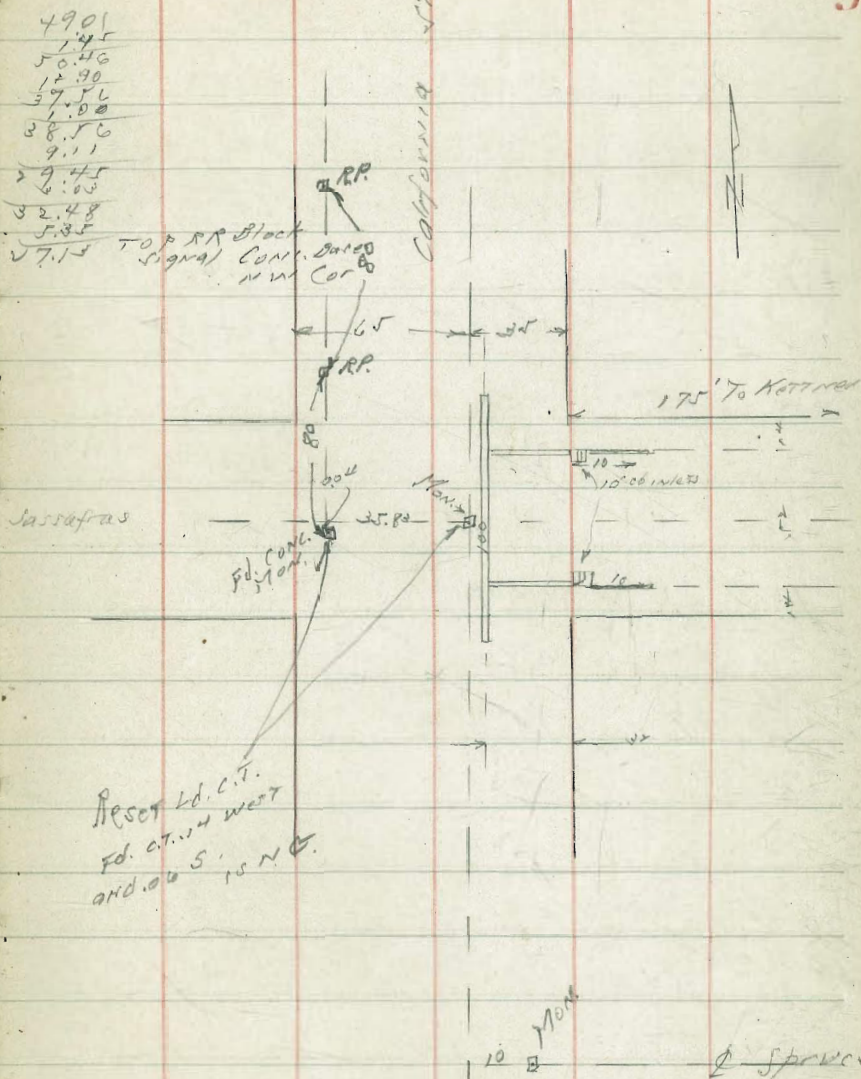
CULV. # 1

INLET	S CB	N CB	OUTLET
0+00 10' S of S.L.	0+24	0+76	1+00
21.50	21.38	21.12	21.00
10.98	11.10	11.34	11.48
6.28	6.73	7.81	8.00
+ 4.50	+ 4.37	+ 3.55	+ 3.48

NOT. SASS.  
SERP

INDEXED  
C.S.I.K.

9



49.01  
1.45  
50.46  
12.90  
37.56  
1.00  
38.56  
9.11  
29.45  
6.63  
32.48  
5.35  
27.13

TOP RR Block  
Signal Cont. Bases  
NW Cor.

Sassafras

California St.

Reset Ld. C.T.  
Rd. C.T. W. WEST  
AND 0.00 S. 15 N.E.

10' MON

Spruce

Moore  
5-7-37

Alley Pav. Const. 20' wide  
Bk 37 LA Jolla Park = Bishop Lane

	E.L.	W.L.	
			96.54 -2.80 93.74 -6.69 92.68 -4.13 96.81 -5.40 91.41 -4.25 95.60 -5.80 89.74 -4.55 94.29
Nly Silverado = 00	90.54	90.17	
0 + 20 Bk	95.93	95.72	
0 + 65	94.95	94.74	
1 + 10	93.96	93.76	
1 + 55	92.98	92.78	
✓ + 00 Bk	92.0	91.80	
+ 25	91.56	91.34	
+ 70	91.12	90.92	
✓ + 05	90.69	90.49	
+ 40 Bk	90.25	90.05	
+ 60 "	90.05	89.83	
+ 80 "	89.94	89.66	
4 + 0 26	89.87	89.49	
+ 20 19	89.82	89.49	

Indexed  
C.S.K.

10

	E	W	
	94.54 -3.44 91.10 -3.71 92.68 -0.57	95.93 -3.44 92.49 -3.71 95.72 -0.57	94.95 -4.22 90.73 -4.52 94.74 -0.70
	93.96 -5.21 88.75 -4.91 92.98 +0.50	95.93 -5.21 90.72 -4.91 95.72 +0.50	94.95 -5.21 89.71 -4.91 94.74 +0.50
	92.98 -4.59 88.39 -4.76 92.78 -0.77	95.72 -4.59 91.13 -4.76 95.72 -0.77	94.74 -4.59 90.14 -4.76 94.74 -0.77
	92.0 -4.81 87.19 -4.07 90.74	91.56 -5.25 86.31 -4.24 90.81	91.12 -4.48 86.64 -4.88 90.60
	90.69 -4.97 85.72 -4.26 90.45	90.25 -5.35 84.90 -4.55 90.20	90.05 -4.97 85.08 -4.26 90.20
	90.05 -5.55 84.50 -4.55 90.05	91.80 -5.81 85.99 -4.45 91.36	90.49 -5.11 85.38 -4.11 90.49
	89.83 -5.90 83.93 -4.13 89.80	91.36 -5.45 85.91 -4.89 90.92	90.49 -4.11 86.80 -4.11 90.49
	89.87 -4.35 85.52 -4.15 89.74	89.87 -4.42 85.45 -4.45 89.87	89.87 -4.47 85.40 -4.47 89.87
	89.49 -4.63 84.86 -4.55 89.08	89.49 -4.80 84.69 -4.79 89.49	89.49 -4.47 85.02 -4.79 89.49

EN Prospect

2 Pav.

S. E. Curb Return  
Girard Ave + Gester St.

		Top Cb	Gutter	
0+00	B.C. W End	159.80	59.13	5.21 ✓
+10	12° 27.34'	160.16	59.99	4.85 ✓
+20	24° 54.68'	160.35	59.68	4.66 ✓
+30	37° 22.02'	160.40	59.73	4.61 ✓
+40	49° 49.36'	160.31	59.64	4.70 ✓
+50	62° 16.70'	160.09	59.42	4.92 ✓
+60	74° 44.04'	159.70	59.03	5.31 ✓
+72.26	90° 00' E.C. W End	159.17	58.50	5.84 ✓

Indexed  
C.S.K.

Nov. 18-36  
Sisson  
Harbor 11

B.M. 158.55 SW B.P. Girard + Gester  
579  
164.34

N of Adams Server  
12-7-36

37	+28.44	M.H. #22	336.74	C 8.58
37			336.88	C 17.10
	+50		337.08	C 7.41
36			337.28	C 6.07
	+50		337.48	C 11.51
35			337.68	C 3.62
34	+68.41	M.H. #21	337.81	C 6.99
	+50		337.90	C 11.42
34			338.10	C 11.32
	+50		338.30	C 13.42
33	+05.49	M.H. #20	338.47	C 11.91
	+50		338.70	C 10.14
32	+08		338.85	C 9.07
31	+75.85	M.H. #19	339.0	C 22.69
	+50		339.75	C 7.39
31			341.21	C 0.378
	+50		342.47	C 17.24
30			344.14	C 14.77
	+50		345.59	C 7.88

11.21 RT  
 96.07  
 86° 31' RT  
 2.92 %

336.74  
8.58  
345.32  
10.88  
356.20

Indexed  
C.S.K.

TT  
12.37  
340.93  
10.17  
351.10

7P  
5.86  
348.24  
8.43  
356.67

TT  
4.50  
354.11  
11.28  
365.39

29	+35.95	M.H. 7/8	10022	27.06	346.01	10.00
29					347.06	
	+50				348.52	
28					349.98	
27	+53.28	M.H. 17	19231		351.34	



F.L.

3

+50

42 + 11.88 Δ 66° 09' M.H. #25 334.76

42 + 04.83 end 8" C.I. 334.79

41 + 92.83 Pier #4. 334.84

41 + 80.83 " #3 334.89

41 + 68.83 " #2 334.94

41 + 56.83 Pier #1 334.99

41 + 44.83 beg. 8" C.I. 335.04

41 + 30.75 Δ 87° 19' M.H. #24 335.09

41

+50

40

39 + 64.29 11° 26' 50" M.H. #23 335.78

Pier  
Footings

328.0

324.0

324.0

328.0

			FL.	
50			331.52	
49 + 53.60	41°34'	M.H. #31	331.72	
49			331.92	
+50			332.13	
47 + 99.88	61°25'	M.H. #30	332.35	
+50			332.55	
47 + 00.05	80°35'	M.H. #29	332.76	
46 + 57.72	67°09'	M.H. #28	332.94	
46			333.17	
45 + 59.50	49°32'	M.H. #27	333.34	
45 + 05.30	85°23'	M.H. #26 ✓	333.56	
44 + 17.30			333.71	El. Pier
44 + 29.30	Sly end 8" C.I.		333.87	Footings
44 + 17.30	Pier #5		333.92	328.0
44 + 05.30	" #4		333.97	327.0
43 + 93.30	" #3		334.02	326.0
43 + 81.30	" #2		334.07	326.0
43 + 69.30	" #1		334.12	327.0
43 + 57.30	Nly end 8" C.I.		334.17	

Sly End "B" Line

16

F.L.

58 + 03.93 = PUMP	328.25
57 + 93.93	328.30
57 + 50	328.47
57	328.68
56 + 71.86 16621' M.H. #35	328.78
+ 50	328.88
56	329.09
+ 50	329.30
55	329.50
+ 50	329.69
54 + 39.62 482' 19" M.H. #34	329.73
54	329.89
53 + 55.24 151' 52" M.H. #33	330.08
53	330.30
+ 50	330.50
52	330.71
51 + 62.60 18° 01' 30" M.H. #32	330.87
51 + 00	331.12
50 + 50	331.33

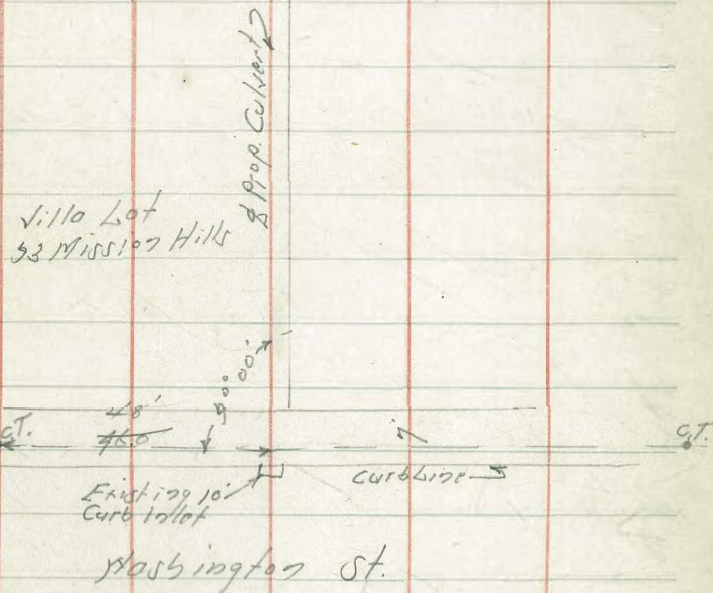
Culvert Grades  
 Villa Lot 33 Mission Hills  
 offset 5 ft of 1/2

0+00	=	Hub Line Washington	254.80	
+30			253.40	8.7 1.6 c 7.7 on Cane Hole
+60	Brk		252.00	10.1 4.3 c 5.8 on Cane Hole
+72	"		249.50	12.6 8.5 c 4.1 on Stue
+83.5	"		244.00	18.1 15.7 c 2.4

Indexed  
 c.s.k.

July 11-86  
 S. W. Co.  
 Hartman 17

B.M. 259.14 Top curb of inlet  
 2.92 W.C. of Washington  
 262.06



Indexed  
C.S.K.

Curb Grades for Mr. Shrig

S.E. Corn Evergreen + Sterne Moore  
WSP <sup>Wilson</sup> Parvall 161.38  
9.27  
170.64

18

51/2 Stone	+ 12.5	+ 2.5	+ 62.5	170.0	checked NE Con
166.5	165.9	145.0	160.5	156.0	169.50
<u>4.1</u>	<u>4.7</u>	<u>5.6</u>	<u>10.1</u>	<u>14.6</u>	<u>1.14</u>
2.8	7.8	4.5	10.5	18.9	
-2.7	-3.1	-2.9	-0.4	4.3	

Slope Meas. of Prop. Renewal of 16" wood  
stave water pipe with 16" C.I.

Botw. La Jolla Shores & Torrey Pines Park

Moore  
Sisson  
7-15-36

0+00 = Sly end of 16" Conc. water line  
& beg. of EX. 16" wood stave

16+90 = Sly line of P.L. 1325

43+30 = Sly line of P.L. 1324

56+32 = EX. 14" Gate Valve

69+70 = Sly of PL 1313

73+18 = 2" check valve

75+10 = 4" Conn. & 4" Valve to Marine Rifle Range

79+10 = 10° Angle

90+10 = Nly of EX. Trestle

4 new Conc. Piers needed

Indexed  
c.s.k.

19

90+63 = 4" Blow off & 4" Conn. To City Farm

90+90 = Sly end of Trestle

97+17 = 4" Valve & 4" Sprinkler stand

103+80 = 4" stand pipe about 35' High

121+70 = 5" check valve

123+10 = 2 - 12" Gate Valves & 12" Bi-pass

129+20 = 2" check V.

140+80 = 2" check V.

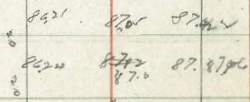
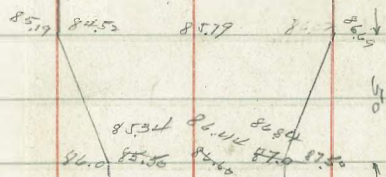
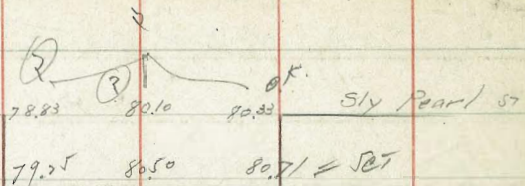
150+37 = 2" Hyd

173+40 = 2" Hyd & 2" check V.

181+90 = beg. of 16" C.I. into La Jolla

Moore  
Sisson  
9-16-36

CURVER ST. PAVING St. Dept.



Nly Marine 85.75 86.53 84.21

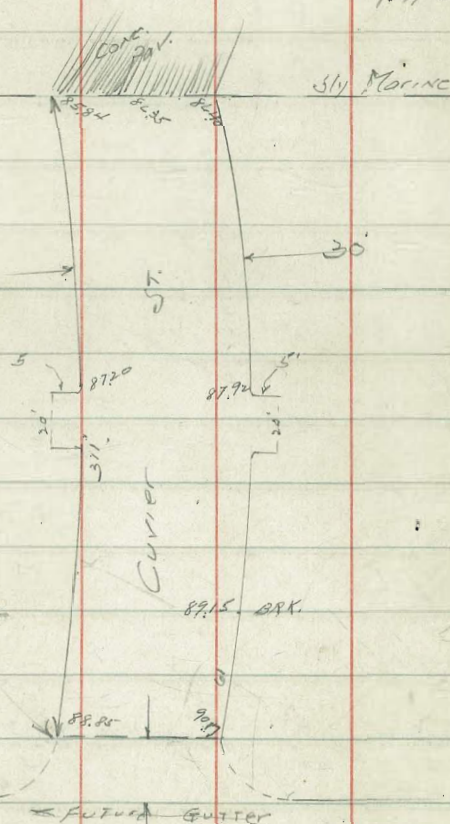
65.88  
72.98  
78.34  
77.69 H.P. 77.20  
78.75 X 84.89 X  
N.E.R.P. Road + 24 Jolla Blvd

Indexed  
C.S.K.

30

Figures = Pav. E.I.

Moore  
Sisson  
9-17-36



Stopped here to better  
construct future gutter  
on Sea Lane

N.E. of Sea Lane

Moore  
Sisson  
9-18-36

CONST. of  
TECOLOTE CANYON STORM DITCH

Indexed  
C.S.K.

3+31 = Fly SANTA Fe RR ROW	1.4	C. 2.7	17	5.35	C 2.6
+50	6.81 = El. Top rail SANTA Fe RR Bridge	1.46	C. 3.2	+2209 = Δ = 22° 31' RT	5.50 C. 3.2
4	2+80.40	1.64	C 3.0	+50	5.07 C 3.0
+50	6.81 3.50	1.81	C 2.5	13	5.98 C 2.6
5	10.31 4.71	2.00	C 2.7	+50	6.30 C 2.5
+50	5.60 9.51	2.17	C 2.8	12	6.61 C 2.5
6	15.11 7.07	2.34	C 2.6	+50	6.90 C 3.0
+50	8.04 7.80	2.51	C 3.1	+70 Why Wooden Bridge Line change	7.0 2 ditch under bridge
7	26.9	C 3.2	15+1639 = New Δ = 45° 28' 27" Row. &	7.2	C 1.3
+50	28.6	C 3.3	conc. box 10.04 Box 2.35 12.59 0.84 11.74 4.16 15.91 1.95 13.96 TP	+50	7.5 C 1.1
8	30.4	C 3.5			7.8 C 2.6
+50	32.1	C 3.5	+50		8.14 C 2.5
76.7 = outlet Yerena Blvd	332	3.32	0.0 ✓	2	8.46 C 2.1
9+20.3 = inlet Box Culv.	359	3.59	0.0 ✓	+50	8.77 C 2.2
+50	378	C 3.2	3		9.1 C 2.4
10	410	C 3.3	+50		9.4 C 2.5
+50	441	C 3.0	4		9.7 C 2.4
11	472	C 2.4	+50		10.0 C 2.7
+50	5.04	C 2.1	5	+400 +50 +650 Δ = approx. 20+85	10.3 C 2.1 10.6 C 2.3 10.8 C 3.0



Tecolote Creek CONST

21	1396 = T.P. 5.2 <u>19.26</u>	10.9	C 3.1
+50		11.2	C 3.3
22		11.5	C 2.9
+50		11.8	C 2.4
23		12.1	C 2.0
+50		12.4	
24		12.7	

Moore  
5-14-37.

Hiley Pav. 20' wide  
Bik 24 La Jolla Park

BM. curb

	E	W
1	155.34 PM	154.98 PM
+20 (Bik)	154.70	154.50
+60	153.39	152.19
1	152.08	151.98
1	+40 (Bik) 150.77	150.57
+60	150.01	149.81
+80	149.04	148.84
2	147.87	147.67
+20	145.49	145.29
+40	144.90	144.70
2	+60 143.10	142.90
3	+10 138.35	138.15
	+60 132.60	132.40
	+80 131.77	131.57
4	130.08	129.88
+20	128.53	128.33
+40	127.12	126.94
5	N14 Highest 122.10	122.90

Grade changed  
See p 70

153.51  
2.79  
150.72  
150.59  
3.77  
154.36  
9.86  
144.50  
1.20  
145.74  
12.54  
133.48  
1.67  
135.15

E	5470 3.60 3.39 +0.21	5339 4.91 +1.34	5208 6.22 6.14 +0.08	5077 7.53 6.71 +0.82	5001 4.35 6.15 +0.20	4904 5.33 4.13 +1.17
W	5470 3.86 4.22 -0.42	5319 5.11 3.85 +1.16	5188 6.22 6.61 -0.19	5057 7.73 7.04 +0.39	4981 4.55 4.25 +0.33	4884 0.07
E	4787 6.49 5.50 -0.19	4549 8.87 7.05 +1.82	4490 9.46 9.89 +0.07	4310 2.22 2.34 -0.08	3885 5.39 7.58 -0.14	3360 1.55 1.98 -0.43
W	4767 6.69 5.93 +0.76	4529 8.07 7.71 +1.96	4470 9.60 9.25 +1.11	4290 2.82 1.59 +1.45	3815 7.59 7.76 -0.17	3340 1.75 1.55 +0.20
E	3177 3.38 3.58 -0.20	2908 4.07 4.24 +0.23	2853 6.62 6.25 +0.27	2714 8.03 7.50 +0.53	2310 12.05 10.85 +1.20	
W	3157 3.58 3.78 -0.20	2988 5.27 5.55 -0.28	2833 6.82 6.97 -0.15	2692 8.23 8.14 +0.10	2290 12.25 11.93 +0.02	

33

Alley Grades  
 BK 5 La Jolla Park + Sly Production  
 St. Dept. grading Moore 10-13-56

SL Pearl = 00

0 + 40 Brk

+ 70

1

+ 50

2

+ 50

+ 90 Brk

3

+ 50

4

+ 50

5

+ 50

6

+ 50

7

+ 50

W

95.73

97.50

98.36

99.23

100.67

102.11

103.55

104.70

104.94

104.13

107.33

108.57

109.72

110.94

112.14

113.33

114.53

115.71

E

96.21

97.80

98.66

99.53

100.97

102.41

103.85

105.0

105.24

106.43

107.63

108.87

110.02

111.24

112.44

113.63

114.83

116.01

par  
 95.73  
 7.67  
 103.40  
 1.26  
 104.66  
 7.08  
 109.02  
 3.06  
 101.96  
 7.26  
 113.22  
 3.62  
 109.60  
 8.00  
 118.26  
 2.17  
 116.09  
 2.09  
 123.18

W

95.73

Indexed  
 c.s.kr

97.50  
 1.77  
 101.26  
 20.24

98.36  
 1.04  
 1.22  
 F 0.18

99.23  
 2.17  
 2.17  
 C 0.02

24  
 100.67  
 4.73  
 1.23  
 C 1.0

E

96.21

97.80  
 1.69  
 1.60  
 C 1.0

98.66  
 1.74  
 2.74  
 C 2.0

99.53  
 3.87  
 1.87  
 C 1.0

100.97  
 5.23  
 1.74  
 C 0.69

W

102.11

103.55  
 1.44  
 1.72  
 F 0.25

104.70  
 1.33  
 4.00  
 F 0.28

~~104.94~~

106.13  
 7.09  
 6.09  
 C 1.0

E

102.41

103.85  
 6.61  
 3.41  
 C 0.66

105.0  
 1.02  
 3.41  
 C 0.61

~~105.24~~

106.43  
 6.79  
 6.20  
 C 0.13

W

107.33

108.52  
 1.19  
 1.28  
 C 1.0

109.72  
 1.20  
 3.88  
 F 0.38

110.94  
 7.37  
 7.61  
 F 0.29

112.14  
 6.12  
 6.63  
 F 0.51

E

107.63

108.87  
 1.24  
 4.40  
 0.0

110.02  
 1.34  
 1.16  
 C 3.0

111.24  
 7.02  
 4.95  
 C 0.07

112.44  
 5.82  
 5.92  
 F 0.10

W

113.33

114.53  
 1.20  
 1.23  
 4.32  
 F 0.45

115.71  
 1.18  
 1.51  
 F 0.04

E

113.63

114.83  
 1.20  
 3.43  
 3.63  
 C 1.0

116.01  
 1.17  
 7.17  
 6.41  
 F 0.74

	W 1/2 Alley	W	E
8	Brk 887	116.90	117.20
+50	9.07	117.60	117.92
9	9.28	118.51	118.65
+50	9.48	119.01	119.37
10	9.68	119.72	120.10
+55	Brk 9.92	120.50	120.90
+75	HL Genitor	120.80	121.49

W	116.90	117.60	118.31	119.01	119.72
	0.38	5.38	4.87	4.17	3.46
	6.59	6.14	5.50	5.00	4.37
F	0.51	0.50	0.63	0.83	0.81

E	117.40	117.92	118.45	119.37	120.10
	5.78	5.26	4.33	4.81	3.08
	5.14	4.26	3.53	2.81	2.35
C	0.44	0.10	0.10	0.10	0.73

W	120.50	120.80	pay.
	2.68	2.38	
	3.04		
F	0.34	0.0	

E	120.90	121.49	"
	2.28	1.69	
C	1.00		
	1.42		

NW. Kowarsant  
Browning

5700.0  
10-17-36

Indexed  
C.S.K.

Curb Grades

57.49  
58.57  
58.06  
59.50  
59.56  
60.17  
61.73  
62.46  
63.27  
63.66  
63.93  
65.93  
68.00  
68.70  
69.70

W side Locust Betw.

Zola + Filled

00		65.0	
13			
25. J		67.0	
40		67.80	
50		70.50	
70		70.0	
77	S of McKOTT		73.63
90	" "		74.80
97	" "		74.92
100	" "		75.40

72.8      76.50

	00	+13	+25	+50	+50	+70
			P.C. 06			
11.28	08.0	64.83	67.0	67.80	70.50	73.0
21.00	21.65	9.10	4.93	6.13	3.43	0.93
			✓	✓	✓	✓
		+77	+90	1400		1400
	73.63	74.80	75.40		76.50	E side
	6.13	4.96	4.36		✓	✓

Cut stakes  
 Ely 1/2 Evergreen  
 100' N of Xenophon

CSM 11-12-36

142.39

SW 80  
 Xenophon  
 Willow  
 154.20  
 1.00  
 155.20  
 13.07  
 142.13  
 0.26  
 142.39

E

E

0725 PC

138.0  
 9.59  
 C 3.0

132.50  
 9.89  
 13.8  
 E 0.9

+80 Brk

126.50  
 15.9  
 C 3.8

126.0  
 16.0  
 14.7  
 C 1.7

1400

122.50  
 19.9  
 C 5.5

122.0  
 20.4  
 16.5  
 C 3.9

135.55 BM.  
 2.62  
 138.175

Our's stakes 11-24-36

				PC.	23' X 4' PC.
135.52	135.38	134.73	133.70	132.70	129.90
	2.77	3.24	2.45	5.45	8.25

Indexed  
 C.S.K.

37



Cb. Return El. N side Xenophon  
 at Evergreen



12" Sewer Mission Beach Sewer Const.  
N of Ventura Pl. Moore  
11-15-36

indexed  
C.S.K.

grades

0 + 00 = Pump house #2	- 9.62	$\begin{matrix} 12.66 \\ 3.04 \\ \hline C 10.00 \end{matrix}$
+ 38	- 9.56	$\begin{matrix} 12.60 \\ 3.04 \\ \hline C 8.57 \end{matrix}$
+ 76 = Ex. M.H. alley S of Island	- 9.50	$\begin{matrix} 12.50 \\ 3.50 \\ \hline C 9.00 \end{matrix}$
1	- 9.46	$\begin{matrix} 12.50 \\ 3.50 \\ \hline C 8.00 \end{matrix}$
+ 34.8	- 9.40	$\begin{matrix} 12.40 \\ 3.00 \\ \hline C 7.60 \end{matrix}$
+ 71.5 = P.C.	- 9.35	$\begin{matrix} 12.39 \\ 3.04 \\ \hline C 7.57 \end{matrix}$
2	- 9.30	$\begin{matrix} 12.33 \\ 3.03 \\ \hline C 7.21 \end{matrix}$
+ 25	- 9.26	$\begin{matrix} 12.30 \\ 3.04 \\ \hline C 7.35 \end{matrix}$
+ 50	- 9.22	$\begin{matrix} 12.26 \\ 3.04 \\ \hline C 7.64 \end{matrix}$
2 + 63.5 = Ex. M.H. <sup>alley</sup> N of Island	- 9.19	$\begin{matrix} 12.23 \\ 3.04 \\ \hline C 7.51 \end{matrix}$
+ 75	- 9.17	$\begin{matrix} 12.21 \\ 3.50 \\ \hline C 7.63 \end{matrix}$
3	- 9.13	$\begin{matrix} 12.17 \\ 4.34 \\ \hline C 7.85 \end{matrix}$
+ 25	- 9.09	$\begin{matrix} 12.13 \\ 4.24 \\ \hline C 7.87 \end{matrix}$
+ 50	- 9.05	$\begin{matrix} 12.03 \\ 4.03 \\ \hline C 8.06 \end{matrix}$
+ 75	- 9.01	$\begin{matrix} 12.05 \\ 4.31 \\ \hline C 7.74 \end{matrix}$
4	- 8.97	$\begin{matrix} 12.01 \\ 4.04 \\ \hline C 7.45 \end{matrix}$
+ 25	- 8.93	$\begin{matrix} 11.97 \\ 4.31 \\ \hline C 7.62 \end{matrix}$
+ 50	- 8.89	$\begin{matrix} 11.93 \\ 4.04 \\ \hline C 7.87 \end{matrix}$
4 + 56 = Ex. M.H. <sup>alley</sup> N of Isthmus	- 8.87	$\begin{matrix} 11.91 \\ 4.04 \\ \hline C 7.80 \end{matrix}$

CONT p 31

San Louis Obispo

SAN JUAN 707  
B.P. Seawall

28

6.98 B.P. Seawall  
0.82  
7.80  
6.93  
0.87 = T.P. Top Stucco Wall  
2.14 Bayside, San Louis Obispo  
 $\begin{matrix} 2.99 \\ 1.18 \\ \hline 1.81 \end{matrix}$   
3 walls Top Pole  
Tersy + Bayside  
2.14  
3.95  
3.80  
1.38 = 3 walls Top Pole  
Isthmus + Bayside  
1.69  
3.04 = T

1.85 = T.P.  
5.17  
 $\begin{matrix} 2.34 \\ 5.17 \\ \hline 1.23 \end{matrix}$   
10.38  
7.10  
1.59  
7.51 = 7.51 B.P. Ventura Pl.  
Seawall

6" High Line Sewer

Alley S of Island Ct.

M.H. -5.0

40' N -4.0

40' S -4.0

Put in by Green  
Sewer Dept.

Alley S of Isthmus

M.H. -5.0

40' N -4.0

40' S -4.0

Alley S of Jamaica

M.H.



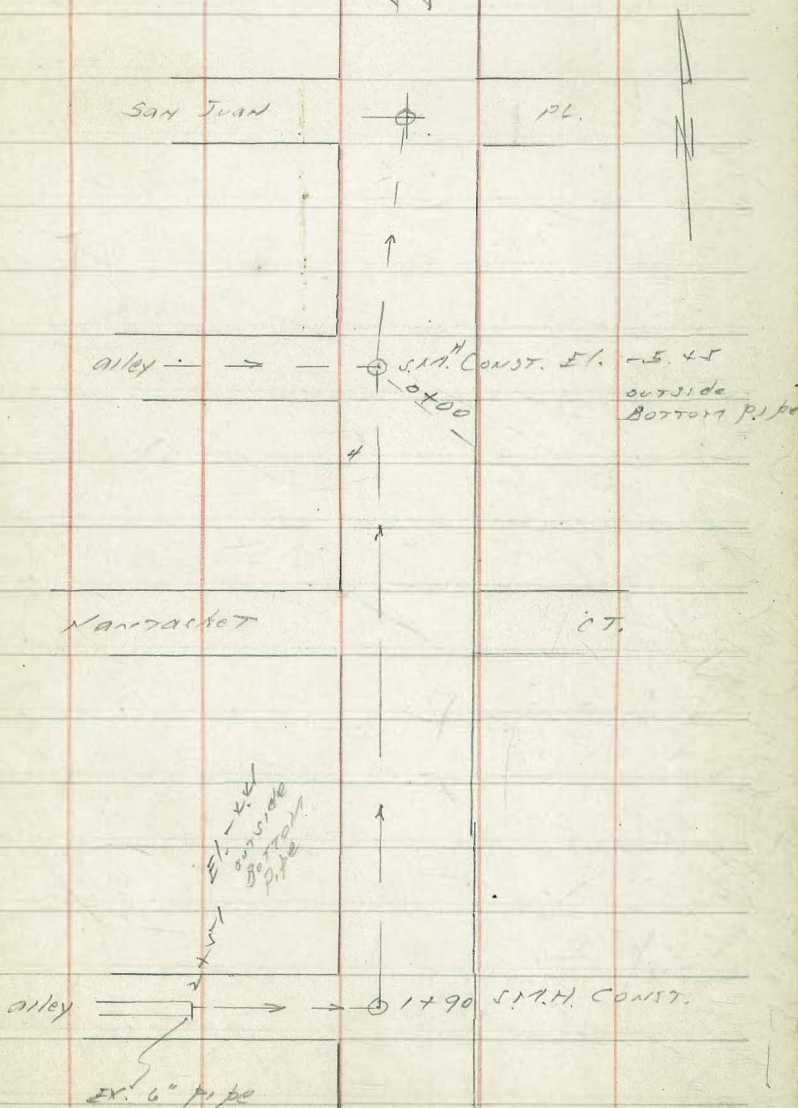
6" Sewer San Juan St.

To Alley S of Nantasket.

EX. M.H. = 0+00	- 8.42	
0+50.95	- 7.91	TP. P 55
1+01.9 - M.H. #2	- 7.40	
+50	- 6.92	0.70
	- 6.42	1.79
		2.49
+50	- 5.92	
+71.9 = D.E.	- 5.70	
new CONST.	El. outside	BOTTOM pipe
00 = M.H. CONST.	- 5.45	
+50	- 5.25	C 3.95
1	- 5.06	C 3.0
1+50	- 4.83	C 2.78
1+90 = M.H. CONST.	- 4.67	C 3.14
2+20	- 4.54	C 3.05
2+51 = Ex. 6" pipe	- 4.21	

30

Baywide Lane



	12"		
4 +50 =	EX. M.H. from p 28	-8.87	C 7.80
5		-8.80	12.14 5.10 7.22
+50		-8.72	12.04 4.54 7.89
6		-8.64	12.50 4.58 7.53
+50		-8.52	12.28 4.26 8.02
+64	EX. M.H.	-8.54	12.26 4.29 7.97
7		-8.48	12.20 4.56 7.64
+50		-8.38	12.10 4.78 7.37
8		-8.30	12.04 4.81 7.21
+50		-8.22	11.90 4.82 7.12
787	EX. M.H.	-8.17	11.84 4.67 7.27
9		-8.14	C 6.95
+50		-8.06	C 6.88
10		-7.98	C 6.97
+47.8	BC	-7.90	C 6.92
10 +93	EX. M.H. 0° 31.0	-7.83	C 6.54
11	0° 36.06	-7.80	C 6.57
+50	1° 10.60	-7.72	C 6.53
12	1° 45.14	-7.65	C 6.15
+50	2° 19.68	-7.57	C 6.00

181 = Jersey DM.  
191  
572

31

1.81  
1.08  
Σ 2.89

12"

2.89 x  
4.54  
- 1.45  
4.28  
2.83 x

12 + 97 = Ex. M.H.	2° 52.15	-7.50	C 5.92
13 + 50	3° 28.76	-7.41	C 5.80
14	4° 03.30	-7.33	C 6.0
+50	4° 37.84	-7.25	C 5.62
14 + 94 = Ex. M.H.	5° 08.24	-7.18	C 5.01
15 + 50	5° 46.92	-7.11	C 6.0
16	6° 21.46	-7.01	C 4.98
+50	6° 56.00	-6.93	C 5.04
17 + 01 = Ex. M.H.	7° 31.23	-6.85	C 5.17
+50	8° 05.07	-6.77	C 4.70
18	8° 39.61	-6.69	C 4.72
+50	<del>9° 14.15</del> 8° 54.24	-6.60	C 4.88
+89 = Ex. M.H.	9° 41.09, 01.28	-6.54	C 4.99
19	✓ 1° 09.08	-6.51	C 4.87
+50	1° 43.62	-6.43	C 4.20
20	2° 18.16	-6.35	C 4.71
+50	2° 52.70	-6.27	C 4.88
+76 = Ex. M.H.	3° 10.70	-6.23	C 5.02
21	3° 27.28	-6.18	C 4.61

0.8 W of M.H.

0.87  
1.37  
- 1.86  
1.96  
0.87 x.P.  
2.17  
2.17 x

0.10

CUTSET 2-8-27  
17401 To 27 + 41.5

P.O.C.

P.O.C.

0.5 W M.H.

0.97  
1.37  
- 2.56  
3.77

- 1.21  
4.25  
3.04 T

00 34.54 = 50'

0.6908 = 1

21	+50	1° 01.82'	-6.10	C 4.58
22		4° 06.00	-6.02	C 4.89
	+50	5° 10.90	-5.94	C 4.80
	+61.5 = Ex. M.H.	5° 17.50	-5.92	C 5.02
		3° 07.22		
23		5° 10.62	-5.87	C 4.64
	+50	4° 36.11	-5.78	C 4.71
24		4° 01.57	-5.70	C 4.01
	+50	3° 27.02	-5.62	C 4.04
	+62 = Ex. M.H.	3° 18.74	-5.60	C 4.02
25		2° 52.49	-5.54	C 3.53
	+50	2° 17.95	-5.45	C 3.79
26		1° 43.41	-5.37	C 3.07
	+50 = Ex. M.H.	1° 08.87	-5.29	C 3.41
27		0° 34.33'	-5.26	C 3.58
	+49.7 = Ex. C.	19° 35' 45"	-5.22	C 3.45
28			-5.19	C 3.30
	+38 = Ex. M.H.		-5.15	C 3.08
	+50		-5.13	C 2.92
29			-5.05	C 2.94

Back shore - N

304	T		
2.18			
0.86			
2.13			
2.99			
2.90			
-1.91			
4.44			
2.14			
1.80			
0.70			
2.40			
5.16			

T.P. spike power pole 8' RT of 22 + 56

T.P.

T.P. spike in pole 8' RT of 28 + 40

Stop 15 + 9 - 07

STOP 22-24-37

	+50		-4.97	C 3.08
30			-4.88	C 2.78
	+28 = EX. 1744		-4.82 =	C 2.50
	+50		-4.80	C 2.00
31			-4.74	C 2.81
	78° 08' RT			
	+24 = APT. 62 45° bends		-4.69	C 4.0
	+48 NO. 1744 CONDUIT		-4.65 =	C 2.16
	+69		-4.61	C 3.09
32	+43 = Pump Sta #1		-4.53	C 3.09

3.10 = 1

ended 3-4-37

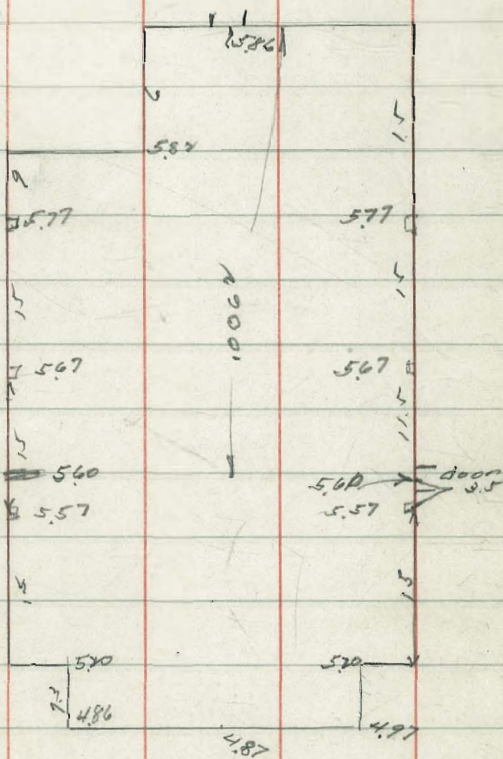
SERP 98-97 Prospect # Herschel

35

9.99 X Floor El. La Jolla Fire Sta.

INDEXED

W.K.  
OCT 13 1948



Alley Pav.  
 DAS 31 La Jolla Park

11-23-36

95.99

SE KLING + FAY

36

	E/y	w/y
N/y KLING = 0+00	93.90	93.40
+20 B	94.25	93.97
+40 B	94.74	94.54
+90	96.12	95.96
+40 B	97.53	97.39
+60 B	98.0	97.88
+80 B	98.20	98.37
+20 B	98.75	98.56
+20 B	98.91	98.71
+20 B	98.95	98.75
+60 B	98.86	98.66
+10	98.50	98.30
+60	98.13	97.92
+10	97.74	97.54
+60 B	97.40	97.20
+80 A	97.29	97.05
5 Sly Silverado	97.22	96.90

INDEXED

WK.

OCT 13 1948

96.84	E 93.90	94.25	94.74	96.14	97.53	98.00
102.53	3.63	3.28	3.79	1.30	5.20	4.53
98.55		3.19	3.78	1.25	4.71	4.82
98.68		+0.09	+0.51	+0.25	+0.29	+0.71
98.49				+0.12		
98.68	W 93.40	93.97	94.74	95.96	97.39	97.88
102.49	0.13	3.56	3.98	1.57	5.14	4.65
		3.27	3.98	1.57	4.83	4.23
		-0.17	-0.07	+1.0	+0.31	+0.22
						+0.30
	E 98.40	98.75	98.91	98.95	98.86	98.50
	8.13	3.78	4.92	2.88	4.97	5.33
	0.55	3.42	4.16	2.48	4.97	4.97
	+0.58	+0.32	+0.76	+0.28	+0.25	+0.56
	W 98.37	98.50	98.71	98.75	98.66	98.30
	4.16	5.27	5.10	5.08	5.17	4.53
	3.98	4.98	4.92	4.58	4.90	5.12
	+0.18	+0.49	+0.15	+0.50	+0.27	+0.21
	E 98.13	97.76	97.40	97.29	97.20	
	4.36	4.73	5.09	5.20	5.37	
	3.78	3.73	4.02	5.00		
	+0.82	+1.0	+0.57	+0.12		
	W 97.92	97.56	97.20	97.05	96.90	
	4.57	4.93	5.29	5.44	5.59	
	4.37	5.00	5.07	5.40		
	+0.20	+0.33	+0.22	+0.06		

Old Town Chapel Const.

12-1-50  
Moore  
1048

INDEXED  
W.K.  
OCT 13 1948

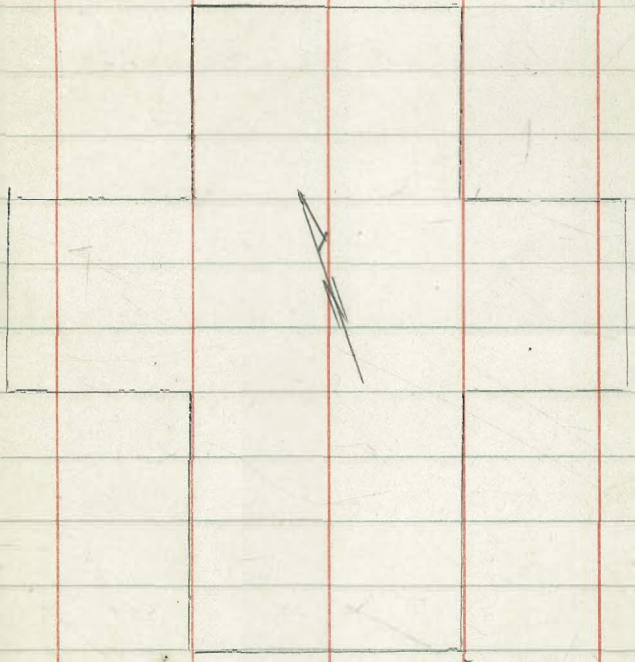
INDEXED 37  
20.48

NWBP 1.00 63.28 31.95 Santiago + Conde

T.P. 6.47 29.07 10.68 22.60

El. Finish Main fl. 25.58 <sup>3.49</sup> <sub>1.71</sub>

11 fl. N end 25.95 <sup>3.12</sup> <sub>2.44</sub> <sub>20.48</sub>



F 1.71



# INDEXED

W.K.

OCT 13 1948

Fire Hyd. Grades  
on Silver Gate Ave

12-1-36  
Moore

38

293.60  
2.32  
296.22  
JP Ecb Silver Gate  
plus 5 of Dudley

cb. grade

SEly Cor. Dupont St

289.10

7.34  
2.04  
9.38

292.70  
2.30  
294.06  
Jcb at Charles

SEly Charles

293.0

2.06

292.70  
1.11

SWly Jennings

275.22

9.10  
3.7  
5.4

292.84  
2.34  
281.74  
284.32

Moore  
12-3-34  
20' Pav. strip

Fay Ave Pav. Grade  
S. of Rushville, W 1/2

153.49  
4.01  
157.50  
4.82  
152.67  
3.02  
155.69

Top cb. 0+00

INDEXED

W.R.

OCT 13 1948

39

	W. gvt	E	E edge
00 = A W 66.	152.55	152.70	152.10
+25	152.65		152.15
+50	152.75	152.95	152.20
+75	152.67		152.22
1	152.60	152.10	152.25
+25	152.52		152.22
+50	152.45	152.90	152.20
+75	152.37		152.15
2	152.30	152.25	152.10
+25	152.22		152.03
+50	152.15	152.60	152.95
+75	152.07		152.87
3	152.0	152.45	152.80
+25	151.92		152.72
+50	151.85	152.30	152.65
+65	151.80	152.25	152.60
4	151.70	152.15	152.50
	155		152.5

	W. gvt	E	E edge
4 + 50	151.40	151.85	152.20
+75	151.25		152.05
5	151.10	151.55	151.90
+25	150.95		151.75
+50	150.80	151.25	151.60
+75	150.65		151.45
6	150.50	150.95	151.30
+25	150.35		151.15
+50	150.20	150.65	151.00
+75	150.05		150.80
7	149.90	150.30	150.60
+25	149.75		150.45 <del>149.25</del>
+54 P.C.	149.60	149.80	149.90

E 1/2 Fay Ave. Grades

153.29  
 152.96  
 152.92  
 152.78  
 152.67

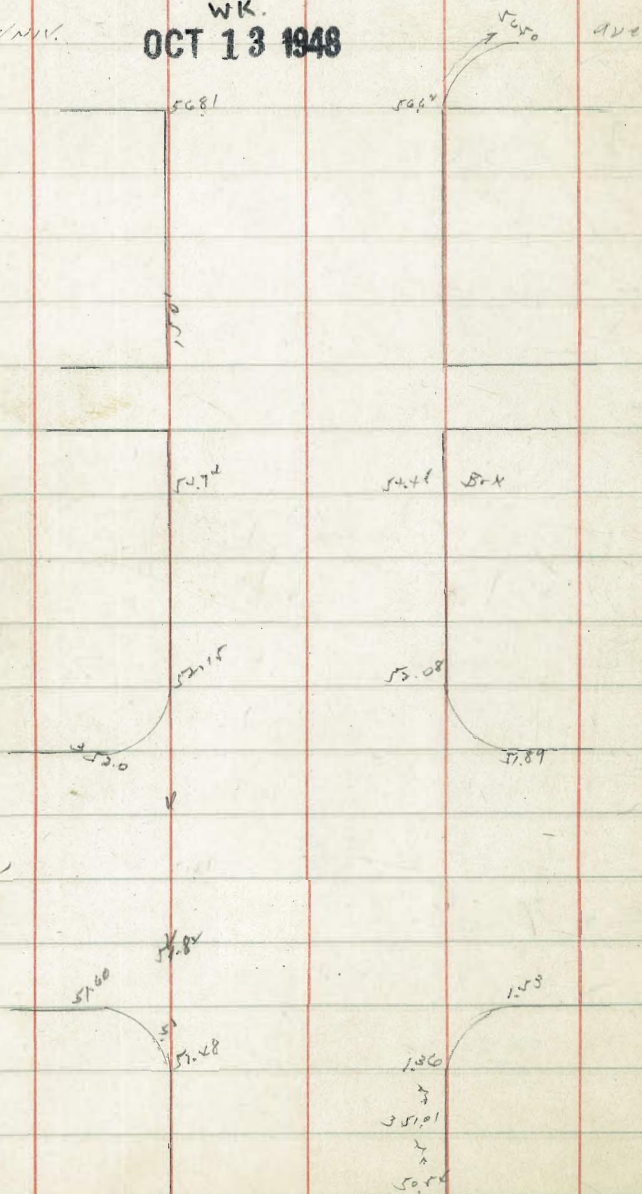
	W	E		W	E
00	153.3	152.65 ✓	5	52.50	52.0 ✓
+50	153.35	152.75 ✓	+50	52.40	51.90 ✓
	53.30	53.15 ✓	6	52.25	51.75 ✓
+150	53.20	53.0 ✓	+50	51.85	51.40 ✓
	53.10	52.85 ✓	7	51.30	50.75 ✓
+50	53.0	52.70 ✓	+54	50.20	49.70 ✓
	52.90	52.60 ✓			
+50	52.80	52.45 ✓			
	52.70	52.30 ✓			
+150	52.60	52.15 ✓			

31 ST. PAUL ST of UNIV. AVE.  
12-7-36

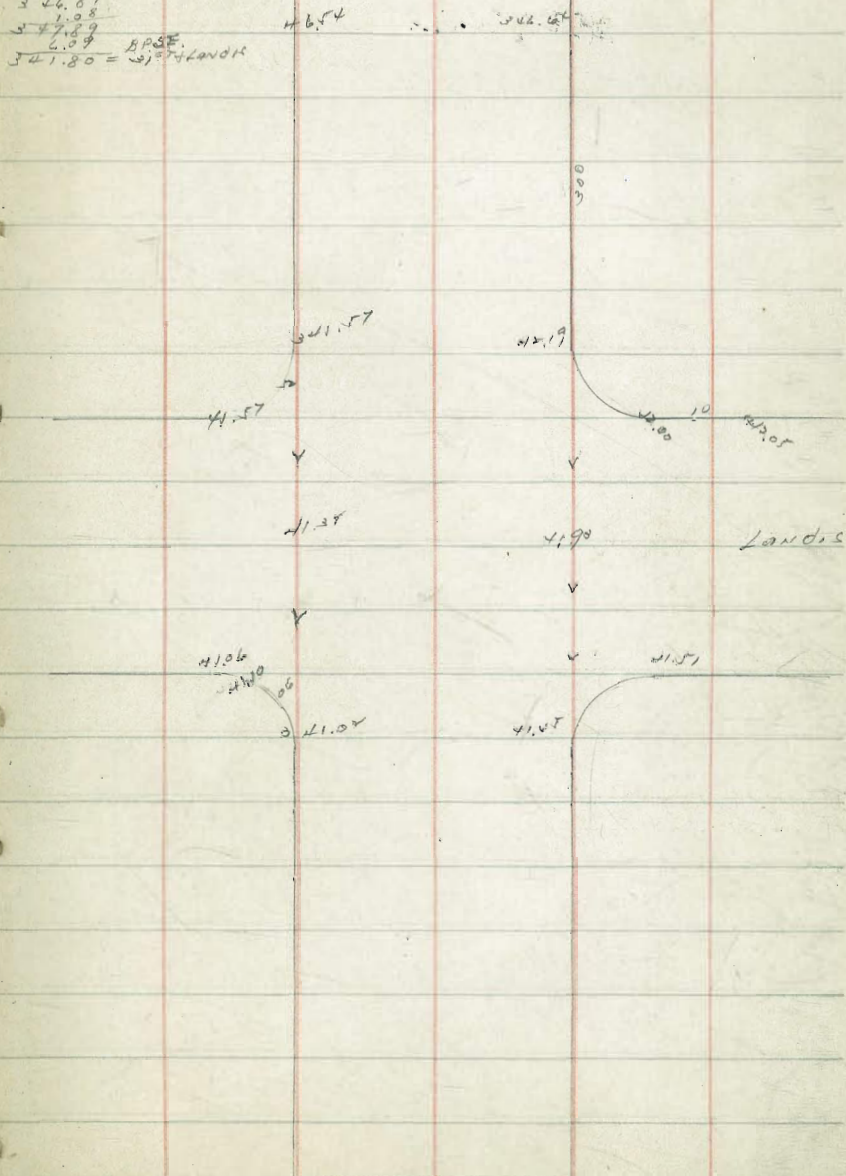
# INDEXED

WK.  
OCT 13 1948

UNIV.



N.W. COR. UNIV. ILL.  
 357.98  
 5.87  
 52.95  
 34.83  
 3.45  
 356.85  
 10.04  
 344.81  
 1.08  
 347.89  
 2.09  
 341.80 = 357.98 + 50.96



S.M.H. El. on LYTTON  
Ely. of Rosecrans

MOORE  
12-17-46

INDEXED

W.K.

OCT 13 1948

42

SWOP 075 42.50 41.75 LYTTON  
Rosecrans

T.P. 117 30.76 12.91 29.59

2+14.3 EX. M.H. FL. 9.19 21.57

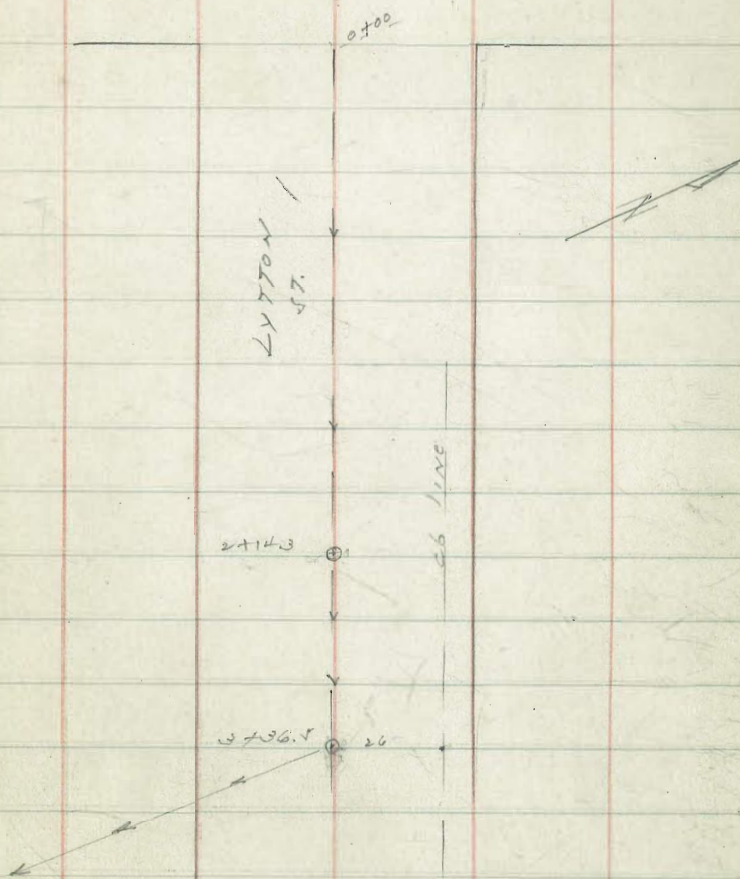
" " RIM 4.91 25.85

3+36.5 EX. M.H. FL. 15.64 15.12

" " RIM 10.96 19.80

26' N of 3+36.5 Top of 11.00 19.76

Rosecrans St



Moore  
1-7-27

DRAIN CONST.  
FRONT D.C. ST

~~31.55~~ NW 2107  
31.70 FRONT 4-C  
31.25

INDEXED  
W.K.  
OCT 13 1948

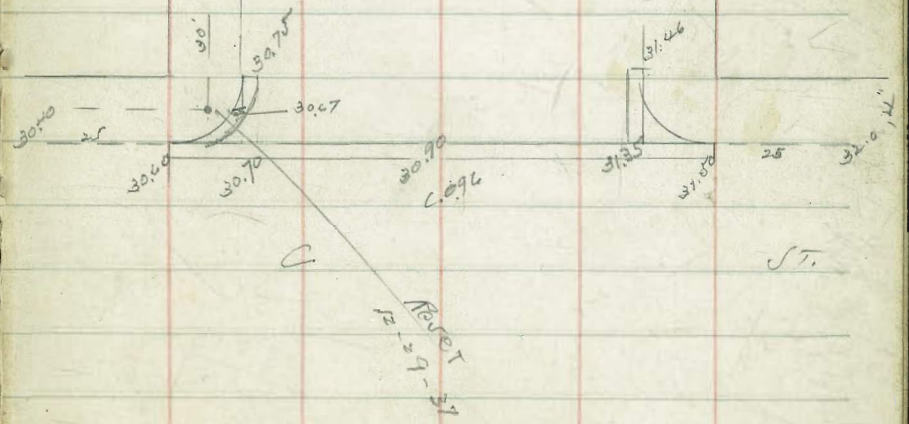
43

7' C.T. SLB ST.

FRONT

14 26 26 14

C.T. RP SQM. 31.98



Side Walk CONST.  
NANTASKET CT

Bk 152-153 Mission Beach

San Juan  
Sea Wall

B.M.B.P. 230 9.37 7.07

J.P. 2.90 2.47 9.80 - 0.43

INDEXED

W.K.  
OCT 13 1948

44

Ely Mission Beach = 00

✓ - 0.40

0 + 40

adm

- 1.07

356  
00

Walk + 60 - 1.50

0 + 80

Bk

✓ - 7.75

4.32  
00

1 + 20

" 1 + 35 Const  
Walk - 1.90

- 1.85

4.44  
00

1 + 69.7

Wly Bayside Lane

- 2.0

4.47  
00

00 = Ely " "

- 2.0

4.47  
00

0 + 30

- 1.70

4.17  
00

0 + 55

- 1.20

4.67  
00

0 + 81.7 Wly Bayside Walk

- 0.50

1.87  
00

Rosecrans St. Grades 100' wide  
Pacific Sly. 15' curbs

No. 30

W-06 E E-06

Congress  
Nly 0 + 19.03 4.65 - 1.2 4.54 - Winedge Pav. Pac.

Sly Congress  
10 + 19.03 4.75 - 0.3 4.70 - 0.2 5.60 - 0.7

1 + 19.03 4.85 - 0.6 5.10 - 0.6 5.29 - 0.6

4 + 19.03 4.95 - 0.8 5.16 - 0.8 5.22 - 0.7

2 + 19.03 5.05 - 1.5 5.18 - 0.9 5.15 - 0.6

+ 19.03 5.15 - 1.5 5.19 - 1.0 5.08 - 0.1

2 + 19.03 <sup>Front</sup> 5.17 - 1.4 5.20 - 0.9 5.07 - 0.7

3 + 19.03 5.07 - 1.1 5.12 - 0.9 5.01 - 0.7

3 + 19.03 Nly Jefferson 4.94 - 1.5 5.02 - 0.8 4.94 - 1.0

July  
1.51 B.P. Center curb Curve  
10.13 Jan Diego + Taylor S. Cor.  
2.79  
6.54 T.P. FH. Fly Top edge  
1.84 Congress + Rosecrans  
8.18 X

2.34  
2.10  
8.44

2.34  
2.39  
8.29

2.39 - RM  
1.51  
2.78  
3.17  
3.17  
8.09  
1.84  
6.22 = Fly Top edge  
3.79 FH. Congress  
10.91 Rosecrans  
4.64 o.k.

INDEXED

W.K.

OCT 13 1948



W c6  
 4.19.03 4.84-1.1  
 4.90-0.8 4.82-1.0

+69.03 4.70-0.5  
 4.77-0.4 4.70-1.1

5 +19.03 4.57-0.8  
 4.65-0.4 4.57-0.4

+69.03 4.42-1.1  
 4.52-0.3 4.44-0.8

6.4.19.03 4.32-0.8  
 4.40-0.4 4.34-1.1 ✓

+69.03 4.20-0.8  
 4.27-0.6 4.20-1.4

Wly 57000  
 7 +19.03 4.07-1.0  
 4.15-0.5 4.07-0.9

Wly 57000  
 7 +69.03 3.96-0.8  
 4.02-0.4 3.96-0.6

8 +19.03 3.83-0.5  
 3.91-0.4 3.83-0.4

+69.03 3.70-0.5  
 3.78-0.4 3.70-0.4

818-7

8.44-7  
 2.70  
 5.70  
 3.55  
 7.25

T.P.

8.69  
 4.37  
 4.32  
 4.44  
 7.65

4.48 T.P. 5706 Wly Cor 110000 Rosecrans  
 3.70  
 3.60  
 7.30

Wcb

Z

Ecb

9+19.03

3.57-0.4

3.65-0.4

3.57-0.1

+69.03

3.45-0.4

3.53-0.4

3.45-0.6

10+19.03

3.32-0.2

3.40-0.2

3.32-0.7

10+69.03

NY  
Hand  
Calc

3.19-0.2

3.27-0.4

3.19-0.7 ✓

11+19.03

5/4

3.07-0.2

3.15-0.2

3.07-0.6 ✓

+69.03

2.94-0.5

3.02-0.2

2.94-0.6

12+19.03

2.82-0.0

2.90-0.2

2.82-0.7 ✓

+69.03

2.69-0.4

2.77-0.4

2.69-0.7

13+19.03

2.57-0.4

2.65-0.2

2.57+0.1

+69.03

2.45-0.8

2.53-0.1

2.45-0.6

730 T

47

765

485

2.81

3.68

6.49

T.P.

W CB

E

E CB

WLY Kurz

14418.6

234 + 0.3

240

234 + 0.3

WLY Kurz

14468.6

234 - 0.7

240 - 0.1

234 + 1.0

CONT. p 60 THIS BOOK.

7307  
3.63

3.67 = 3 nail Tel. pole N. Coon Kurz  
Rochester

← Congdon 50 50 75  
To Max.  
at Riley

Jefferson 50 50

Moore 50 50

Handcock

Kur 72 50 50

WLY Pacific

Rosecrans ST.

poss'ly of E  
of Prop. Paving.  
see 1469-15  
proposed to pass  
up various angles  
and take up diff.  
in the sidewalks.

Line South

Staked  
3-17-37.

Mission Beach  
Sewer CONST. Bayside Lane

San Juan Pl. to North

F.L.  
Grade

Pump House #1 38+74.70	- 12.0	
37 + 21.73 = 50' E of M.H.	- 8.90	C 8.45
36 + 71.73 = $\Delta$ M.H. San Juan Bayside	- 8.81	C 7.11
36 + 50	- 8.78	C 7.08
36	- 8.70	C 7.00
35 + 70 = M.H.	- 8.66	C 6.91
35 + 50	- 8.63	C 7.00
35	- 8.55	C 7.10
34 + 50	- 8.48	C 6.74
34 + 38 = B.C.	- 8.46	C 6.88
34 + 00 0° 26.10	- 8.40	C 7.07
33 + 69.5 = M.H. 0° 51.18	- 8.35	C 6.78
33 + 50 1° 00.35	- 8.30	C 6.92
33 1° 34.68	- 8.23	C 6.82
32 + 50 2° 09.01	- 8.15	C 6.83
32 2° 43.34	- 8.07	C 7.05
31 + 57 = M.H. 3° 12.26	- 8.05	C 7.10

91' = 12° 06.10  
91' = 15° 03.22  
91' = 18° 00.00

B.M. Spike pole 8' N of 28+40

INDEXED

W.K.  
OCT 13 1948

0.70  
1.79  
2.49 X  
3.75  
1.26  
4.17  
2.91 X

P 33

TP nail Cor. Yellow Cor.  
20' W of 35+60

2.2 W

2.1

1.6

1.1

0.6

0.8 W

4.32  
- 1.41 T.P. 5706 33+00  
4.89  
3.48 X

31+50	3° 17.26	-8.02	C 7.12	3.48 $\bar{\Delta}$	
31	3° 52.0	-7.92	C 7.11	3.17	0.31 = B.M. nail in Power Pole 10' E of 27+50
33+50	4° 26.33	-7.87	C 6.92		0.8
30	5° 00.07	-7.79	C 6.45		1.1
29+54 = M.H.	5° 32.24	-7.74	C 7.02		1.4 W
29	6° 09.52	-7.66	C 6.72		1.1
28+50	6° 43.61	-7.58	C 7.02		0.8
28	7° 18.2	-7.51	C 6.57		0.5
27+50	7° 52.33	-7.44	C 6.30		0.2
27+56 = M.H.	8° 01.0	-7.41	C 6.16		= Alley N of Santa Clara Pl.
27+27.2 = P.O.C.	8° 01.0	Not set		0.31 BM	5-11-37 stated
26+92.7		-7.35	C 6.17	3.90	
26+51.4		-7.29	C 6.00		
26+09.0 M.H. ✓		-7.23	C 6.11		
25+66.7		-7.17	C 6.28		
25+24.4		-7.11	C 6.26		
24+82.3 M.H. ✓		-7.04	C 6.04		
24+40.2		-6.98	C 6.00		
23+98.0		-6.92	C 5.88		

23 + 55.7	M.H.	-685		C 5.94
23 + 12.6		-678		C 5.77
22 + 71.1		-672		C 5.97
22 + 29.0	M.H.	-665		C 5.50
21 + 86.7		-659		C 5.37
21 + 44.4		-653		C 5.67
21 + 02.1	M.H.	-646		C 5.25
20 + 54.4		-639	-1.22	C 6.00
20 + 02.1		-632	4.76 3.54 4.52	C 5.11
19 + 54.6	M.H. STA. N.E. = 20100	-625	-0.98 4.41	C 4.63
0 + 42.67		-618	3.43	C 5.04
0 + 85.3		-611		C 5.05
1 + 28	M.H.	-605		C 4.80
1 + 70.67		-598		C 4.90
2 + 12.84		-592		C 4.72
2 + 56.0	M.H.	-586		C 4.40
2 + 98.0		-579		C 4.81
3 + 41.72		-573		C 4.61
3 + 84.58		-567		C 4.69

390 X  
491  
7-1.01 TP ON STUB  
443  
562 X  
4.01  
0.39 TP  
3.88  
3.49 X  
4.71  
-1.22 = B.M. ON LD + CT, & San Jose Pl. and W.L. of

-1.22 = B.M.  
9.52  
8.30  
1.23  
7.07

B.M. 51  
San Jose Pl.  
Ocean Walk  
7.08

Alley S of San Jose Pl.

C 5.02

" N " " " " "

0.698 per ft. South of San Jose Pl.

ENDED 5-11-07

" N " " Salem Ct.

BEGAN STAKING 7-10-07

" N of Seagirt

" N of Sunset

$\frac{3.43}{1.03} = \text{DIT. N.E. Cor. Conn. Slab in front of 821 Toulon Ct.}$

5.437

4457.00		-5.60	<del>C 405</del>	C 405	
4469.5		-5.54	<del>C 403</del>	C 403	
5+14	M.H. 10	-5.48	<del>C 412</del>	C 412	alley N of Tangiers
+54.5		-5.41	<del>C 394</del>	C 394	
+96.9		-5.35	<del>C 381</del>	C 381	
6+29.2	M.H.	-5.29	<del>C 358</del>	C 376	" " Toulon
+81.2		-5.22	<del>C 347</del>	C 345	
7+23		-5.16	<del>C 352</del>	C 371	
+64.8	M.H.	-5.10	<del>C 397</del>	C 415	" " VANITIE
8+11.4		-5.03	<del>C 366</del>	C 384	
+58		-4.96	<del>C 341</del>	C 359	
9+04.6	M.H.	-4.89	<del>C 367</del>	C 387	" " San Rafael Pl.
+47.3		-4.82	<del>C 349</del>	C 367	
+90		-4.76	<del>C 338</del>	C 356	
10+32.7	M.H.	-4.70	<del>C 330</del>	C 348	" " Venice
+76.7		-4.64	<del>C 320</del>	C 338	
11+19.7		-4.57	<del>C 300</del>	C 318	
11+63.3	M.H.	-4.50	<del>C 300</del>	C 380	alley N of Verona Ct. on E Bayside Lane
= 11+94.8 = M.H. #8 from Pacific					Summit of Grade = M.H. #8 from Pacific & Mission Blvd.

1.4366 per 1' ON  $\frac{1}{2}$

MISSION BEACH SENIOR

ON ELY'S LINE of MISSION Blvd. to alley S. of WHITING CT.  
Thence to Bayside Lane

NEPT Pacific MISSION Blvd.

#1	Grade	Invert	
0+00 = M.H. Junction Mission Bldg. Bldg.		-8.13	C 5.39 6.31
+50		-7.99	C 5.24 6.01
1		-7.84	C 5.10 6.08
+50		-7.70	C 5.14 6.06
2		-7.55	C 5.11 6.03
+50		-7.40	C 5.00 5.94
3		-7.25	C 5.88 5.80
+63.30 = M.H. #2		-7.05	C 5.80 5.74
4 +09.3		-6.92	C 5.84 5.74
+55.3	0.29%	-6.78	C 5.78 5.70
5 +01.3		-6.65	C 5.72 5.65
5 +47.3 = M.H. #3		-6.52	C 5.68 5.60
5 +91.9		-6.39	C 5.69 5.61
6 +36.4		-6.25	C 5.56 5.48
6 +81 = M.H. #4		-6.12	C 5.44 5.36
7 +25.7		-5.99	C 5.36 5.28
7 +70.3		-5.85	C 5.16 5.08
8 +15 = M.H. #5		-5.72	C 5.08 5.00

Correction on B.M.

-1.81  
4.88  
3.07  
4.07  
-1.00  
5.23  
4.23  
4.98  
-0.75  
4.53  
3.78  
4.81  
-1.08  
4.13  
5.10  
4.13  
-1.03 = -1.03 p. 52

INDEXED  
W.K.  
OCT 13 1948

alley N of Zanzibar Ct.

alley S of Zanzibar Ct.  
SW. Cor. Bayside Lane and

2.32 Set  
-1.54 = nail B.M. in Power Pole alley N. of Verona Ct.  
146

alley N of Yarmouth Ct.

M.H. in alley N. of Windsor Ct.

-1.03  
0.28 error



	Grade
9+17.6 = M.H.	-5.42
9+58.7	-5.27
9+99.8 = M.H.	-5.12
10+68.5 = M.H.	-4.94
11	-4.84
+50	-4.70
12	-4.56
12+17.2 = M.H.	-4.50
12+75	
13+00	
+50	
13+97.5 = M.H.	

Void

	Grade			
8+15 M.H. #5	-5.72	<del>C 467</del> 3 cut x	C 5.00 ✓	= M.H. N of Windmere Ct.
8+05	-5.56		<del>C 464</del> C 470	
9+15	-5.40		<del>C 466</del> C 464	
9+65 = M.H. #6	-5.24		<del>C 470</del> C 438	= M.H. alley S of Windmere Ct.
10+07.4	-5.10		<del>C 468</del> C 436	

0.32%

	Grade	$\frac{398}{4.87} \times$ prev		
10+49.9	-4.97	$\frac{398}{4.87} - 0.87$ $\frac{4.23}{5.46}$	<del>C 4.50</del>	C 4.38
10+92.4 M.H. #7	-4.83	$\frac{41.77}{4.85}$	C 4.04	C 4.24
11+43.6	-4.67	$\frac{0.68}{4.33}$	<del>C 4.00</del>	C 4.18
11+94.8 = M.H. #8	-4.50	$\frac{3.65}{5.65}$	<del>C 4.00</del>	C 3.80

M.H. alley S of WHITING ST.  
ON S. LINE OF 11550th Ave.  
thence To  
M.H. N end Bay-side Lane  
= Summit Grade





Cabrillo School  
Play Grounds

See next page

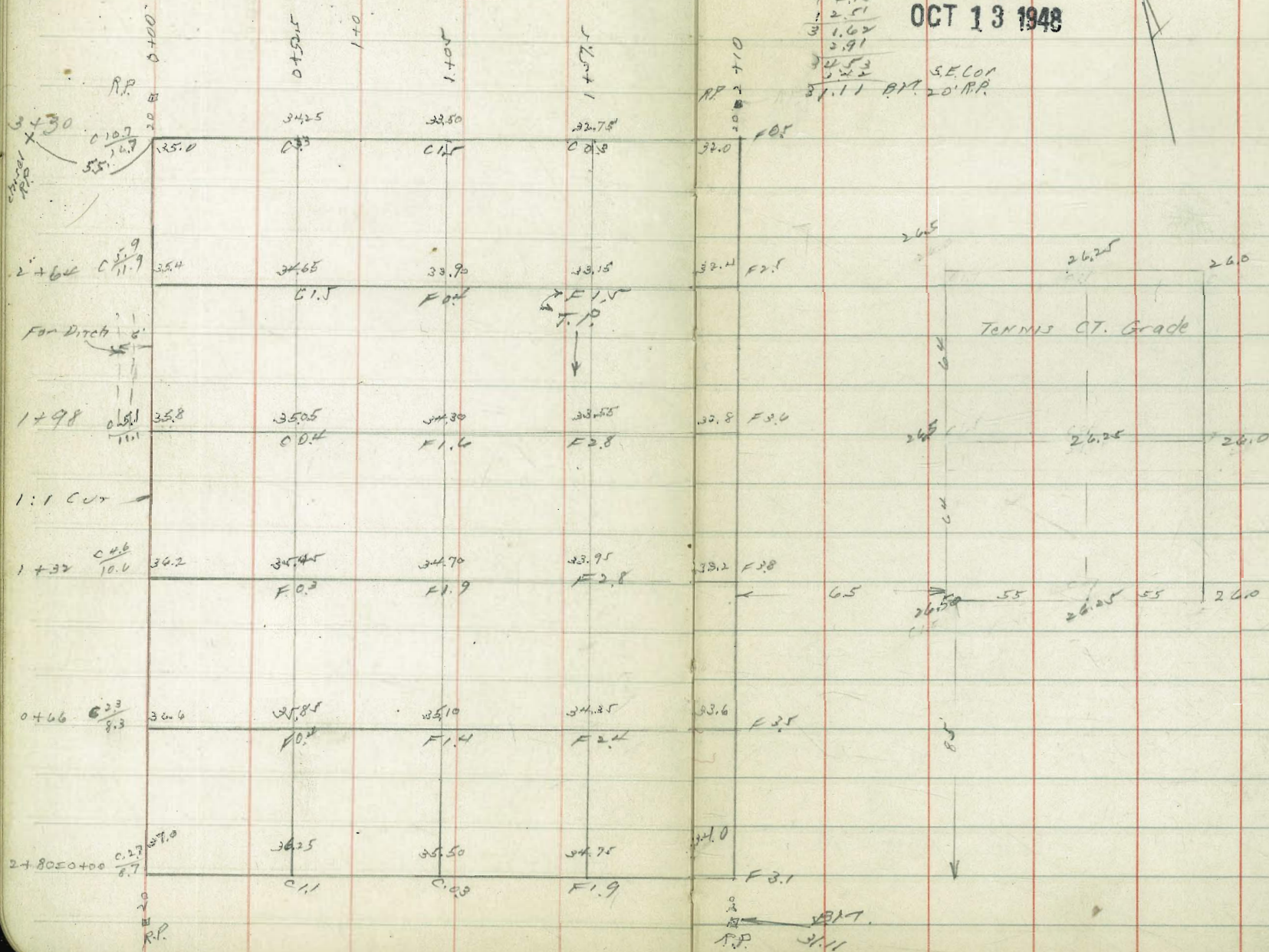
MIN. BP  
EVIDENCE  
701 807.

51.77  
1.97  
53.74  
13.71  
41.03  
3.10  
4.13  
2.51  
1.62  
3.91  
32.53  
3.22  
31.11 B.M.

INDEXED

W.K.

OCT 13 1948



ME COR  
 50000  
 31.50  
 13.51  
 44.51  
 0.51  
 44.00  
 2.7  
 46.7

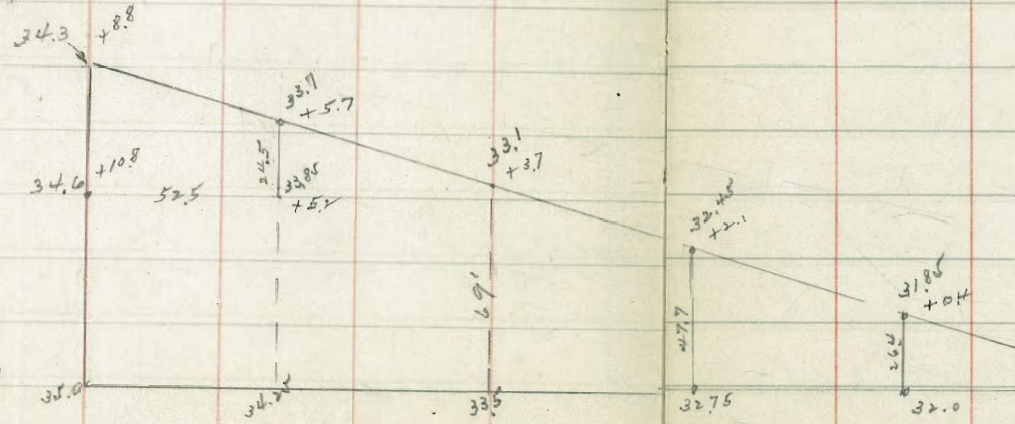
4 + 41.7

3 + 96

3 + 30

RR + Chival  
 cross

55



## Rosecrans St. Grades

Cont. from p 48

W.C. 237

240

E.C. 237

To

Ingraham St. (Causeway)  
= 514 Kurtz St.

60

N	240 -0.7	248 -0.2	240 -0.4
+50	258 -1.0	261 -0.2	258 -0.6
16	267 -1.3	275 -0.4	267 -1.1
+50	280 -1.5	288 -0.6	280 -0.5
17	293 -1.5	301 -0.7	293 -1.4
+50	306 -1.2	314 -0.7	306 -2.1
18	319 -1.7	327 -0.5	319 -2.1
+47.7	337 -1.8	340 -0.4	337 -2.6
+97.7	346 0.0	346 0.0	346 0.0
19 +14.8	338 0.0	338 0.0	338 0.0
+64.18	316 -1.5	324 -0.3	316 -1.6
20	301 -2.4	309 -1.2	301 -1.8
+50	280 -1.5	288 -1.6	280 -1.4
21	259 -1.2	268 -1.4	260 -1.6 ✓
+50	238 -1.4	247 -1.4	240 -1.6
22	217 -1.4	224 -1.1	219 -1.2
+50	195 -1.4	204 -0.9	198 -0.9
23	174 -1.1	184 -0.7	178 -0.8
+50	153 -0.6	163 -0.6	157 -0.4

$$\begin{array}{r} 3.67 \\ 3.61 \\ \hline 7.28 \end{array}$$

S.P. 317. 3 nails

Tel. pole

N Cor

Kurtz  
Rosecrans St.

End of full crown

E N bound of RR.

E S " " "

beg. of full crown

T.P.

594

on W stub

1.24

3.87

5.11

	W c b		E c b	
24	1.32 - 0.6	1.42 - 0.5	1.37 - 0.3	
+50	1.11 - 0.3	1.21 - 0.4	1.16 + 0.1	
25	0.90 - 0.5	1.00 - 0.4	0.95 0.0	
+50	0.69 - 0.3	0.60 0.0	0.75 + 0.1	
55 + 83.45	0.55	0.21	0.41	
55 95.45	0.50 ✓	0.21 ✓ = Pav	0.56 ✓	

$$\frac{4.21}{4.02} \times$$

$$0.59 = \text{B.M. B.P. } \int \text{wily curb } \begin{matrix} \text{Ingraham} \\ \text{Rosecrows} \end{matrix}$$

$$= \text{Line of Ingraham to North}$$

$$= \text{" " " " South}$$



Moore  
5-1-97

ROSECRANS ST.  
12" WATER LINE CONST.  
LYTTON TO QUINBY  
BOTTOM DITCH GRADE

INDEXED  
C.S.K.

62

0 + 00 = 12" x 12" Tee

+ 25 = 5L LYTTON = 12" G.V.

+ 75

1 + 25

+ 75

2 + 25 = NL KINGSTON

2 + 00 = 12" x 6" Tee & 6" x 4" Reducer

2 + 85 = SL KINGSTON

3 + 05

+ 85

4 + 05

+ 85 = NLY JAMES

5 + 20 = 12" x 6" Tee  
6" x 4" Red.

5 + 45 = SLY JAMES

+ 95

6 + 45

+ 95

7 + 45 = NLY BROWN

7 + 80 = 12" x 6" Tee  
6" x 4" Red.

8 + 05 = Sly 1050N				52.08 X		
+55				+50	41.0	+10.5
9 + 05				1	40.0	+3.6
+55				+50	39.0	+3.5
10 + 05 = Nly Homer				✓ Nly CURTIS T.P.	1050 STUB	38.0
12 x 6 Tee					41.51	+3.6
10 + 40 = 6 x 4 Red.				00 Sly	1.65	36.9
					43.16 X	+3.5
10 + 65 = Sly Homers				+50	35.0	+3.7
11 + 15				1	34.4	+3.7
11 + 65				+50	33.1	+3.6
12 + 15				✓ Nly Browning	31.9	+3.9
12 + 65 = Nly Goldsmith = 12" G.V.				00 Sly "	29.9	+4.0
12 x 6 Tee				+50	28.9	+3.8
13 + 00 = 6 x 4 Red.			Mx Dumas	1	27.9	+3.8
13 + 25 = Sly Goldsmith			48.50		26.9	+3.8
			32.00	+50	T.P. STUB	25.9
					12.65	+3.8
Sly Elliott = 00. S. end Navy strip pole	45.9	✓		✓ Nly ALCOTT	30.51	24.9
+50	45.2	+6.1		00 Sly "	1.38	24.2
1	44.5	+3.7		+50	31.89 X	23.4
+50	43.8	+3.0		1		22.6
✓ Nly Dumas	43.1	+3.5		+50		21.8
00 Sly "	42.0	+3.3		✓ Nly Zola		21.0

		26.89 x 5.40 <u>26.49</u> 26.47	20.8	+3.6	
00	Sly Zola		20.3	+3.8	
	+50		19.9	+3.7	
1	12 Tee Navy Stub		19.4	+3.8	
	+50		19.0	+3.8	
✓	Nly Yonge		18.4	+3.8	
00	Sly "	26.47 7.46 <u>27.93</u> 5.89 <u>22.04</u> 0.65 22.69 x	17.7	+3.7	
	+50		17.0	+3.6	
1			16.3	+3.4	
	+50		15.6	+3.4	
✓	Nly Xenophon		12.7	+4.2	
00	Sly "		11.4	+3.9	
	+50		10.20	+3.9	
1			9.0	+3.8	
	+50		7.7	+4.0	
2	Nly Whitner NWAP	12.77 2.38 <u>15.15</u>	7.2	+3.8	
00	Sly "		7.4	+3.5	
	+50		7.4	+3.5	
1			7.8	+3.4	
	+50				

✓ = Nly	Voltaire		8.0	+3.6	
00 = Sly	"		8.0	+4.0	
	+50		7.8	+4.4	
1		15.15 3.38 <u>11.77</u> 1.12 <u>12.89</u>	7.4	+4.5	
	+50		7.1	+4.7	
✓ = Nly	Vidal		6.3	+5.1	
00 = Sly	"		4.2	+5.1	
	+50		3.6	+4.3	
1			2.1	+4.3	
	+50		0.6	+4.2	
✓ = Nly	Tennyson		-1.0	+4.8	
00 = Sly	"		-2.0	+4.9	
	+50	Passerini BM. Sterne 7' Max.	-2.25	+4.7	
1		3.10 0.58 <u>2.68</u>	-2.50	+4.5	
	+50		-2.75	+4.6	
✓ = Nly	Sterne		-3.0	+4.8	
00 = Sly	"		-2.2	+4.3	
	+50		-1.8	+4.1	
1			-1.4	+4.1	
	+50		-1.0	+4.0	

	6.28 = T		
	3.23		
	3.45		
✓ Nly Russell	4.39	-0.4	+3.9
	7.84		
00 = Sly "		-0.2	+3.8
+50		0.0	+3.6
1		0.2	+3.6
+50		0.4	+3.5
✓ Nly Quinby	8.08 = T	+0.4	+3.5
	8.97		
Sly "	5.61	0.4	C.34
	8.97		
+50		0.3	C.33
1		0.2	C.35
+50		0.1	C.34
✓ Nly Poe		0.0	C.34
Sly "		0.2	C.36
+50		0.4	C.35
1		0.0	C.36
+50		0.8	C.35
✓ Nly Olyphant		1.0	C.37
Sly "			



See p 9  
for ties.

Sassafus Grades  
INDIA TO KET.

	S	E	N
-25		8375	
-15		8325	
W. India <sup>0100</sup>	8221	8215	8268
0 +10	80.62	8061	80.94
+50	73.80		73.98
	65.34		65.28
+50	56.86		56.58
+80	51.76		51.36
+90	50.56	4968	49.62
2 E. Ket	49.44	4858	47.87
+15		48.24	

Moore 5-15-57

RETURN TO CALIF.

	S	M.	
00 W. Ket.	47.59	46.81	46.16
+30	43.20		41.88
+60	38.80	38.05	37.40
+80	36.10		35.0
1	33.80		32.80
+20	32.0	31.40	31.10
+40	30.50	29.25	29.70
2 = E. Calif.	26.80	26.40	26.30

SEE P 72  
Comb  
Grades

INDEXED

W.K.

OCT 13 1948

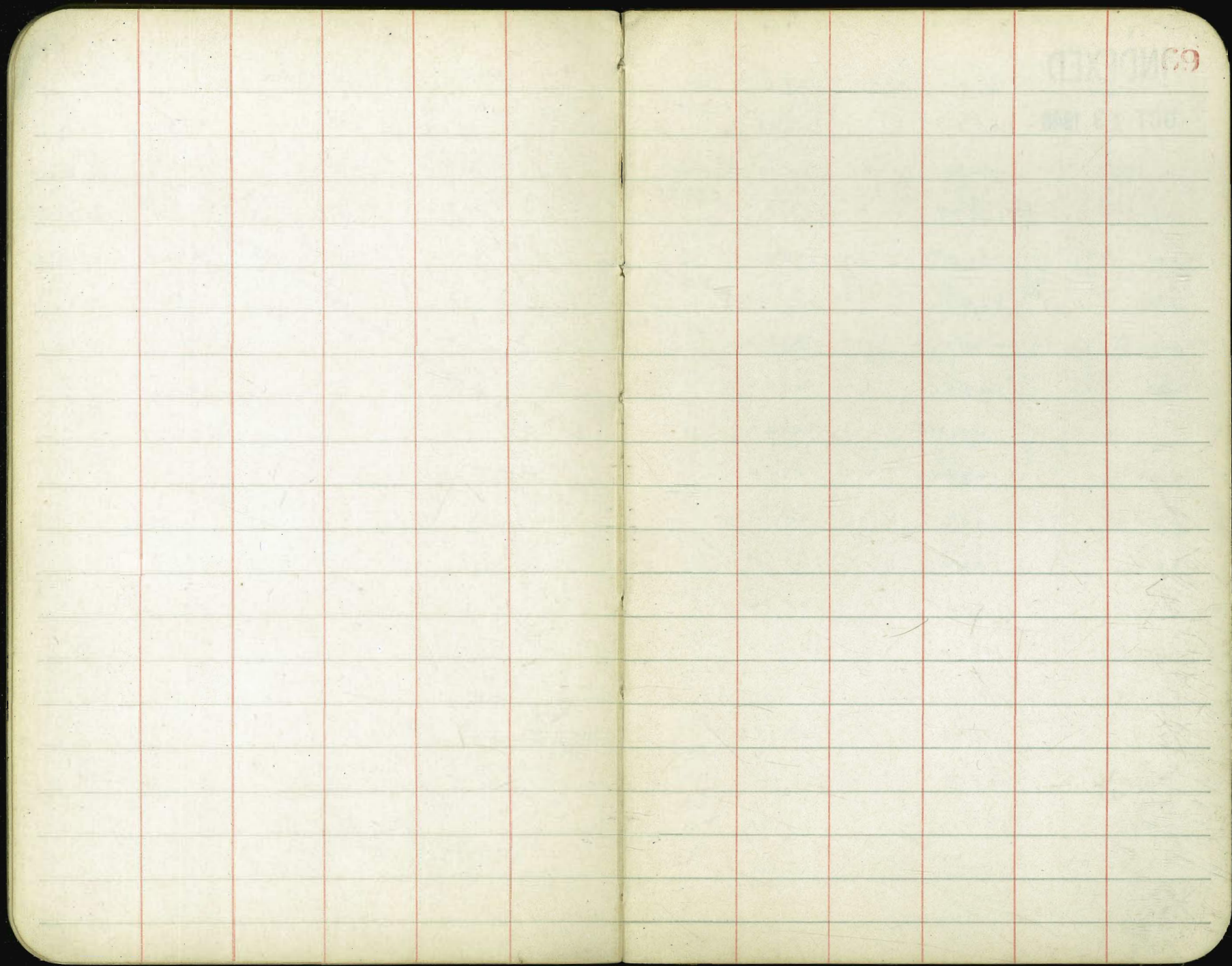
67

48.0	38.8	36.10	33.8	32.0	30.5	26.8
47.40W	10.7	15.4	3.5	5.3	6.8	10.5
	+ 1.2	+ 1.5	+ 2.0	+ 0.8	+ 1.4	+ 1.9
46.5	37.6	35.0	32.8	31.0	+ 9.7	26.3
40.00W	11.9	12.5	2.5	6.2	7.6	11.0
	+ 1.5	+ 0.7	- 0.7	+ 0.4	+ 1.2	+ 1.5

Lasswell  
Cont. to M.H.T. Dixie

	Sec	£	Nick
- 12	26.34	25.90	25.75
- 6	25.80	25.39	25.28
00=W. Calif.	24.95	24.55	24.45
0+08	23.75	23.35	23.25
+60	15.19	15.01	15.01
+80	12.41	12.22	12.23
	10.67	10.50	10.55

~~Harbor~~  
~~Job~~



69

1911



J-17-87. Milky Pav. 26 L Jolla Pt

# INDEXED

W.K.

OCT 13 1948

	E	W	
00	155.24	154.98	154.80 +0.22 157.08
+20 (B)	154.70	154.50	155.51 +0.81 157.07
+60	153.49	153.28	
1	152.08	152.06	157.08 +0.28 150.40 +0.37 154.37 +1.28 153.09 +1.50 146.59 +1.28 151.76 +1.47 150.28
+40 (B)	150.11	150.22	
+80	149.30	149.42	
2	148.18	148.03	
+20	146.74	146.89	
+40 (B)	145.0	145.12	
+60	143.10	143.18	
+10	138.36	138.32	
+60 (B)	136.60	136.44	
+80	131.77	131.60	
3	130.08	129.88	
+20	128.53	128.23	
+40	127.12	126.92	
5	123.10	122.90	

	E	W				
00	54.70	53.39	52.08	50.76	50.11	49.30
	+0.22	+1.22	+0.07	+0.82	+0.10	+0.93
+20 (B)	54.50	53.28	52.06	50.84	50.22	49.42
	+0.22	+1.17	-0.02	+0.11	+0.10	out
E	48.18	46.74	45.0	43.10	38.25	36.60
	+0.68	-0.02	+2.00	-0.02	-0.12	-0.41
W	48.33	46.89	45.12	43.18	38.32	36.44
	+0.10	+0.36	+0.70	+1.19	-0.22	+0.17
E	31.77	30.08	28.53	27.12	23.10	
	-0.10	+0.32	+0.38	+0.52	+1.20	
W	31.60	29.88	28.33	26.92	22.90	
	-0.20	-0.26	-0.12	+0.12	+0.35	

5-19-57

Lower 2" Water on Stearns St.  
W of Rosecrans

00 = WL Rosecrans

2.0

0 + 25 = 66 PC.

4.0

+50

SW 7' Mon. Rosecrans  
STEARNS

6.0

1

2.10  
11.20  
14.50

10.2

$\frac{12.5}{11.0}$	$\frac{10.5}{8.6}$	$\frac{8.5}{6.7}$	$\frac{4.3}{2.6}$
$\frac{1.5}{1.7}$	$\frac{1.9}{2.2}$	$\frac{1.8}{2.1}$	$\frac{1.7}{2.0}$

INDEXED

W.K.

OCT 13 1948

71

0-1-37  
 27000  
 NORTHMAN

Sassaparilla St. Curbs

Kettner to Calif.

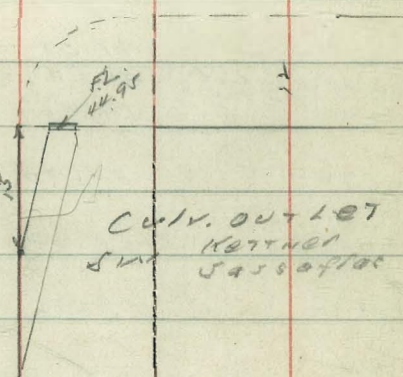
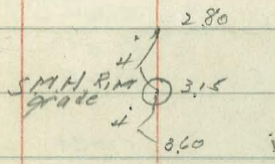
	500	1000	1500	2000	2500	3000	3500	4000	4500
W/V KET.	17.59 ✓	46.75	46.16 ✓						
0 + 00	43.20 ✓	46.20	44.91	42.50	42.0	41.88 ✓	41.28		
0 + 40	38.80 ✓	38.20 ✓	38.05	37.67	37.60 ✓	36.93			
0 + 80	36.10 ✓	5.13	35.40	5.0	35.0 ✓	34.33			
1	33.80 ✓	3.7	33.15	2.7	32.80 ✓	32.13			
1 + 20	32.0 ✓	1.48	31.40	0.9	31.101	30.43			
1 + 40	30.50 ✓	30.0	29.95	9.60	29.70 ✓	29.03			
1 + 60	28.64 ✓	8.17	28.12	7.84	27.95 ✓	26.95			
1 + 75	27.90 ✓	7.60	27.50	7.4	27.25 ✓	26.75			
1 + 87.50			26.91						
2 + 00	27.00 ✓	6.85	26.70	6.60	26.50	26.50			
2 + 22 Ely Top Rail	26.34		26.8		26.00				

SE. SASS. KET.

49.01	49.01	49.01
50.75	0.38	0.53
13.10	49.39	49.34
37.60	11.16	17.39
1.31	38.23	38.14
38.91	0.01	0.04
12.11		8.19
26.80		
4.55		
31.35	38.24	

INDEXED  
 W. K.  
 OCT 13 1948

72



Moore  
6-15-37

Alley PAVING 15' wide  
W/ 208.84 BIK 13 LA JOLLA STRAND

NOTE 3' x 15' Excavated ON Northside

0+00-ELY

Vista del Mar on Pav.

" "

0+20 B

0+50

0+80 B

1+10

1+35 = end of 12' Pav

1+40

1+70

2+00 B

2+08.84

S

34.25

36.70

40.85

45.0

48.30

51.05

51.60

54.90

58.20

59.07

N

33.97

36.70

40.85

45.0

48.30

51.05

51.60

54.90

58.20

59.07

grade  
3' x 15' alley  
on North

36.60

40.75

44.90

48.20

50.95

34.25  
11.09  
45.31  
0.75  
44.56  
12.29  
57.05  
1.95  
55.70  
0.30  
62.00

S

36.70  
8.61  
8.21  
C 0.20

40.85  
4.46  
2.36  
C 0.10

45.0  
12.05  
7.95  
C 0.60

48.30  
8.75  
7.95  
50.87

51.05  
4.00  
5.03  
C 0.37

N

36.60  
8.71  
8.21  
C 0.60

40.75  
4.56  
2.36  
C 0.63

44.90  
0.21  
0.71  
F 0.52

48.20  
8.85  
8.45  
C 0.40

50.95  
6.10  
5.0  
C 1.10

INDEXED

W.K.

OCT 13 1948

S

51.60  
5.45  
4.85  
C 0.63

54.90  
2.15  
0.0

58.20  
1.80  
2.50  
C 1.0

59.07  
2.93  
0.93  
C 2.0

N

51.60  
5.45  
4.85  
C 1.50

54.90  
2.15  
C 0.80

58.20  
1.80  
2.50  
C 0.56

59.07  
2.93  
0.93  
C 0.50

Graded 4 Pav. by St. Dept.

Capistrano Grades

INDEXED

W.K.

OCT 13 1948

E curb

W curb

00 ✓	136.5	0+00 = B.C.	130.5	Sly Meadow
0+28.3 PRC ✓	135.0	+26.79 P.P.C.	132.4 ✓	
		+46.80 P.P.C.	133.5	
		+71.2 P.O.C.	134.5	
	136.45	1+15.4	135.95	
	136.8	1+33.4	136.3	
EC ✓	136.84	1+43.4	136.34	
	136.9	1+58.4	136.4	
	136.7	1+73.4	136.2	
	136.1	1+93.4	135.7	
	135.5	2 +18.4	134.9	
	134.7	2 +33.4	133.8	
	130.0	3+00	129.6	

old Profile 116

118.04	N.W. BP		
12.32	Chatsworth		
130.34	La Cresta		
2.17			
128.17	B.M. C.T. in Mon.	S.E. Cor	Mendota
12.64			
120.81			
197.67	S.W. BP	Chatsworth & Dixon Pl.	
0.31			
197.98			
12.90			
185.08		133.19 = N.W. BP	Chatsworth
0.35			Narragansett?
185.43		135.67	
12.96		3.24	
172.27		132.43	
1.15		11.45	
173.62		142.82	
12.99		5.01	
160.63		138.87	ON MON W/2 EC Capistrano
0.04			
160.67			
12.77			
147.90			
0.73			
148.63			
12.05			
135.58			
1.55			
137.13			
12.74			
124.39			
1.45			
125.84			
7.76			
118.08	S.W. La Cresta		
	Chatsworth		
133.19	B.M. Chats. Narr.		
1.44			
134.65		128.11	
11.30		10.12	SW
123.38		118.01	Chats La Cresta
4.73		118.02	
128.11			
2.64			
125.47			
12.69			
138.16			
	curb E1. Mendota		
	N.W.		N.E.
	6.11		6.15
	122.0		121.96
			CAPISTRANO
	N.W.		N.E.
	8.20		6.9
	129.96		131.97



Wly Return Const. Harbor View Dr. J. J. Moore

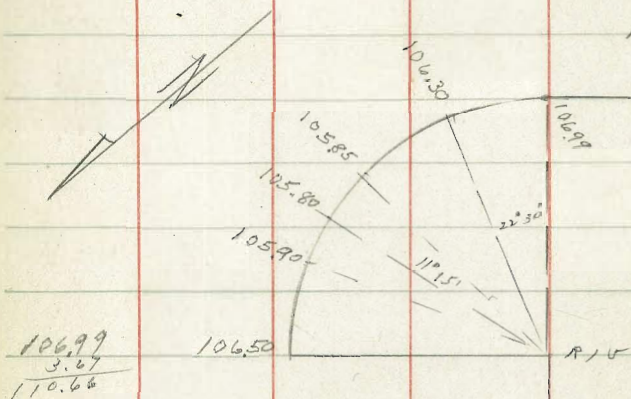
STAKES 2' back

Moore  
8-24-87

Harbor View Dr.

INDEXED  
W.K.  
OCT 13 1948

76



10630	10585	10580	10590	10650
4.36	4.81	4.86	4.76	4.16
3.80	3.81	3.86	3.76	2.16
C 0.5	C 1.0	C 1.0	C 1.0	C 2.0

Six Barsmen

Moore  
8-3-37

Ailey Paving  
BIR 2 Wildwood Annex

	W	E	
	176.96	183.32	
	177.91	180.62	
0+00 Nly	177.81	176.60	
	177.76	177.22	
+10	177.65	177.45	
+20	177.70	177.50	
+30	177.89	177.69	
+40	178.27	178.07	
+50	178.83	178.63	
1+10	179.57	179.37	
1+40	180.83	180.63	
1+60	181.31	181.11	
1+80	181.12	180.92	
2+00	180.23	180.03	
2+20	178.60	178.40	
2+37 Nly Milan	177.20	176.83	

5.44  
177.88

INDEXED

WK  
OCT 13 1948

W	7.49	7.65	7.70	7.89	8.27
	5.63	5.67	5.42	5.43	5.05
	5.13	5.10	5.22	5.03	5.60
	0.50	+0.51	+0.32	0.00	-0.55
E	4.60	7.24	7.25	7.50	7.69
	0.74	0.10	5.87	5.82	5.25
	0.29	0.17	6.38	6.83	6.27
	-0.10	-0.30	-0.56	-1.40	-0.97
W	8.80	9.57	0.83	1.31	1.12
	4.59	5.96	4.70	4.22	4.41
	4.65	5.91	4.88	3.99	3.33
	-0.10	+0.05	+0.62	+0.23	+1.04
					80.23
					5.30
					3.80
					21.50
E	8.63	9.27	0.63	1.11	0.92
	4.69	3.95	4.90	4.62	4.61
	4.13	3.18	4.92	4.95	5.50
	+0.22	+0.77	-0.02	-0.53	0.00
					0.0
VV	78.64	77.20			
	6.87	8.33			
	4.75				
	+2.12				
E	78.40	76.83			
	7.07	8.70			
	6.07				
	+1.0				



740010  
7-13-57

S. Ely Corner

10' tie out of 7' pt. at 1st + C ST

Replaced  
12-29-51

90781 = 405

57  
1/2

Finished  
7-30-57

419  
418  
417  
416  
415  
414  
413  
412  
411  
410  
409  
408  
407  
406  
405  
404  
403  
402  
401  
400  
399  
398  
397  
396  
395  
394  
393  
392  
391  
390  
389  
388  
387  
386  
385  
384  
383  
382  
381  
380  
379  
378  
377  
376  
375  
374  
373  
372  
371  
370  
369  
368  
367  
366  
365  
364  
363  
362  
361  
360  
359  
358  
357  
356  
355  
354  
353  
352  
351  
350  
349  
348  
347  
346  
345  
344  
343  
342  
341  
340  
339  
338  
337  
336  
335  
334  
333  
332  
331  
330  
329  
328  
327  
326  
325  
324  
323  
322  
321  
320  
319  
318  
317  
316  
315  
314  
313  
312  
311  
310  
309  
308  
307  
306  
305  
304  
303  
302  
301  
300  
299  
298  
297  
296  
295  
294  
293  
292  
291  
290  
289  
288  
287  
286  
285  
284  
283  
282  
281  
280  
279  
278  
277  
276  
275  
274  
273  
272  
271  
270  
269  
268  
267  
266  
265  
264  
263  
262  
261  
260  
259  
258  
257  
256  
255  
254  
253  
252  
251  
250  
249  
248  
247  
246  
245  
244  
243  
242  
241  
240  
239  
238  
237  
236  
235  
234  
233  
232  
231  
230  
229  
228  
227  
226  
225  
224  
223  
222  
221  
220  
219  
218  
217  
216  
215  
214  
213  
212  
211  
210  
209  
208  
207  
206  
205  
204  
203  
202  
201  
200  
199  
198  
197  
196  
195  
194  
193  
192  
191  
190  
189  
188  
187  
186  
185  
184  
183  
182  
181  
180  
179  
178  
177  
176  
175  
174  
173  
172  
171  
170  
169  
168  
167  
166  
165  
164  
163  
162  
161  
160  
159  
158  
157  
156  
155  
154  
153  
152  
151  
150  
149  
148  
147  
146  
145  
144  
143  
142  
141  
140  
139  
138  
137  
136  
135  
134  
133  
132  
131  
130  
129  
128  
127  
126  
125  
124  
123  
122  
121  
120  
119  
118  
117  
116  
115  
114  
113  
112  
111  
110  
109  
108  
107  
106  
105  
104  
103  
102  
101  
100  
99  
98  
97  
96  
95  
94  
93  
92  
91  
90  
89  
88  
87  
86  
85  
84  
83  
82  
81  
80  
79  
78  
77  
76  
75  
74  
73  
72  
71  
70  
69  
68  
67  
66  
65  
64  
63  
62  
61  
60  
59  
58  
57  
56  
55  
54  
53  
52  
51  
50  
49  
48  
47  
46  
45  
44  
43  
42  
41  
40  
39  
38  
37  
36  
35  
34  
33  
32  
31  
30  
29  
28  
27  
26  
25  
24  
23  
22  
21  
20  
19  
18  
17  
16  
15  
14  
13  
12  
11  
10  
9  
8  
7  
6  
5  
4  
3  
2  
1

To C.T. 7' pt.  
at 2nd + C ST.

SE Bdry  
KETTNER

To SW. B.P.  
Bdry  
KETTNER

INDEXED

W.K.  
COCT 1231500

N  
A

Bdy. & Ket.

To be destroyed

78

10.50

606

9.46 transferred

11.28  
11.24  
11.20  
11.16  
11.12  
11.08  
11.04  
11.00  
10.56  
10.52  
10.48  
10.44  
10.40  
10.36  
10.32  
10.28  
10.24  
10.20  
10.16  
10.12  
10.08  
10.04  
10.00  
9.56  
9.52  
9.48  
9.44  
9.40  
9.36  
9.32  
9.28  
9.24  
9.20  
9.16  
9.12  
9.08  
9.04  
9.00  
8.56  
8.52  
8.48  
8.44  
8.40  
8.36  
8.32  
8.28  
8.24  
8.20  
8.16  
8.12  
8.08  
8.04  
8.00  
7.56  
7.52  
7.48  
7.44  
7.40  
7.36  
7.32  
7.28  
7.24  
7.20  
7.16  
7.12  
7.08  
7.04  
7.00  
6.56  
6.52  
6.48  
6.44  
6.40  
6.36  
6.32  
6.28  
6.24  
6.20  
6.16  
6.12  
6.08  
6.04  
6.00  
5.56  
5.52  
5.48  
5.44  
5.40  
5.36  
5.32  
5.28  
5.24  
5.20  
5.16  
5.12  
5.08  
5.04  
5.00  
4.56  
4.52  
4.48  
4.44  
4.40  
4.36  
4.32  
4.28  
4.24  
4.20  
4.16  
4.12  
4.08  
4.04  
4.00  
3.56  
3.52  
3.48  
3.44  
3.40  
3.36  
3.32  
3.28  
3.24  
3.20  
3.16  
3.12  
3.08  
3.04  
3.00  
2.56  
2.52  
2.48  
2.44  
2.40  
2.36  
2.32  
2.28  
2.24  
2.20  
2.16  
2.12  
2.08  
2.04  
2.00  
1.56  
1.52  
1.48  
1.44  
1.40  
1.36  
1.32  
1.28  
1.24  
1.20  
1.16  
1.12  
1.08  
1.04  
1.00  
0.56  
0.52  
0.48  
0.44  
0.40  
0.36  
0.32  
0.28  
0.24  
0.20  
0.16  
0.12  
0.08  
0.04  
0.00

6099

10.00

85

Replaced  
12-29-51

KETTNER

Est. 4-15-36 WPA #2353

"Duke" Sta. A+00 - 4+17 (17 x 2 x 3 =

" 4+25 - 4+41 Exc. { 16 x 3 1/2 x 4.5 =

" 4+41 - 4+51 { 10 x 7 x 3.5 =

" 4+51 - 4+66 { 15 x 5 x 3.5 =

"Geo" 3' progress in tunnel

Geor. Commencing Blue Mark. 13 x 6 x 3 =

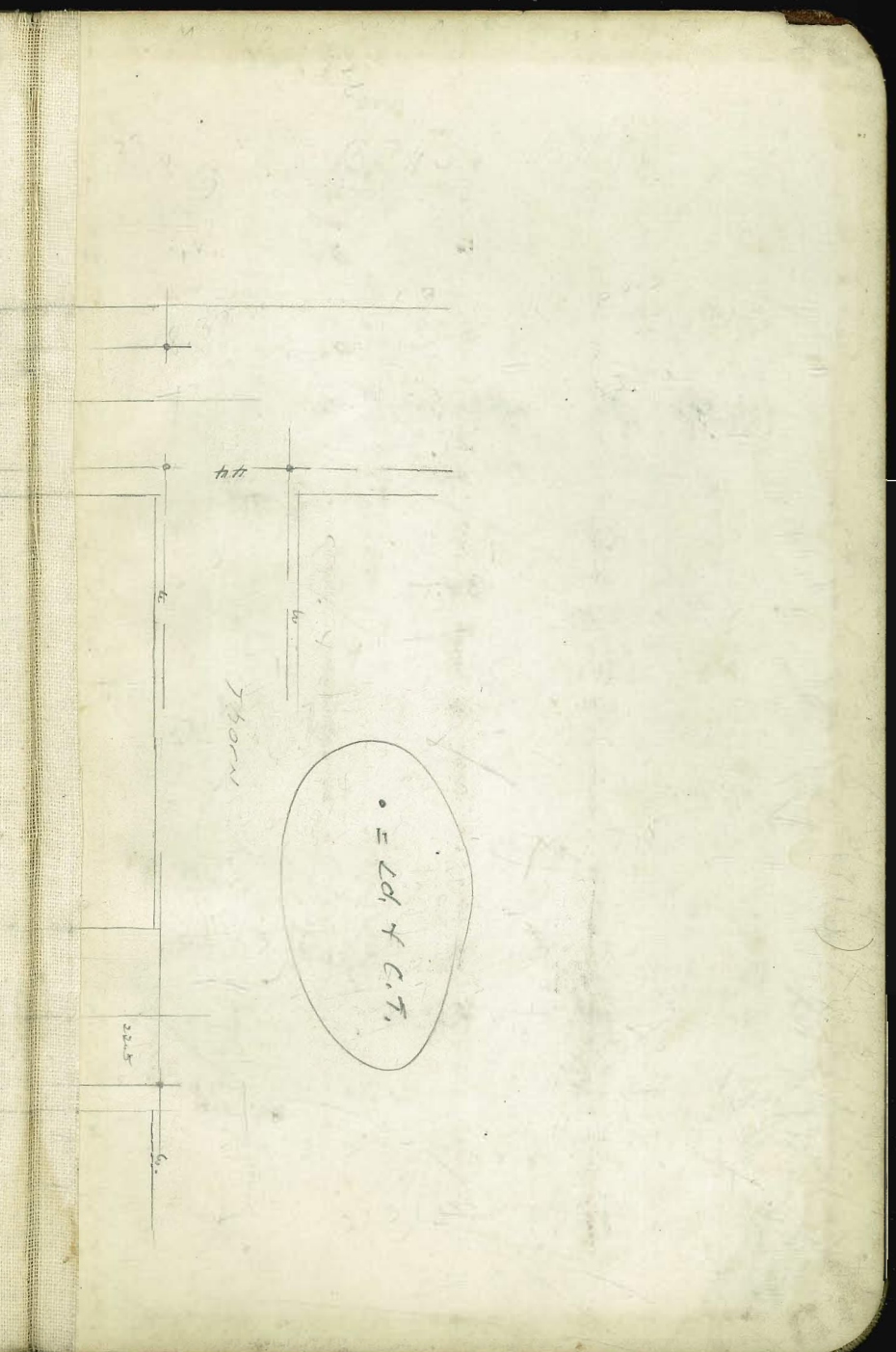
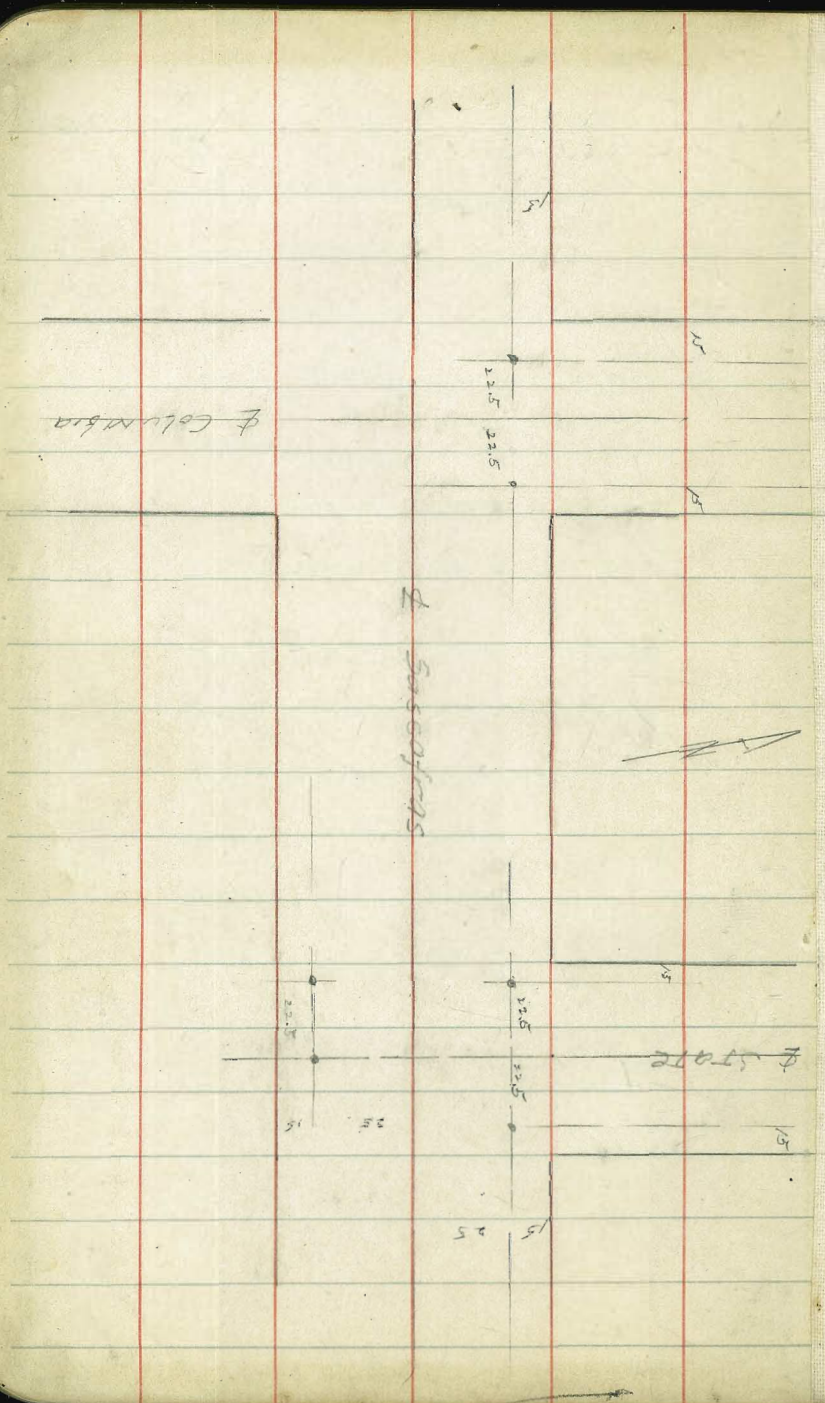
0.50 to 1+15 = 65 x 3.8 x 3 =

No change beyond 1+00

4-

MH #43	1.23	8.91			C 7.68
MH 43			8.06		Str. Grade
A+00			0.60		C 8.38
	1.77	13.71			C 11.94
4+77			12.76	336.69	335.84
4+53			12.65	336.80	335.95
B.M.T.	5.51	349.45		349.94	

Bell



10.52 Roof to Top 1st Floor  
 8.63 Top 1st to Top 2nd Floor.  
 8.60 Top 2nd Floor to Top 3rd Floor  
 SW Ray 55,000

SE GRIM 55,000

52  
 47

DISTANCES FROM CENTER OF ROADWAY FOR CROSS-SECTIONING.

ROADWAY 14 FEET WIDE. SIDE SLOPES 1 1/2 TO 1.

FOR SINGLE TRACK EMBANKMENT.

	0	.1	.2	.3	.4	.5	.6	.7	.8	.9	
0	7.0	7.2	7.3	7.5	7.6	7.8	7.9	8.1	8.2	8.4	0
1	8.5	8.7	8.8	9.0	9.1	9.3	9.4	9.6	9.7	9.9	1
2	10.0	10.2	10.3	10.5	10.6	10.8	10.9	11.1	11.2	11.4	2
3	11.5	11.7	11.8	12.0	12.1	12.3	12.4	12.6	12.7	12.9	3
4	13.0	13.2	13.3	13.5	13.6	13.8	13.9	14.1	14.2	14.4	4
5	14.5	14.7	14.8	15.0	15.1	15.3	15.4	15.6	15.7	15.9	5
6	16.0	16.2	16.3	16.5	16.6	16.8	16.9	17.1	17.2	17.4	6
7	17.5	17.7	17.8	18.0	18.1	18.3	18.4	18.6	18.7	18.9	7
8	19.0	19.2	19.3	19.5	19.6	19.8	19.9	20.1	20.2	20.4	8
9	20.5	20.7	20.8	21.0	21.1	21.3	21.4	21.6	21.7	21.9	9
10	22.0	22.2	22.3	22.5	22.6	22.8	22.9	23.1	23.2	23.4	10
11	23.5	23.7	23.8	24.0	24.1	24.3	24.4	24.6	24.7	24.9	11
12	25.0	25.2	25.3	25.5	25.6	25.8	25.9	26.1	26.2	26.4	12
13	26.5	26.7	26.8	27.0	27.1	27.3	27.4	27.6	27.7	27.9	13
14	28.0	28.2	28.3	28.5	28.6	28.8	28.9	29.1	29.2	29.4	14
15	29.5	29.7	29.8	30.0	30.1	30.3	30.4	30.6	30.7	30.9	15
16	31.0	31.2	31.3	31.5	31.6	31.8	31.9	32.1	32.2	32.4	16
17	32.5	32.7	32.8	33.0	33.1	33.3	33.4	33.6	33.7	33.9	17
18	34.0	34.2	34.3	34.5	34.6	34.8	34.9	35.1	35.2	35.4	18
19	35.5	35.7	35.8	36.0	36.1	36.3	36.4	36.6	36.7	36.9	19
20	37.0	37.2	37.3	37.5	37.6	37.8	37.9	38.1	38.2	38.4	20
21	38.5	38.7	38.8	39.0	39.1	39.3	39.4	39.6	39.7	39.9	21
22	40.0	40.2	40.3	40.5	40.6	40.8	40.9	41.1	41.2	41.4	22
23	41.5	41.7	41.8	42.0	42.1	42.3	42.4	42.6	42.7	42.9	23
24	43.0	43.2	43.3	43.5	43.6	43.8	43.9	44.1	44.2	44.4	24
25	44.5	44.7	44.8	45.0	45.1	45.3	45.4	45.6	45.7	45.9	25
26	46.0	46.2	46.3	46.5	46.6	46.8	46.9	47.1	47.2	47.4	26
27	47.5	47.7	47.8	48.0	48.1	48.3	48.4	48.6	48.7	48.9	27
28	49.0	49.2	49.3	49.5	49.6	49.8	49.9	50.1	50.2	50.4	28
29	50.5	50.7	50.8	51.0	51.1	51.3	51.4	51.6	51.7	51.9	29
30	52.0	52.2	52.3	52.5	52.6	52.8	52.9	53.1	53.2	53.4	30
31	53.5	53.7	53.8	54.0	54.1	54.3	54.4	54.6	54.7	54.9	31
32	55.0	55.2	55.3	55.5	55.6	55.8	55.9	56.1	56.2	56.4	32
33	56.5	56.7	56.8	57.0	57.1	57.3	57.4	57.6	57.7	57.9	33
34	58.0	58.2	58.3	58.5	58.6	58.8	58.9	59.1	59.2	59.4	34
35	59.5	59.7	59.8	60.0	60.1	60.3	60.4	60.6	60.7	60.9	35
36	61.0	61.2	61.3	61.5	61.6	61.8	61.9	62.1	62.2	62.4	36

Calculated by Julien A. Hall, M. Am. Soc. C. E.