

Our Leather Bound Engineers Note Books are carried in the following rulings:

- No. 380 LEVEL BOOK. Left and Right Hand Page the same as Left Hand Page of this Book.
- No. 382 FIELD BOOK. Left Hand Page as in this Book, Right Hand Page 4 x 4 to the inch, Center Line Red.
- No. 384 MINING TRANSIT BOOK. Left Hand Page as in this Book, Right Hand Page 8x8 to the inch, Center Line Red.
- No. 385 FIELD BOOK. Left Hand Page as in this Book, Right Hand Page 8 vertical and 4 horizontal lines to the inch, Center Line Red.

We also carry the Note Books listed above, bound in extra strong Fabri-Hide (otherwise the same quality of book), which can be furnished at a somewhat lower price.

In ordering Fabri-Hide covered books, add the letter "F" to catalog number.

THE FREDERICK POST CO.
ENGINEERING and DRAFTING SUPPLIES
IRVING PARK STATION
CHICAGO, ILL.

MICROFILMED

APR 12 1965

X See Atlantic S. of Laurel
18-4-33
Miller
Walker
Bris

Indexed
C.S.R.

¢

1

+76.8

6.99	7.36	7.45	7.46	7.98.
4.48	4.09	4.00	3.99	3.67.
46	10.	Pay	10.	46.
cl	W. Pay		E. Pay	N. Rail

+70.30

6.98	7.32	7.43	7.45	7.66	7.91
4.50	4.13	4.02	4.00	3.79	3.74
46	10.	Pay	10.	38.8	46.
cl	W. Pay	Pay	E. Pay	N. Rail	S. Rail

+60.

6.89	7.28	7.38	7.41	7.52	7.56	7.90
4.56	4.17	4.07	4.04	3.93	3.87	3.75
46	10.	Pay	10.	27.1	30.4	46.
cl	W. Pay	Pay	E. Pay	N. Rail	S. Rail	cl.

+53.2

6.85	7.25	7.34	7.37	7.42	7.48	7.65
4.60	4.20	4.11	4.08	4.03	3.97	3.80
46	10.	Pay	10.	20.1	27.1	46
cl	W. Pay	Pay	E. Pay	N. Rail	S. Rail	cl.

+50

6.85	7.23	7.30	7.35	7.36	7.40	7.60
4.60	4.22	4.15	4.10	4.09	4.05	3.85
46	10.	Pay	10.	16.	23.1	46
cl	W. Pay	Pay	E. Pay	N. Rail	S. Rail	cl.

+47

6.83	7.23	7.28	7.31	7.32	7.36	7.50
4.62	4.22	4.17	4.14	4.13	4.10	3.87
46	10.	Pay	10.	12.8	19.1	46
cl	W. Pay	Pay	E. Pay	N. Rail	S. Rail	cl.

+44.60

6.84	7.21	7.28	7.29	7.31	7.31	7.58
4.61	4.24	4.17	4.16	4.14	4.14	3.87
46	10.	Pay	10.	16.8	16.8	46.
cl	W. Pay	Pay	N. Rail	S. Rail	S. Rail	cl.

+38

6.81	5.77	7.15	7.20	7.26	7.24	7.52
4.64	5.68	4.30	4.25	4.25	4.21	3.73
46	46.	10.	Pay	20.9	10.	46.
cl	LIP Catch Basin	W. Pay	Pay	N. Rail	S. Rail	cl

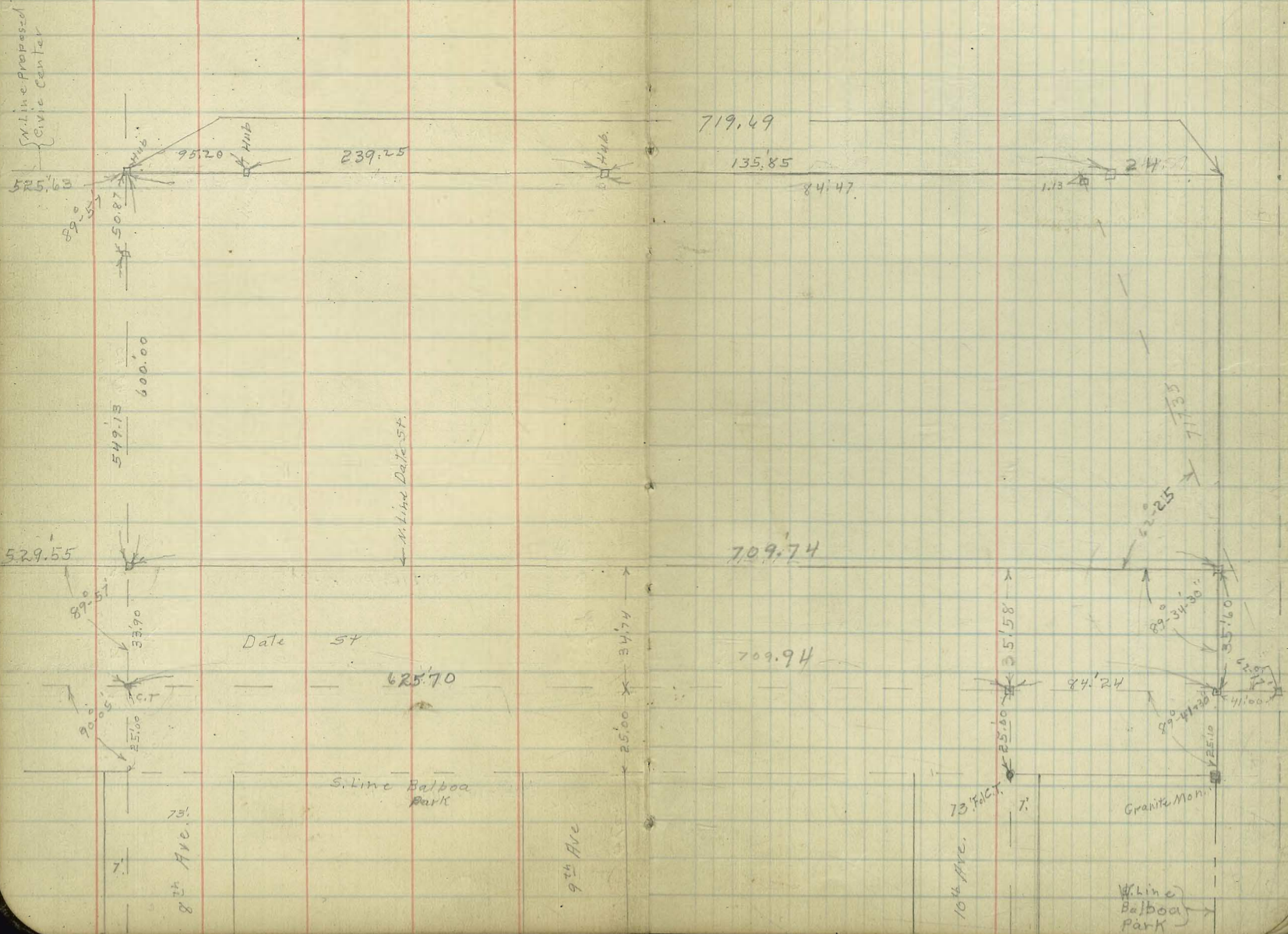
+97.35 1/2

6.98	5.77	7.13	7.15	7.20	7.28	7.50
4.66	5.68	4.32	4.30	4.22	4.17	3.95
46	46.	10.	10.	21	10	46
cl	LIP Catch Basin	W. Pay	N. Rail	S. Rail	Pay	cl.

11.45 H.I

¢

+54	2.40 4.05 46. cl.	7.66 3.79 10 W.PAY	2.25 3.70 PAY	2.27 3.68 10 E.PAY	2.01 4.44 47.8 Lipicarb Inlet.	5.00 3.45 47.8 cl.	
+51	2.38 4.07 46. cl.	2.63 3.82 10 W.PAY	2.74 3.71 PAY	2.05 3.70 10 E.PAY	2.92 4.03 36.7 Grating N. Side Catch Basin	2.82 3.08 46.8 Grating E. Side Catch Basin	2.98 3.47 46.8 cl.
50+00	2.11 4.34 46. cl.	2.42 4.03 10. W.PAY	2.53 3.92 PAY	2.55 3.90 10 E.PAY		2.82 3.53 46. cl.	
+85	2.66 4.45 46. cl.	2.39 4.06 W.PAY	2.45 4.00 PAY	2.50 3.95 10. E.PAY		2.81 3.64 46. cl.	
49+80	6.95 4.47 46. cl.	2.38 4.07 10. W.PAY	2.44 4.01 PAY	2.47 3.98 10. E.PAY	2.60 3.85 35.7 W. end Catch Basin Grating	2.60 3.85 39.4 E. end Catch Basin Grating	46 CURB OUT
	11.45 H.I.						



Grades for Widening Curves
 54th St. Pavmt.
 Plat Book 1389 - P. 34

CURVE #2

B.M. B.P. 12.56 376.31 363.75 ^{Headwall} 5.8.54²⁴ + Orange

Station	EC. Widening Curve	Def L	Grade	Station	Grade
15+86 ²²	9.93		366.38		
15+86 ²² Edge Widening Pav					
#1	2°-24'	8.72	367.59		
T.P.	12.05	6.92	369.39	T.P.	
#2	4°-48'	12.47	368.97		
#3	7°-12'	10.72	370.72		
#4	9°-35'	8.71	372.73		
#5	11°-59'	6.60	374.84		
#6	14°-23'	4.56	376.88		
#7	16°-47'	2.87	378.57		
#8	19°-11'	1.48	379.96		
#9	21°-34'-30"	1.03	380.41		

Indexed
 c.s.k.

Grade	Edge Pav.	Grade	Station
0.06	8.66	0.07	8.59
0.12	12.35	0.21	12.14
0.15	10.54	0.34	10.20
0.24	8.47	0.39	8.08
0.19	6.41	0.32	6.08
0.14	4.42	0.28	4.14
0.09	2.78	0.17	2.61
0.04	1.44	0.03	1.41

Curve #1.

Station	Def. Δ	Rod. Widening Curve		Rod. Edge Pav.			
8+77 ⁷⁰ B.C. Widening Curve.		7.92		7.92			
chd. 25.10							
#1	2-24	7.00 ✓	0.05	6.95	0.05	6.90	
#2	4-48	6.52 ✓	0.23	6.29	0.23	6.06	
#3	7-12	6.28 ✓	0.41	5.87	0.41	5.46	
#4	9-35	6.18 ✓	0.48	5.75	0.52	5.23	
#5	11-59	6.08 ✓	0.24	5.84	0.50	5.34	
#6	14-23	5.98 ✓	0.10	5.88	0.44	5.44	
#7	16-47	5.69 ✓	0.10	5.59	0.22	5.37	
#8	19-11	5.09 ✓	0.07	5.05	0.02	5.03	
#9 = 11+17 ³² E.C. Widening Curve.	21-34-30	4.50		4.50			

#	Stationing	Value
	B.C. Widening Curve	10.95
#1	1-10-30	10.55 ✓
#2	2-21	10.33 ✓
#3	3-31-30	10.12 ✓
#4	4-42	9.91 ✓
#5	5-52-30	9.56 ✓
#6	7-03	8.99 ✓
#7	8-13-30	8.20 ✓
#8	9-24	7.13 ✓
#9	10-34-30	5.99 ✓
#10	11-45	4.30 ✓
#11	12-55-30	2.34 ✓
#12	E.C. Widening Curve 14-06	0.35

chd. 24.60

Curve #3

#	Stationing	Value
	B.C. Widening Curve	1.68
#1	1-34	3.10 ✓
#2	3-08	4.77 ✓
#3	4-42	6.70 ✓
#4	6-16	8.26 ✓
#5	7-50	9.91 ✓
#6	9-24	11.63 ✓
#7	10-57	12.80 ✓
#8	12-31	13.71 ✓
#9	E.C. Wid. Curve 14-05	

chd. 23.48

10.95			
0.02	10.53		10.53
0.18	10.15		10.05
0.23	9.89	0.28	9.61
0.24	9.67		
0.30	9.26		
0.30	8.69		
0.30	7.90		
0.24	6.89	0.42	6.47
0.16	5.83	0.26	5.57
0.08	4.22	0.08	4.14
	2.33		2.31
0.35			

1.68			
3.04	0.02		3.06
0.10	4.67	0.08	4.59
0.20	6.50	0.20	6.30
0.20	8.06	0.25	7.81
0.20	9.71	0.22	9.49
0.20	11.43	0.23	11.20
0.13	12.67	0.13	12.53
	13.70		

10-16-33
Miller
Walker
Bliss

Curb Grades, E. Side Pershing Dr.
from Tool House to 28th & Redwood.

Indexed
c.s.K.

Diff.
Elev.

S. W. of
E. Edge
Pavmt.

E. Edge
Pavmt.

8' E. of E
Edge Pavmt.
Gutter

8' E. of E
Edge Pav.
Curb.

Ground
at Curb ker = 6-11-37
Gutter Grades
10

Station on
E. Edge
Pavmt.

Station on E. Edge Pavmt.			Indexed c.s.K.		Diff. Elev.	S. W. of E. Edge Pavmt.	E. Edge Pavmt.	8' E. of E Edge Pavmt. Gutter	8' E. of E Edge Pav. Curb.	Ground at Curb ker = 6-11-37	Gutter Grades 10
T.P.	7.29	262.29	0.60	255.00				7.62 254.67		5700	254.68
4+50					0.83	1.53	1.53	1.67 253.93	70 0.93 0.60 0.33	0.7	253.93
4400 E.C.					0.80				75		
4+00 E.C.					0.79	2.39	2.33	2.42	74 1.68 1.45 0.23	1.6	
3+50					0.73	3.08	3.02	3.17	74 2.44 2.29 0.15	2.5	
3+00					0.73	3.86	3.76	3.92	74 3.19 3.03 0.16	3.1	
2+50					0.84				75		
2+50					0.74	4.70	4.69	4.67	74 3.95 3.80 0.15	3.9	
2+00					0.73	5.38	5.34	5.42	74 4.70 4.53 0.17	4.7	
1+50					0.84	6.07	6.07	6.17	74 5.47 5.03 0.44	5.3	249.43 B 6.32 ✓
1+00					1.05	6.90	6.95	7.10	70 6.40 6.40 0.00	6.2	
0+50					0.74	7.86	8.00	8.03	70 7.83 7.83 0.00	7.2	
0+00	N. Side Dr. to Tool House.					8.70	8.78 246.87	8.96 246.64	70 247.34 8.26 0.08	8.3	246.64 B 9.11 ✓
B.M. stub 60 W. of Pavmt. opp. Sta 0+00	8.55	255.60		247.05							

Rate

Curb Grades Pershing Dr.

Station's on E. Edge Pavmt.	Difference	8' W. of E. Edge Pavmt	E. Edge Pavmt.	8' E. of E. Edge Pavmt Gutter	8' E. of E. Edge Pavmt. Curb	Ground at Curb	Gutter Grades 6-11-37.
10+50		3.22	3.44	3.54 258.75	2.77		258.75 B 2.90 3.0
	+0.06						
10+00		3.17	3.59	3.70	2.97 2.81 6.16	2.9	3.1 ✓ 3.2 ✓
	+0.04						
+50		3.25	3.54	3.94	3.17 2.81 6.036	2.9	3.3 ✓ 3.4 ✓
	+0.17						
9+00		3.39	3.73 258.56	4.12 258.55	3.47 3.21 6.026	3.4	258.75 ✓ 3.50 3.72 ✓
	+0.55						
+50		3.84	4.28	4.58	3.94 3.45 6.032	3.8	257.71 ✓ 3.94 ✓ 4.29 ✓
	+0.95						
8+00		4.84	5.23	5.29 257.00	4.62 4.56 6.006	4.7	257.00 ✓ 4.65 ✓ 4.93 ✓
	+ 6.2						
+50		5.47	5.85	5.85 256.44	5.12 3.02 6.010	5.1	256.44 ✓ 5.21 ✓ 5.34 ✓
	+0.25						
7+00		5.82	6.10 256.17	6.20 256.39	5.42 5.22 6.025	5.4	5.46 ✓ 5.59 ✓
	+ 0.13						
+50		6.08	6.23	6.49 355.85	5.72 5.44 6.028	5.5	5.72 ✓ 5.85 ✓
	+ 0.14						
6+00		6.28	6.37	6.68 255.21	5.97 5.62 6.035	5.8	6.00 ✓ 5.98 ✓ 6.10 ✓
	0.40						
5+50		6.67	6.77	6.87 255.42	6.37 6.00 6.037	6.2	255.42 ✓ 6.23 ✓ 6.60 ✓
	0.55						
5+00		7.25	7.32 254.97	7.62 254.68	6.92 6.61 6.031	6.8	5+00 254.68 B 6.97 ✓
	0.43						

26729

Stations on S. Edge Pavmt	Curb Grades	Pershing Dr.	8' w. of E edge Pavmt	8' 2d edge Pavmt	Gutter	8' E. of S. edge Pavmt. Curb Grade	Growth at. cl.	Gutter Grades 6-11-37
1+66.5						264.40		12
+50			2.74	263.85 2.85 263.56	263.42	264.12 2.29 2.29 2.00 1.20	2.2	263.47 2.28 2.84
15+00			3.78	3.92 262.49	261.22	262.92 3.49 3.28 2.02 1.10	3.3	262.22 3.48 4.03
+50			4.97	5.09 261.32	261.12	261.82 4.59 4.22 2.00 0.00	4.3	261.12 4.58 4.88
14+00			5.51	5.66 260.75	260.52	261.22 5.19 4.86 2.00	5.0	260.52 5.14
+92 catch Basin			5.54	5.68 260.73	grate 5.98 260.43	261.12 5.28 5.18 2.00	5.1	260.43 B 5.27 ↑
+50			5.85	5.98 260.43	6.38	260.82 5.59 5.38 2.00	5.3	
13+00			6.11	6.30 260.11	6.60	260.52 5.87 5.63 2.00	5.6	
+50			6.34	6.50 259.91	6.90	260.32 6.09 5.84 2.00	5.9	Down
12+00			6.85	6.97 259.44	7.20	259.92 6.49 6.36 2.00	6.3	
T.P. 11+50	6.75	266.41	2.63	259.66	+0.42			
+50			3.14	3.27 259.02	3.48	259.62 2.67 2.63 2.00	2.7	
11+00			3.27	3.53 258.76	3.70	259.32 2.97 2.91 2.00	2.9	258.67 B ↓
10+50			3.22	3.44 258.85	3.54	259.52 2.77 2.68 2.00	2.8	258.75

262.29

Curb Grades Pershing Dr.

Station on E Edge Pavmt	8' W. of C. Edge Pavmt.	8. Edge Pavmt.	Gutter	8' E. of E Edge Pavmt Curb Grade	ground at curb.	Gutter Grades 6-11-37 13
	2.20					
+50		4.67	4.51	287.00	3.8	
	1.63		286.38	3.87 3.63 6.026		
+25		6.22	6.14	285.20	5.5	
	1.70		284.75	5.59 5.39 6.020		
19+00		8.02	7.84	283.60	7.2	
	3.36		283.05	7.79 7.14 6.015		
18+50		11.44	11.20	280.20	10.5	
			279.69	7.5 10.69 10.42 6.027		Brk
T.P.	11.74	290.89	0.41	279.14	3.47	
18+00		3.41	3.34	276.80	2.7	
	3.32		276.21	7.4 2.76 2.64 6.012		
17+50		6.55	6.66	273.50	5.9	
	3.28		272.90	6.80 27 6.06 5.79 6.027		
17+00		9.81	9.94	270.20	9.3	269.50 Brk
	2.99		269.62	10.06 27 9.86 9.25 6.011		6.95 2850
16+50		12.84	12.93	267.20	12.3	266.40
			266.63	13.76 27 12.86 12.20 6.016		10.05
T.P.	13.25	279.56	0.10	266.31	1.85	10.99
16+00		1.60	1.63	265.32	0.9	264.52
	.93		264.78	1.89 26 1.09 0.88 6.021		11.73
15+61.5 catch Basin		2.42	2.56	264.40	2.0	263.90
			263.85	grate 2.86 26 2.04 1.87 6.014		11.55
	266.41		0.29			all c.B 263.55 12.90

Curb Grades Pershing Dr.

8' W. of E. Edge Pavmt.

E. Edge Pavmt.

Gutter

S. E. of E. Edge Pavmt. Cur. & Grade

Ground at - d.

BM. B.P.

2.04 309.04

s.e. 28th st
+ Redwood

21+50 P.C. 20' Rad. Ret.

5.97 6.27 6.43 305.35 6.0
304.81 5.73
5.66
C. 0.07

+25

7.51 7.85 303.75 7.3
303.23 7.33
7.29
C. 0.04

T.P. 8.26 311.08 0.08 302.82

1.58
0.86

+ 20. Brk

1.97

0.42 0.53 0.2
302.37 0.08

1.07

21+00 B

1.30 1.54 301.85 1.0
301.36 1.05
0.98
C. 0.07

2.51

+75

3.78 4.05 299.45 3.5
298.85 3.45
3.40
C. 0.05

2.48

+50

6.32 6.53 296.90 6.0
296.37 6.00
5.85
C. 0.15

2.84

+25

9.13 9.37 294.20 8.7
293.53 8.70
8.61
C. 0.09

2.64

20+00

11.87 12.01 291.50 11.2
290.89 11.40

T.P. 12.38 302.90 0.87 P- 290.52

2.31

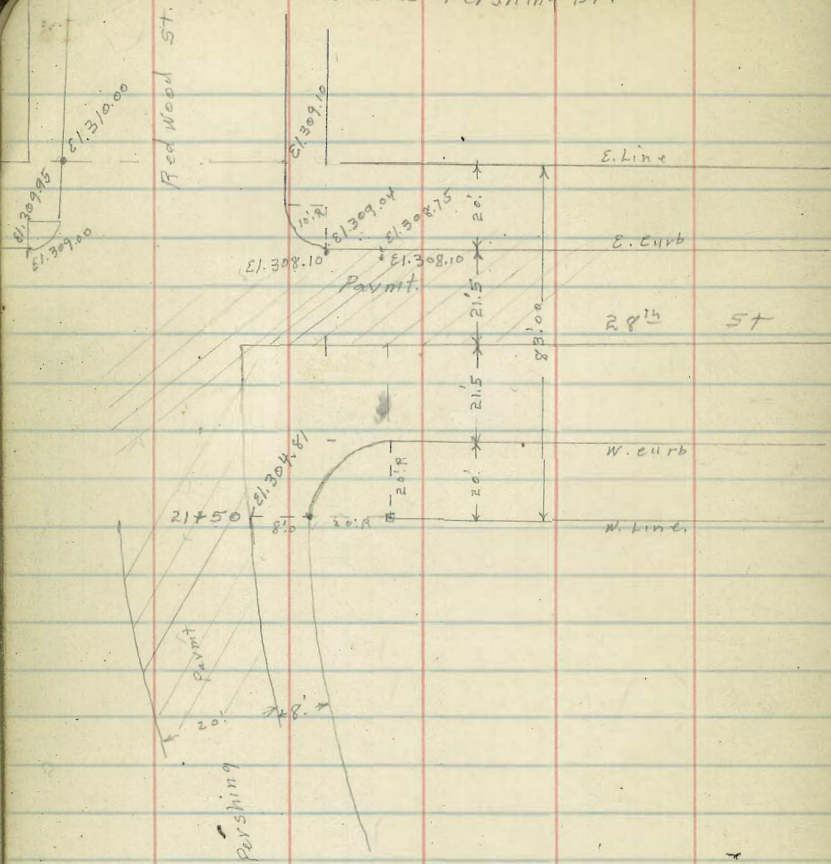
19+75

2.44 2.51 289.10 1.6
288.58 1.79
1.3
C. 0.36

290.89

2.20

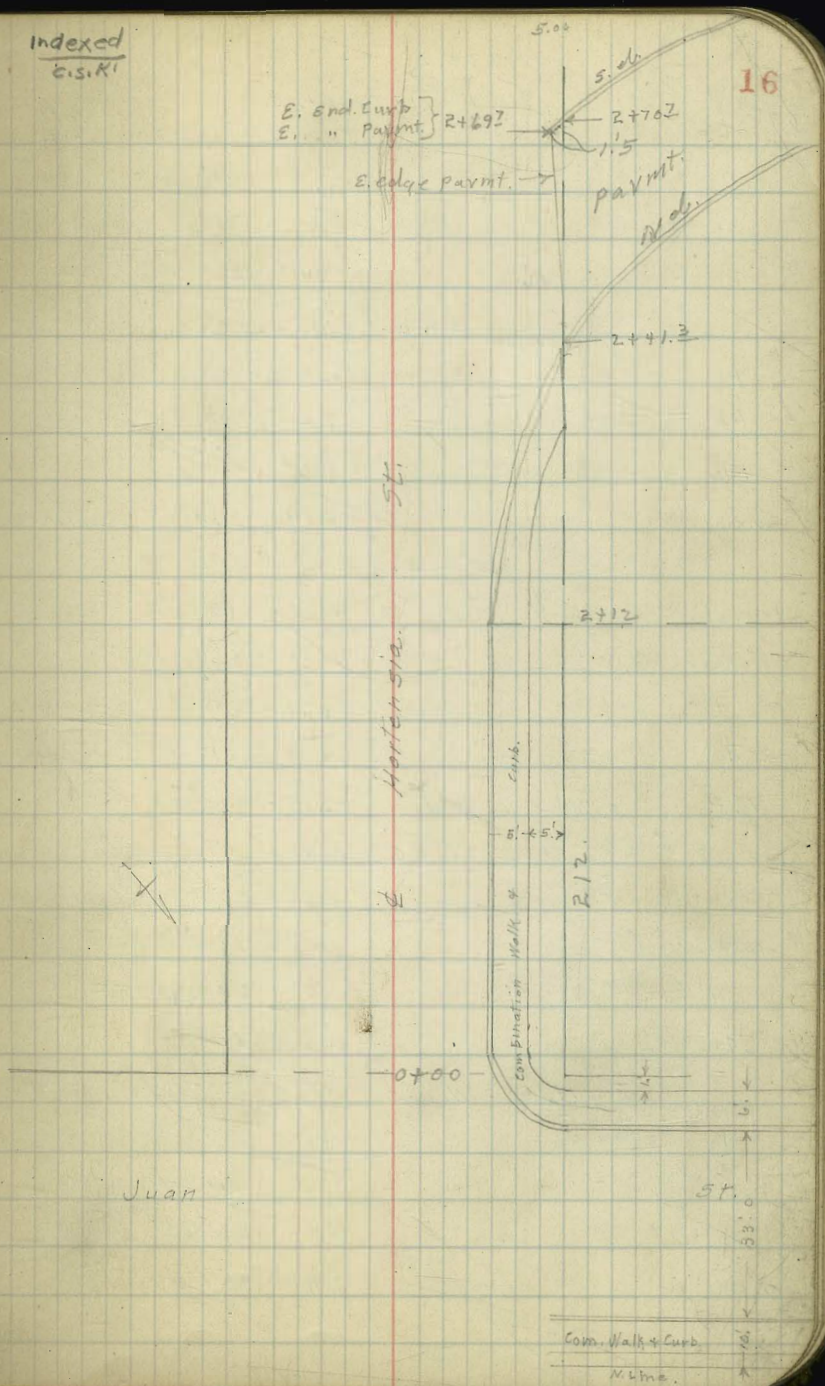
Curb Grades Pershing Dr.



10-21-33 X 522 Hortensia - Juan St South
 Miller Walker
 Blinn
 for Grade establishment.

Indexed
 E.S.K.

B.M. B.P.	0.97	261.99		261.02	N.E. Sunset + Witherbe
T.P.	0.22	249.39	12.82	249.17	
T.P.	0.53	237.33	12.59	236.80	
T.P.	0.85	225.21	12.97	224.36	
B.M. B.P.			5.06	220.15	S.W. Juan + Hortensia
0+00 = S. line Juan = S. line Pavmt. P.V.C.					
0.5 W. of W. ch. line on ch. Red. Profile Grade 221.05					
			4.12	221.09	
			4.61	220.60	
			4.61	220.60	
			4.83	220.88	
			4.08	221.13	
0+03 = E.E. Curb Rt. on W.					
			4.2	221.0	
			4.5	220.7	
			4.8	220.4	
			4.15	221.06	
0+08 Brk. on W. Curb.					
			4.36	220.85	
			5.0	220.2	
			5.0	220.2	
			4.7	220.5	
0+10 Profile Brk					
			4.9	220.3	
			5.1	220.1	
			5.3	219.9	
			4.62	220.59	Profile Grade 220.50



225.21

0+18 Profile Brk

W. cb.	5.34	219.97
gutter	5.9	219.3
1/4	5.8	219.4
♀ E. end grading	5.4	219.8

0+20 Profile Brk E.V.C.

♀	6.1	219.1
1/4	6.5	218.7
gutter	6.6	218.6
W. cb.	6.14	219.07

0+40

W. cb.	12.50	212.71
gutter	13.1	212.1
1/4	12.7	212.5
♀	12.4	212.8
T.P.	0.34	213.05
	12.50	212.71

1+00 P.V.C. Brk

W. emb.	6.68	206.37
gutter	7.3	205.8
1/4	6.8	206.3
♀	6.6	206.5

1+15 = N. End. drive

♀	8.7	204.4
1/4	9.2	203.9
gutter	9.6	203.5
W. emb. cb.	8.98	204.07

213.05

Hortensala

1+20 Brk

17

W. gutter cb. dipped in drive	10.24	202.81
1/4	10.0	203.1
♀	9.5	203.6

1+36 = S. End drive

♀	11.5	201.6
1/4	12.0	201.1
gutter	12.4	200.7
W. cb.	11.87	201.18

1+40 Brk

W. cb.	12.37	200.68
gutter	12.8	200.3
1/4	12.5	200.6
♀ E. End. grading	12.0	201.1
T.P.	2.53	202.71
	12.87	200.18

1+60 Brk

♀	4.19	198.52
1/4	4.8	197.9
gutter	4.4	198.3
W. cb.	4.0	198.7

1+80 Brk

W. cb.	5.9	196.8
gutter	6.0	196.7
1/4	6.4	196.3
♀	5.86	196.85

202.71

2+00 Brk

W. emb. ch	6.86	195.85
gutter	7.4	195.3
1/4	7.2	195.5
± E. end grading	7.1	195.6

2+12 apparent P.C. on W. curb

±	7.4	195.3
1/4	7.5	195.2
gutter	7.7	195.0
	7.22	195.49

2+20 Brk

1/2 W. of W. ch line on curb	7.29	195.42
gutter	7.7	195.0
ch line	7.7	195.0
1/4	7.6	195.1
±	7.7	195.0

2+40 Brk

± E. end grading	7.8	194.9
1/4	7.6	195.1
ch line	7.4	195.3
+9 = gutter	7.3	195.4
+9 = W. curb	6.80	195.91

2+41³

W. line on W. ch.	6.76	195.95
" " " E. End pavmt.	7.30	195.41

202.71

2+60

Hortensia.

18

W. line on pavmt.	5.84	196.87
+1.0 = E. edge "	5.88	196.83
W. ch line	6.4	196.3
1/4 = E. edge Grading	6.7	196.0

2+69.7

1.5 E. of W. line = E. edge pavmt. at E. End. S. ch. of st. to W.	5.46	197.25	S. E. end of Grading
---	------	--------	----------------------

1.5 E. of W. line Top ch. E. End.	5.00	197.71
-----------------------------------	------	--------

2+70.2

W. line Hortensia Top ch.	4.88	197.83
---------------------------	------	--------

W. line Hortensia gutter pavmt 5.30

T.P.	12.75	215.36	0.10	202.61
T.P.	13.06	228.02	0.40	214.96
T.P.	12.36	239.77	0.61	227.41
T.P.	11.40	250.83	0.34	239.43
T.P.	12.22	262.86	0.19	250.64
chX orig. BM.			1.83	261.03 = 261.01

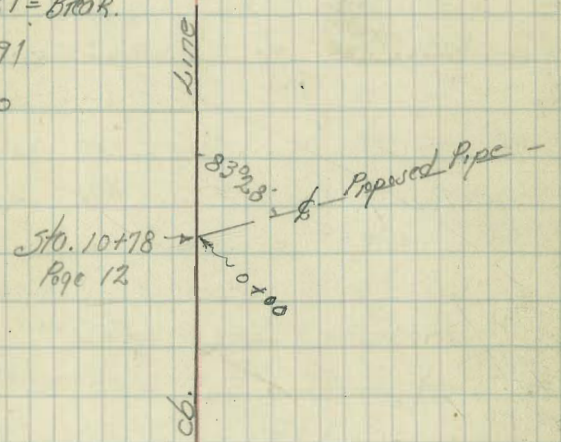
Walker
Bliss
Kammy 11-8-33

FRASHING DRIVE
Grades for 8" Gate Culvert.

Indexed
C.R.M.

Page 12
Elev. East edge Paving 11+00 = 258.76
5.33 +
264.09 = x

Station	+	+	π	- Rod	Elev. Stakes	Flowline	Cuts.
0+00 = cb Face in d.			264.09	4.55	259.54	257.20	+2.34
0+00 Gt. at cb. Face				5.5	258.6		
+50				5.76	258.33	256.20	+2.13
1+00				6.70	257.39	255.20	+2.19
+50				8.08	256.01	254.20	+1.81 = Break.
2+00				10.93	253.16	251.25	+1.91
+30				13.61	249.48	249.5	0.0



Milker
Shes
Kany
11-8-33

Preliminary Levels
on Pershing Drive
to establish Grade for Curb
from North side Drive Way near Tool house

to last Eucalyptus Tree on Left toward City

0+00 Page 10 = 0+00 this line

3.21 350.26 247.05 Page 10

edge Pav. 3.42 246.84

8' Rt. on Pav. 3.35 246.91

0+50

cb. on Ground 3.5 246.8

Gut. 4.4 245.9

Pav. 4.15 246.11

8' Rt. on Paving. 3.97 246.29

1+00

cb. 4.0 246.9

Gut. 5.1 245.2

Paving. 4.63 245.63

8' Rt. 4.46 245.80

1+50

cb. 4.7 245.6

Gut. 5.7 244.6

Pav. 5.32 244.94

8' Rt. 5.19 245.07

2+00

cb. 5.5 244.8

Gut. 6.6 243.7

Paving. 6.19 244.07

8' Rt. 6.05 244.21

250.26 indexed
C.S.K.

20

2+50

cb. 6.7 243.6

Gutter. 7.8 242.5

Paving. 7.25 243.01

8' Rt. 7.14 243.12

3+00

cb. 7.8 242.5

Gut. 8.8 241.5

Paving. 8.32 241.94

8' Rt. 8.23 242.03

3+50

cb. 9.2 241.1

Gut. 10.2 240.1

Pav. 9.68 240.58

8' Rt. 9.50 240.76

4+00

cb. 10.6 239.7

Gut. 11.6 238.7

Paving. 11.24 239.02

8' Rt. 11.14 239.12

4+50

cb. 12.1 238.2

Gut. 13.2 237.1

Paving. 12.70 237.56

8' Rt. 12.62 237.64

T.P. 5.35 242.66 12.95 237.31

5+00

cb.	5.5	237.2
Gut.	6.5	236.2
Porinq.	6.11	236.55
8' Rt.	6.04	236.62

5+50

cb.	6.5	236.2
Gut.	7.2	235.5
Por.	7.13	235.53
8' Rt.	7.02	235.64

5+89.8 =

cb.	7.0	235.7
Gut.	7.9	234.8
3.5' Rt. = ^{Grating to collect} _{meat 1/1.5}	7.92	234.74
Porinq.	7.66	235.00
8' Rt.	7.54	235.12

6+00

cb.	7.0	235.7
Gut.	7.9	234.8
Por.	7.69	235.03
8' Rt.	7.53	235.13

6+50

cb.	6.5	236.2
Gut.	7.3	235.4
Por.	7.04	235.62
8' Rt.	6.94	235.72

7+00

cb.	5.3	237.4
Gut.	6.1	236.6
Porinq.	5.74	236.92
8' Rt.	5.63	237.03

7+50

cb.	3.4	239.3
Gut.	4.3	238.4
Porinq.	3.90	238.76
8' Rt.	3.81	238.85

8+00

cb.	1.0	241.7
Gut.	2.0	240.7
Porinq.	1.39	241.27
8' Rt.	1.32	241.34

(7+67) = Extra station

cb.	2.6	240.1	
Gut.	3.6	239.1	
Porinq.	3.23	239.43	
8' Rt.	3.11	239.55	
T.P. 10.86	252.69	0.83	241.83

8+25

cb.	9.6	243.1
Gut.	10.6	242.1
Por.	10.12	242.57
8' Rt.	10.05	242.64

252.69

8+50

cb.	8.2	244.5
Gut.	9.1	243.6
Pacing.	8.78	243.91
8' Rt.	8.68	244.01

8+75

cb.	7.2	245.5
Gut.	8.1	244.6
Par.	7.64	245.05
8' Rt.	7.58	245.11

9+00

cb.	6.4	246.3
Gut.	7.5	245.4
Pacing.	6.93	245.76
8' Rt.	6.86	245.83

9+25

cb.	5.9	246.8
Gut.	6.7	246.0
Pacing.	6.40	246.29
8' Rt.	6.28	246.41

9+50

cb.	5.5	247.2
Gut.	6.5	246.2
Par.	6.11	246.58
8' Rt.	6.00	246.69

252.69

22

10+00

cb.	4.9	247.8
Gut.	5.8	246.9
Par.	5.58	247.11
8' Rt.	5.50	247.19

10+50

cb.	4.5	248.2
Gut.	5.4	247.3
Par.	5.09	247.60
8' Rt.	5.04	247.64

11+00

cb.	4.1	248.6
Gut.	5.1	247.6
Par.	4.73	247.96
8' Rt.	4.70	247.99

11+50

cb.	3.8	248.9
Gut.	4.8	247.9
Par.	4.31	248.38
8' Rt.	4.25	248.44

11+75

cb.	3.6	249.1
Gut.	4.4	248.3
Par.	4.12	248.57
8' Rt.	4.07	248.62

252.69

12+00

cb.	3.4	249.3
Gut.	4.4	248.3
Par.	4.00	248.69
8' Rt.	3.97	248.72

12+25

cb.	3.6	249.1
Gut.	4.3	248.4
Par.	4.11	248.58
8' Rt.	4.02	248.67

12+50

cb.	3.7	249.0
Gut.	4.6	248.1
Par.	4.34	248.35
8' Rt.	4.27	248.42

12+75

cb.	4.2	248.5
Gut.	5.0	247.7
Par.	4.75	247.94
8' Rt.	4.69	248.00

13+00

cb.	4.9	247.8
Gut.	5.7	247.0
Par.	5.43	247.26
8' Rt.	5.38	247.31

13+25

252.69

13+25

cb.	5.7	247.0	
Gut.	6.3	246.4	
Par.	6.23	246.46	
8' Rt.	6.17	246.52	
T.P. 0.22	246.64	6.27	246.42

13+50

cb.	0.3	246.3
Gut.	1.2	245.4
Paring.	0.98	245.66
8' Rt.	0.90	245.74

14+00

cb.	2.1	244.5
Gut.	3.1	243.5
Par.	2.62	244.02
8' Rt.	2.54	244.10

14+50

cb.	4.1	242.5
Gutter	5.1	241.5
Paring	4.68	241.96
8' Rt.	4.58	242.06

15+00

cb.	6.1	240.5
Gutter	7.0	239.6
Paring	6.67	239.97
8' Rt.	6.58	240.06

23

246.64

15+50

cb.	8.1	238.5
Gut.	8.9	237.8
Paving	8.65	237.99
8' Rt.	8.54	238.10

16+00

cb.	10.2	236.4
Gut.	11.2	235.4
Pav.	10.65	235.99
8' Rt.	10.50	236.14

16+50

cb.	12.3	234.3
Gutter.	12.5	233.1
Paving	12.89	233.75
8' Rt.	12.80	233.84
T.P.	3.15	237.45
	12.34	234.30

16+75

cb.	4.1	233.4
Gut.	5.8	231.7
Pav.	4.91	232.54
8' Rt.	4.81	232.64

17+00

cb.	5.8	231.7
Gut.	7.1	230.4
Pav.	6.21	231.24
8' Rt.	6.18	231.27

237.45

17+30

cb.	7.6	229.9
Gut.	9.2	228.3
Pav.	7.89	229.56
8' Rt.	7.78	229.67

T.P.	12.85	249.94	0.36	237.09
------	-------	--------	------	--------

T.P.	3.32	248.65	3.61	246.33
------	------	--------	------	--------

check 0+00 stub Page 10	1.32	247.33
-------------------------	------	--------

247.34 = Miller,
0.01 = Error,

24

GRADES PERSHING DRIVE

0+00 89e 20
= 0+00

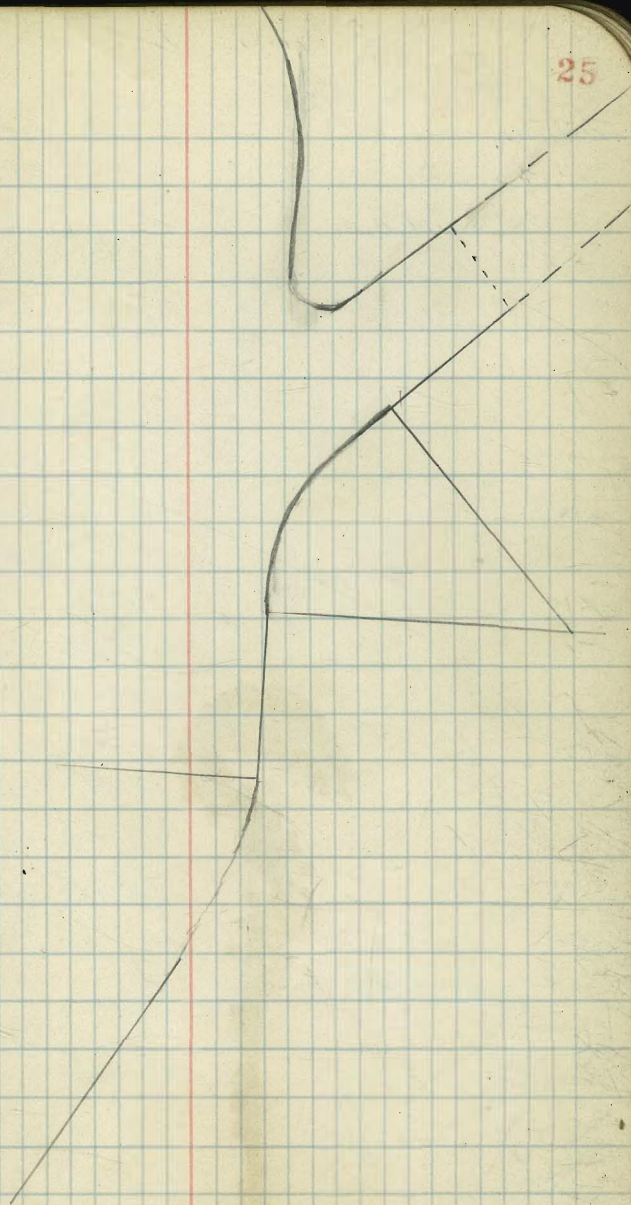
+39 = E.C. Return

Curb Grade

247.34

H. G. See Page 26

25



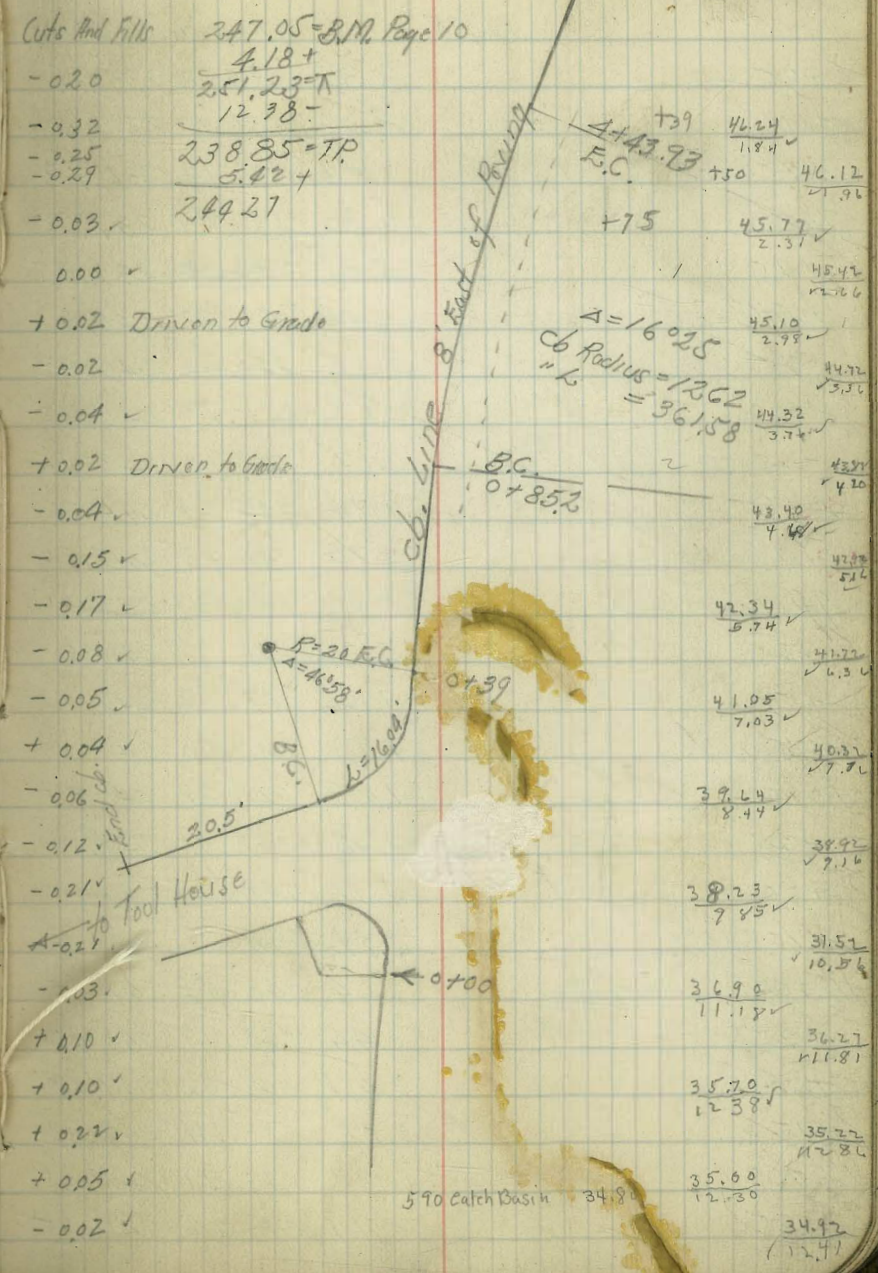
PURSHING DRIVE
Curb Grades

Gutter Grades
6-12-37

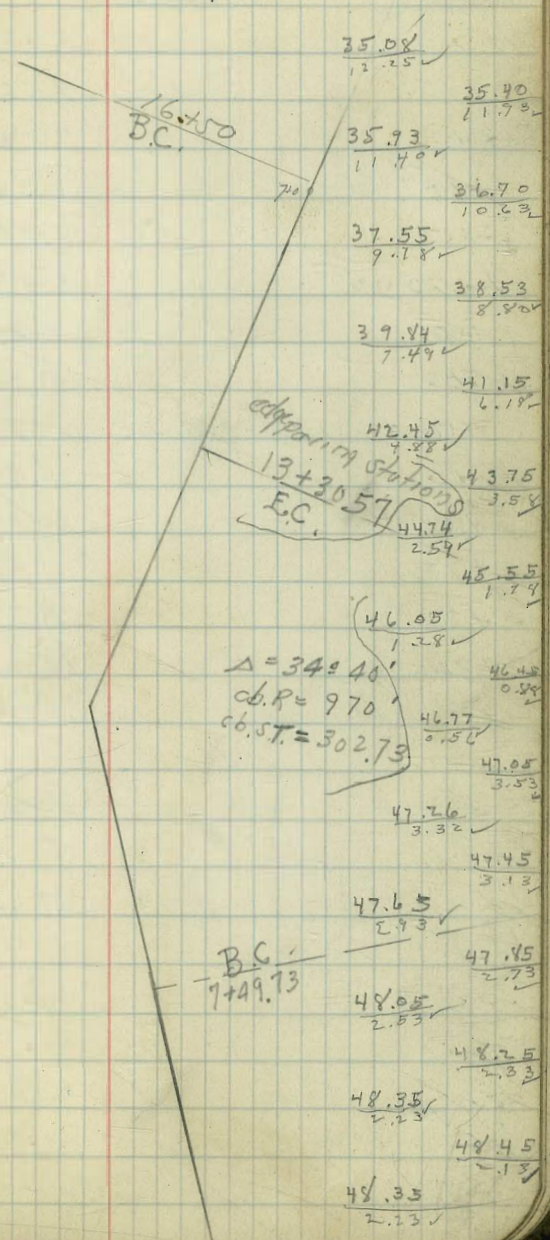
BC, P.L.
7449.73 26

Note stations = east edge Pav. or Elk's stake

Station	Pav. Elev.	Elk's stake	Cb. Grade	Cuts and Fills
End cb on South	251.23	385	247.38	247.58 -0.20
BC, 20' cb Radius	4.29	246.94	247.26	-0.32
0+39 E. Curve	4.33	246.90	247.15	-0.25
= E.C. 20' cb "	4.48	246.75	247.04	-0.29
0+85.2 = BC	4.86	246.37	246.40	-0.03
1+00	4.98	246.25	246.25	0.00
+25	5.28	245.95	245.93	+0.02 Driven to Grade
+50	5.70	245.53	245.55	-0.02
+75	6.12	245.11	245.15	-0.04
2+00	6.51	244.72	244.70	+0.02 Driven to Grade
+25	7.05	244.18	244.22	-0.04
+50	7.63	243.60	243.75	-0.15
+75	8.23	243.00	243.17	-0.17
3+00	8.76	242.47	242.55	-0.08
+25	9.40	241.83	241.88	-0.05
+50	10.04	241.19	241.15	+0.04
+75	10.82	240.41	240.47	-0.06
4+00	11.60	239.63	239.75	-0.12
+25 TR 5.42	24	12.38	238.85	239.06 -0.21
443.93	5.98	238.29	238.50	-0.21
4+75	6.58	237.69	237.72	-0.03
5+00	7.07	237.20	237.10	+0.10
+25	7.64	236.63	236.53	+0.10
+50	8.00	236.27	236.05	+0.22
+75	8.40	235.87	235.82	+0.05
6+00	8.54	235.73	235.75	-0.02



			Rods	Elev. stakes	Curb. Elev.	Cuts. and Fills
244.27						
6+25			8.39	235.88	235.88	0.00 Grade
+50			8.06	236.21	236.20	+0.01 driven to Grade
+75			7.53	236.74	236.73	+0.01 " " "
7+00			6.80	237.47	237.50	-0.03 ✓
+25			5.89	238.38	238.35	+0.03 driven to Grade
+49.73 = B.C.			5.04	239.23	239.33	-0.10 ✓
+75			3.85	240.42	240.64	-0.22 ✓
8+00			2.56	241.71	241.95	-0.24 ✓
+25 TP	9.13	252.23	1.17	243.10	243.25	-0.15 ✓
+50			7.74	244.49	244.55	-0.06 ✓
+75			6.75	245.48	245.54	-0.06 ✓
9+00			5.86	246.37	246.35	+0.02 driven to Grade
+25			5.26	246.97	246.85	+0.12 ✓
+50			5.06	247.17	247.25	-0.08 ✓
+75			4.73	247.50	247.57	-0.07 ✓
10+00			4.43	247.80	247.85	-0.05 ✓
+25			4.08	248.15	248.06	+0.09 ✓
+50			3.96	248.27	248.25	+0.02 driven to Grade
+75			3.71	248.52	248.45	+0.07 ✓
11+00			3.64	248.59	248.65	-0.06 ✓
+25			3.44	248.79	248.85	-0.06 ✓
+50			3.21	249.02	249.05	-0.03 ✓
+75			3.12	249.11	249.17	-0.06 ✓
12+00			2.82	249.41	249.25	+0.16 ✓
+25			2.99	249.24	249.15	+0.09 ✓



	T	Rods	Elev. Stake	Elev. Curb	Cuts And Fills
T.P.	252.23				
12+50 on stake 1.06	250.12	3.17	249.06	248.90	+0.16 ✓
+75		1.56	248.56	248.40	+0.16 ✓
13+00		2.13	247.99	247.75	+0.24 ✓
+30 = 56		3.23	246.89	246.88	+0.01 Driven to Grade
13+50		3.78	246.34	246.25	+0.09 ✓
14+00		5.49	244.63	244.50	+0.13 ✓
+50		7.45	242.67	242.47	+0.20 ✓
15+00		9.55	240.57	240.45	+0.12 ✓
+50 T.P. 1.78	240.30	11.60	238.52	238.42	+0.10 ✓
16+00		3.80	236.50	236.40	+0.10 ✓
+50 = B.C. Lt.		5.90	234.40	234.20	+0.20 ✓
+75		6.90	233.40	232.90	+0.50 ✓
17+00		8.57	231.73	231.70	+0.03 ✓
+30		10.87	229.43	229.90	-0.47 ✓
check on Edge Paving	17+30 P. 24	10.72	229.58		
			229.56 = Paving		
			0.02 = Error		

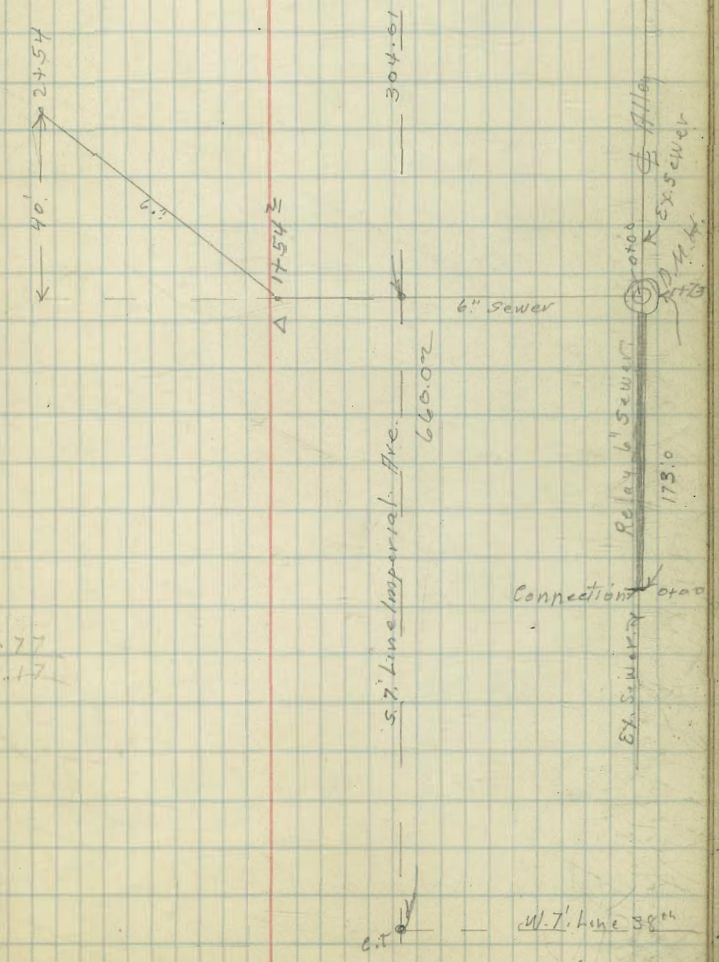
	48.10
	2.98 ✓
	47.60
	2.98 ✓
	46.95
	3.63 ✓
	46.25
	4.33 ✓
	45.45
	5.13 ✓
	44.58
	6.00 ✓
	43.70
	6.88 ✓
	42.70
	7.88 ✓
14+50	41.67
	8.70 ✓
	40.66
	9.92 ✓
15+00	39.65
	10.73 ✓
	38.63
	11.95 ✓
	37.62
	12.76 ✓
	36.40
	2.14 ✓
16+00	35.60
	3.14 ✓
	34.50
	4.24 ✓
17+00	33.40
	5.84 ✓
	32.30
	6.40 ✓
	31.70
	6.14 ✓
	7.64 ✓
	7.44 ✓

	Pay	Curbs		
17+25	8.84	9.13	19+13	9.05
	229.86	229.61		
17+50	10.50	10.74	19+38	9.50
	228.24	228.00		
17+75	12.34	12.60	19+62	10.00
	226.40	226.14		
18+00	4.20	4.40	19+84	10.30
	224.71	224.51		
18+162	5.22	5.62	20+13	10.60
	223.59	223.39		
18+38	6.55		20+38	11.10
+63	7.74		20+63	11.77
+88	8.50		20+84	12.50

Sewer Grades
 BIK 1, Superba HTs.
 for 100.F. Cemetery.

Indexed
 c.s.R.

B.M.	5.50	123.88	118.38	118.38	S.P. 39 th Imperial.	
T.P.	12.06	123.12	12.82	111.06		
connection with ex. 6" sewer 0+00.			7.75	175.37	101.00	+14.37
0+50			7.38	115.74	101.35	+14.39
1+00			6.61	116.51	101.70	+14.81
1+50			5.05	118.07	102.05	+16.02
1+73 D.M.H. $\Delta 90^\circ$ 1+0+00			4.60	118.52	102.21	+16.31
0+50			4.88	118.24	102.56	+15.68
1+00			10.90	112.22	102.91	+9.31
T.P.	1.80	114.02	10.90	112.22		
1+25			5.83	108.19	103.09	+5.10
1+54 Δ		Brk.	5.86	108.16	103.29	+4.87
T.P. E. Gate 100.F. Cemetery.			2.96	111.06		
T.P.	2.88	113.94		111.06		
2+04			3.73	110.21	106.65	+3.56
2+54			0.11	113.83	100.00 (lower)	+3.83



5.77
 108.17

WT. Line 39th St

Outlook Dr Grades. $1\frac{1}{2}$ to 1 slope Fills
 to 1 " " Cuts
 Sketch B1468-16

Indexed
 c.s.K.

% E. 2

30

27.00

23.00

50'

145

35.49

1+00

0+50

0+00

13M. End. Curb

W. line Caprillo Brk

B.C.

E. line High St.

N.E. Cor High
 to Outlook
 Book 1468-17

R+73⁰⁰ 11.54 174.79 10.13 163.25

T.P. 11.54 174.79 10.13 163.25

R+50 11.54 174.79 10.13 163.25

R+00 11.54 174.79 10.13 163.25

1+85⁴⁹ 10.13 173.38 1.10 163.25

T.P. 10.13 173.38 1.10 163.25

1+50 10.13 173.38 1.10 163.25

1+00 10.13 173.38 1.10 163.25

0+50 10.13 173.38 1.10 163.25

T.P. 13.00 164.35 2.04 151.35

0+00 13.00 164.35 2.04 151.35

13M. End. Curb 8.84 153.39 144.55

Lowered π 174.8
 $\frac{173.2}{1.6}$ (173.7) 174.00 (173.7) $\frac{173.2}{1.6}$ Lowered
 $\frac{7.8}{4.1}$
 out. 24'3" F. 6.2 $\frac{7.8}{4.1}$ out. 19'2"

π 173.4
 $\frac{171.4}{2.0}$
 out. 23'0" F. 5.3 $\frac{171.4}{2.0}$ out. 19'2"

π 173.4
 $\frac{166.3}{7.1}$
 out. 18'9" F. 2.7 $\frac{166.3}{7.1}$ out. 16'0"

π 173.4
 $\frac{164.8}{8.6}$
 out. 18'6" F. 2.4 $\frac{164.8}{8.6}$ out. 16'2"

π 164.4
 $\frac{161.1}{3.3}$
 out. 17'1" F. 1.4 $\frac{161.1}{3.3}$ out. 17'4"

π 156.0
 $\frac{156.0}{8.4}$
 out. 15'3" - 0.2 $\frac{156.0}{8.4}$ out. 17'1"

π 150.8
 $\frac{150.8}{13.6}$
 out. 15'3" C. 0.3 $\frac{150.8}{13.6}$ out. 18'0"

π 153.4
 $\frac{145.0}{8.4}$ 146.0
 out. 15'7" C. 0.7 $\frac{145.0}{8.4}$ out. 17'2"

103 90

145.5
 145.0

50.1 T.P. 12.78 223.67 0.12 210.89

5+00

50.1 T.P. 12.75 211.01 0.35 198.24

4+50

24.97 4+25⁰³ E.C.

25.03

4+00

40.6 T.P. 12.82 198.61 0.83 185.79

3+60 Brk.

23.00

3+87⁰⁰ Line Cabrillo

25.00

T.P. 12.75 186.62 0.92 173.87

3+00

27.00

174.97

π 211.0
 $\underline{201.3}$
 9.7
 $\underline{10.2}$
 out. 15.8 F. 0.5

π 198.6
 $\underline{192.2}$
 6.4
 $\underline{4.2}$
 out. 17.2 C. 2.2

π 194.6
 $\underline{187.6}$
 11.0
 $\underline{8.7}$
 out. 17.3 C. 2.3

π 198.6
 $\underline{183.0}$
 15.6
 $\underline{11.4}$
 out. 19.2 C. 4.2

Raised π 184.6
 $\underline{176.7}$
 9.9
 $\underline{7.0}$
 out. 17.9 C. 2.9

π 184.6
 $\underline{175.2}$
 11.4
 $\underline{10.6}$
 out. 15.8 C. 0.8

π 174.8
 $\underline{174.3}$
 0.5
 $\underline{6.5}$
 out. 24.0 F. 6.0

π 223.7
 $\underline{201.3}$
 22.4
 $\underline{6.3}$
 C. 16.1 Not. 1 to 1 slope
 out. 30.0

223.7
 $\underline{192.2}$
 31.5
 $\underline{15.0}$
 16.5 Not. 1 to 1 slope
 out. 30.5

π 211.0
 $\underline{187.6}$
 23.4
 $\underline{5.2}$
 C. 18.2 Not. 1 to 1 slope
 out. 29.0

π 211.0
 $\underline{183.0}$
 28.0
 $\underline{2.0}$
 C. 19.0 Not. 1 to 1 slope
 out. 30.0

Raised π 211.0
 $\underline{176.7}$
 34.3
 $\underline{15.6}$
 C. 18.7 Not. 1 to 1 slope
 out. 30.0

186.6
 $\underline{175.2}$
 11.4
 $\underline{3.2}$
 C. 14.6 out. 29.6

174.8
 $\underline{174.3}$
 0.5
 $\underline{2.3}$
 F. 1.8 out. 17.7

18.3 0/0

2.3 0/0

22.31 T.P. 13.27 261.77 0.59 248.50

7+97⁶⁹

21.63 T.P. 12.94 249.09 0.18 236.15

7+56⁰⁶

P.C.C.

21.33

7+34⁸³

21.22

7+13⁴¹

21.22

6+92³⁹

P.C.C.

20.32 T.P. 12.74 236.33 0.08 223.59

6+71⁵⁷

20.32

6+50⁷⁵

20.32

6+29⁹³

P.C.

(29.93)

6+00 Brk.Gr.

50.0

5+50

50.0

223.67

249.1
245.8
3.3
12.3
out. 28.5 F. 9.0

236.3
240.30
+ 4.0
13.0
out. 40.5 F. 17.0

237.50
+ 1.0
13.8
out. 36.8 F. 14.5

234.70
1.6
15.0
out. 35.1 F. 13.4

236.3
231.90
4.4
13.2
out. 28.2 F. 8.8

223.7
229.15
+ 5.4
2.9
out. 27.5 F. 8.3

226.40
+ 2.7
5.0
out. 26.5 F. 7.7

223.75
0.0
4.5
out. 21.8 F. 4.5

219.7
4.0
4.7
out. 16.1 F. 0.7

223.7
210.5
13.2
12.0
out. 16.2 C. 1.2

15' Rt.

261.8
245.8
16.0
9.5
C. 6.5 out. 21.5

249.1
240.3
8.8
1.0
C. 7.8 out. 22.8

237.5
11.6
4.1
C. 7.5 out. 22.5

234.7
14.4
6.6
C. 7.8 out. 22.8

231.9
17.2
6.6
C. 10.6 out. 25.6

229.1
20.0
8.6
C. 11.4 out. 26.4

226.4
22.7
10.0
C. 12.7 out. 27.7

248.1
223.6
26.5
10.6
C. 15.9 out. 29.0

223.7
219.7
4.0
+ 12.2
C. 16.2 out. 30.0

223.7
210.5
13.2
+ 4.0
17.2 out. 30.0

15' Rt.

13.2%

18.3%

220.00

36.22
36.23
T.P. 12.90 271.81 2.86 258.91

9+40 Brk. Gr.

9+36.83 B.C.

9+22.61 E.C.

8+80.22

8+39.33

8+20 Brk Gr.

22.31

261.77

271.91
262.1
9.7
18.3
out 27.9 8.6

256.7 X 257.00

261.8
256.5
5.3
11.0
out 23.7 5.7

255.6
6.2
12.9
out 25.0 6.7

252.8
9.0
16.2
out 25.8 7.2

250.0
11.8
12.4
out 15.9 6.6

248.7 X 249.00

15.0%

6.67%

13.2%

271.91
262.1
9.7
6.8
C.2.9 out 17.9

256.7

256.5
15.3
4.6
C.10.7 out 25.7

255.6
14.2
6.2
C.10.0 out 25.0

252.8
17.0
7.9
C.11.1 out 26.1

271.8
250.0
21.8
11.5
C.10.3 out 25.3

248.7

12+52²⁰ Pueblo Line End.

49 1/2

12+02⁸⁰

43 1/2

11+60 Brk Gr.

11+54⁴⁰ E. Line Pepita

30.0

11+24⁴⁰ ♀

30.0

T.P. 12.83 296.58

0.50

283.75

Hubs. E. Cor.
Pepita

10+94⁴⁰ E.C. = W. Line Pepita

39.4

10+55⁰⁰

T.P. 12.79 284.25

0.35

271.46

10+15⁶¹

271.86

X 296.58

295.7

296.00

X 296.58

295.7

out. 15.6

0.9
0.3
C.0.6

0.9
0.8
C.0.1

out. 15.1

292.4

4.2
2.3
C.1.9

out. 16.9

0.6520%

292.4

4.2
3.2
C.1.0

out. 16.0

289.7

290.00

289.7

288.8

7.8
4.3
C.3.4

out. 18.4

288.8

7.8
6.4
C.1.4

out. 16.4

284.3

12.3
7.5
C.4.8

out. 19.8

284.3

12.3
9.5
C.2.8

out. 17.8

X 284.25

279.8

4.4
4.1
C.0.3

out. 15.3

15.0%

X 284.25

279.8

4.4
2.0
C.2.4

out. 17.4

273.9

10.3
13.3
F. 3.0

out. 19.5

273.9

10.3
6.5
C.3.8

out. 18.8

X 271.81

268.0

3.8
13.6
F. 9.8

out. 29.7

X 271.81

268.0

3.8
3.3
C.0.5

out. 15.5

15' Lt.

♀
Grade

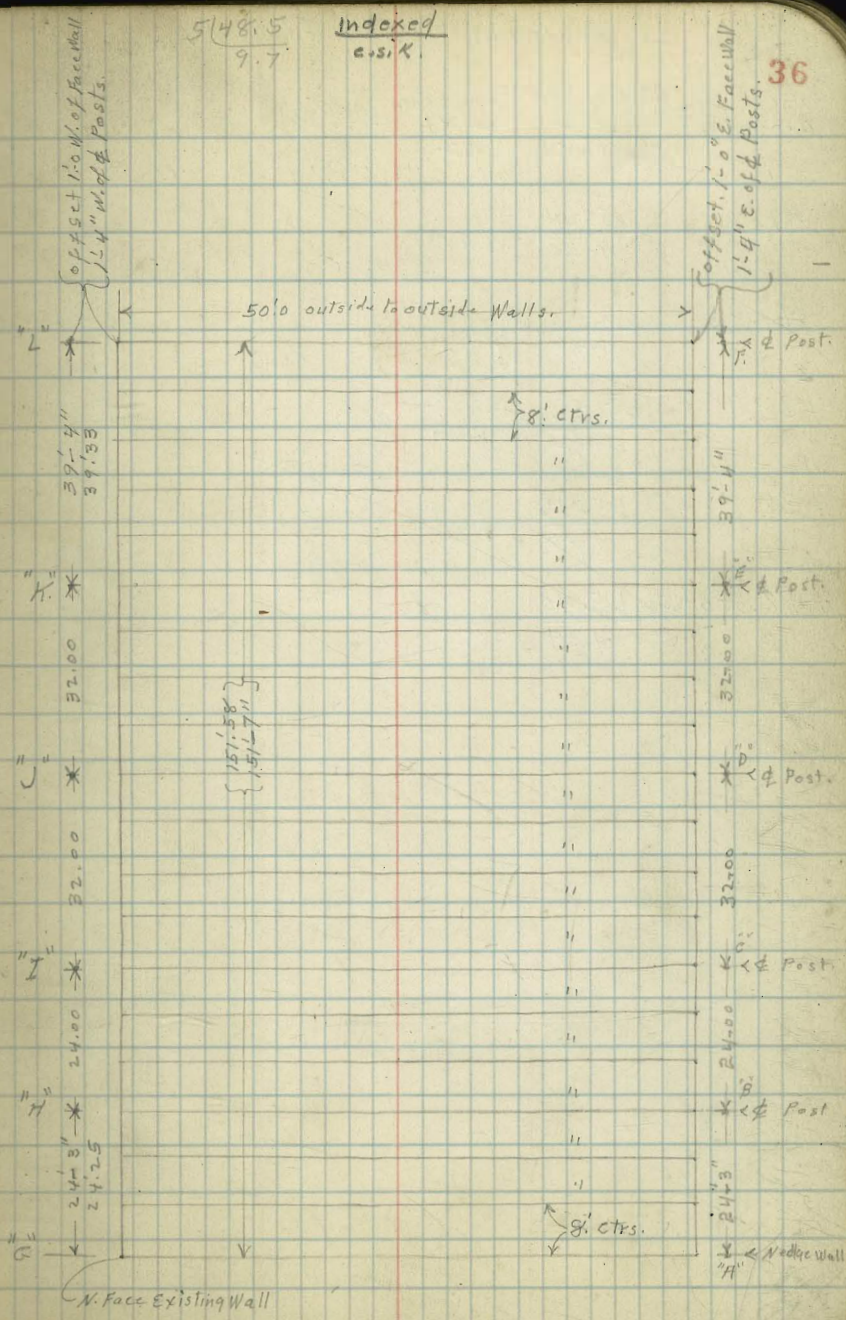
15' Rt

Blacksmith Shop.
City Barns

1-24-34
mills
Walker
Bliss.

548.5
9.7
Indexed
c.s.K.

B.M. Top FireHdt	2.58	75.71		73.13	S.E. 20" + 18 Sts
T.P.	3.17	68.93	9.95	65.76	
Top Wall at "A"			1.55	67.38	El. Top Wall
Stub at "A"			3.83	1.55	Gr. Rd F. 2.28 2'-3 3/4"
" " "B"			4.01	1.55	F. 2.46 2'-5 17/32"
" " "C"			4.03	1.55	F. 2.48 2'-5 3/4"
" " "D"			4.45	1.55	F. 2.90 2'-10 13/16"
" " "E"			4.01	1.55	F. 2.46 2'-5 17/32"
" " "F"			3.40	1.55	F. 1.85 1'-10 3/16"
T.P. "B"	4.99	69.91	4.01	64.92	
Mark on Wall at "G"			2.53	67.38	El. Top Wall
Stub at "H"			4.85	2.53	Gr. Rd F. 2.32 2'-3 27/32"
" " "I"			4.62	2.53	F. 2.09 2'-1 3/32"
" " "J"			5.46	2.53	F. 2.93 2'-11 5/32"
" " "K"			3.57	2.53	F. 1.04 1'-0 1/2"
" " "L"			3.34	2.53	F. 0.81 0'-9 23/32"
T.P.	4.00	69.06	4.85	65.06	
Floor Machine Shop W. side			3.86	65.20	2'-2 5/32" below Wall
" " " " E "			3.66	65.40	Blacksmith Shop Floor 1'-11 3/4" below Wall.
Floor Levels					
W. side	65.20			67.38	office
	4.56			F. 0.81	
+ 9.7	65.24			2.42	
	4.52			66.57	
+ 19.4	65.28			3.19	office floor
	4.48			69.76	
+ 29.1	65.32			67.38	
	4.44			2.38	
+ 38.8	65.36			69.76	
	4.40				
+ 48.5 E Wall	65.40				
	4.36				



Blacksmith Shop. Floor Grades.

2-2024
Miller
Walker
13.00

W. side	Grade	Raise or Gr. Rd	
	65.20		67.38
	Gr. Rd 4.54	4.52	2.36
			<u>69.74</u>
+9.7	65.24		
	4.50	4.48	
+19.4	65.28		
	4.46	4.44	
+29.1	65.32		
	4.42	4.40	
+38.8	65.36		
	4.38	4.36	4.36
			<u>21</u>
+48.5 = E. side	65.40		4.15
	4.34	4.32	

Grade Rd
for Forges.

Levels for Drainage at Garbage
Truck Shed at City Barns.

Indexed
C&R

67.82

38

BM. Fire Hydrant	1.43	74.56	73.13	5. E. 20 th + B. Sts.	E. side shed	6.09	
BM. B.P.		4.31	70.25	5. E. 20 th + B. Sts.	10' E	5.96	
F.P.	4.49	67.82	63.33		20' E	5.62	
		2' N. of N. Line B. St.					1+25 N
1.5 E. of W. Wall shed	12' culvert	7.19		Fl. Inlet	E. side shed	6.01	
		00 = N. Line B. St. = S. End shed.			10' E	5.95	
E. side shed		5.31			20' E	5.56	
10' E.		4.96					1+75' N.
20' E		4.40			E. side shed.	5.99	
0+25 North					10' E	5.85	
E. side shed		5.70			20' E	5.42	
10' E.		5.37					1+82
20' E		4.97			E. side shed ext. platform at Toilets	5.74	S. side
0+50 North					" " "	6.06	
E. side shed		5.87			10' E	5.81	
10' E.		5.64			20' E.	5.38	
20' E		5.29					1+91 S. End. Grease Rack.
0+75 N.					E. side shed on Grease Rack Floor	5.52	
E. side shed.		5.88			+ 4' E	5.77	
10' E		5.77			+ 10' E	5.68	
20' E.		5.44			+ 20' E	5.32	
1+ 00 N							
E. side shed.		5.96					
10' E.		5.90					
20' E		5.55					

15/2/34

Water Grades. Adams Ave
Winona West. to Talmage Park.
Stubs 5' S. of Adams. = 5' N. Water Main.indexed
CSK

39

B.M.	5.02	394.00	388.98	Grade
at 00 = W. line				
Winona W. End. pavmt.	5.20	388.8	388.8	
0+50	3.60	390.4	388.1	+ 2.3
1+00	3.90	390.1	387.4	+ 2.7
1+53.5 - E. End. pavmt	7.40	386.6	386.6	

1+53.5 = E. End. Talmage Pavmt

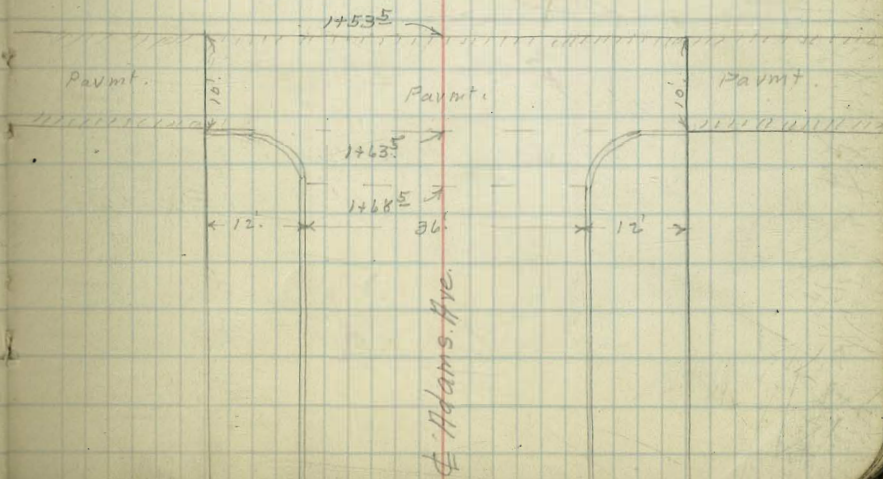
S.	7.85	386.15	
+ 12' ch. line	7.65	386.35	✓
+ 30' = φ	7.15	386.85	
+ 48' = ch.	7.45	386.55	
+ 60' = N	7.52	386.78	

1+63.5

N. on N. End. amt. cl.	7.16	386.89	
N. ch. line on pavmt.	7.50	386.50	
φ " "	7.45	386.55	
S. ch. line " "	7.98	386.04	
S. on S. End. amt. cl.	7.48	386.52	

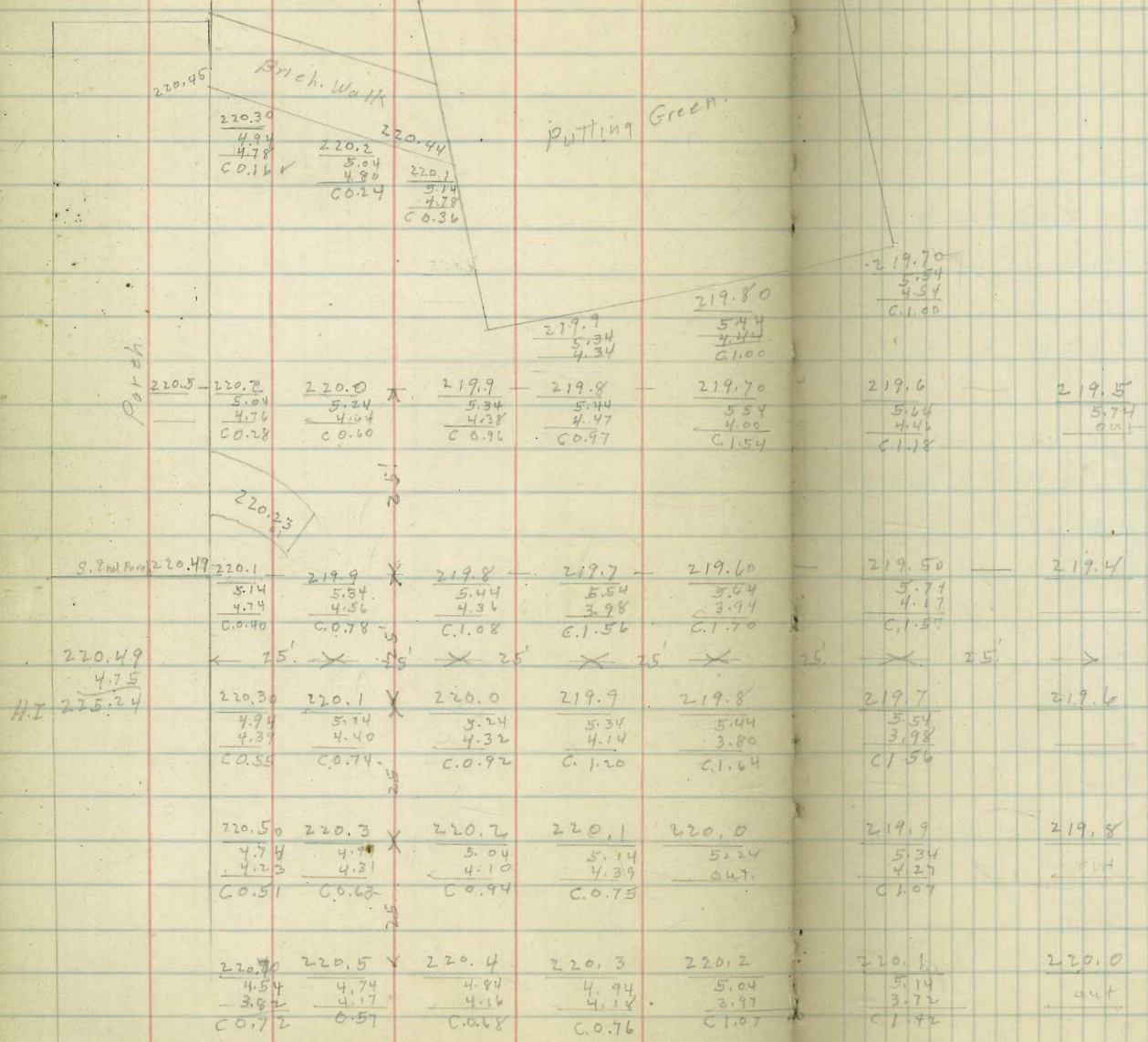
1+68.5

S. amt. cl.	7.69	386.31	
gutter	8.14	385.82	
φ	7.63	386.37	
gutter	7.65	386.35	
N. amt. cl.	7.20	386.80	



Grades For Parking Area at
Municipal Golf Club House Balboa Park

Indexed
c.s.K.



Polk

Indexed
C.S.A.

Ave

Cont. Walk Report W. side Hamilton
Bet. Lincoln + Polk.

6-23-34
Miller
Walker 41

0+00 = S. Line Polk

0+99⁹⁷ Walk OK to North. Grade.

on E. edge = 0'-0 1/2" High on W. Edge.

0+99⁹⁸ " 0'-1" High. to S.

on E. Edge walk = OK. on W. Edge

0+99⁹⁹ Lot. Line Bet. Lots 44 + 45

1+05² High P.T. Raised walk

1+20 Walk to N. 0'-0 3/4" High.

on E. Edge Walk = OK. on W. Edge.

1+20⁰² " OK. Grade.

on E. edge 0'-0 1/4" High on W. Line.

Hamilton

5+99⁹⁴ N. Line Lincoln

Lincoln.

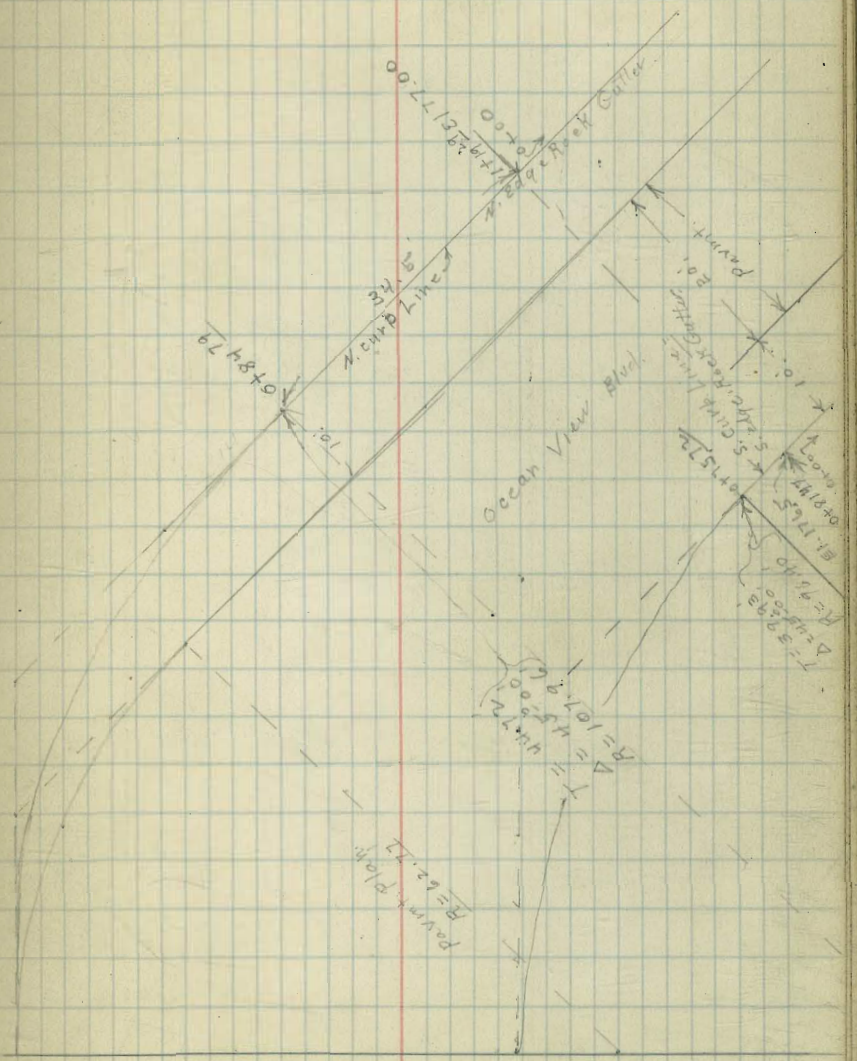
Ave

Ocean View Blvd. Grades
40th to Boundary

6-25-34
Miller
Walker
Bless
40th ↓
Ocean View

Indexed
C.S.M.

B.M. N.W. 7 th Ct	0.64	82.82	Curb Grades	82.18	
S. Side	S. ed	S. edge Pav	W edge Pav	N. ed N. side	E. line 40 th
0+00 BC	4.37	4.90	4.12	3.32	0+00 BC
	78.45	77.92	78.70	79.50	
0+18 ⁹³	78.00			79.02	0+21 ²⁰
	4.82			3.80	
0+37 ⁸⁶	77.54			78.54	0+42 ⁴⁰
	5.28			4.28	
0+56 ⁷⁷	77.09			78.06	0+63 ⁶⁰
	5.73			4.76	
0+75 ⁷² EC	76.63			77.58	0+84 ⁸⁰ EC
	6.17			5.24	
0+81 ⁴⁷ Brk. Not set	76.50			77.00	Not set
0+00				76.80	1+79 ⁸ Brk
					0+00
0+15 ⁵	76.13			76.38	0+15.5
	6.69			6.44	
0+65 ⁵	74.93			75.03	0+65.5
	7.89			7.79	
	Profile			Profile	
Not set	74.00			74.00	Not set
1+00 Brk.	74.10			74.10	1+00 Brk
T.P.	1.26	76.29	73.92	75.03	
1+15 ⁵	73.70			73.76	1+15.5
	2.59			2.53	
				1.53	
				61.00	
1+65 ⁵	72.70			72.66	1+65.5
	3.59			3.63	
				2.63	
				61.00	
2+15 ⁵	71.70			71.56	2+15.5
	4.59			4.73	



76.29

S. d. - s. side Pav N. Side Pav

2+65^E
21.0

70.70
5.59

N. d.

70.46 2+65^E
5.83
4.23
6.1.00

(69.7) Profile out,
70.00 2+86⁵⁴ B.K

2+86⁵⁴ B.K out. 70.4
70.40 12.89 12.91 13.07
69.93 69.91 69.75

2+94.23 B.C. 70.29
6.00

70.00 2+86.00 B.C.
6.29
6.79
6.0.50

3+15.49 69.97
6.32

69.65 3+07²⁴
6.64
5.64
6.1.00

3+36.75. 69.66
6.63

S	E	N
7.08	7.10	7.30
69.21	69.19	68.99

69.29 End Gutter
3+28⁵²
7.00
5.50
6.1.50

3+58.01 69.35
6.94

3+49⁷⁸

End Gutter
3+79.27 E.C. 69.04
7.25

S	South	N
7.56	7.52	7.65
68.73	68.77	68.64

3+71⁰⁴ E.C.

Reset

1+65^E 72.70
4.27

70.29
6.64
A76.97

2+15.5 71.70
5.27

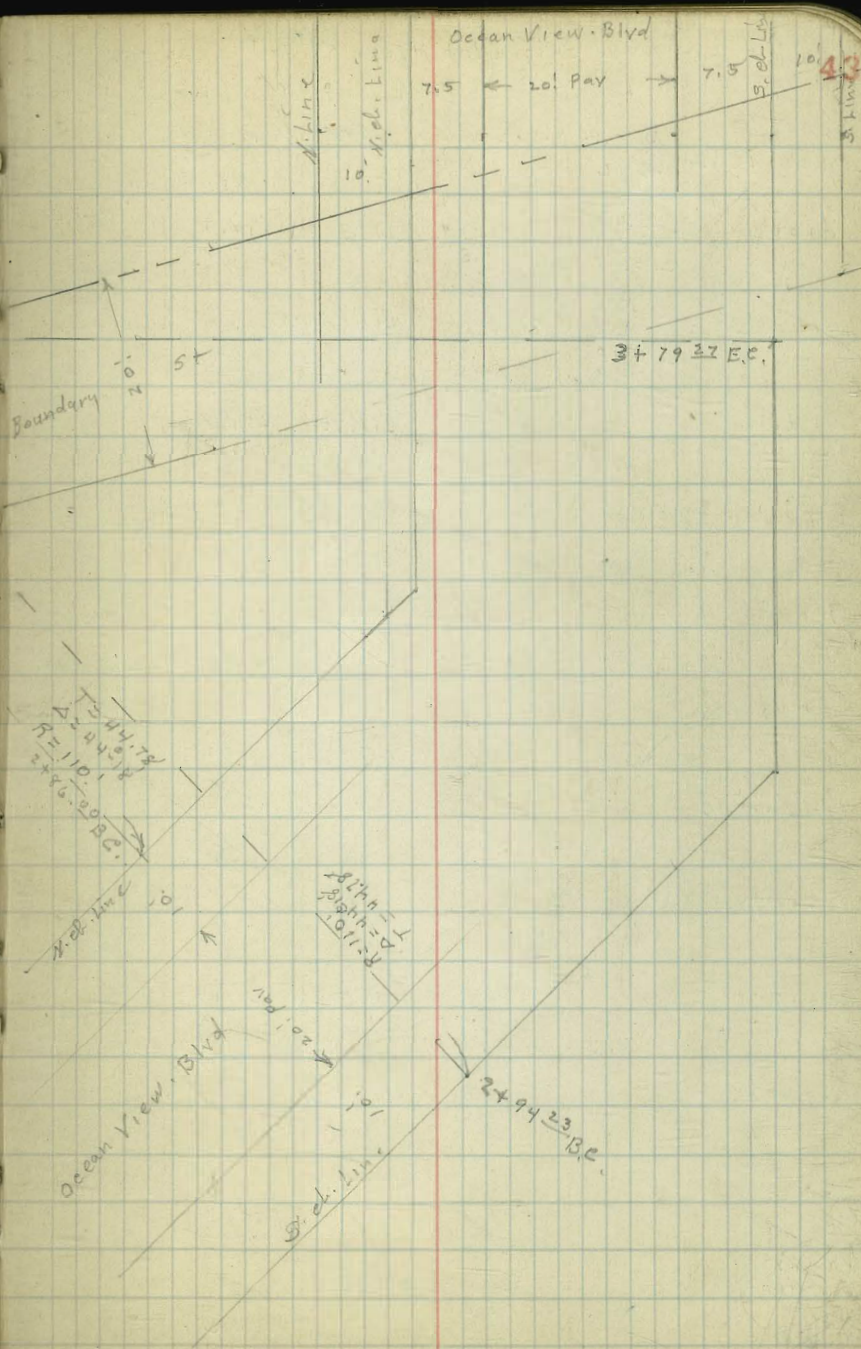
2+65^E 70.70
6.27

2+94²³ B.C. 70.29
6.68

Ocean View Blvd

7.5 ← 20' Pav → 7.5

10' 43



Grades. Golf Club House Rd. Balboa Park.
from 28th + Date to 26th + Russ Blvd.

Book 1486 - 49. Alignment.

B.M. stub # 28 th + Date	Book	Lt.	±	Rt.
	216.12			
W. line 28 th st	9.51			
0+00	225.63 12.53	217.8	218.2	217.9
	7.8 7.2			7.8 7.2
	0.50	6.0.8		F0.4
0+20 th BC Lt	213.60 0.50	218.0	218.50	218.5
	213.10 4.09	7.6 6.6		7.1 7.4
	217.19	6.1.0		F0.3
0+40 PVC		218.1	218.50	219.1
		7.5 5.8		6.5 7.0
		C.1.3		F0.5
0+80		218.3	219.30	220.3
		7.3		5.3
X		4.6		5.7
		C.2.7		F0.4
1+20		218.2	219.27	220.3
		7.3 4.4		5.3 5.8
		C.2.9		-0.5
1+60		217.9	218.74	119.2
		7.7		6.4
1+80		4.9	18.74	6.2
		C.2.8		C.0.2
1+93 th EC		217.2	217.82	217.9
		8.4		7.7
		5.4		6.6
		C3.0		C.1.1
2+00 PVC			-17.62	
2+25		216.3	216.7	216.3
		9.3 6.8		7.3 7.8
		C.2.5		C.1.5
2+60 PVC		215.0	215.40	215.0
		10.6 9.0		10.6 10.2
		C.1.6		C.0.4
3+00		213.8	214.17	213.8
		11.8 12.5		+0.2 3.0
		F0.7		F.3.2
3+40		213.0	213.36	213.0
		4.2 8.6		0.6 7.3
		F.4.4		F7.7 out 11.6

Indexed
C.S.K.I.

44

	Lt.	±	Rt.
3+67 th BC Rt.	212.6	213.05	212.6
	4.6 7.1		4.6 13.6
	F2.5		8.4 out 12.6
4+00	217.19 2.20		
	214.99	212.5	212.95
	6.83		4.7
	221.82		5.0
	3.06		F3.3 out 5.0
4+50	218.76	212.9	213.3
	3.47		4.3
	222.23		3.2
		C.2.1	C.1.1
5+00	213.2	213.6	213.2
	8.6 4.8		8.6 5.4
	C.3.8		C.3.2
5+50	213.5	213.9	213.5
	8.3 4.1		8.3 6.2
	C.4.2		C.2.1
6+00	213.8	214.2	213.8
	8.0 5.9		8.0 7.5
	C.2.1		C.0.5
6+54 th EC	214.2	214.6	214.2
	8.0 7.3		8.0 10.9
	C.0.7		F.2.9
7+00	214.5	214.9	214.5
	7.7 7.6		7.7 18.0
	C.0.1		F3.3
7+20 PVC	214.6	215.0	214.6
	7.6 7.4		7.6 10.6
	C.0.2		F.3.0
7+40		215.13	
7+47 th BC	215.1	215.20	214.6
	7.1 7.0		7.6 10.8
	C.0.1		F.3.2
7+60	215.4	215.30	214.7
	6.8 2.9		7.5 11.2
	F0.1		F.3.7
7+80	215.9	215.50	214.8
	6.3 6.6		7.4 10.9
	F.0.3		F3.5

	Lt	♀	RT
8+00	216.4 5.8 6.9 F 1.1	215.74	214.9 7.3 10.5 F 3.2
8+20	217.0 5.12 6.5 F 1.3	216.02	215.0 7.2 9.4 F 2.2
8+40	217.3 4.9 5.1 F 3.2	216.31	215.3 6.9 9.9 F 3.0
8+60	217.6 7.0 8.6 C 0.4	216.63	215.6 6.6 4.9 C 1.7
8+80 E.V.C.	218.0 8.6 8.3 +0.3	217.00	216.0 10.6 9.4 +1.2
9+00	218.4 8.2 7.9 +0.4	217.41	216.4 10.2 9.7 +0.5
9+20	218.7 7.9 7.5 +0.4	217.91	217.1 9.5 9.5 0.0
9+44 ⁸⁹ EC	219.0 7.6 7.0 +0.6	218.51	217.9 7.7 9.2 -0.5
10+00	219.8 6.8 4.8 +2.0	219.81	219.8 6.8 6.8 0.0
10+31 ²⁸ B.C.Lt	220.2 6.4 4.3 +2.1	220.52	220.5 6.1 4.5 -0.4
10+50	220.6 6.0 4.0 +2.0	220.91	221.0 5.6 6.4 -0.8
10+75	220.9 5.7 3.6 +2.1	221.55	221.6 5.0 6.1 -1.1
11+00 P.V.C.	221.2 5.4 3.3 +2.1	222.0	222.2 4.4 6.0 -1.6

	Lt	RT	71 FL cut 221.8 6.4 Top C.B. 222.0
11+20	221.6 5.0 3.0 +2.0	222.4	222.6 4.0 6.0 -2.0
11+40	221.9 4.7 2.7 +2.0	222.7	222.9 3.7 5.9 -2.2
11+60	222.1 4.5 3.1 +1.4	222.9	223.1 3.5 5.8 -2.3
11+80	222.3 4.3 2.9 +1.4	223.1	223.3 3.3 5.9 -2.4
12+00	222.5 4.1 3.0 +1.1	223.3	223.5 3.1 6.3 -3.2
12+20	222.7 3.9 2.8	223.5	223.6 3.0 6.4 -3.4
12+40	222.9 3.7 2.8 +0.9	223.7	223.7 2.9 5.8 2.9
12+55 ⁴² P.C.C.	223.1 3.5 2.7 +0.8	223.9	223.9 2.8 5.3 -2.5
12+80 14 ⁰ 49.4	222.9 5.5 3.1 +2.4	223.7	223.9 4.5 4.4 +0.1
13+00 26 ⁰ 53.2	222.7 5.7 2.6 +3.1	223.5	223.8 4.6 4.5 +0.1
13+25 41 ⁰ 57.8	222.5 5.9 3.4 +2.5	223.3	223.6 4.8 4.6 +0.2
13+50 57 ⁰ 62.4	222.3 6.1 5.3 +0.8	223.1	223.2 5.7 5.7 -0.5

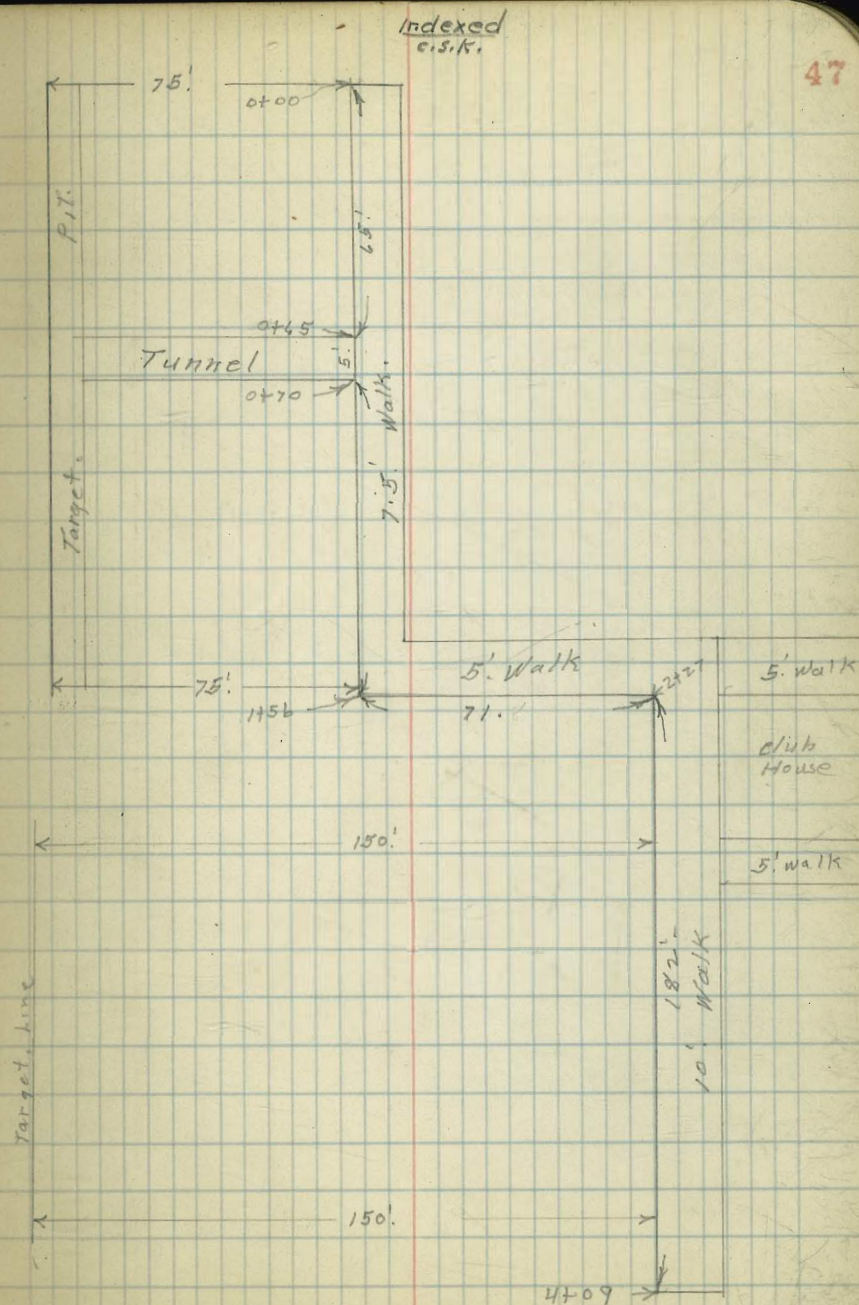
226.62
3.27
223.35
5.06
228.41

45

		LT		RT	
13+75	72+0.1	222.1	222.9	222.7	228.41
		<u>6.3</u>		<u>5.7</u>	
		<u>5.7</u>		<u>6.5</u>	
		+0.6		-0.8	
14+00 E.C.	87-12	221.9	222.7	222.3	
		<u>6.5</u>		<u>6.1</u>	
		<u>5.4</u>		<u>6.6</u>	
		+1.1		-0.5	
14+23 ²² BC		221.7	222.5	222.3	
		<u> </u>		<u> </u>	
14+37 Catch Basin		221.5	222.3	222.1	
		<u> </u>		<u> </u>	

Sidewalk Grades Police
Pistol Range.

BM Mon Ely End B.K. Mailen Park	2.65	88.30	85.65	Grade
0+00 E. End walk	2.60	85.70	85.70	
0+65 E. Edge Tunnel	3.05	85.25	85.14	Raised 1"
0+70 W " "	3.09	85.21	85.14	Raised 1"
0+95	3.31	84.99	84.94	
1+20	3.53	84.77	84.74	
1+56 W. edge N+S. Walk	3.84	84.46	84.46	
1+87	4.31	83.99		
2+06	4.78	83.52		
2+27 Δ 90° 00' S. Edge E+W. Walk	5.19	83.12	83.12	
2+52	5.40	82.90		
2+77	5.62	82.64		
3+02	5.84	82.46		
3+27	6.06	82.24		
3+52	6.28	82.02		
3+77	6.50	81.80		
4+09 W. End. Walk.	6.76	81.54	81.54	



Water Grades Talbot St.

Catalena to Canon Rd.
slabs 13' 5" of 4" = 3' 5" of 6" Main.

50.14 sta

53+29.27

W.

W. Catalena
at TalbotIndexed
C.S.K.

48

BM. Pipe	4.27	257.62		252.75	Canon Rd.
T.P.	7.30	263.93	1.39	255.63	
BM. Man.			2.13	261.80	
0+00. Mon. & Catalena					
0+17 for - Ex Water Main					
0+40 C. Line Catalena			3.2	260.7	256.5 253.5 +7.2 ✓
0+80			4.1	259.8	256.0 253.0 +6.8 ✓
1+20 P.V.C.			5.4	258.5	255.5 252.5 +6.0 ✓
1+60			6.8	257.1	254.8 251.8 +5.3 ✓
2+00			8.2	255.7	254.0 251.0 +4.7 ✓
2+40			9.7	254.2	252.8 249.8 +4.4 ✓
2+80			11.6	252.3	251.2 248.2 +4.1 ✓
T.P.	0.16	251.42	12.67	251.26	248.8 245.8 +4.7 ✓
3+20 E.V.C.			0.9	250.5	245.8 +4.7 ✓
3+70			3.8	247.6	242.6 +5.0 ✓

251.42

49

4+20			8.1	243.3	339.4	+ 3.9 ✓	8.37
4+70			10.7	240.7	235.3	+ 5.4 ✓	
T.P.	0.40	245.08	6.74	244.68	Nail Pole		228.9 15.3 213.6
5+17			7.6	237.5	331.4	+ 6.1	
5+42 ⁴ / ₅	Wedge 50' Rd.						
5+64 ⁵ / ₅			11.3	233.8	230.4	+ 3.4	
5+77 ⁶ / ₅	50' Rd.						
6+12 ⁷ / ₅	Edge 50' Rd.						
T.P.	0.11	233.77	11.42	233.66			
6+65			6.4	227.4	225.7	+ 1.7	
7+18			9.8	224.0	222.0	+ 2.0	
T.P.	1.24	222.44	12.57	221.20			
7+71			2.1	220.4	218.4	+ 2.0	
8+01			5.3	217.2	216.3	Bottom 2" Gas Main	
8+24			4.3	218.2	214.7	+ 3.5	
8+77			8.8	213.7	211.0	+ 2.7	
T.P.	1.26	210.94	12.76	209.68			
T.P.	0.46	198.69	12.71	198.23			
B.M.			6.22	192.47	= 192.42	Pipe 50' Lt. Stake + 90° EC	Canon Rd.

115

7-18-34
Miller
Walker
Bliss.

Water Grades Mt. View. Park

indexed
C.S.K.

BM. NW. 7. Ct.	2.91	40 th 85.09	St.	82.18	40 th +Ocean View	
S. line Ocean View = 0+00.			6.74	78.3	75.3	+ 3.0
0+50			8.7	74.4	74.7	+ 1.7
1+00			10.6	74.5	74.2	+ 0.3
1+50			11.1	74.0	73.7	+ 0.3
2+00			10.8	74.3	73.2	+ 1.1
2+50			10.2	74.9	72.7	+ 2.2
N. line Teak 2+85			9.8	75.3	72.3	+ 3.0
T 3+26.5			9.8	75.3	71.7	+ 3.6
S. line Teak 0+21.5			10.0	75.1	71.4	+ 3.7
1+00			12.1	73.0	69.2	+ 4.8
T.P.	0.29	73.29	12.09	73.00		
1+50			3.5	69.8	66.1	+ 3.7
2+00			5.7	67.6	64.1	+ 3.5
2+34 N. line S.			7.4	65.9	62.7	+ 3.2
T 2+69			8.9	64.4	61.3	+ 3.1
0+15 S. line S.			9.3	64.0	60.7	+ 3.3
0+50			11.5	61.8	58.5	+ 3.3
T.P.	0.62	61.06	12.85	60.44		
1+00			2.4	58.7	55.4	+ 3.3
1+50			5.2	55.9	52.2	+ 3.7
2+00			8.4	52.7	49.1	+ 3.6
2+27 N. line T.			10.5	50.6	47.4	+ 3.2
T 2+62.5 ³⁵			11.9	49.2	46.4	+ 2.8
BM B.P.			10.44	50.62	N.W. 40 th + T. 813	

T. St. Water Grades.
10' 3 of ϕ

Indexed
C.S.K.

52

61.06

W. Line 40 th			11.3	49.8	47.0	+2.8
T 10' E. of ϕ			11.9	49.2	46.6	+2.6
E. Line 40 th			12.0	49.1	46.4	+2.7
0+00			12.7	48.4	46.0	+2.4
0+50			12.8	48.3	45.7	+2.6
1+00			12.7	48.4	45.7	+2.7
1+35			12.7	48.4	45.7	+2.7
1+70 B			12.7	48.4	45.7	+2.7
2+00 B			12.5	48.6	45.7	+2.9
2+00 Top, 24' cmt. Pipe Culvert			15.7	45.4	X	
2+30 B			12.2	48.9	46.2	+2.7
2+60 B			11.5	49.6	46.9	+2.7
2+90 B			10.9	50.2	47.7	+2.5
3+35			7.9	53.2	50.5	+2.7
3+80			3.7	57.4	54.1	+3.3
4+25			0.3	60.8	57.7	+3.1
47.P.	12.84	73.64	0.26	60.80		
4+70 B			9.7	63.9	61.3	+2.6
5+31 ⁸			5.6	68.0	64.4	+3.6
T 5+63			6.2	67.7	64.5	+2.9
Hub. & Boundary S. 13' line T.			6.22	67.42		

Raised grade for line for T. Culvert.

Boundary St. Water Grades. indexed
c.s.K.Teeht. St.
0+00

73.64

6.2 67.4 64.5 +2.9

0+50 4.9 68.7 64.7 +4.0

1+00 2.9 70.7 65.0 +5.7

1+50 2.9 70.7 65.2 +5.5

2+00 3.3 70.3 65.5 +4.8

2+50 3.8 69.8 64.5 +5.3

3+00 5.6 68.0 63.3 +4.7

3+50 7.8 65.8 61.5 +4.3

4+00 8.7 64.9 60.4 +4.3

4+50 8.8 64.8 60.5 +4.3

T.P. 7.56 73.97 7.23 66.41

5+00 8.6 65.4 61.4 +4.0

5+50 7.7 66.3 63.0 +3.3

6+00 5.8 68.2 64.6 +3.6

6+25 Gate 5.5 68.5 65.4 +3.1

cb. Grades. S. Side Ocean View.

E. of Boundary s. edge Pav.

68.50

5.31

67.72

68.18

4.85

4.72

+0.13

5.57

67.46

E. Line Bdy. 100
change

65.3 +3.4

66.1 +4.6

66.9 +3.8

67.2 +3.1

67.0 +2.8

65.6 +2.4

64.6 +1.2

63.8 +1.1

63.4 +1.4

63.5 +1.9

64.1 +2.2

64.6 +3.6

64.7 +3.8

53

P

B.M. 67.03

4.00

73.03

7-19-34
Mills
Wells
Bills

Normal Hts. Water Mains.
Alley bet. 34th St + Hawley Blvd
10" Main

Stakes B. W. 3
& Main

397.29
4.36
394.99 Stab 6 + 43.2

Indexed
C.S.K.

54

B.M. Stab 6 + 43.2	7.34	402.33	394.77	Grade.
6x10" Gate S. Line Mt. View Drive = 0+00			Alley Pav. 394.72	391.1
0+43.2			7.61	395.0
0+46.4			7.3	395.2
1+29.6			7.1	395.9
1+72.0 ⁵⁰ " B			6.4	396.0
2+22.0 ⁵⁰ "			6.3	396.4
2+72.0 ⁵⁰ " B			5.9	397.0
3+12.0 ⁵⁰ "			5.3	397.3
3+52.0 ⁵⁰ " B			5.0	397.0
3+92.0 ⁵⁰ "			5.3	397.0
4+32.0 ⁵⁰ "			5.3	396.9
4+72.0 ⁵⁰ "			5.4	396.8
5+12.0 ⁵⁰ " B			5.5	397.3
5+52.0 ⁵⁰ "			5.0	397.3
N. Line Arthur 5+92.0 ⁵⁰ " B			5.0	397.3
10.5 N. of S. Line 442.2 ⁵⁰ " Tee. duplicate E. for Fire Hydr.	5.06	399.90	7.15	395.2
S. Line Arthur 0+00			7.49	394.84
			5.7	394.2
			5.1	394.8
			3.4	396.5
			3.4	396.5
			4.2	395.7
			4.6	395.3
			4.9	395.0
			5.3	394.6
T.P.	2.76	397.43	5.23	394.67
CHK B.M.	S.E. Copley + 34 th		5.25	392.18

B.M. B.P.S.E. 34 th + Copley	392.18
	6.54
	398.72
Set. B.M. B.P.S.E. 34 th + Arthur	394.03
	4.69
	6.22
	400.25
	5.14
B.M. B.P. N.W. 34 th Mt. View Dr.	395.11
	4.18
	399.29
	5.19
B.M. B.P. S.W. Hawley + Mt. View Dr.	394.16
	4.81
	398.97
	1.71
B.M. Top. Fire Plug S.E. + Mt. View Blvd	397.20
	3.09
	400.29
	4.77
B.M. B.P. S.W. 35 th + Mt. View Dr	395.52
	= 395.42

394.84
5.06
399.90
5.87
394.03 chK B.M. S.E. 34th

				Grade	
	397.42				
3+55		2.7	394.7	390.6	+4.1 ✓
4+10		2.4	395.0	390.5	+4.5 ✓
4+65		3.3	394.1	390.3	+3.8 ✓
5+20 B		2.6	394.8	390.1	+4.7 ✓
5+60		2.5	394.9	389.7	+5.2 ✓
N. Line Copley ex Valve 6+00		4.4	393.0	389.4	+3.6 ✓
20' N. of S. Line 10"x6" Cross		4.8	392.6	389.2	+3.4 ✓
S. Line Copley 6+00		4.7	392.7	389.1	+3.6 ✓
0+60 B 56		2.6	394.8	389.8	+5.0 ✓
1+16		2.7	394.7	390.0	+4.7 ✓
1+72		2.9	394.5	390.2	+4.3 ✓
2+28		3.3	394.1	390.3	+3.8 ✓
2+84		3.2	394.2	390.5	+3.7 ✓
3+40 B 60		3.0	394.4	390.6	+3.8 ✓
4+00		3.2	394.2	390.5	+3.7 ✓
4+60 T.P.	5.64	3.17	394.25		
		5.8	394.7	390.3	+3.8 ✓
5+20 B 40		5.2	394.7	390.1	+4.6 ✓
5+60 B		5.3	394.6	389.6	+5.0 ✓
N. Line Copley 6+00 B		8.1	391.8	388.1	+3.7 ✓
10.5' N. of S. Line 10"x6" Tee. + Valve to E. for Fire Hydr.		8.6	391.3	387.7	+3.6 ✓
S. Line Copley 0+00				387.6	

				Grade	
	399.89				
S. line Collier					
0+00		8.2	391.7	387.6	+4.1 ✓
0+50 B		4.4	395.5	390.5	+5.0 ✓
0+90 B		4.7	395.2	390.7	+4.5 ✓
55					
1+45		5.4	394.5	389.9	+4.6 ✓
2+00 B		6.6	393.3	389.1	+4.2 ✓
2+50		6.4	393.5	388.9	+4.6 ✓
M. line Alley Valve					
3+00 B		6.6	392.3	388.7	+4.6 ✓
7.5 S. of N. Tee		6.5	393.4	388.7	+4.7 ✓
T.P.	4.87	398.29	6.47	393.42	
	Alley N. of Adams 10" Main				
	Stubs B.N. of Main				
W. line 34 th E. 8" Gate				386.4	
40 E. 10x6 Tee		7.9	390.4	386.6	+3.8 ✓
C. line 34 th					
0+00.		7.7	390.6	386.7	+3.9 ✓
0+40 B		5.9	392.4	387.6	+4.8 ✓
51.5					
0+91.5		5.5	392.8	388.2	+4.6 ✓
Tec. N. & S. Alley					
1+43.2		4.9	393.4	388.7	+4.7 ✓
42.5					
1+91.5		4.4	393.9	389.2	+4.7 ✓
2+40 B		4.2	394.1	389.6	+4.5
2+60 B		4.4	393.9	389.5	+4.4
M. line Hawley					
2+81.6		5.3	393.0	389.0	+4.0
T.P.	5.00	397.14	6.15	392.14	

Hawley Blvd.
 10" Main 9'E. of 4 to Fit Existing Gate at Adams

offset 3'E.

60' E. of N. Line
 5' N. of S. Line @ 40'
 8+00 10' Tee.

397.14

Pavmt. 392.3

Profile
 St. grade
 391.6
 Grade
 387.9

Grade change

0+50	4.8	392.3	387.9	388.6	+ 3.7 ✓
1+00	4.8	392.3	387.9	388.5	+ 3.8 ✓
1+50	4.9	392.2	387.8	388.4	+ 3.8 ✓
2+00	4.9	392.2	387.8	388.3	+ 3.9 ✓
2+50	5.0	392.1	387.7	388.2	+ 3.9 ✓
3+00	5.0	392.1	387.7	388.1	+ 4.0 ✓
3+50	5.0	392.1	387.6	388.0	+ 4.1 ✓
3+50 N. Line Adams	5.2	391.9	387.6	387.9	+ 4.0 ✓
3+80 ex. 10" Gate	5.6	391.5	387.2	387.8	To ex Pipe

Profile
 St. grade
 391.3
 S. E. Adams
 + Hawley

T.P. Top Hyd. 1.63 395.35 3.42 393.72

S.E. Adams + Hawley
 BM Top Hyd. 3.32 397.04
 S.E. Mansfield &
 B.M. BP Adams 4.23 392.81 = 392.76

Alley South of Adams Ave
stubs 3' N. of 10" Main.

58

Fire Huds
Adams
B.M. S.E. Hawley
Existing 10" Main
40' W. of Line Tee

6.17 399.49

393.72

Profile
Grade
392.1

E. Line Hawley = 0+00.	7.5	392.0	388.50	+3.5
0+50	6.4	393.1	389.3	+3.8
1+00 B.	5.7	393.8	390.0	+3.8
1+45	5.3	394.2	390.4	+3.8
2+90 B	5.2	394.3	390.4	+3.5
2+30 B	6.0	393.5	390.3	+3.2
W. Line Mansfield 2+65	6.8	392.7	389.1	+3.6

Profile Grade
392.9

40' E. Existing 10" Main

Mansfield Main

B.M. B.P. 5.03 397.81 392.78

Connection EX
6" in Adams Tee.

Profile Grade
392.08

N. Line Adams = 0+00	5.4	392.4	388.5	+3.9
0+50	5.1	392.7	388.7	+4.0
1+00	5.1	392.7	388.9	+3.8
1+30 Tee		392.9	389.1	+3.8

Profile Grade
392.86

4.9 392.9

Alley. N. of Adams.

AM.	5.10	397.88	392.78	s. E. Mansfield + Adams	
20' W. of E. line Tee	5.0	392.9	389.1		+ 3.8
E. line Mansfield.					
0+00	4.9	393.0	389.1		+ 3.9
0+50	4.0	393.9	389.1		+ 4.8
1+00	4.2	393.7	388.9		+ 4.8
1+35 Tee	4.5	393.4	388.7		+ 4.7
1+85	4.6	393.3	388.6		+ 4.7
2+35	4.7	393.2	388.5		+ 4.7
2+61	Ex. Valve.		388.5		
Valve N. line E+W. Alley	4.6	393.3	388.7		+ 4.6
1h N+S. Alley					
E+W. Alley N. of Hawley.					
		397.48			
60' E. of W. line Hawley Ex Main			388.60		
0+00 = E. line Hawley	4.7	392.8	389.0		+ 3.8
0+50	3.3	394.2	389.3		+ 4.9
1+00	3.3	394.2	389.5		+ 4.7
1+35 Cross S. W. of E. line N+S. Alley.	3.7	393.8	389.7		+ 4.1
1+50	4.0	393.5	389.7		+ 3.8
2+00	4.1	393.4	389.5		+ 3.9
2+65 = W. line Mansfield.	4.8	392.7	389.2		+ 3.5
3+05 = 10' E. of ϕ	4.8	393.3	389.1		+ 4.2
N. l. E+W. Alley					
S. W. of E. line N+S. Alley	3.5	394.0	389.9		+ 4.1

8-9-24
Miller
Walker
Bliss

Grades Athletic Field for
S. D. H. S. North of Stadium

Indexed
c.s.k

8-29-61
Moore

B.M. B.P. Walk 9.31 186.21 176.90 N.E. Cor. Gymnasium

TP 9.43 193.89 1.75 184.46

B.M. 9.43 186.93

176.90
NEBB
NEAR
Gym

TP 8.87 191.79 8.41

182.92

0+00 = E. line Field

0+0

0 = N. line

3.2 190.7 186.4

+4.3 150'S 7.1 184.7

25'S 186.2

200'S 8.2 183.6

50'S 3.8 190.1 186.0

+4.1 250'S 8.5 182.3

75'S 185.8

278'S = Sky Lane 10.5 181.3

100'S 6.0 187.9 185.6

+2.3 1+0

Lawn 125'S 8.5 185.4 185.4

0.0 278'S = Sky Lane 9.9 181.9

Lawn 150'S 9.1 184.8

0.0 250'S 8.7 183.1

285'S Fence 181.8

200'S 7.7 184.1

-0+50 W.

150'S 6.7 185.1

N. line 2.8 191.1 186.6

+4.5 2+0

25'S 186.4

150'S 7.0 184.8

50'S 3.8 190.1 186.2

+3.9 200'S 8.4 183.4

75'S 185.95

250'S 9.4 182.4

82'S 4.6 189.3 185.9

+3.4 278'S = Sky Lane 9.9 181.9

100'S 8.4 185.5 185.7

-0.2

Lawn 12'S 8.2 185.7 185.7

1+00 W

N. line 2.7 191.2 186.6 +4.6

25'S 186.4

50'S 3.8 190.1 186.2 +3.9

100'S 185.9

173.89

62

1+00 W

100. S.	8.2	185.7	185.9	-0.2	191.79	
Lawn 110. S	8.1	185.8	185.8	0.0	100 J	185.3 6.5 C21 7.1

1+50 W

N. Line	3.6	190.3	186.5	+3.8	150 J	187.4 7.4 C11 8.3
25 J			186.3			
37. S	4.3	189.6	186.2	+3.4	0+0-76	
					200 J	188.2 8.6 F0.8 9.1
50. S	7.2	186.7	186.1	+0.6		
75 J			185.95		0+0-82	
100. S	8.2	185.7	185.8	-0.1	250 J	181.8 10.0 F0.9 10.9
Lawn 106. S	8.2	185.7	185.7	0.0	0+0-82	

278 J = 5 J Lawn

180.3

11.5

11.5 on Floor

P

2.98

183.62

12.15

179.64

2+00 W

N. Line	4.4	189.5	186.4	+3.1	
28. S	4.7	189.2	186.2	+3.0	
5					
50. S	7.5	186.4	185.8	+0.6	
75 J Lawn			185.75		
100. S	8.2	185.7	185.7	0.0	

193.89

2+50 W.

63

N. Line	4.8	189.1	186.2	+ 2.9
25' S	5.0	188.9	186.0	+ 2.9
50' S	7.9	186.0	185.8	+ 0.2
75' S Lawn			185.5	
95' S	8.5	185.4	185.4	0.0

2+8325 W.

N. Line NW. Cor	5.1	188.8	186.0	+ 2.8
25' S			185.7	
30' S	5.6	188.3	186.7	+ 1.6
50' S	8.3	185.6	185.4 186.4	- 0.8
75' S Lawn			185.1	
95' S	9.0	184.9	184.9	0.0

2+8325 Δ 27° 00' To W. = W. Line

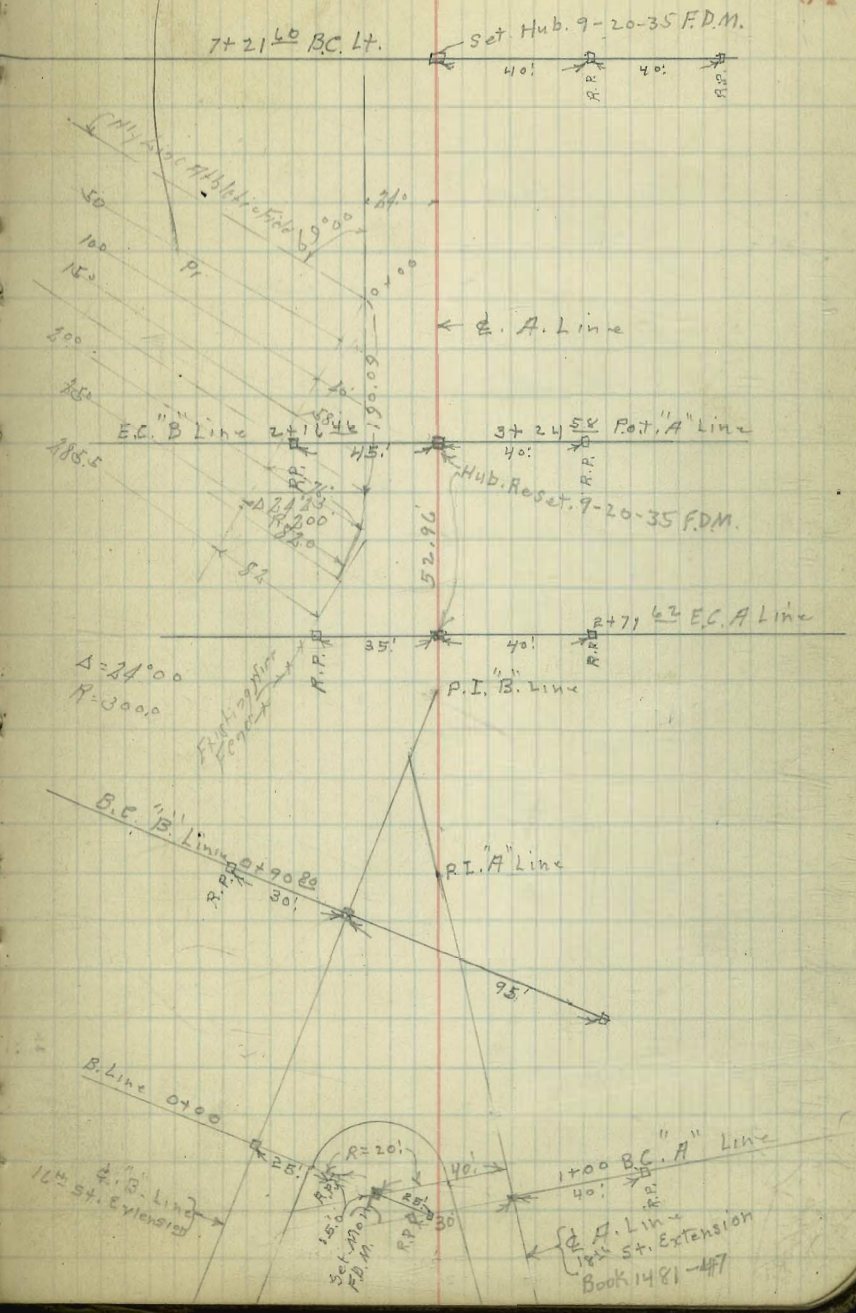
N. Line = NW. Cor	5.1	188.8	186.0	+ 2.8
45' S	6.0	187.9	185.5	+ 2.4
Lawn 100' S	9.4	184.5	184.5	0.0

8-9-34 Extension of 16th + 18th Sts to
 12th Ave. Extension.
 Miller
 Walker
 Blö's

26-54-30
 26-54-30
 53-49-00

22.00

indexed
 c.s.R.



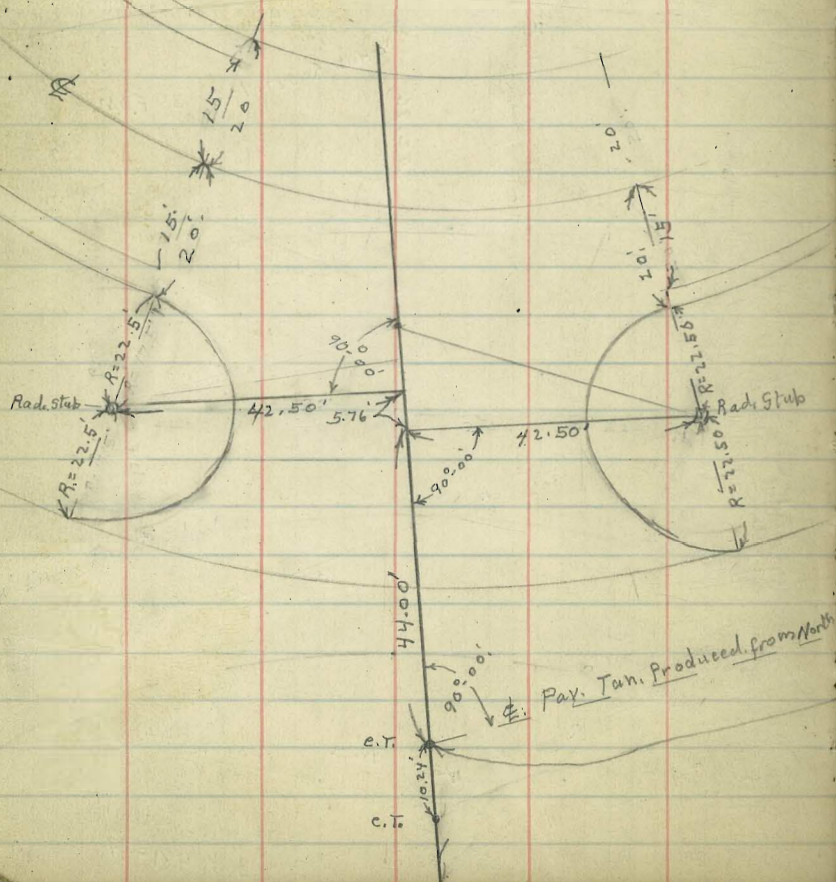
Book 1481-47

Park Blvd. Xing

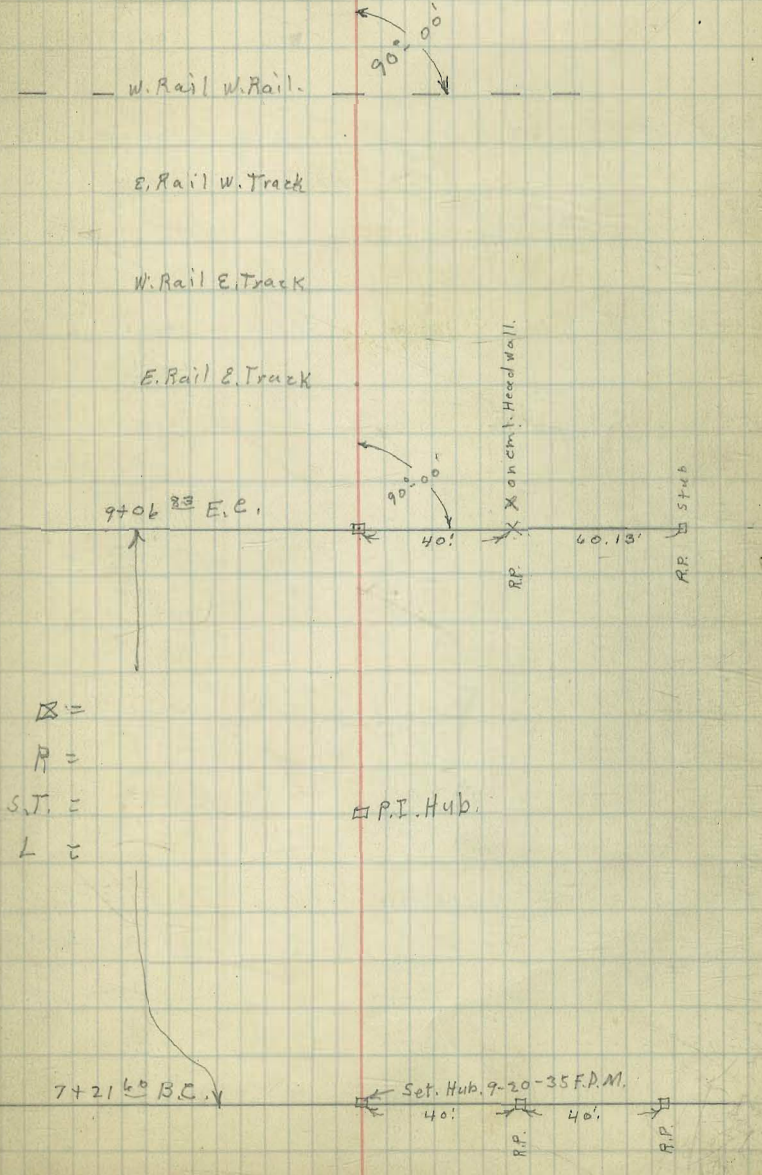
11-4-36

Abandoned 11-5-36

See F.B. 1533-38



C.T. E. of P.P. 10.24
 Park Blvd. Pav. Tan. Produced from North 65
 9+64.36
 9+63.36
 A.P. C.T. 10
 E. Edge (12th Ave) Pav. (Park Blvd.)



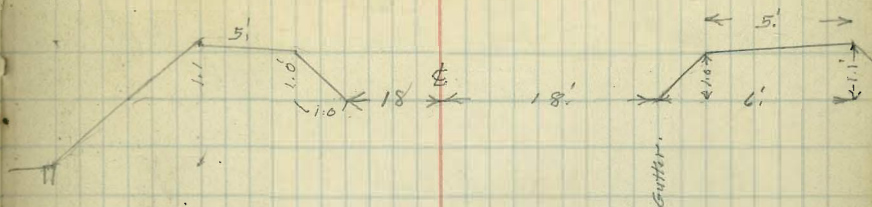
X =
 P =
 S.T. =
 L =

P.I. Hub.

7+21.6° B.C.V

Extension of 16th & 18th Sts
To 12th Ave Extension
Grades

	Lt.	±	Rt.	
W.R.W.Tr.	199.10	199.67	200.25	
9+06.83 EC B 27°55.75'	199.00 0.6 <u>199.6</u> 1.5 2.1 out. 0.9	199.70 BM 199.73 1.34 <u>201.07</u>	200.20 0.6 <u>200.8</u> 0.3 1.8 -1.5	Gutter Berm out 2.2
8+50 8 19°21.55'	197.34 1.1 <u>198.4</u> 2.7 3.7 -1.0	198.34	199.34 1.1 <u>200.4</u> 0.7 2.4 -1.7	G B out. 2.5
8+00 11°49.21'	196.67 1.1 <u>197.7</u> 3.9 4.3 -0.4	197.67	198.07 1.1 <u>199.2</u> 1.9 3.2 -1.3	G B out. 2.0
7+50 B 4°16.91'	194.80 1.1 <u>195.9</u> 5.2 5.2 0.0	195.80	196.80 1.1 <u>197.9</u> 3.2 6.3 -3.1	G B out. 4.6
7+21 ⁴ BCB	194.20 1.1 <u>195.3</u> 5.8 4.0 -0.2	195.10	195.90 1.1 <u>197.0</u> 4.1 8.1 -4.0	G B out. 6.0
6+90 B	193.60 1.1 <u>194.7</u> 6.4 6.4 0.0	194.30	194.60 1.1 <u>195.7</u> 5.4 9.5 4.1	G B out. 6.1



199.73 2 Hub 9+06.83 EC
1.87
201.34
11.69
1.89
0.08
189.22
12.41
177.38
0.77
178.09

8-29-34
Finish Grades
5/4/30
3/1/35
North 5/1/37

	Lt.	±	Rt.	
6+60 B	193.10 1.1 194.2 6.9 6.9 0.0	193.55	193.3 1.1 194.4 6.7 10.8 -4.1	G. B. out. 6.1
		201.07		
6+30 B	192.40 1.1 193.5 7.6 7.7 -0.1	192.70 1.91 192.61	192.40 1.1 193.5 7.4 11.2 -3.6	G. B. out. 5.4
5+90	191.4 1.1 192.5 8.6 8.5 +0.1	191.80	191.4 1.1 192.5 8.6 12.3 -3.7	G. B. out. 5.5
5+40	190.1 1.1 191.2 1.4 1.3 +0.1	190.50	190.1 1.1 191.2 1.4 5.4 -4.0	G. B. out. 6.0
4+90 x	188.80 1.1 189.9 2.7 2.7 0.0	189.20	188.80 1.1 189.9 2.7 5.9 -3.2	G. B. out. 4.8
4+50 x	187.60 1.1 188.7 3.9 3.6 +0.3	188.00	187.60 1.1 188.7 3.9 7.1 -3.2	G. B. out. 4.8
4+10	186.1 1.1 187.2 5.4 4.8 +0.6	186.50	186.1 1.1 187.2 5.4 8.7 -3.3	G. B. out. 5.0

Curb Inlet
RT And Lt

Sept. 26. 24
Moore

192.72
12.35
180.37
1.92
182.39
7.25
175.15
BM 174.57

4+62.25 187.02 190 x 190 = 189.00
3.75

4+55.2

4+57.25 188.67
5 Rod 4.05

BM 174.57 0.7 Rod Hub
1.05
175.62

Curb Inlet on Right

0+50
0+45

0+50

0+39

0+34

6 Rod

0 J. 06/P
183.17
Flank Line

181.45
11.27
1.35
+7.22

168.20
Flank Line

167.19 8.43

166.83

5.06

2 P.P.
179.40 F.L.

13.32
1.90
+2.42

4.80

7.77

F.L.
157.25

16.37
18.19
+2.18

"4"

	Lt.	Σ	Rt.	
3+50	183.3 1.1 184.4 8.2 8.2 0.0	183.70	183.3 1.1 184.4 8.2 11.7 -3.5	G B out. 5.3
2+16 ⁴⁶ EC. B	Lt. 182.2 1.1 183.3 2.4 2.2 +0.2	opposite → 180.11 2+24.5 ⁴² 182.6°	182.1 1.1 183.2 9.4 13.4 -4.0	G B out. 6.0
1+70	179.50 1.1 180.6 5.1 4.8 +0.3	3+00 181.50	180.8 1.1 181.9 3.8 No P. 14	G B
1+30	177.7 1.1 178.8 6.9 5.2 +1.7	2+71 ⁴³ EC 180.22	179.3 1.1 180.4 5.3 8.6 -3.3	G B out. 5.0
0+90 ⁸⁰ BC.	176.2 1.1 177.3 8.4 8.8 -0.4 0.9	1 ^{00.51} 2+30 177.80	177.3 1.1 178.4 7.3 7.6 -2.3	G B out. 3.4
0+60 B	175.6 1.1 176.7 9.0 9.2 -0.2	2 ^{02.11} 2+00 176.3	175.8 1.1 176.9 8.8 12.3 -3.5	G B out. 5.3
0+30 B	175.2 1.1 176.3 9.4 10.2 -0.8	2 ^{54.77} 1+70 175.00	174.1 1.1 175.2 1.0 4.1 -3.1	G B out. 4.1

180.11 TR
5.58
185.69
12.18
173.51
2.63
176.14

5.8
5.3 C 0.57.3
7.0 C 0.38.1
8.0

183.62A

0+10
 out .14
 175.8
 9.9
 10.8
 - 0.9
 174.50
 1.1
 175.6
 10.7
 Not th.

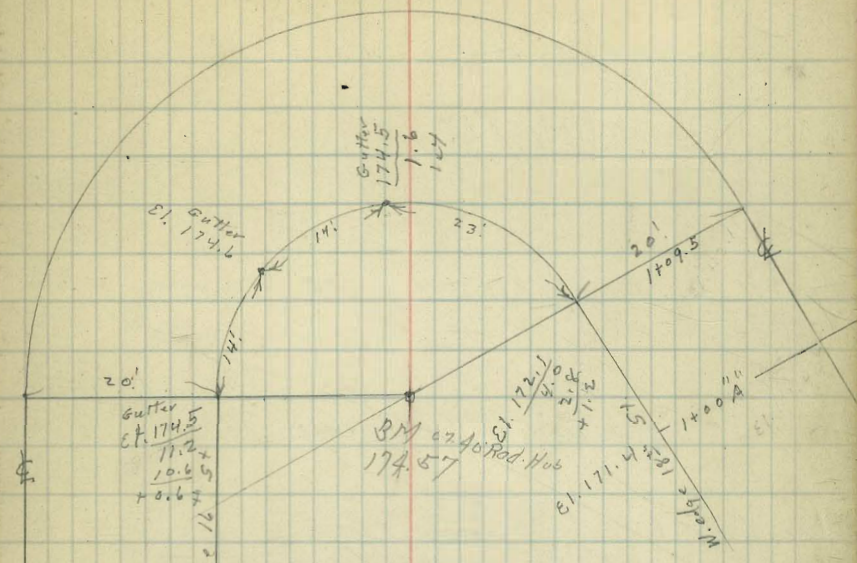
RT
 176.14
 1730 B
 17375
 171.4
 1.1
 172.5
 3.6
 5.3
 - 1.7
 out .2.5

1400 B.C.
 170.50
 1.1
 170.7
 5.4
 7.6
 - 2.2
 out .3.3

LT
 0+50
 166.8
 9.3
 5.8
 + 3.5

0+50
 166.8
 1.1
 167.9
 8.2
 12.6
 - 4.4
 out .6.6

0+00



183.62
 70.50
 18.1

1.37
 174.77

3-24-51
 1-25

B Line Grades

	L	L	R	L
2110.46 = FC 3734.687' L 12°00'	182.20	182.60	182.10	7.0
1+70	7°33.82	180.50		3.1 0.0
c=42.25				
1+20	2°47.32	178.20		5.1 0.6 4.8
c=22.17				
0+90.80 BC	176.20	177.20		6.4 0.3 6.1
0+50		176.0		7.6 0.0 7.6
0+0	174.50	174.90		8.7 0.2 8.2

183.62 ft Bl Field Page 63

9-13-34
Miller
Walker
Bliss

Sewer Grades
El Cerito Hts Sewer Extension

Indexed
C.S.K.

This M.H. Moved 80' E. to Connection With Tank.
S.E. Cor. Lot. 22

B.M. Pipe	3.38	339.21		335.83		
5 1/2" R.R. STUB						
T.P. 0+00	2.53	330.66	11.08	328.13	322.90	5.23
+50				327.26	321.60	5.66
+100				325.76	320.30	5.46
1+63 1/2 M.H. #2 Δ 15° 00' Rt.			7.66	323.00	318.65	+4.35
2+00			8.26	322.40	317.70	+4.70
+50			9.36	321.30	316.40	+4.90
3+00 T.P.	2.81	223.14	10.33	320.33	315.10	+5.23
+50			4.97	318.17	313.80	+4.37
4+00			5.92	317.22	312.50	+4.72
+59 3/4 M.H. #3			7.10	316.04	311.00	+5.04
5+00			7.27	315.87	309.90	+5.97
+50 T.P.	4.00	318.33	8.81	314.33	308.60	+5.73
6+00			5.25	313.09	307.30	+5.78
+50 T.P.	7.24	316.63	9.04	309.29		
+50			6.56	310.07	306.00	+4.07
7+00			4.53	312.10	304.70	+7.40
+55 2/3 D.M.H. #4 Δ 36° 59' - 30 Lt			6.93	309.70	303.30	+6.40
+55 0/8 " " " " #4			6.93	309.70	301.00	+8.70
8+00			11.33	305.30	299.50	+5.80
+50			12.33	304.30	297.80	+6.50
+50 T.P.	0.64	304.26	13.01	303.62		
9+00			1.96	302.30	296.10	+6.20
+50			2.40	301.86	294.40	+7.46
10+00			7.56	296.70	292.70	+4.00
+50			7.76	296.50	291.00	+5.50
11+10 7/8 M.H. #5			8.21	296.05	289.00	+7.05

B.M. 335.83
3.41
+ 339.44
9.93
Top. Septic Tank 329.51
3.5
F.L. Outlet
acc. Plans. 326.0

outlet Septic Tank.

8" Pipe 11.44
Wall 0.67
0.05
12.16

B.M. 335.83
2.13
+ 337.96
12.16
F.L. outlet 325.80

Connection from College Park Septic
Tank. to 8x10' Pipe El Cerito Outfall

+ 337.96

0+00 outlet Septic Tank F.L. El 325.80

0+14

El. stub 4.63
333.33
F.L. Grade 325.26
+8.07

Δ 0+88 } Connection Ex. }
10" Sewer = } El. F.L. 24.72
M.H. #7 Moved 80' E. }
(from 0+00 opp. Page)

1+68 = 0+00 opp. Page = Location of
M.H. #1.

11+50			10.26	294.00	288.00	+6.00	
12+00			10.96	293.30	286.70	+6.60	10.70 303.56
+50			11.71	292.55	285.50	+7.05	
T.P.	2.09	293.41	12.94	291.32			
13+00			2.71	290.70	284.20	+6.50	
+30			4.41	289.00	283.00	+6.00	
14+00			6.86	286.55	281.70	+4.85	
+66 ³⁶	M.H. 6		8.16	285.25	280.00	+5.25	
15+00			10.91	282.50	279.30	+3.20	
+50			9.51	283.90	278.20	+5.70	
16+00			10.61	282.80	277.20	+5.60	
+50 T.P.	3.49	283.94	12.26	280.45	276.10	+4.35	
17+00			5.67	278.27	275.10	+3.17	
+50			6.24	277.70	274.00	+3.70	
18+00			5.78	278.16	273.00	+5.16	
18+22	M.H. 7 Δ	18°-53' Rt	6.44	277.50	272.50	+5.00	
T.P.	1.50	278.61	6.83	277.11	\$ 51.40		
18+50			1.6	277.0	271.40	+5.60	
19+00	#		3.2	75.4	269.30	+6.10	
+50			6.4	72.2	267.20	+5.00	
20+00			9.2	69.4	265.10	+4.30	
+56	M.H. 8		9.2	69.4	263.00	+6.40	
21+00			13.1	65.5	261.60	+3.90	
+50	3.00	264.64	12.97	265.64			
			4.0	64.6	260.10	+4.50	
22+00			4.20	64.44	258.70	+5.74	
+50			5.94	62.70	257.30	+5.40	
23+00	#		6.84	61.80	255.90	+5.90	
23+65	M.H. 9 Δ	18°-32' Lt.	8.94	59.70	254.00	+5.70	

M.H. 5 Sub 5

24+00			9.64	59.00	53.0	+6.00
+50			12.64	56.00	51.6	+4.4
T.P.	3.71	259.74	12.64	256.03		
25+00.			4.84	54.90	50.2	+4.7
+50			5.64	54.10	48.8	+5.3
26+00			7.74	52.00	47.5	+4.5
+50			9.14	50.60	46.7	+4.5
27+00			11.24	48.50	44.8	+3.7
27+30 M.H. #10 ✓			10.04	49.70	244.00	+5.7
27+50			10.94	48.80	43.4	+5.4
28+00			12.3	47.4	41.8	+5.6
T.P.	1.58	249.28	12.04	247.70		
+50			3.54	43.70	40.1	+5.6
29+00			5.44	43.80	38.5	+5.3
+50			8.14	41.10	36.4	+4.3
30+00			8.44	40.80	35.2	+5.6
30+30 M.H. #11 ✓			9.54	39.70	234.20	+5.5
+65			10.93	38.35	33.2	+5.15
T.P.	4.72	240.95	13.05	236.23		
31+00			5.15	35.4	32.1	+3.7
+50			6.35	34.6	30.6	+4.0
32+00			5.60	35.35	29.0	+6.35
+50			7.05	33.90	27.4	+6.5
33+00			8.55	32.40	25.9	+6.5
+34 ¹² Ex M.H.			9.17	231.78	224.80	+6.98
Top. Ex. M.H.			9.17	231.78		

Vert. \angle 27-17' slope 73.

INDEXED
WK
OCT 11 1948

11-28-34
Mills
Waters
Bluns.

No. 1. Green Municipal Golf Course.
Balboa Park
slope stakes SW. Cor

74

B.M. 2.46 102.46 assumed Top 100.00 Headwall

V.L. 27-17 slope 67.1

$$\begin{array}{r} .45839 \\ 67 \\ \hline 320873 \\ 275034 \\ \hline 3071213 \end{array}$$

$$\begin{array}{r} .84975 \\ 67.1 \\ \hline 622125 \\ 533250 \\ \hline 5954625 \end{array}$$

30.7

$$\begin{array}{r} 1.94 \\ 59.54 \\ 307 \\ \hline 2884 \\ 2763 \\ \hline 1210 \\ 1228 \end{array}$$

K.L. 27-27 slope 59.6

$$\begin{array}{r} .41097 \\ 59 \\ \hline 414873 \\ 236485 \\ \hline 2719723 \end{array}$$

$$\begin{array}{r} .89714 \\ 59 \\ \hline 798426 \\ 443570 \\ \hline 5234126 \end{array}$$

Vert. \angle 26-22 slope 54

$$\begin{array}{r} .44411 \\ 54 \\ \hline 177441 \\ 222055 \\ \hline 2398194 \end{array}$$

$$\begin{array}{r} .89597 \\ 54 \\ \hline 358388 \\ 447985 \\ \hline 4838238 \end{array}$$

V.L. 23-51 slope 53.0

$$\begin{array}{r} .39394 \\ 53 \\ \hline 118182 \\ 176970 \\ \hline 2687882 \end{array}$$

$$\begin{array}{r} .91914 \\ 53 \\ \hline 275742 \\ 459570 \\ \hline 4871442 \end{array}$$

Vert. \angle 21-55 slope 48.2

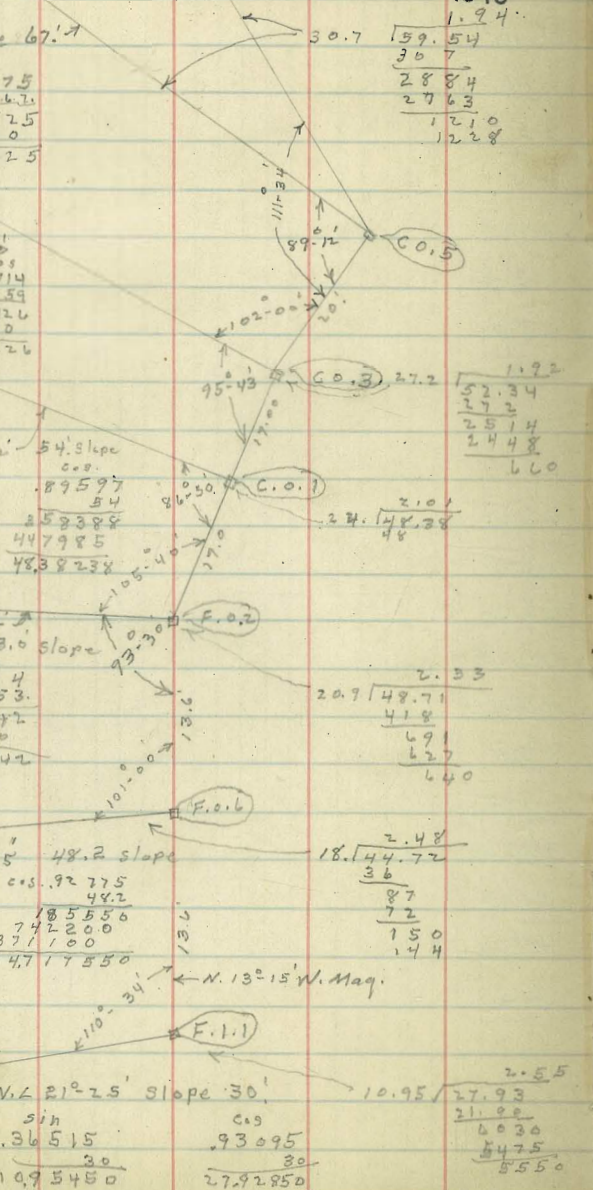
$$\begin{array}{r} .37326 \\ 48.2 \\ \hline 74652 \\ 298608 \\ \hline 149304 \end{array}$$

$$\begin{array}{r} .92775 \\ 48.2 \\ \hline 185550 \\ 371100 \\ \hline 44717550 \end{array}$$

V.L. 21-25 slope 30'

$$\begin{array}{r} .36515 \\ 30 \\ \hline 1095480 \end{array}$$

$$\begin{array}{r} .93095 \\ 30 \\ \hline 2792850 \end{array}$$



Stub S.W. Cor Green. F. 1.00	2.68	99.78
Grade Outside Green.	1.66	+ 1.0
		100.80
T.P. 1.38	91.19	12.65
out 25	8.4	82.8
out 39.2	10.0	81.2
		19.6
		2
		out. 39.2
Center		Total Slope
Grade outside Green.		100.80
out 36.	8.4	82.8
		18.0
		2
		out. 36.0
		Total Slope

Grades N. Side #18 Fairway.

0400 at Green.	0.0	5+30 -10.0
0450	-0.3	5+75 -10.1
1400	-1.4	6+15 -8.5
1740	-1.6	6+60 -10.5
1785	-1.8	7+00 -7.0
2725	-2.6	7+35 -3.2
2765	-2.4	7+70 0.0
3420	-5.8	
3760	-6.6	
4700	-10.5	
4750	-10.0	
4790	-8.8	

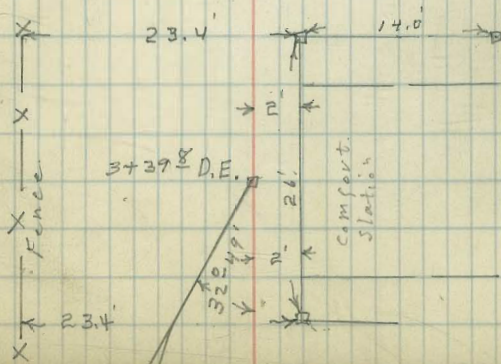
Sewer Con. from 27th + A.
To New Comfort Station at
Recreational Area N. of Russ Blvd

B.M. BP 4.06 212.91 208.85 N.W. 27th + A. St.

INDEXED
W.K.
OCT 11 1946

75

0+00 Connection	8.14	204.77	199.60	+5.17 ✓
0+10 Brk	7.20	205.71	201.21	+4.50 ✓
0+45 [±] M.H. 2 Δ 90° 00' RT	5.01	207.90	201.96	+5.94 ✓
0+94 [±] 50	5.13	207.78	202.30	+5.48 ✓
1+44 [±]	5.65	207.26	202.65	+4.61 ✓
1+94 [±] M.H. 1	6.72	206.19	203.0	+3.19 ✓
T.P. 8.82 215.01	6.22	206.19		
2+44 [±]	6.67	208.34	303.50	+4.84 ✓
2+94 [±]	3.92	211.09	304.00	+7.09 ✓
3+39 [±] D.E.	1.40	213.61	204.43	+9.18 ✓



12-15-34

Dwight St. Cl. Grades
37th to 38th Sts.

INDEXED

N.W. W.K.

OCT 11 1948

319.99 BM

3.21

323.20

Grade stakes St. Dept.

5.0

318.2

76

B.M. B.P. 3.14

323.13

319.99

Profile G

2+00

2+50

3+00

17.9

5.3

00 = E. Line 37th

N. ent. cl

3.57

319.56

319.60

N. Prop. Line

317.6

316.9

316.2

5.6

6.3

7.0

+5.0

+5.1

+3.7

S. " "

4.07

319.06

319.10

S. Prop. Line

316.9

316.1

315.2

6.3

7.1

8.0

+2.8

+3.3

-0.6

S. ent. cl

5.40

317.73

317.70

319.99 BM

3.17

323.16

Finish stakes for St Dept

N. " "

4.88

318.25

318.20

1+60

2+00

2+50

3+00

2+00

N. ch. Line

5.3

317.8

317.40

N. Prop. Line

319.1

317.6

316.9

316.2

5.1

5.6

6.3

7.0

S. " "

6.1

317.0

316.73

4.1

4.6

5.3

6.0

+1.0

+1.0

+1.0

+1.0

2+50

S. ch. Line

5.9

317.2

315.86

S. Prop. Line

317.6

316.9

316.1

315.2

5.6

6.3

7.1

8.0

N. " "

5.5

317.6

316.70

4.6

5.3

6.1

7.0

+1.0

+1.0

+1.0

+1.00

3+00

N. ch. Line

6.1

317.0

316.00

S. " "

7.1

316.0

315.00

3+25

S. ch. Line

7.9

315.2

N. " "

6.5

316.6

1-4-35
Zellen
Walker
Bliss

Sewer Grades
Franklin Ave 7th
F.B. 1501-

E. Extension of
Sierra Vista Add.
P. 35

INDEXED

W.K.

OCT 11 1948

77

5.09
61.29

B.M. Hub	5.94	89.45	83.51	Sta 1+32	
0+00 D.E.			3.64	85.81	80.19 + 5.62 ✓
0+50			4.83	84.62	79.69 + 4.93 ✓
1+00			5.32	84.13	79.19 + 4.94 ✓
1+50			5.25	84.20	78.69 + 5.51 ✓
1+90 Brk			4.92	84.53	78.29 + 6.24 ✓
2+30			10.80	78.15	74.70 + 3.95 ✓
T.P.	0.52	77.25	12.72	76.73	
2+70			1.35	75.90	71.10 + 4.80 ✓
3+10			5.75	71.50	67.50 + 4.00 ✓
3+50 M.H. 1			8.80	68.45	63.90 + 4.55 ✓
4+00			11.70	65.55	62.15 + 3.40 ✓
T.P.	1.78	66.38	12.65	64.60	
4+50			2.80	63.58	60.40 + 3.18 ✓
5+00			4.06	62.32	58.65 + 3.67 ✓
5+50 M.H. 2		Δ 15-58 Rt	5.20	61.18	56.90 + 4.28 ✓

66.38

78

5+50 M.H. 2			56.90		
6+00	6.42	59.96	56.20	+ 3.76	
6+50	7.33	59.65	55.50	+ 3.55	
7+00	6.31	60.67	54.80	+ 5.27	
7+50	3.78	62.60	54.10	+ 8.50	
7+62 ⁴³ M.H. 3 Δ 69-04 RT.	2.73	63.65	53.92	+ 9.73	
T.P.	1.70	62.00	40.30		
8+00	3.87	58.13	53.40	+ 4.73	
8+50	5.00	57.00	52.70	+ 4.30	
9+00	7.00	55.60	52.00	+ 3.00	
9+35 M.H. 4.	8.05	53.95	51.50	+ 2.45	
B.M. C.T. P.I. { N 3: Line Franklin N 5: " Los Pinos	10.33	51.67	= 51.70		

$$\frac{51.70}{10.30}$$

Sewer Construction
 in Arbor Drive - Lat. St. East.
 F. B. 1497-25

BM. by MH			194.30	Top. Rim
			Top.	F.L.
0+00 ERMH	10.43	204.73	194.30	188.00
0+30 Brk		232.03	194.30	191.50
0+80 Brk		259.25	194.30	223.50
1+27 ¹⁵ M.H. Δ 28-55 Lt.	12.85	246.40	246.40	244.00
1+42 ³⁰ Brk		267.05	255.85	250.40
1+79 ⁴⁰	7.70	259.35	259.35	253.40
2+16 ⁷⁰ End.	2.15	264.90	264.90	256.40

INDEXED

W.K.

OCT 11 1948

+ 6.30	1.0' above Existing F.L.
+ 3.40	
+ 2.93	
+ 2.40	
+ 5.45	
+ 5.95	
+ 8.50	

79

210.25
+ 11.15
221.40
1.13
220.27
11.76
232.03
246.70
12.55
259.25
259.80
7.15
267.05

DIRECTIONS FOR USE OF TABLES

TABLE No. 1.

Distance of slope taken from side or shoulder
taken for any width roadway, slope 1 1/2 to 1
If ground is nearly level, the 4th or 5th of the
table is located by the double entry marked in
the column and row. The number in bold

IMPROVED TABLES AND INFORMATION

TABLE No. 2.

To find Tangent and Natural for curve of
any other degree, divide by degree of curve and
all operation found in column of constants.
Degrees of curve with a given length found
by dividing tangent (or constant) opposite L by
given tangent (or constant).
The distance from a point on the tangent to
the curve is very nearly the square of the tangent
length divided by twice the radius.

58.7
21

310.8

Redwood

28.71

308.5



308.5

20.5



23.93

65.0

28.71

83.71

1048
1754

1/2 past to Nutmen

5.5 123.1
27 75.1
152 58

63
34
29

154.6
142.6
12

19.8
7.8
12

72.1
11.6
60.5
9.1
51.4