

G-187

G-187

Our Leather Bound Engineers Note Books
are carried in the following rulings:

- | | |
|---------------------------------|--|
| No. 380 LEVEL BOOK. | Left and Right Hand Page
the same as Left Hand Page
of this Book. |
| No. 382 FIELD BOOK. | Left Hand Page as in this
Book, Right Hand Page 4x4
to the inch, Center Line Red. |
| No. 384 MINING TRANSIT
BOOK. | Left Hand Page as in this
Book, Right Hand Page 8x8
to the inch, Center Line Red. |
| No. 385 FIELD BOOK. | Left Hand Page as in this
Book, Right Hand Page 8 ver-
tical and 4 horizontal lines to
the inch, Center Line Red. |

We also carry the Note Books listed above,
bound in extra strong Fabri-Hide (otherwise
the same quality of book,) which can be fur-
nished at a somewhat lower price.

In ordering Fabri-Hide covered books, add
the letter "F" to catalog number.

THE FREDERICK POST CO.

ENGINEERING and DRAFTING SUPPLIES

P. O. Box 803

CHICAGO

MICROFILMED

APR 12 1965

8-12-38

576

INDEXED
W.K.I
OCT 14 1948

65.97

Replaced
8-10-38
NUTMEG

65.95

S.E. TIDOUT

65.92

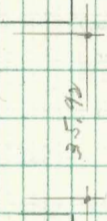
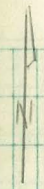
Replaced
8-10-38

NUTMEG

65.90

FT. STOCKTON

1815



Moore
10-1-37

Jellett St. Pav.
at Pacific Blvd.

S

E

N

E Sta.
W. edge Pav.
Merena Blvd

13.90

INDEXED

W.K.

OCT 15 1948

0 + 25 P.C. 13.30

13.50

13.50

E.V. RR

0 + 38 R.W. 13.0

13.20

13.20

0 + 68 12.30

12.50

12.50

0 + 78 OUT

12.25

OUT

0 + 88 = E.R.R.

12.0 = E. Rail
11.8 = W. "

0 + 98 OUT

11.7

OUT

1 + 08 10.25

10.35

10.40

1 + 38 R.W.
R.R.

7.70

7.80

7.80

1 + 65.4 R.W.
Pacific
E.V.

5.40

5.50

5.40

2

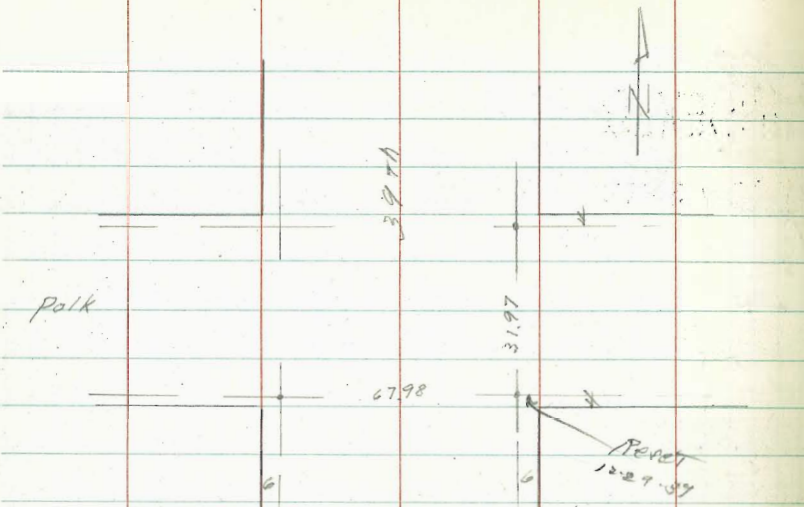
11.33 S.M. Men. Sw Jellett + Merena Blvd.

3.70
14.03

OUT STAKES

N	13.5	13.2	12.5	10.4	7.8	5.40
	0.5	0.8	1.5	3.2	6.2	8.6
	0.7	0.9	1.0	6.1	7.2	9.8
	-0.2	+0.5	+0.5	-2.5	-7.2	-1.2
S	13.8	13.0	12.3	10.25	7.70	5.40
	0.7	1.0	1.7	3.75	6.3	8.6
	1.2	1.7	3.6	6.3	7.4	9.4
	-0.7	-0.7	-0.9	-2.6	-1.1	-0.8

3974 + Polk St. Ties

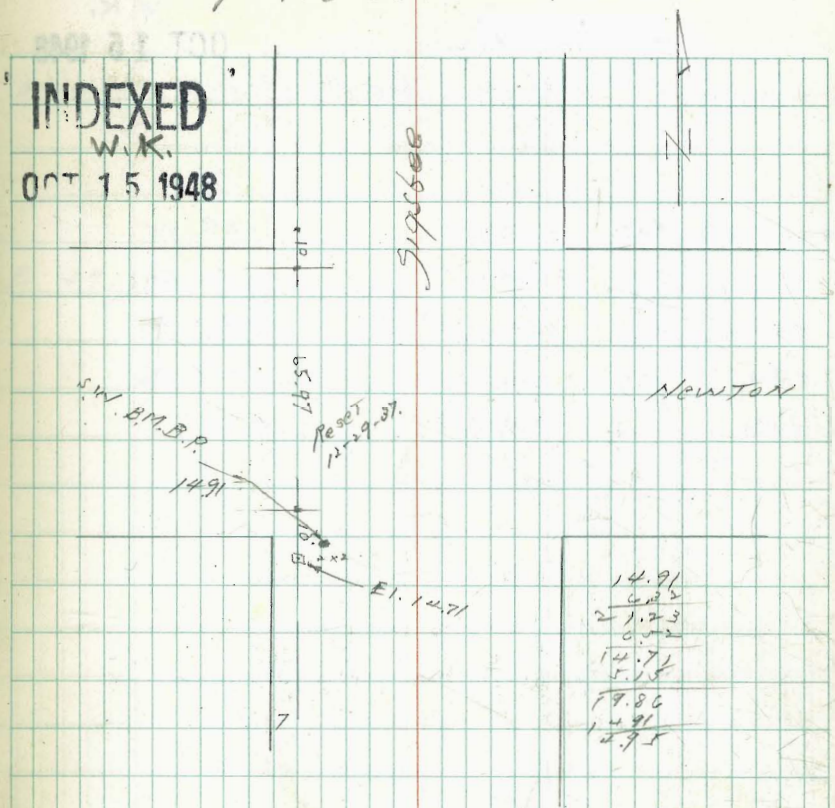


10-8-37

3

7' Tie outs

INDEXED
W.K.
OCT 15 1948



- 14.91
- 6.25
- 21.73
- 6.25
- 14.71
- 5.15
- 19.86
- 4.91
- 12.95

Moore
10-9-37

INDEXED
W.K.

OCT 15 1948

Alley Pav. Univ. Hts.
S of Madison bet. Rhoads, & New York

	W	E
0+00 Sly Mad.	339.70	339.80
+20	340.35	340.50
+40	340.75	340.94
+60	340.66	340.86
1+00	339.97	340.17

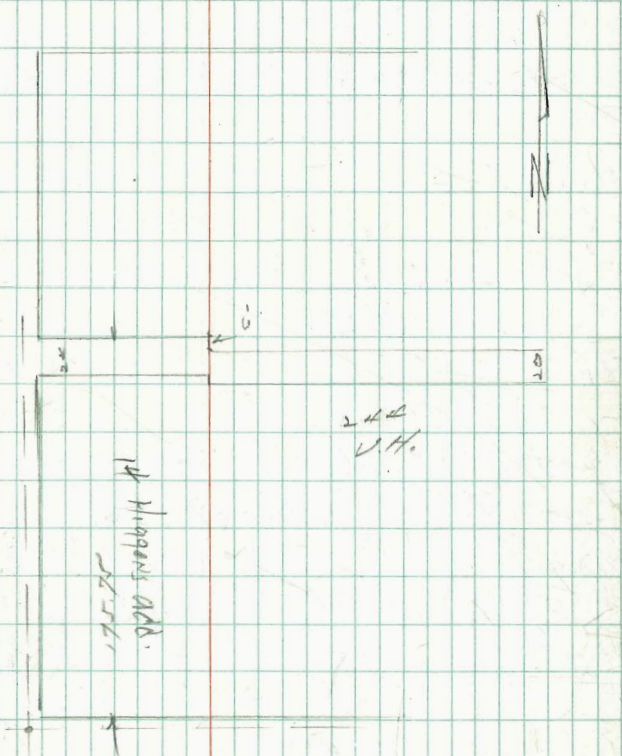
339.80 TOP E cb-

339.49 E Pav.
6.90
345.79

4

W	339.70 6.90	340.35 5.22 5.38 +0.21	340.75 5.04 4.98 +0.06	340.66 5.13 5.18 0.0	339.97 5.82 5.92 -0.10
E	339.80	340.50 5.29 4.88 +0.41	340.94 4.85 4.74 +0.11	340.86 4.93 4.93 0.0	340.17 5.62 4.62 +1.0

Set gley line



10-10-27

Storm drain CONST.
Wetherby + Hancock

2+48 = 15' cb inlet 3.14

3 2.75

+50 2.37

4 2.00

+50.5 RR. Culvert inlet 1.60

11-2-37

0+00 4.70

0+67 = cb. inlet 4.28

1 4.07

+50 3.75

2 3.44

+17.45 = Wedge pav. 3.32 ✓

+48 = 15' cb. inlet 3.14

1.34
12.92
14.26

INDEXED

6

WK

OCT 15 1948

1.50	2.00	2.37	2.75	3.14
12.26	11.89	11.51	11.13	10.75
10.80	10.42	10.04	9.66	9.28
C 1.40	C 5.90	C 8.10	C 4.72	

3.14
2.75
7.86
9.10
4.99

4.28	4.07	3.75	3.44	3.32
12.71	10.94	10.55	10.15	9.76
4.00	5.02	5.00	4.75	4.50
C 8.41	C 7.90	C 8.50	C 8.50	C 4.14

4.07
7.90
11.97
3.98
15.90 X

4.70 = inlet = 0+00
11.20
2.3
+ 0.90

INDEXED

Moore
10-20-37

Center St. Curb inlets
50' E of La Jolla Blvd.

NE. SP. La Jolla Blvd.
7051 and Sea Lane
571
7572

INDEXED 7
W.K.
OCT 15 1940

#1
65.90
9.80
3.66
6.16
C 6.0

#2
65.50
10.25
4.25
C 6.00

68.80
11.90
11.82
C 0.09 FF.
JUNC

STORM DRAIN CONST.

10-23-37.

10th & UNIV.

INDEXED

W.K.
OCT 15 1948

0+00 = OUTLET

270.15
~~270.55~~ 270.79

0+47 = CLEANOUT Type F.

10'
009
270.94 C 5.84

1+02

271.44 C 8.13

1+57 = B = S.L. Univ. beg. Tunnel.

271.95 C 10.02

2+50.6 = END TUNNEL N.C.B. Univ.

272.8 C 10.22

Curb Grades

Chords = 7.2

P.C.	1	2	3	L = E.C. = 0+100	0+126
82.87	82.86	82.86	82.85	82.85	82.83
5.23	5.24	5.24	5.25	5.25	5.27

0+53 = P.C.

0+71.2 = E.C.

82.80
5.30

82.90
5.20
5.40
10.40

FL. to cb inlet 272.87
as laid 15.23

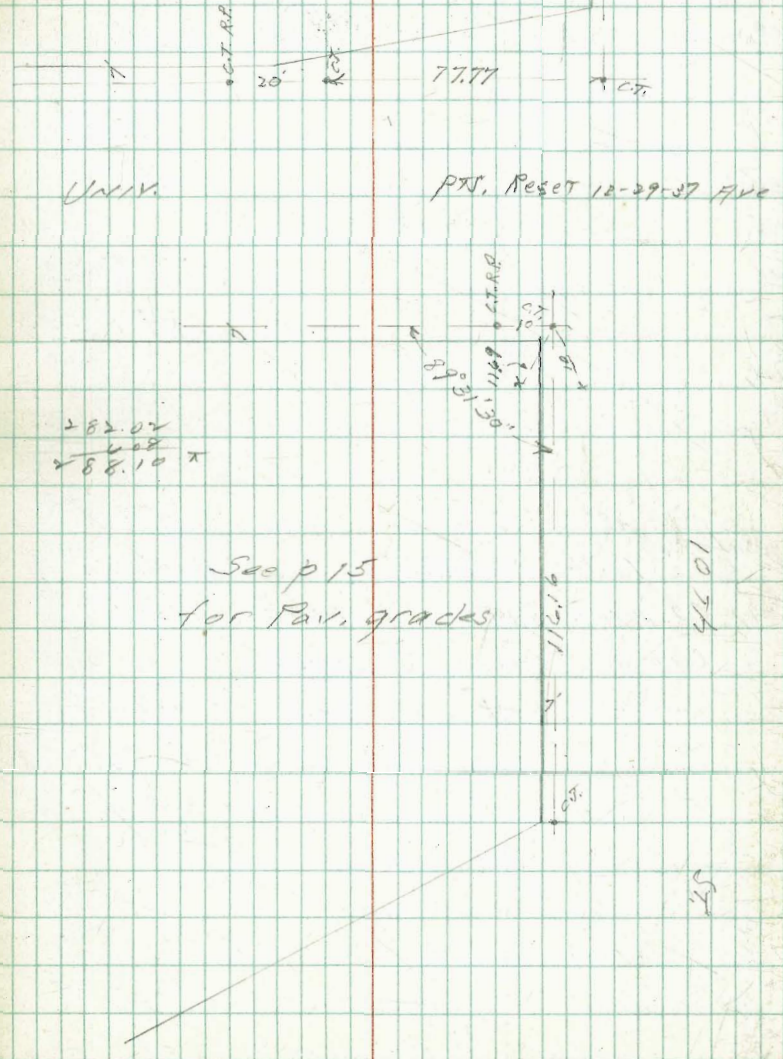
274.50
13.60
4.70
C 8.90

282.82 SWSP 10th & Univ.

4.25
286.27
9.49
276.78 = T.P.
2.27
279.25

BIT. TIE OUT

283.04 = 3 nails
Pole SW Cor.



check of S.M.H. Old Town

B.M.B.P.	0.29	2802		27.73	W.C. 110 Moore W.S. Beck
T.P.	1.61	17.16	1247	15.55	
T.P. Rim of #7	1.55	13.70	501	12.15	
T.P.	5.28	17.43	1.55	12.15	

#5 -3.06

224.55

#6 -2.89

330

#7 -2.59 -2.62

304

#8 -2.33

T.P. Rim of #7

1.76 1391 12.15

Top C.I. Pipe 0484 15.16 -1.25

" Cem " 1420 14.79 -0.88

" " " 1467 15.18 -1.27

INDEXED

W.K.

OCT 15 1948 160' SWly of #7

5.01
12.74
19.75
17.10
-2.59 = S.K. #7

↓
10.50
13.70
-2.80

598 = Rim #8

13.75
19.75
17.23
-2.50

19.69
17.23
-2.06

9

check B.17.

Pacific + La Jolla Miramar Rd.

B.M.	7.15	402.135		394.985	
			6.41	395.725	
T.P.	10.89	412.325	0.70	401.435	
B.M. #1			2.635	409.69	409.60

11-12-37.

INDEXED

10

W.K.

OCT 15 1948

Bolt in Culv. Roadmail near Italian Inn.

Ed. 4 Ct. in Sbound pav. of Pacific + La Jolla Miramar Rd.

R.O.W. Mar. 103' Lt. of 579.

EAST LANE
Torrey Pines Mesa Rd

Get stakes for F.H. at

S.W. Cor. Rosecrans & Sterne

Moore
11-13-57

SW 7' Mon [27

8.07

3.10

Rosecrans
Sterne

~~3.25 curb grade
at PC.
1.12 rod~~

Stake offset 5' back of curb

3.10 = BM
+88
7.98

+4.45

3.53

1.80

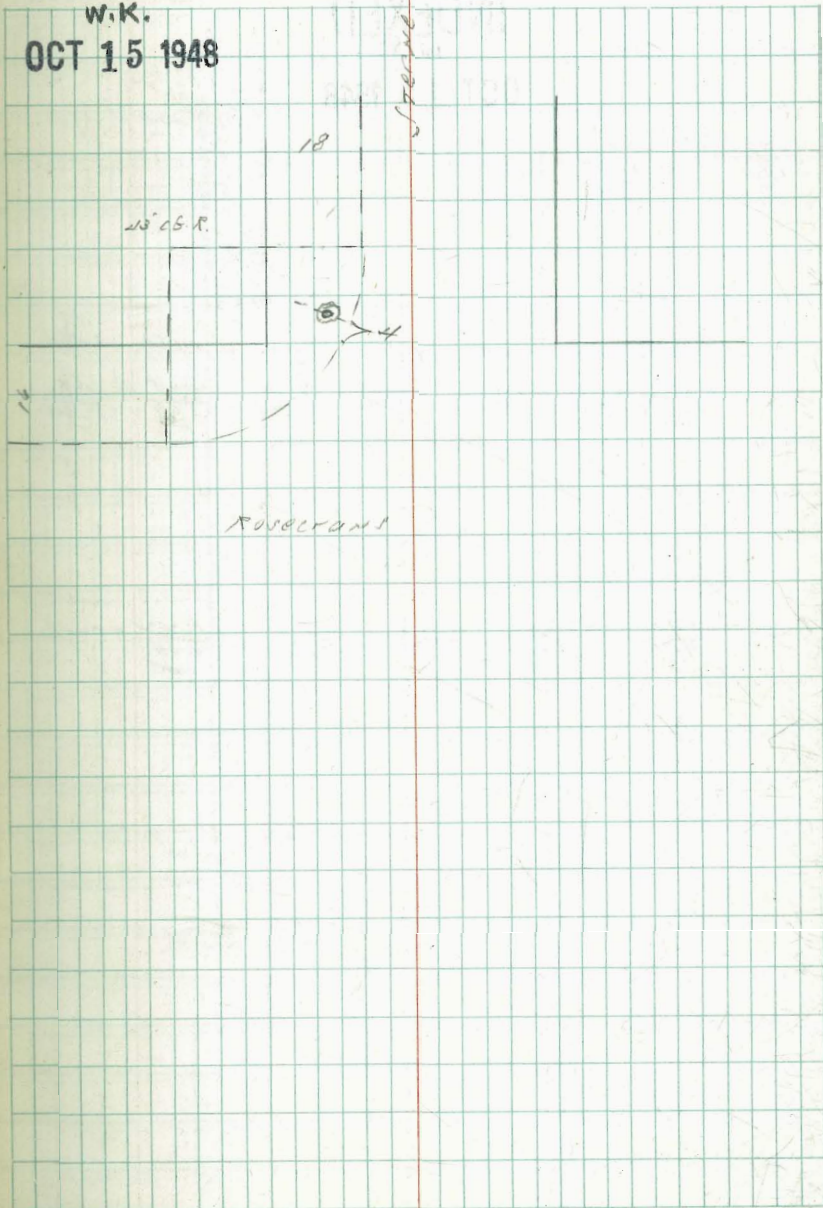
C 1.73 to curb gr.

5' back

INDEXED

W.K.

OCT 15 1948



Const of Curb on
Old Town Plaza

Moore
11-15-47

INDEXED

W.K.

OCT 15 1948

SWBP

San Diego
Mason

506
1965

0450
2038
6.66

1400
2110
590

22.22
2.27
4.71
5.06
19.65 = 78
4.39
7.04
2.20
4.80
4.07
18.87
40.8
4.79
4.23
19.22

E RETURN

0450

1400

break
1486

0450

1400

21.60
5.24

21.20
5.84

19.77
7.27

18.34
8.70

17.30
9.74

16.05
10.99

14.80
12.24

14283 RETURN

14.10
4.77

14.00
5.24
5.24
C 10

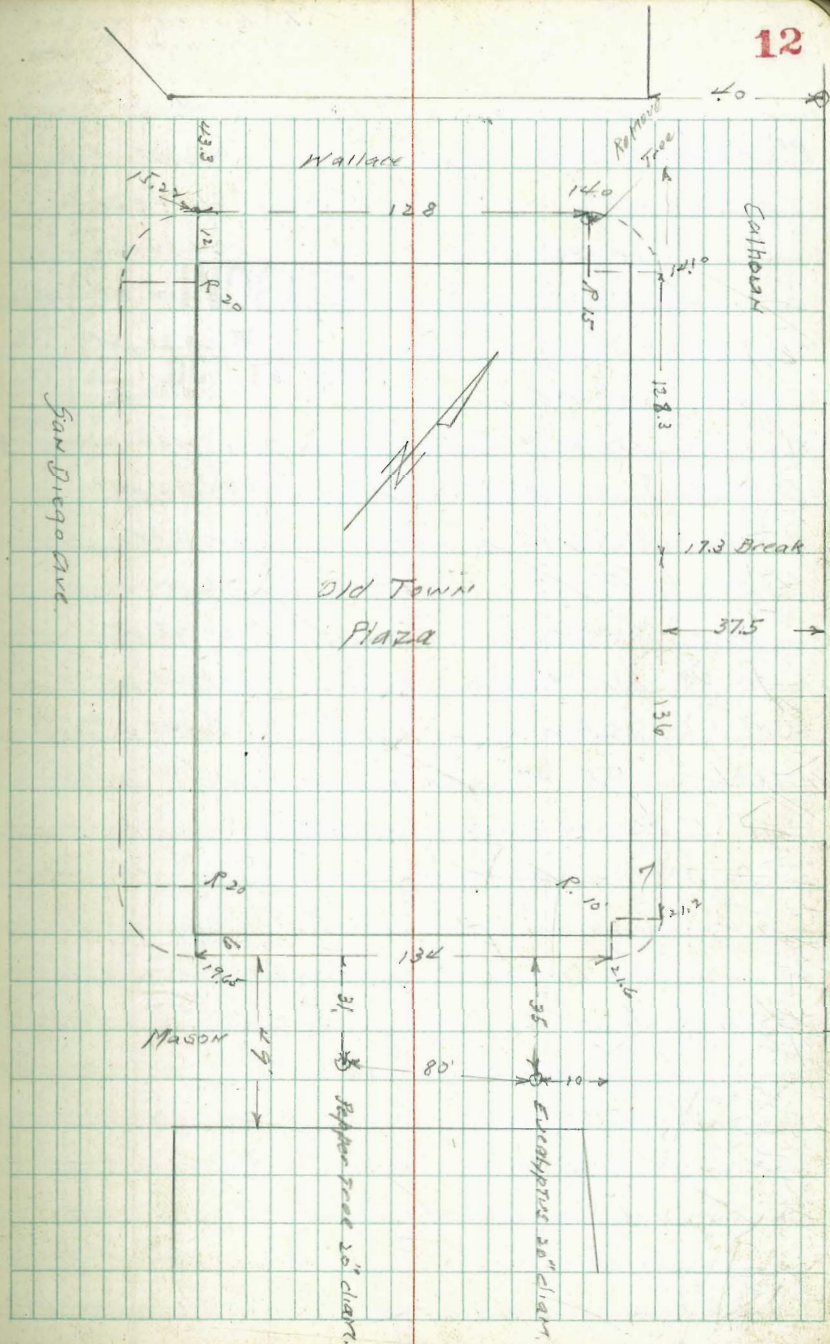
14.27

4.95

14.74
4.48

15.22 = curb
4.00

12



Wilcox St. .75 Gutter
 check Grade .44 Crown
 2 = .05 below
 N. curb

	N c b		5 c b
Catalina P.C. 81400	259.83 ✓		260.33 ✓
+50	61.82 ✓		62.32 ✓
	63.82 ✓		64.32 ✓
+50	65.82 ✓		66.32 ✓ <small>25 Low out-slope</small>
	67.81 ✓		68.31 ✓
+50	69.80 ✓		70.30 ✓
3	71.80 <small>2 Low NOTE</small>		72.30 <small>2 Low GUT.</small>
3 +63 P.C.	274.31 <small>2 Low NOTE</small>		274.81 ✓
4 +63	76.06 <small>2 L</small>		76.56 ✓
+43	78.11 <small>2 L</small>		78.61 ✓
+82	80.48 ✓		80.98 ✓
5 +23 E.V.	83.14 ✓		83.64 ✓
5 +63 P.V.	85.95 ✓		86.45 <small>GUTTER FH</small>
5 +83	87.24 <small>3H</small>	0.811	87.74

THIS LAST SEC. RUNS OUT
 TO NATURAL GROUND.

245.59 spike fence post
 11.58 WL CATALINA
 277.17 100' N. of TENNINGS
 1.23
 275.94
 10.87
 266.81 x
 0.43
 266.38
 11.31
 277.69 x
 0.00
 277.69
 11.95
 289.64 x
 12.63
 277.01
 0.22
 277.23
 12.94
 264.27
 0.45
 264.70

11-37

INDEXED
 W.K.
 OCT 15 1948

✓ = WITHIN 0.10
 GUTTER CHECK 0.10 HIGH

Jennings St. Check 1' gutter
 East below .6 crown
 N. curb

	N 66		S 66
ELY. IMP. 37'	258.45 ✓	✓	258.95 ✓
↑	57.50 ✓	✓	58.0 ✓
PVC 2000	56.97 ✓	GUT. 3H ✓	57.47 ✓
0 + 50	56.64 ✓	G. 3H ✓	57.12 ✓
1.	56.31 ✓	✓	56.81 ✓
1 + 50	55.97 ✓	✓	56.47 ✓
2	55.64 ✓	✓	56.14 ✓
2 + 15 PVC	55.54 ✓	G. 3H ✓	56.04 ✓
2 + 55	55.17 ✓	G. 3H ✓	55.67 ✓
2 + 95	54.62 ✓	G. 3H ✓	55.12 ✓
3 + 35	53.88 ✓	G. 3H ✓	54.38 ✓
3 + 75 PVC	52.95 ✓	G. 3H ✓	53.45 ✓
4 + 30.7	51.33 ✓	G. 3H ✓	51.83 ✓
5 + 01.15 ENL.	49.72 ✓	2H ✓	50.22 ✓
5 + 08.84 P.C. ON S LINE		✓	G. 3H 50.03

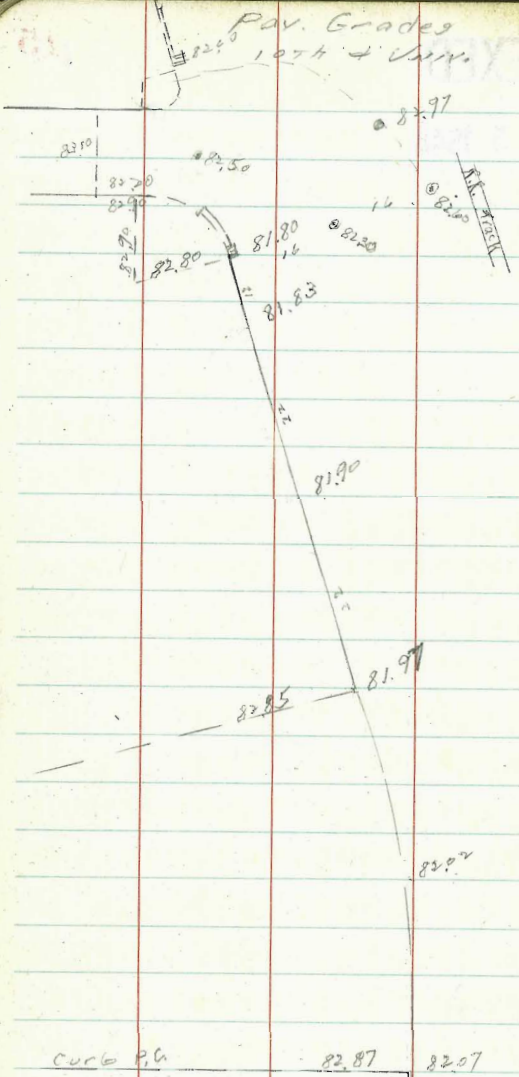
INDEXED

14

W.K.

OCT 15 1948

26470.7
 892
 255.78
 1.42
 257.20



82.02
5.96
87.98

82.02
5.96
87.98

INDEXED
W.K.
OCT 15 1948

Talbot St. Senior CONST.
Akron to Concord.

	F.L. Gr.	CUTS	5' 1
EX. M.H. = 0+00. Akron Cr	99.06	7.08	
0+50	102.05	6.80	
1	105.04	7.07	
+50	108.03	7.40	
2	111.02	7.60	
+50	114.01	7.10	
3 = M.H. #1	117.0	6.95	
+50	120.20	7.03	
4	123.40	7.16	
+50	126.60	7.30	
5	129.80	7.60	
+50	133.0	7.97	E
5 + 97.10 = M.H. #2 0.50' RT. ± Bangor St.	136.0	8.51	E. 57.44 144.57
6 + 50	140.65	8.44	
7	145.02	8.94	
+50	149.40	9.87	
8 + 02.44 = M.H. #3 End. Ex. Sewer	154.0	10.98	

D. M.H. at Concord

11 + 06.8 = Break = Ex. Sewer	199.52	8.67	
11 + 56.8 = D.M.H. #4	201.26	12.97	
" = Ex. upper F.L.	207.0		

106.14 = Rim #1 M.H.

Moore
12/12/07

16

INDEXED

W.K.

OCT 15 1948

144.57
0.62
125.20
12.79
132.41
0.38
132.79
12.88
119.91
0.87
120.28
14.14
106.14 Rim #1

144.57
12.87
157.44
0.46
156.98
11.33
148.31

207.0
9.35
197.65

STORM DITCH CONST. 12-9-37
ON CALIF.

Redwood to Sassafras CUTS

0+0 = FL. EX. 2" pipe inlet	22.54 ✓	
0+15 " 12" pipe outlet	22.81	2.90
0+35 " " inlet	23.16	3.60
0+46 = end of storm ditch = 0+40	23.73	2.20
0+50	23.90	2.45
1 = Break	24.80	1.87
+50	25.04	1.90
2	25.28	1.96
+50	25.52	1.90
3 nly Spruce	25.76	2.03
+40	25.95	1.42
4 +80 sly "	26.15	1.65
4 = Break	26.25	2.08
+50	26.53	2.18
5	26.81	2.15
+50	27.09	2.28
6	27.37	1.96
+50	27.65	1.94
6 +81 = nly Redwood	27.82	1.79
7 +21	28.05	2.0
7 +61 = sly "	28.27	2.33
8 +00 =	28.50	2.0

17

22.54 = FL. 2" pipe = 871.

863
3117

INDEXED

W.K.

OCT 15 1948

2.46
2871 ON STUB
540
3411

W.P.A. General Const. 12-10-37
Eastern Adcl.

by order Phelps		FL. GR.	CUTS
	change cuts	185.58	
0+00 = Ex. M.H.	Juniper Gregory C 12.36	185.58 187.14	14.36
+50	4.60	185.28 188.70	6.46
1	2.41	186.98 190.26	4.14
+50	2.45	188.68 191.82	4.05
2	7.70	190.38 193.38	9.17
+50	5.30	192.08 194.94	4.62
3	9.32	193.78 196.19	10.50
+40	8.72	195.13	9.78
3 + 67.20 M.H. #13	5°24'30" LT C 5.10	197.04	6.10
4	2.48	198.67 197.76	3.37
+50	4.47	201.14 200.38	5.21
5	4.25	203.61 203.01	4.84
+50	9.02	206.08 205.63	9.45
6	8.74	208.55 208.26	9.02
+50	6.14	211.02 210.89	6.27
6 + 92.50 M.H. #12	25°27'30" RT	213.12	8.03
7		213.35	9.97
+50		214.85	11.02
8		216.35	8.62
+50		217.85	8.91
9		219.35	6.20
+50		220.85	4.42
10		222.35	4.52
+50		223.85	6.68

255.48 = S.E. Top Ret. wall B.P. Juniper & Feiton

1.44	
256.92	203.21
12.51	3.04
244.31	✓ 06.25 = T
10.07	0.59
200.38	✓ 05.75 = T.P.
12.86	11.83
✓ 31.52	✓ 17.58 = T
0.15	1.17
✓ 31.67	✓ 16.37 = T.P.
12.22	12.79
✓ 18.85	✓ 29.18 = T
0.14	8.03
✓ 18.79	✓ 21.15 = B.M.
12.92	11.23
206.07	✓ 32.32
1.45	0.52
207.50 = T	✓ 31.86
4.22	12.64
203.21 T.P.	✓ 44.55

INDEXED
W.K.
OCT 15 1948

E. Kalmia & Gregory

B.M. on 5' stud

South of Laurel in Bk 45 221.15

				CUTS
10	+64.5	M.H. #11	58°44'30" RT.	224.28 9.04
11				227.48 3.51
	+50			231.98 4.20
11	+68.09	= Break grade		233.60 4.57
11	+98.09			239.30 5.54 ✓
12	+28.09	D.M.H. #10	58°44' RT	245.0 5.66 ✓
11	"	" = 0 +00	To 334 Maple	251.74 F 1.08
12	+50			252.18 4.52
13				253.18 8.84
	+50			254.18 12.18
14				255.18 14.37
	+50			256.18 12.77
15				257.18 10.38
15	+39.78	M.H. #8 = D		257.97 9.50
		TUNNEL AT NUMBER 9		
16	+72.65	M.H. #7 = D		260.63 13.07
17				263.40 1.97
	+50			268.40 5.66
18				273.40 5.78
	+50			278.40 5.53
19				283.40 6.18
	+50			288.40 6.36
19	+78.83	= M.H. #6		291.31 4.93

South of Maple in 8th cut

{ Maple + FELTON

244.55 x

0.80

243.69

13.17

230.52

6.20

250.66 = 5' STUB #10 D.M.H. = B.M.

10.05

260.71 = x

250.66

12.51

263.17

0.54

262.83

2.41

273.22

1.08

274.16

8.20

282.36

10.48

271.88

4.48

276.36

6.47

275.89

12.92

288.83

0.67

288.16

7.85

298.01

1.77

296.24 = B.M. 5' STUB M.H. #6

	Maple & Felton	F.L.	CUTS
0+00 =	D.H. #10	245.0	5.66
0+30		247.17	6.64
0+42.5		248.15	6.51
0+57	#1	249.12	2.82
0+70.5	#2	250.10	0.59
0+84	#3	251.08	1.69
0+97.5	#4	252.06	4.02
1+11		253.03	5.91
1+24.5		254.01	7.02
1+38		255.0	9.45
1+50		256.35	8.71
2		261.98	11.73
+50		267.61	11.18
2+80	M.H. #9 & Maple	271.0	8.90
3+05		273.12	6.42
+21	Pier #1	274.48	
+37	#2	275.84	
+53	#3	277.20	2.60
4+00		281.20	6.16
+50		285.45	9.10
+80	Break	288.0	8.50
5+30	"	290.5	8.30
5+80	D.E.	292.0	7.82

Ground Profile

260.71 x
 0.10
 260.55
 12.93
 273.48 x
 0.26
 273.22
 10.70
 283.92
 2.22
 280.50 = SWBP 35^d # Maple

250.66
 10.41
 261.07
 0.03
 261.04
 12.80
 273.84
 0.25
 273.71
 10.08
 283.79
 0.88
 284.67
 13.05
 297.72
 1.41
 299.13
 9.18
 308.31

283.79
 3.32
 280.47 = SWBP 35^d # Maple

			CUTS
19	278.83	M.H. #6	291.31 291.31 4.93
20			291.80 5.50
	+50		293.34 6.94
21			294.90 7.65
	+50		296.45 8.42
22			298.00 8.57
	+50		299.55 7.20
	+85.01	EXISTING M.H. PALM	300.63 6.24 ✓
23			300.75 6.24 ✓
	+50		301.15 6.04 ✓
24			301.55 7.09 ✓
	+50		301.95 6.60 ✓
25			302.35 5.43 ✓
	+50		302.75 4.81 ✓
25	+96	EXISTING M.H.	303.12 2.97 ✓
26	+16	SEWER SW of = DEL. ALLEY	303.32 4.68 ✓
	+50		303.47 4.77
27			304.18 4.68
	+50		304.70 5.62
28			305.22 6.01
	+50		305.74 6.01
29			306.25 6.04
	+44.6	M.H. #5 Redwood	306.71 5.27

CONTD. P. 32

21
PALM
FOURTH
SW 7' CT.

305.60
6.07
311.67

311.61
4.78
316.39

Note? from 25+96 to 42+44.6 at
UPAS, SEWER IS 3' W of
E.L. of ALLEY

Redwood #33
NW 3P
311.61

12-13-37

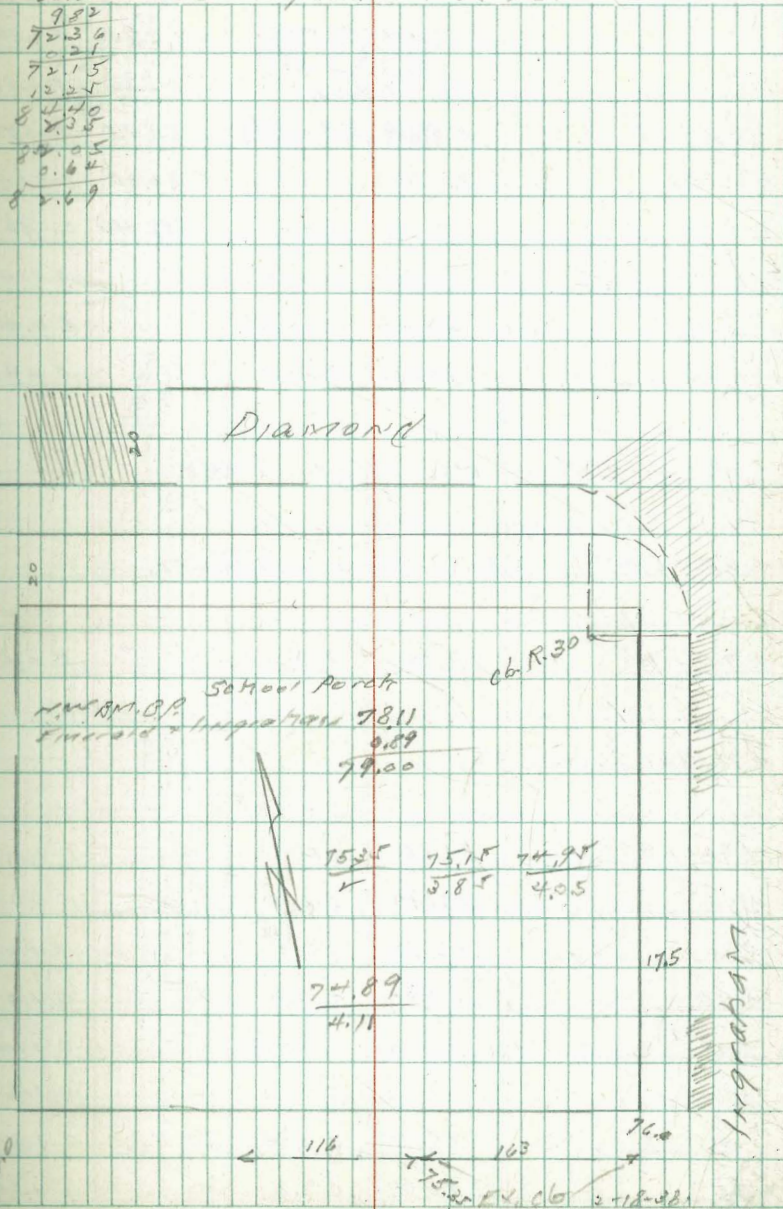
CURBS CONST. at
Pac. Beach Grade School

	GWT.	
N4 EMERALD	75.15	75.65 ✓
0 + 20		76.16 ✓
2 70		77.43 ✓
1 + 20		78.70 ✓
1 + 70		79.97 ✓
2 + 20		81.24 ✓
2 + 40 = P.C.		82.25 ✓
#1	sup. par. 82.0	82.30 ✓
#V		82.25 ✓
#3		82.15 ✓
#4 = E.C. 10000		82.05 ✓
0.750		81.30 ✓
1		80.30 ✓
+ 50		79.30 ✓
2 Break		78.30 ✓
+ 50		77.97 ✓
3		77.64 ✓
+ 50		77.30 ✓
4		76.97 ✓
+ 50		76.64 C 1.0
5 Fly Lines		76.30 C 1.0

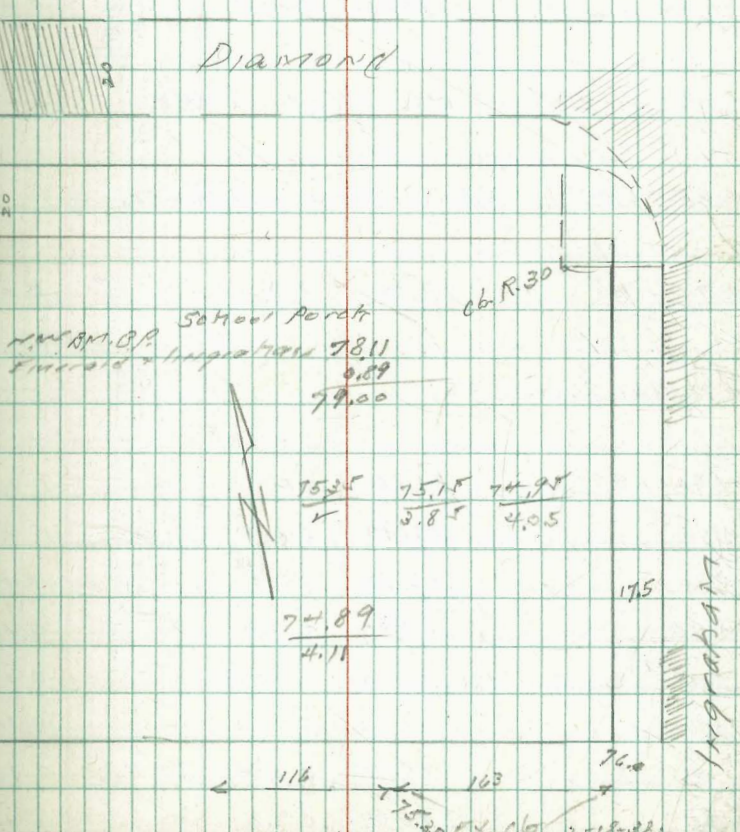
INDEXED
W.K.
OCT 15 1948

WOP

62.54 SEBP Ingraham + Garnet



9.82
72.36
12.25
12.25
81.15
82.30
82.05
0.64
82.69



EMERALD 62.15 75.29

Alley PAV.
DIR 197 V.H.

12-12-37

	W	CUTS	F	
52 Lincoln 0+0	286.95	C 0.54	286.80	F 0.30
0+10	86.40	C 0.34	86.20	F 0.18
0+50 B	83.60	F 0.07	83.45	C 0.50
0+70	82.40	F 0.50	82.30	C 0.65
0+90	81.40	F 0.18	81.40	C 0.93
1+10	80.70	F 0.24		C 0.10
1+30	80.40	F 0.54		C 0.94
1+50	80.30	F 0.35		C 0.47

1+60 = S. Lat #1 on W.L. 275.40 C 4.48

1+65 = C.B. #1 280.10 = Grate 277.70 = F.L.

1+70 = F 80.50 F 0.57 F 0.45

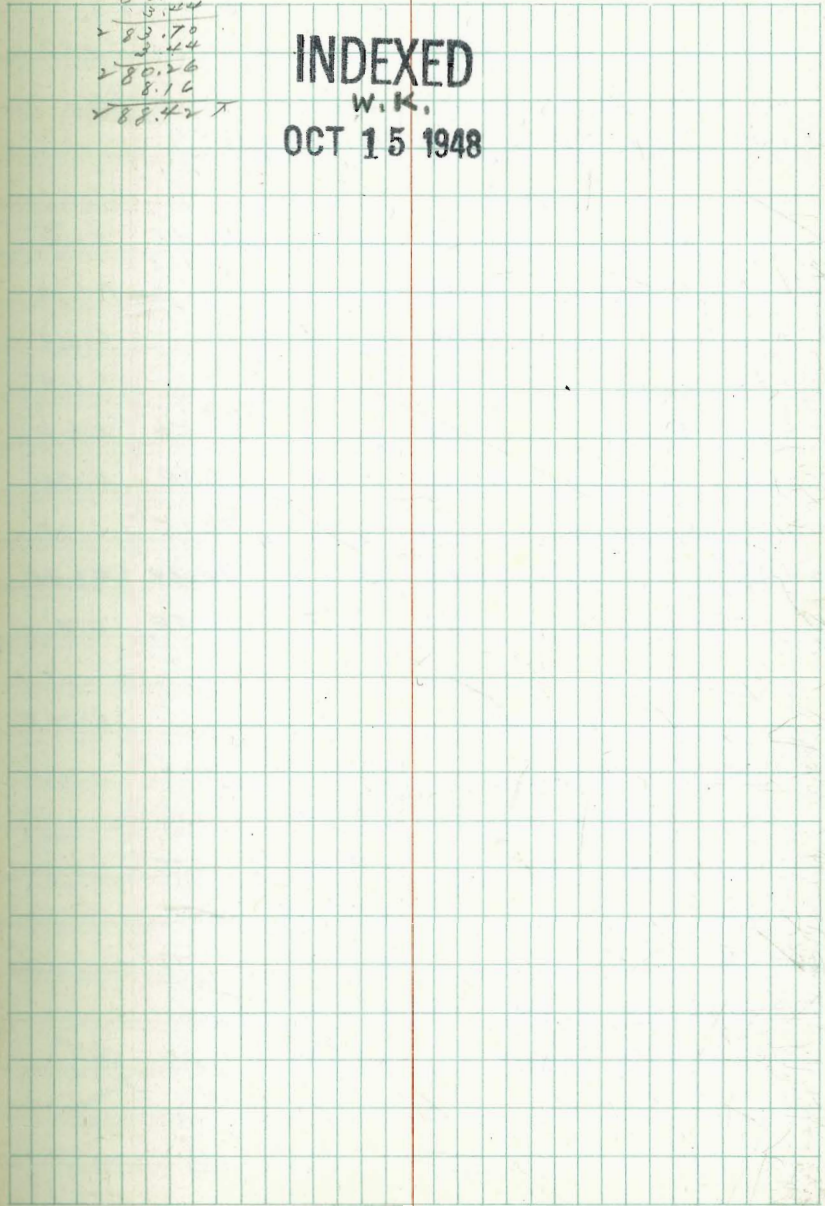
1+71.86 = E CUTS #1

1+90 B	81.10	C 1.0		C 1.0
2+10	81.90	C 1.0		C 1.0
2+30	82.75	C 2.0		C 1.0
2+50	83.30	C 1.0		C 1.0
2+70	83.40	C 1.0		C 1.0
2+90	83.30	C 1.0		C 1.0
3+10 B	82.75	C 0.24		C 1.0
3+60	80.97	C 1.0		C 0.34

LEVEL

287.17 Nails in Pole Lincoln + Alley
 $\begin{array}{r} 1.36 \\ \hline 288.43 \\ \hline 8.17 \\ \hline 280.26 = T.P. C.B. 5' STUB \\ \hline 3.24 \\ \hline 283.70 \\ \hline 3.44 \\ \hline 280.26 \\ \hline 8.16 \\ \hline 288.42 \end{array}$

INDEXED
W.K.
OCT 15 1948



	W.	CUTS	E	CUTS
4+10	79.18	0.02		0.07
4+40	SLAT #2 W.L.	273.10		C 5.33
4+60	B	277.40	277.40	C 2.0
4+80		76.50		C 0.44
5+00		75.70		C 1.10
5+20		74.45		C 1.41
5+40	B	73.50	73.50	C 2.0
5+70		71.60	71.70	C 1.73
5+80		71.05	71.15	C 1.25
5+90		70.45	70.80	C 1.05
6 = N.L.V.M.		69.60	70.50	0.0

	CUTS		
			283.70 π
0+00 = GRATE	280.10	C 0.16	
" = F.L.	277.70	C 2.50	
0+12.21 = A	277.68	C 2.74	
0+50	277.59	C 1.54	
1+00	277.47	C 1.57	
1+50.21 = end. 12" beg. 16. outlet	277.35	C 1.01	
1+66.21 = 16. outlet	277.33	0.00	637' rod = gutter

288.42 π
 10.46
 277.96
 1.92
 279.88 π

2.48
 0.48
 2.0

5+90 = SLAT. ON E. #3 265.80 C 6.05

3' x 4' CON. Box Culv. 17-20-37

Fairmont & Burnham Pl.

31 cu yds Conc.

350.00
1.92
351.92 *

C 1.07 343.60 = 15' offset of inlet

C 2.45 386.30 = 20 " " outlet

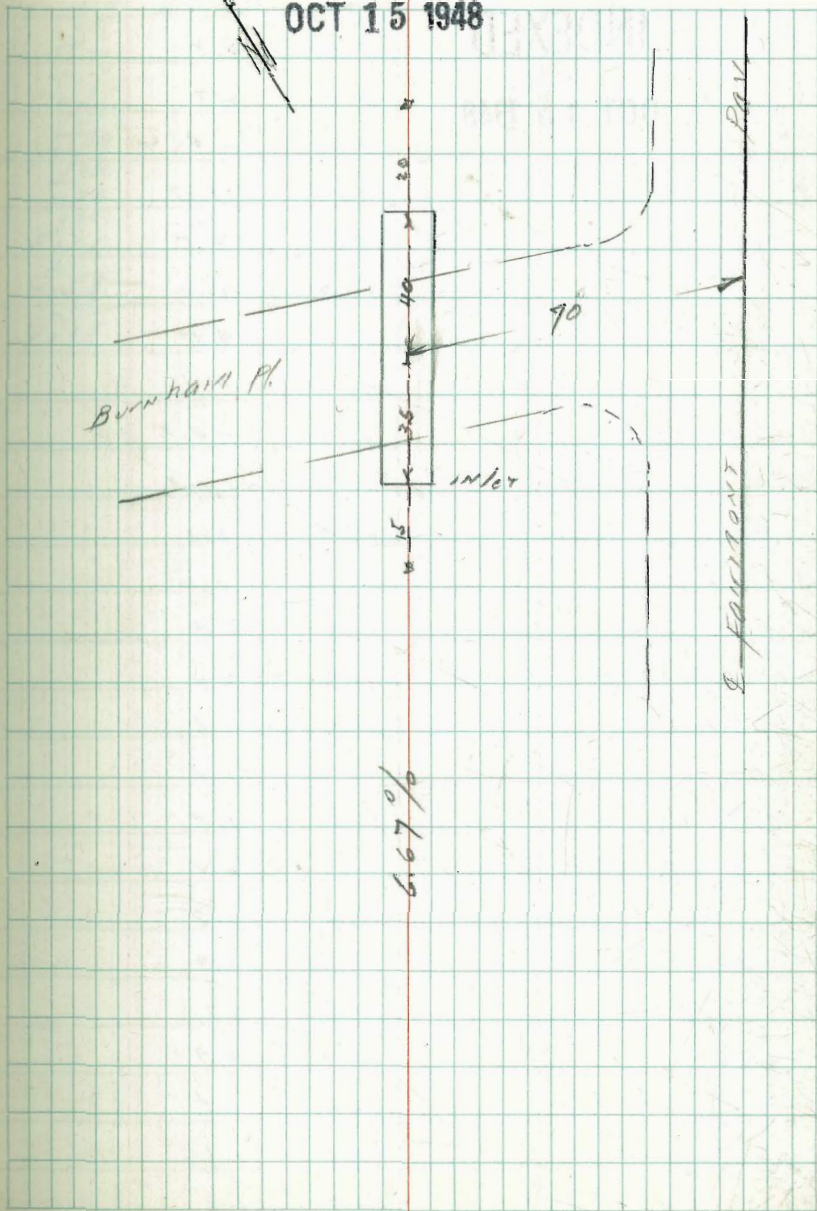
350.00
0.92
350.92

342.60 337.6
8.92 13.32
7.52
C 1.0

INDEXED

W.K.

OCT 15 1948



Tecolote Creek
Storm ditch corner.

12-21-47

26

	INDEXED	FL	CUT
17		8.30	
17 +50		8.60	2.5
18	W.K. OCT 15 1948	8.9	2.7
+50		9.3	-0.4
19		9.6	1.0
+50		9.9	2.5
20		10.2	2.0
+50		10.6	0.5
21		10.9	3.2
+50		11.2	-0.5
22		11.6	-0.5
+50		11.9	2.3
23		12.2	0.0
+50		12.6	2.4
24		12.9	2.0
+50		13.2	1.8
25		13.6	1.4
+50		13.9	11.5
+78 = 41°07' 51"		14.1	2.2
26		14.2	1.8
+50		14.5	2.9
27		14.9	1.7
+50		15.2	4.9
28		15.5	1.5
+50		15.9	1.7
29		16.2	1.8

1004 BM. B.P. Tecolote Bridge

4.77
17.01
4.24
10.77
5.72
16.49
5.26
11.23
9.88
1.11
0.58
0.58
2.77
22.35

29	+50	16.5	2.2
30		16.8	2.2
	+50	17.2	3.1
31		17.5	3.0
	+50	17.8	3.5
32		18.2	1.3
	+47 $\Delta 10^{\circ} 50' RT$	18.50 ₃₃	1.7
33		18.82	2.2
	+50	19.1	0.0
	+95 $\Delta 18^{\circ} 03' RT$	19.4	1.3
34	+50	19.7	1.2
	+75.80 $\Delta 35.41' RT$	19.9	0.7
35		20.0	2.3
	+50	20.3	4.2
36		20.6	1.4
	+50	20.9	1.8
37		21.2	2.5
	+50	21.5	2.5
38		21.8	4.1
	+50	22.1	6.4
39		22.4	6.1

23.35
~~1.78~~
~~1.57~~
~~3.1~~
~~2.68~~
~~4.04~~
~~20.64~~
~~10.85~~
~~1.49~~

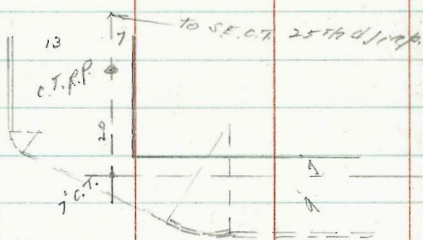
29 +50	16.5	2.2
30	16.8	2.2
+50	17.2	2.1
31	17.5	2.0
+50	17.8	2.5
32	18.2	1.3
+47 $\Delta 10^{\circ} 50' RT$	18.50 ₃₃	1.7
33	18.83	2.2
+50	19.1	0.0
+95 = $\Delta 18^{\circ} 03' RT$	19.4	1.3
34 +50	19.7	1.2
+75.80 $\Delta 35^{\circ} 41' RT$	19.9	0.7
35	20.0	2.3
+50	20.3	4.2
36	20.4	1.4
+50	20.9	1.8
37	21.2	2.5
+50	21.5	3.5
38	21.8	6.1
+50	22.1	6.4
39	22.2	6.1

23.35
~~1.78~~
~~1.57~~
~~3.1~~
~~2.48~~
~~4.04~~
~~2.64~~
~~10.85~~
~~1.49~~

Curb Const.
25th & Central

12-23-37

25th



Replaced
8-10-38

Central Ave.

INDEXED
W.K.
OCT 15 1948

28

Sewer Const.
on Talbot St.
Concord to M.H. #2

12-28-37

	F.L. G.C.	CUTS
M.H. on Concord #0400	201.26	12.97
0 +50	201.56	15.47
1	201.86	17.44
+50	202.16	18.43
2	202.46	18.04
+50	202.76	16.50
2 +90.7 M.H. #1	203.0	14.76
3 +10	203.11	13.91
+50	203.25	12.08
4	203.45	9.60
+50	203.95	8.04
5	204.25	7.25
5 +43.5 M.H. #1 4278.8' LT.	204.53	7.31

INDEXED

29

217.03 BM, E Mon. Talbot + Dover
5.22
216.65

INDEXED
W.K.
OCT 15 1948

INDEXED

W.K.
OCT 15 1948

Gewer Const. in alley
Sampson to Board N of Main St.

	FL. 65	
0 + 00 = EX I.P.H.	24.77	4.33
+50	25.04	5.92
1	25.32	4.97
+50	25.60	5.54
2	25.87	3.94
+50	26.14	3.27
3	26.42	3.82
+00 = M.H.	26.59	5.51
+50	26.70	
4	26.97	
+50	27.25	
5	27.52	
+50	27.80	
6 - D.E.	28.07	

SEBP Main + Seward

27.48
7.57
34.85

Alley. Pav. 1-13-38
 BIK 242 S.D. 2 47.60 add

		Cuts		Cuts
00-Ely Sampson	90.20	0.0	90.0	0.0
0+40 Break	✓ 89.60	0.20	89.60	0.10
0+90	✓ 88.30	0.20	88.30	0.10
1+40 "	✓ 87.0	0.09	87.0	0.10
1+90	✓ 86.75	0.10	86.75	0.10
2+40	^{4.08} 4.13 -0.04 ✓ 86.50	0.16	86.50	0.050
2+90	✓ 86.25	0.10	86.25	0.10
4+40 "	✓ 86.0	0.10	86.0	0.062
3+90	^{5.23} 4.61 +0.62 ✓ 85.35	0.086	85.20	0.10
4+40 "	✓ 84.70	0.10	84.40	0.10
4+90	✓ 84.24	0.10	83.97	0.04
5+40	✓ 83.78	0.10	83.54	0.20
5+80	^{4.60} 3.34 +1.26 ✓ 83.40	0.31	83.20	0.10
5+90 "	83.0	0.10	82.80	0.10
6+0 Sward	81.80	0.0	81.50	0.0

94.01 NWSP Harrison + Sampson
 1.03
 95.04 2-23-38

INDEXED
 W.K.
OCT 15 1948

94.01
 0.81
 94.82 H.
 81.33
 81.39
 4.39
 90.58 H.
 6.21
 83.87
 4.13
 88.60

J.P. 7.94
 87.10
 5.11
 90.21

3-23-38

94.01
 1.59
 95.58
 7.51
 88.06
 2.66
 90.71

5th setting
 of 5+40

4.46
 4.37
 +0.78

on 2 Co. 3 for 52

Sewer Const.
Eastern Add. Contd from p 21

		FL.	CUTS
4.5 E of alley bet.			
33 ^d FELTON ST			
29 + 44.6	M.H. #3 Redwood St.	306.71	5.97
30		307.04	6.52
+ 50		307.34	6.90
31		307.64	7.02
+ 50		307.94	6.95
32		308.24	7.02
+ 50		308.54	6.88
+ 69.6	M.H. #4	308.66	6.85
33		308.84	6.81
+ 50		309.14	7.21
34		309.44	7.10
+ 50		309.74	7.19
35		310.04	7.52
+ 50		310.34	8.03
+ 94.6	M.H. #3 Thorn St.	310.61	7.89
36 + 50		310.94	8.10
37		311.24	8.86
+ 50		311.54	8.76
38		311.84	8.74
+ 50		312.14	8.29
39		312.44	8.36
+ 19.6	M.H. #2	312.56	8.58
+ 50		312.74	8.62
40		313.04	8.27
+ 50		313.34	7.48

314.39 T
~~1.17~~
~~315.22~~
~~8.20~~
~~314.42 T~~
~~8.68~~
 314.79 SW 8P Thorn

310.61
~~7.89~~
~~318.50~~
~~6.84~~
 325.34 T

314.80

				CUTS
41			313.04	6.84
+50			318.94	5.55
42	$\Delta = 90^\circ 17' 30''$ LT.		314.24	4.70
+44.6	M.H.#1	Upas St.	314.51	2.51
43			314.82	2.87
+50			315.10	3.22
44	0.0%		315.39	3.39
+50			315.70	3.15
+79	angle	EX. M.H. on Upas	315.86	3.31
+99	bet. 33 rd + Bancroft		315.96	✓

325.34
 8.32
 317.02
 6.37
 323.39

NINBP

318.15 Upas 433^d

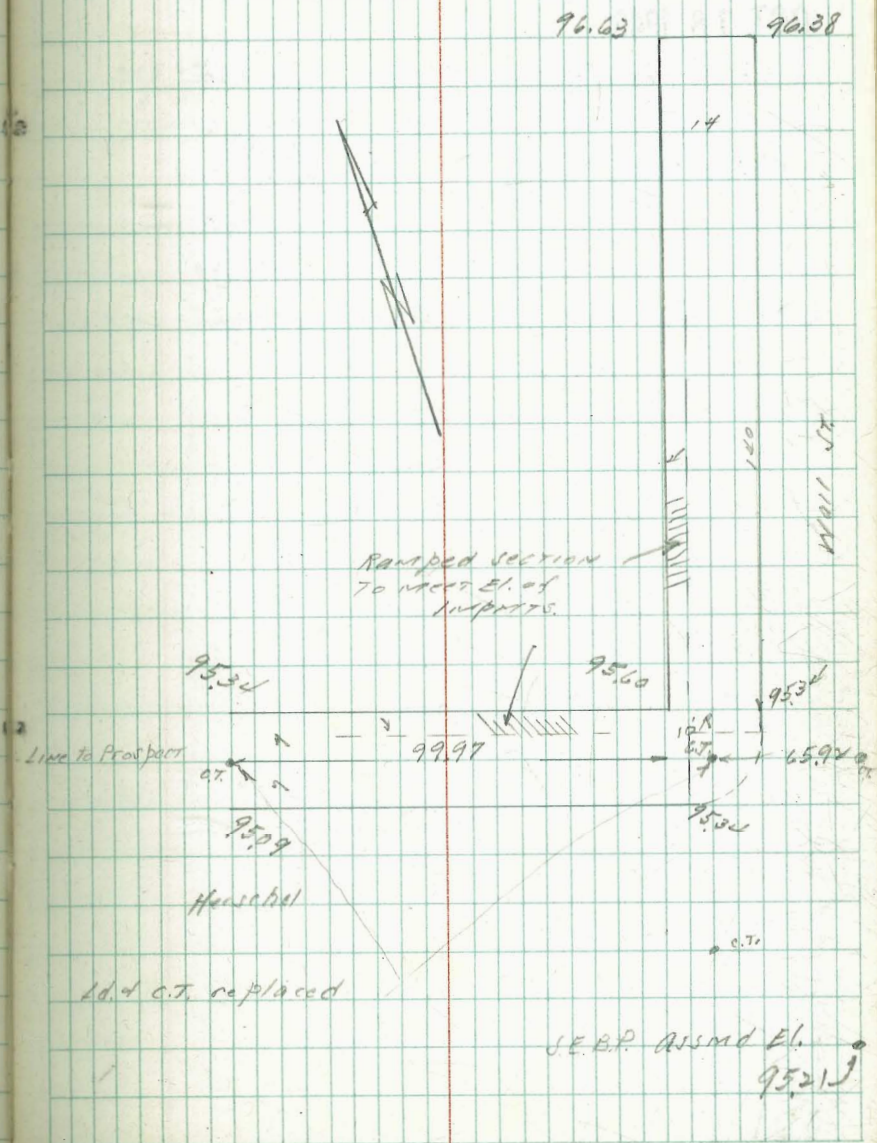
W.P.H.

Full width sidewalk const.
Herschel + Mail Sts.

Moore 1-25-38

INDEXED
W.K.
OCT 15 1948

34



INDEXED

W.K.

OCT 18 1948

0 + 00	OUTLET of EX. CORR. I.P.	218.24
0 + 22	A 21° 07'	218.16
0 + 53	= Break	206.0
0 + 73		204.95
1 + 28		200.20
1 + 67	CONN. WITH INLET of EX. PIPE	196.58 ✓

Calc. Const.
thru $\frac{10-17}{7}$ Cleveland HHS

STORE

2-3-48

W.P.H.

196.58
14.10
✓ 10.68
0.74
✓ 09.94
1.15
✓ 21.29

218.24	218.16	206.0	204.95	200.20
0.05	8.19	4.68	6.33	10.28
0.15	0.25	0.74	2.75	6.95
	24.58	3.94	3.60	3.53
	24.50			

Curb OUTLET Drain
CONST.

2-7-48

Florida & Howard

NWBP

2.24

295.03

290.59

Howard
Florida

INDEXED

W.K.

OCT 18 1948

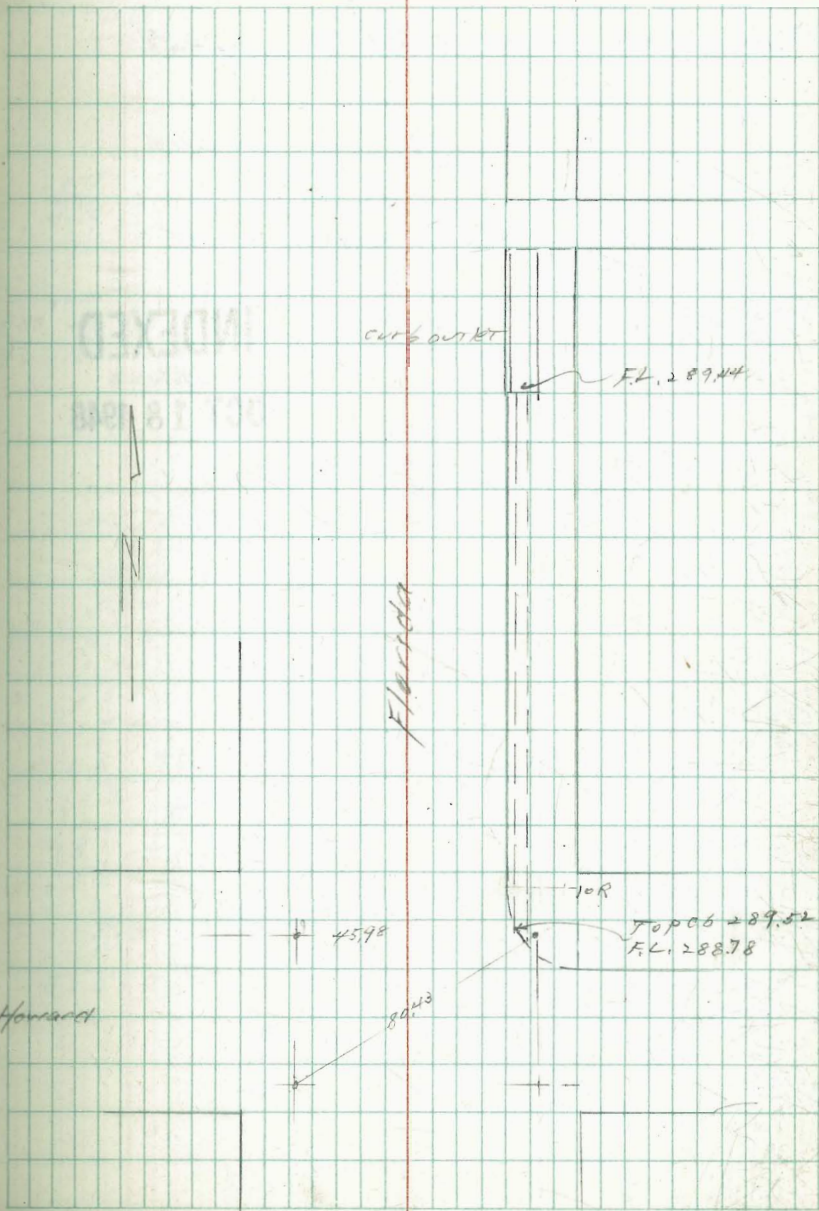
5.59

5.81
3.14
02.70

4.08
2.37
01.60

6.25

36



Bayside Walk Const.
W.P.A.

3-8-32

PORTSMOUTH to North Gr. - 0.40

" " South " - 0.40

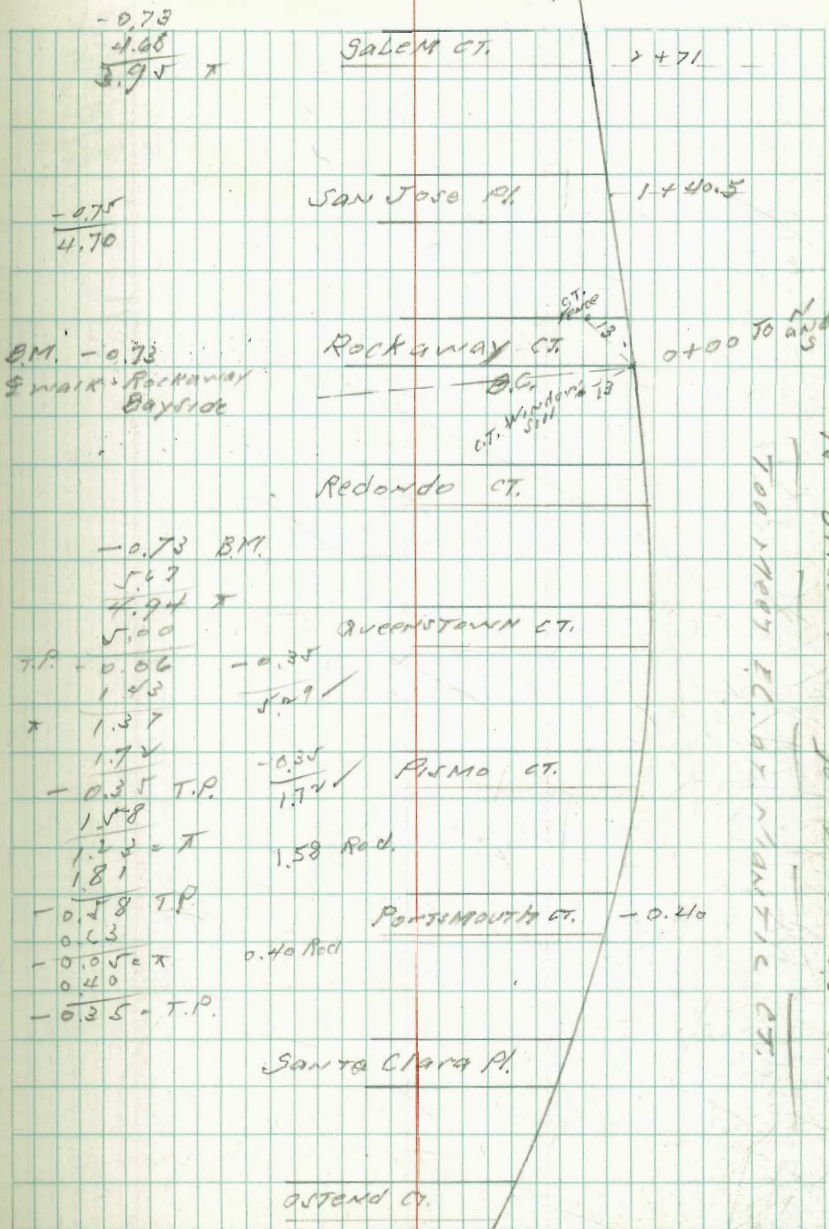
Grade of Wedge Walk - 0.35

INDEXED

W.K.

OCT 18 1948

37



$$\begin{array}{r}
 3.95 \times \\
 4.70 \\
 - 5.75 \text{ K.P.} \\
 \hline
 2.85 \\
 \hline
 2.10 \times
 \end{array}$$

AISEY

Verona Ct. - 0.40

Venice Ct.

San Rafael Pl.

VANITIE CT.

TOULON CT.

7 + 8410
D.C.

TANPIERS CT.

6 + 55

SUNSET CT.

5 + 39

Seagirt Ct.

4 + 00

see p 37

Ormond

Ormond

12703

3.51

~~ALUPOPT~~ NANTIC

SAN JUAN Pt.

NANTARKEET

NANTANT

Gr. - 0.40

5.81

See Gr. BK. 189-69

W.P.A. 6-7-38

4.66
2.77
7.63
8.03

WHITING CT. CONST.

00 = E.L. O.F. WALK	4.77	- 0.60
+ 30	5.03	3.70
+ 50	5.03	3.10
+ 70	4.70	
+ 80 W.L. Strand Way	4.40	
00 E.L. " "	4.20	
+ 35	2.56	
+ 70	0.93	
+ 90	0.21	
+ 110	- 0.11	
+ 141.68	- 0.30	
2 + 13.30 W.L. Blvd.	- 0.50	
00 E.L. " "	- 0.60	
+ 56	- 0.70	
+ 112	- 0.80	
+ 57	- 0.60	
2 + 02 = Bulk head	- 0.40	

INDEXED

W.K.

OCT 18 1948

Windmere Ct.

00 = E.L. O.F. WALK	4.92
+ 40	5.0
+ 80 W.L. Strand Way	3.90
00 E.L. " "	3.70
+ 30	2.31
+ 60 P.V.C.	0.92
+ 80	0.20
+ 100 E.V.C.	- 0.05
+ 40.5	- 0.15
+ 81	- 0.25
2 + 21.5	- 0.35
+ 42 W.L. Blvd.	- 0.45
00 E.L. " "	- 0.60
+ 50.84	- 0.54
+ 101.68	- 0.47
+ 52.52 = Hoop's M.H.T.	- 0.40

INDEXED

W.K.

OCT 18 1948

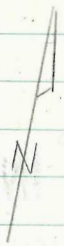
40

4.66
2.19
6.85
7.25
- 0.61
2.15
3.54

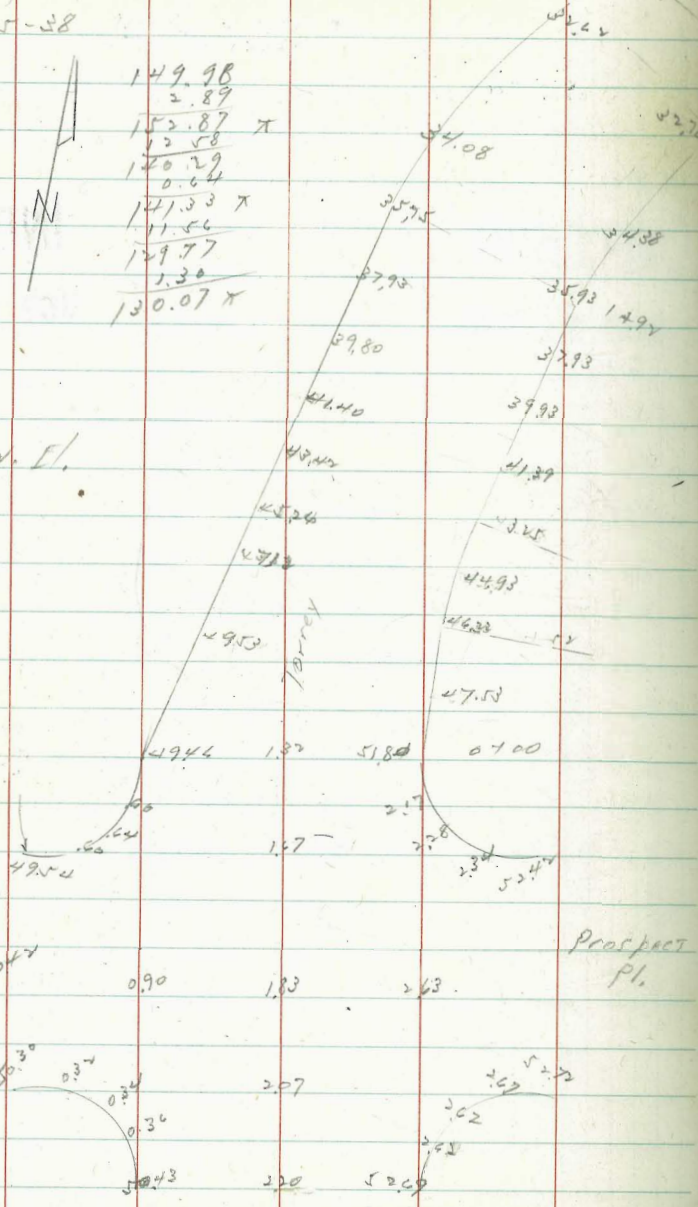
Repairing Torrey Rd.
Prospect to Hillside Dr.
6-15-38

MAX
Torrey 149.98
Prospect 30.99

149.98
2.89
152.87 x
12.58
170.29
0.64
171.33 x
11.56
179.77
1.30
130.07 x

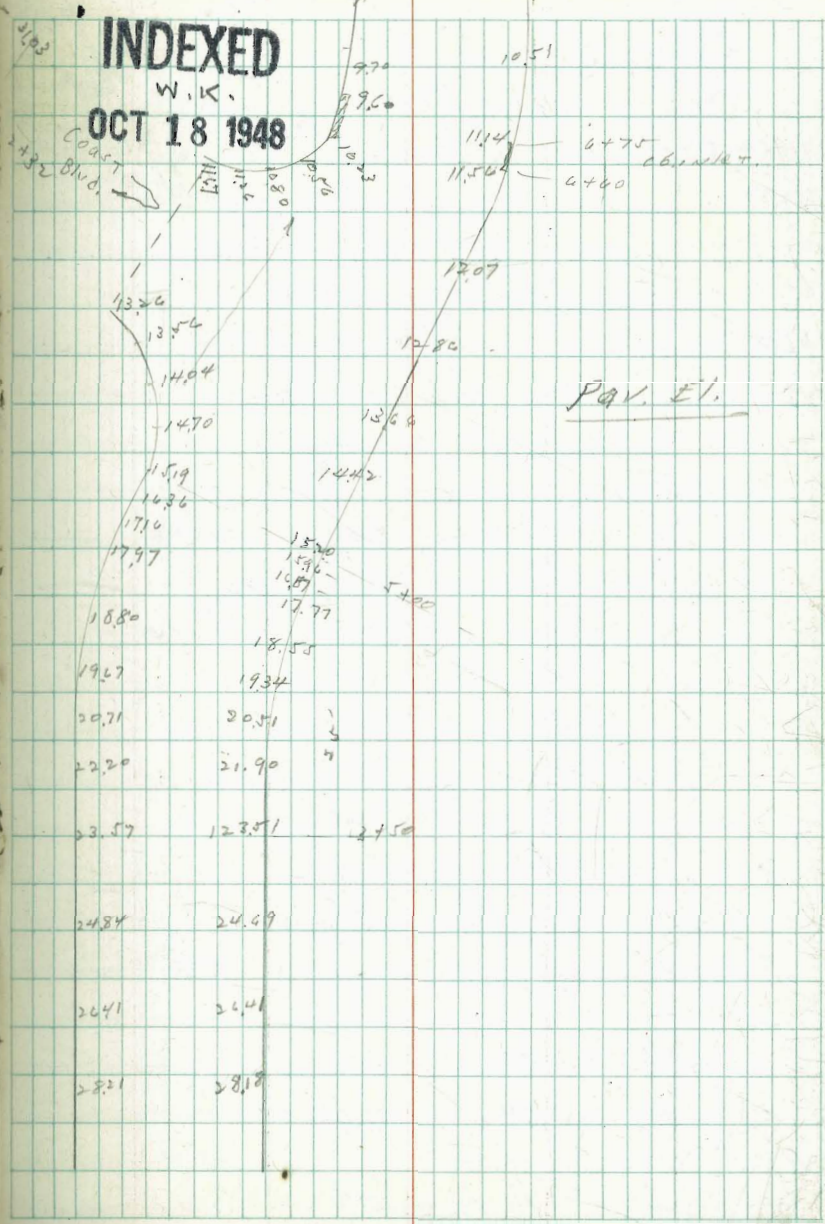


Par. El.



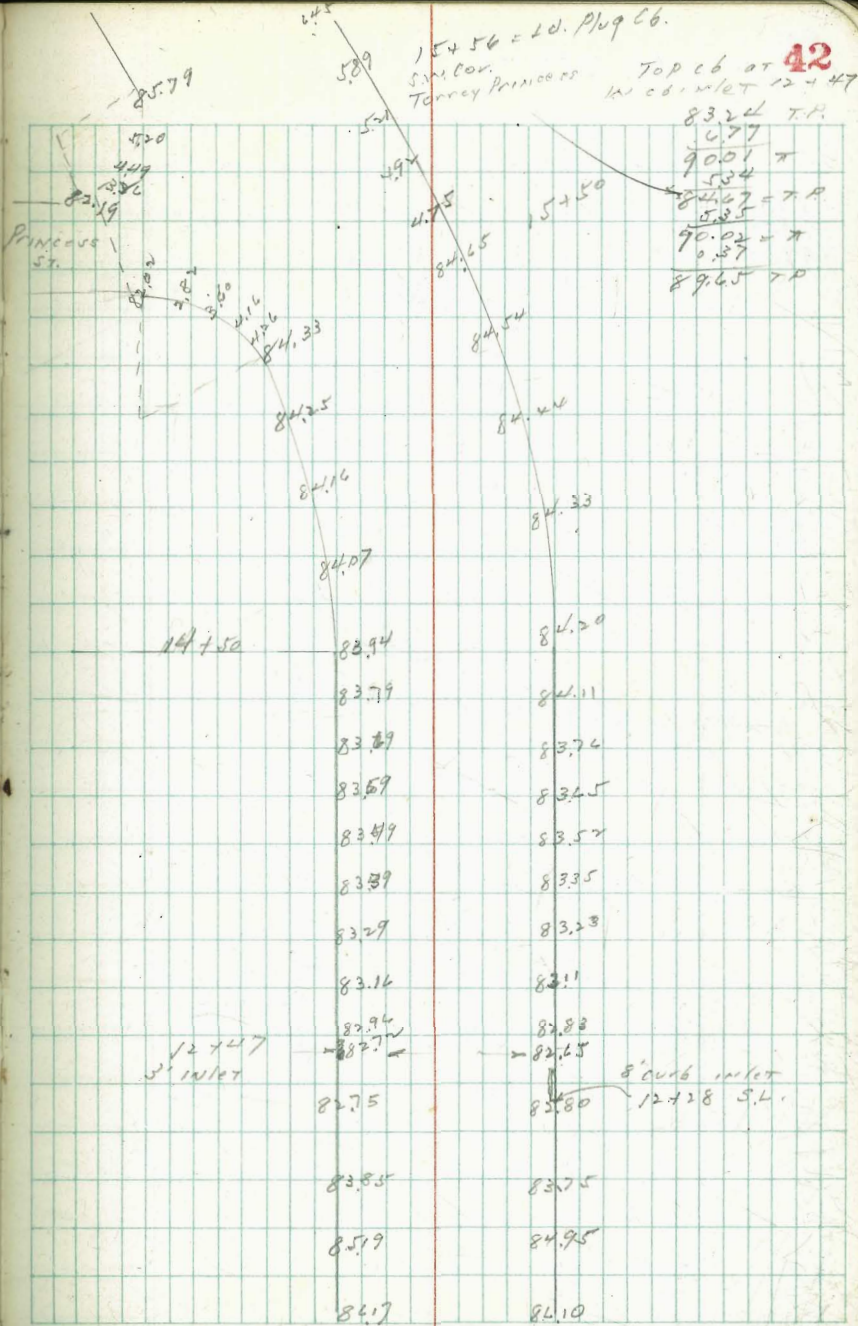
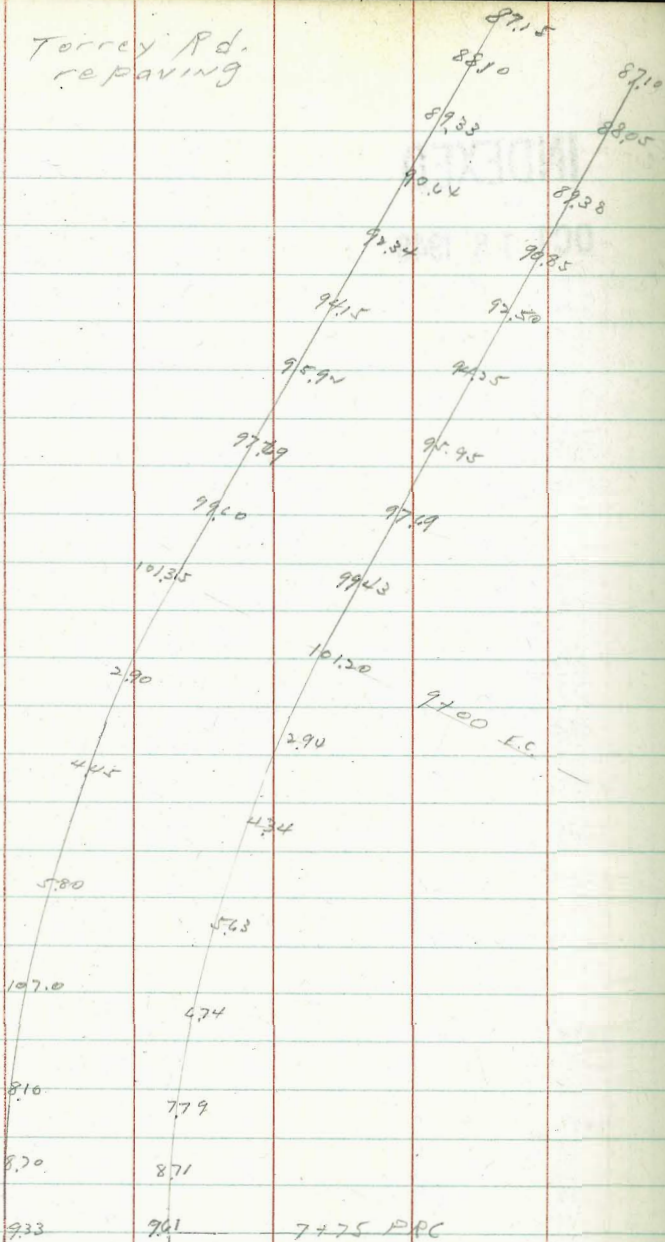
130.07
12.07
117.00
2.12
119.56 x

7+75 PRC 41



Torrey Rd.
repaving

119.56 X
15.23
107.33
7.22
108.55 X
13.05
95.50
0.10
95.60 X
12.36
83.24



Torrey Rd. repaving

89.65 T.P.
 8.00
 97.65 T

Hillside Dr.

18791

H.C. Pav.

90.74

90.12

18775

94.87

94.75

Pay. E.I.

93.54

93.45

Torrey Rd.

E.C.

18100

92.12

92.21

90.94

90.95

89.64

89.58

818

879

C.C. meter

6.50

6.80

6.37

6.55

← 16 + 90

8423

645

8579

Moore
#-15-38

6" Sewer EXT. on Keating
N.E. from Tupper

INDEXED

W.K.
OCT 18 1948
17.69
9.32
244.62 C 8.37

0 + 00 = E Tupper = Ex. Sewer

0 + 50

245.12
17.19
10.58
C 6.61

1 + 00

245.62
14.69
11.64
C 5.05

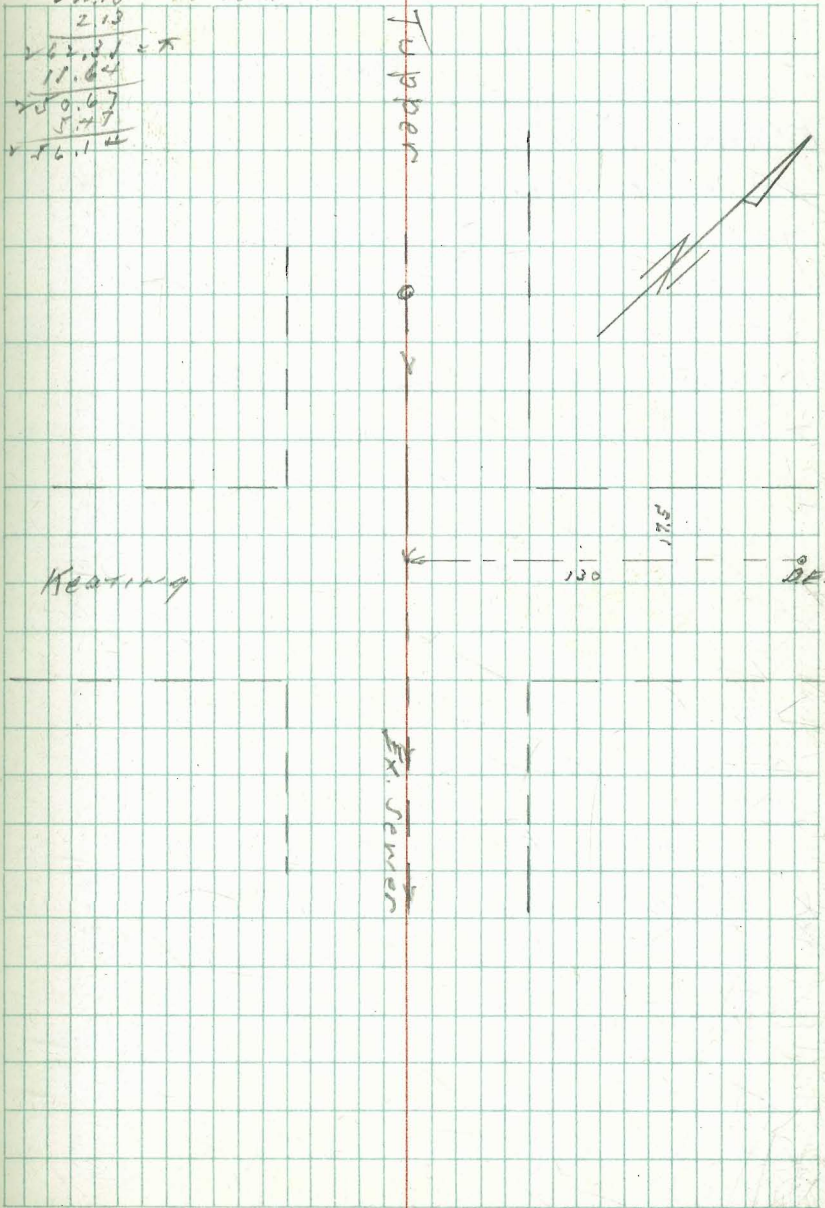
1 + 30 = D.E.

245.92
10.22
6.22
C 4.0

N.E. Cor.

Pringle and
Portola B.P. Top cot. wall

260.18
2.13
262.31 = X
11.64
250.67
5.27
245.40



6" Sewer Ext. on Walnut

India to Col.

3-26-48

Ex. Sewer = 0+00	67.0	C 4.62
0+24 = A = Break	69.0	C 4.48
0+49 = " "	86.0	C 2.04
0+96.5	96.5	C 5.22
1+24 = " "	107.0	C 5.80
1+86.5	114.0	C 6.67
2+29 = D.E.	121.0	C 4.86

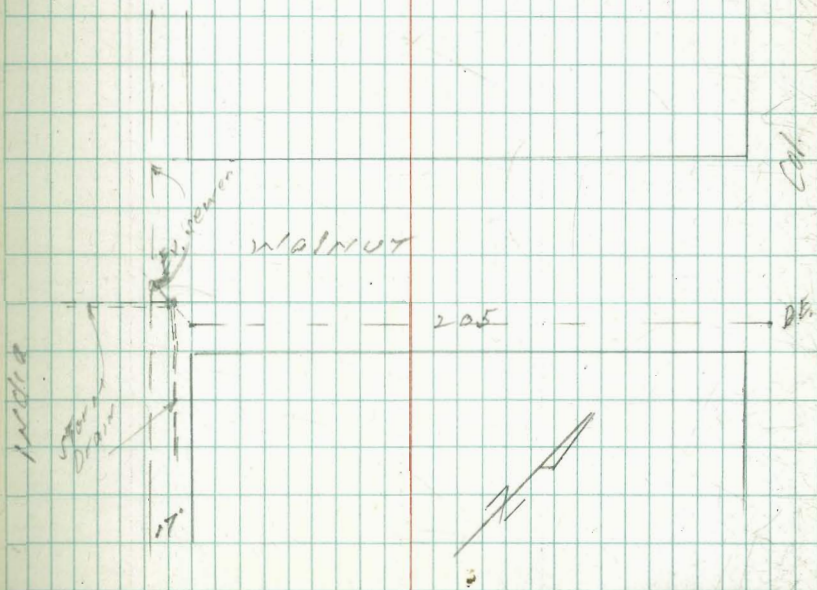
INDEXED

W.K.

OCT 18 1948

66.08				
11.25				
77.83				
0.27				
77.06				
12.80				
89.72				
0.28				
89.24				
12.80				
102.04				
2.24				
101.82				
13.06				
114.88				
0.16				
114.72				
12.80				
127.52				
0.88				
126.64				
10.32				
136.96				
2.36				
134.60 = Hub: 134.61				

8.38	0.72	5.54	7.88
3.72	1.08	0.24	2.08
C 4.62	C 4.48	C 2.04	C 5.80
13.52	15.96		
4.84	9.10		
C 8.67	C 6.84		



La Jolla Fire 570.

8-28-48

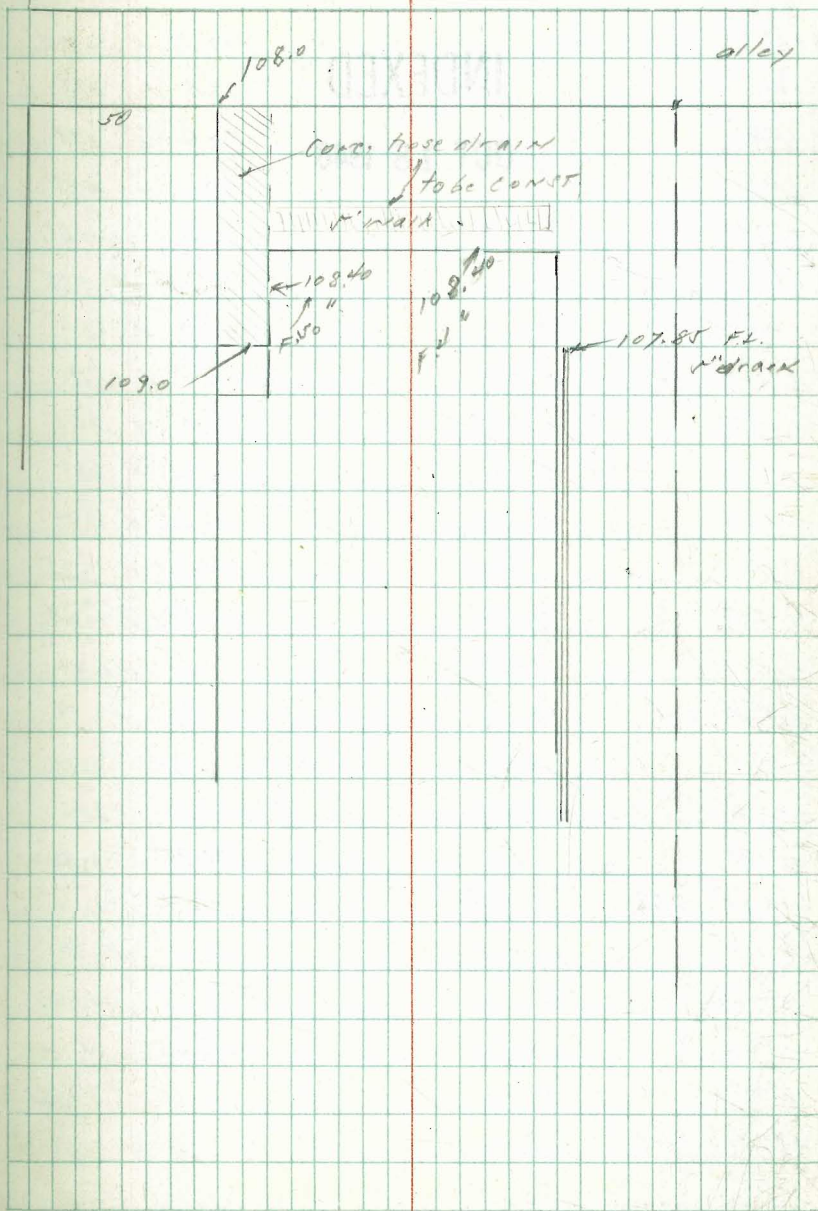
Rear yard.

SWOP	6.26	111.99		105.73	Handed Wall
TP	272	112.19	5.94	108.05	
TP	238	112.48	4.14	108.05	

INDEXED

W.K.

OCT 18 1948



Over Look Mrs.
Curb stake
Wily Elev. Road Oustad to Crown

2-29-38

0+00 P.C. S.L. Oustad	192.5 ✓ 2.45
+20	191.8 ✓ 3.15
+40	191.2 ✓ 3.75
+60	190.5 ✓ 4.45
+74.75 P.C.	190.1 ✓ 4.85
1+00.63 ← 1°00.7	189.2 ✓ 5.55
+24.51 2°01.5	188.7 ✓ 6.25
+44.51 3°03.3	188.05 ✓ 6.90
+64.51 4°04.1	187.3 ✓ 7.65
+84.51 5°05.0	186.25 ✓ 8.60
✓ 104.51 6°15.8	185.25 ✓ 9.70
+124.51 7°06.7	184.0 ✓ 10.95
+144.51 7°57.5	182.7 ✓ 12.25
+164.51 8°48.4	181.2 ✓ 11.75
+184.51 P.C. 10°04.4	179.6 ✓ 13.35
+ 14.27 11°20.0	177.05 ✓ 15.88
+ 44.03 12°35.8	174.50 ✓ 18.43
+73.79	171.95 ✓ 20.98
4+03.55 P.P.C. 13°51.33	169.4 ✓ 15.50
0+00	
0+11.52 1°27.8	168.6 ✓ 12.30
+33.84 4°02.0	167.05 ✓ 12.60
+54.16 6°21.5	165.55 ✓ 14.12
+78.48 9°21.0	164.35 ✓ 15.26
+87.31 P.P.C. 10°24.0	163.7 ✓ 16.01

INDEXED

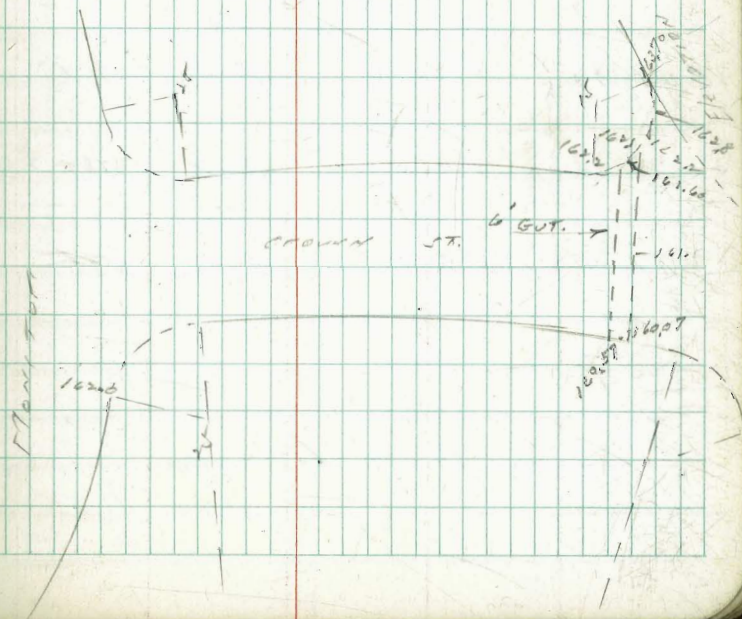
W.K.

OCT 18 1948

47

189.99
796.75 x
12.66
184.49
0.28
182.72 x
12.91
170.02
0.88
170.90 x
2.20
168.20 x.P.
1.21
169.71
1.22
167.30
1.68
168.95
1.52

T.P. stake

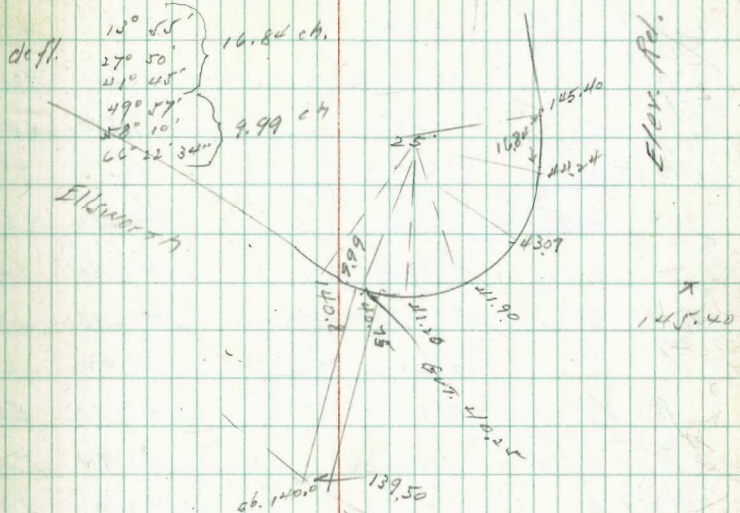


Rd.
ELY Elev. at Ellsworth

	W.C.B.	E. C.B.	
0 + 00 = E.L.		133.0	12.95
+ 20		134.8	13.15 ✓
+ 40		136.5	11.45 ✓
+ 60		138.1	9.81 ✓
+ 80		139.6	8.35 ✓
1 + 00		140.8	7.15 ✓
+ 50		143.9	4.05 ✓
+ 74.47 opp. P.C.	145.40	145.42	2.53 ✓
2	147.01	147.02	11.96 ✓
+ 50	150.12	150.13	8.86 ✓
+ 80	152.0	152.0	6.98 ✓
3 + 00	152.95	152.95	6.03 ✓
3 + 51.83 P.C.	155.4	155.4	3.58 ✓
			3.22 ✓
3 + 67.33	2° 20.09'	156.0	2.98 ✓
3 + 72.33	3° 05.3'	156.2	2.78 ✓ E.C.B. IN KT
3 + 77.33	3° 50.5'	156.4	2.58 ✓

Curb
inlet

158.98
P.V.C.
B.M. 30' P.C.T. = 156.88
158.98 x
13.00
145.95 T.P.
2.00
147.95

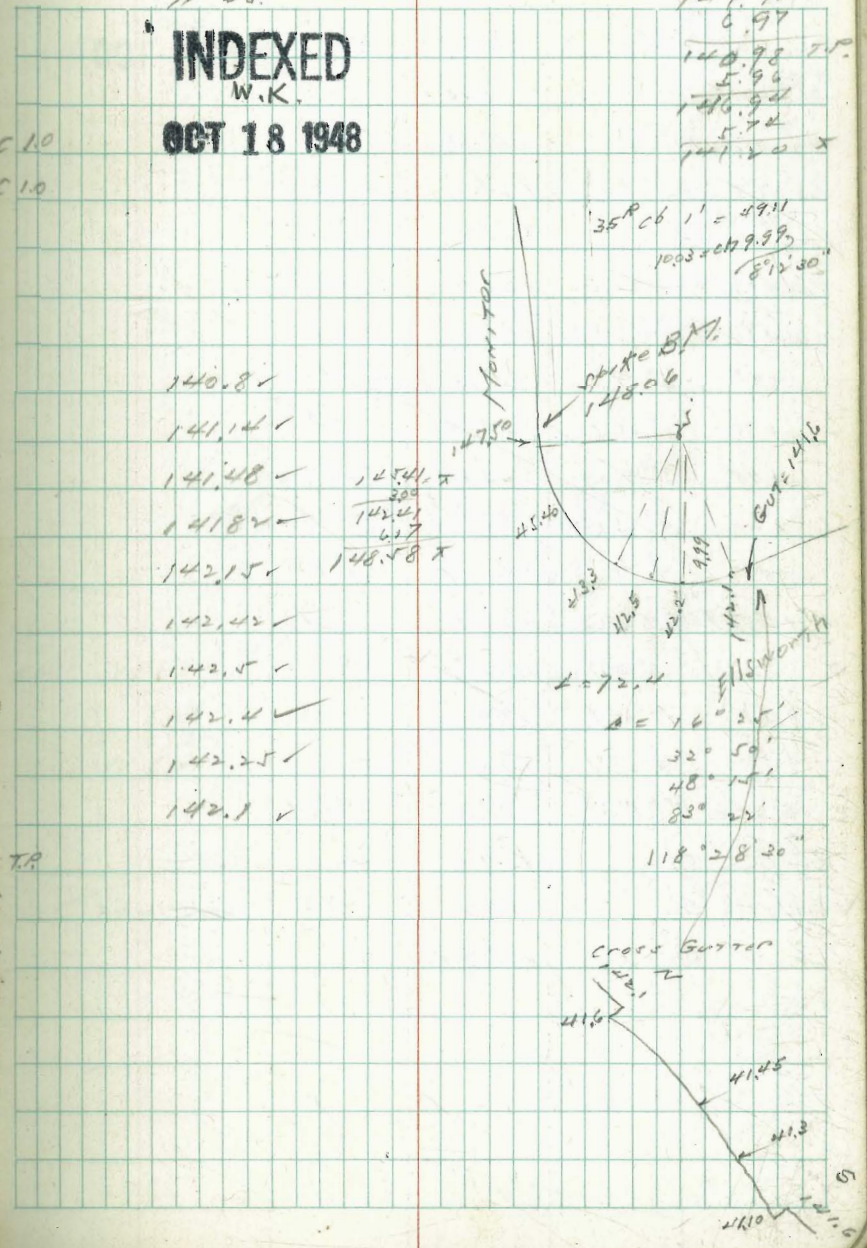


Ellsworth Rd.
Elev. to MONITOR

S.L. 579			5 CB.	
0400	P.C.C. 4 E.L.E.C.		138.5	14.95 ✓
+23.25	R=100	6° 39' 40"	135.0	12.95 ✓
+46.5		13° 19' 20"	136.65 ✓	11.30
+69.75	P.C.C.	19° 59'	138.0	9.95 ✓
			138.8	9.15 ✓
1	⊙	0° 54' 36"	139.5	8.45 ✓
1	⊙ R=600	1° 49' 14"	140.0	7.95 ✓
1906	⊙	2° 43' 48"	140.3	7.65 ✓
	⊙ OPP. P.R.C.	3° 38' 26"	140.64	7.31 ✓
	⊙	5° 09' 47"	140.98	6.97 ✓
4	⊙	6° 41' 08"	141.32	5.62 ✓
1906	31.94	8° 12' 29"	141.65	5.29 ✓
	⊙	9° 43' 50"	141.92	5.02 ✓
	⊙	11° 38' 23"	142.0	4.94 ✓
5	⊙	13° 32' 56"	141.9	5.04 ✓
40'	⊙	15° 27' 29"	141.75	5.19 ✓
	⊙	17° 22' 02"	141.6	5.34 ✓
	⊙ OPP. P.R.C.	19° 16' 35"	141.4	5.74 ✓
3	⊙	20° 05' 50"	140.6	✓
17.2	✓	20° 55' 05"	139.6	✓
	3 P.C.C.	31° 45' 15"		

N 26.
INDEXED
W.K.
OCT 18 1948

127.95 x
6.97
120.98 ✓
5.96
126.94
5.72
121.20 x



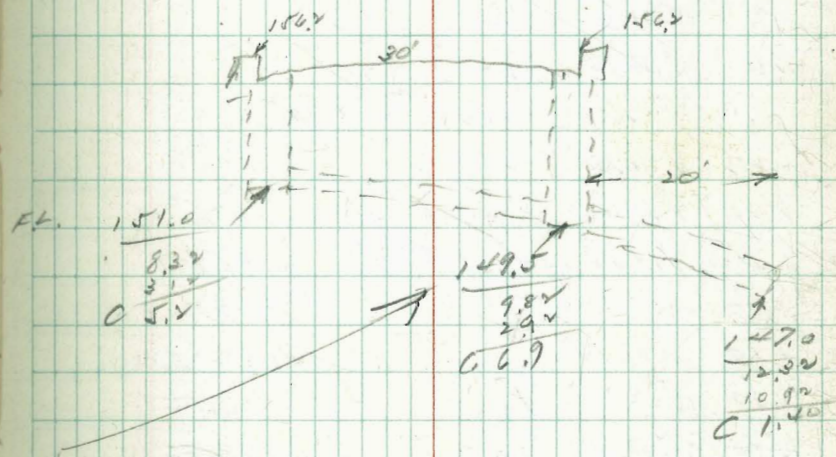
S 06 Crown
Monitor to Elev.

	S 06.		
S 06 Crown			
B.C. Monitor	162.0	7.25 ✓	
21° 02.5 ⓐ	163.15	6.30 ✓	
42° 05.0 ⓑ	164.33	5.18 ✓	
63° 07.5 ⓒ	165.2	2.25 ✓	
P.C.C. = 60 ⓓ	165.8	3.65 ✓	
0+10	0° 20.22	165.9	3.55 ✓
0+20	0° 40.44	165.8	3.65 ✓
+45	1° 31.01	165.13	2.3 ✓
+70	2° 21.5	164.46	2.99 ✓
+95	3° 12.09	163.80	5.65 ✓
1 +20	4° 02.64	163.13	6.3 ✓
+45	2° 53.19	162.47	6.98 ✓
+7387 P.C.C. 5° 51.2	161.70	6.0 ✓	
2	6° 40.2	160.57	7.15 ✓
+25	7° 34.7	159.50	8.2 ✓
+50	8° 25.31	158.43	9.29 ✓
+62.67 P.C.C. 8° 55'	157.80	9.9 ✓	
ⓐ	157.0	10.7 ✓	
3 Parts 163 ⓑ	156.2	11.5 ✓	Curb incl.
ⓒ	155.4 ✓		

INDEXED
W.K.
OCT 18 1948

156.88 = C.T.
 10.822
 167.72
 8.52
 161.70
 7.75
 169.45

156.88 = C.T.
 2.44
 159.32



MONITOR Rd

£	W	E
0 + 00 P.C.	110.0 ✓	110.0 C. 4.6
+ 20	4° 35.20 113.74 ✓	110.0
+ 40	9° 40.40 117.48 ✓	110.0
+ 60	13° 45.60 121.22 ✓	110.0
+ 80	18° 20.80 124.97 ✓	110.0
1	22° 56.00 128.70 ✓	128.5
+ 15	26° 22.40 131.30 ✓	131.0
1 + 30.08	29° 48.80 133.30 ✓	133.0
+ 50	1° 20.44 135.25 ✓	135.0
+ 70	2° 41.40 137.40 ✓	137.0
+ 90	4° 02.16 139.45 ✓	139.0
✓	4° 42.54 140.50 ✓	140.0
+ 20	6° 03.30 142.55 ✓	142.0
+ 40	7° 24.06 144.60 ✓	144.0
✓ + 62.6	9° 19.55 147.50 ✓	147.50
+ 90	10° 46.0 149.70 ✓	149.70
✓ + 10	12° 06.70 151.75 ✓	151.75
+ 30	13° 27.48 153.81 ✓	153.81
+ 50	14° 48.24 155.86 ✓	155.86
+ 70	16° 09.0 157.92 ✓	157.92
+ 90	17° 29.76 159.97 ✓	159.97
4 + 09.61	18° 48.75 162.0 ✓	162.0
+ 31.70	20° 18.75 164.70 ✓	164.70
+ 54.19	21° 49.75 167.45 ✓	167.45
+ 76.48	23° 19.75 170.17 ✓	170.17

see p 59

Elkworth Rd.

S. LINE CROWN

Elkworth Rd.

INDEXED
OCT 18 1948

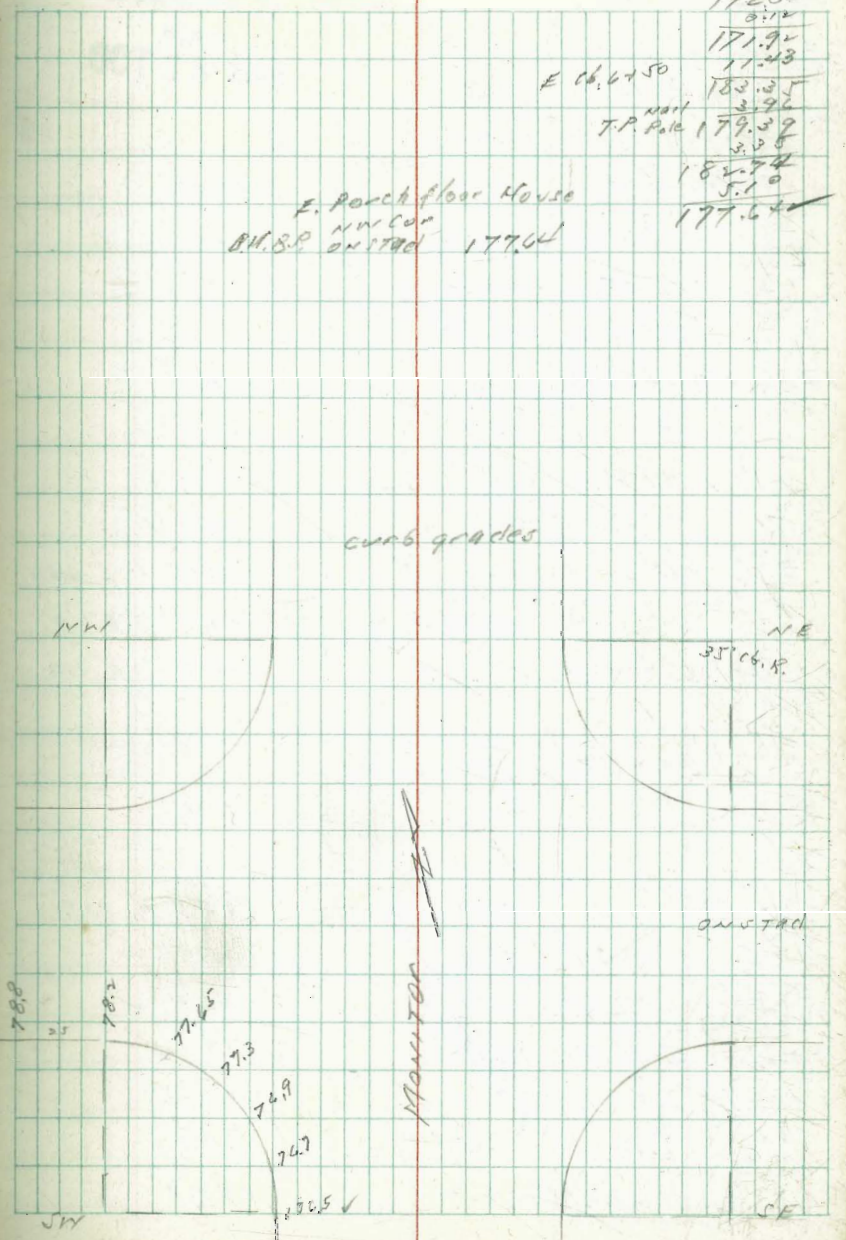
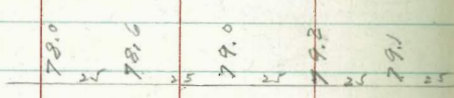
NE Elkworth
MONITOR

spike 51

14806	12806
11183	12806
159.89	12806
159.79	12806
172.04	12806
133.0	131.0
131.0	128.5
S. of Elkworth to Monitor	
£ det = 6° 21'	Ech 27.65
1 + 30.08 29° 48.80	133.30
2 36° 10.0	135.55
3 42° 31.0	137.75
4 48° 52.0	139.60

MONITOR Rd.

Sta.	Elev.	Angle	Dist.	Adj. Elev.	Remarks
4+98.74	172.90	24°48.75	8.82	172.90 ✓	
5+07.58	173.80	25°24.36		173.80 ✓	PXC.
+27.58	175.90	26°45.12		175.90 ✓	
+47.58	177.40	28°05.88		177.40 ✓	
+67.58	178.50	29°26.64		178.50 ✓	
+87.58	179.20	30°47.40		179.20 ✓	
6+07.58	179.40	32°08.16		179.40 ✓	
+27.58	179.10	33°28.92	20.25	179.10 ✓	EVC.
+47.83	178.50	34°50.49		178.50 ✓	
+68.08	177.90	36°12.46		177.90 ✓	
+88.33	177.30	37°34.23		177.30 ✓	
7+08.33	176.70	38°54.99		176.70 ✓	
7+33.33	176.60	40°35.75		176.30 / -1.13	
	176.40			176.00 -1.20	X, MUT.
	176.60			176.15 -1.40	
B.C.C.R. 35'	177.0			176.50 -1.25	



E. porch floor House
 NW Cor
 B.M.S.P. ON STAD 177.64

172.0	X
171.9	
171.8	
171.3	
170.3	
170.2	
170.0	
170.0	
170.0	
177.64	

INDEXED

W.K.
OCT 18 1948

133.00
1.00
134.00
11.70
122.30
2.12
124.42
12.09
111.81
1.26
113.07
6.17
106.90
6.22
113.12

Hilda Rd.		N 06 191	
11.4591:1 150 R			
SL STA.	5 16		
0 + 00	133.0	133.0	
CH 2391 + 24	4° 35.0 ✓	130.8 ✓	
+ 48	9° 10.04	128.6 ✓	
0 + 72 EXC	13° 45.06	126.4	126.4
4 PARTS CH 2801 5 2801	19° 13.36	123.55	
	24° 41.66	120.70	
	30° 09.96	117.85	
1 + 86.60 P/R	35° 38.26	115.0	115.0
	41° 22.03	112.2 ✓	112.2
L PARTS CH 3105 5 3105	47° 05.80	109.9 ✓	110.0 ✓
	52° 49.57	108.1 ✓	108.3 ✓
	58° 33.34	106.7 ✓	107.0 ✓ C 0.50
	64° 17.11	105.85 ✓	106.25 C 1.0
3 + 66.60 P/R	70° 00.88	105.4 ✓	105.9 C 1.0
0 + 00			
<hr/>			
Q STA.	5 6	N 06	
0 + 00 P/R	105.4	105.9	C 0.0
0 + 25	1° 54.59 ✓	105.5	105.95 ✓
0 + 50	3° 49.58 ✓	106.0	106.4 ✓
0 + 77.37	5° 55.03 ✓	106.0	107.0 ✓
1 + 04.74	8° 00.48 ✓	107.4 ✓	107.75
1	9° 32.15 ✓	107.85 ✓	108.3
2	11° 03.82 ✓	108.2 ✓	108.7

	S cb	N cb
3	12°35.49 ✓ 108.3 ✓	108.8
4	14°07.16 ✓ 108.1 ✓	108.6
5	15°38.83 ✓ 107.7 ✓	108.2
6	17°10.50 ✓ 107.1 ✓	107.6
7	18°42.17 ✓ 106.3 ✓	106.8
8	20°13.84 ✓ 105.3 ✓	105.8
9 = 2 + 84.76	21°45.27 ✓ 104.1 ✓	104.6
20' ch	23°16.94 ✓ 102.6 ✓	
Ch. 9.47	24°48.60 ✓ 101.0 ✓	
37 + 34.23 EC	25°32.0 ✓ 100.10 ✓	
EC = 0400	100.10 ✓	
+ 13.53	98.9 ✓	
+ 28.53	97.4 ✓	
+ 43.53	95.9 ✓	
+ 58.53	94.3 ✓	
+ 73.53	92.7 F 1.20	
+ 83.53	91.6 F 1.50	
1 + 03.53	89.2 F 2.30	89.7 ✓ P.C. curb
+ 23.53	86.6 F 2.60	87.1 F 1.20
1 + 83.53 = 85.21 R 110	78.5 F 2.10	79.0 F 1.50

P.C. 100 R on Ely Meridian E Hub. B.M. 103.95

113.12
9.18
103.94
0.01

103.95
1.02
105.77
12.77
93.00
2.24
95.24
12.63
82.61
0.21
82.03

Hilda & Monitor

N.Ely curb 110' c.b.R. 15.6261' per l'

Ely cb.

00 = B.C.

P 59

2 - 20.88	5° 27.84	104.60	c 2.2
stands	10° 55.68	103.70	c 3.5
14.98	14° 50.08	102.70	c 5.2
17.98	19° 31.35	102.40	c 5.6
15.79	23° 38.25	102.50	c 4.1
9.0	25° 58.89	103.20	c 5.9
21.77	31° 39.54	103.60	c 5.8
2 - 18.18	36° 23.94	105.30	c 4.7
	41° 08.33	107.90	c 3.4
		110.0	c 2.46

55

103.75
10.82
113.97

changed
see P 58

Donnan

76.7

OSR 35
3 Panels each
115.0
103.0
100.0
98.0
94.75
89.0

44.0
70.0
77.0

110.0 115.0

OSR
103.7
100.2
98.6

94.75
89.0

103.53

P 54

OSR 110

104.0

Hilda

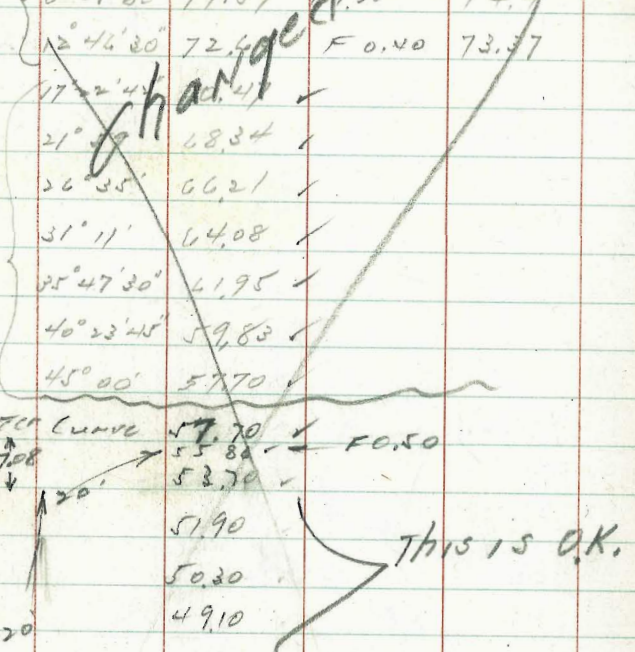
100.0

OSR 110

13.6261
R 110

Hilda and Dorcas

	S 66	N 66
B.C. 100	78.50 F21	79.0 F15
3 ch.	4° 15' 30" 76.53 F20	76.3
16.34	8° 31' 00" 74.57 F1.30	74.4
	2° 46' 30" 72.44 F0.40	73.37
	17° 22' 45" 68.41 ✓	
	21° 49' 68.34 ✓	
	26° 35' 66.21 ✓	
7 Parts ch.	31° 11' 64.08 ✓	
17.66	35° 47' 30" 61.95 ✓	
	40° 23' 25" 59.83 ✓	
	45° 00' 57.70 ✓	
Center Curve	57.70 ✓	F0.50
37.08	55.84 ✓	
	53.70 ✓	
	51.90	
	50.30	
5.20	49.10	
	48.20	
	47.75 c 0.65	
B.C. 180° Curve	47.65 c 0.50	



This is O.K.

83.03
13.50
70.47 T.P.
0.49
70.96
13.25
57.71
0.69
58.40

New Grades at Path
Hilda St beg. at P.R.C

	S	N
P.R.C.	105.75 C 0.15	105.90 C 1.0
P.R.C. - 12.5 2° 23'	105.85 F 0.84	106.0 C 1.0
- 25 4° 46'	105.93 ✓	106.10
- 37.5 7° 10'	106.55	106.55
- 50 11° 33'	107.0	107.0

P.R.C. way to Dorcas

	S	N
P.R.C. = 0.0	105.75 105.90 C 0.15	105.90 ✓
+ 25 1° 54.6	106.0 F 0.45	106.0 ✓
+ 50 3° 49.4	106.2 F 0.85 E.V.C.	106.2 ✓
+ 75 5° 43.8	106.41 ✓	106.51 C 0.9
1 7° 38.4	106.63 F 0.10	106.83 C 1.2
+ 25 9° 32.0	106.84 C 0.70	107.15 C 2.0
1 + 37 10° 28.0	106.95 P.V.C. C 1.25	107.30 C 2.5
+ 57 12° 00	107.08 C 1.10	107.45 C 3.0
+ 77 13° 31.3	107.25 C 0.90	107.50 C 3.9
+ 97 15° 03.0	106.90 C 0.42	107.40 C 1.1
2 + 17 16° 35.0	106.65 ✓	107.15 C 0.8
+ 37 18° 06.3	106.25 ✓	106.75 C 0.6
+ 57 19° 38.0	105.58 ✓	106.08 C 0.8
+ 77 21° 09.6	104.42 ✓	104.94 C 1.7
2 + 84.76 21° 45.0	103.99 ✓	104.49 C 2.3

S.L. P.O.C

N.L. P.R.C. = 150' P. 180° curve S. 06 CONT. P 58

103.95 = 8M. HUB E P.R. of 180° curve

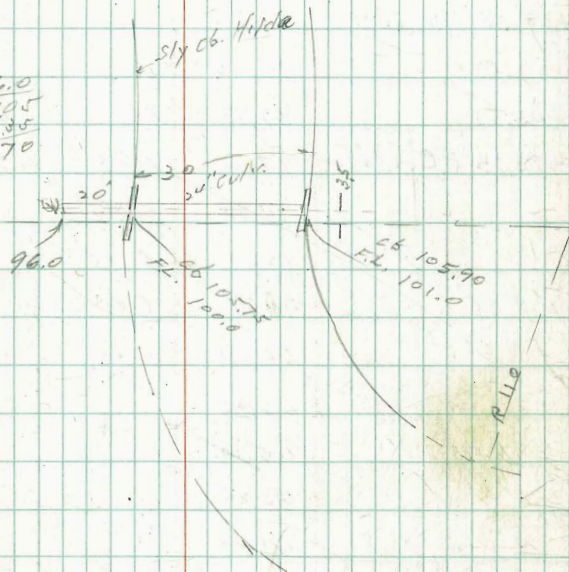
8.92
112.87
5.62

107.25 = B.M. Nail Tel. pole #

H. Ida
170x.70

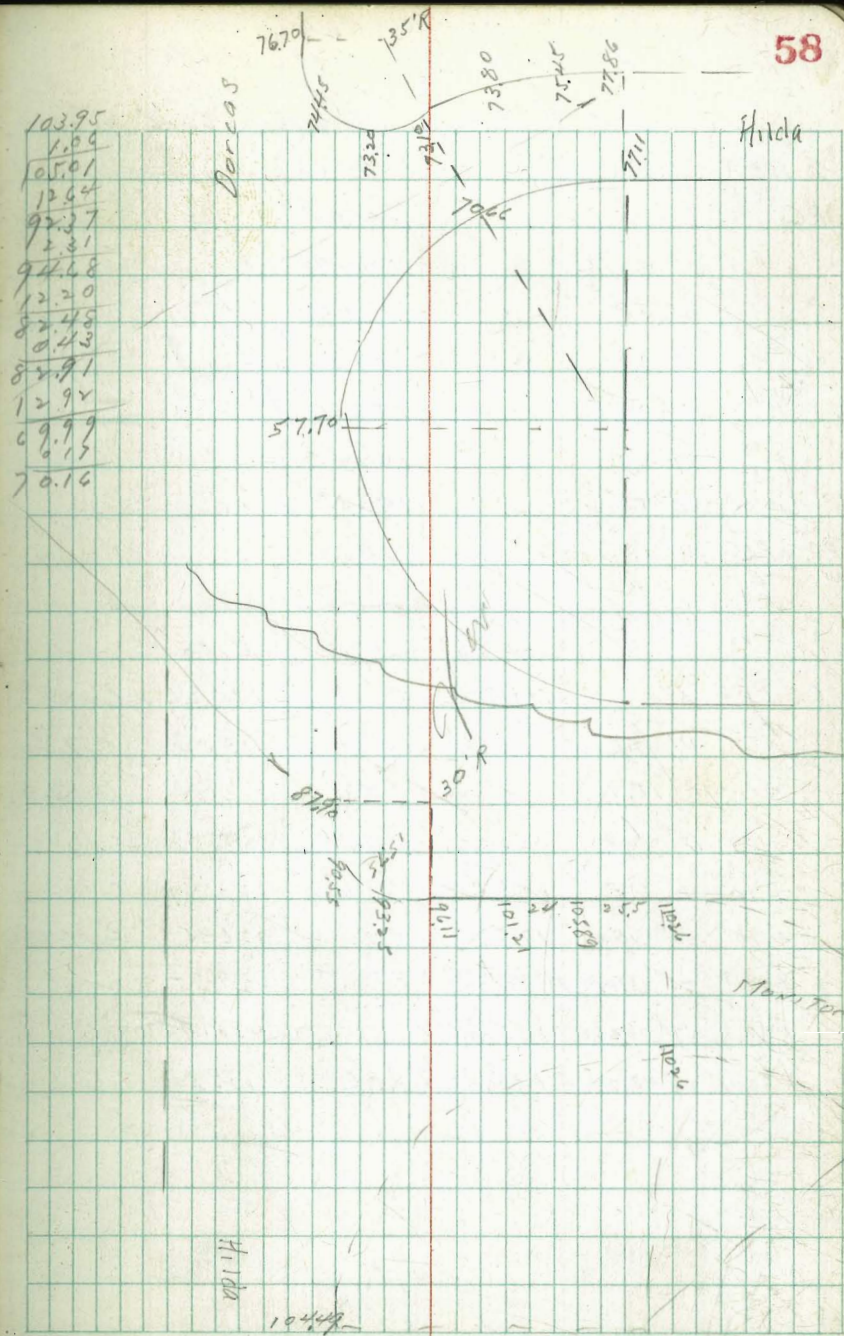
105.90
4.15
110.05

106.0 100.0 96.0
905 1005 1405
337 240 1835
65.54 C 5.55 C 0.70



	S		N
+9.5	22°28.5	103.08	✓
-20	24°00	101.26	C 0.50
E.C. ± 00	25°32	99.05	C 1.0
+51.76		93.00	C 1.0
1403.53	P.C. on N.L.	86.96	F 0.60 87.90 C 0.50
+23.53		84.50	F 0.50 85.15 ✓
+43.53		82.03	F 1.0 82.66 ✓
1 +83.53	P.C. 180° Cur.	77.11	F 0.8 77.86 F 0.4
		74.96	F 4.5
		72.81	C 4.4
opp P.R.C.		70.66	C 1.5
		68.80	C 1.65
		66.95	
		65.10	
		63.25	
		61.40	
		59.55	
		57.70	

Handwritten note, possibly 'Open'



Darcas

Haida

Haida

Monitor

103.95
 1.00
 105.01
 106.4
 92.37
 2.31
 94.68
 12.20
 87.45
 0.43
 82.91
 12.92
 69.99
 6.15
 70.16

Should Job.
ELIM. Double deck grade

N.E. RETURN Hilda
MONITOR curb grade

\$ 125 R	13.756 per i	E c6
86.		104.49
	5° 52' 30"	101.90
7 PARTS	11° 45'	99.95
5.563	17° 38'	99.30
	23° 30' 30"	100.15
	29° 23'	102.45
	35° 15' 30"	106.35
PC. = POC	41° 08' 15"	110.26

Word

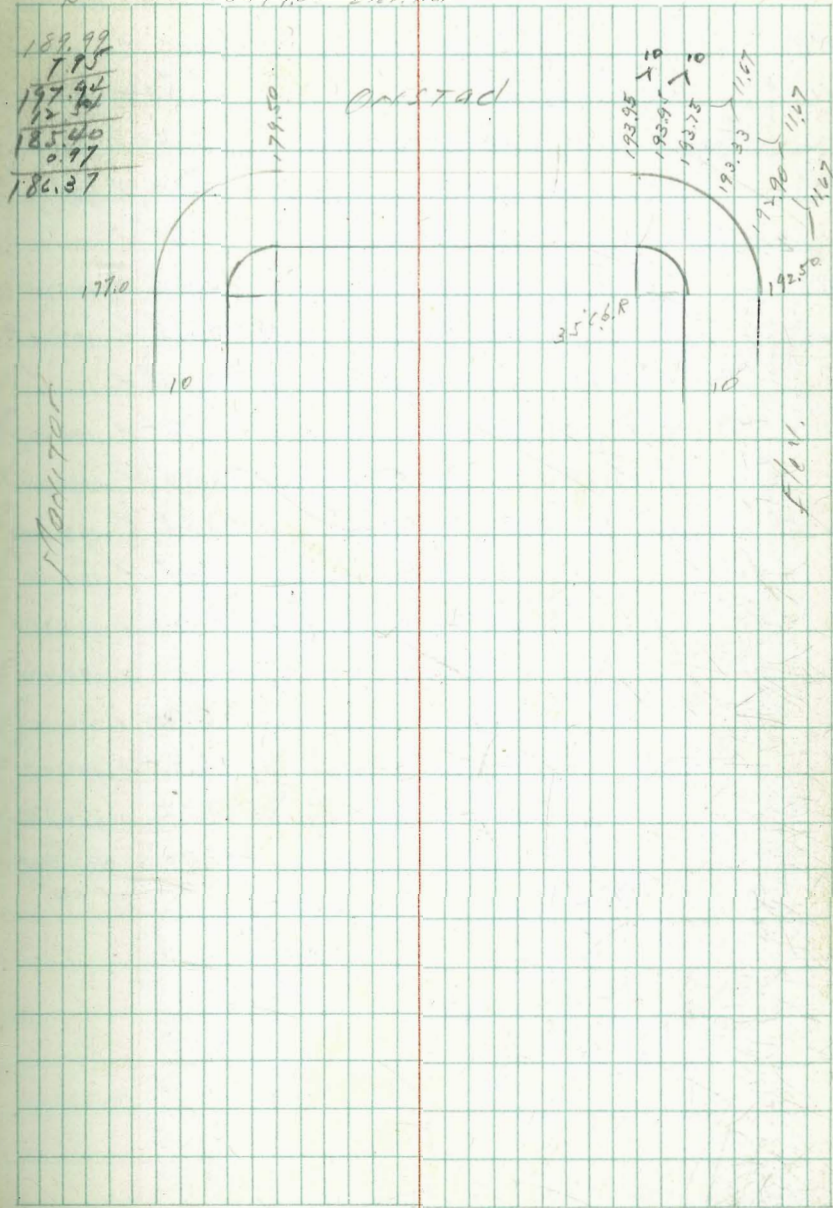
CHANGE ON MONITOR

	W c6		E c6
PC. = POC, = 00	110.26	F 0.3	110.26 ✓ G 2.2
5-18. 4° 07.6	113.58	0.0	113.58 c 1.3
8° 15.7	116.92	0.30	116.74 c 0.60
12° 22.8	120.24	0.80	119.98 c 0.50
16° 30.4	123.60	1.1	123.22 c 0.50
0 + 90 20° 38.0	126.95	P.V.C.	126.45 c 0.20
1 + 10 25° 13.75	130.35	0.10	129.85 ✓
+ 20 27° 30.68	133.75		131.95
1 + 30.08 29° 48.24	133.15	P.P.C.	132.70

103.95
9.28
113.23
0.43
112.80
12.00
125.26
0.22
125.02
9.18
134.20

		Sub.	
PC		192.50 ✓	
2 } 3 PTS 11.67		192.91 ✓	
		193.33 ✓	
		193.75 ✓	
3 }		193.95 ✓	
		193.95 ✓	
5 EC	2 - 10 = 0+00	193.95 ✓	
	+20	193.10 ✓	
	+40 E.V.C.	191.30 ✓	
	+95	185.40 ✓	
1 +50	P.C. Ret. Monitor	179.50 ✓	
1		178.25 ✓	
2		177.60 ✓	
3		177.30 ✓	
4	FC. = 0+00	177.0 ✓	
	+25	176.60 ✓ Floo	
	+50 E.V. Monitor	176.40 ✓ F 0.30	
	+75 P.C.	176.60 ✓	
1 +00		176.90	

BM Hub 254 19.52 Elev. Rd.



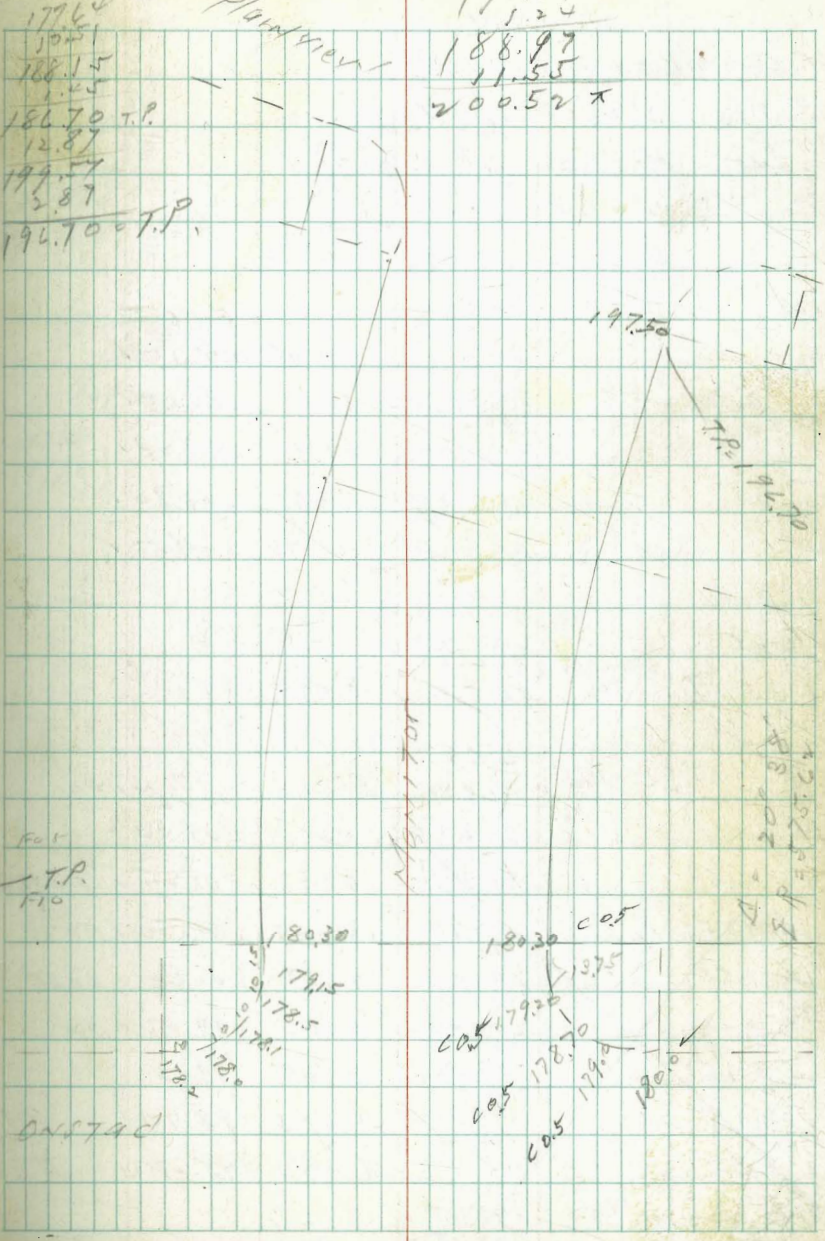
MONITOR Rd.
Onstad to Plainview

	W	New West	E	New East
P.R.C. = 00	180.30	✓ 180.30	180.30	✓ 180.30
①	1° 05.16	181.92	✓ 181.85	✓ 181.90
②	2° 10.32	183.55	✓ 183.35	✓ 183.50
③	3° 15.48	185.17	✓ 184.85	✓ 185.10
④ + 87.29	4° 20.64	186.80	✓ 186.45	✓ 186.70
⑤	5° 20.36	188.20	✓ 187.75	✓ 188.05
⑥	6° 20.08	189.50	✓ 188.95	✓ 189.35
⑦	7° 19.80	190.70	✓ 190.10	✓ 190.50
⑧	8° 19.52	191.85	✓ 191.20	✓ 191.70
⑨	9° 19.24	192.80	✓ 192.15	✓ 192.70
6° P.C. = 100	10° 19.0	193.70	✓ 193.00	✓ 193.65
+ 20	194.45	✓ 193.75	✓ 194.25	✓ 194.00
+ 40	195.10	✓ 194.50	✓ 195.20	✓ 194.75
+ 60	195.65	✓ 195.10	✓ 195.85	✓ 195.40
+ 80	196.00	✓ 195.60	✓ 196.30	✓ 196.00
+ 100	196.35	✓ 196.10	✓ 196.75	✓ 196.45
+ 20	196.55	✓ 196.40	✓ 197.05	✓ 196.80
+ 75	197.0	✓ 197.00	✓ 197.70	✓ 197.50

F10

8.P. Porch UNSTACK + EVERVIEW

177.62
12.57
190.21 *
12.4
188.99
11.55
200.52 *



Web Elev. Rd
ONSTAD to Plainview

Web			
PC Onstad = 00	196.20		
	196.20		
5 Pts	197.86		
ON E	197.20		
2.245	198.94		
	198.25		
	199.98		
	199.30		
	201.04		
	200.30		
EC	202.10		
	201.27		
	202.70	00-PC	202.15
	201.98		
7-20	203.30	0+15	202.65
	202.63		
	203.80	0+35	203.28
	203.19		
	204.20	0+55	203.80
	203.67		
	204.50	0+75	204.27
	204.18		
	204.70		
	204.39		
7 EVC	204.80		
	204.67		
+35 PC, Plainview Rd.	205.0	C 078	

566
SL Plainview Elev. to Monitor

PC = 00	203.40	00	203.40
0+15	202.70	0+25	202.25 / F088
0+35	201.90	0+45	201.00 / F070
	201.80		
0+55	201.10	0+65	200.60 / F085
	201.00		
0+75	200.40	0+85	199.87 / F02
	200.20		
0+95	199.80	1+05	199.25
	199.55		
1+15	199.30	1+25	198.70
	199.00		
1+35	198.90	1+50	198.18
	198.30		
PE Monitor 1450	198.60		
	198.18		

189.99
12.93
202.92
0.15
202.77
8.31
210.68
211.92
198.74
21.09
202.83
201.48
6.77
208.45
4.85
203.40 T.P. PC STAKE

200.50
3.18
197.34
8.61
205.95

818.1
801.403
784.405
767.866
497.70
197.50

sky Plainview

203.40
204.03
204.60
204.90
205.0

172.70
192.30
192.52
192.65
193.15
192.80
198.37
198.00

Monitor

7-14-38

Zanzibar Ct. Sdw.

EL. Ocean Front Walk	4.80 ✓
+40	4.30 ✓
+80 W.L. Strand	3.80 ✓
00 EL "	3.80 ✓
+30	2.80 ✓
+60 P.V.C.	1.80 ✓
+80	1.20 ✓
1 + 00 E.V.C.	0.80 ✓
+30	0.40 ✓
1 + 60 P.V.C.	0.0 ✓
+80	-0.30 ✓
2 PVC	-0.40 ✓
+56.30	-0.49 ✓
3 + 12.59 W.L. Blvd.	-0.58 ✓

INDEXED

W.K.
OCT 19 19484.66
1.20
5.86

7-26-38

York Ct. Sdw.

EL. O.F. Walk 00	4.78 ✓
+40	4.29 ✓
+80 W.L. Strandway	3.80 F 0.13
00 EL "	3.80 F 0.18
+55	2.35 F 0.24
1 + 10 Break	0.90 ✓
1 + 45	0.50 ✓
1 + 80 "	0.10 ✓
1	0.0 ✓
2 parts +3.5	-0.10 ✓
2 W.L. Blvd	-0.20 ✓

INDEXED

W.K.
OCT 19 19484.68
2.11
2.79

Toulon Ct, Const. S side

4.65
2.87
8.72 x

EL O.F. Walk	4.86 ✓
0 + 40	5.53 ✓
0 + 80 WL Strand	6.20 ✓
00 EL "	6.0 ✓
0 + 46.19	3.12 ✓
0 + 92.39 WL Blvd	0.25 ✓
00 EL "	-0.20 ✓
+ 49.17	-0.59 ✓
+ 98.34	-0.98 ✓
1 + 47.51 WL B.S. Lane	-1.37 ✓
10.25	
00 EL " " "	-1.37 ✓
+ 41.1	-0.88 ✓
+ 88.2 WL B.S. Walk	-0.40 ✓

INDEXED
WK
OCT 19 1948

Tangiers Ct. 6-17-38

64

4.58

2.72

7.40 ✓

7.13

0.27 x.p.

3.53

5.60

00 EL O.F. Walk	4.93 ✓
0 + 40	5.61 ✓ STAKE
0 + 80 WL Strand	6.30 ✓
00 EL "	6.20 ✓
0 + 20	5.68 ✓
6 + 30 } Vertical	5.27 ✓
0 + 40	4.60 ✓
0 + 95.24 WL Blvd	0.27 ✓
00 EL "	-0.20 ✓
0 + 55.71	-0.43 ✓
1 + 11.42	-0.67 ✓
1 + 47.15 WL B.S. Lane	-0.90 ✓
00 EL " "	-0.90 ✓
+ 41.25	-0.65 ✓
+ 82.5 WL B.S. Walk	-0.40 ✓

INDEXED
WK
OCT 19 1948

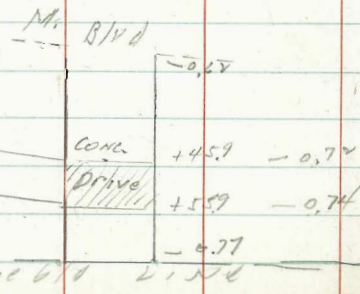
0-16 mps

Yarmouth Ct.

00 =	EL O. F. Walk	4.80 ✓	
+40		4.55 ✓	
+80	WL STRAND	4.30 ✓	
00	EL "	4.10 ✓	
0+40	PVE	1.87 ✓	
+50		1.37 ✓	
+60		0.95 ✓	
+70		0.61 ✓	
+80		0.40 ✓	
+90		0.20 ✓	
1+00	EVC	0.15 ✓	
1+50		0.07 ✓	
2+00		-0.02 ✓	
2+50		-0.09 ✓	
2+94.14	WL Blvd.	-0.16 ✓	
00	EL "	-0.62 ✓	-0.62
0+36.38		-0.51 ✓	-0.69
0+72.77		-0.40 ✓	-0.77

4.65
2.23
4.88 π
6.73
0.15
3.61
3.76 π

INDEXED
WK
OCT 19 1948



Seagirt Ct.

00 =	EL Blvd	-0.35 ✓	
+44.7		-0.44 ✓	
+88.34		-0.57 ✓	
1+32.81		-0.68 ✓	
+24.68	WL Bayside Lane	-0.80 ✓	
00	EL "	-0.80 ✓	
43.55		-0.60 ✓	
287.10	WL " WK	-0.40 ✓	

0.27
3.24
3.51
3.21
0.68
4.39
3.71 ✓

INDEXED
WK
OCT 19 1948

WL Blvd. WL Sunset Top walk
0.39
3.06
3.35

SUNSET CT.

00	EL Blvd	-0.30 ✓	
+43.44		-0.40 ✓	
+86.92		-0.50 ✓	
1+30.38		-0.60 ✓	
+73.84	WL Lane	-0.70 ✓	
14.28		-0.70 ✓	
43.5		-0.55 ✓	
287	WL B.S. Walk	-0.40 ✓	

Sewer Const.
Cullers Westland Ter.

Moore
4-5-38.

	M.H.		F.L.	Cuts
23 + 12.93	#11 on Ex. Sewer		166.0	5.23
22 + 80.73	B.K.		170.0	3.14
22 + 40.46		INDEXED	187.67	3.07
22	"	W.K.	205.34	2.80
21 + 72.95		OCT 19 1948	215.17	4.81
21 + 45.9	"		225.0	3.14
20 + 95.9	#10 M.H. @ 20° 26' R.		235.0	3.61
20 + 54.95	"		237.0	8.22
20 + 13.99	"		239.0	9.92
19 + 73.03	#9 @ 77° 46'		241.0	3.97
19 + 29.69	"		243.12	4.05
18 + 86.36	"		245.25	5.01
18 + 43.03	B.K.		247.37	5.00
17 + 93.09	"		247.57	7.78
17 + 43.09	"		247.77	9.46
16 + 93.09	"		247.97	11.26
16 + 43.09	M.H. #8		248.17	11.87
+ 87.2	"		248.39	12.15
15 + 31.35	"		248.62	12.04
+ 75.52	"		248.84	12.81
14 + 19.69	"		249.06	12.74
+ 63.86	"		249.29	10.40
13 + 08.03	#7 M.H.		249.51	8.58
13 + 00	"		249.54	9.01

177.28 B.M. M.H. R.M. 98 N of #11.

1.48
178.76
1.55
177.21
12.98
190.10
3.11
190.09
12.61
202.70
0.37
202.33
12.96
215.29
0.25
215.04
12.71
227.75
0.20
227.55
12.78
240.33
0.17
240.06
12.46
252.52
0.43
252.09
12.12
264.21

266.43 SWBP Cont. w. Juniper

249.41 = 8 Juniper
18.43
7.84
18.59

staked to this M.H. 4-5-38
began again 5-19-38

	F.L.	CUTS
12 + 50	249.74	10.10
12	249.94	11.15
+ 50	250.14	12.18
11	250.34	13.23
+ 50	250.54	14.28
10	250.74	15.37
+ 50	250.94	15.61
9 + 35 Drop M.H. #3	251.0	15.93
" " " "	261.0	5.93
9 + 100	262.40	6.98
+ 50	264.40	6.97
8	266.40	7.23
+ 50	268.40	7.04
7	270.40	6.92
+ 50	272.40	6.89
6 + 35 M.H. #2	273.0	4.98
6	273.35	8.00
+ 50	273.85	9.24
5	274.35	9.73
+ 50	274.85	10.00
4	275.35	10.30
+ 50	275.85	9.98
3 + 41 M.H. #1 A 90°	275.94	9.90
3	276.35	11.31
+ 50	276.85	12.04

267.84
 1.49
 266.35 - 266.43 = 81M.
 11.83
 278.48
 0.24
 277.92
 10.97
 288.89
 3.02
 285.84 = 5' STUB M.H. #1
 8.80
 294.64

CUTS

2		277.55	10.77
	+50	277.85	10.21
1		278.25	11.68
	+50	278.85	12.71
0	+00	279.35	9.47

thence Sly S' Ely of old City Line

0	+00	279.35	9.47
	+50	279.60	8.47
1		279.85	6.85
	+50	280.10	5.22
2	= D.E.	280.35	3.41

292.64 T

$\frac{11.21}{283.43}$ 4.08 DITH.

Sewer Const.
Juniper & Pentucket

7-4-38

F.L. 0078

INDEXED
W.K.
OCT 19 1948

M.H. #1	251.0	✓
+50	251.25	17.40
1	251.50	18.80
+50	251.75	19.04
2	252.0	17.15
+50	252.25	13.65
3	252.50	9.20
+19.4 #4 M.H.	252.60	6.57
3+72.7	252.87	7.41
4+22.7	253.12	10.41
4+72.7	253.37	12.55
5+22.7	253.62	14.14
5+75 #5 M.H.	253.88	15.50
6+25	254.13	15.95
6+75	254.38	14.95
7+25	254.63	13.26
7+75	254.88	10.04
8+30 #12 M.H. B.L.T.	255.15	6.10
0+00	255.15	✓
+50	257.65	8.58
1	260.15	9.11
+60 D.E.	263.15	2.57

~~266.43~~
~~7.40~~
~~273.83~~
 266.05
 7.40
 273.75
 12.10
 ✓ 261.65
 8.94
 270.59
 2.70
 ✓ 267.89
 2.99
 ✓ 271.88

LD 2/29

Senior Const.

Commonwealth Ave S of Juniper

0 + 00 = D.M.H. #3	251.0	✓
+53	251.27	15.41
1 + 03	251.52	14.40
+53	251.77	13.49
2 + 03	252.02	11.34
+53	252.27	10.07
2 + 02.50 = ^{0 + 00} M.H. #6	252.31	9.77
0 + 50	252.56	8.20
1	252.81	7.20
+50	253.06	7.84
2	253.31	5.63
+50	253.56	4.35
3 + 07.50 = D.F. 5 + 70	253.85	4.40

INDEXED
W.K.
OCT 19 1948

26635
13.21

26796

INDEXED

CONSY. Rogers St.
E of San Elijo

	S	N
- 15	✓ 150.4	155.0 155.4
0400 = Ely	San Elijo Col 152.7	152.8 152.7
0 + 45	C 2.0 144.3	144.3
0 + 90	Bck C 1.9 135.9	135.9
1 + 50	" Col 132.7	132.8 132.7
1 + 60	P.C. S.L. Col 120.4	120.6 120.5
1 + 70	C 0.7 118.1	118.5 118.4
1 + 80	C 0.6 116.4	116.7 116.6
1 + 90.00	P.C. S.L. C 0.9 115.1	115.1 115.0
2 + 01.02	C 1.0 113.8	114.8 114.0

INDEXED
W.K.
OCT 19 1948

113.4
113.15
112.95
112.75
112.45

Moore
2-6-38

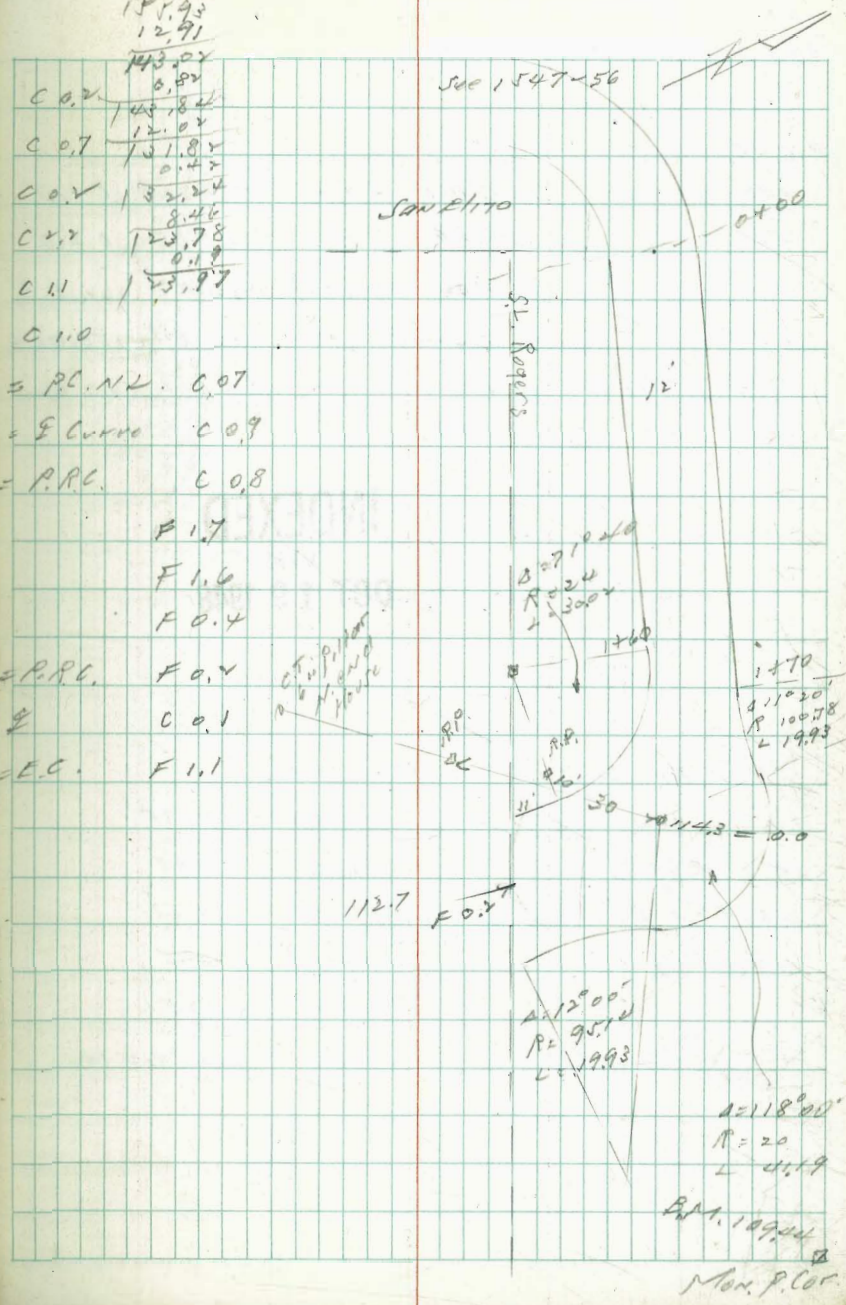
155.03 C.T. B.M.
.90

C 0.2	143.02
C 0.7	131.82
C 0.5	132.24
C 2.2	123.78
C 1.1	123.97
C 1.0	

= P.C. N.L. C 0.7
= E Curve C 0.9
= P.R.C. C 0.8

F 1.7
F 1.6
F 0.4
F 0.5
C 0.1
F 1.1

= P.R.C.
E
= E.C.



See 1547-56

SAN ELIJO

St. Rogers

112.7 F 0.2

A = 12° 00'
R = 95.1
L = 1993

A = 118° 00'
R = 20
L = 45.19
B.M. 1894
Mon. P. Cor.

Paving alley 45 L. Jalla Park
by "Blue bird Lane"

Moore
4-8-38.

E. ON 0+00

72

Pavic, Contr.

	W	E
0+00	167.35	170.05
+20 Break	166.90 \checkmark F. 0.14	167.30 \checkmark C 1.0
+50	164.99 C 1.52	165.35 C 2.0
1	161.80 C 1.0 0.99	162.09 162.15
+50	158.61 C 0.35 1.52	158.84 158.71
+70 Break P.C.	157.32 C 1.0	157.53 C 0.0 FL.
2 +00	155.40	

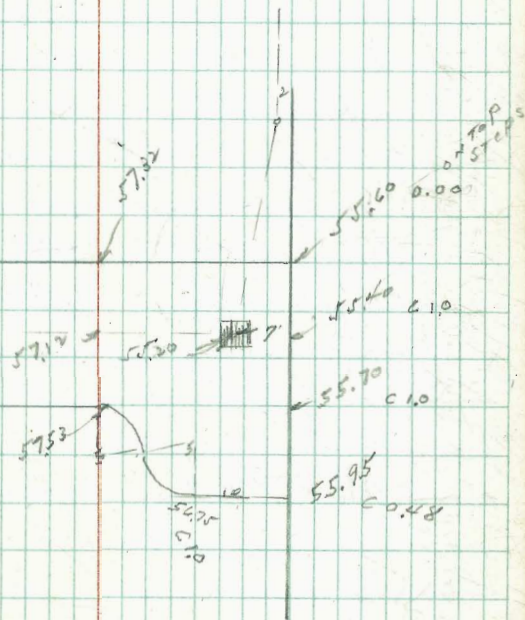
INDEXED
WK.
OCT 19 1948

Grades for drain FL.

00	GRATING	155.20	C 0.75
00	FL. BOX	152.0	C 3.95
0+30.4	F. B	147.08	C 4.03
+50		145.24	C 3.35
1		138.47	C 3.25
+31.2	OUTLET	134.24	0.0 TOP SDW.

170.14 B.M. TOP WALL

1.49
171.60
4.97
167.23
2.44
167.44
9.98
157.27
3.26
C 1.0 160.53
8.83
C 0.84 151.70
2.69
154.39
12.67
141.72
0.59
142.31



Property Line Grader
NW Cor El Cajon & Euclid

4-12-38

SW AP. 1.85 252.05 347.20 4771.57

INDEXED
WK.
OCT 19 1948

348.20	347.75
3.85	4.30
3.88	4.35
0.03 Low	0.05 Low

347.0	347.07	347.34	347.60
5.05	4.98	4.71	4.45
5.12	4.82	4.95	4.35
0.09	+0.16	-0.24	+0.10

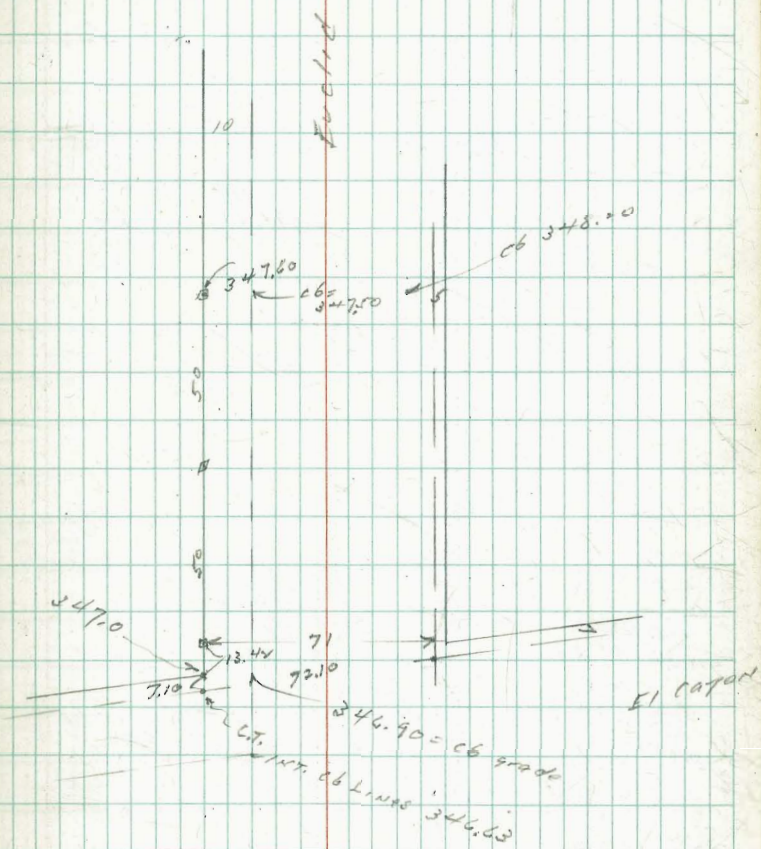
346.63	00	+13.42	+13.42	113.42	1179.42
5.62					
353.26	347.0	47.07	47.34	47.60	48.0
		5.92	5.04	5.26	5.86
		F 1.0	0.0	F 0.60	

1493.42	2413.42	2433.42	2453.42
48.17	48.47	48.87	49.38
5.09	4.8		
5.57	6.3		
F 0.5	F 1.5		

Restated 10-4-38 Moore

73

INDEXED



Lowell St. EXT.
West of PLUM.

March 4-15-38.

INDEXED
WK.
OCT 19 1948

cb. R=774
2207 feet curb grade
def.

0413	0° 29' 00"	185.90	C 9.6
0422.4	0° 49' 75"		
+50	1° 51' 0"	189.87	C 7.2
+75	2° 46' 50"	193.47	
1	3° 42' 0"	197.07	C 5.8
+15.15	4° 15' 50"	199.24	C 4.8
+25	4° 37' 50"	100.66	
+50	5° 33' 12"	104.2	C 3.2
+75	6° 28' 5"	107.77	
2	7° 24' 0"	111.35	C 1.4
+17	W. by Roseville 8° 02'	113.80	C 1.0

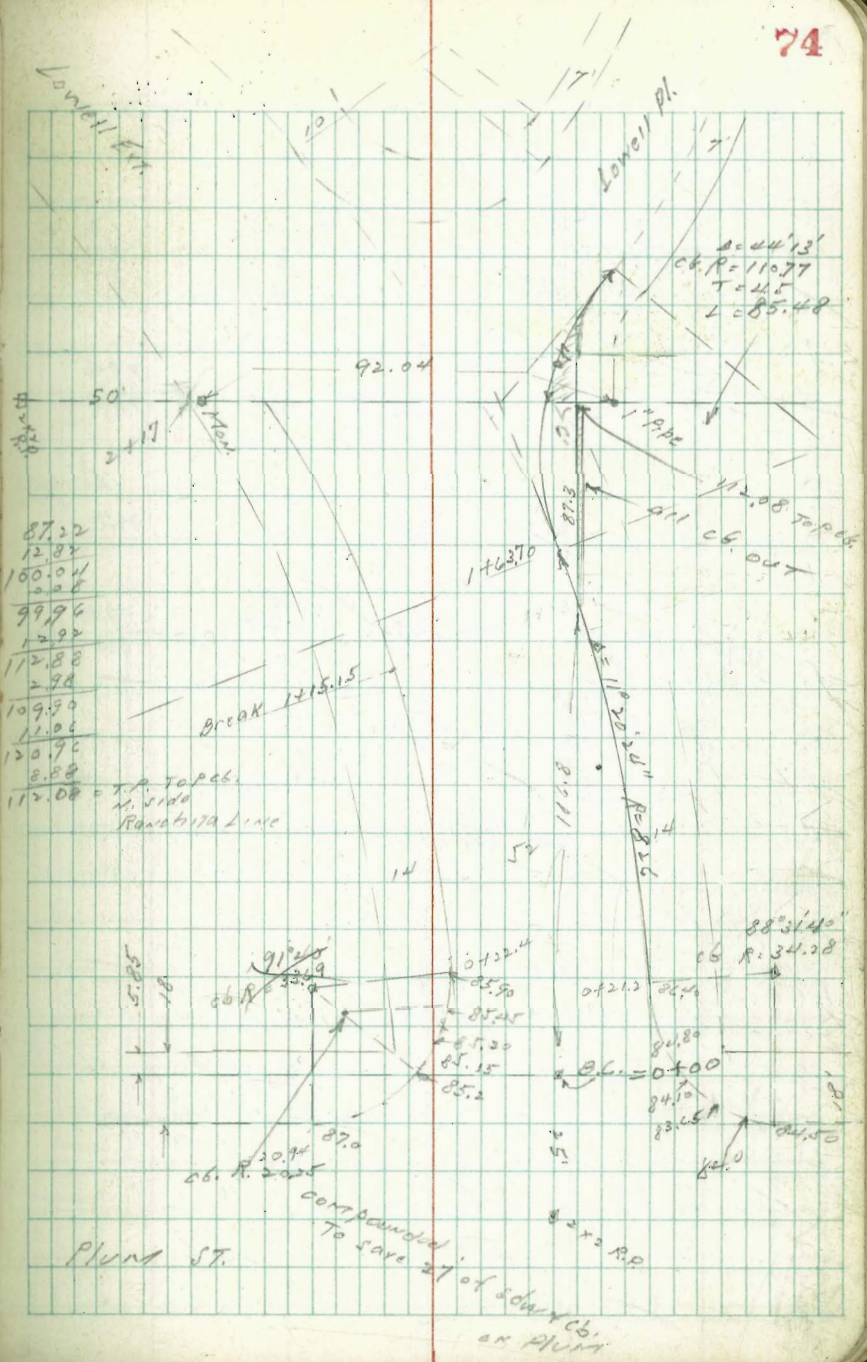
cb. R=826
2.0809' N cb.

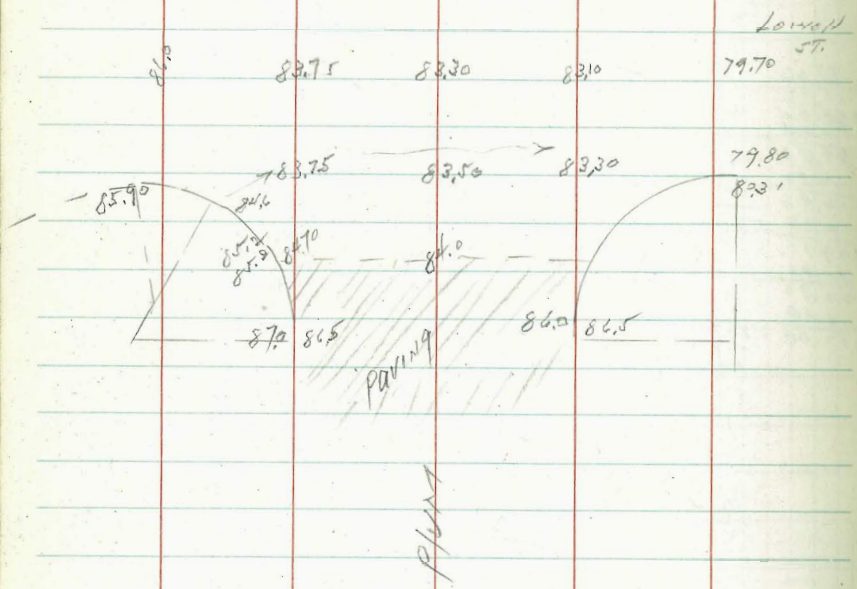
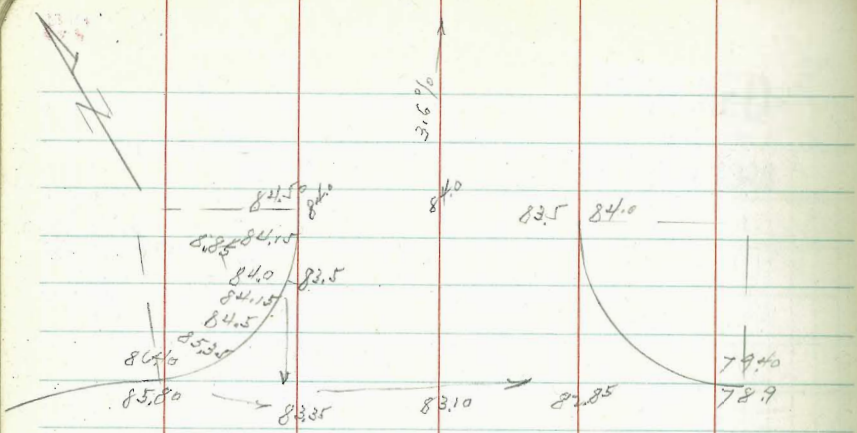
0422.2	0° 44' 11"	186.40	C 3.5
+50	1° 43' 56"	190.30	C 2.6
+75	2° 35' 58"	193.70	
1	3° 27' 60"	97.10	C 2.0
42 PRC	3° 52' 60"	98.74	
723 = P.L.A. curb	4° 15' 50"	100.24	C 0.4

1 +43	4° 57' 12"	102.96	
1 +63.70 PRC	5° 40' 20"	105.78	
		108.10	
		110.42	
		112.74	on par. F 0.57
		113.92	" " F 0.56
		115.10	= top cb

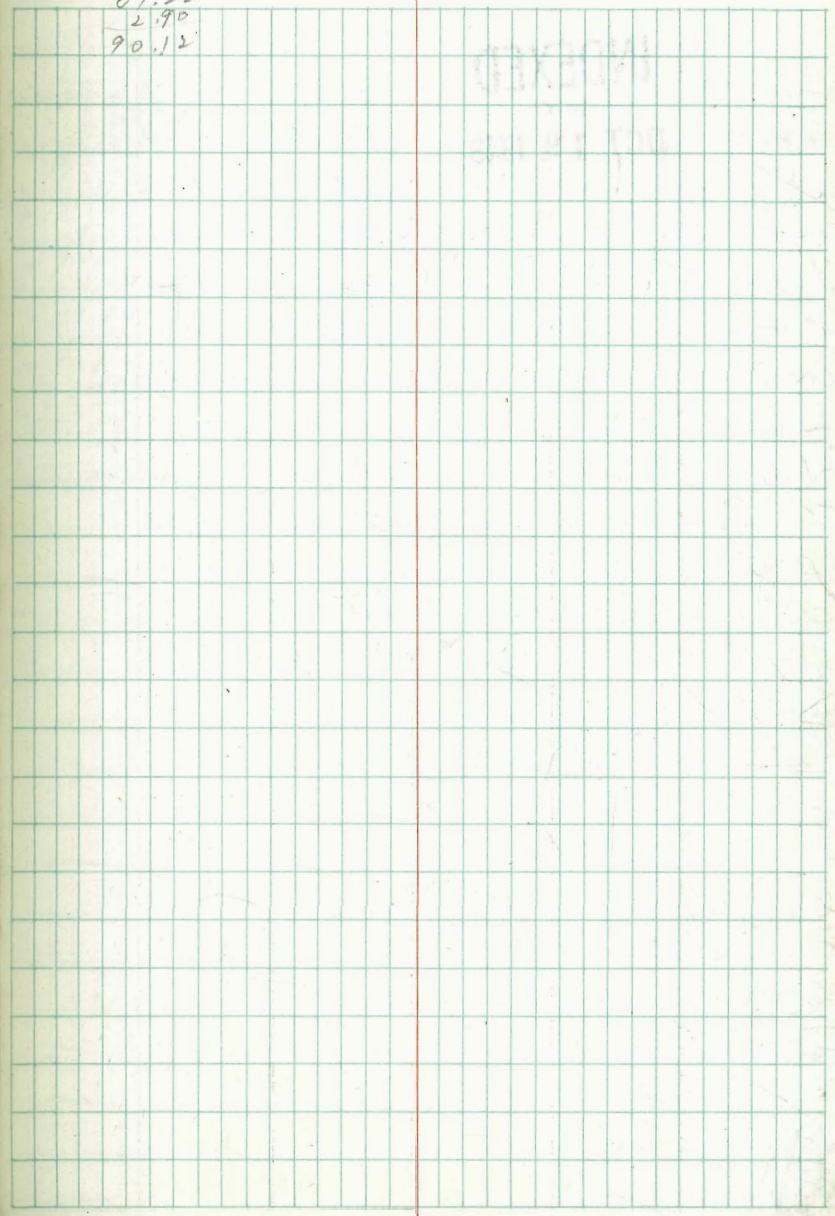
5 parts
1700
def. = 40.2518"

①
②
③
④
⑤ = P.R.C. 1





87.22
2.90
90.12



W.P.H.

Sewer CONST.
alley 14 Frary Hts

5-19-38
Moore
J. J. SON
Morrison

399-74
Probit.

76

INDEXED
WK
OCT 19 1948

FL.

0+00	291.0	C 5.09
+28.5	289.2	C 2.44
+38.5	288.5	C 2.10
+48.5	287.2	C 2.73
+58.5	282.5	C 1.20
+68.5	277.0	C 2.1
1+00	260.0	C 2.88
+20	251.0	C 2.04
+40	243.0	C 2.12
+60	236.0	C 2.77
1+84	230.0	C 4.14

296.23
 .24
 296.47
 12.58
 283.89
 0.70
 284.65
 12.77
 271.88
 0.12
 272.00
 12.20
 259.80
 0.20
 259.82
 12.81
 247.01
 .13
 247.14

234.10 PM

Seagirt Ct. Const.

FL O.F. WK	5.0	✓
+20	5.65	FOOD
+80 WL Strand	6.30	✓
00 FL "	6.20	✓
+41.75	4.23	✓
+83.90	2.27	✓
+25.85 WL M. Blvd	0.30	✓

Sunset Ct. Const

00 O.F. WK	5.0	✓
+40	5.60	✓
+80 WL Str. way	6.20	✓
00 " " "	6.10	✓
+53.16	3.20	✓
+26.33 WL M. Blvd.	0.30	✓

Venice Ct Const.

00 FL O.F. WK	5.00	✓
+40	5.15	✓
+80 WL Strand	5.00	✓
00 FL "	5.10	✓
0+10	4.84	✓
0+20	4.26	✓
0+50	2.03	✓
0+70	0.88	✓
0+90	0.40	✓
+38.07 WL M. Blvd	-0.08	✓
00 FL " "	-0.40	✓
+50.73	-0.70	✓
+01.44 WL Bayside	-1.00	✓
00 FL " "	-1.00	✓
+40.67	-0.70	✓
0+81.33 WL B.S. WK.	-0.40	✓

INDEXED
W.K.
OCT 19 1948

77

276
279
9.55

W.P.A. CONST. SDW.
Veroona Ct.

1-26-38.

4.69
1.21
2.10

00	EL, O.F. W.K.	4.91 ✓
0	+40	+80 ✓
0	+80 W.L. STRAND	4.70 ✓
00	EL "	4.60 ✓
	+30	2.40 ✓
	+50	1.10 ✓
	+70	0.40 ✓
	+90	0.05 ✓
1	+30.5	-0.10 ✓
1	+71 W.L. M. Blvd	-0.25 ✓
00	EL " "	-0.68 ✓
	+47.78	-0.84 ✓
	+95.54 W.L. Bay Lane	-1.00 ✓
00	EL " "	-1.00 ✓
	+41.64	-0.70
	+83.24 W.L. " WALK	-0.40

INDEXED

WK

OCT 19 1948

VANITIE CT.

78

4.66
3.71
8.57

00	O.F. WALK	4.90 ✓
	+40	5.55 ✓
	+80 W.L. STRAND	6.20 ✓
00	EL: "	6.20 ✓
	+49.08	3.25 ✓
	+98.16 W.L. Blvd	0.30 ✓
00	EL "	-0.25 ✓
	+42.67	-0.55 ✓
	+85.33	-0.85 ✓
1	+28 = W.L. B.S.	-1.15 ✓
00	EL "	-1.20 ✓
	+40.1	-0.80 ✓
	+80.2 W.L. BSWK	-0.40 ✓

INDEXED

WK

OCT 19 1948

INDEXED

W.K.

OCT 19 1948

CONST. S. DUL.
Redondo Ct.

5-25-38
C.S.M.

00	EL O.F. WALK	4.94 ✓		4.84 ✓
+51		6.85 ✓		6.53 ✓
+65.5		7.25 ✓		7.01 ✓
+80	W.L. STRAND	7.40 ✓		7.50 ✓
00	EL "	7.40 ✓		7.50 ✓
+31.01		5.35 ✓	0+16	5.73 ✓
+51.01		4.15	0+36	3.78 ✓
+71.01		3.10	0+56	2.33 ✓
+91.01		2.30	0+76	1.41 ✓
+111.01 ✓		1.60	0+96	1.00 ✓
+124 =	W.L. END of EX. WALK	1.20		
+31.01		1.00	1+16	0.85 ✓
+51.01		0.55	1+24	0.79 ✓
+71.01	W.L. M. BLVD	0.20		=WALK

San Jose 79

Salerno Ct.

7.08
7.98
8.98

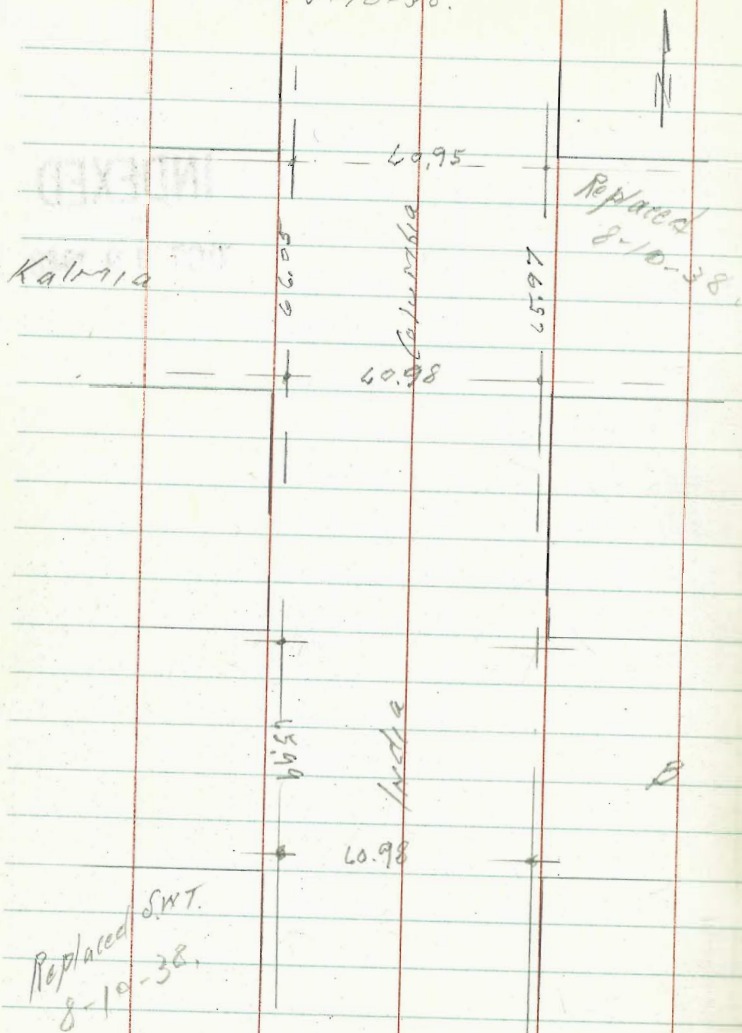
00	EL O.F. WALK	4.94 ✓
440		5.50 ✓
+80	W.L. STRAND	6.05 ✓
00	EL "	5.85 ✓
+25.5		5.30 ✓
+45.5		4.60 ✓
+75.5		3.95 ✓
+105.5		1.30 ✓
+125.5		0.50 ✓
+144.8	W.L. M. BLVD	0.25 ✓

INDEXED

W.K.

OCT 19 1948

N.E. Cor Const.
5-10-38.



IMPROVED TABLES AND INFORMATION

HORIZONTAL STADIA CORRECTIONS

2°-00'	— 0.1	21°-00'	— 12.8	33°-00'	— 29.7
3°-00'	— 0.3	21°-30'	— 13.4	33°-15'	— 30.1
4°-00'	— 0.5	22°-00'	— 14.0	33°-30'	— 30.5
5°-00'	— 0.8	22°-30'	— 14.7	33°-45'	— 30.9
6°-00'	— 1.1	23°-00'	— 15.3	34°-00'	— 31.3
7°-00'	— 1.5	23°-30'	— 15.9	34°-15'	— 31.7
8°-00'	— 1.9	24°-00'	— 16.5	34°-30'	— 32.1
9°-00'	— 2.5	24°-30'	— 17.2	34°-45'	— 32.5
10°-00'	— 3.0	25°-00'	— 17.9	35°-00'	— 32.9
10°-30'	— 3.3	25°-30'	— 18.6	35°-15'	— 33.3
11°-00'	— 3.6	26°-00'	— 19.2	35°-30'	— 33.7
11°-30'	— 4.0	26°-30'	— 19.9	35°-45'	— 34.1
12°-00'	— 4.3	27°-00'	— 20.6	36°-00'	— 34.6
12°-30'	— 4.7	27°-30'	— 21.3	36°-15'	— 35.0
13°-00'	— 5.1	28°-00'	— 22.0	36°-30'	— 35.4
13°-30'	— 5.5	28°-30'	— 22.8	36°-45'	— 35.8
14°-00'	— 5.9	29°-00'	— 23.5	37°-00'	— 36.2
14°-30'	— 6.3	29°-30'	— 24.3	37°-15'	— 36.6
15°-00'	— 6.7	30°-00'	— 25.0	37°-30'	— 37.1
15°-30'	— 7.2	30°-15'	— 25.4	37°-45'	— 37.5
16°-00'	— 7.6	30°-30'	— 25.8	38°-00'	— 37.9
16°-30'	— 8.1	30°-45'	— 26.2	38°-15'	— 38.3
17°-00'	— 8.5	31°-00'	— 26.5	38°-30'	— 38.7
17°-30'	— 9.0	31°-15'	— 26.9	38°-45'	— 39.1
18°-00'	— 9.5	31°-30'	— 27.3	39°-00'	— 39.6
18°-30'	— 10.1	31°-45'	— 27.7	39°-15'	— 40.0
19°-00'	— 10.6	32°-00'	— 28.1	39°-30'	— 40.5
19°-30'	— 11.2	32°-15'	— 28.5		
20°-00'	— 11.7	32°-30'	— 28.9		
20°-30'	— 12.3	32°-45'	— 29.3		

Chains to Feet

1	66
2	132
3	198
4	264
5	330
6	396
7	462
8	528
9	594
10	660

Feet to Chains

100	1.515
200	3.030
300	4.545
400	6.060
500	7.575
600	9.090
700	10.606
800	12.121
900	13.636
1,000	15.151

