



# EUGENE DIETZGEN CO.

DRAWING MATERIALS, MATHEMATICAL and  
SURVEYING INSTRUMENTS

Chicago New York San Francisco New Orleans Pittsburg Toronto

Distances from Center of Roadway for Cross-Sectioning  
Roadway 16 feet wide. Side Slopes 1 on 1.  
For Single Track Embankment.

H	0	.1	.2	.3	.4	.5	.6	.7	.8	.9	H
0	8.0	8.1	8.2	8.3	8.4	8.5	8.6	8.7	8.8	8.9	0
1	9.0	9.1	9.2	9.3	9.4	9.5	9.6	9.7	9.8	9.9	1
2	10.0	10.1	10.2	10.3	10.4	10.5	10.6	10.7	10.8	10.9	2
3	11.0	11.1	11.2	11.3	11.4	11.5	11.6	11.7	11.8	11.9	3
4	12.0	12.1	12.2	12.3	12.4	12.5	12.6	12.7	12.8	12.9	4
5	13.0	13.1	13.2	13.3	13.4	13.5	13.6	13.7	13.8	13.9	5
6	14.0	14.1	14.2	14.3	14.4	14.5	14.6	14.7	14.8	14.9	6
7	15.0	15.1	15.2	15.3	15.4	15.5	15.6	15.7	15.8	15.9	7
8	16.0	16.1	16.2	16.3	16.4	16.5	16.6	16.7	16.8	16.9	8
9	17.0	17.1	17.2	17.3	17.4	17.5	17.6	17.7	17.8	17.9	9
10	18.0	18.1	18.2	18.3	18.4	18.5	18.6	18.7	18.8	18.9	10
11	19.0	19.1	19.2	19.3	19.4	19.5	19.6	19.7	19.8	19.9	11
12	20.0	20.1	20.2	20.3	20.4	20.5	20.6	20.7	20.8	20.9	12
13	21.0	21.1	21.2	21.3	21.4	21.5	21.6	21.7	21.8	21.9	13
14	22.0	22.1	22.2	22.3	22.4	22.5	22.6	22.7	22.8	22.9	14
15	23.0	23.1	23.2	23.3	23.4	23.5	23.6	23.7	23.8	23.9	15
16	24.0	24.1	24.2	24.3	24.4	24.5	24.6	24.7	24.8	24.9	16
17	25.0	25.1	25.2	25.3	25.4	25.5	25.6	25.7	25.8	25.9	17
18	26.0	26.1	26.2	26.3	26.4	26.5	26.6	26.7	26.8	26.9	18
19	27.0	27.1	27.2	27.3	27.4	27.5	27.6	27.7	27.8	27.9	19
20	28.0	28.1	28.2	28.3	28.4	28.5	28.6	28.7	28.8	28.9	20
21	29.0	29.1	29.2	29.3	29.4	29.5	29.6	29.7	29.8	29.9	21
22	30.0	30.1	30.2	30.3	30.4	30.5	30.6	30.7	30.8	30.9	22
23	31.0	31.1	31.2	31.3	31.4	31.5	31.6	31.7	31.8	31.9	23
24	32.0	32.1	32.2	32.3	32.4	32.5	32.6	32.7	32.8	32.9	24
25	33.0	33.1	33.2	33.3	33.4	33.5	33.6	33.7	33.8	33.9	25
26	34.0	34.1	34.2	34.3	34.4	34.5	34.6	34.7	34.8	34.9	26
27	35.0	35.1	35.2	35.3	35.4	35.5	35.6	35.7	35.8	35.9	27
28	36.0	36.1	36.2	36.3	36.4	36.5	36.6	36.7	36.8	36.9	28
29	37.0	37.1	37.2	37.3	37.4	37.5	37.6	37.7	37.8	37.9	29
30	38.0	38.1	38.2	38.3	38.4	38.5	38.6	38.7	38.8	38.9	30
31	39.0	39.1	39.2	39.3	39.4	39.5	39.6	39.7	39.8	39.9	31
32	40.0	40.1	40.2	40.3	40.4	40.5	40.6	40.7	40.8	40.9	32
33	41.0	41.1	41.2	41.3	41.4	41.5	41.6	41.7	41.8	41.9	33
34	42.0	42.1	42.2	42.3	42.4	42.5	42.6	42.7	42.8	42.9	34
35	43.0	43.1	43.2	43.3	43.4	43.5	43.6	43.7	43.8	43.9	35
36	44.0	44.1	44.2	44.3	44.4	44.5	44.6	44.7	44.8	44.9	36
37	45.0	45.1	45.2	45.3	45.4	45.5	45.6	45.7	45.8	45.9	37
38	46.0	46.1	46.2	46.3	46.4	46.5	46.6	46.7	46.8	46.9	38
39	47.0	47.1	47.2	47.3	47.4	47.5	47.6	47.7	47.8	47.9	39
40	48.0	48.1	48.2	48.3	48.4	48.5	48.6	48.7	48.8	48.9	40

Example—If point is 22.6 ft. above grade, how far should it be from center line to be a slope stake point? Ans. from Table 30.6. For same slopes but other widths of roadbed, correct above figures by one-half difference in width of roadbed; thus in example above, for 20 ft. roadbed distance will be  $30.6 + (20 - 16) \div 2$  or 2 ft. added to  $30.6 = 32.6$ . For slopes of 1 on  $1\frac{1}{2}$  see inside of back cover.

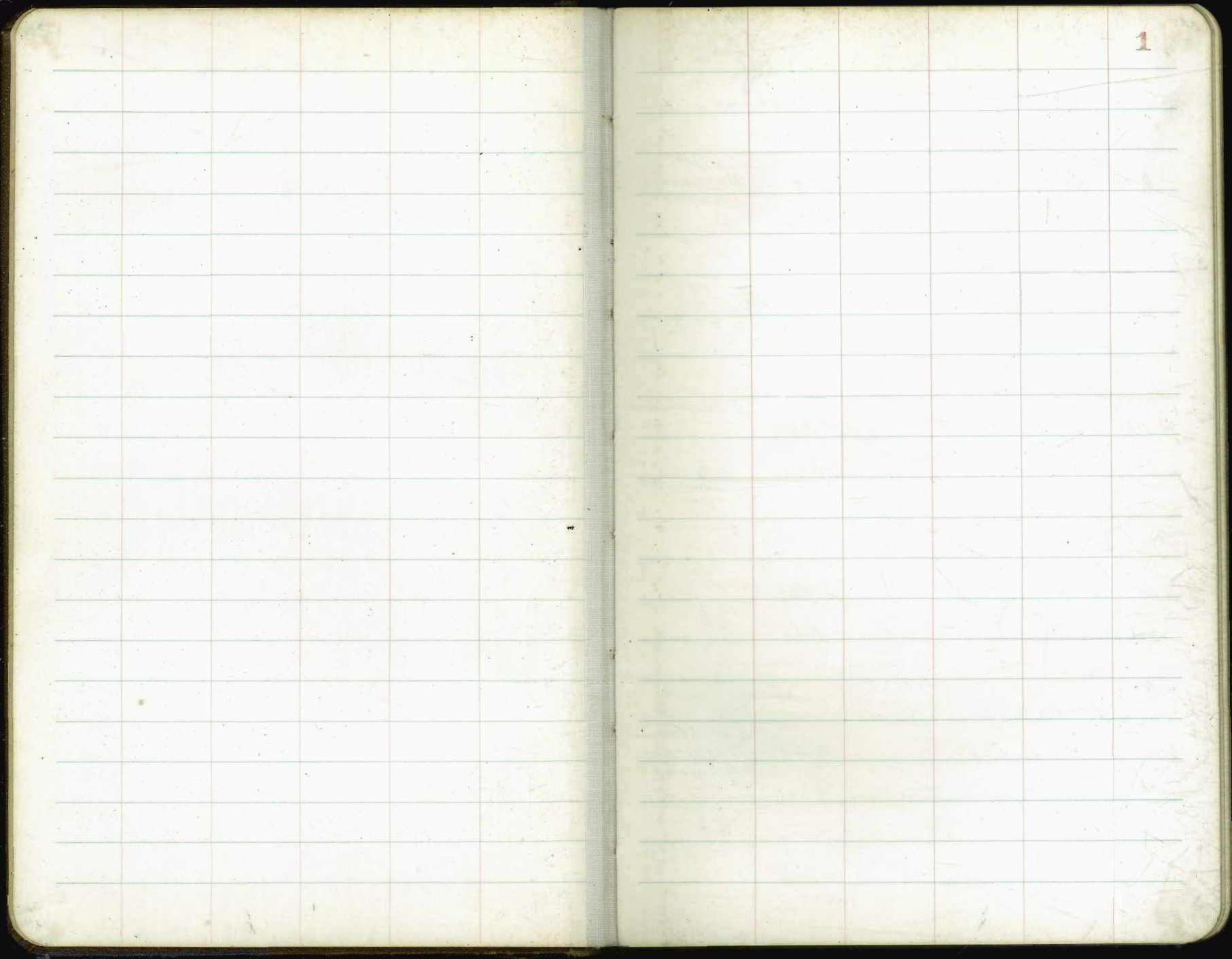
Copyright, 1914, by Eugene Dietzgen Co.

The paper stock of this book is made of a high grade 50% rag paper having a water resisting surface and is sewed with Bing Special Enamel Waterproof Thread.

Made in U. S. A.

MICROFILMED

APR 12 1965



## Roscorans Water Grades

Nov. 28-89  
S.W. Mon  
as beforeIndexed  
J

2

## Fire Hyd S.E. Cor. Roscorans + Dickens

## Curb E.C. on Dickens

B.M.	4.96	14.88	9.92	S.W. Mon Roscorans + Dickens
Top cb		6.48 5.67 0.81	8.40	

6" Line	6.5' E of W.L.	2.00	Fl. 5.0 only pay → 06.9
---------	----------------	------	----------------------------

## Emerson

B.M.	4.33	9.61	5.28	S.W. Mon
6" Line	6.5' E of W.L.	-1.00	10.6 5.2 05.4 on pay	

## Fennelot

B.M.	4.12	7.02	2.90	stake
6" Line	6.5' E of W.L.	-3.30	10.3 5.7 04.6 on pay	

## Carlton

B.M.	8.48	18.40	9.92	S.W. Mon Roscorans + Dickens
6" Line	Crosser Storm Drain	7.70	10.70 4.2 05.9 on pay	

Alley Grader Block 4  
Hartleys North Park

Nov 25-39  
Sisson  
Northern  
Osborne

B/W 7.65 354.05 346.48

5 W.B.P  
Nightman  
+ 32nd

50' N of N.L. Nightman  
07 East

348.98

5.07  
4.56  
0.51

100' N of N.L. Nightman  
07 East

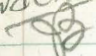
349.98

4.07  
3.57  
0.50

Indexed

3

Alley Paving Block 53 Univ. Hts  
 Monroe to Madison between Hamilton & Arizona

Indexed  


Doc 7-89  
 Sisson  
 Osborn  
 Chapman

4

	F	S	M
0+0 = H.L. Monroe	370.60	370.13	370.26
+20 BM 378.99	371.10	370.64	370.78
+40 SEBP Madison + Hamilton 380.10X	371.51	371.06	371.21
+60	371.12	371.38	371.53
+80 F.V.C.	372.06	371.61	371.76
1+22.5	372.44	371.99	372.14
1+65	372.82	372.38	372.52
2+07.5	373.20	372.76	372.90
2+50	373.59	373.14	373.29
2+92.5	373.97	373.52	373.67
3+35	374.35	373.91	374.05
3+77.5	374.73	374.29	374.43
4+20 P.V.C.	375.12	374.67	374.82
4+40	375.27	374.82	374.97
4+60 F.V.C.	375.36	374.91	375.06
5+0	375.48	375.03	375.18
5+40 P.V.C.	375.60	375.15	375.30
5+60	375.55	375.09	375.23
5+80	375.38	374.79	374.90
5+99.2 = S.L. Madison	374.80	374.45	374.30

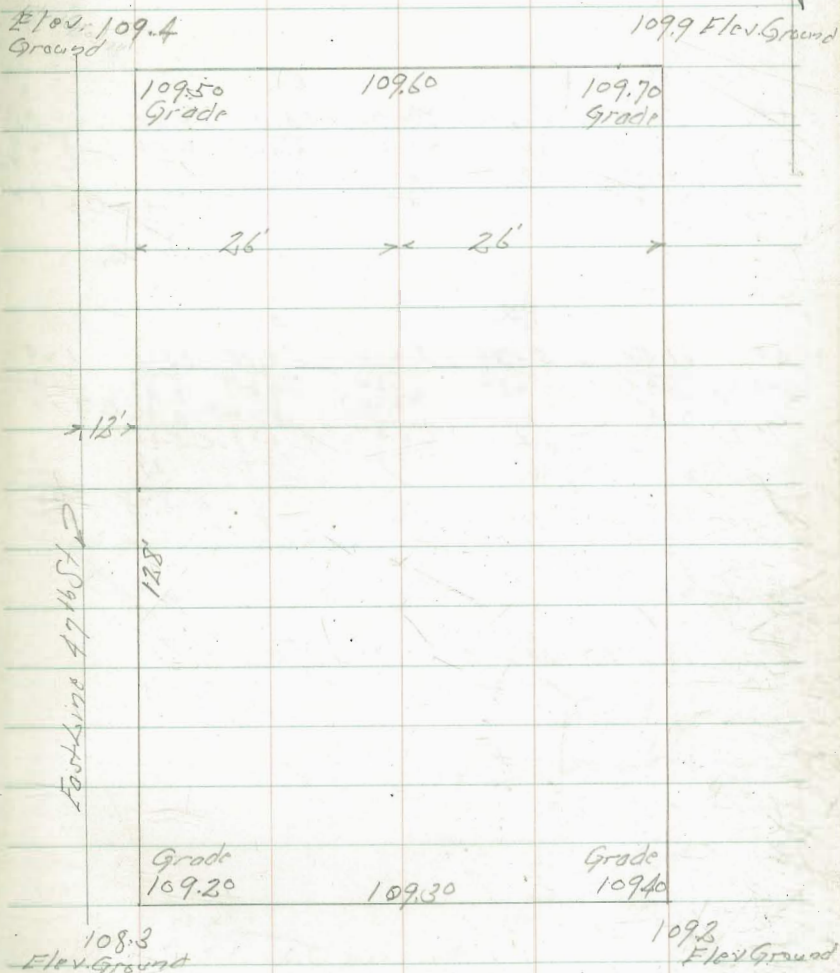
F	370.60	71.10	71.51	71.83	72.06	72.44	72.82
	6.62	6.10	5.71	5.39	5.16	4.78	4.40
		0.71	0.80	0.87	1.03	1.23	1.52
		0.737	0.777	0.772	0.778	0.655	0.498
M	370.26	70.78	71.21	71.53	71.76	72.14	72.52
	6.95	6.44	6.01	5.69	5.46	5.08	4.70
		5.92	5.45	5.06	4.75	4.66	3.70
		0.522	0.556	0.602	0.671	0.642	0.700
F	73.20	73.59	73.97	74.35	74.73	75.12	75.27
	7.15	6.76	6.38	6.00	5.62	5.23	5.08
	6.23	6.52	6.77	6.65	5.68	4.52	4.41
	0.92	0.223	0.561	0.325	0.54	0.71	0.67
M	72.96	73.29	73.67	74.05	74.43	74.82	74.97
	7.45	7.06	6.68	6.30	5.92	5.53	5.08
	5.95	5.96	5.63	6.05	5.54	5.08	4.87
	0.50	0.110	0.105	0.225	0.338	0.45	0.51
F	75.36	75.48	75.60	75.55	75.28	74.80	
	4.99	4.87	4.75	4.55	4.82	5.00	
	4.62	4.37	4.28	4.42	3.82		
	0.61	0.200	0.677	0.713	0.716		
M	75.06	75.18	75.30	75.23	74.90	74.30	
	5.29	5.17	4.80	4.87	5.20	5.80	
	4.28	5.02	4.07	4.20	4.25		
	0.01	0.011	0.073	0.58	0.75		

Tennis Court Ocean View School

B.M.	1.23	117.72	116.49	Six B.P. Ocean View + 47 feet
TP	3.87	114.17	7.92	110.30

~~Indexed~~  
②

Dec 13-89  
Sisson  
Northam  
Osborne 5



Moore  
12-26-29.  
Armada Pl. cb. + Pav.  
on Rosecrans

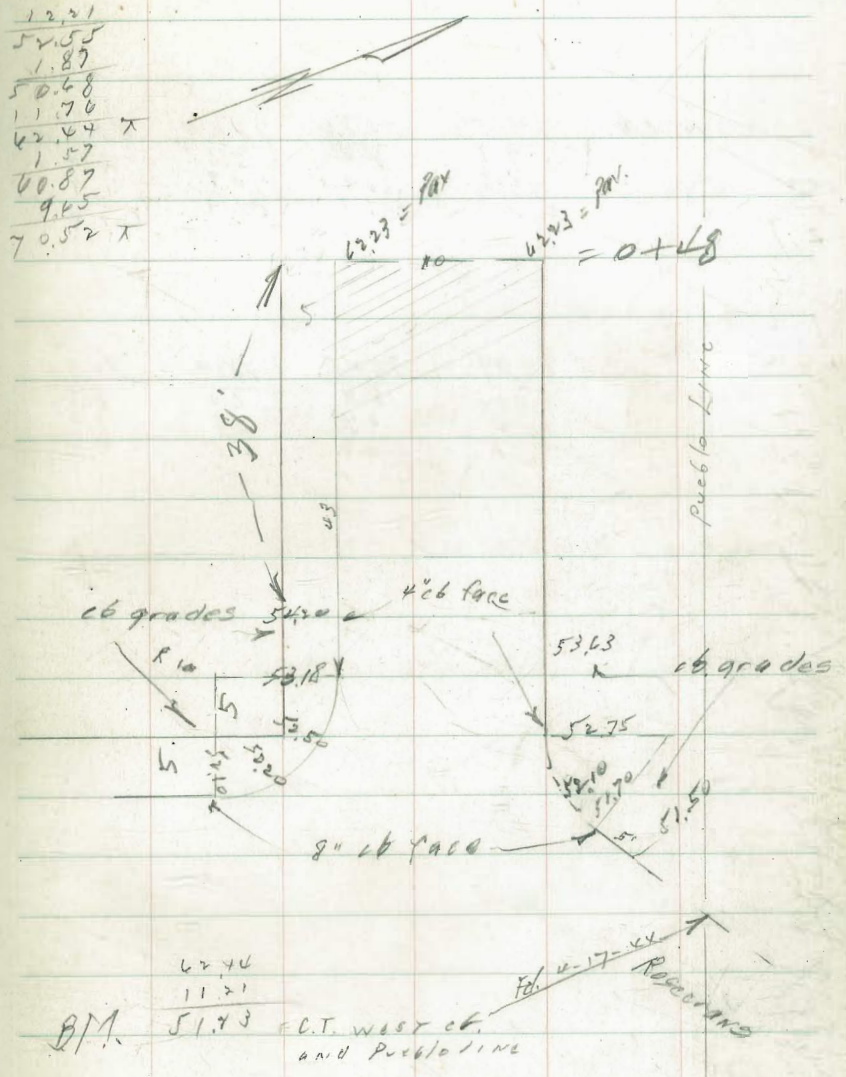
	P.C.		E.C.			
S cb.	52.10	52.20	52.50	52.18	54.20	62.23
	10.34	10.24	9.94	9.26	8.20	8.29
	10.60	10.96	10.48	9.06	7.62	5.77
	-0.26	-0.74	-0.54	0.50	0.64	0.54
					0.33	
					0.95 = Pav.	

	P.C.		E.C.			
N cb.	51.50	51.70	52.10	52.75	53.13	8.29
	10.94	10.74	10.34	9.69	8.81	5.19
	✓	0.0	9.00	8.40	3.66	0.3.10
			0.34	0.39	0.5.15	
					0.39	
					5.48 = Pav.	

CONTD. p 50

278.4 NW Rosecrans  
12.7 SP. BESSEMER  
40.41  
0.57  
40.84  
12.21  
52.65  
1.87  
50.68  
11.76  
42.44 X  
1.57  
60.87  
9.65  
70.52 X

Indexed  
J





Addison St 1/2 Pav. w/ly Willows

72.58 = 5 cb  
 11.65  
 82.23

Indexed

ny

N cb.	74.50	7584	78.60	81.32
	9.7	8.2	5.6	2.9
	1.0	0.7	0.7	1.9
	c 8.1	c 7.7	c 6.9	c 1.0

E	74.09	7545	78.19	80.90
	10.1	8.8	6.0	5.3
	10.2	9.4	8.5	7.9
	-0.1	-0.6	-2.5	-4.6

E

8090 80.82 81.32 1750

⊙ chisel 25 not cb  
 cut

7819 78.10 78.60 1700

7545 75.36 75.86 0 + 50

7409 74.0 74.54 43 cb R

7355

7329

73.60 74.10

5.16  
 72.58 Ex. cb El.

74.10 = El. X X 500 Ex. cb.

1-8-40

Ailey Pav N 50'

BIR 70 Park Villas by St. Dept

SL Dwight 209.83 310.90

0+20 211.22 311.90

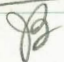
0+40 312.30 312.49

0+50 312.53 312.87

$$\begin{array}{r} 311.39 \text{ E. CG} \\ 4.66 \\ \hline 318.05 \end{array}$$

W	9.83	11.22	12.30	12.53
	8.50	6.81	5.73	5.50
	✓	5.20	5.13	4.89
		67.41	60.60	60.61

E	10.90	11.90	12.69	12.87
	7.16	6.13	5.34	5.16
	✓	3.04	3.80	3.86
		67.11	61.52	61.30

Indexed  


8

S. CURB CONST. ST DEPT.

WISTERIA DRIVE

80 c		89.75
0 + 17	4° 18' LT	89.05
0 + 34	4° 36' "	88.35
0 + 51	6° 54' "	87.65
0 + 68	P.O.C. 9° 12' "	86.95

89.75  
4.54  
94.31

9.05	8.35	7.65	6.95
5.46	5.94	6.60	7.31
	✓	✓	✓

Fd + checked 3-5-41.

Indexed  
J

9

	Alley Pav	St Dept
	BIK 3	E + W alley of Palms Hts
	N	S
E.L. BRANT 00	266.43	266.81
0 + 05	266.56	266.80
0 + 10	266.70	266.60
0 + 20 B.K	266.80	266.70
0 + 50	267.20	267.05
0 + 80 "	267.60	267.40
1 + 20	267.70	267.55
1 + 60 "	267.80	267.90
1 + 80	268.10	268.0
2 + 07.57 W.L. Alley N + S	269.0	268.60

Douglas  
M.W. BRANT

Indexed  
JG

10

268.00								
2.81								
270.81								
2.38								
267.43								
4.20								
273.67	4.33	6.56	6.70	6.80	7.20	7.60	7.70	
	4.38	4.45	4.11	4.01	3.61	3.21	3.11	
		3.90	3.71	3.60	3.04	2.53	2.37	
		0.55	0.40	0.41	0.54	0.68	0.74	7.8
	S	4.34	4.50	4.40	4.70	7.05	7.40	7.55
		4.45	4.31	4.21	4.17	3.76	3.41	3.14
			3.48	3.81	3.61	2.76	2.80	5.76
			0.70	0.60	0.50	1.0	0.55	0.39
	N	7.80	8.10	9.00				
		5.87	5.47					
		5.22						
		0.65						
	S	7.70	8.00	8.20				
		5.97	5.67					
		5.92						
		0.05						

Pav. on E.O.K.



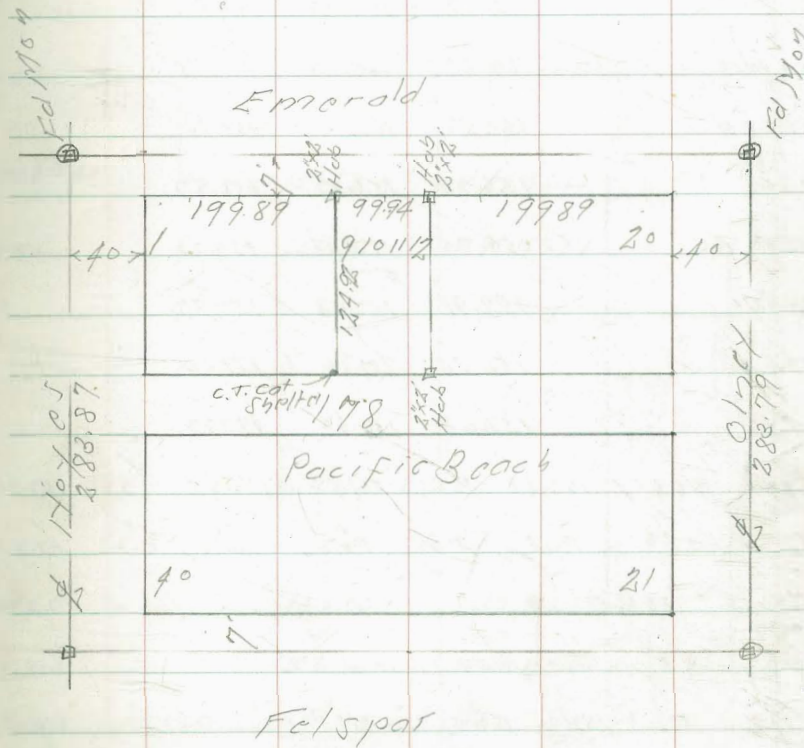
Survey Lots 9-10-11-12 Blk 178  
Pacific Beach

For Mrs. Erwin

Indexed  
~~OS~~

Feb. 40  
Sisson  
Northberg  
Osborn

12



926  
Ever green Grades so. of Sterne

	EGul	♀	W. Gul
NL Sterne	169.00	170.19	170.72
♀ "	166.87	167.50	167.66
♀ "	163.83	<sup>18</sup> 166.20 164.30	164.60
0+12.5	162.83	162.70	163.65
0+25.0	161.58	161.10	161.60
0+65	156.25	155.77	156.27
0+80 BC	154.25	153.77	154.27
0+90	152.91	152.43	152.93
1+00	151.58	151.10	151.60
+15	151.08	150.60	151.10

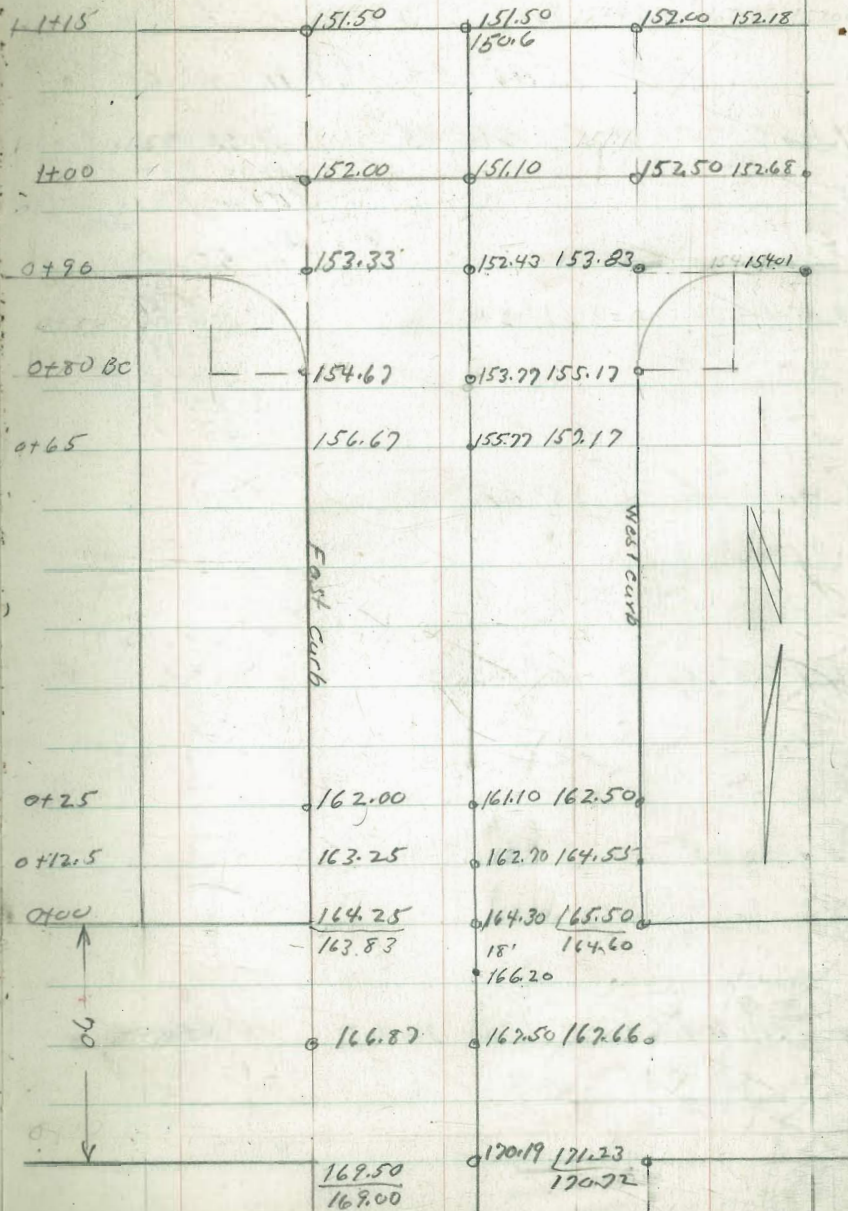
EL 169.00 166.87 163.83 162.83 161.58 156.25 154.25 152.91  
 00 ✓ C.16 F.08 F.07 F.02 6.16 C.23 F.14

EL 151.58 151.08  
 F.02 F.02

♀ 170.19 167.50 164.30 162.70 161.10 155.57 153.57 152.43 151.10 150.60  
 00 ✓ C.50 C.63 C.71 C.77 C.82 C.77 C.12

EL 154.01 152.68 152.18  
 C.84 C.68 F.02

13  
 See Page 11 for old grade  
 MED



Murray Cañon  
Rubbish Road "B" Line

F.B. 1560-53 <sup>R.P.</sup> 45' RT. 45' LT. <sup>R.P.</sup>

1786.75 E.C. 26°45' Assmd. B.M.  
Spike Tel. Pole  
SE Cor Black Smith  
Shop

50.00

1749.6

21°24'

2.45  
52.45  
1.97  
50.48  
10.69  
61.17

1712.05

16°00'

0774.70

10°42'

0737.35

5°21'

070 B.C. RT.

32' LT.

45' RT



Indexed  
PB

8

11

50.50  
10.6  
0.0

50.14

49.74  
11.4  
11.3  
0.1

49.92  
3.5  
2.6  
-0.1

49.42

48.92  
3.5  
3.1  
C 0.4

49.21  
3.2  
0.0

48.71

48.21  
4.2  
3.4  
C 0.6

48.50  
4.0  
5.1  
-1.1

48.0

47.50  
4.9  
3.9  
C 1.0

47.57  
4.9  
1.6  
-1.1

47.27

46.87  
5.6  
4.7  
C 0.9

46.74  
5.7  
5.1  
C 0.6

46.54

46.34  
6.1  
5.5  
C 0.6



3 + 70 E.V.C.

5.4  
2.4  
C 3.0

55.70

15  
5.4  
2.4  
C 1.0

3 + 50

6.6  
8.0  
C 1.0

54.58

6.6  
8.0  
C 2.0

3 + 30

61.17 T

7.5  
8.9  
C 1.6

53.63

7.5  
8.9  
C 1.0

3 + 10

8.3  
6.5  
C 1.8

52.83

8.3  
6.5  
C 1.5

2 + 90

8.9  
7.9  
C 1.0

52.21

8.9  
6.0  
C 2.9

2 + 70 P.V.C.

9.4  
8.3  
C 1.1

51.74

9.4  
7.1  
C 2.3

2 + 28.37

51.04  
1.00

50.94

50.84  
10.3  
9.4  
C 0.9

41.63

41.62

5700 6° 10.5

4780 3° 53.0

4760 1° 35.5

474609 B.C. LT 58' RT.  
40' LT.

4740

61.17 x  
4.14  
57.03  
4.79  
61.82

4720

4700

8  
59.50

59.0  
2.8  
4.2  
- 1.0

59.24  
1.9  
6.7  
- 4.8

59.06  
1.1  
7.2  
- 5.1

59.0  
1.1  
8.1  
- 6.0

59.10

2.6  
1.6  
- 1.0

3.6  
1.7  
- 1.9

59.74

59.56

59.35

59.26

58.54

57.50

16  
60.0  
1.8  
5.0  
- 3.4

60.24  
1.0  
1.8  
- 0.8

60.06  
1.1  
7.6  
- 6.5

59.70  
1.1  
9.2  
- 8.0

59.40

2.6  
8.3  
- 5.7

3.6  
6.6  
- 3.0

6+30

4° 09.5

61.82 X

57.91

57.41

57.91

$$\begin{array}{r} 4.9 \\ 7.8 \\ -2.9 \end{array}$$

$$\begin{array}{r} 3.9 \\ 0.0 \end{array}$$

6+10

1° 52.0

57.0

57.33

57.70

$$\begin{array}{r} 4.8 \\ 8.6 \\ -3.8 \end{array}$$

$$\begin{array}{r} 2.1 \\ 8.5 \\ -4.4 \end{array}$$

5+93.68 B.C. LT. 30' LT. STUB  
61.59 LT. X ON WINGMAIL - LINE

57.60 OUT 57.70 OUT 57.80

5+88.68 E. end Bridge

57.80

5+58.68 W. end Bridge

58.40

5+40.26 E.C. 10° 47.5 25' + 50' LT.

58.40

58.75

59.10

$$\begin{array}{r} 3.4 \\ 7.8 \\ -3.9 \end{array}$$

$$\begin{array}{r} 2.7 \\ 11.9 \\ -9.9 \end{array}$$

5+20

8° 28.0

58.60

59.10

59.60

$$\begin{array}{r} 3.2 \\ 5.0 \\ -1.8 \end{array}$$

$$\begin{array}{r} 2.2 \\ 9.1 \\ -6.9 \end{array}$$

7440/0

7+50

61.54

7+00

59.0

59.34

59.60

6+87.85 E.C. 10° 47.5 25' LT. 65' LT. RP

58.30  
3.5  
3.5  
0.4

58.80

59.30  
2.5  
1.5  
0.4

6+70

8° 44.5

57.64  
4.2  
4.6  
0.4

58.14

58.64  
3.2  
1.1  
0.1

6+50

6° 27.0

57.12  
4.1  
6.5  
- 2.4

57.62

58.12  
3.7  
5.3  
- 1.8

Murray Canon Bridge

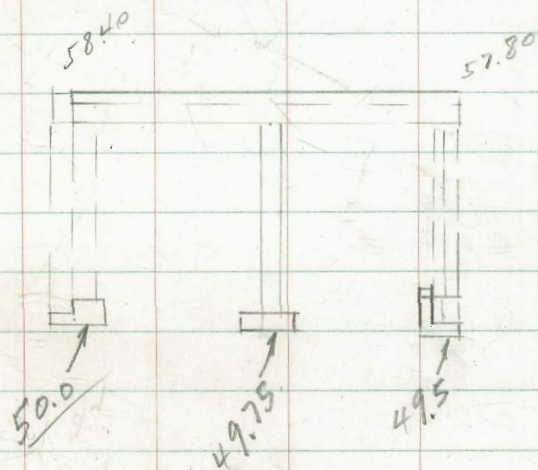
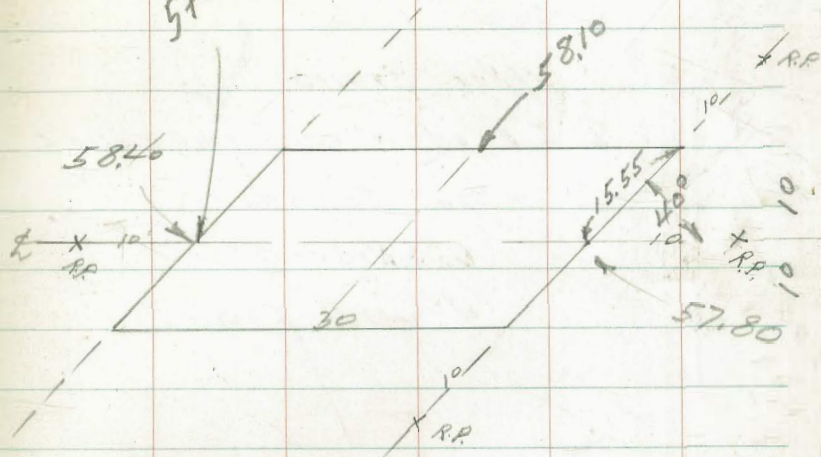
58.40  
 3.25  
 7.84  
 - 4.50

57.80  
 4.02  
 9.38  
 - 5.36

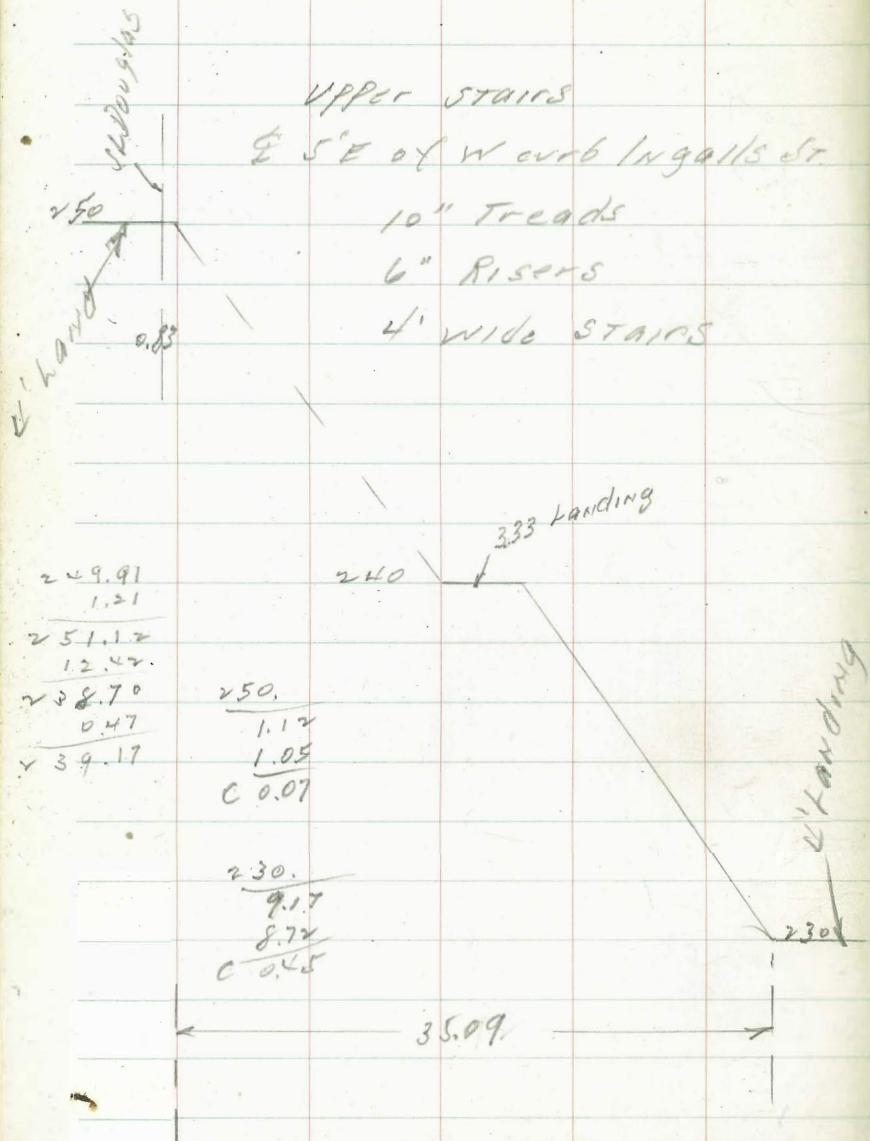
50.0

49.50

Indexed  
 58.68



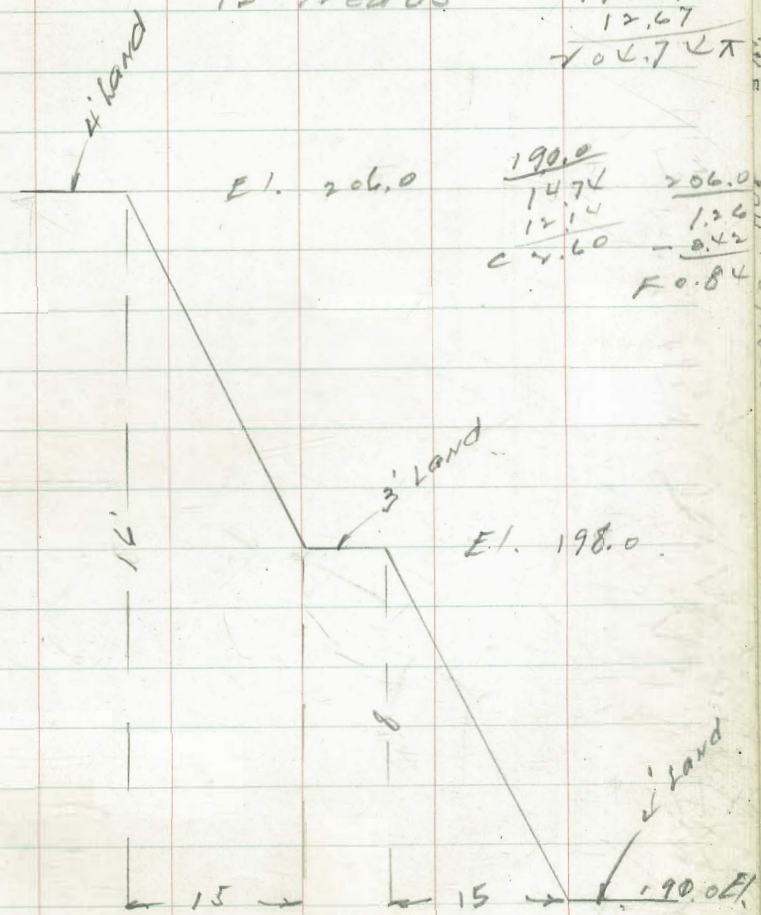
Grant School Playgrounds



Indexed

Lower Stairs

6" Risers 197.4 x  
 0.13  
 197.07  
 12.67  
 206.74 x

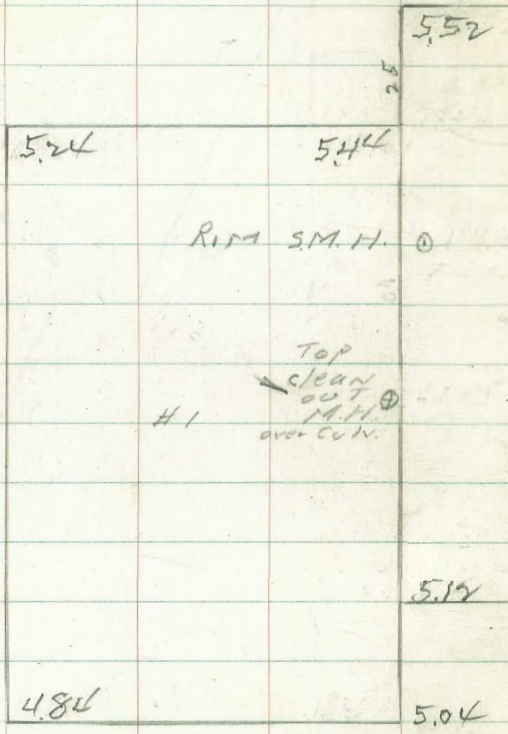


See F.B. 506-59 for C.V.

Grant School Tennis Courts

3 Courts 60x120 each

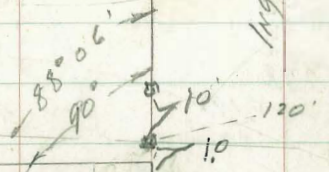
Pueblo line



Rim S.M.H. ①

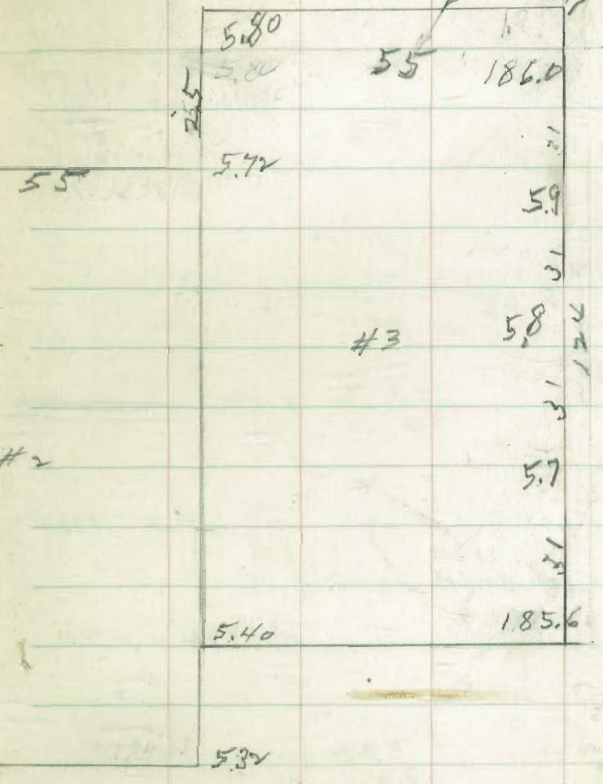
#1  
 Top  
 clean  
 out  
 M.H. ②  
 over C.V.V.

CUTS 1/4 to 1 Indexed



Ingalls

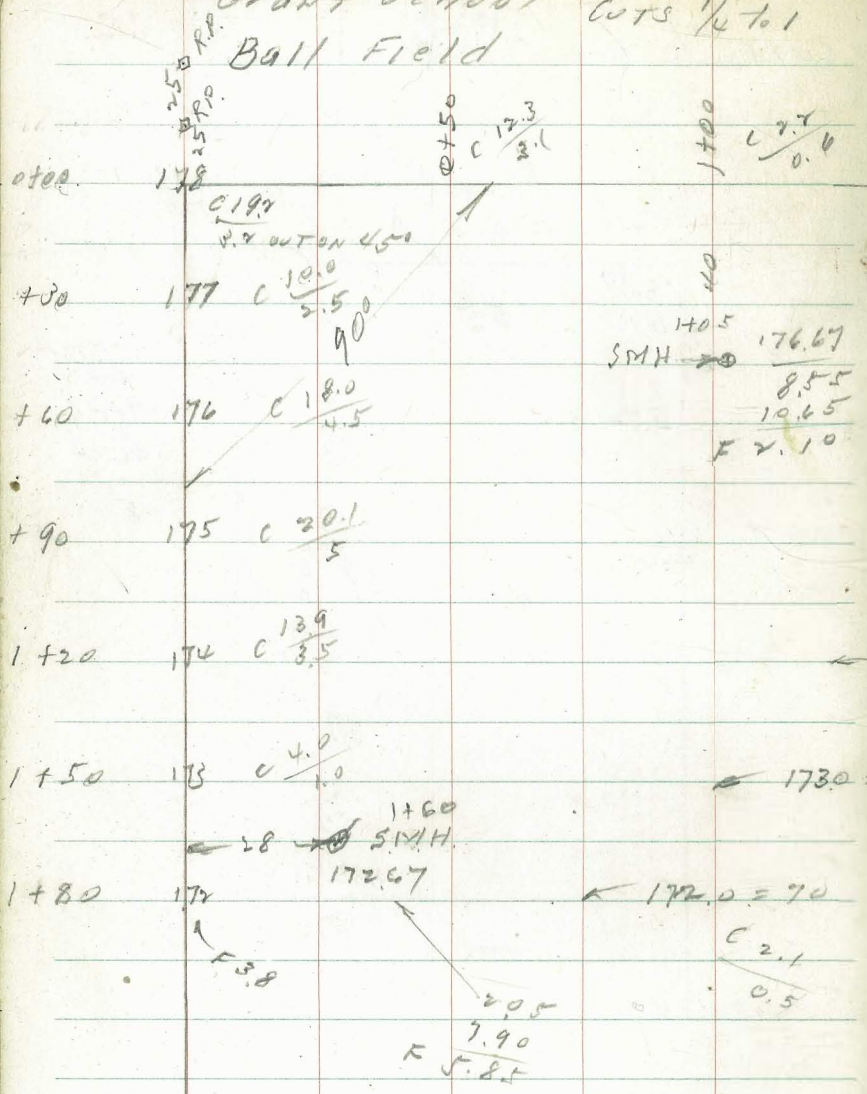
21



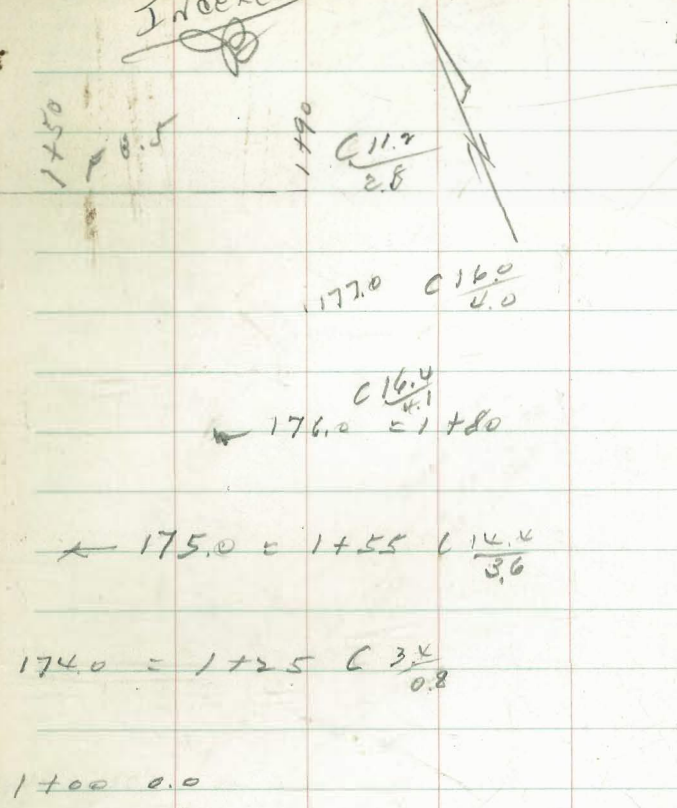
185.77  
 116°  
 197.37  
 0.77  
 196.60  
 10.23  
 708.93

R.P.  
 0101 XI HUB  
 0101010101

Grant School Cuts  $\frac{1}{4}$  to 1  
Ball Field



Indexed



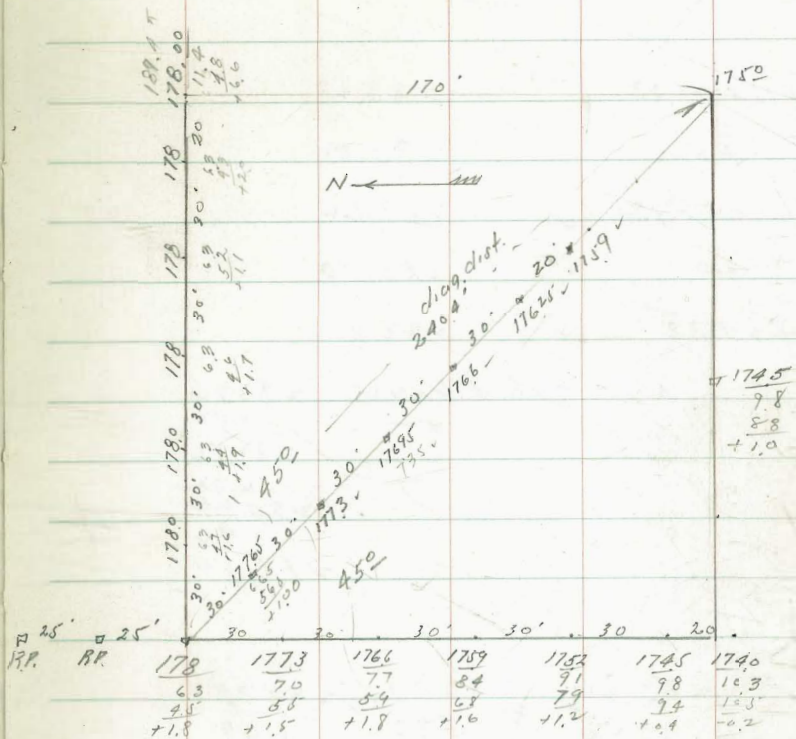
BM. 22  
 185.77  
 11.36  
 197.13  
 0.17 5706  
 196.96 BM.  
 0.57  
 197.23  
 12.68  
 184.60  
 0.62  
 185.42  
 12.30  
 172.92  
 1.80  
 174.72



Milker.  
 81.03  
 1.5611  
 5-24-40

Indexed  
 Additional Grades GRANT SCHOOL 23

Ball Field



17800 E. 1 Grade Horrie plate - 0400 P. 22

+ 9.2 = cut on stake

187.2 = Blue Stake

- 2.9 = Red below stake

184.3 = K

0.91

183.4 = TP

0.01

183.4 = T

38

145.6 chh. middle Tennis Court P 21

125.0

0.2 Error

N.L. Grades ON WASH. ST EXT.

AT 9TH ST 8-16-40

E.C. 11 + 20.83 283.28

+50 283.51

+78.78 ✓ 283.64

12 + 00 ✓ 283.59

+79.38 ✓ 283.35

NW 9th & UNIV. 283.76

5.40

289.16

4.72

284.44

3.90

288.34

283.64 283.59 283.35

↓.70 ↓.75 ↓.99

283.42

↓.97

4.14

F 1.4

F 1.4  
Ed. old LATH MKD.  
check old fill  
on SW Cor. of  
Buckholder Lot.

Indexed  
B

24

3-4-40

Mode	Par. Alley 15' wide	NE	32nd Palm
	Blk 1 Carmel Hts		304.00
			4.79
			308.79
			1.58
N. Palm	304.50	304.50	307.01
			5.20
+20	5.00	5.05	312.55
			3.13
+40	5.40	5.60	309.42
			5.20
+60	5.80	6.00	314.96
+80 EVC	6.00	6.20	
1+00	6.16	6.36	
+50	6.55	6.75	
2	6.94	7.14	
+50	7.34	7.54	
3	7.73	7.93	
+50	8.12	8.32	
4	8.51	8.71	
+50	8.92	8.92	
+80 Pvc	9.15	9.35	
5+00	9.20	9.40	
+20	9.10	9.30	
+40	8.90	9.10	
+60	8.50	8.70	

Indexed W

5+80 7.90 8.10 25  
 6 6.85 7.60

W	4.54	5.00	5.40	5.80	6.00	6.16	6.55
	4.27	3.79	3.39	2.79	2.79	2.63	2.00
		2.20	2.81	2.21	1.79	1.63	5.00
		C1.04	C1.08	C0.78	C1.0	C1.0	C1.00
E	4.53	5.05	5.60	2.79	2.59	2.43	5.80
	4.26	3.74	3.19	1.81	2.01	1.48	4.00
		3.43	3.34	C0.98	C0.58	C1.0	C1.00
		C1.01	C0.85				
W	6.94	7.34	7.73	8.12	8.51	8.92	9.15
	5.61	5.21	4.84	4.43	4.45	4.02	5.81
	5.56	4.21	3.82	3.43	3.20	3.02	5.24
	C0.05	C1.0	C1.0	C1.0	C1.25	C1.0	C0.17
E	5.41	5.01	4.62	4.23	3.84	3.84	5.61
	4.21	3.01	2.62	2.23	1.84	2.84	4.59
	C1.0	C1.0	C1.0	C2.0	C2.0	C2.00	1.02
W	9.10	8.90	8.50	7.90			6.85
	5.86	5.06	6.46	7.06			8.13
	5.89	5.71	0.44	5.42			
	C0.03	C0.35	C6.10	C1.64			
E	5.66	5.86	6.34	8.10			7.60
	4.41	4.36	4.22	6.86			7.36
	C1.25	C1.50	C2.02	C4.70			
				C2.16			

Location of Fire Alarm  
System Radio Towers.

Balboa Park.

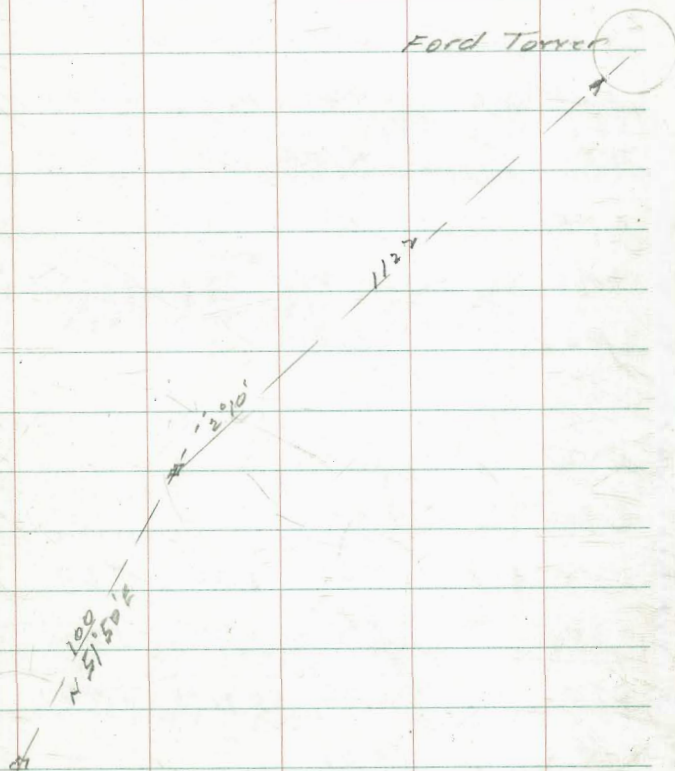
Vicinity 9th & E/M.

Moore  
Hale

3-7-40

Indexed  
B

Ford Tower



Moore					NE 31574 R.P. Dwight
3-15-40.	Pav. alley	46	Park Villas		
		W	E		332.46
					6.31
00	NW Dwight	333.39	3.23	333.34	338.97
					4.65
0+10		3.81	3.65	3.78	334.32
					5.01
+20		4.12	3.86	4.10	339.93
					3.40
+30		4.31	4.06	4.31	336.53
					4.08
+40	E.V.C.	4.40	4.15	4.40	340.61
					4.59
+90		4.55			336.02
					5.75
					441.77
1	+40	4.70			
	+90	4.85			
2	+40	5.00			
	+90	5.15			
3	+40	5.30			
	+90	5.45			
4	+40	Brk.	5.60	5.35	5.60
	+60	"	5.74	5.47	5.72
	+80	"	5.96	5.71	5.96
5	+10		6.61		
	+40	"	7.26	7.01	7.26
	+60	"	7.55	7.23	7.42
	+80	"	7.61	7.31	7.51
6	+00	"	7.44	7.18	7.27

Indexed		Reset		C.090			
W	339 3.81	4.12	4.31	4.40	4.55	4.70	4.85
	4.56 6.12	5.81	5.22	5.53	6.06	5.91	5.76
	4.57 3.30	3.95	3.46	3.33	4.42	4.91	5.10
Low	.03 Cr. 8.25	C.186	C.198	C.200	C.144	C.110	C.060
E	3.34 3.78	4.10	5.12	5.53	6.06	5.91	5.76
	4.59 6.15	5.83	4.01	4.01	4.06	5.21	5.64
	4.62 4.00	3.81	C.161	C.150	C.20	C.060	C.012
Low	.03 Cr. 1.5	C.02					
W	5.00 5.15	5.30	5.45	5.60	5.72	5.96	
	5.41 5.46	6.27	6.32	6.17	6.05	5.81	
	5.71 4.46	4.47	5.27	5.24	5.53	5.46	
F	0.10 C.10	C.20	C.10	C.25	C.05	C.035	
E	5.61 5.06	6.47	6.34	6.17	6.05	5.81	
	4.61 3.40	6.30	5.32	5.50	5.05	5.21	
	C.10 C.20	C.017	C.10	C.067	C.10	C.060	
W	6.61 7.26	7.55	7.61	7.44			
	5.16 4.51	4.22	4.10	4.33			
	5.14 4.51	3.72	3.46	4.37			
	C.0.02	0.0	C.0.50	0.00	LOW		
E	5.16 4.51	7.42	7.51	7.22			
	4.50 4.07	4.35	4.26	4.55			
	C.0.66	C.0.44	3.92	3.97	4.59		
		C.0.43	C.0.37	0.04	LOW		

Watson, Conze

4-5000

PAV. STRIP ON 17TH  
BETW. E & F STS  
for ST DEPT.

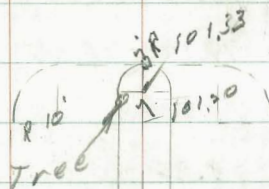
100.0  
4.51  
104.51

6' betw cb face  
too save Pepper Tree

Indexed  
B

23

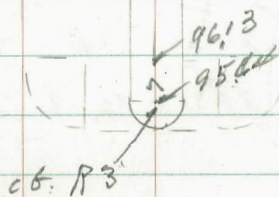
bridge | E ST.



39

17'

TOP F.H. ASSUMED  
EL. 100.0



F ST.

Pav. Alley BIK 55 V.H.

Maure  
OSBORN  
Hale  
4-16-40

	W	E	F
NL Monroe 0+0	377.81	77.66	377.94
0 + 20 Break	78.77	78.37	78.57
0 + 40 "	79.12	78.62	78.82
0 + 91	79.24		
1 + 42	79.36		
1 + 93	79.47		
2 + 44	79.59		
2 + 95	79.71		
3 + 46	79.83		
3 + 97	79.95		
4 + 48	80.06		
4 + 99	80.18		
5 + 50 Break	80.30	79.90	80.0
6 + 00 S.L. Macd.	80.37	80.09	80.22

SEBP Idaho + Macd.

Indexed  
98

23

378.87 6.17							
385.00							
5.52 W 7.81	8.77	9.12	9.24	9.36	9.47		
379.52	6.67	5.71	5.84	5.24	5.12	5.33	
4.72	6.71	5.41	4.98	4.57	4.58	4.65	
384.24	-0.04	0.30	0.38	0.67	0.54	0.70	
4.66 E 7.94	8.57	8.82	5.54	5.44	5.65		
379.78	6.54	5.91	5.66	4.75	4.52	4.65	
5.04		5.54	5.08	0.79	0.90	0.10	
384.82		0.37	0.58				
5.09							
379.73	W 9.59	9.71	9.83	9.95	80.06	80.18	
4.75	5.23	5.71	4.61	4.49	4.98	4.84	
384.48	4.98	4.44	3.61	4.46	4.98	3.86	
	0.25	0.67	0.10	0.03	0.0	0.10	
	E 5.83	5.41	4.91	4.79	5.28	5.16	
	4.98	5.04	5.08	5.30	4.28	5.16	
	0.55	0.37	-0.17	-0.51	0.10	0.0	
	W 80.30	80.37				384.48	
	4.74	4.67				7.66	
	4.38	4.70				6.82	
	0.36	0.52				6.91	
						0.09	
	E 80.0	80.22		80.09	E		
	5.04	4.84		4.95			
	5.04	4.84		4.95			
	0.0	0.07	Low	0.0			

4-25-40.

Foster, CONTR.

Pav. alley 15' wide

Blk + Hartleys N. Park

W

E

0 + 0 N &amp; Wightman 348.18 347.98

0 + 20 Break 48.58 48.38

0 + 28 6" Drain W. 48.74 48.54

0 + 50 49.18 48.98

1 50.18 49.98

1 + 30 50.78 50.58

1 + 60 Break 51.38 51.18

1 + 80 " 51.64 51.44

2 + 00 Pav. Shalley 51.64 51.44

346.40 SWBP 3<sup>rd</sup> + Wightman  
 7.74  
 354.14  
 3.56  
 350.58 W 4818 4858 4874 4918 5018  
 5.60 5.54 5.40 4.96 3.96  
 256.18 ✓ 4.86 3.40 2.94 1.96  
 C 1.0 C 2.0 C 2.0 C 2.0

Indexed

30

E 47.98 4838 4854 4898 49.98  
 6.14 5.76 5.60 5.16 4.16  
 4.76 4.60 4.52 3.90  
 C 1.0 C 1.0 C 0.61 C 0.26

W 5078 5138 5164 51.64  
 5.40 4.80 4.54 4.56  
 5.21 4.40 3.54 4.56  
 C 0.19 C 0.40 C 1.00 0.0 Pav.

E 50.58 51.18 51.44 51.44  
 5.60 5.00 4.74 4.76  
 5.20 4.94 3.74 4.75  
 C 0.34 C 0.04 C 1.00 C 0.01 Pav



4-24-40

Foster, CONT.

Par. alley 15' wide

B/K 3 Hartleys N. Park

	W	E
0+0 NW Wightman	351.35	351.24
+10 Break	52.13	52.0
+20 "	52.79	52.63
+30 "	53.31	53.13
+40 "	53.70	53.51
+50 "	53.96	53.76
+60 "	54.08	53.88
1 +10 "	54.38	54.18
1 +60 "	54.68	54.48
1 +70 "	54.78	54.59
1 +80 "	54.68	54.50
2 +00.58 W alley	54.43	54.32

	W	E
350.78	51.35	52.13
828	7.71	6.93
859.04	7.74	6.93
4.78	-0.03	0.20
854.28		0.10
5.31		0.10
859.59		0.10
	52.0	52.63
	7.87	7.06
	7.81	6.03
		5.43
	0.10	0.10
	53.96	54.38
	5.10	4.68
	4.10	3.98
	0.10	0.30
	53.76	54.18
	5.30	5.18
	3.30	4.18
	0.20	0.18
	54.68	54.48
	4.91	4.88
	4.15	4.58
	0.70	3.58
		0.18
	54.50	54.59
	4.91	4.63
	4.15	4.70
	0.70	-0.07
	54.50	54.32
	4.56	4.74
	4.78	4.79
	0.24	-0.05

31

CONST. So. Curb on  
VENTURA PI.

0+00 W.L.M. Bvd	-1.10	
+50	-0.50	5.03
1	0.10	8.50 ✓
+50	0.70	7.90 ✓
1+76.3 P.V.C.	1.00	7.60 ✓
1	1.24	7.38 ✓
2	1.58	7.02 ✓
3	1.95	6.65 ✓
4	2.40	6.20 ✓
5 E.V.C. 2+76.3	2.90	5.70 ✓
1	3.50	5.10 ✓
2	4.10	4.50
3	4.55	4.05
4	4.95	3.65 ✓
5	5.35	3.25 ✓
6	5.60	3.00 ✓
7	5.70	2.90 ✓
8	5.70	2.90 ✓
9	5.45	3.15 ✓
4+76.4 <sup>10</sup> OCEAN FRONT WALK	4.75	3.85 ✓

SW Ventura  
Seawall

32

7.51  
1.09  
8.60  
8.50  
0.10  
4.43  
4.53

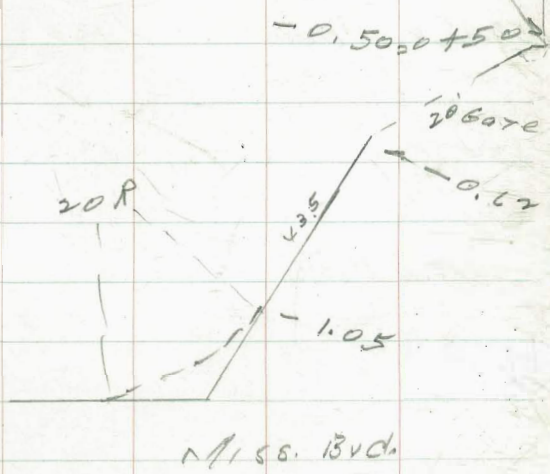
Indexed  
of

F 0.93

F 0.95

F 0.80

F 1.15



6-13-40 Balboa Ave Grades

edge 40' Pav.

def. backed up

S E N

17 2°38.9 F1.5 12.90 12.90 .00

+50 1°37.5 F2.0 12.80 12.80 F0.4

18 0°36.1 F1.7 12.70 12.70 F0.6

+29.38 EC F1.7 12.6 12.6 F0.5

18+58.98 W. end Bridge 13.0

20+54 E " " 13.20

51.80

21+05.80 = 1°32' Pt 13.3 F0.3 13.3 F1.4

B.M. Mon.

1117  
729  
1846

Indexed  
OS



MOORE  
6-19-40.

PRV. Alley 16' wide

HUTCHISON  
CONTR.

BIK 152 M.B.

± STA.	N	E	S
0+00 E. M. Blvd.	-0.70	-0.75	-0.70
0+10 Break	-0.50	-0.70	-0.50
0+35 "	-1.07	-1.21	-0.95
0+55 "	-1.35	-1.46	-1.17
0+75 "	-1.52	-1.63	-1.34
1+15.87	-1.78	-1.91	-1.66
1+56.74 <sup>W.L.</sup> Bayside	-2.00	-2.20	-1.97

SAN JUAN PI.  
Sea Wall

Indexed  
by

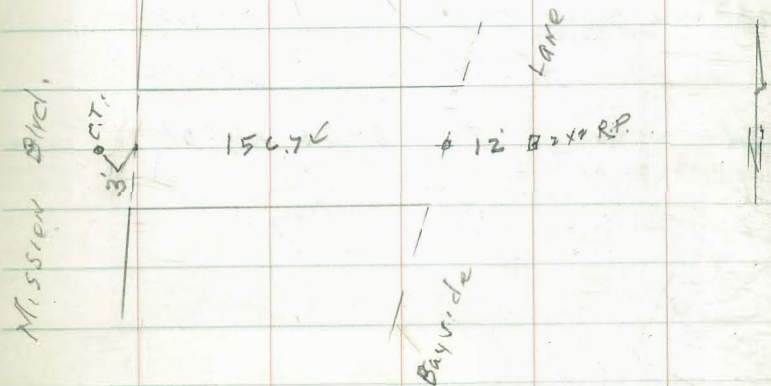
35

7.07							
0.73							
7.80							
7.38							
0.42							
4.13	N	-0.50	-1.07	-1.35	-1.52	-1.78	-2.00
4.55		5.05	3.15	3.15	3.15	3.15	3.15
5.21		5.07	4.22	4.50	4.67	4.93	5.15
-0.66		F 0.02	4.21	4.50	4.64	4.94	5.54
3.81	S	-0.50	0.01	0.0	C 0.03	F 0.01	F 0.39
3.15		F 0.05	-0.95	-1.17	-1.34	-1.66	-1.97
		4.74	3.15	3.15	3.15	3.15	3.15
		C 0.31	4.10	4.32	4.24	4.81	5.12
			3.81	3.32	4.25	5.04	5.42
			C 0.29	C 1.0	C 0.22	F 0.23	F 0.30

SLAT #1 -3.13 ON N side alley  
4.28  
4.40  
C 1.88

" #2 -2.93 " S " "  
7.08  
4.85  
C 2.23

0+00 = -0.70 -0.75 -0.70  
5.25 5.30 5.25  
0.0 5.48 0.0 chisel cut  
chisel cut -0.18



6-24-00

Lewis St. Grading

Albatross to Front

SL STA.	S	E	N	Pipe on N = 00
3' W of E.L. Albatross = 00	284.07	284.16	284.32	
0 + 28 Break E	84.47	84.40	84.74	
0 + 78	85.58		85.83	
1 + 33 W.L. alley	84.70	84.68	84.95	
1 + 48 E.L. "	84.70	84.68	84.95	
2 + 03 P.V.C.	84.11	84.09	84.34	
2 + 23	85.79	85.82	86.15	
2 + 43	85.31	85.52	<del>85.72</del>	
2 + 44.77 = Δ N.L. = P.C.			86.02	
2 + 63	84.70	85.18	85.96	
2 + 78 = W.L. FRONT ON SOUTH	84.14			
2 + 83 ON N.L.			285.72	
3 + 07.68 " = W.L. FRONT to N		84.62	85.68	
		W.L. FRONT		

284.96 SEBP Lewis + FRONT

6.91  
√ 91.87

Indexed

36

	4.6	5.7	6.8	6.8	6.2	5.9	5.4
			5.1	5.1	5.7	6.0	6.5
			5.2	5.2	4.2	4.4	4.5
			-0.1	-0.1	C 1.5	C 1.6	C 2.0
N	4.7	5.8	7.0	7.0	6.4	6.2	6.0
	7.2	6.1	4.9	4.9	5.5	5.7	5.9 = Δ
	5.7	5.2	0.0	5.0	4.8	4.6	4.4
	C 1.5	C 0.9		F 0.1	C 0.7	C 1.1	C 1.5
S	4.8	4.14 = 0.6					
	7.1						
	4.5						
	C 2.6						
N	5.9	5.68 = 0.6					
	6.0						
	4.2						
	C 1.8						

6-26-40

 PAV. Gilley 15' wide Dennis Co.  
 Bix 33 Park Villas A.C. Pav  
 " F McFadden + Buxton

	W	E	E
0+00			
N L Dwight	333.62	33.48	333.58
0+40 Break	34.16	33.89	34.13
+90	34.84	34.58	34.88
1+40 PVC	35.52	35.27	35.52
+60	35.85	35.60	35.85
+80 EVC	36.27	36.02	36.27
2	37.48		
3	38.69		
4	39.90		
5	41.12		
6	42.33	42.08	42.33
+60	42.76	42.51	42.76
+80 EVC	43.17	42.87	43.17
5+10	43.60		
5+40 PVC	44.08	43.83	44.08
+60	44.19	43.94	44.19
+80	43.89	43.63	43.87
6 S.W. Lardis	43.17	42.92	43.11

3328 W NE BP 31 ST + DWIGHT

 5.76  
 338.58  
 3.02  
 335.56  
 7.75

Indexed

37

	W	E	E	E	E	E
3	34.16	34.84	35.52	35.85	36.27	37.48
	4.39	3.71	3.03	7.46	7.04	5.83
	4.14	2.71	2.03	7.08	6.04	4.14
	0.25	0.10	0.10	0.88	0.10	0.33
4	34.13	34.83	35.52	35.85	36.27	37.48
	4.42	3.72	7.79	7.46	7.04	5.83
	4.12	3.52	7.23	7.00	6.04	4.83
	0.30	0.20	0.24	0.46	0.10	0.12
5	38.69	39.90	41.12	42.33	42.76	43.17
	4.62	3.41	7.77	6.56	6.13	5.77
	4.42	2.41	4.77	5.56	5.13	4.77
	0.20	0.10	0.10	0.10	0.10	0.10
6	38.69	39.90	41.12	42.33	42.76	43.17
	4.62	3.41	7.77	6.56	6.13	5.77
	3.62	2.93	7.36	6.67	6.04	5.50
	0.10	0.08	0.41	0.11	0.09	0.27
7	43.60	44.08	44.19	43.89	43.17	42.92
	5.29	4.97	4.86	5.16	5.88	6.13
	4.29	4.49	3.86	4.28		6.15
	0.10	0.08	0.10	0.88		0.02
8	43.60	44.08	44.19	43.89	43.17	42.92
	5.29	4.97	4.86	5.18	5.94	6.15
	5.39	5.00	4.50	4.48	6.09	6.02
	0.10	0.03	0.36	0.70	1.06	LOW





7-11-4015 Alley Pav  
Moore BIK 6 Wilshire Pl.

DENNIS  
6" Cor.

INDEXED

	W	E	E
00 NL E1 Canyon	365.50	5.25	365.50
+50	5.65		
1	5.81		
+50	5.96		
2	6.12		
+50	6.27		
3	6.43		
+50	6.58		
4	6.74		
+50	6.90		
5	7.05		
+50	7.21		
+67.3	7.26	7.01	7.26
+87.3	7.49	7.00	7.22
6 +107.3 SLMeads	7.27	6.93	6.99

607' - 6" Water

	SW	41ST	4	CAYON				
364.42	6.04							
370.46	4.30	W	5.50	5.65	5.81	5.96	6.12	6.27
366.16	5.20		4.96	4.81	5.55	5.40	5.24	5.09
371.36	4.10	F	5.01	4.74	5.19	5.27	5.19	4.77
367.26	5.33		0.07	0.07	0.080	0.13	0.05	0.07
372.59		E	5.80	5.65	5.55	5.40	5.24	5.09
			4.80	5.71	5.24	5.57	4.82	4.09
			0.12	0.19	0.31	0.17	0.42	0.05

chisel  
Cross

W	6.58	6.74	6.90	7.05	7.21	7.26
+50	4.78	4.62	4.46	5.54	5.38	5.33
	4.76	4.48	4.24	4.54	4.57	5.00
	0.02	0.14	0.02	0.10	0.81	0.33

F	4.78	4.62	4.46	5.54	5.38	7.20
	4.43	3.02	4.24	5.30	4.69	5.33
	0.15	0.10	0.02	0.24	0.69	4.72
						0.61

W	7.29	7.27	chisel
	5.30	5.32	
	4.30	5.28	cross
	0.10	0.04	

E	7.22	6.99	
	5.37	5.60	
	4.78	5.44	
	0.59	0.16	

chisel  
cross

6.93  
5.66  
5.71  
0.05 Low

20' Alley Pav.

Griffith Co. 4" H.C.P.

7-9-40

Blk 133 U.H.

312.08 SEBP Tyler &amp; Cleveland

0.81

40

Q STA

W Q E

9 of HL Tyler

0 + 00 302.54 302.27 302.69

0 + 07.32 302.80 302.45 302.70

0 + 25.91 EVC 303.20 302.90 303.20

1 4.10

2 5.00

3 5.90

4 6.80

5 7.70

② 2 + 65.91 PVC 308.60 308.30 308.60

3 + 05.91 309.30 309.0 309.30

3 + 45.91 EVC 309.80 309.50 309.80

① 10.20

② 10.60

③ 17x.8 = Δ 826 Rt 311.0 310.70 311.0

+ 92.80 11.22 10.92 11.22

5 + 02.80 11.39 11.10 11.40

+ 12.80 11.74 11.45 11.74

+ 22.8 12.24 11.96 12.28

+ 32.8 12.91 12.65 12.98

Indexed

Nail  
POST

312.89	W 2.54	2.80	3.20	4.10	5.00	5.90	6.80	7.70
10.21	✓ 10.27	10.09	7.13	6.23	5.33	4.43	3.53	2.98
309.48		9.96	6.63	5.99	4.65	3.43	3.70	5.34
7.05		2.013	2.050	2.024	2.068	2.10	2.17	2.034
310.33	E 2.69	2.70	3.20	4.23	5.23	6.43	2.53	4.98
3.09	10.20	10.19	7.13	5.78	5.12	3.98	2.85	4.41
307.24		5.44	9.43	6.77	5.045	4.021	3.045	2.068
5.44		0.74	0.74	0.84				0.57
312.68	W 8.60	9.30	9.80	10.20	10.60	11.00	11.22	
1.60	4.08	3.28	2.00	3.40	3.20	10.18	9.96	
311.08	4.58	4.43	5.79	5.32	4.98	11.22	10.61	
2.72	F 0.50	F 1.05	F 1.29	F 1.72	F 1.78	F 1.04	F 0.65	
313.80	E 4.08	3.38	2.00	3.40	3.20	10.18	11.22	
1.44	3.47	2.23	3.49	2.54	2.20	9.18	9.96	
312.16	C 0.61	C 1.15	C 0.51	C 1.06	C 1.00	C 1.0	C 0.94	
9.02								
311.18	W 11.39	11.74	12.24	12.91				
	9.79	9.44	8.84	8.27				
	10.59	10.44	9.94	8.61				
	F 0.80	F 1.0	F 1.10	F 0.34				
	E 11.40	11.76	12.28	12.98				
	9.78	9.43	8.90	8.20				
	8.27	7.98	7.72	2.20				
	C 1.51	C 1.44	C 1.18	C 1.0				

	W	E	E
+42.8	13.75	13.50	13.86
+52.8	14.75	14.53	14.90
+62.8	15.73	15.55	16.03
+72.8	16.54	16.42	17.05
+82.8	17.12	17.04	17.88
+92.8	17.52	17.50	18.48
+102.8	17.72	17.85	18.68
+112.8	17.73	18.15	18.88
+122.8 <sup>S.L</sup> Van Buren	17.71	18.37	19.48

321.18 T

41

W	3.75	4.75	5.73	6.52	7.12	7.52
	7.43	6.43	5.45	4.66	4.06	3.66
	8.11	7.43	6.66	5.59	3.06	3.66
F 6.68	F 1.0	F 1.21	F 0.93	C 1.0	0.0	
E	3.86	4.90	6.03	7.05	7.88	8.48
	7.32	6.28	5.15	4.13	3.30	2.70
	5.54	4.54	4.19	2.77	1.49	1.10
C 1.78	C 1.74	C 0.94	C 1.36	C 1.81	C 1.60	
W	7.72	7.73	7.71			
	3.46	3.45	3.47			
	3.64	3.47	3.63			
F 0.18	F 0.02				18.37	
E	8.68	8.88	9.48		2.81	
	2.50	2.80	1.70		2.79	
	0.80	0.17	1.65		.02 H	
C 1.70	C 2.13		.05 H			

7-11-40.

Orange Ave. Pav.

Dennis  
3" AC. on 3" crushed

37th to 40th

37th St	368.35	8.27	7.91	7.85	7.57	7.50	38th St
		8.46			7.78		
	850	8.37	✓		7.72	7.70	
	7.07	8.01			7.39		
	7.39			6.77	6.65		

BREAK  
High CON. Pav  
SPOT5 LAT #1  
362.80

201

38th St	6.99	6.89			5.53	5.26	39th St
		7.12			5.97		
	7.30	7.08	✓		6.05	6.00	
	6.93	6.79			5.76		
	6.24			5.12	5.02		

2.20 ← 2.20  
6.00Orange  
37th  
MWBSP

319.87
3.22
373.09
4.85
368.24
2.96
371.20
5.51
365.69 = 0.17 Orange
3.77
369.44 O.K.

~~Index~~

42

39th St	4.80	4.72			4.08	3.99	40th St
		5.04			4.34		
	5.32	5.12			4.35	4.12	
		4.93			4.11		
	4.60	4.50			3.61	3.50	

4.80 4.60

4.45 40th + Orange

SIS = 364.50 364.62  
Book

Note! Sewer Lat #1 and  
water service put  
in by building contractor

Ailey Pav.  
152 UNIV. HTS.

Criff 7-16-40

0+00	NL Polk	369.23	9.04	369.20
0+10	Break	69.32	9.09	69.52
0+60		69.44	9.20	69.59
1+10	"	69.57	9.32	69.67
1+55		69.69	9.44	69.73
2+00	"	69.80	9.55	69.80
2+20	"	69.92	9.67	69.92
2+50		70.21		
3		70.70		
+50		71.19		
↓		71.68		
+50		72.17		
.5		72.66		
+30		72.95		
5+60	"	373.25	3.00	373.25
+80	"	338	3.20	333
6+00	SL Howard	373.18	373.10	373.28

~~Indexed~~  
531 HE = E Ailey Pav.  
527 HE

raised grade

See Next Page for tile drain

369.96	SE, Polk & Idaho								43
4.39									
376.35	W	9.23	9.32	9.44	9.57	9.69	9.80		
4.60									
369.71		5.12	5.03	4.91	4.78	6.78	6.67		
6.76		5.18	4.74	4.44	4.58	6.30	6.84		
376.47	W	6.64	6.29	6.27	6.20	6.48	6.19		
4.42	E	9.20	9.52	9.59	9.67	9.73	9.80		
372.05		5.15	4.83	4.76	4.68	6.74	6.64		
6.23		O.K.	5.10	4.88	4.82	7.37	6.96		
378.28			6.27	6.12	6.14	6.53	6.29		
	W	9.92	70.21	70.70	71.19	71.68	72.17		
		6.55	6.26	5.77	5.28	4.79	6.11		
		6.76	7.02	4.70	4.87	4.45	6.06		
		6.21	6.12	6.107	6.041	6.034	6.005		
	E	9.92	70.21	70.70	71.19	71.68	72.17		
		6.55	6.26	5.77	5.28	4.79	6.11		
		7.03	6.12	4.80	4.18	4.43	5.69		
		6.48	6.14	6.097	6.110	6.037	6.022		
	W	72.66	72.95	3.25	3.33	3.18			
		5.67	5.33	5.03	4.95	5.10			
		5.67	4.88	4.83	4.17				
		6.05	6.45	6.20	6.18				
	E	72.66	72.95	3.25	3.33	3.28			
		5.62	5.33	5.03	4.95	5.00			
		5.37	4.43	4.30	3.92				
		6.25	6.90	6.73	6.103				

5.28  
S.C.B. Howard = 373.00  
E Ailey

373.95 SW Howard  
ortho

C. Iron  
 Alley Tile drains  
 BIK 152 U.H.

~~Indexed~~

374.35 T

Main drain on Eastside

374.47 T

F.L.

6.1105.03 LOW

0 + 00 OUTLET	✓ 368.74	5.61	5.64
0 + 14.49 = Δ NLPolk 42.33	✓ 368.75	5.58	5.60 5.04 C0.56
0 + 56.82	✓ 368.77	4.77 C0.81	
0 + 99.15	✓ 368.78		5.57 4.66 C0.91
1 + 41.49 JUNCTION of West Drain	368.80	5.55 4.86 C0.69	7.57 7.27 C0.30
1 + 87.99	368.90		
2 + 32.49 INLET	369.0	7.47 7.01 C0.46	

drain on Westside

F.L.

0 + 00 = JUNCTION E.L. alley	368.80 ✓		
0 + 18.58 = Δ	368.81	5.54 4.51 C1.03	
0 + 48.58 INLET	368.82		5.53 4.17 C1.36

7-27-40 Alley Pav. BIK C ALTadena

VR DENNIS

		79.4		
	W	79.5	LOW	E
		.03		
0+00	SLUPAS	317.34	17.05	317.17
+20		18.13	17.88	18.13
+40		18.74	18.57	18.87
+60		19.21	19.06	19.39
0+80	EVC.	19.50	19.35	19.70
1+20		19.90	19.75	20.10
1+60	PVC	20.30	20.15	20.50
1+80		20.48	20.33	20.68
2		20.61	20.46	20.81
+20		20.71	20.56	20.91
+40		20.76	20.61	20.96
+50	Extra	20.80	20.65	21.00 = Summit
+60		20.76	20.61	20.96
+80		20.73	20.58	20.93
3+00	EVC.	20.65	20.50	20.85
+44		20.43	20.28	20.63
3+88		20.21	20.06	20.41
4+32		19.99	19.84	20.19
4+76		19.77	19.62	19.97

Indexed

314.80 5x-OP 3304 THORN SOON NEXT PAGE

824.61	W	17.34	18.13	18.76	9.21	9.50	9.99
440		7.63	6.84	6.21	5.76	5.47	5.07
320.21			6.06	5.16	5.73	5.51	4.07
547			6.98	6.03	6.03	6.06	6.10
325.88							
447	E	7.17	8.13	8.87	9.39	9.70	20.10
321.21		7.80	6.84	6.10	5.58	5.27	4.87
3.76			6.14	6.06	5.76	4.27	3.87
324.97			6.79	6.04	6.18	6.10	6.10
	W	20.30	20.48	20.61	20.71	20.76	20.80
		4.67	4.49	5.27	5.17	5.12	5.08
		3.67	4.39	4.96	5.26	4.12	5.29
		6.10	6.10	6.21	6.09	6.10	6.21
	E	20.50	20.68	20.81	20.91	20.96	21.00
		4.47	4.29	4.16	4.97	4.92	4.88
		4.40	3.79	3.16	4.73	4.49	4.48
		6.07	6.10	6.10	6.24	6.23	6.40
	W	20.76	20.73	20.65	20.43	20.21	19.99
		5.12	5.15	5.23	5.45	5.67	5.89
		5.16	4.15	4.73	5.04	4.67	5.67
		6.04	6.10	6.48	6.41	6.10	6.22
	E	20.96	20.93	20.85	20.63	20.41	20.19
		4.92	4.95	5.03	5.75	5.47	5.29
		4.33	3.95	4.03	4.35	5.54	5.36
		6.69	6.10	6.10	6.10	6.07	6.33
	W	19.77					
		6.11					
		4.11					
		6.20					
	E	19.97					
		5.91					
		5.67					
		6.24					

	W	C	E
5+20 PVC	19.55	19.40	19.75
+40	19.41	19.26	19.61
+60	19.20	18.97	19.39
5+83.57 <sup>N.L.</sup> THORN	18.86	18.52	19.03
		6.09	
		4.3	
		0.42	

Sewer Lat. 10.48

#1 4+30 315.20  $\begin{matrix} 5.45 \\ \hline C 5.23 \end{matrix}$

#2 3+90 315.40  $\begin{matrix} 10.48 \\ 5.47 \\ \hline C 5.01 \end{matrix}$

#3 2+70 315.94  $\begin{matrix} 9.94 \\ 4.49 \\ \hline C 5.45 \end{matrix}$

46

314.80  
9.81  

---

324.61

W	9.55	9.41	9.20	8.86
	5.06	5.20	5.41	5.75
	3.49	5.15	4.41	5.80
	C 1.57	C 0.05	C 1.0	.07 Low
E	9.75	9.61	9.39	9.03
	4.86	5.00	5.22	5.58
	4.10	4.40	4.59	5.61
	C 0.70	C 0.60	C 0.63	.03 Low



7-30-40.

Alley Pav.

BIK 147 MB.

bet. Monterey  
NANTANT

S E N

~~Indexed~~

00 EL Miss Blvd 0.59 0.42 0.50

0 + 12.26 0.41 0.21 0.41

0 + 42.26 -0.56 -0.76 -0.56

0 + 62.26 -1.08 -1.28 -1.08

0 + 82.26 -1.37 -1.57 -1.37

1 + 33.99 -1.80 -2.00 -1.79

W L Bayside

1 33.99

1.22 - SHORT

132.77

S. Lat. #1

-1.79

4.99  
3.33  
C 1.66

" #2

-2.85

6.05  
4.58  
C 1.47

" #3

-1.71

4.91  
2.85  
C 2.04709 El Carmel Pt.  
Seawall

47

0.40 T.P.S.	+ 0.59	+ 0.41	- 0.56	- 1.08	- 1.37	- 1.80
2.80	2.61	2.79	3.76	4.28	4.57	5.00
3.40	2.64	2.48	3.25	3.80	4.59	4.64
	LOW 0.03	0.31	0.51	0.48	0.02	0.36

N + 0.50	+ 0.41	- 0.56	- 1.08	- 1.37	- 1.79
2.70	2.79	3.76	4.28	4.57	4.99
	3.05	3.99	4.14	4.30	4.78
	FOR 0.06	FOR 0.12	FOR 0.12	FOR 0.27	FOR 0.26

do ft.  
W L Bayside Lane

1° 05.30' N 95'

1° 10.80' E 103'

1° 16.36' S 111'

Monroe Ave Bridge

Indexed

West of MAX ST

South wall

W.L. MAX 346.80

Top Finish wall

8-16-40. Rod bottom of sdw.

W end wall 346.80

W.C. MAX.

5

346.80

346.80  
6.16

6.28

6.33

346.75

346.80

346.80

4.49

33

4.82

347.26

4.03

351.29

NEBP  
Monroe +  
MAX.

359.69

2.08

361.77

13.00

374.77

2.84

377.61

Monroe  
SE.C.T. Highland

48

North wall

cb. grade

W.L. MAX = 00

346.80

0 + 11.85

0 + 21.85

0 + 31.85

0 + 41.85

0 + 51.85

0 + 61.85

0 + 71.85

0 + 81.85

0 + 91.85

1 + 01.85

1 + 11.85

1 + 21.85 W. end wall 346.80

351.60

346.80

4.80

.33

5.13

rod for bot. sdw.

346.80 Top sidewalk

2.67

349.47 rail

CONST. 18" drain  
 8-11-40 Russell ST. by St. DEPT.  
 Rosecrans wly.

070 JUNG. EX. 18" C.W.K. 55.05

+50 9.55

1 14.06

+50 18.56

2 23.07

+50 27.57

3 32.08

+43.3 w/c Locust Break 36.0

+74 41.0

4 45.24

+50 53.40

5 61.55

+40 68.07

+80 New inlet 74.6

Indexed  
 88

49

	SW	Rosecrans					
	BMBP	Russell					
5.54							
12.33							
17.87							
0.85							
17.52	5.05	9.55	14.06	18.56	23.07	27.57	
12.05	12.82	8.32	16.11	11.41	7.10	15.13	
30.17	4.02	11.58	7.26	23.4	9.35		
0.27	C 4.30	C 4.53	C 4.35	C 4.74	C 5.88		
29.90							
12.80							
42.70							
0.26	32.08	36.0	41.0	45.24	53.40	61.55	
42.44	10.62	19.37	14.37	10.13	14.27	18.58	
12.93	4.28	11.77	7.97	4.78	9.65	10.87	
55.37	C 6.34	C 7.60	C 6.40	C 5.35	C 4.62	C 7.71	
0.38							
54.99							
12.68	48.07	74.60					
67.67	20.61	14.08					
0.23	8.15	5.47					
67.44		C 8.61					
12.69	C 12.46						
80.13							
0.20							
79.93							
8.75							
88.68							

Arrada Pl. Pav.  
 CONT'D. from p 6  
 S Pav. grade N

0+48 P.C.	62.23	67.23
P.R.C.		64.36
0+67.36 E.C.		66.49
0+85	70.37	70.37
1+30	80.27	80.27
1+60	82.47	82.47

N	62.23	64.36	66.49	70.37	80.27
	2.23	17.59	10.46	6.58	5.10

S	67.23	70.37	80.27
	2.23	6.58	5.10

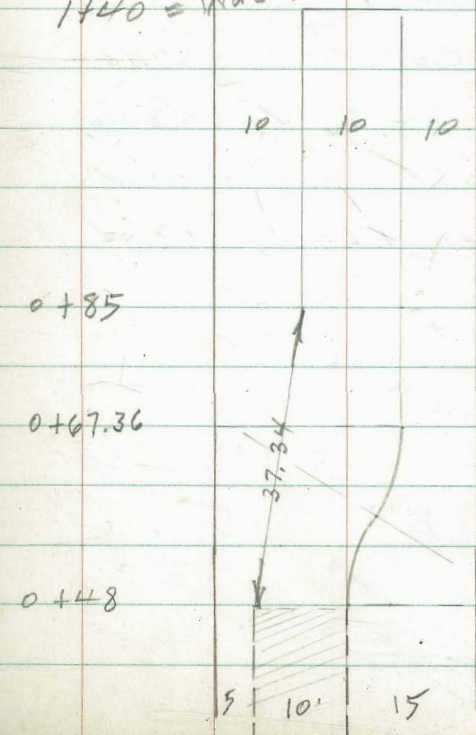
2' S. x S edge

W. 06. d  
 B.M. C.T. Purple Line

51.23  
 12.77  
 64.00  
 0.03  
 63.97  
 12.98  
 76.95  
 0.21  
 76.74  
 8.45  
 85.39

~~Indexed~~

1+60 = was plan



$\Delta = 28^{\circ}57'$   
 $R = 20$   
 $T = 5.16$

Indexed  
C.S.K.

24" CULV. CONST. 97  
CAMINO de la COSTA  
+ Avenida Cortez IN  
La Jolla Hermosa

Moore  
Hale  
9-25-40

0 + 0	TOP curb inlet	35.00
"	F.H. Pipe " Box	30.00
0 + 42.5		29.0
0 + 85	Break over Sewer	28.0
0 + 97	TOP cb inlet	
"	BOT. " Box	27.10
1 + 45		23.40
1 + 90	Break	20.0
2 + 20	OUTLET F.L.	13.0

32.74 BM CT. NELY Con near 51  
 3.51  
 36.25  
 9.72  
 6.53  
 0.62  
 25.91

30.0	29.0	28.0	27.10	23.40
6.25	7.25	8.25	9.15	12.85
1.25	2.25	4.51	5.15	7.55
C 5.0	C 5.00	C 3.74	C 4.0	C 5.30

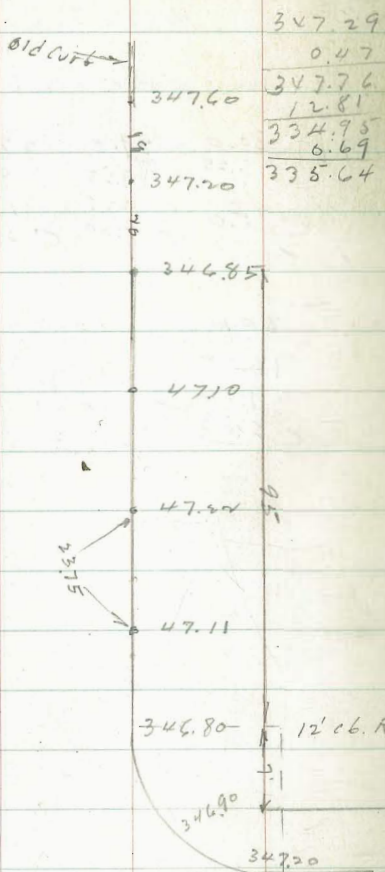
  

20.0	13.0
16.25	12.91
9.72	10.61
C 6.53	C 2.3

Max + Monroe Fill stakes

347.29  
 11.44  
351.73

~~Indexed~~



1-5-41

Max. St.

347.29 NEBP Max + Monroe 1566-12

1.84

349.13

52

For Extra fill

		-9.4	
		19.1	
	346.95		1+09
		-19.9	
		29.8	
0.0	346.85	346.95	1+09
		-4.7	
		7.0	
			-36.0 0+85
			54.0
		-11.6	
		17.4	
			-32.6 0+68
			48.9
		-16.0	
		24.0	
			-26.1 0+51
			39.1
		-21.5	
		32.2	
			-17.3 0+34
			26.0
		-23.3	
		34.9	
			-7.3 0+17
			11.1
		-18.2	
		14.3	
	346.79	346.79	0.0 0+00

(1) Max St.

12-9-40 Pav. Alley E & W  
 BIK 72 Ocean Beach

NEBP  
 Newport  
 Bacon

	12.53	12.40	12.43	11.05 6.08 <u>17.13</u> 5.56 11.57 4.43
0 to Bacon	12.53	12.40	12.43	
0 + 20	12.45	12.10	12.35	76.00 5.12 <u>10.88</u> 4.38
0 + 50	12.23		12.13	
1	11.87		11.77	1526 3.66 <u>11.60</u> 6.91 18.51
+ 50	11.51		11.41	
2	11.15		11.05	
+ 30 PK	10.93	10.58	10.83	
+ 50	10.87	10.57	10.77	
+ 70	10.99	10.64	10.89	
+ 90	11.28	10.93	11.18	
3 + 10	11.75	11.40	11.65	
+ 30	12.38	12.03	12.28	
+ 50	13.30	12.90	13.10	
4	15.45	15.05	15.25	
+ 10	15.88	15.44	15.60	
+ 25	16.25	15.78 ~.73	15.57 ~.94	

5 hat ① 864 F.L.

9.87  
 4.70  
5.17

53

Indexed

S	12.53 4.60 0.0	12.45 4.68 3.68	12.23 4.90 3.90	11.87 4.13 4.13	11.51 4.49 3.49
on old Pav.		+ 1.0	+ 1.0	0.0	+ 1.0
N	12.43 4.70 4.32 - 0.12	12.35 4.78 3.78 + 1.0	12.13 5.00 5.00 00	11.77 4.23 4.60 - 0.37	11.41 4.59 3.59 + 1.0
S	11.15 4.85 4.62 + 0.23	10.93 5.07 4.78 + 0.29	10.87 4.39 4.30 + 0.09	10.99 4.27 4.07 + 0.20	11.28 3.98 3.72 + 0.26
N	11.05 4.95 4.95 0.0	10.83 5.17 5.61 - 0.44	10.77 4.49 4.78 - 0.29	10.89 4.37 4.78 - 0.41	11.18 4.08 3.08 + 1.0
S	11.75 3.51 3.32 + 0.19	11.38 6.13 5.97 + 0.16	13.30 5.21 5.34 - 0.13	15.45 3.86 1.74 + 1.32	15.88 2.63 1.43 + 1.20
N	11.65 3.61 3.85 - 0.24	12.28 6.23 6.47 - 0.24	13.10 5.41 6.04 - 0.63	15.25 3.26 2.26 + 1.0	15.60 2.91 2.91 0.0

2nd Alley  
 2 Box

0 to	0 + 50	1 + 0	1 + 62 = curb line
550	650	620	590
567	950	906	936
	567	559	559
- 0.17			
+ 2.83		+ 3.37	+ 3.77
grate			+ 3.86

1-21-41	Pay Alley	Blk K	Altadena	NWBP
				384 Redwood
	X1	E	F	311.61
070				7.58
NL Redwood	313.19	2.91	313.20	319.19 X
				536
+20 Blk	3.83	3.50	3.80	313.83
				4.70
				318.53 X
+40 "	4.22	3.87	4.09	4.90
				313.63
				3.5X
+60 "	4.35	4.00	4.17	317.17
+80 "	4.24	3.89	4.04	
1 +30 "	3.44	3.29	3.44	
+50 "	3.45	3.10	3.25	
+70 "	3.84	2.99	3.14	
2	3.25		3.05	
+50	3.10		2.90	
3	2.95	2.60	2.75	
+50	2.75		2.63	
4	2.55		2.50	
+50	2.35		2.37	
5	2.15		2.25	
+30	2.03		2.17	
+60 "	1.90		2.10	
+80 "	1.84	1.70	2.08	
5 + 99.03 S. Thorn	1.77	1.44	2.11	
		5.51		

Griffith Co.  
EXCEPT 0.5 ON West side

Indexed

W	3.83	4.22	4.35	4.24	3.64	3.45	3.30
	5.36	4.97	4.84	4.95	5.55	5.08	5.19
	3.36	3.97	3.24	3.95	4.97	4.08	4.20
	2.0	2.0	2.0	2.0	2.0	2.0	2.0
E	3.30	3.80	4.09	4.17	4.04	3.44	3.25
	5.89	5.39	5.10	5.07	5.15	5.75	5.48
	4.00	4.60	4.48	4.82	5.14	4.99	4.98
	0.79	0.62	0.20	0.01	0.0	0.49	0.41
W	3.25	3.10	2.95	2.75	2.55	2.35	2.15
	5.28	5.43	5.58	4.44	4.62	4.82	5.02
	4.28	4.63	4.58	4.82	5.02	4.82	5.02
	1.0	1.80	1.0	0.40	0.0	0.0	0.0

T.P. after this

E	3.05	2.90	2.75	2.63	2.50	2.37	2.25
	5.48	5.63	5.78	5.90	4.67	4.80	4.94
	5.33	5.07	4.86	3.90	4.43	4.80	5.06
	0.15	0.56	0.94	2.0	0.24	0.0	0.14

W	2.03	1.90	1.84	1.77
	5.14	5.27	5.33	5.40
	5.02	4.27	4.90	5.39
	0.10	0.0	0.43	

E	2.17	2.10	2.08	2.11
	5.00	5.07	5.09	5.06
	4.65	4.48	4.40	
	0.35	0.59	0.49	



1-21-41.

Pav alley Blk A  
Griffith Co

Altadena  
SW & P

33<sup>d</sup> + Thon

0100

Alt Thon Brk

W

E

314.20  
0.85  
315.65  
10.08  
305.57

7.56  
313.13  
2.43

310.70  
10.89

321.59  
2.30

319.29  
8.23

327.52

303.13

303.30

3.27

3.45

3.47

3.65

3.93

4.09

4.66

4.77

5.66

5.70

7.69

7.60

9.24

9.07

10.32

10.12

11.58

11.38

13.68

13.48

15.78

15.58

17.88

17.68

18.69

18.49

19.44

19.24

20.13

19.93

20.76

20.56

21.33

21.13

21.84

21.64

P 56

Indexed  
of

W	3.13	3.27	3.47	3.93	4.66	5.66	7.69
	10.00	9.86	9.66	9.20	8.47	7.47	5.44
		8.86	8.66	8.20	7.62	6.60	4.09
		C 1.0	C 1.0	0.0	F 0.15	C 0.87	C 1.35

E	3.30	3.45	3.65	4.09	4.77	5.70	7.60
	9.83	9.68	9.48	9.04	8.36	7.43	5.53
		9.25	8.73	8.40	7.93	7.40	5.68
		C 0.43	C 0.75	C 0.64	C 0.43	C 0.63	F 0.15

W	9.24	10.32	11.58	13.68	15.78	17.88
	3.89	11.27	10.01	7.91	5.81	3.71
	2.94	10.27	9.91	5.91	5.14	2.71
	C 0.95	C 1.0	C 0.10	C 2.0	C 0.69	C 1.0

E	9.07	10.12	11.38	13.48	15.58	17.68
	4.06	11.47	10.21	8.11	6.01	3.91
	4.30	10.47	9.81	7.11	5.01	3.21
	F 0.24	C 1.0	C 0.20	C 1.0	C 1.0	C 0.70

W	18.69	19.44	20.13	20.76	21.33	21.84
	2.90	8.08	7.39	6.76	6.19	5.68
	1.90	7.90	4.89	6.64	5.97	4.63
	C 1.0	C 0.18	C 0.40	C 0.14	C 0.24	C 1.0

E	18.49	19.24	19.93	20.56	21.13	21.64
	3.10	2.35	7.59	6.96	6.39	5.88
	1.10	1.35	6.59	5.96	5.39	5.67
	C 2.0	C 1.0	C 1.0	C 1.0	C 1.0	C 0.21

55

			227.52
			2.99
	W	E	224.53
			5.30
N 4770	23.04	22.84	229.83
5+20 Bk	24.24	24.04	
+40	24.56	24.35	
+60	24.52	24.31	
+80	24.16	23.93	
+98.68	23.45	23.21	
SLUPAS			

Server Lat #1

0410 on E.L.	299.41
	13.74
	9.28
	<u>4.24</u>

56

W	3.04	4.24	4.56	4.52
	4.48	5.69	5.27	5.31
	3.45	5.43	5.33	4.31
	C 1.03	TP	F 0.06	C 1.0

F	2.84	4.04	4.35	4.31
	4.68	3.48	5.48	5.54
	3.48	2.48	5.74	3.54
	C 1.0	C 1.0	F 0.06	C 1.0

W	4.16	3.45
	5.67	6.38
	3.87	✓
	C 1.80	

F	3.93	3.21
	5.90	4.67
	4.90	✓
	C 1.0	

2720-41. CUTS ON STORM DITCH ON  
Nashville, Lapwai N Ely

SW Fop curb -1.15

00 = Sly cb. Lapwai -1.70 C. 0.55  $\frac{6.80}{5.65}$

+50 -1.79 C 1.8

-1.89 C 2.3

+50 -1.98 C 2.4

-2.08 C 3.0

+50 -2.17 C 2.9

-2.27 C 3.4

+50 -2.36 C 3.1

-2.46 C 3.3

+50 Indexed  
~~50~~

-2.55 C 3.7

57

5 -2.65 C 5.4

+50 -2.74 C 5.7

6 -2.84 C 6.5

+50 -2.93 C 6.3

565 T

2.55

3.10

3.53

6.63 X

7 -3.03 C 5.7

+50 -3.12 C 3.0

8 -3.22 C 5.1

+50 -3.31 C 3.7

9 -3.41 C 5.4

+50 -3.50 C 4.3

10 -3.60 C 5.4

+50 -3.69 C 5.4

11 -3.79 C 6.0

+50 -3.88 C 5.8

12 -3.98 C 6.1

+50 -4.07 C 6.1

13 -4.17 C 6.4

+50 -4.26 C 6.1

14 -4.36 C 6.2

+50 -4.45 C 6.6

15 -4.55 C 6.9

+50 -4.64 C 6.7

16 -4.74 C 5.8

+50 -4.83 C 6.4

17 -4.93 C 6.5

+50 -5.02 C 7.0

18 -5.12 C 6.4

+50 -5.22 C 7.1

19 -5.30 C 6.8

+60 S D River -5.40 C 3.2

3-18-41. DICKENS ST. PAV

10.85 SE.  
12.31  
-23.16TOP E.H. ROSECRANS  
DICKENS

59

	5.6	N 6.6
E. Evergreen	19.70	19.35
+ 17.5	19.50	19.15
+ 25 EG	19.30	19.0
+ 75	18.78	18.40
1 + 25	18.26	17.80
+ 75	17.74	17.20
2 + 25	17.22	16.60
+ 75 PC	16.70	16.00
+ 87.5	16.60	15.85
3 W.L. LOCUST	16.40	15.60

INDEXED

S	19.70	19.30	18.78	18.6	17.74
	3.46	3.86	4.28	4.90	5.42
	2.9	3.4	4.38	3.9	3.9
	CO.86	CO.86	0.0	21.0	21.5

N	19.35	19.0	18.40	17.80	17.20
	3.8	4.16	4.76		
	3.7	4.3	5.7		
	CO.1	FO.14	FI.0		

S	17.20	16.70	16.40
	5.94	6.46	6.76
	4.3	5.46	5.76
	CO.16	CO.10	CO.10

N	16.60	16.0	15.60
---	-------	------	-------

Finish grade C-26-41.



Dickens St par. 72.16 T

	Scb	N 06
ELKocust	15.50	14.80
+ 12.5	15.20	14.65
+ 9.5 P.C.	14.90	14.40
81.67		
+ 76.67	13.86	13.36
1 + 78.93	12.81	12.31
1 + 80 BRK	11.77	11.27
2 + 00 "	11.42	10.92
+ 20 "	11.17	10.67
+ 73 P.C. Rescian	10.64	10.14

61

S	15.50	14.90	13.86	12.81	11.77
	7.7	8.3	9.3	10.4	11.4
	7.4	7.5	8.8	9.7	10.4
	0.8	0.6	0.5	0.7	0.10

N	14.80	14.40	13.34	12.31	11.27
---	-------	-------	-------	-------	-------

S	11.42	11.17	10.64
	11.7	12.0	12.52
	10.9	11.3	
	0.8	0.7	

N	10.92	10.67	10.14
---	-------	-------	-------

Dickens Si Pav.

SW 3' CTRP Dickens  
B.M. SCOTT

3-18-41

			10.85
			0.50
			11.35
			7.53
			3.82
EL Rosecrans			
0 + 27 - P.C.	8.40	7.90	3.82
0 + 40 Gutter BRK	8.17	7.67	2.20
			6.08
+ 87	7.36	6.86	
1 + 34	6.55	6.05	
+ 81	5.73	5.23	
2 + 28	4.92	4.42	
+ 75 P.C.	4.10	3.60	
+ 87.5	3.90	3.37	
3 = WL SCOTT	3.80	3.15	
0-18 E.C.B. SCOTT	2.55	2.30	
040 E.L. "	3.00	2.75	
+ 125	3.02	2.80	
+ 45 P.C. C.B.	3.10	2.85	
+ 50	3.22	2.97	
1	3.47	3.22	
+ 50	3.73	3.48	

	S	8.40	8.17	7.36	6.55	5.73
		2.95	3.7	4.0	4.8	5.67
		2.89	1.9	2.7	3.6	4.47
	cb		0.13	0.13	0.12	drive
		3.82				
		4.42				
	N	7.90	7.67	6.86	6.05	5.23
		3.45	3.7	4.5	5.3	6.1
	cb	3.42	2.8	4.4	4.9	5.3
		0.03	0.9	0.1	0.4	0.8
	S	4.92	4.10	3.60		
		6.0	7.2	7.5		
		5.7	6.5	6.9		
		0.7	0.7	0.6		
	N	4.42	3.60	3.15		
		6.9	7.7	8.2		
		6.1	7.2	7.5		
		0.8	0.5	0.7		
	S	3.0	3.10	3.22	3.47	3.73
		8.3	8.4	8.1	7.9	7.6
		8.4	8.4	7.0	7.9	7.6
	F 0.1		F 0.2	C 1.1	0.0	M.K. on Blq.
	N	2.75	2.85	2.97	3.22	3.48
		3.4	3.3	3.7	2.9	2.7
		3.7	4.5	5.2	6.0	6.7
	F 0.3		F 1.2	F 2.0	F 3.1	F X.0



EMERSON E of ROSECRANS

	Sob	Nob	Fwd.
			6.08 X
			4.98
0 to EL ROSECRANS			1.10
			6.47
0 + 27 PC	4.89	4.10	7.57
19.			3.53
0 + 40	4.60	3.99	4.04 BM.
			Chisel
			CROSS
+ 70	3.93	3.22	
1 + 00 BRK	3.25	2.61	
+ 20 "	2.88	2.29	
+ 40 "	2.66	2.12	
+ 80	2.37	1.96	
7 + 20	2.08	1.81	
+ 60	1.79	1.65	
2 + 75 P.C.	1.68	1.59	
3 with SCOTT	1.50	1.50	

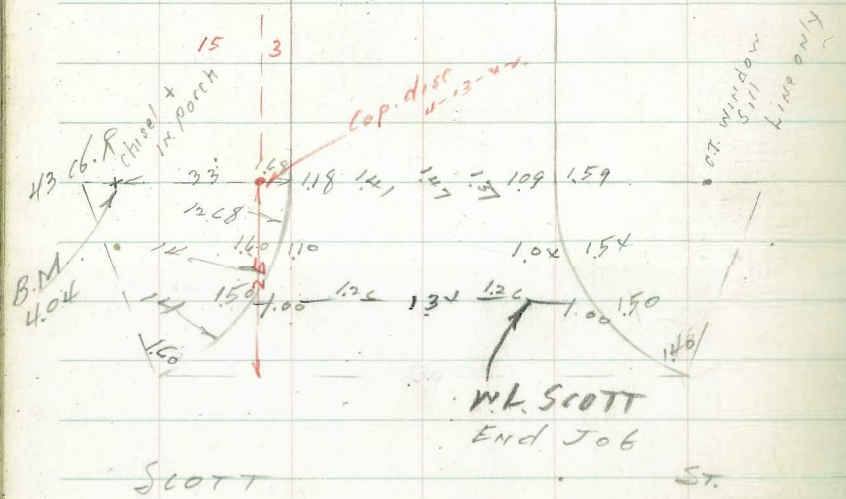
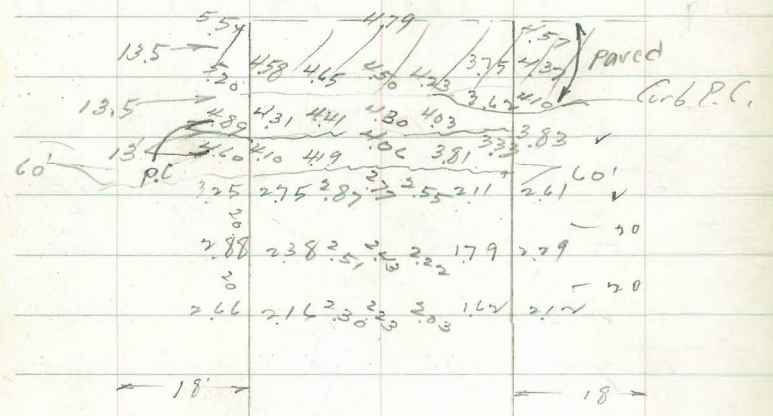
Indexed

63

S	4.89	4.60	3.93	3.25	2.88
	2.68	3.0	3.7	4.4	4.7
	2.57	7.6	1.4	3.8	4.2
		0.4	2.3	0.6	0.5
N	4.10	3.83	3.22	2.61	2.29
	3.47	3.8	4.4	5.0	5.3
	3.46	3.7	4.0	5.0	5.3
		0.1	0.4	0.0	0.0
S	2.66	2.27	2.08	1.79	1.50
	5.0	5.4	5.5	5.8	6.1
	4.3	4.7	4.6	5.2	6.0
	0.7	0.5	0.9	0.6	0.1
N	2.12	1.96	1.81	1.65	1.50
	5.5	5.7	5.8	6.0	6.1
	5.4	5.6	5.8	6.4	6.9
	0.1	0.1	0.0	0.4	0.8

*[Handwritten initials]*

ROSECRANS



Dickens St 6" water grades

			10.85 0.75 11.60
0 to EL Emergent	16.6	6.1 2.9 C3.2	
+50	16.0	6.7 4.0 C2.7	
1	15.4	7.3 4.5 C2.8	7.9 4.6
+50	14.8		C3.3
2	14.3	8.4 4.8 C3.6	9.0
+50	13.7		5.6 C3.2
3 WL locust	13.1	9.6 6.2 C3.4	10.2 8.0
+45 = 2" Cross	12.5		C2.2
0 to EL locust	12.2	10.5 8.0 C2.5	
+50	11.2		11.5 9.2 C2.3
1	10.2	12.5 10.2 C2.3	13.5 10.9
+50	9.2		C2.6
2 = Break	8.2	14.5 11.4 C2.9	
+44 Connection at Rosecrans			
			10.85 0.75 11.60
0 to = 36' E of Rosecrans	5.0	6.6 3.1 C3.5	7.4
+50	4.2		4.0 C3.4
1	3.3	8.3 4.8 C3.5	

1750

Indexed  
JG

2	+64	WL SCOTT
3	+16	Break -
	+50	
4		
	+50	
	+84 = 2" CONNECTION	

11.60 x

2.5	9.1 5.8 C3.3	65 9.7 6.8 C2.9
1.7		11.0 7.9 C3.1
0.6		12.0 8.8 C3.2
-0.4		12.4 10.0
-0.6		C2.2 12.5 10.5 C2.0
-0.9		12.9 11.8 C1.1
-1.3		13.1 12.1 C1.0
-1.5		

EMERSON ST. 6" water grades

0 to = 36' E Rosecrans	1.3	4.04 3.10 7.14	5.9 3.1 C2.8	6.7 3.7 C3.0
+42	0.5		7.5 4.3 C3.2	7.6 4.3 C3.3
+84 = Break	-0.3		7.9 4.8 C3.1	8.6 5.0 C3.6
1	-0.4		8.7 6.0 C2.7	
+50	-0.7			
2	-1.4			
+64	-1.5			

Emerson &  
Dickens St Sewer Lat.

1085  
11.89  
44.74

F.L.

#1 = S.L. Dickens	113.98	
	<u>8.76</u>	
	3.60	
	C 5.16	
#2 = N.L. "	13.58	
	<u>9.14</u>	
	5.41	
	C 3.75	
#3 = N.L. "	13.18	
	<u>9.56</u>	
	4.95	
	C 4.61	
#4 = S.L. "	8.96	
	<u>13.78</u>	
	8.53	
	C 5.25	
#5 = S.L. "	7.96	
	<u>14.78</u>	
	9.90	
	C 4.84	
#6 = N.L. "	5.93	
	<u>16.81</u>	
	12.56	
	C 4.75	
#7 = N.L. "	2.08	10.85
	<u>9.60</u>	0.83
	4.79	<u>11.68</u>
	C 4.81	
#8 = N.L. "	1.11	
	<u>10.57</u>	
	5.35	
	C 5.22	
#9 = N.L. "	-0.15	
	<u>11.83</u>	
	7.19	
	C 4.64	

~~Indeveloped~~

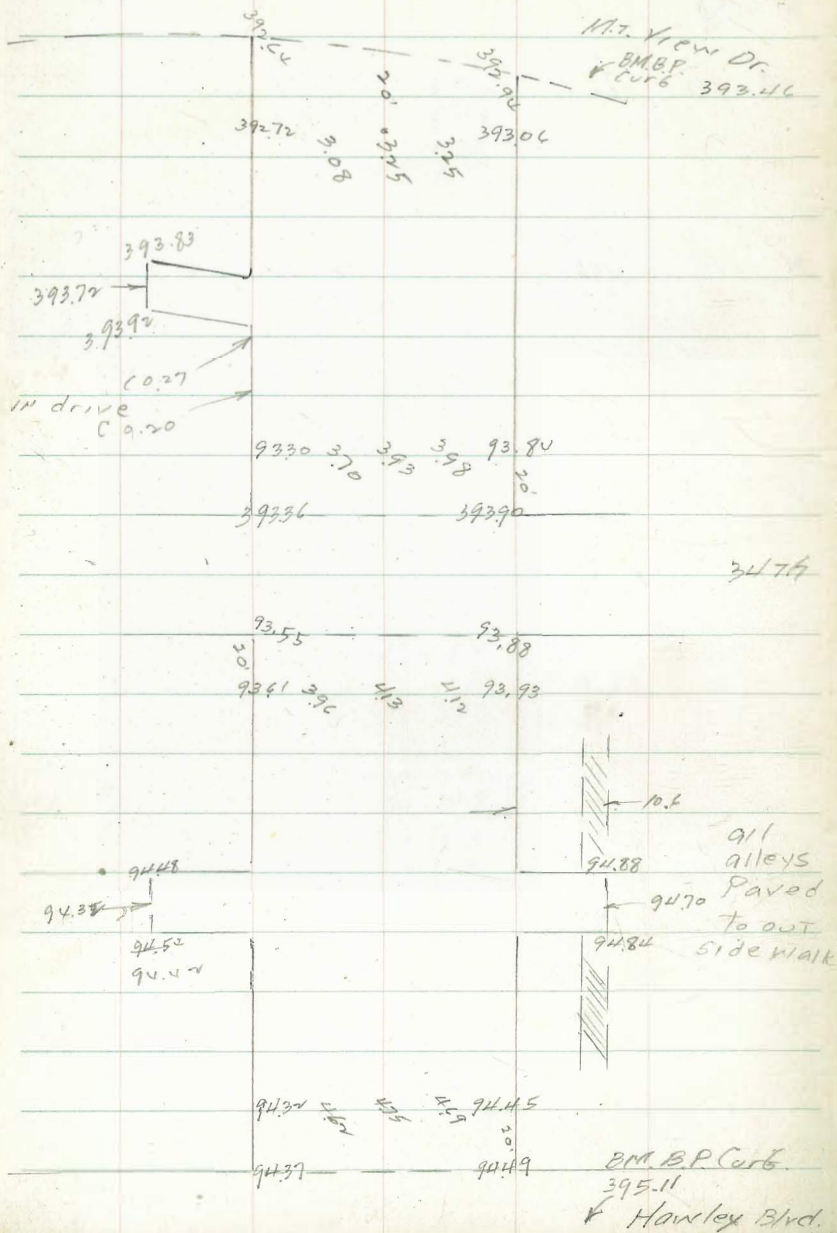
Emerson Sew. Lat.

66

#10 = S.L.	-1.39	
	<u>13.07</u>	
	7.90	
	C 5.13	
#11 = S.L.	-2.38	
	<u>14.06</u>	
	8.68	
	C 5.38	

Moore  
3-20-41

ARTHUR ST. Pav. grades



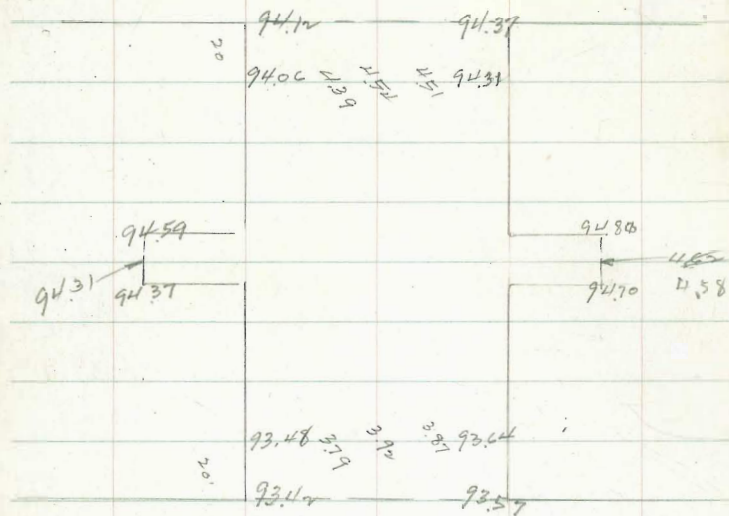
Indexed

67

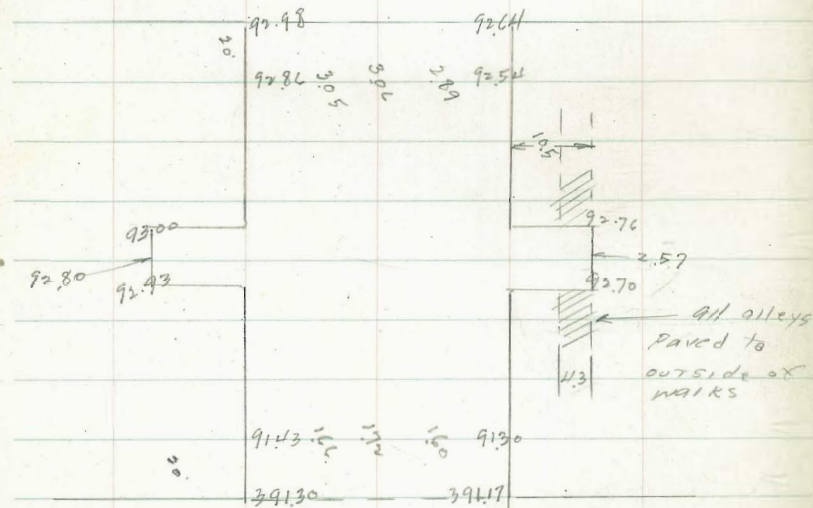
395.11  
 3.37  
 398.49  
 4.10  
 394.39  
 3.88  
 398.27  
 4.81  
 393.46 ✓  
 4.95  
 398.41

Arthur St Paul

Howley Blvd.



Mansfield



35th

SE BP 35th & Arthur 391.73

B.M.B.P. SE Sidney & Mt. View 393.98

3-27-41 by Hazard Co.

Moore  
0566110  
Sammers

Willey Pav. BIK 173 Univ. Hts.

	W	E	291.42
			5.39
			297.31
N 66 Lincoln	290.06	290.95	0.78
			296.53
0+00 Nk "	290.68	91.40	12.18
+20	90.98	91.33	308.71
+40	91.13	91.36	
+460	91.42	91.43	
+80	91.86	91.89	
1	92.63	92.88	
+20	93.15	93.17	
+40	94.01	94.00	
+60	94.89	94.80	
1 +80 = E.V.C.	295.66	295.54	
2 +22.5	97.20	97.05	
+65	98.73	98.57	
3 +07.5	300.26	300.08	
3 +50 = Break	301.80	301.60	
+95	302.60	302.40	
4 +00 "	303.39	303.21	
+25	3.96	3.74	
+50 "	304.54	304.28	

Indexed  
off

W	2.06	0.68	0.98	1.13	1.42	1.86	
	7.45	6.63	6.33	6.18	5.89	5.45	
		6.73	6.82	6.18	5.89	6.22	
		-0.10	-0.49	0.0	0.0	-0.77	
E	0.95	1.20	1.33	1.36	1.43	1.89	
	6.36	5.91	5.98	5.95	5.88	5.42	
		5.00	6.41	6.46	6.38	6.17	
		+0.91	-0.43	-0.51	-0.40	-0.75	
W	2.63	3.15	4.01	4.89	5.66	7.20	8.73
	4.68	4.16	3.30	2.42	12.05	11.51	9.98
	5.30	3.10	1.82	1.06	11.47	10.35	8.65
	-0.62	+1.06	+1.48	+1.36	+1.58	+1.16	+1.33
E	2.44	3.17	4.00	4.80	5.54	7.05	8.57
	4.87	4.14	3.31	2.51	13.17	11.66	10.14
	5.24	4.36	3.31	2.58	12.87	11.32	10.20
	-0.37	-0.22	0.0	-0.07	+0.30	+0.34	-0.06
W	0.26	1.80	2.60	3.39	3.96	4.54	
	8.45	6.91	6.11	5.32	4.75	4.17	
	6.45	5.91	5.76	3.95	3.85	3.72	
	+2.0	+1.0	+0.35	+1.37	+0.90	+0.45	
E	0.08	1.60	2.40	3.21	3.74	4.28	
	8.63	7.11	6.31	5.50	4.97	4.43	
	8.65	6.11	6.31	6.24	5.98	4.43	
	-0.02	+1.0	0.0	-0.74	-1.01	0.0	

69

	W	E	
			308.71
			3.45
1+90 P.V.C.	305.28	305.0	305.26
			6.91
5+10	305.75	305.48	312.17
5+30	306.53	306.23	
+40	6.97	6.67	
+50	7.34	7.04	
+60	7.58	7.30	
+70	7.69	7.40	
+80	7.66	7.37	
+90	7.50	7.22	
6+00 SH Polk	307.20	306.93	

on E. line

2+13 beg. 1' Exception of Pav.

2+50 end " " " "

2+75 Sewer Lat #1  
 293.90  
 14.81  
 10.16  
 4.65

3+15 beg. 0.5 Exception Pav.

3+30 end " " "

W	5.28	5.75	6.53	6.97	7.34	7.58
	3.13	4.94	5.64	5.20	4.83	4.59
	3.27	2.20	5.12	4.91	4.59	4.15
	+0.12	+0.76	+0.57	+0.29	+0.22	+0.22

E	5.00	5.48	6.23	6.67	7.04	7.30
	3.71	6.69	5.94	5.50	5.13	4.87
	4.08	7.25	6.39	5.50	5.13	5.46
	-0.37	-0.56	-0.45	0.0	0.0	-0.59

W	7.69	7.66	7.50	7.20
	4.28	4.51	4.67	4.97
	4.00	4.51	2.67	
	+0.28	+2.0	+2.0	

E	7.40	7.37	7.22	6.93
	4.77	4.80	4.95	5.22
	5.11	4.72	3.95	
	-0.34	+0.06	+1.0	



MOORE Alley Pav. Blk 83 City Hts.

	W		E	319.99
				10.58
				330.57
0 to NW Dwight	324.75	4.30	324.45	1.66
				328.91
+20	26.22	5.77	25.92	8.53
				337.44
				2.53
+40	27.40	6.95	27.10	334.91
				5.72
+60	28.12	7.67	27.82	340.63
				4.33
+80 E.V.C.	28.87	8.42	28.57	336.30
				4.46
①	29.60	9.15 ✓	29.30	340.76
②	30.33	9.88 ✓	30.03	
③	31.07	30.61 ✓	30.77	
2+20 = ④ Break	31.80	31.35 ✓	31.50	
①	32.49	2.04 ✓	32.19	
②	33.18	2.73 ✓	32.88	
③	33.87	3.42 ✓	33.57	
④	34.56	4.11 ✓	34.26	
⑤	35.25	4.80 ✓	34.95	
5+20 ⑥ Break	35.95	5.50 ✓	35.65	
+40	6.12	5.67 ✓	5.82	
+60	6.07	5.64 ✓	5.80	
+80	5.76	5.34 ✓	5.52	
6+00.18 SL Landis	5.35	4.95 ✓	5.15	

6+02 W  $\frac{5.70}{5.06}$  E  $\frac{5.27}{5.49}$

NW 8P 37th & Dwight

W	11.75	6.22	7.40	8.12	8.87	9.60	30.33
	5.82	4.35	3.17	2.45	8.57	7.84	7.11
	4.82	2.81	1.90	1.83	8.01	8.01	5.11
	<u>60.98</u>	<u>62.04</u>	<u>61.27</u>	<u>60.27</u>	<u>60.56</u>	<u>60.17</u>	<u>62.0</u>

Indexed

E	4.45	5.92	7.10	7.82	8.57	9.30	0.03
	6.12	4.65	3.47	9.64	8.87	8.14	7.41
	5.30	2.85	2.49	8.90	7.87	7.90	7.10
	<u>60.84</u>	<u>61.80</u>	<u>60.98</u>	<u>60.74</u>	<u>61.0</u>	<u>60.24</u>	<u>60.31</u>

Should be 61.95

319.99							
10.17							
330.16	W	1.07	1.20	2.49	3.18	3.87	4.56
1.01		6.37	5.64	4.95	4.26	3.57	6.07
329.15		4.37	5.36	4.59	3.54	3.50	5.18
8.88		<u>60.0</u>	<u>60.78</u>	<u>60.36</u>	<u>60.74</u>	<u>60.07</u>	<u>60.87</u>
338.03							

E	0.77	1.50	2.19	2.88	3.57	4.26
	6.67	5.94	5.25	4.56	3.87	3.18
	6.57	5.95	5.33	3.56	2.87	2.18
	<u>60.10</u>	<u>60.01</u>	<u>60.08</u>	<u>61.0</u>	<u>61.0</u>	<u>61.0</u>

W	5.25	5.95	6.12	6.07	5.76	5.35
	5.38	4.68	4.51	4.56	5.00	5.41
	5.40	3.68	3.51	3.68	3.72	4.42
	<u>60.02</u>	<u>61.0</u>	<u>61.0</u>	<u>60.88</u>	<u>61.28</u>	<u>60.99</u>

E	4.95	5.65	5.82	5.80	5.52	5.15
	5.68	4.98	4.81	4.83	5.11	5.48
	3.68	2.98	2.81	2.83	3.64	4.97
	<u>62.0</u>	<u>62.0</u>	<u>62.0</u>	<u>62.0</u>	<u>61.47</u>	<u>60.51</u>

CSM set E grades 7-8-41

3+48 to 5+68 = 0.5 Exception on E

5+65 to 6+00 = 2.0 " " W

Curb  
FRONT ST. Sidewalk by Dennis Co.

Station	N of Palm	W cb	E	Notes
5-6-41				
00 = NL Palm	222.33	222.6		0.77 ✓
0 + 20 Break	221.95	216.6		1.79 1.22 0.007
0 + 40 "	219.95	203.8		3.07 3.09
0 + 95	216.10	16.53		10.02 6.92 6.72 0.20
1 + 50 End Curb	212.25	17.58		10.77 10.77 0.0
1 + 53.5	214.40			= Berra for cb under

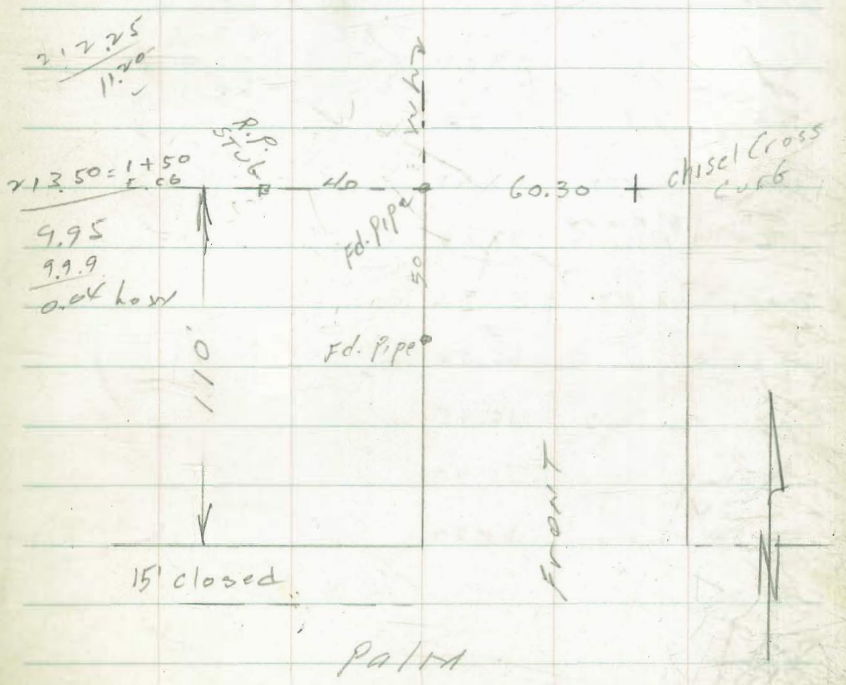
Culv. 16" Cor. 1 P. 12" di.

Top Curb  
00 = 11/10T      212.25

Indexed

Fl. outlet      205.0

Station	W cb	E	Notes
222.33 = NL Palm	1.09		W cb. Front
4 + 3.42	12.22		Slope stakes
11.20	222.5	221.4	220.10
3.3	0.9	2.0	3.3
14.50	7.5	4.2	5.1
12.30	F 1.6	F 2.2	F 1.8
202.40			F 3.7
4.10	OUT 2.4	OUT 3.3	OUT 4.7
206.30			OUT 5.6
			OUT 4.2
222.33			212.4
1.17			Slope stake - 6.1
223.45 X			N of F 18.4
221.75	219.95	216.10	10' Cor Job OUT 7.3
2.20	3.50	7.35	



Moore Reed Ave 2 1/2" diam Dennis Co.  
 Ochoire Ingration to W. of Haines  
 D. Farrow 44.15  
 8-27-41. 8.25  
 F.L. 54.40  
 3.93  
 0+70 W.L. Long St. 40.09 16.91.44.00 48.47  
 18.40 1.37  
 49.84  
 0+70 39.80  
 1+20 39.52  
 1+70 39.44  
 2+20 38.91  
 2+70 38.68  
 3+20 38.40  
 3+70 38.11  
 4+20 37.83  
 4+70 37.55  
 5+20 F.L. ST 37.27  
 5+52 8'E. of Haines 37.08  
 6+20 W.L. ST 36.82  
 +50 36.54  
 7 36.25  
 +50 35.97  
 +80 end 35.80

~~Indexed~~

40.09 39.80 39.52 39.24  
 12.31 12.60 12.88 13.16  
 7.57 5.37 4.68 5.55  
 C 4.74 C 7.23 C 8.20 C 7.61

38.96 38.68 38.40 38.11 37.83  
 13.24 13.72 14.00 14.29 14.57  
 5.79 4.82 4.97 4.03 3.93 = 7.0  
 C 7.65 C 8.90 C 9.03 C 10.26 C 10.64 5706

37.55 37.27 37.08 36.82 36.54  
 12.29 12.57 12.76 13.02 13.30  
 2.54 2.76 1.80 2.96 2.30  
 C 9.75 C 9.81 C 10.96 C 10.06 C 11.00

36.25 35.97 35.80  
 13.59 13.87 14.04  
 6.62 8.40 11.77  
 C 6.95 C 5.47 C 2.27

73

MOORE Osborne County  
 6-17-41, Fav. Alley Blk 150 UH.  
 Griffith Co

	W	C	E	SEBP Polk + Orc
040 nk Polk	358.18	358.52	359.01	346.09 1.18
+20 Break	59.45	59.31	59.77	367.70 8.60
+40 "	60.14	59.99	60.44	358.60 7.36
+60 "	60.75	60.60	61.05	365.96 1.64
+80 "	61.27	61.12	61.57	364.34 6.77
+100 "	62.00	61.85	62.30	371.09 1.33
+40 Break	64.73	62.58	63.03	369.76 4.69
+60	63.20	63.05	63.50	374.25
+80	63.61	63.46	63.91	63.91
+100	64.0	63.85	64.99	
+05	64.08	63.93	65.26	
+20	64.33	64.18	65.39	
+45	64.72	64.57	65.61	
3	65.60	65.45	65.90	65.90
+50	66.38	66.23	66.69	
4	67.17	67.02	67.48	
+50	67.96	67.81	68.26	
5	68.75	68.60	69.05	
+20 Break	69.07	68.92	69.37	
+40 "	69.31	69.17	69.63	

Indexed

	W	C	E	W	C	E	W	C	E
	8.68	9.45	9.14	0.75	1.27	2.00	2.73		
	8.57	6.51	5.87	5.21	4.69	3.96	3.23		
		5.51	5.43	4.43	4.59	3.81	3.47		
		C 1.0	C 0.39	C 0.98	C 0.10	C 0.15	F 0.24		
	9.01	9.77	9.44	1.05	1.57	2.30	3.03		
	8.19	6.19	5.54	4.91	4.39	3.66	2.93		
		5.05	4.62	4.35	3.99	3.30	2.48		
		C 1.14	C 0.98	C 0.56	C 0.20	C 0.36	C 0.65		
	9.20	3.61	4.00	4.08	4.33	4.74	5.60		
	2.76	2.35	1.96	7.01	6.76	6.37	5.49		
	4.24	3.66	2.01	6.49	7.29	6.25	4.74		
	F 6.48	F 1.31	F 0.55	C 0.57	F 0.53	C 0.12	C 0.77		
				TP					
	3.50	3.91	4.99	5.26	5.39	5.61	5.90		
	2.46	2.05	0.97	5.83	5.70	5.48	5.19		
	2.13	1.94	0.50	5.79	5.67	5.44	4.19		
	C 0.33	C 0.11	C 0.47	C 0.04	C 0.03	C 0.04	C 1.0		
	6.38	7.17	7.96	8.75	9.07	9.31			
	4.71	3.92	3.13	7.34	5.38	5.14			
	5.10	2.89	3.13	0.70	4.38	4.14			
	F 0.43	C 1.03	0.0	C 1.64	C 1.0	C 1.0			
	6.69	7.48	8.26	9.05	9.37	9.63			
	4.20	3.61	2.83	2.04	5.08	4.84			
	3.71	2.64	1.83	1.34	4.08	3.82			
	C 0.69	C 0.97	C 1.0	C 0.70	C 1.0	C 1.0			

alley 150 U.H.

374.457

W C F

5+60 69.38 69.27 69.77

+80 69.31 69.26 69.80

6+00 5k Howard 369.00 369.17 369.71

5.78

1+40 Meade C.10 363.03 363.91

Farrow C 0.11

1+60 7-30-41 Cont 363.58 364.07

4.38

1+80 change grade 364.08 368.40 K

✓ by A.E. Brown 364.50 0.95

✓ +20 364.85 0.56

✓ +31.3 365.04 0.0 drain K.

✓ +45 365.21 0.0 K

3+00 365.90 0.0 header

75

W	9.38	9.31	9.06
	5.07	5.14	4.39
	4.07	4.00	
	C 1.0	C 0.48	

E	9.77	9.80	9.71
	4.68	4.65	4.74
	2.85	3.55	
	C 1.83	C 1.10	

Moore Osborne 7-9-41.  
Convert  
O'Brien

Ingraham St. Grading St. Dept

0 to N.H. Diamond	83.0	84.0	
+ 67.5	84.16	85.16	
1 + 25 SL Mo.	85.31	86.31	
+ 45 N.H. Alley	85.68	86.68	
+ 95	86.61	87.61	
+ 45 on E.H.	87.53	88.53	P.C.
+ 70.00 SL Mo.	88.0	90.87	E.C.
0 to 0 N.H. Mo.	90.0	91.87	
+ 25 E.C.	90.97	91.97	
+ 80	92.96	93.96	
1 + 35 Alley	95.0	96.0	
1 + 90	97.04	98.04	
2 + 45.01	99.08	100.08	P.C.
2 + 70.01 SL Chal.	100.0	102.16	E.C.

El. 83.54 = Id. CT. & Diamond  
& E.H. Ingraham

78.11 NW BP Ingraham & Emerald  
4.97 IN Con. Porch of School  
83.08

0.13	W	83.0	84.2	85.3	85.7	86.6
82.95		5.3	4.1	14.7	14.3	13.4
5.30		5.0	4.6	15.6	15.0	14.4
82.25		Co. 3	F 0.5	F 0.9	F 0.7	F 1.0
1.38						
86.87 = NO 11 Pole						
13.11						
99.98	E	84.0	85.0	86.3	86.7	87.6
0.63		4.3	3.1	13.7	13.3	12.4
99.35		2.9	1.6	12.7	11.4	10.3
12.75		C 1.4	C 1.5	C 1.5	C 1.9	C 2.1
112.10						

JUSTICE P.T. C. U. see for grades  
W 87.5 88.0  
12.5  
13.2  
F 0.7  
C 1.4  
E 88.15 90.9 curb  
14.5  
9.1 for 50' P checks  
E 2.4

W	90.0	90.9	93.0	95.0
	10.0	9.1	7.0	5.0
	9.7	9.3	7.7	5.5
	Co. 3	F 0.2	F 0.7	F 0.5
E	91.8	91.9	94.0	96.0
		8.1	6.0	4.0
		5.7	3.8	2.0
		C 1.4	C 1.4	C 2.0
W	97.0	99.1	100.0	
	3.0	13.0	12.1	
	3.7	13.3	13.3	
	F 0.7	F 0.3	F 1.0	
E	98.0	100.1	102.7	
	2.0	12.1		
	0.6	10.6		
	C 1.4	C 1.5		

76  
OUT  
see for grades

Ingraham

	W	E
0 to NL Chalk	102.0	103.0
+62.5	103.27	
1 + 25 SL alloy	104.55	
1 + 45 NL alloy	104.96	
2 + 07.5	106.23	
2 + 70 SL Law	107.5	108.5

0 to NL Law	110.0	111.0
+62.5	113.54	114.52
1 + 25 SL alloy	117.11	118.04
1 + 45 NL "	118.25	119.16
2 + 07.5	121.81	122.78
2 + 70 SL Beryl	125.37	126.20

Ingraham  
Law  
N.E. 50' R.P. for 7' P.T.  
B.M. 2 x 2 Hub - 117.63

121.54 X  
3.91  
117.63

112.10 X 3.44						
108.66 W	102.0	103.3	104.6	105.0	106.2	107.5
12.88	10.1	8.8	7.5	7.1	5.9	4.6
121.54	10.9	9.1	8.4	7.5	6.6	4.8
0.45	F0.8	F0.3	F0.7	F0.4	F0.7	F0.2
121.09						
9.99						
131.08 E	103.0	104.3	105.6	106.0	107.2	108.5
	9.1	7.8	6.5	6.1	4.9	3.0
	8.4	4.3	4.3	3.7	1.6	9.3
	C0.7	C3.5	C2.2	C2.4	C3.3	C3.7

W	110.0	113.6	117.1	118.3	121.8	125.37
	11.5	7.9	4.4	3.4	9.3	6.71
	12.9	9.8	6.7	4.5	7.6	5.80
F	1.4	F1.7	F1.8	F1.3	C1.7	C0.91

E	110.0	114.5	118.0	119.2	122.7	126.20
	10.5	7.0	13.1	11.9	8.4	4.88
	6.6	3.4	8.9	7.0	4.0	
	C3.9	C3.6	C2.7	C4.9	C4.2	

131.08 X  
6.00  
125.08 = E.I.  
Sw 7' C.T.  
Ingraham  
Beryl

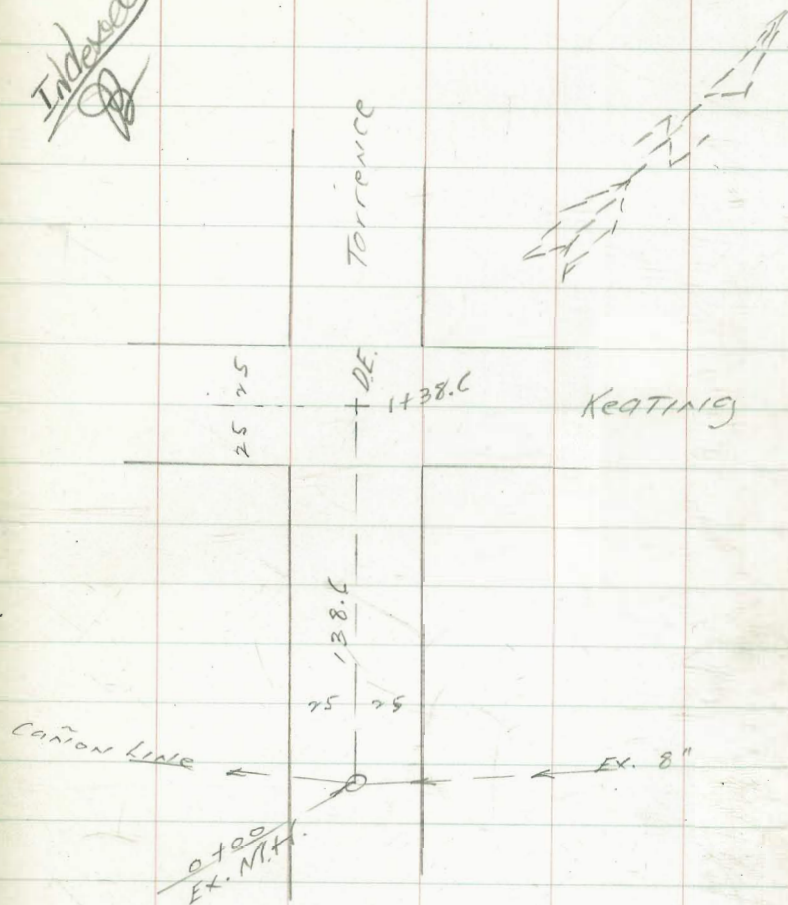
Torrence St. Sewer grades  
Keating Sly to Ex. M.H.

0+00 Ex. M.H. F.L.		113.36	
0+38.6 = Break	El. Rim M.H.	119.0	
	119.98		
0+88.6	12.34	137.5	
	132.34		
1+38.6 = D.E.	0.15	156.0	
	132.17		
	12.86		
	145.03		
	0.26		
	144.57		
	12.58		
	157.15		
	0.78		
Cut stakes offset	156.87		
5' N.E. 1/4	9.77		
	166.64		
	119.0	137.50	156.0
	12.34	7.53	10.00
	8.83	1.18	2.04
	144.99	166.35	166.00

Moore  
Rand  
Sveinmoe  
12-30-41.

78

~~Indexed~~







EROSIAN SURVEY OVERTIME

C.S.M. Osborn Hale 18611 W. Moore

8-27 (8hr) 8-27 (8hr) 8-27 (8hr) 8-27 (8)

8-31 (4)

8-31 (4)

8-31 (4)

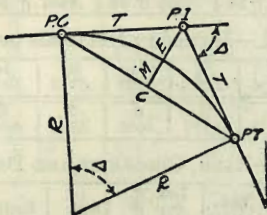
9-2 (8)

9-2 (8)

9-2 (8)

# DIETZGEN'S RAILROAD CURVE AND REDUCTION TABLES

Copyright, 1914, by Eugene Dietzgen Co., New York City



### CURVE FORMULAS

Radius =  $R = \frac{50}{\sin \frac{D}{2}}$  (1) Degree of Curve =  $D$  and  $\sin \frac{D}{2} = \frac{50}{R}$  (2)

Tangent =  $T = R \tan \frac{\Delta}{2}$  (3) Length of Curve =  $L = 100 \frac{\Delta}{D}$  (4)

Middle ordinate =  $M = R(1 - \cos \frac{\Delta}{2}) = R \text{vers} \frac{\Delta}{2}$  (5)

External =  $E = T \tan \frac{\Delta}{4} = R + \cos \frac{\Delta}{2} - R$  (8) =  $R \text{exsec} \frac{\Delta}{2}$  (9)

Long Chord =  $C = 2 R \sin \frac{\Delta}{2}$  (10)  $\Delta$  = Central Angle

### EXPLANATION AND USE OF TABLES

**Stations.**—Given P. I. = Sta. 161 + 60.35 to find Sta. of P. C. and P. T.  $\Delta = 62^\circ 10'$   $D = 8^\circ 20'$ . From Table IV for  $1^\circ$  curve  $T = 3454.1$  and  $+8\frac{1}{3} = 414.49$  ft. From Table V correction = .36 or  $T = 414.85$  ft. P. C. = Sta. P. I. -  $T = 157 + 45.50$ . Also from (4)  $L = 746.00$  and P. T. = Sta. P. C. +  $L = 164 + 91.50$ .

**Offsets.**—Tangent offsets vary (approximately) directly with  $D$  and with square of the distance. Thus tangent offset for Sta. 158 on above curve is 2.16 ft. found as follows. From Table III tangent offset for 100 ft. = 7.27 ft. Distance =  $158 - \text{Sta. P. C.} = 54.50$ , hence offset =  $7.27 (54.50 + 100)^2 = 2.16$  ft. Also square of any distance divided by twice the radius equals (approximately) the distance from tangent to curve. Thus  $(54.50)^2 \div (2 \times 688.26) = 2.16$  ft.

**Deflections.**—Deflection angle =  $\frac{1}{2} D$  for 100 ft.,  $\frac{1}{4} D$  for 50 ft., etc. For  $c$  ft. = (in minutes)  $.3 \times C \times D$  or = defl. for 1 ft. from Table III  $\times C$ . For Sta. 158 of above curve =  $.3 \times 54.5 \times 8\frac{1}{3} = 136.2'$  or  $2^\circ 16.2'$ , or =  $2.50 \times 54.5 = 136.2'$  from Table III. For Sta. 159 deflection angle =  $2^\circ 16.2' + 8^\circ 20' \div 2 = 6^\circ 26.2'$ , etc.

**Externals.**—May be found in similar manner to tangents. Thus  $E$  for curve above is 91.37. For from Table IV for  $1^\circ$  curve  $E = 960.6$  for  $8^\circ 20' = 960.6 \div 8\frac{1}{3} = 91.27$  and from Table V correction = .10 or  $E = 91.37$  ft. Or suppose  $\Delta = 32^\circ$  and  $E$  is measured and found to be 42 ft. What is  $D$ ? From Table IV  $E = 230.9$  and  $\div 42 = 5.5$  or  $D = 5^\circ 30'$ .

6402 E 33527

" W 33570

58  
43

600  
133  
0.47

DISTANCES FROM CENTER OF ROADWAY FOR  
CROSS-SECTIONING.

SW  
8490

Roadway 16 feet wide. Side Slopes 1 on 1½  
For Single Track Embankment.

H	0	.1	.2	.3	.4	.5	.6	.7	.8	.9	H
0	8.0	8.2	8.3	8.5	8.6	8.8	8.9	9.1	9.2	9.4	0
1	9.5	9.7	9.8	10.0	10.1	10.3	10.4	10.6	10.7	10.9	1
2	11.0	11.2	11.3	11.5	11.6	11.8	11.9	12.1	12.2	12.4	2
3	12.5	12.7	12.8	13.0	13.1	13.3	13.4	13.6	13.7	13.9	3
4	14.0	14.2	14.3	14.5	14.6	14.8	14.9	15.1	15.2	15.4	4
5	15.5	15.7	15.8	16.0	16.1	16.3	16.4	16.6	16.7	16.9	5
6	17.0	17.2	17.3	17.5	17.6	17.8	17.9	18.1	18.2	18.4	6
7	18.5	18.7	18.8	19.0	19.1	19.3	19.4	19.6	19.7	19.9	7
8	20.0	20.2	20.3	20.5	20.6	20.8	20.9	21.1	21.2	21.4	8
9	21.5	21.7	21.8	22.0	22.1	22.3	22.4	22.6	22.7	22.9	9
10	23.0	23.2	23.3	23.5	23.6	23.8	23.9	24.1	24.2	24.4	10
11	24.5	24.7	24.8	25.0	25.1	25.3	25.4	25.6	25.7	25.9	11
12	26.0	26.2	26.3	26.5	26.6	26.8	26.9	27.1	27.2	27.4	12
13	27.5	27.7	27.8	28.0	28.1	28.3	28.4	28.6	28.7	28.9	13
14	29.0	29.2	29.3	29.5	29.6	29.8	29.9	30.1	30.2	30.4	14
15	30.5	30.7	30.8	31.0	31.1	31.3	31.4	31.6	31.7	31.9	15
16	32.0	32.2	32.3	32.5	32.6	32.8	32.9	33.1	33.2	33.4	16
17	33.5	33.7	33.8	34.0	34.1	34.3	34.4	34.6	34.7	34.9	17
18	35.0	35.2	35.3	35.5	35.6	35.8	35.9	36.1	36.2	36.4	18
19	36.5	36.7	36.8	37.0	37.1	37.3	37.4	37.6	37.7	37.9	19
20	38.0	38.2	38.3	38.5	38.6	38.8	38.9	39.1	39.2	39.4	20
21	39.5	39.7	39.8	40.0	40.1	40.3	40.4	40.6	40.7	40.9	21
22	41.0	41.2	41.3	41.5	41.6	41.8	41.9	42.1	42.2	42.4	22
23	42.5	42.7	42.8	43.0	43.1	43.3	43.4	43.6	43.7	43.9	23
24	44.0	44.2	44.3	44.5	44.6	44.8	44.9	45.1	45.2	45.4	24
25	45.5	45.7	45.8	46.0	46.1	46.3	46.4	46.6	46.7	46.9	25
26	47.0	47.2	47.3	47.5	47.6	47.8	47.9	48.1	48.2	48.4	26
27	48.5	48.7	48.8	49.0	49.1	49.3	49.4	49.6	49.7	49.9	27
28	50.0	50.2	50.3	50.5	50.6	50.8	50.9	51.1	51.2	51.4	28
29	51.5	51.7	51.8	52.0	52.1	52.3	52.4	52.6	52.7	52.9	29
30	53.0	53.2	53.3	53.5	53.6	53.8	53.9	54.1	54.2	54.4	30
31	54.5	54.7	54.8	55.0	55.1	55.3	55.4	55.6	55.7	55.9	31
32	56.0	56.2	56.3	56.5	56.6	56.8	56.9	57.1	57.2	57.4	32
33	57.5	57.7	57.8	58.0	58.1	58.3	58.4	58.6	58.7	58.9	33
34	59.0	59.2	59.3	59.5	59.6	59.8	59.9	60.1	60.2	60.4	34
35	60.5	60.7	60.8	61.0	61.1	61.3	61.4	61.6	61.7	61.9	35
36	62.0	62.2	62.3	62.5	62.6	62.8	62.9	63.1	63.2	63.4	36
37	63.5	63.7	63.8	64.0	64.1	64.3	64.4	64.6	64.7	64.9	37
38	65.0	65.2	65.3	65.5	65.6	65.8	65.9	66.1	66.2	66.4	38
39	66.5	66.7	66.8	67.0	67.1	67.3	67.4	67.6	67.7	67.9	39
40	68.0	68.2	68.3	68.5	68.6	68.8	68.9	69.1	69.2	69.4	40

Example—If point is 22.6 ft. above grade, how far should it be from center line to be a slope stake point? Ans. from Table 41.9. For same slopes but other widths of roadbed correct above figures by one-half difference in width of roadbed; thus in example above for 20 ft. roadbed distance will be 41.9 + (20 - 16) ÷ 2 or 2 ft. added to 41.9 = 43.9. For slopes of 1 on 1 see inside of front cover.

MADE IN U.S.A.