

G1-A

380

FIELD

Cocket
Quality

MICROFILMED

DEC 1 1964

5 MS W. India & the Malay Archipelago

435-4311

April 1813

6

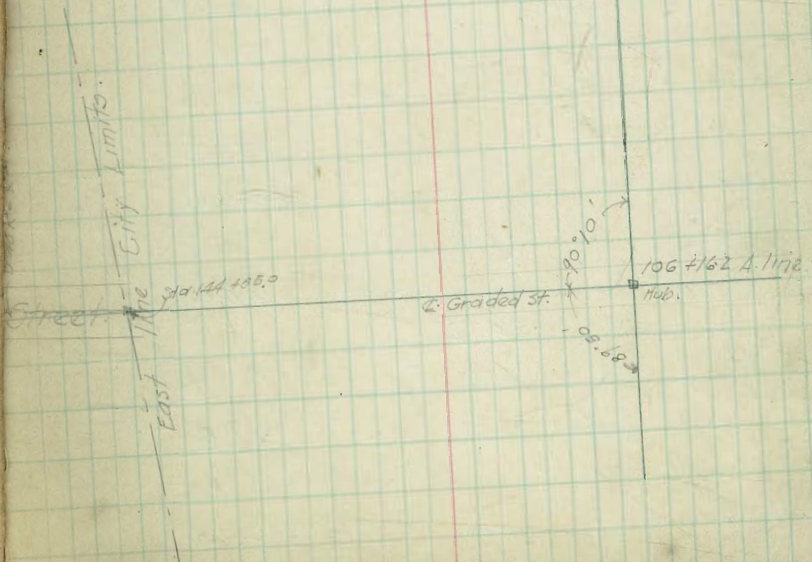
5

A Line Profile.

	+	H.I.	-	Elev.
Top NE Post School	0.37	274.43		274.06
Sta. 80	L. 56°36'		4.4	220.0
81			5.6	218.8
82			8.3	216.1
83			10.9	213.5
T.P.			12.47	211.96
	2.30	214.26		
84			3.9	210.3
85			8.1	206.1
T.P.			12.35	201.91
	0.35	202.26		
86			3.0	199.2
+20			3.3	198.9
87			11.9	190.3
T.P.			13.01	189.25
	0.42	189.73		
88			6.6	183.1
89			12.6	177.1
T.P.			12.58	177.15
	0.35	177.50		
90			5.9	171.6
+55			7.6	169.9
91			14.4	163.1
+10			15.9	161.6
92			15.4	162.1
+75			11.7	165.8
93			12.6	164.9

April - 7 - 1913.

West
vans
bare.



T.P.		12.49	165.01
7	7.99	173.00	
94		5.7	167.3
95		5.8	167.2
96		7.1	165.9
97		10.8	162.2
98		13.2	158.8
99		13.0	160.
100		8.7	164.3
T.P.		7.79	165.21
	3.92	169.13	
101		1.8	167.2
102		3.9	165.2
103		6.3	162.8
104		7.7	161.4
105		10.1	159.0
106		10.8	158.3
+16.2 @ R.90°10'		12.4	156.7
107		14.5	154.6
108		16.6	152.5
T.P.		12.67	156.46
	0.26	156.72	
109		7.0	149.7
110		9.1	147.6
111		11.5	145.2
T.P.		12.59	144.13
	0.86	144.99	
93		12.0	164.1

Graded surface

144.99

112	2.1	142.8
113	4.0	140.9
114	6.4	138.5
115	8.7	136.2
116	10.6	134.3
117	12.7	132.2
T.P.	12.36	132.63

5.32

137.95

118	7.7	130.2
119	9.8	128.1
+85	9.6	128.3
120	13.6	124.3
121	21.0	116.9
+30	14.1	123.8
122	8.8	129.1
+50	4.9	133.0
123	6.3	131.6
124	5.4	132.5
T.P.	5.47	132.48

4.29

136.77

125	3.0	133.7
126	3.4	133.3
+40	2.6	134.1
127	5.5	131.2
128	6.6	130.1
129	12.2	124.5

Grading ends

136.77

T.P.		12.77	124.00
	4.55	128.55	
129+70		11.2	117.3
130		11.6	116.9
131		13.9	114.6
+60		9.7	118.8
132		8.8	119.7
133		4.6	123.9
T.P.		0.92	129.63
	11.49	139.12	
134		11.0	128.1
135		5.1	134.0
136		2.9	136.2
+25		1.1	138.0
137		5.7	133.4
138		8.0	131.1
139		8.7	130.4
T.P.		12.09	127.03
	12.53	139.56	
140		15.0	124.0
141		23.6	115.9
+10		24.8	114.7
142		20.7	118.8
+35		24.6	114.9
143		19.2	120.3
144		7.1	132.4

139.56

T.P.

1.83 137.73

9.51 147.24

144.85

7.2 140.0

N. Hob. Hst City Limits

6.59 140.65 140.70 =
Actual E.

Contour Levels for EIK. 155

12/23/5

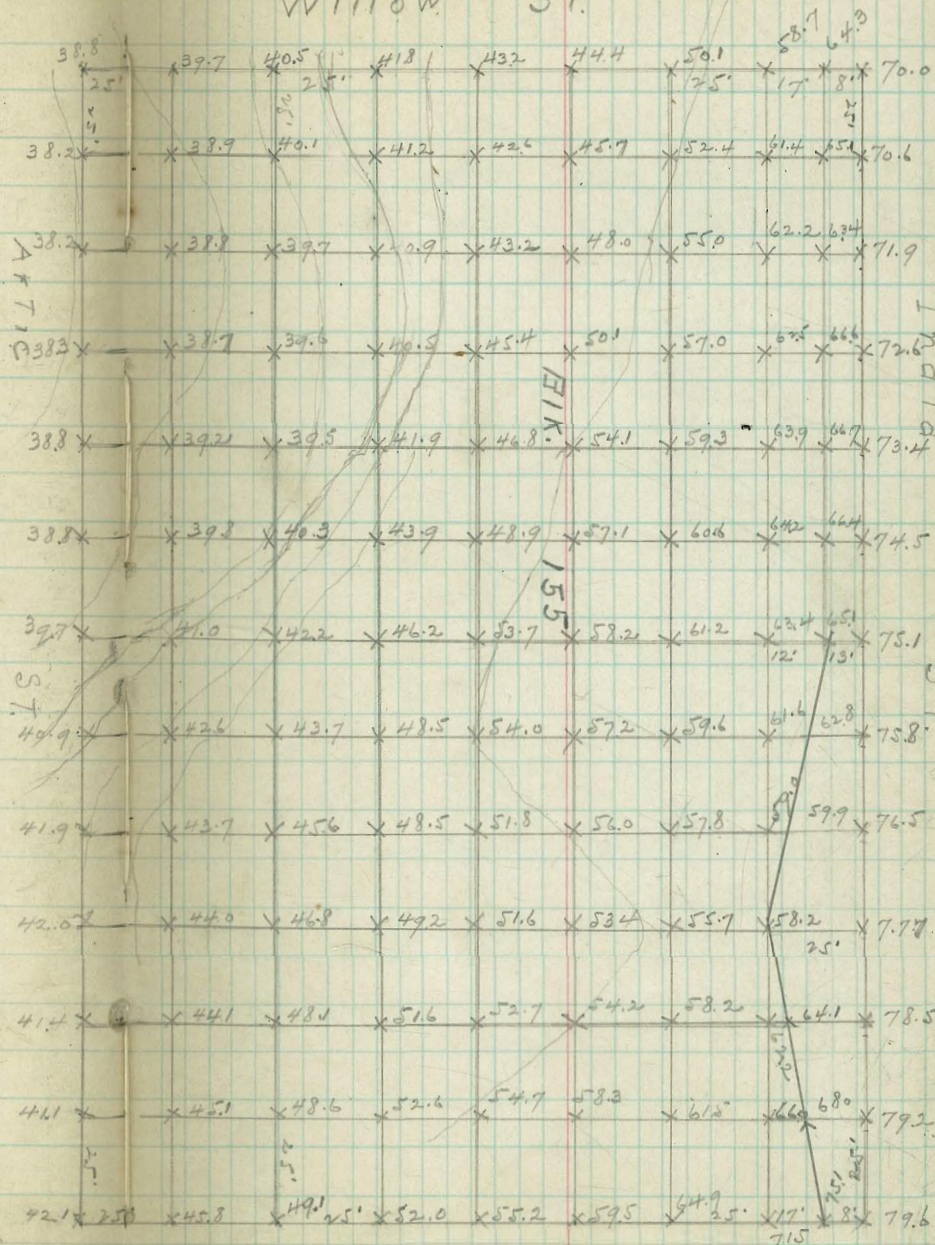
11

EM. Con Man SW. India Vine

81.07

EM	1.57	82.64		
T.P.	1.00	71.54	12.10	70.54
T.P.	2.14	61.24	12.44	59.10
T.P.	1.18	50.44	11.98	49.26

Willow ST.



Vine ST.

ST.

Cut & Fills - Water Dept Shops
bet India & Arctic &
Vine & Willow

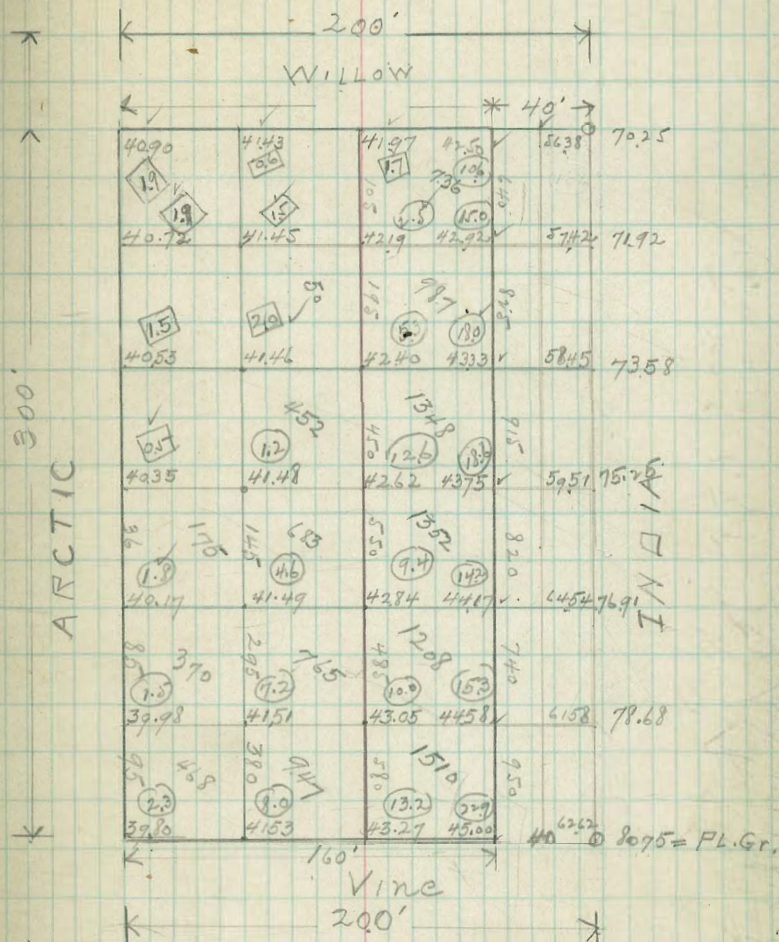
12

BM. SW India & Vine Mon	81.06			
T.P	2.61	83.67	12.51	71.16
T.P	0.89	72.05	12.94	59.11
T.P	0.16	59.27	12.45	46.82
	0.76	47.58		

E Rail - NL Vine	7.80	39.78		
W " " "	7.78	39.80		
E " SL Willow	6.50	41.08		
W " " "	6.73	40.85		

BM. SW India & Vine Mon	81.06			
T.P	2.54	83.60	10.35	73.25

Hub - SW - Corset B.R. 42.11



{ EXC = 11192.2 C y
Emb = 443.4 "

Top

57

6

7

8

T

8

8

T

8

+

8

T

8

8

T

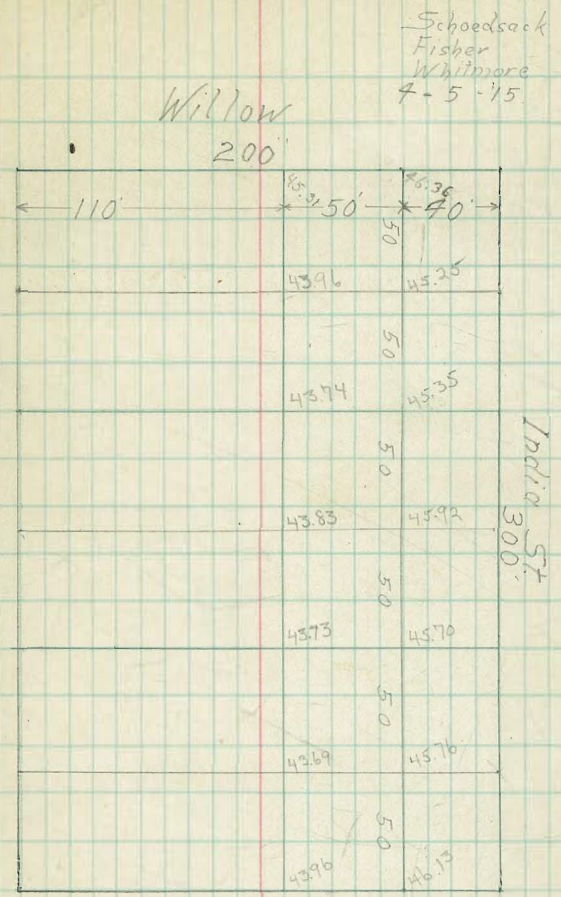
9

9

9

9

	+	H. I	-	Elev	
Top Sta. B.M	1.115	82.175		81.06	Vine + India
T.P.	0.178	69.503	12.850	69.325	
T.P.	0.212	57.910	11.805	57.698	
T.P.	1.58	46.49	13.000	44.910	
			2.53	43.96	
			0.36	46.13	
			0.78	45.76	
8. T.P.	5.90	49.49	2.80	43.69	
8.			5.76	43.73	
7.			3.79	45.70	
			3.57	45.92	
8.			5.66	43.83	
			5.75	43.74	
8.			4.14	45.35	
T.P.			4.24	45.25	
			5.53	43.96	
8.			4.18	45.31	
8.			3.13	46.36	
T.P. B.M.			6.50	42.99	Nail in Post S.W. of lot



79
80
81
82
83
84
85
86
87
88
89
90
91
92
93

Top
Sky

T

8

8

T

8

T

8

T

8

8

T

9

9

9

9

79
36

30

34

35

HUSTON
LORD
O'Brien

N-F-W STREET 1/2 = 30'
A ST

Profiles of Sts in Broadway

Heights

Distance	Profile	Stationing	Profile	Stationing	Notes
0-08		224.16	224.06		City of Dallas
	C.H. cent. ST	4.4	219.8		
	S-	4.4	219.2		
	F-P.H.	4.9	219.3		
	S-	3.2	221.0		
	150.5				
	C	5.9	218.3		
	S	5.5	218.7		
	100				
	C	9.2	215.0		
	S	9.0	215.2		
	150				
	C	13.0	211.2		
	S	13.0	211.2		
T.P.	0.50	211.94	12.72	211.44	pipe R.H. ALLEY
	200.5				
	C	4.5	207.4		
	S	4.6	207.3		
	250				
	C	6.9	205.0		
	S	6.4	205.5		
	271.56 =	W-L.O.F. CENTER ST			
	C	8.3	203.7		
	S	8.23	203.71		pipe
	C. of ST				
	C	10.7	201.5		
	S	10.8	201.1		

"A" ST

E. 4 in. O.F. CENTER OF C. NYS ST

311.94

C			12.6	199.3	
S	T.P.	1.97	201.22	12.69	199.25 PIPE S.E. COR
			50' F		
C			3.7	197.5	
S			4.3	196.9	
			100' F		
C			5.8	195.4	
S			6.6	194.6	
			150' F		
C			5.8	195.4	
S			7.9	193.3	
			200' F		
C			7.1	194.1	
S			8.2	193.0	
			250' F		
C			7.0	194.2	
S			8.0	193.2	
			271.54 = W-4	193.2	EAST ST.
C			6.3	194.9	
S	T.P.		7.86	193.36	PIPE S.W. COR
			CENTER		
C			5.6	195.6	
S			6.2	195.0	

N. & S ST in center of Tract.
60' ST. SOUTH FROM N. Line

Worthern ST

0+00 1.93 205.54 203.71 Pipe
S-PL

W-	1.8	203.7
C	4.2	201.3
F	6.3	199.2

50' S

W-	2.4	203.1
C	4.1	201.4
F	5.9	198.4

100' S

W-	1.8	203.7
C	3.0	202.5
F	7.0	198.5

150' S

W	1.5	204.0
C	4.4	201.1
F	6.5	199.0

200' S

W	1.6	203.9
C	4.4	201.1
F	6.7	198.8

250' S

W	3.0	203.5
C	5.4	200.1
F	8.1	197.4

6036 40

COM
WORTHEN ST

300' S^H

300' SOUTH

W	3.2	202.3
C	5.6	199.9
E	8.7	196.8

350'

W	3.8	201.7
C	6.6	198.9
E	9.0	196.5

400'

W	5.2	200.3
C	7.9	197.4
E	10.4	195.1

450' S

W	7.0	198.5
C	9.1	196.4
E	11.8	193.7

500'

W	10.1	195.4
C	13.2	193.3
E	14.4	191.1

550'

W	12.5	193.0
C	17.6	187.9
E	14.0	189.5

T.P.	2.14	195.28	12.40	193.14
------	------	--------	-------	--------

Worthern ST

195.38

603.6 S-N-3. of center E & W ST

W		70.5	188.23	Pipe
C		8.1	187.3	
E		10.73	184.55	

C-O.P. ST

W		8.4	184.9
C		10.6	184.7
E		12.1	183.2

0+00 S-3. of center ST

W		10.38	184.90	Pipe
C		12.4	182.9	
E		14.4	180.9	
T.P.	0.73	185.13	184.90	

50' S

W		4.0	181.1
C		4.9	180.2
E		5.7	179.4

100'

W		5.0	180.1
C		7.6	177.5
E		8.8	176.3

150'

W		9.3	175.8
C		9.8	175.3
E		11.1	174.0

200' S Northern St

18573

W	11.6	173.5
C	12.8	172.3
F	12.2	172.9

250' S

W	12.7	172.4
C	15.9	169.3
F	15.5	169.6

300' S

W	17.0	168.1
C	15.6	169.5
F	16.3	168.8

350' S

W	16.3	168.8
C	17.1	168.0
F	17.3	167.8

400' S

W	15.5	169.6
C	16.6	168.5
F	15.3	169.9

450' S

W	13.4	171.7
C	13.1	172.0
F	13.6	171.5

CON,
 WORTHEN ST
 185.13
 500'S-

W	11.4	173.5
C	10.5	174.6
F	9.9	175.7

550'S

W	10.0	175.1
C	9.6	175.5
F	9.7	175.4

603.6-N-4.75-ST

W	8.19	176.94
C	8.1	177.0
F	8.0	177.1

S-1.7 Tract

W	6.4	178.5
C	6.5	178.6
F	7.0	178.1

Rip. minor

Center - East & West ST.
 C - ST
 EAST side WEST line of Tract

202.13
 center of ST

N	3.9	199.2
C	4.0	198.1
S	7.6	194.5

East line

N	20.8	200.05
C	4.9	197.2
S	81.5	193.98

50' E

N	2.4	199.5
C	4.5	195.6
S	9.4	192.7

100' E

N	4.4	197.7
C	7.9	194.2
S	10.5	191.5

150'

N	6.6	195.5
C	9.6	192.5
S	12.1	190.0

200' E

N	8.8	193.3
C	11.5	190.4
S	13.5	188.4

"C" ST

46

20313

350'E

N
C
S

271.5'E = W-1.0'E center ST

N	13.89	188.24
C	15.2	186.9
S	17.23	184.90

185.13

East line

N	0.59	184.53
C	2.0	183.1
S	4.1	181.0

50'E

N	3.2	181.9
C	4.9	180.3
S	5.7	179.4

100'E

N	6.3	178.8
C	7.1	178.0
S	8.3	176.9

150'E

N	6.9	178.3
C	8.4	176.7
S	9.1	176.0

CENTER RY W ST
COR, "C" ST

185.13

200 E

N	7.5	177.6
C	8.3	176.9
S	7.8	177.3

271.55 W. 4' of East St

N	7.43	177.70	PIPE	N.W. COR
C	7.4	177.7		
S	9.43	175.70		

C. of ST

N	7.4	177.7
C	7.8	177.3
S	9.3	175.8

HUSTON 8-24-14
LORD
O'Brien

47

30 ST on West side of Addition
from North to South line

2005- ST

48

B.M.	0.25	224.31	224.06	
0+00	S-L T.P. N-ST			
C		4.6	219.7	
F		3.8	220.93	PIPE S-E
	50' S			
C		5.0	219.3	
F		5.3	219.1	
	100' S			
C		5.6	218.7	
F		5.8	218.5	
	150' S			
C		7.1	217.3	
F		5.5	218.8	
	200' S			
C		8.3	216.1	
F		6.0	218.3	
	250' S			
C		9.5	214.8	
F		8.3	216.1	
	300' S			
C		11.2	213.1	
F		10.5	218.7	
	350' S			
C		13.5	210.8	
F		12.3	217.0	
T.P.	1.85	213.97	212.12	

West ST COIT

2005 - ST

213.97

400 S

C 3.5 210.5

E 3.9 210.9

450

C 5.9 208.8

E 5.5 208.5

500

C 8.3 205.8

E 7.8 204.3

550

C 11.1 202.9

E 10.0 204.0

603³ N-line of center E-W ST

C 14.8 199.3

E 13.92 200.05

T.P. -0.01 202.13 11.83 202.14

C of ST

C 4.0 198.1

E 4.9 197.3

0+00 S-line of ST

C 7.6 194.5

E 8.15 193.98 PIPE

CONT LOOS ST

20313

50' S

C			13.0	189.1
F			13.3	188.9
T.P.	0.55	189.59	13.09	189.04

100' S

C			3.6	186.1
F			3.7	185.9

150' S

C			6.4	183.0
F			6.8	182.8

200' S

C			8.5	181.1
F			9.9	179.9

250' S

C			13.6	177.0
F			14.1	175.5
T.P.	0.45	177.56	13.48	177.11

300' S

C			3.7	173.9
F			3.5	174.1

350' S

C			6.0	171.6
F			7.0	170.6

2005 ST

17754

400'

C 7.5 170.1

E 11.0 146.4

450'

C 14.3 143.3

E 15.3 142.4 DRAW

450' DRAW

C 15.8 161.9

500'

C 15.4 162.3

E 14.0 163.6

550'

C 16.7 140.9

E 14.3 143.3

603.

C 14.7 163.9

E 12.47 145.09

C-O.P. ST-S-line

C 13.6 144.0

E 11.0 145.6

30' ST. ON SOUTH line of Addition
 FROM E-line TO W-line
 "E" ST

177.6

C. of ST = W-line

C	13.4	164.0
N	14.7	163.9

0+00 = E-line of ST

C	11.0	166.6
N	12.47	165.09

+50' E

C	8.0	169.6
N	9.1	168.5

100' E

C	4.1	173.5
N	6.0	171.6

150' E

C	3.0	175.6
N	3.4	174.0

T.P. 1087 184.64 37.9 173.77 PIPE

N.E. COR. OF ALLEY

200' E

C	7.8	176.8
N	7.0	177.6

271

C	5.9	178.7
N	7.69	176.95

C. of ST

C	6.0	178.5
N	7.6	177.0

ST. on S-line CONTS

"E" ST

184.64

0400 = East Line of Center ST.

C	4.5	178.1	
N	7.9	177.15	Pipe N.E. CO. V

50' F

C	4.3	178.3
N	7.0	177.6

100'

C	5.2	178.4
N	6.7	177.9

150'

C	5.0	179.6
N	4.0	178.6

200'

C	4.4	180.2
N	5.3	179.3

271 = East ST

C	3.3	182.4	
N	2.89	181.75	Pipe N.W. CO.

C-OF ST = Line Addition

C	1.3	183.4
N	1.9	182.7

30' ST. 011 - East line of Addition
 East 30' of ST Graded Meridian
 From N-line to S-line

276 196.12 19334 pipe
 S-line of ST

W-	3.8	193.3
C-	3.1	194.0
G-	0.8	195.3

50'

W-	3.8	193.3
C-	3.8	193.3
G-	3.0	193.1

100'

W-	4.7	191.4
C-	5.0	191.1
G-	4.4	191.7

150'

W-	7.3	188.8
C-	5.7	190.4
G-	5.3	190.9

200'

W-	8.7	187.4
C-	7.7	188.4
G-	6.7	189.4

250'

W-	9.3	186.9
C-	9.3	186.9
G-	8.7	187.4

ST

S.W. CAN

FAST ST. CONTINUED
 Meridian ST

196.12

- 300' S

W		11.0	185.1
C		10.3	185.9
G		10.3	185.9

350' S

W		12.4	183.7
C		11.9	184.2
G		11.0	184.6

400'

W		12.4	183.7	
C		12.1	183.0	
G		12.8	183.3	
T.P.	0.37	184.03	12.47	183.65

450'

W		2.0	182.0
C		2.5	181.5
G		1.9	183.1

500'

W		3.4	180.6
C		3.9	181.1
G		3.0	181.0

550'

W		4.7	179.3
C		4.7	179.3
G		4.1	179.9

EAST ST. CNT,
MERIDIAN ST

18403

603. = N-1. CENTER ST

W	628	177.74
C	41	177.9
G	60	178.0

C of ST

W	43	177.8
C	47	177.3
G	70	177.0

0700 = S-1. ST

W	838	175.74
C	81	175.9
G	75	176.4

470' S

W	27	174.3	OCAN
C	27	175.3	
G	81	175.9	

100'

W	66	177.4
C	21	175.9
G	69	177.1

150'

W	46	179.4
C	36	180.4
G	39	181.1

T.P.

Meridian St

18402

200' S

W.		3.5	180.5
C.		00	184.0
G.		4.3	184.9
T.P.	7.11	191.07 ⁵	2.06

250' S

W.		8.4	182.7
C.		4.0	185.1
G.		4.9	184.3

300'

W.		7.4	183.7
C.		4.6	184.5
G.		4.5	186.4

350'

W.		7.4	183.7
C.		5.0	184.1
G.		4.4	186.7

400'

W.		8.3	183.9
C.		4.1	185.0
G.		4.8	186.3

3-25-14 58

HUSTON
LOKJ
O. BYRON

Meridian ST

191.07

450' S

W-	8.3	183.9
C-	5.9	185.2
G-	5.3	185.8

500' S

W-	7.9	183.2
C-	7.0	184.1
G-	6.2	184.9

550'

W	9.5	181.6
C	7.8	182.3
G-	7.1	184.0

603.14

W	9.30	181.77
C	8.3	182.2
G-	7.8	182.3

C-adj-ST

W	183.4
C	183.4

+3 sec VINE ST

59

INDIA ST TO ARTIC ST

80' ST 14' WALKS 13' QUARTERS

B.M. 204 83.10 810.6

W. 1/2 India ST.

S 1 2.0 81.1

S-E 2-1 81.0

S 1/4 2-3 80.8

C 2-5 80.6

N 1/4 3-4 79.7

N-E 3-3 79.8

N-S 3-5 79.6

+50 W

S 1 2.7 82.4

S-E 1.4 81.7

S 1/4 3.4 80.7

+25'

S 3 6.1 77.0

S-E 6.1 77.0

S 1/4 7.1 76.0

C 4.3 78.8

N 1/4 5.2 77.9

N-E 11.0 77.6

N-S 11.4 71.7

see page "61"

60

VINE ST

COR - from page 59

83.10

+50

N-3		17.7	65.4
N-4		13.2	69.9
N-1/4		8.5	74.6
C-		10.0	73.1
S-2/4		11.3	71.8
S-C		13.1	70.0
S-1/4	T.P. 0.09	70.30	13.99

+75

S-3		5.7	64.5
S-C		4.8	65.4
S-1/4		3.7	67.5
C-		1.3	68.9
N-1/4		6.7	63.4
N-C		8.4	60.8
N-1		10.5	59.6

100'

N-3		14.5	55.7
N-C		13.5	56.7
N-1/4		12.5	57.7
C-		12.7	57.5
S-1/4		9.7	60.5
S-C		10.7	59.5
S-3	T.P. 0.34	59.09	11.42

61

5902

135'

S-4	6.4	52.4
S-C	5.1	53.9
S-1/4	3.5	55.5
C-	4.1	54.9
N-1/4	5.0	54.0
N-C	5.5	53.4
N-1/2	5.9	52.1

150'

N-1/2	10.3	48.8
N-C	9.5	49.5
N-1/4	7.8	51.5
C-	7.0	52.0
S-1/2	4.8	53.2
S-C	7.5	51.5
S-1/4	10.4	48.6

175'

S-1/2	12.8	46.2
+ 9.0	7.2	49.6
S-C	9.3	49.7
S-1/4	9.6	49.4
C-	10.3	48.7
N-1/4	11.1	47.9
N-C	11.7	47.3
N-1/2	13.7	45.3

VITE

63

5902

200' E. 4. ARTIC. ST.

N-3	14.9	43.1
N-C	14.7	43.3
N-1/4	14.1	42.9
C	N.D.	44.0
S-1/4	12.8	44.2
S-C	14.4	43.6
S-1/2	14.5	43.5

12-4-14

P. 22" Drain in BIK 155 Middletown

	BS	HI	Fs	Elev
BM	162	92.68		81.06
TP	0.01	69.77	12.92	69.76
TP	0.10	56.87	13.00	56.77
	1.44	45.41	12.90	43.91
0			0.11	45.30 37.00
+50			1.84	43.57 36.32
1-			3.03	42.38 35.43
+50			4.56	40.85 34.65
(+893+91) ^{CR}			5.99	39.43 34.00
Top Rail			5.64	39.77
<small>OPIC</small> 2+00			5.93	39.48
<small>135 FEET</small> +50-			9.12	35.29 33.80

0.830 8.35"
7.35 7.42"
6.95 6.11"
6.20 6.28"
5.43 5.58"
8.54 36.87
Bottom of Bellon Water Main
1.49 1.52"

BM	0.79	81.35		81.06
			13.17	68.68
			16.08	65.77

Concrete Drain
culvert

(30.2)

20

BM

TP

TP

0

+50

1-

+50

(+89)

Top of Rd

0.110

2+00

135

+50-

BM

15

Q
To
2
1
7

5

6

7

8

9

10

75

6

7

5

3

7

75



220.93
 17.9
 202.72
 12.38
 210.34 T.P.
 0.31
 210.65

200.93
 3.99

Wed - 12
 Thurs 14
 Fri 17

20005
 361
 20266 H.I.
 150
 20116
 456
 20572

14-27-40-5 -80

125.78
 125.78
 20
 271.56
 213.97
 208
 189

20213
 208
 20000 x

5207
 656
 5846
 1189
 7045

590241

0-14.9-42.1-41.35 +0.8
 150-10.1-48.9-48.4 +0.56
 1-37-56.3-55.6 -0.3
 T.P. 7045-
 1-60 7.9-62.6-62.8 -0.2
 2-0.4-70.1-70.0 +0.1