

EUGENE DIETZGEN CO.
DRAWING MATERIALS, MATHEMATICAL and
SURVEYING INSTRUMENTS

Chicago New York San Francisco New Orleans Pittsburg Toronto

Distances from Center of Roadway for Cross-Sectioning
Roadway 16 feet wide. Side Slopes 1 on 1.
For Single Track Embankment.

H	0	.1	.2	.3	.4	.5	.6	.7	.8	.9	H
0	8.0	8.1	8.2	8.3	8.4	8.5	8.6	8.7	8.8	8.9	0
1	9.0	9.1	9.2	9.3	9.4	9.5	9.6	9.7	9.8	9.9	1
2	10.0	10.1	10.2	10.3	10.4	10.5	10.6	10.7	10.8	10.9	2
3	11.0	11.1	11.2	11.3	11.4	11.5	11.6	11.7	11.8	11.9	3
4	12.0	12.1	12.2	12.3	12.4	12.5	12.6	12.7	12.8	12.9	4
5	13.0	13.1	13.2	13.3	13.4	13.5	13.6	13.7	13.8	13.9	5
6	14.0	14.1	14.2	14.3	14.4	14.5	14.6	14.7	14.8	14.9	6
7	15.0	15.1	15.2	15.3	15.4	15.5	15.6	15.7	15.8	15.9	7
8	16.0	16.1	16.2	16.3	16.4	16.5	16.6	16.7	16.8	16.9	8
9	17.0	17.1	17.2	17.3	17.4	17.5	17.6	17.7	17.8	17.9	9
10	18.0	18.1	18.2	18.3	18.4	18.5	18.6	18.7	18.8	18.9	10
11	19.0	19.1	19.2	19.3	19.4	19.5	19.6	19.7	19.8	19.9	11
12	20.0	20.1	20.2	20.3	20.4	20.5	20.6	20.7	20.8	20.9	12
13	21.0	21.1	21.2	21.3	21.4	21.5	21.6	21.7	21.8	21.9	13
14	22.0	22.1	22.2	22.3	22.4	22.5	22.6	22.7	22.8	22.9	14
15	23.0	23.1	23.2	23.3	23.4	23.5	23.6	23.7	23.8	23.9	15
16	24.0	24.1	24.2	24.3	24.4	24.5	24.6	24.7	24.8	24.9	16
17	25.0	25.1	25.2	25.3	25.4	25.5	25.6	25.7	25.8	25.9	17
18	26.0	26.1	26.2	26.3	26.4	26.5	26.6	26.7	26.8	26.9	18
19	27.0	27.1	27.2	27.3	27.4	27.5	27.6	27.7	27.8	27.9	19
20	28.0	28.1	28.2	28.3	28.4	28.5	28.6	28.7	28.8	28.9	20
21	29.0	29.1	29.2	29.3	29.4	29.5	29.6	29.7	29.8	29.9	21
22	30.0	30.1	30.2	30.3	30.4	30.5	30.6	30.7	30.8	30.9	22
23	31.0	31.1	31.2	31.3	31.4	31.5	31.6	31.7	31.8	31.9	23
24	32.0	32.1	32.2	32.3	32.4	32.5	32.6	32.7	32.8	32.9	24
25	33.0	33.1	33.2	33.3	33.4	33.5	33.6	33.7	33.8	33.9	25
26	34.0	34.1	34.2	34.3	34.4	34.5	34.6	34.7	34.8	34.9	26
27	35.0	35.1	35.2	35.3	35.4	35.5	35.6	35.7	35.8	35.9	27
28	36.0	36.1	36.2	36.3	36.4	36.5	36.6	36.7	36.8	36.9	28
29	37.0	37.1	37.2	37.3	37.4	37.5	37.6	37.7	37.8	37.9	29
30	38.0	38.1	38.2	38.3	38.4	38.5	38.6	38.7	38.8	38.9	30
31	39.0	39.1	39.2	39.3	39.4	39.5	39.6	39.7	39.8	39.9	31
32	40.0	40.1	40.2	40.3	40.4	40.5	40.6	40.7	40.8	40.9	32
33	41.0	41.1	41.2	41.3	41.4	41.5	41.6	41.7	41.8	41.9	33
34	42.0	42.1	42.2	42.3	42.4	42.5	42.6	42.7	42.8	42.9	34
35	43.0	43.1	43.2	43.3	43.4	43.5	43.6	43.7	43.8	43.9	35
36	44.0	44.1	44.2	44.3	44.4	44.5	44.6	44.7	44.8	44.9	36
37	45.0	45.1	45.2	45.3	45.4	45.5	45.6	45.7	45.8	45.9	37
38	46.0	46.1	46.2	46.3	46.4	46.5	46.6	46.7	46.8	46.9	38
39	47.0	47.1	47.2	47.3	47.4	47.5	47.6	47.7	47.8	47.9	39
40	48.0	48.1	48.2	48.3	48.4	48.5	48.6	48.7	48.8	48.9	40

Example—If point is 22.6 ft. above grade, how far should it be from center line to be a slope stake point? Ans. from Table 30.6. For same slopes but other widths of roadbed, correct above figures by one-half difference in width of roadbed; thus in example above, for 20 ft. roadbed distance will be $30.6 + (20 - 16) \div 2$ or 2 ft. added to 30.6 = 32.6. For slopes of 1 on 1 1/2 see inside of back cover.
Copyright, 1914, by Eugene Dietzgen Co.

G-228

*Indexed
completely*

MICROFILMED

APR 13 1965

This Field Book is manufactured of a High Grade 50% Rag Paper having a WATER RESISTING SURFACE, and is sewed with Bing Special Enamel Waterproof thread.

Made in U. S. A.

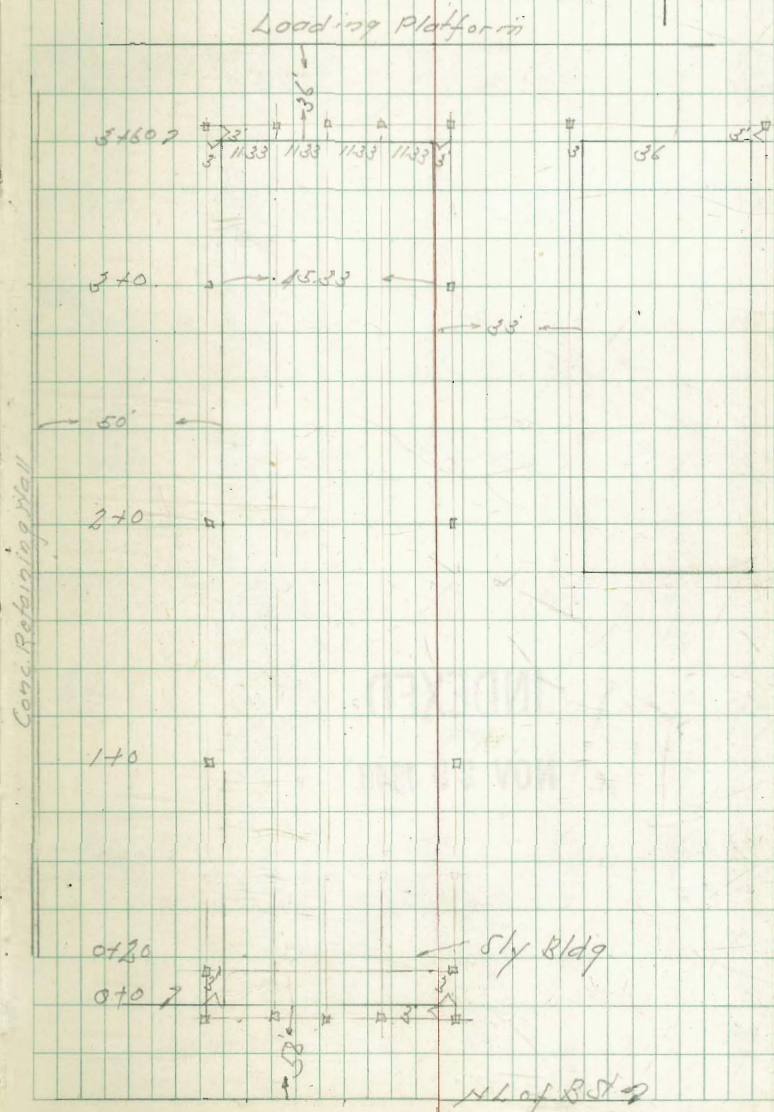
- 1-4 Truck Storage Sheds #1 20th & B Sts
 5-8 Paving Grades Alleys Bk 88 Normal Hts
 9 Sewer Grader Barnard L. Alley Bk 84 Central Home Astoria
 10 Water Line Grader Draper St. Gravilla Pk. Rosemont
 11-14 Paving Grades Alley Bk 88 Point Lemo Hts
 15 Grader Culvert Kettner & Spruce St.
 16 Curb Grader So Side Levis Front to Alley West
 17 Sewer Grader Gardena St West of Gardena Place
 18 Curb Grader Collier Ave West of 54th St
 19 " " Adams " West of 54th St
 20-24 Sewer Grader Ozark - 50th St Alleys & Easements
 25-27 Paving Grades Alleys Block 101 University Hts
 28 Curb Grader W. Lind Vista Rd. at Shenandoah
 29 East Gutter Grader Ray St North of Nightman
 30 Gutter Grader Richmond & Upas #150 Myrtle
 31-32 Gutter Grader West Curb of 6th Ave Univ. to Washington
 Curb Grader 5th St North of Collier
 33-36 28th St. West Half Paving Grader
 38 Curb Levels NW Trojan & 60th St
 39-40 Water & Sewer Laterals 54th St N of #1 Capas
 41-42 Curb Grader So Side Trojan & West side 54th St
 43-44 Gutter Grader E side 5th St North of Adams
 45-59 Adams Storm Drains Maxwell Blvd to Modell Terr
 61-62 Landon St. Paving Fairmount to Highland
 63-66 Dwyer St " " to 48th St
 67-77 Keats - Sarvis Evergreen Paving

- 78-79 Paving Grades Alley Block 84 City Hts
 80 Sewer Grader Block G O.L. Steel Sub. & P.L. 1152

Track Storage Shed
#1 2015 + 8 str.

May 13-47
S. S. Coy
File #
No. 60116

2



Grades Truck Storage Shed
#1 20'4" x 8' 5"

June 16-47
Pier Elev.

86.50: Bottom
Girder

May 16-47
Sept. 4-47. For Pav 3

1+60	Top Pav 431 72.93	2 72.98	439 73.03	434
1+40	72.94	1.53 72.99	418 72.84	1.15
1+20	72.56	4.71 72.61	466 72.66	4.51
1+0	72.37	4.90 72.42	485 72.47	4.80
+80	72.19	5.08 72.24	503 72.29	4.98
+60	N.Y. Office 72.00	72.05	72.10	
+40	INDEXED WK NOV 29 1948			
+20	= 5 1/4 Bldg; 0.185 Per 20' = 2 1/32			
TP Pav 360	77.27	2.01	73.67	
0+0	= 5 1/4 Bldg			
B.M.	765	77.88	70.23	
B.M.	10.33	80.56	70.23	SEBR 8-14-20's
For Paving	5.45	75.68	70.23	

7.08 7.82	73.48	-8.62 1.30	-8.62 1.32	-8.62 1.34	-8.62 1.35	-8.62 1.37	73.48	7.08 7.29
Fo.80.		-13.92 12'11 1/2"	-13.94 12'11 1/4"	-13.94 12'11 1/4"	-13.95 12'11 1/8"	-13.99 12'11 1/8"		Fo.21
7.57 7.99	73.29	-8.62 1.40	-8.62 1.41	-8.62 1.45	-8.62 1.50	-8.62 1.58	73.29	7.29 7.57
Fo.71.		-13.87 13'0 13/16"	-13.13 13'1 1/16"	-13.18 13'2 1/16"	-13.12 13'1 1/16"	-13.19 13'1 1/16"		Fo.27
7.45 8.18	73.11	-8.62 1.64	-8.62 1.69	-8.62 1.72	-8.62 1.74	-8.62 1.81	73.11	7.45 7.66
Fo.73.		-13.26 13'0 3/8"	-13.31 13'3 1/4"	-13.34 13'4 1/16"	-13.26 13'3 1/8"	-13.25 13'3"		Fo.20
7.54 8.46	72.92	-8.62 1.83	-8.62 1.87	-8.62 1.84	-8.62 1.85	-8.62 1.83	72.92	7.64 7.84
Fo.82.		-13.75 13'5 7/8"	-13.79 13'5 7/8"	-13.76 13'5 1/2"	-13.75 13'5 5/8"	-13.75 13'5 5/8"		Fo.20
7.81 8.61	72.74	-8.62 1.91	-8.62 1.96	-8.62 1.92	-8.62 1.93	-8.62 1.92	72.74	7.82 7.98
Fo.82.		-13.63 13'5 7/8"	-13.68 13'8 1/8"	-13.64 13'7 1/2"	-13.65 13'7 1/2"	-13.64 13'7 1/2"		Fo.14
8.01 8.96	72.55	-8.62 1.95	-8.62 2.06	-8.62 2.02	-8.62 2.09	-8.62 2.12	72.55	8.01 8.07
Fo.95.		-13.67 13'8"	-13.68 13'8 1/8"	-13.71 13'8 1/2"	-13.71 13'8 1/2"	-13.72 13'8 1/4"		Fo.20
8.19 9.20	72.37	-8.62 2.04	-8.62 2.06	-8.62 2.02	-8.62 2.09	-8.62 2.12	72.38	8.19 8.16
F1.01.		-13.66 13'7 15/16"			-13.69 13'8 1/4"			Fo.27
8.33 9.30	72.18	-8.62 2.08	-8.62 2.08	-8.62 2.09	-8.62 2.05	-8.62 2.06	72.18	8.33 8.35
Fo.92.		-13.70 13'8 3/8"	-13.70 13'8 3/8"	-13.71 13'8 1/2"	-13.67 13'8"	-13.68 13'8 1/2"		Fo.27
72.00	Cut						72.00	

77.88

	West Top Pav.	Z	East Top Pav.
2+60	74.78 ²⁴⁷	74.83 ²⁴¹	74.88 ²³⁹
1+0	74.59 ²⁶⁸	74.64 ²⁶³	74.69 ²⁵⁸
1+20	74.41 ²⁸¹	74.46 ²⁸¹	74.51 ²⁷⁶
3+0	74.22 ³⁰⁵	74.27 ³⁰⁰	74.32 ²⁹⁵
1+80	74.04 ³²³	74.09 ³¹⁸	74.14 ³¹³
TP	10.78	8.02	72.54
1+60	73.85 ³⁴³	73.90 ³³⁷	73.95 ³³²
1+40	73.67 ³⁶⁰	73.72 ³⁵⁵	73.77 ³⁵⁰
1+20	73.48 ³⁷⁹	73.53 ³⁷⁴	73.58 ³⁶⁹
2+0	73.30 ³⁹⁷	73.35 ³⁹²	73.40 ³⁸⁷
1+80	73.11 ⁴¹⁶	73.16 ⁴¹¹	73.21 ⁴⁰⁶

86.50 Bottom Girder						7.99
7.99	7.99	-8.62	-8.62	-8.62	-8.62	8.62
8.27	7.533	-8.62	-8.62	-8.62	-8.62	8.27
FO.88.	2.58	-11.58	-11.58	-11.58	-11.58	FO.88
	11.58	11.58	11.58	11.58	11.58	
8.18	7.514	-8.62	-8.62	-8.62	-8.62	8.18
9.08	8.59	-8.62	-8.62	-8.62	-8.62	9.08
FO.90.	2.58	-11.21	-11.21	-11.21	-11.21	FO.90
	11.21	11.21	11.21	11.21	11.21	
8.36	7.496	-8.62	-8.62	-8.62	-8.62	8.36
9.38	8.80	-8.62	-8.62	-8.62	-8.62	9.38
FO.97.	2.98	-11.42	-11.42	-11.42	-11.42	FO.97
	11.42	11.42	11.42	11.42	11.42	
8.55	7.477	-8.62	-8.62	-8.62	-8.62	8.55
9.51	8.80	-8.62	-8.62	-8.62	-8.62	9.51
FO.96.	2.98	-11.57	-11.57	-11.57	-11.57	FO.96
	11.57	11.57	11.57	11.57	11.57	
8.73	7.459	-8.62	-8.62	-8.62	-8.62	8.73
9.71	8.80	-8.62	-8.62	-8.62	-8.62	9.71
FO.98.	2.98	-11.74	-11.74	-11.74	-11.74	FO.98
	11.74	11.74	11.74	11.74	11.74	
6.16	7.440	-8.62	-8.62	-8.62	-8.62	6.16
7.01	8.80	-8.62	-8.62	-8.62	-8.62	7.01
FO.84.	2.98	-11.95	-11.95	-11.95	-11.95	FO.84
	11.95	11.95	11.95	11.95	11.95	
6.34	7.422	-8.62	-8.62	-8.62	-8.62	6.34
7.25	8.80	-8.62	-8.62	-8.62	-8.62	7.25
FO.91.	2.98	-12.12	-12.12	-12.12	-12.12	FO.91
	12.12	12.12	12.12	12.12	12.12	
6.53	7.403	-8.62	-8.62	-8.62	-8.62	6.53
7.36	8.80	-8.62	-8.62	-8.62	-8.62	7.36
FO.83.	2.98	-12.33	-12.33	-12.33	-12.33	FO.83
	12.33	12.33	12.33	12.33	12.33	
6.71	7.385	-8.62	-8.62	-8.62	-8.62	6.71
7.43	8.80	-8.62	-8.62	-8.62	-8.62	7.43
FO.72.	2.98	-12.54	-12.54	-12.54	-12.54	FO.72
	12.54	12.54	12.54	12.54	12.54	
6.90	7.366	-8.62	-8.62	-8.62	-8.62	6.90
7.64	8.80	-8.62	-8.62	-8.62	-8.62	7.64
FO.74.	2.98	-12.70	-12.70	-12.70	-12.70	FO.74
	12.70	12.70	12.70	12.70	12.70	

Paving Grades Alley Block 58 Normal Hts
 East + West Alley Bancroft to 33rd St
 North + South Alley Page 7

Cross Sections 1606-64 + 76

checked raw data

INDEXED

WIK

NOV 29 1948

1+75

+49 = W on North

1+40 1/2 = E.L. N + S Alley

1+25 1/2 = W.L. N + S Alley

1+21 = Senior Lateral W on North

+82 1/2

+40 = E.Y.S.

+30

0+0 = E.L. Bancroft

For Check

6.44

384.36

389.19 For Header

390.80 Rt. Back N.S. Alley 8908

E.L. Bancroft
 N.C. E.F. 00
 384.37
 1606-77

May 26-47
 S. 550 m
 1000
 1100
 1200

work order # 31269

29 Grades
 July 11-47 5
 S. 550 m
 1000
 1100
 1200
 1300
 1400
 1500

	North Paving Grade	Sub. Grade		Sub. Grade	
575.8 576.0 576.2 C0.48 2'	385.22	397	84.55	397	385.22 5.58 5.61 F0.03 2'
590 590 590 C0.50 2'	384.90	429	84.23	429	384.90 590
596 596 596 C0.50 2'	384.84	435	84.17	435	384.84 596
598 598 598 C0.70 2'	384.70	449	84.03	449	384.70 598 C0.70 2'
593 593 593 C0.50 2'	384.55	462	83.90	462	384.57 593 C0.70 2'
594 594 594 C2.00 2'	384.46	473	83.77	477	384.42 594 C0.80 2'
648 652 on Paving	384.33	28	384.30	11	663 669 on 11
			384.30	1606-77	384.12
			390.80		

2+65.32 = 142 3rd St.

+45 = Brk

+32 = on North

+22 = Schor Lateral on North 380.66

10.14
4.44
5.76
5

2+10

389.19
390.80

North

South

4.72 386.02
4.78 on Brk 386.08

386.04 4.64
386.16 4.96 on Brk

493
4.44
0.49
385.87 on Brk 85.20

332
385.87 493
5.00
10.07
2

526
4.26
0.70
385.54 on Brk 84.87

3.65
385.54 526
5.04
10.08
2

390.80

Paving Grader North + South Alley
Block 38 Normal Hts Madison Ave North
between Bancroft + 33rd St.

2+285

1+790

1+295

TP 5.42 388.99 3.25 382.57

+80 = F.V.C.

+60

+40

+20

0+0 = N.L. Madison

For Headers 5.45 387.58

BM 4.69 386.83

For 5.55 387.68

382.13

382.13

382.13

0+0 on West
Top Cur. 5
1806-89

Check Header
Aug. 12:47

Sisson
McCoy
Ellen
Lamore

7

	West Pav. Gr.		Sub. Gr.		East Pav. Gr.	
	5.48 2.52 C 1.95 0.7 Nail Fence	388.51	1.07 #	82.84	4.07 #	383.51
	5.64 2.18 C 1.74 1.5 Grass Cont. Wall	383.37	4.21 #	82.70	4.21 #	383.37
	5.76 4.20 C 1.56 1.0 Nail Fence	383.23	4.35 #	82.56	4.35 #	383.23
		388.99				
	5.73 3.69 C 0.64 2	383.09	4.49 #	82.42	5.26 #	383.09
	4.85 2.50 C 1.35 2 Nail Fence	382.97	4.61 #	82.21	5.37 #	382.97
	4.05 3.02 C 1.02 2	382.77	4.81 #	82.11	5.57 #	382.77
	4.37 2.78 C 1.57	382.45	5.13 #	81.78	5.90 #	382.45
	4.78 4.70 C 1.08 2	382.04				382.14
		386.82				

387.68

450.81	= S.L. Ex	11/16x		
TP	5.45	390.80	4.32	385.35
425				
640				
+80	= (W)	07 East		
5475	= PVC			
+69	= Server Connection			379.47
5+255				
+76				
470	= (W)	07 East		
460	= Server Lateral #2	07 East		379.14
41265				
TP	4.62	388.66	3.54	384.04
3477				
TP	4.32	389.67	3.64	385.35
34275				
3478				

387.58 Headers
388.99

Foot	5.91 3.62 1.00	384.84	3.82	390.807	5.65 3.65 84.30	384.90	8 5.90 3.90 0.10
	22 Nail Fence						0.10 Nail Fence
	4.94 3.94 0.10	384.73	3.93	84.08	3.89	384.77	4.90 3.90 0.10
	19 Nail Fence						0.00 Nail Fence
	5.09 3.09 0.10	384.58	4.08	83.91	4.07	384.59	5.08 4.08 0.10
	2.05 Nail Fence						0.10 Nail Fence
	5.18 3.18 0.20	384.47	4.17	83.82	4.17	384.49	5.18 4.18 0.20
	1.25 Nail Fence						0.20
	5.33 4.80 0.53	384.35	4.31	83.68	4.31	384.35	5.33 4.33 0.10
	2						2
	5.46 5.11 0.35	384.21	4.45	83.54	4.45	384.21	5.46 4.46 0.10
	2						0.65 Nail Fence
	5.60 4.89 0.07	384.07	4.59	83.40	4.59	384.07	5.60 4.59 0.07
	2						2
	5.74 3.74 0.20	383.93	3.65	82.26	3.65	383.93	5.74 5.29 0.07
	21 Nail Fence						2
		389.67					
	5.30 3.30 0.20	383.79	3.79	82.12	3.79	383.79	5.30 4.86 0.07
	1.84 Nail Fence						2
	5.94 3.94 0.07	383.65	3.93	82.98	3.93	383.65	5.94 5.07 0.07
	2						2

388.99

Somer Grades Bancroft St North of
 Occan View Blvd Also Alley Block 344 Block 9
 Central Homestead

3+0 = MH #2 56.20 ^{12.19}
^{4.42}
 c 7.77

INDEXED

775 WK NOV 29 1948 52.50 ^{15.89}
^{5.76}
 c 10.74

TP 11.85 68.39 0.37 56.54

750 48.80 ^{8.11}
^{0.37}
 c 7.74

2+0 41.40 ^{15.57}
^{10.63}
 c 4.88

TP 11.77 56.91 0.86 45.14

1+50 = MH #1 34.00 ^{12.00}
^{3.78}
 c 8.22
 off set 7.07 R/W.

1+0 31.33 ^{14.67}
^{5.76}
 c 7.91

750 28.67 ^{17.33}
^{2.98}
 c 7.35

0+0 = HL 26.00 ^{20.00}
^{12.89}
 c 7.31

BM 9.77 46.00 36.23 ^{Smt Top F.Hed}
^{Occan View}
^{+ Bancroft}

June 2-47
 S. S. 500
 Alley
 Williams

H.O.

Staked offset 5' left
 going up grade

Levels 41672-62

B.M. 1057 60.34 ^{Smt Top F.Hed}
^{Occan View}
^{+ 3200}
 60.57 60.40
 167362

510 = OF 63.00 ^{8.11}
^{1.21}
 c 6.90

750 61.30 ^{9.81}
^{2.74}
 c 7.07

TP 363 71.11 0.91 67.48

4+0 59.60 ^{8.79}
^{3.21}
 c 5.58

3+50 57.90 ^{10.49}
^{4.38}
 c 6.21

68.39

Water Line Grades Draper St
Gravilla Place to Rosemont

BM	10.56	94.86		82.80
TP	10.54	102.65	2.25	92.11
TP	12.89	115.10	0.44	102.21
BM			0.53	114.57
TP	12.37	126.85	1.62	113.98

S.ERP
Rosemont
Electric

W. Prop
1707
Rosemont
Draper

INDEXED
WK
NOV 29 1948

States offered 4 1/2" x 1 1/2" dia
Grades & Balances of West Side

June 13 47 10

S. Run
McCord
17110
Williams
140 60118

Gravilla Place

Exist Water 2' 40" → 99.50
Line 5' 80" →
Curb →

0140	100.47	
	11.6	
	8.4	
	68.4	115.10X
0180	101.44	
	12.7	
	2.2	
	68.0	
1420	102.40	
8-4	12.7	
	2.8	
	67.9	
1460	106.05	
	9.0	
	1.7	
	64.3	
240	109.70	
	5.4	
	1.5	
	63.9	
Fd Man		
Post Pole		
Rosemont		126.25X
Exist. Fd → 41'	109.70	
2445	17.1	
	9.1	
	68.0	

Draper

Paving Grades Filley Block 68 Point Loma Hts
From Santa Barbara to Venice Bet Newport & Newport

Cross Sections #1727-2 checked this date

1710

1710 Sewer #65

170

INDEXED

WK

NOV 29 1948

+60 = F.V.C. Sewer #75

TP 12.51 213.03 0.89

+40

+20

+10 Sewer #91 191.29

070 = F.L. Santa Barbara

B.M. 11.44 201.41

198.32

194.77

200.52

#85 191.29

189.97

14.71
9.17
c 5.54
3

18.26
11.85
c 6.41
3

10.12
3.00
c 7.12
5

10.12
2.92
c 7.20
5

NW 8P
Newport &
Santa Barbara

June 16-41 W.O. 31069

Sutton
McCoy
Filley
Williams

Hartsh

L

Scuts

11

7.39
7.55
F 0.16
3

205.64

10.19
10.35
c 0.16
3

202.54

13.60
13.21
c 1.39
3
Lorand
Finn

199.43

3.69
1.00
c 2.69
3

197.72

5.22
2.88
c 2.34
3

195.69

7.91
4.03
c 3.88
3

193.50

205.64
7.39
7.55
c 0.16
3

202.54
10.19
10.35
c 0.16
3

213.03

197.72
3.69
1.00
c 2.69
3

195.69
5.22
2.88
c 2.34
3

193.50
7.91
4.03
c 3.88
3

201.41

2+20

2+0

+80

+60 Sewer #35

+40

TP 10.63 223.20 0.46 212.57

2+20 P.V.C.

2+10 Sewer #45

1+80

1+60 Sewer #10H 202.20
213.03

10.83
5.36
5.47
5

H.S. 202.20

10.83
6.05
4.78
5

Norths

8

Souths

12

4.85
4.99
F0.16
3

218.39

5.95
6.08
F0.15
3

217.29

7.14
7.23
F0.09
3

216.06

8.45
7.72
C0.73
1 Conc
H.P. 199
3

214.75

9.85
9.44
C0.41
3

213.35

1.18
0.29
C0.89
5 Conc
H.P. 199
3

211.85

4.28
4.21
C0.07
3

208.75

213.03

218.47

217.29

216.06

214.75

213.35

223.20

211.85

208.75

4.85
5.15
F0.30
3

5.95
5.79
C0.16
3

7.14
7.43
F0.29
3

8.45
8.38
C0.07
3

9.85
10.63
F0.78
3

1.18
1.57
F0.41
3

4.28
4.80
F0.52
3

North

South

13

570 Server Lot #2 South 222.02 $\frac{10.74}{5.54}$
 $\frac{0.50}{5}$

570 $\frac{6.00}{6.50}$ 226.76 $\frac{6.03}{8.17}$
 $\frac{0.50}{3}$ FOLTA
 3

780 $\frac{6.74}{8.47}$ 226.02 $\frac{6.74}{6.88}$
 $\frac{0.27}{3}$ Conc Apron $\frac{F.5.74}{3}$

4760 = P.V.C. $\frac{7.62}{6.33}$ 225.14 $\frac{7.62}{7.59}$
 $\frac{0.29}{1.5}$ Stop Conc Wall $\frac{3}{3}$ Conc D.I.N.C.

4720 $\frac{9.51}{8.96}$ 223.22 $\frac{9.51}{9.39}$
 $\frac{0.64}{3}$ Conc Apron $\frac{0.16}{3}$

TP 10.54 232.76 0.98 222.22 232.76

780 $\frac{1.90}{1.86}$ 221.30 $\frac{1.90}{1.81}$
 $\frac{0.04}{3}$ Conc Apron $\frac{0.09}{3}$ Conc Apron

3440 = F.V.C. $\frac{5.82}{5.88}$ 219.38 $\frac{5.82}{5.48}$
 $\frac{0.00}{3}$ Conc Apron $\frac{0.04}{3}$ Conc Apron

222.20

222.20

B.M. 6.01 230.12
 5. W. 8 P
 Newport +
 Venice
 230.14

TP 8.23 236.13 4.86 227.90

670050 = W.L. Venice

+80

+60

+55 Series Lat 4.50
 222.79 9.97
 4.71
 5.26

+40

5+20

232.76

North South 14

4.41
 7.55
 3
 228.15 227.69
 5.07
 5.07
 5.60
 5.60
 Return

4.59
 7.16
 3
 228.17 227.84
 4.97
 4.58
 5.37
 5.37

4.71
 7.25
 3
 228.05 227.82
 4.94
 4.58
 5.26
 5.26

4.99
 7.80
 3
 227.77 227.63
 5.13
 5.10
 5.69
 5.69

5.42
 7.84
 3
 227.34 227.27
 5.49
 5.37
 5.08
 5.08

5.07
 4.97
 4.97
 4.97

232.76

Grades Culvert. Kettner Blvd And Spruce St.

2+78.81 = B.C. Lt. Set 5 Lt + Rad. Point	47.08	9.81 5.28 c 4.03
TP 1.83 56.89 12.47 55.06 F.L. Kettner		
1+6.8 = Ely Exist. Pipe 45° 03' Rt.	51.68	15.85 11.28 c 4.37
1+31.66	52.78	14.75 10.84 c 4.11
+95.30	52.87	13.66 10.00 c 3.66
+59 = B.C. Lt	54.96	12.57 8.50 c 4.07
+33	58.08	9.45 7.38 c 2.07
+17	60.32	7.21 5.06 c 2.15
0+01.3 = Wly Ex. IN Pipe	63.00	1.53 0.72 c 3.79
TP 10.77 67.53 62.22 56.76		
BM 4.45 62.98	58.53	S.F. BP Kettner

INDEXED
WK
NOV 29 1948

Sup 27 47 15
S. 5107
M.C. 201
Hill 2
Williams

Stake offsets 17
of 2 Culvert. Except Where Noted

+84.8 = End of Pipe	24.40	26.37 8.80 c 11.57
+76.8 = F.C. 45° 00'	24.48	20.37 11.56 c 8.73
c 25.29		
+53.2 30° 00'	24.72	20.05 11.09 c 8.96
+37.5 20° 00'	25.10	19.17 6.83 c 12.17
+21.8 10° 00'	25.93	18.84 8.74 c 12.10
c 15.63		10
4+06.10 = B.C. Lt	27.21	17.56 4.90 c 12.56
3+790	29.29	15.48 3.71 c 12.07
TP 0.46 44.77 12.58 44.31		
3+50.84	35.56	21.33 11.79 c 9.54
3+11.69 = F.C.	41.82	15.07 5.86 c 6.51
2+95.25	44.45	13.44 7.35 c 5.09
		56.89

Curb Grader South Side Lewis St
Front St to Kelly West

BM 5.94 29090 28496 SFBP
Lewis
Front

INDEXED
WIC
NOV 29 1948

LOT 2 BLK. 2 ADD. Florence Heights

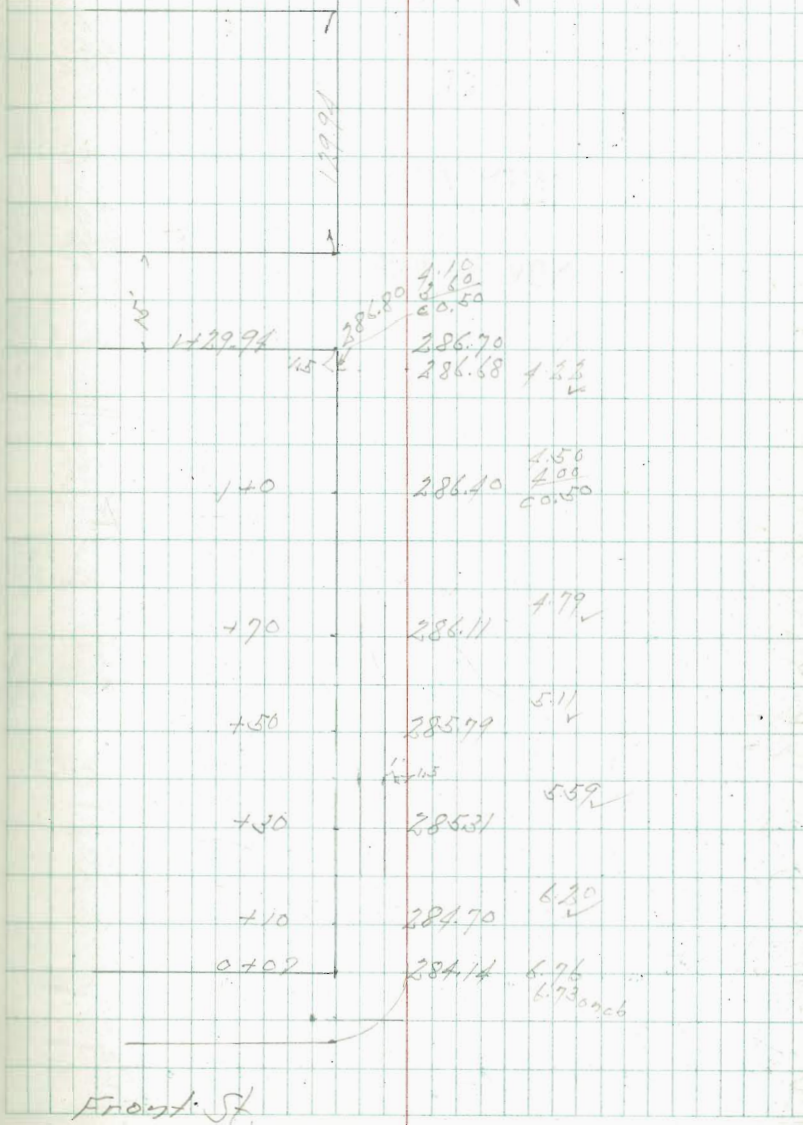
OWNER _____

CONTR. _____

PERMIT NO. _____

Staker offset 1.550. of cb. Face
#13.011 - 1/4 Edge wall No. 21018
July 24. 47
Sullivan
McCoy
Maddal
Hillman 16

Albatross St.



Sewer Grader Gardena St
West of Gardena Place

02	MH Rim	3.30	25.28	25.31
3+27.83	= EXIN / MH		19.00	9.58 3.50 c5.08
2+92.83			19.25	9.33 5.64 c5.69
2+47.83			19.49	9.09 4.20 c4.89
2+22.83	= DF		19.74	8.84 4.19 c4.65
1+83	DF		18.63	9.95 4.26 c5.69
+52.5			18.22	10.26 5.04 c5.22
1+22			18.02	10.56 5.30 c5.26
+91.5			17.71	10.87 5.21 c5.66
+61			17.41	11.17 5.51 c5.66
+30.5			17.10	11.48 5.67 c5.81
0400	= EXIN / MH.		16.80	11.78 5.99 c5.79
B.M.	399	28.58	24.59	Spk Pole 17' R 2+0 *1450-63

INDEXED
WK
NOV 29 1948

August 5-41 17

#1450-60

832.58				
Gardena Place				
3+27.83				
EXIN / MH				
8.50				
31.5				
5.35	20.08 #1	2+84.6	22	3-25
8.13				
3.59	20.45 #3	2+28		
4.54				
		2+22.83 DF		
		1+83 DF		
		1+81.5	#8	19.47 ^{9.15} c4.96
		1+63		
		10.07		
		4.37	18.51	#1
		6.86		
		0+97	XK	
		0+93.5		#7
				18.72 ^{9.56} c4.58
		0+62		#6
				18.52 ^{10.06} c4.36
		7.02.5		#5
				18.52 ^{10.06} c4.36
		070		

Sisson
McCoy
Fisher
Lomax

No 800.98

Note
Main + Lat Ards dug
At this time
Except #1 + #2

Gardena St

EXIN / MH

EXIN / MH

Curb Grader Coll. 1/10/47
 Mark of 54700
 Station of Set of Back of Face of Curb
 " Set by Walter

INDEXED

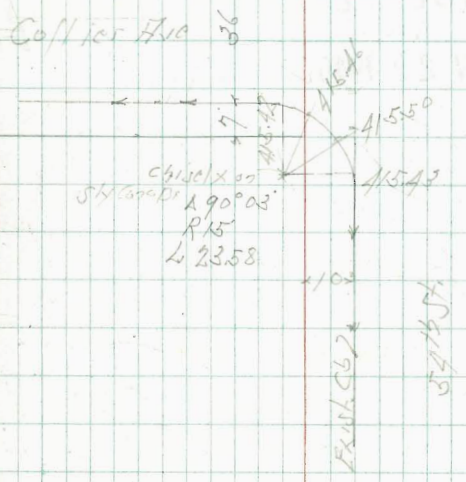
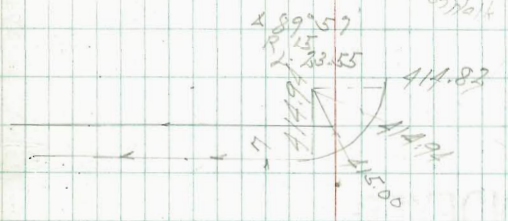
WK

NOV 29 1948

	South	North
725	413.42 $\begin{matrix} 823 \\ 752 \\ \hline 60.8 \end{matrix}$	413.42 $\begin{matrix} 823 \\ \text{out} \end{matrix}$
1720	413.50 $\begin{matrix} 810 \\ 839 \\ \hline 61.98 \end{matrix}$	413.48 $\begin{matrix} 819 \\ 839 \\ \hline 61.90 \end{matrix}$
790	414.00 $\begin{matrix} 767 \\ 569 \\ \hline 61.78 \end{matrix}$	413.86 $\begin{matrix} 781 \\ 574 \\ \hline 62.07 \end{matrix}$
760	414.50 $\begin{matrix} 710 \\ 544 \\ \hline 61.73 \end{matrix}$	414.24 $\begin{matrix} 743 \\ 579 \\ \hline 61.64 \end{matrix}$
730	415.00 $\begin{matrix} 667 \\ 515 \\ \hline 61.52 \end{matrix}$	414.52 $\begin{matrix} 705 \\ 573 \\ \hline 61.22 \end{matrix}$
010-31-2-54154	415.50 $\begin{matrix} 617 \\ 583 \\ \hline 61.22 \end{matrix}$	415.00 $\begin{matrix} 667 \\ 583 \\ \hline 60.84 \end{matrix}$
B.M. 827	421.67	413.40 N.E.B.P. Adams St 54154

Sept. 18-47
 For Returns
 S. J. 187
 7/1/50
 7/1/50

B.M. 691	420.31	413.40 N.E.B.P. Adams St
N.Y. Return	414.94 $\begin{matrix} 537 \\ 435 \\ \hline 60.72 \end{matrix}$	415.00 $\begin{matrix} 537 \\ 437 \\ \hline 60.74 \end{matrix}$
S.Y. Return	415.43 $\begin{matrix} 481 \\ 120.10 \end{matrix}$	415.50 $\begin{matrix} 481 \\ 120.10 \end{matrix}$
		414.94 $\begin{matrix} 537 \\ 437 \\ \hline 60.70 \end{matrix}$
		414.82 $\begin{matrix} 549 \\ 460 \\ \hline 61.87 \end{matrix}$
		415.46 $\begin{matrix} 481 \\ 125 \\ \hline 60.72 \end{matrix}$
		415.42 $\begin{matrix} 481 \\ 125 \\ \hline 60.72 \end{matrix}$



Aug. 7-47
 S. J. 187
 7/1/50
 7/1/50
 N.O. 21018

18

Curb Grader Adams St. North Curb Line
 West of 54th St
 States approx 3' of Curb Face

N.L. Sta	C 2166		3.29	18.87
1+786.5	P.O.C.	4°38'	4.13 F0.44	103.14 9.26 C0.92
	C 2166			
1+577.3		2°19'	2.88 3.52 F0.64	103.95 10.06 9.18 C0.88
	C 2166 Stake line			
1+368.1	BC + 5% Stake line R 248	0°00'	1.83 2.52 C0.95	405.00 9.01 8.06 C0.95
TP Restake	1.01	406.83	7.85	405.82
+98.7			7.00 5.34 C1.55	406.92 7.09 5.54 C1.55
+60.6			5.18 3.27 C1.91	408.83 5.18 3.27 C1.91
+22.5			3.27 1.20 C2.07	410.74 3.27 1.32 C1.91
0+0			2.14 0.55 C1.59	411.87 2.14 0.66 C1.78
0 - 16.5	N.H. C6 End			413.00 1.01 exc.
BM	0.61	414.01		415.40 N.P. BP Adams & 54th St
" Restake	2.37	415.67		418.40

INDEXED
 WK
 NOV 29 1948

Make - Rev. From Field
 Note - Curb Face
 Curb to BC

Note: Existing Curb Return
 N.H. C6 Adams + 54th 15 10'
 Curb on North These
 Grader Set for 12' Curb

#497-47
 Simon
 McCoy
 Billon
 20 More
 N.O. 21018

4+296.7	-F.C.	11°05'		397.75
		C 24.56		
4+05.93		7°23'20"		398.08
		C 24.56		
2+81.19		3°41'40"		398.41
		C 24.56		
2+56.95	BC + 1% Stake line R 191		8.09 7.00 C0.19	398.74 8.09 8.36 C1.54
1571				
2+41.24			7.41 7.20 C0.72	399.42 7.41 7.20 C1.32
20				
2+21.24			6.67 6.87 C0.60	400.16 6.67 6.87 C0.56
22.58				
2+98.66	-F.C.	17°54'	5.95 6.18 F0.23	400.88 5.95 6.18 C0.20
		C 16.05		
2+83.05		16°11'	5.51 5.36 F0.35	401.32 5.51 5.36 C1.26
		C 18.55		
2+65.13		14°12'	5.13 5.60 F0.52	401.70 5.13 5.60 C0.82
		C 18.55		
2+47.31		12°13'	4.89 5.15 F0.26	401.94 4.89 5.15 C1.78
TP	C 27.58	4.79	10.22	402.77
2+20.49		9°16'	4.11 5.09 F0.47	402.22 4.11 5.09 C1.57
		C 21.66		
1+99.57		6°57'	4.27 4.55 F0.28	402.56 4.27 4.55 C1.74
		414.01		
		106.82 Restake		

Sever Grader Ozark St. 50th St And
 Imperial Hvc. Alleys + Rights of Way
 stakes affixed 6' ft. off Sever going up Grade

Plan 6741 L
 Levels 1673-1725

Aug-21-47
 S. J. Ross 20
 M. C. C. H. J. C. C.

N.O. 31037

TP 1236 144.76 0.24 132.40
 2+2576 124.46 8.18
 227
 c5.91.

INDEXED

WK

NOV 29 1948

1+83.15 122.23 10.41
 5-4383 2574.

5+8536 133.90 16.04
 9.22
 c6.82.

MH #1
 1+40.33 Δ 44° 17' Rt. R.P. 6.18 + 6.48 R1
 120.00 12.64
 7.00
 c5.61.

TP 9.97 149.94 4.79 139.97
 5+3917 133.35 11.41
 4.80
 c3.51.

1+20.33 = Bch 115.00 17.64
 7.51
 c10.13.

1+92.98 132.79 11.97
 4.56
 c7.75.

TP 12.01 132.64 0.04 120.63
 +92.67 97.99 22.68
 17.95
 c10.73.

1+16.79 132.24 12.57
 4.38
 c8.14.

TP 12.77 120.67 0.04 107.90

1+00.60 131.68 15.08
 3.97
 c9.16.

TP 13.18 107.94 0.60 94.76
 +65 = Bch 80.98 14.38
 6.60
 c13.78.

2-46.19

+325 78.60 16.67
 14.24
 c1.73.

MH #2
 3+54.41 Δ 2° 00' 30" Rt. R.P. 6.00 + 6.00
 131.13 15.63
 4.36
 c9.27.
 For check 3.97 140.79 17.57
 5.46
 37.64
 140.80

0+0 = Existing M.H. 76.23 19.13
 9.24
 c9.69.
 60 R/W

3+11.59 128.91 15.85
 5.82
 c10.53.

BM 10.09 95.36 85.27
 Ch. 5. M. H.
 N.E. 1/4
 M.H.
 1673-2

2+68.78 126.69 18.07
 10.08
 c7.99.

144.76

9+33.33

144.76

15.27
4.87
c10.40.

8+91.45

144.01

16.02
5.18
c10.84.

8+49.57

143.26

16.77
5.92
c10.85.

8+07.69

142.50

17.53
7.70
c9.83.

7+65.81

141.75

18.28
9.83
c8.45.

TP

10.23 160.03

0.14

149.80

10-41.88

7+23.93

DMH #5
L 1° 34' H

8.94
2.78
c6.16

L141.00
c135.57

10.37
2.78
c11.59.

6+77.74

135.01

14.73
6.87
c8.86.

6+21.55

134.46

15.28
9.07
c6.41.

149.94

13+22.74

157.54

15.78
2.28
c7.90

12+77.74

155.29

13.03
5.87
c7.14

12+32.74

153.04

15.78
7.28
c8.80

11+87.74

150.79

17.53
2.28
c2.00
07.44.11.11.11.11

TP

11.72 168.32 3.43

156.60

114.22.74

11+42.74

MH #4
A 90° 00' H. 8.48.11.11.11.11

148.54

11.20
3.43
c 8.06
8.48.11.11.11.11

For check

323

156.80

09.2.40.6
11.2.8.1

11+00.85

147.78

12.25
3.70
c8.35.

10+58.97

147.03

13.06
4.19
c8.81.

10+17.09

146.27

10.76
2.28
c9.34.

9+75.21

145.52

11.57
4.41
c9.90.

16403

7-46.6

15+94.24	MH #6 P.O.T.	R.P. 6' x 6'	South	163.38	12.61 5.53 c 6.78
			583	170.16	00 stub
16+47.69				162.87	13.16 8.10 c 6.72
16+00.96				162.36	13.63 7.84 c 6.99
15+54.32				161.87	14.15 7.60 c 6.65
TP	8.57	175.99	0.90	169.42	6.99 0.90 c 6.69
15+07.69				161.33	6.69
14+61.03				160.81	7.51 11.20 c 6.31
14+14.38				160.30	8.02 1.02 c 6.68
7-46.6					
13+67.94	MH #5 P.O.T.	R.P. 6' S	6' N	159.79	8.53 2.32 c 6.21
				168.32	

20+61.71					067	169.71	15.29 8.13 c 7.06
1-40.96							
20+20.75	MH #7	A 90° 00' R	R.P. 45° S 48'			166.97	18.23 11.13 c 7.15
		+ 8.48 S					
TP	11.11	185.20	1.90	174.09			9.53 2.25 c 7.08
19+74.10				166.46			
19+27.46				165.94			10.05 2.20 c 7.15
18+80.81				165.43			10.56 3.15 c 7.41
18+34.17				164.92			11.07 4.12 c 6.93
17+87.53				164.40			11.57 3.51 c 7.28
17+40.88				163.89			12.16 8.05 c 6.93
				175.99			

Ozark - 50th + Imperial Ave

Senior Grader Alley North of Imperial Ave. 23
West of Ozark St.
Stake offset 6 ft of Ditch

Sept 2-47

INDEXED
WK
NOV 29 1910.

BM

0.33

184.87

OPJG
Church Hill
+ 100 period

21 + 84.61 = D.F.

177.95

7.35
1.88
c 8.57

+ 60.6 2nd Curve Run

2.33

21 + 48.64 = 114 P.C.

175.20

1.90
2.97
c 7.53

21 + 02.68

172.46

12.74
2.95
c 8.88

185.20

1 + 60 = D.F.

149.66

10.67
7.28
c 2.99

1 + 20

149.38

12.85
6.93
c 4.63

+ 80

149.10

11.33
6.21
c 5.62

+ 40

148.82

11.51
c 9.10

0.28

0 + 0 = MH #4

148.54

BM

3.73

160.33

156.69

0.71
11.42
0.20
1.11
c 9.21

Sewer Grader Easements North of
Imperial Ave. East of Ozark St.
Stakes offset C.R. 1/2

3+09.06			147.04	1691 587 c11.85
2+62.03		007	146.71	1725 613 c11.12
5-1703				
2+15	POT	MH #8	RP 6x6 50.	1758 742 c10.16
TP	758	163.96	2.10	156.38
1+72				1318 381 c9.37
1+29			144.22	1426 581 c8.45
0+86			143.15	1523 653 c8.33
0+43			142.07	1641 308 c8.23
5-430				
0+0	= DMH #3		141.00	
B.M.	1132	158.48	147.16	on stake 7+23.93 DMH #5 Page 21

Sept. 2-47
5:00 PM
77° Cal
Allen

For Check	2.17	170.13	on stake 6' RP MH #6 150.16 Page 22
7+30.13 = D.F.		157.54	1476 819 c8.57
TP	9.02	172.36	0.68
6+90.13		156.18	778 0.68 c7.10
6+50.13		154.82	9.14 7.22 c7.12
6+10.13		153.46	1050 292 c7.57
5+70.13		152.10	1186 784 c7.63
5+30.13		150.74	1322 679 c7.03
4+90.13		149.38	1462 803 c6.53
7+0			
4+50.13	RP 8x8 + 8x8 5x	148.02	1574 1366 c8.67
	Δ 90° 22' 51" MH #9		
4+03.11		147.69	1637 752 c9.75
3+56.08		147.36	1160 652 c10.08
	163.96		

Paving Grades East & West Alley Black Top
University Heights From Alabama to Mississippi

	North			South	
+60	E.L. N.Y.S. Alley 8.58 8.29 8.29 317.47			317.67	8.38 8.26 8.29 317.67
B.M.		8.30		317.25	8.34 8.34 5.71 317.91 1702.11
+40	W.L. N.Y.S. Alley 9.65 8.75 8.75 316.40			316.60	9.45 8.75 8.75 316.60
INDEXED					
WK					
NOV 29 1948					
+70	11.78 10.78 10.00 314.27			314.47	11.58 10.80 10.78 314.47
+72	on South Service Lateral @			308.32	17.75 11.82 11.82 308.32
+60	13.97 12.44 12.44 312.13			312.33	13.77 13.61 13.61 312.33
TP	12.61	326.05	3.68	318.44	on Stub 0460 on Stub
+20	7.17 6.21 6.21 310.00			310.20	7.97 5.97 5.97 310.20
040	F.L. Alabama	308.93		308.83	8.29 8.22 on Stub
TP	12.43	317.12	3.12	304.69	S.W.B.P.
B.M.	7.16	307.81		300.65	E. Cajon Florida

* 1562-21
1702
Plan 6622 L Levels Checked 1702

Sept. 5-17
S. McCoy
McCoy
Hiller
20 1948
25

					W.O. 310.27
2+99.78		324.81		324.42	1.22 1.37 on Stub 1.63 on Stub C.O.B.
+80	17.2 10.87 10.87 324.33			324.52	17.2 10.87 10.87 324.33
+60	2.37 1.42 1.42 323.58			323.78	2.37 1.42 1.42 323.58
+40	3.41 3.41 3.41 322.64			322.84	3.41 3.41 3.41 322.64
+20	1.57 2.83 2.83 321.53			321.73	1.57 2.83 2.83 321.53
+10	5.81 5.81 5.81 320.24			320.44	5.81 5.81 5.81 320.24

326.05

Pairing Grades North + South Alley Block 101
University Heights From E-W Alley to S-L Mcade Rue

	West	Sub. Grade	East	
1+10	725 779 F0.30 3	320.90	320.42	773 321.29 749 5.19 2.00 2.8
INDEXED				
WK				
NOV 29 1948				
+90	8.48 8.83 F0.33 3	320.21	319.73	8.18 8.18 320.51 2.00 2.5
+85	SL * Down		314.81	13.88 64.8
+70	9.29 9.36 F0.07 3	319.40	318.92	9.23 319.70 8.99 6.99 2.00 2.1
TP	7.83	328.69	519	320.86
+40	7.92 7.84 CO.07 3	318.12	317.64	10.51 318.42 7.63 6.50 0.13 3
+35	SL * Down		312.90	13.15 8.02 5.13 5
+20	8.79 5.15 CO.07 3	317.26	316.89	11.31 317.73 8.33 6.49 6.13 3
0+0 - N.L. E-W Alley		316.40	316.45	317.97
BM Ford	8.63	328.15	319.52	07 Stab 0+20 on E
		326.05	81 Ford Page 25	

	West	Sub. Grade	East	
3+26	6.78 6.69 F0.30 3	325.71	325.23	2.92 326.01 6.48 6.18 0.30 3
TP	5.39	332.49	1.59	327.10
+82	3.91 4.40 F0.99 3	321.78	324.30	5.85 325.08 3.61 2.00 1.95
+60	SL * Down		319.31	9.38 11.32 64.78 6
2+38	4.85 4.87 CO.18 3	323.84	323.36	4.79 324.14 1.55 3.80 0.13 3
+94	5.70 5.19 F0.11 3	322.91	322.43	5.72 323.21 5.18 4.63 0.95 3
+50	6.73 6.73 F0.30 3	321.97	321.49	2.66 322.27 1.43 0.62 0.98 3
1+30	7.20 6.13 F0.94 3	321.49	321.01	7.14 321.79 5.90 8.03 0.87 3

328.69
328.15

	West	East		
BM		9.35	318.85	SFRP Mcode + 7162000 318.87
TP	6.58	328.20	10.87	321.62
4150	5.18 5120701 Sk. Mead	327.31	326.91	1.24 327.70 479 477 center
430	5.15 5120701 60.93 2	327.34	326.89	1.26 327.70 479 386 60.93 2
410	5.21 5120701 60.93 2	327.24	326.77	1.38 327.56 479 417 60.93 1
490	5.48 5120701 60.93 2	327.01	326.54	1.41 327.32 510 454 60.93
4170	5.84 5120701 60.93 2	PVC Foss 326.65	326.17	1.98 326.95 554 482 60.93 2

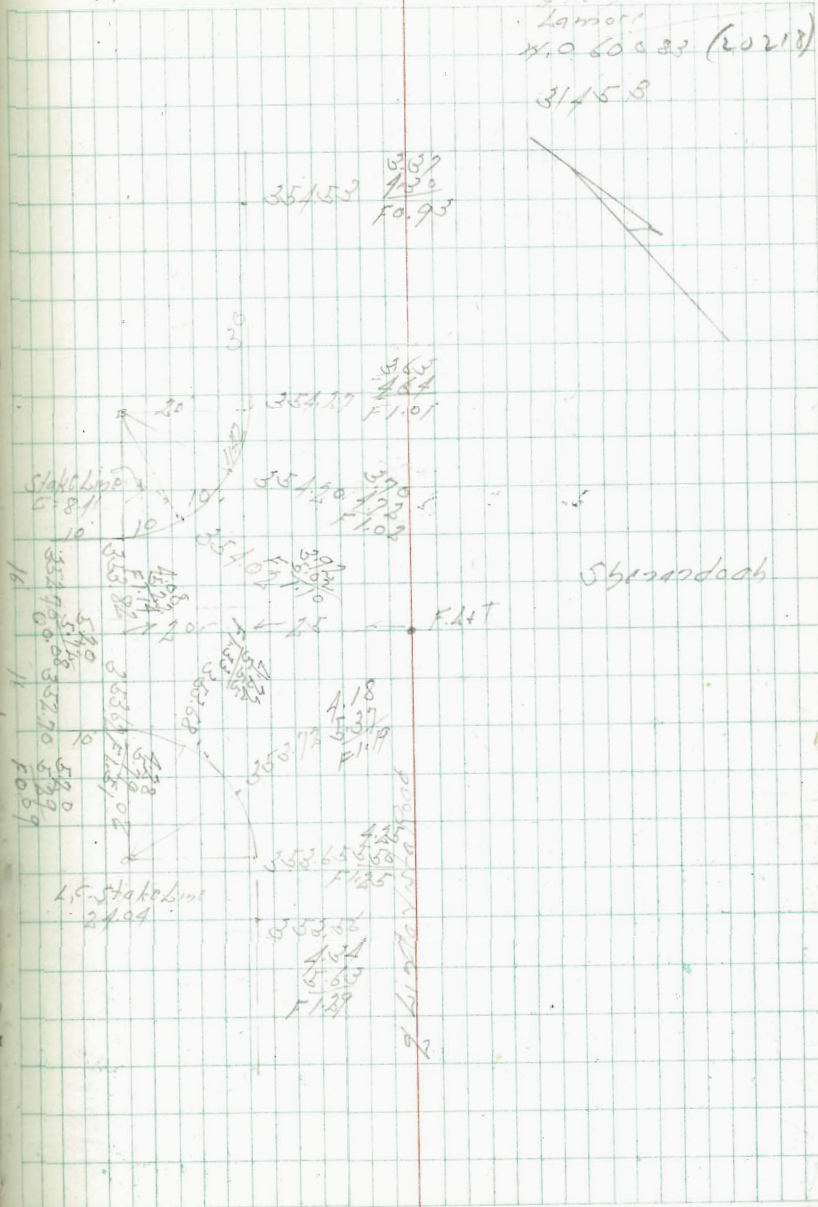
322.49
328.15

Curb Grades Sheppard Ave Dr W
+ Linda Vista Road

BM 5.98 35790 353.93 NE. BP
Sheppard
Linda Vista
1729-41

stakes offset 2' Back of Face Curb

INDEXED
WK
NOV 29 1948



East Gutter Grader Roy St North of
Hightman

INDEXED
WK
NOV 29 1948

B.M. 6.60 358.23 351.63 SE 80°
Hightman
Roy

Sept. 18-47
Sisson 29
McCoy
Hightman
No more
No 60135

			Cuts on top of curb
52.74 1st	1+12		5.10 5.15 6.87
52.86	0+95.5 Drain	52.36	5.87 5.95 6.72
52.40	0+92 Drain	52.34	5.89 5.98 6.91
52.51	0+77 Drain	52.30	5.93 5.94 6.29
52.21	0+58 Drain	52.25	5.98 6.04 6.84
52.20	0+54 Drain		
52.34	0+49 Drain	52.22	6.09 6.18 6.82
		0+25	52.17 6.06
		0+00	

Roy St

0.025

Hightman

South Gutter Richmond & Upar

BM 2.17 289.11 286.97 NFBP
Upar
#1807

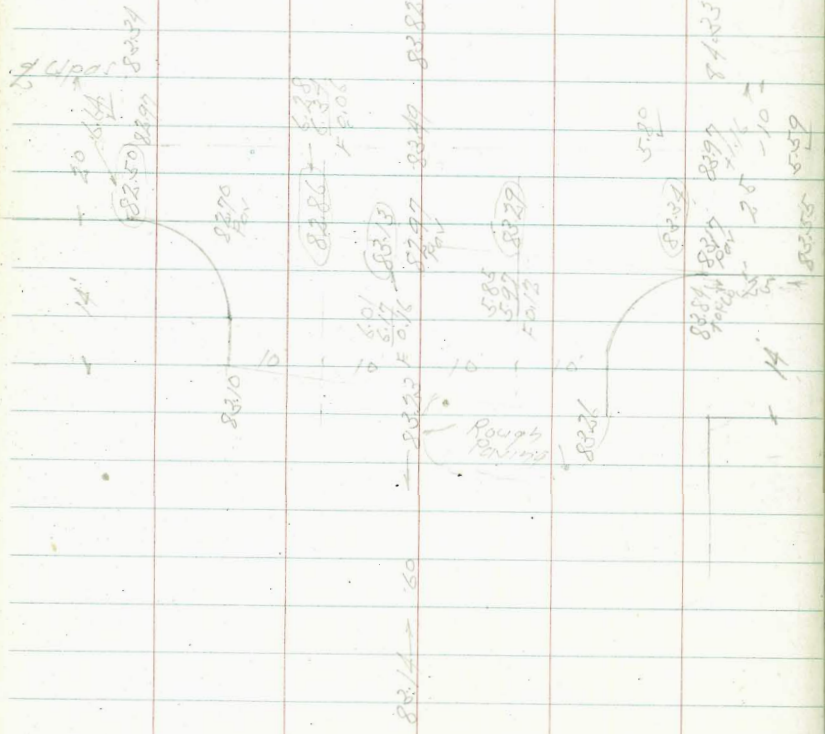
BM 5.20 283.94 NFBP
Upar
Richmond

INDEXED
WK
NOV 29 1948

Richmond

Richmond

Richmond



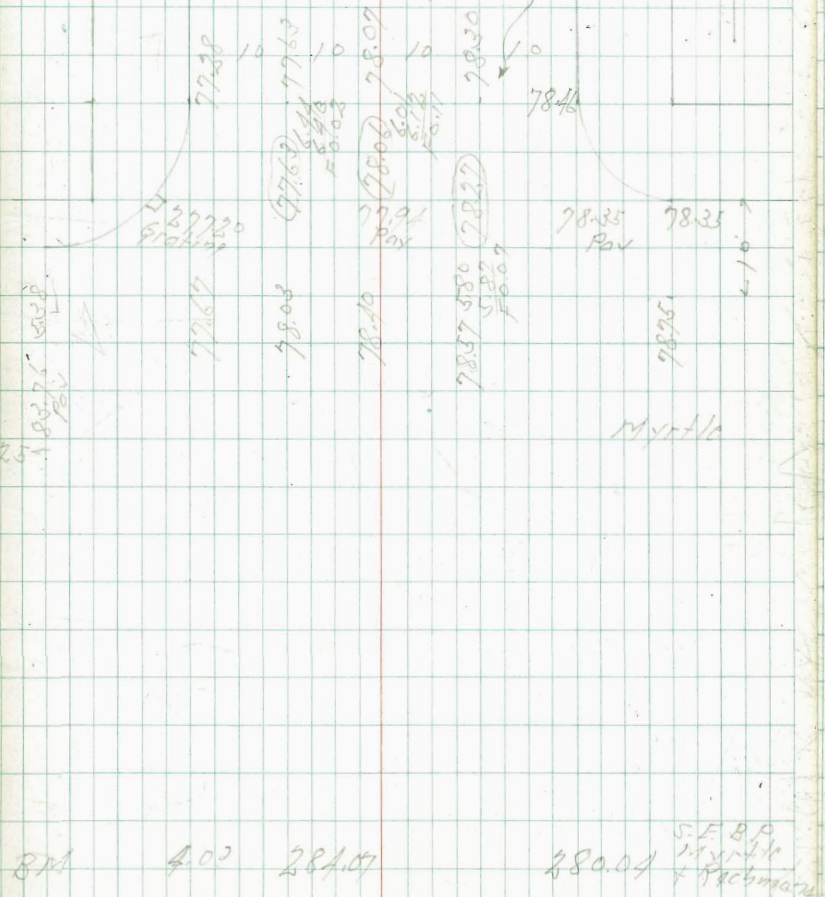
North Gutter Richmond
& Myrtle

Sept 12-47 30
SFBP
McCoy
Richmond
Laurel
No. 60135

INDEXED
WK
NOV 29 1948

Richmond

Bad Roll & Ramps
Hot ML



BM 4.02 284.07

SFBP
Myrtle
Richmond

Gutter Grades West Curb of 6th Ave.
North of University Ave.

INDEXED
WK
NOV 29 1948

			Gutter	Cuts on Top of Curb
+150			279.06	6.87 6.55 0.32
+135			79.01	6.92 6.55 0.37
+20			78.97	6.96 6.57 0.39
+105			78.92	7.01 6.53 0.38
+90			78.88	7.06 6.72 0.33
+75			78.83	7.10 6.69 0.41
+60			78.79	7.14 6.72 0.42
+45			78.74	7.19 6.64 0.54
+30	= Brk		78.70	7.23 6.52 0.67
+15			78.95	6.98 6.56 0.42
0+0	= Fly Field Comb Chestnut		79.20	6.73 6.07 0.67
B.M.	206	285.90	282.87	N.W.B.P. University + 2.15

Sept. 12-47.

Sisson
McCoy
#1100 Lamore

31
Cuts on
Top of Curb

			Gutter	Cuts on Top of Curb
2+00.6	= N.V. Finishing Comb Chestnut		279.21	6.72 6.39 0.33
+180			79.15	6.78 6.35 0.43
+165	Washington		79.10	6.83 6.36 0.47
		281.47	280.83	
		2+00.6		
		0+00		
		106.5		
		N.W. ?		
		University Ave		

Gutter Grades West Curb of 614 Hvc

nails offset 5' East of Curb Line

2+05		280.10	5.00 487 00.13
190		280.00	5.10 490 00.20
175		279.90	5.20 503 00.17
160	279.80	279.80	5.30 512 00.18
145		279.70	5.40 523 00.18
130		279.60	5.50 537 00.13
115 = Brk		279.50	5.60 552 00.08
2+00.6 = NY Field Comb Curb Walk		279.21	
BM.	5.50	285.10	077006 2+00.6

Sept 16-17 32

S. No. 7

M. Co. 7

File 7

187 = Sly Curb + Conc Gutter	280.82	4.80 4.36 00.03
165 = Brk	280.50	4.60 4.66 00.06
150	280.40	4.70 4.70 00.00
135	280.30	4.80 4.83 00.03
2+20	280.20	4.90 4.86 00.04
	285.10	

28th St. Paving West Half Maple to Redwood
 Gut - Grades

East Half in
 Grade Book # 9116-4

Sept. 16-17

33

Sisson
 HCCAL
 HILLMAN

N.O. 10135

INDEXED

WK
 NOV 29 1948

6+0.7 294.65 295.10 295.15 S. Palms St

4+0 296.70 297.45 297.20

Low 296.55

+20 +21.5 +21.5 +20

59.89.83 290.00 290.05 290.50

0+0.7 289.83 290.45 290.60

Hufmeq

3+0.1 289.30 289.10

2+9.1 59.88.54 20 + 20

1+7.5 59.82.73

1+5.0 59.81.18 282.00

1+2.5 59.78.28

0+0.7 59.64.75 261.70

0-2.0 59.62.85 249.5

0-4.0 62.10 261.76

0-6.0 261.35 261.26

S. Palms St

1/4 0.18 Hufmeq
 West Edge



Redwood St

6+0.7 306.89.36 308.11 308.32

7.75 6.06.09

5+5.0 R/L 306.41 6.29.59

BM 5587
 309.02

+20 +21.5 +21.5 +20

1+5.0 296.50 296.25 296.00

0+0 293.70 294.45 294.70

BM 41
 294.91

6+0.7 297.65 295.40 295.15

W. of East Palms St

+10 +20 +20 +20

Palms St

28th St Paving Grades West Half
Maple to Redwood

				West Gutter Grade	
+75		288.20	288.10	6.0 3.4 F34 2.5	
+1450	Brk	289.10	289.55	7.5 9.1 F13 5.4	
+25		290.30	290.70	1.4 1.9 0.5 3.7	
+40		291.20	291.63	1.4 1.9 0.5 3.7	
TP	12.21	292.00	292.88		
+50		292.70	292.80	7.27 5.5 0.5 4.5	
TP	11.83	294.97	295.10		
0+0	HL Maple	294.45	294.00	2.71 2.71 0.5 3	
0-20			292.27	1.4 1.4 F5.0 15.0	
0-60	5.5		291.10	5.3 1.6 F10.9 1.4	
B.M.	1.57	296.71	295.14	N.E.S.P. Maple 28	

				West Gutter Grade	
BM		4.75	292.00		St Top of Hyd. Manhole 28 292.00
3+01	SL Maple		289.04		7.9
2+91	CB B.C. 23E		288.72		8.2 1.4 F3.7 8.9
2+50			287.32		10.2 1.3 F3.1 7.7
TP	8.50		296.94		288.44
2+00			284.83		7.7 1.4 F3.1 2.3
			289.09		

28th St Paving Grades West Half

2+0		294.96	2.0 2.1 F 4.1 7.2
1+50		294.09	2.0 2.25 F 4.25 8.1
2+0		293.23	3.7 3.4 F 7.1 7.1
1+50		292.26	4.6 7.6 F 12.2 7.3
1+0		291.49	5.45 3.9 F 9.35 8.3
1+50		290.52	4.3 10.0 F 14.3 8.6
1+14	CBBC	290.00	
0+0	NL. Muldrey	289.83	7.1 11.3 F 18.4 11.3

296.94

6+30	Z Palm	294.15	6.0 6.2 F 12.2 3
6+0	SL Palm	294.65	6.7 6.7 F 13.4 3
5+50		295.16	6.0 6.0 F 12.0 3
5+0		295.68	5.4 5.9 F 11.3 3.8
4+50		296.19	4.9 3.1 F 8.0 7.8
7P	458 301/2 0.35	296.59	
4+0	8.4	296.70	5.1 5.5 F 10.6 7.5
3+50		295.83	1.1 2.1 F 3.2 10.5

296.94

2845th Pavina Grader West Half
Maple to Redwood

TP	11.92	310.52	2.52	298.60	
+50				298.21	$\begin{matrix} 2.98 \\ 3.88 \\ 0.09 \\ 3 \end{matrix}$
				02238	
2+0				296.87	$\begin{matrix} 4.35 \\ 1.15 \\ 0.14 \\ 3 \end{matrix}$
+50 = Brk				295.50	$\begin{matrix} 5.67 \\ 5.28 \\ 0.77 \\ 3 \end{matrix}$
1+0				294.90	$\begin{matrix} 6.33 \\ 6.29 \\ 0.04 \\ 3 \end{matrix}$
				012	
+50				294.30	$\begin{matrix} 6.88 \\ 8.09 \\ 0.17 \end{matrix}$
BM		618		294.94	$\begin{matrix} 21.41 \\ 294.91 \end{matrix}$
0+0 = NK Palm				293.90	$\begin{matrix} 7.52 \\ 7.23 \\ 0.69 \\ 3 \end{matrix}$
				293.60	
				301.12	

6+0 = SL Redwood				309.82	$\begin{matrix} 3.57 \\ 2.99 \\ 0.53 \\ 3 \end{matrix}$
BM				309.77	$\begin{matrix} 2.90 \\ 2.90 \\ 0.29 \\ 3 \end{matrix}$
+50 = Brk				306.66	$\begin{matrix} 4.26 \\ 3.89 \\ 0.57 \\ 3 \end{matrix}$
5+0				305.09	$\begin{matrix} 5.43 \\ 4.94 \\ 0.59 \\ 3 \end{matrix}$
+50				303.72	$\begin{matrix} 6.80 \\ 6.25 \\ 0.72 \\ 3 \end{matrix}$
				02238	
4+0				302.35	$\begin{matrix} 8.17 \\ 7.71 \\ 0.76 \\ 3 \end{matrix}$
+50				300.98	$\begin{matrix} 7.51 \\ 7.30 \\ 0.15 \\ 3 \end{matrix}$
3+0				299.61	$\begin{matrix} 10.07 \\ 10.91 \\ 2.0 \end{matrix}$
				310.52	

Curb Grades East Side 5416 St
North of Collier Ave

Dec. 26-47 37
S. S. Spon
H. C. C.
Roberts

BM 6.95 420.35

413.40 H&R.P.
H. C. C.
5416 St

INDEXED

WK

NOV 29 1948

413.35 - 4102.5
8.02
2.40
20.92
3 Back

413.11 - 0192.5
2.24
5.88
0736

413.09 - 0192.5
2.24
5.88
0736

414.80
5.55
5.72
415.00
20.39
38m

10 x 5
4095
0407
H. C. C.
5416 St

75.25 Collier Ave

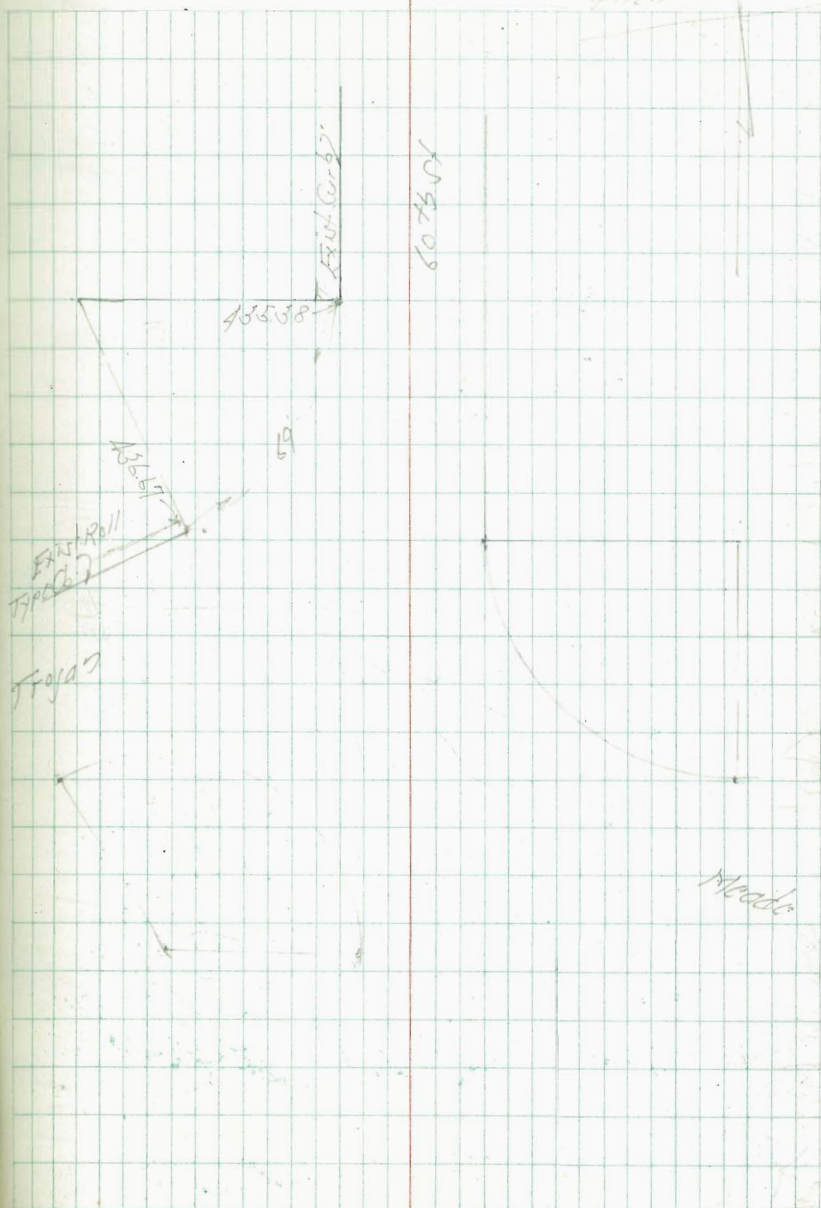
5416 St

Elevations N.W. Curb Trojan & 60th St

BM	13.02	431.68	418.66	H.R. B.P. MEAD 15 1/2" x 1" + 60th St
TP	1310	444.15	0.83	431.35
BM		7.63	436.82	8 P. Faircl 60th No. Meads
Sly Curb		9.07	435.38	Top
N.E. Roll Top Curb		7.78	436.67	Top Back Roll Top Curb
Gutter		8.12	436.33	Gutter

INDEXED
WK
NOV 29 1948

Sept. 28-47
Sisson
McCoy
Ellen 38



W.L. Sta.	N.C. Grade	E.C. Grade	FL Sta.
54 ¹ / ₂ St. Water + Sewer Lateral F.I. Cap on Blvd. to Adams Ave.			
2+06.55	6° 01'	399.20	2+06.55
2+89.5	(185) 2° 35'		2+89.5
2+41.55	0° 17'	400.86	2+41.55
2+41.55	85° 12' 21" 00"		2+41.55
2+07.54	F.C. on W 0° 00'	401.70	2+07.54
1+90.5	(186) 0° 24'		1+90.5
1+81.54	0° 32'	402.36	1+81.54
6+02.7			6+02.7
1+21.54	2° 05.3'	402.89	1+21.54
0+91.5	(187) 1° 19'		0+91.5
0+61.54	3° 32'	403.17	0+61.54
0+20.54	opp 7' Hole		0+20.54
B.M.	3.30	407.07	403.77
	2.27	407.01	403.77

Staker Set
Block of face Curb NO. 23007
Oct 3-47
S. 1117
F. 1119

W.L. Sta.	N.C. Gr.	E.C. Gr.	FL Sta.
6+48.85			6+48.85
6+40.37		396.21	6+40.37
6+80.37		396.91	6+80.37
TP	0.36	395.84	397.48
			398.25
			399.01
			399.76
			400.63
			407.07

N.C. Gr. F.C. Gr.

N.C. Gr.

2 FH 0.7 Bact of Face Carb

10+58.5 = Five Hyd. on East

TP 11.99 408.74 0.27 396.75
TP 12.48 397.02 0.39 384.54

16+03.91 = B.C. on West

BM 3.27 413.27
H.E.D.P. 514.47
514.47
413.10

9+40.85 (17) ^{4.22}_{2.72} 380.91
26.08

9+00.85 (18) ^{12.78}_{1.25} 377.38 381.47 ^{3.46}_{3.55} 9+36.31 (19) TP 8.19 416.51 0.39 408.33
11.25 F0.19

8+80.85 (20) ^{8.50}_{-0.32} 384.51 385.35 ^{-0.12}_{0.12} F0.88 8+76.21 (21)

15+63.94 (182) ^{7.90}_{6.38} 399.41 398.84

TP 0.13 384.93 13.04 384.80

8+20.85 (22) ^{8.92}_{9.98} 388.92 389.73 ^{8.11}_{9.62} F1.51 8+16.21 (23) 15+23.94 (183) ^{7.14}_{7.73} F0.58

7+60.85 (24) ^{5.37}_{6.62} F1.25 392.17 393.17 ^{4.17}_{5.37} F0.92 7+56.21 (25)

15+13.94 (184) ^{11.25}_{7.25} 395.85 395.25

7+00.85 (26) ^{2.25}_{2.25} F1.27 394.89 395.53 ^{2.27}_{3.02} F0.71 6+96.21 (27)

401.02
407.30
on 5/16
15+23.94

100.75 ^{2.70}_{2.25} 391.05 (181) 6+57.21
6+48.85 F.C. 6+48.85

397.84

408.74

Grades South Side Trooper Line
West of 54th St

Curb Stakes

Rough Grad

1+82.3		4.38 4.45 Fo.07	344.05	8.1 7.5 c.0.6
1+38.3	FVL	5.99 6.14 Fo.15	342.41	9.7 9.2 c.0.5
1+18.3		6.76 6.80 Fo.09	341.72	10.4 10.6 Fo.0.2
+98.3		7.41 7.29 c.0.12	341.02	
+78.3		8.03 7.93 c.0.10	340.10	11.8 11.4 c.0.4
+58.3		8.63 8.38 c.0.25	339.80	
+38.3		9.19 8.96 c.0.23	339.24	12.9 12.1 c.0.8
+18.3		9.71 9.49 c.0.22	338.72	
0+0	HW Project	10.13 9.95 c.0.18	338.30	13.9 13.9 c.0.0
	1.38	348.43	8.63	247.55
B 17	For Rough Grad 6.49	352.16		351.67
Cutbr	3.91	355.65		351.77

INDEXED
WK
NOV 29 1948

Curb Staker
off road

Oct 17-47

41

S. McCay

71/100

W.C. 2406

Curb Stakes

Rough

TP	8.52	354.76	0.98	351.18
4+42.61	= B.C.P.		4.05 3.33 c.0.7	351.90
4+17			3.95 4.09 Fo.14	352.00
3+98.3			4.18 4.17 c.0.07	351.75
+78.3			4.58 4.57 c.0.01	351.25
3+58.3	= P.V.C		5.25 5.15 c.0.10	350.50
	+39 = Meter Run			349.13
	+25 Senior			347.37
3+14.3			7.55 6.73 c.0.8	348.88
TP Cb.	7.53	355.93	0.03	348.40
2+70.3			1.16 1.24 Fo.0.8	347.27
2+26.3			1.77 2.81 Fo.0.9	345.66

352.16
348.43 Cb

2.24
Trooper Line
used for
Curb Stakes

Grades 5th St. West Side
South of Trojan Ave.

INDEXED
WK
NOV 29 1948

1468.33 = 5th P...

349.40

5.4
10.7
F0.3

14756 = End Cl 349.38

6.55
5.39
0.78

349.88

4.9
6.5
F1.1

1496.95

1405.90

349.86

6.07
5.06
0.01

0.1168

350.36

4.1
5.2
F0.8

+85.53

+64.23

350.35

3.58
5.58
0.08

350.84

3.9
4.7
F0.8

+44.11

+22.56

350.21

5.09
4.29
0.10

351.26

3.5
4.3
F0.8

+21.55

040 = FC

351.26

1.1
4.10
0.27

351.90

2.9
3.7
F0.8

354.76

355.2304

South West Circle Return
Trojan Ave + 54th St

8M

1.29

105.16

403.77

35.89
E/Com...

0.43 +

392.49

13.10

392.06

0.29

379.68

13.10

379.37

0.44

366.99

13.13

366.55

1.65

355.68

12.96

354.03

8M

3.91

351.77

2.447
7.0/100 + 5.44
351.67

0 + 34.68 = FC South End

351.26

4.62
0.027

+ 21.99

351.50

4.43
4.37
0.006

+ 11.50

351.75

4.18
4.07
0.011

0 + 0 = N End Cl Return

351.90

355.92

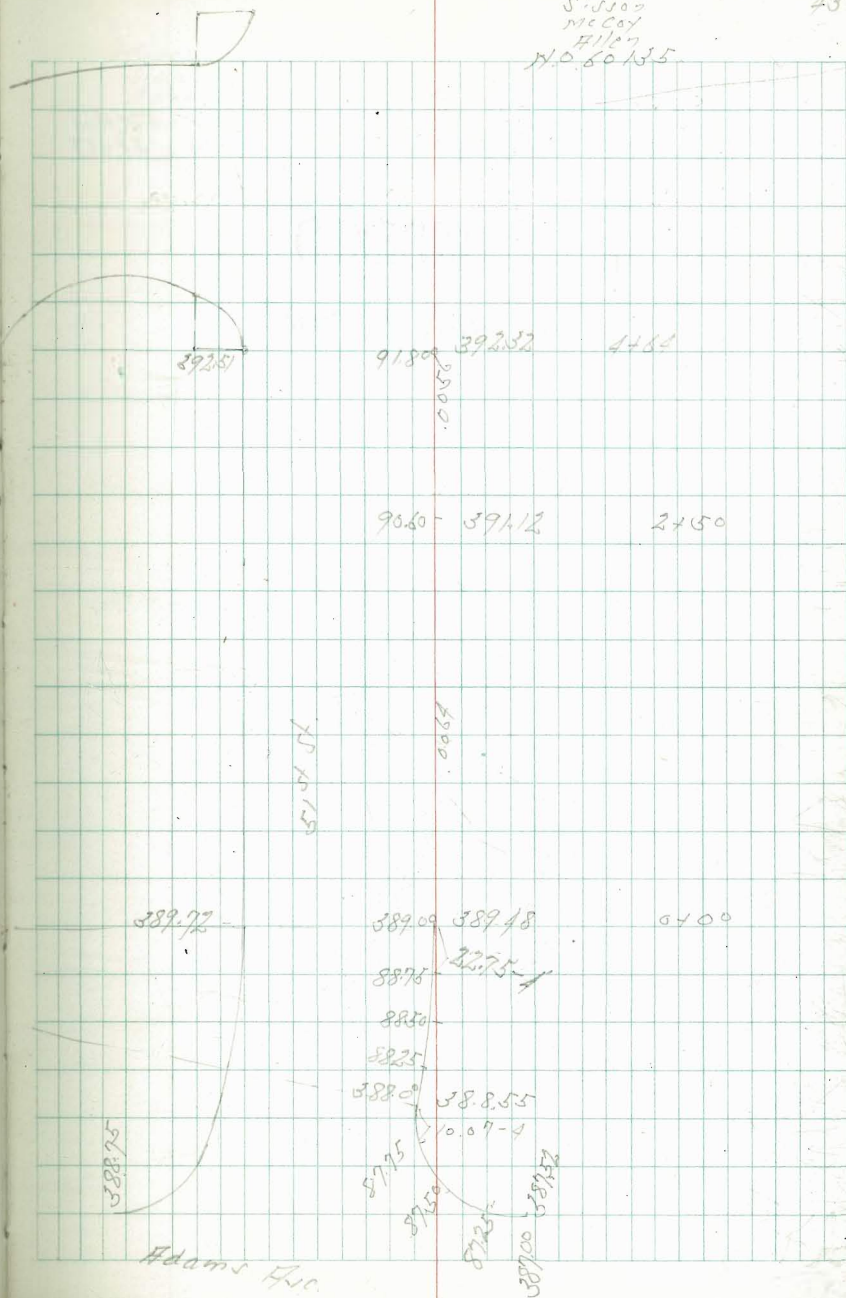
Gutter Grades East Side 5th St
North of Adams Hse

INDEXED
WK
NOV 29 1948

B.M.		2.76	39136	Top F. Hyd SE Adams 4.51 St.
	5.40	394.12	316	389.72
	2.93	391.88	1.85	388.95
	5.04	390.80	2.09	385.76
B.M.	7.48	389.85	380.87	S.F.R.P. Madison 4.97 St.

Oct. 27-47
S. J. J. J.
McCoy
H. J. J. J.
H. O. G. J. J.

43



Grades Junction Dr. + Mondell Terr

44

BM

3.87

387.12

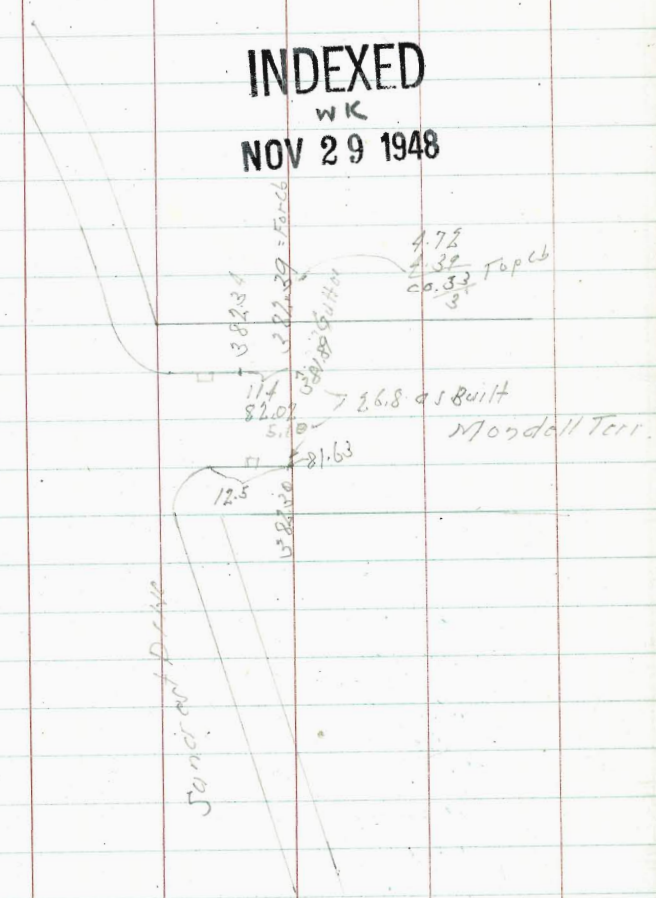
383.25

Titus
24467

INDEXED

WK

NOV 29 1948

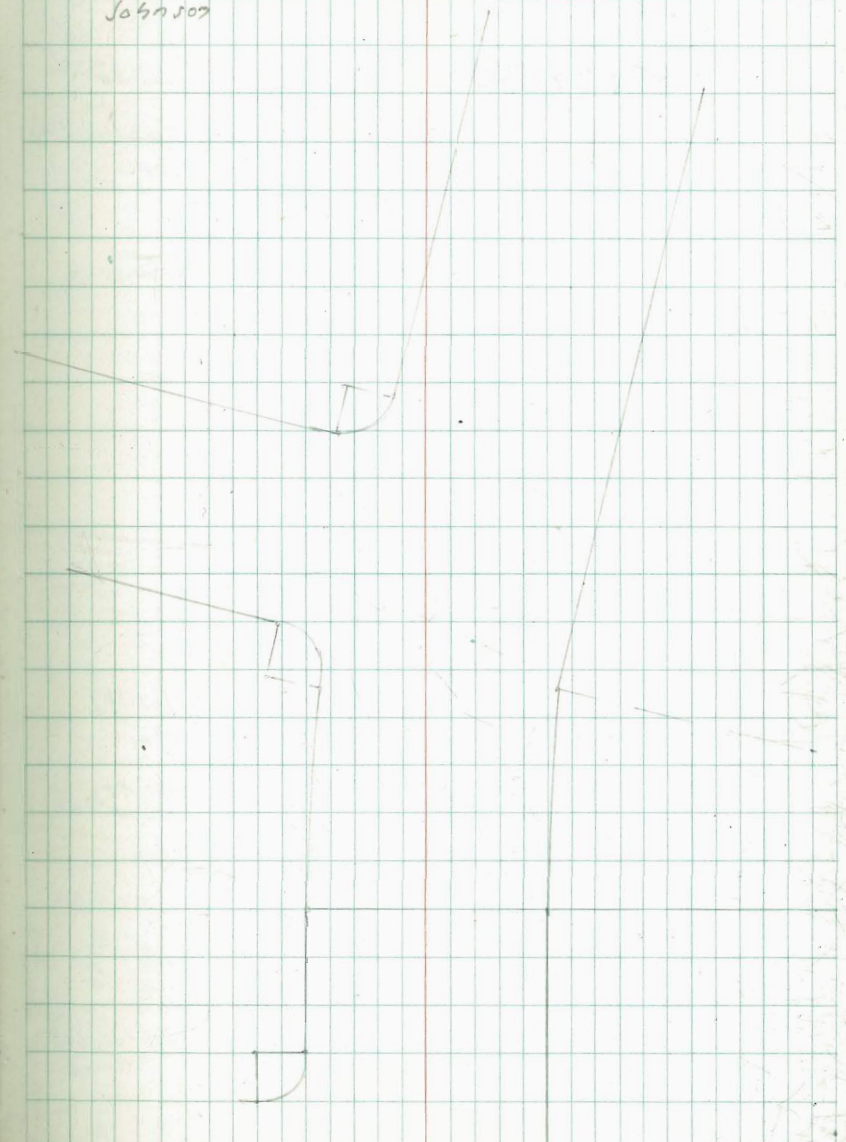


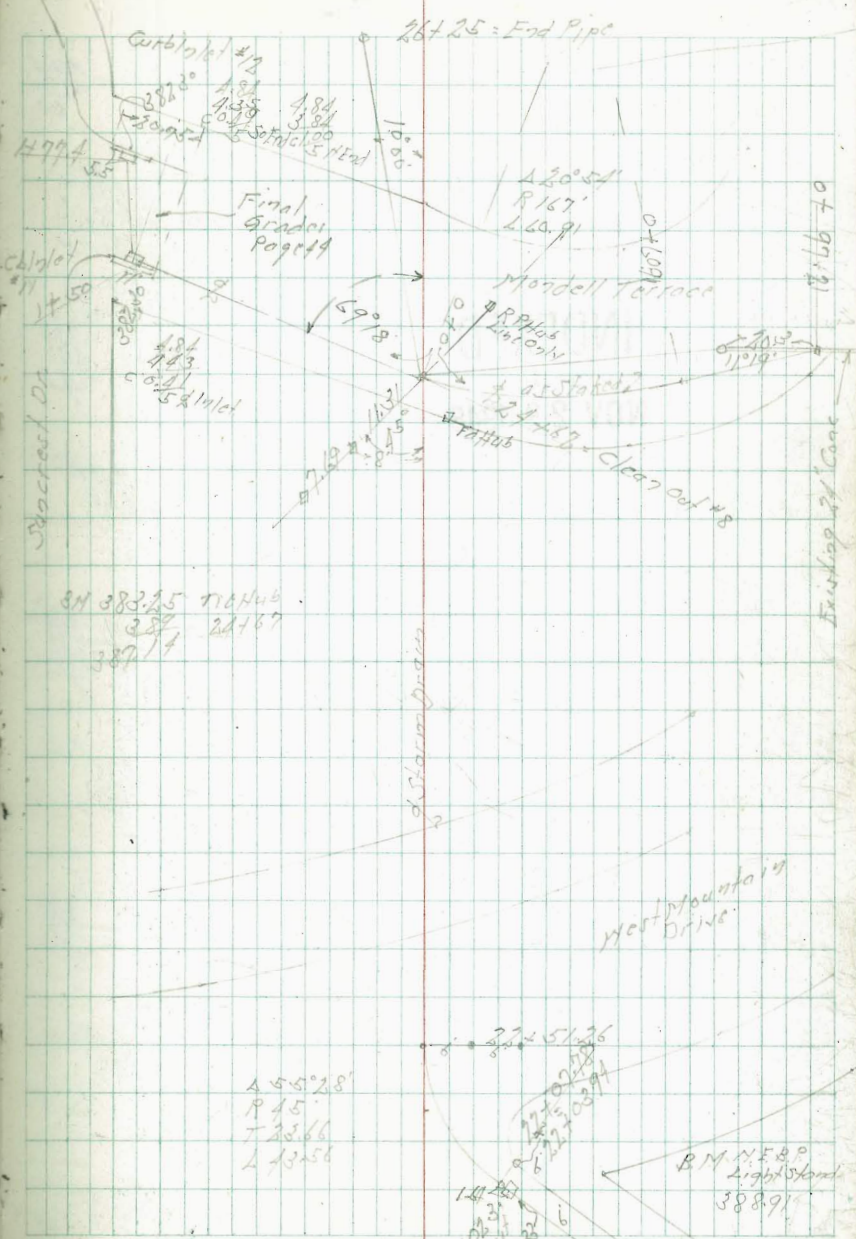
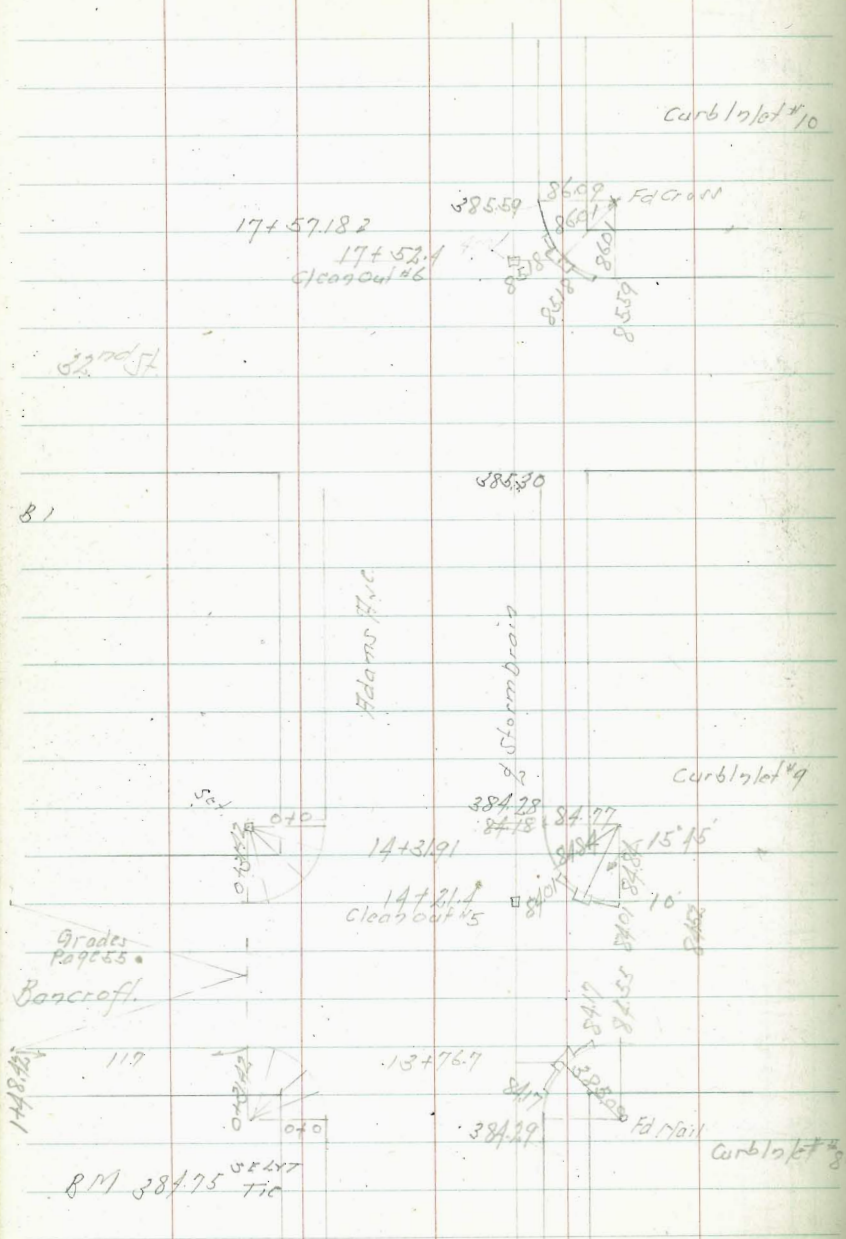
March 10-48

Sisson

Allen

Johnson





Spence

B1

Grades Page 55

Baneroff

119

BM 384.75 TIC

BM 383.25 TIC Hub
387.11
387.11

455.28'
P 45'
T 38.66'
L 43.58'

Adams Hvc

Clean out #8

BM NEB.P
Light Stand
388.91

Grades Adams Ave. Storm Drain
 Hawley Blvd to Mandel Terrace

		4.64		10.08 4.35 5.73 1.2
0+82.48 = M.L. Hawley		385.41		
"			300	
"	CR13	4.52		9.99 4.01 5.98
+59.00 = Cleanout #1	386.38	385.50		5.98 20111
"			300	
"		4.53		9.74 4.27 5.47 6
+30.31		385.75		
"			300	
0+0.65 = Curblet #2		386.00		9.70 5.89 5.80
"			300	
"		4.22		9.74 4.18 5.06 6
-16.27		386.25		
"			300	
"		4.18		8.99 4.10 4.87 8
-32.54		386.50		
"			300	
"		4.14		8.71 4.10 4.61 6
-18.81		386.75		
"			300	
-65.08 = Curblet #1		387.00		8.49 4.20 4.29
BM	6.24	395.49		534.87 Adams V 34 1/2

**INDEXED
 WK
 NOV 29 1948**

Nov 18 47 17

TP	4.26	390.51	6.24	389.25	
"			5.51		10.85 5.81 5.04 23
+7.5				384.64	
"			5.40		10.93 5.02 5.90
+5.0				384.74	
"			5.37		10.65 5.07 5.58
+2.5				384.84	
"			5.19		10.55 4.82 5.73
+4.0				384.94	
"			5.07		10.45 5.05 5.40
+7.5				385.04	
"			4.98		10.35 5.00 5.35
+5.0				385.14	
"			4.67		10.25 4.95 5.30
+2.5				385.24	
"			4.65		10.15 4.81 5.34 6.8
+4.0				385.34	

395.49

"	415			
+75		383.83	9.68 4.59 05.09	
"	431			
+50		383.93	9.58 4.37 05.11	
"	422			
+137	Clear Out #2	384.56	9.43 4.82 05.61 20	
"	416			
+40		384.14	9.37 4.36 05.01 6.3	
"	406			
+75		384.24	9.27 4.29 04.98	
"	395			
+50		384.34	9.17 3.68 05.49	
"	380			
+25		384.44	9.07 3.58 05.49	
"	364			
340		384.54	8.97 3.23 05.74	

392.51

"						
7+10.50 = Opp C610/ct #5				6.09	382.89	11.66 5.92 05.68 8.11
"						
+75				6.02	383.03	11.46 6.82 05.47
"						
+50				5.96	383.13	11.36 6.60 05.36
"						
+25				5.88	383.23	11.26 5.78 05.48
"						
+40				5.80	383.33	11.16 5.58 05.56
"						
+75				5.75	383.43	11.06 5.56 05.56
TP	5.43	394.49		4.45	389.06	
"						
+50				4.71	383.53	9.98 2.63 05.48
"						
+25				4.61	383.63	9.88 2.43 05.25
"						
540				4.51	383.73	9.78 2.23 05.47

392.51

9+0				382.13	9.35 3.71 c 5.64
+75				382.25	9.25 3.71 c 5.54
TP	4.21	391.48	6.12	387.27	
+50				382.33	11.06 5.42 c 5.64
+25				382.47	10.96 5.22 c 5.74
"		5.49			
8+0				382.53	10.86 5.12 c 5.68
"		5.42			
+75				382.63	10.76 5.02 c 5.70
"		5.15			
+55.20	Clean out #3	583.20		382.71	10.68 4.89 5.79 c 5.78
TP	5.58	592.39	1.68	387.81	
"		6.05			
7+32.85				387.80	11.69 6.02 c 5.67
		394.49			

11+25				381.18	10.30 1.88 c 5.42
"					0.06
+96.20	Clean out #4	4.58		381.35	10.63 2.60 c 5.42 78.11
"					0.06
+75				381.43	10.66 4.92 c 5.74
"					4.68
+50				381.53	9.95 4.27 c 5.68
+25				381.63	9.85 4.15 c 5.70
"					0.06
10+0				381.73	9.75 3.95 c 5.80
"					0.06
+75				381.83	9.67 3.81 c 5.86
+50				381.93	9.55 3.85 c 5.70
9+25				382.03	9.45 3.71 c 5.74
		391.48			

Adams Storm Drain

			4.36	379.98	9.15 4.23 C 5.22
125					
			4.15	380.13	9.50 4.05 C 5.25
1370					
			4.01	380.28	9.15 4.50 C 4.65
175					
			3.89	380.43	9.00 5.88 C 5.12
150					
			3.76	380.58	8.85 3.70 C 5.15
125					
TP	3.53	389.43	5.58	385.90	
1270				380.93	10.75 5.85 C 5.20
175				380.88	10.60 4.29 C 5.37
11750				381.03	10.15 5.30 C 5.75

391.48

Nov 14-47 Bancroft rd 50

					4.51	378.76	10.70 4.26 C 5.31 6.3
150							
					4.61	378.89	10.64 4.21 C 5.23
125							
					4.64	379.01	10.59 4.18 C 5.67
1570							
					4.69	379.14	10.59 4.52 C 5.82
175							
					4.79	379.26	10.29 4.85 C 5.23
150							
					4.63	379.40	10.13 4.23 C 5.35
125							
TP				389.43	4.57	379.84	
1270					4.61	379.54	9.90 4.10 C 5.39
175					4.57	379.67	9.86 4.51 C 5.35
TP	3.88	389.53	5.76	385.64			
SM	2.50	391.41		388.91			
13750					4.53	379.53	9.60 4.78 C 4.34

1172140 = Clean out #5 Bancroft Conn.

389.43

Adams Hco. Storm Drain

		6.05			
+75			377.66	14.34 6.25 c8.19 2.3	
TP	6.07	391.94	386		
			3.87		
+52.40	Clear out #6	681.10 81.00	381.01	11.90 3.44 c8.25	
			4.01		
+25			377.88	11.65 4.10 c7.55	
			4.11		
17+0			378.01	11.53 3.62 c7.88	
			4.16		
+75			378.14	11.39 3.69 c7.92	
			4.20		
+50			378.26	11.27 4.36 c8.97	
			4.27		
+25			378.39	11.12 3.39 c7.25	
			4.30		
16+0			378.51	11.02 4.02 c7.00	
			4.36		
15+75			378.64	10.87 2.75 c2.74 2.3	
		389.50			

					4.79
+75			376.40	13.57 2.52 c11.03	
			4.97		
+50			376.55	15.30 2.71 c12.88	
			5.08		
+25			376.70	15.21 2.76 c12.49	
			5.23		
19+0			376.85	15.09 5.08 c10.01	
			5.28		
+75			377.00	14.91 5.17 c9.77	
			5.51		
+50			377.15	14.79 5.30 c9.40	
			5.71		
+25			377.30	14.69 5.50 c9.12	
			5.83		
18+0			377.45	14.49 5.57 c8.92	
		391.94			

Adams Ave Storm Drain					
"		4.63			18.10 2.25 c13.85 NEBP ADAMS ST W. STATION DR
22+02.3	Clear Out #7		375.05		
TP	4.24	393.15	3.03	388.91	
"			3.53		
+75				375.20	15.74 2.22 c13.52
"			3.65		
+50				375.35	16.59 3.28 c12.86
"			3.70		
+25				375.50	16.44 3.99 c12.45
"			3.77		
21+0				375.65	16.29 3.50 c12.79
"			4.05		
+75				375.80	16.14 3.87 c12.27
"			4.32		
+50				375.95	15.99 4.12 c11.87
"			4.58		
+25				376.10	15.84 4.12 c11.70
"			4.86		
20+0				376.25	15.69 4.36 c11.33 6.3

391.94

+75 = PVC.					
				374.04	19.11 2.25 c17.86 5' Nail
+50				374.19	18.96 2.10 c17.87 5.05' Nail
+25				374.34	18.81 2.22 c17.88 5.05' Nail
20+0				374.49	18.66 2.91 c17.75 6'
+75				374.64	18.51 2.54 c17.87 6'
+51.26 = EC. 27° 44'				374.78	18.37 2.65 c17.72 6'
+36.74 18° 29' 20"				374.87	18.28 2.18 c17.10 6'
+22.22 9° 14' 40"				374.96	18.10 2.06 c17.04 6'
2-1452 S&K line C: 1253				375.04	18.11 out
22+07.70 B.C. #1					
22+00.91					

593.15

+75				341.35	17.32 8.62 c 8.67
+50				348.13	10.57 8.37 c 5.20 10W
TP	0.74	358.70	13.17	357.96	16.25 13.17 c 3.08 10W
+25	Anchor			354.88	
25+0				361.63	9.50 7.81 c 1.69 10W
TP	0.22	371.13	12.62	370.91	
RM	0.28	383.33	4.84	388.25	0.7 RP 195W 24.67 18.09 4.84 c 13.25 19.5W
+67	Clear Oct '48	372.00	11.25	390.00	16.09 4.84 c 11.25 19.5W
+50				391.04	17.05 4.39 c 12.66 5.9 Nail
+25	F.V.C.			392.54	16.23 4.07 c 11.48 5.10
TP	2.29	388.09	7.25	385.80	19.61 8.17 c 11.47 5.1 Nail fence
24+0				393.54	

393.15

+65				326.28	10.31 2.86 c 7.45 10W
+45				327.08	9.51 6.84 c 2.67 10W
+25 = End Pipe				327.88	out
TP	2.09	336.59	12.58	334.50	
TP	0.63	347.08	12.22	346.45	
26+0				334.63	21.07 12.22 c 11.85 7.61

358.70

Grades Adams Ave. Storm Drain
Clean out #8 to Mendell Ter.

+774	Curb to #1 #12	377.30	9.85 4.25 65.20 3.01/0.06
+80	Curb to #1 #11	376.44	10.71 4.40 65.31 3.19/0.06
+25		375.70	11.45 3.75 67.20 10.5
140		374.96	12.19 3.88 68.31 10.5
+75		374.22	12.93 4.20 68.73 10.5
+50		373.48	13.67 4.45 69.26 10.5
+25		372.74	14.41 4.69 69.89 10.5
0+0	Clean out #8	372.00	

387.15 opp Page

Clean out #8 to Existing Conc. Culvert
Nov. 24, 54
S. 1000
M. 1000
H. 1000

shakes off set 8' South of Storm Drain

+97.21	Existing 24" Floorline	378.48	8.67 2.95 65.73
+79.06		376.89	10.36 3.66 66.80
+60.91	FC	375.31	11.84 2.07 64.77
+40.60		373.54	13.61 2.05 64.58
+20.30		371.77	15.38 2.09 64.29
0+0	Clean out #8	370.00	
817	390	387.15	383.25 0219 RP 24+67 Page 53

Curb & Gutter Grades Hwy Corner
Adams & Hawley

Dec. 18-47
Sisson
Smith
11/67

Gutter Grades Bancroft South of Adams

55

		Curb	Gutter	
				393.89.25 6.89 396.78
1+16.42		4.67	391.45	390.98 5.43 5.280 Per
15				
1+01.42	Hwy Corner	4.67 4.21 F.004 3	391.45	390.96 5.45
23.5				
+97.92		4.89 4.88 Co. 71	391.43	390.92 5.49
23.5				
+54.42	Gutter Rch	4.72 4.24 Co. 73	391.40	390.89 5.52
13				
+41.42	Gutter Rch	4.33 4.23 Co. 73	391.39	390.71 5.67
10				
+31.42	Cb FC	4.74 4.30 Co. 73	391.38	390.55 5.81
5.50				
+25.92	1/2 Inlet	4.16 4.07 Co. 73		
5.50				
+20.42	1/2 Inlet	4.41 4.34 Co. 73		390.55 5.81 291.07 Grade
4.71				
+15.71	1/2 Rch	4.11 4.07 Co. 73	391.38	390.59 5.81
+07.85		4.62 4.52 Co. 73	391.26	390.59 5.82
0+0	Cb BC W End	4.70 4.55 Co. 73	391.14	390.62 5.79
8 M Gutter	7.16	396.47	389.25	"
8 M	6.59	395.84	389.25	SXOP Adams 11/24

	East	West
	Top Curb	Gutter
Gutter		
March 2, 48		
Sisson		
Smith		
11/67		
Johnson		
1+48.42	383.15	383.17
	6.57 6.5300 Per	
1+25.02	383.28	383.29
	6.84	
1+01.62	383.40	383.41
	6.32	
+78.21	383.52	383.53
	6.20	
+54.82	383.64	383.64
	6.08	
+31.42: Cb FC	384.43	383.76
	5.76 5.720 Co. 73	383.76
		384.43
		5.76
+23.56	384.52	383.88
	5.76 5.720 Co. 73	383.84
		384.52
		5.61
+15.71 1/2 Rch	384.62	384.00
	5.72 5.680 Co. 73	383.92
		384.66
		5.47
+07.85	384.60	384.13
	5.59 5.550 Co. 73	384.01
		384.57
		5.56
0+0 Cb BC Adams	384.59	384.25
	5.47 5.430 Co. 73	384.09
		384.50
		5.47
8 M Gutter	4.97	389.72
		384.75
		5.247
		Adams &
		Bancroft
		7.057
		390.13 From Page 59

Adams Ave Storm Drain
 Intake of Existing Culvert South of Camino Del Rio
 Near City Line

BM 163 99.42 7779
 07 H06
 1-50
 1787-18948

522 97.0 0+150 25'
 F284

533 96.1 0+135 7'
 654
 F325

532 97.9 0+115 25'
 765
 F313
 0+12

531 94.08 0+01.37
 820
 F295
 0+00

Nov 19-47 56
 Sisson
 McCoy
 Allen
 210.50/36
 91.00 Top Footing

96.10
 91.00
 5.10
 5.10

88.90
 10.5 out

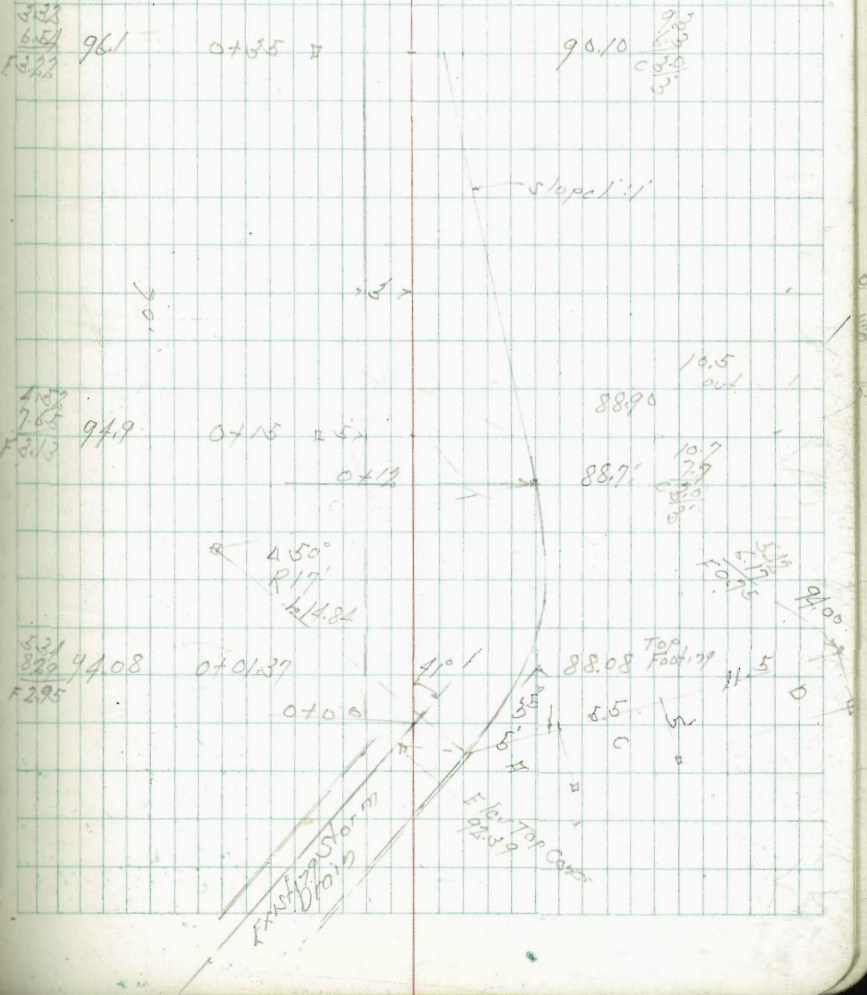
88.71
 10.7
 7.9
 2.8

88.08 Top Footing
 8.5
 11.5

450°
 R17'
 L4.84

EXISTING STORM
 DRAIN

Flow Top Corner
 92.59



Hdams Krc Star m Drain
Curb & Gutter Grades
N.E. Curb Return Hdams & Hanley

BM	650	396.41 395.84	391.40	389.25 390.93 5.18	S.W. 8 th Hdams 13 th
040 - East End					
+0785-4	4.10 2.08 60.08		391.70	390.89 5.52	
+1571-4	4.14 2.08 60.18		391.70	390.89 5.52	
+2356-4	4.10 2.08 60.19		391.70	390.97 5.44	
+3142 - N End				391.23 5.13	

S.W. Curb Return Hdams & Hanley

BM	650	396.41 395.84	391.40	389.25 390.93 5.18	S.W. 8 th Hdams 13 th
040 - West End					
+0785	5.00 2.82 60.36		390.75	390.31 6.20	
+0785	5.00 2.82 60.39		390.84	390.30 6.11	
+1571	4.01 2.00 60.14		390.94	390.39 6.03	
+2356	4.01 2.00 60.15		390.93	390.48 5.93	
+3142 - South End	4.01 2.00 60.15		390.98	390.52 5.83 579.07 Elev	

S.E. Curb Return Hdams & Hanley

040 - East End	4.61 2.91 60.36		391.23	390.58 5.82	
+0785	4.61 2.91 60.35		391.23	390.45 5.94	
+1571	4.61 2.91 60.37		391.23	390.40 6.01 5.98 + 0.6 rate	
+2356	4.61 2.91 60.38		391.23	390.46 out	
+3142 - South End	4.61 2.91 60.38		391.23	390.63	

OK Page 55

Edams H.C. Storm Drain
Curb & Gutter Grades
N.E. Curb Return Edams + Fallon

BM	3.85	393.10	389.25	518 P Edams + Fallon
0+0 = East End BC	$\frac{1.65}{1.38}$ ca. 0.07	388.55	387.97	Curb Gutter
+07.85	$\frac{1.60}{1.36}$ ca. 0.17	388.50	387.89	
+15.71	$\frac{1.58}{1.13}$ ca. 0.13	388.52	387.69	6.05 on grade
+23.56	$\frac{1.58}{1.56}$ ca. 0.02	388.52	387.75	$\frac{0.1}{0.03}$ 5.87
+31.42 = North End FC	$\frac{1.55}{1.50}$ ca. 0.08	388.52	387.92	$\frac{0.1}{0.08}$ 5.74 on top
S.W. Curb Return Edams + Fallon				
0+0 = West End BC	$\frac{1.05}{1.82}$ ca. 0.23	388.95	387.58	
+07.85	$\frac{1.83}{1.70}$ ca. 0.13	388.27	387.65	
+15.71	$\frac{1.79}{1.12}$ ca. 0.06	388.40	387.73	
+23.56	$\frac{1.85}{1.80}$ ca. 0.05	388.25	387.70	
+31.42 = South End FC	$\frac{1.07}{1.07}$ ca. 0.0	388.02	387.66	
BM Gutter Grades	4.53	393.78	389.25	518 P Edams + Fallon

South East Curb Return Edams + Fallon
Gutter Grades
March 2-48

Dec 6-48
Sign
Fallon
Smith

393.10	Curb	Gutter	
0+0 = East End BC	$\frac{5.07}{2.84}$ ca. 0.17	388.02	387.56
+07.85	$\frac{4.92}{2.82}$ ca. 0.07	388.18	387.53
+15.71	$\frac{4.88}{4.33}$ ca. 0.05	388.22	387.51
+23.56	$\frac{4.96}{4.87}$ ca. 0.01	388.14	387.48
+31.42 = South End FC	$\frac{5.14}{4.96}$ ca. 0.22	387.96	387.46
+56.42			387.37
+81.42			387.29
+106.42			387.20
+131.42 = S.W. Junction			387.12 6.66 on Pav.
N.W. Curb Return Edams + Fallon			
0+0 = N.W. End	$\frac{5.01}{4.25}$ ca. 0.26	388.09	387.16
+07.85	$\frac{4.97}{4.39}$ ca. 0.17	388.13	387.53 1.36
+15.71 = 7.85	$\frac{4.93}{4.37}$ ca. 0.15	388.17	387.65 6.29
+23.56 = S.W. End	$\frac{4.90}{4.33}$ ca. 0.20	388.20	387.37 6.41
+25.92 = 7.85	$\frac{4.90}{4.33}$ ca. 0.18		387.63 at curb
+31.42 = N.W. End	$\frac{4.90}{4.33}$ ca. 0.13	388.20	387.37 6.41
+41.42			387.52

H Adams & Son Steam Drains

Curb & Gutter Grader

H.H. Curb Return Adams + 34th St

BM 5.56 394.81 curb 389.25
5040 W End 30 389.55 389.05
5.76

+07.85

+15.71 = 1/2 Return

+20.42 = 1/2 Lateral

+25.92 = 1/2 Lateral

+31.42 = N End EC

+41.42 = N.E. Suspended

BM 5.19 392.29

H.H. Curb Return Adams + 33rd St

0+0 W End B 5.65 386.64 386.06
5.91 6.76
5.52 6.67

+07.85

+15.71 = 1/2 Return

+20.42 = 1/2 Lateral

+25.92 = 1/2 " "

+31.42 = N End EC

+41.42 =

Gutter
March 2-48

SWBP
Adams + 34th

389.25

389.05

388.93

5.89

388.80

6.01

388.72

6.08

388.99 To Cover Cam

6.68

5.92

389.10 5.71 to Pav

386.60

11.25
07.06

386.64

386.06

6.76

386.70

386.08

2.72

386.77

386.10

6.72

386.10 to Cover Cam

6.88

6.72

386.77

385.94

6.88

386.26

6.56 6.90 Pav

Curb Grader Adams + Bancroft

Jan 5-48

54

H.F. Curb Return

BM 2.18 391.09 383.91

TP 4.40 392.13 5.36 385.93

BM 5.38 384.25

0+0 = E End of Return

384.29

5.13

384.20

5.52

384.17 385.00

5.55

384.29

5.13

384.55

5.17

384.55

5.17

384.55

5.17

384.55

5.17

384.55

5.17

384.55

5.17

384.55

5.17

384.55

5.17

384.55

5.17

384.55

5.17

384.55

5.17

384.55

5.17

384.55

5.17

384.55

5.17

384.55

5.17

70
5

Curb Grader Adams Hvc 432

N.Y. Curb Refor "

BM 2.18 391.09 388.91 NFBP
Hd 0.01
Hd 0.01

040 - 80 West End Gutter 385.59 386.09 3.00
5.12 1.89
0.11

+07.85 385.29 386.01 5.08
5.12 5.01
0.07

+15.71 385.18 " 5.08
5.33 5.03
5.50 on front 0.06

+23.56 385.29 386.01 5.08
5.12 5.00
5.32 0.08

+31.42 E.C. End 385.59 " 5.08
5.12 5.20
5.12 0.12

BM For Gutter 4.51 390.71 386.20 4.26 W End

20
0.12
90
30

Landon St. Parson Fairmount to High land

Dec 5-17 61
Sifton
Mason
Z 1400

Cross Sec 1689-54

M. 31193

120	510	555.80	352.59	High 7' Tall Landon High land 1689-59
140			347.50	589 582 63.704
160			349.95	587 583 63.0
180			347.95	554 553 63.9
200			349.95	581 578 63.1
220			349.95	579 575 62.5

INDEXED
WK
NOV 29 1948

445	541 539 97.5	351.94	341.1	31.41	600 351.40	341.1	341.1	341.1	638	351.02	347.0	347.0
12			13	13	13	13	13	13				
351.04	393		17.45								RM 349.04 63.21 354.81	
50.44	50.47											
356.84	397.4		17.25								349.98	
17			17									

Landon St

180	599 541	349.06	48.79	551	603	48.79	551	348.14	612	349.98	612	349.98
107.5		348.85									638	349.98
040												040

Fairmount

HVC

Landon St Paving Grades

BM	3.81	357.40	353.59
	4.14	358.23	353.59

11/17/27
Landon
Highland
1187-59

Gutter Grades
Dec. 16-17
S. H. H. Co.
McCoy
H. H. H.

Highland

H.H.

452 352.08
4.29 10' 55'

448 352.92

530
529.35

530.1

528.5

353.92 4.48 2+70

352.72 4.8 2+40

503
352.20

52.96

352.20
503

521 52.66

522 52.60

7' x 7'

Landon

14.45

14.25

523.00 5.73
522.50 5.87.10

52.80

352.10
5.13

596.50 7
7' x 7'

505 352.35

513 352.27

587 523.55

598 523.58

596 523.27

352.17 5.22 0+30

352.09 5.31 0+0

4.46

54

Dwight St. Paving.

Dec. 15-47 63

51504

McCoy

Allen

Grand Sec. 1691-9

No 31013

Paving Grader
Dec. 30.47
Sisson
Allen
H. Moore
Sherman

Highland

INDEXED
WK
NOV 29 1948

14th St

321 343.80

342.61 2470

B.M. 1118P
347.64

344.46 2470

353 342.48

342.17 2450

346.53

555

46.47

46.47

46.22

346.01 2450

375 342.21

341.83 2430

346.01

0.70

345.31

3.26

351.97

389 342.12

341.60 2410

342.60

145
436.92.02

345.50 381

145
344.90
4.41

342.60 398
Part.

4.61
341.77

345.80 411

344.90
14.25 4.41

Dwight St

Dwight St

B.M. 343.64 0460 111
349.31 111

433 341.18

340.00 0430

237 343.64 42.61 43.66 43.44 342.30 271 460

265 342.35 42.21 43.36 43.15 342.03 295 440

291 340.10 42.01 43.06 42.88 342.84 317 420

313 342.88 42.76 42.71 42.61 342.89 333 040

356 340.95

339.71 040

Fairmount

Hvc

14th St

B.M. Paving 549 346.38

340.89

B.M. Gutter 512 346.01

340.89
H.M. 8P
Dwight St
Fairmount

346.01

DW 1947 St

64

1514 St

BM HW BP
348.37
33.96
Per 352.27 11 347.86

47.79 47.80 47.54
4.48 4.47 4.73

347.40 2170
347.86 2150

351.97
BM 348.37

348.00
4.27

348.00
4.27

Divided by

47.2 347.25

changed

17.5 347.22
Per

47.14 47.11 46.81
5.13 5.16 5.45

346.59 0720

346.52 515
070

Highland

Chartonite

710

BM 328.00
4.81
328.81
1170 335.11

336.01
12.82
BM 328.99 8.P.

BM 328.00
14.00
328.00

336.35 1155
Tapes

336.60 032

BM 348.37
10.92
349.46
12.87
336.61
0.20
336.81

345.55

218 347.28

4514 St

25.57

25.16

25.91

25.67

25.28

Divided by

15.51

15.26

25.50

25.14

25.91

15.26

323.28 245 2170

325.07 1170 2150

1415 336.10

336.40
1423

345.09 139 0120

346.96 250 010

Dwight St. Cur 6 Grader

Dec. 15-17
Sisson
McCoy
11160 65

	net		501
1435-BM	328.10 ¹⁴⁹ ₁₇₆		326.50
1422.65-27 out			326.20
796.66	326.65 ²⁹⁴		325.53
758.33	325.20 ¹³⁹		324.54
720-Gut 8/13	323.75 ⁵⁸¹		323.55
708-C6FC	323.00 ⁶³⁷ ₆₉₉ or cb		322.21 ⁶³⁵ ₆₇₇ or c
070-FL	323.00 ⁶⁵⁷		322.00
BM	559 329.59		324.00

NX 8 P
Dwight
Chamaine

46 1/2 ft.

	320.28								
	320.65	320.05	32.47	32.95	32.30	327.80	2+0		
1435	327.87	2737	2688	2681	2621	2593	21.30	326.80	1+48
	324.02	2342	2324	2301	2305	23.00	333.00	0+20	
C6FC	320.63	2300	2285	2270	22.67	333.17	0+08		
			556	22.88					0+0
			2024	2021					
Chamaine									H.C

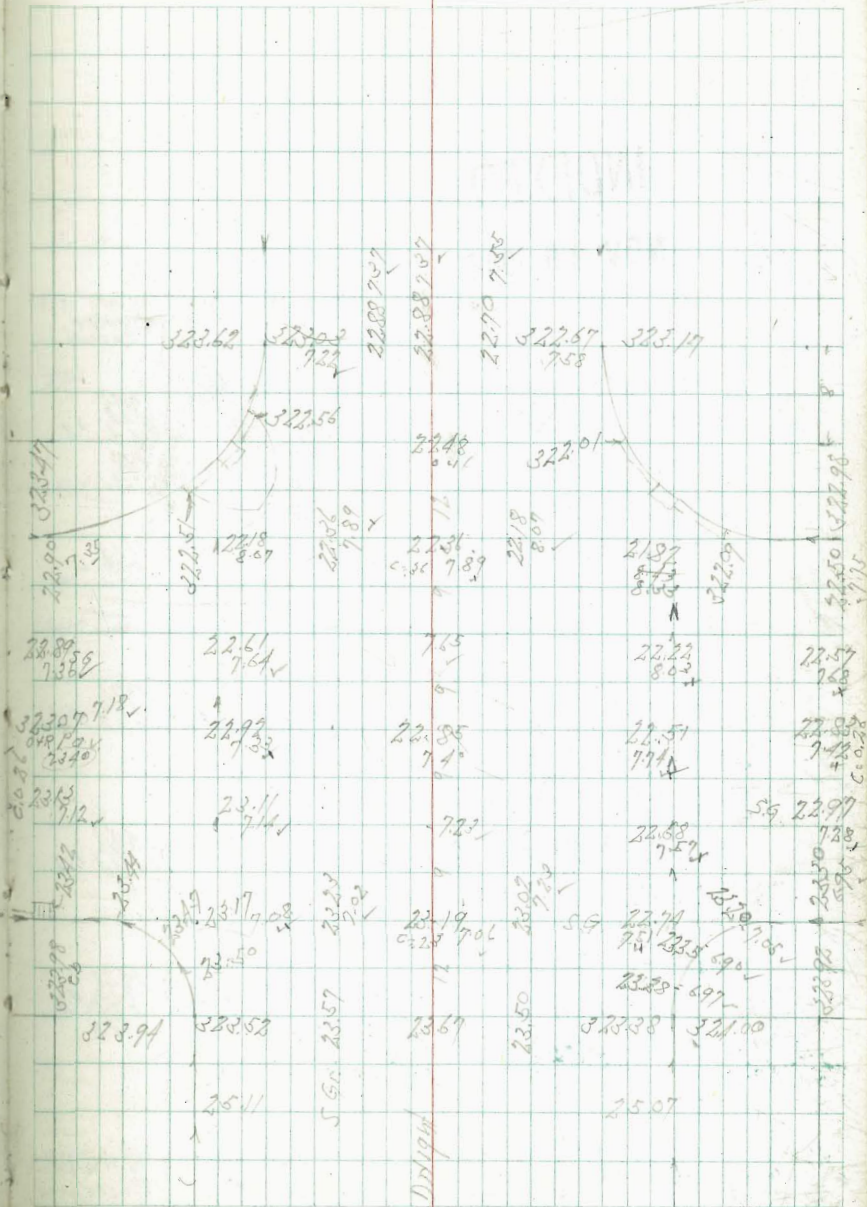
40.25 A

Pay
328.07 328.64 2710.5

1426.66
326.74
326.24
326.11
326.08

326.60
325.5
326.40
326.26
327.88

BM 6.25 3025 324.00
 N.W. SP
 Dixie St.
 Chamaune



Sewer Laterals Keats St.
Rosecrans St to Willow St.

South 2 North

INDEXED
WK
NOV 29 1948

TP	11.65	24.79	2.99	13.14	on MH River Keats Locust
2+60	#12 ^{10.22} 4.58 c5.74	5.81	#11 ^{11.02} 2.52 c6.50	5.81	#1 ^{10.52} 2.18 c6.14 7M
2+10		4.27	#10 ^{11.86} 5.03 c6.78	5.00	#5 ^{11.13} 2.37 c6.74
1+60		3.41	#9 ^{12.07} 4.52 c7.20	4.40	#6 ^{11.23} 4.06 c6.97
1+10	#10 ^{12.83} 6.49 c6.70	3.30	2.55	#7 ^{13.55} 6.06 c7.57	3.80
1+2	#9 ^{13.02} 7.57 c5.77	2.40	1.41	#8 ^{12.77} 7.54 c6.53	2.90
0+0 = HL Rosecrans					
BM	947	16.15		6.66	N.W. 1/4 Div. Rosecrans & Keats 1713-38

Dec. 10-47

S. 5500

MCCOY

Hill

NO 31283

67

	S	2	N	
TP		2.59	45.46	on MH River Keats Willow Keats 1713-38
2+60		36.65	37.35	#1 ^{11.40} 5.86 c5.54 7M ^{10.70} 2.02 c5.78 7M
TP	11.92	48.05	0.15	36.15
0+10	#25	16.08 10.03 c6.05 7M	20.20	18.81
0+0 = HL Evergreen				
TP	12.65	36.28	1.16	23.63
2+10		13.00	19.50	#2 ^{11.70} 5.81 c6.78 ^{10.30} 2.81 c5.78
1+60		11.66	12.50	#3 ^{13.15} 7.20 c5.45 7M ^{12.30} 6.49 c5.00 7M
0+0 = HL Locust				
				24.79

Sewer Laterals Jarvis St.
Rosserons St. to Willow

	South	±	North
0+31	1427 285 6.60	590	1497 8.97
0+10	422 c6.22	595	8.97 c6.76
0+0 = W.L. Locust			
TP	11.67	20.87	2.54 9.20

2+60 INDEXED
WK
NOV 29 1948

2+10	423 5.57 3.72 c5.08	217	247 9.27 3.38 c5.89
1+60	424 9.04 4.30 c4.74 4W	270	2.00 9.24 2.34 c5.38
0+40		0.60	114 1.19 5.90 c5.24
		1.30	10.14 2.19 5.25 4W
0+0 = W.L. Rosserons			
BM	5.08	11.74	6.66

on Morse
Locust
Jarvis

N.W. 1/4
Rosserons
+ Kears

Dec. 10-47. 68

	South	±	North
1+60 #15	10.84 3.35 c5.75 4W	2522	24.52 11.54 5.83 c6.71 4W
TP	5.81	36.06	0.06 31.25
1+10 #16	5.31 1.75 c5.31	23.07	22.37 8.91 1.57 c7.37
0+50 #17	10.81 3.25 c8.06	20.50	19.80 11.37 3.23 c7.58
0+0 = W.L. Evergreen			
BM		8.41	22.90
2+60 #18	16.65 9.25 c5.85	14.71	14.01 17.30 12.56 c4.74
TP	12.56	31.31	2.12 18.75
2+10 #19	8.18 3.21 c4.91	12.75	12.05 8.82 3.22 c4.90
1+60 #20	9.68 1.83 c7.38	11.19	10.49 10.38 1.82 c8.56
0+60 #21	13.38 7.73 c5.65 4W	7.49	6.79 14.08 5.03 c8.25 4W

SE 1/4 Mon
Evergreen
Jarvis
23.85
17.88-27

2087

Evergreen St Waterline Grader

Jarvis to 1996/07
Grader 370 Belant Park Suffer effect & East of 7' curb

2+70 = HL Jarvelow 20.70 19.95
2.75

HL c&fnd 6.36 24.89 21.12
2 profile

2+45 = Bk 20.20 10.45
5.55
c4.9

INDEXED
WK
NOV 29 1948

1+95 19.56 11.19
5.77
c5.4

1+75 18.83 11.97
7.40
c4.7

+95 = Bk 18.10 12.65
8.15
c4.5

+70 = SL Jarvis 17.70 13.05
8.23
c4.72

+35 = 1/2 Jarvis 17.60 13.15
9.01
c4.14

0+40 = HL Jarvis 11.25 17.40 13.35
8.88
c4.47
6. Post

TP 9.78 30.75 10.8 20.97

BM 12.85 22.05 9.20

MONST
Locust
Jarvis
Page 68

Dec 19-47 69
Jarvis
MCCOY
Hillen

X.O. 3/283

March 2-48
Jarvis
Smith
Johnson
X.O. 3/283

Curb Inlet 5' W
Rosacrans + Jarvis

Curb Bottom Box

0+57 = 5' W of Inlet

5.39
1.16
4.84
F0.18

0+27 = 06 F.C.

5.00 0.50
5.05
5.05
c1.54

0+40 = M.A. Rosacrans

BM 6.76 10.05

3.29 5' W 7+54+10
Rosacrans
1/10/07

Jarvis St. Rosecrans St to Willow St.

Paving Grader Rosecrans to Willow

Cross Sections
+ 7 Nov 1938

Stakes offset
3' Back of Prop. N.O. 31283

Feb. 17-18
S. 1900
S. 1100
Smith
S. 52000

	S. Prop C&G Grd.	N. Prop C&G Grd.						
310 - Fl. Locust	860	860	74 610	74 610	3415.86	8.65	8.90 5.65 0.97	8.90
BM		13.44	S.F. Tap FH Locust to Jarvis		3401.63	8.55	6.09 5.25 0.84	8.55
2175 - C&BC	825	825	78 614	78 613	2487.68	8.40	6.34 5.09 0.27	8.40
					2175	8.25	6.39 5.14 0.25	8.25
2125A	760	766	84 607	84 611		7.60	7.04 6.57 0.47	7.66
INDEXED WK NOV 29 1948	695	707	91 608	90 608		6.95	7.69 7.55 0.14	7.07
14262	630	648	97 610	96 611		6.30	8.07 8.03 0.04	6.48
TP	5.53	7.50						
04766	565	589	52 610	50 612		5.65	8.00 7.86 0.14	5.89
5-196	500	530	58 611	55 624		5.00	7.64	5.30
0427 - C&EC	585	553						
040 - W. Rosecrans	504	547	58 610	54 606		5.04		5.47
BM	756	329				3.20	14.64	12.44

S. 1745
Disc.
Rosecrans
+ 129/02
172832

S.F. Tap FH
Locust to Jarvis
opp

Servis Paving Grades

B.M.	Sa. Property C.G. Grade	1976 Sa. Property C.G. Grade	N.E. S.P.P. Evergreen Jarvis
	876	1976	
340 = FL Evergreen	21.30 7.2 2.2 5.0 8.0 5.0 5.0	20.80	7.2 2.2
2475 = C6 EC	20.30 8.3 2.0	19.80	8.7 2.5 F.O.S.
2425	18.34 10.2 10.4 F.O.2	17.94	10.6 1.2 F.O.0
1475	16.38 12.1 12.4 2.0	16.08	12.4 12.2 F.O.2
IP	12.75 28.52 0.26	15.97	
1425	14.42 1.6 0.8 0.8	14.22	1.8 1.3 C.O.S.
0475	12.46 3.6 2.7 0.9	12.36	3.0 2.0 C.O.S.
0425 = C6 EC	10.50 4.5 1.5	10.50	5.5 2.0 C.O.S.
040 = N.L. Locant	9.70 6.3 4.7 0.6	9.70	6.3 4.7 0.6
	16.03		

Curb Grades
April 2-48
S. 5507
Smith
4162
3650507

Sa Curb Grade	North Curb Grade	77
3415.86	21.75	5.11 3.20 C.1.94
3401.68	21.30	5.09 3.57 C.1.52
2487.18	20.80	5.57 5.15 C.0.44
2475	20.30	6.09 5.88 C.0.21
3M		6.66
	18.34	8.05 3.57 F.O.52
	17.94	8.45 8.96 F.O.51
	16.38	10.01 10.22 F.O.21
	16.08	10.31 14.47 F.O.16
TP	12.96	11.97 2.86 F.O.93
	12.46	1.21 2.18 2.07 C.O.14
0425	10.50	1.01 3.74 C.O.25
0412.32	10.00	2.64 2.21 C.O.43
0-1.68	9.70	4.91 3.35 C.1.39
0-15.86	9.50	5.11 3.45 C.1.72
	9.55	5.00 3.22 C.1.87
		14.64

Jarvis St Paving Grades

	28. Grad	5/9 out	A Prop 26 Grad	4.69 out
3+0 - L.H. Willow	36.00	5.06	36.50	4.69
BM		2.29	38.90	5.9
2+75 - C.B.C.	35.15	5.9	35.30	4.6
	34.10	2.6	34.30	4.9
	33.02	8.3	33.14	5.1
	30.86	10.2	30.87	10.4
	28.71	12.5	28.52	12.7
	26.55	14.6	26.21	15.0
TP 13.01	41.19	0.34	28.18	
0+25 - C.B.C.	24.40	4.1	23.90	4.5
0+0 - N.E. Evergreen	23.50	5.2	22.80	5.7
	28.52			

S.C. Grade

	S.C. Grade	M.C. Grade	72
3+0/1.68	36.00	36.50	1.91
1+87/6.8	35.60	35.85	1.91
2+75	35.15	35.30	1.91
	34.10	34.30	1.91
	33.02	33.14	1.91
	30.86	30.87	1.91
	28.71	28.52	1.91
	26.55	26.21	1.91
TP	12.57	25.84	0.55
0+25	24.40	23.90	0.55
0+12.32	23.90	23.30	0.55
0-0/1.68	23.50	22.80	0.55
0-15.86	22.95	22.45	0.55

Keats St. Paving Grades
Rosecrans St to Willow St.

	So. Top C6 Grade	N. Top C6 Grade	
2+0 = FL Locust	10.55 $\frac{9.2}{9.2}$ c7.2	11.23 $\frac{8.5}{8.5}$ c7.9	
2+75 = C6BC	10.30 $\frac{9.5}{9.5}$ c7.4	10.80 $\frac{9.0}{9.5}$ c7.5	
2+25.1	9.69 $\frac{7.1}{9.1}$ c7.0	10.19 $\frac{9.6}{9.6}$ c7.2	
1+75.8	9.09 $\frac{7.7}{9.3}$ c7.4	9.57 $\frac{10.2}{8.2}$ c7.0	
1+26.2	8.48 $\frac{7.3}{13.0}$ c7.3	8.98 $\frac{10.9}{8.7}$ c7.0	
0+76.6	7.85 $\frac{10.9}{10.9}$ c7.0	8.28 $\frac{11.4}{16.5}$ c7.1	
0+50 = Gravel Bk 5+4%			
0+27 = C6FC	7.27 $\frac{7.50}{7.5}$ c7.0	7.77 $\frac{12.00}{12.2}$ c7.8	
0+0 = W. Rosecrans	7.10 $\frac{7.67}{7.6}$ c7.0	7.68 $\frac{12.00}{11.5}$ c7.5	
B.M.	13.11 19.77	6.66 M.M. & D.N. Rosecrans & Keats 1713-38	

INDEXED
NK
NOV 29 1948

Cross Sections
+ Ties 1713-38
No. 1283

So. C6

	So. C6	C6 Grad March 8-48 Smith Job 27070
3+15.81	10.65	$\frac{6.59}{8.2}$ 91.20
3+01.68	10.55	$\frac{6.19}{6.26}$ FO.37
14.00		$\frac{6.79}{8.53}$ c0.26
2+87.68	10.45	$\frac{6.94}{8.82}$ c0.12
12.68	10.30	
	9.69	$\frac{7.55}{7.30}$ c0.25
	9.09	$\frac{8.15}{7.96}$ c0.19
	8.48	$\frac{8.76}{8.81}$ FO.05
	7.88	$\frac{9.36}{9.15}$ c0.21
	7.27	$\frac{9.97}{9.68}$ c0.37
	7.10	$\frac{10.11}{Out}$ Out
B.M.	10.58	17.21

off 7' Back
of Face Curb

Feb. 18-48

73

N.C.
Grade

So. Top
C6 Grade

	N.C. Grade	So. Top C6 Grade
	11.50	$\frac{5.71}{5.76}$ c0.34
	11.25	$\frac{5.99}{5.26}$ c0.33
	11.00	$\frac{6.31}{8.15}$ c0.09
	10.80	$\frac{6.41}{8.63}$ FO.09
	10.19	$\frac{7.05}{7.02}$ c0.02
	9.59	$\frac{7.65}{2.80}$ FO.15
	8.98	$\frac{8.26}{8.25}$ FO.19
	8.28	$\frac{8.81}{9.11}$ FO.25
	7.77	$\frac{9.17}{9.52}$ FO.05
	7.68	out
	6.66	S.N.L. & D.N. Rosecrans & Keats

Kent St Paving Grader

	So. Prop. Ct. Grade	N. Prop. Ct. Grade	S.E. 30' RP Elevation
BM	11.94	20.87	10.0 9.2 6.8
3+0 - E.L. Elevation	22.30	22.50	10.0 9.2 6.8
2+75 - C.B.C.	21.10	21.60	10.0 9.2 6.8
2+25	19.34	19.84	12.7 11.8 6.9
1+75	17.58	18.08	13.2 12.7 6.9
TP	12.53	19.70	
1+25	15.02	16.32	4.0 3.8 6.8
0+75	14.06	14.56	5.7 5.2 6.8
0+25 - C.B.C.	12.30	12.80	7.0 6.5 6.8
0+0	11.60	12.25	7.5 6.8 6.8

19.77

TP	13/18	3829	1.16	25.11	74
	So. Curb Grade			N. Curb Grade	
3+15.86	22.70	3.57 3.16 F1.85		22.90	3.37 2.82 6.85
3+01.68	22.50	3.97 4.94 F0.94		22.50	3.77 3.64 6.73
2+87.68	21.75	4.52 4.76 F0.24		22.30	3.97 4.08 F0.08
2+75	21.10	5.17 5.09 6.08		21.60	4.17 4.29 6.78
		5.17 6.36 F1.09 0.77 Curb			
		6.93 6.88 6.03		19.84	6.43 6.35 6.00
		8.69 9.00 F0.31		18.08	8.19 8.20 F0.01
		10.45 10.75 F0.30		16.32	9.95 9.93 6.02
TP	9.93	26.27	0.90	16.34	
	14.06	3.18 3.25 F0.07		14.56	2.68 2.69 6.25
		4.91 4.85 6.09		12.80	4.41 4.91 6.53
		5.34 5.15 6.21		12.45	4.79 4.07 6.92
0+12.32	11.90	5.14 5.05 6.81		12.25	4.99 3.69 6.30
0-01.68	11.60				
	14.78				
0-15.86	11.25	5.89 4.88 6.12		12.20	5.04 3.22 6.72

17.24

Evergreen St. Paving Grades
Jarvis St. to Hugo St.

INDEXED
WK
NOV 29 1948

Curb Grades
April 2-48
S. 1197
Smith
Filer
Johnson 76

	F. Prop. Cb Grade	H. Prop. Cb Grade	F. Cb Grade	H. Cb Grade
2+00 = N.L. log box	24.46 6.10 5.2 Fol. 6.18 on ch 5	26.00 4.55 3.4 ch 5	24.68 24.42 4.90 4.95 Fol. on ch Fol.	26.00 3.32 3.33 on ch
1+75 = Cb RC	24.50 6.0 4.8 ch 1	25.50 5.0 1.8 ch 2 on core H Prop	14.87.68 24.58 4.71 4.25 ch on 9.1	25.68 3.61 3.28 ch
1+25	23.76 6.8 4.4 ch 6.0 Nail Wall	24.60 5.9 2.9 ch 10.0	14.75 24.50 4.82 4.25 ch on 9	25.60 3.89 3.21 ch
0+75	23.03 7.5 6.3 ch 5	23.70 6.8 3.1 ch 5	23.76 5.56 5.70 Fol. 11	24.60 4.79 4.25 ch on 8
0+25 = Cb FE	22.30 8.3 6.2 ch 5	22.80 7.8 3.2 ch 5	23.03 6.19 6.26 ch on 8.3	23.70 5.62 4.81 ch on 8.1
0+00 = S.L. Jarvis St.	21.75 8.8 6.9 ch 5	22.95 7.6 3.4 ch 5	0+25 22.30 7.02 6.22 ch on 8.5	22.80 6.52 6.22 ch on 8.2
BM 770	30.55	22.85 SE 7 Mon Jarvis Evergreen	0712.32 22.10 7.49 6.22 ch on 8.5	22.70 6.14 5.70 ch on 8
			4-9.68 21.75 7.57	22.95 6.37
			801 4.82 29.32	24.50 SE Soutbank Evergreen log box log??

Evergreen St. Paving Grades
Jarvis St to Hugo St

Stakes off rd 7' Back
of Face of Curb

W.O. 3/28/83

77

	F Prop Cb Grade	W Prop Cb Grade	
2+0 - N.L. Hugo	25.40 573 0xb	27.25 388 0xb	3.93 3.86 0.16
1+75 - C.B. RC	25.90 573 0xb	27.00 388 0xb	1.1 2.1 1.0
1+55 - Brk. 07E	25.89 573 0xb	26.89 388 0xb	1.0 1.0 0.0
1+11.66	25.66 573 0xb	26.66 388 0xb	1.0 1.0 0.0
0+68.22	25.43 573 0xb	26.43 388 0xb	1.0 1.0 0.0
3+43.22			
0+25 - C.B. FC	25.20 573 0xb	26.20 388 0xb	1.0 1.0 0.0
0+0 - S.L. 1996/01	24.82 6.42 0xb	26.40 477 0xb	1.58 2.7 1.12
BM		21.50	S.E. Southeast Evergreen 1996/01
BM	8.30	31.18	S.E. 7' N on Evergreen & Jarvis

	F Cb Grade	W Cb Grade	
2+0 1.68	25.40	27.25	3.93 3.86 0.16
1+87.68	25.90	27.08	3.17 3.86 0.69
1+75	25.90	27.00	3.17 3.86 0.69
1+55	25.89	26.89	3.43 3.86 0.43
1+11.66	25.66	26.66	3.43 3.86 0.43
0+68.22	25.43	26.43	3.89 3.86 0.03
0+25	25.20	26.20	4.17 3.86 0.31
0+18.22	25.10	26.25	4.82 3.86 0.96
0-01.68	24.82	26.40	1.58 3.86 2.28
			29.32

Paving Grader Alley Block 64 City Hts
From Landis to Wiggartman
Between Cherokee + 27th St

Hubert
338.97
4.71
4.64
343.77

	West	Z	East
+80 = F.V.C. 11	338.90 4.59 3.15 c 1.14 27		338.70 4.71 4.64 c 0.67 5.26 1.07 386.092
+75.5		0.15	58.58 5.82 2.86
+71.8			
+60 = 5.80 5.20 c 0.90	338.60 4.59 4.22 c 0.87 3		338.40 4.71 4.64 c 0.71 3
+50.3 = 5.80 5.20 c 0.90			338.97 5.23 5.23 341.07 3
+40 = 38.00	338.00 5.19 4.32 c 0.87 3		337.80 5.23 4.64 c 0.83 3
+34.3		0.15	7.00 c 1.14
+20	337.00 5.19 4.58 c 1.14 3		336.80 5.23 4.64 c 1.14 3
0 + 0 = N.L. Landis	335.60 7.79 6.26 c 0.97 3		335.40 7.79 6.26 c 0.97 3
0-12	7.98 335.21		8.41 334.78
TP	8.38 343.19	8.08	334.81
BM	7.64 342.89		335.25 N.H. 8P Landis 344

Jan. 15-48 78
5.500
5.107
5.014

Cross Sec 1739-4

INDEXED
WK
NOV 29 1948

	West	Z	East
3480 = P.V.C	340.20 4.378 4.07 c 0.35 3		340.00 4.59 4.11 c 0.58 3
3450	339.98 4.60 4.09 c 0.51 3		339.78 4.80 4.58 c 0.82 76 Hall Ho
3480	339.99 4.51 4.21 c 0.34 3		339.57 4.51 4.51 c 0.40 3
3430	339.55 5.05 4.05 c 1.05 0.8		339.35 5.23 4.32 c 0.74 0.3
3480	339.33 5.23 4.64 c 1.07 3		339.13 5.23 4.64 c 0.97 3
TP	4.12 344.58	2.74	340.45
3430	339.12 4.07 3.52 c 0.55 3		338.91 4.27 3.76 c 0.57 3
			343.19

	West	±	East
750	34340 4.91 1.34 CO.57. 3		34320 5.11 1.55 CO.55. 0.7. Nail fence
5+10	P.V.C. 34325 5.06 1.24 CO.82. 3		34305 5.26 5.10 FO.14. 3
4+90	34212 6.19 5.18 CI.01. 3		34199 5.30 5.18 CO.57. 3
TP	5.96 34801	2.23	34235
4+40	F.V.C. 34100 3.58 2.19 CI.09. 3		34080 3.78 3.38 FO.08. 3
4+20	34060 3.09 2.25 CI.15. 3		34040 4.18 3.47 CO.77. 3
4+0	34030 4.28 3.15 CO.53. 3		34010 4.18 4.16 FO.28. 3

544.58

	West	±	East
BM		5.58	338.80 N.W. 8P 341.33 338.82
TP	2.86 34418	6.99	34132
6+12	Wly Pav 199 34185 6.16		34125 7.06
6+0	S. L. Wightman 34220 5.11 5.22 CO.89. 3		34200 5.31 5.27 CI.27. 3
5+80	F.V.C. 34287 5.45 4.32 CI.15. 3		34267 5.54 3.77 CI.12. 0.2. Nail Hour
5+70	34320 5.11 4.22 CO.89. 3		34300 5.51 5.22 CI.29. 0.3. Nail Hour
5+60	34335 4.91 4.40 CO.56. 2		34315 5.11 4.64 CO.53. 0.1. Nail Hour

348.01

80
 Sewer Grader Block C of O.L. Sec/3rd 1st 5-48
 Find Pt. 1152
 stakes offset 4' south
 BM 12.07 3418
 22.11 1566-79

0+0 = D.E. Fixing 16.12

0+075 = M.H. 16.17

TP 11.16 45.13 0.21 33.97

0+37.8 22.02

TP 12.09 56.84 0.38 44.75

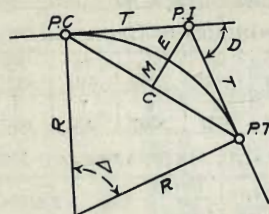
0+66.86 = Bck 48.00

1+00 = DF 17.16

INDEXED
 WK
 NOV 29 1948

DIETZGEN'S RAILROAD CURVE AND REDUCTION TABLES

Copyright, 1914, by Eugene Dietzgen Co., New York City



CURVE FORMULAS

- Radius— $R = \frac{50}{\sin \frac{D}{2}}$ (1) Degree of Curve— D and $\sin \frac{D}{2} = \frac{50}{R}$ (2)
- Tangent— $T = R \tan \frac{\Delta}{2}$ (3) Length of Curve— $L = 100 \frac{\Delta}{D}$ (4)
- Middle ordinate— $M = R(1 - \cos \frac{\Delta}{2})$ (5) $= R \text{vers} \frac{\Delta}{2}$ (6)
- External— $E = T \tan \frac{\Delta}{4}$ (7) $= R \div \cos \frac{\Delta}{2} - R$ (8) $= R \text{exsec} \frac{\Delta}{2}$ (9)
- Long Chord— $C = 2 R \sin \frac{\Delta}{2}$ (10) $\Delta =$ Central Angle

EXPLANATION AND USE OF TABLES

Stations.—Given P. I.—Sta. 161+60.35 to find Sta. of P. C. and P. T. $\Delta = 62^\circ 10'$ $D = 8^\circ 20'$. From Table IV for 1° curve $T = 3454.1$ and $\div 8\frac{1}{3} = 414.49$ ft. From Table V correction—.36 or $T = 414.85$ ft. P. C.—Sta. P.I.— $T = 157 + 45.50$. Also from (4) $L = 746.00$ and P. T.—Sta. P. C. + $L = 164 + 91.50$.

Offsets.—Tangent offsets vary (approximately) directly with D and with square of the distance. Thus tangent offset for Sta. 158 on above curve is 2.16 ft. found as follows. From Table III tangent offset for 100 ft.—7.27 ft. Distance—158—Sta. P. C.—54.50, hence offset— $7.27 (54.50 \div 100)^2 = 2.16$ ft. Also square of any distance divided by twice the radius equals (approximately) the distance from tangent to curve. Thus $(54.50)^2 \div (2 \times 688.26) = 2.16$ ft.

Deflections.—Deflection angle— $\frac{1}{2} D$ for 100 ft., $\frac{1}{4} D$ for 50 ft., etc. For c ft.—(in minutes) $.3 \times C \times D^\circ$ or—defl. for 1 ft. from Table III $\times C$. For Sta. 158 of above curve—.3 $\times 54.5 \times 8\frac{1}{3} = 136.2'$ or $2^\circ 16.2'$, or— $2.50 \times 54.5 = 136.2'$ from Table III. For Sta. 159 deflection angle— $2^\circ 16.2' + 8^\circ 20' \div 2 = 6^\circ 26.2'$, etc.

Externals.—May be found in similar manner to tangents. Thus E for curve above is 115.37. For from Table IV for 1° curve $E = 960.6$ for $8^\circ 20' = 960.6 \div 8\frac{1}{3} = 115.27$ and from Table V correction—.10 or $E = 115.37$ ft. Or suppose $\Delta = 32^\circ$ and E is measured and found to be 42 ft. What is D ? From Table IV $E = 230.9$ and $\div 42 = 5.5$ or $D = 5^\circ 30'$.

DISTANCES FROM CENTER OF ROADWAY FOR
CROSS-SECTIONING.

Roadway 16 feet wide. Side Slopes 1 on 1½
For Single Track Embankment.

H	0	.1	.2	.3	.4	.5	.6	.7	.8	.9	H
0	8.0	8.2	8.3	8.5	8.6	8.8	8.9	9.1	9.2	9.4	0
1	9.5	9.7	9.8	10.0	10.1	10.3	10.4	10.6	10.7	10.9	1
2	11.0	11.2	11.3	11.5	11.6	11.8	11.9	12.1	12.2	12.4	2
3	12.5	12.7	12.8	13.0	13.1	13.3	13.4	13.6	13.7	13.9	3
4	14.0	14.2	14.3	14.5	14.6	14.8	14.9	15.1	15.2	15.4	4
5	15.5	15.7	15.8	16.0	16.1	16.3	16.4	16.6	16.7	16.9	5
6	17.0	17.2	17.3	17.5	17.6	17.8	17.9	18.1	18.2	18.4	6
7	18.5	18.7	18.8	19.0	19.1	19.3	19.4	19.6	19.7	19.9	7
8	20.0	20.2	20.3	20.5	20.6	20.8	20.9	21.1	21.2	21.4	8
9	21.5	21.7	21.8	22.0	22.1	22.3	22.4	22.6	22.7	22.9	9
10	23.0	23.2	23.3	23.5	23.6	23.8	23.9	24.1	24.2	24.4	10
11	24.5	24.7	24.8	25.0	25.1	25.3	25.4	25.6	25.7	25.9	11
12	26.0	26.2	26.3	26.5	26.6	26.8	26.9	27.1	27.2	27.4	12
13	27.5	27.7	27.8	28.0	28.1	28.3	28.4	28.6	28.7	28.9	13
14	29.0	29.2	29.3	29.5	29.6	29.8	29.9	30.1	30.2	30.4	14
15	30.5	30.7	30.8	31.0	31.1	31.3	31.4	31.6	31.7	31.9	15
16	32.0	32.2	32.3	32.5	32.6	32.8	32.9	33.1	33.2	33.4	16
17	33.5	33.7	33.8	34.0	34.1	34.3	34.4	34.6	34.7	34.9	17
18	35.0	35.2	35.3	35.5	35.6	35.8	35.9	36.1	36.2	36.4	18
19	36.5	36.7	36.8	37.0	37.1	37.3	37.4	37.6	37.7	37.9	19
20	38.0	38.2	38.3	38.5	38.6	38.8	38.9	39.1	39.2	39.4	20
21	39.5	39.7	39.8	40.0	40.1	40.3	40.4	40.6	40.7	40.9	21
22	41.0	41.2	41.3	41.5	41.6	41.8	41.9	42.1	42.2	42.4	22
23	42.5	42.7	42.8	43.0	43.1	43.3	43.4	43.6	43.7	43.9	23
24	44.0	44.2	44.3	44.5	44.6	44.8	44.9	45.1	45.2	45.4	24
25	45.5	45.7	45.8	46.0	46.1	46.3	46.4	46.6	46.7	46.9	25
26	47.0	47.2	47.3	47.5	47.6	47.8	47.9	48.1	48.2	48.4	26
27	48.5	48.7	48.8	49.0	49.1	49.3	49.4	49.6	49.7	49.9	27
28	50.0	50.2	50.3	50.5	50.6	50.8	50.9	51.1	51.2	51.4	28
29	51.5	51.7	51.8	52.0	52.1	52.3	52.4	52.6	52.7	52.9	29
30	53.0	53.2	53.3	53.5	53.6	53.8	53.9	54.1	54.2	54.4	30
31	54.5	54.7	54.8	55.0	55.1	55.3	55.4	55.6	55.7	55.9	31
32	56.0	56.2	56.3	56.5	56.6	56.8	56.9	57.1	57.2	57.4	32
33	57.5	57.7	57.8	58.0	58.1	58.3	58.4	58.6	58.7	58.9	33
34	59.0	59.2	59.3	59.5	59.6	59.8	59.9	60.1	60.2	60.4	34
35	60.5	60.7	60.8	61.0	61.1	61.3	61.4	61.6	61.7	61.9	35
36	62.0	62.2	62.3	62.5	62.6	62.8	62.9	63.1	63.2	63.4	36
37	63.5	63.7	63.8	64.0	64.1	64.3	64.4	64.6	64.7	64.9	37
38	65.0	65.2	65.3	65.5	65.6	65.8	65.9	66.1	66.2	66.4	38
39	66.5	66.7	66.8	67.0	67.1	67.3	67.4	67.6	67.7	67.9	39
40	68.0	68.2	68.3	68.5	68.6	68.8	68.9	69.1	69.2	69.4	40

Example—If point is 22.6 ft. above grade, how far
be a slope stake point? Ans. from Table 41.9. For
roadbed correct above figures by one-half difference in w
above for 20 ft. roadbed distance will be $41.5 + (20 - 16) \times$
For slopes of 1 on 1 see inside of front cover.