



# EUGENE DIETZGEN CO.

DRAWING MATERIALS, MATHEMATICAL and  
SURVEYING INSTRUMENTS

Chicago New York San Francisco New Orleans Pittsburg Toronto

Distances from Center of Roadway for Cross-Sectioning  
Roadway 16 feet wide. Side Slopes 1 on 1.  
For Single Track Embankment.

H	0	.1	.2	.3	.4	.5	.6	.7	.8	.9	H
0	8.0	8.1	8.2	8.3	8.4	8.5	8.6	8.7	8.8	8.9	0
1	9.0	9.1	9.2	9.3	9.4	9.5	9.6	9.7	9.8	9.9	1
2	10.0	10.1	10.2	10.3	10.4	10.5	10.6	10.7	10.8	10.9	2
3	11.0	11.1	11.2	11.3	11.4	11.5	11.6	11.7	11.8	11.9	3
4	12.0	12.1	12.2	12.3	12.4	12.5	12.6	12.7	12.8	12.9	4
5	13.0	13.1	13.2	13.3	13.4	13.5	13.6	13.7	13.8	13.9	5
6	14.0	14.1	14.2	14.3	14.4	14.5	14.6	14.7	14.8	14.9	6
7	15.0	15.1	15.2	15.3	15.4	15.5	15.6	15.7	15.8	15.9	7
8	16.0	16.1	16.2	16.3	16.4	16.5	16.6	16.7	16.8	16.9	8
9	17.0	17.1	17.2	17.3	17.4	17.5	17.6	17.7	17.8	17.9	9
10	18.0	18.1	18.2	18.3	18.4	18.5	18.6	18.7	18.8	18.9	10
11	19.0	19.1	19.2	19.3	19.4	19.5	19.6	19.7	19.8	19.9	11
12	20.0	20.1	20.2	20.3	20.4	20.5	20.6	20.7	20.8	20.9	12
13	21.0	21.1	21.2	21.3	21.4	21.5	21.6	21.7	21.8	21.9	13
14	22.0	22.1	22.2	22.3	22.4	22.5	22.6	22.7	22.8	22.9	14
15	23.0	23.1	23.2	23.3	23.4	23.5	23.6	23.7	23.8	23.9	15
16	24.0	24.1	24.2	24.3	24.4	24.5	24.6	24.7	24.8	24.9	16
17	25.0	25.1	25.2	25.3	25.4	25.5	25.6	25.7	25.8	25.9	17
18	26.0	26.1	26.2	26.3	26.4	26.5	26.6	26.7	26.8	26.9	18
19	27.0	27.1	27.2	27.3	27.4	27.5	27.6	27.7	27.8	27.9	19
20	28.0	28.1	28.2	28.3	28.4	28.5	28.6	28.7	28.8	28.9	20
21	29.0	29.1	29.2	29.3	29.4	29.5	29.6	29.7	29.8	29.9	21
22	30.0	30.1	30.2	30.3	30.4	30.5	30.6	30.7	30.8	30.9	22
23	31.0	31.1	31.2	31.3	31.4	31.5	31.6	31.7	31.8	31.9	23
24	32.0	32.1	32.2	32.3	32.4	32.5	32.6	32.7	32.8	32.9	24
25	33.0	33.1	33.2	33.3	33.4	33.5	33.6	33.7	33.8	33.9	25
26	34.0	34.1	34.2	34.3	34.4	34.5	34.6	34.7	34.8	34.9	26
27	35.0	35.1	35.2	35.3	35.4	35.5	35.6	35.7	35.8	35.9	27
28	36.0	36.1	36.2	36.3	36.4	36.5	36.6	36.7	36.8	36.9	28
29	37.0	37.1	37.2	37.3	37.4	37.5	37.6	37.7	37.8	37.9	29
30	38.0	38.1	38.2	38.3	38.4	38.5	38.6	38.7	38.8	38.9	30
31	39.0	39.1	39.2	39.3	39.4	39.5	39.6	39.7	39.8	39.9	31
32	40.0	40.1	40.2	40.3	40.4	40.5	40.6	40.7	40.8	40.9	32
33	41.0	41.1	41.2	41.3	41.4	41.5	41.6	41.7	41.8	41.9	33
34	42.0	42.1	42.2	42.3	42.4	42.5	42.6	42.7	42.8	42.9	34
35	43.0	43.1	43.2	43.3	43.4	43.5	43.6	43.7	43.8	43.9	35
36	44.0	44.1	44.2	44.3	44.4	44.5	44.6	44.7	44.8	44.9	36
37	45.0	45.1	45.2	45.3	45.4	45.5	45.6	45.7	45.8	45.9	37
38	46.0	46.1	46.2	46.3	46.4	46.5	46.6	46.7	46.8	46.9	38
39	47.0	47.1	47.2	47.3	47.4	47.5	47.6	47.7	47.8	47.9	39
40	48.0	48.1	48.2	48.3	48.4	48.5	48.6	48.7	48.8	48.9	40

**Example**—If point is 22.6 ft. above grade, how far should it be from center line to be a slope stake point? Ans. from Table 30.6. For same slopes but other widths of roadbed, correct above figures by one-half difference in width of roadbed; thus in example above, for 20 ft. roadbed distance will be  $30.6 + (20 - 16) \div 2$  or 2 ft. added to 30.6 = 32.6. For slopes of 1 on 1½ see inside of back cover.  
Copyright, 1914, by Eugene Dietzgen Co.

INDEXED

completely  
except pages # 7-9

This Field Book is manufactured of a High  
Grade 50% Rag Paper having a **WATER  
RESISTING SURFACE**, and is sewed with  
Bing Special Enamel Waterproof thread.

Made in U. S. A.

INDEX

Page			
2-6	Stake Cbs Clove St Fenelon to Carleton	35	Stake Cbs Sterne St Willow to Plum
10	Water Line Extensions Clove St Carleton to Fenelon	36-37	Stake Water Services Alley BIK 97 City Hts
11	Restake Cb Shadowlawn & Evergreen	38-41	Stake Rough Grades Southeast Playground
12	Stake Sewer Wabash Ave & Myrtle St. & Alley BIK 19 City Hts	42-44	Stake Storm Drain BIK 2 Berkeley Hts
13	Stake Cb Lets Plum & Fenelon	45-46	Stake Cbs Russell St Willow to Sky Line Point Loma Hts. $\approx$
14-16	Stake Crows Feet Clove St Fenelon to Carleton	47-48	Stake Crows Feet Russell St. town
17	Stake Alley BIK 35 (Park Villas)	49-50	" - Rough Grades Wilbur St Cass to Everts Survey to Establish Nautical Mile Along Harbor Drive from Coast Guard Sta. to West.
18	Stake Intersection Evergreen & Madrid	51-52	Stake Cbs 6th & University Stake & Grades Russell & Sterne St.
19-21	Stake Water Main Opal St Cass to Davies	53-56	Willow to Plum
22	Stake Sewer Across Pacific Hwy No. of Bunker Hill St.	57	Rough Grades Opal St Cass to Davies
23	Stake Cbs Crosby St Cotton to Railroad Ave.	58	Extend Sewer 7th & G. Crows Feet Diamond St.
24	Stake Crows Feet Dwight Ave Cherokee to 37th	59	Gresham to Haines
25-27	" " " Fenelon St Clove to Willow	60-61	Opal St. Crows Feet Cass to Davies
28-29	Stake Water Main & Stubs Polk St Winona to 48th	62	Rough Grades Delta St north to Hist. Colima to
30-31	Restake Sewer laterals Russell & Sterne St. Willow to Plum	63-65	Stake Water Services Electric Ave Forward Stake 6" H.P. Sewer La Jolla Shores Dr. Vallecitos to Avenida De La Playa
32-34	Stake Cbs Diamond St. Gresham to Haines (Also tie outs of 7' Hubs Haines & Diamond)	66	Stake Cbs Mesa Way & Palomar La Jolla Blvd. to Electric Ave
		67-69	Rough Grades Electric, Colima to Midway
		70	Stake Alley Block 9 Roseville Hts.
		71-72	Rough Grades <sup>&amp; Cbs</sup> Electric Midway to Forward.
		73-75	Stake Sewers La Jolla Shores
		76-78	

2-7-49 State Cbs. Clove St.  
 Hendricks Fenelon to Emerson  
 Bramby  
 Greer  
 Rorer  
 W.D. 231084  
 (Plan 68554 68564 & 68574)

Sta.		H1	- Lt.	Elev. Stake Lt.	Elev. Grade Lt.
0+95	Rt. 30 line Fenelon				
0+60	Rt.				
0+50	Rt.				
0+25	Rt. No line Fenelon				
0+12.5	Rt.				
0+00	Rt.				
EC = 1+20	on Clove	5.76		137.03	136.50
#4		5.75		137.04	136.35
#3	SE Co. Ret.	5.61		137.18	136.10
#2	Clove & Fenelon	6.18		136.61	135.63
#1		7.55		135.24	134.90
BC	on Fenelon	9.10		133.69	133.83
#3	Int. H line Clove	6.31		136.48	135.30
#2	NE Co. Ret.	6.79		136.00	135.00
#1	Fenelon & Clove	8.29		134.50	134.15
BC	on Fenelon	9.86		132.93	132.83
B.M.	10.05	142.79			132.74

INDEXED  
 W.K.  
 SEP 1 1949

Cut or Fill Lt.	- Rt.	Elev. Stake Rt.	Elev. Gr. Rt.	Cut or Fill Rt.
		5.39	137.40	136.75 C 0.65
		6.58	136.21	136.50 FO <sup>29</sup>
		6.56	136.23	136.43 FO <sup>20</sup>
		7.23	135.56	135.92 FO <sup>36</sup>
				135.41
				134.74
				CO <sup>53</sup>
				CO <sup>69</sup>
				CO <sup>108</sup>
				CO <sup>98</sup>
				CO <sup>34</sup>
				FO <sup>14</sup>
				CO <sup>18</sup>
				CO <sup>100</sup>
				CO <sup>35</sup>
				CO <sup>10</sup>
				BP NE Cor. Fenelon & Clove

Cont'd. from P. 2

③

Sta.		H. I.	- Lt.	Elev. Stakes Lt.	Elev. Gr. Lt.	Cut or Fill Lt.	- Rt.	Elev. Stake Rt.	Elev. Gr. Rt.	Cut or Fill Rt.
3+90	EC. Cb. Ret Rt.		11.74	140.20	140.00	CO <sup>20</sup> ✓	11.14	140.80	140.50	CO <sup>30</sup>
3+72.5			12.30	139.64	139.43	CO <sup>21</sup> ✓				
3+65	So. line Emerson Lt.		12.47	139.47	139.05	CO <sup>42</sup> ✓				
	T.P.	12.47	151.94	139.47						
3+30	E. Emerson Lt.		4.12	138.67	138.65	CO <sup>02</sup> ✓				
										151.94 A
2+95	Lt. No. line Emerson Lt.		4.35	138.44	138.25	CO <sup>19</sup> ✓				
2+82.5	Lt.		4.76	138.03	138.12	FO <sup>09</sup> ✓				
#3	Int. V. line Clove	H.W. Cb. Ret Clove & Emerson					2.49	140.30	139.50	CO <sup>80</sup> ✓
#2						3.83	138.96	139.00	FO <sup>04</sup> ✓	
#1						4.00	138.79	138.68	CO <sup>11</sup> ✓	
2+70	EC. Cb. Ret Rt.		4.78	138.01	138.00	CO <sup>01</sup> ✓	4.02	138.77	138.50	CO <sup>27</sup> ✓
2+40			4.97	137.82	137.70	CO <sup>12</sup> ✓	5.23	137.56	138.20	FO <sup>64</sup> ✓
2+10			5.66	137.13	137.40	FO <sup>27</sup> ✓	4.90	137.89	137.90	FO <sup>01</sup> ✓
1+80			5.60	137.19	137.10	CO <sup>09</sup> ✓	5.45	137.84	137.60	FO <sup>26</sup> ✓
1+50			5.92	136.87	136.80	CO <sup>07</sup> ✓	5.06	137.73	137.30	CO <sup>42</sup> ✓
1+20	Rt.						5.06	137.73	137.00	CO <sup>23</sup> ✓
1+20	EC. Cb. Ret Lt.		5.76	137.03	136.50	CO <sup>53</sup> ✓	5.07	137.72		
1+07.5	Rt.								136.87	CO <sup>85</sup> ✓

142.79

Cont'd. from P. 3

				Elev.	Elev.
Sta.		H. 1	- 21	State Lt	Gr. Lt.
7+20		6.83		151.61	151.60
6+90		6.30		152.14	151.80
6+60	BC on Clove	6.05		152.39	152.00
#1	SE & SW Co Ret. Clove & Dickens	5.92		152.52	151.98
#2		5.94		152.50	151.70
#3		5.89		152.55	151.25
#3	Int Prop Line Clove	8.20		150.24	150.70
T.P.		8.31	158.44	150.13	
#2		DICKENS & Clove HEBWA Ret.	1.99		149.95
#1		1.82		150.12	150.20
5+40	BC on Clove BC Co Ret. RL & H	2.02		149.92	149.50
5+10		4.43		147.51	147.60
4+80		6.12		145.82	145.70
4+50		7.84		144.10	143.80
4+20		9.94		142.00	141.90
#3	Int W. Line Clove SW Co Ret Clove & Emerson				
#2					
#1					
BC = 3+96	on Clove				

151.94

				Elev.	Elev.	
Cut or Fill Lt.	- E1	State Rt	Gr. Rt.	State Rt	Gr. Rt.	Cut or Fill Rt.
CO <sup>01</sup> ✓	6.29	152.15	152.10	CO <sup>05</sup> ✓		
CO <sup>04</sup> ✓	6.09	152.35	152.20	CO <sup>05</sup> ✓		
CO <sup>39</sup> ✓	5.66	152.78	152.50	CO <sup>28</sup> ✓		
CO <sup>54</sup> ✓	5.41	153.03	152.55	CO <sup>68</sup> ✓		
CO <sup>80</sup> ✓	2.06	156.38	152.70	CO <sup>68</sup> ✓		
CO <sup>20</sup> ✓	2.21	156.23	153.00	CO <sup>23</sup> ✓		
FO <sup>46</sup> ✓	6.31	152.13	152.35	FO <sup>22</sup> ✓		
FO <sup>65</sup> ✓	0.50	151.44	151.55	FO <sup>11</sup> ✓		
FO <sup>03</sup> ✓	1.45	150.49	150.75	FO <sup>26</sup> ✓		
CO <sup>42</sup> ✓	2.20	149.74	150.00	FO <sup>26</sup> ✓		
FO <sup>09</sup> ✓	4.10	147.84	148.10	FO <sup>26</sup> ✓		
CO <sup>12</sup> ✓	6.04	145.90	146.20	FO <sup>30</sup> ✓		
CO <sup>30</sup> ✓	8.19	143.75	144.30	FO <sup>55</sup> ✓		
CO <sup>10</sup> ✓	9.93	142.01	142.40	FO <sup>39</sup> ✓		
	8.29	143.65	140.20	CO <sup>45</sup> ✓		
	8.69	143.25	139.80	CO <sup>45</sup> ✓		
	11.58	140.36	140.00	CO <sup>36</sup> ✓		
	11.14	140.80	140.50	CO <sup>30</sup> ✓		

151.94

Cont'd. from P 4

8

Sta.	+	H. I	- Lt.	Elev State Lt	Elev Gr. Lt
#2					151.25
#2					151.76
#1					151.98
BC-6160					152.00

Cut or Fill Lt	- Rt	Elev. State Lt	Elev. Gr. Rt	Cut or Fill Rt.
				152.00
				152.70
				152.55
				152.50

EG on Carleton	Ex. Ch.				
#4		9.76	148.69	148.67	
#3	Carleton & Glove	8.90	149.54	149.23	
#2		8.17	150.27	149.95	
#1		8.11	150.33	150.46	
8+10	on Glove BC Co. Ret	7.72	150.72	151.00	
7+80		7.06	151.38	151.20	
7+50		7.14	151.30	151.40	

CO <sup>01</sup>	6.12	152.32	152.25	meet CO <sup>07</sup>
CO <sup>21</sup>	6.43	152.01	151.90	CO <sup>11</sup>
CO <sup>32</sup>	6.66	151.78	151.66	CO <sup>13</sup>
FO <sup>13</sup>	4.39	154.05	151.47	C2 <sup>53</sup>
FO <sup>23</sup>	6.65	151.79	151.40	CO <sup>39</sup>
FO <sup>28</sup>	6.82	151.62	151.50	CO <sup>12</sup>
CO <sup>18</sup>	6.65	151.79	151.70	CO <sup>09</sup>
FO <sup>10</sup>	6.44	152.00	151.90	CO <sup>10</sup>

158.44

Cb 138.00  
 G 137.33  
 137.92  
 Cb 138.50  
 G 137.83  
 R=43  
 2+70  
 0.

Cb 137.70  
 G 137.03  
 137.62  
 Cb 138.20  
 G 137.53  
 2+40

Cb 137.40  
 G 136.73  
 137.32  
 Cb 137.90  
 G 137.23  
 2+10

Cb 137.10  
 G 136.43  
 137.02  
 Cb 137.60  
 G 136.93  
 1+80

Cb 136.80  
 G 136.13  
 136.72  
 Cb 137.30  
 G 136.63  
 1+50

Cb 136.50  
 G 135.83  
 136.42  
 Cb 137.00  
 G 136.33  
 1+20

Cb 136.25  
 G 135.58  
 136.30  
 Cb 136.87  
 G 136.20  
 1+07.50

Cb 136.00  
 G 135.33  
 136.20  
 Cb 136.75  
 G 136.08  
 0+95

Cb 135.75  
 G 135.08  
 136.05  
 Cb 136.22  
 G 135.70  
 0+77

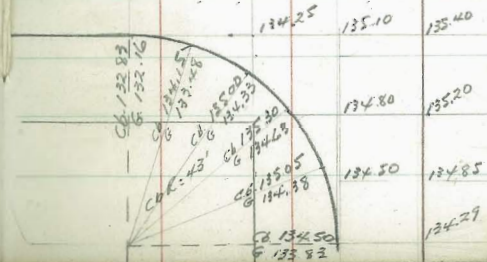
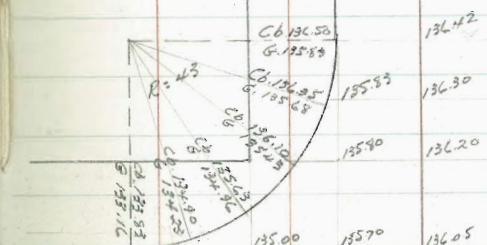
Cb 135.50  
 G 134.83  
 135.90  
 Cb 136.50  
 G 135.75  
 0+60

Cb 135.25  
 G 134.58  
 135.80  
 Cb 136.35  
 G 135.60  
 0+43

Cb 135.00  
 G 134.33  
 135.70  
 Cb 135.92  
 G 135.30  
 0+25

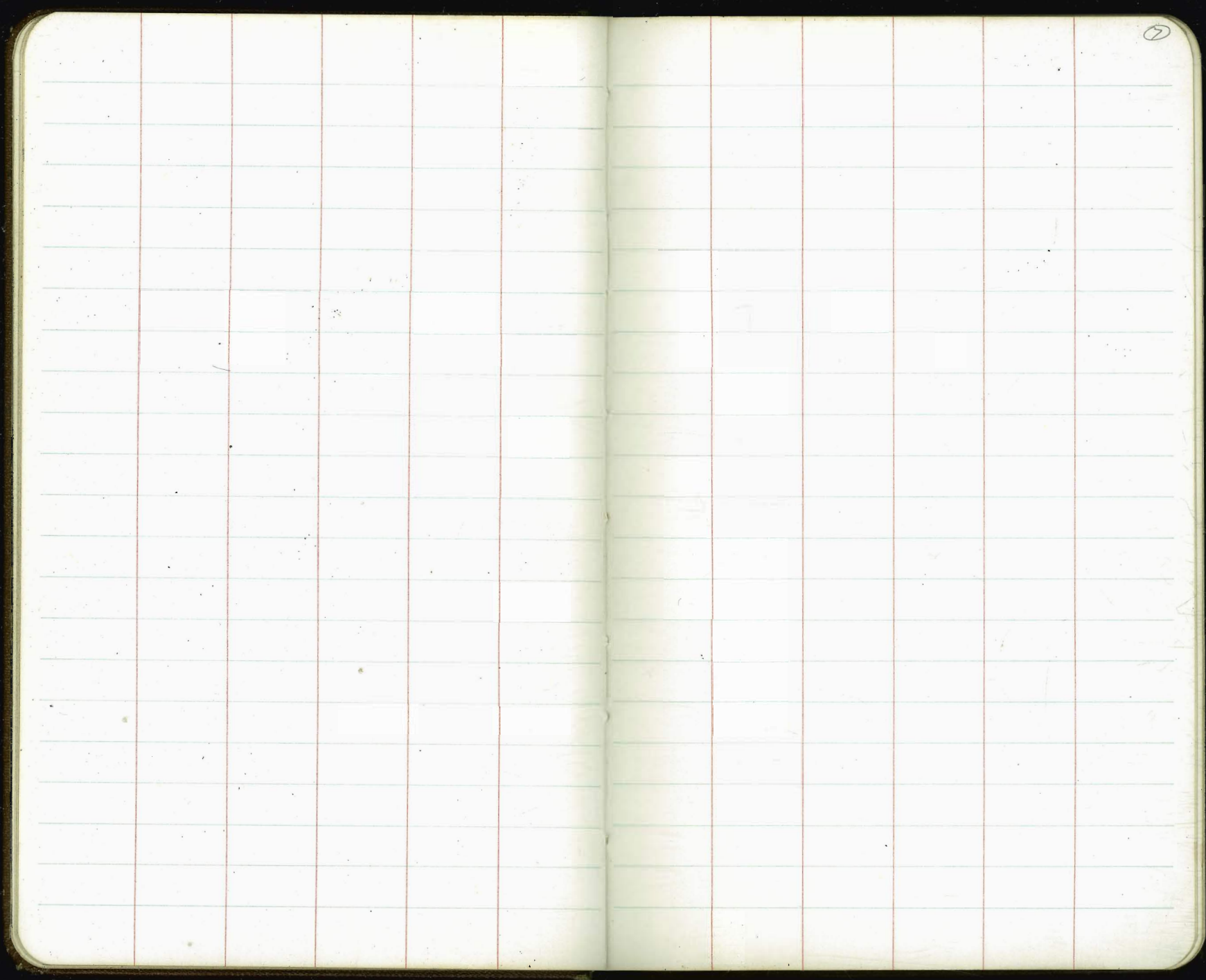
Cb 134.75  
 G 134.08  
 135.60  
 Cb 135.41  
 G 134.90  
 0+12.5

Cb 134.50  
 G 133.83  
 135.50  
 Cb 134.74  
 G 134.07  
 0+00

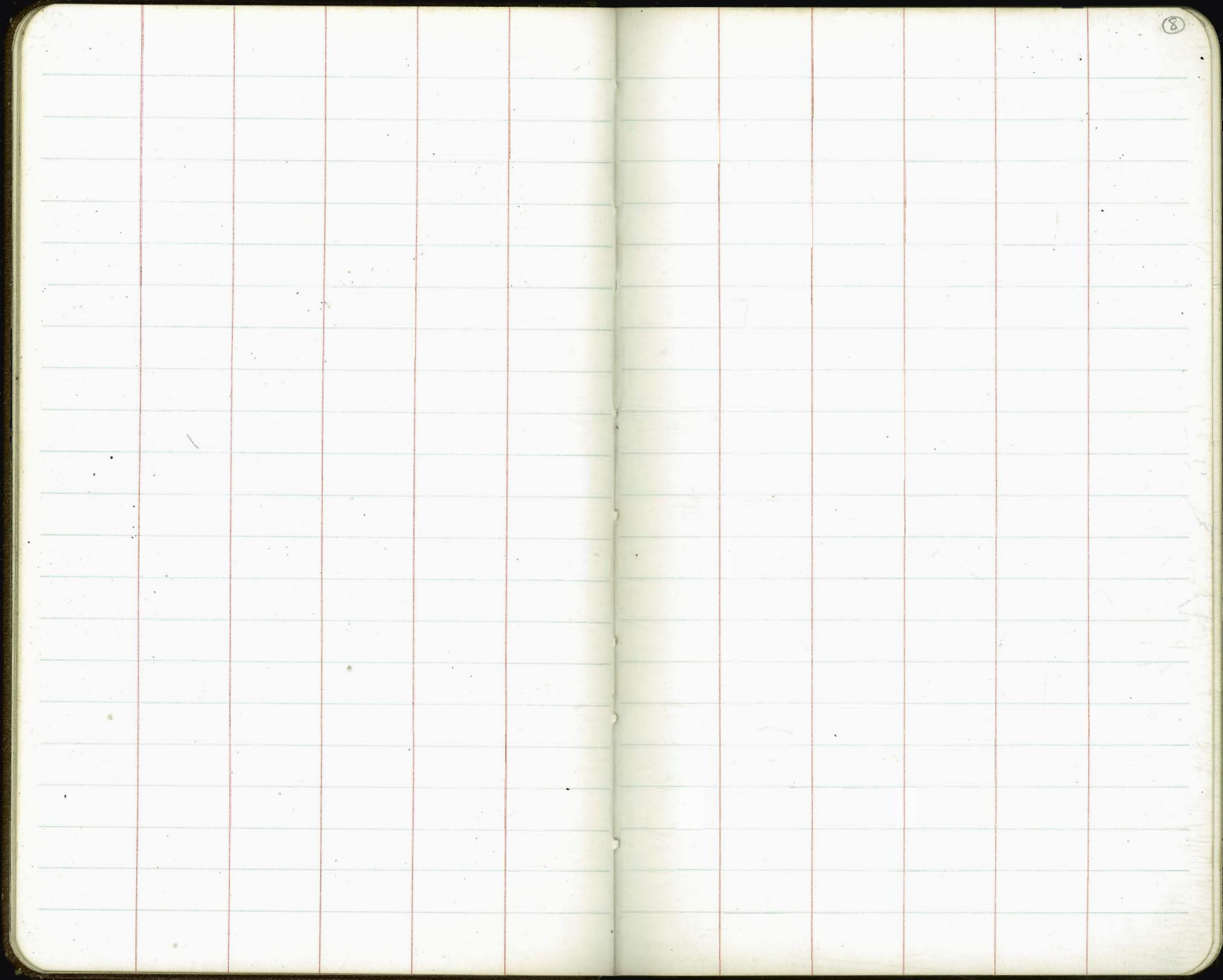


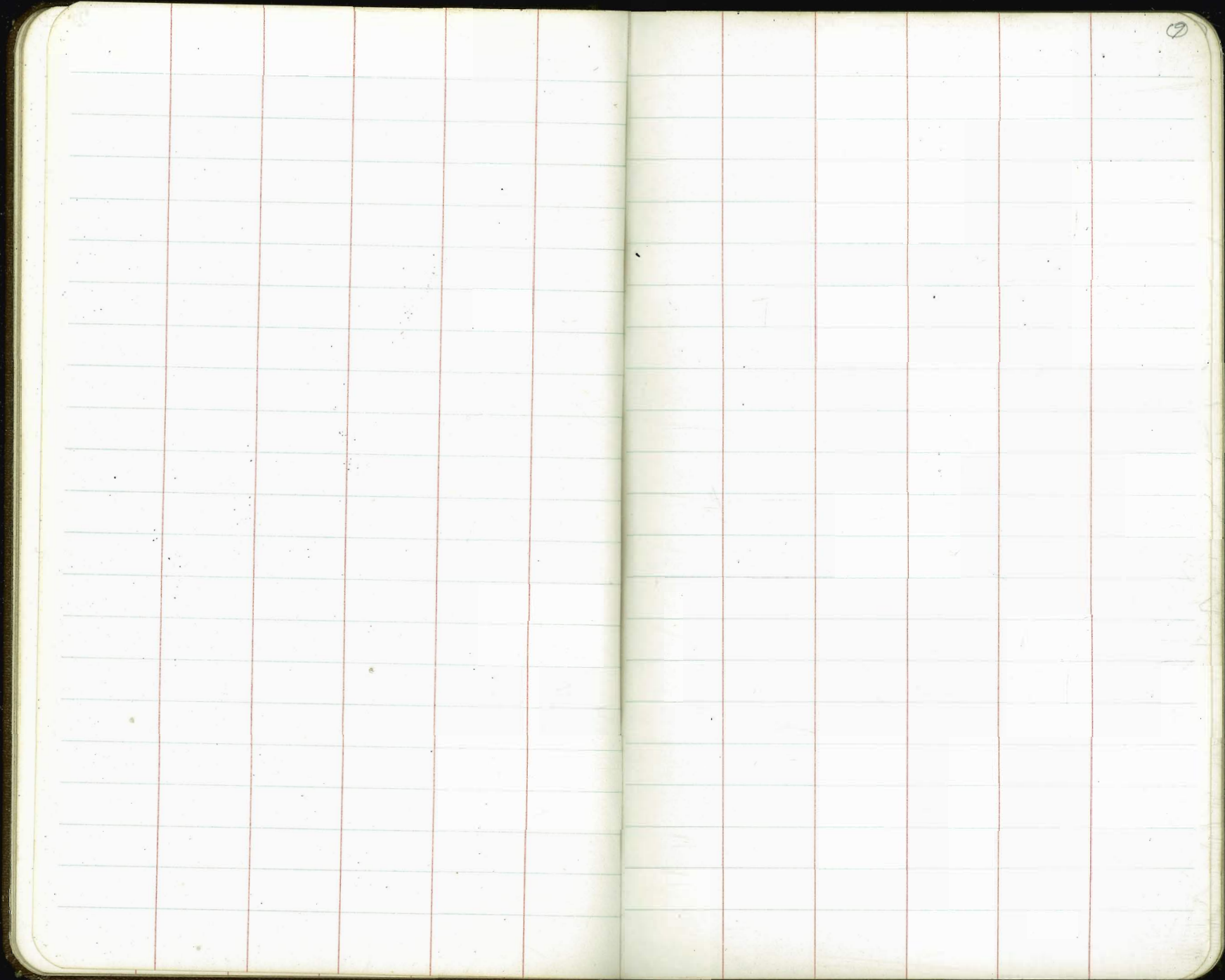
6





7





9

State Water Line Extensions  
to Prop. Lines  
Clove St. Carleton to Fenelon

INDEXED  
W.K.  
SEP 1 1949

0170 W. line Clove 5.04 153.40 148.65 C4.7

0125 Ex Cross Clove & Dickens 148.10

0100 E line Clove 7.37 151.07 145.60 C5.5

T.P.

8.31 158.44

0195 W. line Clove 9.02 142.93 135.70 C7.2

14.08

0100 Ex Cross Clove & Emerson 137.96 134.38 C3.5

TP 12.47 151.94 3.32 139.47

0145 Ex. T. Clove & Fenelon 6.42 136.37 131.80 C. 4.6

0100 No. line Fenelon 7.70 135.09 130.10 C. 4.0

B17 10.05 142.79 132.74

NEBP Fenelon & Clove

2-10-49 Re Stake Cb. on Shadowlawn  
Hendricks Original P. 70 613238  
Bramby  
Greer  
Rorer

INDEXED  
W.K.  
SEP 1 1949

B17			1.83	59.73	59.72
TP	8.98	61.56	1.41	52.58	
2+81.58			10.83	43.16	56.07
2+73.54			8.75	45.24	56.62
TP	3.53	53.99	9.69	50.46	
3+55.54			7.57	52.58	57.80
3+37.54			0.26	59.89	58.63
3+29.67					58.85
B17	0.43	60.15			59.72

Starting B.17

F12.91

F11.38

F9.22

C1.26

10' L&T Evergreen & Shadowlawn

2-16-49	State Sewer at Nobash & Middle Aves & Aiky Block 19					
Hendricks	City Hts					
Bramby	Reference FB 1793 P. 32					
Greer	(Dwg. 7391-L)					
Rorer						
W.O. 80117			3.38	283.35	(283.32)	
CC B. 17			12.22	288.95	278.56	
3158.42 DE	INDEXED					
	W.K.					
	SEP 1 1949					
3133.42			2.41	284.32	274.81	
3108.42 B.K.			7.88	276.85	271.06	
T.P.	12.17	286.73.	1.18	274.56		
2188.42			0.80	274.94	265.26	
2168.42			8.30	267.44	259.46	
T.P.	12.81	275.74	0.38	262.93		
2148.42 B.K.			2.94	260.37	253.66	
2125.92			8.07	255.24	249.73	
2103.42			11.30	252.01	245.79	
T.P.	12.15	263.31	0.22	251.16		
1180.92			1.93	249.45	241.85	
1158.42 B.K.			5.81	245.57	237.91	
1133.42			11.17	240.21	234.02	
T.P.	12.22	251.38	0.73	239.16		
1108.42 Forward Line			2.77	237.12	230.13	
1108.42 Back Line			3.58	236.32	230.13	
0181.31			5.43	234.46	229.73	
0154.21			8.40	231.49	229.32	
0127.10			7.16	232.73	228.91	
0100 Ex M.H.			11.93	227.96	227.97	
			4.92	234.97	228.50	
B. 17	4.78	259.89		235.11		

on Club 3140 FB 1793 P-33

10.37 4' RI.

9.51 " "

7.79 " "

9.68 " "

7.98 " "

6.71 " "

5.51 " "

6.22 " "

7.60 " "

7.66 " "

6.19 " "

6.99 " "

6.19 " "

4.73 " "

2.17 " "

3.82 " "

CC Ex. FL

6.47 " "

Rim Ex M.H. 0100 FB 1793 P. 32

2-16-49  
Hendricks  
Bramby  
Greer  
Rorer

State Sewer at Nabash &  
Myrtle Aves & Aiky Block 19  
City H<sup>+</sup>

Reference FB 1793 P.32  
(Dwg. 7391-L.)

W.O. 80117  
CE B17  
3458.42 DE

INDEXED  
W.K.  
SEP 1 1949

3.38 283.35 (283.32)  
12.22 288.95 278.56

3433.42

2.41 284.32 274.81

3408.42 B.K.  
T.P.

12.17 286.73

7.88 278.85 271.06  
1.18 274.56

2488.42

0.80 274.94 265.26

2468.42

8.30 267.44 259.46

T.P. 12.81 275.74

0.38 262.93

2448.42 B.K.

2.94 260.37 253.66

2425.92

8.07 255.24 249.73

2403.42

11.30 252.01 245.79

T.P. 12.15 263.31

0.22 251.16

1480.92

1.93 249.45 241.85

1458.42 B.K.

5.81 245.57 237.91

1433.42

11.17 240.21 234.02

T.P. 12.22 251.38

0.73 239.16

1408.42 Forward line

2.77 237.12 230.13

Back line

3.57

1408.42 M.H. #1 @ 53° 48' 30" H

236.32 230.13

0481.31

5.43 234.46 229.73

0454.21

8.40 231.49 229.32

0427.10

7.16 232.73 228.91

0400

16.93 227.96 227.97

61 M.H.

4.22 234.97 228.55

B.17

4.78 239.89

235-

on Club 3140 FB1793 P-33  
10.37 4.81

9.51 "

7.79 "

9.68 "

6

6

22-4  
9-8

9-245-12

7391-L  
9064-L

25
32
<hr/>
200
25
<hr/>
250



2-17-49  
 Hendricks  
 Bramby  
 Greer  
 Eover  
 WOH 31084

State Cb Ret. Plum & Fenelon

Dwg # 6855 L & 6856 L

INDEXED

SEP 1 1949

M.K.

			Elev	Elev	
			stace	Gr.	
#3 Int Pl	5.36	97.82	99.15	F1.33	
#2 SE Cb Ret	5.37	97.81	97.60	CO.21	
#1 Plum & Fenelon	7.21	95.97	95.90	CO.07	
BC on Fenelon	9.09	94.09	94.08	Ex. Cb.	
#3 Int Pl. Plum	6.52	96.66	97.00	F 0.34	
#2 NE Cb Ret	6.66	96.52	96.15	CO.37	
#1 Plum & Fenelon	8.18	95.00	94.75	CO.25	
BC on Fenelon	10.27	92.91	93.08	Ex. Cb.	
#3 Int Pl. Plum	2.75	100.43	101.25	F 0.82	
#2 SW Cb Ret	3.41	99.77	101.20	F 1.43	
#1 Plum & Fenelon	1.76	101.42	101.40	CO.02	
BC on Fenelon	0.90	102.28	102.17	Ex. Cb.	
#3 Int Pl. Plum	2.08	101.10	98.80	C 2.30	
#2 NW Cb Ret	3.57	99.61	99.32	CO.29	
#1 Fenelon & Plum	2.82	100.36	100.10	CO.26	
BC on Fenelon	1.86	101.32	101.17	Ex. Cb.	
T.P.	3.85	103.18	8.77	99.33	
T.P.	0.14	108.10	12.91	107.96	
T.P.	0.23	120.87	12.80	120.64	
B-17	0.70	133.44		132.74	

BPNE Cor. Clove & Fenelon

2-18-49

Staked Gutters Clove St.  
Fenelon to Corleton

(14)

Sta	L	H <sub>2</sub>	Grade Pd. Lt	Elev. Gut Lt	Grade Pd. Rt	Elev Gut Rt
2+70	BC. Cb. Rd. Rt.		3.59	137.33	3.09	137.83
2+40			3.89	137.03	3.39	137.53
2+10			4.19	136.73	3.69	137.23
1+80			4.49	136.43	3.99	136.93
1+50			4.79	136.13	4.29	136.63
EC =	1+20 on Clove		5.09	135.83		
# 4			5.24	135.68		
# 3	S.E. Cb Rd.		5.49	135.43		
# 2	Clove & Fenelon		5.96	134.96		
# 1			6.69	134.23		
BC	on Fenelon		7.76	133.16		
1+20					4.59	136.33
1+07.50					4.72	136.20
0+95					4.84	136.08
0+77					5.02	135.90
0+60					5.17	135.75
0+43					5.32	135.60
0+25	Rt. No. Line Fenelon				5.62	135.30
B.M.	8.18	<u>140.92</u>		132.74		B.P. N.E. Cor. Fenelon & Clove
		<u>2</u>				

INDEXED

W.K.  
SEP 1 1949

#				Lt.	Rt.
	P.ckans & clove				
	NE & N.W. Ret.				
T.P.	7.73	157.72	1.19	9.19 149.53	7.64 150.08
5+40	B.C. cb Ret. Ret.			149.99	157.72
				2.35 148.83	1.85 149.33
5+10				4.25 146.93	3.75 147.43
4+80				6.15 145.03	5.65 145.53
4+50				8.05 143.13	7.55 143.63
4+20				9.95 141.23	9.45 141.73
T.P.	11.70	151.18	1.44	139.48	151.18
#3	Dpt. w. line clove				1.39 139.53
#2	S.W. cb Ret. Clove				1.79 139.13
#1	& Emerson				1.59 139.33
3+90	E.C. cb Ret. Rt.			1.59 139.33	1.09 139.83
3+77.5	Lt.			2.16 138.76	
3+65	S. Line Emerson Lt.			2.54 138.38	
3+30	& Emerson			2.94 137.98	
2+95	Lt. No. line Emerson Lt.			3.34 137.58	
2+82.5	Lt.			3.47 137.45	
#3	Lat. w. line clove				2.09 138.83
#2	N.W. cb Ret. Clove				2.59 138.33
#1	& Emerson				2.91 138.01
B.C. = 2+76					
		140.92			140.92

Cont'd from P. 15

(16)

		Exist. Gut	Gut. Grade Lt	Grade Rod	Gut. Grade Rt.
		6.11	151.61		
E.C. on Carleton Ex. Cb.			9.72 148.00	6.14	151.58
# 1	Carleton & Clare		9.06 148.66	6.49	151.23
# 3			8.44 149.28	6.73	150.99
# 2			7.93 149.79	6.92	150.80
# 1			7.59 150.13	6.99	150.73
8+10 Bl. Cb. Ret.			7.39 150.33	6.99	150.83
7+80		7.19 150.53	6.69	151.03	
7+50		6.99 150.73	6.49	151.23	
7+20		6.79 150.93	6.29	151.43	
6+90		6.59 151.13	6.09	151.63	
6+60	BE on Clare	6.39 151.33	5.89	151.83	
# 1	S.E. & S.W. Cb. Ret. Clare & Dickens		6.41 151.31	5.84	151.88
# 2			6.69 151.03	5.69	152.03
# 3			7.14 150.58	5.39	152.33
# 3	int. Prop. Line. Clare		7.69 150.03	6.04	151.68
# 2			7.79 149.93	6.94	150.88
			<u>157.72</u>		<u>157.72</u>
			3		3

2-23-49  
Hendricks  
Bramby  
Greer  
Korer  
No # 31373

State Alley Block 35  
Park Villas

INDEXED  
W.K.  
SEP 1 1949

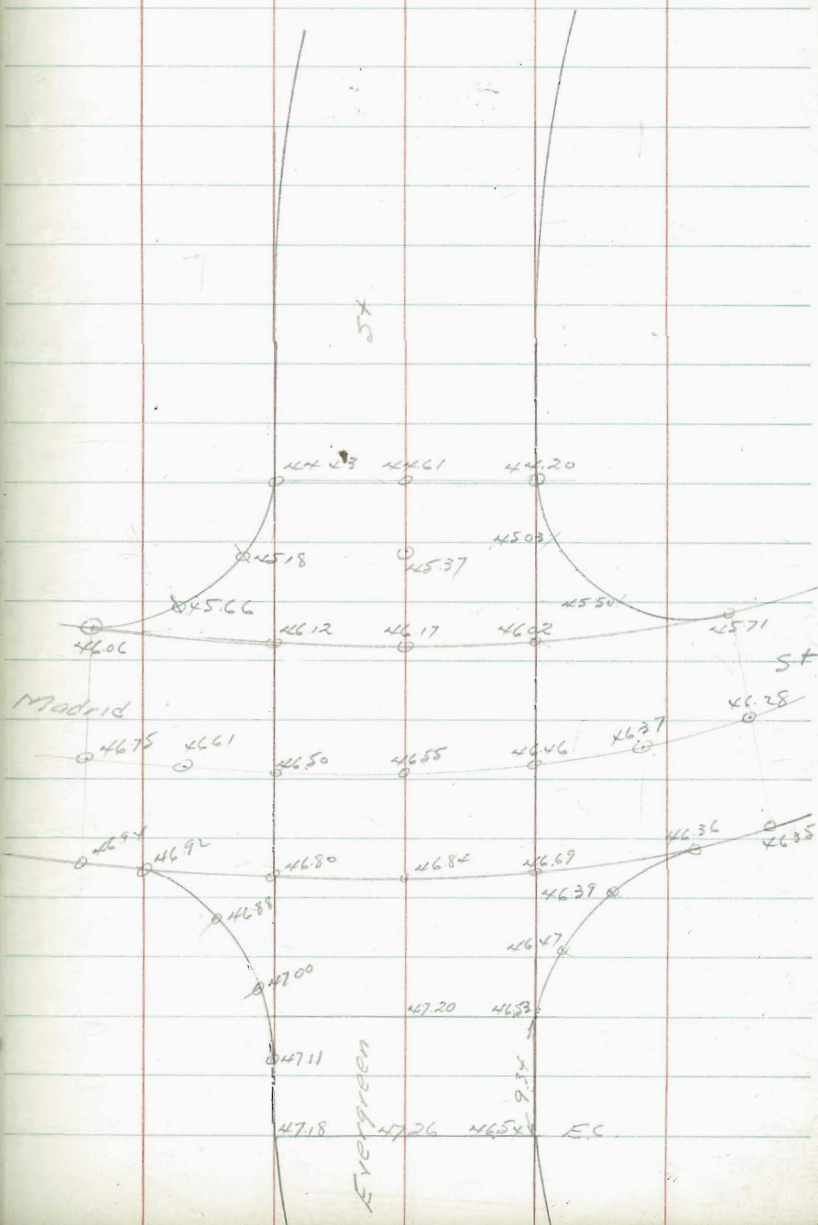
Sta		H.I.	- Lt.	Elev. Stake Lt	Elev. Gr Lt	Cut or Fill Lt	offset	- Rt	Elev. Stake Rt	Elev. Gr Rt	Cut or off. Fill Rt	off. set
			1.46	328.99	328.99	NWBSP	31st &	Lipas				
3400	No. line	Lipas	6.00	324.45	324.48			5.47	324.98	324.97		
2480			5.16	325.29	324.95	C 0 <sup>34</sup> /	0 <sup>20</sup>	2.81	327.64	325.15	C 24 <sup>9</sup> /	1 <sup>0</sup>
2454			5.57	324.88	325.03	F 0 <sup>15</sup> /	2'	4.77	325.68	325.23	C 0 <sup>45</sup> /	2'
2438			5.81	324.64	325.12	F 0 <sup>48</sup> /	2'	4.91	325.54	325.32	C 0 <sup>22</sup> /	2'
T.P.	<u>4.86</u>	<u>330.45</u>	5.91	325.59								
2402			6.59	324.91	325.20	F 0 <sup>29</sup> /	1 <sup>0</sup>	6.35	325.15	325.40	F 0 <sup>25</sup> /	0 <sup>50</sup>
1476			6.48	325.02	325.29	F 0 <sup>27</sup> /	2'	5.70	325.80	325.49	C 0 <sup>21</sup> /	0 <sup>05</sup>
1450			6.21	325.29	325.37	F 0 <sup>08</sup> /	0 <sup>50</sup>	5.88	325.62	325.57	C 0 <sup>05</sup> /	2'
1424			6.07	325.43	325.45	F 0 <sup>02</sup> /	2'	5.34	326.16	325.65	C 0 <sup>51</sup> /	2'
0498			5.54	325.96	325.54	C 0 <sup>42</sup> /	0 <sup>50</sup>	6.15	325.35	325.74	F 0 <sup>39</sup> /	2'
0472			5.51	325.99	325.62	C 0 <sup>37</sup> /	1'	5.69	325.81	325.82	F 0 <sup>01</sup> /	2'
0446			5.11	326.39	325.71	C 0 <sup>68</sup> /	1 <sup>0</sup>	4.75	326.75	325.91	C 0 <sup>84</sup> /	2'
0420			4.97	326.53	325.79	C 0 <sup>74</sup> /	1 <sup>0</sup>	4.82	326.68	325.99	C 0 <sup>69</sup> /	2'
0400	So. line	Myrtle	5.56	325.94	325.95			5.43	326.07	326.07		
B.M	5.95	<u>331.50</u>			325.55				on 3pc & Alley	34 07.10	(FB 1866 P. 4)	

2-18-49  
Hendricks  
Bramley  
Greer  
Korer

State Intersection  
Evergreen & Madrid

INDEXED  
M.K.  
SEP 1 1949

18



2-28-49  
 Hendricks  
 Bramby  
 Greer  
 Corer  
 W.O.#31533

State 6" Water Main  
 Opel St. Cass to Everts  
 (Dwg No. )

(19)

Everts 10180

54

Sta	+ H.I.	-	Elev Stakes	Elev Gr	Cuts
5+00	W. Line Dawes	7.4	113.3	108.34	5.0
4+60		8.8	111.9	107.11	4.8
4+20		9.8	110.9	105.87	5.0
3+80		10.7	110.0	104.63	5.4
TP	12.24	120.74	1.53	108.50	
3+40		1.5	108.5	103.39	5.1
3+00		2.8	107.2	102.15	5.0
2+60	Exc.	4.7	105.3	100.91	4.4
2+40		5.5	104.5	100.31	4.2
2+20		5.6	104.4	99.79	4.6
2+00		6.1	103.9	99.34	4.6
1+80		6.3	103.7	98.96	4.7
1+60		6.6	103.4	98.67	4.7
1+40	Exc.	7.3	102.7	98.45	4.2
0+90		8.4	101.6	97.99	3.6
Opel St. Ave		8.9	101.1	97.54	3.6
0+00	East Line Cass			97.18	
B.M.	9.11	110.03		100.92	

INDEXED  
 W.K.  
 SEP 7 1949

Dawes 80

← 35' → ← 35' →

54  
 Water  
 5180  
 5100  
 10'  
 Opel  
 6"  
 0+00  
 Ex Gate

SE 7' x 8' T  
 Cass & Opel

Cass

0+00 Ex Gate

54

			8.00	112.92		
B+7			7.94	112.98	(112.94)	
T.P.	0.05	120.92	12.71	120.87		
			0.65	132.93		
10+80	W. Line Everts		0.5	133.1	129.25	3.8
10+40			1.4	132.2	128.00	4.2
10+00			2.6	131.0	126.75	4.2
9+60			3.3	130.3	125.50	4.8
9+20			5.0	128.6	124.19	4.4
8+80			6.3	127.3	122.75	4.5
8+40			7.5	126.1	121.20	4.9
8+00			9.3	124.3	119.52	4.8
7+56			11.1	122.5	117.61	4.9
IP	12.87	133.58	0.03	120.71		
7+12			0.0	120.7	115.70	5.0
6+68			1.5	119.2	113.80	5.4
6+24			3.3	117.4	111.90	5.5
5+80	East Line Daves	4.8	115.9	110.00		5.9
5+40	& Daves	6.5	114.2	109.17		5.0

120.74

SW 7' Conc 1701 Daves & Opal  
 1701 PIPE SW Cor Daves & Opal  
 FB1701 P. 72

SW 7' 1701 Opal & Everts



State Water Services  
Opal St. Cass to Dawes

INDEXED  
SEP 7 1949

4179 Ex W Lt	7.88	112.85	112.85	CO <sup>34</sup>
4173 Ex W Rt	8.44	112.30	111.66	CO <sup>64</sup>
4109 Ex W Lt	9.83	110.91	110.20	CO <sup>21</sup>
4123 Ex W Rt	9.84	110.90	110.08	CO <sup>82</sup>
3189 Ex W Lt	10.20	110.54	109.88	CO <sup>66</sup>
3184 New W Lt	10.93	109.81	108.83	CO <sup>98</sup>
T.P. 12.34	120.74	1.53	108.50	
3135 New W Lt	1.13	108.90	108.09	CO <sup>81</sup>
3125 Ex W Rt	1.68	108.35	106.97	CI <sup>38</sup>
2185 New W Lt	2.94	107.09	106.43	CO <sup>66</sup>
2180 Ex W Rt	3.57	106.46	105.54	CO <sup>92</sup>
2135 New W Lt	4.12	105.91	104.89	CI <sup>02</sup>
2114 Ex W Rt	6.13	103.90	103.64	CO <sup>26</sup>
1190 Ex W Rt	6.89	103.14	103.15	FO <sup>01</sup>
1180 Ex W Lt	5.43	104.60	103.74	CO <sup>86</sup>
1157 Ex W Rt	7.06	102.97	102.62	CO <sup>35</sup>
1117 Ex W Lt	6.84	103.19	103.16	CO <sup>03</sup>
1110 Ex W Rt	7.87	102.16	102.18	FO <sup>02</sup>
0185 New W Lt	7.18	102.85	102.96	FO <sup>11</sup>
0135 New W Lt	7.17	102.86	102.66	CO <sup>20</sup>
0100 (East line Cass)	SEE PAGE 51			
1317 9.11	110.03		100.92	SEE L&T Cass & Opal

3-4-49 Stake sewer across  
 Hendricks Pacific Hwy. 170 of Bunker Hills  
 Bramby  
 Greer (Dwg # 3680 B)  
 Rorer  
 HO# 80146

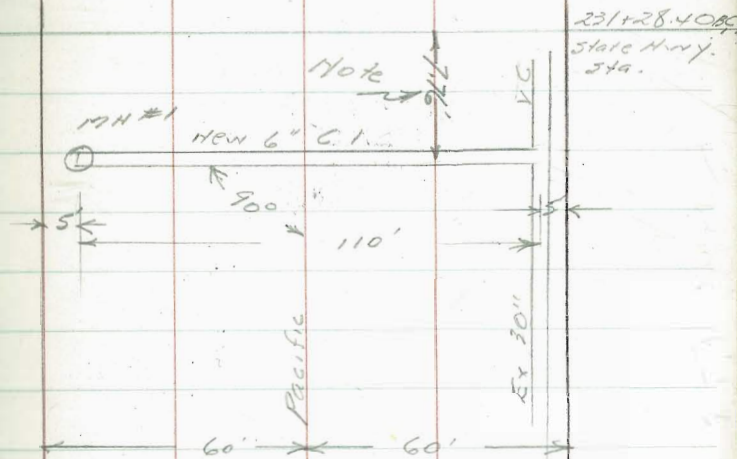
INDEXED

W. K.  
 SEP 1 1949

CK EL 4" CI	8.06	8.05	8.06
1+10 RMH #1	6.14	9.97	7.43
0+00* Conn to Ex 30" VC 449	11.62	6.66	
B17	8.17	16.11	7.94

FLA" CI	FB 1690	P 70
C254		
C496		

TOP of Ex 30" VC Pipe FB 1690



Note: New 6" C.I. Moved  
 3' South of Proposed Line  
 per Dwg 3680-B

3-16-49  
Hendricks  
Bramby  
Greer  
Kover  
WO #21018

State Gbs Crosby  
Cotton to Railroad Ave  
Permit # 3977

(23)

INDEXED  
W.K.  
SEP 1 1949

1154.74 End	7.82	6.41	6.55	F0.14
1132.74	8.02	6.21	6.83	F0.62
1110.74	7.97	6.26	7.11	F0.85
0188.74	7.32	6.91	7.39	F0.48
0166.74 End Dr	7.21	7.02	7.67	F0.65
0121.74 Beg Dr	6.42	7.81	8.11	F0.30
0100	5.72	8.51	8.51	
B17 5.72 14.23			8.51	Top W. Ch. 3100.10 F.B. 1574 P. 67

3-23-49  
 Hendrick  
 Bramley  
 Greer  
 Rorer  
 WO # 31255

Stake Cross Feet

Dwight Ave Cherokee to 3716

		-L-	Gutter Elev. Lt	Cut or Fill
3+00	W Line 3716 St.	10.15	319.47	319.40
2+80	Brc	9.63	319.92	
2+56.4		8.92	320.63	
2+32.8		8.22	321.33	
2+09.02		7.52	322.03	
1+85.6		6.82	322.73	
1+62		6.12	323.43	
1+60	E Line Alley	4.24	324.60	CB 325.31 CO <sup>2</sup>
1+40	W Line Alley	4.45	325.10	CB
1+380		5.41	324.14	
1+14.4		4.71	324.84	
0+90.8		4.01	325.54	
0+67.2		3.31	326.24	
0+43.6		2.61	326.94	
0+20	Brc	1.91	327.64	
0+00	East Line Cherokee	1.24	328.33	CF E. G
1317	956	329.55		319.99

INDEXED  
 W.K.  
 SEP 1 1949

(24)

		-Rt-	Gutter Elev. Rt	Cut or Fill	Elev. Stake
10.50		319.07	319.05		
10.13		319.42			
9.42		320.13			
8.72		320.83			
8.02		321.53			
7.32		322.23			
6.62		322.93			
5.35		324.10	CB CO <sup>2</sup>	324.20	
4.03		324.75	CB CO <sup>37</sup>	325.12	
5.91		323.64			
5.21		324.34			
4.51		325.04			
3.81		325.74			
3.11		326.44			
2.41		327.14			
1.80		327.71	327.75	CF E. G	
	NW 1/4P Dwight & 3716				

3-31-49 Crows Feet Fenelon St  
Hendricks  
Branch  
Greer  
Rear  
W031089  
Dwg 6856 L

INDEXED

SEP 11 1949  
N.Y.K.

			- Lt	Elev Gut Lt		- Rt	Elev Gut Rt
5+82.50			1.57	63.04		0.57	64.04
T.P.	0.26	64.61	12.66	64.35			
5+51.25			9.08	67.93		8.08	68.93
5+20.			4.18	72.83		3.18	73.83
T.P.	0.67	77.01	12.67	76.34			
4+88.75			11.29	77.72		10.29	78.72
4+57.50			6.39	82.62		5.39	83.62
4+26.25			1.50	87.51		0.50	88.51
T.P.	0.27	89.01	12.54	88.74			
3+95	EC Cb Ret E Side	Plum 8.87	72.41	72.41		7.87	93.41
T.P.	2.14	101.28	10.33	99.14	99.14		
2+75.00	EC Cb Ret W Side	Plum 8.97	100.50	100.50	NE 7' MON Ret Len & Pl. on Plum	7.97	101.50
2+43.75			5.01	104.46		4.01	105.46
T.P.	0.04	109.47	12.47	109.43			
2+12.50			13.48	108.42		12.48	109.42
1+81.25			9.52	112.38		8.52	113.38
1+50.00			5.86	116.34		4.56	117.34
1+18.75			1.60	120.30		0.60	121.30
T.P.	0.61	121.90	12.54	121.29			
0+87.50			9.57	124.26		8.57	125.26
0+56.25			5.55	128.28		4.55	129.28
0+25	EC Cb Ret		1.67	132.16		2.67	133.16
0+00	East Line Clove						
B.M.	1.09	133.83		132.74	NEBP Fenelon & Clove		

Fenelon St Cont'd

3		280	98.48
2	SECB Ret Fenelon & Plum	4.35	96.93
1		6.05	95.23
BC		7.87	93.41
		<del>101.28</del>	
3		4.95	96.33
2	HECB Ret Fenelon & Plum	5.80	95.48
1		7.20	94.08
BC		8.87	92.41
		<del>101.28</del>	From p. 25
3		8.89	100.58
2	SWCB Ret Fenelon & Plum	8.94	100.53
1		8.74	100.73
BC		7.97	101.50
		<del>109.47</del>	
3		11.34	98.13
2	HWCB Ret Fenelon & Plum	10.82	98.65
1		10.04	99.43
BC		8.97	100.50

~~109.47~~ from p. 25

6+45 BC CB Ret. w. line Villain 11.36 53.25 10.36 54.25

6+13.75 6.47 58.14 5.47 59.14

6+61

## Fenelon St Contd.

(27)

		5.15	51.52	51.57	2EBP Fenelon & Willow
2	} SW Ck. Ret Fenelon & Willow	5.90	51.09	50.77	
1		4.29	52.38		
BC			56.25		
2	} HW Ck Ret Fenelon & Willow	6.97	50.00	49.70	
1		5.33	51.34		
BC			53.25		
TP	2.36	56.67	<u>10.30</u>	<u>54.31</u>	
		<u>64.61</u>			

4-13-49 State Water Main Polk St  
 Hendricks Winona to Alley West  
 Greer  
 Rover  
 NO#

4916

St.

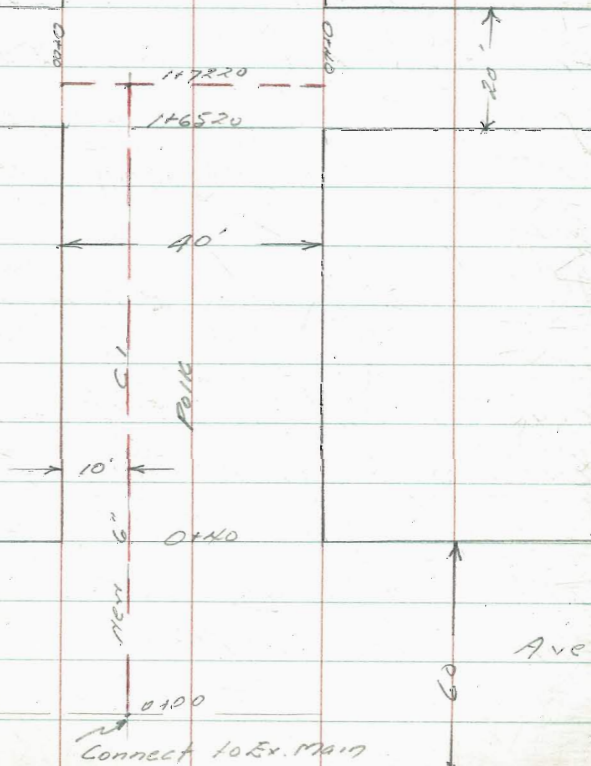
28

Elev. Elev.  
 stage Grade

INDEXED  
 W.K.  
 SEP 1 1949

0+40	No line Polk	29	344.3	338.40	C5?
0+20	R Polk	35	343.7	338.50	C5?
0+00	Sol line Polk	41	343.1	337.90	C5? Alley
1172.20	T2C	41	343.1	337.98	C5?
1460.20		38	343.4	338.40	C5?
1440.20		35	343.7	337.00	C4?
1400.20		27	344.5	340.00	C4?
0+60.20	R.R.K	17	345.5	341.00	C4?
0+40	W. Line Winona	15	345.7	341.68	C4?
0+00	Connect to Ex. Main				
B57	1.70	347.20			

345.50  
 Top Ch  
 SW Cor  
 Winona &  
 Polk



Winona

Ave



423.49 Stake Crossover Water Mains  
 Hendrick In Alley Across Pole (between  
 Greer 48th & Estrella & Between  
 Rorer Estrella & 49th)

Dwg 71824

**INDEXED**

W.K.  
 SEP 7 1920

Between Estrella & 49th

0140	No line Pole	4.4	3200	324.70	C5 <sup>3</sup>	4' RT
0100	50 line Pole	6.0	3284	324.15	C4 <sup>2</sup>	"

Between 48th & Estrella

0+40	No line Pole	3.1	3213	330.66	C0 <sup>6</sup>	4' RT
0100	50 line Pole	0.9	3335	330.50	C3 <sup>0</sup>	"

TP 1.70 334.42 12.28 332.72

B.M 1.73 345.00 343.27 NEAR 48th & Pole

4-21-49 Restate Sewer Laterals  
 Hendricks Sterne St. Willow to Plum,  
 Greer  
 Rover  
 WO# 31413  
 Dwg # 7232k

Sta		H.I.	Elev Stake	Elev Fl. at Prop.	Cuts	Offsets
-----	--	------	------------	-------------------	------	---------

INDEXED  
 W.K.  
 SEP 1 1949

(CK BM)		9.78	164.94	164.94		(on stake Rt 2199.93 FB 1830 P 78)
---------	--	------	--------	--------	--	------------------------------------

2190 (1)		9.04	165.68	158.20	7.48	5' Back
----------	--	------	--------	--------	------	---------

2140 (2)		8.45	166.27	159.69	6.58	" "
----------	--	------	--------	--------	------	-----

1190 (3)		6.79	167.93	161.39	6.54	" "
----------	--	------	--------	--------	------	-----

1440 (4)		5.20	169.52	163.09	6.43	" "
----------	--	------	--------	--------	------	-----

0192 (5)		4.57	170.15	164.79	5.36	" "
----------	--	------	--------	--------	------	-----

0100 W Line Willow

BM	3.10	174.72		171.62		SW 15' L&T Willow & Sterne St
----	------	--------	--	--------	--	-------------------------------

SEE PAGE 35

4-21-49

Hendricks

Greer

Korer

WO# 31413

Restake Sewer Laterals

Russell St Plum to E Line

Point Loma Hk) DWG 72326

(31)

Sta		H.I		Elev. Stake	Elev. Senc	Stub PL	Cuts	offset
519	+	H.I	-					

INDEXED

W.K.  
SEP 1 1949

CE		5.45	168.61	168.62				
								on stub 51299 (FB 1830 P75)

1+86.54	(7)	14.86	159.20	155.58	3.62		5' Ball	
---------	-----	-------	--------	--------	------	--	---------	--

1+40	(8)	9.72	164.34	160.51	3.83		"	
------	-----	------	--------	--------	------	--	---	--

0+90	(9)	5.36	168.70	164.25	4.45		"	
------	-----	------	--------	--------	------	--	---	--

0+45	(10)	3.63	170.43	166.06	4.37		"	
------	------	------	--------	--------	------	--	---	--

0+00 W Line Plum

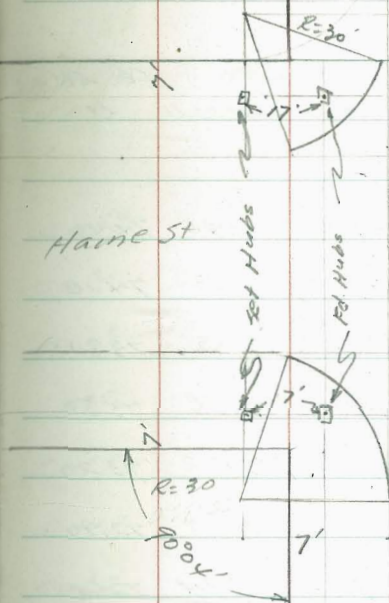
BM	0.64	174.06		173.42				on stub Pt 3+69.90 FB 1830 P75
----	------	--------	--	--------	--	--	--	--------------------------------

State Obs. Diamond St.  
Gresham to Haines & Tie outs

of North 7' Hubs (Haines & Diamond)

32

INDEXED  
W.K.  
SEP 1 1949



Diamond

4-25-49 Stake Cbs. Diamond St.  
 Hendricks  
 Greer  
 Rorer  
 W0431021

Gresham to Haines

DWG. 7373-L

Sta		H.I.	- Lt.	Elev	Cb Elev	C or F.		Elev	Cb Elev	C. or F.	
				Stakes Lt	Lt	Lt		Stakes Rt	Rt.	Rt.	
3+25				4.80	74.90	74.40	CO <sup>50</sup>	4.78	74.92	73.90	CI <sup>02</sup>
3+00				5.30	74.40	74.10	CO <sup>30</sup>	5.30	74.40	73.60	CO <sup>80</sup>
2+75				5.82	73.88	73.80	CO <sup>08</sup>	5.39	74.31	73.30	CI <sup>01</sup>
2+50				6.14	73.56	73.50	CO <sup>06</sup>	5.90	73.80	73.00	CO <sup>80</sup>
2+25				6.38	73.32	73.20	CO <sup>12</sup>	5.87	73.83	72.70	CI <sup>13</sup>
2+00				6.63	73.07	72.90	CO <sup>17</sup>	7.00	72.70	72.40	CO <sup>30</sup>
1+75				6.76	72.94	72.60	CO <sup>34</sup>	7.34	72.36	72.10	CO <sup>26</sup>
1+50				7.10	72.60	72.30	CO <sup>39</sup>	7.83	71.97	71.80	Ex. Cb
1+25				7.50	72.20	72.00	CO <sup>20</sup>			71.50	
1+00				7.93	71.77	71.70	CO <sup>07</sup>			71.20	
0+75				8.25	71.45	71.40	CO <sup>05</sup>			70.90	
0+50				8.32	71.38	71.10	CO <sup>28</sup>			70.60	
0+25				8.85	70.85	70.86	FO <sup>01</sup>			70.30	
0+10 EC.				8.94	70.76	70.62	CO <sup>14</sup>			70.12	
0+00						70.50				70.00	
B.M.		7.40	79.70			70.30	NWBP			Gresham & Diamond	

SEE PAGE 19

Diamond St. Cont'd.

#1	Int. East Line Haines	NE Ret Haines & Diamond				2.10	77.60	77.05	CO <sup>55</sup>	
#2						1.96	77.74	77.10	CO <sup>64</sup> ✓	
#3	Int. No Line Diamond					1.71	77.99	77.26	CO <sup>73</sup>	
#3	Int. No Line Diamond		1.91	77.79	77.20				CO <sup>59</sup>	
#2	NW Ret. Diamond & Haines		2.04	77.66	76.90				CO <sup>76</sup>	
#1			2.42	77.28	76.58				CO <sup>70</sup>	
5180	E Line Haines					3.29	76.41	76.37	EX CB	
515333						3.40	76.30	76.23	CO <sup>07</sup>	
51267						2.87	76.83	76.08	CO <sup>75</sup>	
5100						2.70	77.00	75.93	CI <sup>07</sup>	
4190	BC onll		2.50	77.20	76.38				CO <sup>82</sup>	
4180						2.91	76.79	75.72	CI <sup>97</sup> ✓	
4160			2.91	76.79	76.02		2.98	76.72	75.52	CI <sup>20</sup>
4130			3.18	76.52	75.66		2.97	76.73	75.16	CI <sup>57</sup>
4100			3.43	76.27	75.30		3.55	76.15	74.80	CI <sup>35</sup>
3775			3.70	76.00	75.00		4.00	75.70	74.50	CI <sup>20</sup>
3750			4.36	75.34	74.70		4.46	75.24	74.20	CI <sup>04</sup>

7770  
71

5-3-49 State Cbs. Sterne St  
Hendricks Willow to Plum  
Greer  
Korer  
VVO 31013 + H.1 - Lt Lt  
Dwg. 7232-2

		H.1	- Lt	Lt	Corr F		Elev.	Elev. Gr.	Cor F
			Elev. Stake	Elev. Gr.	Lt	- Lt	Stake Lt	Lt	Lt
3+70	Int Hly line Plum	12.69	163.39	162.70	C0.69	13.31	162.77	162.67	C0.10
#3	Int Hly line Plum	10.45	165.63	163.55	C2.08	11.40	164.68	163.40	C1.28
#2		10.83	165.25	163.48	C1.77	11.21	164.87	163.39	C1.48
#1		11.31	164.77	163.58	C1.19	11.96	164.12	163.53	C0.59
2+75	BC	11.50	164.58	163.80	C0.78	12.13	163.95	163.80	C0.15
2+50	BC	11.43	164.65	164.30	C0.35	11.63	164.45	164.35	C0.10
2+25		11.34	164.74	165.10	F0.36	10.89	165.19	165.20	F0.01
2+00		10.21	165.87	165.90	F0.03	10.11	165.97	166.05	F0.08
1+75		8.99	167.09	166.70	C0.39	9.22	166.86	166.90	F0.04
1+50		8.60	167.48	167.50	Ex. Cb.	7.78	168.30	167.75	C0.55
1+25				168.30		7.91	168.17	168.60	F0.43
1+00				169.10		6.96	169.42	169.45	F0.33
0+75				169.90		6.02	170.04	170.30	F0.26
0+50	BC			170.70		4.07	172.01	171.15	C0.86
0+25	BC					2.03	174.05	172.00	C 2.05
#1	} NEH Rel.					1.92	174.16	172.50	C1.66
#2						3.12	172.96	173.00	Ex. Cb.
0+00	Hly line Willow							173.00	

INDEXED  
M. K.  
SEP 1 1949

B.M. 446 176.08  
171.62

15' L&T SW Willow & Sterne

SEE PAGE 30 & 43

5-6-49 State Water Services  
 Hendricks Aillet Block 97 City Hts.  
 Greer  
 Paper  
 No# 31543

Dwg. 7426 A

36

Sta		H.I.	LT	Elev	Elev	Cor F		Elev	Elev	Cor F
			Stake Lt	Grade Lt	Cor F Lt		-Rt	Stake Rt	Gr Rt	Rt
		328.99						328.99		
3+43	Lt.	3.22		325.77	324.57	C1 <sup>20</sup>				
3+12	Lt.	3.84		325.15	323.94	C1 <sup>21</sup>				
2+93	Lt & Rt	4.24		324.75	323.55	C1 <sup>20</sup>	4.77	324.22	323.44	C0 <sup>78</sup>
2+85	Jewer (2) Rt						4.91	324.09	318.09	C5 <sup>99</sup>
2+43	Rt.						5.90	323.09	322.40	C0 <sup>69</sup>
2+35	Jewer (3) Rt.						6.09	322.90	317.08	C5 <sup>82</sup>
2+34	Lt.	6.33		322.66	322.14	C0 <sup>52</sup>				
2+00	Rt.						7.07	321.92	321.50	C0 <sup>42</sup>
1+95	Lt.	6.70		322.29	321.55	C0 <sup>74</sup>				
1+65	Lt.	7.90		321.09	320.94	C0 <sup>15</sup>				
1+20	Lt.	8.73		320.26	320.03	C0 <sup>23</sup>				
1+12	Rt.						9.65	319.34	319.67	F0 <sup>33</sup>
0+77	Lt.	8.27		320.72	319.14	C1 <sup>58</sup>				
0+46	Lt.	8.21		320.78	318.14	C2 <sup>64</sup>				
0+41	Rt.						10.69	318.30	317.64	C0 <sup>66</sup>
0+00	No. line Myrtle									
TP	8.38	324.51	12.86	316.13						
B17			2.91	321.60						

INDEXED  
 N.K.  
 SEP 1 1949

NWBP list Myrtle



Sta		H. I	-Lt.	Elev Stake Lt	Elev Grade Lt	Cor. F Lt		-Rt	Elev Stake Rt	Elev Gr. Rt	Cor. F Rt
B17	3.89	<u>334.44</u>			330.55		N.W.R.P. 41st & Dnight.				
									<u>334.44</u>		
5155	Rt.							5.10	329.34	329.49	F0 <sup>15</sup>
5181	Rt.							5.38	329.06	329.41	F0 <sup>25</sup>
5160	Lt.		6.18	328.26	328.99	F0 <sup>73</sup>					
5155	Lt.		6.57	327.87	328.89	F1 <sup>03</sup>					
5150	Lt.		6.55	327.89	328.79	F0 <sup>90</sup>					
5139	Rt.							6.84	327.60	328.53	F0 <sup>93</sup>
5115	Rt.							8.59	325.88	328.06	F2 <sup>21</sup>
4189	Lt.		7.29	327.15	327.55	F0 <sup>40</sup>					
4137	Rt.							8.24	326.20	326.44	F0 <sup>24</sup>
4130	Lt.		7.26	327.18	326.35	C0 <sup>83</sup>					
4118	Rt.							8.22	326.20	326.04	C0 <sup>16</sup>
4710	Sewer @ Rt							8.39	326.05	320.64	C5 <sup>41</sup>
T.P.	2.61	<u>328.99</u>	<u>8.06</u>	<u>326.38</u>					<u>328.99</u>		
3185	Lt.		2.40	326.59	325.42	C1 <sup>16</sup>					
3156	Rt.							3.37	325.62	324.75	C0 <sup>87</sup>

May 1949  
Hendricks  
Greer  
Korel  
W04 21037

Stake Rough Grades  
SouthCrest Playground  
Dwg. 75182

8+00

INDEXED

N.K.

SEP 1 1949

7+50

7+00

6+50

6+17.33 Conc. Man

B17 8.48 33.28

150'	100'	50'	Base Line	50'	100'	150'
23 <sup>3</sup>	23 <sup>8</sup>	24 <sup>3</sup>	24 <sup>8</sup>	25 <sup>3</sup>	25 <sup>8</sup>	
9 <sup>5</sup>	9 <sup>6</sup>	9 <sup>3</sup>	8 <sup>5</sup>	8 <sup>4</sup>	6 <sup>4</sup>	
23.5	23.7	24.1	24.5	25.2	26.9	
CO <sup>2</sup>	FO <sup>1</sup>	FO <sup>2</sup>	FO <sup>2</sup>	FO <sup>1</sup>	CO <sup>2</sup>	

23 <sup>2</sup>	23 <sup>5</sup>	24 <sup>5</sup>	24 <sup>2</sup>
10 <sup>10</sup>	9 <sup>5</sup>	8 <sup>2</sup>	9 <sup>1</sup>
23 <sup>3</sup>	23.7	24.6	24.2
CO <sup>1</sup>	CO <sup>1</sup>	CO <sup>1</sup>	FO <sup>2</sup>

23 <sup>0</sup>	23 <sup>7</sup>	24 <sup>7</sup>	25 <sup>0</sup>
	9 <sup>5</sup>	8 <sup>9</sup>	9 <sup>9</sup>
	23.8		24.0
	CO <sup>1</sup>		FO <sup>2</sup>

24 <sup>6</sup>
8 <sup>2</sup>
24 <sup>4</sup>
FO <sup>2</sup>

9 <sup>5</sup>	
23 <sup>8</sup>	24.5
10 <sup>0</sup>	8.8
FO <sup>5</sup>	24.5
	CO <sup>1</sup>

2480 13' Conc. Man 284121 31. (FB1839 P. 40)

Rough Grades South Crest Playground

Cont'd

150' 100' 50' 50' 100' 150'

Base Line

10+50

(145)  
 258<sup>8</sup> 26<sup>3</sup> 26<sup>8</sup> 27<sup>3</sup> 27<sup>8</sup> 29<sup>3</sup> 28<sup>8</sup>  
 8<sup>3</sup> 7<sup>4</sup> 6<sup>8</sup> 6<sup>1</sup> 4<sup>5</sup> 3<sup>1</sup> 1<sup>3</sup>  
 25.0 25.9 26.5 27.2 28.8 30.2 32.1  
 FO<sup>8</sup> FO<sup>4</sup> FO<sup>3</sup> FO<sup>1</sup> C1<sup>0</sup> C1<sup>2</sup> C2<sup>3</sup>

10+00

25<sup>3</sup> 25<sup>8</sup> 26<sup>3</sup> 26<sup>8</sup> 27<sup>3</sup> 27<sup>8</sup> 28<sup>3</sup>  
 9<sup>3</sup> 7<sup>2</sup> 7<sup>4</sup> 6<sup>0</sup> 5<sup>9</sup> 4<sup>3</sup> 2<sup>3</sup>  
 24.1 25.4 25.9 27<sup>3</sup> 27.4 29.1 31.1  
 F1<sup>3</sup> FO<sup>4</sup> FO<sup>4</sup> CO<sup>5</sup> CO<sup>1</sup> C1<sup>3</sup> C2<sup>9</sup>

9+50

24<sup>8</sup> 25<sup>3</sup> 25<sup>8</sup> 26<sup>3</sup> 26<sup>8</sup> 27<sup>3</sup> 27<sup>8</sup>  
 8<sup>3</sup> 8<sup>5</sup> 8<sup>3</sup> 7<sup>4</sup> 6<sup>9</sup> 5<sup>1</sup> 3<sup>5</sup>  
 24.8 24.8 25.1 25.9 26.7 28.2 29.7  
 CO<sup>0</sup> FO<sup>5</sup> FO<sup>2</sup> FO<sup>4</sup> FO<sup>1</sup> CO<sup>2</sup> C1<sup>9</sup>

9+00

24<sup>3</sup> 24<sup>8</sup> 25<sup>3</sup> 25<sup>8</sup> 26<sup>3</sup> 26<sup>8</sup> 27<sup>3</sup>  
 9<sup>3</sup> 9<sup>4</sup> 8<sup>3</sup> 8<sup>1</sup> 7<sup>1</sup> 6<sup>0</sup> 4<sup>4</sup>  
 24.1 23.9 24.5 25.2 26<sup>3</sup> 27<sup>3</sup> 28.9  
 FO<sup>3</sup> FO<sup>9</sup> FO<sup>8</sup> CO<sup>6</sup> FO<sup>1</sup> CO<sup>5</sup> C1<sup>6</sup>

8+50

23<sup>8</sup> 24<sup>3</sup> 24<sup>8</sup> 25<sup>3</sup> 25<sup>8</sup> 26<sup>3</sup> 26<sup>8</sup>  
 9<sup>4</sup> 9<sup>5</sup> 9<sup>3</sup> 8<sup>5</sup> 7<sup>3</sup> 6<sup>4</sup> 4<sup>5</sup>  
 23.9 23.8 24.0 24.8 26.0 26.9 28.9  
 CO<sup>1</sup> FO<sup>5</sup> FO<sup>8</sup> FO<sup>5</sup> CO<sup>3</sup> CO<sup>6</sup> C2<sup>0</sup>

33.28

33.28

Rough Grades Southcrest Playground Cont'd.

13+00

T.P. 9.25 40.71 6.69 31.46

12+50

12+00

11+50

TP 11.10 38.15 6.23 27.05

11+00

33.28  
^

150' 120' 100' 50' 50' 100' 150' 170'

(140')  
29.4 28.8 29.3 29.8 30.3 30.8  
14.3 14.0 12.8 11.2 10.6 9.3  
26.4 26.7 27.8 29.0 30.1 31.5  
F20 F11 F1E F08 F03 C07  
40.71

out  
28.4 28.3 28.8 29.3 29.8 30.3 30.7  
11.3 11.4 9.2 8.4 5.7 4.5  
26.9 26.8 28.5 29.8 32.5 32.7  
F14 F20 F08 C00 C23 C30

27.6 27.8 28.3 28.8 29.3 29.8 30.3  
12.1 11.6 11.3 9.7 8.1 5.7 3.1  
20.1 26.6 27.0 28.5 30.1 32.5 35.1  
F1E F12 F13 F03 C08 C21 C48

27.1 27.3 27.8 28.3 28.8 29.3 29.8 30.0  
12.0 11.8 10.2 9.6 7.8 6.0 3.5 3.3  
26.2 26.3 27.5 28.6 30.3 32.2 34.7 34.4  
F08 F10 F03 C03 C1E C23 C42 C44  
38.15  
^

26.6 26.8 27.3 27.8 28.3 28.8 29.3 29.5  
7.9 7.2 6.2 5.5 3.7 2.0 0.2 0.0  
25.4 26.1 27.1 27.8 29.6 31.3 33.0 33.3  
F12 F02 F03 C00 C13 C25 C3.7 C3.8

33.28  
^

Rough Grades South Crest Playground

(21)

15+00

CK Stub 14+50 Base Line 8.15 32.56 32.6

14+90

14+50

14+00

13+50

40.71  
/

150' 100' 50' 50' 100'

Baseline

30.6 30.8 31.2  
(120)

FB 1838 P. 43

29.8 30.3 30.8 31.6  
3.2  
37.5  
65.9

29.8 30.3 30.8 31.2 31.8 32.3  
10.1 10.9 9.7 8.2 5.2 1.8  
30.6 30.2 31.0 32.5 35.5 38.9  
C0.8 / C0.4 / C0.2 / C1.2 / C3.2 / C6.6

29.2 29.8 30.2 30.8 31.2 31.8  
12.6 11.8 10.2 10.2 8.2 5.2  
28.1 28.9 30.0 30.5 32.2 35.6  
F1.2 / F0.2 / F0.2 / F0.2 / C1.2 / C3.2

28.8 29.2 29.8 30.2 30.8 31.2  
13.9 13.4 12.3 10.4 9.2 7.6  
26.9 27.6 28.4 30.1 31.0 33.1  
F1.9 / F1.2 / F1.4 / C0.1 / C0.3 / C1.8  
40.71

5-9-49 State Storm Drain Block 2  
 Hendricks Berkley Hts.  
 Greer Dwg 6923L & 3636B  
 Korner  
 W04 80137 Sketch P. 44

INDEXED

N.K.

SEP 1 1949

CE BM		13.20	307.43	307.44	CK top of Cb 4115.7 FB 1749 P. 5
3+00.47	30 line Rex	1.60	319.03	317.00	C203
		1.24	319.39	316.00	C3 39
2+65.47	Proposed No. 1 line Rex				
2+28.70		1.06	319.57	313.50	C607
1+91.92		2.79	317.84	311.00	C784
1+55.14		6.54	314.09	308.50	C559
TP	12.13 320.63	4.96	308.50		on stub 10' x 11' 111836
		4.96			
1+18.36	R Alley & Catch Basin		308.50	306.00	C250
1+05.65		4.15	309.31	304.87	4.44
0+72.94 EC		3.98	309.48	309.74	5.74
0+54.72		4.26	309.20	302.83	6.37
0+36.48		4.83	308.63	301.92	6.71
0+18.24		6.25	307.21	301.01	6.20
	beg 18"	5.15	308.31	300.10	8.21
0+00 BC	End Ex 42"	13.56	289.90	289.90	Ex 18" Pipe
	Conc. Pipe				
TP	5.66 313.46	9.95	307.80		
BM	2.18 317.75			315.57	NW BP 52nd & Univ.

SEE PAGE 44

6-1-49  
 Hendricks  
 Greer  
 Rorer  
 NO# 31413

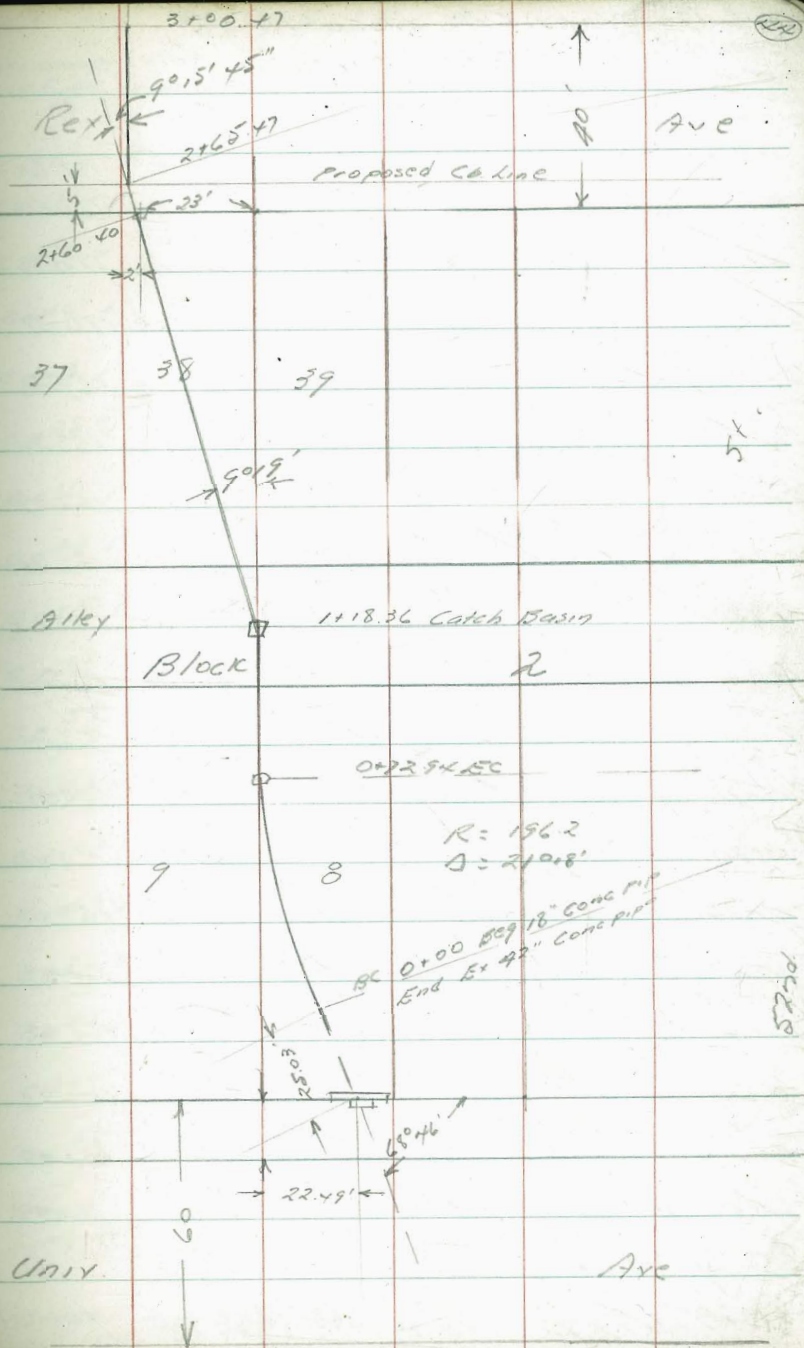
State Cross Feet. Sterne St  
 Willow to Plum

	+	H.1	-L1	Elev. Gr. L1		-R1	Elev. Gr. R1
Int Co. & Pl. Sterne				5.88	162.20		5.91 / 162.17
#3				5.15	162.93		5.18 / 162.90
#2				5.05	163.03		5.14 / 162.94
#1				4.90	163.18		4.95 / 163.13
2175 BC				4.68	163.40		4.68 / 163.40
2150				4.28	163.80		4.23 / 163.85
2125				3.48	164.60		3.38 / 164.70
T.P.	3.06	168.08		7.86	165.02	165.08	7.33 / 165.58
2100				7.48	165.40		
1175				6.68	166.20		6.48 / 166.40
1150				5.88	167.00		5.63 / 167.25
1125				5.08	167.80		4.78 / 168.10
1100				4.28	168.60		3.93 / 168.95
0175				3.48	169.40		3.08 / 169.80
0150				2.68	170.20		2.23 / 170.65
0125 BC				2.13	170.75		1.38 / 171.50
#1				2.01	170.87		1.10 / 171.78
#2							
0400		11/4 Line Willow	1.88	171.00 170.99	Ex. Pav.	0.81	(172.07) 172.07
BM7	1.26	172.88		171.62			

SEE PAGES 55 & 57

24.15' L&T Willow & Sterne

Location Storm Drain  
Block Berkeley H12





5-18-49 Stake Cbs. Russell St.  
 Hendricks Willow to SE 1/4 Line Point Lemg. Hts.  
 Green + H1 - Lt Elev. Stake Elev. Gr. Lt.  
 Cor F Lt. - Rt Elev. Stake Rt. Elev. Gr. Rt. Cor F Rt.

#3	1st So line Willow	0.65	173.51	171.60	C191	2.35	171.81	171.50	C031	-
#2		1.28	172.88	171.40	C148	2.66	171.50	171.30	C020	-
#1		2.76	171.40	170.87	C053	2.94	171.22	170.85	C037	-
2+75	BC Plum	3.39	170.77	170.37	C040	3.60	170.56	170.37	C019	-
2+50		4.43	169.73	169.30	C043	5.25	168.91	169.27	F036	-
2+25		5.64	168.52	168.24	C028	6.55	167.61	168.16	F055	-
2+00		6.88	167.28	167.17	C011	7.66	166.50	167.05	F055	-
1+75		7.83	166.33	166.11	C023	8.39	165.77	165.94	F012	-
1+50		8.66	165.50	165.05	C045	9.41	164.75	164.83	EXCB	-
1+30		9.53	164.63	164.25	C038					
1+10		10.30	163.86	163.54	C032					
0+90		11.06	163.10	162.93	C012					
0+70		11.72	162.44	162.42	C003					
0+50		12.06	162.10	162.01	C009					
0+30		11.55	162.61	161.69	C092			160.89		
0+25	EC	11.60	162.56	161.62	C094					
#2		11.65	162.51	161.50	C101					
#1		11.82	162.34	161.39	C095					
0+00	W. Line Willow	12.89	161.27	161.28	EXCB					
BC on Willow		11.57	162.59							
B17	12.82	174.16	SEE PAGE 55	161.34	SWAP Willow & Russell					

(DWG. 7232-L) (25)

Elev. Stake Rt. Elev. Gr. Rt. Cor F Rt.

17416

INDEXED  
 N.K.  
 SEP 1 1949

Contd. from P. 45

(46)

1+95.30	Ely Line P. Home H/S	15.08	159.08	159.54	FO <sup>46</sup> /	11.55	162.61	160.00	C2 <sup>61</sup> /
1+77.65		13.00	161.16	161.51	FO <sup>35</sup> /	11.72	162.44	161.99	CO <sup>45</sup> /
1+60		10.95	163.21	163.48	FO <sup>27</sup> /	10.07	164.09	163.98	CO <sup>11</sup> /
1+40		9.00	165.16	165.51	FO <sup>25</sup> /	8.24	165.92	166.01	FO <sup>09</sup> /
1+20		6.90	167.26	167.24	CO <sup>02</sup> /	6.22	167.94	167.74	CO <sup>20</sup> /
1+00		5.44	168.72	168.68	CO <sup>04</sup> /	4.46	169.70	169.18	CO <sup>52</sup> /
0+80		4.44	169.72	169.81	FO <sup>09</sup> /	3.28	170.88	170.31	CO <sup>52</sup> /
0+60		3.57	170.59	170.65	FO <sup>06</sup> /	2.65	171.51	171.15	CO <sup>36</sup> /
0+40		2.55	171.61	171.20	CO <sup>41</sup> /	2.40	171.76	171.70	CO <sup>06</sup> /
0+25	EC Russell	2.35	171.81	171.50	CO <sup>31</sup> /	2.30	171.86	172.00	FO <sup>41</sup> /
#3		2.12	172.04	171.70	CO <sup>34</sup> /	2.10	172.06	172.20	FO <sup>14</sup> /
#2		0.96	173.20	171.65	CI <sup>55</sup> /	1.66	172.50	172.18	CO <sup>32</sup> /
#1	Int. to line Wilson	1.0 <sup>10</sup>	174.26	171.45	C2 <sup>81</sup> /	1.10	173.06	171.81	CI <sup>25</sup> /

174.16  
A

174.16  
A

6-1-49  
Hendricks  
Greer  
Korer  
W0\*31413

Stake Crows Feet Russell St  
Willow to 54 line Pt Loma Hl  
Dwig 72326

(47)

#2 End Plum			5.23	170.95		5.18	171.00	
#2			5.48	170.70		5.38	170.80	
#1			5.86	170.32		5.83	170.35	
2175 BC Russell			6.31	169.87		6.31	169.87	
T.P	784	176.18	1.63	168.34		176.18		
2150			1.17	168.80		1.20	168.77	
2125			2.24	167.73		2.31	167.66	
2100			3.30	166.67		3.42	166.55	
1175			4.36	165.61		4.53	165.44	
1150			5.42	164.55		5.64	164.33	
1130			6.22	163.75		6.53	163.44	
1110			6.93	163.04		7.34	162.63	
0190			7.54	162.43		8.04	161.93	
0170			8.05	161.92		8.65	161.32	
0150			8.46	161.51		9.16	160.81	
0130			8.79	161.19		9.59	160.39	
0125 EC			8.87	161.10		9.75	160.22	
#1			9.09	160.88		10.17	159.80	
			9.31	(160.66)			(159.29)	
0100	Ex Pav	44 line Willow		160.66	Ex Pav	10.58	159.34	Ex Pav
						169.97		
BM	8.63	169.97		161.34				
								SWBP Willow & Russell

Contd. from P. 47

28

			5.91	162.62	162.61	CK 5/106 RT 1+95.30 (P 46)		
1495.30	54 Line Pl Home H12		9.49	159.04			9.03	159.50
1477.65			7.52	161.01			7.04	161.49
1460			5.55	162.98			5.05	163.48
1440			3.52	165.01			3.02	165.51
T.P.	0.78	168.53	8.43	167.75		168.53		
1420			9.44	166.74			8.94	167.24
1400			8.00	168.18			7.50	168.68
01.80			6.87	169.31			6.37	169.81
01.60			6.03	170.15			5.53	170.65
01.40			5.48	170.70			4.98	171.20
01.25	5C Russell		5.19	171.00			4.69	171.50
#3			4.98	171.20			4.53	171.65
#2			5.03	171.15			4.60	171.58
#1	Plum		5.23	170.95			4.87	171.31

176.18

176.18  
/1

6-2-49 Stake Rough Grades Wilbur St

Hendricks  
Roberts

Cass to Daves

(Cb)

Cat or

(Cb)

Green  
Kaiser No 31228

Dwg 7352-L Ekv  
- Lt. Stake Lt Lt. Ekv Gr

Elev Elev Gr C or F

Sta		H. 1	- Lt. Stake Lt	Lt.	Fill Lt	- Rt Stake Rt	Rt	Rt	Rt
BM			1.08	96.48	96.51	Chisel X on Porch SE Cor Daves & Wilbur (FB1871)			
4+97.9	N Line Daves		4.5	93.10	91.90	C1 <sup>2</sup>	57	91.9	90.80 C1 <sup>L</sup>
4+87.90			4.9	92.7	91.50	C1 <sup>2</sup>	7.2	90.4	90.49 FO <sup>L</sup>
4+53.95			6.1	91.5	90.44	C1 <sup>L</sup>	8.2	89.4	89.41 CO <sup>0</sup>
T.P.	87.4	97.56	2.05	88.82			97.56		
4+20.			0.0	90.9	89.37	C1 <sup>5</sup>	2.8	88.1	88.33 FO <sup>3</sup>
4+00			0.4	90.5	88.81	C1 <sup>7</sup>	3.3	87.6	87.76 FO <sup>3</sup>
3+80			0.8	90.1	88.32	C1 <sup>8</sup>	3.5	87.4	87.28 CO <sup>L</sup>
3+60			1.1	89.8	87.91	C1 <sup>9</sup>	3.9	87.0	86.88 CO <sup>L</sup>
3+40			1.2	89.7	87.58	C2 <sup>L</sup>	4.2	86.7	86.57 CO <sup>L</sup>
3+20			1.6	89.3	87.29	C2 <sup>0</sup>	4.2	86.7	86.31 CO <sup>L</sup>
2+70			2.1	88.8	86.58	C2 <sup>2</sup>	5.2	85.7	85.64 CO <sup>L</sup>
2+30			3.0	87.9	86.00	C1 <sup>9</sup>	5.3	85.6	85.10 CO <sup>5</sup>
1+90			3.1	87.8	85.42	C2 <sup>4</sup>	6.0	84.9	84.56 CO <sup>3</sup>
1+50			4.3	86.6	84.84	C1 <sup>8</sup>	6.5	84.4	84.03 CO <sup>L</sup>
1+10			5.0	85.9	84.26	C1 <sup>5</sup>	7.5	83.4	83.49 FO <sup>L</sup>
0+70			6.1	84.8	83.68	C1 <sup>2</sup>	8.4	82.5	82.96 FO <sup>5</sup>
0+30			6.6	84.3	83.10	C1 <sup>2</sup>	9.0	81.9	82.42 FO <sup>5</sup>
0+00	E Line Cass				82.69				82.05
BM	9.05	90.87			81.82	SE Chisel D in Cb	90.87		Cass & Wilbur (FB1571) P. 19

INDEXED  
W.K.  
SEP 1 1949

6.3.49  
Hendricks  
Roberts  
Greer  
Corer  
NO# 31228

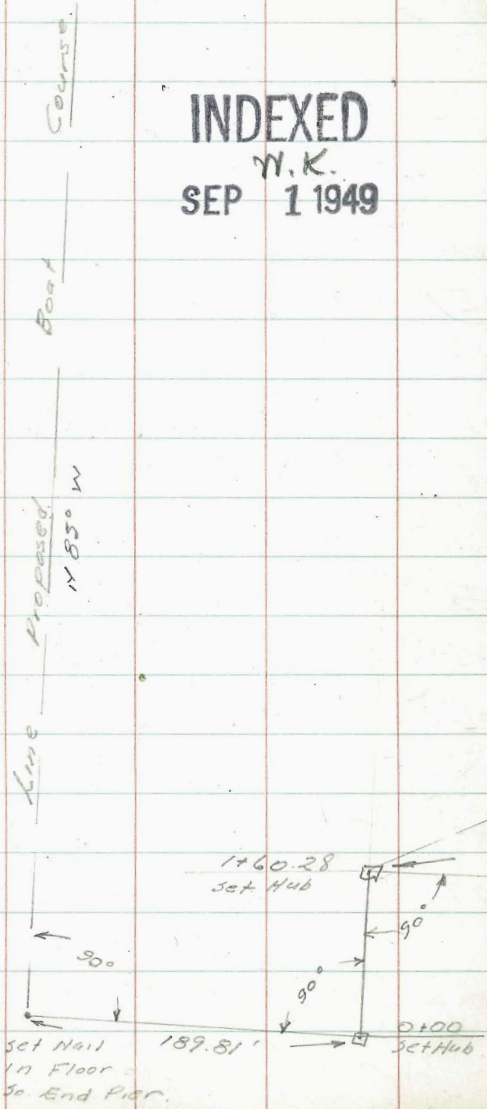
State Rough Grader Wilbur St  
Davies to Everts Dwg. 73524

Sta.	H.I.	-LH	Elev. State	Elev. Gr.	Cor. F	-Rt	Elev. State	Elev. Gr.	Cor. F
			Lt.	Lt.	Lt.		Rt.	Rt.	Rt.

INDEXED  
M.K.  
SEP 1 1949

Sta.	Description	Dist	Elev. State	Elev. Gr.	Cor. F	-Rt	Elev. State	Elev. Gr.	Cor. F
4114.71	Edge Ex Pav Wly line North shore Highlands	0.22	105.91	105.75	Ex C6	1.18	104.95	104.75	Ex C6
3790		+0.6	106.7	105.13	C1 <sup>6</sup>	1.4	104.7	104.13	C0 <sup>6</sup>
3750		+0.2	106.3	103.99	C2 <sup>3</sup>	2.0	104.1	102.99	C1 <sup>1</sup>
3105		1.0	105.1	102.71	C2 <sup>4</sup>	3.7	102.4	101.71	C0 <sup>2</sup>
2160		2.2	103.9	101.43	C2 <sup>5</sup>	5.0	101.1	100.43	C0 <sup>2</sup>
2115		4.3	101.9	100.15	C1 <sup>5</sup>	6.6	99.5	99.15	C0 <sup>3</sup>
1170		5.7	100.4	98.87	C1 <sup>5</sup>	7.8	98.3	97.87	C0 <sup>4</sup>
1125		6.5	99.6	97.89	C2 <sup>0</sup>	8.9	97.2	96.59	C0 <sup>5</sup>
0180		7.1	99.0	96.31	C2 <sup>7</sup>	9.9	96.2	95.31	C0 <sup>8</sup>
0135		8.7	97.4	95.02	C2 <sup>4</sup>	10.7	95.4	94.02	C1 <sup>4</sup>
0110		9.5	96.6	94.33	C2 <sup>3</sup>	11.2	94.9	93.33	C1 <sup>6</sup>
0100	E line Davies	10.0	96.1	94.09	C2 <sup>0</sup>	11.6	94.5	93.00	C1 <sup>5</sup>
BM7			96.2	106.13			106.13		

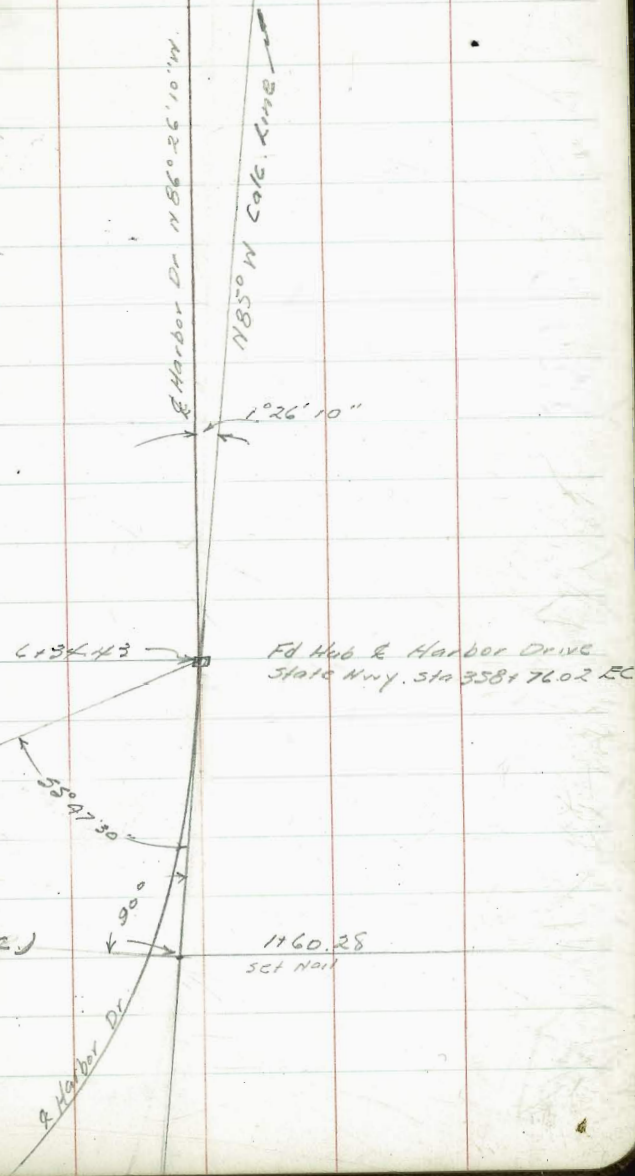
67-49 Survey to Establish Nautical  
 Hendrix Mile for use of J.D. Yacht Club  
 Greer  
 Rorer  
 W.O. 21001



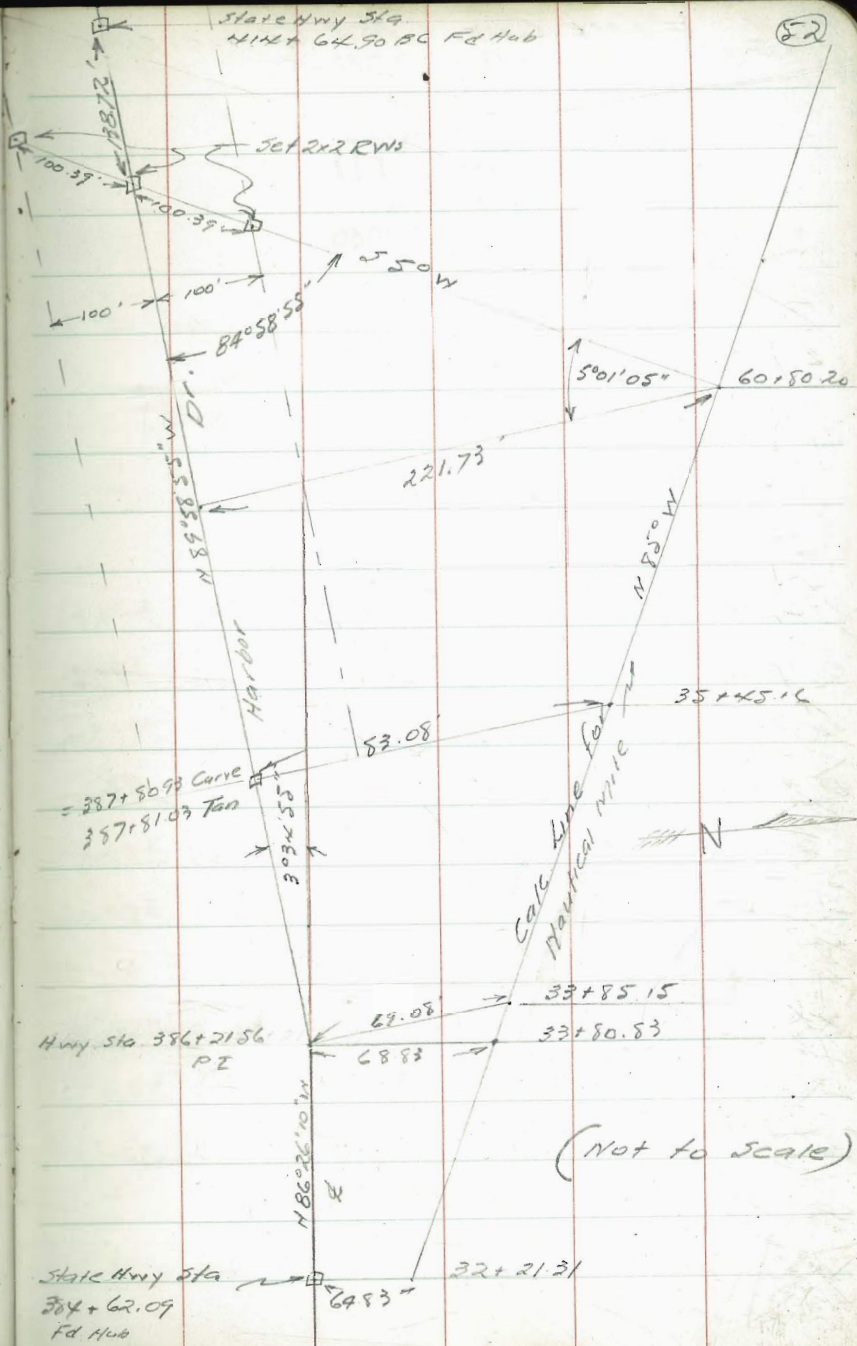
INDEXED  
 N.K.  
 SEP 1 1949

384+62.09 BS  
 Fd. State Hwy. Hub.

6483 32+21.31



Nautical Mile Contd





6-9-49 State Cbs. 6th University  
Hendricks  
Roberts  
Gravel  
Korel  
1101 60361

INDEXED  
W.K.  
SEP 1 1949

53

Sta. + 4.1 - Eley State ET Gr

1100 End 7.96 279.30 279.87 FO<sup>57</sup>

016971 6.20 281.06 281.34 FO<sup>28</sup>

0149 5.59 281.67 281.94 FO<sup>27</sup>

0136 4.75 282.51 282.01 CO<sup>50</sup>

0122 4.73 282.53 282.07 CO<sup>46</sup>

0107.25 EC 6th St. 4.78 282.48 282.06 CO<sup>42</sup>

#2 5.07 282.19 282.19 CO<sup>00</sup>

#1 5.48 281.78 282.17 FO<sup>39</sup>

BC on University 5.23 282.03 282.03 Ex. C6.

BM 3.39 287.26 283.87 NW BP 6th & Univ.  
1

610 49 Stake & Grades Sterne St  
 Hendricks  
 Roberts  
 Greer  
 Corer

3170

3152

3135 R

3118

3100

2175 BC

2150

2125

2100

1175

1150

1125

1100

0175

0150

0125 EC

0100 Hix Line Willow

172.24 (subgrade H1)

+ 42

1517 @ .20 171.82

171.62

SEE PAGE 35 & 43-

PK	CB	\$	CB	PK
		934 (1225)		
	162.26	162.44	162.19	
962	9.76	9.88	9.82	9.75
16260	162.48	162.66	162.42	162.49
931	9.57	9.58	9.60	9.38
16293	162.67	162.86	162.64	162.86
926	9.37	9.18	9.39	9.29
16298	162.87	163.06	162.85	162.96
		9.16	8.96	9.16
		163.08	163.08	
		8.59		
		163.65		
		4.07		
		164.17		
		7.25		
		164.99		
		6.42		
		165.82		
		5.60		
		166.64		
		4.77		
		167.47		
		3.95		
		168.29		
		3.12		
		169.12		
		2.30		
		169.94		
		1.47		
		170.77		
		0.77		
		171.67		
		171.68		
		0.18		
		171.64 El. Cont.		

5m 15' L&T Willow & Sterne

6-10-49 Stake & Grades Russell St.  
 45nd-1625 Willow to Sky Line Point Loma Hts.

Roberts  
 Green  
 Korer  
 3+52

3+35

3+15

3+00

2+75 BC

2+50

T.P. 6.63 174.68 0.67 168.05

2+25

2+00

1+75

1+50

1+30

1+10

0+90

0+70

0+50

0+30

0+25 EC

0+00 Sky Line Willow

168.72 (Subgrade H1)

+ 42

B.M.

6.96

168.30

161.34

SEE PAGE 45

55

PL	CO	+	CB	PL
2.66	3.22	2.98	3.06	3.33
171.02	171.46	171.70	171.62	171.35
3.26	3.11	3.07	3.15	3.28
171.42	171.57	171.61	171.53	171.40
3.43	3.32	3.27	3.33	3.56
171.25	171.36	171.41	171.35	171.12
	3.89	3.64	3.82	
	170.80	171.04	170.96	
		4.47		
		170.21		
		5.55		
		169.13		
		0.67		
		168.05		
		1.76		
		166.96		
		2.85		
		165.87		
		3.94		
		164.78		
		4.78		
		163.94		
		5.54		
		163.18		
		6.20		
		162.52		
		6.76		
		161.96		
		7.22		
		161.50		
		7.59		
		161.13		
		(7.71)		
		161.01		
		7.90 (160.40)		
		160.38		

JWBP Willow & Russell

cb      £      cb

1495.30  
 1477.65  
 1460  
 1440  
 1420  
 1400  
 0180  
 0160  
 0140  
 0125 EC  
 0112.5  
 0100 Hly line Plum

1507  
 15961  
 1309  
 16159  
 1111 -  
 16357  
 908  
 16560  
 745 -  
 16723  
 591 -  
 16877  
 478 -  
 16790  
 395 -  
 17074  
 339 ✓  
 17129  
 309 ✓  
 17159  
 289 -  
 17179  
 342 -      308 -  
 17126      17171      17160

174.68  
 T

6-13-49  
 Hendricks  
 Roberts  
 Greer  
 Lovel

State Rough Grades (Opal St)  
 Cass to Dawes  
 DWG. 7340 L

NO#	Stn	Stake H.	Elev	Cb Elev	Cut or Fill Lt	-Rt	Elev	Cb Elev	Cut or Fill Rt
	314	11	112.92	112.92					
	B.M.		4.34	112.92					
	4+98.19	W Line Dawes	3.3	114.0	113.20	CO <sup>8</sup>	4.2	113.1	112.34 CO <sup>8</sup>
	4+88.19		3.6	113.7	112.88	CO <sup>8</sup>	4.5	112.8	112.18 CO <sup>8</sup>
	4+42.56		4.7	112.6	111.42	CI <sup>2</sup>	6.0	111.3	110.72 CO <sup>8</sup>
	3+96.92		6.1	111.2	109.92	CI <sup>2</sup>	7.5	109.8	109.26 CO <sup>5</sup>
	3+51.28		6.9	110.4	108.51	CI <sup>9</sup>	8.6	108.7	107.81 CO <sup>9</sup>
	T.P.	8.59	117.27	1.22	108.68				
	3+05.64		1.8	108.1	107.06	CI <sup>0</sup>	2.1	107.8	106.36 CI <sup>4</sup>
	2+62		3.6	106.3	105.61	CO <sup>2</sup>	4.7	105.2	104.91 CO <sup>2</sup>
	2+40		4.2	105.7	105.02	CO <sup>2</sup>	5.6	104.3	104.31 CO <sup>0</sup>
	2+20		4.2	105.7	104.50	CI <sup>2</sup>	6.0	103.9	103.79 CO <sup>1</sup>
	2+00		4.2	105.7	104.09	CI <sup>6</sup>	6.9	103.0	103.34 FO <sup>3</sup>
	1+80		4.3	105.6	103.74	CI <sup>9</sup>	7.0	102.9	102.96 FO <sup>1</sup>
	1+60		4.9	105.0	103.49	CI <sup>5</sup>	7.4	102.5	102.67 FO <sup>2</sup>
	1+40		5.7	104.2	103.32	CO <sup>2</sup>	7.5	102.4	102.45 FO <sup>1</sup>
	0+90		6.4	103.5	103.01	CO <sup>5</sup>	8.4	101.5	102.00 FO <sup>5</sup>
	0+40		6.9	103.0	102.70	CO <sup>3</sup>	8.9	101.0	101.54 FO <sup>8</sup>
	0+06				102.49		9.2	100.7	101.23 FO <sup>5</sup>
	0+00	E Line Cass	6.3	103.6	102.45	CI <sup>1</sup>			101.18
	B.M.	8.98	109.90		100.92				

SE 7' L&T Cass & Opal

SEE PAGE 19 & 21

6-17-49  
 Hendricks  
 Roberts  
 Greer  
 Rorer  
 Woz

Extend sewer 30th & G

INDEXED  
 W.K.  
 SEP 1 1949

30th St

Elev. G. Elev. Stack

1100 DE	3.39	153.80	162.74	68.94
0175	2.73	153.55	163.40	69.85
0150	2.62	153.30	163.51	69.21
0125	4.72	153.05	161.41	68.26
0100 SIDE	13.33	152.80		

G. 51

1100 DE

30th Pl.

60

30th St

TP.	561	166.13	117	160.52
BM	11.14	161.09		150.55

3E Top Hydt.  
 30th & Market

0139.83

← 30' → ← 30' →

5' 11"

0100 SIDE

C-24-49 Stake Crows Feet Diamond St.  
 A. Hendricks  
 R. Roberts Gresham to Haines  
 G. Greer DWG. 7373  
 W. Gregory

5180	E Line Haines			5.47	75.75	
5140				5.63	75.59	
5100	W Line Haines			5.79	75.43	
4190	R.H.		5.59	75.63		
4160	(B.K.H.)		5.95	75.27	6.20	75.02
4115			6.49	74.73	6.74	74.48
TP	5.25	81.22	0.65	75.97		
3170			2.43	74.19	2.68	73.94
3125			2.97	73.65	3.22	73.40
2180			3.51	73.11	3.76	72.86
2135			4.05	72.57	4.30	72.32
1190			4.59	72.03	4.84	71.78
1145			5.13	71.49	5.38	71.24
1100			5.67	70.95	5.92	70.70
0155					6.46	70.16
(0150	LK) only (B.K.)		6.27	70.35		
0110	FC CB. R.H.		6.52	70.10	7.00	69.62
0100	E Line Gresham	6.59	70.09	Ex	(7.27)	
			70.04		(7.26)	69.36

1317 6.32 76.62 70.30

NWIRP Diamond & Gresham

SEE PAGE 33

6-27-49

Roberts

Greer

Gregory

NO. #31533

Stake Crows Feet (Opal St.)

Cass to Dawes

Dwg. 73402

Elev.

- Lt.

- Rt.

Elev.

4+98.9 W. Line Dawes 3.25 112.53 ✓

4+88.17 3.57 112.21 ✓

4+52.56 5.03 110.75 ✓

3+96.92 6.48 109.30 ✓

T.P. 8.34 115.78 1.19 107.42

3+51.28 0.77 107.84 ✓

3+05.64 2.22 106.39 ✓

2+60 3.67 104.94 ✓

2+40 4.26 104.35 ✓

2+20 4.77 103.84 ✓

2+00 5.19 103.42 ✓

1+80 5.54 103.07 ✓

1+60 5.80 102.81 ✓

1+40 5.98 102.63 ✓

0+90 6.32 102.29 ✓

0+40 6.66 101.95 ✓

0+06 6.76 101.88 ✓

0+00 E. Line Cass 6.78 101.83 ✓

BM 7.69 108.61 100.92

SE 7' C.T. Cass # Opal



6-29-49

Stake  $\frac{1}{4}$  (Opal St)

Roberts

(Cass to Dawes)

Greer

Gregory

W.O. # 31533

4+98.19

W. Line Dawes

- Lt. 3.70

 $\frac{1}{4}$   
Elev.

112.52

✓

4+88.19

3.89

112.33

✓

4+52.56

5.34

110.81

✓

T.P.

6.80

 $\frac{115.89}{\uparrow}$ 

1.33

109.09

✓

3+96.92

1.33

109.42

✓

3+51.28

2.78

107.97

✓

3+05.64

4.24

106.51

✓

2+60

5.69

105.06

✓

2+40

6.28

104.47

✓

2+20

6.79

103.96

✓

2+00

7.22

103.53

✓

1+80

7.57

103.18

✓

1+60

7.83

102.92

✓

1+40

8.02

102.73

✓

0+90

8.38

102.37

✓

0+70

9.74

101.01

✓

0+06

8.97

101.78

✓

0+00

E. Line Cass

(Final) 8.68

101.74

✓

BM

9.50

 $\frac{110.42}{\uparrow}$ 

100.92

-

 $\frac{1}{4}$   
Elev.

3.90

112.32

✓

3.96

112.26

✓

5.41

110.81

✓

1.40

109.35

✓

2.85

107.90

✓

4.31

106.44

✓

5.76

104.99

✓

6.55

104.40

✓

6.86

103.89

✓

7.30

103.45

✓

7.65

103.10

✓

7.92

102.83

✓

8.11

102.64

✓

8.49

102.26

✓

8.87

101.88

✓

9.24

101.51

✓

(Finish) 8.77

101.45

✓

SF. 7' CT Cass  $\frac{1}{4}$  Opal $\frac{110.42}{\uparrow}$ 

-

 $\frac{1}{4}$   
Elev.

4.11

112.11

✓

4.24

111.98

✓

5.69

110.53

✓

1.68

109.07

✓

3.13

107.62

✓

4.59

106.16

✓

6.04

104.71

✓

6.63

104.12

✓

7.14

103.61

✓

7.59

103.16

✓

7.94

102.81

✓

8.22

102.53

✓

8.41

102.34

✓

8.81

101.94

✓

9.21

101.54

✓

9.53

101.22

✓

(Finish) 9.27

101.15

• add 0.33 to HI for Subgrade

6-22-49  
 Hendricks  
 Roberts  
 Greer  
 Bunch  
 NO. 51048

Stake Rough Grades Delta St  
 40th to 41st  
 DWG. 7337 L

Sta.	+	H.I.	- Lt.	Elev	Elev
				Stake Lt	Gr. Lt
check		9.69		73.68	= 73.68
6+00.50	W. line	41st St.	0.4	83.0	72.94
5+50.50	BC		1.2	82.2	72.50
5+50			4.2	79.2	71.95
5+00			7.6	75.8	71.28
4+50			9.6	73.8	70.60
4+00			10.2	73.2	69.92
3+50			11.4	72.0	69.25
T.P.	13.27	83.37	1.15	70.10	
3+00			1.2	70.1	68.57
2+50			2.4	68.9	67.89
2+00			3.7	67.6	67.21
1+50			2.9	68.4	66.54
1+00			3.1	68.2	65.86
0+50			2.9	68.4	65.18
0+00	E. line	40th	3.6	67.6	64.50

INDEXED  
 W.K.  
 SEP 1 1949

BM 796 71.25  
 71.25  
 63.29

Cor F	Elev	Elev	Cor F
L	Stake Lt	Gr. Rt.	Lt
SW. 17' Mon. 41st & Delta	FB 1765 - Pg. 31		
C10 <sup>1</sup>	13.3	70.1	71.40 F1 <sup>3</sup>
C9 <sup>2</sup>	13.0	70.4	71.50 F1 <sup>1</sup>
C7 <sup>2</sup>	12.6	70.8	70.95 F0 <sup>2</sup>
C4 <sup>5</sup>	12.6	70.8	70.28 C0 <sup>5</sup>
C3 <sup>2</sup>	13.0	70.4	69.60 C0 <sup>8</sup>
C3 <sup>3</sup>	12.1	71.3	68.92 C2 <sup>4</sup>
C2 <sup>2</sup>	11.9	71.5	68.25 C3 <sup>2</sup>
C1 <sup>5</sup>	1.1	70.2	67.57 C2 <sup>6</sup>
C1 <sup>0</sup>	3.5	67.8	66.89 C0 <sup>9</sup>
C0 <sup>4</sup>	5.3	66.0	66.21 F0 <sup>2</sup>
C1 <sup>9</sup>	5.9	65.4	65.54 F0 <sup>1</sup>
C2 <sup>3</sup>	6.4	64.9	64.86 C0 <sup>0</sup>
C3 <sup>2</sup>	7.3	64.0	64.18 F0 <sup>2</sup>
C3 <sup>1</sup>	7.74	63.51	63.50 Ex. Cd.

NWB.P. Delta & 40th.

7-26-49

State Water Services &amp; Sewer La

Hendricks

Electric Ave Colima to Midway

Greer

Roberts

Bunch

WO# 31406

INDEXED

N.K.

SEP 1 1949

3191 Lt. 3.67 82.76 83.15 FO<sup>39</sup>3157 Rt. 1.22 85.21 84.20 CI<sup>01</sup>3124 Lt. 2.92 82.51 82.93 FO<sup>42</sup>3128 Rt. 1.53 84.90 84.09 CO<sup>81</sup>2171 Lt. 4.05 82.38 82.69 FO<sup>31</sup>2112 Lt. 4.37 82.06 82.47 FO<sup>41</sup>1191 Rt. 1.96 84.47 83.57 CO<sup>90</sup>1177 Lt. 4.49 81.94 82.34 FO<sup>40</sup>1157 Rt. 1.88 84.55 83.44 CI<sup>11</sup>1145.52 (3) Rt. 1.66 84.77 78.40 CO<sup>37</sup>1110.52 W Rt. 2.03 84.40 83.26 CI<sup>15</sup>1105.52 sewer #2 Rt. 2.00 84.43 78.25 CO<sup>18</sup>0170.52 W Rt. 2.24 84.09 83.11 CO<sup>98</sup>0165.52 Rt. sewer #1 2.90 83.53 78.09 CO<sup>44</sup>

0100 Ph. Colima &amp; Electric

1917 8.45 86.43 77.98

SW 18P LaJolla &amp; Colima

63

Cont'd from p. 63

64

5123.48 LT 3.37 83.06 83.69 F0<sup>63</sup>

5123 RT 0.18 80.25 84.84 C1<sup>41</sup>

5118.48 (4) LT 3.96 82.47 78.07 C4<sup>40</sup>

4152 LT 3.75 82.68 83.38 F0<sup>70</sup>

4137 RT 1.29 85.14 84.47 C 0.67

86.43

7-27-49. State Water Services Electric A.  
 Hendricks Midway to Forward  
 Roberts  
 Greer  
 Bunch  
 NO 31406

R+

Lt.

5.15 88.79 89.00

BC cb. Ref.  
 SE Electric  
 & Forward

INDEXED  
 W.K.  
 SEP 1 1949

4+60 4.27 89.87 88.52 C1.35

4+55 (10) 2.32 91.52 89.29 C8.52

4+22.5 5.30 88.84 88.06 C0.78

4+17.5 (9) 2.53 91.61 83.04 C8.57

3+74 4.80 89.34 87.73 C1.61

5+30 5.95 88.19 87.50 C0.69 3+13 4.50 89.64 87.31 C2.33

4+69 6.30 87.84 87.08 C0.76 2+30 5.00 89.14 86.74 C2.40

4+10 6.57 87.27 86.67 C0.60 2+25 (7) 4.87 89.31 81.72 C7.59

3+22.47 7.51 86.53 86.06 C0.77 1+71 5.71 88.43 86.47 C1.96

3+07.47 (8) 7.74 86.20 80.91 C5.29 1+86 (6) 5.36 88.78 81.44 C7.34

2+90 8.09 86.05 85.84 C0.21 1+71 6.01 88.13 86.33 C1.80

2+40 9.01 85.13 85.50 F0.37 1+32 6.64 87.50 86.06 C1.44

1+87 9.19 84.95 85.13 F0.18 (112247) 6.82 87.32 85.65 C1.67

(1+2247 BC) 0+93.5 10.50 83.64 84.48 F0.84 0+71.57 0+66.57 (3) 5.99 88.15 80.62 C7.53

B.M. 8.54 94.14 85.60

SE L&T Midway & Electric

8-1-49 State 6" H.P. Sewer  
 Mensinas La Jolla Shores Drive  
 Roberts Vallejos to Avenida De la Playa  
 Greer  
 Bunch DW 9 1382 D.

7.P.1	1.41	(17.38)	17.41
6+64 MH#15	182	16.97	9.64
6+30.8	2.72	16.07	9.31
5+97.6	3.39	15.40	8.98
5+64.4	4.08	14.71	8.64
5+31.2	4.28	14.51	8.31
4+98.0	4.89	13.90	7.98
4+64.8	5.02	13.77	7.65
4+31.6	5.31	13.48	7.32
IP	5.31	18.79	3.99
3+98.4	4.13	13.34	6.98
3+65.2	4.25	13.22	6.65
3+32 MH#14	4.94	12.53	6.32
2+98.8	4.83	12.64	5.99
2+65.6	5.05	12.42	5.66
2+32.4	5.55	11.92	5.32
1+99.2	5.48	11.99	4.99
1+66.0	5.61	11.86	4.66
1+32.8	6.01	11.46	4.33
0+99.6	6.39	11.08	4.00
0+66.4	6.75	10.72	3.66
0+33.2	6.42	11.05	3.33
0+00 MH#13			3.00

E Nail C64 Avenida De la Playa & La Jolla Shores Dr.  
 C7.33 FB1857 P-24

6.76
6.42
6.07
6.20
5.92
6.12
6.16
6.36
6.57
6.21
6.65
6.76
6.60
6.70
6.26
6.13
6.08
6.06
6.77

BM 5.78  $\frac{17.47}{1}$

11.69

0 m' stub 12' at Sta. 2+88 (MH#13)  
 (State MEDC.8.92)

8-349 State Cbs Mesa Way  
 Hendricks La Jolla Blvd to Electric  
 Roberts Ref. Orig 7605-L-6702-L FB 1854  
 Greer  
 Dunch  
 Wom 80014

Sta	+	#1	- Lt	Elev Sta. Ht	Elev Cb Grade H
EC Electric Lt			4.45	89.29	90.50
#1			4.61	89.13	90.37
2+0588 Cb BC			5.41	88.33	89.78
1+9035			6.11	87.63	88.92
1+7485 PL BC Lt			6.74	87.00	88.07
1+5657			7.39	86.35	87.06
1+3657			8.14	85.60	86.00
1+1657			8.86	84.88	85.09
0+9657			9.24	84.50	84.31
0+7657			9.86	83.88	83.68
0+5657			10.47	83.27	83.12
0+3657			10.65	83.09	82.56
0+1657 PL BC Lt			11.64	82.10	82.00
EC=0+100 Mesa Way			12.44	81.30	81.60
#1			12.02	81.72	81.60
BC on La Jolla			12.17	81.57	81.48
TP	11.80	93.74	5.95	81.94	
TP	3.87	87.89	2.08	84.02	
BM	76.3	86.10			78.47

INDEXED  
 W.K.  
 SEP 1 1949

Cor F Lt	(on Prop Line) Sta. Ht	- Rt	Elev Sta. Ht	Elev Cb Grade H	Cor F Rt
F1 <sup>21</sup>	EC Cb	4.61	89.13	91.10	F1 <sup>97</sup>
F1 <sup>24</sup>	#1	4.89	88.85	90.70	F1 <sup>85</sup>
F1 <sup>25</sup>	2+0311 Cb	5.39	88.18	90.04	F1 <sup>86</sup>
F1 <sup>29</sup>	1+8552	5.81	87.93	89.04	F1 <sup>11</sup>
F1 <sup>07</sup>	1+6789	6.61	87.13	88.05	F0 <sup>92</sup>
F0 <sup>21</sup>	1+50.26	7.31	86.43	87.06	F0 <sup>63</sup>
F0 <sup>40</sup>	1+2976	8.06	85.68	86.09	F0 <sup>41</sup>
F0 <sup>21</sup>	1+09.26	9.00	84.74	85.04	F0 <sup>30</sup>
C0 <sup>19</sup>	0+8876	9.51	84.23	84.20	C0 <sup>02</sup>
C0 <sup>20</sup>	0+68.26	10.24	83.50	83.48	C0 <sup>02</sup>
C0 <sup>15</sup>	0+50.66	10.66	83.08	82.91	C0 <sup>17</sup>
C0 <sup>53</sup>	0+33.05	11.06	82.68	82.35	C0 <sup>32</sup>
C0 <sup>10</sup>	0+15.44 PL BC	11.30	82.44	81.79	C0 <sup>65</sup>
F0 <sup>30</sup>					
C0 <sup>12</sup>	0+00 Cb BC	12.16	81.58	81.40	C0 <sup>18</sup>
C0 <sup>09</sup>	#1	12.24	81.50	81.15	C0 <sup>35</sup>
	BC on La Jolla	12.78	80.96	81.00	Ex Cb
	N.E. 20' Cb Red. Stub				
		93.74			
	NEBP La Jolla & Palomar				

Cont'd From P. 68  
Electric Mesa Way to 314 line

PK 1258 (on West)

68

1156.90	314 line PK 1258	254.	91.20	92.00	F0 <sup>80</sup>
1129.28		297	90.77	91.85	F1 <sup>08</sup>
1101.66		3.27	90.47	91.71	F1 <sup>24</sup>
0174.04		3.20	90.54	91.55	F1 <sup>02</sup>
0146.42		346	90.28	91.42	F1 <sup>14</sup>
0118.80	EC Electric	390	89.84	91.25	F1 <sup>44</sup>
0100	PLEC	412	89.46 <del>89.62</del>	91.18	F1 <sup>23</sup> <del>F1<sup>55</sup></del>

93.74

X



No# 80094 State Obs. So. side Palomar  
 8-4-49  
 Hendricks La Jolla Blvd. to Electric.  
 Roberts  
 Greer  
 Bunch

0.84 82.29 83.22 CLK 2+46.49

(Electric & Palomar)  
 FB 1934 P. 95  
 Elev. G.

INDEXED  
 W.K.  
 SEP 1 1949

EC on Electric			174	82.33	82.67	FO <sup>34</sup>
#3			209	81.98	82.53	FO <sup>55</sup>
#2			182	82.25	82.40	FO <sup>15</sup>
#1			264	81.43	82.29	FO <sup>86</sup>
1+68.58 AC Electric			277	81.30	82.17	FO <sup>87</sup>
1+47.51			358	80.49	81.72	F1 <sup>23</sup>
1+26.44			433	79.74	81.26	F1 <sup>52</sup>
1+05.37			443	79.64	80.80	F1 <sup>16</sup>
0+84.30			492	79.15	80.34	F1 <sup>19</sup>
0+63.23			543	78.64	79.88	F1 <sup>24</sup>
0+42.16			495	79.12	79.42	FO <sup>30</sup>
0+21.08			566	78.41	78.96	FO <sup>55</sup>
0+00 AC Palomar			541	78.66	78.50	CO <sup>16</sup>
#2			567	78.40	78.37	CO <sup>03</sup>
#1 opp. PL. AC			568	78.39	78.35	CO <sup>04</sup>
AC on La Jolla			571	78.36	78.36	EX 06

1217 560 84.07  
 A

7847

NEBP La Jolla & Palomar

8-5-49 Stake Rough Grade  
 Hendricks Electric Ave Colima to Midway  
 Roberts  
 Greer  
 Bunch  
 W.O.# 31206  
 6-17-48 PL on Lt  
 5-190 PL &

	H.I.	- Lt.	Elev. Stake	Elev. Gr.
5186.51 BIKH		6.0	82.9	83.71
5166.51 PL RT.		6.0	82.9	83.77
5146.51 (PL) <sup>PLC</sup>		6.1	82.8	83.74
5121.23		6.5	82.4	83.64
4175.98		6.5	82.4	83.47
4130.73		6.5	82.4	83.30
3155.48		6.7	82.2	83.13
3140.23		6.5	82.4	82.95
T.P. 2194.98	6.54	88.93	4.46	82.39
			4.5	82.4
2149.73		4.6	82.3	82.61
2104.48		4.8	82.1	82.44
1159.23		5.1	81.8	82.27
1113.98		5.5	81.4	82.09
0168.73		5.6	81.3	81.92
0123.48 PL on Lt.		5.09	81.76	81.75
0100 No line Colima on &				
0-23.48 PL on Rt				

INDEXED  
 M.K.  
 SEP 1 1949

BM	332	88.61 (88.60)	SELBT
Cor F	- Rt.	Elev Stake	Elev Gr
FO <sup>3</sup>			
FO <sup>2</sup>	3.80	85.13	85.00 Ex. Ch.
FO <sup>2</sup>	2.0	86.9	84.92 C2 <sup>0</sup> -
FI <sup>2</sup>	2.0	86.9	84.82 C2 <sup>1</sup> -
FI <sup>1</sup>	3.0	85.9	84.65 C1 <sup>2</sup> -
FO <sup>2</sup>	2.9	86.0	84.48 C1 <sup>5</sup> -
FO <sup>2</sup>	2.6	86.3	84.31 C2 <sup>0</sup> -
FO <sup>6</sup>	3.4	85.5	84.13 C1 <sup>4</sup> -
FO <sup>4</sup>	1.8	85.1	83.96 C1 <sup>1</sup> -
FO <sup>3</sup>	1.9	85.0	83.79 C1 <sup>2</sup> -
FO <sup>3</sup>	2.2	84.7	83.62 C1 <sup>1</sup> -
FO <sup>5</sup>	1.6	85.3	83.45 C1 <sup>8</sup> -
FO <sup>2</sup>	2.3	84.6	83.27 C1 <sup>2</sup> -
FO <sup>6</sup>	2.7	84.2	83.10 C1 <sup>1</sup> -
(Ex. Ch.)	2.8	84.1	82.93 C1 <sup>3</sup> -
	2.8	84.1	82.8 C1 <sup>3</sup> -
			82.75

BM 8.87 86.85

77.98

SWBP La Jolla & Colima

5-4-49  
Hendricks  
Roberts  
Greer  
Bunch  
NO# 31292

State Alley Block 8  
Roseville Heights  
Ref. DWG. 70384  
FB 1720 P. 45

Sta.	H.I.	LI	LI	LI	LI	LI	LI	RI	RI	RI	Corf	offset
			Elev. Stake	Elev. Gr.	Corf.	Offset	- RI	Elev. Stake	Elev. Grade	RI		
2480		5.82	235.00	234.84	CO <sup>16</sup>	1'	5.57	235.25	235.00	CO <sup>25</sup>		2'
2460		4.63	236.19	235.82	CO <sup>32</sup>	1.05'	4.38	236.44	236.00	CO <sup>44</sup>		"
2440		2.83	237.99	236.80	CI <sup>19</sup>	1.15	3.80	237.02	237.00	CO <sup>02</sup>		"
2420		2.60	238.22	237.72	CO <sup>50</sup>	1'	2.43	238.39	237.94	CO <sup>45</sup>		"
2400		2.00	238.42	238.51	FO <sup>09</sup>	1'	1.06	239.76	239.75	CI <sup>01</sup>		"
1480		0.50	240.32	239.19	CI <sup>12</sup>	0.22	0.61	240.21	239.44	CO <sup>27</sup>		1'
1460		0.49	240.33	239.75	CO <sup>38</sup>	2'	0.27	240.55	240.00	CO <sup>55</sup>		"
TP	0.91	240.82	2.20	239.91				240.82				
1440		1.46	240.65	240.07	CO <sup>58</sup>	1'	1.40	240.71	240.32	CO <sup>39</sup>		2'
1420		1.33	240.78	240.01	CO <sup>22</sup>	1'	1.37	240.74	240.26	CO <sup>48</sup>		"
1400		1.29	240.82	239.60	CI <sup>22</sup>	1.65'	1.52	240.59	239.85	CO <sup>74</sup>		"
0480		2.38	239.73	238.81	CO <sup>92</sup>	2'	2.08	240.03	239.06	CO <sup>97</sup>		"
0460		3.55	238.56	237.64	CO <sup>92</sup>	"	3.33	238.78	237.89	CO <sup>89</sup>		"
0440		5.20	236.91	236.06	CO <sup>85</sup>	1.33'	4.68	237.43	236.31	CI <sup>12</sup>		"
0420		8.35	233.76	234.09	FO <sup>32</sup>	2'	7.47	234.64	234.34	CO <sup>30</sup>		"
0400	F. Line Concord	9.58	232.53	232.01	CO <sup>52</sup>	"	8.81	233.30	232.26	CI <sup>04</sup>		"
TP	10.34	242.11	6.53	231.77				242.11				
TP	11.20	238.30	0.49	227.10								
BM	11.50	227.59		216.09								

INDEXED  
SEP 11 1949

NWBP Tolbot & Concord

Stake Alley Block 8 Reservoir  
(Cont'd)

72

CK 817 12.25 219.63 219.66

Top Conc. Wall RI 4199.32 (FB 1720. P 52)

4199.32 H Line Bonger 51.11.94 219.97 216.85

C3<sup>12</sup>, 4' 12.30 219.61 216.60 C3<sup>01</sup> 1'

4180 9.29 222.62 219.39

C3<sup>23</sup>, 5' 10.51 221.40 219.20 C2<sup>20</sup> "

4160 8.23 223.68 222.03

C1<sup>65</sup>, 3' 8.77 223.14 221.89 C1<sup>25</sup> "

4140 6.84 225.07 224.46

C0<sup>61</sup>, 2' 6.94 224.97 224.37 C0<sup>60</sup> 2'

4120 5.19 226.72 226.56

C0<sup>6</sup>, " 4.97 226.94 226.52 C0<sup>42</sup> "

4100 2.25 229.66 228.35

C1<sup>31</sup>, " 2.92 228.99 228.34 C0<sup>65</sup> 1'

3480 1.92 229.99 229.80

C0<sup>19</sup>, 1' 2.00 229.91 229.84 C0<sup>07</sup> 2'

T.P. 1.92 231.91 10.53 229.99

C0<sup>04</sup>, " 231.91 9.80 231.02 231.00 C0<sup>02</sup> "

3460 9.84 230.98 230.94

C0<sup>61</sup>, 1.45' 8.59 232.23 232.00 C0<sup>23</sup> 1'

3440 8.30 232.52 231.91

F0<sup>09</sup>, 2' 8.03 232.79 233.00 F0<sup>21</sup> "

3420 8.02 232.80 232.89

F0<sup>38</sup>, " 6.85 233.97 234.00 F0<sup>03</sup> "

3400 7.33 233.49 233.87

240.82

8-549  
Hendricks  
Roberts  
Greer  
Bunch  
W0# 31406

State Rough Grades Electric  
Midway to Forward  
Dwyg. 7351.6

73

Sta.			El. Stake Cb H.	Elev. @ Stake H.	Cor F H.		Elev Stake H.	Cb. Elev H.	Cor F H.
5188.6	PK & Soline forward								
5164.68	PK on Rt.	6.2	87.78	88.5	CO <sup>2</sup>	5.68	89.01	89.00	(Ex Cb)
5120.48		6.9	87.47	87.8	CO <sup>3</sup>	5.0	89.7	88.70	C1 <sup>2</sup>
4776.25		6.9	87.16	87.8	CO <sup>6</sup>	2.6	92.1	88.40	C3 <sup>2</sup>
4132.02		7.0	86.85	87.7	CO <sup>8</sup>	2.7	92.0	88.10	C3 <sup>2</sup>
3487.79		8.0	86.54	86.7	CO <sup>3</sup>	3.2	91.5	87.80	C3 <sup>2</sup>
3143.56		8.6	86.23	86.1	FO <sup>4</sup>	3.7	91.0	87.50	C3 <sup>5</sup>
2499.33		8.6	85.92	86.1	CO <sup>3</sup>	4.0	90.7	87.20	C3 <sup>5</sup>
2155.10		9.4	85.61	85.3	FO <sup>3</sup>	4.5	90.2	86.90	C3 <sup>2</sup>
2110.87		10.0	85.30	84.7	FO <sup>6</sup>	5.3	89.4	86.60	C2 <sup>8</sup>
1166.64		10.5	84.99	84.2	FO <sup>8</sup>	6.1	88.6	86.30	C2 <sup>3</sup>
1122.41 BC		11.5	84.68	83.2	FI <sup>5</sup>	6.5	88.2	86.00	C2 <sup>2</sup>
0172.95		11.6	84.34	83.1	FI <sup>3</sup>	6.8	87.9	85.66	C2 <sup>2</sup>
0123.58	PK Lt.		84.00			6.6	88.1	85.32	C2 <sup>8</sup>

0100 PK & No. line Midway

B.17 9.09 94.69  
A

8560

SELBT Midway & Electric

State Obs. Electric Ave  
Midway to Forward. on Lt.

5471.50 PL Lt.	3.76	87.41	88.00	FO <sup>59</sup> ✓
5440.00	3.14	88.03	87.77	CO <sup>26</sup> ✓
5198.49	3.52	87.65	87.54	CO <sup>11</sup> ✓
4476.99	3.77	87.40	87.32	CO <sup>08</sup> ✓
4445.48	3.93	87.24	87.10	CO <sup>14</sup> ✓
4413.98	4.34	86.83	86.88	FO <sup>05</sup> ✓
3482.47	4.67	86.50	86.66	FO <sup>16</sup> ✓
3450.97	5.17	86.00	86.44	FO <sup>44</sup> ✓
3419.46	5.36	85.81	86.22	FO <sup>41</sup> ✓
2487.96	5.57	85.60	86.00	FO <sup>40</sup> ✓
2456.45	5.53	85.64	85.78	FO <sup>14</sup> ✓
2424.95	5.87	85.30	85.56	FO <sup>26</sup> ✓
1493.44	5.95	85.22	85.34	FO <sup>12</sup> ✓
1461.94	6.25	84.92	85.12	FO <sup>20</sup> ✓
1430.43	6.41	84.76	84.90	FO <sup>14</sup> ✓
0498.93 BC.	6.74	84.43	84.68	FO <sup>25</sup> ✓
0465.95	6.73	84.44	84.45	FO <sup>01</sup> ✓
0432.97	7.24	83.93	84.22	FO <sup>29</sup> ✓
0400 Cb. Ref. EC Elec E Midway	7.38	83.79	84.00	FO.24
Ex. Cb. PL on Lt.	7.31	83.86	83.87	

BM 5.57 91.17

85.60

SE. LBT Midway & Electric

## State Cbs Electric Ave Rt

75

## Midway to Forward

		ELEV	STAKE	Cb ELEV	
518197 PK	2.41	8931	89.02	CO <sup>29</sup>	/
517632 RC Cb Rel.	2.13	8959	89.00	CO <sup>29</sup>	/
5147.07	3.13	88.89	88.80	FO <sup>31</sup>	/
511779	3.36	8836	88.60	FO <sup>31</sup>	/
418851	3.36	88.36	88.40	FO <sup>04</sup>	/
415923	3.14	87.98	88.20	FO <sup>22</sup>	/
412995	4.06	87.66	88.00	FO <sup>34</sup>	/
4100.67	4.47	87.25	87.80	FO <sup>55</sup>	/
3771.39	4.90	86.82	87.60	FO <sup>78</sup>	/
3142.11	5.00	86.72	87.40	FO <sup>68</sup>	/
312.83	4.85	86.87	87.20	FO <sup>33</sup>	/
2483.55	4.61	87.11	87.00	CO <sup>11</sup>	/
2154.27	4.98	86.74	86.80	FO <sup>06</sup>	/
212499	5.15	86.57	86.60	FO <sup>03</sup>	/
1195.71	5.38	86.34	86.40	FO <sup>06</sup>	/
1166.43	5.50	86.22	86.20	CO <sup>02</sup>	/
113715 RC	5.95	85.77	86.00	FO <sup>23</sup>	/
1109.72	6.14	85.58	85.80	FO <sup>22</sup>	/
0152.29	6.37	85.35	85.60	FO <sup>25</sup>	/
0154.86	6.55	85.17	85.40	FO <sup>23</sup>	/
0127.43	6.8.7	84.85	85.20	FO <sup>35</sup>	/
01.00	6.74	84.98	85.00	Ex. Cb.	

B17. 6.12 91.72  
X

88.60

SE L&amp;T Midway &amp; Electric

8-16-49  
Hendricks  
Bunch  
Gregory  
Shepherd  
No# 31339

Stake Senior Calle Dela Plata  
Paseo Donoso South to D.E.  
DM# 1381-D

2540

76

INDEXED

W.K.  
SEP 1 1949

1438.80			6.81	18.59	12.42	66.17	/
1411.04			8.45	16.95	10.76	66.19	/
0183.28			9.98	15.42	9.09	66.33	/
045552			11.28	14.12	7.43	66.69	/
T.P.	12.48	25.40	1.01	12.93			
0427.76			0.93	13.66	5.76	67.24	/
= 0400				12.34	4.10	68.24	/
3408.33	M.H.#44		1.59	12.34	4.01	68.33	/
2477.47			2.27	11.66	3.60	68.06	/
2446.64			2.89	11.04	3.20	67.84	/
2415.81			3.45	10.48	2.80	67.68	/
1484.98			4.06	9.87	2.40	67.47	/
1454.15			4.62	9.31	2.00	67.31	/
1423.32			5.22	8.71	1.60	67.11	/
0492.49			5.78	8.15	1.20	66.95	/
0461.66			6.32	7.61	0.80	66.81	/
0430.83			6.86	7.37	0.40	66.97	/
0400	DMH#43		7.62	6.31	0.00	66.31	/

B.17 2.17 13.93  
↑

11.76

£ Nail 8100 (PB1857-P-20)



BM			10.50	46.82	46.81	2101 13100 (FB1857 P. 21)
1490.00	DE		0.16	46.16	35.95	C10.21
1462.84			3.53	42.79	33.77	C9.02
1435.70			6.52	39.76	31.60	C8.16
1408.56			8.88	37.44	29.43	C8.01
0181.42			11.26	35.06	27.26	C7.80
T.P.	13.64	46.32	2.09	32.68		
0154.28			2.08	32.69	25.09	C7.60
0427.14			4.37	30.40	22.92	C7.48
=0+00						
2177.57	M.H. #45		5.95	28.82	20.75	C8.07
2149.54			7.45	27.32	19.08	C8.24
2122.08			9.24	25.53	17.42	C8.11
T.P.	10.48	34.77	1.11	24.29		
1494.32			2.12	23.28	15.75	C7.53
1466.52			4.46	20.94	14.09	C6.85

25.40

8-17-49 State Jewer Camino Del Sol  
Hendricks La Playa to DE on Dela Ribera  
Roberts Dwg. 1382-D  
Bunch  
Gregory

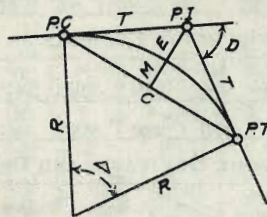
NO# 31339	4.88	3.98	3.98	CK TOP Co. 21 5+00 (FB 1857) P. 29
0+4858	5.12	3.74	-1.96	CC 5.70
0+2429	4.99	3.87	-2.13	CC 6.00
0+00 =	4.90	3.96	-2.30	CC 26
3+64.09 MH #40	5.01	3.85	-2.47	CC 32
3+38	5.26	3.60	-2.65	CC 25
3+12	5.40	3.46	-2.83	CC 29
2+86	5.49	3.37	-2.01	CC 38
2+60	5.55	3.31	-3.19	CC 50
2+34	5.70	3.16	-3.37	CC 53
2+08	5.75	3.11	-3.55	CC 66
1+82	5.98	3.08	-3.73	CC 81
1+56	5.82	3.04	-3.91	CC 95
1+30	6.03	2.83	-4.09	CC 92 1470 DE 5.18 3.68 -1.11 CC 4.79
1+04	6.19	2.67	-4.27	CC 97 1445.74 5.23 3.63 -1.28 CC 4.91
0+82	6.16	2.70	-4.42	CC 13 1121.45 5.08 3.78 -1.45 CC 5.23
0+56	6.36	2.50	-4.61	CC 11 0197.16 5.18 3.68 -1.62 CC 5.30
0+30	6.21	2.65	-4.79	CC 44 0172.87 5.25 3.61 -1.79 CC 5.40
0+00 DMH #4	6.06	2.80	-5.00	CC 80

INDEXED  
W.K.  
SEP 1 1949

BM 5.88 8.86 2.98 2 Nail Dela Playa 6+06.11 (P. 6 FB 1857)

# DIETZGEN'S RAILROAD CURVE AND REDUCTION TABLES

Copyright, 1914, by Eugene Dietzgen Co., New York City



## CURVE FORMULAS

Radius= $R = \frac{50}{\sin \frac{D}{2}}$  (1) Degree of Curve= $D$  and  $\sin \frac{D}{2} = \frac{50}{R}$  (2)

Tangent= $T = R \tan \frac{\Delta}{2}$  (3) Length of Curve= $L = 100 \frac{\Delta}{D}$  (4)

Middle ordinate= $M = R(1 - \cos \frac{\Delta}{2})$  (5)  $= R \text{vers} \frac{\Delta}{2}$  (6)

External= $E = T \tan \frac{\Delta}{4}$  (7)  $= R + \cos \frac{\Delta}{2} - R$  (8)  $= R \text{exsec} \frac{\Delta}{2}$  (9)

Long Chord= $C = 2 R \sin \frac{\Delta}{2}$  (10)  $\Delta =$  Central Angle

## EXPLANATION AND USE OF TABLES

**Stations.**—Given P. I.=Sta. 161+60.35 to find Sta. of P. C. and P. T.  $\Delta = 62^\circ 10'$   $D = 8^\circ 20'$ . From Table IV for  $1^\circ$  curve  $T = 3454.1$  and  $\div 8\frac{1}{3} = 414.49$  ft. From Table V correction=.36 or  $T = 414.85$  ft. P. C.=Sta. P.I.— $T = 157 + 45.50$ . Also from (4)  $L = 746.00$  and P. T.=Sta. P. C. +  $L = 164 + 91.50$ .

**Offsets.**—Tangent offsets vary (approximately) directly with  $D$  and with square of the distance. Thus tangent offset for Sta. 158 on above curve is 2.16 ft. found as follows. From Table III tangent offset for 100 ft.=7.27 ft. Distance=158—Sta. P. C.=54.50, hence offset=7.27  $(54.50 \div 100)^2 = 2.16$  ft. Also square of any distance divided by twice the radius equals (approximately) the distance from tangent to curve. Thus  $(54.50)^2 \div (2 \times 688.26) = 2.16$  ft.

**Deflections.**—Deflection angle= $\frac{1}{2} D$  for 100 ft.,  $\frac{1}{4} D$  for 50 ft., etc. For  $c$  ft.=(in minutes)  $.3 \times C \times D^\circ$  or=defl. for 1 ft. from Table III  $\times C$ . For Sta. 158 of above curve=.3  $\times 54.5 \times 8\frac{1}{3} = 136.2'$  or  $2^\circ 16.2'$ , or= $2.50 \times 54.5 = 136.2'$  from Table III. For Sta. 159 deflection angle= $2^\circ 16.2' + 8^\circ 20' \div 2 = 6^\circ 26.2'$ , etc.

**Externals.**—May be found in similar manner to tangents. Thus  $E$  for curve above is 115.37. For from Table IV for  $1^\circ$  curve  $E = 960.6$  for  $8^\circ 20' = 960.6 \div 8\frac{1}{3} = 115.27$  and from Table V correction=.10 or  $E = 115.37$  ft. Or suppose  $\Delta = 32^\circ$  and  $E$  is measured and found to be 42 ft. What is  $D$ ? From Table IV  $E = 230.9$  and  $\div 42 = 5.5$  or  $D = 5^\circ 30'$ .

DISTANCES FROM CENTER OF ROADWAY FOR  
CROSS-SECTIONING.

Roadway 16 feet wide. Side Slopes 1 on 1½  
For Single Track Embankment.

H	0	.1	.2	.3	.4	.5	.6	.7	.8	.9	H
0	8.0	8.2	8.3	8.5	8.6	8.8	8.9	9.1	9.2	9.4	0
1	9.5	9.7	9.8	10.0	10.1	10.3	10.4	10.6	10.7	10.9	1
2	11.0	11.2	11.3	11.5	11.6	11.8	11.9	12.1	12.2	12.4	2
3	12.5	12.7	12.8	13.0	13.1	13.3	13.4	13.6	13.7	13.9	3
4	14.0	14.2	14.3	14.5	14.6	14.8	14.9	15.1	15.2	15.4	4
5	15.5	15.7	15.8	16.0	16.1	16.3	16.4	16.6	16.7	16.9	5
6	17.0	17.2	17.3	17.5	17.6	17.8	17.9	18.1	18.2	18.4	6
7	18.5	18.7	18.8	19.0	19.1	19.3	19.4	19.6	19.7	19.9	7
8	20.0	20.2	20.3	20.5	20.6	20.8	20.9	21.1	21.2	21.4	8
9	21.5	21.7	21.8	22.0	22.1	22.3	22.4	22.6	22.7	22.9	9
10	23.0	23.2	23.3	23.5	23.6	23.8	23.9	24.1	24.2	24.4	10
11	24.5	24.7	24.8	25.0	25.1	25.3	25.4	25.6	25.7	25.9	11
12	26.0	26.2	26.3	26.5	26.6	26.8	26.9	27.1	27.2	27.4	12
13	27.5	27.7	27.8	28.0	28.1	28.3	28.4	28.6	28.7	28.9	13
14	29.0	29.2	29.3	29.5	29.6	29.8	29.9	30.1	30.2	30.4	14
15	30.5	30.7	30.8	31.0	31.1	31.3	31.4	31.6	31.7	31.9	15
16	32.0	32.2	32.3	32.5	32.6	32.8	32.9	33.1	33.2	33.4	16
17	33.5	33.7	33.8	34.0	34.1	34.3	34.4	34.6	34.7	34.9	17
18	35.0	35.2	35.3	35.5	35.6	35.8	35.9	36.1	36.2	36.4	18
19	36.5	36.7	36.8	37.0	37.1	37.3	37.4	37.6	37.7	37.9	19
20	38.0	38.2	38.3	38.5	38.6	38.8	38.9	39.1	39.2	39.4	20
21	39.5	39.7	39.8	40.0	40.1	40.3	40.4	40.6	40.7	40.9	21
22	41.0	41.2	41.3	41.5	41.6	41.8	41.9	42.1	42.2	42.4	22
23	42.5	42.7	42.8	43.0	43.1	43.3	43.4	43.6	43.7	43.9	23
24	44.0	44.2	44.3	44.5	44.6	44.8	44.9	45.1	45.2	45.4	24
25	45.5	45.7	45.8	46.0	46.1	46.3	46.4	46.6	46.7	46.9	25
26	47.0	47.2	47.3	47.5	47.6	47.8	47.9	48.1	48.2	48.4	26
27	48.5	48.7	48.8	49.0	49.1	49.3	49.4	49.6	49.7	49.9	27
28	50.0	50.2	50.3	50.5	50.6	50.8	50.9	51.1	51.2	51.4	28
29	51.5	51.7	51.8	52.0	52.1	52.3	52.4	52.6	52.7	52.9	29
30	53.0	53.2	53.3	53.5	53.6	53.8	53.9	54.1	54.2	54.4	30
31	54.5	54.7	54.8	55.0	55.1	55.3	55.4	55.6	55.7	55.9	31
32	56.0	56.2	56.3	56.5	56.6	56.8	56.9	57.1	57.2	57.4	32
33	57.5	57.7	57.8	58.0	58.1	58.3	58.4	58.6	58.7	58.9	33
34	59.0	59.2	59.3	59.5	59.6	59.8	59.9	60.1	60.2	60.4	34
35	60.5	60.7	60.8	61.0	61.1	61.3	61.4	61.6	61.7	61.9	35
36	62.0	62.2	62.3	62.5	62.6	62.8	62.9	63.1	63.2	63.4	36
37	63.5	63.7	63.8	64.0	64.1	64.3	64.4	64.6	64.7	64.9	37
38	65.0	65.2	65.3	65.5	65.6	65.8	65.9	66.1	66.2	66.4	38
39	66.5	66.7	66.8	67.0	67.1	67.3	67.4	67.6	67.7	67.9	39
40	68.0	68.2	68.3	68.5	68.6	68.8	68.9	69.1	69.2	69.4	40

Example—If point is 22.6 ft. above grade, how far should it be from center line to be a slope stake point? Ans. from Table 41.9. For same slopes but other widths of roadbed correct above figures by one-half difference in width of roadbed; thus in example above for 20 ft. roadbed distance will be  $41.9 + (20 - 16) \div 2$  or 2 ft. added to 41.9 = 43.9. For slopes of 1 on 1 see inside of front cover.

MADE IN U.S.A.

Handwritten calculations and notes on the left page of the notebook, including various numbers and mathematical operations.

853  
5912  
20  
252  
021  
+231  
11.73  
313  
1786  
773  
32  
809  
1619  
602  
30018  
14002  
14016  
745  
736  
781  
1611  
830  
137.90  
2723  
67  
7848  
67  
9915  
14728  
213  
22  
7  
154  
34720  
1223  
33397  
334229  
334229  
334229  
220  
119  
1214  
1333  
137.59  
193  
389  
4