

EUGENE DIETZGEN CO.

DRAWING MATERIALS, MATHEMATICAL and
SURVEYING INSTRUMENTS

Chicago New York San Francisco New Orleans Pittsburg Toronto

Distances from Center of Roadway for Cross-Sectioning
Roadway 16 feet wide. Side Slopes 1 on 1.
For Single Track Embankment.

H	0	.1	.2	.3	.4	.5	.6	.7	.8	.9	H
0	8.0	8.1	8.2	8.3	8.4	8.5	8.6	8.7	8.8	8.9	0
1	9.0	9.1	9.2	9.3	9.4	9.5	9.6	9.7	9.8	9.9	1
2	10.0	10.1	10.2	10.3	10.4	10.5	10.6	10.7	10.8	10.9	2
3	11.0	11.1	11.2	11.3	11.4	11.5	11.6	11.7	11.8	11.9	3
4	12.0	12.1	12.2	12.3	12.4	12.5	12.6	12.7	12.8	12.9	4
5	13.0	13.1	13.2	13.3	13.4	13.5	13.6	13.7	13.8	13.9	5
6	14.0	14.1	14.2	14.3	14.4	14.5	14.6	14.7	14.8	14.9	6
7	15.0	15.1	15.2	15.3	15.4	15.5	15.6	15.7	15.8	15.9	7
8	16.0	16.1	16.2	16.3	16.4	16.5	16.6	16.7	16.8	16.9	8
9	17.0	17.1	17.2	17.3	17.4	17.5	17.6	17.7	17.8	17.9	9
10	18.0	18.1	18.2	18.3	18.4	18.5	18.6	18.7	18.8	18.9	10
11	19.0	19.1	19.2	19.3	19.4	19.5	19.6	19.7	19.8	19.9	11
12	20.0	20.1	20.2	20.3	20.4	20.5	20.6	20.7	20.8	20.9	12
13	21.0	21.1	21.2	21.3	21.4	21.5	21.6	21.7	21.8	21.9	13
14	22.0	22.1	22.2	22.3	22.4	22.5	22.6	22.7	22.8	22.9	14
15	23.0	23.1	23.2	23.3	23.4	23.5	23.6	23.7	23.8	23.9	15
16	24.0	24.1	24.2	24.3	24.4	24.5	24.6	24.7	24.8	24.9	16
17	25.0	25.1	25.2	25.3	25.4	25.5	25.6	25.7	25.8	25.9	17
18	26.0	26.1	26.2	26.3	26.4	26.5	26.6	26.7	26.8	26.9	18
19	27.0	27.1	27.2	27.3	27.4	27.5	27.6	27.7	27.8	27.9	19
20	28.0	28.1	28.2	28.3	28.4	28.5	28.6	28.7	28.8	28.9	20
21	29.0	29.1	29.2	29.3	29.4	29.5	29.6	29.7	29.8	29.9	21
22	30.0	30.1	30.2	30.3	30.4	30.5	30.6	30.7	30.8	30.9	22
23	31.0	31.1	31.2	31.3	31.4	31.5	31.6	31.7	31.8	31.9	23
24	32.0	32.1	32.2	32.3	32.4	32.5	32.6	32.7	32.8	32.9	24
25	33.0	33.1	33.2	33.3	33.4	33.5	33.6	33.7	33.8	33.9	25
26	34.0	34.1	34.2	34.3	34.4	34.5	34.6	34.7	34.8	34.9	26
27	35.0	35.1	35.2	35.3	35.4	35.5	35.6	35.7	35.8	35.9	27
28	36.0	36.1	36.2	36.3	36.4	36.5	36.6	36.7	36.8	36.9	28
29	37.0	37.1	37.2	37.3	37.4	37.5	37.6	37.7	37.8	37.9	29
30	38.0	38.1	38.2	38.3	38.4	38.5	38.6	38.7	38.8	38.9	30
31	39.0	39.1	39.2	39.3	39.4	39.5	39.6	39.7	39.8	39.9	31
32	40.0	40.1	40.2	40.3	40.4	40.5	40.6	40.7	40.8	40.9	32
33	41.0	41.1	41.2	41.3	41.4	41.5	41.6	41.7	41.8	41.9	33
34	42.0	42.1	42.2	42.3	42.4	42.5	42.6	42.7	42.8	42.9	34
35	43.0	43.1	43.2	43.3	43.4	43.5	43.6	43.7	43.8	43.9	35
36	44.0	44.1	44.2	44.3	44.4	44.5	44.6	44.7	44.8	44.9	36
37	45.0	45.1	45.2	45.3	45.4	45.5	45.6	45.7	45.8	45.9	37
38	46.0	46.1	46.2	46.3	46.4	46.5	46.6	46.7	46.8	46.9	38
39	47.0	47.1	47.2	47.3	47.4	47.5	47.6	47.7	47.8	47.9	39
40	48.0	48.1	48.2	48.3	48.4	48.5	48.6	48.7	48.8	48.9	40

Example—If point is 22.6 ft. above grade, how far should it be from center line to be a slope stake point? Ans. from Table 30.6. For same slopes but other widths of roadbed, correct above figures by one-half difference in width of roadbed; thus in example above, for 20 ft. roadbed distance will be $30.6 + (20 - 16) \div 2$ or 2 ft. added to 30.6 = 32.6. For slopes of 1 on 1½ see inside of back cover.

Copyright, 1914, by Eugene Dietzgen Co.

G-247

CITY ENGINEER'S OFFICE

MICROFILMED

APR 13 1965

This Field Book is manufactured of a High Grade 50% Rag Paper having a WATER RESISTING SURFACE, and is sewed with Bing Special Enamel Waterproof thread.

Made in U. S. A.

1-30 Alignment & Grades Montezuma Road Catskill Dr.

74 - Curb Eley. on Montezuma - 76

Montezuma Road Alignment
Alley East of College Ave 0+0 to 36+75

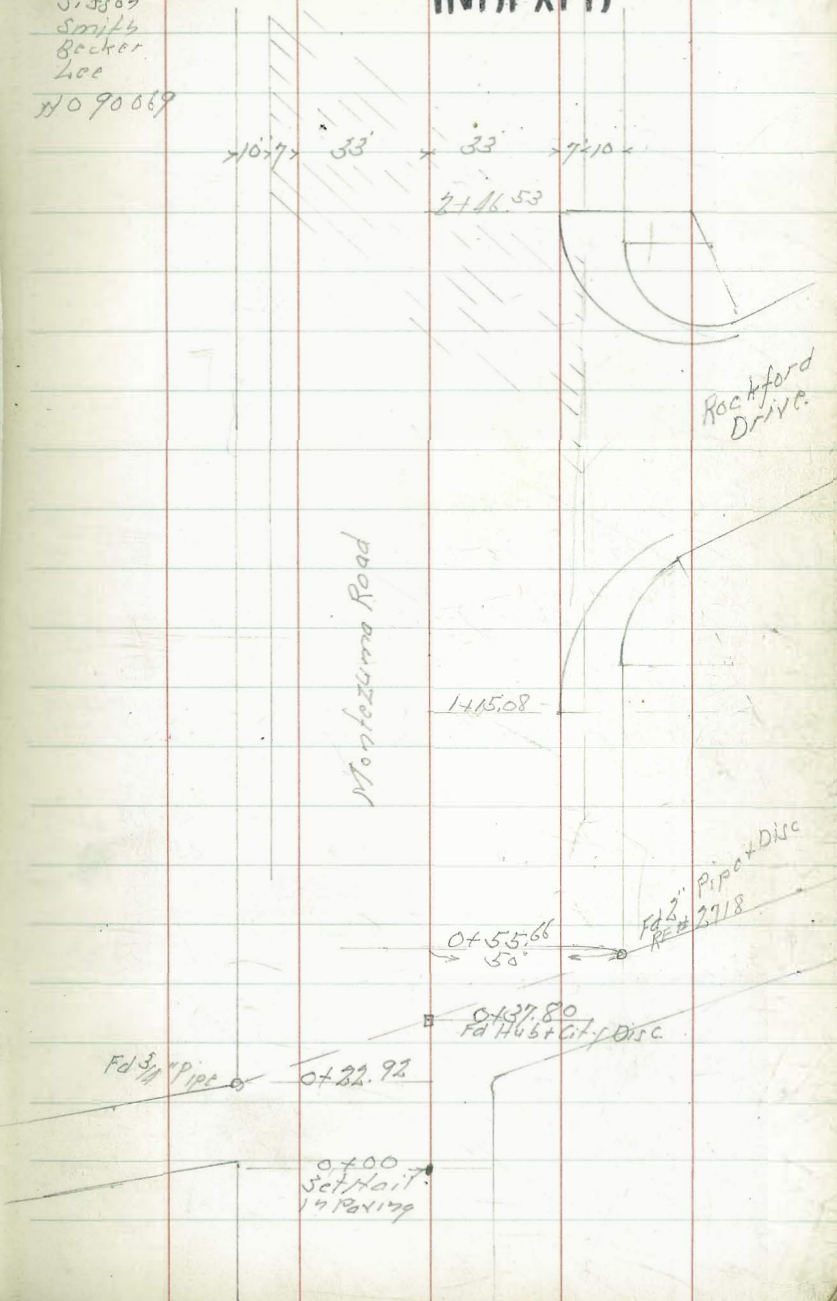
Field Books

1499
1639
1669
1808
TP # 29
1814-64

INDEXED
W.K.

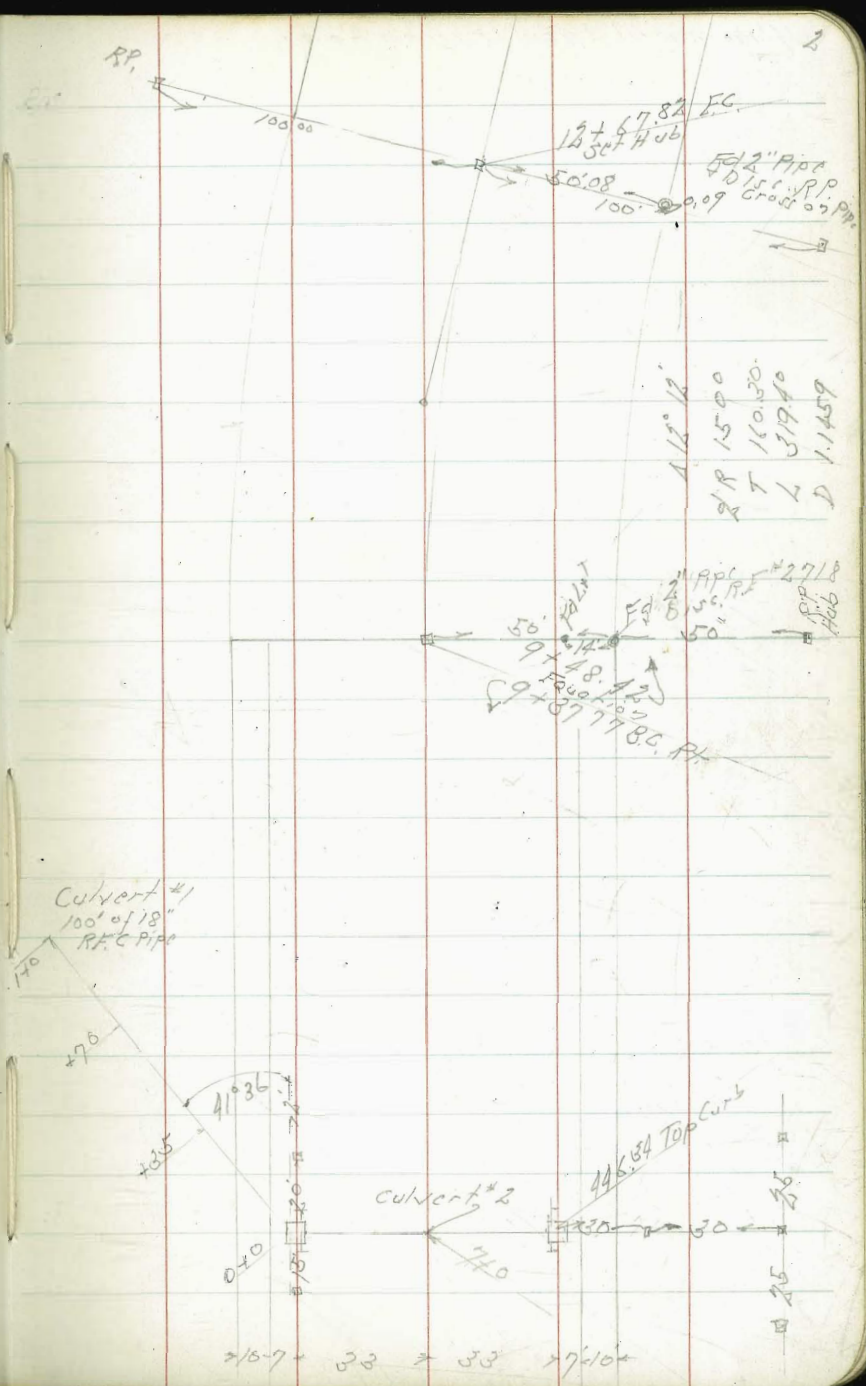
INDEXED

Aug. 3-18
J. S. 507
Smith
Becker
Lee
11090069



Alignment Montezuma Road

Re stake Culvert #1			
BM	1.27	432.73	431.46
			0.75 Sub 13.2 of 8.10/10 9.239
	15'	West of 1/2 Inlet or Cb. line	446.34
			-13.61 4.40 -18.01
	20'	East of 1/2 Inlet	446.34
			-13.61 13.97 -27.58
	0+0	= Center Box	422.35
			10.38 6.33 14.05 10.21
	+35		418.03
			14.70 13.05 +1.65 10.21
	TP	2.48	422.18
		13.03	419.70
	+70		413.70
			8.18 2.77 +0.71 10.21
	1+0	= cullet	410.00
			12.18 11.25 0.23 10.21



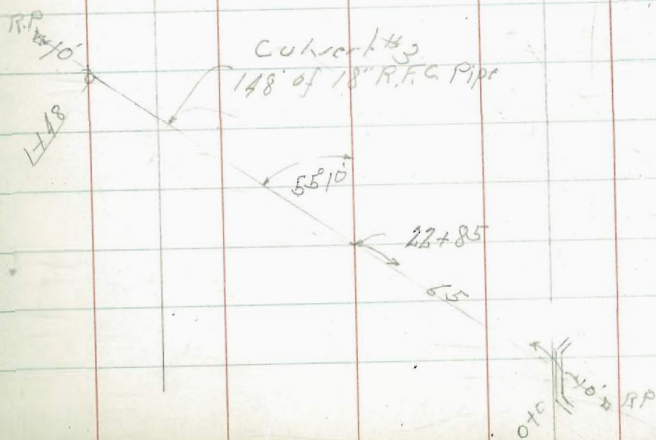
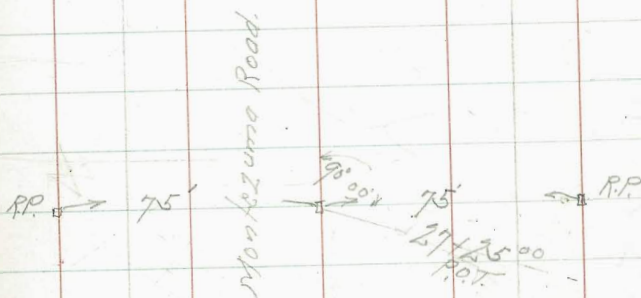
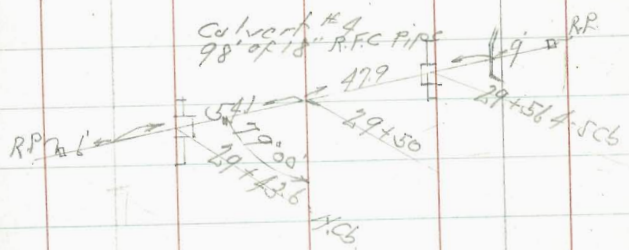
Alignment Montezuma Road

Culvert #4

B.M.	2.20	452.92	450.72	07/11/05 27+25 #1808-20
TP	2.92	444.48	1136	441.56
0+0 = Inlet			438.90	5.58 5.60 F0.02 10' Fall
+143 = 5Cb Line		6.18 5.28 C0.48	438.30	
" = 29+56.4 10' Fall			445.53	-1.05 5.76 F6.75
" " 10' Fall		-1.05 6.54 F7.57	445.53	
+479 = Montezuma			437.00	7.18 7.02 C0.46
+81.5 = 11Cb Line		8.78 8.39 C0.39	435.70	
" = 29+43.6 10' F			445.47	-0.99 8.39 F9.38
" " 10' F		-0.99 9.00 F9.99	445.47	
1+02			434.50	9.98 9.23 C0.73 10' Fall

Culvert #3

B.M.	0.54	451.73	451.19	07/11/05 21+89.70 #1808-20
0+0 = Inlet			439.50	17.23 16.57 C0.70
+37			438.25	13.48 13.1 C0.37 10'
+79			437.00	14.73 8.17 C6.57 10'
1+11			435.75	15.74 13.29 C2.45 10'
748 = outlet			434.50	17.23 16.87 C0.36 15'



Montezuma Road Grades

Notes Reduced to
Levelling
1024-48

Curb Grade

St. North

			454.9	456.7
1+40	452.16		9.3 8.8 +2.2 42.7	9.3 8.2 +1.1 33

			454.7	454.8
1+15.08	C6 BC. 00 R 452.18		9.3 8.8 +2.6 42.6	9.3 8.7 +2.6 42.6

		456.1	455.8	454.4	454.9
0+80	452.05	9.4 8.8 +4.1 48.8	9.4 8.6 +3.8 48.8	9.4 8.5 +3.4 33	9.4 8.5 +2.9 32

		452.6	452.2	452.7
0+55.66	0750 451.80	9.6 8.8 +0.8 48.4	9.6 9.2 +0.4 48.4	9.6 9.1 +0.5 33

		451.3	450.9	450.8
0+22.9	0711 451.23	10.1 10.1 0.0 47	10.1 10.5 -0.4 10	10.1 10.6 -0.5 33

B.M. 8.92 461.43 452.51
 SET TO PT. H24
 Collegiate
 + Montezuma
 452.42
 #1808-19

			456.5	454.1	454.6	452.9	452.2
			9.3 8.0 +4.3 26	9.15 7.4 +1.9 0.0	9.3 8.3 +3.4 14	9.3 8.6 +0.7 33	9.3 9.2 0.0 40

			454.3	454.1	454.9	453.8	453.5	453.4
			9.3 7.2 +2.1 33	9.3 7.2 +1.9 0.0	9.3 8.6 +2.7 14	9.3 7.7 +1.6 33	9.3 8.0 +1.3 41.3	9.3 8.1 +1.2 46.3

			453.5	453.7	454.0	453.4	453.5
			9.4 7.9 +1.5 13	9.4 7.7 +1.7 8.0	9.4 7.4 +2.0 33	9.4 8.6 +1.8 41.4	9.4 7.9 +1.5 46.4

			452.6	453.4	453.6	453.8	454.2	453.8
			9.6 8.8 +0.8 45	9.6 8.6 +1.6 0.0	9.6 7.8 +1.8 20	9.6 7.8 +2.0 33	9.6 7.2 +2.4 48.4	9.6 7.6 +2.0 47.4

			450.6	451.1	450.9	451.3	451.2
			10.1 10.8 0.7 14	10.1 10.3 0.2 0.0	10.1 10.1 0.9 18	10.1 10.1 0.0 30	10.1 10.2 0.1 10

461.43

Carb Grade

Lt = North

±

Rt = South

7

455.3 455.4

455.7 455.4

455.6

456.4

453.0

453.3

+ 80

450.65

10.8 10.8
6.1 6.6
+4.7 +4.8
49.8 44.8

10.8 10.8
5.7 6.8
+5.1 +4.8
33 0.0

10.8 10.8
5.8 5.8
+5.0 +5.8
33 38

10.8 10.8
5.8 8.2
+5.8 +2.4
38 42.4

10.8 10.8
8.2 8.1
+2.4 +3.7
42.4 47.4

455.2

455.6

457.1

457.4

455.8

456.6

456.2

455.1

455.3

453.2

452.7

+ 46.53

CBFC.0784

451.08

10.3 10.3 10.3
6.2 6.8 4.8
+4.1 +4.5 +6.0
49.5 44.5 33

10.3 10.3
5.8 3.8
+4.7 +6.5
6 24

10.3 10.3
5.2 4.8
+4.7 +5.6
6 0.0

10.3 10.3
5.2 6.3
+4.7 +4.0
16 33

10.3 10.3
6.3 8.1
+4.0 +4.2
33 37

10.3 10.3
8.2 8.2
+3.7 +1.6
42.1 47.1

+ 20

451.42

454.0
10.0
6.2
+3.6
43.6

455.7
10.8
5.7
+4.3
33

454.9
10.8
6.6
+3.5
0.0

455.1
10.8
6.3
+3.7
18

453.7
10.8
7.7
+2.9
33

452.5
10.8
8.9
+1.7
41.1

2 + 0

PVC

451.68

454.8 454.8 454.9
9.7 9.7 9.7
6.6 6.6 6.6
+3.1 +3.1 +3.2
48.1 43.1 33

456.2 455.9 454.9
9.7 9.7 9.7
6.6 5.5 6.6
+4.5 +4.3 +3.2
30 0.0 17

454.9 453.3 452.7 452.2
9.7 9.7 9.7 9.7
6.6 8.7 8.7 9.2
+3.2 +1.6 +1.0 +0.6
17 33 41.0 46.0

1 + 80

451.91

455.0
9.5
6.4
+3.1
43.1

454.6 454.5 454.6 453.1 452.9
9.5 9.5 9.5 9.5 9.5
6.8 6.9 7.6 8.3 8.6
+2.7 +2.6 +1.2 +1.0
33 0.0 18 33 41.0

454.6 454.5 454.6 453.1 452.9
9.5 9.5 9.5 9.5 9.5
6.8 6.9 7.6 8.3 8.6
+2.7 +2.6 +1.2 +1.0
33 0.0 18 33 41.0

454.6 454.5 454.6 453.1 452.9
9.5 9.5 9.5 9.5 9.5
6.8 6.9 7.6 8.3 8.6
+2.7 +2.6 +1.2 +1.0
33 0.0 18 33 41.0

454.6 454.5 454.6 453.1 452.9
9.5 9.5 9.5 9.5 9.5
6.8 6.9 7.6 8.3 8.6
+2.7 +2.6 +1.2 +1.0
33 0.0 18 33 41.0

454.6 454.5 454.6 453.1 452.9
9.5 9.5 9.5 9.5 9.5
6.8 6.9 7.6 8.3 8.6
+2.7 +2.6 +1.2 +1.0
33 0.0 18 33 41.0

1 + 60

452.07

454.7 454.9 455.7
9.4 9.4 9.4
6.8 6.6 6.8
+2.6 +2.8 +3.6
47.8 43.8 33

456.5 455.0 454.1 452.9 452.5 452.1
9.6 9.4 9.4 9.4 9.4 9.4
5.8 6.6 7.4 8.6 8.4 9.4
+4.4 +3.6 +2.0 +0.8
23 0.0 15 33 40.4 45.4

456.5 455.0 454.1 452.9 452.5 452.1
9.6 9.4 9.4 9.4 9.4 9.4
5.8 6.6 7.4 8.6 8.4 9.4
+4.4 +3.6 +2.0 +0.8
23 0.0 15 33 40.4 45.4

456.5 455.0 454.1 452.9 452.5 452.1
9.6 9.4 9.4 9.4 9.4 9.4
5.8 6.6 7.4 8.6 8.4 9.4
+4.4 +3.6 +2.0 +0.8
23 0.0 15 33 40.4 45.4

456.5 455.0 454.1 452.9 452.5 452.1
9.6 9.4 9.4 9.4 9.4 9.4
5.8 6.6 7.4 8.6 8.4 9.4
+4.4 +3.6 +2.0 +0.8
23 0.0 15 33 40.4 45.4

456.5 455.0 454.1 452.9 452.5 452.1
9.6 9.4 9.4 9.4 9.4 9.4
5.8 6.6 7.4 8.6 8.4 9.4
+4.4 +3.6 +2.0 +0.8
23 0.0 15 33 40.4 45.4

461.43

461.43

Montezuma Road

Curb Grade

Lt.

Rt.

Pt.

9

			425.9	425.5	424.3	422.4	421.3	435.0	434.7	434.7	434.6	435.1	
7+0	446.34		-6.7 13.7 -20.4 76.2	-6.7 14.1 -20.8 71.2	-6.7 15.3 -22.0 40.	-6.7 17.2 -23.9 33	-6.7 18.3 -25.0 0.0	-6.7 16.6 -11.3 22	-6.7 14.9 -11.6 33	-6.7 14.6 -11.6 40	-6.7 15.9 -11.7 57.6	-6.7 14.2 -11.2 62.8	
6+60	446.39		435.3	435.4	435.7	434.8	430.6	431.2	436.6	436.3	436.1	435.2	435.4
			-6.6 4.5 -12.1 61.5	-6.6 4.4 -11.0 56.5	-6.6 4.4 -10.9 40	-6.6 5.0 -11.6 33	-6.6 5.2 -15.2 8.0	-6.6 8.6 -15.2 12	-6.6 3.2 -9.8 20	-6.6 3.5 -10.1 33	-6.6 3.2 -10.3 40	-6.6 4.8 -11.2 56.8	-6.6 4.2 -11.0 61.8
TP	6.39	439.67	13.42.2	13.22.8	441.7	441.6	439.67x	439.0	440.0	439.4	438.6	438.6	438.4
6+20	446.54		-0.3 4.1 -4.4 51.6	-0.3 4.1 -4.4 46.6	-0.3 4.4 -4.7 40	-0.3 4.5 -4.8 33	-0.3 2.1 -7.4 6.0	-0.3 2.1 -7.4 9	-0.3 6.7 -6.4 14	-0.3 6.7 -7.0 33	-0.3 2.5 -7.6 40	-0.3 2.7 -7.8 51.7	-0.3 2.7 -8.0 56.7
TP	157	446.28	12.15	444.71			4462.8						
7+88	446.75		446.7	446.7	446.7	446.1	445.6	444.9	444.6	444.6	444.7		
			10.6 10.8 0.2 4.4	10.6 10.6 0.0 40	10.6 10.6 0.0 33	10.6 11.2 -0.6 0.0	10.6 11.5 -0.9 9	10.6 12.4 -1.8 12	10.6 12.2 -2.1 33	10.6 12.2 -2.1 33	10.6 12.6 -2.0 43		
7+75	446.86		448.7	448.6	448.6	448.1	447.2	446.9	446.9	446.9	446.9		
			10.5 8.7 +1.8 41.8	10.5 8.8 +1.7 33	10.5 8.8 +1.7 33	10.5 9.3 +1.2 0.0	10.5 10.2 +0.3 11	10.5 10.5 0.0 33	10.5 10.5 0.0 40	10.5 10.5 0.0 40	10.5 10.5 0.0 43		
5+40	447.17		451.1	451.4	451.4	451.3	450.4	450.2	450.0	450.0			
			10.3 6.3 +3.9 19.2	10.3 6.2 +4.2 44.2	10.3 6.0 +4.2 33	10.3 6.7 +4.1 0.0	10.3 7.0 +3.2 33	10.3 7.2 +3.0 43	10.3 7.2 +2.8 48.0	10.3 7.2 +2.8 48.0			
	457.36						457.36						

Gr. 6 Grade

Lt.

S

Rt.

10

			440.3	441.0	442.5	443.4	447.7	452.0	453.2	454.5	452.4	452.4	452.8
9+0		447.74	13.5 20.9 -7.4 55.1	13.5 20.2 -6.7 50.1	13.5 18.7 -5.2 40.3	13.5 12.8 -0.7 33	13.5 13.5 -0.0 0.0	13.5 9.2 -4.3 31	13.5 8.0 -5.5 37	13.5 6.7 -6.8 37	13.5 8.3 -5.2 43	13.5 8.8 -4.7 44.7	13.5 8.4 -5.1 49.7

TP	12.15	461.20	1.56	449.05	461.20	0.75 sub 9714 00%							
----	-------	--------	------	--------	--------	----------------------	--	--	--	--	--	--	--

			433.7	434.8	438.0	439.4	442.0	443.6	447.2	448.6	450.1	450.6
8+60		447.23	3.4 16.9 -13.5 83.6	3.4 15.8 -12.4 58.6	3.4 12.6 -9.2 40	3.4 11.2 -7.8 33	3.4 8.6 -5.2 24	3.4 7.0 -3.6 0.0	3.4 3.2 -0.2 23	3.4 2.0 -1.4 33	3.4 0.5 -2.9 42.9	3.4 0.3 -3.1 47.9

			420.0	421.7	429.9	431.8	438.9	442.6	443.7	444.8	445.1	446.6
8+20		446.85	3.8 30.6 -26.8 82.9	3.8 28.9 -25.1 77.7	3.8 20.7 -16.9 40	3.8 18.8 -15.0 33	3.8 14.7 -10.9 0.0	3.8 2.8 -4.0 17	3.8 6.9 -3.1 33	3.8 5.8 -2.0 10	3.8 5.5 -1.7 22.6	3.8 4.8 -0.0 52.6

			412.4	412.6	422.5	424.8	432.4	434.4	438.7	439.1	440.1	441.3	441.6
7+80	Free 1796.8	446.57	4.0 38.2 -34.2 96.0	4.0 38.0 -34.0 91.0	4.0 28.1 -24.1 40	4.0 25.8 -21.8 33	4.0 18.2 -14.2 0.0	4.0 16.3 -12.3 10	4.0 11.9 -7.9 10	4.0 11.5 -7.5 33	4.0 10.5 -6.5 40	4.0 9.3 -5.3 48	4.0 9.0 -5.0 53

TP	11.70	450.61	0.76	438.91	450.61							
----	-------	--------	------	--------	--------	--	--	--	--	--	--	--

			415.6	415.7	417.3	418.2	424.1	424.9	436.1	435.9	436.3	436.9	437.7
7+40		446.40	2.7 22.1 -19.4 91.1	2.7 22.0 -19.3 86.1	2.7 22.1 -19.4 40	2.7 21.5 -18.8 33	2.7 15.6 -12.9 0.0	2.7 14.8 -12.1 7	2.7 11.7 -9.0 23	2.7 10.8 -8.1 33	2.7 10.4 -7.7 40	2.7 9.5 -6.8 54.3	2.7 8.7 -6.0 59.3
		439.67			439.67								

Curb Grade

Lst.

L.

Rt.

			435.9	436.0	436.3
11+16.14	3°12.19'	450.57	$\frac{10.6}{23.3}$ $\frac{10.6}{23.3}$ $\frac{10.6}{23.3}$ 66.9	$\frac{10.6}{23.3}$ $\frac{10.6}{23.3}$ $\frac{10.6}{23.3}$ 61.9	$\frac{10.6}{22.9}$ $\frac{10.6}{22.9}$ $\frac{10.6}{22.9}$ 70

			438.7	440.0	443.9	445.8
10+74.21	2°24.14'	449.99	$\frac{11.2}{22.5}$ $\frac{11.2}{22.5}$ $\frac{11.2}{22.5}$ 66.0	$\frac{11.2}{21.2}$ $\frac{11.2}{21.2}$ $\frac{11.2}{21.2}$ 55.0	$\frac{11.2}{19.3}$ $\frac{11.2}{19.3}$ $\frac{11.2}{19.3}$ 40	$\frac{11.2}{15.4}$ $\frac{11.2}{15.4}$ $\frac{11.2}{15.4}$ 33

			443.5	444.4	445.8	447.7
10+32.28	1°36.10'	449.42	$\frac{11.8}{17.7}$ $\frac{11.8}{17.7}$ $\frac{11.8}{17.7}$ 53.5	$\frac{11.8}{16.8}$ $\frac{11.8}{16.8}$ $\frac{11.8}{16.8}$ 47.5	$\frac{11.8}{15.4}$ $\frac{11.8}{15.4}$ $\frac{11.8}{15.4}$ 40	$\frac{11.8}{13.8}$ $\frac{11.8}{13.8}$ $\frac{11.8}{13.8}$ 33

			443.6	444.6	445.8	447.6
9+90.35	0°48.05'	448.84	$\frac{12.4}{12.4}$ $\frac{12.4}{12.4}$ $\frac{12.4}{12.4}$ 51.3	$\frac{12.4}{16.6}$ $\frac{12.4}{16.6}$ $\frac{12.4}{16.6}$ 46.3	$\frac{12.4}{15.4}$ $\frac{12.4}{15.4}$ $\frac{12.4}{15.4}$ 40	$\frac{12.4}{13.8}$ $\frac{12.4}{13.8}$ $\frac{12.4}{13.8}$ 33

BM			7.41	453.79	^{07.2' P.P.} 50' R.P.	9+48.42
9+48.42			441.9	442.3	443.6	445.0
9+37.77	B.C.P.	448.26	$\frac{12.9}{12.9}$ $\frac{12.9}{12.9}$ $\frac{12.9}{12.9}$ 54.0	$\frac{12.9}{12.9}$ $\frac{12.9}{12.9}$ $\frac{12.9}{12.9}$ 49.0	$\frac{12.9}{12.9}$ $\frac{12.9}{12.9}$ $\frac{12.9}{12.9}$ 46.	$\frac{12.9}{15.4}$ $\frac{12.9}{15.4}$ $\frac{12.9}{15.4}$ 33

461.20

			439.5	449.9	450.6	456.1	455.7	456.1	454.5	454.6
			$\frac{10.6}{21.7}$ $\frac{10.6}{21.7}$ $\frac{10.6}{21.7}$ 33	$\frac{10.6}{11.3}$ $\frac{10.6}{11.3}$ $\frac{10.6}{11.3}$ 0.0	$\frac{10.6}{10.6}$ $\frac{10.6}{10.6}$ $\frac{10.6}{10.6}$ 2	$\frac{10.6}{15.7}$ $\frac{10.6}{15.7}$ $\frac{10.6}{15.7}$ 22	$\frac{10.6}{15.6}$ $\frac{10.6}{15.6}$ $\frac{10.6}{15.6}$ 33	$\frac{10.6}{15.1}$ $\frac{10.6}{15.1}$ $\frac{10.6}{15.1}$ 40	$\frac{10.6}{6.7}$ $\frac{10.6}{6.7}$ $\frac{10.6}{6.7}$ 43.9	$\frac{10.6}{6.6}$ $\frac{10.6}{6.6}$ $\frac{10.6}{6.6}$ 48.9

			450.0	457.9	456.7	456.7	454.1	454.5
			$\frac{11.2}{11.2}$ $\frac{11.2}{11.2}$ $\frac{11.2}{11.2}$ 17	$\frac{11.2}{7.3}$ $\frac{11.2}{7.3}$ $\frac{11.2}{7.3}$ 0.0	$\frac{11.2}{4.9}$ $\frac{11.2}{4.9}$ $\frac{11.2}{4.9}$ 33	$\frac{11.2}{4.5}$ $\frac{11.2}{4.5}$ $\frac{11.2}{4.5}$ 41	$\frac{11.2}{7.1}$ $\frac{11.2}{7.1}$ $\frac{11.2}{7.1}$ 44.1	$\frac{11.2}{6.7}$ $\frac{11.2}{6.7}$ $\frac{11.2}{6.7}$ 49.1

			449.4	454.1	456.9	457.7	454.1	454.6
			$\frac{11.8}{11.8}$ $\frac{11.8}{11.8}$ $\frac{11.8}{11.8}$ 29	$\frac{11.8}{7.1}$ $\frac{11.8}{7.1}$ $\frac{11.8}{7.1}$ 0.0	$\frac{11.8}{4.3}$ $\frac{11.8}{4.3}$ $\frac{11.8}{4.3}$ 33	$\frac{11.8}{5.5}$ $\frac{11.8}{5.5}$ $\frac{11.8}{5.5}$ 40	$\frac{11.8}{7.1}$ $\frac{11.8}{7.1}$ $\frac{11.8}{7.1}$ 44.7	$\frac{11.8}{6.0}$ $\frac{11.8}{6.0}$ $\frac{11.8}{6.0}$ 49.7

			448.8	452.7	456.5	456.4	453.8	454.3
			$\frac{12.4}{12.4}$ $\frac{12.4}{12.4}$ $\frac{12.4}{12.4}$ 26	$\frac{12.4}{8.5}$ $\frac{12.4}{8.5}$ $\frac{12.4}{8.5}$ 0.0	$\frac{12.4}{4.7}$ $\frac{12.4}{4.7}$ $\frac{12.4}{4.7}$ 33	$\frac{12.4}{4.8}$ $\frac{12.4}{4.8}$ $\frac{12.4}{4.8}$ 40	$\frac{12.4}{7.4}$ $\frac{12.4}{7.4}$ $\frac{12.4}{7.4}$ 45	$\frac{12.4}{6.9}$ $\frac{12.4}{6.9}$ $\frac{12.4}{6.9}$ 50

			448.3	450.6	455.3	455.9	453.2	453.3	453.6
			$\frac{12.9}{12.9}$ $\frac{12.9}{12.9}$ $\frac{12.9}{12.9}$ 13	$\frac{12.9}{10.6}$ $\frac{12.9}{10.6}$ $\frac{12.9}{10.6}$ 7.0	$\frac{12.9}{5.9}$ $\frac{12.9}{5.9}$ $\frac{12.9}{5.9}$ 33	$\frac{12.9}{5.3}$ $\frac{12.9}{5.3}$ $\frac{12.9}{5.3}$ 40	$\frac{12.9}{8.0}$ $\frac{12.9}{8.0}$ $\frac{12.9}{8.0}$ 43	$\frac{12.9}{7.9}$ $\frac{12.9}{7.9}$ $\frac{12.9}{7.9}$ 45	$\frac{12.9}{7.4}$ $\frac{12.9}{7.4}$ $\frac{12.9}{7.4}$ 50.72' P.P.

461.20

carb grade Lt.

TP 6.05 462.35 4.90 456.30

50' Pipe
50' Rt
1216782 EC
over Disc

455.5	455.6	455.7	455.9
$\frac{7.3}{5.3}$	$\frac{7.3}{5.6}$	$\frac{7.3}{5.3}$	$\frac{7.3}{5.3}$
+1.6	+1.7	+1.8	+2.0
46.7	41.7	40	33

14+22.81 CB BC Rt

453.89

457.9	457.2	457.2	457.4
$\frac{7.6}{3.3}$	$\frac{7.6}{4.0}$	$\frac{7.6}{4.0}$	$\frac{7.6}{3.8}$
+1.6	+1.7	+1.8	+2.0
48.6	43.6	40	33

+80

453.62

458.4	458.6	458.9
$\frac{7.8}{2.8}$	$\frac{7.8}{2.6}$	$\frac{7.8}{2.5}$
+5.0	+5.2	+5.3
50.2	45.2	40

+50

453.38

457.6	457.8	458.0	458.5
$\frac{8.1}{2.6}$	$\frac{8.1}{3.1}$	$\frac{8.1}{3.2}$	$\frac{8.1}{2.7}$
+1.5	+1.7	+1.8	+2.1
49.7	44.7	40	33

13+20

453.11

458.4	458.6	458.6	459.6
$\frac{8.4}{2.8}$	$\frac{8.4}{2.6}$	$\frac{8.4}{2.4}$	$\frac{8.4}{1.6}$
+5.6	+5.8	+6.0	+6.3
50.8	45.8	40	33

12+90

452.81

458.4	458.4	459.6	459.8	456.8	456.5
$\frac{8.1}{2.8}$	$\frac{8.1}{2.6}$	$\frac{8.1}{2.6}$	$\frac{8.1}{2.2}$	$\frac{8.1}{2.4}$	$\frac{8.1}{2.7}$
+1.5	+1.7	+1.8	+2.0	+1.0	+1.7
49.7	44.7	40	40	44.0	49.0

461.20

z Pt.

455.9	457.5	457.7	456.2	455.6	458.0	458.3
$\frac{7.3}{5.3}$	$\frac{7.3}{5.7}$	$\frac{7.3}{5.5}$	$\frac{7.3}{5.0}$	$\frac{7.3}{5.6}$	$\frac{7.3}{5.3}$	$\frac{7.3}{5.3}$
+2.0	+2.6	+3.8	+2.3	+1.7	+2.7	+2.9
11	00	16	33	44	49	49

458.7	458.5	458.4	458.6	457.6	457.6
$\frac{7.6}{2.5}$	$\frac{7.6}{2.7}$	$\frac{7.6}{2.6}$	$\frac{7.6}{2.6}$	$\frac{7.6}{2.6}$	$\frac{7.6}{2.6}$
+2.7	+2.9	+2.8	+5.0	+1.0	+1.0
31	20	33	40	44.0	49.0

458.6	459.2	459.5	459.1	457.1	457.0
$\frac{7.8}{2.6}$	$\frac{7.8}{2.8}$	$\frac{7.8}{2.8}$	$\frac{7.8}{2.7}$	$\frac{7.8}{2.8}$	$\frac{7.8}{2.8}$
+2.2	+5.8	+6.1	+5.7	+3.7	+3.6
33	00	33	40	43.7	48.7

458.4	459.5	458.9	459.2	456.8	456.6
$\frac{8.1}{2.8}$	$\frac{8.1}{2.6}$	$\frac{8.1}{2.6}$	$\frac{8.1}{2.6}$	$\frac{8.1}{2.4}$	$\frac{8.1}{2.7}$
+5.3	+6.4	+5.8	+6.1	+3.7	+6.5
73	00	33	40	43.7	48.7

458.8	458.4	459.6	459.8	456.8	456.5
$\frac{8.4}{2.8}$	$\frac{8.4}{2.8}$	$\frac{8.4}{2.6}$	$\frac{8.4}{2.2}$	$\frac{8.4}{2.4}$	$\frac{8.4}{2.7}$
+6.0	+5.6	+6.8	+2.0	+1.0	+1.7
11	00	33	40	44.0	49.0

461.20

Curb Grade

480	154.18	457.6	457.6	457.6	457.7	457.9	457.9	458.0
		8.2 4.8 +3.4 18.4	8.2 4.8 +3.4 18.4	8.2 4.8 +3.4	8.2 4.8 +3.5 0.0	8.2 4.5 +3.7 3.3	8.2 4.5 +3.7 13.7	8.2 4.8 +3.8 18.7
450	154.27	457.4	457.4	457.4	457.5	457.6	457.8	457.6
		8.1 5.0 +3.7 18.1	8.1 5.0 +3.7 18.1	8.1 5.0 +3.7 3.3	8.1 4.9 +3.2 0.0	8.1 4.8 +3.3 3.3	8.1 4.6 +3.5 13.5	8.1 4.8 +3.3 18.5
1670.44	C6 BC Lt 154.35	456.8	456.8	456.8	456.9	457.2	457.4	457.5
		8.0 5.5 +2.5 17.5	8.0 5.5 +2.5 18.5	8.0 5.5 +2.5 3.3	8.0 5.4 +2.6 0.0	8.0 5.1 +2.9 3.3	8.0 4.9 +3.1 13.1	8.0 4.8 +3.2 18.1
15730.96	C6 BC Rt 154.32	456.8	456.6	456.8	457.0	457.2	457.2	457.3
		8.0 5.5 +2.5 17.5	8.0 5.5 +2.5 18.5	8.0 5.5 +2.5 3.3	8.0 5.3 +2.7 0.0	8.0 5.1 +2.9 3.3	8.0 5.1 +2.9 12.9	8.0 5.0 +3.0 17.9
B.M.	6.16	156.19	156.19	156.19	156.19	156.19	156.19	156.19
		8.1 5.6 +2.1 17.8	8.1 5.6 +2.2 18.2	8.1 5.6 +2.7 3.3	8.1 5.2 +2.4 0.0	8.1 5.2 +2.1 3.3	8.1 5.2 +1.8 11.8	8.1 5.2 +1.8 16.8
1571.853	C6 BC Lt 154.27	456.4	456.5	457.0	456.7	456.4	456.1	456.1
		8.1 5.6 +2.1 17.8	8.1 5.6 +2.2 18.2	8.1 5.6 +2.7 3.3	8.1 5.2 +2.4 0.0	8.1 5.2 +2.1 3.3	8.1 5.2 +1.8 11.8	8.1 5.2 +1.8 16.8
14769	154.12	456.7	457.1	458.0	458.0	457.3	457.2	457.4
	162.35	8.2 5.6 +2.6 18.0	8.2 5.2 +3.0 18.3	8.2 4.7 +3.5 3.3	8.2 5.0 +3.2 0.0	8.2 5.0 +3.2 1.7	8.2 5.7 +3.1 3.3	8.2 5.7 +3.4 3.4
		8.2 5.6 +2.6 18.0	8.2 5.2 +3.0 18.3	8.2 4.7 +3.5 3.3	8.2 5.0 +3.2 0.0	8.2 5.0 +3.2 1.7	8.2 5.7 +3.1 3.3	8.2 5.7 +3.4 3.4

Montezuma Road
Curb Grade

Lt.

Rt.

Rt.

15

Station	Notes	Left	Right	Left	Right	Left	Right	Right
19+0	452.71	457.3 9.6 5.0 +4.6 49.6	457.3 9.6 5.0 +4.6 44.6	457.3 9.6 5.0 +4.6 33	457.7 9.6 5.0 +5.0 0.0	457.3 9.6 5.0 +4.6 33	458.0 9.6 4.3 +5.3 45.3	457.9 9.6 4.2 +5.2 50.3
+50	453.10	457.3 9.2 5.0 +4.2 49.1	457.4 9.2 5.0 +4.1 44.1	457.3 9.2 5.0 +4.2 33	457.4 9.2 4.9 +4.3 0.0	458.0 9.2 4.3 +4.9 33	458.1 9.2 4.2 +5.0 45.0	458.1 9.2 4.2 +5.0 50.0
18+0	F.V.C. 1 453.49	457.4 8.9 5.0 +3.9 48.8	457.3 8.9 5.1 +3.8 43.8	457.4 8.9 5.0 +3.9 33	457.6 8.9 4.6 +4.3 0.0	458.4 8.9 4.6 +4.9 33	458.5 8.9 3.9 +5.0 45.0	458.7 8.9 3.7 +5.2 50.0
+70	453.71	457.2 8.6 5.1 +3.5 48.7	457.4 8.6 4.9 +3.7 43.7	457.3 8.6 5.0 +3.6 33	458.0 8.6 4.3 +4.3 0.0	458.7 8.6 4.0 +4.6 33	458.3 8.6 4.0 +4.6 44.6	458.6 8.6 3.7 +4.9 49.6
+40	453.90	457.5 8.5 4.8 +3.7 48.7	457.6 8.5 4.8 +3.7 43.7	457.6 8.5 4.8 +3.7 33	458.0 8.5 4.4 +4.1 0.0	458.4 8.5 4.0 +4.5 33	458.7 8.5 4.1 +4.4 44.4	458.4 8.5 4.0 +4.5 49.4
17+10	454.05 462.35	457.4 8.3 5.0 +3.3 48.3	457.3 8.3 5.0 +3.3 43.3	457.6 8.3 4.7 +3.6 33	457.9 8.3 4.4 +3.9 0.0	458.0 8.3 4.3 +4.0 33	458.1 8.3 4.1 +4.1 44.1	458.3 8.3 4.0 +4.3 49.1

786.00

	Grade		St		L		Rt	
			451.8	451.5	451.4	451.3	451.5	451.7
+90	450.42		8.4 7.0 +7.7 46.1	8.4 7.3 +7.7 41.1	8.4 7.2 +7.5 33	8.4 7.5 +7.7 0.0	8.4 7.3 +7.7 41.1	8.4 7.1 +7.3 46.1
			453.0	453.0	453.1	453.1	453.3	453.4
+50	450.73		8.1 5.8 +2.3 47.3	8.1 5.8 +2.3 42.3	8.1 5.7 +2.4 33	8.1 5.7 +2.4 0.0	8.1 5.4 +2.7 42.7	8.1 5.4 +2.7 47.7
			454.4	454.4	454.5	454.7	455.2	455.0
21+0	451.13		7.7 13.3 +3.3 48.3	7.7 13.3 +3.3 43.3	7.7 13.3 +3.4 33	7.7 13.6 +3.6 0.0	7.7 13.7 +3.7 43.7	7.7 13.8 +3.9 48.7
			455.5	455.4	455.5	455.9	456.0	456.2
+50	451.52	-0.20	7.3 13.3 +4.0 48.9	7.3 13.4 +3.9 43.9	7.3 13.2 +4.0 44.0	7.3 13.9 +4.1 0.0	7.3 13.8 +4.5 33	7.3 13.6 +4.7 49.7
			456.6	456.5	456.5	456.6	457.0	456.7
50+0	451.92		6.9 2.2 +4.7 49.6	6.9 2.3 +4.6 44.6	6.9 2.2 +4.6 33	6.9 2.6 +4.7 0.0	6.9 2.1 +4.8 33	6.9 1.9 +5.0 49.8
B.M	1.55	458.83	5.07	457.28	95 Rt 19+50 05 1109 1808-20 457.19	458.83		
			457.4	457.2	457.2	457.5	457.6	457.7
19+50	452.51		10.0 5.1 +4.9 49.9	10.0 5.1 +4.9 44.9	10.0 5.1 +4.9 33	10.0 4.8 +5.2 0.0	10.0 4.3 +5.5 33	10.0 4.8 +5.4 45.4
	462.35					462.35		

	Grade	St									
TP	4.10	453.84	0.19	449.74	0.25 45.9122+80						
			441.3	440.4	437.1	435.9	438.4	446.2	448.5	449.7	449.7
+80		449.70	0.5 8.5 -8.4 59.0	0.5 9.8 -9.3 54.0	0.5 13.7 -13.6 70	0.5 14.3 -13.8 33	0.5 16.8 -16.3 0.0	0.5 4.0 -3.5 22	0.5 1.7 -1.2 33	0.5 0.5 0.0 40	0.5 0.5 0.0 75
			445.6	444.1	441.6	439.8	437.9	439.5	440.6	440.7	440.6
+55		449.90	0.3 4.6 -4.3 53.7	0.3 6.7 -6.4 48.7	0.3 8.6 -8.3 40	0.3 10.4 -10.1 33	0.3 12.3 -12.0 0.0	0.3 10.7 -10.4 33	0.3 9.2 -8.9 40	0.3 9.3 -9.2 53.8	0.3 9.8 -9.3 55.8
			448.3	447.7	446.7	445.6	440.6	441.5	439.9	440.4	441.1
+30	0.098	450.10	0.1 1.9 -1.8 48.6	0.1 2.5 -2.4 43.6	0.1 3.5 -3.4 40	0.1 4.6 -4.5 33	0.1 9.6 -9.5 17	0.1 8.7 -8.6 0.0	0.1 10.3 -10.2 33	0.1 9.2 -9.1 40	0.1 9.1 -9.0 53.5
			450.2	449.5	448.4	443.7	446.4	444.9	445.4	445.4	445.4
+17		450.21	0.0 0.0 40	0.0 0.7 -0.7 33	0.0 0.8 -0.8 78	0.0 6.5 -6.5 70	0.0 3.8 -3.8 0.0	0.0 5.3 -5.3 33	0.0 4.8 -4.8 40	0.0 4.8 -4.8 77.8	0.0 4.8 -4.8 77.8
TP	1.89	450.23	10.49	448.34			450.23				
			451.7	451.5	450.6	450.3	450.3	450.5	450.3	450.3	450.3
22+05		450.20	8.5 2.1 +1.4 46.2	8.5 2.0 +1.2 41.2	8.5 2.2 +0.3 33	8.5 2.5 0.0	8.5 2.3 +0.2	8.5 2.5 0.0 40	8.5 2.5 0.0 40	8.5 2.5 0.0 45.0	8.5 2.5 0.0 45.0
		458.83					458.83				

Montezuma Road
Grade

Lt

Rt

Rt

		447.1	447.6	448.4	448.7	450.4	451.4	451.7	451.7	
+50	448.36	5.5 5.8 -1.3 46.2	5.5 6.2 -0.8 41.3	5.5 5.5 0.0 35	5.5 5.2 10.3 33	5.5 5.8 -2.0 30	5.5 5.5 -2.8 33	5.5 5.5 -2.3 43.3	5.5 5.5 -2.3 48.3	
		445.1	446.0	447.0	448.8	449.3	451.0	452.0	452.2	
24+0	448.76	5.1 5.8 -0.7 49.2	5.1 5.6 -0.5 44.2	5.1 5.1 -1.8 33	5.1 5.1 0.6 6.0	5.1 5.6 -0.5 0.0	5.1 5.9 -2.2 33	5.1 5.9 -0.8 43.2	5.1 5.7 -0.6 48.2	
		434.0	434.4	439.4	446.5	449.1	452.2	452.9	453.1	
+50	449.15	4.7 13.6 -5.1 67.1	4.7 19.4 -14.7 62.1	4.7 14.4 -9.7 40	4.7 17 -2.3 26 21	4.7 4.7 0.0 0.0	4.7 4.6 -0.1 33	4.7 4.8 -0.1 43.8	4.7 6.7 -2.0 48.8	
		436.9	436.7	439.4	445.7	448.8	449.3	452.3	452.8	
+30	449.31	4.5 16.2 -12.4 58.6	4.5 17.1 -12.6 40	4.5 14.4 -9.9 33	4.5 8.1 -3.6 14	4.5 5.0 -0.5 0.0	4.5 4.8 -0.3 3	4.5 4.5 -0.0 33	4.5 4.8 -0.3 40.5	
		437.1	435.9	436.7	438.5	444.6	449.5	451.3	451.6	451.6
23+0	449.55	4.3 15.7 -12.4 65.4	4.3 17.9 -13.5 64	4.3 17.1 -12.8 40	4.3 15.2 -11.0 18	4.3 9.2 -4.9 0.0	4.3 4.3 0.0 14	4.3 4.5 -0.2 33	4.3 2.2 -2.1 42.1	4.3 2.2 -2.1 47.1
	453.84					453.84				

00288

	Grade	Lt.				Rt.			
27+0	446.39		450.5	450.3	450.5	451.2	452.1	452.3	452.5
			8.9 4.8 +4.1 28.9	8.9 5.0 +3.9 28.9	8.9 4.8 +4.1 33	8.9 4.4 +4.8 0.0	8.9 3.2 +5.2 33	8.9 3.0 +5.9 45.9	8.9 3.8 +5.1 50.9
+50	116.78		450.5	450.4	450.5	451.0	451.7	452.7	452.8
			8.5 4.8 +3.7 48.6	8.5 4.5 +3.6 43.6	8.5 4.8 +3.2 33	8.5 4.2 +4.2 0.0	8.5 3.6 +4.9 33	8.5 2.5 +5.9 43.9	8.5 3.2 +5.0 50.9
26+0	117.18	0.078	449.5	449.3	449.5	450.9	452.6	453.1	453.2
			8.1 5.8 +2.3 47.1	8.1 6.0 +2.1 42.1	8.1 5.8 +2.3 33	8.1 4.4 +3.7 0.0	8.1 3.7 +5.2 33	8.1 2.2 +5.9 45.9	8.1 2.1 +6.0 50.9
+50	147.57		448.4	448.8	449.4	451.3	452.8	453.0	453.0
			7.7 6.9 +0.8 46.2	7.7 6.5 +1.2 47.2	7.7 6.5 +1.8 33	7.7 4.0 +3.7 0.0	7.7 2.5 +5.2 33	7.7 2.3 +5.4 45.4	7.7 2.2 +5.4 50.4
TP	3.52	455.26	2.10	451.74	455.26				
25+0	147.97		448.0	448.0	449.0	451.5	452.2	452.8	452.8
			5.9 5.9 0.0 15	5.9 5.9 0.0 40	5.9 4.9 +1.0 33	5.9 2.4 +3.5 0.0	5.9 1.7 +1.2 33	5.9 1.1 +4.8 44.8	5.9 1.1 +4.8 49.8
	483.84					483.84			

	Grade	Δt.	434.9	435.1	436.4	437.7	439.3	440.4	440.5
29+0	445.44		0.9 11.4 -10.5 60.5	0.9 11.2 -10.3 55.5	0.9 9.9 -9.0 33	0.9 8.8 -7.9 0.0	0.9 2.6 -6.1 33	0.9 5.9 -5.0 47.5	0.9 3.8 -1.9 52.5

		438.3	438.7		439.4	441.1	442.9	443.5	443.7
17+60	445.48		0.8 8.0 -7.2 55.2	0.8 7.1 -6.8 50.2	0.8 6.9 -6.1 33	0.8 5.2 -1.1 0.0	0.8 3.4 -2.6 33	0.8 3.4 -2.0 43	0.8 2.8 -1.8 48.0

			440.7	441.3	441.8	442.0		444.7	445.5	445.5
+40	445.54		0.8 5.6 -4.8 47.2	0.8 5.6 -4.8 40	0.8 4.5 -3.7 33	0.8 3.2 -2.5 0.0		0.8 1.6 -0.8 33	0.8 0.8 0.0 40	0.8 0.8 0.0 48

TP	3.88	446.31	12.83	442.48	442.5	442.8	443.2	444.9	445.6	446.7	447.1	447.2
28+20		445.61		9.7 12.8 -3.1 49.2	9.7 12.5 -2.8 44.2	9.7 12.1 -2.4 33	9.7 10.4 -0.7 0.0	9.7 8.6 0.0 14	9.7 8.2 +1.1 33	9.7 8.2 +1.5 41.5	9.7 8.1 +1.6 46.5	

			445.7	445.8	446.3	448.3	449.8	450.1	450.3
+80	445.80		9.5 9.6 -0.1 45	9.5 9.5 6.0 40	9.5 9.6 +0.5 33	9.5 7.0 +2.5 0.0	9.5 5.5 +4.0 33	9.5 5.2 +4.3 44.3	9.5 5.0 +4.5 49.3

			448.7	449.0	449.5	450.2	451.1	451.5	451.7
27+40 = P.V.C.	446.08		9.2 1.2 +2.6 47.9	9.2 6.3 +2.9 42.9	9.2 5.8 +3.4 33	9.2 5.7 +4.1 0.0	9.2 4.2 +5.0 33	9.2 3.8 +5.4 45.4	9.2 3.8 +5.6 50.4

455.26

455.26

Montezuma Road
Curb Grade

Lt

Rt

Rt

21

81+0

446.39

448.5
8.2
8.2
5.8
+2.1
33
47.4

448.6
8.2
8.2
5.8
+2.4
33
42.4

449.0
8.2
8.2
5.8
+2.6
33

448.8
8.2
8.2
5.8
+2.4
33

448.6
8.2
8.2
5.8
+2.2
33

448.4
8.2
8.2
5.8
+2.0
33

448.6
8.2
8.2
5.8
+2.2
33

+60

446.04

445.9
8.6
8.6
-0.1
45

446.0
8.6
8.6
0.0
40

446.0
8.6
8.6
0.0
33

446.0
8.6
8.6
0.0
15

446.4
8.6
8.6
+0.4
33

446.3
8.6
8.6
+0.3
33

446.0
8.6
8.6
0.0
40

446.2
8.6
8.6
+0.2
15

TP

968

454.60

1.39

444.92

454.60

30+20

445.77

442.9
0.5
3.2
-2.9
33
49.4

442.9
0.5
3.1
-2.9
33
44.4

442.8
0.5
3.2
-3.0
33

443.1
0.5
3.2
-2.7
33

443.2
0.5
3.1
-2.6
33

443.1
0.5
3.2
-2.7
44.1

443.1
0.5
3.2
-2.7
49.1

+80

445.58

438.4
0.7
7.8
-7.2
33
55.7

438.5
0.7
7.8
-7.1
33
50.7

438.5
0.7
7.8
-7.1
33

439.1
0.7
7.2
-6.5
33

439.4
0.7
6.9
-6.2
33

439.5
0.7
6.8
-6.1
49.1

439.5
0.7
6.8
-6.1
35.1

29+40

445.47

435.0
0.8
11.5
-10.5
33
56.1

434.8
0.8
11.5
-10.7
33
56.1

436.4
0.8
9.2
-7.1
33

437.7
0.8
8.8
-7.8
33

437.6
0.8
8.7
-7.9
33

438.7
0.8
7.8
-6.8
30.2

439.0
0.8
7.3
-6.5
35.2

446.31

446.31

Cb Grade. Lt

L ft

				448.8	448.8	448.9	449.3	450.1	450.4	450.6	450.7	451.1
+90.12	Cb EC Lt	447.90		$\frac{76}{6.7}$ +6.9 45.9	$\frac{76}{6.7}$ +0.9 40.9	$\frac{76}{6.8}$ +1.0 33'	$\frac{76}{6.2}$ +1.4 0.0	$\frac{76}{5.4}$ +2.2 33'	$\frac{76}{5.1}$ +2.5 42.3	$\frac{76}{4.9}$ +2.7 42.5	$\frac{76}{4.8}$ +2.8 50	$\frac{76}{4.4}$ +3.2 55

+55	Wly Slapdish oh south	447.80			448.4	448.6	449.4	450.3	450.6	450.6	450.8	450.8
					$\frac{77}{6.9}$ +0.6 40.6	$\frac{79}{6.9}$ +0.8 33'	$\frac{77}{6.7}$ +1.6 0.0	$\frac{77}{5.2}$ +2.5 33'	$\frac{77}{4.9}$ +2.8 42.8	$\frac{77}{4.9}$ +2.8 47.8	$\frac{77}{4.7}$ +3.0 50	$\frac{77}{4.3}$ +3.5 55

+50		447.78										
-----	--	--------	--	--	--	--	--	--	--	--	--	--

				448.6	448.6	448.9	450.0	450.6	450.8	451.0		
32+20		447.59		$\frac{79}{6.9}$ +1.0 41.0	$\frac{79}{6.9}$ +1.0 41.0	$\frac{79}{5.5}$ +2.4 33'	$\frac{79}{4.9}$ +3.0 33'	$\frac{79}{4.7}$ +3.2 42.2	$\frac{79}{4.5}$ +3.4 48.3			

7P	7.27	455.52	6.35	448.25	448.25	455.52						
----	------	--------	------	--------	--------	--------	--	--	--	--	--	--

+80.12	Cb BC Lt La Dorrest.	447.25		449.0	449.4	449.8	450.4	450.7	450.8	450.7		
				$\frac{74}{3.2}$ +1.8 47.2	$\frac{74}{3.2}$ +2.2 42.2	$\frac{74}{4.2}$ +2.6 33'	$\frac{74}{4.2}$ +3.2 0.0	$\frac{74}{3.9}$ +3.5 33'	$\frac{74}{3.8}$ +3.6 43.6	$\frac{74}{3.9}$ +3.5 48.6		

				449.3	449.3	449.5	449.9	449.8	449.8	449.8		
31+40		446.81		$\frac{78}{5.3}$ +2.5 47.5	$\frac{78}{5.3}$ +2.5 42.5	$\frac{78}{6.1}$ +2.7 33'	$\frac{78}{4.7}$ +3.1 0.0	$\frac{78}{4.8}$ +3.0 33'	$\frac{78}{4.8}$ +3.0 43	$\frac{78}{4.8}$ +3.0 48		

454.60

454.60

Montezuma Road
CG Grade

Lt.

±

Rt.

24

Cont Page 33

BM

10.25

445.27

0.25 pp H₂O
75 Lt of L₂
36+75

443.6

443.5

443.3

443.0

442.3

442.2

441.9

+75 End Project 442.99

12.5
11.9
+0.5
46.5

12.5
12.0
+0.5
46.5

12.5
12.5
10.5
33

12.5
12.5
0.0
0.0

12.5
13.3
-0.8
33

12.5
13.3
-0.8
41.2

12.5
13.3
-1.1
46.2

449.8

449.7

449.5

448.3

448.0

448.2

448.1

+40

443.90

11.6
5.7
+5.9
50.8

11.6
5.8
+5.8
46.8

11.6
6.0
+5.6
33

11.6
7.2
+4.4
0.0

11.6
7.3
+4.1
33

11.6
7.2
+4.3
44.3

11.6
7.4
+4.2
49.3

36+10.

444.61

10.9
4.4
+6.5
51.3

10.9
4.6
+6.2
46.3

10.9
4.8
+6.1
33

10.9
5.5
+5.4
0.0

10.9
5.8
+6.1
33

10.9
5.9
+5.0
45.0

10.9
6.0
+4.9
50.0

451.6

451.3

451.1

450.8

450.3

450.0

450.2

+80

445.24

10.3
3.9
+6.4
51.1

10.3
4.2
+6.1
46.1

10.3
4.4
+5.9
33

10.3
4.7
+5.6
0.0

10.3
5.2
+6.1
33

10.3
5.5
+4.8
44.8

10.3
5.2
+5.0
49.8

451.7

451.5

451.4

451.1

450.5

450.3

450.5

+50

445.81

9.7
5.8
+5.9
50.7

9.7
6.0
+5.7
46.7

9.7
6.0
+5.6
33

9.7
6.2
+5.0
0.0

9.7
6.2
+4.7
33

9.7
6.2
+4.5
44.5

9.7
6.0
+4.7
49.5

451.9

452.1

451.7

450.8

450.8

450.7

450.7

35+20

446.31

9.2
3.8
+5.6
50.8

9.2
4.2
+5.8
45.8

9.2
4.7
+5.7
33

9.2
4.7
+4.5
0.0

9.2
4.3
+4.5
33

9.2
4.8
+4.2
44.4

9.2
4.8
+4.4
49.4

455.52

455.52

La Dorna St. Grades

24 Cb Gr.

24 Lt. St.

INDEXED

W.K. 6

INDEXED

2 Grade

RT-F

FCb-Gr

25

1730.04	End	445.54	$\begin{array}{r} 6.3 \\ 7.4 \\ -1.1 \\ \hline 30 \end{array}$	$\begin{array}{r} 6.3 \\ 7.2 \\ -0.9 \\ \hline 25 \end{array}$	$\begin{array}{r} 6.3 \\ 6.9 \\ -0.7 \\ \hline 18 \end{array}$
---------	-----	--------	--	--	--

445.50	$\begin{array}{r} 6.3 \\ 5.9 \\ +0.4 \\ \hline 0.0 \end{array}$	$\begin{array}{r} 6.0 \\ 4.7 \\ +1.3 \\ \hline 18 \end{array}$	$\begin{array}{r} 6.0 \\ 4.5 \\ +1.5 \\ \hline 2.5 \end{array}$	$\begin{array}{r} 6.0 \\ 4.4 \\ +1.6 \\ \hline 30 \end{array}$	445.84
--------	---	--	---	--	--------

52.19

+77.85	=FC	446.20	$\begin{array}{r} 5.6 \\ 6.0 \\ -0.4 \\ \hline 30 \end{array}$	$\begin{array}{r} 5.6 \\ 6.0 \\ -0.4 \\ \hline 25 \end{array}$	$\begin{array}{r} 5.6 \\ 5.5 \\ +0.1 \\ \hline 18 \end{array}$
--------	-----	--------	--	--	--

446.12	$\begin{array}{r} 5.7 \\ 5.7 \\ 0.0 \\ \hline 0.0 \end{array}$	$\begin{array}{r} 5.3 \\ 4.8 \\ +0.5 \\ \hline 18 \end{array}$	$\begin{array}{r} 5.3 \\ 4.5 \\ +0.8 \\ \hline 2.5 \end{array}$	$\begin{array}{r} 5.3 \\ 4.0 \\ +1.0 \\ \hline 30 \end{array}$	446.50
--------	--	--	---	--	--------

35.67

+42.18		446.61	$\begin{array}{r} 5.2 \\ 4.2 \\ +1.0 \\ \hline 30 \end{array}$	$\begin{array}{r} 5.2 \\ 5.1 \\ +0.1 \\ \hline 25 \end{array}$	$\begin{array}{r} 5.2 \\ 4.8 \\ +0.4 \\ \hline 18 \end{array}$
--------	--	--------	--	--	--

446.55	$\begin{array}{r} 5.2 \\ 5.1 \\ +0.1 \\ \hline 0.0 \end{array}$	$\begin{array}{r} 4.9 \\ 4.5 \\ +0.4 \\ \hline 18 \end{array}$	$\begin{array}{r} 4.9 \\ 4.3 \\ +0.6 \\ \hline 2.5 \end{array}$	$\begin{array}{r} 4.9 \\ 4.1 \\ +0.8 \\ \hline 30 \end{array}$	446.91
--------	---	--	---	--	--------

35.67

+66.51	=BC Lt	447.02			
--------	--------	--------	--	--	--

out				$\begin{array}{r} 4.5 \\ \hline \end{array}$	447.32
-----	--	--	--	--	--------

0+0	=FC 37 Cb Red	447.10	$\begin{array}{r} 4.7 \\ 3.9 \\ +0.8 \\ \hline 30 \end{array}$	$\begin{array}{r} 4.7 \\ 4.1 \\ +0.6 \\ \hline 25 \end{array}$	$\begin{array}{r} 4.7 \\ 4.2 \\ +0.5 \\ \hline 18 \end{array}$
-----	---------------	--------	--	--	--

447.06	$\begin{array}{r} 4.7 \\ 4.2 \\ +0.5 \\ \hline 0.0 \end{array}$	$\begin{array}{r} 4.4 \\ 4.2 \\ +0.2 \\ \hline 18 \end{array}$	$\begin{array}{r} 4.4 \\ 3.9 \\ +0.5 \\ \hline 2.5 \end{array}$	$\begin{array}{r} 4.4 \\ 3.7 \\ +0.7 \\ \hline 30 \end{array}$	447.40
--------	---	--	---	--	--------

BDY	251	451.79			Hub 50' Ltr 32+20
-----	-----	--------	--	--	----------------------

451.79					
--------	--	--	--	--	--

Catoctin Drive Grader North + South
of Montezuma Road.

Alignment Pages

FTW Grade

Lt. West

452.3 451.8

+61.93

451.28

$\begin{array}{r} 5.3 \\ 4.7 \\ +1.1 \\ \hline 17 \end{array}$ $\begin{array}{r} 5.2 \\ 4.6 \\ +0.6 \\ \hline 12 \end{array}$

INDEXED

452.5 452.1

+721.93

451.96

$\begin{array}{r} 4.5 \\ 3.9 \\ +0.6 \\ \hline 17 \end{array}$ $\begin{array}{r} 4.5 \\ 4.3 \\ +0.3 \\ \hline 12 \end{array}$

452.6 452.2

+81.93

452.48

$\begin{array}{r} 4.0 \\ 3.8 \\ +0.2 \\ \hline 17 \end{array}$ $\begin{array}{r} 4.0 \\ 3.2 \\ -0.2 \\ \hline 12 \end{array}$

452.5 452.4

+41.93

452.84

$\begin{array}{r} 3.6 \\ 3.4 \\ -0.3 \\ \hline 17 \end{array}$ $\begin{array}{r} 3.6 \\ 4.0 \\ -0.4 \\ \hline 12 \end{array}$

452.5 452.3

0+0

453.21

$\begin{array}{r} 3.2 \\ 2.9 \\ -0.7 \\ \hline 17 \end{array}$ $\begin{array}{r} 3.2 \\ 4.1 \\ -0.9 \\ \hline 12 \end{array}$

B.M.

553

456.43

452.90

H.F. Cor Corn
Porch 68 ft
33+87 ft
Page 23

INDEXED

W.K.

W.O. 9069

Aug. 16. 48

S. J. 1009
S. J. 1010
M. J. 1011
Garber

26

2 Grade

Rt. East

East Carb

452.6

452.1

452.8

452.6

451.14

$\begin{array}{r} 5.3 \\ 3.8 \\ +1.5 \\ \hline 0.0 \end{array}$

$\begin{array}{r} 5.3 \\ 4.3 \\ +0.9 \\ \hline 18 \end{array}$

$\begin{array}{r} 5.3 \\ 3.6 \\ +1.6 \\ \hline 25 \end{array}$

$\begin{array}{r} 5.3 \\ 3.8 \\ +1.4 \\ \hline 30 \end{array}$

452.8

452.4

453.1

452.8

451.82

$\begin{array}{r} 4.6 \\ 3.6 \\ +1.0 \\ \hline 0.0 \end{array}$

$\begin{array}{r} 4.5 \\ 4.0 \\ +0.5 \\ \hline 18 \end{array}$

$\begin{array}{r} 4.5 \\ 4.3 \\ +1.3 \\ \hline 25 \end{array}$

$\begin{array}{r} 4.5 \\ 3.6 \\ +0.9 \\ \hline 30 \end{array}$

452.9

452.4

453.6

453.7

452.34

$\begin{array}{r} 4.1 \\ 3.0 \\ +0.6 \\ \hline 0.0 \end{array}$

$\begin{array}{r} 4.0 \\ 3.0 \\ 0.0 \\ \hline 18 \end{array}$

$\begin{array}{r} 4.0 \\ 3.8 \\ +1.2 \\ \hline 25 \end{array}$

$\begin{array}{r} 4.0 \\ 3.7 \\ +1.3 \\ \hline 30 \end{array}$

452.9

452.6

453.6

453.4

452.70

$\begin{array}{r} 3.7 \\ 3.6 \\ +0.3 \\ \hline 0.0 \end{array}$

$\begin{array}{r} 3.6 \\ 2.8 \\ -0.2 \\ \hline 18 \end{array}$

$\begin{array}{r} 3.6 \\ 2.8 \\ +0.8 \\ \hline 25 \end{array}$

$\begin{array}{r} 3.6 \\ 3.0 \\ +0.6 \\ \hline 30 \end{array}$

453.1

453.1

453.7

453.5

453.07

$\begin{array}{r} 3.4 \\ 3.3 \\ +0.1 \\ \hline 0.0 \end{array}$

$\begin{array}{r} 3.2 \\ 3.2 \\ -0.1 \\ \hline 18 \end{array}$

$\begin{array}{r} 3.2 \\ 3.2 \\ +0.5 \\ \hline 25 \end{array}$

$\begin{array}{r} 3.2 \\ 2.9 \\ +0.3 \\ \hline 30 \end{array}$

456.43

Catcabin Drive

		Lt. West			Lt. East					
			451.1	451.3		451.7				
4+00.83	6°32.95' Cb F.C. Lt.	448.00	8.4 5.3 +3.1 17	8.4 5.1 +3.3 12	447.05	9.4 2.7 +1.7 0.0				
						451.9	451.7	452.5		
3+20.71	3°31.89' Cb B.C. Rt.				447.04	9.4 4.5 +1.9 0.0	8.9 4.2 +1.2 18	8.0 5.0 +3.9 2.5	451.7 8.0 4.2 +1.2 3.0	447.49
+83		448.46	8.0 2.5 +3.5 35	8.0 2.5 +3.5 35		452.0	451.7	451.7	451.8	
+81.78	1°54.2' Cb B.C. Lt.	448.46	8.9 5.8 +1.7 17	8.9 5.6 +3.8 12	448.20	8.2 4.2 +3.8 0.0	8.0 4.9 +3.3 18	8.0 4.2 +3.3 2.5	8.0 4.6 +3.9 3.0	
			451.2	451.3	451.4	452.2	452.0	451.9	452.1	
+36.27	B.C.L.	449.60	6.8 5.8 +1.8 30	6.8 5.1 +1.7 35	6.8 5.0 +1.8 17	449.46	7.0 4.2 +2.8 0.0	6.8 4.4 +2.4 18	6.8 4.5 +2.3 2.5	6.8 4.8 +2.5 3.0
+09.38	5 1/2 Stand. Bk 00 West	450.26	6.2 5.0 +1.2 30	6.2 5.0 +1.2 35			452.3	452.0	452.7	452.6
2+01.93		450.44	6.0 2.8 +1.2 17	6.0 4.8 +1.2 12	450.30	6.1 4.1 +2.0 0.0	6.0 4.4 +1.6 18	6.0 3.7 +2.3 2.5	6.0 3.8 +2.2 3.0	
		456.43				456.43				

Catoctin Drive

			ht		Grade	pt			
			451.8	451.9	452.4	452.7	452.8	453.1	
+82.96	14°29.97'	451.16	$\begin{array}{r} 6.2 \\ 5.5 \\ \hline 60.7 \\ 17 \end{array}$	$\begin{array}{r} 6.2 \\ 5.2 \\ \hline 16.8 \\ 12 \end{array}$	451.02	$\begin{array}{r} 6.2 \\ 4.9 \\ \hline 11.4 \\ 6.0 \end{array}$	$\begin{array}{r} 6.2 \\ 4.5 \\ \hline 11.5 \\ 18 \end{array}$	$\begin{array}{r} 6.2 \\ 4.5 \\ \hline 11.7 \\ 25 \end{array}$	$\begin{array}{r} 6.2 \\ 4.2 \\ \hline 12.0 \\ 30 \end{array}$
			451.7	451.7	452.1	452.0	452.0	452.5	
+42.96	12°49.60'	450.41	$\begin{array}{r} 6.9 \\ 5.6 \\ \hline 12.3 \\ 17 \end{array}$	$\begin{array}{r} 6.9 \\ 5.2 \\ \hline 11.3 \\ 12 \end{array}$	450.28	$\begin{array}{r} 7.0 \\ 5.2 \\ \hline 11.8 \\ 6.0 \end{array}$	$\begin{array}{r} 6.9 \\ 5.3 \\ \hline 11.6 \\ 18 \end{array}$	$\begin{array}{r} 6.9 \\ 5.3 \\ \hline 11.6 \\ 25 \end{array}$	$\begin{array}{r} 6.9 \\ 4.8 \\ \hline 12.1 \\ 30 \end{array}$
TP	5.59	457.32	4.70	451.73	<u>457.32</u>				
			451.3	451.4	451.8	451.8	451.5	451.8	
5+02.96	11°09.23'	449.62	$\begin{array}{r} 6.8 \\ 5.1 \\ \hline 11.7 \\ 17 \end{array}$	$\begin{array}{r} 6.8 \\ 5.0 \\ \hline 11.8 \\ 12 \end{array}$	449.48	$\begin{array}{r} 7.0 \\ 4.8 \\ \hline 12.4 \\ 6.0 \end{array}$	$\begin{array}{r} 6.8 \\ 4.8 \\ \hline 12.2 \\ 18 \end{array}$	$\begin{array}{r} 6.8 \\ 4.9 \\ \hline 11.9 \\ 25 \end{array}$	$\begin{array}{r} 6.8 \\ 4.8 \\ \hline 12.2 \\ 30 \end{array}$
			451.4	451.4	451.6	451.5	451.4	451.9	
+62.96	9°28.86'	448.96	$\begin{array}{r} 7.5 \\ 5.0 \\ \hline 12.5 \\ 17 \end{array}$	$\begin{array}{r} 7.5 \\ 5.0 \\ \hline 12.5 \\ 12 \end{array}$	448.58	$\begin{array}{r} 7.9 \\ 4.8 \\ \hline 13.1 \\ 6.0 \end{array}$	$\begin{array}{r} 7.8 \\ 4.9 \\ \hline 12.9 \\ 18 \end{array}$	$\begin{array}{r} 7.8 \\ 5.0 \\ \hline 12.8 \\ 25 \end{array}$	$\begin{array}{r} 7.8 \\ 4.8 \\ \hline 13.3 \\ 30 \end{array}$
			451.3	451.4	451.6	451.5	451.6	451.9	
4+24.59 - C&EC Pt.	7°52.58'	448.47	$\begin{array}{r} 8.0 \\ 5.1 \\ \hline 12.9 \\ 17 \end{array}$	$\begin{array}{r} 8.0 \\ 5.0 \\ \hline 12.0 \\ 12 \end{array}$	447.65	$\begin{array}{r} 8.8 \\ 4.8 \\ \hline 14.0 \\ 6.0 \end{array}$	$\begin{array}{r} 8.7 \\ 4.9 \\ \hline 13.8 \\ 18 \end{array}$	$\begin{array}{r} 8.7 \\ 4.8 \\ \hline 13.9 \\ 25 \end{array}$	$\begin{array}{r} 8.7 \\ 4.5 \\ \hline 14.2 \\ 30 \end{array}$
		456.43			456.43				

Catocot in Drive

			ft	
			454.0	454.1
+79.10	22° 42' 14"	453.23	$\begin{array}{r} 6.1 \\ 5.3 \\ +0.8 \\ \hline 17 \end{array}$	$\begin{array}{r} 6.1 \\ 5.2 \\ +0.9 \\ \hline 12 \end{array}$
			453.8	453.9
+42.96	21° 11' 45" = E.V.C.	452.97	$\begin{array}{r} 6.4 \\ 5.5 \\ +0.9 \\ \hline 17 \end{array}$	$\begin{array}{r} 6.4 \\ 5.2 \\ +1.0 \\ \hline 12 \end{array}$
TP	4.74	159.34	2.72	454.60
			453.1	453.4
7+02.96	19° 31' 08"	452.69	$\begin{array}{r} 4.6 \\ 3.2 \\ +0.9 \\ \hline 17 \end{array}$	$\begin{array}{r} 4.6 \\ 3.9 \\ +0.9 \\ \hline 12 \end{array}$
			452.9	452.9
+62.96	17° 50' 71"	452.31	$\begin{array}{r} 5.0 \\ 4.4 \\ +0.6 \\ \hline 17 \end{array}$	$\begin{array}{r} 5.0 \\ 4.4 \\ +0.6 \\ \hline 12 \end{array}$
			452.7	452.6
6+22.96	16° 10' 34"	451.80	$\begin{array}{r} 5.5 \\ 4.8 \\ +0.9 \\ \hline 17 \end{array}$	$\begin{array}{r} 5.5 \\ 4.7 \\ +0.8 \\ \hline 12 \end{array}$
			457.32	

			ft			
			454.5	454.7	455.0	455.1
			$\begin{array}{r} 6.3 \\ 4.8 \\ +1.5 \\ \hline 0.0 \end{array}$	$\begin{array}{r} 6.1 \\ 4.6 \\ +1.5 \\ \hline 18 \end{array}$	$\begin{array}{r} 6.1 \\ 4.3 \\ +1.8 \\ \hline 25 \end{array}$	$\begin{array}{r} 6.1 \\ 4.2 \\ +1.9 \\ \hline 30 \end{array}$
			454.3	454.5	454.7	454.6
			$\begin{array}{r} 6.5 \\ 5.0 \\ +1.5 \\ \hline 0.0 \end{array}$	$\begin{array}{r} 6.4 \\ 4.8 \\ +1.6 \\ \hline 18 \end{array}$	$\begin{array}{r} 6.4 \\ 4.6 \\ +1.8 \\ \hline 25 \end{array}$	$\begin{array}{r} 6.4 \\ 4.9 \\ +1.7 \\ \hline 30 \end{array}$
			459.34			
			454.0	454.1	454.5	454.9
			$\begin{array}{r} 4.8 \\ 3.3 \\ +1.5 \\ \hline 0.0 \end{array}$	$\begin{array}{r} 4.6 \\ 3.2 \\ +1.4 \\ \hline 18 \end{array}$	$\begin{array}{r} 4.6 \\ 3.8 \\ +1.8 \\ \hline 25 \end{array}$	$\begin{array}{r} 4.6 \\ 3.4 \\ +2.2 \\ \hline 30 \end{array}$
			452.55			
			453.4	453.4	454.0	454.0
			$\begin{array}{r} 5.2 \\ 3.9 \\ +1.3 \\ \hline 0.0 \end{array}$	$\begin{array}{r} 5.0 \\ 3.9 \\ +1.1 \\ \hline 18 \end{array}$	$\begin{array}{r} 5.0 \\ 3.3 \\ +1.7 \\ \hline 25 \end{array}$	$\begin{array}{r} 5.0 \\ 3.3 \\ +1.9 \\ \hline 30 \end{array}$
			452.17			
			452.6	453.1	453.2	453.3
			$\begin{array}{r} 5.2 \\ 4.2 \\ +1.2 \\ \hline 0.0 \end{array}$	$\begin{array}{r} 5.5 \\ 4.2 \\ +1.3 \\ \hline 18 \end{array}$	$\begin{array}{r} 5.5 \\ 4.1 \\ +1.4 \\ \hline 25 \end{array}$	$\begin{array}{r} 5.5 \\ 4.0 \\ +1.5 \\ \hline 30 \end{array}$
			451.66			
			457.32			

Lt. west

R Grade

Rt = East

		Lt. west		R Grade		Rt = East	
BM		448	454.86				
		454.3	454.2		454.1	454.4	455.1
9+07.62	End Project	454.14		454.00			
		5.3 5.0 +0.2 17	5.2 5.1 +0.1 12		5.3 5.2 +0.1 00	5.2 4.9 +0.3 18	5.2 4.8 +1.0 25
		453.7	453.9		454.2	454.4	454.3
+51.38	PC 25° 43.5'	453.74		453.60			
		5.6 5.4 +0.0 17	5.4 5.4 +0.2 12		5.7 5.1 +0.6	5.6 4.9 +0.7 18	5.6 5.0 +0.6 25
		454.1	454.2		454.4	454.6	454.8
8+15.24	24° 12.88'	453.49		453.35			
		5.9 5.2 +0.7 17	5.9 5.1 +0.8 12		6.0 4.9 +1.1 00	5.9 4.7 +1.2 18	5.8 4.6 +1.4 25
		459.34		459.34			

RP Hub 304
8+51.385

107.0

Montezuma Road + 63rd St. Water Line Grader

Grader 4.0 Below East Top Curb
except across Montezuma Road
H.O. 90.069
stake offset 5' East of 2

Aug. 23. 98
St. Louis
Smith
Mellon
Garber

31

47.68

A 49° 40'
R 110'
T 50.90
L 95.05
E 11.21

+9904

452.12

11.37
7.74
c 3.66

47.67

- 01935

1+49.37-BC

451.20

12.29
7.57
c 4.72

1+22.04 - EL. Montezuma

450.68

12.81
7.26
c 5.55

+81.26

450.64

12.85
5.28
c 6.57

+40.68

450.60

12.89
7.19
c 5.70

0+0 = EL. Montezuma

450.56

12.93
7.21
c 5.72

BM

7.30

462.49

456.19

07 RR No 6
153.41
157.09.06
189.14

2+44.72 - FC

462.49

+48 = Approx. Exist. Line

457.00 Not on pipe

4+0

458.06

7.13
3.87
c 4.57

4+50

455.09

8.40
3.70
c 4.70

5+0

454.12

9.37
1.73
c 4.64

453.05

10.46
6.59
c 3.86

- 01935

Montezuma Road			
Culvert #2	Location	Pages	
BM	0.23	454.02	453.79
			82.3" Pipe 50' ft 97.1242 ft Page 11
			Curb Grad 7.68
1/2 Inlet 60' So of SC6		446.34	5.22 2.76
" " " " " " " " " " " "	25'E	446.34	7.68 5.50 2.18
" " " " " " " " " " " "	25'W	446.34	7.68 5.22 2.46
TP	3.45	445.31	12.16 441.86
			F.L. Pipe 4.31
1/2 Inlet 30' So of SC6		441.00	10.20 5.89
		446.34	-1.03
			F.L. Pipe 6.31
1/2 Inlet on Montez		139.00	
			cb
7+40 on South		441.40	-4.6 -8.9

Aug 24 48 82			
S. Smith McKean Borger			
Aug 27 48			
BM	1.57	453.79	453.79
			9.12 14.10 F4.98
			15' curb 1.00
			32
			446.34
			7.40
			9.12 13.57 F3.45
			446.34 Top Curb
			9.12 13.54 F3.43
			Montezuma

Montezuma Road

		Curb Grade		Lt.		Rt.				
				425.0	424.1	423.8	423.2	422.6	422.3	423.6
				-13.9 8.6 -14.8 82.2	-13.9 1.8 -15.7 40.	-13.9 2.1 -16.0 33.8	-13.9 2.7 -16.6 0.0	-13.9 2.0 -15.9 33	-13.9 2.0 -15.9 46	-13.9 2.3 -16.2 84.3
780		439.76		423.66						
TP	2.22	125.88	12.82	431.1	433.4	433.1	432.1	432.1	432.3	431.9
				-1.9 2.4 -7.3 51.0	-1.9 3.1 -8.0 40	-1.9 3.4 -8.3 33	-1.9 3.8 -8.7 0.0	-1.9 4.1 -9.0 33	-1.9 4.2 -9.1 40	-1.9 4.6 -9.5 84.3
37+30		441.38								
TP	2.60	436.48	12.87	433.88		436.48				
					439.4	439.3	438.4	438.6	439.0	
					1.5 7.4 -2.9 441.5 stub	1.5 7.5 -3.0 33	1.5 8.4 -3.9 0.0	1.5 8.2 -3.7 33	1.5 7.8 -3.3 45.0 stub	
37+0		442.28								
					442.8	442.5	442.0	441.5	441.5	
					3.9 2.0 -1.9 6.0 40	3.9 1.6 -2.3 33	3.9 1.7 -0.8 0.0	3.9 1.2 -1.3 33	3.9 1.3 -1.3 42.0	
36+80		442.81								
					3.6 2.6 -1.0 41.0	3.6 2.8 -1.8 33	3.6 2.0 +0.6 0.0	3.6 2.7 -0.1 33	3.6 2.6 0.0 40	
36+70		443.12								
BM	1.48	446.75		445.27						
					0.7 P.P. plus 75 47+0 1/2 36+75					

B.A. Ford Page 24

Aug. 31-98 33
S. Shop
S. Shop
Beecher
Barger

Curb Grade

Lt

Rt

Rt

BM 1.24 445.26 ^{62 RPH}
^{75' 21" H}
³⁶⁴⁷⁵

TP 11.12 446.50 0.14 435.38

TP 11.87 435.52 1.73 423.65

TP 11.80 425.38 0.12 414.18

			403.6	403.9	403.4	401.4	401.6	401.6	402.3
39+0	437.16		-22.9 107 -33.6 90.4	-22.9 104 -33.3 40	-22.9 106 -33.8 33	-22.9 12.9 -35.2 33	-22.9 12.9 -35.2 40	-22.9 12.9 -35.2 40	-22.9 12.9 -34.9 92.4

			412.5	411.4	411.3	410.2	407.0	406.2	406.0
460	437.78		-23.5 128 -25.3 78.0	-23.5 129 -26.4 40	-23.3 120 -21.5 33	-23.5 111 -27.6 0.0	-23.5 7.2 -30.8 33	-23.5 7.2 -31.6 40	-23.5 8.2 -31.8 87.7

TP 1.08 414.30 12.66 413.22

			418.1	417.3	416.9	415.3	415.5	415.2	415.5
38+20	438.65		-12.8 78 -20.5 70.9	-12.8 86 -21.4 40	-12.8 90 -21.8 33	-12.8 9.6 -22.4 0.0	-12.8 10.4 -23.2 33	-12.8 10.7 -23.5 40	-12.8 10.4 -23.2 74.8

425.88

425.88

Montezuma Rd

Finish Dirt Grade

V.O. # 90069

Sept. 14, 1948

Smith
Becker
Garber

Curb Grade

Lt. Grade Stakes Set Rt.
40' North 40' South

35

1+40

452.16

9.20

9.20

0.00

9.27

9.27

0.00

1+15.08

Cb. B. Con Rt.
Rock Ford Dr.

452.18

9.18

9.18

0.00

9.25

9.25

0.00

9.18

8.01

C-1.17

6.3 out

9.18

8.12

0.06

0+80

452.03

9.33

9.33

0.00

9.40

9.40

0.00

9.33

9.33

0.00

0+55.66

451.80

9.50

9.50

0.00

9.57

9.57

0.00

9.50

9.50

0.00

0+22.18

451.33

10.03

10.03

0.00

10.10

10.10

0.00

BM

8.92

461.43

452.51

SE Top of
Fire Hyd.
College Area
Montezuma
452.42
E.B. # 1808-19

461.43

Card Grade

Lt
40' North
10,73

Q
10,80

Rt
40' South
10,73

2+80

450,63

10,28

10,35

10,28
10,28
000

2+46

EC 66 on Rt,
Rockford Dr.

451,08

9,94

10,01

9,94

2+20

451,42

Note Raked to 5+00 P.V.C.

2+00

P.V.C.

451,68

9,68
9,68
000

9,75
9,75
000

9,68
9,68
000

1+80

451,91

9,45
9,45
000

9,52
9,52
000

9,45

1+60

452,07

9,29
9,29
000

9,36
9,36
000

9,29
9,29
000

461,43

461,43

5750

Pys.

Curb Grade

Lt.
40' North
4.65
4.65
0.00

R.
4.72
4.72
0.00

Rt.
40' South
4.65
4.65
0.00

447.66

4750

448.34

4700

449.01

TP

329

452.38

12.34

449.09

452.38

12.15

12.22

12.15

3785

449.21

3750

449.69

11.67

11.74

11.67

3730

449.96

11.40

11.47

11.40

3700

450.36

11.00

11.07

11.00

461.42

461.43

Montezuma Rd Finish Dirt Grade

	Curb Grade	LT 40 North	Q.	RT 40 South	
7780	446.57	5.74 <u>5.74</u> 0.00	5.81 <u>5.81</u> 0.00	5.74 <u>5.74</u> 0.00	
7740	446.40	5.91	5.98 <u>5.98</u> 0.00	5.91	
7700	446.34	5.97	6.04 <u>6.04</u> 0.00	5.97	Recked Top and @ culverts
6760	446.39	5.92	5.99 <u>5.99</u> 0.00	5.92	
6720	446.54	5.77 <u>5.77</u> 0.00	5.84 <u>5.84</u> 0.00	5.77 <u>5.77</u> 0.00	
5780	446.81	5.50 <u>5.50</u> 0.00	5.57 <u>5.57</u> 0.00	5.50 <u>5.50</u> 0.00	
5740	447.17	5.16 <u>5.16</u> 0.00	5.21 <u>5.21</u> 0.00	5.16 <u>5.16</u> 0.00	

45238

45238

10+32.28	1.3610'				
9+90.35	0° 48.05'				
	1.58	455.37			
BM ^{2" Pipe} 59' AT BC			6.13	453.80	453.79
T.P.	12.18	459.93	4.63	447.75	
9+48.42					
9+37.77	B.C. AT				
9+00					
8+60					
8+20					
		452.38			

Curb Grade	Lt 40' North	Q	RT. 40' South
449.42	5.88 <u>5.95</u> 0.07	5.95 <u>5.95</u> 0.00	5.88 <u>5.88</u> 0.00
448.84	6.46 <u>6.46</u> 0.00	6.53 <u>6.53</u> 0.00	6.46 <u>6.46</u> 0.00
			455.37
448.26	4.05 <u>4.05</u> 0.00	4.12 <u>4.12</u> 0.00	4.05 <u>4.05</u> 0.00
447.74	4.57 <u>4.57</u> 0.00	4.64 <u>4.64</u> 0.00	4.57 <u>4.57</u> 0.00
447.23	5.08 <u>5.08</u> 0.00	5.15 <u>5.15</u> 0.00	5.08 <u>5.08</u> 0.00
446.85	5.46 <u>5.46</u> 0.00	5.53 <u>5.53</u> 0.00	5.46 <u>5.46</u> 0.00
			452.38

Montezuma Rd.	Finish Dirt Grade	Carb Grade	Lt 40' North	R. 40' South	Rt. 40' South	40
12167.82	EC. 6° 06'	452.57	2.73 <u>2.73</u> 0.00	2.80 <u>2.80</u> 0.00	2.73 <u>2.73</u> 0.00	
12130	5° 26.66'	452.11	3.19 <u>3.19</u> 0.00	3.26 <u>3.26</u> 0.00	3.19 <u>3.19</u> 0.00	
12100	P.K.C. 4° 48.29'	451.72	3.58 <u>3.58</u> 0.00	3.65 <u>3.65</u> 0.00	3.58 <u>3.58</u> 0.00	
11475	4° 19.24'	451.39	4 ^{OK} 3.92 2.83 <u>2.83</u> C-0.97	3.99 <u>3.99</u> 0.00	3.92 <u>3.92</u> 0.00	
11158.07	4° 00.24'	451.14	4.16 <u>4.16</u> 0.00	4.23 <u>4.23</u> 0.00	4.16 <u>4.16</u> 0.00	
11716.14	3° 12.19'	450.57	4.73 <u>4.73</u> 0.00	4.80 <u>4.80</u> 0.00	4.73 <u>4.73</u> 0.00	
10474.21	2° 24.14'	449.99	5.31 <u>5.31</u> 0.00	5.38 <u>5.38</u> 0.00	5.31 <u>5.31</u> 0.00	
		455.37				455.37

15115.19 Curb BC Lt
63rd St.

14170

14422.81 Curb BC Rt
63rd St.

13180

13150

13120

12190

TP RT 40 EC 650 459 12 2.75 452 62

Curb Grade

7.2' out
478
454.27
283
C-1.95

8.0' out
493
454.12
240
C-2.53

6.7' out
516
453.89
355
C-1.61

8.6' out
543
453.62
120
C-4.23

10.2' out
567
453.38
97
C-4.96

5.94
5.94
453.11
000

6.24
6.24
452.81
000

Lt.
40' North
4.78

4.93

5.16

5.43

5.67

5.94
5.94
000

6.24
6.24
000

Rt.
40' South
4.85
4.85
000

5.00
5.00
000

5.23
5.23
000

5.50
5.50
000

5.74
5.74
000

6.01
6.01
000

6.31
6.31
000

4.78
4.78
000

4.93
4.93
000

5.16
5.16
000

5.43
5.43
000

5.67
5.67
000

5.94
5.94
000

6.24
6.24
000

9.1' out
516
0.80
C-4.36

9.0' out
543
1.54
C-3.89

8.7' out
567
2.09
C-3.59

8.7' out
5.94
2.46
C-3.48

459 12

T.P.	179	450.53	5.36	448.74
27+40				
24+00		raked both ways stakes at 50' intervals		
	632.00'			
20+00				
T.P.	4.98	454.10	10.91	449.12
T.P.	145° 54' 48"	2.47	460.03	1.56
19+50				
19+00				
	1007.85			
18+50				
18+00	P.V.C.			
		459.12		

Carb Grade	Lt 40' North	R	Rt. 40' South	43
	7.95	8.02	7.95	
446.08	<u>7.95</u>	8.12	<u>7.95</u>	
	0.00	0.00	0.00	
	5.27	5.34	5.27	
448.76	<u>5.27</u>	5.44	<u>5.27</u>	
	0.00	0.00	0.00	
	2.11	2.18	2.11	
451.92	<u>2.11</u>	2.28	<u>2.11</u>	
	0.00	0.00	0.00	
	6.74	6.81	6.74	
452.31	<u>6.74</u>	6.91	<u>6.74</u>	
	0.00	0.00	0.00	
	6.34	6.41	6.34	
452.71	<u>6.34</u>	6.51	<u>6.34</u>	
	0.00	0.00	0.00	
	5.95	6.02	5.95	
453.10	<u>5.95</u>	6.12	<u>5.95</u>	
	0.00	0.00	0.00	
	5.56	5.63	5.56	
453.49	<u>5.56</u>	5.73	<u>5.56</u>	
	0.00	0.00	0.00	
	459.12			

30720

29760

29740

29700

28760

28720

27780

45053

Curb Grade

445.77

445.58

445.47

445.44

445.48

445.61

445.80

45053

Lt.
40' North

4.69
4.69
0.00

4.88
4.88
0.00

4.99

5.02
5.02
0.00

4.98
4.98
0.00

4.85
4.85
0.00

4.66
4.66
0.00

Q

4.76
4.86
0.00

4.95
5.05
0.00

5.06
5.16
0.00

5.09
5.19
0.00

5.05
5.15
0.00

4.92
5.02
0.00

4.73
4.83
0.00

Rt
40' South

4.69
4.69
0.00

4.88
4.88
0.00

4.99
4.99
0.00

5.02
5.02
0.00

4.98
4.98
0.00

4.95
4.85
0.00

4.66
4.66
0.00

44

Montezuma Rd Finish Dirt Grade

32+90.12 C&EC Lt
La Dorada St

32+50

32+20

31+80.12 C&BC Lt
La Dorada St

31+40

31+00

30+60

450⁵³

Curb
Grade

447.90

447.78

447.59

447.25

446.81

446.39

446.04

450⁵³

Lt
40' North

2.56

2.56

0.00

33' gutter
grade

3.42

3.42

33' gutter
grade

3.61

3.61

40'

3.21

3.21

0.00

40'

3.65

3.65

0.00

174' out

40'

4.07

4.07

0.02

4.24

0.00

40'

4.42

4.42

0.00

E

2.63

2.73

0.00

2.75

2.85

0.00

2.94

3.04

0.00

3.28

3.38

0.00

3.72

3.82

0.00

4.14

4.24

0.00

4.49

4.59

0.00

Rt
40' South

2.56

2.56

0.00

2.68

2.68

0.00

2.87

2.87

0.00

3.21

3.21

0.00

40'

3.65

3.65

0.00

4.07

4.07

0.00

4.42

4.42

0.00

45

34771.37 Ob. E.C. Lt. Catoctin Dr.

Curb Grade

Lt.
40' North
5.59
5.59
0.00

±
5.66
5.76
0.00

Rt.
40' South
5.59
5.59
0.00

34460

447.11

33' Lt.
6.21
6.21
0.00

5.54
5.64
0.00

5.47
5.47
0.00

34426.34 Ob. E.C. Rt. Catoctin Dr.

447.44

33' Lt.
5.88
5.88
0.00

5.21
5.31
0.00

5.14
5.14
0.00

45265

T.P. 4.91 45265 6.38 447.74

33+25.97 Ob. B.C. Lt. Catoctin Dr.

447.66

6.39
6.39

6.46
6.56
6.66
0.00

33' Rt.
7.13
7.13
0.00

33+70

447.80

6.25
6.25
0.00

6.32
6.42
6.50

33' Rt.
6.99
6.99
0.00

33+45.46 Ob. B.C. Rt. Catoctin Dr.

447.88

6.17
6.17
0.00

6.24
6.34
0.00

6.17
6.17
0.00

33+10

447.93

6.12
6.12
0.00

6.19
6.29
0.00

6.12
6.12
0.00

1.20 45292 BM NE cor porch 45292

T.P. 5.25 454.12 1.66 448.87

45412

Montezuma Rd. Finish Dirt Grade

Curb Grade

Lt
40' North

±

Rt
40' South

47

36775 End Project

442.99

9.59
9.59
0.00

9.66
9.76
0.00

9.59
9.59
0.00

36740

443.90

10.84
8.68
2.75
0.593

8.68

8.75
8.85
0.00

8.68
8.68
0.00

36710

444.61

7.97
7.97
0.00

8.04
8.14
0.00

7.97
7.97
0.00

35780

445.24

7.34
7.34
0.00

7.41
7.51
0.00

7.34
7.34
0.00

35750

445.81

6.77
6.77
0.00

6.84
6.94
0.00

6.77
6.77
0.00

35720

446.31

6.27
6.27
0.00

6.34
6.44
0.00

6.27
6.27
0.00

34790

446.74

5.84
5.84
0.00

5.91
6.01
0.00

5.84
5.84
0.00

45265

45265

La Dorna St Finish Dirt Grades, WO# 90069

D. Smith
W. Becker
W. Barber

W Curb
Grade

Lt
25' West

G
Grade

E

Rt.
Curb Grade

Rt. 18
25' East

1130,04 Emb grading

445,54

8.49
8.49
000

445,50

8.60
8.60
000

445,84

110x
8.19
6.52
0-1,67

0777,85 E.C.

446,20

7.83
7.83
000

446,12

7.98
7.98
000

446,50

7.53
7.53

0742,18

446,61

7.42
7.42
000

446,55

7.55
7.55
000

446,91

7.12
7.12
000

0706,51 B.C. Lt.

447,02

446,99

447,32

0700

Bath C.C. E.C.
37' Rad.

447,10

6.93
6.93
000

447,06

7.04
7.04
000

447,40

6.63
6.63
000

BM

1.20

454¹²

452²⁰

N.E. Cor.
Con. Parcel
66141 A
33437

Catoctin Dr		North	South	at Montezuma	25' west	Lt.	Grade	Grade	RT	East 49
D Smith W Becker W Barber		Finish Dirt Grade		Sept 20 1947 west Curb Grade	5'84 730 617 0-1.13	12' west			25' East	Curb Grade
2+09.38				45026						
2+01.93							45030			45044
1+61.93							45114			45128
1+21.93							45182			45196
0+81.93							45238			45248
0+41.93							45220			45284
0+00							45307			45321
B.M.	473	45763		45290			45763			

NE Cor Porch
66' RT
33 437
page 23

Catoctin Dr Finish Dirt Grade

					West Curb Groc	25' west	LT 12' West	♀ Grade	♀	R+ 25' East	East 50 Curb Grade
4762.96							5' BK 11.18 8.14 C-3.04	448.58	10.98 11.08 0.00	10.81 10.81 0.00	448.68
4124.59	C6 EC RT						2' BK 12.11 10.77 C-1.34	447.65	11.91 12.01 0.00	11.79 11.79 0.00	447.70
4100.83	C6 EC LT				448.00		2' BK 446.58 13.01 11.73 C-1.28	446.75			
TP	11.12	459.56	9.19	448.44				459.56			
3720.71	C6 BC RT								5' BK 10.07 6.29 C-3.80		447.49
2781.78	C6 BC LT				448.46		2' BK 9.10 6.59 C-2.51	448.30	9.33 9.43 0.00	9.10 9.10 0.00	448.46
2736.27	BC LT				449.60		5' BK 7.96 6.38 C-1.58	449.46	8.17 8.27 0.00	7.96 7.96 0.00	449.60
								457.63			

457.63

457.63

Catoctin Dr Finish Dirt Grade

7702.96

6762.96

6722.96

5782.96

5742.96

5702.96

45956

Lt
12' West

E
Grade

E

RT
25' East

East 51
Barbgrade

5' BK
7.21
6.41
06.80

452.55

7.01
7.11
000

6.80
6.60
000

452.69

5' BK
7.59
6.61
00.98

452.17

7.39
7.49
000

5' BK
7.18
5.56
0-1.62

452.31

5' BK
8.10
6.88
0-1.22

451.66

7.90
8.00
000

7.69
7.69
0.00

451.80

5' BK
8.74
7.75
00.99

451.02

8.54
8.64
000

8.33
8.33
000

451.16

5' BK
9.48
7.90
0-1.58

450.28

9.28
9.38
000

9.07
9.07
000

450.42

5' BK
10.26
8.27
0-1.99

449.48

10.06
10.16
000

9.87
9.87
000

449.62

45956

Cross Section Montezuma Sept 30 1948

W.O. # 22007 ✓

Notes reduced 10-1-48
H. R. Manning Jr.

Smith
Becker
Barber
Gregory
Clark

2720

2700

1780

1760

1740

1715.09

0780

0755.66

0722.9

BM

7.33

459.84

452.51

SE Taboat Hill
College Area
Montezuma

53

Left	Center	Right
454.3	451.4	450.9
55 84	85 92	89 86
458 40	33 33	33 33
	TC 9	TC 9
454.6	451.5	451.2
50 83	82 90	86 88
45 48	33 33	33 50
	TC 9	
454.6	451.9	450.9
52 79	78 89	86 87
44 40	33 33	33 50
	TC 9	
454.7	452.1	452.0
51 77	76 86	85 83
44 40	33 33	33 50
	TC 9	
454.6	452.1	451.3
52 77	76 86	85 85
44 40	33 33	33 40
	TC 9	
454.7	452.2	451.2
51 76	75 86	85 7.8
45 40	33 33	33 33
	TC 9	
455.8	452.2	451.2
40 76	78 86	84 7.8
45 40	33 33	33 33
	TC 9	
452.5	452.2	451.6
83 76	80 85	83 7.6
45 40	33 33	33 33
	TC 9	
451.0	451.0	451.1
88 88	88 9.3	88 8.8
45 40	33 33	33 40
	TC 9	

459.84

5440

5400

4150

4400

3785

3750

3730

3700

2780

24653

45984

451.5	447.2	447.3	446.7	447.3	446.6	447.0	447.2	450.1	54
8.3	12.6	12.5	13.1	12.5	13.2	12.8	12.4	9.7	
45	40	33	33	33	33	33	40	43.5	
452.3	447.9	448.0	447.3	447.6	447.0	447.5	447.7	451.3	
7.5	11.9	11.8	12.5	12.0	12.8	12.3	12.1	8.5	
45	40	33	33	33	33	33	40	43.5	
452.6	448.4	448.7	447.8	448.4	447.6	448.2	448.4	452.0	
7.2	11.4	11.1	12.0	11.4	12.2	11.6	11.4	7.8	
45	40	33	33	33	33	33	40	44	
454.4	449.1	449.2	446.5	449.1	446.3	449.7	449.1	452.3	
5.4	10.7	10.6	11.3	10.7	11.5	11.1	10.7	7.5	
46	40	33	33	33	33	33	40	43.5	
454.5	449.3	449.5	448.6	449.2	446.5	449.3	449.3	452.7	
5.3	10.5	10.3	11.2	10.6	11.3	10.8	10.5	7.1	
46.5	40	33	33	33	33	33	40	43.5	
454.3	449.8	449.9	449.0	449.7	448.9	449.4	449.6	452.7	
5.5	10.0	9.9	10.8	10.1	10.9	10.4	10.2	7.1	
45	40	33	33	33	33	33	40	44	
457.2	450.1	450.3	449.3	450.0	449.2	449.7	449.8	452.8	
2.6	9.7	9.5	10.5	9.8	10.6	10.1	10.0	7.0	
46.5	40	33	33	33	33	33	40	44	
455.2	450.3	450.4	449.7	450.3	449.7	450.1	450.3	453.1	
4.6	9.5	9.4	10.1	9.5	10.1	9.7	9.5	6.7	
44	40	33	33	33	33	33	40	43.5	
455.4	450.5	450.5	450.0	450.6	449.8	450.4	450.6	453.0	
4.4	9.3	9.3	9.8	9.2	10.0	9.4	9.2	6.8	
45.5	40	33	33	33	33	33	40	43.5	
455.5	450.8	451.0	450.3	451.0	450.3	450.6	450.8	452.8	
4.3	9.0	8.8	9.5	8.8	9.5	9.2	9.0	7.0	
45	40	33	33	33	33	33	40	42.5	

45984

12700

11775

11758.07

11716.14

10774.21

10732.28

9790.35

9748.42A

9737.77A BC. RT

9700

45859

4565	Lt 451.9	451.5	450.8	451.8	450.9	RT 451.4	451.7	455.6	56
2.1	6.7	7.1	7.8		7.7	7.2	6.9	3.0	
46	40	33	33	6.8	33	33	40	47	
453.7	451.9	451.3	450.7	451.6	450.6	451.1	451.2	455.0	
4.9	6.7	7.3	7.9		8.0	7.5	7.4	3.6	
45	40	33	33	7.0	33	33	40	46.5	
448.0	451.3	451.3	450.6	451.3	450.3	450.8	451.0	454.7	
10.6	7.3	7.3	8.0		8.3	7.8	7.6	3.9	
47	40	33	33	7.3	33	33	40	45	
436.3	450.5	451.0	450.1	450.6	449.7	450.2	450.5	454.4	
22.3	8.1	7.6	8.5	8.0	8.9	8.4	8.1	4.2	
62	40	33	33		33	33	40	44.5	
439.3	450.1	450.4	449.4	450.1	449.1	449.6	449.9	454.1	
19.3	8.5	8.2	9.2		8.5	8.0	8.7	4.5	
59	40	33	33	8.5	33	33	40	45	
443.9	449.2	449.8	448.8	449.5	448.5	448.9	449.0	454.3	
14.7	9.4	8.8	9.8		9.1	10.1	9.7	9.6	4.3
49	40	33	33		33	33	40	46.5	
444.5	448.9	449.0	448.2	448.9	448.0	448.4	448.8	454.0	
14.1	9.7	9.6	10.4		9.7	10.6	9.8	4.6	
48	40	33	33	9.7	33	33	40	47	
442.4	448.2	448.3	447.5	448.3	447.5	447.9	448.3	453.5	
16.2	10.4	10.3	11.1		11.1	10.7	10.3	5.1	
50	40	33	33	10.3	33	33	40	45.5	
441.5	447.9	447.8	447.1	447.8	446.9	447.4	447.4	452.5	
17.1	10.9	10.8	11.5		11.7	11.2	11.2	6.1	
52	40	33	33	10.8	33	33	40	44	

45859

1571519 C6 BC 14

14769

14722.81 C6 BC 14

13780

13750

13720

12790

12767.82 EC

12730

T.P. 584

46214

2.27

45632

24 Pa. 50AT
12767.82
45630 on disk

45659

46214

456.4	454.3	454.2	453.6	454.3	453.8	455.2
5.7	7.8	7.9	8.5	7.8	8.3	6.9
44	40	33	33	33	33	50
456.9	454.0	453.9	453.4	454.1	453.5	454.0
5.2	8.1	8.2	8.7	8.0	8.6	8.1
44	40	33	33	33	33	50
455.6	453.9	453.8	453.2	453.8	453.2	453.5
6.5	8.2	8.3	8.9	8.9	8.6	8.0
42	40	33	33	33	33	40
457.2	453.6	453.5	452.9	453.6	452.7	453.8
4.9	8.5	8.6	9.2	9.4	8.9	8.3
45	40	33	33	33	33	40
458.3	453.6	453.4	452.6	453.4	452.4	453.6
3.8	8.5	8.7	9.5	8.7	9.7	8.8
45.5	40	33	33	33	33	40
457.7	453.4	453.1	452.3	453.0	452.1	452.7
4.4	8.7	9.0	9.8	9.1	10.0	9.4
45	40	33	33	33	33	40
458.5	452.7	452.9	452.0	452.7	451.9	452.4
3.6	9.4	9.2	10.1	9.4	10.2	9.7
45.5	40	33	33	33	33	40
458.3	452.6	452.5	451.7	452.6	451.5	452.2
3.8	9.5	9.6	10.4	9.5	10.6	10.2
46	40	33	33	33	33	40
457.7	452.1	451.7	451.1	452.2	451.2	451.7
4.4	10.0	10.4	11.0	9.9	10.9	10.4
46	40	33	33	33	33	40

19700

18750

18600

17790

17740

17710

16780

16750

1670144 CLBC.Ht

1575096 CLBC.Ht

46214

457.4	452.8	453.0	452.1	452.7	452.2	452.9	452.9	458.2
4.4	9.3	9.1	10.0	9.4	9.9	9.2	9.2	3.9
45.5	40	33	33	33	33	33	40	46
457.2	453.2	453.3	452.4	453.0	452.6	453.3	453.1	458.3
4.9	8.9	8.8	9.7	9.5	9.5	8.8	9.0	3.8
44.5	40	33	33	33	33	33	40	46
457.0	453.6	453.8	452.9	453.4	453.7	453.9	453.7	458.4
5.1	8.5	8.3	9.2	8.7	9.0	8.2	8.4	3.7
44.5	40	33	33	33	33	33	40	46
457.4	453.7	453.8	453.0	453.5	452.9	454.0	453.7	458.5
4.7	8.4	8.3	9.1	9.2	9.2	8.1	8.4	3.6
44.5	40	33	33	33	33	33	40	45
457.0	453.9	453.8	453.2	453.6	453.1	453.9	453.9	458.4
4.5	8.2	8.3	8.9	9.0	9.0	8.2	8.2	3.7
44	40	33	33	33	33	33	40	45.5
457.5	454.0	454.0	453.2	453.8	453.4	454.3	454.0	458.3
4.6	8.1	8.1	8.9	8.7	8.7	7.8	8.1	3.8
44.5	40	33	33	33	33	33	40	45
457.5	454.1	454.0	453.3	454.0	453.5	454.3	454.2	457.9
4.6	8.0	8.1	8.8	8.6	8.6	7.8	7.9	4.2
44	40	33	33	33	33	33	40	44
457.2	454.2	454.2	453.4	454.0	453.6	454.6	454.3	457.6
4.9	7.9	7.9	8.7	8.1	8.5	7.5	7.8	4.5
45	40	33	33	33	33	33	40	44
456.7	454.3	454.0	453.5	454.1	453.4	454.2	454.3	457.4
5.4	7.8	8.1	8.6	8.1	8.7	7.9	7.8	4.7
44.5	40	33	33	33	33	33	40	43.5
	454.7	453.9	454.3	453.8	454.5	454.4	457.2	
	7.4	8.2	8.3	7.6	7.7	4.9		
	50	33	7.8	33	33	40	43.5	
		9		9	7C			

46214

22130

22117

22105

21190

21150

21100

20150

20110

19150

T.P.

6,84

45924

9,74

45240

4624

Lt

♀

Rt

39

450.7	450.0	450.2	449.2	449.8	449.5	450.0	449.9	441.2
8.6	9.2	9.0	10.0	9.7	9.7	9.2	9.3	18.0
42	40	33	33	9.4	33	33	40	55
450.7	450.2	TC	449.3	450.0	449.6	450.2	449.5	446.1
8.5	9.0	9.0	9.9	9.6	9.6	9.0	9.7	13.1
41	40	33	33	9.2	33	33	40	47
451.5	450.5	TC	449.4	450.1	449.7	450.3	450.0	450.3
7.7	8.7	8.8	9.8	9.5	9.5	8.9	9.2	8.9
42	40	33	33	9.1	33	33	40	45
451.7	450.4	TC	449.6	450.2	449.9	450.4	450.3	451.8
7.5	8.8	8.6	9.6	9.3	9.3	8.8	8.9	7.4
41.5	40	33	33	9.0	33	33	40	42
453.0	450.8	TC	449.9	450.7	450.0	450.7	450.7	453.4
6.2	8.4	8.4	9.3	9.2	9.2	8.5	8.5	5.8
44	40	33	33	8.6	33	33	40	42.5
454.4	451.2	TC	450.3	451.0	450.5	451.3	450.9	454.9
4.8	8.0	8.0	8.9	8.7	8.7	7.9	8.3	4.3
45	40	33	33	8.2	33	33	40	44.5
455.4	451.6	TC	450.9	451.4	450.7	451.5	451.4	455.9
3.8	7.6	7.6	8.3	8.5	8.5	7.7	7.8	3.3
45	40	33	33	7.8	33	33	40	45
456.9	452.0	TC	451.2	451.7	451.1	451.9	451.8	456.5
2.3	7.2	7.2	8.0	8.1	8.1	7.3	7.4	2.7
46	40	33	33	7.5	33	33	40	45
457.2	452.6	TC	451.5	452.2	451.7	452.4	452.5	457.8
2.0	6.6	6.7	7.7	7.5	7.5	6.8	6.7	1.4
46	40	33	33	7.0	33	33	40	46
		TC	9	9	9	TC		

45924

2940

29100

28760

28140

28120

27780

27440

27400

26450

T.P.

830

45517

45924

1237

44681

LT

♀

RT

61

434.6	445.6	445.58	444.74	445.5	445.0	445.6	445.7	439.7
20.6	9.6	9.59	10.43		10.2	9.6	9.6	15.5
61	40	33	33	9.7	33	33	40	52
Toe		TC	9		9	TC	TC	Toe
435.5	445.3	445.3	444.80	445.4	445.1	445.8	445.8	441.0
19.7	9.9	9.9	10.4		10.1	9.4	9.4	14.2
57	40	33	33	9.8	33	33	40	50
Toe		TC	9		9	TC	TC	Toe
438.6	445.7	445.6	444.9	445.4	445.3	446.1	445.9	443.5
16.6	9.5	9.6	10.3		9.9	9.1	9.3	11.7
52	40	33	33	9.8	33	33	40	46
Toe		TC	9		9	TC	TC	Toe
440.7	445.7	445.7	444.9	445.5	445.7	446.0	446.0	445.6
14.5	9.5	9.5	10.3		10.0	9.2	9.2	9.6
47	40	33	33	9.7	33	33	40	44
Toe		TC	9		9	TC	TC	Toe
442.7	445.8	445.8	444.9	445.7	445.0	446.0	446.0	446.8
12.5	9.4	9.4	10.3		10.2	9.2	9.2	8.4
46	40	33	33	9.5	33	33	40	42
Toe		TC	9		9	TC	TC	Toe
446.0	446.0	445.9	445.0	445.9	445.7	446.1	445.9	450.1
9.2	9.2	9.3	10.2		10.0	9.1	9.3	5.1
45	40	33	33	9.3	33	33	40	44
Toe		TC	9		9	TC	TC	Toe
449.0	446.2	446.0	445.3	446.0	445.6	446.6	446.5	451.6
6.2	9.0	9.2	9.9		9.6	8.6	8.7	3.6
44	40	33	33	9.2	33	33	40	45
Toe		TC	9		9	TC	TC	Toe
450.3	446.4	446.1	445.4	446.4	445.6	446.7	446.8	452.3
4.9	8.8	9.1	9.8		9.6	8.5	8.4	2.9
44	40	33	33	8.8	33	33	40	46
Toe		TC	9		9	TC	TC	Toe
450.4	446.9	446.8	445.8	446.9	446.1	446.9	446.8	452.4
4.8	8.3	8.4	9.4		9.1	8.3	8.4	2.8
43.5	40	33	33	8.3	33	33	40	47
Toe		TC	9		9	TC	TC	Toe

45517

33110

3279012 C6 ECLY

32750

32720

3178012 C6 BCLT

31440

31700

30660

30720

29780

45517

		Lt	448.0	447.3	447.9	446.9	447.5	447.7	447.9	450.9
449.5	447.4	7.2	7.9	7.3	8.3	7.7	7.6	7.3	4.3	
5.7	7.8	7.2	7.9	7.3	8.3	7.7	7.6	7.3	4.3	
42	40	33	33	7.3	33	33	40	50	52	
		T.C	9.		9	9				
449.0	448.1	447.8	447.4	447.8	446.9	447.4	447.5	447.8	450.9	
6.2	7.1	7.4	7.8	447.8	8.3	7.8	7.7	7.4	4.3	
42	40	33	33	7.4	33	33	40	50	52	
		T.C	9.		9	T.C				
	447.0	447.1	447.7	446.7	447.4	447.5	450.4			
	8.2	8.1	7.5	8.5	7.8	7.7	4.8			
	50	33	7.5	33	33	40	50			
				9	9					
	446.8	446.9	447.5	446.7	447.4	447.6	450.8			
	8.4	8.3	7.7	8.5	7.8	7.6	4.4			
	50	33	7.7	33	33	40	47			
				9	9					
449.3	446.7	446.6	446.1	447.3	446.6	447.2	447.3	450.9		
5.9	8.5	8.6	9.1	447.3	8.6	8.0	7.9	4.3		
42	40	33	33	7.9	33	33	40	44		
		T.C	9		9	T.C				
449.3	446.8	446.7	446.1	446.8	446.0	446.8	446.9	450.1		
5.9	8.4	8.5	9.1	446.8	9.2	8.4	8.3	5.1		
43	40	33	33	8.4	33	33	40	43.5		
		T.C	9		9					
448.7	446.4	446.4	445.7	446.4	445.8	446.1	446.2	448.8		
6.5	8.8	8.8	9.5	446.4	9.4	9.1	9.0	6.4		
43	40	33	33	8.8	33	33	40	44		
		T.C	9		9	T.C				
446.8	445.9	446.1	445.4	446.2	445.6	446.4	446.3	446.3		
8.4	9.3	9.1	9.8	446.2	9.6	8.8	8.9	8.9		
41	40	33	33	9.0	33	33	40	45		
		T.C	9		9	T.C				
443.1	446.0	446.2	445.3	445.8	445.5	446.2	446.0	443.4		
12.1	9.2	9.1	9.9	445.8	9.7	9.0	9.2	11.8		
45	40	33	33	9.4	33	33	40	45		
		T.C	9		9	T.C				
439.3	446.1	446.1	445.0	445.5	445.2	445.9	445.7	440.3		
15.9	9.1	9.1	10.2	445.5	10.0	9.3	9.5	14.9		
53	40	33	33	9.7	33	33	40	50		
		T.C	9		9	T.C				

45517

	Cost Page 71	3.03	452.93	X on NE cor Foreh 452.90 66' at 331.37
36775	End Project			
36760	Wire Fence			
36746				
36710				
35780				
35750				
35720				
3477.37	C6BC Lt			
34726.34	C6BC Mt			
33795.97	C6BC Mt			
33745.44	C6BC Mt			
T.P.	806	45596	7.27	44720
		45517		

443.4	443.4	443.3	443.3	♀	443.0	443.0	443.4	442.1
12.6	12.6	12.7	12.7	12.6	13.0	13.0	12.6	13.9
446.1	443.4	443.7	443.2	443.3	443.9	443.4	443.4	444.9
9.9	12.6	12.3	12.8	12.7	13.1	12.6	12.6	11.1
44	40	33	33	33	33	33	40	43
449.9	12.0	11.9	12.4	443.9	12.8	12.1	11.9	7.9
46	40	33	33	12.1	33	33	40	46
450.8	444.6	444.7	444.1	444.6	444.0	444.6	444.8	450.0
5.2	11.4	11.3	11.9	11.4	12.0	11.4	11.2	6.0
46	40	33	33	11.4	33	33	40	46
451.5	444.9	445.1	445.5	445.2	444.8	445.4	445.5	450.1
4.5	11.1	10.9	11.5	10.8	11.2	10.6	10.5	5.9
46	40	33	33	10.8	33	33	40	45
451.8	445.7	445.6	445.2	445.8	445.4	446.1	446.1	450.4
4.2	10.3	10.4	10.8	10.2	10.6	9.9	9.9	5.6
47	40	33	33	10.2	33	33	40	44
452.3	446.3	446.2	445.7	446.4	446.0	446.6	446.6	450.5
3.7	9.7	9.8	10.3	9.6	10.0	9.4	9.4	5.5
47	40	33	33	9.6	33	33	40	45
451.9	447.7	447.2	446.6	447.0	446.4	447.1	447.0	451.0
4.1	8.3	8.8	9.4	9.0	9.6	8.9	9.0	5.0
44	40	33	33	9.0	33	33	40	45
		447.3	447.0	447.5	447.1	447.4	447.6	451.7
		8.7	9.0	8.5	8.9	8.6	8.4	4.3
		5.0	3.3	8.5	3.3	3.3	4.0	4.5
451.1	448.1	447.7	447.1	447.7	447.3	447.9		
4.9	7.9	8.3	8.9	8.7	8.7	8.1		
43.6	4.0	3.3	3.3	8.3	3.3	5.0		
450.4	448.1	447.9	447.2	448.0	446.8	447.6	447.7	448.0
5.6	7.9	8.1	8.8	8.0	9.2	8.2	8.3	8.0
4.2	4.0	3.3	3.3	8.0	3.3	3.3	4.0	5.0
		Tc	9		9	Tc		

45596

Cross section La Dorada St Sept. 30 1948

W.O.# 23007

Smith
Becker
Garber
Gregory
Clark

Lt

C

Rt

84

1+30.04 End

444.7	445.8	445.9	445.3	445.5	445.8	446.6	446.7	447.2
8.2	7.1	7.0	7.6		7.1	6.3	6.2	5.7
25	25	18	18	7.4	18	18	25	25
Top	Top	TC	9		9	TC	Bottom	Top

6+77.95 E.C.

445.7	446.4	446.4	445.8	445.9	445.7	446.5	446.8	447.3
7.2	6.5	6.5	7.1		7.2	6.4	6.2	5.6
25	25	18	18	7.0	18	18	25	25
Top	Top	TC	9		9	TC	Bottom	Top

0+42.18

446.7	446.7	446.6	446.0	446.3	445.9	446.7	446.7	447.3
6.2	6.2	6.3	6.9		7.0	6.2	6.2	5.6
27	25	18	18	6.6	18	18	24	25
		TC	9		9	TC	Bottom	Top

0+6.51 B.C., Lt

447.7	446.9	446.9	446.4	446.8	446.4	447.2	447.2	448.0
5.2	6.0	6.0	6.5		6.5	5.7	5.7	4.9
25	25	18	18	6.1	18	18	25	25
Top	Top	TC	9		9		Bottom	Top

BM

0.02

452.92

452.92

NE. cor parcel
Catactin
68' x 33' 39"
Montezuma

452.92

Cross Section Catactin D.

23007

Sept 30 1948
Smith
Garber
Becker
Clark

2709.38

2701.93

1761.93

1721.93

0781.93

0741.93

0700

BM

464

45754

45220

X 0.5 N.F. Cor
Porch
Catactin
Montezuma

451.4	450.2	449.9	450.0	449.7	450.5	450.9	452.3
6.1	7.3	7.6	7.5	7.8	7.0	6.8	5.2
25	25	12	9	18	18	25	25
Top	DOT			9	TC	25	Top
451.2	450.2	450.2	450.2	449.9	450.7	451.1	452.6
6.3	7.3	7.3	7.3	7.6	6.8	6.4	4.9
12	12	9	9	18	18	25	25
Top	9			9	TC	25	Top
452.0	451.0	451.1	451.1	450.7	451.4	452.3	452.9
5.5	6.5	6.4	6.4	6.8	6.1	5.2	4.6
12	12	9	9	18	18	25	25
Top	9			9	TC	25	Top
452.4	451.6	451.7	451.2	452.0	452.0	453.0	
5.3	5.9	5.8	6.3	5.5	5.5	4.5	
12	12	9	18	18	25	25	
Top	9		9	TC	25	Top	
452.6	452.0	452.1	451.5	452.1	452.2	453.6	
4.9	5.5	5.4	6.0	5.4	5.3	3.9	
12	12	9	18	18	25	25	
Top	9		9	TC	25	Top	
452.3	452.3	452.5	452.2	452.4	452.6	453.5	
5.2	5.2	5.0	5.3	5.1	4.9	4.0	
12	12	9	18	18	25	25	
Top	9		9	TC	25	Top	
452.7	452.7	453.0	452.8	453.2	453.5	453.5	
4.8	4.8	4.5	4.7	4.3	4.0	4.0	
12	12	9	18	18	25	25	
Top	9		9	TC	Bottom	Top	

45754

5782.96

5742.96

5702.96

4762.96

4724.59 CBEC.M.

TP 383 45673 464 45290

2781.28 CB.OC.LT

2736.27 BC.LT

45754

86

452.0	451.1	451.1	450.4	450.9	451.0	453.0
4.7	5.6	5.6	6.3	5.8	5.7	3.7
17 Top	17	17	18	18	25 Bot	25 Top
451.7	450.5	450.3	449.7	450.3	450.7	452.7
5.0	6.2	6.4	7.0	6.4	6.5	4.3
17 Top	17	17	18	18	25 Bot	25 Top

451.5	449.4	449.3	448.9	449.6	449.5	451.7
5.2	7.3	7.4	7.8	7.1	7.2	5.0
17 Top	17	17	18	18	25 Bot	25 Top

451.4	448.0	447.9	447.8	448.5	448.5	451.5
5.3	8.7	8.8	8.9	8.2	8.2	5.2
17 Top	17	17	18	18	25 Bot	25 Top

451.4	447.2	447.1	447.1	447.6	447.8	451.6
5.3	9.5	9.6	9.6	9.1	8.9	5.1
17 Top	17	17	18	18	25 Bot	25 Top

45673

451.0	447.9	448.1	448.1	447.9	448.3	448.1	451.6
6.5	9.6	9.4	9.4	9.2	9.2	9.4	5.9
25 Top	25 Bot	12	12	18	18	25 Bot	25 Top

451.5	448.4	449.0	449.3	449.0	449.6	449.7	451.9
6.0	9.1	8.5	8.2	8.5	7.9	7.8	5.6
25 Top	25 Bot	12	12	18	18	25 Bot	25 Top

45754

8+15.24

7+79.10

7+42.96 E.V.C.

7+02.96

6+62.96

6+22.96

45673

L.T. $\frac{1}{2}$

R.T.

17

454.1	453.1	453.4	453.1	453.7	453.6	454.7
2.6	3.6		3.6	3.0	3.1	2.0
12	12	3.3	18	18	25	25
Top	9		9	TC	Bot	Top

454.0	453.0	453.2	453.0	453.5	453.5	455.0
2.7	3.7		3.7	3.2	3.2	1.7
12	12	3.5	18	18	25	25
Top	9		9	TC	Bot	Top

454.0	452.8	452.8	452.5	453.4	453.3	454.8
2.7	3.9		4.2	3.3	3.4	1.9
12	12	3.9	18	18	25	25
Top	9		9	TC	Bot	Top

453.3	452.0	452.2	452.2	452.5	452.7	454.7
3.4	4.7		4.5	4.2	4.0	2.0
12	12	4.5	18	18	25	25
Top	9		9	TC	Bot	Top

452.9	452.0	451.8	451.6	452.3	452.3	454.1
3.8	4.7		5.1	4.4	4.4	2.6
11	11	4.9	18	18	25	25
Top	9		9	TC	Bot	Top

452.6	451.6	451.5	451.2	451.7	451.6	453.3
4.1	5.1		5.5	5.0	5.1	3.4
12	12	5.2	18	18	25	25
Top	9		9	TC	Bot	Top

45673

LT E RT

BM

186

454.86 On RP 466
454.87 50' RT
815138

970762

End

454.3	453.8	454.2	453.7	454.4	454.2	455.1
2.4	2.9	2.5	3.0	2.3	2.5	1.6
12	12		18	18	25	25
Top	9		9	Top	Top	Top

875138

EC

454.0	453.4	453.6	453.1	453.9	453.6	454.5
2.7	3.3	3.1	3.6	2.8	2.9	2.2
12	12		18	18	25	25
Top	9		9	Top	Top	Top

45673

45673

Catocin Dr Water Line "6" replacement Oct. 1, 1948
 W.O. # 23007

Stakes set 10' East of New 2
 equals 5' West of Pipe line

Smith
 Becker
 Garber
 Clark

INDEXED
 WK
DEC 7 1948

1461.93			446.68	$\begin{array}{r} 1.05 \\ 5.68 \\ \hline 6.73 \\ C-4.4 \end{array}$	4100.83	443.50	$\begin{array}{r} 13.23 \\ 9.82 \\ \hline 23.05 \\ C-3.4 \end{array}$
1721.93			447.78	$\begin{array}{r} 9.25 \\ 5.22 \\ \hline 14.47 \\ C-4.0 \end{array}$	3760.77	443.50	$\begin{array}{r} 13.23 \\ 9.44 \\ \hline 22.67 \\ C-3.8 \end{array}$
0181.93			448.28	$\begin{array}{r} 8.45 \\ 4.84 \\ \hline 13.29 \\ C-3.6 \end{array}$	3720.71	443.50	$\begin{array}{r} 13.23 \\ 9.32 \\ \hline 22.55 \\ C-3.9 \end{array}$
0141.93		02.00 note	449.08	$\begin{array}{r} 7.65 \\ 4.51 \\ \hline 12.16 \\ C-3.1 \end{array}$	2781.78	444.28	$\begin{array}{r} 12.45 \\ 8.63 \\ \hline 21.08 \\ C-3.8 \end{array}$
0120.71			449.50	$\begin{array}{r} 7.23 \\ 4.16 \\ \hline 11.39 \\ C-3.1 \end{array}$	2741.93	445.08	$\begin{array}{r} 11.65 \\ 7.60 \\ \hline 19.25 \\ C-4.0 \end{array}$
0405	Meet existing Main Approx E. 449.5'			No Shot on Pipe From Plan	2401.93	445.88	$\begin{array}{r} 10.85 \\ 6.64 \\ \hline 17.49 \\ C-4.2 \end{array}$
BM	3.83	<u>456.73</u>	<u>452.92</u>	X NE cor. Arch Catocin Dr. Montezuma		<u>456.73</u>	

Flt

Smith
Becker
Garber
Clark

Oct 1, 1948 70

Note: Reset property corners for
ME + DS Standish in accordance with
drawing 3572-B. Opening of Detecting Dr

6122.96 447.39 $\begin{array}{r} 9.34 \\ 522 \\ \hline C-4.17 \\ C-4.1 \end{array}$

5182.96 446.69 $\begin{array}{r} 10.04 \\ 597 \\ \hline C-4.07 \\ C-4.1 \end{array}$

B.M.

1.86

454.86
454.87 on RP Hub
50' rt.
8+51.38

5142.96 445.99 $\begin{array}{r} 10.74 \\ 666 \\ \hline C-4.08 \\ C-4.1 \end{array}$

7179.10

Meet existing pipe approx

449.81

No shot
taken from plan

5102.96 445.29 $\begin{array}{r} 11.44 \\ 763 \\ \hline C-3.81 \\ C-3.8 \end{array}$

7142.96

449.50

723
3.89
C-3.34
C-3.4

4162.96 444.59 $\begin{array}{r} 12.14 \\ 876 \\ \hline C-3.38 \\ C-3.4 \end{array}$

7102.96

448.79

794
4.50
3.44
C-3.4

4124.59 443.92 $\begin{array}{r} 12.81 \\ 959 \\ \hline C-3.22 \\ C-3.2 \end{array}$

6162.96

448.09

864
4.95
3.99
C-3.7

45673

45673

Montezuma Road Cross Section
of Embankment 36+80 to 39+17

38+20 ✓

+80 ✓

+30 ✓

37+0 ✓

36+80 ✓

367 447.39 11.41 443.72

BM 2.23 455.13 152.90

*Bt Ford Page 62

N.E. Col
Cone P 6506
68 ft 33+37

Oct. 13-48
S. S. Brown
Becher
Garber
Clark

Lt.

S

Rk.

71

417.2 441.9 442.5 440.8 415.4

50.2 5.5 4.9 6.6 53.0
51.5 Top
16 11 18.8 Top
Slope

424.4 443.9 444.8 444.0 423.3

23.0 5.5 2.6 3.4 24.1
53.5 Top
22 16 25.0 Top
Slope

433.3 444.0 445.2 444.7 431.9

14.1 3.4 2.2 2.7 15.5
4.8 Top
31 27 49 Top
Slope

439.0 443.8 444.8 443.9 438.4

8.4 3.6 2.6 3.5 9.0
15.5 Top
35 34 43 Top
Slope

442.5 443.1 443.4 443.4 441.1

4.9 4.3 4.0 4.0 6.3
4.5 Top
37 35 45 Top
Slope

447.39

For Check

43.8

403.6

on studs
90.4 Lt
39.40
103.66
Page 24

39+47 = Tot

38+94

38+60 ✓

447.39

Lt

St

Rt

72

397.1

50.3
49 = Top
5 = Top

397.5

49.9
49 = Top
5 = Top

398.0

49.4
49 = Top
5 = Top

405.3

42.1
42.3
5 = Top
5 = Top

435.2

12.2
12

435.6

11.8

435.1

12.8
9

402.6

44.8
52 = Top
5 = Top

412.3

35.1
50
5 = Top
5 = Top

437.4

10.0
15

438.4

9.0

439.0

8.0
9

406.2

41.2
52 = Top
5 = Top

447.39

Sewer Grades 63rd St

76500 P-74

B.M. 3.34 463.42

460.08 SE TO R.F.H.
Montezuma
463rd St
763.7

0-13 = Exist. Sewer 13.04 450.38 12 vert

0+0 = M.H. 450.17

12.95
6.13
66.53
5.51/12

+37.5 450.73

12.69
6.16
66.53
5.51/12

+75 451.00

12.42
5.58
66.53
5.51/12

2+29.3: opp Man.

For Sewer Department

March 29-51 73

H.S. 3300
Garber
Rosa
Bertolucci

Exist. Sewer

0-13: Exist. Sewer

0+0 M.H.

East Side Call Road
Marion

Fallon

2+29.3

08832

10' 20' 20'

12639

Montezuma Road

LEVELS on Existing Curb
on Montezuma Road
to determine if Const. to Estb. Grade

Melker 140 20006
Clark, inst.
Hoffman
Fitz.
5-18-51

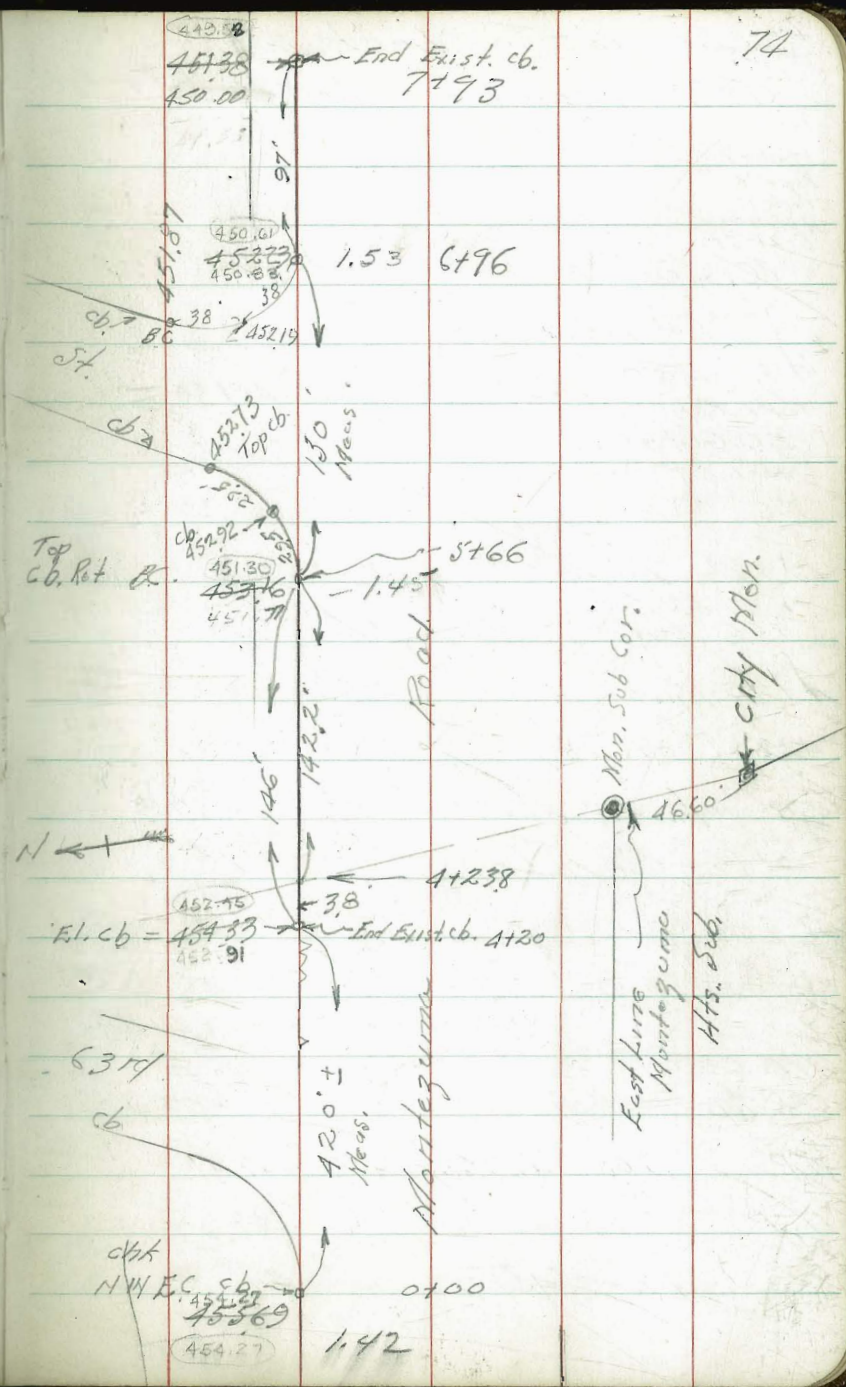
diff. in B.M.s.
see P-75 for correct Elev.

	0.01
chk starting B.M.	460.08
	460.07
T.P.	453.55
T.P.	452.46

B.M.
N.E.B.P. College Ave & Montezuma Rd 449.83

B.M. on Fire Hydr.
SE. 6319 of Montezuma
P-73

?
460.08 NG
see P-75



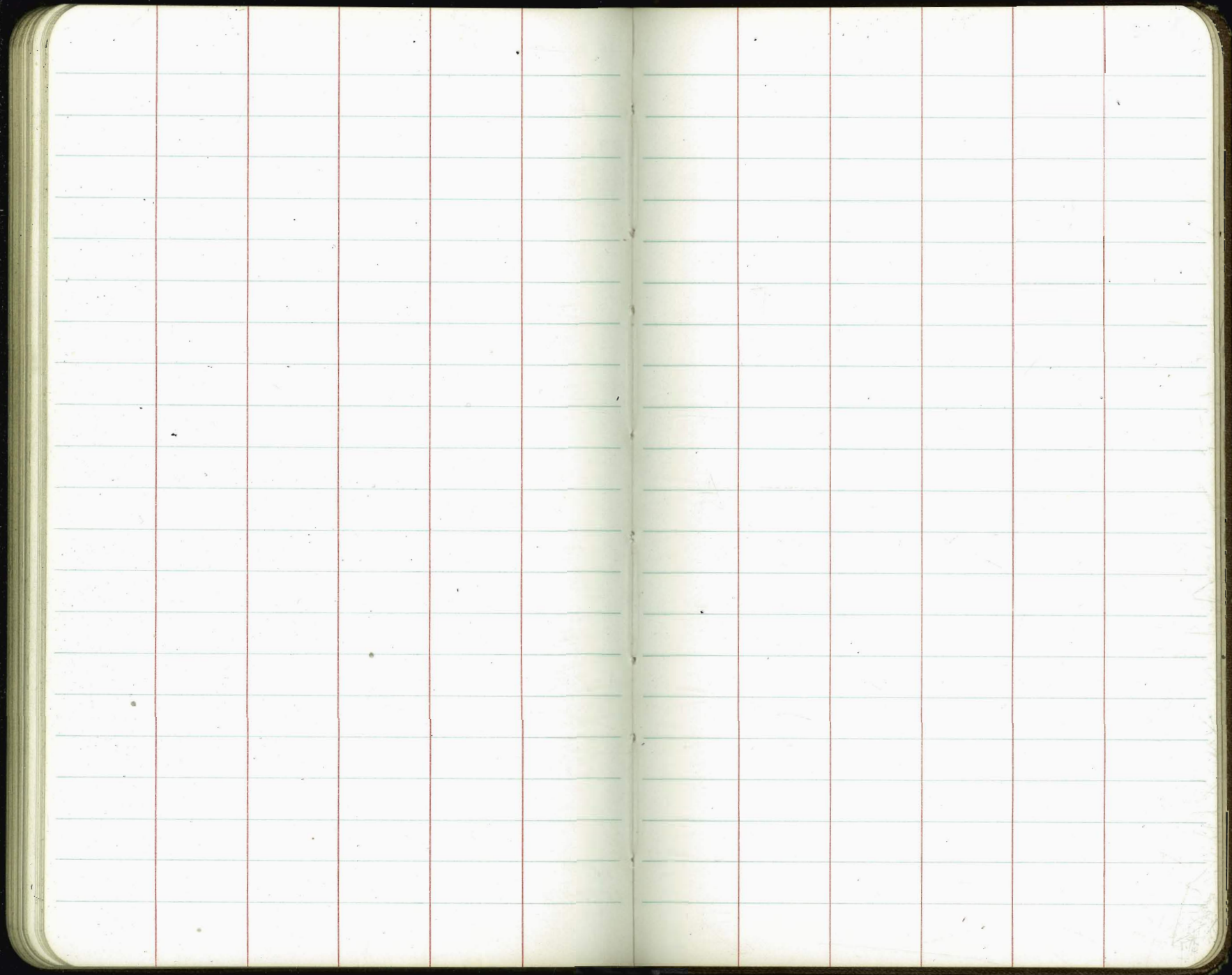
Levels - To check B.M.

at Montezuma & 63rd St Top Hydt

Walker
Pope X
Clark
Huffman
5-21-51

BC. on cb N.E.	523	450.01		
" " Gut. N.E.	475	450.49		
T.P. 374	455.24	7.41	451.50	
N.W. Ret.				
E.S. Gutter.	801	450.90		
N.W. Return				
E.C. Top cb	753	451.38		
5+66 Gutter	761	451.30		
BC. Ret.				
5+66 curb	714	451.77		
4+20 Gut	650	452.41		
4+20 on curb	600	452.91		
T.P. on Hydt 024	458.91	0.95	458.67	
0+70 Gut. - End East. Rd.	551	454.11		
0+00 Gut.	600	453.62		
0+00 Cb.	535	454.27		
		1.41 diff.		
N.E. 63rd		460.08		
chk Top Fire Hydt.	0.95	458.67		
T.P.	9.65	459.62	4.69	449.97
T.P.	5.76	454.66	8.02	448.90
	7.09	456.92		449.83

End.				
7+93 Gut.	5.70	449.54		
7+93 End Cb.	5.24	450.00		
6+96 Gut.	4.87	450.37		
6+96 Cb.	4.41	450.83		
		455.24		
B.M.				
N.E. B.P. College & Montezuma Rd.				



DISTANCES FROM CENTER OF ROADWAY FOR
CROSS-SECTIONING.

Roadway 16 feet wide. Side Slopes 1 on 1½
For Single Track Embankment.

H	0	.1	.2	.3	.4	.5	.6	.7	.8	.9	H
0	8.0	8.2	8.3	8.5	8.6	8.8	8.9	9.1	9.2	9.4	0
1	9.5	9.7	9.8	10.0	10.1	10.3	10.4	10.6	10.7	10.9	1
2	11.0	11.2	11.3	11.5	11.6	11.8	11.9	12.1	12.2	12.4	2
3	12.5	12.7	12.8	13.0	13.1	13.3	13.4	13.6	13.7	13.9	3
4	14.0	14.2	14.3	14.5	14.6	14.8	14.9	15.1	15.2	15.4	4
5	15.5	15.7	15.8	16.0	16.1	16.3	16.4	16.6	16.7	16.9	5
6	17.0	17.2	17.3	17.5	17.6	17.8	17.9	18.1	18.2	18.4	6
7	18.5	18.7	18.8	19.0	19.1	19.3	19.4	19.6	19.7	19.9	7
8	20.0	20.2	20.3	20.5	20.6	20.8	20.9	21.1	21.2	21.4	8
9	21.5	21.7	21.8	22.0	22.1	22.3	22.4	22.6	22.7	22.9	9
10	23.0	23.2	23.3	23.5	23.6	23.8	23.9	24.1	24.2	24.4	10
11	24.5	24.7	24.8	25.0	25.1	25.3	25.4	25.6	25.7	25.9	11
12	26.0	26.2	26.3	26.5	26.6	26.8	26.9	27.1	27.2	27.4	12
13	27.5	27.7	27.8	28.0	28.1	28.3	28.4	28.6	28.7	28.9	13
14	29.0	29.2	29.3	29.5	29.6	29.8	29.9	30.1	30.2	30.4	14
15	30.5	30.7	30.8	31.0	31.1	31.3	31.4	31.6	31.7	31.9	15
16	32.0	32.2	32.3	32.5	32.6	32.8	32.9	33.1	33.2	33.4	16
17	33.5	33.7	33.8	34.0	34.1	34.3	34.4	34.6	34.7	34.9	17
18	35.0	35.2	35.3	35.5	35.6	35.8	35.9	36.1	36.2	36.4	18
19	36.5	36.7	36.8	37.0	37.1	37.3	37.4	37.6	37.7	37.9	19
20	38.0	38.2	38.3	38.5	38.6	38.8	38.9	39.1	39.2	39.4	20
21	39.5	39.7	39.8	40.0	40.1	40.3	40.4	40.6	40.7	40.9	21
22	41.0	41.2	41.3	41.5	41.6	41.8	41.9	42.1	42.2	42.4	22
23	42.5	42.7	42.8	43.0	43.1	43.3	43.4	43.6	43.7	43.9	23
24	44.0	44.2	44.3	44.5	44.6	44.8	44.9	45.1	45.2	45.4	24
25	45.5	45.7	45.8	46.0	46.1	46.3	46.4	46.6	46.7	46.9	25
26	47.0	47.2	47.3	47.5	47.6	47.8	47.9	48.1	48.2	48.4	26
27	48.5	48.7	48.8	49.0	49.1	49.3	49.4	49.6	49.7	49.9	27
28	50.0	50.2	50.3	50.5	50.6	50.8	50.9	51.1	51.2	51.4	28
29	51.5	51.7	51.8	52.0	52.1	52.3	52.4	52.6	52.7	52.9	29
30	53.0	53.2	53.3	53.5	53.6	53.8	53.9	54.1	54.2	54.4	30
31	54.5	54.7	54.8	55.0	55.1	55.3	55.4	55.6	55.7	55.9	31
32	56.0	56.2	56.3	56.5	56.6	56.8	56.9	57.1	57.2	57.4	32
33	57.5	57.7	57.8	58.0	58.1	58.3	58.4	58.6	58.7	58.9	33
34	59.0	59.2	59.3	59.5	59.6	59.8	59.9	60.1	60.2	60.4	34
35	60.5	60.7	60.8	61.0	61.1	61.3	61.4	61.6	61.7	61.9	35
36	62.0	62.2	62.3	62.5	62.6	62.8	62.9	63.1	63.2	63.4	36
37	63.5	63.7	63.8	64.0	64.1	64.3	64.4	64.6	64.7	64.9	37
38	65.0	65.2	65.3	65.5	65.6	65.8	65.9	66.1	66.2	66.4	38
39	66.5	66.7	66.8	67.0	67.1	67.3	67.4	67.6	67.7	67.9	39
40	68.0	68.2	68.3	68.5	68.6	68.8	68.9	69.1	69.2	69.4	40

Example—If point is 22.6 ft. above grade, how far should it be from center line to be a slope stake point? Ans. from Table #1.9. For same slopes but other widths of roadbed correct above figures by one-half difference in width of roadbed; thus in example above for 20 ft. roadbed distance will be $41.9 + (20 - 16) \div 2$ or 2 ft. added to 41.9 = 43.9. For slopes of 1 on 1 see inside of front cover.

MADE IN U.S.A.