

256

Grade Book

Dr. Williams son.
Hil 952 M.

Mrs 266 Mair 2980

1573
108
1281
557
622

801
15
56

1048
0546
15
68
580

MICROFILMED

APR 14 1965

Book 266

Δ 40° 20'

242.24

Returns to City Engineers Office
City Hall, San Diego, Cal.

Landscape

941 Spk in Pole Jennings Place
9407 " " " 1st Pale Crest Hill

Galbet & Reservoir N.E. Cor
pass p 19.17 am 201.32

1 pole Crest Hill near monument
ables on landscape RR. Jt. in p. 12
229.54

625.00
125.00
1875.00
+ 55.00
2015.00
2015.00
11.2



5.51

31.5

FROM

Page 4 Preliminary line Main street
Rosville up Landscape and Bow Ave

Page 2 Continuation of Page 4 to
Sta 11 + 0.00 on Ave

Page 3 - Prelim. line to Silver Gate Ave

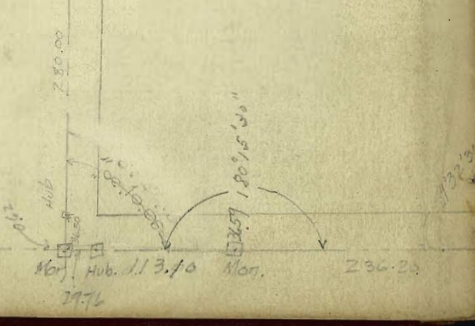
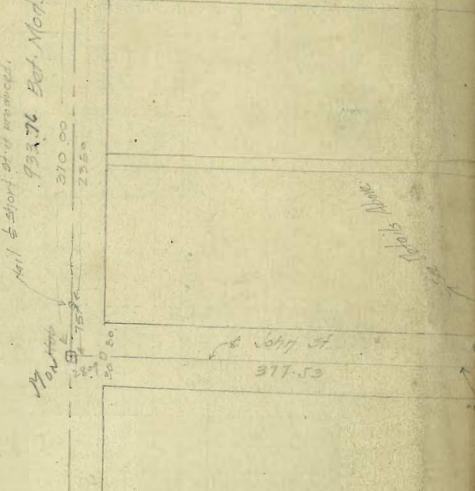
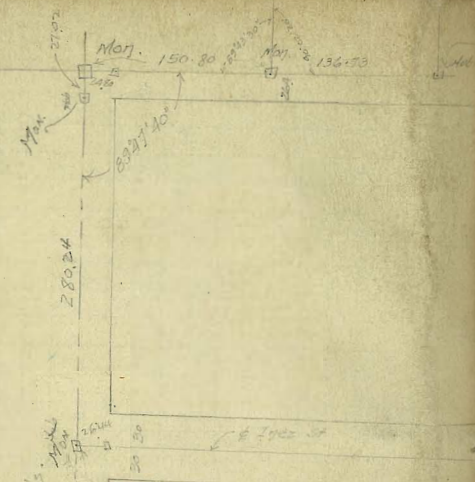
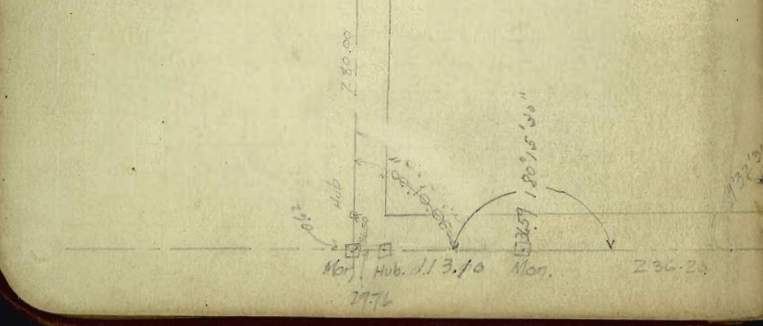
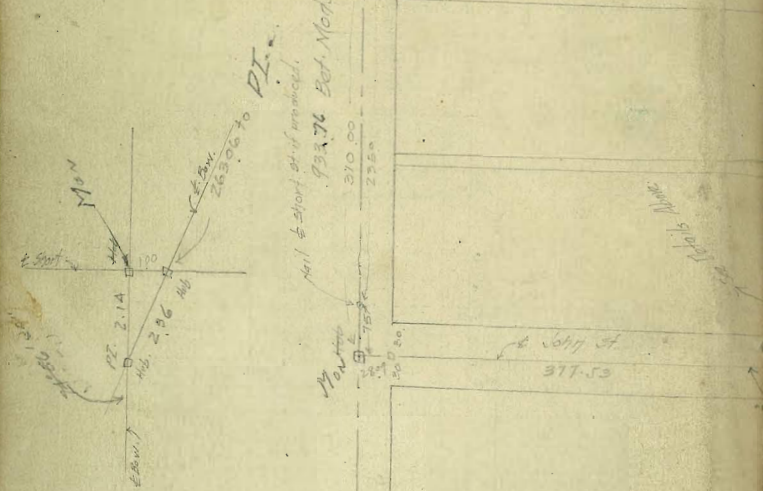
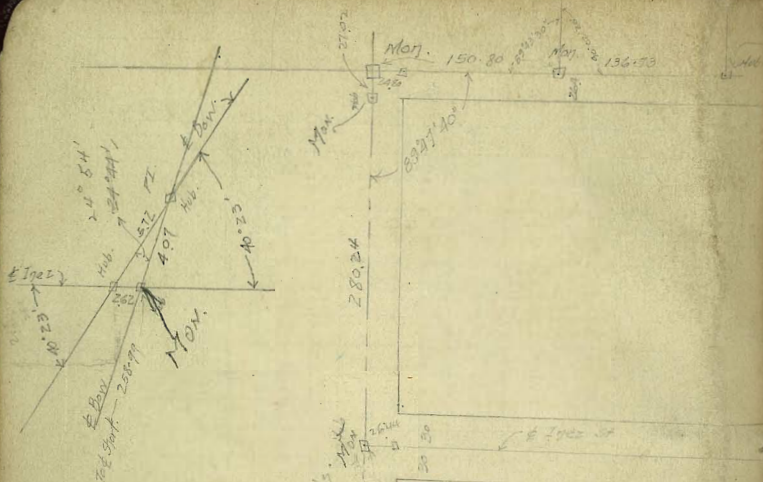
Page 10 Prelim Levels

"	11	"	"
"	12	"	"
"	13	"	"
"	14	"	"

Page 15 Location line from Main st
to end of Bow Ave.

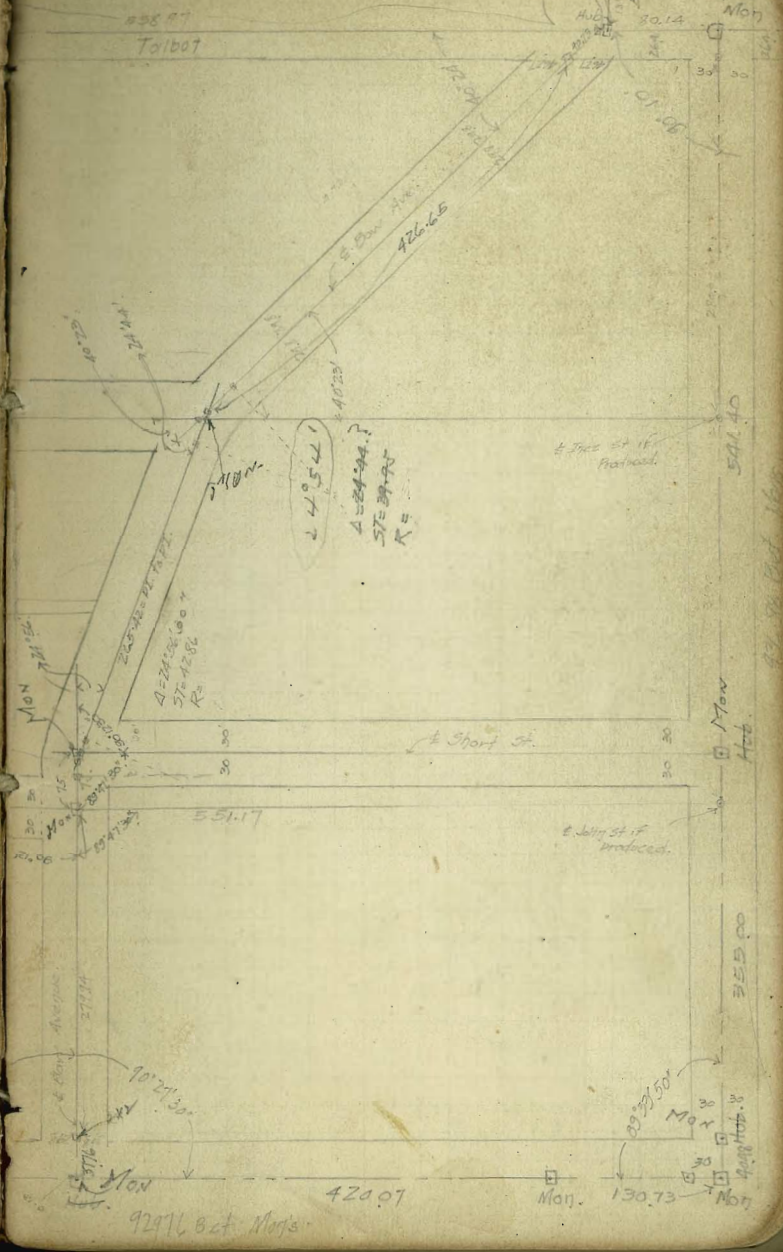
Page 16-18 Location Bow Ave to Silver
Gate -

Page 21 to 27 Location Levels
Leebrick 3/07



726.67 Est. Wops

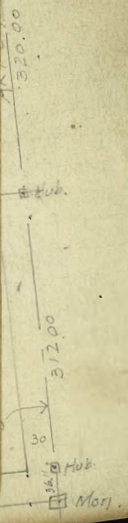
Talbot



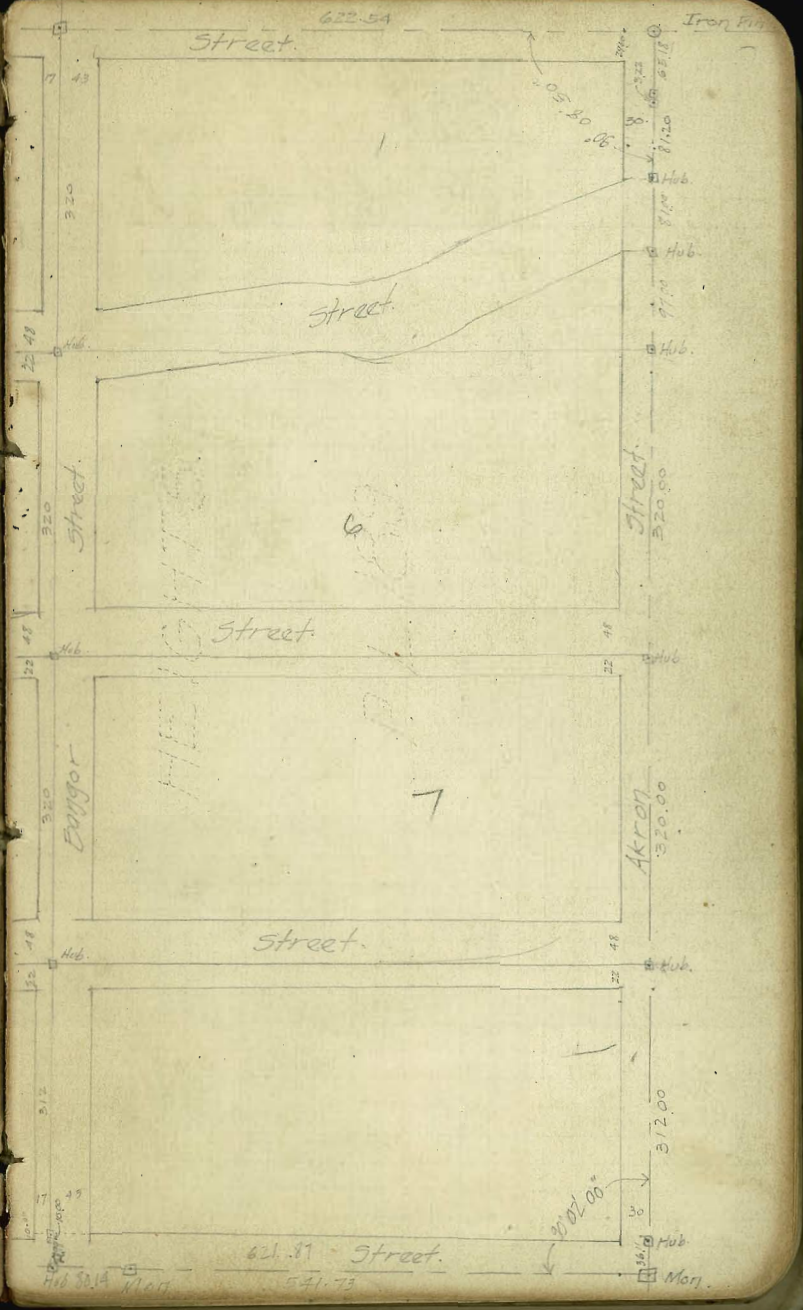
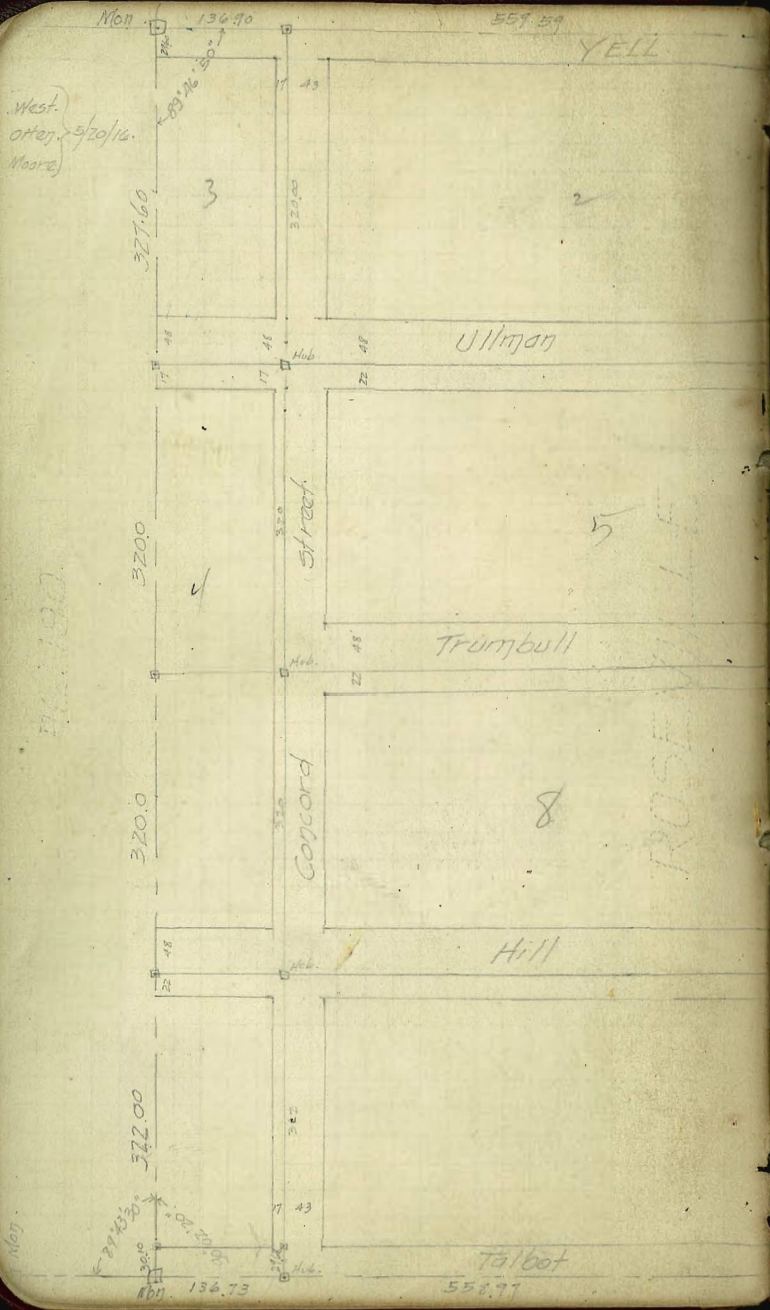
927.6 Est. Wops

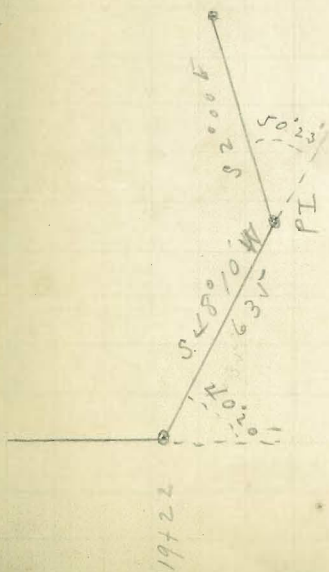
Closing Survey PL. 189

Course	Dist	N	S	E	W
N 70° 00' W	1317.00	505			1317.03
S 0° 13' 10" E	1319.70		1319.70	505	
N 24° 49' 10" E	1317.59	415		1317.59	
N 0° 00' 50" W	1315.71	1315.71			337
		1319.86	1319.70	1322.64	1322.40



411 114 Mori





Extension of Bow Ave. Connecting

R L

11+00 10° 00' S 3° 30' W

6+96 Δ 22.00 S 13° 30' W

4+00 0

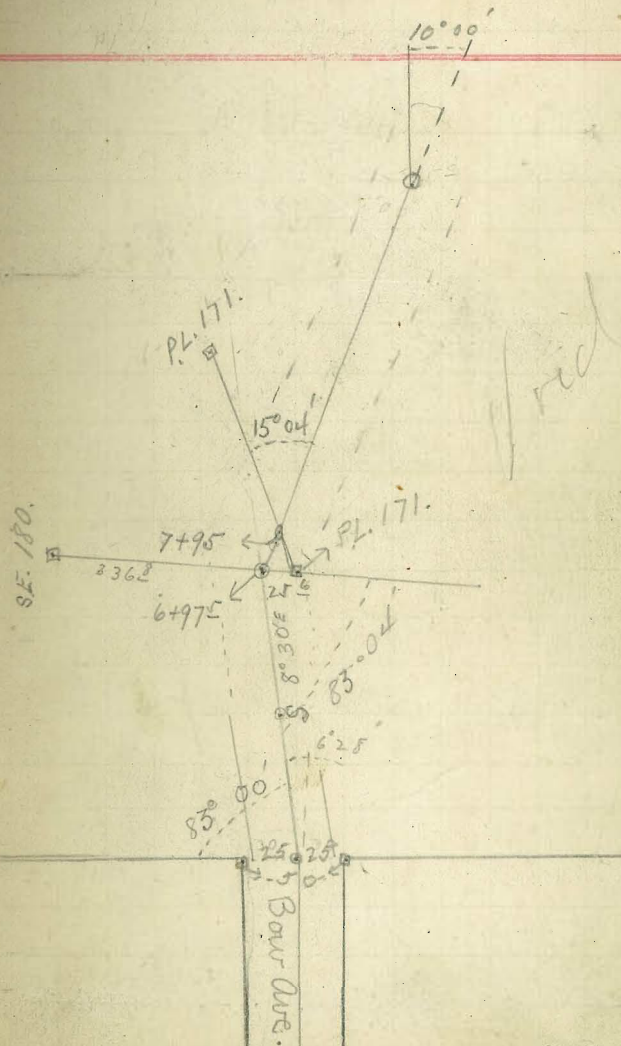
10+00 Δ

From Page 4

Void Page 28

POSTED

with Silver Gate Ave.



28

R L Me

23+26² West side of Silver Gate Ave. Cor Fort

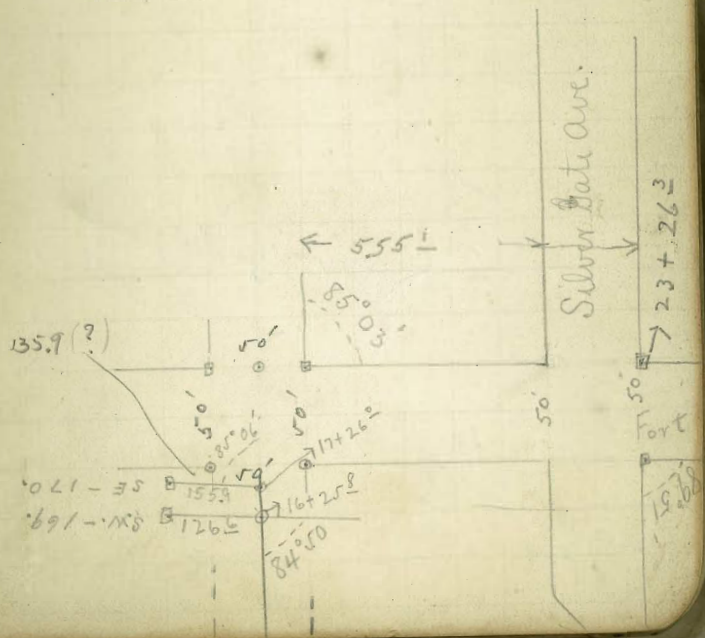
17+71² 85° 03' S 88° 30' W

13+50

126.6

84.50

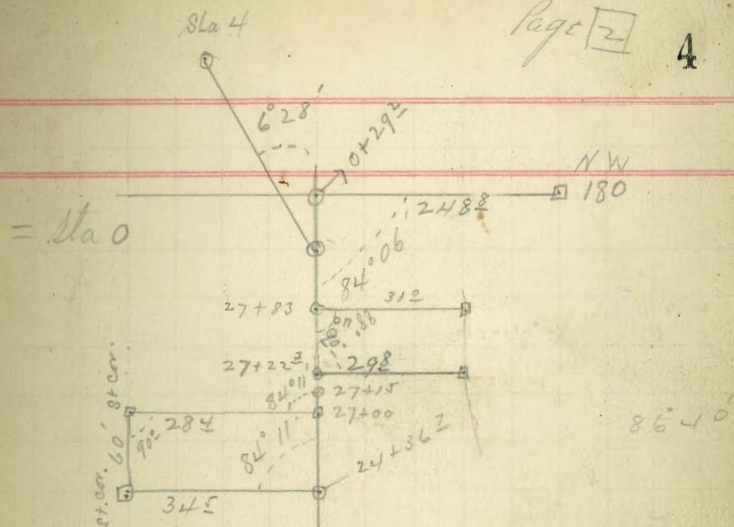
23263
17712
5551



main St Roswell to end of Bow Ave.

	R	L	MC
30+32.4 Δ		6° 28'	
29+00		0° 42'	S 1° 40' E
27+15 Δ		8° 50'	S 1° 00' E
26+34 Δ		12° 55'	S 7° 30' W
25+00 Δ		2° 5' 48"	S 20° 30' W
23+82 Δ		16° 46'	
19+50 Δ		12° 44'	S 46° 00' W
		51° 45'	S 7° 30' W
14 ○			S 89° 00' W
7			
0 ○			

27 15
26 34
69



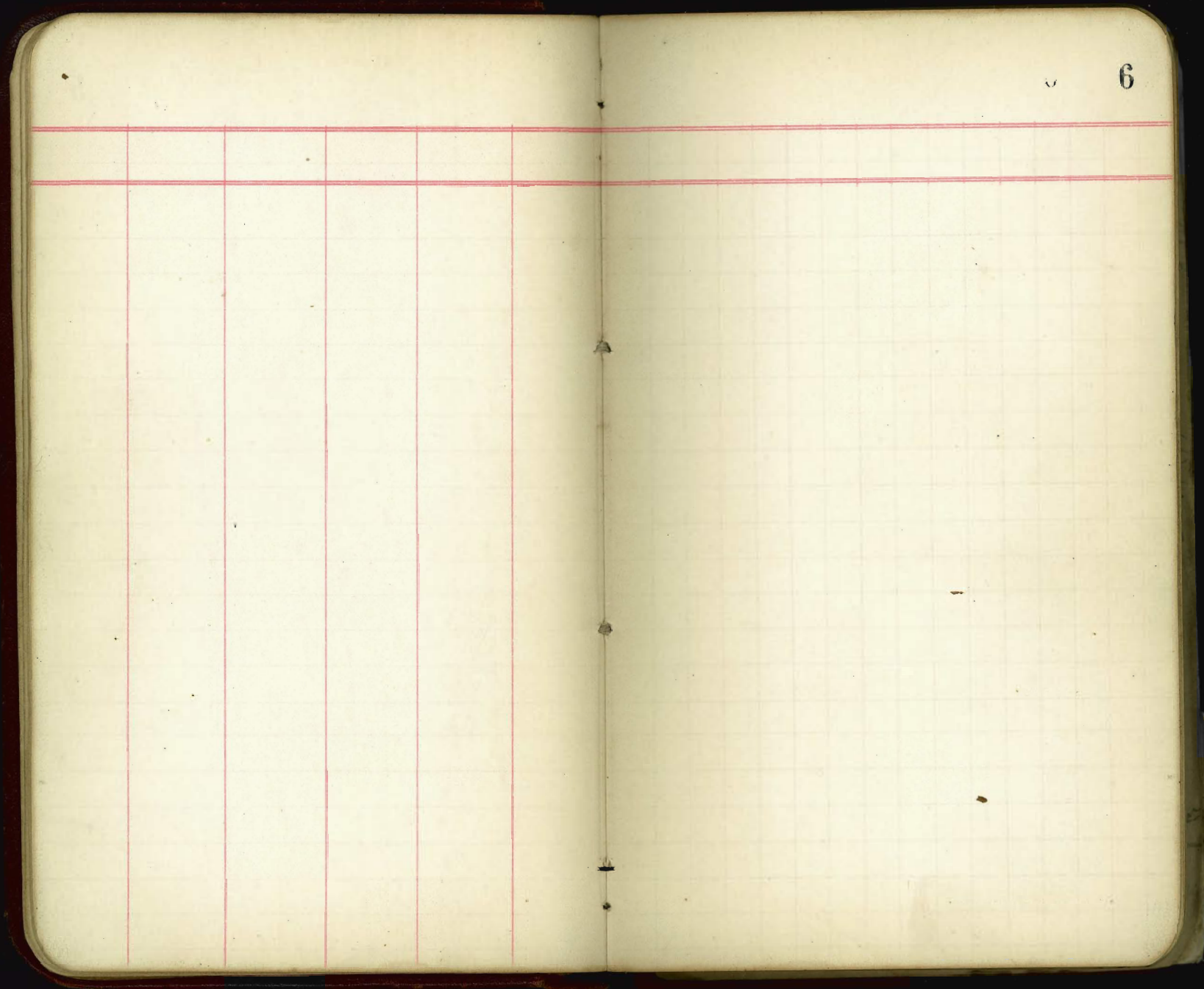
Between Sta 24-25 = 32 ft. short Sta.

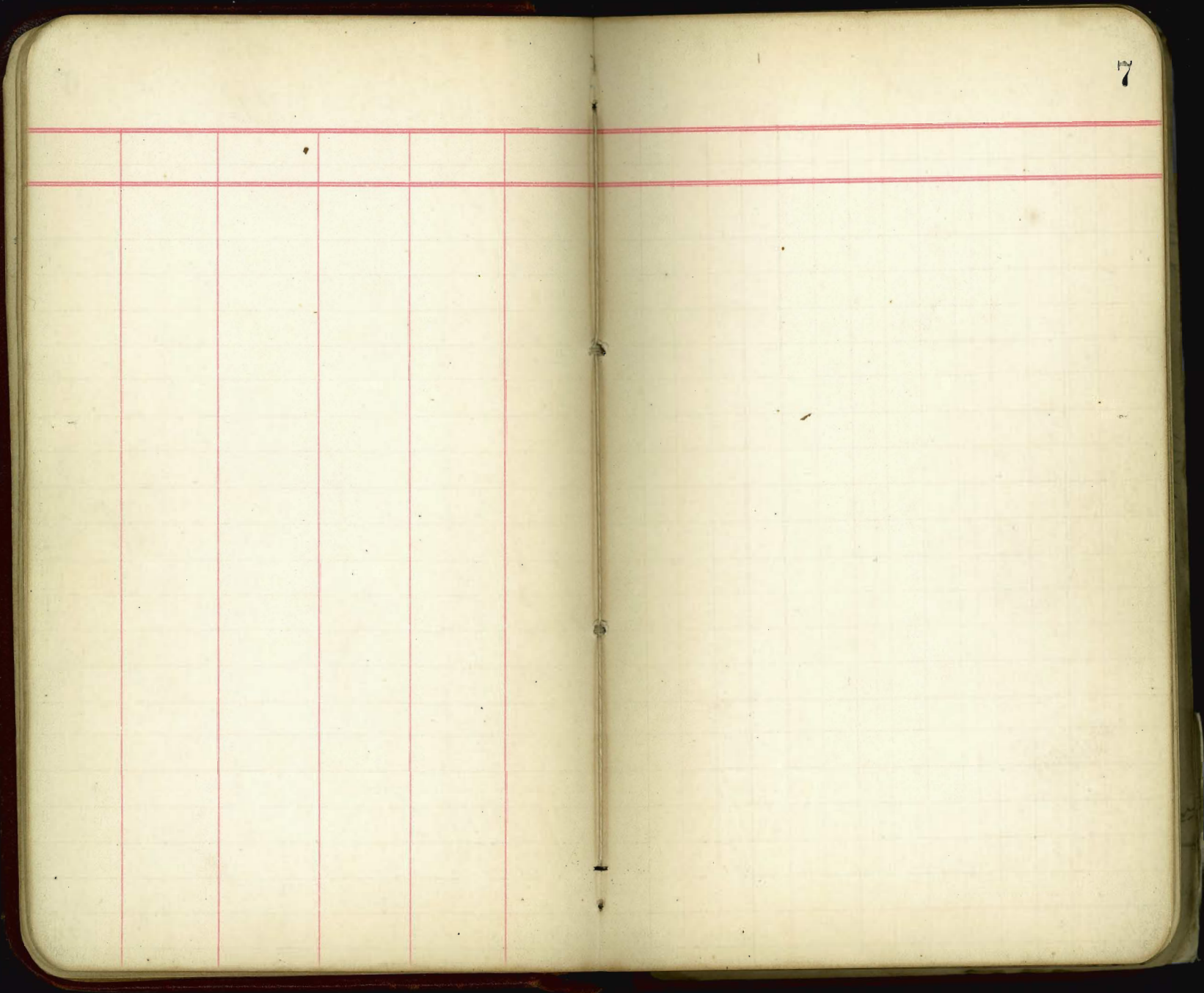
Bull. Cor.

Void
Page 28
see

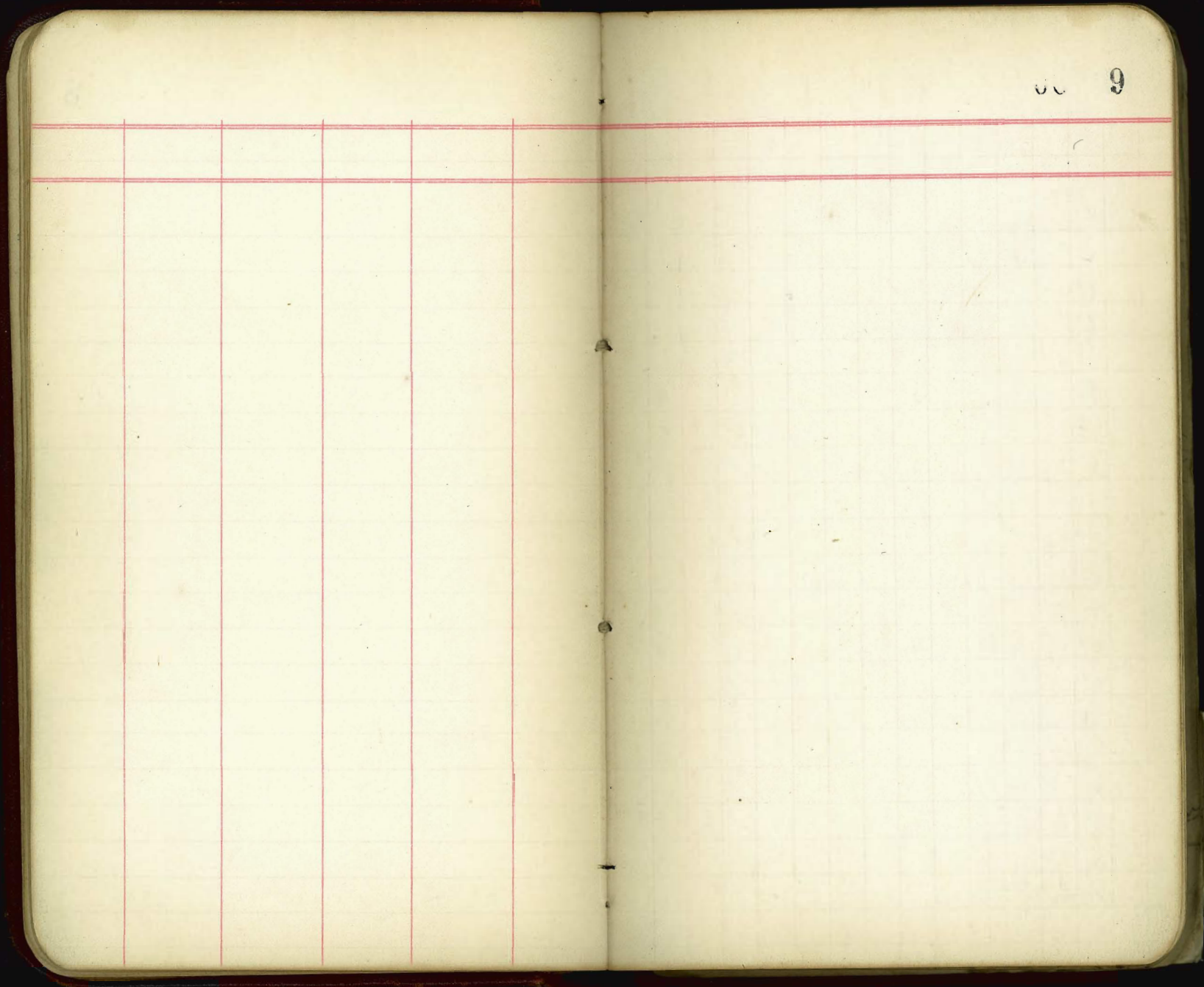
Angu Yoga School

MAIN ST.





The image shows an open notebook with two pages. The left page is a ledger page with a grid of red lines. It has a header section at the top, bounded by two horizontal lines, which is divided into six vertical columns. Below the header, the page is filled with a grid of horizontal and vertical lines, creating a table structure. The right page is a grid page with a uniform grid of red lines. In the top right corner of the right page, the number '8' is printed. The notebook has a dark cover, and the pages are off-white with some minor staining and two small holes along the spine.



Levels up Landscape and Bow Acre to Silver Gate

Sta	BS	HI	FS	Int /	Elc	
X	1.61	56.06			54.45	B.M. on Hitching Post east of Mr Bakers house
X	0.49	43.66	12.89		43.17	
X	0.29	31.04	12.91		30.75	
X	10.90	35.50	6.44		24.60	Hub. Sta. o Main St. Bowville
0.				11.0	24.5	
1.				6.4	29.1	
2				1.3	34.2	
X	12.24	47.69	0.05		35.45	
3.				7.7	40.0	
4				1.9	45.8	
X	13.33	67.02	0.00		47.69	B.M.
5				5.2	55.8	
X	13.07	73.79	0.30		60.72	
6				11.6	62.2	
7 X	12.63	56.42	0.00	3.3	70.5	
8				9.8	76.6	73.79.
9				4.3	82.1	
X	12.04	98.20	0.26		86.16	
10				11.0	87.2	
11				5.2	93.0	
X	13.18	111.38	0.00		98.20	

Levels on Bow-Arre to Silver Gate

		111.38			
12				11.4	100.0
	X	132.8	124.40	0.26	111.12
13	12			2.0	122.2
	X	109.4	134.89	0.45	123.95
14	13		✓	5.5	129.4
15	14			10.7	124.2
16	15			9.8	125.1
	X	120.4	146.62	0.31	134.58
17	16			16.8	129.8
18	17			11.1	135.5
19	18			4.6	142.0
	X	112.52	159.14	0.00	146.62
19	19			6.7	152.4
19+50	20			1.6	157.5
20	20			1.1	158.0
	X	11.77	170.91	0.00	159.14
21	21			8.3	162.6
22	22			8.0	162.9
23	23			5.6	165.3
482	24			1.2	169.7
	X	11.79	182.64	0.06	170.85

Levels on Bow Ave

c

18264

24				11.6	177.0
25				10.0	72.6
26				2.0	180.6
x	11.59	194.53	0.00		182.64
+ 65				8.9	185.6
+ 70				15.0	179.5
+ 75				7.2	186.3
+ 95				6.2	188.3
27				8.4	186.1
+ 10				5.0	189.5
x	12.04	206.47	0.10		194.43
28				10.5	196.0
29				1.2	205.3
x	9.77	215.40	0.84		205.63
30				8.7	206.7
30 + 32 = 0				5.9	209.5
1				2.7	212.7
2				0.6	214.8
x	11.10	226.22	0.28		215.12
3				6.4	219.8
4				31	223.1

Between Sta 24 and 25 = 32 ft. short sta.

L R.

212.7 - 206.9

215.0 - 210.6

226.3 - 214.7

B.M.

222.0 217.5

226.0 222.0

Levels on Bow Ave

	22622			C	L	R.
5				3.6	2226	228.6 - 220.6
6				3.8	2224	222.3 - 227.4
7				2.6	2236	224.1 223.4
X	13.02	236.58	2.66		223.56	Hub 6*96
8				10.5	2261	226.1 225.2
9				4.5	321	230.1 229.5
10				2.7	2340	232.0 233.0
X	12.67	249.25	0.00		236.58	
11				10.6	2386	240.8 245.1
12				3.9	453	244.6 46.9
X	13.33	262.58	0.00		249.25	
13				11.0	2576	523 49.5
14				6.5	2561	56.0 61.1
15				1.3	2613	61.3 68.2
X	13.17	275.43	0.32		262.26	
16				9.9	2685	66.9 67.6
17				6.0	2694	C 70.1 R 69.2
17+71 ²				2.6	2728	72.0 71.2
18				3.6	2758	271.0 70.1
19				0.5	2759	74.8 74.4
X	12.57	287.97	0.03		27540	

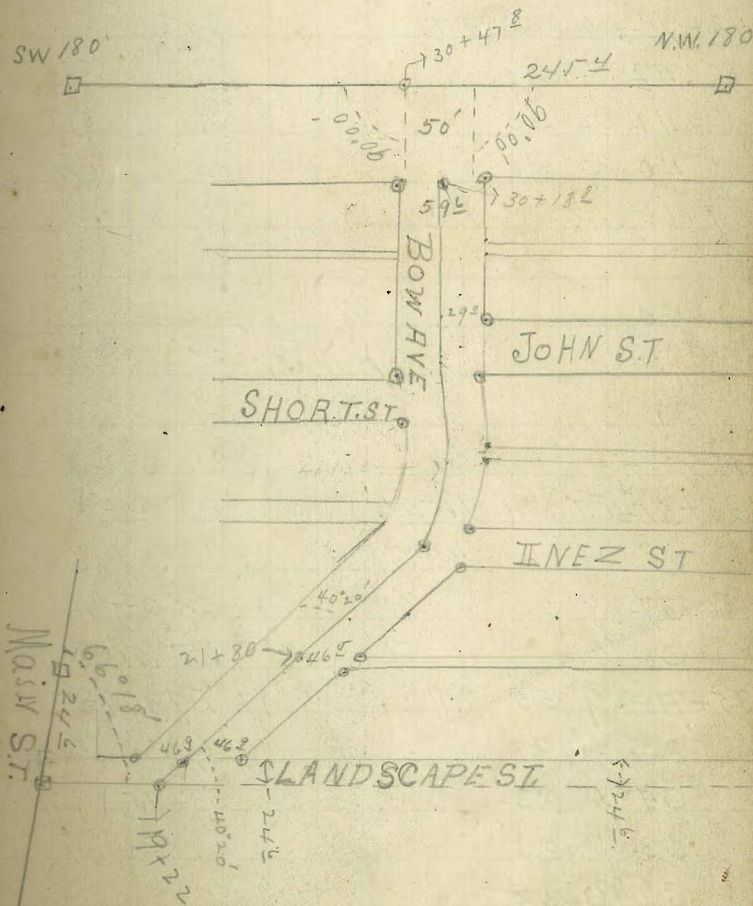
Levels on Bow Ave to Silver Gate

	287.97			L
20			8.3	2787
21			44	2826
22			0.2	2868
23	6.29	294.26	0.00	28797
23 + 26			1.8	2925
B.M.			0.6	2907
		2.09		292.17

C	R
78.4	278.0
287.6	80.8
286.1	285.8
91.7	90.7 center Silver Gate Ave.
B.M. on Telephone Pole Post and Silver Gate Ave.	

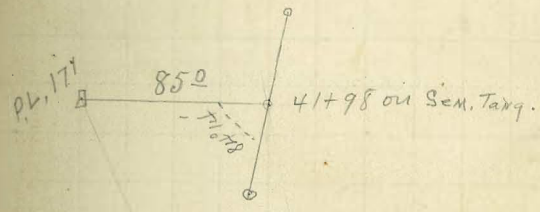
Location Bow Ave to Silver Gate

Sta	L	R	M.C.
30+18 ⁸			
27+51 ⁹	Δ 25° 11'	P.T.	S 2° 00' E
27	22° 05'		12° LT
26	16° 05'		50° 23' A
25	10° 05'		224.9 ST
24	4° 05'		419.8 LC
23+32 ¹	Δ P.C. 12°		25+57 P.I.
19+22 ^Δ		40° 20'	S 48° 10' W
29	140		
80	$\begin{array}{r} 634.8 \\ 224.9 \\ \hline 409.9 \end{array}$	$\begin{array}{r} 19+22 \\ 63.48 \\ \hline 274.68 \\ 224.9 \\ \hline 23+31.9 \end{array}$	
0	$\begin{array}{r} 19+22 \\ 10.22 \\ \hline 9+32.22 \end{array}$		



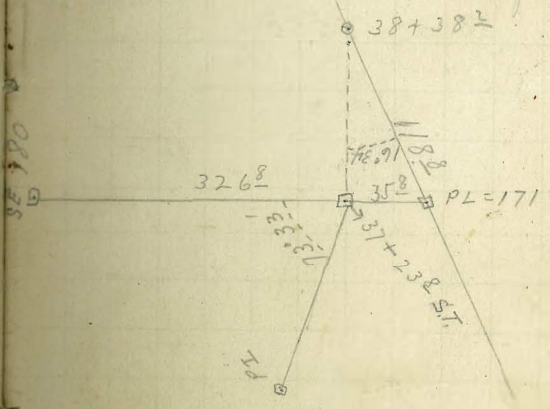
Location Bow Ave.

L	R		
42+70 ⁴ Δ	6° 05'	PT	33° 00' W
42	4° 40'		12° 10' Δ
41	2° 40'		152.7 ST
40	0° 40'		304.1 LC
39+66 ³ Δ	PC 4° LT		41+19 PI
39			
38+31 ⁸ P.T.	16° 55'		S 15° 00' W
38	14° 50'		33° 50' Δ
37	8° 20'		134.33 ST
36	1° 50'		260 ³ LC
35+71 ⁴ Δ	7° 55'	PC C.R. 13° RT.	15° 50' Δ
35	6° 23'		199.19 ST
34	4° 23'		395.2 LC
33	2° 23'		33+75 P.I.
32	0° 23'		
31+75 ⁴ Δ	PC 4° LT		



18.7
10.2

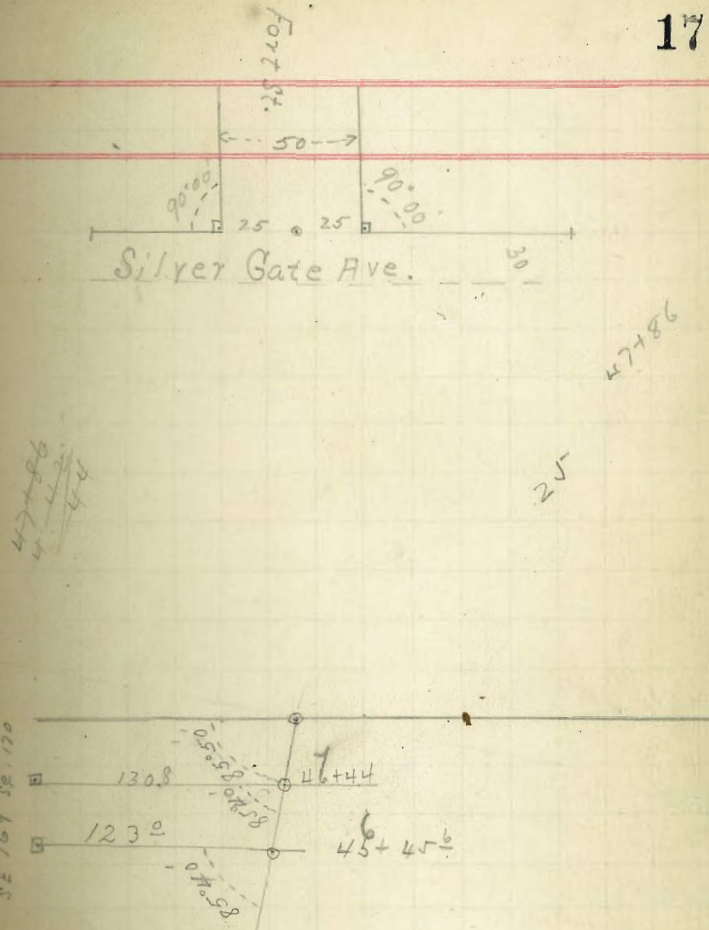
Between Sta 38+31⁸ and Sta 39 = 68² ft.



Note - all trees to curves made on semi-tang.

Localini Bow Ave -

	L	R
53+50	West side	
53+25	center Silver Gate Ave	
53		
52		
51		
50		
49		
48		
47+86		85°50' 85°50'
47		
46		
45		
44		
43		



80+37⁵_Δ74⁰72+81²_□69⁰66+99⁰

63+08

57+93⁰57+00⁰55+09³_□

W.S.M.R.

80+37⁵

Silver Gate Ave -

19² SW. 10425² SE 10425² SE. BLK 525² NE. BLK 143
NE. cor. Russians25² SE. BLK 4

The image shows an open notebook with two pages. The left page is ruled with a grid of red lines, including a header row and several columns. The right page is ruled with a grid of red lines and has the number '19' in the top right corner. The notebook is bound in the center, and the pages are slightly aged and yellowed.

Location Levels Bow Ave.

*	11.86	36.46			22.60
0				12.0	24.5
1				7.3	29.2
-2				2.2	34.3
*	11.77	48.23	000		36.46
3				8.2	40.0
4				2.4	45.9
*	13.12	61.35	000		48.23
√				5.3	56.0
*	12.32	73.56	011		61.24
6				11.2	62.3
7				3.1	70.5
*	12.50	86.06	000		73.56
8				9.3	76.9
9				3.9	82.2
*	12.17	98.23	000		86.06
10				11.0	87.2
11				5.1	93.1
*	12.86	110.68	041		97.92
12				10.5	100.2
*	12.36	123.04	000		110.68

Hub Main St Rosville.

Levels on Bow Ave

13				04	122.6
X	699	129.92	011		122.93
14				02	29.7
X	1287	32.04	1075		191.7
15					24.2
16				6.7	25.3
17				17	30.3
X	1324	45.07	021		31.83
18				9.7	35.4
19				3.6	41.5
X				1.77	43.30
X	10.34	148.82	6.59		138.48
19+95				1.7	47.1
20				4.0	144.8
X	1259	161.41	000		148.82
21				6.5	5.29
22				2.0	59.4
X	1292	174.27	006		161.35
23				12.1	62.2
+22				11.4	62.9
+27				21.6	52.7

Hub 19+22

B.M. on telephone pole off Sta 18+50 Spike

~~47.3~~

edge

Bottom of manow ditch

Levels on Bow Ave

+32'		74.27		11.0	63.3	PC 12°47'
24				6.6	67.7	
25				0.6	73.7	
* 10.60	184.87	000			74.27	on sta 25
26				3.1	81.8	
* 11.80	196.46	021			184.66	
+55				10.5	86.0	edge
+60				20.0	76.5	bottom level
+70				9.2	87.3	edge
27				6.8	89.7	
27+51.9				2.3	94.2	PT
* 10.54	206.51	0.49			195.97	
28				9.6	96.9	
* 10.20	216.50	0.21			206.30	at the mail telephone pole sta 28+80 (not marked)
29				10.1	206.6	
30				8.5	08.0	
30+18.8				6.8	09.7	
31				4.3	12.2	
31+75.8				5.4	11.1	PC
32				3.7	12.8	
* 10.20	225.45	1.25			215.25	

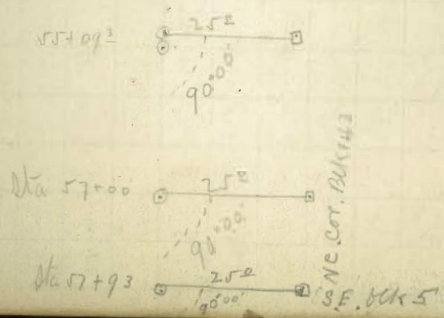
Levels on Bow Ave.

33		225.45		82	172
34				5.0	20.4
35				3.9	21.5
X	8.34	230.93	2.56		222.99
36				8.6	223
37				7.5	234
38				5.7	252
38+28				5.0	259
X	11.45	241.81	0.57		3036
39				9.7	232.1
39+66 ³				8.0	33.8
40				8.1	337
41				3.7	381
X	11.86	253.28	0.39		241.42
42				8.8	44.6
+70 ⁴				4.6	48.7
X	12.60	265.73	0.15		253.13
43				15.5	502
44				9.5	56.2
45				5.1	606
X	12.27	277.68	0.32		265.4

Hub.

		297.65			
46				127	650
47				89	688
47+56				56	921
48				60	717
49				41	736
X	11.90	289.55	0.03		976
50				11.0	785
51				7.0	822
52				31	864
X	4.71	293.66	0.60		859
53				34	902
53+50				0.7	929
B.M.	12.05	304.29	1.42		922
53+25				12.5	918
54				10.3	940
55				67	976
X	11.02	310.35	4.96		2993
56				85	301.9
57				33	307.0
X	12.14	322.48	0.01	0.01	3103
58				97	12.8

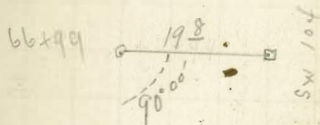
West side Selvir Gate
 B.M. Telephone pole Forks Selvir Gate - Office
 Center



Levels on Silver Gate Ave

32248

59				4.4	317.9
X	12.21	334.43	0.26		322.22
60				11.2	323.2
61				7.9	265
62				5.2	29.2
63				3.2	31.2
64				1.3	33.1
X	8.96	342.32	1.07		337
65				7.0	353
66				5.6	36.7
67				4.3	38.0
68				3.3	39.0
69				1.7	40.6
X	8.55	349.16	1.71		340.6
70				7.2	342.0
71				5.8	43.2
72				5.2	44.0
73				5.0	44.2
74				5.0	44.2
X	7.96	352.27	4.85		344.3
75				7.2	45.1



Hubata 69

POSTED

27

76		35227		5.5	346.8
77				3.5	48.8
78				1.2	51.1
4	7.35	358.72	090		351.37
79				5.1	353.6
80				2.8	355.9
80+37 ^{1/2}				1.7	357.0
B.M.			2.62		356.10

Spike in telephone pole 25 ft off sta 79+50

17 Jannan
Emery

Survey
Point Loma Boulevard
(Line A)

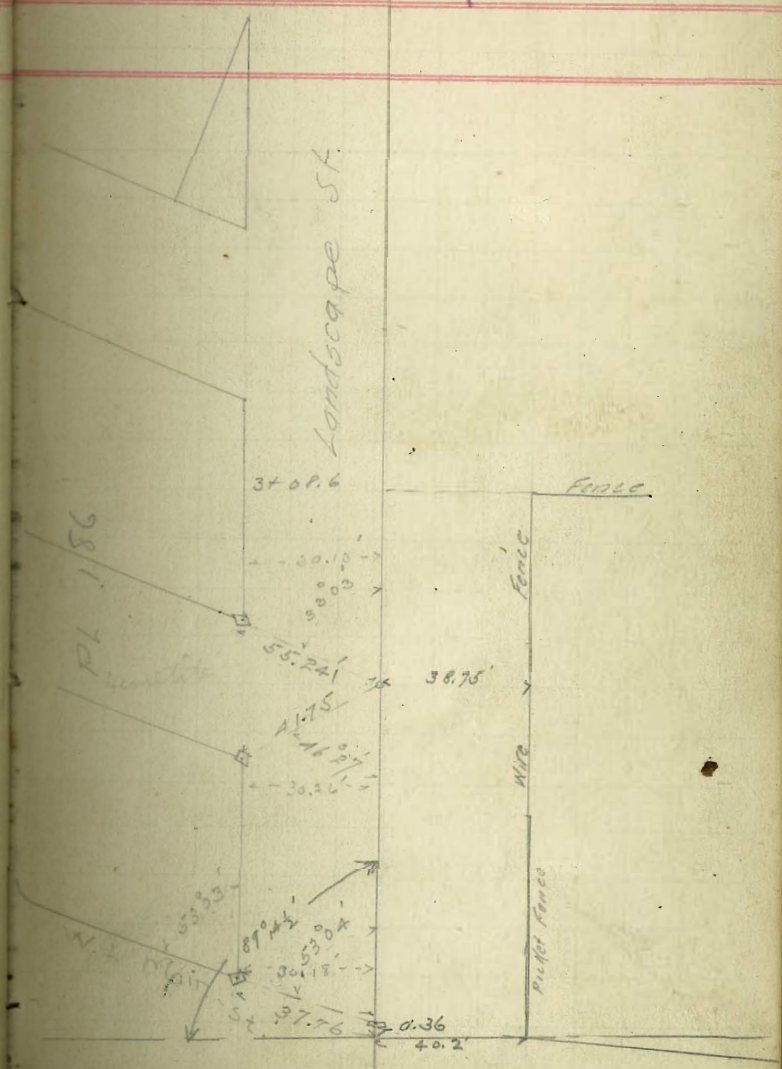
PL 185

By 26.4 - 8 Sta. 9+35.15
New Sub. of
Rumsey's

POSTED 28

3+00

N77W



4/10/07. Great
Emery
Valley

21 + 61 =

17 + 80 = 97

17 + 39 = 56

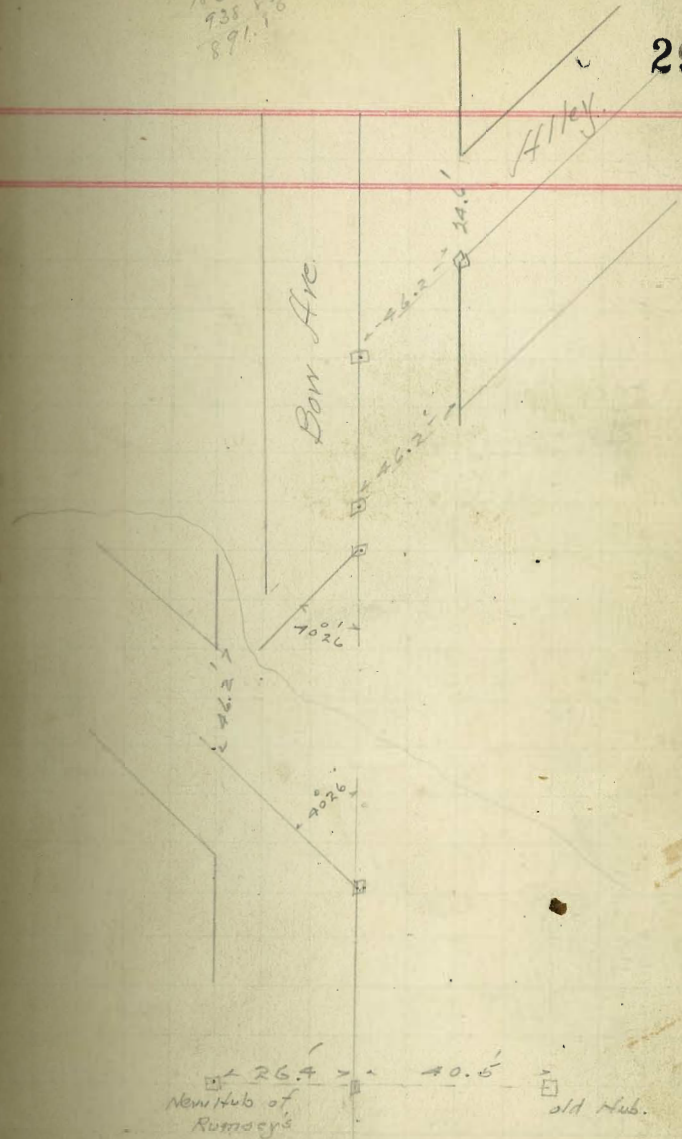
17 + 39 = 56

18 + 30 = 48

56230W

18306.5
938.56
891.1

29



4/11/37 (Hald
Emery
Killy)

30+24 ³³

27.33

27+52 RT. 12° L 313 W

27+12 ³

26+99 ²

26+38 ⁴

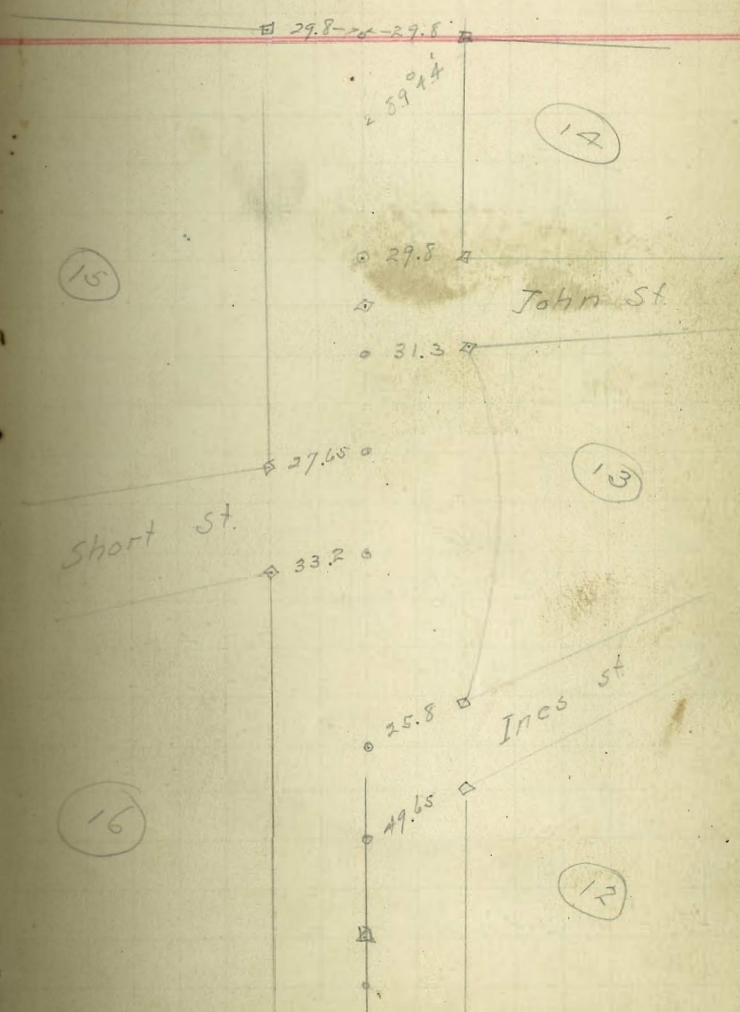
D = 12°
Δ = 49° 53'
St. = 222.46
L = 415° 69'
R = 477.68
T = 222.06

24+45 ²

28+63 ⁴

23+37 ⁴ Post.

23+36 ³ pc. 12° L



2/12/07 Hatch
Emery
Kelley

78 29
16 32
90 01

38+33²³ Pt. 13° R.

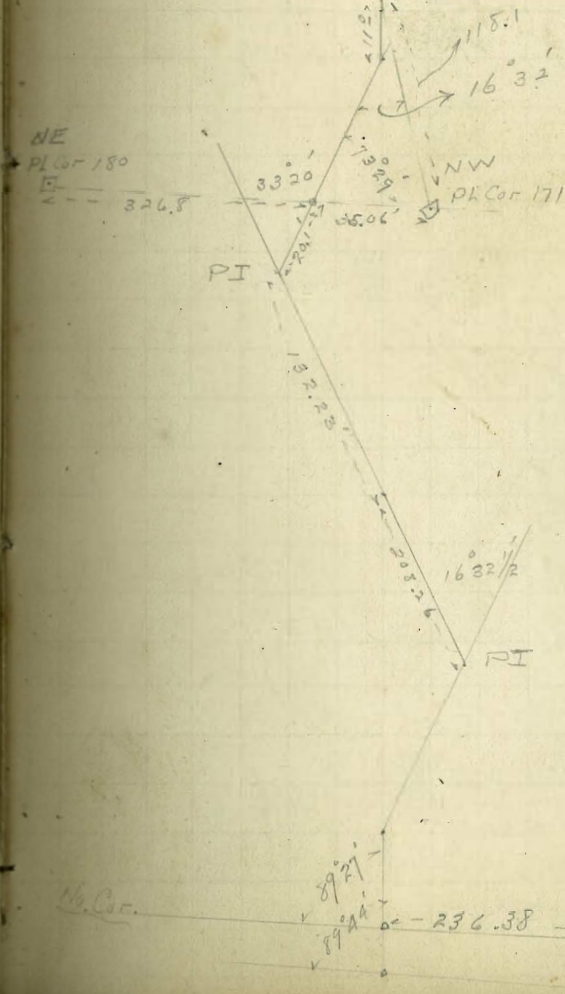
D = 13° R.
A = 33° 20'
S = 132.23
L = 256.41

35+76⁸² CC 13° R.

D = A L.
A = 16° 32'
M = 208.26
L = 413.54

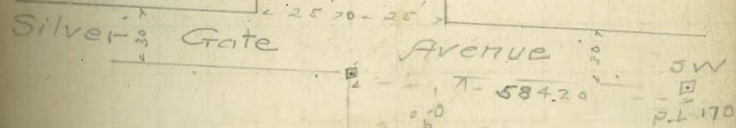
31+63²⁸ PC A L

30+57²⁰ Rumsey's Cr. To NW 180
30+58¹³ 11¹/₂ Line To Roseville Nts. Subd.



57 ↑ See P. 35. 32

Fort



53+23 ¹²

89°50' W 513°30' W

47+90 ³⁹

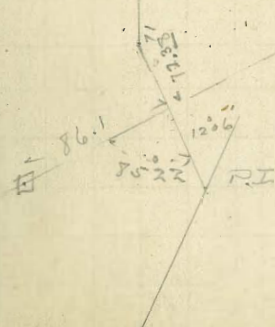
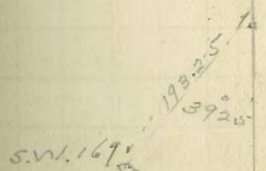
85°37' R. N76°5' W

42+75 ⁰⁵ PT

517°45' W

$D = 7^{\circ} L$
 $A = 120^{\circ} C$
 $L = 157.80$
 $L = 302.0$

37+72 ⁵⁸ PC 4° W



2687.11

1000

72+87Z

72+86Z

69+65⁹

68 - nail

63+06³⁰

61 - nail

59+69

57+91.45 Δ

56+37

0.08L

~~xxxx~~

Rumseys Hub 9.35

old Tree Row 0.34

old 2x6
R.W.Hub + Pipe 36.65
Hub + PipeSW 104
1.26

Hedge

Hedge

1/16/17
Lutes
Emery
Kelly

30.78

30.76
19.35
26.71

POSTED

34

7.713
7635
27

1500
402.93
477.23

80407 82

30495
1025
15.10
Line U.S.M. Reserve
462.83

1025
30495

131370
383
41.16

From P. 32.

1/10/08 Hatch
William
Emery

35

69+66^E

old Hub and 30' → Set Hub.
1/2" pipe at Cor
Hedge row

67+96^A

Set Hub. 30' → old Hub. and 1" pipe
at Spaulding's Cor.
{ 90' strikes 0.55 N of Hub.
{ 30' Sta should be 67+95⁷⁵

63+06³⁰

0°20' L 512°30' W

old Hub 20' Cor Pl 104

57+91²⁵

0°08' L 512°25' W

Set. Hub 29.95' Hub SE Cor. Warner Villa
Tract
40'

{ Vernier of Compass Shifted
{ since last work }

53+23⁴²

89°50' L 513°30' W

Intersection Fort St
and Silver Gate Ave

80+03 90

79+62 30

72+87 ⁵⁰

E Line Silver Gate Arc

off set hand.

S 204.95

N 20.51

W 142.50

U.S. Reservation

Old Mt. Cap
2.38'

30.7

479.23

SE Cor Wireless Tract

SW Cor Wireless Tract

Rumsey's Cor of
Larkin Wireless Tract of pt 10A

Survey of Change in Route
 of East Ft. Loma Blvd - (or line B)
 from Bow Ave. west on Landscape St. to line produced
 of Silver Gate Ave, then S. to Join old

37+07 ¹⁰/₂ =
 53+23 ⁴²/₂

31+23 ⁴⁵/₂ PL Cr.

28+12 ³/₂

26+56 ⁴⁵/₂ PL Cr. set by Wheaton

20+22 ⁶/₂

15+53 ¹²/₂

10+83 ⁵/₂

10+65 ⁴⁵/₂

8+49 ³/₂

6+98 ³/₂

5+94

0+00 =

19+39 ³/₂ old line

Wire Fence and Cypress Hedge Row

89°50' L

30°25' E

Posted

Survey of Fort St.

37

1st at intersection of Pl with
 Cr. of Fort Street



1938 30.12

Jennings St.

P

89°50' L
 30°25' E
 Non-Pl. Cr.
 17.340

37+1+60 is 17 1/2 M of Fence Cor.
 Line produced to Cr. of Fort Street is
 13.8 M of Fence.

Back sight on. Nub. Sta. 18+30 ⁴⁵/₂

9
2
18
March
Churchman -

Levels over Change of Line of Blvd
Line "B"

East Pt Linn.

Bm	11.56	118.50		116.94
	12.00	130.21	0.29	118.21
	13.94	142.20	0.95	129.76
Bm	12.96	152.38	2.78	139.42
0+00 = 197.39 ²	A Line		7.8	
+50			2.9	
T.P.	12.97	165.30	0.15	152.23
1			10.6	
+35			6.7	
+40			5.2	
+50			4.3	
2			+0.1	165.3
T.P.	13.08	178.085	0.75	165.005
+50			6.0	
3			0.5	
T.P.	12.815	190.855	0.245	178.14
+30			7.6	
A			0.7	
T.P.	12.005	202.80	0.06	190.795
+25			10.2	
+50			0.4	

Partial

Station A Line
RR Spike Pole at SE Cor Old Jennings Place

Spike Pole at Sta 18+70 A Line

8

		202.80		
T.P.	12335	215.135	0.0	202.80
+65			6.9	
+75			4.1	
T.P.	1245	227.27	0.315	214.820
5			12.1	
+15			10.8	
+50			9.6	
T.P.	3585	230.685	0.17	227.10
+70			2.7	
B.M.			11.65	229.52
+94			1.9	
6			2.3	
+25			2.7	
+50			3.7	
7			6.3	
+56			9.1	
8			11.0	
T.P.	693	219.065	12.55	218.135
+50			1.9	
9			3.6	
+50			5.4	

229.52 B.R. Spk in Pole at Sta. 5+70

		219.065		
10			7.6	
+ 50			9.2	
+ 65 ²⁵			9.4	
+ 80			9.6	
+ 81			11.0	
T.P.	11.65	221.305	9.41	209.253
11			11.6	
+ 25			10.0	
+ 50			9.2	
+ 70			8.0	
12			7.6	
+ 50			5.0	
13			2.8	
+ 50			0.0	
T.P.	12.91	233.91	0.305	221.00
14			9.3	
+ 50			4.7	
15			0.1	
T.P.	9.31	243.19	0.03	233.88
+ 53 ²²			5.3	
16			2.6	

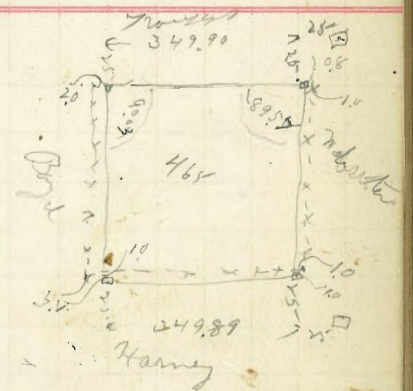
		243.19		
77 ^o	12.07	254.20	1.06	242.13
+50			10.4	
17			6.6	
+50			2.4	
77 ^o	12.89	266.99	0.10	254.10
18			10.0	
+50			4.4	
77 ^o	13.07	277.83	2.23	264.76
19			10.2	
+50			5.6	
20			1.0	276.83
+22.6			0.3	
187 ^m	10.63	287.91	0.55	277.28
+50			9.4	
21			9.1	
+50			8.6	
22			7.9	
+50			7.0	
23			5.6	
+50			4.2	
24			2.9	

Spike 12" stump 10' E of 20 + 22⁶

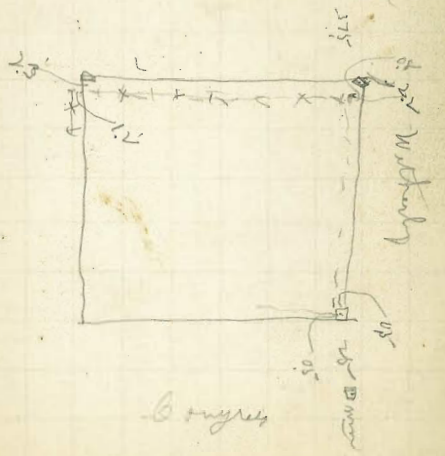
0.20 349.99
 13) 496
 89

		387.91		
+50			1.6	
25			0.2	
T.P.	12.65	299.85	0.71	387.20
+50			10.8	
26			9.2	
+50			7.4	
27			4.9	
+50			4.4	
28			3.3	
+12.83	△		3.1	
+50			2.7	
29			2.2	
+50			2.1	
30			2.9	
770	0.36	29816	2.05	297.80
+50			2.1	
31			3.2	
+50			4.2	
32			5.2	
+50			6.2	
33			7.2	
+50			7.9	

354.0
 349.8



See page



6 pages

		298.16		
34			8.4	
+50			8.7	
T.P.	028	294.64	8.00	290.16
35			5.4	
+50			5.4	
36			4.5	
			4.8	
37			3.7	
+07 ²⁰	=53+23	²⁰ A line	3.2	
Bm			2.68	291.96
Bm			2.90	291.74

292.24 Spk in Pole at Silver Gate by Fort St.

291.69 Hub. SW Cor Warner - Silver Gate.

Landscape 141 pole Crest Hill
Near Stables 229.54

44

X sec. Blvd on Pt. Loma. Tower St.

		HZ		B.M.
	2.74	232.28		229.54
T.P.	6.98	228.43	10.83	221.4578
00+00	= Pueblo Cor.			
E			9.6	218.8
C			10.9	217.5
W.			11.7	216.7
1+00				
E			7.1	221.3
C			8.3	220.1
W.			9.2	219.2
2+00				
W.			2.4	226.01
C			2.1	226.8
E			1.0	227.4
T.P.	12.34	239.51	4.26	227.17
3+00				
E			5.5	234.0
C			6.0	233.5
W.			7.5	232.0
T.P.	9.45	247.95	1.01	238.50

Continued from page 58
0+00 = 27+85.5 Landscape St.



		H.I.		
4700		247.95		
E			2.9	245.1
C			5.0	243.0
W			6.6	241.4
T.P.	9.57	256.53	0.99	246.96
5700				
E			5.6	250.9
C			5.5	251.0
W			6.0	250.5
6700				
W			2.3	254.2
C			2.9	253.6
E			4.0	252.5
7700				
E			1.0	255.5
C			0.0	256.5
T.P.	9.69	265.73	0.79	256.04
7700				
W			8.7	257.3

		H.J		
8+00		265.73		
W			4.5	261.2
C			5.5	260.2
E			6.9	258.8
9+00				
F			4.7	261.3
C			2.8	262.9
W			1.5	264.2
9+34	= Inter Jennings & Dover Sts.			
W			0.8	264.9
C			1.9	263.8
E			3.1	262.6
T.P.	9.65	274.30	0.88	264.65
10+00				
S			7.2	267.1
C			7.3	267.0
W			8.0	266.3
11				
T.P.	7.33	281.00	0.63	2736.7

11+00

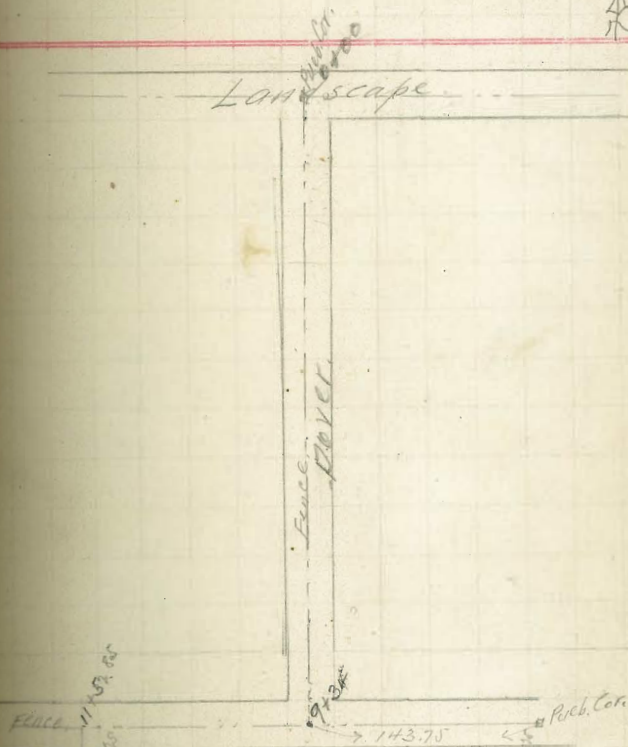
S	281.0	6.4	274.6
C		6.5	274.5
W		7.5	273.5
11+57.85 = Sta 20.01 Silvergate			
W	281.00	7.7	273.3
C		5.3	275.7
S		3.6	277.4
		4.38	276.62

See page 58 for continuation

Sketch showing Blvd. Pt. Loma



Landscape



143.75

20

25

Levels on Silver Gate Arc
from Fort St. to Military Res.
From page 61.

	2758	294.71		291.96 BM
37+078 =		53+23.42 =		Fort St.
W.			2.4	292.3
C			3.4	291.3
E			4.9	289.8
		54+00		
E			2.9	291.8
C			1.2	293.7
W.			-0.4	295.1
T.P.	233	304.04	0.00	294.71
		55+00		
W			5.3	298.7
C			6.7	297.3
E			8.7	295.3
		56+00		
				POSTED
E			4.9	299.3
C			2.3	301.7
W			0.8	303.2
T.P.	1198	315.76	0.26	303.78
		57+00		
W			6.9	308.9
C			9.1	306.7
E			10.4	305.2

		58+00				
			315.76	4.4	311.4	
				3.5	312.3	
				1.9	313.9	
			1276	328.23	0.29	315.47
			59+00			
				9.2	319.0	
				10.4	317.8	
				11.2	317.0	
			60+00			
				4.0	324.2	
				5.1	323.1	
				5.7	322.3	
			61+00			
				1.8	326.4	
				1.2	327.0	
				0.2	328.0	
			9.73	337.32	0.64	327.59
			62+00			
				8.4	328.9	
				7.8	329.5	
				7.3	330.0	

63+00			
	337.32		
W.		6.0	331.5
C.		6.2	331.1
E.		6.5	330.8
64+00			
E.		4.7	332.6
C.		4.1	333.2
W.		3.5	333.8
65+00			
W.		1.6	335.7
C.		1.9	335.4
E.		2.1	335.2
T.P.	7.53	344.11	0.74 336.58
66+00			
E.		6.6	337.5
C.		6.7	337.4
W.		7.0	337.1
67+00			
W.		6.1	338.0
C.		5.6	338.5
E.		4.8	339.3

68+00			
E.	344.11	3.6	340.5
C.		4.5	339.6
W.		5.7	338.4
T.P.	spring gate post opp. sto. 68+00.	5.29	338.82
69+00			
W.		4.1	340.0
C.		3.4	340.7
E.		2.4	341.7
70+00			
E.		0.6	343.5
C.		1.9	342.2
W.		1.9	342.2
T.P.	6.97	349.31	1.77 342.24
71+00			
W.		6.4	342.9
C.		5.5	343.8
E.		4.5	344.8
72+00			
E.		3.9	345.4
C.		5.0	344.3
W.		5.6	343.7

POSTED

73+00

IV.		349.31	5.9	343.4
C.			4.7	344.6
E.			4.0	345.3
74+00				
E.			3.6	345.7
C.			4.2	345.1
IV.			5.4	343.9
75+00				
IV.			4.8	344.5
C.			3.4	345.9
E.			2.6	346.7
T.P.	1216	358.31	316.	346.15
76+00				
E.			9.8	348.5
C.			10.8	347.5
IV.			11.8	346.5
77+00				
IV.			9.9	348.4
C.			8.3	350.0
E.			7.3	351.0

78+00

E.		355.31	4.8	353.5
C.			3.9	352.4
IV.			7.3	351.0
79+00				
IV.			4.9	353.0
C.			3.8	354.5
E.			2.8	355.5
T.P.	656	361.62	325	355.06
80+03.9				
E.			4.0	357.6
C.			4.9	356.7
IV.			5.3	356.3
B.P.	Hub. at Subergate & Military Red line		5.34	356.78

POSTED

Survey Landscape

51

Magnetic

27+85.5 = E Dover & Landscape Sts.

14+50 Δ

13+22.6 Δ

7+50 Δ

5+00 Δ

0+00 Δ

S. 88° 30' W

= 178' landscape with 11 line Rosecrans

X. sec. Lawrence St. from
Readings 20' each side E.

Rosecrans St. West. ✓

52

1-28-09 Lockwood.

EVANS
BIRK

2150

N.E. cor. Rosecrans
741007

B.M.	11.77	33.09	21.32	S	44.91	8.1	36.8
				C		8.4	36.5
		0+00 = W. Line Rosecrans		N		8.1	36.8
N		10.0	23.1		3+00		
C		9.6	23.5	N		5.5	39.4
S		7.3	23.8	C		5.0	39.9
		0+50		S		4.9	40.0
S		6.8	26.3		3+50		
C		2.7	25.9	S		2.2	43.7
N		6.6	26.5	C		2.0	42.9
		1+00		N		2.4	42.5
N		4.1	29.0	T.P.	12.08 56.64	9.35	44.56
C		4.4	28.7		4+00		
S		4.3	28.8	N		11.0	45.6
		1+50		C		10.6	46.0
S		2.0	31.1	S		10.9	45.7
C		1.8	31.3		4+50		
N		1.7	31.4	S		7.3	49.3
T.P.	11.91	44.91	0.09	C		7.7	48.9
		2+00		N		7.3	49.3
N		10.6	34.3				
C		11.2	33.7				
S		10.7	34.2				

5400

N		56.64	21	54.5
			14	55.2
			17	54.9
T.P.	12.77	69.32	0.09	56.55
		5750		
S			11.3	58.0
C		ditch 3.5 deep 5' wide	11.2	58.1
N			11.3	58.0
		6700		
N		ditch 3.5 deep	8.3	61.0
C		" 5' wide	7.9	61.4
S			6.7	62.6
		6750		
S		ditch 5.5 deep 3.5 wide	1.9	67.4
C			4.2	65.1
N			4.6	64.7
		7700		
N			1.5	67.8
+12 S.		ditch 3' wide	7.9	61.4
T.P.	12.96	81.99	0.09	69.23
C			12.5	69.5
S			9.6	72.4

53

2

7450

S		81.99	5.9	76.1
			7.9	74.1
+13 N.			9.9	72.1
+15 N bottom			17.4	64.6
+17 N bank			10.2	71.8
N.			10.1	71.9
		8700		
N			6.6	75.4
+14			15.6	66.4
+14			6.8	75.2
C			5.8	76.2
S			3.2	78.8
		8750		
S			1.1	80.9
C			3.5	78.5
+15			4.0	78.0
+17			10.9	71.1
+18			3.9	78.1
N.			3.2	78.8
		9700		
N.		81.77	0.7	81.3
+17			1.0	81.0
+14			7.5	74.5
+16			0.7	81.3
C			0.4	81.6
T.P.	12.88	94.68	0.9	81.80
S			11.9	82.8

		9450		
S.		9468	8.2	86.5
C.			10.3	84.4
+15			11.0	83.7
+16			18.0	76.7
+18			11.1	83.6
N.			10.6	84.1
		10400		
N.			8.1	86.6
+25			15.7	79.0
+25			8.2	86.5
E.			9.6	87.1
S.			4.8	89.9
		10450		
S.			3.3	91.4
C.			4.8	89.9
N.			5.5	89.2
		11400		
N.			2.3	92.4
C.			1.8	92.9
S.			-0.3	95.0
T.P.	12.38	106.73	0.33	94.35
		11450		
S.			8.5	98.2
+25			10.2	96.5
C.			11.5	95.2
N.			11.6	95.1

B.M. 4 ft. in pole opp. sto. 11450

96.8

97.05

		12400		
N.		106.73	9.3	97.4
C.			7.2	99.5
S.			0.9	105.8
		12450		
N.		106.73	5.4	101.3
+25			5.5	101.2
+25			3.5	104.2
C.		119.02	9.5	109.5
S.			1.1	117.9
		13400		
30°N.E.		106.73	3.3	103.4
35°N.E.			1.9	104.8
20°N.		119.02	7.0	112.0
C.		131.3	9.4	121.9
S.			0.2	131.1
T.P.	12.49	119.02	0.20	106.53
		13450		
30°N.E.		119.02	11.6	107.4
20°N.E.		131.29	16.2	115.1
C.			6.4	124.9
S.		142.15	7.6	134.6
T.P.	12.60	131.29	0.33	118.69

14400			
30' NE			
20' NE	131.29	11.4	119.9
C	142.15	12.4	129.8
S		2.1	140.1
T.P.	1251	142.15	165 129.64
T.P.	10.29	150.10	23.4 139.81
	14450		
S	150.10	8.9	141.2
C	138.76	6.7	132.1
20' NE		18.7	120.1
30' NE	134.60	20.5	114.1
T.P.	127	138.76	12.67 137.49
	15400		
S	138.76	5.2	133.6
C		13.2	125.6
20' NE	134.60	15.7	118.9
30' NE		19.4	117.2
T.P.	8.05	134.60	12.24 126.52
	15450		
30' NE	134.60	15.3	119.3
20' NE		13.1	121.5
C		4.5	130.1
S			

16400			
30' NE	134.60	13.2	121.4
20' NE		13.0	121.6
C		8.2	126.4
S			
	16450		
30' NE	134.60	10.6	124.0
20' NE		9.6	125.0
15' NE		7.7	126.9
E		7.0	127.6
S		3.8	133.5
T.P. - 811	1248	137.26	9.82 124.78
	17400		
30' NE	139.26	10.7	126.6
20' NE		10.2	127.1
17' NE		8.6	128.7
C		6.9	130.4
S		9.0	139.9
T.P.	1283	148.85	124 136.02
	17450		
S		4.0	144.9
C		12.4	136.5
17		15.2	133.7
14		19.2	129.7
20' NE		20.4	128.5
30' NE		20.6	128.3

18700				
S.	148.85	5.0	143.9	
C.		13.3	135.6	
+8'		14.1	134.8	
+70' NE		15.7	133.2	
+36' NE		16.3	132.6	
	187.50			
30' NE		13.3	135.6	
20' NE		13.5	135.4	
C. 1		13.5	135.5	
S.		6.8	142.1	
	197.00			
S.		10.7	138.2	
C.		7.6	139.3	
20' N		8.4	140.5	
30' N		7.8	141.1	
	197.50			
S.		4.0	144.9	
C.		3.2	145.7	
N.		2.6	146.3	
T.P.	13.08	161.65	0.28	148.57
	207.00			
N.		9.0	152.7	
C.		10.7	151.0	
S.		11.4	150.3	

20750				
S.	161.65	6.8	154.9	
C.		5.5	156.2	
N.		3.3	158.4	
T.P.	12.45	173.89	0.21	161.44
	217.00			
N.		10.2	163.7	
C.		11.5	162.4	
S.		14.0	159.9	
	217.50			
S.		8.2	165.7	
C.		6.5	167.4	
N.		4.2	169.7	
T.P.	12.86	186.67	0.08	173.81
	227.00			
N.		10.6	176.1	
C.		12.7	174.0	
S.		15.3	171.4	
	227.50			
S.		9.3	177.4	
C.		7.5	179.2	
N.		4.0	182.7	
	237.00			

23+00

S		186.67	3.1	183.6
C			1.0	185.7
T.P.	12.62	198.64	0.65	186.02
N			7.8	190.8
		237.50		
S			8.5	190.1
C			6.6	192.0
N			0.0	198.6
		23+70		
S			2.2	196.4
C			2.5	196.1
N			0.8	197.8
T.P.	11.49	209.55	0.58	198.06
		24+00		
S			4.7	204.9
C			1.5	208.1
T.P.	13.02	222.41	0.16	209.39
N			12.3	210.1
		24+50		
N			2.7	219.7
C			5.7	216.7
S			9.3	213.1

57

24+85

N		222.41	0.8	221.6
C			3.6	218.8
S			4.7	217.7
T.P.	10.16	232.08	0.49	221.92
		25+05		
N			3.3	228.8
C			3.8	228.3
S			4.9	227.2
		25+50		
S			4.8	227.3
C			4.2	227.9
N			3.4	228.7
		26+00		
S			5.5	226.6
C			6.1	226.0
N			5.6	226.5
		26+50		
N			8.8	223.3
C			8.7	223.4
S			8.5	223.6
		27+00		
S			10.9	221.2
C			10.9	221.2
N			10.3	221.8

27+50

S	202.08	13.4	218.7
E		12.7	219.4
N		13.1	219.0
			Page 44
	27+85.5 = 0+00		Level 61.
N		14.8	217.3
C		14.5	217.6
S		14.7	217.4

see page 44

4365
 1153
 2785
 8303
 400
 2903
 270
 2633

From page 46.

Levels on silver gate are from
 Jennings to Fort St. Readings 30' each
 side E 58

	11.81	276.46	264.65 = 7.7
TR	9.62	285.50	0.58 275.82
		20+50 =	
N			8.1 277.4
C			7.3 278.2
E			9.2 276.3
		21+00	
E			7.0 276.5
C			7.0 278.5
N			5.9 279.6
		21+50	
N			4.8 280.7
C			6.6 278.9
E			8.5 277.0
		22+00	
E			7.8 277.7
C			5.8 279.7
N			4.4 281.1
		22+50	
N			3.4 282.1
C			4.8 280.7
E			6.7 278.8

POSTED

23+00			
E		285.50	5.4 280.1
C			3.5 282.0
W.			2.1 283.4
		23+50	
W.			0.6 284.9
G.			2.1 283.4
E.			3.9 281.6
T.P.	13.02	295.96	2.57 282.93
		24+00	
E			13.1 282.8
C.			11.2 284.7
W.			9.7 286.2
		24+50	
W.			8.5 287.4
C.			9.9 286.0
E.			11.8 284.1
		25+00	
E.			10.4 285.5
C.			8.6 287.3
W.			7.1 288.8
		25+50	
W.			5.6 290.3
C.			7.1 288.8
E.			9.0 286.9

26+00			
E.		295.96	7.1 288.8
C.			5.6 290.3
W.			3.7 292.2
		26+50	
W.			1.4 294.5
C.			3.8 292.1
E.			5.7 290.2
		27+00	
E.			4.4 291.5
C.			2.2 293.7
W.			0.2 295.7
T.P.	7.27	301.93	1.30 294.66
		27+50	
W.			4.9 297.0
C.			6.6 295.3
E.			9.1 292.8
		28+00	
E.			8.2 293.7
C.			5.6 296.3
W.			4.0 297.9
		28+50	
W.			3.2 298.7
C.			3.0 296.9
E.			7.5 294.4

29700			
E	301.93	7.3	294.6
C		4.3	297.6
W		2.8	299.1
29750			
W		2.7	299.2
C		4.4	297.5
E		7.3	294.6
30700			
E		8.0	293.9
C		5.1	296.8
W		3.4	298.5
30750			
W		4.5	297.4
C		6.0	295.9
E		8.8	293.1
31700			
E		9.7	292.2
C		7.2	294.7
W		5.5	296.4
31750			
W		7.0	294.9
C		8.2	293.7
E		10.6	291.3

32700			
E	301.93	11.5	290.4
C		9.2	292.7
W		7.2	294.7
TP	1.57	294.96	8.54 293.39
32750			
W		1.6	298.4
C		3.1	291.9
E		5.4	289.6
33700			
E		6.5	288.5
C		4.2	290.8
W		2.5	292.5
33750			
W		3.1	291.9
C		4.8	290.2
E		7.1	287.9
34700			
E		7.8	287.2
C		5.3	289.7
W		3.6	291.4
34750			
W		3.8	291.2
C		5.6	289.4
E		7.9	287.1

	35400		
E	294.96	8.0	287.0
C		6.0	289.0
W		4.0	291.0
	35450		
W		4.3	290.7
C		5.8	289.2
E		7.6	287.4
	36400		
E		7.1	287.9
C		5.2	289.8
W	POSTED	3.9	291.1
	36450		
W		4.1	290.9
C		5.3	289.7
E		6.9	288.1
	37400		
E		6.2	288.8
C		4.2	291.0
W		3.1	291.9

37407.8 - Sta 53 + 23.42
Continued on page 48

Grades on Silver Gate Ave.

Station	Eastside Grade.	West side Grade.
0+00	275.00	276.0
+50	276.29	277.29
1	277.60	278.60
+50	278.89	279.89
2	280.19	281.19
+50	281.48	282.48
3	282.77	283.77
+50	284.07	285.07
4	285.36	286.36
+50	286.66	287.66
5	287.95	288.95
+50	289.24	290.24
6	290.54	291.54
+50	291.83	292.83
7	293.13	294.13
+50	294.42	295.42
8	295.70	296.70
+50	297.00	298.00
9	296.29	297.25
+50	295.58	296.50

from Jennings to Military Res.

1887

Chart

Silver Gate

Ties at Char. St.

62

72

277.14 = BM. on stump

± Silver Gate & Jennings

Grades = Butter grade -
± Charles St. 25 E. of Silver Gate.

Station	Eastside	West side	Station	Eastside	West side
277.14	276.29	276.0	280.19	281.48	281.19
277.23	276.29	277.29	280.24	281.48	281.19
277.30	276.29	277.29	280.24	281.48	281.19
277.33	276.29	277.29	280.24	281.48	281.19
277.36	276.29	277.29	280.24	281.48	281.19
277.39	276.29	277.29	280.24	281.48	281.19
277.42	276.29	277.29	280.24	281.48	281.19
277.45	276.29	277.29	280.24	281.48	281.19
277.48	276.29	277.29	280.24	281.48	281.19
277.51	276.29	277.29	280.24	281.48	281.19
277.54	276.29	277.29	280.24	281.48	281.19
277.57	276.29	277.29	280.24	281.48	281.19
277.60	276.29	277.29	280.24	281.48	281.19
277.63	276.29	277.29	280.24	281.48	281.19
277.66	276.29	277.29	280.24	281.48	281.19
277.69	276.29	277.29	280.24	281.48	281.19
277.72	276.29	277.29	280.24	281.48	281.19
277.75	276.29	277.29	280.24	281.48	281.19
277.78	276.29	277.29	280.24	281.48	281.19
277.81	276.29	277.29	280.24	281.48	281.19
277.84	276.29	277.29	280.24	281.48	281.19
277.87	276.29	277.29	280.24	281.48	281.19
277.90	276.29	277.29	280.24	281.48	281.19
277.93	276.29	277.29	280.24	281.48	281.19
277.96	276.29	277.29	280.24	281.48	281.19
277.99	276.29	277.29	280.24	281.48	281.19

East side		West side	
Station	Grade		Grade
10	294.87		295.75
+50	294.16		295.00
11	293.46		294.25
+50	292.75		293.50
12	292.04		292.75
+50	291.33		292.00
13	290.62		291.25
+50	289.92		290.50
14	289.21		289.75
+50	288.50		289.00
15	288.87		289.25
+50	289.25		289.50
16	289.62		289.75
+50	290.00		290.00
17	292.19		292.25
+50	294.37		294.50
18	296.56		296.75
+50	298.75		299.00
19	300.94		301.25
+50	303.12		303.50

Silver Gate Ave.

64

Eastside		Westside	
Station	Grade		Grade
20	305.31		305.75
+50	307.50		308.00
21	309.69		310.25
+50	311.87		312.50
22	314.06		314.75
+50	316.25		317.00
23	318.44		319.25
+50	320.63		321.50
24	322.81		323.75
+50	325.00		326.00
25	326.50		327.25
+50	328.00		328.50
26	329.50		329.75
+50	331.00		331.00
27	331.81		331.75
+50	332.62		332.50
28	333.44		333.25
+50	334.25		334.00
29	335.06		334.75
+50	335.87		335.50

Station	Grade	Grade
30	336.69	336.25
+50	337.50	337.00
31	338.31	337.75
+50	339.12	338.50
32	339.94	339.25
+50	340.75	340.00
33	341.56	340.75
+50	342.37	341.50
34	343.19	342.25
+50	344.00	343.00
35	344.75	343.25
+50	344.50	343.50
36	344.75	343.75
+50	345.00	344.00
37	345.25	344.25
+50	345.50	344.50
38	345.75	344.75
+50	346.00	345.00
39	347.10	346.2
+50	348.20	347.4

Silver Gate Ave.

66

East side		West side	
Station	Grade		Grade
40	349.30		348.6
+50	350.40		349.8
41	351.50		351.0
+50	352.60		352.2
42	353.70		353.4
+50	354.80		354.6
43	355.90		355.8
+50	357.00		357.0

Jennings St. from E Silver			
0+00	275.00		275.00
+50	272.48		272.48
1	269.97		269.97
+50	267.44		267.44
2	264.92		264.92
+18.85	264.00		264.00
	North		South

Military Res.

Gate to E Dover St
- E Silver Gate Ave.

- E Dover St

Grades on Dover St.

East side		West side	
Station	Grade	Grade	
	curb	curb	
0+00	218.00	218.00	
	221.01	221.01	
+50	220.92	220.92	
	224.02	224.02	
1	223.83	223.83	
	227.03	227.03	
+50	226.75	226.75	
	230.04	230.04	
2	229.66	229.66	
	233.06	233.06	
+50	232.58	232.58	
	236.07	236.07	
3	235.50	235.50	
	239.08	239.08	
+50	238.41	238.41	
	242.09	242.09	
4	241.33	241.33	
	245.10	245.10	
+50	244.24	244.24	
	248.12	248.12	
5	247.16	247.16	
	251.13	251.13	
+50	250.08	250.08	
	253.60	253.60	
6	253.00	253.00	
	255.31	255.31	
+50	254.65	254.65	
	257.01	257.01	
7	256.29	256.29	
	258.70	258.70	
+50	257.94	257.94	
	260.39	260.39	
8	259.58	259.58	
	262.08	262.08	
+50	261.23	261.23	
	263.79	263.79	
9	262.88	262.88	
+34	264.00	264.00	

229.54 = B.M.
 231.29 H.I.
 230.07
 238.30 H.I.
 238.15
 239.74 H.I.
 239.12
 240.60 H.I.

228.30
 250.73 = B.M. on tub opp sta 4+50
 268.82 H.I.
 268.62
 268.20
 268.16
 268.36 H.I.
 268.86

54K in
 217.37 B.M. Tol. pole Cr. Dover Landscape
 261.99 = B.M. on stump near
 on Cr. Dover & Jennings St.

67 2

= Property line of Landscape St. at Dover.

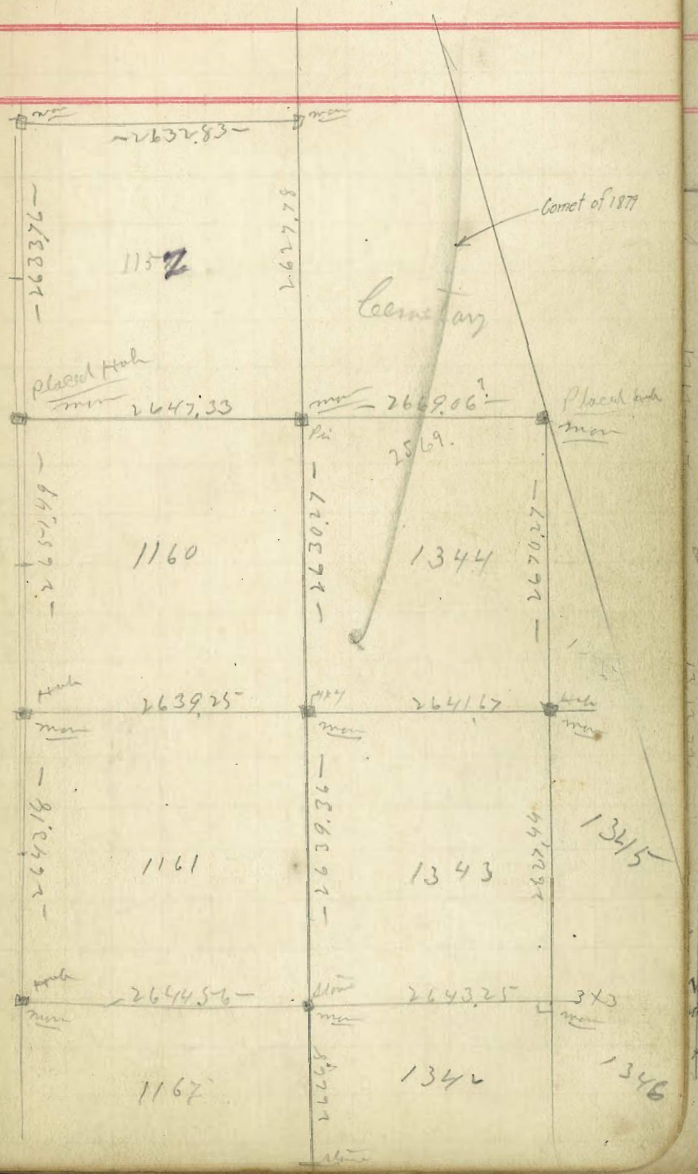
	219.00	219.82	222.83	225.15	228.66	231.58	234.50
E.	0.73	8.38	5.47	2.55	7.08	8.76	5.24
	0.73	8.05	4.62	1.35	10.68	7.33	3.27
		0.23	0.82	0.20	0.68	0.83	2.97
E.	237.41	242.33	243.24	246.16	249.08	252.00	253.65
	13.72	10.27	7.36	12.66	9.74	6.82	5.17
	9.22	3.30	0.31	2.82	2.76	5.67	4.25
	0.37	2.77	0.70	2.56	2.91	21.70	20.44
	0.37		243.24	246.16	249.08	252.00	253.65
W.				12.66	9.74	6.82	5.17
				2.25	5.67	2.12	2.42
				0.73	0.77	0.72	0.77
E.	255.29	256.94	258.58	260.23	261.85 H.I.		244.68
	3.53	1.88	7.78		0.23		28.01
	2.56	0.98	4.60		11.79		27.45
	0.98		0.71		23.32 H.I.		27.01
W.	255.29	256.94	258.58		0.23		27.01
	3.53	1.88	7.78		12.74		24.47
	0.98		0.71		24.57 H.I.		24.68

W.	245.29	246.94	248.58	250.23	251.85 H.I.		244.68
	3.53	1.88	7.78		0.23		28.01
	2.56	0.98	4.60		11.79		27.45
	0.98		0.71		23.32 H.I.		27.01
W.	245.29	246.94	248.58		0.23		27.01
	3.53	1.88	7.78		12.74		24.47
	0.98		0.71		24.57 H.I.		24.68

W.	245.29	246.94	248.58	250.23	251.85 H.I.		244.68
	3.53	1.88	7.78		0.23		28.01
	2.56	0.98	4.60		11.79		27.45
	0.98		0.71		23.32 H.I.		27.01
W.	245.29	246.94	248.58		0.23		27.01
	3.53	1.88	7.78		12.74		24.47
	0.98		0.71		24.57 H.I.		24.68

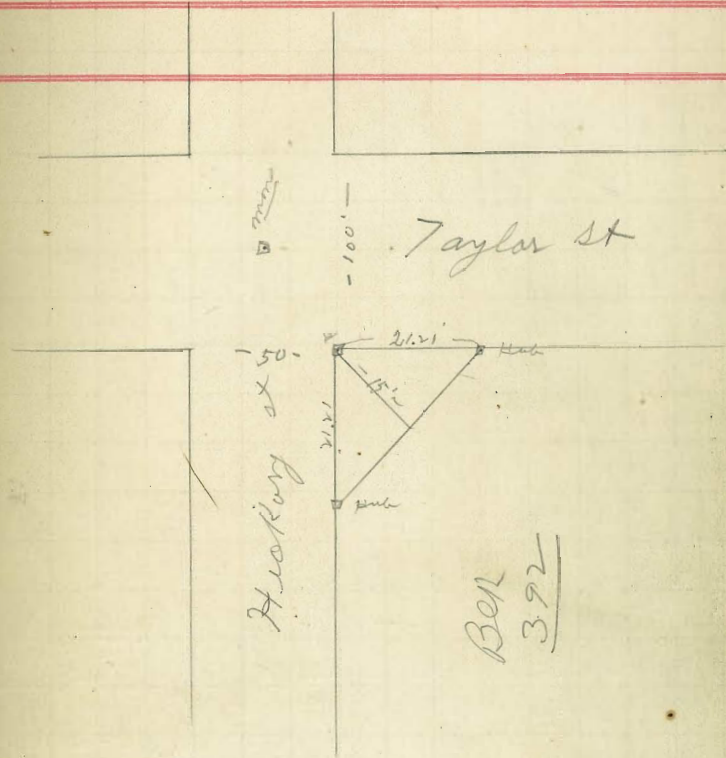
= E. Jennings St.

55.9



Survey to cut off corner
of Block Old Town

8 Clough
1 Dana 69
10 Rogers



8-6-36 Measurements E. 7' line of
Miller 32nd St. from K. St. South.

Pg. 70-A.

(14+76.94) (C.E. 7-181)

14+76.24 N. 7' line of Webster Ave = C.T.

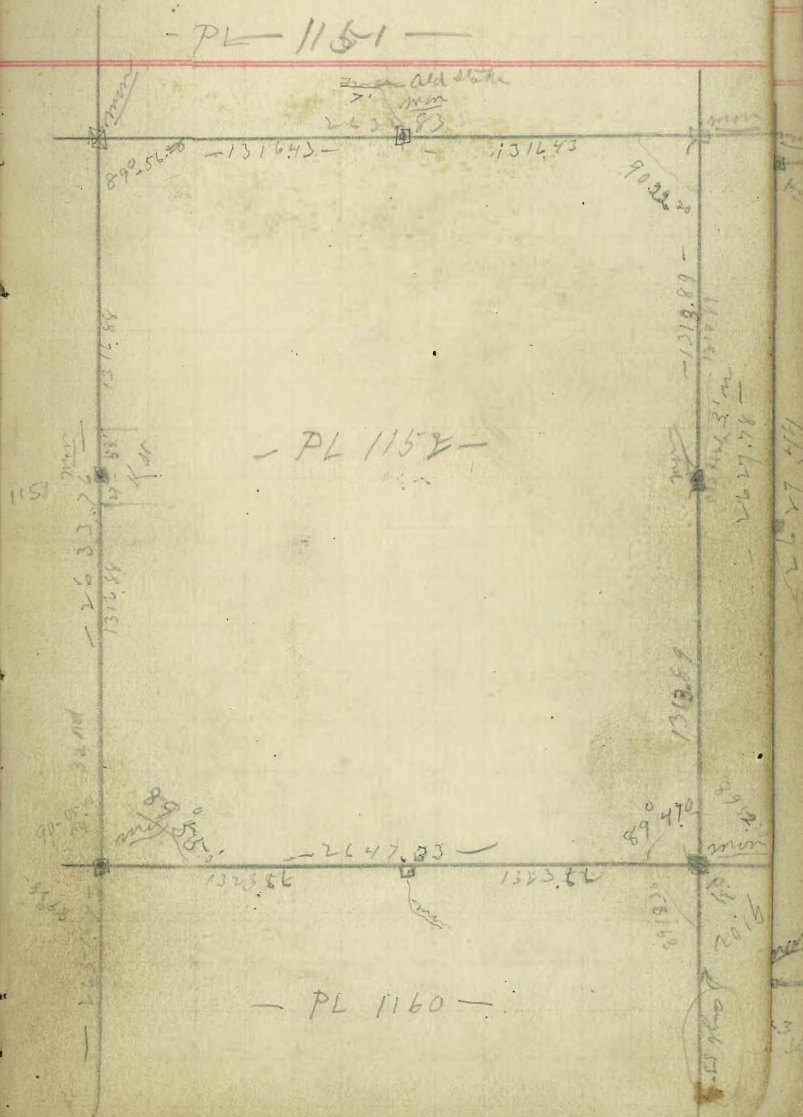
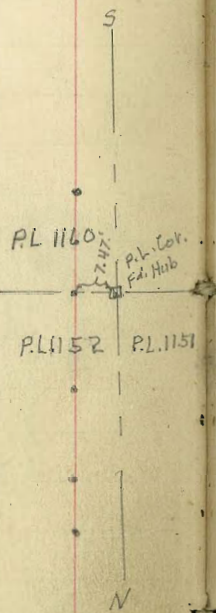
13+17.46 P.L. Line in Alley S. of Commercial.
13+16.28 opp. Page.

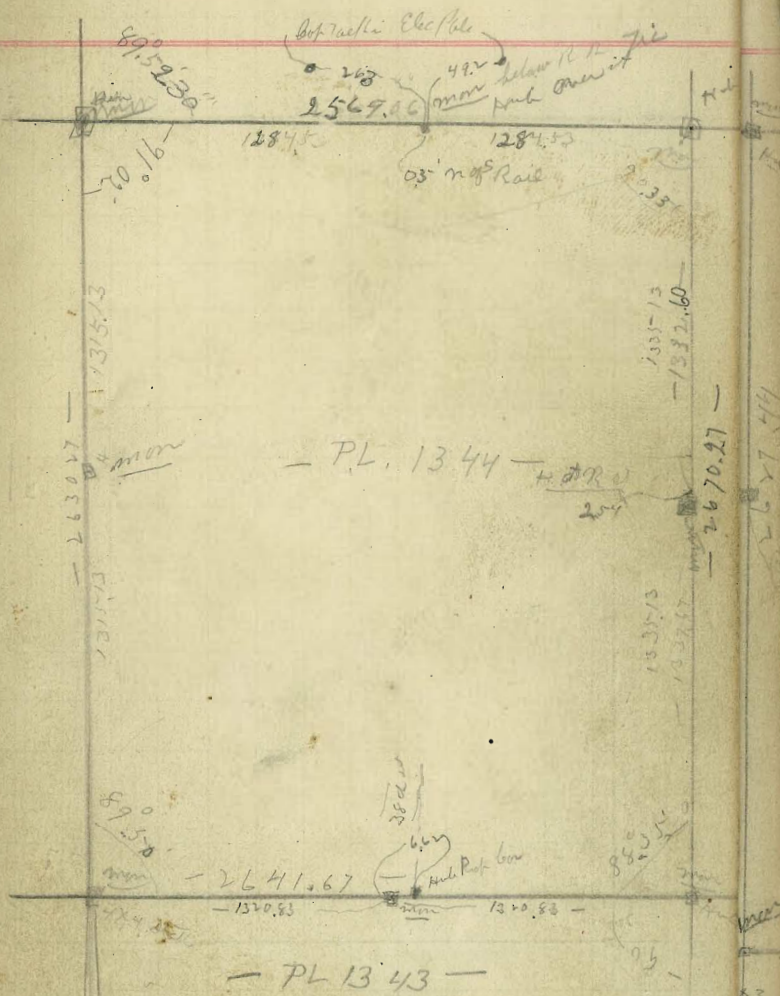
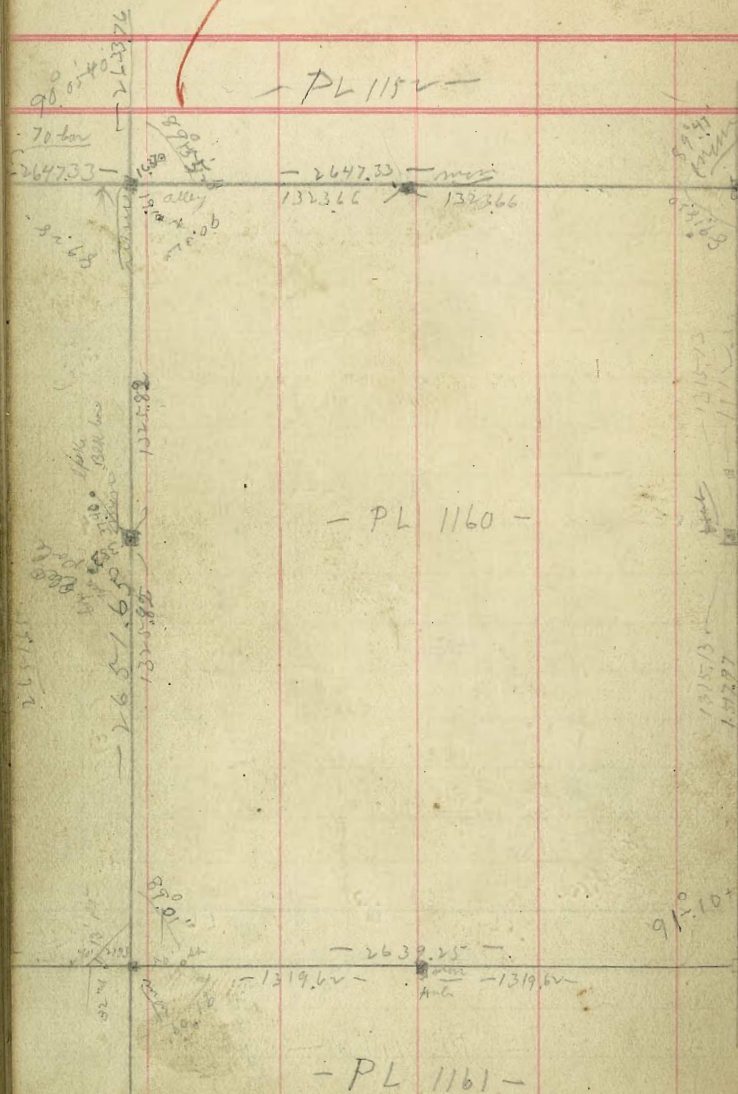
11+58.99 S. 7' line Commercial St. = C.T.

3+79.73 = S. 7' line of L. St. = C.T.

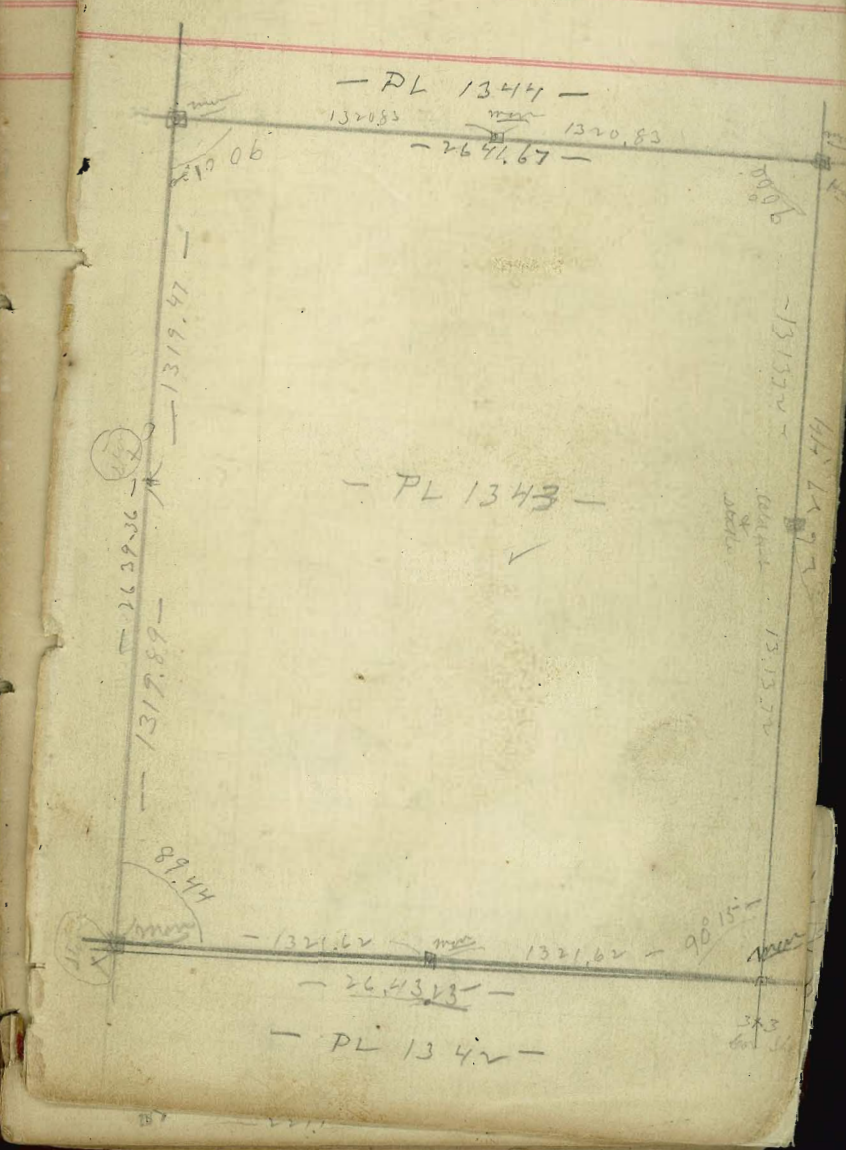
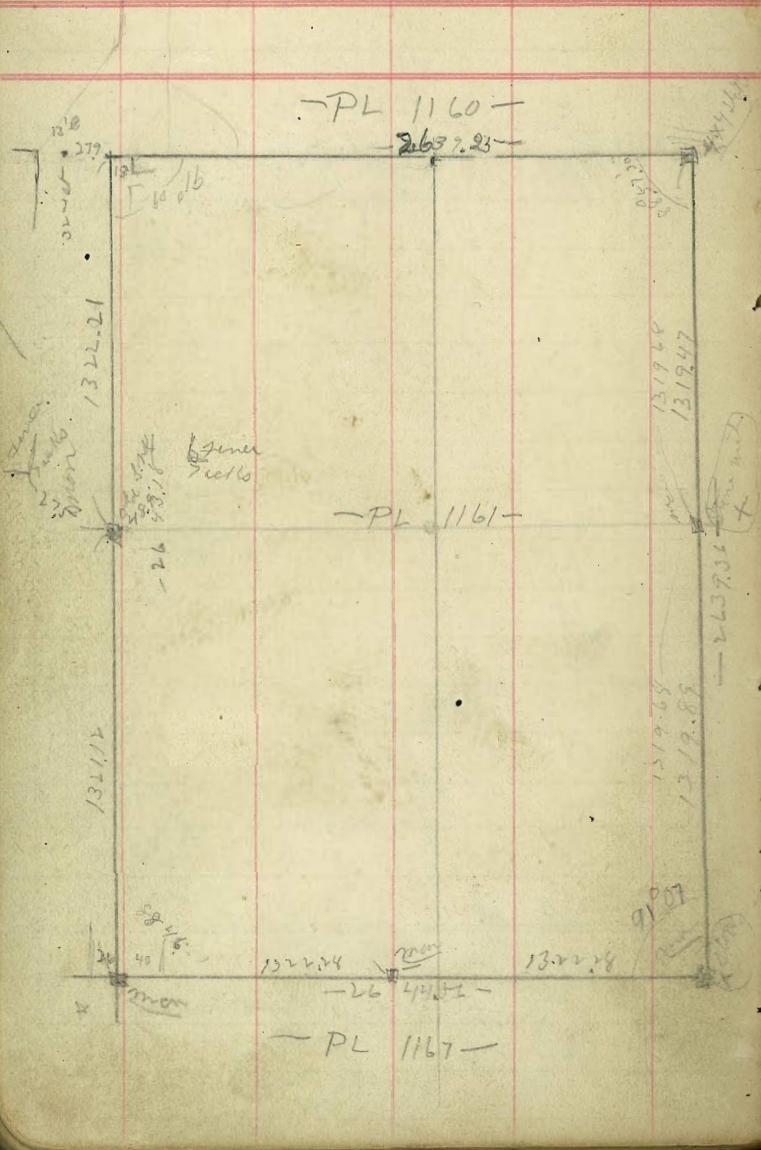
8+13.75 = N. 7' line of L. St. = C.T.

0+00 = S. 7' line of K. St. = C.T.



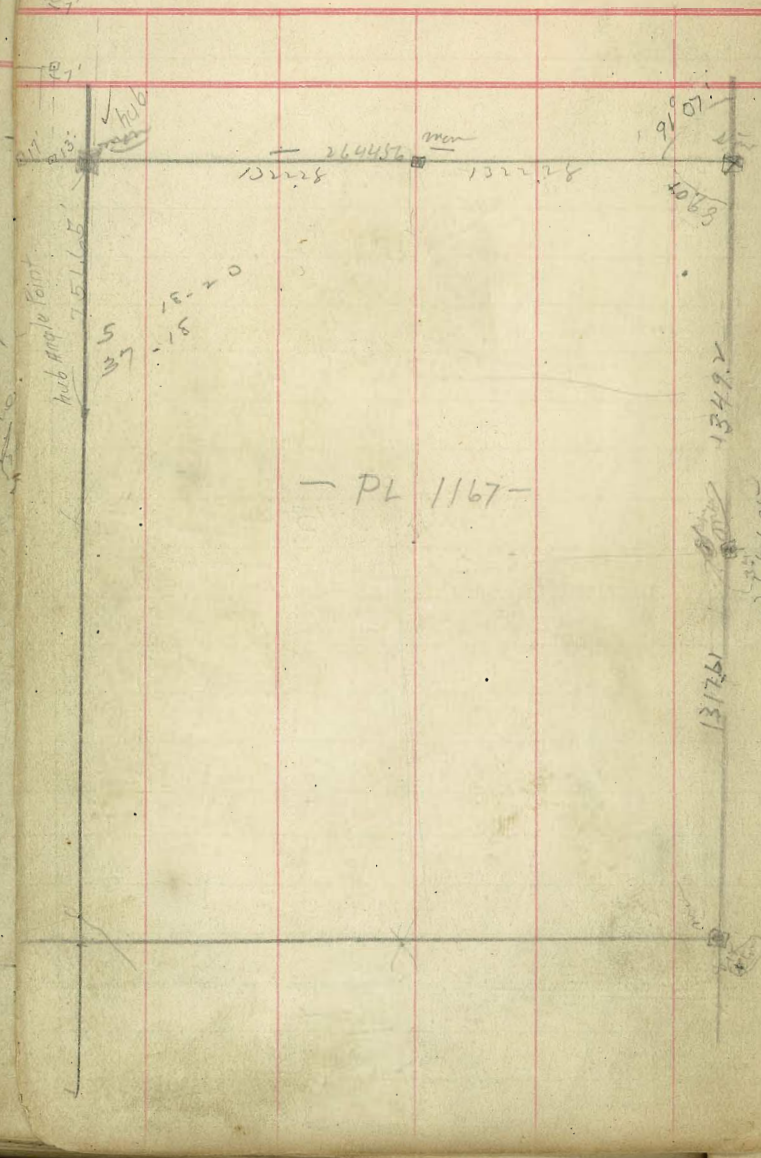


1322.27
1321.12
2643.33



59 60

62 61



Blind marker X
ma
3X5
ma

132162
132162

82.08
82.35

158.8
84.58
133.20
2.006

485.87
41.58
527.45
127.45
27
40.0
154.45

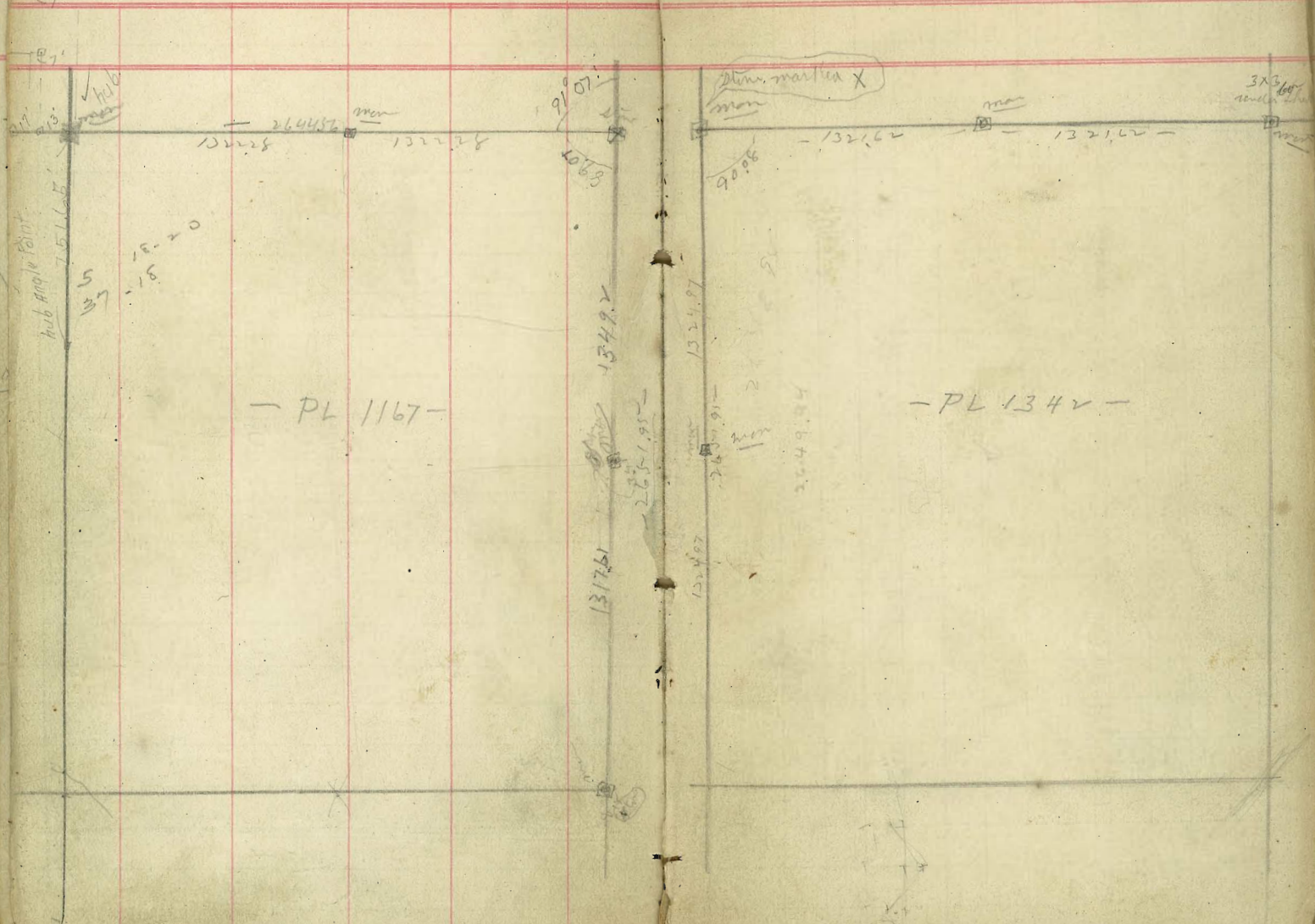
7.45
7.45
7.45
54.45
143.00

792
4883
68
11675
4529
7196

132402
132402

59 60

62 61



- PL 1167 -

- PL 1342 -

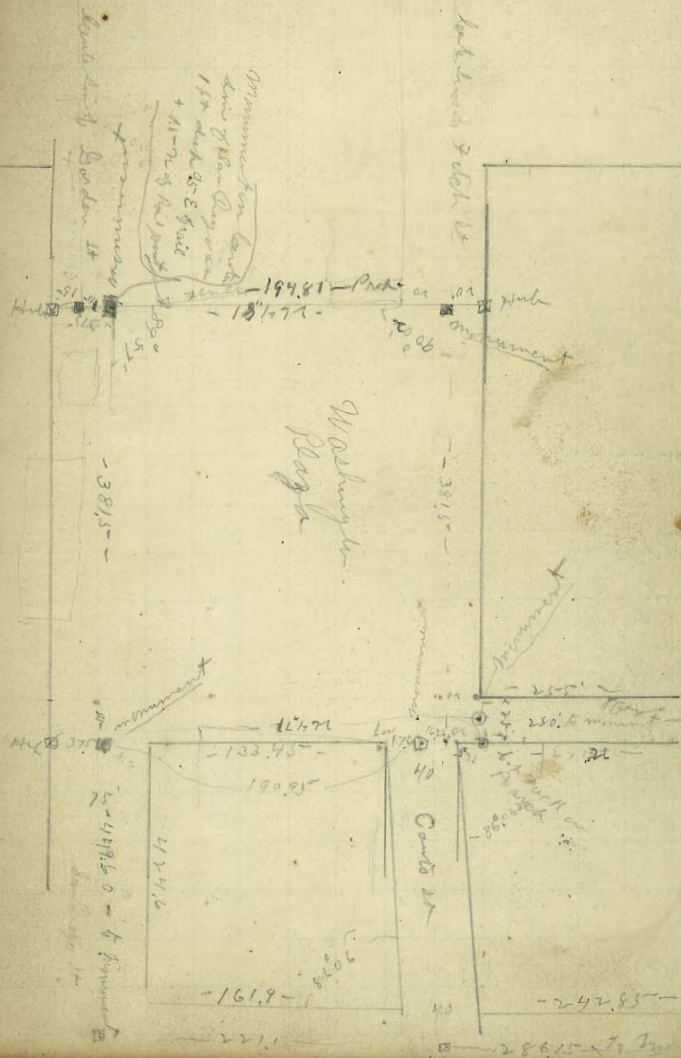
Colough
Danna
Rodgers

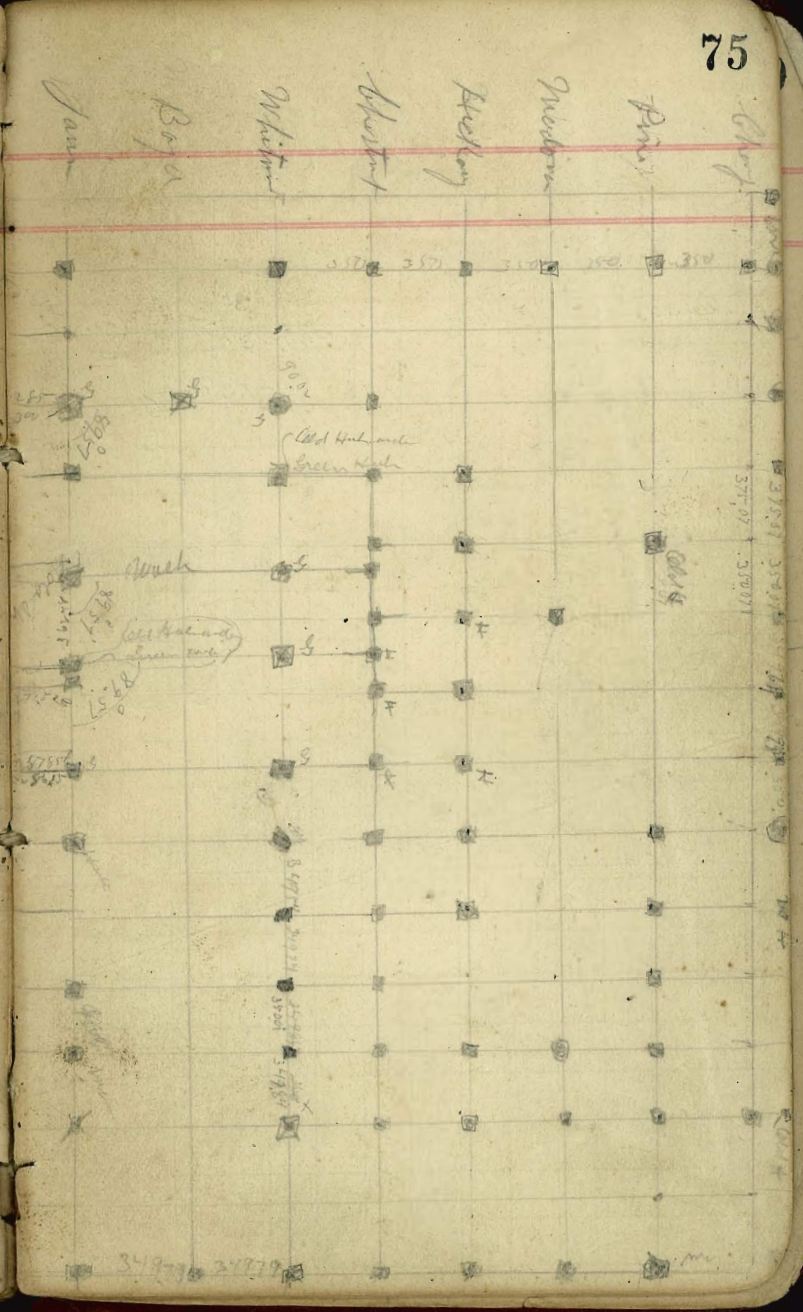
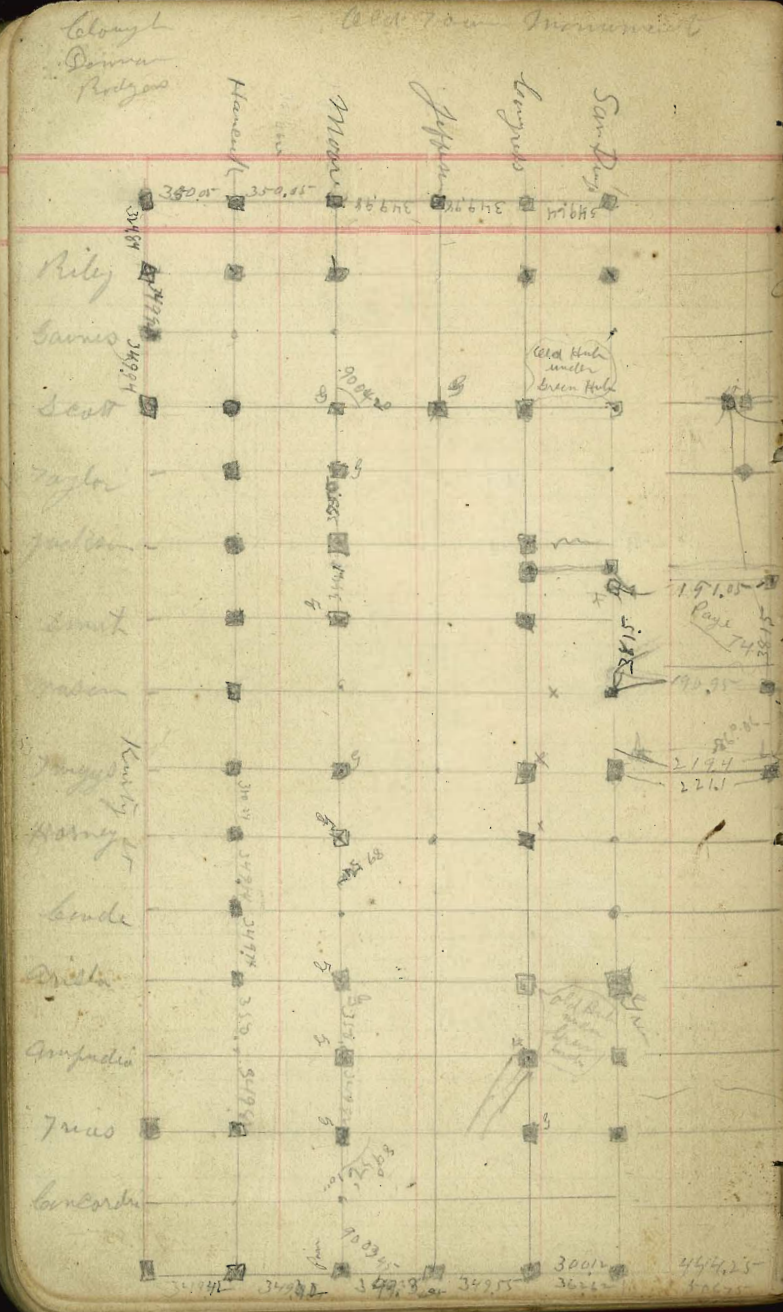
187-10

Location of Old Town
Plaza

Old Town Plaza

74





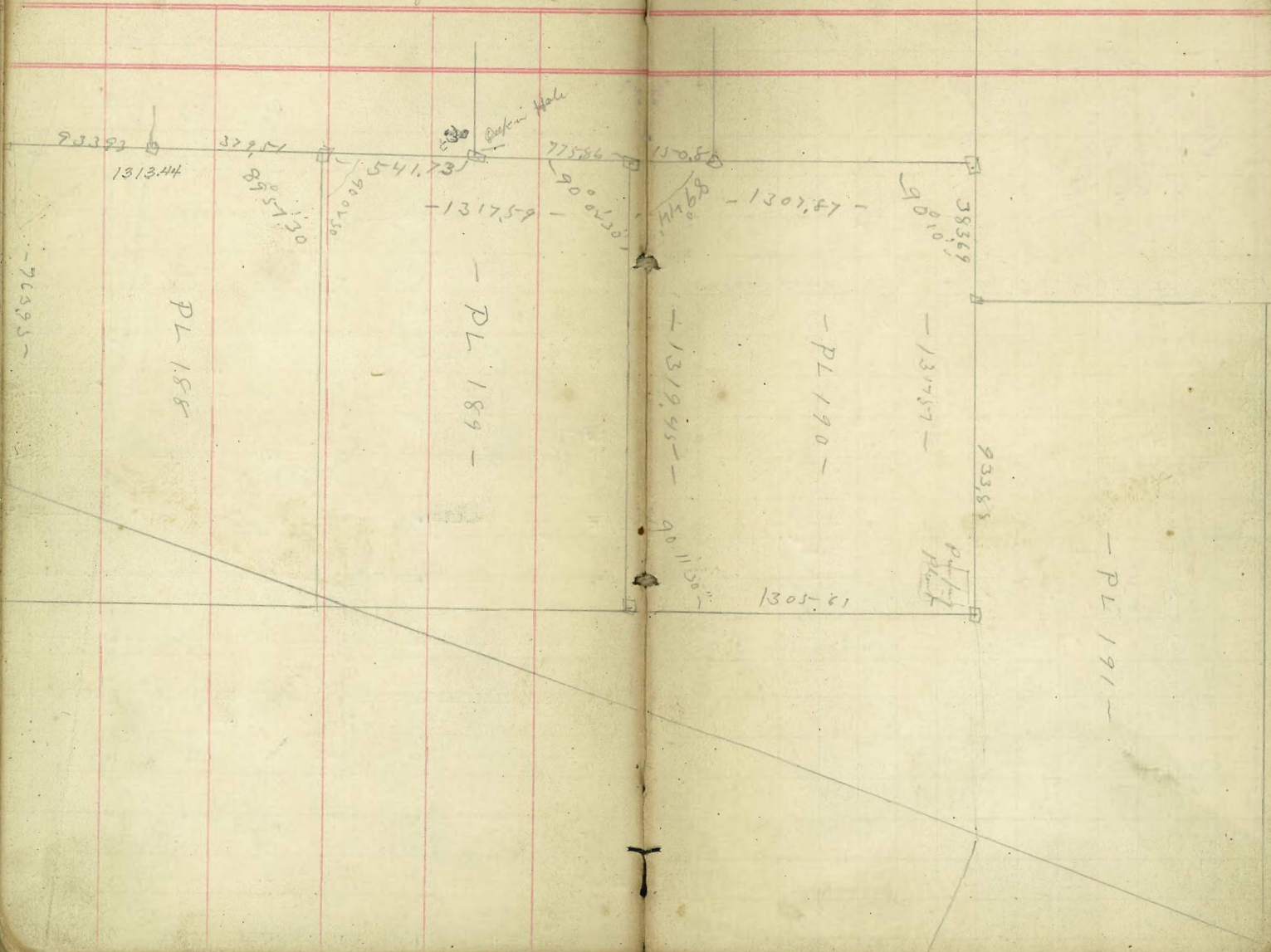
George
Denham
Rodgers

Survey of Paris Dam
- from Bank

Parable Lots
213-

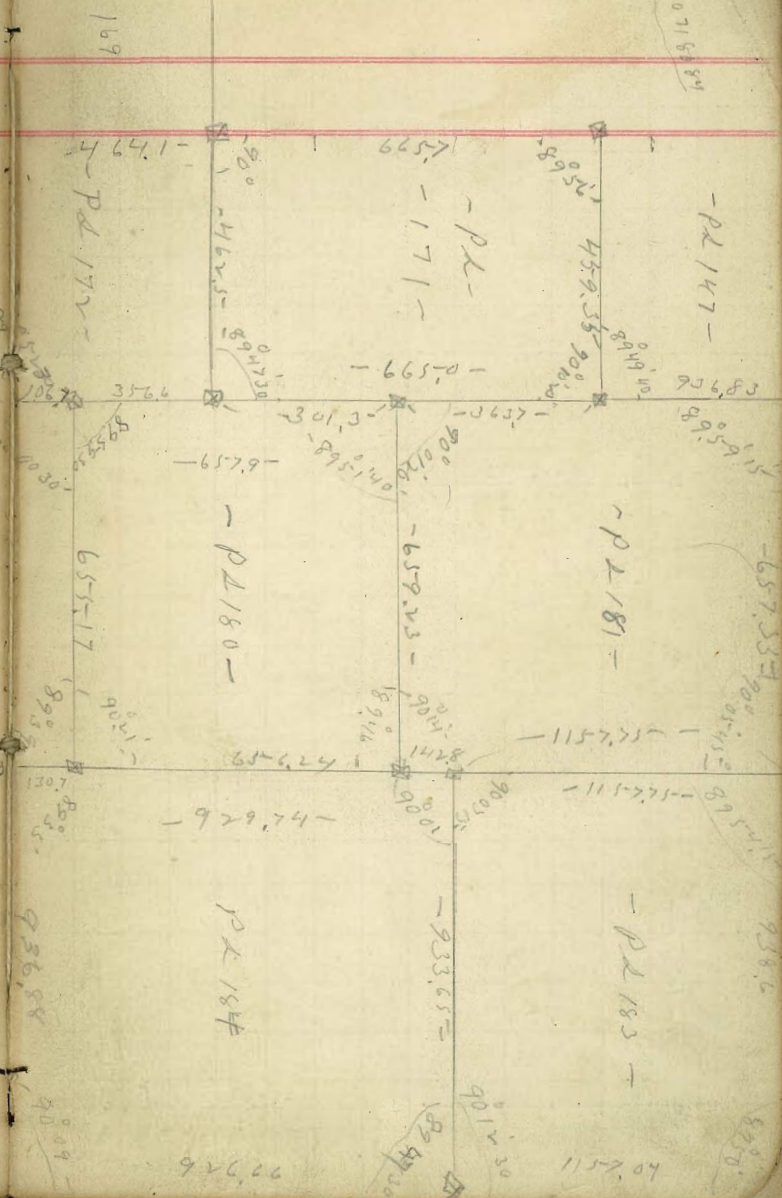
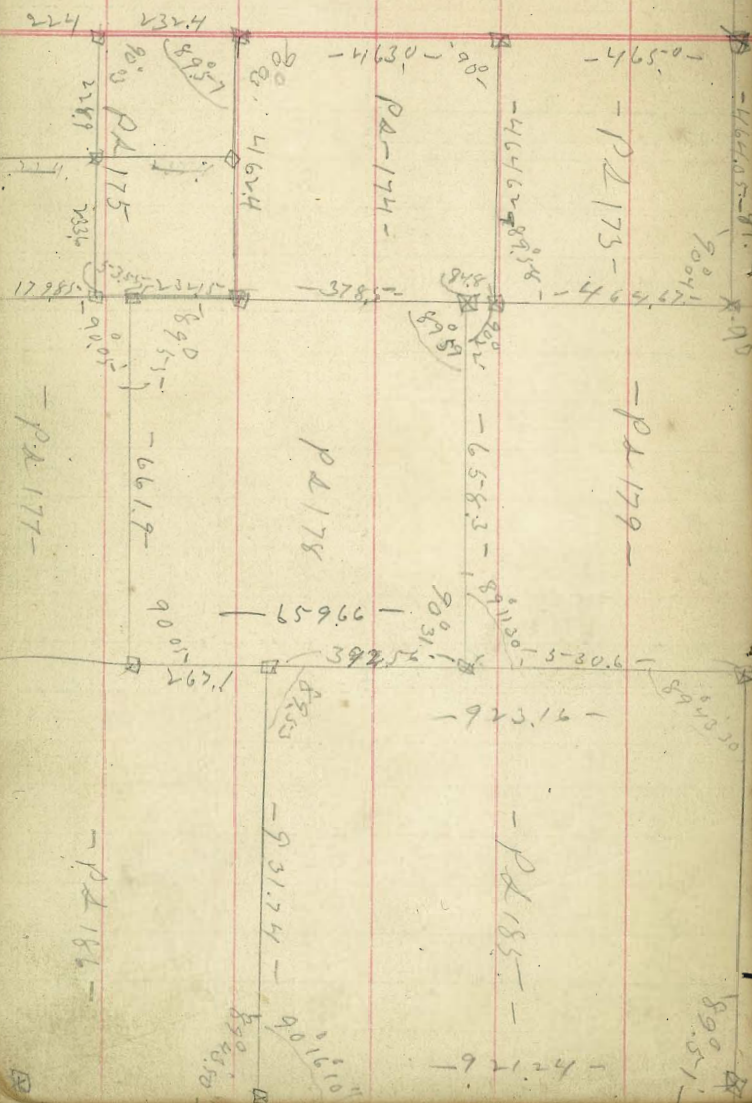
76

80



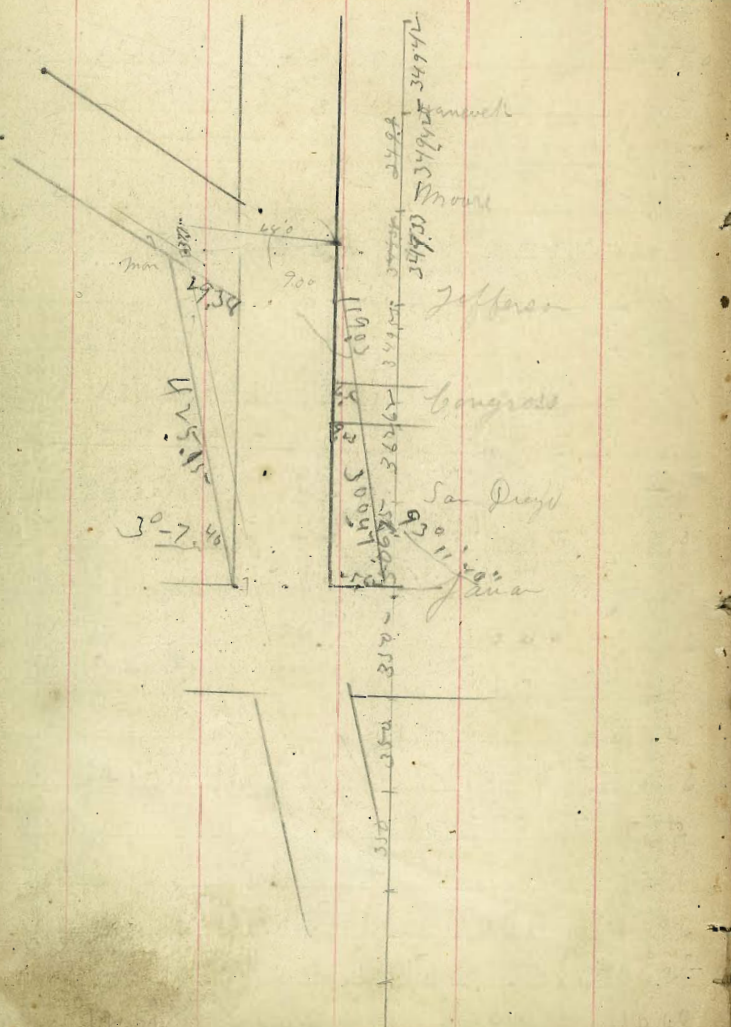
Pais Soma Pueblos
San Bart 213

La Playa



164 + 286 = 450
167
286
450

34955 Congress to State
34828 State to Mon
34990 Mon to Nevada
36262 Congress to S. D.
400 → 900 to Mobile

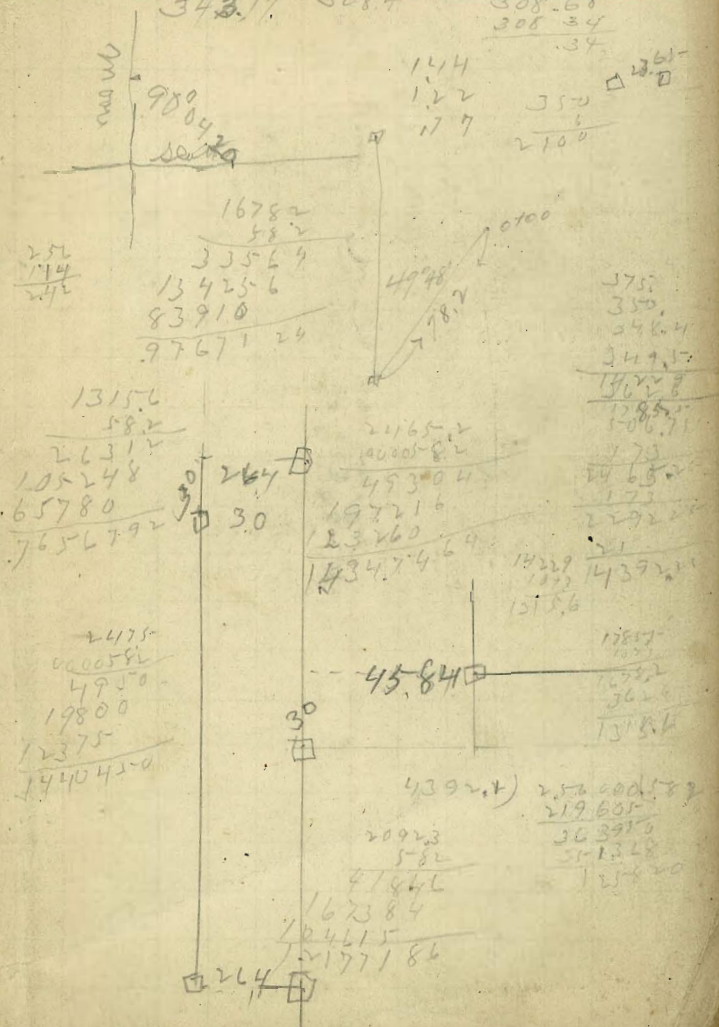


22400
127
23081441
11794
21904
278
22188
117
21937

254.49
124
253.15
1188
265.04
0.18
264.86

265.04
366
26.99

80



100 34955 - brought to Sta 2

24 336

ashlock

66 5726
 3493

462
 150
 2267

19 21569

195337
 1983

19 2352

1953
 1939
 1345

1830
 2335

185.00
 926.00
 1061.00

1950.55
 1917

112.00
 67.13

10039
 1930
 716.50

1950
 10782

1950
 1950

26° 34'

125
 625
 250
 125

4472 | 12.5000
 8944
 35560
 35776

25 625.
 156.25
 781.25 (28)
 4
 41 381
 384

425
 500
 60
 5
 990
 50
 940

2700.0
2672.6

2274

2451.4
236.4

2215.0

326.8
300.0

626.8

2451.2
65.2

2516.9

1320
1600
1320

2800
2600

1600

661.90
47.9

666.68

0001.01
510

105
1061.910

325
6
266
1535
535

250

185 Alley W
285 Alley East
485 Alley W

319.5

370
100

185
8

177

125
495

150
370

507

482
478

1317.46
159.48

1476.94

313.75
65.97
379.72
779.27
1158.99
1384.7

20.

751.88

23

751.65

967.6
322.2

2894
307

3201

324
324
5518
5126

1064.00

48
125

173

150
93

243

142
102
16

312

622.5
557.5

1180
243

937

1289.6
967.6

1322.0