

DISTANCES FROM SIDE STAKES FOR CROSS-SECTIONING
SLOPE 1 TO 1. ROADWAY OF ANY WIDTH

	0	.1	.2	.3	.4	.5	.6	.7	.8	9	
0	0.00	0.10	0.20	0.30	0.40	0.50	0.60	0.70	0.80	0.90	0
1	1.00	1.10	1.20	1.30	1.40	1.50	1.60	1.70	1.80	1.90	1
2	2.00	2.10	2.20	2.30	2.40	2.50	2.60	2.70	2.80	2.90	2
3	3.00	3.10	3.20	3.30	3.40	3.50	3.60	3.70	3.80	3.90	3
4	4.00	4.10	4.20	4.30	4.40	4.50	4.60	4.70	4.80	4.90	4
5	5.00	5.10	5.20	5.30	5.40	5.50	5.60	5.70	5.80	5.90	5
6	6.00	6.10	6.20	6.30	6.40	6.50	6.60	6.70	6.80	6.90	6
7	7.00	7.10	7.20	7.30	7.40	7.50	7.60	7.70	7.80	7.90	7
8	8.00	8.10	8.20	8.30	8.40	8.50	8.60	8.70	8.80	8.90	8
9	9.00	9.10	9.20	9.30	9.40	9.50	9.60	9.70	9.80	9.90	9
10	10.00	10.10	10.20	10.30	10.40	10.50	10.60	10.70	10.80	10.90	10
11	11.00	11.10	11.20	11.30	11.40	11.50	11.60	11.70	11.80	11.90	11
12	12.00	12.10	12.20	12.30	12.40	12.50	12.60	12.70	12.80	12.90	12
13	13.00	13.10	13.20	13.30	13.40	13.50	13.60	13.70	13.80	13.90	13
14	14.00	14.10	14.20	14.30	14.40	14.50	14.60	14.70	14.80	14.90	14
15	15.00	15.10	15.20	15.30	15.40	15.50	15.60	15.70	15.80	15.90	15
16	16.00	16.10	16.20	16.30	16.40	16.50	16.60	16.70	16.80	16.90	16
17	17.00	17.10	17.20	17.30	17.40	17.50	17.60	17.70	17.80	17.90	17
18	18.00	18.10	18.20	18.30	18.40	18.50	18.60	18.70	18.80	18.90	18
19	19.00	19.10	19.20	19.30	19.40	19.50	19.60	19.70	19.80	19.90	19
20	20.00	20.10	20.20	20.30	20.40	20.50	20.60	20.70	20.80	20.90	20
21	21.00	21.10	21.20	21.30	21.40	21.50	21.60	21.70	21.80	21.90	21
22	22.00	22.10	22.20	22.30	22.40	22.50	22.60	22.70	22.80	22.90	22
23	23.00	23.10	23.20	23.30	23.40	23.50	23.60	23.70	23.80	23.90	23
24	24.00	24.10	24.20	24.30	24.40	24.50	24.60	24.70	24.80	24.90	24
25	25.00	25.10	25.20	25.30	25.40	25.50	25.60	25.70	25.80	25.90	25
26	26.00	26.10	26.20	26.30	26.40	26.50	26.60	26.70	26.80	26.90	26
27	27.00	27.10	27.20	27.30	27.40	27.50	27.60	27.70	27.80	27.90	27
28	28.00	28.10	28.20	28.30	28.40	28.50	28.60	28.70	28.80	28.90	28
29	29.00	29.10	29.20	29.30	29.40	29.50	29.60	29.70	29.80	29.90	29
30	30.00	30.10	30.20	30.30	30.40	30.50	30.60	30.70	30.80	30.90	30
31	31.00	31.10	31.20	31.30	31.40	31.50	31.60	31.70	31.80	31.90	31
32	32.00	32.10	32.20	32.30	32.40	32.50	32.60	32.70	32.80	32.90	32
33	33.00	33.10	33.20	33.30	33.40	33.50	33.60	33.70	33.80	33.90	33
34	34.00	34.10	34.20	34.30	34.40	34.50	34.60	34.70	34.80	34.90	34
35	35.00	35.10	35.20	35.30	35.40	35.50	35.60	35.70	35.80	35.90	35
36	36.00	36.10	36.20	36.30	36.40	36.50	36.60	36.70	36.80	36.90	36
37	37.00	37.10	37.20	37.30	37.40	37.50	37.60	37.70	37.80	37.90	37
38	38.00	38.10	38.20	38.30	38.40	38.50	38.60	38.70	38.80	38.90	38
39	39.00	39.10	39.20	39.30	39.40	39.50	39.60	39.70	39.80	39.90	39
40	40.00	40.10	40.20	40.30	40.40	40.50	40.60	40.70	40.80	40.90	40
41	41.00	41.10	41.20	41.30	41.40	41.50	41.60	41.70	41.80	41.90	41
42	42.00	42.10	42.20	42.30	42.40	42.50	42.60	42.70	42.80	42.90	42
43	43.00	43.10	43.20	43.30	43.40	43.50	43.60	43.70	43.80	43.90	43
44	44.00	44.10	44.20	44.30	44.40	44.50	44.60	44.70	44.80	44.90	44
45	45.00	45.10	45.20	45.30	45.40	45.50	45.60	45.70	45.80	45.90	45
46	46.00	46.10	46.20	46.30	46.40	46.50	46.60	46.70	46.80	46.90	46
47	47.00	47.10	47.20	47.30	47.40	47.50	47.60	47.70	47.80	47.90	47
48	48.00	48.10	48.20	48.30	48.40	48.50	48.60	48.70	48.80	48.90	48
49	49.00	49.10	49.20	49.30	49.40	49.50	49.60	49.70	49.80	49.90	49
50	50.00	50.10	50.20	50.30	50.40	50.50	50.60	50.70	50.80	50.90	50

Distance of slope stake from side or shoulder stake for any width roadway, slope 1 to 1. If ground is nearly level, the cut or fill at side stake is located by the double entry method in left column and top row. The number in body of table in same row and column gives distance from side stake to slope stake. If ground is not level estimate the difference in elevation between the side stake and slope stake, lower target by this amount if cut, elevate if fill. Add this amount to cut or fill and find distance in table. Set up rod at this point, and line of sight should cut target. If it does not make the slight adjustment necessary.

INDEXED

to page #6

MICROFILMED

APR 14 1965

TABLE XIII—CORRECTIONS FOR TANGENTS AND EXTERNALS

These corrections are to be added to the approximate values, found by dividing the tangent, or external, for a 1° curve (Table VIII) by the degree of curve, in order to obtain the true tangents, or externals. Intermediate values may be obtained by interpolation.

FOR TANGENTS ADD

Central Angle	DEGREE OF CURVE													
	5°	10°	15°	20°	25°	30°	35°	40°	45°	50°	55°	60°	65°	70°
10°	.03	.06	.09	.13	.16	.19	.22	.25	.28	.31	.34	.38	.42	.46
15°	.04	.10	.14	.19	.24	.29	.34	.39	.45	.51	.53	.58	.63	.68
20°	.06	.13	.19	.26	.32	.39	.45	.51	.58	.65	.72	.79	.84	.90
25°	.08	.16	.24	.33	.40	.49	.58	.67	.75	.83	.90	.99	1.06	1.14
30°	.10	.19	.29	.39	.49	.59	.69	.79	.89	.99	1.09	1.20	1.29	1.39
35°	.11	.22	.34	.47	.58	.69	.79	.81	.92	1.04	1.20	1.42	1.54	1.66
40°	.13	.26	.40	.53	.67	.80	.93	1.06	1.20	1.34	1.49	1.64	1.79	1.94
45°	.15	.30	.44	.60	.76	.91	1.06	1.21	1.37	1.52	1.70	1.87	2.04	2.21
50°	.17	.34	.51	.68	.85	1.02	1.19	1.36	1.54	1.72	1.91	2.10	2.29	2.48
55°	.19	.38	.57	.76	.95	1.14	1.32	1.52	1.72	1.92	2.14	2.35	2.56	2.77
60°	.21	.42	.63	.84	1.05	1.27	1.49	1.71	1.94	2.17	2.38	2.60	2.83	3.07
65°	.23	.46	.69	.93	1.16	1.40	1.64	1.88	2.13	2.38	2.63	2.88	3.13	3.39
70°	.25	.51	.76	1.02	1.28	1.54	1.80	2.06	2.33	2.60	2.88	3.16	3.44	3.72
75°	.27	.56	.83	1.12	1.40	1.69	1.98	2.27	2.57	2.87	3.16	3.47	3.78	4.09
80°	.30	.61	.91	1.22	1.53	1.84	2.15	2.46	2.78	3.10	3.44	3.78	4.12	4.46
85°	.33	.66	1.00	1.33	1.68	2.02	2.36	2.70	3.05	3.40	3.77	4.14	4.55	4.89
90°	.36	.72	1.09	1.45	1.83	2.20	2.57	2.94	3.32	3.70	4.10	4.50	4.91	5.32
95°	.39	.79	1.19	1.55	2.00	2.40	2.80	3.20	3.61	4.02	4.40	4.98	5.38	5.83
100°	.43	.86	1.30	1.74	2.18	2.62	3.06	3.50	3.95	4.40	4.88	5.37	5.85	6.34
110°	.51	1.03	1.56	2.08	2.61	3.14	3.67	4.21	4.76	5.31	5.86	6.43	7.01	7.60
120°	.62	1.25	1.93	2.52	3.16	3.81	4.45	5.11	5.77	6.44	7.12	7.80	8.50	9.22

FOR EXTERNALS ADD

Central Angle	DEGREE OF CURVE													
	5°	10°	15°	20°	25°	30°	35°	40°	45°	50°	55°	60°	65°	70°
10°	.001	.003	.004	.006	.007	.008	.009	.011	.012	.014	.015	.017	.018	.020
15°	.003	.007	.010	.014	.018	.023	.027	.029	.032	.035	.039	.043	.047	.051
20°	.006	.011	.017	.022	.028	.034	.038	.045	.051	.057	.063	.070	.076	.083
25°	.009	.018	.027	.036	.046	.056	.065	.074	.083	.093	.106	.120	.127	.135
30°	.013	.025	.038	.051	.065	.078	.090	.103	.116	.129	.149	.170	.179	.188
35°	.018	.035	.054	.072	.086	.109	.131	.153	.175	.197	.213	.230	.247	.264
40°	.023	.046	.070	.093	.117	.141	.172	.203	.234	.265	.277	.290	.315	.341
45°	.030	.060	.093	.119	.153	.184	.216	.254	.289	.325	.351	.378	.411	.445
50°	.037	.075	.116	.151	.189	.227	.266	.305	.345	.384	.425	.467	.508	.550
55°	.046	.093	.142	.188	.236	.283	.332	.381	.420	.479	.530	.582	.641	.700
60°	.056	.112	.168	.225	.283	.340	.398	.457	.516	.575	.636	.697	.774	.851
65°	.067	.135	.204	.273	.343	.412	.483	.554	.625	.697	.771	.845	.922	1.01
70°	.080	.159	.240	.321	.403	.485	.568	.652	.735	.819	.906	.994	1.08	1.17
75°	.095	.182	.266	.353	.440	.528	.617	.707	.797	.887	.977	1.07	1.18	1.29
80°	.110	.220	.332	.445	.558	.671	.787	.903	1.02	1.13	1.25	1.38	1.50	1.62
85°	.128	.259	.391	.524	.657	.790	.926	1.06	1.20	1.34	1.47	1.62	1.76	1.91
90°	.149	.299	.450	.603	.756	.910	1.07	1.22	1.38	1.54	1.70	1.87	2.03	2.20
95°	.174	.350	.522	.706	.885	1.06	1.25	1.43	1.62	1.80	1.99	2.18	2.38	2.58
100°	.200	.401	.604	.809	1.01	1.22	1.43	1.64	1.85	2.06	2.28	2.50	2.73	2.96
110°	.268	.536	.806	1.08	1.35	1.63	1.91	2.20	2.48	2.76	3.05	3.35	3.66	3.96
120°	.360	.721	1.08	1.45	1.82	2.19	2.57	2.95	3.33	3.72	4.11	4.50	4.91	5.32

Index

Pgs

No PK storm Drain - Wightman et al.	16
grades La Jolla Blu - center to Marine	7
Bayard - Law to Loring - grade stakes	10
Yosemite - La Playa - Moorland - Promontory	12-
Midway Dr. Bridge - Nashville - sewer stakes	15
Alley - Blk 8 - Highland Pk. stakes	20
" " 179 - Manasse & Scheller	22
" " 136 - Univ. Hts	25
Whitefield Pl. and Alley - drain stakes	28
Alley - Blk 18 - Pt Loma Hts - stakes	31
" " 147 - Univ. Hts	34
" " 19 - Fairmount Add	43
Curb grades - 33d. N. of University	49
La Jolla Pk. Villa Tract - culvert stakes	50 & 51
stakes ^{curbs} grades Wilbur - E. of Ramont	39-51 & 54
Waverly Ave - La Jolla grade & curb stake	58 & 63
Sewer stakes in Seminole Dr.	65
Saranac & 67-68-69-etc	77

Stakes for St. Drain - Wightman
 See Plan 7988-L - 6-22-50 - 7.05
 W.O. 20441

North Park Storm Drain.			
	27+30		25.06
			11.55
			13.51
	+53.71 = B.C.		24.71
			11.30
			13.41
23+00	45.19	^{45.19} 32.18	13.01
		^{44.74}	
+35	44.74	31.90	12.84
		^{44.27}	
+70	44.27	31.62	12.65
		^{43.67}	
24+05	43.67	31.34	12.33
		^{42.41}	
+40	42.41	31.06	11.35
		^{40.40}	
+75 = C.L. #7	40.40	30.78	9.62
		^{36.30}	
25+10	36.30	25.52	10.78
		^{32.25}	
+45	32.25	20.25	12.00
		^{29.39}	
+70	29.39	16.48	12.91
		^{13.00}	
+93.04 = C.L. #8	27.14	13.00	14.14
		^{26.76}	
26+14.79 = B.C.	26.76	12.77	13.99
		^{26.00}	
±	26.00	12.63	13.37
		^{25.83}	
26+41.67 = E.C.	25.83	12.49	13.34
		^{25.62}	
+70	25.62	12.19	13.43
		^{25.44}	
27+00	25.44	11.87	13.57

INDEXED
 APR 28 1952

Stakes - short Culvert along W. side
of 3rd - Wightman - N.

346.34 = SW. 32nd

2

0+00 = C.L. #8
25+93.04

27.14

27.14

13.50

13.64

16+52.53 = C.L. #5

+80

17+15

+50

+85

18+20

+55

+90

19+33 = C.L. #6

+70

20+05

+40

+75

21+10

+45

+80

22+15

+50

+75

23+00 = in 45.19

28.37
13.77

28.37

13.77

14.60

27.52

27.52

14.04

13.48

27.10

27.10

14.30

12.80

26.87

26.87

14.53

12.34

Conn. 18" Pipe to Exist Box on E. side
Bound.

25.40

25.40

20.00

15.40

49.16
49.16 37.36 11.80

48.88 48.88 37.14 11.74

48.49 48.49 36.86 11.63

48.05 48.05 36.58 11.47

47.75 47.75 36.30 11.45

47.31 47.31 36.02 11.29

47.08 47.08 35.74 11.34

46.62 46.62 35.46 11.16

46.30 46.30 35.12 11.18

46.53 46.53 34.82 11.71

45.98 45.98 34.54 11.44

45.82 45.82 34.26 11.56

45.63 45.63 33.98 11.65

45.53 45.53 33.70 11.83

45.36 45.36 33.42 11.94

45.24 45.24 33.14 12.10

45.08 45.08 32.86 12.22

44.96 44.96 32.58 12.38

45.10 45.10 32.38 12.72

32.18

Inlets - Herman + Wightman

Inlet # 9 = S.W. Cor.

Top cb. \pm Inlet. 49.56 49.53⁵⁶ C 0.03
 " " \pm Ret. 49.61 49.53⁶¹ C 0.06

1/2 way on pipe 49.09 43.28^{9.09} C 5.81

Inlet # 10 = S.E.

Top cb. \pm Inlet. 49.11 49.04¹¹ C 0.07

P.C. on Wightman = Meet.

48.81 12+65 51.94 51.94 40.07 11.87

1/4 49.08 49.02⁰⁸ C 0.06 13~ 52.72 52.72 39.83 12.89

1/2 49.14 49.07¹⁴ C 0.07 +35 51.86 51.86 39.58 12.28

3/4 49.11 49.03¹¹ C 0.08 +70 51.45 51.45 39.33 12.12

P.C. on Herman

48.85[✓] 14+05 51.14 51.14 39.09 12.05

+40 50.73 50.73 38.84 11.89

1/2 way on pipe 49.02 42.27^{9.02} C 6.75 +75 50.43 50.43 38.60 11.83

15+10 50.06 50.06 38.35 11.71

+45 49.63 49.63 38.11 11.52

15+80 49.49 49.49 37.86 11.63

16+15 49.56 49.56 37.62 11.94

16+52.53 = C.L.#5

30 th + Univ.		56.19		
		56.03	C 0.16	
		IF.		
± N.W. Cor. Inlet # 1	56.19	56.19		
		49.00	C 7.19	
Pipe 0+17	56.20	56.20		
		48.54	7.66	
" 0+34	56.01	56.01		
		48.09	7.92	
0+51 = Inlet # 2	56.30	56.30		
		47.63	8.67	
Top cb		56.30		
		56.22	C 0.08	
± NE Inlet To S:	56.30	56.30		
		47.13	9.17	
Pipe 0+40	55.88	55.88		
		46.97	8.91	
0+75	55.79	55.79		
		46.83	8.96	
+90.8 = C.L. # 1	→ 0+00			
0+00	55.48	55.48		
		46.77	8.71	
+35	55.34	55.34		
		46.63	8.71	
+70	55.24	55.24		
		46.49	8.75	
1+05	55.15	55.15		
		46.35	8.80	
+40	55.04	55.04		
		46.21	8.83	
+66.12	54.90	54.90		
		46.10	8.80	
+92.24 = C.L. # 2	54.81	54.81		
		46.00	8.81	
To N.	54.81	54.81		
		46.50	8.31	

To N.W. Cor. Ohio.

Pipe 0+20	55.31	53.1	47.07	8.24
0+45	55.05	50.5	47.79	7.27
0+62.7 = Inlet # 4	55.46	54.6	48.29	7.18
± Inlet # 4	55.46			
3+66.32 = Lug.	54.87	54.87	45.78	8.79
± Inlet # 3	55.03	50.3	54.96	C 0.17
		50.3	46.75	C 8.28
± Inlet # 5	54.85	54.85	49.75	C 5.10
C.L. # 2 - To E	54.81	4.81	49.00	C 5.81

	= 20 Cross	54.93					
To N.		54.59	46.50 ^{4.59}	8.09			
C.O. # 2		54.59	46.00	8.59	8+05	51.42	43.11 ^{1.42} 8.31
To E.		54.59	49.00	5.59	+40	51.87	42.90 ^{1.87} 8.97
3+66.32		54.49	45.78 ^{4.49}	8.71	+75	51.58	42.69 ^{1.58} 8.89
4+00		53.97	45.55 ^{3.97}	8.42	9+10	51.34	42.48 ^{1.34} 8.86
+35		53.44	45.34 ^{3.44}	8.10	+45	50.57	42.27 ^{0.57} 8.30
+70		53.37	45.13 ^{3.37}	8.24	+91.78 - C.O. # 4	50.42	41.99 ^{0.42} 8.43
5+05		53.18	44.92 ^{3.18}	8.26			
+40		53.07	44.71 ^{3.07}	8.36	10+20	51.03	41.74 ^{1.03} 9.25
+75		52.78	44.50 ^{2.78}	8.28	+55	51.17	41.54 ^{1.17} 9.63
6+10		52.67	44.29 ^{2.67}	8.38	+90	51.40	41.29 ^{1.40} 10.11
s.w. +55.63 =	C.O. # 3	52.80	44.00 ^{2.80}	8.80	11+25	51.67	41.05 ^{1.67} 10.62
To E.		52.80	46.00 ^{2.80}	6.80	+60	51.69	40.80 ^{1.69} 10.89
					+95	52.00	40.56 ^{2.00} 11.44
± Inlet # 6 = I.F. Box		52.68	46.38 ^{2.68}	6.30	12+30	52.12	40.31 ^{2.12} 11.81
					+65	52.34	40.07 ^{2.34} 12.27
6+57.38 = B.C.		52.80	43.99 ^{2.80}	8.81			
6+74.64 = ±		52.12	43.89 ^{2.12}	8.23			
6+91.91 = 94.41 ahead.		52.46	43.78 ^{2.46}	8.68			
7+35		52.24	43.53 ^{2.24}	8.71			
+70		52.02	43.32 ^{2.02}	8.70			

Inlets at S. side of Wightman & Grimm

Inlet # 7 = S.W. Cor. - 20' Rad.

± of Return ^{Top cb.} 50.70 50.41 ⁷⁰ c 0.29

± of Inlet ^{I.E.} 50.57 50.57 45.33 c 5.24

± of 18" Pipe ^{I.E.} 50.39 50.39 45.17 5.22

S.E. Cor. ^{I.E.} ± Inlet # 8 50.29 50.29 45.00 5.29

24" pipe to N ^{I.E.} 44.50 5.79

± Return ^{Top cb.} 50.39 50.39 c 0.08

± of 24" 50.41 50.41 44.25 6.16

clean Out # 4 = 50.43 50.43 44.00 6.43

W.O. 22019

9-14-50
7.0Set check B.M. on SE. 5' ct. Genter 7
69.42Stakes for St. Drain - La Jolla Blvd.
Genter to Marine - 8147 - L

INDEXED

APR 28 1952

63.82 = F.L. Box

0-47.5 = Inside edge Box: 63.41 ^{8.41} 63.87 4.54 63.82 4.59

= Ang. Pt.

0+00 = N. S. Line Genter	69.20	^{9.20} 64.00	5.20	^{9.20} 63.82	5.38
+25	69.96	^{9.96} 64.10	5.86	^{9.96} 63.82	6.14
+70	70.10	^{0.10} 64.19	5.91	^{70.10} 63.82	6.28
1+05	70.21	^{0.21} 64.29	5.92	^{0.21} 63.82	6.39
+40	70.41	^{0.41} 64.38	6.03	^{0.41} 63.82	6.59
+75	69.94	^{9.94} 64.48	5.46	^{9.94} 63.82	6.12
2+10	70.30	^{0.30} 64.57	5.73	^{70.30} 64.04	6.26
+50	70.17	^{0.17} 64.68	5.49	^{70.17} 64.29	5.88
+94.35 = B.C.	70.13	^{70.13} 64.80	5.33	^{70.13} 64.57	5.56
^{31.5} 3+25.85 = Ang. - 9'E.	69.34			^{9.34} 64.77	4.57
3+66.37	69.46			^{9.46} 65.02	4.44
4+06.89 = Ang.	69.54			^{9.54} 65.27	4.27
4+49.59	69.60			^{9.60} 65.53	3.47
4+92.29 = end.	69.45			^{9.45} 65.80	3.65

Rough Grades - La Jolla Blvd + Marine

N. of Marine

4505 N. of P.C. Ret. 74.5 ^{4.5}71.9 C 2.6

P.C. Ret. 74.4 ^{4.4}71.4 C 3.0

(on Marine)
E.C. Ret. 74.7 ^{4.7}72.6 C 2.1

N. Side

(on Marine - S. side)
P.C. Ret. 71.7 ^{71.7}70.3 C 1.4

S. to La Jolla Blvd.
E.C. = 71.3 ^{71.3}69.4 C 1.9

35.925 = P.C. 70.4 ^{70.4}69.5 C 0.9

at Alley 71.3 ^{71.3}69.7 C 1.6

N. of Marine

12.60 E. of P.C.

P.C.

around

12' Back

73.4 73.48 F 0.24

72.90 72.63 C 0.27

72.66 72.06 C 0.60

72.20 71.62 C 0.58

71.62 71.40 C 0.22

71.18 71.37 F 0.19

72.83 71.83 C 2.00

75.22 72.09 C 3.13

72.56 72.40 C 0.16

72.23 72.45 F 0.22

72.50 72.45 C 0.05

E.C. Ret.	69.03	69.41 ₃	F 0.38
end Inlet.	69.21	69.44 ₂	F 0.23
= P.C.	69.02	69.49 ₂	F 0.47
	69.81	69.55 ₈	F 0.74
	69.20	69.61 ₃	F 0.41
	69.33	69.67 ₃	F 0.34
= E.C. = P.C. 4' Rad.	69.59	69.73 ₅₉	F 0.14
E.C. 4' Rad.	69.59	69.78 ₅₉	F 0.19
End. cb.	69.60	69.81 ₆₀	F 0.21

9-27-50 - 7.0.

Rough Grades - Bayard - Law to
Loring - Plan = 7822-L - W.O. 31634

stakes 5' Back

INDEXED

APR 28 1952

10

	West.				East.	
0+00 = N.L. Law	59.14			59.63	59.61	
+20 - 0.5 B. Topwall	64.5 ^{64.5} 59.6	C 4.9	0.2 in	61.7	60.1 ^{1.7}	C 1.6
+66 - Line	61.8 ^{61.8} 60.7	C 1.1	"	62.1	61.2 ^{2.1}	C 0.9
1+12 - 1 B.	62.5 ^{62.5} 61.8	C 0.7	"	62.9	62.2 ^{2.9}	C 0.7
1+58	63.3 ^{63.3} 62.9	C 0.4	1.4 in	65.1	63.3 ^{5.1}	C 1.8
2+04	64.7 ^{64.7} 63.9	C 0.8		65.6	64.4 ^{5.6}	C 1.2
+50	65.5 ^{65.5} 65.0	C 0.5		66.4	65.4 ^{6.4}	C 1.0
+70 = S.L. Beryl	65.52 65.49			65.96	65.90	
0+00 = N.L. Beryl	67.14 67.17			68.02	68.01	
+20	68.7 ^{68.7} 67.7	C 1.0		69.4	68.5 ^{9.4}	C 0.9
+66	70.3 ^{70.3} 68.8	C 1.5		70.1	69.7 ^{70.1}	C 0.4
1+12	71.2 ^{71.2} 70.0	C 1.2		71.9	70.9 ^{1.9}	C 1.0
+58	73.0 ^{73.0} 71.2	C 1.8	0.2 in	74.0	72.0 ^{4.0}	C 2.0
2+04	74.1 ^{74.1} 72.3	C 1.8		75.1	73.2 ^{5.1}	C 1.9
+50	75.2 ^{75.2} 73.5	C 1.7		75.9	74.4 ^{5.9}	C 1.5
+70 = S.L. Wilbur	73.94 73.93			74.91	74.90	

B.M. 84.33 = S.W. 7 ct. - Loring

West.

East.

	West.			East.		
0+00 = N.L. Wilbor	75.10	75.09		76.05	76.02	
+20	77.3	^{7.3} 75.8	C 1.5	78.0	^{8.0} 76.7	C 1.3
+66 - 4' B.	79.0	^{9.0} 77.4	C 1.6	80.8	^{10.8} 78.2	C 2.6
1+12	80.1	^{10.1} 78.9	C 1.2	81.6	^{11.6} 79.7	C 1.9
+58	80.5	80.5	0.0	83.5	^{13.5} 81.2	C 2.3
2+04 - a. in	84.3	^{4.3} 82.1	C 2.2	84.6	^{4.6} 82.6	C 2.0
+50	83.8	^{3.8} 83.7	C 0.1	85.9	^{5.9} 84.1	C 1.8
+70 = S.L. Loring	84.36	84.34		84.77	84.75	

Rough Grades - Yosemite - La Playa
to Moorland - Plan - 7922 - L

W.O. 31407

10-6-50 - 7.0.

Indexed

24.89 = cb. at ¹²
c.t. = 4

West.

East.

0+00 = N.L. Sub.	27.99	27.97		26.99	26.97	
+40 - 5' Back	28.6	27.5 ^{8.6}	C 1.1	27.6	26.5 ^{7.6}	C 1.1
+80	28.5	27.2 ^{8.5}	C 1.3	27.1	26.3 ^{7.1}	C 0.8
1+26	28.1	27.1 ^{8.1}	C 1.0	27.4	26.1 ^{7.4}	C 1.3
+72	28.7	26.9 ^{8.7}	C 1.8	27.6	26.0 ^{7.6}	C 1.6
2+18	28.6	26.7 ^{8.6}	C 1.9	27.9	25.9 ^{7.9}	C 2.0
+64	28.7	26.6 ^{8.7}	C 2.1	28.3	25.8 ^{8.3}	C 2.5
3+10	28.4	26.4 ^{8.4}	C 2.0	28.2	25.7 ^{8.2}	C 2.5
+56	27.3	26.2 ^{7.3}	C 1.1	28.3	25.5 ^{8.3}	C 2.8
A+02	26.3	26.1 ^{6.3}	C 0.2	28.0	25.4 ^{8.0}	C 2.6
+48	26.2	25.9 ^{6.2}	C 0.3	27.4	25.3 ^{7.4}	C 2.1
+94	26.3	25.7 ^{6.3}	C 0.6	26.4	25.2 ^{6.4}	C 1.2
5+40	26.3	25.6 ^{6.3}	C 0.7	24.3	25.1	F 0.8
+60 = S.L. La Playa	25.9	25.5 ^{5.9}	C 0.4	25.2	25.0 ^{5.2}	C 0.2

Rough grades - Fortuna - Promontory
to Haines.

12

E. gutter at N.L. Fortuna

N.

South

gut. =

41.75

W. Gutter - opp.

41.72

0+00 = W.L. Prom

ingut. line

43.2

41.50 C 1.7

45.9

42.00

C 3.9

+50

43.0

41.25 C 1.8

44.6

41.75

C 2.9

+100

43.3

41.00 C 2.3

43.0

41.50

C 1.5

+50

43.1

40.75 C 2.4

43.2

41.25

C 2.0

+200

42.6

40.50 C 2.1

42.1

41.00

C 1.1

Rough Grades - Promontory -
Moorland to La Playa - Plan 7950-L

35.90 = N.W. Cor. Walk - at Sub Line
14

10' R.P. = ct. in cb.

Indexed

W.O. 31639

10-10-50-7.0

Sub. = end. cbs.

West

East.

0+00 = N.L.

35.66

35.02

+25'	36.5	35.3	C1.2	33.9	34.6	F0.7
+65'	36.5	34.5	C2.0	33.0	33.8	F0.8
1+05'	34.2	33.7	C0.5	32.1	33.0	F0.9
+45'	33.6	32.8	C0.8	2' BACK 31.0	32.1	F1.1
+85'	32.4	31.8	C0.6	29.7	31.1	F1.4
2+25'	31.7	30.8	C0.9	29.0	30.1	F1.1
+65'	30.7	30.0	C0.7	28.4	29.3	F0.9
3+05'	29.9	29.4	C0.5	27.8	28.7	F0.9
+45'	29.6	29.1	C0.5	26.9	28.5	F1.6
+90	29.0	28.9	C0.1	26.4	28.3	F1.9
4+35'	29.5	28.8	C0.7	25.6	28.2	F2.6
+80	29.2	28.6	C0.6	26.2	28.1	F1.9
5+25'	28.8	28.4	C0.4	25.2	27.9	F2.7
5+61.2 = S.L. La Playa.	28.6	28.2	C0.4	25.2	27.8	F2.6

48.80 = ct. in cb. - (from Mon)

Sewer Stakes - Midway Dr.

Plan - 1610-D

W.O. 20678

Bridge to Nashville

10-19-50 - 70

B.M. \square in w. cb. - E Nashville +2.39

\square in w. abut. - S. end Bridge 19.92

15

Indexed

					4.22	16.83	
	$\Sigma = 6.55$			2+50	16.83	12.38	4.45
0+00 = N.L. Ollie St.	5.00 +1.55	-1.55	6.21	+	3.47	17.58	3.84
+50	4.95 1.60	1.60	4.57		17.58		
1 ~	4.96 1.59	1.59	4.36				
+50	4.95 1.60	1.60	4.21				
2 ~	4.87 1.68	1.68	4.06				
+46.25 = M.H. 1	5.01 1.54	-1.54	3.92				
0+00 ahead.							
+50	4.84 1.71	1.71	2.44				
1 ~	15.02 12.57	2.45	0.96				
+50	11.32 2.70	3.70	0.52				
2 ~	9.94 5.08	5.08	2.00				
+50	8.05 6.97	6.97	3.48				
3 +00.67 = E.C.	5.83 9.19	9.19	4.98				
0+00 ahead.							
+50	3.67 11.35	11.35	6.46				
1 ~	2.50 12.52	12.52	7.94				
+50	1.26 13.76	13.76	9.42				
2 ~	21.05 5.60	15.45	10.90				

4851
W.O. 20698

11-1-50 - 70.

Plan - 4052-B

B. 1776-P-77

16

Stake St. Drain Thru Block 8

Valencia Park - Unit # 1 - City Job.

1+87.5

80.90

80.90
73.00

7.90

- 6' Rt.
0+00 = N. cb. Trinidad

8.76

55.64

5.64

54.78

C 0.86

2+12.5

86.10

86.10

79.25

6.85

+20

6.03

58.37

8.37

55.00

C 3.37

2+41.88

88.84

8.84

85.13

3.71

6' Rt.
+64.04 = B.C.

3.23

61.17

61.17

57.62

3.55

10' Rt = cross on cb.

88.77

8.77

87.50

1.27

C = Gut.

10' Rt.
+74.60 = E.C.

3.21

61.19

61.19

58.25

2.94

+87.50 =

2.54

61.86

61.86

59.00

2.86

1+07.95 = B.C.

65.70

5.70

60.92

4.78

10' Rt.

+23.66 = E.C.

67.70

7.70

62.39

5.31

+25

67.80

7.86

62.50

5.30

+62.5

74.30

74.30

68.00

6.30

INDEXED
AW
APR 28 1952

Indexed

11-6-50

7.0.

17

Curb. Stakes - Promontory - Plan 7950-L

		West.		East
0+00 = Meet cbs.	35.73	35.66		35.14 35.02
+25	35.41	35.26 ⁴¹	C 0.15	34.64 34.56 ⁶⁴ C 0.08
+45	35.27	34.92 ⁵²⁷	C 0.35	34.18 34.19 F 0.01
+65	34.93	34.54 ⁹³	C 0.39	33.85 33.80 ⁸⁵ C 0.05
+85	34.31	34.14 ³¹	C 0.17	33.61 33.39 ⁶¹ C 0.22
1+05	33.81	33.71 ⁸¹	C 0.10	33.11 32.96 ^{3.11} C 0.15
+25	33.40	33.27 ⁴⁰	C 0.13	32.67 32.52 ⁶⁷ C 0.15
+45	32.90	32.79 ⁹⁰	C 0.11	32.25 32.04 ²⁵ C 0.21
+85	31.74	31.81 ⁷⁴	F 0.07	31.46 31.06 ⁴⁶ C 0.40
2+25	30.58	30.84 ⁵⁸	F 0.26	30.20 30.09 ²⁰ C 0.11
+45	30.38	30.38	— 0.0	29.83 29.64 ⁸³ C 0.19
+65	30.40	30.00 ⁴⁰	C 0.40	29.64 29.26 ⁶⁴ C 0.38
+85	29.71	29.68 ⁷¹	C 0.03	29.48 28.95 ⁴⁸ C 0.53
3+05	29.59	29.42 ⁵⁹	C 0.17	28.91 28.71 ⁹¹ C 0.20
+25	29.38	29.24 ³⁸	C 0.14	28.58 28.55 ⁵⁸ C 0.03
+45	29.10	29.12 ¹⁰	F 0.02	28.15 28.45 ¹⁵ F 0.30
+90	28.85	28.92 ⁸⁵	F 0.07	28.04 28.31 ⁰⁴ F 0.27

27.89 = Top. N. cb. at ~~4~~ = By Cross.

18

W.

E.

4+35	28.26	28.23 ₂₆	F 0.47	27.87	28.18 _{7.87}	F 0.31
+80	28.33	28.54 ₃₃	F 0.21	27.85	28.04 _{7.85}	F 0.19
5+25	28.30	28.35 ₃₀	F 0.05	27.76	27.91 _{7.6}	F 0.15
+58.85 = PC.	28.05	28.21 ₀₅	F 0.16	27.78	27.81 _{7.78}	F 0.03
3' = sl. La Playa	28.36	28.20 ₃₆	C 0.16	27.84	27.80 ₈₄	C 0.04
1/2	28.37	28.19 ₃₇	C 0.18	27.66	27.76 ₆₆	F 0.10
W.L. Prom. = end.	28.30	28.25 ₃₀	C 0.05 = F.L.	27.35	27.70 ₃₅	F 0.35

Indexed

Curb stakes - Yosemite - Plan 7922-L

	West.			East.		
0+00 = N.L. Sub.	27.97	27.97		26.97	26.97	
+20	27.36	27.70 ₃₀	F 0.34	26.76	26.67 ₇₆	C 0.09
+40	27.13	27.49 ₁₃	F 0.36	26.50	26.51 ₅₀	F 0.01
+60	27.01	27.33	F 0.32	26.31	26.32 ₃₁	F 0.01
+80	26.85	27.23 ₈₅	F 0.38	26.08	26.26 ₀₈	F 0.18
1+26	26.80	27.06 ₈₀	F 0.26	26.13	26.14 ₁₃	F 0.01
1+72	26.77	26.90	F 0.13	26.10	26.02 ₁₀	C 0.08
2+18	26.88	26.73 ₈₈	C 0.15	25.95	25.90 ₉₅	C 0.05
2+64	26.61	26.57 ₆₁	C 0.04	26.00	25.78 ₀₀	C 0.22
3+10	26.38	26.40	F 0.02	26.01	25.66 ₀₁	C 0.35
3+56	26.12	26.23 ₁₂	F 0.11	25.83	25.53 ₈₃	C 0.30
4+02	25.86	26.07 ₈₆	F 0.21	25.56	25.41 ₅₆	C 0.15
4+48	25.82	25.90 ₈₂	F 0.08	25.40	25.29 ₄₀	C 0.11
4+94	25.36	25.74 ₃₆	F 0.38	24.88	25.17 ₈₈	F 0.29
5+40	25.36	25.57 ₃₆	F 0.21	24.66	25.05 ₆₆	F 0.39
+57 = P.C.	25.23	25.51	F 0.28	24.78	25.01 ₇₈	F 0.23
S.L. La Playa	25.33	25.50	F 0.17	24.76	25.00	F 0.24
1/2	25.40	24.48	F 0.08	24.59	25.08	F 0.49
W.L. Yosemite	25.66	25.50	C 0.16	25.03	25.00	C 0.03
= end						

Stake Alley
Plan - 8263-L

15 - Blk. 1 - N. Highland Park
W.O. 62194 - 11-28-50
7.0.

B.M. 374.25 = SW. B.P. 33rd + El Cajon.

20

Ind.

South

North

0+00 = w.L. 33rd

72.45

72.70

+20 - 2' B.

72.73 72.⁷³₀₈ C 0.65

0.04 B.

73.83

72.⁸³₂₈

C 1.55

+60 2' B.

71.95 71.⁹⁵₃₄ C 0.61

0.07 B.

73.47

71.⁴⁷₅₄

C 1.93

1+00 2' B.

70.30 70.³⁰₆₉ F 0.30

0.14 in

72.50

70.⁵⁰₈₀

C 1.70

+40 2' B.

70.22 69.²²₈₇ C 0.35

0.23 in

72.20

70.²⁰₀₇

C 2.13

+60 - 2' B.

70.54 69.⁵⁴₅₅ C 0.99

0.24 in

71.61

69.⁶¹₇₅

C 1.86

+80 - 2' B.

70.47 69.⁴⁷₃₃ C 1.14

0.35 in

71.30

69.³⁰₅₃

C 1.77

2+15 - 2' B.

68.88 69.⁸⁸₀₂ F 0.14

0.39 in

70.47

69.⁴⁷₂₂

C 1.25

2+50 = end.

68.84 68.⁸⁴₇₂ C 0.12

1.01 in
Nail in Pole

70.49

68.⁴⁹₉₂

C 1.57

Stake Wall + cb. at Princess st.
 and spindrift - Plan - 3850 - B
 W.O. 2008 12-21-50 7.0

Wall - Grades - 3' E. of W. face

2+38.3 = End. 68.90 69.63 F 0.73
8.90

+ 48.8 68.67 70.20 F 1.53
8.67

+ 59.3 68.51 70.55 F 2.04
8.51

+ 85.3 67.07 70.67 F 3.60
7.07

+ 92.3 = End. 66.46 ⁴⁶66.30 C 0.16

B.M. = 69.33 = sw. B.P. 21
 Transferred to Nail in pole - S.F. 70.76
 P. 7925

cb. Grades:

Indexed

1+65 = B.C.

71.05

P.R.C.

69.59 69.82 F 0.23
59

2+28 = F.C. 68.33 68.63 F 0.30
33

2+38.3 = Top cb. 68.13 68.13

W.O. 31512

BM. 46.04 = SE.B.P. Kearney + Beardsley. 22

Stake Alley - Block 179 - Manasse + Schiller
Plan - 8030-L 1-2-51 7.0.

Indexed

1' excepted - Both sides

South

North

0+00 = W.L. Beardsley		43.71	43.56		1.08 B.	43.96	43.86	
+20 -	1.14 B.	43.67	43.07 ⁶⁷	C 0.60	1.08	44.11	43.37 ^{4.11}	C 0.74
+40	1.12 B.	43.50	42.67 ^{3.50}	C 0.83	1.17 B.	43.64	42.97 ^{3.64}	C 0.67
+60	2' B.	42.72	42.34 ^{2.72}	C 0.38	2' B.	43.02	42.64 ^{3.02}	C 0.38
+80	0.87	43.09	42.10 ^{3.09}	C 0.99	1.50 B.	43.34	42.40 ^{3.34}	C 0.94
1+20	0.36 B.	42.46	41.70 ^{2.46}	C 0.76	1.41 B.	42.87	42.00 ^{2.87}	C 0.87
+60	0.30 B.	41.61	41.30 ^{.61}	C 0.31	2' B.	41.60	41.60	Grade
2+00 -	0.74 Pole in on	41.86	40.90 ^{1.86}	C 0.96	1.02 B.	41.78	41.20 ^{1.78}	C 0.58

South

North

2+40 - Nail on line	41.67	40.50 ^{1.67}	C 1.17	0.72 B.	41.41	40.80 ^{1.41}	C 0.61
+60 - 0.09 B.	41.52	40.31 ^{1.52}	C 1.21	0.50 B.	41.11	40.61 ^{1.11}	C 0.50
+80 0.10 B.	41.45	40.16 ^{1.45}	C 1.29	1' B = Cross	41.10	40.46 ^{1.10}	C 0.64
3+20 2' B.	40.42	39.87 ^{0.42}	C 0.55	1' B.	40.45	40.17 ^{0.45}	C 0.28
+60 - 2' B.	40.31	39.59 ^{0.31}	C 0.72	2' B.	40.00	39.89 ^{0.00}	C 0.11
+80 - 1' B.	40.25	39.39 ^{0.25}	C 0.86	2' B.	39.87	39.69 ^{0.87}	C 0.18
4+00 - 0.25 B.	40.12	39.08 ^{0.12}	C 1.04	1.48 B.	39.92	39.38 ^{0.92}	C 0.54
+20 - 2' B.	39.56	38.67 ^{0.56}	C 0.89	1' B.	39.13	38.97 ^{0.13}	C 0.16
+40 - 0.20 in Nail	39.00	38.14 ^{0.00}	C 0.86	1.40 B	38.67	38.44 ^{0.67}	C 0.23
+60 - 2' B.	37.98	37.44 ^{0.98}	C 0.54	2' B.	36.75	37.74 ^{0.75}	F 0.99

	South			North			
4+80 - 2' B.	37.69	^{7.69} 36.49	C 1.20	1' B.	36.27	^{36.79} 36.79	C 0.52
5+00 - 0.15' B.	36.97	^{6.97} 35.30	C 1.67	1' B.	35.72	^{35.72} 35.60	C 0.12
+20 - 2' B.	36.70	^{6.70} 33.87	C 2.83	1.83 B.	35.72	^{5.72} 34.17	C 1.55
+40 - 1.76 B.	35.03	^{5.03} 32.19	C 2.84	1' B.	33.96	^{3.96} 32.49	C 1.47
+60 - 2' B.	32.58	^{2.58} 30.27	C 2.31	1.77 B.	32.63	^{2.63} 30.57	C 2.06
+80 - 2' B.	29.64	^{9.64} 28.23	C 1.41	2.5' B. = Cross	28.57	^{8.57} 28.53	C 0.04
6+00.77 = F.1 Sigbee	26.19					^{26.05} 26.05	

B.M. = 288.30 = Ely. Cross in M.H. Rim - 10' Alley. 25

Indexed

Stake Alley - Block 136 - Univ. Hts.

Plan - 7997-L

W.O. 31522

1-3-51 - 7.0

0+00 = w.L. Vermont.

South
292.95 ✓

North

93.22

+10 - 2' B	95.35	^{5.35} 93.50	C 1.85	2' B.	95.57	^{5.57} 93.77	C 1.80
+30 - 2' B = x	95.44	^{5.44} 94.40	C 1.04	2' B.	95.33	^{5.33} 94.64	C 0.69
+50 - 2' B x	95.27	^{5.27} 94.83	C 0.44	2' B.	95.20	^{5.20} 95.05	C 0.15
+70 - 2' B. = x	95.22	^{5.22} 94.79	C 0.43	2' B.	95.56	^{5.56} 95.00	C 0.56
+90 - 2' B.	94.28	94.28	- Grade	2' B = x	95.44	^{5.44} 94.48	C 0.96
1+00 - 2' B.	93.73	^{3.91} 93.90 _{3.13}	F 0.17	2' B	94.44	^{4.44} 94.10	C 0.34
+20 - S. 2' B.	93.24	^{3.24} 93.22	C 0.02	2' B. - x	93.91	^{3.91} 93.42	C 0.49

South

North

1+40 - 2' B.	92.43	92.65 2.43	F 0.22	2' B.	93.32	92.85 3.32	C 0.47
+60 - 2' B.	92.15	92.21 2.18	F 0.06	2' B. - Cross	93.09	92.41 3.09	C 0.68
+80 - 2' B.	91.50	91.90 1.50	F 0.40	2' B.	92.25	92.10 2.25	C 0.15
2+20 - 2' B.	91.33	91.44 1.33	F 0.11	3' B.	92.11	91.64 2.11	C 0.47
+60 - 2' B.	91.50	91.50 0.99	C 0.51	2' B.	92.07	91.19 2.07	C 0.88
3+00 - 2' B.	91.14	91.14 0.54	C 0.60	2' B.	91.22	90.74 1.22	C 0.48
+40 - 2' B.	90.90	90.90 0.09	C 0.81	2' B.	90.72	90.29 0.72	C 0.43
+80 - 2' B.	89.59	89.63 0.59	F 0.04	0.86 B	90.70	89.83 0.70	C 0.87
4+20 - 2' B.	88.85	89.18 0.80	F 0.33	2' B.	89.78	89.38 0.78	C 0.40
+60 - 2' B.	88.84	88.84 0.73	C 0.11	2' B.	89.09	88.93 0.09	C 0.16

South

North

5 + 00 -	1.4 B. - Cross	88.84	8 ^{8.84} 8.28	C 0.56	0.70 B.	88.79	8 ^{8.79} 88.48	C 0.31
----------	----------------	-------	---------------------------	--------	---------	-------	----------------------------	--------

+ 42.58 =	Sub. line	88.34	8 ^{8.34} 87.80	C 0.54	2 B.	88.32	8 ^{8.32} 88.00	C 0.32
-----------	-----------	-------	----------------------------	--------	------	-------	----------------------------	--------

Indexed

STAKE STORM Drain ~ WHITEFIELD Pl. & ALLEY

PLAN ~ 8274-L

W.O. 20714 1-11-51 0+16.5 ~ 4' Rt. 4" 165.38 152.96 C 8.83

0+00 = Stake on line ~ 5' back face curb

Meet flowline of box

+ flowline 174.00

gutter 175.74

+ top up back 176.34

Type "H" Curb Inlet

0+20 4' Lt. 172.87

0+40 = Stake 5' back on line

Flowline of "H" box 171.73

Top 5' 2' Rt. 175.92 62.60

Grate ~ 4' Rt. 174.92 60.01

chisel cross 15' sth. on face curb

+ 44.5 ~ 4' Rt. 156.51

0+08.5 ~ 4' Rt. B.C. 4" 168.36 155.50 C 7.28

0+16.5 ~ 4' Rt. 4" 165.38 152.96 C 8.83

4' Lt. 150.37

0+24.5 ~ 8' Rt. C. 162.60 147.80 C 8.58

4' Lt. 152.83

0+32.5 ~ 4' Rt. 4" 160.01 141.06 C 5.82

4' Lt. 159.06

0+40.5 ~ 4' Rt. 4" 157.61 136.5 C 4.84

4' Lt. 154.16

0+44.5 ~ 4' Rt. 156.51 131.5 C 2.73

4' Lt. 130.06

0+48.5 = B.C. ~ 4' Rt. 155.50 126.5 C 3.27

4' Lt. 122.83

0+59.76 ~ 4' Lt. 152.94 C 4.80

4' Rt. 150.37

0+71.02 ~ 4' Lt. 150.37 C 4.74

4' Rt. 147.80

0+82.27 = E.C. 4' Lt. 147.80 C 5.83

1+06.27-4' Lt. 142.88 c 6.33

2+04-End Pipe ~ Anchor
Stub 6' Lt. 108.13 c 4.83

+14.27-4' Lt. 141.06 c 6.06

+22.27-4' Lt. 139.04 c 6.52

+30.27-4' Lt. 136.83 c 7.51
Anchor

+38.27-4' Lt. 134.43 c 6.90

+46.27-4' Lt. 131.84 c 7.45

+54.27-4' Lt. 129.06 c 7.12
Anchor

+62.27 4' Lt. 126.08 c 6.59

+70.27-4' Lt. 122.91 c 6.33

+78.27-4' Lt. 119.55 c 6.35
Anchor

Indexed

Stake Alley - Block 18 - Pt. Loma Hts.
 W.O. 31499 3-21-51 -7.0.

	South		± 90.13	Pave	Pave	North	
0+00 = N.L. Capistrano	89.92	89.80			90.80		90.60
+20 - 2' B.	92.45	91.46 ^{2.45}	00.99	Line	93.44		92.02 ^{3.44} C 1.42
+40 - 2' B.	92.95	92.72 ^{2.95}	00.23	0.20 B.	93.92		93.12 ^{3.92} C 0.80
+60 - 2' B.	93.17	93.71 ^{3.17}	F 0.54	0.17 B.	94.91		93.94 ^{4.91} C 0.97
+80 - 2' B.	93.80	94.27 ^{3.80}	F 0.47	0.40 B.	95.45		94.47 ^{5.45} C 0.98
1+20 - 2' B.	94.36	95.04 ^{4.36}	F 0.68	2' B.	95.61		95.24 ^{5.61} C 0.37
+60 - 2' B.	95.44	95.81 ^{5.44}	F 0.37	2' B.	96.49		96.01 ^{6.49} C 0.48
+80 - 2' B.	95.94	96.26 ^{5.94}	F 0.32	0.24 B.	97.70		96.46 ^{7.70} C 1.24

	South				North		
2+00 2' B.	96.88	96.84 ^{.88}	C 0.04	0.32 B.	97.85	97.04 ^{.85}	C 0.81
+40 - 2' B.	98.60	98.17 ^{.60}	C 0.43	0.20 in	99.96	98.37 ^{.96}	C 1.59
+80 - 2' B.	99.66	99.50 ^{.66}	C 0.16	0.50 in	00.74	99.70 ^{.74}	C 1.04
3+00 - 2' B.	99.92	100.02 ^{.92} 99.92	F 0.10	2' B.	00.59	100.22 ^{.59}	C 0.37
+20 - 2' B.	00.57	100.26 ^{.57}	C 0.31	2' B.	00.86	100.47 ^{.86}	C 0.39
+40 - 2' B.	0.46	00.44 ^{.46} 00.59 100.35	C 0.11 C 0.24	2' B.	01.05	100.59 ^{1.05}	C 0.46
+50 - 2' B.	0.22	00.40 100.40 ^{.22}	F 0.18 Grade	2' B. = P.C. 10' Rad.	01.09	100.68 ^{1.09}	C 0.41
3+60 = E.L. Talley 2' B.	0.00	00.30 100.45 ^{.30}	F 0.45 F 0.15				
± Level.							
3+75 = W.L. Cor. 2' B.	0.12	100.54 100.45 ^{.12}	F 0.33 C 0.09				

96.65 = S.E. B.P. Chatsworth
+ Tennyson

(33)

N. + S. Alley -

West.

East.

0+00 = N.L. of Alley to E. ^{2' B}	100.38	100.65 100.38	F 0.27			
0+10 = 2' B.	99.95	100.79 99.45	F 0.84	= P.C.	01.36	1.36 100.87 C 0.49
+50 - 2' B.	01.64	1.64 01.33	C 0.31	2' B.	01.66	1.66 01.53 C 0.13
+70 - 157 B	02.22	02.22 01.60	C 0.62	0.05 B	02.16	2.16 01.86 C 0.30
+90 - 165 B	02.68	2.68 01.33	C 1.35	0.05 B	02.20	2.20 01.60 C 0.60
1+10 - 2' B.	01.72	01.72 100.00	C 1.72	0.04 B	01.25	01.25 100.18 C 1.07
+30 = S.L. Tennyson		97.59				97.59

Indexed

Grade stakes in Alley - Block 147 - Univ. Hts.

Plan - 8036-L - B. 1793-71

W.O. 31619 3-26-51 7.0.

West.

East.

0+00 = N.L. Polk

310.60

cut 0.35 B.

12.45

12.45
11.58

C 0.87

+20 - 2' B.

9.86

10.63
9.86

F 0.77

0.33 B.

11.97

11.97
11.20

C 0.77

+40 - 0.36 in

11.84

11.84
10.69

C 1.15

2' B.

12.23

12.23
10.99

C 1.24

+71 - 2' B.

11.14

11.14
10.78

C 0.36

1' B.

12.02

2.02
11.08

C 0.94

+02 - 0.50 B.

11.54

11.54
10.88

C 0.66

2' B.

12.45

2.45
11.18

C 1.27

+33 - 0.50 B.

11.38

11.38
10.97

C 0.41

2' B.

11.86

1.86
11.27

C 0.59

+64 - 1' B. x

11.24

11.24
11.06

C 0.18

2' B.

11.14

11.36
1.14

F 0.22

+95 - 2' B.

11.12

11.15
1.12

F 0.03

2' B.

11.55

1.55
11.45

C 0.10

West.

East.

2+26-2' B. 3	11.10	11.25 ³ 1.10	F 0.15	2' B.	11.82	1.82 11.55	C 0.27
+57-2' B. 31	11.12	11.34 1.12	F 0.22	1.50 B.	12.67	2.67 11.64	C 1.03
+88-2' B.	11.38	11.43 1.38	F 0.05	1.61 B.	12.76	2.76 11.73	C 1.03
3+19-0.50 B	11.47	11.53 1.47	F 0.06	2' B. <u>T.P.</u>	12.08	2.08 11.83	C 0.25
3+50-2' B	11.58	11.62 1.58	F 0.04	2' B.	11.70	11.92 1.10	F 0.22
+70-2' B.	11.90	1.90 11.73	C 0.17	2' B.	11.67	12.03 1.67	F 0.36
+90-2' B.	12.42	2.42 11.94	C 0.48	2' B.	12.00	12.22 12.00	F 0.22
4+10-2' B.	12.41	2.41 12.24	C 0.17	2' B.	13.11	3.11 12.51	C 0.60
+30-0.50 B.	12.60	2.60 12.64	F 0.04	3' B.	13.38	3.38 12.89	C 0.49
+50-2' B.	12.85	2.85 13.14	F 0.29	2' B.	13.57	3.57 13.36	C 0.21

	West.				East.		
4+70-2'B.	13.42	13.74 3.42	F 0.32	0.35' B.	13.82	13.92 3.82	F 0.10
5+00-2'B.	14.66	14.71 4.66	F 0.05	2'B.	14.50	14.83 4.50	F 0.33
+30-2'B.	16.15	15.68 6.15	C 0.47	2'B.	15.70	15.75 5.70	F 0.05
+60-1'B.	18.19	16.65 8.19	C 1.54	2'B.	16.79	16.66 6.79	C 0.13
+80-1'B.	18.66	17.30 8.66	C 1.36	2'B.	17.11	16.90 7.11	C 0.21
+99.35 6+00	17.81	17.95			16.56	16.57	

Sewer Stakes - 27th + Main -

Plan - 8811-L

W.O. 62215

3-27-51

7.0.

2445

16.34

13.89

2.46

+90

18.71

18.71
14.06

4.65

stakes - 5' Rt.

3+20

20.23

20.23
14.18

6.05

0+00 = Conn. to 8" 95 W. of W.L. 28th

+55

21.37

21.37
14.32

7.05

0+00

18.63

10.78

+90 = M.H. #2

21.60

21.60
14.46

7.14

+35

22.87

10.92

11.95

0+00

+70

26.87

11.06

15.81

+35

21.95

21.95
14.81

7.14

1+05

27.79

11.26

16.59

+70

22.22

22.22
15.16

7.06

+40

28.36

11.34

17.02

1+05

22.11

22.11
15.51

6.60

+75

28.36

11.48

16.88

1+43.88 = plug.

22.26

22.26
15.90

6.36

2+10

27.93

11.62

16.31

+45

27.34

11.76

15.58

Indexed

2+81 = M.H. 1

27.21

11.90

15.31

= 0+00

27.10

12.90

14.06

0+35

27.10

13.04

14.06

+70

26.49

13.18

13.31

1+05

24.33

13.32

11.01

+40

21.17

13.46

7.71

+75

18.36

13.60

4.76

2+10

17.10

13.74

3.36

27.35 = N.W. 7' Dick - 28th + Main

37

28.23 = Nail in Pole - S. side Alley By M.H. 1

Sewer Stakes - 27th + Main -

Plan - 8811-L

W.O. 62215

3-27-51

7.0.

2+45

16.34 13.89

2.46

+90

18.71 14.06

4.65

stakes - 5' Rt.

3+20

20.23 14.18

6.05

+55

21.37 14.32

7.05

0+00 = Conn. to 8" 95 w. of W.L. 28th

+90 = M.H. #2

21.60 14.46

7.14

0+00

18.63 ^{8.63} 10.78 c 7.85

+35

22.87 ^{22.87} 10.92 c 11.95

+70

26.87 ^{26.87} 11.06 c 15.81

1+05

27.79 ^{27.79} 11.20 c 16.59

+40

28.36 ^{28.36} 11.34 c 17.02

+75

28.36 ^{28.36} 11.48 c 16.88

2+10

27.93 ^{27.93} 11.62 c 16.31

+45

27.34 ^{27.34} 11.76 c 15.58

5+10 Rt.
2+81 = M.H. 1

27.21 ^{27.21} 11.90 c 15.31

= 0+00

27.10 12.90 c 14.00

0+35

27.10 13.04 c 14.06

+70

26.49 13.18 c 13.31

1+05

24.33 13.32 c 11.01

+40

21.17 13.46 c 7.71

+75

18.36 13.60 c 4.76

2+10

17.10 13.74 c 3.36

27.35 = N.W. 7' Disk - 28th + Main

37

28.23 = Nail in Pole - S. side Alley by M.H. 1

Indexed

170.71 = S.W.B.P. Quail + Hilltop
Indexed

152.94 = S.W.B.P. - 4th + Hilltop. 38
Indexed

Sewer Grades. Hilltop - W. of Quail
Plan - 8837-L
W.D. 20009 4-3-51 7.0.

Sewer Grades - Toyne - S. of Hilltop
Plan - 7792-L 4-3-51 7.0.

0+00 = ± M.H. - 2.60 W. of ± Alley Produced

0+00 = ± M.H. 143.00

0+00 57.30 157.38

+30 50.60 50.60 43.30 C 7.30

+30 67.19 7.19 58.12 C 9.07

+60 51.81 51.81 43.60 C 8.21

+60 68.55 8.55 58.85 C 9.70

+90 52.96 52.96 43.90 C 9.06

+90 69.70 9.70 59.59 C 10.11

1+15 53.70 53.70 44.15 C 9.55

1+22.60 = end. 70.60 0.60 60.38 C 10.22

1+27 = 26" - Top = 148.90 54.14
1+36.7 = ± Hilltop 54.14 44.37 C 9.77

Indexed.

Water Meter Stakes on Wilbur - E. of Lamont. - Plan- 8365-L				0+30	88.49	N. Side 8.49 86.61	C 1.88
#500							
W.O. 60020	4-5-51-	7.0.		0+80	87.96	7.96 86.13	C 1.83
5' Comb. Walks - stakes - 2' Back of Walk							
0+00 = E.L. Lamont.			South Side	1+10	87.67	7.67 85.84	C 1.83
= ϕ of Box 1+20	85.73	5.73 84.77	C 0.96	2+46	85.71	5.71 84.52	C 1.19
1+80	83.14	84.18 2.14	F 1.04	3+22	85.14	5.14 83.72	C 1.42
2+21	80.80	83.78 0.180	F 2.98	3+76	86.79	6.79 82.87	C 3.92
2+69	80.53	83.31 0.53	F 2.78	4+40	84.84	4.84 81.40	C 3.44
3+20	79.99	82.75 9.99	F 2.76	4+99	81.81	81.81 79.60	C 2.21
+61	80.74	82.13 9.99	F 1.39				
4+31	79.99	86.65 9.99	F 0.67				
4+99 = end:	77.74	78.60 7.74	F 0.86				

Indexed

Pave Stakes "T" Alley Block 126 - Univ. Hts.

Plan - 7968-L

w.o. 31619 4-8-51 7.0.

E. + W. Alley	North		
0+00 = E.L. Louisiana	28.34	328.56 ₃₄	F 0.22

+20 - 2' B.	28.21	27.72 ^{8.21}	C 0.49
-------------	-------	-----------------------	--------

+40 - 1.80 B.	26.83	26.33 ^{8.3}	C 0.50
---------------	-------	----------------------	--------

+80 - 1.42 B.	23.76	22.99 ^{3.76}	C 0.77
---------------	-------	-----------------------	--------

1+20 - 2' B.	20.45	19.65 ^{0.45}	C 0.80
--------------	-------	-----------------------	--------

+40 - 2' B. = N.	19.14	18.20 ^{9.14}	C 0.94
------------------	-------	-----------------------	--------

N + S Alley			
+60 2' B.	18.53	17.90 ^{8.53}	C 0.63

2+00 - 0.43 B.	19.44	18.30 ^{9.44}	C 1.14
----------------	-------	-----------------------	--------

	South		
2' B. = N.	28.93	328.68 ^{8.93}	C 0.25

0.50 B.	29.51	27.81 ^{9.51}	C 1.70
---------	-------	-----------------------	--------

0.07 B.	26.90	26.35 ^{6.90}	C 0.55
---------	-------	-----------------------	--------

Line = cut	23.85	22.85 ^{3.85}	C 1.00
------------	-------	-----------------------	--------

0.20 B = cut.	19.58	19.35 ⁵⁸	C 0.23
---------------	-------	---------------------	--------

2' B.	17.95	17.90 ⁹⁵	C 0.05
-------	-------	---------------------	--------

2' B.	18.10	17.60 ^{8.10}	C 0.50
-------	-------	-----------------------	--------

1' B.	18.28	18.00 ²⁸	C 0.28
-------	-------	---------------------	--------

		North				South	
2+40-2'B.	19.48	9.48 18.70	0.78	0.32 in = cut.	19.39	9.39 18.40	0.99
+80-2'B.	20.03	20.03 19.10	0.93	0.22 in	19.58	9.58 18.80	0.78
3+00 = W.L. Texas	19.28	19.27			19.10	19.07	

N. + S. Alley -	West.				E.	
0+00 = N.L. Howard.	17.56	17.56			16.18	16.44 - set cut.
+20 - 0.65 in	18.03	^{8.03} 17.09	C 0.94	1' B.	16.50	^{6.50} 16.38 C 0.12
+40 - 0.90 in	18.69	^{8.69} 16.67	C 2.02	1' B.	16.59	⁵⁹ 16.37 C 0.22
+60 0.60 in	18.26	^{8.26} 16.75	C 1.51	2' B.	16.71	⁷¹ 16.45 C 0.26
+80 2' B.	17.46	^{7.46} 16.92	C 0.54	2' B. +	16.81	⁸¹ 16.62 C 0.19
+15' - 2' B.	17.62	⁶² 17.28	C 0.34	1' B.	17.36	^{7.36} 16.98 C 0.38
+50 - 2' B.	17.70	^{7.70} 17.64	C 0.06	1' B.	17.78	⁷⁸ 17.34 C 0.44
Alley +75 = S.L. E + W.	17.95	⁹⁵ 17.90	C 0.05	2' B.	18.10	^{8.10} 17.60 C 0.50

Paving Stakes - 20 Alley - Block 19
 Fairmount Add. to City Hts. - Map 1035
 W.O. 31829 4-30-51 7.0

Indexed

	West.			East.		
0+00 = N.L. Univ.	✓ 41.52				341.47	
+20 - 0.02 in	43.03	^{43.03} 341.96	C 1.07	0.05 B.	43.11	^{3.11} 42.26 C 0.85
+45 - 0.47 in	44.62	^{4.62} 42.51	C 2.11	0.15 B.	43.48	^{3.48} 42.81 C 0.67
+70 - 1' B.	43.73	^{3.73} 43.06	C 0.67	2' B.	43.65	^{3.65} 43.36 C 0.29
+90 - 2' B.	43.94	^{3.94} 43.47	C 0.47	0.75 B.	44.15	^{4.15} 43.77 C 0.38
1+10 - 1' B.	44.76	^{4.76} 43.84	C 0.92	2' B.	44.40	^{4.40} 44.14 C 0.26
+50 - 1' B.	44.48	^{4.48} 44.52	F 0.04	0.88 B.	46.02	^{6.02} 44.82 C 1.20
+90 - 1' B.	44.82	^{4.82} 45.19	F 0.37	2' B.	45.74	^{5.74} 45.49 C 0.25

	West			East			
2+30 - 2' B.	46.02	^{6.02} 45.87	C 0.15	2' B.	46.63	^{6.63} 46.17	C 0.46
2+70 - 2' B.	46.43	^{6.43} 46.54	F 0.11	2' B.	47.22	^{7.22} 46.84	C 0.38
3+10 - 2' B.	47.52	^{7.52} 47.22	C 0.30	1.09' B.	48.55	^{8.55} 47.52	C 1.03
+30 - 2' B.	48.04	^{8.04} 47.51	C 0.53	1.04' B.	48.56	^{8.56} 47.81	C 0.75
+50 - 2' B.	48.00	^{8.00} 47.70	C 0.30	1.20' B.	48.66	^{8.66} 48.00	C 0.66
+70 - 2' B.	48.60	^{8.60} 47.79	C 0.81	1.50' B.	48.63	^{8.63} 48.09	C 0.54
+90 - 1' B.	47.76	^{7.76} 47.78	F 0.02	1.47' B.	49.24	^{9.24} 48.08	C 1.16
4+30 - 2' B.	48.08	^{8.08} 47.66	C 0.42	2' B.	47.18	^{7.18} 49.96	F 2.78
+70 - 2' B.	48.02	^{8.02} 47.54	C 0.48	2' B.	47.88	^{7.88} 47.84	C 0.04
5+10 - 3' B.	48.27	^{8.27} 47.42	C 0.85	2' B.	47.90	^{7.90} 47.72	C 0.18

West.

East.

5+30 - 2' B.	48.10	8.10 47.18	C 0.92	2' B.	48.04	8.04 47.46	C 0.58
+50 - 2' B.	47.56	7.56 46.58	C 0.98	2' B.	47.87	7.87 46.81	C 1.06
+70 - 0.36 in	47.96	7.96 45.63	C 2.33	2' B.	46.68	6.68 45.76	C 0.92
+90 - 3' B.	46.69	6.69 44.31	C 2.38	5' B.	46.54	6.54 44.31	C 2.23
5+99.13 = 51 Polk		43.57				43.21	

Wall "A"

Wall "B"

N. end. - 0.44 in	47.66	7.66 46.80	C 0.86	5' B. - Cross	45.35	45.90 5.35	F 0.55
S. end. - 0.41	48.00	8.00 47.40	C 0.60	5' B.	46.61	6.61 46.40	C 0.21

Indexed

Pave Stakes - 20' Alley - Blk. 187 - City Hts.

Plan - 8024-L 5-2-51 7.0.

	West.		East.			
0+00 = N.L. Landis		26.80		326.50		
+20 - 1.5' B.	27.28	^{7.28} 26.83	C 0.45	2' B. 26.92	^{6.92} 26.53	C 0.39
+40 - 2' B.	27.33	^{7.33} 26.80	C 0.53	2' B. 26.83	^{6.83} 26.50	C 0.33
+80 - 2' B.	26.65	^{6.68} 26.68	F 0.03	2' B. 26.35	^{6.38} 26.35	F 0.03
1+20 - 2' B.	26.71	^{6.71} 26.56	C 0.15	2' B. 25.70	^{26.76} 5.70	F 0.56
+60 - 0.54 in	27.42	^{7.42} 26.44	C 0.98	2' B. 25.98	^{26.14} 5.98	F 0.16
2+00 - out.		26.32		2' B. 26.07	^{6.07} 26.02	C 0.05
+40 - 0.60 B.	27.31	^{7.31} 26.20	C 1.11	2' B. 25.72	^{25.90} 5.72	F 0.18

	West.				East.		
2+60-2'B.	26.72	^{6.72} 26.14	C 0.58	2'B.	25.70	25.84 5.70	F 0.14
+80-2'B.	26.86	^{6.86} 26.02	C 0.84	3'B.	25.41	25.72 5.41	F 0.31
3+00-2'B.	26.57	^{6.57} 25.78	C 0.79	3'B.	25.13	25.48 5.13	F 0.35
+20-2'B.	26.39	^{6.39} 25.43	C 0.96	2'B.	24.77	25.13 4.77	F 0.36
+40-1.5'B.	25.01	^{5.01} 24.96	C 0.05	2'B.	24.82	4.82 24.66	C 0.16
+60-1.25'B.	25.40	^{5.40} 24.36	C 1.04	2'B.	23.26	24.06 3.26	F 0.80
+80-2'B.	24.61	^{4.61} 23.65	C 0.96	2'B.	22.40	23.35 2.40	F 0.95
4+00-0.85'B.	24.31	^{4.31} 22.83	C 1.48	2'B.	21.88	22.53 1.88	F 0.65
+20-2'B.	22.08	^{22.08} 21.88	C 0.20	2'B.	21.44	21.58 1.44	F 0.14
+60-2'B.	20.41	^{22.41} 19.96	C 0.45	2'B.	18.80	19.66 18.80	F 0.86

	West.				East.		
4+80 - 2' B.	19.80	^{9.80} 19.02	C 0.78	2' B.	17.47	18.72 7.47	F 1.25
5+00 - 0.64 B.	19.50	^{9.50} 18.33	C 1.17	2' B.	17.08	18.03 7.08	F 0.95
+20 - 2' B.	16.80	17.87 6.80	F 1.07	2' B.	16.08	17.57 6.08	F 1.49
+40 - 2' B.	14.31	17.65 6.31	F 1.34	2' B.	16.41	17.35 6.41	F 0.94
+80 - 2' B.	16.38	17.45 6.38	F 1.07	2' B.	16.07	17.15 6.07	F 1.08
5+99.87 - 2' B. S.L. Wightman	17.04	17.40 7.04	F 0.36	2' B.	15.57	17.00 5.57	F 1.43

Indexed

Corp Grades - 30rd - N. of Univ.

B.M.

322.15 = S.W. N. of Univ.

0+00 = N.L. Univ.

Top cb. cb = 22.35 22.50 = Grade

+35 F 0.71

+70 F 0.78

1+05 = Brk. 23.70 F 0.17

+40 F 0.07

+75 F 0.07

2+10 F 0.03

2+50.4 = Meet. cb. 26.08

Indexed

17.10 50
32
16.78

Stakes for Storm Drain - in Lot 7
Block "F" Villa Tract - La Jolla Park
Plan 4230-B - 5-3-51-70

	10' Lt.			
0+00 = Meet Ext. Pipe	76.18	71.20	6.14	C 4.98
6' Back of end. - I.F.	70.53			
+16 = ang.	66.03	60.00	6.03	C 6.03
+46	50.90	51.23 0.90		F 0.33
+76	43.93	42.45	3.93	C 0.48
1+06	35.60	33.68	5.60	C 1.92
+36	26.80	24.90	6.80	C 1.90
1+62.70 = end.	19.16	17.10	9.16	C 2.06
I.F. of Exist. pipe =	16.66			

Indexed

Rough Grade Stakes - Wilbur -
Lamont - East. - Plan 8365-L

W.O. 31676 - 5-4-51 7.0.

stakes 5' B. unless Marked North

0+00 = E.L. Lamont 86.90

South

85.95

+50

92.2 ^{2.2} 86.4 C 5.8

86.2

85.5 ^{6.2}

C 0.7

1~

92.8 ^{92.9} 85.9 C 6.9

85.4

85.0 ^{5.4}

C 0.4

+50 - cut - 1' in

89.2 ^{91.2} 85.4 C 3.8

82.9

84.5 ^{82.9}

F 1.6

2~ cut 0.7 in

88.9 ^{88.9} 85.0 C 3.9

79.2

84.0 ^{79.2}

F 4.8

+50

89.8 ^{91.8} 84.5 C 5.3

79.3

83.5 ^{79.3}

F 4.2

3~

90.7 ^{90.7} 84.0 C 6.7

78.9

83.0 ^{78.9}

F 4.1

+40

91.0 ^{91.0} 83.5 C 7.5

79.3

82.5 ^{79.3}

F 3.2

84.3

North

South

3+80	90.2	^{90.2} 82.80	C 7.4	80.0	81.8 80.0	F 1.8
4+20-3'B.	89.5	^{88.5} 82.0	C 6.5	79.1	81.0 79.1	F 1.9
+60	86.6	^{6.6} 80.9	C 5.7	78.1	79.9 78.1	F 1.8
4+99.02 (5+00)	83.0	^{83.0} 79.6	C 3.4	76.3	78.6 76.3	F 2.3

B.M. = 120.96 = $\frac{1}{2}$ ct. Market + 47th

Indexed

Stake 30" Culvert. N.E. Market + 47th

Plan - 4180-B 5-8-51 7.0

W.O. 20769

stakes 20' Rt.

0+00 = Conn. 118.85

+30.4 31.03 ^{31.03} 19.75 C 11.28

+60.8 33.06 ^{33.06} 20.65 12.41

+91.2 30.98 ^{30.98} 21.55 C 9.43

1+21.6 26.67 ^{6.67} 22.45 C 4.22

1+52.0 = end pipe 23.93 ⁹³ 23.36 C 0.57

1+78 27.85 ^{7.8} 24.32 C 3.5

2+04 = end Ditch 31.9 ^{31.9} 25.3 C 6.6

Indexed

stakes for Ditch - S. side of Hilltop

E. of 47th

0-12 = Beg. 86.4 86.40 0.0

0+00 = E.L. 47th 6.8
0+44 86.8 85.84 C 1.0

1+00 = end. 85.5 ⁵ 85.28 C 0.2

Indexed

Corb Stakes - Wilbur - Lamont East

W.O. 31676

3-10-51 - 7.0

North

South

0+00 = E.L. Lamont

86.46 | 86.90 F 0.44
6.4685.84 | 85.95 F 0.11
5.84

+30

86.51 | 86.61 F 0.10
5185.55 | 85.66 F 0.11
55

+60

86.21 | 86.32 F 0.11
6.2185.30 | 85.36 F 0.06
30

+90

85.90 | 86.03 F 0.13
5.9085.02 | 85.06 F 0.04
02

1+20

85.77 | 85.74 C 0.03
5.7784.76 | 84.77 F 0.01
76

+50

85.36 | 85.45 F 0.09
5.3684.44 | 84.48 F 0.04
44

+80

84.96 | 85.16 F 0.20
4.9683.95 | 84.18 F 0.23
3.95

2+10

84.51 | 84.87 F 0.36
4.5183.84 | 83.88 F 0.04
3.84

+40

84.54

83.60 | 83.88 F 0.01
3.60

+45

84.26 | 84.63 F 0.37
4.26

3

North

South

2+70	83.92	84.29 3.92	F 0.37	83.29	83.30 .29	F 0.01
3+00	83.80	84.00 2.80	F 0.20	82.85	83.00 2.85	F 0.15
+40	83.37	83.50 3.37	F 0.13	82.39	82.50 2.39	F 0.11
+80	82.67	82.80 .67	F 0.13	81.45	81.80 1.45	F 0.35
4+20	81.82	81.95 1.82	F 0.13	80.86	80.95 .86	F 0.09
+60	80.74	80.85 0.74	F 0.11	79.84	79.85 .84	F 0.01
4+99.02 = 5+00 = end.	79.50	79.60 .50	F 0.10	78.57	78.60 .57	F 0.03

Indexed

Stake Sewer - Torrence - Reynard to Eagle

Plan - 76 06 - L					
W.O. 62 155	5-14-	51	7.0,		
stakes 4.5' N.					
0+00 = M.H.	91.60	Meet.	191.00		
+35	^{6.51} 91.85	C 4.66	^{6.51} 96.51	91.25	C 5.26
+70	^{6.68} 92.09	4.59	^{6.68} 96.68	91.49	C 5.19
1+05	^{8.01} 92.34	5.67	^{8.01} 98.01	91.74	C 6.27
+40 = M.H. 1	^{01.26} 92.58	8.68	^{01.26} 101.26	91.98	C 9.28
+70 - T.P.	^{06.92} 99.30	7.62	^{06.92} 106.92	99.00	C 7.92
2+00		13.25	^{13.25} 120.17	106.02	C 7.23
+41		15.87	^{15.87} 136.04	09.13	C 6.74
+82 = M.H. 2		16.85	^{16.85} 152.89	12.25	C 4.60
Req. stakes 4.5' S.					
3+00 = Wall		35.97	^{5.97} 31.26	31.26	C 4.71
+25 T.P.		46.55	^{6.55} 40.51	40.51	C 6.04
+50 = M.H. 3		57.73	^{57.73} 49.76	49.76	C 7.97
3+85		59.49	^{9.49} 50.29	50.29	C 9.20

4+20 59.40

^{9.40} 50.81

C 8.59

+55 59.25

^{9.25} 51.34

C 7.91

4+90 = end. 58.76

^{8.76} 51.86

C 6.90

Lat No (1)

5' S. of S.L. on line

16.87

^{6.87} 12.80

C 4.07

Indexed

Stakes for Culvert in Block 3				stakes - 5' from end of opening				
Center Add. to La Jolla Park - Map 915				2+91.58 = cb. line - \pm of 10' Inlet.				
Plan 7511-L	5-22-51	70	Top cb. - 10' N.	34.72	34.43 ⁷²	C 0.29		
W.O. 20443			10' S.	34.99	34.43 ⁹⁹	C 0.56		
1+20.69 = South inside wall of Box - 22' out from Cor.								
Nails - 5' both Sides	Top of Inlet	20.97	20.20 ⁹⁷	C 0.77 = Top	34.99	27.12	C 7.87	
Cross on Cor. wall catch Basin		20.97	117.39 ^{20.97}	C 3.58				
1+46.71 = \pm Type D	6 N.	21.36	17.65 ^{21.36}	C 3.71	F.L. inlet	34.99	27.00	C 7.99
6 + 12' N.			20.70 ^{1.36}	C 0.66				
Top = Alley grade								
1+75		23.17	18.50 ^{3.17}	C 4.67				
2+00		24.80	20.00 ^{4.80}	C 4.80				
+30		28.47	22.34 ^{8.47}	C 6.13				
+60 - 322 Lt.		30.85	24.68 ^{30.85}	C 6.17				

Indexed

108.89 = Disk on E Waverly + S' line Midway 58

Rough Grade Stakes - on Waverly Ave
Midway^{gr.} to Colima - La Jolla

Plan - 8419-L 5-22-51 70

W.O. 31239

East.

West.

S.W. Cor.

108.75

stakes 5' Back

0+00 = S.E. Cor.

09.8

08.4

09.0

F 0.6

6.4

+20

11.5 ^{11.5} 09.4

C 2.1

08.0

08.9

F 0.9

8.0

+70

10.1 ^{10.1} 08.5

C 1.6

06.6

08.0

F 1.4

6.6

1+20

09.1 ^{9.1} 07.5

C 1.6

08.9

07.0

F 1.1

5.9

+60

08.7 ^{8.7} 06.9

C 1.8

05.2

06.4

F 1.2

5.2

2+00

08.0 ^{8.0} 06.5

C 1.5

04.8

06.0

F 1.2

4.9

+50

07.1 ^{7.1} 06.3

C 0.8

04.1

05.8

F 1.7

4.1

East.

West.

3+00 06.9 0^{6.9}_{6.1} C 0.8

04.0 0^{5.6}_{4.0} F 1.6

+50 06.6 0^{6.6}_{5.9} C 0.7

03.7 0^{5.4}_{3.7} F 1.7

4+00 05.7 0^{5.7} - Grade

02.8 0^{5.2}_{2.8} F 2.4

+50 04.3 0^{5.5}_{4.3} F 1.2

02.2 0^{5.0}_{2.2} F 2.8

5+00 05.6 0^{5.6}_{5.3} C 0.3

04.0 0^{4.8}_{4.0} F 0.8

+44.8 06.2 0^{6.2}_{5.1} C 1.1

04.2 0^{4.6}_{4.2} F 0.4

+54.8 = NW.

04.60

+90 = N.E. Cor.
Colima

06.05

Sewer lat. ① 04.47 0^{4.47}_{0.50} C 3.97

④ 06.67 0^{6.67}_{0.97} C 5.70

stakes 5' back

on line ② 05.13 0^{5.13}_{0.63} C 4.50

⑤ 02.53 0^{2.53}_{0.17} C 2.36

③ 06.32 0^{6.32}_{0.83} C 5.49

Stake Sewer - 4th + Broadway - Plan 8889-L
 W.D. 62217 6-1-51- 70.
 stakes 6' Rt.

± Toyne + Hilltop C+11'			
0+00 = ± M.H. 1	54.08	44.45 ^{54.08}	C 9.63
+35	53.50	44.80 ^{53.50}	C 8.70
+70	53.16	45.15 ^{3.16}	C 8.01
1+05	52.97	45.50 ^{2.97}	C 7.47
+40	52.96	45.85 ^{2.96}	C 7.11
+75	52.99	46.20 ^{2.99}	C 6.79
2+02.98 = M.H. 2 0+00 ahead.	52.90	46.48 ^{2.90}	C 6.42
0+30	54.14	47.23 ^{+ .14}	C 6.91
+60	55.77	47.98 ^{5.77}	C 7.79
+90	56.83	48.73 ^{6.83}	C 8.10
1+20	57.60	49.48 ^{7.60}	C 8.12
+50	58.47	50.23 ^{8.47}	C 8.24
+80 = T.P.	59.50	50.98 ^{9.50}	C 8.52
2+10	60.78	51.73 ^{0.78}	C 9.05
+40	62.16	52.48 ^{2.16}	C 9.68

152.94 = Sw.B.P. - Hilltop + 42.94

60

Indexed

2+70	63.52	53.23 ^{63.52}	C 10.29
2+97.66 = M.H. 3 0+00 ahead.	64.97	53.92 ^{64.97}	C 11.05
+36	64.50	54.82 ^{4.50}	C 9.68
+72	64.29	55.72 ^{4.29}	C 8.57
1+08	64.21	56.62 ^{4.21}	C 7.59
+44	64.21	57.52 ^{4.31}	C 6.79
+80	64.53	58.42 ^{4.53}	C 6.11
2+16	65.19	59.32 ^{5.19}	C 5.87
+52	67.07	60.22 ^{7.07}	C 6.85
+88	70.39	61.12 ^{70.39}	C 9.27
3+24	73.60	62.02 ^{3.60}	C 11.58
3+60 = M.H. 4	76.14	62.92 ^{6.14}	C 13.24
0+40	76.89	63.20 ^{76.89}	C 13.69
+80 = Plug.	76.70	63.48 ^{76.70}	C 13.22

Stake Sewer - Cleveland + Richmond

Plan - 8661-L	6-8-51	7.0	
= Cross on N. Rim Vermont + Cleveland.			
0+00 = Ext. M.H.	89.27	84.65	4.62
+35	89.78	84.78	5.00
+70	90.25	84.92	5.33
1+05	90.62	85.06	5.56
+40	91.00	85.19	5.81
+75	91.44	85.33	6.11
2+10	91.82	85.46	6.36
+45	92.20	85.60	6.60
+80	92.57	85.73	6.84
3+15 = M.H. 1	92.93	85.87	7.06
+35	93.34	86.00	7.34
+70	93.68	86.14	7.54
1+05	94.08	86.28	7.80
+40	94.46	86.41	8.05
+75	94.86	86.55	8.30
2+10	95.26	86.68	8.58

Indexed

2+45	95.67	86.82	8.85
+80	96.06	86.95	9.11
3+15	96.43	87.09	9.34
+50	96.87	87.22	9.65
+90.92 = M.H. 2	97.64	87.38	10.26
+35	97.76	87.52	10.24
+70	98.10	87.65	10.45
1+05	98.19	87.79	10.40
+40	98.32	87.92	10.40
+75	98.42	88.06	10.36
1+95 = M.H. 3	98.51	88.13	10.38
0+35	98.72	88.27	10.45
+70	98.80	88.40	10.40
1+05	98.88	88.54	10.34
+40	99.13	88.67	10.46
+75	98.97	88.81	10.16
2+10	98.42	88.94	9.48
+50.54 = M.H. 4	97.53	89.10	8.43

W.O 31392

Indexed

62

Stake Drain - 32nd + Thorn - Plan - 6560-L

10-3-51 - 7.0

	Top =	97.28	96.25	1.03
			7.28	
0+00 =	± C.B. in Alley	92.28	91.60	5.68
			4.75	
0+20		94.75	91.20	3.55
			4.49	
+40		94.49	90.80	3.69
			4.09	
+60		94.09	90.40	3.69
			4.32	
+82.95 =	± Box - C.L.	94.32	89.94	4.38
	Top	94.32	94.32	0.00
15.5 =	0+00			0.32
0+25 -	approx	91.82	76.5	15.3
			91.8	
+40.83 =	Nail on ±	94.32	76.0	18.3
			94.3	
approx at	Box	94.3	77.00	17.3

Indexed

Stake Curbs - Waverly -

	East			West	
0-07.96 = Meet.	09.99		0-35.22 = Meet.	08.75	
0+00	09.59	09.80 ⁵⁹	F 0.21	08.72	09.00 ⁷² F 0.28
+20	09.37	09.40 ³⁷	F 0.03	08.25	08.90 ²⁵ F 0.65
+53.33	08.86	08.76 ⁸⁶	C 0.10	07.59	08.26 ⁵⁹ F 0.67
+86.66	08.20	08.72 ²⁰	C 0.08	07.27	07.62 ²⁷ F 0.35
1+20	07.66	07.48 ⁶⁶	C 0.18	07.08	06.98 ⁰⁸ C 0.10
+40	07.27	07.13 ²⁷	C 0.14	06.77	06.63 ⁷⁷ C 0.14
+60	06.95	06.85 ⁹⁵	C 0.10	06.45	06.35 ⁴⁵ C 0.10
+80	06.78	06.66 ⁷⁸	C 0.12	06.30	06.16 ³⁰ C 0.14
2+00	06.65	06.54 ⁶⁵	C 0.11	06.15	06.04 ¹⁵ C 0.11
+35	06.02	06.40 ⁰²	F 0.38	05.95	05.90 ⁹⁵ C 0.05
+70	06.01	06.25 ⁰¹	F 0.24	05.65	05.75 ⁶⁵ F 0.10
3+05	05.72	06.11 ⁷²	F 0.39	05.31	05.61 ³¹ F 0.30
+40	05.80	05.97 ⁸⁰	F 0.17	04.88	05.47 ⁸⁸ F 0.59
+75	05.29	05.83 ²⁹	F 0.55	04.30	05.33 ³⁰ F 1.03
4+10	04.97	05.69 ⁹⁷	F 0.72	03.79	05.19 ⁷⁹ F 1.40
+45	04.35	05.54 ³⁵	F 1.19	04.07	05.04 ⁰⁷ F 0.97

East.

West.

4+80	04.60	05.40 4.60	F 0.80		04.31	04.90 31	F 0.59
5+15	05.11	05.26 11	F 0.15		04.57	04.76 .57	F 0.19
+44.8	05.47	05.14 47	C 0.33		04.73	04.64 73	C 0.09
+54.8	05.48	05.20 48	C 0.28	= B.C.	04.79	04.60 .79	C 0.19
+13.21				12.51			
+13.21	06.10	05.40 6.10	C 0.70		05.03	04.56 5.03/	C 0.47
+8.80	06.18	05.78 6.18	C 0.40		04.87	04.50 4.87	C 0.37
= B.C.	06.38	06.05 38	C 0.33	E.C.	04.59	04.36 4.59	C 0.23
E.C. - Meet.	06.61	06.62			04.14	04.13	

Stake 240' Sewer in Seminole Dr.
N. of M.H. in Bradford. St.

6-26-51 7.0

Acorn + Seminole
B.M. = Spike in Pole - S.E. - Book 1340 - P. 33 465.68

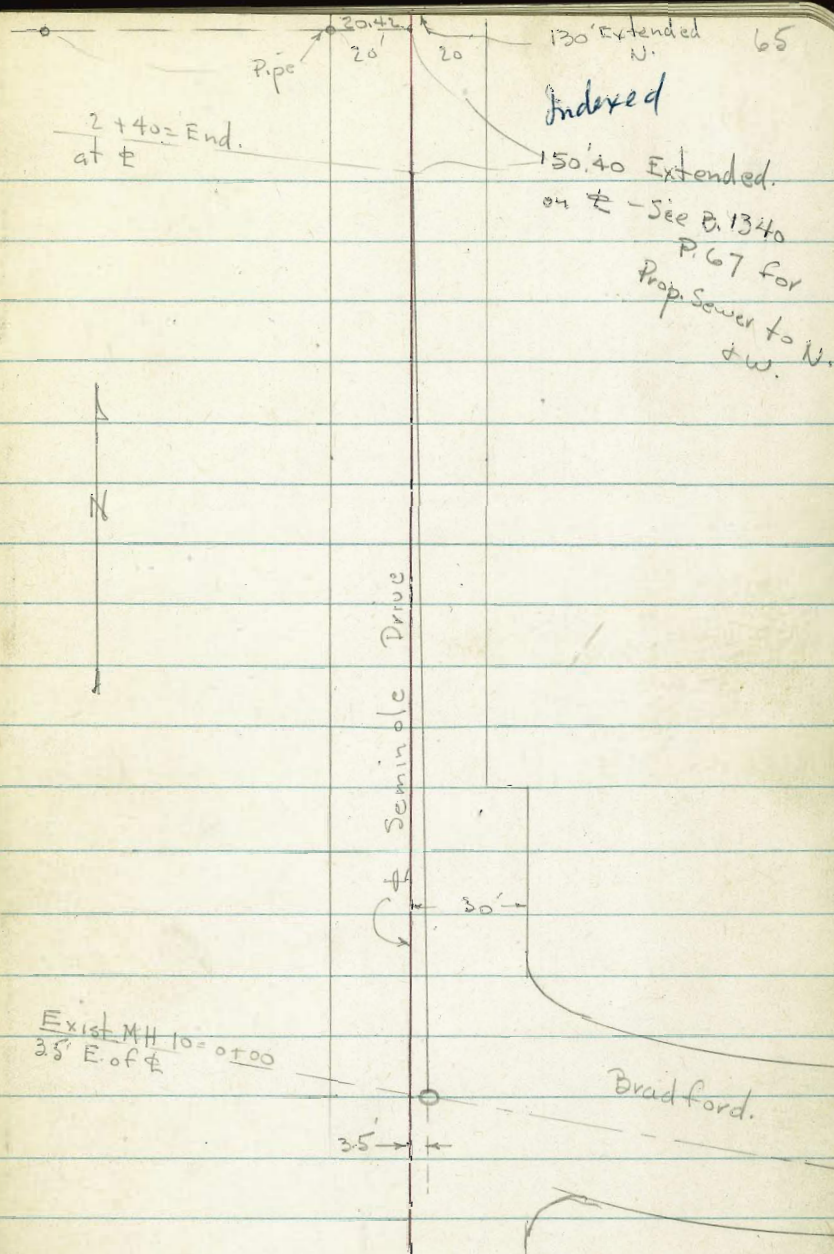
See Plan - 8362 - L - W.O. 20009

5' Rt.

0+00 = M.H. 10' - Meet. Plan-Elv = 454.00
454.02 = I.E.

+30	62.73	^{2.73} 54.23	8.50
+60	62.83	^{2.83} 54.44	8.39
+90	63.05	^{3.05} 54.65	8.40
1+20	63.75	^{3.75} 54.86	8.89
+50	64.14	^{4.14} 55.07	9.07
+80	64.27	^{4.27} 55.28	8.99
2+10	64.37	^{4.37} 55.49	8.88
+40 = end.	64.50	^{4.50} 55.70	8.80
⁰⁺⁰⁰ +30 +70	64.70	^{64.70} 55.91	8.79
+60 +30 +10	65.04	^{5.04} 56.12	8.92
+90 +30	65.40	^{5.40} 56.33	9.07
1+20 +60	65.51	^{5.51} 56.54	8.97
+50 +90 +90.40 = M.H. = End.	65.60	^{5.60} 56.75	8.85

Cont. on P. 66



Exist M.H. 10 = 0+00
35' E. of E

Indexed

Stake Sewer - North of Washington - Dove

to Brant. - Plan 8996-L - 8-11-51

W.O. 62223

7.0

1+90 = M.H. 3
0+00 ahead

Stake Grade Cut.

67.34 67.34 59.58 7.76

10' E. of E Dove

0+00 = M.H. 1

61.87 61.87 56.35 5.52

+35

67.23 67.23 59.82 7.41

+70

67.40 67.40 60.07 7.33

4' Rt.

1+05 = end.

67.13 67.13 60.32 6.81

+35

62.99 62.99 56.60 6.39

+70

62.82 62.82 56.84 5.98

1+05

62.51 62.51 57.09 5.42

+40

63.10 63.10 57.33 5.77

+75

62.67 62.67 57.58 5.09

2+10

62.52 62.52 57.82 4.70

+45

62.15 62.15 58.06 4.09

+72 = M.H. 2

0+00 ahead

61.11 61.11 58.25 2.86

+35

62.05 62.05 58.50 3.55

+70

63.22 63.22 58.74 4.48

1+05

64.43 64.43 58.98 5.45

+40

65.12 65.12 59.23 5.89

+65

66.66 66.66 59.40 7.26

Cont. from P.

65 - 11-5-52-70.

= 1+50.40 = P. 65

0+00 = Exist M.H.

65.60 65.60 56.75 8.85

+35

65.62 65.62 56.2 8.62

+70

65.80 65.80 57.00 8.80

1+05

65.85 65.85 57.24 8.61

+30 = end.

65.69 65.69 57.49 8.20

Indexed

Stake Sewer -	Illinois - N. of Meade		
Plan 8876-L		8-14-51	
W.O. 23708		70.	
0+00 = Exist. M.H.	Meet.	379.23	
0+09 = M.H. 1		86.03	79.40
0+00 ahead.			6.63
+35		85.87	79.54
+70		85.91	79.68
1+05		86.06	79.82
+40		85.97	79.96
+65		84.46	80.06
+90 = M.H. 2 - T.E.		84.86	80.16
0+00 ahead			4.70
	To N.	84.86	80.26
+35		84.84	80.40
+70		85.03	80.54
1+05		85.18	80.68
+40		85.46	80.82
+75		85.74	80.96
2+10		85.90	81.10

2+45	86.15	81.24	4.91
+80	86.48	81.38	5.10
3+10 = M.H. 3	86.62	81.50	5.12

Sewer Crossings - from P. (70)

Crossing # at Little St. - Plan 4384-B
 La Jolla
 W.O. 20738 - 10-29-51 - 70.

0+00 = Exist M.H.		71.03 = I.E.	
= Stub - Grade	80.52	71.20	9.32
0+35	80.82	72.95	7.87
+70	81.54	74.70	6.84
1+05	86.60	76.45	10.15
+45 = plug.	86.14	78.45	7.69

N. of Torrey Pines Rd

BM. - 8.5' R.P. Cross - S.E. Cor. 319.58

□ in Cor. of Wall - S.E. Cor. 320.89

curb stakes - 38th + Wightman

Plan - 8606-L - w.o. 31587 - 7.0. 9-21-51

N.W. Ret.

W. P.C.

6.09

4.38

5.24

5.24

4.38.

6.09

E.C. = 38th

N.E. Ret.

N. P.C. = 38th

6.09

4.38

5.24

5.24

4.38

6.09

E.C. = Wightman

	Grade		
	0.03		
20.03	19.88	c 0.15	
	86		
19.86	19.57	0.29	
	80		
19.80	19.43	c 0.37	
	63		
19.63	19.37	0.26	
	68		
19.68	19.43	0.25	
	93		
19.93	19.57	0.36	
cb = 19.94	19.95		

cb = 20.63	20.65		
	0.60		
20.60	20.25	c 0.35	
	0.47		
20.47	20.10	c 0.37	
	42		
20.42	20.00	0.42	
	45		
20.45	20.06	0.39	
	58		
20.58	20.15	0.43	
	81		
20.81	20.46	0.35	

~~Stub to S of M.H. 3~~

N. Side - W. to Alley

P.C. = 0+00

0+43.67

0+87.34

1+31.00 = 3' Rad Alley

Grade - on Alley

Alley at N.L.

W. side Alley

at N.L. 1' B. Cross

7' S. = end. = 3' B. Cross

Indexed

19.88

22.65

25.41

28.18

28.42 F 0.24

Conc.
28.61 = 28.59

29.87 29.79⁸⁷ c 0.08

29.95 29.72⁹⁵ c 0.23

Indexed

Stake Sewer - 67 th + Saranac				2+41.65	37.63	37.63 23.93	13.70
Plan - 8318-L - 9-24-51 - 7.0				+61.65	40.32	40.32 25.77	14.55
				+81.65	41.42	41.42 26.91	14.51
0+00 = Exist. M.H.	387.02 ^{Rim}	377.17	77.61 = stub ^{7 E.}	3+01.65	41.79	41.79 27.33	14.46
+35	89.30	89.30 9.57	9.73	+36.65	42.53	42.53 27.47	15.06
+70	96.71	96.71 81.96	14.75	3+71.65 = M.H. 2 ^{10 RT.}	41.23	41.23 27.61	13.62
1+05	01.19	01.19 84.35	16.84	0+00			
+40	04.16	04.16 86.75	17.41	0+36.03	44.31	44.31 27.75	16.56
+75	03.09	03.09 89.14	13.95	0+72.06 = M.H. 3	46.27	46.27 27.90	18.37
2+10	400.46	00.46 91.53	8.93	stub. to S. of M.H. 3	46.27	46.27 39.00	7.27
+39.35 = M.H. 1	01.18	01.18 93.56	7.62	0+45 = Brk.	47.01	47.01 39.90	7.11
0+00				+85	47.13	47.13 40.70	6.43
0+20	01.52	01.52 94.64	6.88	1+20	47.75	47.75 41.40	6.35
+40	02.47	02.47 96.24	6.23	+55	48.10	48.10 42.10	6.00
+60	05.46	05.46 98.36	7.10	1+90 = end	48.16	48.16 42.80	5.36
+80	09.77	09.77 401.00	8.77				
1+15	18.88	18.88 06.04	12.84				
+50	24.26	24.26 11.08	13.18				
+85	29.79	29.79 16.11	13.68				
2+21.65 = Brk.	34.61	34.61 21.38	13.23				

Cont. on P. 72

stake La Jolla Shores - Sewer Crossings

Plan - 1684-D - W.O. 20798 - 9-26-51 - 7.0

Crossing # 5 - stakes - 5 ft.

0+00 = 1+72 on orig.	47.32	41.88 ^{7.32}	5.44
+31.2	51.89	42.50 ^{51.89}	9.39
+62.4	52.48	43.13 ^{52.48}	9.35
+93.6	50.72	43.75 ^{50.72}	6.97
1+24.8	52.35	44.38 ^{52.35}	7.97
1+56.0 = 0+16	52.87	45.00 ^{52.87}	7.87

Crossing # 4 - 5' ft.

0+00 = M.H. 4	47.32	34.80 ^{47.32}	12.52
+30	49.16	37.56 ^{49.16}	11.60
+60	50.39	40.32 ^{50.39}	10.07
+90	51.49	43.08 ^{51.49}	8.41
1+20	53.27	45.84 ^{53.27}	7.43

B.M. = 75.27 = Nail in Pole - S. side

70

Indexed

Crossing # 3 - 5' ft.

0+00 = Exist. Sewer	57.58	49.08 ^{57.58}	8.50
0+32.5	60.30	51.81 ^{60.30}	8.49
0+65 = M.H. # 3	63.99	54.54 ^{63.99}	9.45
0+00			
+30	68.49	57.06 ^{68.49}	11.43
+60	70.28	59.58 ^{70.28}	10.70
+90	70.87	62.10 ^{70.87}	8.77
1+20 = Plug.	73.11	64.62 ^{73.11}	8.49

Crossing # 2
5' ft.

0+00 = M.H. # 2	85.34	76.80 ^{85.34}	8.54
0+28.75	91.54	79.26 ^{91.54}	12.28
+57.50	91.81	81.73 ^{91.81}	10.08
+86.25	92.69	84.20 ^{92.69}	8.49
1+15.00 = plug.	93.46	86.66 ^{93.46}	6.80

See P. 67

B.M. = \square = Gr. Wall - S.E. Cor. 38th - 320.89

Indexed
Wightman -

cb. Stakes - S. side 38th W.

PC =	cb = 19.29	19.29	
0 + 43.67	22.33	22.10 ^{2.33}	CO.23
+ 87.34	25.12	24.91 ^{5.12}	CO.21
1 + 31 = 3' Rad. Alley	27.75	27.72 ⁷⁵	CO.03
Grade on Alley		27.94 ⁷⁵	F 0.19
E. Alley - S.L. ^{cross} 3' bk.	27.79	28.05 ⁷⁹	F 0.26
W. Alley S.L.	29.76	29.48 ⁷⁶	CO.28
7' N.	29.72	29.38 ⁷²	CO.34

S. side 38th - E.

end Ret.

0 + 42

0 + 84 = Meet.

Rad.

curb.

Grade

Meet

Meet \downarrow Grade
= 19.81 - 19.86 =

22.44

25.07 = o.k. for
Grade

N. Side - 38th E.

20' Rad.
0 + 00 = PC.

+ 43.67

+ 87.34

1 + 31 = 3' Rad.

Alley opp.

22.95

25.13

28.45

28.45

20.46

23.15^{2.95} F 0.20

25.84¹³ F 0.71

28.54⁷⁵ F 0.09

28.76⁴⁸ F 0.31

Indexed

71

Alley - at N.L.

28.53 28.87⁵³ F 0.34

41st & Wightman -

N.E. Ret.

B.M. = N.W.B.P.

336.62

Meet cb. -

36.48

6' = PC. Wightman

36.37

36.13³⁷

CO.24

6.09

36.21

35.93^{6.21}

CO.28

4.38

35.57

35.81⁵⁷

F 0.24

5.24 = E

35.53

35.75⁵³

F 0.22

5.24

36.14

35.76^{6.53}

CO.38

4.38

36.32

35.80^{6.32}

CO.52

6.09 = E.C. - 41st

36.46

36.00^{.46}

CO.46

+ = Meet. - 6

36.19

B.M. = 450.73 = nail in Pole by M.H. 472

Cont. from P. 69

Sewer Stakes - 30th + C - for City.

Sewer in Saranac - 67th - East. Indexed

w.o.

Indexed

Near E.L. 30th

Exist. M.H. - in Alley

28.3' w. = 1' w. of E of 30th

M.H. = 0+00

+35

+70

1+05

+40

+65

+90

2+10

+ 30.26 = N. "C"

- Plug.

87.14 = I.R.

85.81 = fig. grade

93.75

94.06

94.36

94.57

94.69

94.88

95.00

95.11

95.46

86.00 C 7.5

86.35 C 7.7

86.70 C 7.61

87.05 C 7.52

87.40 C 7.29

87.65 C 7.23

87.90 C 7.10

88.10 C 7.01

88.30 C 7.16

To S.

To W. + E.

0+00 = M.H. 3

+35

+70

1+05

+40

+75

2+10

+45

+80

3+20 = M.H. 4

= 0+00

+35

+70

1+05

+40

+75

2+10

+45

46.20

46.20

45.89

46.67

47.75

48.70

49.52

50.02

50.00

49.24

47.95

47.07

46.28

45.62

44.80

44.02

43.38

43.05

46.20

46.20

45.89

46.67

47.75

48.70

49.52

50.02

50.00

49.24

47.95

47.07

46.28

45.62

44.80

44.02

43.38

43.05

43.05

43.05

43.05

7.20

18.30

17.85

18.49

19.43

20.24

20.92

21.28

21.12

20.22

18.77

17.75

16.82

16.02

15.06

14.14

13.36

12.89

445.89 = Top Hyd. - 68th + Saranac.

442.49 = R.P. Cross - 68th

Indexed

2 + 80 43.05 43.05
30.30 12.75

3 + 15.5 = M.H. 5 43.15 43.15
30.44 12.71

= 0 + 00

+ 35 43.55 43.55
30.81 12.74

+ 70 44.14 44.14
31.19 12.95

1 + 05 44.68 44.68
31.56 13.12

+ 40 45.50 45.50
31.94 13.56

+ 75 46.46 46.46
32.31 14.15

2 + 10 47.13 47.13
32.69 14.44

+ 45 47.54 47.54
33.06 14.48

+ 80 47.89 47.89
33.44 14.45

3 + 15 47.96 47.96
33.80 14.16

+ 34.06 = M.H. 12 48.00 48.00
34.00 14.00

= 0 + 00

0 + 35 48.10 48.10
35.42 12.68

+ 70 48.25 48.25
36.84 11.41

1 + 05 48.42 48.42
38.26 10.16

+ 40 48.80 48.80
39.68 9.12

+ 75 49.42 49.42
41.10 8.32

2 + 10 50.21 50.21
42.52 7.69

447.46 = 0 in wall - By. M.H. 12

456.32 = spike in N.W. Ble - 69th

73

2 + 41.45 = M.H. 15 51.31 51.31
43.80 7.51

0 + 00

0 + 35 52.79 52.79
44.57 8.22

+ 70 54.51 54.51
45.34 9.17

1 + 05 = 6 stub. 56.95 56.95
46.11 10.84

1 + 44.72 = M.H. #16 59.58 59.58
47.00 12.58

68th - Saranac - to South

M.H. # 5 = 0 + 00 30.44 30.44

+ 35 43.36 43.36
31.63 11.73

+ 70 43.70 43.70
32.82 10.88

1 + 05 44.46 44.46
34.01 10.45

+ 40 45.08 45.08
35.20 9.88

+ 75 46.00 46.00
36.39 9.61

2 + 10 46.83 46.83
37.58 9.25

+ 45 47.55 47.55
38.77 8.78

+ 80 48.86 48.86
39.96 8.90

3 + 15 49.65 49.65
41.15 8.50

+ 50 50.93 50.93
42.34 8.59

5' w.
+ 80.13 = M.H. 6 52.47 52.47
43.36 9.11

Indexed

spike in N.W. Pole - 68th + Mohawk 452.71

449.92 = Top 2" pipe on N.L. Sub.

74

					Elev.	Grade	Cut.
0+00 = M.H. 6	43.36						
+35	52.80	43.67	9.13	3+85	43.00	43.00 35.54	C 7.46
+70	53.39	43.99	9.40	4+20	43.23	43.23 35.68	7.55
1+05	53.93	44.30	9.63	4+50 = M.H. 13	43.15	43.15 35.80	7.35
+40	54.20	44.62	9.58	0+40	43.58	43.58 36.16	7.42
+65	54.51	44.84	9.67	+75	43.94	43.94 36.48	7.46
+90 = M.H. 7	54.90	45.06	9.84	1+10	44.49	44.49 36.79	7.70
				+45	45.12	45.12 37.11	8.01
8' Easement - Lot 36 - N. of M.H. 12 -				+80	45.57	45.57 37.42	8.15
0+00 = M.H. 12	34.00			2+15	45.90	45.90 37.74	8.16
+35	46.62	34.14	12.48	2+50 = M.H. 14	46.78	46.78 38.05	8.73
+70	44.89	34.28	10.61				
1+05	43.57	34.42	9.15	+35	47.48	47.48 38.37	9.11
+40	42.47	34.56	7.91	+70	47.97	47.97 38.68	9.29
+75	41.30	34.70	6.60	1+05	48.10	48.10 39.00	9.10
2+10	40.66	34.84	5.82	+50 = Plug.	48.32	48.32 39.40	8.92
+45	40.41	34.98	5.43				
+80	41.13	35.12	6.01				
3+15	41.73	35.26	6.47				
+50 = M.H. 14	42.09	35.40	6.69				

Indexed

470.53 = Cross on walk - U.E. Manchester + Saranac. 75
469.82 = Nail on Pole W. of Manchester - N. of Saranac.
P274095

210' stub. - in 69th - S. of Saranac.

3+15 71.01 71.04
57.40 C 13.61

3+54.97 = M.H. 21 71.10 71.10
58.71 C 12.39

5' both ways
0+00 = 1+05 - P. 73 56.49 56.49
46.11 C 10.38

= 0+00

+35 57.27 57.27 10.00

+35 71.18 71.18 58.85 12.33

+70 57.77 57.77 9.35

+70 71.23 71.23 58.99 12.24

1+05 58.22 58.22 8.64

1+05 71.06 71.06 59.13 11.93

+40 58.68 58.68 7.95

+40 70.17 70.17 59.27 10.90

+75 59.35 59.35 7.46

+75 68.18 68.18 59.41 8.77

2+10 = plug. 60.31 60.31 7.27

2+00 = plug. 66.09 66.09 59.51 6.58

69th - Saranac - North 456.32 = Pole

Saranac - 69th - East - P. 73

0+00 = M.H. 16

Indexed

M.H. 16 = 0+00 59.58 47.00 C 12.58

+35 59.38 47.14 C 12.24

0+35 62.10 48.16 13.94

+70 58.78 47.28 11.50

+70 64.97 49.31 15.66

1+05 58.31 47.42 10.89

1+05 67.52 50.47 17.05

+40 57.79 47.56 10.23

+40 68.91 51.62 17.29

+75 57.46 47.70 9.76

+75 69.81 52.78 17.03

2+10 57.11 47.84 9.27

2+10 70.35 53.93 16.42

+45 56.93 47.98 8.95

+45 70.75 55.09 15.66

+80 56.78 48.12 8.66

+80 71.05 56.24 14.81

3+15 56.54 48.26 8.28

459.22 = spike in S.W. Pole - 69th + Mandalay.

Indexed

3+60 = M.H. 17 = 0+00	56.26	4	6.26 8.44	c 7.82
0+35	56.26	4	6.26 8.58	7.68
+70	56.32	4	6.32 8.72	7.60
1+05	56.38	4	6.38 8.86	7.52
+40	56.46	4	6.46 9.00	7.46
+75	56.63	4	6.63 9.14	7.49
2+10	56.73	4	6.73 9.28	7.45
+45	57.05	4	7.05 9.42	7.63
+80	57.59	4	7.59 9.56	8.03
3+15	58.03	4	8.03 9.70	8.33
3+61.10 = M.H. 18 = 0+00 in Mandalay	58.36	4	8.36 9.88	8.48
0+35	58.96	5	8.96 0.58	8.38
+70	59.51	5	9.51 1.28	8.23
1+05	60.32	5	10.32 1.98	8.34
+40	61.51	5	11.51 2.68	8.83
+75	62.62	5	12.62 3.38	9.24
2+10	63.25	5	13.25 4.08	9.17
+45	64.10	5	14.10 4.78	9.32

Nail in Gray Pole 467.14
Mandalay + Manchester

76

2+80	65.34	65.34	55.48	c 9.86
3+15	66.04	66.04	56.18	9.86
+55.09 = M.H. 19	66.31	66.31	56.98	9.33
0+35 = Manchester	66.50	66.50	57.12	9.38
+70	66.63	66.63	57.26	9.37
1+05	66.81	66.81	57.40	9.41
+40	66.90	66.90	57.54	9.36
+75	67.11	67.11	57.68	9.43
2+10	67.31	67.31	57.82	9.49
+45	67.44	67.44	57.96	9.48
+80	67.36	67.36	58.10	9.26
3+15	67.37	67.37	58.24	9.13
+60 = M.H. 20	67.61	67.61	58.42	9.19
+35 = 0+00	67.86	67.86	58.77	9.09
+70	68.06	68.06	59.12	8.94
1+05	68.50	68.50	59.47	9.03
+40	68.76	68.76	59.82	8.94
+80 = Plug.	69.21	69.21	60.22	8.99

Mohawk - 68th to 67th

Indexed

In Alley - Block 2 = W. of 68th
S. of Mohawk

77

68 th			67 th		
0+00 = M.H. 6	43.36		0+00 = M.H. 7	45.06	
+35	52.36	52.36 43.50 C 8.86	+37	55.51	5.51 45.21 10.30
+70	52.64	52.64 43.64 C 9.00	+74	55.95	5.95 45.36 10.59
1+05	52.78	52.78 43.78 C 9.00	1+11	56.01	6.01 45.51 10.50
+40	53.41	53.41 43.92 C 9.49	+48	56.25	6.25 45.66 10.59
+75	54.27	54.27 44.06 C 10.21	+85	56.90	6.90 45.80 11.10
2+10	55.10	55.10 44.20 10.90	2+22	57.65	7.65 45.95 11.70
+45	55.75	55.75 44.34 11.41	+59	58.46	8.46 46.10 12.36
+80	56.40	56.40 44.48 11.92	+96	59.16	9.16 46.25 12.91
3+15	56.73	56.73 44.62 12.11	3+33	59.43	9.43 46.39 13.04
+50	56.85	56.85 44.76 12.09	3+70 = M.H. 8	59.53	9.53 46.54 12.99
+75	56.85	56.85 44.86 11.99	0+35	59.09	9.09 46.68 12.41
4+00 = M.H. 9	56.55	56.55 44.96 11.59	+70	58.51	8.51 46.82 11.69
⁼⁰⁺⁰⁰ 0+35	55.42	55.42 45.10 10.32	1+05	57.80	7.80 46.96 10.84
+70	53.98	53.98 45.24 8.74	+40	56.23	6.23 47.10 9.13
1+05	52.88	52.88 45.38 7.50	+80 = Plug.	54.41	4.41 47.26 7.15
+40	51.92	51.92 45.52 6.40			
+75	51.07	51.07 45.66 5.41			
2+00 = plug.	50.59	50.59 45.76 4.83			
2+30 = add.	50.20	50.20 45.88 4.32			

Alley - Blk 5
staked 5' Sly

Sewer

Indexed

78

				3+15	50.30	59.07	C-8.72
0+00 = M.H. 7	445.06	- IN -		3+40 ²⁷ 2 SMH #23	450.50	58.61	C-8.4
+35	45.34	54.22 C-9.63	= 0+00 = Block 8 - E. of 69th				
+70	45.62	54.43 C-8.81		+35	59.12	50.78	C 8.34
1+05	46.90	54.05 C-8.15		+70	59.36	51.06	C-8.30
+40	46.18	53.22 C-7.72		1+05	59.41	51.34	8.07
+75	46.46	54.22 C-7.76		+40	59.53	51.62	7.91
2+10	46.74	54.60 C-7.84		+75	59.86	51.90	7.96
+45	47.02	54.27 C-7.27		2+10	60.13	52.18	7.95
+80	47.30	55.23 C-8.43		+45	60.25	52.46	7.79
3+15	47.58	56.39 C-8.81		+90 = M.H. 24	60.54	52.92	7.72
3+40 2 SMH #22	447.78	56.24 C-8.26					
0+35	48.06	57.46 C-9.40					
+70	48.34	58.08 C-9.74					
1+05	48.62	58.35 C-9.73					
1+40	48.90	58.23 C-10.23					
+75	49.18	59.08 C-9.20					
2+10	49.46	59.35 C-9.82					
+45	49.74	59.36 C-9.62					
+80	50.02	59.50 C-9.28					

Indexed

Stake 225' of Sewer for City - 63rd W.

of Montezuma Rd. - See Plan 9354-L

#6076

W.O. 20009

2-27-52 - 7.0

Exist. M.H.

449.04

0+00 = Exist. end.

56.34 49.66

C 6.68

+35'

56.90 49.91

C 6.99

+70

56.80 50.15

6.65

1+05

56.41 50.40

6.01

+40

56.12 50.64

5.48

+55' = M.H.

55.84 50.75

5.09

+90

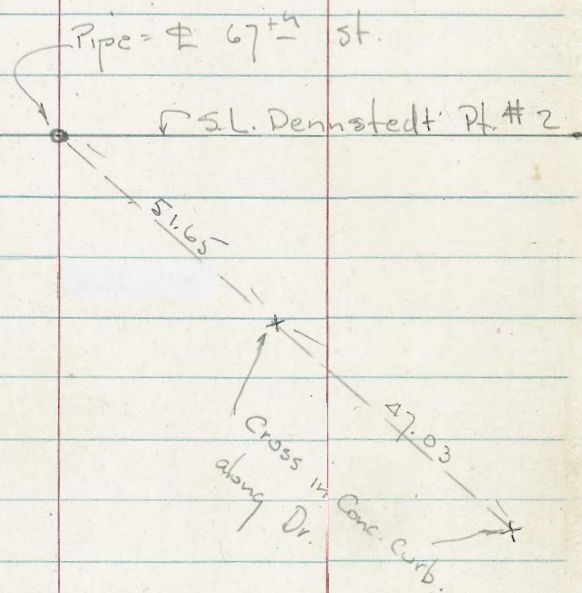
55.59 50.99

4.60

2+25 = end.

55.37 51.24

4.13



77.67
 77.17
 ———
 44

42

57-63

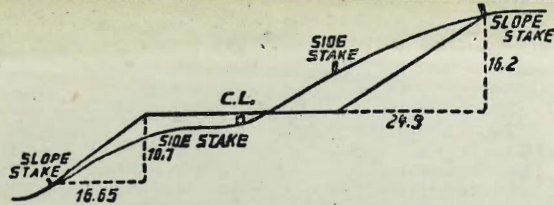
62
16
46

46 11
16
46 27
56 49
10 22

64 77
1 70
66 47
6 54
07

44.40
3.00
41.40
44.6
4 0.00
4.4

49.39 = .40



DISTANCES FROM SIDE STAKES FOR CROSS-SECTIONING.

SLOPE 1 1/2 TO 1. ROADWAY OF ANY WIDTH.

	0	.1	.2	.3	.4	.5	.6	.7	.8	.9	
0	0.00	0.15	0.30	0.45	0.60	0.75	0.90	1.05	1.20	1.35	0
1	1.50	1.65	1.80	1.95	2.10	2.25	2.40	2.55	2.70	2.85	1
2	3.00	3.15	3.30	3.45	3.60	3.75	3.90	4.05	4.20	4.35	2
3	4.50	4.65	4.80	4.95	5.10	5.25	5.40	5.55	5.70	5.85	3
4	6.00	6.15	6.30	6.45	6.60	6.75	6.90	7.05	7.20	7.35	4
5	7.50	7.65	7.80	7.95	8.10	8.25	8.40	8.55	8.70	8.85	5
6	9.00	9.15	9.30	9.45	9.60	9.75	9.90	10.05	10.20	10.35	6
7	10.50	10.65	10.80	10.95	11.10	11.25	11.40	11.55	11.70	11.85	7
8	12.00	12.15	12.30	12.45	12.60	12.75	12.90	13.05	13.20	13.35	8
9	13.50	13.65	13.80	13.95	14.10	14.25	14.40	14.55	14.70	14.85	9
10	15.00	15.15	15.30	15.45	15.60	15.75	15.90	16.05	16.20	16.35	10
11	16.50	16.65	16.80	16.95	17.10	17.25	17.40	17.55	17.70	17.85	11
12	18.00	18.15	18.30	18.45	18.60	18.75	18.90	19.05	19.20	19.35	12
13	19.50	19.65	19.80	19.95	20.10	20.25	20.40	20.55	20.70	20.85	13
14	21.00	21.15	21.30	21.45	21.60	21.75	21.90	22.05	22.20	22.35	14
15	22.50	22.65	22.80	22.95	23.10	23.25	23.40	23.55	23.70	23.85	15
16	24.00	24.15	24.30	24.45	24.60	24.75	24.90	25.05	25.20	25.35	16
17	25.50	25.65	25.80	25.95	26.10	26.25	26.40	26.55	26.70	26.85	17
18	27.00	27.15	27.30	27.45	27.60	27.75	27.90	28.05	28.20	28.35	18
19	28.50	28.65	28.80	28.95	29.10	29.25	29.40	29.55	29.70	29.85	19
20	30.00	30.15	30.30	30.45	30.60	30.75	30.90	31.05	31.20	31.35	20
21	31.50	31.65	31.80	31.95	32.10	32.25	32.40	32.55	32.70	32.85	21
22	33.00	33.15	33.30	33.45	33.60	33.75	33.90	34.05	34.20	34.35	22
23	34.50	34.65	34.80	34.95	35.10	35.25	35.40	35.55	35.70	35.85	23
24	36.00	36.15	36.30	36.45	36.60	36.75	36.90	37.05	37.20	37.35	24
25	37.50	37.65	37.80	37.95	38.10	38.25	38.40	38.55	38.70	38.85	25
26	39.00	39.15	39.30	39.45	39.60	39.75	39.90	40.05	40.20	40.35	26
27	40.50	40.65	40.80	40.95	41.10	41.25	41.40	41.55	41.70	41.85	27
28	42.00	42.15	42.30	42.45	42.60	42.75	42.90	43.05	43.20	43.35	28
29	43.50	43.65	43.80	43.95	44.10	44.25	44.40	44.55	44.70	44.85	29
30	45.00	45.15	45.30	45.45	45.60	45.75	45.90	46.05	46.20	46.35	30
31	46.50	46.65	46.80	46.95	47.10	47.25	47.40	47.55	47.70	47.85	31
32	48.00	48.15	48.30	48.45	48.60	48.75	48.90	49.05	49.20	49.35	32
33	49.50	49.65	49.80	49.95	50.10	50.25	50.40	50.55	50.70	50.85	33
34	51.00	51.15	51.30	51.45	51.60	51.75	51.90	52.05	52.20	52.35	34
35	52.50	52.65	52.80	52.95	53.10	53.25	53.40	53.55	53.70	53.85	35
36	54.00	54.15	54.30	54.45	54.60	54.75	54.90	55.05	55.20	55.35	36
37	55.50	55.65	55.80	55.95	56.10	56.25	56.40	56.55	56.70	56.85	37
38	57.00	57.15	57.30	57.45	57.60	57.75	57.90	58.05	58.20	58.35	38
39	58.50	58.65	58.80	58.95	59.10	59.25	59.40	59.55	59.70	59.85	39
40	60.00	60.15	60.30	60.45	60.60	60.75	60.90	61.05	61.20	61.35	40
41	61.50	61.65	61.80	61.95	62.10	62.25	62.40	62.55	62.70	62.85	41
42	63.00	63.15	63.30	63.45	63.60	63.75	63.90	64.05	64.20	64.35	42
43	64.50	64.65	64.80	64.95	65.10	65.25	65.40	65.55	65.70	65.85	43
44	66.00	66.15	66.30	66.45	66.60	66.75	66.90	67.05	67.20	67.35	44
45	67.50	67.65	67.80	67.95	68.10	68.25	68.40	68.55	68.70	68.85	45
46	69.00	69.15	69.30	69.45	69.60	69.75	69.90	70.05	70.20	70.35	46
47	70.50	70.65	70.80	70.95	71.10	71.25	71.40	71.55	71.70	71.85	47
48	72.00	72.15	72.30	72.45	72.60	72.75	72.90	73.05	73.20	73.35	48
49	73.50	73.65	73.80	73.95	74.10	74.25	74.40	74.55	74.70	74.85	49
50	75.00	75.15	75.30	75.45	75.60	75.75	75.90	76.05	76.20	76.35	50

THE NATIONAL BLANK BOOK COMPANY

HOLYOKE

MASSACHUSETTS

MASSACHUSETTS

NEW YORK

CHICAGO

BOSTON

SAN FRANCISCO