

DISTANCES FROM SIDE STAKES FOR CROSS-SECTIONING
SLOPE 1 TO 1. ROADWAY OF ANY WIDTH

	0	.1	.2	.3	.4	.5	.6	.7	.8	9	
0	0.00	0.10	0.20	0.30	0.40	0.50	0.60	0.70	0.80	0.90	0
1	1.00	1.10	1.20	1.30	1.40	1.50	1.60	1.70	1.80	1.90	1
2	2.00	2.10	2.20	2.30	2.40	2.50	2.60	2.70	2.80	2.90	2
3	3.00	3.10	3.20	3.30	3.40	3.50	3.60	3.70	3.80	3.90	3
4	4.00	4.10	4.20	4.30	4.40	4.50	4.60	4.70	4.80	4.90	4
5	5.00	5.10	5.20	5.30	5.40	5.50	5.60	5.70	5.80	5.90	5
6	6.00	6.10	6.20	6.30	6.40	6.50	6.60	6.70	6.80	6.90	6
7	7.00	7.10	7.20	7.30	7.40	7.50	7.60	7.70	7.80	7.90	7
8	8.00	8.10	8.20	8.30	8.40	8.50	8.60	8.70	8.80	8.90	8
9	9.00	9.10	9.20	9.30	9.40	9.50	9.60	9.70	9.80	9.90	9
10	10.00	10.10	10.20	10.30	10.40	10.50	10.60	10.70	10.80	10.90	10
11	11.00	11.10	11.20	11.30	11.40	11.50	11.60	11.70	11.80	11.90	11
12	12.00	12.10	12.20	12.30	12.40	12.50	12.60	12.70	12.80	12.90	12
13	13.00	13.10	13.20	13.30	13.40	13.50	13.60	13.70	13.80	13.90	13
14	14.00	14.10	14.20	14.30	14.40	14.50	14.60	14.70	14.80	14.90	14
15	15.00	15.10	15.20	15.30	15.40	15.50	15.60	15.70	15.80	15.90	15
16	16.00	16.10	16.20	16.30	16.40	16.50	16.60	16.70	16.80	16.90	16
17	17.00	17.10	17.20	17.30	17.40	17.50	17.60	17.70	17.80	17.90	17
18	18.00	18.10	18.20	18.30	18.40	18.50	18.60	18.70	18.80	18.90	18
19	19.00	19.10	19.20	19.30	19.40	19.50	19.60	19.70	19.80	19.90	19
20	20.00	20.10	20.20	20.30	20.40	20.50	20.60	20.70	20.80	20.90	20
21	21.00	21.10	21.20	21.30	21.40	21.50	21.60	21.70	21.80	21.90	21
22	22.00	22.10	22.20	22.30	22.40	22.50	22.60	22.70	22.80	22.90	22
23	23.00	23.10	23.20	23.30	23.40	23.50	23.60	23.70	23.80	23.90	23
24	24.00	24.10	24.20	24.30	24.40	24.50	24.60	24.70	24.80	24.90	24
25	25.00	25.10	25.20	25.30	25.40	25.50	25.60	25.70	25.80	25.90	25
26	26.00	26.10	26.20	26.30	26.40	26.50	26.60	26.70	26.80	26.90	26
27	27.00	27.10	27.20	27.30	27.40	27.50	27.60	27.70	27.80	27.90	27
28	28.00	28.10	28.20	28.30	28.40	28.50	28.60	28.70	28.80	28.90	28
29	29.00	29.10	29.20	29.30	29.40	29.50	29.60	29.70	29.80	29.90	29
30	30.00	30.10	30.20	30.30	30.40	30.50	30.60	30.70	30.80	30.90	30
31	31.00	31.10	31.20	31.30	31.40	31.50	31.60	31.70	31.80	31.90	31
32	32.00	32.10	32.20	32.30	32.40	32.50	32.60	32.70	32.80	32.90	32
33	33.00	33.10	33.20	33.30	33.40	33.50	33.60	33.70	33.80	33.90	33
34	34.00	34.10	34.20	34.30	34.40	34.50	34.60	34.70	34.80	34.90	34
35	35.00	35.10	35.20	35.30	35.40	35.50	35.60	35.70	35.80	35.90	35
36	36.00	36.10	36.20	36.30	36.40	36.50	36.60	36.70	36.80	36.90	36
37	37.00	37.10	37.20	37.30	37.40	37.50	37.60	37.70	37.80	37.90	37
38	38.00	38.10	38.20	38.30	38.40	38.50	38.60	38.70	38.80	38.90	38
39	39.00	39.10	39.20	39.30	39.40	39.50	39.60	39.70	39.80	39.90	39
40	40.00	40.10	40.20	40.30	40.40	40.50	40.60	40.70	40.80	40.90	40
41	41.00	41.10	41.20	41.30	41.40	41.50	41.60	41.70	41.80	41.90	41
42	42.00	42.10	42.20	42.30	42.40	42.50	42.60	42.70	42.80	42.90	42
43	43.00	43.10	43.20	43.30	43.40	43.50	43.60	43.70	43.80	43.90	43
44	44.00	44.10	44.20	44.30	44.40	44.50	44.60	44.70	44.80	44.90	44
45	45.00	45.10	45.20	45.30	45.40	45.50	45.60	45.70	45.80	45.90	45
46	46.00	46.10	46.20	46.30	46.40	46.50	46.60	46.70	46.80	46.90	46
47	47.00	47.10	47.20	47.30	47.40	47.50	47.60	47.70	47.80	47.90	47
48	48.00	48.10	48.20	48.30	48.40	48.50	48.60	48.70	48.80	48.90	48
49	49.00	49.10	49.20	49.30	49.40	49.50	49.60	49.70	49.80	49.90	49
50	50.00	50.10	50.20	50.30	50.40	50.50	50.60	50.70	50.80	50.90	50

Distance of slope stake from side or shoulder stake for any width roadway, slope 1 to 1. If ground is nearly level, the cut or fill at side stake is located by the double entry method in left column and top row. The number in body of table in same row and column gives distance from side stake to slope stake. If ground is not level estimate the difference in elevation between the side stake and slope stake, lower target by this amount if cut, elevate if fill. Add this amount to cut or fill and find distance in table. Set up rod at this point, and line of sight should cut target. If it does not make the slight adjustment necessary.

MICROFILMED

APR 14 1965

DIRECTIONS FOR USE OF TABLES



TABLE No. XIV

Distance of slope stake from side or shoulder stake for roadway, slope 1N to 1. If ground is nearly level, the cut or fill at side stake is located by the double entry method.

IMPROVED TABLES
AND
INFORMATION

cut larger. If it does not make the slight adjustment necessary.

TABLE No. VIII

To find Tangent and Distance for curve of any other degree, divide by degree of curve and add correction found in column of corrections. Degree of curve with a given D may be found by dividing tangent (or external) opposite I by given tangent (or external). The distance from a point on the tangent to the curve is very nearly the square of the tangent length divided by twice the radius.

$$\begin{aligned} \text{C} &= \frac{2 \times \text{D}^2}{\text{R}} \\ \text{I} &= \frac{100 \times \text{D}}{\text{R}} \\ \text{E} &= \frac{100 \times \text{D}^2}{\text{R}} \end{aligned}$$

TABLE XIII—CORRECTIONS FOR TANGENTS AND EXTERNALS

These corrections are to be added to the approximate values, found by dividing the tangent, or external, for a 1° curve (Table VIII) by the degree of curve, in order to obtain the true tangents, or externals. Intermediate values may be obtained by interpolation.

FOR TANGENTS ADD

Central Angle	DEGREE OF CURVE													
	5°	10°	15°	20°	25°	30°	35°	40°	45°	50°	55°	60°	65°	70°
10°	.03	.06	.09	.13	.16	.19	.22	.25	.28	.31	.34	.38	.42	.46
15°	.04	.10	.14	.19	.24	.29	.34	.39	.45	.51	.53	.58	.63	.68
20°	.06	.13	.19	.26	.32	.39	.45	.51	.58	.65	.72	.79	.84	.90
25°	.08	.16	.24	.33	.40	.49	.58	.67	.75	.83	.90	.99	1.06	1.14
30°	.10	.19	.29	.39	.49	.59	.69	.79	.89	.99	1.09	1.20	1.29	1.39
35°	.11	.22	.34	.47	.58	.69	.79	.81	.92	1.04	1.29	1.42	1.54	1.66
40°	.13	.26	.40	.53	.67	.80	.93	1.06	1.20	1.34	1.49	1.64	1.79	1.94
45°	.15	.30	.44	.60	.76	.91	1.06	1.21	1.37	1.52	1.70	1.87	2.04	2.21
50°	.17	.34	.51	.68	.85	1.02	1.19	1.36	1.54	1.72	1.91	2.10	2.29	2.48
55°	.19	.38	.57	.76	.95	1.14	1.32	1.52	1.72	1.92	2.14	2.35	2.56	2.77
60°	.21	.42	.63	.84	1.05	1.27	1.49	1.71	1.94	2.17	2.38	2.60	2.83	3.07
65°	.23	.46	.69	.93	1.16	1.40	1.64	1.88	2.13	2.38	2.63	2.88	3.13	3.39
70°	.25	.51	.76	1.02	1.28	1.54	1.80	2.06	2.33	2.60	2.88	3.16	3.44	3.72
75°	.27	.56	.83	1.12	1.40	1.69	1.98	2.27	2.57	2.87	3.16	3.47	3.78	4.09
80°	.30	.61	.91	1.22	1.53	1.84	2.15	2.46	2.78	3.10	3.44	3.78	4.12	4.46
85°	.33	.66	1.00	1.33	1.68	2.02	2.36	2.70	3.05	3.40	3.77	4.14	4.55	4.89
90°	.36	.72	1.09	1.45	1.83	2.20	2.57	2.94	3.32	3.70	4.10	4.50	4.91	5.32
95°	.39	.79	1.19	1.55	2.00	2.40	2.80	3.20	3.61	4.02	4.40	4.98	5.38	5.83
100°	.43	.86	1.30	1.74	2.18	2.62	3.06	3.50	3.95	4.40	4.88	5.37	5.85	6.34
110°	.51	1.03	1.56	2.08	2.61	3.14	3.67	4.21	4.76	5.31	5.86	6.43	7.01	7.60
120°	.62	1.25	1.93	2.52	3.16	3.81	4.45	5.11	5.77	6.44	7.12	7.80	8.50	9.22

FOR EXTERNALS ADD

Central Angle	DEGREE OF CURVE													
	5°	10°	15°	20°	25°	30°	35°	40°	45°	50°	55°	60°	65°	70°
10°	.001	.003	.004	.006	.007	.008	.009	.011	.012	.014	.015	.017	.018	.020
15°	.003	.007	.010	.014	.018	.023	.027	.029	.032	.035	.039	.043	.047	.051
20°	.006	.011	.017	.022	.028	.034	.038	.045	.051	.057	.063	.070	.076	.083
25°	.009	.018	.027	.036	.046	.056	.065	.074	.083	.093	.106	.120	.127	.135
30°	.013	.025	.038	.051	.065	.078	.090	.103	.116	.129	.149	.170	.179	.188
35°	.018	.035	.054	.072	.086	.109	.131	.153	.175	.197	.213	.230	.247	.264
40°	.023	.046	.070	.093	.117	.141	.172	.203	.234	.265	.277	.290	.315	.341
45°	.030	.060	.093	.119	.153	.184	.216	.254	.289	.325	.351	.378	.411	.445
50°	.037	.075	.116	.151	.189	.227	.266	.305	.345	.384	.425	.467	.508	.550
55°	.046	.093	.142	.188	.236	.283	.332	.381	.420	.479	.530	.582	.641	.700
60°	.056	.112	.168	.225	.283	.340	.398	.457	.516	.575	.636	.697	.774	.851
65°	.067	.135	.204	.273	.343	.412	.483	.554	.625	.697	.771	.845	.922	1.01
70°	.080	.159	.240	.321	.403	.485	.568	.652	.735	.819	.906	.994	1.08	1.17
75°	.095	.182	.266	.353	.440	.528	.617	.707	.797	.887	.977	1.07	1.18	1.29
80°	.110	.220	.332	.445	.558	.671	.787	.903	1.02	1.13	1.25	1.38	1.50	1.62
85°	.128	.259	.391	.524	.657	.790	.926	1.06	1.20	1.34	1.47	1.62	1.76	1.91
90°	.149	.299	.450	.603	.756	.910	1.07	1.22	1.38	1.54	1.70	1.87	2.03	2.20
95°	.174	.350	.522	.706	.885	1.06	1.25	1.43	1.62	1.80	1.99	2.18	2.38	2.58
100°	.200	.401	.604	.809	1.01	1.22	1.43	1.64	1.85	2.06	2.28	2.50	2.73	2.96
110°	.268	.536	.806	1.08	1.35	1.63	1.91	2.20	2.48	2.76	3.05	3.35	3.66	3.96
120°	.360	.721	1.08	1.45	1.82	2.19	2.57	2.95	3.33	3.72	4.11	4.50	4.91	5.32

INDEX

Pg.	Description
2	Stake Curbs Plum St. {Fenelon to Garrison}
3-9 (47)	Stake War Memorial Bldg.
15 (25-27)	Stake Curbs Zoo Rd
10-12 (18-19)	
28-29 (31-20)	Midway Dr.
13-14	Stake Alley BIK 143 Univ. Hqts.
16-17	Rhoda Dr.
20 (21-23) 56	Stake Water Services Chalcedony {Lamon to Academy}
30 (32)	Stake Redwood St. {Herman to 32nd}
24	Stake Curbs Myrtle Ave {Florida to Alabama}
41	Stake Sewer "A" St. & 47th St.
42	Stake Sewer 33rd & Univ.
43-45	Stake Storm Drain 33rd & Univ.
46.	Stake Ch. Inlet & Drain Ampudia & Moore
48-49	Stake Alley BIK 149 Univ. Hqts.
51-55 (57-64)	Paving Pentucket, Westland & Commonwealth
70-76 (79)	Juniper to Ivy
	Pave Alleys BIKs 198, 199, 200, 201
65-66	Mission Beach
	Pave Alleys BIKs 194, 195, 196, 197
67-68	Mission Beach
	Stake Water Services Alley BIK. 16
69	Sunset Cliffs

Index Cont.

①

Pg.	Description
77	Stake Sewer Camino Del Rio
78	Stake Storm Drain ^{Orange} _{to} Trajan
79	Ivy E. Westland, stake curb inlet

11-16-50 Stake Cbs Plum St
 Hendricks
 Sherman Fenelon to Garrison
 Shepard
 Crawford
 W.O. # 31628
 Dwg. 7982-L

②

INDEXED

APR 26 1951

Sta.	+ H.I.	- Lt.	Elev. Stake	Elev. Grade	Cut or fill	- Rt.	Elev. Stake	Elev. Grade	Cut or fill
2+00 at Pl. Beg. Ex. Ck	13.82		87.29	87.39	meet			86.58	
#1	13.16		88.05	87.90	CO ¹⁵	14.26	86.95	87.30	FO ³⁵
1+75	12.35		88.86	88.70	CO ¹⁶	13.48	87.73	88.20	FO ⁴¹
1+50	10.10		91.11	90.82	CO ²⁹	11.61	89.60	90.32	FO ⁷²
1+25	8.15		93.06	92.95	CO ¹¹	9.46	91.75	92.45	FO ⁷⁰
1+05	6.43		94.78	94.50	CO ²⁸	7.77	93.44	93.98	FO ⁵⁴
0+85	5.10		96.11	95.75	CO ³⁶	6.44	94.77	95.17	FO ⁴⁰
0+65	4.20		97.01	96.70	CO ²¹	5.47	95.74	96.01	FO ²⁷
0+45	3.62		97.59	97.35	CO ²⁴	4.98	96.23	96.52	FO ²⁹
0+25 EC	3.21		98.00	97.85	CO ¹⁵	4.79	96.42	96.85	FO ⁴³
#1	3.03		98.18	98.18	CO ⁰⁰	4.73	96.48	96.95	FO ⁴²
0+00 at PL End Ex. Ck	2.52		98.69	98.70	meet	4.55	96.66	96.65	meet
B.M. 8.57	$\frac{101.21}{1}$			92.69					

SEBP Fenelon & Plum

11-17-50

Stake Cbs. Zoo Road

(3)

Hendricks
Sherman
Crawford
Shepard
VO# 20671

Drive

Dwg. 8267-L

INDEXED
APR 26 1951

#2		294.01	292.96	C1 ⁰⁵ ✓
#1		294.31	293.20	C1 ¹¹ ✓
1482 BC		294.55	293.92	C1 ¹³ ✓
1162		294.63	293.89	C1 ⁰⁴ ✓
1142		294.41	293.75	C0 ⁶⁶ ✓
1122		294.47	293.88	C0 ⁵⁹ ✓
1102		294.58	294.00	C0 ⁵⁸ ✓
0182		294.72	294.11	C0 ⁶¹ ✓
0150.18		294.65	294.21	C0 ⁴⁴ ✓
0118.36 EC		294.44	294.32	C0 ¹³ ✓
#3		294.38	294.38	C0 ⁰⁰ ✓
#2		294.35	294.44	F0 ⁰⁹ ✓
#1		294.28	294.50	F0 ²² ✓
BC		294.34	294.55	F0 ²¹ ✓
21 ^{1/2} Beg. Nev. Co. Park Blvd		294.69	294.64	Ex. Cb ✓

Restake P-15)
Restake P-25

BIM

294.47

Chisel + in. Cb. CP #1 FB1730 P-56

5+80.59		294.41	293.94	CO ⁵³ ✓
5+56.30		294.18	293.87	CO ³¹ ✓
T.P. 5+32.01		TP. (294.30)	293.80	CO ⁵¹ ✓
5+07.72		294.25	293.72	CO ⁵³ ✓
4+83.43		294.19	293.64	CO ⁵⁵ ✓
4+59.14	Restarts P. 25	294.19	293.56	CO ⁶³ ✓
4+34.85		294.16	293.48	CO ⁶⁸ ✓
4+10.56		294.30	293.40	CO ⁹⁰ ✓
3+86.27		293.81	293.32	CO ⁴⁹ ✓
3+65.91		293.75	293.20	CO ⁵⁵ ✓
3+45.55		293.72	293.00 293.02	CO ⁹⁰ ✓
3+25.18 PRC		293.33 293.51	292.82	CO⁵¹ CO ⁶⁹ ✓
#6		293.01	292.71	CO ³⁷ ✓
#5	End Inlet	292.96	292.64	CO ²⁷ ✓
#4	K Inlet	292.87	292.58	CO ³⁸ ✓
#4	Boq Inlet	292.41	292.57	CO ³⁰ ✓
#3		292.59	292.59	F 016 CI ⁰² ✓
		293.74	292.73	CI ⁰¹ ✓
		292.80		CI ⁰⁷ ✓

Contd. from p. 4		301.23	(East Ent. to Memorial Hill)		
T.B.M.		297.90	Chisel \square S.E. Cor. on Conc Base for flag Pole		
T.B.M.		(297.92)	On Hub <u>50</u> End of Base Line		
0+00. End new Cb 700 load		FB170	291.50	291.50	Ex Cb
0+20.31			292.01	291.81	CO ²⁰ ✓
0+40.62			292.39	292.12	CO ³⁵ ✓
0+60.94 P.C.C. 15' Rad			293.08	292.42	CO ⁶⁶ ✓
#1			293.36	292.65	CO ⁷¹ ✓
EC 15' Rad			293.70	292.85	CO ⁸⁵ ✓
EC 25' Rad			294.31		CO ⁰⁶
			294.24	294.25	CT ²⁹ ✓
#3			293.51		FO ²⁴
			295.72	293.75	CT ⁹⁷ ✓
#2			293.00		FO ³⁷
			295.21	293.37	CT ⁵⁴ ✓
#1	Restack		293.32		CO ¹⁵
			294.85	293.17	CT ⁷⁴ ✓
7+75 B.C. 25' Rad	p. 25	= Restack	293.12		FO ⁰³
			294.38	293.15	CT ³³ ✓
7+40.95			294.35		CO ⁸⁹
			294.49	293.46	CT ⁰³ ✓
7+06.89			293.69	293.77	FO ⁰⁸ ✓
6+86.89			294.40	293.89	CO ⁵¹ ✓
6+66.89			294.47	293.97	CO ⁵⁰ ✓
6+46.89					
6+21.32 EC =			294.58	293.99	CO ⁵⁹ ✓
6+00.95			294.61	293.97	CO ⁶⁴ ✓

11-21-50
Hendricks
Sherman
Crawford
Shepard
WV# 20671

State Service Roads
War Memorial Bldg.
(See P. 9 for Layout)

	Elev. of Stake	Elev. Paving	Cut or fill	
1+52.63	297.60 ✓	297.80	FO ²⁰ ✓	
1+29.63	298.01 ✓	297.89	CO ¹³ ✓	
1+06.63	298.26 ✓	297.98	CO ²⁸ ✓	
0+81.63 EC 10' Radius of Service Road	298.37 ✓	298.08	CO ²⁵ ✓	
#11	298.32 ✓	298.15	CO ¹⁷ ✓	
#10	298.28 ✓	298.15	CO ¹³ ✓	
#9	298.30 ✓	298.14	CO ¹⁶ ✓	
#8	298.15 ✓	298.12	CO ⁰³ ✓	
#7	298.05 ✓	298.10	FO ⁰⁵ ✓	
#6	297.87 ✓	298.08	FO ²¹ ✓	
#5	297.85 ✓	298.06	FO ²¹ ✓	
#4	297.91 ✓	298.04	FO ¹³ ✓	
#3	298.06 ✓	298.02	CO ⁰⁴ ✓	
#2	298.20 ✓	298.00	CO ²⁰ ✓	
#1 of 34' Roadway Radius	298.30 ✓	297.92	CO ³⁸ ✓	

IMPROVED
APR 26 1951
See Dwg 8268-L & 8267-L

	Elev. Stake	Elev. Cb	Cut or fill
1+52.63 BC	297.06	298.00	FO ²⁸ ✓
1+29.63	298.33	298.09	CO ²⁴ ✓
1+06.63	298.22	298.18	CO ⁰⁴ ✓
0+83.63	298.24	298.27	CO ²⁷ ✓
0+60.63	298.37	298.36	CO ²¹ ✓
0+37.63 EC	298.24	298.46	FO ²² ✓
0+24.58 center	298.55 ✓	298.44	CO ¹¹ ✓
0+11.52 PRC	298.03	298.43	FO ¹⁰ ✓
0+00 RC 15' 16' Radius	298.19	298.33	FO ¹⁴ ✓
#6	298.21	298.75	FO ³⁴ ✓
#5	298.21	"	FO ⁵⁴ ✓
#4	298.17 ✓	"	FO ⁵⁸ ✓
#3	298.07 ✓	"	FO ⁶⁸ ✓
#2	298.13	"	FO ⁶² ✓
#1 of 10' Cb Radius	298.10	298.75	FO ⁶⁵ ✓

Island

B.M.

297.92

CP# 3 (on Hub) FB 1730
50 End of Base Line

Cont'd. from p. 6

(7)

(Red: Restake)

	Elev. of Stake	Elev. of Paving or Ck.	Cut or Fill	Station	Elev. Stake	Elev. Ck.	Cut or Fill
	297.73		FO 55				
EC 9' Radius	297.79	298.28	FO 59				
	297.76		FO 48				
#1	297.74	298.24	FO 93	0+90.67	298.39	298.50	FO 11
0+82.60 BC 9' Rad	297.27	298.21	FO 94	0+86 L. Pt. 90	298.39	298.48	FO 0.9
0+55.06	296.90	298.08	FI 18	0+57.33	297.65	298.33	FO 68
0+27.53	297.47	297.94	FO 47	0+28.67	297.78	298.19	FO 41
	296.96		FO 98		297.70		FO 39
0+00 EC 15' Rad	297.80	297.80	CO 00	0+00 EC 15' Rad	297.95	298.05	FO 10
	297.78		FO 05				
#1	296.32	297.50	FI 18	#1	297.31	298.02	FO 11
	297.89		CO 39		297.88		FO 13
Service Road							
2+81.38 BC Zoo Rd		292.356			294.39		
	294.16		CO 41		294.28		CO 14
2+55.63	295.25	293.75	CO 50	2+55.63 BC Zoo Rd	294.25		CO 03
	295.41		CO 14		295.99		CO 37
2+29.13	296.64	295.27	CO 37	2+29.13	297.73	295.62	CO 11
	296.40		FO 40		295.71		FI 29
2+02.63	297.25	296.80	CO 55	2+02.63 EC	297.80	297.00	CO 88
	297.24		FO 06				
1+77.63	297.98	297.30	CO 68				

10-27-50 Stake 15" Conc. Pipe
 Hendricks Zoo Road & Nav Memorial Bldg
 Sherman
 Crawford
 Shepard
 (Dwg 8267-L)

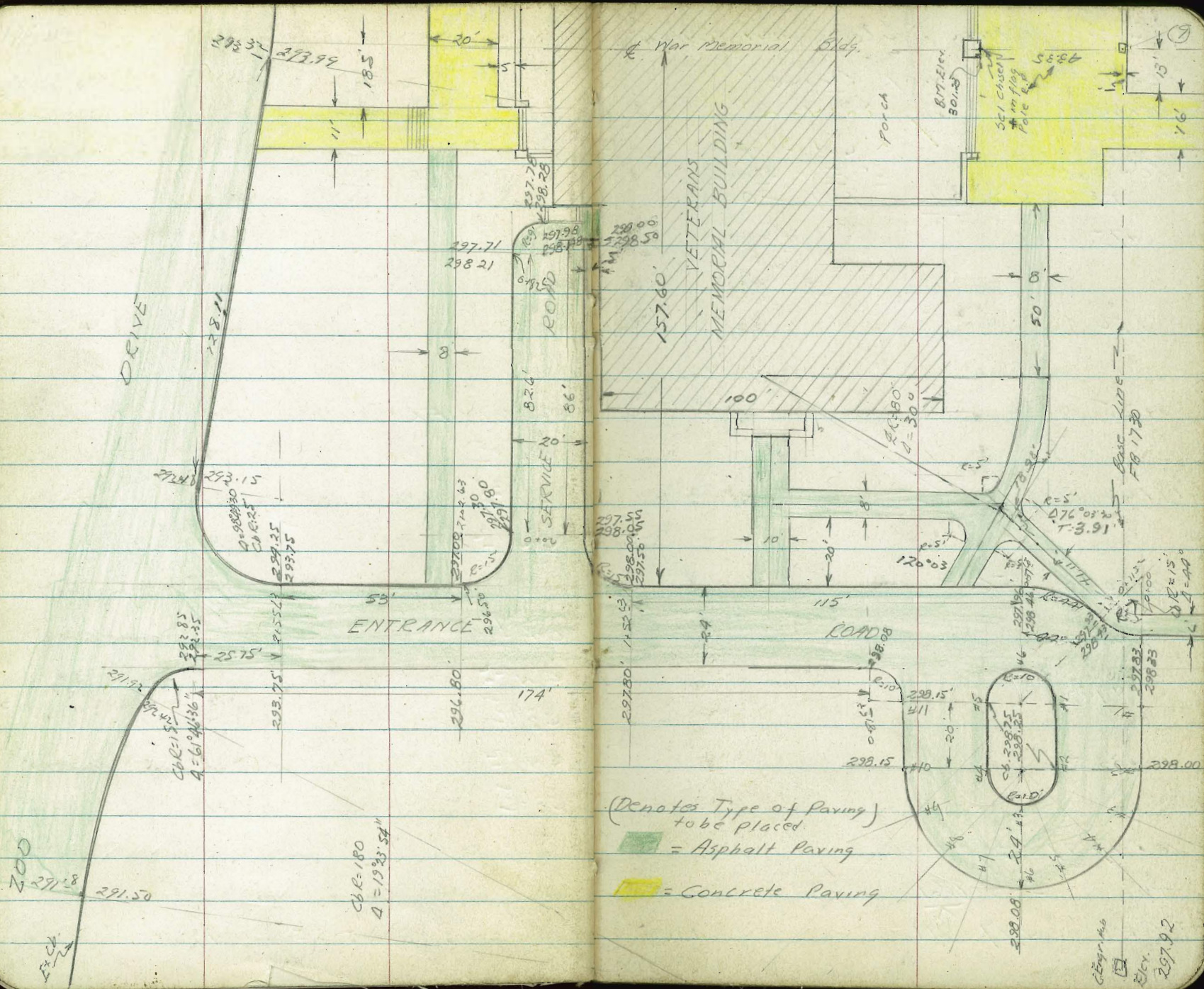
INDEXED
 APR 26 1951

Restake 11-30-50
 Moved 25' South along Ck
 Ltr

0+56.25	Ex Inlet	288.64	Ex Inlet Ex.	} Restake
0+37.50		292.79 288.74	C4 ⁰⁵	
0+18.75		293.15 288.84	C4 ³¹	
0+00 Ck Line		293.06 288.94	C4 ¹²	
0+74 End		292.93 288.64	C4 ²⁹	
0+55.5		292.95 288.73	C4 ²³	
0+37		292.77 288.82	C3 ⁹⁵	
0+18.5		292.93 288.91	C4 ⁰²	
0+00		292.66 289.01	C3 ⁶⁵	

B17

293.72 (on stake 3+45.55 P.4)



Center
Elev.
297.92

11-28-50 Slope Stake Open. Ditch

Hendricks Midway Drive
Sherman (Orig 8214-2)
Crawford 1/2:1 Slope
Shepard 6' Flat 87m Ditch.
W04 20697
TP 438 390 909 -0.48
+75

+50

+25

11+00

10+80.33 EC

+54.72

+49.12

10+33.51

10+17.91 Beg. Ditch

TP 543 8.61 293 3.18

TBM 4.97 6.11 1.14

INDEXED

APR 26 1951

Elev.

(10)

Cut Reading Rod

Rt.

Rod Reading Cut

C6¹ 8^E 14^L -598 14^L 9³ C5^{3/2}
12^L 11⁰

C5⁸ 8⁸ 14^L 596 14^L 9^L C5^E
11.7 11²

C5⁸ 8⁸ 14^L 595 14^L 8⁸ C5⁸
11.7 11⁷

C5^{3/2} 9^L 14^E 593 14^E 8^L C6^L
11⁰ 12²

C5⁹ 8^L 14^E 592 14^E 7² C6⁸
12⁰ 13²

C6^L 8^L 14^E 591 14^E 7^E C7⁰
12² 13^E

C5⁴ 9^L 14^E 590 14^E 7^L C6⁸
11^L 13²

C4⁹ 9^L 14^L 589 14^L 7⁹ C6^L
10^L 12²

C7^L 7^L 14^L -588 14^L 7^L C7⁰
13⁷ 13^E

Nail in pole #4187

on stake at cleanout Box
01110 E Midway Dr.

Cont'd. from p. 10

E

(11)

Elev.

13+95.27

Cut	Reading	Rod		Rod	Reading	Cut
C4 ²	5 ⁸	10°	6.11	10°	4 ⁷	C5 ³
9 ³						10 ⁹

13+71.81

C4 ⁷	5 ³	10°	6.10	10°	4 ²	C5 ¹
10 ¹						10 ⁵

13+48.35

C5 ⁰	5 ⁰	10°	6.09	10°	4 ⁹	C5 ¹
10 ⁵						10 ⁶

13+24.89

C4 ⁸	5 ²	10°	6.08	10°	5 ¹	C4 ⁹
10 ⁵						10 ⁵

13+01.43

C4 ⁸	5 ²	10°	6.06	10°	4 ⁶	C5 ⁴
10 ²						11 ¹

+77.97

C4 ⁸	5 ²	10°	6.05	10°	4 ⁰	C6 ⁰
10 ²						12 ⁰

+54.57

C4 ⁸	5 ¹	9 ⁹	6.03	9 ⁹	4 ⁵	C5 ⁴
10 ²						11 ¹

+25

C5 ³	4 ⁶	9 ⁹	6.01	9 ⁹	4 ¹	C5 ⁸
10 ⁹						11 ⁷

12+00

C5 ²	4 ²	9 ⁹	6.00	9 ⁹	4 ³	C5 ⁵
10 ⁸						11 ⁴

390
/

Cont'd P. 18

5.00 - 1.19 - 1.13

14+89.08 EC

14+65.65

14+42.19

14+18.73

3.90
^

Elev.

(2)

Cut Reading Rod Rod Reading Cut

on stub 15' R+ 14+89.08 MKD 50505

04² 5⁹ 10¹ - 6.18 10¹ 5⁰ 05¹
9³ 10⁷

04² 5⁸ 10¹ 6.16 10¹ 5⁰ 05¹
9³ 10⁷

04² 5⁹ 10¹ 6.15 10¹ 5¹ 05⁰
9³ 10⁵

04⁰ 6⁰ 10⁰ 6.13 10⁰ 5⁴ 04⁶
9⁰ 9⁹

11-29-50 Stake 19114 for Paving
 Hendricks Block 143
 Sherman University Heights
 Crawford

Shepard
 NO # 31230

	Elev. State	Elev. Grade	Cut or Fill	offset		Elev. Stake	Elev. Grade	Cut or Fill	offset
2+60	303.71	300.60	C3 ¹¹	3'		300.68	300.30	C0 ³⁸	2'
2+40	304.06	301.00	C3 ⁰⁶	2'		301.23	300.70	C0 ⁵³	2'
2+20	304.04	301.49	C2 ⁵⁵	0.4'		301.58	301.19	C0 ³⁹	2'
2+00	305.10	302.08	C3 ⁰²	1'		300.80	301.28	F0 ⁹⁸	2'
1+80	309.51	302.77	C6 ⁷⁴	2'		300.89	302.47	F1 ⁵⁸	2'
1+60	309.82	303.50	C6 ³²	2'	T.P.	304.82	303.20	C2 ⁰⁸	0.08
1+40	308.31	304.23	C4 ⁰⁸	2'		305.78	303.93	C1 ⁸⁵	(0.45 m)
1+20	308.00	304.97	C3 ⁰³	2'		305.05	304.67	C0 ³⁸	2'
1+00	309.86	305.71	C4 ¹⁵	2'		305.10	305.41	F0 ³¹	2'
0+80	309.28	306.43	C2 ⁸⁸	2'		305.28	306.13	F0 ⁸⁵	2'
0+60	308.19	307.16	C1 ⁰²	2'		305.24	306.62	F1 ³⁸	2'
0+40	311.11	307.90	C3 ²¹	3'		306.28	306.71	F0 ⁴³	2'
0+20	310.84	308.63	C2 ²¹	3'		304.84	306.43	F1 ⁵⁹	2'
0+00	d. Lincoln	308.89	308.85	Ex. Pav.		305.76	305.72	Ex. Pav.	

INDEXED
 APR 26 1951

BM 12.74 303.33
 TP 0.46 302.87
 Cont'd from P. 14

NWBP Howard & Florida

	Elev. Stake	Elev. Grade	Cut or Fill	offset		Elev. Stake	Elev. Grade	Cut or Fill	offset
5+99.20	304.05	304.02	Ex. Paving		302.43	302.43	Ex. Pav.		
5+80	305.04	303.69	C1 ³⁵	0.48'	302.77	302.00	FO.23	2'	
5+60	308.02	303.27	C1 ⁷⁵	0.44'	302.30	302.97	FO ⁶⁷	2'	
5+40	303.64	302.74	CO ⁹⁰	2'	302.55	302.44	CO ¹¹	0.17'	
5+20	307.42	302.06	C1 ³⁶	2'	300.95	301.76	FO ⁸¹	2'	
5+00	302.19	301.27	CO ⁹²	2'	300.84	300.97	FO ¹³	0.20'	
4+80	300.86	300.47	CO ³⁹	2'	299.73	300.17	FO ⁴⁴	2'	
4+60	299.54	299.83	FO ²⁹	2'	298.72	299.52	FO ⁸¹	2'	
4+40	299.17	299.35	FO ¹⁸	2'	TP 298.94	298.35	299.05	FO ⁷⁰	2'
4+20	299.03	299.01	CO ⁰³	2'	297.82	298.71	FO ⁸⁹	2'	
4+00	299.13	298.83	CO ³⁰	2'	297.93	298.53	FO ⁶⁰	2'	
3+80	299.89	298.80	C1 ⁰⁸	2'	298.63	298.50	CO ¹³	0.15 in	
3+60	299.94	298.93	C1 ⁰¹	2'	297.96	298.63	FO ⁶⁷	2'	
3+40	301.79	299.20	C2 ⁵⁹	3'	299.58	298.90	CO ⁶⁸	0.16 in	
3+20	301.92	299.55	C2 ³⁷	3'	298.68	299.25	FO ⁵⁷	0.24 in	
3+00	301.97	299.90	C2 ⁰⁷	3'	298.57	299.60	F1 ⁰³	2'	
2+80	302.61	300.25	C2 ³⁶	3'	298.77	299.95	F1 ¹⁸	2'	

Restate Cbs
Zoo Road

(15)

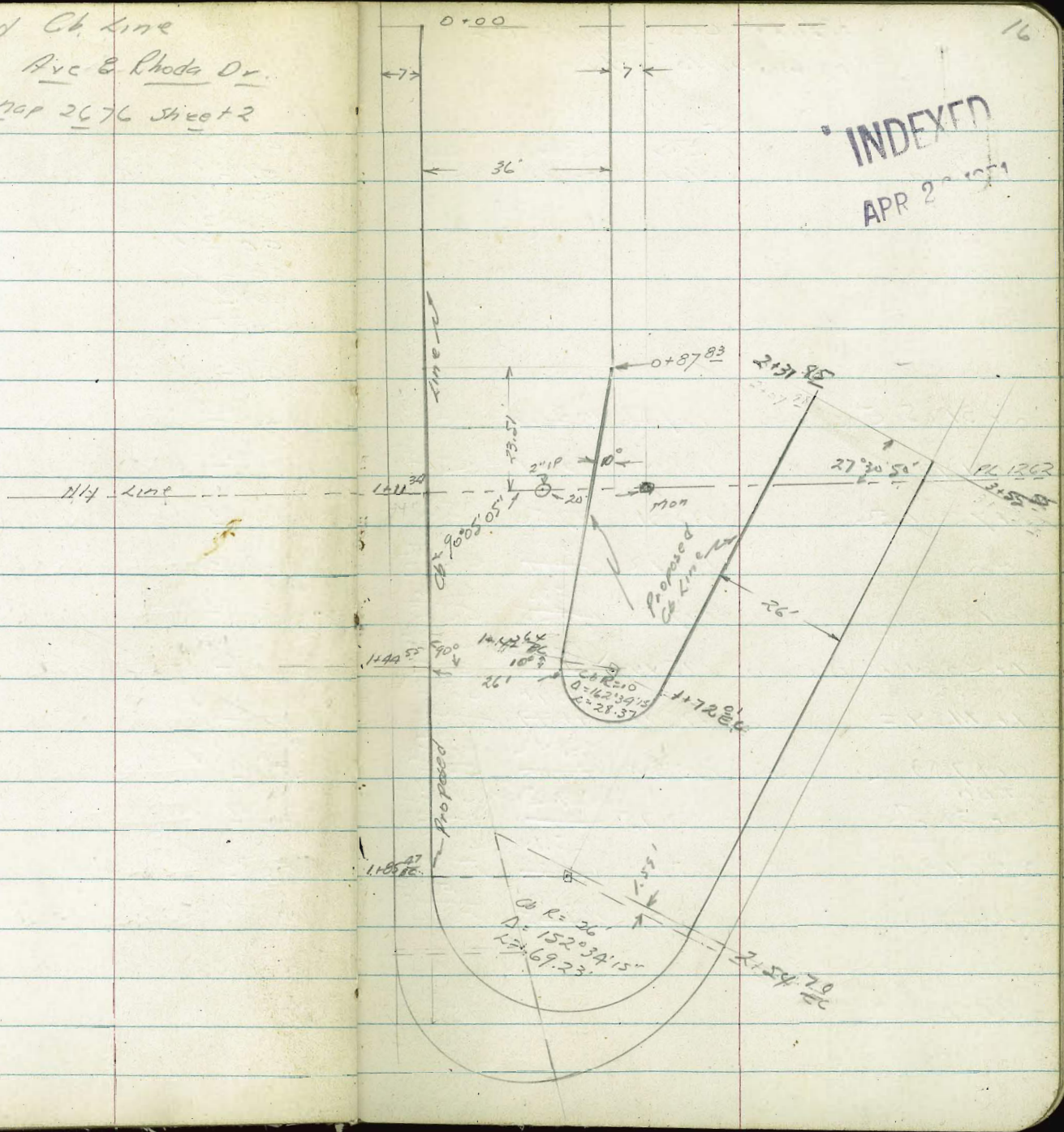
INDEXED
APR 26 1951

3+25.18 PRC	Dwig 8267-1	293.36	292.60	CO 76 ✓
3+11.52	End cb. inlet	293.64	292.44	CO 20 ✓
3+07.02	Reg cb. inlet	293.25	292.44	CO 81 ✓
2+84.27		292.70	292.48	CO 22 ✓
2+63.82		292.84	292.58	CO 25 ✓
2+43.36		293.31	292.73	CO 48 ✓
2+22.91		293.40	292.96	CO 44 ✓
2+02.45 W		293.75	293.20	CO 55 ✓
1+82 EC	See Restate Diary	293.79	293.42	CO 36 ✓
1+62		294.06	293.59	CO 47 ✓
1+42		294.11	293.75	CO 36 ✓
1+22		293.97	293.88	CO 09 ✓
1+02		294.03	294.00	CO 03 ✓
0+82		294.32	294.11	CO 21 ✓
0+50.18		294.37	294.21	CO 16 ✓
0+18.36 EC		294.38	294.32	CO 05 ✓
# 3		294.29	294.38	FO 09 ✓
# 2		294.27	294.44	FO 07 ✓
# 1	294.28	294.50	FO 22 ✓	
BC	294.34	294.55	FO 21 ✓	
- 27.38 on Park Blvd		294.64	EV CB	

12-5-50.
 Hendriks
 Sherman
 Shepard
 Crawford
 NO# 25020

Proposed Ch. Line
 Cabrillo Ave & Rhoda Dr.
 Ref. Map 2676 Sheet 2

INDEXED
 APR 2 1951



Stake Cbs Rhoda Dr.
E Cabrillo Ave

17

Station	Lt.			Elev. Stake	Elev. Gr.	Cut or Fill	Rt.	Elev. Stake	Elev. Gr.	Cut or Fill
	Elev. Stake	Elev. Gr.	Cut or Fill							
				3+55.55 End	198.22	187.82	C10 ⁴⁰			
				3+25.63	196.18	184.23	C11 ²⁵			
				2+95.71	193.37	180.64	C12 ⁷³			
				2+75.21	190.35	178.18	C12 ¹⁷			
				2+54.70 EC	184.85	175.72	C9 ¹³			
				#5	180.64	175.90	C5 ³⁴			
2+31.85 End	189.56	186.69	C2 ⁸⁷	#4	179.93	175.22	C4 ⁷¹			
2+01.93	188.14	183.09	C5 ⁰⁵	#3	178.40	173.17	C3 ²³			
1+72.01 EC	185.31	179.50	C5 ⁸¹	#2	176.95	175.11	C1 ⁸⁴			
#2	181.92	177.89	C3 ⁹⁸	#1	175.46	175.09	C0 ⁴²			
#1	177.28	175.53	C1 ⁷⁵	1+95.47 BC 26' Radius	174.34	174.50	FO ¹⁶			
1+43.64 BC 10' Radius	175.44	173.80	C2 ⁵²	1+44.55	171.50	171.92	FO ⁴²			
1+11.69 ± Puckto line	176.71	176.94	C5 ⁸⁰	1+11.34 Puckto line	169.49	169.83	FO ³⁴			
0+87.83 L. on Lt.	173.34	169.42	C3 ²²	0+87.83	168.00	168.35	FO ³⁵			
TBM.		167.58	C1 ¹⁷	(0+21" Pipe & Cap, 1170 on H.L. (169.28) P.L. 1262.)	166.30	166.50	FO ²⁰			
0+58.56	168.75	165.14	C0 ⁰⁴	0+58.56						
0+29.28	165.78	163.92	FO ¹⁵	0+29.28	164.45	164.65	FO ²⁰			
0+00	163.77	161.75	FO ¹⁰	0+00	162.71	162.81	FO ¹⁰			

B.177

155.01

Hwy 7' L&T Cabrillo & Pearl

Cont'd from P12
Slope stake open Ditch
Midway Dn

2
Elev. 18

16181.30 EC
16132.43 BC

Cut	Reading	Rod - 6m	Rod	Reading	Cut
CH ²	4 ⁴	9 ¹	-6.28	9 ¹	4 ² CH ²
10 ¹					10 ¹

16100

CH ¹	4 ⁹	9 ⁰	-6.25	9 ⁰	4 ⁷ CH ³
9 ²					9 ⁵

15175

CH ¹	4 ⁹	9 ⁰	-6.24	9 ⁰	4 ⁷ CH ³
9 ²					9 ⁵

15150

CH ¹	4 ⁹	9 ⁰	-6.22	9 ⁰	4 ⁷ CH ³
9 ²					9 ⁵

15125

CH ²	4 ⁸	9 ⁰	-6.20	9 ⁰	4 ⁷ CH ³
9 ²					9 ⁵

1418908

CH ⁰	5 ⁹	9 ⁰	-6.18	9 ⁰	3 ⁹ CH ¹
9 ⁰					10 ⁷

B12 3.91 2.78
N
-1.13
20

on stake 15' RT 1418908

12-11-50 Stake Conc Apron End of
 Hendricks 60" Conc. Pipe Midway Dr.
 Shepard
 Crayford
 Box. 8214-L

W.O. #20697

- Lt. Elev. Stake Elev. Gr
 Lt.

INDEXED
 APR 25 1951

Cut. Rt. Elev. Stake Elev. Gr Cut
 Rt.

19

10+32.91 End Apron 4.64 -0.57 -5.89

CS²² 1 3.20 0.87 -5.89 C6.76

10+25.41 4.58 -0.51 -5.88

CS³⁷ 2.39 1.68 -5.88 C7.52

10+17.91 POC 2.16
 BC. of Apron 1.91 -5.88

C7.72 2.98 1.09 -5.88 C6.97

Corrected 9.95 4.07 9.95 -6.01 -5.88

FL Ex 60" Pipe

B.M. 5.07 3.94 -1.13

on Stake 157 Rk 14189.08 (R.18)

State Water Services

Chalcedony St

Lamont to Academy Southside

Dwg 8096-4

INDEXED

Apr 26 1951

Elev. of East Stake

Elev. Grade

Back edge of Sidewalk
10' above G. Elev.

20
Cost of fill

B.M.		114.26	114.28	CK top cb. 5+81		
5+50					114.77	115.52
						FO ⁷⁵ ✓
5+00					117.26	117.92
						FO ⁶⁶ ✓
4+50					119.93	120.41
						FO ⁴⁸ ✓
4+00					121.46	122.19
						FO ⁷³ ✓
3+50					122.65	123.22
						FO ⁵⁷ ✓
3+00					123.89	123.77
						CO ¹³ ✓
2+50					124.11	124.22
						FO ¹¹ -
2+00					124.41	124.67
						FO ²⁶ ✓
1+50					124.66	125.12
						FO ⁴⁶ ✓
0+35					125.35	125.88
						FO ⁵³ ✓

0+00 East line Lamont

B.M. 126.03 4' L&T SE. Cor. Lamont & Chalcedony

12-12-50
Hendricks
Shepard
Crawford
MVO# 20629

Rough
Slope Stake Redwood

Herman to 32nd.
Orig 7936-L

Elev. Pk Rod Reading

2+57

294.69 50 9.7

$\frac{299.71}{A}$

1+98.5

294.48 +14? 14?

1+10

294.27 +14 $\frac{1}{2}$ 12 $\frac{1}{2}$

T.P.

2.00 2798.3 1247 277.83

1+00

294.22 +39 7 $\frac{3}{4}$

0+60

294.36

T.P. 283 290.30 12.24 287.47

B.M. 450 299.71 295.21

INDEXED

APR 26 1951

or Fill
Cut 1/2' from 20'

Elev. Pk Rod Reading Cont. of file

F4?
7'

294.69 50 11 $\frac{5}{8}$ F6 $\frac{5}{8}$
9.8

$\frac{299.71}{II}$

F29 $\frac{1}{2}$
44L

294.48 +14 $\frac{7}{8}$ 19 $\frac{5}{8}$ F34 $\frac{2}{8}$
57 $\frac{3}{8}$

F27 $\frac{0}{8}$
40 $\frac{5}{8}$

144 $\frac{294.27}{294.27}$ +14 $\frac{9}{8}$ 10 $\frac{8}{8}$ F25 $\frac{3}{8}$
38 $\frac{0}{8}$

F11 $\frac{1}{8}$
16 $\frac{7}{8}$

294.22

294.36

NE 7' L&T Redwood @ Herman
(FB1762 P-70)

Stake 8" ESVC. Sewer
 Redwood St.
 Herman to 32nd.
 DWG-7936-L

INDEXED
 APR 25 1951

2+64		11.80	251.27		FLEX. MH.	
		5.72	257.35	25100	6.35 Meet. Ex.	
2+34		5.39	257.68	25183	5.85	
2+04	2.59	263.07	TR 11.99	260.48	25265	7.83
1+84	End Conc. Encasement	11.96	260.51	253.20		7.31
1+74	Exc.	12.10	260.37	253.47		6.90
1+64		11.50	260.97	253.83		7.14
1+54.0	Bvc.	10.45	262.02	254.49		7.53
1+26.4		8.40	264.07	256.23		7.84
0+98.8		6.37	266.10	257.97		8.13
0+71.2		6.36	266.11	259.71		6.40
0+43.6		3.34	269.13	262.45		7.68
0+16	Reg. Conc. Encasement	0.77	271.70	263.19		7.85
0+00	Ex. M.H. to North	8.19	264.28	264.19		Ex F.L. MH. 0+00
T.P.	0.39	272.47	10.91	272.08		Rim Sewer MH 0+00
T.P.	0.44	282.99	13.00	282.55		Trail in Power Pole
B17.	0.34	295.55		295.21		N.E. 7' L&T Redwood & Herman

12-26-50
Hendricks
Shepard
Crawford
W0# 20629

Stake 30" Culvert.
Redwood St.
Dirig. 7936-L

23

INDEXED
APR 26 1951

1+60

13.30 259.47 259.00

047

1+28

11.86 260.91 259.90

C1 09

0+96

10.92 261.55 260.80

C1 05

0+64

9.61 263.16 261.70

C1 46

0+32

8.82 263.95 262.60

C1 35

0+00

7.66 265.11 263.50

C1 61

BM

0.69 272.77

272.08

(Rim MH. P-22)

12-27-50 State Cbs Myrtle Ave
 Hendricks North Side
 Shepard Florida to Alabama
 Cranford
 W.O.# 20007

24

INDEX

APP 20 1957

	Prop. Line		3.04	215.45	214.67	CO 78
1+50	E.C. Ch. Alley		3.25	215.24	214.53	CO 71
1+50	P.I.				214.47	
1+47	BC 3' Radius		3.25	215.24	214.02	CI 22
1+30			5.25	213.24	211.65	CI 59
1+20					210.38	
1+10			7.78	210.71	208.92	CI 79
T.P.	8.95	218.49	1.08	209.54		
0+90		X	3.44	207.18	206.20	CO 98
0+71.7	End. Ex. Ch.		6.14	204.48	204.02	+46
0+70						
0+50			7.90	202.72	202.42	+30
0+10	EC			200.50	200.30	+20

T.P. 11.68 210.62 13.63 198.94 { NE Myrtle }
 T.P. 0.57 212.57 13.15 212.00 { E Florida }
 T.P. 1.01 225.15 12.75 224.14
 B.M. 0.89 236.89 236.00 S.V.B.P. Cypress Co Florida

18T } 3' North of North Line Myrtle
 } 7' West of East Line Florida

1-2-51 Restake Cbs
 Hendricks
 Shepard War Memorial Bldg
 Crawford
 VIO # 20671
 Dwg. 8267-4

2+2291 #2		293.40	293.96	CO 44 ✓
2+07.46 #1		293.65	293.20	CO 45 ✓
1+82	BC	293.79	293.42	CO 37 ✓
1+62		294.07	293.59	CO 48 ✓
1+42		294.11	293.75	CO 36 ✓
1+22		293.96	293.88	CO 08 ✓
1+02		294.02	294.00	CO 02 ✓
0+82		294.30	294.11	CO 19 ✓
0+50.18		294.32	294.21	CO 4 ✓
0+1836	EC	294.36	294.22	CO 04 ✓
#3		293.96	294.38	FO 46 ✓
#2		295.73	294.44	CI 29 ✓
#1		294.27	294.50	FO 23 ✓
BC (27.38)		294.21	294.55	FO 34 ✓
Beq. near Cb Part Bldg		294.70	294.64	Ex. 66

INDEXED
 APR 20 1951

Cont'd. from p. 25

26

5+80.59	294.48	293.94	CO 54 ✓
5+56.30	294.30	293.87	CO 43 ✓
5+32.01	294.38	293.80	CO 58 ✓
5+07.72	294.25	293.72	CO 53 ✓
T.P. 4+83.43	294.20	293.64	CO 55 ✓
4+59.4	294.19	293.56	CO 63 ✓
4+34.85	294.17	293.48	CO 62 ✓
4+10.56	294.31	293.40	CO 91 ✓
3+86.27	293.83	293.32	CO 51 ✓
3+68.91	293.77	293.20	CO 57 ✓
3+45.55	—	293.00	
3+25.18 P.R.C.	291.85	292.60	FO 75 ✓
3+11.52 End cb inlet	291.79	292.44	FO 65 ✓
3+07.02 Beg cb inlet	291.76	292.44	FO 68 ✓
2+84.27	292.71	292.48	CO 73 ✓
2+63.82 #4	292.89	292.58	CO 31 ✓
2+43.36 #3	293.33	292.73	CO 60 ✓

Cont'd from p. 26

27

29790

on Hub south end
of Base Line

0+00 Beg New Ck Zook Road	291.50	291.50	EC
0+20.31	292.03	291.81	CO ²² ✓
0+40.62	292.45	292.12	CO ³³ ✓
0+60.94 PCC	292.42	292.42	CO ⁰⁰ ✓
# 1	291.78	292.65	FO ⁸⁷ ✓
EC 15' Radius	292.07	292.85	FO ⁷⁸ ✓
EC 25' Radius	294.39	294.25	CO ¹⁴ ✓
# 3	293.36	293.78	FO ³⁹ ✓
# 2	292.99	293.37	FO ³⁸ ✓
# 1	293.16	293.17	FO ⁰¹ ✓
7+75 BC 25' Radius	293.14	293.15	FO ⁰¹ ✓
7+40.95	294.56	293.46	CI ¹⁰ ✓
7+06.89	294.30	293.77	CO ⁵³ ✓
6+86.89	294.43	293.89	CO ⁵⁴ ✓
6+66.89	294.06	293.97	CO ⁰⁹ ✓
6+46.89 EG			
6+21.32 = Equa.	294.60	293.99	CO ⁶¹ ✓
6+00.95	294.64	293.97	CO ⁶⁷ ✓

1.3-51 Stake Cbs Midway Drive
 Hendricks West side - Ollie St.
 Shepard to West Point Loma Blvd.
 Cranford
 No # 20697

Dwg. 8261-L RT

INDICATED
 APR 20 1951

	Elev. Stake	Elev. Grade	Cut or Fill		Elev. Stake	Elev. Gr.	Cut or Fill
3+00	2.66	3.20	FO ⁵⁴ ✓	1190 ⁰⁴ EC. Midway	2.09	1.69	CO ⁴⁰
2+75	2.55	3.09	FO ⁵⁴ ✓	#2	1.71	1.55	CO ¹⁵
2+50	3.19	2.97	CO ²² ✓	#1	0.99	1.15	FO ¹⁵
2+25	3.04	2.86	CO ¹⁸ ✓	B.C. Max. v. 116.	1.00	0.96	CO ⁰⁴
2+00	3.12	2.75	CO ³⁷ ✓	EC. Max. v. 116.	0.27	0.75	FO ⁴⁸
1+80.04	3.32	2.66	CO ⁶⁶ ✓	#2	0.28	0.90	FO ⁵²
1+55.04	2.78	2.56	CO ²³ ✓	#1	0.82	1.24	FO ⁴³
1+30.04	2.93	2.48	CO ⁴⁵ ✓	1+20.04	B.C. 0.97	1.39	FO ⁴²
1+00	3.39	2.39	C ¹⁰⁰ ✓	Midway	1.34	1.45	FO ⁴⁴
0+75	1.45	2.31	FO ⁸⁶ ✓	0+75	1.38	1.52	FO ¹⁴
0+50	0.77	2.24	F ¹⁴⁷ ✓	0+50	1.34	1.59	FO ²⁵
0+25	0.51	2.16	F ¹⁶³ ✓	0+25	1.35	1.66	FO ³¹
0+00 EC. Midway	0.81	2.09	F ¹²⁸ ✓	0+00	0.98	1.72	FO ²⁵
#2	1.54	2.06	FO ⁵² ✓	0+35	0.90	1.83	FO ⁹³
#1	1.50	2.02	FO ⁵² ✓	0+60	0.71	1.90	F ¹⁹
B.C. on Ollie	1.55	1.99	FO ⁴⁴ ✓	Ollie			
B.M.		2.23		Chisel 17 in Cor. 3.01	1190.04	4.5' Lt.	(FR 2099 P. 10)

Cont'd. from P. 28

Rt

Elev. Stake Elev. Grade Cut or Fill

	Elev. Stake	Elev. Grade	Cut or Fill
6+67.67 EC	4.97	4.94	Exc. Cb.
#1 6+62.08	4.76	4.89	FO ¹³
6+56.50 BC 40' Rad	5.07	4.84	CO ²³
6+31.27	2.97	4.91	F1 ⁷⁴
6+06.03	3.15	4.59	F1 ⁴⁴
5+80.80 B.C.	4.01	4.47	FO ⁴⁴ ✓
5+50	3.84	4.33	FO ⁴⁹ ✓
5+23	3.57	4.21	FO ⁶⁴ ✓
5+00	3.67	4.11	FO ⁴⁴ ✓
4+75	3.70	4.00	FO ³⁰ ✓
4+50	3.58	3.88	FO ³⁰ ✓
4+25	3.35	3.77	FO ⁴² ✓
4+00	3.51	3.65	FO ¹⁴ ✓
3+75	3.25	3.54	FO ²⁹ ✓
3+50	3.49	3.43	CO ⁰⁶ ✓
3+25	3.42	3.31	CO ¹¹ ✓

Lt.

29

Sta. Elev. Stake Elev. Grade Cut or Fill

Sta.	Elev. Stake	Elev. Grade	Cut or Fill
6+83.50	3.63	4.74	F1 ¹¹
6+59.65	3.17	4.58	F1 ⁴¹
6+35.81	3.02	4.42	F1 ⁴⁰
6+11.97	3.56	4.26	FO ⁷⁰
5+88.13	3.59	4.15	FO ⁵²
5+80.80	3.26	4.10	FO ⁷⁴
5+50	3.28	3.92	FO ⁶⁴
5+25	2.81	3.77	FO ⁹⁶ ✓
5+00	2.79	3.61	FO ⁸² ✓
4+75	2.91	3.46	FO ⁵⁵ ✓
4+50	2.71	3.30	FO ⁵⁹ ✓
4+25	2.17	3.15	FO ⁹⁸ ✓
4+00	2.51	2.99	FO ⁴⁸ ✓
3+75	2.60	2.84	FO ²⁴ ✓
3+50	2.45	2.68	FO ²³ ✓
3+25	2.24	2.53	FO ²⁹ ✓
3+00	2.04	2.37	FO ³³ ✓
2+75	1.80	2.22	FO ⁴² ✓
2+50	1.89	2.06	FO ¹⁷ ✓
2+25	1.83	1.91	FO ⁰⁸ ✓

1-4-51 Slope stake Redwood St
 Hendricks/Herman to 32nd.
 Crawford
 No. 20629

INDEXED
 APR 20 1951

30

	Elev. Gr. at P.L.	Grade Rod	Reading	Fill 1/2:1 Slope	Elev. Gr. at P.L.	Grade Rod	Reading	Fill 1/2:1
2+57	294.69				294.69			
2+18	294.55	+18°	8 ²	F26 ² 39 ³	294.55	+18°	9 ⁵	F27 ⁵ 41 ³
1+79	294.41	+17 ⁹	9.5	F27 ⁴ 41 ¹	294.41	+17 ⁹	12 ¹	F30 ⁰ 45 ⁰
1+40	294.27	+17 ⁷	5 ³	F28 ⁰ 34 ⁵	294.27	+17 ⁷	4 ²	F21 ⁹ 33 ⁰
T.P. 4+6	276.54		272.08	10m sewer mt.				
1+20	294.22	+11 ⁶	6 ⁸	F18 ⁴ 27 ⁶	294.22	+11 ⁶	+2 ⁴	F9 ³ 13 ⁸
TP 0+0	282.65	10.47	282.55					
1+00	294.22	+1 ²	8°	F9 ³ 13 ⁸	294.22	+1 ²	2°	F3 ² 4 ⁸
B.M. 10.47	293.02		282.55					
B.M.			295.21	11.5 7.287	Herman Co Redwood			

Profile of Exist. Pav.
Midway Dr.

31

1155.04

INDEXED
APR. 26 1951

G. 20 G 20 G

0 86 1 40 1 78 1 73 2 03

1130.04 H.L. Nashville

0 70 1 31 1 72 1 62 1 93

1400

0 91 1 35 1 64 1 60 1 84

1700

0+50

1 05 1 39 1 61 1 50 1 69

0+00 EC. Ch Ret. on Rt.

1 19 1 38 1 57 1 37 1 55

0-35 G Office

1 29 1 37 1 65 1 59

Profile Midway Dr Contd

22

G 20 20 G

4100

2⁴⁵ 2⁵¹ 3⁰⁷ 2⁹¹ 3¹³

3450

2¹⁴ 2²⁴ 2⁷⁷ 2⁶⁸ 2⁹⁰

3400

1⁸³ 1⁹¹ 2⁴⁴ 2³⁸ 2⁶⁸

2450

1⁵² 1⁶¹ 2¹⁹ 2²³ 2⁴³

2400

1²¹ 1³³ 1⁹⁶ 1⁹⁷ 2²⁴

1480.04

1⁰¹ 1¹⁹ 1⁸⁵ 1⁸⁴ 2¹⁴

20

2

20

G

5+8080

 $3 \overline{56}$ $3 \overline{58}$ $3 \overline{96}$ $3 \overline{64}$ $3 \overline{92}$

5+50

 $3 \overline{38}$ $3 \overline{36}$ $3 \overline{82}$ $3 \overline{49}$ $3 \overline{74}$

5+00

 $3 \overline{07}$ $3 \overline{12}$ $3 \overline{64}$ $3 \overline{34}$ $3 \overline{56}$

4+50

 $2 \overline{76}$ $2 \overline{77}$ $3 \overline{25}$ $3 \overline{09}$ $3 \overline{23}$

INDEXED

1130.04 rd line Nashville

1100

0150

0100 ECCB Ret. R.

0-35 K Office

0-60 H.L. Office

BM 233

Grades Midway Dr.

INDEXED

Gutter 26' 1951

APR 20 '11

0.88

~~0.70~~

0.91

1.05

1.19

1.29

1.26

~~1.42~~~~1.43~~~~1.56~~~~1.62~~~~1.66~~

1.95

~~1.77~~

1.92

~~1.75~~

35

1.87

~~1.75~~

37

1.82

~~1.75~~

1.79

~~1.75~~

1.77

~~1.75~~

Finish Paving

20' Rt.

Gutter
as poured~~1.94~~

1.89

~~1.74~~

1.69

1.66

1.92

1.84

1.69

1.55

1.44

1.36

34

E.V.

Cont'd.

35

	Gutter Lt.	20' Lt.	\$	20' Rt.	Gutter Rt.
3+50	2.14	2.59	2.96 2.97 2.86 34	F 292 2.77	2.90
3+00	1.83	2.30	2.68 2.69 2.59 34	2.72	2.68
2+50	1.52	2.01	2.40 2.37 2.32 35	2.46	2.43
2+00	1.21	1.72	2.12 2.10 2.05 33	2.23	2.24
1+80.0x 5 line Nashville	1.07 1.04	1.60	2.03 1.99 1.94 34	2.13	2.14
1+55.0x 4 Nashville	0.95 0.85	1.48	1.98 1.86 1.83 35	2.01	2.02

Cont'd.

				4		36
					20' Lt	45. Panel
						Gutter Lt.
6+75					4.86	
6+50					4.66	
6+37 (Traffic Signal Box)			3.88		4.46	4.20
6+00					4.37	
					4.26	
5+80-80			3.56	4.04 3.92	4.16 4.10 .52	4.22 4.10 3.92
					4.09	
5+50			3.38	3.84 3.75	3.99 3.94 .53	4.04 3.94 3.74
					3.81	
5+00			3.07	3.56 3.46	3.72 3.67 .50	3.78 3.80 3.71 3.56
					3.53	
4+50			2.76	3.26 3.17	3.45 3.40 .49	3.43 3.45 3.33
					3.25	
4+00			2.45	2.97 2.88	3.17 3.13 .46	3.19 3.31 3.22 3.13

Stake & Island Curbs
Midway Drive

1114.90 BC 50' Radius

1108

0168

0128

0105.14 EC 50' Radius

0-10 nose of Island

INDEXED

APR 20 1951

37

172 ~~2.44~~ ~~2.32~~ ~~2.25~~ E101.61. F0⁶⁰ F0⁵³ F0⁷²

170 ~~2.43~~ ~~2.32~~ ~~2.25~~ F0⁶¹ F0⁵³ F0⁷²

162 ~~2.39~~ ~~2.32~~ ~~2.25~~ F0⁶⁰ F0⁶³ F0⁷⁷

166 ~~2.35~~ ~~2.31~~ ~~2.25~~ F0⁶¹ F0⁵³ F0⁶⁹

160 ~~2.33~~ ~~2.25~~ F0⁶¹ F0⁵³ F0⁷²

162 ~~2.32~~ ~~2.25~~ F0⁷⁰ F0⁶³

L Island Curbs Contd.

198

38

3+01

2.46

3.20

~~2.75~~
3.10

~~F067~~

~~F064~~
F074

2+61

2.27

2.97

~~2.77~~
2.88

~~F066~~
F061

F020

2+21

2.10

2.75

~~2.72~~
2.67

~~F062~~

~~F057~~ F055

1195.18 EC SW Radius

1.95

2.60

~~2.58~~
2.53

~~F063~~

~~F058~~ F065

1180.04 Nose of Island

1.86

2.53

~~2.47~~
2.44

~~F062~~

~~F058~~ F067

1130.04 Nose of Island

1.74

2.45

~~2.39~~
2.27

~~F053~~

~~F059~~ F071

Island Curbs Cont'd

29

5+41

E/CY
Nail

3.82

4.55

~~4.44~~

~~4.39~~

FO65

~~FO77~~

FO73

5+01

3.65

4.32

~~4.22~~

~~4.17~~

FO57

~~FO55~~

FO67

4+61

3.44

4.09

~~4.01~~

~~3.96~~

FO77

~~FO56~~

FO65

4+21

3.23

3.86

~~3.77~~

~~3.74~~

FO55

~~FO57~~

FO63

3+81

2.97

3.64

~~3.54~~

~~3.53~~

FO64

FO56

FO67

3+41

2.73

3.42

~~3.38~~

~~3.27~~

FO63

FO58

FO69

Island Curbs Cont'd.

40

7+21

5.83 (297)
-52

7+01

5.62 -
-58

6+81

To 5.42 5.42 Meet
-53

6+597

4.67 / 5.23 FO56

6+37

4.39 5.05

6+21

4.19 4.93 FO74

518080

3.99 ~~4.76~~ FO62
4.61 FO63

1-19-51 Stake Sewer A St
 Hendricks
 Allen
 Shepard
 240# 20009

47th St to 200' West.

& Cotton

5T 41
 2 1/2" I.P.

INDIVIDUAL
 APR 25 1951

2+00 D.E.

5X

2+00 DE	485	212.35	206.15	6.20 ✓
1+75	480	212.70	205.97	6.72 ✓
1+50	449	212.71	205.80	6.91 ✓
1+25	467	212.53	205.62	6.91 ✓
1+00	504	212.16	205.45	6.71 ✓
0+75	551	211.69	205.27	6.42 ✓
0+50	584	211.36	205.10	6.26 ✓
0+25	612	211.08	204.92	6.16 ✓
0+00	1275	212.20	204.75	5+46 (E+1st.)
		Ex. M.H.	204.45	Main line 47th

5' ←

5'

5'

5'

5'

5'

5'

0+00 Ex. M.H.

5T

FD L&T

N

1-20-57 Stake 8" V.C. Sewer
 Hendricks 33rd. & University
 D. Smith
 Shepard
 Jisson
 WOH 20398

INDEXED
 APR 1957

42

3+44.78 DE	320.78	306.18 309.09	14.60 11.74 ✓
3+23.78	321.25	306.90 308.72	14.25 12.93 ✓
3+02.78 MH #1	321.35	307.61	13.74 ✓
2+81.58	321.94	308.33	13.61 ✓
2+60.40	322.67	309.05	13.62 ✓
2+39.22	322.29	309.77	12.52 ✓
2+39.22 MH #2 R4	322.61	309.77	12.84 ✓
3+00	322.88	310.57	12.31 ✓
1+75	322.98	311.08	11.90 ✓
1+50	323.18	311.59	11.59 ✓
1+25	323.44	312.60	11.34 ✓
1+00	323.78	312.61	11.17 ✓
0+75	324.38	313.12	11.26 ✓
0+50	324.69	313.63	11.06 ✓
0+25	325.25	314.14	11.11 ✓
0+00 MH #3	325.33	314.67	10.66 ✓

B.M.

322.10 - 322.15

SW BP Univ & Mile

420-51
Hendricks
D. Smith
Shepard
Sisson
W0# 20397

Stake Storm Drain
33 rd & Univ. to Lincoln
and Boundary
DWG. 7862L

INDEXED
APR 26 1951

42

3+25	336.81	320.09	16.72 ✓
3+00	335.04	319.68	15.36 ✓
2+75	334.62	319.25	15.37 ✓
2+50	332.77	318.83	13.94 ✓
2+25	332.35	318.40	13.95 ✓
2+00	331.9	317.98	13.21 ✓
1+75	330.11	317.55	12.56 ✓
1+50	IP. 328.97	317.13	11.84 ✓
1+25	327.51	316.68	10.83 ✓
1+00	327.08	316.26	10.82 ✓
0+80.35 EG	326.60	315.93	10.67 ✓
# 2	326.33	315.58	10.75 ✓
# 1	325.86	315.24	10.65 ✓
0+19.61 BC	325.55	314.88	10.67 ✓
0+11.16 B+K	325.48	314.75	11.73 ✓
0+00	325.30	314.25	11.05 ✓

INDEXED

Storm Drain Contd.

44

Cuts

6+89.74 BC	339.13	326.29	12.84 ✓
6+75	338.48	326.05	12.43 ✓
6+50	337.50	325.63	11.87 ✓
6+25	337.17	325.20	11.97 ✓
6+00	336.85	324.78	12.07 ✓
5+75	336.43	324.35	12.08 ✓
5+54.6 & Cleanout #2	336.54	324.00	12.54 ✓
5+25	336.78	323.49	13.29 ✓
5+00	336.92	323.07	13.85 ✓
4+75	336.97	322.64	14.33 ✓
4+50	337.10	322.22	14.88 ✓
4+25	337.88	321.79	16.09 ✓
4+07.45 CC RT.	338.03	321.49	16.54 RT.
4+07.45 LT	337.50	321.45	16.11 ✓ LT.
#3	337.66	321.27	16.39 ✓
#2	337.95	321.05	16.90 ✓
#1	337.98	320.83	17.15 ✓
3+55.75 BC	337.69	320.61	17.08 ✓

Storm Drain Cont'd.

B+7 (12.5x48") 339.34 Hgt. 6+89.25 F.B. 1757 R74

K.46 330.97 (331.20)

10' Lt.

10' Lt.

9.17.68	End 60"	5.12	342.31	342.00	330.20	C11 ⁸⁹	C12 ¹⁴
9+00		4.52	342.91	341.62	329.88	H74 ✓	C13 ⁰³
8+75		8.25	341.98	341.53	329.42	12.41 ✓	C12 ⁵⁶
8+50	605	347.43	576	341.7	341.38	12.38 ✓	C12 ⁶⁷
8+25				341.13	328.57	12.54 ✓	
8+00				341.07	328.16	12.91 ✓	
7+75				341.19	327.74	13.45 ✓	
7+41.26	EC			340.99	327.17	13.82 ✓	
# 3				340.73	326.95	13.78 ✓	
# 2				340.46	326.73	13.73 ✓	
# 1				339.46	326.51	12.95 ✓	

1-24-51 Stake Co Inlet & Storm Drain
 Hendricks Ampudia St. South of Moore
 Allen
 Shepard
 No # 3435
 Dwg. 7889-L

INDEXED
 APR 23 1977

CK.	12.47	12.49	Check Rim MH #1	FB 2007 P. 46
1+05 End 18" Conc. Pipe	10.80	10.59	C10 ²¹	/
0+97	11.78	2.17	C9 ¹¹	/
0+89	13.31	4.53	C8 ²⁸	/
0+81	20.76	6.53	C14 ²²	/
0+73	23.44	8.25	C15 ¹⁹	/
0+48.67	25.98	13.67	C13 ³¹	/
0+24.33	26.65	17.09	C9 ⁵⁶	/
0+00 Beg Storm Drain	26.19	21.50	C4 ⁶⁹	/
Ely End Inlet	26.23	26.5006	F0 ²⁷	/
wly End Inlet	26.45	26.5006	F0 ²⁵	
BMT End Ex Co.		26.50		

Stake 2x6" Pipes
6 18" pipe Zoo Road

47

0+75 End.	8.05	8.14	C0-09
0+55	5.39	8.08	C2-69
0+36.67	5.31	8.02	C2-71
0+18.33	5.51	7.97	C2-66
0+00 Ex. Inlet	6.38	7.91	C1-53

1-27-50
Hendricks
Shepard
Sisson
Brumer

State Alley Block 149
Univ. Hts.
as per Pencil Grade Profile #2375

INDEXED
APP 27 1954

28

				4			RT
4+40	338.91	338.62	CO ²⁹	340.80	338.84	C1 ⁹⁶	✓
4+90	337.82	337.84	FO ⁰³	339.21	337.97	C1 ³⁴	✓
3+70	336.84	337.26	FO ⁴²	338.79	337.32	C1 ⁴⁷	✓
3+40	337.02	336.67	CO ²⁵	337.38	336.67	CO ⁷¹	✓
3+20	335.35	335.96	FO ⁶¹	337.05	336.26	CO ⁷⁹	✓
3+00	336.52	335.61	CO ⁹²	336.58	335.91	CO ⁶⁷	✓
2+80	336.01	335.32	CO ⁶⁹	336.05	335.62	CO ⁴²	✓
2+60	335.52	335.07	CO ⁴⁵	336.70	335.38	C1 ³²	✓
2+20	336.00	334.62	C1 ³⁵	336.00	334.95	C1 ⁰⁵	✓
1+80	335.11	334.23	CO ⁸⁸	335.13	334.53	CO ⁶⁰	✓
1+40	334.58	333.80	CO ⁷⁸	335.21	334.10	C1 ¹¹	✓
1+00	333.85	333.38	CO ⁴⁷	334.35	333.68	CO ⁶⁷	✓
0+60	333.22	332.95	CO ³⁷	333.85	332.25	CO ⁶⁰	✓
0+20	333.00	332.53	CO ⁴⁷	333.14	332.83	CO ³¹	
0+00 North Line Pk	331.99	331.99			332.77		

Block 149 Univ. H.A. Cont'd

49

LT

RT

6+80 South Line Howard	344.58	344.58			346.15	
5+80	343.39	343.86	FO ¹⁷ /	345.21	344.16	CI ⁰⁵ /
5+60	342.26	342.61	FO ²⁵ /	344.15	342.91	CI ³⁴ /
5+40	341.52	341.54	FO ⁰² /	342.72	341.84	CO ⁸⁸ /
5+20	340.42	340.64	FO ²⁸ /	342.14	340.94	CI ²⁰ /
5+00	340.12	339.94	CO ¹⁸ /	341.55	340.24	CI ³¹ /
4+80	339.89	339.41	CO ⁴⁸ /	340.56	339.71	CO ⁸⁵ /

2-1-51 State Cbs. & Retaining Wall
 Hendricks Redwood St
 Allen Herman to 32nd
 Shepard
 W.O.# 20629 Dwg. 7936-L

20

INDEXED
 APR 26 1977

0+95 End Wall	29098	29351	F258			
0+78.5	29007	29363	F356			
0+62 Beg Wall	29489	29370	C19			
2+61.17 BC on Rt.				29428	294.61	FO ³³
2+57 BC on H.	294.30	294.59	FO ²⁹			
2+18	29340	294.45	F105	293.39	294.45	F1 ⁰⁶
1+79	292.88	294.31	F143	293.04	294.31	F1 ²⁷
1+40	293.29	294.17	FO ⁹⁸	293.08	294.17	F1 ⁰⁹
1+20	292.13	294.12	F199	293.13	294.12	FO ⁹⁹
1+00	290.91	294.12	F321	291.91	294.12	F2 ²¹
0+80	290.21	294.17	F396	292.32	294.17	F1 ⁸⁵
0+60	294.88	294.26	C662	293.02	294.26	F1 ²⁴
0+51 Beg New cb.	294.41	294.32		294.42	294.32	
0+00 = East line Herman						

BM

295.21 H.E. 7' x 8" T Redwood G. Herman

2-1-51
 Hendricks Stake Pentucket
 Allen Rough Grades
 Shepard Ivy to Juniper
 W/OA Dwg. 79454

5+51.06		266.9	261.38
5+14.36	C3 BC Rt	270.0	267.11
4+91.06			
4+91.06		270.0	263.31
4+51.06		269.9	265.32
4+11.06		270.2	266.97
3+71.06		270.1	267.87
3+31.06		270.0	268.10
2+91.06		269.2	267.58
	TP	267.55	
2+51.06		267.2	266.33
2+00.84		265.7	264.39
1+50.63		262.6	262.44
	TP	258.16	
1+00.42		257.2	260.49
0+50.21		248.3	258.54
0+00	N. Line Ivy	247.6	256.60

BM

24897

2494

57

INDEXED

APR 26 1951

C5 ⁵	252.5	260.59	F8 ¹
C7 ²	252.5	261.71	F9 ²
C6 ⁷	253.1	262.81	F9 ³
C4 ⁶	253.7	264.82	F11 ¹
C3 ³	264.7	266.47	F1 ⁸
	TP 265.36		
C2 ³	268.7	267.39	C1 ³
C1 ⁹	267.8	267.60	C0 ³
C1 ⁶	270.6	267.08	C3 ⁵
C0 ⁹	270.5	265.83	C4 ⁷
C1 ³	269.4	263.82	C5 ⁶
C0 ⁷			
F0 ³	267.0	261.82	C5 ³
F3 ³	264.4	259.82	C4 ⁶
F10 ³	262.5	257.82	C4 ⁷
F9 ⁰	260.6	255.82	C4 ⁸

(FB1810 P. 73 Control Point # 7)

2-2-51 Stake 8" Water Main
Hendricks
Allen
Shepard
W/O# 20629

Redwood St.

Dwg. 7936-L

INDEXED
APR 20 1951

52

2+00	294.4	290.80	C3 ^C
1+60	293.8	290.68	C3 ^L
1+20	293.6	290.53	C3 ^L
0+80	293.5	290.38	C3 ^L
0+40	293.6	290.25	C3 ^M
0+00	293.6	290.30	C3 ^M

B.M.

295.21

N.E. 7' C.P.T. Redwood & Herman

2-5-51
Hendricks
Allen
Shepard
VVO# 31478

Stake Rough Grades
Commonwealth St.
Juniper to Laurel
Dwg. 7944 L-

Rt. 52
Elev. 61

INDEXED
APR 26 1951

5+60		284.78			285.74	
5+27.5		284.1	284.43	FO ³	287.9	285.31 C2 ⁵
4+95		284.2	284.09	CO ¹	286.8	284.88 C1 ⁹
4+62.5		284.1	283.74	CO ⁴	288.4	284.45 CO ²
4+30		283.7	283.40	CO ³	288.3	284.02 C1 ³
3+90	T.P.	283.55				
3+90		282.8	282.90	FO ¹	284.0	283.40 CO ⁶
3+80		282.0	281.94	CO ¹	283.0	282.37 CO ⁶
3+10		280.0	280.52	FO ⁵	281.7	280.90 CO ⁸
2+68		278.5	278.79	FO ³	280.4	279.16 C1 ³
2+26		275.0	277.05	F2 ¹	279.0	277.41 C1 ⁶
1+84		276.4	275.31	C1 ³	278.1	278.66 C2 ⁴
1+42	T.P.	275.10				
1+42		274.0	273.57	CO ⁴	277.3	273.91 C3 ⁴
1+00		269.7	271.83	F2 ¹	275.6	272.16 C3 ⁴
0+60		269.9	270.00	FO ¹	273.0	270.50 C2 ⁵
0+30		269.4	268.50	CO ⁹	272.1	269.25 C2 ⁹
0+00	IV Line Juniper	267.04	267.00			268.00

B 17

266.43

SWBP Juniper & Commonwealth

2-6-51 Stake Rough Grades
 Hendricks
 Allen
 Shepard by
 W043478

Commonwealth
 to Juniper

INDEXED

APR 26 1951

24

4+06.11	264.6	262.83	C1 ⁸	263.6	262.83	CO ⁸
3+86.11	263.7	262.36	C1 ³	263.1	262.36	CO ⁷
3+66.11 PRC	264.1	261.89	C2 ³	263.0	261.89	C1 ¹
3+46.11	263.9	261.42	C2 ⁵	262.1	261.42	CO ⁷
3+26.11	263.6	260.97	C2 ⁶	261.4	260.97	CO ⁴
3+06.11	263.4	260.58	C2 ⁸	261.1	260.58	CO ⁵
2+86.11	262.7	260.22	C2 ⁵	260.7	260.22	CO ⁵
2+66.11	262.0	259.93	C2 ¹	260.0	259.93	CO ¹
2+46.11	261.9	259.68	C2 ³	259.3	259.68	FO ⁴
2+26.11	261.9	259.48	C2 ⁴	258.4	259.48	F1 ¹
2+02.86 BC	262.85	259.27	C3 ⁵	258.8	259.27	F3 ⁵
1+62.28	261.3	259.02	C2 ³	247.3	258.82	F11 ⁵
1+21.71	261.8	258.76	C3 ⁰	—	258.36	—
0+81.14	260.8	258.57	C2 ³	249.8	257.91	F8 ¹
0+40.57	260.8	258.25	C2 ⁵	258.1	257.45	F2 ⁴
0+00	259.0	258.00	C1 ⁰	256.4	257.00	FO ⁶

BM

26643

SW BP Commonwealth & Juniper

5178.17	50	Line Juniper	266.50		267.50	267.50	
5141.74			266.9	265.84	C1 ^L	267.3	266.34 C1 ^O
5105.31	EC		266.4	265.18	C1 ^R	266.2	265.18 C1 ^O
4178.91			266.4	264.55	C1 ^R	265.5	264.55 CO ⁹
4152.51			265.5	263.93	C1 ^L	265.0	263.93 C1 ^L
4126.11			265.0	263.30	C1 ^R	264.5	263.30 C1 ^R

2-9-51

Hendricks

Allen

Shepard

Huffman

120# 20629

Restake Cbs

Redwood St.

Herman to 32nd St

Drig 7936-L

INDEXED
Apr 9 1951

+ 25 294.25

+ 25 295.33

EC 32nd St. (294.37) 294.73 Meet
Plan

295.14

43 294.69 294.69 CO⁰⁰

298.97 295.01 CO⁹⁶ ✓

#2 294.97 294.66 CO³¹

294.85 294.83 CO⁰³ ✓

#1 294.91 294.62 CO²⁹

294.57 294.67 FO¹⁰ ✓

216.17 BC Pt.

294.42 294.61 FO¹⁹ ✓

2157 BC Pt. 294.95 294.59 CO³⁶

2118 294.34 294.45 FO¹¹ ✓

294.16 294.45 FO²⁹ ✓

1779 294.12 294.31 FO¹⁹

294.07 294.31 FO²⁴ ✓

1460 294.03 294.17 FO¹⁴ ✓

293.94 294.17 FO²³ ✓

1720 294.05 294.12 FO⁰⁷ ✓

293.91 294.12 FO²¹ ✓

1100 293.99 294.12 FO¹³ ✓

293.88 294.12 FO²⁴ ✓

0780 — 294.17

294.04 294.17 FO¹³ ✓

0760 294.39 294.26 CO¹³

294.55 294.26 CO²⁹

0751 Beg rest. Cb

INDEXED

APR 26 1951

57

2-9-51 State Rough Grades
Hendricks Westland St Ave
Allen Ivy to Juniper Lt
Shepard
Huffman
W 6# 31478

		Elev. Gr. (248.20) (248.17)
5+83.2	S line Juniper	257.03
5+63.2		260.8 257.80
5+23.2		260.6 259.10
4+83.2		260.3 259.87
4+43.2		259.8 260.17
4+03.2		259.2 260.00
3+63.2	TP. 259.31	259.60
3-23.2		259.4 259.20
2+83.2		259.2 258.60
2+43.2		258.9 257.61
2+03.2		257.3 256.40
1+63.2		255.9 254.80
1+22.4		254.6 252.89
0+81.6	TP. 253.0	250.98
0+40.8	TP. 252.04	Prof Pipe 249.07
0+00 H. line Ivy		249.6 247.16

B.M.

266.43

Hub #3 W. line
Ivy & Westland
FB 1810 P. 73

	Elev. Gr.	
258.62	258.62	Ex Ch.
C30 /	261.2	258.80 C24 ✓
C15 ✓	261.7	259.60 C21 ✓
C04 /	262.4	260.37 C20 ✓
F04 ✓	262.2	260.67 C15 ✓
F08 ✓	261.6	260.50 C11 ✓
F03 ✓	261.7	260.10 C14 ✓
C03	261.2	259.70 C15 ✓
C05 /	260.0	259.11 C09 ✓
C13 /	258.4	258.12 C03 ✓
C02	256.7	256.77 F01 ✓
C14 ✓	254.1	255.03 F09 ✓
C17 /	250.6	253.14 F25
C20 ✓	247.4	251.24 F38
C13	244.1	249.34 F52
C24	240.5	247.44 F69

S.W. of Juniper & Commonwealth.

2-18-51 State Water Services
 Hendricks @ Sewer Laterals
 Allen
 Shepard Pentucket Ave
 Hu Hman 147 to Juniper
 Wb# 31478 -1 Dwg 7945-L

INDEXED
 APR 26 1951

5+635 (23) 26487 256.11 C8⁷¹

5+434

4+12.6 (24) 26984 26090 C8⁹⁴

3+92.5 W

1+61.1 (25) 263⁰⁴ 256.00 C7⁰⁴

1+408 W

0+30 W

3+62.2 (26) 26725 26221 C5⁰⁴

3+42.1

2+61.6 (27) 26789 261.00 C6⁸⁹

2+41.5 W

0+65.4 W

245-51
 Hendricks Stake Water Services
 & Senior Laterals
 Commonwealth
 Juniper to Laurel
 04979642

INDEXED
 APR 20 1951

5725 W		284.39	
5710 (6)	284.36	279.22	C5 ¹⁴
4770 W		283.82	
4760 (7)	284.01	278.72	C5 ²⁹
4720 W		283.30	
4710 (8)	283.26	278.20	C5 ⁰⁶
3760 (9)	281.88	277.21	C4 ⁶⁷
3710 (10)	279.76	275.32	C4 ¹⁴
2760 (11)	278.12	273.35	C4 ⁷⁷
2710 (12)	275.50	271.30	C4 ²⁰
1725 (13)	273.10	267.18	C5 ⁹²

1780 W		275.50	
1770 (14)	276.75	270.97	C6 ⁶⁹
1740 W	} (in) 273.86		
1730 (15)			

B77

26643

SWBP Juniper & Commonwealth

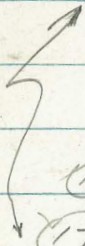
2-18-51 State Water Services &
 Hendricks Sewer Laterals
 Commonwealth Ave
 Wy to Juniper

60

INDEXED
 APR 9 1951

#17 688 264.59 259.15 C5⁴⁵

B.M. 501 271.44 266.43
 Restate No 17



- (16)
- (17)
- (18)
- (W Lot 18)

} in

(Lot 6) (19)	259.46	254.22	C5 ²⁴
(Lot 6) W			
1194 (20)	259.38	254.33	C5 ⁰⁵
1184 W			
1127 (21)	257.47	254.55	C2 ⁹²
0187 W			
0160 (22)	257.85	254.75	C3 ¹⁰
0150 W			

B.M.

266.43

SWRP Juniper & Commonwealth

2-15-51

Hendricks

State Water Services
& Server Laterals
Westland Ave.
1/4 to Juniper
Dwg. 7943-L

61

INDEXED
APR 26 1951

5+48.79 ①

260.26 254.11 C6⁵

5+07.86

4+97.63 ②

260.11 255.23 C4⁸⁸

4+56.70 W

1+49.74 W

TP. 25623

1+39.51 ③

254.11 248.12 C5⁹⁹

0+98.58 W

0+88.35 ④

251.53 247.54 C3⁹⁹

0+25.58 W

0+10.23 ⑤

247.92 244.11 C3⁸¹

248.17

220.51 State Drain Westland 5
Hendricks & Ivy. Dwg. 7943-L
Shepard
Allen
Huffman
Wot# 31478

INDEXED
APR 26 1951

62

0+75 End.	226.4	226.25	CO!
0+48.77	17.15 5.55	232.08 230.21	CI 8!
0+22.53 Angle Pt.	243.68	224.17	09.51
0+00 Beg. 15" Conc Pipe	246.42	237.58	08 85

B.M.	106	249.23 <u>1</u>	248.17	Hub #3 FB1810 P-73
------	-----	--------------------	--------	--------------------

2-20-51 Stake Cbs Pentuckott
 Hendricks
 Shepard
 Allen
 Heffman
 No. 31478 170 18 U
 Dwg. 7945 L

5+50.18	262.39	261.20
5+27.70 E.C.H.	264.03	261.25
5+25.14	264.32	261.38
5+20.56	262.73	261.80
5+13.41 B.C.	262.42	261.86
4+90.11	262.84	262.11
4+70.11	263.62	263.31
4+50.11	264.38	264.31
4+30.11	265.15	265.32
4+19.29 End S.W. on Rt.	265.98	266.24
4+10.11	266.92	266.97
3+90.11	267.69	267.54
3+70.11	268.21	267.87
3+50.11	268.02	268.09
3+30.11	267.83	268.10
3+10.11	267.57	267.92
2+90.11	267.18	267.58
2+70.11	266.70	267.04
2+50.11 B.V.C.	266.15	266.33

INDEXED

APPROX. 1951

B17 = & 12 Disc. Juniper & Pentuckott

E119 (FB1810 P7)	260.12	260.12	260.12	Ex C4
E278	260.08	260.08	260.08	FO 24
E294	260.19	260.35	260.59	FO 33
FO 33	261.00	261.01	261.20	FO 36
CO 57	261.09	261.45	261.71	CO 73
CO 73	261.41	261.73	261.71	CO 31
CO 31	262.56	263.03	262.82	CO 07
CO 07	263.56	264.04	263.82	FO 17
FO 17	264.57	265.20	264.82	FO 26
FO 26	265.49	266.25	265.74	CO 41
FO 05	266.22	266.58	266.47	CO 11
CO 15	266.79	267.22	267.04	CO 34
CO 34	267.4	267.51	267.39	FO 07
FO 07	267.24	267.72	267.59	FO 27
FO 27	267.35	267.78	267.60	FO 35
FO 35	267.17	267.65	267.42	FO 42
FO 42	266.83	267.25	267.08	FO 34
FO 34	266.29	266.57	266.54	FO 18
FO 18	265.58	266.51	265.83	

Pentucket Contd

	Elev. Stake	Elev. Gr.	Subgrade	Elev. Stake	Elev. Gr.	
2+25.11	266.99	265.34	C16 ^E	264.59	265.39	264.83 CO ⁵⁶ ✓
2+00.11	265.43	264.36	C10 ^T	263.60	264.26	263.84 CO ⁴² ✓
1+75.11	263.82	263.38	CO ⁴⁴	262.62	263.29	262.85 CO ⁴⁴ ✓
1+50.11	262.65	262.40	CO ³⁵	261.63	262.26	261.86 CO ⁴⁹ —
1+25.11	261.34	261.42	FO ⁰⁸	260.65	261.26	260.87 CO ³⁹ —
1+00.11	260.40	260.44	FO ⁰⁴	259.66	260.15	259.88 CO ²⁷ ✓
0+75.11	259.44	259.46	FO ⁰²	258.68	259.10	258.89 CO ²¹ —
0+45.11	258.37	258.28	CO ⁰⁹	257.50	257.47	257.70 FO ²³ ✓
0+25.11	257.68	257.50	CO ¹⁶	257.07	257.07	256.91 CO ¹⁶ ✓
0-2.23 Rt	—	—	0100	255.41	257.67	255.82 C18 ^E ✓
0+2.23 Lt.	255.70	256.60	FO ⁹⁰	—	—	—

2-23-51
Hendricks
Allen
Shepard
No# 31703

Pave Alleys Blocks
198, 199, 200, & 201
Mission Beach

Orig. 7940-d

INDEXED

APP 9 20 1951

65

0+85.48	-0.84 - 0.73	FO ¹¹ /	-0.37 - 0.73 CO ³⁶ /
0+55.48	-0.26 - 0.60	CO ³⁴ /	-0.42 - 0.60 CO ³⁸ /
0+25.48 (0+16.94 = Water Rt) (0+09.02 = Water Lt)	-0.30 - 0.46	CO ¹⁶ /	-0.06 - 0.46 CO ⁴⁰ /
0+00 E-Line Mission Blvd. T.P. 0.74	-0.60 - 0.58	ET.	-0.63 - 0.58 ET
1+52.95 W-Line Mission Blvd.	0.12		0.17 0.14 ET Pav
1+40	0.80 0.56	CO ²⁴ /	0.60 0.56 CO ⁰⁴ /
1+20 (1+10.70 = Water Rt)	0.42 0.96	FO ⁵⁴ /	1.02 0.96 CO ⁰⁶ /
1+00	1.06 1.51	FO ⁴⁵ /	1.91 1.51 CO ⁴⁰ /
0+80	2.64 2.22	CO ⁴² /	2.63 2.22 CO ⁴⁴ /
0+60	3.57 3.08	CO ⁴⁹ /	3.37 3.08 CO ²⁹ /
0+40	4.35 4.02	CO ³³ /	4.40 4.02 CO ³⁸ /
0+20	5.71 4.97	CO ⁷⁴ /	5.33 4.97 CO ³⁶ /
0+00 E-Line Strandway T.P. (497)	5.88		5.93
0-20 W-Line Strandway (0-36.67 water)	5.98 5.98		6.03
0-46.66 (0-61.67 water)	5.95 5.59	CO ³⁶ /	6.45 5.61 CO ⁸⁴ /
0-73.33 Beg. Pav Block 198	5.66 5.20	CO ⁴⁶ /	5.57 5.20 CO ³¹ /

B.M.

7.08 (SWAB Seawall & San Jose Place)

Alleys Blocks

198, 199, 200 & 201

Mission Beach Cont'd.

66

0154.28	Paving End Block 201	-0.13	-1.00	CO ⁸⁷ ✓	-0.19	-1.00	CO ⁸⁵
0127.14		-1.15	-1.10	FO ⁰⁵ ✓	-1.14	-1.10	FO ⁰⁴ ✓
0100	E. Line Bayside	-1.22	-1.20	EY	-	-1.20	EY
1184.92	W. Line Bayside Lane	-1.35		E	-	-1.31	EY
1178.48		-1.10	-1.14	CO ⁰⁴ ✓	-1.04	-1.14	CO ⁰⁵
1145.48		-1.20	-1.00	FO ²⁰ ✓	-1.00	-1.00	CO ²
1115.48		-1.03	-0.87	FO ¹⁵ ✓	0.35	-0.87	CI ²³

(1 + 11.60 water on lot)

2-26-51

Hendrick

WV #31703

Stakes Alleys

194, 195, 196 & 197 Mission Blvd

Dwg. 7939-L

IMPROVED
APP 26 1951

67

0+20	-0.27	-0.43	CO ¹⁶	-0.28	-0.45	CO ⁰⁷
0+20	-0.47	-0.47	CO ⁰⁰	-0.53	-0.56	CO ⁰³
0+00 E Line Mission Blvd	-0.54				-0.71	
1+66.58 W Line Mission Blvd	0.17			-0.8	0.18	
1+40	1.28	1.07	CO ²¹	1.93	1.07	CO ⁸⁶
1+20	2.23	1.73	CO ⁵⁰	2.67	1.73	CO ⁹⁴
1+00	3.60	2.50	CO ¹⁰	2.55	2.50	CO ⁰⁵
0+80	3.38	3.36	CO ⁰³	3.26	3.36	FO ¹⁰
0+60	4.57	4.36	CO ²¹	4.45	4.36	CO ⁰⁹
0+40	5.57	5.33	CO ²⁴	5.52	5.33	CO ¹⁹
0+20	6.07	6.26	FO ¹⁹	6.54	6.26	CO ²⁸
E Line Strandway	6.95			6.98	6.95	
W Line Strandway	7.05			7.05		
0-26.67	7.27	6.53	CO ⁷⁴	7.08	6.53	CO ⁵⁵
0-53.33	6.68	6.00	CO ⁶⁸	6.02	6.00	CO ⁰³

0154.58 End		-0.40				-0.40		
0152		-0.24	-0.53	CO ²⁹ ✓		-0.68	-0.53	EO ¹⁵ ✓
0120 ✓		-0.67	-1.01	CO ³⁴ ✓		-0.92	-1.06	CO ¹⁴ ✓
		-1.50						
0100	E Line Bayside		-1.50				-1.60	
1196.49	W Line Bayside		-1.50				-1.60	
1190 ✓		-1.31	-1.47	CO ¹⁶ ✓		-0.91	-1.46	CO ⁵⁸ ✓
1150 ✓		-0.44	-1.21	CO ⁷⁷ ✓		-0.89	-1.21	CO ³² ✓
1110 ✓		-0.93	-0.86	CO ⁰³ ✓		-0.64	-0.96	CO ³³ ✓
0170 ✓		-0.69	-0.71	CO ⁰²		-0.63	-0.71	CO ⁰⁸ ✓
0130		-0.17	-0.46	CO ²⁹		-0.39	-0.46	CO ¹⁷ ✓

2-27-51
Hendricks
Allen
Shepard
Huffman
rro # 31478

State Cbs. Commonwealth

1-1/2 to Juniper

Drig. 7944-L
FB 1810 P. 53

\$ Subgrade

INDEXED

APP 20 1951

70

3+66.11 PRC.	261.58	261.89	FO ³¹	✓	261.39	261.45	261.87	FO ⁴⁴	✓
3+46.11	261.03	261.42	FO ³⁹	✓	260.92	260.96	261.42	FO ⁴⁶	✓
3+26.11	260.42	260.97	FO ⁵⁵	✓	260.47	260.62	260.97	FO ³⁵	✓
3+06.11	261.22	260.58	CO ⁶⁴	✓	260.08	260.20	260.58	FO ³⁸	✓
2+86.11	T.P. 260.44	260.22	CO ²²	✓	TP 259.72	259.72	260.22	FO ⁵⁰	✓
2+66.11	259.73	259.93	FO ²⁰	✓	259.43	259.42	259.93	FO ⁵¹	✓
2+46.11	259.30	259.63	FO ²²	✓	259.18	259.34	259.68	FO ³⁴	✓
2+26.11	259.20	259.48	FO ¹⁸	✓	259.99	259.38	259.48	FO ¹⁰	✓
2+02.86 BC	259.97	259.27	FO ³⁰	✓	258.77	259.07	259.27	FO ²⁰	✓
1+72.40	259.00	259.08	FO ⁰⁵	✓	258.51	258.65	258.92	FO ²⁷	✓
1+41.92	258.46	258.89	FO ⁴³	✓	258.24	258.18	258.58	FO ⁴⁰	✓
1+11.44	258.35	258.70	FO ³⁵	✓	257.97	257.69	258.24	FO ⁵⁵	✓
0+80.96	258.07	258.51	FO ⁴⁴	✓	257.71	257.65	257.90	FO ²⁵	✓
0+50.48	258.00	258.32	FO ²²	✓	257.44	257.74	257.56	CO ¹⁸	✓
0+20	258.02	258.13	FO ¹¹	✓	257.17	257.14	257.22	FO ⁰⁸	✓
0+00 N. Line 1-1/2	258.45	258.00	CO ⁴⁵	✓	256.75	256.97	257.00	FO ⁰³	✓

Subgrade

BM.

(266.47)

5118P Juniper & Commonwealth

5+78.17	So line Juniper	266.50		(266.73 Finish)	267.49	267.50	
5+41.74		265.88	265.84	CO ⁰⁴ ✓	265.84 ✓	266.22	266.34 FO ¹³ ✓
5+05.31	EC.	265.25	265.18	CO ⁰² ✓	264.69 ✓	265.16	265.18 FO ⁰² ✓
4+82.11		265.22	264.64	CO ⁵⁸ ✓	264.14 ✓	265.22	264.64 CO ⁵⁸ ✓
4+58.91		264.20	264.09	CO ¹¹ ✓	263.59 ✓	264.91	264.09 CO ⁸² ✓
4+35.71		264.20	263.54	CO ⁶⁶ ✓	263.04 ✓	263.32	263.54 FO ²² ✓
4+12.51		262.68	262.99	FO ³¹ ✓	262.49 ✓	262.80	262.99 FO ¹⁹ ✓
3+89.31		262.54	262.44	CO ¹⁰ ✓	261.94 ✓	262.16	262.44 FO ²⁸ ✓

2-28-51
W04
31478

State Cbs Commonwealth
Juniper to Laurel
Dwg. 7744-L

72

IMPROVED
APR 26 1951

Subgrade

3+69.30	282.40	282.48	FO ⁰⁸	✓	282.19 TP 282.31	282.82	282.93	FO ¹¹	-
3+49.30	281.54	281.94	FO ⁴⁰	✓	281.66	282.07	282.37	FO ³⁰	-
3+29.30	280.92	281.28	FO ³⁶	✓	280.98	TP. 281.29	281.68	FO ³⁹	-
3+09.30	279.91	280.52	FO ⁵⁴	✓	280.21	280.48	280.90	FO ⁴²	-
2+79.30	279.15	279.27	FO ¹³	✓	278.96	279.32	279.66	FO ³⁴	✓
2+49.30	277.99	278.03	FO ⁰⁴	✓	277.71	278.22	278.41	FO ¹⁹	-
2+19.30	276.00	276.79	FO ¹⁹	✓	276.47	277.14	277.16	FO ⁰³	✓
1+89.30	275.78	275.55	CO ²³	✓	275.23	276.04	275.91	CO ¹³	✓
1+59.30	274.44	274.31	CO ¹³	✓	(273.99 TP) 273.98	275.03	274.66	CO ³⁷	✓
1+29.30	273.29	273.07	CO ²⁴	✓	272.74	273.83	273.41	CO ⁴²	✓
0+99.30	271.83	271.83	CO ⁰⁰	✓	271.50	272.41	272.16	CO ²⁵	-
0+79.30	270.52	270.95	FO ⁴³	✓	270.64	271.43	271.33	CO ¹⁰	-
0+59.30	269.65	270.00	FO ³⁵	✓	269.75	270.51	270.50	CO ⁰¹	✓
0+29.65	268.43	268.52 268.30	FO ⁰⁹	✓	268.37	269.40	269.34 269.28	CO ⁰⁶	✓
0+00	n line Juniper	267.04	267.00	Meet.	OTW 267.26 267.33 (finish)	268.18	268.00	Meet	

B.M.

266.43

SWRBP Juniper & Commonwealth

Commonwealth Contd

110.70

288.09 288.08

(GR SW RT. 5140 F13.810 P.65)

Subgrade

PK. on Lt.	284.47	284.58	FO ¹¹ ✓				
EC.	285.20	284.62	CO ⁵⁸ ✓	285.51	285.74	FO ²³ ✓	
5+54 BC Lt.	285.20	284.71	CO ⁴⁹ ✓	5140 284.62 (F100H) 5140 284.52			
5+51 BC Rt.				285.14	285.62	FO ⁴⁸ ✓	
5+27.34	285.21	284.43	CO ⁷⁸ ✓	284.36	285.34	285.31	CO ⁰³ ✓
4+94.67	283.97	284.09	FO ¹³ ✓	283.98	285.00	284.88	CO ¹² ✓
4+62.00	284.20	283.74	CO ⁴⁶ ✓	283.59	284.52	284.45	CO ⁰⁷ ✓
4+29.30	283.57	283.40	CO ¹⁷ ✓	283.21	283.93	284.02	FO ⁰⁹ ✓
4+09.30	283.45	283.20	CO ²⁵ ✓	282.98	283.82	283.76	CO ⁰⁶ ✓
3+89.30	282.26	282.90	FO ⁰⁴ ✓	282.65	283.28	283.40	FO ¹² ✓

2-28-51

West St

Stake Cb. Inlet
Westland St.
DW9 7943-k

74

INDEXED

APR 9 1951

0109.33 End Cb. Inlet 243.15 247.89 F474

0104.83 Beg " " 241.46 247.67 F621

252.04

(Prop pipe P. 57)

3-1-50
Hendricks
Allen
Shepard
Bruner
W0731478

State Cbs. Westland Ave
Ivy to Juniper
Dwg. 7943-L

INTERVEN
Cb. 9
APP

Subgrade

Cb. Grade

Station	Notes	Left	Right	Grade	Subgrade	Left	Right	Grade	
7+23.20	EVC	259.07	259.20	FO ¹³	✓	258.95	260.58	259.70 CO ⁸⁹ ✓	
3+03.20	T.P.	258.72	258.95	FO ²³	✓	258.70	259.91	259.45 CO ⁴⁶ ✓	
2+83.20		258.49	258.60	FO ¹¹	✓	258.36	259.49	259.11 CO ³⁸ ✓	
2+63.20		257.98	258.16	FO ¹⁸	✓	257.82	258.96	258.67 CO ²⁹ ✓	
2+43.20		257.53	257.61	FO ⁰⁹	TP	257.39	258.30	258.12 CO ¹⁸ ✓	
2+23.20		257.35	257.06	CO ²⁹	✓	256.78	257.49	257.50 FO ⁰¹ ✓	
2+03.20		256.93	256.40	CO ⁵³	✓	256.09	256.69	256.77 FO ⁰⁸ ✓	
1+83.20		256.19	255.65	CO ⁵⁴	✓	255.30	TP. 255.61	255.95 FO ³⁴ ✓	
1+63.20	BVC	254.92	254.80	CO ¹²	✓	254.42	254.44	255.03 FO ⁵⁹ ✓	
1+30.56		254.44	253.32	CI ¹²	✓	252.88	253.14	253.47 FO ³³ ✓	
0+97.92		251.63	251.82	FO ²⁰	✓	251.35	251.65	251.91 FO ²⁶ ✓	
0+65.28		250.41	250.34	CO ⁰⁷	✓	249.82	250.19	250.35 FO ¹⁶ ✓	
0+32.64		TP. 252.02	248.51	248.85	FO ³⁴	✓	248.29	248.58	248.19 FO ²¹ ✓
0+4.33	Beg. Cb on Rt.	-	-	-	+20	247.70	241.36	247.44 F6 ⁰⁸ ✓	
0-4.33	Beg. Cb on Lt.	247.27	247.16	CO ¹¹	0+00	247.41	-	-	

B.M

Westland Ave. Contd.

76

EC.	Ch. Elev	Stake		Subgrade	Ch.	Elev. Stake Meet.
#1		256.82	Meet		258.68	259.56 CO ¹³
BC					258.69	258.60 CO ⁰⁹
5+87.53	End Sp on Rt.					258.62 Ex. C6.
5+78.83	EC on Lt.	256.97	256.92	Ex. C6		—
5+76.70	BC on Lt.	256.84	257.03	FO ¹⁹ ✓	PK 5320 (257.55 Finish)	—
5+63.20		257.16	257.80	FO ⁶⁴ ✓	257.80 ✓	258.88 258.80 CO ⁰⁸ ✓
5+43.20		257.83	258.55	FO ⁷³ ✓	258.38 ✓	259.23 259.20 CO ¹³ ✓
5+23.20		258.71	259.10	FO ³⁹ ✓	258.85 ✓	259.58 259.60 FO ⁰³ ✓
5+03.20		259.83	259.54	CO ²⁹ ✓	259.29 ✓	259.78 260.04 FO ²⁵ ✓
4+83.20		260.33	259.87	CO ⁴⁶ ✓	259.62 ✓	259.97 260.37 FO ⁴⁰ ✓
4+63.20		260.16	260.07	CO ⁰⁹ ✓	259.82 ✓	260.22 260.57 FO ³⁵ ✓
4+43.20		260.34	260.17	CO ¹⁷ ✓	259.92 ✓	260.56 260.67 FO ¹¹ ✓
4+23.20		259.69	260.14	FO ⁴⁵ ✓	259.89 ✓	260.45 260.64 FO ¹⁹ ✓
4+03.20		259.70	260.00	FO ³⁰ ✓	259.75 ✓	260.33 260.50 FO ¹⁷ ✓
3+63.20		259.18	259.60	FO ⁴² ✓	259.35 ✓ 260.16	260.13 260.10 CO ⁰³ ✓

3-12-51
Hendricks
Allen
Shepard
Brubner
NO# 20789

State 15' Senior
across Camino Del Rio
Dwg. 4204-B

INDEXED

77

APR 2

1+54 End	13.10	23.32	18.66	4.66	10' Rt.
1+15.5	4.72	31.70	18.60	13.10	"
0+77	4.84	31.58	18.53	13.05	"
0+38.5	5.01	31.41	18.47	12.94	"
0+00 Ex MH	7.97	28.45	18.40	10.05	"
			17.90	F.L. Ex MH.	
TP 13.06	31.42	4.27	23.36		
TP 4.35	27.63	5.97	23.28		
Bm. 4.55	29.25		24.70	on Hub 12+94.52	

3-13-50
Hendricks
Allen
Shepard
Bruner
MO # 20682

Stake Storm Drain
54th St bet Orange &
Trojan
Dwg. 8540-L

78

INDEXED

1+53	End Ditch	340.74	(342.5) ^{C1⁸} _{3⁸}	C1 ⁵ 3 ⁵ 342.3
1+36.5		340.80	342.5 C 3 ² 5 ¹	C2 ¹ (342.9) 4 ¹
1+19.95	Reg open Ditch End Pipe	344.07	340.87	C3 ²⁰ 10' Rt
0+99.87		347.26	340.99	C6 ²⁷ "
0+79.78		347.24	341.11	C6 ²³ "
0+59.69	& 54th	347.25	341.23	C6 ¹³ 10' Lt
0+41.36		344.93	341.34	C3 ⁵⁹ 10' Rt
0+23.02		346.67	341.45	C5 ²² "
0+04.69	Reg New 45" End Exist 45"	346.76 (341.59) E.	341.56	C5 ²⁰ "
R17		347.12		Rim Sewer MD 8' Rt 0+50 (FB1846 R59)

3-20-51 Stake Cb Inlet & 5' of
Hendricks Special Cb. 1/4 E Westland
Aiken
Shepard
Bruner
NO# 31478

INDEXED

APR 26 1951

79

West End of Special Cb.	247.19	247.41	F0 ²³
East End of 5' special cb	246.71	247.44	F0 ⁷²
SO End of Box	246.35	247.44	F1 ⁰⁹
NE End of Box	245.41	247.66	F2 ²⁵

3-2
 H/c
 A/
 Sh
 Br
 W

277.20
 8.65
 55

8294.31
 285.8

20826.08
 299539

245.3
 505

277
 213.5

5188.13
 2384

6-1197
 2384

6-3551
 2384

6-5965
 2384

6-8350

22.52
 108

249.25
 108
 255.41
 108

259.28
 266

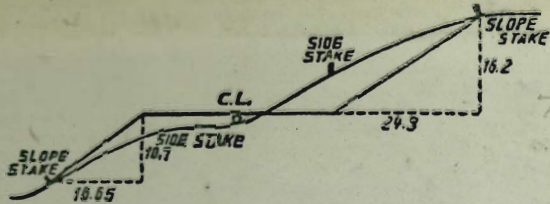
256.62

247.70
 108
 266

258.41
 266

248.70
 258.07

247.70
 104
 248.49



DISTANCES FROM SIDE STAKES FOR CROSS-SECTIONING.
 SLOPE 1 1/2 TO 1. ROADWAY OF ANY WIDTH.

	0	.1	.2	.3	.4	.5	.6	.7	.8	.9	
0	0.00	0.15	0.30	0.45	0.60	0.75	0.90	1.05	1.20	1.35	0
1	1.50	1.65	1.80	1.95	2.10	2.25	2.40	2.55	2.70	2.85	1
2	3.00	3.15	3.30	3.45	3.60	3.75	3.90	4.05	4.20	4.35	2
3	4.50	4.65	4.80	4.95	5.10	5.25	5.40	5.55	5.70	5.85	3
4	6.00	6.15	6.30	6.45	6.60	6.75	6.90	7.05	7.20	7.35	4
5	7.50	7.65	7.80	7.95	8.10	8.25	8.40	8.55	8.70	8.85	5
6	9.00	9.15	9.30	9.45	9.60	9.75	9.90	10.05	10.20	10.35	6
7	10.50	10.65	10.80	10.95	11.10	11.25	11.40	11.55	11.70	11.85	7
8	12.00	12.15	12.30	12.45	12.60	12.75	12.90	13.05	13.20	13.35	8
9	13.50	13.65	13.80	13.95	14.10	14.25	14.40	14.55	14.70	14.85	9
10	15.00	15.15	15.30	15.45	15.60	15.75	15.90	16.05	16.20	16.35	10
11	16.50	16.65	16.80	16.95	17.10	17.25	17.40	17.55	17.70	17.85	11
12	18.00	18.15	18.30	18.45	18.60	18.75	18.90	19.05	19.20	19.35	12
13	19.50	19.65	19.80	19.95	20.10	20.25	20.40	20.55	20.70	20.85	13
14	21.00	21.15	21.30	21.45	21.60	21.75	21.90	22.05	22.20	22.35	14
15	22.50	22.65	22.80	22.95	23.10	23.25	23.40	23.55	23.70	23.85	15
16	24.00	24.15	24.30	24.45	24.60	24.75	24.90	25.05	25.20	25.35	16
17	25.50	25.65	25.80	25.95	26.10	26.25	26.40	26.55	26.70	26.85	17
18	27.00	27.15	27.30	27.45	27.60	27.75	27.90	28.05	28.20	28.35	18
19	28.50	28.65	28.80	28.95	29.10	29.25	29.40	29.55	29.70	29.85	19
20	30.00	30.15	30.30	30.45	30.60	30.75	30.90	31.05	31.20	31.35	20
21	31.50	31.65	31.80	31.95	32.10	32.25	32.40	32.55	32.70	32.85	21
22	33.00	33.15	33.30	33.45	33.60	33.75	33.90	34.05	34.20	34.35	22
23	34.50	34.65	34.80	34.95	35.10	35.25	35.40	35.55	35.70	35.85	23
24	36.00	36.15	36.30	36.45	36.60	36.75	36.90	37.05	37.20	37.35	24
25	37.50	37.65	37.80	37.95	38.10	38.25	38.40	38.55	38.70	38.85	25
26	39.00	39.15	39.30	39.45	39.60	39.75	39.90	40.05	40.20	40.35	26
27	40.50	40.65	40.80	40.95	41.10	41.25	41.40	41.55	41.70	41.85	27
28	42.00	42.15	42.30	42.45	42.60	42.75	42.90	43.05	43.20	43.35	28
29	43.50	43.65	43.80	43.95	44.10	44.25	44.40	44.55	44.70	44.85	29
30	45.00	45.15	45.30	45.45	45.60	45.75	45.90	46.05	46.20	46.35	30
31	46.50	46.65	46.80	46.95	47.10	47.25	47.40	47.55	47.70	47.85	31
32	48.00	48.15	48.30	48.45	48.60	48.75	48.90	49.05	49.20	49.35	32
33	49.50	49.65	49.80	49.95	50.10	50.25	50.40	50.55	50.70	50.85	33
34	51.00	51.15	51.30	51.45	51.60	51.75	51.90	52.05	52.20	52.35	34
35	52.50	52.65	52.80	52.95	53.10	53.25	53.40	53.55	53.70	53.85	35
36	54.00	54.15	54.30	54.45	54.60	54.75	54.90	55.05	55.20	55.35	36
37	55.50	55.65	55.80	55.95	56.10	56.25	56.40	56.55	56.70	56.85	37
38	57.00	57.15	57.30	57.45	57.60	57.75	57.90	58.05	58.20	58.35	38
39	58.50	58.65	58.80	58.95	59.10	59.25	59.40	59.55	59.70	59.85	39
40	60.00	60.15	60.30	60.45	60.60	60.75	60.90	61.05	61.20	61.35	40
41	61.50	61.65	61.80	61.95	62.10	62.25	62.40	62.55	62.70	62.85	41
42	63.00	63.15	63.30	63.45	63.60	63.75	63.90	64.05	64.20	64.35	42
43	64.50	64.65	64.80	64.95	65.10	65.25	65.40	65.55	65.70	65.85	43
44	66.00	66.15	66.30	66.45	66.60	66.75	66.90	67.05	67.20	67.35	44
45	67.50	67.65	67.80	67.95	68.10	68.25	68.40	68.55	68.70	68.85	45
46	69.00	69.15	69.30	69.45	69.60	69.75	69.90	70.05	70.20	70.35	46
47	70.50	70.65	70.80	70.95	71.10	71.25	71.40	71.55	71.70	71.85	47
48	72.00	72.15	72.30	72.45	72.60	72.75	72.90	73.05	73.20	73.35	48
49	73.50	73.65	73.80	73.95	74.10	74.25	74.40	74.55	74.70	74.85	49
50	75.00	75.15	75.30	75.45	75.60	75.75	75.90	76.05	76.20	76.35	50

THE NATIONAL BLANK BOOK COMPANY
 HOLYOKE MASSACHUSETTS
 NEW YORK CHICAGO BOSTON SAN FRANCISCO