

DISTANCES FROM SIDE STAKES FOR CROSS-SECTIONING
SLOPE 1 TO 1, ROADWAY OF ANY WIDTH

	0	.1	.2	.3	.4	.5	.6	.7	.8	.9	
0	0.00	0.10	0.20	0.30	0.40	0.50	0.60	0.70	0.80	0.90	0
1	1.00	1.10	1.20	1.30	1.40	1.50	1.60	1.70	1.80	1.90	1
2	2.00	2.10	2.20	2.30	2.40	2.50	2.60	2.70	2.80	2.90	2
3	3.00	3.10	3.20	3.30	3.40	3.50	3.60	3.70	3.80	3.90	3
4	4.00	4.10	4.20	4.30	4.40	4.50	4.60	4.70	4.80	4.90	4
5	5.00	5.10	5.20	5.30	5.40	5.50	5.60	5.70	5.80	5.90	5
6	6.00	6.10	6.20	6.30	6.40	6.50	6.60	6.70	6.80	6.90	6
7	7.00	7.10	7.20	7.30	7.40	7.50	7.60	7.70	7.80	7.90	7
8	8.00	8.10	8.20	8.30	8.40	8.50	8.60	8.70	8.80	8.90	8
9	9.00	9.10	9.20	9.30	9.40	9.50	9.60	9.70	9.80	9.90	9
10	10.00	10.10	10.20	10.30	10.40	10.50	10.60	10.70	10.80	10.90	10
11	11.00	11.10	11.20	11.30	11.40	11.50	11.60	11.70	11.80	11.90	11
12	12.00	12.10	12.20	12.30	12.40	12.50	12.60	12.70	12.80	12.90	12
13	13.00	13.10	13.20	13.30	13.40	13.50	13.60	13.70	13.80	13.90	13
14	14.00	14.10	14.20	14.30	14.40	14.50	14.60	14.70	14.80	14.90	14
15	15.00	15.10	15.20	15.30	15.40	15.50	15.60	15.70	15.80	15.90	15
16	16.00	16.10	16.20	16.30	16.40	16.50	16.60	16.70	16.80	16.90	16
17	17.00	17.10	17.20	17.30	17.40	17.50	17.60	17.70	17.80	17.90	17
18	18.00	18.10	18.20	18.30	18.40	18.50	18.60	18.70	18.80	18.90	18
19	19.00	19.10	19.20	19.30	19.40	19.50	19.60	19.70	19.80	19.90	19
20	20.00	20.10	20.20	20.30	20.40	20.50	20.60	20.70	20.80	20.90	20
21	21.00	21.10	21.20	21.30	21.40	21.50	21.60	21.70	21.80	21.90	21
22	22.00	22.10	22.20	22.30	22.40	22.50	22.60	22.70	22.80	22.90	22
23	23.00	23.10	23.20	23.30	23.40	23.50	23.60	23.70	23.80	23.90	23
24	24.00	24.10	24.20	24.30	24.40	24.50	24.60	24.70	24.80	24.90	24
25	25.00	25.10	25.20	25.30	25.40	25.50	25.60	25.70	25.80	25.90	25
26	26.00	26.10	26.20	26.30	26.40	26.50	26.60	26.70	26.80	26.90	26
27	27.00	27.10	27.20	27.30	27.40	27.50	27.60	27.70	27.80	27.90	27
28	28.00	28.10	28.20	28.30	28.40	28.50	28.60	28.70	28.80	28.90	28
29	29.00	29.10	29.20	29.30	29.40	29.50	29.60	29.70	29.80	29.90	29
30	30.00	30.10	30.20	30.30	30.40	30.50	30.60	30.70	30.80	30.90	30
31	31.00	31.10	31.20	31.30	31.40	31.50	31.60	31.70	31.80	31.90	31
32	32.00	32.10	32.20	32.30	32.40	32.50	32.60	32.70	32.80	32.90	32
33	33.00	33.10	33.20	33.30	33.40	33.50	33.60	33.70	33.80	33.90	33
34	34.00	34.10	34.20	34.30	34.40	34.50	34.60	34.70	34.80	34.90	34
35	35.00	35.10	35.20	35.30	35.40	35.50	35.60	35.70	35.80	35.90	35
36	36.00	36.10	36.20	36.30	36.40	36.50	36.60	36.70	36.80	36.90	36
37	37.00	37.10	37.20	37.30	37.40	37.50	37.60	37.70	37.80	37.90	37
38	38.00	38.10	38.20	38.30	38.40	38.50	38.60	38.70	38.80	38.90	38
39	39.00	39.10	39.20	39.30	39.40	39.50	39.60	39.70	39.80	39.90	39
40	40.00	40.10	40.20	40.30	40.40	40.50	40.60	40.70	40.80	40.90	40
41	41.00	41.10	41.20	41.30	41.40	41.50	41.60	41.70	41.80	41.90	41
42	42.00	42.10	42.20	42.30	42.40	42.50	42.60	42.70	42.80	42.90	42
43	43.00	43.10	43.20	43.30	43.40	43.50	43.60	43.70	43.80	43.90	43
44	44.00	44.10	44.20	44.30	44.40	44.50	44.60	44.70	44.80	44.90	44
45	45.00	45.10	45.20	45.30	45.40	45.50	45.60	45.70	45.80	45.90	45
46	46.00	46.10	46.20	46.30	46.40	46.50	46.60	46.70	46.80	46.90	46
47	47.00	47.10	47.20	47.30	47.40	47.50	47.60	47.70	47.80	47.90	47
48	48.00	48.10	48.20	48.30	48.40	48.50	48.60	48.70	48.80	48.90	48
49	49.00	49.10	49.20	49.30	49.40	49.50	49.60	49.70	49.80	49.90	49
50	50.00	50.10	50.20	50.30	50.40	50.50	50.60	50.70	50.80	50.90	50

Distance of slope stake from side or shoulder stake for any width roadway, slope 1 to 1. If ground is nearly level, the cut or fill at side stake is located by the double entry method in left column and top row. The number in body of table in same row and column gives distance from side stake to slope stake. If ground is not level estimate the difference in elevation between the side stake and slope stake, lower target by this amount if cut, elevate if fill. Add this amount to cut or fill and find distance in table. Set up rod at this point, and line of sight should cut target. If it does not make the slight adjustment necessary.

MICROFILMED

APR 14 1965

DIRECTIONS FOR USE OF TABLES

TABLE No. XIV

Distance of slope stake from side of road
stake for any width roadway, slope 1% to 12%
If ground is nearly level, the end of hill at side
stake is located by the double end stake

IMPROVED TABLES
AND
INFORMATION

cut stake. If it does not mark the right side
judgment necessary

TABLE No. VIII

To find Tangent and External for curve of
any other degree, divide by degree of curve and
the correction found in column of correction.
Degree of curve with a given L may be found
by dividing tangent (or external), opposite L by
given tangent (or external).

The distance from a point on the tangent to
the curve is very nearly the perpendicular of the tangent
length divided by twice the radius.

ST
col
sid
sid
cut
If

	Pgs
Curb stakes - 60th - S. of El Cajon	41
grades 69th - El Cajon - Saranac	43
" " Saranac - 69 - 70th	44
Curb stakes 69th - El Cajon - Mohawk	45
" " Mohawk - 69 - 70th	46
" " " 70 - 71st	48
grades 69th - Saranac - Mandalay	50
" Manchester - " "	51
" Saranac - 68th - 69th	52
" Mohawk 67 - 68th	53
" 68th - Mohawk - Saranac	55
Curb ret. 69th & Saranac	56
" stakes " Mohawk - Saranac	57
" " " Saranac - Mandalay	58
" " Saranac - 68 - 69	60
" " " 69 - 70th	62
" " Mohawk 67 - 68 "	64
grades on 69th N. of Mandalay	66
Curbs 68th Mohawk - Saranac	67
" Mohawk 68 - 69th	68
" 68th El Cajon to Mohawk	70
Pave Alley, Blk 3 - Wilshire Pl.	71
Manchester - Saranac - Mandalay ^{curbs}	73
Sewer stakes Keating, Nly Linwood	76
Curb stakes Seminole Dr. @ Ark St	77
Inlet & Culvert - 33d & Martin	78
Flood Water Levels - Texas Exten	79

	Pgs
Alley Blk. 147, Univ. Hts., check paving	1
Alley Blk. 126, Univ. Hts., check paving	5
Alley Blk. 5, Chester Park Add., gradestakes	6
Alley Blk. 16, Pt. Loma Hts, stake ^{80'} Waxona N. 7	
Brooklyn - 60 to 61st grades	8
63d St. from Bridge to Broadway	13
" Nly Akins - culverts	17
Curbs - Brooklyn - E. of 60th	18
Mohawk - 71st - Westerly - grades	25
63d - curb stakes - ^{Brooklyn to Wunderlin} Wunderlin to Bdway	28
" " " Akins, N'ly	30
Wightman - stake curbs - 40 to Central	33
grades - 42nd gamma to alpha	34
" Beta - 41st to 42d	35
" Gamma - 41st to 43d	36
Drain - Una & Cottonwood & Alley - Blk B	38
" Yonge & Locust	{ 39
curbs 45th - W. si. S. of Thorn	{ 39
grades - Haines & Roosevelt.	40
see opposite pages for continuation	

Roberts
Cota
Moore
Pillen
6-6-51
W03144

Check Paving in Alley EIK 147 Univ. Hts

Polk to Howard
Between Texas & Louisiana

7334L FB 1773 p. 6

Lt

Measurements to Edge of Pavement only
accurate to hundredths of even one hundred Station

INDEXED

JUN 8 1951

0+51.3

8' 0" Lt END Conc Buttress

311.65
96 Top at Blag.
311.63
86 Top
310.74
80 Pav.

0+45.7

15' Rt Pav. Edge Begin Excursion for Euc. Tree

311.67
91 Top at Blag.
311.57
82 Top
310.90
83 Pav.
310.65

0+40

0+31.5

9' Lt END ROUNDED CURB BEGIN BUTTRESS ALONG GARAGE

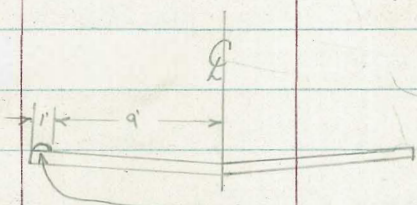
8.3 Lt

311.60
91 Top
310.79
9
311.0
82 Top
310.78
83 Pav.
310.68
10
311.12

0+20

310.72
9
310.73
10
311.28

0+10



0+00

9' Lt Begin of Slippery Rounded Curb? Avo. 1' wide.
North line Polk

Berm?

310.86
91 Top
310.58
9 EAV
310.03
9
310.5
53
310.74
41.5 Pav.
310.90
311.60
311.44

BM

Direct Elevation Rod

324.95 SEBP Texas & Polk

Cont'd From Page 1

22

£

Rt 2

T.P.

311.25

2+50

311.31
10

311.23

311.63
10

2+00

311.14
10⁰⁰

311.08

311.49
10⁰⁰

1+50

311.08
10

310.92

311.35
10

1+00

310.87
10¹⁰

310.79

311.18
985

0+60

8² Rt to Edge Pav. END Exception at Euc.

310.76
10

310.68

11.03
8²

0+52

7⁵ Rt to Edge of Paving

Contd From Page 2

2+

♀

FF 3

4+60

313.48
10

313.33

313.66
96

4+40

312.92
10

312.85

313.21
10

4+20

312.45
10

312.35

312.77
10

4+00

312.18
10.5

312.03

312.40
10.00

3+80

311.87
10

311.76

312.13
10

3+60

311.69
92

311.61

312.00
92

3+00

311.51
10.5

311.35

311.78
10.5

Cont'd From Page 3

Lt

E

Rt 4

TP

316.69

5499.32 { 92 Rt End Berm
So. Line Howard

92

316.85

316.60

316.70

92
Edge

92
Top

5490

92 Rt

Begin sloppy conc. Berm

5480

317.21
10

316.82

316.91
10

5460

316.66
10

316.41

316.70
92

5400

314.67
92

314.47

314.76
92

4480

314.08
10

313.89

314.27
92

Roberts
Cata
Moore
F. Hon
6-7-51
W.D. 2006

Check Paving Alley BK 126 Univ. Hts
Howard, Louisiana & Texas

Lt
Edge
Pav.

Rt
Edge
Pav.

5

7968-L

INDEXED

JUN 8 1951

1+74.99 Meets N
E & W Alley

10.0

10.0

0+50.5

10.0

10.0

0+50

9.3

10.0

0+00 N.E.S. Alley
N.L. Howard

9.4

10.0

2+99.79 W.L. Texas

10.0

9.9

2+50

10.0

9.7

1+50

10.0

10.0

1+00

9.9

10.2

0+50

10.1

10.0

0+00 E & W Alley
E.L. Louisiana

9.9

9.9

GRADE STAKES ALLEY Bk. 5, CHESTER PARK ADD.
 FOOTING ELEV-CONC. WALL UNDERLINED IN GREEN
 0450 = NORTH LINE ORANGE AVE.
 STAKES PUT IN ALLEY TO CHECK GROUND & WALL

INDEXED

JUL 3 1951

6

NO. # 20066

	LT.	RT.
7+80	$\frac{353.28}{353.33}$ F 0.10	$\frac{353.75}{353.33}$ C 0.42
7+70	$\frac{354.11}{354.27}$ F 0.16	$\frac{354.98}{354.27}$ C 0.71
7+50	$\frac{355.78}{355.91}$ F 0.13	$\frac{356.30}{355.91}$ C 0.39
7+30	$\frac{357.31}{357.12}$ C 0.19	$\frac{357.11}{357.12}$ C 0.29
7+10	$\frac{357.89}{357.87}$ GRADE	$\frac{357.71}{357.87}$ F 0.18
6+90	$\frac{358.03 \text{ STAKE ELEV.}}{358.21 \text{ GRADE ELEV.}}$ C 0.82	$\frac{358.17}{358.21}$ C 0.36
BM	DIRECT ELEV. ROD	347.20 SW. CP. 4TH. & EL CAJON

	LT.	RT.
		BM CHECK 347.20 = 347.20 SW. CP. 4TH. & EL CAJON
		8+92 10° LT. END BLDG. FLOOR ELEV. = 349.89
		349.10 GUTTER ELEV. 348.85 ✓ SO. PL. EL CAJON, END PAVE 349.10 GRADE ELEV. 348.83 ✓
		8+60 10° LT. FLOOR ELEV. BLDG = 350.29 (DOOR)
8+60	$\frac{349.73}{349.38}$ C 0.35	$\frac{348.95}{349.23}$ F 0.28
8+40	$\frac{350.81}{349.71}$ C 0.30	$\frac{349.18}{349.61}$ F 0.43
8+20	$\frac{350.65}{350.47}$ E-0.18	$\frac{349.89}{350.44}$ F 0.55
8+00	$\frac{351.73 \text{ CROSS ON BLDG}}{351.68}$ C 0.05	$\frac{352.14}{351.67}$ C 0.47
		7+99 10° ET. END BRICK & CONC. WALL FOOTING ELEV = 352.78
		7+91 10° LT. BEGIN BLDG. FLOOR ELEV. = 351.48

Alley Blk. 16 / Pt. Loma Hgts
 stake 80' Wawona - North
 W.O. 20006

Garber 7/2/51

Cota
 Pullen
 Bruner

Lt.

Rt.

1951

	77.83	78.41
+80	77.69	77.69
	C-0.14	C-0.72
	78.70	79.45
+60	78.62	78.62
	C-0.08	C-0.83
	79.69	80.31
+40	79.46	79.46
	C-0.23	C-0.85
	80.17	81.23
+20	80.25 Grade	80.25 Grade
	F-0.08	C-0.98
+19.5	Bottom Found. Conc. Rubble Wall - 79.93	
0+00	80.80	81.00
0-02	Bottom Found. Conc. Rubble Wall - 81.14	

Direct elev. rod . 81.05

5.83

81.05

Nwly end Cb.
 Return.

0.56 86.88 11.26 86.32

0.67 97.58

96.91 Ld. of Tr. Cb
 end 7.5 Rt Sta 0+00
 Nly Oliphant

Indexed
7-17-52

B.M. = hd oct. 60th

Disk on wall
61st

234.53

242.23

Grade Stakes - Brooklyn - 60th to
65th - Plan 7971-L

w.O. 31337 10-16-51 - 7.0.

		North			South	
0+00 = E.L. 60 th	36.2	^{6.2} 35.8	C 0.4	33.1	34.0	F 0.9
0+22	35.7	^{5.7} 34.7	C 1.0	33.5	33.7	F 0.2
0+71	32.7	^{2.7} 32.8	F 0.1	31.4	31.8	F 0.4
1+20	29.7	^{9.7} 31.0	F 1.3	28.6	30.0	F 1.4
+60	30.5	^{0.5} 30.0	C 0.5	26.7	28.9	F 2.2
2+00	30.1	^{0.1} 29.8	C 0.3	26.5	28.8	F 2.3
+40	31.3	^{1.3} 30.5	C 0.8	27.3	29.5	F 2.2
+80	32.6	^{2.6} 32.0	C 0.6	29.3	31.0	F 1.7
3+37.80	36.4	^{6.4} 34.9	C 1.5	32.0	33.9	F 1.9
+87.80 = to F of wall.	42.3	^{2.3} 37.2	C 5.1	33.5	36.0	F 2.5

0+00 = E.L. 61st

0+10 = PC. on Rt.	42.2	^{42.2} 38.0	C 4.2	36.3	37.0	F 0.7
+60	42.0	^{2.0} 39.0	C 3.0	39.5	38.0	C 1.5
1+10	43.6	^{3.6} 40.0	C 3.6	40.0	39.0	C 1.0
+60	43.3	^{3.3} 40.9	C 2.4	38.2	39.9	F 1.7

253.26 = 0 in wall - N- 0+58

243.66 = Sw. Pole Fergus

North

2+10	42.2	41.9 ^{2.6}	C 0.7
+60	44.3	42.8 ^{4.3}	C 1.5
3+06.60 - 8' w. of w.l. Fergus.	45.5	43.8 ^{5.5}	C 1.7

0+00 = E.L Fergus

0+08	50.3	45.5 ^{50.3}	C 4.8
+58 = B.M. on wall	53.1	48.1 ^{53.1}	C 5.0
+98	53.6	49.9 ^{53.6}	C 3.7
1+38 = Cross in Dr.	55.3	51.2 ^{55.3}	C 4.1
+78	56.8	52.0 ^{6.8}	C 4.8
2+28.2	57.4	52.6 ^{7.4}	C 4.8
+68.2	57.1	52.2 ^{7.1}	C 4.9
3+08.2	56.2	51.0 ^{6.2}	C 5.2
+48.2	52.7	48.8 ^{2.7}	C 3.9
+80.7	52.3	46.4 ^{2.3}	C 5.9
4+00.45 = w.l. 62 nd	48.8	45.7 ^{8.8}	C 3.1

0+00 = E.L.	47.7	46.0 ^{7.7}	C 1.7
+20.5	48.0	46.9 ^{8.0}	C 1.1
+60.5	48.4	49.8 ^{8.4}	F 1.4

246.14 = B.M. on Cross on Wall S.E. Fergus

247.85 = B.M. - Cross in Park
Sw. 62nd

South

38.6	40.9	F 2.3
39.4	41.8 ^{9.4}	F 2.4
42.3	42.8 ^{2.3}	F 0.5
45.2	44.5 ^{5.2}	C 0.7
46.2	47.1 ^{6.2}	F 0.9
46.6	48.9 ^{6.6}	F 2.3
47.5	50.2 ^{7.5}	F 2.7
48.1	51.0 ^{8.1}	F 2.9
49.1	51.6 ^{9.1}	F 2.5
49.9	51.2 ^{8.9}	F 2.3
48.2	50.0 ^{8.2}	F 1.8
47.5	47.8 ^{7.5}	F 0.3
46.0	45.7 ^{7.5}	C 0.6
43.7	44.7 ^{3.7}	F 1.0
39.6	45.0 ^{39.6}	F 5.4
41.1	45.9 ^{41.1}	F 4.8
45.6	48.8 ^{5.6}	F 3.2

270.23 = Cross on Wall - SW. 63rd

271.21 = SW. F.H. - 63rd

North

South

70

1+10.5	54.8	^{4.8} 53.5	C 1.3		50.8	52.5 ^{0.8}	F 1.7
1+60.5	58.0	^{8.0} 57.2	C 0.8	B.M. on Cross	54.27	56.1 ^{4.3}	F 1.8
2+14.05	62.6	^{2.6} 61.5	C 1.1	B.M.	58.7	60.5 ^{8.3}	F 2.2
+67.60	67.5	^{7.5} 65.7	C 1.8		61.9	64.7 ^{1.9}	F 2.8
3+07.60	74.5	^{7.5} 68.5	C 6.0		65.6	67.5 ^{5.6}	F 1.9
+47.60	77.9	^{7.9} 70.4	C 7.5		69.4	69.4	Grade
+75.60 = W.L. 63rd	78.5	^{8.5} 71.8	C 6.7		70.4	70.1 ^{0.4}	C 0.3
0+00 = E.L.	78.1	^{8.1} 72.5	C 5.6		69.0	70.6 ^{1.0}	F 1.6
+32	76.9	^{6.9} 71.3	C 5.6		68.2	70.3 ^{8.2}	F 2.1
+83.3	74.8	^{4.8} 70.5	C 4.3		66.7	69.5 ^{6.7}	F 2.8
1+34.6	73.3	^{3.3} 69.7	C 3.6		65.0	68.7 ^{5.0}	F 3.7
+74.6	72.8	^{2.8} 69.1	C 3.7		63.9	68.1 ^{3.9}	F 4.2
2+14.6	70.5	^{0.5} 68.7	C 1.8		65.6	67.7 ^{5.6}	F 2.1
+65.35	70.2	^{0.2} 68.5	C 1.7		64.7	67.5 ^{4.7}	F 2.8
3+16.10	70.3	^{0.3} 68.2	C 2.1		65.8	67.2 ^{5.8}	F 1.4
3+66.85 = W.L. Stark	70.7	^{0.7} 68.0	C 2.7		65.9	66.8 ^{5.9}	F 0.9
0+00 = E.L. - B.M.	70.51	^{70.5} 67.6	C 2.9		65.3	66.5 ^{5.3}	F 1.2
+37.8	70.2	^{0.2} 66.9	C 3.3		65.1	65.9 ^{5.1}	F 0.8

247.60 = Cross by Porch - N.
64±5

North

0+77.8	69.1	65.6 ^{9.1}	C 3.5
1+17.8	68.4	63.8 ^{8.4}	C 4.6
1+57.8	64.4	61.4 ^{4.4}	C 3.0
+97.8	60.9	58.3 ^{0.9}	C 2.6
2+47.56	57.3	54.2 ^{7.3}	C 3.1
+97.33	53.9	50.0 ^{3.9}	C 3.9
3+37.33	51.1	47.3 ^{1.1}	C 3.8
+77.33	46.6	45.6 ^{6.6}	C 1.0
4+01.46 = w.L.	44.1	45.2 ^{4.1}	F 1.1
0+00 = E.L.	39.9	45.2 ^{9.9}	F 5.3
+45.93	31.5	46.3 ^{31.5}	F 14.8
+85.93	42.4	49.9 ^{2.4}	F 7.5
1+25.93	56.9	56.2 ^{2.9}	C 0.7
+65.93	66.2	63.0 ^{6.2}	C 3.2
2+05.93	70.5	67.2 ^{0.5}	C 3.3
+45.93	70.4	68.8 ^{0.4}	C 1.6
+85.93	71.2	69.5 ^{1.2}	C 1.7
3+25.93	72.2	70.0 ^{2.2}	C 2.2
+65.93	71.5	70.0 ^{1.5}	C 1.5

270.89 = □ in Bot. Step of School
otay st.

South

63.7	64.6 ^{3.7}	F 0.9
61.8	62.5 ^{1.8}	F 1.0
59.3	60.4 ^{9.3}	F 1.1
56.2	57.3 ^{6.2}	F 1.1
51.6	53.2 ^{1.6}	F 1.6
43.3	49.0 ^{3.3}	F 5.7
41.4	46.3 ^{1.4}	F 4.9
38.2	44.6 ^{8.2}	F 6.4
36.4	44.2 ^{6.4}	F 7.8
32.8	44.2 ^{32.8}	F 11.4
34.5	45.3 ^{34.5}	F 10.8
45.7	48.9 ^{5.7}	F 3.2
56.6	55.2 ^{6.6}	C 1.4
63.6	62.4 ^{3.6}	C 1.2
68.4	66.6 ^{8.4}	C 1.8
69.2	68.0 ^{9.2}	C 1.2
69.2	68.5 ^{9.2}	C 0.7
69.6	69.0 ^{9.6}	C 0.6
69.4	69.0 ^{9.4}	C 0.4

11

270.20 = N.E. Hyd. - 65th

12

North

4 + 05.93 = 73.1 69.5^{3.1} C 3.6

+ 49.93 = P.C. on S.

+ 52.93 = P.C. on N. 71.4 68.5^{71.4} C 2.9

65th
4 + 62.36 = W.L.

68.1

South

9.2
69.2 68.5 C 0.7

8.2
68.2 67.6 C 0.6

67.1

Indexed
7-17-52

206.73 = □ in Walk - E - 3+95
232.97 = □ in Walk - E - 5+75

13

Stakes - 6^{3rd} - Bridge to Broadway.

West.

East.

0+00 = Beg. full st.	91.4	97.5 1.4	F 6.1	88.4	97.5 88.4	F 9.1
+40	91.3	96.6 1.3	F 5.3	93.1	96.6 3.1	F 3.5
+80	92.4	95.4 2.4	F 3.0	93.1	95.4 2.1	F 2.3
1+20	92.6	95.6 2.0	F 3.0	93.8	95.6 1.8	F 1.8
+60	93.0	95.8 2.8	F 2.8	93.8	95.8 2.0	F 2.0
2+00	93.9	96.0 2.1	F 2.1	94.2	96.0 1.8	F 1.8
+40	94.5	96.4 1.9	F 1.9	95.3	96.4 1.1	F 1.1
+80	96.8	97.5 0.7	F 0.7	96.0	97.5 1.5	F 1.5
3+20	99.6	99.7 0.1	F 0.1	98.4	99.7 1.3	F 1.3
+60	01.3	02.8 1.5	F 1.5	01.0	02.8 1.8	F 1.8
4+00	07.1	06.8 0.3	C 0.3	07.3	06.8 0.5	C 0.5
+50	13.5	13.0 0.5	C 0.5	14.6	13.0 1.6	C 1.6
5 ~	19.2	19.3 0.1	F 0.1	23.0	23.0 19.3 3.7	C 3.7
+50	25.9	25.6 0.3	C 0.3	29.9	25.6 4.3	C 4.3
6 ~	31.9	31.9	G.	4' BK. NAIL IN PALM 37.0	31.9 7.0	C 5.1

249.60 = \square in wall
259.70 " " "

7+17- w.
8+17- w.

west

288.50 - spike in Pole - w. 1 to 4

303.44 = R.P. Cross

East

14

6+50	39.8	38.2	C 1.6	41.5	38.2	C 3.3
7+07.4	46.9	45.4	C 1.5	47.7	45.4	C 2.3
+57.4	53.2	51.2	C 2.0	52.9	51.2	C 1.7
8+07.4	57.7	57.1	C 0.6	58.0	57.1	C 0.9
+57.4	62.9	63.0	F 0.1	63.0	63.0	C
9+07.4 = P.C.	69.9	68.9	C 1.0	68.4	68.9	F 0.5
+17.4 = S.L. Brooklyn						
0+00 = N.L.						
+10 = P.C.	78.7	74.2	C 4.5	78.2	74.2	C 4.0
+60	82.0	80.8	C 1.2	84.0	80.9	C 3.1
1+10	86.9	87.4	F 0.5	90.7	87.6	C 3.1
+62.6	93.9	94.4	F 0.5	98.0	94.7	C 3.3
2+02.6	98.0	98.8	F 0.8	04.0	99.2	C 4.8
+42.6	00.2	01.9	F 1.7	05.6	02.4	C 3.2
+82.6	01.3	03.4	F 2.1	06.9	03.9	C 3.0
3+22.6	99.9	03.3	F 3.4	06.8	03.7	C 3.1
+62.6	99.0	01.9	F 2.9	06.0	02.2	C 3.8
4+02.6	97.7	00.3	F 2.6	04.8	00.4	C 4.4
+35.73 = S.L. Wunderlin	96.8	99.0	F 2.2	03.9	99.0	C 4.9

304.48 = TopHyd. - Wunderlin

West.

332.83 = B+ - Broadway.

306.71 = □ - F. 2+02

East.

15

Wunderlin

0+00 = N.L.

95.6 97.5 F 1.9

02.2 2.2
98.5 C 3.7

+40

89.8 98.0 F 8.2

99.9 9.9
99.0 C 0.9

+80

91.4 98.5 F 7.1

97.3 99.5
7.5 F 2.2

1+17

94.3 99.0 F 4.7

97.8 3 00.0 F 2.2
1.8

+57

97.4 00.2 F 2.8

00.1 01.2 F 1.1
0.1

+97

01.5 02.8 F 1.3

06.8 03.8 C 3.0
6.8

2+37

06.8 07.0 F 0.2

12.7 12.7 C 4.7
08.0

+87

12.0 13.3 F 1.3

18.6 14.3 C 4.3
8.6

3+37

16.6 19.5 F 2.9

24.9 20.5 C 4.4
4.9

+87

27.3 25.7 C 1.6

30.7 26.7 C 4.0
30.7

4+25.6 = RC.

31.9 30.5 C 1.4

33.3 31.5 C 1.8
3.3

+35.5 = S.L.

Broadway

Culverts -

7

15

Det. 60[±] + 61[±]

$$234.53 = \text{ct.} - 60^{\pm}$$

for Pipe only

0+00 = E.L. 60[±] to S.

1+89.5 = ϕ - S. cb.

2+02 = \pm N. cb.

S. end = 30' S. of S.L. 25.57 $\begin{matrix} 5.57 \\ 24.00 \end{matrix}$ c 1.57

1.83' out from cb = Ang. 28.56 $\begin{matrix} 8.56 \\ 25.30 \end{matrix}$ c 3.26

1.83 S. of N. cb. = Ang. 29.32 $\begin{matrix} 9.32 \\ 26.20 \end{matrix}$ c 3.12

N. end = 30' N. of N.L. 31.41 $\begin{matrix} 1.41 \\ 29.70 \end{matrix}$ c 1.71

93.49 = Cross on Walk

247.85 = Cross in Porch

17.

63rd - N. of Akins.

Indexed

62nd - Brooklyn - South

Indexed

25' N. of S.L.

44.54
44.58 39.33 C 5.25

0+85 = ± Boyes

E. side - at cb. line

93.00 91.37^{2.00} C 1.63

0+00 = ± Box on N. cb. line

0+00

45.52 40.67^{5.52} C 4.85

S.S.

+50 = S.L.

43.89 38.00^{3.89} C 5.89

W. side at cb. line

92.91 91.00^{2.91} C 2.91

1+00

39.31 35.31^{4.31} C 4.00

+50

35.62 32.62^{5.62} C 3.00

64th Culvert = 55' W. of E.L. 64th St.

2 ~

33.42 29.93^{33.42} C 3.49

5 West.

+50

33.22 27.24^{3.22} C 5.98

N. cb. line

44.09 40.05^{44.09} C 4.04

+80

33.25 25.62^{3.25} C 7.63

2+10 = Brk.

32.55 24.00^{2.55} C 8.55

S. cb. line = 15"

43.09 38.00^{43.09} C 5.09

+60

29.52 20.22^{29.52} C 9.30

To South = 18"

43.09 35.00^{43.09} C 8.09

4+10

24.73 16.44^{24.73} C 8.29

20' S. of S.L.

31.90 30.20^{1.80} C 1.60

+60

20.15 12.66^{20.15} C 7.49

5+10

16.10 08.88^{16.10} C 7.22

+50 = 15.48
from
E.L.

12.80 05.86^{12.80} C 6.94

7.54

06.50
5.86
.64

1.60
5.86 = I.E. Exist.

17.38
1.72
15.66

1.9 E.

Curb Stakes - Brooklyn - 60th - East.

234.53 = ct. - 60th

North *Indexed*

South

	North	South	
N.L. Brook. End. on 60th	35.90 36.30 5.90	F 0.40	
10.47	35.37 35.50 5.37	F 0.13	
PC = 0+16	35.11 34.90 5.11	C 0.21	
0+22	34.97 34.68 .97	C 0.29	
0+54.66	33.45 33.46 .45	F 0.01	
+87.33	32.10 32.23 .32	F 0.13	
1+20	31.32 31.00 .32	C 0.32	
+40	30.65 30.36 .65	C 0.29	
+60	30.19 29.94 .19	C 0.25	
+80	30.39 29.74 .39	C 0.65	
2+02 = E Box	28.80 29.76 8.80	F 0.96	
2+00			
+20	30.55 29.99 .55	C 0.56	
+40	30.83 30.45 .83	C 0.38	
+60	31.31 31.13 .31	C 0.18	
+80	32.06 32.02 .06	C 0.04	

	North	South	
= end. S.L. Brooklyn.	33.26	34.00 3.26	F 0.74
	33.81	34.10 3.81	F 0.29
	33.76	33.90 3.76	F 0.14
	33.61	33.68 3.61	F 0.07
	32.54	32.46 .54	C 0.08
	31.08	31.23 .08	F 0.15
	30.12	30.00 .12	C 0.12
	29.55	29.36 .55	C 0.19
	29.24	28.94 .24	C 0.30
	29.19	28.74 .19	C 0.45
892 = E pipe +89.5 = E Box	27.50	28.75 7.50	F 1.25
Lat. FL end = ①	26.35		
2+00	28.97	28.76 .97	C 0.21
	29.45	28.99 .45	C 0.46
	29.79	29.45 .79	C 0.34
	30.32	30.13 .32	C 0.19
	31.28	31.02 1.28	C 0.26

North

3+09.6	33.38	33.51 ₃₈	F 0.13
+39.2 = = w.L. 61st	34.96	35.01 ₄₉	F 0.05
20'	35.57	35.47 ₅₇	C 0.10
40'	36.20	36.37 ₂₀	F 0.17
= 0+00 .60' = E.L.	37.19	37.19 ₁₉	C 0.02
0+08	37.68	37.75 ₆₈	F 0.07
+40	37.95	38.00 ₉₅	F 0.05
+75	38.62	38.62	G.
1+10	39.15	39.30 ₁₅	F 0.15
+45	39.94	39.97 ₉₄	F 0.03
+80	40.79	40.75 ₇₉	C 0.14
2+15	41.07	41.32 ₀₇	F 0.25
+50	41.96	42.00 ₉₆	F 0.04
+85	42.57	42.67 ₅₇	F 0.10
3+06.6	43.39	43.34 ₃₉	C 0.05
+14.6 = w.L.	43.91	43.75 ₉₁	C 0.16
20'	44.20	43.91 ₂₀	C 0.29
40'	44.63	44.27 ₆₃	C 0.36
60' = E.L. Fergus	45.16	44.67 ₁₆	C 0.49

South

737.2 = P.C.	32.68	32.51 ⁶⁸	C 0.17
10.47	34.29	33.89 ⁴²⁹	C 0.40
End = S.L.	33.95	34.35 ₃₉₅	F 0.40
End = S.L.	34.09	34.42 ₀₉	F 0.33
10.47	35.95	35.90 ⁹⁵	C 0.05
0+10 = P.C.	36.97	36.60 ₉₇	C 0.37
	37.16	37.04 ₁₆	C 0.12
	37.76	37.62 ⁷⁶	C 0.14
	38.42	38.30 ⁴²	C 0.12
	39.42	38.97 ⁴²	C 0.45
	39.84	39.65 ⁸⁴	C 0.19
	40.29	40.32 ₂₉	F 0.03
	41.13	41.00 ¹³	C 0.13
	41.73	41.67 ⁷³	C 0.06
	42.47	42.34 ⁴⁷	C 0.13
3+04.6 = P.C.	42.94	42.71 ⁹⁴	C 0.23
10.47	43.34	42.88 ³⁴	C 0.46
End = S.L.	43.31	42.85 ³¹	C 0.46

North

South

Fergus
0+00 = E.L.

End = S.L.

+08

PC = 0+10

+33

+58

+78

+98

1+18

+38

+58

+78

2+08.2

+28.2

+48.2

+68.2

+88.2

3+08.2

+28.2

+48.2

+68.2

45.46	45 ⁴⁶ ₂₅	C 0.21
45.70	45 ⁷⁰ ₅₀	C 0.20
46.85	46 ⁸⁵ ₈₀	C 0.05
48.14	48 ¹⁴ ₁₀	C 0.04
48.82	49 ⁰⁴ ₀₂	F 0.22
49.66	49 ⁸⁶ ₈₀	F 0.20
50.40	50 ⁵⁶ ₅₀	F 0.16
50.90	51 ¹⁴ ₁₀	F 0.24
51.18	51 ⁶¹ ₁₈	F 0.43
51.67	51 ⁹⁵ ₉₇	F 0.28
52.30	52 ³⁷ ₃₀	F 0.07
52.59	52 ⁵⁵ ₅₁	C 0.04
52.64	52 ⁶⁴ ₄₈	C 0.16
53.09	52 ²⁰ ₀₉	C 0.89
52.11	51 ⁶⁸ ₁₁	C 0.43
51.33	50 ⁹⁴ ₃₃	C 0.39
49.98	49 ⁹⁷ ₁₈	C 0.01
48.74	48 ⁷⁷ ₇₄	F 0.03
47.32	47 ³⁵ ₃₂	F 0.03

45.14	45.14	C 2.02
45.70	43.80 ^{5.70}	C 1.90
46.32	44.60 ^{6.32}	C 1.72
47.06	45.80 ^{7.06}	C 1.26
47.76	47.10 ^{7.76}	C 0.66
48.26	48.04 ²⁶	C 0.22
48.88	48.86 ⁸⁸	C 0.02
49.15	49.56 ⁵	F 0.41
50.06	50.14 ⁰⁶	F 0.08
50.48	50.61 ⁴⁸	F 0.13
50.43	50.95 ⁴³	F 0.52
51.52	51.37 ⁵²	C 0.15
51.44	51.55 ⁴⁴	F 0.11
50.11	51.48 ¹¹	F 1.37
50.42	51.20 ⁰⁴²	F 0.78
49.68	50.68 ⁶⁸	F 1.00
49.17	49.94 ¹⁷	F 0.77
48.40	48.97 ⁴⁰	F 0.57
47.72	47.77 ⁷²	F 0.05
46.73	46.35 ⁷³	C 0.38

North

South

3+80.7	46.58	46. ⁵⁸ 39	C 0.19	45.85	45. ⁸⁵ 39	C 0.46	
+92.2 =	46.06	45. ⁶⁰⁶ 99	C 0.07	+90.2 = P.C.	45.50	45. ⁵⁰ 01	C 0.49
4+00.2 = W.L. 62 nd	45.82	45. ⁸² 71	C 0.11	10.47	44.75	44. ⁷⁵ 67	C 0.08
20.5	45.74	45. ⁷⁴ 42	C 0.32	S. end.	43.48	44. ³⁰ 30	F 0.82
35 = ^{5' B.} Box	45.63	45. ⁶³ 50	C 0.13	S. end	43.47	44. ⁵⁴ 54	F 1.07
40.5	45.60	45. ⁶⁰ 54	C 0.06	10.47	45.29	45. ³⁹ 33	C 0.26
60 = E.L. = 0+00	46.19	46. ¹⁹ 01	C 0.18	D+10 = P.C.	45.80	45. ⁸⁰ 40	C 0.40
0+108							
0+20.5	46.97	46. ⁹⁷ 89	C 0.08	46.27	45. ²⁷ 89	C 0.38	
+40.5	47.56	47. ⁵⁶ 14	F 0.58	47.62	47. ⁶² 14	C 0.48	
+60.5	49.49	49. ⁴⁹ 77	F 0.28	48.85	48. ⁸⁵ 77	C 0.07	
+93.83	52.57	52. ⁵⁷ 23	C 0.34	51.28	51. ²⁸ 23	C 0.05	
1+27.66	54.58	54. ⁵⁸ 69	F 0.11	54.03	53. ⁰³ 69	C 0.34	
1+60.50	57.24	57. ²⁴ 14	C 0.10	56.11	56. ¹¹ 14	F 0.03	
+96.20	60.44	59. ⁴⁴ 98	C 0.46	59.14	58. ¹⁴ 98	C 0.16	
2+31.90	63.62	62. ⁶² 82	C 0.80	62.24	62. ²⁴ 82	C 0.42	
2+67.60	65.85	65. ⁸⁵ 67	C 0.18	64.91	64. ⁹¹ 67	C 0.24	
+87.60	67.38	67. ³⁸ 16	C 0.22	66.24	66. ²⁴ 16	C 0.08	
3+07.60	68.41	68. ⁴¹ 44	F 0.03	67.56	67. ⁵⁶ 44	C 0.12	
+27.60	69.84	69. ⁸⁴ 53	C 0.31	68.49	68. ⁴⁹ 53	F 0.04	

North

3+47.60	70.64	70.40 ^{.64}	Co.24
+65.60 = P.C.	71.35	71.17 ^{.35}	Co.18
+75.69 = W.L. 63 rd			
10.47	71.67	71.82 ^{.87}	Fo.15
10.47	72.66	72.80 ^{.80}	Fo.14
EC = on 63 rd = NE. Ref.	73.77	74.17 ^{.77}	Fo.40
EC. 63 rd	74.22	74.17 ^{.22}	Co.05
10.47	73.51	73.12 ^{.51}	Co.39
10.47	72.32	72.45 ^{.32}	Fo.13
P.C. = 0+10	71.84	71.92 ^{.84}	Fo.08
0+32	71.20	71.32 ^{.20}	Fo.12
+66.2	71.00	70.77 ^{.00}	Co.23
1+00.4	70.39	70.21 ^{.39}	Co.18
1+34.6	69.89	69.66 ^{.89}	Co.23
+54.6	69.27	69.32 ^{.27}	Fo.05
+74.6	69.26	69.04 ^{.26}	Co.22
+94.6	68.85	68.84 ^{.85}	Co.01
2+14.6	68.74	68.70 ^{.74}	Co.04
+50.65	68.55	68.53 ^{.55}	Co.02
+86.70	68.39	68.35 ^{.39}	Co.04

South

	69.19	69.40 ^{.19}	Fo.21
	69.63	69.99 ^{.63}	Fo.36
	69.98	70.05 ^{.98}	Fo.07
	69.65	69.75 ^{.65}	Fo.10
	68.88	68.92 ^{.88}	Fo.04
EC. 63 rd	69.28	68.92 ^{.28}	Co.36
	70.12	70.12 ^{.12}	Co.17
	71.00	70.58 ^{.00}	Co.42
	70.90	70.70 ^{.90}	Co.20
	70.42	70.32 ^{.42}	Co.10
	70.53	69.77 ^{.53}	Co.76
	70.00	69.21 ^{.00}	Co.79
	68.88	68.66 ^{.88}	Co.22
	68.47	68.32 ^{.47}	Co.15
	68.05	68.04 ^{.05}	Co.01
	67.78	67.84 ^{.78}	Fo.06
	67.81	67.70 ^{.81}	Co.11
	66.98	67.53 ^{.98}	Fo.55
	67.34	67.35 ^{.34}	Fo.01

	North			South			
3 + 22.75	68.45	68. ⁴⁵ 18	Co. 27	67.66	67. ⁶⁶ 18	Co. 48	
3 + 58.80 = N.	68.51	68. ⁵¹ 00	Co. 51	+56.80 = PC	67.61	67. ⁶¹ 01	Co. 60
3 + 66.8 = W.L. Stork	68.06	67. ⁰⁶ 95	Co. 11	-10.47 - Sup. Ret.	66.49	66. ⁴⁹ 78	Fo. 29
±	67.79	67. ⁷⁹ 77	Co. 02	-S. end	65.88	66. ⁸⁸ 04	Fo. 16
0 + 00 = E.L.	67.47	67. ⁴⁷ 60	Fo. 13	-S. end	65.65	65. ⁶⁵ 90	Fo. 25
0 + 08	67.35	67. ³⁵ 55	Fo. 20	10.47 S.E. Ret.	66.21	66. ²¹ 45	Fo. 24
				0 + 10 = PC	66.10	66. ¹⁰ 50	Fo. 40
0 + 37.8	66.97	66. ⁹⁷ 86	Co. 11		66.42	65. ⁴² 86	Co. 56
+ 57.8	66.42	66. ⁴² 31	Co. 11		65.74	65. ⁷⁴ 31	Co. 43
+ 77.8	65.85	65. ⁸⁵ 62	Co. 23		64.90	64. ⁹⁰ 62	Co. 28
+ 97.8	65.16	64. ¹⁶ 78	Co. 38		64.14	63. ¹⁴ 78	Co. 36
1 + 17.8	64.26	63. ²⁶ 80	Co. 46		63.22	62. ²² 80	Co. 42
+ 37.8	63.05	62. ⁰⁵ 65	Co. 40		61.77	61. ⁷⁷ 65	Co. 12
+ 57.8	61.58	61. ⁵⁸ 36	Co. 22		60.70	60. ⁷⁰ 36	Co. 34
+ 77.8	60.07	59. ⁰⁷ 92	Co. 15		58.69	58. ⁶⁹ 92	Fo. 23
+ 97.8	58.42	58. ⁴² 33	Co. 09		57.04	57. ⁰⁴ 33	Fo. 29
2 + 30.98	55.91	55. ⁹¹ 56	Co. 35		53.18	54. ¹⁸ 56	F 1.38
+ 64.15	53.28	52. ²⁸ 79	Co. 49		52.27	51. ²⁷ 79	Co. 48
+ 97.33	50.45	50. ⁴⁵ 02	Co. 43		49.29	49. ²⁹ 02	Co. 27
3 + 17.33	48.86	48. ⁸⁶ 49	Co. 37		47.89	47. ⁸⁹ 49	Co. 40

North

3+37.33	47.56	47.24	56	C 0.32
+57.33	46.29	46.27	29	C 0.02
+77.33	45.36	45.58	36	F 0.22
4+01.46 = W.L. 64 ⁴⁴	44.73	45.14	73	F 0.41
15.93 E.	45.08	45.03	03	C 0.05
30'E = F.L.	44.25	45.14	25	F 0.89
0+06.	46.13	45.18	18	C 0.95
+26	46.08	45.61	08	C 0.47
+46	46.48	46.31	48	C 0.17
+66	47.39	47.30	39	C 0.09
+86	49.74	49.84	74	F 0.10
1+06.	53.27	52.81	27	C 0.46
+26	56.59	56.20	59	C 0.39
+46	59.89	59.80	89	C 0.09
+66	63.17	63.02	17	C 0.15
+86	65.84	65.48	84	C 0.36
2+06	67.61	67.17	61	C 0.44
+26	68.53	68.11	53	C 0.42
+46	68.81	68.75	81	C 0.06
+66	69.36	69.21	36	C 0.15

South

46.69	46.24	69	C 0.45
45.43	45.27	43	C 0.16
44.78	44.58		C 0.20
44.29	44.14	29	C 0.15
44.13	44.03	13	C 0.10
43.94	44.14	94	F 0.20
44.18	44.18		G
44.88	44.61	88	C 0.27
45.74	45.34	74	C 0.43
46.45	46.30	45	C 0.15
48.68	48.84	68	F 0.16
51.44	51.81	44	F 0.37
55.47	55.20	47	C 0.27
62.68	62.40	68	C 0.28
66.09	65.12	09	C 0.97
66.67	65.91	67	C 0.76
67.15	66.50	15	C 0.65
67.45	66.75	45	C 0.70
67.79	66.90	79	C 0.89

Cont. on P. 27

Rough Grades - Mohawk - 71st - West.
 Plan - 7841-L 11-2-51 7.0

Indexed

	North			South		
0+00 = E.L. 70 th		75.20		73.95	74.35	
+50	77.8	77.3 ⁷⁸	C 0.5	77.5	76.6 ⁷⁷	C 0.9
1~	80.2	79.6 ^{0.2}	C 0.6	78.7	78.8 ^{9.7}	F 0.1
+60	83.5	82.3 ^{3.5}	C 1.2	81.0	81.5 ^{9.5}	F 0.5
2+20	86.9	85.0 ^{6.9}	C 1.9	83.7	84.2 ^{3.7}	F 0.5
+60	89.3	86.5 ^{9.3}	C 2.8	84.6	85.8 ^{4.6}	F 1.2
3~	91.6	87.6 ^{11.6}	C 4.0	86.7	86.9 ^{8.7}	F 0.2
+40	93.3	88.2 ^{3.3}	C 5.1	88.1	87.4 ^{8.1}	C 0.7
4~	93.3	88.7 ^{3.3}	C 4.6	87.7	87.9 ^{7.7}	F 0.2
+50	90.0	89.1 ^{0.0}	C 0.9	85.1	88.3 ^{5.1}	F 3.2
5~	89.6	89.5 ^{0.0}	C 0.1	86.3	88.8 ^{6.3}	F 2.5
+60	92.8	90.0 ^{2.8}	C 2.8	88.2	89.3 ^{8.2}	F 1.1
6+20.14 = w.L. 71 st	94.5	90.6 ^{4.5}	C 3.9	91.1	89.8 ^{9.1}	C 1.3

	North			South		
0+00 = EL: 69 th	65.3	65.0 ^{5.3}	C 0.3	64.4	64.3 ^{7.4}	C 0.1
+50	66.8	66.1 ^{6.8}	C 0.7	64.8	65.4 ^{4.8}	F 0.6
1+00	68.7	67.3 ^{8.7}	C 1.4	66.3	66.5 ^{6.3}	F 0.2
+60	71.1	68.6 ¹¹	C 2.5	67.6	67.9 ^{7.6}	F 0.3
2+00	72.1	69.4 ^{2.1}	C 2.7	68.6	68.7 ^{8.6}	F 0.1
+40	73.1	70.0 ^{3.1}	C 3.1	69.0	69.3 ^{4.0}	F 0.3
+90	74.1	70.7 ^{4.1}	C 3.4	70.0	70.0	Grade
3+40	74.9	71.4 ^{4.9}	C 3.5	70.2	70.6 ^{7.2}	F 0.4
+80	75.6	71.9 ^{5.6}	C 3.7	70.5	71.2 ^{0.5}	F 0.7
4+20	75.7	72.6 ^{5.7}	C 3.1	71.6	71.9 ^{1.6}	F 0.3
+60	76.1	73.7 ^{6.1}	C 2.4	72.6	73.0 ^{2.6}	F 0.4
5+00	77.0	75.0 ^{7.0}	C 2.0	74.1	74.3 ^{4.1}	F 0.2
+40	78.4	76.3 ^{8.4}	C 2.1	75.0	75.5 ^{5.0}	F 0.5
+80	79.9	76.7 ^{9.9}	C 3.2	76.3	75.7 ^{6.3}	C 0.4
6+19.75 = W.L. 70 th		75.35			74.50	

North

South

65.75 27

45.00

1075

S.E. Ref. - Otay

= P.C.

3+06	69.88	69.70 ⁸⁸	C 0.18	66.63		
+26	69.92	69.96 ⁹²	F 0.04	5.19 = S. end.	68.30	67.04 ^{8.30} C 1.26
+46	70.20	70.37 ⁹²	C 0.13	9.57	67.74	67.55 ⁷⁴ C 0.19
+66	69.98	70.02 ⁹²	F 0.04	6.13 = P.C. = 0+00	67.87	67.87 C
+86	69.53	69.82 ⁹²	F 0.29	0+05.75	67.70	67.97 ⁹² F 0.27
4+06	69.59	69.45 ⁵¹	C 0.14	+35.75	68.81	68.33 ³³ C 0.48
+52.36 = P.C.	68.89	68.50 ⁸⁹	C 0.39	+65.75	69.09	68.70 ^{9.09} C 0.39
10.47 = 65 th Ret.	68.74	68.40 ⁷⁴	C 0.34	+85.75	69.09	68.96 ^{9.09} C 0.13
N. end at N.L. + W.L. 65 th	68.69	68.50 ⁶⁹	C 0.19	1+05.75	69.20	69.07 ²⁰ C 0.13
				+25.75	69.18	69.02 ¹⁸ C 0.16
Inlets at Bottom of 63 rd East.				+45.75	69.06	68.82 ^{9.06} C 0.24
5' N. of N. end.	94.93	95.49 ⁹³	F 0.56	+65.75	68.76	68.45 ⁷⁶ C 0.31
5' S. of S. end on ch. line	95.12	95.43 ¹²	F 0.31	2+10.75 = P.C.	68.73	67.61 ^{8.73} C 1.12
west				10.47	68.15	67.18 ^{8.15} C 0.97
5' N. of N. End.	95.08	95.49 ⁰⁸	F 0.41		67.40	66.58 ^{7.40} C 0.82
5' S. of S. end.	95.04	95.43 ⁰⁴	F 0.39			

299.78 = Sum. Pole Wunderlin + 6th

306.71 = D E-2 + 2

332.83 = ct. Broadway

Indexed

28

6th - cb. Stakes - Wunderlin to Broadway

Exist cb.	West		
	95.08		
S. end.	97.31	97.31 96.20	C 1.11
10.47	97.75	97.75 97.05	C 0.70
P.C. = 0+10	97.73	97.73 97.63	C 0.10
0+40	98.53	98.53 98.01	C 0.52
+80	98.90	98.90 98.52	C 0.38
1+17	00.01	00.01 99.00	C 1.01
+37	00.10	00.10 99.39	C 0.71
+57	00.20	00.20 00.15	C 0.05
+77	00.82	00.82 01.29	F 0.47
+97	02.49	02.49 02.81	F 0.32
2+17	05.26	05.26 04.71	C 0.55
+37	07.62	07.62 07.00	C 0.62
+67	11.21	11.21 10.74	C 0.47
+97	14.75	14.75 14.48	C 0.28
3+27	19.14	19.14 18.22	C 0.92
+57	22.28	22.28 21.96	C 0.32
+87	25.88	25.88 25.70	C 0.18

East		
01.86	01.86 99.78	C 2.08
00.21	00.21 98.95	C 1.26
99.16	9.16 98.63	C 0.53
99.03	99.03 99.01	C 0.02
99.53	99.53 99.52	C 0.01
99.97	00.00 99.97	F 0.03
00.27	00.27 00.39	F 0.12
01.14	01.14 01.15	F 0.01
02.25	02.25 02.29	F 0.04
04.03	04.03 03.81	C 0.22
06.08	6.08 05.71	C 0.37
08.17	8.17 08.00	C 0.17
11.82	11.82 11.74	C 0.08
15.57	15.57 15.48	C 0.09
19.40	19.40 19.22	C 0.18
23.40	23.40 22.96	C 0.44
26.75	26.75 26.70	C 0.05

4+25.6 = P.C. -

West 30.43 30.50₄₃ F0.07East 31.32 31.51₃₂ F0.19

10.47

West 31.11 31.40 F0.29

East 32.20 32.80₂₀ F0.60

N. end on W.L.

West 32.93 31.78₂₈₃ C1.05East 33.54 33.92₅₄ F0.38

= Exist. ch.

West 31.77 31.89

Brooklyn to Wunderlin - P. 22 for Ret.

0+10 = P.C.

West 74.17

East 74.17

+40

West 77.91 78.14₉₄ F0.23East 77.90 78.21₇₉₀ F0.31

+70

West 82.69 82.11₆₉ C0.58East 82.76 82.25₇₆ C0.51

1+00

West 86.94 86.08₉₄ C0.86East 85.89 86.29₈₉ F0.40

+30

West 90.47 90.05₄₇ C0.42East 89.84 90.33₈₄ F0.49

+62.6

West 94.75 94.36₇₅ C0.39East 94.28 94.71₂₈ F0.43

+82.6

West 96.95 96.70₉₅ C0.25East 96.95 97.10₆₉₄ F0.15

2+02.6

West 99.00 98.80₀₀ C0.20East 00.18 99.20₁₈ C0.98

+22.6

West 00.65 00.50₆₅ C0.15East 00.96 01.00₉₆ F0.04

+42.6

West 02.15 01.90₁₅ C0.25East 02.37 02.40₃₇ F0.03

+62.6

West 03.05 02.80₀₅ C0.25East 03.11 03.40₁₁ F0.29

+82.6

West 03.66 03.40₆₆ C0.26East 03.48 03.90₄₈ F0.42

3+02.6

West 03.52 03.50₅₂ C0.02East 03.56 04.00₅₆ F0.44

+22.6

West 03.37 03.30₃₇ C0.07East 03.24 03.70₂₄ F0.46

+42.6

West 02.81 02.70₈₁ C0.11East 02.69 03.10₆₉ F0.41

West-

East

1+90	95.79	95.98 ₇₉	F 0.19	95.82	95.98 ₈₂	F 0.16
2+20	95.85	96.13 ₅₁₃	F 0.28	95.98	96.13 ₅₁₃	F 0.15
+40	96.65	96.35 ₆₅	C 0.30	96.63	96.35 ₆₃	C 0.28
+60	96.64	96.81 ₆₄	F 0.17	97.04	96.81 ₇₀₄	C 0.23
+80	97.43	97.51 ₄₃	F 0.08	98.00	97.51 ₅₀₀	C 0.49
3+00	98.88	98.47 ₈₈	C 0.41	98.59	98.47 ₅₉	C 0.12
+20	99.75	99.65 ₇₅	C 0.10	99.52	99.65 ₅₂	F 0.13
+40	01.25	01.07 ₂₅	C 0.18	00.82	01.07 ₈₂	F 0.25
+60	01.68	02.75 ₆₈	F 1.07	02.23	02.75 ₂₃	F 0.52
+80	04.96	04.65 ₉₆	C 0.31	04.41	04.65 ₄₁	F 0.24
4+00	07.10	06.80 ₇₁₀	C 0.30	07.17	06.80 ₇₁₇	C 0.37
+20	10.11	09.20 ₁₀₁₁	C 0.91	10.96	09.20 ₁₀₉₆	C 1.76
+55	14.40	13.59 ₄₄₀	C 0.81	14.19	13.59 ₄₁₉	C 0.59
+90	18.51	18.08 ₅₁	C 0.43	18.51	18.08 ₅₁	C 0.43
5+25	23.03	22.47 ₃₀₃	C 0.56	22.31	22.47 ₃₁	F 0.16
+60	28.32	26.86 ₈₃₂	C 1.46	29.59	26.86 ₅₉	C 2.73
+95	31.16	31.25 ₁₆	F 0.09	31.66	31.25 ₆₆	C 0.41
6+30	35.28	35.64 ₂₈	F 0.36	35.93	35.64 ₉₃	C 0.29
+65	40.39	40.03 ₃₉	C 0.36	40.69	40.03 ₆₉	C 0.66

424

West.

East.

7+07.4	45.13	45.35 ³	F0.22	45.83	45.35 ⁸³	C0.48
+47.4	50.24	50.06 ²⁴	C0.18	50.33	50.06 ³³	C0.27
+87.4	54.87	54.78 ⁸⁷	C0.09	54.93	54.78 ⁹³	C0.15
8+274	59.92	59.49 ⁹²	C0.43	59.36	59.49 ³⁶	F0.13
+67.4	64.24	64.21 ²⁴	C0.03	63.89	64.21 ⁸⁹	F0.32
9+07.4 = P.C.		68.92		69.27	68.92 ²⁷	C0.35

Indexed

Curb Stakes - S. side of Wightman

40th to Central

W.O. 31587

12-16-51 7.0

3 Back Grade

1st 1/4 Top

42.35

42.35

= Grade

G+00 = E.L. 40th

42.21 42.21 Co.44

42.35

41.75

Co.60

+13 = E.C.

F.L. 1.4

42.21 42.27 Fo.06

+50

42.34 42.38 Fo.04

+85

42.40 42.49 Fo.09

1+20

42.54 42.59 Fo.05

+38 = Alley

42.59 42.64 Fo.05

w. end Ret. at S.L.

42.78 42.79 Fo.01

E. end " " "

42.89 42.85 Co.04

+62

42.74 42.72 Co.02

1+90

42.91 42.80 Co.11

2+20

42.94 42.89 Co.05

+50

42.97 42.98 Fo.01

+80

43.12 43.03 Co.05

3+00 = w.L. Central Ret. → 43.03 43.11 = cb. to w.

gut = 42.60

at w.L. Stake to Show Grade

Grade 43.11 43.11

Rough Grades on 42nd - Gamma to Alpha
 Plan - 8548-L
 W.O. 31665

12-26-51

7.0

8443 = Pole - SW. Beta + 42nd
 8449 = S.W. in walk

Indexed

34

	West.				East.		
0+00 = N.L. Gamma	80.8	^{80.8} 79.8		84.0	^{4.0} 80.3		C 3.7
+40	81.3	81.0	C 0.3	86.6	81.6		C 5.0
+80	81.7	81.8	F 0.1	86.2	82.4		C 3.8
1+20	82.1	82.1	G	84.2	82.7		C 1.5
+60	83.3	82.4	C 0.9	84.3	83.0		C 1.3
2+00	84.1	82.6	C 1.5	84.6	83.2		C 1.4
+50	84.3	82.9	C 1.4	84.9	83.5		C 1.4
2+99.83 = S.L. Beta	84.4	83.2	C 1.2	85.5	83.8		C 1.7
40' N = E on E.				85.5	84.2		C 1.3
0+00 = N.L. Beta	83.4	83.2	C 0.2	85.3	84.5		C 0.8
+50	83.7	^{3.7} 83.7	G	85.9	84.9		C 1.0
1~	83.8	84.3	F 0.5	86.1	85.4		C 0.7
+50	84.6	^{3.8} 84.8	F 0.2	86.8	85.8		C 1.0
2~	86.1	^{6.1} 85.4	C 0.7	88.2	86.2		C 2.0
+50	86.5	^{6.5} 86.0	C 0.5	88.5	86.7		C 1.8
+85.4 = Beg. obs. + Pavc	86.36			86.95	86.94		

Beta - 41st to 42nd

60.53 = Nail in pole 41st + Beta.

35

Indexed

North

South

0+00 = E.L. 41 st	66.7	^{6.7} 62.6	C 4.1		58.9	62.7	F 3.8	
+50	68.7	^{8.7} 64.9	C 3.8		61.6	^{8.9} 64.8	F 3.2	
1~	71.2	^{11.2} 67.1	C 4.1		66.7	66.9	F 0.2	
+50	74.1	^{4.1} 69.4	C 4.7		71.2	^{71.2} 69.1	C 2.1	
2~	75.1	^{5.1} 71.6	C 3.5		72.5	^{2.5} 71.3	C 1.2	
+40	77.0	^{7.0} 73.4	C 3.6		73.7	^{3.7} 73.0	C 0.7	
+80	77.5	^{7.5} 75.1	C 2.4		74.9	^{4.9} 74.7	C 0.2	
3+20	79.9	^{9.9} 76.5	C 3.4		75.8	76.0	F 0.2	
+60	81.0	^{1.0} 77.7	C 3.3		77.4	^{7.4} 77.2	C 0.2	
4+00	81.9	^{1.9} 78.7	C 3.2		79.4	^{9.4} 78.2	C 1.2	
+50	82.6	^{2.6} 79.7	C 2.9	9.8 79.3	C 0.5	79.8	^{9.8} 79.2	C 0.6
5~	82.2	^{2.2} 80.7	C 1.5	2.9 80.5	C 2.4	82.9	^{2.9} 80.2	C 2.7
+50	82.4	^{2.4} 81.8	C 0.6	4.1 81.7	C 2.4	84.1	^{4.1} 81.3	C 2.8
6+00.62 =	83.4	^{3.4} 82.8	C 0.6	4.4 82.9	5	84.4	^{4.4} 82.3	C 2.1

w.L. 42nd

PC. =

5+90.62

82.6

Gamma - 41st to 43rd

	North		
0-30 = E 41 st	72.0	73.3 _{2.0}	F 1.3
0+00 = E.L.	73.0	73.8 _{3.0}	F 0.8
+50	73.8	74.4 _{3.8}	F 0.6
1~	74.6	74.8 _{4.6}	F 0.2
+50	74.9	75.2 _{4.9}	F 0.3
2~	72.9	75.7 _{2.8}	F 2.9
+50	72.8	76.1 _{2.8}	F 3.3
3~	74.6	76.6 _{4.6}	F 2.0
+50	75.6	77.0 _{5.6}	F 1.4
4~	77.0	77.4 _{5.3}	F 0.4
+50	78.3	77.9 _{5.3}	C 0.4
5~	77.5	78.3 _{7.3}	F 0.8
+50	79.3	78.8 _{7.3}	C 0.5
6+00.55 = WL 42 nd	80.7	79.2 _{0.7}	C 1.5
0+00 = E.L. 42 nd	84.0	79.7 _{4.0}	C 4.3
+50	85.1	79.9 _{5.1}	C 5.2
1+00	84.6	80.1 _{4.6}	C 4.5
+40	84.0	80.3 _{4.0}	C 3.7

81.13 = Top Hyd. 42nd + Gamma
75.64 = Nail in S.W. pole 41st + Gamma

36

Indexed

	South		
	75.4	74.3 _{5.4}	C 1.1
	75.5	74.6 _{5.5}	C 0.9
	76.1	74.8 _{6.1}	C 1.3
	77.1	75.1 _{7.1}	C 2.0
	77.5	75.4 _{7.5}	C 2.1
	77.7	75.8 _{7.7}	C 1.9
	76.8	76.1 _{7.8}	C 0.7
	76.9	76.4 _{6.9}	C 0.5
	77.0	76.7 _{7.0}	C 0.3
	77.4	77.1 _{7.4}	C 0.3
	76.5	77.4 _{6.5}	F 0.9
	75.5	77.7 _{5.5}	F 2.2
	73.7	78.1 _{3.7}	F 4.4
	76.4	78.4 _{6.4}	F 2.0
	77.2	78.7 _{7.2}	F 1.5
	77.1	78.9 _{7.1}	F 1.8
	77.2	79.1 _{7.2}	F 1.9
	76.5	79.3 _{6.5}	F 2.8

North

1+80	83.4	80.1 ^{3.4}	c 3.3
2+20	82.6	79.3 ^{2.6}	c 3.3
+60	81.6	78.1 ^{1.6}	c 3.5
+96.74	83.0	77.1 ^{2.0}	c 5.9
3+26.74	83.4	76.4 ^{3.4}	c 7.0
+54.74 = w.L 43 rd		76.66	

South

76.0	79.1	F 3.1
76.2	78.3 ^{6.2}	F 2.1
77.2	77.7	c 0.1
77.1	76.1 ^{2.1}	c 1.0
77.1	75.0 ^{2.1}	c 2.1
	73.46	

Stake Drain - Una + Cottonwood
 Plan - 6969-L
 W.O. 20517

1-24-52 - 7.0

Indexed

6.62 BM. = 9.55 - cut in Rim - 3+02.7 38

Drain thru Block B - Birch to Alley
 at Una.

0+05.4			
0+00 = stub.	6.87		
	10.51		
+30	6.74	3.73	
	10.51		
+60 = end bend	6.66	3.85	
	12.26		
+95	6.52	5.74	
	13.52		
1+30	6.38	7.14	
	14.05		
+59.2 = CL. ^{to S}	6.27	7.78	
	14.23		
to W. S	6.27	7.96	
	13.02		
1+95	6.13	6.89	
	11.75		
2+30	5.99	5.76	
	9.55		
2+66.1 = P.C.	5.85	3.70	
	9.31		
+77.75 = Mid.	5.80	3.51	
	9.51		
2+89.4 = E.C.	5.75	3.76	
	9.55		
3+02.7 = Ext. CL.	5.70	3.85	

0-02.5?			
0+00 - Exist 36"	7.92	7.92	
= cut at Heddwall		3.37	C 4.55
		4.33	
+35	4.33	3.50	C 0.83
		5.04	
+70	5.04	3.63	C 1.41
		5.05	
1+05	5.05	3.76	C 1.29
		4.98	
+40	4.98	3.89	C 1.09
		5.35	
+75	5.35	4.02	C 1.33
		6.55	
2+10	6.55	4.15	C 2.40
		6.66	
+45	6.66	4.28	C 2.38
		8.07	
2+85.8 = end 24"	8.07	4.43	C 3.64
		4.89 = I.E.	
= cleanout		24"	
		8.69	
I.E. of Pipe at Inlet	8.69	4.87	C 3.82
		8.69	
Top of cb. at ±	8.69	8.59	C 0.10

Stake Drain - Yonge - + Locust.

Plan - 4375-B 1-28-52 - 7.0.

Indexed

Curb. Stakes - W. Side of 45th - S. of Thorn 39

Plan - 8722-L 2-1-52 - 7.0.

Indexed

326.45 = NW.B.P.
45th Thorn

	Stake	Grade	Cwt.
6' Lt.	40.16	40.16 33.80	C 6.36
0-16 = Ext. ? - 6' Rt.	38.33	8.33 33.80	C 4.53
0+00 =	42.32	+2.32 34.86	C 7.46
0+25	44.41	44.41 37.20	C 7.21
+70	46.16	46.16 39.54	C 6.62
EL locust.			
= Headwall 1+00 =	46.80	6.80 41.56	C 5.24

50' of Ditch - No grade.

	Stake	Grade	Cwt.
0+00 = S.L. Thorn = cb.			25.20
+10	24.77	24.93	F 0.16
+20	24.10	24.41	F 0.31
+35			
+55	22.28	22.55	F 0.27
+90	20.54	20.69	F 0.15
1+25	18.84	18.82	C 0.02
+60	16.72	16.96	F 0.24
+95	14.87	15.10	F 0.23
2+30	13.16	13.23	F 0.07
+65	11.19	11.37	F 0.18
3+00 = end.	09.00	09.51	F 0.51
3' B. 4' across	10.22	10.01	C 0.21
3+00 = S. end on E.	10.67	10.51	C 0.16
2+68	12.91	12.20	C 0.71
2+36 = Meet. cb.		13.90	

2-7-52 7.0.

40

Indexed

Rough Grades - Haines - Roosevelt - S.

22.5 N.

35.4
W.

22.5 N.

36.22

E.

N.L. Roosevelt = gut.

35.57

= gut.

36.10

±

36.9

6.9

35.2

C 1.7

38.0

8.0

35.7

C 2.3

S.L. = 0 + 00'

37.4

7.4

34.9

C 2.5

40.8

0.8

35.4

C 5.4

+50

38.6

8.6

34.5

C 4.1

39.3

9.3

35.0

C 4.3

1+00

37.4

7.4

34.1

C 3.3

38.6

8.6

34.6

C 4.0

+50

34.3

4.3

33.7

C 0.6

34.9

4.9

34.2

C 0.7

2~

33.3

33.3

G

34.0

4.0

33.8

C 0.2

Indexed

Curb Stakes - W. side 60th - S. of El Cajon
Plan 8813-L 2-11-52- 7.0.

End. cb.		65.84		
PC - 10' Ret.		65.84	65.81	C 0.03
0+00 = S.L.	No. stake	65.75		
+35		65.70	65.70	C 0.42
+70		65.45	64.81	C 0.64
1+09.2 = Mect.		64.49	64.28	C 0.21

Beg. at Estelle - to N. West

W.L. 60 th + N.L. Estelle		21.62	20.62	C 1.00
2' Rad. on 60 th → B.C.	E.C.	20.88	20.52	C 0.36
			20.60	C 0.28
0+10=7		21.58	21.00	C 0.58
+50		23.73	23.00	C 0.73
+70		24.72	24.06	C 0.66
+90		25.75	25.23	C 0.52
1+10		26.89	26.52	C 0.37
+30		28.25	27.92	C 0.33
+50		29.30	29.44	F 0.14

East.

end cb.		20.55	20.60	
10.47'		21.64	20.90	C 0.74
= PC 70' Rad.		21.98	21.30	C 0.68
		23.43	23.18	C 0.25
		24.16	24.18	F 0.02
		25.39	25.31	C 0.08
		27.04	26.56	C 0.48
		28.38	27.94	C 0.44
		29.57	29.44	C 0.13

Rough Grades - 60th Estelle - N.

West.

East.

1+70	31.04	31.07	F 0.03		31.06	31.07	F 0.01
+90	32.68	32.76 ₆₈	F 0.08	PC. 20' Rad.	32.75	32.76	F 0.01
Bradford.				☐	33.55	33.57	F 0.02
2+25 = ☐	35.70	35.72	F 0.02	end of cb.	34.26	34.26	
+70				end cb.	37.40	37.43	
+70				☐	38.00	37.81	C 0.19
2+60	38.99	38.68	C 0.31	PC.	39.01	38.68 ⁰¹	C 0.33
+90	41.43	41.39	C 0.04		42.63	41.55 ^{2.63}	C 1.08
3+20	44.24	44.10 ²⁴	C 0.14		45.08	44.42 ^{5.08}	C 0.66
+50 = cb.	46.94	46.80	C 0.14	cb =	47.39	47.30 ⁹⁶	C 0.66

456.79 = S.W.B.P. El Cajon + 69th

Indexed

463.53 = S.W. Pole - 69th + Mohawk

43

Rough Grades - 69th - El Cajon to Saranac

West.

East.

0+00 = N.L. El Cajon	57.17	57.12		57.29	57.26	
+60	57.8	57.5	C 0.3	58.3	57.7 ^{8.3}	C 0.6
1~	58.4	58.0	C 0.4	58.5	58.2 ^{8.5}	C 0.3
+40	59.4	58.8 ^{8.4}	C 0.6	59.5	59.1 ⁵	C 0.4
+82.5	60.3	59.9	C 0.4	60.8	60.3	C 0.5
2+25	61.0	61.0	G.	61.7	61.5 ^{1.7}	C 0.2
+67.5	62.3	62.1 ³	C 0.2	62.6	62.7	F 0.1
3+10 = S.L. Mohawk	63.1	63.1	G	65.0	63.9 ^{5.0}	C 1.1
0+00 = N.L.	63.1	63.7	F 0.6	65.6	64.6 ^{5.6}	C 1.0
+50	62.5	62.6	F 0.1	65.4	63.4 ^{5.4}	C 2.0
1~	60.8	61.3 ^{0.8}	F 0.5	64.6	62.1 ^{4.6}	C 2.5
+50	58.9	60.1 ^{8.4}	F 1.2	63.1	60.8 ^{3.1}	C 2.3
2~	55.8	58.8	F 3.0	61.9	59.5 ^{1.9}	C 2.4
+50	54.7	57.5 ^{2.7}	F 2.8	61.8	58.3 ^{1.8}	C 3.5
3+10 = P.C.	54.4	56.0 ^{4.4}	F 1.6	60.6	56.8 ^{4.6}	C 3.8
Saranac.						

Rough Grades - Saranac - 69th to 70th

456.32 = N.W. Pole 69th + Saranac.

Indexed

	North			South		
To S. 0+00 = EL. 69 th	= NW Cor. →	54.6	54.8	F 0.2		
0+10 = PC					61.0	61.0 58.3 C 2.7
+55		63.6	61.2 ^{3.6}	C 2.4	65.7	61.7 ^{5.7} C 4.0
1+00		66.3	64.4 ^{6.3}	C 1.9	68.6	65.2 ^{8.6} C 3.4
+40		69.5	67.0 ^{9.5}	C 2.5	71.9	67.7 ^{7.1} C 4.2
2+80		70.4	68.4 ^{0.4}	C 2.0	73.0	69.2 ^{3.0} C 3.8
2+20		70.2	69.0 ^{0.2}	C 1.2	72.7	69.7 ^{2.7} C 3.0
+70		70.2	69.5 ^{0.2}	C 0.7	71.7	70.2 ^{1.7} C 1.5
3+14.7 = P.C. on N.		70.7	69.9 ^{0.7}	C 0.8	Manchester	70.7 ^{1.8} C 1.1
3+39.7 = E.C. on N.		70.8	69.9 ^{0.8}	C 0.9	3+64.7 = S. E	71.2 ^{2.3} C 1.1
3+89.7 = E.C.		72.2	70.4 ^{2.2}	C 1.8		
4+14.7 = P.C.		72.8	70.9 ^{2.8}	C 1.9	73.3	71.7 ^{3.3} C 1.6
4+60		73.0	71.4 ^{3.0}	C 1.6	74.0	72.1 ^{4.0} C 1.9
5+00		72.0	70.8 ^{2.0}	C 1.2	74.1	71.5 ^{4.1} C 2.6
+40		70.5	68.3 ^{0.5}	C 2.2	73.7	69.0 ^{3.7} C 4.7
+80		67.5	64.8 ^{2.5}	C 2.7	71.9	65.5 ^{1.9} C 6.4
6+19.93 = W.L. 70 th		65.6	62.6 ^{5.6}	C 3.0	66.7	62.25 ^{6.7} C 4.4
$\frac{14.1}{5.2}$ To S.	= 147 Back →					

Curb stakes 69thE/Cajon To
Mohawk

Indexed

463.45
S.W. Pole 69th → Mohawk 45

	Grade	West stake	all .04 lower		Grade	East	
0 + 00	457.12	57.19		C 0.07 F 0.03	457.22		04 lower.
0 + 06.09	457.14	57.18		C 0.01	457.26		1/2 stake
0 + 15	457.21	57.07		F 0.14	457.32	57.17	.19 F 0.15
+ 37.5	457.35	56.99		F 0.36	457.50	57.55	C 0.05.01
+ 60.	457.49	56.84		F 0.65	457.68	57.70	C 0.02 F 0.02
+ 80	457.67	57.21		F 0.46	457.89	57.89	1/2 F 0.04
1 + 00	457.94	57.82		F 0.12	458.20	58.21	C 0.01 F 0.03
1 + 20	458.31	58.09		F 0.22	458.61	58.45	F 0.16
1 + 38 P.C. Alley Ret	458.73	58.34		F 0.39 .48	459.07	58.56	F 0.51 .55
S. Side E.C. Alley Ret	458.78	58.34		F 0.44 .41	459.12	58.56	F 0.56 .60
End Ret. Alley	458.90	59.35		C 0.45 .59	459.24	59.20	F 0.04
End Ret. Alley	459.41	60.04		C 0.63	459.80	60.68	C 0.88 .84
N. Side E.C. Alley Ret.	459.29	58.72		F 0.57	459.68	59.68	F 0.54 .58
1 + 62 P.C. Alley Ret	459.34	58.72		F 0.62	459.73	59.73	F 0.54.63
1 + 95	460.19	60.40		C 0.21 .17	460.67	60.74	C 0.07.03
2 + 30	461.09	61.30		C 0.25	461.65	61.65	F 0.18.19
2 + 65	461.99	62.24		C 0.25 .21	462.64	62.64	F 0.11.21
3 + 02 P.C. cb. Ret.	462.94	63.20		C 0.26 .22	463.68	463.63	F 0.05.09

Curb stakes Mohawk

69th to 70th.

46

Indexed

North

South

0+08	^{PC} Cb Ref	465.18	65.09	F 0.15	464.43	64.16	64.43	F 0.27
+40		465.90	65.82	F 0.08		64.86	¹⁶ 65.16 ₊₉₆	F 0.30
+70		466.57	66.44	F 0.13		65.61	65.83 ₆₁	F 0.22
1+00		467.24	67.16	F 0.08		66.35	66.51 ₃₅	F 0.16
+30		467.92	67.79	F 0.13		66.84	67.18 ₈₄	F 0.34
+60		468.60	68.20	F 0.40		67.55	67.85 ₅₅	F 0.30
+80		469.03	68.93	F 0.10		68.05	68.28 ₀₅	F 0.23
2+00		469.41	69.34	F 0.07		68.36	68.66 ₃₆	F 0.30
+20		469.75	69.65	F 0.10		68.61	69.00 ₆₁	F 0.39
+40		470.04	69.92	F 0.12		68.92	69.29 ₉₂	F 0.37
+75		470.63	70.33	F 0.30		69.43	69.88 ₄₃	F 0.45
3+10		471.22	70.86	F 0.36		69.97	70.47 ₉₇	F 0.50
+45		471.81	71.63	F 0.18		70.34	71.06 ₃₄	F 0.72
+80		472.41	71.92	F 0.49		70.73	71.66 ₇₃	F 0.93
4+00		472.73	72.16	F 0.57		71.38	71.98 ₃₈	F 0.60
+20		473.14	72.65	F 0.49		71.81	72.39 ₈₁	F 0.58
+40		473.74	73.08	F 0.66		72.32	72.99 ₃₂	F 0.67
+60		474.23	73.57	F 0.66		72.82	73.48 ₈₂	F 0.66
5+00		475.25	74.53	F 0.72		74.05	74.50	F 0.45

North

South

5 + 40	476.27	75.95	F 0.32
+60	476.69	76.36	F 0.33
+80	476.65	76.50	F 0.15
6 + 00	476.28	76.31	C 0.03
+10 = P.C.	475.80	75.92	C 0.12
+20	475.35	74.93	
= w.l. 70th	75.35 ⁶⁷	75.67	C 0.32

75.39	75.52	F 0.13
76.24	75.94 ^{6 2 9}	C 0.30
76.33	75.90 ^{6 3 9}	C 0.43
75.34	75.43 ⁶	F 0.09
74.62	75.05 ^{6 2}	F 0.43
74.18	74.50 ¹⁸	F 0.32

N.E. Ret. - 69th + Mohawk stake Cr.

N.W. Ret.

69th	64.38	64.40	F 0.02
	64.04	64.60	F 0.56
	63.72	64.80 ^{6 7 2}	F 1.08
	63.85	65.02 ^{6 8 5}	F 1.17
E.C. = Mohawk	65.03	65.18 ⁰³	F 0.15

S.E. Ret.

69th	63.63	63.67	F 0.04
1/4	63.85	63.90	F 0.05
1/2	64.39	64.10 ³⁹	C 0.29
3/4	64.14	64.27	F 0.13
P.C.	64.16	64.43 ¹⁶	F 0.27

Curb Stakes - Mohawk - 70th to 71st
Indexed

	Stake	North		South	
0+00 = E.L. 70 th	75.03	75.20	F 0.17	74.27	74.35 F 0.08
+10 = P.C.	75.20	75.50	F 0.30	74.49	74.75 ⁴⁹ F 0.26
+45	76.82	77.08	F 0.26	76.21	76.33 ²¹ F 0.12
+80	78.25	78.66	F 0.41	77.68	77.91 ⁶⁸ F 0.23
1+15	79.81	80.24	F 0.43	79.23	79.49 ²³ F 0.26
+50	81.45	81.82	F 0.37	80.83	81.07 ⁸³ F 0.24
+85	83.19	83.40	F 0.21	82.22	82.65 ²² F 0.43
2+20	84.70	84.97	F 0.27	83.79	84.22 ⁷⁹ F 0.43
+40	85.41	85.82	F 0.41	84.55	85.07 ⁵⁵ F 0.52
+60	86.25	86.53	F 0.28	85.29	85.78 ²⁹ F 0.49
+80	86.92	87.13	F 0.17	86.05	86.38 ⁰⁵ F 0.33
3+00	87.44	87.69	F 0.16	86.60	86.85 ⁴⁴ F 0.25
+20	87.86	87.95	F 0.09	87.04	87.20 F 0.16
+40	88.15	88.18	F 0.03	87.39	87.43 F 0.04
+75	88.55	88.47	C 0.08	87.88	87.72 C 0.16
4+10	88.49	88.76	F 0.27	87.90	88.01 F 0.11
+45	88.63	89.05	F 0.42	88.35	88.30 C 0.05
+80	88.91	89.34	F 0.43	88.44	88.59 F 0.15
5+15	89.34	89.63	F 0.29	88.65	88.88 F 0.23

North

South

5+50	89.72	89.92	F 0.20	89.19	89.17	C 0.02
+85	90.13	90.21	F 0.08	89.16	89.46	F 0.30
6+12 = P.C.	90.35	90.42	F 0.07	89.40	89.67	F 0.27
20 = W.L. 71 st	90.60	90.70	F 0.10	89.70	89.75	F 0.05

(518K)

Rough Grades 69th St
Saranac to Mandalay End
Lt=West Rt=East

Lt=West
Indexed

Rt=East 50

2750

457³³ 55⁵⁷ F1²

458⁰⁸ 58⁵⁸ C0⁵

6795 455¹⁵⁵ 57⁴⁵ C1²

456³⁰ 58⁶⁹ C2²

2700

457⁵³ 55³⁵ F2²

458²⁸ 59⁴⁸ C1²

6745 455⁷⁵ 56⁶⁹ C0²

456⁵⁰ 58⁸⁸ C2²

1750 ⁶² EC

457⁷³ 56⁴⁴ F1⁶

6700 455⁹² 56⁴⁵ C0⁵

456⁶⁸ 58⁴³ C1⁸

1745'

458⁵⁰ 59²⁴ C1⁴

5750 456¹² 56¹² G

456⁸⁸ 58⁴⁵ C1⁶

1710

458⁶⁴ 60²⁵ C1⁶

BC ↗

457⁶⁵ 55²² F2⁴

5700 456³³ 56²³ F0¹

457⁰⁸ 57⁷² C0⁶

0775'

458⁷⁸ 61⁴⁸ C2²

Mid Tan

457³⁰ 55³⁷ F1²

4750 456⁵³ 55⁰¹ F1⁰

457²⁸ 57⁷¹ C0⁴

0725'

458⁹⁸ ^{02 60} 64⁵³ C5²

4700 456⁷³ 55⁵⁵ F1²

457⁴⁸ 57⁵⁵ C0⁴

Lt EC Return

456⁶⁰ 55² F1⁵

3750 456⁹³ 55²⁶ F1²

457⁶⁸ 57⁸⁸ C0²

0700 Nly Saranac

3700 457¹³ 55²³ F1²

457⁸⁸ 57⁹² C0

BM

461⁰⁰ on plan
Sheet 7

51BK

Rough Grades Manchester
Saranac to Mandalay
Lt. West Rt. East

Indexed

Lt. West

Rt. East 51

2+41⁵⁹

468³⁰ 68⁶⁰ C0³ 468⁸⁰ 69⁰³ C0²

6+95⁵⁹ 466⁰² 66⁵⁹ C0⁶

466⁵² 67⁰⁵ C0⁵

1+91⁰²

468⁵⁵ 68⁶⁶ C0¹ 469⁰⁵ 69²⁷ C0²

(50²)

6+45⁵⁹ 466²⁷ 67²² C1⁴

466⁷⁷ 66²⁰ C0¹

(50²)

1+40⁵⁹ EXC.

468⁸⁰ 69⁰⁰ C0³ 469³⁰ 71⁰⁰ C-1²

(49³)

5+96⁰² 466⁵⁵ 67⁸⁸ C1³

467⁰⁵ 67⁶⁵ G

1+20⁵⁹

468⁹² 69¹¹ C0³ 469⁴¹ 71¹⁶ C-1²

(50²)

5+45⁵⁹ 466⁸⁰ 67²⁷ C1²

467³⁰ 67²⁶ G

1+00⁵⁹

469⁰² 69⁶⁴ C0⁶ 469⁵⁶ 71⁵⁰ C-1²

4+94⁰² 467⁰⁶ 67⁵⁸ C0⁵

467⁵⁵ 67²⁴ C0²

0+80⁵⁹

469²⁶ 70³³ C1¹ 469²³ 71² C2⁰

4+43⁵⁹ 467³⁰ 67⁵⁶ C0³

467⁸⁰ 68²⁵ C0⁵

0+60⁵⁹

469⁴⁸ 70⁴³ C1⁰ 470⁰³ 71²³ C-1²

5+93⁰² 467⁵⁵ 67⁸¹ C0³

468⁰⁵ 68⁵⁷ C0⁵

0+25

469²⁰ 70²² C0² 470⁴⁰ 72¹⁶ C-1²

3+42⁵⁹ 467⁸⁰ 67⁵⁸ F0²

468³⁰ 68⁵¹ C0²

0+00 Nly Saranac

2+92⁰² 468⁰⁵ 67⁸³ F0²

469⁵⁵ 68⁸² C0³

Rough Grades - Saranac - 68th to 69th

Indexed

N.W. Cor. 68th

N.E. Cor. -

5' B. - N. end	42.2	41.9 ²²	C 0.3
" - S. end	42.5	42.1	C 0.4

5' B. - N. end	42.7	42.00	C 0.7
----------------	------	-------	-------

S.W. Cor.

5' B. - W. end	44.2	42.8 ²	C 1.4
" " - P.C. - S. end	43.9	43.2	C 0.7

0+00 = E.L. 68th To S.	43.5	42.5	C 1.0
+60	45.0	43.7 ^{5.0}	C 1.3
1+10	46.1	44.7 ^{6.1}	C 1.4
+60	47.1	45.7 ^{7.1}	C 1.4
2+00	47.1	46.3 ^{7.1}	C 0.8
+40	47.5	46.7 ^{7.5}	C 0.8
+90	46.8	46.9	F 0.1
3+40	46.7	47.1 ^{6.1}	F 0.4
+90	46.8	47.3 ^{6.5}	F 0.5
4+40	47.6	47.5	C 0.1
+80	48.4	48.0 ⁴	C 0.4
5+20	49.3	49.3	G
+60	51.5	51.3	C 0.2
6+20.4	54.6	54.8	F 0.2

South

44.1	43.3 ^{4.1}	C 0.8
44.6	44.5 ⁵	C 0.1
45.5	45.5	G
47.6	46.5 ^{7.6}	C 1.1
48.6	47.1 ^{8.6}	C 1.5
50.2	47.4 ^{10.2}	C 2.8
50.0	47.6 ^{10.0}	C 2.4
49.3	47.8 ^{9.3}	C 1.5
48.3	48.1 ³	C 0.2
49.0	48.3 ^{9.0}	C 0.7
51.6	48.8 ^{1.6}	C 2.8
51.9	50.0	C 1.9
52.8	52.0	C 0.8
55.1	55.4	F 0.3

Rough Grades - Mohawk - 67th to 68th

Indexed

53

	North			South		
0+00 = E.L. of 67 th	50.3	49.1 ^{0.3}	C 1.2	50.5	49.5 ^{0.5}	C 1.0
+60	50.9	50.2 ^{0.8}	C 0.7	52.2	50.7 ^{2.2}	C 1.5
1+00	51.6	51.2 ^{1.6}	C 0.4	52.7	51.7	C 1.0
+40	52.5	52.6	F 0.1	54.1	53.1 ^{4.1}	C 1.0
+75	54.3	54.0	C 0.3	56.0	54.5 ^{6.0}	C 1.5
2+10	56.0	55.4 ^{6.0}	C 0.6	57.1	55.9 ^{7.1}	C 1.2
+50	57.1	56.6 ^{7.1}	C 0.5	58.9	57.1 ^{8.9}	C 1.8
+90	57.0	56.9	C 0.1	58.7	57.4 ^{8.7}	C 1.3
3+30	56.8	56.4	C 0.4	58.4	56.9 ^{8.4}	C 1.5
+70	56.4	55.4	C 1.0	57.4	55.9 ^{7.4}	C 1.5
4+10	55.5	54.5	C 1.0	56.3	54.9 ^{6.3}	C 1.4
+60	53.8	53.3	C 0.5	54.9	53.8 ^{4.9}	C 1.1
5+10	52.5	52.1	C 0.4	53.4	52.6 ^{3.4}	C 0.8
+60	52.0	50.9 ^{2.0}	C 1.1	53.5	51.4 ^{3.5}	C 2.1
6+11.1 = W.L. 68 th	51.6	49.7 ^{1.6}	C 1.9	53.4	50.2 ^{3.4}	C 3.2
0+00 = F.L. 68 th	51.3	49.5 ^{1.3}	C 1.8	53.1	49.5 ^{3.1}	C 3.6
+40	49.9	49.7 ^{9.9}	C 0.2	52.3	49.7 ^{2.3}	C 2.6
+90	48.9	50.0 ^{8.9}	F 1.1	50.8	50.0	C 0.8

	North			South		
1+40	49.5	50.2	F 0.7	50.0	50.2	F 0.2
+80	50.0	50.7	F 0.7	50.2	50.6	F 0.4
2+20	50.7	51.7	F 1.0	50.9	51.6	F 0.7
+60	55.8	53.2 ^{5.8}	C 2.6	53.3	53.0 ³	C 0.3
3+10	56.6	55.4 ^{6.6}	C 1.2	55.3	55.1 ³	C 0.2
+50	57.5	56.9 ^{7.5}	C 0.6	57.2	56.5 ^{7.2}	C 0.7
+90	59.3	58.1 ^{9.3}	C 1.2	58.4	57.7 ^{8.4}	C 0.7
4+50	60.5	59.6 ^{0.5}	C 0.9	59.7	59.1 ⁷	C 0.6
5+00	61.2	60.7 ^{1.2}	C 0.5	61.1	60.2 ^{1.2}	C 0.9
+50	61.9	61.9	G	62.2	61.4 ^{2.2}	C 0.8
6+10=	62.8	63.3 ^{2.8}	F 0.5	62.7	62.8	F 0.1
6+20=w.L. 69+ ¹³						

68th - Rough Grades - Mohawk to Saranac.

452.66 = Pole - NW Cor. Mohawk ✓

55

Indexed

West.

East.

0+00 = N.L. Mohawk

+10	51.9	49.3 ^{1.9}	C 2.6	50.0	49.1 ^{0.9}	C 0.9
+60	50.4	48.3 ^{0.4}	C 2.1	48.2	48.2	C
1+10	49.2	47.3 ^{1.9}	C 1.9	47.1	47.2	F 0.1
+60	47.8	46.3 ^{1.5}	C 1.5	46.2	46.2	C
2+10	47.4	45.2 ^{2.2}	C 2.2	44.9	45.2 ^{0.3}	F 0.3
+60	46.1	44.2 ^{1.9}	C 1.9	44.4	44.2	C 0.2
3+10	43.9	43.2 ^{0.7}	C 0.7	43.7	43.2 ^{0.5}	C 0.5

3+20 = S.L. Saranac

68th - Rough Grades - El Cajon to Mohawk

Indexed

		West.	
0+00 = N.L. El Cajon	6.92	57.42	
+40	57.9	56.9 ⁹	C 1.0
+90	57.4	56.1 ⁴	C 1.3
1+40	56.2	55.4 ^{6.2}	C 0.8
+80	55.3	54.6 ^{5.3}	C 0.7
2+20	54.9	53.5 ^{4.9}	C 1.4
+60	54.5	52.1 ^{4.5}	C 2.4
3+00	53.6	50.4 ^{3.6}	C 3.2

+10 = S.L. Mohawk

Returns - 69th + Saranac

Indexed

S.W. - PC = 69 th		55.95	
1/4	55.92	55.78 ⁹²	C 0.14
1/2	55.57	55.60	F 0.03
3/4	55.03	55.32 ³	F 0.29
E.C. = Saranac	54.58	55.03 ⁵⁸	F 0.45

457.41 = Sw. B.P. 68th + El Cajon

56

East.

	57.46	
	57.5	56.8 ⁵ C 0.7
	56.1	55.9 ^{6.1} C 0.2
	55.0	55.0 G
	54.8	54.2 ⁸ C 0.6
	54.3	53.0 ^{4.3} C 1.3
	53.5	51.6 ^{3.5} C 1.9
	53.0	49.9 ^{3.0} C 3.1

S.E. PC = 69 th	58.58	56.73 ^{8.58}	C 1.85
1/4	57.97	56.83 ^{7.97}	C 1.14
1/2	57.65	57.20	C 0.45
3/4	57.26	57.65 ^{6.5}	F 0.39
E.C. = Saranac	57.67	58.12 ⁶⁷	F 0.45

Corb. Stakes - 69th - Mohawk to Saranac.

Indexed

Return.	West.		
PC = Mohawk	63.31		
1/4	63.50		
1/2	63.62		
3/4	63.70		
E.C. = 69 th = 0408	63.37	63.65 ₃₇	F 0.28
0+43	62.55	62.76 ₅₅	F 0.21
0+78	61.86	61.87	F 0.01
1+13 ₃₅	60.84	60.99 ₈₄	F 0.15
1+48	59.97	60.10 ₉₇	F 0.13
1+72	59.46	59.49	F 0.03
2+07	58.47	58.61	F 0.14
+42	57.65	57.72 ₆₅	F 0.07
+77	57.00	56.84 ₇₀	C 0.16
3+12 = PC Saranac.	56.10	55.95 ₁₀	C 0.15

Ret - P. 56

SW. Sect. Mohawk + 69 th	East.		
PC = Mohawk	62.81		
1/4	63.00		
1/2	63.12		
3/4	63.08		
EC = 69 th	62.94		
	63.28	63.51 ₂₈	F 0.23
	62.62	62.62	G
	61.69	61.74 ₆₉	F 0.05
- PC 2' Rad.	60.79	60.85 ₇₉	F 0.06
EC = Alley - S	60.79	60.82	F 0.03
E.L. - S.	63.45	60.92 ₄₅	C 2.53
E.L. - N.	61.69	60.42 ₆₉	C 1.27
EC Alley - N	60.40	60.32	C 0.08
PC = 2' Rad.	60.40	60.24 ₄₀	C 0.16
	59.00	59.36	F 0.36
	58.70	58.47 ₇₀	C 0.23
	57.78	57.59 ₇₈	C 0.19
	58.56	56.73	

69th - Saranac to Mandalay

Indexed

West.

456.32 = N.W. Pole - 69th + Saranac.

58

East.

Saranac.

Ret. N.W.

w. end.

E.C. = Saranac

52.77 54.77 F 1.00

1/2

Pole on line

55.12 55.48 F 0.36

2/3

0.5 W.

56.50 56.12⁵⁰ C 0.38

P.C. = 69th

56.83 56.60⁸³ C 0.23

E.C. = Saranac.

61.71

+13.34

56.89 56.90 F 0.01

2/3

60.33

60.42³³

F 0.09

+20'

56.99 57.14⁹⁹ F 0.15

1/3

59.48

59.45⁴⁸

C 0.03

+33.3

57.25 57.40²⁵ F 0.15

0+25 = P.C.

59.04

58.98⁰⁴

C 0.06

+33.3 = P.C.

57.58 57.65⁵⁸ F 0.07

0+50

59.10

58.88¹⁰

C 0.22

† Curve

57.50 57.77⁵⁰ F 0.27

0+75

58.85

58.78⁷⁵

C 0.07

E.C. = 1+50.62

57.49 57.73⁴⁹ F 0.24

1+10

58.53

58.64⁵³

F 0.11

1+45

58.30

58.50³⁰

F 0.20

1+75

57.60 57.63⁶⁰ F 0.03

58.58

58.38⁵⁸

C 0.20

2+10

57.54 57.49⁵⁴ C 0.05

58.52

58.24⁵²

C 0.29

+45

57.37 57.35³⁷ C 0.02

57.97

58.10⁹⁷

F 0.13

+80

57.21 57.21 C

57.77

57.96⁷⁷

F 0.19

3+15

56.86 57.07⁸⁶ F 0.21

57.38

57.82³⁸

F 0.44

+50

56.89 56.93⁸⁹ F 0.04

57.47

57.68⁴⁷

F 0.21

+85

56.92 56.79⁹² C 0.13

57.52

57.54⁵²

F 0.02

54 680

69th Saranac to Mandalay

459.22 = S.W. Pole - 69th + Mandalay

59

West.

East.

4 + 20	56.76	56.65 ⁷⁶	C 0.11		57.29	57.40 ⁷⁸	F 0.12
+ 55 ₃₅	56.49	56.51 ⁴⁹	F 0.02		57.11	57.24	F 0.15
4 + 90	56.07	56.37 ⁰⁷	F 0.30		57.10	57.12	F 0.02
5 + 25 ₃₅	56.08	56.23 ⁰⁸	F 0.15		57.40	56.98 ⁴⁰	C 0.42
+ 60	56.13	56.09 ¹³	C 0.04		56.47	56.84 ⁴⁷	F 0.37
+ 95 ₃₅	56.34	55.95 ³⁴	C 0.39		56.75	56.70 ⁷⁵	C 0.05
6 + 20	56.05	55.85 ⁰⁵	C 0.20		56.75	56.60 ⁷⁵	C 0.15
+ 45	55.76	55.75 ⁷⁶	C 0.01	= P.C.	56.16	56.50 ¹⁶	F 0.34
+ 70	55.77	55.65 ⁷⁷	C 0.12	+ 17.4' - 1/2 E.L. 69th	56.38	56.45 ³⁸	F 0.07
6 + 95 ± = End.	57.38	55.55 ³⁸	C 1.83	+ 11.2' end at Mandalay	59.10	56.49 ¹⁰	C 2.61

Saranac - 68th to 69th

Indexed

~~South~~
South

0+00 = E.L. 68 th to S.			
+08 = P.C.	43.17	43.41 ₁₁	F 0.24
+40	43.77	44.05 _{3.77}	F 0.28
+70	44.37	44.65 _{3.7}	F 0.28
1+00	44.90	45.25 _{4.90}	F 0.35
+30	45.61	45.85 _{6.1}	F 0.24
+60	46.42	46.45 _{4.2}	F 0.03
+80	46.62	46.81 _{6.2}	F 0.19
2+00	46.86	47.09 _{8.0}	F 0.23
+20	47.05	47.30 _{8.05}	F 0.25
+40	47.12	47.42 _{7.12}	F 0.30
+80	47.45	47.59 _{4.4}	F 0.14
3+20	47.44	47.75 _{4.4}	F 0.31
+60	47.58	47.92 _{8.0}	F 0.34
4+00	47.71	48.08 _{7.1}	F 0.37
+40	48.01	48.25 _{8.01}	F 0.24
+60	48.45	48.42	C 0.03
+80	48.83	48.78 _{8.0}	C 0.05
5+00	49.29	49.31	F 0.02

Ret. P. 69

245
26
3121

60

			North	
PC	x	41.63	42.29 _{1.63}	F 0.66
	x	42.71	42.66 _{7.1}	C 0.05
	x	42.61	43.30 _{2.61}	F 0.69
	✓	43.69	43.90 _{6.9}	F 0.21
	✓	44.29	44.50 _{2.9}	F 0.21
	✓	44.80	45.10 _{8.0}	F 0.30
New		45.23	45.70 _{2.3}	F 0.47
		45.74	46.06 _{7.4}	F 0.32
	✓	45.93	46.34 _{9.3}	F 0.41
	✓	46.17	46.55 _{1.7}	F 0.38
	✓	46.50	46.67 _{8.5}	F 0.17
2+45 = end.				
New st.	New	46.65	46.84 _{8.5}	F 0.79
	✓	46.77	47.00 _{7.7}	F 0.23
3+21 = end.				
		46.80	47.17 _{8.0}	F 0.37
		46.96	47.33 _{9.6}	F 0.37
		47.12	47.50 _{7.12}	F 0.38
		47.42	47.67 _{7.42}	F 0.25
		47.85	48.03 _{7.85}	F 0.18
		48.44	48.56 _{8.44}	F 0.12

South

North

5+20	50.28	50.02	C 0.26
+40	50.90	50.93	F 0.03
+60	51.58	52.00 ₈₀	F 0.42
+91	53.21	53.81 ₂₁	F 0.60
C + 12 = PC. 69 th to S.		55.03	

49.10	49.27	F 0.17
50.03	50.18 ₃	F 0.15
51.13	51.25 ₃	F 0.12
52.54	53.06 _{2.54}	F 0.52
53.77	54.77 ₄₂	F 1.00

G + 20.31 = PC.

Curb Stakes - Saranac - 69th to 70th

Indexed

62

North

South

0+00 = E.L. 69th to 5.

0+00

0+00 = PC

57.67

58.12

F 0.45

+40

60.06

60.57

F 0.51

0+64.7 = PC.

61.84 61.71

C 0.13

+70

62.54

62.87

F 0.33

1+00

64.46 64.42

C 0.04

1+00

64.80

65.17

F 0.37

+20

65.58 65.82

F 0.24

66.17

66.57

F 0.40

+40

66.67 66.96

F 0.29

67.17

67.71

F 0.54

+60

67.31 67.82

F 0.51

68.12

68.57

F 0.45

+80

67.84 68.41

F 0.57

68.80

69.16

F 0.36

2+00

68.13 68.75

F 0.62

69.12

69.50

F 0.38

+35

68.83 69.10

F 0.27

69.60

69.85

F 0.25

+70

69.10 69.45

F 0.35

69.89

70.20

F 0.31

3+05

70.22

70.55

F 0.33

+14.7 = PC.

69.46 69.90

F 0.44

+40

70.48

70.90

F 0.42

+75

70.78

71.25

F 0.47

4 +14.7 PC.

70.79 70.90

F 0.11

71.18

71.65

F 0.47

4+60

71.09 71.35

F 0.26

71.60

72.10

F 0.50

+80

70.77 71.31

F 0.54

71.27

72.06

F 0.79

	North			South			
5+00	70.28	70.77 ₂₈	F 0.49	70.75	71.52 ₇₈	F 0.77	
+20	69.20	69.76 ₂₅	F 0.56	70.15	70.51 ₁₅	F 0.36	
+40	67.90	68.25 ₉₀	F 0.35	68.76	69.00 ₇₆	F 0.24	
+75	65.12	65.23 ₁₂	F 0.11	65.97	65.94 ₀₁	C 0.03	
6+05.3	62.42	62.61 ₄₂	F 0.19	Saranac. = 6+10=PC.	63.01	62.88	C 0.13
+20=W.L. 70 th To S.	61.23	61.25 ₂₃	F 0.02	Ret. sw.	63.07	62.25 _{3.07}	C 0.82
Manchester + Saranac. - Returns				= EC. 70 th	cb=62.32	62.25	
<u>N.W. Ret.</u>							
PC. = Saranac.	69.46	69.90	F 0.44				
1/4	69.69	70.03 ₆₉	F 0.34				
1/2	70.34	70.12 ₃₄	C 0.22				
3/4	70.57	70.05 ₅₇	C 0.52				
<u>EC. = Manchester</u>	69.77	69.96 ₇₇	F 0.19				
<u>N.E. = PC. = Manchester.</u>	70.16	70.46 ₁₆	F 0.30				
1/4	70.29	70.60 ₂₉	F 0.31				
1/2	70.59	70.72 ₅₉	F 0.13				
3/4	70.70	70.83 ₇₀	F 0.13				
<u>E.C. = Saranac.</u>	70.79	70.90 ₇₉	F 0.11				

Curb Stakes -

Mohawk - 67th to 68th

64

Incl. depth

North

South

0+00 = E.L. 67 th	4897	49.12 ₉₇	F0.15		50.22	49.53 ⁰²²	C0.69
1/2	4899	49.17 ₉₇	F0.18		49.14	49.61 ₁₄	F0.47
0+13 = P.C.	4909	49.26 ₀₉	F0.17		49.36	49.76 ₃₆	F0.40
+35	4951	49.70 ₅₁	F0.19		49.68	50.20 ₆₈	F0.52
+60	4997	50.20 ₉₇	F0.23		50.39	50.70 ₃₉	F0.31
+80	5039	50.66 ₃₉	F0.26		50.66	51.15 ₆₆	F0.50
1+00	5075	51.20 ₇₅	F0.45		51.23	51.70 ₂₃	F0.47
+20	5145	51.85 ₄₅	F0.40		51.75	52.35 ₇₅	F0.60
+40	5192	52.60 ₉₂	F0.68		52.31	53.10 ₃₁	F0.79
+75	New. 5321	54.00 ₂₁	F0.79		53.80	54.50 ₈₀	F0.70
2+10 T.P.	5483	55.40 ₈₃	F0.57	0.7 High ok.	55.45	55.90 ₄₅	F0.46
+30	5556	56.09 ₅₆	F0.59		56.21	56.59 ₂₁	F0.38
+50	5620	56.57 ₂₀	F0.37		56.59	57.07 ₅₉	F0.48
+70	5638	56.84 ₃₈	F0.46		56.88	57.34 ₈₈	F0.51
+90	5624	56.90 ₂₄	F0.66		57.00	57.40 ₀₀	F0.40
3+10	5626	56.74 ₂₆	F0.48		56.75	57.24 ₇₅	F0.49
+30	5608	56.37 ₀₈	F0.29		56.41	56.87 ₄₁	F0.46
+65	5529	55.54 ₂₉	F0.25		55.86	56.04 ₈₆	F0.24
4+00	5452	54.71 ₅₂	F0.19		55.28	55.21 ₂₈	C0.07

Mohawk - 68th

452.66 = N.W. Pole
68th + Mohawk

455.49 = s.w. porch - 68th + Mohawk

65

North

South

4 + 35	53.68	53.87 ₃	F0.19		54.26	54.37 ₂₀	F0.11
+ 70	52.68	53.04 ₆₃	F0.36		53.36	53.54 ₃₆	F0.18
5 + 05	51.65	52.21 ₈	F0.56		52.10	52.71 ₁₀	F0.61
+ 40	50.76	51.37 ₁₁	F0.61		51.42	51.87 ₄₂	F0.45
+ 75	✓ 50.00	50.54 ₉₅	F0.54		50.76	51.04 ₇₆	F0.28
6 + 03.10 = PC.	49.53	49.89 ₅₃	F0.36	PC = Mohawk	50.00	50.39 ₀₀	F0.39
1/4	49.42	49.72 ₄₂	F0.30		49.93	50.22 ₉₃	F0.29
1/2	49.50	49.60 ₅₀	F0.10		49.84	50.15 ₈₄	F0.31
3/4	49.47	49.48 ₄₇	F0.01	s.w. Ret.	49.86	50.20 ₈₆	F0.34
E.C. = 68 th	49.32	49.34 ₃₂	F0.02	E.C. 68 th See P. 70	50.02	50.33 ₀₂	F0.31

See P. 67

Stake Rough grades for City Forces
on 69±4 N. of Mandalay

#6103

3-19-52 - 70.

W.O.

Indexed

66

		West		East	
6+95.91 = N.L. Mandalay	59.7	^{9.7} 54.6	C 5.7	56.9	^{6.9} 55.1 C 1.8
7+50	57.1	^{7.1} 54.3	C 2.8	58.0	^{8.0} 54.8 C 3.2
8+00	56.2	^{6.2} 54.1	C 2.1	56.4	^{6.4} 54.6 C 1.8
8+50	54.3	^{4.3} 53.9	C 0.4	54.0	54.3 F 0.3

Curb Stakes - 68^{th} - Mohawk to Saranac
 442.49 = R.P. Cross - N.W. 68^{th} + Saranac.

	West.		
N.W. Ret. - P. 65			<i>Indexed</i>
0+00 = N.L. Mohawk			
0+08 = P.C.	49.32	49.34	F 0.02
+45	48.80	48.60	C 0.20
+80	48.08	47.89	C 0.19
1+15	47.41	47.18	C 0.23
+50	46.69	46.47	C 0.22
+85	45.69	45.76	F 0.07
2+20	45.46	45.05	C 0.41
+55	44.61	44.34	C 0.27
2+90	43.39	43.63	F 0.24
3+12 = P.C.	42.86	43.18	F 0.32
1/4	43.00	43.00	G
1/2	42.78	42.88	F 0.10
3/4	42.83	42.80	C 0.03
E.C. = Saranac.	42.84	42.79	C 0.09
end.	42.91	42.81	C 0.10
N.W. Ret. 68^{th} + Saranac.			
W.L. 68^{th}	42.67	42.06	C 0.61
E = N.L. Saranac.	42.98	42.02	C 0.96

	Stake	East.	
E.C. = Mohawk	49.94	49.54	C 0.40 ⁶⁷
3/4	50.00	49.50	C 0.50
1/2	49.67	49.40	C 0.27
1/4	49.40	49.24	C 0.16
P.C. = 68^{th}	49.39	49.09	C 0.30
	48.55	48.37	C 0.18
	47.53	47.68	F 0.15
	46.82	47.00	F 0.18
	46.15	46.32	F 0.17
	45.36	45.63	F 0.27
	44.47	44.95	F 0.48
	44.03	44.27	F 0.24
	43.23	43.59	F 0.36
	42.90	43.16	F 0.26
	42.85	43.12	F 0.27
	42.79	43.20	F 0.41
	43.27	43.27	G
cb.	3.37	43.41	
P.C.			
R.N. = end	41.56	42.00	F 0.44
N.E. Ret. P. 69	41.16	41.94	F 0.78

Curb Stakes - Mohawk - 68th to 69th
 North *Indexed*

0+00 = E.L. 68 th			
+08 = P.C.	49.54		
+45	49.50	49.73 ₅₀	F 0.23
+80	49.39	49.90 ₆₉	F 0.51
1+15	49.63	50.08 ₆₃	F 0.45
+40	49.82	50.20 ₈₂	F 0.38
+60	50.07	50.37	F 0.30
+80	50.30	50.67 ₃₀	F 0.37
2+00	50.72	51.10 ₇₂	F 0.38
+20	51.32	51.67 ₃₂	F 0.35
+40	52.10	52.37 ₁₀	F 0.21
+60	52.86	53.20 ₈₆	F 0.34
+90	54.26	54.55 ₂₆	F 0.29
3+10 = T.P.	55.03	55.41 ₀₃	F 0.38
+30	55.90	56.20 ₉₀	F 0.30
+50	56.46	56.92 ₄₆	F 0.46
+70	57.12	57.57 ₁₂	F 0.45
+90	57.76	58.14 ₇₆	F 0.38
4+10	58.38	58.64 ₃₈	F 0.26

E.C. = 68 th	49.60	South 49.83	F 0.23 68
3/4	49.49	49.67 ₇	F 0.13
1/2	49.35	49.53 ₃	F 0.15
1/4 S.E. Ref.	49.53	49.50 ₅₃	C 0.03
P.C. Mohawk	49.16	49.54 ₁₆	F 0.38
	49.68	49.73 ₆₈	F 0.05
	49.43	49.90 ₄₃	F 0.47
	49.44	50.08 ₄₄	F 0.64
	49.72	50.20 ₇₂	F 0.48
	49.90	50.36 ₉₀	F 0.46
	50.22	50.64 ₂₂	F 0.42
	50.66	51.05 ₆₆	F 0.39
	51.20	51.58 ₂₀	F 0.38
	51.77	52.23 ₇₇	F 0.46
	52.51	53.00 ₅₁	F 0.49
	53.98	54.25 ₉₈	F 0.27
	54.71	55.05 ₇₁	F 0.34
	55.53	55.80 ₅₃	F 0.27
	56.08	56.47 ₀₈	F 0.39
	56.46	57.09 ₄₆	F 0.63
	57.23	57.65 ₂₃	F 0.42
	57.74	58.14 ₇₄	F 0.40

North

4+50	59.27	59.57	Fo. 30
+90	60.14	60.49	Fo. 35
5+30	61.10	61.42	Fo. 32
+70	61.86	62.34	Fo. 48
6+12 = PC	62.72	63.31	Fo. 59
1/4	62.94	63.50	Fo. 56
1/2	63.56	63.62	Fo. 06
3/4	63.50	63.67	Fo. 17
E.C. = cb. in = 69 th	63.57	63.65	

N.W. Ret. - 68 th + El. Cajon			
PC = 68 th	56.76	57.35	Fo. 59
N.L. El Cajon	56.92	57.42	Fo. 50
1/2	57.14	57.52	Fo. 38
3/4	57.54	57.53	001
E.C. = Meet clo. El Cajon	57.44	57.46	

58.75'	59.07	Fo. 32
59.82	59.99	Fo. 17
60.68	60.92	Fo. 24
61.30	61.84	Fo. 54
62.19	62.81	Fo. 62
62.33	63.00	Fo. 67
62.85	63.12	Fo. 27
63.23	63.08	0.15
	62.94	

N.E. Ret. Saranac. + 68 th				<i>Indexed</i>
PC - Saranac.	41.64	42.29		
1/4	41.65	42.12	Fo. 47	
1/2	41.74	42.06	Fo. 32	
3/4	41.68	42.02	Fo. 34	
E.C. = 68 th	41.80	42.00	Fo. 20	
12' N. - end.	41.88	41.94	Fo. 06	

See P. 67

Curb Grades - 68th - El Cajon to Mohawk
See P. 69 for Ret.

455.54 = \square on porch - S.W. Cor.
68th + Mohawk

	West.		
on Ret.			
0+00 = N.L. El Cajon	57.42		
0+06 = P.C.	57.35		
0+39.5	56.36	56.85	F 0.49
0+73.0	56.02	56.36	F 0.34
1+06.5	55.51	55.87	F 0.36
+38 = P.C. - To E.	54.39	55.41	F 1.02
= E.C. To N.	54.39	55.49	F 1.01
W. end - S.	56.25	55.50	C 0.75
W. end - N	55.55	55.17	C 0.38
E.C. = To S.	54.33	55.07	F 0.74
+62 = P.C. To E	54.33	55.01	F 0.68
+80	54.22	54.62	F 0.40
2+00	53.87	54.11	F 0.24
+20	53.44	53.54	F 0.07
+40	52.58	52.92	F 0.24
+60	51.75	52.05	F 0.30
3+02 = P.C.	50.02	50.33	F 0.31

1/4

1/2 See P. 65

3/4

	East.		
457.46 = Sw. P. El Cajon + 68th			
E.C. Meet cb.	57.64	57.68	70
3/4	57.20	57.63	F 0.43
1/2	56.96	57.52	F 0.56
N.L.	56.68	57.46	F 0.78
P.C.	56.67	57.25	F 0.68
	56.35	56.78	F 0.43
	55.83	56.20	F 0.37
	55.34	55.62	F 0.28
= P.C. To W.	53.87	55.07	F 1.20
E.C. To N	53.87	55.06	F 1.19
	55.68	55.16	C 0.52
	54.78	54.77	C 0.01
E.C. To S.	54.13	54.67	F 0.54
P.C. To W.	54.13	54.60	F 0.47
	53.76	54.19	F 0.43
	53.36	53.65	F 0.29
	52.84	53.02	F 0.18
	52.09	52.33	F 0.24
	51.23	51.55	F 0.32
	49.60	49.83	F 0.23

See P. 68
for Ret.

Stake Alley Pave - Blk. 3 - W. L. Shire Place
 W.O. 31887

Plan - 6185 - L
 Meade to El Cajon Indexed

SWBP 363.56 El Cajon + Van Dyke

71

	64.01	West.			64.17	East.	
0+00 = N.H. El Cajon	64.11	64.33			64.34	64.57	
+20 - 0.25 B.	65.94	64.87 ^{5.94}	C 1.07	2' B.	65.04	65.01 ⁰⁴	C 0.03
+40 - 0.25 B.	66.07	65.23 ^{6.07}	C 0.84	"	65.34	65.29 ³⁴	C 0.05
+60 2' B.	65.19	65.41	F 0.22	" = Cross	65.37	65.42 ³⁷	F 0.05
+80 "	65.43	65.40 ⁴³	C 0.03	" "	65.40	65.40	C
1+20 3' B.	65.23	65.20 ^{5.23}	C 0.03	2' B.	65.34	65.20 ³⁴	C 0.14
+60 2' B.	65.39	65.00 ^{5.39}	C 0.39	"	65.38	65.00 ³⁸	C 0.38
+80 "	65.37	64.88 ^{5.37}	C 0.49	0.27 B = Nail	65.75	64.88 ^{5.75}	C 0.87
2+00 "	65.38	64.71 ^{5.38}	C 0.67	2' B.	64.79	64.71 ⁷⁹	C 0.08
+20 "	64.47	64.50 ⁴⁷	F 0.03	"	64.70	64.50 ⁷⁰	C 0.20
+40 "	64.51	64.25 ⁵¹	C 0.26	"	64.33	64.25 ³³	C 0.08
+70 "	64.40	63.83 ⁴⁰	C 0.57	0.35 B = Nail	65.18	63.83 ^{5.18}	C 1.35
3+00 "	63.87	63.41 ⁸⁷	C 0.46	2' B.	63.80	63.41 ⁸⁰	C 0.39
+30 "	63.07	62.99 ^{3.07}	C 0.08	"	62.98	62.99 ⁹⁸	F 0.11
+50 "	62.49	62.74 ⁴⁹	F 0.25	"	62.54	62.74 ⁵⁴	F 0.20
+70 "	62.36	62.55 ³⁶	F 0.19	"	62.17	62.55 ¹⁷	F 0.38
+90 "	62.15	62.41 ¹⁵	F 0.26	"	61.86	62.41 ⁸⁶	F 0.55
4+10 "	62.15	62.33 ¹⁵	F 0.18	"	61.92	62.33 ⁹²	F 0.41

	West.			East.			
4+45' - 2' B.	61.74	62.24	F 0.50	2' B.	61.80	62.24	F 0.44
+ 80 "	62.25	62.16 ²⁵	C 0.09	"	62.00	62.16 ⁰⁰	F 0.16
5+15 "	62.44	62.07 ⁴⁴	C 0.37	0.83 B = Nail	62.73	62.07 ⁷³	C 0.66
+ 50 1.5 B.	63.06	61.98 ⁰⁶	C 1.08	0.81 B = Nail	63.02	61.98 ⁰²	C 1.04
+ 85 1.5 B	63.47	61.90 ⁴⁷	C 1.57	2' B = Cross	62.89	61.90 ⁸⁹	C 0.99
6+07.2 = S.L. Meade	62.30	61.84 ³⁰	C 0.46	Cross on cb.	62.06	61.84 ⁰⁶	C 0.22
# 11'	61.78	61.81		+ 7'	61.67	61.84	
# + 13'	61.40	61.50					

Manchester - Saranac to Mandalay.
Curb Stakes.

Indexed

73

	West.			East.		
0+00 = N.L. Saranac.						
0+20 = P.C. of Ret.	^{Top} 69.89			^{Top} 70.42		
0+25	69.66	69.90	F 0.24	70.19	70.40	F 0.21
0+60.6	69.30	69.48	F 0.18	69.79	70.03	F 0.24
+80.6	69.24	69.26	F 0.02	69.65	69.73	F 0.08
1+00.6	69.15	69.07	C 0.08	69.52	69.56	F 0.04
+20.6	68.84	68.92	F 0.08	69.35	69.41	F 0.06
+40.6	68.65	68.80	F 0.15	69.33	69.30	C 0.03
+75.6	68.52	68. ⁵² ₂₀	C 0.32	69.19	68.70	C 0.49
2+10.6	68.18	68. ⁴⁵ ₄₅	F 0.27	68.60	68.95	F 0.35
2+45.6	68.17	68.27	F 0.10	68.49	68. ⁷⁷ ₄₉	F 0.28
+80.6	67.85	68. ⁸⁰ ₈₅	F 0.25	68.15	68.60	F 0.45
3+15.6	67.64	67. ⁹² ₆₄	F 0.28	68.08	68. ⁴² ₈₂	F 0.34
+50.6	67.10	67. ⁷⁵ ₇₀	F 0.65	67.97	68. ²⁵ ₉₇	F 0.28
+85.6	67.31	67. ⁵⁷ ₃₁	F 0.26	67.80	68.07	F 0.27
4+20.6	67.42	67.40	C 0.02	67.78	67. ⁹⁰ ₇₈	F 0.12
+55.6	67.14	67. ⁷² ₁₄	F 0.08	67.76	67. ⁷² ₇₆	C 0.04
+90.6	67.02	67. ⁰⁵ ₀₂	F 0.03	67.53	67.55	F 0.02
5+25.6	66.94	66. ⁸⁷ ₉₄	C 0.07	67.11	67.37	F 0.26

	West.				East.		
5 + 60.6	66.69	66.70	F 0.01		66.97	67.20	F 0.23
+ 95.6	66.66	66. ⁶⁶ 52	C 0.14		66.71	67.02	F 0.31
6 + 20.6	66.66	66. ⁶⁶ 40	C 0.26		66.76	66.90	F 0.14
+ 45.6 = PC.	66.36	66. ³⁶ 27	C 0.09		66.71	66.77	F 0.06
1/2	66.44	66. ⁴⁴ 09	C 0.35	+ 70.6	66.79	66.64	C 0.15
end at w.L.	66.95	66. ⁹⁵ 84	C 1.11	+ 95.6 = end.	67.06	66.52	C 0.54

South

North

0+00 = w.L. 68th to S.

0+00 = w.L. 68th to N.

+13.5 = w.L. to N.

42.91 42.81

end at w.L. 68th

42.67 42.06

+50

43.83 42.98 ^{3.83} c 0.85

1/2

42.65 42.09 ⁶⁵ c 0.56

+70

44.40 43.11 ^{4.40} c 1.29

0+13 = P.C.

42.66 42.12 ⁶⁶ c 0.54

+90

44.83 43.32 ^{4.83} c 1.51

+36.5

42.62 42.23 ⁶² c 0.39

1+10

45.17 43.61 ^{5.17} c 1.56

+56.5

42.75 42.76 F 0.01

+30

46.00 43.98 ^{6.00} c 2.02

+76.5

43.15 42.57 ¹⁵ c 0.58

+50

46.25 44.43 ^{6.25} c 1.82

+96.5

43.17 42.86 ^{3.17} c 0.31

+60

46.52 44.70 ^{6.52} c 1.82

1+16.5

44.12 43.23 ^{4.12} c 0.89

+36.5

44.90 43.68 ^{4.90} c 0.22

+56.5

45.33 44.21 ^{5.33} c 1.12

1+81.5 = end.

45.92 44.91 ^{5.92} c 1.01

Indexed

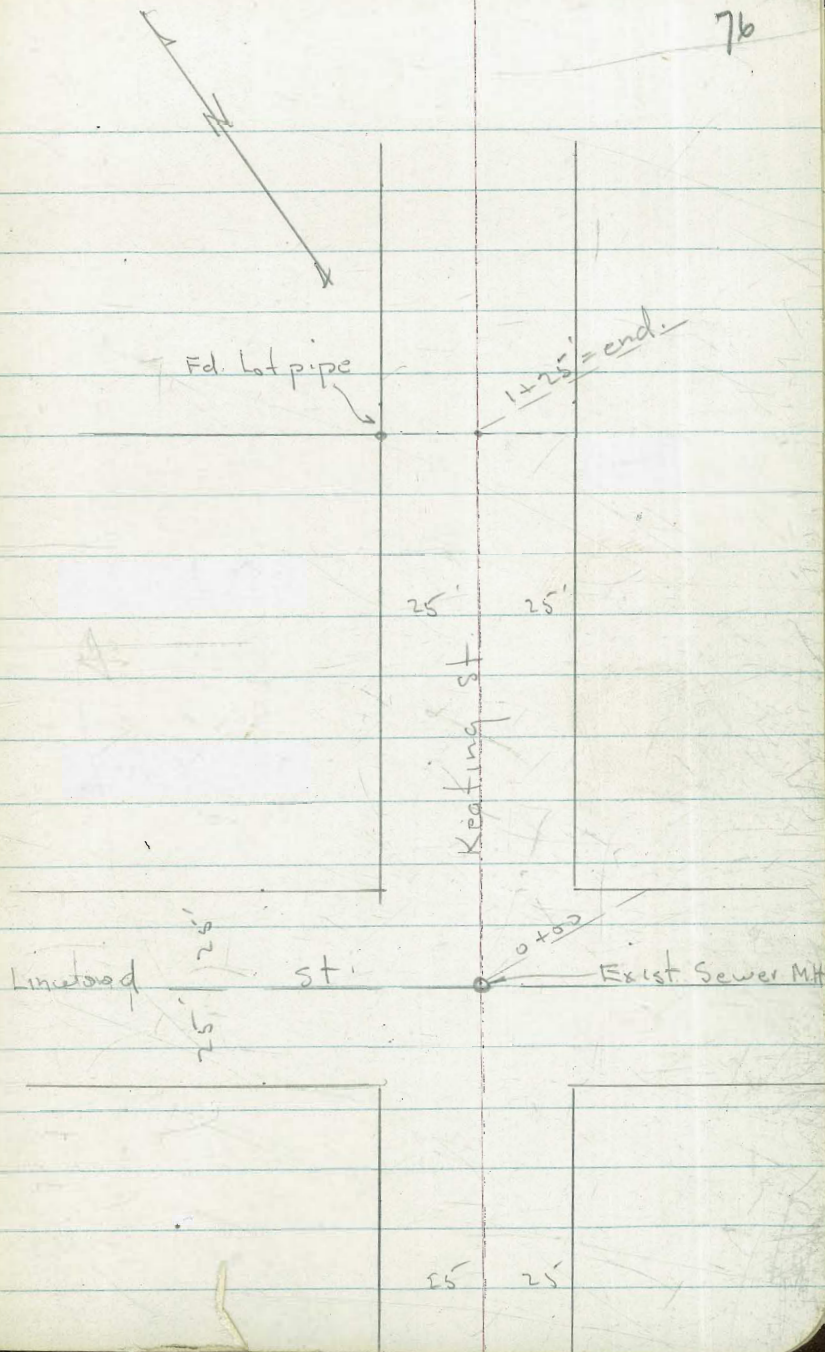
Stake Sewer for City - on Keating
St. 125' Nly. from Φ Linwood

W.O. 20009 4-14-52 7.0.

B.M. = N.W. spike in Pole 137.23
Guy + Keating

+ 1% Grade	Stake	Grade	Cut.
0+00 = Exist M.H.	33.71	25.40 ³	8.31
+25	32.80	25.65 ²	7.15
+50	32.81	25.90 ²	6.91
0+75	32.75	26.15 ²	6.60
1+00	32.98	26.40 ²	6.59
+25 = end.	33.21	26.65 ³	6.56

76



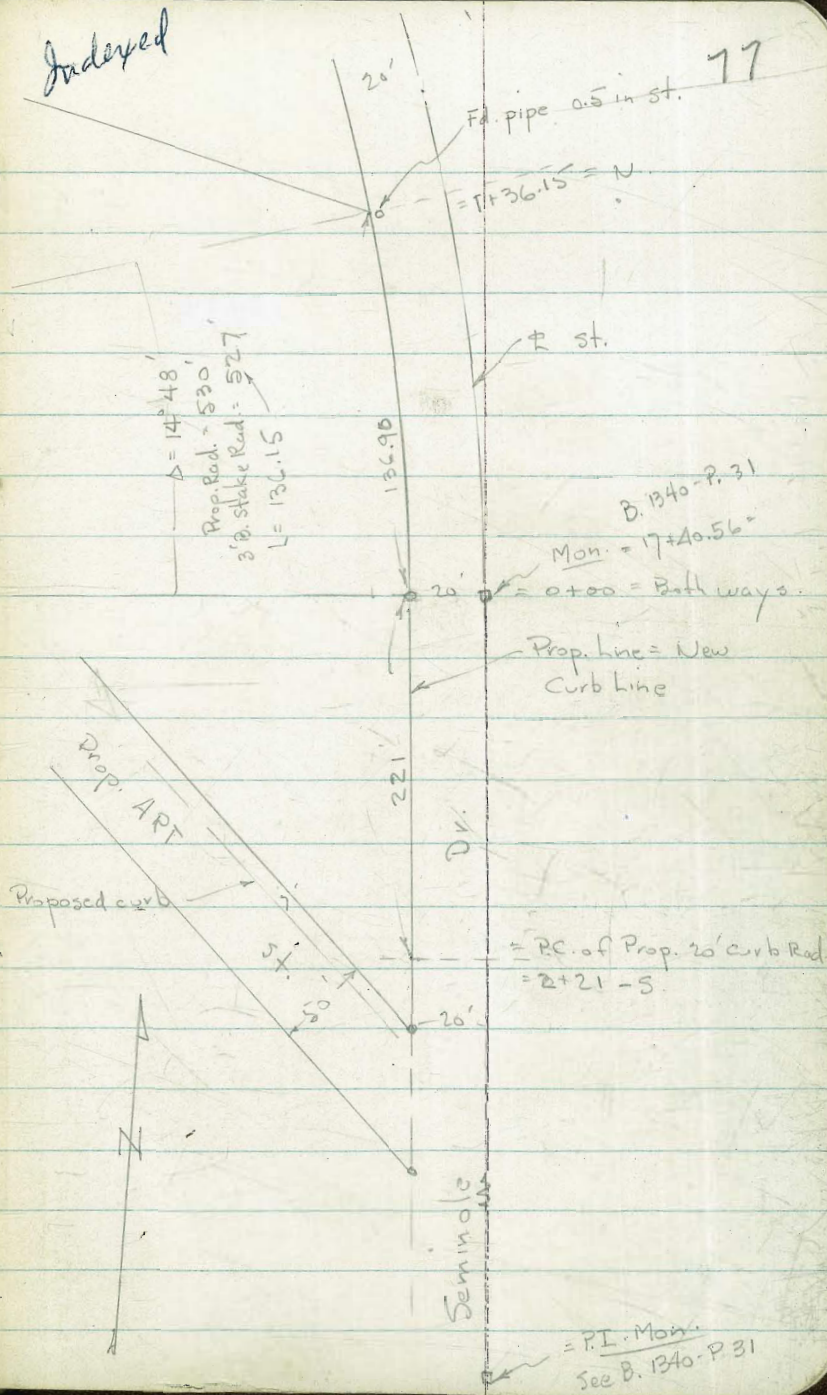
Curb Stakes - Seminole Dr. - Safeway Store

W.O. 20007 ? 7-1-52 7.0.

	New Grade			
= P.C. at Art St.				F 0.02
2+21 - to S.	57.18	57.16	456.34	C 2.95
	9.79			C 2.48
1+90	57.30	59.79	56.49	C 3.29
	9.44			C 2.40
+55	57.44	59.84	56.66	C 3.18
	9.44			C 1.86
+20	57.58	59.44	56.82	C 2.62
	9.01			C 1.33
+95	57.68	59.01	56.93	C 2.08
	8.82			C 1.04
+70	57.78	58.82	57.02	C 1.80
	8.26			C 0.34
+35	57.92	58.26	57.18	C 1.08
	7.11			F 0.35
+100 = Prop. B.C.	58.06	57.71	57.34	C 0.37
	7.71			F 0.79
+25	58.16	57.37	57.45	F 0.08
	7.37			F 0.96
+50	58.26	57.30	57.56	F 0.26
	7.30			F 0.66
+75 } on Curve	58.36	57.70	57.67	C 0.03
	7.70			F 0.77
+100	58.46	57.69	57.79	F 0.10
	7.69			F 0.03
+25	58.56	58.53	57.90	C 0.63
	8.53			F 0.61
+36.15 = end.	58.60	57.99	57.95	C 0.04
	7.99			
4 } NW Ret.		57.17	57.14	C 0.03
2 } Art.		57.25	57.09	C 0.16
			57.84	C 0.38
3 }		57.92	57.90	C 0.94
4 }		57.94	57.90	C 1.84
5 = E.C. on Art.		58.94	57.90	

near art st.

Indexed



Stake Inlet and Culvert at S. end of
33rd St. - Plan 8035-L - 11-9-51 7.0.

Indexed

Stake S.E. of E. end of Box

on. cb. Line

7.45 7⁴⁵/₀₀ C 0.45

N. & S. Curb. Line 55. 7.92 7⁹²/₀₀ C 0.92

W. end Box = Cross S.N. 7.00 7.00 0.0

6" too - pipe 7.92 3⁹²/₆₀ C 4.32

+20 = P.C. 8.28 3²⁸/₅₁ C 4.77

+37.69 8.73 3⁷³/₄₃ C 5.30

+55.39 = E.R.C. 9.91 3⁹¹/₃₅ C 6.56

+73.08 10.20 3²⁰/₂₇ C 6.93

+90.78 = E.C. 9.15 3¹⁵/₁₉ C 5.96

1+20.78 5.31 3³¹/₀₆ C 2.25

1+50.78 5.73 2⁷³/₉₃ C 2.80

1+78.78 = End. 4.38 2³⁸/₈₁ C 1.57

406
2 5/10

Curb. Returns - 33rd + Martin 78
9.73 = 7 ct. S.W. Martin
8.27 = ct. Greeley - E. cb.
N.E. Ret.

P.C. - 33rd

10.02 = cb.

9.99 10.02 F 0.03

9.90 10.00 F 0.10

10.01 10.00 C 0.01

E.C. = Martin 10.07 10.00 C 0.07

S.E. Ret.

P.C. = Martin 9.78 10⁰⁰/₉₈ F 0.22

10.02 10⁰²/₉₂ C 0.10

9.86 9⁸⁶/₈₄ C 0.02

E.C. = 33rd 9.81 9⁸¹/₇₅ C 0.06

N.W. Ret. - Greeley

P.C. = 33rd 9.25 9²⁵/₄₆ C 0.79

9.20 9²⁰/₆₀ C 0.60

9.33 9³³/₅₈ C 0.75

E.C. = Greeley 9.33 9³³/₅₅ C 0.78

S.W. Ret.

P.C. = Greeley 9.03 9⁰³/₃₅ C 0.68

8.87 8⁸⁷/₃₃ C 0.54

8.70 8⁷⁰/₃₁ C 0.39

E.C. = 33rd 8.48 8⁴⁸/₁₆ C 0.32

Flood water levels

Water Elev. on Texas ext. across River

9:15 A.M. - 1-18-52 = 33.53 ^{on Road} our Data on

S.W. Cor. of Beryl + Academy - water over curb - Mostly from Valley to N.

Academy + Chaceadony - water over curb at inlet at S.W. Cor. - 0.3 over cb. at ~~E~~ of inlet

Water over banks of Drain W. of Diamond - same as ^{above}

water goes Down Noyes - Much washing

Colima + La Jolla Mesa - Culvert Not $\frac{1}{2}$ full

Canyon on S. Side Torrey Rd. By St. Louis

Terr. - Sewer work changed channel to Run into Road instead of Culvert.

W. of Paseo Dorado + De la Plata -

water over Curb - Dirt in st.

Water flows into Beach + Tennis club

Drains Not large enough

Univ. + College - inlets Not enough to take care of water.

54th + 52nd - W. side - No Inlets.

79

INDEXED

Lee

JAN 21 1952

Water

9:15

S.W.

curb

Acad.

inlet

Water

water

Colima

Canyo

Terr.

into

W.O.

wat

wat

Draw

Univ.

of

54th

Water

24.86
- 16.90

41.76

9:15

S.W.

curb

2406
98.32

07.68

Head

inlet

1+02.36

Water

water

Colima

Cany

Terr

into

W. o

wat

wat

Draw

Univ

of

54th

55.
54.
80.
58.
45.1
42.1
81.1

10' 98

285.64

21.0
459.64

457.00

457.00
 459.60
 2.60

0	458.68			285.64
1	458.87	458.86	.01	
2	459.05	459.00	.05	460.5
3	459.24	459.12	.12	459.15
4	459.42	459.20	.22	1.36
5	459.60	459.26	.34	
6	459.78	459.29	.49	
7	459.96	459.29	.67	
8	460.15	459.28	.87	
9	460.33	459.23	1.10	
10	460.51	459.15	1.36	0.136

01
 13
 55
 .30
 .18
 .0091024
 14647

459.60
 455.80
 3.80
 840
 = 00.45238
 09
 18
 27
 36
 45

0	456.25			
1	456.16	456.18	.02	
2	456.07	456.15	.08	
3	455.98	456.15	.17	
4	455.89	456.19	.30	
5	455.80	456.27	.47	
6	455.71	456.39	.68	
7	455.62	456.45	.83	
8	455.53	456.75	1.22	
9	455.44	456.98	1.54	
10	455.35	457.25	1.90	.0190

463.80
 455.80
 8.00
 .014545

540
 550
 455.80
 1.45
 457.25
 455.35
 1.90

21 + 56.13
 17 + 40.56
 415.59

21 + 56.13
 3 69.51
 28 + 25.64