

DISTANCES FROM SIDE STAKES FOR CROSS-SECTIONING
SLOPE 1 TO 1, ROADWAY OF ANY WIDTH

	0	.1	.2	.3	.4	.5	.6	.7	.8	.9	
0	0.00	0.10	0.20	0.30	0.40	0.50	0.60	0.70	0.80	0.90	0
1	1.00	1.10	1.20	1.30	1.40	1.50	1.60	1.70	1.80	1.90	1
2	2.00	2.10	2.20	2.30	2.40	2.50	2.60	2.70	2.80	2.90	2
3	3.00	3.10	3.20	3.30	3.40	3.50	3.60	3.70	3.80	3.90	3
4	4.00	4.10	4.20	4.30	4.40	4.50	4.60	4.70	4.80	4.90	4
5	5.00	5.10	5.20	5.30	5.40	5.50	5.60	5.70	5.80	5.90	5
6	6.00	6.10	6.20	6.30	6.40	6.50	6.60	6.70	6.80	6.90	6
7	7.00	7.10	7.20	7.30	7.40	7.50	7.60	7.70	7.80	7.90	7
8	8.00	8.10	8.20	8.30	8.40	8.50	8.60	8.70	8.80	8.90	8
9	9.00	9.10	9.20	9.30	9.40	9.50	9.60	9.70	9.80	9.90	9
10	10.00	10.10	10.20	10.30	10.40	10.50	10.60	10.70	10.80	10.90	10
11	11.00	11.10	11.20	11.30	11.40	11.50	11.60	11.70	11.80	11.90	11
12	12.00	12.10	12.20	12.30	12.40	12.50	12.60	12.70	12.80	12.90	12
13	13.00	13.10	13.20	13.30	13.40	13.50	13.60	13.70	13.80	13.90	13
14	14.00	14.10	14.20	14.30	14.40	14.50	14.60	14.70	14.80	14.90	14
15	15.00	15.10	15.20	15.30	15.40	15.50	15.60	15.70	15.80	15.90	15
16	16.00	16.10	16.20	16.30	16.40	16.50	16.60	16.70	16.80	16.90	16
17	17.00	17.10	17.20	17.30	17.40	17.50	17.60	17.70	17.80	17.90	17
18	18.00	18.10	18.20	18.30	18.40	18.50	18.60	18.70	18.80	18.90	18
19	19.00	19.10	19.20	19.30	19.40	19.50	19.60	19.70	19.80	19.90	19
20	20.00	20.10	20.20	20.30	20.40	20.50	20.60	20.70	20.80	20.90	20
21	21.00	21.10	21.20	21.30	21.40	21.50	21.60	21.70	21.80	21.90	21
22	22.00	22.10	22.20	22.30	22.40	22.50	22.60	22.70	22.80	22.90	22
23	23.00	23.10	23.20	23.30	23.40	23.50	23.60	23.70	23.80	23.90	23
24	24.00	24.10	24.20	24.30	24.40	24.50	24.60	24.70	24.80	24.90	24
25	25.00	25.10	25.20	25.30	25.40	25.50	25.60	25.70	25.80	25.90	25
26	26.00	26.10	26.20	26.30	26.40	26.50	26.60	26.70	26.80	26.90	26
27	27.00	27.10	27.20	27.30	27.40	27.50	27.60	27.70	27.80	27.90	27
28	28.00	28.10	28.20	28.30	28.40	28.50	28.60	28.70	28.80	28.90	28
29	29.00	29.10	29.20	29.30	29.40	29.50	29.60	29.70	29.80	29.90	29
30	30.00	30.10	30.20	30.30	30.40	30.50	30.60	30.70	30.80	30.90	30
31	31.00	31.10	31.20	31.30	31.40	31.50	31.60	31.70	31.80	31.90	31
32	32.00	32.10	32.20	32.30	32.40	32.50	32.60	32.70	32.80	32.90	32
33	33.00	33.10	33.20	33.30	33.40	33.50	33.60	33.70	33.80	33.90	33
34	34.00	34.10	34.20	34.30	34.40	34.50	34.60	34.70	34.80	34.90	34
35	35.00	35.10	35.20	35.30	35.40	35.50	35.60	35.70	35.80	35.90	35
36	36.00	36.10	36.20	36.30	36.40	36.50	36.60	36.70	36.80	36.90	36
37	37.00	37.10	37.20	37.30	37.40	37.50	37.60	37.70	37.80	37.90	37
38	38.00	38.10	38.20	38.30	38.40	38.50	38.60	38.70	38.80	38.90	38
39	39.00	39.10	39.20	39.30	39.40	39.50	39.60	39.70	39.80	39.90	39
40	40.00	40.10	40.20	40.30	40.40	40.50	40.60	40.70	40.80	40.90	40
41	41.00	41.10	41.20	41.30	41.40	41.50	41.60	41.70	41.80	41.90	41
42	42.00	42.10	42.20	42.30	42.40	42.50	42.60	42.70	42.80	42.90	42
43	43.00	43.10	43.20	43.30	43.40	43.50	43.60	43.70	43.80	43.90	43
44	44.00	44.10	44.20	44.30	44.40	44.50	44.60	44.70	44.80	44.90	44
45	45.00	45.10	45.20	45.30	45.40	45.50	45.60	45.70	45.80	45.90	45
46	46.00	46.10	46.20	46.30	46.40	46.50	46.60	46.70	46.80	46.90	46
47	47.00	47.10	47.20	47.30	47.40	47.50	47.60	47.70	47.80	47.90	47
48	48.00	48.10	48.20	48.30	48.40	48.50	48.60	48.70	48.80	48.90	48
49	49.00	49.10	49.20	49.30	49.40	49.50	49.60	49.70	49.80	49.90	49
50	50.00	50.10	50.20	50.30	50.40	50.50	50.60	50.70	50.80	50.90	50

Distance of slope stake from side or shoulder stake for any width roadway, slope 1 to 1. If ground is nearly level, the cut or fill at side stake is located by the double entry method in left column and top row. The number in body of table in same row and column gives distance from side stake to slope stake. If ground is not level estimate the difference in elevation between the side stake and slope stake, lower target by this amount if cut, elevate if fill. Add this amount to cut or fill and find distance in table. Set up rod at this point, and line of sight should cut target. If it does not make the slight adjustment necessary.

MICROFILMED

APR 14 1965

TABLE XIII—CORRECTIONS FOR TANGENTS AND EXTERNALS

These corrections are to be added to the approximate values, found by dividing the tangent, or external, for a 1° curve (Table VIII) by the degree of curve, in order to obtain the true tangents, or externals. Intermediate values may be obtained by interpolation.

FOR TANGENTS ADD

Central Angle	DEGREE OF CURVE													
	5°	10°	15°	20°	25°	30°	35°	40°	45°	50°	55°	60°	65°	70°
10°	.03	.06	.09	.13	.16	.19	.22	.25	.28	.31	.34	.38	.42	.46
15°	.04	.10	.14	.19	.24	.29	.34	.39	.45	.51	.53	.58	.63	.68
20°	.06	.13	.19	.26	.32	.39	.45	.51	.58	.65	.72	.79	.84	.90
25°	.08	.16	.24	.33	.40	.49	.58	.67	.75	.83	.90	.99	1.06	1.14
30°	.10	.19	.29	.39	.49	.59	.69	.79	.89	.99	1.09	1.20	1.29	1.39
35°	.11	.22	.34	.47	.58	.69	.79	.89	.99	1.09	1.20	1.31	1.41	1.51
40°	.13	.26	.40	.53	.67	.80	.93	1.06	1.20	1.34	1.49	1.64	1.79	1.94
45°	.15	.30	.44	.60	.76	.91	1.06	1.21	1.37	1.52	1.70	1.87	2.04	2.21
50°	.17	.34	.51	.68	.85	1.02	1.19	1.36	1.54	1.72	1.91	2.10	2.29	2.48
55°	.19	.38	.57	.76	.95	1.14	1.32	1.52	1.72	1.92	2.14	2.35	2.56	2.77
60°	.21	.42	.63	.84	1.05	1.27	1.49	1.71	1.94	2.17	2.38	2.60	2.83	3.07
65°	.23	.46	.69	.93	1.16	1.40	1.64	1.88	2.13	2.38	2.63	2.88	3.13	3.39
70°	.25	.51	.76	1.02	1.28	1.54	1.80	2.06	2.33	2.60	2.88	3.16	3.44	3.72
75°	.27	.56	.83	1.12	1.40	1.69	1.98	2.27	2.57	2.87	3.16	3.47	3.78	4.09
80°	.30	.61	.91	1.22	1.53	1.84	2.15	2.46	2.78	3.10	3.43	3.78	4.12	4.46
85°	.33	.66	1.00	1.33	1.68	2.02	2.36	2.70	3.05	3.40	3.77	4.14	4.55	4.89
90°	.36	.72	1.09	1.45	1.83	2.20	2.57	2.94	3.32	3.70	4.10	4.50	4.91	5.32
95°	.39	.79	1.19	1.55	2.00	2.40	2.80	3.20	3.61	4.02	4.40	4.98	5.38	5.83
100°	.43	.86	1.30	1.74	2.18	2.62	3.06	3.50	3.95	4.40	4.88	5.37	5.85	6.34
110°	.51	1.03	1.56	2.08	2.61	3.14	3.67	4.21	4.76	5.31	5.86	6.43	7.01	7.60
120°	.62	1.25	1.93	2.52	3.16	3.81	4.45	5.11	5.77	6.44	7.12	7.80	8.50	9.22

FOR EXTERNALS ADD

Central Angle	DEGREE OF CURVE													
	5°	10°	15°	20°	25°	30°	35°	40°	45°	50°	55°	60°	65°	70°
10°	.001	.003	.004	.006	.007	.008	.009	.011	.012	.014	.015	.017	.018	.020
15°	.003	.007	.010	.014	.018	.023	.027	.029	.032	.035	.039	.043	.047	.051
20°	.006	.011	.017	.022	.028	.034	.038	.045	.051	.057	.063	.070	.076	.083
25°	.009	.018	.027	.036	.046	.056	.065	.074	.083	.093	.106	.120	.127	.135
30°	.013	.025	.038	.051	.065	.078	.090	.103	.116	.129	.149	.170	.179	.188
35°	.018	.035	.054	.072	.086	.109	.131	.153	.175	.197	.213	.230	.247	.264
40°	.023	.046	.070	.093	.117	.141	.172	.203	.234	.265	.277	.290	.315	.341
45°	.030	.060	.093	.119	.153	.184	.216	.254	.289	.325	.351	.378	.411	.445
50°	.037	.075	.116	.151	.189	.227	.266	.305	.345	.384	.425	.467	.508	.550
55°	.046	.093	.142	.188	.236	.283	.332	.381	.420	.479	.530	.582	.641	.700
60°	.056	.112	.168	.225	.283	.340	.398	.457	.516	.575	.636	.697	.774	.851
65°	.067	.135	.204	.273	.343	.412	.483	.554	.625	.697	.771	.845	.922	1.01
70°	.080	.159	.240	.321	.403	.485	.568	.652	.735	.819	.906	.994	1.08	1.17
75°	.095	.182	.266	.353	.440	.528	.617	.707	.797	.877	.970	1.07	1.18	1.29
80°	.110	.220	.332	.445	.558	.671	.787	.903	1.02	1.13	1.25	1.38	1.50	1.62
85°	.128	.259	.391	.524	.657	.790	.926	1.06	1.20	1.34	1.47	1.62	1.76	1.91
90°	.149	.299	.450	.603	.756	.910	1.07	1.22	1.38	1.54	1.70	1.87	2.03	2.20
95°	.174	.350	.522	.706	.885	1.06	1.25	1.43	1.62	1.80	1.99	2.18	2.38	2.58
100°	.200	.401	.604	.809	1.01	1.22	1.43	1.64	1.85	2.06	2.28	2.50	2.73	2.96
110°	.268	.536	.806	1.08	1.35	1.63	1.91	2.20	2.48	2.76	3.05	3.35	3.66	3.96
120°	.360	.721	1.08	1.45	1.82	2.19	2.57	2.95	3.33	3.72	4.11	4.50	4.91	5.32

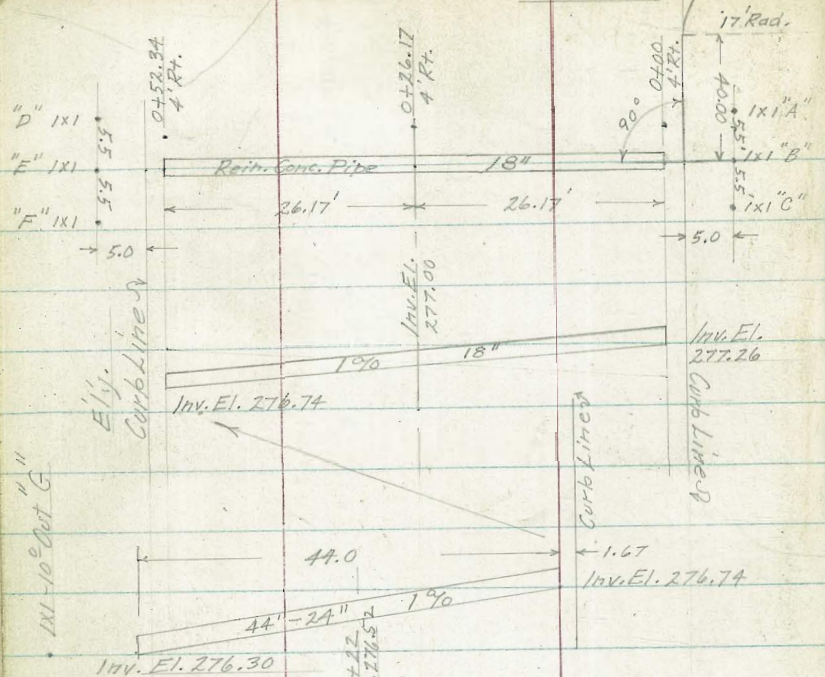
INDEX

Page

Poplar - Columbine to Fairmount 7 ✓
 Heather - Poplar to Manzanita 10 ✓
 Columbine - Poplar to Manzanita 12 ✓
 Poplar - Dahlia to Columbine 15
 Dahlia - Poplar to Manzanita 17
 Marlborough - Poplar to Manzanita 19
 Poplar - Marlborough to Dahlia 20
 Poplar - Snowdrop to Marlborough 22
 Poplar - Violet to Tuberosa 26
 Poplar - Tuberosa to Snowdrop 28
 Snowdrop - Poplar to Manzanita 31
 Tuberosa - Poplar to Manzanita 33
 Violet - Poplar to Manzanita 35
 MANZANITA PLACE - Fairmount to Manz. Drive 37
 Glenfield - Fairmount to Manz. Drive 39
 Manzanita Drive - Manz. Place to Marlborough 41
 Arbor Vitae - Snowdrop to Manz. Drive 48
 Manzanita Drive - Marlborough to Violet 50
 Pepper Dr. - Columbine to Hollywood Park 55
 Pepper Dr. - Snowdrop to Hollywood Park 57

INDEX CONT. on Pg 79

Marlborough



Ref. Pts. 10° Rt. & Lt. of R. to Inv. El.

289.50 "A"	0+00	0+52.34
285.33	289.50	289.50
4.17	277.26	276.74
3.64	12.24	12.76
C-0.53	4.13	3.56
289.50 "B"	C-8.11	C-9.20
277.26	0+26.17	
12.24	289.50	289.50 "D"
3.64	277.00	285.33
C-8.60	12.50	4.17
	3.65	3.88
289.50 "C"	C-8.85	C-0.29
285.31		
4.19		
3.66		
C-0.53		
1.66	289.50	287.84

Garber 10/19/51
Shepard & Marm-Clear
Bruener
Bryson W.O. 31514

Culvert No. 3
18" & 24"
Type A2 Inlets

289.50 "E"	289.50 (24") 0+22	Delayed
276.74	276.52	
12.76	12.98	
3.84	10.13	
C-8.92	C-2.85	

289.50 "F"	289.50 (24") 0+44 10° Rt
285.31	276.30
4.19	13.20
3.91	12.30
C-0.28	C-0.90

289.50 0+44 - 10° Lt.	289.50 10° Out on R. "G"
276.30	276.30
13.20	13.20
11.43	12.13
C-1.77	C-1.07

Note: ADDIT Benches on Pg 71

		Rec.
2.77	302.56	5.36 297.20 297.19
6.13	303.78	3.99 299.79
9.99	297.82	0.17 297.65
4.53	293.82	5.99 287.83
6.43	294.27	4.98 289.29 N/E F.H.V. Poplar & Tuberose
0.16	297.81	9.98 287.84 N/E F.H.V. Poplar & Hollywood Park
3.81	303.60	5.94 297.66 Top F.H.V. N/E Poplar & Columbine
5.36	302.55	2.76 299.79
		297.19 SEBP Fairmount & Quince

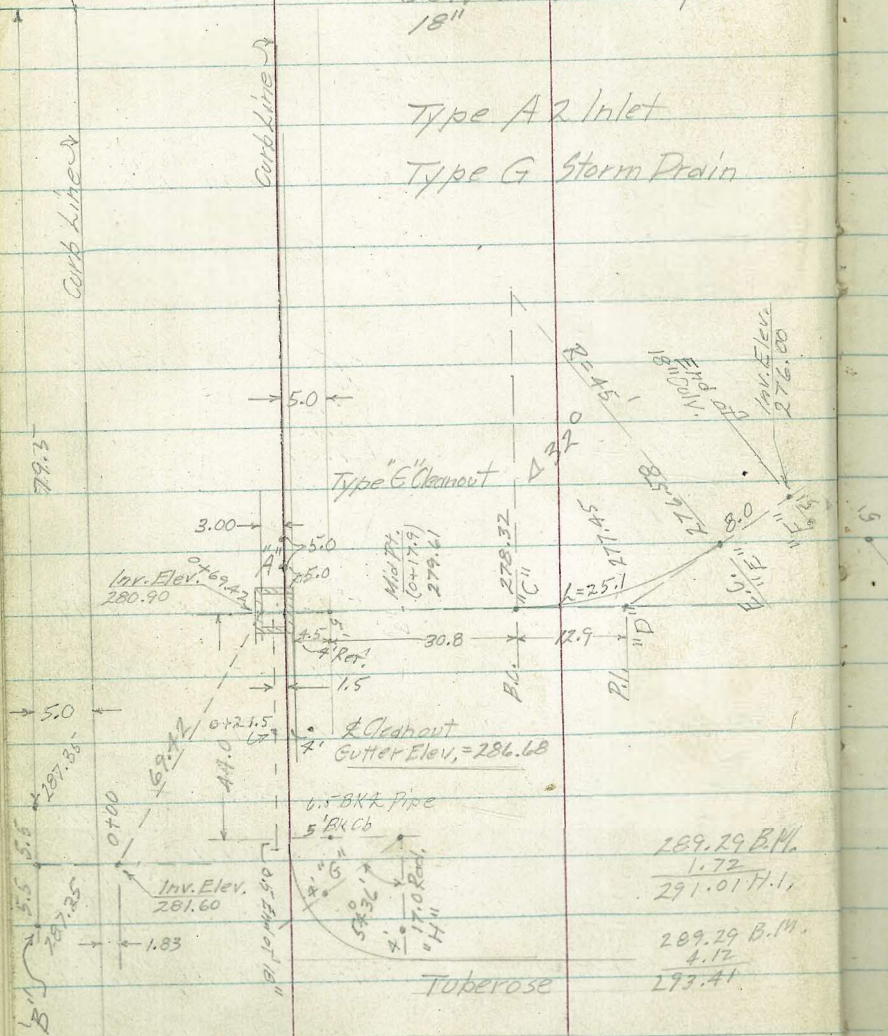
Snowdrop

Garber 10/22/51
Shepard X Warm-Clear
Bruener W.O. 31514
Bryson

Culvert No. 4 @ 5
18"

Type A-2 Inlet

Type G Storm Drain



F.C. 291.49 H.I.
286.80 grade T.C.B.
4.69
4.98 rod
FO.29

Culvert #5 (Cont.)
mid.pt. 291.49 H.I.
286.88 grade T.C.B.
4.61
4.94 rod
FO.33

61.2 291.49
286.97
4.52
4.97 rod
FO.45

293.41 "B"
287.35
6.06
5.40
C-0.66 5' out

290.05 "D" (Mid. Pt.)
281.60
8.45
3.26
C-5.19
290.05
277.45
12.60
5.50
C-7.10

290.05 "E" (E.C.)
281.43
8.62
2.88
C-5.74
290.05
276.58
13.47
7.25
C-6.22

290.05 End of Pipe
281.25
8.80
2.82
C-5.98
290.05
281.08
8.97
3.14
C-5.83

Culvert No 5
290.05 0+00
281.33 50 FT of 66
6 RT. & Pipe
8.72
3.53
C-5.19

290.05 0+21.5
281.11 40 RT
Gutter (3' Box)
8.94
3.28
C-5.66
290.05
280.68
3.37
3.25
C-0.12

290.05 "A" Reset
287.35 Ck. F-0.53
9.15
3.22
C-5.93

"G" Type A-2 Inlet
"H"
290.05
287.25
290.05
287.35
2.80
1.89
C-0.91
2.70
1.83
C-0.87

290.05 0+00
281.60
8.45
3.26
C-5.19

290.05 0+17.33
281.43
8.62
2.88
C-5.74

290.05 0+34.70
281.25
8.80
2.82
C-5.98

290.05 0+52.05
281.08
8.97
3.14
C-5.83

290.05 0+69.42
280.90
9.15
3.21
C-5.94

290.05 "A" Reset
287.35 Ck. F-0.53
2.70
3.24
F-0.54
290.05 "C" (B.C.)
278.32
11.73
4.70
C-7.03

Reset 291.01
278.32
13.69
5.29
C-8.40
8° BK

0.76 290.05
K

289.29 Top F.H.
Tuberose d
Pavlot

Garber 10/29/51
 Shepard & Warm-Clear
 Bruner W.O. 31514
 Bryson

"A"	"B"	"E"	0+16.17
287.36	287.36	287.36	287.36
279.60	279.60	273.00	272.00
7.76	7.76	14.36	15.36
7.51	7.42	6.14	8.00
C-0.25	C-0.34	C-8.22	C-7.36

"C"	"D"	"F"
287.36	287.36	287.36
278.99	278.99	271.00
8.37	8.37	16.36
9.08	9.84	9.19
F-0.71	F-1.47	C-7.17

"C"	B.C.	Mid. Pt.
278.99	278.96	278.96
0.71	269.60	266.30
278.28 Hub Elev.	9.36	12.66
0.68	8.02	6.53
278.96 H.I.	C-1.34	C-6.13

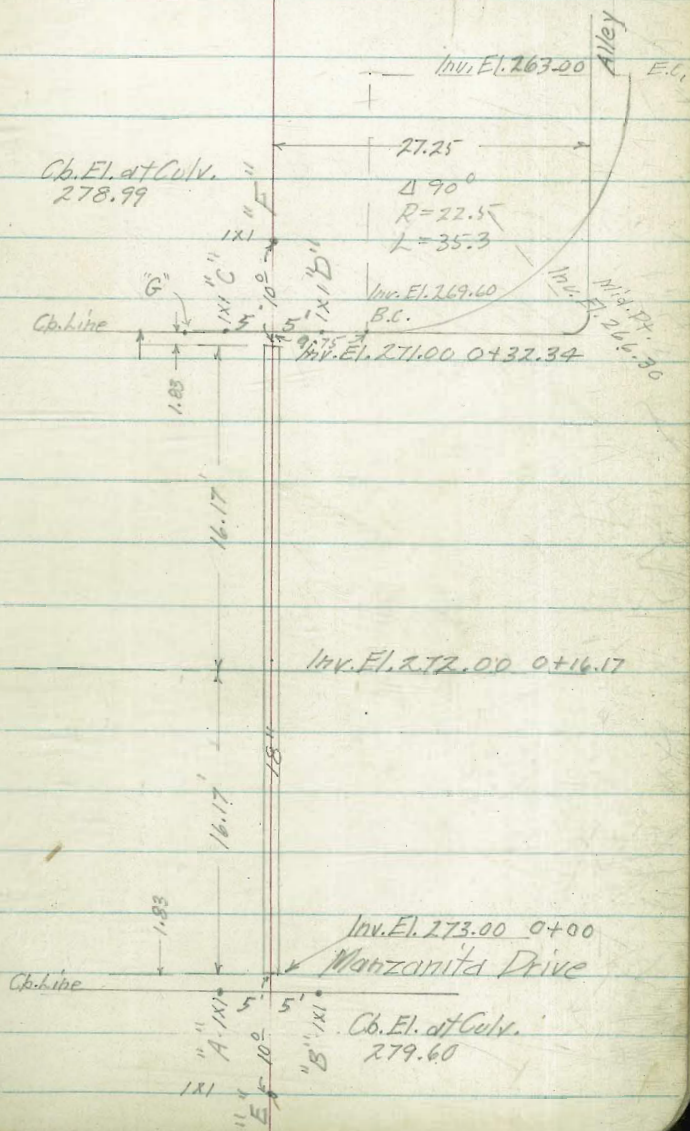
E.C.
278.96
263.00
15.96
11.20
C-4.76

RESET: "G"

"G"	"E"
286.82 F.Hy.	287.09
0.27 + Rod	279.10
287.09 H.I.	7.99
278.99 elev. Tp. CB.	5.88
8.10	C-11
8.61	
F 0.51	

0.54	287.36	11.01	286.82 F.Hy. Manzanita
0.17	297.83		F.Hy. Poplar & Columbine

Culvert No. 1.
 Type "H" Inlet



Garber
Shepard &
Bruener
Bryson

Oct. 30, 51
Cool-Cloudy
showers

Culvert No 2

2" Type Inlets & Head Wall

Note-Culv. moved 19.0 Ely. Inv. Elev. changed to

go over 6" Transite Water Pipe

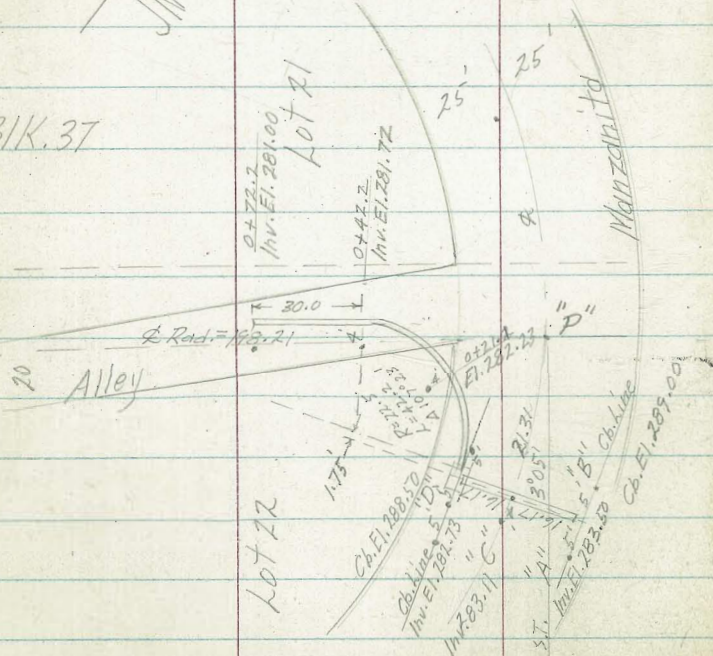
Old Dist. & Defl. from pt. "P" = 21.31 & 3° 05'

New Dist. & Defl. from pt. "P" = 11.31 & 1° 38'

Nov. 21, 51 - Rain



BIK. 37



"A" Curb	"A" Inv.	"B" Curb
293.95	293.95	293.95
289.00	283.50	289.00
4.95	10.45	4.95
4.62	4.62	4.63
C-0.33	C-5.83	C-0.32

"C"	"D" Curb	"D" Inv.
293.95	293.95	293.95
283.11	288.50	282.73
10.84	5.45	11.22
4.78	5.23	5.23
C-6.06	C-0.22	C-5.99

0+21.1	0+42.2	0+72.2
293.95	293.95	293.95
282.23	281.72	281.00
11.72	12.23	12.95
5.59	7.70	14.04
C-6.13	C-4.53	F-1.09

New Inv. Elevs.

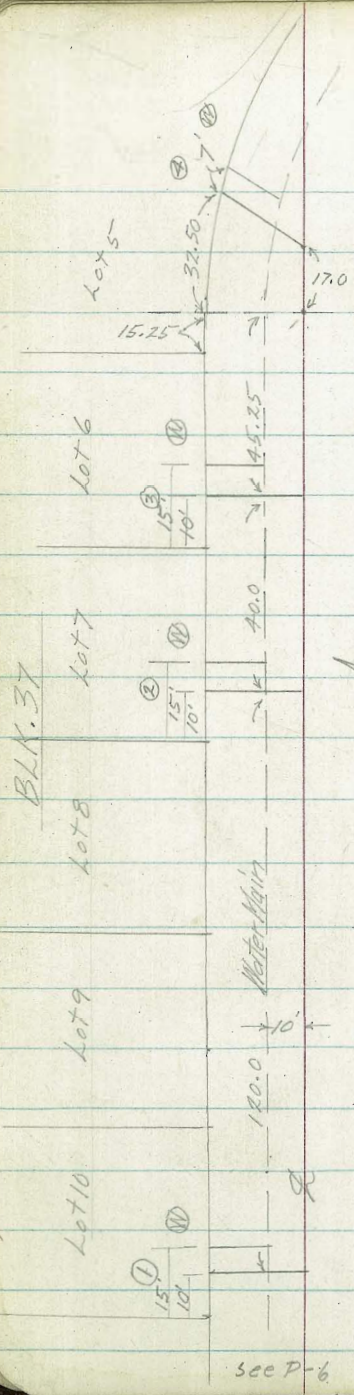
"A"	"D"	"C"
293.85	293.85	293.85 & St.
284.90	284.67	284.78
8.95	9.18	9.07
4.52	5.18	4.53
C-4.13	C-4.00	C-4.54

"A-Cb"	"D-Cb"
293.85	293.85
289.00	289.00
4.85	4.85
4.52	5.18
C-0.33	F-0.33

3.60	295.56	1.99	291.96
2.12	293.95	4.27	291.83
6.81	296.10		

Rec.
6.26 289.30 (289.29)

F.H.V.
Paplar
289.29 & Tuberosa



P.C.

Arbor Vitae

Sewer Lots. Nos 1, 2, 3 & 4

Manzanita Dr.

see P-6

10/30/51 W.O. 31514^v 5
 Garber Cool-Cloudy
 Shepard X Profiles - Sheet 13
 Bruener
 Bryson Water & Sewer Laterals.

No. 1	No. 1		No. 7	No. 7
289.95	299.95	289.49	298.81	298.81
289.49	290.51	6.90	288.42	288.98
10.46	9.44	296.39	10.33	9.83
3.56	3.06	2.42	5.57	6.33
C-6.90- 4	C-6.38 P.L.	298.81	C-4.76- 4	C-3.50 P.L.
No. 2	No. 2		No. 9	No. 9
299.95	299.95	298.81	298.81	298.81
290.21	290.73	288.36	288.86	288.86
9.74	9.22	10.45	9.95	9.95
2.74	3.23	5.80	6.33	6.33
C-7.00- 4	C-6.00 P.L.	C-4.65- 4	C-3.62 P.L.	C-3.62 P.L.
No. 3	No. 3		No. 9	No. 9
299.95	299.95	298.81	298.81	298.81
290.45	290.95	288.36	288.86	288.86
9.50	9.00	10.45	9.95	9.95
3.22	4.41	5.80	6.33	6.33
C-6.28- 4	C-4.59 P.L.	C-4.65- 4	C-3.62 P.L.	C-3.62 P.L.
No. 4	No. 4		No. 9	No. 9
299.95	299.95	298.81	298.81	298.81
290.60	291.10	288.36	288.86	288.86
9.35	8.85	10.45	9.95	9.95
5.29	6.87	5.80	6.33	6.33
C-4.06- 4	C-1.98 P.L.	C-4.65- 4	C-3.62 P.L.	C-3.62 P.L.
5.33	293.33	11.95	288.00	
4.79	299.95	0.22	295.16	
7.54	295.38	287.84		

5.50 287.83 (Rec. 287.84)
 F.Hy. Arbor Vitae & Manzanita Dr.
 F.Hy. Poplar & Hollywood Park

Lt.

Rt.

S/W Return

#1
 298.24
 298.60
 F0.36

Rod. 298.24
 Elev. 298.60
 F0.36

+35

P.L.	Cb.	Cb.	P.L.
298.06	298.01 298.06 F0.05	298.03 298.08 C0.01	298.08

#1
 299.66
 298.77
 C 0.89

298.26
 298.77
 F0.51

2+10

P.L.	Cb.	Cb.	P.L.
303.34	297.80 297.78 C0.02	297.51 297.80 F0.29	303.34
	5.56 4.51 C-1.05	5.54 4.29 C-1.25	

B.C. Poplar

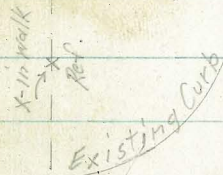
298.17 Rod
 298.40 Elev.
 F 0.23

+85

P.L.	Cb.	Cb.	P.L.
297.49	297.50 297.49 C0.01	297.36 297.51 F0.15	297.51

S/W Return

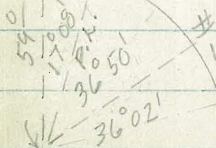
3+34.84



Hedder
 Rod 299.57
 Elev. 298.75
 C 0.82

+60

P.L.	Cb.	Cb.	P.L.
303.34	297.38 297.21 C0.17	297.19 297.22 F0.03	303.34
	6.13 4.66 C-1.47	6.12 5.14 C-0.98	



2+61.84

1+35

P.L.	Cb.	Cb.	P.L.
296.93	296.66 Rod 296.93 Elev. F0.27	296.99 296.94 C0.05	296.94

Lt.		Rt.	
P.L.	Cb.	Cb.	P.L.
3+85		299.80 300.11 F0.31	300.11
3+60		299.45 299.76 F0.31	303.34 <u>299.76</u> 3.58 <u>3.55</u> C-0.03
3+34.84		299.30 299.41 F0.11	303.34 <u>299.41</u> 3.93 <u>3.54</u> C-0.39
+99.84		298.79 298.92 F0.13	303.34 <u>298.92</u> 4.42 <u>3.48</u> C-0.94
2+64.84 Cb. 86. Lt.	303.34 <u>298.40</u> 4.94 <u>3.78</u> C-1.16	298.17 298.40 F0.23	298.27 Rd 298.43 edy 303.34 <u>298.43</u> 4.91 <u>4.00</u> C-0.91

Lt.		Rt.	
P.L.	Cb.	Cb.	P.L.
5+02.11 +92.11		301.19 301.75 F0.56	303.34 → 301.75 <u>1.59</u> <u>1.63</u> F-0.04
+75		300.76 301.37 F0.61 300.76 301.51 F0.75	301.51
+50		300.43 301.02 F0.59 300.43 301.16 F0.73	303.34 <u>301.16</u> 2.18 <u>2.80</u> F-0.62
+25		300.06 300.67 F0.61 300.06 300.81 F0.75	300.81
4+00		299.93 300.32 Eley F0.39 299.93 Rod 300.46 Eley F0.53	(E. Door) 303.34 <u>300.46</u> 2.88 <u>3.52</u> F-0.64

Indexed

Heather St. - Poplar to Manzanita 10

			Lt.		Rt.			
			P.L.	Ob.	Q	P.L.		
Heather ST. LT.	Alley Returns E	Block 2+3 RT.	1+00	299.46	299.27 299.46 FO.19	299.52	299.21 299.49 FO.28	299.49
1+42 Alley BC	299.08 299.22 FO.14	299.00 299.32 FO.32						
1+40 Alley EC	299.08 299.26 FO.18	299.00 299.36 FO.36	0+80	305.27 299.49 5.78 5.20 C-0.58	299.30 299.49 FO.19	299.54	299.27 299.50 FO.23	305.27 299.50 5.77 5.12 C-0.65
Alley at emp N.L.	299.54 Red 299.31 elev C 0.23	299.79 299.41 C 0.38						
Alley AT emp S.L.	300.04 elev 299.42 C 0.62	300.19 299.49 C 0.70	1+60	299.46	299.26 299.46 FO.20	299.51	299.21 299.47 FO.26	299.47
1+25 Alley EC	299.12 299.37 FO.25	299.26 299.44 FO.18						
1+23 Alley B.C	Red. 299.12 Elev. 299.37 FO.25	299.26 Red 299.44 Elev FO.18	0+40 BVC	305.27 299.39 5.88 5.49 C-0.39	299.09 299.39 FO.30	299.43	299.21 299.39 FO.18	305.27 299.39 5.88 5.03 C-0.83
			0+08		298.33 298.87 FO.54		299.08 Elev 299.20 Elev = elev 299.20 FO.12	
			E.C 0+05		Red. 298.13 Elev 298.82 FO.69	298.75		299.25 End Ch. 5.98
6.88	305.27 303.34 P-7	4.95 298.39						

Lt.		Rt.	
P.L.	Cb.	£	Cb.
2+00	305.27		298.50
E.V.C	298.53	298.70	298.78
	6.74		Fa.28
	6.00		6.49
	C-0.74		5.03
			C-1.46

1+80		298.58	
	298.82	298.96	298.74
			299.01
			Fa.27

1+60	305.27	298.78	298.91
	299.06	299.06	299.10
	6.21	299.12	299.10
	5.76		Fa.19
	C-0.45		6.17
			5.36
			C-0.81

1+40		Red	
	299.24	299.24	299.33
			299.34

see pg. 10
for alkyl
Returns

1+20	305.27		305.27
	299.38	299.45	299.44
	5.89		5.83
	5.27		5.01
	C-0.60		C-0.82

Lt.		Rt.	
P.L.	Cb.	£	Cb.
E.P.	Elev 296.82		296.56
			296.82
			Fa.26
# 2	Elev 296.92		296.61
			296.92
			Fa.37

# 1	Elev 297.00		296.62
			297.00
			Fa.38
3+07.07	Elev 297.10		296.75
B.C. LT.			297.10
			Fa.35

3+05	297.12	297.12	
B.K.			297.40
			297.53
			Fa.13

2+99.17	305.27	296.93	297.60
B.C. RT.	297.20	297.20	297.70
	8.07	Fa.27	305.27
	6.21	297.49	297.70
	C-1.86		7.57
			5.60
			C-1.97

+66.12	305.27	297.41	297.83
	297.64	297.64	298.06
	7.63	Fa.23	297.89
	6.37		Fa.23
	C-1.24		7.21
			5.65
			C-1.56

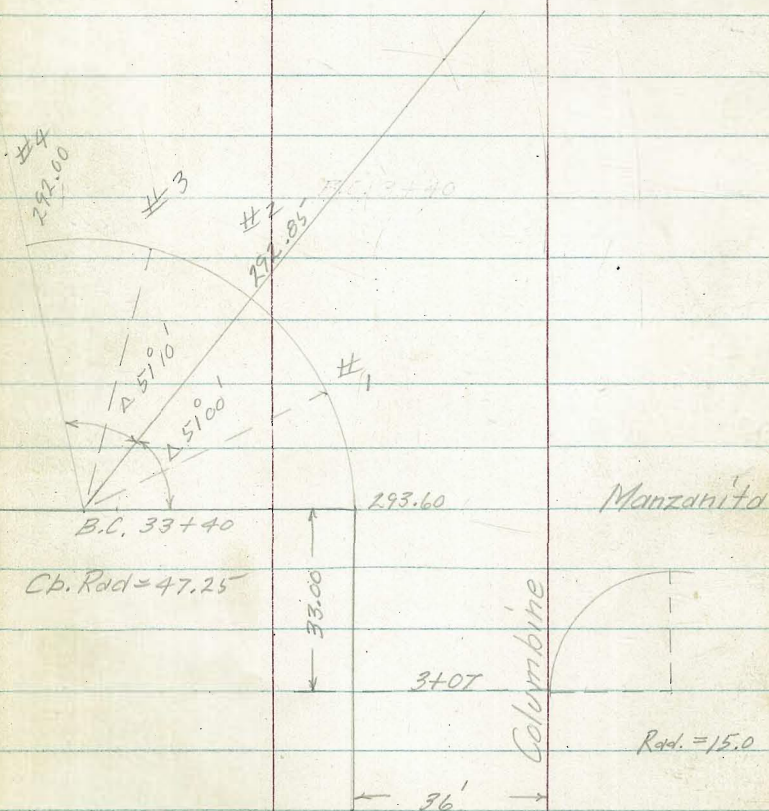
2+33.06	305.27	297.93	298.42
	298.09	298.09	298.42
	7.18	Fa.16	305.27
	6.28	298.30	298.42
	C-0.90		GRADE
			6.85
			5.43
			C-1.42

Lt.
 #2
 301.14
 292.85
 8.29
 5.80
 C-2.49
 #3
 301.14
 292.00
 9.14
 6.84
 C-2.30

Indexed

Columbine - Poplar to Manzanita 12

	Lt.	P.h.	Cb.	±	Cb.	P.h.
1+00	301.14	295.42	295.63		301.14	
	295.66	295.66	295.96	295.77	295.96	
	5.48	F0.24	F0.33		5.18	
	5.28				5.05	
	C-0.20				C-0.13	
0+80	301.14	295.38	295.52		301.14	
B/C	295.58	295.58	295.88	295.69	295.88	
	5.56	F0.20	F0.36		5.26	
	Not set					
0+50	301.14	295.25	295.55		301.14	
	295.42	295.42	295.72	295.56	295.72	
	5.72	F0.17	F0.17		5.42	
	5.69				4.80	
	C-0.03				C-0.62	
0+20	301.14	294.94	295.47		301.14	
	295.26	295.26	295.56	295.47	295.56	
	5.88	F0.32	F0.09		5.58	
	Not set					
0+05		295.18	295.52			
K/C						
0+00	301.14			295.05	301.14	
	295.15				295.55	
	5.99				5.59	
	5.93					
	C-0.06					



Direct Elev. Rd on C.B. Grades
 3.48 301.14 see P-7 (Returns) 297.66 F.H./Poplar of Columbine

Lt.		Rt.		
P.L.	Cb.	℥	Cb.	P.L.
2+00	295.36 295.21		295.30 295.44	
E.V.C	295.21 C 0.15	295.29	F 0.19	295.44
1+80	301.14 295.41 5.73 5.24 C-0.49	295.42 295.41 C 0.01	295.28 295.66 F 0.38	301.14 295.66 5.48 5.14 C-0.34
1+60	295.50 295.56 295.56 F 0.06	295.27 295.82 F 0.55	295.27 295.82 F 0.55	295.82
1+42 Alley EC	295.48 295.65 F 0.17	295.61 295.93 F 0.32	295.61 295.93 F 0.32	
1+40 Alley BC	295.48 295.67 F 0.19	295.61 295.95 F 0.34	295.61 295.95 F 0.34	
+40	301.14 295.65 5.49 5.50 0.00	295.75	301.14 295.93 5.21 5.35 F 0.14	
Alley AT Prop. ON WEST	295.61 295.72 F 0.11	295.72 296.00 F 0.28	295.72 296.00 F 0.28	
Alley AT Prop. ON EAST	295.67 295.74 F 0.07	295.68 296.04 F 0.36	295.68 296.04 F 0.36	
1+25 Alley E.C	295.13 295.69 F 0.56	295.51 295.99 F 0.48	295.51 295.99 F 0.48	
1+23 Alley B.C	Rad Elev 295.13 295.67 F 0.54	295.51 295.97 F 0.46	295.51 295.97 F 0.46	

Lt.		Rt.		
P.L.	Cb.	℥	Cb.	P.L.
3+07	301.14 294.00 7.14 5.24 C-1.90	294.40 294.00 C 0.40 293.89 294.00 F 0.11	294.40 294.00 C 0.40 293.89 294.00 F 0.11	301.14 294.10 7.04 5.37 C-1.67
3+07	301.14	293.92	293.87 294.09 F 0.22	301.14
B.C	294.00			294.10
RTI	7.14 5.24 C-1.90			7.04 5.37 C-1.67
℥				
+85		294.25		
+75	301.14 294.35 6.79 5.35 C-1.44	294.51 294.35 C 0.16	294.36 294.48 F 0.12	301.14 294.48 6.66 5.44 C-1.22
+50	294.63	294.66 294.63 C 0.03	294.57 294.80 F 0.23	294.80
+25	301.14 294.92 6.22 5.17 C-1.05	294.95 294.92 C 0.03	294.95 295.12 C 0.10	301.14 295.12 6.02 5.21 C-0.81

Lt.	Ch.	Rt.	Ch.	P.L.
P.L.				

E.C. - (P.R.C. 94085) ON MANUS. DR.	292.85	293.99	E.C. = 8+39.52 ON MANUS. DR.
# 2	292.76 293.10 F0.34	293.82 294.00 F0.18	# 2
# 1	293.02 293.35 F0.33	293.77 294.05 F0.28	# 1
CB. Ret. Lt. (3+40 = BC Lt.)	293.46 293.60 F0.14	294.09	CB. Ret. Rt. B.C. = 3+07

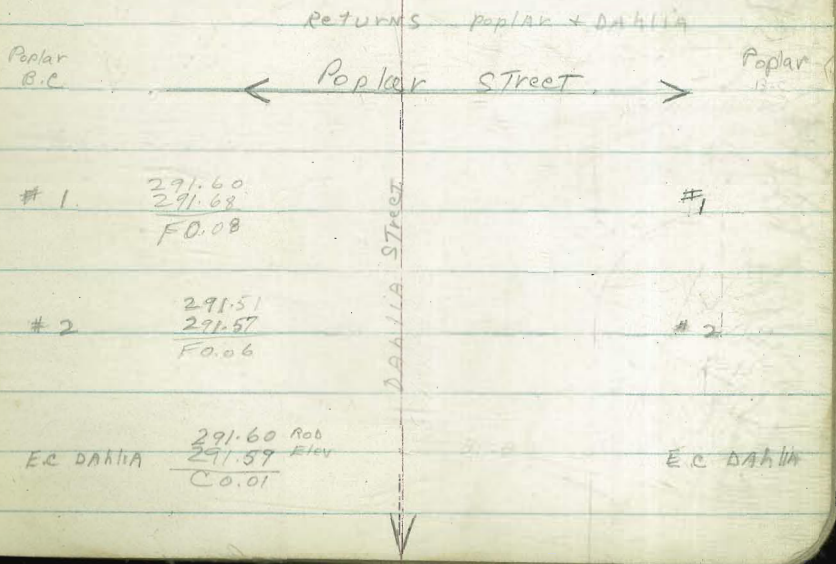
447

292.95

440 301.14
293.60
7.54
5.11
C-2.93

3+26

293.48



1 291.60
291.68
F0.08

2 291.51
291.57
F0.06

E.C. DAHLIA 291.60 Rob
291.57 Elev
C0.01

E.C. DAHLIA

Poplar - Dahlia to Columbine

Indexed

Lt.				Rt.			
P.L.	Cb.	\$	Cb.	P.L.			
+85	298.74	292.50	292.43	298.74			
	292.67	292.67	292.66	292.66			
	6.07	FO.17	FO.23	292.66			
	5.32			6.08			
	C-0.75			5.15			
				C-0.93			
+60	298.74	292.32	292.12	298.74			
	292.39	292.39	292.38	292.38			
	6.35	FO.07	FO.26	6.36			
	5.36			5.47			
	C-0.99			C-0.89			
+35	298.74	292.19	292.03	298.74			
	292.10	292.10	292.09	292.09			
	6.64	CO.09	FO.06	6.65			
	5.65			5.91			
	C-0.99			C-0.74			
+10	298.74	291.71	291.59	298.74			
	291.82	291.82	291.81	291.81			
	6.92	FO.11	FO.22	6.93			
	5.87			6.46			
	C-1.05			C-0.47			
+10				298.74			
				291.70			
				7.04			
				6.77			
				C-0.27			

Lt.				Rt.			
P.L.	Cb.	\$	Cb.	P.L.			
2+10	298.74	294.14	294.10	298.74			
	294.10	294.10		294.10			
	4.64	CO.04		4.67			
	3.67			3.20			
	C-1.00			C-1.47			
+85	298.74	293.70	293.82	298.74			
	293.82	293.82		293.79			
	4.92	FO.12	FO.18	4.95			
	3.95			3.11			
	C-0.97			C-1.24			
+60	298.74	293.34	293.34	298.74			
	293.54	293.54		293.51			
	5.20	FO.20	FO.24	5.23			
	4.14			4.02			
	1.06			C-1.21			
+35	298.74	293.04	293.25	298.74			
	293.25	293.25		293.23			
	5.49	FO.21	FO.13	5.51			
	4.72			4.12			
	C-0.77			C-1.39			
1+10	298.74	292.85	292.97	298.74			
	292.97	292.97		292.94			
	5.77	FO.12	FO.32	5.80			
	4.87			4.47			
	C-0.90			C-1.33			

297.66 DIRECTOR ROAD ON CR. GRADES

P.L. Grades 108 298.74

297.66 F.H.V. Poplar & Columbine

P.L.	Ch.	Ch.	P.L.
EC on Columbine S.E. of Poplar	29510 295.20 FO.10	29441 294.60 FO.17	EC on Columbine S.E. of Poplar
# 2	29504 295.24 FO.20	29448 294.59 FO.11	
# 1	29518 295.40 FO.22	29443 294.57 FO.14	
BC on Poplar	29541 295.50 FO.09	29455 BC on Poplar	
LT Ely Return	← Poplar St →	RT Sly Return	
B.C. +69.87 298.74 294.72 4.02 3.64 C-0.38	29458 294.72 FO.14	29438 294.55 FO.17 298.74 4.19 2.96 C-1.23	
+45		29418 294.48 FO.30 298.74 294.98 4.26 Not set	
+35	29434 294.39 FO.05 4.35 3.80 C-0.55	29413 294.37 FO.24 298.74 294.37 4.37 3.31 C-1.06	

DAHLIA ST. Alley Returns

Alley	LT	RT
Alley Black 5-4		
1+42 Alley B.C.	29013 290.38 FO.25	29053 290.88 FO.35
1+40 Alley E.C.	29013 290.42 FO.29	29053 290.92 FO.39
Alley RT BL	29050 290.47 CO.03	29088 290.97 FO.07
1+25 Alley E.C.	29130 290.78 CO.52	29124 291.29 CO.95
1+23 Alley B.C.	29087 290.73 CO.14	29125 291.24 CO.01
1+23 Alley B.C.	29087 Elev 290.78 CO.09	271.25 Rod. 291.29 Elev FO.04

Dahlia - Poplar to Manzanita

(Garber)

Indexed

	P.L.	Cb.	♀	Cb.	P.L.
1+00	295.60	291.21 291.28		291.56 291.78	295.60
	291.28	F007	291.49	F0.22	291.78
	4.32				3.82
	3.83				1.90
	C-0.49				C-1.92

+80		291.40 291.38 291.47		291.66 291.99	
	291.49	F011 F0.09	291.70	F0.33	291.99

+60	295.60	291.47 291.53		291.80 292.03	295.60
	291.53	F0.06	291.74	F0.23	292.03
	4.07				3.57
	3.85				2.02
	C-0.22				C-1.55

8VC +40		291.44 291.41		291.87 291.91	
	291.41	C0.03	291.62	F0.04	291.91

0+08		291.15 Rod 291.10 Elev		291.64 Rod 291.60	
		C0.05		C0.04	

B.C. 0+05	295.60			295.60	
	291.09		291.21	291.59	
	4.51			4.01	
	4.04			2.30	
	C-0.47			C-1.11	

CB. Grades: Direct Elev. Rod.
8.78 295.60

286.82
286.82 P. Hy Dahlia & Manzanita

	P.L.	Cb.	♀	Cb.	P.L.
2+73.32		Rod 287.39			
	287.31	Elev 287.31 C 0.08	287.51		
					Rod 287.40 Elev 287.80 F0.40
					287.80

1+91.66	295.60	288.80 288.52		288.61 289.01	295.60
	288.52	C0.08	288.72	F0.40	289.01
	7.08				6.59
	7.09				5.21
	0.00				C-1.38

8VC 1+60		289.65 289.72		289.99 290.22	
	289.72	F0.01	289.93	F0.23	290.22

+40	295.60				295.60
	290.40		290.61		290.90
	5.20				4.70
	5.10				4.55
	C-0.10				C-0.15

see page 16 for Alloy Returns

1+20	290.83		291.04		291.33
------	--------	--	--------	--	--------

Poplar - Marlborough to Dahliad

Indexed

Lt.		ℳ	Rt.	
P.L.	Cb.		Cb.	P.L.
+47.72	Lowered to meet Box 285.30		285.27 285.35 C 0.02	285.30
+47.72	Box .14 Low 293.50 285.31 8.19 7.5 C 0.69		285.37 285.31 285.31	
+27.72	Lowered grade to meet Box 285.46		285.83 285.41 C 0.42	285.46
+10	293.50 285.73 7.77 6.7 C 0.87		285.62 285.73 F 0.11 293.50 285.73 7.77 8.1 F 0.63	
#1	286.59 285.91 C 0.69			
#2	286.83 286.02 C 0.83 Rod Elev 286.89 286.05 C 0.85			
B.F.C. Marlborough				
5.66	293.50 X		287.84 B.M. F.H/D	

Lt.		ℳ	Rt.	
P.L.	Cb.		Cb.	P.L.
+75	287.12		286.68 287.12 F 0.44	287.12
+50	293.50 286.56 6.94 6.7 C 0.24		286.19 286.56 F 0.37	286.47 286.56 F 0.09 293.50 286.56 6.94 6.7 C 0.04
+27.72	293.50		285.77 286.06 F 0.29	286.07 286.06 C 0.01 293.50 286.06 7.44 7.3 C 0.14
+07.72	285.67		285.30 285.67 F 0.37	285.75 285.67 C 0.08 285.67
+87.72	293.50 285.42 8.08 7.2 C 0.88		Req 285.46 Elev 285.42 C 0.04	285.94 285.42 C 0.52 293.50 285.42 8.08 8.3 F 0.22
Direct Elev. Rod on CB, Grades				
N/E Poplar & Holly Wood PK.				

Poplar - Snowdrop to Marlborough

	Lt.	Ob.	ℓ	Ob.	P.L.
0475	295.31 289.05	288.78 289.05 F0.27		288.27 288.66 F0.39	295.31 288.66 6.65 7.1 F0.45
+50	295.31 288.97 6.34 5.00 C 1.34	288.75 288.97 F0.22		288.19 288.55 F0.36	295.31 288.55 6.76 6.9 F0.14
+30	295.31 288.90	288.53 288.90 F0.37		287.97 288.46 F0.49	295.31 288.46 6.85 7.1 F0.25
+10	295.31 288.81 6.50 5.2 C 1.30	Rod 288.49 Elev 288.81 F0.32		287.81 288.78 F0.47	295.31 288.78 6.53 6.4 C 0.06
0700	295.31 288.80		Rod 287.87 Elev 288.21 F0.34	287.87 288.21 F0.34	295.31 288.21 7.10 7.4 F0.3

For Return see A 25

DIRECT Elev Rod on CB. GRADES

5.95 295.31 289.38 B.M. N/E

Indexed

	Lt.	P.L.	Ob.	ℓ	Ob.	P.L.
1475	295.31 289.40		288.95 289.40 F0.45			
1+50	295.31 289.32 5.99 4.7 C 1.29		289.15 289.32 F0.17			
1+25	295.31 289.23		289.04 289.23 F0.19			
Rt BC 1+15			288.81 288.85 F0.04			
1+00	295.31 289.14 6.17 4.7 C 1.47		288.87 Rod 289.14 Elev F0.27			

288.78
289.15 #1
F0.37

288.82
289.08 #2
F0.26

288.88
287.05 E.C. Snowdrop
F0.17 E/Ly Ret.

288.60
288.88 = E.C. Snowdrop
F0.20

288.59
288.89 #2
F0.30

288.85
288.71 #1
F0.06

S/Ly Ret.

288.81
288.85
F0.04
295.31
288.85
6.46
6.4
C 0.06

Rod 288.50
Elev 288.78
F0.28
295.31
288.78

Post Poplar v Tuberosa

Lt.		♀	Rt.		Lt.		♀	Rt.	
P.L.	Cb.		Cb.	P.L.	P.L.	Cb.		Cb.	P.L.
1+77.72	295.31 289.60 5.71 4.7 C 1.01		288.98 289.53 F 0.57	295.31 289.55 5.76 5.7 C 0.06	175	295.31 288.48 6.83 5.4 C 1.43		288.31 288.48 F 0.17	288.19 288.48 F 0.29 295.31 288.48
+57.72	295.31 289.64 C 0.20		289.20 289.55 F 0.35	295.31 289.55	F.V.C.	295.31 288.77 6.54 5.4 C 1.14		288.38 288.17 F 0.39	288.44 288.77 F 0.33 295.31 288.77 6.54 6.4 C 0.14
P.V.C.	289.03 289.60 F 0.57 5.71 4.4 C 1.31		289.16 289.49 F 0.33	295.31 289.49 5.82 5.7 C 0.12	3+37.72	295.31 289.08 F 0.34		288.74 289.08 F 0.34	288.85 289.08 F 0.23 295.31 289.08
2+00	295.31 289.48 5.83 4.6 C 1.23		288.97 289.30 F 0.33	295.31 289.30	3+17.72	295.31 289.33 5.98 4.8 C 1.18		288.95 289.33 F 0.38	288.71 289.30 F 0.59 295.31 289.30 6.01 6.1 F 0.09
Rt. B.C.	1485		288.74 ^{Rev} 289.22 ^{Elev} F 0.48	295.31 289.22 6.09 6.0 C 0.09	2+97.72	295.31 289.49 F 0.58		288.91 ^{Rev} 289.49 F 0.58	288.82 289.46 F 0.64 295.31 289.46

	Lt.		Rt.
	P.L.	£	P.L.
+75			286 42 286 77 FO.35
			295 31 286 77 <u>8.54</u> 8.5 <u>C0.04</u>

	Lt.		Rt.
	P.L.	£	P.L.

A+65	295.31	286 67
B.C.T.	286.93	286 93
	8.38	FO.32
	7.8	
	<u>C0.58</u>	

+50	295 31	287 03	287 02
	287.19	287 19	295 31
	8.12	FO.16	287.19
	6.5		FO.17
	<u>C1.32</u>		8.12
			8.1
			<u>C0.02</u>

+35=0100

+25	295 31	287 52	287 48
	287.62	287 62	295 31
		FO.10	FO.14
			287 62

5+25

285.95	
285.90	
<u>C0.05</u>	285.90

4+00	295 31	red 287 83	287 96
	288 05	287 83	288 05
	7.26	FO.22	FO.09
	6.3		295 31
	<u>C0.96</u>		288.28 ✓
			7.03
			7.1
			<u>FO.07</u>

5+007

286.11	
286.34	
<u>FO.23</u>	286.34

	Return	Poplar - SnowDrop
		N/Ly
		288.68
EG SnowDrop		288.70
		F0.22
		288.55
# 2		288.26
		F0.31
		288.51
# 1		288.80
		F0.29
		.
B.C poplar	Rod	288.44
	Flex	288.81
		F0.32

Clark
Shepherd
Bruner
Bryson

12/17/51
W.D. - 31514

26

Poplar - Violet to Tuberosa

Indexed

LT.

RT.

LT.			♀		RT.		LT.			RT.	
P.L.	CB.		CB.	P.L.	P.L.		P.L.	CB.	♀	CB.	P.L.
0+63	286.49 285.71 C0.78	285.50 285.71 F0.21	285.18 285.71 F0.53	286.14 285.71 C0.43	2102.12	289.40 288.33 C1.07	288.25 288.33 F0.08	287.91 288.27 F0.36		287.90 Red 287.97 288.29 elev C0.39	
0+33 opp. B.C. RT.	285.48 284.97 C0.51	284.69 284.97 F0.28	284.50 284.97 F0.47	285.49 284.97 C0.51	1+82.12	288.18	288.07 288.18 F0.11	287.96 288.16 F0.20		288.16	
			284.19 284.66 F0.47	#4	1+62.12	289.30 287.94 C1.36	287.88 287.94 F0.06	287.71 287.93 F0.22		287.92 287.93 F0.01	
0+10 E.C. Poplar LT. only	284.47 284.21 C0.26	284.65 284.21 C0.44	283.93 284.37 F0.44	#3							
					1+42.12	287.60	287.45 287.60 F0.15	287.47 287.60 F0.13		287.60	
#2		284.00 283.96 C0.04	284.31 284.13 C0.18	#2							
					1+22.12 B.V.C.	288.39 287.17 C1.22	286.90 287.17 F0.27	287.11 287.17 F0.06		287.67 287.17 C0.50	
#1		283.52 283.91 F0.39	283.98 Red 283.88 Elev #1 C0.10	BEG. IN. CB.							
			Ref. on RT.		0+9.3	286.44	Red 286.41 Elev 286.44 F0.03	286.35 286.44 F0.09		286.44	
E.C. Violet N'ly Return	284.00 283.92 C0.05	Red 283.49 Elev 283.95 F0.46	check: 286.37	286.38 = Elev. F.Hyd. 1/2 Corner Poplar & Violet							
	289.38	DIRECT Elev. Red	289.38	NAIL N/E Post Pop. & Tuberosa							

LT.

RT.

LT.

RT.

P.L.

CB.

♀

CB.

P.L.

P.L.

CB.

♀

CB.

P.L.

2+75
RT. only

287.80
288.07
FO.27
288.07
FO.07

E.C
Tuaense 288.30

288.07
288.30
FO.23

#2 288.26

288.03
288.26
FO.23

#1 288.20

288.22
288.20
CO.02

2+65
LT. only
B.C
C 1.21

288.11
288.21
FO.10

2+42.12
E.V.C
290.15
288.35
C 1.80

288.13
288.35
FO.22

287.90
288.26
FO.36
288.12
288.26
FO.14

2+22.12
288.39

Red 288.40
E.V. 288.39
CO.01

287.88
288.33
FO.45
288.33

3+00
RT. only

287.74
287.86
FO.12
287.76 Rod
287.86 Elev
FO.10

Poplar - Tuberosa to Snow Drop

Indexed

LT.

RT.

	P.L.	CA	♀	CA	P.L.		P.L.	CA	♀	CA	P.L.
0+64	287.88 287.72 C0.16	287.68 287.73 F0.05		287.12 287.33 F0.21	287.41 287.33 C.08					286.90 286.60 C0.30	EC Tuberosa
0+37	288.05 287.81 C0.24	287.53 287.81 F0.28		287.26 287.47 F0.21	287.67 287.47 C0.20					287.11 286.67 C0.44	#2
0+10 B.C. Poplar LT. ONLY	288.36 287.90 C0.46	287.57 287.90 F0.33		287.62 287.66 F0.04	287.89 Red 287.66 GRADE C0.23	1+65 BL RT	287.36	287.58 287.38 287.43 C0.15		287.01 286.85 C0.16	286.82 286.85 F.02
0+00 RT. ONLY											
#2		287.63 287.94 F0.31				H45 B.V.C	288.18 287.42 C0.76	287.25 287.42 287.47 F0.22		287.19 286.91 C0.28	286.77 286.91 C0.08
#1		287.51 287.98 F0.47				1+18	288.31 287.51 C0.80	287.44 287.56 F0.12		286.87 287.06 F0.19	287.43 287.06 C0.37
#A Tuberosa	288.00	287.61 288.00 F0.39				0+91 Red GRADE	288.09 287.61 C0.48	Red 287.15 287.65 F0.50		287.11 287.20 F0.09	287.50 Red 287.20 GRADE C0.30
Direct Elev. flood	287.38			287.38	Elev. T.G.M.	NAIL CORN. Post N/E Tuberosa & Poplar					

3+75
RT. only

287.82
288.21
F 0.39

3+65
RT. only

287.85 287.93
288.14 288.14
F 0.29 F 0.21

3+45
RT. only

Red 287.71 287.75 Red
Blv 288.00 288.00 G
F 0.29 F 0.25

SNOWDROP - Poplar to MARYANITA

Indexed

LT.		RT.		LT.		RT.		
P.L.	CB	CB	P.L.	P.L.	CB	P.L.	CB	
1+40 Alley BC	289.38 289.32 FO.14	289.86 290.02 FO.16						
Alley AT Prop. L.	291.85 289.57 C 2.28	291.94 290.07 C 1.87		EC	290.26	290.05 290.26 FO.21		
Alley AT Prop. L.	290.95 289.45 C 1.50	291.15 289.95 C 1.20		# 2		290.02 290.36 FO.34		
1+25 Alley EC	289.02 289.40 FO.38	289.72 289.90 FO.18		# 1		289.67 290.40 FO.73		
1+23 Alley BC	291.01 289.37 C 1.64	289.02 289.37 FO.35	289.72 289.87 FO.15	291.35 289.87 C 1.48	2+45.13 BC ON LT.	293.29 290.36 C 2.93	290.18 290.30 290.36 FO.06 FO.18	290.85 290.86 FO.01
0+95	290.51 289.13 C 1.38	288.98 289.13 FO.15	289.55 289.63 FO.08	291.21 289.63 C 1.58	2+32	290.24	290.26 290.24 C 0.02	290.74 290.74 Grade
0+65	291.04 288.88 C 2.16	288.78 288.88 FO.10	289.15 289.39 FO.24	291.18 289.39 C 1.79	2+02	292.30 290.00 C 2.30	289.76 290.00 FO.24	290.40 290.50 FO.10
0+35	289.58 288.64 C 0.94	288.54 288.64 FO.10	289.03 289.14 FO.11	290.74 289.14 C 1.60	1+72	291.97 289.95 C 2.02	289.72 289.75 FO.03	290.20 290.25 FO.05
0+05 No 289.38 Grade 288.40 C 0.98	Red 288.26 Elev 288.40 FO.14	288.68 288.70 FO.22	290.11 288.90 C 1.21	1+42 Alley AT.	291.77 289.51 C 2.26	289.38 289.51 FO.13	Red 289.86 Elev 290.01 FO.15	292.07 290.01 C 2.06

DIRECT ELEVATION

No.: 289.38

289.38 elev TB M NAIL

Pole N/E CORNER Tuberosa - Poplar

E.C

291.56	
291.65	291.65
F0.09	

2

291.40	
291.40	291.40
Grade	

#

1

291.18	
291.22	291.22
F0.04	

2457

B.C ON RT.

291.04	293.15
291.05	291.05
F0.01	C2.10

Tuberose Poplar to Manzanita

Indexed

LT.

RT.

LT.		♀		RT.		P.L.		♀		P.L.	
P.L.	CB			CB	P.L.	P.L.	CB		CB	P.L.	
						EC MANZ. RT.			289.69		
									289.78	289.98	
Alley E.C.	289 Rod 289 Elev F0.05	34 39		288.78 Rod 288.95 Elev F0.17		# 3			F0.29		
									289.87		
									289.97		
									F0.10		
Alley AT P.L. LINE	292 289. C 2.62	06 44		290.54 289.00 C 1.54		# 2					
									289.99		
									289.95		
									C0.04		
Alley AT P.L.	289 289. C0.08	37 29		289.38 288.90 C0.48		# 1			289.92		
									289.70		
									C0.02		
Alley E.C.	289.13 289.24 F0.11			288.59 288.85 F0.26		2+73.40 CB.C RT.	293.18 290.35 C 2.83	290.12 290.35 F0.23	289.60 289.85 F0.25	291.02 289.85 C 1.17	
1+23 Alley B.C	291.49 289.21 C 2.28	289.13 289.21 F0.08		288.59 288.82 F0.23	290.09 288.82 C 1.27	2+62	290.27 290.27 F0.19	290.08 290.27 F0.19	289.47 289.79 F0.32	289.79	
0+95	290.49 288.99 C 1.50	288.85 288.99 F0.14		288.58 288.62 F0.04	289.30 288.62 C 0.68	2+32	292.85 290.04 C 2.81	289.95 290.04 F0.09	289.53 289.58 F0.05	291.30 289.58 C 1.78	
0+65	290.17 288.76 C 1.41	288.64 288.76 F0.12		288.14 288.42 F0.28	289.09 288.42 C 0.67	2+02	292.75 289.82 C 2.93	289.92 289.82 C 0.10	289.34 289.37 F0.03	290.64 289.37 C 1.27	
0+35	289.51 288.53 C 0.98	288.32 288.53 F0.21		287.78 288.21 F0.43	288.82 288.21 C 0.61	1+72	291.88 289.39 C 2.29	289.54 289.59 F0.05	288.99 289.16 F0.17	290.76 289.16 C 1.60	
0+05	289.19 Rod 288.30 G C 0.89	288.07 288.30 F0.23		287.61 288.00 F0.39	288.29 Rod 288.00 Grade C 0.29	1+42 Alley R.T.	291.90 289.38 C 2.52	289.34 289.38 F0.04	288.78 288.94 F0.16	290.40 R 288.94 G C 1.46	
Direct Elev. Rod:	289.38			289.38	Tom Nail Post	N/E Corner Tuberose - Poplar					

L.T.

R.T.

P.L.

CB.

E

CB

P.L.

F.C.
Mans

290.96

290 86
290 96
F0.10

3+79.16

294.24
290.85290 72
290 85

B.C. LT.

C 3.39

F0.13

3+73.4

290.83

3+48.4

294.15
290.71
C 3.44290 57
290 71
F0.14

3+23.4

293.91
290.59
C 3.32290 37
290 59
F0.22

2+98.4

293.47
290.47
C 3.00290 30
290 47
F0.17

Violet - Poplar to MANZANITA

Indexed

LT.				RT.		LT.		RT.			
P.L.	CR.	Q		CB	P.L.	P.L.	CB.	R	CB.	P.L.	
Alley AT PROP. L				Rd 285.76 283.06 C 0.70		3+32.90	286.27 286.06 C 0.21	285.87 286.07 F 0.20		286.15 286.54 F 0.39	288.34 286.54 C 1.80
Alley AT PROP. L				Rd 285.80 284.93 C 0.87		3+02.90	286.38 285.70 C 0.68	285.59 285.70 F 0.11		286.12 286.29 F 0.17	288.11 286.29 C 1.82
1+25 E.C Alley RT				284.80 284.88 F 0.08		2+72.90 E.V.C.	285.72 285.33 C 0.39	285.29 285.33 F 0.04		285.83 286.04 F 0.21	288.36 286.04 C 2.32
1+23 B.C Alley RT ONLY	284.95 284.07 C 0.88	283.59 284.07 F 0.48		284.80 284.85 F 0.05	286.03 284.85 C 1.18	2+52.90	285.32 285.10 C 0.22	284.83 285.10 F 0.27		285.72 285.88 F 0.16	287.58 285.88 C 1.70
0+95	284.82 283.85 C 0.97	283.59 283.85 F 0.26		284.23 284.64 F 0.41	285.78 284.64 C 1.14	2+32.90 B.V.C.	284.69 284.72 F 0.23	284.56 284.92 F 0.36		285.42 285.73 F 0.31	287.31 285.73 C 1.58
0+65	283.84 283.62 C 0.22	283.51 283.62 F 0.05		284.02 284.42 F 0.40	284.10 284.42 F 0.32	2+02	284.30 284.68 F 0.38	284.44 284.68 F 0.27		285.23 285.48 F 0.25	287.26 285.48 C 1.78
0+35	282.95 283.38 F 0.43	282.98 283.38 F 0.40		283.75 284.18 F 0.43	284.18	1+72	284.36 284.25 C 0.11	284.07 284.25 F 0.18		285.10 285.24 F 0.14	286.52 285.24 C 1.28
0+05 B.C RT	Rd 281.84 Elev 283.15 F 1.31	283.47 283.15 C 0.32		Rd 283.91 Elev 283.95 F 0.06	284.00 283.95 F 0.05	1+42 Alley B.C.	284.79 284.22 C 0.57	283.91 284.22 F 0.31		Rd 284.90 Elev 285.00 F 0.10	286.22 Rd 285.00 Elev C 1.22
0+00 N/WLY LINE Poplar						1+70 B.C Alley				284.90 285.01 F 0.11	

Direct Elev. Rod:

286.38 NE Elm H/O. Pop & Violet.

LT.

RT.

P.L.

C.B.

Q

C.B.

P.L.

E.C.
MANS. DR.286.72
287.00
F0.28

2

286.56
286.87
F0.31

1

286.47
286.83
F0.363+64.31
B.C. RT.286.44
286.78
F0.34288.60
286.78
C1.82E.C. Not constructed
MANS. DR.

286.25

2
END. C.B. ON
S.W. L. OF
Yulet.285.75
286.32
F0.57

1

285.70
286.40
F0.703+55.50
B.C. LT.286.15
286.30
F0.15286.03
286.30
F0.27

RA 286.43

3+53.70
B.K.

286.29

286.29

286.54

286.70

Indexed

MANZANITA PLACE - Fairmount to WARD 3. DRIVE

LT.		RT.		LT.		RT.		
P.L.	C.B.	♀	C.B.	P.L.	C.B.	♀	P.L.	
				1742.28 Alley EC	313.62 312.91 C 0.71	313.59 312.91 C 0.68	312.94 313.46 313.30 C 0.16 F 0.36	REPLACED KNOCKED OUT 314.80 313.30 C 1.50
0+49.69 LT. B.C.	312.59	312.48 312.59 F 0.11	312.79	Alley B.C.		313.59 312.92 C 0.67		
0+25 LT. only		312.47 312.52 F 0.05		Alley AT Prop.		313.19 312.98 C 0.21		
0+00 W.L. Fairmount	312.44	312.42 cb. 312.44 elev. 312.95		Alley AT Prop.		312.97 312.92 C 0.05		
E.C. 0+70.49 RT. only				313.04 313.10 F 0.06	313.92 313.10 C 0.82	Alley EC		
# 3 RT. only				312.68 313.27 F 0.59	1+10.05 Alley B.C LT.	312.84 312.79 C 0.05	313.11 313.21 F 0.10	314.87 313.21 C 1.66
# 2 RT. only				313.38 313.58 F 0.20	313.81 Rod 313.58 elev C 0.23	0+90.27	312.75 312.74 C 0.01	313.06 313.15 F 0.09
# 1 RT. only				313.88 313.97 F 0.09	0+70.49 EC RT.	(Replaced Knocked out) 312.36 312.72 312.68 C 0.04 F 0.32	313.04 313.10 F 0.06	
B.C. RT Fairmount				314.39 cbk. 314.40 EXISTING F 0.01	E.C. LT. only	312.50 312.62 F 0.12	312.79	

318.02 Direct elev. Rd. 318.02 S/E of Fairmount + THORNE

LT.			RT.								
P.L.	C.B.	F	C.B.	P.L.							
# 1	313.69 313.07 C 0.62										
# 2	313.19 312.82 C 0.37										
E.C. MANS. DRIVE NORTH LINE	313.05 312.74 C 0.31										
E.C. MANS. DRIVE SOUTH LINE	312.49 312.73 F 0.24										
# 2	312.74 312.83 F 0.09										
# 1	312.77 312.95 F 0.18										
1+92.00 B.C. LT	313.88 313.04 C 0.84	313.93 313.04 C 0.89	313.90 313.45 C 0.45	314.90 Rod 313.45 ch C 1.53	2+90.49 END CB.	310.23 313.30 F 3.07	314.11 313.30 C 0.81	313.61 313.70 F 0.09	313.93 313.70 C 0.23		
1+89.79	313.78 313.05 C 0.73				2+59.96	313.20	313.90 313.20 C 0.70	313.92 313.62 C 0.30	314.71 Rod 313.62 C 1.09		
1+67.28	313.07 312.98 C 0.09		313.57 313.38 C 0.19		2+58.04 B.C. LT	312.70 313.19 F 0.49	313.94 313.19 C 0.75	Elev 313.62			
					2+25.02 RT. ONLY			314.23 313.53 C 0.70	315.24 Rod Elev 315.53 C 1.71		

Glenfield - Fairmount to Manzanita Dr.

Indexed

LT.			RT.			LT.			RT.		
P.L.	C.B.	R.	C.B.	P.L.		P.L.	C.B.	R.	C.B.	P.L.	
Alley at Prop. LT. 1+40 B.V.C. C0.19	306.41 306.22 306.22 C0.18	306.40 306.22 306.41	306.00 306.62 F0.62	307.41 306.62 C0.79		2+20 LT. 306.61 306.93 F0.32	306.85 306.93 F0.08	307.22		308.31 307.43 C0.88	
1+25 End Exist. CB. H.											
1+03.35			305.83 306.07 F0.24	307.59 306.07 C1.52	Alley AT Prop. L.				308.24 307.48 C0.76		
0+66.75 B.C. RT.			305.33 305.51 F0.18	306.59 305.51 C1.08	Alley E.C.				306.85 307.35 F0.50		
#2			305.67 305.40 C0.27		2+03.44 Alley BC RT				306.85 307.32 F0.47	308.21 307.32 C0.89	
#1			305.91 305.55 C0.36		2+00		306.73 306.80 F0.07	307.09	306.84 307.30 F0.46		
CB. E.C. on Fairmount			EXIST 305.85	Meat Exist.	1+80	306.57 306.62 F0.05	306.50 306.62 F0.12	306.91	306.67 307.12 F0.45	308.30 307.12 C1.18	
0+24		304.51			1+60		306.50 306.40 C0.10	306.69	306.43 306.90 F0.47		
0+08	303.97 Meat Existing WALK				1+43 Alley BC LT.		306.42 306.16 C0.26				
0+00 ON LT. WEST LINE Fairmount (W.L. Glenfield STATIONING					Alley E.C. LT.		306.42 306.15 C0.27				

3/8.02 - Direct Elev. Rod: 3/8.02 = ELEV. B.P. 7 Third + Fairmount.

<u>LT.</u>			<u>RT.</u>							
P.L.	CB.	E.	CB.	P.L.	P.L.	CB.	E.	CB.	P.L.	
3+72	307.28 306.64 C 0.64	306.74 306.64 C 0.10		306.91 307.14 F 0.23	308.24 307.14 C 1.10					
3+36	307.21 306.78 C 0.43	306.87 306.78 C 0.09		307.01 307.28 F 0.27	308.49 307.28 C 1.21					
3+00 E.V.C.	306.90 306.73 F 0.03	307.00 306.73 C 0.07	307.22	307.11 307.43 F 0.32	308.75 307.43 C 1.32	E.C. MAN'S. Dr.	305.50	305.41 305.50 F 0.09	307.99 308.50 F 0.51	308.50
2+80		307.23 307.00 C 0.23	307.29	307.14 307.50 F 0.36		# 3		305.80 305.75 C 0.05	#5 307.25 308.00 F 0.75	
2+60	307.12 307.03 C 0.09	307.13 307.03 C 0.10	307.32	307.27 307.53 F 0.26	308.61 307.53 C 1.08	# 2		306.09 306.10 F 0.01	#4 306.91 307.60 F 0.69	
2+40 LT.		306.90 307.00 F 0.10	307.29			# 1		306.36 306.30 C 0.06	#3 306.92 307.30 F 0.38	308.91 307.30 C 1.61
2+39.38 Alley B.C. RT.				307.13 307.50 F 0.37		4+22.98 CB. B.C. LT.	306.61 306.32 C 0.29	306.37 306.32 C 0.05	#2 306.73 307.10 F 0.37	
Alley E.C. RT.				307.28 307.55 F 0.27		4+11.51 P.L. B.C. LT.		306.57 306.47 C 0.10	#1 306.72 306.97 F 0.25 Ret. RT.	
Alley AT P.L. RT.				307.55		4+07.98 CB. B.C. RT.	Rod Elev.	306.58 306.48 C 0.10	306.69 306.99 F 0.30	308.66 306.99 C 1.67

LT.					RT.						
P.L.	CB.	L	CB.	P.L.	P.L.	CB.	L	CB.	P.L.		
4+700.9	300.07 298.66 C 1.41	298.18 298.66 F0.98		298.40 298.40 Grade	298.46 298.40 C 0.06	0+50		297.38 296.05 C 1.33	296.12 296.05 C 0.07	295.50 295.55 F 0.05	295.51 295.55 F 0.04
4+45.71	300.60 299.32 C 1.28	298.93 299.32 F0.39		298.96 299.00 F0.09	298.74 299.00 F 0.26	6+36.70 (F.C.) MANZ.		297.74 296.19 C 1.55	296.34 296.19 C 0.15	295.65 295.69 F 0.09	296.30 295.61 C 0.61
4+21.33	301.00 299.98 C 1.02	299.90 299.98 F 0.08		299.77 299.60 C 0.17	300.17 299.60 C 0.57	6+08.70 LT. ONLY 20' ahead CB.E.C. ON TAX.		298.31 296.49 C 1.82	296.34 296.49 F 0.15		296.05
3+96.95	301.98 300.64 C 0.84	300.34 300.64 F 0.30		300.42 300.20 C 0.22	300.56 300.20 C 0.36	6+08.24 RT. ONLY		296.54	296.54	296.13 296.54 F 0.41 296.04 C 0.09	296.56 296.54 C 0.02
3+72.57 (B.C.) manz. drive & STATIONING	302.04 301.30 C 0.74		301.09	301.09 300.80 C 0.29	301.44 300.80 C 0.64	CB.E.C. LT. Heather Sly See Pg. 10 For Return		298.45 296.82 C 1.63			
Alley B.C.		Knocked out Rod 300.98 301.10 301.27 E 0.17 F 0.24				5+79.80 RT. ONLY				296.45 296.40 C 0.05	297.46 296.40 C 1.06
Alley E.C.		Knocked out Rod 300.98 301.10 301.35 F 0.25 F 0.37				5+72.92 RT. ONLY				296.75 296.87 F 0.12	277.42 296.87 C 0.55
Alley at Prop S. LINE		300.96 Rod 301.37 Elev 301.40 F 0.03 F 0.44				4+94.48 (P.R.C.) CB. B.C. LT. HEATHER M.E. See Pg. 10		Red. 299.75 Elev. 298.00 298.00 C 1.75	297.79 298.00 F 0.21	297.92 297.80 C 0.12	298.16 297.80 C 0.36

LT.				RT.				LT.				RT.			
P.L.	CB	L		CB	P.L.			P.L.	CB	L		CB	P.L.		
(7+00)	296.42 295.50 C 0.92				294.54 295.00 F 0.46			7+79.06 RT. ONLY				294.11 294.14 F 0.03	293.65 294.14 F 0.49		
7+00.52 S/164 BC LT.		295.38 295.50 F 0.12						7+75 LT. ONLY 21.83 AHEAD BC ON TANG.	295.35 294.68 C 0.67			294.81 294.68 C 0.13			
(7+748) Alley BC RT.				294.73 294.81 F 0.08				7+53.17 (B.C.)	295.57 294.91 C 0.66			294.80 294.91 F 0.11	294.37 294.41 F 0.04	292.61 294.41 F 1.80	
Alley EC RT.				294.73 294.85 F 0.12				7+25	295.65 295.25 C 0.40			294.96 295.23 F 0.29	294.61 294.73 F 0.12	293.05 294.73 F 1.68	
Alley AT Prop. LINE RT. S. LINE				294.34 294.89 F 0.55				7+19.52 Alley B.C LT.				294.95 295.30 F 0.35			
Alley AT Prop. LINE RT. N. LINE				294.87 295.11 F 0.24				Alley EC LT.				294.95 295.34 F 0.39			
Alley EC RT.				294.91 295.07 F 0.16				Alley AT Prop. LINE S. LINE				Ad. 295.70 295.39 C 0.31			
6+92.71 Alley BC RT.				294.91 295.07 F 0.16				Alley AT Prop. LINE N. LINE				Ad. 296.44 295.55 C 0.89			
6+75 N	296.67 295.78 C 0.89	Ad. 295.76 295.78 F 0.02		295.14 295.28 F 0.14	294.91 295.28 F 0.37			Alley EC LT.				Ad. 295.38 295.51 F 0.12			

LT.				RT.		LT.				RT.	
P.L.	CB.	Q		CB.	P.L.	P.L.	CB.	Q	CB.	P.L.	
7+08.54 (P.R.C.)	292.85	292.33 292.85 Fo.52		293.41 292.73 00.68	294.37 292.73 C1.64	Alley E.C. H. South Line			Red 289.57 290.74 289.74 Fo.17		
8+82.64 RT. ONLY				292.89 293.03 Fo.14	294.44 293.03 C1.41	Alley AT P.L. SOUTH			Red. 290.66 289.79 C0.87		
8+56.75 RT. ONLY				292.97 293.37 Fo.40	294.42 293.32 C1.10	Alley at P.L. N.			Red 293.11 290.09 C3.02		
8+40.17 Brk. RT. ONLY					294.16 293.50 C0.66	Alley E.C.			Red 290.03 290.04 Fo.01		
8+39.52 C.B.C. LT Columbine See Pg. 13	293.99	293.86 293.99 Fo.13				10+46.85 Alley C.B. AC LT.			Red 290.03 290.07 Fo.04		
8+37.52 Brk. LT. ONLY	295.63 294.00 C1.63	293.86 294.00 Fo.14				10+00	293.73 291.22 C2.51	291.06 290.22 Fo.16	290.87 290.81 C0.06	290.85 290.81 C0.04	
8+30.85 RT. ONLY				293.63 293.60 C0.03		9+66.98 (E.C.)	294.30 292.00 C2.30	291.67 292.00 Fo.33	291.52 291.50 C0.02	291.41 291.50 Fo.09	
8+06.08 LT. ONLY	295.49 294.35 C1.14	294.45 294.35 C0.10				9+47.50	294.60 292.29 C2.31	292.13 292.29 Fo.16	291.81 291.91 Fo.10	291.46 291.91 Fo.45	
8+04.96 RT. ONLY				293.76 293.87 Fo.11	294.14 293.87 C0.27	7+28.02	295.03 292.57 C2.46	292.31 292.57 Fo.26	292.33 292.32 C0.01	293.28 292.32 C0.96	

	LT.			RT.			LT.			RT.		
	P.L.	CB.	ℓ	CB.	P.L.		P.L.	CB.	ℓ	CB.	P.L.	
#2 LT. only	286.40	286.40										
12+08.02 (P.R.C.)	289.60 286.65 C 2.95	No GRASS Brk		285.67 285.87 F0.22	286.59 285.87 C 0.70		13+09.69 RT. only			286.48 281.48 F 1.00	280.64 281.48 F 0.84	
12+02.93 RT. only				285.95 286.12 F0.17	287.15 286.12 C 1.03.		CB. EC. +18" LT. only	283.17 283.07 C 0.10		282.80 283.07 F 0.27		
#1 11+92.40 LT. only	289.71 286.87 C 2.84						12+94.19 RT. only			280.87 282.19 F 1.32	280.92 282.19 F 1.27	
11+80.49 RT. only				286.53 286.81 F0.28	287.07 286.81 C 0.26		DAHLIA CB. EC. LT. 9LY	284.82 284.50 C 0.32				
11+58.55 (B.C.)	290.37 287.50 C 2.87	287.11 287.50 F0.39		286.95 287.50 F0.55	287.27 287.50 F0.23							
11+25		289.12 288.29 F0.17		288.48 288.18 C0.30			12+69.57 RT. only			283.64 283.54 C0.10	283.59 283.54 C0.05	
11+00	291.98 288.87 C 3.11	289.79 288.87 F0.08		288.88 288.72 C0.16	289.15 288.72 C 0.43							
10+75		289.45		289.28 287.25 C0.03			12+74.95 RT. only			284.70 284.64 C0.06	284.58 284.64 F0.06	
(10+50)	293.10 290.05 C 3.05	290.05		289.74 289.77 F0.03	290.42 ^{Red} 289.77 ^{ERY} C 0.65							
10+25		RL. concrete 290.61 290.63 F0.02		290.51 290.29 C0.22			12+20.33 RT. only			285.63 285.50 C0.13	^{Red} 285.50 ^{ERY}	
10+66.30	Alley BC. LT	289.57 289.67 F0.10										
		286.82 Direct Exp. Rod.		286.82	Fire Hyd. S/E Dahlia + Mans. Drive							

Intersection MANZ. Dr. - Marlborough.
 LT. RT.

P.L.	LT.		RT.		P.L.	LT.		RT.	
	CB.	Σ	CB.	P.L.		CB.	Σ	CB.	RT.
Mid-PT.			287.37 287.30 C0.07	287.77 287.30 C0.47	MANZ. Dr. (0+90.10) OPP. P.C.C. ON RT.				
CB. B.C. RT. RT. only			285.65 285.90 F0.25	286.03 285.90 C0.13		291.18 288.74 C2.44	288.40 288.74 F0.34	288.72 288.74 F0.02	288.55 288.74 F0.19
+84.59 RT. only			283.79 283.75 C0.04 284.75 F0.96	283.15	#3	290.32 287.33 C2.99	287.21 287.33 F0.12		
+62.51 RT. only			283.50 283.35 C0.20	282.40	#2	287.24 286.05 C3.19	285.98 286.05 F0.07		
+40.43			282.98 282.75 C0.48	281.90	28.90				
+20.21			282.03 281.47 281.72 C0.31	281.77	#1	288.57 285.07 C3.50	286.10 285.07 C0.03		
TANG. ON RT. FROM (P.T.) 15+74.85 (CB. STATIONS)					Alley B.C.	284.50	284.81 284.50 C0.31		
Alley AT Prop. Line	283.92		283.85 283.92 F0.07		Alley E.C.	284.47	284.81 284.47 C0.34		
Alley E.C.	283.87		283.46 283.87 F0.41		Alley AT Prop. Line LT. ONLY	288.27 284.52	288.29 284.52		
Alley B.C. LT.	284.95 283.83 C1.12		283.46 283.93 F0.37		(MANZ. Dr. & Alley Block 6 Marlborough STATIONS 0+00=	C3.75	C3.77		
# 5			283.27 283.39 F0.12		Prop. P.I. AT MANZ. Dr. & MANZ. Alley Block 6				

Channel Grades - E. Cambridge Street

(MANZ. Dr. &
Alley Block 6
Marlborough
STATIONS
0+00=

Arbor Vitae - Snowdrop to Manz. Dr.

Indexed

LT.			RT.			LT.			RT.		
P.L.	CB.	Q	CB.	P.L.		P.L.	CB.	Q	CB.	P.L.	
1+83.27	296.07		296.03 296.07 F0.04	296.07	#1 LT.	291.65	291.57 291.65 F0.08				
1+63.27	297.43 295.97 C1.46		295.70 295.97 F0.27	296.65 295.97 C0.68	3+43.56 B.C. LT.	294.96 292.10 C2.86	291.91 292.10 F0.19		292.12 292.10 C0.02	293.62 292.10 C1.52	
1+43.27	295.74		295.54 295.74 F0.20	295.74	3+23.56	295.06 293.17 C1.89	293.03 293.17 F0.14		293.09 293.17 F0.08	294.22 293.17 C1.05	
1+23.27	296.62 295.37 C1.25		295.30 295.37 F0.07	296.03 295.37 C0.66	3+03.56	294.08	293.81 294.08 F0.27		293.86 294.08 F0.22	294.08	
1+03.27	294.86		294.90 294.86 C0.04	294.83 294.86 F0.19	2+83.56	296.70 294.80 C1.90	294.61 294.80 F0.19		294.38 294.80 F0.42	295.39 294.80 C0.59	
0+83.27	296.05 294.22 B.V.C. C1.83		294.30 294.22 C0.08	295.41 294.22 C1.19	2+63.56	295.36	295.03 295.36 F0.33		294.98 295.36 F0.38	295.36	
0+50.23	295.04 293.06 C1.98		293.05 293.06 F0.01	294.14 293.06 C1.08	2+43.56	297.14 295.72 C1.42	295.39 295.72 F0.33		295.36 295.72 F0.36	295.99 295.72 C0.27	
0+17.19	293.92 291.90 opp. EC LT. C2.02		291.96 291.90 C0.06	293.63 291.90 C1.73	2+23.56	295.92	295.47 295.92 F0.45		295.54 295.92 F0.38	295.92	
0+08	opp. EC RT. at Snowdrop		291.56 291.65 F0.09	293.52 291.65 C1.87	2+03.27	297.26 296.03 C1.23	295.78 296.03 F0.25		295.81 296.03 F0.22	296.14 296.03 C0.11	

Manzanita Drive - Marlborough to Violet

Indexed

	LT.			RT.			LT.			RT.	
	P.L.	CB.	ℓ	CB.	P.L.		P.L.	CB.	ℓ	CB.	P.L.
2+70.96	295.48 293.05 C 2.43	292.94 292.05 FO.11		292.89 292.91 FO.02	293.32 292.91 C 0.41	4+93.13 E.V.C.	296.89 295.86 C 1.03	296.00 295.86 C 0.14		295.22 295.69 FO.47	296.63 295.69 C 0.94
2+45.79	295.10 292.44 C 2.66	292.16 292.24 FO.28		292.35 292.26 C 0.09	292.56 292.26 C 0.30	4+73.13		296.18 296.17 C 0.01		295.73 296.04 FO.31	
2+20.62 (P.R.C.)	295.09 291.82 C 3.27	291.72 291.82 FO.10		291.71 291.61 C 0.10	292.27 291.61 C 0.66	4+53.13	298.09 296.33 C 1.76	296.06 296.33 FO.27		295.94 296.25 FO.31	296.29 296.25 C 0.04
E 1+90.10 RT. ONLY				291.02 290.94 C 0.08	291.78 290.94 C 0.84	4+33.13		295.88 296.36 FO.48		296.13 296.31 FO.18	
# 1+66.05 RT. ONLY				290.58 290.37 C 0.21		4+13.13	297.81 296.23 C 1.58	296.00 296.23 FO.23		296.18 296.22 FO.04	296.46 296.22 C 0.24
# 1+42.04 RT. ONLY				289.89 289.80 C 0.09	290.67 289.80 C 0.87	3+93.13		295.66 295.97 FO.31		295.99 295.97 C 0.02	
3 1+16.05		289.33 289.36 FO.03		289.56 289.27 C 0.29		3+73.13 B.V.C.	297.93 295.56 C 2.37	295.39 295.26 FO.17		295.67 295.56 C 0.11	296.58 295.56 C 1.02
E 0+90.10 opp P.C.C. ON RT. STATIONS	288.74			288.72 288.74 FO.02	288.74	3+34.63	297.65 294.61 C 3.04	294.55 294.61 FO.06		294.80 294.56 C 0.24	294.94 294.56 C 0.38
* For MANZ. Dr. - Marlborough Returns + Intersection, see Pgs 46 + 47						2+96.13 (E.C.)	295.72 293.67 C 2.05	293.69 293.67 C 0.02		293.58 293.56 C 0.02	294.15 293.56 C 0.57

295.16 Direct Elev. Rd

295.16 Elev. P.H.D

S/E MANZ + Arbor Vitae

LT			RT			LT			RT		
P.L.	CB.	E	CB.	P.L.		P.L.	CB.	E	CB.	P.L.	
7+60.90	294.35 291.82 C2.53	291.72 291.82 Fo.10		291.31 291.32 Fo.01	292.54 291.32 C1.22	7+32.46	291.95 289.71 C2.24	289.63 289.97 Fo.28	289.24 289.21 289.43 Fo.19	290.87 289.21 C1.66	
7+27.80	293.84 292.22 C1.62	291.89 292.22 Fo.33		291.98 291.72 C0.26	292.49 291.72 C0.77	7+10.57	292.18 289.98 C2.20	289.65 289.98 Fo.33	289.44 289.47 289.57 Fo.13	290.64 289.47 C1.17	
(P.R.C.) 6+95.41	Rd 293.86 Elev 292.62 C1.24	292.37 292.62 Fo.25		292.24 292.12 C0.12	292.33 292.12 C0.21	8+88.68	292.15 290.26 C1.89	290.05 290.26 Fo.21	289.60 289.74 Fo.14	290.55 289.74 C0.81	
6+71.08	Rd 292.91 Elev 292.91	292.71 292.41 Fo.20		292.96 292.41 C0.55	292.41 292.41 Fo.00	8+56.65	RT only		290.00 290.14 Fo.14	291.01 290.14 C0.87	
6+46.88	Rd 293.97 Elev 293.21 C0.76	293.02 293.21 Fo.19	292.92	293.01 292.71 C0.30	292.18 292.71 Fo.53	8+24.62	RT only		290.44 290.53 Fo.09	291.27 290.53 C0.74	
6+26.88	293.47	293.28 293.47 Fo.19	293.18	292.89 292.77 Fo.08	292.97	F.C. in Arbor Vitae LT	291.90	291.96 291.90 Fo.06			
(6+07)= 6+06.88 (B.C.)	294.12 293.77 C0.35	293.56 293.77 Fo.21	293.49	293.28 293.30 Fo.02	293.40 293.30 C0.10	# 2	291.48	291.28 291.48 Fo.20			
5+86.88	294.10	293.87 294.10 Fo.23		293.89 293.66 C0.23	293.66	# 1	291.32	291.10 291.32 Fo.22			
5+66.88	295.45 294.46 C0.99	294.26 294.46 Fo.20		294.14 294.07 C0.07	295.07 294.07 C1.00	7+92.59	293.78 291.42 C2.36	291.44 291.42 C0.02	291.11 290.92 C0.19	291.32 290.92 C0.40	
5+30	Rd 296.64 Elev 295.16 C1.48	295.18 295.16 C0.02		294.81 294.88 Fo.07	296.16 294.88 C1.28	B.C. LT Arbor Vitae					

GRABER CHANGED TO MIST AX

LT.			RT.			LT.			RT.		
P.L.	CB.	♀	CB.	P.L.		P.L.	CB.	♀	CB.	P.L.	
Alley BC 10+16.20 RT. only			288.46 288.51 288.74 Fo.48		12+22.10 (E.C.) RT. only				289.70 289.70 Fo.20	291.79 289.90 C 1.89	
Alley E.C. RT.			288.46 288.53 288.96 Fo.50		11+96.34 RT. only				289.57 289.74 Fo.17	289.79 289.69 C 0.10	
MANZ (B.C.) 10+14.80	290.52 289.01	289.13 289.03	288.46 288.51 288.70 288.58 289.01 Fo.31	288.62 288.51 C 0.11	11+70.43 EC. LT. (Tuberose North)	290.57 289.98 C 0.59	289.69 289.98 Fo.29		289.23 289.58 Fo.35	289.10 289.48 Fo.38	
Alley AT Prop LINE, SOUTH	C 1.51	C 0.10			11+46.62	289.83 289.79 C 0.04	289.46 289.79 Fo.33		289.10 289.47 Fo.37	288.94 289.29 Fo.35	
9+94.34 (E.C.) MANZ.	290.60 289.09 C 1.51	289.10 289.49 Fo.01	288.70 288.67 289.09 Fo.39	289.77 288.66 C 1.11	11+22.68	289.47 289.59 Fo.12	289.23 289.59 Fo.36		288.83 289.35 Fo.52	288.83 289.09 Fo.26	
Alley EC			288.76 288.61 289.04 Fo.28		10+98.74 (E.C.)	289.38 289.37 Fo.01	289.21 289.39 Fo.12		288.57 289.24 Fo.67	288.40 288.89 Fo.44	
9+90.23 Alley B.C. RT.			288.76 288.61 289.03 Fo.27	288.61	10+74.80	289.56 289.19 C 0.37	289.18 289.19 Fo.01		288.75 289.12 Fo.37	288.36 288.69 Fo.33	
9+74.35	291.28 289.22 C 2.06	289.16 289.23 Fo.07	288.77 288.72 289.15 Fo.38	288.72	10+54.80	289.69 289.06 C 0.63	288.97 289.06 Fo.09		288.65 289.00 Fo.35	288.34 288.56 Fo.22	
9+54.35	291.60 Red 289.44 C 2.16	289.14 289.44 Fo.30	288.97 288.94 289.28 Fo.31	291.10 288.94 C 2.16	10+34.80	289.71 289.00 C 0.71	288.75 289.00 Fo.25		288.93 Elev. Box	288.42 288.50 Fo.08	

Grades raised to meet Box

Grades raised to meet Box

Grades changed to meet Box

(2181)

	LT.			RT.			LT.			RT.	
	P.L.	CB.	Q.	CB.	P.L.		P.L.	CB.	Q.	CB.	P.L.
14+21.01	292.98 291.09 C1.89	291.02 291.09 F0.07		290.50 290.59 F0.09	290.90 290.59 C0.31	Alley B.C 15+47.20	289.28	289.21 289.28 F0.07		288.65 288.78 F0.13	288.78
14+01.01	292.99 291.26 C1.73	290.95 291.26 F0.31		290.68 290.76 F0.08	291.17 290.76 C0.41	15+30.55 RT. (E.C) ↓	291.25 ^{Red} 289.55 C1.70			288.94 289.04 F0.10	289.34 289.04 C0.30
13+93.01 (B.C.)	292.80 291.31 C1.49	291.08 291.31 F0.23		290.74 290.81 F0.07	290.46 290.81 F0.3.5	Alley AT Prop. LINE SOUTH	289.43	289.23 289.43 F0.20			
13+81.01	291.36	291.14 291.36 F0.22		290.62 290.86 F0.24	290.86	Alley AT Prop. LINE North	289.86	289.18 289.86 C2.32			
13+61.01	293.31 291.39 C1.92	291.13 291.39 F0.26		290.87 290.89 F0.02	292.72 290.89 C1.83	Alley E.C	289.81	289.78 289.81 F0.03			
13+41.01	291.33	291.11 291.33 F0.22		290.74 290.83 F0.09	290.83	15+12.33 Alley B.C LT.	292.18 289.81 C2.37	289.78 289.81 F0.03		288.43 289.28 289.31 F0.03 F0.38	Reset knocked out 289.13 289.31 F0.18
13+21.01 B.V.C.	293.93 291.21 C2.72	291.14 291.21 F0.07		290.43 290.71 F0.28	292.55 290.71 C1.84	14+88.50	292.48 290.16 C2.32	289.73 290.16 F0.43		289.59 289.66 F0.07	290.11 289.66 C0.45
12+87.70 EC (Tuberose) LT. (SOUTH)	294.11 290.96 C3.15	290.86 290.96 F0.10		290.21 290.44 F0.23	291.64 290.44 C1.20	14+64.76	292.47 290.50 C1.97	290.42 290.50 F0.08		289.93 290.00 F0.07	291.50 290.00 C1.50
12+54.90 RT. only				289.83 290.17 F0.34	291.85 290.17 C1.68	14+41.01	292.80 290.84 C1.96	290.73 290.84 F0.11		290.06 290.34 F0.28	291.75 290.34 C1.41

END. CB.	286.25		285.74	286.87
17+53.73	286.32		285.84	285.84
#2 LT. Violet.	F0.07		F0.10	C1.03
17+32.95			285.70	287.04
RT. only			285.60	286.14
			F0.54	C0.90
			F0.44	
17+12.18			286.05	286.43
RT. only			286.43	
			F0.38	
17+07.65	288.60		286.42	287.41
E.C. LT.	287.00	287.00	286.50	286.50
G.C. Violet.	C1.60		F0.08	C0.91
16+93.83		286.88	286.48	
		287.20	286.67	
		F0.32	F0.21	
16+80.04	289.43	287.14	286.82	288.14
	287.40	287.40	286.90	286.90
	C2.03	F0.26	F0.08	C1.24
16+66.23		286.93	286.94	
		287.09	287.09	
		F0.66	F0.15	
16+52.43	289.64	287.31	287.20	288.58
(B.C.)	288.79*	287.19	287.29	287.29
	C0.85	F0.48	F0.09	C1.29
	287.79			
	C1.85			
16+19.79	290.64	287.96	287.58	288.98
	287.26	288.26	287.76	287.76
	C1.38	F0.30	F0.18	C1.22
	288.26			
	C2.38			
15+87.14	290.85	288.40	288.04	289.75
	288.73	288.73	288.23	288.23
	C2.12	F0.33	F0.19	C1.52
15+54.49	290.15	289.02	288.48	289.90
(E.C)	287.20	289.20	288.70	288.70
	C0.95	F0.18	F0.22	C1.20

ch - 286.39

286.38

FH/d. N/E

Poplar & Violet

Pepper Drive - Columbine to Holly Wood Pk.

Indexed

LT.			RT.						
P.L.	CB.	C.	CB.	P.L.					
1+84.91	290.77	290.38 290.77 Fo.39	290.67 291.11 Fo.44	291.11	3+64.91 (R. Grade only)	285.97 285.49 C.048	285.49	Not set 286.00	286.48 286.00 C.048
1+64.91- B.V.C.	291.02 291.08 Fo.06	290.77 291.08 Fo.31	291.07 291.37 Fo.30	291.46 291.37 C.009	3+51.57	285.99	285.76 285.99 Fo.23	286.55 286.49 C.006	286.49
1+38.27	291.46	291.15 291.46 Fo.31	291.25 291.67 Fo.42	291.67	3+24.91= E.V.C.	287.73 286.98 C.075	286.82 286.98 Fo.16	287.21 287.48 Fo.27	288.32 287.48 C.084
1+11.64	292.05 291.83 C.022	291.57 291.83 Fo.26	291.73 291.97 Fo.24	291.94 291.97 Fo.03	3+04.91	287.69	287.50 287.69 Fo.19	287.99 288.19 Fo.20	288.19
0+85	292.21	292.07 292.21 Fo.14	292.15 292.28 Fo.13	292.28	2+84.91	288.93 288.34 C.059	288.25 288.34 Fo.09	288.53 288.83 Fo.30	289.18 288.83 C.035
0+58.37 opp. B.C. LT. For Ret. see p. 9	Rd 293.42 Elev 292.58 C.084	292.64 292.58 C.006	292.51 292.58 Fo.07	293.22 292.58 C.064	2+64.91	288.95	288.01 288.95 Fo.14	289.03 289.42 Fo.39	289.42
0+29.18 RT. only			293.02 292.89 C.013	292.89	2+44.91	289.50 289.49 C.001	289.15 289.49 Fo.34	289.60 289.94 Fo.34	289.80 289.94 Fo.06
0+00 = E. Pepper RT. only (E.V.C. Columbine)			293.08 293.20 Fo.12	294.61 293.20 C.141	2+24.91	289.97	289.48 289.97 Fo.49	290.02 290.39 Fo.37	290.39
0-22.84 opp. B.C. RT. (For Ret. see p. 62.)			293.45 293.43 C.002	294.56 rd 293.43 Elev C.113	2+04.91	289.97 290.39 Fo.42	289.96 290.39 Fo.43	290.44 290.77 Fo.33	290.57 Rod 290.77 Elev Fo.20
2 STATIONING									
	297.73	Direct elev. Rod	297.73	B.M. To Hyd. s/e Poplar + Columbine					

	LT			RT	
	P.L.	CB.	F.	CB.	P.L.
4+66.10 END CB, LT. only	280.16 282.57 F2.41	282.61 282.57 C0.04			
4+64.91 LT. only	282.59	NOT SET 282.59			
4+44.91 LT. only	282.89	282.72 282.89 F0.17			
4+46.84 END. CB RT AT. only				282.70 283.44 F0.74	281.90 283.44 F1.54
4+24.91	283.75 283.36 C0.39	283.13 283.36 F0.23		283.70 283.86 F0.16	283.29 283.86 F0.57
4+04.91 = B.V.C.	284.61 284.01 C0.60	283.73 284.01 F0.28		284.38 284.29 284.51 F0.22 F0.13	284.95 284.51 C0.44
3+78.23	285.00 Rad Elev.	284.71 285.00 F0.29		285.25 285.50 F0.25	285.50

Pepper Drive - Snowdrop to Hollywood Park

Indexed

	P.L.	C.B.	Z	C.B.	P.L.		P.L.	C.B.	Z	C.B.	P.L.
1+50	289.46	289.40 289.46 F0.06		289.26 289.00 C 0.26	289.00	3+00 LT. only	284.29	284.85 284.29 C0.56			
1+30	290.73 289.49 C1.24	289.42 289.49 F0.07		289.03 289.07 F0.04	290.28 289.07 C1.21	2+96.54 END C.B. RT.				283.97 283.96 C0.01	281.91 283.96 F2.05
1+10	289.34	289.22 289.34 F0.12		288.78 288.72 F0.17	288.95	2+80	285.05 285.07 F0.02	284.91 285.07 F0.16		284.84 284.56 C0.28	283.99 284.56 F0.57
0+90	290.15 288.99 C1.16	288.70 288.99 F0.29		288.42 288.65 F0.23	289.93 288.65 C1.28	2+60	286.02	285.93 286.02 F0.09		285.58 285.51 C0.07	285.51
0+70	288.47	288.55 288.47 C0.08		287.83 288.18 F0.35	288.18	2+50 EVC	287.00 286.55 C0.45	286.39 286.55 F0.16		286.05 286.02 C0.03	286.10 286.02 C0.08
0+50: B.V.C	289.71 287.76 C1.95	287.81 287.76 C0.05		287.35 287.53 F0.18	289.49 287.53 C1.96	2+30	287.50	287.33 287.50 F0.17		287.17 286.98 C0.19	286.98
0+20	286.56	286.81 286.56 C0.25		286.82 286.42 C0.40	286.42	2+10 Elev	289.50 290.54 288.27 C2.27 C1.23	288.14 288.27 F0.13		287.96 287.75 C0.21	288.54 287.75 C0.79
0+10.10 B.C. LT.	288.89 286.16 C2.73	286.56 286.16 C0.40				1+90	288.85	288.91 288.85 C0.06		288.69 288.35 C0.34	288.35
0-09.94 AC, RT see p. 60 for details				285.49 285.31 C0.18	287.67 285.31 C2.36	1+70 Rd	290.59 289.25 C1.34	289.15 289.25 F0.10		288.83 288.74 C0.07	289.98 288.76 C1.22

290.11 Direct Elev. Rd: 290.11 S/E F.M.D Snowdrop & Pepper

3405.39
BNA CB 4T

281.18
284.04
F 2.86

285.12
284.04
C 1.08

SNOWDROP - Poplar to Sycamore Dr.

Indexed

	LT			RT		
	P.L.	CB	℄	CB	P.L.	
Alley AT Prop. N. LINE		288.23 287.59 C 0.84		287.62 287.20 C 0.42		
1+25 Alley EC for R. Grade	289.15 P.L. Elev. 287.52 C 1.63	287.07 287.54 F 0.47		286.91 287.15 F 0.24	288.40 P.L. Elev. 287.13 R.G. C 1.27	
1+23 Alley B.C.		287.07 287.58 F 0.49		286.91 287.15 F 0.24		
0+95	289.20 287.90 C 1.30	287.82 287.90 F 0.08		287.50 287.55 F 0.05	289.55 287.55 C 2.00	
0+65	289.19 288.28 C 0.91	288.15 288.28 F 0.13		287.80 287.97 F 0.17	288.85 287.97 C 0.88	
0+35	289.07 288.67 C 0.40	288.48 288.67 F 0.19		288.26 288.38 F 0.12	288.91 288.38 C 0.53	
0+05 CB EC		288.88 289.05 F 0.17		288.60 288.80 F 0.20		
For Ref. see pg 22						
0+00 = S.L. Poplar						
℄ STATIONS						

290.11 Direct Elev Rod

290.11 Staff/Hand. Poplar & Snowdrop

	LT			RT		
	P.L.	CB	℄	CB	P.L.	
2+45.79	288.71 285.89 C 2.82	285.81 285.89 F 0.08			285.45 285.50 F 0.05	287.08 285.50 C 1.58
2+19.35	288.50 286.24 C 2.26	286.00 286.24 F 0.24			285.72 285.84 F 0.12	286.92 285.84 C 1.08
1+92.90	288.63 286.60 C 2.03	286.28 286.60 F 0.32			285.92 286.20 F 0.28	286.89 286.20 C 0.69
1+66.45	288.79 286.96 C 1.83	286.75 286.96 F 0.21			286.27 286.56 F 0.29	286.97 286.56 C 0.41
1+40 (B.C.) Snowdrop	289.37 287.33 C 2.04	No grade Brk on CB			No grade Brk on CB	287.25 286.92 C 0.33
B.C. (1+42) Alley		287.11 287.31 F 0.20			286.52 286.90 F 0.38	
E.C. Alley		287.11 287.35 F 0.24			286.52 286.94 F 0.42	
Alley AT Prop. S. LINE		287.15 287.40 F 0.25			287.07 Rod 286.99 Elev C 0.10	

LT			RT			LT			RT			
P.L.	CB.	Q.	CB.	P.L.		P.L.	CB.	Q.	CB.	P.L.		
3113.96 CB. BC (E/ly) LT	285.23 284.97 C0.26					3194.20 1962	285.78 283.48 C2.30		283.32 283.48 F0.16		282.67 283.12 F0.45	283.47 283.12 C0.35
2184.51 RT. only 15 20			284.61 284.91 F0.30			3174.58 arc = 1261	283.88 283.88 F0.06		283.82 283.88 F0.06		283.43 283.47 F0.04	283.47
2154.06 RT. only			285.23 285.37 F0.14	287.08 285.37 C1.71		3154.96 E.V.C.	286.71 284.28 C2.43		284.24 284.28 F0.04		284.11 283.83 C0.28	283.83
E.C. Pepper Dr.	286.16					3134.96	284.65		284.83 284.65 C0.18		284.24 284.17 C0.07	284.17
# 4	286.50 286.03 C0.47					314.96 B.V.C.	287.50 284.96 C2.54		285.23 284.96 C0.27		284.29 284.46 F0.17	286.54 284.46 C2.08
# 3	286.71 285.92 C0.79					E.C. (on Pepper Dr.)			285.49 285.31 C0.18			
# 2	285.72 285.81 F0.09					# 3			285.46 285.15 C0.31			
# 1	285.65 285.80 F0.15					# 2			285.65 285.10 C0.55			
CB. BC LT. 2150.47 N/y Ret.	285.62 285.84 F0.22					# 1 E/ly Ret.			285.48 285.03 C0.45			

LT.			RT.		
P.L.	CB.	ℓ	CB.	P.L.	
F.C. 5+81.55 24.59	282.43 279.98 C2.45	279.95 279.98 F0.03	279.64 279.42 C0.22	279.69 279.42 C0.27	
5+56.85 24.68	280.43	280.50 280.43 C0.07	279.95 279.92 C0.03	279.92	
5+32.17 24.59	283.12 280.88 C2.24	280.96 280.88 C0.08	280.30 280.42 F0.12	280.20 280.42 F0.22	
5+07.48 24.68	281.33	281.28 281.33 F0.05	280.85 280.92 F0.07	280.92	
4+82.80 24.59	283.76 281.78 C1.98	281.72 281.78 F0.06	281.35 281.42 F0.07	281.27 281.42 F0.15	
4+58.11 ARC= 24.68	282.23 Rough only		281.94 281.92 C0.02	281.92	
4+33.43 = P.R.C. 19.62	284.93 282.68 C2.25	282.68 282.68 Grade	282.26 282.42 F0.16	283.09 282.42 C0.67	
4+13.81 19.61		283.05 283.09 F0.03	282.47 282.77 F0.30		

(For all other Returns see pg. 63)

LT.			RT.		
P.L.	CB.	ℓ	CB.	P.L.	
6+14.49					278.94 278.77 C0.17
6+10.62					278.63 278.77 F0.14
#3 END. CB.					279.10
#2					279.10
#1					279.10
5+95.35 = CB. B.C. LT.					281.60 279.44 C2.16
5+92.87					279.50
					279.65
					281.74 279.67 C2.07
					279.61 279.67 F0.06
					279.62 279.75 F0.13
					279.46 279.21 C0.25

COLU MBINE - Poplar to S/E LINE Lot 8 A. 18.

Indexed

	P.L.	CB.	E.	CB.	P.L.
Alley AT P.L.		296.17 295.90 Co.27		295.61 295.22 Co.39	
Alley E.C.		295.21 295.82 Fo.61		295.08 295.19 Fo.11	
1+18 = B.C. Alley	296.43 295.64 Co.79	295.16 295.64 Fo.48		295.25 295.14 Co.11	295.93 295.14 Co.82
0+87	296.63 295.48 C1.15	295.02 295.48 Fo.46		294.77 294.78 Fo.21	295.83 294.99 Co.85
0+56	296.47 295.35 C1.12	295.18 295.35 Fo.17		294.56 294.85 Fo.29	296.02 294.85 C1.18
0+25	296.71 295.20 C1.51	295.09 295.20 Fo.11		294.45 294.70 Fo.25	296.09 294.70 C1.39
0+05 = CB, EC		295.20		295.60	
0700 = S. LINE Poplar For RETURNS see pg. 16					
STATIONS					
				297.73 ON E/AYD. S/E Poplar +	Columbine

	P.L.	CB.	E.	CB.	P.L.
	295.34 294.57 Co.77	294.23 294.57 Fo.34		293.82 294.25 Fo.43	294.60 294.25 Co.35
	295.70 294.85 Co.85	294.54 294.84 Fo.30		294.09 294.49 Fo.40	294.78 294.49 Co.29
	295.70 295.13 Co.57	294.82 295.13 Fo.31		294.48 294.72 Fo.24	295.43 294.72 Co.71
				294.85 294.87 Fo.02	294.87
				294.84 294.97 Fo.13	294.97
				295.52 295.62 Fo.10	
				295.50 295.50 Grade	
	295.81 295.40 Co.40	295.25 295.40 Fo.15			
				(See pg. 64)	296.30
					296.24

See also page 66

Alley Bl. 13 SNOWDROP

#	P.L	CB	F	CB	P.L				
				292.52 292.65 F0.13		Alley BC	Rod 281.98 282.02 F0.04		
4+54.96	293.91 292.45 C1.46	292.25 292.45 F0.20		292.35 292.48 F0.13	293.73 292.48 C1.25	Alley EC	Rod 281.98 Elev. 282.04 F0.06		
4+40.94	294.35 292.73 C1.62	292.55 292.73 F0.18				Alley AT Prop L(S)	Rod 284.26 Elev 282.08 C2.18		
4+20.94	295.17 293.01 C2.16	292.90 293.01 F0.11				Alley AT Prop L(W) - E.C	Rod 283.00 Elev 282.60 C0.40		
4+00.94	295.35 293.25 C2.10	293.02 293.25 F0.23				Alley EC			
4+00.94	295.35 293.25 C2.10	293.02 293.25 F0.23				Alley BC LT. only	Rod 282.25 Elev 282.54 F0.29		
3+74.05	295.15 293.49 C1.66	293.41 293.49 F0.08				4+75.75 END CONST. C1.34	293.37 292.03 292.19 292.03 C0.16	292.17 292.06 C0.11	292.91 292.06 C0.85
3+47.17	295.13 293.73 C1.40	293.61 293.73 F0.12		293.59 293.55 C0.04	294.55 293.55 C1.00	E.C RT on Pepper Dr.		292.64 292.58 C0.06	292.58
3+16.28	294.87 294.01 C0.86	293.75 294.01 F0.26		293.58 293.78 F0.20	294.41 293.78 C0.63	# 3		292.50 292.69 F0.19	
2+85.38	295.02 294.39 C0.63	294.07 294.39 F0.32		293.72 294.02 F0.30	294.41 294.02 C0.39	# 2		292.40 292.78 F0.22	

2+47:CB
B.C LT.

295.52
295.62
FO.10

CB.E.C.
(At. Prop)
RT.

295.45
296.30
FO.85

Lots 9+10, BIK 18, EASTCOASTLINE Columbine

LT		RT	
PL	CB	CB	PL

5+55.27-
sly LINE
Lot 10

291.84
289.65
C 2.19

5+45.51

291.21
290.04
C 1.17

5+35.75
= B.C

291.48
290.42
C 1.06

5+20.36

291.82
290.90
C 0.92

400.36

292.42
291.45
C 0.97

4+75.75-
Sly Lot 8
BIK 18
see pg. 62

(E. LINE
STATIONS
From 4+75.75)

292.19 Rod
292.03 Elev
C 0.16

297.19 - direct Elev Rod.

297.19 S/E. B.P. QUINCE + FAIRMOUNT

The image shows an open notebook with two pages. The pages are cream-colored and feature light blue horizontal ruling. The right page is numbered '67' in the top right corner. The notebook has a dark cover visible around the edges. The pages are otherwise blank, with some faint smudges and a small mark on the right page.

Clark 8452
Shephard W.D. 2/1007
Bruner
Bryson

N/E

CB. Ret. 304h + UPAS

69

Indexed

EC +12

2 BK

326.01 chik.
325.98 Elev. TP CB

EC (304h ST.) Prep. L

5 BK 2 BK

325.63
326.04
F 0.41

Mid. Pt.

5 BK 3 BK

325.28
326.10
F 0.82

B.C. (UPAS ST.) 0+00
Prep. L

5 BK 3 BK

325.62
326.06
F 0.44

0-12

325.98 chik.
326.02 EXIST CB TP

331.90 DIRECT Elev. Rod:

331.90 = N/E B.P.
MUTLE + 304h

C. J. Clark
Shepherd
Bruner
Bryson

8-5-52
W.O. 21009

(bet. Raven + Hill Top)

Sewer, & Alley BIK (P) to Lot

20 BIK (14) ON Hill Top

Indexed

1+10

169.40
158.68 FL DE
C 10.72

1+00

168.83
158.03 FL
C 10.80

0+75

167.20
156.41 FL
C 10.79

0+50

165.34
154.79 FL
C 10.55

0+25

163.39
153.18 elev FL
C 10.21

(STKS set 5' RT & L)

0+00 : & Hill Top + &
Alley
(M.H.)

161.23
elev FL 151.56
M.H. C 9.67

171.33 Direct Elev. Rod

171.33 = S/W B.P. Raven + Hill Top

Benches For LEX. PARK

71

	N/E Post. Poplar & Tuberose	✓	289.38
F.Hy.	N/E Poplar & Tuberose	✓	289.29
F.Hy.	N/E Poplar & Hollywood Park	✓	287.84
F.Hy.	N/E Poplar & Columbine	✓	297.66
SFBP	Fairmount & Quince	✓	297.19
F.Hy.	S/E Manzanita & Arbor Vitae		295.16
F.Hy.	S/E Manzanita & Dahlia	✓	286.82
F.Hy.	S/E Snowdrop & Pepper	✓	290.11
S/E	RAD. PT. Poplar Columbine	(not used)	295.93
Ch. □	ON SPRING GROUNDS Tree N/E Cor. Snowdrop + Pepper Dr.	✓	289.06

Clark
Shepard
Gruber
Bryson

8-5-52

W.O. 20009

SEWER - Hill Top

From EXIST M.H. & Alley bet. Quail + 39' + 44'
To Lot 14 BIK 16

Indexed

72

0+65 = D.F.

165.22
157.67
C 7.55

0+30

165.04
157.53
C 7.51

0+00 = EXIST M.H.

165.83
157.41 Fl. Line in to MH
C 8.42

Clark
Shepherd
Bruner
-8-7-52
W.O. 20960

STORM DRAIN EXT.

52nd + HANIMAN

Indexed

Detail: CURTAIN WALL

DATA: F.B. 2237

DNQ: 4566-B

5' 5' ELEV FL. LINE = 214.82

C
F
Pipe

0+55.36 = CURTAIN WALL FACE

215.28
214.82
C 0.46

0+35.36

216.51
216.02
C 0.49

0+15.36 = F.C.

218.01
217.22
C 0.79

0+07.68 = MID PT.

218.87 Rod
217.61 ELEV
C 1.26

0+00 = B.C. = END EXIST
Pipe

STKS SET 5' AWAY Rod
217.99 ELEV FL. LINE
EXIST PIPE

24" Pipe

FIN. WALL 2' below Flo. Line

217.99 DIRECT Elev. Rod:

217.99 = Elev. FLOW LINE END EXIST. PIPE

Clark CB RETURNS: TEAK ST.

Shepherd
Bruver
Johns

39th & 40th

9-4-52

AS PER DWG: 9320L

W.O. 20108

Indexed

SEE P 75 FOR GUTTER GRADES

← 40th ST →

CB END
P.L. #1

76.97 Rod
77.15 Elev
F0.18

76.16 Rod
76.22 Elev
F0.06

#1 CB END P.L.

(N.W)

(S.W)

EXIST. 77.66 B.C.

B.C. 76.77 EXIST.

N

TEAK

EXIST 80.24 B.C.

B.C. 79.11 EXIST

(N.E.)

(S.E.)

#1
79.61 Rod
80.00 Elev
F0.39

#1
78.02 Rod
78.30 Elev
F0.28

CB END #2
80.35 Rod
80.37 Elev
F0.02

← 39th ST →

76.95 Rod #2
77.58 Elev
F0.63

(M)

Direct Elev. Rod:

77.51 = SW L&T

39th Teak

TEAK ST. - 39th to 40th

Indexed

75

10-14-52

GUTTER GRADES (Crew Feet)
(EXIST. CBS.)

LT.		RT.		STA.	LT. GUTTER	RT. GUTTER
STA.	GUTTER	GUTTER				
				3+20	94.53	93.45
1+40	90.73	89.73		3+00	95.08	94.08
1+20=B.V.C	88.93	88.03		2+80	95.33	94.33
0+95	86.75	85.85		2+60	95.53	94.43
0+70	84.56	83.67		2+40	95.33	94.23
0+45	82.38	81.49		2+20	95.03	93.83
0+20	80.20	79.31		2+00	94.33	93.13
0+10=CB.B.C	79.57	78.74		1+80	93.33	92.23
0+00= F.LINE 39 th ST.	79.33	77.63		1+60	92.08	91.08

B.M.

DIRECT Elev Rods

77.51 = 7' CT. S.W. 39th + TEAK

LT.
STA. GUTTER

RT.
GUTTER

LT.
STA. GUTTER

RT.
GUTTER

5+35

5+10

4+85

4+60

4+35

4+10

3+85

3+60 K.V.C. 91.83

3+40 93.78

(Changes Made - IN - FROM E.V.C. TO CR.B.C.)

#1 (AT PL)

6+40.40 LT = AC
6+40.60 RT = AC

6+35

6+10

5+85

5+60

chk: P2.17 = 92.18 = N/W
7' C.T.
OCEAN VIEW
44078

76.48

76.99

75.55

76.10

91.73

92.73

C/axis
Bruner
Perkins

Rough GRADES - WIGHTMAN

Indexed

12-2-52
W.O. 20009

Boundary to NILE

DATA: Green sheet # 937 + DWG - 7988-6

STA LT RT

STA	NORTH LT.	SOUTH RT.
2+50	319.01 315.30 C 3.71	313.65 314.30 F 0.65
2+00	320.26 315.60 C 4.66	314.46 315.60 F 1.14
1+50 <i>SA 1/64</i>	319.04 316.60 C 2.44	317.00 CHK, 317.20 EXIST PAV
1+00	324.97 319.00 C 5.97	320.48 320.00 C 0.48
0+50	325.24 322.00 C 3.24	322.77 323.00 C 0.23
0+10	325.26 Rod 326.00 Elev. <i>NOTE: Grade Raised</i> F 0.74 <i>AT 10 to keep water</i> <i>OUT OF WIGHTMAN</i>	326.10 Rod 327.00 elev F 0.90
0+00 = E.L. Nile	CHK: 325.03 Rod Meet EXIST. 325.00 EXV	326.02 CHK: 326.00 Meet EXIST

3+00 = W.L NILE meet EXIST 315.00
CHK: 312.84
312.84 CHK: 313.00

B.M. 333.44 Direct Elev Rod: 333.44 = N.W. B.P. UNIV + BOUNDARY

Clark
Stephens
Bruner

12-17-52

V.O. 21103 ✓

(Ref. No. 31514)

IMP. PEPPER DRIVE

AT HOLLYWOOD PK.

DATA: 4660-B

Indexed

STA.	LT.		E	RT.	
	P.L.	C.B.		C.B.	P.L.
1+03.4		283.35 283.09 C0.26			
1+02.14 RT. only				282.59 chk. 282.60 EXIST. C.B.	
0+81.4 = E Inlet		282.95 chk. 282.97		282.36 Box Set Led 282.47 IN SOFT FILL	
0+63.40		282.90 283.03 F0.13		282.55 282.53 (to meet Ex.) C0.02 ↔ C0.08	
0+43.40		283.09 283.27 F0.18		282.60 282.77 (to meet Ex.) F0.17 ↔ F0.12	
0+23.40		283.38 283.69 F0.31		283.27 283.19 C0.08	
0+08.89 LT. only		284.19 chk. 284.20 meet EXIST.		284.02 chk. 284.02 meet EXIST.	
0+00 RT. only					

(0+00 = RT. E Pepper Dr.)

AT 90° to CB END
S/W Pepper Dr
Hollywood PK.

B.M. Div. Elev. Rod: 289.06 = Ch. □ on Cone Ring around Tree N.E. Pepper & Snow Drop

1+21.44

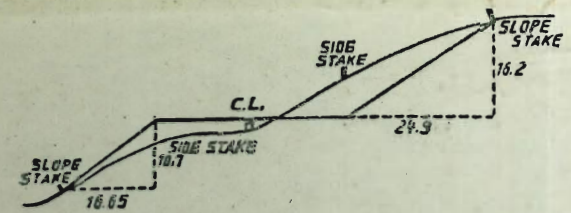
283.07 chk.
283.49 EXIST
CBLT.

INDEX

79

	Pg
SNOWDROP - Poplar to Sycamore Dr	59
COLUMBINE - Poplar to Sky Line, Lot 8, Bl 18	62
QUINCE ST. - Fairmount to COLUMBINE	64
Lots 9 + 10 Block 18 East Line Columbine	66
C.B. Ret. 30th & UPAS N/E	69
Hilltop Sewer, Alley bet. 41st & 42nd to Lot 20 Blk 14	70
" " , Alley bet 39th & 40th to Lot 14 Blk 16	72
Storm DRAIN EXT. 52nd & HANMAN	73
C.B. Returns; TEAK ST 39th & 40th	74
Rough GRADES NIGHTMAN - Bodry to N/E	77
GRADES - PEPPER DR & Hollywood PARK	78

W. Foot	E. Foot
303.34	303.34
3.19	3.19
300.15	300.15
321.98	



DISTANCES FROM SIDE STAKES FOR CROSS-SECTIONING.
SLOPE 1 1/2 TO 1. ROADWAY OF ANY WIDTH.

	0	.1	.2	.3	.4	.5	.6	.7	.8	.9	
0	0.00	0.15	0.30	0.45	0.60	0.75	0.90	1.05	1.20	1.35	0
1	1.50	1.65	1.80	1.95	2.10	2.25	2.40	2.55	2.70	2.85	1
2	3.00	3.15	3.30	3.45	3.60	3.75	3.90	4.05	4.20	4.35	2
3	4.50	4.65	4.80	4.95	5.10	5.25	5.40	5.55	5.70	5.85	3
4	6.00	6.15	6.30	6.45	6.60	6.75	6.90	7.05	7.20	7.35	4
5	7.50	7.65	7.80	7.95	8.10	8.25	8.40	8.55	8.70	8.85	5
6	9.00	9.15	9.30	9.45	9.60	9.75	9.90	10.05	10.20	10.35	6
7	10.50	10.65	10.80	10.95	11.10	11.25	11.40	11.55	11.70	11.85	7
8	12.00	12.15	12.30	12.45	12.60	12.75	12.90	13.05	13.20	13.35	8
9	13.50	13.65	13.80	13.95	14.10	14.25	14.40	14.55	14.70	14.85	9
10	15.00	15.15	15.30	15.45	15.60	15.75	15.90	16.05	16.20	16.35	10
11	16.50	16.65	16.80	16.95	17.10	17.25	17.40	17.55	17.70	17.85	11
12	18.00	18.15	18.30	18.45	18.60	18.75	18.90	19.05	19.20	19.35	12
13	19.50	19.65	19.80	19.95	20.10	20.25	20.40	20.55	20.70	20.85	13
14	21.00	21.15	21.30	21.45	21.60	21.75	21.90	22.05	22.20	22.35	14
15	22.50	22.65	22.80	22.95	23.10	23.25	23.40	23.55	23.70	23.85	15
16	24.00	24.15	24.30	24.45	24.60	24.75	24.90	25.05	25.20	25.35	16
17	25.50	25.65	25.80	25.95	26.10	26.25	26.40	26.55	26.70	26.85	17
18	27.00	27.15	27.30	27.45	27.60	27.75	27.90	28.05	28.20	28.35	18
19	28.50	28.65	28.80	28.95	29.10	29.25	29.40	29.55	29.70	29.85	19
20	30.00	30.15	30.30	30.45	30.60	30.75	30.90	31.05	31.20	31.35	20
21	31.50	31.65	31.80	31.95	32.10	32.25	32.40	32.55	32.70	32.85	21
22	33.00	33.15	33.30	33.45	33.60	33.75	33.90	34.05	34.20	34.35	22
23	34.50	34.65	34.80	34.95	35.10	35.25	35.40	35.55	35.70	35.85	23
24	36.00	36.15	36.30	36.45	36.60	36.75	36.90	37.05	37.20	37.35	24
25	37.50	37.65	37.80	37.95	38.10	38.25	38.40	38.55	38.70	38.85	25
26	39.00	39.15	39.30	39.45	39.60	39.75	39.90	40.05	40.20	40.35	26
27	40.50	40.65	40.80	40.95	41.10	41.25	41.40	41.55	41.70	41.85	27
28	42.00	42.15	42.30	42.45	42.60	42.75	42.90	43.05	43.20	43.35	28
29	43.50	43.65	43.80	43.95	44.10	44.25	44.40	44.55	44.70	44.85	29
30	45.00	45.15	45.30	45.45	45.60	45.75	45.90	46.05	46.20	46.35	30
31	46.50	46.65	46.80	46.95	47.10	47.25	47.40	47.55	47.70	47.85	31
32	48.00	48.15	48.30	48.45	48.60	48.75	48.90	49.05	49.20	49.35	32
33	49.50	49.65	49.80	49.95	50.10	50.25	50.40	50.55	50.70	50.85	33
34	51.00	51.15	51.30	51.45	51.60	51.75	51.90	52.05	52.20	52.35	34
35	52.50	52.65	52.80	52.95	53.10	53.25	53.40	53.55	53.70	53.85	35
36	54.00	54.15	54.30	54.45	54.60	54.75	54.90	55.05	55.20	55.35	36
37	55.50	55.65	55.80	55.95	56.10	56.25	56.40	56.55	56.70	56.85	37
38	57.00	57.15	57.30	57.45	57.60	57.75	57.90	58.05	58.20	58.35	38
39	58.50	58.65	58.80	58.95	59.10	59.25	59.40	59.55	59.70	59.85	39
40	60.00	60.15	60.30	60.45	60.60	60.75	60.90	61.05	61.20	61.35	40
41	61.50	61.65	61.80	61.95	62.10	62.25	62.40	62.55	62.70	62.85	41
42	63.00	63.15	63.30	63.45	63.60	63.75	63.90	64.05	64.20	64.35	42
43	64.50	64.65	64.80	64.95	65.10	65.25	65.40	65.55	65.70	65.85	43
44	66.00	66.15	66.30	66.45	66.60	66.75	66.90	67.05	67.20	67.35	44
45	67.50	67.65	67.80	67.95	68.10	68.25	68.40	68.55	68.70	68.85	45
46	69.00	69.15	69.30	69.45	69.60	69.75	69.90	70.05	70.20	70.35	46
47	70.50	70.65	70.80	70.95	71.10	71.25	71.40	71.55	71.70	71.85	47
48	72.00	72.15	72.30	72.45	72.60	72.75	72.90	73.05	73.20	73.35	48
49	73.50	73.65	73.80	73.95	74.10	74.25	74.40	74.55	74.70	74.85	49
50	75.00	75.15	75.30	75.45	75.60	75.75	75.90	76.05	76.20	76.35	50

THE NATIONAL BLANK BOOK COMPANY
 HOLYOKE MASSACHUSETTS
 NEW YORK CHICAGO BOSTON SAN FRANCISCO