

DISTANCES FROM SIDE STAKES FOR CROSS-SECTIONING
SLOPE 1 TO 1. ROADWAY OF ANY WIDTH

	0	.1	.2	.3	.4	.5	.6	.7	.8	9	
0	0.00	0.10	0.20	0.30	0.40	0.50	0.60	0.70	0.80	0.90	0
1	1.00	1.10	1.20	1.30	1.40	1.50	1.60	1.70	1.80	1.90	1
2	2.00	2.10	2.20	2.30	2.40	2.50	2.60	2.70	2.80	2.90	2
3	3.00	3.10	3.20	3.30	3.40	3.50	3.60	3.70	3.80	3.90	3
4	4.00	4.10	4.20	4.30	4.40	4.50	4.60	4.70	4.80	4.90	4
5	5.00	5.10	5.20	5.30	5.40	5.50	5.60	5.70	5.80	5.90	5
6	6.00	6.10	6.20	6.30	6.40	6.50	6.60	6.70	6.80	6.90	6
7	7.00	7.10	7.20	7.30	7.40	7.50	7.60	7.70	7.80	7.90	7
8	8.00	8.10	8.20	8.30	8.40	8.50	8.60	8.70	8.80	8.90	8
9	9.00	9.10	9.20	9.30	9.40	9.50	9.60	9.70	9.80	9.90	9
10	10.00	10.10	10.20	10.30	10.40	10.50	10.60	10.70	10.80	10.90	10
11	11.00	11.10	11.20	11.30	11.40	11.50	11.60	11.70	11.80	11.90	11
12	12.00	12.10	12.20	12.30	12.40	12.50	12.60	12.70	12.80	12.90	12
13	13.00	13.10	13.20	13.30	13.40	13.50	13.60	13.70	13.80	13.90	13
14	14.00	14.10	14.20	14.30	14.40	14.50	14.60	14.70	14.80	14.90	14
15	15.00	15.10	15.20	15.30	15.40	15.50	15.60	15.70	15.80	15.90	15
16	16.00	16.10	16.20	16.30	16.40	16.50	16.60	16.70	16.80	16.90	16
17	17.00	17.10	17.20	17.30	17.40	17.50	17.60	17.70	17.80	17.90	17
18	18.00	18.10	18.20	18.30	18.40	18.50	18.60	18.70	18.80	18.90	18
19	19.00	19.10	19.20	19.30	19.40	19.50	19.60	19.70	19.80	19.90	19
20	20.00	20.10	20.20	20.30	20.40	20.50	20.60	20.70	20.80	20.90	20
21	21.00	21.10	21.20	21.30	21.40	21.50	21.60	21.70	21.80	21.90	21
22	22.00	22.10	22.20	22.30	22.40	22.50	22.60	22.70	22.80	22.90	22
23	23.00	23.10	23.20	23.30	23.40	23.50	23.60	23.70	23.80	23.90	23
24	24.00	24.10	24.20	24.30	24.40	24.50	24.60	24.70	24.80	24.90	24
25	25.00	25.10	25.20	25.30	25.40	25.50	25.60	25.70	25.80	25.90	25
26	26.00	26.10	26.20	26.30	26.40	26.50	26.60	26.70	26.80	26.90	26
27	27.00	27.10	27.20	27.30	27.40	27.50	27.60	27.70	27.80	27.90	27
28	28.00	28.10	28.20	28.30	28.40	28.50	28.60	28.70	28.80	28.90	28
29	29.00	29.10	29.20	29.30	29.40	29.50	29.60	29.70	29.80	29.90	29
30	30.00	30.10	30.20	30.30	30.40	30.50	30.60	30.70	30.80	30.90	30
31	31.00	31.10	31.20	31.30	31.40	31.50	31.60	31.70	31.80	31.90	31
32	32.00	32.10	32.20	32.30	32.40	32.50	32.60	32.70	32.80	32.90	32
33	33.00	33.10	33.20	33.30	33.40	33.50	33.60	33.70	33.80	33.90	33
34	34.00	34.10	34.20	34.30	34.40	34.50	34.60	34.70	34.80	34.90	34
35	35.00	35.10	35.20	35.30	35.40	35.50	35.60	35.70	35.80	35.90	35
36	36.00	36.10	36.20	36.30	36.40	36.50	36.60	36.70	36.80	36.90	36
37	37.00	37.10	37.20	37.30	37.40	37.50	37.60	37.70	37.80	37.90	37
38	38.00	38.10	38.20	38.30	38.40	38.50	38.60	38.70	38.80	38.90	38
39	39.00	39.10	39.20	39.30	39.40	39.50	39.60	39.70	39.80	39.90	39
40	40.00	40.10	40.20	40.30	40.40	40.50	40.60	40.70	40.80	40.90	40
41	41.00	41.10	41.20	41.30	41.40	41.50	41.60	41.70	41.80	41.90	41
42	42.00	42.10	42.20	42.30	42.40	42.50	42.60	42.70	42.80	42.90	42
43	43.00	43.10	43.20	43.30	43.40	43.50	43.60	43.70	43.80	43.90	43
44	44.00	44.10	44.20	44.30	44.40	44.50	44.60	44.70	44.80	44.90	44
45	45.00	45.10	45.20	45.30	45.40	45.50	45.60	45.70	45.80	45.90	45
46	46.00	46.10	46.20	46.30	46.40	46.50	46.60	46.70	46.80	46.90	46
47	47.00	47.10	47.20	47.30	47.40	47.50	47.60	47.70	47.80	47.90	47
48	48.00	48.10	48.20	48.30	48.40	48.50	48.60	48.70	48.80	48.90	48
49	49.00	49.10	49.20	49.30	49.40	49.50	49.60	49.70	49.80	49.90	49
50	50.00	50.10	50.20	50.30	50.40	50.50	50.60	50.70	50.80	50.90	50

Distance of slope stake from side or shoulder stake for any width roadway, slope 1 to 1. If ground is nearly level, the cut or fill at side stake is located by the double entry method in left column and top row. The number in body of table in same row and column gives distance from side stake to slope stake. If ground is not level estimate the difference in elevation between the side stake and slope stake, lower target by this amount if cut, elevate if fill. Add this amount to cut or fill and find distance in table. Set up rod at this point, and line of sight should cut target. If it does not make the slight adjustment necessary.

MICROFILMED

APR 15 1965

DIRECTIONS FOR USE OF TABLES

TABLE No. XIV

Distance of slope stake from side or shoulder
stake for any width roadway, slope 1 1/2 to 1
is estimated as follows: level the cut or fill at side
stake is located by the double entry method in

IMPROVED TABLES
AND
INFORMATION

cut taper. If it does not make the slight ad-
justment necessary.

TABLE No. VIII

To find tangent and distance for curve of
any other degree, divide by degree of curve and
add correction found in column of correction.
Degree of curve with a given T may be found
by dividing tangent (or external) opposite T by
given tangent (or external).

The distance from a point on the tangent to
the curve is very nearly the square of the tangent
length divided by twice the radius.

Indicated

BM. = 272.96 = c.t. - E 9th - S. 7 Johnson

269.67 = Cross on M.H.
270.02 = R.P. Cross. on Walk

Rough Grades - 9th - Johnson - N.

Plan - 9109-L

W.D. 31620 - 4-6-52 - 7.0.

West.

East.

0+00 = N.L. Johnson	72.52	72.0	
+50	73.3	71.5 ^{3.3}	C 1.8
1+00	72.0	71.0 ^{2.0}	C 1.0
+50	71.2	70.5 ^{1.2}	C 0.7
2+05 = endwalk on W.	69.9	69.9	Gr.

cb = 71.98	72.0		
74.7	71.5 ^{4.7}	C 3.2	
76.8	71.0 ^{6.8}	C 5.8	
77.7	70.4 ^{7.7}	C 7.3	
2+00.86	70.9	69.9 ^{0.9}	C 1.0
+30 = endwalk on E.	70.0	69.6 ^{70.0}	C 0.4

culvert stakes

0+00 = Inlet = 2+30	69.34	69.58 ^{top cb}	F 0.24
5' E. on cb line	69.34	63.00	
9' W. on cb line	69.70	69.58 ⁷⁰	C 0.12
0+25	62.36	56.00 ^{62.36}	C 6.36
0+50 = End	50.73	49.00 ^{50.73}	C 1.73
5' E.			

To Flowline

Stake Water Line - Beta - 41st to 42nd

Plan 8549-L

-4-21-52

70

stakes - 5' Rt.

0+00 = E.L. 41st

62.1 ^{62.1} 58.6 C 3.5

+50

64.2 ^{60.8} 60.8 C 3.4

1~

66.0 ^{63.1} 63.1 C 2.9

+50

68.3 ^{65.3} 65.3 C 3.0

2~

70.6 ^{67.6} 67.6 C 3.0

+40

72.5 ^{69.4} 69.4 C 3.1

+80

74.0 ^{71.1} 71.1 C 2.9

3+20

75.3 ^{72.5} 72.5 C 2.8

+60

76.3 ^{73.7} 73.7 C 2.6

4+00

77.3 ^{74.6} 74.6 C 2.7

+50

78.4 ^{75.6} 75.6 C 2.8

5~

79.6 ^{76.7} 76.7 C 2.9

+50

80.6 ^{77.7} 77.7 C 2.9

6+00.62 = W.L. 42nd

81.8 ^{78.8} 78.8 C 3.0

N.W. Cor. - 8th + Brwdy.

2

Indexed

14' Rad - 4-parts.

P.C. = Brwdy.

1/4

1/2

3/4

E.C. = 8th

analyzed

272.96 = 7' et.

3

Stake water line - 9th - Johnson - N.
 Plan 9109-L - A-23-52 70.

stakes - 5' Lt.

0+00 = NL Johnson	71.8	68.3 ^{1.8}	C 3.5
+40	71.7	67.9 ^{1.7}	C 3.8
+80	70.4	67.5 ^{0.4}	C 2.9
1+20	70.1	67.1 ^{0.1}	C 3.0
+60	69.9	66.7 ^{0.9}	C 3.2
2+00	69.4	66.3 ^{0.4}	C 3.1
+20 = end.	70.2	65.6 ^{0.2}	C 4.6

Water Services

0+20 - E.	71.44	71.80 ⁴⁴	F 0.36
0+70 - E.	72.26	71.30 ²⁶	C 0.96
1+90 - W.	70.30	70.12 ³⁰	C 0.18

Rough Grades - Quimby - Plum to Willow, S.F. Pole Plum. 163.91
 Plan. - 9013-L - 5-2-52 7.0
 W.O. 31893
 Top Bolt - w. edge Dr. = 179.67
 on S.

Indexed 4

South

North

0+00 = w.L. Willow

	Station	Elevation	Grade	Notes	Station	Elevation	Grade	Notes
+25 = PC	81.31	⁸¹³ 74.4	C 6.9		74.91	⁴⁹ 74.0	C 0.9	
+70	82.75	⁸²⁷ 77.0	C 6.7		76.31	⁷⁶⁸ 76.8	F 0.5	
1+10	83.32	⁸³³ 78.5	C 4.8		79.70	⁷⁸⁴ 78.4	C 1.3	
+30	82.78	⁸²⁸ 78.6	C 4.2		79.64	⁷⁸⁶ 78.6	C 1.0	
+70	79.23	⁷⁹² 77.7	C 1.6		78.98	⁷⁷⁸ 77.8	C 1.2	
2+10	75.68	⁵⁷ 75.1	C 0.6		77.43	⁷⁴ 75.3	C 2.1	
2+50	70.01	⁶⁰ 71.7	F 1.7	2+42.5	75.87	⁵⁹ 72.7	C 3.2	
2+90 = PC	66.38	⁶⁹ 68.4	F 2.0	2+75 = PC	71.56	⁶⁶ 70.0	C 1.6	
E.L. Plum	64.41	⁴⁴ 67.4	F 3.0	E.C. = end = N.L.	68.59	⁸⁶ 68.2	C 0.4	
± Plum	62.08	²¹ 67.2	F 5.1					
± Quimby	63.51	⁵¹ 67.4	F 3.9	culvert. stakes = w. stake	64.87	¹⁵ 67.15	F 2.28 = Top	
End = N.L.	63.53	⁵³ 68.0	F 4.5	Top cb.	65.45	¹⁵ 67.15	F 1.70 = Top	
				0+00 = ± Box	⁴⁵ 65.45	⁴² 59.15	C 6.30	
				+30	64.03	64.03	C 7.46	
10' RP on S.				+60 = end.	56.19	¹⁹ 54.00	C 2.19	
10' RP on N.								

} H 56.34

Water Stakes.

167.96 = spike in S.E. Pole-Plum.

5

	ave			
0+00 = W.L. Miller	72.3	^{2.3} 69.0	C 3.3	
+25	73.5	^{2.5} 70.5	C 3.0	
+70	76.1	^{0.1} 73.2	C 2.9	
1+10	77.8	^{7.8} 74.8	C 3.0	
+30	77.9	^{7.9} 75.0	C 2.9	
+70	76.8	^{6.8} 74.0	C 2.8	
2+10	73.4	^{3.4} 71.5	C 2.3	
+42.5	70.7	^{0.7} 68.8	C 1.9	
+75 = opp. P.C.	68.1	^{8.1} 66.1	C 2.0	
3+18	66.3	^{6.3} 63.7	C 2.6	
+48 = End.	65.8	^{5.8} 63.4	C 2.4	

Curb Stakes - Johnson -

270.02 = R.P. Cross

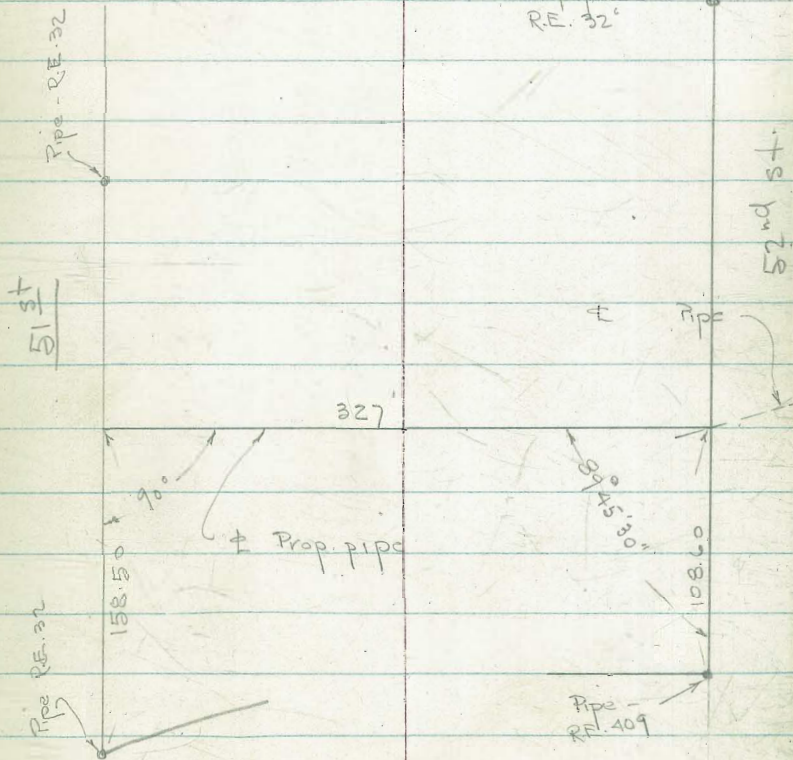
Index 6

	West.				East.		
Johnson 0+00 = N.L. = cb.		72.51		cb.	71.98		
+30	71.70	72.04	F 0.34		71.47	71.69	F 0.22
+60	71.55	71.57 ₅₈	F 0.02		71.28	71.37 ₃₈	F 0.09
+90	71.22	71.18	C 0.12		70.72	71.05 ₉₂	F 0.33
1+25.01	70.99	70.70 ₉₉	C 0.29	PC	70.60	70.68 ₆₀	F 0.08
+65	70.86	70.28 ₈₆	C 0.58	±			
2+00.86 = P.C.	69.99	69.91 ₉₉	F 0.92	E.C.	70.60	70.58 ₆₀	C 0.02
E.C. - 10' Rad.	69.23	69.85 ₂₃	F 0.62	40.27 = P.C.	70.34	70.16 ₃₄	C 0.18
29.56 = P.C. - 4' Rad.	69.41	69.65 ₄₁	F 0.24	±			
- Box	69.63	69.58		E.C.	70.42	70.06 ₄₂	C 0.36
				+41.01 = P.C. 4' Rad.	69.26	69.67 ₂₆	F 1.41
				End. Box	69.62	69.58	

Stake St. Drain - Blk. E. Oak Park
 Plan - 6923-L - 5-15-52 7.0.

285.12 = Crosson E. Rim of Sewer Mt. in 51st
 315.57 = NW. B.P. - 52nd + Univ.

0+00 = E.L. 51st	83.02	81.88	C 1.14
+25	84.73	82.43	C 2.30
+50	85.73	82.98	C 2.75
+75	86.76	83.53	C 3.23
1+00	87.91	84.08	C 3.83
+25	89.63	84.63	C 5.00
+50	89.99	85.18	C 4.81
+75	90.40	85.73	C 4.67
2+00	90.45	86.28	C 4.17
+25	90.09	86.83	C 3.26
+50	90.58	87.38	C 3.20
+75	91.30	87.93	C 3.37
3+00	91.50	88.48	C 3.02
+27 = W.L. 52nd	96.44	89.07	C 7.37
Join Pipe - 89.09			



1" pipe
 RE. 32'

52nd St.

327'

Prop. pipe

Pipe -
 RE. 409

Univ. Ave.

Curb Stakes - 42nd - Alpha to Gamma
 Plan - 8548-L 5-15-52 7.0.

84.43 = Pole Beta + 42nd
 84.49 = walk

W O - 31685

INSTRUMENT
 law
 MAR 19 1953

West

East

Ret.			
F.C. = Gamma		79.10	
1/4		79.15	
1/2		79.30	
3/4		79.55	
PC. = Beta. = 0+00 =	N.L.	79.68	79.75 ₆₉ F 0.07
+20		80.20	80.39 ₂₀ F 0.19
+40		80.88	80.93 ₈₈ F 0.05
+60		81.27	81.40 ₂₇ F 0.13
+80		81.64	81.74 ₆₄ F 0.10
1+00		81.95	82.00 ₉₅ F 0.05
+20		82.21	82.17 ₂₁ C 0.04
+35.06 - PC + Rad.		82.26	82.26 G
EC. = To N.		82.26	82.32 ₂₆ F 0.06
W.L. = on S.		82.80	82.38 ₈₀ C 0.42
W.L. = on N.		83.38	82.50 ₃₈ C 0.88
PC. = To S.		83.16	82.44 ₁₆ C 0.72
EC. = 1+63.06		83.16	82.42 ₁₆ C 0.74
1+95		82.56	82.60 ₅₆ F 0.04

NE Ret.			
EC.			
1/4			
1/2			
3/4			
PC.		80.21	80.25 ₂₁ F 0.04
		80.72	80.93 ₇₂ F 0.21
		81.33	81.50 ₃₃ F 0.17
		81.91	81.97 ₉₁ F 0.06
		82.27	82.34 ₂₇ F 0.07
		82.61	82.61 G
		82.76	82.77 F 0.01
		82.84	82.86 F 0.02
EC. To N.		82.84	82.92 ₈₄ F 0.08
EL. on S.		83.73	82.98 ₇₃ C 0.75
EL. on N.		83.70	83.10 ₇₀ C 0.60
PC. - To S.		83.03	83.04 ₀₃ F 0.01
EC.		83.03	83.02 ₀₃ C 0.01
		83.14	83.20 ₁₄ F 0.06

West.

East.

2+30	82.96	82. ⁹⁶ ₈₀	C 0.16		83.28	83.40 ₂₈	F 0.12
F +65	83.22	83. ²² ₀₀	C 0.22		83.34	83.60 ₃₄	F 0.26
2+99.84 = PC. <small>SL. Beta.</small>	84.27	83. ²⁷ ₂₀	C 1.07	= S.L.	84.31	83. ³¹ ₈₀	C 0.51
1/4	83.36	83. ³⁶ ₁₂	C 0.24	±	84.35	84. ³⁵ ₁₈	C 0.20
1/2	82.64	83. ⁰⁴ ₂₆	F 0.37	N.L. = 0+00	84.47	84.50 ₄₇	F 0.03
3/4	82.75	82. ⁷⁵ ₈₂	F 0.07	0+35	84.91	84. ⁹¹ ₈₀	C 0.11
E.C. = Beta.	82.44	82. ⁴⁴ ₆₀	F 0.16	+70	85.26	85. ²⁶ ₁₀	C 0.16
N.W. Ret.				1+05	85.43	85. ⁴³ ₄₀	C 0.03
E.C. = Beta	82.36	82. ³⁶ ₅₉	F 0.23	+40	85.78	85. ⁷⁸ ₇₀	C 0.08
1/4	82.83	82. ⁸³ ₇₉	C 0.04	+75	86.09	86. ⁰⁹ ₀₀	C 0.08
1/2	82.83	82. ⁸³ ₉₄	F 0.11	2+10	86.33	86. ³³ ₃₀	C 0.03
3/4	83.36	83. ³⁶ ₀₇	C 0.29	+45	86.80	86. ⁸⁰ ₆₀	C 0.20
PC. = 0+00 = N.L.	82.38	83. ³⁸ ₂₀	F 0.82	+85.23 = PC. Meet.	86.88	86.94	
+35	83.41	83. ⁴¹ ₅₇	F 0.16 <small>NW</small>				
+70	83.75	83. ⁷⁵ ₉₄	F 0.19				
1+05	84.26	84. ²⁶ ₃₁	F 0.05				
+36 ¹² / ₁₀ = PC.	84.78	84. ⁷⁸ ₆₄	C 0.14				
E.C. = To N.	84.78	84. ⁷⁸ ₇₂	C 0.06				
W.L. on S.	84.56	84. ⁵⁶ ₇₈	F 0.22				

West

w.L. on N.	85.78	85.00 ⁻⁷⁸	Co.78
PC. = To. S.	85.33	84.94 ^{5.33}	Co.39
E.C. = 1+64.12	85.33	84.95 ^{5.33}	Co.38
2+00	84.80	85.37 ^{7.57}	FO.57
+35	85.80	85.78 ^{8.0}	Co.02
2+60.5	85.99	86.07 ^{8.08}	FO.08
Meet cb. +85.23 = PC	86.31	86.36	

East.

Curb Stakes- Gamma - 41st to 43rd75.64 = S.W. Pole - 41st + Gamma

11

	North			South		
Gamma End. = N.L.	72.95	73.48 _{2.85}	F 0.63	75.23	75.00	C 0.23
1/2	73.15	73.72 _{1.15}	F 0.57	75.22	74.75 ^{5.22}	C 0.47
P.C.C.	73.34	73.90 ₈₄	F 0.56	74.96	74.55 ^{.96}	C 0.41
1/3	74.09	74.15 ₈₉	F 0.06	74.87	74.63 ^{.87}	C 0.24
2/3	74.39	74.40	F 0.01	74.81	74.81	G
E.C. = 0+85	74.78	74.66 ⁷⁸	C 0.12	75.20	75.00 ^{.20}	C 0.20
1+20	74.94	74.97 ₁₄	F 0.03	75.64	75.23 ^{.64}	C 0.41
+55	75.25	75.28	F 0.03	75.62	75.46 ^{.62}	C 0.16
+90	75.65	75.59 ^{.65}	C 0.06	75.55	75.69 ^{.55}	F 0.14
2+25	75.95	75.90	C 0.05	75.99	75.92 ^{.99}	C 0.07
+60	76.30	76.20 ^{.30}	C 0.10	76.12	76.15 ^{.12}	F 0.03
+95	76.27	76.51 ₂₇	F 0.24	76.49	76.38 ^{.49}	C 0.11
3+30	76.79	76.82 ₇₉	F 0.03	76.66	76.61 ^{.66}	C 0.05
+65	76.99	77.13 ₉₉	F 0.14	77.04	76.84 ^{.04}	C 0.20
4+00	77.33	77.44 ₃₃	F 0.11	77.25	77.07 ^{.25}	C 0.18
+35	77.78	77.75	C 0.03	77.53	77.30 ^{.53}	C 0.23
+70	78.13	78.06 ^{.13}	C 0.07	77.62	77.53 ^{.62}	C 0.09
5+05	78.27	78.37	F 0.10	77.75	77.76	F 0.01
+40	78.56	78.67 ₅₆	F 0.11	77.98	77.99	F 0.01

INDEXED
law
MAR 19 1953

	North		
5 + 65	78.97	78.89 ^{9.7}	C 0.08
+ 90 = PC.	79.28	79.10 ²⁸	C 0.18
1/4	79.38	79.15 ³⁸	C 0.23
1/2 = N.W. Ret.	79.54	79.30 ⁵⁴	C 0.24
3/4	79.56	79.55 ⁵⁶	C 0.01
E.C. = 42 nd	79.68	79.75 ⁶⁸	F 0.07
N.E. Ret. - See P. 8			
E.C. + 15	80.21	80.25	F 0.04
	80.09	80.05 ⁰⁹	C 0.04
	80.36	79.90 ³⁶	C 0.46
	80.18	79.78 ¹⁸	C 0.40
PC. = 0 + 10	79.73	79.74	F 0.01
0 + 42.5	80.18	79.88 ¹⁸	C 0.30
+ 75	80.00	80.02	F 0.02
1 + 07.5	79.89	80.16 ⁸⁹	F 0.27
1 + 40.0	80.27	80.29	F 0.02
+ 60	79.69	80.25 ⁶⁹	F 0.56
+ 80	80.06	80.06	C
2 + 00	79.65	79.73 ⁶⁵	F 0.08
+ 20	78.76	79.25 ⁷⁶	F 0.49

81.13 = S.E. Hyd. 42nd Gamma

77.78 = S.W. Pole

	South		
	78.22	78.15 ²²	C 0.07
	78.28	78.32 ²⁸	F 0.04
	78.45	78.35 ⁴⁵	C 0.10
S.W. Ret.	79.38	78.15 ³⁸	C 0.23
	77.94	77.70 ⁹⁴	C 0.24
	76.62	76.96 ⁶²	F 0.34
S.E. Ret.			
E.C. = 42 nd	77.25	76.96 ²⁵	C 0.29
1/4	78.27	77.75 ²⁷	C 0.52
1/2	78.63	78.28 ⁶³	C 0.35
3/4	78.69	78.60 ⁶⁹	C 0.09
PC.	78.66	78.74 ⁶⁶	F 0.08
	78.60	78.88 ⁶⁰	F 0.28
	79.03	79.02 ⁰³	C 0.01
	79.08	79.16 ⁰⁸	F 0.08
	79.04	79.29 ⁰⁴	F 0.25
	79.16	79.25 ¹⁶	F 0.09
	79.11	79.06 ¹¹	C 0.05
	78.70	78.73 ⁷⁰	F 0.03
	78.50	78.25 ⁵⁰	C 0.25

Gamma

42nd to 43rd

North

South

13

2+60	77.85	78.11 ₈₅	F 0.26	77.34	77.11 ³⁴	C 0.23
2+96.74	77.02	77.07	F 0.05	76.58	76.07 ⁵⁸	C 0.54
3+06.74	76.66	76.77 ₆₆	F 0.11	76.27	75.76 ²⁷	C 0.51
3+16.74	76.48	76.58 ₄₈	F 0.10	75.85	75.39 ⁸⁵	C 0.46
+26.74	76.38	76.43 ₃₈	F 0.05	75.41	74.98 ⁴¹	C 0.43
+36.74 = P.C.	76.45	76.40	C 0.05	74.68	74.52 ⁶⁸	C 0.16
1/2	76.52	76.42 ₅₂	C 0.10	74.30	74.02 ³⁰	C 0.28
End = Meet.	76.68	76.66		73.46	73.46	

W.L. 43rd

Curb Stakes - Beta - 41st to 42nd60.53 = Pale - 41st + Beta

14

INDEXED
law
MAR 19 1953

on Ret.	North			South		
0+00 = E.L. 41 st	63.65	62. ³ 65 59	C 1.06	62.26	62.72	F 0.46
0+10 = P.C.	63.78	63. ⁷⁸ 05	C 0.73	63.06	63.01	C 0.05
+45	65.51	64. ⁵ 51 63	C 0.88	64.52	64.54	F 0.02
+80	66.70	66. ⁷⁰ 20	C 0.50	66.14	66. ¹⁴ 06	C 0.08
1+15	67.78	67.78	G	67.64	67. ⁶⁴ 59	C 0.05
+50	69.26	69. ²⁶ 35	F 0.09	69.05	69.11 ⁵	F 0.06
+85	71.03	70. ⁰³ 93	C 0.10	70.85	70. ⁸⁵ 64	C 0.21
2+20	72.85	72. ⁸⁵ 50	C 0.35	72.40	72. ⁴⁰ 16	C 0.24
+40	73.62	73. ⁶² 40	C 0.22	72.94	73. ⁹⁴ 02	F 0.08
+60	74.30	74. ³⁰ 27	C 0.03	73.83	73.86	F 0.03
+80	74.96	75. ⁹⁶ 08	F 0.12	74.69	74. ⁶⁹ 65	C 0.04
3+00	75.76	75. ⁷⁶ 83	F 0.07	75.19	75. ¹⁹ 37	F 0.18
+20	76.36	76. ³⁶ 51	F 0.15	76.08	76.04	C 0.04
+40	77.15	77. ¹⁵ 14	C 0.01	76.74	76. ⁷⁴ 66	C 0.08
+60	77.82	77. ⁸² 71	C 0.11	76.97	77.22	F 0.25
+80	78.30	78. ³⁰ 21	C 0.09	77.81	77. ⁸¹ 74	C 0.07
4+00	78.69	78.66	C 0.03	78.34	78. ³⁴ 22	C 0.12
+35	79.63	79. ⁶³ 38	C 0.25	79.15	79. ¹⁵ 03	C 0.12
+70	80.27	80. ²⁷ 10	C 0.17	79.50	79. ⁵⁰ 83	F 0.33

North

5 + 05	80.91	80. ⁹¹ 82	C 0.09
+ 40.	81.73	81. ⁷³ 54	C 0.19
+ 65	82.30	82. ³⁰ 06	C 0.24
+ 90 ⁶⁵ = P.C. = 42 ⁴⁰	82.66	82. ⁶⁶ 59	C 0.07

See P. 9 for Ret.

South

80.35	80. ⁶⁵ ₃₅	F 0.30
81.23	81. ⁴⁴ ₂₃	F 0.21
81.86	82. ⁰¹ _{1.86}	F 0.15
82.44	82.60	F 0.16

BM. = Spike in S.W. Pole + 449.40
 67th + Mohawk

Stake. Culvert - 67th

Mohawk - N.

Indexed

N.E. Ret.
 end of Curb.

Top 49.11

cut 48.46

0+00 = inlet

49.68 48.34 C 1.34

+35

49.68 48.09 C 1.59

+70

49.20 47.83 C 1.37

1+05

48.72 47.57 C 1.15

+40

48.38 47.31 C 1.07

+75

47.92 47.05 C 0.87

=end.

2+10

47.75 46.79 C 0.96

+45 = end pipe

47.47 46.53 C 0.94

+90 = Meet ground

47.25 46.20 C 1.05

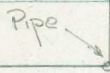
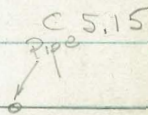
9.68	4	8.38	C 1.30
9.68	4	8.24	C 1.44
9.20	4	8.10	C 1.10
8.72	4	7.96	C 0.76
8.38	4	7.82	C 0.56
7.92	4	7.68	C 0.24
7.75	4	7.54	C 0.21

Indexed

Stake Sewer - Hortensia + Congress

w.O. 20009 - 7-10-52 - 7.0

0+00 = Meet.	72.97	65.45	c 7.52
+38.5	73.74	73.74 66.47	c 7.27
+62	74.09	74.09 67.10	c 6.99
+85.5 = M.H.	74.09	74.09 67.72	c 6.37
1+20.5	74.48	74.48 68.65	c 5.83
+55.5	75.30	75.30 69.58	c 5.72
+90.5	76.06	76.06 70.51	c 5.55
2+18.5	76.65	76.65 71.26	c 5.39
2+46.5 = end.	77.15	77.15 72.00	c 5.15



Congress

2+46.5 = End.

st

25 25'

Hortensia

0+00 = End. of Exist.

38.5

st

100

47

0+85.50
77.99
89° 59' Rt.

Cross. in Sly. Rim of St. Drain
M.H. in Int. 73.67

B.M. = spike in S.W. Pole
Congress + Hortensia 75.01

Curb. Stakes

Quimby - Willow to Plum.

167.96 = Pole

179.67 = Bolt.

Indexed 18

North

South

1	72.12	72.10		73.17	73.14		
2	72.49	72.50	F 0.01	73.64	73.38 ⁶⁴	C 0.26	
3	73.02	73.15	F 0.13	73.75	73.85 ⁸⁵	F 0.10	
4 = P.C. = 0+25	73.94	73.85 ⁹⁴	C 0.09	74.07	74.42 ⁰⁷	F 0.35	
+45	75.56	75.24	C 0.32				
0+70	77.04	76.75 ⁰⁴	C 0.29	76.94	77.00	F 0.06	
+90	77.93	77.76 ⁹³	C 0.17	77.85	77.94 ⁸⁵	F 0.09	
1+10	78.51	78.37 ⁵¹	C 0.14	78.32	78.47 ³²	F 0.15	
+30	78.48	78.57 ⁴⁸	F 0.09	78.42	78.61 ⁴²	F 0.19	
+50	78.51	78.36 ⁵¹	C 0.15	78.27	78.33 ²⁷	F 0.06	
+70	77.82	77.75 ⁸²	C 0.07	77.57	77.65 ⁵⁷	F 0.08	
+90	76.77	76.74 ⁷⁷	C 0.03	76.44	76.57 ⁴⁴	F 0.13	
2+10	75.13	75.31 ¹³	F 0.18	74.77	75.09 ⁷⁷	F 0.32	
+42.5	72.11	72.67 ¹¹	F 0.56	71.78	72.35 ⁷⁸	F 0.57	
+75 = P.C.	69.64	70.03 ⁶⁴	F 0.39	68.91	69.61 ⁹¹	F 0.70	
8.89	69.11	69.40 ¹¹	F 0.29	2+90 = P.C.	68.19	68.39 ¹⁹	F 0.20
8.90	68.51	68.89 ⁵¹	F 0.38	8.13	67.75	67.86 ⁷⁵	F 0.11
8.89	68.22	68.48 ²²	F 0.26	8.12 = PRC	67.15	67.50 ¹⁵	F 0.35
7.09	68.26	68.25 ²⁶	C 0.01	14.81	66.05	67.21 ⁰⁵	F 1.16
7.09 = End.	67.86	68.20 ⁸⁶	F 0.34	F. end. Inlet.	66.14	67.17 ¹⁴	F 1.03
				w. end.	66.04	67.18 ⁰⁴	F 1.14

South

10.66	65.87	67.22 5.87	F 1.35
10.66	66.17	67.32 6.17	F 1.15
10.65	66.11	67.42 6.11	F 1.31
10.31	66.38	67.55 6.38	F 1.17
10.31	66.43	67.69 6.43	F 1.26
10.31 = P.R.C.	65.13	67.85 5.13	F 2.72
6.03	65.44	67.99 5.44	F 2.55

Stake Sewer - 66th + Madera

Plan - 1766-D - 5-16-52 - 7.0.

220.57 = 0+00 Rim.

66th - N. to Brooklyn.

0+00 - Conn. to Sewer. 20.57 20.57 13.00

+35 21.96 21.96 12.81

+70 20.76 20.76 10.04

1+05 21.01 21.01 8.71

+40 21.80 21.80 7.93

+75 22.83 22.83 7.38

2+10 25.03 25.03 8.01

+45 T.P. 29.52 29.52 10.92

+80 33.80 33.80 13.63

3+15 36.65 36.65 14.90

+40 38.15 38.15 15.28

3+60 = MH 1 38.63 38.63 14.86

= 0+00 ahead.

0+35 39.31 39.31 15.29

+70 39.05 39.05 14.79

1+05 38.70 38.70 14.20

+40 38.04 38.04 13.29

+75 New 36.52 36.52 11.52

2+10 34.95 34.95 9.71

238.65 = N.W. Pole - Madera + Brooklyn.

235.63 = Pole by M.H. 1

Indexed

20

2+45 33.26 33.26 25.49 7.77

+80 32.67 32.67 25.73 C 6.94

3+15 32.26 32.26 25.98 C 6.28

+40 32.96 32.96 26.15 C 6.81

4.5 + 20 w. New. 164.27 = M.H. 2 32.86 32.86 26.32 C 6.54

0+00 - New.

0+35 33.68 33.68 27.20 C 6.48

+70 35.21 35.21 28.07 7.14

1+05 35.84 35.84 28.95 6.89

+40 36.85 36.85 29.82 7.03

+75 37.99 37.99 30.70 7.29

2+10 39.04 39.04 31.57 7.47

+45 40.02 40.02 32.45 7.57

+80 41.00 41.00 33.32 7.68

3+10 = M.H. 3 41.60 41.60 34.07 7.53

0+00

+35 42.28 42.28 34.95 7.33

+70 42.70 42.70 35.82 6.88

1+05 43.27 43.27 36.70 6.57

+40 43.93 43.93 37.57 6.36

1+75 - T.P.	44.56	44.56 38.45	6.11	2+35 = MH. 10	60.60	60.60 52.06	8.54
2+10	45.56	45.56 39.32	6.24	0+00			
+45	46.48	46.48 40.20	6.28	0+35	59.63	9.63 52.20	7.43
+80	47.37	47.37 41.07	6.30	+70	59.06	9.06 52.34	6.72
3+06.05 = MH. 4	48.07	48.07 41.72	6.35	1+00 = Plug.	58.78	8.78 52.46	6.32
= + Wunderlin							

Begin - Brooklyn - To W.

0+00 = MH. 2		26.32					
0+40 = Brk.	38.17	38.17 29.52	8.65	NSW			
+70	45.39	45.39 36.72	8.67				
1+00	51.82	51.82 43.92	7.90				
+30 = MH. 9	56.57	56.57 51.12	5.45				
0+35	60.83	60.83 51.26	9.57				
+70	63.77	63.77 51.40	12.37				
1+05	65.92	65.92 51.54	14.38				
+40	65.56	65.56 51.68	13.88				
+75	63.19	63.19 51.82	11.37				
2+10	61.51	61.51 51.96	9.55				

Beq. Madera - Wunderlin to N.

248.82 = S.W. Pole Wunderlin

272.85 = S.W. Pole - Broadway + Madera.
273.99 = S.E. Pole " + Bittern

22
Indexed

± Broadway 69.66

3+21.04 = M.H. 6

69.66
69.88 59.99 9.67

0+00 = M.H. 4

4 1.72

-0+00

+35

49.05 42.60 6.45

0+35

70.15 70.15 60.55 9.60

+70

50.14 43.47 6.67

+70

70.67 70.67 61.11 9.56

1+05

51.20 44.35 6.85

1+05

71.00 71.00 61.67 9.33

+40

52.09 45.22 6.87

+40

71.21 71.21 62.21 8.98

+75

53.31 46.10 7.21

+75

71.45 71.45 62.79 8.66

2+10

53.45 46.97 6.48

2+10

71.68 71.68 63.35 8.33

+45

54.39 47.85 6.54

+45

71.97 71.97 63.91 8.06

+80 = T.P.

55.27 48.72 6.55

+80

72.24 72.24 64.47 7.77

Ang. Pt.

3+20 = M.H. 5

56.72 49.72 7.00

3+15

72.44 72.44 65.03 7.41

-0+00

+50

72.73 72.73 65.59 7.14

0+35

57.90 50.84 7.06

+73.96 = M.H. 7

72.93 72.93 65.97 6.96

+70

59.22 51.96 7.26

-0+00

73.37 73.37 66.50 6.87

1+05

60.39 53.08 7.31

0+35

73.85 73.85 67.02 6.83

+40

61.44 54.20 7.24

+70

74.36 74.36 67.55 6.81

+75

62.08 55.32 6.76

1+05

74.91 74.91 68.07 6.84

2+10

63.35 56.44 6.91

+40

75.54 75.54 68.60 6.94

+45

66.70 65.96 57.56 9.14

+75

76.02 76.02 69.12 6.90

+80

69.19 69.85 58.68 110.51

2+10

76.02 76.02 69.12 6.90

Madera - Bittern + N.

278.70 = SW. Pole - Madera + Hilger

2 + 45	76.52	6.52 9.65	6.87
+ 80	77.06	7.06 0.17	6.89
3 + 15	77.60	7.60 0.70	6.90
+ 40	77.90	7.90 1.07	6.83
+ 62.03 = M.H. 8	78.11	8.11 1.40	6.71
= 0 + 00			
0 + 35	78.61	8.61 1.93	6.68
+ 70 = plug	79.43	9.43 2.45	6.98

Broadway ^{from} - Madera - W.

23

Indexed

0 + 00 = M.H. 6			59.99
+ 35	70.26		63.14
+ 70	71.87		66.29
1 + 05	74.69		69.44
+ 40	78.24		72.59
+ 75	81.95		75.74
2 + 10	85.23		78.89
+ 45	88.77		82.04
+ 80	92.35		85.19
3 + 20	96.27		88.79
+ 60 = M.H. 15	00.34		92.39
= 0 + 00			
+ 35	03.85		95.37
+ 70	07.42		98.34
1 + 05	10.98		01.32
+ 40 = Plug	14.44		04.29

9.66

10.15

Broadway -

305.36 = S.E. Pole

Madera - E.

Evelyn + Body.

Evelyn - Broadway - N.

350.53 = Pole by End.

Indexed

24

0+00 = M.H. 6

+35

+70

1+05

+40

+75

2+00 = M.H. 16

0+00
+

+35

+70

1+05

+40

+70 = Brk.

2+05

+40

+66.61 = M.H. 17

0+30

+60 = Plug.

59.99

69.90

67.11

65.09

65.13

66.87

68.66

72.97

78.40

83.90

89.12

92.80

96.17

98.97

00.91

03.57

06.73

9.90

7.11

5.09

5.13

6.87

8.66

72.97

8.40

83.90

9.12

92.80

96.17

98.97

00.91

03.57

06.73

9.77

6.84

4.68

4.58

6.18

7.87

6.82

6.89

7.03

6.89

6.00

8.18

9.79

10.83

10.94

11.55

0+00 = M.H. 17

+35

+70

1+05

+40

+75

2+10

+45

+80

3+15

+40 = M.H. 18

+30

+60

1+90 = Brk

1+20

+50

1+80

2+10 = end.

+80

45.5 = gr.

00.34

00.21

00.58

01.30

02.37

03.45

05.43

07.37

09.97

12.18

14.81

18.52

22.12

25.54

29.50

34.04

39.05

90.08

00.34

00.21

00.58

01.30

02.37

03.45

05.43

07.37

09.97

12.18

14.81

18.52

22.12

25.54

29.50

34.04

39.05

25.00

9.14

7.89

7.14

6.74

6.69

6.65

7.51

8.33

9.81

11.22

11.75

13.36

14.86

14.23

14.74

13.86

14.05

Bittern -	Madera - W.		
3i RP Cross N. 2+15 - 302.61			
0+00 = M.H. 7	72.86	65.97	
+30	73.74	73.74 67.47	6.27
+60 = Brk.	79.19	79.19 68.97	10.22
+95	84.10	84.10 74.92	9.18
1+30	90.44	90.44 80.87	9.57
+65	96.48	96.48 86.82	9.66
2+00 = M.H. 19	00.82	00.82 92.77	8.05
+35	03.58	03.58 95.43	8.15
+70	06.33	06.33 98.09	8.24
1+05	08.64	08.64 300.75	7.89
+40	10.29	10.29 03.41	6.88
+75	12.74	12.74 06.07	6.67
2+10	15.48	15.48 08.73	6.75
+45	18.13	18.13 11.39	6.74
+80 T.R.	21.21	21.21 14.05	7.16
3+15	24.61	24.61 16.71	7.90
+50	28.12	28.12 19.37	8.75
+75	30.75	30.75 21.27	9.48
4+00 = M.H. 20	34.10	34.10 23.17	10.93

Pole - S. By M.H. 20 334.72		
Pole - S. ahead of M.H. 21 - 362.17	38.12	28.17
	42.71	33.18
	47.63	38.18
	52.47	43.19
	57.46	48.19
	61.73	53.20
	63.74	56.06
	66.97	56.30
	70.38	56.55
	72.35	56.72
	73.94	56.90

} .07 low. 25

Indexed

Wunderlin -

Madera -

E.

248.82 = Sw. hole
Madera.

331.54 = R.P. Cross 3+25.93

Indeped

0+00 = M.H. # 4	48.32	832 41.72	6.60
+30	51.58	51.58 43.52	8.06
+50	56.77	56.77 46.92	9.85
+70	63.13	63.13 54.72	8.41
+80	66.20	66.20 59.72	6.48
1+00	72.18	72.18 68.50	3.68
+20	77.99	77.99 74.84	3.15
+60	88.86	88.86 85.08	3.78
2+00 = M.H. 13	99.42	99.42 95.32	4.10
+35	07.44	07.44 01.69	5.75
+70	14.84	14.84 08.06	6.78
1+05	21.67	21.67 14.43	7.24
+30 = Brk.	26.37	26.37 18.98	7.39
+70	32.04	32.04 23.78	8.26
2+10	35.96	35.96 28.58	7.38
+45	39.35	39.35 32.78	6.57
+80 = M.H. 14	43.12	43.12 36.98	6.14
0+00			
0+30	45.73	45.73 37.25	8.48
+60	48.00	48.00 37.52	10.48

0+90	48.84	48.84 37.79	11.05
1+20	48.55	48.55 38.06	10.49
+50 = Plug.	46.96	46.96 38.33	8.63
Wunderlin - Madera - W.			
0+00 = M.H. # 4		41.72	
+40	47.66	47.66 42.44	C 5.22
+60	47.18	47.18 43.24	C 3.94
+80	47.71	47.71 44.30	C 3.41
1+20	49.27	49.27 47.40	C 1.87
+60	57.06	57.06 52.00	C 5.06
+95	64.39	64.39 57.20	C 7.19
2+30	70.06	70.06 62.40	C 7.66
+65	75.28	75.28 67.60	C 7.68
3+00 = M.H. 11	80.56	80.56 72.80	C 7.76
0+00			
0+35	89.27	89.27 73.05	C 11.22
+70	86.21	86.21 73.29	C 12.92
1+05	87.64	87.64 73.54	C 14.10
+40	88.33	88.33 73.78	C 14.55

Cont. on Pg 28

Grades for Sewer in Dixie Drive

Between Law & Beryl

* W.O. 20009 7-17-52 7.0.

I.E. = 33.60

0+00 = Exist M.H.	38.59	8.59 34.00	C 4.59
+30	38.97	8.97 34.66	C 4.31
+60	39.63	9.63 35.32	C 4.31
+90	40.21	0.21 35.98	C 4.23
1+20	41.08	1.08 36.64	4.44
+50 = End.	42.24	2.24 37.30	4.94

0+65.60 = Int. Radial Line at P.R.C.

at 5.22' S.W. from E of st. Ang. $74^{\circ} 07' 30''$
in Nly. Sector.

B.M. = wly. 7' at P.R.C. N. of Law. 40.31

Cont. from P. 26.

Wonderlin - W. of Madera.

Spikain Pole
3+42 Between
M.H.s 11 & 12

85.04

28

Indexed

1+75	86.41	86.41	4.03	C 12.38
2+10	84.05	84.05	4.27	C 9.78
+45	82.90	82.90	4.52	C 8.38
+80	82.60	82.60	4.76	C 7.84
3+15	82.91	82.91	5.00	C 7.91
+50	83.63	83.63	5.25	C 8.38
+75	83.93	83.93	5.43	C 8.50
4+00 = M.H. 12	83.88	83.88	5.60	C 8.28
0+00				
0+35	83.64	83.64	5.74	C 7.90
+70	83.30	83.30	5.88	C 7.42
1+05	83.52	83.52	6.02	C 7.50
+40	83.60	83.60	6.16	C 7.44
+80 = Plug.	83.79	83.79	6.32	C 7.46

Rough Grades - Playa Del Norte.
 Plan - 8916-L
 W.O. 31555

neptune Pt - J.J. Blvd
 7-23-52 7.0.

	South		
Beq. B.C. Curve "A"	60.4	^{60.8} 61.2	F 0.4 F 0.8
1/3 = Nail - 0.22 in	61.9	^{61.9} 59.5	C 2.4
2/3	58.2	58.3	F 0.1
E.C.	56.3	^{57.0} 57.0	F 0.7
+35 = B.C. "B"	53.3	^{55.6} 55.6	F 2.3
1/3	52.5	^{54.6} 54.6	F 1.6
2/3	51.7	^{52.6} 52.6	F 0.9
P.R.C. = Beq. "C"	50.8	^{51.1} 51.1	F 0.3
1/3	49.6	^{49.9} 49.9	F 0.3
2/3 - T.P.	49.1	^{48.8} 48.8	C 0.3
E.C.	48.5	^{47.7} 47.7	C 0.8
+34	47.7	^{46.8} 46.8	C 0.9
B.C. "D"	45.6	^{45.9} 45.9	F 0.4
1/3	45.1	^{44.9} 44.9	C 0.2
2/3	44.3	^{43.9} 43.9	C 0.4
E.C.	43.9	^{42.9} 42.9	C 1.0
+35	43.9	^{41.9} 41.9	C 2.0
B.C. "E"	43.7	^{40.6} 40.6	C 3.1
1/3	38.8	38.7	C 0.1

63.70 = Mon.
 57.04 = Pole = E.C. "A" South
 55.60 = R.P. Cross - P.I. - "C"

45.10 = R.P. Cross "D" 29

Indexed

	North		
	62.3	^{60.6} 60.6	C 2.3
New	61.8	^{61.8} 59.2	C 2.6
	60.7	^{60.7} 58.3	C 2.4
	59.0	^{59.0} 57.0	C 2.0
	56.8	^{55.6} 55.6	C 1.2
	54.7	^{54.1} 54.1	C 0.6
	55.5	^{52.6} 52.6	C 2.9
	54.1	^{51.1} 51.1	C 3.0
	52.8	^{49.9} 49.9	C 2.9
	51.3	^{48.8} 48.8	C 2.5
	48.8	^{47.7} 47.7	C 1.1
	47.1	^{46.8} 46.8	C 0.3
	46.7	^{45.9} 45.9	C 0.8
	46.2	^{44.9} 44.9	C 1.3
	45.0	^{43.9} 43.9	C 1.1
	46.0	^{42.9} 42.9	C 3.1
	43.0	^{41.9} 41.9	C 1.1
	41.8	^{40.6} 40.6	C 1.2
	37.9	^{38.7} 38.7	F 0.8

South

North

2/3		35.6	36.3 5.6	F 0.7		36.2	36.3	F 0.1
EC "E"	-	32.4	33.9 2.4	F 1.5		34.1	33.9 2.2	C 0.2
+42.50 = BC "F"		28.0	31.2 3.0	F 3.2		31.2	31.2	G
1/3	New	26.8	29.1 6.3	F 2.3		29.1	29.1	G
2/3		24.7	26.9 4.1	F 2.2	-	26.6	26.9 2.0	F 0.3
EC		24.2	25.0 4.2	F 0.8		24.0	25.0 4.0	F 1.0
+40 = BC 114°		25.4	23.0 5.4	C 2.4		24.6	23.4 4.6	C 1.2
1/3 = 38°		24.6	21.5 4.6	C 3.1	P.C. 10 Alley Rad.	22.8	22.6 8	C 0.2
2/3		23.4	19.9 23.4	C 3.5	Ang.	21.7	22.3 1.5	F 0.6
end =		20.7	18.4 20.7	C 2.3	= BC.	20.5	21.1 0.5	F 0.6
					= end.	20.8	20.9	F 0.1

Tecolote Sewer #2

Sheets 1875-D
1876-D

Stakes 6' left.

B.M. = 04006
E.I. = 182.82
8-18-52
W.O. 20903
C.H.S.

T.B.M. = Nail in 1/4 post 35' Lt of
Sta. 8+11 Elev. = 206.42

Indexed

	Stake	Grade	Cut.		Stake	Grade	Cut.	T.P.
196+77.89 (1696D) = 0400	-	177.74			7~	202.50	195.25	7.25
0+05	182.37	177.86 ^{2.37}	C- 4.51		7+50	204.65	196.50	8.15
0+50	185.22	179.00	C 6.22		8+01 ²	205.74	197.76	7.98
1~	187.20	180.25	6.95		$\Delta 21^{\circ} 56' N$ 8+06 M.H.#2		197.88	
1+50	187.90	181.50	6.40		8+11 ²	205.93	198.00	7.93
2~	191.78	182.75	9.03	T.P.	8+50	206.37	198.97	7.40
2+50	197.73	184.00	13.73		9+00	207.89	200.22	7.67
2+81 ⁴²	200.94	184.78	16.16	T.P.	9+50	208.91	201.47	7.44
$\Delta 47^{\circ} 52' - 15'' N$ 2+86.42 M.H.#1		184.90			10+00	210.05	202.72	7.33
2+91 ⁴²	201.43	185.02	16.41		10+50	211.24	203.97	7.27
3+00	201.42	185.25	16.17		11+00	212.11	205.22	6.89
3+50	201.32	186.50	14.82		11+50	213.14	206.47	6.67
4~	198.69	187.75	10.94		12+00	214.31	207.72	6.59
4+50	196.57	189.00	7.57	T.P.	12+50	215.09	208.97	6.12
5~	196.36	190.25	6.11		12+74 ⁹	216.25	209.60	6.69
5+50	197.11	191.50	5.61		12+79 ⁹⁰ M.H.#3 $\Delta 28^{\circ} 01' N$		209.73	
6~	199.04	192.75	6.29		12+84 ⁹	216.61	209.88	6.73
6+50	201.40	194.00	7.40					

Cont P-32

~~2.5%~~
2.10%

TECOLOTE SEWER #2
Construction Grades
Plan # 1875-D - 1876-D

Walker
Herdin
Huffman
Presley 8-27-52

32

Station	Corr. P-32	Elev. Sta.	Elev. Int.	Cuts	Offsets
21+27.31		245.24	236.00	9.24	6.21
21+00		244.82	235.15	9.67	"
20+50		242.23	233.60	8.63	"
20+00		240.06	232.05	8.01	"
19+50	3.10 %	237.96	230.50	7.46	"
19+00		236.25	228.98	7.30	"
18+50		234.70	227.40	7.30	"
18+00		233.27	225.85	7.42	"
17+50		231.60	224.30	7.30	"
16+52.5	P.P.T. MH #4 T.P.	229.79	222.75	7.04	"
16+50		227.37	221.20	6.07	"
16+00		225.93	219.65	6.28	"
15+50	3.10 %	224.13	218.10	6.03	"
15+00		222.91	216.55	6.36	"
14+50	3.5 % T.P.	221.66	215.00	6.66	"
14+00		219.83	213.45	6.38	"
13+50		218.62	211.90	6.72	"
13+00		216.68	210.35	6.33	"

Cont. from P-31

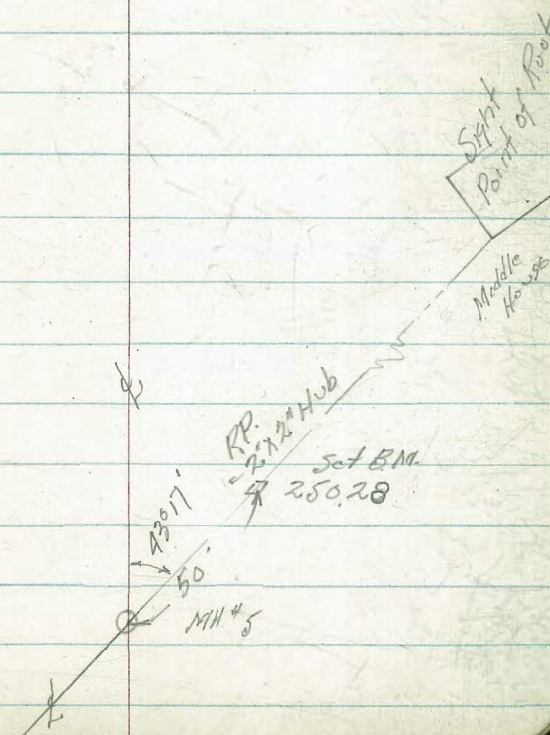
TECOLOTE SEWER #2

Construction Grades

Plan 1876-D

Station		Elev. Stakes	Elev. Invert	Cuts:
28+00		266.77	258.47	8.30
27+50		264.86	256.77	8.09
27+00		263.28	255.07	8.21
26+50	TP --	261.26	253.37	7.89
26+00		260.46	251.67	8.79
25+50		256.34	249.97	6.37
25+17.12	P.O.T. 1/2 MH #6	255.22	248.85	6.37
25+12.12				
25+00		254.36	248.29	6.07
24+50	TP →	252.29	246.64	5.65
24+00		250.60	244.99	5.61
23+50		249.11	243.34	5.77
23+00		247.98	241.69	6.29
22+50		247.67	240.04	7.63
22+00		246.02	238.39	7.63
21+50		244.84	236.74	8.10
21+37.81	TP	245.06	236.31	8.75
21+32.31	Δ Lt 43°17' 1/2 MH #5		236.15	

Cont from P-32



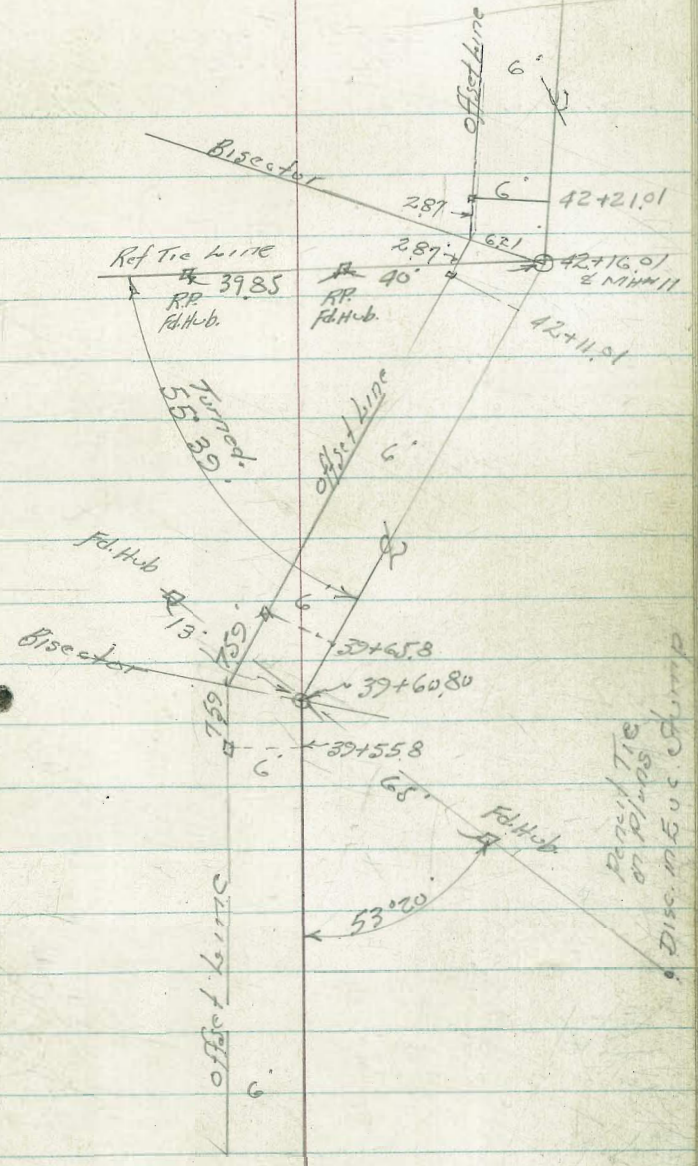
TECUMSEH SEWER #2

Construction Grades

Plan 1876-D

Station	Elev. stakes	Elev. Inverts	Cuts	
42+50	47.04	36.57	10.47	
42+21.01		36.72		
Δ 30° 04' 30" Lt. 6x12				
42+16.01 = 2 MH #11	45.53	336.23	9.30	
42+16.01		334.44		
41+70.00	26.72	319.76	6.96	
P.O.T.				
41+23.80 = 8 MH #10	11.99	303.22	8.77	
		08.94		
41+00	08.94	302.44	6.50	
40+50	06.79	300.79	6.00	
40+00	05.70	299.14	6.56	
39+65.8	305.69	298.01	7.68	
Δ 46° 45' Rt.				
39+60.80 = 2 MH #9		297.84		
39+55.8	TP	305.12	297.67	7.45
39+30		303.44	296.79	6.65
39+00		302.80	295.77	7.03
38+50		300.81	294.07	6.74
38+00		299.98	292.37	7.61
37+50		297.42	290.67	6.75
37+00	TP → 295.84 on Rock	295.08	288.97	6.11
36+50		293.40	287.27	6.13
36+00		292.36	285.57	6.79

Cont. from D-34



TECOTE SEWER #2

Construction Grades

Plan 1876-D

350.87 = P.K. = Rad. Pt. of Banjo

36

Station	Elev. Stakes	Elev. Invert	Cuts.
47+63.02 = end.	50.72	50.72 41.70	9.02
+30	50.63	50.63 41.37	9.26
47+00	49.88	9.88 41.07	8.81
+50	48.89	8.89 40.57	8.32
46+00	44.90	4.90 40.07	4.83
+50	36.26	39.57	F.3.31
45+00	47.49	47.49 39.07	8.42
+50	47.86	47.86 38.57	9.29
44+00	46.75	46.75 38.07	8.68
+50	46.67	46.67 37.57	9.10
43+00	46.90	46.90 37.07	9.83

Beq. Tecolote ^{camp} ^{Jeweler}
 trunk sewer
 8-5-52

Plan 1689-D

E. by Pac. Hwy

5.22 = 0+01.82 - Cross on Rim

7.35 = Bolt in Bridge - S.W. Headwall

Indexed

38

	10'RX stake	Grade	cut	El. Stake	Grade	cut
0+00 - Exist M.H.						
0+01.82	4.39	4.17	8.56	5+75	4.97	-1.88
+36.82	3.49	4.03	7.52	6+10	4.71	-1.74
+71.82	3.49	3.89	7.38	6+45	5.29	-1.60
1+06.82	3.63	3.75	7.38	6+80	5.53	-1.46
+40	4.23	3.62	7.85	7+15	5.73	-1.32
+75	4.55	3.48	8.03	7+50	6.01	-1.18
2+10	4.74	3.34	8.08	7+85	6.44	-1.04
+45	4.46	3.20	7.66	8+20	7.28	-0.90
+80	4.06	3.06	7.12	8+55	8.38	-0.76
3+15	4.76	2.92	7.68	8+72.74 Back	9.65	-0.69
+50	5.09	2.78	7.87	A 23°-23'-30" Lt.		
+84.23 Back	4.71	2.64	7.35	8+72.74 Ahead.		-0.69
+84.23 Ahead	4.71	2.64	7.35			
4+00	4.83	2.58	7.41	Cont. P-39		
+35	4.41	2.44	6.88			
+70	4.79	2.30	7.09			
5+05	4.63	2.16	6.79			
5+40	4.99	2.02	6.95			

Morena & Leogh
 10.04 - B.M. on Bridge N.E. side

TECOCOTE SEWER #1

Construction Grades

Walker
Hardin
Huffman
Peebles 829-52

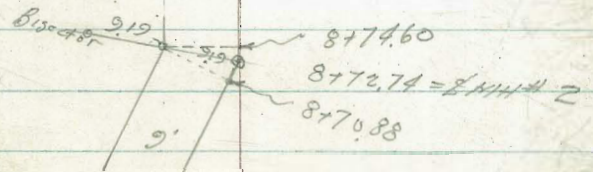
Plan #1689-D

Station		Elev. Stakes	Elev. Invert	Cuts
13+20	→ Cont. P-40	7.38	1.10	6.28 ✓
12+85		7.34	0.96	6.38 ✓
12+50		7.25	0.82	6.43 ✓
12+15		7.34	0.68	6.66 ✓
11+80		7.44	0.54	6.90 ✓
11+45		7.64	0.40	7.24 ✓
11+10		7.54	0.26	7.28 ✓
10+75		7.37	0.12	7.25 ✓
P.O.T.				
10+43.47	2. MH #3	7.68	-0.01	7.69 ✓
	Reset	7.84	-0.23	8.00 14" 8.07
10+05		8.31	-0.16	8.47 ✓
	"	10.06	-0.43	10.36 14" 10.49
9+70		10.16	-0.30	10.46 ✓
	"	7.35	-0.63	7.79 14" 7.98
9+35		6.95	-0.44	7.39 ✓
9+14	Gas Line Int.	6.85	-0.75	7.43 → 14"
9+00	Elev. Bottom = 1.54 " Top sewer = 1.52	8.00	-0.58	8.58 ✓
	Reset	10.01	-0.39	10.69
8+74.60		9.98	-0.68	10.66
	Reset	10.01	-0.39	10.70
8+72.74	2. MH #2	9.98	-0.69	10.67
			-0.39	
8+70.88		9.98	-0.70	10.68

0.57

offset line

Note: - Pipe lowered
to clear Gas Line.
Per Inst. cut Brown Insp
9-4-52

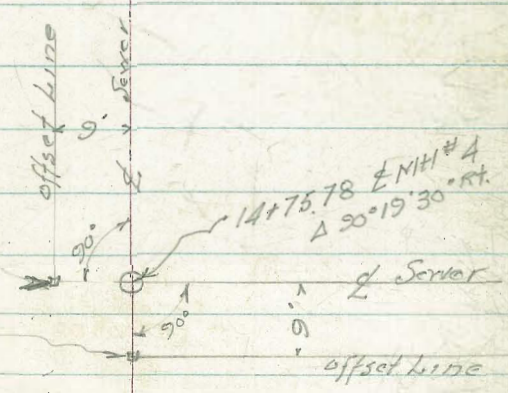


Cont. from P-38

TECUMSEH SEWER #2

Const. Grades

Station	Cont. P-41	Elev. Stokes	Elev. Invert.	Cuts
18+85		11.03	3.36	7.67
18+50		10.54	3.22	7.32
18+06.4		10.10	3.03	7.07
17+70		12.09	2.98	9.19
17+45		12.14	2.80	9.34
17+10		11.86	3.66	9.20
16+75		11.46	2.52	8.94
16+40		11.13	2.38	8.75
16+05		10.86	2.24	8.62
15+70		10.60	2.10	8.50
15+35		10.34	1.96	8.38
15+00		10.15	1.82	8.33
14+75.78	} ENH #4 TP Pk. Hill → Δ 30°19'30" Rt.	10.05	1.72	8.33 Ahead
14+75.78		10.06	1.72	8.34 back
14+60		8.15	1.66	6.49
14+25		7.45	1.52	5.93
13+90		7.39	1.38	6.01
13+55		7.40	1.24	6.16



TECUMSEH SEWER #1

Const. Grades

Station	Elev. Stake	Elev. Invert	Cuts
---------	-------------	--------------	------

10+43

see P 43

2

FB. 2133-76
 check old & Hub 2021.57

001
 903
 902

21+00

20+65

20+36.57

ENH#5 Δ 89°59' Lt

20+27.57

ENH#5

20+18.57

~~Δ 89°59' Lt~~

19+90

10.56 3.97

3.23

10.56 3.89

10.60 3.78

10.87 3.64

10.95 3.50

6.59

6.67

6.82

7.23

7.45

offset 9'

offset

20+36.57

6'

20+18.57

20+27.57 = ENH#5
 Δ 89°59' Lt.

Cont. from P-40

Beg. at M.H. 15

Line R.P. M.H. 15 = 53.12

69.03 = Pole = By. M.H. 16

69.14 = Hub. 42
M.H. 16

74.17 = Nail in Tree By M.H. 17

	stake	Grade	cut.
0+00 = M.H. 15	55.09	54.10	5.66
+35	54.90	48.44	6.05
+70	57.30	50.27	7.03
1+05	58.09	50.62	7.47
+40 = T.P.	60.74	50.97	9.77
+75 T.P.	62.25	51.32	10.93
2+10	62.00	51.67	10.31
+45	62.30	52.02	10.28
+80	62.92	52.37	10.55
3+15	62.42	52.72	19.70
+50	62.22	53.07	9.15
+85	62.98	53.42	9.56
4+20	64.25	53.76	10.49
+55	65.62	54.11	11.51
+90	66.09	54.46	11.62
5+25	66.45	54.81	11.64
+60	67.20	55.16	12.04
+95	67.98	55.51	12.47
6+15.87 = M.H. 16	68.56	55.71	12.85

0+00 = M.H. 16

+35	68.39	55.71	12.49
+70	68.03	56.09	11.94
1+05	68.17	56.28	11.89
+40	67.10	56.48	10.62
+75	68.34	56.67	11.67
2+10	68.47	56.86	11.61
+45	67.73	57.05	10.68
+80	66.91	57.25	9.66
3+15	65.89	57.44	8.45
+50	65.33	57.63	7.70
+85	67.05	57.82	9.23
4+20	68.48	58.02	10.40
+55	70.00	58.21	11.79
+85	71.47	58.37	13.10
5+13.46 = M.H. 17	72.76	58.53	14.23

Tecolote # 1
M.H. 5 to 6

13.28 - BOT 1700.

M.H. 6 to 7

12.74 = 110' R.P.
By M.H. 5A.

16.50 43

9 - Rt.

	Stake	Grade	Cut.				
12' Both ways				0+00 = M.H. 6.	14.12	14.12	6.55
0+00 = M.H. 5	10.48	10.48 3.93	6.55	+35	14.28	14.28	6.45
+35	10.67	10.67 4.19	6.48	+70	14.38	14.38	6.29
+70	11.07	11.07 4.45	6.62	1+05	14.74	14.74	6.40
1+05	11.30	11.30 4.70	6.60	+40	14.95	14.95	6.35
+40	11.65	11.65 4.96	6.69	+75	15.21	15.21	6.35
+75	11.93	11.93 5.22	6.71	2+10	15.27	15.27	6.15
2+10	12.20	12.20 5.48	6.72	+45	15.72	15.72	6.34
+45	12.51	12.51 5.74	6.77	+80	16.08	16.08	6.45
+80	12.75	12.75 5.99	6.76	3+15	16.60	16.60	6.71
3+15	12.72	12.72 6.25	6.47	+50	17.68	17.68	7.53
3+30.81 = M.H. 5A	12.36	12.36 6.29	6.07	+85	19.05	19.05	8.64
1/3 +85	10.75	10.75 6.52	4.23	4+20	17.80	17.80	7.13
2/3 +120	12.41	12.41 6.75	5.66	+60	18.00	18.00	7.04
4+17.83 = M.H. 6	13.90	13.90 6.98	6.92	+99.78 = M.H. 7	18.22	18.22	6.97
4+57.51 M.H. 6	13.87	13.87 7.27	6.60	B.M. 24 Rt.	18.49		
4+97.21 = old - M.H. 6	14.13	14.13 7.57	6.55				

Part I

75' R.P. Hub ^{M.H. 18} 69.46M.H. 18 to 19
12' Lt.

44

M.H. 17 to 18 - 12' Lt.

0+00 = M.H. 17	58.54		0+00 = M.H. 18	71.96	71.96	
+35'	72.96	58.73 C 14.23	+35'	72.21	61.36	10.60
+70'	73.20	58.92 C 14.28	+70'	71.75	72.21	10.66
+1+05'	73.24	59.12 C 14.12	+1+05'	71.49	71.75	10.00
+40'	71.55	59.31 C 12.24	+40'	70.17	71.49	9.55
+75'	70.61	59.50 C 11.11	+75'	69.54	70.17	8.04
2+10'	69.34	59.69 C 9.65	2+10'	68.03	9.54	7.22
+45'	69.13	59.89 C 9.24	+45'	67.32	62.32	
+80'	68.91	60.08 C 8.83	+80'	66.81	8.03	5.51
3+15'	69.08	60.27 C 8.81	3+15'	66.53	7.32	4.61
+50'	69.78	60.46 C 9.32	+50'	66.04	6.81	3.91
+85'	70.70	60.66 C 10.04	+85'	66.40	6.53	3.44
4+20'	71.48	60.85 C 10.63	4+20'	66.37	6.04	2.75
+55'	71.83	61.04 C 10.79	+55'	66.05	6.40	2.92
+90'	72.17	61.23 C 10.94	+90'	66.07	6.37	2.70
5+13.46 = M.H. 18	71.96	61.36 C 10.60	5+13.46 = M.H. 19	67.43	6.05	2.19
					6.07	2.04
					7.43	3.25
					64.18	

Part I. M.H. 28 to 29 - 12' Lt.

117.37 = \square on water M.H. - Rt. 141 + 80

	stake	Grade	cut.
0+00 = M.H. 28	05.54	97.03	C 8.51
+35	07.31	97.66	9.65
+70	09.98	98.29	11.69
1+05	12.28	98.92	13.36
+40	13.28	99.55	13.73
+75	> 13.65	100.18	13.47
2+10	✓ 13.42	100.81	12.61
+45	- 12.01	101.44	10.57
+80 = T.P.	- 10.74	102.07	8.67
3+15	- 09.83	102.70	7.13
+50	- 10.02	103.33	6.69
+85	- 08.72	103.96	4.76
4+20	- 09.30	104.59	4.71
+55	- 10.66	105.22	5.44
+90	- 12.60	105.85	6.75
5+15	✓ 13.83	106.30	7.53
+38.54 = M.H. 29	12.68	06.72	5.96

M.H. 29 to 30

110.80 = R.P. Hdb. - M.H. 29

119.22 = " " " 30

45

0+00 = M.H. 29	12.68	06.72	5.96
+35	13.91	07.16	6.75
+70	14.28	07.59	6.69
1+05	15.42	08.03	7.39
+40	15.38	08.47	6.91
+75	16.05	08.91	7.14
2+10	15.83	09.34	6.49
+45	15.97	09.78	6.19
+80	16.54	10.22	6.32
3+15 T.P.	16.73	10.66	6.07
+50	15.80	11.10	4.70
+85	16.16	11.53	4.63
4+20	18.20	11.97	6.23
+55	18.63	12.41	6.22
+80	19.59	12.72	6.87
5+02.49 = M.H. 30	20.20	13.00	7.20
24 Lt	20.87		

M.H. 19 to 20 - 12' Lt.

72.50 = Nail in Pole
N.

80.26 = B.M. in Pole - 109 + 49

46

	stake.	Grade	cut.
0 + 00 = M.H. 19	67.43	7.43 64.18	3.25
+35 = T.P.	71.01	71.01 64.37	6.64
+70	72.88	72.88 64.57	8.31
1 + 05	73.80	73.80 64.76	9.04
+40	74.87	74.87 64.95	9.92
+75	74.83	74.83 65.14	9.69
2 + 10	74.37	74.37 65.34	9.03
+45	73.50	73.50 65.53	7.97
+80	72.44	72.44 65.72	6.72
3 + 15	71.61	71.61 65.91	5.70
+50	71.59	71.59 66.11	5.48
+75	70.88	70.88 66.24	4.64
+99.40 = M.H. 20	71.40	71.40 66.38	5.02
^{= 0 + 00} 24 Lt.	71.16		
+35	70.58	70.58 66.57	4.01
+70	71.08	1.08 66.77	4.31
1 + 05	71.34	1.34 66.96	4.38
+40	71.53	1.53 67.15	4.38
+75	71.68	1.68 67.34	4.34

2 + 10	71.02	1.02 67.54	3.48
+45	70.90	0.90 67.73	3.17
+80	70.97	0.97 67.92	3.05
3 + 15	71.36	1.36 68.11	3.25
+50	71.54	1.54 68.31	3.23
+85	71.82	1.82 68.50	3.32
4 + 20	72.29	2.29 68.69	3.60
+44.2 = M.H. 21	72.40	2.40 68.82	3.58
^{= 0 + 00} +35	72.62	2.62 69.07	3.55
+70	73.43	3.43 69.31	4.12
1 + 05	73.51	3.51 69.56	3.95
+40	76.06	6.06 69.80	6.26
+75	77.99	7.99 70.05	7.94
2 + 10	79.39	9.39 70.29	9.10
+45	78.95	8.95 70.54	8.41
+80	78.97	8.97 70.78	8.19
3 + 15	78.68	8.68 71.03	7.65
+43.29 = M.H. 22	78.19	8.19 71.22	6.97
28 29			

M.H. 7 to 8

0+00 = M.H. 7	18.23	11.25		
+35	18.65	11.51	7.14	
+70	19.62	11.77	7.85	
1+05	20.74	12.02	8.72	
+40	21.92	12.28	9.64	
+75	22.60	12.54	10.06	
2+10	22.63	23.21	12.80	9.83 10.41
+45	22.91	24.78	13.06	9.85 11.72
+80	22.57	23.06	13.31	9.26 9.75
3+15	23.25	23.85	13.57	9.68 10.28
+50	23.61	24.69	13.83	9.78 10.86
+85	23.76	24.56	14.09	9.67 10.47
4+20	23.92	24.85	14.35	9.57 10.50
+55	24.01	24.56	14.60	9.41 9.96
+90	24.26	24.13	14.86	9.40 9.27
5+25	25.00	25.05	15.12	9.88 9.93
+50 = M.H. 8	25.24	25.25	15.30	10.24 9.95
24' H.	24.33			

30.25 = Pole By Sub Line

47

0+00 = M.H. 8

		15.30	
+35	25.69	15.56	10.13
+70	26.60	15.82	10.78
1+05	27.23	16.07	11.16
+40	27.73	16.33	11.40
+75	27.70	16.59	11.11
2+10	27.48	16.85	10.63
+45	27.21	17.11	10.10
+80	26.68	17.36	9.32
3+15	26.03	17.62	8.41
+50	25.59	17.88	7.71
+85	24.97	18.14	6.83
4+20	23.94	18.40	5.54
+55	22.75	18.65	4.10
+90	22.53	18.91	3.62
5+25	23.56	19.17	4.39
+50 = M.H. 9	27.07	19.35	7.72

M.H. 30 to 31

0+00 = M.H. 30	13.00		
+35	21.70	13.44	8.26
+70	23.70	13.88	9.82
1+05	25.73	14.31	11.42
+40	25.19	14.75	10.44
+75	25.07	15.19	9.88
2+10	24.39	15.63	8.76
+45	24.03	16.06	7.97
+80	24.18	16.50	7.68
3+15	23.70	16.94	6.76
+50	23.92	17.38	6.54
+85 - T.P.	23.70	17.81	5.89
4+20	23.09	18.25	4.84
+60	23.21	18.75	4.46
+98.21 = M.H. 31	23.07	19.23	3.84

129.32 = Nail in Sycamore - Bet. M.H. 31 + 32 48

134.36 = Nail in Oak - ahead of M.H. 32

0+00 = M.H. 31	19.23		
+35	23.80	19.67	4.13
+70	25.11	20.11	5.00
1+05	25.11	20.54	4.57
+40	25.65	20.98	4.67
+75	26.68	21.42	5.26
2+10	27.68	21.86	5.82
+45	29.27	22.29	6.98
+80	30.17	22.73	7.44
3+15	30.73	23.17	7.56
+50	31.13	23.61	7.52
+85	31.43	24.04	7.39
4+20	31.64	24.48	7.16
+60	32.68	24.98	7.70
+98.21 = M.H. 32	33.12	25.46	7.66

M.H. 22 to 23 -

Req. 10' Lt.

0+00 = M.H. 22

		71.22		
		8.50		
+35	78.50	71.47	7.03	
		9.87		
+70	79.87	71.71	8.16	
		80.86		
1+05	80.86	71.96	8.90	
		2.01		
+40	82.61	72.20	10.41	
		83.63		
+75	83.63	72.45	11.18	
		84.18		
2+10	84.18	72.69	11.49	
		2.17		
+45	82.17	72.94	9.23	
		9.02		
+80	79.02	73.18	5.84	
		8.86		
3+15 - T.P.	78.86	73.43	5.43	
		9.27		
+50	79.27	73.67	5.60	
		9.21		
+85	79.21	73.92	5.29	
		9.55		
4+20	79.55	74.16	5.39	
		9.88		
+55	79.88	74.41	5.47	
		0.10		
+90	80.10	74.65	5.48	
		0.37		
5+25	80.37	74.90	5.47	
		1.07		
+60	81.07	75.14	5.93	
		1.51		
+95	81.51	75.39	6.12	
		2.10		
6+23.29 = M.H. 23.	82.10	75.58	6.52	

81.08 = 50' R.P. M.H. 23

87.32 = 60 R.P. = M.H. 24

Navy R.P. = 88.32 49

0+00 = M.H. 23

				75.58
				2.31
+35		82.31		75.83
				6.48
				2.09
+70		82.09		76.07
				6.02
				2.34
1+05		82.34		76.32
				6.02
				2.53
+40		82.53		76.56
				5.97
				3.42
+75		83.42		76.81
				6.61
				83.05
2+10		83.05		77.05
				6.00
				2.54
+45		82.54		77.30
				5.24
				2.99
+80		82.99		77.54
				5.45
				2.89
3+15		82.89		77.79
				5.10
				3.97
+50		83.97		78.03
				5.94
				5.80
+85 - T.P.		85.80		78.28
				7.52
				5.67
4+20		85.67		78.52
				7.15
				7.81
+55		87.81		78.77
				9.04
				8.08
+90		88.08		79.01
				9.07
				8.40
5+25		88.40		79.26
				9.14
				89.66
+60		89.66		79.50
				10.16
				89.90
+95		89.90		79.75
				10.18
				90.34
6+30		90.34		79.99
				10.35
				91.15
+53.42 = M.H. 24		91.15		80.15
				11.00
				20' Lt. - 90.04

M.H. 9 to 10

0+00 = M.H. 9		27.07	19.35		
+35		28.52	19.61	8.91	
+70		28.20	19.86	8.34	
1+05		28.07	20.12	7.95	
+40		28.15	20.38	7.77	
+75		28.23	20.64	7.59	
2+10		28.42	20.90	7.52	
+45		28.80	21.16	7.64	
- +80		29.17	21.41	7.76	
3+15	7.73	21.58	21.67	7.64	
+50	7.90	21.76	21.93	7.73	
+85	8.10	21.93	22.19	7.84	
4+20	8.03	22.10	22.45	7.68	
+55	7.88	22.28	22.70	7.46	
+90	8.02	22.45	22.96	7.61	
5+25	8.30	22.62	23.22	7.70	
+48.41 = M.H. 10	8.08	22.80	23.40	7.48	
ahead	7.98	22.90			

22.45
22.19
24.04 2.62
21.9
4.81

37.01 = Pole By M.H. 11

50

0+00 = M.H. 10			23.40		
+35	7.76	31.18	23.42	31.18	7.43
+70	7.37	31.30	23.93	31.30	7.20
1+05			31.50		7.05
+40			32.11		7.31
+75			32.87		7.72
2+10			33.97		8.47
+45			34.42		8.57
+80			34.89		8.69
3+15			35.16		8.61
+50			35.40		8.50
+85			35.85		8.60
4+20			36.24		8.64
+55			36.50		8.55
+90			36.65		8.35
5+25			36.84		8.19
+60			37.44		8.44
+91 = M.H. 11			37.84		8.54

23.28
23.19
24.47

M.H. 32 to 34
12' Lt.

152.39 = Nail in Oak
By M.H. 35

154.86 = 40651
153.05 = 406.60

0+00 = M.H. 32	33.47	^{33.47} 25.46	8.01	2+45	48.45	^{48.45} 35.07	13.38
+35	32.07	^{3.07} 25.90	7.17	+80	51.84	^{51.84} 35.64	16.20
+70	33.32	^{3.32} 26.33	6.99	3+15	54.60	^{54.60} 36.21	18.39
1+05	32.02	^{2.02} 26.77	5.25	+50	56.12	^{56.12} 36.78	19.34
+40	31.91	^{1.91} 27.21	4.70	+85	55.99	^{55.99} 37.35	18.64
+75	31.84	^{1.84} 27.65	4.19	4+20	54.89	^{54.89} 37.92	16.97
2+10	31.58	^{1.58} 28.08	3.50	+50 = M.H. 34	52.10	^{52.10} 38.42	13.68
+45	32.41	^{2.41} 28.52	3.89	= 0+00 +35	48.99	^{8.99} 38.99	10.00
+80	34.73	^{4.73} 28.96	5.77	+70	47.68	^{7.68} 39.56	8.12
3+15	35.73	^{5.73} 29.39	6.34	1+05	47.55	^{7.55} 40.13	7.42
+50	35.95	^{5.95} 29.83	6.12	+40	47.87	^{7.87} 40.70	7.17
+85	37.03	^{7.03} 30.27	6.76	+75	48.42	^{8.42} 41.27	7.15
4+20	37.07	^{7.07} 30.70	6.37	2+10	49.16	^{9.16} 41.84	7.32
+50 = M.H. 33	36.67	^{6.67} 31.08	5.59	+45	49.78	^{9.78} 42.41	7.37
= 0+00 +35	36.93	^{6.93} 31.65	5.28	+80	50.09	^{50.09} 42.98	7.11
+70 = T.P.	37.77	^{7.77} 32.22	5.55	3+15	50.26	^{50.26} 43.55	6.71
1+05	39.18	^{9.18} 32.79	6.39	+50	50.13	^{50.13} 44.12	6.01
+40	40.06	^{0.06} 33.36	6.70	+85	49.76	^{9.76} 44.69	5.07
+75	40.91	^{0.91} 33.93	6.98	4+20	50.92	^{0.92} 45.26	5.66
2+10	43.10	^{3.10} 34.50	8.60	+50 = M.H. 35	51.49	^{1.49} 45.76	5.73

M.H. 24 to 26

0+00 = M.H. 24	80.15		
+35	91.95	80.45	11.50
+70	90.44	80.75	9.69
1+05	87.02	81.07	5.98
+40	85.88	81.34	4.54
+75	88.29	81.64	6.65
2+10	89.39	81.94	7.45
+45	89.74	82.24	7.50
+80	89.28	82.53	6.75
3+15	89.55	82.83	6.72
+50	89.90	83.13	6.77
+85	90.08	83.43	6.65
4+20	90.38	83.73	6.65
+55	90.43	84.02	6.41
+95.56 = M.H. 25	91.02	84.36	6.66
⁰⁺⁰⁰ +35	91.47	84.66	6.81
+70	91.95	84.96	6.99
1+05	92.47	85.25	7.22
+40	92.15	85.55	6.60
+75	90.92	85.85	5.07

93.80 = spike in Sycamore

100.96 = 20' R.P. M.H. 26

99.03 = spike in Sycamore

2+10	92.93	92.93	6.78
+45	93.28	86.45	6.83
+80	95.12	86.74	8.38
3+15	95.28	87.04	8.24
+50	96.21	87.34	8.87
+85	97.06	87.64	9.42
4+20	98.38	87.94	10.44
+55	99.51	88.23	11.28
+95.77 = M.H. 26	101.60	88.57	13.03
⁰⁺⁰⁰ +35	02.53	88.87	13.66
+70	00.51	89.17	11.34
1+05	97.47	89.46	8.01
+40	96.20	89.76	6.44
+75	96.60	90.06	6.54
2+10	96.94	90.36	6.58
+45	97.31	90.66	6.65
+80	97.38	90.95	6.43
3+15	98.04	91.25	6.79
+50	98.97	91.55	7.42
+85	00.32	91.85	8.47

52

old Ground Elev. - Lehigh St. 53

stakes 10 ft. of \pm

4+20	01.06	92.15	8.91
+55	01.03	92.44	8.59
+98.02 = M.H. 27	01.19	92.80	8.39
+35	00.73	93.10	7.63
+70	00.92	93.40	7.52
1+05	01.49	93.69	7.80
+40	01.84	93.99	7.85
+75	02.17	94.29	7.88
2+10	02.76	94.59	8.17
+45 = T.P.	03.67	94.89	8.78
+80	04.55	95.18	9.37
3+15	05.06	95.48	9.58
+50	04.81	95.78	9.03
+85	04.47	96.08	8.39
4+20	04.59	96.38	8.21
+55	04.89	96.67	8.22
+98 = M.H. 28 - in	05.16	97.03	8.13

10+43.47 = M.H. 3	8.3	9.3	7.7	C 0.6
11 ~	7.7	7.6		C 0.1
+50	7.8	7.5		C 0.3
12 ~	7.4	7.2		C 0.2
+50	7.2	7.1		C 0.1
13 ~	7.4	7.2		C 0.2
+50	7.3	7.4		F 0.1
14 ~	7.8	7.5		C 0.3
+50	8.2	8.0		C 0.2
+75.78 = M.H. 4	9.89	10.05		F 0.16
		9.89		

M.H. 11 to 12

43.82 = Cross on M.H. - by M.H. 12

54

12 to 13

	stake	Grade	cut.				
0+00 = M.H. 11	37.84	29.30	8.54	0+00 = M.H. 12		34.20	
+35 = T.P.	38.28	29.59 ^{8.28}	8.69	+35	40.48	40.48	5.99
+70	38.79	29.88 ^{8.79}	8.91	+70	40.83	40.83	6.05
1+05	39.36	30.17 ^{9.36}	9.19	1+05	41.53	41.53	6.46
+40	40.04	30.46 ^{0.04}	9.58	+40	41.40	41.40	6.04
+75	40.23	30.75 ^{0.23}	9.48	+75	41.48	41.48	5.83
2+10	40.78	31.04 ^{0.78}	9.74	2+10	41.50	41.50	5.56
+45	40.75	31.33 ^{0.75}	9.42	+45	42.37	42.37	6.14
+80	41.26	31.62 ^{1.26}	9.64	+80	43.32	43.32	6.80
3+15	41.53	31.91 ^{1.53}	9.62	3+15	44.48	44.48	7.67
+50	41.07	32.20 ^{1.07}	8.87	+50	45.34	45.34	8.24
+85	40.37	32.49 ^{0.37}	7.88	+85	46.08	46.08	8.69
4+20	40.10	32.78 ^{0.10}	7.32	4+20 = T.P.	46.52	46.52	8.84
+55	40.26	33.07 ^{0.26}	7.19	+55	46.70	46.70	8.73
+90	40.43	33.36 ^{0.43}	7.07	+90	46.73	46.73	8.47
5+25	40.55	33.65 ^{0.55}	6.90	5+25	46.91	46.91	8.36
+60	40.51	33.94 ^{0.51}	6.57	+66 = M.H. 13	47.41	47.41	8.52
+90.97 = M.H. 12	40.40	34.20 ^{0.40}	6.20				

M.H. 35 to 36

0+00 = M.H. 35		145.76	
+35	51.97	1.97 46.33	5.64
+70	52.84	2.84 46.90	5.94
1+05	53.69	3.69 47.47	6.22
+40	55.33	5.33 48.04	7.29
+75	58.63	8.63 48.61	10.02
2+10	61.97	61.97 49.18	12.79
+45	63.70	63.70 49.75	13.95
+80	65.21	65.21 50.32	14.89
3+15	65.86	65.86 50.89	14.97
+50	64.63	64.63 51.46	13.17
+85	63.21	63.21 52.03	11.18
4+20	62.88	62.88 52.60	10.28
+55	58.42	8.42 53.17	5.25
+90	58.26	8.26 53.74	4.52
5+24 = M.H. 36	✓ 60.17	60.17 54.29	5.88
0+35	✓ 61.70	61.70 54.89	6.81
+70	✓ 64.66	64.66 55.48	9.18
1+05	✓ 67.09	7.09 56.08	11.01
+40	✓ 69.74	69.74 56.67	13.07

171.46 = P.O.T. Stub. ahead MH 36

55

169.36 = nail in Tree - MH 37

		Stake	Grade	cut.
1+75	✓ 71.38	71.38	71.38	14.11
2+10	✓ 70.86	70.86	70.86	13.00
+45	✓ 68.34	68.34	68.34	9.88
+80	— 65.88	65.88	65.88	6.83
3+15	— 66.86	66.86	66.86	6.87
+50	— 66.39	66.39	66.39	7.21
+85	✓ 68.50	68.50	68.50	6.15
4+20	✓ 69.75	69.75	69.75	5.13
+55	✓ 71.00	71.00	71.00	7.66
+90	✓ 72.54	72.54	72.54	8.32
5+24 = M.H. 37	✓ 74.46	74.46	74.46	8.97
			63.20	9.92
			63.20	11.26

58.46
 1.68
 58.74
 60.14

0+00 = M.H. 13	47.41	^{7.41} 38.89	8.52	0+00 = M.H. 14	43.58	
+35	47.53	^{7.53} 39.18	8.35	+35	51.70	^{1.70} 42.92
+70	47.91	^{7.91} 39.47	8.44	+70	52.03	^{2.03} 44.27
1+05	48.28	^{8.28} 39.76	8.52	1+05	52.50	^{2.50} 44.61
+40	48.51	^{8.51} 40.05	8.46	+40	52.90	^{2.90} 44.96
+75	48.84	^{8.84} 40.34	8.50	+75	53.46	^{3.46} 45.30
2+10	49.19	^{9.19} 40.63	8.56	2+10	53.65	^{3.65} 45.64
+45	49.47	^{9.47} 40.92	8.55	+45	54.06	^{4.06} 45.99
+80	49.49	^{9.49} 41.21	8.28	+80	54.36	^{4.36} 46.33
3+15	49.17	^{9.17} 41.50	7.67	3+15	54.62	^{4.62} 46.68
+50	48.54	^{8.54} 41.79	6.75	+50	54.42	^{4.42} 47.02
+85	49.39	^{9.39} 42.08	7.31	+85	53.76	^{3.76} 47.36
4+20	50.14	^{9.14} 42.37	7.77	4+20	53.50	^{3.50} 47.71
+55	50.65	^{9.65} 42.66	7.99	+55	53.99	^{3.99} 48.05
+90	50.77	^{9.77} 42.95	7.82	+90	53.79	^{3.79} 48.40
5+25	51.08	^{1.08} 43.24	7.84	5+25	53.26	^{3.26} 48.74
+66 = M.H. 14	51.36	^{1.36} 43.58	7.78	+60	53.62	^{3.62} 49.08
				+85.03 = M.H. 15	54.69	^{4.69} 49.33

Grade of M.H. as staked → 49.44
Ahead.

0+00 = M.H. 37	74.46	63.20	
+35	✓ 75.55	63.80	11.75
+70	✓ 75.82	64.39	11.43
1+05	✓ 76.23	64.99	11.24
+40	✓ 75.63	65.58	10.05
+75	✓ 74.45	66.18	8.27
2+10	✓ 73.09	66.77	6.32
+45	- 73.92	67.37	6.55
+80	- 75.90	67.96	4.22
3+15	- 75.16	68.56	7.94
+50	- 75.80	69.15	4.44
+85	- 74.23	69.75	6.60
4+20	- 76.69	70.34	4.66
+55	✓ 75.60	70.94	5.80
+90	✓ 76.41	71.53	6.65
5+24.46 = M.H. 38	✓ 77.16	72.12	5.09

0+00 = M.H. 38

+35	- 80.31	72.12	7.54
+70	✓ 78.63	72.77	5.07
1+05	✓ 78.52	73.42	5.21
+40	✓ 79.52	74.07	4.45
+75	✓ 79.70	74.72	4.80
2+10	- 80.31	75.37	4.33
+45	- 79.61	76.02	4.29
+80	- 82.19	76.67	3.48
3+02.93 = M.H. 39	✓ 82.11	77.32	2.94
= end.		77.74	3.10

72.12
1.68
73.80

224
112
9.42

74.52
10.8
81.50

74.72
1.64
76.40

175.97 = Hub.

Rough Grades - 46th - Logan to
 Ocean View - Plan - 9289-L
 W.O. 31808 11-28-52 - 70.

B.M. 105.64 = ∇ on N.E. Rt. - Logan

Indexed 58.

West.

East.

0+00 = N.L. Logan

+03.4 = end. cb.

104.72

105.68

Station	West	East
+40	07.0 ^{2.0} 05.0 C 2.0	05.8 ^{5.4} 05.2 C 0.6
1+00	06.3 ^{6.3} 04.1 C 2.2	06.2 ^{6.2} 04.3 C 1.7
+50	03.6 ^{3.6} 03.4 C 0.2	05.0 ^{5.0} 03.9 C 1.1
2+00	01.8 ^{1.8} 02.7 F 0.9	03.9 ^{3.9} 03.2 C 0.7
+50	01.1 ^{1.1} 02.0 F 0.9	03.7 ^{3.7} 02.2 C 1.1
3~	01.3 01.3 G	02.9 ^{2.9} 02.0 C 0.9
+50	01.0 ^{1.0} 00.6 C 0.4	02.0 ^{2.0} 01.4 C 0.6
4~	99.4 ^{9.4} 99.9 F 0.5	01.2 ^{1.2} 00.8 C 0.4
+50	98.0 ^{8.0} 99.2 F 1.2	99.9 ^{9.9} 00.1 F 0.2
5~	97.4 ^{7.4} 98.5 F 1.1	99.8 ^{9.8} 99.5 C 0.3
+50	97.5 ^{7.5} 97.7 F 0.2	00.4 ^{0.4} 98.9 C 1.5
6+00.56 = S.L. "T"	96.9 ^{6.9} 96.6 C 0.3	00.3 ^{0.3} 98.4 C 1.9

"T" to Ocean View 46⁺

	West.		
0 to 100 = N.L. "T"	96.4	96.8	F 0.4
+50	96.7	96.6	C 0.1
1 ~	96.4	96.4	G
+50	96.1	96.2	F 0.1
2 ~	95.8	96.0	F 0.2
+50	95.2	95.8	F 0.6
3 ~	95.4	95.6	F 0.2
+50	95.8	95.4 ⁸	C 0.4
4 ~	96.0	95.2 ^{6.0}	C 0.8
+50	96.3	95.0 ^{6.3}	C 1.3
5 ~	96.4	94.8 ^{6.4}	C 1.6
+50	96.0	94.6 ^{6.0}	C 1.4
6 to 100.37 = S.L. O.V.	94.4	94.4	G

99.12 = R.P. Cross on N.E. - "T" + 46 + 59
 94.62 = w. at. ± O.V.

East.		
98.5	97.8 ^{8.5}	C 0.7
97.9	97.1 ⁹	C 0.8
97.3	96.9 ^{7.3}	C 0.4
97.4	96.7 ^{7.4}	C 0.7
97.2	96.5 ^{7.2}	C 0.7
96.6	96.3 ^{6.6}	C 0.3
96.3	96.1 ^{6.3}	C 0.2
96.6	95.9 ^{6.6}	C 0.7
96.6	95.7 ^{6.6}	C 0.9
97.1	95.5 ^{7.1}	C 1.6
97.1	95.3 ^{7.1}	C 1.8
96.6	95.1 ^{6.6}	C 1.5
95.0	94.9 ^{5.0}	C 0.1

Curb stakes - 46th Logan to "T"

165.64 = 0 on N.E. Ret

Indexed

Sta.	West.			East.		
	Stake	Grade				
0+00 = N.L. Logan						
+03.4 = Meant.		104.72		+03.4		05.68
0+20	04.88	04.90	F 0.02	+40	05.25	05.24 C 0.01
+40	04.89	04.92	F 0.03	+75	04.82	04.80 C 0.02
+60	04.73	04.72	C 0.01	+100	04.60	04.37 C 0.23
+95	04.26	04.21 ²⁶	C 0.05	+45	04.10	03.93 ⁴¹⁰ C 0.17
1+30	03.84	03.72 ⁸⁴	C 0.12	+80	03.43	03.50 ⁴³ F 0.07
+65	03.34	03.21 ³⁴	C 0.13	2+15	03.02	02.06 ⁰² F 0.04
2+00	02.78	02.72 ⁷⁸	C 0.06	+50	02.93	02.63 ⁹³ C 0.30
+35	02.09	02.22 ⁰⁹	F 0.13	+85	02.36	02.19 ³⁶ C 0.17
+70	01.90	01.73 ⁹⁰	C 0.17	3+20	01.91	01.76 ⁹¹ C 0.15
3+05	01.54	01.24 ⁵⁴	C 0.30	+55	01.45	01.32 ⁴⁵ C 0.13
+40	00.60	00.75	F 0.15	+90	00.88	00.89 F 0.01
+75	00.00	00.26	F 0.26	4+25	99.80	00.45 ⁸⁰ F 0.65
4+10	99.60	99.72	F 0.17	+60	99.30	00.02 ³⁰ F 0.72
+45	99.17	99.27	F 0.10	+95	98.83	99.58 ⁸³ F 0.75
+80	98.51	98.78 ⁵¹	F 0.27	5+30	99.18	99.15 E 0.03
5+05	98.18	98.43 ¹⁸	F 0.25	+65 = Cross	98.80	98.71 ⁸⁰ C 0.09
+30	98.15	98.08 ¹⁵	C 0.07	+90 = P.C.	98.07	98.40 ⁰⁷ F 0.33

West

East

61

5+50	97.92	97. ⁷² 68	C 0.24			
+70	97.48	97. ⁴⁸ 28	C 0.20			
+90 = P.C.	97.06	97. ⁰⁶ 80	C 0.26	SE. Ret.		98.40
10.47 } Sw. Ret.	96.82	96. ⁸² 60	C 0.22		98.84	98. ⁸⁴ 40
10.47 }	96.80	96. ⁸⁰ 48	C 0.32		99.95	98. ⁹⁵ 80
End = Prop. Line	96.58	96. ⁵⁸ 42	C 0.16		99.99	99. ⁹⁹ 10
End = Prop. Line	96.42	96.42	G		98.74	98.73
10+7	96.47	96. ⁵⁵ 47	F 0.08		98.52	98. ⁵² 40
10.47 } NW Ret.	96.69	96. ⁷⁰ 69	F 0.01	NE. Ret.	98.14	97. ⁸⁵ 85
P.C. = 0+10	96.60	96. ⁸⁰ 80	F 0.20		97.80	97. ⁸⁰ 42
				0+20	97.75	97. ⁷⁵ 26
0+45	96.57	96. ⁶⁶ 66	F 0.09		97.33	97. ³³ 16
+80	96.38	96. ⁵¹ 58	F 0.13		97.10	97. ¹⁰ 01
1+15	96.15	96. ³⁷ 37	F 0.22		96.84	96. ⁸⁷ 87
+50	96.07	96. ²² 27	F 0.15		96.88	96. ⁸⁸ 72
+85	95.59	95. ⁵⁹ 08	F 0.49		96.73	96. ⁷³ 58
2+20	95.72	95. ⁷² 93	F 0.21		96.79	96. ⁷⁹ 43
+55	95.78	95. ⁷⁸ 79	F 0.01		96.25	96. ²⁵ 29
+90	95.52	95. ⁵² 64	F 0.12		96.27	96. ²⁷ 17

West

East.

3+25	95.79	95.50 ⁷⁹	C 0.29	96.49	96.60	C 0.49	
+60	95.32	95.35 ₂	F 0.03	95.74	95.85 ₇₄	F 0.11	
+95	95.25	95.21 ⁵	C 0.04	95.69	95.71	F 0.02	
4+30	95.11	95.06 ¹¹	C 0.05	95.79	95.56 ⁷⁹	C 0.23	
+65	95.06	94.92 ^{5 06}	C 0.14	95.84	95.42 ⁸⁴	C 0.42	
5+00	94.95	94.77 ⁹⁵	C 0.18	95.68	95.27 ⁶⁸	C 0.41	
+30	94.62	94.65 ₂	F 0.03	95.40	95.15 ⁴⁰	C 0.25	
+60	94.37	94.52 ₃₇	F 0.15	95.10	95.02 ¹⁰	C 0.08	
+90 = PC.	94.15	94.40 ₁₅	F 0.25	94.57	94.90	F 0.33	
10.47	94.13	94.35 ₁₃	F 0.22	94.95	94.87 ⁹⁵	C 0.08	
10.47	94.21	94.23 ₂₁	F 0.02	94.77	94.91 ₇₇	F 0.14	
307 = end	94.19	94.20 ₁₉	F 0.01	276 = end	94.80	94.93 ₈₀	F 0.13

Indexed

Water Line Stakes - E. Tecolote				7 ~	64.1	58.9	C 5.2 ✓
Rd. - Plan-9 174-L	1-13-53	-70.		+50	64.0	59.4	C 4.6 ✓
W. O. 20847				8 -	64.0	59.6	C 4.4 ✓
				+50	64.0	59.6	C 4.4 ✓
Sta. -				9 ~	63.8	59.5	C 4.3 ✓
0-10 = Conn.				+50	63.9	59.2	C 4.7 ✓
0+00 = Linda Vista Rd.				10 ~	63.6	58.9	C 4.7 ✓
+50	362.8	360.8	C 2.0 ✓	+40	63.1	58.7	C 4.4 ✓
1 ~	360.7	60.0	C 0.7 ✓	+84.73 = end.	62.9	58.5	C 4.4 ✓
+50	359.9	58.8	C 1.1 ✓				
2 -	359.8	57.5	C 2.3 ✓	3+45 = F.H.	58.96	60.09	F 1.13
+50	359.4	56.3	C 3.1 ✓			8.96	
+90	360.0	55.9	C 4.1 ✓	= To F.L.		61.6	C 4.6
3+40	360.3	56.1	C 4.2 ✓	4+90.58 = 12" to N.	61.6	57.0	
4 ~	360.9	56.5	C 4.4 ✓	7+34 = F.H.	63.18	63.26	F 0.08
+50	361.0	57.0	C 4.0 ✓			1.8	
5 ~	361.2	57.3	C 3.9 ✓	10+84.73 = F.H.	64.55	4 55	C 2.11
+50	361.3	57.7	C 3.6 ✓			62.44	
6 ~	363.1	58.1	C 5.0 ✓				
+50	63.4	58.3	C 5.1 ✓				

Rough Stakes - Wellington St.
 Plan - 9173-L 1-26-53 7.0.

356.61 = Disk - in Linda Vista Rd. *Judy* 64

360.49
 Pole

West-

East.

0+00 = S.L. E. Tecolote Rd.

+24 = P.C.	58.8	59.5	F 0.7	58.5	59.5	F 1.0
+70	58.3	58.6	F 0.3	58.4	58.6	F 0.2
1+20	58.0	57.7	C 0.3	58.5	57.7	C 0.8
+60	56.9	57.0	F 0.1	59.4	57.0	C 2.4
2 ~	57.2	56.5	C 0.7	58.4	56.5	C 1.9
+40	57.0	56.1	C 0.9	58.5	56.1	C 2.4
3 -	56.4	55.7	C 0.7	57.5	55.7	C 1.8
+50	56.0	55.4	C 0.6	57.2	55.4	C 1.8
4 ~	55.5	55.1	C 0.4	56.4	55.1	C 1.3
+50	55.0	54.8	C 0.2	56.1	54.8	C 1.3
5 ~	54.6	54.5	C 0.1	55.7	54.5	C 1.2
+50	54.5	54.2	C 0.3	56.0	54.2	C 1.8
6 ~	53.4	53.9	F 0.5	55.3	53.9	C 1.4
+50	53.3	53.6	F 0.3	54.7	53.6	C 1.1
7 ~	53.3	53.3	G	53.8	53.3	C 0.5
+50	52.8	53.0	F 0.2	53.0	53.0	G
8 ~	52.4	52.7	F 0.3	52.5	52.7	F 0.2
+50	51.4	52.4	F 1.0	53.2	52.4	C 0.8

West.

East.

9~

51.1 52.1 F 1.0

52.9 52.1^{2.9} C 0.8

+50

50.9 51.8_{0.9} F 0.952.1 51.8^{2.1} C 0.3

10~

50.7 51.5_{0.7} F 0.852.1 51.5^{2.1} C 0.6

+27.9 = E. end.

52.2 51.3^{2.2} C 0.9

+57.15 = W. end.

50.6 51.2_{0.6} F 0.6

Water line Stakes - Wellington

Indexed 66

stakes on $\Phi = 10'$ Rt.	2-4-53	7.0	
at E. Tecolote			
0+24 = cb. PC	59.5	59.5	c 4.1
+20	57.9	57.8	c 3.3
1+20	56.9	56.9	c 3.3
+60	56.5	56.5	c 3.6
2~	56.2	56.2	c 3.8
+40	55.9	55.9	c 3.9
3~	55.4	55.4	c 3.8
+50	54.9	54.9	c 3.6
4~	54.4	54.4	c 3.4
+50	53.9	53.9	c 3.2
5~	54.1	54.1	c 3.7
+50	53.7	53.7	c 3.6
6~	53.3	53.3	c 3.5
+50	53.1	53.1	c 3.6
7~	52.9	52.9	c 3.7
+50	52.6	52.6	c 3.7
8~	52.2	52.2	c 3.6
+50	51.5	51.5	c 3.2
9~	51.8	51.8	c 3.8

9+50	51.4	51.4	c 3.7
10~	51.4	51.4	c 4.2
+42.53 = end.	50.8	50.8	c 3.6
Sub. line			

Fire Hyd. Stakes

4+09 = Φ - cb. Grade	55.05		
3+99	54.15	55.05	F 0.90
4+19		4.15	
8+09 = Φ		52.65	
7+99	52.37	52.65	F 0.28
8+19			

57.7
57.5

Inlets + Culvert - Playa Del Norte

Plan - 8916-L - 4650-B
 W.O. 21019

9-18-52 70

INDEXED
Law
 MAR 19 1953

Inlet on S.

5 B. - w. end. <small>225</small>	21.31	21.22 ³¹	C 0.09
± = F.L.	21.38	21.38 ^{16.49}	C 4.89
5 B. E. end. <small>8.75</small>	21.45	21.68 ⁴⁵	F 0.23
Begin 6" Drain			
0+21	22.19	22.19 ^{17.54}	C 4.65
+42 = P.C.	23.34	23.34 ^{18.58}	C 4.76
+82.4 = P.C.	25.05	20.57	C 4.48
1+07.4	25.93	21.80	C 4.13
+32.4	25.09	23.04	C 2.05
+57.4	26.59	24.27	C 2.32
1+80 = end.	28.85	25.40	C 3.45

Inlet on N.

5 B. - w. end.	20.11	22.22 ^{0.11}	F 2.11
± = F.L.	21.18	21.18 ^{17.41}	C 3.77
5 B. E. end.	21.88	22.37 ^{1.88}	F 0.49

27.86 = B.P. Playa Del Sur. + Vista Del mar. 68

22.47 = Pole = N.E. Del Norte + Neptune

24" Culvert from Inlet to Ocean

0+00 = Box	16.49		
+28	22.37	22.37	C 7.87
+56	18.10	18.10	C 5.60
+84	17.58	17.58	C 7.08
1+12 = end.	10.10	10.10	C 1.60

21.80

21.57
 20.57
 1.00

366
 2304
 62

20.66
 18.58
 1.48

446
 24.27
 1.19

20.01
 3.00
 17.01

17.01
 16.49
 .52

7.58
 25.40
 2.18

Curb Stakes - Playa Del Norte

69

E. end of La Jolla Blvd. South

North

B.C. - Join	60.50	60.80	F 0.30	59.78	60.00	F 0.22
#1	60.45	60.04 ⁴⁵	C 0.41	58.16	59.47 ₁₁	F 1.31
2	60.09	59.31 ⁰⁹	C 0.78	57.26	59.09 ₂₉	F 1.83
3	58.32	58.59 ₃₁	F 0.27	56.78	58.57 ₆₇₈	F 1.79
A	57.07	57.77 ₀₇	F 0.70	56.07	57.77 ₀₇	F 1.70
5 = E.C. "A"	55.16	56.94 ₁₆	F 1.78	55.56	56.94	F 1.39
35 = B.C. "B"	53.89	55.56 ₈₉	F 1.67	54.60	55.56 ₆₀	F 0.96
1	52.98	54.64 ₉₈	F 1.66	54.25	54.64 ₂₅	F 0.39
2	52.38	53.72 ₃₈	F 1.34	53.52	53.72 ₅₂	F 0.20
3	52.05	52.80 ₀₅	F 0.75	52.50	52.80	F 0.30
4	51.60	51.93	F 0.33	51.90	51.93	F 0.03
5 = E.C. B. = B.C. C	51.13	51.12	C 0.01	51.16	51.12	C 0.04
1	50.38	50.35	C 0.03	50.52	50.35 ⁵²	C 0.17
2	49.67	49.69	F 0.02	49.51	49.69 ₅₁	F 0.18
3	48.26	49.02 ₂₆	F 0.76	48.13	49.02 ₁₃	F 0.89
4	48.24	48.35 ₂₄	F 0.11	48.19	48.35 ₁₉	F 0.16
5 = E.C. "C"	47.82	47.68 ⁸²	C 0.14	47.47	47.68 ₄₇	F 0.21
+34	46.18	46.76 ₁₈	F 0.58	46.72	46.76	F 0.04
+68 = B.C. D	45.42	45.84 ₄₂	F 0.42	46.04	45.84 ⁰⁴	C 0.20

South

B.C. D. 45.84 F 0.42

1 44.58 4 5.25 F 0.672 43.95 4 4.66 F 0.713 42.39 4 4.07 F 0.684 42.42 4 3.48 F 1.06S = EC. D 42.40 4 2.89 F 0.49+35 41.04 4 1.89 F 0.85B.C. E 40.51 4 0.56 F 0.051 39.77 3 9.45 C 0.322 38.52 3 8.15 C 0.373 36.37 3 6.73 F 0.364 35.12 3 5.31 F 0.19S = EC. F 32.71 3 3.89 F 1.18

+42.5

B.C. F 29.24 3 1.23 F 1.991 27.94 2 9.59 F 1.652 26.00 2 7.96 F 1.963 25.73 2 6.37 F 0.64A = E. C. F 24.89 2 4.92 F 0.03+20 = 24.39 2 3.95 C 0.44

North

604
46.04 45.84 C 0.20

45.42 45.25 C 0.17

44.66 44.66 G

44.42 44.07 C 0.35

44.02 43.48 C 0.54

✓ 43.01 42.89 C 0.12

41.46 41.89 F 0.43

40.41 40.56 F 0.15

39.16 39.45 F 0.29

37.06 38.15 F 1.09

36.03 36.73 F 0.70

34.15 35.31 F 1.16

32.99 33.89 F 0.90

31.64 31.23 C 0.41

29.33 29.59 F 0.26

26.56 27.96 F 1.40

25.78 26.37 F 0.59

25.42 24.99 C 0.43

4.13 24.19 24.11 C 0.08

South

North

on S.								
BC. - 56.80 Rad.	17	23.21	23.21	C0.20	SS	23.60	23.36	C0.24
20° 38' 30" = 1	42	22.39	22.16 ³⁹	C0.23	= B.C. 10' Rad.	22.61	22.57 ⁶¹	C0.04
9.75' from E		21.45	21.68 ⁴⁹	F0.23	±	22.53	22.21 ⁵³	C0.32
E Inlet		21.38	21.32 ³⁸	C0.06	end =	22.74	22.18 ⁷⁴	C0.56
2.25' from E		21.31	21.22 ³¹	C0.09				
20° 07' = 2		20.18	20.48 ¹⁸	F0.30	15' Rad. on N. Side			
" " 3		19.60	19.64 ⁶⁰	F0.04	E. end.	21.92	22.00 ⁹²	F0.08
" " 4		18.30	18.80 ³⁰	F0.50	5' B. 2' W.	21.87	21.97 ⁸⁷	F0.10
12° = end.		18.19	18.41 ¹⁹	F0.22	P.C.	21.32	21.88 ³²	F0.56
					1/2	21.64	21.50 ⁶⁴	C0.14
					BC. 21' Rad.	20.92	21.13 ⁹²	F0.21
					1/2	20.46	20.98 ⁴⁶	F0.52
					end.	19.49	20.88 ⁴⁹	F1.39

Spillway Stakes - Neptune P.L. + Playa Del Norte
 Plan - 8918-L 12-26-52 70.

S. end on cb.

17.50

S. end = 3' out ^{Top cb.}

17.22 17.75 F0.53

10.5

17.17 17.72 F0.58

10.5

N. end 17.37 17.75 F0.38

South

16.84

895 7" B.

15.82

12' out on Φ

10.87

789 7" B.

13.87

N - 7' N. = cross on pipe

12.25 10.11 C 2.14

714 6" B.

10.85

S - 7' S.

10.15 10.11 C 0.04

626 5" B.

9.00

+32

438 3" B.

6.87

21.33 out = end
 4' out

325 3" B.

6.30

N - Gross on pipe

11.85 8.80 C 3.05

S. - 7' out.

8.55 8.80 F0.25

INDEXED
 Lee
 MAR 19 1953

Rough Grades - Rynchon - T to Ocean View.
 Plan - 9079-L - 9-15-52 - 70.

13.26 = R.P. Cross - at T +
 100.52 = S.W. Pole Ocean View

73

Indexed

	West.			East.		
0+00 = N.L. "T"	13.9	^{3.9} 11.8	C 2.1	14.8	^{4.8} 12.4	C 2.4
+40	12.3	^{2.3} 10.4	C 1.9	11.3	^{1.3} 10.9	C 0.4
+80	09.0	09.0	G	10.7	^{10.7} 09.5	C 1.2
1+20	07.3	07.6	F 0.3	11.3	^{11.3} 08.1	C 3.2
+60	06.2	06.1	C 0.1	09.4	^{9.4} 06.6	C 2.8
2+00	03.6	^{3.6} 04.8	F 1.2	08.8	^{8.8} 05.3	C 3.5
+40	02.6	^{2.6} 03.8	F 1.2	06.7	^{6.7} 04.3	C 2.4
+80	02.5	^{2.5} 03.1	F 0.6	06.4	^{6.4} 03.6	C 2.8
3+20	02.6	02.7	F 0.1	04.8	^{4.8} 03.2	C 1.6
+60	00.8	^{0.8} 02.4	F 1.6	04.8	^{4.8} 02.9	C 1.9
4+00	00.7	^{0.7} 02.1	F 1.4	04.8	^{4.8} 02.6	C 1.9
+40	01.7	01.9	F 0.2	06.0	^{6.0} 02.4	C 3.6
+80	02.2	^{2.2} 01.6	C 0.6	06.0	^{6.0} 02.1	C 3.9
5+20	01.7	^{1.7} 01.3	C 0.4	04.0	^{4.0} 01.8	C 2.2
+60	01.6	^{1.6} 01.0	C 0.6	03.9	^{3.9} 01.5	C 2.4
6+00 = S.L. Ocean View	00.1	^{0.1} 00.6	F 0.5	02.9	^{2.9} 01.4	C 1.5

Rynchon- Logan to "T"

115.89 = S.W. pole - "T"

Indexed 74

West.

East.

0+00 = N.L. Logan

= Exist. cb.

	West.			East.		
		09.75			10.60	
+50	11.4	11.4 10.1	C 1.3	12.2	2.2 10.6	C 1.6
.1+00	12.3	2.3 10.3	C 2.0	11.6	1.6 10.8	C 0.8
+40	11.9	1.9 10.2	C 1.7	11.0	10.7	C 0.3
+80	09.7	9.7 09.6	C 0.1	10.0	10.1	F 0.1
2+20	08.4	08.8	F 0.4	09.3	09.3	G
+60	07.1	07.9	F 0.8	07.7	08.4	F 0.7
3+00	07.4	07.5	F 0.1	07.4	08.0	F 0.6
+40	07.5	07.7	F 0.2	09.6	9.6 08.2	C 1.4
+80	08.5	08.6	F 0.1	08.0	09.1 8.0	F 1.1
4+20	10.4	10.4 09.9	C 0.5	09.7	10.4 9.7	F 0.7
+60	13.3	3.3 10.8	C 2.5	13.4	3.4 11.3	C 2.1
5+00	15.0	5.0 11.4	C 3.6	15.1	5.1 11.9	C 3.2
+50	15.5	5.5 11.7	C 3.8	16.6	6.6 12.2	C 4.4
6+00 = S.L. "T"	16.0	6.0 12.0	C 4.0	15.9	5.9 12.6	C 3.3

Coluvert - wly. of Pyncheon - Logan - N.

1071 = 0 on inside Cor. of N.E. Ret. - Logan 75

on cb. line 5' N. of N. end Opening	08.05	Top cb. 08.04	C 0.01
Inlet on E.			
5' S. of S. end	07.07	07.99	F 0.92
6' E. of cb. on E. of 15" Cross pipe	07.29	7.29 07.78	C 2.51 = FL.
side-on cb. line 5' N. of N. end at W. on 15" Cross pipe	07.22	07.58	F 0.36
6 Rt. 0+00 } same for 4' of 18" pipe } static	07.29	07.49	F 0.20 = Top of cb. at end.
0+00 - F.L.	07.29	7.29 04.28	C 3.01
+40	07.18	7.18 04.16	C 3.02
+80	07.37	7.37 04.04	C 3.33
1+20	08.28	8.28 03.92	C 4.36
+60	10.33	10.33 03.80	C 6.53
2+00	12.48	12.48 03.68	C 8.80
+40	12.03	12.03 03.56	C 8.47
+80	11.33	11.33 03.44	C 7.89
3+20 = Meet. pipe N.L. Logan:	09.66	9.66 03.32	C 6.34

338.95 = SE 7' ct Florida + Adams 76

Index of

Curb Stakes - Adams + Florida

Plan - 9995-L - 2-6-53 - 70,

0+00 = E.L. Florida		39.03	64	38.56	
+35	38.46	38.78	46	F 0.32	
+70	37.64	38.53	7.64	F 0.89	
1+05	37.55	38.28	7.55	F 0.73	
+40	37.58	38.03	7.58	F 0.45	
+60	37.24	37.98	24	F 0.74	
+80	37.19	37.94		F 0.75	
2+10	37.82	38.02	7.82	F 0.20	
+37.76 = end		38.09	7.65	64	

Rough Grades - E. Tecolote Rd.
2-13-53 - 7.0

360.49 = spike in S.W. Pole - Wellington + Tecolote 77
Indexed

0+00 = Linda Vista Rd South

North

Station	Grade	Grade	Grade	Station	Grade	Grade	Grade
				0+41	63.5	65.6 3.8	F 2.1
0+70	61.6	64.7 3.1	F 3.1			64.9	
1-	60.9	64.0 0.9	F 3.1		61.3	64.8 1.3	F 2.8
+50	59.4	62.7 3.3	F 3.3		62.0	62.9	F 0.9
2~	59.1	61.5 2.4	F 2.4		61.6	61.6	G
+40	59.7	60.5 0.8	F 0.8		62.0	60.7 1.3	C 1.3
+80		9.7			61.0	60.2 0.8	C 0.8
3+20					59.8	60.1 0.3	F 0.3
+60	59.3	60.2 0.9	F 0.9		61.3	60.2 1.1	C 1.1
4+00	59.8	60.5 0.7	F 0.7		61.8	60.5 1.3	C 1.3
+55.6	59.3	61.0 1.7	F 1.7		61.0	61.0	G
5+15.6	59.6	61.5 1.9	F 1.9		61.4	61.5	F 0.1
+75.6	62.0	62.0	G		62.4	62.0	C 0.4
6+10	62.8	62.3 0.5	C 0.5		63.3	62.3 1.0	C 1.0
+55	62.7	62.6	C 0.1		64.0	62.6 1.4	C 1.4
7+05	63.2	63.0 0.2	C 0.2		63.9	63.0 0.9	C 0.9
+45	63.4	63.3	C 0.1		64.1	63.3 0.8	C 0.8
+85	63.5	63.5	G		64.2	63.5 0.7	C 0.7
8+25	64.1	63.6 0.5	C 0.5		64.0	63.6 0.4	C 0.4

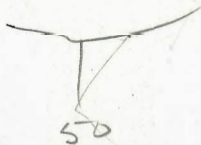
	South		
8+65	63.5	63.6	F 0.1
9+05	63.3	63.5	F 0.2
+45	63.2	63.3	F 0.1
10+00	62.6	63.0	F 0.4
+50	62.2	62.7	F 0.5
+84.73 = end obs.	64.6	62.4 ^{4.6}	C 2.2
11+50 = gut.	64.2	61.4 ^{4.2}	C 2.8
12~	63.4	61.1 ^{3.4}	C 2.3
+50	63.7	60.8 ^{3.7}	C 2.9
13~	63.7	60.5 ^{3.7}	C 3.2
+50	64.9	60.2 ^{4.9}	C 4.7
14~	64.2	59.9 ^{4.2}	C 4.3
+50	63.3	59.6 ^{3.3}	C 3.7
15~	62.5	59.3 ^{2.5}	C 3.2
+50	61.6	59.0 ^{1.6}	C 2.6
16~	60.9	58.7 ^{0.9}	C 2.2
+50 = end.	58.4	58.4	G

364.88 = Top Hyd.
10 + 84.73

78

	North		
	64.0	63.6 ^{4.0}	C 0.4
	63.9	63.5 ^{3.9}	C 0.4
	63.8	63.3 ^{3.8}	C 0.5
	63.6	63.0 ^{3.6}	C 0.6
	63.5	62.7 ^{3.5}	C 0.8
	62.9	62.4 ^{2.9}	C 0.5
= Beg. gut. grades.	62.5	61.4 ^{2.5}	C 1.1
	62.3	61.1 ^{2.3}	C 1.2
	62.0	60.8 ^{2.0}	C 1.2
	61.7	60.5 ^{1.7}	C 1.2
	61.5	60.2 ^{1.5}	C 1.3
	61.1	59.9 ^{1.1}	C 1.2
	60.8	59.6 ^{0.8}	C 1.2
	60.5	59.3 ^{0.5}	C 1.2
	60.4	59.0 ^{0.4}	C 1.4
	60.1	58.7 ^{0.1}	C 1.4
	58.2	58.4 ^{8.2}	F 0.2

10° 29' Lt.



90
89 60
10 29
79 31

78.29

o syc

3.50
1.75

298

225
875
11.00

9' Rt.

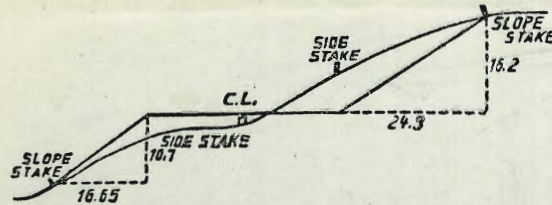
37.77
12.75
150.52
6.43
50.09
7.38
57.47
2.63
54.84

130.52
11.34
89.18

50.42
2.10
48.42

57.47
2.59
54.88

57.47
5.38
52.10



DISTANCES FROM SIDE STAKES FOR CROSS-SECTIONING.

SLOPE 1 1/2 TO 1. ROADWAY OF ANY WIDTH.

	0	.1	.2	.3	.4	.5	.6	.7	.8	.9	
0	0.00	0.15	0.30	0.45	0.60	0.75	0.90	1.05	1.20	1.35	0
1	1.50	1.65	1.80	1.95	2.10	2.25	2.40	2.55	2.70	2.85	1
2	3.00	3.15	3.30	3.45	3.60	3.75	3.90	4.05	4.20	4.35	2
3	4.50	4.65	4.80	4.95	5.10	5.25	5.40	5.55	5.70	5.85	3
4	6.00	6.15	6.30	6.45	6.60	6.75	6.90	7.05	7.20	7.35	4
5	7.50	7.65	7.80	7.95	8.10	8.25	8.40	8.55	8.70	8.85	5
6	9.00	9.15	9.30	9.45	9.60	9.75	9.90	10.05	10.20	10.35	6
7	10.50	10.65	10.80	10.95	11.10	11.25	11.40	11.55	11.70	11.85	7
8	12.00	12.15	12.30	12.45	12.60	12.75	12.90	13.05	13.20	13.35	8
9	13.50	13.65	13.80	13.95	14.10	14.25	14.40	14.55	14.70	14.85	9
10	15.00	15.15	15.30	15.45	15.60	15.75	15.90	16.05	16.20	16.35	10
11	16.50	16.65	16.80	16.95	17.10	17.25	17.40	17.55	17.70	17.85	11
12	18.00	18.15	18.30	18.45	18.60	18.75	18.90	19.05	19.20	19.35	12
13	19.50	19.65	19.80	19.95	20.10	20.25	20.40	20.55	20.70	20.85	13
14	21.00	21.15	21.30	21.45	21.60	21.75	21.90	22.05	22.20	22.35	14
15	22.50	22.65	22.80	22.95	23.10	23.25	23.40	23.55	23.70	23.85	15
16	24.00	24.15	24.30	24.45	24.60	24.75	24.90	25.05	25.20	25.35	16
17	25.50	25.65	25.80	25.95	26.10	26.25	26.40	26.55	26.70	26.85	17
18	27.00	27.15	27.30	27.45	27.60	27.75	27.90	28.05	28.20	28.35	18
19	28.50	28.65	28.80	28.95	29.10	29.25	29.40	29.55	29.70	29.85	19
20	30.00	30.15	30.30	30.45	30.60	30.75	30.90	31.05	31.20	31.35	20
21	31.50	31.65	31.80	31.95	32.10	32.25	32.40	32.55	32.70	32.85	21
22	33.00	33.15	33.30	33.45	33.60	33.75	33.90	34.05	34.20	34.35	22
23	34.50	34.65	34.80	34.95	35.10	35.25	35.40	35.55	35.70	35.85	23
24	36.00	36.15	36.30	36.45	36.60	36.75	36.90	37.05	37.20	37.35	24
25	37.50	37.65	37.80	37.95	38.10	38.25	38.40	38.55	38.70	38.85	25
26	39.00	39.15	39.30	39.45	39.60	39.75	39.90	40.05	40.20	40.35	26
27	40.50	40.65	40.80	40.95	41.10	41.25	41.40	41.55	41.70	41.85	27
28	42.00	42.15	42.30	42.45	42.60	42.75	42.90	43.05	43.20	43.35	28
29	43.50	43.65	43.80	43.95	44.10	44.25	44.40	44.55	44.70	44.85	29
30	45.00	45.15	45.30	45.45	45.60	45.75	45.90	46.05	46.20	46.35	30
31	46.50	46.65	46.80	46.95	47.10	47.25	47.40	47.55	47.70	47.85	31
32	48.00	48.15	48.30	48.45	48.60	48.75	48.90	49.05	49.20	49.35	32
33	49.50	49.65	49.80	49.95	50.10	50.25	50.40	50.55	50.70	50.85	33
34	51.00	51.15	51.30	51.45	51.60	51.75	51.90	52.05	52.20	52.35	34
35	52.50	52.65	52.80	52.95	53.10	53.25	53.40	53.55	53.70	53.85	35
36	54.00	54.15	54.30	54.45	54.60	54.75	54.90	55.05	55.20	55.35	36
37	55.50	55.65	55.80	55.95	56.10	56.25	56.40	56.55	56.70	56.85	37
38	57.00	57.15	57.30	57.45	57.60	57.75	57.90	58.05	58.20	58.35	38
39	58.50	58.65	58.80	58.95	59.10	59.25	59.40	59.55	59.70	59.85	39
40	60.00	60.15	60.30	60.45	60.60	60.75	60.90	61.05	61.20	61.35	40
41	61.50	61.65	61.80	61.95	62.10	62.25	62.40	62.55	62.70	62.85	41
42	63.00	63.15	63.30	63.45	63.60	63.75	63.90	64.05	64.20	64.35	42
43	64.50	64.65	64.80	64.95	65.10	65.25	65.40	65.55	65.70	65.85	43
44	66.00	66.15	66.30	66.45	66.60	66.75	66.90	67.05	67.20	67.35	44
45	67.50	67.65	67.80	67.95	68.10	68.25	68.40	68.55	68.70	68.85	45
46	69.00	69.15	69.30	69.45	69.60	69.75	69.90	70.05	70.20	70.35	46
47	70.50	70.65	70.80	70.95	71.10	71.25	71.40	71.55	71.70	71.85	47
48	72.00	72.15	72.30	72.45	72.60	72.75	72.90	73.05	73.20	73.35	48
49	73.50	73.65	73.80	73.95	74.10	74.25	74.40	74.55	74.70	74.85	49
50	75.00	75.15	75.30	75.45	75.60	75.75	75.90	76.05	76.20	76.35	50

THE NATIONAL BLANK BOOK COMPANY
 HOLYOKE MASSACHUSETTS
 NEW YORK CHICAGO BOSTON SAN FRANCISCO