

DISTANCES FROM SIDE STAKES FOR CROSS-SECTIONING
SLOPE 1 TO 1. ROADWAY OF ANY WIDTH

	0	.1	.2	.3	.4	.5	.6	.7	.8	.9	0
0	0.00	0.10	0.20	0.30	0.40	0.50	0.60	0.70	0.80	0.90	0
1	1.00	1.10	1.20	1.30	1.40	1.50	1.60	1.70	1.80	1.90	1
2	2.00	2.10	2.20	2.30	2.40	2.50	2.60	2.70	2.80	2.90	2
3	3.00	3.10	3.20	3.30	3.40	3.50	3.60	3.70	3.80	3.90	3
4	4.00	4.10	4.20	4.30	4.40	4.50	4.60	4.70	4.80	4.90	4
5	5.00	5.10	5.20	5.30	5.40	5.50	5.60	5.70	5.80	5.90	5
6	6.00	6.10	6.20	6.30	6.40	6.50	6.60	6.70	6.80	6.90	6
7	7.00	7.10	7.20	7.30	7.40	7.50	7.60	7.70	7.80	7.90	7
8	8.00	8.10	8.20	8.30	8.40	8.50	8.60	8.70	8.80	8.90	8
9	9.00	9.10	9.20	9.30	9.40	9.50	9.60	9.70	9.80	9.90	9
10	10.00	10.10	10.20	10.30	10.40	10.50	10.60	10.70	10.80	10.90	10
11	11.00	11.10	11.20	11.30	11.40	11.50	11.60	11.70	11.80	11.90	11
12	12.00	12.10	12.20	12.30	12.40	12.50	12.60	12.70	12.80	12.90	12
13	13.00	13.10	13.20	13.30	13.40	13.50	13.60	13.70	13.80	13.90	13
14	14.00	14.10	14.20	14.30	14.40	14.50	14.60	14.70	14.80	14.90	14
15	15.00	15.10	15.20	15.30	15.40	15.50	15.60	15.70	15.80	15.90	15
16	16.00	16.10	16.20	16.30	16.40	16.50	16.60	16.70	16.80	16.90	16
17	17.00	17.10	17.20	17.30	17.40	17.50	17.60	17.70	17.80	17.90	17
18	18.00	18.10	18.20	18.30	18.40	18.50	18.60	18.70	18.80	18.90	18
19	19.00	19.10	19.20	19.30	19.40	19.50	19.60	19.70	19.80	19.90	19
20	20.00	20.10	20.20	20.30	20.40	20.50	20.60	20.70	20.80	20.90	20
21	21.00	21.10	21.20	21.30	21.40	21.50	21.60	21.70	21.80	21.90	21
22	22.00	22.10	22.20	22.30	22.40	22.50	22.60	22.70	22.80	22.90	22
23	23.00	23.10	23.20	23.30	23.40	23.50	23.60	23.70	23.80	23.90	23
24	24.00	24.10	24.20	24.30	24.40	24.50	24.60	24.70	24.80	24.90	24
25	25.00	25.10	25.20	25.30	25.40	25.50	25.60	25.70	25.80	25.90	25
26	26.00	26.10	26.20	26.30	26.40	26.50	26.60	26.70	26.80	26.90	26
27	27.00	27.10	27.20	27.30	27.40	27.50	27.60	27.70	27.80	27.90	27
28	28.00	28.10	28.20	28.30	28.40	28.50	28.60	28.70	28.80	28.90	28
29	29.00	29.10	29.20	29.30	29.40	29.50	29.60	29.70	29.80	29.90	29
30	30.00	30.10	30.20	30.30	30.40	30.50	30.60	30.70	30.80	30.90	30
31	31.00	31.10	31.20	31.30	31.40	31.50	31.60	31.70	31.80	31.90	31
32	32.00	32.10	32.20	32.30	32.40	32.50	32.60	32.70	32.80	32.90	32
33	33.00	33.10	33.20	33.30	33.40	33.50	33.60	33.70	33.80	33.90	33
34	34.00	34.10	34.20	34.30	34.40	34.50	34.60	34.70	34.80	34.90	34
35	35.00	35.10	35.20	35.30	35.40	35.50	35.60	35.70	35.80	35.90	35
36	36.00	36.10	36.20	36.30	36.40	36.50	36.60	36.70	36.80	36.90	36
37	37.00	37.10	37.20	37.30	37.40	37.50	37.60	37.70	37.80	37.90	37
38	38.00	38.10	38.20	38.30	38.40	38.50	38.60	38.70	38.80	38.90	38
39	39.00	39.10	39.20	39.30	39.40	39.50	39.60	39.70	39.80	39.90	39
40	40.00	40.10	40.20	40.30	40.40	40.50	40.60	40.70	40.80	40.90	40
41	41.00	41.10	41.20	41.30	41.40	41.50	41.60	41.70	41.80	41.90	41
42	42.00	42.10	42.20	42.30	42.40	42.50	42.60	42.70	42.80	42.90	42
43	43.00	43.10	43.20	43.30	43.40	43.50	43.60	43.70	43.80	43.90	43
44	44.00	44.10	44.20	44.30	44.40	44.50	44.60	44.70	44.80	44.90	44
45	45.00	45.10	45.20	45.30	45.40	45.50	45.60	45.70	45.80	45.90	45
46	46.00	46.10	46.20	46.30	46.40	46.50	46.60	46.70	46.80	46.90	46
47	47.00	47.10	47.20	47.30	47.40	47.50	47.60	47.70	47.80	47.90	47
48	48.00	48.10	48.20	48.30	48.40	48.50	48.60	48.70	48.80	48.90	48
49	49.00	49.10	49.20	49.30	49.40	49.50	49.60	49.70	49.80	49.90	49
50	50.00	50.10	50.20	50.30	50.40	50.50	50.60	50.70	50.80	50.90	50

Distance of slope stake from side or shoulder stake for any width roadway, slope 1 to 1. If ground is nearly level, the cut or fill at side stake is located by the double entry method in left column and top row. The number in body of table in same row and column gives distance from side stake to slope stake. If ground is not level estimate the difference in elevation between the side stake and slope stake, lower target by this amount if cut, elevate if fill. Add this amount to cut or fill and find distance in table. Set up rod at this point, and line of sight should cut target. If it does not make the slight adjustment necessary.

MICROFILMED

APR 15 1965

DIRECTIONS FOR USE OF TABLES

TABLE No. XIV

Distance of slope side from side of shoulder
State for any width roadway, slope 1% to 1:
If ground is level, level the cut or fill at

IMPROVED TABLES
AND
INFORMATION

TABLE No. VIII

To find the angle and horizontal curve of
any other degree divide by degree of curve and
the constant found in column of constants.
Layers of curve with a quarter may be found
by finding tangent (or constant) opposite 1/4
of angle (or constant).

The distance from a point on the tangent
to the curve is very nearly the square of the tangent
length divided by twice the radius.

TABLE XIII—CORRECTIONS FOR TANGENTS AND EXTERNALS

These corrections are to be added to the approximate values, found by dividing the tangent, or external, for a 1° curve (Table VIII) by the degree of curve, in order to obtain the true tangents, or externals. Intermediate values may be obtained by interpolation.

FOR TANGENTS ADD

Central Angle	DEGREE OF CURVE													
	5°	10°	15°	20°	25°	30°	35°	40°	45°	50°	55°	60°	65°	70°
10°	.03	.06	.09	.13	.16	.19	.22	.25	.28	.31	.34	.38	.42	.46
15°	.04	.10	.14	.19	.24	.29	.34	.39	.45	.51	.53	.58	.63	.68
20°	.06	.13	.19	.26	.32	.39	.45	.51	.58	.65	.72	.79	.84	.90
25°	.08	.16	.24	.33	.40	.49	.58	.67	.75	.83	.90	.99	1.06	1.14
30°	.10	.19	.29	.39	.49	.59	.69	.79	.89	.99	1.09	1.20	1.29	1.39
35°	.11	.22	.34	.47	.58	.69	.79	.81	.92	1.04	1.29	1.42	1.54	1.66
40°	.13	.26	.40	.53	.67	.80	.93	1.06	1.20	1.34	1.49	1.64	1.79	1.94
45°	.15	.30	.44	.60	.76	.91	1.06	1.21	1.37	1.52	1.70	1.87	2.04	2.21
50°	.17	.34	.51	.68	.85	1.02	1.19	1.36	1.54	1.72	1.91	2.10	2.29	2.48
55°	.19	.38	.57	.76	.95	1.14	1.32	1.52	1.72	1.92	2.14	2.35	2.56	2.77
60°	.21	.42	.63	.84	1.05	1.27	1.49	1.71	1.94	2.17	2.38	2.60	2.83	3.07
65°	.23	.46	.69	.93	1.16	1.40	1.64	1.88	2.13	2.38	2.63	2.88	3.13	3.39
70°	.25	.51	.76	1.02	1.28	1.54	1.80	2.06	2.33	2.60	2.88	3.16	3.44	3.72
75°	.27	.56	.83	1.12	1.40	1.69	1.98	2.27	2.57	2.87	3.16	3.47	3.78	4.09
80°	.30	.61	.91	1.22	1.53	1.84	2.15	2.46	2.78	3.10	3.44	3.78	4.12	4.46
85°	.33	.66	1.00	1.33	1.68	2.02	2.36	2.70	3.05	3.40	3.77	4.14	4.55	4.89
90°	.36	.72	1.09	1.45	1.83	2.20	2.57	2.94	3.32	3.70	4.10	4.50	4.91	5.32
95°	.39	.79	1.19	1.55	2.00	2.40	2.80	3.20	3.61	4.02	4.40	4.95	5.38	5.83
100°	.43	.86	1.30	1.74	2.18	2.62	3.06	3.50	3.95	4.40	4.88	5.37	5.85	6.34
110°	.51	1.03	1.56	2.08	2.61	3.14	3.67	4.21	4.76	5.31	5.86	6.43	7.01	7.60
120°	.62	1.25	1.93	2.52	3.16	3.81	4.45	5.11	5.77	6.44	7.12	7.80	8.50	9.22

FOR EXTERNALS ADD

Central Angle	DEGREE OF CURVE													
	5°	10°	15°	20°	25°	30°	35°	40°	45°	50°	55°	60°	65°	70°
10°	.001	.003	.004	.006	.007	.008	.009	.011	.012	.014	.015	.017	.018	.020
15°	.003	.007	.010	.014	.018	.023	.027	.029	.032	.035	.039	.043	.047	.051
20°	.006	.011	.017	.022	.028	.034	.038	.045	.051	.057	.063	.070	.076	.083
25°	.009	.018	.027	.036	.046	.056	.065	.074	.083	.093	.106	.120	.127	.135
30°	.013	.025	.038	.051	.065	.078	.090	.103	.116	.129	.149	.170	.179	.188
35°	.018	.035	.054	.072	.086	.109	.131	.153	.175	.197	.213	.230	.247	.264
40°	.023	.046	.070	.093	.117	.141	.172	.203	.234	.265	.277	.290	.315	.341
45°	.030	.060	.093	.119	.153	.184	.216	.254	.289	.325	.351	.378	.411	.445
50°	.037	.075	.116	.151	.189	.227	.266	.305	.345	.384	.425	.467	.508	.550
55°	.046	.093	.142	.188	.236	.283	.332	.381	.420	.479	.530	.582	.641	.700
60°	.056	.112	.168	.225	.283	.340	.398	.457	.516	.575	.636	.697	.774	.851
65°	.067	.135	.204	.273	.343	.412	.483	.554	.625	.697	.771	.845	.922	1.01
70°	.080	.159	.240	.321	.403	.485	.568	.652	.735	.819	.906	.994	1.08	1.17
75°	.095	.182	.266	.353	.440	.528	.618	.707	.797	.887	.977	1.07	1.18	1.29
80°	.110	.220	.332	.445	.558	.671	.787	.903	1.02	1.13	1.25	1.38	1.50	1.62
85°	.128	.259	.391	.524	.657	.790	.926	1.06	1.20	1.34	1.47	1.62	1.76	1.91
90°	.149	.299	.450	.603	.756	.910	1.07	1.22	1.38	1.54	1.70	1.87	2.03	2.20
95°	.174	.350	.522	.706	.885	1.06	1.25	1.43	1.62	1.80	1.99	2.18	2.38	2.58
100°	.200	.401	.604	.809	1.01	1.22	1.43	1.64	1.85	2.06	2.28	2.50	2.73	2.96
110°	.268	.536	.806	1.08	1.35	1.63	1.91	2.20	2.48	2.76	3.05	3.35	3.66	3.96
120°	.360	.721	1.08	1.45	1.82	2.19	2.57	2.95	3.33	3.72	4.11	4.50	4.91	5.32

Index

Sunset Cl. Blvd - W Pt. Loma - Midway	1
" " A. line	4
" " B "	8
" " Midway - edge paving	9
" " " alignment	11
Midway & Ingraham	13
" " R line	15
Ingraham - N line	17 & 19
Midway Dr. R-2 line	18
Sunset Cl. Blvd & W. Pt Loma Blvd	20
" " A. line	23
" " B "	35
" " D "	42
" " Nily Bridge ^{Lanes} R+LHV	44-53
Midway Dr. " Midway Bridge	54
" " "S" line	56
" " "S-1" "	60
" " "R-2" "	62
" " & Ingraham	71
" " & Sunset Cl. Blvd	73
X Line - Crossover	75

Alignment Sunset Cliffs Boulevard
 West Point Loma Blvd. to Midway Drive

Aug. 18-52
 H. Sisson
 Garber
 Porter
 Perkins

Cross Sec. 2151

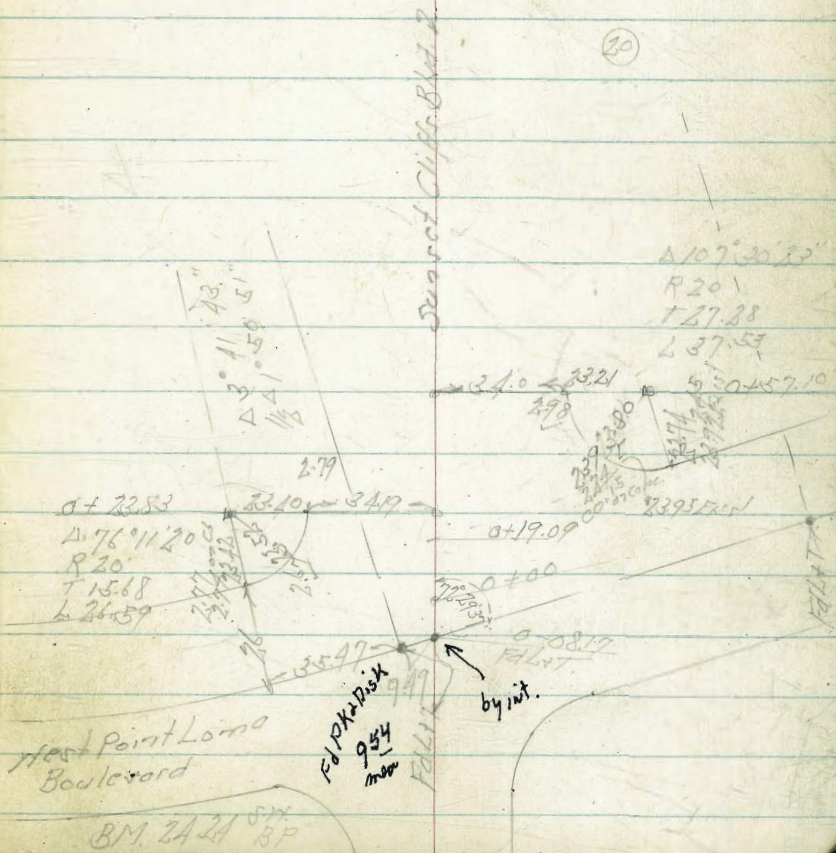
X.O. 22058

Indexed

Indicate

┌ Alignment

○ Grader



954 mea

BM 195 26.19

2124 BP
 West Point Loma
 Sunset Cliffs

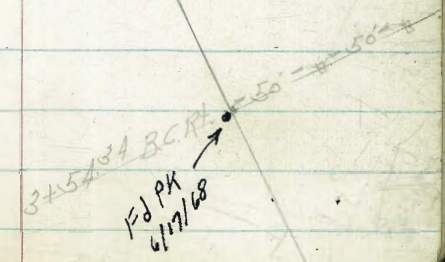
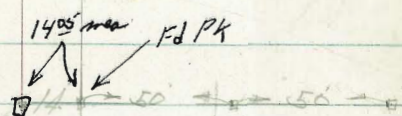
BM 2124 BP

Alignment Subsect/Cliff Blvd

+28.8° F.C.	12° 52.875'	
10+0	12° 19.87'	
+4.50 10.28	11° 22.57'	
+39.72	11° 10.79'	
9+0	10° 25.27'	A 25° 45' 45"
+50	9° 27.98'	R 1500
8+0	8° 30.68'	L 674.46
+50	7° 33.39'	T 343.03
7+0	6° 36.09'	D1 1.1459
+50	5° 38.80'	
6+0	4° 41.50'	
+50	3° 44.21'	
5+0	2° 46.91'	
+50	1° 49.62'	
4+0	0° 52.32'	
+45.66		
3+51.34 BC RT		

10+28.8° F.C.

Fd Hubs & Disk
6/17/68 2000
Fd 9/79 JAH
Reset



Sunset Cliffs Blvd.

20+52.68

B 20+27.01 Bc Lt.

(24)

(33)

H 2

L B 2

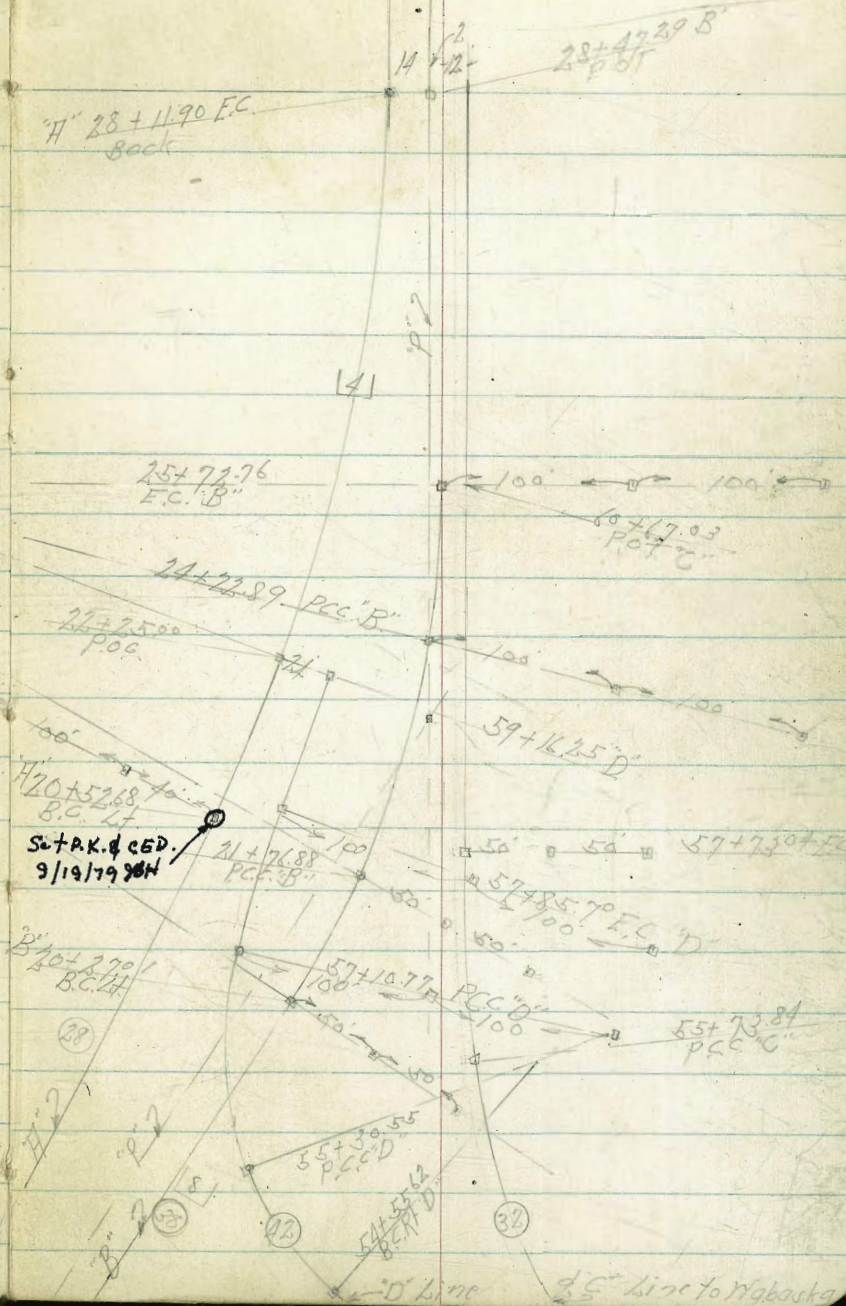
BM 10.70
Xon M.H. 3-
190 R/L 14+15

Fd Hub & Disk
6/17/68 JKH
Fd. 9/18/79 JKH
Reset 2" Pipe & CED.

1405' JKH PK.
50' → 50' → 50'
10428.80 FC

9+39.72 E.C.H.
50' → 50' → 50'
9+39.72
P.C.

+11.90 F.C.	14° 30'	
28+0	14° 16.36" LH	Δ 29° 00'
+50	13° 19.66" LH	QR 1500'
27+0	12° 21.77" LH	T 387.93
+50	11° 24.47" LH	L 759.22
26+0	10° 27.18" LH	Di. 1.145915
+50	9° 29.88" LH	
25+0	8° 32.59" LH	
+50 P.O.C.	7° 35.29" LH	
24+0	6° 38.00" LH	
+50	5° 40.70" LH	
23+0	4° 43.41" LH	
+50	3° 46.11" LH	
+25 P.O.C.	3° 17.46" LH	
22+0	2° 48.82" LH	
+50	1° 51.52" LH	
21+0	0° 54.22" LH	
20+52.68 B.C. Lt		



13+57.49 P.O.T.

75' → 75' →
Moved 0.06 East
to check L&T NY Br.

13+57.49 Fd Mon
P.O.T.

B.M. 17.69
D.M.H. Cor
ixing Wall
Sandwich
Bridge

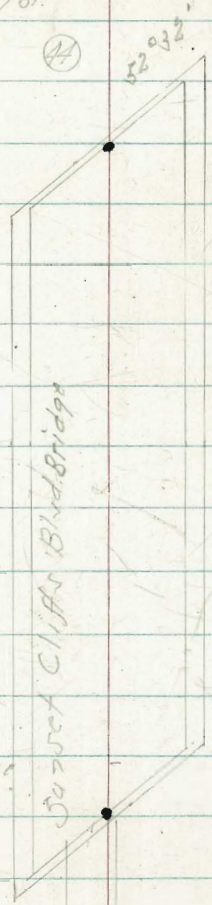
41+59.90 L&T
Fd L&T
9/19/79 JKH

B.M. 17.56
L&T NY Bridge
30+28

30+28.00 58' L&T
P.O.T. in Care Island
Fd L&T
9/19/79 JKH

28+11.90
FC "H"

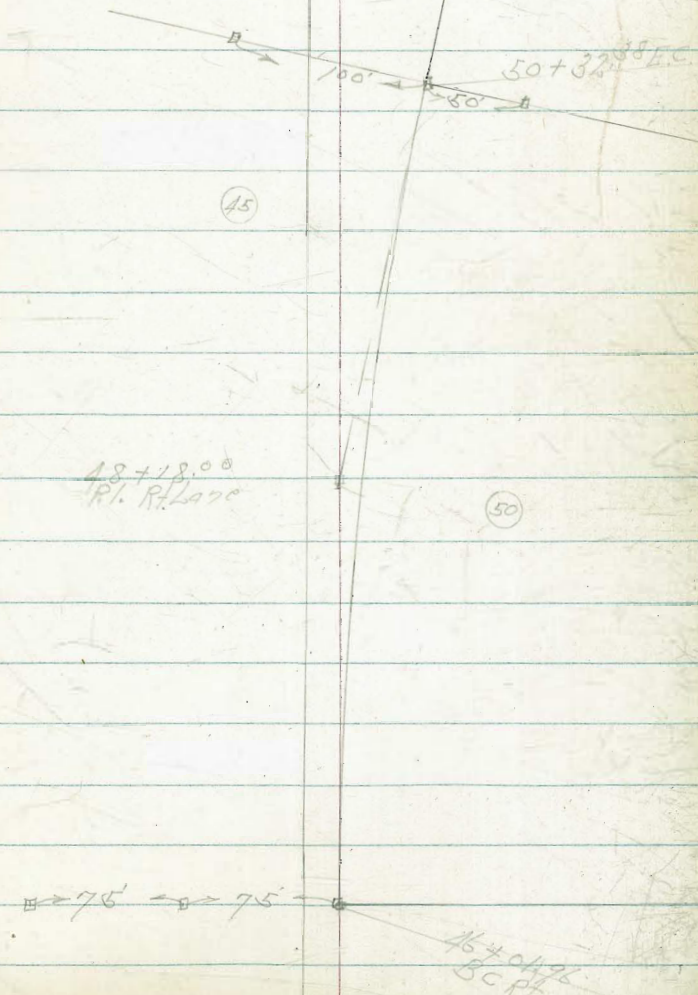
28+47.39 "B"
P.O.T.



Sunset Cliff Blvd.

30.90

+3288 FC	6° 09.92 ✓	
50+0	5° 42.09 ✓	
+75		
+50	1° 59.12 ✓	
+25		Δ 12° 19' 50"
19+0	1° 16.15 ✓	± R 2000
+75		T 216.04
+50	3° 33.17 ✓	L 430.42
+25		D 0.85944
18+0	2° 50.20 ✓	
+75		
+50	2° 07.23 ✓	
+25		
17+0	1° 24.26 ✓	
+75		
+50	0° 41.29 ✓	
+25		
16+01.96 BC PT		

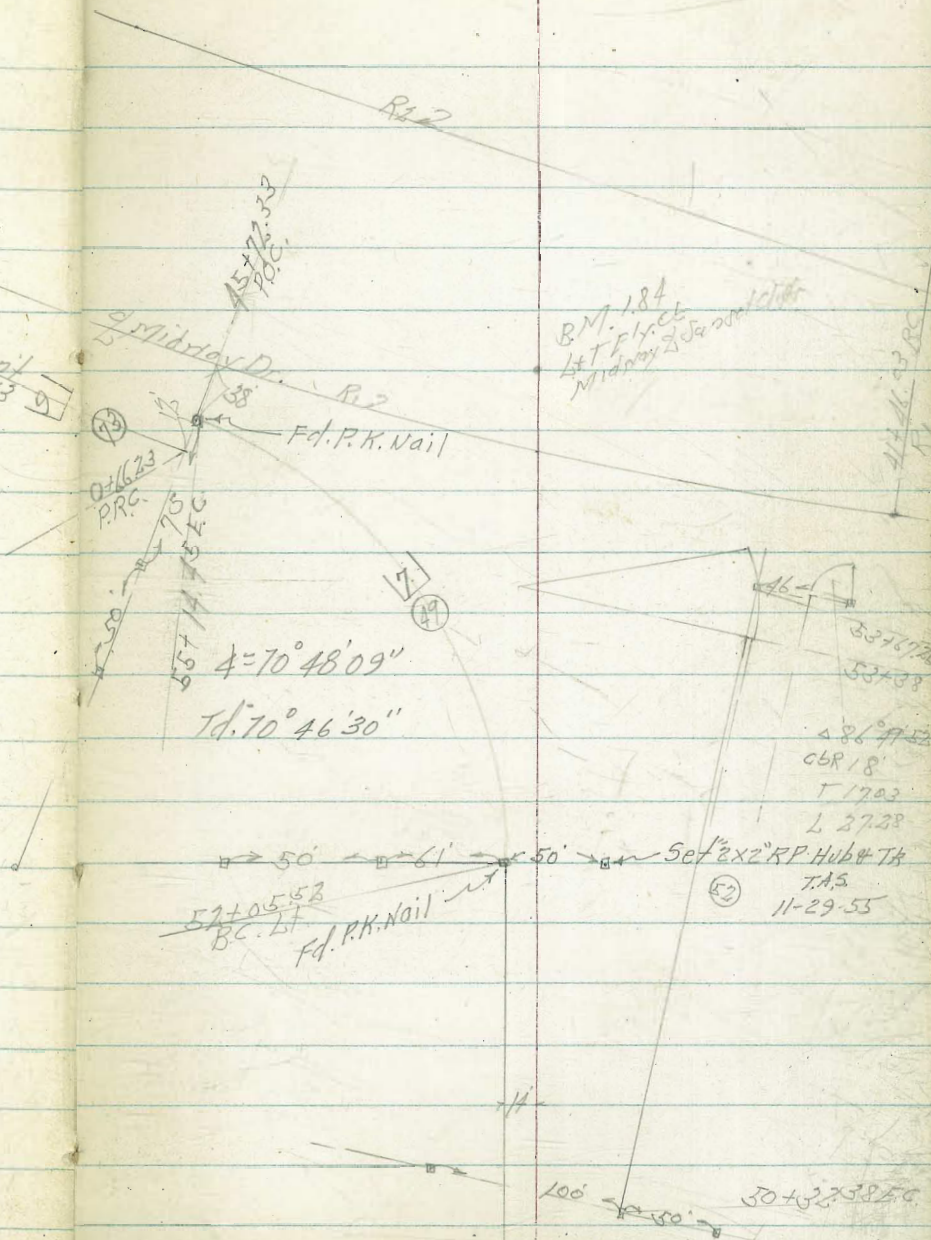


Sunset Clair Blvd.

Cont Page 9

+1445 FC	35° 24.075'	
5340	33° 44.72' ✓ ⁰⁰	
+90 Trans Pcd	32° 35.76'	
+75	30° 52.82'	Δ 70° 48' 09"
+50	28° 00.92' ✓ ⁰⁰	SR 250
+43.80 = 1 R on R	27° 18.30'	
+25	25° 09.02'	T 177.67
5440	22° 17.15' ✓ ⁰⁰	L 308.93
+88 = S on R X	20° 54.66'	
+75	19° 25.26'	D. 6.8755
+72.63 P on S L R	19° 08.76' ✓	
+50	16° 32.37' ✓ ⁰⁰	
+25	13° 41.48'	
5340	10° 19.60' ✓ ⁰⁰	
+75	7° 57.71'	
+50	5° 05.82' ✓ ⁰⁰	
+25	2° 13.93'	

52+05.52 BC Lt



Flammock
B Line

Sunset Cliffs Blvd.

+2289 PCC	10° 04.09' ✓	
21+0	9° 07.87' ✓	
+75	8° 06.48'	Δ 20° 08' 10"
+50	7° 05.10' ✓	R 700.0
+25	6° 03.71'	T 124.29
23+0	5° 02.32' ✓	L 246.01
+75 0	4° 00.93' ✓	D 2.4555
+50 0	2° 59.55' ✓	
+25	1° 58.16'	
22+0	0° 56.77' ✓	
+76.88 PCC	3° 04' ✓	
+50	2° 31.01' ✓	Δ 6° 08'
+25	1° 00.32'	R 1400
21+0	1° 29.62' ✓	T 75.0
+75	0° 58.92'	L 149.87
+50	0° 28.23' ✓	D 1.2278
20+27.01 B.C.H.		

+72.76 P.C.	3° 04' ✓	
+50	2° 36.07' ✓	Δ 6° 08'
+25	1° 05.28'	R 1400
25+0	1° 24.68' ✓	T 75.00
+75	0° 03.98'	L 149.87
24+50	0° 33.29' ✓	D 1.2278

Alignment Sunset Cliffs Midway Drive
Edge of Paving to Ventura Blvd.

+61.73 EC	1° 51.37'	
+50	1° 14.75'	Δ 3° 42' 46"
+25	1° 30.65'	R 30.48'
1+0	1° 16.56'	T 98.78
+75	1° 02.46'	L 197.50
+50	0° 48.36'	D 10.5639
+25	0° 34.27'	
3+0	0° 20.17'	
+14.23 P.C.	0° 00'	
+50	2° 34.09'	Δ 5° 32' 02"
+25	2° 13.13'	R 20.50'
2+0	1° 52.17'	T 99.07
+75	1° 31.20'	L 198.00'
+50	1° 10.24'	D 10.8385
+25	0° 49.28'	
1+0	0° 28.32'	

0+11.23 E.P.
55+17.75 Sunset Cliffs

Brd. Ford Page 7

+08.63 EC	11° 02.78'	
8+0	13° 25.67'	Δ 28° 05' 34"
+75	11° 38.24'	R 400'
+50	9° 50.81'	T 100.07
+25	8° 03.38'	L 196.12
7+0	6° 15.95'	D 1.42972
+75	4° 28.52'	
+50	1° 41.09'	
+25	0° 53.66'	
6+12.51 B.C. I.T.		

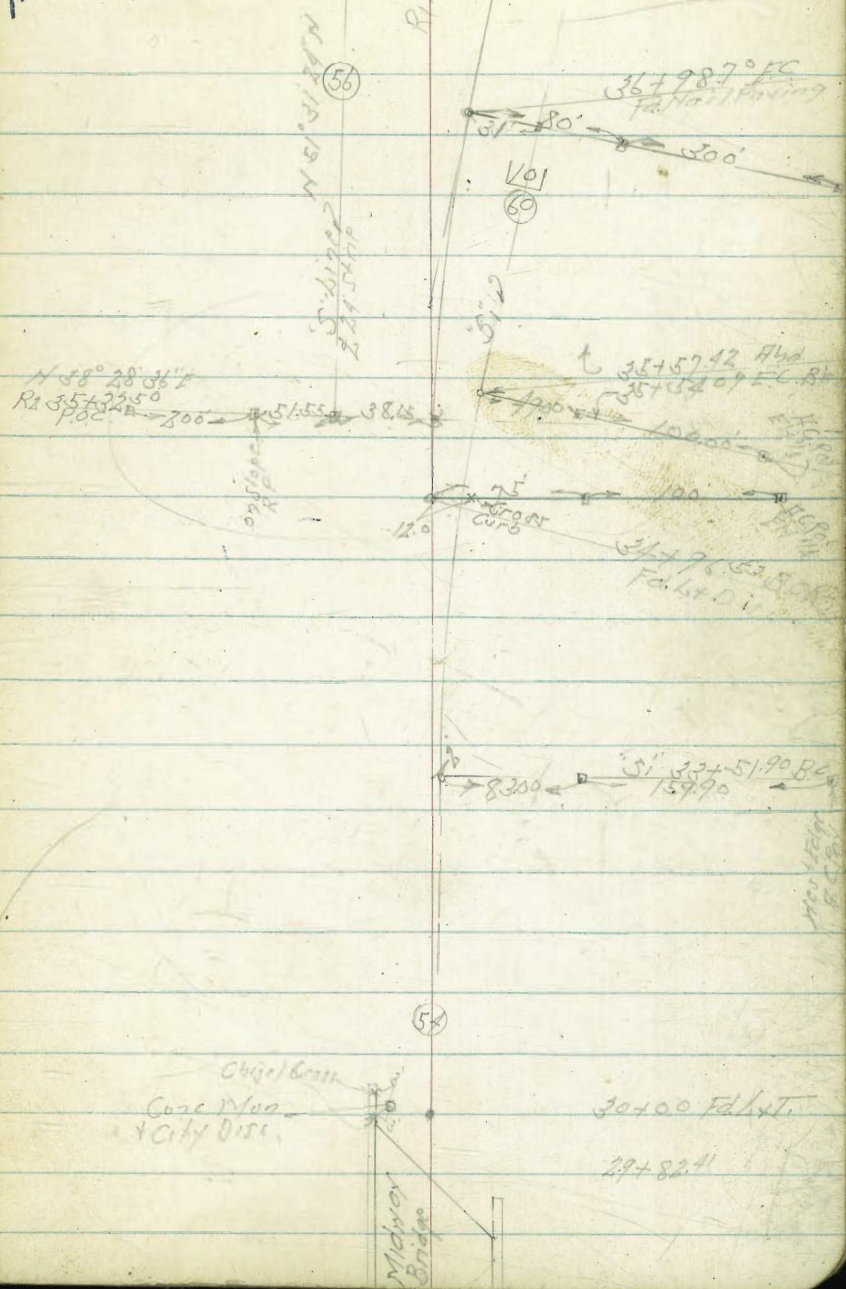
Midway Drive
Si Line

+ 57.42 Ahead		
+ 54.07 E.C. Back	5° 47.50'	
+ 25	4° 57.54' ✓	A 11° 25'
35 + 0	4° 14.57' ✓	R 1000'
+ 75	3° 31.60' ✓	T 101.43
+ 50	2° 48.83' ✓	L 20217
+ 25	2° 05.65' ✓	D 1.7189
+ 15 S.L.	1° 18.16' ✓	
34 + 0	1° 22.88' ✓	
25.05 - 2.84		
+ 75	0° 39.71' ✓	
23.15 - 2.84		
33 + 51.9° RC Pt.		

Alignment Sunset Cliffs Blvd.
And Midway Drive

Indexed

+987° E.C. R2	5° 47.50'	
+75	5° 06.75'	
+50	1° 22.78'	Δ 11° 35'
+25	3° 40.81'	Δ 5° 47' 20"
3640	2° 57.84'	R 1000'
+75	2° 14.87'	T 101.43
+50	1° 31.90'	L 202.17
+32.50	1° 01.82'	D. 1.7189
+07.50	0° 18.85'	
3540	0 05.96'	
3496.53 B.C.R. R2		



42+17.98 4/22
42+17.55 B.K. 7

Fd. L. T

41+46.03 BC
R1

(56)

BM 3.75
8P
38+08

37+98
500

Nail in Corral
BM 1.73 80x23' 86+67 R2

36+98.70
500 F.C.

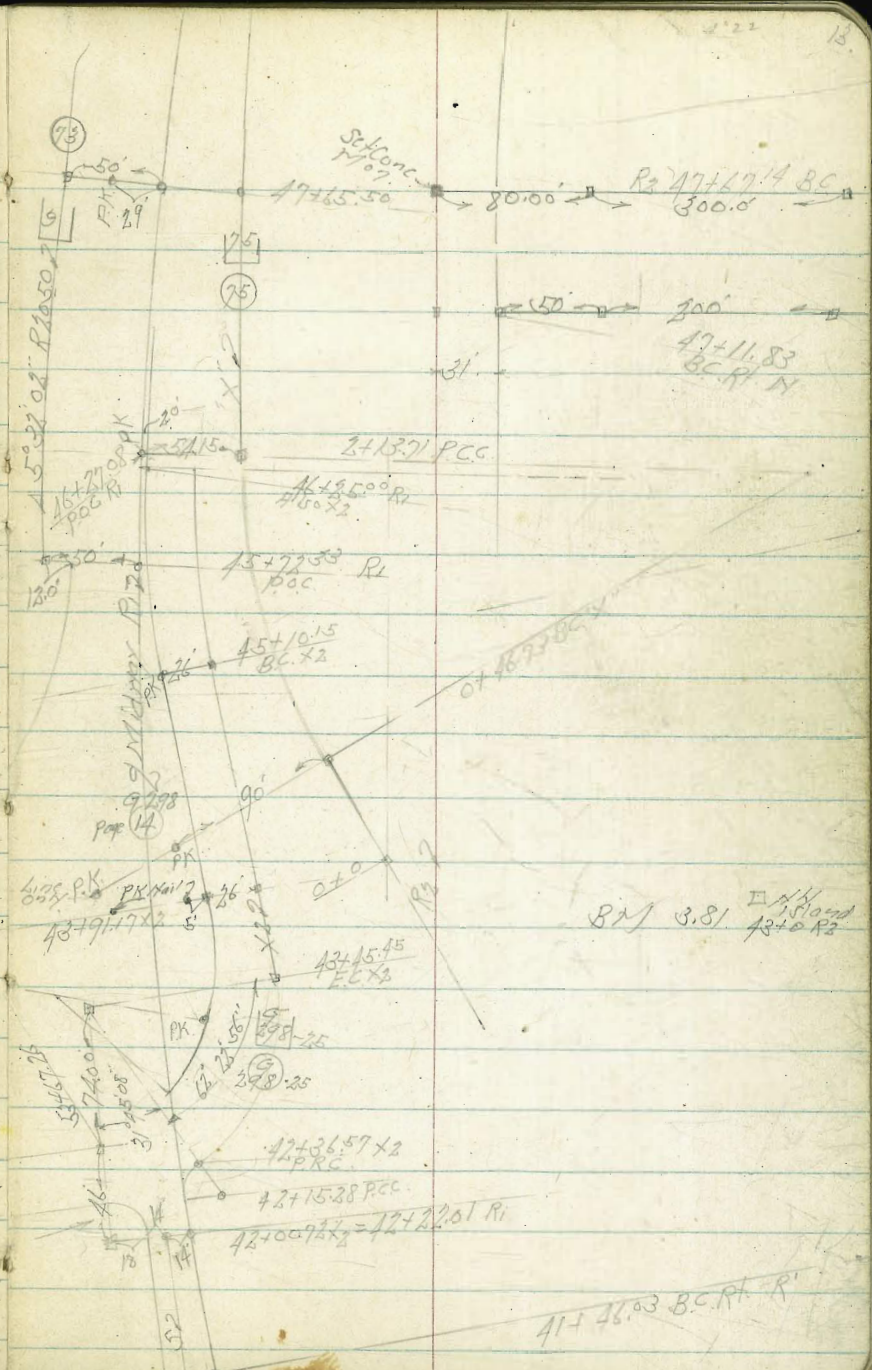
Midway Drive + Ingraham St.

Ri Line

Indexed

47+0	7° 56.10' ✓	
+50	7° 13.13' ✓	
+50: opp to MH	6° 53.95' ✓	
+27.08	6° 53.43' ✓	L 43° 22' 35'
46+0 P.O.C.	6° 30.16' ✓	L 21° 41' 17.5'
+77.33	6° 06.38' ✓	L R 2000
45+50	5° 47.18' ✓	T 795.42
+99.09	5° 03.43' ✓	L 1514.12 0+622 557+745
+91.6	4° 31.24' ✓	D 0.859487
+81.6	3° 58.97' ✓	
+50	3° 38.27' ✓	
43+0	2° 55.30' ✓	
+95.31	2° 12.33' ✓	
+90.31	2° 03.88' ✓	
+50	1° 29.35' ✓	
+36.57	1° 17.81' ✓	
+22.01	1° 05.30' ✓	
+17.55	1° 01.46' ✓	
42+0	0° 46.38' ✓	
+75	0° 24.90' ✓	
41+46.03 B.C. Pt. R1		

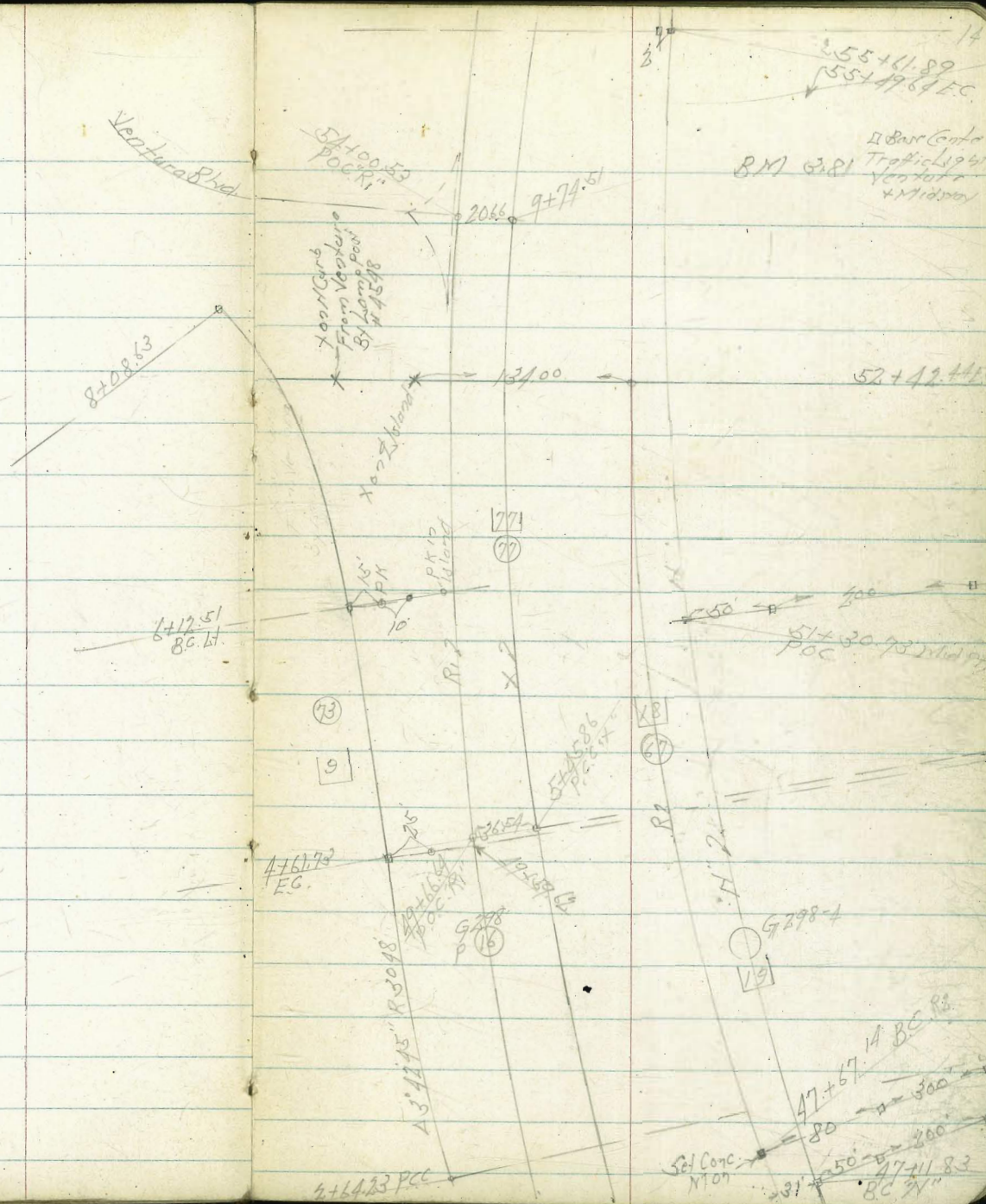
L 86° 49' 52"
R 18'
T 17.03
L 27.28



41+46.03 B.C. Pt. R1

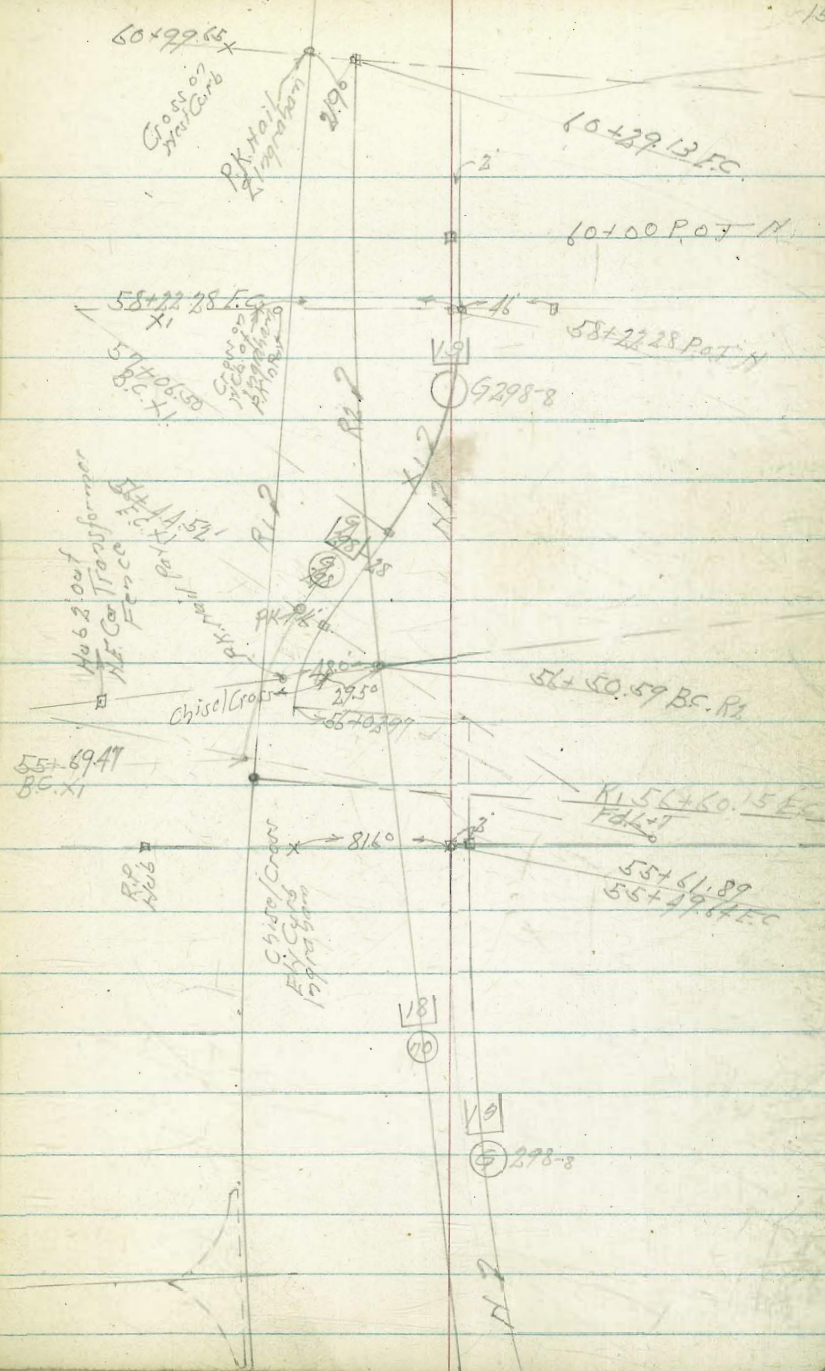
Ri Line

55+0	19° 23.65' ✓
+50	18° 40.68' ✓
54+00.53	17° 58.17' ✓
+50	17° 14.73' ✓
53+0 POC R1 Post	16° 31.76' ✓
+50	15° 48.79' ✓
52+0	15° 05.82' ✓
+50	14° 22.85' ✓
51+0	13° 39.87' ✓
+50	12° 56.90' ✓
50+0	12° 13.93' ✓
+66.64	11° 45.26' ✓
+59.63	11° 39.23' ✓
+50 POC 3rd Com	11° 30.96' ✓
49+0	10° 47.98' ✓
+50	10° 05.02' ✓
48+0	9° 22.04' ✓
+65.50	8° 52.39' ✓
47+50	8° 39.07' ✓



R1 Line

2.910 R1 Car
at Eloc 17.4
W Side of Hwy
Opp 58+0
Page 70



+60.15 FC. R1	21° 41.29' ✓
+50	21° 32.56' ✓
56+0	20° 19.59' ✓
55+50	20° 06.62' ✓

66+7518 B.C. Pt.

2/12/1970

2/12/70

Qtr. Pot
No. 1



67298-10



60+29.13 F.G. Pt.

Pt.
P2

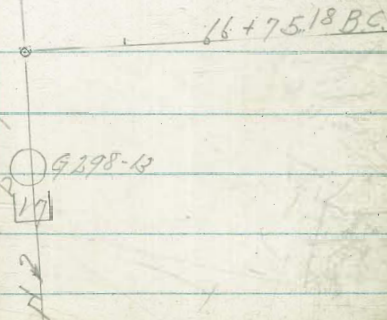
Ingraham St.
"H" Line.

Ingraham St.
Indexed

+15.70 EC "H"	2° 14.25'	
+25	2° 00.26'	
70+0	1° 51.66'	A 4° 28' 30"
+75	1° 43.07'	Z R 5000
+50	1° 34.47'	T 195.26
+25	1° 25.88'	L 390.52
69+0	1° 17.29'	D 034277
+75	1° 08.69'	
+50	1° 00.10'	
+25	0° 51.50'	
68+0	0° 42.91'	
+75	0° 34.32'	
+50	0° 25.72'	
+25	0° 17.13'	
67+0	0° 08.53'	
66+75.18 BC RT "H"		

17
Ingraham
71+39.20 P.O.T.
70+65.70 EC
Midway

Rt 2 Ingraham



Midway Drive Alignment

R₂ Line

Sketch Page 14

+42.44 F.C.	10° 28.45" ✓	
52+0	9° 32.88" ✓	Δ 20° 56' 54"
+50	8° 26.22" ✓	Δ 10° 28' 27"
51+0	7° 20.11" ✓	R 1300
+50	6° 14.00" ✓	T 240.33
50+0	5° 07.89" ✓	L 475.30
+50	4° 01.78" ✓	D. 1.3222
49+0	2° 55.67" ✓	
+50	1° 49.56" ✓	
48+0	0° 43.45" ✓	
+7+67.14 BC Pt		

+29.13 F.C. "R ₂ "	5° 25.83" ✓	
60+0 ✓	5° 00.29" ✓	Δ 10° 50' 40"
+50 ✓	4° 17.82" ✓	Δ 5° 25' 30"
59+0 ✓	3° 34.35" ✓	R 2000
+50 ✓	2° 51.37" ✓	T 189.84
58+0 ✓	2° 08.40" ✓	L 378.51
+58.49 ✓ x	1° 32.73" ✓	D. 0.8594
+30.30 ✓ x	1° 08.50" ✓	
+13	0° 58.62	
57+0 ✓	0° 42.46" ✓	
+88.62 x	0° 32.68	
+56.59	0° 05.16	
56+50.59 BC Pt "R ₂ "		

Midway Drive + Ingraham St.

No Line or Edge of Paving.

+61.89 Head

+49.64 Back

13° 40' ✓

55+0

12° 51.38' ✓

A 27° 30'

+50

12° 02.45' ✓

R 17562

54+0

11° 13.51' ✓

T 427.03

+50

10° 24.58' ✓

L 837.81

53+0

9° 35.64' ✓

F 51.17

+50

8° 46.71' ✓

D. 0.9787

52+0

7° 57.77' ✓

+50

7° 08.84' ✓

+30.73 - Mid Pt.

6° 50' ✓

51+0

6° 19.90' ✓

+50

5° 30.97' ✓

50+0

4° 42.03' ✓

+50

3° 53.10' ✓

49+0

3° 04.16' ✓

+50

2° 15.23' ✓

48+0

1° 26.29' ✓

+50

0° 37.36' ✓

47+11.83 B.C. Pt.

Grades Sunset Cliffs Boulevard
West Point Loma Blvd.

Lt: West

Index and

Aug. 20-52 Saturday
F. S. Simon
Garber
Rorer
D. S. Brown
off map

Rt: East

	Slope	Super	RP	Tac	Hinge	EP		EP	Hinge	Tac	RP	
+50	2:1	.024	11.2 11.2 -0.1 55.4	11.2 F10.2 15.4	5.57 20.49 25	11.3 11.2 22 14.59 14 5.74	44.8 44.5	19.88 19.54 14.66 14 6.82	19.27 25'	6.72 2.3 4.8 2.5 30.0	4.8 4.9 -3.1 50.0	
2+0		.011	11.1 11.2 -0.1 55.8	11.1 F10.4 15.8	+0.7 5.18 20.88 25	0.8 11.2 20.76 14 14.54 5.6	39.5 39.1	20.11 20.41 14.57 14 5.72	19.91 25'	6.15 1.6 5.1 F3.5 32.0	5.1 9.1 -1.3 42.0	
+50			11.0 11.0 -0.0 56.7	11.0 F10.7 15.4	+0.3 4.82 21.24 25	7.0 11.0 21.29 14 14.49 5.07	34.7 35.2	21.25 21.30 14.48 14 5.02	20.75 25'	5.31 0.8 4.5 F3.7 32.1	1.5 6.2 -1.3 42.4	
TP		.280	12.7 13.4 -0.7 56.5	12.7 F6.2 40.5	9.89 4.89 21.67 28.14	13.3 2.8 3.6 F6.1 17.1 17.14	40.5 40.5	22.08 22.06 19.79 F2.6 19.8	21.51 30.79	4.55 6.6 8.7 F3.1 35.0	8.7 8.8 -0.1 45.0	
0+59.10 CB 86.07 Rt.	2:1		8.1 8.5 -0.4 49.2	6.4 8.1 F1.7 39.2	4.27 21.77 35.84	5.8 8.1 4.3 F2.3 24.84	38.7 38.5	22.71 22.57 34 34	21.99 45	6.1 4.7 C1.4 46.4		
0+23.83 CB 86.07 Lt.			5.9 5.2 0.7 45.7	5.9 F0.7 45.7	22.18 45	5.4 5.2 0.2 37 34	23.21					
B.M.		388	28.12	24.24	24.24	5.74 5.74	8.11	0.46	24.70	24.24	5.74 5.74	

Nov. 21-52
Front Street
BM 2424
1.22
2.606
Soil Grades
BM 2424 Above
1.95
2.617

Soil Cr.
B.M.
5.74
5.74

Finish Grades Nov. 29.52
 H.S. 1500
 Popl
 Red
 K. Miller
 Rt. 20.41T
 22

Lt.

Slope	Super	RP	Toe	Hinge	EP	L	EP	Hinge	Flow Line	Soils
+50	2:1	.08	53 53 6.0 47.0	-0.7 5.3 F 1.0 37.0	15.96 25'	+0.2 5.3 F 5.1 14	147 6.59 15.08 13.9L 14.53 4.51 5.50	866 883 12.84 14 7.57 14 7.72	607 3.1 4.1 F 1.0 27.0	4.0 4.0 10.1 37.0
For Finish 18.27T										
7+0			54 5.1 -0.7 48.0	-1.1 5.4 F 6.5 38.0	16.39 38.0	-0.3 5.4 F 5.7 14	599 7.76 15.51 49.0 5.07	833 810 13.27 7.13 7.37	564 2.6 4.9 F 2.3 29.6	4.9 4.1 10.2 37.6
+50			53 5.3 6.0 48.8	-1.1 5.2 F 6.2 38.8	16.86 38.8	-0.7 5.3 F 6.0 14	557 7.76 5.59 15.98 4.43 4.60	776 793 13.74 6.67 6.84	5.4 2.4 5.1 F 2.7 30.4	5.1 4.5 7.05 10.4
6+0		.08	53 5.2 10.1 49.8	-2.1 5.3 F 7.1 39.8	17.36 25'	-1.3 5.3 F 6.5 14	502 5.12 16.48 39.3 4.76	726 743 14.24 6.12 6.33	4.9 1.9 5.1 F 3.2 31.4 7	5.1 4.8 7.03 4.2
5+50	2:1	.08	45 5.2 -0.7 49.4	-3.7 4.5 F 7.2 39.4	17.91 25'	-1.8 1.5 F 6.3 14	4.47 7.04 17.03 14.338 3.76 3.55	6.76 6.88 14.79 14.548 5.72	4.36 1.4 4.0 F 2.6 30.2	4.0 3.8 7.02 4.02
15.26T										
15.26T										

Grades Survey Cl. H. Blvd.

Indexed

H Line

TP 1.51 11.82 4.95 10.31

Slope Super

Hinge

E.P.

±

E.P.

Hinge

Sail Cr.

20.41
8.81
13.60
2.81
1.81

+50

2:1 .050

4.5
3.5
+0.6
384

14.186
4.1
F2.7
38.4

13.84
23'

2.0
12.2
12?

27.5
8.22
8.39
13.28
12.29
37.2

8.25
1.2
3.52
12.17
12.17
37.2

5.54
1.5
37.2

Final Grades

18.27 T

6.82 on 50' TP
11.43 91 3972 EC H

+39.72 EC H

.053

4.1
3.8
-0.3
406

1.3
4.1
F2.8
306

13.97
25'

1.9
4.1
F2.2
14

E.P. 8.12

E.P. 9.12

Hinge 4.20

(Flow line)

11.46
25'

3.8
3.8
0.0
25'

3.8
3.7
7.01
3.8

B.M.

15.66

3.19

12.07

X 07 M.H.K. on
144 L1
019+35

3.60
out

1.50
0.51

#2 Sail Cr

21.50

10.24 on 50' TP

11.44

4.29

15.71

0.64

3.8
3.6
+0.2
41.0

7.38
F2.0
31.0

14.47

1.5
3.8
F2.3
14

7.76
1.2

7.91
13.76
6.65
6.82

9.54
1.17

9.71
12.86
5.21
8.45
8.33

(Flow line)

11.45

6.82
3.8
3.8
0.0
25'

3.8
4.1
-0.3
3.8

SC. 52

11.44

4.58

16.02

+50

.076

4.8
5.7
-0.3
112

7.39
+0.2
4.8
F2.1
34.2

15.08
25'

+4.0
4.8
F2.8
14

7.65
1.2

7.72
14.25
6.16
6.19
6.27

9.32
9.52

13.19
5.08
12.13
8.28
8.15
8.12

(Flow line)

11.53

6.74
3.7
3.5
F0.8
26.6

4.5
4.8
-0.7
36.6

8+0

2:1 .08

5.4
5.7
-0.3
76.4

5.2
-0.3
F2.7
36.4

15.56
25'

+0.6
5.4
F2.8
14

6.82
1.2

6.99
14.48
14.57
5.7

9.06
9.33

13.56
4.71
12.44
14.79
12.14

(Flow line)

11.80
25'

6.47
+3.5
4.1
F0.6
26.2

4.1
3.5
-0.4
36.2

15.26

15.26

"A" Limb

		RR	TOC	Hinge	F.P	T	Sail Code
12+0	211	5.5 5.2 0.0 4.2	+0.6 5.2 F2.6 3.2	1.45 11.21 23'	+0.4 5.2 F2.8 1.2	4.69 4.72 11.42 4.70 4.96	16.21 SC#2 16.02
	Finish 15.6.7						
+50		2.9 3.6 +0.3 38.4	+0.2 2.9 F2.7 38.4	4.03 11.63 23'	+0.1 2.9 F2.8 1.2 ?	4.33 4.30 11.69 4.52 4.69	
11+0	.009	2.3 2.1 +0.2 38.2	-0.3 2.3 F2.6 38.2	2.53 12.13	-0.3 2.3 F2.5 1.2	3.99 4.16 12.02 12.418 4.25	
+50	023	1.9 1.6 +0.2 38.6	-0.9 1.9 F2.8 38.6	2.99 12.67 23' 3.54	-0.6 1.9 F2.6 1.2	3.69 3.77 12.42 1.2 3.77	
10+0	211 037	1.5 1.3 +0.2 38.8	-1.4 1.3 F2.9 38.8	2.43 13.23 23'	-1.0 1.3 F2.5 1.2	3.19 3.34 12.83 1.2 3.34	
		11.82					

"A" Line

			Hinge		FP	±		Sail Cr.
450	2.1	4.8 4.8 0.0 40.6	4.89 1.0 4.8 F3.8 30.6	10.77 23'	0.5 4.8 F4.3 12	479 477 11.33 12.17 19.0	4.11 4.53 11.56 4.66	16.21 551 on MH 10.70 3.55 16.05
	Finish 15.66T							Sail Cr #3 16.02
1450		4.7 6.0 -0.3 40.2	4.95 1.1 4.7 F3.6 30.2	10.71 23'	0.6 4.7 F4.1 12?	476 475 11.26 13.47 19.0	4.53 4.79 11.50 4.73	
150		4.6 4.9 -0.3 40.0	4.98 1.1 4.6 F3.5 30.0	10.68 23'	0.6 4.6 F4.0 12	479 479 478 11.23 5.75	4.55 4.72 11.47 4.7	
1350		4.9 4.9 0.0 40.6	4.97 1.1 4.9 F3.8 30.6	10.69 23'	0.6 4.9 F4.2 12	478 475 11.24 12.49 5.74	4.54 4.71 11.48 4.73 4.96	
1250	2.1	5.0 5.0 0.0 41.2	4.74 0.9 5.0 F4.1 31.2	10.92 23'	0.5 5.0 F4.5 12	474 474 477 11.28 12.49 5.73	4.59 4.82 11.52 4.8	
		11.82						

Grades Sunset Cliff Blvd
H Line

			Hinge		E.P	±		Soil Cr
17+0	2:1	5.1	11.61 23'	10.1 5.1 F4.1 12?	12.16 12' 3.89 4.06	5.34 5.51 3.65 1.17 3.82		Soil Cr 16.05
	Finish 15.66 T 4.23 x 0.77 H BM 16.71 19.0 ft 14+25							Soil Cr-2 16.05 4.41 11.55 6.19 17.74
+50		5.4 5.2 70.2	11.38	1.8 1.2 F4.2 12	11.93 4.15 4.29	5.52 5.72 3.88 1.17 4.65		
BM	246 Finish BM 10.70 Above 5.85 T 16+0 16.05 T	12.16	10.70 10.74	10.70 10.74 19.0 ft 14+25 10.70 #2151-19	4.30 4.47 11.72 12	4.06 4.23 11.96 4.09 1.17 4.26		
+50		4.4 4.5 70.1 40.2	11.00	0.7 0.2 F3.6 30.2	11.55 11.2 4.50 1.59 4.69	4.33 4.70 11.79 4.26 1.17 4.26		
15+0	2:1	4.6 4.2 40.4	11.82	0.9 0.6 F3.7 30.4	11.42 12' 4.33 1.80	4.36 4.53 4.09 1.17 4.54		

"A" Line

			Hinge		F.P.	±			Soil G.
+50	2.1	5.5 5.2 +0.1 4.22	0.9. 3.82 5.5 F 4.6 32.2.	12.23 23'	0.4. 5.5 F 5.1 12	4.96 5.73 12.78 12' 4.45 4.48	4.64 4.87 13.10	3.93 4.10 4.10	16.95 3.21 TP 13.64 4.39 17.83
		Finish 16.05							
19+0		5.2 5.2 +0.1 4.16	0.9. 3.88 F 4.3 31.6.	12.27	0.3. 5.2 F 4.9 12	4.92 5.09 12.82 3.21 12	4.98 4.85 13.06	3.99 2.73	50.42 17.74
+50		4.9 4.8 +0.1 40.8	1.0. 3.82 4.9 F 3.9 38.8.	12.18	0.4. 4.9 F 4.5 12	5.01 5.18 12.73 3.32 3.29 3.29	4.77 4.74 12.97	3.98 2.25	
18+0		4.9 4.8 +0.1 40.6	1.1. 4.01 4.9 F 3.8 30.6.	12.04	0.6. 4.9 F 4.3 12	5.15 5.32 12.59 3.46 3.29	4.96 5.08 12.83	3.22 2.39	
17+50	2.1	5.1 4.9 +0.1 40.6	1.3. 4.20 5.1 F 3.8 30.6.	11.95 23	0.8. 5.1 F 4.3 12	5.34 5.51 12.40 12' 3.65 3.52	5.10 5.27 12.64	3.41 3.58	
		13.16							

"A" Line

Sept 22 52
H.S. 1500
Garber
Kort
Parkins

			Hinge		EP	d		EP	
7.50	211.06	4.8 4.8 4.8 38.2	32.2 36.2 613	10.47 23'	6.87 6.98 2.9 2.8 F2.1 12	5.07 5.27 6.02 12.31	5.82 4.44 4.78	4.78 4.48 3.96 13.87 19.46	2.55 1.72 3.72
26.10	Finis 46 grade 16.107 5.62 109.8 78.7 188.5	5.4 5.4 -0.7 36.6	36.4 36.4 F1.8 28.6 6.48	10.12 23'	2.7 5.4 F2.7 12	7.65 12 13.52 11.00 12	6.20 6.37 4.76 5.13	4.45 4.2 13.71 21.86	4.12 2.76 3.88
7.50		5.2 5.2 -0.3 35.8	38.8 F1.4 25.8 6.68	9.92 23'	2.9 5.2 F2.3 12	7.3 15.52 5.77 10.80 12	6.48 6.57 4.68 5.35	1.53 4.7 13.63 23.38	4.20 2.77 2.96
25.10		5.4 5.4 -0.3 36.2	38.8 F1.6 36.2 6.73	9.87 23'	3.0 5.4 F2.4 12	7.4 15.57 17.58 10.75 12	6.45 6.62 4.71 5.38	4.53 4.7 13.63 23.98	3.64 2.79 2.96
24.50	211.06	5.7 5.4 -0.4 37.0	37.1 5.7 F2.0 27.0 6.64	9.96 23'	2.9 5.7 F2.8 12	7.2 15.57 17.58 10.84 12	6.33 6.53 4.68 5.39	4.4 4.6 13.72 34	3.55 2.79 2.87
		13.70							

F.S. 1500
17.27

12.83

52.6
16.42

J.C. 42
18.16

"A" Line

			Hinge		F.P.	Δ	E.P.		
450	Finch St K.60	Cont + Page 41							19. E Edge 17.83
	2:1	0.8		0.1					Sub. Grade K. 43
+ 11.90 EG.	NSB		12.93		13.56	14.25	14.96		
23+4729 POT. B			23		12.286	217	12.00		
					3.03	284			
									50.72
									18.16
									4.92
									13.184
									13.0
28+0	.061	4.1 38 12.3 39.2	1.0 1.1 F 31	6.17 12.68 23	0.4 24 F 37 12	13.35	14.08	14.85	2.98
						13.307	2.34	12.05	1.37
						1.77	3.21	1.74	
150	.074	4.7 27 66 384	2.0 2.2 F 29	4.97 11.69 23	1.2 23 F 35 12	12.51	13.40	14.44	3.29
						4.2	3.02	13.28	1.98
						3.91	3.7		2.75
						4.08			
27+0	2:1 .08	4.4 22 60 364	2.2 2.4 F 17	5.67 10.98 23	1.8 1.7 F 21 12	11.86	12.82	14.11	3.72
						12	3.60	16.07	2.32
						4.52	4.7		5.78
						4.73			

10.70

Grader Sup set Cliffs Blvd.
"C" Line

Indexed

Slope Super		Hinge	EP.	E	E.P.	Hinge	Cont Page 40	
+50	2:1		385 17 402 4.2	13.47	514 409 537 436 170.5 79 F74 24'	12.68 35'	392 1.0 49 F79 48.8	79 81 -52 58.8
60+0	Finish 16.60 T		391 12 403 4.2	13.41	520 425 537 442 170.5 81 F76 24'	12.67 35'	398 1.1 81 F70 49.0	81 84 -21 59.0
+50	Soil/Cref 17.33		397 12 411 4.1	13.35	502 526 441 543 458 170.5 80 F77 24'	12.56 35'	404 1.1 85 F74 49.8	85 88 -21 59.8
59+00	2:1		403 17 420 4.2	13.29	532 422 549 449 170.5 87 F80 24'	12.50 35'	410 out 1.2 87 F75 50.8	87 90 -21 60.0
58+92					13.03 24'	12.48 35'	412 1.2 87 F75 50.0	out
						12.48 35'		

13.70 B + Ford 29

Grader Sunset Cliffs
B Line

Indirect

Sept. 6. 52 33
H. S. 5107
Garber
Kofler
Chapman

		Soil Gate	Valley	E.P.	L ₂₅₀	E.P.	Hinge			
1140	2:1	BM 10.70 480 1520	406 11.60 17.5	333 17 350 ✓	384 401 11.87 13	408 425 11.63 0.0	-0.1 51 F52 0.0	11.08 11'	458 +0.5 31 F44 30.2	51 51 0.0 30.2
	Finish 1566									
1571	at Ford 1491.2		381 ✓ 11.85 16	315 17 332 ✓	366 379 383 12.05 12	396 413 345 363 0.0	-0.3 33 F3.5 0.0	(Flow Line) 11.35 11'	431 183 F31 172.	50 50 0.0 37.2
+28.80	EC.		366 cut 12.00 154	308 17 325 ✓	343 370 11.77 12	-0.2 22 F2.4 0.0	(Flow Line) 11.37 11'	429 out 10.2 20 F20 150	33 33 0.0 35	
10 +0				294 17 311 ✓	345 379 383 12.26 10.21	378 402 339 356 11.81 14	-0.2 0.7 F1.0 14	(Flow Line) 11.41 35	425 +0.2 0.7 F0.5 28.0	0.7 0.7 0.0 36
9450	2:1			316 17 333 ✓	12.55 13.56 265 382	11.85 14 335 354	-0.3 0.1 F0.4 14	(Flow Line) 11.46 35	420 0.1 0.0 25	0.1 0.0 0.0 35
	0.86	11.56	1070	190.14 141.25				11.56		

"B" Line

				Valley	EP	Z	EP	Hinge			
+50	2.1	To point 424	15.66 3.8 11.98 Top (set 11.47)	519 10.97 25	3.73 3.90	4.34 4.71 11.47 12	4.49 4.65 3.97 4.14 0.0	0.3 1.2 F4.3 0.0	10.68 11'	4.8 0.9 F3.7 78.9	4.6 0.0 28.4
13+0	3.7	Fin 153 15.65 X 4.25 10.71	M.H. Riv 10.90	4.76 10.90 23.5	3.74 3.87	4.33 4.4 11.48 12	4.47 4.64 3.95 4.13 0.0	0.3 1.2 F4.3 0.0	10.69 11'	4.9 0.9 F3.7 78.4	4.6 0.0 28.4
+50		501 Crater 15.20 X 4.2 Soil Crater 15.71		4.61 11.05 23	3.68 3.85	4.42 4.52 11.53 12	4.42 4.60 3.95 4.09 0.0	0.3 1.2 F4.6 0.0	10.73 11'	4.9 0.8 F4.1 79.2	4.6 0.0 28.2
12+0				4.46 11.20 26.5	3.57 3.77	4.42 4.52 11.60 12	4.42 4.60 3.95 4.09 0.0	0.3 1.2 F4.7 0.0	10.81 11'	4.8 0.8 F4.1 79.2	4.9 0.0 29.2
11+50	2.1			4.23 11.40 19.0	3.28 3.45	4.42 4.52 11.72 12	4.42 4.60 3.95 3.89 0.0	0.1 1.0 F4.9 0.0	10.93 11'	4.7 0.8 F4.4 79.8	5.0 0.0 27.8
				11.56							

Grades Sunset Cliffs

B' Line

Soil Grate #2
Jan. 5.53

35

Finish

BM 10.70 Below
5.95
16.05

Valley

E.P.

Z

E.P.

Hinge

1640

2.1

451

11.54
32.5

445
27
4.72

475
491
11.95
12

198
5.15
11.71
4.86
0.0

1.2
F 4.8
0.0

11.16
11

489
1.7
F 4.3
19.1

6.0
6.0
0.0
396

Finish

BM 10.71 190' R¹ 1425
15.66 X
4.23 X on Y.H.

+50

424

11.42
31.0

341
17
3.58

198
5.07
11.79

514
5.37
11.55
3.65
3.83
0.0

1.3
6.2
F 4.9
0.0

11.00

466
1.9
5.2
F 4.3
19.1

6.2
6.2
0.0
396

TP

Soil Grate
15.30 T

12.88

480

6.68

12.88

1540

11.60
14.80
16.90

435

11.31
29.5

354
17
3.77

503
5.20
11.66

527
5.42
11.42
3.78
3.75
0.0

0.1
4.6
F 4.8
0.0

10.67

479
0.7
4.6
F 4.3
19.4

4.9
4.9
0.0
394

Soil Grate

BM 10.71 190' R¹ 1425
15.71
5.00 X on Y.H.
10.70

+50

10.70
5.09
16.2

463

11.03
28

364
17
3.81

513
5.30
11.56

537
5.52
11.32
3.88
4.05
0.0

0.2
1.7
F 4.7
0.0

10.77
11

489
0.8
4.6
F 4.1
19.2

4.9
4.9
0.0
392

1440

2.1

stop

491

10.75
26.5

370
17
3.87

431
4.57
4.33
11.50
12

445
4.72
11.26
3.95
4.1
0.0

0.3
4.6
1.3
0.0

10.71
11

495
0.9
4.6
F 3.7
18.4

4.6
4.6
0.0
384

11.56

11.56

"B" Line

Station	Notes	Valley	EP 398 Z	EP 409	Hinge	Final	
+50	2:1	382 12.23 40'	361 378 37	402 12.79 12'	409 12.21 12'	439 11.76 23'	5.8 5.8 9.0 9.24
18+0	Fin 155 16.057 Soil Grate 16.40	396 12.09 38.5	378 375 3.9	493 429 12.62	455 4.92 12.144 12'	446 11.59 23'	5.7 5.7 -0.2 4.8
+50	50.2 16.69	410 11.95 37'	395 4.1	423 470 12.46	476 488 11.98 12'	463 11.43 23'	5.7 5.7 -0.2 4.7
19+0		423 11.82 35.5	411 4.28	440 432 12.29	488 5.65 11.81 12'	479 11.26 23'	5.8 5.8 0.0 4.8
+75				12.20	11.75 10.50	11.20 21.5'	out
+50		437 11.68 34.0	438 4.7 4.7	457 4.74 12.12	493 5.10 11.76 5'	481 11.21 17'	5.7 5.7 5.7 F4.0 25.0 3.5
16+25	2:1			12.04 12'	11.77 1.50	11.22 12.3'	out

12.88

"B" Line

F.S. McElroy
17.27

Super			Valley		I.P.	Z	F.P.	Hinge	
22+0	211 .10	Soil Cr. 17.70	68 4.5 C.B.	9.8 22'	6.97	7.58 7.75 10.78 12	5.78 4.53 5.37 13.17 12	14.26 23'	6.4 6.7 6.5
+7.5									
+50	.092		6.88 out	10.0 22'	6.37	7.47 7.74 10.90	5.21 4.73 13.11476 12	14.12	6.8 6.8 5.7
	Finis 3 16.69								
	SC #2 18.37								
22+0	.075		6.38 4.58 07.50	10.5 22'	6.02	7.12 7.27 11.25	5.02 4.65 5.77 13.05	13.87	6.9 6.6 6.2
+76.88	P.C.C. .066			10.8 22'	6.13	6.93 7.70 11.44	5.35 4.68 5.52 13.02	13.74	6.9 6.6 6.2
+50	.055		5.78	11.1 22'	5.60	6.75 6.87 11.67	5.35 4.91 5.55 12.99	13.59 23'	6.3 6.0 5.7
21+0	21.035		5.18	11.7 22'	5.78	6.48 6.75 12.095	5.22 4.77 5.81 12.95	13.31 23'	6.1 6.0 5.7
		12.21							

Grades Sunset Cliffs
8" Line

Finish Dec. 3-58 89
Grades 4 Sisson
Garber
Ketch
Kelley

Valley

F.P. 2

F.P.

Hinge

+50	2.1	.025	3.7	12.9	430	546 5.52	4.35	496 5.03	386 4.73	:C	
		50 #3 1837		11.0		1297 7.70	4.52	1346 12	473 out		Finish next 10' 10" DM 10.58 22758 6.02 16.66
25+0		.045	4.5	12.1	4.88	598 6.75	4.93	492 5.73	392 4.73		Finish 17.27
		Finish 16.69		17.1		1239 10.42	5.10	1340 12	4.02		Sail Gate 17.70
+50		.065	5.3	11.3	5.18	6.58 7.75	5.52	5.93 5.20	3.95 4.73		Sail Gate and DM 6.90 2058 10.32 BC 11 17.35
				20'		11.79 11.81	5.20	13.34 12	12.5		
+2289 P.C.C.		.076		10.8	5.78			13.31 12			
				21'	out	11.49 12					
24+0		.085	6.2	10.4	6.02	7.12 7.29	6.25	5.92 5.26	4.42 4.80	:C Page 32	
			4.2 C.L.	22'	out	11.25 12	5.33	13.28 12			
TP				7.04	07 25 46 24+22.89 P.C.C. 8 50 76	7.48 7.25		5.14 5.27	4.42 4.52		
23+150	2.1	.097	5.17	9.9	6.38	7.25 7.48	6.81	5.27 4.52	4.42 4.80	2.37	-2.1 6.6 6.6 6.0 5.0
				22'		10.89 12		13.23 12	7.6 7.6	14.30 23'	20.4
				22.21							

"B" Line

19.68T

40
F.G. W. E. 1911

28+0 2.1
55#2
18.37
13.73
17.81
20.54
+50
Finish 59T
16.60 T

FP 4.579 FP 5.88
3.15 5.76
17.14.55 14.43.92
0.03 5.18 12.35
596
588
575
547
374
391 0.4
27.80
27.87
28 F84
28
19.77
39
Hinge 2.88
2.8
8.9
F78
5.18
10.4
6.16

363
0.0
3.81
3.98
14.20
4.63
4.02
14.08
4.39
4.76
14.17
4.14
4.62
13.90
36
30
13.35
41
3.25
7.8
7.8
5.54
7.8
7.8
10.2
15.1

27+0
50/100 ft
17.32
4.10
13.22
4.17
18.81 T

4.41
4.61
4.08
13.93
0.13
1.56
4.76
13.81
12
4.75
4.40
4.75
4.50
13.61
32
32
out
3.54
0.8
6.9
6.9
F6.6
F6.1
43.62
55.2
15.2

TP
+50 4.38 13.90 4.18 9.52
0.2 HOG
D. 15
Walker
3.55

4.65
4.82
3.69
13.72
1.40
4.75
4.92
13.62
12
19.68T 6.06
4.97
3.92
4.09
3.40
34
34
out
3.75
0.5
6.5
6.5
F6.2
F6.2
45.68
55.2
6.2

+25
26+0
3.84
4.94
5.71
3.89
13.43
4.03

18.33
34.91
4.94
5.02
3.89
13.52
12
19.33
34.91
4.94
5.02
3.89
13.52
12
35.53
35.6
12.78
43.91
12.73
46.53
3.87
4.0
7.0
F6.3
5.7
6.9

25+72 76.5
60x67.03 C

13.21
6
13.49
12
13.25
35.94
0.5
7.8
F7.3
35.9
12.70
46.94
10.1
7.8
F6.8
60.5
7.8
7.8
7.0

13.70 Bet Ford
1991 36

17.56 L&T 2514
 17.555 Bridge 30428

E
 BM 17.56 L&T 30428
 54 Bridge

E.P.
 Hinge
 Sailer 18.01
 FP 17.56 L&T 54 Bridge

BM 2.21 19.765 4.295 10.135
 9.63
 BM 10.98 14.43
 Finish 18.85
 1.35 L&T Above
 BM 17.57 5c #2
 20.42
 2.96 L&T Above
 2.78
 17.56 L&T Above
 30.34 T
 2.78
 BM 17.56

30+0 2.1) 16.51
 26
 4.75 0.15 15.90
 37
 150 0208 7.0 3.0 3.48
 7.7 7.0
 -0.7 F45
 5.50 4.50
 15.37
 37
 F45 26
 26 26 45

+25 0308 14.71
 37
 29+0 0875 8.7 42.467
 8.8 2.8
 -6.1 F45 74.19
 5.70 7.60 37
 F45 26
 28 28 5.70

+75 0475 13.57
 37
 28+47.29 P.O.T. B 058
 28+11.90 E.C.H.
 8.7 5.5
 8.7 2.7
 0.0 F45
 53.4 73.4 37
 4.8 6.12
 8.7 1.7
 F37 13.50
 28 26

BM 0.83 18.39
 17.56 L&T 2514
 54 Bridge

3.57 3.71 3.69
 3.27 3.27
 124
 16.64 16.77 16.65
 364 2.91 3.03
 3.71 3.58 3.70
 4.53 4.27 4.28 4.36
 4.72 4.53 4.53

15.85 16.10 15.98
 3.58 3.26
 4.25 4.27
 5.73
 4.45
 2.15 2.65 2.5

4.98 4.84
 4.72 4.97
 5.07
 2.75 5.25 3.1
 2.95 2.6 F31
 12' 4.33
 4.97

5.38 5.55
 4.72 5.14
 30.5 5.1
 5.37 5.37 5.15
 331 5.15
 37 2.81
 5.43 6.7
 6.1

BM 13.90

2.81 3.27
 3.27
 148 2.9
 9.3
 16.53 F6.4 15.98
 26' 3.15 26' 37' 50.8
 287 2.4 9.3
 7.2 9.1
 F6.4 50.8 60.8

15.55 15.00
 26.13' 37.13'
 5.98
 2.75 5.25 3.1
 11.2
 2.95 2.6 F31
 26.50' 26.5 37.50'
 4.98 5.2.5
 419 3.7 11.2
 14.71 11.2 11.5
 37.50' F7.5 37.5
 32.5 33.5

14.98 14.43
 29.13' 38.13'
 5.98
 5.98 4.98
 4.98 4.98
 5.15
 7.0 9.3
 7.4
 2.81
 28.11' F8.2 39.11
 52.5 33.5

14.70 14.15
 28.11' F8.2 39.11
 52.5 33.5

BM 13.90

D Line

Indexed

Soil Crates #2

6.99
11.25
18.24

				E.P.	ℓ	E.P.	
58 -			$\frac{5.92}{5.72}$ 3.64	13.24 24'	13.75	$\frac{3.13}{12.11}$ 4.49 4.53	
+85 $\frac{20}{EC}$	5° 22' ✓		$\frac{4.94}{5.71}$	13.30 24'	13.71	$\frac{4.53}{4.70}$	16.88 T
		Δ 10° 44'					
+75	9° 36.01'	R 400'		13.34	13.68		
		T 37.58					Soil Crates #2 17.74
+50	2° 48.58' ✓	L 74.93	$\frac{4.80}{4.97}$ 3.44	13.44	13.58	$\frac{3.30}{12.11}$ 4.66 4.83	
		D, 4.2972					
+25	1° 01.15'			13.49	13.45		
+10 $\frac{27}{RCC}$	0° 00' ✓		$\frac{4.74}{4.91}$	13.50	13.34	$\frac{4.88}{5.05}$ 4.66 4.83	
		Δ 51° 37.49"		4.24	4.45		
57 -	1° 32.56'	R 200'	$\frac{4.76}{4.91}$ 3.38	13.50	13.29	$\frac{3.59}{12.11}$ 4.95 4.95	
		T 96.75					
+75	5° 07.12'	L 180.22	$\frac{4.81}{4.98}$	13.43 24'	13.10	$\frac{5.12}{5.13}$ 4.95 4.95	
		D, 8.5944					
36+50	8° 13.28'		$\frac{3.63}{4.99}$ 5.16	13.25 24'	13.66		

55+50.55 RCC.

"D" Line

43

59 -

14.01

4.23
4.20

58+50

529 2.84
537

13.04 13.88
24'

3.00 4.36
4.53

Sunset Cliffs Blvd.
North of Bridge

Inverted

SC #3
Jan 28-53

Sept. 13-52
F.S. 1107
Garber
Rogger
Offman

44

Sta.	Slope	Super	R.P.	Toe	Hinge	E.P.	E	E.P.	Hinge	Toe	R.P.
+50	Dec 22-52	FIN 6	70.2	-4.9	13.09	13.64	14.00	13.64	13.09	-4.9	7.4
	BM 17.69	DNN Co.	+0.7	86.2	37'	26'	4.03	26'	37'	7.4	-0.2
	18.87	Sunset Cliffs	70.2		194	139	4.20	139	194	7.4	7.6
		Bridge				456		456		7.6	71.6
43-	BM 17.69			-5.9	14.08	14.63	14.93	14.63	14.08	-5.9	5.6
	18.83			7.3	37'	26'	3.10	26'	37'	5.6	7.0
	1.79			7.2	3.95	3.40	3.19	3.49	3.95	7.0	7.0
	1.79			7.3	6.43	3.57	3.27	3.52	6.43	7.0	7.0
+50				2.9	14.96	15.51	15.76	15.51	14.96	2.9	9.3
				16.5	37'	26'	2.25	26'	37'	9.3	10.1
				17.4	14.96	2.53	2.73	3.03	14.96	10.1	39.8
				74.2	37'	2.69	2.82	3.12	37'	3.07	39.8
42-				2.1	15.79	16.34	16.58	16.34	15.79	2.1	2.1
				16.5	37'	26'	1.45	26'	37'	2.1	out
				16.4	3.88	2.6	2.72	3.03	3.88	2.1	out
				76	15.79	16.34	16.58	16.34	15.79	2.1	out
41+75					16.17	16.72	16.96				
					37'	26'					
TP					17.90						
T.P.					6.74						
B.M.					6.71						

H.H. R.P.
19.1-28-51
L.F. N. D. H. C.
M.D. of
S. J. 20-50-51

H.H. R.P.
S. J. 20-50-51
Bridge

	R.P.	Toe	Hinge	E.P.	Z	E.P.	Hinge	
46 +0.96 B.C. R+Lanc	72 78 -0.8 83.2	-0.9 7.2 F8.1 83.2	1.91 8.13 37 9.90	-1.4 7.2 F8.6 26	8.68 26 9.35 10.15 12 10.32 9.52	9.78 8.02 9.67 10.01 17 10.89 8.87 10.18 9.64	-0.8 6.8 F7.6 26 10.45	8.8 6.8 F7.1 51.2 8.12
TP 18.67 9.85 9.82 1.02								
+50 10.04	7.5 8.2 -0.7 85.6	-1.8 7.5 F9.3 55.6	9.64 19.03 37 9.00	-2.3 7.5 F9.8 26	9.25 9.73 9.58 8.45 1.7 8.23	8.72 8.61 9.28 9.16 8.87 1.7 9.04	9.89 -1.5 7.3 F8.8 57.6	7.3 7.2 8.10 8.16
TP 18.83 10.33 8.51 1.33 9.87	4.88	7.27	5.83	2.39	0.7 Hub 46 + 0.96 B.C. R+Lanc			
45 - S.C.#2 18.03	9.2 9.3 0.1 89.0	-1.8 9.2 F11.0 59.0	8.68 9.99 37 8.09	-2.3 7.2 F11.5 26	8.79 8.26 10.54 7.49 1.7 7.62	7.81 7.78 7.65 8.15 8.33 10.35 7.06 7.68 1.7 7.78	-2.1 8.2 F10.5 26 10.07 7.9	8.6 8.2 -0.2 87.6
+50	8.7 8.2 -0.5 70.0	-2.8 8.7 F11.5 80.0	7.45 11.02 37 7.01	-3.4 8.7 F11.7 26	7.26 7.13 7.43 11.57 6.46 1.7 6.63	6.81 6.98 6.65 7.33 7.59 7.33 11.50 6.01 6.53 1.7 6.70	7.55 7.39 -3.1 8.2 F11.6 26 11.28 6.75	8.3 8.2 7.01 89.8
44 -	7.9 8.6 -0.1 70.4	-3.8 7.9 F11.7 80.4	6.63 12.05 37 5.98	-4.4 7.9 F11.3 26	6.23 6.10 6.10 12.60 2.61 5.49 5.60	5.81 5.98 5.55 6.33 6.29 6.76 13.02 5.01 2.61 5.49 5.78 5.61	-2.3 7.9 F11.2 26 11.99 37 6.04	7.9 7.9 7.0 70.4
	8.22							

Sunset Cliffs Left Lane
North of Bridge

	10.04		Hinge		F.P.		E.P.	±	F.P.	Hinge
#50	77 84 04 574	2.5 77 F52 774	531 -173 37 519		20. 77 F57 26		456 17 5.28 4.73 26 4.64 2.77 2.87		408 4.75 5.76 2 4.16 1.73 4.53	428 27 4.75
scr 9.84										
18+0	77 84 04 574	2.3 77 F52 774	485 519 37-104 473		15. 77 F58 26		402 1.73 5.82 26 4.19 1.27		354 3.77 1.30 2 3.53 3.79	374 247
Scr#2 18.03 9.87 8.72 1.76 9.92										
+50	77 84 04 596	1.4 77 F63 796	416 588 37 204		08. 77 F62 26		341 17 6.43 26 3.49 3.77 3.86		292 3.1 6.91 2 3.96 3.18	513 67 380
47+0	77 84 04 610	+0.7 77 F70 510	348 6.56 37 236		+0.2 77 F25 26		2.73 17 7.11 26 2.87 2.78		225 2.77 2.42 7.59 2 2.32 2.50	245 67 312
46+50	76 78 02 622	0.9 76 F76 522	273 7.31 37 10.72 7.27x		-0.6 76 F82 26		1.98 2.15 7.86 26 10.19 10.37		150 1.77 116 8.24 2 9.19 1.77 9.82	170 2.27

Slope		Super		Hinge	Lat	FP	2	FP	Not Hinge	BM	Lat
TP	1.51	6.35	5.56	1.84	Lat N 24° 06' Midway						Lat 5.25 Midway 7.198 Sand
+25	2.11			1.80							SC. Song 1.52
				1.85							
				23							
53+10		0.53		1.93	6.08						BM 1.84 Lat
	SC			1.97							
	7.77			23							
+75		0.6		1.83							
	SC #2			23							
	TP 8.1.1.13			1.95	5.97						
	7.40			2.24							
+50	8.83	0.6		1.98							SC #3
				23							
				1.59							TP 1.43
+25		0.53		2.20							
				23							
+05.57											
8.0 Lt.											
52+0		0.45		2.28							
				23							
				1.55							
				2.65							
				5.90							
				6.97							
51+50	2.11			2.83							
				2.68							
				37							
				6.00							
	7.44			5.60							
				5.97							

slope Super

Hinge

EP

Z

F.P.

Finish
7.19

SC #2
8.83

Cont Page 73

SC
801

+14.45 EC

0.80
23

1.20
12

1.57
12

5570

5.5
5.5
+0.2
33
0.65
0.65
23

7.16
43
0.85
23
23 4.70

5.5
5.5
F0.1
12

4.76
4.76
1.25
12
1.24
2.7

5.98
5.98
1.66
12
1.23
7.06

6.35
7.02

SC 43
5.75

+7.5

0.95
23

1.35
12

1.81
12

+13.80 = opp
44 + 99.09 Midway

5.8
5.8
-0.2
37.2
5.2
5.2
F0.6
24.6

6.86
6.01
1.15
23
23 4.40

4.8
4.8
F0.6
12

6.46
6.46
1.55
12
4.98
4.13

5.10
5.10
5.77
2.09
1.53
3.47
3.82

5.92
6.51

1.87
3.68
3.85
5.68
5.68

+2.5

1.22
23

1.66
12

2.14
12

5410

5.2
5.2
-0.2
33.4
5.0
5.0
F0.3
23.4

6.6
1.37
1.37
23
23 4.18

4.6
4.6
F0.6
12

6.24
6.24
1.77
12
1.23
5.75

4.83
4.83
5.50
2.36
3.19
3.36

5.65
5.64

3.4
3.4
2.91
2.3
F1.7
26.4

+7.5

1.51
1.36
23

1.91
12

2.67
12

53750

4.3
4.3
-0.3
33.4
4.7
4.7
0.6
23.4

6.35
1.66
1.51
23
23 7.17
5.89

4.3
4.3
0.0
12

5.95
5.95
2.06
12
1.2
3.48
3.77
3.6
3.94

4.0
4.0
5.87
2.99
1.5
2.56
5.81
5.81
2.7
5.07

5.92
5.81

3.8
3.8
3.54
2.3
F1.2
25.4

6.25

Slope	Super		L	EP	Hinge	
48+0	065	& TP 1.43 Page 47 7.90 9.33 Finish 10.04 5 Cr #2 Jan & TP 1.43 Page 47 9.35 10.78	388 447 6.24 2 4.54 4.71	399 453 4.80 26. EP 5.88 4.75	2.5 5.90 3.1 6.3 4.14 37 6.64 3.32 3.34 3.4	
450	06		319 387 6.87 2.39 4.08	2.44 2.83 3.99 4.08	3.99 4.07 5.43 26. EP 5.85 5.52	5.27 4.77 3 6.01 2.5 6.4 6.5 4.77 4.48 5.48
47+0	055		247 314 7.59	1.72 7.56 2.32 3.39	5.49 6.13 26. EP 4.15 4.83	4.51 5.53 3.74 5.55 1.7 6.9 6.5 4.77 4.48 5.48
450	05		1.70 4.37 0.99 2.44 2.47	8.34 0.99 2.44 2.47	0.3 6.4 7.01 26. EP 4.23	3.58 6.46 3.7 4.23 0.8 7.82 6.4 6.7 6.3 5.82
46+0	01.96 BCRT		9.16	8.02 26	7.54 3.7	Page 45

Sunset Cliffs Blvd. Right Lane

Finish
10.04

	Slope	Supp	S.C.	Not Sldr	d	FP	FP	Hinge	
			9.33						
+50	211	047	2.6 4.8 F2.2 7.4	4.09 8	5.25 5.22 5.62	4.09 5.41 2.169	3.05 3.28 6.25 26.773	3.58 37.820	4.6 4.8 F0.7 38.4 4.8 4.8 4.8
+32.38 FC					6.58 6.75	4.20 2	3.08 26.770	2.56 37.822	out
50+0		056	2.2 4.5 F2.2 7.6	4.12 8	5.62 5.69	4.12 5.08 2.136	3.16 6.24 26.762	2.59 37.819	4.8 4.8 F0.7 38.4 4.8 4.8 4.8
			S.C. #2 10.78			6.53	7.79		
+50		058		4.77 8	5.27 5.24 5.94	4.77 4.77 2	3.25 6.24 26.743	2.71 37.807	3.3 3.3 F1.7 38 39.2 39.2 39.2
49+0		06	1.5	5.20 8	4.84 5.27 5.51	5.20 5.20 2.558	2.9 5.27 6.24 70.2 7.79	3.10 37.788	3.1 3.1 F1.5 40.6 5.4 5.4 5.4
18+50	211	06			4.35 5.27 5.93	5.69 5.09 5.24	2.4 3.8 1.25 26.659	3.59 37.719	3.1 3.1 F2.4 11.8 5.5 5.5 5.5
BM	126		6.65	2.39	2 Hub 46+01.96 RC	Page 45	6.70		

L E.P. E.P. Hinge

Scr 43
7.75
1.46
3.29
5.55
8.81
2.13
1.41

AP
8.090
07
1.93

BM

5.56

1.88

L+T NFG
xydroy
2 Sunset Hfs
1.87

+67.26 =
BC. 07 RT.

Sail Get
4.88
5.04 L+T
BM 1.89

2.12
5.63
1.72
5.80
out

1.93
26'
582

5.5
6.0
10.5
26

?
1.83
1.4
37
593

6.0
6.0
6.9
37

6.0
6.0
16 Rad.
Pavel

53+38 =
BC. 07 LT.

5.2
5.0
8
2.25
8

4.63
1.70
4.81
2.25
2.55
1.70
5.61

4.81
5.01
2.04
26
5.71
5.88

5.4
5.2
10.5
26

1.99
1.5
27 576

5.9
6.0
37

5.9
6.0
47

7.14

Grades Midway Drive
Midway Bridge North

Indexed

Sept. 20-22
Garber
Parker
Pugh
O'Hanlon

19.20x
1.35
8M177
54
NWC
NWC
NWC
NWC
NWC
NWC

		Hinge	E.P.		Gutter	Carb	Gutter	E.P.	Hinge
+75	10.8 10.8 0.0 75	0.0 10.8 17.08 85.0	-0.6 18.8 13.45 33.4	13.00 13.07 26	13.31 2	13.31 +0.38 1.07 F0.69	13.31 2	13.07 13.29 26 1.52 1.78	-6.5 6.3 6.3 5.0 36.68 38.3 72.3 1.64
+50	out C.V.S.C.	13.19 72	60 13.74 30.98	5.46 1.2 5.62 5.81 3.79 26	14.03 2	14.53 -0.84 0.43 F1.08	14.03 2	4.38 4.52 F0.14 0.90V	13.79 26 out 13.33 35.12 5.58 5.58
+33	14.19 86 10.3 700	0.0 8.9 2.5 80.0	-1.8 8.9 F10.2 36.30	14.27 26	14.51 2	15.01 -0.83 0.43 F1.05	14.51	-1.27 6.2 26 1.42 0.33 0.52	-7.8 6.2 14.17 3.06 0.41 82.3 77.3
TP	BM 3.45 11.15 14.10	4.95	12.45	11.15	7.50				
31+0	2.1 12.8 12.8 10.6 6.9	1.0 12.8 F8.8 55.9	3.5 13.5 14.69 28.2	15.19 15.19 26	15.45 2	15.95 1.96 2.76 0.0 0.72V	15.45 2	-8.7 15.21 26	35.0 4.0 out
+75		15.47 36.16	15.92 27.10						BM 18.03 0.33 18.41 1.07 below
+50		16.18 34.08	16.56 26.39						Soil/Gravel Soil/Gravel BM 3.45 9.83 13.88 4.85 8.93 10.27 19.20
+25		32.0			TP	5.20	6.50	11.15	1.30
30+13									12.457 Rpt Back Page 56
BM	062	18.65	18.03						Cross section of Midway at Love

2 cb + sc.
14.19

1950 TSCR 1/2 lane
10.37
8.93
4.11
13.04 A

Curb
BM 3.45 89 4/11
7.19
38 + 0.82
10.64

	Hinge	EP		Gutter	Curb	Gutter	F.P.	Hinge				
34+0 x	116 116 50 88.9	33. 116 F83 78.9	9.17 563 382	35. 116 F81 45.3	8.95 408 428	448 12 4.25	8.56 26	8.08 2	8.58 F80.6	5.58 14.60		
+7.5		8.93 549	8.93 43.85	8.75 21	8.51 2	9.01 F85.9	Cont Page 60					
+51.90 - CB RC 0.18.94	116 116 50 79.9	34. 116 F82 69.9	9.16 535 10.10	35. 116 F81 42.5	9.00 10.37 10.23 10.20	8.97 10.23 26	8.93 9.45 4.76 4.09 F123	8.25 F84.5	9.48 11.93 F84.5	7.47 26 7.45 13.5 7.35	-10. 5.8 6.81 7.29 11.50 12.70	-0.3. 5.8 6.81 7.29 11.50 12.70
+2.5		8.75 52	9.36 40.99	9.38 26	9.50	10.00 4.19 5.40 F121	9.50 2	8.30 26		7.75 37		
32+0	149 149 50 77.8	3.3. 116 F82 67.8	9.16 50.6 10.02	2.7. 116 F82 39.6	9.71 9.72 9.76	9.19 7.97 9.83 9.54 26	10.04 10.54 3.65 4.85 F120	10.04 2	8.37 9.91 F1.51 0.11.19	9.08 26 5.52 4.77 6.77	26. 21 8.64 5.96 9.22 10.27	-21. 21 F82 5.96 9.22 10.27
+7.5		9.71 49.1	10.26 38.25	10.39 21	10.63	11.15 3.06 4.02 F0.96	10.63 2	9.91 26		9.36 37		
+50.	123 123 50 78.1	3.1. 116 F10.2 88.1	10.35 47.7 8.85	16. 122 F10.7 36.7	10.90 8.42 8.42 8.36 26	8.42 8.42 8.36 26	11.27 11.77 2.42 3.22 F0.80	11.27 2	7.14 7.92 F0.78 0.11.19	10.74 26 3.86 4.11	-42. 21 10.80 4.07 7.91 8.4	-40. 21 F82 5.96 9.22 10.27
+2.5 Begin S. 1 Cr		11.02 46.3	11.52 35.27	11.67 26	11.91	12.41 1.78 2.68 F0.90	11.91 2	6.50 6.98 F0.78 0.11.19		11.55 26	11.60 37	
32+0	2.1 116 50 76.6	0.7. 116 F10.9 76.6	11.73 44.8 7.47	0.2. 116 F11.1 33.8	12.28 17 33.8 33.84 7.09	6.92 6.84 7.01 26	12.60 13.10 1.09 1.70 F0.81	12.60 2	5.81 6.29 F0.28 0.11.19	12.03 26 2.27 2.50 3.53	-5.8. 5.3 12.21 37 6.10 7.1	-5.7. 5.3 12.21 37 6.10 7.1
		12.45						6.50				

S line

55.000
13.04
8.57
1.50
2.63
71.37

Lt West

Hinge

Rt East

57

39+0

49
46
10.8
48
39
308.

4.78
23
233

+0.4
49
F4.5
12.

F.P. 5.33
12
1.97
1.97
1.57
5.57
12
1.47

+0.3
47
F3.9
12
12 on Pav

+50

49
48
10.7
72.2
+0.3
48
F4.6
382.

5.43
23
7.61
1

-0.3
48
F4.1
12.

5.98
12
7.06
7.23
6.82
6.92
6.77
12

-0.5
48
F4.8
12

38+0

50
51
-0.1
43.4
-0.2
5.0
F5.2
33.4

5.98
23
7.06

-0.8
50
F5.8
12.

6.53
12
6.51
6.17
6.27
6.77
6.74
12

-1.9
48
F5.6
12 on Pav

+50

46
49
-0.3
44.8
-1.3
4.2
F6.9
34.8

7.10
23
5.94

-1.4
46
F6.0
12.

7.14
12
5.99
8.07
5.82
5.90
7.22
12

-1.5
46
F6.1
12 on Pav

37+0

52
53
-0.1
48.0
-2.3
5.2
F7.5
38.0

8.02
23
5.02

-2.1
52
F7.3
12.

7.88
12
5.16
5.33
5.46
5.63
7.58
12

-1.8
48
F6.6
12 on Pav

5.76

B.M.

5.36

1.83

L. T. H. 16
Mick
R. W. G. 17
7.84

50.
6.85

+17.98 Ad.
+17.55 8t

42+0

57
59
-0.2
34

57
57
0.0
24

15
23

53

54
57
F. 0.3
13

1.83
12EP

5.03
77
5.20

479 2.06
472 12EP
0.8
0.78r

51
53
F. 0.2
12 on 80
12 on 80

7.19

Grader Midway Drive

51 Line

Slope Scaper		Top Curb	TP	4.07	5.80	4.70	1.73	1.80	No. 15 MKC V. 1008.01 32.11.36+17 #2151-40
+	7.5	7.65 864 F0.99	6.54	Curb	4.78	F.P.	Hinge		
+57.12	454	7.51 857 F2.06	6.68		6.18	4.78	4.19	4.44	5.8 5.8 5.8 F2.5 12.0 490 on RP
+54.07	EC. 88 054					17.8 F2.1 24			
+25	Finish BM 3.17 24.7 8.81	7.28 863 F1.39	6.95		6.45				
35+0	2'1 075	7.00 818 F1.15	7.19		6.69	1.89	1.07	4.56	4.54 5.87 4.6 F2.0 24 35 394 46 5.1 -0.5 49.4
+75		6.71 790 F1.19	7.48		6.98	3.74 4.5 3.99			8.0 on top 14.6 10.99 1.57 2.08 8.59
+50	OK 08	6.38 758 F1.30	7.81		7.31	5.39 24 3.20 24 9.31 24 3.75 9.45	4.51	4.08	4.0 5.0 7.0 5.1 F3.1 11.3 5.1 5.4 -0.3 5.13 8.63
+25		6.01 732 F1.38	8.18		7.68				
34+0	2'1 075	5.61 6.82 F1.81	8.58		8.08	6.28 24 8.32 4.5 8.57	5.46	9.4	4.07 5.6 F5.4 24 5.46 35 7.4 3.15 5.0 3.2 5.6 F4.6 44.2 5.6 5.6 0.0 5.42
+75		5.18 6.04 F0.86	9.01		8.51				
33+5196	BC. RT. 04		9.43		8.93	7.47	6.81		
			4.76 6.09 F1.03				35		

Slope Super

Curb Top Gutter F.P.

Hinge

cb
14.197

Finish
8.617

cb Grade
8.49

cb x Sub.
8.49

Cont'd

5c
8.80

+98.70 F.C.R2

4.68
3.78
F1.20

5.91
8.28

5.41

4.93
2.1

3.2
3.2
F4.3
2.1

4.71
3.5

3.7
1.1
F4.1
4.2

5.2
7.01
7.70 F.H.C.

+75

2.17
3.11
F0.94

6.02
8.17

5.52

+50

off set 2'

2.34
1.58
F1.24

6.15
8.04

5.65

2.4
2.7
3.0
0.8
F3.9
2.1

4.74
3.5
3.89

3.87
1.3
1.7
F3.8
4.2

4.7
1.0
5.2

+25

2.46
0.6
F1.99

6.28
7.91
7.30
F1.27

5.78

8.10
8.10 F.H.C.

3670

start cb

6.40
7.79
8.86
F1.07

5.90

0.9
5.5
F4.1
2.1
3.2
2.2
2.7

4.46
3.5
4.17

4.15
1.3
5.5
F4.2
4.4

5.5
8.3
7.02
5.34

5.80

Midway Drive R2 Line

Finish
86

Curb Grader #5 Sisco
Garber
Rorer
Kellay
Sep. 14. 53

Curb W Side Island
March 22. 53
RR out.

	Ditch	FP	Curb	Gut	Curb	Gutter	FP	Hinge
	Flory Line Ditch							
+98.70	6.00 2.40 38.80 Ditch 7.22 01.16	7.34 34	6.96 26 6.18 12 6.35	5.91 2	5.91 5.91	5.91 31 5.91 31 5.91 31	3.55 0.9 4.49 55 4.00 7.35	4.71 86 Page 61 432
+75			6.02	5.52	6.02	6.02 31 5.52 31		Curb Grader EP
+50	Start from 1st		5.59 12.7 5.76 26	5.65 2	6.15	6.15 31 5.65 31		RR 2.45 5.02 8.49
+25		12.04		5.78	6.28	6.28 31 5.78 31		Sc #8 RR 3.45 5.78 8.93
36+0			7.82 26.70	5.90 2	6.40	6.40 31 5.90 31		
+75				6.04	6.54	6.54 31 6.04 31		
35+50			8.07 26	6.72 2	6.72	6.72 31 6.22 31		
+22.50				6.37	6.87	6.87 31 6.37 31		
35+07.50				6.61	7.11	7.11 31 6.61 31		
34+26.53	BCR1			6.74	7.24	7.24 31 6.74 31		

See Page 56

5.80 Bed Ford
Page 51

Midway Drive R2

Ditch April 3-53

Note 39+50 to 45+50
Hinge set to Finis's Lowered 0.5 to Shoulder Sub 63

Finis's 4+T + Dec 8-52

BM	4+T	island	Ditch	FR	Curb	Gut	Gurb	Gutter	E.P	Hinge
217	52338	740	413	367	4.65	4.15	4.77	4.15	4.28	
+50	6.12	3.5	2.70	367	4.65	4.15	4.77	4.15	4.28	
+25	3.1	1.84	1.54	4.78	4.78	4.28	4.90	4.40	4.40	
39+0	8.49	5.02	2.80	4.04	4.90	4.40	5.02	4.52	4.40	
+75	3.15	3.80	8.82	4.31	5.02	4.52	5.15	4.65	4.52	
+50	5.22	3.66	1.15	4.15	5.15	4.65	5.22	4.81	4.65	
+25	3.21	3.21	3.8	5.02	5.28	4.78	5.43	4.93	4.78	
38+0	3.21	3.21	3.8	5.38	5.46	4.90	5.44	4.94	4.78	
+75	3.21	3.21	3.8	5.74	5.52	5.02	5.53	5.03	4.78	
37+50	3.62	5.20	3.8	6.11	5.65	5.15	5.65	5.15	4.78	
37+25				5.80	5.78	5.28	5.78	5.28	4.78	

Midway Drive R2

Ditch
8827

Finish
7.40
5.17
2.23
4.47
6.70

Ditch
Gratic
Flow line

EP Curb Gut 2 Curb Gutter EP Hinge R.P.

42+0	6.63 6.53 Co. 09	31. 27. 38.	5.18 2.20 38.	5.87 5.32 3.1	4.89 4.59 2.6	4.36 5.39 2	2.2 4.5 F2.00	4.77 5.82 F1.05	3.72	3.22	6	3.10 3.1 5.83 6.08	3.44 5.07 4.17 2.12 5.5 6.35 6.35	5.33 3.21 2.07 6.6	3.2 5.4 7.02 7.04 8.04
+75	curb 8.19	Finish 6.51		4.85 5.20 F0.95	3.64	3.14		4.73 5.78 F1.03	3.96	3.26	6				
+50	S.C.#3 8.93	30. 25 38	5.08 2.30 38.	5.27 5.23 3.4	4.72 5.45 2.6	4.20 5.29 2	2.1 F2.00	4.67 5.71 F1.04	3.82	3.32	6	3.20 3.1 5.73 5.98	5.27 6.27 2.1 4.9 2.72 5.50 6.31 6.4	5.23 2.1 2.17 6.6	4.9 8.1 F1.8 8.6 8.6 7.76
+25				4.72 5.28 F0.96	3.79	3.29		4.58 5.67 F1.09	3.91	3.41	6				
41+0	1.02 6.53 Co. 06	29. 27 38	4.88 2.52 38.	5.57 5.27 3.4	4.82 5.08 2.6	4.00 5.16 2	1.9 F2.00	4.27 5.22 F1.08	4.02	3.52	6	3.14 3.87 3.1 5.53 5.78	5.57 6.27 2.1 4.9 2.92 5.5 6.06 6.25	5.03 3.9 2.37 6.6	4.4 8.2 F2.0 8.8 8.8 7.83
+75				4.47 5.36 F0.89	4.02	3.52		4.35 5.37 F1.02	4.14	3.64	6				
+50	6.32 6.03 Co. 09	38. 37 38	4.63 2.77 38.	5.32 5.23 3.17	4.84 5.20 2.6	3.75 4.77 2.528	1.66 4.5 F2.00	4.22 5.33 F1.12	4.27	3.77	6	2.85 3.81 3.1 5.28 5.37	5.32 5.82 2.1 4.9 3.17 5.5 5.76 6.31	4.78 3.9 2.67 6.6	4.4 8.1 F2.0 9.0 9.0 8.0
+25	TP		5.32	5.31	5.81	-0.01 0.72 2.00		4.10 5.24 F1.14	4.39	3.89	6				
40+0	6.21 5.83 Co. 05	27. 27 38	4.38 2.3 38.	5.07 5.37 3.4	4.07 4.78 2.6	3.50 4.79 2	1.4 F2.00	3.97 5.14 F1.14	4.57	4.02	6	3.37 3.37 3.1 5.03 5.28	5.07 5.37 2.1 4.9 3.42 5.5 5.5	4.53 3.9 2.87 6.6	4.4 8.1 F2.0 9.0 9.0 8.06
39+75			5.31	5.80	5.76	3.22 4.80	4.52	4.02	4.44	4.14	6				

Midway Drive Rd

	Hinge	EP	EP	Valley	F.P.	F.P.	Hinge
+1183 B.F.H.					1.44		2.88
47+0	03454 25 192 0.5 46.0 37 295	04.1 45 26.0 26 334 359	13.27 3.24 4.40 4.42 193	320 7.04 14.5	3.83 4.16 3.1	2.14 2.89 4.17 4.12	488 539 2.64 5.93 19.8
+150	0244 26 0364 25 498 3.59	09.1 28 26 26 382 407	14.4 4.75 4.25 132 137	341 25 479	3.15 14.5	2.29 2.24 2.04 1.34 1.57	450 5.02 5.05 2.98 5.09 5.11
46+0	0244 26 1.33 37 424	14.4 26 26 431 453 472	15.27 3.60 4.10 4.45 4.72	359 25 434	3.60 14.5	2.11 2.12 4.10 4.17 1.73	446 47.0 3.24 5.51 5.06 5.31
BM	5542 8.57	3.87	1.25	2151.43 172			
+150	116 3.09 F27 3.70 484 37 487 5.13	1.8 28 26 26 479 5.04	4.19 4.67 2.75 3.01 3.83 4.20 4.62 4.87	328 231 3.55 14.5	3.59 3.33 3.95 3.37 14.5 4.62 4.87	2.59 3.37 3.37 3.37 4.62 4.87	4.50 5.00 3.00 3.47 5.50 5.22 5.57
45+0	23 26 F21 3.16 41.2 54 5.63	23 26 F21 3.32 26 26	4.5 2.90 2.19 1.82 2.80 3.11 4.22 5.02	350 14.5	4.03 3.80 3.71 4.77 5.02	2.74 3.11 3.11 4.77 5.02	4.15 5.15 3.93 2.77 5.5 5.80 5.50

184411
535
967

777150
707
1823
1123
7211821

Midway R₂

	Slope	Super		FP	FP	Σ	Valley		
52+0		0716	4.86 -1.0 5.0 F6.0 490	5.37 5.37 -0.2 5.2 5.2 F6.2 26 26 4.35 4.60	7.99 7.99 1.5 4.9 F6.4 2 2 6.07 6.32		3.60 11.5	7.86 7.86 8.19	11.23 11.23 BM 3.78 4.20 3.81
	50+2	10.21	4.10 -1.7 4.8 F4.5 50.0	4.39 4.39 -0.8 4.8 4.8 F4.8 26 26 3.77 4.03	6.80 6.80 1.2 4.8 F4.6 2 2 5.78 6.03		3.70 13.5	7.76 7.76 8.07	
57+0		09	3.60 -2.2 4.7 F7.0 50.8	4.86 4.86 -1.3 4.7 4.7 F4.0 26 26 3.35 3.59	6.86 6.86 0.9 4.6 F4.7 2 2 5.49 5.74		3.90 13.5	7.56 7.56 7.89	
4.50		09	3.35 -2.5 5.0 F7.5 52.0	4.10 4.10 -1.5 4.5 4.5 F4.5 26 26 2.09 3.24	6.36 6.36 0.7 4.6 F4.3 2 2 5.75 6.00		4.70 14.5	7.06 7.06 7.69	
50+0		09	3.73 -2.8 5.1 F7.7 50.4	3.98 3.98 -1.5 4.7 4.7 F4.7 26 26 3.27 3.23	6.15 6.15 0.5 4.9 F4.4 2 2 5.13 5.38		2.65 1.20 16.5	7.36 7.36 7.59	
			5.62						

	Slope	Super		EP	EP		Valley	
+50		002	2.4 2.7 F2.1 11.2	1.56 5.06 2.75 3.7 3.14	2.91 2.7 2.23 2.26 2.16 2.25 3.41	2.30 7.5	5.96 5.34	BM 3.81 Traffic log 3.50 Vanhook 7.31 + Midway
54+0		016	1.9 4.8 F2.9 42.8	3.26 4.21 3.54 2.35	3.28 3.78 3.36 2.57 2.78	2.60 7	4.71 3.3 5.04	BM 3.81 Above 1.95 5.76
7+50	Stop	03	1.1 5.0 F2.9 11.8	3.00 3.50 4.31 3.9 5.90	2.66 2.7 3.98 2.6 2.61 2.5 2.78	1.90 70	4.41 3.3 1.7	SC #2 11.22 Jan 16.53 Jan 16.53 17.05.22 + 12.74 BM 2.25 2.39 8.64
TP	4.80	51.39		5.03	0.159			SC #2 BM 2.25 Above 3.24 5.89
53+0		0A4	4.5 5.0 F2.5 11.0	2.22 2.7 5.08 3.7 5.13	2.84 2.84 4.10 2.26 5.61 2.5 5.88	3.20 7.5	4.11 3.3 1.42	
52+42.44 FC		06	0.1 5.0 F2.4 17.8	5.82 5.7 5.99 3.7 4.22 5.62	5.90 6.40 5.33 2.6 4.88 2.5 5.13	3.40 10	8.06 3.3 5.39	

FP FP

Valley

57+0

134
25
52 1.22
465
22
592

542
33
575

Finiss
731

+8.5

Top 1.80
1.05
20 = 10 drops/h

Dec 30.51
F705
5.76

+50.59 BCRA

5.16
5.02
5.01
1.18
26
4.71
4.62
conc

4.14
4.15
7.9 1.59
43.5
462

513
33
545

50
6.61

8.07

3.09 2.30
Load Plug
NE Cor Floor
inside Midway
opp 5920
2-25 Plan

536
5.87
36
47
51.1 1.81/20
2 2.47
4.56
4.87
4.32

483
33
516

50.52
5.89

58+0

43
28
4.5 1.11
38.5 37
4.78

41
28
61.3 1.33
26
4.56
4.87
4.32

36
47
51.1 1.81/20
2 2.47
4.56
4.87
4.32

1.20
17

x50

40
31
F07 1.44
38.2 37
4.45

5.87
5.37
37
4.6
F09 1.65
36
4.24
4.87
4.32

482
5.47
33
48
1.65 2.01/21
2 2.47
3.75
4.04

454
33
487

381
33
614
1.5
14

55+0

31
48
F09 2.00
38.8 37
3.89

5.36
5.87
39
4.3
F10 2.14
26
3.77
4.87
4.32

452
50
5.03
20
4.9 2.39
F11 2
3.50
4.87
4.32

415
33
448

531
33
564
2.0
10

539

Midway Drive + Ingraham St
R2.

Indexed

EP

EP

L

Valley

5940

491
75
577 0.79
2
5.10
25
5.33

0.0

5340 South

5067
345.167
311 231.099
5800
225

450

425
85
579 0.75
2
5.14
25
5.39

0

225
373
5.70 4653

410

Top 0.75
0.0 - 10/11

5840

490
75
567 0.867
2
5.09
25
5.34

0.10
15

4584

567
33
602
481
75
566 0.95
491
75
579

5.55
5.5

5743030

1.36
27.55

467
75
572 1.09
2
4.80
25
5.05

R2

72

EP

1/2

Valley

+29.13 = EC
Opp. 6140 R.

0.91
4.97
25
5.22

60+0

0.90

4.99
25
5.31

+0.15

59+50

0.85
5.01
25
5.29

+0.1

sc
6.69

Edge of Pavement to Venturo

		Hinge	Base W.F.P.
7+0		0.84 1.404	1.28 4.85 3.69 3.77
+75	SC 4.72 4.15 5.37 5.96 2.20 3.24 BM 3.1	0.71	1.11
+50	SC #2 4.88 1.05 BM 3.83	0.57 4.31	3.98 1.12 0.94 3.92 3.95 4.11
+25		0.44	0.77
+1251 B.C. Lt.		0.37	0.67
6+0		0.30 4.58	4.12 0.60 4.28 1.25 4.45
+75		0.17	0.54
+65.87 2171st 971st		0.10	
+50		0.12 4.75	4.14 0.58 4.31 4.39 4.47
5+25		0.16 1.76	0.62

	Hinge	Base W.F.P.
+8.83	1.43	1.98
8+0	1.38 2.50	1.97 2.96 3.13
+75	1.25	1.76
+50	1.11 3.72	1.60 3.28 3.45
7+25	0.98	1.44

Bas of Crotch
Trestle
Venturo
M 3.81

Above

0.05

3.45
4500

3.98 1.07 1.25

4.04 1.14 3.75

4.36 1.40 4.53

Alignment + Grader Cross Over
X Line

Soil Cr Feb. 27-53

Ditch
576T

pt. 1

75

Indexed

			EP	Z:FP	Ditch		
1-22.42							
2+13.71	P.C.C.	15° 56.78' ✓	old CB 314	0.55		Flork. int'l. -0.11	5.4 5.37 5.82 60.70 12.2
	Opp 16+2708 R1			6.91 6.78		5.87 5.12 60.70	
31.28						12.67	
+82.43	Opp 2800 L	12° 57.60' +10	old CB 341	0.61	7.02	-0.05	5.0 5.31 5.0 5.36 12 60.03
	BM Soil Cr	4x4 idoms 42.40 R2		5.97 5.94	6.25 6.73	5.81 5.88 60.53	12.64
	205 68'	10° 48.00' *R 300					
+59.81				1.23	0.75		0.09 0.59 6.27
		T 85.71		24 5.63 17 5.82	6.11 6.28		
+37.19	x	8° 38.40' L 16698	old CB 435	0.98	6.73	0.37	5.2 4.7 4.7 4.94 0.82 0.0 12 0.0
+17		6° 42.66' D, 57395		24 5.19 17 5.57	5.88 6.05	5.44 4.95 60.47	12.60
1+14.58		6° 28.80' +		1.78	1.30		1.15 5.71 8.71 8.4 7.6 = Berm 5.63 7.37
				24 5.09 17 5.35	5.81 5.73		
+91.97		4° 19.20' +10	519 332 5.52	2.18	1.70		1.61 5.25 4.50 = Berm
				24 4.63 17 4.85	5.16 5.03		
+69.35		2° 09.60' +		2.58	2.10		2.05 4.81 2.62 = Berm
6-22.62				24 4.38 17 4.75	4.76 4.73		
+16.73	B.C. R4		447 35 4.82	2.88	2.50		2.47 2 = Berm 4.07
				3.98 3.4 4.5	4.96 4.53		
+23.36				2.93	2.84		2.83 3.4 = Berm 4.03 0.04
				24 3.82 17 4.19	4.92 4.77		
0+0 = Opp 11+11.98 R2			458 33 4.91	2.79	3.07		
				24 4.07 17 4.54			

BM 4.22 5.50

1-28

L.V. NICB
Middletown

Page 73

Midway Drive
X 4.70

0.76
5.76

76

Station	Angle	Distance	Soil/Crate	Old CB	Flow	Ditch	Flow	Flow	
+56.18	2° 41.71' 10"			Old CB 30.3	2.57 1.76 1.93	-0.52	6.11 6.53 5.80 6.73 6.88	0.28 12.492	5.2 5.48 5.2 5.60 5.2 5.60 5.2 5.60
+31.73	2° 29.90'		Soil/Crate 1.86T 6.35 6.30 4.90 5.20		0.45	-0.57		0.29	
+07.28	2° 13.09' 11"			Old CB 37.0	0.46 6.40 6.57	0	6.0 5.2 6.08 6.23 5.60 6.63	0.30 6.58	5.2 5.46 5.2 5.60 5.2 5.60
+82.83	1° 56.28' R 25.00'	A 731' 44"			0.47	-0.43		0.31	
+58.38	1° 39.47' 11"	332.15		Old CB 25.4	0.48 6.38 6.55	-0.38	5.9 5.2 6.07 6.12 5.60 6.54	0.33 6.54	5.2 5.46 5.2 5.60 5.2 5.60
+33.93	1° 22.66'	Di. 468755			0.49	-0.31		0.33	
3209.48	1° 05.85' 11"			Old CB 27.6	0.50 6.36 6.53	-0.29	5.9 5.2 6.07 6.05 5.27 6.68	0.34 6.52	5.2 5.46 5.2 5.60 5.2 5.60
+85.09	0° 49.04'				0.51	-0.25		0.35	
+60.58	0° 32.29' 11"			Old CB 29.6	0.52 6.34 6.51	-0.20	5.9 5.2 6.08 5.96 5.40 6.56	0.36 6.50	5.2 5.46 5.2 5.60 5.2 5.60
12-24-45									
+336.13	0° 15.43'				0.54 6.32 1.9 6.49 0.4	0.16		0.38 12 6.48 6.0	

550

Midway Drive
X Line

Station	Angle	Distance	Notes	Chord	Offset	Flow/Line	Other	Dist
+ 77.61	2° 30.98'	L 110'		0.46 67	0.50 479 487	-0.80 0.71	5.3 5.9 5.0	5.5 5.9 5.0
	Δ 16° 32' 24"					-0.70 inlet		7.6
+ 52.91	2° 02.18'	R 1500'	Inlet		0.48	6.70	-0.88	0.18
6-41.5		T	-0.70	TP	599	6.70	479	0.71
+ 28.21	1° 34.38'	L 428.65		0.46 9.4	4.72 479	-0.70 -0.88	5.3 5.9 5.0	5.5 5.9 5.0
		D, 114.59						12.5
6-03.51	1° 06.07'		5.0 5.20		0.44	-0.84		0.20
+ 78.81	0° 37.77'	H0		0.43 12.3	4.77 4.93	-0.67 -0.79	6.3 5.1 5.1	5.3 5.1 5.1
16-24.70						6.55 8.48 0.71		12.6
+ 54.12	0° 09.46'				0.42	-0.95		0.21
08.21								
+ 45.86 P.C.C. = 0 PP 49+66.64 1-16.20	3° 48.37'			0.42 14.5	4.78 4.93	-0.62 -0.75	6.3 5.0 5.1	5.3 5.0 5.1
+ 29.52	3° 37.14'				0.41	-0.70		0.21
57-05.08	3° 20.68'	H0		0.41 17.3	4.72 4.91 4.96	-0.57 -0.66	6.3 5.3 5.0	5.3 5.0 5.0
+ 80.13	3° 03.52'				0.42	-0.61		0.22 13
	5.50					5.50		

Midway Drive
X Line

79

S:FR

Ditch

SC
S:20A

+ 74.51
Opp 5440052 R.
2520

8° 11.20 -

0.92

Curb

1.65

4.65
0706

+ 19.31

7° 42.32

0.89

0.86
0.60 - Ditch

1.52

4.78
4.91
Feb 12

9 + 29.61

7° 14.02

0.85

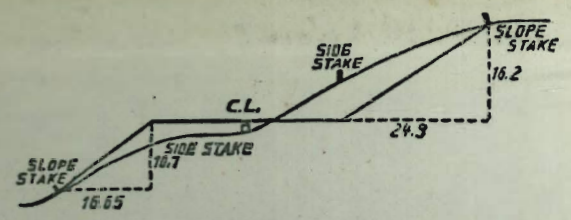
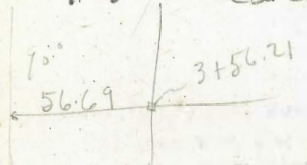
4.55
5.16
Feb 21

0.73
24° - Ditch
4.97

1.39

4.96
5.16
Feb 21

10.83
 9.01
 1.82
 USC+G.S. - BM.1 - 75' N. of
 U. end of S. Bridge - Near
 Catch Basin



DISTANCES FROM SIDE STAKES FOR CROSS-SECTIONING.
 SLOPE 1 1/2 TO 1. ROADWAY OF ANY WIDTH.

	0	.1	.2	.3	.4	.5	.6	.7	.8	.9	
0	0.00	0.15	0.30	0.45	0.60	0.75	0.90	1.05	1.20	1.35	0
1	1.50	1.65	1.80	1.95	2.10	2.25	2.40	2.55	2.70	2.85	1
2	3.00	3.15	3.30	3.45	3.60	3.75	3.90	4.05	4.20	4.35	2
3	4.50	4.65	4.80	4.95	5.10	5.25	5.40	5.55	5.70	5.85	3
4	6.00	6.15	6.30	6.45	6.60	6.75	6.90	7.05	7.20	7.35	4
5	7.50	7.65	7.80	7.95	8.10	8.25	8.40	8.55	8.70	8.85	5
6	9.00	9.15	9.30	9.45	9.60	9.75	9.90	10.05	10.20	10.35	6
7	10.50	10.65	10.80	10.95	11.10	11.25	11.40	11.55	11.70	11.85	7
8	12.00	12.15	12.30	12.45	12.60	12.75	12.90	13.05	13.20	13.35	8
9	13.50	13.65	13.80	13.95	14.10	14.25	14.40	14.55	14.70	14.85	9
10	15.00	15.15	15.30	15.45	15.60	15.75	15.90	16.05	16.20	16.35	10
11	16.50	16.65	16.80	16.95	17.10	17.25	17.40	17.55	17.70	17.85	11
12	18.00	18.15	18.30	18.45	18.60	18.75	18.90	19.05	19.20	19.35	12
13	19.50	19.65	19.80	19.95	20.10	20.25	20.40	20.55	20.70	20.85	13
14	21.00	21.15	21.30	21.45	21.60	21.75	21.90	22.05	22.20	22.35	14
15	22.50	22.65	22.80	22.95	23.10	23.25	23.40	23.55	23.70	23.85	15
16	24.00	24.15	24.30	24.45	24.60	24.75	24.90	25.05	25.20	25.35	16
17	25.50	25.65	25.80	25.95	26.10	26.25	26.40	26.55	26.70	26.85	17
18	27.00	27.15	27.30	27.45	27.60	27.75	27.90	28.05	28.20	28.35	18
19	28.50	28.65	28.80	28.95	29.10	29.25	29.40	29.55	29.70	29.85	19
20	30.00	30.15	30.30	30.45	30.60	30.75	30.90	31.05	31.20	31.35	20
21	31.50	31.65	31.80	31.95	32.10	32.25	32.40	32.55	32.70	32.85	21
22	33.00	33.15	33.30	33.45	33.60	33.75	33.90	34.05	34.20	34.35	22
23	34.50	34.65	34.80	34.95	35.10	35.25	35.40	35.55	35.70	35.85	23
24	36.00	36.15	36.30	36.45	36.60	36.75	36.90	37.05	37.20	37.35	24
25	37.50	37.65	37.80	37.95	38.10	38.25	38.40	38.55	38.70	38.85	25
26	39.00	39.15	39.30	39.45	39.60	39.75	39.90	40.05	40.20	40.35	26
27	40.50	40.65	40.80	40.95	41.10	41.25	41.40	41.55	41.70	41.85	27
28	42.00	42.15	42.30	42.45	42.60	42.75	42.90	43.05	43.20	43.35	28
29	43.50	43.65	43.80	43.95	44.10	44.25	44.40	44.55	44.70	44.85	29
30	45.00	45.15	45.30	45.45	45.60	45.75	45.90	46.05	46.20	46.35	30
31	46.50	46.65	46.80	46.95	47.10	47.25	47.40	47.55	47.70	47.85	31
32	48.00	48.15	48.30	48.45	48.60	48.75	48.90	49.05	49.20	49.35	32
33	49.50	49.65	49.80	49.95	50.10	50.25	50.40	50.55	50.70	50.85	33
34	51.00	51.15	51.30	51.45	51.60	51.75	51.90	52.05	52.20	52.35	34
35	52.50	52.65	52.80	52.95	53.10	53.25	53.40	53.55	53.70	53.85	35
36	54.00	54.15	54.30	54.45	54.60	54.75	54.90	55.05	55.20	55.35	36
37	55.50	55.65	55.80	55.95	56.10	56.25	56.40	56.55	56.70	56.85	37
38	57.00	57.15	57.30	57.45	57.60	57.75	57.90	58.05	58.20	58.35	38
39	58.50	58.65	58.80	58.95	59.10	59.25	59.40	59.55	59.70	59.85	39
40	60.00	60.15	60.30	60.45	60.60	60.75	60.90	61.05	61.20	61.35	40
41	61.50	61.65	61.80	61.95	62.10	62.25	62.40	62.55	62.70	62.85	41
42	63.00	63.15	63.30	63.45	63.60	63.75	63.90	64.05	64.20	64.35	42
43	64.50	64.65	64.80	64.95	65.10	65.25	65.40	65.55	65.70	65.85	43
44	66.00	66.15	66.30	66.45	66.60	66.75	66.90	67.05	67.20	67.35	44
45	67.50	67.65	67.80	67.95	68.10	68.25	68.40	68.55	68.70	68.85	45
46	69.00	69.15	69.30	69.45	69.60	69.75	69.90	70.05	70.20	70.35	46
47	70.50	70.65	70.80	70.95	71.10	71.25	71.40	71.55	71.70	71.85	47
48	72.00	72.15	72.30	72.45	72.60	72.75	72.90	73.05	73.20	73.35	48
49	73.50	73.65	73.80	73.95	74.10	74.25	74.40	74.55	74.70	74.85	49
50	75.00	75.15	75.30	75.45	75.60	75.75	75.90	76.05	76.20	76.35	50

THE NATIONAL BLANK BOOK COMPANY
 HOLYOKE MASSACHUSETTS
 NEW YORK CHICAGO BOSTON SAN FRANCISCO

+74
 OPP 6
 +19
 9+24