

100  
7  
93

DISTANCES FROM SIDE STAKES FOR CROSS-SECTIONING  
SLOPE 1 TO 1. ROADWAY OF ANY WIDTH

	0	.1	.2	.3	.4	.5	.6	.7	.8	.9	
0	0.00	0.10	0.20	0.30	0.40	0.50	0.60	0.70	0.80	0.90	0
1	1.00	1.10	1.20	1.30	1.40	1.50	1.60	1.70	1.80	1.90	1
2	2.00	2.10	2.20	2.30	2.40	2.50	2.60	2.70	2.80	2.90	2
3	3.00	3.10	3.20	3.30	3.40	3.50	3.60	3.70	3.80	3.90	3
4	4.00	4.10	4.20	4.30	4.40	4.50	4.60	4.70	4.80	4.90	4
5	5.00	5.10	5.20	5.30	5.40	5.50	5.60	5.70	5.80	5.90	5
6	6.00	6.10	6.20	6.30	6.40	6.50	6.60	6.70	6.80	6.90	6
7	7.00	7.10	7.20	7.30	7.40	7.50	7.60	7.70	7.80	7.90	7
8	8.00	8.10	8.20	8.30	8.40	8.50	8.60	8.70	8.80	8.90	8
9	9.00	9.10	9.20	9.30	9.40	9.50	9.60	9.70	9.80	9.90	9
10	10.00	10.10	10.20	10.30	10.40	10.50	10.60	10.70	10.80	10.90	10
11	11.00	11.10	11.20	11.30	11.40	11.50	11.60	11.70	11.80	11.90	11
12	12.00	12.10	12.20	12.30	12.40	12.50	12.60	12.70	12.80	12.90	12
13	13.00	13.10	13.20	13.30	13.40	13.50	13.60	13.70	13.80	13.90	13
14	14.00	14.10	14.20	14.30	14.40	14.50	14.60	14.70	14.80	14.90	14
15	15.00	15.10	15.20	15.30	15.40	15.50	15.60	15.70	15.80	15.90	15
16	16.00	16.10	16.20	16.30	16.40	16.50	16.60	16.70	16.80	16.90	16
17	17.00	17.10	17.20	17.30	17.40	17.50	17.60	17.70	17.80	17.90	17
18	18.00	18.10	18.20	18.30	18.40	18.50	18.60	18.70	18.80	18.90	18
19	19.00	19.10	19.20	19.30	19.40	19.50	19.60	19.70	19.80	19.90	19
20	20.00	20.10	20.20	20.30	20.40	20.50	20.60	20.70	20.80	20.90	20
21	21.00	21.10	21.20	21.30	21.40	21.50	21.60	21.70	21.80	21.90	21
22	22.00	22.10	22.20	22.30	22.40	22.50	22.60	22.70	22.80	22.90	22
23	23.00	23.10	23.20	23.30	23.40	23.50	23.60	23.70	23.80	23.90	23
24	24.00	24.10	24.20	24.30	24.40	24.50	24.60	24.70	24.80	24.90	24
25	25.00	25.10	25.20	25.30	25.40	25.50	25.60	25.70	25.80	25.90	25
26	26.00	26.10	26.20	26.30	26.40	26.50	26.60	26.70	26.80	26.90	26
27	27.00	27.10	27.20	27.30	27.40	27.50	27.60	27.70	27.80	27.90	27
28	28.00	28.10	28.20	28.30	28.40	28.50	28.60	28.70	28.80	28.90	28
29	29.00	29.10	29.20	29.30	29.40	29.50	29.60	29.70	29.80	29.90	29
30	30.00	30.10	30.20	30.30	30.40	30.50	30.60	30.70	30.80	30.90	30
31	31.00	31.10	31.20	31.30	31.40	31.50	31.60	31.70	31.80	31.90	31
32	32.00	32.10	32.20	32.30	32.40	32.50	32.60	32.70	32.80	32.90	32
33	33.00	33.10	33.20	33.30	33.40	33.50	33.60	33.70	33.80	33.90	33
34	34.00	34.10	34.20	34.30	34.40	34.50	34.60	34.70	34.80	34.90	34
35	35.00	35.10	35.20	35.30	35.40	35.50	35.60	35.70	35.80	35.90	35
36	36.00	36.10	36.20	36.30	36.40	36.50	36.60	36.70	36.80	36.90	36
37	37.00	37.10	37.20	37.30	37.40	37.50	37.60	37.70	37.80	37.90	37
38	38.00	38.10	38.20	38.30	38.40	38.50	38.60	38.70	38.80	38.90	38
39	39.00	39.10	39.20	39.30	39.40	39.50	39.60	39.70	39.80	39.90	39
40	40.00	40.10	40.20	40.30	40.40	40.50	40.60	40.70	40.80	40.90	40
41	41.00	41.10	41.20	41.30	41.40	41.50	41.60	41.70	41.80	41.90	41
42	42.00	42.10	42.20	42.30	42.40	42.50	42.60	42.70	42.80	42.90	42
43	43.00	43.10	43.20	43.30	43.40	43.50	43.60	43.70	43.80	43.90	43
44	44.00	44.10	44.20	44.30	44.40	44.50	44.60	44.70	44.80	44.90	44
45	45.00	45.10	45.20	45.30	45.40	45.50	45.60	45.70	45.80	45.90	45
46	46.00	46.10	46.20	46.30	46.40	46.50	46.60	46.70	46.80	46.90	46
47	47.00	47.10	47.20	47.30	47.40	47.50	47.60	47.70	47.80	47.90	47
48	48.00	48.10	48.20	48.30	48.40	48.50	48.60	48.70	48.80	48.90	48
49	49.00	49.10	49.20	49.30	49.40	49.50	49.60	49.70	49.80	49.90	49
50	50.00	50.10	50.20	50.30	50.40	50.50	50.60	50.70	50.80	50.90	50

Distance of slope stake from side or shoulder stake for any width roadway, slope 1 to 1. If ground is nearly level, the cut or fill at side stake is located by the double entry method in left column and top row. The number in body of table in same row and column gives distance from side stake to slope stake. If ground is not level estimate the difference in elevation between the side stake and slope stake, lower target by this amount if cut, elevate if fill. Add this amount to cut or fill and find distance in table. Set up rod at this point, and line of sight should cut target. If it does not make the slight adjustment necessary.

MICROFILMED

APR 15 1965

DIRECTIONS FOR USE OF TABLES

TABLE No. XIV

Distance of slope from side of station  
state for run-way roadway, etc. to 1.  
If ground is nearly level the cut of 11 is 11.

IMPROVED TABLES  
AND  
INFORMATION

TABLE No. VIII

To find Tangent and Distance for curve of  
any other degree, divide by degree of curve and  
add correction found in column of corrections.  
Degree of curve will be given 1/2 mile  
by dividing tangent (or curve) by 1.75  
gives tangent (or curve).  
The distance from a point on the tangent to  
the curve is very nearly the same as the tangent  
length divided by twice the radius.

0  
1  
2  
3  
4  
5  
6  
7  
8  
9  
10  
11  
12  
13  
14  
15  
16  
17  
18  
19  
20  
21  
22  
23  
24  
25  
26  
27  
28  
29  
30  
31  
32  
33  
34  
35  
36  
37  
38  
39  
40  
41  
42  
43  
44  
45  
46  
47  
48  
49  
50

gr  
60  
slc  
cu  
11

Stake Drain at Eugene Pl.  
 Plan- 9504-L 9-16-52 7.0  
 W.O. 20953

INDEXED  
 JER  
 JUL 14 1954

0993  
 615  
 5373

	Stake	Grade	cut.				
				= 0+00			
				1+37.41 = C.L.	46.21	41.33	C 4.88
1+37.41 = C.L.	46.71	41.33 <sup>6.71</sup>	5.38	+36.2	47.55	43.58 <sup>1.55</sup>	C 3.97
+67.5	43.12	38.62 <sup>43.12</sup>	4.50	+72.41	49.03	45.83 <sup>9.03</sup>	3.20
+75.5	42.33	37.66 <sup>42.33</sup>	4.67	+92.33 = P.C.	50.40	47.42 <sup>0.40</sup>	2.98
+83.5	40.10	36.38 <sup>40.10</sup>	3.72	1+08.30 1/2	52.26	49.09 <sup>2.26</sup>	3.17
+91.5	37.82	35.02 <sup>37.82</sup>	2.80	+23.75 = E.C.	54.55	50.56 <sup>4.55</sup>	3.99
+99.5	35.92	33.34 <sup>5.92</sup>	2.58	+32.15 = C.L.	55.41	51.66 <sup>5.41</sup>	C 3.75
2+07.5 -	34.32	31.42 <sup>4.32</sup>	2.90	To Top	55.41	60.00 <sup>5.41</sup>	F 4.59
+15.5 - T.P.	32.99	29.26 <sup>32.99</sup>	3.73				
+45.5	26.05	20.26 <sup>6.05</sup>	5.79				
+75.5 T.P.	18.94	11.26 <sup>8.94</sup>	7.68				
3+05.5	11.66	02.26 <sup>11.66</sup>	9.40				
+35.5	03.43	03.26 <sup>03.43</sup>	10.17				
+43.5	01.42	01.10 <sup>01.42</sup>	10.32				
+51.5	99.58	89.18 <sup>99.58</sup>	10.40				
+59.5	97.80	87.50 <sup>97.80</sup>	10.30				
+67.5	94.81	86.06 <sup>94.81</sup>	8.75				
+75.5 = end. - 15' w.	89.70	84.86 <sup>9.70</sup>	4.84				
7 E.	92.02	84.86 <sup>92.02</sup>	7.16				

Rough Grades - 6<sup>th</sup> - Pennsylvania to  
 Plan - 9313-L - 9-17-52 - 7.0 Univ.

INDEVEN  
 JER  
 JUL 13 '54

387.58 = S.E. 7<sup>ct.</sup> Penn.  
 386.15 = N.W. 7<sup>ct.</sup> Evans.  
 384.10 = N.W. B.P. Univ.

2

0+07.5 = P.C.

0+00 = N.L. Penn. 86.9 87.2 F 0.3

0+00 = N.L. Robinson 83.8 83.9 F 0.1

+50 87.1 87.3 F 0.2

+50 83.8 84.0 F 0.2

1~ 87.6 87.1 C 0.5

1~ 84.0 84.2 C 0.2

+50 87.2 86.9 C 0.3

+50 84.2 84.3 F 0.1

2~ 86.5 86.7 F 0.2

2~ 84.9 84.5 C 0.4

+50 86.2 86.5 F 0.3

+50 84.7 84.5 C 0.2

3~ 86.9 86.3 C 0.6

3~ 84.5 84.5 G

+50 86.4 86.1 C 0.3

+50 84.5 84.2 C 0.2

A~ 86.0 85.9 C 0.1

4~ 83.9 84.0 F 0.1

+50 86.7 85.5 C 1.2

+20.5 P.C. 84.0 Set 84.2

S~ 85.7 85.0 C 0.5

Univ.

on PL.

+50 84.7 84.6 C 0.1

6+00 = S.L. 83.8 84.1 F 0.3

Robinson

P.C. = 84.2

Curb Stakes - 6<sup>th</sup> Penn. to Robinson

6.53

INDEXED  
JER  
JUL 14 1954

3.50  
2.97  
.53 3

E.C. 20' Ret. on Penn.	86.68	86.60	C 0.08	4+50	85.20	85.54 <sub>20</sub>	F 0.34
1/3	86.90	86.86	C 0.04	+70	84.91	85.37 <sub>4.91</sub>	F 0.46
2/3	86.88	87.05 <sub>6.88</sub>	F 0.20	5+05	84.50	85.05 <sub>4.50</sub>	F 0.55
P.C. = 0+07.5	86.86	87.20 <sub>6.86</sub>	F 0.34	+40	84.40	84.74 <sub>4.0</sub>	F 0.34
+27.5	86.31	87.30 <sub>6.31</sub>	F 0.99	+72.5	83.96	84.45 <sub>3.96</sub>	F 0.49
+47.5	86.47	87.31 <sub>6.47</sub>	F 0.84	+92.5 = P.C.	83.57	84.18 <sub>3.57</sub>	F 0.61
+85	87.15	87.16	F 0.01	1/3	83.57	84.00 <sub>3.57</sub>	F 0.43
1+20	87.15	87.02 <sub>7.15</sub>	C 0.13	2/3	83.41	83.75 <sub>3.41</sub>	F 0.34
+55	86.80	86.88 <sub>6.80</sub>	F 0.08	E.C. = Robinson	83.13	83.50 <sub>13</sub>	F 0.37
+90	86.36	86.74 <sub>6.36</sub>	F 0.38				
2+25	86.37	86.69 <sub>6.37</sub>	F 0.23				
+60	85.62	86.46 <sub>5.62</sub>	F 0.84				
+95	86.04	86.32 <sub>6.04</sub>	F 0.28				
3+20	85.97	86.22 <sub>5.97</sub>	F 0.25				
+45	85.69	86.12 <sub>5.69</sub>	F 0.43				
+70	85.91	86.02 <sub>5.91</sub>	F 0.11				
+90	85.25	85.93 <sub>5.25</sub>	F 0.68				
4+10	85.25	85.82 <sub>5.25</sub>	F 0.57				
+30	85.34	85.69 <sub>5.34</sub>	F 0.35				

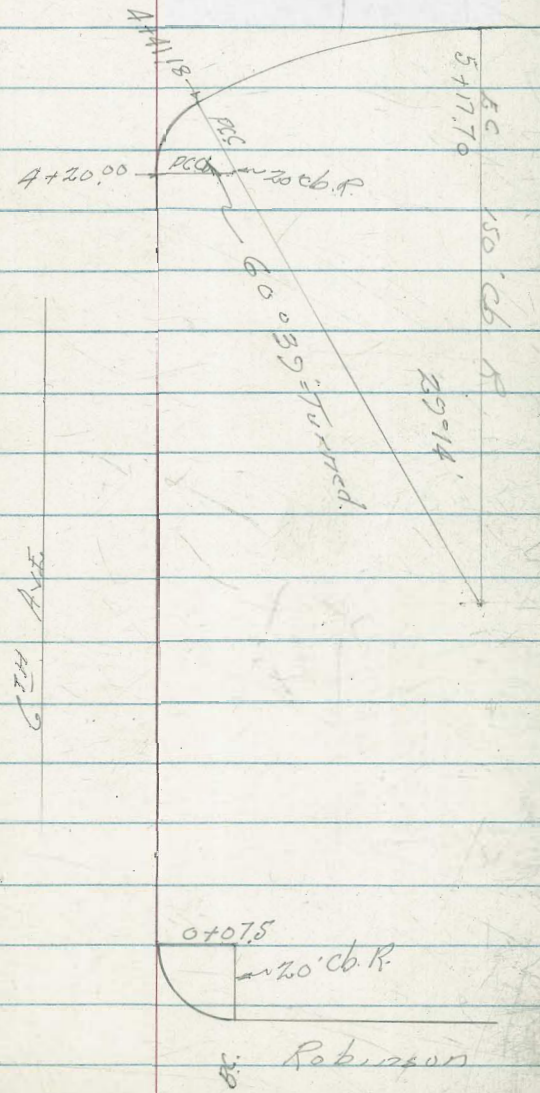
Curb Stakes on 6th Ave  
from Robinson to Univ. Ave

INDEXED  
HER  
JUL 14 1954

Walker Plan 2314-6 MO 20573  
Fogg  
Huffman  
Presley 10-8-52

Univ. Ave

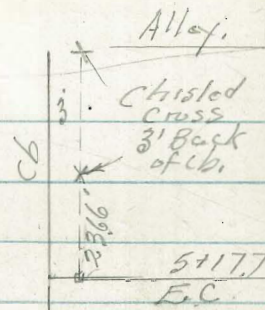
Stations	Left P.S.	Flag Stakes	El Curb	Cuts & Fills
2+80		284.24	284.50	F 0.16
+60		284.25	284.52	F 0.27
+40		284.02	284.52	F 0.50
+20		284.24	284.50	F 0.26
2+100 = P.K.		284.18	284.45	F 0.27
+75		283.84	284.38	F 0.54
+50		284.05	284.30	F 0.25
+25		283.79	284.23	F 0.44
1+00		283.64	284.15	F 0.51
+75		283.55	284.08	F 0.53
+50		283.53	284.00	F 0.47
0+30		283.59	283.94	F 0.35
③ = 0+07.5 = B.C. Return		283.66	283.87	F 0.21
②		283.66	283.84	F 0.18
①		283.57	283.73	F 0.16
N.E. Ref. Robinson		283.29	283.55	F 0.26
B.C. on Robinson				



6<sup>TH</sup> AVE. CURB GRADES

Stations		Elev. Station	El. Curb	Cuts & Fills
5+60 ±	chk. cb. of Alley		28386	
Exist. cb				
5+34.1	def. A	28385	28394	F0.09
5+17.70	= E.C. 14°37'	28338	28399	F0.61
5+07.70	12°42.28	28324	28402	F0.78
4+97.70	10°47.68	28303	28405	F1.02
4+87.70	8°53.08	28293	28408	F1.15
Apex.				
4+77.70	= Bk 6°58.48	28350	28411	F0.61
4+68.57	5°13.86	28377	28409	F0.32
4+59.44	3°29.24	28341	28406	F0.65
4+50.31	1°44.62	28336	28403	F0.67
4+41.18	= P.G.C.	28378	28400	F0.22
4+30.58	= ctr. Return	28387	28399	F0.12
4+20.00	= B.C. 20' cb. Return	28349	28399	F0.50
4+00		28344	28409	F0.65
+75		28407	28419	F0.12
3+50		28426	28429	F0.03
3+20	= E.V.C.	28432	28439	F0.07
3+00		28436	28446	F0.10

Direct Elev. Rod used.





Grades NW Curb Return

6th & Robinson

Walker  
Papp  
Huffman  
Pestel  
10-18-52

El.  
Stakes El. Curb

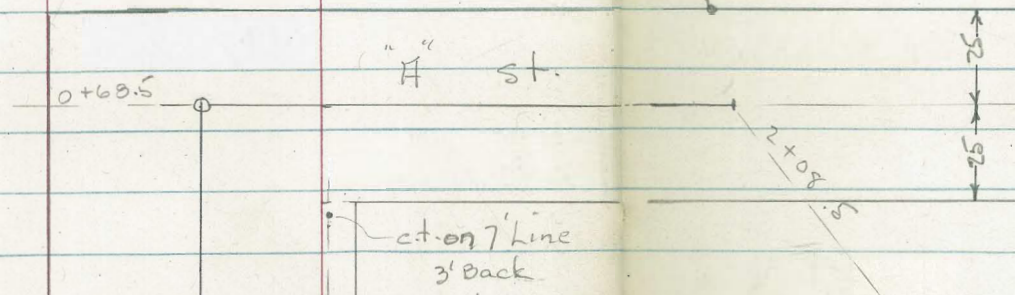
offset

4 - E.C. on 6th	285.60	285.48	C 0.12	5'
3	285.66	285.49	C 0.17	"
2	285.53	285.51	C 0.02	"
1	285.61	285.53	C 0.08	"
B.C. on Robinson	285.62	285.55	C 0.07	"

Stake Sewer - for City  
 W.O. 20009  
 10-10-52  
 7.0

INDEXED  
 J & R  
 JUL 14 1954

7



Station	Grade		
0+00 = Meet.	43.35	140.57	C 2.78
+34.25	43.04	40.81	2.23
+68.5 = M.H.	42.48	41.05	1.43
1+03.5	43.61	42.30	1.31
+38.5	46.02	43.55	2.47
+73.5	48.98	44.80	4.18
2+08.5 = end.	52.05	46.05	6.00

B.M. = S.W. B.P. - 22<sup>nd</sup> + "B" = 145.42

22<sup>nd</sup>

Rough Grades - Adams - El Cerrito Dr.

to E.

w.o. 62297-23786

11-21-52 70

N.

Plan- 10149-L  
9880-L

B.M.

INDEXED

JER  
JUL 11 1954

8

0+00 = E El Cerrito S.B.

S.B. Grade

+50 54.7 55.5 F 0.8

56.9 55.5 C 1.4

+95 53.6 54.4 F 0.8

4'B = Cross

55.9 54.9 C 1.0

1+35 51.2 52.6 F 1.4

55.4 53.1 C 2.3

+75 48.0 48.3 F 0.3

53.6 48.8 C 4.8

2+15 43.3 41.5 C 1.8

47.3 42.0 C 5.3

+38.20 = Banjo 39.8 38.2 C 1.6

42.5 38.5 C 4.0

+62.70 = end

36.2 37.0 F 0.8

BM. 456.40 = SE. B.P. Adams + El Cerrito 9

See P. 8

Curb Stakes Adams - El Cerrito - E.

North

1-24-53

70.

South

Meet. = Beg. 40 Rad.

1/3

56.10  
6.24  
56.24 55.90 C 0.34

2/3

56.48 55.72 C 0.70

10.5 Back = P.C.

from = P.C. of 510' R.

+8.6

1

56.55 55.54 C 1.01  
6.55  
56.54 55.41 C 1.13

P.C. + 540' R. + Meet.

55.50

Brk. Midway.

54.52 55.49 F 0.97

2

55.99 55.10 C 0.89

2

54.35 54.83 F 0.48

3 = E.C. = 0+97.34

55.18 54.79 C 0.39

3 = E.C.

53.70 54.39 F 0.69

1+15

54.75 54.26 C 0.49

1+04.09 = BC Ret.

53.00 54.22 F 1.22

+35

54.47 53.05 C 1.42

1/3

53.49 53.65 F 0.16

+55

52.11 51.22 C 0.89

2/3

53.55 52.83 C 0.72

+75

49.76 48.76 C 1.00

End

53.15 51.60 C 1.55

+95

45.25 45.69 F 0.44

End - NE Ret

48.89 48.40 C 0.49

2+09.09 = B.C.

42.53 42.15 F 0.62

1/2

46.40 47.29 F 0.89

1/2

41.49 41.63 F 0.14

P.C. = 1794.09

44.87 45.34 F 0.47

P.R.C.

40.08

2+09.09 = B.C.

42.59 42.65 F 0.07

Beg. Cul de Sac.

1/2

40.37 41.25 F 0.88

6 parts - on P. 10

P.R.C.

39.80

B.M. = spike in Pole - P.R.C. on South.

442.15

10

South - P.R.C.

41.74 4<sup>1.74</sup> 0.08 C 1.66

1

41.52 3<sup>1.52</sup> 8.20 C 3.32

2

36.63 3<sup>6.63</sup> 7.33 F 0.70

3 = E

36.99 3<sup>6.99</sup> 7.00 F 0.01

4

37.21 3<sup>7.21</sup> 7.18 C 0.03

5

39.64 3<sup>9.64</sup> 8.02 C 1.62

6 = North P.R.C.

39.28 3<sup>9.28</sup> 9.80 F 0.52

Stakes

Adams.

11

0+00 = El Cerrito

55.44 - Pass

Mid. pt. - N.L.

49.67

50.05  
9.67

F 0.38

+50

54.67 55.40 F 0.73

+95

54.33 54.97 F 0.64  
53.68 54.54 F 0.86

+145

52.76 53.94 F 1.18  
2.76

+35

51.54 52.76 F 1.22  
1.54

on balance

51.08

52.08

F 1.00

+55

49.90 50.88 F 0.98  
9.98

49.58

50.23  
1.08  
9.58

F 0.65

+75

47.53 48.42 F 0.89  
7.53

47.14

47.77  
7.14

F 0.63

+95

44.83 45.34 F 0.51  
4.83

2+15

41.46 41.65 F 0.19  
4.6

+38.2 = El R.

38.28 38.33 F 0.05  
28

Stake Curbs - Sutherland St.

Plan - 9793-L

W.O. 62149 - 2-24-53 - 70.

INDEXED

JUL 14 1954

12

	West.			East.		
0+00 = N.L. Pac. Hwy	4.19		end =	4.59	4.51	
+7.07	3.52	4.48 <sub>3.52</sub>	F 0.93	4.03	4.62 <sub>3.96</sub>	F 0.59
0+13 = P.C.	3.70	4.67 <sub>3.70</sub>	F 0.97	3.94	4.67 <sub>3.96</sub>	F 0.71
(+59) 1+00	6.40	6.76 <sub>4.0</sub>	F 0.36		5.64	
1+05	6.39	6.88 <sub>3.9</sub>	F 0.79		6.53	
+25	7.31	7.35 <sub>3.1</sub>	F 0.04		6.93	
+45	9.24	9.24 <sub>2.4</sub>	C 1.40		7.39	
+65	9.99	9.99 <sub>3.7</sub>	C 1.62		7.88	
+85	9.88	9.88 <sub>3.92</sub>	C 0.96		8.42	
2+00	9.40	9.40 <sub>4.0</sub>	C 0.06		8.98	
2+05		9.48			9.54	
+48		10.60			10.10	
+70 = end.		11.30			10.80	

Rough Grades - Sutherland. + 2-24-53  
7.0.

4.31 = □ in N.W. Ret - Pac. Hwy + Sutherland.

13

West

0+13	4.8	4.8	G.
+59	5.4	5.8	F 0.4
1+05	6.5	6.9	F 0.4
+45	9.7	9.7	C 1.9
+85	10.5	10.5	C 1.6
2+25	11.8	10.0	C 1.8
+70 = End.	13.7	11.3	C 2.4

East

	5.0	4.8	C 0.2
	5.7	5.6	C 0.1
	6.6	6.5	C 0.1
	7.3	7.4	F 0.1
on line	9.2	9.2	C 0.8
	9.9	9.9	C 0.4
	11.2	10.8	C 0.4



Curb Stakes - Trojan - 54<sup>th</sup> East.  
 Plan - 10184-L  
 W.O. 62299

INDEXED  
 JUL 14 1954

end cb. on Ret.	52.79	52.30 <sup>79</sup>	C 1.49
1/3	52.36	52.15 <sup>36</sup>	C 0.21
2/3	52.63	52.00 <sup>63</sup>	C 0.63
P.C. = 0-22.65	52.64	51.90 <sup>64</sup>	C 0.74
0+00	52.25	51.85 <sup>25</sup>	C 0.40
+35	52.23	52.03 <sup>23</sup>	C 0.20
+70	51.98	52.20 <sup>98</sup>	F 0.22
1+05	52.15	52.38 <sup>15</sup>	F 0.23
+40	52.37	52.55 <sup>37</sup>	F 0.18
+75	52.65	52.73 <sup>65</sup>	F 0.08
2+10	52.59	52.90 <sup>59</sup>	F 0.31
+45	53.03	53.08 <sup>03</sup>	F 0.05
+80	53.35	53.25 <sup>35</sup>	C 0.10
3+20	53.53	53.45 <sup>53</sup>	C 0.08
+40	53.54	53.58 <sup>54</sup>	F 0.04
+60	54.10	53.77 <sup>10</sup>	C 0.33
+80	54.33	54.03 <sup>33</sup>	C 0.30
4+00	54.57	54.35 <sup>57</sup>	C 0.22

351.67 = 4 ct. - 54<sup>th</sup> + Trojan  
 362.66 = Top Hyd - Sharon Pl.

4+20	54.98	54.73 <sup>98</sup>	C 0.25
+40	55.33	55.17 <sup>33</sup>	C 0.16
+60 - T.P.	55.93	55.68 <sup>93</sup>	C 0.25
4+80 - 55.96	56.37	56.25 <sup>37</sup>	C 0.12
5+15	57.37	57.30 <sup>37</sup>	C 0.07
+50	58.38	58.35 <sup>38</sup>	C 0.03
+85	59.24	59.40 <sup>24</sup>	F 0.16
6+20	60.27	60.45 <sup>27</sup>	F 0.18
+55	61.31	61.50 <sup>31</sup>	F 0.19
+80 = end	64.04	62.25 <sup>04</sup>	C 1.79

53.16 = E

INDEXED

HER

JUL 14 1954

curb stakes for Service Sta - La Jolla  
shores + Torrey Pines Rd.

Plan - 3221 - Sheet 2 - By Jaeger

2-16-53 - F.O. W.O.

Beg. at S.E. Cor. of Lot.

Cor. =	49.93	50.85	F 0.92
# 1	50.39	50.78	F 0.39
# 2	50.45	50.70	F 0.25
# 3 = P.C. 30' Rad.	49.78	50.66	F 0.88
1	49.60	50.59	F 0.99
2	49.37	50.41	F 1.05
3	49.10	50.09	F 0.99
4 = F.C. 30' Rad.	48.69	49.53	F 0.84
5 = P.C.	48.01	48.40	F 0.39
6 = 1/3	47.07	46.97	C 0.10
7 = 2/3	45.86	45.54	C 0.32
8 = Cor.	44.55	44.11	C 0.44
# 9 = end. - N.W. Cor.	43.76	42.99	C 0.77

Stake Sewer for Ser. Sta. - La Jolla Shores  
 + Torrey Pines Rd. - for City

W.O. 20009 - 3-19-53 7.0

See Plan 9505-L

		Plan-2977	
By Cor. of Lot 9		38.60	8.70
0+00 = Exist plug.	38.60	29.90	8.70
+35	38.65	30.60	8.05
+70 +29	39.66	31.30	8.36
1+05	39.81	32.00	7.81
+37 = Ang. 16° Rt.	40.41	32.64	7.77
1+70	40.39	33.30	7.09
2+10 = end.	40.44	34.10	6.34

I.E. of M.H. #1 29.14 = Plan.

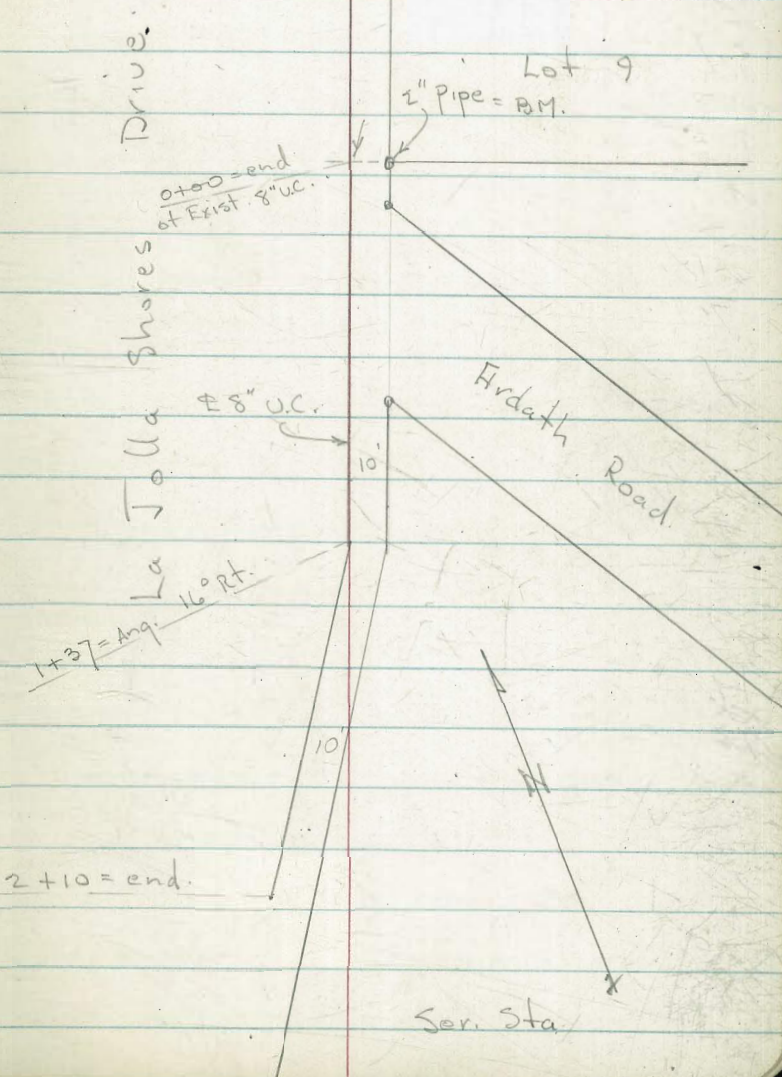
Rim = 36.87

B.M. = 2" pipe  
 Sw. Cor. of Lot 9 38.76

INDEXED  
 JUL 14 1954

M.H. #1

16



Rough Grade Stakes - Tustin  
 Macaulley to Oliphant - Plan - 9137-L  
 w.o. 31871 - 2-23-53 7.0.

West.

0+00 = E + N.L. Macaulley	49.4	47.3	4.9	C 2.6
+30	53.1	48.1	5.0	C 5.0
+50	51.4	47.8	5.0	C 3.6
+90	50.0	44.5	5.5	C 5.5
1+40	46.6	38.2	8.4	C 8.4
+90	40.7	31.8	8.9	C 8.9
2+40	31.9	25.5	6.4	C 5.5
+90	26.2	19.2	7.0	C 7.0
3+40	22.5	12.9	9.6	C 9.6
+80	15.5	8.4	7.1	C 7.1
4+20	11.7	5.3	6.4	C 6.4
+43.86	11.1	3.8	7.3	C 7.3
+73.85 = S.L. Oliphant	09.1	3.8	5.3	C 5.3

74  
 Meas.

Pole 148.69  
 Macaulley.  
 102.47 = Pole  
 Oliphant

INDEXED  
 JUL 14 1954

East.

46.0	146.7	F 0.7
46.5	147.6	F 1.1
46.0	147.3	F 1.3
44.9	143.9	C 1.0
38.5	37.5	C 1.0
33.9	33.9	C 2.8
26.9	24.7	C 2.2
18.3	18.3	G
10.0	11.9	F 1.9
08.4	07.5	C 0.9
05.0	04.3	C 0.7
02.4	02.8	F 0.4
99.8	101.0	F 1.2

135.09 = Cor. of Step.  
 1+70 = Rt. 17

118.22 = Cor. Step = 0 - 3 + 02 = Rt.

Curb stakes - Wellington St.  
 Plan - 9173-L  
 W.O. 20847  
 3-25-53 7.0

356.61 = Disk - Linda Vista Rd.  
 357.20 = Top Hyd. - 4+00 - East.  
 360.49 = Pole - Tecolote - SW. Cor.  
 18

INDEXED  
 JUL 14 1954

	East.			West.		
PC. = Tecolote	60.42	60.54	F 0.13	60.54	60.54 <sup>54</sup>	C 0.49
1/4	60.40	60.28 <sup>40</sup>	C 0.12	60.16	59.95 <sup>16</sup>	C 0.21
1/2	60.00	60.02	F 0.02	59.72	59.82 <sub>72</sub>	F 0.10
3/4	59.71	59.76 <sub>71</sub>	F 0.05	59.52	59.68 <sub>52</sub>	F 0.16
E.C. = 0+24	59.23	59.53 <sub>23</sub>	F 0.27	58.50	59.50	F 1.00
0+72	58.29	58.57 <sub>29</sub>	F 0.28	58.58	58.57	C 0.01
1+20	57.66	57.65	C 0.01	57.68	57.65	C 0.03
+40	57.30	57.29	C 0.01	57.28	57.29	F 0.01
+60	56.99	56.98	C 0.01	56.82	56.98 <sub>82</sub>	F 0.16
+80	56.73	56.70	C 0.03	56.77	56.70	C 0.07
2+00	56.66	56.47 <sup>66</sup>	C 0.19	56.60	56.47 <sup>60</sup>	C 0.13
+20	56.63	56.27 <sup>63</sup>	C 0.36	56.27	56.27	G
+40*	56.30	56.13 <sup>30</sup>	C 0.17	56.20	56.13 <sup>20</sup>	C 0.07
+90	55.82	55.83	F 0.01	55.78	55.83 <sub>78</sub>	F 0.05
3+40	55.46	55.52 <sub>46</sub>	F 0.06	55.41	55.52 <sub>41</sub>	F 0.11
+90	55.20	55.22 <sub>20</sub>	F 0.02	55.20	55.22	F 0.02
4+40	54.63	54.91 <sub>63</sub>	F 0.28	55.01	54.91 <sup>01</sup>	C 0.10
+90	54.56	54.61 <sub>56</sub>	F 0.05	54.57	54.61 <sub>57</sub>	F 0.10

## East.

5+40	54.21	54.30 <sub>21</sub>	F0.09
+90	53.87	54.00 <sub>76</sub>	F0.13
6+40	53.76	53.69 <sub>43</sub>	C0.07
+90	53.43	53.39 <sub>20</sub>	C0.04
7+40	53.05	53.08	F0.03
+90	53.00	52.78 <sub>22</sub>	C0.22
8+40	52.48	52.47	C0.01
+90	52.15	52.17	F0.02
9+40	51.99	51.86 <sub>99</sub>	C0.13
+90	51.62	51.56 <sub>62</sub>	C0.06
10+32.75	51.66	51.30 <sub>65</sub>	C0.35

## West.

	54.16	54.30 <sub>16</sub>	F0.14
	53.86	54.00 <sub>21</sub>	F0.14
	53.81	53.69 <sub>31</sub>	C0.12
	53.26	53.39 <sub>20</sub>	F0.13
	52.93	53.08 <sub>21</sub>	F0.15
	52.34	52.78 <sub>34</sub>	F0.44
	52.46	52.47	F0.01
	52.06	52.17 <sub>06</sub>	F0.11
	52.05	51.86 <sub>05</sub>	C0.19
	51.51	51.56 <sub>51</sub>	F0.05
10+20	51.32	51.38 <sub>32</sub>	F0.06
10+52.26	50.63	51.18 <sub>0.63</sub>	F0.55

Curb stakes - East Tecolote Rd.

South

P.C. = Linda Vista Rd.	64.28	65.35 4.28	F 1.07
1/4	64.95	65.35 4.95	F 0.40
1/2	64.76	65.27 4.76	F 0.54
3/4	64.55	65.09 4.55	F 0.54
E.C. = 0+64	64.39	64.84 39	F 0.45
0+84	64.22	64.35 51	F 0.13
1+22.66	63.51	63.40 52	C 0.11
1+61.32	62.52	62.46 52	C 0.06
2+00	61.21	61.52 21	F 0.31
+20	60.64	61.03 0.64	F 0.39
+40 = P.C.	60.42	60.54 42	F 0.12

INDEXED  
JUL 1954  
JER

20

North

P.C. = Linda Vista Rd.	65.37	66.07 5.37	F 0.70
1/2	65.46	65.91 46	F 0.45
E.C. = 0+41	65.38	65.62 38	F 0.24
0+64	64.91	65.04 4.91	F 0.13
0+84	64.35	64.53 35	F 0.18
1+22.66	63.53	63.55 53	F 0.02
	62.87	62.57 87	C 0.30
	61.82	61.59 82	C 0.23
	61.33	61.12 33	C 0.21
2+40	60.92	60.74 92	C 0.18
2+60	60.45	60.45	G
+80	60.03	60.23 03	F 0.20
3+00	59.09	60.10 9.09	F 1.01
+20	59.76	60.06 7.76	F 0.30
+40	60.31	60.09 31	C 0.22
+60	60.43	60.21 43	C 0.22
+95	60.51	60.42 51	C 0.09
4+30	60.15	60.71 15	F 0.56

Wly. of Wellington

3+40 = PC.

+60

4+10

+60

5+10

+60

6+~~10~~<sup>15</sup>

+60

7+05

+25

+45

+65

+85

8+05

+25

+45

+65

+85

9+05

South

60.05

60.34 60.<sup>34</sup><sub>21</sub> Co.1360.96 60.<sup>96</sup><sub>62</sub> Co.3461.24 61.<sup>24</sup><sub>02</sub> Co.2261.40 61.<sup>40</sup><sub>40</sub> Fo.0361.61 61.<sup>61</sup><sub>84</sub> Fo.2363.26 63.<sup>26</sup><sub>28</sub> Co.9862.94 62.<sup>94</sup><sub>65</sub> Co.2962.98 63.<sup>98</sup><sub>02</sub> Fo.0463.02 63.<sup>02</sup><sub>21</sub> Fo.1963.13 63.<sup>13</sup><sub>33</sub> Fo.2063.12 63.<sup>12</sup><sub>43</sub> Fo.3163.31 63.<sup>31</sup><sub>51</sub> Fo.2063.19 63.<sup>19</sup><sub>56</sub> Fo.3763.44 63.<sup>44</sup><sub>59</sub> Fo.1563.52 63.<sup>52</sup><sub>59</sub> Fo.0763.32 63.<sup>32</sup><sub>58</sub> Fo.2663.31 63.<sup>31</sup><sub>54</sub> Fo.2363.33 63.<sup>33</sup><sub>47</sub> Fo.14

65.56 = Top. Hyd. - 7+45 - S.

North

4+55.58 - PC.

1/4

1/2

3/4

E.C.

E.C.

1/4

1/2

3/4

PC = 5+75.58

6+00

+35

+70

7+05

+25

+45

+65

+85

8+05

+25

60.64

60.93

61.09

61.39

61.56

61.69

61.61

61.89

61.78

61.77

61.91

62.40

62.65

62.98

63.05

63.15

63.36

63.58

63.59

63.39

60.99

61.08

61.20

61.38

61.67

62.04

61.96

61.92

61.94

61.97

62.17

62.45

62.73

63.02

63.21

63.33

63.43

63.51

63.56

63.59

Fo.35

Fo.15

Fo.11

Co.01

Fo.11

Fo.35

Fo.35

Fo.03

Fo.16

Fo.20

Fo.26

Fo.05

Fo.08

Fo.04

Fo.16

Fo.18

Fo.07

Co.07

Co.03

Fo.20



64.93 = Top Hyd - 10+84.73

9+25	63.30	63.39 <sub>31</sub>	F 0.09
+45	63.14	63.28 <sub>14</sub>	F 0.14
+80	63.21	63.07 <sub>13</sub>	C 0.14
10+15	62.93	62.86 <sub>13</sub>	C 0.07
+50	62.71	62.65 <sub>11</sub>	C 0.06
+84.73 = End	62.24	62.44 <sub>24</sub>	F 0.20

North

8+45	63.50	63.59	F 0.09
+65	63.19	63.58 <sub>19</sub>	F 0.39
+85	63.39	63.54 <sub>39</sub>	F 0.15
9+05	63.40	63.47 <sub>40</sub>	F 0.07
+25	63.43	63.39 <sub>43</sub>	C 0.04
+45	63.34	63.28 <sub>34</sub>	C 0.06
+80	63.22	63.07 <sub>22</sub>	C 0.15
10+15	63.13	62.86 <sub>13</sub>	C 0.27
+50	62.94	62.65 <sub>11</sub>	C 0.29
+84.73	62.62	62.44 <sub>62</sub>	C 0.18

INDEXED

JER  
JUL 14 1954

Water + Sewer Lat.

Macawley		5.8					
0+00 = N.L. at E	45.8	43.1	C 2.7	2+16 = W	28.91	28.54 <sup>91</sup>	C 0.37
+30	46.5	44.0 <sup>6.5</sup>	C 2.5				
+50	45.9	43.7 <sup>5.9</sup>	C 2.2	2+31 = ①	32.29	32.29 <sup>22.00</sup>	C 10.29
+90	43.1	40.3 <sup>3.1</sup>	C 2.8				
1+40	38.0	34.0 <sup>8.0</sup>	C 4.0	2+56 = W	23.73	23.48 <sup>73</sup>	C 0.25
+90	32.2	27.6 <sup>3.2</sup>	C 4.6				
2+40	26.1	21.3 <sup>6.1</sup>	C 4.8	2+71 = ②	28.13	28.13 <sup>16.95</sup>	C 11.18
+90	19.9	14.9 <sup>9.9</sup>	C 5.0				
3+40	13.3	8.5 <sup>13.3</sup>	C 4.8	2+96 = W	18.67	18.41 <sup>67</sup>	C 0.26
+80	08.5	4.1 <sup>8.5</sup>	C 4.4				
4+20	05.1	1.0 <sup>5.1</sup>	C 4.1	3+11 = ③	24.26	24.26 <sup>12.50</sup>	C 11.76
+73.7 = S.L. Oliphant	02.7	8.3 <sup>02.7</sup>	C 4.4				
				3+36 = W	13.76	13.35 <sup>76</sup>	C 0.41
				3+51 = ④	19.57	19.57 <sup>08.90</sup>	C 10.67
				3+74 = W	09.65	09.05 <sup>65</sup>	C 0.60
				3+88.7 = ⑤	14.55	14.55 <sup>05.70</sup>	C 8.85

INDEXED

JUL 1 1954

0 + 46.5 = 1' Rad. +55	64.73 +13	65.41 +13	64.91	F 0.78	6+20	61.79 +13	62.93 +13	62.43	F 1.14
+64	64.32	65.30 +13	64.80	F 0.98	+50	62.50	63.18 +13	62.68	F 0.68
+84	63.84	65.05 +13	64.55	F 1.21	+80	62.29	63.42 +13	62.92	F 1.13
1 + 22.66	62.98	64.09 +13	63.59	F 1.11	7+05	62.32	63.63 +13	63.13	F 1.31
+61.32	61.97	63.13 +13	62.63	F 1.16	+25	62.55	63.82 +13	63.32	F 1.27
2 + 00	61.05	62.17 +13	61.67	F 1.12	+45	62.63	63.94 +13	63.44	F 1.31
+20	60.50	61.69 +13	61.19	F 1.19	+65	62.77	64.04 +13	63.54	F 1.27
+40	60.15	61.25 +13	60.75	F 1.10	+85	62.88	64.12 +13	63.62	F 1.24
+50 = 2' Rad.	60.08	61.03 +13	60.53	F 0.95	8+05	62.94	64.17 +13	63.67	F 1.23
3 + 37.5 = 1' Rad. +46	60.09	60.66 +13	60.16	F 0.57	+25	63.04	64.20 +13	63.70	F 1.16
+60	59.99	60.82 +13	60.32	F 0.83	+45	62.99	64.20 +13	63.70	F 1.21
+95	60.00	61.11 +13	60.61	F 1.11	+65	62.95	64.19 +13	63.69	F 1.24
4 + 30 +59.6	60.24	61.39 +13	60.89	F 1.15	+85	62.91	64.15 +13	63.65	F 1.24
+68.1 = 1' Rad.	60.61	61.70 +13	61.20	F 1.09	9+05	62.91	64.08 +13	63.58	F 1.12
5 + 55.6 = 2' Rad. +90	61.26	62.41 +13	61.91	F 1.15	+25	62.91	64.00 +13	63.50	F 1.09
	61.43	62.69 +13	62.19	F 1.26	+45	62.80	63.89 +13	63.39	F 1.09
					+80	62.51	63.68 +13	63.18	F 1.17
					10+15	62.40	63.47 +13	62.97	F 1.07
					+54.73 = end.	62.12	63.23 +13	62.73	F 1.11

Water Line -  
Plan - 9789-L

Thor - St. Main to Dalbergia  
4-13-53 7.0.

B.M. - N.W. 7' ct. Main  
Top S.E. Hyd. - Dalbergia

7.55  
12.45

25

INDEXED  
MER  
JUL 14 1954

0+00 = NL Main	7.4	<sup>7.4</sup> 3.7	C 3.7
+20	7.4	<sup>7.4</sup> 4.8	C 2.6
+60	8.5	<sup>8.5</sup> 6.0	C 2.5
1+00	8.9	<sup>8.9</sup> 6.2	C 2.7
+50	9.3	<sup>9.3</sup> 5.8	C 3.5
2 ~	9.0	<sup>9.0</sup> 5.5	C 3.5
+50	9.0	<sup>9.0</sup> 5.1	C 3.9
3+00.5 = S.L. Dalbergia	9.1	<sup>9.1</sup> 4.8	C 4.3
+50.5	8.7	<sup>8.7</sup> 4.3	C 4.4
4+00.5 = NL.	7.8	<sup>7.8</sup> 4.6	C 3.2

Rough Grades - Thor

INDEXED  
JUL 1 1951

West.

East.

0+00 = N.L. Main

7.50

8.03

+20 8.5 8.1 C 0.4

got = RC = 7.70  
8.20

+60 10.3 9.3  
9.2 C 1.1

+40 8.91  
9.39

1+00 9.5 9.5 C

9.63  
9.65

9.88 = Top

+50 9.3 9.2 C 0.1

RC = 9.38  
E.C. 9.45

9.80 = End.

2~ 9.2 9.2  
8.8 C 0.4

10.0

9.5

C 0.5

+50 9.0 9.0  
8.5 C 0.5

9.8

9.1

C 0.7

3+00.5 = S.L. Dalbergia 8.2 8.1 C 0.1

9.5

9.5  
8.7

C 0.8

+50.5 7.0 7.9 F 0.9

4+00.5 = N.L. 6.4 7.7 F 1.3

9.1

9.3

F 0.2

Rough Grades - Denver St.  
 Jelleth to Ingulf. - Plan 9218-L  
 W.O. 32014 - 4-20-53 7.0.

45.24 = Sw. Pole - Jelleth + Denver  
 53.11 = Mon - Ingulf.  
 54.55 = N.E. Pole "

27

INDEXED  
 JER  
 JUN 1 1954

	West.			East.		
0+00 = N.L. Jelleth	42.7	43.2	F 0.5	49.0	46.1	C 2.9
+23 = PC.	43.1	44.4	F 1.3	48.9	45.4	C 3.5
+43	43.6	45.0	F 1.4	48.6	45.7	C 2.9
+90 - 2' in	45.5	46.1	F 0.6	49.3	46.9	C 2.4
1+30	46.4	47.1	F 0.7	50.8	47.9	C 2.9
+70	47.5	48.1	F 0.6	51.9	48.9	C 3.0
2+10	48.2	49.1	F 0.9	52.9	49.8	C 3.1
+50	47.9	50.1	F 2.2	53.6	50.8	C 2.8
+90	49.9	50.8	F 0.9	54.5	51.5	C 3.0
3+40	50.8	51.1	F 0.3	55.5	51.9	C 3.6
+50.07 = SL Ingulf.	50.7	51.0	F 0.3	55.4	52.0	C 3.4

Rough Grades - Erie St. - Sep. 27

4-31-53

7.0.

West

0+00 = NL. Jelleff	63.4	63.8 <sub>4</sub>	F 0.4
+23 = P.C.	63.5	65.0 <sub>3.5</sub>	F 1.5
+43	63.9	65.2 <sub>3.4</sub>	F 1.3
1+00	64.0	64.9 <sub>4.2</sub>	F 0.9
+50	63.6	64.6 <sub>3.6</sub>	F 1.0
2~	62.9	64.3 <sub>2.9</sub>	F 1.4
+50	62.4	64.1 <sub>2.4</sub>	F 1.7
3~	63.2	63.8 <sub>3.2</sub>	F 0.6
+50.03 = S.L. Ingulf.	62.9	63.5 <sub>2.9</sub>	F 0.6

66.84 = S.W. Pole - Jelleff

65.25 = Sly. Cross on M.H. - Ingulf.

63.61 = S.W. Pole - Ingulf

East.

69.2	9.2 67.5	C 1.7
68.9	8.9 66.4	C 2.5
68.8	8.8 66.2	C 2.6
70.4	70.4 65.9	C 4.5
71.5	71.5 65.6	C 5.9
70.2	70.2 65.3	C 4.9
70.1	70.1 65.1	C 5.0
71.0	71.0 64.8	C 6.2
69.5	9.5 64.7	C 4.8

INDEXED  
JER  
JUL 1 1 1954

28

Rough Grades - Frankfort. - See. P. 28

93.35 = S.W. Pole - Jellet  
 105.00 = N.E. Cor. Porch - S.W. Cor. - Ingulf.

29

	West.		
0+00 = N.L. Jellet	94.4	95.8 4.8	F 1.4
+25 = P.C.	95.3	98.4 5.3	F 3.1
+70	98.0	02.2 8.0	F 4.2
1+10	99.2	05.0 9.2	F 5.8
+50	01.0	07.4 1.0	F 6.4
+90	03.0	09.3 3.0	F 6.3
2+30	03.8	10.9 3.8	F 7.1
+70	05.3	12.1 5.3	F 6.8
3+10	04.0	12.9 4.0	F 8.9
+50 = S.L. Ingulf.	03.6	12.7 3.0	F 9.1

INDEXED

JER  
 JUL 14 1954

	East.		
	06.9	6.9 100.3	C 6.6
	07.5	7.5 00.0	C 7.5
	08.3	8.3 03.2	C 5.1
	10.5	10.5 06.0	C 4.5
	12.3	12.3 08.4	C 3.9
	13.9	13.9 10.3	C 3.6
	17.3	17.3 11.9	C 5.4
	19.5	19.5 13.1	C 6.4
	22.0	22.0 13.9	C 8.1
	22.9	22.9 15.2	C 7.7



Curb Stakes-  
W.O. 21871

Tustin  
5-4-53 7.0.

INDEXED

JER  
JUL 1 1954

West.

End.				
	48.72	47.30 <sup>8.72</sup>	C1.42	
PC. = 0+14.3	47.61	47.65 <sub>0.04</sub>	F0.04	
0+30	47.86	48.12 <sub>1.86</sub>	F0.26	
+50	46.90	47.76 <sub>0.90</sub>	F0.86	
+70	45.38	46.54 <sub>1.16</sub>	F1.16	
+90	43.59	44.45 <sub>0.86</sub>	F0.86	
1+25	39.77	40.02 <sub>0.25</sub>	F0.25	
+60	35.47	35.60 <sub>0.13</sub>	F0.13	
+95	31.36	31.17 <sub>0.19</sub>	C0.19	
2+30	26.99	26.75 <sub>0.23</sub>	C0.23	
+65	22.82	22.32 <sub>0.50</sub>	C0.50	
3+00	18.29	17.90 <sub>0.39</sub>	C0.39	
+40.	13.60	12.85 <sub>0.75</sub>	C0.75	
+60	11.54	10.48 <sub>1.06</sub>	C1.06	
+80	09.39	08.44 <sub>0.95</sub>	C0.95	
4+00	07.48	06.72 <sub>0.76</sub>	C0.76	
+20	05.81	05.32 <sub>0.49</sub>	C0.49	
+43.74	04.28	03.77 <sub>0.51</sub>	C0.51	

East.

End.			
	46.06	46.70 <sub>0.64</sub>	F0.64
#	46.55	47.00 <sub>0.45</sub>	F0.45
PC. = 0+11.7	47.03	47.30 <sub>0.27</sub>	F0.27
	47.28	47.64 <sub>0.36</sub>	F0.36
	46.39	47.26 <sub>0.87</sub>	F0.87
	44.99	46.00 <sub>1.01</sub>	F1.01
	43.20	43.98 <sub>0.68</sub>	F0.68
	39.43	39.40 <sub>0.03</sub>	C0.03
	35.03	34.93 <sub>0.10</sub>	C0.10
	30.80	30.45 <sub>0.35</sub>	C0.35
	26.49	25.98 <sub>0.51</sub>	C0.51
	22.17	21.50 <sub>0.67</sub>	C0.67
	17.75	17.03 <sub>0.72</sub>	C0.72
	12.62	11.92 <sub>0.70</sub>	C0.70
	10.16	09.53 <sub>0.63</sub>	C0.63
	08.05	07.45 <sub>0.60</sub>	C0.60
	06.06	05.65 <sub>0.41</sub>	C0.41
	04.38	04.27 <sub>0.11</sub>	C0.11
	03.00	02.77 <sub>0.23</sub>	C0.23

West.

4+63.74 = P.C.

02.59 03.50 c 0.09

End. 03.92 03.<sup>92</sup>83 c 0.09

East.

02.15 2.15  
01.50 c 0.6501.48 1.48  
00.95 c 0.53

Stake cb. + Drain - Frankfort + Morena  
 Plan - 10162 - L 5-5-53 7.0.  
 w.o. 20984

INDEXED  
 SER.

B.M. - 10.04 = B.P. at Bridge  
 5.74 = Sw. Pole - Frankfort + Morena

32

n.w. Ret. - Frankfort

P.C. = Morena

1/2

E. end of Inlet - 5<sup>B</sup>.

N.E. Ret.

N. end

1/2

P.C. = 0+00

0+25

+70

1+05

+40

+75

2+00

+24 = P.C.

end = w.L. Nashville

5.25 5.4<sub>3</sub> F 0.15

5.34 5.4<sub>4</sub> F 0.11

5.38 5.4<sub>8</sub> F 0.10

6.41 6.4<sub>8</sub> C 0.93

6.14 6.4<sub>4</sub> C 0.70

6.42 6.4<sub>7</sub> C 0.95

6.10 6.6<sub>8</sub> C 0.42

6.00 6.8<sub>9</sub> C 0.11

6.35 6.1<sub>0</sub> C 0.25

6.36 6.3<sub>1</sub> C 0.05

6.96 6.5<sub>2</sub> C 0.44

7.08 7.0<sub>8</sub> C 0.41

7.27 7.2<sub>7</sub> C 0.46

7.76 7.7<sub>6</sub> C 0.88

Box Culvert.

0+00 = at inlet

+22.91

+45.83 = Ang. 5' 2"

+63.33 = end. 10' 2"

Beg. open Ditch

1+11.19 = Ang.

+50

+90

2+30

+70

2+05 = at Bridge - 1.2

5.11

5.26

5.21

5.16

4.0

3.7

3.4

3.4

1.5

-1.2

5.11

2.91

5.26

2.80

5.21

2.68

5.16

2.59

2.03

3.7

1.57

1.10

3.4

0.63

1.5

0.16

-0.25

C 2.20

C 2.46

C 2.53

C 2.57

C 2.0

C 2.1

C 2.3

C 2.8

C 1.3

F 1.0

Stake Drain at Park - 54<sup>th</sup> + Orange  
Plan - 2162 - D

INDEXED  
JUL 14 1954

0+00	63.15	63.15 61.20	1.95	5+75	27.18	7.18 25.63	C 1.55
0+22.5	61.18	61.18 55.40	5.78	6+18.73 = C.B.	24.67	4.67 24.11	C 0.56
+45	62.10	62.10 49.60	12.50	6+53.73	23.68	3.68 22.90	C 0.78
+53	61.35	61.35 48.10	13.25	+88.73	23.25	3.25 21.68	C 1.57
+61	60.79	60.79 47.15	13.64	7+23.73	21.36	1.36 20.46	C 0.90
+96	57.73	57.73 45.47	12.26	7+45.73 = end.	19.95	1.95 19.69	C 0.26
1+27.92 = B.C.	55.27	55.27 43.94	11.33				
+	53.48	53.48 42.80	10.68	B.M. <sup>s</sup> stub # 2	328.07		
1+75.57 = F.C.	51.91	51.91 341.65	10.26	stub # 3	340.12		
1+99.69 = C.B.	50.20	50.20 40.49	9.71	stub by Olive Trees	336.60		
2+21.63 = C.B.	48.42	48.42 39.44	8.98	" " " "	349.41		
2+59.75	45.50	45.50 37.61	7.89	" " " "	361.38		
2+97.87	42.67	42.67 35.78	6.89	Pole - Nly. of Orange	372.94		
3+36 = Brk.	39.74	39.74 33.95	5.79				
3+65.92 = C.B.	36.61	36.61 32.91	3.70				
4+00	34.78	34.78 31.73	C 3.05				
+35	33.72	33.72 30.51	C 3.21				
+70	32.10	32.10 29.29	2.81				
5+05	30.95	30.95 28.07	2.88				
+40	29.29	29.29 26.85	C 2.44				

Stake Curbs - Denver St - Sec P. 27

34

INDEXED  
JER  
JUL 1 1951

	West			East		
End. - on N.L.	43.39	43. <sup>39</sup> <sub>20</sub>	C 0.19	46.65	46. <sup>65</sup> <sub>07</sub>	C 0.58
1/2	43.50	43. <sup>50</sup> <sub>50</sub>	F 0.30	45.51	45. <sup>51</sup> <sub>59</sub>	F 0.09
P.C. = 0+23	44.19	44. <sup>19</sup> <sub>19</sub>	F 0.16	45.48	45.40	C 0.08
0+43	44.65	44. <sup>65</sup> <sub>19</sub>	F 0.34	45.80	45. <sup>80</sup> <sub>74</sub>	C 0.06
+75	45.47	45. <sup>47</sup> <sub>47</sub>	F 0.30	46.65	46. <sup>65</sup> <sub>52</sub>	C 0.13
1+10	46.35	46. <sup>35</sup> <sub>35</sub>	F 0.28	47.34	47.38	F 0.04
+45	47.06	47. <sup>06</sup> <sub>06</sub>	F 0.43	48.33	48. <sup>33</sup> <sub>24</sub>	C 0.09
+80	48.30	48. <sup>30</sup> <sub>35</sub>	F 0.05	49.20	49. <sup>20</sup> <sub>10</sub>	C 0.10
2+15	49.16	49. <sup>16</sup> <sub>16</sub>	F 0.05	50.23	49. <sup>23</sup> <sub>96</sub>	C 0.27
+50	49.91	50. <sup>06</sup> <sub>91</sub>	F 0.15	51.00	50. <sup>00</sup> <sub>81</sub>	C 0.19
+70	50.24	50. <sup>24</sup> <sub>49</sub>	F 0.25	51.33	51. <sup>33</sup> <sub>24</sub>	C 0.09
+90	50.51	50. <sup>51</sup> <sub>51</sub>	F 0.27	51.42	51. <sup>42</sup> <sub>53</sub>	F 0.11
3+10	50.73	50. <sup>73</sup> <sub>73</sub>	F 0.22	51.51	51. <sup>51</sup> <sub>70</sub>	F 0.19
+40 = P.C.	50.80	51. <sup>10</sup> <sub>80</sub>	F 0.30	52.15	51. <sup>15</sup> <sub>85</sub>	C 0.30
= end. on S.L.	50.15	51. <sup>00</sup> <sub>15</sub>	F 0.85	54.35	52. <sup>00</sup> <sub>35</sub>	C 2.35

see P. 28

Stake curbs - Erie St. East.

West.

End	67.32	67.45 <sup>52</sup>	F 0.13	63.86	63.80 <sup>6</sup>	C 0.06
1/2	66.82	66.83	F 0.01	63.95	64.53 <sup>395</sup>	F 0.59
PC. = 0+23	66.28	66.40 <sup>78</sup>	F 0.12	64.90	65.00	F 0.10
0+43	65.89	66.23 <sup>89</sup>	F 0.34	65.06	65.20	F 0.14
0+76	65.79	66.04 <sup>94</sup>	F 0.25	65.09	65.23	F 0.14
1+09	65.88	65.86	C 0.02	65.20	65.04 <sup>20</sup>	C 0.16
+42	65.86	65.67 <sup>86</sup>	C 0.19	65.14	64.86 <sup>514</sup>	C 0.28
+75	65.57	65.48 <sup>57</sup>	C 0.09	64.62	64.67	F 0.05
2+08	65.34	65.29 <sup>34</sup>	C 0.05	64.92	64.48 <sup>92</sup>	C 0.44
+41	65.08	65.10	F 0.02	64.66	64.29 <sup>66</sup>	C 0.37
+74	64.97	64.92	C 0.05	64.28	64.10 <sup>28</sup>	C 0.18
3+07	64.49	64.73 <sup>49</sup>	F 0.24	64.18	63.92 <sup>418</sup>	C 0.26
+40 = PC.	64.28	64.54 <sup>28</sup>	F 0.26	63.92	63.73 <sup>92</sup>	C 0.19
End.	64.41	64.65 <sup>41</sup>	F 0.24	63.83	63.54 <sup>83</sup>	C 0.29
= Inqulf.				63.34	63.40 <sup>34</sup>	F 0.06

63.61 = Sw. Pole

Curb. Stakes - Frankfort. 6-2-53

36

INDEXED  
M.E.R.  
1111 1-1054

	West.			East.		
End.	97.27	97.27 95.80	C 1.47	02.67	2.67 100.25	C 2.42
1/2	97.82	97.82 97.10	C 0.72	00.69	00.69 99.87	C 0.82
P.C. = 0+23	98.74	98.74 98.40	C 0.34	00.74	00.74 100.00	C 0.74
+43	00.02	00.02 0.25	F 0.23	01.32	1.32 01.25	C 0.07
+70 = T.P.	02.06	02.06 02.24	F 0.18	03.03	03.03 03.24	F 0.21
+90	03.38	03.38 03.67	F 0.29	04.33	04.33 04.67	F 0.34
1+10	05.03	05.03 05.00	C 0.03	05.67	05.67 06.00	F 0.33
+30	06.31	06.31 06.23	C 0.08	06.85	06.85 07.23	F 0.38
+50	07.05	07.05 07.36	F 0.31	08.04	08.04 08.36	F 0.32
+70	08.03	08.03 08.40	F 0.37	08.97	08.97 09.40	F 0.43
+90	09.93	09.93 09.34	F 0.41	10.01	10.01 10.34	F 0.33
2+10	10.02	10.02 10.23	F 0.21	10.85	10.85 11.23	F 0.38
+30	10.77	10.77 10.92	F 0.15	11.83	11.83 11.92	F 0.09
+50 = T.P.	11.45	11.45 11.56	F 0.11	12.44	12.44 12.56	F 0.12
+70	12.10	12.10	G.	12.96	12.96	F 0.14
+90	12.35	12.35 12.55	F 0.20	13.49	13.49 13.55	F 0.06
3+10	12.58	12.58 12.90	F 0.32	13.90	13.90	G.
+30	12.88	12.88 13.20	F 0.32	14.62	14.62 14.20	C 0.42
+40 = P.C.	13.11	13.11 13.10	C 0.01	15.05	5.05 14.50	C 0.55
End.	13.03	13.03 12.65	C 0.38	15.61	15.61 15.20	C 0.41

Curb Stakes  
Plan - 9789-L

Thor -  
6-17-53

- 70

INDEXED  
JER  
JUL 1 1953

37

	West.			East.		
0+00 = N.L. Main	got. 6.95 7.46	7.50				
+08 = P.C.	7.55	7.55	- G			
+20	7.90	8.05 7.95	F 0.15			
+40	8.59	8.76 8.59	F 0.17			
+60	8.86	9.24 8.86	F 0.38			
+80	9.08	9.48 9.08	F 0.40			
1+00	9.31	9.50 9.31	F 0.19			
+38.13 = 2' Rad.	9.28	9.24	C 0.04	2' Rad 9.93	9.86	
To W. N	9.28	9.26	C 0.02	To E.		
end at W.L.	9.39	9.42 9.39	F 0.03	End - E.L.	10.00	10.01
end at W.L.	9.23	9.28 9.23	F 0.05	End - E.L.	10.49	9.91 10.49
To W. S.	8.94	9.12 8.94	F 0.18	To E. S	10.17	9.75 10.17
1+62 = 2' Rad.	8.94	9.06 8.94	F 0.12	2' Rad.	10.17	9.69 10.17
1+95	8.97	8.84 8.97	C 0.13		9.29	9.45 9.29
2+30	8.79	8.59 8.79	C 0.20		9.10	9.20
+65	8.80	8.35 8.80	C 0.45		9.13	8.95 9.13
3+00.45 = S.L. Dalbergia	8.96	8.10 8.96	C 0.86		8.90	8.70 8.90



3+25	8.17	<sup>8.17</sup> 7.96	Co. 21	3+06 = P.C.	8.79	<sup>77</sup> 8.65	Co. 14
+70	7.50	<sup>7.82</sup> 7.80	Fo. 32	1/2	8.26	<sup>73</sup> 8.73	Fo. 47
4+00 = N.L.	7.11	<sup>7.70</sup> 7.11	Fo. 59	End. = cb.	8.91	8.89	
				got. 8.17			

N.E. Ret.

				got. 9.17			
			Exist. cb.	9.90		9.89	
			1/2	9.31		<sup>66</sup> 9.66	Fo. 35
			E.C.	8.94		<sup>43</sup> 9.43	Fo. 49
			+6 = N.L.	8.30		<sup>25</sup> 9.25	Fo. 95
						<sup>30</sup> 8.30	

Trial Cb. Grades - along Tamacha Rd.

from Sub. + Paving to w. - To 10+78

See B. 2222 - P. 32 - Profile 3673-472

W.O. 31770

8-5-53

7.0.

N. Side

S. side

+43.2 = Pave

70.32

71.10

18 ~	69.7	70.2	F 0.5	71.4	70.9	C 0.5
+50	69.6	70.0	F 0.4	70.0	70.6	F 0.6
17 ~	69.1	69.8	F 0.7	69.2	70.3	F 1.1
+50	68.3	69.6	F 1.3	68.9	70.0	F 1.1
16 ~	68.3	69.4	F 1.1	67.6	69.7	F 2.1
+50	68.3	69.2	F 0.9	66.7	69.4	F 2.7
15 ~	68.2	69.0	F 0.8	67.1	69.1	F 2.0
+50	68.3	68.8	F 0.5	67.6	68.8	F 1.2
14 ~	68.6	68.6	G	68.0	68.5	F 0.5
+50	68.9	68.4	C 0.5	67.5	68.2	F 0.7
13 ~	68.9	68.2	C 0.7	67.5	67.9	F 0.4
+50	69.2	68.0	C 1.2	67.4	67.6	F 0.2
12 ~	69.2	67.8	C 1.4	67.5	67.3	C 0.2
11 + 50	68.6	67.6	C 1.0	67.1	67.03	C 0.1
10 + 78 - P.I. of Grade Lines	66.8	67.2	F 0.5	65.9	66.61	F 0.7

INDEXED  
JER  
JUL 17 1954

270.75 = B.M. in Pole

39

Stake Culverts -- Camino Del Oro --

Plan - 10394-L - 9-14-53 - 7.0.

W.O. 31866

		Grade	Box	Culvert
0 - 09.5 = outside Seawall	3.52	1.28		4.80
0 + 35	1.80	1.11		2.91
+ 70	2.28	0.98		3.26
1 + 05	2.58	0.84		3.42
+ 40	2.80	0.71		3.51
+ 75	2.64	0.57		3.21
2 + 08	2.47	0.44		2.91
+ 18 = Brk in Box.	2.48	0.40		2.88
+ 47.45 = ang.	2.34	0.19		2.53
+ 74.51 "	2.59	0.00		2.59
3 + 01.57 "	3.00	0.20		2.80
+ 28.63 "	3.73	0.39		3.34
+ 59.90 = B.C.	4.55	0.61		3.94
d = 1° 12' 30"				
4 + 00 = end Box	5.92	0.90		5.02
Req. 36" pipe		0.90		0.90 = pipe
4 + 35 - 7.5	7.53	2.22		5.31
+ 70 - 7	9.48	3.53		5.95

B.M. = D - N.E. Cor.  
Camino Del Oro + Paseo Grande

3.02

40

INDEXED  
JUL 14 1954

		18" pipe	
	3.52	0.84	4.36
	1.80	0.67	2.47
	2.28	0.54	2.82
	2.58	0.40	2.98
	2.80	0.27	3.07
	2.64	0.13	2.77
Ang.	2.47	0.01	2.48
2 + 14.20 = end at H. Inlet	2.45	0.00	2.45
0.00		F 0.70	
0.52		F 0.72	
0.39		F 0.38	
0.61		F 0.49	

B.M. = S.W. Disk  
La Jolla Shores

27.69

26.35  
14.80  
11.55

41

5 + 05' - 7'	11.55	4.85	6.70
+36.10 = P.C.C. - 7'	12.37	6.05	6.32
+75 - 7'	13.33	7.50	5.83
6 + 10 - 6'	15.95	8.82	7.13
+45 - 7.5	19.00	10.14	8.86
+80 - 7'	21.57	11.45	10.12
7 + 15 - 6.5	23.63	12.75	10.88
+50 = 7	25.32	14.05	11.27
+70 = C.L. <sup>11.55</sup>	26.29	14.80	11.49
± 10' Inlet = Flow Line - 5' B	26.35	21.00	5.35
	cb = 26.20		
	gr = 25.40		
+95.40 = E.C.	26.10	15.68	10.42
8 + 17 - 7	27.13	16.43	10.76
+37 - 7'	27.83	17.33	10.50
+70.4 = Meet.	19.10		

## Stake Sewer in Roseland Dr.

Plan - 5081-B

W.O. 62350 - 10-6-53 7.0.

B.M. - spike in SE. Pole 73.58

Stakes 4 1/2 ft.

0+00 = Conn. to Exist. Sewer = P.C. 100' Rad. Cur. vc

0+00 = P.C. 72.73 72.73 64.62 C 8.11

+06.11 = Mid. 73.36 73.36 64.99 C 8.37

+12.22 = E.C. 73.75 73.75 65.36 C 8.39

+44.15 75.65 75.65 67.27 C 8.38

+76.08 77.12 77.12 69.19 C 7.93

1+08 = Plug. <sup>-4.5' both ways</sup> 77.59 77.59 71.10 C 6.49

Beg. Lat. - 90° - 18'

Lat. at Prop. 83.98 83.98 76.00 7.98

INDEXED  
JER  
JUL 14 1954

Stake Drain - Block L - Jolla Tract  
 La Jolla Park - Map 1535

W.O. 21080 - 10-8-53 7.0.

Plan - 4972-B

B.M. = Top. Hyd.

226.14

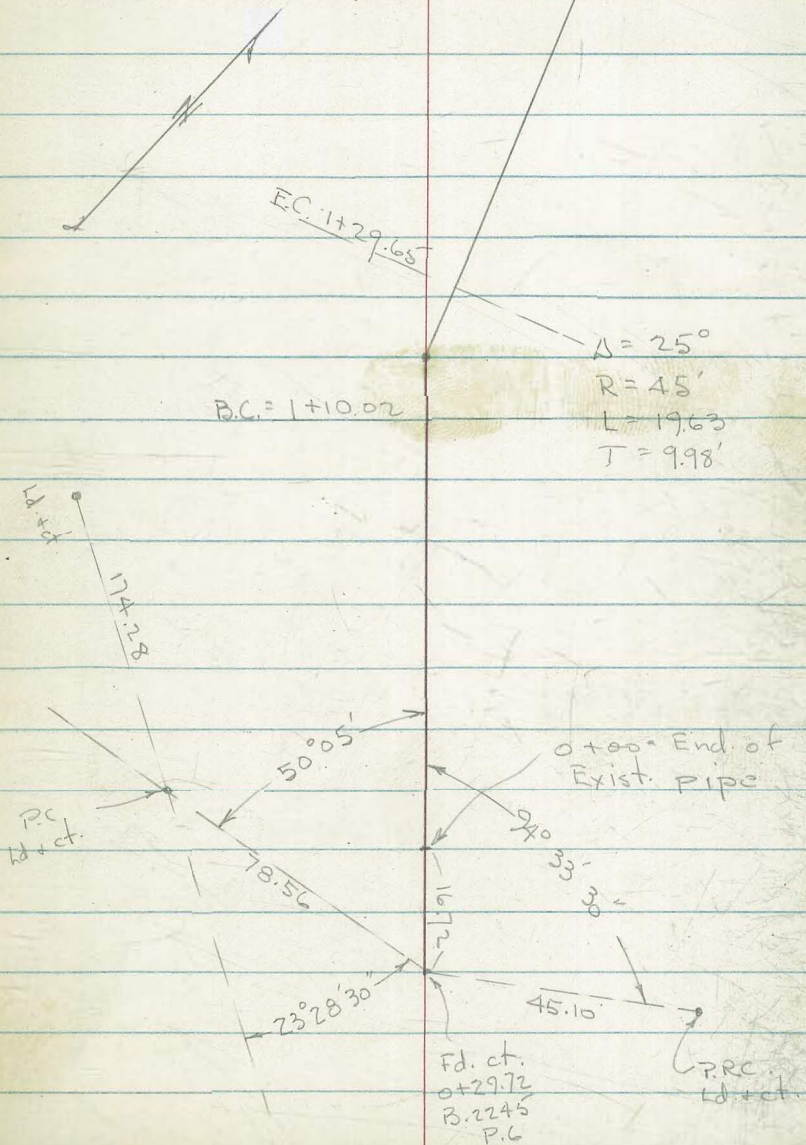
0+00 = Exist 24" C.M.P. 209.00

+35 - 5'	07.47	7.47 03.95	C 3.52
+70 - 8'	06.02	66.02 98.87	C 7.15
+90 - 8'	04.88	04.88 95.97	C 8.91
1+10.02 = BC - 8'	02.78	02.78 93.07	C 9.71
± 8'	01.19	01.19 91.63	C 9.56
1+29.65 = EC - 7'	98.82	98.82 90.19	C 8.63
+55 7'	88.48	88.48 86.51	C 1.97
+84 - 7'	83.10	3.10 82.30	C 0.80
2+20 - 6'	78.53	8.53 77.08	C 1.45
(+55) = end - 5'	74.70	4.70 72.00	C 2.70
2+32 = end - 6 ft	77.78	7.78 75.34	C 2.44
74.0			

INDEXED  
 JUL 1 1954

Conc. Man  
 L.S. 1880

43



184  
 184  
 184

Stake 20' Alley in Sly. of Blk 34  
 La Jolla shores - Plan - 10.397-L  
 W.O. 31866 - 10-14-53 - 7.0

B.M. 744 = + - S.E. Vallecitos + Paseo Grande 44

4.73 = spike in S. Pale at Curve - Guy.

INDEXED

JUL 14 1954

North

3.18 = Conc.  
in gut. Line

South

0 + 00 = FL. Del Oro

+10 = P.C.	4.02	<sup>4.02</sup> 3.58	C 0.44	0.30 Dip to Here!	3.45	3.46	F 0.01
+40.44	4.05	<sup>4.05</sup> 3.65	C 0.40		3.52	<sup>52</sup> 3.49	C 0.03
+70.88	3.97	<sup>97</sup> 3.72	C 0.25		3.51	3.52	F 0.01
1 + 01.33 = B.C.	4.10	<sup>4.10</sup> 3.80	C 0.30		3.32	<sup>56</sup> 3.56	F 0.24
+16.61	4.03	<sup>4.03</sup> 3.84	C 0.19		3.56	<sup>61</sup> 3.61	F 0.05
+31.89	4.10	<sup>4.10</sup> 3.88	C 0.22		3.62	<sup>66</sup> 3.66	F 0.04
+47.17 = E.C.	4.29	<sup>4.29</sup> 3.93	C 0.36		3.55	<sup>71</sup> 3.71	F 0.16
+74.55	4.34	<sup>34</sup> 4.01	C 0.33		3.75	<sup>80</sup> 3.80	F 0.05
2 + 01.93	4.04	4.09	F 0.05		3.71	<sup>89</sup> 3.89	F 0.18
+29.33	3.97	<sup>18</sup> 4.18	F 0.21		3.73	<sup>98</sup> 3.98	F 0.25
+49.33	4.12	<sup>30</sup> 4.30	F 0.18		3.82	<sup>10</sup> 4.10	F 0.28
+69.33	3.86	<sup>52</sup> 4.52	F 0.66		4.08	<sup>34</sup> 4.34	F 0.26
+97.79	4.95	<sup>91</sup> 4.91	C 0.04		4.86	<sup>87</sup> 4.77	C 0.09
3 + 26.25	5.39	5.30	C 0.09		5.11	<sup>20</sup> 5.20	F 0.09
+54.71	5.87	<sup>87</sup> 5.70	C 0.17		5.65	5.63	C 0.02
+83.17	6.11	6.10	C 0.01		6.37	<sup>37</sup> 6.06	C 0.31
4 + 11.63 = P.C. = end of cb.		6.50 ✓				6.50 ✓	

Stake Alley in Blk 12 - La Jolla Shores

Plan - 103/96 - L 10-14-53 - 7.0.

B.M. 4.83 = □ in

Uly. Ret. Alley +  
DeLa Ribera

45

INDEXED  
JER  
JUL 1 1954

Camino Del Sol  
0+00 =  $\pm$  at E.L.

North

South

+32.71 0.32B

4.38

3.60

4.38

3.77

C 0.61

4.12

4.12

3.67

C 0.45

+65.42 - 0.60B

4.25

4.25

3.95

C 0.30

4.31

4.31

3.87

C 0.44

+98.13 - 0.40B

4.86

4.12

C 0.74

0.30B

5.07

4.07

C 1.00

+3084

4.30

4.30

G

Line

4.86

4.27

C 0.59

+63.53 = Brk

4.23

4.47

F 0.24

0.20 in

4.99

4.47

C 0.52

+95.36

4.35

4.60

F 0.25

1-B

4.92

4.60

C 0.32

2+2720

4.63

4.73

F 0.10

1-B

4.83

4.73

C 0.10

+59.03 = W.L.

4.81

Meet.

4.90

Meet.



Stake 20' Alley in Block 9 - La Jolla Shores  
 Plan - 10396-L - 10-15-53 - 7.0.

B.M. = 7.32 -  $\Pi$  in Nly. Ret. Alley  
 + Paseo Grande

46

INDEXED

JER  
 JUL 14 1954

North

South

		North			South
Calle de La Plata 0+00 = $\pm$ + E.L.	set cut	4.94			4.99
0+32.52	5.72	5.17 <sup>72</sup>	C 0.55	6.35	5.21 C 1.14
0+65.05 = Ang.	5.37	5.38 <sup>37</sup>	F 0.01	6.03	5.44 <sup>03</sup> C 0.69
+87.07 - 0.10 B	5.71	5.60 <sup>71</sup>	C 0.11	5.92	5.68 <sup>92</sup> C 0.24
1+07.07 - 0.23 B	7.29	5.77 <sup>29</sup>	C 1.52	6.06	5.84 <sup>06</sup> C 0.22
+27.07 - 1' B	6.18	6.10 <sup>18</sup>	C 0.08	6.29	6.20 <sup>29</sup> C 0.09
+60.37	6.95	6.80 <sup>95</sup>	C 0.15	7.40	6.85 <sup>40</sup> C 0.55
+93.67	7.52	7.50	C 0.02	7.98	7.50 <sup>98</sup> C 0.48
2+03.67	7.65	7.58 <sup>65</sup>	C 0.07	8.61	7.61 C 1.00
+13.67 = W.L. Paseo Grande		7.43			7.54

Stake Trial / Grade on Wells - from  
 Mtascadero to Tennyson - 5' from Prop.  
 W.O. 32179 - 10-16-53. 7.0.

BM. 152.02 = ± P.K. on Ely. 7' wells.  
 Mtascadero 47

INDEXED  
 JEA  
 JUL 14 1954

East.

West.

Alicia  
 0+00 = N.L.

+10 = P.C.	23.0	<sup>3.0</sup> 22.7	C 0.3	23.2	23.7	F 0.5
+60	19.4	19.4	G	19.7	20.5 9.7	F 0.8
1+10	15.7	16.0	F 0.3	17.7	17.2	C 0.5
+60	12.5	12.7	F 0.2	13.5	14.0	F 0.5
2+10	09.6	09.4	C 0.2	10.1	10.7	F 0.6
+65 = P.C.	05.8	105.7	C 0.1	07.5	107.1	C 0.4

2+75 = S.L.

Tennyson

B.M. = 124.76 - N.W. Conc. Mon. Alicia

48

106.92 - S.W. Conc. Mon. Tennyson

East

West

Atascadero  
0+00 = N.L.

+10 = P.C.	49.4	49.9	F 0.5	51.2	52.2	F 1.0
+30	47.4	48.5	F 1.1	49.2	49.6	F 0.4
+50	45.7	46.7	F 1.0	47.5	47.6	F 0.1
1+00	42.0	42.2	F 0.2	43.1	43.0	C 0.1
+50	37.2	37.8	F 0.6	39.1	38.5 <sup>9.1</sup>	C 0.6
2+00	32.5	33.3 <sub>2.8</sub>	F 0.8	34.9	33.9	C 1.0
+30	29.7	30.6 <sub>1.1</sub>	F 0.9	32.6	31.2 <sup>2.6</sup>	C 1.4
+65 = P.C.	27.5	27.5	G	29.6	28.0 <sup>9.6</sup>	C 1.6
+75 = S.L. Alicia						

Stake Sewer - Thorn St. - Chamoune - E.

Plan - 5066 - B - 10-26-53 70.

W.O. 62345

B.M. = N.W. B.P. - Thorn <sup>+ Chamoune</sup> 332.96

4.5' rt. Stake Grade Cut.

0+00 = Exist M.H. 32.32 318.60 C 13.72

+35 32.00 18.74 13.26

+70 31.39 18.80 12.59

1+05 30.86 19.02 11.84

+40 30.38 19.16 11.22

+75.8 = ± Alley 29.70 19.30 10.40

2+00 = Plug. 28.92 19.40 C 9.52

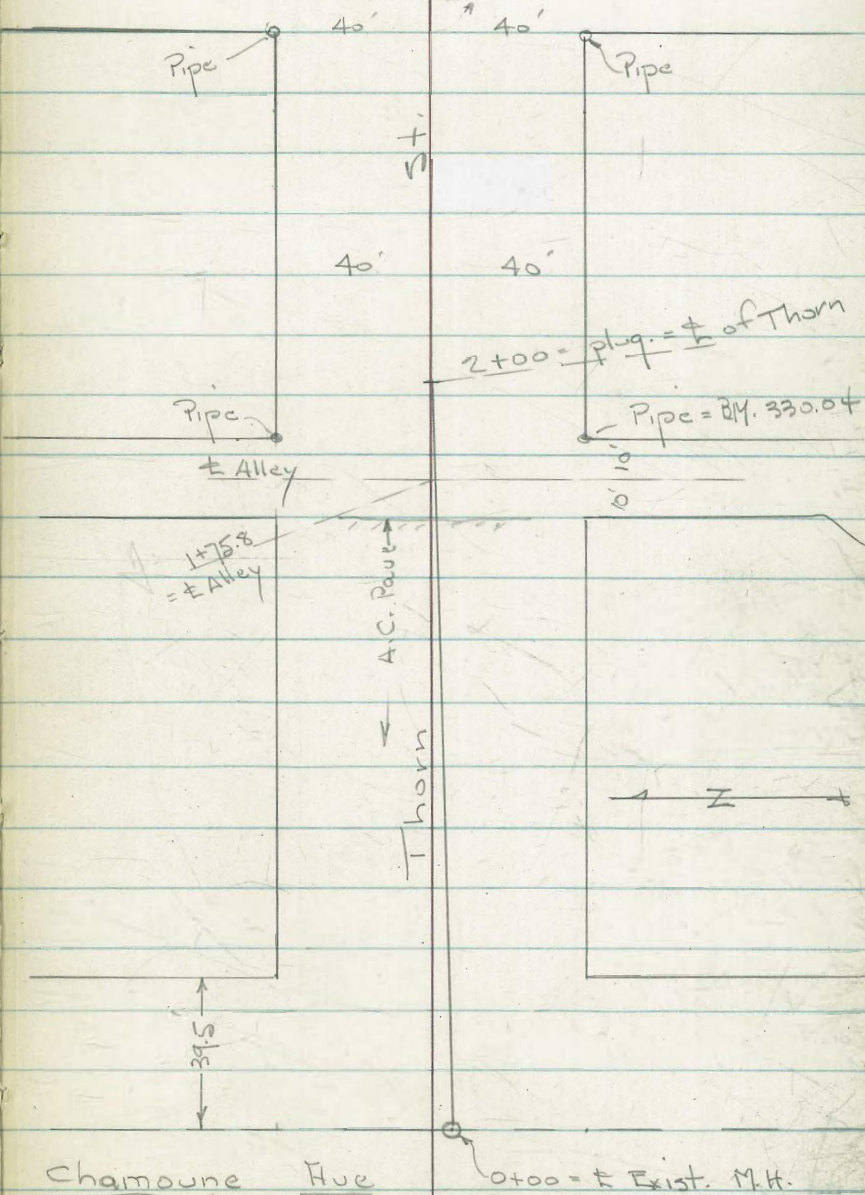
B.M. = S.E. pipe - Chamoune <sup>+ Alley</sup> 330.04

46<sup>th</sup>

INDEXED  
SER  
JUL

St.

49



INDEXED  
JER  
JUL 1054

Stake St. Drain - Market + Quail

Plan - 4214 - B - w.o. 20797 - 11-5-53-7.0

B.M.

0+00 = 55.71' from 7' Line

Exist. pipe	I.F. pipe = 17.91			
		118.36		
0 + 29.63	22.82	22.82	18.60	C 4.22
+ 59.27	23.37	23.37	19.30	C 4.07
+ 88.90	21.97	21.97	20.15	C 1.82
1 + 18.54	22.31	22.31	21.00	C 1.31

18.95  
2.15  
21.10  
19.60  
2.20  
21.80

22.17 = Bot

22.07 = Bot

17.91  
19.30  
37.21  
18.60

Stakes - 5' Rt.

## Stake Sewer - Wittier St.

Plan - 2168-D - W.O. 32095 - 11-6-53 - 7.0.  
 46.86 = spike in Pole

		6.77	5.77
0+00 = E.L. Catalina	46.77	41.00	5.77
+35	49.15	42.42	6.73
+70	52.72	43.95	8.77
1+05	56.35	45.28	11.07
+40	57.64	46.70	10.94
+75	58.20	48.13	10.07
2+10	58.85	49.55	9.30
+45.4 = M.H. 6	59.44	51.00	8.44
0+00			
+			
+85	61.15	52.38	8.77
+70	63.05	53.76	9.29
1+05	63.30	55.14	8.16
+40	63.80	56.52	7.28
+65 = plug.	63.23	57.50	5.73

## Line in Formosa

0+00 = M.H. 6		51.00	
+35	58.85	51.35	7.50
+70	58.03	51.70	6.33
1+95	57.24	51.95	5.29

## Catalina - Wittier to N.

49.76 = Pole at end.

spike in Pole on top  
 stakes 5' Rt.

0+00 = Exist M.H.

		Grade Elev.	Cut.
0+00 =	47.77	44.77	3.00
0+35	46.25	39.00	6.25
0+70	48.80	39.35	4.45
1+05	52.34	49.80	2.54
1+40	55.28	39.70	15.58
1+75	57.19	52.34	4.85
2+10	57.95	40.05	17.90
2+45	57.46	55.28	2.18
2+80	55.81	57.19	1.38
3+00 = M.H. 5	54.56	40.75	13.81
+30	52.46	57.95	5.49
+60	50.31	41.10	9.21
+90 = Plug.	48.70	41.45	7.25

INDEXED  
 JUL 14 1954

Banning St. - Wittier to Mendocino

INDEXED  
M.E.R.

BM = 24.56 = Pole - Sw. Wittier + Banning Ht. 1 - 1954

- Exist Sewer - 0+00 = M.H. 1	22.60	22.60 15.05	7.55
+35	21.10	21.10 16.11	4.99
+70	21.90	21.90 17.16	4.74
1+05	22.99	22.99 18.22	4.77
+40	23.41	23.41 19.27	4.14
+75	24.13	24.13 20.33	3.80
2+10	25.53	25.53 21.38	4.15
+45	27.79	27.79 22.44	5.35
+80 = M.H. 2	30.84	30.84 23.50	7.34
0+35	34.88	34.88 27.86	7.02
+70	39.29	39.29 32.22	7.07
1+05	43.66	43.66 36.58	7.08
+40	48.13	48.13 40.94	7.19
+75	52.55	52.55 45.30	7.25
2+10	57.03	57.03 49.66	7.37
+45	61.22	61.22 54.01	7.21
+65 = M.H. 3	62.47	62.47 56.50	5.97

62.39 = S.E. Pole Banning + Mendocino

52

0+00 = M.H. 3

+35	62.10	56.50 62.10	5.46
+70	61.88	61.88 56.78	5.10
1+05	61.85	61.85 56.92	4.93
+40	61.81	61.81 57.06	4.75
+70 = Plug.	61.86	61.86 57.18	4.68

- Pole on Lt. = 46.97

Rough Grades - Byron St. - Scott - E.  
 Plan - 10933 - L 11-12-53 - 7.0.

BM = 2.28 = 50' R.P. - P.A. To E Hub. 53

North

South

INDEXED  
 JER  
 JUL 1 1954

	North			South		
0+00 = E.L. Scott						
+46.73 = P.C.	5.9	5.3 <sup>9</sup>	C 0.6	5.8	5.4 <sup>8</sup>	C 0.4
+90	4.1	4.2	F 0.1	4.4	4.6	F 0.2
1+40	3.5	3.0	C 0.5	3.5	3.6	F 0.1
+80	2.9	2.3 <sup>9</sup>	C 0.6	3.1	2.9 <sup>3</sup>	C 0.2
2+20	2.5	1.9 <sup>5</sup>	C 0.6	2.5	2.4	C 0.1
+83 = P.C.	1.8	1.8	CT	2.0	1.8	C 0.2
on N.L. - 3' W.	1.4	1.2	C 0.2			
± 3' B.	1.2	1.2	CT	1.4	1.3	C 0.1
on N.L. - 3' E.	1.4	0.5 <sup>1.4</sup>	C 0.9			
0+17 = E.C.	1.0	1.1	F 0.1			
+60	1.1	1.3	F 0.2	1.3	1.3	G
1+00	1.0	1.5	F 0.5	1.3	1.5	F 0.2
+39 = P.C. on N.	1.2	1.6	F 0.4			
+58 = P.C. on S.				1.4	1.7	F 0.3
Meet	1.71	1.66		1.85	1.80	



Stake Rough Grades + Water  
 on Russell St. - Locust To Rosecrans  
 Plan 10668-L - W.O. 31599 - 11-16-53

546 = Sw. B.P. Rosecrans 54  
 33.83 = Wly top of Bottom Step. - SE Cor.  
 Locust

Water

-7.0.

N. Side - S' Back

0+00 = W.L. Rosecrans.

INDEXED  
 JUL 14 1954

+35 = Beg.	8.9	8.9 5.30	c 3.6				
+75	13.1	13.1 9.2	c 3.9		11.5	13.0	F 1.5
1+25	18.1	18.1 14.0	4.1		17.3	17.7	F 0.4
1+75	22.8	22.8 18.9	3.9		21.8	22.5	F 0.7
2+25	27.9	27.9 23.7	4.2		27.4	27.2	c 0.2
+75	33.1	33.1 28.5	4.6		32.3	32.0	c 0.3
3+00 = E.L. Locust	35.8	35.8 30.6	c 5.2		33.2	34.6	F 1.4
						3.2	
E.L. on S.	35.3	35.3 35.1	c 0.2				

## Stake Sewer in Alley - Block 12

55

			cut.				
0+00 = Exist. M.H. 5	27.71	<sup>7.71</sup> 20.18	7.53	1+05	36.04	<sup>6.04</sup> 30.12	5.92
+35	25.92	<sup>5.92</sup> 20.43	5.49	+22 = Plug.	37.95	<sup>7.95</sup> 30.30	7.65
+70	27.12	<sup>7.12</sup> 20.67	6.45				
1+05	27.04	<sup>7.04</sup> 20.92	6.12				
+40	25.75	<sup>5.75</sup> 21.16	4.59				
+75	25.95	<sup>5.95</sup> 21.41	4.54				
2+10	29.42	<sup>9.42</sup> 21.65	7.77				
+35	32.86	<sup>32.86</sup> 21.82	11.04				
+60.67 = M.H. 17 = Back	35.37	<sup>35.37</sup> 22.00	13.37				
Ahead	35.37	<sup>35.37</sup> 27.50	7.87				
0+35	39.02	<sup>39.02</sup> 27.74	11.28				
+70	40.00	<sup>40.00</sup> 27.97	12.03				
1+05	39.58	<sup>39.58</sup> 28.21	11.37				
+40	38.65	<sup>38.65</sup> 28.44	10.21				
+75	38.26	<sup>38.26</sup> 28.68	9.58				
2+10	36.55	<sup>36.55</sup> 28.90	7.65				
+25 = M.H. 4	35.49	<sup>35.49</sup> 29.00	6.49				
0+35	35.03	<sup>35.03</sup> 29.38	5.65				
+70	34.67	<sup>34.67</sup> 29.75	4.92				

Stake Sewer in Alley - Blk. 13

Stake Sewer - Calalma - S. of Voltaire 56

5+10-90 to Voltaire

5' et.

0+00 = M.H. 11	63.95	63.95 57.50	6.45
+35	63.78	63.78 58.03	5.75
+70	64.15	64.15 58.55	5.60
1+05	64.31	64.31 59.08	5.23
+40	64.63	64.63 59.60	5.03
+75	65.36	65.36 60.13	5.23
2+10	66.74	66.74 60.65	6.09
+45	67.93	7.93 61.18	6.75
+80	68.29	8.29 61.70	6.59
3+00 = M.H. 12	68.75	8.75 62.00	6.75
0+35 = T.P.	69.73	9.73 64.00	5.73
+70	71.29	71.29 66.08	5.29
1+05	72.95	72.95 68.00	4.95
+40 = Plug.	75.40	5.40 70.00	5.40

Exist. M.H.		49.15	
+32.95 - M.H. 7	61.37	61.37 52.25	9.12
+35	61.40	61.40 53.74	7.66
+70	62.42	62.42 55.23	7.19
1+05	63.62	63.62 56.72	6.90
+40	64.86	64.86 58.21	6.65
+75	66.11	66.11 59.70	6.41
2+10	67.35	7.35 61.19	6.16
+45	68.60	8.60 62.68	5.92
+80	69.80	9.80 64.17	5.63
3+00 = M.H. 10	70.54	70.54 65.00	5.54
+35	71.85	71.85 66.49	5.36
+65 = Plug.	72.87	72.87 67.76	5.11

75.11 = □ in Walk - By End.

Stake Sewer - E. of 58<sup>th</sup> + Churchward.

Plan - 11074-L - 11-23-53 - 7.0.

W.O. 62347

INDEXED  
MER  
JUL 14 1954

57

N. + S. Line - stakes - 6' w.

To S.

0+00 = M.H. 1      92.85      82.00      10.85

+35      93.54      83.96      9.58

+70      94.46      85.92      8.54

1+07.16 = Plug.      94.17      88.00      6.17

To N.

0+36.42      92.00      82.14      9.86

0+72.84 = Plug.      90.34      82.29      8.05

Line to E.

0+00 = M.H. 1      92.37      82.00      10.37

0+31.25      88.76      78.66      10.10

+62.50      83.24      75.33      7.91

+75      80.65      73.50      7.15

+87.50      78.34      70.90      7.44

1+00      75.26      67.80      7.46

+33.33      66.72      59.54      7.18

+66.66      58.18      51.27      6.91

2+00      49.67      43.00      6.67

2+36.30      40.24      32.32      7.92

+72.61 = Exist M.H.      31.64      21.65      10.00

40.24

32.32

31.64

21.65

31.64

21.65

Stake Sewer - Voltaire - Catalina to San  
 Clemente - Sec P. 51 - 11-28-53 7.0

0+00 = M.H. 7		52.25	
+35	61.75	52.87	8.88
+70	62.37	53.50	8.87
1+05	63.09	54.12	8.97
+40	63.78	54.74	9.04
+75	64.54	55.36	9.18
2+10	65.08	55.99	9.09
+45	65.71	56.61	9.10
+70	66.17	57.05	9.12
+95.4 = M.H. 8	66.61	57.50	9.11
0+35	67.23	57.76	9.47
+70	67.93	58.02	9.91
1+05	68.60	58.29	10.31
+40	69.30	58.55	10.75
+75	69.95	58.81	11.14
2+10	70.53	59.07	11.46
+45	71.02	59.34	11.68
+66.4 = M.H. 9	71.19	59.50	11.69

71.70 = U.E. Pole San Clemente + Voltaire 58

INDEXED  
 JUL 14 1954

0+00 = M.H. 9		59.50	
+35	70.72	59.66	11.06
+70	69.14	59.82	9.32
1+10 = Plug	65.61	60.00	5.61

Stake Sewer - Collier Park Outfall  
 Plan - 2200 - D. - 11-28-53 F.O.  
 W.O. 21112

INDEXED  
 JER  
 JUL 14 1954

8" at end of Pipe 0+00 = Exist	18.32	8.32 11.14	7.18	+70	14.73	14.73 9.36	5.37
+35	17.48	7.48 11.04	6.44	+05	14.40	14.40 9.26	5.14
+70	16.33	6.33 10.95	5.38	+40	13.97	13.97 9.15	4.82
+05	16.58	6.58 10.86	5.72	+75	14.49	14.49 9.05	5.44
+40	16.57	6.57 10.77	5.80	2+10	14.73	14.73 8.94	5.79
+75	16.11	6.11 10.68	5.43	+45	14.90	14.90 8.84	6.06
2+10	15.95	5.95 10.59	5.36	+80	13.75	13.75 8.73	5.02
+35	15.87	5.87 10.52	5.35	+99.72 = M.H. 3	14.04	14.04 8.67	5.37
+55 = M.H. 1	15.78	5.78 10.47	5.31	0+35	14.39	14.39 8.53	5.86
0+35	15.65	5.65 10.36	5.29	+70	14.11	14.11 8.39	5.72
+70	15.82	5.82 10.26	5.56	+05	13.93	13.93 8.25	5.68
+05	15.86	5.86 10.15	5.71	+40	13.74	13.74 8.11	5.63
+40	15.77	5.77 10.05	5.72	+75	13.29	13.29 7.97	5.32
+75	16.05	6.05 9.94	6.11	2+10	14.12	14.12 7.83	6.29
2+10	17.14	7.14 9.84	7.30	+45	13.79	13.79 7.69	6.10
+45	19.93	9.93 9.73	10.20	+80	13.26	13.26 7.55	5.71
+80	20.05	20.05 9.63	10.42	3+00 = M.H. 4		7.47	
3+00.28 = M.H. 2	20.07	20.07 9.57	10.50				
0+35	17.80	17.80 9.47	8.33				

Stake Water - on Mendocino

Plan - 2169-D

INDEXED  
JER  
JUL 14 1954

5' Rt.

at Banning		63.3		
0+00 = Conn.	63.3	58.9	C 4.4	
+39.65	62.7	58.4	C 4.3	
+79.30	62.1	58.7	C 3.4	
1+18.95	61.7	59.0	2.7	
+58.60 = E.C.	61.4	59.3	2.1	
+99.75	61.2	59.6	1.6	
2+40.90	61.6	59.9	1.7	
+80.90	62.8	61.0	1.8	
3+20.90	64.9	62.5	2.4	
+60.90	67.8	64.3	3.5	
4+04.25	71.5	68.2	3.3	
+47.60 = End.	76.0	72.1	3.9	
at Voltaire				

Stake Sewer - Venice - Voltaire 60  
to Muir - S.W. Pole 108.50

INDEXED  
JER  
JUL 14 1954

0+00 = M.H. 14	79.40	9.40	71.00	C 8.40
+35	81.38	81.38	75.17	6.21
+70	86.09	86.09	79.34	6.75
1+05	90.13	90.13	83.51	6.62
+40	93.80	93.80	87.68	6.12
+75	98.10	8.10	91.85	6.25
2+10	103.73	3.73	96.02	7.71
+35 = M.H. 16	05.46	05.46	99.00	6.46
0+24	07.31	7.31	07.86	5.45
+48 = Plug.	09.06	9.06	04.72	4.34

Stake Sewer - Voltaire - Catalina to Bolinas

Catalina			
0+00 = M.H. 7		52.25	
+35	61.35	61.35 53.25	8.10
+70	61.54	61.54 54.25	7.29
1+05	62.07	62.07 55.25	6.82
+40	62.81	62.81 56.25	6.56
+65	63.42	63.42 56.96	6.46
+84.1 = M.H. 11	63.97	63.97 57.50	6.47
0+35	65.01	65.01 58.69	6.32
+70	66.15	66.15 59.88	6.27
1+05	67.34	67.34 61.07	6.27
+40	68.51	8.51 62.26	6.25
+75	69.68	9.68 63.45	6.23
2+10	70.83	70.83 64.64	6.19
+50 = M.H. 13	72.10	72.10 66.00	6.10
0+35	73.34	73.34 66.70	6.64
+70	74.51	74.51 67.89	7.12
1+05	75.55	75.55 68.09	7.46
+40	76.31	63.1 68.78	7.53
+75	77.15	7.15 69.48	7.67

INDEXED

JER  
JUL 1, 1954 7815

61

2+10		8.15 70.17	7.98
+51.5 = M.H. 14	79.25	1.25 71.00	8.25
0+35	80.24	80.24 71.49	8.75
+70	81.23	81.23 71.98	9.25
1+05	82.18	82.18 72.48	9.70
+40	83.17	83.17 72.97	10.20
+75	84.07	84.07 73.46	10.61
2+13 = M.H. 15	84.73	84.73 74.00	10.73
0+30	85.17	85.17 74.71	10.46
+60	85.60	85.60 75.42	10.18
+85 = plug.	85.94	85.94 76.00	9.94



Stake Collier Park Sewer - M.H. 4

To 6

0+00 = M.H. 4	13.57	3.57	7.47	C 6.10
+35	15.78 7.33	8.45	15.87	5.87 7.33 C 8.54
+70	14.50 7.19	7.31	14.53	7.19 C 7.34
1+05	13.83 7.05	6.78	14.06	7.05 C 7.01
+40	14.16 6.91	7.25	14.20	6.91 C 7.29
+75	14.05 6.77	7.28	14.09	6.77 C 7.32
2+10	13.33 6.63	6.70	13.40	6.63 C 6.77
+45	12.84 6.49	6.35	12.92	6.49 C 6.43
+82.79 = M.H. 5	13.55 6.34	7.21	13.22	6.34 C 6.88
0+35	13.11 6.20	6.91	12.95	6.20 6.75
+70	13.27 6.06	7.21	13.07	6.06 7.01
1+05	13.07 5.92	7.15	13.19	5.92 7.27
+40	13.57 5.78	7.79	13.31	5.78 7.53
+75		14.16		14.16 5.64 8.52
2+10		14.64		14.64 5.50 9.14
+45		15.11		15.11 5.36 9.75
+80		15.27		15.27 5.22 10.05
3+00 = M.H. 6		16.85		16.85 5.14 11.71
0+35		17.11		17.11 5.00 12.11

INDEXED  
JER  
JUL 14 1954

+70	18.64	18.64	4.86	13.78
1+05	20.04	20.04	4.72	15.32
+40	19.94	19.94	4.58	15.36
+75	19.50	19.50	4.44	15.06
2+10	19.37	19.37	4.30	15.07
+45	19.02	19.02	4.16	14.86
+80	18.40	18.40	4.02	14.38
3+00 = M.H. 7	18.09	18.09	3.94	14.15
0+35 - 10' Lt.	15.55	3.12	12.43	<del>12.48</del>
50	13.66	2.77		10.89
60	14.40	2.53		11.87
+70	14.73	2.29	12.44	<del>12.52</del>
80	14.66	2.05		12.61
90 - 10' Lt.	14.08	1.81		12.27
1+05	14.73	1.46		13.27
+40	1.48 +	0.63		0.85
+70 = M.H. 8	2.02	2.02	-0.08	2.10
0+35	2.03	2.03	-0.22	2.25
+70	2.20	2.20	0.36	2.56
1+05	2.37	2.37	0.50	2.87
+40	2.93	2.93	0.64	3.57
+75	4.38	4.38	-0.78	5.16

Rim = 9.48

2+10	4.29	4.29 - 0.92	5.21
+45	4.11	4.11 - 1.06	5.17
+80	4.44	4.44 1.20	5.64
3+00 = M.H. 9	6.29	6.29 1.28	7.57
0+35	5.18	5.18 1.42	6.60
+70	4.67	4.67 1.56	6.23
1+05	4.63	4.63 1.70	6.33
+40	4.66	4.66 1.84	6.50
+68.40 = M.H. 10 Cann.	4.83	4.83 - 1.95	6.78

Stake Sewer - Jefferson St - Riley 3  
175' Nth. W.O. 20009

Plan 1083-D

1-5-54

C. Hotch

5.55 = S.W. Spike in pole Jefferson & Riley

0+00 Existing M.H. 363	-1.74	5.37	
+25	3.51	-1.56	5.07
+50	3.38	-1.38	4.76
+75	3.37	-1.21	4.58
1+00	3.46	-1.03	4.49
+25	3.52	-0.86	4.38
+50	3.60	-0.68	4.28
+75	3.70	-0.51	4.21

INDEXED  
JER  
JUL 14 1954

Rough Grade Stakes - 58<sup>th</sup> Trojan

to Meade - Plan - 11149-L

W.O. 21194 - 12-30-53 7.0.

0+00 =  $\pm$  Trojan

on Prop. Line

El. stakes

Grade = 0 $\pm$  below Pavc  
at  $\pm$

0+50 = P.C.

417.3 4 G

+70 15.7 G

+90 13.7 F 0.2

1+10 11.3 F 0.8

+50 06.7 F 2.0

+90 04.0 F 1.3

2+30 397.4 F 4.2

+70.72 91.8 F 6.4

3+10.72 95.4 G

+50.72 94.0 C 0.9

+90.72 92.0 F 0.2

4+30.72 90.7 F 1.0

+70.72 95.6 C 2.8

5+10.72 96.5 C 1.0

+50.72 01.8 C 2.1

+90 05.8 C 0.8

6+10 08.1 C 0.4

INDEXED  
JUL 14 1954

INDEXED

JER

JUL 4 1954

Stake Drain - Balboa at Pasadena

Plan - 11071-A1 - 1-12-54 - 7.0

W.O. 21145

			cut
0+00 = Beg. C.L.	23.61	<sup>23.61</sup> 16.99	6.62
+06	23.75	<sup>23.75</sup> 17.08	6.67
+25	24.29	<sup>24.29</sup> 17.68	6.61
+50	24.91	<sup>24.91</sup> 18.48	6.43
+75	25.40	<sup>5.40</sup> 19.27	6.13
1+00	26.01	<sup>6.01</sup> 20.07	5.94
+25	26.61	<sup>6.61</sup> 20.86	5.75
+50	27.16	<sup>7.16</sup> 21.66	5.50
+65 = Brk	27.54	<sup>7.54</sup> 22.13	5.41
+90	28.16	<sup>8.16</sup> 22.30	5.86
2+14	28.70	<sup>8.70</sup> 22.46	6.24
+24	28.96	<sup>8.96</sup> 24.40	4.56
+27.79 = Ang.	28.98	<sup>8.98</sup> 24.78	4.20
+53	29.70	<sup>9.70</sup> 27.30	2.40
+82 = end	30.37	<sup>37</sup> 30.20	0.17

Levels + stakes for paving on Balboa Ave.  
W. of Bridge

INDEXED  
JUL 14 1954  
66

Station	Grade	N. stake	cut.	±	Grade	Actual Gut.	stake S.		
4+00	12.64	12.43	12.84	0.20	12.46	12.03	11.83	12.23	C 0.20
+75	12.60	12.39	12.73	0.13		12.06	11.86	12.32	C 0.26
+50	12.56	12.17	12.61	0.05		12.09	12.00	12.33	C 0.24
+25	12.52	12.09	12.67	0.15		12.12	11.94	12.40	C 0.28
3+00	12.48	12.10	12.46	0.02	12.36	12.16	11.99	12.42	C 0.26
+75	12.44	11.98	12.55	0.11		12.19	11.94	12.51	C 0.32
+50	12.40	11.83	12.47	0.07		12.22	11.90	12.43	C 0.21
+25	12.43	11.93	12.64	0.21		12.25	11.84	12.33	C 0.08
2+00	12.47	12.06	12.83	0.36	12.24	12.28	11.87	12.32	C 0.04
+75	12.50	12.11	12.90	0.40		12.31	11.91	12.34	C 0.03
+50	12.53	11.95	12.68	0.15	12.24	12.34	11.78	12.40	C 0.06
+25	12.57	11.96	12.91	0.24		12.37	11.78	12.55	C 0.18
1+00	12.60	11.98	12.60	G	12.27	12.40	11.82	12.48	C 0.08
+75	12.63	12.11	12.64	0.01		12.43	11.97	12.58	C 0.15
+50	12.66	12.38	12.82	0.16	12.37	12.47	12.20	12.83	C 0.36
+25	12.70	12.66	13.36	0.66		12.50	12.47	13.17	C 0.67
0+00 =		13.21	14.11		13.40		12.82	13.45	

arbitrary - 50' E. of Air Raid  
Line going E. Siren

B.M. = B.P. in S.E. of Bridge

Elev. shown

N

E

S

1249 = Inlet

12.55  
12.03 - 11.51 = low pt.

9+00		12.57			12.08	12.47		
8+00		12.75			12.03	12.55		
+75								
+50		12.84		12.87				
+25								
7+00		12.76			12.00	12.01	12.60 C 0.60	
+75					12.00	11.98	12.44 C 0.44	
+50		12.76			12.00	11.77	12.30 C 0.30	
+25					12.00	11.82	12.29 C 0.29	
6+00		12.75		12.67	12.00	11.84	12.49 C 0.49	
+75					12.00	11.84	12.58 C 0.58	
+50		12.75			12.00	11.80	12.46 C 0.46	
+25					12.00	11.72	12.31 C 0.31	
5+00	12.80	12.83	13.40	C 0.60	12.51	12.00	11.79	12.29 C 0.29
+75	12.76	12.67	13.34	C 0.58		12.00	11.80	12.15 C 0.15
+50	12.72	12.58	12.98	C 0.26		12.00	11.77	12.05 C 0.05
4+25	12.68	12.55	12.92	C 0.24		12.00	11.70	12.13 C 0.13

INDEXED  
 JUL 14 1954

Stake Trial Curb Stakes - N. Side

of Santa Margarita - Plan - 11265-L

W.O. 32107 - 2-24-54 - 7.0

Used # Sta. - Book 2309-P 15

B.M. = Nail in Pole - Rt. 2+10 174.37 - P. 16  
 B. 2309

1+6088 Alley	74.7	77.52	F 2.8
1+90	71.4	75.29	F 3.9
2+16.59	70.9	73.25	F 2.4
+36.59	70.3	72.1	F 1.8
+56.59	69.8	71.4	F 1.6
+76.32	69.6	71.35	F 1.8
+86.09 = F.C.	69.9	71.46	F 1.6
3+33.82	71.5	72.04	F 0.5
+81.55	72.0	72.6	F 0.6
4 +29.28	72.5	73.2	F 0.7
4 +77.01	72.5	73.75	F 1.3

Stakes - Alley - Block 5 - Frary Hts.  
 Plan - 10697-L - 2-26-54 F.O.  
 W.O. 31908

INDEXED  
 ER  
 JUL 14 1954

		East		West	
0+00 = S.L. Thorn	11.84	84 11.54	C 0.30	14.17	14.17 11.82 C 2.35
+10	12.95	95 12.03	C 0.92	13.76	376 12.28 C 1.48
+30	12.81	81 12.33	C 0.48	13.01	3.01 12.58 C 0.43
+50	12.15	2.18 11.68	C 0.50	12.15	2.15 11.93 C 0.22
+80	10.40	40 10.12	C 0.28	10.81	81 10.12 C 0.69
1+00	09.47	47 09.10	C 0.37	09.66	66 09.10 C 0.56
+20	08.35	35 08.29	C 0.07	09.13	9.13 08.28 C 0.85
+45	07.54	54 07.37	C 0.17	07.96	96 07.37 C 0.59
+70	06.58	58 06.47	C 0.11	07.25	725 06.47 C 0.78
+90	06.46	646 05.54	C 0.92	06.51	651 05.54 C 0.97
2+10	04.56	56 04.22	C 0.34	05.18	5.18 04.22 C 0.96
+30	01.10	10 02.48	F 1.38	03.47	3.47 02.48 C 0.99
+50	97.31	31 00.79	F 3.48	01.07	1.07 00.79 C 0.28
+70	99.91	91 99.55	C 0.36	99.71	71 99.55 C 0.16
3+00	97.25	25 97.91	F 0.66	98.37	37 98.16 C 0.21
+20	90.10	10 97.04	F 6.94	99.34	934 97.29 C 2.05
+30	89.69	69 96.87	F 7.18	97.50	50 97.12 C 0.38
+39.4 = spillway - 2' B. on W.	92.45	45 90.40	C 2.05		

96.65



Stake Alley - Block 4 - Frank Hts.  
Plan - 10698-L - 7.0.

INDEXED  
MER  
JUL 14 1954

West.

East.

0+00 = N.L. Thorn

		12.42	
+10	16.00	<sup>6.00</sup> 13.61	C 2.39
+30	16.06	<sup>6.06</sup> 15.18	C 0.88
+50	17.95	<sup>7.95</sup> 15.78	C 2.17
+80	17.25	<sup>7.25</sup> 15.96	C 1.29
1+00	16.64	<sup>6.64</sup> 15.99	C 0.65
+20	19.07	<sup>8.07</sup> 15.87	C 2.20
+50	18.05	<sup>8.05</sup> 15.67	C 2.38
+70	15.67	<sup>6.7</sup> 15.25	C 0.42
+90	16.64	<sup>6.64</sup> 14.59	C 2.05
2+15	16.04	<sup>6.04</sup> 13.60	C 2.44
+40	15.04	<sup>5.04</sup> 12.62	C 2.42
+60	13.21	<sup>3.21</sup> 12.08	C 1.13
+80	10.55	<sup>10.55</sup> 12.03	F 1.47
3+10	12.64	<sup>6.64</sup> 12.29	C 0.35
+30	11.91	<sup>11.91</sup> 12.74	F 0.83
+50	13.55	<sup>13.55</sup> 13.73	F 0.18
+70	15.11	<sup>5.11</sup> 14.81	C 0.30

P.K.

	13.36	13.36 = G.
	14.93	14.93 = G
	15.47	15.53 F 0.06
	15.90	15.79 C 0.19
	15.93	15.74 C 0.19
	15.76	15.62 C 0.14
	14.91	15.42 F 0.51
	14.97	15.00 F 0.03
	13.39	14.34 F 0.95
	12.71	13.35 F 0.64
	12.74	12.37 C 0.37
	11.23	11.83 F 0.60
	09.63	11.77 F 2.14
	12.70	12.04 C 0.66
	12.43	12.49 F 0.06
	12.80	13.48 F 0.68
	14.35	14.57 F 0.22

West.

East.

3+90	15.56	15.59 <sup>5</sup>	F 0.03	15.17	15.38	F 0.21
4+16	16.63	16.52 <sup>6</sup>	C 0.11	17.75	16.35 <sup>7</sup>	C 1.40
+42	17.63	17.46 <sup>6</sup>	C 0.17	18.92	17.33 <sup>8</sup>	C 1.59
+68	18.51	18.39 <sup>5</sup>	C 0.12	19.12	18.30 <sup>9</sup>	C 0.82
+94	19.37	19.33 <sup>3</sup>	C 0.04	19.71	19.28 <sup>7</sup>	C 0.43
5+20	20.95	20.26 <sup>9</sup>	C 0.69	21.51	20.25 <sup>1</sup>	C 1.26
+40	21.71	20.85 <sup>1</sup>	C 0.86	21.09	20.85 <sup>1</sup>	C 0.24
+60	21.46	21.38 <sup>4</sup>	C 0.08	22.45	21.45 <sup>5</sup>	C 1.00
+80	22.11	21.85 <sup>2</sup>	C 0.26	22.97	22.03 <sup>2</sup>	C 0.94
+98.52 = S.L. Upas.	22.53	22.26 <sup>5</sup>	C 0.27	22.64	22.55 <sup>6</sup>	C 0.09

Stakes for St Drain - Alley - Blk 4  
 Plan - 10498 - 2-26-54 7.0.

INDEXED  
 JER  
 JUL 14 1954

72

Top = of S.L. Thorn	11.70	11.50	C 0.20	Co. 40 - 11 in E. Ret.
0+00 = n.s. = ± C.L.	11.70	11.70 08.08	C 3.62	
+35	14.88	4.88 08.18	C 6.70	
+70	16.19	6.19 08.29	C 7.90	
1+05	16.11	6.11 08.39	C 7.72	
+40	15.72	5.72 08.50	C 7.22	
+75	15.34	5.34 08.60	C 6.74	
2+10	15.41	15.41 08.71	C 6.70	
+45	14.50	14.50 08.81	C 5.69	
+83.25 = Catch Basin	10.86	10.86 08.93	C 1.93	
Grate =	10.86	11.40 0.86	F 0.54	

Rough Grade Stakes - Georgia St.  
 Myrtle to Upas. - Plan - 10941-L

B.M. 272.62 = 40.07' R.P. Cross - on W. 73

W.O. 31164 - 4-7-54 7.0

INDEXED  
 JEA  
 JUL 11 1954

	East				West		
Myrtle to E 0+00 = N.L.	89.05	07			90.22		
+30	82.5	85.2 2.5	F 2.7	+	90.1	86.0	C 4.1
+60	77.2	79.0 7.2	F 1.8	+	80.9	80.0	C 0.9
+98.38	74.0	74.4	F 0.4		78.1	75.3 8.1	C 2.8
1 +28.38 = P.C.	71.8	72.2	F 0.4		72.5	72.5	G
P.R.C.	71.5	71.2 1.5	C 0.3		72.4	71.4 2.8	C 1.0
1/3	70.7	70.3 0.7	C 0.4	4' B	71.4	70.4 1.4	C 1.0
2/3	69.2	69.6 4.2	F 0.4	4' B	71.3	69.7 2.3	C 1.6
Int. 40' Rad. + end	68.8	69.2 8.8	F 0.4		68.2	69.2 8.2	F 1.0

Rough Grade Stakes - Mason -  
 Jefferson to Congress - Plan 10996-L  
 W.O. 32203 - 4-13-54 - 70.

West.

0+00 = NL. Jefferson <small>on line</small>	19.9	20.0	F 0.1
+50 - on line	21.3	19.8	C 1.5
1+00	20.7	19.5	C 1.2
+20			
+30		19.7	
1+50	20.8	20.8 19.3	C 1.5
2 ~	20.2	20.2 19.0	C 1.2
+50	20.3	20.3 18.8	C 1.5
3 ~ = S.L. Congress		18.50	

18.50 = W. Cor. Congress + Mason = B.P.

74

INDEXED  
 JER  
 JUL 14 1954

East.

	20.3	20.5	F 0.2
	21.3	20.3	C 1.0
	21.0	20.0	C 1.0
Sewer Lat ①	20.93	20.93 15.10	C 5.83
(W)			
	21.0	21.0 19.8	C 1.2
	20.7	20.7 19.5	C 1.2
	20.4	20.4 19.3	C 1.1
		19.0	

Curb Stakes - Georgia St. - See P. 73  
4-19-54 7.0.

INDEXED  
JER  
JUL 14 1954

East

West

(end of Pause)  
0+00 = NL Myrtle to E.

		East			West	
		89.07			90.22	
+10	87.69	88.60 7.69	F 0.91	89.38	89.68 7.38	F 0.30
+20	86.35	87.30 7.35	F 0.95	87.46	88.10 7.46	F 0.64
+30	85.00	85.40 5.00	F 0.40	85.48	86.20 5.48	F 0.72
+60	78.85	79.00 8.85	F 0.15	79.40	80.00 9.40	F 0.60
+78.38	76.03	76.40 6.03	F 0.37	77.07	77.50 7.07	F 0.43
+98.38	74.00	74.40 4.00	F 0.40	74.98	75.30 4.98	F 0.32
1+28.38 = PC	71.96	72.15 1.96	F 0.19	71.60	72.52 1.60	F 0.92
P. RC	71.52	71.75 1.52	C 0.37	71.57	71.40 1.57	C 0.17
+18.38	69.61	70.20 9.61	F 0.59	71.30	70.30 6.30	C 0.95
+12.02	70.04	69.72 0.04	C 0.32	70.75	69.75 0.75	C 0.95
+13.21	69.54	69.30 0.54	C 0.24	69.94	69.32 0.94	C 0.62
+11.69	69.54	69.10 0.54	C 0.44	69.50	69.10 0.50	C 0.40
1' Rad.	69.37	69.00 0.37	C 0.37	69.19	69.00 0.19	C 0.19
S. end cb. = E.	69.41	69.10 0.41	C 0.31	69.20	69.10 0.20	C 0.10

= W.

Curb Stakes - Mason - See P. 74

4-19-54 - 70

East

0100 = S.L. Congress

19.00

+08 = P.C.

19.10

19.04

C 0.06

<sup>355</sup>  
+13.5

19.33

19.22

C 0.11

<sup>355</sup>  
+79

19.49

19.40

C 0.09

<sup>355</sup>  
1+14.5

19.72

19.58

C 0.14

<sup>355</sup>  
+50.0 -1+47

19.87

19.73

C 0.14

<sup>355</sup>  
+85.5

20.06

19.93

C 0.13

<sup>355</sup>  
2+21.0

20.11

20.11

C

<sup>355</sup>  
+56.5

20.27

20.29

F 0.02

+92.0 = P.C.

20.40

20.46

F 0.06

2+00 = N.L. Jefferson, 20.57

<sup>57</sup>  
20.50

C 0.07

INDEXED  
MER  
JUL 14 1954

West

18.50

18.52

18.54

F 0.02

18.88

18.72

C 0.16

18.91

18.90

C 0.01

19.23

19.08

C 0.15

19.31

19.25

C 0.06

19.55

19.43

C 0.12

19.70

19.61

C 0.09

19.83

19.79

C 0.04

20.09

19.96

C 0.13

19.97

20.00

F 0.03

Stake 90' of Sewer in Galveston  
S. of Jelleffe - Plan - 8525 B-L

W.O. 2009 / - 5-5-54 7.0.

M.H. # 1 =  $\pm$  Galveston + Jelleffe

I.E. Assumed Elev. from Pan.

Rim - S. = Cut		138.20	
0+00 = $\pm$ M.H. 1	- I.E.	130.40	
0+00 - Conn		130.60	
+30	36.69	130.81	C 5.88
+60	35.57	131.02	C 4.55
+90	34.78	131.23	C 3.55

+ 0.79% Grade

INDEXED  
MER



Stake Drain Ditch - N. of Balboa Ave

Plan - 5255-B - 5-6-54 - 7.0

w.o. 21222  
B.M. = 1367 = B.P. in Bridge

0-15	12.46	12.20 <sup>46</sup>	C 0.26
0+00 = N.L. Balboa	12.61	11.85 <sup>261</sup>	C 0.76
+30	12.52	11.70 <sup>252</sup>	C 0.82
+60	12.07	11.55 <sup>207</sup>	C 0.52
+90	12.33	11.40 <sup>233</sup>	C 0.93
1+20	12.12	11.25 <sup>212</sup>	C 0.87
+50	12.19	11.10 <sup>219</sup>	C 1.09
+80	12.10	10.95 <sup>210</sup>	C 1.15
2+10	12.65	10.80 <sup>265</sup>	C 1.85
+40	12.88	10.65 <sup>288</sup>	C 2.23
+70	12.90	10.50 <sup>290</sup>	C 2.40
+91 = $\pm$ Cutoff Wall	11.01	10.39 <sup>1101</sup>	C 0.62
3+07 = End	10.00	10.26 <sup>000</sup>	F 0.26

INDEXED

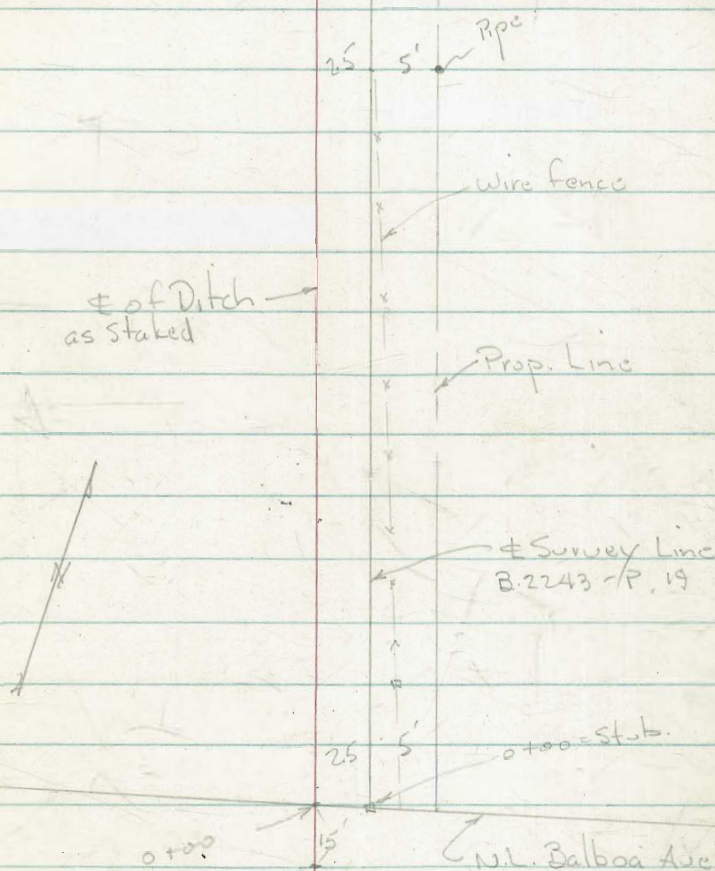
JER  
JUL 14 1954

78

3+07 = end.

2+91

$\pm$  Cutoff wall

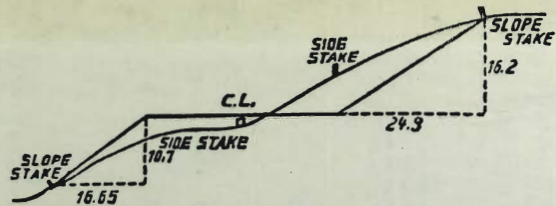
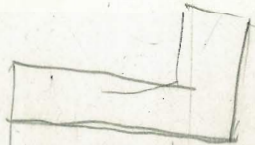


Try stakes for grade on w. side of  
La Jolla Scenic Dr. - N. of La Jolla Rancho Rd.  
W.O. 25020 - 5-10-54 7.0.

INDEXED  
JER  
JUL 14 1954

0+00 = N.L. La Jolla Rancho Rd.

2+40 = P.U.C.	52.2	<sup>52.2</sup> 49.3	C 2.9
+80	54.6	<sup>4.6</sup> 51.3	C 3.3
3+20	55.5	<sup>5.5</sup> 53.1	C 2.4
+60	59.7	<sup>9.7</sup> 54.6	C 5.1
4+00	64.0	<sup>64.0</sup> 55.9	C 8.1
+40	65.3	<sup>65.3</sup> 56.8	C 8.5
+80	68.7	<sup>68.7</sup> 57.6	C 8.1
5+20	63.6	<sup>63.6</sup> 58.0	C 5.6
+60	59.7	<sup>9.7</sup> 58.4	C 1.3
6+00	57.7	<sup>57.7</sup> 58.6	F 0.9
+40	56.0	<sup>56.0</sup> 58.9	F 2.9
+80	54.0	<sup>54.0</sup> 59.2	F 5.2
7+20.4 = B.C.	53.9	<sup>53.9</sup> 59.4 3.9	F 5.5



**DISTANCES FROM SIDE STAKES FOR CROSS-SECTIONING.**

**SLOPE 1 1/2 TO 1. ROADWAY OF ANY WIDTH.**

	0	.1	.2	.3	.4	.5	.6	.7	.8	.9	
0	0.00	0.15	0.30	0.45	0.60	0.75	0.90	1.05	1.20	1.35	0
1	1.50	1.65	1.80	1.95	2.10	2.25	2.40	2.55	2.70	2.85	1
2	3.00	3.15	3.30	3.45	3.60	3.75	3.90	4.05	4.20	4.35	2
3	4.50	4.65	4.80	4.95	5.10	5.25	5.40	5.55	5.70	5.85	3
4	6.00	6.15	6.30	6.45	6.60	6.75	6.90	7.05	7.20	7.35	4
5	7.50	7.65	7.80	7.95	8.10	8.25	8.40	8.55	8.70	8.85	5
6	9.00	9.15	9.30	9.45	9.60	9.75	9.90	10.05	10.20	10.35	6
7	10.50	10.65	10.80	10.95	11.10	11.25	11.40	11.55	11.70	11.85	7
8	12.00	12.15	12.30	12.45	12.60	12.75	12.90	13.05	13.20	13.35	8
9	13.50	13.65	13.80	13.95	14.10	14.25	14.40	14.55	14.70	14.85	9
10	15.00	15.15	15.30	15.45	15.60	15.75	15.90	16.05	16.20	16.35	10
11	16.50	16.65	16.80	16.95	17.10	17.25	17.40	17.55	17.70	17.85	11
12	18.00	18.15	18.30	18.45	18.60	18.75	18.90	19.05	19.20	19.35	12
13	19.50	19.65	19.80	19.95	20.10	20.25	20.40	20.55	20.70	20.85	13
14	21.00	21.15	21.30	21.45	21.60	21.75	21.90	22.05	22.20	22.35	14
15	22.50	22.65	22.80	22.95	23.10	23.25	23.40	23.55	23.70	23.85	15
16	24.00	24.15	24.30	24.45	24.60	24.75	24.90	25.05	25.20	25.35	16
17	25.50	25.65	25.80	25.95	26.10	26.25	26.40	26.55	26.70	26.85	17
18	27.00	27.15	27.30	27.45	27.60	27.75	27.90	28.05	28.20	28.35	18
19	28.50	28.65	28.80	28.95	29.10	29.25	29.40	29.55	29.70	29.85	19
20	30.00	30.15	30.30	30.45	30.60	30.75	30.90	31.05	31.20	31.35	20
21	31.50	31.65	31.80	31.95	32.10	32.25	32.40	32.55	32.70	32.85	21
22	33.00	33.15	33.30	33.45	33.60	33.75	33.90	34.05	34.20	34.35	22
23	34.50	34.65	34.80	34.95	35.10	35.25	35.40	35.55	35.70	35.85	23
24	36.00	36.15	36.30	36.45	36.60	36.75	36.90	37.05	37.20	37.35	24
25	37.50	37.65	37.80	37.95	38.10	38.25	38.40	38.55	38.70	38.85	25
26	39.00	39.15	39.30	39.45	39.60	39.75	39.90	40.05	40.20	40.35	26
27	40.50	40.65	40.80	40.95	41.10	41.25	41.40	41.55	41.70	41.85	27
28	42.00	42.15	42.30	42.45	42.60	42.75	42.90	43.05	43.20	43.35	28
29	43.50	43.65	43.80	43.95	44.10	44.25	44.40	44.55	44.70	44.85	29
30	45.00	45.15	45.30	45.45	45.60	45.75	45.90	46.05	46.20	46.35	30
31	46.50	46.65	46.80	46.95	47.10	47.25	47.40	47.55	47.70	47.85	31
32	48.00	48.15	48.30	48.45	48.60	48.75	48.90	49.05	49.20	49.35	32
33	49.50	49.65	49.80	49.95	50.10	50.25	50.40	50.55	50.70	50.85	33
34	51.00	51.15	51.30	51.45	51.60	51.75	51.90	52.05	52.20	52.35	34
35	52.50	52.65	52.80	52.95	53.10	53.25	53.40	53.55	53.70	53.85	35
36	54.00	54.15	54.30	54.45	54.60	54.75	54.90	55.05	55.20	55.35	36
37	55.50	55.65	55.80	55.95	56.10	56.25	56.40	56.55	56.70	56.85	37
38	57.00	57.15	57.30	57.45	57.60	57.75	57.90	58.05	58.20	58.35	38
39	58.50	58.65	58.80	58.95	59.10	59.25	59.40	59.55	59.70	59.85	39
40	60.00	60.15	60.30	60.45	60.60	60.75	60.90	61.05	61.20	61.35	40
41	61.50	61.65	61.80	61.95	62.10	62.25	62.40	62.55	62.70	62.85	41
42	63.00	63.15	63.30	63.45	63.60	63.75	63.90	64.05	64.20	64.35	42
43	64.50	64.65	64.80	64.95	65.10	65.25	65.40	65.55	65.70	65.85	43
44	66.00	66.15	66.30	66.45	66.60	66.75	66.90	67.05	67.20	67.35	44
45	67.50	67.65	67.80	67.95	68.10	68.25	68.40	68.55	68.70	68.85	45
46	69.00	69.15	69.30	69.45	69.60	69.75	69.90	70.05	70.20	70.35	46
47	70.50	70.65	70.80	70.95	71.10	71.25	71.40	71.55	71.70	71.85	47
48	72.00	72.15	72.30	72.45	72.60	72.75	72.90	73.05	73.20	73.35	48
49	73.50	73.65	73.80	73.95	74.10	74.25	74.40	74.55	74.70	74.85	49
50	75.00	75.15	75.30	75.45	75.60	75.75	75.90	76.05	76.20	76.35	50

THE NATIONAL BLANK BOOK COMPANY

HOLYOKE

MASSACHUSETTS

NEW YORK

CHICAGO

BOSTON

SAN FRANCISCO