

DISTANCES FROM SIDE STAKES FOR CROSS-SECTIONING  
SLOPE 1 TO 1. ROADWAY OF ANY WIDTH

	0	.1	.2	.3	.4	.5	.6	.7	.8	.9	
0	0.00	0.10	0.20	0.30	0.40	0.50	0.60	0.70	0.80	0.90	0
1	1.00	1.10	1.20	1.30	1.40	1.50	1.60	1.70	1.80	1.90	1
2	2.00	2.10	2.20	2.30	2.40	2.50	2.60	2.70	2.80	2.90	2
3	3.00	3.10	3.20	3.30	3.40	3.50	3.60	3.70	3.80	3.90	3
4	4.00	4.10	4.20	4.30	4.40	4.50	4.60	4.70	4.80	4.90	4
5	5.00	5.10	5.20	5.30	5.40	5.50	5.60	5.70	5.80	5.90	5
6	6.00	6.10	6.20	6.30	6.40	6.50	6.60	6.70	6.80	6.90	6
7	7.00	7.10	7.20	7.30	7.40	7.50	7.60	7.70	7.80	7.90	7
8	8.00	8.10	8.20	8.30	8.40	8.50	8.60	8.70	8.80	8.90	8
9	9.00	9.10	9.20	9.30	9.40	9.50	9.60	9.70	9.80	9.90	9
10	10.00	10.10	10.20	10.30	10.40	10.50	10.60	10.70	10.80	10.90	10
11	11.00	11.10	11.20	11.30	11.40	11.50	11.60	11.70	11.80	11.90	11
12	12.00	12.10	12.20	12.30	12.40	12.50	12.60	12.70	12.80	12.90	12
13	13.00	13.10	13.20	13.30	13.40	13.50	13.60	13.70	13.80	13.90	13
14	14.00	14.10	14.20	14.30	14.40	14.50	14.60	14.70	14.80	14.90	14
15	15.00	15.10	15.20	15.30	15.40	15.50	15.60	15.70	15.80	15.90	15
16	16.00	16.10	16.20	16.30	16.40	16.50	16.60	16.70	16.80	16.90	16
17	17.00	17.10	17.20	17.30	17.40	17.50	17.60	17.70	17.80	17.90	17
18	18.00	18.10	18.20	18.30	18.40	18.50	18.60	18.70	18.80	18.90	18
19	19.00	19.10	19.20	19.30	19.40	19.50	19.60	19.70	19.80	19.90	19
20	20.00	20.10	20.20	20.30	20.40	20.50	20.60	20.70	20.80	20.90	20
21	21.00	21.10	21.20	21.30	21.40	21.50	21.60	21.70	21.80	21.90	21
22	22.00	22.10	22.20	22.30	22.40	22.50	22.60	22.70	22.80	22.90	22
23	23.00	23.10	23.20	23.30	23.40	23.50	23.60	23.70	23.80	23.90	23
24	24.00	24.10	24.20	24.30	24.40	24.50	24.60	24.70	24.80	24.90	24
25	25.00	25.10	25.20	25.30	25.40	25.50	25.60	25.70	25.80	25.90	25
26	26.00	26.10	26.20	26.30	26.40	26.50	26.60	26.70	26.80	26.90	26
27	27.00	27.10	27.20	27.30	27.40	27.50	27.60	27.70	27.80	27.90	27
28	28.00	28.10	28.20	28.30	28.40	28.50	28.60	28.70	28.80	28.90	28
29	29.00	29.10	29.20	29.30	29.40	29.50	29.60	29.70	29.80	29.90	29
30	30.00	30.10	30.20	30.30	30.40	30.50	30.60	30.70	30.80	30.90	30
31	31.00	31.10	31.20	31.30	31.40	31.50	31.60	31.70	31.80	31.90	31
32	32.00	32.10	32.20	32.30	32.40	32.50	32.60	32.70	32.80	32.90	32
33	33.00	33.10	33.20	33.30	33.40	33.50	33.60	33.70	33.80	33.90	33
34	34.00	34.10	34.20	34.30	34.40	34.50	34.60	34.70	34.80	34.90	34
35	35.00	35.10	35.20	35.30	35.40	35.50	35.60	35.70	35.80	35.90	35
36	36.00	36.10	36.20	36.30	36.40	36.50	36.60	36.70	36.80	36.90	36
37	37.00	37.10	37.20	37.30	37.40	37.50	37.60	37.70	37.80	37.90	37
38	38.00	38.10	38.20	38.30	38.40	38.50	38.60	38.70	38.80	38.90	38
39	39.00	39.10	39.20	39.30	39.40	39.50	39.60	39.70	39.80	39.90	39
40	40.00	40.10	40.20	40.30	40.40	40.50	40.60	40.70	40.80	40.90	40
41	41.00	41.10	41.20	41.30	41.40	41.50	41.60	41.70	41.80	41.90	41
42	42.00	42.10	42.20	42.30	42.40	42.50	42.60	42.70	42.80	42.90	42
43	43.00	43.10	43.20	43.30	43.40	43.50	43.60	43.70	43.80	43.90	43
44	44.00	44.10	44.20	44.30	44.40	44.50	44.60	44.70	44.80	44.90	44
45	45.00	45.10	45.20	45.30	45.40	45.50	45.60	45.70	45.80	45.90	45
46	46.00	46.10	46.20	46.30	46.40	46.50	46.60	46.70	46.80	46.90	46
47	47.00	47.10	47.20	47.30	47.40	47.50	47.60	47.70	47.80	47.90	47
48	48.00	48.10	48.20	48.30	48.40	48.50	48.60	48.70	48.80	48.90	48
49	49.00	49.10	49.20	49.30	49.40	49.50	49.60	49.70	49.80	49.90	49
50	50.00	50.10	50.20	50.30	50.40	50.50	50.60	50.70	50.80	50.90	50

Distance of slope stake from side or shoulder stake for any width roadway, slope 1 to 1. If ground is nearly level, the cut or fill at side stake is located by the double entry method in left column and top row. The number in body of table in same row and column gives distance from side stake to slope stake. If ground is not level estimate the difference in elevation between the side stake and slope stake, lower target by this amount if cut, elevate if fill. Add this amount to cut or fill and find distance in table. Set up rod at this point, and line of sight should cut target. If it does not make the slight adjustment necessary.

MICROFILMED

APR 15 1965

DIRECTIONS FOR USE OF TABLES

TABLE NO. XIV

Distance of slope stake from side of shoulder  
stake for cross-sloped roadway, slope 1% to 1.  
It is assumed to be 10 feet from the cut or fill at side.

IMPROVED TABLES  
AND  
INFORMATION

TABLE NO. VIII

To find tangent and intercept for curve of  
any other degree, divide by degree of curve and  
add correction found in column of corrections.  
Degree of curve with equivalent, and be found  
by dividing tangent (or intercept), opposite 1 by  
tangent (or intercept).  
The distance from a point on the tangent to  
the curve is very nearly the square of the tangent  
length divided by twice the radius.

TABLE XIII—CORRECTIONS FOR TANGENTS AND EXTERNALS

These corrections are to be added to the approximate values, found by dividing the tangent, or external, for a 1° curve (Table VIII) by the degree of curve, in order to obtain the true tangents, or externals. Intermediate values may be obtained by interpolation.

FOR TANGENTS ADD

Central Angle	DEGREE OF CURVE													
	5°	10°	15°	20°	25°	30°	35°	40°	45°	50°	55°	60°	65°	70°
10°	.03	.06	.09	.13	.16	.19	.22	.25	.28	.31	.34	.38	.42	.46
15°	.04	.10	.14	.19	.24	.29	.34	.39	.45	.51	.53	.58	.63	.68
20°	.06	.13	.19	.26	.32	.39	.45	.51	.58	.65	.72	.79	.84	.90
25°	.08	.16	.24	.33	.40	.49	.58	.67	.75	.83	.90	.99	1.06	1.14
30°	.10	.19	.29	.39	.49	.59	.69	.79	.89	.99	1.09	1.20	1.29	1.39
35°	.11	.22	.34	.47	.58	.69	.79	.89	1.01	1.12	1.23	1.34	1.44	1.54
40°	.13	.26	.40	.53	.67	.80	.93	1.06	1.20	1.34	1.49	1.64	1.79	1.94
45°	.15	.30	.44	.60	.76	.91	1.06	1.21	1.37	1.52	1.70	1.87	2.04	2.21
50°	.17	.34	.51	.68	.85	1.02	1.19	1.36	1.54	1.72	1.91	2.10	2.29	2.48
55°	.19	.38	.57	.76	.95	1.14	1.32	1.52	1.72	1.92	2.14	2.35	2.56	2.77
60°	.21	.42	.63	.84	1.05	1.27	1.49	1.71	1.94	2.17	2.38	2.60	2.83	3.07
65°	.23	.46	.69	.93	1.16	1.40	1.64	1.88	2.13	2.38	2.63	2.88	3.13	3.39
70°	.25	.51	.76	1.02	1.28	1.54	1.80	2.06	2.33	2.60	2.88	3.16	3.44	3.72
75°	.27	.56	.83	1.12	1.40	1.69	1.98	2.27	2.57	2.87	3.16	3.47	3.78	4.09
80°	.30	.61	.91	1.22	1.53	1.84	2.15	2.46	2.78	3.10	3.44	3.78	4.12	4.46
85°	.33	.66	1.00	1.33	1.68	2.02	2.36	2.70	3.05	3.40	3.77	4.14	4.55	4.89
90°	.36	.72	1.09	1.45	1.83	2.20	2.57	2.94	3.32	3.70	4.10	4.50	4.91	5.32
95°	.39	.79	1.19	1.55	2.00	2.40	2.80	3.20	3.61	4.02	4.40	4.85	5.38	5.83
100°	.43	.86	1.30	1.74	2.18	2.62	3.06	3.50	3.95	4.40	4.88	5.37	5.85	6.34
110°	.51	1.03	1.56	2.08	2.61	3.14	3.67	4.21	4.76	5.31	5.86	6.43	7.01	7.60
120°	.62	1.25	1.93	2.52	3.16	3.81	4.45	5.11	5.77	6.44	7.12	7.80	8.50	9.22

FOR EXTERNALS ADD

Central Angle	DEGREE OF CURVE													
	5°	10°	15°	20°	25°	30°	35°	40°	45°	50°	55°	60°	65°	70°
10°	.001	.003	.004	.006	.007	.008	.009	.011	.012	.014	.015	.017	.018	.020
15°	.003	.007	.010	.014	.018	.023	.027	.032	.037	.043	.049	.054	.060	.065
20°	.006	.011	.017	.022	.028	.034	.038	.045	.051	.057	.063	.070	.076	.083
25°	.009	.018	.027	.036	.046	.056	.065	.074	.083	.093	.106	.120	.127	.135
30°	.013	.025	.038	.051	.065	.078	.090	.103	.116	.129	.149	.170	.179	.188
35°	.018	.035	.054	.072	.086	.109	.131	.153	.175	.197	.213	.230	.247	.264
40°	.023	.046	.070	.093	.117	.141	.172	.203	.234	.265	.277	.290	.315	.341
45°	.030	.060	.093	.119	.153	.184	.216	.254	.289	.325	.351	.378	.411	.445
50°	.037	.075	.116	.151	.189	.227	.266	.305	.345	.384	.425	.467	.508	.550
55°	.046	.093	.142	.188	.236	.283	.332	.381	.420	.479	.530	.582	.641	.700
60°	.056	.112	.168	.225	.283	.340	.398	.457	.516	.575	.636	.697	.774	.851
65°	.067	.135	.204	.273	.343	.412	.483	.554	.625	.697	.771	.845	.922	1.01
70°	.080	.159	.240	.321	.403	.485	.568	.652	.735	.819	.906	.994	1.08	1.17
75°	.095	.182	.286	.383	.480	.578	.678	.777	.877	.977	1.07	1.18	1.29	1.39
80°	.110	.220	.332	.445	.558	.671	.787	.903	1.02	1.13	1.25	1.38	1.50	1.62
85°	.128	.259	.391	.524	.657	.790	.926	1.06	1.20	1.34	1.47	1.62	1.76	1.91
90°	.149	.299	.450	.603	.756	.910	1.07	1.22	1.38	1.54	1.70	1.87	2.03	2.20
95°	.174	.350	.522	.706	.885	1.06	1.25	1.43	1.62	1.80	1.99	2.18	2.38	2.58
100°	.200	.401	.604	.809	1.01	1.22	1.43	1.64	1.85	2.06	2.28	2.50	2.73	2.96
110°	.268	.536	.806	1.08	1.35	1.63	1.91	2.20	2.48	2.76	3.05	3.35	3.66	3.96
120°	.360	.721	1.08	1.45	1.82	2.19	2.57	2.95	3.33	3.72	4.11	4.50	4.91	5.32

Index

Drain -	
Pave Locust - Macoutey - Newell	1-
Stake Alley BIKK - Univ Hts	2-3
Pave Bancroft - Ash to Cedar	19-20
Pave E ST - 30 <sup>th</sup> 270' wly of wline	21-22
Alley bet. Montezuma Rd - wly College Ave	26
Stake Maple - Balsam - Nutmeg	27
Stake 135' Sewer - 65 <sup>th</sup> Broadway	28
Stake 68 <sup>th</sup> at Saranac - 120' storm drain - OT Nly end 60 <sup>th</sup>	29-31
Stake curb - lot 12 BIKD, south look	32
Stake handis - Nile st Ely	33-34
Stake Sewer - Pardec 2	4-
Sewer ext. Broadway + Quail	11
Storm Drain - ext 49 <sup>th</sup> + Orange	15
Stake Typed - 2 inlet 7 <sup>th</sup> + K	13
Storm Drain - Boundary + Thoen	36
Sewers - Inrig Park Unit #2	37
Pave Birch - Woden to Vesta	44
sewer extension Inrig Park unit 2	45
Traffic Lights 4 + Laurel	46

Stake Alley BIK K Univ Hts

Allen  
Powell  
Schelein

3-24-53

WIO # 31885

INDEXED  
DEC 27 1953

See page 2 For Alley Grades

	IE	Stake
end pipe 1404	372.90	06.10 379.00
0478	374.68	0-970 384.38
0452	376.45	C-8.12 384.57
0420 Nly	378.23	C-758 385.81
E Alley 0400 catch basin	C049 385.32 Grate	C-5.81 385.81

Drain staked 6' Nly

12" conc Drain 104' Nly Nly line Suncrest

Index

Tieouts 7 pts 16 <sup>th</sup> Island + 16 <sup>th</sup> + J - 47 <small>(L H. 878-13)</small>	
Storm Drain extension - Reynard way	48-
Sewers - 63 <sup>rd</sup> + Imperial - Alley BIK 6	
Encanto Hts -	49.51
Pave Dotest - Dale to Fern	52-53
Stake inlet + Drain - NW corner - state + Sassafras	55
Stake Drain 36 <sup>th</sup> + Henrick	56-
Stake Sewer BIK 136 - City Hts <small>Max Dr + Max rose</small>	57-58
Stake storm Drain lot 523 Talmadge Park	59-
Stake storm drain - Kurtz + Witherby <small>El Cajon to Amherst</small>	60
Stake storm Drain - Harbison Ave <small>Between El Cajon + Amherst</small>	61-
Curb Replacement - Harbison Ave	62
Sewer extension - Harbison Ave + Cervantes	63-
Pave Alley BIK 42 - Tract 1368 -	64-
Pave Newton Ave - 43 <sup>rd</sup> ST wly -	67-
Stake Drive 1190 K Lauber ST	71-
Curb Returns Newton Ave	72
65.72' curb at 5536 Alleghancy	73-
Sewer 67 <sup>th</sup> + AKins to Brooklyn	74-
Alley BIK 82 - Park Villas	77-

48" Conc pipe drain at Macaulay + Newell

2-13-53

WO # 32046

DWG - 93784

Stakes = 6' 5" & Pipe

EL = 16.62

BM: Conc Mon. Swly cor Lowell + Locust.

I.E. Elev | Stake | Cut or fill

END 48" EXIST PIPE

Wly of Locust

0+00

(11.89)

12.18

-0.29

1.36% Grade

0+44

11.57

16.30

C-4.73

0+88

10.97

15.37

C-4.42

1+32

10.37

15.82

C-5.45

End

1+76

9.97

14.48

C-4.71

INDEXED  
JER  
NOV 27 1953

①



Cont front page 2

3

Stake Alley BIK K - unwin Hts.  
LT = Wly Rt = eLy -

Stake Grade Stake Grade

Stake Alley Copely -  
5481

389.00

388.80

5470 } C-1.35  
Nail  
1' BK

C 0.67  
389.70

□ - 0.5'  
389.03

C 0.38  
389.21

□ - 0.5'  
388.83

- C 0.27 - To stub 3' back

5450 } Nail 0.92  
C 1.00

C 0.46  
389.80

□ - 0.5'  
389.34

C 0.27  
389.41

□ - 1' BK  
389.14

5430

C 0.21  
389.55

□ - 0.5'  
389.34

C 0.36  
389.50

□ - 1' BK  
389.14

5405

C 0.26  
389.40

□ - 2' BK  
389.14

C 0.16  
389.10

□ - 1' BK  
388.94

4470 } conc  
Nail  
1' BK

C 0.19  
389.05  
C 0.24

□ - 0.5'  
388.86

C 0.18  
388.84

□ - 0.5' BK  
388.66

C - 1.15  
- Nail in Block wall - 0.60 back



L

(79)

WO #20009

4-9-53

Allen

D. Sisson

Powell

Sewer for

Sewer Dept

from exist

deadend in

Pardee St

86'± south

of P.I.

Pardee +

'L' St.

To Grade

84.0

Proposed  
Deadendexist  
dead  
end

EXIST 6" sewer

Pardee St

(74)

Station

I.E.G.

Stake

0+84 D.E.

79.03

86.02

C-6.99

0+63

78.82

85.56

C-6.74

0+42

78.61

84.99

C-6.38

0+21

78.40

84.55

C-6.15

10% G-

0+00 - exist D.E.

78.19

Meet



Stake Central, Thorn  
 Central St. + Thorn South to  
 Ban Jo 470 South of Redwood -  
 Thorn St. 415 to Central.  
 Vlo # 31907 -

4-9-53

Allen, D. Sisson, Powell.

Ret - 9311-L, 9311-A-L, 9310-L

FR 2140, 2153. LT = EIT

	Rough	Curb Gr	Stake		Rough	Curb Gr	Curb Stk.
1760	C 0.27 301.60	301.43	FO.10 301.33		C 0.9 302.8	301.93	FO.94 300.99
1740	C-0.64 302.31	301.67	FO 71 300.96		C-1.19 303.36	302.17	F1 01 301.16
1720 BVC	C 0.81 302.45	301.64	C 0.04 301.68		C 1.37 303.51	302.14	FO.03 302.11
0790	C 1.49 302.86	301.37	C 0.33 301.70		C-2.13 304.00	301.87	C 0.21 302.08
0760	C-1.51 302.62	301.11	C 0.39 301.50		C-2.52 304.13	301.61	FO.34 301.27
0730	C-2.22 302.07	300.85	C 0.15 301.00		C-3.46 304.81	301.35	C 0.19 301.54
5/4 line Redwood - 0700	C 1.96 302.55	300.59	FO.14 300.45	301.50 in Red PT	C-3.41 304.50	301.09	ON BC C 0.13 0-02-
B.M. = NW Lot - Central + Thorn -			305.12				
Central - 470' South to Ban Jo							

JER  
 NOV 27 1953

RT = Wly.

Rough

Rough

Curb Gr

Curb Stk.

Central Redwood To South  
LT = E14

ct = W14-

6

	Stakes Rough	Curb Gr	CB Stake		Rough	Curb Gr	Curb stakes
3+80	C-4.36 286.22	281.86	F0.27 281.59		C. 703 289.39	282.36	C0.40 282.76
3+10	C-3.36 289.09	285.73	F0.04 285.69		C 9.06 295.29	296.23	C0.23 286.46
3+20 = EVC	C-2.28 291.88	289.60	C0.16 299.76 TP		C7.49 297.59	290.10	C0.50 290.60
3+00	C-2.43 294.47	292.04	C0.14 292.18		C 6.12 298.66	292.54	C0.23 292.77
2+80	C-2.02 296.23	294.21	F 0.02 294.19		C-4.59 299.30	294.71	C0.26 294.97
2+60	C1.26 297.36	296.10	F 102 295.08		C 3.45 300.05	296.60	F0.32 296.28
2+40	C-1.45 299.17	297.72	C0.25 297.97		C2.53 300.75	298.22	C0.23 298.45
2+20	C0.93 299.99	299.06	C0.18 299.24		C 1.74 301.30	299.56	C0.19 299.75
2+00	C0.56 300.69	300.13	Grade 300.13		C-1.39 302.02	300.63	Grade 300.63
1+80	C0.13 301.04	300.91	F0.07 300.84		C0.98 302.39	301.41	F0.04 301.37

Central - Redwood styfo  
BANTO - LF=214

Rough Curb GR Curb STKS

Back BANTO  
+23.56

F 0.99  
265.50 264.51

+23.56

F 0.59  
265.36 265.95 266.14

+17.57

C-3.52  
270.57 267.05 267.55

(+03.18)  
PRC BANTO

C 0.39  
268.35 268.74

(Back BANTO  
5+33.18

(5+03.18.P.P. BANTO)

BC BANTO  
4+70

C 5.36  
275.61 270.25 270.33

4+40

C 5.62  
279.74 274.12 273.61

4+10

C-4.93  
282.97 277.99 276.41

see page  
8 for  
C.O.L. #1

Rt= W/L

7

INDEXED  
BY  
NOV 27 1953

Rough Curb GR Curb STKS

F 0.24  
260.38 265.50 264.66

F 2.91  
263.09 266.00 266.08

C-1.12  
268.47 267.35 267.18

C 0.22  
268.75 268.97

C-2.71  
273.46 270.75 270.84

C 5.67  
280.29 274.62 274.65

C-5.59  
284.08 278.49 278.65

Grades for Culvert #1 - South  
 end Central Ave - 470' South of  
 South line Redwood

INDICATED  
 IN  
 ER  
 NOV 1953  
 GUTTER

Curb  
~~IE~~ Elev stake  
 Curb inlet at sly end Box Jo

Wly cor	265.50	F 6.82 258.68	F 6.02 264.70
Mid point	265.50	F 5.30 260.20	F 4.47 264.67
FLY COR	265.50	F 5.74 259.76	F 4.84 264.70
end pipe 1420	216.40	C 0.40 216.80	Footing Headwall. C-2.40 214.40
0+80	231.26	C 3.42 234.68	
0+40	246.13	C 5.77 251.90	
#2 Inlet sly end Cul-de-sac 0400	261.00	C 4.41 265.41	GUTTER TOP CB 265.50

Grades for Culvert #2 8  
 9310-2-9311-6  
 2 inlets = 215.10' North of North  
 line Redwood.

Pipe on page 9

Curb INlet Fly side Central - 10" throat

	elev	stake	
GUTTER at INLET	297.40	299.52	C-2.12
Sly - Curb over INLET	298.25	299.23	C 0.97
Curb NY - I.E. pipe	298.25	298.97	C 0.72
outlet to EAST } staked 7' west	292.71	299.26	C 6.55
I.E. pipe inlet from west	293.25	299.52	C 6.27
Middle Central	293.43	299.58	C-6.15

Type A-2 Inlet wly side Central 10" throat

	elev	stake	
BOTTOM Box I.E. Pipe	293.61	299.77	C 6.16
GUTTER AT INLET	297.90	299.77	GUT C-1.87
Top Curb 73	298.73	299.94	Sly Tip/cb C 1.21 NY C-1.23

I.E. Grades for Pipe Culvert  
 #2 East of Central -  
 215.10 North of No. Line Redwood  
 9311-L

INDEXED  
 JGA  
 NOV 27 1953

I.E. stake

See Page 10 for Central-Redwood To  
 Thoren.

Gravity headwall W Footing on	268.00	C 4'0	
1+76.30		C 2.10	
M 1+79.30	270.00	272.10	I.E.
<sup>27.5</sup> Mid Point 56.5 length			
1+48.80			
E 1+50.30	280.76	283.18	C-2.42
ON PIPE going ELY en TYPE G clean out	291.51	298.28	C-6.77
1+1+21.30	291.51	299.39	C-7.88
<sup>88.5</sup> 0+90.96	291.81	299.88	C 8.07
<sup>59.</sup> 0+60.64	292.11	298.79	C 6.68
<sup>29.5</sup> 0+30.32	292.41	299.00	C 6.59
# 0. ELY cb line 0+00 Central	292.71	299.26	C 6.55

Central-Redwood To Thaxen  
 9310-L  
 4-9-53

LT= W14-

	Rough	cb Gr	cb STK1
2+20 <sup>69</sup>		298.73	
2+00	C 1.75 300.49	298.74	C 1.58 300.32
BVC 1+80	C 1.42 300.26	298.84	C 0.20 299.04
1+50	C 2.88 301.98	299.10	C 0.10 299.20
1+20	C 1.62 300.98	299.36	F 0.73 298.63
0+90	C-3.62 303.24	299.62	C 0.104 299.66
0+60	C 1.52 301.40	299.88	F 0.87 299.01
0+30	C-3.64 303.78	300.14	F 0.07 300.07
Nly Line Redwood 0+00 = Rd Pt.	C 1.42 301.82	300.40	See B C

0-365 ON Ely Side ONLY-

13' MONON S.E. COR tied 100' + 150 Wly on ± 7' LINE  
 sly Redwood

INDEXED

HER  
 NOV 27 1953

etc. etc.

Rough	cb Gr	cb STK1
	298.24	Top catch 288.29
F 1.24 297.02	298.26	C 1.0 299.36
C 0.33 298.68	298.35	C 0.46 298.81
F 0.45 298.15	298.60	C 0.28 298.88
F 0.44 298.42	298.86	F 0.04 298.82
F 0.77 298.95	299.12	C 0.52 299.64
F 0.30 299.08	299.38	F 0.03 299.35
F 1.71 297.93	299.64	C 0.11 299.75
F 1.83 298.07	299.90	C 0.20 300.10
	300.21	C 0.19 300.40

Central - Redwood to Thorax  
 LT = W 14

	Rough	Cb Gr	Cb STR
5432	C-1.28 304.32	303.04	C0.25 303.29
4498	C-1.4 302.9	302.54	C0.10 302.64
4464	C-1.30 303.35	302.05	F0.52 301.53
4430	C-1.12 302.67	301.55	F0.60 300.95
3496 ✓	C0.91 301.97	301.06	F0.05 301.01
3462 ✓	C0.82 301.38	300.56	F0.01 300.55
3428 ✓	C0.74 300.81	300.07	C0.11 300.18
2494 ✓	F0.09 299.48	299.57	C0.01 299.58
2460	C0.22 299.30	299.08	F0.05 299.03
2440	C1.02 299.88	298.86	C0.31 299.17

Rt = el. 4

11

	Rough	Cb Gr	Cb STR
	C3.19 306.47	303.28	F0.07 303.21
	C-2.01 304.71	302.70	C0.11 302.81
	C-1.52 303.65	302.13	F0.39 301.74
	C1.36 302.91	301.55	F0.04 301.51
	C1.58 302.56	300.98	F0.13 300.85
	C1.74 302.14	300.40	C0.17 300.57
	C1.23 301.06	299.83	F0.22 299.61
	C0.31 299.56	299.25	F0.12 299.13
	C0.85 299.53	298.68	F0.43 298.25
	C0.60 299.00	298.40	F0.07 298.33



Central- Redwood to Thorns

~~S.E. COR~~  
BC Thorn  
SW COR

(304.32)  
304.84 = C.O. 24

30° to

304.21 304.44 C.O. 23

12° 33

304.07 303.61 F.O. 46

Slyline Thorn 17° 27

304.03 303.59 F.O. 44

30° =  
E.C. ON THORN

304.80 C.O. 41

304.84 305.21

BC ON Central

303.94 303.57 F.O. 37

30°

304.65 C.O. 20

304.85

cb STR

Cb Gr

GUTTER Gr

12° 33

304.51 F.O. 35

304.16

30° to E.C. Redwood

C.O. 87

302.37 301.50

301.00

Slyline thorn 17° 27

304.43 F.O. 30

304.13

30° to 2/3

F.O. 16

301.03 301.19

300.69

BC ON Central.

304.34 F.O. 30

304.04

30° to 1/3

F.O. 09

301.01 301.10

300.60

S.E. COR Central + Thorn

BC ON Central

C.O. 12

301.21 301.09

300.59

30° to EC - Redwood

301.50 F1. 42

300.08

Return -

S.W. COR - Central + Redwood -

30° to 2/3

300.96 F1 16

299.80

30° to 1/3

300.52 F.O. 7

299.85

LT: W14

BC ON Central

300.42 F.O. 29

300.13

N.WEST COR Central + Redwood

Rough Cb Gr cb STRs

Rough Cb Gr cb STRs

Rt: 214

Slyline thorn -

6400

C

304.03

304.43

5466

C1. 41

304.94 303.53 C.O. 25

303.78

C-2.95

306.80 303.85

Grade

303.85

Stake Type A-2 cb inlet  
AT&T Near RR.  
4-14-53  
WDP 21062

Allen

D. Sisson

Powell

Ret. 4776-B.

RECEIVED  
NOV 27 1953

Ely Cox - Stake elev = 1.27 - C 1.05 To Gr.  
C 0.36 To cb

Wly Cox - Stake elev = 1.56 - C 1.32 To grate  
C 0.65 top cb

Staked 3' back of fc cb

Grate elev at inlet = 0.24.

Top Corb Gr at inlet = 0.91

Sewer extension from D.E.  
115' east of Intersection of 50' extension  
Broadway & Quail.

WO# 20008

4-15-52

Allen

D. Sisson

P. Wall.

Ref. 8837-4 .7% Grade

INDEXED  
JER  
NOV 27 1952

14

	I.E. Elev.	Stake	cut
0+50=DE	165.90	176.49	C-10.59-
0+25	165.73	176.25	C-10.52
EXIST D.E. 0+00	165.55	175.98	D-10.43

Storm Drain extension  
H975 + Orange  
No # 20488  
4-16-53-

INDEXED  
JER  
NOV 27 1953

C. Allen Drain stake  
D. Sisson 6' 5 1/4"  
C. Powell extension is 42" pipe  
Ref. 4777-B exist pipe = 48" pipe.  
FB 1720-31.

TE elev stake

end pipe  
by line Allen  
1+20

323.48

C 2.43  
325.91

0+90

323.18

C-199  
325.17

0+60.

322.88

C 3.75  
326.63

0+30

322.58

C 3.69  
326.27

exist end 48" pipe  
Near Nw corner  
0+00. H94 Orange

322.28

C-223  
325.51

Improvements on Idaho St.  
 between Sly line EL cañon Blvd  
 + Nly line Howard. LT = eily side Idaho.

B.M. = Direct  
 SECOR Reduced  
 Idaho  
 Howard = 373.01

Rt = Nly side Idaho 15

	Cb Gr	CbStk		Curb Gr	CbStk
2+10.87-	373.92 <del>374.04</del>	<del>C0.12</del> 374.16	CO. 24	374.49	F0.15 374.34
1+83.37 Bnk	374.03 <del>374.25</del>	<del>F0.01</del> 374.24	CO. 21	374.70	F0.31 374.39
Sly Alley Ret. 1+65.37 B.C.	grades changed per J.K.P. 374.11 <del>374.22</del>	CO. 18 374.40		374.83	F0.27 374.56
Nly Alley Ret. 1+41.37 B.C.	State 373.95 F0.26	CO. 04 374.25		375.01	F0.11 374.90
1+20	374.34	CO. 29 374.63		375.17	F0.16 375.01
0+90	374.53	CO. 33 374.86		375.40	F0.30 375.10
0+72 1/2 d.n. - 25'		CO. 37			F0.23
0+60	374.72	375.09		375.62	375.39
0+30	374.91	CO. 29 375.20		375.85	F0.33 375.52
0+12 1/2 = 25' drive. Sly line EL cañon.		CO. 39			F0.50
0+00	375.10	375.49		376.07	375.57

INDEXED  
 SER  
 NOV 27 1953

374.50 Ely end Sly Alley Ret  
 stake 374.50  
 F0.22

LT=ely.

Cont Page 18

17

RT=WNly

	GUTTER	cb Gr	cb STK	
		(375.88)		
+ 4' of TANGENT	375.41	375.90		
	CO.63			
+ Δ of 30°00'	375.42	375.91	376.05	CO.14
	FO.10			
+ Δ of 30°00'	375.48	375.98	375.38	FO.60
	FO.04			
+ Δ of 30°00'	375.55	376.05	375.51	FO.54
BC = Idaho ST	375.57	376.07	375.57	FO.50
S. West Return	EL CAJON + Idaho			
		cb Gr	cb ST	
3+32.37		373.40	373.62	CO.22
				CO.08
3+01.03		373.54	373.62	
				CO.21
2+69.70		373.68	373.89	
				CO.53
2+58.07 to 12' dr				
2+38.37		373.82	374.35	

	GUTTER	cb Gr	cb STK	
S.E. TANT tied 17' Ely ON Sly 7' line EL CAJON				
		(374.98)		
				TO MEET
E.C. EL CAJON				CO.09.
+ Δ of 30°00'	374.47	374.91		CO.18
	CO.66			
+ Δ of 30°00' 4' 3' bk	374.50	374.98		375.16
	CO.82			CO.33
+ Δ of 30°00' X 7' bk	374.58	375.07		375.40
	CO.06			CO.39
BC = Idaho ST (hill)	374.43	375.10		375.49
S.E. RET EL CAJON + Idaho				
		cb Gr	cb STK	
		PK-4' bk		FO.38
		373.57		373.19
				PK-4' bk
		373.81		FO.47
				FO.43
		374.05		373.62
				FO.48
		374.28		373.80

NE 7' L+T Tied out 'X' 17' Ely on NLY 7' Line  
Howard

	Cb Gr	Cb STK 17-7'6K	
EC = Idaho	373.40	373.62	C-0.22
2/3	373.32	373.63	C 0.31
1/3	373.22	373.56	C 0.34
BC = Howard	373.22 373.18	373.16	FO.06
NECOR			
	Cb Gr	Cb STK	
Idaho - EC	373.57	373.19	FO.38
2/3	373.50	373.02	FO.48
1/3	373.00	372.73	FO.77
Howard BC	373.56	373.92	FO.24
N W COR. Howard + Idaho			

	Cb Gr	Cb STK. C 4.05
EC Howard	373.20	377.25
2/3	373.10	C 1.87 374.97
1/3	373.01	FO.01 373.00
BC = Idaho	(373.02) - 372.97	MEET
Sweet Ref Howard + Idaho.		
EC = Howard	373.20	378.79 - C 5.59
This Ref. Moved S'Nly Per G.G. 4-22-53		
2/3	373.10	375.61 - 2.51
1/3	373.01	374.45 - C 1.44
BC: Idaho	EXIT 372.97 372.97	
RET SW COR Idaho + Howard		

NE

Pave Bancroft st. Ash to Cedar  
 2-18-53  
 Wot # 3186d  
 (CD)  
 Allen, Sisson, Powell, Sahelin -

Lt = W14

Rt = city -

19

INDEXED  
 SER  
 NOV 27 1953

Gutter

Curb el

Gutter Curb el.

Bancroft - Ash to Beech

Curbs in place

2+90 (C)

209.65 Curb in

B

2+45 (D)

5' back prop C-4.31

B.C.S

3+10

210.45

211.09

212.25

213.09

Z skyline Beech

3+00

210.28

211.00

211.95

213.00

2+80 Brk

209.03

211.03

Lake

Lake

N skyline ash st

0+00

190.87

191.50

192.88

193.50



Bancroft - Beech to Cedar

	GUTTER	curb & l	⊘	GUTTER	cbel-
5 1/4" Cedar 3+00	238.97	239.50	239.02	237.75	238.00
2+80	239.38	239.80	239.02	237.86	238.30
2+60	238.93	239.40	238.61	237.49	237.90
2+40	238.13	238.60	237.80	236.66	237.10
2+20	236.65	237.20	236.34	235.23	235.70
2+00	234.68	235.20	234.37	233.26	233.70
	Rake				
5 1/4" Beech 0+00	212.60	(213.10) 213.00		213.72	(214.22) 214.00
BC 0-10	212.10	213.11		213.20	214.20

Pave E ST - Wly line 30<sup>th</sup> 270 Wly of W line

9008-L

2-19-53

Allen  
Sissort  
Pa Neil  
Schelin  
W0# 31712

LT Rough grade stakes  
1' back prop  
1' back R<sub>h</sub>  
Rough curb 6r curb stake

INDEXED  
JER  
NOV 27 1953  
finish Gr

Rt = N14

21

1440	C-153 183.63	182.10	F0.39 181.71	181.87 182.20	C-430 186.94	182.64	F0.32 182.32
1420	C-093 184.37	183.64	Grade 183.63	183.42 183.75	C-3.56 187.77	184.21	F0.13 183.78
1400	C0.27 185.03	184.76	F0.22 184.54	184.57 184.90	C-2.74 188.12	185.38	F0.47 184.91
0480	C011 185.58	185.47	F0.31 185.16	185.37 185.70	C-2.29 188.46	186.17	F0.40 185.77
0460	F011 185.66	185.77	F0.25 185.52	185.66 185.99	C-2.11 188.66	186.55	F0.15 186.40
0435	F0.26 185.02	185.88	F0.12 185.76	185.83 186.16	C-1.50 188.27	186.77	F0.10 186.67
B.C. 0410	F.0.97 185.03	186.00	F0.40 185.60	186.00 186.33	C-1.23 188.23	187.00	F0.15 186.85
Wly line 30 <sup>th</sup> 0400		185.86				187.10	

BM = NW BP - 30<sup>th</sup> + E ST EL = 187.63

EC ON E' ST 30+10

LT  
186.00

F040  
185.60

RT

122

Rough cb gr cb st k

Rough cb Gr cb st k

2/3 (prop 30th st)

185.86 F0.81  
185.05

EC ON E' ST - 0+10 -

187.00 F0.5  
186.85

1/2 ret

185.50 F0.37  
185.13

2/3 (prop w/ 30th st)

187.10 F0.10  
187.00

BC ON 30th

184.98 Meet  
184.77

1/3 ret

~~C0.25~~ 187.51  
187.28 C0.23  
187.51

S.W. Return 30th + E

end grading  
2+60

167.51

BC ON 30th

187.58

166.67

R Fin Gr

N.W. Return 30th + E

168.02 = 2+60

end improvement  
2+55

C0.5  
166.62 168.15 F0.11  
167.99

167.65

167.04 167.90  
167.37 168.23

168.16

168.66 Grade  
168.67

2+55

2+40

C-1.51  
171.59 170.08 F0.46  
169.62

167.58

169.14 169.83  
169.47 170.16

C-1.90 F0.14  
172.48 170.58 170.44

2+10

C-1.46  
175.40 173.94 F0.29  
173.65

173.34 173.69  
173.67 174.02

C-0.58 F0.42  
175.02 174.44 174.02

1+80

C-2.34  
180.13 177.79 F0.03  
177.76

7.79

177.54  
177.87

7.79

C-4.40 F0.19  
182.69 178.29 178.10

1+60

C-1.82  
181.97 180.15 F0.40  
179.75

179.91  
180.24

C-3.97 F0.23  
184.63 180.66 180.43



stakes for Drain 30<sup>th</sup> + upas + Dale

	cb stk	cb Gr	Gutter G	stat	Invert Gr	Stake
				'X' 5' Nly E Box		culvert
				Meet Pipe 5/4 upas 0+21 <sup>0</sup>	322.39	
				Meet in upas 0+97 <sup>5</sup>	322.88	
0+40 <sup>06</sup>	C017 323.36	323.19	C119 322.17			
0+35 <sup>06</sup>	C126 323.45		→ 322.19			
BC Dale 0+28 <sup>06</sup>	C004 323.37	323.33	C079 322.58	E inlet 0+71 <sup>5</sup>	323.00	C-125 324.75 'X' 3' back face cb
2/3 culvert 0+20 <sup>21</sup>	F034 323.05	323.39	F001 323.06	L.P.T 0+56 <sup>5</sup>	323.13	C-204 325.17
1/3 Ret. 0+12 <sup>35</sup>	F034 323.05	323.39	Grade 323.05	0+37 <sup>6</sup>	323.28	C-206 325.34
BC upas 0+45 <sup>0</sup>	C026 323.58	323.32	C085 322.73	0+18 <sup>8</sup>	323.43	C-204 325.47
4 E wly BC upas st 0+00 <sup>=</sup>	C035 323.65	323.30	C091 322.74	Junction point NW cor. upas + 30 <sup>th</sup> 0+00	323.58	C-161 325.19

Ret. S.W. cor - upas + Dale

Stake Drain 30<sup>th</sup>, upas, Dale

Drain 30<sup>th</sup>, upas, Date,

25

invert. stake

Outlet So. on  
1450<sup>±</sup> Date.

322,19

Junction Box  
1434<sup>±</sup>

322,25

ob line SW cor upas  
1430<sup>±</sup> + Date

322,27

Alley Return Sly Montezuma Rd + Wly  
College Ave - BK 4. College Park #1  
Ret. FB 2239  
12

4813-B

NO # 21076

INDEXED  
SER  
NOV 27 1953

26

2-25-53

Allen, Sisson, Powell, Schelin

Back Alley end curb	Plan Grade 446.65	CO 03 446.68
------------------------	----------------------	-----------------

W Alley EC	446.57 446.57	FO 05 446.44
---------------	------------------	-----------------

Shots taken on RadP

Montezuma Rd 12C	Top Cb exist 446.46 446.51	Meet
---------------------	----------------------------------	------

Wly Return

Top Cb	stake
--------	-------

Alley @ 2' bx End curb	Plan Grade 447.18	FO.60 446.78
---------------------------	----------------------	-----------------

E.C.	447.23 447.70	FO.13 447.10
------	------------------	-----------------

Montezuma Rd BC	EXISTING Top Cb. 447.17 447.04	Meet
--------------------	--------------------------------------	------

Ely Return

Stake Maple - Balsa to Nutmeg -  
 N1/4 Curb already in place + 570' of curb + walk  
 W1/4 of Balsa already in place

W.O.# 62300

INDEXED  
 JER  
 NOV 27 1953

curbs staked 3' back  
 face curb.

27

Allen Dwg - 10181-L.

3+96.03

C 132

Cb Grate

259.85

258.53

Sisson No rough grades required

Powell

3+69.98

C 0 04

258.88

258.84

Scholin

Stake Cb. Gr

3+43.98

C 0.18

259.34

259.16

BC  
 1+84.95

C 0 01  
 262.81 262.80

EVC  
 3+33.97

C-264

261.93

259.29

1+48.26

F 0.84 Set Level  
 W1/4 curb  
 264.30

3+13.97

C-178

261.38

259.60

1+11.57

F 0.81 Set Level W1/4 curb  
 265.79

2+93.97

C-175

261.72

259.97

EC  
 0+74.88

C-0 04 Set Level W1/4 curb  
 267.28

2+73.97

C-128

261.68

260.40

MPC Curve  
 0+37.44

C-0 24 268.06

BVC  
 2+53.97

C-117

262.07

260.90

570' West of Ely Line  
 Balsa + end exist curb  
 D+00 = BC

MEET 268.88

EC  
 2+42.80

C-0 85

262.06

261.21

used end exist curb as BM = 268.88

2+15.81

C-0 10

262.11

262.01





Stake CDR Saranac to North + Storm Drain  
 W/O # 20682- LT = W14 To Ely  
 3-3-53  
 Allen.  
 Sisson  
 Powell  
 Schelin  
 Ref 10070-2-

INDEXED  
 SER  
 NOV 27 1953

Rt. Ely 29

	Rough	CG Gr	Rough	CG Gr
Re				
3+20	C-057 441.01	440.44	C-250 442.94	440.44
2+70	F054 440.15	440.69	C-24 443.13	440.69
2+20	F118 439.76	440.94	C-192 442.86	440.94
1+70	F159 439.60	441.19	C1.21 442.40	441.19
1+20	F128 440.16	441.44	C02 441.56	441.44
0+70	F01 441.60	441.69	C0-40 442.09	441.69
end exist Curb 0+20		441.94		444.94
Bc 0+08		442.00		442.00
Nyline Saranac 0+00		442.04		442.43

	LT = W14		C125		Restak
	CO 28	439.10	438.27		
	cb Rough	cb. Gr	GUTTER	STAKE	
17.67 & 68th	FO44		CO23	CO24	
17.67	438.75	439.19	438.52	438.76	
10.15	FO55		CO12	CO24	
	438.73	439.28	438.61	438.85	
	Grade		CO66	CO50	
10.15	439.32	439.33	438.66	439.16	
	CO20		CO87	CO100	
BC Wly side Banjo	439.58	439.38	438.71	439.71	
Back Banjo -		(439.10)			
5+73.67					
Lead Pt. Banjo					
5+48.67					
Begin Banjo					
5+29.06		439.38	438.71		
	C-03				
4+70	440.04	439.69			
	CO5				
4+20	440.42	439.94			
	CO.69				
3+70	440.88	440.19			

	CONT ON 31		RT = E14		30
	CB	cb. Gr	GUTTER	STAKE	Restak
	Rough				9-1-53
	CO88		C121		
17.67	439.98	439.10	438.27		
	CO92		C164	CO.71	
17.67	440.18	439.21	438.54	439.25	
	C129		C126	C1.38	
10.15	440.59	439.30	438.63	440.01	
PRE.	C1.85		C-2.52	C1.33	
10.15	441.20	439.35	438.68	440.01	
	C-202		C-2.69	C-1.29	
BC Ely side Banjo	441.42	439.40	438.73	440.02	
	CO20				
	441.42	439.40			
	C-24				
	442.13	439.69			
	C-261				
	442.55	439.94			
	C-264				
	442.83	440.19			

Elev on 50' RW Hob - Wly -  
Tie out of 68<sup>th</sup>

436.14

NW stake 4 NMIY.

stake I.E.

41  
stake  
NE cor

INDEXED  
JER  
NOV 27 1953

31

NE COR INLET		439.10	
ON INE	C108		C110
Grate	439.35	438.27	439.37
BOTTOM BOX	C425		C427
I.E. Pipe NE <sup>th</sup>	439.35	435.10	439.37
Top curb	C025		C027
N.W. COR	439.35	439.10	439.37

Type H inlet

end pipe	C-515		
1420	427.35	422.20	

0+90	C-845		
	433.88	425.43	

0+60	C-826		
	436.91	428.65	

0+30	C-802		
	439.90	431.88	

Type H inlet	C-484		
0+00	439.94	435.10	

Stake Curb - Lot 12 Block D - Southlook  
Olivewood Terrace.  
W of 20007  
2-4-53  
Allen

INDEXED  
SER  
NOV 27 1953

Sisson 30' curb Radius

Powell

Schelin

Ref. Profile #701

TP sheet # 354.

Subdiv map 1555

0+94.56 PRC	47.29	F 0.65 46.64
1417.98	49.30	
0+94.56-PRC-4629-		
0+90	46.90	46.36 C 1.11
0+70	46.30	47.41
		C-0.57
0+66.22	46.20	46.77
		C-0.55
0+50	46.00	46.55
		C 0.60
0+30	45.80	46.40
		C-0.77
0+10	45.80	46.57
W/L line Lot 12		(+0.07)
0+00:	45.90	45.97 Meet -

Stake Landis ST = Nile ST. R54' (E)

Ely.

WO# 32001

3-10-53

Allen

Sisson

Powell

Ref. Dwg # 9610-2

ST = Nile

INDEXED  
JER  
NOV 27 1953

ST = 514

33

	Rough	Cb Gr	Cb Stks		Rough	Cb Gr	Cb Stks
2725	C0.71 314.71	314.00	F0.04 313.96		C0.05 313.05	313.00	F0.52 312.48
1493.5	C-172 316.60	314.89	C0.13 315.02		C0.75 315.20	314.45	C0.10 314.54
Ely Rd's Ret's 1462	C1.14 316.92	315.78	C0.21 315.85		C0.33 316.24	315.91	F0.07 315.84
W14 BC Alley Ret's 1438	C1.98 318.53	316.55	C0.03 316.58		C-0.35 317.07	316.72	C0.14 316.86
0499	C-1.23 319.25	318.02	C0.12 318.14		F0.29 317.92	318.21	F0.20 318.01
0460	C-0.99 320.49	319.50	C0.23 319.73		F0.54 319.16	319.70	F0.38 319.32
0430	C-0.06 321.39	320.75	C0.12 320.87		F0.60 320.40	321.00	F0.46 320.54
Elyline Nile ST 0400		321.97 322.00				(322.29) 322.31	

NERP Landis + Boundary ST = EL. 329.04. Auto Rid.

Landis - Nile to east  
LT = N14

Rt = S14  
See Page 35 for S14 Alley Refs.

	Rough	Cb Gr	Cb stks	Gutter <sup>Cr</sup>		Rough	Cb Gr	Cb stks
N14 Cb end 0+58.35		311.77	F085 310.92	311.27				
0+51.64		311.54	F048 311.06					
E Drain 0+49.64			IN 11' RAPT No Cb. C063	310.99				
Begin Drain, end. 0+47.64		311.54	C0.08 311.62		end curb in alley	316.07	C0.80 316.87	
going Nly E Landis 0+28.79		311.91	F064 311.27 4' WY.	311.41	in Alley E.C.	315.82	C004 315.86	
Sly curb end 0+00		312.49		311.99	N. Ely Ret DC Tosly.	315.85 315.78	C001	
					end curb (14')	318.50 316.84	C1.66	
Curb at ely end improvement.					ON Rad PT. EC	316.56 316.59	F003 To Alley	
end cb N14 2+63	C0.37 312.14	311.77	C038 312.15		NW alley Ret AC	316.58 316.55	C003	
end cb sly 2+75	C-1.25 313.72	312.47	C031 312.78			F. 2.50 309.93	312.49	Grade 312.48

514. Alley Refs Landis - Nile to Wabash

35

INDEXED

NOV 27 1953

end curb N alley

316.20

CO 71

316.91

EC. Alley

315.95

F. O 81

315.84

BC. Landis ST

315.91

F. O 07

315.84

South est alley Ref

end Curb Pt Alley

317.01

CO 05

317.06

EC-in alley

316.76

CO 10

316.86

BC. on Landis

316.72

CO 14

316.86

South West alley return.



Grades For 24' Extension 36  
36" Storm Drain - Boundary Thorn -

0+00 - exist 36" pipe

W<sub>o</sub># 2103P

FB 2213-20

INDEXED  
JER  
NOV 27 1953

IE

Stake

0+24

270.94

C 4.28

275.22

3.87 Gr.

0+00 - exist 36" pipe

271.85

Sewers. I Mig Park unit 2

Dwig-1795-D, 1796-D;

WO# 32021-

INDEXED

NOV 27 1953

PK Nail in AC.

NW Prop Lt T tied 6<sup>00</sup> + 16<sup>00</sup> south.

5-4-53

N.W. Prop Lt T tied

C. Allen

6<sup>00</sup>' + 16<sup>00</sup>' South PK Nail in AC

D Sisson

I.E. Elev stake

C Powell-

I.E. Elev stake

MH#3.

C-631

MH#5

C6.52

2+10

225.17

231.48

2+10

223.86

230.38

1+80

224.96

C-708  
232.04

1+80

223.65

C6.65  
230.30

1+50

224.75

C-756  
232.31

1+50

223.44

C-6.90  
230.34

1+20

224.54

C-795  
232.49

1+20

223.23

C6.91  
230.14

0+90

224.33

C8.06  
232.39

0+90

223.02

C-6.99  
230.01

0+60

224.12

C-811  
232.23

0+60

222.81

C-704  
229.85

Nails 6' Wly

0+30

223.91

C-789  
231.80

0+30

222.60

C-7.08  
229.68

.7%

.7%

MH# R.

C7.55

C-7.01

0+00 -

223.70

231.20

0+00 = MH#4

222.39

229.40

48<sup>th</sup> ST connection

Duval St. corner

BM: NE BP  
49+ Fed-

## Sewer Insig Unit 2

## Sewers, Insig Unit 2

38

	I.E. Elev	Stake
M.H.#7 2+11	223.45	C-762 231.07
1+80	222.98	C-767 230.65
1+50	222.53	C-740 229.93
1+20	222.08	C-712 229.20
0+90	221.63	C-680 228.43
0+60	221.18	C-649 227.67
0+30	220.73	C-599 226.72
M.H.#6 0+00	220.28	C-554 225.82

	I.E. Elev	Stake
M.H.#9 2+11	223.10	C-735 230.45
1+80	222.05	C-785 229.90
1+50	221.05	C-8.01 229.06
1+20	220.05	C-7.91 227.96
0+90	219.05	C-7.69 226.74
0+60	218.05	C-7.07 225.12
0+30	217.05	C-6.21 223.26
M.H.#8 0+00	216.05	C-5.22 221.27

49th ST CONN. NEBP  
49th + Fed

224.92

Mary Lou STCONN-

Sewer - Irrig Unit 2

Main Line Sewer

39

Irrig Unit #2

DW 95-1796 P, 1795-D-

				I.E. Elev	Stake
			2+70	223.92	C 9.21 233.13
			2+40	224.04	
2	2+11	214.98	2+35	224.06	C-9.02 233.08
		C-6.95 221.93	2+10	224.16	C-8.93 233.09
1	1+80	214.48			
		C-7.37 221.85	1+80	224.28	C-8.55 232.83
1	1+50	214.00			
		C-7.49 221.49	1+50	224.40	C 8.22 232.62
1	1+20	213.52			
		C-7.41 220.93	1+20	224.52	C-7.90 232.42
0	0+90	213.04			
		C-7.07 220.11	0+90	224.64	C-7.42 232.06
0	0+60	212.56			
		C-6.61 219.17	0+60	224.76	C 7.19 231.95
0	0+30	212.08			
		C-5.97 218.05	0+30	224.88	C-6.54 231.42
MH#10	0+00	211.60			
		C-5.00 216.60	MH#1 0-03	225.01	C-5.24 230.25

50th ST CANN.

BM = L + D & 47 + Fed = 228.05

5+65 222.74 C-863  
231.37

5+35 222.86 C-880  
231.66

5+05 222.98 C-872  
231.70

4+75 'X' 6" 223.10 C-872  
231.82

4+45 223.22 C-859  
231.81

4+15 223.34 C-861  
231.95

3+85 223.46 C-866  
232.12

3+55 223.58 C-822  
231.80

MH# 274872  
3+25 CONN- 223.70 C-7.41  
231.11

3+00 223.80 C-827  
232.07

8+62.40	221.13	C 9.33 230.46
8+32.40	221.31	C 9.08 230.39
8+02.40	221.49	C 8.84 230.33
7+72.40	221.67	C 9.10 230.77
7+42.40	221.85	C 8.94 230.79
7+12.40	222.03	C 8.62 230.65
6+82.40	222.21	C 8.16 230.37
MH# 4-Duval st 6+52.40	222.39	
TP- NE Prop L+T = 229.86'		
6+25	222.50	C 7.87 230.37
5+95	222.62	C 8.74 231.36

			IE	stake
11+54.79	218.48	C 8.33 226.81	14+47.23	214.82 C 9.78 224.60
11+24.79	218.84	C 9.30 228.14	14+17.23	215.23 C 10.34 225.57
10+94.79	219.20	C-9.13 228.33	13+87.23	215.64 C 7.71 223.35
10+64.79	219.56	C 8.83 228.39	MH#8 - Mary Lou. 13+57.23	216.05
10+34.79	219.92	C 5.39 225.31	13+34.79	216.32 C 5.83 222.15
10+14.79 <sup>BC</sup>	220.16	C 5.62 225.78		
MH#6-49 <sup>ST</sup>		C 5.14 225.42	13+04.79	216.68 C 10.48 227.16
10+04.79	220.28	C 5.69 226.03 (TP)		
9+94.79 (BC)	220.34		12+74.79	217.04 C-8.34 225.38
9+82.40	220.41			
9+52.40	220.59	C-7.11 227.70	12+44.79	217.40 C 9.76 227.16
9+22.40	220.77	C-9.55 230.32	12+14.79	217.76 C 8.72 226.48
8+92.40	220.95	C 9.14 230.09	11+84.79	218.12 C 7.39 225.51

17+44.66	210.16	C 5.61 215.77			
17+14.66	210.88	C 5.46 216.34			
MH# 10-5025 16+84.66	211.60				
16+57.23	211.95	C 6.35 218.30			
16+27.23	212.36	C 10.04 222.40			
15+97.23	212.77	C-9.90 222.67			
15+67.23	213.18	C-9.39 222.57			
15+37.23	213.59	C 8.22 221.81	MH*12- 18+34.00	208.02	C 6.89 214.91
15+07.23	214.00	C 6.82 220.82	18+04.66	208.72	C-6.49 215.21
14+77.23	214.41	C 10.04 224.45	17+74.66	209.44	C 6.05 215.49



Stake Birch St  
 Woden to Vesta.  
 No # 32020  
 5-6-53

INDEXED  
 HER  
 NOV 27 1953

Rt = NELY cur L 44

Gutter Topcb

C Allen Ref. Dwg 9875-4

D. Sisson Curbs in place

LT = WLY -

C. Powell - GUTTER Topcb

6400.90 22.20 22.70

22.93 23.60

Brkingrade wly.

5780.90 22.33 23.00

3420.6 26.87

Replaced Curb

3409.2 27.04

Take

Take

WLY Line Woden

0400 30.97 31.64

31.97 32.64

Stake 135.94 Sewer  
 To connect MH# 12 DWG 1795D, 1796D  
 IM 19. POLK UNIT + MH 135.94 E17  
 DWG 4658-B-

INDEXED  
 JER  
 NOV 27 1953

WO # 21035

S-27-53-

C. Allen

D. Sisson

C. Powell

IE Elev Stake

DWG 4658-B

EXIST MH

143584

201.00

1410

202.36 209.99 C7.63

0470

204.42 211.28 C6.86

0430

206.48 213.46 C6.98

DWG 1796D.

208.25

0400 = EXIST MH# 12

208.02

stake traffic Lites and cut  
backs on Corbs 4<sup>th</sup> at Laurel  
and at 5<sup>th</sup> + Laurel.

7' L & T's on all 4 corners -

INDEXED  
SER  
NOV 27 1953

NE 7' L & T tied 'x' 13' Nly + 13' Ely along 7' lines

NW 7' L & T tied 'x' 13' Nly + 13' Wly

'x' in  
side walk

S.W. 7' L & T tied 'x' 13' Sly + 13' Wly

SE COR 7' L & T tied 10' Sly + 10' Ely

	GUTTER Grade	cb Grade	stake
cb elev at Base Signal Lite		242.48	242.62
EC = 4 <sup>th</sup> Ave	(242.45) 242.38	242.80	F0.05 242.75
2/3	C0.56 242.11	242.65	C0.02 242.67
1/3	C0.70 241.90	242.58	C0.02 242.60
BC = Laurel	C1.11 241.66	242.36	C0.41 242.77
NW Ret.	20' Rad		

			Topcb C
cb elev at Base for signal		243.57	243.76
90° - EC - Laurel	C10.6 242.96	(243.77) 243.70	244.02
60° Δ 2/3	C0.83 242.90	243.50	243.73
30° Δ 1/3	C0.76 242.91	243.50	243.67
BC = 4 <sup>th</sup> Ave	C0.97 243.00	243.69	243.97
NE Return	= 20' Rad.		

	Got. Gr	cb stake	cb Gr
Ref DWG 10196L - Sheets 1, 2, 3, 4			
		cb are on sheet #1 -	
NO# 21015		stake	cb elev

	cb elev at Base Signal Lite		
		C0.06	242.08
EC = 4 <sup>th</sup> Ave	C0.93 241.08	C0.31 242.01	(241.72) 241.70
2/3	C0.78 241.38	C0.32 242.16	241.84
1/3	C0.67 241.48	C0.25 242.15	241.90
BC = Laurel	C0.39 241.76	C0.05 242.15	(242.10) 242.08
SE Ret = 17' Rad.			242.08
9' Ely BC			242.47

	cb elev at Base Signal Lite		
		F0.35	240.74
EC = 4 <sup>th</sup> Ave	C0.47 240.36	C0.14 240.83	(240.69) 240.67
2/3	C0.48 240.65	C0.13 241.13	241.00
1/3	C0.58 240.71	C0.19 241.29	241.10
BC = Laurel ST	C0.56 240.62	C0.08 241.18	(241.10) 241.08
S.W. Ret = 20' Rad.			

INDEXED  
HER  
NOV 27 1953

Tie out at 7 points at 16<sup>th</sup> +  
Island Ave and at 16<sup>th</sup> + J<sup>ST</sup>

WO #

6-18-53

Allen

D. Sisson

Powell

North west cor. Island and J already  
Removed -

Island

Ave

7

chisel  
'X' in walk

7' x 7' L+D  
Placed 10-7-53  
S.C.A.  
Fd L+D  
with 7' LINE/67  
+ SHY PL. Island

20'  
180'

LSD  
R.E 913  
LIVE  
checked

16<sup>th</sup> ST

J

5<sup>th</sup>

chisel  
'X' in walk

7' x 7' L+D  
Replace L+D  
10-7-53  
S.C.A.

20'

chisel 'X' in walk

26'

INDEXED  
JER  
NOV 27 1953

48

State Storm Drain extension

in Lots 28-31, BK 457 - East 1/2

PL 1122

West of Reynard way + Nly of  
Torrence St.

WOM 21099

Ret. 4878-B.

NEW Pipe

0+25	C 1.80 172.14	170.34
------	------------------	--------

6.74%

0+00	C 1.26 169.82	168.66
------	------------------	--------

end exist pipe	el. stake	FE grade
0+62	meet 171.92	171.92

6.07%

0+50	C 0.69 171.87	171.18
------	------------------	--------

0+25	C 0.26 169.92	169.66
------	------------------	--------

Nwly + inc. 0+00	C 1.41 169.55	168.14
---------------------	------------------	--------

Sewers 63rd + Imperial

No # 21010

626-53 C. Allen, D. Sisson, C. Powell  
M. Law head.

Ret - 4634-B Alley Bk & E Noanto  
HI

9887-L B.M. - B.P. ST Cor 65<sup>th</sup> +  
Imperial = 221.14 (Plan)

M.H. #1-4634-B

Gr.  
I.E. - 60' Stake CUT.

INDEXED  
JER  
NOV 27 1953  
Stations I.E. Grade Stake CUT

1+75 213.23 219.90 C-6.67

M.H. #1 tied  
52' 102' Wly along  
& Alley extended

M.H. #1 & 63rd Alley  
2+05.95 To E14

212.53 C-9.99

1+40 213.09 219.85 C-6.76

Continues on  
9887-L.

1+92<sup>80</sup> Plug

211.71

1+05 212.95 220.30 C-7.35

0+70 212.81 220.98 C-8.17

0+75 210.61 220.21 C-9.60

0+35 212.67 221.95 C-9.28

0+40 208.44 217.70 C-9.26

M.H. #1 & Alley  
+ 63rd

0+00 212.53 222.52 C-9.99

~~9887-L~~

1+05 206.27 215.11 C-8.84

0+70 204.10 212.36 C-8.26

Plug in 63rd

2+92.95 220.53 229.72 C-9.19

0+35 201.93 209.40 C-7.47

2+63.95 217.87 227.25 C-9.38

Imperial 463rd

M.H. #1 - 199.76 208.96 C-9.20 E14

2+34.95 215.20 224.87 C-9.67

Tied 54' 10'  
90' to 63rd

Direct elev Rod used.

Sewers - 63rd + Imperial  
+ Alley BIK 6 - Encanto Hts

82

Stat.	IF	Stake	CUT.	Sta.	IF Grade	Stake	CUT
5425	✓ 217.60	223.98	C-6.38	8475	✓ 235.33	245.50	C-10.17
4490	✓ 216.87	221.98	C-5.11	8440	✓ 232.52	242.83	C10.31-
4455	✓ 216.13	220.70	C-4.57	8405	✓ 229.71	237.52	C7.81
4420	✓ 215.40	219.97	C-4.57	7470	✓ 226.90	233.81	C-6.91
3485	✓ 214.66	219.90	C-5.24	7435	✓ 224.09	231.80	C-7.71
MH#2 3450	✓ 213.93	219.75	C 5.82	MH#3 7400	✓ 221.28	232.13	C-8.22 - N4 C10.85 shy
3415	✓ 213.79	219.45	C-5.66	6465	✓ 220.54	231.41	C-10.87-
3480	✓ 213.65	220.01	C-6.36	6430	219.81	229.30	C-9.49
2445	Grade ONLY ✓ 213.51	220.03	C-6.52	5495	✓ 219.07	227.66	C 8.59
2410	✓ 213.37	219.17	C-5.80	5460	✓ 218.34	224.69	C-6.35

Sewick - Alley BIK 6  
Encanto HT

5)

Sta.	IEG	Stake	CUT
------	-----	-------	-----

sta	IE Grade	Stake	CUT
-----	----------	-------	-----

Plug- 10450	243.25	255.68	C-12.43
----------------	--------	--------	---------

10440	243.21	255.73	C12.52
-------	--------	--------	--------

10405	243.07	255.72	C-12.65
-------	--------	--------	---------

MHH4 9470	242.93	252.74	C9.81	314 Stake N14 Stake C-8.70
--------------	--------	--------	-------	----------------------------------

9445	240.95	251.03	C10.08
------	--------	--------	--------

9410	238.14	249.23	C11.09
------	--------	--------	--------



Pave Date ST V10 315 96  
 Date to Fern ST LT = NY  
 Ret 10058-L

BM NE BP  
 Date & Date Pt: sly -  
 EL = 237.04

Direct elev Rod used 52

INDEXED  
 JER  
 NOV 27 1953

6-30-53  
 C. Allen, D. Sisson, M. Lawhead

Station	Gutter	℄ grade	℄ grade
W/Line 307E 240.72	(239.12) 238.15	237.62	237.62
178072	238.05	237.62	237.62
1460	237.82	237.36	237.44
1440	237.62	237.11	237.25
1420	237.42	236.86	237.06
1400	237.22	236.61	236.87
0480	237.02	236.36	236.68
0460	236.82	236.11	236.49
0441	236.62	235.86	236.30
0420	236.42	235.61	235.85
EH Line 0400 Date	Next 236.22	235.30	235.30

Station	Gutter	Top cb	℄ grade
	(236.52) 236.49		
	236.20		
	235.90		
	235.60		
	235.30		
1411	235.16	235.66	235.70
0491	234.86	235.36	235.36
	234.70		
	234.40		
	234.10		
	233.80		
0400 Ely Line Date	233.40	233.40	

No curbs  
 change  
 Make  
 to  
 change  
 ℄ grade  
 This

Replace curb

x 3'6" C-0 5/8 gutter  
 C-0 0 1/2 top cb  
 C-0 0 1/2 gutter  
 Grade top cb

Pave Date - 30<sup>th</sup> to Feb  
 See page 52  
 RT=NY

INT  
 JER  
 NOV 27 1953

RT=514-

53

Station	gutter	Top Cb	Grade	Station	gutter	grad	Cb grade
				2+29.00			
				2+19.00			
1+44	} 12		Red = Curb Replaced	1+12.25			
1+32			No Grader -	0+89.75			
1+01	} 12			0+49			
0+89				0+39			
Wly Line Fern	(235.20)		(235.00)	Wly Line Fern	(234.33)		
2+31.02	235.26		235.00 4.66	2+31.02	234.36		
2+20	✓ 235.36		235.30 4.97 ✓	2+20	✓ 234.50		
2+00	✓ 235.55		235.62 5.29 ✓	2+00	✓ 234.70		
1+80	✓ 235.90		235.88 5.55 ✓	1+80	✓ 234.88		
1+60	✓ 236.25		236.15 5.82 ✓	1+60	✓ 235.06		
1+40	- 236.65		236.44 6.11 ✓	1+40	✓ 235.24		
1+20	✓ 236.96		236.69 6.36 ✓	1+20	✓ 235.42		
1+00	✓ 237.25		236.92 6.59 ✓	1+00	✓ 235.60		
0+80	✓ 237.55		237.16 6.83 ✓	0+80	✓ 235.78 = 0+77-235.81		
0+60	✓ 237.78		237.37 7.04 ✓	0+60	✓ 235.96		
0+40	✓ 237.97		237.56 7.23 ✓	0+40	✓ 236.14 = 0+39-236.15 ✓		
0+20	✓ 238.10		237.76 7.43 ✓	0+20	✓ 236.28 = 0+25 set		
Ely Line 30 <sup>th</sup>	(238.20)		(237.67)	Ely Line 30 <sup>th</sup>	236.32		
0+00	238.22		237.67	0+00	236.54		

IF MH at 2426.6 BM -  
 Stake sewer connection  
 Alvarado Filtration Plant  
 Ref. Draw 10588-4, FB 2271-1

C Allen, D. Sisson

INDEXED

54  
 INDEXED  
 HER  
 NOV 27 1953

MEET EXIST MH	IF grade	Stake	
2426.6	528.16		
2406.3	527.85	534.59	C-6.74
1486 = BC RT	527.54	535.10	C-7.56
1461	527.17	534.57	C-7.40
1436	526.79	532.79	C-6.00
1411	526.41	531.49	C-5.08
MH #1		5' HIGH	
0486	526.03	530.32	C-4.29
0464.5	525.76	528.66	C-2.90
0443	525.47	528.86	C-3.39
0421.5	525.18	528.38	C-3.20
EXIST MH #2 CITY OF La Mesa DWG IMPROVEMENTS OF RASORIA	524.89 ✓		

Started at July

Stake Type A-2 inlet and  
 stem drain on NW cor  
 Sossafros ST and State ST  
 C. Allen, D. Sisson, C. Powell

INDEXED  
 SER  
 NOV 21 1953

7-16-53 - Ref 4887-13-

BM BP NW State + Sossafros - EL = 166.32

Staked 4' wly -

NO # 21096

IE grade Stake

Meet gutter - C 0.34

1+26.5 end curb inlet 157.57 157.91

1+18.46 = Begin curb inlet 157.63 C-1.54- 159.17

0+97.86 = EC 157.78 C-4.80 162.58

Midpoint Curve 0+88.78 157.87 C-6.24- 164.11

22.5 Rad.  
 Staked.

0+74 = 13C 157.96 C-7.02 164.98

0+37 158.23 C-7.54 165.77

Stake Type A-2 Cat L	TOP CB GR F0.91	163.40 -	158.50	C-3.99	162.49
0+00					
Basin - West	GUTTER grade				
side State ST	162.6 - F0!!				

Stake MY COR	Stake Mid pt.
F0.23 TOP CB	F0.91 TOP CB
163.17	162.49
C0.57 GUTTER	F0!! GUTT
	C-3.99 PIPE

Stake 1/4 end
F10! TOP CURB
162.39
F0.21 - GUTTER.

Stake storm <sup>Drain</sup> 5-36<sup>th</sup> and  
Hemlock St - Wly 536<sup>th</sup>

W # 20467-  
7-16-53

C. Allen, D. Sisson, C. Powell

Ref - FB 2029-2

4201-B-

INDEXED  
JER  
NOV 27 1953

52

TP <sub>5</sub>			8.06	244.617 44.65
TP <sub>4</sub>	0.30	52.71	3.06	52.41
TP <sub>3</sub>	12.83	55.41	0.15	42.58
TP <sub>2</sub>	5.38	42.73	6.00	37.35
TP <sub>1</sub>	4.31	43.35	12.57	39.04
B.M.	0.81	51.61		NWBP 35 <sup>th</sup> Florence 50.80
*		*		

Garage Floor 0+06 - FB 2029 - Page 24

IE Grade Stake Cut

0+44.61	33.20	37.35	C415
0+22.3	33.63	37.96	C-433
Neot EXIST 36" pipe - 0+00 NW Cor Hemlock + 36 <sup>th</sup>	34.06	38.33	0427

Stake Sewer in Alley BK 136  
and portions of Quince, Lexington Ave  
+ Public Rights of Way - (City Hts)  
WOT # 32121  
Ref - FB 1827 - Page 22 - Dwg # 7461.2

Figures in Red are  
cut off walls.

Red = Restake 8-5-52 - 6' Ely.

57

I.E. Sewer		Stake	Cut	Station	I.E. Sewer	Stake	Cut
Staked C/W/yo P & Sewer				MH # 3			
2+30	229.80 -	234.77 236.64	C4.97 C-6 <sup>84</sup>	5+22.67	290.02	294.96	C 4.94
2+02.67	No Grade			5+00	286.89	293.19	C-6 <sup>30</sup>
1+90	220.80	224.00 226.74	C-3 <sup>20</sup> C-5 <sup>94</sup>				
1+62.67				4+60	281.35	288.35	C-7 <sup>00</sup>
1+50	211.80 -	218.46 220.78	C-6.66 C-8 <sup>98</sup>				
EVC				4+20	275.81	282.90	C-7 <sup>09</sup>
1+32.67	207.90	215.98 212.89	C-8.08 C-4.99				
CUT OFF WALL							
1+22.67	206.17 -	212.44 213.97	C-6.27 C-9.52	3+80.00	270.27	277.47	C-7 <sup>20</sup>
1+12.67	204.45 -	210.67	C-6 <sup>22</sup>				
BVC				3+47.67	265.79 -	275.39	C-9 <sup>60</sup>
0+92.67	203.10	211.86 207.67	C-8.76 C-4 <sup>57</sup>	3+32.67			
end encasement				3+27.67	261.84 -	272.66	C-10 <sup>82</sup>
0+82.67	202.86 -	210.92 206.91	C-8.06 C-4 <sup>05</sup>				
begin encasement				BK			
0+47.67	202.03 -	207.54 207.64	C-5.51 C-5 <sup>61</sup>	3+07.67	255.52	270.29	C-14 <sup>77</sup>
MANHOLE # 15 ON EXIST 15"				2+92.67			
0+00	200.90	208.54	C-7 <sup>64</sup>	2+80.17	245.21 -	254.51	C-9 <sup>30</sup>
in Lexington Ave.							
FL = 273.24				MH # 2			
BM = Nail in pole BM # 3 - FB 1827 - 24				2+52.67	234.90 -	244.84	C-9 <sup>94</sup>

Sewers Alley BIK 136. City Hts  
Cont

1-8

Station 1E Grade stake out

Stated 6" wly of sewer.

plug-  
6+82.67 291.62 298.28 C-6<sup>66</sup>

6+42.67 291.22 299.60 C8<sup>38</sup>

6+02.67 290.82 299.79 C8<sup>97</sup>

5+62.67 290.42 298.60 C-7<sup>58</sup>

Storm Drain in Lot 523  
Talmadge Park Unit #3  
(Max Drive & Monroe) W021116

5 4959-13 IE Stake  
FB 2243-1

BM - Elev 347.26

INDENTED

0+80± Top Clean out 340.0 340.90

0+55.45 Top Clean out F 4.64 332.6 327.96

60+55.45 Bottom of Break in Clean out F 2.44 330.4 327.96

60+55.45 IE Box 326.07 C-1897E Box 327.96 (C-3.71)

20+27.72 324.68 C-681 331.49 (C-0.88)

Meet exist 3011 ROP  
0+00 323.30



Stake Storm Drain extension

Near Kurtz + Witherby ST

Block 223, Middletown

2 Cleanout tied out 5' + 10' along

6' x 2' Box Culvert to Fly

Ret - DWG 4947-B-

I.E.

Stake

BM = I.E. exist 6' x 2' Box culvert = - 1.31

1/2" end pipe

0+36

- 0.50

3/4" end 4" expand  
N 1/4 edge cleanout

0+00

- 1.2

cleanout

Tip = 1.49

I.E. = - 1.2

1.86 = 0.37

1.86 = @ 3/16

Stake Station Drain in Ely 5<sup>00</sup>  
 Harbison Ave. Between EL Caton  
 and Amherst St  
 No # 21107 - 8-11-53

C. Allen, D. Sisson, C. Powell

Ret- 4943-B, FB 2240-10

IE stake-

staked 5° Ely of 2 Pipe

sta IE stake cut

Grade changed between 2+26.25  
 and 3+66.25 to meet state Highway  
 work. 4.23% grade used.

1+46.25 461.35 465.55-C4.20

IE Stake cut

3+66.25 469.40 476.32 C-6.92

1+16.25 460.60 463.87-C3.27

3+46.25 468.56 475.06 C-6.50

0+91.25 459.82 463.43-C-3.61

3+16.25 467.29 473.62 C-6.33

0+66.25 459.05 462.52-C3.47

2+86.25 466.02 472.88 C-6.86

0+41.25 458.27 460.89-C2.62

2+56.25 464.75 471.98 C-7.23

0+16.25 457.50 459.95-C2.45

2+26.25 463.48 470.30 C-6.82

0+08.25 457.13 C-2.60  
 459.73

2+06.25 462.85 468.02 C5.17

clean out Amherst  
 + Harbison Ave  
 0+00 Box 456.67

C-3.42  
 460.09

1+76.25 462.10 466.91 C-4.81

Stake Curb Replacement

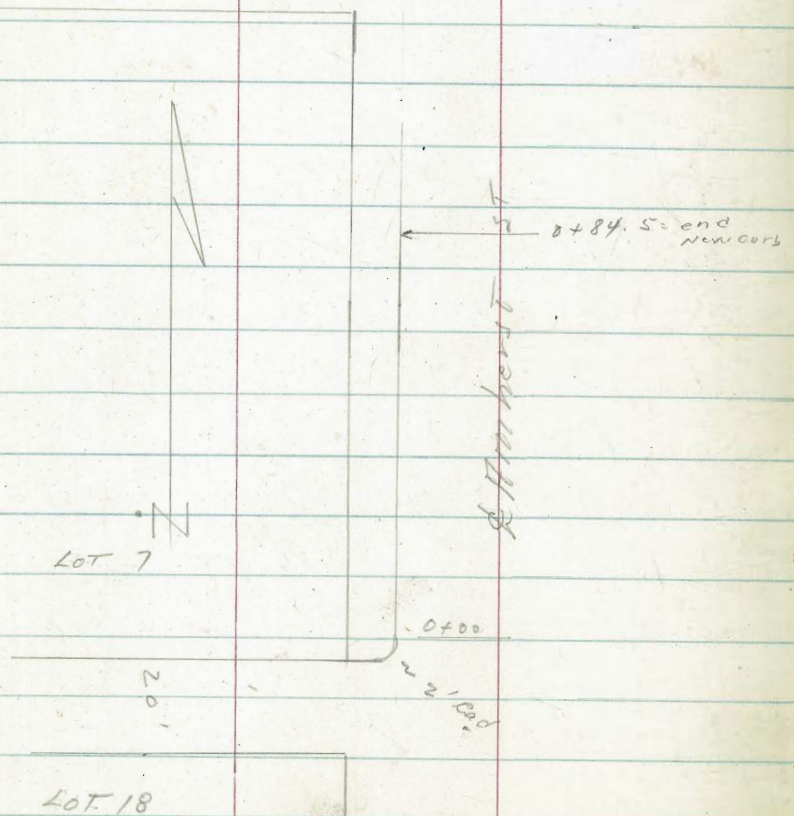
West side Harbison Ave  
From Alley BIK 6 to 86.5 North  
of Nylene Alley Lot 2 La Mesa Colony.

Staked 2' back face curb

Ret. 4943-13-

EL. Cañon

Blvd



	Top Curb elev.	Stake	Cut or Fill
0+84.5	473.47 ✓	474.16	C 0.69
0+63.3	472.53	472.55	C 0.02
0+48	471.85	472.03	C 0.18
0+21 ±	470.65	470.55	F 0.10
RC. At Alley 0+00	469.71	469.37	F 0.34 to sh
Propend Ret.	C 0.08		F 0.43 to cast Re

Stake sewer extension intersection  
Harbison Ave + Cervantes Sts.

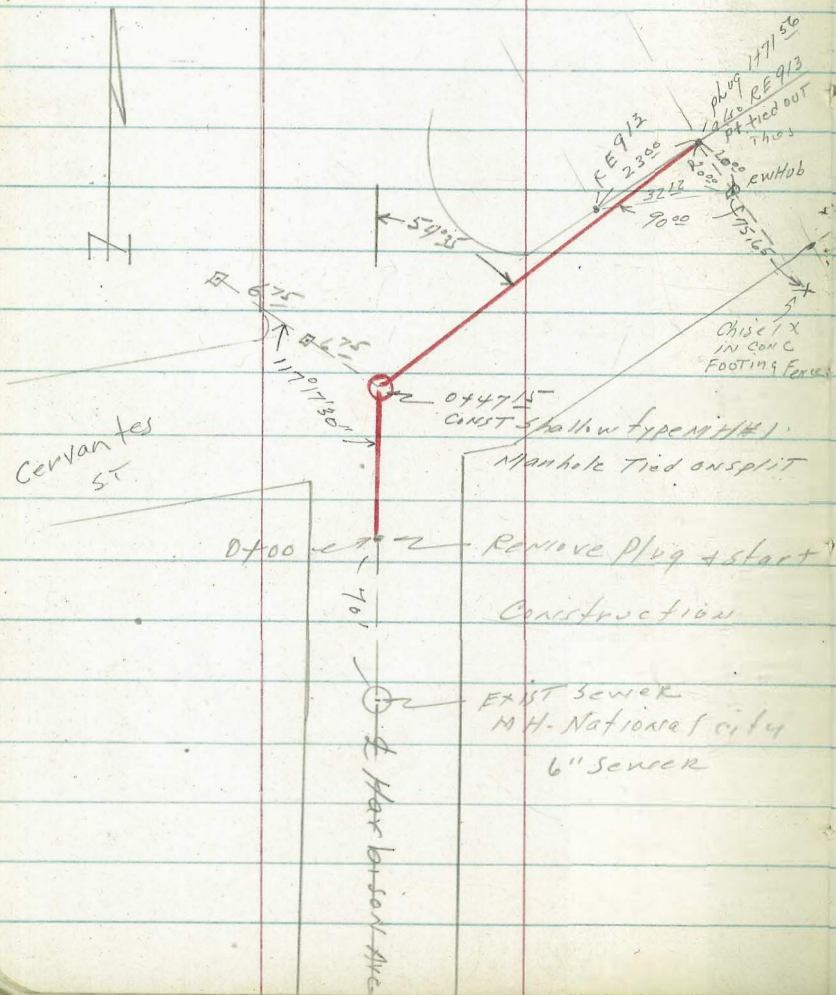
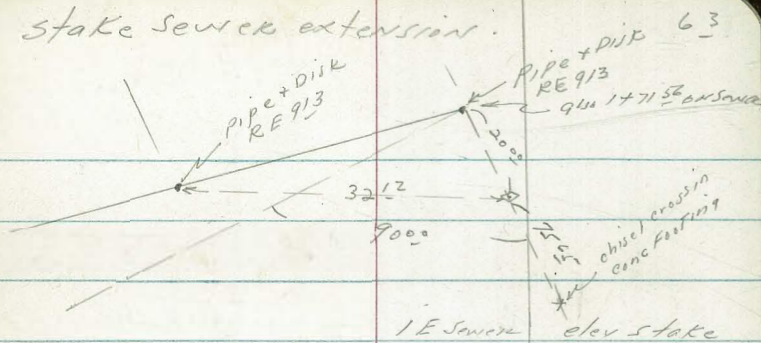
WO # 62330. 8-25-53

C. Allen, D. Sisson, C. Powell

staked 6" w/y & sewer

Ref - 4961-13.

Stake sewer extension.



Plug-on lot cor tied out	1+71.56	178.28	C 4.57	182.85
	1+50	178.12	C 5.56	183.68
	1+25	177.95	C-6.01	183.96
	1+00	177.77	C 5.82	183.59
	0+75	177.60	C-5.42	183.02
	0+47.15	177.41	C-4.97	182.38
	0+25	177.25	C-5.19	182.44
			C 5.50	
0+00 = Plug 70' Nly exist MH		177.08		182.58
BM = PL exist MH 70' Nly / Plug. EL = 176.26				

Stake Alley BIK 42 Tract 1368 (Fairmount add.)  
 Trojan Ave to Elk Cation  
 Between Altadena Ave + 51st St  
 LT = W14

RECORDED  
 PER  
 NOV 27 1953  
 Grade Ely Side

Sta	Grade Wly Side	Sta	Grade Ely Side
1432	379.28 ✓ X-3'6K	1432	379.58 ✓ X-1'66K
1410	378.19 ✓ A 3'6K	1410	378.49 ✓ X-1'6K
1400	377.52 ✓ A 3'6K	1400	377.82 ✓ X 1'6K
0490	376.52 ✓ A 3'6K	0490	376.82 ✓ X 1'6K
0480	375.18 ✓ A 2'6K	0480	375.48 ✓ A 3'6K
0470	373.50 ✓ A 3'6K	0470	373.80 ✓ A 3'6K
0435	365.40 ✓ A 4'2back	0435	365.40 ✓ A 3'6K
0405	IF = 352.50 ✓ A 5'6K	0405	IF = 352.40 ✓ A 5'6K
Nyline Trojan 0400	357.30 ✓ A 3'6K	0400	357.00 ✓ A 3'6K

BM = X in drive 112' rt sta H00 - 378.77

## Alley BIK 42 Cont.

Lt = wly.

Rt = e ly

15

Sta	grade wly side □ 3' back	stake		Sta	grade e ly side □ 3' back	stake	
3480	387.48	387.47	F 0.01	3480	387.68 - (7.69)	387.92	C-0.24
3440	□ 3' back 387.09 ✓	387.40	C 0.31	3440	Nail in shed 1.03 in alley 387.29 ✓	387.92	C-0.63
3420	□ 3' back 386.83 ✓	387.37	C 0.54	3420	Nail in shed 0.74 in alley 387.03 ✓	387.97	C-0.94
3400	□ 3' back 386.42 ✓	386.85	C 0.43	3400	□ 3' back 386.66 ✓	387.20	C 0.54
2480	□ 3' back 385.88 ✓	386.33	C-0.45	2480	□ 3' back 386.15 ✓	386.97	C 0.82
2460	□ 3' back 385.24 ✓	385.60	C 0.36	2460	□ 3' back 385.54 ✓	386.30	C-0.76
2440	□ 1' back 384.49 ✓	384.54	C 0.05	2440	□ 1.50' back 384.79 ✓	385.26	C-0.47
2420	□ 1' back 383.63 ✓	383.68	C 0.05	2420	□ 3' back 383.93 ✓	384.08	C-0.15
1498	Nail .95' back 382.15 ✓	384.12	C-1.57	1498	□ 3' back 382.85 ✓	383.26	C-0.41
1476	Nail .82' back 381.46 ✓	383.04	C-1.58	1476	□ 3' back 381.76 ✓	381.88	C-0.12
1454	Nail .77' back 380.37 ✓	381.71	C-1.34	1454	□ 3' back 380.67 ✓	380.83	C-0.16

Sta	Grade Elys side	Stake		Sta	Grade Wlys side	Stake	Cut or fill
6480	387.41 3' back	388.01	C-119	6480	387.57 3' back	387.53	F 0.04
6460	387.84 3' back	388.80	C-0.96	6460	387.96 3' back	387.84	F 0.12
6440	388.12 ✓	388.50	C 0.38	6440	388.29 ✓	388.22	F 0.07
	3' back				3' back		
6420	388.27 ✓	388.32	C 0.06	6420	388.46 ✓	388.50	C 0.04
	3' back				3' back		
6400	388.28 ✓ Nail Blacktop 1' back	388.55	C 0.27	6400	388.48 (8.48)	388.81	C-0.33
	3' back				3' back		
5470	388.19 ✓	389.47	C-128	5470	388.39 ✓ (8.40)	388.89	C-0.50
	3' back				3' back		
5440	388.10 ✓	389.18	C-108	5440	388.30 ✓ (8.31)	389.40	C-1.10
	3' back				3' back		
5410	388.01 ✓	388.92	C 0.91	5410	388.21 ✓ (8.22) X-1° in Alley.	389.36	C-1.15
	3' back				3' back		
4480	387.92 ✓	388.62	C 0.70	4480	388.12 (8.12)	388.35	C-0.23
	1.50 back				3' back		
4450	387.83 ✓	388.13	C-0.30	4450	388.03 ✓ (8.02)	388.15	C-0.12
	3' back				Nail 1.55 back		
4420	387.74 ✓	387.98	C 0.24	4420	387.94 (7.94)	388.67	C-0.73
	3' back				Nail 2.2 back		
4400	387.65	388.00	C 0.35	4400	387.85 ✓ (7.82)	388.66	C 0.81

LT=514 = 3'6" E  
 Pave Newton Ave cont

Rt=Nly-

68

Stat.	Rough	Sly Curb Grade	Sly Curb Stake	Sly quarter grade	d grade	Nly quarter	Nly curb stake	Nly curb grade	Nly Rough Grade
3+81.15	C-6.16 63.53	57.37	F0.27 57.10	57.25	57.36	57.17	C 0.11 57.31	57.20	C-2.31 59.51
3+86.95	C-5.98 63.70	57.72		57.60	57.70	57.50	grade 57.52	57.52	C-1.34 58.86
3+21.15		58.24		58.10	58.18	57.96	C 0.24 58.20	57.96	C-2.74 60.70
2+91.15		58.68		58.52	58.58	58.34	C 0.42 58.75	58.33	C-2.24 60.57
2+61.15		59.11		58.93	58.98	58.73	C 0.02 58.72	58.70	C-2.01 60.71
2+31.15		59.55		59.35	59.38	59.11	C 0.24 59.31	59.07	C-1.14 60.21
2+01.15		59.98		59.78	59.78	59.50	C 0.24 59.68	59.44	C 0.81 60.25
1+81.15		60.27		60.06	60.08	59.79	C 0.19 59.92	59.73	C 0.27 60.00
1+61.15		60.81		60.53	60.48	60.17	C 0.12 60.21	60.09	C-0.08 60.17
1+41.15		61.10		60.86	60.85	60.58	C 0.43 60.46	907 Ten 60.03	C-0.71 61.24



LT=SH-  
Pave Newton Ave.

RT=NY-

69

Stat	Rough	SH curb grade	SH curb stake	SH quarter grade	q grade	Nly quarter	Nly cb stake	Nly cb grade	Rough
5	5481.15	F3.21 33.95	F0.45 36.51	36.89	37.04	36.89	F0.38 36.58	36.96	C-1.58 38.54
3	5461.15	F5.32 34.68	F0.60 39.40	39.93	40.08	39.93	F0.25 39.75	40.00	C-3.41 43.41
3	5441.15	F4.54 38.71	F0.46 42.79	43.18	43.33	43.18	F0.23 43.02	43.25	C1.68 44.93
2	5421.15	F2.68 43.63	F0.31 46.01	46.22	46.38	46.23	F0.35 45.95	46.30	C-3.42 49.72
2	5401.15	C-1.41 50.40	F0.11 48.88	48.91	49.06	48.91	F0.49 48.49	48.98	C3.75 52.73
2	4481.15	C5.89 57.20	F0.28 51.03	51.23	51.38	51.22	F0.12 51.16	51.28	C1.99 53.27
2	4461.15	C-7.51 60.77	F0.32 52.94	53.18	53.32	53.15	F0.58 52.63	53.21	C0.42 53.63
1	4441.15	C-6.69 61.53	F0.21 54.63	54.75	54.88	54.66	C0.04 54.81	54.77	C2.74 57.51
1	4421.15	C-6.88 62.93	F0.43 55.62	55.98	56.08	55.91	C0.07 56.03	55.96	C1.61 57.57
1	4401.15	C-6.2 63.13	F0.17 56.73	56.75	56.92	56.73	C0.17 56.94	56.77	C0.43 57.20

LT = sky - **SUFFER** IN 1600  
 Pace Newton cont

Rt = N14 -

79

Staf	Quadr	slxcb	slxcb	slx	side	Nlyquarter	Nlycbstake	Nlycbgrade	R109L
ex (7.47)	4420						F0.01 26.57	26.58	F0.37 26.21
(7.485)	4 + 27.50						C0.10 26.74	26.64	
7.50	4 + 35 = end grade (7.50)					26.64		26.73	
7+1	4 + 40 - 7.53							26.76	C0.39 27.15
7+01	4 + 47.5 - 7.545					27.88	C0.05 26.99	26.94	C1.11 28.05
6+81	4 + 55 - 7.56					27.56	C0.08 27.71	27.63	C-1.02 28.65
6+61	4 + 75 - 7.65					28.64	C0.06 28.77	28.71	C-2.00 30.71
6+41	4 + 80 - 7.66					30.11	F0.05 30.13	30.18	C2.47 32.65
6+21	4 + 85 - 7.67					31.98	F0.11 31.94	32.05	C2.12 34.17
6+01						34.24	F0.16 34.15	34.31	C-0.46 34.77

Handwritten notes on a yellow sticky note:

- (7.47) 4420 = begin grade
- (7.485) 4 + 27.50
- 7.50 4 + 35 = end grade (7.50)
- 4 + 40 - 7.53
- 4 + 47.5 - 7.545
- 4 + 55 - 7.56
- 4 + 75 - 7.65
- 4 + 80 - 7.66
- 4 + 85 - 7.67

LT = 54 - **SUFFER** in 1000  
 Pave New Low cont

stat	Rough	sl4cb grade	sl4cb stake	sl4 quarter	grade
------	-------	----------------	----------------	----------------	-------

end Nlycb  
7+28.33

**see Page 72 for  
Returns.**

P.I. & P.H.  
7+21.15

26.67

end sl4  
cub  
7+13.97

#10.02  
F6.18  
20.72

26.90

C0.10  
27.00

28.73

26.78

**7+13.11 = Water Lat on Nly-**

7+01.18

**26.44**

C0.45

26.94

27.39

27.88

27.04

6+8.15

F0.14  
27.49

**27.13**  
27.63

see Returns Page 72

27.56

27.71

6+6.15

C0.06  
28.77

**28.21** (grade)  
28.71

28.64

28.79

28.64

6+4.15

F0.17  
30.01

**29.68** (F0.20)  
30.18

F0.29

30.11

30.26

6+21.15

F0.52  
31.53

**31.55**  
32.05

F0.23  
31.82

31.98

32.13

6+01.15

F0.84  
33.47

34.31

F0.32  
33.99

34.24

34.39

Rt = Nly -

79

Nlyquarter	Nlycbstake	Nlycbgrade	Rough
------------	------------	------------	-------

F0.01  
26.57

26.58

F0.37  
26.21

26.54

C0.10  
26.74

26.64

26.64

26.73

**26.76**

C0.39  
27.15

27.88

C0.05  
26.99

26.94

C1.11  
28.05

27.56

C0.08  
27.71

27.63

C-1.02  
28.65

28.64

C0.06  
28.77

28.71

C-2.00  
30.71

30.11

F0.05  
30.13

30.18

C2.47  
32.65

31.98

F0.11  
31.94

32.05

C2.12  
34.17

34.24

F0.16  
34.15

34.31

C-0.46  
34.77

~~5790~~  
~~575~~  
~~50~~

5705 - 7.81

5715

5725

5735

5745

5755

5765

5775

5785

5790 - 7.96  
81  
15

5790  
575  
50

5790  
575  
50

5790  
575  
50

5790  
575  
50

5790  
575  
50

5790  
575  
50

LT=54 - **SUFFER MIXED**

Pave New Lon cont

RT=Nly-

70

stat	Rough	Slycb grade	Slycb stake	Sly quarter	grade	Nlyquarter	Nlycbstake	Nlycbgrade	Rough
end Nlycb 7+28.33							F0.01 26.57	26.58	F0.37 26.21
<b>See Page 72 for Returns.</b>									
P.I. 2+Pl. 7+21.15					26.67	26.54	C0.10 26.74	26.64	
end Sly Curb 7+13.97	#10.02 F6.18 20.72	26.90	C0.10 27.00	26.73	26.78	26.64		26.73	
								26.76	C0.39 27.15
7+01.18		26.44 26.94	C0.45 27.39	27.88	27.04	27.88	C0.05 26.99	26.94	C1.11 28.05
6+81.15	F0.14 27.49	27.13 27.63		27.56	27.71	27.56	C0.08 27.71	27.63	C-1.02 28.65
6+61.15	C0.06 28.77	28.21 28.71		28.64	28.79	28.64	C0.06 28.77	28.71	C-2.00 30.71
6+41.15	F0.17 30.01	29.68 30.18		30.11	30.26	30.11	F0.05 30.13	30.18	C2.47 32.65
6+21.15	F0.52 31.53	31.55 32.05	F0.23 31.82	31.98	32.13	31.98	F0.11 31.94	32.05	C2.12 34.17
6+01.15	F0.84 33.47	34.31	F0.32 33.99	34.24	34.39	34.24	F0.16 34.15	34.31	C-0.46 34.77

7+13.11 = Water Lat on Nly-

see Returns Page 72

C Allen  
D. Shepard  
D. Sisson  
C. Powell

9-2  
INDEXED  
NER  
NOV 27 1953

Stake Drive - 1170 Klauben ST

Ref. 7128-4 TP Sheet 3282

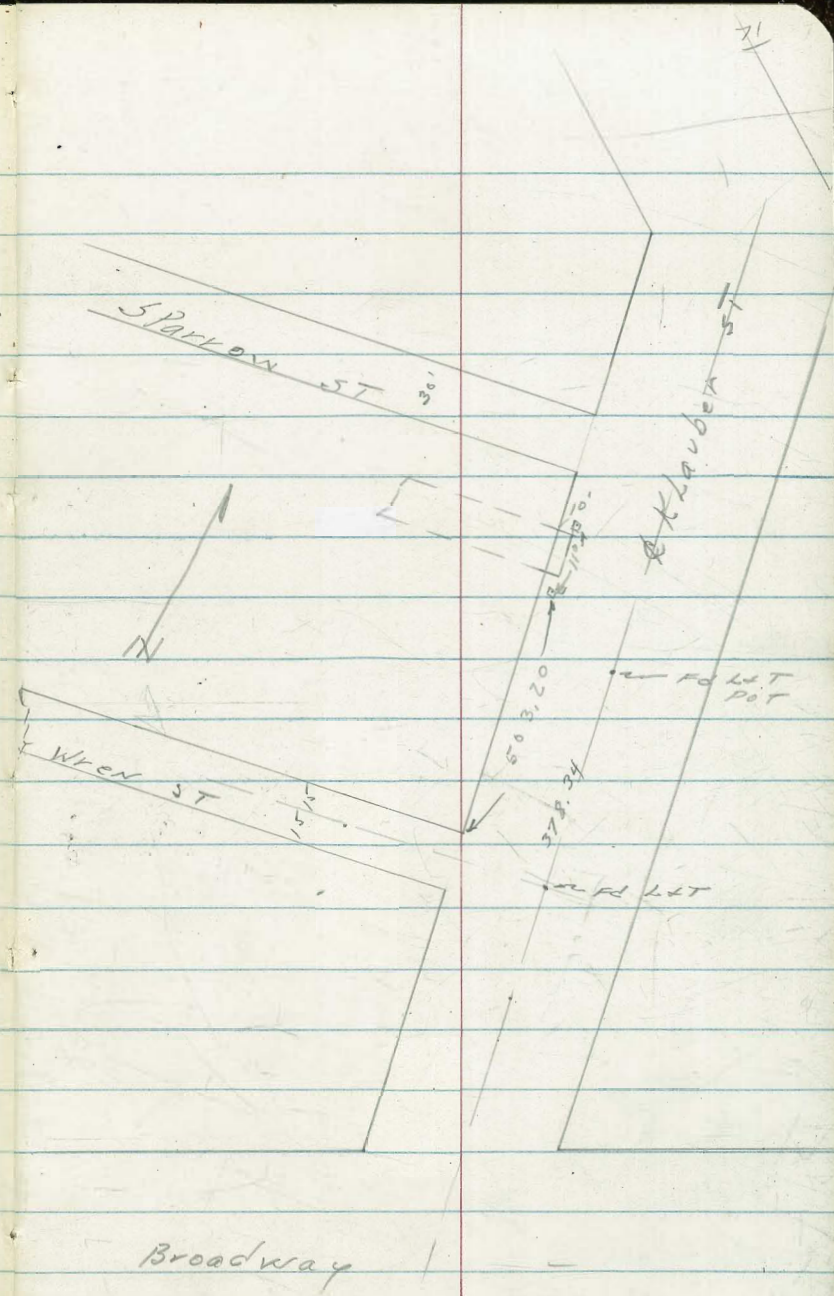
File Map # 1133 3264

Profile Sheet # 541-

stake elev.

NY Drive F0.79  
5714.20 368.41 369.20

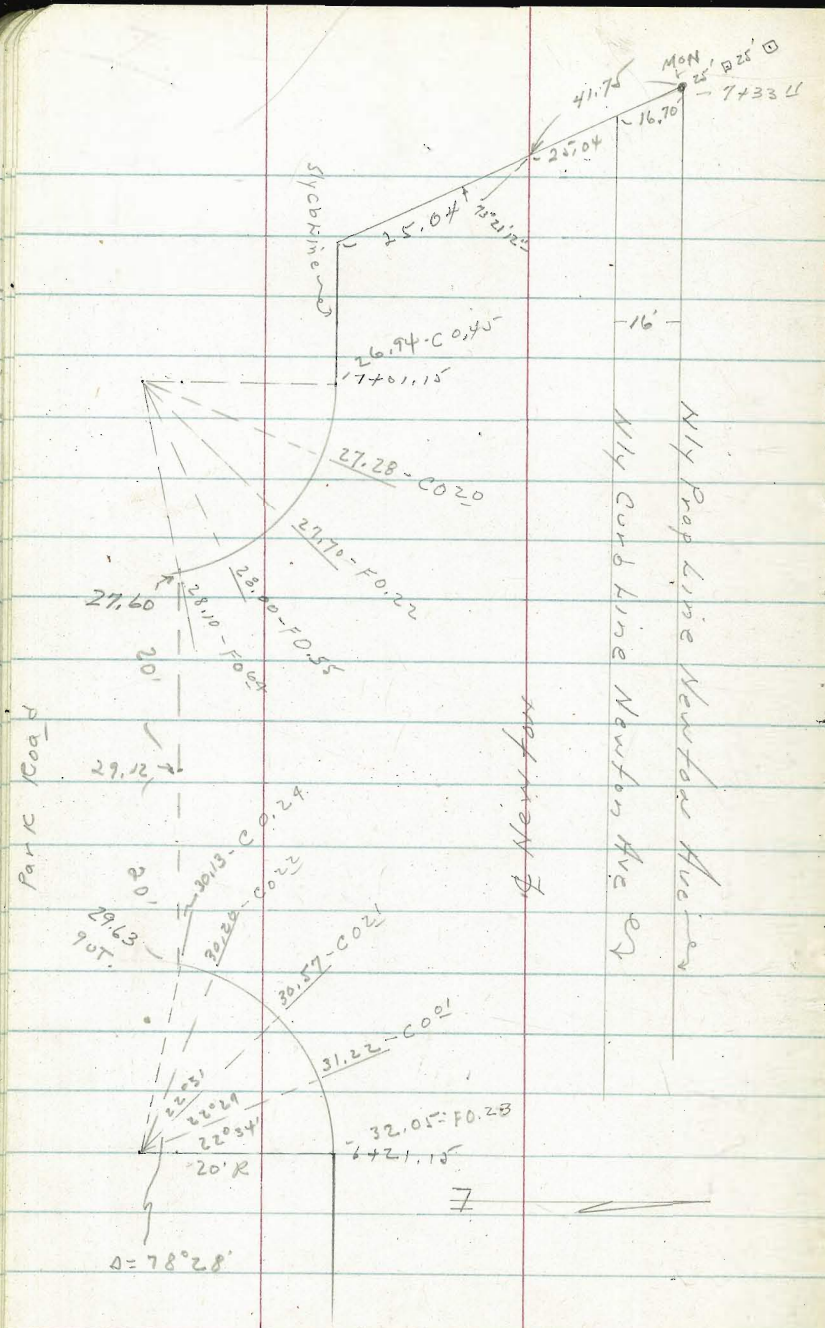
Sly edge Dr F0.65  
5703.20 368.27 368.92



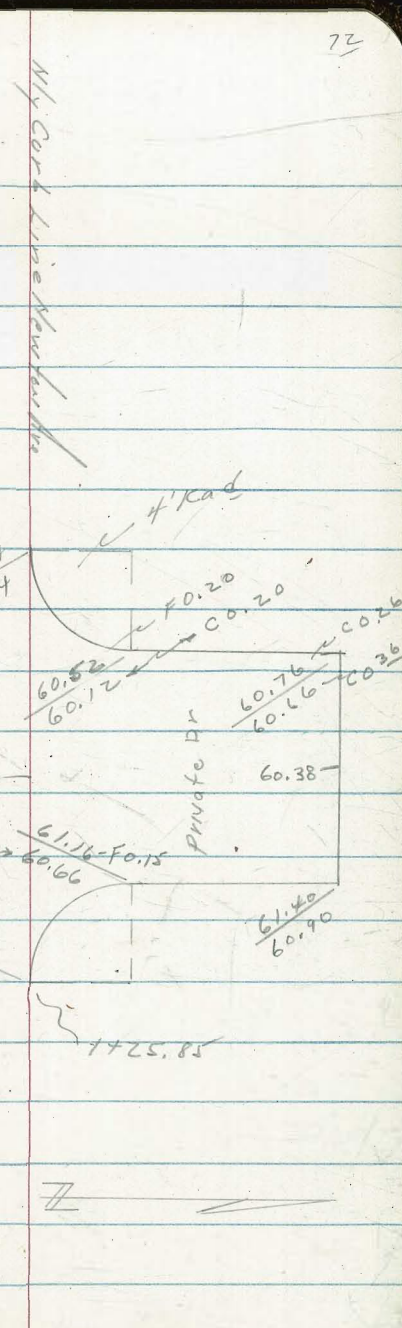
Staked for 10' curbs per profile

BM BRABP SWCOR Broadway 465<sup>TH</sup>

Broadway



15 rd st unit 17 43-00+0



15 rd st unit 17 43-00+0

Curb stakes at 5-36  
 Alleghany St -  
 No # 20007

INDEXED  
 MFR  
 NOV 27 1953

10-14-53

C. Allen

D. Sisson

C. Powell

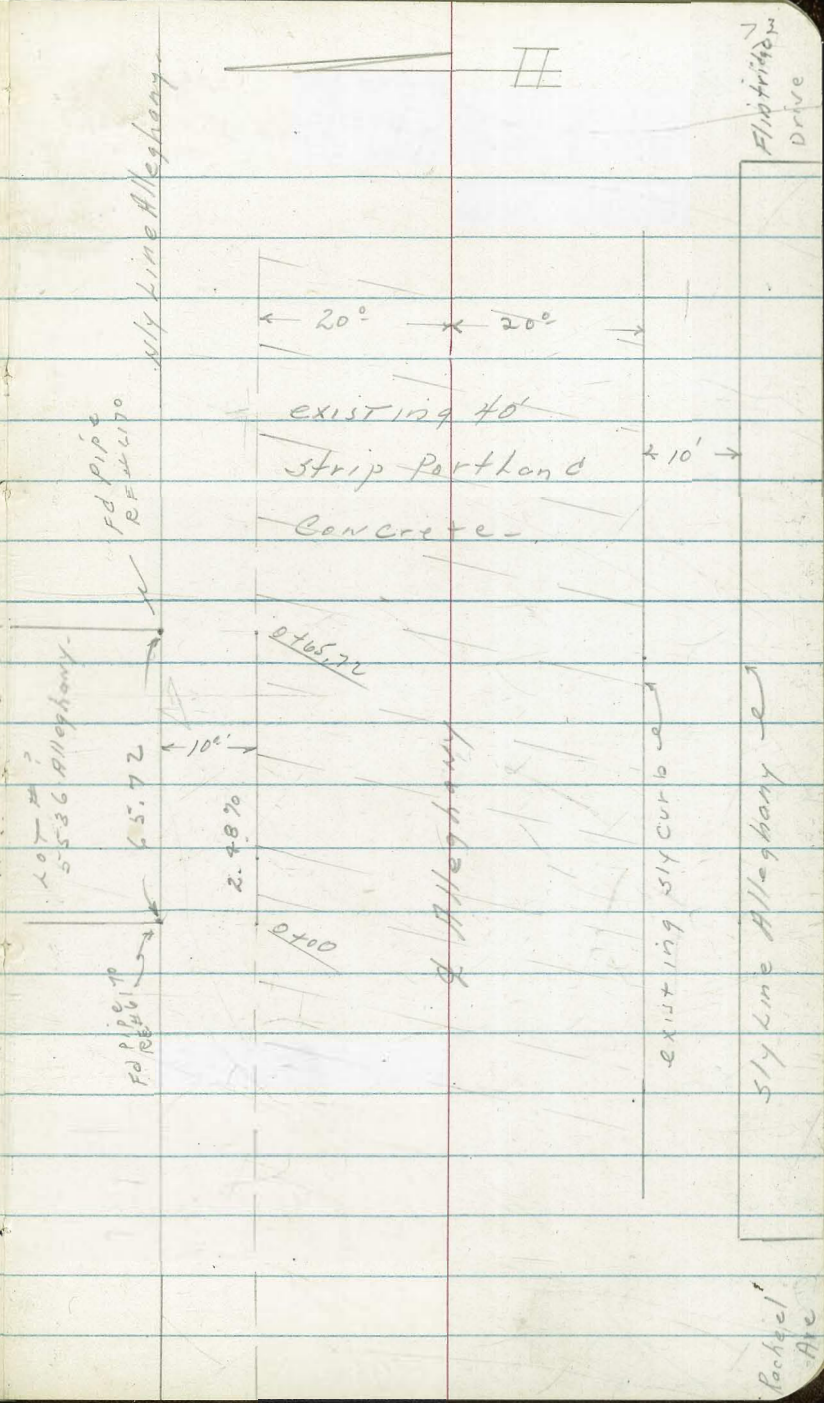
Alleghany paved with 40' strip  
 of Portland Concrete - curbs  
 in on South side - curbs on  
 North side set to fit curbs  
 on Sly side

Used Nly edge Conc and put in .7 cbr -  
 No Bench Available -

No Profile Available -

	Stake Rod	Grade Rod	
0+65.72	F 0.98 3.26	2.28	
0+46	F 1.02 3.79	2.77	2.48% Grade
0+26	F 0.94 4.21	3.27	
Wly Lot Line 0+00	F 0.80 4.71	3.91 = grade Rod	

Rod - Not elevation  
 Used Nly edge Conc +.7 curb face



Flint Hill  
 Drive

Backed  
 Area



568' 8" VC sewer in 67<sup>th</sup> St  
 AKins Nly toward Brooklyn Ave  
 Direct elev reduced

INDEXED  
 JER  
 NOV 27 1953

WO # 62294 - Encanto -

Station I.E. Grade Stake CUT

10-16-53- C. Allen, D. Sisson, C. Powell

staked 5' ely of sewer

Ref- 10148-L - FB 2205/16 -

Points tied out in FB 2205/16

Station	I.E. Grade	Stake	CUT
1E grade stake	277.00	284.02	C-7.02
2+45	238.95	247.62	C-8.67
2+09	233.30	241.12	C-7.82
1+73	227.65	235.17	C-7.52
1+37 <sup>00</sup> MH#1	222.00	231.27	C-9.27
1+02.25	221.57	229.38	C-7.81
0+68.50	221.14	228.30	C-7.16
0+34.25	220.71	227.68	C-6.97
EXIST MH # 67 <sup>th</sup> + AKins 0+00	220.28	228.28	C-8.00
CONNECT TO N11 stub out	RM: Rim MH 228.23		
2+81	244.60	253.83	C-9.23
3+89	261.55	269.06	C-7.51
4+60.75	269.91	276.44	C-6.53
4+96.50	272.61	279.38	C-6.77
5+32.25	275.30	281.64	C-6.34
5+68.00	277.00	284.02	C-7.02

157090

plug - 50  
 50

157090

MH#2  
 4+25

SEWER extension Baltic ST &  
Lind Vista Road  
W.O. 62341  
10-27-53 - C. Allen, Division,  
C. Powell

INDEXED  
J.E.R.  
NOV 27 1953

Sta I E Sewer stake CUT

Ref: FB-2276 & 1107 & 24-

6' LT  
I E. Stake CUT

M.H. #2 (Fore Tan) 423.03 C-10.08  
2+49.17 412.95 (Back Tan) 423.44 C-10.49

2+12.62 411.22 ✓ 420.64 C-9.42

P109-  
4+78.17 428.52 ✓ 435.19 C-6.67

1+76.08 409.50 ✓ 419.40 C-9.90

4+45.43 426.25 ✓ 434.00 C-7.75

1+39.54 407.77 417.32 C-9.55

4+12.72 424.00 ✓ 432.50 C-8.50

M.H. #1 (Fore Tan) 416.53 C-10.48  
900 to both Tang-  
1+03 406.05 (Back Tan) 416.17 C-10.12

5+80.01 421.87 ✓ 430.65 C-8.78

0+68.66 405.26 ✓ 414.11 C-8.85

3+47.30 419.64 ✓ 429.29 C-9.65

0+34.33 404.47 ✓ 412.43 C-7.96

2+14.59 417.41 ✓ 426.94 C-9.53

EXIST Plug  
150' N of exist MH  
0+00 403.68 410.46 C-6.78

2+81.88 415.18 424.93 C-9.75

in Baltic ST

Stake Storm Drain Connection  
in Western Addition - Between Udall St  
and Voltaine St

B.M. = 3 EBP - Pointsettia  
+ Voltaine St  
96.35 - Direct elev  
Rod

Staked 8' Wly of E Pipe front  
Type G Cleanout 3+49.55 to  
3+43.45 -  
0+00 to 1+49.55 = chisel 'X' in 6 3' shy -

Ref. FB 2210.

50 11-B

Station	IF Grade	Stake		Station	IF Grade	Stake	Cut
R+25	82.38	89.66	C-7 <sup>22</sup>				
2+00	82.55	89.98	C-7 <sup>43</sup>	3+43.45 (Meet exist 30")	57.70		
1+75	82.73	90.35	C-7.62	3+23.65	58.17	68.62	C1045
Tied 8+16' Wly L = 90° to Nly. Type G Cleanout 1+49.55	82.90	90.74	C-7 <sup>84</sup>	3+03.80 Brk	60.64	68.45	C781
1+25	83.07	90.90	C-7 <sup>83</sup>	2+95.90 Brk	61.92	68.25	C633
1+00	83.24	90.60	C-7 <sup>36</sup>	2+88.15 Brk	63.89	69.34	C545
0+75	83.42	90.34	C-6 <sup>92</sup>				
0+50	83.59	90.11	C-6 <sup>52</sup>	2+80.60 Brk	66.52	71.58	C506
FC. 0+18.55	83.81	89.76	C-5.95	2+73.30 (Brk)	69.81	75.37	C586
Inlet Udall - 0+00 = exist	83.93	89.70	C-5 <sup>77</sup>	L' 33° 23' - 25' } 8.35 + 16.70 2+49.11 } staked on split	82.22	87.52	C-5 <sup>34</sup>

Stake Alley Per Pt. BIK 52  
 Park Villas -  
 Ref. 10386 - L, FB 2084 - 17  
 11/12/82 - WOH 31558 - LT = July -

Between  
 Dwight + Londis  
 33<sup>rd</sup> + Bancroft

RT = ELY  
 APPROVED  
 JER  
 NOV 27 1953

station	Grade	Stake	cut or fill	station	Grade	Stake	cut or fill
3740.35	□ 3'-Back 334.79 ✓	334.26	F 0.23	3740.35	□ 3'-BK 334.79 ✓	334.52	F 0.23
3700.35	□ -3 BK 334.12	333.96	F 0.16	3700.35	□ 3' BK 334.12 ✓	334.28	C 0.16
2760.35	□ 3' BK 333.45 ✓	333.52	C 0.07	2760.35	□ 2' BK 333.45 ✓	333.82	C 0.37
2720.35	□ -2' BK 332.77	333.34	C 0.57	2720.35	□ -3' BK 332.77 ✓	333.44	C -0.67
1780.35	□ 3' BK 332.10	332.40	C -0.30	1780.35	□ 3' BK 332.10 ✓	332.57	C 0.47
1740.35	□ 3' back 331.42 ✓	331.62	C 0.20	1740.35	□ 3' BK 331.42 ✓	331.68	C 0.26
1700.35	□ 4' back 330.75 ✓	330.00	F 0.75	1700.35	□ 3' BK 330.75 ✓	331.18	C 0.43
0760.35	□ 3' BK 330.07	329.75	F 0.32	0760.35	□ 3' BK 330.07 ✓	330.18	C 0.11
0720.35	□ 3' BK 329.40 ✓	329.17	F 0.23	0720.35	□ 3' BK 329.40 ✓	329.42	C 0.02
Nly Line = DWIGHT 0700	328.88	MEET		0700	328.98	MEET	

BM = E Alley Nly 7 Line DWIGHT FB 2084-18. 328.47

Direct Reading Rod

Alley BIK 52, Park Villas Cont

LT = Wly -

Dwight to Landis  
Between 3388  
+ Bancroft

RT = Ely -

78

Station	Grade	Stake	Cut or Fill -
---------	-------	-------	------------------

Station	Grade	Stake	Cut or Fill
---------	-------	-------	-------------

544 in Landis	(Meet)		
6+00.35	336.46		

Meet			
336.38			

<table border="1"> <tbody> <tr> <td>5+80.35</td> <td>337.06</td> <td>338.99</td> <td>C-1.93</td> </tr> </tbody> </table>	5+80.35	337.06	338.99	C-1.93			
5+80.35	337.06	338.99	C-1.93				

<table border="1"> <tbody> <tr> <td>5+80.35</td> <td>337.06</td> <td>338.58</td> <td>C-1.52</td> </tr> </tbody> </table>	5+80.35	337.06	338.58	C-1.52			
5+80.35	337.06	338.58	C-1.52				

5+60.35	337.52	338.31	E0.79
---------	--------	--------	-------

<table border="1"> <tbody> <tr> <td>5+60.35</td> <td>337.52</td> <td>338.16</td> <td>C-0.64</td> </tr> </tbody> </table>	5+60.35	337.52	338.16	C-0.64			
5+60.35	337.52	338.16	C-0.64				

<table border="1"> <tbody> <tr> <td>5+60.35</td> <td>337.52</td> <td>338.16</td> <td>C-0.64</td> </tr> </tbody> </table>	5+60.35	337.52	338.16	C-0.64			
5+60.35	337.52	338.16	C-0.64				

5+40.35	337.78	338.67	C0.89
---------	--------	--------	-------

<table border="1"> <tbody> <tr> <td>5+40.35</td> <td>337.78</td> <td>337.99</td> <td>C0.21</td> </tr> </tbody> </table>	5+40.35	337.78	337.99	C0.21			
5+40.35	337.78	337.99	C0.21				

<table border="1"> <tbody> <tr> <td>5+40.35</td> <td>337.78</td> <td>337.99</td> <td>C0.21</td> </tr> </tbody> </table>	5+40.35	337.78	337.99	C0.21			
5+40.35	337.78	337.99	C0.21				

5+20.35	337.83	338.20	C0.37
---------	--------	--------	-------

<table border="1"> <tbody> <tr> <td>5+20.35</td> <td>337.83</td> <td>337.81</td> <td>F0.02</td> </tr> </tbody> </table>	5+20.35	337.83	337.81	F0.02			
5+20.35	337.83	337.81	F0.02				

<table border="1"> <tbody> <tr> <td>5+20.35</td> <td>337.83</td> <td>337.81</td> <td>F0.02</td> </tr> </tbody> </table>	5+20.35	337.83	337.81	F0.02			
5+20.35	337.83	337.81	F0.02				

5+00.35	337.49	337.52	C0.03
---------	--------	--------	-------

<table border="1"> <tbody> <tr> <td>5+00.35</td> <td>337.49</td> <td>339.01</td> <td>C-1.52</td> </tr> </tbody> </table>	5+00.35	337.49	339.01	C-1.52			
5+00.35	337.49	339.01	C-1.52				

<table border="1"> <tbody> <tr> <td>5+00.35</td> <td>337.49</td> <td>339.01</td> <td>C-1.52</td> </tr> </tbody> </table>	5+00.35	337.49	339.01	C-1.52			
5+00.35	337.49	339.01	C-1.52				

4+60.35	336.82	336.79	F0.03
---------	--------	--------	-------

<table border="1"> <tbody> <tr> <td>4+60.35</td> <td>336.82</td> <td>336.98</td> <td>C0.16</td> </tr> </tbody> </table>	4+60.35	336.82	336.98	C0.16			
4+60.35	336.82	336.98	C0.16				

<table border="1"> <tbody> <tr> <td>4+60.35</td> <td>336.82</td> <td>336.98</td> <td>C0.16</td> </tr> </tbody> </table>	4+60.35	336.82	336.98	C0.16			
4+60.35	336.82	336.98	C0.16				

4+20.35	336.14	336.55	C0.41
---------	--------	--------	-------

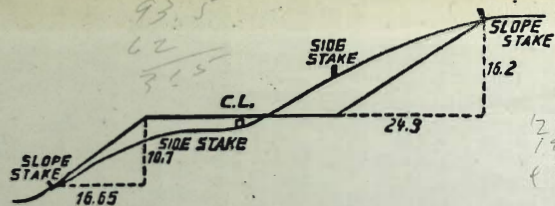
<table border="1"> <tbody> <tr> <td>4+20.35</td> <td>336.14</td> <td>336.44</td> <td>C.0.30</td> </tr> </tbody> </table>	4+20.35	336.14	336.44	C.0.30			
4+20.35	336.14	336.44	C.0.30				

<table border="1"> <tbody> <tr> <td>4+20.35</td> <td>336.14</td> <td>336.44</td> <td>C.0.30</td> </tr> </tbody> </table>	4+20.35	336.14	336.44	C.0.30			
4+20.35	336.14	336.44	C.0.30				

3+80.35	335.47	336.10	C0.63
---------	--------	--------	-------

<table border="1"> <tbody> <tr> <td>3+80.35</td> <td>335.47</td> <td>336.66</td> <td>C1.19</td> </tr> </tbody> </table>	3+80.35	335.47	336.66	C1.19			
3+80.35	335.47	336.66	C1.19				

<table border="1"> <tbody> <tr> <td>3+80.35</td> <td>335.47</td> <td>336.66</td> <td>C1.19</td> </tr> </tbody> </table>	3+80.35	335.47	336.66	C1.19			
3+80.35	335.47	336.66	C1.19				



**DISTANCES FROM SIDE STAKES FOR CROSS-SECTIONING.**

SLOPE 1½ TO 1. ROADWAY OF ANY WIDTH.

	0	.1	.2	.3	.4	.5	.6	.7	.8	.9	
0	0.00	0.15	0.30	0.45	0.60	0.75	0.90	1.05	1.20	1.35	0
1	1.50	1.65	1.80	1.95	2.10	2.25	2.40	2.55	2.70	2.85	1
2	3.00	3.15	3.30	3.45	3.60	3.75	3.90	4.05	4.20	4.35	2
3	4.50	4.65	4.80	4.95	5.10	5.25	5.40	5.55	5.70	5.85	3
4	6.00	6.15	6.30	6.45	6.60	6.75	6.90	7.05	7.20	7.35	4
5	7.50	7.65	7.80	7.95	8.10	8.25	8.40	8.55	8.70	8.85	5
6	9.00	9.15	9.30	9.45	9.60	9.75	9.90	10.05	10.20	10.35	6
7	10.50	10.65	10.80	10.95	11.10	11.25	11.40	11.55	11.70	11.85	7
8	12.00	12.15	12.30	12.45	12.60	12.75	12.90	13.05	13.20	13.35	8
9	13.50	13.65	13.80	13.95	14.10	14.25	14.40	14.55	14.70	14.85	9
10	15.00	15.15	15.30	15.45	15.60	15.75	15.90	16.05	16.20	16.35	10
11	16.50	16.65	16.80	16.95	17.10	17.25	17.40	17.55	17.70	17.85	11
12	18.00	18.15	18.30	18.45	18.60	18.75	18.90	19.05	19.20	19.35	12
13	19.50	19.65	19.80	19.95	20.10	20.25	20.40	20.55	20.70	20.85	13
14	21.00	21.15	21.30	21.45	21.60	21.75	21.90	22.05	22.20	22.35	14
15	22.50	22.65	22.80	22.95	23.10	23.25	23.40	23.55	23.70	23.85	15
16	24.00	24.15	24.30	24.45	24.60	24.75	24.90	25.05	25.20	25.35	16
17	25.50	25.65	25.80	25.95	26.10	26.25	26.40	26.55	26.70	26.85	17
18	27.00	27.15	27.30	27.45	27.60	27.75	27.90	28.05	28.20	28.35	18
19	28.50	28.65	28.80	28.95	29.10	29.25	29.40	29.55	29.70	29.85	19
20	30.00	30.15	30.30	30.45	30.60	30.75	30.90	31.05	31.20	31.35	20
21	31.50	31.65	31.80	31.95	32.10	32.25	32.40	32.55	32.70	32.85	21
22	33.00	33.15	33.30	33.45	33.60	33.75	33.90	34.05	34.20	34.35	22
23	34.50	34.65	34.80	34.95	35.10	35.25	35.40	35.55	35.70	35.85	23
24	36.00	36.15	36.30	36.45	36.60	36.75	36.90	37.05	37.20	37.35	24
25	37.50	37.65	37.80	37.95	38.10	38.25	38.40	38.55	38.70	38.85	25
26	39.00	39.15	39.30	39.45	39.60	39.75	39.90	40.05	40.20	40.35	26
27	40.50	40.65	40.80	40.95	41.10	41.25	41.40	41.55	41.70	41.85	27
28	42.00	42.15	42.30	42.45	42.60	42.75	42.90	43.05	43.20	43.35	28
29	43.50	43.65	43.80	43.95	44.10	44.25	44.40	44.55	44.70	44.85	29
30	45.00	45.15	45.30	45.45	45.60	45.75	45.90	46.05	46.20	46.35	30
31	46.50	46.65	46.80	46.95	47.10	47.25	47.40	47.55	47.70	47.85	31
32	48.00	48.15	48.30	48.45	48.60	48.75	48.90	49.05	49.20	49.35	32
33	49.50	49.65	49.80	49.95	50.10	50.25	50.40	50.55	50.70	50.85	33
34	51.00	51.15	51.30	51.45	51.60	51.75	51.90	52.05	52.20	52.35	34
35	52.50	52.65	52.80	52.95	53.10	53.25	53.40	53.55	53.70	53.85	35
36	54.00	54.15	54.30	54.45	54.60	54.75	54.90	55.05	55.20	55.35	36
37	55.50	55.65	55.80	55.95	56.10	56.25	56.40	56.55	56.70	56.85	37
38	57.00	57.15	57.30	57.45	57.60	57.75	57.90	58.05	58.20	58.35	38
39	58.50	58.65	58.80	58.95	59.10	59.25	59.40	59.55	59.70	59.85	39
40	60.00	60.15	60.30	60.45	60.60	60.75	60.90	61.05	61.20	61.35	40
41	61.50	61.65	61.80	61.95	62.10	62.25	62.40	62.55	62.70	62.85	41
42	63.00	63.15	63.30	63.45	63.60	63.75	63.90	64.05	64.20	64.35	42
43	64.50	64.65	64.80	64.95	65.10	65.25	65.40	65.55	65.70	65.85	43
44	66.00	66.15	66.30	66.45	66.60	66.75	66.90	67.05	67.20	67.35	44
45	67.50	67.65	67.80	67.95	68.10	68.25	68.40	68.55	68.70	68.85	45
46	69.00	69.15	69.30	69.45	69.60	69.75	69.90	70.05	70.20	70.35	46
47	70.50	70.65	70.80	70.95	71.10	71.25	71.40	71.55	71.70	71.85	47
48	72.00	72.15	72.30	72.45	72.60	72.75	72.90	73.05	73.20	73.35	48
49	73.50	73.65	73.80	73.95	74.10	74.25	74.40	74.55	74.70	74.85	49
50	75.00	75.15	75.30	75.45	75.60	75.75	75.90	76.05	76.20	76.35	50

THE NATIONAL BLANK BOOK COMPANY  
 HOLYOKE MASSACHUSETTS  
 NEW YORK CHICAGO BOSTON SAN FRANCISCO