

DISTANCES FROM SIDE STAKES FOR CROSS-SECTIONING
SLOPE 1 TO 1, ROADWAY OF ANY WIDTH

	0	.1	.2	.3	.4	.5	.6	.7	.8	.9	
0	0.00	0.10	0.20	0.30	0.40	0.50	0.60	0.70	0.80	0.90	0
1	1.00	1.10	1.20	1.30	1.40	1.50	1.60	1.70	1.80	1.90	1
2	2.00	2.10	2.20	2.30	2.40	2.50	2.60	2.70	2.80	2.90	2
3	3.00	3.10	3.20	3.30	3.40	3.50	3.60	3.70	3.80	3.90	3
4	4.00	4.10	4.20	4.30	4.40	4.50	4.60	4.70	4.80	4.90	4
5	5.00	5.10	5.20	5.30	5.40	5.50	5.60	5.70	5.80	5.90	5
6	6.00	6.10	6.20	6.30	6.40	6.50	6.60	6.70	6.80	6.90	6
7	7.00	7.10	7.20	7.30	7.40	7.50	7.60	7.70	7.80	7.90	7
8	8.00	8.10	8.20	8.30	8.40	8.50	8.60	8.70	8.80	8.90	8
9	9.00	9.10	9.20	9.30	9.40	9.50	9.60	9.70	9.80	9.90	9
10	10.00	10.10	10.20	10.30	10.40	10.50	10.60	10.70	10.80	10.90	10
11	11.00	11.10	11.20	11.30	11.40	11.50	11.60	11.70	11.80	11.90	11
12	12.00	12.10	12.20	12.30	12.40	12.50	12.60	12.70	12.80	12.90	12
13	13.00	13.10	13.20	13.30	13.40	13.50	13.60	13.70	13.80	13.90	13
14	14.00	14.10	14.20	14.30	14.40	14.50	14.60	14.70	14.80	14.90	14
15	15.00	15.10	15.20	15.30	15.40	15.50	15.60	15.70	15.80	15.90	15
16	16.00	16.10	16.20	16.30	16.40	16.50	16.60	16.70	16.80	16.90	16
17	17.00	17.10	17.20	17.30	17.40	17.50	17.60	17.70	17.80	17.90	17
18	18.00	18.10	18.20	18.30	18.40	18.50	18.60	18.70	18.80	18.90	18
19	19.00	19.10	19.20	19.30	19.40	19.50	19.60	19.70	19.80	19.90	19
20	20.00	20.10	20.20	20.30	20.40	20.50	20.60	20.70	20.80	20.90	20
21	21.00	21.10	21.20	21.30	21.40	21.50	21.60	21.70	21.80	21.90	21
22	22.00	22.10	22.20	22.30	22.40	22.50	22.60	22.70	22.80	22.90	22
23	23.00	23.10	23.20	23.30	23.40	23.50	23.60	23.70	23.80	23.90	23
24	24.00	24.10	24.20	24.30	24.40	24.50	24.60	24.70	24.80	24.90	24
25	25.00	25.10	25.20	25.30	25.40	25.50	25.60	25.70	25.80	25.90	25
26	26.00	26.10	26.20	26.30	26.40	26.50	26.60	26.70	26.80	26.90	26
27	27.00	27.10	27.20	27.30	27.40	27.50	27.60	27.70	27.80	27.90	27
28	28.00	28.10	28.20	28.30	28.40	28.50	28.60	28.70	28.80	28.90	28
29	29.00	29.10	29.20	29.30	29.40	29.50	29.60	29.70	29.80	29.90	29
30	30.00	30.10	30.20	30.30	30.40	30.50	30.60	30.70	30.80	30.90	30
31	31.00	31.10	31.20	31.30	31.40	31.50	31.60	31.70	31.80	31.90	31
32	32.00	32.10	32.20	32.30	32.40	32.50	32.60	32.70	32.80	32.90	32
33	33.00	33.10	33.20	33.30	33.40	33.50	33.60	33.70	33.80	33.90	33
34	34.00	34.10	34.20	34.30	34.40	34.50	34.60	34.70	34.80	34.90	34
35	35.00	35.10	35.20	35.30	35.40	35.50	35.60	35.70	35.80	35.90	35
36	36.00	36.10	36.20	36.30	36.40	36.50	36.60	36.70	36.80	36.90	36
37	37.00	37.10	37.20	37.30	37.40	37.50	37.60	37.70	37.80	37.90	37
38	38.00	38.10	38.20	38.30	38.40	38.50	38.60	38.70	38.80	38.90	38
39	39.00	39.10	39.20	39.30	39.40	39.50	39.60	39.70	39.80	39.90	39
40	40.00	40.10	40.20	40.30	40.40	40.50	40.60	40.70	40.80	40.90	40
41	41.00	41.10	41.20	41.30	41.40	41.50	41.60	41.70	41.80	41.90	41
42	42.00	42.10	42.20	42.30	42.40	42.50	42.60	42.70	42.80	42.90	42
43	43.00	43.10	43.20	43.30	43.40	43.50	43.60	43.70	43.80	43.90	43
44	44.00	44.10	44.20	44.30	44.40	44.50	44.60	44.70	44.80	44.90	44
45	45.00	45.10	45.20	45.30	45.40	45.50	45.60	45.70	45.80	45.90	45
46	46.00	46.10	46.20	46.30	46.40	46.50	46.60	46.70	46.80	46.90	46
47	47.00	47.10	47.20	47.30	47.40	47.50	47.60	47.70	47.80	47.90	47
48	48.00	48.10	48.20	48.30	48.40	48.50	48.60	48.70	48.80	48.90	48
49	49.00	49.10	49.20	49.30	49.40	49.50	49.60	49.70	49.80	49.90	49
50	50.00	50.10	50.20	50.30	50.40	50.50	50.60	50.70	50.80	50.90	50

Distance of slope stake from side or shoulder stake for any width roadway, slope 1 to 1. If ground is nearly level, the cut or fill at side stake is located by the double entry method in left column and top row. The number in body of table in same row and column gives distance from side stake to slope stake. If ground is not level estimate the difference in elevation between the side stake and slope stake, lower target by this amount if cut, elevate if fill. Add this amount to cut or fill and find distance in table. Set up rod at this point, and line of sight should cut target. If it does not make the slight adjustment necessary.

0.03
9.89
+ 4
9.97
10.13
9.97
20.16
17
25 9.89
3.42 40
1410.49
0.07

3914
4340
8254
4127

MICROFILMED

APR 15 1965

Page	Index	Page	
		34	Sapphire St. ✓
3	Alley BIK 54-O.B. ✓	36	" " Ties ✓
5	Sampson + Logan ^{Gutter curbs} ✓ + Tie Pt. R.P. ✓	37	Santa Cruz Ave. East of Redondo ✓
6-	Cass St. Turquoise to Van Nuys ✓	39	storm drain + Alley ^{BIK 58.} Park Villas ✓
8-9	Martin St. - 35 th to Wabash Fway ✓	40	Alley BIK 58 Park Villas ✓
10	Thomas Ave - Storm Drain ✓	41	Everts Garnet to Felspar ✓
11	+ BIK. 274-P.B. " " ^{Reed to} Thomas } ✓	42	Haines - Diamond to Beryl ✓
		46	Soap Box Derby Track. Collier Park ✓
12	Alley BIK 178 Pac. Beach. ✓	52	Jarvis St. East of Scott St. ✓
14	Tie Point Thomas Ave ✓	53	Engelow - Scott to Rosecrans ✓
15-20	Thomas Ave. Olney to Lamont ✓	54	Scott St. - Jarvis to Harbor Dr. ✓
21	BIK #42 Ocean Beach ^{Lot stakes} ✓ lots 31+32 ✓	59	Occam View Sewer Blvd
22	Crown Pt. Dr. + Fortuna ^{Storm} drain ✓	60	Catoctin Dr.
24	Felspar. ^{Pendleton} to Noyes } ^{curb stakes} ✓ Garnet to Emerald } ^{for grade} ✓	67	Rosecrans + Pacific Hy. Curbs
26	Olney } ^{examination} ✓	69	Catoctin Dr. ^{el. + (S)}
28	Curbs Florence ^{35th to Wabash} ✓	73	Drain ^{El Paseo Grande} La Jolla Shores Dr. to
27 & 33	Scott St. ^{waterline} ✓	76	Side walk Jewell + Hornblond.
29	Haines ^{Rough Grade} ✓	77	Grade Cabrillo So of Pearl
28	Florence ^{Curbs} ✓	78	check grade Plum + Newell
31	Alley BIK. 1 P.B. ^{Bayard to} Mission ✓ between Chalcedony + Missouri	79	Tie Point BIK. 75-O.B.

The image shows an open notebook with two facing pages. The pages are cream-colored and feature light blue horizontal ruling. Each page has a vertical red margin line on the left side. The notebook is bound in the center with visible stitching. The pages are blank, with no text or drawings. The number '2' is written in the top right corner of the right page.

Alley BIK. 5A Ocean Beach
Sunset Cliffs to Cable
between Santa Monica + Saratoga

INDEXED
JER
MAY 5 1954

3

	South	North		South	North	
C.H.S. Begg Scholin			12-8-53 No. 32190 Sheet 10780-L F.B. 2266-P2	4+20	N-0.60	N-0.65 in
	South	North				
1+40	0-2'	1.80 21.57 C0.23	3.09 21.57 C1.52	N.1.10		
				3+80	0-2'	
1+20	0-1'	2.30 21.90 C0.46	2.10 21.90 C0.20	0-2'		
				3+40	0-2'	
1+00	Top of Hinge-2.33	3.95 22.29 C1.66	2.86 22.29 C0.57	N-2'		
				3+00	N-0.25	
0+80	0-2'	3.27 22.71 C0.56	2.90 22.71 C0.25	0-2'		
				2+60	N-0.06	
0+60	0-2'	3.42 23.18 C0.24	5.03 23.18 C1.85	0-2'		
				2+40	0-2'	N-0.02 in
0+30	0-1'	4.11 23.78 C0.33	4.85 23.92 C0.93	0-2'		
				2+20	0-2'	X-2'
0+00 = Wly. Sunset cliffs		24.39	24.66	2+00	0-2'	N-0.35
				1+80	0-2'	N-0.47

Alloy Blk. 5A O.B.

4

	South	North	
Ely. Cable ST 6x00	16.08	6.04 ^v 16.03	
5480 0 ^v	6.69 16.30 C0.39	7.71 16.25 C1.46	↓-Line
5400 0-5'	6.92 16.75 C0.17	7.93 16.70 C1.23	X-0.25
5400 0-2	7.28 17.20 C0.08	8.17 17.15 C1.02	X-0.35
0460 0-1'	7.57 17.65 F0.08	7.67 17.60 C0.07	0-1'

Gutter - on Logan at
Sampson

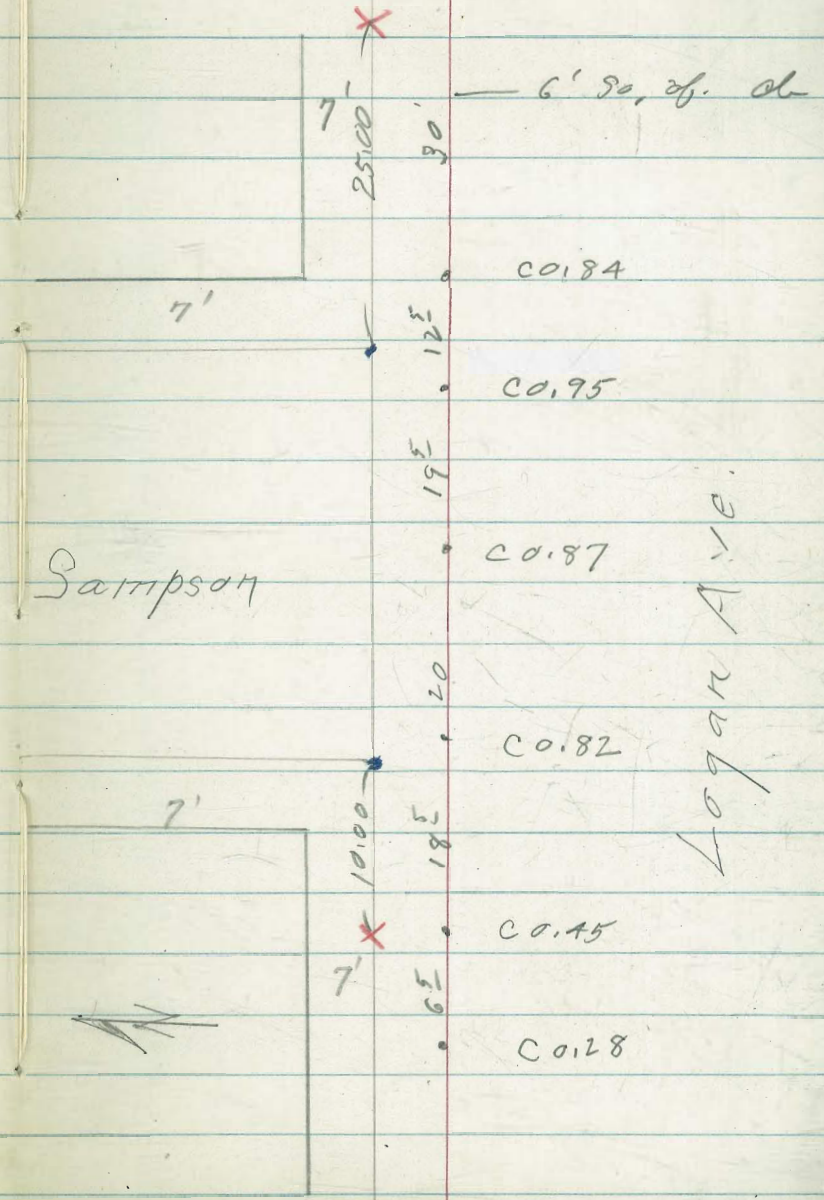
C.O. 38

C.H.S.
Begg
Oltman
Schelin

INDEXED
MER
MAY 5 1954

12-10-53
W.O.

- denotes Fd. Lt.
- " out cross R.P.



6' 30" of ab

C.O. 84

C.O. 95

C.O. 87

C.O. 82

C.O. 45

C.O. 28

Logan Ave.

Sampson



Cass St.

12-11-53
N.O.# 3169A

6

Turquoise to Van Nuy

Alley

sheet 10523-L

1+25

F.B. 1662

8.70
158.31
C 0.39

C 1.64
159.03
C-261

INDEXED
SER
MAY 5 1954

0+92.5

7.78
157.14
C 0.64

63.17
157.77
C-5.40

N

0+60

6.13
155.97
C 0.16

62.06
156.52
C-5.54

N

2+06.2

6.60
146.16
C 0.44

8.37
146.94
C 1.43

0+08 d. E.C.

4.48
154.21
C 0.27

7.01
154.73
C 2.28

1+63.7

4.62
143.97
C 0.55

6.02
144.93
C 1.09

0+00

153.94

154.45

Alley ←

1+48.7

3.93
143.40
C 0.53

4.73
144.22
C 0.51

Nly. Agate

1+06.6

3.72
141.27
C 2.45

2.67
142.20
C 0.47

0+64.49

Line

8.44
139.14
F 0.70

1.22
140.17
C 1.05

Sly Agate
3+08.7

151.50

152.00

0+14.49 E.C.

1'

6.32
136.68
F 0.36

8.91
137.68
C 1.23

3+00.7

50.64
151.07
F 0.43

2.72
151.60
C 1.12

0+00 =

Nly. Turquoise

136.28

137.28

2+48.7

8.46
148.35
C 0.11

50.14
148.95
C 1.19

Cass
Rough grade

10' Back of rd.

0+45	7.62 165.81 C 1.81	70.12 166.57 C 3.55
0+15 - on Lt. Col. 0+13 } F.C. on rd.	6.65 165.25 C 1.40	8.83 165.93 C 2.90
0+00 Nly. Archer	164.97	165.67
slg. Archer 2+65.	163.55	164.29 ^v
2+52 on rd 2+50 } B.C. on Lt.	2.81 162.96 F 0.15	4.99 163.78 C 1.21
2+05	1.47 161.21 C 0.26	3.55 161.93 C 1.62
1+72.5	0.49 160.03 C 0.46	3.25 160.77 C- 2.48
1+40	7.30 158.85 C 0.45	62.02 159.61 C- 3.01
Alloy		

Cass

slg Van Nuys. 2+65	169.40	170.15
2+52 } cl. B.C.	8.10 169.25 F 1.15	9.35 170.00 F 0.65
2+18 ^E	8.10 168.85 F 0.95	9.27 169.62 F 0.35
1+85	8.24 168.46 F 0.22	9.46 169.25 C 0.21
1+65	7.82 168.23 F 0.41	71.08 169.02 C 2.06
1+40 Alloy	7.31 167.84 F 0.53	71.67 168.63 C- 3.04
1+25	8.72 167.58 C 1.14	71.37 168.36 C 3.01
1+05	7.44 167.16 C 0.28	71.44 167.94 C 3.50
0+75	8.11 166.48 C 1.63	70.91 167.25 C 3.66

Martin St. 12-14-53

35th to Wabash Freeway

please Note; put ob grades for staking
IN G-313 back of Book D. Smith

8

Ties Martin
" Florence

2125
76

INDEXED

Rough
Grade

MAY 5 1954

4+00 0-3' 1.70
21.03
C 0.67

0.98
21.32
F 0.34

185
30
21

x-0.4 in
2+25 P.V.C. 7.40
37.21
C 0.19
724
33
688
37.71
47.35
37.71
C 9.64

P.V.C.
3+80 0-0' 3.51
23.22
C 0.29

5.47
23.54
C 1.93

1+75 x
75 0.5 in 8.34
39.30
F 0.96
718
30
47.67
39.80
C 7.87

1+325 7.40
41.40
F 4.00
50.01
46.90
C 8.11

E.V.C.
3+45 0 line 8.95
27.38
C 1.57

9.35
27.76
C 1.59

0+86 36.68
43.50
F 6.82
8.09
44.00
C 4.09

3+25 x-0.1 in 3 11.40
29.63
C 1.77

3.65
30.05
C 3.60

0+40 P.V.C. 37.81
45.60
F 7.79
581
344
46.10
8.05
46.10
C 1.95

3+05 x-0.15 in 3.49
31.64
C 1.85

7.13
32.09
C 5.04

0+20 39.43
45.80
F 6.37
649
33
616
47.35
9.70
47.35
C 2.35

2+85 x 0.7 in 4.63
33.40
C 1.23

41.36
33.87
C 7.49

0+10 40.17
45.42
F 5.25
664
33
627
676
48.10
50.56
48.10
C 2.46

2+65 x-0.9 in 5.30
34.91
C 0.39

43.58
35.41
C 8.17

= w/ly. 35th
0+00 40.64
44.80
F 4.16
661
33
624
676
48.90
51.26
48.90
C 2.36

2+50? ch.
2+45 x
0.9 in 5.94
36.20
F 0.26

45.74
36.70
C 9.04

641
33
608

Martin St.

		Exp	
5+42.71	Prop Lt	A.97 15.07 F0.15	—
5+40.28	Prop. Rt	—	Exist at \$5.36 15.59
5+32.04	cc.B.C. Lt.	A.19 15.25 F1.06	—
5+28.93	cc.B.C. Rt	—	4.61 15.64 F1.03
5+00	D-A EUC.	5.10 15.55 F0.45	X-5 5.62 15.85 F0.23
4+80	D-2	C.02 15.91 C0.11	6.18 16.19 F0.01
4+60	D-3	C.61 16.65 F0.04	C.81 16.91 F0.10
4+40		7.17 17.74 F0.57	8.81 18.00 C0.81
4+20	D-A	9.72 19.20 C0.52	1- 20.06 19.47 C0.59

Thomas Ave. Storm Drain

Ch. Inlets. Thomas St.

C.H.S. • INDEXED
 B099
 Joltman
 Schelin
 MAY 5 1954
 B.M. = X in Pave. 0-20
 FB 2260
 34
 EL = 13.46

5 1+15.99 B.C. 22.02
 16.91 x-4'
 1400' walk on Rt C 5.09
 broken across
 5 0+95.67 21.07
 16.44 x-4'
 C 4.65
 5 0+75.34 20.21
 15.96 x-4'
 C 4.25
 0+64 = start walk + stops broken away from house
 0+60 = end undermined
 portion of slab 8.75
 5 0+55.01 15.49 x-5'
 C 3.26
 start slab
 walk on Rt is
 undermined + broken 7.74
 5 0+34.68 = E.C. 15.02 x-5'
 C 2.72
 EXT = 1.09
 4 0+17.34 = Mid Curve 7.12
 14.61 x-5' Rt
 C 2.51
 0+15 = start conc. slab
 on Rt. is ok.
 = BC 6.25
 4 0+00 = Type "D" C.B. 14.20 C'rt.
 C 2.05

1+38 3.10
 122.97 3.14
 C 0.13 F 0.33
 1+18 3.41
 123.00 3.33
 C 0.41 F 0.17
 2+23.96 = End = Plug 24.53
 18.82
 C 5.71
 = Nly. ch. line Thomas 23.32 also R 10' Lt
 2+03.96 = type "H" C.B. 18.50 10' Rt.
 C 4.82 on ch. line
 = Sly. ch. line Thomas 23.41 also R 10' Lt.
 1+63.96 type "A.2" C.B. 18.00 10' Rt.
 C 5.41 on ch. line
 1+31.70 = E.C. 22.58
 17.27 o.c.
 C 5.31
 EXT = 1.44
 Mid Curve 22.02
 1+23.85 17.09 0 6'
 C 4.93
 1+20 = end of crack
 where walk on right
 is broken away
 from house

Storm Drain BIK. 274-P.B.

17.46

11

12-21-53

N.O. 21090

C.H.S.
Boyer
Schelin
Pulley

INDEXED

MAY 5 1954

Meet. Exist.

1+35

~~6.25~~
~~14.20~~ - I.E. exist = 14.10
~~14.10~~
~~2.15~~

1+01.25

~~6.71~~ 6.71
~~13.79~~ 13.91
C 2.80

0+67.50

~~6.66~~ 6.66
~~13.78~~ 13.72
C 2.94

0+33.75

~~6.75~~ 6.75
~~13.57~~ 13.52
3 2 3

0+00 = Nly. line Reed

~~5.07~~
~~13.36~~
C 1.71

Nly. ce. Reed
0-20

Meet. Curb

Alley BIK, 178 Pac. Beach

Olney to Noyes

12-21-53
W.O. 3178C

between Felspar & Emerald

C.H.S.
Bett.
Pullen.
Scholin

INDEXED
SER
MAY 5 1954

0+00 = wly. line Olney.

B.M. = sly. rim M.H. & Noyes (10745-L) ELI = 70.25

Alley 20' wide. Paucd 19th wide

3+80 RT. = (S) #2

8.86
64.78
C 4.08

A+30 RT. = (S) #1

9.05
65.01
C 4.04

	Lt. = So	Rt. = No	
2+20 02	8.60 68.54 C 0.06	71.50 68.84 C 2.66	0-2'
1+80 02	9.83 68.38 C 1.45	73.04 68.68 C 4.36	N. 1.65
1+40 D (No line)	8.86 68.22 C 0.64	71.26 68.52 C 2.74	N - 0.24
E.V.C. 1+00 02	8.88 68.06 C 0.82	7.35 68.36 C 0.99	0-2'
0+80 X-6'	8.41 67.80 C 0.61	9.24 68.10 C 1.14	0-2'
0+60 02	8.04 67.17 C 0.87	8.87 67.47 C 1.40	02
0+40 X-0.25	8.35 66.19 C 2.16	8.66 66.49 C 2.17	0-2'
0+20 X-0.25	7.33 64.84 C 2.49	8.19 65.14 C 3.05	0-2'
P.O.C. 0+00 X-0.25	7.33 63.35 C 3.98	7.67 64.00 C 3.67	02

	Lt. = Sa	Rt. = No.	
Ely, Noyes St.			
5+00 0-2'	9.76 70.63 F0.87	0.83 70.93 F0.10	0.2'
4+80 0-2'	9.91 70.11 F0.10	0.35 70.41 F0.06	0.2'
4+60 0-2'	9.97 69.74 C0.23	0.11 70.04 C0.07	0.2'
4+40 N 0.45	8.58 69.48 F0.90	9.25 69.78 F0.53	0.2'
4+20 P.O.C. 0-2'	7.09 69.34 F2.25	8.73 69.64 F0.91	0.2'
3+80 0-3'	6.76 69.18 F2.42	8.67 69.48 F0.81	0.2'
3+40 0-2'	6.91 69.02 F2.11	7.58 69.32 F1.74	0.2'
3+00 N. -0.83	7.89 68.86 F0.97	7.78 69.16 F1.38	0-2'
2+60 N. -0.90	8.74 68.70 C0.04	8.63 69.00 F0.37	0-2'

Tie Points Thomas Ave
Lamont to Olney 12/25/53

INDEXED
JER
MAY 5 1954

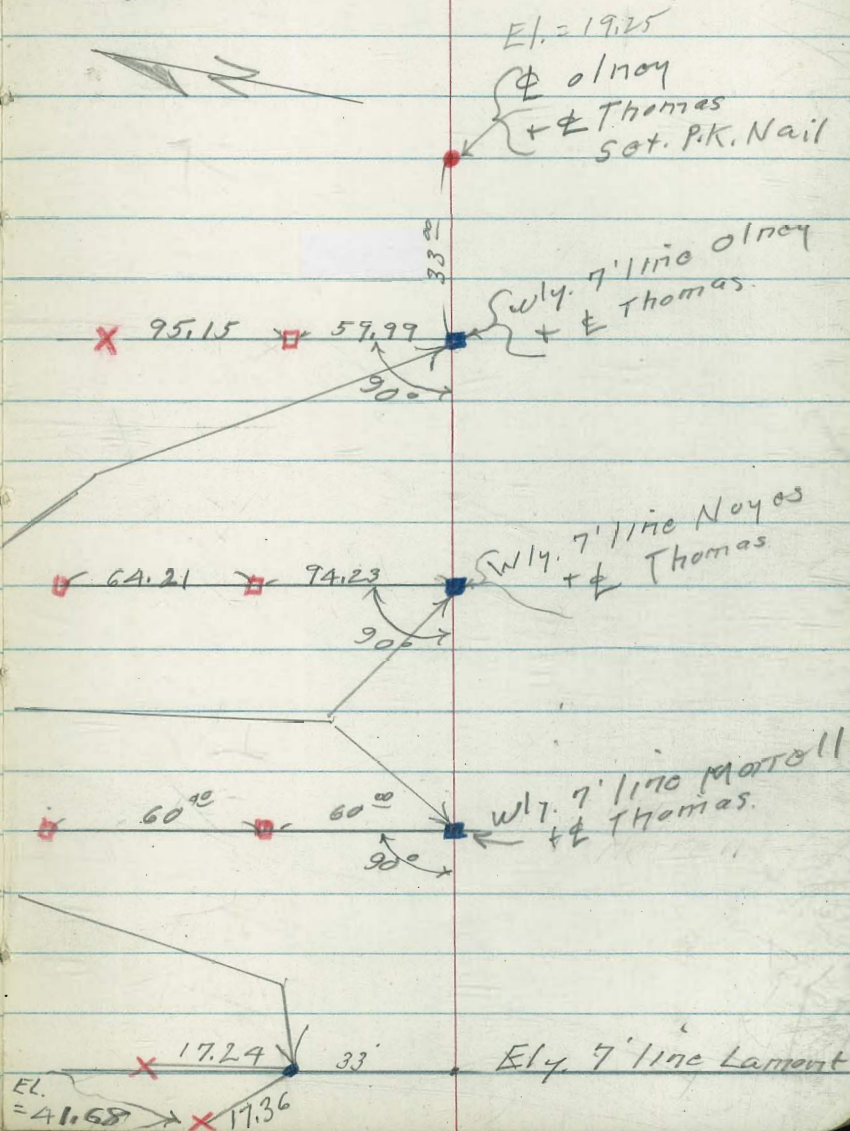
- denotes Fd. Lgt.
- " " Mort
- " set 1/2 R.P.
- x " cut cross in conc.

90° ls are to R.P. Hubs not along 7' line.

Note →
4 points replaced

Replaced with lead + Disk
A-16-54

Ch.S.
Begg
Scheelin
Pulleys



EL. = 41.68

Curb Ret. Olney + Thomas

B.M. = Chisel D N.E. of Ret ^{Lamont} + Thomas } El. = 41.76

Cross 14 ft. = 41.70 See Page 1A.

$\Delta = 18^\circ$ 3 times = 54°
 plus 1 time = $16^\circ 06'$
 = $70^\circ 06' = \text{Prop}$

Thomas St.	1.63 21.57 Co. 0.06	180	1.49 21.35 Co. 1.14
	1.48 21.10 Co. 0.38	36	1.48 20.90 Co. 0.58
	1.50 20.96 Co. 0.54	54	20.96 Co. 0.54
			21.07 B.C.
Olney St.			
Thomas			
F.C. #5		N.W. Ret.	
#4		S.W. Ret.	
#3		Prop. #1 = Prop.	
#2		B.C.	
0.185 20.80 Co. 0.05			
0.55 20.55 X			
0.16 20.30 Fo. 1.14			
9.78 20.00 Fo. 2.22			
17.67			

Curb Returns

Noyes + Thomas

Thomas	6.30 26.15 Co. 0.15	N.W. Ret.	7.15 27.10 Co. 0.05
	6.09 26.50 Fo. 0.41	S.W. Ret.	7.39 27.37 Co. 0.02
	5.77 26.85 Fo. 0.88	Prop. #1	27.67 B.C.
		B.C.	
Noyes			
Prop. #4			
#3			
#2			
#1			
B.C. #1			
7.57 27.16 Co. 0.41			
7.44 27.22 Co. 0.22			
7.44 27.20 Co. 0.24			
7.66 27.30 Co. 0.36			
27.45			

Cb. Ret. Morrell + Thomas

Cb. Ret. Larnont + Thomas

16

Thomas Ave

1.55	1.30
31.57	32.07
F0.02	F0.77
1.50	1.30
31.50	32.00
X	F0.70
1.48	1.62
31.60	32.05
F0.12	F0.43
1.50	1.74
31.80	32.25
F0.24	F0.51
1.37	2.00
31.95	32.45
C3.42	F0.45
3.22	

Morrell St.

41.25 gutter

1.72	1.71
41.11	40.97
C0.61	C0.84
	40.83 gutter

Morrell

1.76	1.44
31.95	31.80
F0.19	F0.30
0.89	0.89
31.50	31.50
F0.61	F0.61
0.48	0.48
31.15	31.15
F0.67	F0.67
0.89	0.89
30.79	30.79
F0.90	F0.90

Thomas Ave

these grades meet existing walk

3 equal parts

Larnont

41.77	41.65
41.54	41.30

Thomas

9.42 x 0.79 = 7.65 ✓ 9.42 = 9.42

0.81
0.78
C0.03

0.85
40.75
C0.10

40.77
0.10
C0.13

N.W. Ret. #3
S.W. Ret. #2

R=30

N.E. Ret. R=20'

S.E. Ret

S.E. Ret

Prop. #4

#3

#2

#1

B.C.

E.C. #3

#2

#1

B.C.

Thomas Ave.
Olney

12/28/53

N.W. Rad. OLNEY + THOMAS EL. = 26,04

17

					Sty. Rough	cl.	cl.	Nly. Rough	
					4+60	32.61 28.71 C3.91	8.73 28.71 C0.22	8.64 29.21 F0.57	3471 29.21 C5.50
	Rough	S. cl	N. cl	Rough	+A0		9.10 29.34 F0.24	9.52 29.84 F0.32	
+50	9.19 27.50 C-1.69	7.43 27.50 F0.07	7.72 28.00 F0.28	7.59 28.00 F0.41	A+20	32.70 29.79 C2.91	9.84 29.79 C0.05	0.20 30.29 F0.09	4.99 30.29 C4.70
2+00	7.87 26.16 C1.71	6.07 26.16 F0.09	6.66 26.66 X	7.10 26.66 C0.44	A+00		0.00 30.07 F0.07	0.57 30.57 X	
1+50	4.34 24.82 F0.48	4.82 24.82 X	5.14 25.32 F0.18	7.58 25.32 C2.26	3+80	2.13 30.16 C1.97	0.06 30.16 F0.10	0.71 30.66 C0.05	4.18 30.66 C3.52
1+00	2.88 23.48 F0.60	3.30 23.48 F0.18	4.07 23.98 C0.09	7.82 23.98 C3.84	+60		0.03 30.07 F0.04	0.65 30.57 C0.08	
+50	1.08 22.14 F1.06	2.14 22.14 X	2.70 22.64 C0.06	6.20 22.64 C3.62	3+40	31.49 29.80 C1.69	9.78 29.80 F0.02	0.43 30.30 C0.13	1.81 30.30 C1.51
0+10 = cl. EC	0.65 21.07 F0.42	21.07	16.3 21.57 C0.06	5.95 21.57 C4.38	P.O.C. 3+20	31.54 29.36 C2.18	9.36 29.36 X	9.80 29.86 F0.06	30.81 29.86 C0.95
why. line olney 0+00	20.80			21.30	3+00	31.29 28.84 C2.45	8.84 28.84 X	9.23 29.34 F0.11	9.99 29.34 C0.65

02.67%

Thomas.

N.W. Rad. Noyes + Thomas (EL = 28.70) 18

	Rough Noyes to Marshall Rough					sly Rough	cl.	cl.	Nly. Rough	
1+00	—	3.38 23.17 C0.21	3.67 23.67 X	—						
0+80	2.34 23.50 F1.16	3.56 23.50 C0.06	4.08 24.00 C0.08	5.47 24.00 C1.47	+40	4.50 25.31 F0.81	5.25 25.31 F0.06	5.78 25.81 F0.03	8.56 25.81 C2.75	X 5
+60		4.27 23.98 C0.29	4.62 24.48 C0.14		+20		4.75 24.89 F0.14	5.27 25.39 F0.12		
0+40 P.O.C.	3.45 24.60 F1.15	4.68 24.60 C0.08	5.17 25.10 C0.07	8.29 25.10 C3.19	3+00	2.33 24.55 F2.22	4.51 24.55 F0.04	5.16 25.05 C0.11	8.87 25.05 C3.82	
0+10 = cl.B.C.	5.45 25.55 F0.10	25.65	26.15	8.49 26.15 C2.34	+80		4.35 24.26 C0.09	5.03 24.76 C0.27		
0+007 wly. 5+80 } Noyes					P.O.C. 2+60	4.08 24.04 C0.04	4.11 24.04 C0.07	4.67 24.54 C0.13	7.04 24.54 C4.50	
<u>Noyes</u>					2+10	2.16 23.56 F1.40	3.52 23.56 F0.04	4.06 24.06 X	7.30 24.06 C3.24	
Noyes 5+00 = Ely.	27.00			27.50	E.V.C. 1+60	2.34 23.08 F0.74	3.06 23.08 F0.02	3.36 23.58 F0.22	3.89 23.58 C0.31	
A+90 cl.B.C.	31.90 27.45 C4.45	7.90 27.45 C0.45		33.85 27.95 C5.90	1+40		3.22 22.96 C0.26	3.52 23.46 C0.06		
A+80		8.43 27.90 C0.53	7.97 28.40 F0.43	T.P.	1+20	2.22 23.00 F0.78	3.58 23.00 C0.58	3.48 23.50 F0.02	4.64 23.50 C1.74	

Thomas
Noyes to Morrell

N.W. Rad. Morrell & Thomas (E_L = 37.30) 19
sly Nly.
Rough sb. Rough

	sly. Rough	sb.	Nly. sb.	Rough						
					3 ~	3.55 33.52 C0.03	3.83 33.52 C0.31	4.14 34.02 C0.12	5.08 34.02 C1.06	
Ely Morrell 5700	30.70				P.O.C. 2+80	3.61 33.34 C0.27	3.56 33.34 C0.22	3.84 33.84 X	5.15 33.84 C1.31	
bl. B.C. A+90	3.91 30.29 C3.62	30.29	30.79	0.51 30.79 F0.28	2+50	5.21 33.15 C2.06	3.20 33.15 C0.05	3.55 33.65 F0.10	4.87 33.65 C1.22	Tip
E.O.C. A+60	31.93 29.07 C2.86	9.21 29.07 C0.14	9.12 29.57 F0.45	9.45 29.57 F0.12	2 ~	6.91 32.82 C4.09	2.82 32.82 X	3.30 33.32 F0.02	8.54 33.32 C5.22	N
T+0		8.36 28.29 C0.07	8.04 28.79 F0.75		1+50	6.95 32.49 C4.46	2.44 32.49 F0.05	2.93 32.99 F0.06	9.23 32.99 C6.24	N. 1' in
+20	9.44 27.56 C1.88	7.47 27.56 F0.09	6.09 28.06 F1.97	8.17 28.06 C0.11	1 ~ N.	7.33 32.16 C5.17	2.12 32.16 F0.04	2.75 32.66 C0.09	9.05 32.66 C6.39	N--a2
A+00		6.83 26.91 F0.08	7.07 27.41 F0.34		0+50	6.53 31.83 C4.70	1.72 31.83 F0.11	2.32 32.33 F0.01	8.44 32.33 C6.11	N. 0.2 IN
+80	5.55 26.31 F0.76	6.20 26.31 F0.11	6.56 26.81 F0.25	8.67 26.81 C1.86	bl. B.C. 0+10	6.15 31.57 C4.58	1.55 31.57 F0.02	7.23 32.07 C5.16		
3+60		5.60 25.78 F0.18	6.28 26.28 X		Morrell wly. 0+00					

Set. B.M.
 41.68 = Cross in Ely. Cl. Lament 20
 5' North of Nly. line Thomas

	Sly.		Nly.	
	Rough	cl	cl	Rough
Ely. Lament 0.52			1.57	
5+00	40.65	40.55	41.30	41.30
	F0.13		C0.27	
+80		9.45	0.60	
		39.57	40.55	
		F0.12	C0.05	
+60	8.20	8.34	9.18	9.80
	38.51	38.51	39.40	39.40
	F0.31	F0.17	F0.22	C0.40
+40		7.33	8.15	
		37.54	38.35	
		F0.21	F0.20	
+20	5.06	6.28	7.37	7.03
	36.67	36.67	37.40	37.40
	F1.61	F0.39	F0.03	F0.37
A~		5.83	6.55	
		35.90	36.57	
		F0.07	F0.02	
+80	3.80	5.08	5.85	5.98
	35.23	35.23	35.85	35.85
	F1.43	F0.15	X	C0.13
+60		4.63	5.33	
		34.66	35.23	
		F0.03	C0.10	
+40	3.40	4.18	4.73	5.28
	34.18	34.18	34.73	34.73
	F0.78	X	X	C0.55
3+20		4.04	4.26	
		33.80	34.32	
		C0.24	F0.06	

Raised 0.10 to meet with be left it

Replace sly + wly. Corners
 Lots #31 + #32 Blk 42. O.B.

O.H.S
 Bagg
 Schellin
 puller

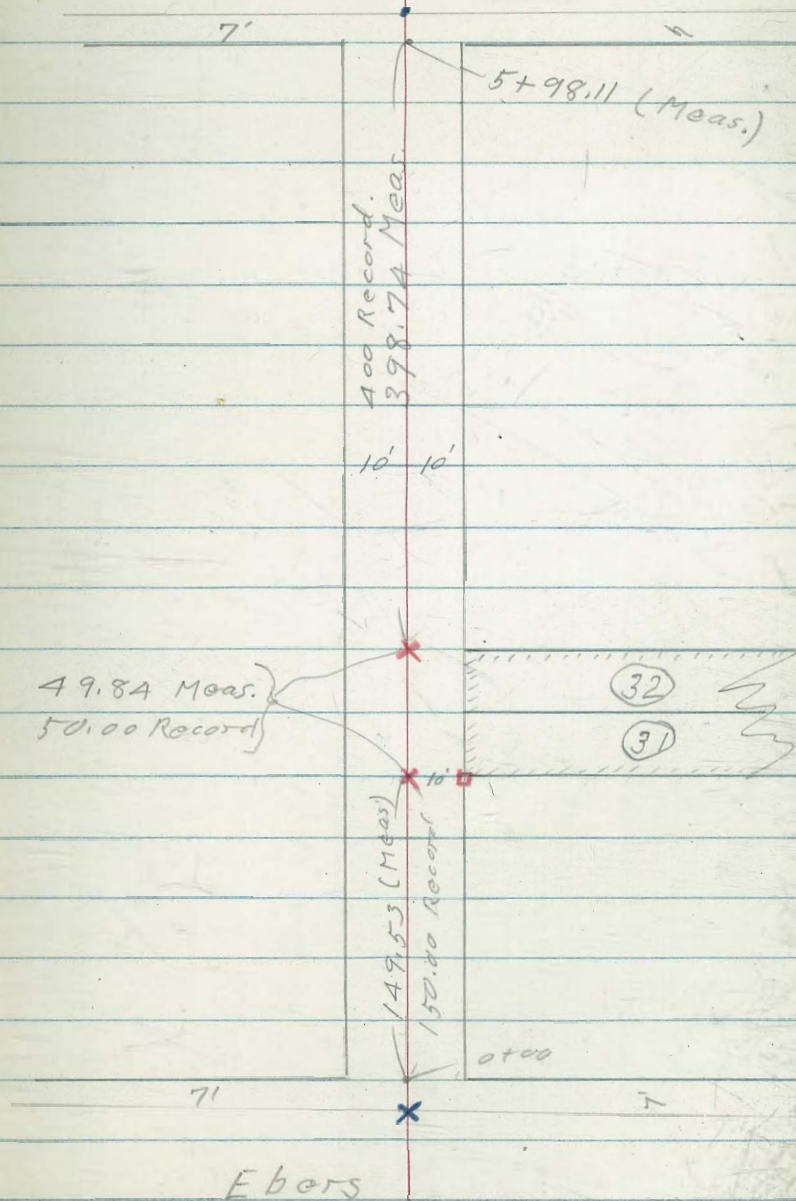
• - denotes Rd. Cross } F.B. 2197-P9
 " " " Nail }

X " cut cross in Conc.

□ " set 1/2 R.W. Hub. + disk

INDIVIDUAL
 DEED
 MAY 5 1954

Sunset Cliff Blud.



Storm Drain

Crown Pt. Drive at Fortuna

1-8-54

C.H.S. sheet 10 755-L
 Bagg " 10 754-L
 Schelin T.P. Book 20-P-16
 Pullen
 N.O.# 32074

stakes 10' N. of ϕ .

+ Nly. wall. C.O.

1+14.56 = B.C. 16.62
 1.24
 C 15.38

0+78.56 17.17
 +0.24
 C 16.93

0+42.56 = E.C. 17.10
 -0.71

Mid Curve \rightarrow $\left\{ \begin{array}{l} N 15.77 \\ -1.08 \\ S 16.85 \end{array} \right.$ C 17.81
 = S. Fly line. C.Pt. P-100
 Start Contract.

0+18.38 = 12.13
 -1.45
 C 13.58

0+08 = B.C. 8.58
 -1.74
 C 10.32

0+00 = outlet 1.65
 -1.93
 C 3.58

Crown Pt. Drive
 at Morrell

INDEXED

HER
 MAY 5 1954

= Nly. of Fortuna }
 2+95.81 = Ctr. C.I.

= Sly. of Fortuna
 2+55.81 = Ctr. C.I.

C.I.
 2+54.11 Sly. wall

2+45.98 = E.C.

2+34.46

2+22.94 = B.C.

1+80.53

1+38.12 = E.C.

1+26.34

22

13.10 ^{10' Lt.}
 2.15 so. ^{11. 10' west} 13.10
 C 10.95 C 10.45

13.90
 1.95 - 10' Lt.
 C 11.95

12.50
 1.95 10' Lt.
 C 10.55

12.62
 1.90
 C 10.72

12.80
 1.84
 C 10.96

12.96
 1.78
 C 11.18

13.62
 1.57
 C 12.05

14.91
 1.36
 C 13.55

15.76
 1.30
 C 14.46

0.5%

Crown Point Drive,
storm drain

= End. of Job

3+35.98

~~11.56~~
~~2.85~~
C 8.71

11.20
~~2.85~~
C 8.35

3+21.05

0.5%

~~12.19~~
~~2.77~~
C 9.33

11.60
~~2.77~~
C 8.83

3+06.13 = B.C.

~~12.29~~
~~2.70~~
C 9.59

12.38
~~2.70~~
C 9.68

Felspar. - Pendelton to
Noyes. st.

Stake cl. for examination
of grade (Grade to nearest 0.10')

Stakes on curb line. No Tacks.
south North

3+00	8.25 50.80 F 2.55	9.82 51.80 F 1.98
2+50	8.75 51.00 F 2.25	50.48 52.00 F 1.52
2+00	0.15 51.20 F 1.05	1.89 52.20 F 0.31
1+50	0.45 51.40 F 0.95	2.35 52.40 F 0.05
1+00	1.30 51.60 F 0.30	3.01 52.60 C 0.41
0+50	2.40 51.80 C 0.60	4.60 52.80 C 1.80
0+00: why pendelton.	2.00 52.00	3.02 53.00

N.W. B.P. Olney & Garnet El: 45° 24

INDEXED
SER

MAY 1+20	9.40 56.80 C 2.60	62.00 57.80 C 4.20
0+80	6.85 55.05 C 1.80	60.45 56.10 C 4.35
0+40	3.54 53.30 C 0.24	7.06 54.40 C 2.66
why. olney st. 0+00	1.20 51.55 F 0.35	5.84 52.70 C 3.14
80 wide why. olney st. 5+00	52.70 49.98 C 2.72	6.95 51.08 C 5.87
4+50	4.00 50.20 C 3.80	7.25 51.20 C 6.05
4+00	3.68 50.40 C 3.28	6.00 51.40 C 4.60
3+50	1.35 50.60 C 0.75	9.15 52.60 C 4.55
		2.30 51.60 C 0.70

Felspar. obs. Pendeltorn to Noyes

Olney St. ch.
For grade examination

25

stakes on curb line. No tacks.

Ely Noyes
5+00

4.91
6A.50
C0.41

5.71
65.66
C0.05

sl. Felspar.
2+70

9.69
50.50
F0.81

9.65
49.30
C0.35

4+50

3.50
63.53
F0.03

4.48
64.53
F0.05

2+25

8.01
48.59
F0.58

7.78
47.59
C0.19

4+00

2.14
62.56
F0.42

3.49
63.56
F0.07

1+85

6.62
47.09
F0.47

6.55
46.07
C0.48

3+60

1.78
61.85
F0.07

1.55
62.85
F1.30

1+45
Alloy

6.03
45.97
C0.06

6.01
44.90
C1.11

3+20

0.22
61.26
F1.04

1.14
62.26
F1.12

1+25

5.65
45.55
C0.10

5.34
44.44
C0.90

2+80

0.26
60.80
F0.54

1.57
61.80
F0.23

1+05

5.36
45.23
C0.13

4.94
44.07
C0.87

2+40

0.18
60.35
F0.17

1.96
61.35
C0.01

0+65

4.83
44.87
F0.04

4.66
43.60
C1.06

2+00

9.37
59.56
F0.19

2.27
60.56
C1.71

0+32^E

4.51
44.78
F0.29

4.11
43.35
C0.76

1+60

9.75
58.38
C1.37

3.13
59.38
C3.75

Nly Garnet.
0+00

44.68

43.10

Olney St. Curbs
For examination of grade

Sheet 11112-L
F01820-P-72

INDEXED
JER
MAY 5 1954

1+83³ 6.83 6.14
66.60 65.60
C 0.23 C 0.54

1+45 5.56 5.31
64.20 63.20
C 1.36 C 2.11

Alloy

0+57 Lt. Ber. 21' H. double Cur. 62.80 : D. Floor
0+00 = Nly Felspar. 2' Back
of curb line

1+25 4.38 4.69
62.97 61.97
C 1.41 C 2.72

1+15 3.80 4.42
62.32 61.32
C 1.48 C 3.10

0+76.6 61.09 62.87
59.18 58.16
C 1.91 C 4.71

sly. Emerald,
2+70 9.80 69.93
71.80 70.75
F 2.00 F 0.82

0+38.3 8.29 60.16
56.03 55.00
C 2.26 C 5.16

2+60 9.50 68.89
71.38 70.38
F 1.88 F 1.39

Nly Felspar St.
0+00 4.31 8.15
52.88 51.82
C 1.43 C 6.33

2+21.6 8.06 7.19
69.00 68.00
F 0.94 F 0.81

80
wide

Scott + Ingelow.

Water line

1-22-54

sheet 10200-L

Grade set 3" below top of ch.

city portion of job has been completed. A't to far. East.

This is 1911 aot. portion.

& Ingelow. - EL. = 3.34

B.M. = S.W. 5' x 7' L + Disk Rosecrans

I.F.

1+34

0+89.5

0+45 = A Lt.

0+00 = wly line Scott St.

INDEXED
HER
MAY 5 1954

Told (Kurt) contractors foreman
to get up connection prints
before digging trenches

- 0.46
- 3.70
C 3.24

- 0.30
- 3.90
C 3.60

0.50
- 4.10
C 4.60

- 0.34
- 4.00
C 3.66

Florence.

1/28/59

cls. + Rot wall. at Wabash Ferry

INDEXED
JACK
MAY 5 1954

				Top of wall	Base of wall	
				End wall		
				20.31	20.31	
				Part #2	15.86	3' back
				C 1.36	C 4.45	
5+40	7.14	7.55		Part #1	20.00	
	18.26	18.40		19.37	16.28	
	F 1.12	F 0.85		C 0.63	C 3.72	
5+20	8.80	9.12	5+5.16A	7.93	19.93	
	19.52	19.66	wall B.C.	19.80	16.70	
	F 0.72	F 0.54		C 0.13	C 3.23	
5+00	0.30	0.88				
	20.90	21.08				
	F 0.60	F 0.20				
A+80	2.22	2.39		SE Rot.	N.E. Rot.	
	22.40	22.57		#2 End of	7.08	P.T.
	F 0.18	F 0.18		2 on North	17.10	ARC 11.95
Cl. on South			Meet cl.			ARC 49.04
A+60 start	3.88	4.11	on. So	End cl. on		= Totals
	24.03	24.13		#1 South	6.60	ARC 5.84
	F 0.15	F 0.02		7.30	17.60	ARC 16.24
				17.35	F 1.00	
Start Cl. on North						
A+54 =	Meet cl.					
	on North.					
0+00 = Wly. 35 th						
				B.C. on South	6.00	
				5+52.76	17.62	
					F 1.62	
				B.C. on North	6.60	
				5+48.88	17.93	
					F 1.33	

Diamond to Beryl. Haines
1/28/54
N.I.O.# 32124

Rough grade
Curb stakes - page 42

29

JSR
MAY 5 1954

sheet 10658-L
" 10658-L

N.I.O. disk 92135

West

East

Rough grade stakes 1' back
west East
2+70 sly. Missouri 82.23^v 81.32

sly chalcodony

2+70

70.85

70.92

2+60 B.C. 2.32 2.69
82.05 82.13
C 0.17 C 0.56

2+60 B.C.

1.45 1.15
90.58 90.65
C 0.87 C 0.50

2+10 1.47 1.69
81.14 81.20
C 0.33 C 0.49

2+10

N.-1'

90.20 9.60
89.26 89.32
C 0.94 C 0.28

1+60 0.17 1.00 X
80.23 80.27 line
C 0.06 C 0.73

1+60

8.90 8.22 X-1
87.94 88.00
C 0.96 C 0.22

1+10 9.55 9.78
79.32 79.35
C 0.23 C 0.43

1+10

N.-0.05

8.10 6.76
86.63 86.67
C 1.47 C 0.09

0+60 8.80 9.51
78.41 78.42
C 0.39 C 1.09

0+60

N.
11/10

6.80 5.76 X
85.31 85.34 -1
C 1.47 C 0.42

0+10 7.97 8.12
77.50 77.50
C 0.27 C 0.62

0+10 B.C.

4.73 4.65
84.00 84.01
C 0.73 C 0.64

Diamond
0+00 = Nly 77.32 77.31^v

Nly. Missouri
0+00

83.74^v 83.75

Cit. of Diamond + Ely. T. Haines EL = 76.19

Haines

Rough Grade.

30

	West	East		West	East
N.E.B.P. 103.27			S.E. LTT 116.12		
Law. St. 2+70 = Sly	101.72 ^v	102.20	Beryl. St. 2+70 = Sly	115.60	116.06
2 2+60 d.B.C.	2.29 101.38 C 0.91	2.82 101.86 C 0.96	2+60 d.B.C.	5.72 115.16 C 0.56	6.28 115.62 70.66
2 2+10 N -0.36	101.24 99.61 C 1.63	1.10 X- 100.15 1' C 0.95	2+10 X-1'	3.57 112.95 C 0.62	5.34 X 113.40 1.20 C 1.94 17.
1+60 N-0.50	100.02 97.95 C 2.07	9.82 N 98.43 -0.15 C 1.39	1+60	1.38 110.73 C 0.65	2.76 111.18 C 1.58
1+10	7.77 96.24 C 1.53	8.65 N. 96.71 0.1017 C 1.94	1+10	9.81 108.51 C 1.30	10.38 N 108.96 -0.15 C 1.42
0+60	5.80 94.52 C 1.28	7.11 95.00 N-0.10 C 2.11	0+60	7.78 106.29 C 1.49	8.75 N 106.74 -0.30 C 2.01
0+10 d.B.C.	4.25 92.80 C 1.45	4.81 93.27 0.2 C 1.54	0+10 d.B.C.	5.75 104.07 C 1.68	5.88 104.52 C 1.36
Chalcedony 0+00 = Nly	92.46.	92.93	Law. St. 0+00 = Nly	103.63	104.08

Alley Bk 1 - Pacific Beach

Mission Blvd to Bayard

Between Chalcedony & Missouri

C.H.S.

B 999

Schellin

Pullen

Sheet 10746-L

FB 2204 - page 51

0+00 = wly line Bayard,

conc. pavement 19⁵⁰ wide

B.M. = N.E.B.P. Chalcedony + Bayard - E.L. = 53.10

FB 2204 - p 60

3+70 Lt. = (S) #1

5.55
39.98

C 5157

lat. stakes

5' RT of end

of Lat.

1+45 Lt. = (S) #2

6.90
41.74

E - 4.96

INDEXED
MER
MAY 5 1954

6.50

31

0+40 RT

South

±

North

2+20 X-3'

6.48

46.30

C 0.18

7.57

46.60

C 0.97

N-0.65'

1+80 X'-3'

6.79

46.65

C 0.14

7.63

46.95

C 0.68

N-0.38'

1+40

6.93

47.00

C 0.07

7.86

47.30

C 0.56

X-2'

1+00 N-2.30'

8.27

47.34

C 0.93

8.83

47.64

C 1.19

N-0.75'

0+60 N-2.05'

8.43

47.68

C 0.75

9.20

47.98

C 1.22

N-0.52'

0+40 0-1'

8.08

47.79

C 0.29

9.37

48.09

C 0.28

N-0.42'

0+20 0-1'

8.33

47.78

C 0.55

8.70

48.08

C 0.62

0-1'

0+00

47.64

47.94

wly. Bayard

Scott St.

Curb inlet + C.O.

sheet 10200-L

INDEXED
JER
MAY 5 1951

	Top	I.E.
Harbor Drive		
Exist pipe 17	-0.51	-0.51
For. C.O. at	+0.30	-3.29
	F 0.81	C 2.78
	Top of curb	Outer
	-0.61	-0.61
0+39.16 (6' back)	-0.40	-0.90
	F 0.21	C 0.29
Top Casement = -0.40		
	1.91	1.91
0+27.25 (8' back)	-0.60	-1.43 grates
	C 2.51	C 3.34
	1.92	1.92
0+15.44 6' back	-0.57	-1.07
	C 2.49	C 2.99

For. C.I. #1 - sly line Inge low = 0+00
Set line stakes on curb line

Sapphire Street,

Bayard to Mission Blvd.

C.H.S.
Bey
Schelin
Pullen2-10-54
W.O.#32324
Street 6804-LE.V.C.
3+55
3.70
104.12
F0.427.06
104.82
C 2.24

1+25

8.33
108.45
F0.122.96
109.15
C-3.81

3+15

3.98
104.61
F0.637.91
105.31
C 2.60

0+85 P.V.C.

9.68
109.74
F0.064.16
110.44
C3.72P.V.C.
2+754.40
105.30
F0.908.18
106.00
C 2.18

0+50

0.99
111.02
F0.034.80
111.72
C3.082+38⁴

2+20

5.17
106.40
F1.237.22
107.10
C 2.12

0+15 cl.E.C.

1.58
112.30
F0.725.98
113.00
C2.982+01¹

Mid curve

E.V.C.
1+657.15
107.49
F0.3411.26
108.19
C 3.070+00 = wly
Bayard2.43
112.103.57
113.50

1+

5+87⁸

0.44
100.10
C 0.34

4.24
100.80
C 3.44

N
14

1+95 Lt. = (W)

6.83
106.89
F 0.06

0+80 Lt. = (W)

10.50
109.90 - cb. grade
C 0.60

5+47⁸

1.72
101.49
C 0.23

4.61
102.19
C 2.42

5+07⁸

1.91
102.48
F 0.57

5.43
103.18
C 2.25

South

North

Rough Curb Curb Rough

Mission Blvd.

Ely. 1110 7.40
6+57⁸ 97.42

8.85
98.84

4+67⁸ P.V.C.

2.36
103.06
F 0.70

5.81
103.76
C 2.05

cb. B.C.
6+47⁸ 9.36
97.70
C 1.66

102.36
98.90
C 3.46

4+30²

3.07
103.42
F 0.35

6.26
104.12
C 2.14

6+27⁸ 7.70
98.30
C 1.40

102.44
99.25
C 3.19

3+92.6

3.55
103.77
F 0.22

6.74
104.47
C 2.27

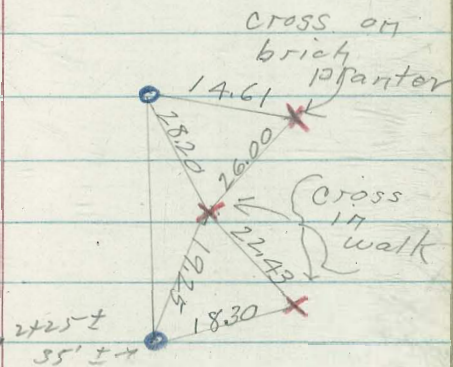
+

Prop. R.P.s. Sapphire

±
Sapphire

36

INDEXED
HER
MAY 5 1954



0+00
wly line Bayard

Santa Cruz Ave

Redondo Street - East.

C.H.S
 B 099
 Schelin
 Pulley
 2-23-54
 W.O.# 323AZ
 F.B. 2062-P43
 sheet 10923-L

0+00 = Ely line Dixson's Sub. #2
 curb stakes 4' back of el.

2+00
 6.77
 204.96
 C-1.81
 C 1.31

1+60
 9.30
 207.86
 C-1.44
 C 0.94

1+20
 118L
 107
 105
 C 0.55
~~1.62~~
~~210.77~~
~~C-0.85~~
~~C 0.35~~

0+80
 5.15
 213.68
 C 1.47
 C 0.97

0+40
 7.49
 216.59
 C 0.88
 C 0.38

0+00
 20.64
 219.50
 C 1.14
 C 0.64

6.78
 205.52
 C 1.16
 C 0.66

10.11
 208.44
 C 1.67
 C 1.17

3.54
 211.36
 C-2.18
 C 0.68

5.66
 214.28
 C 1.38
 C 0.88

9.14
 217.20
 C 1.94
 C 1.44

1.03
 220.10
 C 0.93
 C 0.43

INDEXED
 DER
 MAY 5 1954

3+43⁴
 d=12°21'
 3.26
 192.67
 C 0.59
 4.57
 192.47
 C 2.10

3+22⁵
 d=9°11'
 5.23
 194.74
 C 0.49
 6.01
 194.80
 C 1.21

3+01⁶
 d=6°01'
 7.44
 196.80
 C 0.64
 C 0.54
 8.42
 197.12
 C 1.30
 C 1.20

2+91⁶
 d=3°00'
 9.23
 198.60
 C 0.63
 C 0.43
 200.30
 199.10
 C 1.20
 C 1.00

cb. B.C.
 2+61⁶
 1.28
 200.30
 C 0.98
 C 0.67
 1.30
 200.81
 C 0.49
 C 0.19

2+41⁶ 9'
 back
 4.40
 201.89
 C 2.51
 C 2.11
 3.58
 202.41
 C 1.17
 C 0.77

Brk.
 2+21⁶
 4.51
 3.38
 4.60
 203.78
 C-1.13
 C 0.63
 C 1.22
 C 0.72
 5.40
 203.92
 C 1.48
 C 0.98

Raised are better to
 meet improvements; cuts
 are in red.

A+40 ⁸ E.C.	5.69	5.49	6.05	6.05
	2.64	184.20	183.26	3.70
d=15'-30'	C 1.05	C 1.49	C 2.79	C 2.35

A+30	6.46	6.45	7.70	7.70
	5.46	184.90	183.94	4.50
d=11'-38'	C 1.00	C 1.55	C 3.76	C 3.10

A+19 ²	7.40	7.40	8.40	8.40
	6.24	185.66	184.72	5.30
d=7'-45'	C 1.16	C 1.76	C 3.68	C 3.10

A+08 ²	8.40	8.40	90.00	90.00
	7.06	186.48	185.56	6.14
d 3'-52'	C 1.34	C 1.72	C 4.44	C 3.86

3+97 ¹⁶ B.C.	9.13	9.13	90.84	90.84
	7.99	187.88	186.49	7.10
	C 1.14	C 1.75	C 4.35	C 3.74

E.C.		1.21	3.06	
3+64 ⁴		190.60	190.14	
d=15'-30'		C 0.61	C 2.92	

cannot check L-10923 for
sta. as in FB 2062
43 - so far
station from east to west &
picked some of the grades
off the profile + met
existing improvements as
well as possible.

Redondo St.
A+62¹ 183.20 182.30

Exist Prop Actual EL.
A+54² = 183.65 182.66 top of

A+47² = 184.20 5.02
183.26
06. B.C. on R.R. C 1.76

BIK 58 - Park Villas ⁸⁵⁸
 storm drain

C.H.S.
 B099
 Pullon
 sheet # 10747-L
 F.B. 222 page 22
 2-26-54
 W.O.# 31538

INDEXED
 JER
 MAY 5 1954

0+63 ³	9.21 306.40 C 2.81	X-3' Lt.	Sta. 1+31.33 Page 40 Type D. 1+70 = Ctr. C.B. IE.	16.20 311.45 C 4.75	6.20 314.95 C 1.25
0+44 ²	8.20 305.50 C 2.70	D-4' Lt.	1+47 ³	3.51 310.38 C 3.13	D 4' Lt.
Δ 90° Left 0+25 ⁴⁷ = Ctr. C.O. Type B.	7.21 304.60 C 2.61	{ Cross on ch. 2' west Ctr. C.O.	1+24 ⁵	313.15 309.31 C 3.84	D 4' Lt.
on Feltory Existing C.I. 0+00 = Ctr.	3.52 303.45		1+01 ⁷ = L 3°-34'-35" RT 0+81 ⁷ = L 3°-34'-35" Lt.	10.90 308.24 C 2.66	
				10.02 307.30 C 2.72	

← X-9' west ctr.

Grate

Alley Bk. 58 Park Villas
 upas to Myrtle
 between 33rd & Felton

INDEXED

C.H.S.
 Bogg
 Pullen
 Feb. 26, 54

sheet # 107A7-L
 F.B. 2222 - Page 22
 width 31538

MAY 5 1954

west

East,

Lt.

Rt.

Myrtle.
 sly. line

0+00 = Ally. line upas st.

3+00

7.04
 317.01

6.71
 316.71

B.M. = N.W. B.P. upas + 33rd EL. = 318.45

Lt.

Rt.

2+50 0-1' 6.35
 316.00

5.82
 315.70

X-1'

C 0.35

C 0.12

L.V.C.

0+50 0-3

6.85
 316.28
 C 0.57

6.14
 316.16 0-3'
 F 0.02

2+11^E 0-1' 6.23
 315.85
 C 0.48

5.60
 315.55
 C 0.05

D-4'

0+40 0-3

6.97
 316.40
 C 0.57

6.81 X
 316.32 -2'
 C 0.49

1+73³ X-3' 6.50
 315.70
 C 0.80

5.15
 315.40
 F 0.25

D-4'

0+30 0-3

7.25
 316.44
 C 0.81

7.18
 316.36 0-3'
 C 0.82

1+35⁵ X-3' 6.32
 315.54
 C 0.78

4.20
 315.24
 F 1.04

0+20 0-3

7.49
 316.37
 C 1.12

7.60
 316.30 0-3'
 C 1.30

1+31.33 = Ctr. type D

C.B. - see page 39

0+10 0-3

7.57
 316.21
 C 1.36

7.75
 316.12 0-3'
 C 1.63

1+10 X-
 6.20
 315.62
 C 0.58

4.65
 315.32
 F 0.67

D-1'

0+00

315.97

315.62

0+85 0-1' 5.86
 315.70
 C 0.16

6.29
 315.40
 C 0.89

N-0.20

Everts St.

Garnet to Felspar. 3-5-54

C.H.S. W.O.# 32161
 Begg
 Scholin sheet 10997-L
 Pullen.

INDEXED
 MER
 MAY 5 1954

0+00 = Nly line Garnet

chs. from 0+00 to 45 are existing.

sly Felspar.

2+70 0-3' 4.00
 45.00

Rx
 = East

5.55
 45.54 3' Back

B.C. 30' Rad.
 2+60

2.57
 44.80
 F0.23

5.54
 45.33
 F0.21

2+22A

4.29
 44.04
 F0.25

4.65
 44.72
 F0.07

1+84 0-3'

3.25
 43.27
 F0.02

3.55
 44.11
 F0.56

0-3' street

1+47 0-1' Alley
 E.C.

2.60
 42.50
 F0.10

3.20
 43.50 3' back
 F0.30

0-3' street

1+45 0-2' Alley
 2' Rad. B.C.

2.60
 42.51
 F0.09

3.20 3' Back Events
 43.52 2' Back Alley
 F0.32

start of

1+45 2' Back
 prop.

2.35
 42.88
 F0.33

3.45
 43.88 2' Back
 F0.43

Haines St

Diamond to Beryl. 3/31/54
No. 3212A

wly. cl. 42
Ely. cl.

INDEXED
JER
MAY 5 1954

			0+10=d.E.C.	3.90 84.00 F 0.10	4.48 84.01 C 0.47
Rough grade - page 29	wly. cl.	Ely. cl.	Missouri St. 0+00=Nly.	83.74	83.75
1+45=prop	80.36	80.41	x		
Alloy	F 0.26	C 0.46	Missouri St.		
1+25 Prop.	79.99	80.02			
	F 0.45	F 0.07	slly Missouri 2+70=	22 82.23	82.32
^{c0.33} 1+25=E.C. A' Ret.	E 0.12	C 0.10	^{c0.24}		
			w.B.C. 2+60=	2.03 82.05 F 0.02	2.20 82.13 C 0.07
^{cl. Ret.} 1+21 B.C. A' alloy	C 0.27	C 0.25			
			2+20	C 0.10	C 0.15
0+90	C 0.24	C 0.31			
			1+80	C 0.11	C 0.21
0+50	C 0.51	C 0.29			
			1+49=E.C.	C 0.17	C 0.17
0+10=E.C.	7.55 77.50 C 0.05	7.60 77.50 C 0.10			
			w. Ret. 1+45=B.C. A'	C 0.16	^{c0.17} C 0.17
0+00	77.32	77.31	C 0.11		
Nly. Diamond					

	Harris St. curbs. westerly. d	Ely. ch	el. Ret. 1+21 = B.C. 4' Rad	Wly. d.	Ely. d. ⁴³
1+80	C0.26	F0.20		C0.32	C0.02
1+49-E.C.	grade	F0.18	0+90	C0.47	C0.03
Alley Rot 1+45. B.C. 4' Rad.	C0.02	F0.15	0+50	C0.35	C0.20
1+45 prep	87.96 C0.06	88.00 F0.02	0+10 = E.C.	3.00 92.80 C0.20	3.25 93.27 F0.02
Alley			0+00 = Nly line	92.46 [✓]	92.93 [✓]
1+25 prep	87.43 F0.47	87.47 F0.55	Chalcedony st.		
1+25-E.C.	F0.19	F0.09	Chalcedony 2+70 = sly line	90.85 [✓]	90.97 [✓]
B.C. 4' 1+21 alley Rot	grade	C0.10	2+60 B.C.	0.78 90.58 C0.20	0.66 90.66 X
0+90	C0.02	C0.15	2+20	C0.34	F0.07
0+50	C0.09	C0.25			

Haines Street

	wly. ch.	Ely. ch.		wly. ch.	Ely. ch.
line Law. st. 2+70 = sly.	101.72 ^v	102.20 ^v	1+45 - prop.	1.06 110.46 C 0.60	2.52 110.92 C 1.40
2+60 ^{ch.} B.C.	1.55 101.38 C 0.17	2.02 101.86 C 0.16	⊕ Alley		
2+20	C 0.30	C 0.07	1+25 prop.	10.06 109.57 C 0.49	9.97 110.03 F 0.06
1+80	C 0.23	C 0.02	1+25 = E.C.	9.51 109.25 C 0.26	9.19 109.71 F 0.52
1+49 - ch. E.C.	C 0.24	F 0.03	1+21 = B.C. A' Red. Rot.	C 0.51	F 0.27
1+45 ^{A' Red.} ch. B.C.	7.80 97.39 C 0.34	8.00 97.86 C 0.04	0+90	C 0.37	C 0.41
1+45 Prop.	8.86 97.79 C 0.07	8.98 97.79 C 0.72	0+50	C 0.17	C 0.10
⊕ Alley			0+10 = ch. E.C.	3.96 104.07 F 0.11	4.58 104.52 C 0.06
1+25 Prop.	8.05 97.11 C 0.94	8.25 97.58 C 0.69	0+00 = Nly Law.	103.63 ^v	104.08 ^v
1+25 - ch. E.C.	0.72 C 0.11 C 0.01	7.04 F 0.20 F 0.05	⊕ Law. st.		

Hairies St.

45

	Wly. cl.	Ely. cl.
117c Beryl. 2+70 = sly	115.60	116.06
30' Rad. cl. Rot. 2+60 B.C.	5.10 115.16 F0.06	5.86 115.62 E0.24
2+20	C0.05	C0.11
1+80	C0.15	C0.12
1+49 = E.C.	C0.31	C0.10
4' Rad. Rot. 1+45 = B.C.	0.55 10.14 C0.41	0.81 10.60 C0.24

Soap Box Derby Track
Collier Park

A-29-54

W.D.# 20992

C.H.S.

F.B.

2190

Boyer

P-8

Schelin

No number on plans.

Puller

Set ϕ stakes to Finish Grade

0+00 = ϕ Clovis at N. Ely line

P.L.# 206 (= at Valota St.)

1+40

1+00

0+60

0+30

0+00 N. Ely line P.L.# 206 ϕ Clovis St.

INDEXED
SER
MAY 1954

46

See G. B. 351

P. 24

3.20%

Restake
1/24/55

9.23 9.20
59.42 59.42
F 0.19 F 0.22

0.65 0.63
60.60 60.60
C 0.05 C 0.03

170 ~~196~~ 1.88
61.58 ~~61.58~~ 61.58
C 0.12 C P. 2 C 0.30

1.90 2.27
62.24 2.24
F 0.34 C 0.03

2.59 2.59
62.90 62.90
F 0.31 F 0.31

Soap Box Derby Track

6%

Rostako
1-24-55
C.H.S.

Rostako 47
1/25/55
alt

3+90

7.42 7.28
48.90 48.90 - T.P.
F 1.52 F 1.62 F 2.52

3+40 = E.V.C.

48.60 48.61
51.90 51.90
F 3.30 F 3.29 F 4.30

3+20

49.11 49.05
53.03 53.03
F 3.92 F 3.98 F 4.92

3+00

49.80 49.92
54.02 54.02
F 4.22 F 4.10 F 5.22

2+80

1.20 1.29
54.87 54.87
F 3.67 F 3.58 F 4.67

2+60 R.V.C.

2.24 2.20
55.58 55.58
F 3.34 F 3.38 F 4.34

1.13

3/25/55

2+24.67 ahead } = E.C. = Starting line
2+21.37 back }

4.27 4.67 4.65 4.67 4.27
56.71 56.71 56.71 57.71 57.71
F 2.44 F 2.04 F 2.06 F 3.04 F 3.44
T.P. 55.65

1+98.35 - Mid curve (Rad. is set.)

6.50 6.50 6.50
57.50 57.50 58.00
F 1.00 F 1.00 F 1.50

9.20%

T = 24.67 L = 46.04

1+75³³ = B.C. $\Delta 50^\circ-58'$ - R = 51.76'

7.85 7.85 OK. to Here
58.28 58.28 59.28
F 0.43 F 0.43

Soap box derby track.

Restake

48

1/24/55

Restake

1/25/55

8+10

4.37
23.80
C 0.57

4.20
23.80
C 0.40

F 0.43

7+90

P.V.C.

λ

5.40
24.90
C 0.50

5.22
24.90
C 0.32

F 0.50

7+40

8.55
27.90
C 0.65

8.36
27.90
C 0.46

F 0.35

6+90

1.04 T.P.
30.90
C 0.14

0.98 T.P.
30.90
C 0.08

F 0.86

6+40

3.26
33.90
F 0.64

3.17
33.90
F 0.73

F 1.64

5+90

2/9

6.34
36.90
F 0.56

6.05
36.90
F 0.85

F 1.56

5+40

9.25 T.P.
39.90
F 0.65

8.96
39.90 - T.P.
F 0.94

F 1.65

4+90

2.28
42.90
F 0.62

1.98
42.90
F 0.92

F 1.62

4+40

4.37
45.90
F 1.53

4.16
45.90
F 1.74

F 2.53

Restake

1/24/55

49

Restake
1/25/55

11+60 P.V.C.

~~5.86~~
~~15.90~~
 F 0.04

~~5.82~~
~~15.90~~
 F 0.08

F 1.04

11+20

~~5.69~~
~~16.70~~
 F 1.01

~~5.60~~
~~16.70~~
 F 1.10

F 2.01

10+70

~~17.46 T.B.M.~~
~~17.70~~
 F 0.24

~~7.32~~
~~17.70~~
 F 0.38

F 1.24

10+20

~~21.06~~
~~18.70~~
 C 2.36

~~20.90~~
~~18.70~~
 C 2.20

C 1.36

9+70

~~21.40~~
~~19.70~~
 C 1.70

~~21.15~~
~~19.70~~
 C 1.45

C 0.70

9+20

~~22.75 T.P.~~
~~20.70~~
 C 2.05

~~2.57~~
~~20.70~~
 C 1.87

C 1.05

8+70 = E.V.C.

~~2.50~~
~~21.70~~
 C 0.80

~~2.62~~
~~21.70~~
 C 0.92

F 0.20

8+50

~~3.25~~
~~22.20~~
 C 1.05

~~3.05~~
~~22.20~~
 C 0.85

C 0.05

8+30

~~3.65~~
~~22.90~~
 C 0.75

~~3.54~~
~~22.90~~
 C 0.74

F 0.25

Soap Box Derby Tracks

Restake

50

1/21/55

Restake

1/21/55

14+50

6.29
17.60
F1.31

6.18
17.60
F1.42

F1.31

14+00

6.19
17.10
F0.91

6.10
17.10
F1.00

F1.91

13+50

6.38
16.60
F0.22

6.25
16.60
F0.35

F1.22

13+00

6.04
16.10
F0.08

6.08
16.10
F0.02

F1.08

12+80

5.97
15.90
C0.07

6.01
15.90
C0.11

F0.93

12+40 - R.V.C.

6.21
15.50
C0.71

6.15
15.50
C0.65

F0.29

12+20

= level of pond.
(1000' of ditch to EL. 14³⁸)

6.23
15.38
C0.85

6.27
15.38
C0.89

F0.15

12+00 = Finish line

6.04
15.40
C0.64

6.01
15.40
C0.61

F0.36

11+80

6.00
15.58
C0.42

5.95
15.58
C0.37

F0.58

Soap Box Derby Track.

57

16400 = End of track

15450

15400

Restake
1/24/55

6.65
19.10
F 2.45

6.63
19.10
F 2.47

Restake
1/25/55

F 3.45

6.72
18.60
F 1.88

6.76
18.60
F 1.84

F 2.88

6.30
18.10
F 1.80

6.25
18.10
F 1.85

F 2.80

170

Jarvis St.
Curbs

4/29/54

UNDEVELOPED
HER
MAY 5 1954

52

Curb stakes 4' back

Lt. = North

Rt. = South

2+53³ Lt. only.

3.06
1.48
C 1.58

2+2A⁰³

2.47
1.35
C 1.12

3.28
1.33
C 1.95

1+92

1.97
1.23
C 0.74

2.27
1.22
C 1.05

1+60 Brk

1.44
1.11
C 0.33

1.63
1.11
C 0.52

1+15

0.98
0.98
X

1.66
0.98
C 0.68

0+70

1.02
0.84
C 0.18

1.27
0.83
C 0.44

0+25 = Brk

0.91
0.70
C 0.21

1.15
0.68
C 0.47

0+12.5

0.93
0.60
C 0.33

1.19
0.60
C 0.59

0+00

0.88
0.60
C 0.28

1.27
0.60
C 0.67

Ingelow St. 4/28/54
Scott to Rose crans

INDEXED
MER
MAY 5 1954

53

2+73 B.C. Existing cb. on Lt. 2.82 3.03

2+20 1.26 0.92
1.03
F. 0.11

2+10 1.02 0.77
0.72
C. 0.05

2+00 B.K. Existing cb. on RL. +0.88 0.62 ✓

1+56.25 0.63 0.49

1+12.50 0.37 0.35

0+68.75 0.04
+0.11 0.21
F. 0.07

0+25 = E.C. -0.15
-0.15
X +0.07

0+00 = Wly 1100 Scott

Scott St.

4/28/54

Jarvis to Harbor Drive

INDEXED
MER
MAY 5 1954

54

= 0+00

2+70 Lt. = Sly line Ingalow

0.99
- 0.150
C 1.49

2+35 Lt = Nly Ingalow

0.61
- 0.40
C 1.01

2+00 Lt

0.65
- 0.30
C 0.95

1+75 = B.C. on Rt.

0.36
- 0.122
C 0.158

+ 0.10

1+25

0.25
- 0.03
C 0.28

0+75

0.04
+ 0.16
F 0.12

0+25 = E.C. on Rt.

0.29
+ 0.35
F 0.106

0.59

0+12 = E.C. on Lt

0.29
0.40
F 0.11

0+00 = Sly line Jarvis

Scott

55

100 RT = Existing cl

^{63.5}
0+69.75

-0.15
-0.64
-0.31 C 1.86
F 0.33

Rate

^{37.5}
0+39.50 RT

-0.50 ~~1.04~~
-0.47 -0.47
F 0.03 C 1.52

0+39¹⁵ Ch. B.C. on Lt.

-0.40

0+27²⁵ Brk. on RT

-0.60

-0.50

0+15⁴⁴ Lt.

-0.57

0+100 = sly Inq below

Curb Returns
Scott + Jarvis

INDEXED
MAY 5 1954

South Return East Return

R = 18'

3 equal Parts

#3 - E.C. 0.129
Scott 0.140 0.40
F 0.11

#2 ~~0.14~~ 0.75
~~0.46~~ 0.46
F 0.27 C 0.29

#1 ~~0.84~~ 0.71
~~0.53~~ 0.53
C 0.31 C 0.18

B.C. 1.12 1.27
~~0.60~~ 0.60
Jarvis C 0.52 C 0.67

Curb returns
Scott + Ingelow

56
INDEXED
MAY 5 1954

North Return West. Ret.

R = 43' 7 equal parts. 43' Rad. 7 equal Parts

#7 - 0.15
E.C. - 0.15
grade

#6 - 0.12
- 0.20
C 0.08

#5 - 0.05
- 0.25
C 0.20

#4 + 0.77
- 0.32
C 1.09

#3 + 0.45
- 0.36
C 0.81

#2 + 0.59
- 0.40
C 0.99

#1 + 0.77
- 0.45
C 1.22

B.C. }
Scott }
St }

B.C. 0.90
- 0.50
C 1.40

Scott St.

Curb Return
Harbor Drive + Scott

Radius set. (30.07)
Stakes 4' back of Ch. face.

#8 = EC,			
#7			
#6 end of Const.	- 0.31		
	+ 0.18		
9 1/2'	F 0.49		
#5	- 0.38		
	+ 0.10		
9 1/2'	F 0.48		
#4	- 0.52		
	- 0.02		
9 1/2'	F 0.50		
#3	- 0.42		
	- 0.13		X
9 1/2'	F 0.29		
#2	- 0.43		
	- 0.18		X
9 1/2'	F 0.25		
#1 - Prop. B.C.	- 0.48		
	- 0.27		X
9 1/2'	F 0.21		
14 1/2'	- 0.47		
0 + 39 1/2' = BC	- 0.40		X
	F 0.07		

Gloria St.

58

North of Ocean View Blvd.

A-29-54

C.H.S.

13099

Schelin

Pullen

street 10821-L

10822-L

N.O.# 31731

Laterals spotted at 0+10 = #1

0+40 = #2

1+15 = #3

1+65 = #4

end of line

1+67

1+50

1+00

0+50

0+00 = Nly. line

Ocean View.

~~Wrong~~

wrong
office

orders from
do not index

133.32

133.20

132.85

132.50

132.15

Sewer - Ocean View Blvd.
at Gloria Street 4-29-54

C.H.S.
Boyer
Scholin
Pullen

Sheet #10821-L
#10822-L

0+00 = M.H. #3 - sheet 10821-L

INDEXED
JER
MAY 2 1954

2+10.3 = connection to existing line

5.84
132.15
C 3.69

1+90.8 = M.H. #1

6.12
132.01
C 4.11

1+50

7.52
131.73
C 5.79

1+00

8.65
131.38
C 7.27

0+50

8.78
131.03
C 7.75

0+00 = Existing M.H. #3

8.64
130.68
C 7.96

Catoctin Drive

Montezuma to Nly line La Mesa Colony

B.M. = S.W.B.P. Montezuma
& Catoctin EL. = 447.95

60

INDEXED
JER
DEC 6 1954

C.H.S.
Begg sheets 10699-L
Schellin 10700-L
pullon 10700-A-L.
F.B. - 2202-P-17

5-6-54

NO. 32227

14°-25'			1.11	51.60
0+90.38			450.00	449.52
			C 1.11	C 2.09
15°-27.3'			1.20	2.34
0+65.38			449.51	448.92
			C 1.69	C 3.42
16°-29.6'			51.94	51.85
0+40.38		N. 3°	449.02	448.32
			C 2.92	C 3.53
17°-31.8'				
0+15.38				
17°-27'				
0+17.36 = P.R. C. curb. Rk.			448.53	477.77
18°-10'				
0+00				St. 475.11

180-33'
0-9.56 = start ch. on left

8.076
448.00

Rate = 2.4896 ER = 690, Plan 690.5 Calc.

0°-0' set on E.C.

Curve is backed in.

0+00 = ~~C~~ Catoctin + Nly line Montezuma

Catoctin

61

6°-07.2'
2+90.383.23
453.59
F0.364.74
453.67
C1.076°-57'
2+70.382.90
453.35
F0.454.71
453.39
C1.327°-46.8'
2+50.382.81
453.07
F0.264.09
453.11
C0.988°-36.5'
2+30.382.99
452.75
C0.243.49
452.71
C0.789°-26.3'
2+10.382.6
452.40
C0.22.89
452.30
C0.5910°-16.12' (Good)
1+90.38 = (P.O.C.)2.30
451.97
C0.333.24
451.92
C1.3211°-18.4'
1+65.381.70
451.47
C0.232.96
451.32
C1.5412°-20.6'
1+40.381.67
450.98
C0.693.01
450.72
C2.2913°-22.8'
1+15.381.62
450.49
C1.132.92
450.12
C2.30

Catfectin

T.P. □ Ctr. N.E. of Pt. Saranac 62
 & Catfectin EL: 453.60

A+70.38

4.29 454.07 C 0.21	3.78 454.07 F 0.29	4.08 454.15 F 0.07	4.88 454.15 C 0.73
--------------------------	--------------------------	--------------------------	--------------------------

A+50.38

4.02 454.17 F 0.15	3.90 454.17 F 0.27	4.84 454.27 C 0.57	4.80 454.27 C 0.53
--------------------------	--------------------------	--------------------------	--------------------------

18°-10'
A+37.86 = E.C.

3.95 454.22 F 0.27	4.16 454.22 F 0.16	4.71 454.32 C 0.39
--------------------------	--------------------------	--------------------------

1°-08.4'
A+10.38

3.54 454.25 F 0.71	4.70 454.38 C 0.32
--------------------------	--------------------------

1°-58.7'
3+90.38

4.10 454.24 F 0.14	4.71 454.34 C 0.37
--------------------------	--------------------------

2°-48'
3+70.38

3.97 454.18 F 0.21	4.77 454.32 C 0.45
--------------------------	--------------------------

3°-37.8'
3+50.38

3.70 454.10 F 0.40	4.69 454.22 C 0.47
--------------------------	--------------------------

4°-27.5'
3+30.38

3.45 453.97 F 0.52	4.65 454.08 C 0.57
--------------------------	--------------------------

5°-17.4'
3+10.38

3.51 453.79 F 0.28	4.72 453.89 C 0.83
--------------------------	--------------------------

↑

See page 71
 for curbs.
 Here

↓

Catootin

63

8+50		452.02	452.02	
			F 0.36	
8~		3.47 452.29	1.93 452.29	
		C 1.18	F 0.36	2.597.0
7+50		3.59 452.55	2.34 452.55	
		C 1.04	F 0.21	
7~		3.49 452.82	2.43 452.82	
		C 0.67	F 0.39	
6+50		3.48 453.08	2.83 453.08	
		C 0.40	F 0.25	
6~		3.42 453.34	2.92 453.34	
		C 0.08	F 0.42	
5+50.		3.68 453.61	3.35 453.61	
		C 0.07	F 0.26	
Nly 1/4 lot A. Lamosa Colony 5+35.38 = E Saranac. St.		3.70 453.70	3.43 453.70	
		Grade	F 0.27	
cb. B.C. on Rt. A+90.38		4.29 453.96	3.89 453.96	4.19 453.95
		C 0.33	F 0.107	C 0.24 C 0.90

Catoctin

10+00		3.07 451.21 C 1.86	1.05 451.21 F 0.16
9+78.07		3.24 451.33 C 1.91	1.20 451.33 F 0.13
9+28.07		3.08 451.60 C 1.48	1.36 451.60 F 0.24
8+80.07 = E.C. Alley cl			1.48 451.86 F 0.38
2' Rad.			
8+78.07 = B.C. Alley cl			1.48 451.91 F 0.43
8+78.07 Prop. Alley		3.51 451.87 C 1.64	3.08 451.99 C 1.09
8+58.07 Prop.		3.96 451.98 C 1.98	4.06 452.12 C 1.94
8+58.07 = E.C. Alley cl		-	1.58 452.02 F 0.44
Rad = 2'			
8+56.07 = B.C. Alley cl		-	1.58 451.99 F 0.41

Catoctin

14 ~

3.40	8.74
449.05	449.05
C 4.35	F 0.31

13 + 50

51.91	9.08
449.32	449.32
C 2.59	F 0.24

13 ~

0.45	9.24
449.59	449.59
C 0.86	F 0.35

12 + 50

1.28	9.71
449.86	449.86
C 1.42	F 0.15

12 ~

1.07	0.01
450.13	450.13
C 0.74	F 0.12

11 + 50

1.39	0.22
450.40	450.40
C 0.99	F 0.18

11 ~

1.45	50.46
450.67	450.67
C 0.78	F 0.21

10 + 50

2.19	50.70
450.94	450.94
C 1.25	F 0.24

	Catoctin	0.15	4.96
	Med. Existing	3.83	
	#3	453.68	
		3.95	3.95
	#2	3.90	453.80
		00.05	
		4.11	4.11
	Part # I	453.90	453.88
		00.21	
		4.19	
	A+90.38 = B.C.	453.95	
		C 0.24	

S.E. of. Rot Saranac

+Catoctin.

942

942

942

End. of Job.
1A+83.46

8.52^{ob.}
448.45

8.52 EXIST. ob.
448.45

1A+64.35

4.08
448.64

8.32
448.64

C 3.44

F 0.32

F 0.35

1A+44.35

53.99
448.80

8.51
448.80

C 5.19

F 0.29

1A+24.35

3.66
448.92

8.50
448.92

C 4.74

F 0.42

Rosecrans + Pacific Hy.
stake 228' ab. s.wly cor.

C.H.S.
Schelin
Pullen

5-11-54
W.O. 20007

Profile #3061

F.B. 177A P50+P57

#1629-P-47

INDEXED
DEC 6 1954

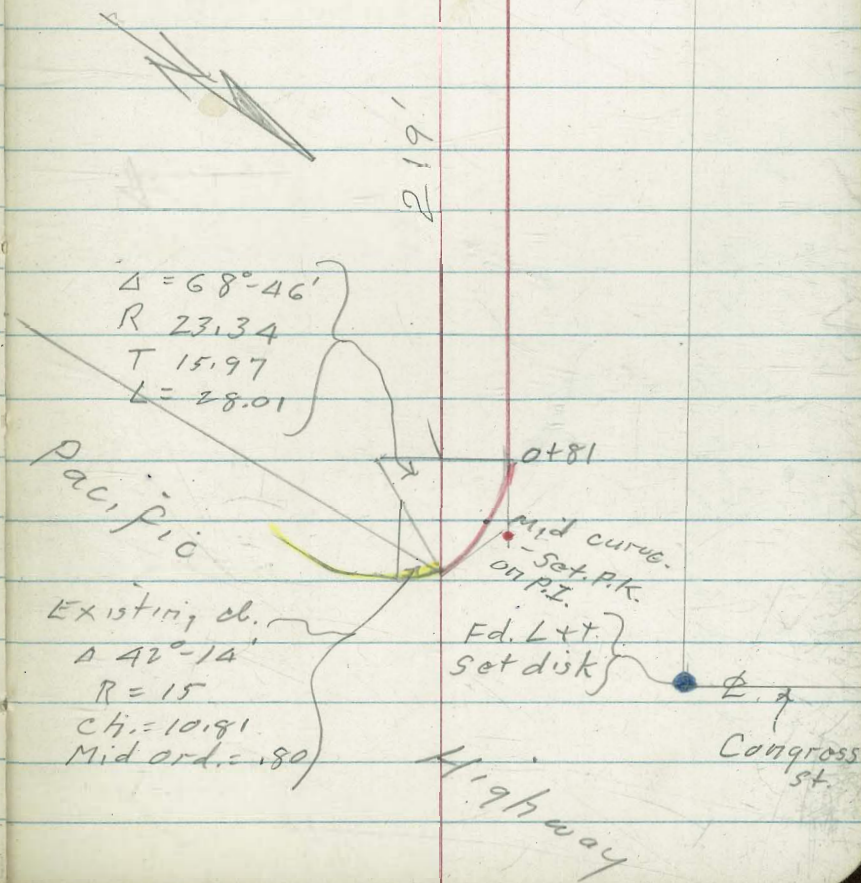
Stakes 3' back of face of curbs
levels - Page 68

B.M. = N.W. B.P. Congress + Rosecrans
EL. = 4.25

street closed

1190
Jefferson st.

Fd pipe
Checks 1190



Sketch page 67

2+06	4.49 4.51 5.13 5.13 F0.64 F0.62
1+81	4.55 5.18 F0.63
1+56	4.74 5.23 F0.49
1+31	4.83 5.28 F0.45
1+06	4.81 5.33 F0.52
0+81 = E.C.	4.90 5.38 F0.48
Mid curve	5.06 5.40 F0.34
Existing curb	5.42 Existing el.

(closed)
wly line Jefferson st.
3+00' 4.94

2+81

4.18	4.21
4.98	4.98
F0.80	F0.77

2+56

4.01	4.04
5.03	5.03
F1.02	F0.99

2+31

4.18	4.20
5.08	5.08
F0.90	F0.88

Sewer laterals
Catoctin Dr.

6/1/54

by number only - See 10699-L

10700 L
10700A-L

Lat. #	Grade	
# 7	55.00 449.30 C 5.70	
# 6	54.90 449.20 C 5.70	
# 5	54.60 448.30 C 6.30	T.P. 51.20
# 4	53.53 447.40 C 6.13	
# 3	446.30	omit
# 2	52.28 445.10 C 7.18	
# 1	50.70 444.80 C 5.90	

69

Lat. #	Grade	
# 15	53.14 446.60 C 6.54	
# 14	444.90	omit
# 13	51.50 Moved 445.10 C 6.40	444.8
# 12		445.90 omit
# 11	52.58 447.00 C 5.58	
# 10		449.00 omit
# 9	53.74 449.30 C 4.44	
# 8	51.66 449.20 C 5.16	

Catoctin

Sewer Lots

70

Lot. #

Grade.

#22

8.40
443.50
C 4.90

#21

49.02
444.00
C 5.02

#20

444.10

omit

#19

444.50

omit

#18

51.04
445.00

C 6.94 - Method 5.94

#17

445.80

omit

#16

53.08
446.40
C 6.68

Catoctin Drive
Curb Stakes 6/9/54
on Curve

A47.95 ^{20.P.}
S.W. Corner
Catoctin East

Rt.
West

71

Stationing	Rate = 2.4%	Rate = 2%	Stationing	Rate = 2.4%	Rate = 2%
Running Sly E.C. = 0400	10699-L 20400		3+07 ^E	50.14 450.48 F0.34	51.67 450.77 C0.90
on ϕ Stationing	Lt. = East	Rt. = West			
ϕ Rate = 2.4911 ^{1 in. foot}	Rate = 2.4%	Rate = 2%	2+87 ^E	51.30 450.96 C0.34	51.83 451.17 C0.66
X ON DRIVE					
1+27 ^E	53.32 453.89 F0.57	53.70 453.79 F0.09	2+67 ^E	52.87 451.44 C-1.43	51.84 451.57 C-0.27
1+07 ^E	54.36 454.08 C-0.28	53.45 453.97 F0.52	2+47 ^E	53.25 451.92 C-1.33	52.30 451.97 C-0.33
0+87 ^E	53.62 454.22 F0.60	53.75 454.10 F0.35	2+27 ^E	51.64 452.30 F0.66	2.56 452.40 C0.16
0+67.5 ^E	54.29 454.32 F0.03	53.81 454.18 F0.37	2+07 ^E (GP)	53.48 452.71 C0.77	2.84 452.75 C0.09
0+47.5 ^E	54.13 454.34 F0.21	54.12 454.24 F0.12	1+87 ^E	3.84 453.11 C-0.73	2.87 453.07 F0.20
0+27.48	53.94 454.38 F0.44	3.34 ^{(13' bk} 454.25 ^{Co. 05} F0.91	1+67 ^E	53.36 453.39 F0.03	2.95 453.35 F0.40
0+00 = E.C.	4.16 454.32 F0.16	53.75 454.22 F-0.47	1+47 ^E	53.73 453.67 C0.06	3.18 453.59 F0.41

447.95

Lt. East

Rt. West

N.E. Rot. Catoctin
+ Montezuma

72

West. (-RP)
End. cl. on

(448.08)

A+46⁶⁷

48.88
448.00
(c 0.88) (c 0.80)

+6.48'

777

A+27⁵

882
448.37
c 0.45

6.94

483
21

(E L)
P.R.C. on East

A+20⁴⁷

447.67
447.77
F 0.10

+0.32' diff.

Existing do

Existing
E.L.

A+07⁵

49.94
448.08
c-1.86

49.61
448.77
c 0.84

E.C. #1

448.94

446.94

6.94

3+87⁵

49.54
448.56
c 0.98

50.33
449.17
c-1.16

#3

447.30

7.15

447.15

c 0.15

3+67⁵

49.94
449.04
c-0.90

51.26
449.57
c-1.69

#2

447.45

7.36

447.36

c 0.09

3+47⁵

50.12
449.57
c-0.60

51.05 (TP)
449.97
c-1.08

part #1

447.14

7.57

447.57

F 0.43

3+27⁵

450.00
450.00
Grade

50.32
450.37
F 0.05

B.C. 4+20 47.

7.67

447.77

F 0.10

F 0.10

Storm Drain

La Jolla Shores Drive thru Paseo Grande

Lots 11+12 BIK. 19 La Jolla Shores Unit #1

6-1A-5A

wo # 21166

C.H.S.
Boyer
Schellin
Pulley

sheet 2261-D

F.B. 2244 - P1 + P21

Proposed street.
Drain - west of (El Paseo Grande)

INDEXED
JER
DEC - 6 1954

stakes 10' left (North)

Exist. drain. outlet.
0+62 = make connection to

1.46
+ 1.46 - meet

0+37

2.45
+ 0.50
C 1.95

0+00 = outlet - See 2261-D

- 0.10
- 0.46
C 0.36

sheet 261-D

Portion of drain between
La Jolla Mesa Drive + El Paseo Grande
Stakes 10' Left (= North)

1+50

C 0.34

7.68
18.48
F 0.80

1+25

C 0.31

7.65
17.99
F 0.34

1+00

C 0.82

7.30
17.50
F 0.20

0+75

C 0.78

7.13
17.01
C 0.12

0+50

C 1.04

8.84
16.52
C 2.32

0+25

C 1.70

C.55 6.55
16.03 Make 15.83
C 0.52 Make C.0.72

at El. Paseo Grande

0+00 = intake existing drain

5.92
15.54
0.38 High

2+97¹

21.35 meet.

2+75

9.53

F0.47

2.33
20.93
C 1.40

2+50

8.88

F 1.12

0.96
20.44
C 0.52

2+25

9.68

F0.32

9.72
19.95
F 0.23

2+00

C 0.20

8.58
19.46
F 0.88

1+75

C 0.02

8.10
18.97
F 0.87

Sidewalk
wly side of Jewell
North of Hornblend

W.O. 20007
6-22-54

sheet # 11293-L

Rise of walk = $\frac{1}{4}$ " per foot.

B.M. = N.E. B.P. Reed & Jewell, E.I. = 58.43

stakes 10' back of curb

B.M.	58.43
	<u>4.72</u>
	63.15
	<u>11.88</u>
	51.27
	<u>0.87</u>
	52.14
	<u>6.15</u>
	45.99
	<u>8.21</u>
	54.20
	<u>0.30</u>
	53.90
	<u>11.15</u>
	65.05
	<u>3.79</u>
	61.26 = T.B.M.

Set direct
El. Red. here.

Alley
1+24.45

Rake thru
to Garret

0+68⁵

Brk. 0+49⁴⁵

Brk. 0+29⁴⁵

E.I. 0+10

0+00

Existing
cl. + walk

Hornblend

wly of line
Jewell

Plan
Grade
Ely.
Edge
walk

walk
or
headers
as laid
grade

76

Curb

walk
nearest meet Exist

3.83

Set at 63.32 to
C.O. 51

F014
(0.1A low)

45' 11"
Existing walk

45' 11"
Headers in place

3.83		
63.42	63.21	63.20
C.O. 41	3.42	F0.21
2.60		
62.82	62.53	62.60
10.22		
1.70		
61.92	61.83	61.70
F0.22		

Stake Portion of
Cabrillo - south of Pearl.

C.H.S. 7-2-54
Begg W.O. 20005
Schelin

0+00 = sly line Pearl.

F.B. 1808 - P 48

Profile # 2642

stakes on Prop. line

" Set to Prop grade

B.M. = N.W. Lt. Cabrillo + Pearl. E.L. = 155.01

2+00 B.M.

1+87^E Fd 3/4" pipe. Cannot read #

1+70 B.M.

1+00 Fd. pipe R.E. 32 0.07 North
stake. used same as

0+50

0+00 = sly Pearl.

stakes on Prop.

Ely. Side - Cabrillo

Prop. grade

Curb Grade

158.80	41.67
—	158.87
—	C 2.80
158.76	9.72
—	158.83
—	C 0.89
158.50	61.11
—	158.57
—	C 2.54
157.88	61.44
—	158.95
—	C 2.49
157.44	62.31
—	157.51
—	C 4.80
157.00	

Check grade

W.O. #31738

Plum & Newell

7/12/54

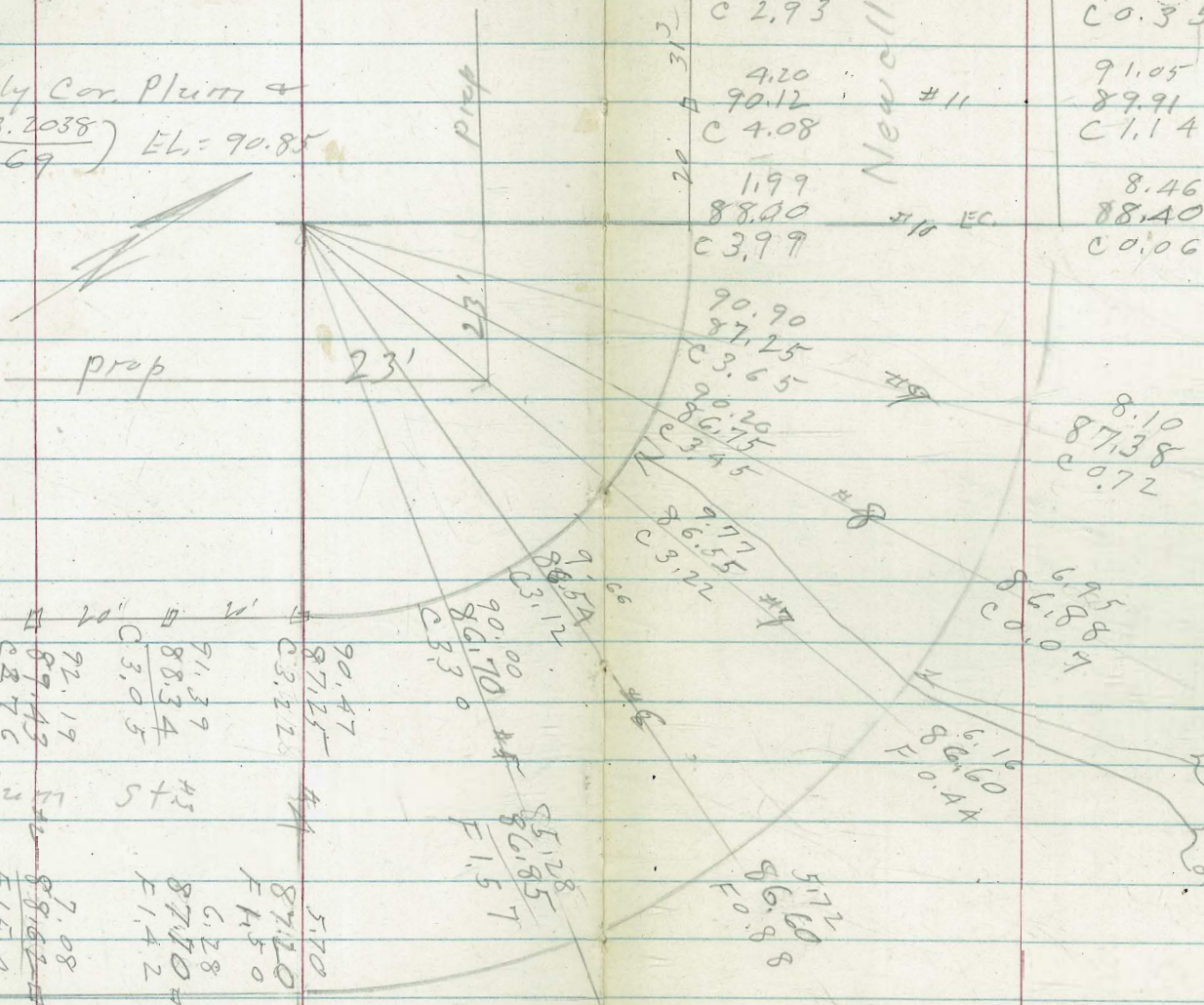
78

C.H.S.
Bey
Pullen
Schelin

Sheet #111AG-L

B.M. = Mon. Wly Cor. Plum &

Newell (FB. 2038) EL. = 90.85



100.08	#13	9.22
98.28		97.89
C 1.80		C 1.33
7.13		4.25
94.20	#12	93.90
C 2.93		C 0.35
4.20		91.05
90.12	#11	89.91
C 4.08		C 1.14
1.99		8.46
88.00	#10 EC	88.40
C 3.99		C 0.06

90.90		8.10
87.25		87.38
C 3.65		C 0.72
90.20		
86.75		
C 3.45		
91.77		
86.55		
C 3.22		
90.54		
86.16		
C 3.12		
90.00		
86.16		
C 3.30		

90.85		90.47		90.47
87.12		87.12		87.12
C 3.33		C 3.33		C 3.33
90.00		90.00		90.00
86.17		86.17		86.17
C 3.33		C 3.33		C 3.33
91.33		91.33		91.33
88.34		88.34		88.34
C 3.05		C 3.05		C 3.05
92.19		92.19		92.19
87.43		87.43		87.43
C 2.76		C 2.76		C 2.76
91.45		91.45		91.45
C 2.63		C 2.63		C 2.63
91.46		91.46		91.46
C 2.63		C 2.63		C 2.63
90.52		90.52		90.52
C 0.94		C 0.94		C 0.94

4' + back of cl. line

BIK. 75-0.13

Reset Tie Points 12/2/54

C.H.S.

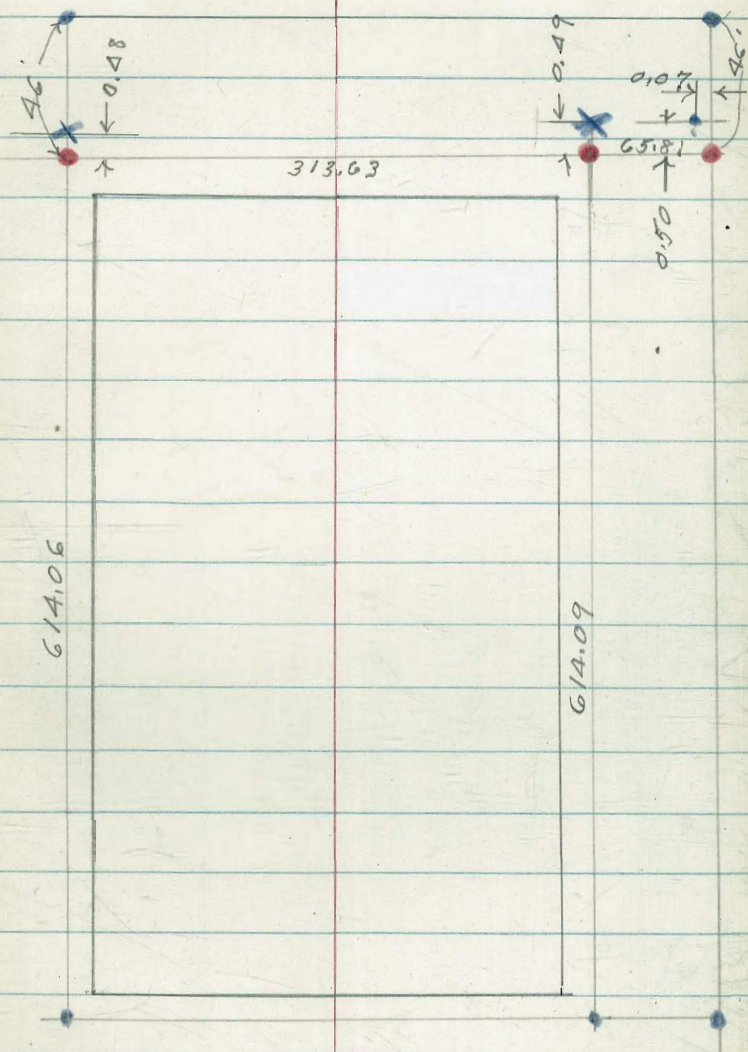
13099

Schelin

Pullen

Blue denotes points as shown
on work sheet • = L+T or disk
x = cross

Red denotes points set. = • disk



C.H.

Beq

Sch

Pu

Bl

R

7/65

1,0093

46

35

18

.99

27

-0.01

-0.19

158

1290

449

200

51.26

2220-P68

71
145
216
108

1925
769
2693
628
2065

56.95
4.89
6184
109
6016

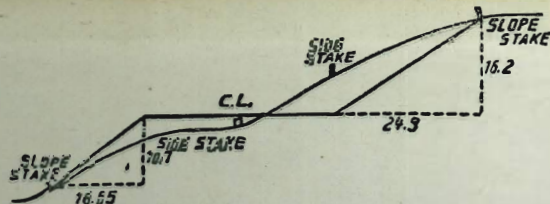
3012
29.86
26

1042
8
24

104
40
64

989
67

109
40
69



DISTANCES FROM SIDE STAKES FOR CROSS-SECTIONING.

SLOPE 1 1/2 TO 1. ROADWAY OF ANY WIDTH.

	0	.1	.2	.3	.4	.5	.6	.7	.8	.9	
0	0.00	0.15	0.30	0.45	0.60	0.75	0.90	1.05	1.20	1.35	0
1	1.50	1.65	1.80	1.95	2.10	2.25	2.40	2.55	2.70	2.85	1
2	3.00	3.15	3.30	3.45	3.60	3.75	3.90	4.05	4.20	4.35	2
3	4.50	4.65	4.80	4.95	5.10	5.25	5.40	5.55	5.70	5.85	3
4	6.00	6.15	6.30	6.45	6.60	6.75	6.90	7.05	7.20	7.35	4
5	7.50	7.65	7.80	7.95	8.10	8.25	8.40	8.55	8.70	8.85	5
6	9.00	9.15	9.30	9.45	9.60	9.75	9.90	10.05	10.20	10.35	6
7	10.50	10.65	10.80	10.95	11.10	11.25	11.40	11.55	11.70	11.85	7
8	12.00	12.15	12.30	12.45	12.60	12.75	12.90	13.05	13.20	13.35	8
9	13.50	13.65	13.80	13.95	14.10	14.25	14.40	14.55	14.70	14.85	9
10	15.00	15.15	15.30	15.45	15.60	15.75	15.90	16.05	16.20	16.35	10
11	16.50	16.65	16.80	16.95	17.10	17.25	17.40	17.55	17.70	17.85	11
12	18.00	18.15	18.30	18.45	18.60	18.75	18.90	19.05	19.20	19.35	12
13	19.50	19.65	19.80	19.95	20.10	20.25	20.40	20.55	20.70	20.85	13
14	21.00	21.15	21.30	21.45	21.60	21.75	21.90	22.05	22.20	22.35	14
15	22.50	22.65	22.80	22.95	23.10	23.25	23.40	23.55	23.70	23.85	15
16	24.00	24.15	24.30	24.45	24.60	24.75	24.90	25.05	25.20	25.35	16
17	25.50	25.65	25.80	25.95	26.10	26.25	26.40	26.55	26.70	26.85	17
18	27.00	27.15	27.30	27.45	27.60	27.75	27.90	28.05	28.20	28.35	18
19	28.50	28.65	28.80	28.95	29.10	29.25	29.40	29.55	29.70	29.85	19
20	30.00	30.15	30.30	30.45	30.60	30.75	30.90	31.05	31.20	31.35	20
21	31.50	31.65	31.80	31.95	32.10	32.25	32.40	32.55	32.70	32.85	21
22	33.00	33.15	33.30	33.45	33.60	33.75	33.90	34.05	34.20	34.35	22
23	34.50	34.65	34.80	34.95	35.10	35.25	35.40	35.55	35.70	35.85	23
24	36.00	36.15	36.30	36.45	36.60	36.75	36.90	37.05	37.20	37.35	24
25	37.50	37.65	37.80	37.95	38.10	38.25	38.40	38.55	38.70	38.85	25
26	39.00	39.15	39.30	39.45	39.60	39.75	39.90	40.05	40.20	40.35	26
27	40.50	40.65	40.80	40.95	41.10	41.25	41.40	41.55	41.70	41.85	27
28	42.00	42.15	42.30	42.45	42.60	42.75	42.90	43.05	43.20	43.35	28
29	43.50	43.65	43.80	43.95	44.10	44.25	44.40	44.55	44.70	44.85	29
30	45.00	45.15	45.30	45.45	45.60	45.75	45.90	46.05	46.20	46.35	30
31	46.50	46.65	46.80	46.95	47.10	47.25	47.40	47.55	47.70	47.85	31
32	48.00	48.15	48.30	48.45	48.60	48.75	48.90	49.05	49.20	49.35	32
33	49.50	49.65	49.80	49.95	50.10	50.25	50.40	50.55	50.70	50.85	33
34	51.00	51.15	51.30	51.45	51.60	51.75	51.90	52.05	52.20	52.35	34
35	52.50	52.65	52.80	52.95	53.10	53.25	53.40	53.55	53.70	53.85	35
36	54.00	54.15	54.30	54.45	54.60	54.75	54.90	55.05	55.20	55.35	36
37	55.50	55.65	55.80	55.95	56.10	56.25	56.40	56.55	56.70	56.85	37
38	57.00	57.15	57.30	57.45	57.60	57.75	57.90	58.05	58.20	58.35	38
39	58.50	58.65	58.80	58.95	59.10	59.25	59.40	59.55	59.70	59.85	39
40	60.00	60.15	60.30	60.45	60.60	60.75	60.90	61.05	61.20	61.35	40
41	61.50	61.65	61.80	61.95	62.10	62.25	62.40	62.55	62.70	62.85	41
42	63.00	63.15	63.30	63.45	63.60	63.75	63.90	64.05	64.20	64.35	42
43	64.50	64.65	64.80	64.95	65.10	65.25	65.40	65.55	65.70	65.85	43
44	66.00	66.15	66.30	66.45	66.60	66.75	66.90	67.05	67.20	67.35	44
45	67.50	67.65	67.80	67.95	68.10	68.25	68.40	68.55	68.70	68.85	45
46	69.00	69.15	69.30	69.45	69.60	69.75	69.90	70.05	70.20	70.35	46
47	70.50	70.65	70.80	70.95	71.10	71.25	71.40	71.55	71.70	71.85	47
48	72.00	72.15	72.30	72.45	72.60	72.75	72.90	73.05	73.20	73.35	48
49	73.50	73.65	73.80	73.95	74.10	74.25	74.40	74.55	74.70	74.85	49
50	75.00	75.15	75.30	75.45	75.60	75.75	75.90	76.05	76.20	76.35	50

THE NATIONAL BLANK BOOK COMPANY
 HOLYOKE MASSACHUSETTS
 NEW YORK CHICAGO BOSTON SAN FRANCISCO