

BALBOA - VISTA

PAGES	INDEX	DATE
1-25	BALBOA VISTA SUB-BDY PAVING GRADES LAUREL-54TH & ELY LINE	4-9-59
26-28	LOCATION & GRADES COLV'S NOS. 1-2-23, LAUREL ST.	4-9-59
29-30	GRADES - ALLEY BLK. J	4- -59
31-35	GRADES - ALLEY BLK. I & LOLLY CIRCLE	4- -59
36-46	PAVING GRADES BLACKTON DRIVE	4-16-59
47-60	PAVING GRADES 55TH ST.	4-20-59
61-67	PAVING GRADES BILOXI ST.	4- -59
68-72	PAVING GRADES - ALLEY BLK. A	6-22-59
73-76	GRADES ALLEY BLK. H	
	(FOR CONT'D GRADES BALBOA VISTA SEE G-324)	
77	EXTENSION 30" STORM DRAIN 32ND ST. NLY. OF REDWOOD	7-20-59

Ref. Map 5 3006-2142

F.B. 2165 - G-323

Dir 95 10715-42L (D)

7-16-54

Stamper
Sisson
Nordahl

±

PAVING GRADES BALBOA VISTA ET. AL.

54-TH & LAUREL; THENCE NELY NO. 31973

S.E. Curb Ret Laurel & 54-th.

40'- Roadway Curb to Curb

NOTE: 9

0+00 = 66.25' Nely of 54-th St. along 54-th & Laurel St.

Laurel St.

E.C. = 0+00 ± 4 = 67° 58' = 66.25' NELY

of 54th St.

16.92'

P.O.C. 50° 30' 10"

16.92'

P.O.C. 33° 02' 07" End Cb Inlet

P.C. 8' 30" 10"

P.O.C. 24° 46' 36" (55.25 out from Ctr & Inlet

8'

P.O.C. 16° 31' 04" Begin Cb Inlet

P.C. 16.00

R = 55.50 ± = 67.58

B.C. S.E. Cb Ret $\frac{1}{2}$ = 65.84 $\frac{1}{2}$ = 30.9706 x 2 = 61.9412

5.78 Tan.

R ± = 69° 35'

B.C. Curb Prod to E.C. L = 72.87

B.M.

269.09

Top S.E. F.H. Laurel & 54-th. 2165
16

Gut

Curb

Rough
Curb

C.O. 38

F.O. 80

68.27

8.09

268.89

268.89

1" BE

F.O. 25

68.13

267.88

268.38

268.38

C.O. 52"

F.O. 29

7.64

67.71

267.12

267.95

267.95

263.20

266.95

267.78

267.78

Outlet

Inlet

8" Pipe

F.O. 25

67.30

266.72

267.55

267.55

F.O. 41

C.O. 03

66.74

7.18

266.65

267.15

267.15

LAUREL ST. FROM 54-TH ST. N.E.L.Y.

N.E. CURB Ref. 54-TH & Laurel

O+24.35

Curb

Curb

Gut

±

CO¹⁵

9.35
269.20

269.70

Laurel s F

E.C. = O+23.58 $\Delta = 110^\circ 25'$

FO²⁵

C 2.20^v

269.50

269.75

69.75
270.00

2.20
270.00

269.50

269.75

269.50

O.K. v

268.44 + O-23.10

15.22' 11"

FO.78

68.82
269.60

269.60

268.77

P.O.C. $83^\circ 48' 40''$

268.30 + O-38.03

B

P.O.C. $69^\circ 49' 41''$

~~269.57~~ 268.74

B'

P.O.C. $55^\circ 50' 42''$

FO.91

68.69
269.60

C 2.64^v

269.60

C 3.47^v

72.24
268.77

15.98' 16"

FO⁰³

69.93
269.96

269.46

P.O.C. $27^\circ 54' 50''$

15.97

$\Delta = 110^\circ 25'$ P.L.R. = 25

FO¹⁰

70.23
270.33

C 1.80^v

213
270.33

269.83

B.C. Lt. $\Delta = 63.17'$ Ch. R. = 32.78 $\Delta = 110^\circ 25'$

+ 2.08' Tan $\Delta = 52.4365 \times 2 = 104.87315$

B.C.

DW95 10715-42 L 27

rt.

(3)

F.8.2165 Gut

Curb

Cb
2009A

Gut

cb

LAUREL ST. FROM 54-TH NE 1/4

C 151 C 168

E.C. +9.32 = N.W. PL. Alley Bk T

7438 7438
272.87 272.70

F 0.16

E.C. 2' Cb Ref. N.W.

7242
272.58

C 2.56^v F 0.07

1410.06 R=2' f=69°09'05"
B.C. N.W. Curb Ref Alley Bk T

5.05 7242
272.49 272.49
cb -

E.C. +8' S.W. = P.L. Alley Bk J

F 0.22

71.32
271.40 271.54
Gut

E.C. 2' Cb Ref.

F 0.05

71.33
270.88 271.38
Gut
E14

* = 90° R = 2'
0+90.43 B.C. S.W. Curb Ref. Alley Bk J

C 2.41^v C 0.04

4.22 71.85
271.81 271.81 271 66

71.33 0.69
271.28 271.28
cb
N14

16.60

C 2.10^v C 0.05

0+73.83

3.40 71.35
271.30 271.30 271 05

F 0.03 F 0.81^v
70.77 0.19
270.80 270.80
cb

0+48.70

50.25

C 0.41

F 0.14

0+23.58

71.06
270.65

70.04 269.68
270.15 269.50

LAUREL ST. FROM 75A-TH. N ELY

B.C. + B' = NE PL. Alley Bk T & Laurel

B.C. N.E. Ch Ret. Alley Bk T

1 + 38.65 * = 110° 50' 55"

~~1 + 24.14~~ E.C. N.E. Ch Ret. Alley Bk T

(see Sheet 21)

B.C. + 9.32 = S.E. PL. Alley Bk J

B.C. S.E. Ch Ret. Alley Bk J

L = 2 * = 69° 11'

1 + 19.02 = E.C. S.E. Ch Ret. Alley Bk J

cb 24: 4 24. ④
Gut 4-9-54 Gut cb.

FO 18 CO 32
7370 70
273.88 273.38

FO 15
7357
273.72

CO 21 ✓ FO 24
4.02 73.57
273.81 273.81
cb

CO 10
7243
271.82 272.33
W14

FO 03
~~CO 47~~
7223
272.26
W14

FO 12 CI 37
7223 3.72
272.35 272.35
cb. N14
N14

lt. 4-8-54

rt. ⑤

LAUREL ST, NELY FROM 54-TH.

S.W. Ref. Laurel & Blackton

E.C. Blackton 110° 49'

Rough
Curb Curb

Rough
Curb Curb

F0.39
~~6.61~~
8132 80.92
281.31 281.31

18.19

3/4 P.O.C. SW. Ref. 82° 15' 10"

C0.23 C0.33
80.75 80.85
280.52 280.52

18.18

1/2 P.O.C. SW. Ref 53° 41' 56"

F0.03 C1.02
79.57 80.62
279.60 279.60

18.19

1/4 P.O.C. SW. Ref 25° 07' 47"

F0.68 C1.58
78.93 80.19
278.61 278.61

T.P. 277.67

16'

B.C. Ref. Rt.

2+17.14

S.W. Ref.

$d = 47.1182 \times 2 = 94.2364$

$\angle = 110^\circ 49'$

Cb R = 36.48' SW Cb. Ref. Laurel

L = 70.56' & Blackton

C0.01

C1.65^v

F0.30

F0.51

~~C1.15~~

~~C1.45~~

9.62

77.67

77.23

8.89

277.97

277.97

277.81

277.74

~~277.44~~

~~277.74~~

C0.16

276.9164

lt 63.31 2700 / +85.48

76.26^{RT}
276.25 276.81

C1.56^v

F0.09

76.04

275.88

C1.69^v

6.08

74.43^v

F0.01

5.71

274.52

274.52

274.27

274.02

274.02

1+53.83 P.O.T.

15.18

Set P.K.

PP. 584 558-H

T.B.M. Sta 1+50±

514 Line Laurel

276.12

LAUREL ST. NEW FROM 54-TH.

N.W. Ref. Laurel & Blackton

NOTE: See Pg. 9 for Curve Data

2+92.28 B.C. Lt.

+ 33.46'

E.C. Cb. Ref. N.W. $69^{\circ}11'$

15.33

^{2/3} P.O.C. N.W. Ref. $46^{\circ}07'$

15.32.

^{1/3} P.O.C. N.W. Ref. $23^{\circ}03'56''$

15.33

B.C. Cb. Ref. Lt. $A=69^{\circ}11'$ $L=45.98'$
 $2+58.82$ Cb. $R=38.08'$ $d=45.1384 \times 2 = 90.2768$

41.68'

2+38.

Lt.

C

Rt.

(6)

Rough

Corb

Corb Corb

1.50 FO¹¹
4.32 82.71
282.82 282.82

1.79¹³ CO¹³
3.74 82.08
281.95 281.95

1.84⁰⁸ FO⁰⁸
82.94 81.02
281.10 281.10

1.91⁶³ FO⁶³
2.14 79.60
280.23 280.23

279.80 cut.

FO²³
78.87
279.10

279.62

LAUREL ST. NELY FROM 54-TH.

S.E. Ch. Ret. Laurel & Blackton

Blackton

B.C. S.E. Ret. $59^{\circ}02'55''$

22.03

2/3

P.O.C. S.E. Ret. $39^{\circ}21'42''$

22.02

1/3

P.O.C. S.E. Ret. $19^{\circ}41'07''$

22.03

T.B.M. 3+40.31 & Rod. Ch. Ret. 288.68

S.E. Ret. $\angle = 59^{\circ}02'55''$ $d = 26.80713 \times 2 = 53.61426$

3+40.31 = P.C.C. Ch. R = 64.12 $L = 66.08$

TP

285.52

Corb

24

4

24

7

Corb

Rough

Corb

Grade C 2.57

81.96 4.53

281.96 281.96

Grade C 2.85

82.10 4.95

282.10 282.10

FD. 15 C 2.58

82.92 5.65

283.07 283.07

C.O. 23 C 1.86

84.38 6.01

284.15 284.15

7-23-54

⑧

LAUREL ST. NELY FROM 54-TH
NE Cb. Ref Laurel & Blackton

Rough
Curb Curb

130° 08'
P.C. N.E. Ref. Laurel & Blackton

Grade
85.40
285.40 285.40

19.78.

130° 08' 43"

C.O.²⁹

1/3
P.O.C. N.E. Ref. 86° 45' 48"

85.34
285.10 285.10

19.79.

2/3
P.O.C. N.E. Ref. 43° 22' 54"

C.O.⁰¹
85.81
285.80 285.80

19.78

P.C.G. Laurel + NE Ref. $\Delta = 130^\circ 08' 42''$ $L = 59.35$
3 + 83.38 Blackton. Cb. R. = 26.13'
 $d = 65.7816 \times 2 = 131.5632$

1.62 C.O.⁰⁶
8.62 87.06
287.00 287.00

LAUREL ST. NELY. FROM 54-TH.

P.R.C. (see Pg. 11)
 5+19.16 24° 04' 22"
 Top Hub
 T.P. Sta 4+92.22 Lt. 299.73
 26.94 C=26.92'
 S.W. cb. Ret. (see Pg. 10) Laurel H
 4+92.22 21° 12' 52" Alley-H
 93.00 21° 17' 49" S° pl 34"
 4+68.79 0.96 out on chord 3' 88" cb. Lt.
 48.37 48.36'
 C=47.31
 S.W. cb. Ret. Alley Blk H. (see Pg. 10) S.W. cb. Ret. Laurel
 4+44.85 16° 11' 18" & Blackton
 .584 (1.90) 09' 34"
 4+13.48 out 1.58 on chord 3' 1/2" cb. on Lt. Ret.
 6.147 " 1.20 07' " Ret.
 C=61.34 6° 29' 36"
 20 NE. cb. Ret. Laurel
 3+83.38 9° 39' 58" & Blackton
 3+61.84 Lt. 0.93' out on chord on Ret. 4° 34' 12"
 43.07 C=43.02 SE. cb. Ret. Laurel
 3+40.31 5° 05' 46" & Blackton
 48.03' C=47.97'
 B.C. Lt. 4 = 48° 08' 40" L = 226.88'
 2+92.28 & R = 270' T = 120.62'
 d = 6.3662/ft.
 33.46' T.P.
 2758.82 285.42

Lt. Rt. (9)
 Curb Rough Curb Curb
 CO.56 FO¹⁵ C1.75
 496 94.25 563
 294.40 294.40 294.15 293.90 293.90
 CO.79 C0.04 T.P. C225
 3.72 92.97 473
 292.93 292.23 292.69 292.48 292.48
 C0.05 91.69
 291.64
 C1.32 FO²⁰ C1.87
 167 F 0.03 9.65 917.2
 290.35 290.32 290.11 289.85 289.85
 C0.28 FO¹⁸
 88.95 87.99
 288.67 288.17
 C0.06 C0.23 C1.80
 87.06 86.53 8.30
 287.00 287.00 286.76 286.50 286.50
 C0.22
 85.54
 285.32
 281.54 281.79

Stamper
Huffman
Begg
Nordahl

7-28-54 Curb.

Cb
Rough

LAUREL ST. NELY FROM 54-TH.

SE. Cb. Ret Laurel & Alley Blk. H.

P.O.C. SE Ret & Sly Pl Laurel $67^{\circ}44'02''$
& Alley Blk. H

9.19

FO⁹⁵

91.02

291.97

291.97

P.O.C. SE Ret $33^{\circ}52'01''$

9.19

FO.96

1.12

292.08

292.08

E.C. SE Cb Ret Laurel & Cb. R=15.55 Cb. L=18.38

4+92.22 Alley Blk. H Cb A= $67^{\circ}44'02''$

93.00

FO⁹⁹

91.49

292.48

C0.56

92.98

292.48

SW. Curb Ret Laurel & Alley Blk. H.

P.O.C. & Pl. Sly Laurel $67^{\circ}44'02''$

9.19

FO.31

90.44

290.75

290.75

P.O.C. SW. Ret. $33^{\circ}52'01''$

9.19

FO³⁸

89.97

290.35

290.35

B.C. Ret SW. Cb Ret Alley Blk. H Cb R=15.55 Cb. L=18.38

4+44.85 & Laurel Cb A= $67^{\circ}44'02''$

58

Pl. R=10'

P.L. A= $143^{\circ}45'25''$

290.35

FO²⁰

91.72

289.85

C1.87

91.72

289.85

Corb
Rough

Corb.

Rough
Corb Corb

LAUREL ST. NEWY FROM 54-74.

(Plan Sheet 18)

(See Pg 12)

cb4 = 67°03'40" cbR = 15.86

E.C.N.E. Ret. Alley B/B

6+46.47 P.D.C. A = 12°09'26" Set. 0.39 wly

49.35' C = 49.29' 0.94' Rt. 3' Bk R = 277

N.W. Ret Laurel & Alley B/B

Alley B/B

E.C. S.W. Ret

67°03'40"

9.28

P.D.C. S.W. Ret.

33°31'50"

9.20

B.C. NW. Ch Ret Alley B/B, cb4 = 67°03'40"

5+97.12 & Laurel/Poc. cbR = 15.86 Set. 0.39 wly

5+73.56 A 7°26'41"

0.86 Rt.

47.12 C = 47.07 1.00' Lt.

5+50 P.D.C. A = 2°56'42"

30.84' C = 30.83'

P.R.C. Rt. A = 54°42'40" L = 286.47

5+19.16 R = 300' T = 155.21 d = 5.7296

C1.39^v
272
301.33

C0.04
0137
301.33
cb

301.09

FD.01
0083
300.84
300.84

C2.90
374
300.84

F1.11
9846
299.57

299.57

C0.54⁰²

0.94' out, 99.53
6+21.79
et.
99.51
0.94' out from chord.

FD.03
836
299.09

299.09

C1.06^v
970
298.64

FD.11
9793
298.64

298 40

C0.02
9817
298.15
298.15

FD.08
9718
297.26

C0.78
667
295.89

FD.14
9575
295.89

295 83

FD.03
9688
296.91
FD.09
9554
295.58
C1.62^v
720
295.58

FD.47
9343
293.90
293.90

294.40

294.40 294 15

LAUREL ST. NELY FROM 54-TH.

55-TH.
E.C. S.W. Ch. Ret. 4 126° 52' 10"

20.07

P.O.C. S.W. Ret. 95° 09' 07"

20.07

4 = 19° 19' 37" 7 + 19.79 Chord

P.O.C. SW Ret.

63° 26' 05"

20.07 1/2

P.O.C. SW Ret.

31° 43' 02"

20.06' 1/4

Chord = 36.25' 4 = 126° 52' 10" Ch. L = 80.27

P.O.C. S.W. Ch. Ret. Laurel 4 55-76

6 + 87.19 & P.O.C. 16° 02' 44"

40.72' C = 40.68'

Laurel + Alley BIRB

P.O.C. N.E. Ret. 4 N.H. P.L. 67° 03' 40"

9.28

Alley BIRB

P.O.C. N.E. Ret.

33° 51' 50"

9.28

T.P.

301.98

T.B.M. Top P.L. Hub & Curve

303.48

Curve

Lt

Rt

Curve

Curve

Rough

FO 08

0640
306.48

CO 41

306.89
306.48

CO 01

05.97
305.96

CO 56

306.52
305.96

FO 18

05.13
305.31

Lt Ch

FO 13

05.12
305.25

CO 52

305.77
305.25

FO 58

03.70
304.28

CO 14

305.42
304.28

CI 37

FO 07

4.92
303.55

0348
303.55

303 31

FO 07

02.98
303.05

CO 173

478
303.05

Grade

00.81
300.81

CO 01

02.45
302.44

CO 01

01.95
301.94

FO 03

01.10
301.13

300.73
CUT

Rt.
0.64 Cut from Chord

LAUREL ST. NELY FROM 50-TH.

Curb
Rough

Curb
Rough

E.C.
8+05.63 ± $\angle = 27^{\circ} 21' 20''$

60.50
0.50
310.00
cut.

310.00 309.97 309.50 309.50

53.38' C = 53.31'

N.W. Curb Ret Laure / 4 55-TH.

FO.36
08.37
308.73

E.C. N.W. Cb. Ret. 55-TH $65^{\circ} 33' 22''$

10.98

FO 33
08.13
308.48

$\frac{3}{4}$ P.O.C. N.W. $49^{\circ} 10'$

10.99

FO 29
07.80
308.09

$\frac{1}{2}$ P.O.C. N.W. $32^{\circ} 46' 41''$

10.99

FO 28
07.34
307.62

$\frac{1}{4}$ P.O.C. N.W. $16^{\circ} 23' 20''$

10.99

FO 32
60.62
7.70
307.08 307.08 306.86

cb = 43.95'
C.P. = 38.41' $\angle = 65^{\circ} 33' 22''$
P.O.C. N.W. Ret. 55-TH & Laurel

7+52.25 P.O.C. $\angle = 22^{\circ} 15' 31''$

65.06 C = 64.95' O.K.

LAUREL ST. NEW FROM 54-TH.

T.B.M. 5.6.1 (100) 305.79

PRN^o P. 273047
NW Cor Laurel +
Blackton

Laurel of 55th. (see Pg. 52)
B.C. S.E. 1/4. Ref. 75° 45'

FO⁰³
08.24
308.27 308.27

12.45

3/4 P.O.C. 56° 48' 45"

FO³⁹
08.37
308.76 308.76

12.44

1/2 P.O.C. 37° 52' 30"

FO⁰⁶
09.38
309.44 309.44

12.44

1/4 P.O.C. 18° 56' 15"

FO¹⁶
10.24
310.40 310.40

12.45

Ch. R. = 37.65 A = 75° 45' Ch. L. = 49.78'
E.C. S.E. 1/4. Ref. 55th & Laurel

8 + 29.66 P.O.T.

311.59

CO¹² 65.14
11.52 654
311.40 311.40

24.03

Sheet 15
Curb
Rough Curb

(15)
Curb
Rough

LAUREL ST. NELY FROM 54-TH.

N.E. Curb Ret. Laurel & 55-TH.

T.B.M.

317.63 — 317.65 (See P. 17)

FO 07

10.00

B.C. N.E. Ch. Ret 104° 15'

310.07 310.07

16.66

C.O. 40

10.62

3/4 P.O.C. 78° 11' 15"

310.22 310.22

16.65

C.O. 87

11.77

1/2 P.O.C. 52° 07' 30"

310.90 310.90

16.65

C.O. 49

12.54

1/4 P.O.C. 26° 03' 45"

312.05 312.05

16.65

Top Stub & Ch R. N.E. Ret Laurel & 55-TH

T.B.M. Sta 8+57.66 E.C. Ret. P.O.T. &

314.85

Ch. R. = 36.61 A = 104° 15' Cb L = 66.61'
E.C. N.E. Ch. Ret. Laurel & 55-TH

C.O. 31

C.O. 03

C.O. 18 C. 4.24

3.71

13.43

13.75

7.81

8+57.66 P.O.T. &

312

313.40

313.40

313 74

313.57

313.57

28.00

TOP P.L.E.C.

T.B.M. NE Ret Laurel & 55-TH

312.75

Curb
Rough

Curb

8-9-54

Curb
Rough

LAUREL ST NELY FROM 54-TH

		M 46.78'
E.C. Ch. Ret.	52° 07' 30" 104° 15'	C = 46.71" R = 2959' = 3' Bk Ch. T = 38.05'
9.89		
5/6 P.O.C.	43° 26' 15" 86° 52' 30"	
9.88		
2/3 P.O.C.	34° 45' 69° 30'	
9.88'		
1/2 P.O.C.	26° 03' 45" 52° 07' 30"	
9.88		
1/3 P.O.C.	17° 22' 30" 34° 45'	
9.88		
1/6 P.O.C. SW Ret.	8° 41' 15" 17° 22' 30"	
9.89		
Ch R 3 Bk = 29.59' C = 7.167'		
C = 52.45'		
Ch R = 32.59' Ch L = 59.30' A = 104° 15'		
B.C. Ret. SW Ch Ret. Laurel & Balboa Vista		
9+07.04 P.O.T. 9+07.49		A @ B.C.
24.77		
8+82.42		
24.76		

			F0 ¹⁵	F3.84
			22.05	318.36
			322.20	322.20
			F0 ⁰⁹	
			21.38	
			321.42	321.42
			C0 ⁰⁶	F 3.12
			20.69	317.48
			320.63	320.63
			C0 ⁰⁷	
			19.89	
			319.82	319.82
			C0 ¹⁸	F 1.66
			19.18	317.34
			319.00	319.00
			F0 ³⁴	
			17.86	
			318.20	318.20
			C0.65	Grade
			8.00	17.33
			317.35	317.35
				317.54
			C0.57	
			15.40	
			315.37	
			C0.26	
			15.74	
			315.48	

Curb
Rough

Sheet 18

⊕

Curb

LAUREL ST. NELY FROM 54-TH.

N.E.P.L. Laurel & Alley Blk C.

E.C. + 8' Tan NW Coy

10' + Wly. Gar. Opp. House N=3505 Laurel St.

323.45

23.86

323.45

T.B.M. Chis + Top Nly Side Drive To Gar

317.65

C0.55

E.C. NE. Cb R. $\phi = 90^\circ 22' 10''$

323.27

23.82

323.27

$\phi = 90^\circ 22' 10''$ Cb R = 2' Cb L = 3.14'

E.C. N.E. Cb Ret. Alley Blk C & Laurel

F0.33

C0.34

323.15

23.82

323.48

323.48

$\phi + 77.66$ P.O.C. $\phi = 1^\circ 05' 19''$

$\uparrow 12.54$ C = 12.54'

⊕ B.C. Lt. $\phi T = 84.20$ $d = 5.2087$

$\phi + 65.12$ P.O.C. $\phi R = 330'$ $\phi = 28^\circ 37' 45''$ $L = 164.89$

322.20

$\uparrow 14.73'$ Tan

Dist. 9.84'

$\phi R = 300'$ $D = 5.7296$ $\pi @ 0.41'E. \phi$ Alley $0^\circ 00'$ ϕ Alley N. $\phi R = 74.4837'$

$\pi @ \phi$ Alley C & N. Line Laurel $0^\circ 00' = \phi$ Alley ϕ Laurel $\Delta R = 75^\circ 45'$

-10.62' Wly

N.W. P.L. Laurel & Alley Blk C

Set. Hub. 2' Bk Cb.

321.31

C0.20

21.51

321.31

8.76 Tan + E.C.

C1.13

E.C. NW. Cb Ret. $75^\circ 45'$

Set. R/H. 1.75 Bk Cb.
in P.P.

320.95

22.08

320.95

2.64

Cb R = 2' Cb L = 2.64' $\phi = 75^\circ 45'$

C0.50

C1.14

B.C. N.W. Cb. Ret. Laurel & Alley Blk C

Set. R/H. 1.75 Bk Cb.
in P.P.

1.28

21.92

$\phi + 50.39$ P.O.T. (Sheet 18)

320.78

320.78

21.60

C0.03

$\phi + 28.79$ Lt.

19.09

313.06

21.60

T.B.M.

316.02

316.00 - 2165 BECAUSE NW COY DRIVE
Laurel / 458-TH.

LAUREL ST. NELY FROM 54-TH.

1/2 P.O.C. AN. Ret 16° 56'

9.34

1/6 P.O.C. AN. Ret 8° 28'

9.35

Ch L = 56.05'

Ch R = 65.43' A = 50° 48' 10"

B.C. NW. Ch. Ret. Balboa Vista & Laurel

11 + 08.79 - & P.O.C. A = 12° 28' 20"

09.36'

2.90' C = 2.90'

(See sheet 11)

S.W. PL. Laurel & Alley B.R.F.

E.C. + 8'

E.C. S.W. Ch. Ret. A = 89° 40' 28"

A = 89° 40' 28"

Ch R = 2' L = 31' Laurel &

B.C. S.W. Ch. Ret. Alley B.R.F.

11 + 05.89 & P.O.C. 12° 13' 14"

27.95' C = 27.94'

55.89' C = 55.82'

10 + 77.94 P.O.C. 9° 47' 57"

27.94' C = 27.93'

10 + 50 & P.O.C. 7° 22' 07"

45.01' A C = 44.98' TR 331.96

45.62' C = 45.59'

22.81' C = 22.81'

10 + 27.19 & P.O.C. 5° 23' 19"

22.81

Corb
Rough

F 1.99

399.76

341.75

F 1.87

338.45

340.32

F 1.85

337.04

338.90

F 2.16

329.83

331.99

Corb

FO 25

4150

341.75

FO 21

4011

340.32

FO 10

3880

338.90

CO 01

3520

335.19

FO 03

3196

331.99

FO 25

2905

329.29

Corb

cb

Rough

CO 42

3896

338.54

338.54

FO 411

3797

338.38

338.38

FO 17

3797

338.14

FO 28

3467

334.95

FO 32

3143

331.75

C 2.87

341.01

338.14

338.14

CO 52

332.27

331.75

FO 27

2890

329.17

LAUREL ST. NELY FROM 5A-TH

E.C. + 8' = SE P.L. Laurel & Alley F

8.00 Tan @ 90°

B.C. SE. Ch Ret. 90° 00'

A = 90° Ch C = 2' L = 3.14
E.C. S. E. Ch Ret. Alley F & Laurel

E 11 + 32.38

2.37 Tan (Sheet 11)

E.C. 4

11 + 30.01 A = 14° 18' 52" V

21.22' C = 21.22'

Laurel & Balboa Vista (Sheet 13)

E.C. N.W. Ch Ret. 50° 48' 10" V

T.P.

341.14

5/6 P.O.C. NW Ret. 42° 20'

2/3 P.O.C. NW Ret. 33° 52'

9.34'

1/2 P.O.C. NW Ret. 25° 24' 05"

9.34

Sheet 13
Curb
Rough Curb

Curb (20)
C.O. 86
4266
341.80 Curb
Rough 341.80

C.O. 25
4189
341.64 Curb
Rough 341.64

C.O. 03
4189
341.86 Curb
Rough 342.52
341.86

341.00

F 4.39
343.10
347.49 F019
47.30
347.49

F 3.57
342.63
346.20 F028
45.92
346.20

F 3.01
341.59
344.60 F018
44.42
344.60

F 2.52
340.66
343.18 F011
43.07
343.18

LAUREL ST. NELY FROM 54-TH

End Conc. Paut.

P.L. SW. Ret.

56-TH Laurel

+13.1 Tan

SW. Ch Ret.

E.C. 11.90

P.O.C SW Ret.

13.22

13.22

P.O.C SW Ret.

13.22 T.P.

P.O.C SW Ret.

19.35

P.O.C SW Ret.

19.34

Ch R = 33.21' $\Delta = 132^\circ 53' 20''$ Ch. L = 77.03

~~72 + 61.91~~ 12 + 61.95

12 + 62.08 P.O.T. B.C SW. Ch Ret. 56-TH Laurel

BM = 33.21' Radius Point

SW. Ch Laurel + 56-TH - EL = 363.86

61.81

62.08 Tan

30.90

12 + 00 P.O.T.

T.P.

33.81

67.62 Tan

11 + 66.19

33.81

Curve

Sheet 1A

Curve

Curve (2)

Curve

Rough

F 1.89

367.14

369.00

369.00

CO⁰¹

68.97

368.96

CO¹⁰

F 1.36

68.70

367.24

368.60

368.60

CO⁰⁵

F 0.44

67.59

367.10

367.54

367.54

Grade

F 0.00

66.08

366.06

366.08

366.08

CO⁶⁰

C 0.46

63.82

363.68

363.22

363.22

CO¹⁴

C - 1.53

60.50

361.89

360.36

360.36

FO⁰²

55.91

355.93

FO⁴⁴

C - 1.06

51.06

352.56

351.50

351.50

FO¹¹

46.57

346.68

LAVREL ST. NELY FROM 54-TH

Curb Lt Rt (22)
 Rough Curb
 Co. 26 Grade
 360.85 60.59
 360.59 360.59

B.C. NE Ch Ref Balboa Vista $132^{\circ}53'20''$
 @ Lavrel

10.46

Grade

$7/8$ P.O.C. $116^{\circ}16'40''$

359.41 59.41
 359.41

10.47

C. 0.59

F007

$3/4$ P.O.C. $99^{\circ}40'00''$

359.14 58.48
 358.55 358.55

10.47

F006

$5/8$ P.O.C. $83^{\circ}03'20''$

358.10 58.04
 358.10

10.47

C. 0.28

F006

$1/2$ P.O.C. $66^{\circ}26'40''$

358.40 58.06
 358.12 358.12

10.47

F005

$3/8$ P.O.C. $49^{\circ}50'00''$

358.61 58.56
 358.61

10.47

F0.40

F0.31

$1/4$ P.O.C. $33^{\circ}13'20''$

359.08 59.19
 359.50 359.50

10.47

F0.42

$1/8$ P.O.C. $16^{\circ}36'40''$

360.80 60.38
 360.80

10.46

C.P. = 361.94 = $132^{\circ}53'20''$ C.P.L. = 83.94
 E.C. N.E. Ch Ref Lavrel @ Balboa Vista
 { 33.19' R = 3' 8" Ch.
 C = 60.85'
 T = 76.13'

F 1.52
 360.83 61.92
 362.35 362.35

F0.43

~~12 + 74.60~~ @ P.O.T. **12 + 75.08**

T.P.

359.19

12.52 Turn

	Curb	Lt	€	Et.	Curb	Et.
	Rough	Curb			Rough	

LAUREL NELY FROM 59-TH

P.O.T.					376.10	376.10
--------	--	--	--	--	--------	--------

11.47 + E.C.					F0.29	C-6.18
--------------	--	--	--	--	-------	--------

B.C. SE. Cb Ret.	47°06'40"				77.56	384.03
					377.85	377.85

17.55					C0.08	
-------	--	--	--	--	-------	--

CBR=21.35 A=47°06'40" Cb.L=17.55					79.28	
EG. SE Cb Ret 56-76 & Laurel (Sheet 14)					379.20	Mid Pt

13+98.06 P.O.T. €	13+98.14	13+98.32			C0.23	C-4.36
-------------------	----------	----------	--	--	-------	--------

44'					80.77	384.90
20.96 Tan					380.59	380.54

(Sheet 10)					C0.22	
EG. + 12.78 N/W Pt. Laurel & Alley D					79.52	
				379.30	379.30	

12.78 Tan					C0.24	
-----------	--	--	--	--	-------	--

E.C. N.W. Cb Ret. Alley D 47°06'40"					78.02	
				377.78	377.78	slly

1.64' TP.		376.47				
-----------	--	--------	--	--	--	--

CBR=47°06'40" CBR=2' L=1.64.					C-1.34	C0.43
B.C. N.W. Cb Ret. Alley D & Laurel					78.02	

13+77.70 P.O.T. €					378.93	
					377.59	377.59 slly

26.35'					C0.23	
52.70 Tan					74.03	

13+51.35					373.80	
----------	--	--	--	--	--------	--

26.35					C0.50	
					F0.20	

13+25 P.O.T. €					370.30	69.60
					369.80	369.80

25'					F0.43	
-----	--	--	--	--	-------	--

13+00 P.O.T. € Lt. only					65.64	
				366.07	366.07	

24.92

14.788

Curb	LT	RT	Curb
Finish	Curb	Curb	Finish

LAUREL ST. NELY FROM 54-TH.

NE.P.L. Laurel & Alley D

	F0.27	
	82.87	
383.14	383.14	

EG+10.00

	F0.81	F0.34
	82.13	82.60
382.94	382.94	Wly
	Wly	

B.C. NE Ch Ret.

3.14

ChC=2'4"-90°L=3.14' R/WI. Ch-36.00'

E.C. NE Ch Ret Alley D

	F1.01	F0.54
	82.13	82.60
383.14	383.14	Sly
	Sly	

14+17.60 P.O.T. &

46'
19.54 Tan

Opposite W. Ch. Ret. 56-TH

P.O.T. SE Ret.

369.50 369.50

23.00

P.O.T. SE Ret

369.90 369.90

23.00

P.O.T. SE Ret

370.90 370.90

23.00

P.O.T. SE Ch Ret 56TH + Laurel

373.00 373.00

23.89

LAUREL ST. NELY FROM 54-TH.

Ely Line Balboa Vista
 Edd Contract.
 15+86.26 11° 14' 45"

± 29.06 C = 29.05' 0.33 H. 0.38 R_L

15+86.26 11° 15"
 15+57.20 8° 28' 13"

± 20' C = 20'

15+37.20 6° 33' 37"
 ± 20'

P.O.C.
 15+17.20 4° 39' 02"
 ± 20' C = 20'

P.O.C.
 14+97.20 2° 44' 26"
 ± 28.70 C = 28.69' 0.32 H. 0.37 R_L

B.C. Lt. d = 5.7296
 ± R = 300" L = 117.76' T =
 14+68.50 R_L = 22° 29' 30" d = 5.7296 ± C = 117.00'
 Total A = 47° 08' 40" T = 130.89'
 3.5.18 T_{th} 2165-5

14+33.32 TR 385.33
 15.72

Curb Lt. ± Rt Curb (25)
 Rough Curb 8- Curb Rough

C-5.96 FO¹⁵ CO³⁵ F 8.38
 391.36 85.25 85.75 377.02
 385.40 385.40 385.40 385.40

C-4.22 CO¹⁷ CO²⁰ F 5.09
 391.84 87.79 87.82 382.53
 387.62 387.62 387.62 387.62

T.A.S.
 8-10-54 C-2.96 CO⁰⁹ CO²⁰ F 3.97
 391.61 391.50 88.58 88.74 384.57
 388.54 388.54 388.54 388.54

8-10-54
 Checked 391.12 C-2.11 CO⁰⁶ CO⁰⁷ F 2.07
 391.02 88.97 88.98 386.84
 388.91 388.91 388.91 388.91

C-2.06 FO⁰² FO²⁸ F 1.37
 390.84 88.76 88.56 387.41
 388.78 388.78 388.78 388.78

C-2.43 CO⁶⁰ FO⁰¹ C-1.29
 390.13 88.30 87.69 388.99
 387.70 387.70 387.70 387.70

CO³² CO⁷³
 85.33 85.57
 385.01 384.84 384.84

4-9-50

(26)

LOCATION & GRADE OF CULV. NO. 1

@ 54-TH. & LAUREL Elev Grade Cut
Sta. (See Sheet 28-10742-L)

cb inlet 54th COR 54th

+ Laurel - Top ch
FO.18
267.37
3ly end inlet = 267.55

Top ch
FO.39
267.39
Mid point = 267.78

Top ch
C.1.19
269.14
NEly end = 267.95

Cb. Inlet 67.49 267.78 FO.29 ✓ Ch

S.E. RET. 67.49 266.95 C.O. 54 ✓ Gut

0+00 = B.C. Cb Ret. 7.49 269.57 R2.08 Curb

@ Center NE
Cb Ret. 44.59 49' 24" 267.49 268.74 F1.25 Gutter

= Inlet @ 54th & Laurel
0+71.57 NE Ret. 9.96 262.78 7.18 ✓
Stakes 10'
W/4 50'
S-12-54
C.7.38
270.16
262.78

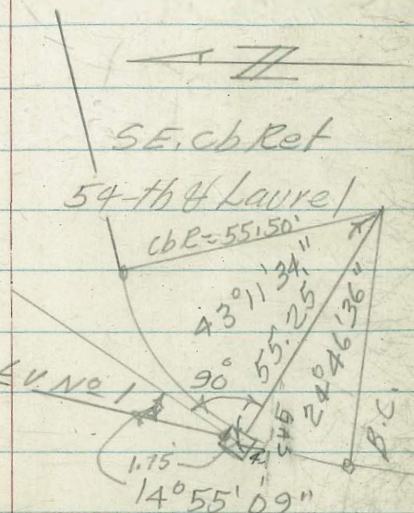
0+50 9.96 262.90 7.01 ✓
all grades raised
0.5 to misc
sewer
588
C 6.38
269.28
262.90

0+25 8.11 263.05 5.06 ✓
508
C 5.58
268.63
263.05

Outlet @ S.E. Cb. Ret
0+00 = @ 54th & Laurel 7.41 263.20 4.21
365
C 4.15
267.55
263.20

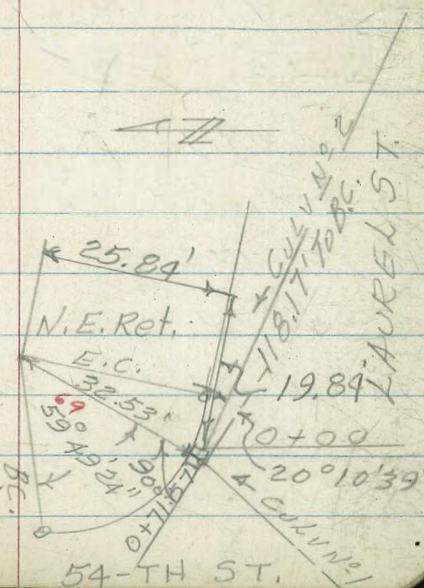
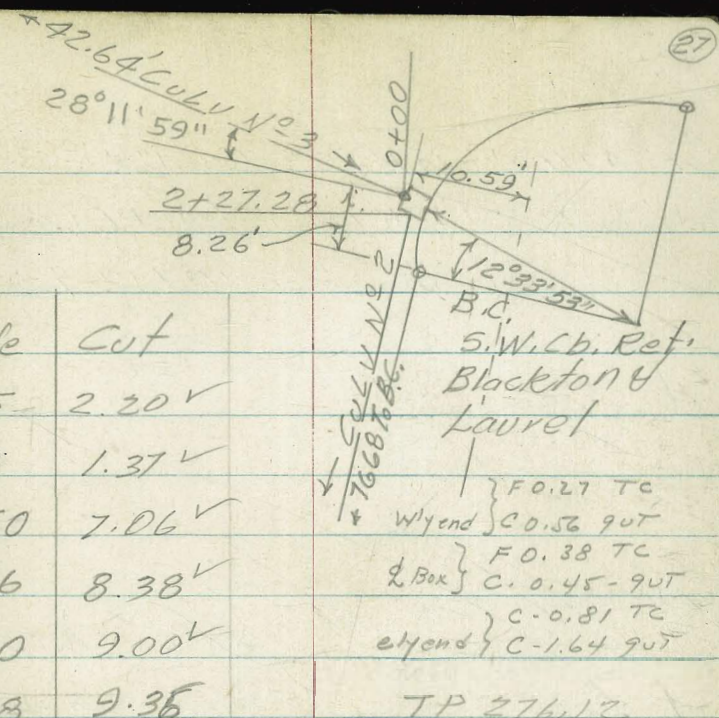
B.M. 269.09

Top SE FH. 54th & Laurel



LOCATION & GRADE CULV. No 2 @ 54-TH
 & LAUREL THENCE SELY ALONG
 LAUREL ST. (See Sheet 28-10742-L)

Sta		Elev	Grade	Cut
15 ⁽⁵⁴⁾ R.P. to Box	Gut.	79.55	277.35	2.20 ✓
	Curb	79.55	278.18	1.37 ✓
2+27.28 ⁰⁰		78.56	271.50	7.06 ✓
2+00		77.64	269.26	8.38 ✓
1+75		76.20	267.20	9.00 ✓
E.C. 24.00				
1+50.60	10° 12' 30" %	74.54	265.18	9.36
16.21				
1+34.39 P.O.C.	5° 06' 15" %	73.85	263.85	10.00 ✓
16.22				
B.C. Lt. $\Delta = 20^\circ 25' d = 18.888$				
1+18.17 T=16.39' L=32.43		71.81	262.51	9.30 ✓
0+98.17 ²⁰		72.23	261.18	11.05 ✓
0+78.17 ²⁰		71.83	260.48	11.35 ✓
0+50 ^{28.17}	1.9% ↑	70.83	259.95	10.88 ✓
0+25		70.26	259.48	10.78 ✓
0+00		69.84	259.00	10.84 ✓
N.E. Curb		272.30	69.57	62.73 ✓ Ch.
& Inlet 15' Box		272.30	68.74	63.56 ✓ G

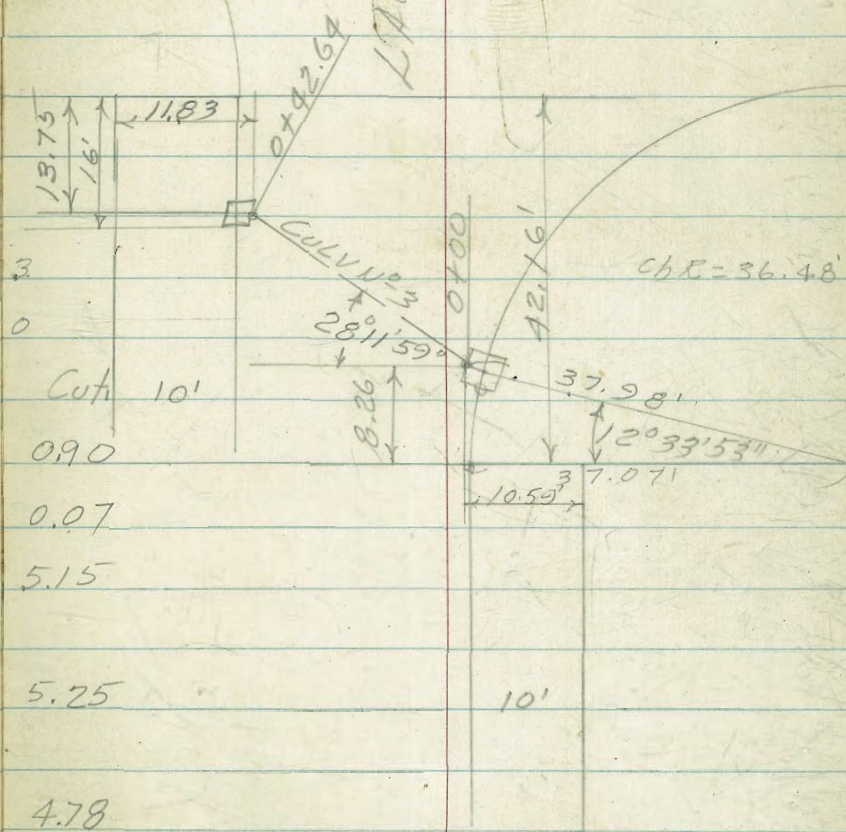


LOCATION & GRADE CULV. N° 3 @
S.W. COR. BLACKTON & LAUREL
(See Sheet 28.10.742-L)

5' back Face Curb & Box
 Tip cb = 277.48
 Gut = 278.65
 Bottom Box = 274.00

elyend } F 0.20 TC
 } C-0.123 9UT
 & Box } C-0.33 TC
 } C-1.16 9UT
 wlyend } C-0.33 TC
 } C-1.03 9UT

LAUREL ST



R.P. 15' Nly & Type	Elev	Grade	Cut
Gut B-2 Inlet	281.08	278.65	2.43
Curb	281.08	279.48	1.60
R.P. 15' Ely			10'
Gut	279.55	278.65	0.90
Curb	279.55	279.48	0.07
0+42.64	279.15	274.00	5.15
0+21.32	279.75	273.50	5.25
0+00	277.78	273.00	4.78
15' R.P. Ely & Type Gut G Inlet	278.12	277.35	0.77
Curb	278.12	278.18	F 0.06

2-34 0/0

GRADES ALLEY BLK J BALBOA VISTA
GRADING ONLY

2+00

F0.27
275.30
275.57
Stub 2' back

275.32

C-4.13
280.00
275.87

1+40

F-2.11
274.80
276.91

276.66

C-3.80
281.61
277.21

1+00

F0.34
277.96
278.30

278.05

5.
C-X.69
284.29
278.60

0+60

F1.67
279.01
280.68

280.43

C-5.7
286.7
280.98 } Hand Level

0+00 = 5. Line Balboa Vista Sub.

F4.58
280.42
285.00

284.75

C-4.4
289.7
285.30 } Hand Level

(0+00)
Ed. 2"x2" Hub of Alley BLK J + 5. Line Sub = 284.89
Set. R.P. Hub 40' South.

B.M.

276.12

(See P 5)

ALLEY BLK J - GRADING ONLY

B.M.

4+34.69 Fd. Hub & Disk set R.P. Hubs. 25' & 75' E. of & Alley
 10.70 Along skew 5 to W
 4+34.69 = Sly Line Laurel 5' & 69° 11'

3+80

F 0.32
 271.08
 271.40 271.27 C-1.54
 273.36
 271.82

F-2.23
 269.60
 271.83 271.58 C-1.09
 273.22
 272.13

3+40

F-1.96
 276.49
 272.45 272.20 C 1.53
 274.28 } C-14
 272.75 } 2741

3+00

89
 F 0.47
 272.87
 273.34 273.09 C-2.44
 276.08-TT
 273.64

2+50

C-0.49
 274.94
 274.45 274.20 C-3.27
 278.02
 274.75

GRADES ALLEY BLK I BAUBOA VISTA

GRADING ONLY

2+16.48 (look for 2" Pipe)

1+41.32 (look for 2" Pipe)

53'

0+88.32

40'

0+48.32

30'

0+18.32 B.C. RT.

18.32'

32.10' Nly & Laurel & 5.70' W. 69° 11' Nly Line Laurel & Alley I

B.M.

276.12

(see page 5)

	C-1.41		C-0.01 Marked Grade
	7.69		6.49
	286.28	285.88	286.48

	C-1.10		F-0.68
	83.69		281.91
	282.59	282.19	282.59

	C-1.21		C-0.04
	279.50		278.33
	278.29	277.89	278.29

	C-1.55		C-1.48
	275.85		275.78
	274.30	273.90	274.30

	C-1.93		
	274.63		
	272.70	272.72	274.36
	10.70		25.21
			P.L., B.C.
			omitted

ALLEY BLK I GRADING ONLY

(see Pg. 34)

3+76.32 P.O.C. $\angle = 49^{\circ} 35' 10''$

45.16 C = 44.96

P.R.C. RT $\angle R = 135'$ L = 90.33 T = 47.38

3+31.16 $\angle = 38^{\circ} 20' 40''$ d = 12.7323

To S.W. Ret. $\angle \angle = 30^{\circ} 28' 12''$

21.27 C = 21.02

3+09.89 P.O.C. $\angle = 15^{\circ} 14' 06''$

21.27 C = 21.02

P.R.C. L $\angle R = 40'$ L = 42.54 T = 23.53

2+88.62 $\angle = 60^{\circ} 56' 25''$ d = 42.9718

$\angle \angle = 13^{\circ} 39' 32''$

16.69 C = 16.65

2+71.93 P.O.C. $\angle \angle = 6^{\circ} 49' 46''$

16.69 C = 16.65

B.C. RT $\angle R = 70'$ L = 33.38 T = 17.01

2+55.24 $\angle = 27^{\circ} 19' 05''$ d = 24.5553

60.02

1+95.22

53.9

LH

E

RT

(32)

F.O. (Grade)

6.62

286.63

286.23

C-1.09

87.72

286.63

C-3.44

93.51

290.07

289.67

C0.66

0.73

290.07

Nail in Fence
0.12 back

C-1.89

92.92

291.03

290.73

C0.29

1.32

291.03

Nail in Fence
0.40 back

C0.10

291.92

291.82

291.42

F0.59

291.23

291.82

over head Nail distance
0.55 back

F 3.35

288.72

292.07

291.67

F0.90

291.17

292.07

F 3.48

288.51

291.99

291.59

F0.71

291.28 + TP

291.99

C-1.08

290.86

289.78

289.38

289.78

conc Nail in Base
at Wall - ON LINE

LOWY CURVE INTERSECTION 16

ALCORN R. 15' 139.97' 43" S. 1/4 (1/4 P. 33)

25.69 = 25.64

P.O.C. $\phi = 50^{\circ} 27' 26''$

25.70 $\phi = 25.65$

4+21.42 P.O.C. $\phi = 21^{\circ} 43' 23''$ $L = 56.57'$

NO. 111y $\phi = 19^{\circ} 10' 20''$

P.O.C. SW. 1/4 $106^{\circ} 11' 04''$

15.45

P.O.C. SW. 1/4 $10^{\circ} 47' 22''$

15.44

P.O.C. SW. 1/4 $35^{\circ} 23' 41''$

15.44

NO. Center

B.C. 11. Ret $\phi R = 25'$ $L = 46.33'$

4+21.42 P.L. $\phi = 106^{\circ} 11' 04''$ $\phi = 19^{\circ} 10' 20''$

282.90.0 282.50 282.10

45.17 = 44.96

LOLLY CIRCLE ALLEY GRADES

B.M.

4+70 E.C. Ch Ret's Lolly Circle

CO 23				FO 67
8045				8004
280.22	279.72	280.03	280.81	280.71
cb.	gt.		gt.	cb

4+66.08 B.C. Ch Ret's Rt & Lt. $\Delta = 89^{\circ}5'55''$ cb R=4' L=6.23'

CO 06			FO 28	FO 68
8045			8004	8004
280.39	279.89	280.14	280.32	280.72
cb	gt.		gt.	cb

(see sketch & Curve Data Pg 3.5)

4+58.05 = Sly P.L. Biloxi St.

CO 42	CO 69		C 1.17	CO 55
8097	8097		8143	8143
280.55	280.28	279.97	280.26	280.88
cb	gt.		gt.	cb
	10'			10'

24.14'

4+33.81
E.C.

$\Delta = 10^{\circ}10'12''$

C-1.53			5.51
3.59			
282.06	281.66		282.06
			c-3.45

12.42 C = 12.36

4+21.49 E.B.C. Lt. $\Delta = 120^{\circ}20'24''$ L=12.42

C-1.40			C-2.84
4.30			5.74
282.90	282.50		282.90

def $\Delta = 19^{\circ}10'20''$

45.16 $\Delta = 44.96$

(cont'd from Pg 32)

INTERSECTION DETAILS BILOXI ST &

LOLLY CIRCLE ALLEY

P.L.R = 320' d = 5.37147

At 4+58.05 Obj. 90° Ely of 320' R. Center

10' Ely = Def & Lt. 0° 53' 43" = NE cb @ P.L.

10' Wly = Def & Rt. 0° 53' 43" = NW cb @ P.L.

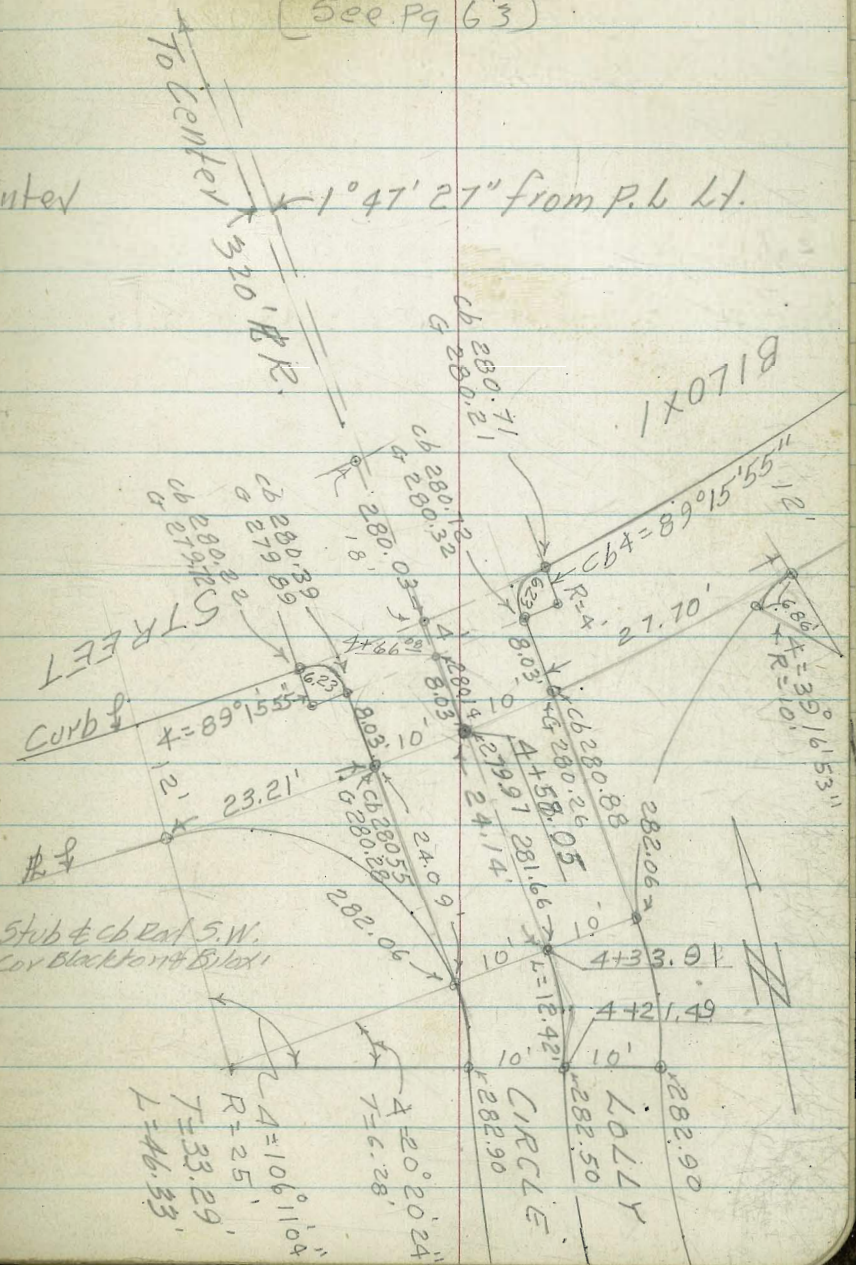
14' = 1° 15' 12"

BENCH LEVELS

See Pg. 34 for Grades
Lolly Circle Alley +
Biloxi Intersection

T.B.M.	-12.49	276.12
+0.45		
T.P.	-8.64	
T.B.M. ^{5' Ht} +1.42	-5.63	(out) 291.28
RP 50' Wly R.P. 2" Pipe 579.6+67.79 - Blackton		
T.B.M. Top Stub (50' RP)	-1.53	295.38
+8.76		
T.P.	-0.46	
+12.49		
B.M. (See Pg 5)		276.12

(See Pg 63)



For final paving grades Blackton Dr - Faulconer
to Laurel - See FB 324-66

PAVING GRADES BLACKTON DRIVE

B.C.N.E. Ref. $90^{\circ}14'36''$

8.26

P.O.C.N.E. Ref. $66^{\circ}34'52''$

6.28

P.O.C.N.E. Ref. $48^{\circ}35'12''$

8.48

P.O.C. N.E. Ref. $\Delta = 24^{\circ}17'36''$

8.48

29.50

See sheet 12

$$\Delta = 90^{\circ}14'30'' \quad d = 85.9436 \times 2 = 171.8872$$

$0+15 \frac{1}{4}$ E.C. Ch Ref. Rt. Ch. R = 20' L = 31.50

$0+00 = 50.80'$ N. of Chisl Cross in 5/4 ch Faulconer St

B.M.

313.40

Lt. (see sheet 12)

Corb

7-24-54

Rt.

(36)

3 1/2

ch.

Corb

Rough

C 11.20

C 101

1400

13.81

312.80

312.80

C 103

C 097

1338

13.28

312.35

312.35

C 072

C 063

1285

12.71

312.08

312.08

C 105

C 103

1280

12.78

311.75

311.75

C 082

C 226

1206

313.50

311.24

311.24

C 121

312.20

312.10

Top Chisl Cross 5/4 Curb & Blackton & 5/4 ch

Faulconer St. 2028
74

7-24-54

PAVING GRADES BLACKTON DRIVE

Rough Curb	Curb		Curb	Rough Curb
F0.05	FO ⁰⁵		FO ¹³	C-2.72
292.32	92.32		92.74	295.59
292.37	292.37	292.58	292.87	292.87
CO.12	CO ⁰⁴		FO ⁰⁶	C-2.01
295.26	95.18		95.58	297.65
295.14	295.14	295.35	295.64	295.64
CO.06	FO ⁰³		FO ⁰²	C-0.94
298.55	98.46		98.97	299.93
298.49	298.49	298.70	298.99	298.99
F0.35	FO ⁰³		FO ¹¹	CO.92
302.15	02.58		02.78	303.82
302.40	302.61	302.61	302.90	302.90
CO.49	CO.33		Grade	C-1.99
306.21	06.89		06.97	308.21
305.72	306.47		306.97	306.22
CO.54	CO ¹⁰		CO ¹³	C-2.21
309.04	08.60		09.13	311.21
308.50	308.50	308.71	309.00	309.00

2+20

1+80

TP

296.41

1+40

1+00

TP

305.44

0+60

0+40

Corb
Rough

L.

E

Rt.

Corb
Rough

(38)

PAVING GRADES BLACKTON DRIVE

Corb

Corb

4+99.63 = B.C. Ch. Ret. Lt. Ch. R. = 36.48

F0.44
280.87
281.31

CO⁰¹
81.32
281.31

281.92

F0¹¹ 0-2.47
82.49 285.07
282.60 282.60

TB

285

F0.24
283.20
283.44

F0¹¹
83.33
283.44

283.71

F0.15 C-1.91
83.90 285.96
284.05 284.05

4+00

F0.38
284.98
285.36

CO.02
284.98
284.95

F0¹²
85.24
285.36

285.57

F0.23 C-2.22
85.63 288.08
285.86 285.86

3+60

TR

287.28

F0.37
286.90
287.28

FO.03
286.90
286.93

Grade
87.28
287.28

F0.34 C-2.05
87.44 289.48
287.78 287.73

3+20

F0.33
288.87
289.20

CO.45
288.87
288.42

F0¹⁴
89.06
289.20

F0²⁸ C-3.27
89.62 292.19
289.70 288.92

2+80

F0.31
289.85
290.16

F0⁰¹
90.15
290.16

290.37

Grade C-1.79
90.66 292.45
290.66 290.66

2+60

Stampel
535011
Nordahl

Curb
Rough

Lt.

7-20-54

Rt.

Curb
Rough

(39)

PAVING GRADES BLACKTON DRIVE

(see Pg 8)

0+79.63 = Ch B.C. Rt. Ch R = 26.13

(0+78.77 = P.L.C. B.C. N.E. Rt.)

38.81'

(see Pg 6)

0+40.82 = Ch E.C. Lt. Ch R = 38.08

(0+37.94 = R.R.E.C. N.W. Lt.)

0+39.8' for water main only

0+21.4 = Nly Curb Line Produced

0+00 Nly

5+30.68 = Laurel & Blackton

5+09.28 = Sly Curb Line Prod

4+77.83 = Ch B.C. Rt. Ch R = 64.12

S.E.

C-1.40
286.16
284.76

FO 16
84.60
284.76

285.04

Grade C-1.46
85.40
285.40
(see Pg 9)

86.86
285.40

C 1.50

284.32
282.82

O.K.

FO 11

282.71
282.82

283.53

282.58

282.03

280.61

Grade C-3.01
81.96
281.96
284.97
281.96

PAVING GRADES BLACKTON DRIVE

Curb Lt. & Rt. Curb
 Rough Curb 7-23-54 Curb Rough ⁽⁴⁰⁾

3+17			C-1.64 91.68 290.04	FD ⁰⁸ 89.96 290.04	290 25	FD ⁰² 90.52 290.54	C-1.72 92.26 290.54
------	--	--	---------------------------	-------------------------------------	--------	-------------------------------------	---------------------------

40'			C-1.59 91.26 289.67	FD ⁰¹ 89.66 289.67	289.88	FD ²⁷ 89.90 290.17	C-1.99 92.16 290.17
-----	--	--	---------------------------	-------------------------------------	--------	-------------------------------------	---------------------------

40'			C-1.32 90.34 289.02	FD ⁰⁸ 88.94 289.02	289 23	FD ⁰² 89.50 289.52	C-1.74 91.26 289.52
-----	--	--	---------------------------	-------------------------------------	--------	-------------------------------------	---------------------------

40'			C-1.68 89.76 288.08	FD ⁰¹ 88.07 288.08	288 29	FD ²⁵ 88.33 288.58	C-1.92 90.50 288.58
-----	--	--	---------------------------	-------------------------------------	--------	-------------------------------------	---------------------------

47	1+73 ⁵	C-0.10 87.54 287.44	C-1.99 88.79 286.80	CO ¹¹ 86.91 286.80	287.01	CO ⁰³ 87.33 287.30	C-2.23 88.53 287.30
----	-------------------	---------------------------	---------------------------	-------------------------------------	--------	-------------------------------------	---------------------------

51.23	1+24 ³⁸	C-0.14 86.25 286.11	C-1.48 86.90 285.42	FD ¹⁶ 85.26 285.42	285 63	CO ⁰¹ 85.93 285.92	C-2.29 88.21 285.92
-------	--------------------	---------------------------	---------------------------	-------------------------------------	--------	-------------------------------------	---------------------------

19.14

PAVING GRADES BLACKTON DRIVE

1/2 P.O.C.

66° 27' 42"

21.46

Curb
Rough

Curb

C-2.81
291.71
288.90

FO¹⁷
88.73
288.90

1/4 P.O.C.

∠ = 33° 13' 51"

21.46 T.P.

289.64

C-2.17
292.17
290.00

FO³⁶
89.64
290.00

SW. Cb Ret. Blackton & Biloxi
C60 = 37' ∠ = 132° 55' 53" L = 85.84
SW. Curb Ref. (See Sheet 12)

C-1.39
292.09
290.70

FO¹²
90.58
290.70

FO⁰⁴
91.38
291.42

C-2.11
93.53
291.42

4+40

C-1.20
91.85
290.65

FO⁰⁶
90.59
290.65

FO⁰⁷
91.17
291.24

C-2.06
93.30
291.29

4+00

C-1.48
91.93
290.45

FO⁰⁶
90.99
290.45

FO¹³
90.88
291.01

C-1.97
92.98
291.01

3+50

C-1.46
91.67
290.21

FO⁰⁵
90.16
290.21

FO¹¹
90.62
290.73

C-2.11
92.84
290.73

33

4.

±

RT.

Curb (4)

Curb

Rough

GRADES BLACKTON ST

curb Lt. & Rt. Curb (42)
 Rough 7-23-59 Rough

6+25 48' Curb CO⁰⁹ C-1.12
 294 78 9513 296.46
 295.04 295.09

5+77 40' Curb FO⁰⁷ C-1.38
 293 03 9325 294.70
 293.32 293.32

5+37 40' Curb FO⁰⁷ C-2.20
 291 98 9220 94.47
 292.27 292.27

4+97 TP. 40' Curb CO¹¹ C-1.78
 291.71 1/6 91.71 293.41
 291.34 291.63 291.63

T.B.M. 290.14 - 290.17
 C-4.34 FO⁰⁹
 P.R.C. 132°55'53" 290.17 85.74
 285.83 285.83

3/4 R.O.C. 290.96 FO⁴² 87.08
 287.50 287.50
 * = 99°41'33"

Curb
Rough

Ct. Rough
4-15-54
7-22-54
Finish cb.

Ct.
Curb
Rough

Curb
Rough

GRADES BLACKTON ST

8+17			F1.37 ^v 9.63 301.00	FO 21 ^v 02.79 301.00	301.21	FO.33 01.18 301.51	C2.56 4.07 301.51
7+77			FO.62 ^v 9.24 299.86	FO 07 ^v 99.79 299.86	300.07	FO.49 99.81 300.36	C3.41 ^v 3.77 300.36
TP.		299.53					
7+37			CO.27 ^v 8.87 298.60	FO 02 ^v 98.58 298.60	298.81	FO.43 98.67 299.10	C2.04 ^v 1.14 299.10
14.58			CO.23 ^v 8.39 298.16	FO.22 ^v 97.94 298.16	298.29	FO.22 98.36 298.58	C1.86 ^v 0.44 298.58
7+22.42 ±	33 computed. ↑	7-20-54 T.A.S. Set "2x2" 40' West. Set "2x2" 40' East.					
25.38						FO.21 97.48 297.40	C1.07 ^v 8.76 297.69
6+97							
29.21							
6+67.79 =	OK. Sub Bdy	Set. R.P. Hubs 55.11' @ 105.17' W/4 of Blackton				FO 46 95.50 295.69	C 0.35 FO.19 295.77 295.96
6+50							
T.B.M.		295.38					(See p 35)

54.54'

GRADES BLAKTON ST

Lt. C Rt. Curb (44)
 4-15-54
 Curb Rough
 Curb Curb

10+77

F1.46^v F0 26 F0 35 C 5.26
 5.69 06.89 07.32 2.93
 307.15 307.15 307.37 307.67 307.67

10+37

F1.46^v F0 27 F0 23 C 4.32
 5.23 06.42 06.96 1.51
 306.69 306.69 306.90 307.19 307.19

9+97

F1.16^v F0 02 F0 12 C 4.95
 4.46 05.80 06.20 11.27^v
 305.82 305.82 306.03 306.32 306.32

T.P.
9+50

304.56

F1.36 C0 01 Grade C 2.96
 3.19 04.56 05.06 8.02
 304.55 304.55 304.77 305.06 305.06

T.P.
9+00

303.25

F1.39 C0 03 F0 07 C 3.01
 01.83 03.25 03.66 6.74
 303.22 303.22 303.43 303.73 303.73

T.P.
8+50

302.88

F1.48 F0 41 F0 34 C 2.58^v
 0.40 01.47 02.08 4.97
 301.88 301.88 302.09 302.39 302.39

GRADES BLACKTON ST.

13+43

T.P.

303.89

T.P. 5' RR 5' ELY P.L.

T.P. 5' RR 12+90

307.95

12+90

12+37

T.P.

310.72

11+97

11+57

11+20.90 = P.O.T. set & R.P. Hubs

50' & 100' RT.

11+17

still 11+20.90

T.B.M. on Ely Pot R.P. 50' &

314.95

Curb
Rough

Curb

Curb

Curb
Rough

CK

±

RT.

(45)

4-15-54

F2.28	FO ⁰⁶		FO ⁰⁹	C2.82
8.92	01.14		02.11	5.02
301.20	301.20	301.66	302.20	302.20
F2.37	FO ⁰³		FO ⁰²	C4.04
0.68	03.02		03.89	7.95
303.05	303.05	303.44	303.91	303.91
F1.83	FO ⁰⁵		FO ⁰²	C4.51
3.08	04.86		05.60	10.13
304.91	304.91	305.22	305.62	305.62
F1.66 ^v	CO ¹²		FO ⁰⁴	C5.37
4.42	06.20		06.68	12.09
306.08	306.08	306.36	306.72	306.72
				4' RR P.L.
FO.90	CO ³³		FO ³³	C5.17
5.95	07.18		07.11	12.61
306.85	306.85	307.11	307.44	307.44
FO.95	CO ⁰⁴		CO ⁰⁴	C6.25
6.25	07.24		07.79	14.00
307.20	307.20	307.43	307.75	307.75

GRADES BLACKTON ST.

E.C. Ch. Ret. S.W. $\angle = 90^{\circ}06'30''$
 Cor Blackton & Olive

$\frac{3}{4}$ P.O.C. S.W. Ret. $\angle = 67^{\circ}34'52''$

12.59

295.72

$\frac{1}{2}$ P.O.C. S.W. Ret. $\angle = 45^{\circ}03'15''$

12.58

$\frac{1}{4}$ P.O.C. S.W. Ret. $\angle = 22^{\circ}31'37.5''$

12.59

T.P.

S.W. Ch R = 32' $\angle = 90^{\circ}06'30''$ L = 50.35

13+92.83 B.C. Curb Returns
 (see sheet 17)

Set P.K. Nly Side S.W. Cor

T.B.M. #P-170662 Olive & Blackton

13+78

13+63

B.M.

305.30

Curb Lt. E Rt. Rough 46
 F0.38 F0.41 4-16-54 F0.10 Curb
 5.43 9540 7-23-54 F0.18 Curb
 295.81 295.81 $\angle = 89^{\circ}53'30''$ E.C. Co. 98
 304.28 526
 304.28

F0.92 F0.54 $\frac{3}{4}$ S.E. Ret. P.O.C. G.O.48 C 1.59
 5.88 96.26 S.E. Ret. $\frac{1}{2}$ P.O.C. 03.63 476
 296.80 296.80 $\angle = 67^{\circ}25'07''$ 303.15 303.15

295.166 (G-325-9)

F1.45 F0.35 Grade C2.49
 630 9740 S.E. Ret. $\frac{1}{2}$ P.O.C. 02.25 474
 297.75 297.75 $\angle = 49^{\circ}56'45''$ 302.25 302.25

X0.21 12.5617 12.5617

F1.85 298.67 $\angle = 22^{\circ}28'22''$ C0.21 C2.90
 682 B.C. S.E. Ch Ret. L = 50.24 01.77 446
 298.67 $\angle = 89^{\circ}53'30''$ R = 32' 301.56 301.56

F0.37
 9830
 298.67

F1.95 C0.01 F0.09 C2.93
 735 9931 01.21 423
 299.30 299.30 300.30 301.30 301.30

299.63

F2.21 F0.15 C0.09 C2.95
 774 9980 01.49 435
 299.95 299.95 300.64 301.40 301.40

F2.22 F0.01 C0.15 C2.80
 9828 0049 01.80 445
 300.50 300.50 301.04 301.65 301.65

305.30 TOP $\frac{3}{4}$ " PIPE S.E. EC. Olive & Blackton 2165
 50

GRADES 55-TH ST. FROM SLY
 LINE BALBOA VISTA TO OLIVE ST.
 B.C. N.W. Curb Ret. 55-th & "Faulconer"

Faulconer.
 B.C. N.W. Cb Ret $\angle = 89^{\circ}45'30''$

2/3 $59^{\circ}50'20''$

10.45

1/3 P.O. C.N.W. Ret $29^{\circ}55'10''$

10.44

N.W. Ret, cb R = 20' $\angle = 89^{\circ}45'30''$ L = 31.33

0 + 149 $\angle =$ E.C. Cb Ret Lt. Ch. Tan = 19.92

84 55-75.

0 + 00 = Chris/Crosses N.W. Erim 55-th & Faulconer

B.M.

334.74

(see Sheet 15) 8-02-54
 4-19-54
 Ret " 17 Lt. E Rt. Curb
 Curb
 Rough

F0.75 F0.65
 32.58 32.68
 333.33 333.33

F0.47
 33.09
 333.56 333.56

F0.27
 33.58
 333.85 333.85

F1.02 C0.09
 32.88 33.94
 333.90 333.90
 333.48
 F0.42

Top of Sly Chris/Cross Sewer M.H. 55-th & Faulconer

Corb Lt & Rt (48)
8-02-54 Corb
Eough

GRADE 55-TH ST

N.E. Corb Ret. 55-th & Falconer

See Sheet 17-10731-L

B.C.N.E. Ret. $\Delta = 90^{\circ}14'30''$

14.157'

FO⁰¹ C 2.21
38.48 4070
338.49 338.49

3/4 P.O.C.N.E. Ret. $67^{\circ}40'53''$

14.56

CO¹⁹
37.49
337.30 337.30

1/2 P.O.C.N.E. Ret. $45^{\circ}07'15''$

14.57

C 2.40 C 3.11
38.50 39.21
336.10 336.10

1/4 P.O.C.N.E. Ret. $22^{\circ}33'37''$

14.56

FO⁰²
35.38
335.40 335.40

$\Delta = 90^{\circ}14'30''$ C.B.E. = 36.99' L = 58.26'
0+5676 E.C.N.E. Ch. Ret. 55-th & Falconer

57.23'

47.85

F 3.69^v FO²³
29.96 3342
333.65 333.65 334.20 FO⁰⁶ C 3.75^v
34.79 38.60
334.85 334.85
CO⁰⁸

GRADES 55-TH-5T

E.C. Nly Cb. Ref Fly Alley "G"

3.14

$\angle = 90^\circ 4' 30''$ CbR = 2' L = 3.14

1+77 = E.C. Nly Cb. Ref Fly Alley "G"

1+65 = E+W. Alley "G"

1+60

E.C. Cb. Ref. $\angle = 89^\circ 45' 30''$

3.14

CbR = 2' $\angle = 89^\circ 45' 30''$ L = 3.14

1+53 = B.C. Cb. Ref Fly Alley "G"

1+20

1+00 Raise 0.07' from St. Line. on Vertical Lt.

(0+79.94)

0+80

Curb
Rough

Curb

8-02-54

Curb

Curb
Rough

EO¹⁸

303.9

330.21

330.21

FO.58

301.2

330.70

330.70

331.11

331.11

cut

F 3.04

27.74

330.78

3

330.78

FO.72

30.57

331.29

C 4.22

35.51

331.29

CO⁰⁹

31.11

331.02

331.02

FO.95

30.57

331.52

331.52

F 3.42

28.72

332.14

CO⁰⁹

32.18

332.14

FO⁰⁶

32.58

332.64

C 3.68

36.32

332.64

F 4.20

29.02

333.22

CO.41

33.63

333.22

FO⁰³

33.97

334.00

C 3.38

37.38

334.00

333.57

Curb Lt. & Rt. Curb
Rough Curb 8-02-34 Curb Rough

GRADES 55-TH. ST.

		F0.55	C0 ¹⁷			C0 ⁰⁹	C4.08 ^v
		19.53	20.25			20.62	24.66
4+20		320.08	320.08	320.29		320.58	320.58
TP	321.42						
		F0.49 ^v	C0.25			F0 ⁰³	C4.12 ^v
		21.77	22.51			22.73	26.88
3+80		322.26	322.26	322.47		322.76	322.76
TOP 5th							
TP 3+40	228.54	F0.52 ^v	C0 ⁰⁵			F0 ⁰¹	C3.83 ^v
		23.69	24.26			24.70	28.54
3+40		324.21	324.21	324.42		324.71	324.71
		F1.41 ^v	F0 ⁰²			C0 ⁰³	C3.18 ^v
		24.51	25.83			26.45	29.60
TP 3+00	329.60	325.92	325.92	326.13		326.42	326.42
		F 2.49 ^v	C0 ⁰⁷			F0 ²²	C3.11 ^v
		24.90	27.46			27.67	31.00
2+60		327.39	27.39	327.60		327.89	327.89
			C0 ⁰⁵			F0 ¹²	C3.02
		F 2.77	28.12			28.43	31.55
2+40		25.30	328.07			328.57	328.57
		328.07	C0 ⁰⁹			F0 ⁰¹	328.57
			28.84			29.23	
2+20		328.75	328.75			329.24	329.24
TP	330.39						
43							
		F 3.20	C0 ⁰⁶			F0 ⁰⁸	C3.22
		26.22	29.46			29.85	33.15
2+00		329.42	329.42			329.93	329.93

7

GRADES 55-TH. 57

Curb	ct.	±	Et.	Curb	(31)
Rough	Curb	4-19-54	Curb	Rough	
		8-02-39			

6+60

F 1.25 ^v	CO ⁴			CO ²¹	C 5.33 ^v
0752	0888			09.88	15.00
308.77	308.77	309.18		309.67	309.67

TP

6+20

316.54 ~ 316.60

F 1.19 ^v	CO ²⁴			CO ⁰²	C 5.86 ^v
0874	0997			10.70	16.54
309.93	309.93	310.27		310.68	310.68

TP

5+80

312.47

F 1.65 ^v	FO ⁰²			CO ⁰³	C 4.34 ^v
0974	1137			12.06	16.37
311.39	311.39	311.67		312.03	312.03

5+40

F 1.39 ^v	CO ¹³			CO ⁰¹	C 2.96 ^v
1177	1329			13.74	16.69
313.16	313.16	313.40		313.73	313.73

5+00

F 1.32 ^v	CO ²⁶			Grade	C 2.29 ^v
1393	15.51			15.76	18.05
315.25	315.25	315.47		315.76	315.76

TP Tap Stub
4+60 Et 55'

4+60

321.29

F 1.16 ^v	CO ²⁸			FO.25	C 3.15 ^v
1648	17.92			17.89	21.29
317.64	317.64	317.85		318.14	318.14

52

Lt Rt

Curb Curb 8-2-54 Curb

Rough Curb Curb Rough

GRADES 55-TH. 57.

0+37.56 = N.W. P.L.B.C. P.L.R=25'

8+60.81 = 55-1/4 Laurel = 0+00 Nly

T.B.M. 314.85 ~ 314.85 Top 5 Stub Center NE. Cb. R. 55-1/4 Laurel

B.M. 317.65 (See Pg 17) FO⁰¹ C 5.44

(See Pg 14) Cb R = 37.65

8+16.17 = B.C. Cb Ref. SE 55-1/4 Laurel

08.24 13.71
308.27 308.27

T.B.M. 317.67 ~ 317.65 (See Pg 17)

(8+18.49 = SE P.L.B.C. Sisson 2165)

FO.16 C 6.67
07.65 14.48
307.81 307.81

8+00

(A6 = Sisson)
7+71.56 = B.C. S.W. P.L. Ref. checked

CO.32 FO⁰⁸ CO¹⁰ C 5.66
6.80 06.40 08.22 13.78
306.48 306.48 307.27 308.12 308.12

7+70.56 = B.C. S.W. Cb. Ref. 55-1/4 Laurel

FO.28 CO.08 CO⁰² C 6.07
6.95 07.31 08.52 14.57
307.23 307.23 307.76 308.50 308.50

7+40

FO.03 FO.15 CO¹¹ C 3.63
6.90 07.78 09.11 14.63
307.93 307.93 308.43 309.00 309.00

7+00

Lt 7 & Rt

(53)

Curb
Rough

Curb

Curb

Curb
Rough

4-20-54

GRADES 55-TH. ST.

2+20

TP

318.47

FO.57 ^v	FO ⁰⁵		CO.12	C5.31
11.47	11.99		12.66	17.83
312.04	312.04	312.25	312.54	312.54

1+80

FO.51 ^v	FO.11		CO.15	C5.00 ^v
10.83	11.23		11.98	16.83
311.34	311.34	311.55	311.83	311.83

1+40

FO.16 ^v	CO ⁰⁷		CO ⁰⁷	C3.71 ^v
10.47	10.70		11.20	14.84
310.63	310.63	310.84	311.13	311.13

1+00

CO.06 ^v	FO ⁰⁸		Grade	C3.30 ^v
9.98	09.84		10.42	13.72
309.92	309.92	310.13	310.42	310.42

0+72.95 = E.C. NE Ch. Ref. 55-th & Laurel
Cb R = 36.61 Δ = 104°15'

	FO ¹⁴		FO ⁰⁷	C2.95 ^v
	09.30		10.00	13.02
309.44	309.44	309.65	310.07	310.07

0+71.39 = P.L. E.C. Pt.

0+40.67 = F.C. NW. Ch. Ref. 55-th & Laurel
Cb R = 38.41 Δ = 65°33'22"

FO.31	FO.36			
08.42	08.37			
308.73 ^v	308.73			

0+36.04 = 2" R.P. & Sub. Bdy Pt. & 55-th
Set R.P. Hub 75' W. of Δ of 55-th. N. 170.14 W. by to E. Alley B
Set R.P. Hub 25' E. of Δ of E. Alley B

GRADES 35-TH. 57

Curb
Rough

47. 8-2-54
Curb

54
Rt. Curb
Rough

4+39.50

F2.89 ^v	FO.35			CO.14	CA.12 ^v
14.83	17.37			18.36	22.34
317.72	317.72	317.	93	318.22	318.22

3+99.50

F2.62 ^v	FO.17			FO.02	CA.84 ^v
13.38	15.83			16.48	21.34
316.00	316.00	316	21	316.50	316.50

3+59.50

F2.36 ^v	CO.01			CO.26	CA.77 ^v
12.35	14.72			15.47	19.98
314.71	314.71	314	92	315.21	315.21

TP.

314.47

3+19.50

F1.14 ^v	FO.04			CO.17	CA.80 ^v
12.66	13.76			14.47	19.10 ^v
313.80	313.80	314	01	314.30	314.30

3+00

F1.23 ^v	CO.03			CO.22	CA.89 ^v
12.22	13.48			14.17	18.84
313.45	313.45	313	66	313.95	313.95

2+60

F1.05 ^v	CO.01			CO.10	CA.11 ^v
11.70	12.78			13.35	18.36
312.75	312.75	312	96	313.25	313.25

GRADES 55-TH ST

8-2-54
 4-20-54

53
 Curb Rough

Station	Grade	8-2-54 Curb	8-2-54 Rough	4-20-54 Curb	4-20-54 Rough
6+59.50		CO.36 ^v	FO ¹⁵		FO ⁰⁹ C5.47
		33.55	33.04		33.60 39.16
		333.19	333.19	333.40	333.69 333.69
TP	331.29	FO.61 ^v	CO ⁰¹		CO ⁰⁵ C4.72
6+39.50		31.02	31.64		32.18 36.85
		331.63	331.63	331.84	332.13 332.13
TP	335.72				
TP	326.55	F1.95 ^v	CO ¹⁰		CO ²⁰ C3.93
5+99.50		26.53	28.60		29.20 32.93
		328.50	328.50	328.71	329.00 329.00
		F.2.56 ^v	FO ¹¹		CO ⁰⁹ C3.50
5+59.50		22.82	25.27		25.97 29.38
		325.38	325.38	325.59	325.88 325.88
TP	321.99	F 2.54	FO ³⁵		CO.12 C 4.06 ^v
5+19.50		19.80	21.99		22.96 26.90
		322.34	322.34	322.55	322.84 322.84
		F 2.72 ^v	FO.23		FO ¹⁰ C 4.26 ^v
4+79.50		17.10	19.59		20.22 24.38
		319.82	319.82	320.03	320.32 320.32

GRADES 55-TH ST

55-TH SEIFERT
 E.C. SE Ret $\Delta = 89^{\circ} 53' 30''$
 14.52

3/4 P.O.C. SE Ret $67^{\circ} 25' 08''$
 14.51 TP 342.74

1/2 P.O.C. SE Ret $44^{\circ} 56' 45''$
 14.51

1/4 P.O.C. SE Ret $22^{\circ} 28' 22''$
 14.51

7+31.42 = P.L.B.C. $\Delta = 25'$
 $CB R = 37'$ $\Delta = 89^{\circ} 53' 30''$ $L = 58.05$
 7+26.42 = SE Cb Ret. 55-TH SEIFERT
 (See Sheet 16)

TP 345.22
 6+99.50

LT RT (56)
 Curb Curb
 Rough Rough

FO.72 C 3.78
 44.81 4925
 345.53 345.53

FO.16 C 5.21
 42.74 48.11
 342.90 342.90

FO.18 C 6.53
 40.43 47.14
 340.61 340.61

FO.13 C 7.15
 38.91 46.19
 339.04 339.04

CO.01 C 7.26
 38.08 45.33
 338.07 338.07

C 1.76 FO.17 C 6.76
 37.77 35.84
 336.01 336.01 336.22 336.51 336.51

GRADES 55-TH ST.

(57)

Curb Rough	Lt Curb	Rt Curb	Curb Rough
---------------	------------	------------	---------------

1/2 P.O.C. NE Ret. 45° 03' 15"

CO ⁰³ 41.63 341.60	C440 46.00 341.60
-------------------------------------	-------------------------

14.55

1/4 P.O.C. NE Ret 22° 31' 37"

FO.22 41.14 341.36	C286 44.22 341.36
--------------------------	-------------------------

This return originally taken 5' taller than

14.55

SW.R=27' CB.R=37'4" = 20° 06' 30" L=58.19'
8+7+42 = E.C. NE. CB Ret 55-114 50 feet
36.
T.P.

FO ¹⁵ 41.54 341.69	C251 44.20 341.69
-------------------------------------	-------------------------

PL.R = 20'
(8+19+42 = E.C. NE. PL. Ret.)
26.

F263	CO ⁰⁵		
3820	4088		
340.83	340.83	341.04	

340.87
GUT

(7+86.20 - 20.46 Rt. 3/4" Pipe + Disk)

(7+86.11 - 29.95 Lt. 1/2" Pipe for T.K.)

F1.22	CO ¹⁴		
38.67	40.03		
339.89	339.89	340.10	

339.94
GUT

7+79.50

T.P.

340.03

CO.96	FO ¹⁴		
3720	3820		
338.24	338.24	338.45	

338.21
GUT

7+39.50

Lx		Rt	
Curb Rough	Curb	Curb	Curb Rough

GRADES - 55-TH ST

9+39.50		F2.97	CO ⁰⁷		F0.12	C2.37
20		3862	41.66		41.97	4.46
		341.59	341.59	341.80	342.09	342.09

9+19.50		F3.45	FO ¹⁰		CO ¹¹	C2.48
		3820	41.55		42.26	4.63
		341.65	341.65	341.86	342.15	342.15

8+89.50		F3.66	FO ⁰⁵		CO ¹⁸	C2.28
		3786	41.47		42.20	4.30
		341.52	341.52	341.73	342.02	342.02

8+59.50		F3.29	CO ⁰⁵		CO ¹⁶	C2.15
		3811	41.45		42.06	4.40
		341.40	341.40	341.61	341.90	341.90

E.C. Cb. Ref. N.E.	90° 06' 30"				FO ⁹⁶	C2.94
Cor 55-TH & Seifert					45.53	48.07
(See Sheet 16)					346.03	346.03
					45.07	

14.55					CO ¹⁰	C5.08
3/4	67° 34' 52"				43.40	48.38
					343.30	343.30

14.55

GRADES - 55-TH ST

E.C. SW. Ch Ret $\angle = 90^{\circ} 06' 30''$
55-TH Olive

3/4 $67^{\circ} 34' 53''$

1/2 $45^{\circ} 03' 15''$

1/4 $22^{\circ} 31' 37''$

CBR = $32'$ $\angle = 90^{\circ} 06' 30''$ $L = 50.33'$
10 + 61.49 = R. & Ch. B.C. Lt. SW. Ret 55-TH Olive.
(see sheet 17)

10 + 39.50

TP.

337.72

10 + 19.50

9 + 99.50

9 + 79.50

9 + 59.50

Rough	4	Rt	59
Curb	Curb	Curb	Curb
22.89	FO.46	4-20-54	
33.54	30.24	8-02-54	
330.70	330.70		
22.47	FO ³⁹		
34.47	31.61		
332.00	332.00		
22.30	CI ¹¹		
35.50	34.31		
333.20	333.20		
21.90	CO ¹³		
36.15	34.38		
334.25	334.25		
21.64	FO ²⁵		
36.94	35.05		
335.30	335.30	335.51	
	CO ⁰³		
	37.13		
	337.10		
	CO ¹³		
	35.93		
	335.80		
	CO ¹²		
	37.72		
	337.60		
	CO ⁰⁶		
	39.12		
	339.06		
	CO ²¹		
	39.95		
	339.74		
	FO ²⁷		
	340.24		
	FO ¹⁸		
	40.96		
	340.64		
	CO ⁰⁶		
	40.70		
	340.64		
	FO ²⁶		
	41.42		
	341.26		
	CO ¹⁶		
	41.50		
	341.76		
	CO ¹³		
	38.38		
	335.80		
	CO ⁰⁶		
	2.60		
	41.66		
	339.06		
	CO ²¹		
	39.97		
	340.24		
	FO ¹⁸		
	3.73		
	4.81		
	341.14		
	FO ²⁶		
	41.50		
	341.76		

	LT	RT
	Curb Rough	Curb Rough

GRADES 55-TH. ST.

B.M. 333.99 → 334.01

B.M. 334.00 → 333.94 Top 5 W. 25 R. Hub 55-TH & Olive 2165
56

TP 343.46

10 + 93.50 = Cb. Line Produced. 334.17 334.17

FO ¹⁶	C 1.46
3401	35.63
334.17	334.17

~~10 + 88.92~~

334.07	334.40	C 1.64
		36.04
		334.40

Stampex Lt & Rt.
Cota 7-15-54
Nordahl
Moralez

(61)
Corb
Rough

PAVING GRADES BILOXI ST. 54-TH
TO BLACKTON DRIVE (See Sheet 16)
for Profile

Corb

9.82 T.P.

CO¹³

2/5 P.O.C. SE Ret. $17^{\circ}39'56''$

78.13
278.00

278.00

9.82

CO⁰²

1/5 P.O.C. SE Ret $8^{\circ}49'58''$

78.23
278.21

278.21

9.82 C 3 Bk Ch = 8.86'

Grade

A @ P.C. (See Sheet 16 for Ch. Ret. Profile)
 $\Delta = 88^{\circ}19'40''$ CBR = 31.85 L = 49.10'
0+63.64 = P.R.C. S.E. Ch. Ret. 54-th & Biloxi

78.50
278.50

C.H. 34
278.50

8.46 Δ def. $\Delta = 0^{\circ}50'10''$ C = 8.46

d = 5.92714 Δ T = 287.98' Δ L = 453.51'
0+55.18 = B.C. Δ L1 Δ R = 290' Δ = 89°36'

326' RR d = 5.37147

Elev = 278.37-

0+00 = L&D Disk Δ 54-th & Biloxi

NOTE: From Δ 54-th & Biloxi L&D Disk N. 50.26' to Ch. B.C.
S. 49.89' to Ch. B.C.

B.M.

291.28

Stub Rad point SW cor Blackton & Biloxi

B.M.

278.37

L&D Disk Δ 54-th & Biloxi

See page 35

Corb Lt # 26
Rough Corb Rough

GRADES BILOXI ST.

2/5 POC. NE Ref 18° 29' 44"

Corb
C0.08
78.47
278.39 ✓ 278.39

1/5 POC. NE Ref 19° 14' 52"

Corb
C0.09
78.65
278.56 ✓ 278.56

10.398 C = 9.39' 3' Bk. Ch.

X @ Center
A = 92° 28' 40" Ch L = 32.21' L = 51.99
D + 67.72 = P.C. NE. Ch Ref. 54 to 4 Biloxi
C = 4.08 deflt = 1° 14' 20" C = 4.08
89° 59' 60"
88° 45' 40"

Corb
C0.10
78.85
279.58 ✓ 278.75 278.84

deflt = 44° 09' 50"
B.C. SE Ref. 54 to 4 Biloxi
A = 88° 19' 40"

Corb
C0.05
77.70
277.65 ✓ 277.65

(See Sheet 10)
9.82

4/5 35° 19' 52"

Corb
C0.17
77.87
277.90 ✓ 277.70

9.82

3/5 26° 29' 54"

Corb
C0.23
78.05
277.82 ✓ 277.82

9.82 26° 29' 54"

Corb
C0.06
78.13
278.07 ✓ 278.07

Set Mid point for rough grade

INTERSECTION DETAILS ALLEY BIKA

BILOXI ST.

Sta Curb Gut. Cb

(See Sheet 19)

N.E. P.L. # Alley A
 $\times 89^{\circ}35'41''$ Lt.
 11.28' A
 @ P.L. # Alley

CO.18			
2.05			
281.87	281.37	(see Pg. 65)	
3' Bk. NE P.L.			

	CO.45	CO.95	CO.02	CO.52
B.C. N.W. Ret.	1.10	8.10	80.67	80.67
$\times 87^{\circ}66'25''$ 18" A	280.65	280.15	280.65	280.15
N.W. Alley Ret.				
@ Center 2' R	2' P.N.W.			
	B.C. T. Line Hub. (Gut)			

L = 2.32'
 $R = 2' \times = 66^{\circ}25'18''$
 E.C. Cb. Ret.
 Sly 11.88

CO.17	CO.57	FO.04	CO.46
0.88	0.88	80.67	80.67
280.71	280.31	280.71	280.31

@ P.L. # Wly Alley
 Sly 11.88

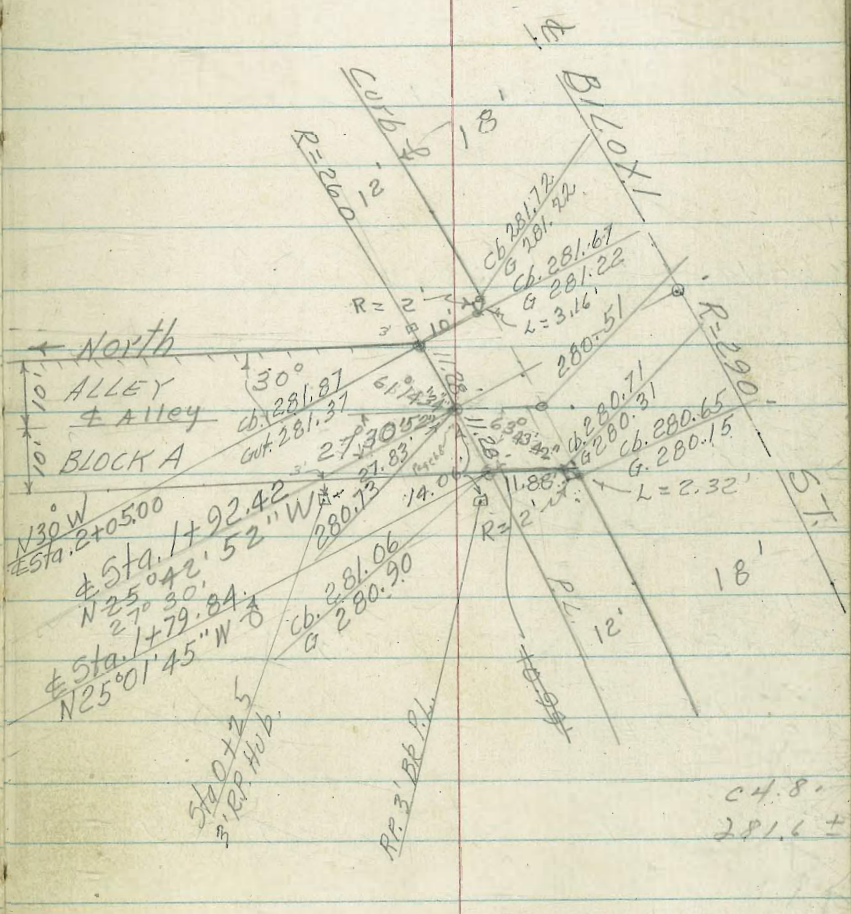
FO.33	FO.17
0.73	0.73
281.06	280.90

Wly 11.28

281.06	280.90
--------	--------

@ # Alley # P.L.
 $11.28 = 1^{\circ}14'34''$
 $P.L. R = 260'$
 $1 + 92.42 = 13.33'26''$ # Alley BIK A

12.58 \uparrow C = 12.58'



Curb
Rough

Curb
Rough

GRADES BILOXI ST.

Biloxi 4 Block
P.R.C. 5W Ch. Ref.

2+70.45 21° 15' 56" (See Pg. 42)
10.45'

285.33 285.33 285.54 285.83 285.83

2+60 20° 14'

F-1.32 FO⁰⁷ 283.47 8472 284.79 284.79 285.00 85.20 285.29 285.29
284.33

20' 2+40 18° 15' 27"

F1⁰² FO¹² 282.50 8338 283.50 283.50 283.71 84.19 284.00 284.00
283.04

20' 2+20 16° 16' 55"

FO.52 FO¹¹ 281.90 82.31 282.42 282.42 282.63 82.91 282.92 282.92
281.96

27.58 C = 27.58

Alley A. B.C. N.E. Ch. Ref. $\angle = 89° 35' 41''$
(See Sheet 19)
N.E. Ch. Ref. Alley A.

CO²⁰ 81.92 281.72
CO.58 230 281.72
C1.08 281.22
2' B.N.E. B.C. Gut.
7' R.R. Ch. face

5/4 10.00 E.C. N.E. Ch. Ref. $\angle 30°$ Lt.
N.E. P.L. Alley B/R A
(See Sketch Pg 64)

C0.25 81.92 281.67
CO.38 2.05 281.67
C0.88 281.22
2' R.N.E. E.C. Gut.
7' Line Hub.

GRADES BILOXI ST.

4+53.82 4-39° 22' 48" (E Mon)

↑ 13.82

4+40 38° 00' 53"

40' C = 39.97

4+00 34° 03' 48"

40' C = 39.97'

3+60 30° 06' 43"

40' C = 39.97'

3+20 26° 09' 38"

40' C = 39.971

2+80 22° 12' 32" T.P. 286.16

9.55 C = 9.55'

Curb

Rough

Curb

LT

E

RT

7-21-59

Curb

(66)

276.25

CO. 26 FO 22
295.73 95.47
295.69 295.69 295.92

FO. 71 FO 22
293.27 93.78
294.00 294.00 294.21

FO. 90 FO 65
290.96 91.21
291.86 291.86 292.07
291.40

F. 1.80 FO 49
287.50 88.81
289.30 289.30 289.51
288.84

F. 2.13 FO 14
284.17 86.16
286.30 286.30 286.51
285.84

GRADES BILOXI ST.

Corb
Rough

Lt.

±

Rt.

(67)

7-21-54

Corb

Corb

T.B.M.

295.35

295.38

50' RP. (see pg 35)

FD²²

F.C.
5+08.69 ± 44°48'

C 0.2

9794

298.16

298.16

28.69 C = 28.67

C 0.21

± 0.9

FO⁰⁷

4+80

41°57'58"

~~(?)~~ ~~old established~~
~~grade?~~

297.34

9706

~~296.25~~

297.13

297.13 ✓

± 26.18' C = 26.17

Rough stubs S back except as noted

Lt. & Rt.

(68)

See Sheet

PAVING GRADES ALLEY BLK A
BALBOA VISTA.

ROUGH 6-22-54 ROUGH

1+60

F0.28	F0.47	C0.94	C-1.16
282.39	2.20	3.91	284.13
282.67	282.67	282.97	282.97
stub 0.5' back			

1+30

F0.87	F0.75	C0.48	C0.72
281.48	1.60	3.13	283.37
282.35	282.35	282.65	282.65
stub 0.5' back			

1+00 TP

282.38

F1.05	F0.99	C0.05	C0.19
280.98	1.04	2.38	282.52
282.03	282.03	282.33	282.33

0+50

F0.67	F0.68	C0.08	Grade
280.83	0.82	1.88	281.8 ±
281.50	281.50	281.80	281.80

0+25

F0.88	F0.85	C0.33	C0.22
280.35	0.38	1.86	281.75
281.23	281.23	280.98	281.53

0+00 Fd 2x2" Hub & Disk & Alley
 } 27.68' to nail in pole # 5845624 NELY of Hub
 Hub tied } 55.00' to chisel X Ely conc. drive w/ly of hub
 (See 1964)

0+00 = N 1/4 P.L. Biloxi 1.5' = E Biloxi 1.5' Sta. 1492.42

Paving Width = 19.5'

B.M.

291.28

See Page 34
on Rod Point SW COR Blackton + Biloxi ST

Rough grade stakes 5' back of Prop except as Noted

LT

±

RT

(69)

6-22-54

GRADES ALLEY BLK A.

ROUGH

ROUGH

3+90

F0.12 F0.12
287.76 7.76
287.88 287.88
3

C0.44 C0.98
8.62 289.16
288.18 288.18

3+60

F1.33 F1.15
285.68 5.86
287.01 287.01

C0.33 C0.44
7.64 287.75
287.31 287.31

Elev = 287.55

9° ± RT

TBM - Nail in pole (Fly side) # 584564H Sta 3+29

3+20

F0.84 F0.67
285.01 5.18
285.85 285.85

C1.19 C0.92
7.34 287.07
286.15 286.15

2+80

F0.70 F0.87
284.08 3.97
284.78 284.78

C1.22 C1.58
6.30 286.66
285.08 285.08

2+40

C1.11 C1.10
285.00 4.99
283.89 283.89
Nail in fence
0.5' back 0.59' bk

C1.62 C1.89
5.81 286.08
284.19 284.19

2+00

C0.94 C0.94
284.13 84.13
283.19 283.19
Nail in fence
0.2' back 0.52' bk

C1.00 C1.49
4.49 284.98
283.49 283.49

GRADES ALLEY BLK A

ct. t Et. (70)
6-22-54

6+20
TBM Nail in pole # 584566H - 9' RT stat 6+00 - EL = 291.92

C 0.85	C 0.85	C 0.84	C -1.34
290.78	0.78	1.07	291.57
289.93	289.93	290.23	290.23
Nail 0.25 back	Nail 0.38E		

5+80

F 0.85	F 0.86	C 0.39	C -1.14
289.24	89.23	0.78	291.53
290.09	290.09	290.39	290.39
	3'		

5+40

F 0.28	C 0.08	C 1.69	C -1.67
289.97	0.33	2.24	292.22
290.25	290.25	290.55	290.55
	3'		

TBM - ON 2" X 2" RW hub 2 Alley 4+75²⁹ - EL = 291.33

5+00
Hub tied } 51⁴⁸ To P.K. Nail in Fly end conc block wall
 } 91² To Nail in pole # 584565H - ELY of hub

C 0.25	C 0.32	C 2.51	C -2.53
290.44	0.51	3.00	293.02
290.19	290.19	290.49	290.49
	3'		

4+75²⁹ = P.O.T. 2" X 2" RW hub -

4+60

C 0.35	C 0.61	C 2.66	C -2.95
290.04	0.30	92.65	292.94
289.69	289.69	289.99	289.99
	3'		

T.P. 290.86

4+20

C 0.15	C 0.19	C 1.81	C 2.14
288.90	8.94	90.86	291.19
288.75	288.75	289.05	289.05
stub 4' back	3'		

GRADES ALLEY BLK A

8+40

F 0.80	F 0.60	C 1.19	C 1.32
287.36	7.56	9.65	289.78
288.16	288.16	288.46	288.46

8+00 TR

290.75

C 0.02	F 0.03	C 1.46	C 1.56
289.00	8.95	0.75	290.85
288.98	288.98	289.29	289.29

7+60

C 1.31	C 1.35	C 1.61	C 1.70
290.68	0.72	1.28	291.37
289.37	289.37	289.67	289.67
Nail in Fence 0.17 Back	0.40 Bk		

7+30

C 2.02	C 2.02	C 1.53	C 2.10
291.49	1.51	1.32	291.89
289.49	289.49	289.79	289.79
Nail in fence ON LINE	0.30 Bk		

7+00

C 1.97	C 1.99	C 1.70	C 1.95
291.58	1.60	1.62	291.86
289.61	289.61	289.91	289.91
Nail 0.15 back	0.35 Bk		

6+60

F 0.32	F 0.34	C 0.87	C 1.74
289.45	9.43	0.94	291.81
289.77	289.77	290.07	290.07

GRADES ALLEY BLK A

B.M. 286.18 - 286.18 = 20' RB To Sewer M.H. N^o 25
N/4 of Olive & Alley G-323-35

71
9+32.59 F.C. Curb Returns
FO 5.48
C0.37
~~F0.13~~ ~~C0.37~~
C1.47 C0.97
8.40 8.40
286.61 286.11 286.02 286.93 287.43
5. 5.

cb. R = 2' \angle = 90° 66' 30" Lt. 89° 53' 30" Rt.
9+30.59 = B.C. Curb Ret's L=3.14
71
FO.31 C0.19
5.48 5.48
285.79 285.29 286.12 286.93 287.33
Gut. cb

2" x 2" RW Hub Tied } 48.05' to head Nail in pole # 584568 H-CSE 1/4" x 1/4" #6
(cained) } 100' to head Nail in pole 592257 (N Ely of Hub
9+25.71 End Curb on Rt.
9+25.59 P.L. 5/4 Line Olive
71.90
C0.65
C0.25 C0.47
6.14 285.96
285.89 285.49 286.17 287.00 287.43
cb Gut Gut cb

20.32' Curb
9+04.83 End Curb on Lt.
0.5.58
FO.77 FO.37
6.06 6.06
286.83 286.43 286.31 286.92
cb Gut C1.20 8.12

Elev = 288.86

TBM - Nail in pole # 584568 H - 9' RT Sta 8+78
8+70
F0.79 F0.55
286.50 6.74
287.29 287.29
C1.02 C-1.3
8.71 289.02
287.69 287.69

ROUGH GRADES ALLEY BLK-H
BALBOA VISTA (See Sheet 20)

0+77.47	CO. 67 312.19 311.52			C-3.57 1541 311.82
27.47				
0+50	FO. 48 315.11 315.59			C-2.46 318.35 315.89
30				
0+20	FO. 67 319.36 320.03		319.78	O-2.10 222.43 320.33
20				

End Curbs $\Delta = 89^{\circ}45'30''$ Lt. $\Delta = 90^{\circ}14'30''$ Rt. R-5
0+00 = E.C. Curb Ret's Foul cover of Alley H

	322.40 Cb	322.00 Gut		323.15	323.96
0-05 = B.C. Curb Returns	321.91 15'		322.83		324.25 15'

B.M. 322.72 on Hub Nly Line Foul cover of Alley BLK H.

GRADES ALLEY BLK H.

3+17.47

C.1.53
05.20
303.67

C-11.65
315.62
303.97

40

2+77.47

C.2.09
06.15
304.06

C-9.79
314.15
304.36

40

2+37.47

C0.72
305.16
304.44

C-6.03
10.77
304.74

40

1+97.47

F0.24
304.49
304.83

C-2.99
308.12
305.13

40

1+57.47

F0.01
305.21
305.22

C-3.44
308.96
305.52

40'

1+17.47

C0.40
307.39
306.99

C-3.29
310.58
307.29

40'

GRADES ALLEY BLK H

21. e Rt. (73)

5+47.47

Co. 87
293.65
292.78

C-5.02
297.96
292.94

40

Co. 14
294.45
294.31

C-4.40
298.95
294.55

5+07.47

40

Co. 47
297.34
296.87

C-8.24
292.31
297.07

4+67.47

40

Co. 51
300.48
299.97

C-6.74
307.01
300.27

4+27.47

40

C-0.95
303.29
302.34

C-8.54
11.18
302.64

3+87.47

40

C-1.54
04.92
303.38

C-10.41
314.09
303.68

3+47.47

30

GRADES ALLEY BIK-H

Contd in G-324

B.M.

(See Sheet 20 for Ch. Ref's.)
 (for Curb Returns See Pg. 10)

6+1.2.40 def α = 16°52'20"

14.93 C = 14.77'

CBR = 1555' α = 67°44'02" L = 18.38'

S. 550 M. 97 PL. R = 10' T = 3055' L = 25.09'

5+97.47 B.C. Lt. α = 58°16'21"

(See Sheet 20)

50

Lt.

C

Rt.

(76)

291.04
9.60

290.87

291.49
11.30

C. 2.20

292.70

291.50

291.10

C. 5.02

296.52

291.50

INDEXED
DER
18 1055

EXTENSION 30" STORM DRAIN 32-ND
NLY OF REDWOOD ST. W.O. 20937

7-20-54
Dwg 4464-B
F.B. 1692-2082

Stampel
Sisson
Nordahl
Set Stakes
10' Lt.

Elev Grade Cut

0+63⁵⁰ End 270.98 270.22 0.76

0+50 272.00 270.72 1.28

0+20 275.30 271.83 3.47

Existing 42" Pipe
0+00 Make Connection 272.51

276.39
+ 3.82
272.57 Top Pipe
F.L. of Existing 42" Pipe

B.M.

EXT

NLY

0+

0+

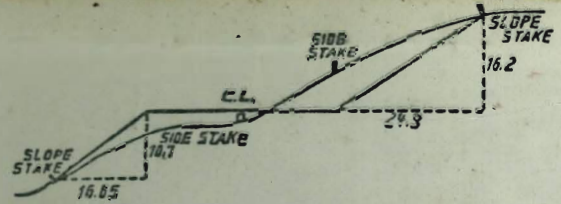
0+

0+

B.M

50
5
2
5
5

36.25
21.25



DISTANCES FROM SIDE STAKES FOR CROSS-SECTIONING.

SLOPE 1 1/2 TO 1. ROADWAY OF ANY WIDTH.

	0	.1	.2	.3	.4	.5	.6	.7	.8	.9	
0	0.00	0.15	0.30	0.45	0.60	0.75	0.90	1.05	1.20	1.35	0
1	1.50	1.65	1.80	1.95	2.10	2.25	2.40	2.55	2.70	2.85	1
2	3.00	3.15	3.30	3.45	3.60	3.75	3.90	4.05	4.20	4.35	2
3	4.50	4.65	4.80	4.95	5.10	5.25	5.40	5.55	5.70	5.85	3
4	6.00	6.15	6.30	6.45	6.60	6.75	6.90	7.05	7.20	7.35	4
5	7.50	7.65	7.80	7.95	8.10	8.25	8.40	8.55	8.70	8.85	5
6	9.00	9.15	9.30	9.45	9.60	9.75	9.90	10.05	10.20	10.35	6
7	10.50	10.65	10.80	10.95	11.10	11.25	11.40	11.55	11.70	11.85	7
8	12.00	12.15	12.30	12.45	12.60	12.75	12.90	13.05	13.20	13.35	8
9	13.50	13.65	13.80	13.95	14.10	14.25	14.40	14.55	14.70	14.85	9
10	15.00	15.15	15.30	15.45	15.60	15.75	15.90	16.05	16.20	16.35	10
11	16.50	16.65	16.80	16.95	17.10	17.25	17.40	17.55	17.70	17.85	11
12	18.00	18.15	18.30	18.45	18.60	18.75	18.90	19.05	19.20	19.35	12
13	19.50	19.65	19.80	19.95	20.10	20.25	20.40	20.55	20.70	20.85	13
14	21.00	21.15	21.30	21.45	21.60	21.75	21.90	22.05	22.20	22.35	14
15	22.50	22.65	22.80	22.95	23.10	23.25	23.40	23.55	23.70	23.85	15
16	24.00	24.15	24.30	24.45	24.60	24.75	24.90	25.05	25.20	25.35	16
17	25.50	25.65	25.80	25.95	26.10	26.25	26.40	26.55	26.70	26.85	17
18	27.00	27.15	27.30	27.45	27.60	27.75	27.90	28.05	28.20	28.35	18
19	28.50	28.65	28.80	28.95	29.10	29.25	29.40	29.55	29.70	29.85	19
20	30.00	30.15	30.30	30.45	30.60	30.75	30.90	31.05	31.20	31.35	20
21	31.50	31.65	31.80	31.95	32.10	32.25	32.40	32.55	32.70	32.85	21
22	33.00	33.15	33.30	33.45	33.60	33.75	33.90	34.05	34.20	34.35	22
23	34.50	34.65	34.80	34.95	35.10	35.25	35.40	35.55	35.70	35.85	23
24	36.00	36.15	36.30	36.45	36.60	36.75	36.90	37.05	37.20	37.35	24
25	37.50	37.65	37.80	37.95	38.10	38.25	38.40	38.55	38.70	38.85	25
26	39.00	39.15	39.30	39.45	39.60	39.75	39.90	40.05	40.20	40.35	26
27	40.50	40.65	40.80	40.95	41.10	41.25	41.40	41.55	41.70	41.85	27
28	42.00	42.15	42.30	42.45	42.60	42.75	42.90	43.05	43.20	43.35	28
29	43.50	43.65	43.80	43.95	44.10	44.25	44.40	44.55	44.70	44.85	29
30	45.00	45.15	45.30	45.45	45.60	45.75	45.90	46.05	46.20	46.35	30
31	46.50	46.65	46.80	46.95	47.10	47.25	47.40	47.55	47.70	47.85	31
32	48.00	48.15	48.30	48.45	48.60	48.75	48.90	49.05	49.20	49.35	32
33	49.50	49.65	49.80	49.95	50.10	50.25	50.40	50.55	50.70	50.85	33
34	51.00	51.15	51.30	51.45	51.60	51.75	51.90	52.05	52.20	52.35	34
35	52.50	52.65	52.80	52.95	53.10	53.25	53.40	53.55	53.70	53.85	35
36	54.00	54.15	54.30	54.45	54.60	54.75	54.90	55.05	55.20	55.35	36
37	55.50	55.65	55.80	55.95	56.10	56.25	56.40	56.55	56.70	56.85	37
38	57.00	57.15	57.30	57.45	57.60	57.75	57.90	58.05	58.20	58.35	38
39	58.50	58.65	58.80	58.95	59.10	59.25	59.40	59.55	59.70	59.85	39
40	60.00	60.15	60.30	60.45	60.60	60.75	60.90	61.05	61.20	61.35	40
41	61.50	61.65	61.80	61.95	62.10	62.25	62.40	62.55	62.70	62.85	41
42	63.00	63.15	63.30	63.45	63.60	63.75	63.90	64.05	64.20	64.35	42
43	64.50	64.65	64.80	64.95	65.10	65.25	65.40	65.55	65.70	65.85	43
44	66.00	66.15	66.30	66.45	66.60	66.75	66.90	67.05	67.20	67.35	44
45	67.50	67.65	67.80	67.95	68.10	68.25	68.40	68.55	68.70	68.85	45
46	69.00	69.15	69.30	69.45	69.60	69.75	69.90	70.05	70.20	70.35	46
47	70.50	70.65	70.80	70.95	71.10	71.25	71.40	71.55	71.70	71.85	47
48	72.00	72.15	72.30	72.45	72.60	72.75	72.90	73.05	73.20	73.35	48
49	73.50	73.65	73.80	73.95	74.10	74.25	74.40	74.55	74.70	74.85	49
50	75.00	75.15	75.30	75.45	75.60	75.75	75.90	76.05	76.20	76.35	50

THE NATIONAL BLANK BOOK COMPANY
 HOLYOKE MASSACHUSETTS
 NEW YORK CHICAGO BOSTON SAN FRANCISCO