

DISTANCES FROM SIDE STAKES FOR CROSS-SECTIONING
SLOPE 1 TO 1. ROADWAY OF ANY WIDTH

	0	.1	.2	.3	.4	.5	.6	.7	.8	.9	
0	0.00	0.10	0.20	0.30	0.40	0.50	0.60	0.70	0.80	0.90	0
1	1.00	1.10	1.20	1.30	1.40	1.50	1.60	1.70	1.80	1.90	1
2	2.00	2.10	2.20	2.30	2.40	2.50	2.60	2.70	2.80	2.90	2
3	3.00	3.10	3.20	3.30	3.40	3.50	3.60	3.70	3.80	3.90	3
4	4.00	4.10	4.20	4.30	4.40	4.50	4.60	4.70	4.80	4.90	4
5	5.00	5.10	5.20	5.30	5.40	5.50	5.60	5.70	5.80	5.90	5
6	6.00	6.10	6.20	6.30	6.40	6.50	6.60	6.70	6.80	6.90	6
7	7.00	7.10	7.20	7.30	7.40	7.50	7.60	7.70	7.80	7.90	7
8	8.00	8.10	8.20	8.30	8.40	8.50	8.60	8.70	8.80	8.90	8
9	9.00	9.10	9.20	9.30	9.40	9.50	9.60	9.70	9.80	9.90	9
10	10.00	10.10	10.20	10.30	10.40	10.50	10.60	10.70	10.80	10.90	10
11	11.00	11.10	11.20	11.30	11.40	11.50	11.60	11.70	11.80	11.90	11
12	12.00	12.10	12.20	12.30	12.40	12.50	12.60	12.70	12.80	12.90	12
13	13.00	13.10	13.20	13.30	13.40	13.50	13.60	13.70	13.80	13.90	13
14	14.00	14.10	14.20	14.30	14.40	14.50	14.60	14.70	14.80	14.90	14
15	15.00	15.10	15.20	15.30	15.40	15.50	15.60	15.70	15.80	15.90	15
16	16.00	16.10	16.20	16.30	16.40	16.50	16.60	16.70	16.80	16.90	16
17	17.00	17.10	17.20	17.30	17.40	17.50	17.60	17.70	17.80	17.90	17
18	18.00	18.10	18.20	18.30	18.40	18.50	18.60	18.70	18.80	18.90	18
19	19.00	19.10	19.20	19.30	19.40	19.50	19.60	19.70	19.80	19.90	19
20	20.00	20.10	20.20	20.30	20.40	20.50	20.60	20.70	20.80	20.90	20
21	21.00	21.10	21.20	21.30	21.40	21.50	21.60	21.70	21.80	21.90	21
22	22.00	22.10	22.20	22.30	22.40	22.50	22.60	22.70	22.80	22.90	22
23	23.00	23.10	23.20	23.30	23.40	23.50	23.60	23.70	23.80	23.90	23
24	24.00	24.10	24.20	24.30	24.40	24.50	24.60	24.70	24.80	24.90	24
25	25.00	25.10	25.20	25.30	25.40	25.50	25.60	25.70	25.80	25.90	25
26	26.00	26.10	26.20	26.30	26.40	26.50	26.60	26.70	26.80	26.90	26
27	27.00	27.10	27.20	27.30	27.40	27.50	27.60	27.70	27.80	27.90	27
28	28.00	28.10	28.20	28.30	28.40	28.50	28.60	28.70	28.80	28.90	28
29	29.00	29.10	29.20	29.30	29.40	29.50	29.60	29.70	29.80	29.90	29
30	30.00	30.10	30.20	30.30	30.40	30.50	30.60	30.70	30.80	30.90	30
31	31.00	31.10	31.20	31.30	31.40	31.50	31.60	31.70	31.80	31.90	31
32	32.00	32.10	32.20	32.30	32.40	32.50	32.60	32.70	32.80	32.90	32
33	33.00	33.10	33.20	33.30	33.40	33.50	33.60	33.70	33.80	33.90	33
34	34.00	34.10	34.20	34.30	34.40	34.50	34.60	34.70	34.80	34.90	34
35	35.00	35.10	35.20	35.30	35.40	35.50	35.60	35.70	35.80	35.90	35
36	36.00	36.10	36.20	36.30	36.40	36.50	36.60	36.70	36.80	36.90	36
37	37.00	37.10	37.20	37.30	37.40	37.50	37.60	37.70	37.80	37.90	37
38	38.00	38.10	38.20	38.30	38.40	38.50	38.60	38.70	38.80	38.90	38
39	39.00	39.10	39.20	39.30	39.40	39.50	39.60	39.70	39.80	39.90	39
40	40.00	40.10	40.20	40.30	40.40	40.50	40.60	40.70	40.80	40.90	40
41	41.00	41.10	41.20	41.30	41.40	41.50	41.60	41.70	41.80	41.90	41
42	42.00	42.10	42.20	42.30	42.40	42.50	42.60	42.70	42.80	42.90	42
43	43.00	43.10	43.20	43.30	43.40	43.50	43.60	43.70	43.80	43.90	43
44	44.00	44.10	44.20	44.30	44.40	44.50	44.60	44.70	44.80	44.90	44
45	45.00	45.10	45.20	45.30	45.40	45.50	45.60	45.70	45.80	45.90	45
46	46.00	46.10	46.20	46.30	46.40	46.50	46.60	46.70	46.80	46.90	46
47	47.00	47.10	47.20	47.30	47.40	47.50	47.60	47.70	47.80	47.90	47
48	48.00	48.10	48.20	48.30	48.40	48.50	48.60	48.70	48.80	48.90	48
49	49.00	49.10	49.20	49.30	49.40	49.50	49.60	49.70	49.80	49.90	49
50	50.00	50.10	50.20	50.30	50.40	50.50	50.60	50.70	50.80	50.90	50

Distance of slope stake from side or shoulder stake for any width roadway, slope 1 to 1. If ground is nearly level, the cut or fill at side stake is located by the double entry method in left column and top row. The number in body of table in same row and column gives distance from side stake to slope stake. If ground is not level estimate the difference in elevation between the side stake and slope stake, lower target by this amount if cut, elevate if fill. Add this amount to cut or fill and find distance in table. Set up rod at this point, and line of sight should cut target. If it does not make the slight adjustment necessary.

31-8
616
242

MICROFILMED

APR 15 1965

PAGES	INDEX	DATE	PAGE	INDEX	DATE
1-3	SEWER GRADES LAUREL - 54-TH TO BLACKTON	4-19-54	77	SEWER GRADES ALLEY "D"; LAUREL ST. N.Y.	
4-17	SEWER GRADES BLACKTON; FAULCONER TO OLIVE				
18-19	SEWER GRADES ALLEY BLY. J - LAUREL ST. SLY.				
20-22	SEWER GRADES LAUREL - BLACKTON TO 55-TH.				
23-25	SEWER GRADES ALLEY H; FAULCONER TO LAUREL				
26-30	SEWER GRADES ALLEY B; LAUREL TO OLIVE				
31-35	SEWER GRADES ALLEY A; BILOXI TO OLIVE				
36-42	SEWER GRADES 55-TH ST; FAULCONER TO SEIFERT	4-29-54			
43-44	SEWER GRADES E. W. ALLEY G; 55 ST. ELY				
45	SEWER GRADES 54-TH @ BILOXI				
46	SEWER GRADES BILOXI - 54-TH TO ALLEY A				
47	SEWER GRADES 54-TH ST. @ OLIVE ST.				
48-49	SEWER GRADES OLIVE ST. 54-TH TO ALLEY B				
50-52	SEWER GRADES LAUREL ST. 53-TH TO ALLEY - D				
53-57	SEWER GRADES BALBOA VISTA DR. FAULCONER LAUREL TO				
58-62	SEWER GRADES FAULCONER ST. # VICINITY				
63-66	SEWER GRADES ALLEY - C; LAUREL TO SEIFERT				
67-69	SEWER GRADES BALBOA VISTA DR. SEIFERT ST LAUREL TO				
70-73	SEWER GRADES ALLEY "F"; LAUREL SLY.				
74-76	SEWER GRADES 56-TH ST; LAUREL SLY				

Dwg 510715-42L
 Ref. Maps 2142-3006
 F.b. 2165-2142-G-320
 Lt

RT. ①

SEWER ALIGNMENT & GRADES LAUREL ST
 FROM 54-TH ST. NELY 8" V.C.P.

Ref. Stakes Set 4-19-54
 5' Ref.

2100 W.O. 31973
 1+42.54
 28'
 P.O.T. Ahead
 & N 45 Alley
 1+14.54 & M.H. N 1-4 W. to S. 69° 11' & Alley Sly Stub
 & 32'
 0+82.54 End Concl. Enc.
 12'
 0+70.54 Begm Concl. Enc.
 35.54
 0+35
 135.54
 0+00
 0+28.90 = Exst M.H. &
 0+00 = Pt. 66.25 Ely of 1+disk & Laurel & 54th
 B.M. 269.09

61048

58896

C 8.83 ✓
 74 52
 265.69

C 9.25 ✓ C 9.01
 73 25 7308
 264.00 264.07
 10' RP
 5' Stub & Alley
 South
 C 8.77 ✓
 72 27
 263.50

C 8.45 ✓
 71 76
 263.31

C 7.86 ✓
 61 60
 262.74

C 7.86 ✓
 9 85
 262.19

261.73

TOP SEFH. Laurel & 54th.

SEWER GRADES LAUREL ST. NELY FROM 59TH

1450

1425

1400

± Laurel St
2+96.77 ± M.H. N° 2 Blackton

275.00

6.77^v

80.43

273.66

(120)
2+75.11 ± M.H. 31'

6.82^v

78.98

272.16

2+50.77 ± M.H. 31'

7.10^v

77.75

270.65

± From Main Along Lt. 61.50' Sub Blackton Tily
+ Blackton N° 5
2+25.10 ± M.H. N° 2 ± Lt. 771' Ahead

7.39^v

76.54

269.15

2+00

28.84

6.96^v

8.08^v

77.45

75.49

270.49

267.41

1+71.16 N° 131-Lt.

28.62'

SEWER GRADES ALLEY BLK J.

1+75 = $\frac{1}{4}$ M.H. N^o 40

1+50

1+25

1+00

0+75

0+50

0+25

0+00 = Plug 425 5/4 $\frac{1}{4}$ Laurel St

B.M.

See Pg. 18

NOTE: Offsets are 5' rt.
of & laterals

RT.

4-14-54

SEWER GRADES BLACKTON ST. FROM

FAULKNER ST. NLY W.O. 31973

2+31.18 = N^o 50 RT. 8" V.C.P.

C 5.56	C 7.66
.91.36	94.91
285.80	287.25

25

2+06.18

C 4.89
.92.76
287.87

25'

1+81.18 = N^o 51 RT

C 4.35	C 6.96 ^v
94.29	97.60
289.94	290.64

25' TP

1+56.18

↑

9/6
8.30

295.50

C 4.29
.96.31
292.02

25

1+31.18 = Lot. N^o 52 RT.

C 4.57 ^v	C 5.94 ^v
98.64	300.92
294.10	294.98

35

Lot. N^o 53 RT.
0+96.18 = Begin Line & step Plug

C 5.30 ^v	C 5.83 ^v
302.30	304.33
297.00	298.50

TP

304.74

B.M.

313.40

Chis. Cross & Blackton & Sky Ch. Faulkner

BLACKTON SEWER GRADES

4-14-54 $\frac{1}{2}$ Rt. (5)

4+06.18

C 3.23
82.52
279.29

25

C 3.36 | C 6.06
83.52 | 87.12
280.16 | 281.06

3+81.18 = N^o 47 Rt.

25

C 3.35
84.37
281.02

3+56.18

25

C 3.99 | C 6.51
85.87 | 89.30
281.88 | 282.79

3+31.18 = N^o 48 Rt.

TP

286.50

25

C 4.35^v
87.09
282.74

3+06.18 =

↑
B. 448
-

25

C 4.91 | C 7.48^v
88.51 | 92.18
283.60 | 284.70

2+81.18 = N^o 49 Rt.

40.50

C 5.72
90.72
285.00

2+40.68 E.M.H. N^o 39

19.50

4-14-54

+

rt.

②

BLACKTON ST. SEWER GRADES

0+25

↑
+2.813 00

C 7.43

3 13

275.70

T.P. 2+17.14 B.C. SW. Ret Laurel 278.80 - 278.89

↓ Blackton

+ N. to E. = 61° 54' for Stub

0+00 N14

+ N. to H. No 2

5+30.68 = + Laurel & Blackton

+ S. to W. = 69° 11' for Stub

C 6.21

C 6.37

C 6.92

C 7.28

1.09

3.7

1.92

2.38

274.88

275.00

275.00

275.10

outlet

5' L.M.A.

5' rt. M.H.

outlet

Stub E.

10'

10'

30.68

C 4.77

0.83

276.06

5+00

18.82

C 4.31

C 6.73

1.02

4.35

4+81.18 = No 45 RT.

276.71

277.62

25'

C 3.86

1.43

277.57

4+56.18

3.448 00

25'

C 3.31

C 6.03

1.74

5.37

4+31.18 = No 46 RT

278.43

279.34

25'

BLACKTON ST. SEWER GRADES

1+47.08

25

1+22.08 = N^o 43 Lt.

10.31

1+11.77 = N^o 36 Rt.

11.77

1+00

27.92

0+72.08 = N^o 44 Lt.

22.08

0+50

2.813

Lt.

±

Rt.

7

4-14-54.

C 7.96

7.10

279.14

C 7.07

8.17

281.10

C 8.06

6.49

278.43

C 8.11

6.25

278.14

C 6.93

8.53

281.60

C 8.21

86.05

277.81

C 6.82

6.32

279.50

C 8.33

5.36

277.03

C 8.18

4.58

276.40

BLACKTON ST. SEWER GRADES

2+72.08 = N° 40 - Lt.

T.P.

289.08

34.30

2+37.78 = N° 34 - Rt.

15.70

2+22.08 = N° 41 - Lt.

22.08

2+00

17.22

1+82.78 = N° 35 Rt.

10.70

1+72.08 = N° 42 Lt.

25'

Lt.

Rt.

Lt.

Rt.

4-14-54

C 6.30
0.93
284.63

C 6.43
9.08
282.65

C 6.95
8.64
281.69

C 6.82
1.45
284.63

C 6.75
0.50
283.75

C 7.17
8.42
281.25

C 7.49
8.12
280.63

C 7.59
7.73
280.14

C 6.86
0.44
283.58

C 6.90
9.30
282.40

C 7.76
7.60
279.84

↑
1/10
3/10
2.81
+

BLACKTON ST. SEWER GRADES

4 4 XL 9
4-14-57

3+82.08 = N° 38 Lt.

C 6.24 C 5.54
1.92 0.32
285.68 284.78

22.08

C 5.68
0.18
284.50

3+60.00 = N° 37 Lt.

12.22

↑

C 5.65 C 7.00
90.00 2.75
284.35 285.75

3+47.78 = N° 32 Rt.

2%

15.70

+1.250%

C 6.48 C 5.69
1.58 9.84
285.10 284.15

3+32.08 = N° 39 Lt.

12.08

C 5.72
9.72
284.00

3+20 = M.H. N° 37

22.22

↑

C 6.04 C 6.84
9.42 2.23
283.38 285.39

2+97.78 = N° 33 Rt.

+2.813%

25.70

BLACKTON ST. SEWER GRADES

5+37.78 = N^o 28 - Rt.

25'

5+12.78 = N^o 29 - Lt.

25'

4+87.78 = N^o 29 - Rt.

40'

4+47.78 = N^o 30 - Rt.

30.96

4+46.82 = N^o 37 - Lt.

21.82'

4+25.78 = N^o 31 - Lt.

27.22'

3+97.78 = N^o 31 - Rt.

15.70

1
%
250
1.250

Lt. Rt. (10)

4-14-54

C 5.64
2 37
286.73

C 6.92
4 17
287.25

C 5.61
2 02
286.41

C 5.46
1 56
286.10

C 6.47
3 47
287.00

C 5.54
1 14
285.60

C 6.68
3 18
286.50

C 5.39
1 88
286.49

C 5.62
1 21
285.59

C 5.54
0 85
285.31

286.00

C 5.47
90 44
284.97

C 7.21
3 21
286.00

BLACKTON ST. SEWER GRADES

6+62.78

22.78

(5100)

6+40 = ϕ M. H. N^o 29

2.22

6+37.78 = N^o 26 Rt.

25'

6+12.78

25'

5+87.78 = N^o 27 - Rt.

25'

5+62.78

25

+ 3,417.96

+ 1,250.90

Lt.

ϕ

Rt.

(11)

4-11-54

C 7 51

296 29

288.78

C 7 00

93.00

288.00

C 6 91

94 89

287.98

C 5 37

5 82

290.45

C 6 39

94 05

287.66

C 6 17

93 52

287.35

C 6 47

4 97

288.50

C 5 90

92 94

287.04

BLACKYAN ST. SEWER GRADES

8+37.78 = N^o 22-Rt.

25

8+12.78

25

7+87.78 = N^o 23-Rt.

25'

7+62.78

25'

7+37.78 = N^o 24-Rt.

25'

7+12.78

25'

6+87.78 = N^o 25-Rt.

25'

L.

C6 68
301.44
294.76

R+C7.72⁽¹²⁾
304.72
297.00

C6 83
300.74
293.91

C6 87
299.92
293.05

C7.70
303.30
295.60

C6 94
299.14
292.20

C7.00
298.36
291.35

C6.98
301.08
294.10

C7.29
297.78
290.49

C7.48
297.12
289.64

C5.62
297.92
292.30

BLACKTON ST. SEWER GRADES

Lt. & Rt. (13)

9+62.78

C6 20
304.57
298.37

25

9+37.78 = No 20 Rt

C6 23 C7 87
303.95 307.57
297.72 299.70

25

9+12.78 T.P. on Stub

2.62500

303.34

C6 28
303.34
297.06

25

8+87.78 = No 21 Rt

C6 30 C8 00
302.70 306.35
296.40 298.35

7.78

8+80 = & M.H. No 29

C6 27
302.47
296.20

17.22

8+62.78 = No 22 Lt.

C6 38
302.00
295.62

25

8+37.78 =

BLACKTON ST. SEWER GRADES

± 84.78

11+00

22' ck. 10+37 ^{Rough Grade} Rt.

311.50 - 311.51

C 5 23
306.63
301.40

10+78 = Plug

5.22

10+72.78 = N^o 17 - Rt.

C 5 33 C 10 07
306.59 312.63
301.26 302.56

35'

10+37.78 = N^o 18 - Rt.

C 5 87 C 9 07
306 21 311 44
300.34 302.37

25'

10+12.78

C 6 02
305 70
299.68

25

9+07.78 = N^o 19 - Rt.

C 6 17 C 8 91
305 20 310 22
299.03 301.31

25

BLACKTON ST. SEWER GRADES

12+69.78

25'

12+44.78 = N^o 14-Rt.

30'

12+14.78

30'

11+04.78 = N^o 15-Rt.

25'

± M.H. N^o 42
11+59.78 = N^o 16-Rt.

~~11+30~~

Levels checked in 10+78

~~11+30~~

on sewer from south

30'

22. ± Rt. (15)

C-6-06
303.83
297.77

C-6-18 C-10-81
304.78 310.15
298.60 299.34

C-6-05
305.64
299.59

C-5-67 C-10-74
306.25 312.04
300.58 301.30

C-5-18 C-10-57
306.58 312.69
301.40 302.12

BLACKYON ST. SEWER GRADES

14+22

C-6.28
299.03
292.75

32.22

13+89.78 = N^o 11 - Rt.

C-6.09 C-9.19
299.90 304.89
293.81 295.70

20

13+69.78

C-6.05
300.52
294.47

25

13+44.78 = N^o 12 - Rt.

C-5.97 C-9.01
301.27 305.08
295.30 296.07

25

13+19.78

C-5.83
301.95
296.12

25

12+94.78 = N^o 13 - Rt.

C-5.85 C-10.69
302.80 308.40
296.95 297.71

25

↑
3.2980%

BLACKTON ST. SEWER GRADES

B.M.

± M.H. No 26
14 + 44.78 = ± Olive & Blackton

.22.83

22.

±

22.

(17)

C 7 54
299 54
292.00 PK 5.514 M.H. No 26

Re-computed

4/30/54
RJK

SEWER GRADES ALLEY BLK J

BALBOA VISTA 8" V.C.P.

See Sheet No. 23-10737-C

+75 = E.M.H. No 40

1+50

+25

1+00 T.P. on slab

277.00

+75

+50

0+25

0+00 = Plug 425' 5/4 of E Laurel St

B.M.

276.12

E

(18)

C7 10 ✓
76 30
269 20

C6 38 ✓
76 40
270 02

C5 70 ✓
76 55
270 85

C5 32 ✓
277 00
271 68

C5 34 ✓
77 85
272 51

C6 08 ✓
79 42
273 34

C7 15 ✓
81 32
274 17

C8 23 ✓
83 23
275 00

P.K. Polen^o

See Pg 5-G-320

Alley Blk J. Sewer

€

4+25 = € M.H. N^o 1 & Laure/st

4+00

+75

+50

+25

3+00

+75

+50

+25

2+00

↑
- 2.080%

264 00

67 31 ✓

71 83

264 52

65 95 ✓

70 99

265 04

65 00 ✓

70 58

265 56

64 76 ✓

70 84

266 08

64 86 ✓

71 46

266 60

65 23 ✓

72 35

267 12

66 00 ✓

73 64

267 64

66 60 ✓

74 75

268 16

67 16 ✓

75 84

268 68

SEWERGRADES LAUREL ST. NELY
 FROM & BLACKTON DRIVE 8" V.C.P.
 1+50

C 6 74
 289 52
 282 78

1+25

C 6 76
 288 24
 281 48

1+00

C 7 13
 287 32
 280 19

0+75

C 7 14
 286 03
 278 89

11.26

0+63.54 = N° 128 Rt. 5' W/4 & 5' R/L

C 7 09
 285 39
 278 30

C 6.82
 286.62
 279.80
 31' R.L.

13.54
 T.P. on stub 5' Rt

+5.188%

0+50

284.66

C 7 07
 284 66
 277 59

0+25

C 7 00
 283 30
 276 30

0+00 = & Laurel & Blackton = & MH 2 #

275.00

B.M. P.K. in Pole

276.12

See Pg. 5-G-320

SEWER GRADES LAUREL ST. NELY

0+00 NELY Laurel @ Alley B (see sheet 6)
 7+96.21 = \angle M.H. N° 4 \angle N. to E. = 68° 48'

21.21

7+75

7+50

29.41

7+20.59 = N° 130 Rt. R.P. 5' 45' RR PL.

20.59

7+00

29.41

T.P. on 5' Rt stub

6+70.59 = N° 129 Rt.

20.59

6+50

29.27

\angle W. to N. = 118° 06'
 (1+92.72 = \angle M.H. N° 3 \angle W. to S. 61° 54' Line Alley H)

6+20.73 @ Alley H

17.72

1+75

25

↑
 + 3.419 (293.42)
 5' 5.45' RR PL.
 + 5.18890

C 10.04	C 9 85	5' Rt		
301.07	300.85	on BK Tan.		
291.03	291.00	on BK Tan.		
+ 1.333 R.P. Stub N.	C 8 86			
	299.13			
	290.27			
	C 8 72			
	298.14			
	289.42			
	C 8 19	C 6.90		
	296.60	298.58		
	288.41	291.68		
	C 7 55	36' Rt		
	295.26			
	287.71			
	C 6 72	C 6.67		
	293.42	295.42		
	286.70	288.75		
	C 8 86	10' Rt.		
	294.86			
	286.00			
	C 9.84	C 9.52	5' Rt	C 9.29
	294.84	294.52	on BK Tan.	294.37
	285.00	285.00		285.08
	5' Rt on For. Tan.	C 8 62	R.P. Stub S.	
		292.70	+ 4.375 →	
		284.08		

SEWER GRADES LAUREL ST NELY

8" V.C.P.

6.755%

B.M. Chis/ X

Laurel @ 55th SE. Cor

317.65 ~ 317.68

T.P. on Stub. 25' N.E. & M.H. +

110.44

W. to S. = 68.48'

S. to N.E. = 104.15'

1+82.34 = M.H. N-5 @ Laurel @ 55th

7.34'

1+75

1+50

1+25

1+00

0+75

T.P. on 5' Rt Stub

0+50

0+25

6.855%

(301.69)

Lt. E Rt.

C 5.79

309.42

303.63

R.P. Stub NELY

C 5.46

C 5.30

C 5.05

308.98

308.80

308.57

303.52

303.50

303.52

R.P. Stub N.

R.P. Stub S.

+ 1.273 +

C 4 96

+ 1.281 →

307.96

303.00

C 4 82

306.10

301.28

C 5 14

304.71

299.57

C 6 12

303.98

297.86

C 6 74

302.88

296.14

C 7 26

301.69

294.43

C 8 11

300.82

292.71

SEWER GRADES ALLEY-H 8" V.C.P.

2+75

¢
C 6.75
06 14
299.39

2+50

C 6.25
06 01
299.76

2+25

C 4.79
04 93
300.14

2+00

C 4.62
05 13
300.51

1+75

C 4.90
05 78
300.88

1+50

C 4.93 93
06 19
301.26

1+25

C 5.76
07 40
301.64

24.27

C 7.21
09 21 ✓
302.00

1+00.73 = Begin Line & Plug.

0+00 = ¢ Alley H & N 1/4 Line Falconer St.

T.B.M. ^{Top of old & Hub} & Alley H & N 1/4 Line 322.72

B.M. ^{Falconer} 334.74

5/4 Chris / Cross M.H. Rim 55th & Falconer

↑
1.50 90

SEWER GRADES ALLEY - H

⊕

5+00
 4+75
 T.P.
 4+50
 4+25
 4+00
 3+75
 3+50
 3+25
 24.27
 3+00.73 = M.H.N. 38
 25.73

299.02

↑
4.375

⊕
 C 4.57
 94.85
 290.28
 C 5.72
 97.09
 291.37
 C 6.55
 99.02
 292.47
 C 7.66
 01.22
 293.56
 C 8.01
 02.67
 294.66
 C 9.29
 05.04
 295.75
 C 8.83
 05.67
 296.84
 C 8.11
 06.05
 297.94
 C 7.17
 06.17
 299.00 ✓

6

SEWER GRADES ALLEY - H

B.M.

6+20.73 = 4 M.H. N^o 3 = 1492.72 Laurel

285.00

20.73

St. Main Jct.
(see pg 21)

C 7.96

6+00

93.87

285.91

5+75

→ - 4.375%

C 7.51

94.37

287.00

5+50

C 6.78

94.87

288.09

5+25

C 5.57

94.76

289.19

4-23-54

E

26

SEWER GRADES ALLEY BIK-B 8" VCP.

2+00 (See Sheet N^o 7)
$$\begin{array}{r} C 6.71 \\ 00 \ 38 \\ 293.67 \end{array}$$

+75

$$\begin{array}{r} C 6.76 \\ 00 \ 09 \\ 293.33 \end{array}$$

+50

$$\begin{array}{r} C 6.87 \\ 99 \ 87 \\ 293.00 \end{array}$$

+25

$$\begin{array}{r} C 7.69 \\ 00 \ 36 \\ 292.67 \end{array}$$

1+00

$$\begin{array}{r} C 8.61 \\ 00 \ 94 \\ 292.33 \end{array}$$

0+75

$$\begin{array}{r} C 9.35 \\ 01 \ 35 \\ 292.00 \end{array}$$

0+50

$$\begin{array}{r} C 10.18 \\ 01 \ 85 \\ 291.67 \end{array}$$

0+25

$$\begin{array}{r} C 10.50 \\ 01 \ 83 \\ 291.33 \end{array}$$
0+00 = E ALLEY-B & M.H. N^o 4 (See Pg 21)

291.00

B.M.

300.85

5' RP M.H. N^o 5 (See Pg 21)

+1.333 26

4-23-54

€

(27)

SEWER GRADES ALLEY - B

			c 3.90 ✓
			02 40
+25			298.50
			c 4.00 ✓
			01 80
4+00			297.80
			out.
+75			297.10
			c 5.42
			01 82
+50			296.40
			c 5.73
			01 43 ✓
+25			295.70
			c 6.08
			01 08
3+00 = E.N.H. NO 30			295.00
			c 6.37
			01 04
+75			294.67
			c 6.88
			01 21
+50			294.33
			c 6.77
			00 77
2+25			294.00

↑
 +2.890
 ↑
 +1.333

4-23-54

SEWER GRADES ALLEY - B

T.B.M. 95.39
 +50
 +25
 T.B.M. Sta 5+50 Wly Side Alley 310.03
 6+00 = E.M.H. No 31
 +75
 +50
 +25
 5+00 TP 305.38
 +75
 4+50

↑
7.5%

↑
+2.8%

95.38 50' RR Hub C 8 79
 Wly of E Blackton 17 06
 Sta 6+67.79 308.27
 C 8 94
 14 78
 305.84
 C 8 91 V
 12 31
 303.40
 C 7.45 V
 10 13
 302.70
 C 6.02 V
 08 02
 302.00
 C 5.35 V
 06 65
 301.30
 C 4.78 V
 05 38
 300.60
 C 4.40 V
 04 30
 299.90
 C 4.48 V
 03 68
 299.20

SEWER GRADES ALLEY - B

+

+25

check for levels

C-6.58
323.18
316.60

9+00

↑
-5.73/100

TBM - Nail in pole
P170664
LT of stat 10+55+
on sewer 321.66
(321.66)

C-6.30
323.83
317.53

30

8+70

C-5.74
324.28
318.54

25.74^v

8+44.26 ± = M.H. N° 41

C-5.24
324.74
319.50^v

CR. on Rough Gr. Stub

87.26

7+73 R.L. See 6-322

32663 ~ 32663

C5.59
29.59
319.00^v

7+60 End Line - Plug

+50

C6.21
24.23
318.02

+25

C7.23
22.82
315.59

7+00

↑
+9.75/100

C7.82
20.97
313.15

T.P. on Stub
6+75

319.10

C8.39
19.10
310.71

SEWER GRADES ALLEY - B

B.M. : Nail in Pole # P170663 SWLY cor. Alley B
BL = 314.21 + Olive - 6324-28

11+79.26 = E.M.H. No 27 & Alley B & Olive St
3' 5/4 of Sub-B by Olive St.

32.26

+ 50

+ 25

11+00

+ 75

+ 50

+ 25

10+00

+ 75

9+50

↑
- 3.731%

Lt. & Rt.

staked 5' Wly & sewer

306.82 307.00

Stub R.P.W.
← 8.824 -
C-8.08
316.28
308.20 ✓

R.P.E. Stub

C-8.89
318.03
309.14 ✓

C-10.52
320.59
310.07

C-9.94
320.94 ✓
311.00 ✓

C-9.28
321.22
311.94

C-8.82
321.69
312.87

C-8.38
322.18
313.80

C-7.98
322.71
314.73 ✓

C-7.29
322.95
315.66

Lt E Rt

SEWER GRADES ALLEY A BALBOA VISTA

1450 = N^o 170 - Rt.

25

1425

25

1400

25

0475

30

0445 = N^o 171 - Rt.

20

0425

25

0400 = Nly line Biloxi & Alley A &

20'

0-20

13.3'

& N. to Wly = 100° 11' 24" for 5' stub wly

0-33.30 = & M. H. & Biloxi & Alley A
(46) N^o 20

B.M.

282.64

C6 12 ✓

83 98
277.86

275.29

C7 39 ✓

82 33
274.94

C7 47

82 10
274.63 ✓

C7 21

81 54
274.33 ✓

C4.96 ✓

81 73
276.77

273.96

C7.54

81 25
273 71

C8.30

81 71
273.41

C8 84

82 00
273.16

C9.11

82.11
273.00

5' Rt.

Top 5' R.P. Stub B.C. SE Ret 54' & Biloxi

See G-320
62

SEWER GRADES ALLEY A

Station	Description	lt	rt
3+75		C9 93 ✓ 87 42 277.49	
3+50 = N°166 - Rt.	↑ + 0.14	277.39	C5.51 87 53 282.02
3+25	+ 0.14	C8 76 ✓ 86 05 277.29	
12.28		C8.34	C9.53
3+12.72 = M.H. N° 23	T.P. on 5' Rt stub. ↑	285.58 85.58 ✓ 277.24 5' Rt	86.77 277.24 12' Rt
12.72			C6.25 86 84
3+00 = N°167 - Rt.		277.08	280.59
2+75		C8.07 ✓ 84 85 276.78	
2+50 = N°168 - Rt.	↑ + 1.225	276.47	C6.84 86 24 279.40
2+25		C7.66 ✓ 83 82 276.16	
2+00 = N°169 - Rt.		275.86	C6.41 ✓ 84 90 278.49
1+75		C7.53 ✓ 83 08 275.56	

Lt. + Rt.

SEWER GRADES ALLEY - A

C 8.05

C 6.26

91.56

285.30

6+00 = N^o 161 - Rt.

278.39

C 11.59

C 11 58 ✓

289.88

89 87

278.29

278.29

5+75

C 6.76

C 8.92 ✓

285.50

5+50 = N^o 162 - Rt.

278.19

C 12 22 ✓

90 31

278.09

5+25

C 7.62

C 8.93 ✓

285.49

5+00 = N^o 163 - Rt.

~~90 61~~
277.99

C 12 72 ✓

90 61

277.89

4+75

C 8.00

92 78

284.78

4+50 = N^o 164 - Rt.

277.79

C 11 64 ✓

89 33

277.69

4+25

C 6.21

89 68

283.47

4+00 = N^o 165 - Rt.

277.59

+ 0.4 %

lt. W14 € Rt.
Red = Reset of Sta Kev to W14.

SEWER GRADES ALLEY A

8+00 = N° 157 - Rt.

C 6.80
91.09
279.71 | 284.29

7+75

C 11.20 C 9.78
290.73 89.31
279.53 - 10' - 279.53

7+50 = N° 158 - Rt.

C 7.30
92.00
279.36 | 284.70

7+25

C 12.20 C 10.74
291.38 89.92
279.18 - 10' - 279.18

7+00 = N° 159 - Rt.

C 7.22
92.12
279.00 | 284.90

6+75

+0.713 90

C 12.65 C 11.23
291.47 90.05
278.82 (10') 278.82

6+50 = N° 160 - Rt.

C 6.63
~~91.73~~
278.64 | 285.10

17.29

6+32.71 = € M.H. N° 24

C 12.73 C 11.46 C 13.13
291.25 89.98 91.65
278.52 (10') 278.52 278.52
5' RT 12' RT

17.71

6+15

+0.490

C 12.89 C 11.45
291.34 89.90
278.45 (N 10' W14) 278.45

SEWER GRADES ALLEY A

Nail in T.P. # 584568
 B.M. See 6320 288.87 ~ 288.86
 72

Manhole # 25 Tied to stubs 10' + 20' to Nly of MH
 and on E Alley A extended

9+52.71 = E.M.H. N° 25 = 3' Sly of E Olive Bdy
 Sub

C 5.48 C 5.38
 86.28 86.18
 280.80 ✓ 280.80
 10' R.P. 20' R.P.

27'
 9+25.71 = Sly P.L. Olive St.

C 6.90
 87.50
 280.60

25.71
 9+00 = N° 155 - Rt.

C 6.72
 88.62
 280.42 281.90

8+75

↑
 + 0.713.90

C 7.07
 87.32
 280.25

8+50 = N° 156 - Rt.

C 6.47
 89.77
 280.07 283.30

8+25

C 9.62
 289.51 -
 279.89 .103 - C 8.60
 88.49
 279.89

4-29-54

SEWER GRADES 55-TH ST.

3+05 = N° 65-RT.

C 8.90 C 8.39
25.85 29.59
316.95 321.20

25

C 8.42
26.46
317.98

+80

25

C 7.80 C 8.64
26.87 31.59
319.07 322.95

+55 = N° 66-RT

25 T.P.

327.51

C 7.35
27.51
320.16

+30

25

C 7.08
28.32
321.24

2+05

25

C 6.86
29.19
322.33

+80

15.00

-4348.00

± N. to E. 89° 45' 30" stub & Alley-G E. + W.
1+65.00 = ± N. H. N° 10 Begin Sewer

C 6.85 C 6.87
29.85 30.07
323.00 323.23
5.11 +11.515 → R.P. Stub
& Alley-G

0+00 = ± Falconer & 55-th

B.P.

334.74

Sly Christ Cross M. H. Bm 55-th & Falconer

SEWER GRADES - 55 TH. ST.

5+30

20.4'

5+09.6 = M.H. N^o 9

4.60'

5+05 = N^o 61 - Rt.

25

+80

25 TP

+55 = N^o 62 - Rt.

25

+30

25

4+05 = N^o 63 - Rt.

25

+80

25

+55 = N^o 64 - Rt.

25

3+30

25

-1.281%

319.53

-4.34%

Lt.

±

Rt

36

36-A

C 5.88

13 62

307.74

C 6.84

14 84

308.00

C 6.96

15 16

308.20

C 7.76

17 05

309.29

C 8.44

18 81

310.37

C 8.69

20 15

311.46

C 9.07

21 62

312.55

C 9.22

22 85

313.63

C 9.23

23 95

314.72

C 9.19

25 00

315.81

C 7.56

18 06

310.50

C 9.86

23 31

313.45

C 9.81

26.23

316.42

C 9.24

28 24

319.00

SEWER GRADES 55-TH. 57.

+ 30
 25
 7+05 = N^o 57-RT.
 25
 + 80
 25
 + 55 = N^o 58-RT.
 4' TP. 311.04
 (+51- Begin Conc. Encasement)
 21
 + 30
 25
 6+05 = N^o 59-RT.
 25
 + 80
 25
 5+55 = N^o 60-RT.
 25

-128.90

C 5.15	
10.33	
305.18	
C 4.69	C 8.18
10.19	14.58
305.50	306.40
C 3.94	
09.76	
305.82	
C 3.52	C 8.18
09.66	15.22
306.14	307.04
C 3.49	
09.95	
306.46	
C 4.11	C 8.93
10.89	16.63
306.78	307.70
C 4.43	
11.53	
307.10	
C 4.87	C 8.21
12.29	16.57
307.42	308.36

SEWER GRADES 55-TH ST.

	LT.	±	RT
		C4 71.	
		9 48	
1+00		304.77	
19'		C4 91	C7.64
		9 44	13.07
0+81 = N ^o 126 - Rt.		304.53	305.43
³¹ (0+71.39 = P.L. E.C. NE. Pt. Curve / # 55-TH)		C5 13	
		9 27	
0+50		304.14	
²⁵ N.W. Ref. (0+37.56 = P.L. E.C. Lt.)		C5 84	
		9 66	
0+25		303.82	
		C	
↑ 0+00 =			
8+60.96 = E.M. H. N ^o 5 & Curve / # 55-TH		303.50	
30.96 T.P.	306.06	306.10	
		C4 20	
+30		0 10	
		303.90	
³⁰ (8+01 - End Conc. Encasement)		C4 84	C9.18
		09 12	14.36
8+00 = N ^o 127 - Rt.		304.28	305.18
25		C5 38	
		09 98	
+75		304.60	
20		C5 24	C8.40
		10 10	14.16
7+55 = N ^o 56 - Rt.		304.86	305.76
25			

+1.273%

-1.281%

SEWER GRADES 55-TH ST.

3+00

24

+76 = N^o 122 - Rt.

26

2+50

14.4'

2+35.6 = E.M.H. N^o 32

9.6'

2+26 = N^o 123 - Rt.

26

2+00

24

1+76 = N^o 124 - Rt.

26

1+50

24

1+26 = N^o 125 - Rt.

26

Lt.

E

Rt.

(39)

C5.00
13.18
308.17

C5.10 C9.72
12.65 18.27
307.55 308.55

C5.22
12.09
306.87

C5.37
11.87
306.50

C5.34 C10.18
11.72 17.84
306.38 307.66

C5.30
11.35
306.05

C5.14 C9.59
10.88 16.36
305.74 306.77

C5.00
10.41
305.41

C4.76 C8.21
9.86 14.12
305.10 305.91

SEWER GRADES 55-TH ST

5+0.0
 13.4'
 4+86.6 = E M.H. N° 33
 10.6
 4+76 = N° 118-Rt.
 26'
 4+50
 20'
 T.P. on stub
 4+26 = N° 119-Rt.
 26
 4+00
 24'
 3+76 = N° 120-Rt.
 26
 3+50
 29
 3+26 = N° 121-Rt.
 26

+ 7.0 9/10 ↑

+ 2.6 9/10 ↑

316.72

Lt. & Rt. (70)

C 6 88	
20 82	
313.94	
C 6 89	
19 89	
313.00	
C 6 45	C 8.85
19 20	24.01
312.75	315.16
C 5 71	
17 78	
312.07	
C 5 27	C 8 77
16 72	21 11
311.45	312.34
C 4 80	
15 57	
310.77	
C 4 71	C 9.18
14 86	20 22
310.15	311.04
C 4 77	
14 24	
309.47	
C 4 91	C 9.31
13 76	19 05
308.85	309.74

SEWER GRADES 55-TH-ST.

lt. t rt. (41)

20'
7+50

C7 10
38 54
331.44

12.20

24
7+26 = N^o 113-RT,

C7 60
37 35
329.76

C+2.20
45.13
332.93

26
7+00

C7 81
35 75
327.94

24
6+76 = N^o 114-RT.

C7 70
33 96
326.26

C10 44
40 33
329.89

26 T.P. 333.54
6+50

C7 40
31 84
324.44

24
6+26 = N^o 115-RT.

C7 37
30 13
322.76

C8 61
34.72
326.11

26
6+00

C7 20
28 14
320.94

24'
5+76 = N^o 116-RT.

C7 11
26 37
319.26

C7 34
30.05
322.71

26'
T.P. on stub
5+50 324.41

C6 97
24 41
317.44

24'
5+26 = N^o 117-RT.

C6 87
22 63
315.76

C8 43
26.80
318.37

26

↑
7.0 %
+

SEWER GRADES 55-TH. ST.

B.M.

9+81.32 = End of Line Plug

T.P. on Stub

5.00'

+76.32 = N^o 173-Rt.

26.32

+50

+25

9+00

+75

+50

+25

8+00

13.68

7+86.32 = E.N.H. N^o 44 @ Seifert St.

16.32

7+70

33401

34010

See Pg 60 G-320

~333.94

Lt.

¢

Rt.

(72)

C 5 10

40 10

335.00

C 5 29

40 26

334.97

C 8.02

44.24

336.22

C 5 92

40 76

334.84

C 6 35

41 06

334.71

C 6 67

41 25

334.58

C 6 81

41 26

334.45

C 6 90

41 23

334.33

C 6 63

40 83

334.20

C 6 23

40 30

334.07

C 5 74

39 74

334.00 ✓

C 6 36

39 20

332.84

+0.51300

Lt. Lt. Rt.
31.28
3
6-3-54

SEWER GRADES ALLEY BLK. G-BALBOA VISTA

1+65 = ϕ N.H. N^o 21 = ϕ N. & S. Alley "G"

C 4.95
46 95
342.00^v

1+50

C 5.95
46 22
340.27^v

1+25

C 5.98
43 37
337.39^v

T.P.

340.57

C 6.06
40 57
334.51^v

1+00

0+75

C 5.83
37 47
331.64^v

0+60 = N^o 132 - Lt.

+ 11.515.90

C 7.38^v
37 96
330.58
10'

C 5.51
35 42
329.91^v

C 7.36
37 56
330.20^v
10'

0+55 = N^o 133 - Rt

C 5.29
34.62
329.33^v

0+25 = ϕ N.H. N^o 10 ϕ 55.71 ϕ E & W Alley "G"

C 4.90
30.78
325.88^v

0+00 = ϕ N.H. N^o 10 ϕ 55.71 ϕ E & W Alley "G"

323.00

B.M.

367.00 (See Pg. 56)

Lt Lt Lt

SEWER GRADES ALLEY G E & W.

B.M. 334.75 ~ 334.74 Top of 5/4 Chis/Cross M.H. Rim
55-th & Faulconer

TP 358.12

def Lt. 59°36' - 12° Lt. = N° 7 - Lt.
3+00 = End of Line Plug

C 8.02 C 5.12
61.82 58.12
353.80 353.00 ✓
12'
C 5.44
56.81
351.37

2+80

2+69 = N° 6 - Lt.

C 8.31 C 5.49
59.31 55.96
351.00 350.47
10"

2+50

+ B. 148.96

C 5.41
54.33
348.92

2+35

C 5.15
52.04
346.89 ✓

TP

1+95 = N° 5 Lt.

348.95

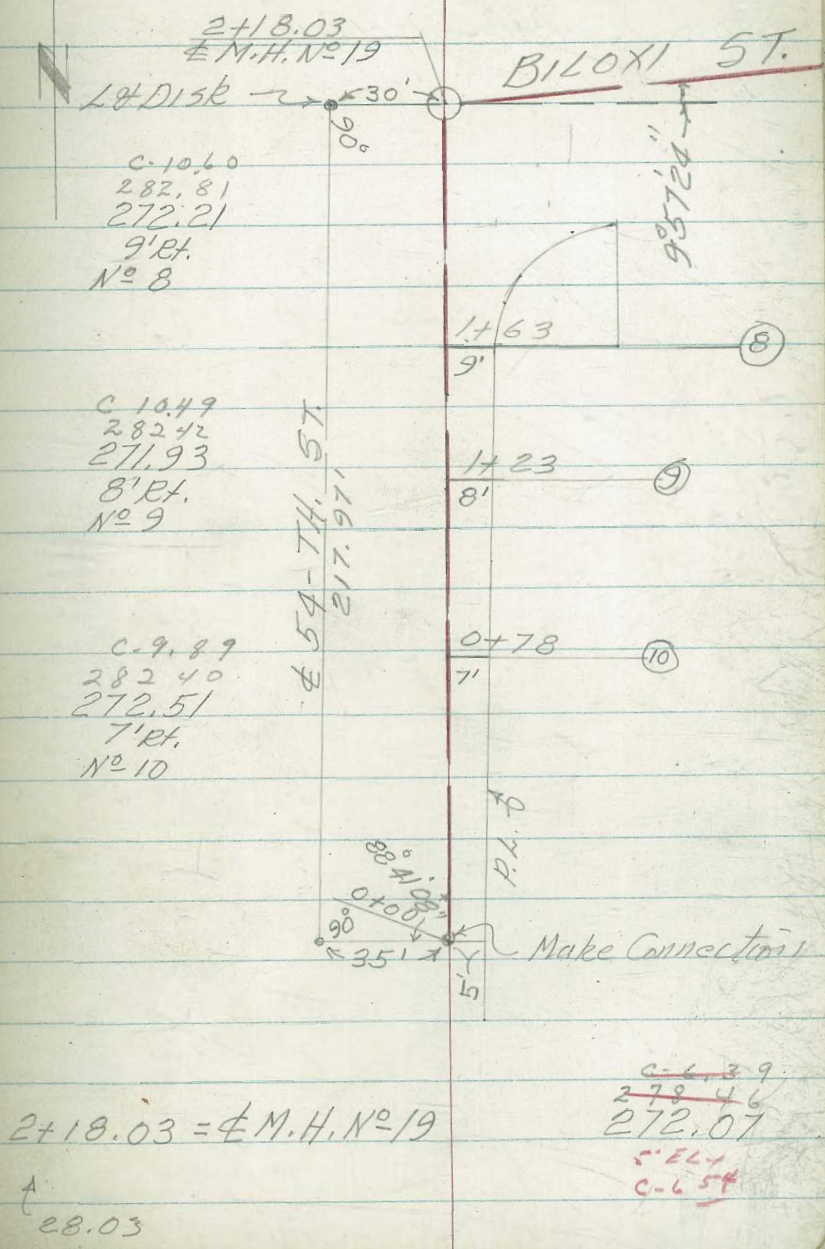
C 8.38 C 4.51
53.38 348.95
345.00 ✓ 344.44 ✓
10'

1+75

C 4.67
47.48
342.81

SEWER GRADES 54-TH. & BILOXI ST.

1+90	C	C-6.40 278.27 271.87
27'		
1+63 = N° 8-Rt.		C-5.99 277.67 271.68
13'		
1+50		C-5.89 277.48 271.59
27'		
1+23 = N° 9-Rt. -		C-5.74 277.34 271.40
23'		
1+00		C-5.96 277.20 271.24
22'		
0+78 = N° 10-Rt. -		C-5.99 277.08 271.09
28'		
0+50	+0.7%	C-6.18 277.07 270.89
0+25		C-6.05 276.76 270.71
0+00		C-5.99 276.53 270.54
B.M.		



offset stakes
5'-Rt.

SEWER GRADES BILOXI ST. FROM
54-TH ST. ELY TO ALLEY - "A"

B.M.

4 W. to N. 100° 11' 24"
1+45.53 = E.M.H. N° 20
20.53'

1+25

1+00

0+75

0+50

0+25

0.639 9/10

{ E.M.H. N° 19
0+00 = 30' E @ 90° to E 54-th St. 9° 57' 24" Thence Def 4 Lt.

B.M.

282.64

	69.00
	82.00
	273.00
Stub R.P. N.	5' Rt on BK. Tan. 68.33
	81.20
	272.87
	67.81
	80.52
	272.71
	67.35
	79.90
	272.55
	67.08
	79.47
	272.39
	66.78
	79.05
	272.27
	272.07

5' R.P.
Tap Stub B.C.S.E Ret
54th Biloxi see G-320

SEWER GRADES 54-TH & OLIVE ST.

B.M.

set RFB 5' Lt

= No 1-RT.
1+23- End Conc. Enc.

c 1.36
75.72
274.36

4 RT. 31°37'
1+00- Begin Conc. Enc.

c 2.61
76.34
273.73

30.4' lateral moved to
0+75 meet existing
+69.6 = No 2-RT sewer

c 3.60
77.08
273.48

273.84

19.6'
+50 = No 2' RT

q
x
x

c 4.64
77.87
273.23

c 7.56
81.30
273.74
12

0+00

+25

c 5.61
78.59
272.98

0+00

c 6.55
79.28
272.73

-0+80.4 = No 3-RT.

c 10.52
80.72
272.20

c 6.42
82.72

276.30 (-2+95.4)

-2+95.4 = No 4-RT.

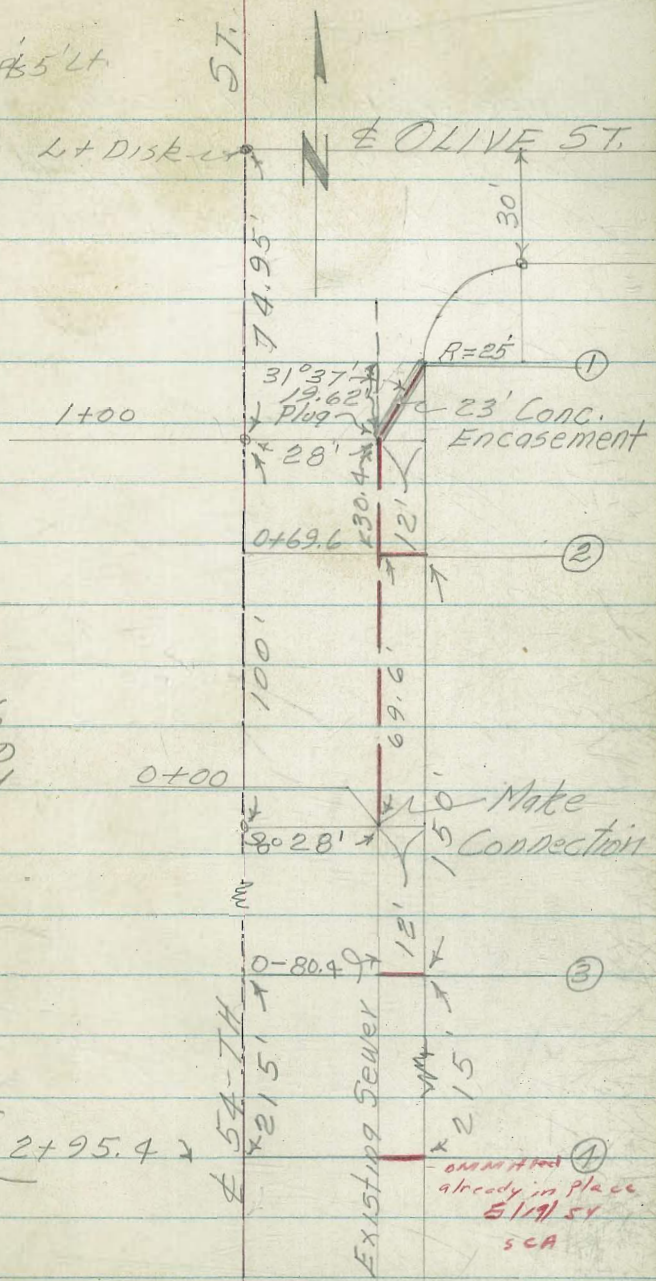
271.34

276.36

B.M.

279.62

Top RP stub BC. SE Ret. Olive & 54-Th. G-3 24-53



SEWER GRADES OLIVE ST FROM E
ALLEY A ELY TO E ALLEY "B"

1+70 = E.M.H. N^o 26 & E Blackton Drive

C 7.54
299.54
292.00

1+50

C-7.30
297.98
290.68

1+25

C 7.12
296.16
289.04

1+00

C-6.86
294.25
287.39

0+75

C-6.43
292.17
285.74

0+50

C-6.11
290.20
284.09

0+25

C-5.97
288.42
282.45

0+00 = E.M.H. N^o 25 = 27 N 1/4 of 5/4 line Olive
& E Alley "A"

C-5.90
286.70
280.80 (on 5' RP to Ely)

B.M.

288.86

Nail in Pole N^o 584568-H. 9'-Rt. E Alley "A"
Sta 8+78 (6320-72)

28885.9

SEWER GRADES OLIVE ST.

B.M.

314.21 - P.K. IN E. Side P.N. P-170663 (G-324)
28

3+40 = ϕ M.H. N^o 27 = ϕ Alley - B"

C-6.687
313.68 } 2' studs
307.00 } 2' w/d MH

C-7.60
314.60 }
307.00 } ON R.P. NAIL 5' SLY. MH

+ 20

C-7.34
312.58
305.24

3+00

C-7.39
310.86
303.47

+ 75

C-7.26
308.53
301.27

+ 50

C-7.48
306.54
299.06

+ 25

C-7.59
304.44
296.85

2+00

C-7.54
302.19
294.65

30

+ 8.824 % ↑

lt. rt.

SEWER GRADES LAUREL ST. FROM 55th

To ELY BDY BALBOA VISTA SUB-BDY

(x 56 top W) Lt. ahead = 16° 20' 23"
x W. to N. 104° 15' = E Alley "C" x W. to S. = 79° 59' 59" = Balboa Vista Dr. Sub.
1+70.24 = E Laure / & Alley "C" = E M.H. N° 6

+ 50

1+25

1+00

+ 75

+ 50

0+25

Def L from Bk Tan Rht. 6° 37'

0+00 = E M.H. N° 5 E Laure / & 55-th.

B.M. 323.42

C-6.36
321.36
315.00 ✓

C-6.00
319.62
313.63

C-5.77
317.71
311.94

C-5.29
315.54
310.25

C-4.91
313.48
308.57

C-5.04
311.42
306.88

C-5.33
310.52
305.19

C-5.61
309.11
303.50

(303.45 at built)

(See pg. 53)

SEWER GRADES LAUREL ST.

Ref Pts Set 5' Rt.

6-9-54

(51)

Lt

±

Rt.

+ 12.910 ↑

4+00

± 21.13'

Def. & from W. by B&T. Lt. Ahead = 12° 17' 57"

± W. to N. 120° 35' 23" = stub to Balboa Vista N.

+ 78.87 = ± M.H. N° 7 = ± W. To S. 62° 18' 14" stub to Alley F.S.

TP

340.90

+ 50

+ 25

3+00

+ 75

TP

331.78

+ 50

+ 10.545 92 ↑

+ 25

2+00

29.76

B.M.

323.42

(See pg. 53)

C 9.85^v

49.58

337.73

337.26

C 9.19

46.19

337.00

Lat. Nly. ± Laurel
Stub. C 6.98

43.99

337.01

B&T. M.H. N° 7, RR. 5' B.

C 8.37

Lat. Alley F.S. 1/4
Stub. 25'

42.32

333.95

C 7.75^v

39.07

331.32

C 7.36^v

36.04

328.68

C 6.92^v

32.97

326.05

C 6.48^v

29.80

323.41

C 6.45^v

27.22

320.77

C 6.25^v

24.39

318.14

6-10-54

SEWER GRADES LAUREL ST.

B.M.

± W. to N. = 131° 56' 19" To ± Alley-D-Nly.

± W. to S. = 48° 03' 41" = stub 56-75 St. 5/4

5 + 84.14 = ± M.H. N° 8 = 0+00 Line ± Alley-D-Nly.

34.14

+50

+25

TP

5+00

+75

TP

4+50

18'

4+32 = N° 94 - RT.

7'

4+25

↑
+12.91 90

367.55

358.65

C 13.22

76.72

363.94

363.50

363.52

2' inlet

5' inlet

2' inlet stub

stub

C 12.76

+0.828

71.85

56-57 line

359.09

C 11.81

67.67

355.86

C 11.21

63.85

352.64

C 10.96

60.37

349.41

C 10.59

56.77

346.18

C 10.56

C 6.32

54.42

56.03

343.86

349.71

C 10.32

30'

53.27

342.95

Lt. C Rt.

see sheet-9 Plan
" " 24-Profile

SEWER GRADES BALBOA VISTA DRIVE
FROM LAUREL ST. TO FALCONER ST.

1+50

C 6.31 }
327.83 }
321.52 }

21'

1+29 = N° 68 Lt.

C-11.11 C 5.62 }
333.55 326.23 }
322.44 320.61 }
30'

29'

1+00

C-4.80 }
324.15 }
319.35 }

21'

0+79 = N° 67 Lt.

C-9.98 } C-4.22 }
329.21 322.66 }
319.23 318.44 }
35'

19'

0+60

C-3.76 }
321.37 }
317.61 }

14'

0+46 = N° 93 Lt.

C-10.15 } C-3.76 }
328.40 320.76 }
318.25 317.00 }
38'

21'

0+25'

C-4.13 }
320.22 }
316.09 }

4 = W. to S. 80° 00'

0+00 = C. Laurel & Alley - C. = C. M.H. N° 6

see Laurel St
315.00

↑
+ 4.35%

B.M. = Nail in Pole NWly cor Laurel &
Alley BIK C - elev = 323.42

SEWER GRADES BALBOA VISTA DRIVE

Lt. Rt.

3+94.82 = M.H. N° 12.4 = 26° 29' 35" Lt.

C 10.04 } Fwd
340.04 }
330.00 }
C-9.85 }
339.85 } Back Tan
330.00 }

19.82'

C-9.56 }
338.92 }
329.36 }

3+75.

TBM - Nail in pole RT of stat.
280 on sewer - Elev = 336.76

C-9.21 }
337.77 }
328.56 }

25'

3+50

C-8.57 }
341.99 }
333.42 }
21' }
C-9.05 }
337.00 }
327.95 }

19'

3+31 = N° 72 Lt.

C-8.85 }
335.97 }
327.12 }

26'

3+05

C 10.31 }
341.53 }
331.22 }
21' }

25'

2+80 = N° 71 Lt.

C-8.727 }
335.04 }
326.32 }

30'

2+50

C-8.42 }
333.78 }
325.36 }

23'

2+27 = N° 70 Lt.

C 12.19 }
340.79 }
328.60 }
23' }

22.18'

2+04.82 = M.H. N° 11 4 = 01° 35' 38" Rt

C-7.25 }
331.16 }
323.91 }

26.82'

1+78 = N° 69 - Lt.

C-6.94 }
338.49 }
325.09 }
26' }
322.74 } (TP)

28'

3.205%

SEWER GRADES BALBOAVISTA DRIVE

5+95 = N^o 76 - Lt. 6.59/96 ↑
 20.18'
 5+74.82 = & M.H. N^o 13 4 = 28°00' Lt. ↑
 18.82
 5+56 = N^o 172 - Rt.
 28'
 5+28 = N^o 75 Lt.
 28'
 5+00
 30'
 4+70 = N^o 74 Lt. ↑
 20'
 4+50
 25'
 4+25
 17'
 4+08 = N^o 73 Lt.
 13.18

10.278/96 ↑
 10.278/96

Lt

&

Rt.

(55)

C-11.98 C-8.547
 64.38 358.37
 352.40 349.83
 28'

90° to Ewd
 { C-9.80 C-7.55 }
 356.30 356.05 } 90° to Back on
 348.50 348.50

C-7.517 C-5.57
 354.08 352.42
 346.57 346.85
 22'

C-12.647 C-7.78
 358.55 351.47
 345.91 343.69
 23'

C-7.73
 348.54
 340.81

C-10.44 C-7.95
 350.10 345.68
 339.66 337.73
 20'

C-8.33
 344.00
 335.67

C-8.93
 342.03
 333.10

C-7.91 C-9.53
 343.33 340.88
 335.42 331.35
 28'

Lt. & Rt.

SEWER GRADES BALBOA VISTA DRIVE

B.M. 40' RR Hub 3+194 L PROCK 36701 ~ 36700

C6 25
69 25
363.00

7+94.82 = Plug
TIP on Stub →

C7.44
7233
364.89
23'

362.81

7+92 = N° 80 Lt.

29'

C8.17

C7 73

7+63 = N° 79 Lt.

7252
364.35
25'

68 63
360.90

23'

C8 55

7+40

67 94

23'

359.39

7+17 = N° 78 Lt.

C8.60
71.34
362.74
24'
21.5

C9 13
67 00
357.87

17'

C9 54

7+00

66 29

25'

356.75

6+75

C9 79

23'

64 89
355.10

6+52 = N° 77 Lt.

10
C7.04
66.50
359.46
20'

C9 79
63 38
353.59

27'

6+25

C9 39
361.29
351.81

30'

→
+ 6.59% →

Profile
See Sheet 24
See Sheet 9-Plan
6-4-54

SEWER GRADES BALBOA VISTA DRIVE

B.M.

1+50 = End of Line Plug

1+48 = N° 81 - Rt. Δ -73°21' 4-Rt. 75°33'

1+25

1+05 = N° 82 - Rt.

0+80

0+50

0+24 = N° 83 - Rt.

Δ = W. to N. 78°
0+00 = 22' N/4 of Δ Falconer St. & Balboa Vista

B.M.

348.94

C. 6.17 ✓
65.97
359.80

C. 6.33 ✓ C. 6.66 ✓
365.85 368.58
359.52 361.92

C. 6.84 ✓
363.21 22'
356.37 32'

C. 7.05 ✓ C. 4.53 ✓
60.67 361.50
353.62 356.97
30'
40

C. 6.82 ✓
357.01
350.19

C. 6.13 ✓
52.20
346.07

C. 5.90 ✓
348.40 C. 4.21
342.50 48.71
344.50
24'
34'

339.20

2
Stub to W. on
Falconer

Tap fire Hyd. S.W. Cor Balboa Vista Dr & Falconer
2'

+ 13.733%

SEWER GRADES FAULCONER ST
FROM 55-TH TO BALBOA VISTA DRIVE
LATERALS

B.M.

2+20 = N^o 137 - Lt.

C 7.05
355.12
348.07 345.28 ✓

1+70 = N^o 136 Lt.

C 6.60
352.97
346.37 342.28
30'

1+20 = N^o 135 Lt.

C 6.55
349.33
342.98 338.53
30'

0+70 = N^o 134 - Lt.

C 7.16
345.36
338.20 334.78
30'

0+00 = Ely line 55-th St.

B.M.

348.94 Top FH SWly Cor Balboa Vista dr & Faulconer

LT. & RT
See Profile Sheet 2A 6-7-54

SEWER GRADES FAULCONER ST.

1+75 = N^o 139 - RT.

C-6.03 C 7.77
352.40 356.17
347.37 348.40

1+50

C 6.30
352.50
346.20

1+25 = N^o 140 - RT.

C 6.23 C-8.88
351.26 354.85
345.03 345.97
8'

1+00

C-6.15
350.02
343.87

0+80

C 6.01
348.94
342.93

0+65 = N^o 141 RT.

C-5.89 C-9.62
348.12 352.62
342.23 343.00

0+50

141.667

C-5.77
347.30
341.53

0+25

C-5.71
346.08
340.37

0+00 = & Balboa Vista Drive & 22' N/4 of
& Faulconer St. Thence W/4. 210'

C 7.22
346.42
339.20

B.M.

SEWER GRADES FAULCONER ST.

B.M. Top F.H. Swlycor. Falconer + Timothy. $348.94 =$

348.94

2+10 = End of Line Plug

2+00 = N^o 138 - Rt.

Lt. Lt. Rt.

(60)

C 4.98
53.98
349.00

C 5.37
353.90
348.53

C 7.00
356.41
349.41
8'

See Profile Sheet 29
Plan " 9

SEWER GRADES FAULCONER ST SLY.

6-7-54

ALONG TIMOTHY DRIVE

B.M.

1+43.43 = \pm M.H.N^o 1

335.24

18.43

07.76

1+25.10 = \pm M.H.N^o 1

43.51

335.75

1+00

07.49

43.93

336.44

0+75

07.13

44.26

337.13

0+50

↑
-2.761%

06.83

344.65

337.82

0+25

06.91

345.40

338.51

4 W. to S.W. $86^{\circ}52'17''$
0+00 = \pm Balboa Vista $\&$ 22' Nly of \pm Falconer

07.22

346.42

339.20

B.M.

348.94

See plan Sheet 6
Profile " 26

62

SEWER LATERALS FAULKNER ST.
FROM BLACKTON ST. ELY

Lt.

+

B.M.

1+70 = N^o 55 - Lt.

C-7.23
324.98
317.75 317.05
20'

0+12 = N^o 54 - Lt.

C-8.24
314.18
305.94 305.24
20'

0+00 = Ely Line Blackton Drive & Faulkner

B.M.

(Waist high)
TBM Nail in Anchor pole # 376.375 } elev - 335.97
10 LT Sewer Sta 1+64

See Profile Sheet 28
" Plan " 0
Lt.

Staked 5' Ely & Sewer

63

SEWER GRADES ALLEY-C; LAUREL TO SEIFERT.

1+69 = N^o 152 - Rt.

25'

1+44

25'

1+19 = N^o 153 - Rt

19

1+00

20

0+80

16

0+64 = N^o 154 - Rt

14

0+50

0+25

0+00 = & Laurel & Alley-C" = & M.H. N^o 6

B.M. PR Nail Ely side pole NWly cor Laurel + Alley B.K.C.

42
323.79

C-5.95 } C-7.54
332.01 } 334.58
326.06 } 327.04

10'

C-5.61
330.03
324.42

C-5.34 } C-6.16
328.13 } 329.54
322.79 } 323.38

10'

C-5.24
326.78
321.54

C-4.93
325.17
320.24

C-4.81 } C-6.14
324.00 } 325.83
319.19' } 319.69

10'

C-5.03
323.30
318.27

C-5.65
322.29
316.64

6.76
321.76
315.00

Lt. & Rt.
Staked 5' ELY & O.F. sewer

SEWER GRADES ALLEY - C.

3+69 = No 148 - Rt.

25

3+44

25

3+19 = No 149 - Rt.

19'

3+00

25

2+75 = M.H. No 35

9'

2+66 = No 150 - Rt.

22'

2+44

25

2+19 = No 151 - Rt.

25

1+94

25

↑

9%

+ 4.0

↑

↑

+ 6.545%

C-5.27
342.03
336.76

C-7.44
344.78
337.34
10'

C-5.35 }
341.11 }
(TP) 335.76 }

C-5.50 }
340.26 }
334.76 }

C-8.51
344.01
335.50
10'

C-5.46 }
339.46 }
334.00 }

C-5.30 }
338.30 }
333.00 }

C-8.43
337.84
332.41

C-10.36
343.70
333.34
10'

C-5.76
336.76
331.00

C-6.04
335.37
329.33

C-10.51
340.51
330.00
10'

C-6.05 }
333.75 }
327.70 }

SEWER GRADES ALLEY - C

5+69 = N^o 144 - Rt.

19'

5+50 = M.H. N^o 43

30'

5+20 = N^o 145 - Rt.

26

4+94

25

4+69 = N^o 146 - Rt.

10'

4+59 = N^o 147 - Rt.

19'

4+40

21'

4+19

25

3+04

25'

↑
+10.385%

↑

↑

↑
+4.0%

lt. & rt. (65)

C-5.26 } C-4.76
351.23 } 351.54
345.97 } 346.78
10'

C-5.62 }
349.62 } C-5.88 }
344.00 } 349.88 }
344.00 } 344.00 }
10' offset

C-4.97 } C-9.32
347.77 } 352.66
342.80 } 343.34
10'

C-4.72 }
346.48 }
341.76 }

C-4.68 } C-10.66 }
345.44 } 352.00 }
340.76 } 341.34 }
10'

C-4.59 } C-11.19 }
344.95 } 352.13 }
340.36 } 340.94 }
10'

C-4.80 }
344.40 }
339.60 }

C-4.88 }
343.64 }
338.76 }

C-5.09 }
342.85 }
337.76 }

SEWER GRADES ALLEY - C

B.M.

6+80 = End of Line Plug

11'

6+69 = No 142 - Rf

25'

6+44

25'

6+19 = No 143 - Rf

25'

5+94

25'

+10.383

Lt. Rt

(6)

C-4.97 }
362.47 }
357.50 }

C-4.97
361.33
356.36

C-7.12
364.07
356.95
10'

C-5.10
358.86
353.76

C-5.16
356.32
351.16

C-7.48 }
359.24 }
351.76 }
10'

C-4.95 }
353.52 }
348.57 }

SEWER GRADES BALBOA VISTA DRIVE
FROM LAUREL TO SEIFERT ST.

1+80

C 12.44
68.42
355.98

30

C 12.35
65.17
352.82

1+50 T.P.

365.17

22

C 11.83
62.33
350.50
C 5.04
62.44
357.40
15.4'

1+28 = No 112 - RT.

28 T.P.

357.88

1+00

C 10.34^v
57.88
347.54

0+75

C 10.44^v
55.35
344.91

0+50

C 10.13^v
52.40
342.27

T.P.

349.64

0+25

C 10.00
49.64
339.64

T.P.

340.90

0+00 = E Laurel St. 15.4' Wly of Ely Line
of Balboa Vista

C 9.85^v
46.85
337.00

T.P.

331.78

B.M.

323.49

LT
See Sheet 0 Plan
See Sheet

+

RT

(67)

+10.54590

∠ N. Ta W = 120° 35' 23"

lt & rt.

SEWER GRADES BALBOA VISTA DRIVE

4+07 = No 107 - RT.

25

3+82

25

^{T.P.}
3+57 = No 108 - RT.

25

3+32

25

3+07 = No 109 - RT.

32'

2+75 = ~~of~~ M.H. No 36

2+85 = Lot No 110
+ 8'

2+57 = No 110 - RT

25'

2+32

25'

2+07 = No 111 - RT.

27

↑
+ 0.727 90
↑
+ 10.545 90

372.19

C 5.76 C 9.21
72 72 76.76
366 96 367.55
15.4'

C 5.50
72 28
366.78

C 5.59 C 9.13
72 19 76.32
366.60 367.19
15.4

C 5.35
71 76
366 91

C 4.93 C 8.65
71 16 75.58
366.23 366.83
15.4

C 5.08
71.08
366.00 ✓ C 7.71
74.77

C 6.73 367.06
70 83 15.4
364 10 365.84
15.4'

C 8.89
70 35
361.46

C 10.89 C 7.51
69 72 72.32
358.83 364.81
15.4'

Lt. & Rt.

SEWER GRADES BALBOA VISTA DRIVE

B.M. 373.01 ~ 373.01 30' R.P. P.L. Rad S.W. Cor Balboa Vista
of Seifert St.

Station	Grade	Left	Right
6+00 = N ^o 103 - Rt.		368.00	C 6.84 76.62 369.78
30' A Bl. = 32° 51' 35"		C 5.76 73.76 368.00 ✓	
5+50 = Plug = End Line			
3'		C 6.21	C 7.58
5+47 = N ^o 104 - Rt.		74.19 367.98	76.82 369.24 15.4
20'		C 6.14	
5+27		73.97 367.83	
20'	↑		
5+07 = N ^o 105 - Rt.	9/10	C 5.84 73.53 367.69	C 7.14 75.91 368.77 15.4'
2.5'		C 5.73	
4+82	40.727	73.23 367.30	
2.5'		C 5.83	C 7.66
4+57 = N ^o 106 - Rt.		73.15 367.32	75.85 368.19 15.4'
2.5'		C 5.75	
4+32		72.89 367.19	
2.5'			

Location of lateral

Location of Water
Lateral Stake 5'
Sly of Lateral -

Water Lateral #1
P 100 = PRC - X Tongue
and Lurking Sely -

Lateral #1

0 + 06.52 - 0° 44.83

Ch: 6.52

#2 (45' - 5° 09.40')

0 + 51.52 - 5° 54.23

Ch: 44.93

#3 (45' - 5° 09.40')

0 + 96.52 - 11° 03.63

Ch: 44.93

#4 (45' - 5° 09.40')

1 + 41.52 - 16° 13.03

Ch: 44.92

#5 (50' - 5° 43.77)

1 + 91.52 - 21° 56.80'

Ch: 49.70

#6 (80' - 9° 10.04')

2 + 71.52 - 31° 06.84

Ch: 79.65

5' ELY - 10° 19.21

Chud = 5'

5' ELY - 6° 28.61

5' ELY

11° 38.01

5' ELY

16° 47.41

5' ELY

22° 31.18

5' ELY

31° 41.22

See Sheet 9 - Plan
" " Profile

6-11-59

SEWER GRADES ALLEY "F" 5LY FROM
LAUREL ST.

+15.96% ↑

1+63 = & M.H. No. 14 P.O.T.

C 7.38 ✓

45 38
338.00

C 6.40 ✓

44 32
337.92

+50

C 5.70 ✓

43 47
337.77

1+25

C 5.79 ✓

43 40
337.61

1+00

C 5.49 ✓

42 95
337.46

0+75

C 5.98 ✓

43 29
337.31

0+50

C 6.60 ✓

43 75
337.15

0+25

↑
+0.613%

(= & M.H. No. 7; A. W. to S. = 62°18'14"
0+00 = & Laurel & 10' Wly of ELY Line Alley-F

337.00

B.M.

343.99

(See 25' R.P. Stub Alley F Pg 51)

SEWER GRADES ALLEY "F"

4+00

25

+75

25

3+50

17

3+33 = \angle M.A.N = 15; \angle L.H. = $4^{\circ}25'46''$

3+05

TP

+75

+50 T.P.

+25

2+00 T.P.

1+75

12'

+0.882%

+1.15%

368.56

359.22

351.06

6-11-54

(71)

C 11.38^v
75 47
364.09

C 11.76^v
75.63
363.87

C 11.17^v
74.82
363.65

C 9.63^v
73.13
363.50

C 9.78^v
69.08
359.30

C 8.66^v
63.46
354.80

C 8.17^v
59.22
351.05

C 8.00^v
55.30
347.30

C 7.51^v
51.06
343.55

C 7.15^v
46.95
339.80

6-11-39

SEWER GRADES ALLEY - "F"

6+39 = Δ M.H.N^o 17; Δ = 33° 15' 30" Lt. def Δ = 34° 32' 52"

C 11.60
77.60
366.00 ✓

24 = 23.98

C 11.86

6+15 def Δ = 30° 55' 45"

77.68
365.82

25 = 24.98

C 12.02

+90 def Δ = 27° 09' 35"

77.66
365.64

30 - C = 29.98

C 11.71 ✓

+60 def Δ = 22° 38' 11"

77.13
365.42

30 - C = 29.97

C 10.51

54+30 def Δ = 18° 06' 47"

75.71
365.20

27' C = 26.98'

C 9.47

5+03 = Δ M.H.N^o 16; Δ Lt. = 43° 16' 37" def Δ = 14° 02' 31"

74.47
365.00

28. C = 27.97' T.P. 373.53

C 8.78 ✓

+75 def Δ = 9° 49' 13"

73.53
364.75

25' C = 24.98'

C 9.22 ✓

+50 def Δ = 6° 03' 03"

73.75
364.53

25 C = 24.98'

C 10.44 ✓

4+25 def Δ = 2° 16' 53"

74.75
364.31

15.13

4+09.87 = B.C. Lt. R = 190' d = 9.046702 Δ = 76° 33' 08" L = 253.86'

T.A.S.
6-10-54

By George Gibson

Approved To Put in on Curve

6-11-59

SEWER GRADES ALLEY - "F"

B.M. 366.99 - 367.00 (See Pg 56)

T.P. 373.33

30.45
7 + 37.20 = End of Line Plug

c 8.51
74.90
366.39

20.45

7 + 10

c 9.57
75.87
366.30

25

6 + 85

c 10.55
76.75
366.20

21.27

6 + 63.73 F.C. $\Delta = 38^\circ 16' 34''$

c 10.85
76.95
366.10

24.73' c = 24.71'

\uparrow
~~10.14 90%~~
10.426 9%

See Profile Sheet 25
Plan Sheet 9 Lt.

Et Et

(79)

SEWER GRADES 56-TH. ST. LAUREL ST. SLY

1+97

25'

1+72 = No 85 Lt.

25'

1+47

25'

1+22 = No 84 Lt.

Set T.B.M.

25'

5' RR stub P.C. SW Ret
56th & Laurel

367.20 - 367.24

6320
21

0+97

25

0+72 = No 95 Lt.

25

0+47

25

0+22 = No 96 Lt.

22'

= E.N.H. No B

0+00 = E Laurel & 56th St, W. to S = 48° 03' 41"

B.M.

64.18
69.31
365.13

C 13.25 C 3.92
78.97 68.84
365.72 364.92

27'
C 3.74
68.46
364.72

C 13.98 C 3.87
79.29 68.38 ✓
365.31 364.51

28'
C 3.99
68.29
364.30

C 13.92 ✓ C 5.56
79.77 69.66
365.85 364.10
29'

C 7.23
71.12
363.89

C 11.33 ✓ C 10.01
82.43 73.69
371.10 363.68
30'

363.50

↑
0.828%

SEWER GRADES 56-TH ST.

4+22 = No 90-Lt.

25

3+97

25

T.P. on Stub for Lat.

3+72 = No 89-Lt.

25

3+47

25

3+22 = No 88-Lt.

20.15

3+01.85 = E.M.H. No 18; $\Delta = 1^{\circ}30' Lt.$

-1.6.85

2+85

13'

T.P. on Lat R.P.

2+72 = No 87-Lt.

25'

2+47

25

2+22 = No 86-Lt.

25

↑
381.95
+ 8.372 %

↑
373.04
+ 0.828 %

Lt. € et.

(75)

69.21 67.83
88.71 83.89
379.50 376.06

22'
67.47
81.43
373.96

67.01 67.16
81.95 79.03
374.94 371.87

23'
67.12
76.90
369.78

63.36 67.33
74.27 75.02
370.91 367.69

24'
67.51
73.51
366.00 ✓

74
66.84
72.60
365.86

65.14 66.19
73.04 71.94
367.90 365.75

26'
65.36
70.90
365.54

69.46 64.76
75.36 70.10
365.90 365.34

26'

SEWER GRADES 56-TH-57.

Lt. & rt. (26)

Set TBM.		- 7.35	385.57
T.P.	+ 13.04	392.92	- 0.38
B.M.	+ 13.26	380.26	367.00
ck. BM			

Wly 40' R.P. Hub to E.C. on 56th St. Wly
 40' R.P. Hub - to P.R.C. & Balboa Vista Dr. See Pg 56.

5+16.85 = End of line Plug

- 4.85
- 5+12 = No 92 - Lt.
- 20'
- 4+92
- 20'
- 4+72 = No 91 - Lt.
- 25
- 4+47
- 25'

x B. 372 of

	C 5.93
	389.93
	384.00 ✓
C 10.55	C 6.35
96.85	389.94
386.30	383.59
33'	C 7.22
	389.14
	381.92
C 12.40	C 7.83
96.40	88.07
384.00	380.24
22'	C 8.00
	86.15
	378.15

		±			See Profile Sheet 25. " Plan " 8		(See Pg. 69) 77
		Grade Elev.	Cut	Prop. Lat.	B.M. 372.99 = 373.0	Grade Elev.	Cut.
SEWER GRADES ALLEY D FROM LAUREL NLY							
3+03 =	N ^o 102 - Rt. 10'	371.80		375.14	79.96	4.82 ^v	
3+00 =	End of Line Plug	371.80	79.70	7.90 ^v	375.14		
2+80	T.P. - 382.14	371.65	82.14	10.49 ^v			
2+60 =	± M.H. N ^o 34	371.50	84.20	12.70 ^v	371.50		
2+53 =	N ^o 101 - Rt.	371.46	84.73	13.27 ^v	380.05	87.36	7.31
2+28		371.37	86.14	14.77			
2+03 =	N ^o 100 - Rt. 10'	371.27	86.82	15.55	382.43	88.64	6.21
1+80 =	End Conc. Cradle	371.19	87.08	15.89			
1+53 =	N ^o 99 - Rt. - 10'	371.09	87.29	16.20 ^v	382.54	89.45	6.91
1+25		370.98	87.08	16.10 ^v			
1+00	T.P.	370.89	386.17	15.28 ^v			
0+85 =	N ^o 98 - Rt. - 10'	370.83	85.34	14.51 ^v	380.06	88.22	8.16 ^v
0+64		370.75	83.38	12.63 ^v			
0+50 =	Begin Conc. Cradle						
0+48		370.50	81.77	11.27 ^v			
0+32		369.38	80.29	10.91 ^v			
0+16		367.01	78.78	11.77 ^v			
0+05.5 =	N ^o 97 - Rt. 53'	364.71	77.85	13.14 ^v	378.30	87.31	9.01
0+00 =	± Laurel & Alley - D	363.50			53' Rt.		
B.M.		376.72					
				5' R.P. Blk Tan	5+84.14	(See Pg 52)	

SEW

3+03

3+00

2+80

2+60

2+5

25'
2+28

2+0

1+80

27'
1+5

1+2

1+0

0+

0+

0+

0+

0+

0+

0+

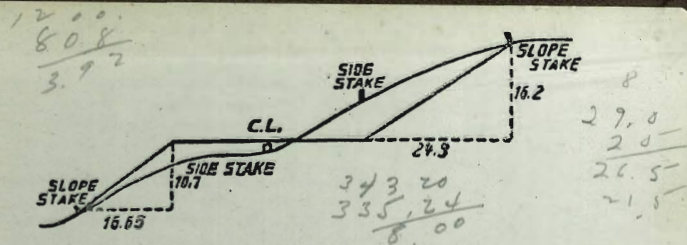
0+0

B.M.

8933
34
92 73

0.59
3.58

2.99



DISTANCES FROM SIDE STAKES FOR CROSS-SECTIONING.
SLOPE 1 1/2 TO 1. ROADWAY OF ANY WIDTH.

	0	.1	.2	.3	.4	.5	.6	.7	.8	.9	
0	0.00	0.15	0.30	0.45	0.60	0.75	0.90	1.05	1.20	1.35	0
1	1.50	1.65	1.80	1.95	2.10	2.25	2.40	2.55	2.70	2.85	1
2	3.00	3.15	3.30	3.45	3.60	3.75	3.90	4.05	4.20	4.35	2
3	4.50	4.65	4.80	4.95	5.10	5.25	5.40	5.55	5.70	5.85	3
4	6.00	6.15	6.30	6.45	6.60	6.75	6.90	7.05	7.20	7.35	4
5	7.50	7.65	7.80	7.95	8.10	8.25	8.40	8.55	8.70	8.85	5
6	9.00	9.15	9.30	9.45	9.60	9.75	9.90	10.05	10.20	10.35	6
7	10.50	10.65	10.80	10.95	11.10	11.25	11.40	11.55	11.70	11.85	7
8	12.00	12.15	12.30	12.45	12.60	12.75	12.90	13.05	13.20	13.35	8
9	13.50	13.65	13.80	13.95	14.10	14.25	14.40	14.55	14.70	14.85	9
10	15.00	15.15	15.30	15.45	15.60	15.75	15.90	16.05	16.20	16.35	10
11	16.50	16.65	16.80	16.95	17.10	17.25	17.40	17.55	17.70	17.85	11
12	18.00	18.15	18.30	18.45	18.60	18.75	18.90	19.05	19.20	19.35	12
13	19.50	19.65	19.80	19.95	20.10	20.25	20.40	20.55	20.70	20.85	13
14	21.00	21.15	21.30	21.45	21.60	21.75	21.90	22.05	22.20	22.35	14
15	22.50	22.65	22.80	22.95	23.10	23.25	23.40	23.55	23.70	23.85	15
16	24.00	24.15	24.30	24.45	24.60	24.75	24.90	25.05	25.20	25.35	16
17	25.80	25.95	26.10	26.25	26.40	26.55	26.70	26.85	27.00	27.15	17
18	27.00	27.15	27.30	27.45	27.60	27.75	27.90	28.05	28.20	28.35	18
19	28.50	28.65	28.80	28.95	29.10	29.25	29.40	29.55	29.70	29.85	19
20	30.00	30.15	30.30	30.45	30.60	30.75	30.90	31.05	31.20	31.35	20
21	31.50	31.65	31.80	31.95	32.10	32.25	32.40	32.55	32.70	32.85	21
22	33.00	33.15	33.30	33.45	33.60	33.75	33.90	34.05	34.20	34.35	22
23	34.50	34.65	34.80	34.95	35.10	35.25	35.40	35.55	35.70	35.85	23
24	36.00	36.15	36.30	36.45	36.60	36.75	36.90	37.05	37.20	37.35	24
25	37.50	37.65	37.80	37.95	38.10	38.25	38.40	38.55	38.70	38.85	25
26	39.00	39.15	39.30	39.45	39.60	39.75	39.90	40.05	40.20	40.35	26
27	40.50	40.65	40.80	40.95	41.10	41.25	41.40	41.55	41.70	41.85	27
28	42.00	42.15	42.30	42.45	42.60	42.75	42.90	43.05	43.20	43.35	28
29	43.50	43.65	43.80	43.95	44.10	44.25	44.40	44.55	44.70	44.85	29
30	45.00	45.15	45.30	45.45	45.60	45.75	45.90	46.05	46.20	46.35	30
31	46.50	46.65	46.80	46.95	47.10	47.25	47.40	47.55	47.70	47.85	31
32	48.00	48.15	48.30	48.45	48.60	48.75	48.90	49.05	49.20	49.35	32
33	49.50	49.65	49.80	49.95	50.10	50.25	50.40	50.55	50.70	50.85	33
34	51.00	51.15	51.30	51.45	51.60	51.75	51.90	52.05	52.20	52.35	34
35	52.50	52.65	52.80	52.95	53.10	53.25	53.40	53.55	53.70	53.85	35
36	54.00	54.15	54.30	54.45	54.60	54.75	54.90	55.05	55.20	55.35	36
37	55.50	55.65	55.80	55.95	56.10	56.25	56.40	56.55	56.70	56.85	37
38	57.00	57.15	57.30	57.45	57.60	57.75	57.90	58.05	58.20	58.35	38
39	58.50	58.65	58.80	58.95	59.10	59.25	59.40	59.55	59.70	59.85	39
40	60.00	60.15	60.30	60.45	60.60	60.75	60.90	61.05	61.20	61.35	40
41	61.50	61.65	61.80	61.95	62.10	62.25	62.40	62.55	62.70	62.85	41
42	63.00	63.15	63.30	63.45	63.60	63.75	63.90	64.05	64.20	64.35	42
43	64.50	64.65	64.80	64.95	65.10	65.25	65.40	65.55	65.70	65.85	43
44	66.00	66.15	66.30	66.45	66.60	66.75	66.90	67.05	67.20	67.35	44
45	67.50	67.65	67.80	67.95	68.10	68.25	68.40	68.55	68.70	68.85	45
46	69.00	69.15	69.30	69.45	69.60	69.75	69.90	70.05	70.20	70.35	46
47	70.50	70.65	70.80	70.95	71.10	71.25	71.40	71.55	71.70	71.85	47
48	72.00	72.15	72.30	72.45	72.60	72.75	72.90	73.05	73.20	73.35	48
49	73.50	73.65	73.80	73.95	74.10	74.25	74.40	74.55	74.70	74.85	49
50	75.00	75.15	75.30	75.45	75.60	75.75	75.90	76.05	76.20	76.35	50

THE NATIONAL BLANK BOOK COMPANY
HOLYOKE MASSACHUSETTS
NEW YORK CHICAGO BOSTON SAN FRANCISCO
321/17
95
320.22