

DISTANCES FROM SIDE STAKES FOR CROSS-SECTIONING
SLOPE 1 TO 1. ROADWAY OF ANY WIDTH

	0	.1	.2	.3	.4	.5	.6	.7	.8	.9	
0	0.00	0.10	0.20	0.30	0.40	0.50	0.60	0.70	0.80	0.90	0
1	1.00	1.10	1.20	1.30	1.40	1.50	1.60	1.70	1.80	1.90	1
2	2.00	2.10	2.20	2.30	2.40	2.50	2.60	2.70	2.80	2.90	2
3	3.00	3.10	3.20	3.30	3.40	3.50	3.60	3.70	3.80	3.90	3
4	4.00	4.10	4.20	4.30	4.40	4.50	4.60	4.70	4.80	4.90	4
5	5.00	5.10	5.20	5.30	5.40	5.50	5.60	5.70	5.80	5.90	5
6	6.00	6.10	6.20	6.30	6.40	6.50	6.60	6.70	6.80	6.90	6
7	7.00	7.10	7.20	7.30	7.40	7.50	7.60	7.70	7.80	7.90	7
8	8.00	8.10	8.20	8.30	8.40	8.50	8.60	8.70	8.80	8.90	8
9	9.00	9.10	9.20	9.30	9.40	9.50	9.60	9.70	9.80	9.90	9
10	10.00	10.10	10.20	10.30	10.40	10.50	10.60	10.70	10.80	10.90	10
11	11.00	11.10	11.20	11.30	11.40	11.50	11.60	11.70	11.80	11.90	11
12	12.00	12.10	12.20	12.30	12.40	12.50	12.60	12.70	12.80	12.90	12
13	13.00	13.10	13.20	13.30	13.40	13.50	13.60	13.70	13.80	13.90	13
14	14.00	14.10	14.20	14.30	14.40	14.50	14.60	14.70	14.80	14.90	14
15	15.00	15.10	15.20	15.30	15.40	15.50	15.60	15.70	15.80	15.90	15
16	16.00	16.10	16.20	16.30	16.40	16.50	16.60	16.70	16.80	16.90	16
17	17.00	17.10	17.20	17.30	17.40	17.50	17.60	17.70	17.80	17.90	17
18	18.00	18.10	18.20	18.30	18.40	18.50	18.60	18.70	18.80	18.90	18
19	19.00	19.10	19.20	19.30	19.40	19.50	19.60	19.70	19.80	19.90	19
20	20.00	20.10	20.20	20.30	20.40	20.50	20.60	20.70	20.80	20.90	20
21	21.00	21.10	21.20	21.30	21.40	21.50	21.60	21.70	21.80	21.90	21
22	22.00	22.10	22.20	22.30	22.40	22.50	22.60	22.70	22.80	22.90	22
23	23.00	23.10	23.20	23.30	23.40	23.50	23.60	23.70	23.80	23.90	23
24	24.00	24.10	24.20	24.30	24.40	24.50	24.60	24.70	24.80	24.90	24
25	25.00	25.10	25.20	25.30	25.40	25.50	25.60	25.70	25.80	25.90	25
26	26.00	26.10	26.20	26.30	26.40	26.50	26.60	26.70	26.80	26.90	26
27	27.00	27.10	27.20	27.30	27.40	27.50	27.60	27.70	27.80	27.90	27
28	28.00	28.10	28.20	28.30	28.40	28.50	28.60	28.70	28.80	28.90	28
29	29.00	29.10	29.20	29.30	29.40	29.50	29.60	29.70	29.80	29.90	29
30	30.00	30.10	30.20	30.30	30.40	30.50	30.60	30.70	30.80	30.90	30
31	31.00	31.10	31.20	31.30	31.40	31.50	31.60	31.70	31.80	31.90	31
32	32.00	32.10	32.20	32.30	32.40	32.50	32.60	32.70	32.80	32.90	32
33	33.00	33.10	33.20	33.30	33.40	33.50	33.60	33.70	33.80	33.90	33
34	34.00	34.10	34.20	34.30	34.40	34.50	34.60	34.70	34.80	34.90	34
35	35.00	35.10	35.20	35.30	35.40	35.50	35.60	35.70	35.80	35.90	35
36	36.00	36.10	36.20	36.30	36.40	36.50	36.60	36.70	36.80	36.90	36
37	37.00	37.10	37.20	37.30	37.40	37.50	37.60	37.70	37.80	37.90	37
38	38.00	38.10	38.20	38.30	38.40	38.50	38.60	38.70	38.80	38.90	38
39	39.00	39.10	39.20	39.30	39.40	39.50	39.60	39.70	39.80	39.90	39
40	40.00	40.10	40.20	40.30	40.40	40.50	40.60	40.70	40.80	40.90	40
41	41.00	41.10	41.20	41.30	41.40	41.50	41.60	41.70	41.80	41.90	41
42	42.00	42.10	42.20	42.30	42.40	42.50	42.60	42.70	42.80	42.90	42
43	43.00	43.10	43.20	43.30	43.40	43.50	43.60	43.70	43.80	43.90	43
44	44.00	44.10	44.20	44.30	44.40	44.50	44.60	44.70	44.80	44.90	44
45	45.00	45.10	45.20	45.30	45.40	45.50	45.60	45.70	45.80	45.90	45
46	46.00	46.10	46.20	46.30	46.40	46.50	46.60	46.70	46.80	46.90	46
47	47.00	47.10	47.20	47.30	47.40	47.50	47.60	47.70	47.80	47.90	47
48	48.00	48.10	48.20	48.30	48.40	48.50	48.60	48.70	48.80	48.90	48
49	49.00	49.10	49.20	49.30	49.40	49.50	49.60	49.70	49.80	49.90	49
50	50.00	50.10	50.20	50.30	50.40	50.50	50.60	50.70	50.80	50.90	50

Distance of slope stake from side or shoulder stake for any width roadway, slope 1 to 1. If ground is nearly level, the cut or fill at side stake is located by the double entry method in left column and top row. The number in body of table in same row and column gives distance from side stake to slope stake. If ground is not level estimate the difference in elevation between the side stake and slope stake, lower target by this amount if cut, elevate if fill. Add this amount to cut or fill and find distance in table. Set up rod at this point, and line of sight should cut target. If it does not make the slight adjustment necessary.

MICROFILMED

APR 15 1965

PAGES	INDEX	DATE
1-6	WATER LINE LAUREL ST.; 54-TH. ELY BDY BALBOA ^{-VISTA}	6-11-54
7-8	WATER LINE BILOXI ST.; 54-TH TO BLACKTON	6-18-54
9-10	WATER LINE OLIVE ST.; 54-TH TO 55-TH.	6-30-54
11-18	WATER LINE <u>55-TH ST.</u> ; FAULCONERT ^O OLIVE ST.	6-28-54
19-22	WATER LINE BALBOA VISTADR. FAULCONERT ^O LAUREL	7-13-54
23-25	WATER LINE BALBOA VISTADR. LAUREL TO SEIFERT	7-24-54
26-27	WATER LINE SEIFERT ST.; 55-TH TO BALBOA ^{VISTA DR.}	7-24-54
28-31	WATER LINE 56-TH ST.; ELY LINE BALBOA SUB BDY. ^{-TO LAUREL ST.}	7-19-54
32	WATER LATERALS FAULCONER ST.	8-6-54
33-34	EXTENSION S ELY CURB; Lot 11 ALVARADO HTS ^{COTACTIN DRIVE}	9-8-54
35-42	SUBGRADES FOR CONC. PAVING LAUREL ST.	
43	SUBGRADES 55-TH ST. FOR CONC. PAVING	
44-45	SUBGRADES CONC. PAVING BALBOA VISTADR.	
46-47	SUBGRADES A.C. PAVING BLACKTON DRIVE	10-20-54
48-50	SUBGRADES A.C. PAVING BILOXI ST.	10-20-54
51-52	BENCH LEVELS BALBOA VISTA	
53-53	SUBGRADES 56-TH & LAUREL	10-12-54
54-55	GRADE CHANGE BLACKTON & FAULCONER	10-22-54
56	SUBGRADES 54-TH & LAUREL STS.	
57	SUBGRADES 54-TH & BILOXI STS.	10-22-54

PAGES	INDEX	DATE
58	GRADES-COLVERT; 51-ST & ORANGE AVE ✓	11-03-54
59-62	GRADES-ALLEY BLK 9, LAMESA COLONY ✓	11-10-54
63	GRADES-MILTON & DENVER	11-17-54
64-66	BENCH LEVELS BALBOA VISTA AREA	12-01-54
67-69-18	"STORM DRAIN ORTEN ST.	
70	SEWER GRADES ASHTON & GALVESTON	
71-72	SEWER & WATER GALVESTON ST	
73-74	SEWER RE-ALIGNMENT DOVE TO BRANT 2-10-55 ✓	
75-78	SEWER GRADES MILTON ST.; ^{GALVESTON TO} HARTFORD	

INDEXED

WATER LINE GRADES LAUREL ST.

2+17.14

31.14

1+86 = (W) Lat. 14 31'

36

1+50

1+00

26.17'

0+73.83

33.83

0+40

0+00

{ 0-50.35 = ^{Make} Begin Waterline Connection
 { = 19.21 NELY of Lt Disk & 54-th & Laurel
 { = 65.84 NELY of & Laurel & 54-th.
 { 0+00 = E.C. 6E. Cb. Ret. Laurel & 54-th
 66.25'
 B.M.

269.09

Lt.

&

Rt.

①

Grades are & Finish
& Top of Curb

F 0.85
76.87
277.72

F 0.12 F 1.12
76.12 74.90
276.27 276.02

F 0.82
73.25
274.07

F 0.54
71.34
271.88

F 0.84
70.21
271.05

F 0.80
69.37
270.17

F 0.43
68.66
269.09

Top SE. F.H. Laurel & 54th.

WATER LINE GRADES LAUREL ST.

$\Delta = 54^\circ 42' 40''$ $R = 290'$ $L = 276.92'$ $d = 5.9271$

$5 + 27.56 = P.R.C. \text{ def } \Delta = 24^\circ 04' 22''$

$27.56' c = 27.56'$

$5 + 00 \text{ def } \Delta = 21^\circ 15' 10''$

$50 c = 49.93'$

$4 + 50 \text{ def } \Delta = 16^\circ 08' 13''$

$50 c = 49.93'$

$4 + 00 \text{ def } \Delta = 11^\circ 01' 16''$

$28' c = 27.99'$

$\text{def } \Delta = 8^\circ 09' 23''$

$3 + 72 - 11' R.t. = \text{W Lat}$

$30' c = 29.98$

$\text{def } \Delta = 5^\circ 05' 13''$

$3 + 42 - 11.25 R.t. \& F.H.$

$38.32' c = 38.30'$

$\text{def } \Delta = 1^\circ 10'$

$3 + 03.68 = \text{Intersection } 6'' \text{ line Blaceton Dr.}$

$11.40'$

$R = 280'$ $L = 235.28'$

$2 + 92.28 = B.C. \text{ Lt } \Delta = 48^\circ 08' 40''$

$d = 6.138833$

42.28

27.50

32.86

Lt.

Rt.

Rt.

(2)

$F 1.05$
 93.10
 294.15

$F 1.23$
 91.46
 292.69

$F 1.09$
 89.98
 290.07

$F 1.18$
 86.26
 287.44

$F 1.25$
 84.72
 285.97

$F 0.32$
 85.40
 285.72

$F 1.26$
 3.15
 284.41

$F 0.01$ $F 1.27$
 84.14 82.88
 284.15 284.15
S.W. 1/4 S.W. 1/4

$F 0.37$
 82.05
 282.42

$F 0.25$
 81.54
 281.79

$F 0.26$
 78.94
 279.50

WATER LINE GRADES LAUREL ST.

9+00

50

8+50

45.52

8+05.634=

8+04.48 = E.C. def $\Delta = 27^{\circ} 21' 20''$

11.01

def $\Delta = 26^{\circ} 16' 04''$

7+93.47 = 8" C.I. Cross = Intersection 55-th
St. H₂O Line

43.47' C = 43.45

7+50 def $\Delta = 21^{\circ} 58' 25''$

50' C = 49.88

7+00 def $\Delta = 17^{\circ} 02' 04''$

36' C = 35.98

6+64 - 31' Lt. = W lat. def $\Delta = 13^{\circ} 28' 41''$

50' C = 49.88'

6+14 - 11' Rt. = W lat. def $\Delta = 8^{\circ} 32' 20''$

44' C = 43.98

5+70 def $\Delta = 4^{\circ} 11' 33''$

42.44' C = 42.40

Lt.

Rt.

Rt.

(3)

F 1.17

315.92

317.09

F 1.09

312.15

313.24

F 0.54

309.43

309.97

F 0.48

309.77

309.25

F 0.43

306.25

306.68

F 1.03

302.83

303.86

F 0.53

132

301.85

31'

F 1.35

300.49

301.84

F 0.98

298.04

298.02

F 1.04

7.74

298.78

11'

F 1.00

5.54

296.54

WATER LINE GRADES LAUREL ST.

4. E. R. (4)

12+00 ^{over} C.N. ^{to} T.P. ^{on} 5' R.Stub 350.06

F0.79
350.06
350.85

26'

11+74-11.25 R.L. & F.H.

F0.28 C1.10 F0.96
346.70 347.86 345.90
346.98 348.86 346.86

17.46'

11+56.54 = 8" x 6" C.I. Tee

L0.07 5' Ely 11.25' 5' Wly
344.45
344.38

22.68'

T.P. 341.79

11+33.86 E.C. Defl = 14° 18' 52.5"

L0.10 ✓
341.10 ✓
341.00 ✓

33.86' c = 33.89

11+00 defl = 11° 27' 42"

F0.67 ✓
336.54
337.21 ✓

T.P.
50' c = 49.96'

332.47

F0.89 ✓
330.73
331.62 ✓

10+50 defl = 7° 14' 55"

46 c = 45.97

10+04 = W. Lat. 31' R.L. Defl = 3° 22' 22"

F0.68 C0.61 F0.39 ED⁰¹ F0.99
325.92 327.21 326.08 260.25.66
326.60 326.60 326.47 326.60 326.60
5' Wly 5' Ely 5' Ely 5' Wly

25.18 c = 25.18

Mean T.P. on Stub 5' 51y
9+78.82 defl = 1° 15' 04"

323.57

F0.14 ✓
323.57
323.71 ✓

14.85'

E.C. = 330

∠ = 28° 37' 45" d = 5.05551

9+63.97 = B.C. L.R. = 340' L = 169.89'

F0.24 ✓
321.96
322.20 ✓

33.97

F0.28 ✓
319.11
314.39 ✓

9+30

30'

7-12-54

WATER LINE GRADES LAUREL ST.

$\Delta = 22^{\circ}29'30''$ $d = 5.54475$

$14+72.35 = B.C.Lt. R = 310' L = 121.69'$

5.35 T.P. 386.59

14+67-9' Rt. @ Lat.

10'

14+57-29' Lt. @ Lat.

32'

14+25

36.43' T.P. 377.39

13+88.57 - 8" C.I. Tee

38.57

13+50

50'

13+00 T.P. 368.30

30'

12+70

31' T.P. 359.35

12+39-11' Rt. @ Lat.

39'

F0.11

86.59

387.70

C0.33 F0.16

87.69 7.20

~~387.36~~ 387.36 387.36

5'Ely 5'Wly

F0.34 F1.05 F0.88

86.38 85.67 85.84

386.72 386.72 386.72

5'Ely 5'Wly

C0.02

83.70

383.68

F0.79

78.16

378.95

F0.02

73.18

373.20

F0.77

64.98

365.75

F1.00

60.28

361.28

F0.95 C0.90 F0.88

5.71 57.03 55.25

356.66 356.13 356.13

5'Ely 5'Wly

WATER LINE GRADES LAUREL ST.

B. M.

391.11

391.02

3' Blow off

15+94.04 = Endline deft = 11° 14' 45"

44.04 C = 44.00'

15+50 deft = 7° 10' 33"

30 C = 49.95'

15+00 deft = 2° 33' 19"

27.65 C = 27.64'

F 0.46
84.94
385.40
F 0.97
87.34
388.31
F 1.39
87.41
388.80

6" WATER BILOXI ST.

INDEXED

2+98.47 E.C. def α = 23°13'56"

18.99'

2+79.48 - W 29' Lt. def α = 21°25'08"

53.71'

2+25.77 def α = 16°17'24"

41.54'

TP

282.18

1+84.23 def α = 12°10'24"

39.90'

1+44.33 def α = 8°31'48"

31.14'

1+13.19 def α = 5°32'22"

45.04'

0+68.15 def α = 1°14'20"

12.97

$\alpha = 46°27'52''$ $L = 243.29$
0+55.18 = B.C. Lt. $R = 300$ $d = 5.729578$

37.18'

0+18 - Make Connection

0+00 = 10' Sly of L. & Disk ~~at~~ 54' off Biloxi

B.M.

291.28

See plan Profile
Sheet 7 Sheet 16

⑦

Grades are & Finish 6-18-54
& Top of Curb F 0.79
86.52
287.29

F 1.10 F 0.41 F 0.75
84.52 85.29 5.15
285.70 285.70 285.90
RR 5' W. 29' RR 5' E

F 0.45
82.18
NOTE: Offset stakes 282.63
= are 5' Rt.

F 0.51
80.60
281.11

F 0.58
79.65
280.23

F 1.05
78.66
279.71

F 0.78
78.06
278.84

78.03

Stub & Cb. Radius S.W. Cor. Blackton & Biloxi

6" WATER BILOXI ST.

B.M.

291.28 (see Pg 7)

On Blackton.
3+79.54 - Make Connection to 6" Line to Tee

28.07'

3+51.47

F.O. 57

91.11
291.68

F.O. 55

90.07
291.62

A 53'

(Def.
4 Pt. 23° 14' from B.C.

INDEXED

8" WATER LINE OLIVE ST. FROM.

54-TH TO 55-TH. TP 304.56

3+65.25 = 18.75' PL. & F.H.

44.95 P.K. in P. #P. 170662 after Pole was Moved 295.66

3+20.30-10' N. of Blackton & 10' S. of Olive

65.05 TP 295.30

2+55.25 = P.L. B.C. S.W. Ret. Blackton & Olive

55.25

2+00

59.87' . TP. 286.16

1+40.13 & Alley "A" & Olive 10' S. of &

40.13

1+00

50'

0+50

0+00 = 10' S. of Olive & Elyline 54th

22

0+22 = 10' S. of Olive & Elyline 54th

B.M.

See Plan Sheet 7

"Profile"

6-30-54

(9)

Grades are finish
& top of curb

C1.54 C0.62 F0.26

4.56 0536 4.48

303.02 304.74 304.74

C0.98 RR 18.75' B.A.

00.49 5'E. 15' S.W.

299.51 RR 5' W.

C0.87

5.30

294.43

C0.75

90.87

290.12

C0.93

6.37

285.44

C0.66

2.97

282.31

C0.95

9.36

278.41

C1.42

75.95

274.53

6-30-59

8" WATER MAIN OLIVE ST.

B.M. 327.59 327.62 Sta 5+50 5' RR P.

6+60.30 = 10'-E/4 of E 55-th & 10'sly of Olive
39.25' 332.64
F2.55

6+20.35 = W/4 Line 55-th St.
25 331.77
334.32
F2.12

5+95.35 = B.C. S.W. Pl. Ref. Olive & 55-Th
45.35' 29.38
331.50
F1.40

5+50 TP 322.44 3.49
324.89

50' 50.55
7.04

5+00 317.59

19.67' TP 313.38 F0.29

4+80.33 = E Alley "B" & 10'sly of Olive
30.33 4.65
314.89

4+50 60.64
11.73
311.09

50' C1.45
07.41

4+00 305.96

34.75

INDEXED

8" WATER MAIN 55-TH. ST. FROM
FAULCONER TO LAUREL ST.

2+45 = W. 9' RT.

30'

2+15 = W. 29' LT.

20'

1+25 = W. 9' RT.

30' 25'

70
1+65 = W. 29' LT.

45' 50'

1+20 = W. 29' LT.

50'

0+70 = W. 29' LT.

13.24'

0+56⁷⁶ = W. 9' RT.

36⁷⁶

0+20 = W. 29' LT.

20'

Make Connection.
0+00 = E. Faulconer 10' Ely E. 55-TH

B.M.

334.74

Plan Sheet. 9

Profile "

H.

E

RT.

TOP CB.

6-28-54

TOP CB.

(11)

F 0.79
327.31
328.10

C 0.11
328.51
328.40

F 0.15
328.77
328.92

F 0.70
328.39
329.09

F 0.63
329.72
329.75

F 0.10
330.00
330.10

F 0.19
330.25
330.44

F 0.70
329.89
330.59

F 0.40
331.74
332.14

F 0.66
331.58
332.24

grade
333.29
333.29

(333.22)

F 0.57
333.63
334.20

F 0.05
334.90
334.85

C 0.10
333.97
333.87

C 0.05
334.53
334.48

334.68

Top 5/4 Chis/Cross Sewer M.H. 55-TH & Faulconer

8" WATER 55-TH. ST.

4+75 = 9.25 Rt. F.H.

10'

4+65 = W. 29' Lt.

20'

4+45 = W. 9' Rt.

30'

4+15 = W. 29' Lt.

20'

3+95 = W. 9' Rt.

30'

3+65 = W. 29' Lt.

20'

3+45 = W. 9' Rt.

30'

3+15 = W. 29' Lt.

20'

2+95 = W. 9' Rt.

30'

2+65 = W. 29' Lt.

20'

Lt.
Topcb
6-28-54

F0.66
316.30
316.96

F0.65
316.90
317.55

F0.64
318.12
318.76

F0.58
319.98
320.56

F0.67
320.98
321.65

F0.73
322.47
323.20

F0.73
323.45
324.18

F0.64
324.85
325.49

F0.67
325.62
326.31

F0.78
326.64
327.42

Rt.
Topcb
F0.41 = N1/2 S1/4
C0.06
317.31
317.25
315 Stake

C0.14
319.19
319.05

C0.20
322.14
321.94

C0.24
324.71
324.47

C0.18
326.78
326.60

(12)

8" WATER 55-TH. ST.

7+45=W. 9' Rt.

30'

7+15=W. 29' Lt.

20'

6+95=W. 9' Rt.

30'

6+65=W. 29' Lt.

20'

6+45=W. 9' Rt.

30'

6+15=W. 29' Lt.

50'
(Lot. 5-Omitted)

5+65=W. 29' Lt.

20'

5+45=W. 9' Rt.

30'

5+15=W. 29' Lt.

20'

4+95=W. 9' Rt.

20'

Lt.
Top Ch.

6-28-59

±

Rt.
Top Ch.

(13)

F0. 77
306. 91
307. 68

F0. 08
308. 35
308. 43

F0. 25
307. 55
307. 80

F0. 73
307. 45
308. 18

F0. 70
307. 82
308. 52

C0. 20
309. 28
309. 08

F0. 14
308. 52
308. 66

F0. 48
308. 61
309. 09

F0. 58
309. 01
309. 59

C0. 26
310. 31
310. 05

F0. 20
309. 91
310. 11

F0. 73
309. 71
310. 44

F0. 29
311. 76
312. 05

F0. 59
311. 73
312. 32

F0. 57
312. 61
313. 18

E0. 15
313. 67
313. 52

F0. 20
314. 27
314. 47

F0. 61
314. 08
314. 69

F0. 74
315. 03
315. 77

C0. 19
316. 25
316. 06

8" WATER 55-TH. ST.

2+16 = W. 29' Lt.

30'

1+86 = W. 9' Rt.

20'

1+66 = W. 29' Lt.

30'

1+36 = W. 9' Rt.

20'

1+16 = W. 29' Lt.

43'

0+73 = W. 9' Rt.

7'

0+66 = F.H. 14.70' Rt.

0+66 = W. 29' Lt.

65.19'

8+60.81 = 0+00 Wly

7.33'
8" Cross

8+53.48 = 10.514
E Laurel St.

53.48'

8+00

55'

Lt.	6-29	54	Rt.
Top cb.	FO.	56	Top cb.
	12.07	11.62	
	311.97	312.18	
		FO. 50	FO. 03
		11.15	11.91
	311.41	311.65	311.94
	Grade	FO. 51	
	11.09	10.79	
	311.09	311.30	
		FO. 45	FO. 13
		10.32	10.93
	311.11	310.77	311.06
	FO. 01	FO. 55	
	10.20	09.87	
	310.21	310.42	
		FO. 41	FO. 10
		09.24	09.97
		309.65	310.07
	FO. 03	FO. 21	CO. 29
	09.30	9.32	10.49
	309.33	309.53	310.20
			5N
			5'S
		308.85	
		308.65	
		FO. 43	
		306.87	
		307.30	

8" WATER 55-TH. ST.

4+66=W. 29' Lt.

30'

4+36=W. 9' Rt.

20'

4+16=W. 29' Lt.

30'

3+86=W. 9' Rt.

20'

3+66=W. 29' Lt.

TP.

314.77

30'

3+36=W. 9' Rt.

20'

3+16=W. 29' Lt.

30'

2+86=W. 9' Rt.

20'

2+66=W. 29' Lt.

30'

2+36=W. 9' Rt.

20'

Lt.

E

Rt.

(15)

Top cb.

Top cb.

F0.44 6-29-54
1884 F0.78
319.28 1871
319.28 319.19

F0.51 F0.22
17.25 17.83
317.76 318.05

F0.21 F0.52
16.48 16.38
316.69 316.90

F0.44 F0.14
15.32 15.91
315.76 316.05

✓ F0.54 ✓ F0.34
14.36 14.77
314.90 315.11

F0.39 F0.07
14.07 14.68
314.46 314.75

F0.07 F0.34
13.67 13.61
313.74 313.95

F0.44 F0.11
12.98 13.60
313.42 313.71

F0.36 F0.47
12.50 12.60
312.86 313.07

F0.40 F0.13
12.14 12.70
312.54 312.83

8" WATER 55-TH. ST.

7+16=W. 29' Lt.

30'

6+86=W. 9' Rt.

20'

6+66=W. 29' Lt.

30'

6+36=W. 9' Rt.

T.P.

331.07

20'

6+16=W. 29' Lt.

30'

5+86=W. 9' Rt.

20'

5+66=W. 29' Lt.

30'

5+36=W. 9' Rt.

T.P.

322.82

20'

5+16=W. 29' Lt.

30'

4+86=W. 9' Rt.

20'

Lt.

4

Rt.

(16)

Top cb.

Top cb.

F0.47
36.43
336.90

6-29-59
F0.57
36.54
337.11

F0.57
34.66
335.23

F0.23
35.29
335.52

F0.18
33.43
333.61

F0.62
33.20
333.82

F0.45
31.07
331.52

F0.44
31.37
331.81

E 0.35
30.10
329.75

F0.33
29.63
329.96

F0.49
27.13
327.62

F0.24
27.67
327.91

Grade
25.85
325.85

F0.61
25.45
326.06

F0.45
23.32
323.77

F0.38
23.68
324.06

C0.33
22.34
322.01

F0.31
21.99
322.30

F0.51
19.90
320.41

F0.28
20.42
320.70

8" WATER 55-TH. ST.

Lt. ♀ Rt.
Top cb. 6-29-54 Top cb. (17)

			F0.51	F0.77	
			38.29	38.24	
10+16=W.29' Lt.			338.80	339.01	
30'				F0.53	
To Be done By City				40.05	omit
<u>9+86=W.9' Rt.</u>				340.58	340.81
20'			C0.03	F0.51	
			41.10	40.77	
9+66=W.29' Lt.			341.07	341.28	
50'			C0.40	F0.47	
			41.63	41.37	
9+16=W.29' Lt.			341.23	341.84	
50'			C0.18	F0.39	
			41.60	41.24	
8+66=W.29' Lt.			341.42	341.63	
50'			F0.38	F0.63	
			40.36	40.32	
8+16=W.29' Lt.			340.74	340.95	
39.68'	TP.	339.38		F0.58	
55-TH & Selfert				39.37	
7+76.32=8"X6"				339.95	
Tee					
10.32'			F0.50	F0.47	
			38.81	39.05	
7+66=W.29' Lt.			339.31	339.52	
40'				F0.54	
26				37.13	
7+28=W.9' Rt.				337.67	337.96
50'					F0.19
					37.50
7+21=W.9' Rt.					337.69

6-29-54

(2)

8" WATER 55-TH. ST.

B.M.

333.98 ~ 334.60

11+16.59=3"

Blow off

^{10'}
55-TH 0/110e "
11+06.59=8 Tee

50.59

10+56=W.29' Lt.

40'

60.26
32.90
332.64

60.17
33.05
332.88

F0.46 F0.49
35.36 35.54
335.82 336.03

INDEFYEN

6" WATER MAIN BALBOA VISTA DRIVE
FROM FAULCONER TO LAUREL ST.

2+83 = W. 13.5' RT def α = 26° 34' 01"

43' C = 42.94'

2+40 = W. 13.5' RT def α = 21° 19' 30"

42' C = 41.94 TP. 367.15

~~omit W. lat.~~

1+98 = W. 13.5' RT. def α = 16° 12' 18"

47' C = 46.92'

1+51.00 = W. 13.5' RT. def α = 10° 28' 31"

26' C = 25.99'

1+25 def α = 7° 18' 21"

25 C = 24.99' TP. 358.31

1+00 def α = 4° 15' 29"

24' C = 23.99'

W 13.5' RT

0+76.1 = W 33.5' Lt. def α = 1° 19' 27"

10.93' C = 10.93'

B.C. Lt. R = 235' L = 265.99'

0+65.07 α = 64° 51' d = 7,314.354

0+185

& Faulconer & 10' Ely

0+185

0+00 = of Balboa Vista Drive Make Connection

B.M.

348.94

Lt
TOP CB.

FIN GR.

Rt
TOP CB.

13

7-13-54

FO. 44	CO. 39	CO. 34
68 88	69.84	69.79
369.32	369.45	369.45
	514.5'	N14.5'
FO 79	CO. 22	CO. 09
68 79	70.01	69.88
369.58	369.79	369.79
	514.5'	N14.5'
FO. 83		
67 15		
367.98	368.23	368.23
	5	
FO. 00	FO. 39	CO. 79
63 02	63.84	65.02
364.02	364.23	364.23
	514.5'	N14.5'
FO. 92		
59 96		
360.88		
FO. 99		
56 19		
357.18		
FO. 86	CO. 91	FO. 95
52.91	54.18	52.37
353.27	353.27	353.37
514.5'	N14.5'	514.5'
		N14.5' RP
	FO. 81	
	50.75	
	351.60	351.56
		351.59
	CO. 78	
	46.08	
	345.30	

Top F.H. S.W. Cor Timothy & Faulconer

5725 def \angle = 15°13'19"

F0.37
50 50
350.91

29' c = 28.98" T.P. 352.51

F0.51 CO.86 F0.29
59 71 5538 5423
354.22 354.52 354.52

4+96 = W. 13.5⁵ Lt. def \angle = 12°56'44"

19' c = 19'

CO.59 F0.84 F0.49
5676 5533 5588
356.17 356.17 356.37
sly Nly

4+77 = W. 33.5⁴ Lt. def \angle = 11°27'16"

43' c = 42.97 T.P. 360.68

F1.05 CO.31 F0.67
60.05 6166 6068
361.10 361.35 361.35
sly Nly

4+34 = W. 13.5⁵ Lt. def \angle = 8°04'46"

3'

CO.62 F0.42
61.60 6036
360.98 360.98 361.13
sly 5' Nly

4731 = W. 33.5⁴ Lt. def \angle = 7°50'38"

45' c = 44.97'

CO.44 F0.21 F0.70
6505 6440 6407
364.61 364.61 364.71
sly 5' Nly 5'

3+86 = W. 33.5⁴ Lt. def \angle = 4°18'43"

15' c = 15'

F0.66 CO.87 F0.13
6509 6674 6574
365.75 365.87 365.87
sly 5' Nly 5'

3+71 = W. 13.5⁵ Lt. def \angle = 3°08'05"
R = 365'4 = 64.51

39.94' c = 39.92' = 413.12' d = 4.709242
P.R.C.

F0.41
6728
367.69

3+31.06 def \angle = 32°25'30"

6.06 c = 6.06

F0.37 CO.87 CO.56
6753 6860 6849
367.90 367.93 367.93
sly 5' Nly 5'

3+25 = W. 13.5⁵ Lt. def \angle = 31°41'13"

12' c = 12'

F0.12 CO.35 F0.38
6824 6871 6795
368.36 368.36 368.33
Nly sly

3+13 = W. -33.5⁵ Lt. def \angle = 30°13'26"

30' c = 29.98

8+03=W.13⁵ Rt.

28'

7+75

T.P.

334.64

29

7+46=W.13⁵ Rt.

1.82'

7+44.18 E.C. def \angle =32°25'30"

24.18' C=24.18'

7+20

def \angle =30°31'37"

1°53' 53"

31' C=30.99

6+89=W.13⁵ Rt. def \angle =28°05'37"

26' C=25.99'

6+68=F.H.-13.75 Rt. def \angle =26°03'11"

42' C=41.97

T.P.

343.40

6+21=W.13⁵ Rt. def \angle =22°45'24"

31' C=30.99'

5+90=W.13⁵ Rt. def \angle =20°19'25"

31' C=30.99'

5+59=W.13⁵ Rt. def \angle =17°53'25"

34' C=33.96'

4.

\$

et.

(2)

F0.28 C0.79
33 34 34 94
333.62 334.15

F0.28
34 64
334.92

C0.56
37 18
336.12 336.62

F0.33
35 86
336.19

F0.40
36 71
337.11

F0.45 C0.29 Grade
37 93 39 08 38 84
338.38 338.84 338.84

5' 5/4 5' N/4
F0.30 C0.09 F0.50
39 43 40 22 39 63
339.73 340.13 340.13

5' 5/4 5' N/4
F0.61 Grade F0.55
41 78 42 75 42 20
342.39 342.75 342.75

5' 5/4 5' N/4
F0.54
44 23
344.77

F0.43 C0.84 F0.27
47 12 48 69 47 58
347.55 347.85 347.85
5' 5/4 5' N/4

6" WATER MAIN FAULCONER TO LAUREL
ALONG BALBOA VISTA DRIVE

B.M.

323.39 ~ 323.42

8" X 6" Tee = H₂O @
10 + 32⁴⁴ Laurel 1/4
Meas. Balboa Vista

324.00

F 0.33

22.67

323.00

F 0.03

22.87

322.90

F 0.37

C 0.82

23.80

25.69

324.17

324.87

F 0.84

C 0.56

26.71

28.74

327.55

328.18

F 0.82

C 0.34

29.98

31.68

330.80

331.34

10 + 11.80

40.08

9 + 71.72

17.72

9 + 53 = W. 13⁵ Rt. TP

325.69

50

9 + 03 = W. 13⁵ Rt.

50

8 + 53 = W. 13⁵ Rt.

50

6" WATER MAIN LAUREL TO SEIFFERT
ALONG BALBOA VISTA DRIVE

2+04 = W. 29' RT

1+97 = W. 9' RT

1+54 = W. 29' LT

1+17 = W. 9' RT

1+04 = W. 29' LT

J.P.

361.40

0+54 = W. 29' LT

J.P.

352.17

0+04 = W. 29' LT

0+00 = N.W. P.E.C. Laurel & Balboa Vista

0-40 Make Connection @ Laurel & Balboa Vista

B. M.

L.
Top Curb

E
Fin. Gr.

R.
Top Curb

(23)

FO 01
69.83
369.84

FO 62
69.43
370.05

FO 59
69.28
369.87

0.87
69.29
370.16

CO.32
67.71
367.39

FO 88
66.72
367.60

FO 54
62.37
363.91

1.37
62.94
364.21

CO.34
62.30
361.96

F 1.35
60.73
362.08

CO 27
55.10
354.83

FO.44
54.48
354.92

CO.34
47.83
347.49

C 1.20
48.78
347.58

6" C.Y. WATER BALBOA VISTA DRIVE

4+54=W. 29' Lt.			F0.87 72.00 372.87	F0.96 72.12 373.08	
4+47=W. 9' Rt.				F0.96 72.04 373.00	F1.03 72.25 373.28
4+04=W. 29' Lt.			F0.92 71.36 372.28	F0.71 71.79 372.50	
3+97=W. 9' Rt.				F0.74 71.67 372.41	F0.93 71.77 372.70
3+54=W. 29' Lt.			F0.59 71.11 371.70	F0.73 71.18 371.91	
3+47=W. 9' Rt.				F0.78 71.04 371.82	F0.35 71.56 372.11
Lot 22 Omitted 3' on Phis.				F0.63 70.61 371.24	F0.17 71.36 371.53
2+9 2 ⁹ =W. 9' Rt.					
2+54=W. 29' Lt.	TP	369.91	F0.63 69.90 370.53	0.83 69.91 370.74	
2+47=W. 9' Rt.				C0.31 69.96 360.65	C0.09 71.03 370.94

6" WATER LAUREL TO SEIFERT
ALONG BALBOA VISTA

B.M.

$6+07 = 90^\circ \text{ C.I. Bend} = \text{Balboa Vista \& Seifert}$
H₂O Intersection

$5+97 = W. 24' RT.$

~~$5+67 = F.H. 17.5' RT.$~~ *Moved to Sta 5+17*

$5+54 = W. 29' RT.$

$5+47 = W. 12.3' RT.$

$5+17 = F.H. 9.25' RT.$

$5+04 = W. 29' RT.$

$4+97 = W. 9' RT.$

Lt.
±
Rt.
(25)
Elev. Top Curb
Fin. Grade
Elev Top Curb

FO. 41

74.79
375.20

CO 15

75.16
375.01

FO. 79

74.51
375.30

FO. 61 CO. 29 FO. 26

73.78 74.97 74.42
374.39 74.68 374.68

5514 5N14

FO 25

73.79
374.04

FO 65

73.60
374.25

FO 59 FO. 23

73.57 74.22
374.16 374.45

FO⁰⁸

73.38
373.46

FO. 95 FO. 26 FO. 52

72.72 73.84 73.58
373.67 374.10 374.10

F.H. 14 F.H.
514

FO. 92 FO. 23

72.64 73.64
373.56 373.87

7-29-54
(544)

6" WATER MAIN SEIFERT ST. FROM:
55-TH ST. TO BALBOA VISTA DRIVE

2+20.03

F1 05
73 36
370.41

1+75

TR

372.03

F1 10
72.03
373.13

1+35

F1 39
68 20
369.59

1+22.05

F1 12
66 58
367.70

TR

362.97

F1 23
2 97
364.20

0+98.05

F1 31
53.91
355.22

0+50 TR

353.91

F1 44	C0 76	F1 14
44 30	4629	4439
345.74	345.53	345.53
	5'E14	0.75' @ 531 S1W14

0+00 = F.H. 13.75' Rt.
= E.C. S.E. Cb. Ref. & R. 55-789 Seifert.
Cb.R. = 37' Cb.S. = 36' Comb. L 40' from Center to S.R.T. Sth line.

0-45 Make Connection @ 55-TH & Seifert

- B.M.

WATER MAIN SEIFERT ST. FROM 55-TH TO
BALBOA VISTA DRIVE

2+85 ^{HeD Line} Make Connection With Balboa Vista

2+60

375.20

FO 15

4 55

379.70

INDEXED

8" C.I. WATER MAIN & LATERALS 56-TH ST.
FROM ELY. LINE BALBOA VISTA SUB BDY TO
LAUREL ST. MAIN.

1+50 = W. 14' Lt. def $\Delta = 10^{\circ} 40'$

12' c = 12'

1+38 = W. 34' Lt. def $\Delta = 8^{\circ} 22' 29''$

32' c = 31.94'

~~omit W. Lat.~~ installed
1+06 = W. 34' Lt. def $\Delta = 2^{\circ} 15' 47''$

11.85' c = 11.85'

def $\Delta = 9^{\circ} 38' 24''$
0+83.65' $\Delta = 0+94' =$ B.C. H₂O Rt. 10' L = 157.51'
d = 11.459156

17.30' c = 17.29

0+66.35' = W. 24' Lt. Δ def $\Delta = 6^{\circ} 32' 32''$

34.59' c = 34.57'

0+31.76' = W. 24' Lt. Δ def $\Delta = 0^{\circ} 20' 27''$

1.95'

0+29.81' = B.C. Δ R = 160' Δ L = 221.85'
 $\Delta = 79^{\circ} 26' 45''$ d = 10.7429

0+08.12' = 15' Nly of Ely. Line of Balboa Vista sub-
of 5/4 Line 56-th Δ - Bdy.

B.M.

392.97

44

7-19-54

Δ

rt

(28)

Stamped
Garber
Sisson
Nordahl

FO. 78	FO ⁰⁵	CO ¹³
90.08	91.04	91.22
390.86	391.09	391.09
	5' 5/4	5' Nly

CO. 24	FO ²³	FO 78
90.49	90.02	89.74
390.23	390.25	390.52
5' 1/4	5' 5/4	
FO ⁰²	FO. 46	FO ⁵⁰
88.58	89.02	88.33
388.56	388.56	388.83
5' 5/4	5' Nly	

FO ¹⁵	CO ⁴⁵	FO 56
86.75	87.35	86.61
386.90	386.90	387.17
5' 5/4 24' Lt.	5' Nly	
FO. 37	CO ⁰⁷	et. est. FO ⁸⁰
84.63	85.07	to Main 84.47
385.00	385.00	385.27
24' Lt.	5' Nly	12'
5' 5/4		et. est.
		to Main

FO ²⁶	FO ²²
82.74	82.78
383.00	383.00
15'	
5' R.P. Nly	5' Ely

Top 3/4" Pipe 25' Rt. Sta E.C. 2+51.66 2165
16

WATER 56-74. 57.

3+52 = F.H. 14.25 Rt.

25 c = 5' T.P.

378.18

3+27 = W. 34' Lt.

5 c = 5'

3+22 = W. 14' Rt.

45' c =

2+77 = W. 34' Lt.

5 c = 5'

2+72 = W. 14' Rt. T.P.

384.21

20.34' c =

2+51.66 EC. def A = 30° 04' 55"

11.66 c = 11.66

2+40 = W 34' Lt. def A = 27° 51' 08"

25 c = 24.97' 4 46 18

2+15 = W 14' Rt. def A = 23° 04' 50"

8'

2+07 = W. 34' Lt. def A = 21° 33' 10"

32 c = 31.94'

1+75 = W. 34' Lt. def A = 15° 26' 28"

25 c = 24.97'

4 4 20

Lt. 4 Rt. (29)

F1.02 C0.43 F1.43

76.98 78.66 76.80

378.00 378.23 378.23

5' 5/4 5' N/4

C0.48 F0.24

80.35 79.63

379.87 379.87 380.14

5' 5/4 5' N/4

F0.96 C0.86 C0.18

79.64 81.69 81.01

380.60 380.83 380.83

5' 5/4 5' N/4

C0.59 F0.28 F0.55

85.08 84.21 84.21

384.49 384.49 384.76

5' 5/4 5' N/4

C1.12 C2.15

86.57 87.60

385.22 385.45 385.45

5' 5/4 5' N/4

F0.89

86.21

387.10

C0.86 C0.10 F0.82

88.71 87.95 87.90

387.85 387.85 388.12

5' 5/4 5' N/4

F1.00 C0.40 F0.19

88.90 90.53 89.94

389.90 390.13 390.13

5' 5/4 5' N/4

~~389.73~~ 390.00

OMI F. W. Lt.
C0.38 C0.35 F0.81

91.21 91.18 90.29

390.83 390.83 391.10

5' 5/4 5' N/4

WATER 56-TH ST.

5+72=W. 14' Rt.

45'

5+27=W. 34' Lt.

5'

5+22=W. 14' Rt.

45'

4+77=W. 34' Lt.

5'

4+72=W. 14' Rt.

45'

4+27=W. 34' Lt.

5'

4+22=W. 14' Rt.

45' c =

3+77=W. 34' Lt.

5'

3+72=W. 14' Rt.

20' c =

Lt.

\$

Rt.

(30)

F 0 18 C 0 22 C 0 23
68 75 9.83 69 84
368.93 369.61 369.61

C 0 34 C 0 20 F 0 64
69.90 69.76 69.19
369.56 369.56 369.83
5' 5/4 5' 1/4

C 0 60 C 0 89
7067 7096
369.84 370.07 370.07
5' 5/4 5' 1/4

C 0 07 F 0 39 F 0 60
70.62 70.16 70.22
370.55 370.55 370.82
5' 5/4 5' 1/4

C 0 73 C 1 36
71.95 72.58
370.99 371.22 371.22
5' 5/4 5' 1/4

C 0 22 F 0 31 F 0 25
72.85 72.32 72.15
372.63 372.63 372.90
5' 5/4 5' 1/4

C 0 37 C 0 05
73.75 73.43
373.15 373.38 373.38
5' 5/4 5' 1/4

C 0 34 F 0 32 F 1 11
76.06 75.90 74.88
375.72 375.72 375.99
5' 5/4 5' 1/4

C 0 41 F 0 52
76.97 76.04
376.33 376.56 376.56
5' 5/4 5' 1/4

Lt.

±

Rt.

(51)

WATER 56-TH. ST.

B.M.

363.

363.86 - SWLY Curb Radius Hub Laurel 1/4 56-TH. (G-320-40)

T.B.M.

367.24 Top 5' R.P. Stub E.C.S.W. Cb. Ref. 1/4 56-TH G-323-74 Laurel

377.18. ✓ 377.19 4+91

78.04 ← -78.16 13+88

7+03.72 = W. Intersection Laurel 1/4 56-TH. ST.

6+72 = W 1/4 R.F.

6+22 = W 1/4 R.F.

CO 32	F 1.26	CO 47
74 02	73.87	75.60
373.70	375.13	375.13
	5' 3/4	5' 1/4
FD 23	CO 28	C 1.53
69.63	70.72	71.97
369.86	370.44	370.44
	5' 3/4	5' 1/4

INDEXED

WATER-LATERALS FAULCONER ST. FROM.

55-TH. TO BALBOA VISTA DRIVE

B.M.

348.96 ~

(3190 Omit)

3+40 = W 21' Lt.

2+90 = W 21' Lt.

T.P. TOP ELY EDGE DR. @ BK CB.
TO HOUSE NO 5523 FAULCONER ST.

351.74

2+40 = W 21' Lt.

1+80 = W 21' Lt.

1+30 = W 21' Lt.

0+80 = W. 21' Lt.

T.P.

343.79

0+00 = ELY LINE 55-TH. ST.

B.M.

334.74

Lt.

t

32

8-6-54

2165-13

-348.94 TOP F. Hyd. S.W. Cor. Timothy & Faulconer

F 1.24

51.72

352.96

1' BK CB

FO 62

53.30

353.94

FO 27

53.23

353.50

CO 80

51.93

351.13

CO 90

48.50

347.60

C 1.45

44.19

342.74

ELY CHISEL CROSS M.H. R.M. 55-TH & FAULCONER

INDEXED

EXTENSION OF SELY CURB THROUGH
LOT 11 ALVARADO HTS. 100' & 38' SELY &
PARALLEL TO EXISTING NWLY CURB

W.O. 20007 Top NWLY Cb.

1+00

458.70

CO 19

458.80

458.61

0+75

458.86

CO 36

459.15

458.79

0+00 = 38' Cbs
Moved To 40' - Width @ Sta 1+00
By Geo Gibson

0+50

9-13-54

459.12

CO 29

459.32

459.03

0+25

459.37

CO 16

459.45

459.29

CO 16

59.53

459.37

0+00 = Match.

459.67

459.46 ✓

T.B.M.

460.21

B.M.

459.46

Ref DWG 8134-L
9-8-54
FB 2039

Stampen
Hoffman
Sherry

NOTE: Stakes Set 3'
back of Cb.

Spike P.P. N^o P-177749 opposite Sta D+00
Top of End SELY Cb. Sta 1+53

2039
31

9-13-54

(34)

EXTENSION OF SELV CURB THROUGH
LOT 11 ALVARADO HTS.

0-07 Match @ Driveway

459.60

1+00

FO 01
59.06
459.07

0+75

FO 30
58.89
459.19

0+50

0.5%

FO 34
58.98
459.32

0+25

FO 08
59.37
459.45

0+00

FO 23
59.34
459.57

B.M.

460.21 (see P 33)

INDEXED

SUBGRADES FOR CONC. PAVING
LAUREL ST; NELY FROM S.W. CURB RET.
55-TH & LAUREL ST.

Lt. E Rt. (35)

7+67.45

23° 42' 36"

306.99
20'

307.24

306.49
20'

15.2

B.C. N.W. Ref. 55-TH.

7+52.25

22° 15' 31"

307.08 5r.
307.09 checks.
cb.

306.41 ✓

305.66 ✓

20.09

7+32.16

20° 20' 24"

305.33 ✓

304.58 ✓
20'

20

7+12.16 def 4 = 18° 25' 50"

304.24 ✓

303.48 ✓
20'

24.97

B.C. S.W. Ref 55-TH Begin Conc. Pavf.

6+87.19 def 4 = 16° 02' 44"

303.55
cb

302.88 ✓

303.05
cb

168.03 C = 165.84'

P.R.C. A = 54° 42' 40"

5+19.16 d = 5.7296 E R = 300'

B.M.

Lt. £ Rt.

SUBGRADES LAUREL ST.

8+82.33

315.06 ✓

24.67

EC NE Rct. 55-71

8+57.66

313.40

313.06 ✓

14'

EC NE Rct. 55-71

8+43.66

312.02 ✓

14

E.C.S.E. Rct. 55-71

8+29.66

310.73
20' ✓

310.98 ✓

24.01

8+05.63 EC. $\angle 27^{\circ} 21' 20''$

309.13 ✓

309.38 ✓

308.63
20' ✓

18.88

7+86.75

$25^{\circ} 33' 11''$

308.03
20' ✓

308.28 ✓

307.53
20' ✓

19.3

B.M.

317.65

G-

Lt. E Pt.

SUBGRADES LAUREL ST.

E.C. SE Ret Balboa Vista

P.O.C.

10+04.46 def 4 = 3°24'42"

326.60
cb

326.14

326.60
cb.

19.34

TP

327.36 cb.

9+85.12 P.O.C.

1°44'11"

323.88

323.38
20

323.38

20

L = 164.89'

B.C. Lt.

E R = 330' d = 5.2087

9+65.12 T = 84.20 A = 28°37'45"

321.28
20

321.78

321.28
20

321.13
38

19.55

9+45.57

320.16

319.66
20

320.18
38

20

9+25.57

318.55

318.00
20

318.00

18.57

TP

318.30

B.C. SE Ret Balboa Vista

9+07.00

317.34
cb

317.05

317.05

317.40
cb

24.67

Lt. € Rt.

SUBGRADES LAUREL ST.

11+20

13° 26' 43"

339.43 ✓

10.64

B.C. N.W. Ret. Balboa Vista

11+09.36 P.O.C.

12° 31' 13"

338.90
cb

338.20 ✓

Alley F
B.C. S.W. Ret
11+05.89

338.14

19.36

336.56

10+90 P.O.C.

10° 50' 23"

335.97 ✓

20

10+70 P.O.C.

9° 06' 12"

333.66 ✓

20

P.O.C.

10+50 def 4 = 7° 22' 01"

331.99
cb

331.36 ✓

331.75
cb

22.81

P.O.C.

10+27.19 def 4 = 5° 23' 12"

329.29
cb

328.73 ✓

329.17
cb

22.73

Lt.

±

Rt.

SUBGRADES LAUREL ST.

12+34.47

355.47[✓]

355.07[✓]

20

B.

12+14.47

352.53[✓]

353.03^{49 ✓}

353.53
cb 03

20

11+94.47

349.58[✓]

350.08^{54 ✓}

350.67
cb 17

20

11+74.47

346.63[✓]

347.13^{59 ✓}

347.86
cb 36

20

11+54.47

343.68[✓]

Radial
349.89
cb 39

344.18^{.60 ✓}

344.88
cb 38

24.46

11+30⁰¹ E.C. 14° 18' 52"

340.58

10⁰¹

Lt.

€

Rt.

SUBGRADES LAUREL ST.

13+54.47

TP

20

372.76

cb

68
375.26

3.18
372.76

13+39.47

20

4.70
371.20
cb

73
370.28

370.23
369.78

13+14.47

20

4.70
368.20
cb

78
367.34

7.28
366.84

↑ 14.736%

12+94.47

TP
19.39

Top S.W. R. Rad.
Hwy. 56-1b & Laurel

363.82

364.39
83

4.33
363.89

EC. NE. Cb. Ref. Bulboa Vista.

12+75.08

1.89
362.39
cb

2.38
361.96

20.61

12+54.47

20

358.92

SUBGRADES LAUREL ST.

4 = 22° 29' 30"
L = 117.76 d = 5.7296
B.C. 4. ER = 300'

14+68.50

387.28

16.50

14+52

386.02

14.80

7.635%

14+37.20

384.89

18.88

14+18.32

382.56

20

TP

381.90

EC. 54. Cb. R. 156. 1/16

13+98.32

380.12

380.54
Cb

23.85

13+74.97

376.22

6.13
375.72

20

St. E. St.

12.19 970

14.736 96

Lt. & Rt.

SUBGRADES LAUREL ST.

End Project. 15+86.26	11° 14' 45"			384.98
29.06				
15+57.20	8° 28' 13"			387.20
20'				
15+37.20	6° 33' 37"			388.12
20'				
15+17.20	4° 39' 02"			388.49
20				
P.O.C. 14+97.20	2° 44' 26"			388.36
14.35				
P.O.C. 14+82.85	1° 22' 13"			387.65
14.35'				

INDEXED

(B)

SUBGRADES 55-TH ST. FOR CONC

LT E Rt

PAVING
E.C. NE. Ch. Ref. 55-TH
0+72.95 8" Laurel

309.21 ✓

7.95

0+65

25

308.96
8" cb
20'

E.C. N.W. Ch. Ref. 55-TH
0+40.67 8" Laurel

308.58 ✓

309.28
20'

B.C. S.E. Ch. Ref. 55-TH
8+16.17 8" Laurel

305.88
20'

306.98 ✓

16.17

8+00 4.5' Gutter depress 0.10 in Center

29.44'

306.53 ✓

306.71
20'

B.C. S.W. Ch. Ref. 55-TH &
7+70.56 Laurel

306.85 ✓

B.M.

INDEXED

5" SUBGRADES BALBOA VISTA DRIVE

cb Lt. E Rt.

0+60

355.52

0+40

352.57

353.58

354.78

18'

36

0+20

349.61

350.58

18'

Balboa Vista Laurel
E.C.N.W. Cb. Ref.

0+04.69

347.49

346.99
Gvt.

346.66

7.58

Curb Line

321.42

97 87⁸⁸

321.99

14"

Balboa Vista Laurel
B.C. S.W. Cb. Ref.

97 73⁸⁸

322.48

B.M.

SUBGRADES BALBOA VISTA DRIVE

LT	ET	RT
cb		cb

End. Conc Pavt
1+34.71 (check)

365.39

1+13.52

362.77

Balboa Vista & Laurel
EC, NE Cb Ref.
0+92.33

360.37

360.02

360.59

INDEXED

Subgrade = 0.67

(46)

Lt.

±

Rt.

SUBGRADES BLACKTON & BILOXI

5+77

99 ✓
291.65 292.36
18

26'

5+57

33 ✓
290.23 291.08 291.79 ✓
38 18

20'

5+37

288.46 289.53 290.60 291.31 ✓
58 38 18

20'

5+17

290.23 290.94 ✓
18

20'

4+97

290.33 290.67 ✓

27.18'

Blackton & Biloxi
B.C. S.W. Ch. Ref
4+69.82

290.46 ✓

B.M.

290.70

Top B.C. S.W. Ch. Ref. Blackton & Biloxi

SUBGRADES BLACKTOWN ST.

Lt. £ Rt.

7+22.33 E.C. Biloyi Lt.

297.62 ✓

25.33

6+97

296.73 ✓

20

6+77

295.99 ✓

20'

6+57

295.26 ✓

20'

6+37

294.52 ✓

20'

✓ 6+17

⁵²
~~273.08~~ 293.79 ✓

20'

5+97

⁸³
292.34 293.05 ✓
PB

20'

INDEYER

SUBGRADES BILOXI ST.

Lt.

±

Rt.

48

3+20

26°09'38"

288.84 ✓

3+00

24°11'05"

287.34 ✓

2+80

22°12'32"

285.84 ✓

85.97

2+70⁴⁵P.R.C. SW
Cb Biloxi Blacktop

21°15'56"

284.87

2+60

20°14'

284.33

20'

2+40 P.O.C.

18°15'27"

283.04

20'

2+20 P.O.C.

16°16'55"

281.96

SUBGRADES BILOXI ST.

Lt £ Rt

4+40 38°00'53" stop 295.25 ✓

4+20 36°02'21" 294.40 ✓

4+00 34°03'48" 293.54 ✓

3+80 32°05'16" 292.47 ✓

3+60 30°06'43" 291.40 ✓

3+40 28°08'11" 290.12 ✓

Lt.

±

Rt.

SUBGRADES BILOXI ST.

EC.

5+08.69

44° 48'

297.62

28.69

4+80

41° 57' 58"

296.63

20'

4+00

39° 59' 26"

295.94

9-22-54

(51)

INDEXED

BENCH LEVELS BALBOA VISTA

Cont'd. Pg. 52

Sta	+	H.I.	-	Elev.	
	10.77	286.48			
B.M.			7.76	275.71	S.E.B.P. 54-th & Olive N
	0.44	283.47			
TP.			12.74	283.03	
	0.07	295.77			
B.M.			12.98	295.70	S.W.B.P. Blackton & Olive
	1.80	308.68			
TP.			2.97	306.88	
	11.66	309.85			
B.M.			2.33	298.19	N.W.B.P. Blackton & Biloxi Sts.
	9.41	300.52			
TP.			4.43	291.11	
	12.61	295.54			
B.M.			0.31	282.93	N.W.B.P. Laurel & Blackton
	13.19	283.24			
B.M.			4.54	270.05	N.E.B.P. Laurel & 54-th St.
	4.82	274.59			
B.M.			7.77	269.09	Moved (raised) Top S.E.F. Hyd. Laurel & 54-th. 2165

Contd. on Pg. 64

11-18-54

(52)

BENCH LEVELS BALBOA VISTA

Sta	+	H.I.	-	Elev	
B.M.			2.41	333.21	NWBP 55-th & Faulconer
	10.38	335.62			
TP			0.35	325.24	
	12.70	325.59			
B.M.			1.71	313.45	(s. shot) & Blackton & Faulconer
				313.48	Chisel Cross on Banjo
B.M.			2.27	312.89	NEBP Blackton & Faulconer
	11.39	315.16			
TP			0.42	303.77	
	11.59	304.19			
TP			0.17	292.60	
	9.84	292.77			
B.M.				282.93	NWBP Laurel & Blackton
B.M.			10.16	270.08	270.05 NEBP Laurel & 54-th
	2.52	280.24			
B.M.			6.59	277.72	SEBP 54-th & Biloxi ✓
	2.49	284.31			
TP			4.66	281.82	PK. PP. No JP 273134 opposite House No 2665
		286.48			E. side 54-th st

INDEXED

SUBGRADES 56-TH. 4 LAUREL STS.

0+94.09

omit
374.32

0+77.38

omit
370.70

0+76.07

0+69

369.88 371.98³⁵ 373.00

0+46

368.76^v 369.96^v 370.90_{cb.}

0+23

368.40 368.83^v 369.90_{cb.}

0+02⁵⁰ 4 5' Gutter
e 50

368.28

5+86⁵⁹ P.L. B.C. Lt.
0+00

368.96_{cb 46} 368.38⁸⁰₄ 369.50_{cb}

INDEXED

(59)

LEVELS FOR PROPOSED GRADE
CHANGE @ FAULCONER & BLACKTON

	cb	gut	±	gut	cb.
0+46 ⁶	16.41	15.94	16.61	15.98	16.48
0+31 ⁶	15.32 15	14.85 15	15.55	14.92 15	15.40 15
0+27 ⁶ ± M. H.			15.34 15.34 TOP M.H.		
0+16 ⁶	14.15	13.65 15	14.82	14.23 15	14.70 15
0+00 = E.C. NE. Cb. Ret.	12.84 15	12.37 15	14.29	13.97 15	13.84 20 LIP
0-20 Ely Cb		12.0 15.6	13.80	13.75 15	13.40 32 LIP
0-38 ± Blackton		3125 150	13.17	313.39 15	
0-56 Wly Cb			cb 31288 431237		
B.M.	313.49	Top Christ Cross Sly Cb. Faulconer & Blackton Drive			

INDEXED

FINISH GRADES CHANGE ORDER @
BLACKTON & FAULCONER

0+27 ± M.H.

0+16.60

0+00 = F.C.N. E.Cb. Ref.

0-20

0-38

B.M.

313.49

10-22-54

55

910^B A.C. Part. to be ±

Removed & Replaced

315.34

FO 24

4.32

314.56

CO 47

13.87

313.40

CO 60

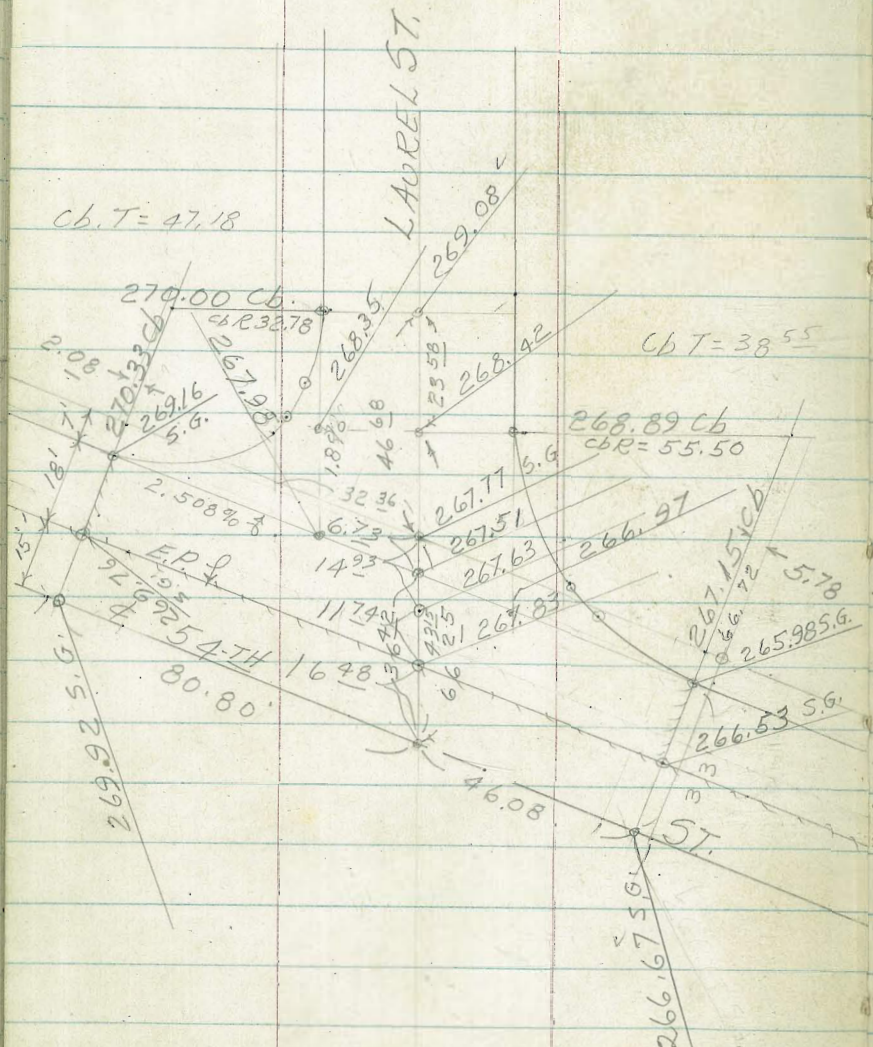
3.80

313.20

313.17

INDEXED

SUBGRADES 54-TH & LAUREL



B.M.

269.09

Top S.E.F.H. Laurel / 54-TH

INDEX

SUBGRADES 54-TH & BILOXI

Lt. & Rt.

d=4=194'20" E.C.N.E.
O+67.72 Ch. Ref.

278.17

12.54

∠T=287.98'
d=5.92714 L=453.51'
∠R=290'4"=89°36'

O+55.18 ∠B.C. Lt.

277.32⁶⁶

O+33 = Ely Ch. Line

276.93 276.81 276.69
18 18

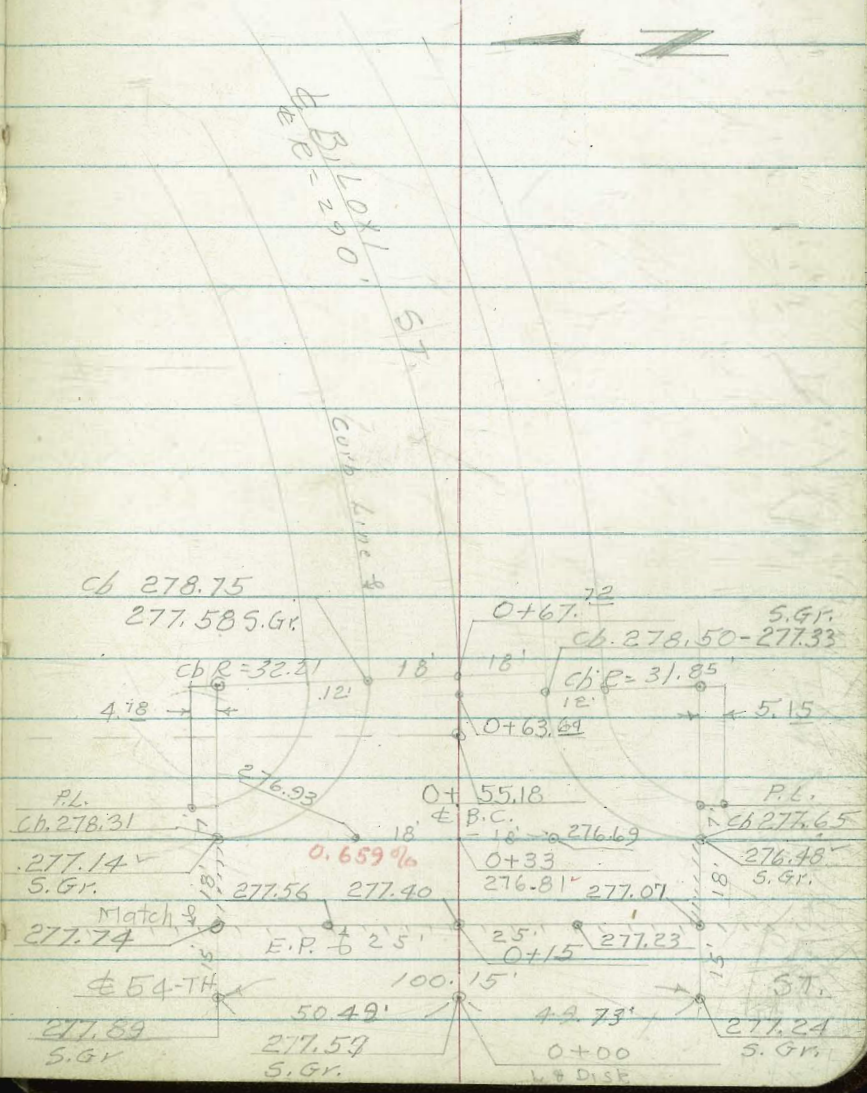
O+15 = F.P.
(Existing)

277.74 277.56 277.40 277.23 277.07
50.26 25 25 49.89

O+00 = ∠ 54-th & Biloxi

Top L. & Disk ∠ 54-th.
B.M. & Biloxi

278.37



INDEXED

STAKES FOR CULVERT 51-ST. 4 ORANGE AVE

2-48" C.C.P @ 5'-6" C-C W.O. 21071

8"X14"-2 1/2" CONC. CURTAIN WALLS @ N. & S. ENDS

Sta. Elev. Grade Cut

1+20	314.19	309.92	4.27
1+00	315.25	309.70	5.55
0+75	314.64	309.42	5.22
0+50	315.60	309.15	6.45
0+25	316.39	308.87	7.52
TR			313.65
0+00	311.50	308.60	2.90
B. M. TRN ^o 9	2212 To P ² X2 ¹ Hub		311.44
	33 Sta 14 + 01.46		

Ref DW 95322-B
F.B. 2212.

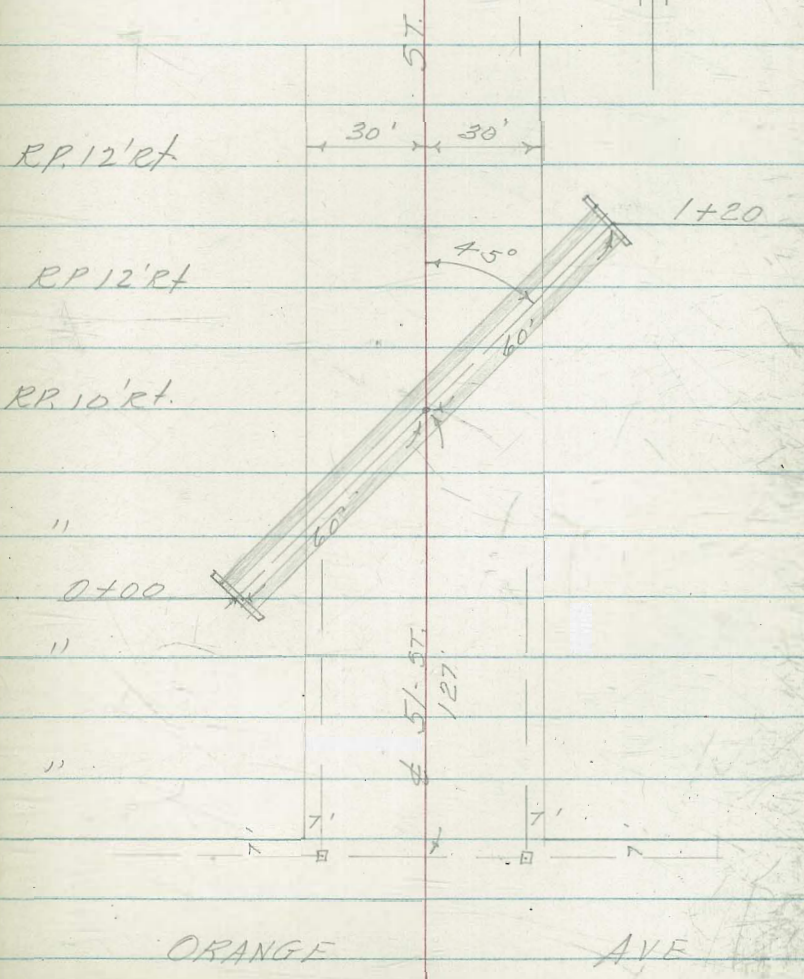
11-03-59

Stamper
Huffman
Nordahl
Elmore

(58)

NOTE: Stakes Set 10' Rt. of C

F. 7 X 7 Hub @ SE.
Cor 51-st. & Tr. 111



INDEXED

(PRIVATE CONTRACT)

GRADE STAKES ALLEY BLK 9 LAMESA COLONY

ELY FROM 69-TH ST. W.O. 62395

ct.

←

11-10-54

Et.

(59)

Ref F.B. 2314

53

DW9 5468-B

Stamped
Hoffman
Nordahl
Elmore

1+20

C 1.00
56.80
455.80
0.0

C 1.11
56.86
455.75
1' BK

1+00

C 0.86
56.26
455.40
0.0

C 0.30
55.65
455.35
2' BK
Chisel Cross

0+80

C 1.04
56.24
455.20
0.0

C 0.33
55.53
455.20
2' BK

0+40

C 0.77
55.82
455.05
0.0

C 1.10
56.05
454.95
2' BK
Chisel Cross

0+00 = E line 69-th St.

F 0.08
54.82
454.90
3' BK

C 0.98
55.68
454.70
2' BK

B.M.

456.75

S.W.B.P. 69-th & El Cajon

GRADES ALLEY BLK 9

2+40

T.P.

2+20

2+00

1+80

T.P.

1+60

1+40

458.03

4.

±

RT

(60)

11-10-54

FO 31
58.99
459.30
2' BR

FO 17
58.78 ✓
458.95
2' BR

CO 59
58.99
458.40
2' BR

CO 39
58.14 ✓
457.75
2' BR

CI 03
58.03
457.00
0.0

CO 97
57.38
456.35
0.0

CI 46
60.61
459.15
1' BR

CI 67
60.47
458.80
2' BR chsl cross

CO 76
59.06 ✓
458.30
1' BR

CI 43
60.08 ✓
457.65
1.22' BR

CO 38
57.33
456.95
2' BR

CO 40
56.70
456.30
1' BR

GRADES ALLEY BLK 9

3+75

C 0 73
60.92
460.19
2' BK

F 0.21
59.84
460.05
2' BK

3+50

C 0.85
60.94 ✓
460.09
2' BK

F 0.40
59.53 ✓
459.93
2' BK

3+25

C 0.66
60.64
459.98
2' BK

F 0.14
59.67 ✓
459.81
2' BK

3+00

F 0.11
59.77
459.88
2' BK

C 0.37
60.06
459.69 ✓
2' BK

2+80

F 0.24
59.56 ✓
459.80
2' BK

C 0.62
60.22 ✓
459.60
2' BK

2+60

F 0.39
59.21
459.60
2' BK

C 1.31
60.71 ✓
459.40
1' BK

4. 11-10-54 27 (2)

0.4166 70

0.4122 56

GRADES ALLEY BLK 9

B. M.

454.75 -

454.75 Ely Rim Sewer M. H. & 69th

& Alley Blk 9

NOTE: Set P.K. on & @ 5th. 5+00

Used Chisel Crosses on & 69th & Alley line for line
on West; Used R.F. Pipe Approx 15' E. of E. Line
of 70th St. & 10' S.W. of & Alley for line to East.

4+60

C 1 24
61.79 ✓
460.55
2' BK

C 0 57
61.02 ✓
460.45
2' BK

4+30

C 1 43
61.85 ✓
460.42
2' BK

C 0 13
60.46 ✓
460.31
2' BK

4+00

C 0 55
60.85 ✓
460.30
2' BK

F 0 27
59.90 ✓
460.17
2' BK

4.

+

87

(62)

11-10-54

INDEXED

GRADES ON PROP. LINES MILTON &

DENVER STS. W.O. 32127

Ref DW 93 11229-32 L
F.B. 2221-2224

Stamper (63)
Huffman
Nordahl
Elmore

11-17-54

NOTE: Grades Shown are fin Grades
@ back of Sidewalk

1+97

C 0.04
31.99
31.95

1+72

C 1.65^v
33.22
32.07

Thence Nly @ 90° Lt.

1+36 = Pl. Line @ 90° Lt.

1+25 = Pl. Line @ Chicago

C 0.34^v
31.82
31.48^v

0+62⁵

C 0.56
29.86
29.30^v

Thence Fly Along Nly
Line of Milton St.

0+00 = } 5/8 Fly Line Alley
Blk. 26

C 0.27^v
27.40
27.13^v

T.P.

34.86

B.M.

42.03

Set P.K. P.P. N° 4103 @ 5/8 Side of Milton @ Denver St

S.W. B.P. Erie & Milton

INDEXED

12-1-54

(62)

Cont'd From Pg. 52

BENCH LEVELS BALBOA VISTA

Sta	+	H. I.	-	Elev	
TP.			0.13	346.07	333.21 NWBP 55-th & Faulconer
	12.97	346.20			
B.M.			2.89	333.23	333.21 NWBP 55-th & Faulconer
	11.33	336.12			
TP.			0.60	324.79	
	11.32	325.39			
TP.			0.30	314.07	
	5.60	314.37			
B.M.			5.12	308.77	N.W.B.P. Laurel & 55-th.
	7.50	313.89			
TP.			0.70	306.39	
	13.00	307.09			
TP.			0.71	294.09	
	11.87	294.80			
B.M.			0.36	282.93	282.93 NWBP Laurel & Blackston
	13.24	283.29			
B.M.				270.05	NEBP Laurel & 54-th

Contd from Pg. 64

12-1-54

(65)

BENCH LEVELS BALBOA VISTA

Sta	+ H.I	- Elev
	3.52	314.82
TP.		11.63 311.30
	0.66	322.93
B.M.		4.25 322.27
	0.80	326.52
TP.		11.63 325.72
	0.04	337.35
T.B.M.		10.32 337.31
	0.12	347.63
TP.		12.92 347.51
	0.61	360.43
TP.		12.89 359.82
	10.02	372.71
TP.		0.36 362.69
	13.32	363.05
B.M.		10.19 348.94
B.M.		9.40 349.73
	13.06	359.13
TP.		346.07

S.W. B.P. Balboa Vista Drive & Laurel St.

Top E.C. R. 3/4" Pipe Ely Side Balboa Vista Drive

S.W. Balboa
348.94 5. shot. Top F. Hyd. Faulconer & Vista Dr

N.W. B.P. Balboa Vista Drive & Faulconer

BENCH LEVELS BALBOA VISTA

Sta	+	H.I.	-	Elev.	
B.M.			6.38	380.65	S.E.B.P. Laurel / 456th St.
	11.78	387.03			
TP.			0.06	375.25	
	12.81	375.31			
B.M.			8.24	362.50	NEBP Laurel / Balboa Vista Drive
	11.94	370.74			
TP.			0.93	358.80	
	11.65	359.73			
TP.			0.28	348.08	
	13.00	348.36			
TP.			0.11	335.36	
	13.20	335.47			
B.M.				322.27	SWBP Balboa Vista Drive / Laurel St
B.M.			6.04	308.78	-308.77 NWBP Laurel / 455th St
		314.82			

INDEXED

18" R.C.P. STORM DRAIN & CURB/INLETS

Sta ORTEN ST.

Sta	Grade	Elev.	Cut	
1+50	58.20	62.53	C433	
1+25	56.87	61.52	C465	
7.58 P.C. 1+17.42	def $\alpha=11^{\circ}50'$	56.47	61.07	C460
C=17.41				
P.O.C. 1+00	def $\alpha=9^{\circ}20'16''$	55.54	60.86	C532
P.O.C. 0+75	def $\alpha=5^{\circ}45'25''$	54.21	86.9	C448
C=24.98				
P.O.C. 0+50	def $\alpha=2^{\circ}10'33''$	52.88	81.2	C524
15.19 C=15.19' $\alpha=23^{\circ}40'$ R=200' L=82.61'				
0+34.81	B.C.Lt. $\alpha=8.524367$	52.07	76.8	C564
T=41.90'				
0+00	50.22	64.3	66.21	
B.M.		57.01		

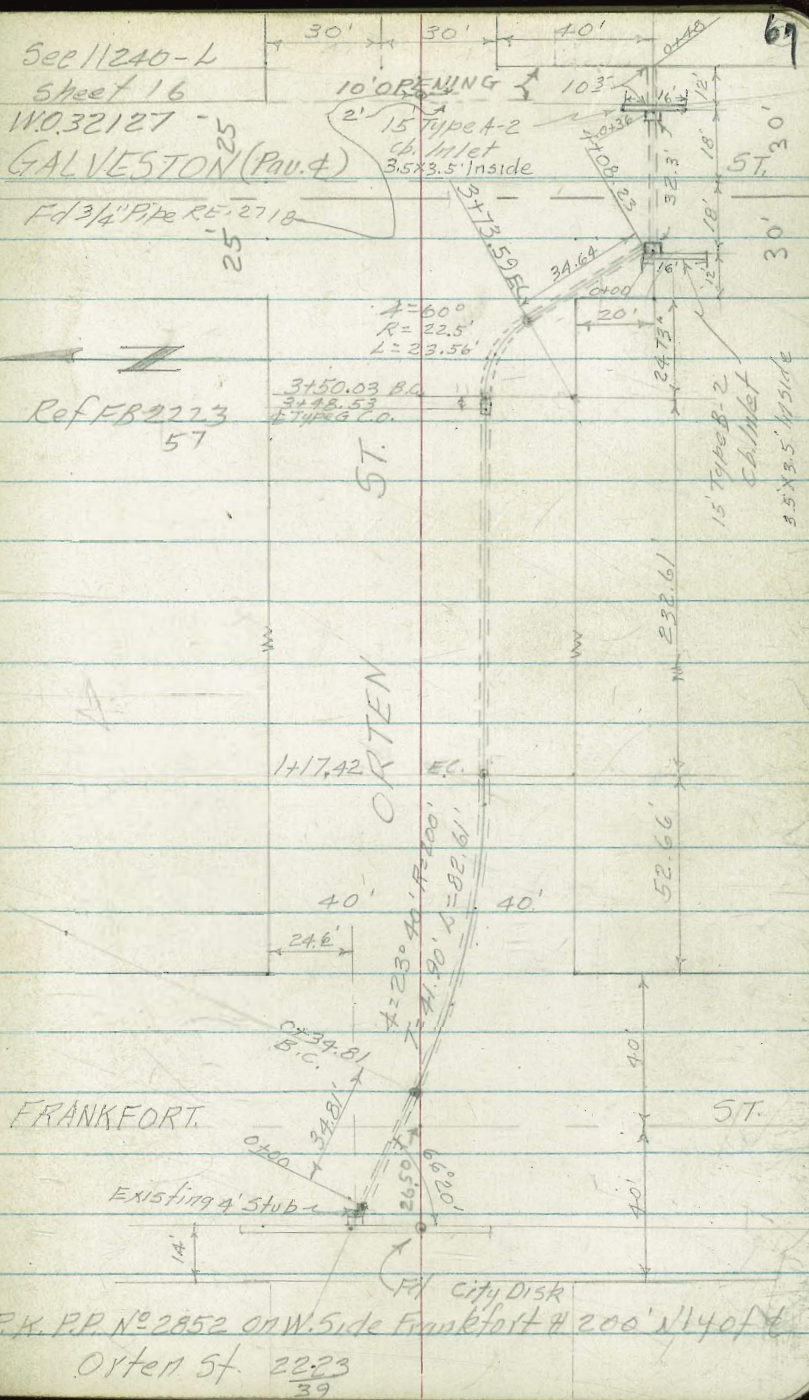
Sec 11240-L

Sheet 16

11032127

GALVESTON (PAV.)

Fd 3/4" Pipe RE-2718



Ref FB 2223

57

ST.

ORTEN

FRANKFORT

ST.

P.K. P.P. No 2852 on W. Side Frankfort # 200' N 1/4 of 4

Orten St 2223
39

18" DRAIN ORTEN ST.

Sta		Grade	Elev.	Cut
	$\Delta = 60^\circ L = 23.56'$ @ Center 3+50.03 B.C. Pt. R=22.50	68.84	76 ³¹	0.7 47
3+48.53	Type "G" C.O.	68.76	76 ¹⁸	0.7 42
2+3.53		76 ⁹⁹ top		F081
3+25		67.51	74 ⁵⁸	0.7 07
3+00		66.18	73 ²⁹	0.7 11
2+75	5.32 96	64.85	71 ⁶⁶	0.6 81
2+50		63.52	9 ²⁵	0.6 23
2+25		62.19	767	0.5 48
2+00		60.86	65 ⁵⁸	0.4 72
1+75		59.53	63 77	0.4 24

18" DRAIN ORTEN ST.

		Grade	Elev.	Cut	
0+48 End Stub	964	78.20	9 ⁰⁶	C0 ⁸⁶	
0+36 Top Ch.	79.83 08'11" F019	79.75	8 ⁶⁰	F1 ¹⁵	79.79 8 ⁶⁰ F1 ¹⁹ TOP CB 8' RT.
0+36 Gutter		78.92	8 ⁶⁰	F0 ³²	
0+36 Outlet		73.00	8 ⁶⁰	C5 ⁶⁰	
0+36 Inlet Ely		77.80	8 ⁶⁰	C0 ⁸⁰	
0+00 Inlet Ely		72.20	7 ³⁷	C5 ¹⁷	
0+00 Top Ch 13.75' Rt		79.32	7 ²⁷	F2 ⁰⁵	
0+00 Gutter		78.42	7 ³⁷	F1 ⁰⁵	
0+00 Top Ch. 2.25' Lt. (See sketch p 67)		79.24	7 ³⁷	F1 ⁸⁷	
0+00 Top Ch.		79.25	7 ³⁷	F1 ⁸⁸	
4+08.23 End @ Inside Inlet		72.00	7 ³⁷	C5 ³⁷	
17.32					
3+90.91		71.02			
17.32					
E.C.					
3+73.59		70.09	7 ⁶⁰	C6 ⁵¹	
11.78					
P.O.C.					
3+61.81		69.47	7 ⁸³	C7 ³⁶	
11.78					

INDEXED

SEWER GRADES ASHTON & GALVESTON STS.

1+99 = ϕ M.H. No 3 Galveston St.

1+75

1+50

1+25

1+00

0+75

0+50

0+25

0+00 = ϕ Ashton & 156' Ely of E. line Frankfort St.

B.M.

55.85

80' NW C6 1/4 30' (X) should be Drive

See Street 19
Dwg 11238-L

2+05 - Plug ~ 74.04

Stk. d. 6' 5/8

81.42

74.00

C-7.42

80.29

72.35

C-7.94

78.37

70.64

C-7.73

6.26

68.94

C-7.32

74.30

67.23

C-7.07

72.47

65.52

C-6.95

70.56

63.81

C-6.75

68.77

62.11

C-6.66

60.40

P.K. PPN No 2698 on W. Side Frankfort 39' 5/4 of ϕ
Ashton & Frankfort G-328-46

LT
Sewer Profile Sheet 15
Plan - 14-16

RT
Main
NOTE: Water is 15' W. of E. cb.
Sewer Main is 6' W. of E. cb.

(71)

SEWER GRADES GALVESTON ST 8" V.C.P.

1+57.46 = Sewer Lat. No 22-6' Rt. = 2' bk cb

27.46

1+30

1+22.46 = W. Lat. (Rt.) = 2' bk cb

1+03.73 = Sewer Lat. No 21-6' Rt. = 2' bk. cb.

28.73

0+75

0+68.73 = W. Lat. (Rt.) = 2' bk. cb.

0+50 = Sewer Lat. No 20-6' Rt. = 2' bk. cb.

0+25

0+00 = E. M. H. No 3 (see P 970)
= E. Ashton St 6' W. of Fly Line Galveston

87.95

77.38

C10.57

87.70

76.80

C10.90

87.87

78.20

6 C9.67

87.90

82.77

2' bk cb

84.83

76.23

C10.60

85.11

75.61

C9.50

86.87

77.50

6

C.9.37

85.14

81.69

2' bk cb

83.89

75.08

C8.81

8

74.54

84.10

76.50

6

C7.60

82.29

74.00

C8.29

SEWER & WATER GALVESTON ST
FROM ASHTON ST; NLY. W.O. 32127

Lt. € Rt

3+80

4+20 = Water Lat. Lt. = 2' bk cb

80.62

~~80.95~~
2' bk cb,
Top cb. Grade

2+29⁹² = Wat. Lat. Rt. = 2' bk cb.

86.60
~~83.31~~ C329
2' bk cb,
Top cb. Grade

2+01¹⁹ = Sewer Lat N^o 23 - 6' Rt.

78.30

87.95
78.80
6' 0.95

2+00¹⁹ = End 8" Line Plug

87.09
78.30
C879

1+80

88.66
77.87
C1029

1+76¹⁹ = Water Lat 6' - Rt = 2' bk. cb

88.38
83.30 C528
2' bk. cb,
Top cb. Grade

1
2
3

INDEXED

REALIGNMENT OF SEWER NORTH OF
WASHINGTON ST; FROM DOVE TO BRANT

34

2+72 & M.H. N^o 2

2+50

2+25

2+00

1+75

1+50

1+22 Meet.

B.M.

0.317%

262.51

Ref G -276
66

DW 98996-L

W.O. 20009

2-10-55

(73)
Stampev
Huffman
Sherwood
Elmore

NOTE: Sewer Moved 15' N. from Sta 1+22
To 2+72 offset stakes 3' Lt. of
New Alignment

C 3.28 C 3.14 ✓

✓ 61.00 ✓ 60.86 ✓

57.72 57.72

9'4"

C 3.47 ✓

✓ 61.72 ✓

57.65

C 3.82

✓ 61.39 ✓

57.57

C 4.22

✓ 61.71 ✓

57.49

C 5.37

62.78 ✓

57.41

C 5.86

63.19 ✓

✓ 57.33

57.24

F.L.

Tap P.K. Nail Sta 1+05 4' Lt. G-276

66

SEWER DOVE TO BRANT

3+68 Meet

C 5 51
63.53 ✓
58.02

14'

3+54

C 5.39
63.37 ✓
57.98

14'

3+40 Match

C 4.91
62.84 ✓
57.93 (57.87)

15

3+25

C 3.8¹₂
61.70 ✓
57.88 69

25

3+00

C 3.55
61.35 ✓
57.80

0.78 = 0.317 %
246'

28

INDEXED

SEWER GRADES MILTON ST.

1+00

82.42

0.869

0+75

78.72

0.872

0+50

75.02

0.943

0+39.7 = \pm M.H. No. 1 = 48' E. of Galveston St.
10' N. of S. Line Milton St.

Sw. 81.97

83.38^s

73.50

73.50

0.847

0.988

0+20

77.10

71.52

0.558

$\pm = 49^{\circ}05'08''$ Rt. E. to SE;
0+00 = 22' E. of Galveston St.
= \pm Existing M.H.

69.50

B.M.

Lt

\pm

Rt.

(75)

14.850

10.100

LA

E

RF

8" SEWER MILTON ST

2+50

104.62 C-9¹⁸

2+25

100.92 C-8²⁹

2+00

97.22 C-9²⁹

14.8 8/10

1+75

93.52 C-9²²

1+50

89.82 C-10⁶⁶

1+25

86.12 C-10²⁹

8" SEWER MILTON ST.

Thence $\pm 90^\circ$ W. to N,
 $4+00.8 = \pm M.H.N^\circ 2 = 19.14$ E. of E. line of
 Hartford St. N/4 & 10' N. of S. line Milton St.

LT

€

RT

(77)

C-673
 C-785
 C-648

eg 13373
 dia 13405
 sty 13348

127.00

127.20

13439
 C-90

10'
 Ref.
 Plug

3+75

123.12

13371
 C-1059

3+50

119.42

C-931

3+25

14.8%

115.72

C-985

3+00

112.02

C-888

2+75

108.32

C-885

8" SEWER MILTON ST.

B.M.

4+70.8 = End Plug

4+50 ✓

4+25 26

4+23²⁶

1 5/10

Lt.

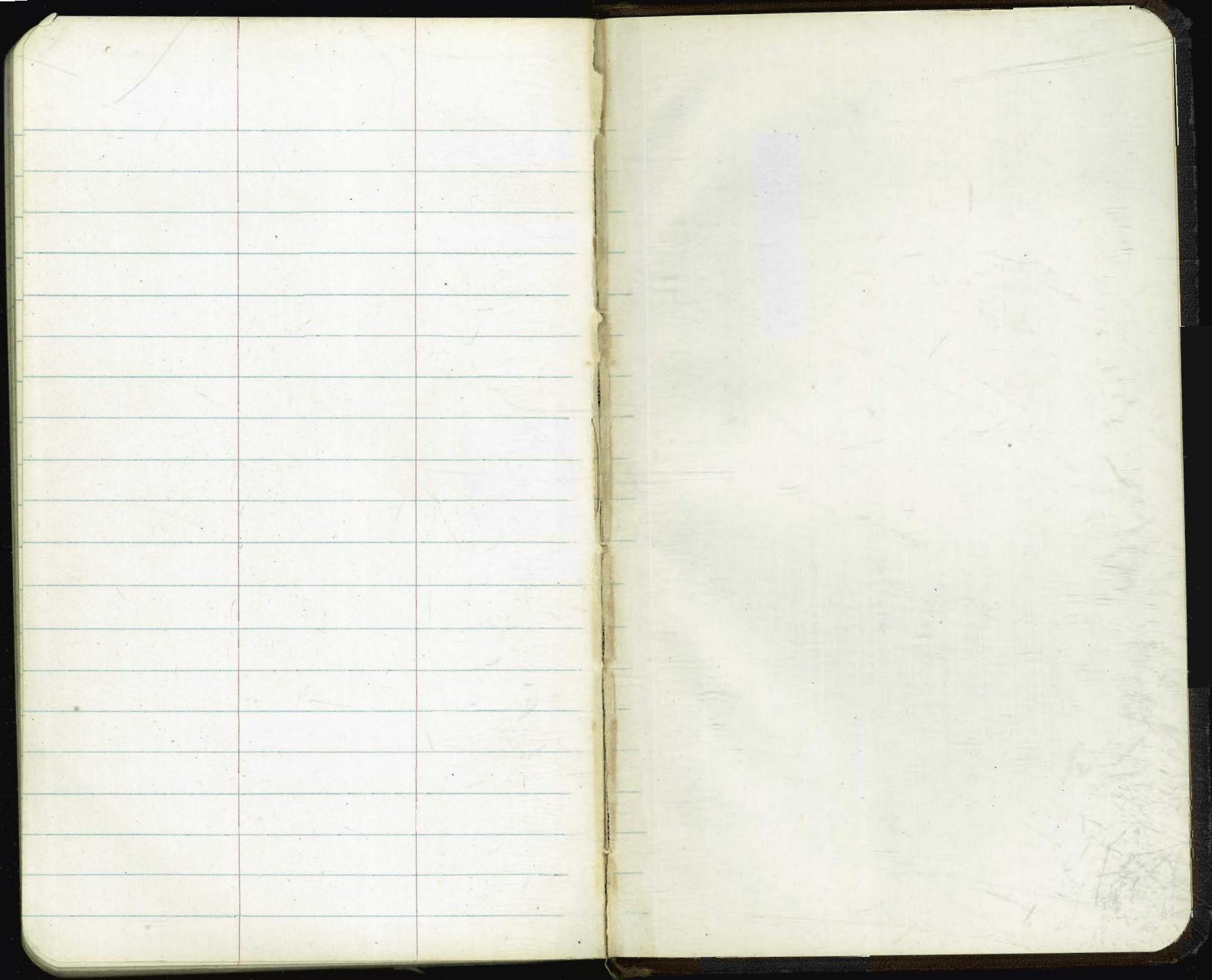
€

Rt. (78)

136.11
127.70 C8 43

132.54
127.49 C5 05

127.24
127.22 132.65 C5 43



32 2885.9
 15.5
 32304.1
 204
 1938246
 4460920
 546744

9 22 74
 2 10 33
 7 09 43
 14 19 24

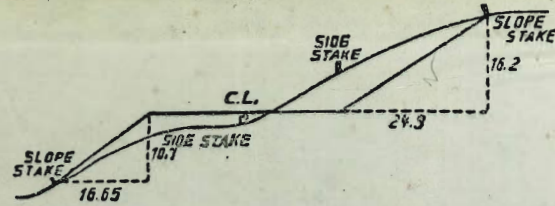
14.16
 6
 51.50

2498730
 1261
 2499991
 204

1499994.4
 4999998.8
 5149998144

17 41
 13 3
 5 2 23
 7

12 19
 12 13
 12 19
 6 4



DISTANCES FROM SIDE STAKES FOR CROSS-SECTIONING.
 SLOPE 1 1/2 TO 1. ROADWAY OF ANY WIDTH.

	0	.1	.2	.3	.4	.5	.6	.7	.8	.9	
0	0.00	0.15	0.30	0.45	0.60	0.75	0.90	1.05	1.20	1.35	0
1	1.50	1.65	1.80	1.95	2.10	2.25	2.40	2.55	2.70	2.85	1
2	3.00	3.15	3.30	3.45	3.60	3.75	3.90	4.05	4.20	4.35	2
3	4.50	4.65	4.80	4.95	5.10	5.25	5.40	5.55	5.70	5.85	3
4	6.00	6.15	6.30	6.45	6.60	6.75	6.90	7.05	7.20	7.35	4
5	7.50	7.65	7.80	7.95	8.10	8.25	8.40	8.55	8.70	8.85	5
6	9.00	9.15	9.30	9.45	9.60	9.75	9.90	10.05	10.20	10.35	6
7	10.50	10.65	10.80	10.95	11.10	11.25	11.40	11.55	11.70	11.85	7
8	12.00	12.15	12.30	12.45	12.60	12.75	12.90	13.05	13.20	13.35	8
9	13.50	13.65	13.80	13.95	14.10	14.25	14.40	14.55	14.70	14.85	9
10	15.00	15.15	15.30	15.45	15.60	15.75	15.90	16.05	16.20	16.35	10
11	16.50	16.65	16.80	16.95	17.10	17.25	17.40	17.55	17.70	17.85	11
12	18.00	18.15	18.30	18.45	18.60	18.75	18.90	19.05	19.20	19.35	12
13	19.50	19.65	19.80	19.95	20.10	20.25	20.40	20.55	20.70	20.85	13
14	21.00	21.15	21.30	21.45	21.60	21.75	21.90	22.05	22.20	22.35	14
15	22.50	22.65	22.80	22.95	23.10	23.25	23.40	23.55	23.70	23.85	15
16	24.00	24.15	24.30	24.45	24.60	24.75	24.90	25.05	25.20	25.35	16
17	25.50	25.65	25.80	25.95	26.10	26.25	26.40	26.55	26.70	26.85	17
18	27.00	27.15	27.30	27.45	27.60	27.75	27.90	28.05	28.20	28.35	18
19	28.50	28.65	28.80	28.95	29.10	29.25	29.40	29.55	29.70	29.85	19
20	30.00	30.15	30.30	30.45	30.60	30.75	30.90	31.05	31.20	31.35	20
21	31.50	31.65	31.80	31.95	32.10	32.25	32.40	32.55	32.70	32.85	21
22	33.00	33.15	33.30	33.45	33.60	33.75	33.90	34.05	34.20	34.35	22
23	34.50	34.65	34.80	34.95	35.10	35.25	35.40	35.55	35.70	35.85	23
24	36.00	36.15	36.30	36.45	36.60	36.75	36.90	37.05	37.20	37.35	24
25	37.50	37.65	37.80	37.95	38.10	38.25	38.40	38.55	38.70	38.85	25
26	39.00	39.15	39.30	39.45	39.60	39.75	39.90	40.05	40.20	40.35	26
27	40.50	40.65	40.80	40.95	41.10	41.25	41.40	41.55	41.70	41.85	27
28	42.00	42.15	42.30	42.45	42.60	42.75	42.90	43.05	43.20	43.35	28
29	43.50	43.65	43.80	43.95	44.10	44.25	44.40	44.55	44.70	44.85	29
30	45.00	45.15	45.30	45.45	45.60	45.75	45.90	46.05	46.20	46.35	30
31	46.50	46.65	46.80	46.95	47.10	47.25	47.40	47.55	47.70	47.85	31
32	48.00	48.15	48.30	48.45	48.60	48.75	48.90	49.05	49.20	49.35	32
33	49.50	49.65	49.80	49.95	50.10	50.25	50.40	50.55	50.70	50.85	33
34	51.00	51.15	51.30	51.45	51.60	51.75	51.90	52.05	52.20	52.35	34
35	52.50	52.65	52.80	52.95	53.10	53.25	53.40	53.55	53.70	53.85	35
36	54.00	54.15	54.30	54.45	54.60	54.75	54.90	55.05	55.20	55.35	36
37	55.50	55.65	55.80	55.95	56.10	56.25	56.40	56.55	56.70	56.85	37
38	57.00	57.15	57.30	57.45	57.60	57.75	57.90	58.05	58.20	58.35	38
39	58.50	58.65	58.80	58.95	59.10	59.25	59.40	59.55	59.70	59.85	39
40	60.00	60.15	60.30	60.45	60.60	60.75	60.90	61.05	61.20	61.35	40
41	61.50	61.65	61.80	61.95	62.10	62.25	62.40	62.55	62.70	62.85	41
42	63.00	63.15	63.30	63.45	63.60	63.75	63.90	64.05	64.20	64.35	42
43	64.50	64.65	64.80	64.95	65.10	65.25	65.40	65.55	65.70	65.85	43
44	66.00	66.15	66.30	66.45	66.60	66.75	66.90	67.05	67.20	67.35	44
45	67.50	67.65	67.80	67.95	68.10	68.25	68.40	68.55	68.70	68.85	45
46	69.00	69.15	69.30	69.45	69.60	69.75	69.90	70.05	70.20	70.35	46
47	70.50	70.65	70.80	70.95	71.10	71.25	71.40	71.55	71.70	71.85	47
48	72.00	72.15	72.30	72.45	72.60	72.75	72.90	73.05	73.20	73.35	48
49	73.50	73.65	73.80	73.95	74.10	74.25	74.40	74.55	74.70	74.85	49
50	75.00	75.15	75.30	75.45	75.60	75.75	75.90	76.05	76.20	76.35	50