

DISTANCES FROM SIDE STAKES FOR CROSS-SECTIONING  
SLOPE 1 TO 1. ROADWAY OF ANY WIDTH

	0	.1	.2	.3	.4	.5	.6	.7	.8	.9	
0	0.00	0.10	0.20	0.30	0.40	0.50	0.60	0.70	0.80	0.90	0
1	1.00	1.10	1.20	1.30	1.40	1.50	1.60	1.70	1.80	1.90	1
2	2.00	2.10	2.20	2.30	2.40	2.50	2.60	2.70	2.80	2.90	2
3	3.00	3.10	3.20	3.30	3.40	3.50	3.60	3.70	3.80	3.90	3
4	4.00	4.10	4.20	4.30	4.40	4.50	4.60	4.70	4.80	4.90	4
5	5.00	5.10	5.20	5.30	5.40	5.50	5.60	5.70	5.80	5.90	5
6	6.00	6.10	6.20	6.30	6.40	6.50	6.60	6.70	6.80	6.90	6
7	7.00	7.10	7.20	7.30	7.40	7.50	7.60	7.70	7.80	7.90	7
8	8.00	8.10	8.20	8.30	8.40	8.50	8.60	8.70	8.80	8.90	8
9	9.00	9.10	9.20	9.30	9.40	9.50	9.60	9.70	9.80	9.90	9
10	10.00	10.10	10.20	10.30	10.40	10.50	10.60	10.70	10.80	10.90	10
11	11.00	11.10	11.20	11.30	11.40	11.50	11.60	11.70	11.80	11.90	11
12	12.00	12.10	12.20	12.30	12.40	12.50	12.60	12.70	12.80	12.90	12
13	13.00	13.10	13.20	13.30	13.40	13.50	13.60	13.70	13.80	13.90	13
14	14.00	14.10	14.20	14.30	14.40	14.50	14.60	14.70	14.80	14.90	14
15	15.00	15.10	15.20	15.30	15.40	15.50	15.60	15.70	15.80	15.90	15
16	16.00	16.10	16.20	16.30	16.40	16.50	16.60	16.70	16.80	16.90	16
17	17.00	17.10	17.20	17.30	17.40	17.50	17.60	17.70	17.80	17.90	17
18	18.00	18.10	18.20	18.30	18.40	18.50	18.60	18.70	18.80	18.90	18
19	19.00	19.10	19.20	19.30	19.40	19.50	19.60	19.70	19.80	19.90	19
20	20.00	20.10	20.20	20.30	20.40	20.50	20.60	20.70	20.80	20.90	20
21	21.00	21.10	21.20	21.30	21.40	21.50	21.60	21.70	21.80	21.90	21
22	22.00	22.10	22.20	22.30	22.40	22.50	22.60	22.70	22.80	22.90	22
23	23.00	23.10	23.20	23.30	23.40	23.50	23.60	23.70	23.80	23.90	23
24	24.00	24.10	24.20	24.30	24.40	24.50	24.60	24.70	24.80	24.90	24
25	25.00	25.10	25.20	25.30	25.40	25.50	25.60	25.70	25.80	25.90	25
26	26.00	26.10	26.20	26.30	26.40	26.50	26.60	26.70	26.80	26.90	26
27	27.00	27.10	27.20	27.30	27.40	27.50	27.60	27.70	27.80	27.90	27
28	28.00	28.10	28.20	28.30	28.40	28.50	28.60	28.70	28.80	28.90	28
29	29.00	29.10	29.20	29.30	29.40	29.50	29.60	29.70	29.80	29.90	29
30	30.00	30.10	30.20	30.30	30.40	30.50	30.60	30.70	30.80	30.90	30
31	31.00	31.10	31.20	31.30	31.40	31.50	31.60	31.70	31.80	31.90	31
32	32.00	32.10	32.20	32.30	32.40	32.50	32.60	32.70	32.80	32.90	32
33	33.00	33.10	33.20	33.30	33.40	33.50	33.60	33.70	33.80	33.90	33
34	34.00	34.10	34.20	34.30	34.40	34.50	34.60	34.70	34.80	34.90	34
35	35.00	35.10	35.20	35.30	35.40	35.50	35.60	35.70	35.80	35.90	35
36	36.00	36.10	36.20	36.30	36.40	36.50	36.60	36.70	36.80	36.90	36
37	37.00	37.10	37.20	37.30	37.40	37.50	37.60	37.70	37.80	37.90	37
38	38.00	38.10	38.20	38.30	38.40	38.50	38.60	38.70	38.80	38.90	38
39	39.00	39.10	39.20	39.30	39.40	39.50	39.60	39.70	39.80	39.90	39
40	40.00	40.10	40.20	40.30	40.40	40.50	40.60	40.70	40.80	40.90	40
41	41.00	41.10	41.20	41.30	41.40	41.50	41.60	41.70	41.80	41.90	41
42	42.00	42.10	42.20	42.30	42.40	42.50	42.60	42.70	42.80	42.90	42
43	43.00	43.10	43.20	43.30	43.40	43.50	43.60	43.70	43.80	43.90	43
44	44.00	44.10	44.20	44.30	44.40	44.50	44.60	44.70	44.80	44.90	44
45	45.00	45.10	45.20	45.30	45.40	45.50	45.60	45.70	45.80	45.90	45
46	46.00	46.10	46.20	46.30	46.40	46.50	46.60	46.70	46.80	46.90	46
47	47.00	47.10	47.20	47.30	47.40	47.50	47.60	47.70	47.80	47.90	47
48	48.00	48.10	48.20	48.30	48.40	48.50	48.60	48.70	48.80	48.90	48
49	49.00	49.10	49.20	49.30	49.40	49.50	49.60	49.70	49.80	49.90	49
50	50.00	50.10	50.20	50.30	50.40	50.50	50.60	50.70	50.80	50.90	50

Distance of slope stake from side or shoulder stake for any width roadway, slope 1 to 1. If ground is nearly level, the cut or fill at side stake is located by the double entry method in left column and top row. The number in body of table in same row and column gives distance from side stake to slope stake. If ground is not level estimate the difference in elevation between the side stake and slope stake, lower target by this amount if cut, elevate if fill. Add this amount to cut or fill and find distance in table. Set up rod at this point, and line of sight should cut target. If it does not make the slight adjustment necessary.

Grade 346

962  
967

10116

MICROFILMED

APR 16 1965

DIRECTIONS FOR USE OF TABLES

TABLE No. XIV

Distance of slope stake from side of roadway for any width roadway slope 1 1/2 to 1. It should be nearly level, the cut on the hill side.

IMPROVED TABLES  
AND  
INFORMATION

TABLE No. VII

To find Tangent and Extension for curve of any other degree, divide by degree in curve and add correction found in column of correction. Degree of curve with 2 given may be found by dividing tangent (or extension) opposite by given tangent (or extension).  
The distance from a point on the tangent to the center is very nearly the square of the tangent length divided by twice the radius.

0  
1  
2  
3  
4  
5  
6  
7  
8  
9  
10  
11  
12  
13  
14  
15  
16  
17  
18  
19  
20  
21  
22  
23  
24  
25  
26  
27  
28  
29  
30  
31  
32  
33  
34  
35  
36  
37  
38  
39  
40  
41  
42  
43  
44  
45  
46  
47  
48  
49  
50  
ST  
EC  
SH  
CU  
II

SEWER GRADES INGRAHAM ST. FROM  
ALLEY BLK 201 TO ALLEY BLK 184  
PACIFIC BEACH.

COTA  
GABSER  
KELLY  
N.O.# C2916  
3-08-55

8+00

69.99  
64.91 GRADE  
C 5.08 ✓

66.86  
61.73  
C 5.13 ✓

1425

2+75

69.40  
64.41  
C 4.99 ✓

66.49  
60.96  
C 5.53 ✓

1400

2+50

68.80  
63.91  
C 4.89 ✓

66.11  
60.47  
C 5.64 ✓

0+75

2+25

68.22  
63.41  
C 4.81 ✓

65.77  
59.98  
C 5.79 ✓

0+50

2+00

67.78  
62.97  
C 4.81 ✓

65.46  
59.49  
C 5.97 ✓

0+25

1+75

67.47  
62.13  
C 5.04 ✓

71.25  
65.90  
C 5.35 ✓

65.13 OFFSET E. 1/2  
59.00 GRADE E. 1/2  
C 6.13 ✓

0+00 EAST M.H. OPPOSITE ALLEY BLK 201

341976  
EAST M.H.

1+50

67.20  
61.94  
C 5.26 ✓

342576  
LAT. CONN.  
= 0+00  
ON LAT.

70.64  
65.48  
C 5.21 ✓  
MAIN PIPE

70.64  
65.63 LAT. ELEV.  
5.01

1402<sup>53</sup> MEET LATERAL STUB

72.02  
66.85  
C 5.67

0179.41

71.49  
66.79  
C 5.50

EC. ON LAT. CONN. = 8756.29

71.55  
66.03  
C 5.52

#2 on lat.

70.81  
65.89  
C 4.92

#2 on lat.

70.62 OFFSET ELEV.  
65.76 GRADE ELEV.  
C 4.86 ✓

STAKES FOR PAVING ALLEY B/LK. 18 LA MESA COLONY

COTA  
GARBER  
KELLY  
3-09-55 Ord.  
No. # 32157.

INDEXED

	LT.	RT.		LT.	RT.
1420	476.62 476.37 C 0.25	477.55 476.54 C 1.01	2400	474.68	475.14 474.37 C 0.74
1400	477.39 476.69 C 0.70	477.46 476.82 C 0.64	1490	474.28 474.68 F 0.40	475.75 474.97 C 0.78
0475	476.91 477.10 F 0.19	477.42 477.17 C 0.25	1480	475.05 475.14 F 0.09	476.34 475.43 C 0.91
0150	476.98 477.50 F 0.52	477.16 477.52 F 0.36	1470	475.60 475.50 C 0.10	476.18 475.77 C 0.41
0425	477.38 477.91 F 0.53	477.33 <sup>STUB</sup> 477.89 <sup>GRADE</sup> F 0.54	1460	476.78 475.72 C 1.06	476.58 475.97 C 0.61
0400 Ely P.L. 72nd.	478.39 478.31 <sup>Grade elev.</sup>	478.34 478.22	1440	476.76 476.05 C 0.71	476.95 476.26 C 0.69

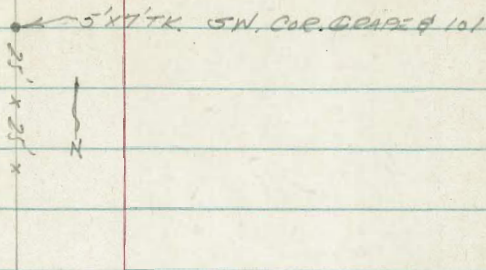
	LT.	RT.		LT.	RT.
2460	170.40 169.99 C 0.41	169.98 170.17 F 0.19			
2450	171.08 170.40 C 0.68	170.31 170.63 F 0.32			
2440	171.44 170.96 C 0.48	170.76 171.23 F 0.47	3435 <sup>08</sup> - 1/4 P.L. HARRISON	169.72 169.30 C 0.42	168.11 168.90 F 0.79
2430	171.98 171.65 C 0.33	171.86 171.94 F 0.08	3415	169.86 169.52 C 0.34	168.73 169.28 F 0.55
2420	172.38 172.50 F 0.12	172.33 172.80 F 0.47	2480	170.05 169.59 C 0.46	169.37 169.64 F 0.27
2410	172.80 173.36 F 0.56	173.66	2470	170.03 169.71 C 0.32	169.50 169.84 F 0.34

CURB STAKES GRAPE ST. FROM PACIFIC HWY TO  
175'± WEST, (Sb. C.B.)

INDEXED

OCT 9 1956

COTA  
GABLER  
KELLY  
W.D.#20730  
3-18-55



0+75

6.33  
5.94  
C 0.39

0+50

6.22  
5.89  
C 0.33

END RETURN (PROP. LINE)

6.19 EXIST  
6.18 GRADE

0+25

6.07  
5.84  
C 0.23

177A.25 B.C. PARKING LOT

6.15  
6.13  
C 0.02

EQ. GRAPE (0+00)

5.98  
5.79  
C 0.19

1450

6.15  
6.09  
C 0.06

MIDPOINT

5.74 STAKE  
5.70 GRADE  
C 0.04

1425

6.19  
6.04  
C 0.15

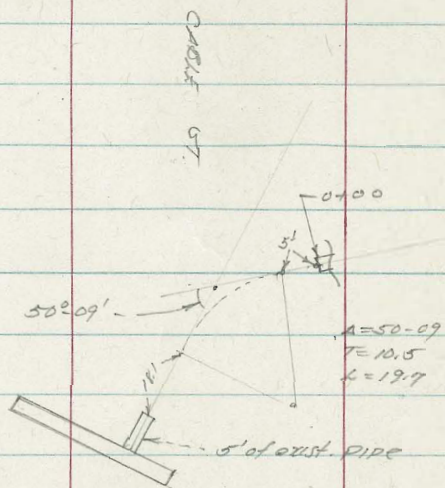
B.C. PACIFIC HWY.

5.62 EXIST  
5.62 GRADE

1400

6.27  
5.99  
C 0.28





0400

8.15

INDEXED

1400

45.67 EXIST

0485

45.50  
45.80  
F 0.30

0460

0435

45.52  
45.89  
F 0.37

3400

44.84  
45.36  
F 0.52

0410 B.C.

45.52  
45.98  
F 0.46

2475

44.72  
45.40  
F 0.68

0400 GRY P.L. PACIFIC BEACH DRIVE

46.02 EXIST  
46.00

2450

45.44 EXIST  
45.52 GRADE



INDEXED

COTA  
CARBER  
KELLEY  
5-18-55

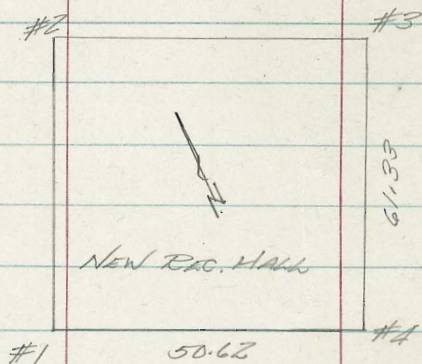
FIN. FLOOR ELEV. = 350.25

(SEE DRAWING # 2820 - D)

#1.)

$$\begin{array}{r} 350.25 \text{ G.} \\ 349.39 \\ \hline \text{F} 0.86 \end{array}$$

#2.)

$$\begin{array}{r} 350.25 \text{ G.} \\ 349.35 \\ \hline \text{F} 0.90 \end{array}$$


#3.)

$$\begin{array}{r} 350.25 \text{ G.} \\ 349.61 \\ \hline \text{F} 0.64 \end{array}$$

#4.)

$$\begin{array}{r} 350.25 \text{ G.} \\ 349.81 \\ \hline \text{F} 0.44 \end{array}$$

B.M. = 352.78, CHIS. X 3' No. OF OFSN.

COR. OF GREEN BLDG. OPPOSITE  
EXISTING REC. BLDG.

STAKE CUTTER, 69TH & SARANAC  
DRAWING 5699B

INDEXED

6-10-55

0+70

97.40  
97.32  
C 00.8

0+56

97.87  
97.73  
C 0.14

0+38

98.50  
98.29  
C 0.21

0+20

99.07  
98.81  
C 0.26

0+15

99.32  
98.08  
C 0.24

100.00  
100.00

0+00 S.E. CB. BC. 69th & SARANAC

0+76.3 S.W. CB. BC. 69th & SARANAC

ASSUMED ELEV. 100.00 AT 0+00

☞ ON S.E. GUT. LINE SARANAC

96.97  
96.97

GRADE STAKES COMMERCIAL, BETWEEN  
28TH & 29TH - ON CURB GRADE

INDEXED

CUT TO CB. CUT TO PL.

2+69.70  
68.70  
~~68.45~~  
C 0.29 GRADE

2+44.70  
68.61  
68.37  
C 0.24 F 0.05

2+19.70  
68.70  
68.29  
C 0.41 C 0.12

1+94.70  
68.28  
68.21  
C 0.07 F 0.22

3+44.70  
69.95  
68.66  
C 1.29 C 1.00

1+69.70  
69.24  
68.13  
C 1.11 C 0.82

3+19.70  
68.86  
68.59  
C 0.27 F 0.02

0+00 = EAST LINE 28 - SEE PG. 17 FB. 23.05

2+94.70

ADD 0.29' TO CB. GRADE FOR PL. GRADE

69.19  
68.52  
C 0.67 C 0.38

DIRECT ELEV. ROD USED

INDEXED

CB

QUITTER

B.C. JUNIPER

93.60	93.03
93.60	93.00
EXIST	EXIST

#1

93.50	Stub	93.50
93.85	Grade	93.30
F 0.35		C 0.20

#2

93.60	93.60
93.92	93.40
F 0.32	C 0.20

#3

93.55	93.55
94.00	93.50
F 0.45	C 0.05

E.C. UNION

94.13	94.13
94.19	93.69
F 0.06	C 0.14

E.C. +10'

94.56	94.20
94.54	94.20
EXIST.	EXIST

STAKE ALLEY BLK. 13 SWANS ADD.  
SOUTH OF MAPLE, BETWEEN FAIRMOUNT  
& 44TH.

INDEXED

	LT.	RT.		LT.	RT.
				282.50	281.94
				282.01 ✓	281.71 ✓
0+80	245.84 284.71 ✓ C1.11	284.70 284.47 ✓ C0.23	2+30	C0.49	C0.23
				283.06	282.51
				282.47 ✓	282.17 ✓
0+60	287.47 285.70 0.27 C2.37	286.47 284.80 0.81 C1.67	2+05	C0.59	C0.34
				283.15	283.05
				282.93 ✓	282.63 ✓
0+40	287.26 285.37 0.26 C1.89	286.73 285.07 0.34 C1.16	1+80	C0.52	C0.42
				284.05	283.15
				283.39 ✓	283.09 ✓
0+20	287.37 285.57 (0.33) C1.80	286.38 285.27 (0.33) C1.11	1+55	C0.66	C0.06
				284.10	283.54
				283.85	283.55 ✓
0+00	286.64 285.70 C0.94	286.23 Grade 285.40 C0.83	1+30	C0.55	F0.01
				285.18	284.20
				284.31 ✓	284.01 ✓
			1+05	C0.87	C0.17

B.M. 280.17 N.W.B.P. MAPLE & FAIRMOUNT



LT.

RT.

14

3480

277.22  
273.36  
C 3.86275.46  
273.06  
C 2.40

3460

277.46  
275.86  
C 1.60276.74  
275.56  
C 1.18

3440

278.28  
277.87  
C 0.41277.65  
277.57  
C 0.08

3420

280.26  
279.43  
C 0.83278.45  
279.13  
F 0.68

3400

280.59  
280.49  
C 0.10279.23  
280.19  
F 0.96

2480

281.29  
281.10  
C 0.19279.93  
280.80  
F 0.87

2455

281.88  
281.55  
C 0.33281.09  
281.25  
F 0.16

Stakes, 28<sup>th</sup> & Date

15

INDEXED

213.38  
213.15  
F0.7

#2

214.10  
214.05  
C0.05

#1

2875

0+00 exist. cb.

214.39  
214.15  
F0.06

0+50 B.C. 28<sup>th</sup>

214.48  
214.75  
F0.27

0+30

20° Rad.

0+50 B.C.

214.85  
214.89  
F0.04

0+10

P.L.

10'

214.96  
214.75  
F0.11

0+00 Exist. cb. 28<sup>th</sup>

DATE

04/11/92

148192 meet  
exist.

1+81<sup>92</sup> Meet exist. cb.

209.32  
209.32

1+56<sup>42</sup>

209.71  
209.78  

---

F0.07

1+41<sup>42</sup>

210.00  
210.05  

---

F0.05

1+21<sup>42</sup>

210.42  
210.50  

---

F0.09

1+01<sup>42</sup>

211.12  
211.30  

---

F0.18

F.C. Date 0+81<sup>42</sup>

212.65  
212.65  
Grade

INDEXED

	LT.	RT.		LT.	RT.
1450	153.57 156.39 F 2.82	158.73 157.39 C 1.34			
1425	151.39 154.92 F 3.53	157.54 155.92 ✓ C 1.62			
1400	150.15 153.44 F 3.29	155.80 154.44 C 1.36			
0+75	149.19 151.96 F 2.77	155.10 152.96 C 2.44		164.75 162.90 C 1.85	
			2+51 <sup>75</sup> Nail in fence on 2 <sup>nd</sup> BK. of ob. face		
0+50	148.15 150.48 F 2.33	154.46 151.48 C 2.98		159.71 160.65 F 0.92	161.86 161.62 C 0.24
			2+15 <sup>96</sup> 33' Rad. Pt.		
0+25 ob. B.C.	148.75 Stub 149.00 Grade F 0.25	153.63 150.00 C 3.63		156.79 158.30 F 1.51	160.43 159.30 C 1.13
			1+82 <sup>19</sup> B.C.		
B.M. 149.34	top of exist. ob. at 0+00 ON RT.				
147.72	" " " " " " ON LT.				

STAKE ROUGH GRADE TAFT, COLIMA TO MIDWAY

INDEXED

LT.

RT.

140.56

136.06 P-18

140.64 P

OCT 1953  
146761

140.01  
140.86 ✓  
F 0.80

142.95  
141.36 ✓  
C 1.59

LT. RT.

142761

142.31  
142.96 ✓  
F 0.65

146.24  
145.48 ✓  
C 2.76

4100

133.13  
135.11 ✓  
F 1.68

138.08  
135.74 ✓  
C 2.34

048761

143.49  
144.39 ✓  
F 0.90

147.90  
144.97 ✓  
C 2.93

3450

133.30  
135.20 ✓  
F 2.10

137.50  
135.99 ✓  
C 1.51

044761

144.32  
145.17 ✓  
F 0.85

149.05  
145.83 ✓  
C 3.22

340761

133.62 ✓  
135.65 ✓  
F 2.03

137.47  
136.20 ✓  
C 1.27

012752 Rad. Pt. LT. F 0.33

145.06 ✓  
145.39

246761

133.97  
136.24 ✓  
F 2.27

138.40  
136.76 ✓  
C 1.64

041761 Rt. only

Stake 149.68  
Grade 146.26  
C 3.42

244761

134.89  
136.82 ✓  
F 1.93

139.38  
137.34 ✓  
C 2.04

0+00 = NKT Line Colima

0-15<sup>92</sup> Rad Pt. Rt.

240761 ✓

136.97  
138.52  
F 1.55

141.59  
139.02 ✓  
C 2.57

B.M. end exist db. top COLIMA ON Rt. 146.64

" " " " " " Lt. 145.60

Lt. Rt.

X  
132.10

640592 Rad. Pt. Lt.

13323 skib 13757  
13493V  
C 2.64

5462<sup>47</sup> Rad. Pt. Rt.

133.33  
135.80 ✓  
F 0.47

5457<sup>47</sup> Lt. only

13376  
134.29 ✓  
F 0.53

5437<sup>47</sup> Lt. only

134.29 138.65  
134.52 ✓ 135.24 ✓  
F 0.23 C 3.41

5400

154.15 ✓ 138.26  
134.81 ✓ 135.49V  
F 0.66 C 2.77

4450

B.M. top east' ch. Rt. Midway 133.94  
" " " Lt. " 132.14

ROUGH GRADE STAKES BELLEVUE, COLIMA  
 WD. # 31A39 TO MIDWAY ST.

7-07-55

INDEXED

29  
 121.37  
 117.79P

	LT.	RT.		LT.	RT.
1+00	118.03 118.28 ✓ FO.26	121.30 119.08 ✓ C2.22		116.41 119.28 ✓ F2.87	120.91 120.08 ✓ C0.83
0+50	119.06 118.08 ✓ C0.98	122.80 118.88 ✓ C3.92	3+50		
5			3+47.61 Sewer Lat #2 on Lt.	116.5 114.4 @ PL. C7.1	116.3 114.4 C1.9
0+27.52 Rad. Pt. LT.	119.28 ✓ 117.99 C1.29	123.47 ✓ 118.79 C4.68		116.66 119.08 ✓ F2.42	120.65 119.88 ✓ C0.77
5			3+00		
0+17.52		123.79 118.75 C5.04,		116.31 118.88 ✓ F2.57	120.54 119.68 ✓ C0.86
5			2+50		
0-0247		124.76 119.04 C5.72		116.29 118.68 ✓ F2.39	120.50 119.48 ✓ C1.02
3			2+00		
0-15.92 Rad. Pt. Rt.				116.34 118.48 ✓ F2.14	120.01 119.28 C0.73
4			1+50		

B.M. east cb. end. on Rt. @ Colima & Bellevue = 120.55 121.47  
 " " " " Lt. " " " = 118.62 120.65

LT.

RT.

LT.

RT.

5462<sup>AD</sup> Rad. Pt.  
Rt.122.05  
120.95 ✓  
C1.10

5450 Lt. only

119.25  
120.09 ✓  
F0.84

120.89X

5400

117.39  
119.88  
F2.49119.99  
120.69 ✓  
F0.70

4450

116.59  
119.68 ✓  
F3.09119.23  
120.48 ✓  
F1.25

B.M. check begin exist cb. on Lt. 120.64 = 120.65

4400

116.17  
119.48 ✓  
F3.06119.57  
120.28 ✓  
F0.71

120.32

6405<sup>92</sup> Rad.  
Pt. Lt.3457<sup>61</sup> Water RP. 10460  
Service on Lt.119.35.5 sub  
119.31 CB. 70P  
C004

6400 Lt. only

120.29



Rough grade stakes, Taft, Midway to Forward.

7-07-55

INDEXED

Lt.

Rt.

13413

138.87

13490 ✓

135.70

F0.77

C3.17

145762

132.74

140.02

133.81 ✓

134.61 ✓

F1.05

C5.41

141762

132.27

137.99

132.80 ✓

133.60

F0.53

C4.39

047257

131.27 ✓

135.15

131.80 ✓

132.60 ✓

F0.33

C2.55

042753

136.71

132.40

C4.31

040753 Rt. only

137.60

138.59 ✓

F0.99

2450

140.28

139.39 ✓

C0.89

0-1592 Rd. Pt.  
Rt.

138.37

136.39 ✓

C1.93

149762

139.98

137.19 ✓

C2.79

BM, Top exist. c.s. end on Lt.

131.42

" " " " " Rt.

132.48

139.77 #  
140.07  
55  
141.02

22  
7.07  
2.3  
9.98

Lt.

Rt.

140261 Check with owner  
Sewer Lat. #1 Lt. only

144 ✓ 145.8  
148.1 140.1  
C4 03.7

142.77

142.01 ✓

F1.29

347762

147.18

142.81 ✓

C2.37

142.07

142.83 ✓

F0.76

3450

147.03

143.63 ✓

C3.40

141.02

140.71 ✓

C0.31

3400

144.91

141.51 ✓

C3.40

147.67#

5.35  
1.25  
6.60

23

238  
678  
916

Lt.

Rt.

Lt.

152.16 ✓  
129.00  
C 3.16

577248 Rad. Pt  
Rt. only

147.99  
147.82 ✓  
C 0.17

152.20  
148.63 ✓  
C 3.57

5750

147.09  
147.02  
C 0.07

149.96  
147.83 ✓  
C 2.13

5700

1457 Lt.

146.60  
146.34 ✓  
C 0.26

149.91  
147.14 ✓  
C 2.77

415762

12

641593 Rad. Pt.  
Lt.

146.12  
145.44  
C 0.68

147.90  
146.24 ✓  
C 1.66

41762

148.40

640678 Lt. only

145.16  
145.28 cb.  
F 0.12

41261 Water Service Lt. only

579762 Lt. only  
0.6K, chix top, wall

151.45  
148.57 ✓  
C 2.88

INDEXED

	Lt.	Rt.		Lt.	Rt.
		243.9			
		234.0 INVERT			
0+78	SEWER LIT (4) RT.	C 9.9			
		243.35			
		243.76 CE.			
0+72	WATER SERVICE RT.	F 0.41			
	24597	243.95			
	24450	243.80			
0+70	CHIS. X BL.	C 1.47		240.83	240.33
			2+00		
	24611	243.95			
	24456	243.80			
0+50	C 1.55	C 0.15		242.67	239.67
				241.23	240.72
			1+80	C 1.44	F 1.05
	24643	243.28			
	24425	243.40			
0+30	C 2.18	F 0.12		243.17	242.42
			1+35	242.65	242.66
				C 0.52	C 0.36
	24347	STAKE			
	24358	GRADE - 24250			
0+00	ELY PL. CUTS			245.53	243.82
				244.86	243.40
			0+90	C 1.47	C 0.42

INDEXED

LT.

COTA  
GARBER  
KELLEY  
FULLEN  
7-11-55  
W.O.# 31439

LT.

RT.

0+476L

145.26  
145.17  
C 0.09

145.64  
145.83  
F 0.19

1+676L

140.59  
140.86  
F 0.27

141.02  
141.36  
F 0.32

0+275<sup>2</sup> E.C. LT. only

145.11  
145.39  
F 0.28

1+476L

141.91  
141.99  
F 0.08

143.05  
142.49  
C 0.56

0+476L RL & 14(21)

145.54  
145.50 (38)  
C 0.04  
C 0.10 <sup>ok.</sup>

146.53L  
146.26  
C 0.27

1+276L

143.10  
142.96  
C 0.14

143.14  
143.48  
F 0.34

0-02.38 RL

147.44  
146.50  
C 0.94

1+076L

143.76  
143.76  
GRADE

144.50  
144.31  
C 0.19

0-09.98 RL

147.51L  
146.57  
C 0.94

0+876L

144.45  
144.39  
C 0.06

144.87  
144.97  
F 0.10

0-15.92 E.C. RL

146.63

0+676L

144.60  
144.86  
F 0.26

145.22  
145.48  
F 0.26

0+00 = NLY. Line Colima

B.M. EXIST. CB TOP COLIMA ON RT. = 146.64  
" " " " " LT. 145.60

	LT.	RT.		LT.	RT. 26
			1450	134.72 134.80 F 0.08	135.23 135.49 F 0.26
24876L	135.51 135.85 F 0.34	136.13 136.39 F 0.26	1425	134.88 134.95 F 0.12	135.52 135.61 F 0.09
24676L	136.07 136.24 F 0.22	136.48 136.76 F 0.28	1400	134.80 135.10 F 0.30	135.58 135.74 F 0.16
24476L	136.46 136.87 F 0.36	137.18 137.34 F 0.16	8775	135.00 135.25 F 0.25	135.66 135.86 F 0.20
24276L	137.24 137.58 F 0.34	138.07 138.08 F 0.01	3450	135.05 135.40 F 0.35	135.64 135.99 F 0.35
24076L	138.24 138.52 F 0.28	138.81 # 139.07 F 0.21	3425	135.11 135.55 F 0.44	135.98 136.10 check F 0.12 ✓
14876L	139.20 139.64 F 0.44	140.24 140.14 CR 1.0	34076L	135.21 135.65 F 0.44	136.01 136.20 F 0.19

	LT.	RT.		LT.	RT.
5757 <sup>42</sup> LT.	133.36 133.80 F 0.44	—			
5750 RT.	—	134.93 134.99 F 0.06			
5747 <sup>47</sup> Lt only	133.55 134.10 F 0.55	—			
5737 <sup>47</sup> Lt only	133.85 134.29 F 0.44	—	6705 <sup>22</sup> B.C. LT.	132.01 132.10 F 0.09	—
5725 Rt. only	—	135.35 135.11 C 0.24	5799 <sup>92</sup> Lt.	132.17 132.31 F 0.14	—
5700.	134.21 134.50 F 0.29	135.11 135.24 F 0.13	5781 <sup>69</sup> LT.	132.66 132.95 F 0.29	—
475	134.39 134.65 F 0.26	135.36 135.36 GRADE	5772 <sup>38</sup> #1 (RT)	—	134.83 <sup>stubs</sup> <del>134.83</del> Grade
			5762 <sup>47</sup> B.C. RT.	—	134.54 134.93 F 0.39

Stake drainage ditch along So. Levee  
 Midway to Lapwai - Drawing 9152 L  
 San Diego River FB. 2066-61

INDEXED

COTA  
 GAEBER  
 KELLEY  
 PULLEN  
 W.D.

2150 9 1054

-0.73  
 -2.53  
 C 1.80

+0.06  
 -2.18  
 C 2.24

9150

+1.79  
 -1.83  
 C 3.62

5750

+0.16  
 -2.23  
 C 2.39

9100

+0.22  
 -1.88  
 C 2.10

2400

-0.83  
 -2.58  
 C 1.75

5700

+0.03  
 -2.28  
 C 2.31

8150

+0.66  
 -1.93  
 C 2.39

1750

-0.29  
 -3.17  
 C 2.88

4150

+0.41  
 -2.33  
 C 2.74

8400

+0.04  
 -1.98  
 C 2.02

1400

-0.05  
 -3.75  
 C 3.70

4400

0.00  
 -2.38  
 C 2.38

7450

+0.58  
 -2.03  
 2.61

0450

+0.30 — STAKE  
 -4.33 — GRADE  
 C 4.63

8150

-0.27  
 -2.43  
 C 2.16

7100

H. +1.35  
 -2.08  
 C 3.43  
 R.L. -0.35  
 -2.08  
 C 1.73 R4

0+00 invert exist  
 36" PIPE

-4.91

8400

-1.16  
 -2.48  
 C 1.32

6150

-0.47  
 -2.13  
 C 1.71

Stake drainage ditch off levee  
Cont'd.

29

S.W. 3' L&T. SET. ELEV. = -0.76

10+82±

+2.44  
-1.70  
C 4.14

10+50

+3.75  
-1.73  
C 5.48

10+00

+1.31  
-1.78  
C 3.09



2739-D

INDEXED

LT

RT

LT

RT

COTA  
GARBER  
KELLEY  
PURLEN 7-15-55

152.18  
151.94  
C0.24

152.62  
152.94  
F0.32

0+75

159.55  
159.83  
F0.28

150.69  
150.48  
C0.21

151.18  
151.48  
F0.30

BC 33' RAD. CURVE ON RT.

0+50

149.00  
149.00  
GRADE

149.46  
150.00  
F0.54

1482.49 B.C. C0.29

158.59  
158.30

159.23  
159.30  
F0.07

0+25 B.C.

148.40  
148.50  
F0.10

149.26  
149.66  
F0.40

1475

158.00  
157.85  
C0.15

158.67  
158.85  
F0.18

#2

147.89  
148.00  
F0.11

148.92  
149.50  
F0.58

1450

156.37  
156.38  
F0.01

156.75  
157.38  
F0.63

#1

147.71

149.34

1425

154.96  
154.90  
C0.06

155.39  
155.90  
F0.51

EXT. CB.

153.55  
153.43  
C0.12

153.88  
154.43  
F0.55

0+00 = N.Y. line Clove

1400

B.M. 149.34 Top ext. CB. AT 0+00 ON RT.

147.72 " " " " " ON LT.

#7  
162.54  
163.00  
F 0.46

#6  
162.03  
162.90  
F 0.87

#5 ?  
161.96  
162.65  
F 0.69

#4  
162.00 ✓  
162.72  
F 0.72

#3  
161.92  
161.62  
C 0.30

#2  
161.20  
161.03  
C 0.17

#1  
160.22  
160.15  
F 0.21

#13  
159.73  
160.63  
F 0.90

#12  
160.79  
161.23  
F 0.44

#11  
161.15  
161.82  
F 0.67

#10  
161.49  
162.40  
F 0.91  
P.R.C.H. F 0.48

#9  
161.73  
162.65  
F 0.92  
#15 F 1.06

#8  
162.19 (26)  
162.90  
F 0.41  
#14 F 1.09

CB STAKES BELLEVUE - COLIMA TO MIDWAY

COTA  
GARRISER  
KELLEY  
PULLEN  
NO. 31439  
7-15-55

2664-D

11.175  
12.117 32

LT.

RT.

LT.

RT.

INDEXED

				118.04	119.52
				118.48	119.29
				F0.44	C0.23
0+17 <sup>52</sup> RT.			1450		
		119.12			
		118.75			
		C0.37			
				118.18	119.87
				118.38	119.19
				F0.25	C0.18
0+07 <sup>53</sup> RT.			1425		
		119.22			
		118.83			
		C0.39			
#1 Lt.	118.76				
	117.93				
	C0.83				
				118.27	119.31
				118.28	119.09
				F0.01	C0.22
0-02 <sup>47</sup> RT.			1400		
		119.95 ✓			
		119.04			
		C0.91			
				118.32	120.19
				118.18	118.99
				C0.14	C1.20
0-09 <sup>28</sup> RT.			0+75		
		121.04			
		119.42			
		C1.62			
				118.26 ✓	119.79
				118.68	118.89
				C0.18	C0.90
0-15 <sup>92</sup> EC RT.			0+50		
		119.72			
				118.19	119.71
				117.99	118.79
				C0.20	C0.95
0+00 = N.Y. Line Colima			0+27 <sup>50</sup> BC Lt.		

BM. TOP CURT. OR. ON RT. OPP. 0+00 COLIMA & BELLEVUE - 120.55  
" " " " Lt " " " " " - 118.62

DIRECT ELEV. ROD.

			119.28 119.78 F 0.30	120.23 120.59 F 0.36
--	--	--	----------------------------	----------------------------

3+00	118.93 119.08 F 0.15	119.98 119.89 C 0.09	119.74 119.68 C 0.06	500 → 119.98 120.49 F 0.51
------	----------------------------	----------------------------	----------------------------	----------------------------------

2+75	118.86 118.98 F 0.12	119.75 119.79 F 0.04	119.53 119.58 F 0.05	120.21 120.39 F 0.18
------	----------------------------	----------------------------	----------------------------	----------------------------

2+50	118.77 118.88 F 0.11	119.64 119.69 F 0.05	119.61 119.48 C 0.13	120.13 120.29 F 0.15
------	----------------------------	----------------------------	----------------------------	----------------------------

2+25	118.73 118.78 F 0.05	119.51 119.59 C 0.08	119.40 119.38 C 0.02	119.35 3.08 116.27 120.31 120.19 C 0.12
------	----------------------------	----------------------------	----------------------------	--

2+00	118.62 118.68 F 0.06	119.60 119.49 C 0.11	3+57 W.M.LT. 119.31 C 0.04 TO CLS 119.28 ✓	120.35 120.09 C 0.26
------	----------------------------	----------------------------	--	----------------------------

1+75	118.50 118.58 F 0.08	119.49 119.39 C 0.10	119.07 119.18 F 0.16	120.13 119.99 C 0.14
------	----------------------------	----------------------------	----------------------------	----------------------------

#1 ON RT.

121.70  
121.08 ✓  
C 0.62

549998 LT.

120.28  
120.28  
GRADE

5475

120.72  
120.18  
C 0.54

5462<sup>AD</sup> BCRA

121.20  
120.95  
C 0.25

5450

120.06  
120.08  
F 0.02

120.85  
120.89  
F 0.04

5425

120.21  
119.98  
C 0.23

120.45  
120.79  
F 0.14

5400

119.81  
119.88  
F 0.07

120.53  
120.69  
F 0.16

CHECK B.M. 120.02 = N.W. B.P. MIDWAY & BELLEVUE

STAKE STORM DRAIN OFF CLAREMONT DRIVE  
SEE 5688B

INDEXED

COTA  
CARRER  
KELLEY  
FULLEN  
NO. 62906  
7-20-85

0+75

288.37  
282.57  
C 5.80

290.65 10' ET.  
287.00 invert  
C 3.65

290.65  
292.25  
F 1.60

2+027 & BOX

0+50

287.94  
287.72  
C 6.27

291.33  
286.85  
C 4.48

2+100

0+31 1/2 E.C.

287.64  
281.08  
C 6.56

289.34  
285.99  
C 3.35

1+75

0+19 1/2 MID. PT.

286.57  
280.67  
C 5.90

288.59  
285.14  
C 3.45

1+50

0+07 1/2 E.C.

284.82  
280.26  
C 4.56

289.27  
284.28  
C 3.99

1+25

0+00 = EXIST. CB. INLET  
CLAREMONT DR.

284.76 STAKE  
280.00 invert.  
C 4.76

288.27  
283.43

1+00

B.M. CB. T.O.P. OF EXIST. INLET AT 0+00 = 284.76  
GUTTER " " " " " = 283.76

C 4.84

STAKE CR. ON LA JENA HERMOSA DRIVE  
NLY. OF VIA DEL NORTE.  
(ON RT.)

INDEXED

EC

84.67  
85.17  
F 0.55

147<sup>04</sup> EC.

85.15  
85.90  
F 0.75

#3

84.53  
85.04  
F 0.51

1425

84.97  
85.81  
F 0.84

#2

84.23  
84.73 ✓  
F 0.50

84.73  
84.35  
38

1400

84.90  
85.69  
F 0.79

#1

84.46  
84.51  
F 0.05

0+75

84.74  
85.57  
F 0.83

EC. Via Del Norte  
ON RT.

83.96 ✓  
84.03

0+50

84.62  
85.45  
F 0.83

0+00 = N.W. Line Via Del Norte

0+29

84.67  
85.34  
F 0.77

#6  
86.18  
86.10  
C 0.08

#5  
86.44  
86.18  
C 0.26

#4  
86.87  
86.70  
C 0.67

#3  
87.04  
86.20  
C 0.84

#2  
87.21  
86.15  
C 1.06

#1 (BC on RT.)  
86.17  
86.08  
C 0.09

PRC  
86.13  
86.05  
~~C 0.15~~  
C 0.08

EC  
85.15  
85.90  
F 0.75

#8  
85.35  
85.97  
F 0.62

#7  
85.78  
86.67  
F 0.24



CURB STAKES TAFT, MIDWAY ST. TO FORWARD ST

2663-D

INDEXED

COTA  
GARBER  
KELLEY  
PULLEN  
7-21-55  
W.O. # 51459

Lt

Rt. 38

131.35  
131.80  
F0.45

132.45  
132.60 G.  
C0.85

0+27<sup>52</sup>  
OCT 20 1/2

135.50  
135.60  
F0.10

136.65  
136.40  
C0.25

0+17<sup>52</sup>  
(#10) & Rt.

131.24 (131)  
131.37 (#1)  
F0.13

132.92  
132.48  
C0.44

1+77<sup>62</sup>

134.82  
134.90  
F0.08

136.19  
135.70  
C0.49

0+07<sup>52</sup>

133.37  
132.40  
C0.97

1+57<sup>62</sup>

134.49  
134.30  
C0.19

135.62  
135.10  
C0.52

0-02<sup>47</sup>

132.98  
132.43  
C0.55

1+37<sup>62</sup>

133.78  
133.81  
F0.03

135.33  
134.61  
C0.72

0-09<sup>28</sup> Rt.

133.51  
132.50  
C1.01

1+17<sup>62</sup>

132.88  
133.14  
F0.26

135.85  
133.94  
C1.41

0-15<sup>22</sup> B.C. Rt.

133.10  
132.56  
C0.54

0+87<sup>58</sup>

131.97  
132.47  
F0.50

134.02  
133.27  
C0.75

0+00 = N.Y. Line Midway St

0+57<sup>55</sup>

	Lt.	Rt.		Lt.	Rt. 59
3450	143.12 142.85 G C 0.27	143.38 143.65 G F 0.27	5700	146.70 147.02 e. F 0.32	147.59 147.82 G F 0.23

3425	141.95 141.79 C 0.14	142.85 142.59 C 0.26	4475	146.17 146.62 F 0.45	147.48 147.22 C 0.06
------	----------------------------	----------------------------	------	----------------------------	----------------------------

3400	140.69 140.73 F 0.04	141.67 141.53 C 0.14	445762	145.88 146.34 F 0.46	146.98 147.14 F 0.16
------	----------------------------	----------------------------	--------	----------------------------	----------------------------

2475	139.53 139.67 F 0.14	140.45 140.47 F 0.02	443762	145.61 145.96 F 0.35	146.62 146.76 F 0.14
------	----------------------------	----------------------------	--------	----------------------------	----------------------------

2450	138.15 138.61 F 0.46	139.16 139.41 F 0.25	441762	145.26 145.44 F 0.18	146.15 146.74 F 0.09
------	----------------------------	----------------------------	--------	----------------------------	----------------------------

LATERALS PGS. 22 & 23

2425	137.34 137.55 F 0.21	138.17 138.35 F 0.18	349762	144.43 T.P. 144.79 F 0.36	145.62 145.59 C 0.03
------	----------------------------	----------------------------	--------	---------------------------------	----------------------------

49762	136.42 136.39 C 0.03	137.28 137.19 C 0.09	347762	143.74 144.01 F 0.27	144.61 144.81 F 0.20
-------	----------------------------	----------------------------	--------	----------------------------	----------------------------

LT.

RT.

36406.78

148.23  
148.70  
F 0.47

—

35797.62

148.13  
148.57  
F 0.44

—

25775

147.92  
148.22  
F 0.30

150.21  
149.35 (#1)  
C 0.86

#1) RT

25772.47 BC RT

149.07  
149.00  
C 0.07

147.86 EC RT

20750

147.35  
147.82  
F 0.47

148.93  
148.63  
C 0.30

15725

147.09  
147.42  
F 0.33

148.37 ✓  
148.23  
C 0.14

C + 09.99

148.39  
148.68  
F 0.30

—

INDEXED

0+90

163.77  
16.46 ✓  
10.36  
C 6.10

COTA  
KELLEY  
GARBER  
PULLEN  
7-26-55  
N.O.#  
DRAWING#

0+65

163.52  
16.71  
15.42  
C 1.29

0+50

163.37  
16.86 ✓  
17.03  
F 0.67

0+45

163.32 Grade  
16.91 Grade Rod. ✓  
11.80  
C 5.11

0+25

163.17 G. ✓  
17.11 G.R.  
12.42  
C 4.69

0+00 EXIST. M.H.

162.87 ✓  
17.36  
13.30 Rod  
C 4.06  
101 No.

162.87  
17.36 ✓  
12.84  
C 4.52  
R.M.

B.M.

12.84 180.234.1.

167.39

Check B.M. - 4.41 236.87 = 236.90

= Hub. 3+8633  
FR. 2205 P.F. CA

2+30 C.O. WALL 9.88 Rod.

2+25

188.03 ✓  
17.45 ✓  
11.67  
C 5.78

T.P. 13.10 205.47 X 0.52 192.34

2+00

181.55  
11.35 ✓  
5.26  
C 6.09

1+90 cut off wall #1

1+80

176.36  
16.54 ✓  
9.27  
C 7.27

T.P.

+12.71 192.90 H.I.

FOR H. ONLY

1+50

168.58  
11.65  
3.75  
C 7.90

1+33 1/2

164.20  
16.03  
6.14

1+12

C 9.39

163.99  
16.24 ✓  
8.44  
C 7.80

3+50 1/2  
M.H.#2

220.50 G<sup>AI</sup> INVERT  
20.75  
7.90  
C 12.85

10.69 241.25 X  
3+25

0.79 230.56  
213.97 G  
17.38  
0.79 ✓  
C 16.59

3+10 C.O.  
WALL

5.23 Rod.

3+00

207.49  
23.86 ✓  
8.96  
C 19.90

13.15 231.35 X 0.07 218.20

2+75

201.00  
17.27  
6.85  
C 10.47

-0.04 180.19

2+70 C.O.  
WALL

9.62 Rod.

13.01 218.27 X

0.22 205.25

2+51

194.78  
16.70 ✓  
2.61  
C 8.09

180.23 H.I.

INDEXED

ROUGH GRADE 31ST CEDAR TO ERM

	LT.	RT.	LT.	RT.
2+30 <sup>6</sup> P.V.C.	202.82 191.95 C 10.87	189.47 191.87 F 2.40	2+89.3 Sewer Lat #2 Lt.	190.1 181.9 C C 8.2
2+00	204.32 195.18 C 9.14	191.18 194.91 F 3.73	2+59.3 Sewer Lat #1 Lt.	203.7 187.2 C 1.65
1+50	201.65 <sup>chis x</sup> ✓ 200.34 <sup>2<sup>nd</sup> m</sup> C 1.31	196.56 199.85 F 3.29	3+06 Exist Lt.	187.48 exist 187.55
1+00	208.86 205.50 C 3.36	198.02 204.78 F 6.76	3+01 <sup>2</sup> Exist Rt.	187.61 exist 187.82 C
0+50	215.68 210.66 <sup>on line</sup> C 5.02	202.15 209.72 F 7.57	2+90 <sup>6</sup>	189.10 187.84 C 1.26 182.52 187.95 F 5.43
0+00 N.E. P.L. CEDAR TO WEST	215.82	214.65	2+70 <sup>6</sup>	191.50 188.69 C 2.81 183.84 188.73 F 4.89
B.M. SW. B.P. CEDAR & GROVE	225.47		2+50 <sup>6</sup>	196.30 190.04 C 6.26 185.98 190.03 F 4.05

STAKE 18" R.C.P. ACROSS CALIFORNIA ST.

REFERENCE 2768 D

F.B. 1832 P. 62

43

# INDEXED

COTA  
GABBER  
KELLY  
DULLEN  
W.O. # 21270

0+56 END 18" R.C.P. TO BE BUILT  
BY RAILROAD

11.59  
4.07 -  
C 7.52

0+42.5  $\frac{1}{2}$  CROSSES 8" COVER

11.83  
4.30 -  
C 7.53

0+21.25

11.92  
4.53 -  
C 7.39

0+00 BEGIN 18" R.C.P. TO BE  
BUILT BY RAILROAD.

11.94  
4.77 -  
C 7.17

STAKE "T" ALLEY A BETWEEN 32nd & BOUNDARY  
& SOUTH OF MEADE

44

COTA  
CARBER  
KELLEY

INDEXED

W.D. # 31300

8-03-55

	LT.	RT.	LT.	RT.
	382.48 382.38 C0.10	<sup>0.85 BK</sup> 382.47 382.58 C0.09		
141370			381.12 380.70 C0.42	381.39 <sup>2 BK</sup> 380.70 C0.69
		2475		
	383.13 <sup>2 BK</sup> 382.97 C0.16	382.98 <sup>2 BK</sup> 382.97 C0.01		
048703			382.74 380.91 C1.33	381.11 <sup>12 BK</sup> 380.91 C0.50
		2450		
	383.30 383.56 F0.26	383.61 <sup>3 BK</sup> 383.56 C0.05		
046037			382.16 381.11 C1.05	382.01 <sup>13 BK</sup> 381.11 C0.90
045037	383.80 383.70 C0.10	383.63 383.70 F0.07		
		2425		
	383.00 383.56 F0.56	383.48 <sup>12 BK</sup> 383.56 F0.08		
044037			381.71 381.32 C0.42	381.72 <sup>2 BK</sup> 381.32 C0.40
		2400		
	382.97 382.68 C0.29	383.25 <sup>2 BK</sup> 382.68 C0.57		
042037			381.95 381.52 C0.43	381.63 <sup>2 BK</sup> 381.52 C0.11
		1475		
	381.15	381.37		
0400 = SLX Ph. Meade			382.68 381.80 C0.88	381.92 <sup>2 BK</sup> 381.80 C0.12
		14037		

NORTH & SOUTH ALLEY

LT.

RT.

LT.

RT.

4450 37 Meet

379.21

379.29

379.59

379.59

379.45

379.28 ✓

379.50 ✓

379.50

379.21 ✓

379.21

4420 37

C 0.09

C 0.09

142206

C 0.24

C 0.07

3<sup>rd</sup> BK. ON SP217

380.06

379.98

379.33

379.42<sup>3<sup>rd</sup> BK.</sup>

379.68 ✓

379.68 ✓

379.04 ✓

379.04 ✓

4400

C 0.38

C 0.30

0+9446

C 0.29

C 0.38

380.08

380.34

379.39<sup>3<sup>rd</sup> BK.</sup>

379.15 ✓

379.88 ✓

379.88 ✓

378.87 ✓

378.87

8475

C 0.20

C 0.46

0+6723

C 0.57

C 0.28

380.41

380.24

379.35

379.29

380.09 ✓

380.09 ✓

378.70 ✓

378.70 ✓

8450

C 0.37

C 0.15

0+40

C 0.65

C 0.59

380.42

380.15

378.83

379.13

380.29 ✓

380.29 ✓

378.46 ✓

378.46 ✓

8425

C 0.13

F 0.14

0+20

C 0.37

C 0.67

381.91 <sup>W.K.I.R.C.</sup>

381.05

✓

✓

380.50 ✓

380.50 ✓

377.65

377.82

8400

C 1.41

C 0.55

0+00

EAST & WEST ALLEY



LT

RT

148095

379.02 ✓

147689 Meet LT

378.93

146170

380.13 ✓  
379.28  
C0.85 5/1082

379.57 ✓  
379.28  
C0.29 1082

143606

379.90 ✓  
379.29 ✓  
C0.61

380.57 ✓  
379.29 1082  
C1.28

CS. STAKES ASH, KETTNER TO PACIFIC HWY.

COTA (ON NORTH ONLY)  
GABER  
KELLEY  
PULLEN  
8-08-55

2768 D  
F.B. 1832 P. 62

INDEXED

LC  
3192.87  
7.24  
256.0  
F0.28 Meet? 7.56.0

0+15  
16.07  
15.88 8BK  
C0.19  
15.08  
13.02 7.30BK  
H40 C2.06  
475  
3154.32  
8.56  
8.17  
C0.39 C0.39

0408 EC Ash  
15.15  
16.02 10<sup>out</sup>  
F0.87  
13.95  
13.42  
H25 C0.53 7<sup>0K</sup>  
3429.0  
3135.82  
8.67  
8.77  
F0.08 F0.01  
8.70  
8.77

#3  
16.23  
16.16 13<sup>out</sup>  
C0.07  
14.25  
14.02  
H00 C0.23  
3+1025  
3490.7  
9.1  
9.48  
F0.27  
9.25  
9.38  
F0.12  
81.42  
22.22  
4.22  
74.52

#2  
16.35  
16.28 11<sup>out</sup>  
C0.07  
14.70  
14.62  
0+75 C0.08  
2491.5  
2495.32  
9.75  
9.99  
F0.26  
10.05  
9.99  
C0.06

#1  
16.33  
16.10 C<sup>out</sup>  
F0.07  
15.27  
15.21  
0+50 C0.06  
2475  
2481.87  
10.40  
10.50  
F0.10  
10.79  
10.50  
C0.29

BC  
16.46  
16.50  
15.85  
15.80  
0+25 C0.05  
H69.67 edge K1 Box  
12.50  
12.38  
C0.27  
12.30 red  
12.27  
C0.03  
12.17  
12.27  
F0.10

C.B. STAKE NE. COR. ASH & KETTNER @ 100' EAST  
OF KETTNER. 2768D, FB. 1832 P9.62

46

Cota

0+40  
19.78  
20.01  
F 0.23

0+40  
19.1A  
19.10 ✓  
C 0.04

0+25  
18.61  
18.75  
F 0.14

E.C. ASH 0-008A  
18.10 ✓  
18.12 ✓  
F 0.02

MID PT.  
18.00 ✓  
18.05 ✓  
F 0.05

B.C. KETTNER  
17.92 ✓  
~~18.05~~ Meet  
F 0.13 | 1400  
20.88  
20.92 Meet  
F 0.09

STAKE & GRADE HORTENSIA & GUY STS.  
105' E. OF & HORTENSIA ON GUY & 85' S.W. OF  
& GUY ST. ON HORTENSIA SEE 122446

INDEXED

1405 & BOTH

OCT 9 1956

✓ 194.68 ON SPIT COTA  
195.76 HATCH  
F 1.08 KELLEY  
PULLEN  
W.D. # 6222  
8-15-55

1480

✓ 197.09  
191.55  
C 5.74

0+80

✓ 195.21  
195.10  
C 0.11

1470

✓ 197.22  
192.21  
C 5.01

0+70

✓ 195.55  
195.55  
GRADE

1460

✓ 196.41  
192.97  
C 3.44

0+40

✓ 196.60  
196.57  
C 0.03

1450

✓ 194.91  
193.64  
C 1.27

0+20

✓ 197.53  
197.40  
C 0.13

1440

✓ 195.16  
194.21  
C 0.95

0+00 = END OF CURB  
ON GUY

✓ 198.77 STAKE  
198.54 & GRADE  
C 0.23

1430

✓ 195.31  
194.69  
C 0.62

BC GUY 195.70  
FC 172.79 19  
190.50

S.M. S.W.S.P. JUAN ST. & HORTENSIA ST.  
= 220.09

DIRECT ELEV. ROD USED

CB. STAKE 31ST ST. N.E. OF CEDAR

SEE 2716-D

COTA  
HATCH  
PULLEN  
KELLEY

INDEXED

8-15-55  
W.D. # 31036

50

	LT.	RT.		LT.	RT.
17	205.54 205.48 ✓ C 0.06	205.05 204.77 ✓ C 0.28		195.17 195.20 F 0.03	194.94 194.89 C 0.05
1400			2100		
0	208.15 208.06 ✓ C 0.09	207.31 207.24 ✓ C 0.07		197.78 197.84 ✓ F 0.06	197.31 197.36 F 0.05
0+75			1475		
0	210.76 210.59 ✓ C 0.17	210.13 209.71 ✓ C 0.42		199.19 exist.	
0+50			1422 <sup>20</sup> exist. CB.		
0	213.05 ✓ 213.37 F 0.32	212.52 ✓ 212.18 C 0.38			200.61 199.83 C 0.18
0+25			1450		
0	216.60 STAKE 215.77 GRADE C 0.23				202.40 202.30 C 0.10
0+02			1425		
0	215.84 215.82	214.65 214.65		204.79 exist.	
0+00 = N.K.Y. P.D. CEDAR TO WEST.			1411.76 exist. CB.		

188.13  
50

187.52  
187.48

3406 Meel exist  
Cb. on Lt

187.63  
187.61

3401A exist CR  
Pt.

187.65 ✓  
187.72 ✓  
F0.07

188.14  
187.11 ✓  
C0.37

249062

188.68  
188.61  
C0.07

189.15 ✓  
188.61 ✓  
C0.54

247062

190.12  
190.00  
C0.12

190.42  
189.97 ✓  
C0.45

245062

191.89  
191.95 ✓  
F0.06

192.35  
191.87 ✓  
C0.48

243062 P.V.C.

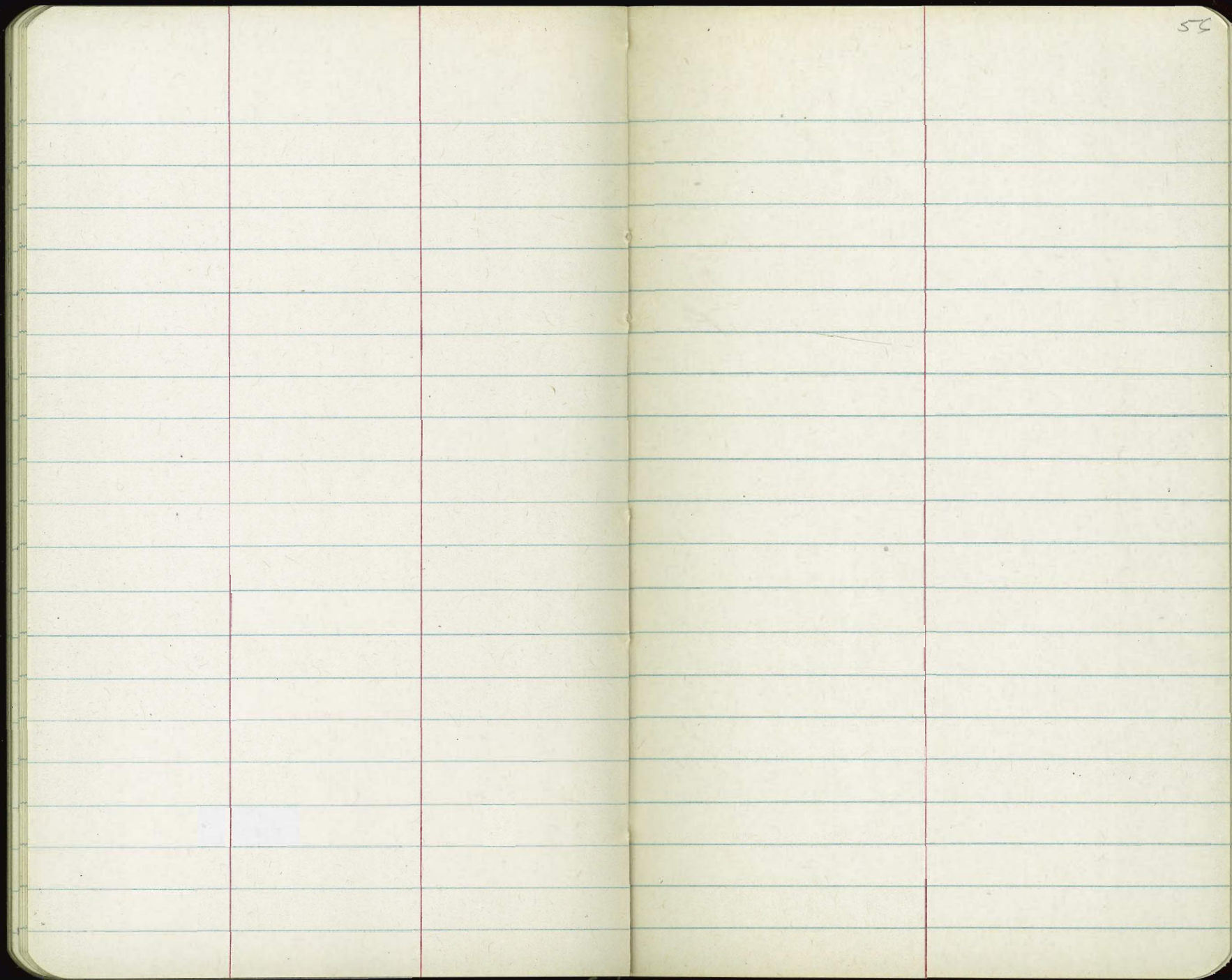
Handwritten red scribbles in the left margin.







The image shows an open notebook with two facing pages. The pages are cream-colored and feature light blue horizontal ruling. A vertical red margin line is present on each page, creating a narrow margin on the left side of the left page and the right side of the right page. The notebook is bound in the center with three visible stitches. The pages are blank, with no writing or markings. The number '55' is written in the top right corner of the right page. The notebook is set against a dark background.

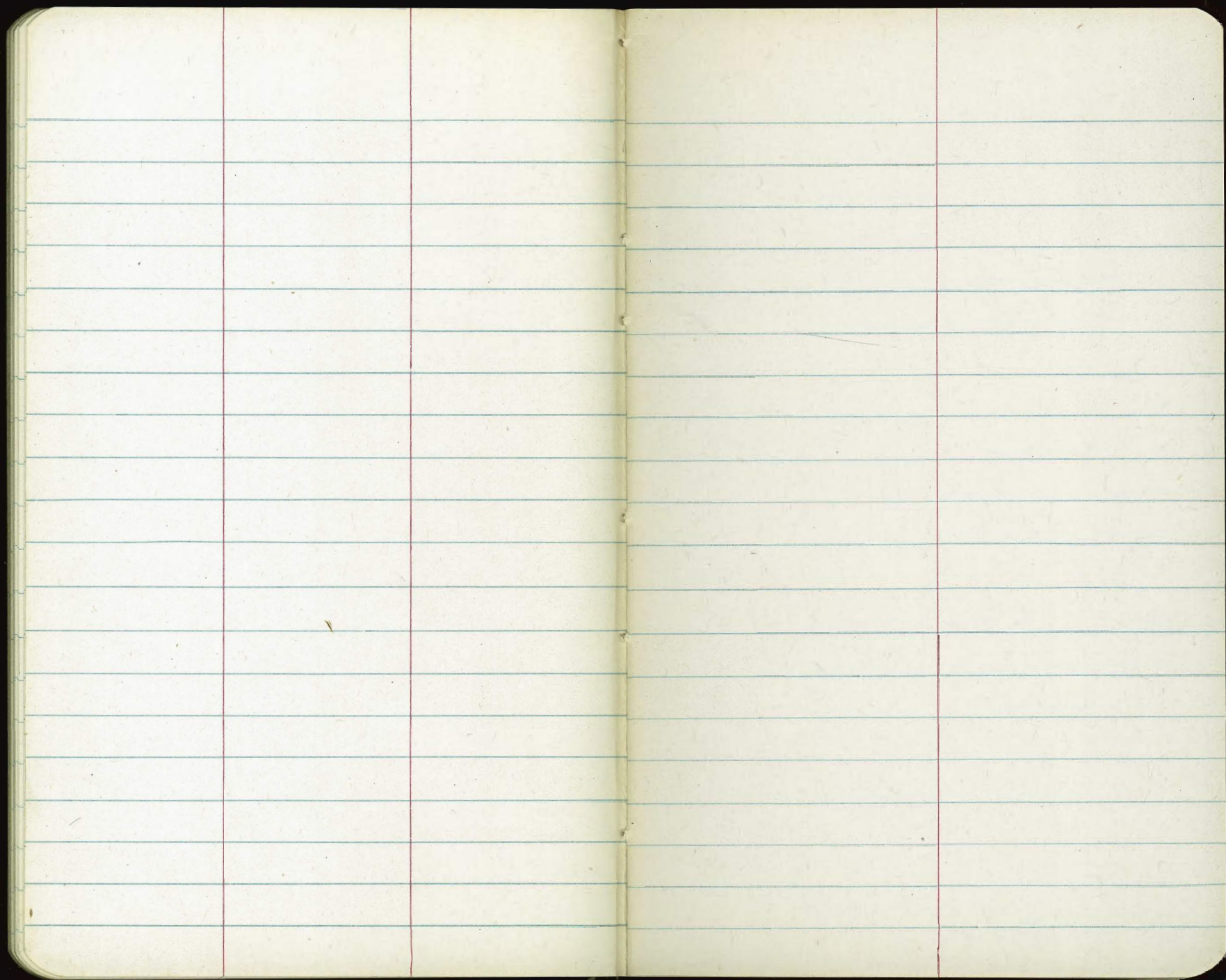




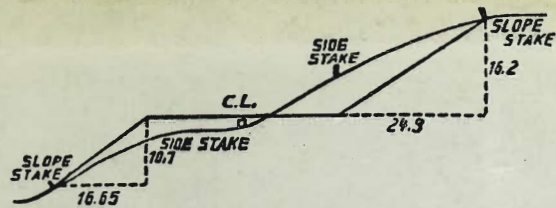












**DISTANCES FROM SIDE STAKES FOR CROSS-SECTIONING.**  
**SLOPE 1 1/4 TO 1. ROADWAY OF ANY WIDTH.**

	0	.1	.2	.3	.4	.5	.6	.7	.8	.9	
0	0.00	0.15	0.30	0.45	0.60	0.75	0.90	1.05	1.20	1.35	0
1	1.50	1.65	1.80	1.95	2.10	2.25	2.40	2.55	2.70	2.85	1
2	3.00	3.15	3.30	3.45	3.60	3.75	3.90	4.05	4.20	4.35	2
3	4.50	4.65	4.80	4.95	5.10	5.25	5.40	5.55	5.70	5.85	3
4	6.00	6.15	6.30	6.45	6.60	6.75	6.90	7.05	7.20	7.35	4
5	7.50	7.65	7.80	7.95	8.10	8.25	8.40	8.55	8.70	8.85	5
6	9.00	9.15	9.30	9.45	9.60	9.75	9.90	10.05	10.20	10.35	6
7	10.50	10.65	10.80	10.95	11.10	11.25	11.40	11.55	11.70	11.85	7
8	12.00	12.15	12.30	12.45	12.60	12.75	12.90	13.05	13.20	13.35	8
9	13.50	13.65	13.80	13.95	14.10	14.25	14.40	14.55	14.70	14.85	9
10	15.00	15.15	15.30	15.45	15.60	15.75	15.90	16.05	16.20	16.35	10
11	16.50	16.65	16.80	16.95	17.10	17.25	17.40	17.55	17.70	17.85	11
12	18.00	18.15	18.30	18.45	18.60	18.75	18.90	19.05	19.20	19.35	12
13	19.50	19.65	19.80	19.95	20.10	20.25	20.40	20.55	20.70	20.85	13
14	21.00	21.15	21.30	21.45	21.60	21.75	21.90	22.05	22.20	22.35	14
15	22.50	22.65	22.80	22.95	23.10	23.25	23.40	23.55	23.70	23.85	15
16	24.00	24.15	24.30	24.45	24.60	24.75	24.90	25.05	25.20	25.35	16
17	25.50	25.65	25.80	25.95	26.10	26.25	26.40	26.55	26.70	26.85	17
18	27.00	27.15	27.30	27.45	27.60	27.75	27.90	28.05	28.20	28.35	18
19	28.50	28.65	28.80	28.95	29.10	29.25	29.40	29.55	29.70	29.85	19
20	30.00	30.15	30.30	30.45	30.60	30.75	30.90	31.05	31.20	31.35	20
21	31.50	31.65	31.80	31.95	32.10	32.25	32.40	32.55	32.70	32.85	21
22	33.00	33.15	33.30	33.45	33.60	33.75	33.90	34.05	34.20	34.35	22
23	34.50	34.65	34.80	34.95	35.10	35.25	35.40	35.55	35.70	35.85	23
24	36.00	36.15	36.30	36.45	36.60	36.75	36.90	37.05	37.20	37.35	24
25	37.50	37.65	37.80	37.95	38.10	38.25	38.40	38.55	38.70	38.85	25
26	39.00	39.15	39.30	39.45	39.60	39.75	39.90	40.05	40.20	40.35	26
27	40.50	40.65	40.80	40.95	41.10	41.25	41.40	41.55	41.70	41.85	27
28	42.00	42.15	42.30	42.45	42.60	42.75	42.90	43.05	43.20	43.35	28
29	43.50	43.65	43.80	43.95	44.10	44.25	44.40	44.55	44.70	44.85	29
30	45.00	45.15	45.30	45.45	45.60	45.75	45.90	46.05	46.20	46.35	30
31	46.50	46.65	46.80	46.95	47.10	47.25	47.40	47.55	47.70	47.85	31
32	48.00	48.15	48.30	48.45	48.60	48.75	48.90	49.05	49.20	49.35	32
33	49.50	49.65	49.80	49.95	50.10	50.25	50.40	50.55	50.70	50.85	33
34	51.00	51.15	51.30	51.45	51.60	51.75	51.90	52.05	52.20	52.35	34
35	52.50	52.65	52.80	52.95	53.10	53.25	53.40	53.55	53.70	53.85	35
36	54.00	54.15	54.30	54.45	54.60	54.75	54.90	55.05	55.20	55.35	36
37	55.50	55.65	55.80	55.95	56.10	56.25	56.40	56.55	56.70	56.85	37
38	57.00	57.15	57.30	57.45	57.60	57.75	57.90	58.05	58.20	58.35	38
39	58.50	58.65	58.80	58.95	59.10	59.25	59.40	59.55	59.70	59.85	39
40	60.00	60.15	60.30	60.45	60.60	60.75	60.90	61.05	61.20	61.35	40
41	61.50	61.65	61.80	61.95	62.10	62.25	62.40	62.55	62.70	62.85	41
42	63.00	63.15	63.30	63.45	63.60	63.75	63.90	64.05	64.20	64.35	42
43	64.50	64.65	64.80	64.95	65.10	65.25	65.40	65.55	65.70	65.85	43
44	66.00	66.15	66.30	66.45	66.60	66.75	66.90	67.05	67.20	67.35	44
45	67.50	67.65	67.80	67.95	68.10	68.25	68.40	68.55	68.70	68.85	45
46	69.00	69.15	69.30	69.45	69.60	69.75	69.90	70.05	70.20	70.35	46
47	70.50	70.65	70.80	70.95	71.10	71.20	71.40	71.55	71.70	71.85	47
48	72.00	72.15	72.30	72.45	72.60	72.75	72.90	73.05	73.20	73.35	48
49	73.50	73.65	73.80	73.95	74.10	74.25	74.40	74.55	74.70	74.85	49
50	75.00	75.15	75.30	75.45	75.60	75.75	75.90	76.05	76.20	76.35	50

THE NATIONAL BLANK BOOK COMPANY  
 HOLYOKE MASSACHUSETTS  
 NEW YORK CHICAGO BOSTON SAN FRANCISCO