

DISTANCES FROM SIDE STAKES FOR CROSS-SECTIONING
SLOPE 1 TO 1. ROADWAY OF ANY WIDTH

	0	.1	.2	.3	.4	.5	.6	.7	.8	.9	
0	0.00	0.10	0.20	0.30	0.40	0.50	0.60	0.70	0.80	0.90	0
1	1.00	1.10	1.20	1.30	1.40	1.50	1.60	1.70	1.80	1.90	1
2	2.00	2.10	2.20	2.30	2.40	2.50	2.60	2.70	2.80	2.90	2
3	3.00	3.10	3.20	3.30	3.40	3.50	3.60	3.70	3.80	3.90	3
4	4.00	4.10	4.20	4.30	4.40	4.50	4.60	4.70	4.80	4.90	4
5	5.00	5.10	5.20	5.30	5.40	5.50	5.60	5.70	5.80	5.90	5
6	6.00	6.10	6.20	6.30	6.40	6.50	6.60	6.70	6.80	6.90	6
7	7.00	7.10	7.20	7.30	7.40	7.50	7.60	7.70	7.80	7.90	7
8	8.00	8.10	8.20	8.30	8.40	8.50	8.60	8.70	8.80	8.90	8
9	9.00	9.10	9.20	9.30	9.40	9.50	9.60	9.70	9.80	9.90	9
10	10.00	10.10	10.20	10.30	10.40	10.50	10.60	10.70	10.80	10.90	10
11	11.00	11.10	11.20	11.30	11.40	11.50	11.60	11.70	11.80	11.90	11
12	12.00	12.10	12.20	12.30	12.40	12.50	12.60	12.70	12.80	12.90	12
13	13.00	13.10	13.20	13.30	13.40	13.50	13.60	13.70	13.80	13.90	13
14	14.00	14.10	14.20	14.30	14.40	14.50	14.60	14.70	14.80	14.90	14
15	15.00	15.10	15.20	15.30	15.40	15.50	15.60	15.70	15.80	15.90	15
16	16.00	16.10	16.20	16.30	16.40	16.50	16.60	16.70	16.80	16.90	16
17	17.00	17.10	17.20	17.30	17.40	17.50	17.60	17.70	17.80	17.90	17
18	18.00	18.10	18.20	18.30	18.40	18.50	18.60	18.70	18.80	18.90	18
19	19.00	19.10	19.20	19.30	19.40	19.50	19.60	19.70	19.80	19.90	19
20	20.00	20.10	20.20	20.30	20.40	20.50	20.60	20.70	20.80	20.90	20
21	21.00	21.10	21.20	21.30	21.40	21.50	21.60	21.70	21.80	21.90	21
22	22.00	22.10	22.20	22.30	22.40	22.50	22.60	22.70	22.80	22.90	22
23	23.00	23.10	23.20	23.30	23.40	23.50	23.60	23.70	23.80	23.90	23
24	24.00	24.10	24.20	24.30	24.40	24.50	24.60	24.70	24.80	24.90	24
25	25.00	25.10	25.20	25.30	25.40	25.50	25.60	25.70	25.80	25.90	25
26	26.00	26.10	26.20	26.30	26.40	26.50	26.60	26.70	26.80	26.90	26
27	27.00	27.10	27.20	27.30	27.40	27.50	27.60	27.70	27.80	27.90	27
28	28.00	28.10	28.20	28.30	28.40	28.50	28.60	28.70	28.80	28.90	28
29	29.00	29.10	29.20	29.30	29.40	29.50	29.60	29.70	29.80	29.90	29
30	30.00	30.10	30.20	30.30	30.40	30.50	30.60	30.70	30.80	30.90	30
31	31.00	31.10	31.20	31.30	31.40	31.50	31.60	31.70	31.80	31.90	31
32	32.00	32.10	32.20	32.30	32.40	32.50	32.60	32.70	32.80	32.90	32
33	33.00	33.10	33.20	33.30	33.40	33.50	33.60	33.70	33.80	33.90	33
34	34.00	34.10	34.20	34.30	34.40	34.50	34.60	34.70	34.80	34.90	34
35	35.00	35.10	35.20	35.30	35.40	35.50	35.60	35.70	35.80	35.90	35
36	36.00	36.10	36.20	36.30	36.40	36.50	36.60	36.70	36.80	36.90	36
37	37.00	37.10	37.20	37.30	37.40	37.50	37.60	37.70	37.80	37.90	37
38	38.00	38.10	38.20	38.30	38.40	38.50	38.60	38.70	38.80	38.90	38
39	39.00	39.10	39.20	39.30	39.40	39.50	39.60	39.70	39.80	39.90	39
40	40.00	40.10	40.20	40.30	40.40	40.50	40.60	40.70	40.80	40.90	40
41	41.00	41.10	41.20	41.30	41.40	41.50	41.60	41.70	41.80	41.90	41
42	42.00	42.10	42.20	42.30	42.40	42.50	42.60	42.70	42.80	42.90	42
43	43.00	43.10	43.20	43.30	43.40	43.50	43.60	43.70	43.80	43.90	43
44	44.00	44.10	44.20	44.30	44.40	44.50	44.60	44.70	44.80	44.90	44
45	45.00	45.10	45.20	45.30	45.40	45.50	45.60	45.70	45.80	45.90	45
46	46.00	46.10	46.20	46.30	46.40	46.50	46.60	46.70	46.80	46.90	46
47	47.00	47.10	47.20	47.30	47.40	47.50	47.60	47.70	47.80	47.90	47
48	48.00	48.10	48.20	48.30	48.40	48.50	48.60	48.70	48.80	48.90	48
49	49.00	49.10	49.20	49.30	49.40	49.50	49.60	49.70	49.80	49.90	49
50	50.00	50.10	50.20	50.30	50.40	50.50	50.60	50.70	50.80	50.90	50

Distance of slope stake from side or shoulder stake for any width roadway, slope 1 to 1. If ground is nearly level, the cut or fill at side stake is located by the double entry method in left column and top row. The number in body of table in same row and column gives distance from side stake to slope stake. If ground is not level estimate the difference in elevation between the side stake and slope stake, lower target by this amount if cut, elevate if fill. Add this amount to cut or fill and find distance in table. Set up rod at this point, and line of sight should cut target. If it does not make the slight adjustment necessary.

G 372
30th St. Canyon

DIRECTIONS FOR USE OF TABLES

TABLE NO. XIV

Distance of slope stake from side of shoulder
stake for any width roadway, slope 1 to 1.
Stake is located by the double entry method in

IMPROVED TABLES
AND
INFORMATION

cut larger. If it does not make an slight ad-
justment necessary.

TABLE NO. VIII

To find Tangent and External for curve of
any other degree divide by degree of curve and
add correction found in column of corrections.
Degree of curve with a given T may be found
by dividing tangent (or external) opposite T by
given tangent (or external).
The distance from a point on the tangent to
the curve is very nearly the square of the tangent
length divided by twice the radius.

TABLE XIII—CORRECTIONS FOR TANGENTS AND EXTERNALS

These corrections are to be added to the approximate values, found by dividing the tangent, or external, for a 1° curve (Table VIII) by the degree of curve, in order to obtain the true tangents, or externals. Intermediate values may be obtained by interpolation.

FOR TANGENTS ADD

Central Angle	DEGREE OF CURVE															
	5°	10°	15°	20°	25°	30°	35°	40°	45°	50°	55°	60°	65°	70°		
10°	.03	.06	.09	.13	.16	.19	.22	.25	.28	.31	.34	.38	.42	.46		
15°	.04	.10	.14	.19	.24	.29	.34	.39	.45	.51	.53	.58	.63	.68		
20°	.06	.13	.19	.26	.32	.39	.45	.51	.58	.65	.72	.79	.84	.90		
25°	.08	.16	.24	.33	.40	.49	.58	.67	.75	.83	.90	.99	1.06	1.14		
30°	.10	.19	.29	.39	.49	.59	.69	.79	.89	.99	1.09	1.20	1.29	1.39		
35°	.11	.22	.34	.47	.58	.69	.79	.89	1.01	1.11	1.21	1.31	1.41	1.51		
40°	.13	.26	.40	.53	.67	.80	.93	1.06	1.20	1.34	1.49	1.64	1.79	1.94		
45°	.15	.30	.44	.60	.76	.91	1.06	1.21	1.37	1.52	1.70	1.87	2.04	2.21		
50°	.17	.34	.51	.68	.85	1.02	1.19	1.36	1.54	1.72	1.91	2.10	2.29	2.48		
55°	.19	.38	.57	.76	.95	1.14	1.32	1.52	1.72	1.92	2.14	2.35	2.56	2.77		
60°	.21	.42	.63	.84	1.05	1.27	1.49	1.71	1.94	2.17	2.38	2.60	2.83	3.07		
65°	.23	.46	.69	.93	1.16	1.40	1.64	1.88	2.13	2.38	2.63	2.88	3.13	3.39		
70°	.25	.51	.76	1.02	1.28	1.54	1.80	2.06	2.33	2.60	2.88	3.16	3.44	3.72		
75°	.27	.56	.83	1.12	1.40	1.69	1.98	2.27	2.57	2.87	3.16	3.47	3.78	4.09		
80°	.30	.61	.91	1.22	1.53	1.84	2.15	2.46	2.78	3.10	3.44	3.78	4.12	4.46		
85°	.33	.66	1.00	1.33	1.68	2.02	2.36	2.70	3.05	3.40	3.77	4.14	4.55	4.89		
90°	.36	.72	1.09	1.45	1.83	2.20	2.57	2.94	3.32	3.70	4.10	4.50	4.91	5.32		
95°	.39	.79	1.19	1.55	2.00	2.40	2.80	3.20	3.61	4.02	4.40	4.98	5.38	5.83		
100°	.43	.86	1.30	1.74	2.18	2.62	3.06	3.50	3.95	4.40	4.88	5.37	5.85	6.34		
110°	.51	1.03	1.56	2.08	2.61	3.14	3.67	4.21	4.76	5.31	5.86	6.43	7.01	7.60		
120°	.62	1.25	1.93	2.52	3.16	3.81	4.45	5.11	5.77	6.44	7.12	7.80	8.50	9.22		

FOR EXTERNALS ADD

Central Angle	DEGREE OF CURVE															
	5°	10°	15°	20°	25°	30°	35°	40°	45°	50°	55°	60°	65°	70°		
10°	.001	.003	.004	.006	.007	.008	.009	.011	.012	.014	.015	.017	.018	.020		
15°	.003	.007	.010	.014	.018	.023	.027	.029	.032	.035	.039	.043	.047	.051		
20°	.006	.011	.017	.022	.028	.034	.038	.045	.051	.057	.063	.070	.076	.083		
25°	.009	.018	.027	.036	.046	.056	.065	.074	.083	.093	.106	.120	.127	.135		
30°	.013	.025	.038	.051	.065	.078	.090	.103	.116	.129	.149	.170	.179	.188		
35°	.018	.035	.054	.072	.086	.109	.131	.153	.175	.197	.213	.230	.247	.264		
40°	.023	.046	.070	.093	.117	.141	.172	.203	.234	.265	.277	.290	.315	.341		
45°	.030	.060	.093	.119	.153	.184	.216	.254	.289	.325	.351	.378	.411	.445		
50°	.037	.075	.116	.151	.189	.227	.266	.305	.345	.384	.425	.467	.508	.550		
55°	.046	.093	.142	.188	.236	.283	.332	.381	.420	.479	.530	.582	.641	.700		
60°	.056	.112	.168	.225	.283	.340	.398	.457	.516	.575	.636	.697	.774	.851		
65°	.067	.135	.204	.273	.343	.412	.483	.554	.625	.697	.711	.845	.922	1.01		
70°	.080	.159	.240	.321	.403	.485	.568	.652	.735	.819	.906	.994	1.08	1.17		
75°	.095	.182	.266	.353	.440	.528	.617	.707	.797	.877	1.07	1.18	1.29	1.39		
80°	.110	.220	.332	.445	.558	.671	.787	.903	1.02	1.13	1.25	1.38	1.50	1.62		
85°	.128	.259	.391	.524	.657	.790	.926	1.06	1.20	1.34	1.47	1.62	1.76	1.91		
90°	.149	.299	.450	.603	.756	.910	1.07	1.22	1.38	1.54	1.70	1.87	2.03	2.20		
95°	.174	.350	.522	.706	.885	1.06	1.25	1.43	1.62	1.80	1.99	2.18	2.38	2.58		
100°	.200	.401	.604	.809	1.01	1.22	1.43	1.64	1.85	2.06	2.28	2.50	2.73	2.96		
110°	.268	.536	.806	1.08	1.35	1.63	1.91	2.20	2.48	2.76	3.05	3.35	3.66	3.96		
120°	.360	.721	1.08	1.45	1.82	2.19	2.57	2.95	3.33	3.72	4.11	4.50	4.91	5.32		

Stake's Sewer Storm Drain & Culvert 30th St Fall 1-5

Stake Sewer Laterals Overlook Hts. 6-

Sewer SMH#5 to existing one
on Wly Side 30th St ~~staked 6" Wly~~

staked 10" Wly

0+00 = SMH #5
 12" Wly
 6⁵¹/₆ 6⁵¹/₆
 8¹⁰
 C-5²⁷ 202⁸³ 5⁹⁵ C-3¹²

0+30
 7⁴⁸
 C-5²² 202²⁶ 06⁰¹ C-3⁷⁵

0+60
 7³³
 C-5⁶⁴ 201⁶⁹ 04⁵¹ C-2⁸²

0+90
 7⁵⁰
 C-5⁸⁸ 201¹² 04⁷² C-4⁶⁰

1+20
 6⁴⁸
 C-5⁹³ 200⁵⁵ 05²⁸ C-4⁷³

1+50
 6³⁹
 C-5⁴¹ 199⁹⁸ 04²¹ C-4⁹³

1+80
 6²⁸
 C-6⁸⁷ 199⁴¹ 05⁴³ C-6⁰²

2+10
 5⁶⁰
 C-6⁷⁶ 198⁸⁴ 06⁰¹ C-7¹⁷

2+40
 4⁴⁰
 C-6¹³ 198²⁷ 05⁵¹ C-7²⁴

2+74⁷⁷ meet existing SMH.

1976

=S

0+00 Wly

0+30

0+60

0+90

1+20

1+50

1+80

2+08²¹ SMH #4

2+39

201⁴⁵

0962 C-8¹⁷

205²⁹

1245 C-7¹⁶

209¹³

2117 C-12⁰⁴

212⁹⁷

2520 C-12⁷³

216⁸¹

3065

C-13⁸⁴

220⁶⁵

3079

C-10¹⁴

224³⁴

3355

C-9²¹

225⁵⁷

3420

C-8⁶³

BM

220⁵⁰ Con Men Wly 7' Line

30th + Pl. Line Nutmeg

Prop Hub 234⁷⁵

on tie out Hub # 241²⁴

2169	226 ⁸⁰	3464 C-784	1450	221 ¹¹	6 ⁰ Ely 2783 C-672
2199	228 ⁰³	3501 C-698	1480	229 ⁰¹	3430 C-529
3129	229 ²⁶	3581 C-655	21987 SMH #2 BC,	239 ⁵⁰	4465 C-515
3163 ⁰⁶ SMH #3	230 ⁶⁸	3814 C-776	2141 ⁸⁷ mid Pt.	23964	4738 C-774
		Make connection to existing sewer			50 Ely
		SLK 10⁰Ely	2153 ⁸⁸ EC,	23978	4844 C-866
		6 ⁰ Ely			
0100 SMH #5 Line to South	785 C-502 202 ⁸³	575 C-312	2170	23988	4827 C-839
0130	838 C-452 C-495	203 ⁸⁶	3100	24008	4882 C-874
0160	1068 C-579	204 ⁸⁹	3130	24027	4877 C-850
0192 ⁵⁷ L. 16°44' N.	1687 SMH #1 C-1087	206 ⁰⁰	3160	24046	4756 C-760
1420	213 ²¹	2213 C-897	3190	24065	4565 C-500

4+20

~~240⁸⁴~~

471
C386

4+42⁸⁸ SMH

241⁰⁰

43⁹⁹
C-30

Stake 5x5° box culvert
under 30th St fill

268^e
~~30~~

10° sly

Made end 11 to 30th 10° sly

0+00 Fly end culvert

~~84~~
C-176 207⁰⁰
826
C-126

~~0928~~
C-238 900
C-200

2+70

~~10° sly~~
C-38

~~10° sly~~
~~213~~
C-134

~~169~~
207
C-128

0+30

C-260 41
206²¹

~~907~~ 901
C-276 C-270

3+01 ⁹⁵ Fly end culvert.
made end 11 to 30th

~~10° sly~~
~~136~~
165
C-165

~~10° sly~~
~~169~~
200⁰⁰
C-159
255
C-255 C-155

0+60

C-301 82
205⁶²

~~878~~ 883
C-310 C-321

0+90

C-399 523
204²³

~~969~~ 922
C-473 C-429

1+20

C-406 65
204²¹

~~900~~ 871
C-476 C-447

1+50

C-403 407
203²¹

~~796~~ 810
C-441 C-455

1+80

C-475 349
204²⁶

~~648~~ 824
C-362 C-538

2+10

C-085 89
202¹²

~~339~~ 374
C-113 C-157

2+40

~~10° sly~~
C-075 228
~~173~~
C-134 201¹⁰

~~303~~
C-155

10° sly

207⁰⁰

Stake 18" Storm Drain
around Ely of 30th St Fill

staked BKEY

↓
34 Ely

0+00 inlet @ S/E end 245⁸⁵ 4964
C-379

0+23 22 Ely 245⁶² 4985
C-423

0+53 16 Ely 245³² 4921
C-439

0+83 15 Ely 245⁰² 4928
C-426

1+00 BC 24 Ely 244⁸⁵ 4937
C-452

1+20 Mid Pt. 22 Ely 244⁶³ 4951
C-488

1+40 end @ FC 35 Ely 244⁴¹ 4694
C-253

Sewer laterals (D) incl also water stubs
Lillian St.

all sewers staked 5" BK Prop
all waters staked 5" BK 06 Pace

Viola St

6

6756 (D) on E 6240 6820 C-580

6751 (W) on E 6802 6852 C-050

5737 (2) on E 7320 8018 C-718

3726 (D) on E 7837 7942 C-103

omit from sheet list
but (D) + (W) also (W)
in Viola St. closed

1781 (4) on E 7610 8434 C-824

1776 (W) on E 8154 8188 C-034

1731 (5) on W 7920 8437 C-517

1726 (W) on W 8475 8574 C-099

0731 (6) on E (?) existing 9040 9989 C-949

077

0726 (W) on E 9587 existing

0700 Nly line Dorcas

4777⁵³ (D) on N

5920 6817 C-897

4759⁸³ (8) on S

5740 6911 C-1171

4754⁸³ (W) on S

6210 6363 C-153

3736⁵ (W) on N

5259 5360 C-101

3730⁵ (17) on N

4640 5856 C-1216

0700 = Fly line Morena Blvd

Sewer & Water Laterals
Gertrude St

				5768 ⁴⁹ (10) on N	5667	5657	F-0 ¹⁰ 72
1744 (12) on W	3360	3558	F-190	5763 ⁴⁹ (19) on N	5150	5346	C-194
0799 (10) on W	3913	3544	F-367	3721 ⁸¹ (10) on W	53 ²³	53 ³⁶	C-0 ¹³
0794 (11) on W	3050	3337	C-287	3717 ²¹ (16) on W	4430	5292	C-862
0774 (10) on E	3780	3836	C-056	2774 (10) on W	5762	4776	F-386
0769 (10) on E	3230	4102	C-872	2769 (15) on W	4130	4421	C-291
0700 = My line Viola St				1799 (10) on W	4664	4182	F-482
3767 ⁸⁶ (10) on W	3953	4040	C-087	1794 (14) on W	3670	3913	C-243
3762 ⁸⁶ (25) on W	3470	3882	C-412	1790 (15) on E		4716	48 ⁰⁰ C-084
0700 = Mast Sly cor lot 24 @ Dorcas St				1785 (13) on E		4170	5164 C-994
0726 ⁰³ (2) on W	2250	2738	C-508	1749 (10) on W	4303	3816	F-487

	Dorcas St	Laterals	Bianca Ave	
8791 ⁰⁴ (W) on N	118 ²¹			42 ⁸⁰ 48 ⁹⁷ C-6 ¹⁷ ^{8v}
8486 ⁰⁴ (37) on N	113 ²⁰		3787 ⁴⁴ (34) on E	
3701 ⁰⁴ (W) on N	49 ⁰¹	51 ³¹ C-2 ³⁰	3767 ⁴⁴ (35) on E	43 ⁸⁰ 49 ⁰² C-6 ⁰²
2796 ⁰⁴ (110) on N	44 ⁴⁰	49 ¹⁶ C-4 ⁷⁶	3719 (W) on W	47 ⁴³ 44 ⁹⁷ F-2 ⁴⁶
6705 ⁰⁴ (112) on N	80 ⁶⁰	87 ³² C-6 ⁷²	3714 (54) on W	39 ¹⁰ 43 ¹⁹ C-4 ⁰⁹
3763 ²⁶ (33) on S	52 ³⁰	57 ³² C-5 ⁰²	3701 ⁴⁴ (52) on E	43 ⁶⁰ 49 ⁴⁶ C-5 ⁸⁶
1775 ²³ (W) on S	39 ⁷²	40 ²⁶ C-0 ⁵⁴	2769 (W) on W	47 ⁸⁰ 44 ⁶² F-3 ¹⁸
1770 ²³ (32) on S	1 ⁵⁰ BK Prop 34 ⁵⁰	39 ⁸⁰ C-5 ³⁰	2764 (53) on W	38 ⁶⁰ 42 ⁶⁹ C-4 ⁰⁹
0+00 = Fly line Savannah			2701 ⁴⁴ (53) on E	44 ⁴⁰ 54 ²⁵ C-9 ⁰⁵
<u>Savannah St</u>			(36) on E	42 ⁸⁰ 54 ²¹ C-11 ⁴¹
(W) on E 0724	27 ⁶⁴	28 ²⁶ C-1 ¹²		40 ⁵⁰ 48 ⁹⁴ C-8 ⁴⁴
Lat (28) on E 0719	22 ⁶⁰	29 ¹⁰ C-6 ⁵⁰	(30) on E	
0+00 = Fly line Buenos Ave			(29) on E	36 ⁵⁰ 45 ¹¹ C-8 ⁶¹

18" Storm Drain in Path BIK 2
 Overlook Hts.
 staked 6" sly of E pipe

Everview Rd 9
 Laterals sewer water

0+00 = E type G Cleanout 90⁸⁰ 98¹⁵ C-2⁹⁵

4+41²⁶ (W) m S

143⁵⁶ 45²⁷ C-1⁸¹

0+30 83⁴² 87²⁷ C-3⁸⁷

3+98⁶⁸ (61) m S

128¹⁰ 43³⁸ C-1⁵²⁸
~~43⁶⁸ C-1⁵⁵⁸~~

0+60 76⁰⁵ 78⁵⁷ C-2⁵²

3+63⁴⁸ (W) m S

136⁷⁰ 40³⁵ C-3⁶⁵

0+90 68⁶⁹ 71⁷¹ C-3⁰²

3+58¹² (60) m S

126⁰⁰ 41⁴ C-1⁵⁴⁰
~~39⁷¹ C-1³⁷¹~~

1+20 61³³ 64⁴⁴ C-3¹¹

3+09⁹¹ (W) m S

131¹⁸ 36⁶² C-5⁴⁴

1+50 53⁹⁷ 58⁰⁰ C-4⁰³

3+04⁵⁵ (59) m S

119⁰⁰ 35⁹⁵ C-16⁹⁵

on Wly line of wall face 6" My 50¹⁸
 1+78² = Wly edge curtain wall C-3²⁵ 46²³ 48⁵⁶ 6⁰⁵⁴ C-1⁶³

2+69⁴⁹ (58) m N

119⁴⁰ 34⁹⁵ C-15⁵⁵

end 18" RCP

2+56³⁴ (W) m S

121⁰⁵ 26⁷⁷ C-5⁷²

2+50²⁸ (57) m S

109⁴⁰ 26⁵⁷ C-17¹⁷

0+00 BCE Dorcas St

Stake 18" RCP Storm Drain
 Btwn Everview Rd & Monitor BKS
 stake d 62 Ely of E

Everview Rd
 Sewer & Water Laterals

(106) F074

2+16⁰⁰ 155³⁰ 62²⁰ C-6²⁰

1+81¹⁷ 155⁴⁷ 60²⁹ C-4⁸²

1+46³⁴ L. 90° type G cleanout 155⁶⁵ 60¹⁴ C-4⁴⁹

1+20³⁴ EC, 159⁶⁰ 62⁴ C-3⁰¹

1+02⁶⁷ MID PT. 160²⁰ 66⁵⁵ C-5⁶⁵

0+85^{BC} 162²⁰ 70⁰⁸ C-9⁹⁸

0+57 164²⁰ 70⁰⁸ C-5⁴⁸

0+17 BTK 167²⁰ 74⁵⁷ C-7³⁷

0+00 cb line existing type A-2
 cb inlet meet

6+16⁹ (W) on S 161⁸⁰ ~~61³⁴~~ F-0⁴⁶

6+12⁶ (67) on S 154⁰⁰ 59⁷² C-5⁷²

5+68⁸ (66) on S 150²⁰ 52⁸⁰ C-2⁶⁰

5+64⁴ (W) on S 154³⁰ ~~53²²~~ 447 F-0⁴⁸
 C-0¹⁷

5+28⁵ (W) on S 150⁹⁰ 50²⁰ F-0²⁰

5+24¹ (65) on S 145⁷⁰ 47²⁴ C-1⁵⁴

4+92⁹ (60) on N 147⁵⁰ 48⁶⁵ C-1¹⁵

4+87² (64) on N 142²⁰ 49⁹¹ C-7⁷¹

154⁹⁰ type G 54²² F068

cb 154²⁸ 54²⁹ F067
 154²⁸ C001

cb 155³⁰ 54⁶⁴ F066
 ic 154⁶³ C001

18³³ ↓ cb 157³³ 57⁰² F031

3+08³⁴ Ely Nly end outlet box ic 154⁸¹ C-2²¹
 end pipe

2+79⁵⁹ 154⁹⁷ 61²³ C-6²⁶

2+50⁸⁴ L. type G Cleanout 155¹³ 65²⁸ C10¹⁵
 top of box 164⁴⁵ C0⁸³

Everview Rd Sewer & Water
Laterals Cont.

Becomes Plainview Rd

11

17704⁴ (W) on E *omitted on list*

EIONstad St Ely BC Everview 8114²⁶

16799⁴ (104) on E *omitted on list*

6716⁹⁴ (W) on S

12778¹³ (W) on N

185^B 84⁹⁴ F-019

6712⁵⁷ (67) on S

12774³⁸ (72) on N

179⁸⁰ 84⁸⁴ C-504

5768⁷⁸ (66) on S

12741⁶ (71) on N

177⁴⁰ 83¹² C-572

5764⁴¹ (W) on S

12708⁶ (70) on S

176⁰⁰ 82⁹⁴ C-694

5728⁴⁸ (W) on S

11733⁶ (W) on N

179⁴⁵ 79⁶¹ C-016

5724⁴¹ (65) on S

11728⁶ (69) on N

175⁰⁰ 78⁴⁷ C-347

4792⁸⁷ (W) on N

10786⁶ (W) on N

179²⁰ 79⁸⁵ F-005

4787³⁴ (64) on N

10781⁶ (68) on N

174⁸⁰ 79⁵⁷ C-477

Plainview Rd
Sewer and Water Laterals Cont.

Brownell St
Sewer + Water Laterals

12

Cushman Ave only (incl 11)

5758⁷² (10) on N cb. in use 187⁸³

2743⁶⁵ (99) on W

1946⁰ 97⁸⁹ C-329

21465² (10) on E 212⁸⁶ 212¹⁰ F-076

27386⁵ (10) on W

199⁷⁷ 99⁸⁷ cb. in use

21400² (110) on E 208⁰⁰ 11⁸⁰ C-380

27176⁵ (10) on W

200²⁸ 0038 cb. in use

20763⁶ (109) on W 208⁰⁰ 13⁶⁷ C-567

27126⁵ (100) on W

195⁴⁰ 98²⁴ C-284

19754² (10) on E 212²¹ 12⁴⁵ C-024

1767⁶⁵ (101) on W

196⁵⁰ 98⁸⁷ C-237

19749⁵ (108) on E 207⁰⁰ 13³⁹ C-639

1762⁶⁵ (10) on W

201⁵⁰ 0166 cb. in use

17176⁵ (102) on E

198⁰⁰ 0460 C-660

17126⁵ (10) on E

202⁶⁵ 0361 C-096

0+00 Brownell = s PL of Cushman

Solar St water Laterals

19727⁵ (107) on E 206¹⁰ 12⁴⁰ C-630

0775 (10) on W

178⁷² cb. in

18789⁶ (100) on W *omit on list* 204⁹⁰

0725 (10) on W

181⁸⁵ 79⁵³ F-230

18769⁵ (105) on E 203⁵⁰ 11¹³ C-763

0+00 Solar St = s PL of Cushman

Elevation Rd
Sewer & Water laterals

14+73 ⁷¹ (89) on S	166 ³⁰	70 ⁵⁶ C-426
14+78 ⁵⁰ (W) on S	173 ⁶⁸	74 ⁰² C-034
15+23 ² (91) on S	169 ⁶⁰	75 ⁹⁰ C-630
15+28 (90) on N	173 ²⁰	81 ²² C-802
15+28 ⁰ (W) on S	177 ⁵⁶	78 ⁵⁰ C-098
15+75 ⁰ (92) on N	176 ²⁰	86 ⁵⁰ C-1030
15+80 ³ (W) on N (cb in use)		
(99) omit		
17+19 ⁰ (95) on N	184 ⁶⁰	95 ³⁰ C-1070
17+24 ³ (W) on N (cb in use)	187 ⁶	
18+05 ⁷⁵ (90) on N	185 ⁸⁰	93 ¹⁹ C-739

Now here on it is called Hilda Rd ¹³

6+62 ⁷³ (83) on NE	110 ⁰	117 ⁴⁵ C-735
6+69 ²⁸ (W) on NE	115 ⁴⁵	117 ²¹ C-176
7+33 (W) on NE	122 ⁴⁰	123 ⁰⁶ Fly stab C-066
13+16 ⁸ (85) on S	156 ⁶⁰	61 ³⁹ C-479
13+22 ⁰ (W) on S (cb in use)		
13+68 ⁰ (80) on S	158 ⁸⁰	64 ⁸⁵ C-605
13+74 ³ (W) on S (cb in use)		
14+25 ⁶ (87) on S	162 ⁷⁰	68 ⁹⁵ C-625
14+30 ⁶ (W) on S (cb in use)		
14+60 ⁰ (88) on N omit	167 ⁶⁰	
14+65 ² (W) on N omit (cb in use)		

Hilda Rd Sewer & Water
Laterals

5760^L (99) on W 98⁴⁰
 5764² (W) on W ob in use
 5780³ (S) on NE 101⁴⁰ 108³³ C-693
 5786⁵ (W) on NE 106⁴ 107⁴⁵ C-105
 6+43[°] (S) on S 105³⁰ 108⁰¹ C-271
 6+47² (W) on S ob in use

Ellsworth St
↓
Laterals

4769³⁵ (98) on W 133²⁰ 38⁰² C-482
 1735²⁵ (97) on W 136⁹⁰ 41⁰⁶ C-416
 1730 (W) on W ob in use

2734²⁰ (90) on W 96⁷⁰ 98⁸⁹ C-219
 2741⁴ (W) on W ob in use
 3741³⁴ (43) on W 97⁶⁰ 04²⁰ C-710
 3748¹ (W) on W 108³⁰ 06⁷⁹ F-151
 3795⁰ (99) on W 97⁷⁰ 04⁷⁹ C-709
 4701⁹ (W) on W ob in use
 4736 (W) on E 107²⁰ 08³³ C-113
 4748⁴ (46) on W 97²⁰ 100⁸¹ C-297
 4754⁷ (W) on W ob in use
 5724⁴² (98) on W 98⁴⁰ 99⁷¹ C-131
 5728⁶⁴ (W) on W ob in use

Ellsworth St Sta From North to South
on Monitor to Elevation Rd.

Hilda Rd
Sewer & Water laterals
cont.

Monitor Rd
Sewer & Water laterals

15

0451 (38) on W

77⁰ existing

0454 (W) on W

ob in use

1401 (39) on W

846⁰

90¹⁵ C-6¹⁵

1406 (W) on W

ob in use

(40) on E

✓ 98⁸⁰

~~0872~~ C-992
1237
1000 C-1357

W on E

✓ 1044⁵

0754
110⁰⁰ C-588
0.939

444⁵⁵ (W) on N

ob in use

439⁷³ (75) on N

149⁰⁰ 55⁷⁸ C-678

345⁹⁵ (79) on N

13940 45⁰³ C-5-63

1467² (W) on N

119⁵ 120⁵⁴ C-104

1463⁴ (73) on N

11360 117¹⁹ C-3⁵⁹

(W) on S

106²⁰ 111²⁶ C-5⁸⁰
112⁰¹ C-580

(77) on S

103⁰⁰ 139⁵ C-1095
12⁰² C-902

0182 (W) on N

10260 285 C-015
103⁷⁰ 703²⁴ 7046

0477 (17) on N

97⁷⁰ 98¹ C-041

0400 = E int Hilda & Monitor

13+84²⁶ (82) on S

192⁰⁰ 97⁸⁶ C5⁸⁶

10+47⁹ (81) on N

176⁶⁰ 83⁹² C.7³²

8+78⁶² (80) on N

171⁹⁰ 72²⁴ C0³⁴

8+73⁶² (W) on N. cb in use

8+27⁰² (79) on N

171⁰⁰ 70⁴⁷ F0⁵³

8+21⁷⁰ (W) on N cb in use

7+73⁸² (78) on N

170⁴⁰ 74²⁰ C-3⁸⁰

7+66⁴ (W) on N

cb in use

6+09³¹ (W) on N

cb in use

6+03⁷⁹ (76) on N

165⁸⁰ 70⁷⁹ C.4⁹⁹

8-16-57

City Contract woth 21528

Dorcas Hilda & Bianca - Curves
for sta. see skt 8 plans all stakes 3" at 06 face

17

1+5244	55 ²⁰	55.77 C057 56.31 C+11	3+31 ⁹⁵	75 ⁵²	75.42 F0.10
1+3211	53 ²⁰	53.07 - F0.03 L05 54.15 C+30	3+23 ²⁵	74 ⁵⁰	74.37 F0.13
1+4178	51 ³⁰ 50 ²⁵	51.70 C023 C040 52.13 C+18	3+07 ⁴⁶	72 ⁹⁶	72.81 F0.15
0+9146	49 ⁸⁵ 49 ⁴⁰	50.77 C+37 C-092	2+91 ⁶⁷	71 ⁴³	4.06 = F0.40 71.06 F0.37
0+7113	48 ⁸⁰ 48 ⁴⁰	49.73 C+33 0.93	2+67 ²⁰	68 ⁶⁴	68.71 C0.07
0+5081	48 ³⁰ 48 ⁰⁰	49.17 C+17 C0.87	2+44 ¹³	65 ⁸⁶	65.72 F0.14 66.24 C0.38
0+3048	48 ⁴⁰ 47 ⁸⁰	48.92 C+12 0.92	2+20 ³⁵	63 ⁰⁷	62.74 F0.33 63.99 C0.97
0+1016	48 ⁵⁰ 47 ²⁰	48.72 C0.82 0.22	1+96 ⁵⁷	60 ²⁹	60.02 F0.23 60.53 C0.24
0+00 Bianca Rd BC	48 ⁵³ 48 ⁰⁰	48.84 C0.31	1+72 ⁷⁹	57 ⁵⁰	7.32 F0.11 57.97 C0.47
BM		77.87 N.E.P. Hilda + Dorcas use			

0+67⁴⁶ PRC. 57°41'30" 73¹⁰

7484
C-174

0+56²³ 48°05' 73⁴⁰

7461
C-121

0+44⁹⁸ 38°28' 73²⁵ 73²⁰

7477
C-082

0+33⁷³ 28°51' 74⁷⁵ 74⁶⁵

7546
C-041

0+22⁴⁹ 19°14' 75⁷⁵ 75⁶⁰

7601
C-026

0+11²⁴ 9°37' 76⁷⁵ 76⁵⁵

7695
C-020

C-1012

0+00 E.C. Dorcas 78⁰⁹ 77⁸⁰

7805 7809.06
F004

1+10⁵⁷ 8°31'

7465 C-102

0+99⁸⁰ 6°23'15"

73⁷⁵ C-145

meet @ Hilda Rd.

3+45⁵⁸

77¹²

ob stub
7695 F0.17

0+89⁰² 4°15'30"

73²⁵ C-145

3+46¹¹

76⁴⁰ 76²⁰

76.02 F038

0+78²⁴ 2°07'45"

7481
73⁰⁰ C-181

Rough Grade Stakes Even view Rd
 City Contract
 Staked 5th BK Prop

8-21-57

19.

	Lt,	Rt.		
4700	3884 ^{prop} 496 C94 140 ²³	433 140 ²³ C33		
3789 ²³ ↑			BM steps top 4430 48° LT	157 ⁸¹ elev
3789 ²⁰ ↓ ^{3d} 4440 _{small C50}	496 C102 13940	139 ³⁵ 4219 C28		
3775	4609 C81 138 ⁰⁰	137 ⁹⁴ 4154 C36		53 ³² met
3750	4383 C85 135 ³⁷	135 ¹⁴ 4109 C59		5753 ⁹³ met h. 153 ⁵³
3725	1405 C81 132 ³⁶	131 ⁸⁶ 3902 C72		5725 52 ⁷³ C25 150 ²²
3700	14039 C114 128 ⁹⁶	128 ⁰⁹ 3541 C73		5719 ⁹⁸ met Mt. 150 ¹³ 150 ³⁴ Cment 4665 F35
2785		125 ⁵³ 3316 C76		5748 5700 C33 14815 148 ²² 4450 F37
2775		12516		5636 4775 C42 14620 146 ²⁰ 4659 C09 on Prop.
2764 ⁸⁵	C94 33 ⁰⁰ 12360			4734 4750 C31 14421 144 ²¹ 4368 F05
2750	C19 123 ²² 121 ³⁰			4961 4725 C74 142 ²² 142 ²² 4437 C22

Cb Stakes 3rd BK Cb Area
 SW Return Onstad
 Everview

Elevation Rd 7' type K inlet
 on Ely side City Contract

ie C-6³⁴
 gutter C-2⁰³
 Cb C-1¹⁹

New grades

Note pipe 24" into Centered 2' Nly

10° Sly on Cb line extended 106⁴²
 E box 5° sly 106⁴²

end existing cb
 old 173⁵¹ 172⁵⁶ 277
 C-0²¹

ie inlet 7' type K 100¹⁵

EC, Everview 174⁰⁴ 173⁰⁰ 452
 C-1⁵²

cb elv 105³⁰

gutter 104⁴⁷

3/4 175²⁷ 174⁴⁰ 538
 C-0⁹⁸

105⁰⁸

10' Nly on Cb extended
 E box

~~105⁸³ knocked out~~

1/2 176⁵⁰ 175⁹⁰ 664
 C-0²⁴

ie ~~C-5⁶⁸~~ C-4⁹³

cb ~~C-0⁵³~~ F-0²²

gutter ~~C-1³⁶~~ C-0⁶¹

1/4 177⁴⁶ 177²⁵ 758
 C-0³³

BC, Onstad 177^{96 same} 177⁹⁶ 803
 C-0⁰³

Sta 5+17.80 Curb stakes Elevation Rd. 8-29-57
 P.R.C. NE 1/4 City Contract.
 staked 3rd bk page

		702	C101
6+77.8 E.V.C.	116.01	15.46	F056
		455	C100
6+57.8	113.55	14.80	C-125
6+37.8	111.25	12.72	C147
6+17.8	109.30	10.84	C154
5+97.8	107.55	9.21	C-166
5+77.8	106.30	8.08	C178
5+57.8	105.70	4.00	C130
		7.64	C194
5+37.8	105.38	7.42	C204
5+17.80 = meet inlet 7' type K staked bk page	105.30		

		8123.31	EC.	133.00	meet
		1/2		130.80	32.06 C126
		7+76.52	BC.	128.65	29.33 C068
		(18.66)			
		7+57.86	EC.	125.60	26.01 C041
		EC 2002			
		7+37.8		123.19	23.37 C018
		7+17.8		120.79	21.56 C077
				8.29	FD 11
		6+97.8		118.40	19.45 C-105

(132.96)

Stake 8" V.C. Sewer
 City Contract. 6" Nly stakes

10586
 64
 9945

22

2+40 C9.97 110⁸⁵ 20.82

2+10 C10.66 114⁴⁸ 25.14

1+80 C11.08 118¹¹ 29.19

1+50 C11.09 121⁷⁴ 32.83

1+20 C10.60 125³⁷ 35.97

0+90 C9.68 129⁰⁰ 38.68

3+36⁰⁰ meet SMH exists 99²²
 10

0+60 C9.04 132⁶³ 41.67

3+00 C7.39 103⁵⁹ 10.98

0+30 C8.18 136²⁶ 44.44

2+70 C8.90 107²² 16.12

0+00 Meet existing SMH ie 139⁸⁹

sta
 4+90 approx on EverView

R. 10 9/16 7 1/2

Stake Onstad St
City Contract
Lt & Wly

staked 3rd BK of Race

RT = Ely

use existing cd ends as BM 165⁷⁹
66

166²⁶
13

0+75 end cb 6591
164⁷⁷ C 1.14
73

6655
165³⁰ C 1.25

0+50 16780
167⁵⁰ C 0.30

168⁰⁵ 168.95 C 0.90

0+25 7050
170²³ C 0.27

170⁸⁰ 171.62 C 0.82

0+00 Existing EC 72.66
172⁹⁷ meet FO.14
N of Everview 7280

173.74
173⁵⁶ meet C 0.18

Nly Hinge Road - Rad 288
 25° chd = 28.79
 Clairemont Mesa Blvd
 Bridge over Murphy Canyon Road
 70+63 ¹⁹ BC "P" 0° 00'

+75 1° 21' 12"

+92 3° 18' 05"

71 ~ 4° 13' 05"

+00 ²⁵ end sly wing wall 4° 18' 15"

+02 ²⁰ end Nly wing wall 4° 31' 39"

+16 Begin Bridge 6° 03' 06"

^{Line of Piles}
 +17 Abut #1 bearing 6° 09' 58"

^{hgt dirt 5' Ely of Abut}
 +23 +8' below finish 6° 51' 14"

+25 7° 04' 58"

Nly Bridge Edge 284
 25° chd = 28.39

4 Bridge Rad 267
 25° chd = 26.69

+50

+58 ³⁷ $\frac{1}{2}$ Bent #2 10° 54' 24"

+75 12° 48' 45"

72 ~ 15° 40' 38"

+25 18° 32' 31"

+28 ⁵⁷ $\frac{1}{2}$ Bent #3 18° 57' 04"

+50 21° 24' 25" POC "P"

+75 24° 16' 18" POC "P"

73 ~ 27° 08' 11" POC "P"

+09 ⁹¹ $\frac{1}{2}$ Bent #4 28° 16' 19"

$\frac{1}{2} \Delta = 61^\circ 30' 34''$
 Rad = 250'
 turn 460.62
 L = 536.77
 def/4 = 6.8754935
 35° chd = 24.99
 100° chd = 99.3348

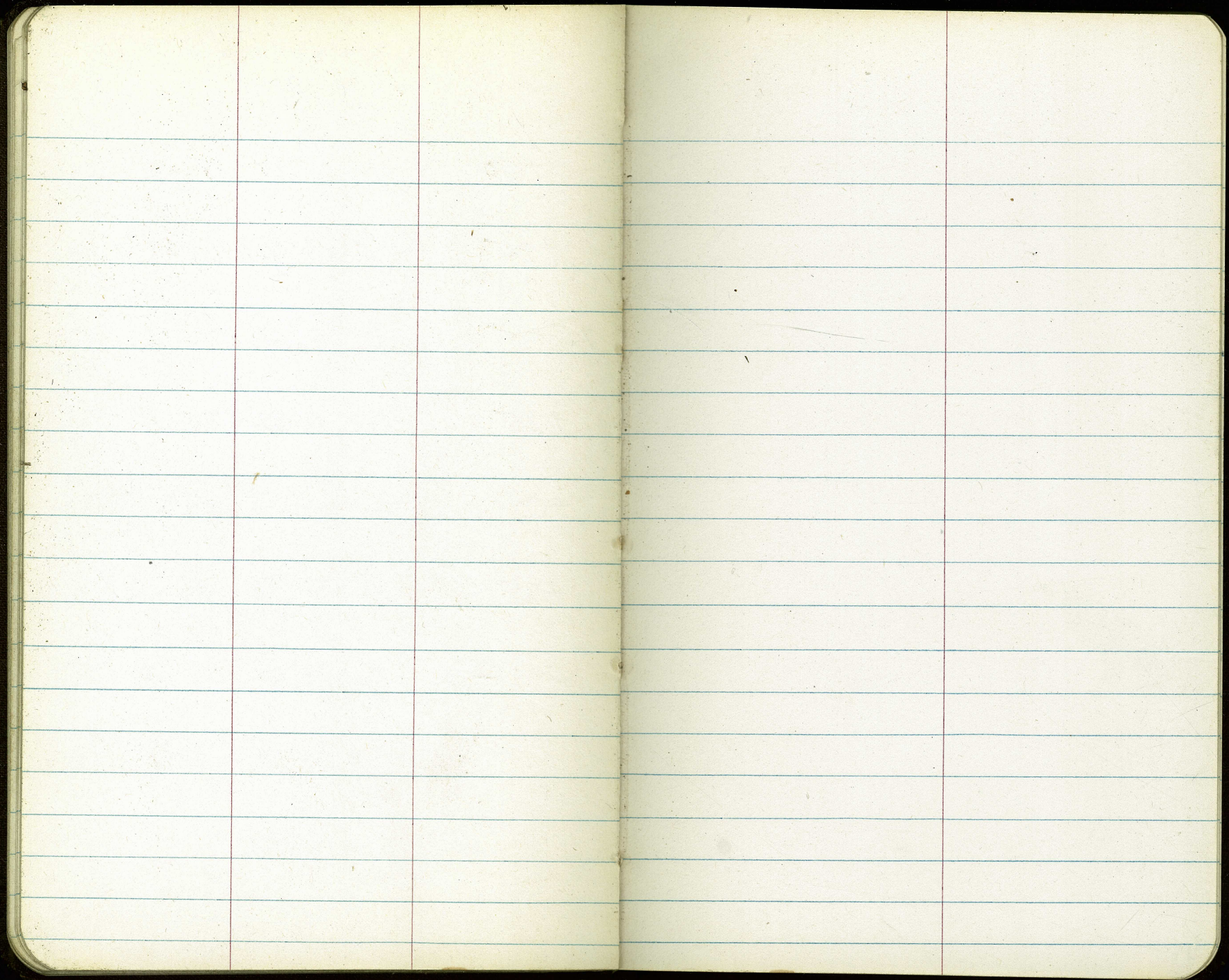
24

9° 56' 52"

25° chd on Rad of
287 or 3° Bl of Bl
E' 46 = 28.68

25

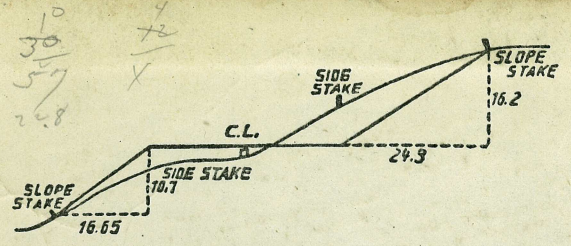
73+25	30° 00' 04"	+50	44° 19' 30"
+50	32° 51' 58"	+75	47° 11' 24"
+56 ⁵⁰ & Bearing Abut #5	33° 36' 39"	75 ~	50° 03' 17"
+58 ⁰⁰ END Bridge	33° 46' 58"	+25	52° 55' 10"
yellow +68 ²⁵ EA END STOP 17 Foot S, Wingwall	34° 57' 26"	+50	55° 47' 04"
white +68 ⁸² END N/Y WINGWALL	35° 01' 21"	+75	58° 38' 57"
+75	35° 43' 51" POC P'	+99 ⁸⁶ Bl	P chd = 24.85 287 chd = 28.53 288 chd = 28.64 61° 29' 49"
yellow +83 ²⁵ END S/Y WINGWALL	36° 40' 34"		
74 ~	38° 35' 44"		
+25	41° 27' 37"		



196.57
 2279
 2378

23,8
 203
 223
 172 97
 69 77
 3 8.20

23.8
 124
 71 4
 476
 47.4
 340 6
 414
 1421
 203
 273
 73 54
 65 30
 3 8 24
 273



DISTANCES FROM SIDE STAKES FOR CROSS-SECTIONING.
 SLOPE 1 1/2 TO 1. ROADWAY OF ANY WIDTH.

	0	.1	.2	.3	.4	.5	.6	.7	.8	.9	
0	0.00	0.15	0.30	0.45	0.60	0.75	0.90	1.05	1.20	1.35	0
1	1.50	1.65	1.80	1.95	2.10	2.25	2.40	2.55	2.70	2.85	1
2	3.00	3.15	3.30	3.45	3.60	3.75	3.90	4.05	4.20	4.35	2
3	4.50	4.65	4.80	4.95	5.10	5.25	5.40	5.55	5.70	5.85	3
4	6.00	6.15	6.30	6.45	6.60	6.75	6.90	7.05	7.20	7.35	4
5	7.50	7.65	7.80	7.95	8.10	8.25	8.40	8.55	8.70	8.85	5
6	9.00	9.15	9.30	9.45	9.60	9.75	9.90	10.05	10.20	10.35	6
7	10.50	10.65	10.80	10.95	11.10	11.25	11.40	11.55	11.70	11.85	7
8	12.00	12.15	12.30	12.45	12.60	12.75	12.90	13.05	13.20	13.35	8
9	13.50	13.65	13.80	13.95	14.10	14.25	14.40	14.55	14.70	14.85	9
10	15.00	15.15	15.30	15.45	15.60	15.75	15.90	16.05	16.20	16.35	10
11	16.50	16.65	16.80	16.95	17.10	17.25	17.40	17.55	17.70	17.85	11
12	18.00	18.15	18.30	18.45	18.60	18.75	18.90	19.05	19.20	19.35	12
13	19.50	19.65	19.80	19.95	20.10	20.25	20.40	20.55	20.70	20.85	13
14	21.00	21.15	21.30	21.45	21.60	21.75	21.90	22.05	22.20	22.35	14
15	22.50	22.65	22.80	22.95	23.10	23.25	23.40	23.55	23.70	23.85	15
16	24.00	24.15	24.30	24.45	24.60	24.75	24.90	25.05	25.20	25.35	16
17	25.50	25.65	25.80	25.95	26.10	26.25	26.40	26.55	26.70	26.85	17
18	27.00	27.15	27.30	27.45	27.60	27.75	27.90	28.05	28.20	28.35	18
19	28.50	28.65	28.80	28.95	29.10	29.25	29.40	29.55	29.70	29.85	19
20	30.00	30.15	30.30	30.45	30.60	30.75	30.90	31.05	31.20	31.35	20
21	31.50	31.65	31.80	31.95	32.10	32.25	32.40	32.55	32.70	32.85	21
22	33.00	33.15	33.30	33.45	33.60	33.75	33.90	34.05	34.20	34.35	22
23	34.50	34.65	34.80	34.95	35.10	35.25	35.40	35.55	35.70	35.85	23
24	36.00	36.15	36.30	36.45	36.60	36.75	36.90	37.05	37.20	37.35	24
25	37.50	37.65	37.80	37.95	38.10	38.25	38.40	38.55	38.70	38.85	25
26	39.00	39.15	39.30	39.45	39.60	39.75	39.90	40.05	40.20	40.35	26
27	40.50	40.65	40.80	40.95	41.10	41.25	41.40	41.55	41.70	41.85	27
28	42.00	42.15	42.30	42.45	42.60	42.75	42.90	43.05	43.20	43.35	28
29	43.50	43.65	43.80	43.95	44.10	44.25	44.40	44.55	44.70	44.85	29
30	45.00	45.15	45.30	45.45	45.60	45.75	45.90	46.05	46.20	46.35	30
31	46.50	46.65	46.80	46.95	47.10	47.25	47.40	47.55	47.70	47.85	31
32	48.00	48.15	48.30	48.45	48.60	48.75	48.90	49.05	49.20	49.35	32
33	49.50	49.65	49.80	49.95	50.10	50.25	50.40	50.55	50.70	50.85	33
34	51.00	51.15	51.30	51.45	51.60	51.75	51.90	52.05	52.20	52.35	34
35	52.50	52.65	52.80	52.95	53.10	53.25	53.40	53.55	53.70	53.85	35
36	54.00	54.15	54.30	54.45	54.60	54.75	54.90	55.05	55.20	55.35	36
37	55.50	55.65	55.80	55.95	56.10	56.25	56.40	56.55	56.70	56.85	37
38	57.00	57.15	57.30	57.45	57.60	57.75	57.90	58.05	58.20	58.35	38
39	58.50	58.65	58.80	58.95	59.10	59.25	59.40	59.55	59.70	59.85	39
40	60.00	60.15	60.30	60.45	60.60	60.75	60.90	61.05	61.20	61.35	40
41	61.50	61.65	61.80	61.95	62.10	62.25	62.40	62.55	62.70	62.85	41
42	63.00	63.15	63.30	63.45	63.60	63.75	63.90	64.05	64.20	64.35	42
43	64.50	64.65	64.80	64.95	65.10	65.25	65.40	65.55	65.70	65.85	43
44	66.00	66.15	66.30	66.45	66.60	66.75	66.90	67.05	67.20	67.35	44
45	67.50	67.65	67.80	67.95	68.10	68.25	68.40	68.55	68.70	68.85	45
46	69.00	69.15	69.30	69.45	69.60	69.75	69.90	70.05	70.20	70.35	46
47	70.50	70.65	70.80	70.95	71.10	71.25	71.40	71.55	71.70	71.85	47
48	72.00	72.15	72.30	72.45	72.60	72.75	72.90	73.05	73.20	73.35	48
49	73.50	73.65	73.80	73.95	74.10	74.25	74.40	74.55	74.70	74.85	49
50	75.00	75.15	75.30	75.45	75.60	75.75	75.90	76.05	76.20	76.35	50

THE NATIONAL BLANK BOOK COMPANY
 HOLYOKE MASSACHUSETTS
 NEW YORK CHICAGO BOSTON SAN FRANCISCO