

DISTANCES FROM SIDE STAKES FOR CROSS-SECTIONING
SLOPE 1 TO 1. ROADWAY OF ANY WIDTH

	0	.1	.2	.3	.4	.5	.6	.7	.8	.9	
0	0.00	0.10	0.20	0.30	0.40	0.50	0.60	0.70	0.80	0.90	0
1	1.00	1.10	1.20	1.30	1.40	1.50	1.60	1.70	1.80	1.90	1
2	2.00	2.10	2.20	2.30	2.40	2.50	2.60	2.70	2.80	2.90	2
3	3.00	3.10	3.20	3.30	3.40	3.50	3.60	3.70	3.80	3.90	3
4	4.00	4.10	4.20	4.30	4.40	4.50	4.60	4.70	4.80	4.90	4
5	5.00	5.10	5.20	5.30	5.40	5.50	5.60	5.70	5.80	5.90	5
6	6.00	6.10	6.20	6.30	6.40	6.50	6.60	6.70	6.80	6.90	6
7	7.00	7.10	7.20	7.30	7.40	7.50	7.60	7.70	7.80	7.90	7
8	8.00	8.10	8.20	8.30	8.40	8.50	8.60	8.70	8.80	8.90	8
9	9.00	9.10	9.20	9.30	9.40	9.50	9.60	9.70	9.80	9.90	9
10	10.00	10.10	10.20	10.30	10.40	10.50	10.60	10.70	10.80	10.90	10
11	11.00	11.10	11.20	11.30	11.40	11.50	11.60	11.70	11.80	11.90	11
12	12.00	12.10	12.20	12.30	12.40	12.50	12.60	12.70	12.80	12.90	12
13	13.00	13.10	13.20	13.30	13.40	13.50	13.60	13.70	13.80	13.90	13
14	14.00	14.10	14.20	14.30	14.40	14.50	14.60	14.70	14.80	14.90	14
15	15.00	15.10	15.20	15.30	15.40	15.50	15.60	15.70	15.80	15.90	15
16	16.00	16.10	16.20	16.30	16.40	16.50	16.60	16.70	16.80	16.90	16
17	17.00	17.10	17.20	17.30	17.40	17.50	17.60	17.70	17.80	17.90	17
18	18.00	18.10	18.20	18.30	18.40	18.50	18.60	18.70	18.80	18.90	18
19	19.00	19.10	19.20	19.30	19.40	19.50	19.60	19.70	19.80	19.90	19
20	20.00	20.10	20.20	20.30	20.40	20.50	20.60	20.70	20.80	20.90	20
21	21.00	21.10	21.20	21.30	21.40	21.50	21.60	21.70	21.80	21.90	21
22	22.00	22.10	22.20	22.30	22.40	22.50	22.60	22.70	22.80	22.90	22
23	23.00	23.10	23.20	23.30	23.40	23.50	23.60	23.70	23.80	23.90	23
24	24.00	24.10	24.20	24.30	24.40	24.50	24.60	24.70	24.80	24.90	24
25	25.00	25.10	25.20	25.30	25.40	25.50	25.60	25.70	25.80	25.90	25
26	26.00	26.10	26.20	26.30	26.40	26.50	26.60	26.70	26.80	26.90	26
27	27.00	27.10	27.20	27.30	27.40	27.50	27.60	27.70	27.80	27.90	27
28	28.00	28.10	28.20	28.30	28.40	28.50	28.60	28.70	28.80	28.90	28
29	29.00	29.10	29.20	29.30	29.40	29.50	29.60	29.70	29.80	29.90	29
30	30.00	30.10	30.20	30.30	30.40	30.50	30.60	30.70	30.80	30.90	30
31	31.00	31.10	31.20	31.30	31.40	31.50	31.60	31.70	31.80	31.90	31
32	32.00	32.10	32.20	32.30	32.40	32.50	32.60	32.70	32.80	32.90	32
33	33.00	33.10	33.20	33.30	33.40	33.50	33.60	33.70	33.80	33.90	33
34	34.00	34.10	34.20	34.30	34.40	34.50	34.60	34.70	34.80	34.90	34
35	35.00	35.10	35.20	35.30	35.40	35.50	35.60	35.70	35.80	35.90	35
36	36.00	36.10	36.20	36.30	36.40	36.50	36.60	36.70	36.80	36.90	36
37	37.00	37.10	37.20	37.30	37.40	37.50	37.60	37.70	37.80	37.90	37
38	38.00	38.10	38.20	38.30	38.40	38.50	38.60	38.70	38.80	38.90	38
39	39.00	39.10	39.20	39.30	39.40	39.50	39.60	39.70	39.80	39.90	39
40	40.00	40.10	40.20	40.30	40.40	40.50	40.60	40.70	40.80	40.90	40
41	41.00	41.10	41.20	41.30	41.40	41.50	41.60	41.70	41.80	41.90	41
42	42.00	42.10	42.20	42.30	42.40	42.50	42.60	42.70	42.80	42.90	42
43	43.00	43.10	43.20	43.30	43.40	43.50	43.60	43.70	43.80	43.90	43
44	44.00	44.10	44.20	44.30	44.40	44.50	44.60	44.70	44.80	44.90	44
45	45.00	45.10	45.20	45.30	45.40	45.50	45.60	45.70	45.80	45.90	45
46	46.00	46.10	46.20	46.30	46.40	46.50	46.60	46.70	46.80	46.90	46
47	47.00	47.10	47.20	47.30	47.40	47.50	47.60	47.70	47.80	47.90	47
48	48.00	48.10	48.20	48.30	48.40	48.50	48.60	48.70	48.80	48.90	48
49	49.00	49.10	49.20	49.30	49.40	49.50	49.60	49.70	49.80	49.90	49
50	50.00	50.10	50.20	50.30	50.40	50.50	50.60	50.70	50.80	50.90	50

Distance of slope stake from side or shoulder stake for any width roadway, slope 1 to 1. If ground is nearly level, the cut or fill at side stake is located by the double entry method in left column and top row. The number in body of table in same row and column gives distance from side stake to slope stake. If ground is not level estimate the difference in elevation between the side stake and slope stake, lower target by this amount if cut, elevate if fill. Add this amount to cut or fill and find distance in table. Set up rod at this point, and line of sight should cut target. If it does not make the slight adjustment necessary.

G-378

MICROFILMED

APR 19 1965

DIRECTIONS FOR USE OF TABLES

TABLE No. XIV

Distance of slope stake from side of shoulder
stake for any width roadway, slope 1N to 1
If ground is nearly level, the cut or fill at stake
is located by the double stake method.

IMPROVED TABLES
AND
INFORMATION

cut target. If it does not make the right
placement necessary.

TABLE No. VIII

To find Tangent and External for curve of
any other degree, divide by degree of curve and
add remaining found in column of constants.
Degree of curve with radius and tangent to be found
by dividing tangent (or external) by constant
given tangent (or external).

The distance from a point on the tangent to
the curve is very nearly the square of the tangent
length divided by twice the radius.

INDEX

1

TORREY PINES GOLF COURSE

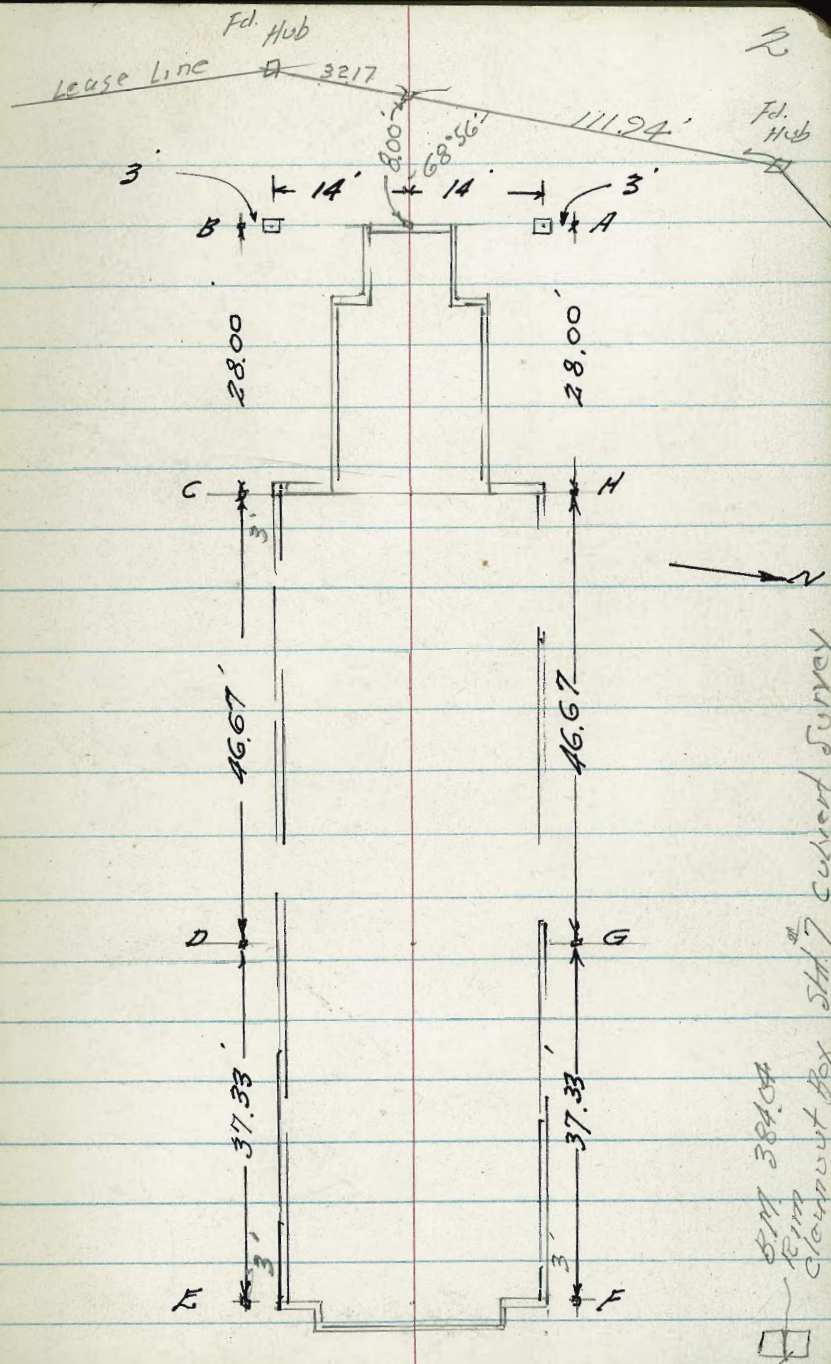
CLUB HOUSE LAYOUT

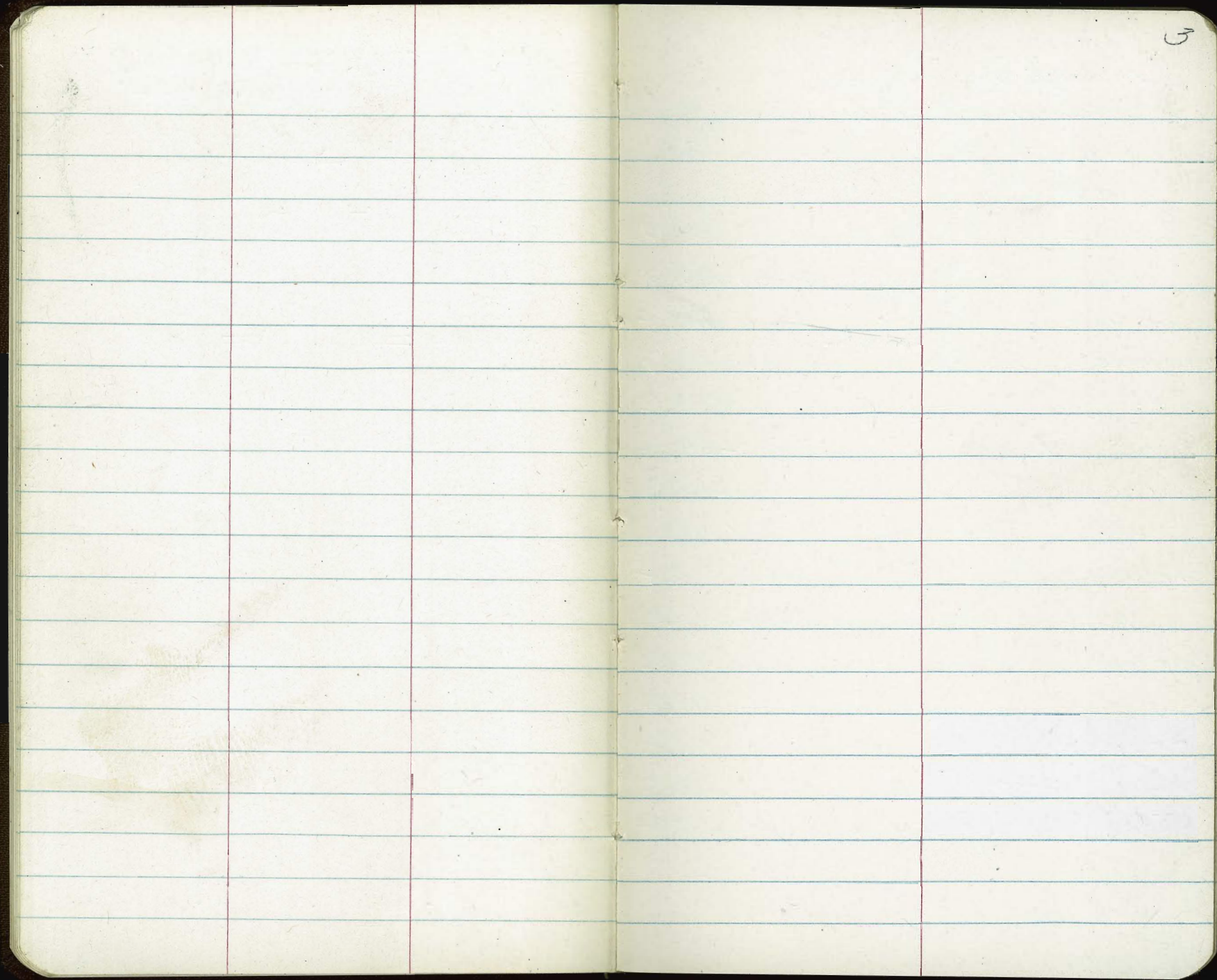
Plan sheet 1, 2, MOSHER & DREW ARCHITECTS

Walker
Taylor
Stucky 8-8-57
Meyer

NO 21469

A	377.19
B	377.17
C	378.68-TR
D	381.96
E	385.63
F	383.76
G	381.46
H	378.49
Rim Cleanout	384.04





5

Rose Canyon Sewer
"B" Line To MICHMIR

PLAN 4581-D WD 20711

Walker 8-26-1957
Schlen
Meyer
Burnes

Station	Elev. Stake	El. Invert	Cuts	Offsets
Cont. P5				
+80	125.86	119.16	6.70	10' rd.
+40	126.21	119.08	7.21	
4+00	127.05	118.84	8.21	
+60	126.91	118.68	8.23	
3+20	126.38	118.52	7.86	
MH#56				
3+00 TP	126.34	118.44	7.90	
+80	126.42	118.36	8.06	
+40	126.61	118.20	8.41	
2+00	126.65	118.04	8.61	
+60	126.62	117.88	8.74	
1+20	126.70	117.72	8.98	
+80	126.41	117.56	8.85	
0+40	125.84	117.40	8.44	
0+00 = MH#55	122.62	117.24	5.38	
175+38.45 Back on "H" line = MH#55		117.24		
	129.816		DISC.	

"B" LINE ROSE CANYON SEWER

To MIRA MUR

Station	Cont. P. 6	Elev. Stake	Elev. Invert	Cuts	Offsets
+40		128.38	121.40	6.98	10' 10"
10+00		128.22	121.24	6.98	
+60		128.38	121.08	7.30	
9+20		128.24	120.92	7.32	
+80		128.23	120.76	7.47	
+40 TP		127.90 127.89	120.60	7.30 7.39	
8+00		127.90	120.44	7.46	
MH #96					
7+87.42 = EC	3° 52.73	127.83	120.39	7.44	
+75	3° 31.37	128.04	120.35	7.69	
+50	2° 48.37	127.96	120.25	7.71	
+25	2° 05.37	127.62	120.15	7.47	
7+00	1° 22.37	127.55	120.05	7.50	
+75	0° 39.37	127.45	119.95	7.50	
MH #95					
6+52.53 = BC		127.29	119.85	7.44	
6+20		127.23	119.72	7.51	
P.O.T.					
5+84.53		126.63	119.58	7.05	
+60		126.10	119.48	6.62	
5+20		125.39	119.32	6.07	

"B" LINE - ROSE CANYON SEWER

TO MIRAMIR

Station		El Invert	Cuts	offsets
→ Cont. P-7				
+40		134.83	123.80	11.03
16+00		134.36	123.64	10.72
15+60		133.83	123.48	10.35
15+20		133.24	123.32	9.92
+80		133.67	123.16	10.51
+40		134.46	123.00	11.46
14+00		133.67	122.84	10.83
+75		133.08	122.74	10.34
13+49.53 = EC	MH 98 2° 06.96	132.58	122.64	9.94
+25	1° 45.88	132.16	122.54	9.62
13+0	1° 24.39	131.85	122.44	9.41
+75	1° 03.9	131.37	122.34	9.03
+50	0° 41.4	130.98	122.24	8.74
+25	0° 19.9	130.81	122.14	8.67
13+01.80 = EC	MH 97	130.33	122.05	8.28
+60		129.10	121.88	7.22
11+20		128.60	121.72	6.88
10+80		128.50	121.56	6.94

"B" LINE - ROSE CANYON SEWER

TO MIRAMIR

Station			Elev INNERT	Cuts	offsets
→ Cont. P. 9					
+25	3° 58.36	139.21	126.13	13.08	10' RT.
22+00	3° 15.36	139.13	126.03	13.10	
+75	3° 32.36	139.15	125.93	13.26	
+50	1° 49.36	139.25	125.83	13.42	
+25	1° 06.36	139.22	125.73	13.49	
21+00	0° 23.36	139.38	125.63	13.75	
MH 100					
20+86.31	BC. RT.	139.42	125.59	13.83	
+60		139.12	125.49	13.63	
				13.14	
20+20		138.47	125.33	12.59	
+80		138.22	125.17	13.05	
TR. BM NW. 804 Conc. Signal Base		139.07			
+40		138.16	125.01	13.15	
19+00		137.77	124.85	12.92	
18+60		137.66	124.69	12.97	
18+20		137.21	124.53	12.68	
+80		136.82	124.37	12.45	
+40		136.87	124.21	12.66	
17+00 = MH #99		135.71	124.04	11.67	
16+70		135.28	123.92	11.36	

8" LINE - ROSE CANYON SEWER
TO MIRAMIR

STATION		EL. INVERT	Cuts	offsets
27+75	3° 01.3	141.58	128.72	12.86 v 10' rt
+50	2° 18.33	141.40	128.53	12.87 v
+25	1° 35.36	141.20	128.34	12.86 v
27+0	0° 52.37	141.04	128.15	12.89 12.88
MH 102				
26+69.53 - 8 C.R.		141.21	127.92	13.29 13.27
26+20		141.39	127.73	13.66 13.62
+80		141.97	127.57	14.40 14.35
+40		141.86	127.41	14.45 14.39
25+00		141.50	127.25	14.25 14.18
+70		141.35	127.13	14.22 14.14
24+42.59		142.01	127.02	14.99 14.90
+98.91		138.56	126.85	11.71 11.61
23+60.46		138.26	126.69	11.57 11.46
PK + DISC. NW. Cor Bridge		141.26		
Z.P.				
MH # 101				
23+36.99 = EC	7° 11	138.53	126.59	11.94
+25	6° 50.36	138.53	126.53	12.00
23+00	6° 07.36	139.04	126.43	12.61
+75	5° 24.36	139.26	126.33	12.93
22+50	4° 41.36	139.41	126.23	13.18

Adjusted cuts to
up the discrepancy in
check out.
Leads backed in from 62+40

23+36.99 138.53
chk on stub 138.65
0.12

ROSE CANYON SEWER
TO HICKMAN

station		El	Invert	Cuts	offsets
+60		146.20	133.93	12.27 ✓	10' ret
34+20		146.24	133.62	12.62 ✓	"
+80		145.85	133.32	12. ⁵³ 43	"
+40		145.55	133.01	12.54 ✓	"
33+00 = MH 104 - P.O.T.		145.15	132.71	12.44 ✓	"
+60		144.71	132.41	12.30 ✓	"
32+20		144.54	132.10	12.44 ✓	"
+80		144.18	131.80	12.38 ✓	"
+40		143.61	131.49	12.12 ✓	"
31+00		143.23	131.19	12.04 ✓	"
+60		142.60	130.89	11.71 ✓	"
30+20		142.19	130.58	11.61 ✓	"
+80		141.79	130.28	11.51 ✓	"
+40	TR →	142.29	129.97	12.32 ✓	"
29+00		142.16	129.67	12.49 ✓	"
+75		142.03	129.48	12.55 ✓	"
MH 103					"
28+46.97 EC	5° 05.0	142.10	129.27	12.83 ✓	"
+25	4° 27.24	141.76	129.10	12.66 ✓	"
28+00	3° 44.27	141.75	128.91	12.84 ✓	"

ROSE CANYON SEWER
To MICHMAR

Station	EL.	INVERT	Cuts.	offsets
+40	150.40	139.09	11.31 ✓	10' rd.
41+00	150.22	138.79	11.43 ✓	"
+60	149.93	138.49	⁴⁴ 11.50 ✓	"
40+20	149.29	138.18	11.11 ✓	"
+80	148.64	137.88	10.76 ✓	"
+40	147.52	137.57	9.95 ✓	"
39+00	146.47	137.27	9.20 ✓	"
+60	146.64	136.97	9.67 ✓	"
P.O.T. 38+19.15	145.14	136.66	8.48 ✓	"
38+00 = MH 105 - P.O.T.	142.95	136.51	6.44 ✓	"
+80	140.16	136.36	3.80 ✓	"
+40	141.60	136.05	5.55 ✓	"
37+00	142.58	135.75	6.83 ✓	"
+60	143.68	135.44	8.24 ✓	"
36+20	147.07	135.14	11.93 ✓	"
+80	146.88	134.84	12.04 ✓	"
+40	T.P. → 146.71	134.53	12.18 ✓	"
35+00	146.37	134.23	12.14 ✓	"
34+50		133.93		

ROSE CANYON SEWER

TO MIRAMAR

11

	El.	Invert	Cuts	offsets
+80	156.73	144.72	12.01 ✓	10.14.
+40	156.47	144.41	12.06 ✓	"
48+00 = MH 107	156.02	144.11	11.91 ✓	"
+80	155.65	143.96	11.69 ✓	"
+40	155.40	143.65	11.75 ✓	"
47+0 TR	155.02	143.35	11.67 ✓	"
+60	154.70	143.05	11.65 ✓	"
46+20	148.70		5.96	"
	151.44	142.74	8.70	"
+80	147.13		4.69	"
	149.85	142.44	7.41	"
+40	152.36		10.13 ✓	"
	153.96	142.13	11.83	"
45+0	154.11		12.28 ✓	"
	155.74	141.83	13.91	"
+60	154.09		12.56	"
	155.71	141.53	14.18	"
44+20	153.85		12.63 ✓	"
	155.47	141.22	14.25	"
+80	153.15		12.23 ✓	"
	154.77	140.92	13.85	"
+40	152.42		11.81 ✓	"
	154.04	140.61	13.43	"
43+00 = MH 106 = P.O.T.	151.77		11.46 ✓	"
	153.40	140.31	13.09	"
+60	151.40		11.39 ✓	"
	153.02	140.01	13.01	"
TR 42+20	151.14	139.70	11.44	"
	152.76	139.70	13.06	"
41+80	150.79	139.40	11.39 ✓	"

	E1.		Cuts	offsets
	import			
56+20	158.36	150.34	8.02 ✓	10' rt.
+80	158.54	150.04	8.50 ✓	"
+40	158.84	149.73	9.11 ✓	"
55+0	159.05	149.43	9.62 ✓	"
+60	157.78	149.13	8.65 ✓	"
54+20	158.45	148.82	9.63 ✓	"
+80	159.91	148.52	11.39 ✓	"
+40	160.11	148.21	11.90 ✓	"
53+00 MH108	159.96	147.91	12.05 ✓	"
+80	159.80	147.76	12.04 ✓	"
+40 ^{TR}	159.72	147.45	12.27 ✓	"
52+0	159.40	147.15	12.25 ✓	"
+60	159.13	146.85	12.28 ✓	"
51+20	158.67	146.54	12.13 ✓	"
+80	158.26	146.24	12.02 ✓	"
+40	157.64	145.93	11.71 ✓	"
50+0	157.31	145.63	11.68 ✓	"
+60	157.87	145.33	12.04 ✓	"
49+20	157.12	145.02	12.10 ✓	"

BE LINE GRADES
ROSE CANYON SEWER

	164.55	B.M. 74' RT 62+62.85'		
	El. Stake	El. Invert	Cuts	offsets
+40 - P-14				
63+00 MH 110	164.82	155.51	9.31	10' RT.
+80	164.78	155.36	9.42	"
+40	chk 164.51 → 164.48	155.06	9.42 ✓	"
62+0	164.33	154.75	9.58 ✓	"
+60	164.14	154.41	9.70 ✓	"
61+20	163.71	154.14	9.57 ✓	"
+80	163.26	153.84	9.42 ✓	"
+40	162.91	153.53	9.38 ✓	"
60+00	162.44	153.23	9.21 ✓	"
+60	162.04	152.93	9.11 ✓	"
59+20	161.73	152.62	9.11 ✓	"
+80	161.02	152.32	8.70 ✓	"
+40	159.78	152.01	7.77 ✓	"
58+00 MH 109	159.83	151.71	8.12	"
+80	158.30	151.56	6.74 ✓	"
+40	155.49	151.25	4.24 ✓	"
57+0	155.42	150.95	4.47 ✓	"
56+60	157.81	150.65	7.16 ✓	"

"B" LINE GRADES - ROBE CANYON SEWER

STATIONS		ELEV.	INVERT	Cuts	offsets
70 +80		171.27	161.44	9.83 ✓	10 ft.
+40	0.76%	170.88	161.13	9.75 ✓ 9.73	"
70 +00		170.51	160.83	9.68 ✓	"
+60		170.17	160.53	9.64 ✓	"
69 +20		170.04	160.22	9.82 ✓	"
+80		169.86	159.92	9.94 ✓	"
+40		169.55	159.61	9.94 ✓	"
MIR III					
68 +00		169.12	159.31	9.81 ✓	"
+80		168.82	159.16	9.66 ✓	"
+40		168.18	158.85	9.33 ✓	"
67 +00		168.03	158.55	9.48 ✓	"
+60		T.P. → 167.71	158.25	9.46 ✓	"
66 +20		167.30	157.94	9.36 ✓	"
+80	0.76%	166.90	157.64	9.26 ✓	"
+40		166.32	157.33	8.99 ✓	"
65 +00		166.36	157.03	9.33 ✓	"
+60		165.26	156.73	8.53 ✓	"
64 +20		162.47	156.42	6.05 ✓	"
63 +80		159.93	156.12	3.81 ✓	"
63 +40		161.48	155.81	5.67 ✓	"

ROSE CANYON SEWER GRADES

15

15" LINE

STATION		ELEV. INVERT	Cuts	offsets
77 + 90 80		177.52 166.75	9.78 10.77 ✓	10' ret.
M.H. #113		166.83		
77 + 80		166.53	11.25 ✓	"
		166.38	11.57 ✓	"
+ 75 30		177.95 166.34		
77 + 00		166.15 ✓	11.77 ✓	"
		177.92 166.15		
+ 60		177.79 165.85	11.94 ✓	"
76 + 20		176.82 165.54	11.28 ✓	"
+ 80		175.93 165.24	10.69 ✓	"
+ 40		174.97 164.93	10.04 ✓	"
75 + 00		173.98 164.63	9.35 ✓	"
+ 60		173.93 164.33	9.60 ✓	"
74 + 20	0.76 %	173.74 164.02	9.72 ✓	"
+ 80		173.60 163.72	9.88 ✓	"
+ 40		173.17 163.41	9.76 ✓	"
M.H. 112				
73 + 00	TR	173.20 163.11	10.09 ✓	"
+ 80		173.17 162.96	10.21 ✓	"
+ 40		173.17 162.65	10.52 ✓ 10.82	"
72 + 00	0.76 %	172.92 162.35	10.57 ✓	"
+ 60		172.15 162.05	10.10 ✓	"
71 + 20		171.56 161.74	9.82 ✓	"

ROSE CANYON SEWER GRADES

"B" LINE

STATION	El.	Invert	Cuts	offset
+70	186.20	172.43	13.77 ✓	10' rct.
85 + 30	185.64	172.21	13.41 ✓	✓
+90	185.17	171.98	13.19 ✓	✓
+50	184.66	171.76	12.90 ✓	✓
MH # 115	182.97		11.45 ✓	✓
84 + 06.77	183.77	171.52	12.25 ✓	✓
80		171.32		
+70	181.51	171.24	10.19 ✓	✓
83 + 30	179.82	171.02	8.80 ✓	✓
83 + 00		170.71	7.87 ✓	✓
+90	178.58	170.63		
60		170.41	6.56 ✓	✓
+50	176.97	170.33		
82 + 05	175.51	170.11	5.40 ✓	✓
80		169.99		
+65	174.47	169.80	4.67 ✓	✓
81 + 25	173.96	169.68	4.46 ✓	✓
MH # 114		169.50		
80 + 75	175.74	169.38	6.55 ✓	✓
80 + 75 - MH 114	178.31	169.19	9.31 ✓	✓
80 + 30	180.12	169.00	11.23 ✓	✓
80 + 50	180.67	168.66	11.86 ✓	✓
+90	179.56	168.58	10.98 ✓	✓
79 + 80	TR 179.14	168.50	10.86 ✓	✓
+80	178.90	168.28	10.93 ✓	✓
79 + 40		168.08	11.87 ✓	✓
60	177.57	167.67	10.21 ✓	✓
+70		167.75		
78 + 30	177.05	167.36	9.99 ✓	✓
		167.44		
		167.06		
		167.14		

0.56%

0.76%

0.76%

TR

TR

ROSE CANYON SEWER GRADES

"B" LINE

93 +60 = TR 134678"		176.86		
+30		176.69		
93 +00		176.52		
+60		176.30		
90 +30	0.56%	176.08		
+30		175.85		
+40	cont. p-18	175.63	Cuts	offsets
MH 116	Reset → 183.88		9.60	
89 +00	184.30 174.28	174.28	10.02 ✓	10' rct.
	Reset → 184.08		10.05 ✓	
+55	183.77 174.03	174.03	9.74	-
	Reset → 183.70		9.92	-
88 +10	184.41 173.78	173.78	10.63 ✓	-
	Reset → 183.85		10.30	-
+70	184.94 173.55	173.55	11.39 ✓	-
	Reset → 184.56		11.23 ✓	-
87 +30	185.63 173.33	173.33	12.30 ✓	-
	Reset 15		13.05	-
+90	186.31 173.10	173.10	13.21 ✓	-
	TR → 186.90 - Reset		14.02	-
+50	186.98 172.88	172.88	14.10 ✓	-
	186.63		13.97	-
86 +10	186.51 172.66	172.66	13.85 ✓	-

ROSE CANYON SEWER

"8" LINE GRADES

18

STATION			EI. Invert	Cuts	offsets
+40		T.P.	185.77	178.43	7.34 ✓ 10 ft
96 +00			185.30	178.20	7.10 ✓ "
+60	0.56 %		185.83	177.98	7.85 ✓ "
95 +20			185.60	177.76	7.84 ✓ "
+80		Reset →	185.59	8.06	"
			185.37	7.74 ✓	"
+40		Reset →	185.13	7.82	"
			184.62	7.31	"
94 +00		Reset →	185.27	8.19	"
			183.40	6.82 ✓	"
MH 117		Reset →	185.67	7.81	"
93 +60	Δ Pt. 13° 16' 18"		184.82	176.86	7.36 ✓
+30		T.P. →	185.74	Reset	9.05
			188.27	188.27	11.58 ✓ 11.58 ✓ OK
93 +0		T.P.	185.74	176.69	9.22 ✓
+60			189.29	176.52	12.77 ✓
			185.32	9.02 ✓	"
+20			184.91	176.30	12.76 ✓
			184.06	8.83 ✓	"
92 +20			188.74	176.08	11.66 ✓
+80	0.56 %		184.38	8.53 ✓	"
			188.49	175.85	12.34 ✓
+40			184.02	8.39 ✓	"
			187.78	175.63	12.15 ✓
91 +00			183.19	7.79 ✓	"
+60			187.93	175.40	12.53 ✓
			183.31	8.13 ✓	"
+20			187.22	175.18	12.04 ✓
			182.99	8.03 ✓	"
90 +20			186.34	174.96	11.38 ✓
+80			182.47	7.74 ✓	"
			185.06	174.73	10.33 ✓
+40			182.77	8.26 ✓	"
89 +40			184.69	174.51	10.18 ✓

ROSE CANYON SEWER
"B" LINE GRADES

50' Lt 101+50
BM Chisled a SF (w) Base Windmill
197.91 = Elev. 19

STATIONS	EL.	INVERT	CUTS	offsets
+80 64	190.92	182.46 ^{.46}	8.44	10' rd.
103 +80 24	191.37	182.23 ^{.25}	9.12	"
+80 84	189.61	182.01 ^{.03}	7.58	"
+80 44	188.94	181.78 ^{.80}	7.14	"
102 +13.75 = Δ rd. 21°20'40"	189.73	181.64	8.09	"
102 +00	T.P. → 189.33	181.56	7.77	"
+60	188.42	181.34	7.08	"
101 +20	188.24	181.12	7.12	"
+80	187.93	180.89	7.04	"
+40	188.26	180.67	7.59	"
100 +00	187.72	180.44	7.28	"
+60	187.13	180.22	6.91	"
99 +20	187.98	180.00	7.98	"
+80	188.33	179.77	8.56	"
+40	188.99	179.55	9.44	"
98 +00 = L.H. 118	188.30	179.32	8.98	"
+60	187.20	179.10	8.10	"
97 +20	186.65 ^{.73}	178.88	7.85	"
	186.14		7.77	"
96 +80	185.96	178.65	7.49	"
			7.31	"

0.56%

M.H. #119

0.56%

0.56%

ROSE CANYON SEWER - GRADES

9-3-1957

20

"B" LINE

STATION	El. Invert	Cuts	offsets
172 +70	188.50		
+85	188.83		
172 +0	187.97		
+60	187.66		
10 114 +30	187.36		
+80	187.06		
+65	186.75		
108 +00 = Δ 1st. 17°23'	192.90 / 184.92	7.98	10.1st.
+60 64	194.41 / 184.70	9.71	"
107 +20 24	195.54 / 184.47	11.07	"
+80 84	197.41 / 184.25	13.16	"
+80 44	197.68 / 184.02	13.66	"
106 +00 04	197.82 / 183.80	14.02	"
+60 64	197.35 / 183.58	13.77	"
+80 34	197.67 / 183.41	14.26	"
105 +00 - 1/2 MH 120	195.58 / 183.24	12.34	"
+80 84	195.09 / 183.13 ¹⁵	11.94	"
+80 44	194.25 / 182.90 ⁹²	11.33	"
104 +00 04	T.P. → 193.0 / 182.68 ⁷⁰	10.31	"

0.26%

Cont. on p. 21

Cont. on p. 21

0.56%

0.88%

ROSE CANYON SEWER - GRADES

"B" LINE

STATIONS		El.	Invert	Cuts	offsets
Cont. p22					
113 +50	0.76%	T.R. → 198.75	189.11	9.64	10' Tol.
112 +99.18 = Δ 1st	65' 29"	200.32	188.72	11.60	"
+70 73		198.91	188.53	9.88	"
+35 38		197.76	188.26	9.50	"
112 +0 03		198.67	188.00	10.67	"
+60 63		198.85	187.69	11.16	"
111 +20 23		197.36	187.39	9.97	"
+80 83		196.55	187.09	9.46	"
+40 43		196.26	186.78	9.48	"
110 +0 03		195.61	186.48	9.13	"
+80 63	0.76%	T.R. 195.27	186.17	9.10	"
109 +0 23		195.37	185.87	9.50	"
+80 83		194.58	185.57	9.01	"
108 +0 43		194.41	185.26	9.15	"
STATION # 1122					
112 +99.18 = Δ 1st			188.72		

ROSE CANYON SEWER GRADES

"B" LINE.

Stations	%	El. Invert	Cuts	offsets
M.H. 125 119 +50 = Δ 125	1°30'45"	204.13 / 194.48	9.65	10' Rt. on diag. Bisector
+25		203.98 / 194.22	9.76	10' Rt.
119 +0	10.55%	203.47 / 193.95	9.52	"
+60		202.37 / 193.53	8.84	"
118 +20		202.31 / 193.11	9.20	"
+80		201.70 / 192.69	9.01	"
+40		201.42 / 192.26	9.16	"
117 +0		201.04 / 191.84	9.20	"
M.H. 124 116 +75		201.07 / 191.58	9.49	"
116 +32		200.46 / 191.25	9.21	"
+90	0.76%	199.72 / 190.93	8.79	"
+50		199.53 / 190.63	8.90	"
115 +10		199.71 / 190.33	9.38	"
+70		199.93 / 190.02	9.91	"
114 +30		199.73 / 189.72	10.01	"
2 M.H. #123 113 +90 = Δ 4 76'16" 25"		199.54 / 189.41	10.13	"
cont. front p. 21	0.76%			

ROSE CANYON SEWER
GRADES - "B" LINE

STATIONS	Elev.	Invert	Cuts	offsets
126 + 20	207.85	201.58 ^{.18}	6.67	10' rd.
+ 80	207.93	200.78	7.15	"
125 + 40	208.09	200.38	7.71 ✓	"
chk & Hub 125+10	208.90 208.91			
NIH 127 125 + 10 = 44. 308.4 308.4	208.34	200.08	8.26	"
+ 65	208.01	199.63	8.38	"
12A + 20	207.70	199.18	8.52	"
+ 80	207.92	198.78	9.14	"
+ 40	207.87	198.38	9.49	"
123 + 00	207.63	197.98	9.65	"
+ 60	207.08	197.58	9.50	"
NIH # 126 122 + 25 = POT.	206.00	197.23	8.77	"
+ 90	206.13	196.88	9.25	"
+ 50	205.83	196.48	9.35	"
121 + 10	205.70	196.08	9.62	"
+ 70	205.28	195.68	9.60	"
120 + 30	205.04	195.28	9.76	"
119 + 90	204.95	194.88	10.07	"

ROSE CANYON SEWER
GRADES - "B" LINE

24

STATIONS	El.	Invert	Cuts	offsets
+75	212.26	206.47	5.79 ✓	10' rht
132+00	212.22	206.28	5.94 ✓	"
+75	212.05	206.09	5.96 ✓	"
+50	212.41	205.90	6.51 ✓	"
+25	T.P. 212.33	205.71	6.62 ✓	"
131+00	212.52	205.52	7.00 ✓	"
MH # 129 +70 50 BC	211.98	205.31	6.67 ✓	"
+60	211.76	205.22	6.54 ✓	"
130+20	211.19	204.92	6.27 ✓	"
+80	210.88	204.61	6.27 ✓	"
+40	210.52	204.31	6.21 ✓	"
MH # 128 129+08 28	210.23	204.07	6.16 ✓	"
129+00	210.01	203.98	6.03 ✓	"
+60	209.73	203.58	6.15 ✓	"
128+20	209.64	203.18	6.46 ✓	"
+80	209.50	202.78	6.72 ✓	"
+40	209.09	202.38	6.71 ✓	"
127+00	208.76	201.98	6.78 ✓	"
126+60	208.61	201.58	7.03 ✓	"

ROSE CANYON SEWER
GRADES - "B" LINE

STATION		Elev. Invert	Cuts	Offsets
+69		218.76 211.37	7.39 ✓	10' Lt.
142+29		218.40 211.07	7.33 ✓	"
+89		218.48 210.76	7.72 ✓	"
+49	TP	218.12 210.46	7.66 ✓	"
MH #132 141+25		217.83 210.27	7.56 ✓	10' Lt
141+09		217.34 210.15	7.19 ✓	10' Lt.
+69		217.06 209.85	7.21 ✓	"
140+29		217.00 209.54	7.46 ✓	"
+89		217.60 209.24	8.36 ✓	"
+49		217.49 208.93	8.56 ✓	"
139+09		217.52 208.63	8.89 ✓	"
138+69		216.89 208.33	8.56 ✓	"
134+48.49 = <i>Back</i>				
138+48.49 = <i>MH #131</i>		216.63 208.17	8.46 ✓	"
<i>Ahd.</i>				
134+20		216.39 207.95	8.44 ✓	"
+80		215.93 207.65	8.28 ✓	"
+40		214.85 207.34	7.51 ✓	"
133+00		213.90 207.04	6.86 ✓	"
+60		213.10 206.73	6.37 ✓	"
MH #130				
132+39.05 EC		212.70 206.58	6.12 ✓	"

ROSE CANYON SEWER

GRADES - "B" LINE

STATIONS		Elev. Invert	Cuts	offsets
BM Conc. Pier	22823			
See Construction Plans Sheet #23	CHK 228.30			
+40	TP 225.00	215.71	9.29 ✓	10' Lt.
148 +00	224.70	215.40	9.30 ✓	"
+60	224.40	215.10	9.30 ✓	"
147 +20	223.90	214.79	9.11 ✓	"
+80	223.92	214.49	9.43 ✓	"
+40	223.30	214.19	9.11 ✓	"
146 +00	222.99	213.88	9.11 ✓	"
+60	223.15	213.58	9.57 ✓	"
145 +20	222.66	213.27	9.39 ✓	"
+80	222.12	212.97	9.15 ✓	"
144 +40	221.41	212.67	8.74 ✓	"
MH #133				
144 +11	28	221.58	212.45	9.13 ✓
+89	220.96	212.28	8.68 ✓	"
+49	220.20	211.98	8.22 ✓	"
143 +09	219.46	211.67	7.79 ✓	"

ROSE CANYON SEWER

GRADES ~ 8" LINE

STATIONS			Elev. Invert	Cuts	offsets
+70		30.64	230.84 221.50	9.34 ✓	9.14
155 +30	0.92 9°	30.64	230.76 221.13	9.63 ✓	9.51
+90		29.84	229.84 220.76	9.08 ✓	
+50			229.48 220.39	9.09 ✓	
M.H. 135					
154 +14.32	-Δ 4° 42' 57"		229.55 220.07	9.48 ✓	CHK & Hub 229.50 ✓ = T.P. Sht 32 Prelim. Notes
+90			228.68 219.89	8.79 ✓	
+50			228.48 219.59	8.89 ✓	
153 +10			228.22 219.28	8.94 ✓	
+70			227.74 218.98	8.26 ✓	
152 +30			226.66 218.67	7.99 ✓	
+90			226.98 218.37	8.61 ✓	
+50	0.76 9°		227.04 218.07	8.97 ✓	
151 +10			226.25 217.76	8.49 ✓	
+70			225.91 217.46	8.45 ✓	
150 +30			226.44 217.15	9.29 ✓	
+90		T.P.	226.37 216.85	9.52 ✓	
149 +50			226.10 216.55	9.55 ✓	
M.H. 134					
149 +10.55	-Δ 4° 55' 43"		225.35 216.24	9.11 ✓	
148 +80			224.80 216.01	8.79 ✓	

ROSE CANYON SEWER
GRADES — "B" LINE

STATIONS			Elev. invert	Cuts	offsets
+90		237.07	228.12	8.95	10.4
+50		236.43	227.75	8.68	
162 +10	36.08	235.86	227.38 ^{6.08}	8.48	8.70
+70		236.51	227.02	9.49	
161 +30		235.70	226.65	9.05	TP in tree 20' LT & 3858
+90		235.47	226.28	9.19	
+50		235.32	225.91	9.41	
160 +10	33.95	234.36	225.54	8.82	8.41
+70	TP. 01	234.32	225.18	9.14	
+30		233.90	224.81	9.09	
M.H. 136			33.84		
159 +10.40	Δ 6' 4" LT 33.84	234.02	224.63	9.39	9.21
+90	33.59	233.65	224.44	9.21	9.15
+50	out	232.77	224.07	8.70	
158 +10		232.84	223.71	9.13	
+70	out	231.81	223.34	8.50	
157 +30		232.75	222.97	9.78	
+90	32.09	232.05	222.60	9.45	9.49
+50	57	231.59	222.23	9.36	
156 +10	30.74	230.92	221.87 ^{30.74}	9.05	8.87

ROSE CANYON SEWER

GRADES - "B" LINE

45.05
42.12
2.93

29

STATIONS			Elev. Invert	Cuts	offsets
	chk d 168 + 95.05, Prelim	245.39			
		245.36			
	M.H. # 138	32.0 45.42	.542		
168 + 95.05	Δ H 24' 04"	244.39	233.69	10.70	11.73
+50		44.56	244.13	233.28	10.85 11.28
168 + 10		44.5936	243.30	232.91	10.39 11.68
+70		44.00 14	243.08	232.54	10.54 11.46
167 + 30		42.07	241.83	232.17	9.66 9.90
+90		41.73	240.90	231.80	9.10 9.93
+50		40.65	240.22	231.44	8.78 9.21
166 + 10		39.71	239.36	231.07	8.29 8.64
+70		40.00	238.76	230.70	8.06 9.30
165 + 30		39.62	238.87	230.33	8.54 9.29
+90		38.52	237.98	229.96	8.02 8.56
+50		38.37	238.08	229.60	8.48 8.77
164 + 10			237.61	229.23	8.38
	M.H. 137				
163 + 90	Δ H. 17' 54' 05"	237.56	229.04	8.52	
+70		237.56	228.86	8.70	
163 + 30		237.63	228.49	9.14	

ROSE CANYON SEWER

GRADES - 8" LINE

STATIONS		El. invert	Cuts	offsets - 10' Rt.
175+25	48.80	8.80 39.47	9.33	
+90	48.47	8.47 39.15	9.32	
+55	47.76	7.76 38.83	8.93	
174+20	47.14	7.14 38.51	8.63	
+85	46.57	6.57 38.19	8.38	
+50 = M.H. 139	46.36	6.36 37.87	8.49	
173+15	45.94	5.94 37.55	8.39	
+80	44.93	4.93 37.23	7.70	
+45	44.46	4.46 36.91	7.55	
172+10	44.57	4.57 36.59	7.98	
+75	44.87	4.87 36.27	8.60	
+40	44.90	4.90 35.94	8.96	
171+05	44.48	4.48 35.62	8.86	
+70	44.38	4.38 35.30	9.08	
+35	44.21	4.21 34.98	9.23	
170+00	43.63	3.63 34.66	8.97	
+65	43.49	3.49 34.33	9.16	
169+30	44.10	4.10 34.01	10.09	
#138				
168+95.05 = M.H. 1		33.69		
35				
30				

ROSE CANYON SEWER

GRADES - "B" LINE

10' Rt.

+85	56.35	^{6 35} 47.24	9.11
+50	55.59	^{5 59} 46.76	8.83
181+15	55.12	^{5 12} 46.29	8.83
+80	55.32	^{5 32} 45.82	9.50
+45 - T.P.	54.91	^{4 91} 45.34	9.57
180+10	54.35	^{4 35} 44.86	9.49
+75	54.16	^{4 16} 44.39	9.77
+40	53.51	^{3 51} 43.92	9.59
179+05	53.28	^{3 28} 43.44	9.84
+70	52.94	^{2 94} 42.96	9.98
178+35	52.43	^{2 43} 42.49	9.94
+98.85 = M.H. 140	52.25	^{2 25} 42.00	10.25
+70	51.62	^{1 62} 41.71	9.91
+35	51.13	^{1 13} 41.39	9.74
177+00	50.50	^{0 50} 41.07	9.43
+65	50.14	^{0 14} 40.75	9.39
176+30	49.91	^{9 91} 40.43	9.48
+95	49.47	^{9 47} 40.11	9.36
175+60	48.71	^{8 71} 39.79	8.92

+35	63.84	^{3 84} 54.11	9.73
188+00 = M.H. 142	63.85	^{3 85} 53.76	10.09
+75	63.55	^{3 55} 53.51	10.04
+40	63.12	^{3 12} 53.16	9.96
187+05	62.74	^{2 74} 52.81	9.93
+70	62.27	^{2 27} 52.46	9.81
+35 = T.P.	62.00	^{2 00} 52.11	9.89
186+00	61.36	^{1 36} 51.76	9.60
+65	60.53	^{0 53} 51.41	9.12
185+30	60.34	^{0 34} 51.06	9.28
+95	60.09	^{0 09} 50.71	9.38
+60	59.79	^{9 79} 50.36	9.43
184+25	59.62	^{9 62} 50.01	9.61
+90	59.95	^{9 95} 49.66	10.29
+55	59.28	^{9 28} 49.31	9.97
183+20	58.51	^{8 51} 48.96	9.55
= M.H. 141		^{7 58} 48.61	8.97
+84.97	57.58	^{7 58} 48.61	8.97
+55	57.31	^{7 31} 48.19	9.12
182+20	56.27	^{6 27} 47.72	8.55

ROSE CANYON SEWER;
"B" LINE TO MICAMAR

STATIONS		El Invert	Cuts	10' Rt. offsets
195+10	71.62	^{1 62} 60.53	11.09	
+75	71.15	^{1 15} 60.24	10.91	
+40	70.59	^{0 59} 59.94	10.65	
194+05	70.14	^{0 14} 59.65	10.49	
+70	69.25	^{9 25} 59.35	9.90	
+35	69.11	^{9 11} 59.06	10.05	
193+00 = M.H. 143	68.74	^{8 74} 58.76	9.98	
+60	69.12	^{9 12} 58.36	10.76	
192+20	67.96	^{7 96} 57.96	10.00	
+85 - T.P.	67.85	^{7 85} 57.61	10.24	
+50	67.65	^{7 65} 57.26	10.39	
191+15	67.17	^{7 17} 56.91	10.26	
+80	66.96	^{6 96} 56.56	10.40	
+45	66.81	^{6 81} 56.21	10.60	
190+10	66.78	^{6 78} 55.86	10.92	
+75	66.45	^{6 45} 55.51	10.94	
+40	66.20	^{6 20} 55.16	11.04	
189+05	65.75	^{5 75} 54.81	10.94	
188+70	64.93	^{4 93} 54.46	10.47	

ROSE CANYON SEWER

"B" LINE TO MIGNAR

STATION	ELEV. INVERT	CUTS	OFFSETS
+45	74.68 +68 65.87	8.81	
201+10	74.07 4.07 65.57	8.50	
+75	73.55 3.55 65.28	8.27	
+40	72.39 2.39 64.98	7.41	
200+05	71.81 1.81 64.69	7.12	
+70	71.51 1.51 64.39	7.12	
+35	71.48 1.48 64.10	7.38	
Hub - 71.54 = 71.47 = B.M. 199+00 = M.H. 145	71.48 1.48 63.80	7.68	
+80	71.62 1.62 63.64	7.98	
+45	71.86 1.86 63.35	8.51	
198+10	71.60 1.60 63.05	8.55	
+75	71.19 1.19 62.76	8.43	
+40	71.70 1.70 62.46	9.24	
197+05	71.11 1.11 62.17	8.94	
+70	71.24 1.24 61.87	9.37	
+35	71.51 1.51 61.58	9.93	
196+00 = M.H. 144	71.42 1.42 61.28	10.14	
+80	71.17 1.17 61.12	10.05	
195+45	71.06 1.06 60.83	10.23	

ROSE CANYON SEWER;
"B"-LINE TO MIRAMAR

STATIONS	ELEV.	INVERT	CUTS	OFFSETS
208+00	80.08	71.37 ^{0.08}	8.71	
+65	79.17	71.07 ^{9.17}	8.10	
207+30	78.12	70.78 ^{8.12}	7.34	
+95	77.90	70.49 ^{7.90}	7.41	
+60	77.20	70.19 ^{7.20}	7.01	
206+25	77.43	69.90 ^{7.43}	7.53	
+90	77.11	69.60 ^{7.11}	7.51	
+55	77.24	69.31 ^{7.24}	7.93	
205+20	77.15	69.01 ^{7.15}	8.14	
+85 = T.P.	76.17	68.72 ^{6.17}	7.45	
+50 = M.H. 147	75.68	68.42 ^{5.68}	7.26	
204+20	75.73	68.18 ^{5.73}	7.55	
+85	75.90	67.88 ^{5.90}	8.02	
+50	75.86	67.59 ^{5.86}	8.27	
203+15	75.37	67.29 ^{5.37}	8.08	
+80	75.22	67.00 ^{5.22}	8.22	
+45	74.93	66.70 ^{4.93}	8.23	
202+10	74.76	66.41 ^{4.76}	8.35	
201+75 = M.H. 146	74.84	66.11 ^{4.84}	8.73	

ROSE CANYON SEWER;
"B" LINE TO MICHMAR

STATIONS		El Invert	CUTS	offsets
+85		86.29	^{6 29} 77.12	9.17
+50 = M.H. 149		85.65	^{5.65} 76.82	8.83
214 + 10		85.00	^{5 00} 76.50	8.50
✓ +70		85.32	^{5 32} 76.16	9.16
+35		84.62	^{4 62} 75.87	8.75
213 + 00		84.19	^{4 19} 75.57	8.62
+65		83.01	^{3 01} 75.28	7.73
212 + 30		82.14	^{2 14} 74.98	7.16
✗ +95		81.99	^{1 99} 74.68	7.31
+60		81.59	^{1 59} 74.39	7.20
211 + 25		81.46	^{1 46} 74.10	7.36
+90		81.39	^{1 39} 73.80	7.59
+55		82.25	^{2 25} 73.51	8.74
✓ 210 + 20		83.06	^{3 06} 73.21	9.85
+85		82.93	^{2 93} 72.92	10.01
+50 = Ang. T.P. = M.H. 148		82.88	^{2 88} 72.62	10.26
209 + 10		81.54	^{1 54} 72.30	9.24
+70		80.32	^{0 32} 71.96	8.36
208 + 35		80.32	^{0 32} 71.67	8.65

ROSE CANYON SEWER
"B" LINE - TO MIRAMAR

STATION		El. invert	CUTS	offsets
+60	90.70	^{0 70} 82.62	8.08	
221 + 25	90.59	^{0 59} 82.35	8.24	
+90 - TR.	90.57	^{0 57} 82.08	8.49	
+55'	90.59	^{0 59} 81.82	8.77	
220 + 20	90.36	^{0 36} 81.55	8.81	
+85'	90.11	^{0 11} 81.29	8.82	
+50 = M.H. .150	89.94	^{9 94} 81.02	8.92	
219 + 10	89.54	^{9 54} 80.70	8.84	
+70	89.19	^{9 19} 80.36	8.83	
+35'	88.93	^{8 93} 80.07	8.86	
218 + 00	89.02	^{9 02} 79.77	9.25	
+65'	89.42	^{9 42} 79.48	9.94	
217 + 30	89.09	^{9 09} 79.18	9.91	
+95	87.93	^{7 93} 78.88	9.05	
+60	87.32	^{7 32} 78.59	8.73	
216 + 25	87.04	^{7 04} 78.30	8.74	
+90	87.44	^{7 44} 78.00	9.44	
+55'	87.72	^{7 72} 77.71	10.06	
215 + 20	86.91	^{6 91} 77.41	9.50	

ROSE CANYON SEWER;"B" LINE TO MIRA MAR

37

STATION		EI. INVERT	CUTS	OFFSETS
+45	96.80	^{6 80} 87.82	8.98	
228+10	96.30	^{6 30} 87.56	8.74	
+75 = M.H. 152	95.79	^{5 79} 87.29	8.50	
227+35	95.15	^{5 15} 86.99	8.16	
+95	94.98	^{4 98} 86.68	8.30	
+60	94.89	^{4 89} 86.42	8.47	
226+25	94.45	^{4 45} 86.15	8.30	
+90	94.15	^{4 15} 85.88	8.27	
+55	94.23	^{4 23} 85.62	8.61	
225+20	93.44	^{3 44} 85.35	8.09	
+85	93.16	^{3 16} 85.09	8.07	
= Ang. +50 = M.H. 151	93.27	^{3 27} 84.82	8.45	
224+10	93.20	^{3 20} 84.52	8.68	
+70	92.46	^{2 46} 84.21	8.25	
+35	92.53	^{2 53} 83.95	8.58	
223+00	92.43	^{2 43} 83.68	8.75	
+65	91.76	^{1 76} 83.41	8.35	
222+30	91.14	^{1 14} 83.15	7.99	
221+95	90.84	^{0 84} 82.88	7.96	

ROSE CANYON SEWER;

"B" LINE TO MIRAMAR

STATIONS			Elev. Invert	CUTS	offsets
235 + 00 = M.H. 154		2.51	2.51 92.80	9.71	
+75		2.60	2.60 92.61	9.99	
+50		2.69	2.69 92.42	10.27	
234 + 15		2.69	2.69 92.15	10.54	
+80		2.61	2.61 91.89	10.72	
+45		2.44	2.44 91.62	10.82	
233 + 10		1.95	1.95 91.36	10.59	
+75		1.35	1.35 91.09	10.26	
+40		1.06	1.06 90.82	10.24	
232 + 05		0.92	0.92 90.56	10.36	
+70		100.37	0.37 90.29	10.08	
+35		99.90	9.90 90.03	9.87	
231 + 00 = M.H. 153		99.87	9.87 89.76	10.11	
+60		99.42	9.42 89.46	9.96	
230 + 20		99.14	9.14 89.15	9.99	
+85		98.53	8.53 88.89	9.64	
+50		98.12	8.12 88.62	9.50	
229 + 15		97.55	7.55 88.35	9.20	
228 + 80		97.36	7.36 88.09	9.27	

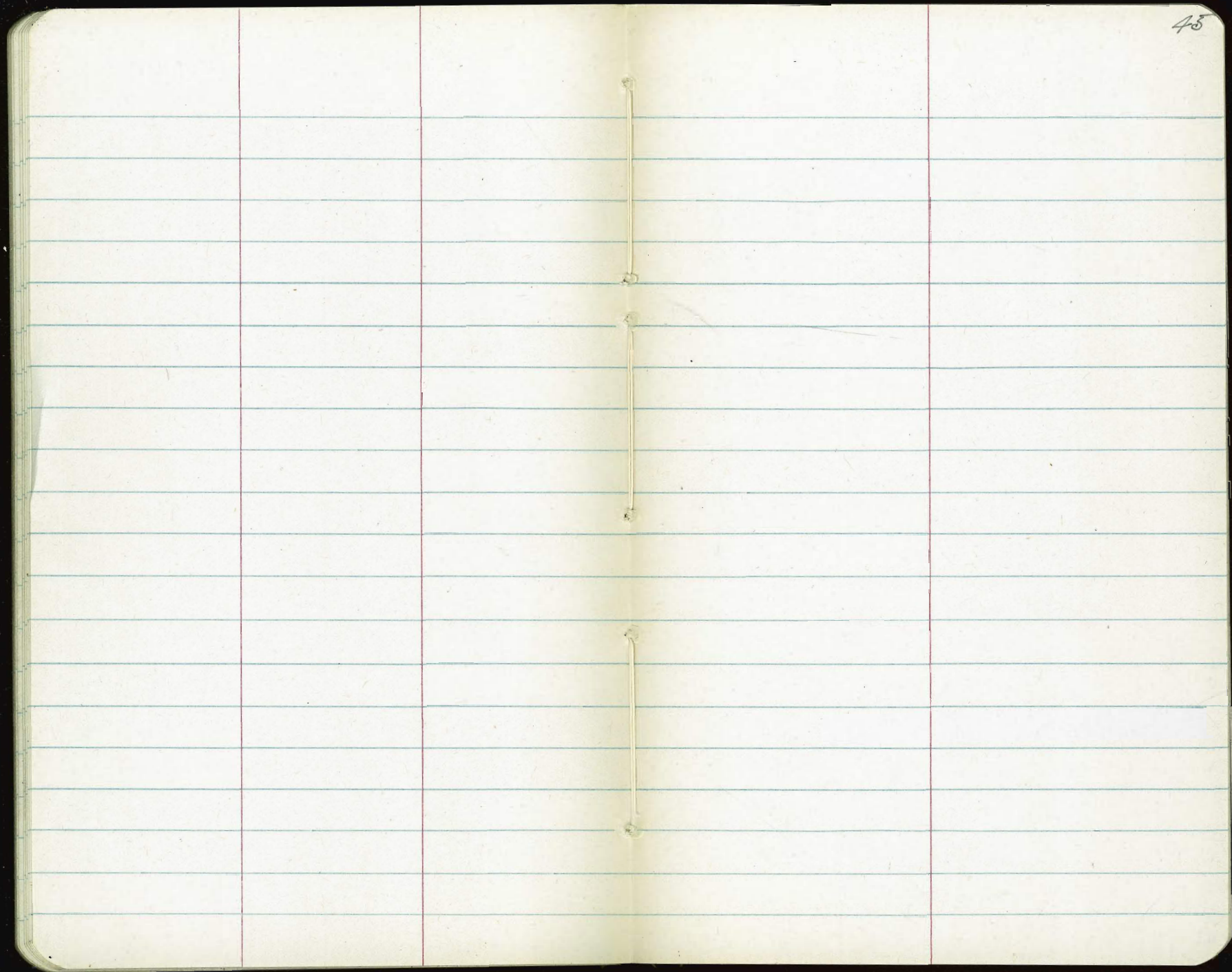
ROSE CANYON SEWER;
"B" LINE TO MIRMAR

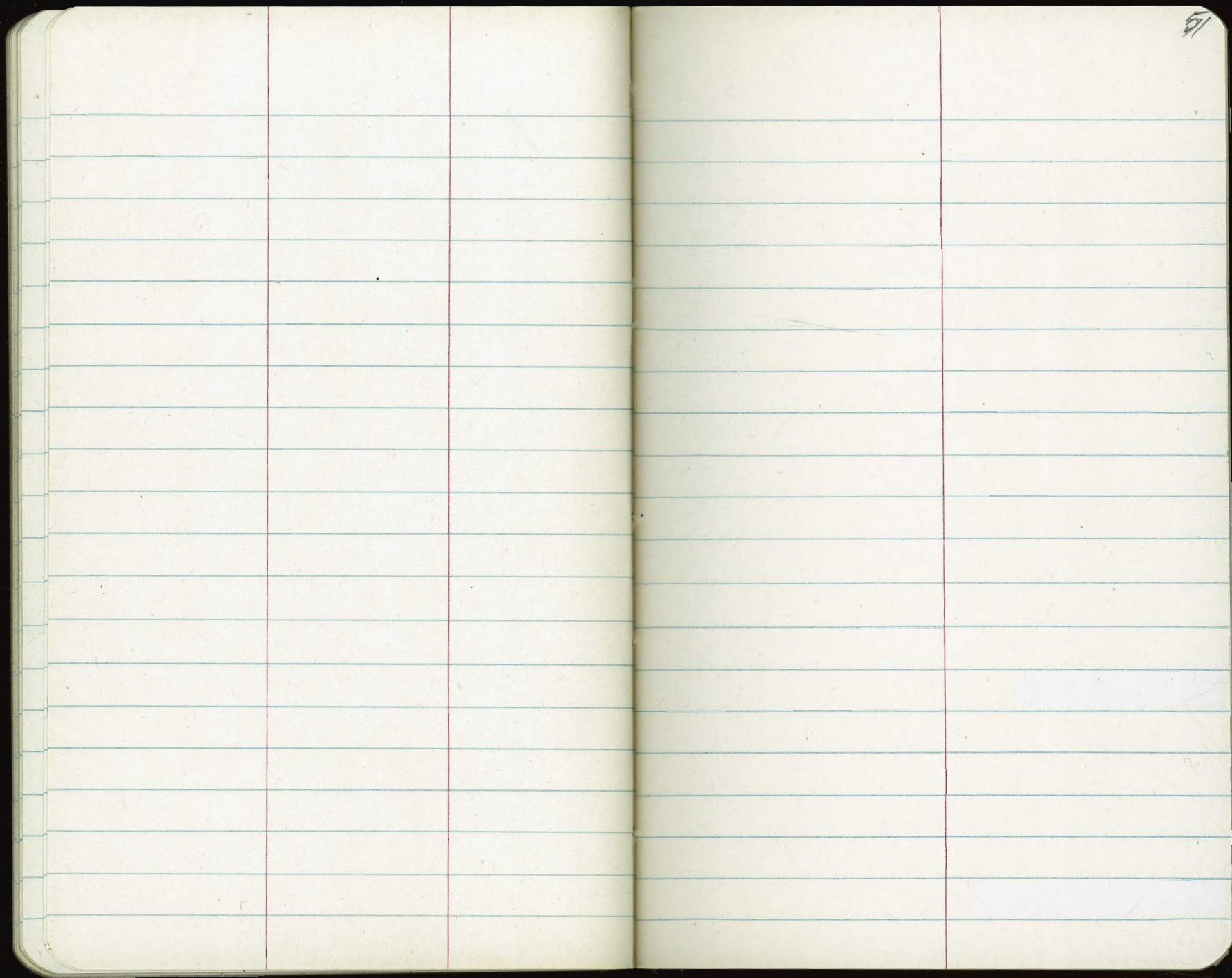
	I. E.	CUTS	offsets
+60	8.21 ^{8.21} 300.26	7.95	
241+25	8.01 ^{8.01} 99.80	8.21	
+90	7.71 ^{7.71} 99.34	8.37	
+55	7.09 ^{7.09} 98.88	8.20	
240+20 = ^{Ang.} M.H. 155	6.72 ^{6.72} 98.42	8.30	
+90	6.52 ^{6.52} 98.09	8.43	
+55	6.35 ^{6.35} 97.71	8.64	
239+20	5.76 ^{5.76} 97.34	8.42	
+85	5.71 ^{5.71} 96.96	8.75	
+50	5.37 ^{5.37} 96.58	8.79	
238+15	5.38 ^{5.38} 96.20	9.18	
+80	5.17 ^{5.17} 95.82	9.35	
+45	5.26 ^{5.26} 95.45	9.81	
237+10	6.62 ^{6.62} 95.07	11.55	
+75	5.25 ^{5.25} 94.69	10.56	
+40	4.58 ^{4.58} 94.31	10.17	
236+05	3.52 ^{3.52} 93.93	9.59	
+70	3.47 ^{3.47} 93.56	9.91	
235+35	2.84 ^{2.84} 93.18	9.66	

Sta.		I.E.	Cut.	Offset
+35	15.32	^{5.32} 09.18	6.14	
248 +00 = T.P.	14.71	^{4.71} 08.72	5.99	
+65	14.77	^{4.77} 08.25	6.52	
247 +30	14.32	^{4.32} 07.79	6.53	
+95	14.04	^{4.04} 07.33	6.71	
+60	13.80	^{3.80} 06.87	6.93	
246 +25	13.74	^{3.74} 06.41	7.33	
+90	14.46	^{4.46} 05.94	8.52	
+55	15.16	^{5.16} 05.48	9.68	
245 +20 = M.H. 156	15.29	^{5.29} 05.02	10.27	
+80	14.96	^{4.96} 04.48	10.48	
+40	14.50	^{4.50} 03.95	10.55	
244 +05	13.61	^{3.61} 03.49	10.12	
+70	13.74	^{3.74} 03.03	10.71	
+35	12.73	^{2.73} 02.57	10.16	
243 +00	11.45	^{1.45} 02.11	9.34	
+65	10.27	^{0.27} 01.65	8.62	
242 +30	10.92	^{10.92} 01.19	9.73	
241 +95 = T.P.	10.15	^{10.15} 300.72	9.43	

Sta		IE	Cut
+90	Ang. = M.H. 158	24.87	8.81
+55'		24.34	8.60
254+20		23.43	8.03
+85'		23.99	8.92
+50		24.44	9.71
253+15		23.80	9.41
+80		23.87	9.81
+45'		25.44	11.72
252+10		27.76	14.38
+75'		24.98	11.94
+40		24.14	11.43
251+05'		23.54	11.17
+70		23.36	11.33
+35'		23.62	11.92
250+00 = M.H. 157		23.93	12.57
+75' - T.P.		23.02	11.99
+40		20.25	9.69
249+05'		18.55	8.45
248+70		16.98	7.34

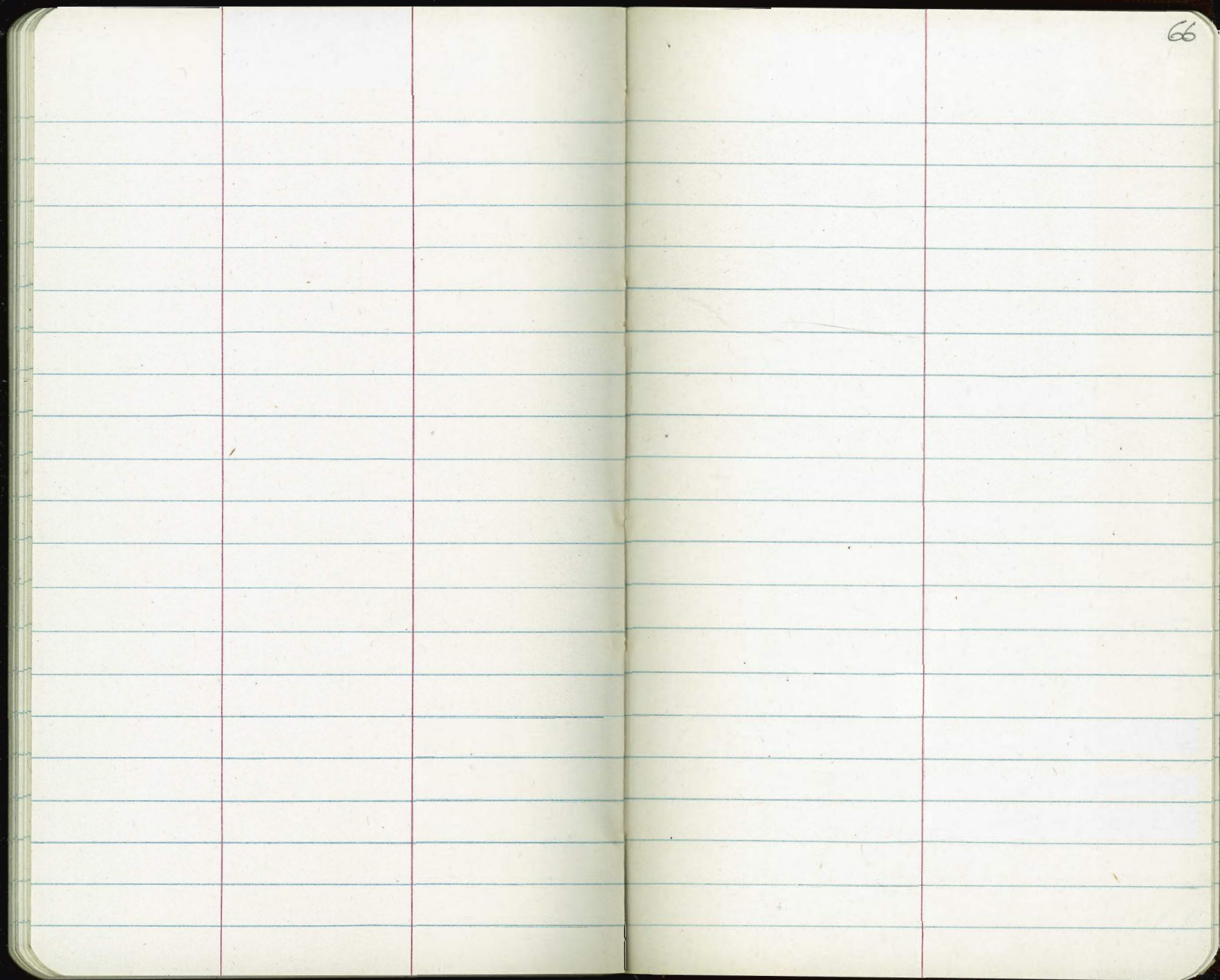
Sta	I.E.	Cut.
+65.33		
+87 = Conn.	28.12	8 12 18.54 9.58
+70	28.05	8 05 18.46 9.59
+40 33 = 1	28.02	8 02 18.31 9.71
259 + 10	27.78	7 78 18.16 9.62
+75	27.50	7 50 17.98 9.52
+40	27.08	7 08 17.81 9.27
258 + 05	27.06	7 06 17.64 9.42
+70	26.51	6 51 17.46 9.05
+35	26.36	6 36 17.28 9.08
257 + 00	25.93	5 93 17.11 8.82
+65	26.44	6 44 16.94 9.50
256 + 30	26.12	6 12 16.76 9.36
+95	25.97	5 97 16.59 9.38
+60	25.70	5 70 16.41 9.29
255 + 25	25.72	5 72 16.24 9.48

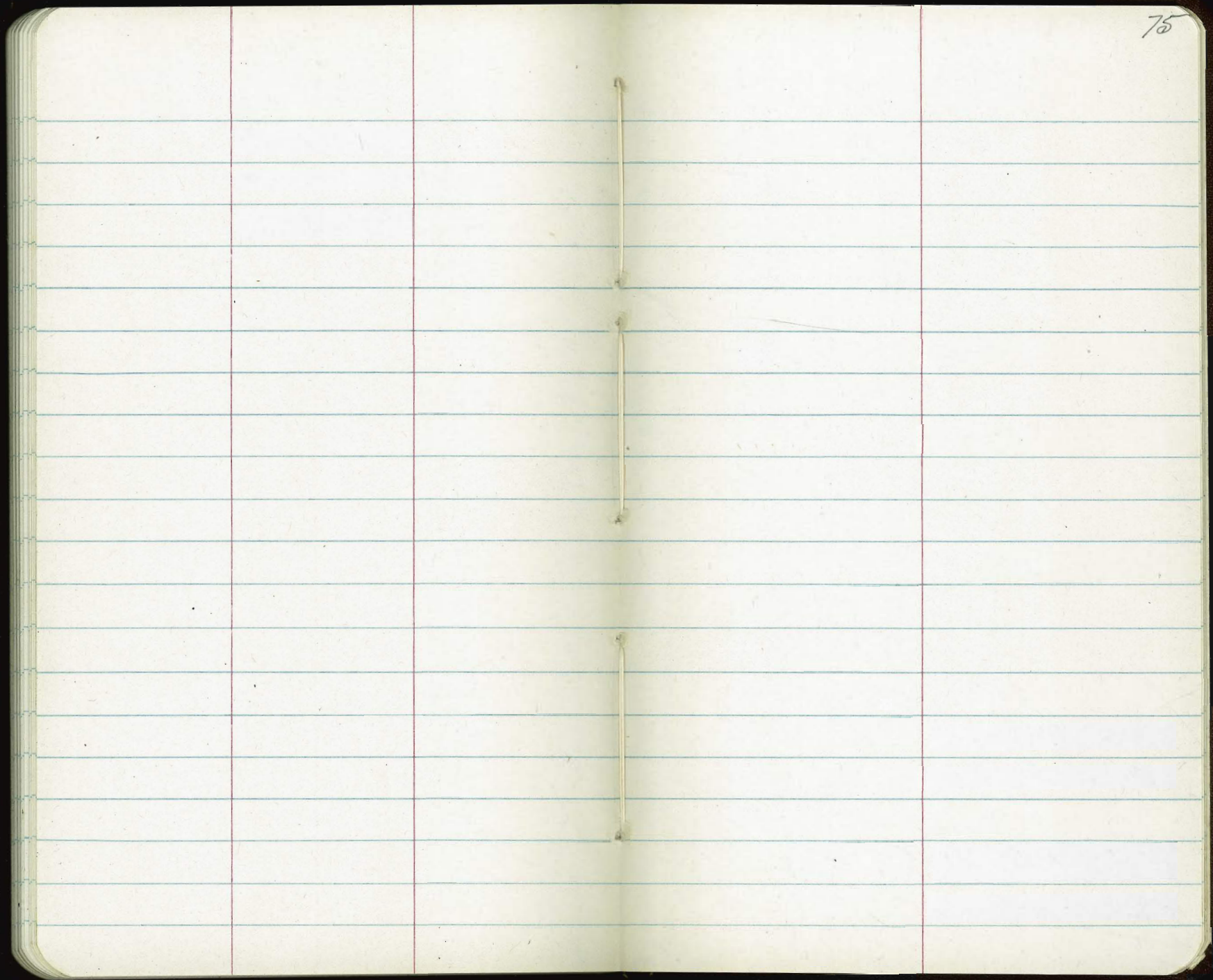




51

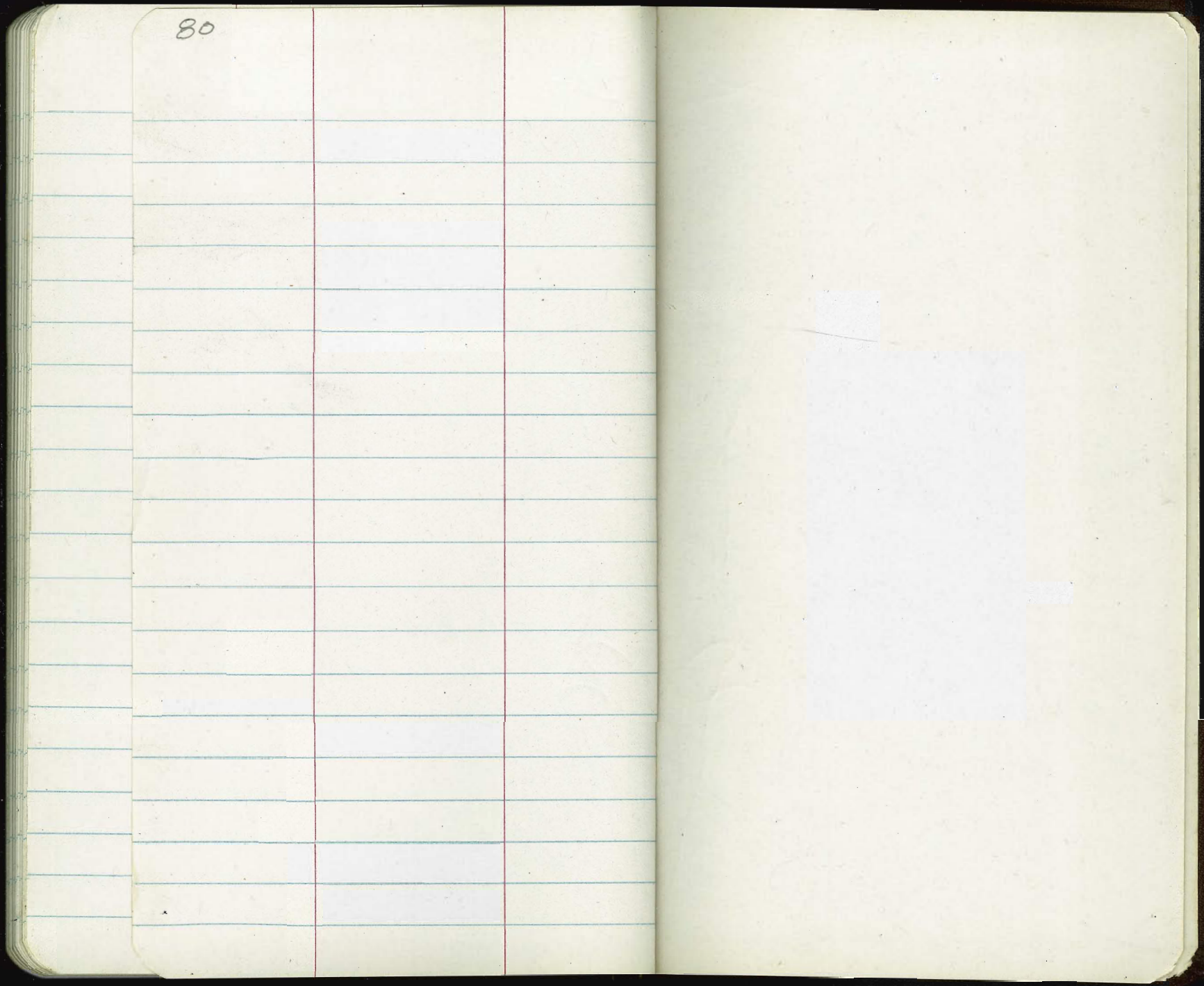
The image shows an open notebook with two facing pages. Both pages are cream-colored and feature horizontal light blue lines for writing. Each page is further divided into three vertical columns by two red lines. The right page has the number '60' written in the top right corner. The notebook is set against a dark background.





The image shows an open notebook with two facing pages. Both pages are cream-colored and feature light blue horizontal ruling. A vertical red margin line is present on the left side of each page. The right page has the number '78' written in the top right corner. The notebook is set against a dark background.

80



1
 11° 22' Lt. - 224+50

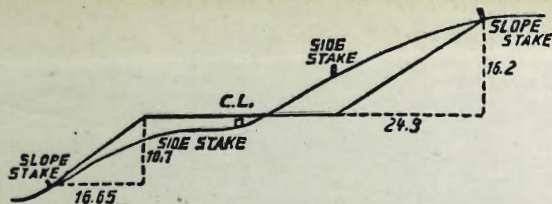
235+00 - 2° 41' 45" Rt.

240+20 - 6° 04' 20" Rt.

245+20 15° 07' Lt.

254+90 - 8° 36' 30" Rt.

259+87 = end.



DISTANCES FROM SIDE STAKES FOR CROSS-SECTIONING.

SLOPE 1 1/2 TO 1. ROADWAY OF ANY WIDTH.

	0	.1	.2	.3	.4	.5	.6	.7	.8	.9	
0	0.00	0.15	0.30	0.45	0.60	0.75	0.90	1.05	1.20	1.35	0
1	1.50	1.65	1.80	1.95	2.10	2.25	2.40	2.55	2.70	2.85	1
2	3.00	3.15	3.30	3.45	3.60	3.75	3.90	4.05	4.20	4.35	2
3	4.50	4.65	4.80	4.95	5.10	5.25	5.40	5.55	5.70	5.85	3
4	6.00	6.15	6.30	6.45	6.60	6.75	6.90	7.05	7.20	7.35	4
5	7.50	7.65	7.80	7.95	8.10	8.25	8.40	8.55	8.70	8.85	5
6	9.00	9.15	9.30	9.45	9.60	9.75	9.90	10.05	10.20	10.35	6
7	10.50	10.65	10.80	10.95	11.10	11.25	11.40	11.55	11.70	11.85	7
8	12.00	12.15	12.30	12.45	12.60	12.75	12.90	13.05	13.20	13.35	8
9	13.50	13.65	13.80	13.95	14.10	14.25	14.40	14.55	14.70	14.85	9
10	15.00	15.15	15.30	15.45	15.60	15.75	15.90	16.05	16.20	16.35	10
11	16.50	16.65	16.80	16.95	17.10	17.25	17.40	17.55	17.70	17.85	11
12	18.00	18.15	18.30	18.45	18.60	18.75	18.90	19.05	19.20	19.35	12
13	19.50	19.65	19.80	19.95	20.10	20.25	20.40	20.55	20.70	20.85	13
14	21.00	21.15	21.30	21.45	21.60	21.75	21.90	22.05	22.20	22.35	14
15	22.50	22.65	22.80	22.95	23.10	23.25	23.40	23.55	23.70	23.85	15
16	24.00	24.15	24.30	24.45	24.60	24.75	24.90	25.05	25.20	25.35	16
17	25.50	25.65	25.80	25.95	26.10	26.25	26.40	26.55	26.70	26.85	17
18	27.00	27.15	27.30	27.45	27.60	27.75	27.90	28.05	28.20	28.35	18
19	28.50	28.65	28.80	28.95	29.10	29.25	29.40	29.55	29.70	29.85	19
20	30.00	30.15	30.30	30.45	30.60	30.75	30.90	31.05	31.20	31.35	20
21	31.50	31.65	31.80	31.95	32.10	32.25	32.40	32.55	32.70	32.85	21
22	33.00	33.15	33.30	33.45	33.60	33.75	33.90	34.05	34.20	34.35	22
23	34.50	34.65	34.80	34.95	35.10	35.25	35.40	35.55	35.70	35.85	23
24	36.00	36.15	36.30	36.45	36.60	36.75	36.90	37.05	37.20	37.35	24
25	37.50	37.65	37.80	37.95	38.10	38.25	38.40	38.55	38.70	38.85	25
26	39.00	39.15	39.30	39.45	39.60	39.75	39.90	40.05	40.20	40.35	26
27	40.50	40.65	40.80	40.95	41.10	41.25	41.40	41.55	41.70	41.85	27
28	42.00	42.15	42.30	42.45	42.60	42.75	42.90	43.05	43.20	43.35	28
29	43.50	43.65	43.80	43.95	44.10	44.25	44.40	44.55	44.70	44.85	29
30	45.00	45.15	45.30	45.45	45.60	45.75	45.90	46.05	46.20	46.35	30
31	46.50	46.65	46.80	46.95	47.10	47.25	47.40	47.55	47.70	47.85	31
32	48.00	48.15	48.30	48.45	48.60	48.75	48.90	49.05	49.20	49.35	32
33	49.50	49.65	49.80	49.95	50.10	50.25	50.40	50.55	50.70	50.85	33
34	51.00	51.15	51.30	51.45	51.60	51.75	51.90	52.05	52.20	52.35	34
35	52.50	52.65	52.80	52.95	53.10	53.25	53.40	53.55	53.70	53.85	35
36	54.00	54.15	54.30	54.45	54.60	54.75	54.90	55.05	55.20	55.35	36
37	55.50	55.65	55.80	55.95	56.10	56.25	56.40	56.55	56.70	56.85	37
38	57.00	57.15	57.30	57.45	57.60	57.75	57.90	58.05	58.20	58.35	38
39	58.50	58.65	58.80	58.95	59.10	59.25	59.40	59.55	59.70	59.85	39
40	60.00	60.15	60.30	60.45	60.60	60.75	60.90	61.05	61.20	61.35	40
41	61.50	61.65	61.80	61.95	62.10	62.25	62.40	62.55	62.70	62.85	41
42	63.00	63.15	63.30	63.45	63.60	63.75	63.90	64.05	64.20	64.35	42
43	64.50	64.65	64.80	64.95	65.10	65.25	65.40	65.55	65.70	65.85	43
44	66.00	66.15	66.30	66.45	66.60	66.75	66.90	67.05	67.20	67.35	44
45	67.50	67.65	67.80	67.95	68.10	68.25	68.40	68.55	68.70	68.85	45
46	69.00	69.15	69.30	69.45	69.60	69.75	69.90	70.05	70.20	70.35	46
47	70.50	70.65	70.80	70.95	71.10	71.25	71.40	71.55	71.70	71.85	47
48	72.00	72.15	72.30	72.45	72.60	72.75	72.90	73.05	73.20	73.35	48
49	73.50	73.65	73.80	73.95	74.10	74.25	74.40	74.55	74.70	74.85	49
50	75.00	75.15	75.30	75.45	75.60	75.75	75.90	76.05	76.20	76.35	50

THE NATIONAL BLANK BOOK COMPANY
 HOLYOKE MASSACHUSETTS
 NEW YORK CHICAGO BOSTON SAN FRANCISCO