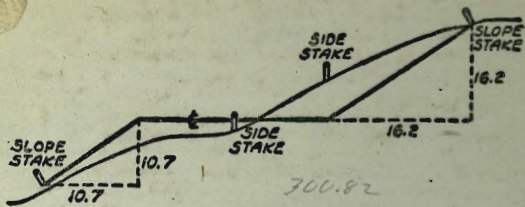


G-391



DISTANCES FROM SIDE STAKES FOR CROSS-SECTIONING
SLOPE 1 TO 1. ROADWAY OF ANY WIDTH

	0	.1	.2	.3	.4	.5	.6	.7	.8	.9	
0	0.00	0.10	0.20	0.30	0.40	0.50	0.60	0.70	0.80	0.90	0
1	1.00	1.10	1.20	1.30	1.40	1.50	1.60	1.70	1.80	1.90	1
2	2.00	2.10	2.20	2.30	2.40	2.50	2.60	2.70	2.80	2.90	2
3	3.00	3.10	3.20	3.30	3.40	3.50	3.60	3.70	3.80	3.90	3
4	4.00	4.10	4.20	4.30	4.40	4.50	4.60	4.70	4.80	4.90	4
5	5.00	5.10	5.20	5.30	5.40	5.50	5.60	5.70	5.80	5.90	5
6	6.00	6.10	6.20	6.30	6.40	6.50	6.60	6.70	6.80	6.90	6
7	7.00	7.10	7.20	7.30	7.40	7.50	7.60	7.70	7.80	7.90	7
8	8.00	8.10	8.20	8.30	8.40	8.50	8.60	8.70	8.80	8.90	8
9	9.00	9.10	9.20	9.30	9.40	9.50	9.60	9.70	9.80	9.90	9
10	10.00	10.10	10.20	10.30	10.40	10.50	10.60	10.70	10.80	10.90	10
11	11.00	11.10	11.20	11.30	11.40	11.50	11.60	11.70	11.80	11.90	11
12	12.00	12.10	12.20	12.30	12.40	12.50	12.60	12.70	12.80	12.90	12
13	13.00	13.10	13.20	13.30	13.40	13.50	13.60	13.70	13.80	13.90	13
14	14.00	14.10	14.20	14.30	14.40	14.50	14.60	14.70	14.80	14.90	14
15	15.00	15.10	15.20	15.30	15.40	15.50	15.60	15.70	15.80	15.90	15
16	16.00	16.10	16.20	16.30	16.40	16.50	16.60	16.70	16.80	16.90	16
17	17.00	17.10	17.20	17.30	17.40	17.50	17.60	17.70	17.80	17.90	17
18	18.00	18.10	18.20	18.30	18.40	18.50	18.60	18.70	18.80	18.90	18
19	19.00	19.10	19.20	19.30	19.40	19.50	19.60	19.70	19.80	19.90	19
20	20.00	20.10	20.20	20.30	20.40	20.50	20.60	20.70	20.80	20.90	20
21	21.00	21.10	21.20	21.30	21.40	21.50	21.60	21.70	21.80	21.90	21
22	22.00	22.10	22.20	22.30	22.40	22.50	22.60	22.70	22.80	22.90	22
23	23.00	23.10	23.20	23.30	23.40	23.50	23.60	23.70	23.80	23.90	23
24	24.00	24.10	24.20	24.30	24.40	24.50	24.60	24.70	24.80	24.90	24
25	25.00	25.10	25.20	25.30	25.40	25.50	25.60	25.70	25.80	25.90	25
26	26.00	26.10	26.20	26.30	26.40	26.50	26.60	26.70	26.80	26.90	26
27	27.00	27.10	27.20	27.30	27.40	27.50	27.60	27.70	27.80	27.90	27
28	28.00	28.10	28.20	28.30	28.40	28.50	28.60	28.70	28.80	28.90	28
29	29.00	29.10	29.20	29.30	29.40	29.50	29.60	29.70	29.80	29.90	29
30	30.00	30.10	30.20	30.30	30.40	30.50	30.60	30.70	30.80	30.90	30
31	31.00	31.10	31.20	31.30	31.40	31.50	31.60	31.70	31.80	31.90	31
32	32.00	32.10	32.20	32.30	32.40	32.50	32.60	32.70	32.80	32.90	32
33	33.00	33.10	33.20	33.30	33.40	33.50	33.60	33.70	33.80	33.90	33
34	34.00	34.10	34.20	34.30	34.40	34.50	34.60	34.70	34.80	34.90	34
35	35.00	35.10	35.20	35.30	35.40	35.50	35.60	35.70	35.80	35.90	35
36	36.00	36.10	36.20	36.30	36.40	36.50	36.60	36.70	36.80	36.90	36
37	37.00	37.10	37.20	37.30	37.40	37.50	37.60	37.70	37.80	37.90	37
38	38.00	38.10	38.20	38.30	38.40	38.50	38.60	38.70	38.80	38.90	38
39	39.00	39.10	39.20	39.30	39.40	39.50	39.60	39.70	39.80	39.90	39
40	40.00	40.10	40.20	40.30	40.40	40.50	40.60	40.70	40.80	40.90	40
41	41.00	41.10	41.20	41.30	41.40	41.50	41.60	41.70	41.80	41.90	41
42	42.00	42.10	42.20	42.30	42.40	42.50	42.60	42.70	42.80	42.90	42
43	43.00	43.10	43.20	43.30	43.40	43.50	43.60	43.70	43.80	43.90	43
44	44.00	44.10	44.20	44.30	44.40	44.50	44.60	44.70	44.80	44.90	44
45	45.00	45.10	45.20	45.30	45.40	45.50	45.60	45.70	45.80	45.90	45
46	46.00	46.10	46.20	46.30	46.40	46.50	46.60	46.70	46.80	46.90	46
47	47.00	47.10	47.20	47.30	47.40	47.50	47.60	47.70	47.80	47.90	47
48	48.00	48.10	48.20	48.30	48.40	48.50	48.60	48.70	48.80	48.90	48
49	49.00	49.10	49.20	49.30	49.40	49.50	49.60	49.70	49.80	49.90	49
50	50.00	50.10	50.20	50.30	50.40	50.50	50.60	50.70	50.80	50.90	50

Distance of slope stake from side or shoulder stake for any width roadway, slope 1 to 1. If ground is nearly level, the cut or fill at side stake is located by the double entry method in left column and top row. The number in body of table in same row and column gives distance from side stake to slope stake. If ground is not level estimate the difference in elevation between the side stake and slope stake, lower target by this amount if cut, elevate if fill. Add this amount to cut or fill and find distance in table. Set up rod at this point, and line of sight should cut target. If it does not make the slight adjustment necessary.

0	
1	11
2	11
3	11
4	11
5	11
6	11
7	11
8	11
9	11
10	11
11	11
12	11
13	11
14	11
15	11
16	11
17	11
18	11
19	11
20	21
21	21
22	21
23	21
24	21
25	21
26	21
27	21
28	21
29	21
30	21
31	31
32	31
33	31
34	31
35	31
36	31
37	31
38	31
39	31
40	41
41	41
42	41
43	41
44	41
45	41
46	41
47	41
48	41
49	41
50	50

Distance
ground is
column a
side stake
side stake
cut or fill
If it does

DIRECTIONS FOR USE OF TABLES

TABLE No. XIV

Distance of slope stake from side or shoulder
stake for any width roadway slope 1 1/2 to 1
If ground is nearly level the cut or fill at any
stake is taken by the nearest entry marked in

IMPROVED TABLES
AND
INFORMATION

cut larger. If it does not make the right
adjustment necessary.

TABLE No. VII

To find Tangent and External for curve of
any other degree, divide by degree of curve and
add correction found in column of correction.
Degree of curve with a given L may be found
by dividing tangent (or external) opposed by
given tangent (or external).
The distance from a point on the tangent to
the curve is very nearly the angle of the tangent
length divided by twice the radius.

TABLE XIII—CORRECTIONS FOR TANGENTS AND EXTERNALS

These corrections are to be added to the approximate values, found by dividing the tangent, or external, for a 1° curve (Table VIII) by the degree of curve, in order to obtain the true tangents, or externals. Intermediate values may be obtained by interpolation.

FOR TANGENTS ADD

Central Angle	DEGREE OF CURVE													
	5°	10°	15°	20°	25°	30°	35°	40°	45°	50°	55°	60°	65°	70°
10°	.03	.06	.09	.13	.16	.19	.22	.25	.28	.31	.34	.38	.42	.46
15°	.04	.10	.14	.19	.24	.29	.34	.39	.45	.51	.53	.58	.63	.68
20°	.06	.13	.19	.26	.32	.39	.45	.51	.58	.65	.72	.79	.84	.90
25°	.08	.16	.24	.33	.40	.49	.58	.67	.75	.83	.90	.99	1.06	1.14
30°	.10	.19	.29	.39	.49	.59	.69	.79	.89	.99	1.09	1.20	1.29	1.39
35°	.11	.22	.34	.47	.58	.69	.79	.89	.99	1.09	1.20	1.31	1.42	1.54
40°	.13	.26	.40	.53	.67	.80	.93	1.06	1.20	1.34	1.49	1.64	1.79	1.94
45°	.15	.30	.44	.60	.76	.91	1.06	1.21	1.37	1.52	1.70	1.87	2.04	2.21
50°	.17	.34	.51	.68	.85	1.02	1.19	1.36	1.54	1.72	1.91	2.10	2.29	2.48
55°	.19	.38	.57	.76	.95	1.14	1.32	1.52	1.72	1.92	2.14	2.35	2.56	2.77
60°	.21	.42	.63	.84	1.05	1.27	1.49	1.71	1.94	2.17	2.38	2.60	2.83	3.07
65°	.23	.46	.69	.93	1.16	1.40	1.64	1.88	2.13	2.38	2.63	2.88	3.13	3.39
70°	.25	.51	.76	1.02	1.28	1.54	1.80	2.06	2.33	2.60	2.88	3.16	3.44	3.72
75°	.27	.56	.83	1.12	1.40	1.69	1.98	2.27	2.57	2.87	3.16	3.47	3.78	4.09
80°	.30	.61	.91	1.22	1.53	1.84	2.15	2.46	2.78	3.10	3.44	3.78	4.12	4.46
85°	.33	.66	1.00	1.33	1.68	2.02	2.36	2.70	3.05	3.40	3.77	4.14	4.53	4.89
90°	.36	.72	1.09	1.45	1.83	2.20	2.57	2.94	3.32	3.70	4.10	4.50	4.91	5.32
95°	.39	.79	1.19	1.55	2.00	2.40	2.80	3.20	3.61	4.02	4.40	4.98	5.38	5.83
100°	.43	.86	1.30	1.74	2.18	2.62	3.06	3.50	3.95	4.40	4.88	5.37	5.85	6.34
110°	.51	1.03	1.56	2.08	2.61	3.14	3.67	4.21	4.76	5.31	5.86	6.43	7.01	7.60
120°	.62	1.25	1.93	2.52	3.16	3.81	4.45	5.11	5.77	6.44	7.12	7.80	8.50	9.22

FOR EXTERNALS ADD

Central Angle	DEGREE OF CURVE													
	5°	10°	15°	20°	25°	30°	35°	40°	45°	50°	55°	60°	65°	70°
10°	.001	.003	.004	.006	.007	.008	.009	.011	.012	.014	.015	.017	.018	.020
15°	.003	.007	.010	.014	.018	.023	.027	.032	.037	.043	.049	.053	.057	.061
20°	.006	.011	.017	.022	.028	.034	.038	.045	.051	.057	.063	.070	.076	.083
25°	.009	.018	.027	.036	.046	.056	.065	.074	.083	.093	.106	.120	.127	.135
30°	.013	.025	.038	.051	.065	.078	.090	.103	.116	.129	.149	.170	.179	.188
35°	.018	.035	.054	.072	.086	.109	.131	.153	.175	.197	.213	.230	.247	.264
40°	.023	.046	.070	.093	.117	.141	.172	.203	.234	.265	.277	.290	.315	.341
45°	.030	.060	.093	.119	.153	.184	.216	.254	.289	.325	.351	.378	.411	.445
50°	.037	.075	.116	.151	.189	.227	.266	.305	.345	.384	.425	.467	.508	.550
55°	.046	.093	.142	.188	.236	.283	.332	.381	.420	.479	.530	.582	.641	.700
60°	.056	.112	.168	.225	.283	.340	.398	.457	.516	.575	.636	.697	.774	.851
65°	.067	.135	.204	.273	.343	.412	.483	.554	.625	.697	.771	.845	.922	1.01
70°	.080	.159	.240	.321	.403	.485	.568	.652	.735	.819	.906	.994	1.08	1.17
75°	.095	.182	.266	.353	.440	.528	.617	.707	.797	.887	.977	1.07	1.18	1.29
80°	.110	.220	.332	.445	.558	.671	.787	.903	1.02	1.13	1.25	1.38	1.50	1.62
85°	.128	.259	.391	.524	.657	.790	.926	1.06	1.20	1.34	1.47	1.62	1.76	1.91
90°	.149	.299	.450	.603	.756	.910	1.07	1.22	1.38	1.54	1.70	1.87	2.03	2.20
95°	.174	.350	.522	.706	.885	1.06	1.25	1.43	1.62	1.80	1.99	2.18	2.38	2.58
100°	.200	.401	.604	.809	1.01	1.22	1.43	1.64	1.85	2.06	2.28	2.50	2.73	2.96
110°	.268	.536	.806	1.08	1.35	1.63	1.91	2.20	2.48	2.76	3.05	3.35	3.66	3.96
120°	.360	.721	1.08	1.45	1.82	2.19	2.57	2.95	3.33	3.72	4.11	4.50	4.91	5.32

INDEX

Imp's BIRCH ST - UNA to VESTA	1
Imp's La Jolla Comm. Center	2
Imp's Crown Pt. Dr. (Honeycut to Roosevelt)	3
Flicker St. (Lisbon to Imp)	5
Nly side "K" CB grades: Lots 19-18-19 - BIK 4 CRIPPENS ADD:	8
Wly 47 From Dallas #2 Nly to Hill Top Rough - GRADES only (Tr. G - IN 399)	9
ALTADENA (Polk to ORANGE)	13
Alley BIK 17 - S.S. CLIFFS	17
Sewer: 29th & Nly Laurel (BIK 4 - PARK ADD)	19
68th St. - Solita to AMHERST - Sewer. water & inlet Pp	21 25

INDEX (CONT.)

	Pg.
C.B. IN let & Culvert TERRY PINES Rd - LOT #1 VANDERBILT-VISTA	29
STORM DRAIN - Lot 95 - BIK 7 FAIRMOUNT ADD AUBURN AT ONTARIO	28
STORM DRAIN: FELTON & NUTMEG	29
STORM DRAIN: Lot 71 LA JOYA MESA VISTA	30
STORM DRAIN - CAL-WESTERN-MONACOST P.L. 193 PT. LOMA	32
Alpha - BETA - 41ST	35
Hilltop - BDRY to 42nd & 41ST - Hilltop to Bidway	41
CEDARBRAE LANE (Catalina Blvd to P.L. 104)	58
Imps 34th & "A" ST	61
CB INLETS & DRAIN	67

	Pg.
GRADES: ALLEY BIK "A" SILVER TERRACE AZUSA - to 350: 54	68
Imp's: ALLEY BIK-15- SUNSET CLIFFS	70
CB'S FOR DRIVES: REMINGTON Rd	72

CLARK
GARBER
ONIL
ABREUILLA
7-23-57
W.O. 32488

IMPS - BIRCH ST
UNA TO VESTA

REF: DWG: 4007-D
FB 2170-42 etc

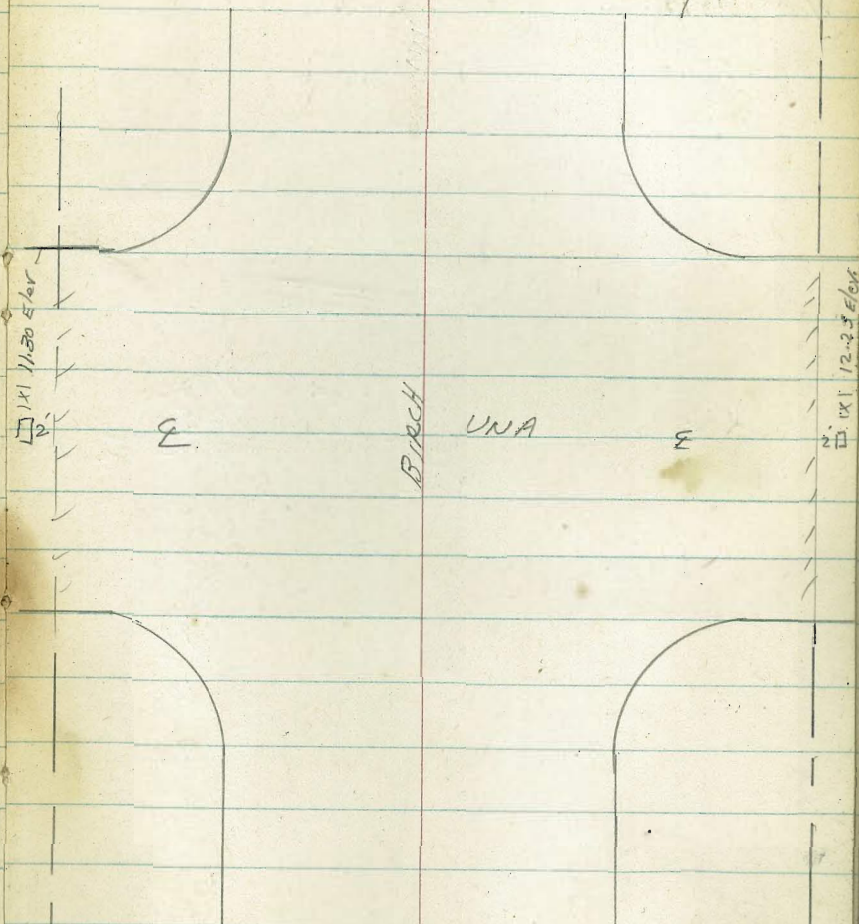
	LT (NEly)		♀	RT (SWly)	
	CB	GUT.		GUT	CB
6+00.6 = Nly Line ↑ VESTA	22.55	most EXIST		most EXIST	21.55
GRADES "RAKED" IN ↓					
4+40.60	17.90	17.40		16.40	16.90
4+20.60 ↑	17.50	17.00		16.00	16.50
GRADES PTS "RAKED" IN ↓					
0+00 = Sky Line UNA	13.01	12.50		11.50	12.00

B.M. = 2

B.M. = 2

12.07 = SE L+T UNA & BIRCH (FB 2170-43)

21.60 = S.W. 7' L+T
BIRCH & VESTA



CLARK
GARBER
ONEIL
ABRENILLA
7-25-57
W.O. 21590

LA Jolla Comm. Center

Storm-Drain

STA.

(Stabs 5' LTR)

1+26.5 = 8" D" Box
79.62
79.50
C 0.12
= Grate

79.62
76.50
C 3.12 F.L. Box

1+00

79.41
75.81
C 3.60

0+75

78.99
75.15
C 3.84

0+50

78.69
74.49
C 4.20

0+25

78.28
73.83
C 4.45

0+00 = BK EXIST INLET
SELY CUIPIER + Prospect

73.00 = F.L.
inlet
73.17 = F.L. 12"
C 1.76

B.M.

86.04 = S.E. BP
DRAPER + KLINE

Ref: City Notes - A-10 (?)
DWG: 4614-D

2

CLARK
GARBER
ONEIL
ABRENILLA
7-26-57
W.O. 32301

JMP'S CROWN PT. DRIVE

HoneycUTT to Roosevelt AVE

LT (Ely)

RT (W. Ly)

STA	P.L	CB	E	CB	P.L
1+15.72 9th Ark LT only	20.41 19.83 Co.58	20.41 19.83 Co.58			
1+13.49 (Line only) = CB BC LT		20.20 19.84 Co.36			
0+95.72 = PT. 90% Sw by City N.	19.88	19.46 19.88 Fo.42			
0+75.72 LT only Fo.31	19.52 19.83	19.33 19.83 Fo.50			
0+60 LT only	19.76	19.14 19.76 Fo.62			
0+40 LT only	19.68	18.84 19.68 Fo.84			
0+20 LT only	19.90 19.59 Co.31	19.13 19.59 Fo.46			
0+00 = PT. 90% N W by Corner HoneycUTT + Crown Point Drive	20.14 19.50 Co.64	20.07 19.50 Co.57		19.86 20.22 = CB END Fo.36	

Notes Ely CB line STATIONS:

B.M.

(20.18 = Fut. E.C.)

Ref: City Notes: C-15 (Stampem) 3
DWG: 13098-L

STA	P.L	LT	E	CB	RT
2+13.5 - * (STA 2+39.65)	19.20 19.38 Fo.18	19.15 19.38 Fo.23		20.46 19.94 Co.52	20.76 19.94 Co.82
Σ + 18.30 = CB BC LT + RT					
2+16.73	19.38	19.28 19.38 Fo.10			(not set)
1+97.17	19.78 19.49 Co.29	19.74 19.49 Co.25		20.52 20.02 Co.50	20.98 20.02 Co.96
1+74.48	19.59	20.01 19.59 Co.42		20.33 20.11 Co.22	20.11
1+51.78	17.21 19.68 F2.47	18.70 19.68 Fo.98		20.51 20.19 Co.32	20.68 20.19 Co.49
1+29.09 CB E.C LT	20.28 19.78 Co.50	20.28 19.78 Co.50		20.11 20.28 Fo.17	20.28
1+21.29 = mid PT LT	20.52 19.81 Co.71	20.52 19.81 Co.71			
1+20.69 = End of PT				20.31 = EXIST	chk.

STA	Prop	CB	E	CB	Prop	STA
End - Const CA END RT = BC				19.63 19.20 Co. 43		
3+03.69 = EC = END CB LT	19.19 18.72 Co. 47	18.84 18.72 Co. 12				
-21.35 2+82.34 LT only	19.46 18.92 Co. 54	19.11 18.92 Co. 19				
-21.35 def. P. 20.31 ch. - 21.34 2+60.99 LT only	19.82 19.12 Co. 70	19.75 19.12 Co. 63				
-21.34 2+39.65 LT only	20.27 19.32 Co. 95	19.72 19.32 Co. 40				
-2.92 2+36.73 LT only - end Brk - def. 59' ch. 18.43	19.34	19.37 19.34 Co. 03				
EXIST CB END RT.			19.91	19.91 EXIST CB		
2+29.60 = CB PR CRT (CB RT)			19.79 19.90 Fo. 11	19.90		
2+23.95 = mid PT RT			20.08 19.92 Co. 16	19.92		

CLARK
GALBER
MOORE
ABRENILLA
4-17-58
W.O. 32536

Flicker ST
Lisbon to Imperial

STA.	P.L.	CB	E	CB	P.L.
0+65	276.20	276.09 276.20 Fo.11		277.45 277.47 Fo.02	277.47
0+50=B/C	275.80 275.83 Fo.03	275.79 275.83 Fo.04		277.16 277.18 Fo.02	279.22 277.18 C2.04
0+30	275.31	275.22 275.31 Fo.09		276.58 276.74 Fo.16	276.74
0+10=CB BC - Flicker -	275.36 274.80 Co.56	274.72 274.80 Fo.08		276.26 276.30 Fo.04	278.56 276.30 C2.26
#1	274.60	274.60 274.60 grade		276.21 276.22 Fo.01	276.22
#2	274.30	274.66 274.30 Co.36		276.54 276.35 Co.19	276.35
#3=CB END	275.12 274.14 Co.98	275.31 274.14 C1.17		276.91 276.48 C0.43	278.02 276.48 C1.54
0+02.50 = X-Gutter Grades	273.95 = Gutt.		275.15 Pav		275.60 = Gutt
Set T.A.M. B.M.	(DIP. ELEV. ROD)		274.05 = ch	SW CB END Lisbon + Flicker	276.59 = ELEV. F. MON Flicker + Rainbow

Ref: 4896-D
city notes L-22 (Hatch)

5

STA	P.L.	CB	E	CB	P.L.
#3 = CB END LT. (RAINBOW)	276.22	275.59 276.22 Fo.63			
1+40 RT only				277.77 277.65 Co.12	281.25 277.65 C3.60
1+25 RT only				277.85 277.77 Co.08	277.77
1+10 RT only				277.84 277.82 Co.02	281.23 277.82 C3.41
#3=CB END (RAINBOW)	276.23	276.45 276.23 Co.22			
#2	276.50	276.51 276.50 Co.01			
#1	276.65	276.63 276.65 Fo.02			
0+95 = CB BC LT	276.21 276.65 Fo.44	276.58 276.65 Fo.07		277.76 277.79 Fo.03	277.79
0+80	276.04 276.48 Fo.44	276.35 276.48 Fo.13		277.67 277.71 Fo.04	280.09 277.71 C238

LT				RT			
STA.	P.L	CB	Σ	CB	P.L		
2+75=BVC	272.33 273.62 F 1.29	273.77 273.62 Co.15		274.66 274.62 Co.04	277.96 274.62 C3.34 278.44 274.74=CSTP C3.70		
2+70=W/S RT							
2+50	273.31 274.21 Fo.84	274.10 274.21 Fo.11		275.22 275.21 Co.01	279.60 275.21 C3.99		
2+25	274.80	274.77 274.80 Fo.03		275.76 275.79 Fo.03	275.79		
2+00	274.80 275.38 Fo.58	275.32 275.38 Fo.06		276.47 276.38 Co.09	280.06 276.38 C3.68		
1+85	275.74	275.89 275.74 Co.15		276.83 276.74 Co.09	276.74		
1+70=E.V.G.	275.92 276.09 Fo.17	276.11 276.09 Co.02		277.12 277.09 Co.03	281.45 277.09 C4.36		
1+55 ^{CB} =BC LT	275.98 276.39 Fo.41	276.47 276.39 Co.08		277.41 277.40 Co.01	277.40		
#1	276.45	276.67 276.45 Co.22					
#2	276.35	276.07 276.35 Fo.28					

LT				RT			
STA.	P.L	CB	Σ	CB	P.L		
#1	261.40	262.07 261.40 Co.67					
3+91.45=CB LT	266.55 262.30 C4.25	262.42 262.30 Co.12					
3+80	263.86	263.59 263.86 Fo.27	264.46	265.79 265.21 Co.58	265.21	265.21	
3+60	270.01 266.57 C3.44	266.55 266.57 Fo.02		267.55 267.57 Co.02	276.95 267.57 C9.38		
3+55	267.25	267.10 267.21 Fo.11		268.05 268.25 Fo.20	268.25	268.25	
3+35	269.68	269.95 269.68 Co.27		269.93 270.68 Fo.75	270.68	270.68	
3+15	271.70 271.56 Co.14	271.59 271.56 Co.03		272.18 272.06 Co.12	278.00 272.06 C5.94		
2+95	272.87	273.25 272.87 Co.38		273.31 273.87 Fo.56	273.87	273.87	
2+85=Sew #1 RT							
					278.17 265.488 C12.69	278.17 269.00 PL 9.17	

CHK:

261.86 = 261.84 = R.R. SPIKE
P.P. #70183

LT.

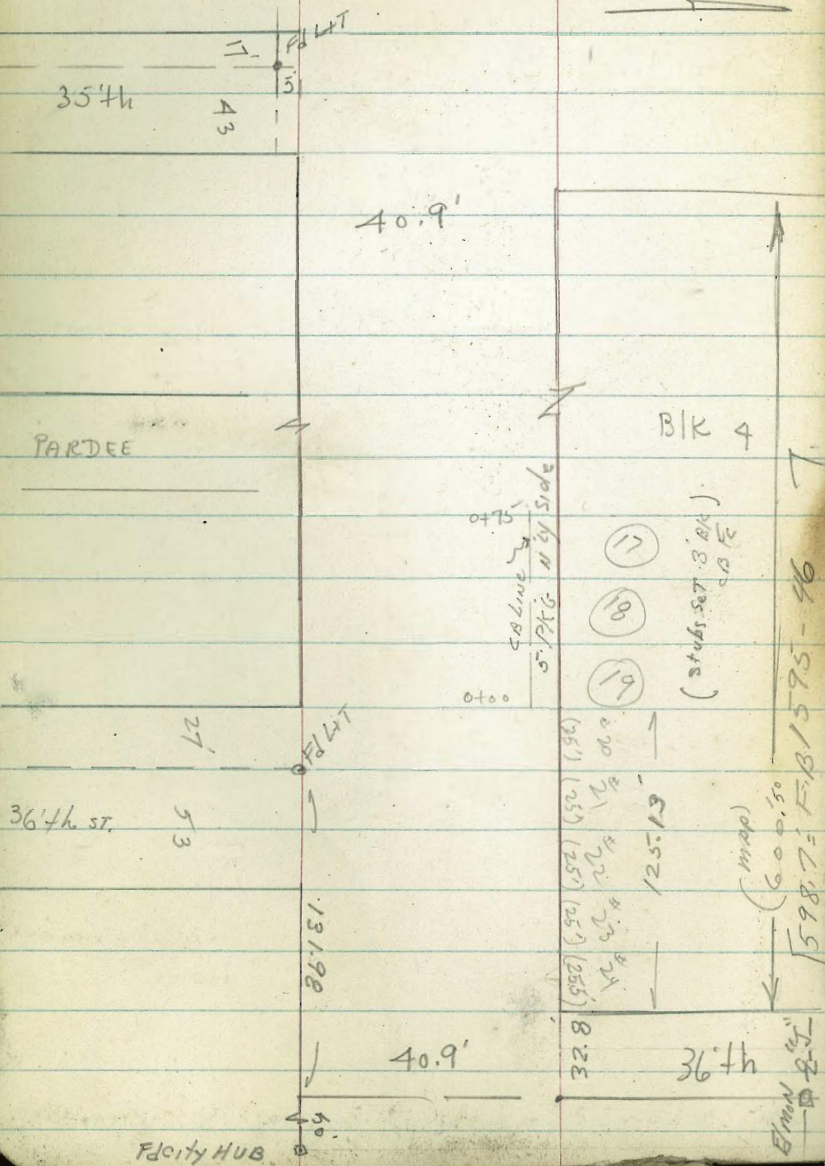
	LT.	P.L.	CB	E	CB	RT (ELY) P.L.
4+87.49 CBEND (At SE Prop Cms) (Flicker + Imp)					260.258 261.13 C1.45	261.71 261.13 C0.58
(# 2) CB, E.C.					261.10 261.10 Grade	262.55 261.10 C1.45
# 1					261.07 261.08 F0.01	261.08
4+71.37 = CB BE RT					261.16 261.10 C0.06	263.10 261.10 C2.00
4+45.70 RT only					261.90 261.86 C0.04	261.86
4+20 RT only					262.57 262.62 F0.05	267.98 262.62 C5.36
4+00 RT only					263.81 263.56 C0.25	275.06 263.56 C11.50
#4 = CB EC - IMPERIAL -	265.73 260.40 C5.33	260.71 260.40 C0.31				
#3	260.50	260.71 260.50 C0.21				
#2	265.65 260.80 C4.85	262.20 260.80 C1.40				

7

CLARK
 GARBER
 MOORE
 ABRENILLA
 4-18-58
 W.O. 20020

LOTS 17-18-19-BLK 4 CRIPPENS ADD:

CB GRADE



Ref: 3046-G
 T.P.S 141
 F.B 1602 + 1595

8

CB Grades:

STA:	CB
0+75=END CB (Act. dist. 74.78)	104.11 103.15 Co. 96
0+60	102.30 102.27 Co. 03
0+40=B.P.C	100.56 100.23 Co. 33
0+20	98.37 98.11 Co. 26
0+00=Beg CB	95.93 96.00 Fo. 07

Note: 0+00 (E-Line Lot 19)

Falls a few tenths e'ly of
 W'ly line of 36th to S'ly
 However we held to grade Bk on 'proj of W.L. 36th
 to N'ly AS shown on green sheet.

CHK.

87.45: 87.45 = STA B.M

B.M. (Inv. Elev. Rod.)

87.45 = S.W. 4th
 PARDEE +
 "K"
 F.B. 1595-47

CLARK
 BARBER
 MOORE
 ABCEN/110
 5-13-58
 W.O. 21700

47th ST (wly side)

Chollas #2 N'ly to Hill Top

STA	Prop.	wly CB
1+00	175.01 172.00 C3.01	
0+75	174.87 171.36 C3.51	
0+50	174.52 170.67 C3.85	
0+25	173.81 167.80 C4.01	
0+00 = Sky Line Chollas at 47th	170.99 168.66 C2.33	

Bm (Dir. Elev. Rods)

NWBP.
 158.85 = MKT 44544

Ref: Notes T-22
 DWG: 5544-D through 5557-D

7

STA.	P.L.	wly CB.
#3	175.00	
#4 EG "F" ST (NW'ly Ret)	176.34 175.30 C 1.04	
#4) E.G. "F" ST.	175.45 175.25 C 0.20	
#3	174.70	
#2 (end-pt)	174.93 173.87 C 1.06	
#1	173.05	
1+16.83 = 47th CB BC + F ST (SW Ret.)	174.92 172.48 C 2.44	

STA	P.L	W/L CB
3+23.83	178.23	
2+98.83	179.65 177.53 C2.12	
2+73.83	176.84	
2+48.83	178.57 176.14 C2.43	
2+23.83	175.45	
1+98.83 = CB BC NWLY 47+L + "F" ST.	176.38 174.75 C1.63	
#1	174.73	
#2 (mid-pt.)	175.97 174.84 C1.13	

STA	P.L	CB
#2 (mid-pt.)	182.11 181.34 C0.77	
#3	181.75	
#4 E.C. CRAIGIE (NWLY)	182.76 182.23 C0.53	
#4 E.C. CRAIGIE	182.58 182.18 C0.40	
#3	181.43	
#2 (mid-pt.)	181.65 180.53 C1.12	
#1	179.57	
3+47.83 = CB BC CRAIGIE (SWLY)	181.08 178.89 C2.19	

474h

STA	P.L	W'ly CB
5+75	185.20	
5+50	185.36 184.51 C0.85	
5+25	183.81	
5+00	183.80 183.12 C0.68	
4+75	182.42	
4+50	182.87 181.73 C1.14	
4+27.83 = B.C. + CRAIGIE (NW'ly)	182.40 181.11 C1.29	
#1	181.08	

11

STA	P.L	W'ly CB
(#4) E.C. Hilltop	189.15 189.04 C0.11	
#3	188.50	
#2 mid-pt.	188.39 187.73 C0.66	
#1	186.85	
6+12.83 = SW'ly CB BC 474h Hilltop	187.93 186.25 C1.68	
6+00	187.69 185.90 C1.79	

CLARK Imps: ALTA DENA: (POLK to ORANGE)

GARBER
MOORE
ABRENILLA
7-23-58
W.O. 32663

CB GRADES (As Per Profile)
#4131

Ref: DWG: 4382-D 4 Profile sheet #4131 13
Notes: K-18+19 (Roberts - GARBER - Hatch)

	P.L.	CB	E	CB	P.L.
0+13 = CB BC LT	12 45 313.50 F 1.05	313.63 313.50 Co.13			
0+12 = CB BC RT			314.50 314.50 Grade	16 68 314.50 C 2.18	
#1	313 04 313.56 F 0.52	Knocked out 313 68 313.56 Co. 12		314 88 314.87 Co. 01	314.87
#2	310 41 313.70 F 3.29	311 83 313.70 F 1.87		315.45 315.45 (meet)	
#3	314 21 314.15 Co. 06	314 21 314.15 Co. 06		315.98 E	
0-35 = CB BC (Swly) LT	315.52 (meet)				
B.M.				N'ly 315.45 = CB end	POLK AT ALTA DENA

STA.	P.L.	CB	E	CB	P.L.
1+60 = B/C	312.80	312 71 312.80 F 0.09			313 88 313.80 Co. 08 313.80
1+50	15 23 312.84 C 2.39	312 99 312.84 Co. 15			313 97 313.84 Co. 13 18 73 313.84 C 4.89
1+29 WS LT	15.40 312.94 C 2.46				
1+25	312.96	313 38 312.96 Co. 42			314 23 313.96 Co. 27 313.96
1+00	315.75 313.08 C 2.69	313 41 313.08 Co. 33			314 09 314.08 Co. 01 18 68 314.08 C 4.60
0+79 WS LT	313.18 TP CB (in)				
0+75	313.20	313.42 313.20 Co. 22			314.21 314.20 Co. 01 314.20
0+50	14 10 313.32 Co. 78	313 31 313.32 F 0.01			314 23 314.32 F 0.09 18 50 314.32 C 4.18
0+25	313.44	313 28 313.44 F 0.16			314 22 314.44 F 0.22 314.44

CB's: ALTADENA

STA.	LT.		E	RT.	
	P.L.	CB		CB	P.L.
3+20	303.61 306.65 F3.04	306.45 306.65 F0.20		307.77 307.65 C0.12	308.70 307.65 C1.05
3+00	307.50	307.42 307.50 F0.08		308.93 308.50 C0.43	308.50
2+80	305.16 308.50 F3.34	308.31 308.50 F0.19		309.45 309.50 F0.05	311.37 309.50 C1.87
2+60	309.90	309.55 309.90 F0.35		310.80 310.90 F0.10	310.90
2+54 W.S. (W) LT					
2+40	309.25 310.90 F0.65	310.40 310.90 F0.50		312.04 311.90 C0.14	16.14 311.90 C9.24
2+20	311.65	311.48 311.65 F0.17		312.86 312.65 C0.21	312.85
2+00 = 3/6	12.97 312.20 C0.97	312.10 312.20 F0.10		313.39 313.20 C0.19	18.19 313.20 C4.99
1+89 W.S. (W) LT	312.65				
1+80	312.60	312.48 312.60 F0.12		313.67 313.60 C0.07	313.60

14

CB's: ALTADENA

STA.	LT.		E	RT.	
	P.L.	CB		CB	P.L.
4+60	305.07	305.50 305.07 C0.43		306.21 305.83 C0.38	305.83
4+54 W.S. LT	304.19 304.95 F9.76				
4+40	303.21 304.71 F1.50	305.22 304.71 C0.51		305.77 305.53 C0.24	307.10 305.53 C1.57
4+21 = E X-CURRENT + "K" BOXES	304.56	ca	(See Pg. 15)		305.42
	301.25	FL Box			FL 302.10
4+00	302.76 304.63 F1.87	305.04 304.63 C0.41		305.88 305.53 C0.35	306.36 305.53 C0.83
3+80	304.91	305.42 304.91 C0.51		306.03 305.84 C0.19	305.84
3+60	03.75 305.40 F1.65	305.81 305.40 C0.41		306.40 306.36 C0.04	307. 306.36 C0.64
3+54 W.S. (W) LT					
3+40	305.95	306.03 305.95 C0.08		306.81 306.95 F0.14	306.95

CB'S: ALTADENA

ORANGE
ALTADENA

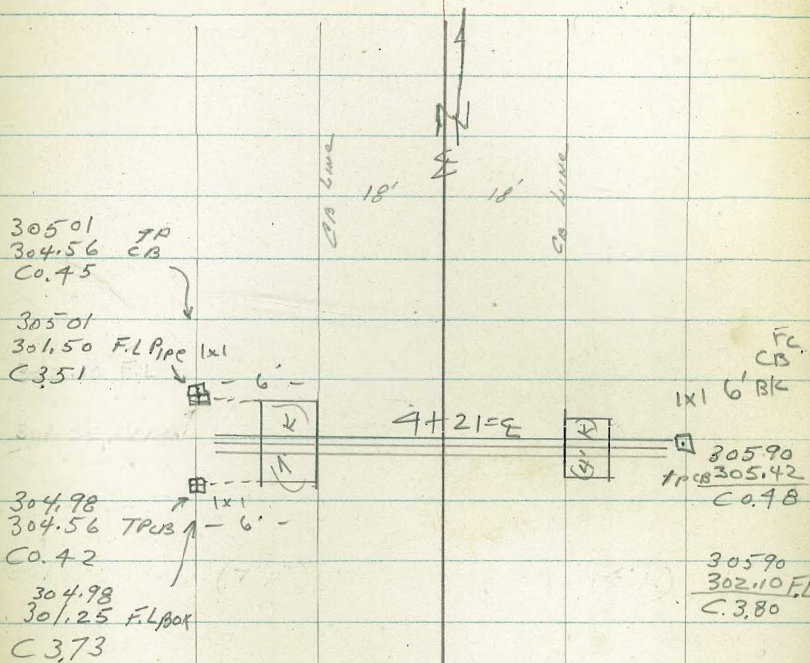
CHK:

312-13 = 312.11 E SPIKE

5+71.20 =CB.865:	310.12 310.25	(meet)		(meet)	310.65
5+45	308.81	307.86 308.81 F1.45 -0.06	308.67 309.32 Fo.65	308.67 309.32 Fo.65	
5+44=WS RT		1.39 adjusted exist to meet CB ahead		309.3 TP CB	
=EVC 5+20	303.69 307.42 F 3.73	308.25 307.42 Co.83	307.26 308.00 Fo.74	307.21 308.00 Fo.79	
5+04 WS WT RT				307.25 TP CB	
5+00	306.43	305.74 306.43 Fo.69	307.01 307.07 Fo.06	307.07	
4+94 WS LT		304.88 305.31 TP Fo.43			
4+80	303.42 305.65 f. 2.23	306.68 305.65 C 1.03	306.90 306.35 Co.55	308.30 306.35 C 1.95	

X-CULVERT (15" Pipe) +
"K" INLETS

15



60" CULVERT + Ditch
 BIK 27 - FAIRMINT ADD:
 (ORANGE TO ALLEY BLK 27)

W.O. 32663

Ref: DWG: 4392-D (GAMBER) 16
 City Notes K-18-19 (Hatch)

0+75	305.48 299.80 C 5.68	305.28 299.80 C-5.48	8° RT
0+67	305.90 300.10 C 5.80	305.39 300.10 C-5.29	8° RT
0+59	305.71 300.50 C 5.21	305.50 300.50 C-5.00	8° RT
0+51	305.88 301.00 C 4.88	305.77 301.00 C-4.77	8° RT
0+43	306.23 301.40 C 4.83	305.88 301.40 C-4.48	8° RT
0+35	306.60 301.70 C 4.90	307.52 301.70 C-5.82	8° RT
0+18.97	307.14 302.20 C 4.94	306.04 302.20 C-3.84	8° RT
stubs sat 8' ret (except noted)			
0+02.97 = outside (slly) edge new Box		308.52 302.51 C-6.01	7.15 LT
0+00 = S. line ORANGE			
B.M. 312.11 - Spike L's Orange & Altadena			

3+69.90 = E.C. Endline	301.00 296.10 C-4.90	8° LT	
3+48.12 = BC	301.18 296.32 C-4.86	6° LT	
299.09 #	301.89 296.78 C-5.11	8° RT	
3+06	303.39 297.23 C-6.16	8° RT	
2+66	303.43 297.67 C-5.76	8° RT	
1+86	304.07 298.12 C-5.95	8° RT	
[1+59.5 ± = PT. INT 18" pipe	303.70 299.95 C 3.75	18" pipe	
1+46 = E.C.	303.70 - # 298.56 C 5.14	8° RT	
1+22.27 = Mid-pt	303.70 - # 298.56 C 5.14	8° RT	
0+98.58 = B.C.	303.70 - # 298.56 C 5.14	8° RT	
(wrap pipe + w/ (6-30') to Avoid house	304.94 299.07 C-5.87	8° RT	
0+87	306.28 299.30 C 6.98	305.26 299.30 C-5.96	8° RT

CLARK
GARBER
MOORE
ABRENNIA
7-31-58
W.D. 32823

ALLEY BIK 17- S.S. CLIFFS

FROUDE to Devonshire

REF: City Notes B-20 (ALLEN)
DWG: 5298-D

17

STA.

STA.	LT.	RT.	STA.	LT.	RT.
			3+02 = W.S. LT.	421 40.9-PAV C1.2	
1+40	47.14 47.21 F0.07	46.92 46.96 F0.04	3+00	42.56 40.98 C1.58	40.51 42.03 40.73 C1.30
1+20	49.16 48.74 C0.42	49.35 48.79 C0.86	2+75	43.66 41.67 C1.99	43.06 41.42 C1.64
1+00 BYC	51.26 50.65 C0.61	51.58 50.70 C1.18	2+50	44.31 42.37 C1.94	43.31 42.12 C1.19
0+80	53.61 52.79 C0.82	52.74 52.54 C0.20	2+30	43.81 42.99 C0.82	43.52 42.74 C0.78
0+60	55.37 54.92 C0.45	55.01 54.67 C0.34	2+10	43.67 43.74 F0.07	43.72 43.49 C0.23
0+40	58.22 57.05 C1.17	58.26 56.80 C1.40	1+90	44.55 44.62 F0.07	44.81 44.37 C0.44
0+20	59.29 59.18 C0.11	60.40 58.93 C1.47	1+75	44.94 45.33 F0.39	45.53 45.08 C0.45
0+00	61.25 (meet)	(meet) 60.80	1+60	45.64 46.04 F0.40	46.11 45.79 C0.32

B.M.

116.34 = S.E.B.P

OSPREY
GUIZOT

STA.

CLK: (3+16.78)
 top CB Prop LT 40.39 = 40.41

3+ 20.92 = Prop Car
 RT

(Meet) 40.10

(3+18.85 = Prop. E)

39.91

3+16.78 = Prop Car
 LT 40.07 (Meet)

3+07 = Sew LAT
 #1-LT

41.51
 35.8 P.L.
 45.71

41.51
 35.6 F.L.
 45.91

CLARK
GARBER
MOORE
ABGENI/A
10-9-58
W.O. 32915

SEWER: 29th ST
+ NLY OF LAUREL-ELY
(BIK 4 - PARK ADD.)
(Lots 29 - thru -39)

STA: Elev.
4+33.74 = m.H #4 (8'RT) 274.57
260.96
C 13.61

STA:

Elev. grade

1+18.74 = E Cut-off WALL

↑
6.44
↓

1+15.37

203.19
196.83
C 6.36

4+20

(4'RT)

272.16
258.55
C 13.61

3+80

(")

262.12
251.52
C 10.60

1+00 end CONC ENCASE

0+87 = m.H #2

188.67
183.66
C 5.01

3+40

(")

251.06
244.50
C 6.56

0+58

↑
4.20
↓

187.76
183.54
C 4.22

2+60

(")

240.45
237.47
C 3.08

0+30 Beg CONC ENCASE

0+29

187.86
183.43
C 4.43

2+20

(4'RT)

234.96
230.44
C 4.52

↑
17.572
↓

(= m.H #1)
0+00 = PT. INT. (8'RT)
EXIST 8" Sewer (CANYON)
+ E 29th

191.23
183.31
C 7.92

1+80

(5'RT)

222.45
216.38
C 6.07

1+43.74 = m.H #3

215.68
210.01
C 5.67

B.M (Dir. Elev. Rod)

190.42 = 2x2
HUB 20+00 - CITY NOTES - STAMPER - H-20 Pg 3

STA: Elev.
 Chk: 289.05 = 289.05 = Chx

STA 6+09.92 - 25' LTR

City Notes: H-20 - Pg 10 -
 W.O. 32915
 T. STAMPER

5+43.74 = M.H #5	(Stub & RT)	285.68
		280.00
		C 5.68
5+07.06	(5' RT)	283.01
		273.65
		C 9.36
4+70.4	(4' RT)	275.54
		267.31
		C 8.23

17312 ↑

CLARK
GARBER
MOORE
ARBENILLA
10-20-58
W.O. 32687

6876 ST.
SOLITA to AMHERST

- For under-grid See Pg 25 -

LT. RT (ELY)

STA	P.L	CB	E	CB	P.L
1+40 = B.V.C	452.31 452.27 C 0.04	452.42 452.27 C-0.15		451.92 451.87 C-0.05	451.83 451.87 F0.04
1+15	451.85	452.43 451.85 C-0.58		451.47 451.45 C-0.02	451.45
0+90	452.37 451.43 C0.94	452.35 451.43 C-0.92		451.20 451.03 C-0.17	451.20 451.03 C0.17
0+65	451.01	451.88 ^{Chis.X} 451.01 C-0.87		450.56 451.03 F-0.47	451.03
0+40 = N'ly LINE SOLITA - W'ly	451.20 450.60 C0.60	451.06 450.60 C-0.46		450.25 450.20 C-0.05	450.20 ↑ CB: RETURN
0+30 = N'ly LINE TOWER - E'ly				450.10 450.10 0.00	450.12 450.10 C0.02
(0+00 = S'ly Line) SOLITA - W'ly					

As Per F.B 2253-22

Dir. Elev. Rod:
(F.B 2253)

B.M =

450.00 = ^{Dir. Elev. Rod} ~~Dir. Elev. Rod~~ ^{Dir. Elev. Rod} ~~Dir. Elev. Rod~~
6876 TOWER

Ref: DWG: 5115-D
5116-D
F.B 2253-22
LT.

STA	P.L	CB	E	CB	P.L	RT
3+60 = E.V.C	455.41 454.64 C0.77	455.75 454.64 1-11		454.49 454.24 C-0.25	454.51 454.24 C0.27	
3+40	454.27	454.42 454.27 C-0.15		453.92 453.87 C-0.05	453.87	
3+20 = B.V.C	454.22 454.02 C0.20	454.24 454.02 C 0.22		453.62 453.62 0.00	453.59 453.62 F0.03	
3+05	453.89	454.21 453.89 C-0.32		453.62 453.49 C-0.13	453.49	
2+80	454.03 453.66 C0.37	453.95 453.66 C-0.29		453.50 453.26 C-0.24	453.51 453.26 C0.25	
2+55	453.44	454.39 453.44 C-0.95		453.13 453.04 C-0.09	453.04	
2+30	454.01 453.22 C0.79	454.06 453.22 C-0.84		453.55 452.82 C-0.73	453.50 452.82 C0.68	
2+05	453.00	453.59 453.00 C-0.59		452.50 452.60 F0.10	452.60	
1+80 = E.V.C	452.84 452.78 C0.06	452.45 452.78 F-0.33		452.66 452.38 C-0.28	452.60 452.38 C0.22	
1+60	452.56	452.75 452.56 C-0.19		452.20 452.16 C-0.04	452.16	

LT.					RT.						
STA.	P.L.	CB	E	CB	P.L.	STA.	P.L.	CB	E	CB	P.L.
6+20	460.25	460.78 460.25 C-0.53		460.25 459.84 C-0.41	459.84	8+00 LT. ONLY	457.42	457.75 457.42 C-0.33			
6+00=B.V.C	460.13 459.89 Co.24	460.18 459.89 C-0.29		460.37 459.49 C-0.88	460.41 459.49 Co.92	7+90 LT ONLY	457.72 457.67 Co.05	457.82 457.67 C-0.15			
5+75	459.34	459.71 459.34 C-0.37		459.69 458.94 C-0.75	458.94	7+73=EXIST TYPE "G" CB 18' RT				458.55	458.55 <small>=EXIST. CB</small>
5+50	459.05 458.78 Co.27	459.04 458.78 C-0.26		458.68 458.38 C-0.30	458.79 458.38 Co.41	7+65	458.32 458.29 Co.03	458.35 458.29 C-0.06		458.80 458.67 C-0.13	458.77 458.67 Co.10
5+25	458.24	459.25 458.24 C-1.01		458.17 457.84 C-0.33	457.84	7+40	458.91	459.07 458.91 C-0.16		459.18 459.05 C-0.13	459.05
5+00	458.33 457.69 Co.64	458.41 457.69 C-0.72		457.75 457.29 C-0.46	457.40 457.29 Co.11	7+20=EXC	459.51 459.41 Co.10	459.52 459.41 C-0.11		459.67 459.35 C-0.32	459.69 459.35 Co.34
4+75	457.15	457.79 457.15 C-0.64	ch. 3. X.	457.71 456.75 C-0.86	456.75						
4+50	456.83 456.60 Co.23	456.74 456.60 C-0.14		456.16 456.20 Fo.04	456.10 456.20 Fo.10	7+00	459.83	460.44 459.83 C-0.61		459.65 459.75 F-0.10	459.75
4+25	456.06	456.59 456.06 C-0.53		455.66 455.66 0.00	455.66	6+80	460.41 460.23 Co.18	460.44 460.23 C-0.21		460.78 460.00 C-0.78	460.59 460.00 Co.59
4+00	455.96 455.51 Co.45	456.00 455.51 C-0.49		455.22 455.11 C-0.11	455.12 455.11 Co.01	6+60	460.43	460.46 460.43 C-0.03		460.72 460.11 C-0.61	460.11 460.11
3+75	454.97	455.85 454.97 C-0.88		454.74 454.57 C-0.17	454.57	6+40	460.66 460.38 Co.28	460.75 460.38 C-0.37		460.62 460.05 C-0.57	460.57 460.05 Co.52

68+L (ROSEFIELD to AMHERST)

23

STA	P.L	CB	E	CB	P.L	STA	P.L	CB	E	CB	P.L
NWLY											
0+18=CB BC	456.10	456.14									
LT only	455.60	455.60									
	CO.50	C-0.54									
# 1		456.12				1+93	452.33	452.54 452.33 C-0.21		452.05 452.33 F0.28	452.33
# 2		456.08 455.65 C-0.43				1+73	453.02 452.91 CO.11	452.89 452.91 F0.02		452.67 452.91 F-0.24	452.75 452.91 F0.16
# 3		455.61				1+53	453.39	453.43 453.39 C-0.04		453.38 453.39 F0.01	453.39
# 4 = EXIST CB						1+33=B.V.	454.42 453.76 CO.66	454.34 453.76 C-0.58		454.42 453.76 C-0.66	454.48 453.76 CO.72
# 4		456.40				1+08	454.16	454.63 454.16 C-0.47		455.33 454.16 C-1.17	454.16
# 3		456.52				0+83	455.37 454.56 CO.81	455.11 454.56 C-0.55		455.80 454.56 C-1.24	455.84 454.56 C1.28
# 2		457.23 456.75 C-0.48				0+58	454.96	455.56 454.96 C-0.60		455.18 454.96 C-0.22	454.96
# 1		457.44 457.02 C-0.42				0+33	456.12 455.36 CO.76	456.00 455.36 C-0.64		456.30 455.36 C-0.94	456.32 455.36 CO.96
8+07=CB BC	457.63	457.71				0+25=CB BC (Future)				456.41 455.49 C-0.92	456.38 455.49 CO.89
LT	457.29	457.29				RT only					
SWLY	CO.34	C-0.42				Req CB here -					
						(No Return here)					
						here -					
						Berm to sly for N CB Line					

		Lt		Rt				Lt		Rt	
STA.	P.L.	CB	E	CB	P.L.	STA.	P.L.	CB	E	CB	P.L.
3+98	445.46 444.66 C 0.80	445.00 444.66 C-0.34		445.78 444.66 C-1.12	445.73 444.66 1.07	— <u>CONTINUE ON Pg 26</u> —					
3+78	444.96	444.92 444.96 F-0.04		445.58 444.96 C-0.42	444.96 444.96	6+00	449.61 448.50 C 1.11	449.27 448.50 C-0.77		449.21 448.80 C-0.41	449.25 448.80 C 0.45
3+58	445.84 445.44 C 0.40	445.18 445.44 F-0.26		445.88 445.44 C-0.44	445.88 445.44 C 0.44	5+75	447.84	448.42 447.84 C-0.58		448.24 448.11 C-0.13	448.11
3+38	446.11	446.25 446.11 C-0.14		446.46 446.11 C-0.35	446.11 446.11	5+50	448.03 447.19 C 0.84	446.97 447.19 F 0.32		447.67 447.42 C-0.25	447.71 447.42 C 0.29
3+18=B.V.C	447.06 446.95 C 0.11	447.26 446.95 C-0.31		446.98 446.95 C-0.03	447.08 446.95 C 0.13	5+25	446.54	446.11 446.54 F 0.43		446.96 446.73 C-0.23	446.73
3+00	447.79	448.43 447.79 C-0.64		448.02 447.79 C-0.23	447.79 447.79	5+00	446.62 445.88 C 0.74	445.74 445.88 F 0.14		446.36 446.05 C-0.31	446.30 446.05 C 0.25 Chis. X
2+75	449.21 448.96 C 0.25	452.68 448.96 C-3.72		449.30 448.96 C-0.34	449.40 448.96 C 0.44	4+78=E.V.C	446.27 445.31 C 0.96	445.32 445.31 C-0.01		446.13 445.44 C-0.69	446.13 445.44 C 0.69
2+53=E.V.C	449.89 449.79 F 0.10	452.56 449.99 C-2.57		450.71 449.99 C-0.72	450.60 449.99 C 0.61	4+58	444.88	445.27 444.88 C-0.39		445.98 444.96 C-1.02	444.96
2+33	450.88	452.49 450.88 C-1.61		451.21 450.88 C-0.33	450.88 450.88	4+38	445.88 444.63 C 1.25	444.49 444.63 C-0.26		445.63 444.63 C-1.00	445.89 444.63 C 1.26
2+13	451.82 451.65 C 0.17	451.92 451.65 C-0.27		451.61 451.65 F 0.04	451.73 451.65 C 0.08	4+18	444.55	444.57 444.55 C-0.02		445.88 444.58 C-1.30	444.58

687L ST $\frac{1}{2}$ SOLITA to
AMHERST

SEW + WAT. Services
+ C.B. INLET + CULVERT RT.

LT.
Prop

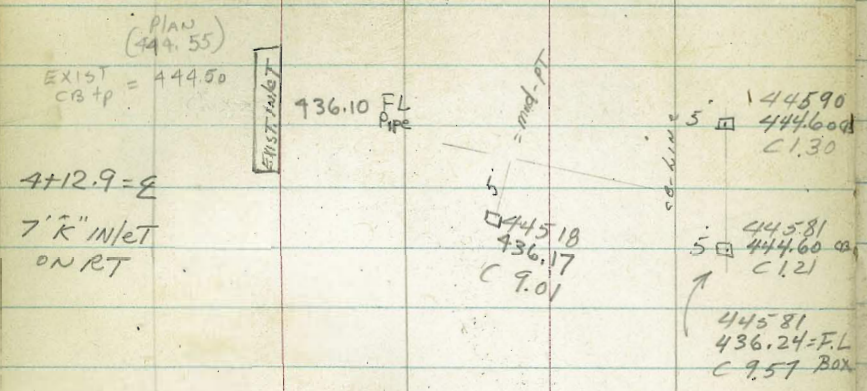
Σ

Prop.

LT.
Prop

Σ

RT.
Prop



4+12.9 = Σ
7' R" INLET
ON RT

3+77.5 = W.S (in)
LT (8' 5 1/2')

2+87 = Sew LAT #4 RT
448.86
439.00
9.86

448.86
443.00
C 5.86

2+77 = W.S RT (in)
45+ N 1/4

4+95.5 =
SEW LAT #3 - LT
446.30
441.64
C 4.66

446.30
438.39
C 7.91

1+30 = Sew LAT #1 - RT
454.94
444.12
10.82 Σ

454.94
448.44
6.50 Prop

4+91 = Sew LAT #2 RT
438.28

441.00

0+100 = N 1/4 Line ROSE FIELD

4+45.5 = W.S LT (in)
(7' 1/2')

B.M

450.00 = REF PIN
SE 1/4 CB RET. 687L + Tower

68th Rosefield to AMHERST

STA	LT. P.L	CB	E	CB	RT. P.L
CHK:			450.00 =		450.00 = ST 6:8:11

#3-EXIST CB
ENDS

#2

#1

6+50.67	450.29 449.80	450.00 449.80		450.50 450.20	450.51 450.20
=CB 80%:	C-0.49	C-0.20		C-0.30	C-0.31

6+31.7

6+40.2#	450.23 449.55	450.01 449.55		450.06 449.90	450.13 449.90
=9th 8-12	C-0.68	C-0.46		C-0.16	C-0.23
6+25	449.15	449.83 449.75 C-0.68		449.64 449.48 C-0.16	449.48

CLARK
BARBER
MOORE
ABRENILLA

10-22-58
W.O. # 21665

CB INLET & CULVERT

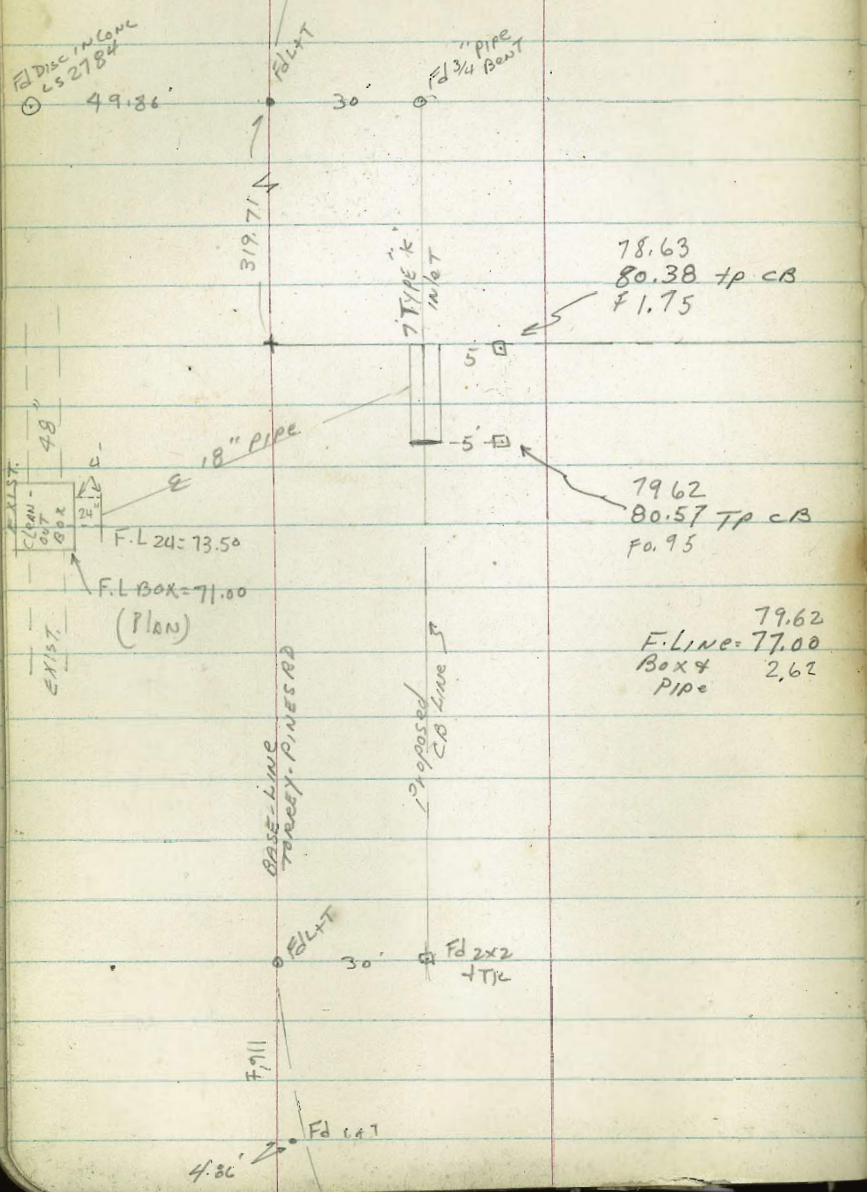
TORREY PINES RD - LOT #1
VANDERBILT VISTA

REF: DWG: 7284-B

DWG: 5240-D

DWG: 5623-D

27



(DWG: 5623-D)

T.B.M. (Dir. Elev. Rod:)

80.42 = ELEV EXIST & PAV
AT W'LY LINE
VANDERBILT VISTA

CLARK -
GARBER
MOORE
ABRENNIA
12-26-58
W.O. 21663

STORM DRAIN
LOT 45-BLK 4
FAIRMOUNT ADD:

Ref: City notes: J-19 (OSBORNE) 28
W.O. 21663
DMG: #6913-B

Note: This job staked previous to this date by parties unknown - Restaked by us on date shown

STA. Elev's:

STA. Elev's:
0+57.50 261.99
257.47 = F.L.
C 4.52

Sed IXI 5' (of toe) BK at 90°
to Approx. Center Dam
264.4
266.00 elev Tp Dam
F1.6 = tp Dam

0+49.50 261.02
257.17 = F.L.
C 3.85

0+41.50 BLK 260.33
256.96 = F.L.
C 3.37

1+37.50 264.47
= end pipe 262.25 = F.L. 266 = Tp Dam
= W'y toe EARTH DAM C 2.22

0+17.50 258.47
= end CB outlet struct. 256.73 = F.L. line
Beg 18" pipe C 1.74

30
+ 1+01.50 264.16
260.06 = F.L.
4.10

0+00 Chk. CB = 57.22 4K. 256.55 Gut.

30
0+65.50 264.00
= F.L. 257.87 F.L.
C 6.13

B.M. 253.30 = SPIKE Pole
N.W. CORNER ONTARIO & AUBURN

CLARK
GARBER
MOORE
MORRELLA
4-10-59

W.O. 21786

STORM-DRAIN -
FELTON & NUTMEG
LOT 5 BIK 43 - EASTERN ADD.

REF: DATA:

F.B. 2027-64
DWG: 7252-A-B

0+48 = EXIST 30" R.C.P. DWG: 250.22 249.78 = ACT. E / 01 EXIST 30" R.C.P.

0+32

250.78
248.52
C 2.26

Subs 5' RTG
(Ely)

0+16

248.87
247.26
C 1.61

Sly Fe. Contain - Wall

0+00 = (PT 40' FT Sly
(OF EXIST Sly END
30" R.C.P.
DWG: 44-11-B)

= F.L. Pipe

248.39
246.00
C 2.39

B.M.

275.52 = S.E. 7' X 13'
LT. NUTMEG + FELTON

CLARK
GARBER
MOORE
ABRENNIA
4-13-59
W.O. 21786

STORM-DRAIN + Lot 71 -
LA JOLLA MESA VISTA

REF DATA: NO city notes!
DWG: 7290-B

30

1+22.5

note: no grades on ditch as per plan
ditch to be 4' wide & 1' deep

= Beg. 4' ditch
0+95 = N'ly edge
Con. Apron.

TRAPRON 270.28
E+W GND = 269.00
C 1.28

270.28
268.00 F.L. & APRON
C 2.28

(Subs 10' 2" intake)
= APRON

= N'ly face 10' hd wall
0+80 = end pipe

TR. WALL 271.68
269.00
C 2.68

271.68
266.00 = F.L. Pipe
C 5.68

= N'ly line sub-dir

2+05 = end ditch

0+60

269.23
263.00
C 6.23

0+40

269.42
260.00
C 9.42

1+77.5

0+20 (10' ST)

272.78
257.00
C 15.78

1+50

0+00 = EXIST END 24"
CONC. PIPE

F.L. FL = 254.00 - meet
EXIST.

(REMOVE EXIST)
(STAND-PIPE)

B.M.

276.19 = Ch □ SE ly Corner Con. Drive STA 0-30 13' ± LT

CLARK
GARBER
MOORE
ABRENIA
4-14-59
W.O. 21786

STORM-DRAIN

WINNETT (closed) Nly of FEDERAL Blvd.

STA.	Elev's:
2+30.14 = 22 21.70	273.47 269.15 C 4.32
2+06.14 (Curve moved ahead - see note ①) RT.	273.14 269.03 C 4.11
1+82.14 = L 10° LT	272.53 268.91 C 3.62
1+60	272.19 268.81 C 3.38
1+20	271.73 268.61 C 3.12
0+80	271.42 268.41 C 3.01
stubs 5' LT (Ely) C	
0+40	270.11 268.20 C 1.91
= Nly Fe. hd wall 0+00 = PT. 38' Nly of EXIST Ely + Wly Sewer, Nly Federal	270.87 268.00 = F.6 24" pipe C 2.87
T.B.M.	277.29 = P.K. NAIL, SWly

REF: City Notes

#L-21 w.o. 31859 31

[OF NO VALUE HERE]

DWG: 7123-B

(No ties except to EXIST
SEWER E. WINNETT)

Note: ^② DWG:

Distances do not chk
to scale; WE held 0+00 to
38' Nly of EXIST M.H. & ended
Pipe at 5'ly edge conc. Paring
at Fed = 2+50.94 rather
than 2+8' as shown on
DWG:

Note: ^① Angle PT 9° 31' RT moved Ahead 14.96' to
Meet Change in Alignment of Pipe in WINNETT
ST, S'ly of FEDERAL (P.I. to P.I.)

2+50.94 = END PIPE

~~273.31 273.35
269.50 269.50
C 3.81 C 3.85~~

2+46.94 grid B.M.

~~273.38 273.43
269.34 269.34
C 4.04 C 4.09~~

2+36.94 grid B.M.

~~273.54 273.55
269.19 269.19
C 4.35 C 4.36~~

~~2+33.98 = F.C.~~

~~273.55
269.17
C 4.38~~

Pole WINNETT + FEDERAL

[City Notes L-21 w.o. 31859 - P.2]

CLARK
GARBER
MOORE
ABRENILLA
4-21-59
W.O. 21786
STA.

STORM-DRAIN

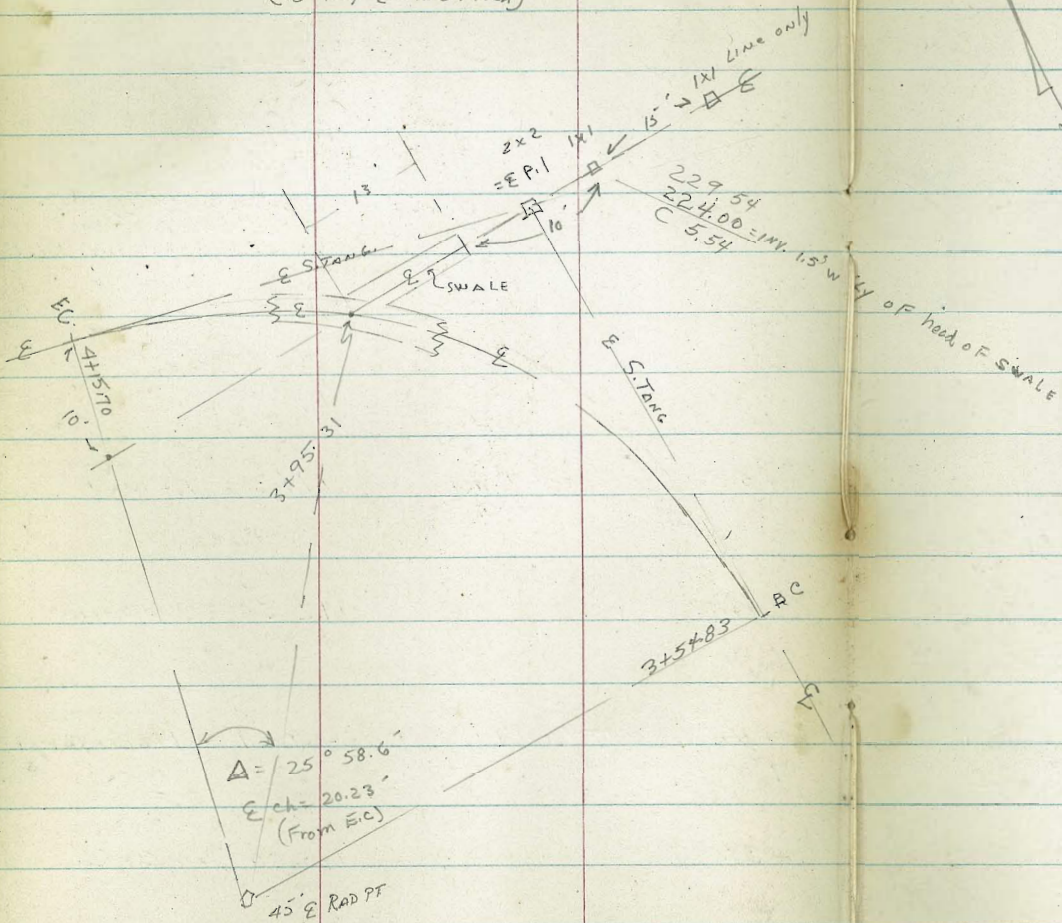
CAL-WESTERN to MNAGO ST.

		INV. Elev's:	TP side-wall Elev's	STA:	INV. Elev's:	TP side-wall Elev's
1+90 = E.V.C	PK 25' RT	263.56 250.50 C 13.06		3+64.83 = E.V.C	233.27 227.80 C 5.47	
1+80	PK 15' 45" RT	258.55 251.50 C 7.05		(1.10) 3+54.83 = B.C E.P. = 45' Δ = 77°30.3	234.38 230.20 C 4.18	
1+70 = B.V.C	PK 14.9' RT	258.56 251.30 C 7.26		3+44.83 = B.V.C	234.85 232.30 C 2.55	
1+35	PK 12.7' RT	259.24 251.95 C 7.29		(32.42) 3+12.41	244.62 238.35 C 6.27	
1+00	PK 10.65' RT	258.53 252.59 C 5.94		(32.11) 2+80 = E.V.C	254.74 244.40 C 10.34	
0+65	PK wall 8.6' RT	257.92 253.25 C 4.67		2+70	254.35 245.80 C 8.55	
0+30	PK wall 6.5' RT	257.98 253.90 C 4.01		2+60 = B.V.C	254.38 246.70 C 7.68	
0+00 - stub 10' RT - E		257.76 254.50 C 3.26		2+25	253.77 248.60 C 5.17	
				2+01.70 = CRT 6°49.3'	259.11 249.86 C 9.25	
T.B.M. (Dir. der. Rods)		260.46 = P.K. S.W. Cor. ReT-wall		prelim. (SURVEY STA 2+43.3)		
				City notes - STAMPER		

STORM DRAIN
CAL. WESTERN (CONT.)

	INT. Elev's	TP side-wall Elev's	CHK:
5+89.88 = L RT 3°26' (19.91)	210.09 197.98 C 12.11	(not shown) = +2.0 over Elev. INV. 9	192.22 = 192.18 = Chk (Survey STA.) 9+17.64 (Stampers)
5+69.97 = grid ANK (39.64)	214.99 200.00 C 14.99		
5+30.33 (39.63)	218.28 203.27 C 15.01		6+57± { 192.65 = meet TP CRB with TP wall 192.29 = meet EXIST PAV with INV. Ditch
4+90.70 = grid ANK (32.5)	218.36 206.55 C 11.81		
4+58.20 (32.5)	219.11 210.35 C 8.76		6+53.47 = grid ANK TP wall ON RT. 194.27 Conv. DIVERSION 194.30 = TP wall F.O. 03
4+25.70 = grid ANK (32.5)	223.44 214.15 C 9.29		6+49.97 = E.V.C. 194.90 192.50 = INV. Ditch C 2.40
4+15.70 = E.C. Note: See pg. For Detail 34 ON SWALE (3+95.31)	225.37 215.45 C 9.92		6+44.97 = L LT 16°16'± = Beg Conc. DIV. WALL - RT. 195.51 195.51 Grid Div. 192.25 = Bot Wall 194.75 = TP wall C 3.26 C 0.76
4+05.70 (20.14)	226.32 217.20 C 9.12		6+39.97 (X) 15' RT. 197.15 193.00 = INV. Ditch C 4.15
3+85.26 (20.13)	231.09 222.50 C 8.59		6+29.97 = B.V.C. (X) 15' RT. 198.38 193.90 C 4.48 (40.09')

Detail of Swale - Conc.
(3' wide
(13' long - E main Ditch))



CHK: 227.80 = 227.77 =

2x2 = E.P.I.
SURVEY STA:
(Stamp) 6+39.70

CLARK
GARBER
MOORE

4-15-59
W.O. 32999

ALPHA ST. ÷ Ely Line Lot 7
to SE Bdry Southcrest Pk

LT

RT (w/ly)

Ref: City Notes I-24

35

W.O. 32999

(Del. CHIPMAN-Pope)

STA.	P.L.	C.B.	E	C.B.	P.L.	STA.	P.L.	C.B.	E	C.B.	P.L.
1+75	46.71	46.38 46.71 Fo.33		46.15 46.71 Fo.56	46.71	3+61.69 RT. only				31.46 32.15 Fo.69	32.68 32.15 Co.53
1+50	49.02 48.74 Co.28	48.09 48.74 Fo.65		48.26 48.74 Fo.48	48.43 48.74 Fo.31	3+41.69 RT. only				32.17 33.40 Fo.63	33.40
1+25	50.15 50.76 Fo.61	50.15 50.76 Fo.61		50.73 50.76 Fo.03	50.76	3+21.69 = B.V.C.				36.68 34.85 Fo.17	35.93 34.85 Cl.08
1+00	54.23 52.78 Cl.45	52.19 52.78 Fo.59		52.66 52.78 Fo.12	53.01 52.78 Co.23	3+00 RT. only				36.62 36.43 Co.19	37.62 36.43 Cl.19
0+75	54.81	54.32 54.81 Fo.49		54.39 54.81 Fo.42	54.81	2+75 RT. only				38.44 38.26 Co.18	38.26
0+50	59.98 56.83 Cl.15	56.60 56.83 Fo.23		56.32 56.83 Fo.51	57.86 56.83 Cl.03	2+49.82 = P.R.C. LT.	39.52 40.10 Fo.58	39.64 40.10 Fo.46		39.83 40.10 Fo.27	40.86 40.10 Co.76
0+25	58.85	58.65 58.85 Fo.20		59.03 58.85 Co.18	58.85	2+25	42.41 42.33 Co.08	42.18 42.33 Fo.15		42.09 42.33 Fo.24	42.51 42.33 Co.18
0+00 = END OF EXIST IMP'S Ely Line Lot 7	60.87				60.87	2+00	44.55	44.25 44.55 Fo.30		44.07 44.55 Fo.48	44.55
						1+82.55 = B.C.	46.24 46.10 Co.14	45.74 46.10 Fo.36		45.56 46.10 Fo.54	46.04 46.10 Fo.06

T.B.M.

60.87 = ch D 20' RT
7+49 City Notes

ALPHA (CONT.)

Note: grade change to meet EXIST CB ON LT

STA	P.L	CB	LT. CB	RT. CB	CB.	P.L
5+27.89 =EXIST CB RT.	26.52	25.80 26.52	25.80 26.44 Fo.64		=EXIST 26.90	26.90 CLK 27.00 =EXIST.
5+06.19	27.10	26.35 27.10	26.35 27.03 Fo.68	26.87 27.50 Fo.63	26.87 27.59	27.59
4+84.69	28.94 27.69 C1.25	27.19 27.69	27.19 27.64 Fo.45	26.44 28.14 F1.70	26.44 28.19	27.28 28.19 Fo.91
4+63.19	28.28	27.83 28.28	27.83 28.26 Fo.43	27.82 28.76 Fo.94	27.82 28.78 Fo.96	28.78
4+41.69 =E.C	28.87 28.87 grade	28.53 28.87 Fo.34			28.60 29.37 Fo.77	31.78 29.37 C2.41
4+21.69	29.53	29.27 29.53 Fo.26			29.25 29.86 Fo.61	29.86
4+01.69	31.06 30.26 C0.80	30.02 30.26 Fo.24			29.74 30.36 Fo.62	30.51 30.36 C0.15
3+88.72 ARC LT. only	32.14 30.90 C1.24	30.62 30.90 Fo.28				
3+81.69 RT. only					30.82 31.15 Fo.33	31.15

Note: 12.5 EXIST CB PUT IN ON PREVIOUS CONST.

5+78.50 =	25.56	
EXIST. CB LT	24.91 CLK = ACT. ELEV	
5+56.60	25.78 (EXIST - PLAN)	24.91 = EXIST CB END
	24.93	24.93
5+55.20	25.95 (25.79)	25.40
	25.40	25.02
5+43.90		25.90
		F0.88
	25.76	25.76
5+31.90 = CB	26.40	26.30
B.C. LT.		F0.54

BETA : ALPHA to 41' ST.

Left Page						Right Page					
STA.	P.L.	CB	E	CB	P.L.	STA.	P.L.	CB	E	CB	P.L.
0+40	38.50	37.68 38.50 Fo.82		37.58 38.75 F1.17	38.75	2+21.74	45.75	45.75 grade		45.94 45.75 Co.19	45.75
0+20	37.99 38.00 Fo.01	37.37 38.00 Fo.63		37.08 38.00 Fo.92	37.34 38.00 Fo.66	(curve in 6 Pcs) (2+00.43=BC) 2+00.23	45.34 44.70 Co.64	44.71 44.70 Co.01		44.90 44.70 Co.20	46.66 44.70 C1.96
0+00=PRC on RT + Pic. C. LT at Alpha. selly Return	37.82 37.80 Co.02	37.40 37.80 Fo.40		36.05 37.00 Fo.95	36.36 37.00 Fa.64	1+77.22 2341'	43.75	43.64 43.75 Fo.11		44.31 43.95 Co.36	43.95
# 1	37.73	36.90 37.73 Fo.83		35.64 35.80 Fo.16	35.80 #1	1+54.01=EC	42.91 42.80 Co.11	42.20 42.80 Fo.60		43.33 43.20 Co.13	45.69 43.20 C2.49
# 2	37.67	36.79 37.67 Fo.88		34.47 34.40 Co.07	35.12 #2 34.40 Co.72	1+40	42.28 42.25 Co.03	40.95 42.25 F1.30		42.30 42.65 Fo.35	42.87 42.65 Co.22
# 3	37.69 37.60 Co.09	37.13 37.60 Fo.47		32.97 33.00 Fo.03	33.00 #3	1+20	41.46	39.93 41.46 F1.53		41.10 41.86 Fo.76	41.86
# 4	37.90	37.34 37.90 Fo.56		31.79 31.90 Fo.11	32.99 #4 31.90 C1.09	1+00	40.00 40.67 Fo.67	39.27 40.67 F1.40		40.06 41.07 F1.01	41.03 41.07 Fo.04
# 5	38.85	38.63 38.85 Fo.22		30.62 30.90 Fo.28	32.14 #5 30.90=PRC C1.24 (Alpha 3+88.72)	0+80	39.88	38.67 39.88 F1.21		39.43 40.28 Fo.85	40.28
# 6 PRC (Alpha) (2+49.82)	40.10	39.64 40.10 Fo.46				0+60=ENC LT.	38.53 39.10 Fo.57	38.07 39.10 F1.03		38.61 39.50 Fo.89	40.25 39.50 C0.75

BETA (CONT.)

LT.					RT.						
STA.	P.L.	CB	E	CB	P.L.	STA.	P.L.	CB	E	CB	P.L.
4+14.06	56.32	55.33 56.32 Fo.99		55.81 56.63 Fo.82	56.63	#1 RT.				60.87 61.30 Fo.93	#1
3+92.94= E.V.C	54.84 54.80 Co.04	53.74 54.80 F1.06		54.30 55.10 Fo.80	56.81 55.10 C1.71	CB-BC RT 4+70.16				60.39 60.70 Fo.31	57.31 60.70 F3.39
3+72.94	53.65	53.04 53.65 Fo.61		53.30 53.80 Fo.50	53.80	#4=CB E.C 41' ST.	60.56 61.35 Fo.79	60.90 61.35 Fo.45			
3+52.94 = B.C	52.98 52.40 Co.58	51.83 52.40 Fo.57		52.66 52.50 Co.16	53.48 52.50 Co.98	#3	61.20	60.82 61.20 Fo.38			
3+28.33= E.C	51.68 51.00 Co.68	50.84 51.00 Fo.16		50.62 51.00 Fo.38	52.66 51.00 C1.66	#2	60.85	59.46 60.85 F1.39			
3+07.00	49.95	49.71 49.95 Fo.24		49.66 49.95 Fo.29	49.95	#1	60.35	59.39 60.35 Fo.96			
2+85.68	49.67 48.90 Co.77	48.61 48.90 Fo.29		48.62 48.90 Fo.28	50.08 48.90 C1.18	4+61.34=CB BC LT.	58.42 59.70 F1.28	58.86 59.70 Fo.84			
2+64.37	47.85	47.55 47.85 Fo.30		47.67 47.85 Fo.18	47.85	4+56.30	59.36	58.52 59.36 Fo.84		58.98 59.69 Fo.71	59.69
2+43.05	47.15 46.80 Co.35	46.45 46.80 Fo.35		46.81 46.80 Co.01	49.38 46.80 C2.58	4+35.18	57.52 57.84 Fo.32	56.65 57.84 F1.19		57.28 58.16 Fo.88	56.87 58.16 F1.29

BETA (CONT.)

41' ST. ST.

S. Line
BETA to S/L 70'

(39)

CB P.L

	64.96	64.47	64.37	66.36
0+70=ENDIMPS	64.54	64.54	63.80	63.80
	C0.42	F0.07	C0.57	C2.56

0+60	64.18	63.86 64.18 F0.32	63.09 63.44 F0.35	63.44
------	-------	-------------------------	-------------------------	-------

0+40	63.75 63.58 C0.17	62.57 63.58 F1.01	60.90 62.81 F1.91	62.81
------	-------------------------	-------------------------	-------------------------	-------

0+30=CB EC (See pg opposite)			60.77 62.55 F1.78	58.65 62.55 F3.90
------------------------------------	--	--	-------------------------	-------------------------

0+20	63.08	61.81 63.08 F1.27		
------	-------	-------------------------	--	--

	62.76 62.72 C0.04	61.36 62.72 F1.36		
--	-------------------------	-------------------------	--	--

= S.L. BETA
0+00=CB EC
LT

(=0+30 41' ST)
#4=E.C. 41' ST

60.77 62.55 F1.78	62.55	#1	62.65	62.09 62.65 F0.56
-------------------------	-------	----	-------	-------------------------

#3

60.92 62.30 F1.38	62.30	#2=EXIST CB and	62.75	62.75 chk 62.75
-------------------------	-------	--------------------	-------	--------------------

#2

61.09 61.83 F0.76	61.85			
-------------------------	-------	--	--	--

CHARK
GARBER
MOORE
ABRENNIA
9-28-59
N.O. 32910

BOUNDARY to
HILLTOP #42 ST

BURY to Ely
LT (AS 4)

RT

STA	P.L	CB	E	CB	P.L
-----	-----	----	---	----	-----

0+40	175.19	175.04 175.19 F0.15			
------	--------	---------------------------	--	--	--

0+26 map STA 0+3.4 = Sew LAT #1 LT	176.01 171.95 PL C4.06		171.05		
---	------------------------------	--	--------	--	--

0+20 LT only	175.10 174.25 C-0.85	173.90 174.25 F0.35			
0+20 = W.S. LT	176.54 174.25 C2.29				

0+08.6 = Prop. RT			174.30 173.80 C0.50	174.36 173.80 = TP C0.56 PAX	
0+00 LT only	172.70	171.51 172.70 F1.19		173.13 172.50 = TP C0.63 PAX	

0-06 Beg CB LT		172.00 171.90 C0.10			
0-08.8 = Prop. LT	173.86 171.90 C1.96				

B.M

166.53 = SW B.P

3942 + HILLTOP

REF: DWG'S: 6825-26-27-D
CITY notes: I-J-22

41

LT

RT

1+50	176.30	175.90 176.30 F0.40			175.93 176.30 F0.37
------	--------	---------------------------	--	--	---------------------------

1+35	176.45	176.42 176.45 F0.03			176.35 176.45 F0.10
------	--------	---------------------------	--	--	---------------------------

1+20	177.31 176.60 C0.71	176.60 176.60 grade			176.63 176.60 C0.03
------	---------------------------	---------------------------	--	--	---------------------------

1+00	176.65	176.47 176.65 F0.18			176.61 176.67 F0.06
------	--------	---------------------------	--	--	---------------------------

0+78.4 (0+80 = Sew) LAT #2 LT	176.72 171.75 PL C4.97			171.15 g	
0+80	177.15 176.51 C0.64	176.21 176.51 F0.30			176.41 176.47 F0.06

0+70 = W.S. LT	176.30 = TP C0.20				
0+60	175.88	175.62 175.88 F0.26			176.01 176.00 C0.01

0+46.83 = CB BC RT					175.42 175.68 F0.26
-----------------------	--	--	--	--	---------------------------

					175.17 175.45 F0.28
--	--	--	--	--	---------------------------

					174.96 175.10 F0.14
--	--	--	--	--	---------------------------

CB END

4111TOP
 BDRY to 39th (CONT.)

LT.				RT.							
STA	P.L	CB	E	CB	P.L	STA	P.L	CB	E	CB	P.L
2+84.5	167.79	167.93 167.79 C0.14									
2+65 LT. only	172.96 169.38 C3.58	169.36 169.38 F0.02									
2+64.58-CB B.CRT (meet)				168.38 (meet)		3+44.58- CB CRT				166.15	166.15 (meet)
2+50	173.95 170.68 C3.27	170.54 170.68 F0.14		169.84 170.09 F0.25	173.74 170.09 C3.65						
(moved to 2+55) 2+43 = Sew LAT #3 LT	174.07 166.60 PL C7.47		164.30 E			#3 = CB end	167.00	167.30 167.00 C0.30			
2+30	172.48	172.10 172.48 F0.38		171.87 172.16 F0.29	172.16	#2	167.00	167.38 167.00 C0.38			
2+10	175.70 174.10 C1.60	173.81 174.10 F0.29		173.63 173.83 F0.20	174.80 173.83 C0.97	#1	167.10	167.12 167.10 C0.02			
1+90	175.19	175.05 175.19 F0.14		175.17 175.07 C0.10	175.07	2+94.15 = CB 80. LT (N.W. ly) [39th]	171.21 167.30 C3.91	167.35 167.30 C0.05			
1+70	177.01 175.82 C1.19	175.63 175.82 F0.19		175.67 175.76 F0.09	175.85 175.76 C0.09	2+89 = Sew LAT #4 LT. moved to 2+55	172.28 163.00 PL C9.28		162.40 E		
							173.30 165.6		1733 163.77 E C9.53		
							C 7.7 PL				

HILTOP
394h to QUAIL (CONT.)

CHK:

166.53 = SWBP 394h
HILTOP 43

STA:	P.L.	CB	E	CB	P.L.
Alley (4+57.08) E.C.				166.34 166.64 Fo.30	166.64
4+53.08 = CB BC Alley (RT. only)				166.34 166.55 Fo.21	166.55
4+50	166.68 166.93 Fo.25	166.66 166.93 Fo.27		166.29 166.53 Fo.24	163.09 166.53 F3.44
4+25	166.76	166.54 166.76 Fo.22		166.60 166.42 Co.18	166.42
4+00	166.46 166.58 Fo.12	166.38 166.58 Fo.20		166.26 166.31 Fo.05	161.30 166.31 F5.01
3+78.58 Beg "B" Ref. Wall RT. Sec. Pg. 52					
3+74.15 = CB BC LT (NEW) [394h]	167.07 166.40 Co.67	166.18 166.40 Fo.22		166.11 166.20 Fo.09	162.20 166.20 F4.0
#1	166.35	166.23 166.35 Fo.12			
#2	166.30	166.33 166.30 Co.03			
#3 = CB end	166.35	166.32 166.35 Fo.03			

STA	P.L.	CB	E	CB	P.L.
5+25	168.82 167.89 Co.93	167.79 167.89 Fo.10	167.37 167.40 Fo.03	168.75 167.40 C1.35	
5+05	167.44	167.35 167.44 Fo.09	167.03 166.90 Co.13	166.90	166.90
4+85 = B.C.	167.40 167.18 Co.22	166.92 167.18 Fo.26	166.54 166.69 Fo.15	167.69 166.69 C1.00	
4+75 (LT only)	167.11	166.81 167.11 Fo.30			
4+81.08 = Alley B.C RT only			166.47 166.66 Fo.19	166.66	
Alley E.C.			166.47 166.72 Fo.25	166.72	
4+77.08 = Alley at P.L RT. only			167.40 166.84 Co.56	166.78 166.84 Fo.06	
4+57.08 = Alley at P.L RT. only			165.47 166.76 F1.29	164.32 166.76 CB F2.44	
			165.47 166.40 Fo.93 = Pav		

166.40 = Pav
Level Sect

HILLTOP
(CONT)

QUAIL to 40' + h

170.71 = SWB.P QUAIL
+ HILLTOP

HILLTOP (CONT)						QUAIL to 40' + h					
STA.	P.L.	LT. CB	E	RT CB	P.L.	CHK. STA.	P.L.	CB.	E	CB.	P.L.
#3 CB end	172.25	172.47 172.25 C 0.22				7+60	175.62 175.70 F0.08	175.58 175.70 F0.12		176.11 176.23 F0.12	176.64 176.23 C0.41
#2	172.08	171.73 172.08 F0.35				7+35	174.68	174.60 174.68 F0.08		175.09 175.18 F0.09	175.18
#1	171.85	171.62 171.85 F0.23				7+13.65=CB B.C LT. (NEly) QUAIL	173.96 173.80 C0.16	173.87 173.80 C0.07		174.09 174.30 F0.21	174.83 174.30 C0.53
6+33.65=CB BC LT (N'Wly) QUAIL	172.48 171.60 C0.88	171.42 171.60 F0.18				#1	173.40	173.76 173.40 C0.36			
6+30	171.50	171.34 171.50 F0.16				#2	173.30	173.80 173.30 C0.50			
6+10	170.93	170.65 170.93 F0.28				#3=CB END	173.33	173.38 173.33 C0.05			
5+90 LT ONLY	171.14 170.24 C0.90	169.93 170.24 F0.31									
5+89.55=CB BC RT ONLY EXIST.				170.23	170.23 (meet)	6+91.60 RT ONLY				173.30 173.50 F0.20	173.50
5+67.5	169.39	169.28 169.39 F0.11		169.14 169.20 F0.06	169.20	6+69.55=EXIST. CB.BC. RT.				(162.66) 172.71	172.71
5+45	169.53 168.54 C0.99	168.41 168.54 F0.13		168.14 168.17 F0.03	169.71 168.17 C1.54						

HILLTOP (CONT.)

STA:	P.L.	CB	±	CB	P.L.
8+30	178.46	178.24 178.46 FO.22		178.75 178.99 FO.24	178.99
8+10	177.66 177.75 B.V.C FO.09	177.54 177.75 FO.21		178.11 178.30 FO.19	180.53 178.30 C2.23
8+06.05				178.09 178.14 FO.05	178.14
ALLEY B.C R.T.					
ALLEY E.C				178.09 178.05 C0.04	178.05
8+02.05				180.42 178.17 C2.25 C2.72	179.54 178.17 C1.37 P.V.
ALLEY AT P.L.					
7+85	176.50 176.73 only FO.23	176.49 176.73 FO.24			
7+82.05				177.69 177.34 C0.35 C0.59	177.96 177.34 C0.62 P.V.
ALLEY Prop					
ALLEY E.C				177.21 177.22 FO.01	177.22
7+78.05				177.21 176.98 C0.23	176.98
ALLEY B.C RT					

STA:	P.L.	CB	±	CB	P.L.
9+53.88	180.35	180.23 180.35 FO.12			
LT. ONLY					
9+33.88	180.70 180.30 Co.40	180.08 180.30 FO.22			
LT.					
only = B.V.C					
9+14.43					CHK. 179.92
EXIST. CB B.C					179.92
R.T.					
9+12.58	180.29 179.96 C0.33	179.88 179.96 FO.08			
LT					
only					
8+92.25					179.64 179.79 FO.15
RT					179.79
only					
8+91.29	179.62	179.66 179.62 C-0.04			
LT					
only					
8+70	179.62 179.29 C0.33	179.13 179.29 FO.16			179.56 179.67 FO.11
E.V.C					181.86 179.67 C2.19
8+50	179.50 178.96 C0.54	178.86 178.96 FO.10			179.45 179.45 0.00
					181.47 179.45 C2.02

HILLTOP (CONT)

CLK:

180.08 = SWA.P 46
40'4" HILLTOP

40th to RAYEN

STAI	P.L	CB	E	CB	P.L	STAI	P.L	CB	E	CB	P.L
#2	179.00	179.17 179.00 C-0.17									
#3 CB end	178.98	179.17 178.98 C-0.19				11+16.93=G (Alley RT B/K AT P.L. Par. edge)				178.83	P.L Par. edge
10+34.06 RT only				180.45 180.26 C-0.19	180.26	11+13.88 LT only	178.42	178.23 178.42 F 0.19			
10+14.24 RT only				180.65 180.52 C-0.13	180.52	11+06.93= Alley AT P.L w/ wide alley				179.33 179.50 F 0.17 Co. 38 Par.	179.28 179.50 F 0.22 (178.75 G.T)
9+94.43= EXIST. CB B.C. RT					chk 180.78 (meet)	Alley E.C				179.41 179.38 C 0.03	179.38
↙						11+02.93= Alley B.C. RT				179.41 179.32 C-0.09 (street)	179.32
9+73.88= = CB B.C. LT NW [4046]	180.91 180.20 Co. 71	180.13 180.20 F 0.07				10+93.88= B.V.C	178.67 178.65 Co. 02	178.60 178.65 F 0.05		179.53 179.50 Co. 03	180.54 179.50 C 1.04
#1	180.09	180.06 180.09 F 0.03				10+73.88	178.83	178.64 178.83 F 0.19		179.87 179.75 C-0.12	179.75
#2	179.98	179.88 179.98 F 0.10				10+53.88= CB B.C. RT. NEW [4046]	178.88 179.00 F 0.12	178.83 179.00 F 0.17		179.85 180.00 F 0.15	181.09 180.00 C 1.09
#3 CB end	179.91	180.39 179.91 C 0.48				↙ #1	179.05	179.05 179.05 0.00			

HILLTOP (CONT.)
(40'4L to RAVEN)

CHK:

171.33 = SWBP 47
RAVEN + HILLTOP

STA:	P.L.	CB	ε	CB	P.L.
12+17.56	178.18 175.52 C 2.66	175.42 175.52 FO.10		175.10 175.25 FO.15	174.94 175.25 FO.31
12+04 = Sew LAT 45 LT.	178.87 170.80 PL C 8.07		166.72 ε		
11+95.72	176.27	176.17 176.27 FO.10		176.19 176.23 FO.04	176.23
11+73.88 = E.V.C	178.67 177.02 C 1.65	176.84 177.02 FO.16		177.10 177.20 FO.10	177.91 177.20 CO.71
11+53.88	177.60	177.54 177.60 FO.06		178.02 178.02 0.00	178.02
11+33.88 = LT only	178.74 178.07 C 0.67	177.83 178.07 FO.24		178.82 178.73 C 0.09	178.82 chx 2 in
11+30.93 = ALLEY B.C. RT.				178.83 178.82 C-0.01 (street)	178.82
ALLEY E.C. RT				176.83 178.96 FO.13	178.96
11+26.93 = ALLEY AT PL RT.				178.77 179.08 FO 31 CB C 0.02 PL	178.81 179.08 FO.27

STA:	P.L.	CB	ε	CB	P.L.
13+50.65	167.97	167.66 167.97 FO.31			
13+26.90	178.74 169.58 C 9.16 (65 BK Prop.)	169.29 169.58 FO.29			
13+19.40 = EXIST. CB BC RT (RAVEN) 13					
13+03.15 LT only	178.26 171.18 C 7.08 0.2 BK Prop.	170.95 171.18 FO.23			
12+79.40 LT E.V.C only	175.82 172.79 C 3.03	172.71 172.79 FO.08			
12+59.40 LT only	176.90 173.96 C 2.94	173.82 173.96 FO.14			
12+44 = SEW. LAT 76 LT.	177.38 169.60 PL C 7.78		164.90 ε		
12+39.40 = CB BC RT, EXIST. (RAVEN)	177.40 174.77 C 2.63	174.68 174.77 FO.09			
12+34 = W.S LT (set by water survy. crew)					

CHK
168.75 168.75

CHK.
174.27 174.27
(meet.)

(178.82)

HILLTOP (CONT.)
(RAVEN to 41' ST)

CHK:

151.66 = SWB.P 48

- 41' ST + HILLTOP

STA:	P.L.	CB	±	CB.	P.L.	STA:	P.L.	CB	±	CB.	P.L.
14+51.96 = ALLEY AT P.L. RT.				157.62 160.18 F2.56	160.18						
14+41.76 = ALLEY	167.44 161.25 C6.19					#1 ←	154.00	154.02 154.00 C-0.02			
14+37.73 LT. only	161.56	161.37 161.56 F0.19				15+64.13 = CB.BC LT (NW. LY) (41' ST)	156.38 154.27 C2.11	154.07 154.27 F0.02			153.27 - meet.
14+31.7 = ALLEY ALLEY AT P.L. RT.				160.05 161.20 F1.15	161.72	15+44.26	154.93	154.74 154.93 F0.19		154.02 154.18 F0.16	154.18
ALLEY E.C.				159.55 161.60 F2.05		15+24.40 = E.V.C.	157.17 155.59 C1.58	155.38 153.59 F0.21		155.25 155.09 C-0.16	152.20 155.09 F2.89
14+27.76 = ALLEY B.C. RT.				161.93 161.83 C-0.10	161.83	15+04.40	156.63	156.51 156.63 F0.12		156.70 156.13 C-0.57	156.13
14+14.40 = E.V.C.	170.23 163.36 C6.87	163.17 163.36 F0.19		162.74 162.86 F0.12	160.97 162.86 F1.89	14+84.40 = B.V.C.	161.40 157.95 C3.45	157.71 157.95 F0.24		158.11 157.45 C-0.66	153.10 157.45 F4.35
13+94.40	164.93	164.69 164.93 F0.24		164.31 164.37 F0.06	164.37	14+61.06	159.75	159.47 159.75 F0.28		159.55 159.26 C-0.29	159.26
13+74.40 = B.V.C.	169.20 166.36 C2.84	166.12 166.36 F0.24		165.66 165.63 C-0.03	166.49 165.63 C0.86	14+55.76 = ALLEY B.C. RT.				159.88 159.67 C0.21	159.67 159.67
						ALLEY E.C. RT.				159.88 160.06 F0.18	157.62 160.06 F2.44

Hilltop (CONT.)

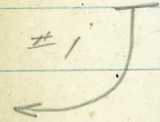
(41'ST to MORRISON)

49

STA:	P.L	CB.	±	CB.	P.L
16+44.13=	155.58	153.24		152.62	152.62
CB.BC. LT	153.62	153.62			
(NE'W)	C 1.96	F 0.38			-meet
[41'ST]					
#1	153.58	153.36			
		153.58			
		F 0.22			
#2=mid-pt	153.60	153.53			
		153.60			
		F 0.07			
#3	153.90	154.16			
		153.90			
		C-0.26			
#4=CB.E.C		154.70			
on 41'ST	154.75	154.75			
		F-0.05			
#4=CB.E.C	154.75	154.41			
on 41'ST		154.75			
		F 0.34			
#3	154.15	154.13			
		154.15			
		F 0.02			
#2=mid-pt	153.90	154.18			
Ret.		153.90			
		C-0.28			

STA:	P.L	CB	±	CB	P.L
18+12.13	159.38	159.35			157.91
		159.38			158.38
		F-0.03			F 0.47
17+92.13	162.22	159.12			157.55
	158.77	158.77			157.77
	C 3.45	C-0.35			F 0.22
					F 0.32
17+72.13	157.86	158.09			156.75
		157.86			156.86
		C-0.23			F 0.11
17+52.13=Sen	156.42	156.42			155.43
LT 1516	161.05	156.42			154.91
2ATD	156.63	156.63			155.63
17+52.13	C 4.42	F-0.21			F 0.20
					F 0.72
17+34.13	155.46	155.54			154.40
		155.46			154.46
		C-0.08			F 0.06
17+14.13	156.21	154.80			153.65
	154.60	154.60			153.60
	C 1.61	C-0.20			C-0.05
					F 1.07
16+94.13	154.04	154.23			152.92
		154.04			153.04
		C-0.19			F 0.12
16+74.13=	155.98	153.94			152.62
B.V.C.	153.78	153.78			151.90
	C 2.20	C 0.16			152.78
					F 0.16
					F 0.88
16+59.13	153.70	154.05			152.31
		153.70			152.70
		C-0.35			F-0.39

delete
(connected)



HILLTOP (CONT.)

STA:	LN24) LT			RT.		
	P.L.	CB	E	CB	P.L.	
19+60.14	158.83 158.08 C0.75	157.59 158.08 F0.49		156.80 157.07 F0.27	156.62 157.07 F0.45	
19+50.14	159.37	157.75 158.37 F0.62		157.02 157.37 F0.35	157.37	
19+30.14 = EXIST. CB BC RT. (MORRISON)	160.17 158.87 C1.30	158.37 158.87 F0.50		157.95	157.95 (meT)	
19+10.14 LT. ONLY +95.14 \$ Morrison	160.63 159.20 C1.43	158.72 159.20 F0.48	✓			
18+90.14 LT. ONLY	159.45	159.45 F0.42				
18+70.13 LT. ONLY	161.21 159.52 C1.69	159.33 159.52 F0.19				
18+60.14 = EXIST. CB BC RT. ONLY (MORRISON)				158.83	158.83 (meT)	
18+52.13	159.71	159.52 159.71 F-0.19		158.76 158.78 F0.02	158.78	
18+32.13	162.59 159.65 C2.94	159.39 159.65 F0.26		158.45 158.65 F0.20	158.24 158.65 F0.41	

(MORRISON to 42nd)

STA:	CHK:			157.60 SWBP MORRISON HILLTOP		
	P.L.	CB	E	CB	P.L.	
(OK STA) 21+39.30 = W.S. LT.	156.11 154.51 C1.54	154.57				
21+46.19 = EXIST. CB B.C. RT. [42nd]	155.56 154.44 C1.12	154.11 154.44 F0.33			153.59 153.44 153.44	
21+25	154.85	154.41 154.85 F0.44			153.73 153.85 F0.12 0.19	153.85
21+00	157.27 155.33 C1.94	155.07 155.33 F0.26			154.02 154.33 F0.31	155.25 154.33 C0.92
20+75	155.80	155.57 155.80 F0.23			154.59 154.80 F0.21	154.80
20+50	158.05 156.28 C1.77	156.06 156.28 F0.22			155.02 155.28 F0.26	154.87 155.28 F0.91
20+25	156.75	156.54 156.75 F0.21			155.65 155.75 F0.10	155.75
20+00.14	158.48 157.22 C1.26	156.87 157.22 F0.35			155.82 156.22 F0.40	155.88 156.22 F0.34
19+80.14	157.57	157.24 157.57 F0.33			156.18 156.57 F0.39	156.57

HILLTOP (CONT.)
(MORRISON to 42nd)

CHK:

152.94 = SWB.P 51
42nd + Hilltop

	Ob		Ob
22+67.19 = CB end RT only			152.71 152.59 152.59
22+41.69 = E 8' Cont. out RT. only			152.27 154.23 152.59 152.59 CB 0.32 C 1.64 0.06 F 0.38
#2 = CB end	153.60	155.47 153.60 C 1.87	
← #1	153.40	153.73 153.40 C 0.33	
22+24.30 = CB BC LT NWLY [42nd]	155.58 153.40 C 2.18	153.21 153.40 F 0.19	
22+16.19 = CB BC RT only			152.70 152.60 152.60
22+06.19 LT. only	153.65	153.71 153.65 C 0.06	
21+86.19 LT. only	155.45 153.91 C 1.54	153.95 153.91 C 0.04	
21+66.19 LT. only	154.18 154.18	154.18 0.00	

23+04.38 = (no CB here)
CB BC LT

NELY
[42nd]

		out	
← #1 = Beg CB	154.70 153.55 C 1.23	154.74 153.55 C 1.19	154.84 153.55 C-1.29
(STA 22+94.38 (5L 42nd))		out	
#2 = CB end	153.73	154.70 153.73 C 0.97	154.76 153.73 C-1.03

Hilltop (CONT)

RETAINING WALL (56-EB)

REF: DWG: 6825-D
(Spec) 56-EB

(44 E/4 E.LINE)
39'4"

3+78.58 to 4+42.58 S/4 Side
/ST.

4+42.58

4.5'

162.42
164.25 = Top
F1.83

162.42
161.25 = bott.
C1.17

4+30.58

4.5'

161.49
164.21 = Tp
F2.72

161.49
160.25 = bott.
C1.24

4+10.58

4.5'

161.08
164.125 = Tp
F3.045

161.08
160.25 = bott.
C0.83

30' 30'

S/LINE

3+90.58

4.5'

161.13
164.04 = Tp
F2.91

161.13
160.25 = bott.
C0.88

3+78.58

4.5'

161.68
164.00 = Top Wall
F2.32

161.68
161.25 = bottom elev
C0.43

HILLTOP

3+34.58

DISC

39'4"

B/M

166.53 = SWAP. HILLTOP + 39'4"

SEWER MAINS - H/L/TOP
- Vic. RAVEN - (41ST to RAVEN)

1+20 174.78
166.42 = d. end
C 8.36

0+90 173.31
164.45
C 8.86

0+60 171.93
162.49
C 9.44

0+30 170.30
160.52
C 9.78

0+00 = ^{w/y} END EXIST 6"
V.C.P. 110' w/y
OF E ALLEY
B/K = 5
168.26
158.56[±] = i.e. EXIST PIPE
C 9.70

stubs 6' 178 (5' 11")

53

VIC. - 39TH (QUAIL to 39TH)

1+50 = D-END 172.35
164.00
C 8.35

1+20 170.08
162.64
C 7.44

0+90 168.57
161.27
C 7.30

0+60 167.25
159.91
C 7.34

0+40 166.32
159.00
C 7.32

0+20 = E.V.C. 165.61
158.10
C 7.51

0+10 165.25
157.80
C 7.45

= B.V.C.
0+00 = PT 65'± w/y E ALLEY
B/K 2 165.00
157.67 = i.e. EXIST.
C 7.33

Sew-main Hilltop
Vic. - Bdry. (39th to Bdry)

H27 = D. END

174.62
171.05
C3.57

H202

175.39
170.97
C4.42

O+77

176.12
170.90
C5.22

O+52

176.48
170.82
C5.66

O+27

176.64
170.74
C5.90

O+00 = EXIST M.I.H
E Hilltop bet.
39th + BDRY

170.65 (170.55)

Garber
Moore
Abrenilla

10-28-59
W.O. 32859

Stake Alley Blk 14
Bird Rock (Midway,
Forward Beaumont, LaJolla
Hermosa Ave)

56

Std.	Lt.	Rt.
2+00	93.30 1X1 93.53 2°BK F0.25	94.93 Nail in fence 93.80 0.24 BK C-1.13
+70	93.35 1X1 93.35 2°BK 0.00	94.72 Nail in fence 93.60 0.12 BK C-1.12
+40	92.95 1X1 93.14 2°BK F-0.19	94.63 Nail in fence 93.39 0.17 BK C-1.24
1+10	93.09 1X1 92.94 2°BK C-0.15	94.30 Nail in fence 93.19 0.45 BK C-1.11
+90	92.85 1X1 92.72 2°BK C-0.13	93.42 1X1 92.97 2°BK C-0.45
+70	92.05 1X1 92.33 2°BK F-0.28	94.59 Nail in fence 92.58 0.44 BK C-2.01
+45	91.65 1X1 91.74 2°BK F-0.09	94.27 Nail in fence 91.99 0.50 BK C-2.28
+20	91.21 1X1 91.15 2°BK C-0.06	92.62 Nail in fence 91.40 0.48 BK C-1.22
0-05	90.63 G	90.94 G
	B.M. Id. & TK. Elev. 90.56	

Std.	Lt.	Rt.
+20	97.33 Nail in fence 96.40 0.60 BK C-0.93	97.05 1X1 96.65 2°BK C-0.40
4+00	95.88 1X1 95.95 2°BK F-0.07	96.79 1X1 96.20 2°BK C-0.59
+80	95.43 1X1 95.50 2°BK F-0.07	96.59 1X1 95.75 2°BK C-0.84
+60	94.98 1X1 95.05 1°BK F-0.07	96.32 1X1 95.30 2°BK C-1.02
+45	94.95 1X1 94.85 1°BK C-0.10	95.94 1X1 95.10 2°BK C-0.84
+30	98.58 X on top wall 94.65 1.0BK C-3.93	96.02 1X1 94.90 2°BK C-1.12
3+04	98.02 X on top wall 94.43 0.75 BK C-3.59	95.19 1X1 94.68 2°BK C-0.51
+78	93.72 1X1 94.21 0.50 BK F-0.49	94.92 1X1 94.46 3°BK C-0.46
+52	93.68 1X1 93.99 2°BK F-0.31	94.99 X on drive 94.24 2°BK C-0.75
2+26	93.66 X on Drive 93.77 2°BK F-0.11	95.07 Nail in fence 94.02 0.17 BK C-1.05

Std.	Lt.	Rt.
	✓ 95.19 Gut.	✓ 95.78 Gut
5+80	96.65 X on drive 96.81 3 ^o BK F-0.16	97.58 1X1 97.06 2 ^o BK C-0.52
+60	96.90 1X1 97.21 2 ^o BK F-0.31	97.88 1X1 97.46 2 ^o BK C-0.42
+35	96.70 1X1 97.14 2 ^o BK F-0.44	97.65 X on drive 97.38 2 ^o BK C-0.27
5+10	96.54 X on drive 97.06 2 ^o BK F-0.52	97.22 1X1 97.31 2 ^o BK F-0.09
+85	96.75 1X1 96.98 1 ^o BK F-0.23	98.08 X on walk 97.24 1 ^o BK C-0.84
+60	96.64 1X1 96.91 2 ^o BK F-0.27	98.64 X on Wall 97.16 0.16BK C-1.18
4+40	97.68 Nail in fence 96.75 0.47BK C-0.93	97.79 1X1 97.00 2 ^o BK C-0.79

Garber
Moore
Abrenilla
11-5-59

A1st St. Hilltop to Bdry.

	P.L.	Cb.	Cb.	P.L.
	167.73	166.64		
+50	166.87	166.87		
	C 0.86	F 0.23		
	166.70	165.34		On Cb.
+30	165.70	165.70	Chks.	164.90
	C-1.0	F 0.36		
		165.04		
NW B.C.		165.38		
+25.3		F 0.34		
NW Alley		165.04		
+21.3		165.19		
		F 0.15		
SW Alley	164.46	163.46	162.95	
		164.13	163.42	
+06.3	164.05	F-0.67	F-0.47	
B.C. SW Alley	C 0.41	163.46	162.95	
+02.3		163.73	163.06	
		F 0.27	F 0.11	
	163.23	162.50	162.06	162.66
+90	162.75	162.75	162.20	162.20
	C 0.48	F 0.25	F 0.14	C 0.40
	162.02	160.59	160.38	160.94
+70	160.75	160.75	160.50	160.50
	C 1.27	F 0.16	F 0.12	C 0.44
	160.90	158.64	158.62	159.97
+50	158.75	158.75	158.70	158.70
	C 2.15	F 0.11	F 0.08	C 1.27
	158.98	156.77	156.46	158.57
+30	156.75	156.75	156.70	156.70
	C 2.23	C-0.02	F 0.24	C 1.87
E.C.	157.73	see Hilltop		157.08
+10	154.75	154.75	154.75	154.75
	C 2.78			C 2.23
0+00				

	P.L.	Cb.	Cb.	P.L.
	166.50	164.50		
+21.3	164.77	165.27		
	1.73	1.23		
	Pave			Pave
	164.31	163.79		163.79
+06.3	163.93	164.26	163.55	163.22
	C-0.38	C-0.05	C-0.24	C-0.57
	172.14	170.05		
+17.60	170.10	170.10		
	C 2.04	F 0.05		
	169.26	169.25		
+00	169.25	169.25		
		F 0.01		
	169.64	168.08		
+75	168.06	168.06		
	C 1.58	C-0.02		

CLARK
GARBER
ABRENIA
3-3-60
W.O. 33081

CEDARBRAE - LANE

Note: grade limits Fut. CB to CB

see pg. 59 For Water

Ref: City Notes
DWG: 5763-E-D

C.H.W. 1-22-59 58
W.O. 33081 INDEX B-22

LT		RT		STA	P.L	CB	CB	P.L
STA	P.L	CB	CB	P.L				
1+46 = B.V.C	47.48 348.15 Fo. 67		51.62 348.75 C 2.87	3+78.54 = E.B.C	38.47 339.20 Fo. 73			40.36 339.80 C 0.56
1+00	49.28 349.71 Fo. 43		52.77 350.31 C 2.46	3+67.5 = Sew LAT (5) RT		40.9 331.19 Sew C 9.7 main		40.86 336.25 P.L C 4.61
1+99 = Sew Lat (1) LT	348.91 343.00 P.L C 5.91	48.9 342.42 Sew C 6.5 main		3+50	40.76 340.34 C 0.42			41.37 340.94 C 0.43
0+60 = F.V.C	50.00 351.06 F 1.06		53.70 351.66 C 2.04	3+00 (P.K. DRIVE)	41.36 342.33 Fo. 97			44.07 342.93 C 1.14
				T.B.M. = 335.49 on 8" x 2" Radius pt.				
				2+78 = Sew LAT (4) RT		45.4 334.7 Sew C 10.7 main		45.47 340.34 P.L C 5.13
0+40	50.36 351.42 F 1.06		53.67 352.10 C 1.57	2+50	43.48 344.32 Fo. 84			46.51 344.92 C 1.59
				2+26 = F.V.C	44.62 345.27 Fo. 65			47.67 345.87 C 1.80
0+20 = B.V.C (= Prop. E.C)	50.45 351.22 Fo. 77		54.43 352.54 C 1.89					
0+06 = B.C Fut. CB'S	350.10		353.15	1+86	46.00 346.75 Fo. 8			49.54 347.35 C 2.19
0+00 = E.L CATALINA BLDG	51.19 349.0 C 2.19		54.03 354.30 Fo. 27					
B.M. (Dir. Elev. Rad.)		350.14 = 3/4" Pipe	45' LT @ 0+00	1+68.4 = Sew LAT (2) LT	46.74 341.00 P.L C 5.74	46.7 339.3 Sew C 7.4		

WATER MAIN + W. SERVICES

stubs 5' LT + main

LT			RT		STA.			
P.L.	CB		CB	P.L.				
<p>Note: <u>Cont. claims he did not receive cut sheet on this job!</u></p>					1+96=	346.39 TP 346.40 TP Fool.		
					1+60		347.85 344.03 C382	
					1+20		349.30 345.79 C351	
					0+80		350.57 347.14 C343	
					0+55=W.S. LT.	350.77 TP 351.17 = CB Fo.40		
					0+40		351.55 348.3 C325	
(= STA 97 +) W.L. P.L. 104 only					0+14=F.Hyp.	stubs along Fe.		
4+31.14 = W.L. P.L. 104 = end job	36.80 337.13 Fo.33		38.19 337.80 C1.8		RT		52.25 TP 352.69 = CB Fo.44	352.23 353.00 Fo.77 52.25 353.00 = stub Fo.75 K-od by cont.
4+00	37.94 338.54 Fo.60		39.34 338.79 C0.55		0+00 = F.L. CATALINA		351.61 347.9 C3.71	
3+847 = SEW LAT(3) LT.	38.00 332.00 PL C6.0		38.00 330.15 = Sew main C7.85		0-35 = make CONNECT.			(meet EN ST.)

STA.	LT.	RT.
3+60	340.24 336.70 C3.54	
3+20	341.76 338.29 C3.47	
2+80	343.34 339.88 C3.46	
2+65 = W.S. LT & RT.	343.83 343.72 TP C0.11 CB	345.20 344.32 TP C0.88 CB
2+40	344.84 341.47 C3.37	
2+17 = W.S. RT.		347.88 346.27 TP C1.61 CB
2+00	346.39 343.00 C3.39	

STA.	LT.	RT.
4+51.7 = end man = 3" Bl. off.	337.61 333.94 C3.67	
4+18.8 = E.F. HYP (Stubs 8' + 18' on Rad.) R.F.H.	337.92 TP C0.66 CB	337.98 338.26 = Fly Fo. 28 338.53 338.26 = Fly Fo. 28 C0.32 Kod by cont.
4+00	338.33 335.13 C3.20	
one Radius 2x2 T.O.M. = 335.49		
3+78.54 = B.C.	339.36 335.96 C3.40	
3+75.5 = W.S. RT.		340.52 339.92 TP C0.60 Kod by cont.
3+68.5 = W.S. LT.	339.37 337.60 = TP Fo. 23 CB	

CLARK
GARBER
ABAKANNIA
3-9-60
W.O. 32939

Imp's: 34th ST.

"B" to "A"

RT. (E'ly)

LT

STA.	P.L.	CB	±	CB	P.L.
0-40 (E) RT only				175.32 175.50 F0.18	171.85 175.25 F3.40
0-58 RT only				174.46 174.50 F0.04	174.25

0-78 = CB
B.C. LT.
(SW'ly)

178.58	174.84
174.28	174.28
C 4.30	C0.56

1

175.35	175.06 175.35 F0.29
--------	---------------------------

2

176.15	176.19 176.15 C0.04
--------	---------------------------

3 = EXIST
CB-end

176.82	chk 176.82 176.82
--------	----------------------

0-80

174.00	175.13 174.00 C1.13	173.25 173.00 C0.25	167.39 173.00 F5.61
--------	---------------------------	---------------------------	---------------------------

B.M: = Chn SWCB E.C "B" at 34th = 177.30

Ref: City notes INDEX I-22 WEST + ROBERTS 61
Dwg: 16396A-D
26397A-D

STA.	P.L.	CB	±	CB	P.L.
0+50.42 = B.V.C.	185.55 181.52 C4.03	181.80 181.52 C0.28		180.79 180.72 C0.07	180.30 180.72 F0.42
0+25.21	179.93	181.30 179.93 C1.37		179.25 179.13 C0.12	179.13
(ENCL. "B") 0+00 RT only				177.79 177.53 C0.26	174.92 177.53 F2.61
0-02 = CB B.C. LT (NW'ly)	182.57 178.20 C4.37	179.44 178.20 C1.24			
# 1	177.75	178.77 177.75 C1.02			
# 2	177.60	177.92 177.60 C0.32			
# 3 = EXIST CB-end	177.59	chk: 177.59 177.59			
0-22 RT only				176.17 176.40 F0.23	176.28

(PRICE of CB gutter made x 0.50)
 to meet
 price of CB gutter made x 0.50

STA:	P.L.	CB	E	CB	P.L.	STA:	P.L.	CB	E	CB	P.L.
(0.5' CBFC)		182.48				2+70.84=					166.84
A/ky at P.L.	182.10	182.10				W.S. RT					169.00 TP CB
(N/4 alkyl line)		Co.38									F.16
(0.3' CBFC)						2+70.84	173.41	170.82		169.13	167.24
1+50.42 RT		182.43		181.60	181.86		169.13	169.13		169.00	169.00
only	182.05	182.05		181.82	181.82		C4.28	C1.69		Co.13	F1.76
		Co.38		F0.22	Co.04						
						2+50.42	172.32	173.20		172.50	
0.5' CBFC		182.63						172.32		172.00	
A/ky at P.L. LT	183.04	183.04						Co.88		Co.50	
(S/2y alkyl line)		F0.41									
0.65' CBFC						2+30.42	178.27	174.91		175.03	173.62
1+40.42=alkyl	182.98	182.81					175.27	175.27		174.80	174.80
E.C. LT		182.98					C3.00	F0.36		Co.23	F1.18
		F0.17									
						2+10.42	177.76	177.26		177.26	
								177.76		177.20	177.20
								F0.50		Co.06	
1+36.42=alkyl	185.88	182.81				2+00.42=					176.79
B.C. LT	183.08	183.08				W.S. RT					178.18=TP CB
	C2.80	F0.27									F1.39
1+30.42	183.28	183.28		182.61	182.97	1+90.42	183.62	180.02		179.19	179.15
		183.28		182.46	182.46		179.80	179.80		179.18	179.18
		grade		Co.15	Ca.51		C3.82	Co.22		Co.01	F1.03
						4+86.4=EXIST	183.66				
						W.S. RT	180.12 TP				
1+10.42 (=chest)	183.86	183.80		182.80			C3.54	182.10		180.44	
(V-curves)		183.86		182.70	182.70	1+70.42	181.40	181.40		180.72	180.72
		F0.06		Co.10				Ca.70		F0.28	
0+90.42	187.01	183.43		182.54	182.91	1+64.42=	183.74	182.12			
	183.40	183.40		182.48	182.48		181.78	181.78			
	C3.61	Co.03		Co.06	Co.43	Alley B.C. LT	C1.96	Co.34			
EXIST					181.72						
0+74.4= W.S. RT					181.97 TP						
					F0.25						
0+70.42	182.80	182.68		181.94		1+60.42=	182.04	182.12			
		182.80		181.82	181.82			182.04			
		F0.12		Co.12		Alley E.C. LT		Co.08			

Note: (alkyl to E/Ly closed)

Fd T.B.M = P.K NAIL Pile #1229 = 167.11

LT.

RT.

STA: P.L. CB. E CB. P.L.

Sly Ret.

E.C. "A" ST.
= STA. 5782

#4 = CB, E.C. 162.50
"A" ST. 162.50
C0.22

#3 = 4' Type "K" Inlet 162.10
162.10 - chk.
162.10

#2 162.65
163.59
162.65
C0.94

#1 164.10
165.39
164.10
C1.29

2+90.84 = CB 171.47
166.00 167.53
C5.47 C1.53
B.C. RT. 166.72
166.50 166.50
C0.22

Note: see Pg 64 For Rough-grades mt. 3/4th 1/4"

STA: P.L. LT. CB. E CB. RT. P.L.

Sly Ret.

(= 5782 "A" ST)
E.C.

#4 = CB, E.C. 163.10
"A" ST. 163.00
C0.10 163.00

#3 = 4' Type "K" Inlet
chk = 162.62 134.52 stub
162.60 162.60 P.L.
F28.08
@ 22.5' Radial
(to Brow-line)

#2 162.57 135.83 stub
163.00 163.00 P.L.
F0.43 F27.17
38.5' Radial
to Brow-line

#1 162.99 154.97 stub
164.40 164.40 P.L.
F1.41 F9.43
@ 12.5' Radial
to Brow-line

2+94.84 = CB 166.38
166.15 163.43
C0.23 F2.72
B.C. RT.
RT.

34th (cont.)

Note: W. meters set previous to this date by another party 64

CB GRADES: "A" ST.

LT.		RT.		STA.	P.L.	CB	g	CB	P.L.
				0+73.18	182.45 179.92 C2.53	179.65 179.92 F0.27		178.04 178.42 F0.38	168.25 178.42 F10.17
				0+53.18	177.63	177.46 177.63 F0.17		175.86 176.13 F0.27	176.13
3+80.84 = N.L. "A"	165.00	131.69 - P.M.P. CORN 165.00 F 33.31		0+33.18	180.19 174.60 C 5.59	174.26 174.60 F 0.34		173.19 173.10 0.00 = grade	163.50 173.10 F 9.6
				(0+25 end case encase. E Sew)					
				0+08 = CB BC RT.	170.12	169.82 170.12 F 0.30		167.86 168.80 F 0.94	162.34 168.80 F 6.46
		149.33 165.35 F 16.02		(meet EXIST CB end. RT.)	178.45				
3+40.84 = E "A"	164.65			0+00 = E. Line 33rd	168.70 C 9.75	168.70		167.22	167.22 = ← CB end
				(Beg CONC. ENCASE E Sew.)					
3+00.84 = S.L. "A"	164.30	167.31 165.70 F - 3.39							

not set

B.M. P.K. & DISC E 33rd & S 1/4 30' Line "A" ST
Elev = 165.14

"A" ST. (CONT)

65

STA:	P.L.	CB	E	CB	P.L.
-E FELTON 1+33.18 RT only				181.29 181.69 Fo.40	180.75 181.69 Fo.94
1+13.18 RT only				180.69 180.79 Fo.10	180.79
1+03.18 Beq WAIR-RT.					
#3=CB E.C. FELTON	183.75	183.75			
#2	183.07	182.27 183.07 Fo.85			
#1	182.40	181.40 182.40 F1.00			
0+93.18 =CB BC LT	183.35 181.38 C1.97	180.44 181.38 Fo.94		180.00 179.88 C0.12	173.25 179.88 F6.63

(E.C. + 582 'FT. 58 TOP LY ON FELTON)

STA:	P.L.	CB	E	CB	P.L.
meet EXIST CB (E.C. + 582)	188.19				
(E.C. + 291)	186.40 186.40 0.00 =grade				
(Felton) #4 = E.C.	184.70	184.57 184.70 Fo.13			
#3	184.20	184.26 184.20 C0.06			
#2	184.00	183.99 184.00 Fo.01			
#1	184.10	184.10 184.10 0.00 grade			
1+73.18 = CB BC LT	187.48 184.20 C3.28	184.15 184.20 Fo.05		182.95 183.50 Fo.55	182.57 183.50 Fo.93
1+53.18 RT only				182.14 182.60 Fo.46	182.60

"A" ST. (CONT.)

66

STA:	(NLY) LT.			RT.		
	P.L.	CB	E	CB	P.L.	
3+60	184.08 179.47 C 4.61	179.70 179.47 C 0.23		179.05 179.23 F 0.18	180.42 179.23 C 1.19	
3+40	181.34	181.63 181.34 C 0.29		180.84 180.97 F 0.13	180.97	
3+20 = E.V.C.	186.42 183.22 C 3.20	183.21 183.22 F 0.01		182.49 182.72 F 0.23	184.11 182.72 C 1.39	
3+00	188.15 184.73 C 3.42	184.66 184.73 F 0.07		184.14 184.23 F 0.09	185.81 184.23 C 1.58	
2+80	190.24 185.78 C 4.46	185.88 185.78 C 0.10		184.93 185.28 F 0.35	186.60 185.28 C 1.32	
2+60	191.25 186.37 C 4.88	184.24 186.37 F 0.13		185.52 185.87 F 0.35	187.74 185.87 C 1.87	
2+40	191.92 186.50 C 5.42	186.20 186.50 F 0.30		185.54 186.00 F 0.46	188.20 186.00 C 2.20	
2+20	191.06 186.17 C 4.89	185.96 186.17 F 0.21		185.30 185.67 F 0.37	185.25 185.67 F 0.42	
2+00 = B.V.C.	190.98 185.38 C 5.60	185.13 185.38 F 0.25		184.77 184.88 F 0.11	184.88 184.88 grade	

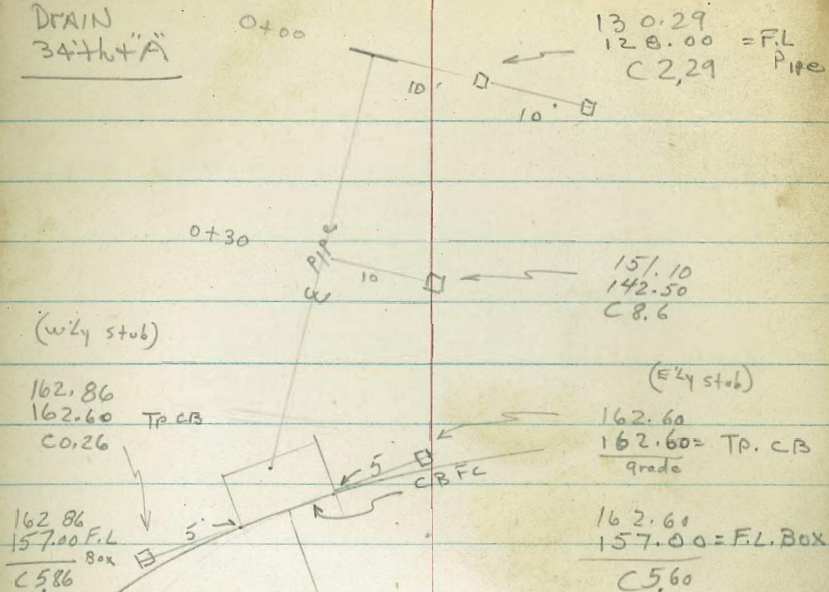
STA:	(NLY) LT.			RT.		
	P.L.	CB	E	CB	P.L.	
5+00	149.91 166.68 F 16.77 @ 14' P.L.	168.16 166.68 C 1.48			167.15 167.16 F 0.01	167.16
4+80 = B.V.C.	153.90 168.24 F 14.34 @ 17.4	169.34 168.24 C 1.10			168.41 168.74 F 0.33	170.94 168.74 C 2.20
4+60	170.11	170.67 170.11 C 0.56			169.90 170.49 F 0.59	170.49
by Cont. - (K-od)	167.58 4+45 = W.S. 3' AX P.L.	165.92 171.51 = TP CB F 5.59				
4+40	165.69 171.98 F 6.29 @ 14' P.L.	172.05 171.98 C 0.07			171.71 172.24 F 0.53	173.17 172.24 C 0.93
4+20	173.85	173.50 173.85 F 0.35			173.60 173.99 F 0.39	173.99
4+00	173.82 175.73 F 1.91	175.01 175.73 F 0.72			175.36 175.74 F 0.38	176.21 175.74 C 0.47
3+95 = W.S. LT	174.50 176.20 F 1.70					
3+80	177.60	177.47 177.60 F 0.13			177.02 177.49 F 0.47	177.49

"A" ST. (CONT.)

STA' P.L. CB E CB P.L.

↓ F 23.8 @ 35.7 (See p. 63)	137.46		162.72	170.95
5782=CB	163.00	163.00	162.50	162.50
E.C. F 25.54 (@ 14' from RL)			Co. 22	C 8.45
5762	163.60	163.60	163.66	172.70
F 20.8 @ 31.2		Co. 59	163.60	163.60
			Co. 06	C 9.10
5742	143.10	165.24	164.24	
	164.45	164.45	164.69	164.69
F 21.35 @ 14' from RL		Co. 79	F 0.45	
5720=	165.52	166.70	165.65	171.56
E.V.C.P.T.		165.52	165.70	165.90
		C 1.18	F 0.25	C 5.66
F 15.8 @ 23.7				

TYPE K INLETS +
DRAIN
34" x 16" x "A"



67

(w/ly stub)

(E'ly stub)

(w/ly stub)

(E'ly stub)

C/ARK
GARBER
ABRENILLA
ANDERSON
4-7-60
W.O. 20046

ALLEY BIK H (PORTION) OF AZUSA
SILVER TERRACE

Note: All stubs. SET ON P.LINE
grades refer to pt. 2.5' in from
P.L. + to E - AS MARKED

REF: / DWG: 9111-D
(City notes: W.O. 32837
INDEX E-17 - Roberts-(8-15-57)

68

STA:	(N'LY) LT.	EA Alley	RT
1+20 = E.D.	44.10 40.46	36.01 = F.P.	40.00 39.31 = TP. PINKET
Catch-BASIN 4 RT OF EA Alley	C3.64 @ 2.5	(meet EXIST) DRAIN	CO.69 TP. DRAIN FO.16 @ 2.5
1+00	43.85 40.82 C3.63 @ 2.5	40.39 39.67 CO.72	40.39 40.52 FO.13 @ 2.5
0+75	43.98 41.65 C2.33 @ 2.5	40.14 40.50 FO.36	40.14 41.35 FI.21 @ 2.5
0+50	44.59 42.48 C2.11 @ 2.5	40.42 41.33 FO.91	40.42 42.18 FI.76 @ 2.5
0+30	45.34 42.84 C2.50 @ 2.5	41.37 41.76 FO.39	41.37 42.38 FI.01 @ 2.5
0+10	45.29 42.56 C2.73 @ 2.5	41.94 41.72 CO.22	41.94 41.65 CO.29 @ 2.5
0+00 = E. Line AZUSA	(meet EXIST Alley APPROX)	CK #1.58 (41.58)	
Set. T.B.M.		42.14 = P.K.	@ AZUSA + @ ALLEY BIK H
B.M. (D.M. Elev. Rod:)		32.56 = N.E. B.P.	AZUSA + LAURETTA

STA:	(N'LY) LT.	EA Alley	RT
3+05	48.33 48.15 CO.18 @ 2.5		45.95 47.00 FI.05 @ 2.5
2+77.50	46.66 46.39 CO.27 @ 2.5		43.24 45.24 C2.00 @ 2.5
2+50	44.28 44.63 FO.35 @ 2.5		40.98 43.48 F2.50 @ 2.5
2+30	43.31 43.52 FO.21 @ 2.5		42.03 42.37 FO.34 @ 2.5
2+10	42.65 42.77 FO.12 @ 2.5		40.90 41.62 FO.72 @ 2.5
1+86.66	42.32 42.09 CO.23 @ 2.5		41.13 40.94 CO.19 @ 2.5
1+63.33	42.11 41.44 CO.67 @ 2.5		40.30 40.26 FO.04 @ 2.5
1+40	42.09 40.73 C1.36 @ 2.5		40.17 39.58 CO.59 @ 2.5

(Set &
grade on stubs @ RT)

ALLEY BIK H (CONT.)

CHK: 56-59 = 56.60 = NE.B.P.

(LAURETTA & BENICIA)

Grades on Stubs on RT

STA: LT.

Alley RT

= END grading

3+50	49.84 48.85 Co. 99 @2.5'	48.61 47.70 Co. 91	48.61 48.55 Co. 06 @2.5'
3+27.5	49.03 48.50 Co. 53 @2.5 in	46.24 47.35 F1.11	46.24 48.20 F1.96 @2.5 in

CLARK
GARBER
ANDERSON
4-15-60
W.O. 32396

Imp's Alley Bk 15-SUNSET CLIFFS

REF: DWG: 8345-D
F.B. 2300

70

	LT.	RT.		LT.	RT.
1+00	128.24 128.20 Co.04	128.31 128.20 Co.11			
0+75	125.81 125.50 Co.31	126.74 125.45 C1.29 124.69 123.80 Co.89	2+75	149.23 149.60 F0.37	149.91 149.70 Co.21
0+60 RT. only			2+50	148.46 147.20 C1.26	148.20 147.20 C1.00
0+50 = E.V.C.	123.10 122.80 Co.30	122.29 122.60 F0.31	2+35	146.46 145.20 C1.26	144.92 145.20 F0.28
0+40	121.80 121.60 Co.20	121.38 121.40 F0.02	2+20	144.45 143.20 C1.25	143.12 143.20 F0.08
0+30	120.53 120.00 Co.53	120.00 120.10 F0.10	2+00	141.83 140.46 C1.37	141.63 140.40 C1.23
0+20	119.62 118.50 C1.12	118.91 118.60 Co.31	1+80	138.81 137.74 C1.07	138.27 137.60 Co.67
0+10	116.69 116.70 F0.01	117.98 116.70 C1.28	1+65	136.94 135.70 C1.24	135.41 135.50 F0.09
0+00			1+50	134.85 133.96 Co.89	134.11 133.80 Co.31
			1+25	132.23 131.08 C1.15	131.91 131.00 Co.91
B.M					

CLARK
GARBER
ABRENILLA
ANDERSON
4-17-60

20039 = W.D

Drives - Remington Rd
(College Dorm PKG Lots)

LT (NLY)

RT (S'LY)

REF: DWGS: 11656-L
NO CITY NOTES

72

Note: { NLY Drive moved 8' ± ELY by CONTRACTOR (GOLDEN)
S'LY " " 2' ± " " "

check (S'LY) at P.B.C.
STA: 15+99.92

= 430.17 = (430.10 = plan)

NLY Drive
WLY end CB

430.76
430.80 - TP CB
FO.04

NLY Drive
ELY end CB = 113.8 ±
(along CB) WLY OF
ST. B.C.

430.87
430.96 - TP CB
FO.09

WLY end CB
S'LY Drive

TP CB: 430.89
430.93
FO.04

ELY end CB
S'LY Drive along CB line
77.4' ± WLY OF
B.C. Remington
Rd

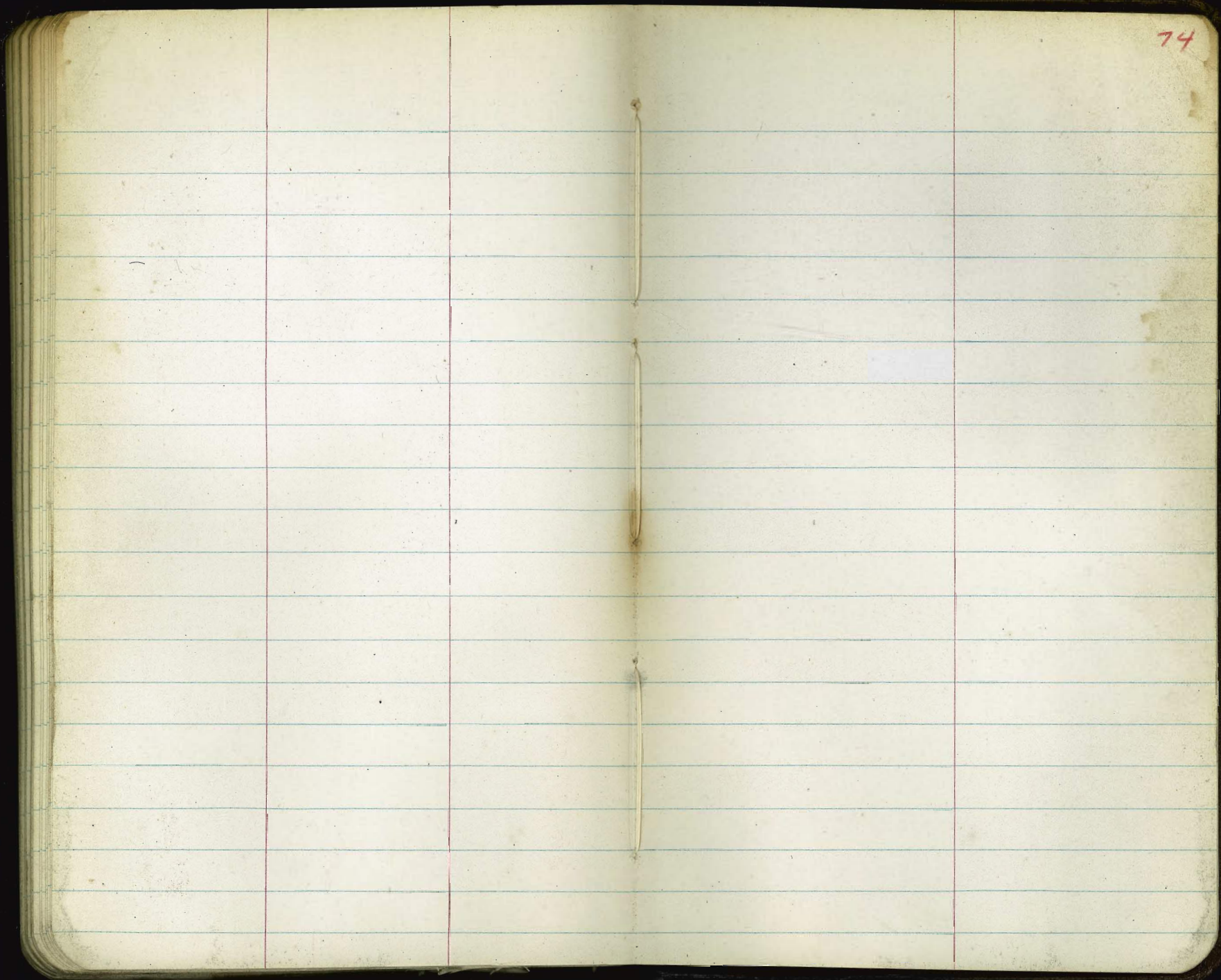
TP CB: 430.97
431.10
FO.13

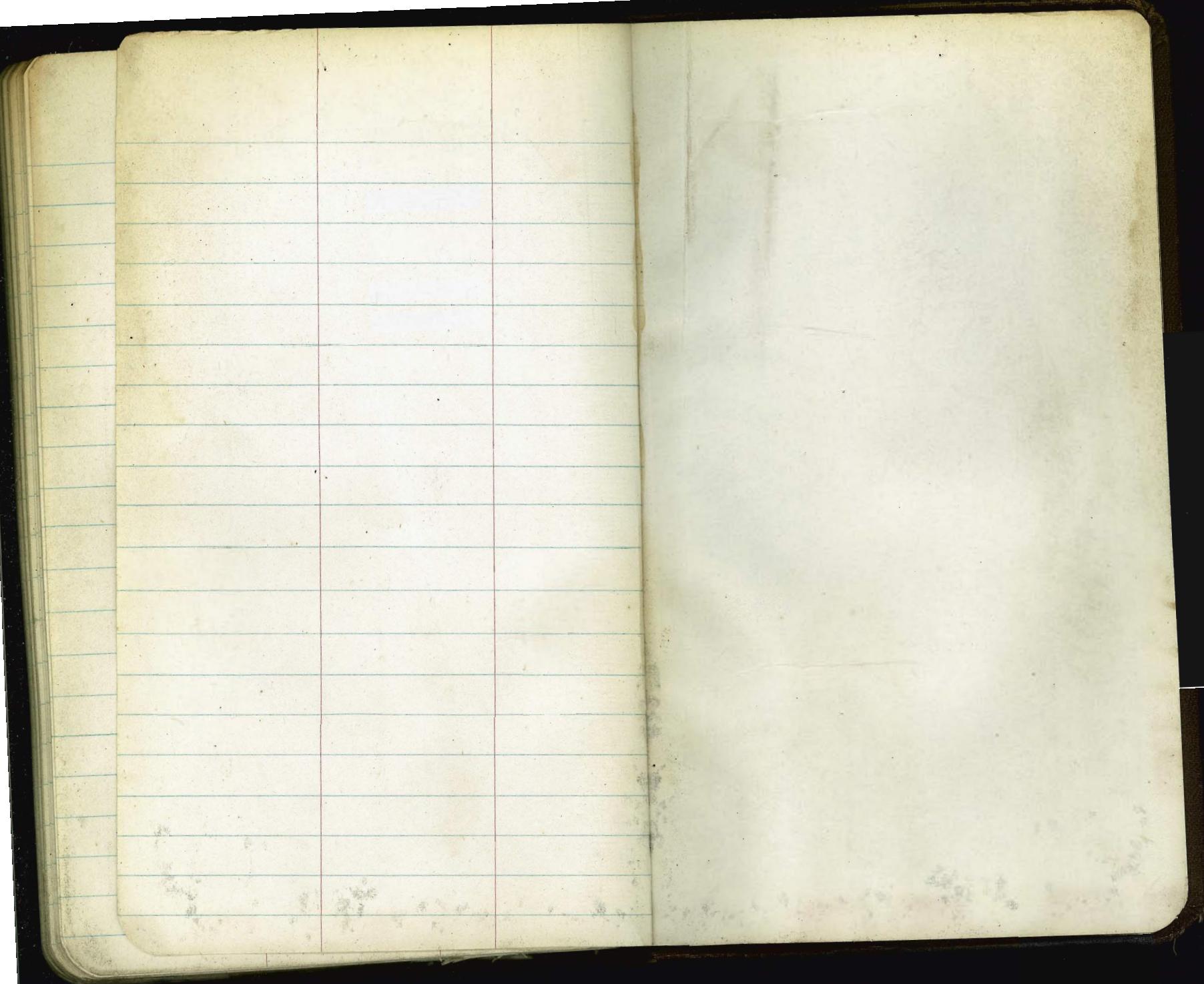
STA BC = 13+50.99

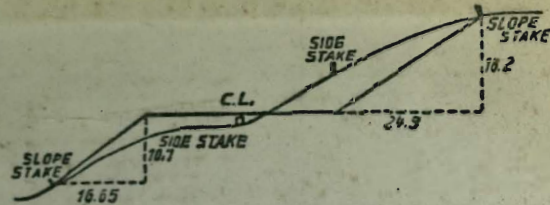
B.M

Remington Rd
(NLY side) end walk = S'LY CORN LOT: 64

433.73 = CLD = U.S.G.S DATUM = 427.61 CITY







DISTANCES FROM SIDE STAKES FOR CROSS-SECTIONING.
SLOPE 1 1/2 TO 1. ROADWAY OF ANY WIDTH.

	0	.1	.2	.3	.4	.5	.6	.7	.8	.9	
0	0.00	0.15	0.30	0.45	0.60	0.75	0.90	1.05	1.20	1.35	0
1	1.50	1.65	1.80	1.95	2.10	2.25	2.40	2.55	2.70	2.85	1
2	3.00	3.15	3.30	3.45	3.60	3.75	3.90	4.05	4.20	4.35	2
3	4.50	4.65	4.80	4.95	5.10	5.25	5.40	5.55	5.70	5.85	3
4	6.00	6.15	6.30	6.45	6.60	6.75	6.90	7.05	7.20	7.35	4
5	7.50	7.65	7.80	7.95	8.10	8.25	8.40	8.55	8.70	8.85	5
6	9.00	9.15	9.30	9.45	9.60	9.75	9.90	10.05	10.20	10.35	6
7	10.50	10.65	10.80	10.95	11.10	11.25	11.40	11.55	11.70	11.85	7
8	12.00	12.15	12.30	12.45	12.60	12.75	12.90	13.05	13.20	13.35	8
9	13.50	13.65	13.80	13.95	14.10	14.25	14.40	14.55	14.70	14.85	9
10	15.00	15.15	15.30	15.45	15.60	15.75	15.90	16.05	16.20	16.35	10
11	16.50	16.65	16.80	16.95	17.10	17.25	17.40	17.55	17.70	17.85	11
12	18.00	18.15	18.30	18.45	18.60	18.75	18.90	19.05	19.20	19.35	12
13	19.50	19.65	19.80	19.95	20.10	20.25	20.40	20.55	20.70	20.85	13
14	21.00	21.15	21.30	21.45	21.60	21.75	21.90	22.05	22.20	22.35	14
15	22.50	22.65	22.80	22.95	23.10	23.25	23.40	23.55	23.70	23.85	15
16	24.00	24.15	24.30	24.45	24.60	24.75	24.90	25.05	25.20	25.35	16
17	25.50	25.65	25.80	25.95	26.10	26.25	26.40	26.55	26.70	26.85	17
18	27.00	27.15	27.30	27.45	27.60	27.75	27.90	28.05	28.20	28.35	18
19	28.50	28.65	28.80	28.95	29.10	29.25	29.40	29.55	29.70	29.85	19
20	30.00	30.15	30.30	30.45	30.60	30.75	30.90	31.05	31.20	31.35	20
21	31.50	31.65	31.80	31.95	32.10	32.25	32.40	32.55	32.70	32.85	21
22	33.00	33.15	33.30	33.45	33.60	33.75	33.90	34.05	34.20	34.35	22
23	34.50	34.65	34.80	34.95	35.10	35.25	35.40	35.55	35.70	35.85	23
24	36.00	36.15	36.30	36.45	36.60	36.75	36.90	37.05	37.20	37.35	24
25	37.50	37.65	37.80	37.95	38.10	38.25	38.40	38.55	38.70	38.85	25
26	39.00	39.15	39.30	39.45	39.60	39.75	39.90	40.05	40.20	40.35	26
27	40.50	40.65	40.80	40.95	41.10	41.25	41.40	41.55	41.70	41.85	27
28	42.00	42.15	42.30	42.45	42.60	42.75	42.90	43.05	43.20	43.35	28
29	43.50	43.65	43.80	43.95	44.10	44.25	44.40	44.55	44.70	44.85	29
30	45.00	45.15	45.30	45.45	45.60	45.75	45.90	46.05	46.20	46.35	30
31	46.50	46.65	46.80	46.95	47.10	47.25	47.40	47.55	47.70	47.85	31
32	48.00	48.15	48.30	48.45	48.60	48.75	48.90	49.05	49.20	49.35	32
33	49.50	49.65	49.80	49.95	50.10	50.25	50.40	50.55	50.70	50.85	33
34	51.00	51.15	51.30	51.45	51.60	51.75	51.90	52.05	52.20	52.35	34
35	52.50	52.65	52.80	52.95	53.10	53.25	53.40	53.55	53.70	53.85	35
36	54.00	54.15	54.30	54.45	54.60	54.75	54.90	55.05	55.20	55.35	36
37	55.50	55.65	55.80	55.95	56.10	56.25	56.40	56.55	56.70	56.85	37
38	57.00	57.15	57.30	57.45	57.60	57.75	57.90	58.05	58.20	58.35	38
39	58.50	58.65	58.80	58.95	59.10	59.25	59.40	59.55	59.70	59.85	39
40	60.00	60.15	60.30	60.45	60.60	60.75	60.90	61.05	61.20	61.35	40
41	61.50	61.65	61.80	61.95	62.10	62.25	62.40	62.55	62.70	62.85	41
42	63.00	63.15	63.30	63.45	63.60	63.75	63.90	64.05	64.20	64.35	42
43	64.50	64.65	64.80	64.95	65.10	65.25	65.40	65.55	65.70	65.85	43
44	66.00	66.15	66.30	66.45	66.60	66.75	66.90	67.05	67.20	67.35	44
45	67.50	67.65	67.80	67.95	68.10	68.25	68.40	68.55	68.70	68.85	45
46	69.00	69.15	69.30	69.45	69.60	69.75	69.90	70.05	70.20	70.35	46
47	70.50	70.65	70.80	70.95	71.10	71.25	71.40	71.55	71.70	71.85	47
48	72.00	72.15	72.30	72.45	72.60	72.75	72.90	73.05	73.20	73.35	48
49	73.50	73.65	73.80	73.95	74.10	74.25	74.40	74.55	74.70	74.85	49
50	75.00	75.15	75.30	75.45	75.60	75.75	75.90	76.05	76.20	76.35	50

THE NATIONAL BLANK BOOK COMPANY
HOLYOKE MASSACHUSETTS
NEW YORK CHICAGO BOSTON SAN FRANCISCO