

DISTANCES FROM SIDE STAKES FOR CROSS-SECTIONING
SLOPE 1 TO 1. ROADWAY OF ANY WIDTH

	0	.1	.2	.3	.4	.5	.6	.7	.8	.9	
0	0.00	0.10	0.20	0.30	0.40	0.50	0.60	0.70	0.80	0.90	0
1	1.00	1.10	1.20	1.30	1.40	1.50	1.60	1.70	1.80	1.90	1
2	2.00	2.10	2.20	2.30	2.40	2.50	2.60	2.70	2.80	2.90	2
3	3.00	3.10	3.20	3.30	3.40	3.50	3.60	3.70	3.80	3.90	3
4	4.00	4.10	4.20	4.30	4.40	4.50	4.60	4.70	4.80	4.90	4
5	5.00	5.10	5.20	5.30	5.40	5.50	5.60	5.70	5.80	5.90	5
6	6.00	6.10	6.20	6.30	6.40	6.50	6.60	6.70	6.80	6.90	6
7	7.00	7.10	7.20	7.30	7.40	7.50	7.60	7.70	7.80	7.90	7
8	8.00	8.10	8.20	8.30	8.40	8.50	8.60	8.70	8.80	8.90	8
9	9.00	9.10	9.20	9.30	9.40	9.50	9.60	9.70	9.80	9.90	9
10	10.00	10.10	10.20	10.30	10.40	10.50	10.60	10.70	10.80	10.90	10
11	11.00	11.10	11.20	11.30	11.40	11.50	11.60	11.70	11.80	11.90	11
12	12.00	12.10	12.20	12.30	12.40	12.50	12.60	12.70	12.80	12.90	12
13	13.00	13.10	13.20	13.30	13.40	13.50	13.60	13.70	13.80	13.90	13
14	14.00	14.10	14.20	14.30	14.40	14.50	14.60	14.70	14.80	14.90	14
15	15.00	15.10	15.20	15.30	15.40	15.50	15.60	15.70	15.80	15.90	15
16	16.00	16.10	16.20	16.30	16.40	16.50	16.60	16.70	16.80	16.90	16
17	17.00	17.10	17.20	17.30	17.40	17.50	17.60	17.70	17.80	17.90	17
18	18.00	18.10	18.20	18.30	18.40	18.50	18.60	18.70	18.80	18.90	18
19	19.00	19.10	19.20	19.30	19.40	19.50	19.60	19.70	19.80	19.90	19
20	20.00	20.10	20.20	20.30	20.40	20.50	20.60	20.70	20.80	20.90	20
21	21.00	21.10	21.20	21.30	21.40	21.50	21.60	21.70	21.80	21.90	21
22	22.00	22.10	22.20	22.30	22.40	22.50	22.60	22.70	22.80	22.90	22
23	23.00	23.10	23.20	23.30	23.40	23.50	23.60	23.70	23.80	23.90	23
24	24.00	24.10	24.20	24.30	24.40	24.50	24.60	24.70	24.80	24.90	24
25	25.00	25.10	25.20	25.30	25.40	25.50	25.60	25.70	25.80	25.90	25
26	26.00	26.10	26.20	26.30	26.40	26.50	26.60	26.70	26.80	26.90	26
27	27.00	27.10	27.20	27.30	27.40	27.50	27.60	27.70	27.80	27.90	27
28	28.00	28.10	28.20	28.30	28.40	28.50	28.60	28.70	28.80	28.90	28
29	29.00	29.10	29.20	29.30	29.40	29.50	29.60	29.70	29.80	29.90	29
30	30.00	30.10	30.20	30.30	30.40	30.50	30.60	30.70	30.80	30.90	30
31	31.00	31.10	31.20	31.30	31.40	31.50	31.60	31.70	31.80	31.90	31
32	32.00	32.10	32.20	32.30	32.40	32.50	32.60	32.70	32.80	32.90	32
33	33.00	33.10	33.20	33.30	33.40	33.50	33.60	33.70	33.80	33.90	33
34	34.00	34.10	34.20	34.30	34.40	34.50	34.60	34.70	34.80	34.90	34
35	35.00	35.10	35.20	35.30	35.40	35.50	35.60	35.70	35.80	35.90	35
36	36.00	36.10	36.20	36.30	36.40	36.50	36.60	36.70	36.80	36.90	36
37	37.00	37.10	37.20	37.30	37.40	37.50	37.60	37.70	37.80	37.90	37
38	38.00	38.10	38.20	38.30	38.40	38.50	38.60	38.70	38.80	38.90	38
39	39.00	39.10	39.20	39.30	39.40	39.50	39.60	39.70	39.80	39.90	39
40	40.00	40.10	40.20	40.30	40.40	40.50	40.60	40.70	40.80	40.90	40
41	41.00	41.10	41.20	41.30	41.40	41.50	41.60	41.70	41.80	41.90	41
42	42.00	42.10	42.20	42.30	42.40	42.50	42.60	42.70	42.80	42.90	42
43	43.00	43.10	43.20	43.30	43.40	43.50	43.60	43.70	43.80	43.90	43
44	44.00	44.10	44.20	44.30	44.40	44.50	44.60	44.70	44.80	44.90	44
45	45.00	45.10	45.20	45.30	45.40	45.50	45.60	45.70	45.80	45.90	45
46	46.00	46.10	46.20	46.30	46.40	46.50	46.60	46.70	46.80	46.90	46
47	47.00	47.10	47.20	47.30	47.40	47.50	47.60	47.70	47.80	47.90	47
48	48.00	48.10	48.20	48.30	48.40	48.50	48.60	48.70	48.80	48.90	48
49	49.00	49.10	49.20	49.30	49.40	49.50	49.60	49.70	49.80	49.90	49
50	50.00	50.10	50.20	50.30	50.40	50.50	50.60	50.70	50.80	50.90	50

Distance of slope stake from side or shoulder stake for any width roadway, slope 1 to 1. If ground is nearly level, the cut or fill at side stake is located by the double entry method in left column and top row. The number in body of table in same row and column gives distance from side stake to slope stake. If ground is not level estimate the difference in elevation between the side stake and slope stake, lower target by this amount if out, elevate if fill. Add this amount to cut or fill and find distance in table. Set up rod at this point, and line of sight should cut target. If it does not make the slight adjustment necessary.

G 394

MICROFILMED

APR 19 1965

DIRECTIONS FOR USE OF TABLES

TABLE No. XIV

Distance of slope stake from side of shoulder
stake for any width roadway, slope 14 to 1
If ground is nearly level, the cut or fill

IMPROVED TABLES
AND
INFORMATION

TABLE No. VIII

To find Tangent and External for curve in
any other degree, divide by degree of curve and
add correction found in column of correction.
Degree of curve with a given L may be found
by dividing tangent (or external) by radius (or
given tangent) (or external).
The distance from a point on the tangent to
the curve is very nearly the square of the tangent
length divided by twice the radius.

1
2
3
4
4
4
4
5
1
2
3
4
5
6
7
8
9
10
11
12
13
14
15
16
17
18
19
20
21
22
23
24
25
26
27
28
29
30
31
32
33
34
35
36
37
38
39
40
41
42
43
44
45
46
47
48
49
50
51
52
53
54
55
56
57
58
59
60
61
62
63
64
65
66
67
68
69
70
71
72
73
74
75
76
77
78
79
80
81
82
83
84
85
86
87
88
89
90
91
92
93
94
95
96
97
98
99
100

Roberts
12-27-57
W.O. # 32669

Grades Calle Gaviota
Winchester to RoxoKe
13232-L

Station	Rough	Curb	Curb	Rough
1+25		255.67 255.61 F 0.06	256.12 256.07 F 0.05	
1+00	257.32 256.98 C 0.3	257.01 256.88 F 0.13	257.33 257.30 F 0.03	261.14 257.33 C 3.8
0+75		258.25 258.10 C 0.15	258.54 258.44 F 0.10	
0+50	261.43 259.31 C 2.1	259.48 259.31 C 0.17	259.75 259.05 F 0.70	265.45 259.75 C 5.7
0+25		260.67 260.53 C 0.14	260.96 260.69 F 0.27	
0+00 Curb E.C. Winchester	263.66 261.74 C 2.0	261.74 F 0.07	262.17 F 0.30	265.92 262.17 C 3.7

Rough

curb

curb

Rough

2

Existing
2+30.93 Paving
Roanoke

251.00 ✓

251.00

251.00

251.00 ✓

2+00

252.19
251.40
F 0.8

252.30
252.19
C 0.11

252.50
252.22
F 0.28

252.95
252.50
C 3.5

1+80.93 BRK

252.93
252.07
F 0.8

253.10
252.93
C 0.17

253.42
253.07
F 0.35

257.04
253.42
C 3.6

1+50

254.45
253.73
F 0.7

254.47
254.45
C 0.02

255.20
254.91
C 0.29

258.78
254.91
C 3.9

Grades Winchester St.

Sea Breeze to Gaviota

13233-L

Station	Rough	Curb	Curb	Rough
1+35.84 P.V.		246.83 246.31 F 0.52	247.33 247.16 F 0.17	
1+20 ✓	247.25 246.52 C 0.8	246.52 245.84 F 0.68	247.20 247.06 C 0.14	247.52 247.06 C 0.4
0+95		246.03 246.01 F 0.02	247.15 246.65 C 0.50	
0+70 ✓	245.54 245.19 F 0.3	245.54 245.40 F 0.14	246.65 246.24 C 0.41	248.63 246.24 C 2.4
0+45		244.90 244.79 F 0.11 245.05 244.79 F 0.26	245.90 245.83 C 0.07	
0+20 Curb EC. ✓	244.56 244.46 F 0.2	244.56 C 0.14	245.42 C 0.36	248.04 245.42 C 2.6
0+00 East Line Seafreeze				

	Rough	Curb	Curb	Rough	4
2+75 ✓	253.67 252.57 C 1.1	252.57 251.57 F 1.00	253.07 252.75 F 0.32	254.0 253.07 C 1.5	
2+55.84 E.V.C.		251.46 251.24 F 0.22	252.26 251.96 C 0.30		
2+35.84 ✓	251.58 250.37 C 1.2	250.37 250.27 F 0.10	251.12 250.87 C 0.25	251.4 250.87 C 0.5	
2+15.84		249.41 249.06 F 0.35	250.33 249.91 C 0.42		
1+95.84 ✓	249.22 248.57 C 0.6	248.57 248.28 F 0.29	249.07 249.03 F 0.04	249.62 249.07 C 0.5	
1+75.84		247.86 247.49 F 0.37	249.04 248.36 C 0.68		
1+55.84 ✓	247.64 247.28 C 0.3	247.28 246.95 F 0.33	247.87 247.78 C 0.09	248.58 247.78 C 0.8	

4422.84 Curb
B.C. ✓
Gariota

Rough
26173
261.10
C 0.6

Curb
261.10
26079
F 0.31

Curb
261.57
26110
F 0.47

Rough
26201
261.57
C 0.4

5

4415.84 BRK

260.70
26043
F 0.27

261.20
26056
F 0.64

4400

259.77
25973
F 0.04

260.27
25955
F 0.72

3775 ✓

25968
258.33
C 1.4

25833
258.33
GRADE

258.83
25843
F 0.40

26122
258.83
C 2.4

3450

25693
256.89
C 0.04

257.39
25727
F 0.12

3425 ✓

25720
255.45
C 1.7

25548
255.45
C 0.03

255.95
25561
F 0.34

25720
255.95
C 1.2

3400

254.01
25387
F 0.14

254.51
25428
F 0.23

Rough		Curb		Curb	Rough	6
#2	#3	263.16 26303 F0.13		#2 262.66 26203 F0.63		
	r					
#1	#2	263.10 26303 F0.07		#1 262.26 26196 F0.30		
BC, Curb Return on Gavista	#1	263.13 26304 F0.09		261.74 26167 F0.07		
EC, Curb Return on Gavista		262.61 26241 F0.20		262.17 26187 F0.30		
#3		262.45 26177 F0.68		262.38 26094 F1.44		
#2		262.15 26158 F0.57		262.33 26092 F1.41		
#1		261.68 26103 F0.65		262.05 26085 F1.20		

1+34.98 Existing
Paving

Rough

Curb

265.43

Curb

265.22

Rough

7

1+24.98 BRK ✓

265.96
265.40
C 0.6

265.40

265.10
264.91
F 0.19

265.42
265.10
C 0.3

1+00

264.95
264.65
F 0.30

264.77
264.67
C 0.10

0+75 ✓

265.68
264.50
C 1.2

264.50
264.29
F 0.21

264.24
264.07
F 0.17

264.70
264.24
C 0.5

0+50

264.10
263.05
C 0.05

263.89
263.82
C 0.07

0+18 EC Curb Return
at Gainsa

265.80
263.48
C 2.3

263.50
263.48
C 0.02

263.68
263.28
C 0.40

264.41
263.28
C 1.1

#3

#4

263.29
263.16
F 0.13

#3

263.23
262.97
C 0.26

Sea Breeze Drive
 Roanoke to Winchester
 13234-L

Station	Rough	Curb	Curb	Rough
0+25		24958 249.46 C 0.12	250.40	
0+13EC ^{curb Ret} ✓	249.53 249.40 F 1.1	24973 249.53 C 0.20	/ / /	/ / /
#3		24978 249.50 C 0.28	/ / /	/ / /
#2		24936 249.30 C 0.06	/ / /	/ / /
#1		24898 248.88 F 0.10	/ / /	/ / /
BC ^{curb Return} on Roanoke		248.50	/ / /	/ / /

0+00 North line of Roanoke

	Rough	Curb	Curb	Rough 9
1+75.93 P.V.C.		248.62 248.54 C 0.08	249.14 249.10 F 0.04	
1+45 ✓	248.74 248.05 F 0.6	248.74 248.58 F 0.16	249.34 249.20 F 0.14	250.26 249.34 C 1.0
1+20		248.89 248.50 F 0.39	249.49 249.40 F 0.09	
0+95 ✓	249.04 247.85 F 1.1	249.04 248.83 F 0.21	249.69 249.61 F 0.07	250.54 249.69 C 0.8
0+70		249.43 249.19 C 0.24	249.87 249.79 C 0.08	
0+45 BRK ✓	2 249.34 247.81 F 1.5	249.68 249.34 C 0.34	250.07 249.94 C 0.13	251.60 249.94 C 1.7
0+35		249.71 249.40 C 0.31	250.52 250.10 C 0.42	

Rough

Curb

Curb
24537
245.30
C0.07

Rough 10

#3

///

#2

END 24715
244.40
C2.75

24559
245.35
C0.24

#1

24522
244.95
C0.27

24622
245.65
C0.57

2+56.93 BC ✓
Curb Return at Winchester

24747
245.59
C1.9

24588
245.59
C0.29

24647
246.19
C0.38

24892
246.19
C2.7

2+35.93 ✓

24785
246.80
C1.1

246.80
246.65
F0.15

24745
247.40
C0.05

24964
247.40
C2.2

2+16.93

24769
247.69
GRADE

24829
248.29
GRADE

1+95.93 ✓

24827
24798
F0.3

24834
248.27
C0.07

24894
248.87
C0.07

25057
24887
C1.7

Rough

Curb

Curb

Rough

11

E.C. Curb Return
at
Winchester
on
Sea Breeze

242.30
242.18

#3

243.05
242.91
F0.14

#2

243.58
243.55
C0.03

244.07
243.87
C0.20

#1

#1

243.84
243.67
C0.17

244.53
244.28
C0.25

#2

B.C. Curb Return
on
Winchester

243.47
243.48

244.70
244.56
C0.14

E.C. Curb Return
on
Winchester

11 1 1

245.78
245.42
C0.36

Roanoke Street
 Reo to Sea Breeze
 13235-h

Station	Rough	Curb	Curb	Rough
0+75 ✓	21313 211.78 C 1.3	21178 211.78 GRADE	21190 211.78 C 0.12	21331 211.78 C 1.5
0+50		21028 210.20 C 0.08	21055 210.20 C 0.35	/
0+27.32 EC Curb Return Reo	21090 208.76 C 2.1	20906 208.76 C 0.30	20876 208.76 GRADE	21141 208.76 C 2.6
EC Curb Return at Reo 0+00	20927 207.60 C 1.7	20766 207.60 C 0.06	/ / /	/ / /
#2		20760 207.60 GRADE	20840 208.05 C 0.35	
#1		20870 207.90 C 0.80	21097 207.35 C 3.62	

	Rough	Curb	Curb	Rough
2+37.76		22339 223.31 C0.08	22371 223.31 C0.40	
2+17.76 ✓	221.37 221.26 F0.1	221.37 221.32 F0.05	22143 221.37 C0.06	22217 221.37 C0.8
1+97.76		21982 219.70 C0.12	21970 219.70 GRADE	
1+77.76 P.V.C. ✓	21893 218.30 C0.6	21849 218.30 C0.19	21833 218.30 C0.03	21857 218.30 C0.3
1+50		21673 216.54 C0.19	216.54 216.17 F0.37	
1+25 ✓	21572 214.95 C0.7	21501 214.95 C0.06	21497 214.95 C0.02	21495 214.88 F0.1
1+00		213.37 213.24 F0.13 F0.13	21346 213.37 C0.09	

	Rough	Curb	Curb	Rough	14
4+00 ✓	242.48 242.16 C 0.3	242.33 242.16 C 0.17	242.49 242.16 C 0.33	242.49 242.16 C 2.3	
3+75		239.43 239.24 C 0.19	239.56 239.24 C 0.32		
3+50 ✓	236.47 236.31 C 0.2	236.31 236.19 F 0.12	236.31 236.29 F 0.02	237.71 236.31 C 1.4	
3+25		233.39 233.23 F 0.16	233.39 233.28 F 0.11		
3+00 ✓	230.46 230.40 F 0.1	230.46 230.46 GRADE	230.46 230.42 F 0.04	231.40 230.46 C 0.9	
2+75		227.54 227.41 F 0.13	227.54 227.35 F 0.19		
2+57.76 E.V.C. ✓	225.61 225.52 C 0.1	225.52 225.52 GRADE	225.52 224.72 F 0.80	225.52 225.52 GRADE	

Rough

Curb

Curb

Rough

15

5+17.76

251.80

4+92.76

11

111

250.85

Exist Line off 0.50

4+67.76

11

111

249.25

24871

F 0.54

4+57.76 Curb
Return
at
Sea Breeze

248.50

24801

F 0.5

248.50

24841

F 0.09

248.50

24821

F 0.29

24833

248.50

F 0.2

4+47.76

247.64

24747

F 0.17

24779

24764

C 0.15

4+37.76 PVC

24668

24658

C 0.1

24658

246.58

GRADE

246.58

24633

F 0.25

24769

246.58

C 1.1

Beverly Sewer

NO. 32706

4056-D 4057-D
4058-D 4059-D 4060-D

2+00 NH 15

14062
135.00
C 5.62

1+60

13965
134.20
C 5.45

1+20

13918
133.40
C 5.78

0+80

13900
132.60
C 6.40

3+03 DEAD END

15056
140.00
C 1056

0+40

13844
131.80
C 6.64

2+80

14675
138.88
C 7.87

Existing N.H.
0+00 Elwood & Geneva

131.00 I.R. = 130.30

2+40

14236
136.94
C 5.42

779
Rim 179.09

MH#10 South to Dead End.

MH#10 to MH#11 to Dead End. 17

1+59.90

16988
156.00
C13.88

1+27.92

16930
155.80
C13.50

0+97.D.E.

16900
155.39
C13.61

0+95.94

17075
155.60
C15.15

0+64.6

16335
155.26
C8.09

0+63.96

17080
155.40
C15.40

0+32.3

16183
155.13
C6.70

0+31.98

16790
155.20
C12.70

0+00 MH#10

16969
155.00
C17.69

0+00 MH#10

155.00

3 + 53.82

17300
158.50
C 14.50

3 + 21.18

17287
157.86
C 15.01

5 + 02.72 D.E.

17491
161.40
C 13.51

2 + 88.54

17206
157.23
C 14.83

4 + 77.22

17427
160.90
C 13.37

2 + 55.90 MH #11

17037
156.60
C 13.77

4 + 51.72 MH #12

17335
160.40
C 12.95

2 + 23.86

16979
156.40
C 13.39

4 + 19.10

17435
159.76
C 14.59

1 + 91.88

17030
156.20
C 14.10

3 + 86.46

17388
159.13
C 14.75

Elwood & Lenox to Beverly & Lenox

3+00	14744 143.30 C 4.14	6+20 MH #19	181.10 174.00 C 7.10
------	---------------------------	-------------	----------------------------

2+50	14731 142.20 C 5.11	6+00	179.75 171.80 C 7.95
------	---------------------------	------	----------------------------

2+00	14729 141.10 C 6.19	5+50	174.58 166.32 C 8.26
------	---------------------------	------	----------------------------

1+50	14717 140.00 C 7.17	5+00	170.74 160.84 C 9.90
------	---------------------------	------	----------------------------

167.82 Hub ✓

1+00	14701 138.90 C 8.11	4+50	168.47 155.36 C 13.11
------	---------------------------	------	-----------------------------

0+50	14674 137.80 C 8.94	4+00	162.99 149.88 C 13.11
------	---------------------------	------	-----------------------------

146.64

Existing MH 0+00 Elwood & Lenox	136.70	IF = 135.94 Rim 149.06	3+50 MH #18	151.21 144.40 C 6.81
------------------------------------	--------	---------------------------	-------------	----------------------------

= 8790

20080
190.78
C 10.02

11+20

23633
229.66
C 6.67

= 8780 P.K.C.

20116
190.00
C 11.16

10+70

22823
220.99
C 7.24

= 8750

19935
188.14
C 11.21

10+20

21898
212.33
C 6.65

1 8700

19555
185.07
C 10.48

9+70

21047
203.66
C 6.81

1 7750

19138
182.00
C 9.38

9+20 EVC MA# 20

20411
195.00
C 9.11

7700

18764
178.92
C 8.72

9+10

20324
193.28
C 9.96

66750

18414
175.85
C 8.29

9+00

20249
191.87
C 10.62

13+52.65

27181
247.52
C24.29

13+26.12

27016
247.42
C22.74

12+99.59

26778
247.31
C20.47

12+73.06

26411
247.21
C16.90

12+46.53

25966
247.10
C12.56

12+20 MH #21

25480
247.00
C7.80

11+70

24539
238.32
C7.07

Nail in Pole Geneva & Hanover
249.63
249.71

21

27213 Spoke in Pole

14+58.82 MH #22
Lenox & Beverly

26566
247.96
C17.90

14+32.24

26826
247.84
C20.42

14+05.71

27130
247.73
C23.57

13+79.18

27252
247.63
C24.89

MH 12 to MH 23 to DEAD END

3+00

19820
190.07
C 8.13

2+50

19207
185.12
C 6.95

2+00

18736
180.18
C 7.18

1+50

18374
175.23
C 8.51

1+00

18161
170.29
C 11.32

0+50

17670
165.34
C 11.36

0+00 MH*12

160.40

4+15 D.E.

3+82.5

3+56 MH*23

213.03
203.00
C 10.03

210.97
199.00
C 11.97

206.48
195.00
C 11.48

Geneva & Winston to MH#14

23

2+87

20812
201.54
C 6.58

2+37 MH#13

20163
195.00
C 6.63

5+87 MH#14

245.25
240.80
C 4.45

1+896

19602
187.32
C 8.70

5+37

241.53
234.26
C 7.27

1+42.2

19010
179.64
C 10.46

4+87

236.37
227.72 ~~221.78~~
C 8.65

0+94.8

18385
171.96
C 11.89

4+37

229.95
221.18 ~~214.03~~
C 8.77

0+47.4

17700
164.28
C 12.72

3+87

222.91
214.63 ~~208.09~~
C 8.28

(MH#11) 0+00

156.60

3+37

215.42
208.09 ~~201.54~~
C 7.33

Roberts Grade Stakes Alley Block 7,

W.O. #32258

Fortuna Park

2-18-58

4594-D

1+17

4253
41.06
C 1.47

4095
40.81
C 0.14

0+94

4230
40.46
C 1.84

4120
40.21
C 0.99

0+71

4058
39.87
C 0.71

4073
39.62
C 1.11

S.L.
2+00 Chico

4346

4309

0+48

4053
39.28
C 1.25

3991
39.03
C 0.88

1+80 BRK

4431
43.05
C 1.26

42.80
42.32
F 0.48

0+25 BRK

4021
38.69
C 1.52

3914
38.44
C 0.70

1+60

4313
42.35
C 0.78

4218
42.10
C 0.08

North Line
0+00 Fortuna

38.05

37.79

1+40 BRK

4246
41.66
C 0.80

41.51
41.41
C 0.10

Roberts

Grade Stakes Alley Block B,
Cornish Heights

25

2-18-58

W.O. 31874

5008-D

1+10

24756
246.69
C 0.87246.44
246.30
F 0.12

2+60

24537
244.10
C 1.27~~243.85~~
24373
F 0.12~~243.85~~
~~243.59~~
~~F 0.26~~

0+85

24755
246.88
C 0.6724665
246.63
C 0.03

2+30

24541
244.87
C 0.54244.62
24393
F 0.69

0+60 EVC

24785
247.02
C 0.7724705
246.83
C 0.22

2+00 EVC

24650
246.63
C 0.87~~245.38~~
24493
F 0.75~~245.38~~
~~245.34~~
~~F 0.14~~

+ 245.46

0+40

24768
247.06
C 0.6224719
246.79
C 0.40

1+80

24638
246.06
C 0.32246.17
245.69
C 0.48

0+20

24745
246.62
C 0.8324663
246.37
C 0.26

1+60 PK

24637
246.31
C 0.06246.06
24585
F 0.21North Line
0+00 Paloma St.

246.44

245.42

1+35

24718
246.50
C 0.6824640
246.25
C 0.15245.42 2x2 2x2
0+00

4+20	24087 239.94 C0.93	239.59 239.25 F0.34	5+40	23505 233.87 C1.18	23466 233.62 C1.04
4+00	24152 240.45 C1.07	24068 240.20 C0.48	5+20	23766 235.25 C2.41	23630 235.00 C1.30
3+80 PVC	24190 241.02 C0.88	24163 240.77 C0.86	5+00	23825 236.46 C1.79	23757 236.21 C1.36
3+50	24327 241.79 C1.48	24231 241.54 C0.77	4+80	23907 237.53 C1.54	23737 237.20 C0.17
3+20	24433 242.56 C1.77	242.31 241.62 F0.69	4+60	24081 238.43 C2.38	238 238.18 23786 F0.32
2+90	24476 243.33 C1.43	243.08 242.84 F0.24	4+40	24082 239.19 C1.63	238.94 238.49 F0.45

$\frac{24}{10} \times \frac{1}{29}$
 $\frac{1}{29}$

So. Line
 5780.21 Ft. Loma Ave.

231.37

230.80

5760 EVC

233.12

232.42

C 0.70

232.31

232.17

C 0.14

2-21-58

Grade Stakes for 7' Curb

N.O. 24960

Inlet on N.E. Corner Euclid
and Federal. 5253B-D

(50' North Curb)

50'

West Edge Inlet

22723
226.07 Curb
C 1.16

22723
223.50 I.E.
C 3.73

8.34'

50'

East Edge Inlet

22696
226.07 Curb
C 0.89

~~22696~~

Inlet
226.23

Roberts
3-5-58
WD20009

Grade Stakes for Sewer
13th St., Commercial to "L"
(For City Forces)

29

2+45

282
-0.49
C3.31

1+00

347
-1.07
C4.54

2+35

279
-0.53
C3.32

0+75

351
-1.17
C4.68

2+25

278
-0.57
C3.35

0+65 MH

-1.21 Actual

2+00

277
-0.67
C3.44

0+50

370
-1.36
C5.06

1+75

302
-0.77
C3.79

0+25

390
-1.61
C5.51

1+50

311
-0.87
C3.98

0+00 MH

-1.86 Actual

1+25

325
-0.97
C4.22

B.M. 3.00 N.E.B.P. 13th & Imperial

3+25

²⁴⁶
 -0.17
 C 3.63

4+00

³⁰⁸
 0.10
 C 2.98

3+05

²⁹³
 -0.25
 C 3.18

3+90

³⁰⁷
 0.06
 C 3.01

2+95

³⁰²
 -0.29
 C 3.31

3+80

³²⁵
 +0.02
 C 3.23

2+85

³⁰⁶
 -0.33
 C 3.39

3+70

³²¹
 -0.02
 C 3.23

2+75

³⁰⁰
 -0.37
 C 3.37

3+60

³⁰⁵
 -0.06
 C 3.11

2+65

²⁹³
 -0.41
 C 3.34

3+50

³⁵⁰
 -0.10
 C 3.60

2+55

²⁸⁵
 -0.45
 C 3.30

3+39 MH

-0.14 Actual

5+75

440
0.79
C 3.61

5+50

420
0.69
C 3.51

7+19 AM

1.34 Actual

5+25

401
0.59
C 3.42

7+00

534
1.27
C 4.07

5+00

383
0.49
C 3.34

6+75

518
1.18
C 4.00

4+75

360
0.40
C 3.20

6+50

499
1.08
C 3.91

4+50

337
0.30
C 3.07

6+25

480
0.98
C 3.82

4+25

316
0.20
C 2.96

6+00

460
0.88
C 3.72

4-16-58 Grades For Grantville Sewer
W.O. 32672

See 4523-D thru 4530-D sheets

RANIER AVENUE

2+50

8970
79.11
C 10.59

5+50

10180
93.58
C 8.22

2+00

8900
76.17
C 10.83

5+00

10000
91.43
C 8.57

1+50

8330
73.22
C 10.10

4+50

9783
89.29
C 8.54

1+00

7928
70.28
C 9.00

4+00

9556
87.14
C 8.42

0+50

7478
67.33
C 7.45

3+50 MH 24

9360
85.00
C 8.60

Existing MH Existing I.E. = 63.56
0+00 @ Riverdale
& Ranier

7159
64.39
C 7.20

3+00

9180
82.06
C 9.74

BM 72.72

1/2 Capped Galv. Pipe

(Riverdale @
Ranier NE Corner)

10233

95.63

C 6.70

95.72

32

9+50

119.00
110.00
C9.00

9+00

117.77
108.00
C9.77

8+50

115.74
106.00
C9.74

125.59 ££ Hub Renier & Holabird.

8+00

112.88
104.00
C8.88

7+50

110.42
102.09
C8.4210+80 Dead End
(Short of Holabird.)122.73
114.43
C8.30

7+00 MH 25

107.72
100.00
C7.72

10+50 MH 26

122.10
114.00
C8.10

6+50

106.05
97.86
C8.19

10+00

121.20
112.00
C9.20

Glacier Avenue

5+76 MH 22

9890
87.80
C 11.10

2+46 MH 21

7843
69.00
C 9.43

5+50

9766
86.33
C 11.33

2+00

7636
67.85
C 8.51

5+00

9522
83.48
C 11.74

1+50

7483
66.60
C 8.23

4+50

9393
80.63
C 13.30

1+00

7375
65.36
C 8.39

4+00

9099
77.78
C 13.21

0+50

7205
64.11
C 7.94

3+50

8655
74.93
C 11.62

0+00

Existing MH Exist. IE = 62.04

Erindale
&
Glacier

7044
62.87
C 7.57

3+00

8198
72.08
C 9.90

9+00

11458
101.08
C 1350(121.04 on Hub & Glacier $\frac{1}{2}$ & Holabird)

8+50

11317
99.03
C 14.14

8+00

10998
96.98
C 13.1010+72 DE
(Near Holabird)11781
104.45
C 13.36

7+50

10656
94.93
C 11.63

10+50

11674
104.05
C 12.69

7+00

10388
92.88
C 11.00

10+00

11417
103.25
C 10.92

6+50

10126
90.83
C 10.43

9+50

11326
102.45
C 10.81

6+00

9842
88.78
C 9.64

9+22 MH23

11415
102.00
C 12.15

VANDEVER AVENUE

3+00

6616
60.11
C6.05

1+25

6536
59.41
C5.95

2+75

6658
60.01
C6.57

1+00

6532

6482
59.31
C5.51

2+50

6706
59.91
C7.15

0+75

6531
59.21
C6.10

2+25

6694
59.81
C7.13

0+59.31 MH15

6580
59.15
C6.65

2+00

6690
59.71
C7.19

0+29.65

6615
59.03
C7.12

1+75

6627
59.61
C6.66

Existing MH
0+00 Vandever
&
Fairmount

Existing I.E. = 58.33

6663
58.91
C7.72

1+50

6590
59.51
C6.39

65.78 Hb at Fairmount

4+75

TF

6690
60.81
C 6.09

6+50

6972
61.51
C 8.21

4+50

6682
60.71
C 6.11

6+25

6957
61.41
C 8.16

4+25

6675
60.61
C 6.24

6+00

6970
61.31
C 8.39

4+00

6674
60.51
C 6.23

5+75

6981
61.21
C 8.61

3+75

6649
60.41
C 6.08

5+50

6900
61.11
C 7.89

3+50 MH 16

6623
60.31
C 5.92

5+25

6811
61.01
C 7.10

3+25

6585
60.21
C 5.64

5+00

6741
60.91
C 6.50

8+25

7137
62.21
C9.16

10+00 MH18

7550
62.91
C12.59

8+00

7111
62.11
C9.00

9+75

7444
62.81
C11.63

7+75

7085
62.01
C8.84

9+50

7354
62.71
C10.83

7+50

7038
61.91
C8.47

9+25

7261
62.61
C10.00

7+25

7005
61.81
C8.14

9+00

7219
62.51
C9.68

7+00 MH17

6978
61.71
C8.07

8+75

7165
62.41
C9.24

6+75

6971
61.61
C8.10

8+50

7167
62.31
C9.36

13+50

8712
79.03
C 8.09

9867 & Hub Halabird

See Page 47

13+00

8515
78.00
C 7.15

16+45.04 D.E.

10398
88.20
C 15.78

12+50

8425
76.96
C 7.29

16+00

10597
86.58
C 19.39

12+00

8577
75.93
C 9.84

15+50

10305
84.78
C 18.27

11+55 NH19

E Mission Gorge Rd.
£ (87.44) PR8780
75.00
C 12.80

15+00

9668
82.98
C 13.70

11+00

8353
70.71
C 12.82

14+45.04 NH20

9100
81.00
C 10.00

10+50

7825
66.81
C 11.44

14+00

8889
80.07
C 8.82

4-28-58 Grade Stakes for Alley BIKIT,
Roberts Ocean Beach Park

#988-D

W.D. #32797

40

				2+92	2'	34.19 33.71 C 0.48	34.22 33.91 C 0.31	2'
1+24	0.17	32.12 31.08 C 1.04	31.45 31.28 C 0.17	2+68	2'	33.50 33.19 C 0.31	33.87 33.39 C 0.48	2'
0+96	2'	31.10 30.91 C 0.19	31.58 31.11 C 0.47	2+44	0.41	33.50 32.66 C 0.84	33.81 32.86 C 0.95	1.27
0+68	0.17	31.52 30.73 C 0.79	31.47 30.93 C 0.54	2+20 EVC	0.30	33.17 32.14 C 1.03	33.57 32.34 C 1.23	1.38
0+40 EVC	2'	30.70 30.56 C 0.14	30.83 30.76 C 0.07	2+00	0.23	32.86 31.75 C 1.11	33.20 31.95 C 1.25	1.59
0+20	0.97	31.16 30.24 C 0.92	30.94 30.44 C 0.50	1+80 PVC	2'	31.94 31.44 C 0.50	32.35 31.64 C 0.71	1.87
0+00 Ebers		29.81	29.70	1+52	0.21	32.29 31.26 C 1.02	33.78 31.46 C 2.32	2.19

TBM 29.11 on Disc Ebers & Alley

4+55

2'

37.95
37.91
C0.0438.24
38.11
C0.13

4+30

2'

37.42
37.20
C0.2237.47
37.40
C0.07

6+00.09 Froude 42.03

42.27

4+05

2'

37.05
36.48
C0.5736.72
36.68
C0.045+80 BRK 0.19 41.69
41.50
C0.1942.22
41.70 0.14 IN
C0.52

3+80 EVC

0.40

36.31
35.77
C0.5436.20
35.97
C0.235+55 1' 41.10
40.77
C0.3341.36
40.97 0.10
C0.39

3+60

0.18

36.30
35.24
C1.0635.58
35.44
C0.145+30 2' 40.54
40.06
C0.4840.95
40.26 0.11
C0.69

3+40 PVC

0.48

36.14
34.76
C1.3835.32
34.96
C0.365+05 2' 39.65
39.34
C0.3139.69
39.54 0.04 IN
C0.15

3+16

0.51

35.72
34.24
C1.4834.88
34.44 0.45
C0.444+80 2' 38.63
38.55
C0.0839.02
38.83 1'
C0.19~~4+30 Froude~~

41

4-28-58 Grade Stakes for Alley in
Block 14, Ocean Beach Park

M.O. #32797

4987-D

(14.5)

42

1+16 3' 30.80
30.73
F0.07

30.80
30.64 2'
F0.16

0+92 3' 30.70
30.52
C0.18

31.22
30.52 0.16
C0.70

0+68 0.48 30.67
30.25
C0.42

30.84
30.25 0.10
C0.59

0+44 2' 30.05
29.97
C0.08

30.16
29.97 2'
C0.19

0+20 Break 2' 29.70
29.64
F0.06

29.90
29.70 2'
C0.20

0+00 Ebers 29.52

29.47

2+80 EVC 2' 34.14
33.96
C0.18

33.99
33.96 2'
C0.03

2+60 2' 33.76
33.40
C0.36

33.66
33.40 2'
C0.20

2+40 PVC 2' 33.29
32.94
C0.35

33.23
32.94 2'
C0.29

2+10 2' 32.50
32.32
C0.18

32.64
32.32 2'
C0.32

1+80 EVC 4' 31.94
31.71
C0.23

32.24
31.71 1.60
C0.53

1+60 4' 31.41
31.34
C0.07

31.46
31.34 1.10
C0.12

1+40 PVC 1' 31.07
30.94
F0.13

31.07 2'
31.05
F0.02

BN 30.12

SNET Muir & Ebers

4+40 EVC	2' 3925 39.14 C0.11	3988 39.14 2.51 C0.74	6+00.05 Froude ✓ 44.76	44.90
4+20	2' 3893 38.33 C0.60	3877 38.33 2' C0.44	5+80 1' 44.84 44.57 C0.27	45.02 44.65 2' C0.37
4+00 PVC	2' 3805 37.64 C0.41	3835 37.64 2' C0.71	5+60 1' 45.05 44.25 C0.80	44.96 44.27 2' C0.69
3+76	2' 3766 36.90 C0.76	3702 36.90 2' C0.12	5+40 PVC 1' 43.52 43.28 F0.24	44.15 43.52 2' C0.63
3+52	2' 3692 36.17 C0.75	3620 36.17 2' C0.03	5+15 1' 43.15 42.42 C0.73	43.30 42.42 1.21 C0.88
3+28	0.04 3600 35.43 C0.57	3621 35.43 0.18 C0.78	4+90 3' 41.74 41.33 C0.41	42.70 41.33 1.38 C1.37
3+04	6' 3530 34.70 C0.60	3496 34.70 2' C0.26	4+65 6' 40.90 40.23 C0.67	40.95 40.23 2' C0.52

ROBERTS GRADE STAKES FOR BOX CULVERT IN
 4-30-58 ROCK PLACE, WATERVILLE HTS. TO COLLEGE AVE.
 W.A.#21444

See 4369-D.

9 1/2" = 0.79
 SUBGRADE

ROUGH

FINISH

2+75

ROUGH
 306.18
 305.50
 C0.68

FINISH 44

1+21 Break

304.02 ^{Finish} 304.81
 303.23
 F0.79

2+50

305.83
 305.26
 C0.57

1+00

30309
 303.34
 F0.25

215.92
 7.96
 Subgrade

2+25

305.44
 305.02
 C0.42

0+75

30290
 302.52
 C0.38

Set Finish Subgrade
 (Red tops)

2+00

304.86
 304.78
 C0.08

0+50

30258
 301.71
 C0.87

1+75

304.54
 304.31
 F0.23

0+25

300.90

1+58.72 Angle Lk

304.38 ^{Finish} 305.17
 303.93
 F0.45

0+00 Existing Box
 Waterville Hts

300.09 ^{Finish} 300.88

1+39.96

304.20
 303.80
 F0.40

	<u>ROUGH</u>	<u>FINISH</u>	<u>ROUGH</u>	<u>FINISH</u> 45
4+50	30760 30718 C0.42		6+25	30924 308.86 C0.38
4+25	30704 306.94 C0.10		6+00	30877 308.62 C0.15
4+00	30672 306.70 C0.02		5+75	30838 308.38 GRADE
3+75	306.46 306.36 F0.10		5+50	30843 308.14 C0.29
3+50	306.22 305.84 F0.38		5+25	30839 307.90 C0.49
3+25	305.98 305.42 F0.56		5+00	30805 307.66 C0.39
3+00	30508 305.74 F0.66		4+75	30773 307.42 C0.31

ROUGH

FINISH

7+76.97 Exist Box
College Ave.

311.38

312.17

Finish

7+61.97 Break

311.07

310.18

310.97

Finish

C0.89

7+41.60

311.57

309.98

C1.59

7+21.24 Angle Lt.

310.42

309.78

C0.64

7+00

311.11

309.58

C1.53

6+75

310.40

309.34

C1.06

6+50

309.86

309.10

C0.76

5-5-58
W.S. 32672

Grantville Sewer Continued

MISSION GORGE ROAD

See Page 32

4+00

7890
67.43
C 11.47

0+50 EVC

7597
64.66
C 11.31

3+50 MH #13

7835
67.00
C 11.35

0+40

7591
64.42
C 11.49

3+00

7785
66.61
C 11.24

0+30

7585
63.57
C 12.28

2+50

7735
66.22
C 11.13

0+20

7580
62.10
C 13.70

2+00

7690
65.83
C 11.07

0+10

7574
60.02
C 15.72

1+50

7657
65.44
C 11.13

Existing MH
0+00 Train Ave.

Rim = 75.73

57.63
✓

1+00

7631
65.05
C 11.26

7+26

8224
70.10
C12.14

(79.42)

#8

7+00 MH #14

8189
70.00
C11.89

6+50

8138
69.57
C11.81

6+00

8069
69.14
C11.55

8+30 Dead End

8354
70.52
C13.02

5+50

7997
68.71
C11.26

8+04

8324
70.42
C12.82

5+00

7954
68.28
C11.26

7+78

8292
70.31
C12.61

4+50

7925
67.86
C11.39

7+52

8259
70.21
C12.38

BLOCK 47

2+51.30

6743
58.37
C 9.06

0+75.39

6810
57.67
C 10.43

2+26.17

6739
58.27
C 9.12

0+48.09 EC

6818
57.56
C 10.62

2+01.04

6756
58.17
C 9.39

0+36.06

6844
57.51
C 10.93

1+75.91

6764
58.07
C 9.57

0+24.04

6878
57.47
C 11.31

1+50.78

6764
57.97
C 9.67

0+12.92

6903
57.42
C 11.61

1+25.65

6765
57.87
C 9.78

Exist. MH
0+00 Twain Ave

Exist. IE = 57.07

6913
57.37
C 11.76

1+00.52

6784
57.77
C 10.07

4+59.87 - - - - -	67.18	59.20 C 7.98 67.04	1+20 D.E. - - - - -	67.95 59.25 C 8.50	50
4+59.87 4+33.67 - - - - -		59.10 C 7.94	0+90		67.24 59.05 C 8.19
4+07.47 C 4+33.67		67.13 58.99 C 8.14	0+60		67.59 58.86 C 8.73
3+81.27 C 4+07.47		67.49 58.89 C 8.60	0+30		67.64 58.66 C 8.98
3+55.07 C 3+81.27		67.46 58.78 C 8.68	0+00 MH#12		58.47 C 9.01
3+28.87 C 3+55.07		67.33 58.68 C 8.65	5+25.09 DE		67.14 59.47 C 7.67
C 3+02.67		67.53 58.57 C 8.96	5+05.59		67.02 58.39 C 8.63
C 2+76.47 MH#12		67.48 58.47 C 9.01	4+86.09 MH#11		67.94 59.31 C 8.63

FAIRMOUNT EXTENSION

3+14.61

51
6698
53.86
C1302

1+39.61

6663
53.26
C1337

2+89.61

6678
53.86
C1292

1+14.61 MH# 2

To The East → 6660
52.86
C1374

6660
52.86
C1344

2+44.61

6662
53.86
C1286

0+85.95

6658
52.96
C1362

2+39.61

6654
53.86
C1288

0+57.30

6661
52.76
C1385

2+14.61

6652
53.56
C1296

0+28.65

6665
52.56
C1409

1+89.61

6657
53.46
C1311

Existing MH
0+00 at Pump House

6657.63
Exist. ↗

6647
52.36
C1411

1+64.61

6663
53.36
C1327

66.76
pic

4+89.61

6773
54.66
C13.07

6+64.61 D.E.

6936
55.36
C14.00

4+64.61 NA #1

6752
To The East 54.86
C12.66

6752
54.56
C12.96

6+39.61

6906
55.26
C13.80

4+39.61

6736
54.46
C12.90

6+14.61

6877
55.16
C13.61

4+14.61

6728
54.36
C12.92

5+89.61

6855
55.06
C13.49

3+89.61

6729
54.26
C13.03

5+64.61

6830
54.96
C13.34

3+64.61

6925
54.86
C13.09

5+39.61

6807
54.86
C13.21

3+39.61

6716
54.06
C13.10

5+14.61

6790
54.76
C13.14

MISSION GORGE ROAD

1+48

6732
55.76
C 11.57

0+25

6678
55.74
C 11.04

1+20 MH#9

6729
55.64
C 11.656729
55.34
C 11.95

0+00 MH#9

"
1+20

55.64

0+90

6787
55.22
C 12.65

2+60 DE.

6807
56.20
C 11.87

0+60

6811
55.10
C 13.01

2+32

6771
56.08
C 11.63

0+30

6743
54.98
C 12.45

2+04

6750
55.97
C 11.53

0+00 MH#1

"
4+46.1

See pg. 52

To The South 54.56

54.86

1+76

6729
55.86
C 11.43

2+00

6770
56.44
C 11.26

3+75

6865
57.14
C 11.51

1+75

6755
56.34
C 11.21

3+50 MH #8

6834
57.04
C 11.30

1+50

6744
56.24
C 11.20

3+25

6848
56.94
C 11.54

1+25

6747
56.14
C 11.33

3+00

6841
56.84
C 11.57

1+00

6727
56.04
C 11.33

2+75

6825
56.74
C 11.51

0+75

6713
55.94
C 11.19

2+50

6802
56.64
C 11.38

0+50

6700
55.84
C 11.16

2+25

6775
56.54
C 11.21

4+50 D.E.

6856
57.44
C11.12

4+25

6856
57.34
C11.22

4+00

6855
57.24
C11.31

Between Lots 46, 47 and Lots 50, 51

1731	6421 53.38 C10.83	2+88.33	6550 54.01 C11.49
1+04.8	6404 53.28 C10.76	2+62 MH*3	6521 53.91 C11.30
0+78.6	6396 53.17 C10.79	2+35.8	6493 53.80 C11.13
0+52.4	6430 53.07 C11.23	2+09.6	6483 53.70 C11.13
0+26.2	6550 52.96 C12.54	1+83.4	6466 53.59 C11.07
0+00 MH #2 ↓ 1+14.61 Fairmount See page 51	52.86 C13.74	1+57.2	6437 53.49 C10.88

69.34

4+72.64

6943
54.75
C14.68

6+50.32

6623
55.46
C10.77

4+46.31

6989
54.64
C15.23

6+25.32

6683
55.36
C11.47

4+19.98

6747
54.54
C12.93

6+00.32

6837
55.26
C13.11

3+93.65

6673
54.43
C12.30

5+75.32

6887
55.16
C13.71

3+67.32

6594
54.33
C11.61

5+50.32

6975
55.06
C14.69

3+40.99

6548
54.22
C11.265+25.32 MH #4
0+00 to North6929
To North } 55.26
C14.036929
54.96
C14.33

3+14.66

6548
54.12
C11.36

4+98.97

6934
54.85
C14.49

8+25.32

6592
56.16
C 9.76

10+00.32

6628
56.86
C 9.42

8+00.32

6576
56.06
C 9.70

9+75.32

6640
56.76
C 9.64

7+75.32

6589
55.96
C 9.93

9+50.32

6619
56.66
C 9.53

7+50.32

6586
55.86
C 10.00

9+25.32

6604
56.56
C 9.48

7+25.32

6594
55.76
C 10.18

9+00.32

6607
56.46
C 9.61

7+00.32

6600
55.66
C 10.34

8+75.32 MH#5

6584
56.36
C 9.48

6+75.32

6611
55.56
C 10.55

8+50.32

6615
56.26
C 9.89

11+75.32

6673
57.56
C 9.17

13+50.32

6762
58.26
C 9.36

11+50.32

6692
57.46
C 9.46

13+25.32

6763
58.16
C 9.47

11+25.32

6706
57.36
C 9.70

13+00.32

6759
58.06
C 9.53

11+00.32

6670
57.26
C 9.44

12+75.32

6744
57.96
C 9.48

10+75.32

6686
57.16
C 9.70

12+50.32

6723
57.86
C 9.37

10+50.32

6650
57.06
C 9.46

12+25.32 MH# 6

6734
57.76
C 9.58

10+25.32

6636
56.96
C 9.40

12+00.32

6689
57.66
C 9.23

15+25.32

6923
58.96
C10.27668200
17+00.326910
59.66
C9.44

15+00.32

6822
58.86
C9.36

16+75.32

6910
59.56
C9.54

14+75.32

6770
58.76
C8.94

16+50.32

6903
59.46
C9.57

14+50.32

6815
58.66
C9.49

16+25.32

6689
59.36
C7.53

14+25.32

6798
58.56
C9.42

16+00.32

6933
59.26
C10.07

14+00.32

6796
58.46
C9.50

15+75.32 NH#7

6922
59.16
C10.06

13+75.32

6774
58.36
C9.38

15+50.32

6935
59.06
C10.29

MISSION GORGE ROAD

1+25

69.84
55.76
C14.08

1+00

69.80
55.66
C14.12

0+75

69.71
55.56
C14.15

0+50

69.60
55.46
C14.14

17+75.32 D.E.

69.08
59.96
C9.12

0+25

69.47
55.36
C14.11

17+50.32

68.92
59.86
C9.06

17+25.32

68.82
59.76
C9.06

0+00 MH #4

55.26
C14.03

V

5+25.32

See page 57

3+00

7037
56.46
C13.91

2+75

7028
56.36
C13.92

4+70 D.E.

7102
57.14
C13.88

2+50

7018
56.26
C13.92

4+40

7085
57.02
C13.83

2+25

7008
56.16
C13.92

4+10

7078
56.90
C13.88

2+00

7000
56.06
C13.94

3+80

7072
56.78
C13.94

1+75

6993
55.96
C13.97

3+50 MH# 10

7066
56.66
C14.00

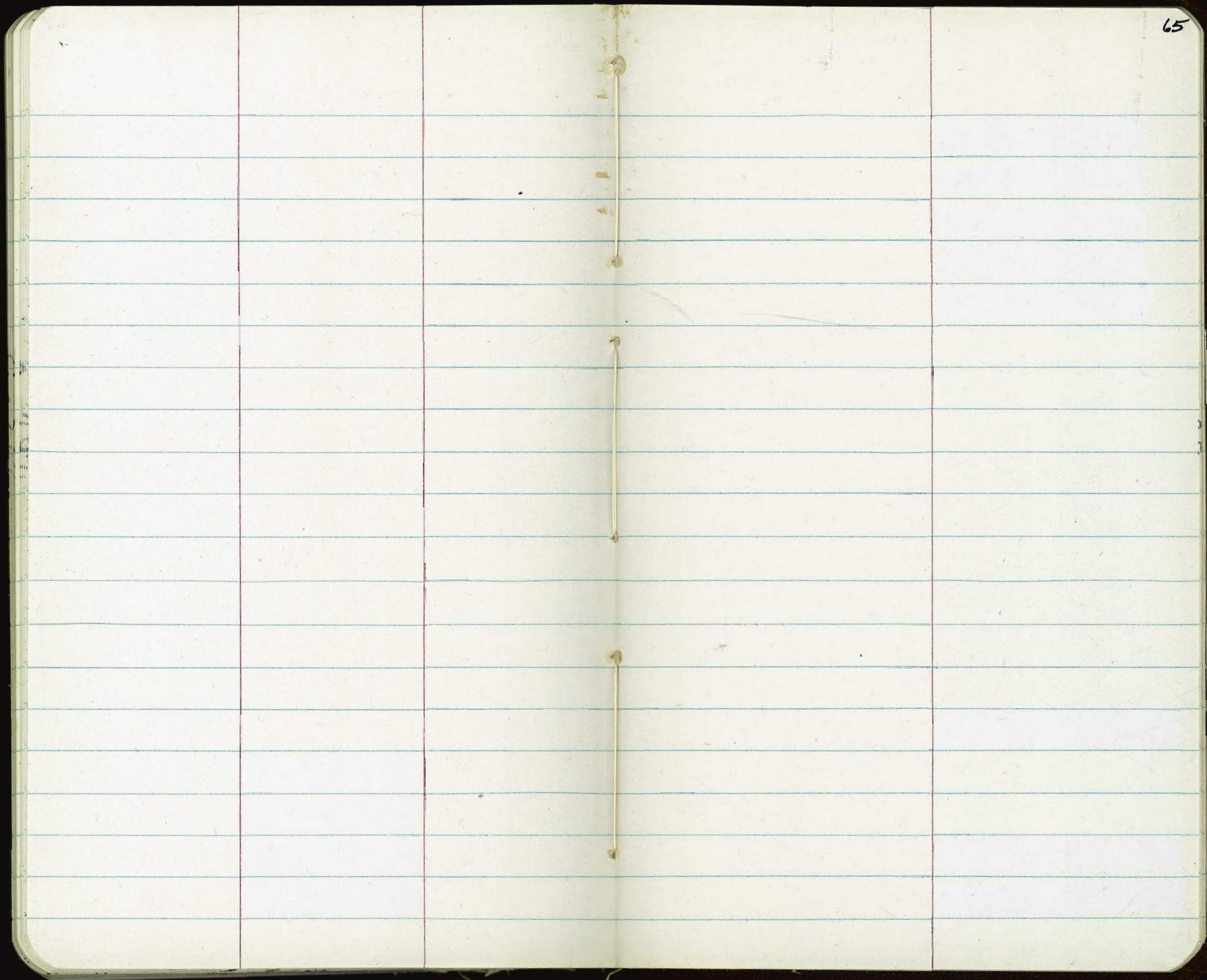
1+50

6989
55.86
C14.03

3+25

7051
55.56
C13.95
13.75

The image shows an open notebook with two facing pages. Both pages are cream-colored and feature light blue horizontal ruling. The notebook is bound in the center, and the pages appear slightly aged. In the top right corner of the right page, the number '63' is handwritten. The pages are otherwise blank, with no text or drawings.



Roberts
W.O. 31597
5-19-58

Grade Stakes Myrtle Ave.
Cherokee to Hwy 112992

4531-AD
curb

Rough

Rough

curb

1+25

314.10
314.04
FO.06

313.10
313.14
CO.04

1+00

314.60
314.58
FO.02

3151
314.60
CO.5
1.11

3141
313.60
CO.5

313.60
313.60
GRADE

0+75

315.10
315.05
FO.05

314.10
314.10
GRADE

0+50

315.63
315.60
CO.03

3158
315.60
CO.2

3153
314.60
CO.7

314.60
314.53
FO.07

0+25

316.21
316.10
CO.11

315.10
314.95
FO.15

East Line
0+00 Cherokee

316.60

316.60
316.62

315.60
315.54 BM

315.60

~~310.38~~ ~~Fole #3699~~ ^{309.92}

~~302.94~~ ~~NWEP~~

curb

Rough

Rough

curb

1+61.13-2^oRd. St.

313.38
31326
F0.12

313.38
3133
F0.1

312.38
3122
F0.2

312.38
31212
F0.26

1+61.13-2^oRd. Alley

313.46
31326
F0.20

312.46
31212
F0.34

End Return

313.62
31359
F0.03

312.62
31208
F0.54

End Return

31428
314.02
C0.26

31317
312.02
313.02
C0.15

1+37.13-2^oRd. Alley

313.86
F0.19

312.86
C0.05

1+37.13-2^oRd. St.

313.86
31367
F0.19

3141
313.86
C0.2

3131
312.86
C0.2

31291
312.86
C0.05

curb

Rough

Rough

curb

72

2+92.26 ²⁰²
Cal.

310.62
310.60
F0.02

3122
310.62
C1.6

// // // // // // //

2+78.26

31112
311.03
C0.09

310.03
30983
F0.20

2+50

31174
311.60
C0.14

3120
311.60
C0.4

310.60
3101
F0.5

31063
310.60
C0.03

2+25

31231
312.10
C0.21

311.10
31065
F0.45

2+00

31273
312.60
C0.13

3128
312.60
C0.2

311.60
3112
F0.4

311.60
31116
F0.44

1+75

31318
313.10
C0.08

312.10
31186
F0.24

Curb

Rough

Rough

Curb

73

0+06 ^{20°}
ch
Rad (Lt)

30988
309.80
C0.08

3135
309.80
C3.7

Midpoint Return (Lt)

31014
310.10
C0.04

3+78.26 = 0+06 (Rt)

3099
308.75
C1.1

30912
308.75
C0.35

ERD Return (Lt)

~~310.40~~

3+58.26 ~~0+06~~ (Rt)

30897
30881
C0.86
16

3+38.26 (Rt) ^{37th}
& Street

30915
3091
F0.1

30920
30915
C0.05

End Ret. (Lt)

310.75

3+18.26 (Rt)

30938
30933
C0.05

Midpoint Return (Lt)

31063
310.55
C0.08

2+98.26 (Rt)

30956
3092
F0.4

30979
30956
C0.23

Curb

Rough

Rough

Curb

74

1+20 EVC

30563
305.00
C0.63

3078
305.00
C2.8

3051
304.00
C1.1

30552
304.00
C1.52

1+00

30667
306.57
C0.10

30636
305.57
C0.79

0+80

30780
30755
F0.25

3109
307.80
C3.1

3075
306.80
C0.7

30705
306.80
C0.25

0+60

30867
30829
F0.38

30796
307.67
C0.39

0+40

30920
30905
F0.15

3133
309.20
C4.1

3108
308.20
C2.6

30843
308.20
C0.23

0+20

30961
309.55
C0.06

30883
308.55
C0.28

curb

Rough

Rough

curb

75

1+59.75 @ St.
Curb
Grade

30395
301.00
C 2.95

45 sec CT
E

1+59.75

30375
301.50
C 2.25

3043
301.50
C 2.8

End

300.50
3002
F 0.3

300.50
30019
F 0.31

End Return

30480
30338
C 1.42

30340
302.38
C 1.02

1+35.75 4th Rad.
Alley

30450
30334
C 1.16

30401
302.34
C 1.67

1+35.75 4th Rad.
St.

30450
303.61
C 0.89

30401
302.61
C 1.40

Roberts
H.O. 32896
5-20-58

Grades For Madison Ave.

76

4763-D

curb

Rough

Rough

curb

7° 29.6'
0+49.89

30822
307.93
C 0.29

3082
307.93
C 0.3

3076
307.53
C 0.1

30762
307.53
C 0.09

4° 29.5'
0+29.89

30951
309.21
C 0.30

3095
309.21
C 0.3

308.81
3082
F 0.6

308.81
30822
F 0.59

21° 29.4'
~~0+09.89~~
0+09.89 PK

31091
310.50
C 0.41

3109
310.50
C 0.4

310.10
30884
F 1.3

310.10
30885
F 1.25

#3

31135
311.25
C 0.10

0+00

310.50
30994
F 0.56

#2

31216
311.80
C 0.36

#1

Exist.
curb

312.26
✓

PK Pile # 715

314.87

	curb	Rough	Rough	curb
25° 30.2' 1+69.89	30281 302.68 C 0.13	3028 302.68 C 0.1	3 303.26 3031 F 0.2	- 303.26 30314 F 0.12
22° 30.1' 1+49.89	30317 303.10 C 0.07	3032 303.10 C 0.1	3035 303.39 C 0.1	30348 303.39 C 0.09
19° 30.0' 1+29.89	30379 303.60 C 0.19	3038 303.60 C 0.2	3043 303.67 C 0.6	30429 303.67 C 0.62
16° 29.9' 1+09.89	30468 304.35 C 0.33	3047 304.35 C 0.3	3050 304.23 C 0.8	30505 304.23 C 0.82
13° 29.8' 0+89.89	30554 305.35 C 0.23	3056 305.35 C 0.2	3058 305.09 C 0.7	30578 305.09 C 0.69
10° 29.7' 0+69.89 PVC	30679 306.65 C 0.14	3068 306.65 C 0.1	3069 306.25 C 0.6	30688 306.25 C 0.63

#4

Curb
302.44
302.40 ~~302.48~~
C0.34

Rough

Rough

Curb

78

#3 Low

302.80
302.25 ~~302.40~~
C0.55

303.45
302.30
C1.15

303.4
302.30
C1.1

#2 (opening)

302.65
302.35
C0.30

#1

302.72
302.40
C0.32

PRC

26° 57'
1 + 79.54 PRC (L)
20' CB Rad

302.66
302.53
C0.13

302.6
302.53
C0.1

26° 01.3'
1 + 73.35 PRC (R)
20' CB Rad.

303.2
303.24
GRADE

303.24
303.22
FOOT

31° 28.7' - 2 + 09.76 = 28' CB Rad.

curb.

Rough

curb

Rough

79

#10

303.00
30130
F1.70

#9

302.96
30262
F0.28

#3 302.90
3012
F1.7

#8

302.80
30249
F0.32

#7

302.70
30228
F0.42

#6 ✓

302.62
30242
F0.20

#2 302.62
3024
F0.2

P.R.C.

303.15
30266
F0.49

#5

302.50
30238
F0.12

#11

303.08
30108
F2.00

#10

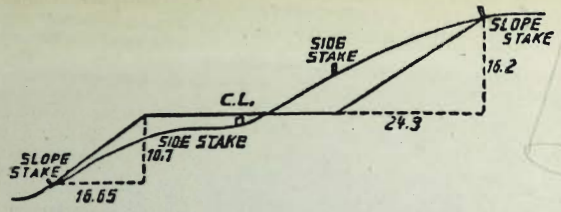
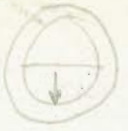
#9

#8

#7

#6 ✓

#5



DISTANCES FROM SIDE STAKES FOR CROSS-SECTIONING.
SLOPE 1 1/2 TO 1. ROADWAY OF ANY WIDTH.

	0	.1	.2	.3	.4	.5	.6	.7	.8	.9	
0	0.00	0.15	0.30	0.45	0.60	0.75	0.90	1.05	1.20	1.35	0
1	1.50	1.65	1.80	1.95	2.10	2.25	2.40	2.55	2.70	2.85	1
2	3.00	3.15	3.30	3.45	3.60	3.75	3.90	4.05	4.20	4.35	2
3	4.50	4.65	4.80	4.95	5.10	5.25	5.40	5.55	5.70	5.85	3
4	6.00	6.15	6.30	6.45	6.60	6.75	6.90	7.05	7.20	7.35	4
5	7.50	7.65	7.80	7.95	8.10	8.25	8.40	8.55	8.70	8.85	5
6	9.00	9.15	9.30	9.45	9.60	9.75	9.90	10.05	10.20	10.35	6
7	10.50	10.65	10.80	10.95	11.10	11.25	11.40	11.55	11.70	11.85	7
8	12.00	12.15	12.30	12.45	12.60	12.75	12.90	13.05	13.20	13.35	8
9	13.50	13.65	13.80	13.95	14.10	14.25	14.40	14.55	14.70	14.85	9
10	15.00	15.15	15.30	15.45	15.60	15.75	15.90	16.05	16.20	16.35	10
11	16.50	16.65	16.80	16.95	17.10	17.25	17.40	17.55	17.70	17.85	11
12	18.00	18.15	18.30	18.45	18.60	18.75	18.90	19.05	19.20	19.35	12
13	19.50	19.65	19.80	19.95	20.10	20.25	20.40	20.55	20.70	20.85	13
14	21.00	21.15	21.30	21.45	21.60	21.75	21.90	22.05	22.20	22.35	14
15	22.50	22.65	22.80	22.95	23.10	23.25	23.40	23.55	23.70	23.85	15
16	24.00	24.15	24.30	24.45	24.60	24.75	24.90	25.05	25.20	25.35	16
17	25.50	25.65	25.80	25.95	26.10	26.25	26.40	26.55	26.70	26.85	17
18	27.00	27.15	27.30	27.45	27.60	27.75	27.90	28.05	28.20	28.35	18
19	28.50	28.65	28.80	28.95	29.10	29.25	29.40	29.55	29.70	29.85	19
20	30.00	30.15	30.30	30.45	30.60	30.75	30.90	31.05	31.20	31.35	20
21	31.50	31.65	31.80	31.95	32.10	32.25	32.40	32.55	32.70	32.85	21
22	33.00	33.15	33.30	33.45	33.60	33.75	33.90	34.05	34.20	34.35	22
23	34.50	34.65	34.80	34.95	35.10	35.25	35.40	35.55	35.70	35.85	23
24	36.00	36.15	36.30	36.45	36.60	36.75	36.90	37.05	37.20	37.35	24
25	37.50	37.65	37.80	37.95	38.10	38.25	38.40	38.55	38.70	38.85	25
26	39.00	39.15	39.30	39.45	39.60	39.75	39.90	40.05	40.20	40.35	26
27	40.50	40.65	40.80	40.95	41.10	41.25	41.40	41.55	41.70	41.85	27
28	42.00	42.15	42.30	42.45	42.60	42.75	42.90	43.05	43.20	43.35	28
29	43.50	43.65	43.80	43.95	44.10	44.25	44.40	44.55	44.70	44.85	29
30	45.00	45.15	45.30	45.45	45.60	45.75	45.90	46.05	46.20	46.35	30
31	46.50	46.65	46.80	46.95	47.10	47.25	47.40	47.55	47.70	47.85	31
32	48.00	48.15	48.30	48.45	48.60	48.75	48.90	49.05	49.20	49.35	32
33	49.50	49.65	49.80	49.95	50.10	50.25	50.40	50.55	50.70	50.85	33
34	51.00	51.15	51.30	51.45	51.60	51.75	51.90	52.05	52.20	52.35	34
35	52.50	52.65	52.80	52.95	53.10	53.25	53.40	53.55	53.70	53.85	35
36	54.00	54.15	54.30	54.45	54.60	54.75	54.90	55.05	55.20	55.35	36
37	55.50	55.65	55.80	55.95	56.10	56.25	56.40	56.55	56.70	56.85	37
38	57.00	57.15	57.30	57.45	57.60	57.75	57.90	58.05	58.20	58.35	38
39	58.50	58.65	58.80	58.95	59.10	59.25	59.40	59.55	59.70	59.85	39
40	60.00	60.15	60.30	60.45	60.60	60.75	60.90	61.05	61.20	61.35	40
41	61.50	61.65	61.80	61.95	62.10	62.25	62.40	62.55	62.70	62.85	41
42	63.00	63.15	63.30	63.45	63.60	63.75	63.90	64.05	64.20	64.35	42
43	64.50	64.65	64.80	64.95	65.10	65.25	65.40	65.55	65.70	65.85	43
44	66.00	66.15	66.30	66.45	66.60	66.75	66.90	67.05	67.20	67.35	44
45	67.50	67.65	67.80	67.95	68.10	68.25	68.40	68.55	68.70	68.85	45
46	69.00	69.15	69.30	69.45	69.60	69.75	69.90	70.05	70.20	70.35	46
47	70.50	70.65	70.80	70.95	71.10	71.25	71.40	71.55	71.70	71.85	47
48	72.00	72.15	72.30	72.45	72.60	72.75	72.90	73.05	73.20	73.35	48
49	73.50	73.65	73.80	73.95	74.10	74.25	74.40	74.55	74.70	74.85	49
50	75.00	75.15	75.30	75.45	75.60	75.75	75.90	76.05	76.20	76.35	50

THE NATIONAL BLANK BOOK COMPANY
 HOLYOKE MASSACHUSETTS
 NEW YORK CHICAGO BOSTON SAN FRANCISCO